

Isoré, Marlène

## Article

# Changes in natural disaster risk: Macroeconomic responses in selected Latin American countries

Economies

## Provided in Cooperation with:

MDPI – Multidisciplinary Digital Publishing Institute, Basel

*Suggested Citation:* Isoré, Marlène (2018) : Changes in natural disaster risk: Macroeconomic responses in selected Latin American countries, *Economies*, ISSN 2227-7099, MDPI, Basel, Vol. 6, Iss. 1, pp. 1-12,  
<https://doi.org/10.3390/economies6010013>

This Version is available at:

<https://hdl.handle.net/10419/197065>

### Standard-Nutzungsbedingungen:

Die Dokumente auf EconStor dürfen zu eigenen wissenschaftlichen Zwecken und zum Privatgebrauch gespeichert und kopiert werden.

Sie dürfen die Dokumente nicht für öffentliche oder kommerzielle Zwecke vervielfältigen, öffentlich ausstellen, öffentlich zugänglich machen, vertreiben oder anderweitig nutzen.

Sofern die Verfasser die Dokumente unter Open-Content-Lizenzen (insbesondere CC-Lizenzen) zur Verfügung gestellt haben sollten, gelten abweichend von diesen Nutzungsbedingungen die in der dort genannten Lizenz gewährten Nutzungsrechte.

### Terms of use:

*Documents in EconStor may be saved and copied for your personal and scholarly purposes.*

*You are not to copy documents for public or commercial purposes, to exhibit the documents publicly, to make them publicly available on the internet, or to distribute or otherwise use the documents in public.*


*If the documents have been made available under an Open Content Licence (especially Creative Commons Licences), you may exercise further usage rights as specified in the indicated licence.*



<https://creativecommons.org/licenses/by/4.0/>

Article

# Changes in Natural Disaster Risk: Macroeconomic Responses in Selected Latin American Countries

Marlène Isoré <sup>1,2</sup> <sup>1</sup> HECER, University of Helsinki, FI-00014 Helsinki, Finland; marlene.isore@helsinki.fi<sup>2</sup> Bank of Finland, 00101 Helsinki, Finland<sup>1</sup>

Received: 29 November 2017; Accepted: 1 February 2018; Published: 26 February 2018

**Abstract:** This paper studies the theoretical effects of changes in disaster risk on macroeconomic variables in five Latin American economies. It compares country-specific variants of the New Keynesian model with disaster risk developed by Isoré and Szczerbowicz (2017). Countries with higher price flexibility, such as Argentina, Brazil, and Mexico, are found to be relatively less vulnerable to disaster risk shocks, as compared to Chile and Colombia in particular. Overall, the analysis suggests that increases in the probability of natural disasters over time may have significant macroeconomic effects, beyond the direct impact of actual disaster occurrences themselves.

**Keywords:** natural disasters; disaster risk; DSGE models; business cycles; Latin America

**JEL Classification:** E20; E31; E32; Q54

## 1. Introduction

Evidence regarding the macroeconomic effects of natural disasters is scarce and not yet conclusive. In particular, it seems that natural events need to be “extreme” to significantly impact a country’s short or long term GDP growth (Cavallo et al. 2013). The most commonly used database of natural disasters, EM-DAT ([www.emdat.be](http://www.emdat.be)) includes a very large range of situations that “overwhelms local capacity and/or necessitates a request for external assistance”, from floods to earthquakes among many others. Yet, what may look like a catastrophe at the local level does not necessarily matter at aggregate levels, unless the geographical size of the country is itself very small, such as Haiti, for instance (Cavallo et al. 2010). Therefore, while negative effects are found on specific samples or disaster types (e.g., Hsiang and Jina (2014) for cyclones), no significant impact emerge in meta-analyses of indirect costs (Lazzaroni and van Bergeijk 2014).<sup>2</sup> Skidmore and Toya (2002) even argue that natural disasters may even have a positive long run growth effect via the reconstruction activities in the recovery phase. From a theoretical point of view, the impact of disasters on growth is also ambiguous. Standard growth model would predict that a sudden destruction of the physical capital stock increases output growth by stimulating savings and investment. On the contrary, endogenous growth models with increasing returns to scale may find negative effects. Hence, the consequences of *actual* natural disasters on dynamic macroeconomic variables are far from clear-cut, both theoretically and empirically.

Meanwhile, a recent but growing macroeconomic literature has emphasized the role of disaster risk on economic outcomes, starting with the seminal paper by Barro (2006). Originally designed for replicating asset pricing features, such as the risk premium puzzle, this literature has been

<sup>1</sup> The opinions expressed in this paper are those of the authors and do not necessarily reflect the views of the Bank of Finland.

<sup>2</sup> Caruso and Miller (2015) and Caruso (2017) argue that other long run welfare consequences exist, such as negative health effects, impacts on labor markets, and losses of human capital accumulation, even without clear effects in terms of growth.

further developed into dynamic and stochastic macroeconomic models. [Gabaix \(2011\)](#), [Gabaix \(2012\)](#), and [Gourio \(2012\)](#) have introduced a small but time-varying probability of disasters in real business cycle models, and find that changes in the *probability* of disasters, without any arrival of the disaster itself, may suffice to trigger economic recessions. [Isoré and Szczerbowicz \(2017\)](#) further showed how to extend this approach to a New Keynesian environment, and found that disaster risk shocks—again, absent of actual disaster realization—, generate procyclical responses of consumption, investment, labor, wage, and inflation, simultaneously to the recession and rise in equity premium. Further empirical evidence by [Siriwardane \(2015\)](#) and [Marfè and Penasse \(2017\)](#) support the relationship between changes in the probability of a disaster and macroeconomic variables.

It may seem like a paradox that changes in disaster risk affect real macroeconomic variables when natural disasters themselves generally do not. The disaster risk literature defines “disasters” as rare events destroying a large share of a country’s existing capital stock. Even though it often focuses on political or financial disasters, it also encompasses extreme natural events, by definition. Therefore, this suggests that it is not so much the arrival of actual natural disasters that affects the dynamic paths of macroeconomic variables, but the simple risk that they may occur, i.e. the uncertainty component that is embedded in changes in their probability over time.

In this paper, changes in disaster risk are simulated for five Latin American countries—namely Argentina, Brazil, Chile, Colombia, and Mexico—using variants from the New Keynesian DSGE model developed by [Isoré and Szczerbowicz \(2017\)](#). This study is the first analysis of the effects of changes in disaster risk, absent of actual disaster occurrence, in the particular context of emerging economies. Here are the main results. In all five countries, a 1% increase in the probability of disaster unambiguously decrease output, consumption, investment, labor, wage, and inflation, on impact. However, a large rebound in investment follows in the period after the shock in Argentina, Brazil, and Mexico. This tends to limit the size of the macroeconomic responses for this group of countries. On the contrary, Chile and Colombia do not experience the rebound, exacerbating the magnitude and persistence of the shock. The model gives theoretical explanations to these differences. In particular, very low degrees of price stickiness make the first group of countries less vulnerable. As the probability of a disaster increases, output prices adjust quickly, such that precautionary savings are channelled quite rapidly into higher investment. On the contrary, with slightly less frequent—but still much more than e.g., in the US—price changes, Chile and Colombia’s responses in production factors, capital and labor, is much more pronounced, translating into much lower investment, and therefore output. Higher frequency and severity of natural disasters, such as in Chile, where extreme events are mostly earthquakes, also contribute to particularly strong macroeconomic responses to disaster uncertainty.

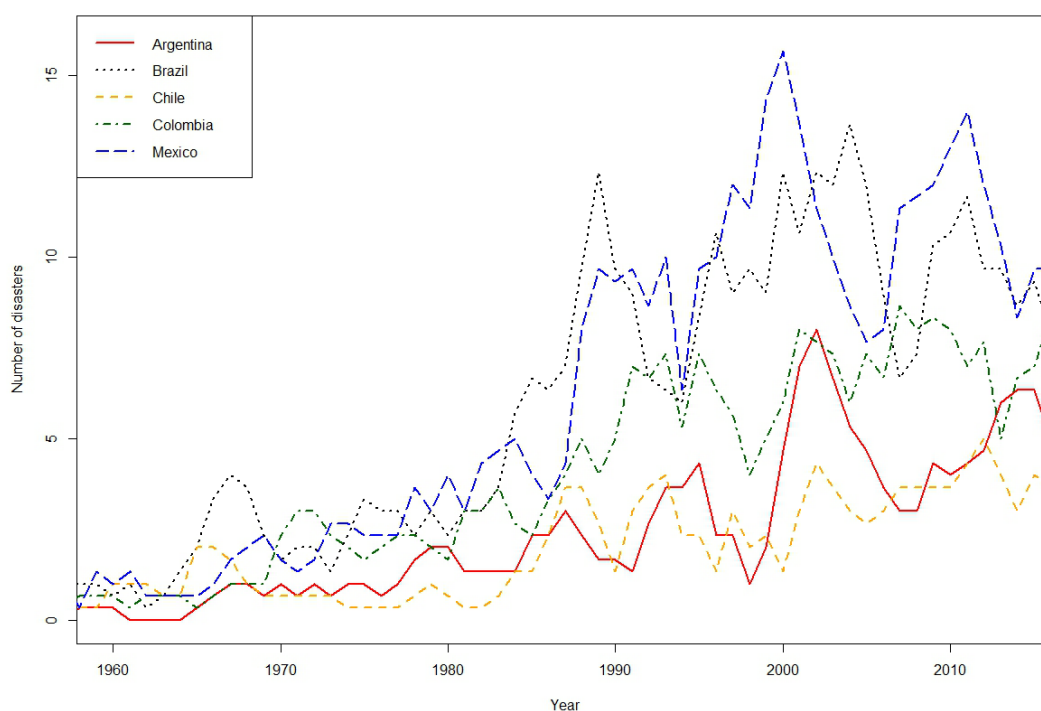
The remainder of this paper is as follows. Section 2 presents some evidence on natural disasters in the five countries of interest, regarding their frequency, type, and size in particular. Section 3 summarizes the model by [Isoré and Szczerbowicz \(2017\)](#), a New Keynesian DSGE model which embeds a small but time-varying probability of disaster. Section 4 discusses how calibration accounts for country specificities and shows the responses of macroeconomic variables to a 1% change in disaster risk. Finally, Section 5 concludes.

## 2. Evidence on Natural Disasters in Latin America

The scope of this paper is limited to five countries, namely Argentina, Brazil, Chile, Colombia, and Mexico. This group of countries has several advantages. First, they are part of the broadly defined range of emerging economies. [Toya and Skidmore \(2007\)](#) find that high income and financially developed countries typically suffer less from natural disasters, partly because they may be located in geographic regions with disasters of lower physical intensity but also because wealth makes them less vulnerable to disasters of any given size (by larger investment in safety measures for instance). Second, among emerging economies, these five countries are geographically large enough such that any “local” natural disaster does not automatically slow down their economy, but only “extreme” ones may. Third and most importantly, empirical evidence is sufficiently important for some of the model

parameters required in the theoretical simulation exercises presented here. In particular, the elasticity of intertemporal substitution and the degree of price stickiness play a key role in the responses, as explained in Isoré and Szczerbowicz (2017). These parameters are well documented for this group of countries, unlike for example South-Asian countries of similar income levels (see Subsection 4.1).

Figure 1 illustrates the evolution in the number of disasters over time for these five countries, as reported in the EM-DAT database. The most striking feature—yet not limited to this particular group of countries—is the growth of disaster occurrences over time. Low figures in the early period might partly be explained by under-reporting. However, even over the 1990s onward period, the positive trend remains. Reasons for this trend are beyond the scope of this paper, but climate change could be an obvious candidate. As far as economic consequences of natural disasters are concerned, this suggests that it might be worth investigating not only the impact of actual disaster occurrences per se, but also changes in their frequency over time.



**Figure 1.** Number of natural disasters since 1960 for selected countries. Three-year moving average. Source: EM-DAT and author’s calculations.

However, since only extreme events seem to matter for macroeconomic outcomes, both according to empirical evidence on natural disasters and the theoretical disaster risk literature, the scope of these events to be considered must be narrowed down from EM-DAT. Table A1 here reports only the first top-10 natural disasters per country of interest, together with their type and associated capital loss in current US dollar terms. The “ $\Delta$ ” column of the same table calculates the share of the country-specific capital stock which corresponds to this damage, using data on capital stock and deflator available from 1950 in FRED database (<https://fred.stlouisfed.org/>). Finally, the long-term probability of extreme natural events is defined as the frequency of disasters with  $\Delta > 0.001$ , i.e., a destruction share of the capital stock of at least 0.1%. Averaged across the five countries, this probability is 4.5% annually. Nevertheless, heterogeneity across the five countries is substantial, partly due to the type of natural disasters they face and other geographical features. For instance, Chile’s density of capital stock in narrow geographical areas subject to earthquakes contributes to high capital damages.

Overall, these stylized facts first suggest that time variations in the probability of natural disasters may matter for economic outcomes, beyond actual occurrences of these disasters. Second, they provide information on the relative size of capital destruction in case of extreme natural disasters as well

as their long-term probability, both dimensions being taken into consideration when simulating the model responses of macroeconomic variables to disaster risk shocks in Section 4.

### 3. Model Overview

The economy is composed of households, firms, and a public authority. Calculation details are provided in Isoré and Szczerbowicz (2017).

#### 3.1. Households

Households are infinitely-lived and identical over a unit interval. Their lifetime utility is defined as recursive Epstein-Zin-Weil preferences as

$$\tilde{V}_t = \left[ [C_t (1 - L_t)^\omega]^{1-\psi} + \beta_0 \left( E_t \tilde{V}_{t+1}^{1-\gamma} \right)^{\frac{1-\psi}{1-\gamma}} \right]^{\frac{1}{1-\psi}} \quad (1)$$

where  $C$  denotes consumption,  $L$  labor supply,  $0 < \beta_0 < 1$  the discount factor,  $\gamma$  the parameter of risk aversion, and  $1/[1 - (1 + \omega)(1 - \psi)]$  the elasticity of intertemporal substitution (EIS).

Households accumulate capital stock over time according to

$$K_{t+1} = \left[ (1 - \delta_t)K_t + S \left( \frac{I_t}{K_t} \right) K_t \right] e^{x_{t+1} \ln(1-\Delta)} \quad (2)$$

with  $K$  for capital,  $I$  for investment,  $\delta_t$  the depreciation rate,  $S \left( \frac{I_t}{K_t} \right)$  convex capital adjustment costs, and where  $x$  is an indicator variable standing for the arrival of a “disaster” that would destroy a fraction  $\Delta$  of the capital stock.<sup>3</sup>

A disaster is an event associated with a (low) probability  $\theta_t$ , in which case  $x_{t+1} = 1$ , and  $x_{t+1} = 0$  otherwise. This probability  $\theta_t$  is itself time-varying and follows a first-order autoregressive process as

$$\log \theta_t = (1 - \rho_\theta) \log \bar{\theta} + \rho_\theta \log \theta_{t-1} + \sigma_\theta \varepsilon_{\theta_t} \quad (3)$$

where  $\bar{\theta}$  is the mean,  $\rho_\theta$  the persistence, and  $\varepsilon_\theta$  i.i.d innovations.

Households not only consume and invest in capital but can also save in the form of one-periods bonds issued by a public authority, and pay lump-sum taxes. They rent their capital and labor force to monopolistic competition firms that they own. Therefore, their budget constraint is given by

$$C_t + I_t + T_t + \frac{B_{t+1}}{p_t} \leq \frac{W_t}{p_t} L_t + \frac{P_t^k}{p_t} u_t K_t + D_t + \frac{B_t(1 + r_{t-1})}{p_t} \quad (4)$$

where  $T$  denote the taxes,  $B$  the bonds with yield  $r$ ,  $p$  the price of final goods,  $W$  the wage rate,  $P_t^k$  the rental rate of capital, and  $D$  dividends from the firms.

The problem of the representative household is therefore to maximize (1) subject to (2) and (4), given the time-varying disaster risk (3). As such, this problems gives nonlinear optimality conditions because of the potential occurrence of a (large) disaster,  $x$ . However, simple stationarity assumptions can be made so as to reexpress these conditions in terms of the disaster risk,  $\theta_t$ , only and not the disaster event itself. Then, perturbation methods can be used to simulate the impact of a change in disaster risk, instead of global methods had the disaster occurrence stayed in the equilibrium system. This solution method is detailed in Isoré and Szczerbowicz (2017).

<sup>3</sup> The depreciation rate is a function of the utilization rate  $u$  of capital as  $\delta_t = \delta_0 u_t^\eta$ , and the capital adjustment costs given by the function  $S \left( \frac{I_t}{K_t} \right) = \frac{I_t}{K_t} - \frac{\tau}{2} \left( \frac{I_t}{K_t} - \frac{I}{K} \right)^2$ .

### 3.2. Firms

The supply side of this economy is composed of a final good sector, in perfect competition, and  $j$  intermediate goods sector, in monopolistic competition. Intermediate goods firms minimize their cost of production in each period by choosing optimal labor and capital demand levels such that

$$\begin{aligned} \min_{L_{j,t}, u_t K_{j,t}} & W_t L_{j,t} + P_t^k u_t K_{j,t} \\ \text{s.t.} & Y_{j,t} = \left( \frac{p_{j,t}}{p_t} \right)^{-\nu} Y_t, \\ \text{and} & Y_{j,t} = (u_t K_{j,t})^\alpha (z_t L_{j,t})^{1-\alpha}. \end{aligned}$$

The first constraint is a downward-sloping demand curve for good  $j$ , with  $\frac{p_{j,t}}{p_t}$  its relative price and  $\nu$  the elasticity of substitution among these goods for the final good producer's with Dixit-Stiglitz aggregator,  $Y_t = \left( \int_0^1 Y_{j,t}^{\frac{\nu-1}{\nu}} dj \right)^{\frac{\nu}{\nu-1}}$ . The second constraint is a Cobb-Douglas production function where  $z_t$  is a labor-augmenting productivity which grows according to

$$\frac{z_{t+1}}{z_t} = e^{\mu + x_{t+1} \ln(1-\Delta)} \tag{5}$$

where  $\mu$  is a trend, while the second term accounts for the impact of disasters.<sup>4</sup>

In addition, with Calvo probability  $\zeta$ , intermediate goods producers update their price in period  $t$  so as to maximize the present-discounted value of future profits, i.e.,

$$\max_{p_{j,t}} E_t \sum_{s=0}^{\infty} (\zeta)^s Q_{t+s} \left( p_{j,t} Y_{j,t} - W_t L_{j,t} - P_{j,t}^k \tilde{K}_{j,t} \right)$$

where

$$Q_{t,t+1} \equiv \frac{\partial \tilde{V}_t / \partial C_{t+1}}{\partial \tilde{V}_t / \partial C_t} = \beta_0 \left( \frac{C_{t+1}}{C_t} \right)^{-\psi} \left( \frac{1 - L_{t+1}}{1 - L_t} \right)^{\omega(1-\psi)} \frac{V_{t+1}^{-\chi}}{(E_t V_{t+1}^{1-\chi})^{\frac{-\chi}{1-\chi}}} \tag{6}$$

is the (real) households' stochastic discount factor. The resulting price gives an optimal inflation rate as

$$1 + \pi_t^* = \frac{\nu}{\nu - 1} \frac{\Xi_{1t}}{\Xi_{2t}} (1 + \pi_t)$$

where  $\Xi_1$  and  $\Xi_2$  are such that

$$\Xi_{1t} = Y_t mc_t^* + \zeta E_t [Q_{t,t+1} (1 + \pi_{t+1})^\nu \Xi_{1,t+1}], \quad \text{and} \tag{7}$$

$$\Xi_{2t} = Y_t + \zeta E_t [Q_{t,t+1} (1 + \pi_{t+1})^{\nu-1} \Xi_{2,t+1}]. \tag{8}$$

with  $mc_t^*$  the real marginal cost of production.

### 3.3. Public Authority

Finally, a public authority collects taxes, issues the bonds, and sets their nominal yield according to a Taylor type rule as

$$r_t = \rho_r r_{t-1} + (1 - \rho_r) \left[ \Phi_\pi (\pi_t - \bar{\pi}) + \Phi_Y \left( \frac{Y_t}{z_t} - \frac{\bar{Y}}{\bar{z}} \right) + \bar{r} \right] \tag{9}$$

<sup>4</sup> This assumption follows Gourio (2012) and its role is further discussed in Isoré and Szczerbowicz (2017).

where an overbar stands for the steady-state value of a variable.

#### 4. Simulations

After a brief description of calibration values in Subsection 4.1, a 1% increase in disaster risk is simulated for the countries of interest, with two distinct exercises as follows. First, in Subsection 4.2, only the EIS and price stickiness vary across countries, while everything else is kept identical across countries. This allows to gauge the specific role of these parameters in driving the macroeconomic responses. Then, in Subsection 4.3, also the size and long term probability of disasters differ across countries. In that case, divergences across countries become even more striking.

##### 4.1. Calibration

Table 1 presents the main calibration values. Most correspond to Isoré and Szczerbowicz (2017) at monthly (instead of quarterly) frequency, and the reader can refer to that paper for a lengthier description. However, four specific parameters are modified to account for country-specific characteristics, as follows.<sup>5</sup>

**Table 1.** Calibration, monthly values.

<i>Disaster risk</i>		
$\theta$	probability of disaster	0.0037
$\Delta$	size of disaster	0.0078
$\rho_\theta$	persistence of (log) disaster risk	0.965
$\sigma_\theta$	st. dev. of innovations to (log) disaster risk	0.2
<i>Utility function</i>		
$\beta_0$	discount factor	0.9976
$\gamma$	risk aversion coefficient	3.8
$\omega$	leisure preference	2.33
$1/[1 - (1 + \omega)(1 - \psi)]$	(Country-specific) EIS	
	<i>Argentina</i>	0.1
	<i>Brazil</i>	0.107
	<i>Chile</i>	0.137
	<i>Colombia</i>	0.158
	<i>Mexico</i>	0.158
<i>Investment</i>		
$\delta_0$	capital depreciation rate	0.0067
$\tau$	capital adjustment cost	2
$\bar{u}$	steady-state utilization rate of capital	1
<i>Production</i>		
$\alpha$	capital share of production	0.33
$\nu$	elasticity of substitution among goods	6
$\mu$	trend growth of productivity	0.0017
$\zeta_0$	(Country-specific) Calvo probability	
	<i>Argentina</i>	0.41
	<i>Brazil</i>	0.33
	<i>Chile</i>	0.7
	<i>Colombia</i>	0.68
	<i>Mexico</i>	0.375
<i>Public authority</i>		
$\Phi_\pi$	Taylor rule inflation weight	1.6
$\Phi_y$	Taylor rule output weight	0.4
$\bar{\pi}$	target (gross) inflation rate	1.0017
$\rho_r$	interest rate smoothing parameter	0.947

<sup>5</sup> This does not mean that other parameters are not country-specific, but that their importance for the simulations of this particular model is negligible, such keeping them identical across countries favor the ease of comparison.



First, the EIS follows country-specific mean estimates by [Havranek et al. \(2015\)](#). Their methodology has the advantage to make studies with different models and empirical strategies comparable. For our five countries of interest, the mean EIS estimate is quite low, below 0.16 as compared to 0.6 for the US for instance, and reported in Table 1.<sup>6</sup> This observation is consistent with the idea that countries where households hold less stock market assets exhibit lower EIS values, in line with the literature.

Second, degrees of price stickiness (Calvo probabilities) follow empirical estimates by [Burstein et al. \(2005\)](#) for Argentina and by [Morandé and Tejada \(2008\)](#) for the four other countries. All five countries are much more price-flexible than the US, where price change is observed every 7.5 months on average, but particularly so in Argentina, Brazil, and Mexico with 1.5 to 1.7 month on average versus 3.1 to 3.3 for Chile and Colombia. [Gagnon \(2009\)](#) documents that the frequency of price change in Mexico has varied a lot between low-inflation and high-inflation regimes, but [Morandé and Tejada \(2008\)](#)'s estimate for the period 1995–2006 seems consistent with this result.

Finally, the size of capital destruction in case of a disaster,  $\Delta$ , and the steady-state probability of a disaster,  $\theta$ , are calculated as described earlier (Section 2). In Table 1 and the first simulation exercise (Section 4.2), the results are averaged across the five countries, such that only the EIS and Calvo probability differences are at play. Then, in the second simulation exercise (Section 4.3), they follow the country-specific values reported in Table A1.

#### 4.2. Response to a Disaster Risk Shock: Country-Specific EIS and Price Stickiness Only

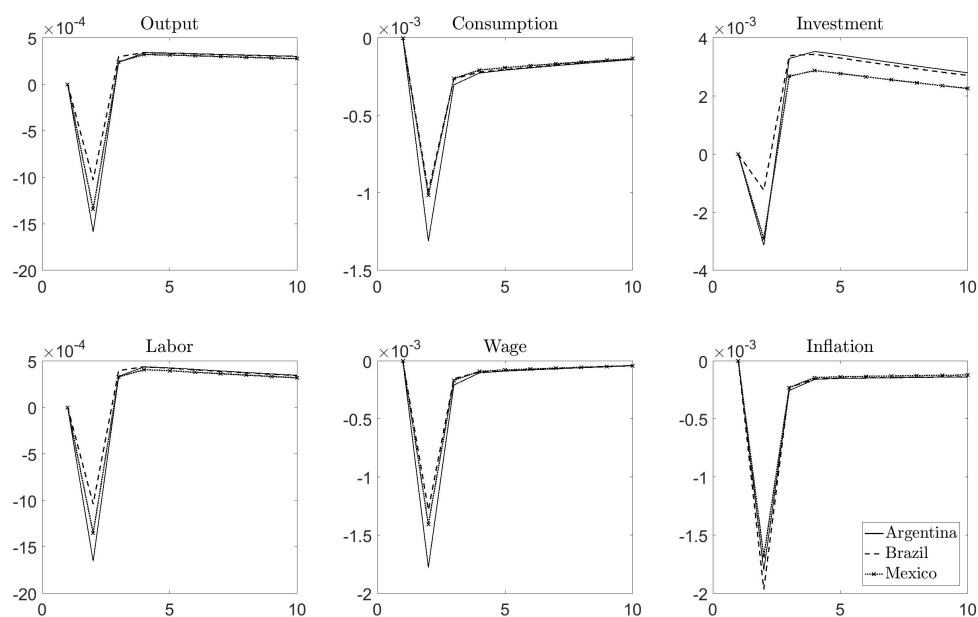
Figures 2 and 3 illustrate the effects of a 1% increase in the probability of disaster on the main macroeconomic variables. The increase in disaster risk reduces investment and consumption, and thus generates a recession, in all five countries of interest. As the demand for production factors drops, labor and wages also go down. Lower consumption levels generate a deflation. However, the size of these responses and the recovery period largely differ between the two groups. Indeed, Argentina, Brazil, and Mexico (Figure 2) experience an overall very small initial impact, on output and labor in particular, followed by a rebound in investment and to a lower extent in output. On the contrary, Chile and Colombia (Figure 3) suffer much more both on impact and in the recovery phase since there is almost no subsequent rebound. The difference between the two groups is not much due to the elasticity of intertemporal substitution, which is lower than 0.16 for all five countries, i.e., very small value compared to the critical unity driving the sign of the responses. However, it is due to the significant different levels of price stickiness. Indeed, the first group of countries have a mean frequency of price change from 1.5 to 1.7 month—corresponding to a monthly Calvo probability between 0.3 and 0.4—whereas it is 3.1 to 3.3 months for the second group.<sup>7</sup> As to conclude, everything else equal, increases in (disaster) risk have less impact on macroeconomic quantities in emerging economies where prices are relatively more volatile.

---

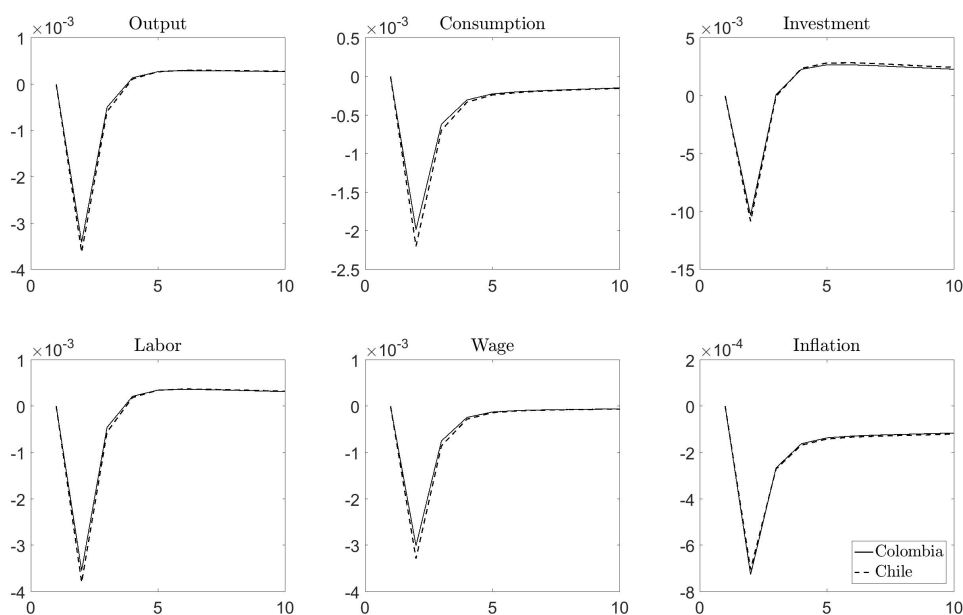
<sup>6</sup> Argentina's estimate from [Havranek et al. \(2015\)](#) is negative and therefore here replaced by an arbitrarily small but positive value, such that the model runs consistently.

<sup>7</sup> As for comparison, prices change every 7.5 months on average in the US.





**Figure 2.** Effect of a 1% increase in the probability of disaster in Argentina, Brazil, and Mexico. Calibration: see Table 1. Percentages on the vertical axis.

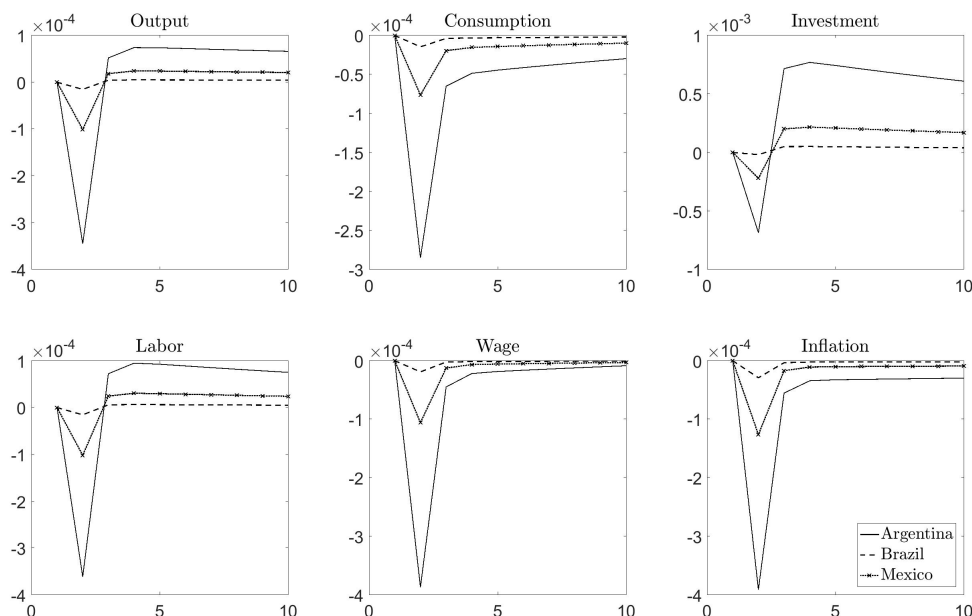


**Figure 3.** Effect of a 1% increase in the probability of disaster in Chile and Colombia. Calibration: see Table 1. Percentages on the vertical axis.

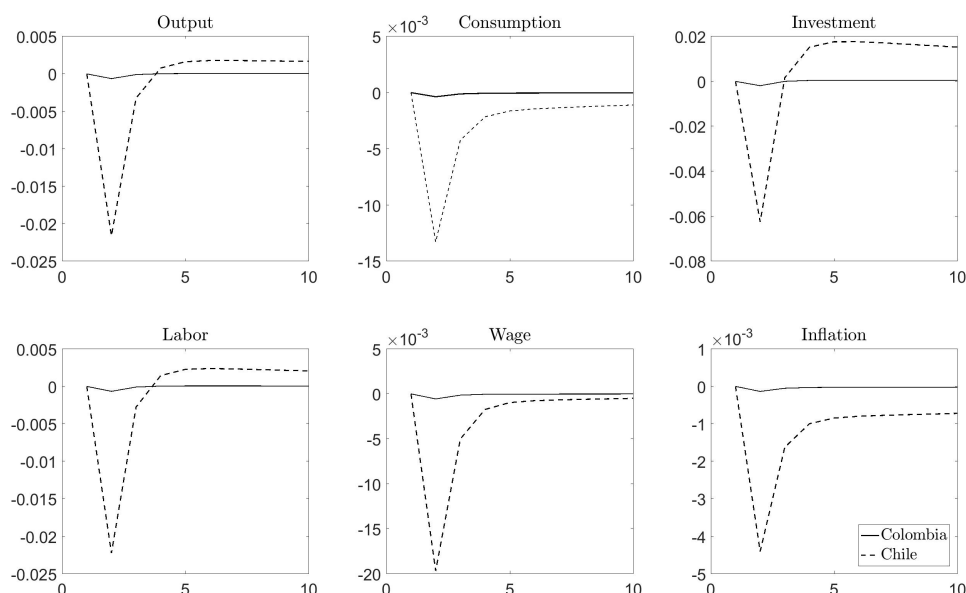
### 4.3. Response to a Disaster Risk Shock: Country-Specific Disaster Size and Probability

Figures 4 and 5 report the responses to the same shock when not only the EIS and Calvo probability are country specific, but also the disaster size and probability. This exacerbates substantially the differences between countries within each of the subgroups. In the first group (Figure 4), Argentina’s output response is now about four times larger than Mexico’s while Brazil is very mild. The relative size somehow depends on the type of natural disasters that a country experiences. In particular, Argentina’s most destructing disasters have been floods, whereas Brazil’s are droughts and Mexico’s are storms and earthquakes (see Table A1). Nevertheless, the size of the macroeconomic responses to a disaster risk shock remain small as a whole, in accordance with the price volatility result emphasized earlier. In the second group (Figure 5), Chile’s responses become much bigger than Colombia’s for the

same size of the shock. In particular, an increase in the probability of disaster by 1% in Chile generates a drop in output and labor by more than 2% and a drop in investment close to 6%. These large magnitudes may be explained by several factors. One is the degree of price stickiness, as already mentioned. Another is the type of disasters again, in particular Chile experiences major earthquakes much more than the other countries. Finally, other reasons such as the geographic specificities likely matter. For instance, the concentration of productive activities in narrower geographic areas may explain larger damages as a natural catastrophe arrives.



**Figure 4.** Effect of a 1% increase in the probability of disaster in Argentina, Brazil, and Mexico, with varying steady-state disaster risk and size (see Table A1). Percentages on the vertical axis.



**Figure 5.** Effect of a 1% increase in the probability of disaster in Chile and Colombia, with varying steady-state disaster risk and size (see Table A1). Percentages on the vertical axis.

## 5. Conclusions

This paper generates theoretical dynamic responses of macroeconomic variables to disaster risk shocks for five emerging market economies. For this purpose, it builds on the New Keynesian DSGE model by [Isoré and Szczerbowicz \(2017\)](#) to simulate the effects of changes in the time-varying probability of disasters, absent of actual disasters. This approach follows the literature on disaster risk in business cycles, developed by [Gabaix \(2011\)](#) and [Gourio \(2012\)](#) in particular.

The five countries of interest do not differ much by their elasticity of intertemporal substitution, which is commonly low in emerging market economies with incomplete financial markets. However, they differ significantly by their degree of price stickiness. All five are much more price-flexible than the US but Argentina, Brazil, and Mexico's frequency of price changes is almost double as compared to Colombia and Chile. This output price volatility seems to make the former group of countries much less vulnerable to changes in disaster risk than the latter. In addition, Chile's high frequency and severity of capital destruction in case of natural disasters make it particularly responsive to time changes in the probability of disasters.

Overall, this paper suggests that analyzing the uncertainty component in natural disasters, as well as the fluctuations in this uncertainty over time, is key to economic development. Its theoretical model forms a positive approach in this direction. Yet, this paper does not draw any normative implication for practical disaster risk management as such. Further research would be needed in this direction.

**Acknowledgments:** I thank Juho Peltonen for excellent research assistance and Antti Ripatti for discussions.

**Conflicts of Interest:** The author declares no conflict of interest.

## Abbreviations

The following abbreviations are used in this manuscript:

DSGE Dynamic Stochastic General Equilibrium

## Appendix A

**Table A1.** Top-10 disasters in Argentina, Brazil, Chile, Colombia, and Mexico. "Damage" in thousands of current value US dollars, from EM-DAT-database. "Capital Stock" in thousands of 2011 U.S. Dollars, and deflator index, from FRED-database. The " $\Delta$ " column is calculated as the ratio of "Damage" over "Capital stock" times "Deflator".

<b>Argentina</b>					
Type	Date	Damage	Capital Stock	Deflator	$\Delta$
Flood	October 1985	1,300,000	894440000	0.5650	0.002572431
Flood	1 April 2013	1,300,000	2017062625	1.0560	0.000610323
Flood	11 April 1998	1,100,000	1206780125	0.7790	0.001170111
Flood	28 April 2003	1,028,210	1282971250	0.8570	0.000935156
Flood	May 1983	1,000,000	874513312.5	0.5290	0.002161613
Flood	4 April 2016	1,000,000	na		
Flood	August 1983	800,000	874513312.5	0.5290	0.00172929
Flood	1 October 2001	750,000	1284127375	0.8270	0.000706232
Flood	September 1993	600,000	1009387687.5	0.7140	0.000832521
Flood	23 March 1988	490,000	937870750	0.6120	0.000853693
Average $\Delta$ :					0.001285708
Nb. obs. > 0.001					4
Annual prob.					0.0597
<b>Brazil</b>					
Type	Date	Damage	Capital Stock	Deflator	$\Delta$
Drought	January 2014	5,000,000	13311434000	1.0750	0.000349411
Drought	1978	2,300,000	3732019500	0.3710	0.001661154
Drought	December 2004	1,650,000	8978346000	0.8800	0.000208836
Drought	May 2012	1,460,000	12151692000	1.0390	0.000115638
Flood	June 1984	1,000,000	5157555500	0.5480	0.000353814

Flood	June 1984	1,000,000	5157555500	0.5480	0.000353814	
Flood	2 February 1988	1,000,000	6099374000	0.6120	0.000267894	
Flood	11 January 2011	1,000,000	11662182000	1.0210	0.0000839836	
Flood	22 November 2008	750,000	9948994000	0.9800	0.00007.6923	
Drought	November 1985	651,000	5341811500	0.5650	0.000215697	
					Average $\Delta$ :	0.000368717
					Nb. obs. > 0.001	1
					Annual prob.	0.0149
<b>Chile</b>						
<b>Type</b>	<b>Date</b>	<b>Damage</b>	<b>Capital Stock</b>	<b>Deflator</b>	<b><math>\Delta</math></b>	
Earthquake	27 February 2010	30,000,000	906230500	1.0000	0.033104161	
Flood	25 March 2015	1,500,000	na			
Earthquake	3 March 1985	1,500,000	203282750	0.5650	0.013059973	
Extreme temp.	10 September 2013	1,000,000	1087604125	1.0560	0.000870693	
Earthquake	24 January 1939	920,000	na			
Wildfire	15 January 2017	870,000	na			
Earthquake	16 September 2015	800,000	na			
Volcanic activity	24 April 2015	600,000	na			
Earthquake	21 May 1960	550,000	57127410.156	0.1730	0.055650882	
Earthquake	6 May 1953	500,000	42003230.469	0.1515	0.078573243	
					Average $\Delta$ :	0.03625179
					Nb. obs. > 0.001	4
					Annual prob.	0.0597
<b>Colombia</b>						
<b>Type</b>	<b>Date</b>	<b>Damage</b>	<b>Capital Stock</b>	<b>Deflator</b>	<b><math>\Delta</math></b>	
Earthquake	25 January 1999	1,857,366	963227750	0.7910	0.002437766	
Flood	1 September 2011	1,290,000	1567348875	1.0210	0.000806117	
Flood	April 2011	1,030,000	1567348875	1.0210	0.000643644	
Volcanic activity	13 November 1985	1,000,000	581150875	0.5650	0.003045528	
Flood	6 April 2010	1,000,000	1488079250	1.0000	0.000672007	
Earthquake	31 March 1983	410,900	538144687.5	0.5290	0.001443382	
Flood	November 1970	138,800	293590625	0.2250	0.002101187	
Insect infestation	17 May 1995	104,000	855184437.5	0.7440	0.000163456	
Flood	15 March 2012	62,000	1646414750	1.0390	0.0000362441	
Storm	17 October 1988	50,000	658900687.5	0.6120	0.000123993	
					Average $\Delta$ :	0.001147333
					Nb. obs. > 0.001	4
					Annual prob.	0.0597
<b>Mexico</b>						
<b>Type</b>	<b>Date</b>	<b>Damage</b>	<b>Capital Stock</b>	<b>Deflator</b>	<b><math>\Delta</math></b>	
Storm	19 October 2005	5,000,000	4645159500	0.9090	0.001184147	
Storm	13 September 2013	4,200,000	6297161000	1.0560	0.000631598	
Earthquake	19 September 1985	4,104,000	2321685000	0.5650	0.00312864	
Storm	15 September 2010	3,900,000	5671746000	1.0000	0.000687619	
Flood	28 October 2007	3,000,000	5074071000	0.9620	0.000614596	
Storm	10 September 2014	2,500,000	6498113500	1.0750	0.000357886	
Storm	1 October 2005	2,500,000	4645159500	0.9090	0.000592073	
Storm	30 June 2010	2,000,000	5671746000	1.0000	0.000352625	
Storm	22 June 1993	1,670,000	2988199500	0.7140	0.000782724	
Storm	12 September 2013	1,500,000	6297161000	1.0560	0.000225571	
					Average $\Delta$ :	0.000855748
					Nb. obs. > 0.001	2
					Annual prob.	0.0299

## References

- Barro, Robert J. 2006. Rare disasters and asset markets in the twentieth century. *The Quarterly Journal of Economics* 121: 823–66.
- Burstein, Ariel, Martin Eichenbaum, and Sergio Rebelo. 2005. Large devaluations and the real exchange rate. *Journal of political Economy* 113: 742–84.

- Caruso, German, and Sebastian Miller. 2015. Long run effects and intergenerational transmission of natural disasters: A case study on the 1970 Ancash Earthquake. *Journal of Development Economics* 117(SC): 134–50.
- Caruso, German Daniel. 2017. The legacy of natural disasters: The intergenerational impact of 100 years of disasters in Latin America. *Journal of Development Economics* 127(SC): 209–33.
- Cavallo, Eduardo, Sebastian Galiani, Ilan Noy, and Juan Pantano. 2013. Catastrophic natural disasters and economic growth. *Review of Economics and Statistics* 95: 1549–61.
- Cavallo, Eduardo, Andrew Powell, and Oscar Becerra. 2010. Estimating the direct economic damages of the earthquake in haiti. *The Economic Journal* 120: F298–312.
- Gabaix, Xavier. 2011. Disasterization: A Simple Way to Fix the Asset Pricing Properties of Macroeconomic Models. *American Economic Review* 101: 406–9.
- Gabaix, Xavier. 2012. Variable Rare Disasters: An Exactly Solved Framework for Ten Puzzles in Macro-Finance. *The Quarterly Journal of Economics* 127: 645–700.
- Gagnon, Etienne. 2009. Price setting during low and high inflation: Evidence from mexico. *The Quarterly Journal of Economics* 124: 1221–63.
- Gourio, Francois. 2012. Disaster Risk and Business Cycles. *American Economic Review* 102: 2734–66.
- Havranek, Tomas, Roman Horvath, Zuzana Irsova, and Marek Rusnak. 2015. Cross-country heterogeneity in intertemporal substitution. *Journal of International Economics* 96: 100–18.
- Hsiang, Solomon M., and Amir S. Jina. 2014. *The Causal Effect of Environmental Catastrophe on Long-Run Economic Growth: Evidence From 6700 Cyclones*. NBER Working Papers 20352. Cambridge: National Bureau of Economic Research, Inc.
- Isoré, Marlène, and Urszula Szczerbowicz. 2017. Disaster risk and preference shifts in a New Keynesian model. *Journal of Economic Dynamics and Control* 79: 97–125.
- Lazzaroni, Sara, and Peter A van Bergeijk. 2014. Natural disasters' impact, factors of resilience and development: A meta-analysis of the macroeconomic literature. *Ecological Economics* 107: 333–46.
- Marfè, Roberto, and Julien Penasse. 2017. *The Time-Varying Risk of Macroeconomic Disasters (10 April 2017)*. Technical report. Paris: Finance Meeting EUROFIDAI-AFFI.
- Morandé, Felipe, and Mauricio Tejada. 2008. *Price Stickiness in Emerging Economies: Empirical Evidence for Four Latin-American Countries*. Technical report, Documentos de Trabajo 286. Santiago: Universidad de Chile.
- Siriwardane, Emil N. 2015. *The Probability of Rare Disasters: Estimation and Implications*. Technical report, Harvard Business School Working Paper. Boston: Harvard Business School.
- Skidmore, Mark, and Hideki Toya. 2002. Do natural disasters promote long-run growth? *Economic Inquiry* 40: 664–87.
- Toya, Hideki, and Mark Skidmore. 2007. Economic development and the impacts of natural disasters. *Economics Letters* 94: 20–25.



© 2018 by the author. Licensee MDPI, Basel, Switzerland. This article is an open access article distributed under the terms and conditions of the Creative Commons Attribution (CC BY) license (<http://creativecommons.org/licenses/by/4.0/>).