

Money in monetary policy design under uncertainty: the Two-Pillar Phillips Curve versus ECB-style cross-checking

Günter W. Beck

(Goethe University Frankfurt and CFS)

Volker Wieland

(Goethe University Frankfurt, CEPR and CFS)



Discussion Paper
Series 1: Economic Studies
No 20/2007

Editorial Board:

Heinz Herrmann
Thilo Liebig
Karl-Heinz Tödter

Deutsche Bundesbank, Wilhelm-Epstein-Strasse 14, 60431 Frankfurt am Main,
Postfach 10 06 02, 60006 Frankfurt am Main

Tel +49 69 9566-1

Telex within Germany 41227, telex from abroad 414431

Please address all orders in writing to: Deutsche Bundesbank,
Press and Public Relations Division, at the above address or via fax +49 69 9566-3077

Internet <http://www.bundesbank.de>

Reproduction permitted only if source is stated.

ISBN 978-3-86558-321-5 (Printversion)

ISBN 978-3-86558-322-2 (Internetversion)

This paper was presented at the joint Bundesbank/Fed Cleveland conference (June 2007) on "Monetary policy strategy: Old issues and new challenges". The views expressed in the paper are those of the authors and not necessarily those of the Bundesbank or the Federal Reserve Bank of Cleveland.

Monetary policy strategy: Old issues and new challenges

Joint Deutsche Bundesbank/Federal Reserve Bank of Cleveland
Conference

6-7 June 2007

Frankfurt am Main

Wednesday, 6 June 2007

09:45 – 10:05

Introduction

Sandra Pianalto (President, Federal Reserve Bank of Cleveland)

10:05 – 11:15

The optimal monetary policy response to exchange rate misalignments

Campbell Leith (*University of Glasgow*)

Simon Wren-Lewis (University of Oxford)

Discussants:

Mathias Hoffmann (Deutsche Bundesbank)

Robert Kollmann (Université Libre de Bruxelles)

11:15 – 11:45

Break

11:45 – 12:55

Monetary policy and core inflation

Michele Lenza (*European Central Bank*)

Discussants:

Andreas Hornstein (Federal Reserve Bank of Richmond)

Michael Krause (Deutsche Bundesbank)

- 12:55 – 14:30 **Lunch**
- 14:30 – 15:40 **Reconsidering the role of monetary indicators for euro area inflation from a Bayesian perspective using group inclusion probabilities**
Michael Scharnagl (*Deutsche Bundesbank*)
Christian Schumacher (*Deutsche Bundesbank*)
- Discussants: David Altig (*Federal Reserve Bank of Cleveland*)
 Livio Stracca (*European Central Bank*)
- 15:40 – 16:10 **Break**
- 16:10 – 17:20 **Uncertainty about perceived inflation target and monetary policy**
Kosuke Aoki (*London School of Economics and Political Science*)
Takeshi Kimura (*Bank of Japan*)
- Discussants: Nicoletta Batini (*International Monetary Fund*)
 Martin Bodenstein (*Federal Reserve Board*)
- 18:30 **Dinner**
- Speaker: Axel Weber (*President, Deutsche Bundesbank*)

Thursday, 7 June 2007

- 10:00-11:10 **Mortgage markets, collateral constraints and monetary policy: Do institutional factors matter?**
Alessandro Calza (*European Central Bank*)
Tommaso Monacelli (*Università Commerciale Luigi Bocconi*)
Livio Stracca (*European Central Bank*)
- Discussants: Fiorella de Fiore (*European Central Bank*)
 Andreas Schabert (*University of Dortmund*)

- 11:10 – 11:30 **Break**

11:30 – 12:40 **Money in monetary policy design : ECB-style cross-checking in the New Keynesian Model**

Günter Beck (*Goethe University Frankfurt*)

Volker Wieland (*Goethe University Frankfurt*)

Discussants: Stefan Gerlach (*Bank for International Settlements*)
Samuel Reynard (*Swiss National Bank*)

12:40 – 14:00 **Lunch**

14:00 – 15:10 **The inflation dynamics mystery**

Robert King (*Boston University*)

Anthony Landry (*Federal Reserve Bank of Dallas*)

Discussants: Ragner Nymoen (*University of Oslo*)
John M Roberts (*Federal Reserve Board*)

15:10 – 15:30 **Break**

15:30 – 16:40 **The rationality and reliability of expectations reported by British households: Micro evidence from the British household panel survey**

James Mitchell (*National Institute of Economic and Social Research*)

Martin Weale (*National Institute of Economic and Social Research*)

Discussants: Mike Bryan (*Federal Reserve Bank of Cleveland*)
Joachim Winter (*University of Munich*)

Money in Monetary Policy Design under Uncertainty: The Two-Pillar Phillips Curve versus ECB-Style Cross-Checking[†]

Guenter W. Beck

Goethe University Frankfurt and CFS
gbeck@wiwi.uni-frankfurt.de

Volker Wieland^{††}

Goethe University Frankfurt, CEPR and CFS
wieland@wiwi.uni-frankfurt.de

1st version: August 26, 2006

This version: October 18, 2006

Abstract

The European Central Bank has assigned a special role to money in its two pillar strategy and has received much criticism for this decision. In this paper, we explore possible justifications. The case against including money in the central bank's interest rate rule is based on a standard model of the monetary transmission process that underlies many contributions to research on monetary policy in the last two decades. Of course, if one allows for a direct effect of money on output or inflation as in the empirical "two-pillar" Phillips curves estimated in some recent contributions, it would be optimal to include a measure of (long-run) money growth in the rule. In this paper, we develop a justification for including money in the interest rate rule by allowing for imperfect knowledge regarding unobservables such as potential output and equilibrium interest rates. We formulate a novel characterization of ECB-style monetary cross-checking and show that it can generate substantial stabilization benefits in the event of persistent policy misperceptions regarding potential output. Such misperceptions cause a bias in policy setting. We find that cross-checking and changing interest rates in response to sustained deviations of long-run money growth helps the central bank to overcome this bias. Our argument in favor of ECB-style cross-checking does not require direct effects of money on output or inflation.

JEL Classification: E32, E41, E43, E52, E58

Keywords: *monetary policy, quantity theory, Phillips curve, European Central Bank, policy under uncertainty.*

[†]This paper was prepared for the invited session on "Money in Monetary Policy" at the EEA 2006 Annual Congress, Vienna, August 24 – 28, 2006. A subset of this paper's findings has been summarized in a shorter paper submitted to the Journal of the European Economic Association under the title 'Money in Monetary Policy Design under Uncertainty: A Formal Characterization of ECB-Style Cross-Checking'. We thank Katrin Assenmacher-Wesche, Stefan Gerlach and seminar participants at the invited session "Money in Monetary Policy" at the EEA 2006 Annual Congress for helpful comments. The usual disclaimer applies.

^{††}Corresponding author. Contact: Goethe University of Frankfurt. Mertonstrasse 17, 60325 Frankfurt. Tel.: ++49-69-79825288. E-mail: wieland@wiwi.uni-frankfurt.de

Non-technical summary

The European Central Bank has assigned a special role to money in its two pillar strategy and has received much criticism for this decision. In this paper, we explore possible justifications. The case against including money in the central bank's interest rate rule is based on a standard model of the monetary transmission process that underlies many contributions to research on monetary policy in the last two decades. Of course, if one allows for a direct effect of money on output or inflation as in the empirical "two-pillar" Phillips curves estimated in some recent contributions, it would be optimal to include a measure of (long-run) money growth in the rule. In this paper, we develop a justification for including money in the interest rate rule by allowing for imperfect knowledge regarding unobservables such as potential output and equilibrium interest rates. We formulate a novel characterization of ECB-style monetary cross-checking and show that it can generate substantial stabilization benefits in the event of persistent policy misperceptions regarding potential output. Such misperceptions cause a bias in policy setting. We find that cross-checking and changing interest rates in response to sustained deviations of long-run money growth helps the central bank to overcome this bias. Our argument in favor of ECB-style cross-checking does not require direct effects of money on output or inflation.

Nicht-technische Zusammenfassung

Die Europäische Zentralbank hat der Geldmenge eine besondere Rolle in ihrer Zwei-Säulen-Strategie zugewiesen und ist dafür kritisiert worden. In diesem Papier untersuchen wir mögliche Rechtfertigungen für die EZB-Strategie. Die Argumente, die gegen eine Strategie, bei der Geld in die Zinsregel mit aufgenommen wird, ins Feld geführt werden, basieren auf einem Standardmodell des monetären Transmissionsprozesses. Wenn man dagegen von einem direkten Effekt der Geldmengenentwicklung auf Output oder Inflation ausgeht, wie das in einigen geschätzten „Zwei-Säulen“ Phillips Kurven angenommen wird, ist es optimal das (langfristige) Geldmengenwachstum in die Regel aufzunehmen. In diesem Papier entwickeln wir eine Rechtfertigung dafür, dass Geld in die Zinsregel integriert wird, weil wir unvollständiges Wissen bezüglich unbeobachtbarer Größen wie Produktionspotential und Gleichgewichtszins zulassen. Wir formulieren eine neue Charakterisierung des Quervergleichs, wie ihn die EZB anwendet, und zeigen, dass dadurch beträchtliche Stabilisierungseffekte erzielt werden können, wenn anhaltende Fehleinschätzungen bezüglich des Produktionspotentials vorliegen. Solche Fehleinschätzungen verursachen eine Verzerrung bei der Geldpolitik. Diese Verzerrung kann vermieden werden, wenn die Notenbank mit ihren Zinsen auf anhaltende Abweichungen des Geldmengenwachstums reagiert. Dementsprechend hängt unser Argument nicht davon ab, dass direkte Effekte der Geldmenge auf Output oder Inflation existieren.

1 Introduction

Contrary to the monetary policy strategies of the U.S. Federal Reserve and many inflation-targeting central banks, which assign no special role to monetary aggregates, the European Central Bank has maintained a separate and important role for money in its two pillar strategy. The ECB distinguishes an ‘economic’ and a ‘monetary’ pillar:¹

- “**Economic analysis** assesses the short to medium-term determinants of price developments. The focus is on real activity and financial conditions in the economy. The economic analysis takes account of the fact that price developments over those horizons are influenced largely by the interplay of supply and demand in the goods, services and factor markets.”
- “**Monetary analysis** focuses on a longer-term horizon than the economic analysis. It exploits the long-run link between money and prices. The monetary analysis mainly serves as a means of **cross-checking**, from a medium to long-term perspective, the short to medium-term indications for monetary policy coming from the economic analysis.”

In terms of economic theory, the long-run link noted by the ECB is related to the equation of exchange, that is, the definition of the velocity of money. Rewritten in growth terms it relates money growth, inflation and output growth to the change in velocity. In the long-run, once output growth and the change in velocity have settled down to trend, the equation of exchange implies a proportional relationship between money growth and inflation. In terms of empirics, this relationship has manifested itself most clearly in periods of very high inflation. Recent empirical assessments, however, have re-emphasized its validity in periods of moderate to low inflation in leading industrial economies.²

On this basis, Gerlach (2003, 2004) has proposed to augment the standard Phillips curve, which accounts for shorter-term inflation dynamics, resource utilization gaps and inflationary shocks, with a measure of long-run or low-frequency money growth.³ His estimates indicate a direct effect of filtered money growth on inflation. Such an augmented Phillips curve unifies the two pillars of the ECB in a single assessment of inflationary risks, and—if treated as a structural relationship—provides a rationale for including filtered money growth in the central bank’s optimal interest rate rule. Consequently, optimal interest rate policy would embody a small but systematic response to ongoing monetary developments. The ECB’s description of its strategy, however, does not rely on a direct effect of money on inflation in the Phillips curve. Rather, it

¹See <http://www.ecb.int/pub/pdf/other/monetarypolicy2004en.pdf>.

²See, for example, Gerlach (2003, 2004), ECB (2004), Haug and Dewald (2004), Pill and Rautanen (2006), Assenmacher-Wesche and Gerlach (2006a, 2006b). Bordo and Filardo (2006) consider different inflation zones including low inflation and deflation.

³A similar proposal has been made by Neumann and Greiber (2004).

focuses on the long-run link and its usefulness for identifying medium- to long-term inflationary risks. Thus, we aim to develop an alternative rationale for including money in the policy rule that stays as close as possible to the ECB's stated reasons. The ECB's former chief economist, Otmar Issing, wrote on the monetary pillar: *"In line with the argument of a closer relationship between money and inflation at lower frequencies, the function ascribed to the monetary pillar is to reveal medium-term risks to price stability .."* but *"... there is no mechanical monetary policy reaction to deviations of M3 growth from the reference value"* and *"... cross-checking the information from the economic analysis with the information from the monetary pillar is ... a crucial element underpinning the robustness and medium-term policy orientation"*. He concludes: *"you can also think of the monetary pillar as the institutionalized promise of what the ECB will continue to do in the future; cultivating, as far as possible, an approach to central banking geared towards constant learning and encompassing all available information relevant for monetary policy"*.⁴

We formally characterize ECB-style cross-checking using a policy rule with two components. The first component aims to control inflationary risks based on a standard Phillips curve and aggregate demand relationship. Essentially, it is the optimal interest rate rule of an inflation-targeting central bank. If implemented successfully this rule should ensure that inflation averages around the central bank's inflation target. Its weakness is that it relies on knowledge of unobservables such as the equilibrium real interest rate and potential output that may be subject to large and persistent policy misperceptions.⁵

The second component captures the idea of cross-checking using the long-run relationship between money and inflation. We assume that the central bank checks regularly whether a filtered money growth series adjusted for output and velocity trends averages around the inflation target. If the central bank obtains successive signals of a sustained deviation of inflation from target it adjusts interest rates accordingly.

Our simulations indicate that persistent policy misperceptions regarding potential output induce a policy bias that translates into persistent deviations of inflation and money growth from target. In this case, our "two-pillar" policy rule may effectively overturn the policy bias. Cross-checking relies on filtered series of actual money and output growth without requiring estimates of potential output. Nevertheless, it leads to adjustments in interest rate policy that offset the bias resulting from policy misperceptions. Indirectly, however, it helps the central bank to learn the proper level of interest rates.

⁴See Issing (2005).

⁵See, e.g. Orphanides (2003) and Orphanides et al. (2000a).

2 Money growth and inflation in the long run

The equation of exchange defines velocity, $v_t = -m_t + p_t + y_t$, where (m, y, p) denote the logarithms of money, output and the aggregate price level. Taking first differences we approximate the equation in growth terms:

$$\Delta v_t = -\Delta m_t + \Delta p_t + \Delta y_t. \quad (1)$$

Δ is the first-difference operator. In the long-run, output growth and the change in velocity will settle down to trend and reveal a proportional relationship between money growth and inflation. In the short-run, however, fluctuations in velocity and output growth are likely to obscure this relationship. The behavior of velocity may be characterized as a function of the nominal interest rate, i , real output and money demand shocks, ε^{md} , using a standard money demand equation:

$$m_t - p_t = \gamma_y y_t - \gamma_i i_t + \varepsilon_t^{md}. \quad (2)$$

Here, γ_y denotes the income elasticity and γ_i the semi-interest rate elasticity of money demand. Money demand shocks are assumed to be normally distributed with mean zero and variance σ_{md}^2 . Taking first differences, re-arranging (2) and combining with (1) we obtain:

$$\Delta v = (1 - \gamma_y)\Delta y + \gamma_i \Delta i + \Delta \varepsilon_{md}. \quad (3)$$

Long-run equilibrium values (superscript *) can then be determined as follows. In the long-run, money demand shocks would average to zero, and the nominal interest rate would settle down to its steady state level. Thus, the long-run trend in velocity corresponds to $\Delta v_t^* = (1 - \gamma_y)\Delta y_t^*$, and long-run inflation is proportional to long-run money growth adjusted for output and velocity trends:⁶

$$\Delta p_t^* = \Delta m_t^* - \gamma_y \Delta y_t^*. \quad (4)$$

Recent studies obtained empirical support for this long-run relationship using various filters or frequency-specific estimation. And more interestingly, they have found money growth to lead inflation at this frequency. To give an example, Gerlach (2004) uses the following filter

$$\mu_t^f = \mu_{t-1}^f + \lambda (\mu_t - \mu_{t-1}^f) \quad (5)$$

to approximate long-run values of inflation and money growth. In his work, μ_t may alternatively stand for money growth, Δm_t , or money growth adjusted for output growth.

⁶A trend in velocity may not only arise from potential output growth Δy_t^* with an income elasticity γ_y different from unity, but also from other sources such as financial innovations (see Orphanides and Porter (2001) and Masuch, Pill and Willeke (2001)).

In our paper we will follow equation (4) and adjust money growth using the estimate of the income-elasticity of money demand, i.e.

$$\mu_t^f = \Delta m_t^f - \gamma_y \Delta y_t^f. \quad (6)$$

3 Monetary policy design without money

Most research on monetary policy rules in the last two decades has focused on models, in which the monetary transmission mechanism works as follows: the nominal interest rate affects the real interest rate due to price rigidity, the real rate influences the output gap via aggregate demand and the output gap impacts on inflation via a standard Phillips curve. Thus, monetary aggregates play no direct role in the transmission of policy from nominal interest rates to inflation.⁷ Money supply instead is determined recursively from a money demand equation.

To illustrate this point we use a simple New-Keynesian style model with backward-looking expectations in the spirit of Svensson (1997), Rudebusch and Svensson (1999) and Orphanides and Wieland (2000). The model consists of a Phillips curve and an aggregate demand equation:

$$\pi_t = \pi_{t+1}^e + \alpha_y (y_t - y_t^*) + \varepsilon_{\pi,t}, \quad (7)$$

$$y_t - y_t^* = (y_{t+1}^e - y_{t+1}^{*,e}) - \beta_r (i_t - \pi_{t+1}^e - r_t^*) + \varepsilon_{y,t}, \quad (8)$$

$$\text{where } \pi_{t+1}^e = \pi_{t-1}, y_{t+1}^e - y_{t+1}^{*,e} = y_{t-1} - y_{t-1}^*.$$

$\pi_t = \Delta p_t$ denotes inflation, $(\varepsilon_{\pi,t}, \varepsilon_{y,t})$ stand for zero-mean cost-push and demand shocks respectively with variances $(\sigma_\pi^2, \sigma_y^2)$, r^* denotes the long-run equilibrium interest rate and the superscript e refers to market expectations, which we assume to be backward-looking.

An inflation-targeting central bank would set the nominal interest rate i_t in order to minimize expected discounted inflation deviations from target

$$\min_{i_t, i_{t+1}, \dots} E_t \left\{ \sum_{s=t}^{\infty} \delta^{s-t} (\pi_s - \pi^*)^2 \right\}, \quad (9)$$

where π^* denotes the central bank's inflation target and δ its discount factor. Consequently, optimal monetary policy corresponds to a Taylor-style interest rate rule, which responds to lagged inflation and output gaps but not to money growth:

$$i_t^{opt} = r_t^* + \pi_{t-1} + \frac{1}{\alpha_y \beta_r} (\pi_{t-1} - \pi^*) + \frac{1}{\beta_r} (y_{t-1} - y_{t-1}^*). \quad (10)$$

⁷Exceptions are studies of the so-called 'P-star' model, originally of Hallman, Porter and Small (1991), such as Gerlach and Svensson (2003) and Gerdemeier, Motto and Pill (2002).

The superscript ‘opt’ refers to ‘optimal’.

To be clear, the central bank achieves the desired interest rate setting by conducting open-market operations that influence the money supply. Thus, the money supply is determined according to the money demand equation (2) consistently with the desired policy rate, current output and the price level. However, money does not appear as a variable in the central bank’s optimal interest rate rule and the remainder of the economy is automatically insulated from money demand shocks. Of course, the model defined by equations (7), (8), (10) and (2) also exhibits the long-run relationship between money growth and inflation discussed in the preceding section and emphasized by the ECB’s monetary pillar.

4 The two-pillar Phillips curve and policy design

Inspired by the evidence for the long-run relationship between money and inflation, Gerlach (2003, 2004) proposed to include a filtered measure of money growth or adjusted money growth in the estimation of the short-run Phillips curve. A simplified version of the two-pillar Phillips curve is given by

$$\pi_t = \alpha_\mu \mu_t^f + \alpha_\pi \pi_{t-1} + \alpha_y (y_t - y_t^*) + \varepsilon_{\pi,t}, \quad (11)$$

where we define adjusted filtered money growth μ_t^f as in equations (5) and (6) and assume that the weights on filtered money growth and lagged inflation sum to one, i.e. $\alpha_\pi = 1 - \alpha_\mu$.

In this subsection, we intend to make just one simple point. Namely, if any central bank were to consider this empirical two-pillar Phillips curve as a structural relationship⁸ it would conclude that a measure of filtered money growth should enter in its interest rate rule. Replacing the standard accelerationist Phillips curve in (7) with the two-pillar Phillips curve (11) we proceed to derive the optimal interest rate rule for the model comprising equations (11), (8), (9) and (2):

$$i_t^{2p} = \frac{\alpha_y \beta_r}{\alpha_y \beta_r + \alpha_\mu \lambda \gamma_i} r_t^* + \frac{\alpha_y \beta_r}{\alpha_y \beta_r + \alpha_\mu \lambda \gamma_i} \pi_{t-1} + \frac{1 - \alpha_\mu \lambda}{\alpha_y \beta_r + \alpha_\mu \lambda \gamma_i} \left(\frac{1 - \alpha_\mu}{1 - \alpha_\mu \lambda} \pi_{t-1} - \pi^* \right) \quad (12)$$

$$+ \frac{\alpha_y}{\alpha_y \beta_r + \alpha_\mu \lambda \gamma_i} (y_{t-1} - y_{t-1}^*) + \frac{\alpha_\mu}{\alpha_y \beta_r + \alpha_\mu \lambda \gamma_i} \left[(1 - \lambda) \mu_{t-1}^f + \lambda \gamma_i i_{t-1} - \lambda \varepsilon_{md,t-1} \right].$$

The superscript ^{2p} refers to the two-pillar Phillips curve underlying this rule. It is more complicated than the rule given by (10) because the nominal interest rate influences

⁸Gerlach typically refrains from a structural interpretation with the exception of Gerlach (2004) where he introduces long-run money growth as a proxy for market expectations of inflation. Theoretical foundations for direct effects of money on aggregate demand and inflation can be obtained from micro-founded models that allow for non-separability of money and consumption in household utility. Empirical implementations, however, have failed to detect strong direct effects (cf. Ireland (2004) and Andres et al. (2006)).

inflation not only via aggregate demand but also via a small contribution of current money supply to filtered money growth, μ_t^f . Substituting out this effect leaves us with the lagged interest rate and the lagged money demand shock in the rule. However, the most important new element is the lagged filtered (and adjusted) money growth rate μ_{t-1}^f . Of course, if the coefficient on filtered money growth in the two-pillar Phillips curve, α_μ , is set to zero, the interest rule again collapses to the specification without money in (10).

5 ECB-style cross-checking and policy design

The interest rate rule derived in the preceding section can be viewed as a possible interpretation of the ECB's two pillar strategy. Our understanding, however, is that the ECB's strategy as stated does not require a direct effect of money on inflation in the Phillips curve. The ECB's description of cross-checking suggests to us that it uses the monetary pillar to accumulate evidence signalling trend changes in inflation. The monetary pillar appears to stand for the ECB's concern for 'robustifying' its policy under uncertainty and is subjected to regular scrutiny and learning.

Thus, we develop an alternative characterization of ECB-style cross-checking that stays as close as possible to the ECB's own description. Our proposed interest rate rule has two components:

$$i_t^{CC} = i_t^{EA} + i_t^{MA} \quad (13)$$

Here the superscript *CC* refers to cross-checking, *EA* to the interest rate setting implied by the ECB's 'economic analysis' and *MA* to an additive adjustment in interest rate setting that arises from the ECB's 'monetary analysis'. We set the first component equal to the optimal interest rate rule in the baseline model:

$$i_t^{EA} = i_t^{opt} \quad \text{as defined in equation (10)}. \quad (14)$$

This interest rate setting should ensure that inflationary risks based on a standard Phillips curve are controlled perfectly and inflation fluctuates randomly around the mean, π^* . However, this component relies on knowledge of unobservables such as the equilibrium real interest rate, r^* , or potential output, y^* , that may be subject to large and persistent policy misperceptions.

The second component, i_t^{MA} , is novel and captures the idea of cross-checking using the long-run relationship between money and inflation. This component is additive and persistent, because it is intended to offset persistent policy biases due to imperfect information. We assume that the central bank regularly tests whether filtered and adjusted money growth, μ^f , still averages around the inflation target. Thus, the central

bank computes the normally-distributed test statistic,

$$\kappa = \frac{\mu_{t-1}^f - \pi^*}{\sigma_{\mu^f}}, \quad (15)$$

and checks whether κ deviates from a critical value κ^{crit} . σ_{μ^f} denotes the standard deviation when $i_t^{EA} = i_t^{opt}$ is implemented with correct values of potential output and the mean of μ^f corresponds to π^* . If the central bank obtains successive signals of a sustained deviation from target, i.e. ($\kappa > \kappa^{crit}$ for N periods) or ($\kappa < -\kappa^{crit}$ for N periods), it responds by adjusting interest rates accordingly.⁹

$$i_t^{MA} = \begin{cases} i_{t-1}^{MA} + \left(\frac{1}{\alpha_y \beta_r}\right)(\mu_{t-1}^f - \pi^*) & \text{if } \kappa > \kappa^{crit} \text{ or } \kappa < -\kappa^{crit} \text{ for } N \text{ periods} \\ i_{t-1}^{MA} + 0 & \text{else} \end{cases} \quad (16)$$

As long as $i_t^{EA} = i_t^{opt}$ is implemented with full knowledge of potential output, y_t^* and the real equilibrium rate, r^* , cross-checking with regard to i_t^{MA} will almost never lead to an adjustment in interest rates. Under imperfect knowledge, however, cross-checking may once in a while have a very important effect on interest rate policy.¹⁰

6 Cross-checking and policy misperceptions

Recent research exploiting data on historical revisions to real-time estimates of the output gap has identified very persistent policy misperceptions.¹¹ The persistence of measurement errors arises primarily from biased estimates of unobservable potential output, since revisions to actual output decline more rapidly than those to the output gap. Thus, if a central bank relies on potential output measures in policy design, its policy stance may be biased for a sustained period of time. To illustrate this effect we define the policy-maker's estimate of potential output, $\hat{y}_t^* = y_t^* + bias_t$, as the sum of true potential output and a measure of the misperception denoted by $bias_t$, and include it in the baseline rule:

$$i_t^{EA} = i_t^{opt} = r_t^* + \pi_{t-1} + \frac{1}{\alpha_y \beta_r}(\pi_{t-1} - \pi^*) + \frac{1}{\beta_r}(y_{t-1} - y_{t-1}^* - bias_{t-1}). \quad (17)$$

⁹The response coefficient on inflation deviations from target is the same as in i_t^{EA} , namely $\frac{1}{\alpha_y \beta_r}$.

¹⁰The two parameters of i_t^{MA} , κ^{crit} and N play different roles. κ^{crit} reflects the probability that an observed deviation of μ^f from π^* is purely accidental (for example a 5% or 1% significance level). N defines the number of successive deviations in excess of this critical value. Thus, the greater N the longer the central bank waits to accumulate evidence of a sustained policy bias. For example, if κ^{crit} is set to the 1% critical value for the normal distribution (2.575) and the critical number of periods of sustained deviations N is set to 4, the probability of such an event in the absence of policy misperceptions would be less than 10^{-8} .

¹¹See Orphanides (2003) and Orphanides et al. (2000) who estimate a worst-case process of misperceptions with a near unit root (0.96) and standard deviation of 3.77% using quarterly revisions from 1966 to 1994.

The resulting bias in interest rate policy will induce a persistent deviation of inflation from target. For example, if the central bank's estimate of potential output were to remain permanently 1% above its true level (i.e. $bias_t = 1\forall t$), average inflation would increase by $(\alpha_y \beta_r)(\beta_r)^{-1}$ percentage points.

To illustrate this point further we calibrate the model with the standard Phillips curve and backward-looking expectations defined by equations (7), (8) and (2). The calibration of the parameters is summarized in **Table 1**. We then simulate the interest rate rule (17)

Table 1: Calibration

| Parameter | Value | Economic interpretation |
|-------------------------------------|-------|---|
| $-\beta_r$ | -1 | Real interest rate elasticity of aggregate demand (in line with Andres et al. (2006) and Ireland (2004)). |
| α_y | 0.5 | Elasticity of Phillips curve w.r.t. output gap (broadly in line with Gerlach (2004)). |
| γ_y | 0.1 | Income elasticity of money demand (in line with Andes et al. (2006) and Ireland (2004)). |
| $-\gamma_i$ | -0.4 | Interest rate elasticity of money demand (in line with Andres et al. (2006) and Ireland (2004)). |
| λ | 0.2 | Weighting parameter of filter (broadly in line in Gerlach (2004)) |
| $r^*, \Delta y_t^*, \pi^*$ | 2 | Equilibrium real interest rate, potential output growth and inflation target |
| $\sigma_\pi, \sigma_y, \sigma_{md}$ | 0.8 | Standard deviation of cost-push, demand and money demand shocks |
| σ_{μ^f} | 0.38 | Standard deviation of μ^f |
| κ^{crit} | 1% | Critical value for the cross-checking rule. |
| N | 4 | Number of periods required for a sustained deviation in the cross-checking rule. |

with the following sequence of policy misperceptions:

$$\begin{aligned}
&\text{for } t = (1, 10) && bias(t) = 0 \\
&\text{for } t = (11, 12, 13, 14) && bias(t) = (1, 2, 3, 4) \\
&\text{for } t = (15, 100) && bias(t) = 4 \\
&\text{for } t = (101, 102, 103) && bias(t) = (3, 2, 1) \\
&\text{for } t = (104, 200) && bias(t) = 1
\end{aligned} \tag{18}$$

The central bank's initial estimate of potential output is assumed to coincide with the true value. In periods 11 to 14 the central bank begins to overestimate potential output leading to a bias of 4% from period 14 onwards. In the calibrated model this misperception will cause a bias of -4% in the central bank's interest rate response to short-run inflationary risks. Ultimately, this policy bias will induce an increase in average inflation of 2 percentage points. Accordingly, money growth and the long-run level of nominal interest rates will also rise by 2 percentage points. From period 100 onwards the central bank's overestimate of potential output declines to 1% and the resulting deviation in

average inflation to 0.5 percentage points.

Figure 1: Output Gap Misperceptions and the Money-Inflation Link

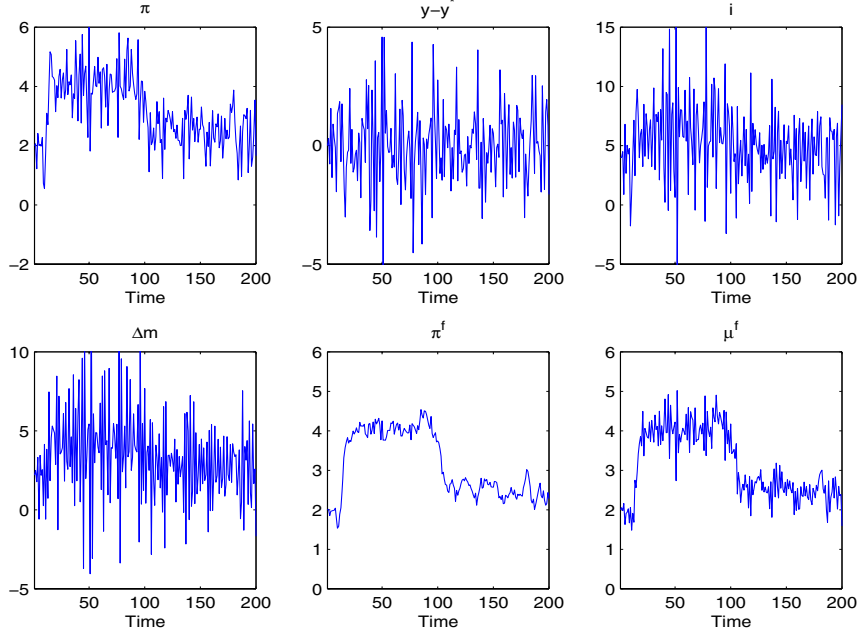


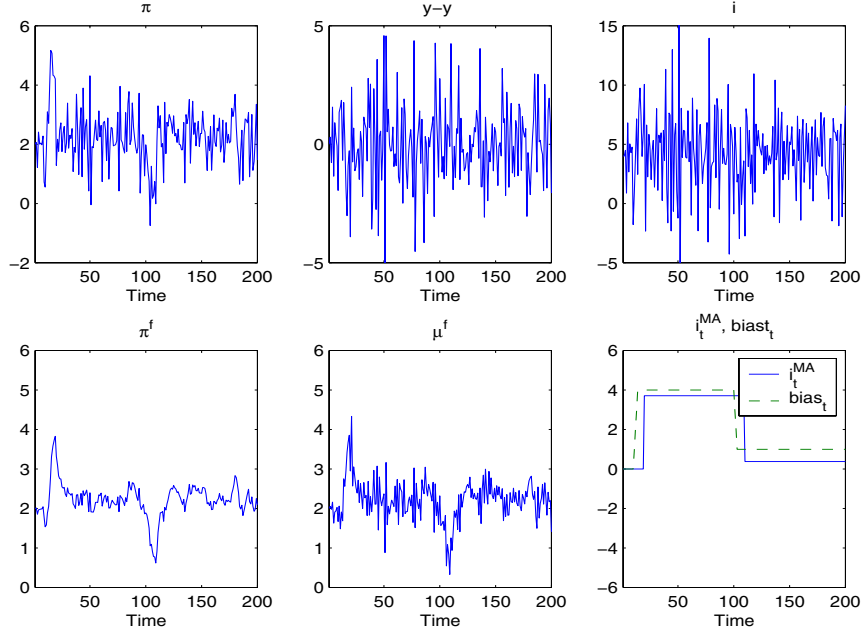
Figure 1 presents a simulation of the consequences of policy misperceptions for a single draw of normally-distributed cost-push, demand and money demand shocks. Given the many alternative sources of short-run fluctuations in inflation the persistent increase due to policy misperceptions cannot be immediately read from inflation realizations. Nevertheless, the filtered measures of inflation, π^f , and money growth, Δm^f , eventually reveal the increase in average money growth and inflation. This simulation shows how policy misperceptions regarding potential output would render the long-run relationship between money growth and inflation quite apparent in the data. In the short run, however, money growth may deviate substantially from inflation due to movements in interest rates and output as well as money demand shocks.

This simulation emphasizes the weakness of the policy rule, $i_t^{EA} = i_t^{opt}$, in the event of persistent misses on potential output. A similar effect would arise from incorrect estimates of the equilibrium real interest rate r^* . Of course, one may argue that the process of misperceptions in (17) is an extreme example and that the central bank will learn from its mistakes. Thus, we proceed to show that cross-checking as defined by the rule in equation (16) provides a convenient and effective avenue for learning and correcting the central bank's policy bias.

We repeat the preceding simulation using the cross-checking rule, i_t^{CC} , defined by (16) which includes an additive and persistent adjustment in the event of sustained deviations of filtered (adjusted) money growth from target. The outcome is reported in **Figure 2**. We have dropped the panel with actual money growth, Δm , and have instead

included a panel reporting the bias in the central bank's estimate of potential output, $bias_t$, and the adjustment in interest rates due to monetarist cross-checking. This adjustment corresponds to i_t^{MA} as defined in equations (15) and (16). The cross-checking rule

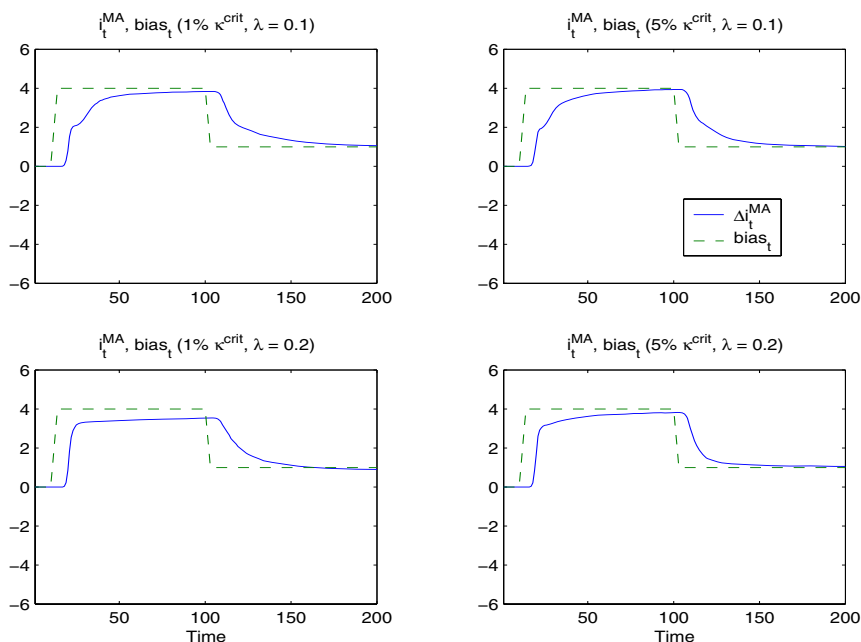
Figure 2: Output Gap Misperceptions and ECB-Style Cross-Checking



responds to the increase in filtered money growth, μ_{t-1}^f , fairly quickly after the policy bias has arisen. The interest rate adjustment of $(\frac{1}{\alpha_r \beta_r})(\mu_{t-1}^f - \pi^*)$ almost perfectly offsets the policy bias arising from potential output, $(\frac{1}{\beta_r})(bias_{t-1})$. Once the misperception of potential output declines after period 100, cross-checking soon leads to another adjustment of interest rates. In the preceding simulation the parameters of the cross-checking rule were set as follows: κ^{crit} was set to the 1% critical value (2.575) and the number of periods required for a sustained deviation, N , was equal to 4 periods. The parameter λ , which determines how flexibly filtered money growth, μ_t^f , responds to innovations was set to 0.2.

To assess the sensitivity of our findings we draw 1000 series of shocks of length 200 from a normal distribution and use them to conduct a set of alternative simulations. Some of the findings are reported in **Figure 3**. The bottom left panel of Figure 3 reports the average path of the interest rate adjustment due to monetary cross-checking, i.e. i_t^{MA} , over 1000 simulations under the same parameter settings as in the single simulation displayed in Figure 2. This panel confirms that, on average, cross-checking leads to the appropriate interest rate adjustments offsetting the policy bias due to output gap misperceptions. The other panels in Figure 3 consider alternative values of λ and κ^{crit} . Reducing λ to 0.1 implies smoother filtering of money growth. Consequently, it takes longer to detect a persistent change and the interest adjustment from cross-checking

Figure 3: Sensitivity Analysis Regarding the Performance of Cross-Checking



happens somewhat later in the top left panel than in the bottom left panel of Figure 3. Lowering κ^{crit} to the 5-percent level (i.e. 1.96) renders cross-checking more sensitive to trend changes in money growth. Consequently, the interest-rate adjustments happen somewhat earlier in the second column of panels than in the first column.

7 Outlook

We have reviewed two possible rationales for including a smoothed measure of money growth in the central bank's interest rate rule. First, we have confirmed that the two-pillar Phillips curve presented in the recent literature—if considered a structural relationship—would provide such a rationale. More interestingly, however, we have also shown that money can still play a very useful role in the central bank's interest rate rule if the economy corresponds to a more standard model, which does not incorporate a direct effect of money on inflation.

We have presented a novel, formal characterization of ECB-style cross-checking. To our knowledge this is the first formal characterization of the ECB's two pillar strategy with cross-checking as an interest rate rule. Under the unrealistic assumption that the true values of potential output and equilibrium real interest rates are known to the central bank our specification of cross-checking would never come into play. However, with imperfect knowledge there is a possibility of policy misperceptions. These misperceptions may generate sustained deviations of inflation from target. Due to the long-run link

between money growth and inflation these deviations are also apparent in filtered measures of money growth. Thus, a central bank that responds to persistent and significant deviations of money growth by adjusting interest rates can effectively offset the policy bias arising from misperceptions about potential output and other unobservables.

Our findings open up several interesting avenues for further research. For example, allowing for unforeseen, permanent shifts in velocity, i.e. shifts in money demand parameters, the information content of long-run money growth would depend on how quickly the central bank learns the new parameter values.¹² Furthermore, we have focused on strict inflation targeting with backward-looking expectations. In this case, cross-checking for persistent shifts is relatively straightforward as inflation and adjusted money-growth are expected to be white-noise processes. Extending the analysis to allow for partially forward-looking market expectations would not change this feature of our economy. However, flexible inflation targeting (with the output gap in the central bank's loss function) would introduce mean reversion in inflation and adjusted money growth dynamics. In this case, a more sophisticated test may be required for cross-checking. Finally, our baseline model may be extended to render filtered money growth a leading indicator of filtered inflation, such that it clearly dominates filtered inflation as the object of cross-checking.

References

- Andres, Javier, David J. Lopez-Salido and Javier Valles, 2006, Money in an Estimated Business Cycle Model of the Euro Area, *Economic Journal* 116, 457-477.
- Assenmacher-Wesche, Katrin and Stefan Gerlach, 2006a, Interpreting Euro Area Inflation at High and Low Frequencies, BIS Working Paper No. 195.
- Assenmacher-Wesche, Katrin and Stefan Gerlach, 2006b, Money at Low Frequencies, Paper prepared for the invited session on "Money in Monetary Policy" at the EEA 2006 Annual Congress, Vienna.
- Bordo, M. and A. Filardo, 2006, Money Still Makes the World Go Round: The Zonal View, Paper prepared for the invited session on "Money in Monetary Policy" at the EEA 2006 Annual Congress, Vienna.
- ECB, 2004, Monetary Analysis in Real Time, *Monthly Bulletin*, October 2004.
- Gerdesmeier, D., R. Motto and H. Pill, 2002, Paradigm Uncertainty and the Role of Monetary Developments in Monetary Policy Rules, Paper presented at the ECB workshop The Role of Policy Rules in the Conduct of Monetary Policy, Frankfurt.
- Gerlach, Stefan, 2003, The ECBs Two Pillars, CEPR Discussion Paper, No. 3689.
- Gerlach, Stefan, 2004, The Two Pillars of the European Central Bank, *Economic Policy* 40, 389-439.

¹²For a practical example see Orphanides and Porter (2001).

- Gerlach, S. and L. Svensson, 2003, Money and Inflation in the Euro-Area: A Case for Monetary Indicators? *Journal of Monetary Economics* 50, pp. 1649-1672.
- Hallman, J., R. Porter, and D. Small, 1991, Is the Price Level Tied to the M2 Monetary Aggregate in the Long Run?, *American Economic Review*, 81 (September), pp. 841-58.
- Haug, A. and W. Dewald, 2004, Longer-term Effects of Monetary Growth on Real and Nominal Variables, ECB Working Paper No 382.
- Ireland, Peter N., 2004. Money's Role in the Monetary Business Cycle, *Journal of Money, Credit and Banking*, 36 (6), 969-83.
- Issing, Otmar, 2005, The Monetary Pillar of the ECB, paper prepared for the conference "The ECB and its Watchers VII", 3 June 2005.
- Masuch, Klaus, Huw Pill and Caroline Willeke, 2001, Framework and Tools for Monetary Analysis, in, Klöckers, Hans-Joachim and Caroline Willeke, eds., 2001, *Monetary Analysis: Tools and Applications*, ECB.
- Neumann, M. J. M. and C. Greiber, 2004, Inflation and Core Money Growth in the Euro Area, Discussion Paper 36, Economic Research Centre of the Deutsche Bundesbank.
- Orphanides Athanasios, 2003, The Quest for Prosperity without Inflation, *Journal of Monetary Economics*, 50 (3), 633-663.
- Orphanides, Athanasios and Richard Porter, 2001, Money and Inflation: The Role of Information regarding the Determinants of M2 Behavior, in, Klöckers, Hans-Joachim and Caroline Willeke, eds., 2001, *Monetary Analysis: Tools and Applications*, ECB.
- Orphanides, Athanasios, Richard D. Porter, David Reifschneider, Robert Tetlow and Frederico Finan, 2000, Errors in the Measurement of the Output Gap and the Design of Monetary Policy, *Journal of Economics and Business*, 52 (1/2), 117-141.
- Orphanides, Athanasios and Volker Wieland, 2000, Inflation Zone Targeting, *European Economic Review*, 44 (7) , 1351-1387.
- Pill, Huw, and Thomas Rautananen, 2006, *Monetary Analysis - The ECB Experience*, Paper presented at the conference "The ECB and its Watchers VIII", 5 May 2006.
- Rudebusch, G. and L. Svensson. 1999. *Policy Rules for Inflation Targeting*. in, Taylor, J.B., ed., *Monetary Policy Rules*, NBER and Chicago Press.
- Svensson, Lars E.O., 1997, Inflation Forecast Targeting: Implementing and Monitoring Inflation Targets. *European Economic Review* 41 (6), 1111 - 1146.

The following Discussion Papers have been published since 2006:

Series 1: Economic Studies

| | | | |
|---|------|--|--|
| 1 | 2006 | The dynamic relationship between the Euro overnight rate, the ECB's policy rate and the term spread | Dieter Nautz Christian J. Offermanns |
| 2 | 2006 | Sticky prices in the euro area: a summary of new micro evidence | Álvarez, Dhyne, Hoeberichts Kwapil, Le Bihan, Lünnemann Martins, Sabbatini, Stahl Vermeulen, Vilmunen |
| 3 | 2006 | Going multinational: What are the effects on home market performance? | Robert Jäckle |
| 4 | 2006 | Exports versus FDI in German manufacturing: firm performance and participation in international markets | Jens Matthias Arnold Katrin Hussinger |
| 5 | 2006 | A disaggregated framework for the analysis of structural developments in public finances | Kremer, Braz, Brosens Langenus, Momigliano Spolander |
| 6 | 2006 | Bond pricing when the short term interest rate follows a threshold process | Wolfgang Lemke Theofanis Archontakis |
| 7 | 2006 | Has the impact of key determinants of German exports changed? Results from estimations of Germany's intra euro-area and extra euro-area exports | Kerstin Stahn |
| 8 | 2006 | The coordination channel of foreign exchange intervention: a nonlinear microstructural analysis | Stefan Reitz Mark P. Taylor |
| 9 | 2006 | Capital, labour and productivity: What role do they play in the potential GDP weakness of France, Germany and Italy? | Antonio Bassanetti Jörg Döpke, Roberto Torrini Roberta Zizza |

| | | | |
|----|------|--|---|
| 10 | 2006 | Real-time macroeconomic data and ex ante predictability of stock returns | J. Döpke, D. Hartmann C. Pierdzioch |
| 11 | 2006 | The role of real wage rigidity and labor market frictions for unemployment and inflation dynamics | Kai Christoffel Tobias Linzert |
| 12 | 2006 | Forecasting the price of crude oil via convenience yield predictions | Thomas A. Knetsch |
| 13 | 2006 | Foreign direct investment in the enlarged EU: do taxes matter and to what extent? | Guntram B. Wolff |
| 14 | 2006 | Inflation and relative price variability in the euro area: evidence from a panel threshold model | Dieter Nautz Juliane Scharff |
| 15 | 2006 | Internalization and internationalization under competing real options | Jan Hendrik Fisch |
| 16 | 2006 | Consumer price adjustment under the microscope: Germany in a period of low inflation | Johannes Hoffmann Jeong-Ryeol Kurz-Kim |
| 17 | 2006 | Identifying the role of labor markets for monetary policy in an estimated DSGE model | Kai Christoffel Keith Küster Tobias Linzert |
| 18 | 2006 | Do monetary indicators (still) predict euro area inflation? | Boris Hofmann |
| 19 | 2006 | Fool the markets? Creative accounting, fiscal transparency and sovereign risk premia | Kerstin Bernoth Guntram B. Wolff |
| 20 | 2006 | How would formula apportionment in the EU affect the distribution and the size of the corporate tax base? An analysis based on German multinationals | Clemens Fuest Thomas Hemmelgarn Fred Ramb |

| | | | |
|----|------|--|---|
| 21 | 2006 | Monetary and fiscal policy interactions in a New Keynesian model with capital accumulation and non-Ricardian consumers | Campbell Leith Leopold von Thadden |
| 22 | 2006 | Real-time forecasting and political stock market anomalies: evidence for the U.S. | Martin Bohl, Jörg Döpke Christian Pierdzioch |
| 23 | 2006 | A reappraisal of the evidence on PPP: a systematic investigation into MA roots in panel unit root tests and their implications | Christoph Fischer Daniel Porath |
| 24 | 2006 | Margins of multinational labor substitution | Sascha O. Becker Marc-Andreas Müндler |
| 25 | 2006 | Forecasting with panel data | Badi H. Baltagi |
| 26 | 2006 | Do actions speak louder than words? Household expectations of inflation based on micro consumption data | Atsushi Inoue Lutz Kilian Fatma Burcu Kiraz |
| 27 | 2006 | Learning, structural instability and present value calculations | H. Pesaran, D. Pettenuzzo A. Timmermann |
| 28 | 2006 | Empirical Bayesian density forecasting in Iowa and shrinkage for the Monte Carlo era | Kurt F. Lewis Charles H. Whiteman |
| 29 | 2006 | The within-distribution business cycle dynamics of German firms | Jörg Döpke Sebastian Weber |
| 30 | 2006 | Dependence on external finance: an inherent industry characteristic? | George M. von Furstenberg Ulf von Kalckreuth |
| 31 | 2006 | Comovements and heterogeneity in the euro area analyzed in a non-stationary dynamic factor model | Sandra Eickmeier |

| | | | |
|----|------|--|---|
| 32 | 2006 | Forecasting using a large number of predictors: is Bayesian regression a valid alternative to principal components? | Christine De Mol Domenico Giannone Lucrezia Reichlin |
| 33 | 2006 | Real-time forecasting of GDP based on a large factor model with monthly and quarterly data | Christian Schumacher Jörg Breitung |
| 34 | 2006 | Macroeconomic fluctuations and bank lending: evidence for Germany and the euro area | S. Eickmeier B. Hofmann, A. Worms |
| 35 | 2006 | Fiscal institutions, fiscal policy and sovereign risk premia | Mark Hallerberg Guntram B. Wolff |
| 36 | 2006 | Political risk and export promotion: evidence from Germany | C. Moser T. Nestmann, M. Wedow |
| 37 | 2006 | Has the export pricing behaviour of German enterprises changed? Empirical evidence from German sectoral export prices | Kerstin Stahn |
| 38 | 2006 | How to treat benchmark revisions? The case of German production and orders statistics | Thomas A. Knetsch Hans-Eggert Reimers |
| 39 | 2006 | How strong is the impact of exports and other demand components on German import demand? Evidence from euro-area and non-euro-area imports | Claudia Stirböck |
| 40 | 2006 | Does trade openness increase firm-level volatility? | C. M. Buch, J. Döpke H. Strotmann |
| 41 | 2006 | The macroeconomic effects of exogenous fiscal policy shocks in Germany: a disaggregated SVAR analysis | Kirsten H. Heppke-Falk Jörn Tenhofen Guntram B. Wolff |

| | | | |
|----|------|---|---|
| 42 | 2006 | How good are dynamic factor models at forecasting output and inflation? A meta-analytic approach | Sandra Eickmeier Christina Ziegler |
| 43 | 2006 | Regionalwährungen in Deutschland – Lokale Konkurrenz für den Euro? | Gerhard Rösl |
| 44 | 2006 | Precautionary saving and income uncertainty in Germany – new evidence from microdata | Nikolaus Bartsch |
| 45 | 2006 | The role of technology in M&As: a firm-level comparison of cross-border and domestic deals | Rainer Frey Katrin Hussinger |
| 46 | 2006 | Price adjustment in German manufacturing: evidence from two merged surveys | Harald Stahl |
| 47 | 2006 | A new mixed multiplicative-additive model for seasonal adjustment | Stephanus Arz |
| 48 | 2006 | Industries and the bank lending effects of bank credit demand and monetary policy in Germany | Ivo J.M. Arnold Clemens J.M. Kool Katharina Raabe |
| 01 | 2007 | The effect of FDI on job separation | Sascha O. Becker Marc-Andreas Müндler |
| 02 | 2007 | Threshold dynamics of short-term interest rates: empirical evidence and implications for the term structure | Theofanis Archontakis Wolfgang Lemke |
| 03 | 2007 | Price setting in the euro area: some stylised facts from individual producer price data | Dias, Dossche, Gautier Hernando, Sabbatini Stahl, Vermeulen |
| 04 | 2007 | Unemployment and employment protection in a unionized economy with search frictions | Nikolai Stähler |

| | | | |
|----|------|---|---|
| 05 | 2007 | End-user order flow and exchange rate dynamics | S. Reitz, M. A. Schmidt M. P. Taylor |
| 06 | 2007 | Money-based interest rate rules: lessons from German data | C. Gerberding F. Seitz, A. Worms |
| 07 | 2007 | Moral hazard and bail-out in fiscal federations: evidence for the German Länder | Kirsten H. Heppke-Falk Guntram B. Wolff |
| 08 | 2007 | An assessment of the trends in international price competitiveness among EMU countries | Christoph Fischer |
| 09 | 2007 | Reconsidering the role of monetary indicators for euro area inflation from a Bayesian perspective using group inclusion probabilities | Michael Scharnagl Christian Schumacher |
| 10 | 2007 | A note on the coefficient of determination in regression models with infinite-variance variables | Jeong-Ryeol Kurz-Kim Mico Loretan |
| 11 | 2007 | Exchange rate dynamics in a target zone - a heterogeneous expectations approach | Christian Bauer Paul De Grauwe, Stefan Reitz |
| 12 | 2007 | Money and housing - evidence for the euro area and the US | Claus Greiber Ralph Setzer |
| 13 | 2007 | An affine macro-finance term structure model for the euro area | Wolfgang Lemke |
| 14 | 2007 | Does anticipation of government spending matter? Evidence from an expectation augmented VAR | Jörn Tenhofen Guntram B. Wolff |
| 15 | 2007 | On-the-job search and the cyclical dynamics of the labor market | Michael Krause Thomas Lubik |
| 16 | 2007 | Heterogeneous expectations, learning and European inflation dynamics | Anke Weber |

| | | | |
|----|------|--|----------------------------------|
| 17 | 2007 | Does intra-firm bargaining matter for business cycle dynamics? | Michael Krause Thomas Lubik |
| 18 | 2007 | Uncertainty about perceived inflation target and monetary policy | Kosuke Aoki Takeshi Kimura |
| 19 | 2007 | The rationality and reliability of expectations reported by British households: micro evidence from the British household panel survey | James Mitchell Martin Weale |
| 20 | 2007 | Money in monetary policy design under uncertainty: the Two-Pillar Phillips Curve versus ECB-style cross-checking | Günter W. Beck Volker Wieland |

Series 2: Banking and Financial Studies

| | | | |
|----|------|---|---|
| 01 | 2006 | Forecasting stock market volatility with macroeconomic variables in real time | J. Döpke, D. Hartmann C. Pierdzioch |
| 02 | 2006 | Finance and growth in a bank-based economy: is it quantity or quality that matters? | Michael Koetter Michael Wedow |
| 03 | 2006 | Measuring business sector concentration by an infection model | Klaus Düllmann |
| 04 | 2006 | Heterogeneity in lending and sectoral growth: evidence from German bank-level data | Claudia M. Buch Andrea Schertler Natalja von Westernhagen |
| 05 | 2006 | Does diversification improve the performance of German banks? Evidence from individual bank loan portfolios | Evelyn Hayden Daniel Porath Natalja von Westernhagen |
| 06 | 2006 | Banks' regulatory buffers, liquidity networks and monetary policy transmission | Christian Merkl Stéphanie Stolz |
| 07 | 2006 | Empirical risk analysis of pension insurance – the case of Germany | W. Gerke, F. Mager T. Reinschmidt C. Schmieder |
| 08 | 2006 | The stability of efficiency rankings when risk-preferences and objectives are different | Michael Koetter |
| 09 | 2006 | Sector concentration in loan portfolios and economic capital | Klaus Düllmann Nancy Masschelein |
| 10 | 2006 | The cost efficiency of German banks: a comparison of SFA and DEA | E. Fiorentino A. Karmann, M. Koetter |
| 11 | 2006 | Limits to international banking consolidation | F. Fecht, H. P. Grüner |

| | | | |
|----|------|--|---|
| 12 | 2006 | Money market derivatives and the allocation of liquidity risk in the banking sector | Falko Fecht Hendrik Hakenes |
| 01 | 2007 | Granularity adjustment for Basel II | Michael B. Gordy Eva Lütkebohmert |
| 02 | 2007 | Efficient, profitable and safe banking: an oxymoron? Evidence from a panel VAR approach | Michael Koetter Daniel Porath |
| 03 | 2007 | Slippery slopes of stress: ordered failure events in German banking | Thomas Kick Michael Koetter |
| 04 | 2007 | Open-end real estate funds in Germany – genesis and crisis | C. E. Bannier F. Fecht, M. Tyrell |
| 05 | 2007 | Diversification and the banks' risk-return-characteristics – evidence from loan portfolios of German banks | A. Behr, A. Kamp C. Memmel, A. Pfingsten |
| 06 | 2007 | How do banks adjust their capital ratios? Evidence from Germany | Christoph Memmel Peter Raupach |
| 07 | 2007 | Modelling dynamic portfolio risk using risk drivers of elliptical processes | Rafael Schmidt Christian Schmieder |
| 08 | 2007 | Time-varying contributions by the corporate bond and CDS markets to credit risk price discovery | Niko Dötz |
| 09 | 2007 | Banking consolidation and small business finance – empirical evidence for Germany | K. Marsch, C. Schmieder K. Forster-van Aerssen |

Visiting researcher at the Deutsche Bundesbank

The Deutsche Bundesbank in Frankfurt is looking for a visiting researcher. Among others under certain conditions visiting researchers have access to a wide range of data in the Bundesbank. They include micro data on firms and banks not available in the public. Visitors should prepare a research project during their stay at the Bundesbank. Candidates must hold a Ph D and be engaged in the field of either macroeconomics and monetary economics, financial markets or international economics. Proposed research projects should be from these fields. The visiting term will be from 3 to 6 months. Salary is commensurate with experience.

Applicants are requested to send a CV, copies of recent papers, letters of reference and a proposal for a research project to:

Deutsche Bundesbank
Personalabteilung
Wilhelm-Epstein-Str. 14

60431 Frankfurt
GERMANY

