

Acciari, Paolo; Polo, Alberto; Violante, Giovanni L.

Working Paper

"And Yet, It Moves": Intergenerational Mobility in Italy

IZA Discussion Papers, No. 12273

Provided in Cooperation with:

IZA – Institute of Labor Economics

Suggested Citation: Acciari, Paolo; Polo, Alberto; Violante, Giovanni L. (2019) : "And Yet, It Moves": Intergenerational Mobility in Italy, IZA Discussion Papers, No. 12273, Institute of Labor Economics (IZA), Bonn

This Version is available at:

<https://hdl.handle.net/10419/196771>

Standard-Nutzungsbedingungen:

Die Dokumente auf EconStor dürfen zu eigenen wissenschaftlichen Zwecken und zum Privatgebrauch gespeichert und kopiert werden.

Sie dürfen die Dokumente nicht für öffentliche oder kommerzielle Zwecke vervielfältigen, öffentlich ausstellen, öffentlich zugänglich machen, vertreiben oder anderweitig nutzen.

Sofern die Verfasser die Dokumente unter Open-Content-Lizenzen (insbesondere CC-Lizenzen) zur Verfügung gestellt haben sollten, gelten abweichend von diesen Nutzungsbedingungen die in der dort genannten Lizenz gewährten Nutzungsrechte.

Terms of use:

Documents in EconStor may be saved and copied for your personal and scholarly purposes.

You are not to copy documents for public or commercial purposes, to exhibit the documents publicly, to make them publicly available on the internet, or to distribute or otherwise use the documents in public.

If the documents have been made available under an Open Content Licence (especially Creative Commons Licences), you may exercise further usage rights as specified in the indicated licence.

DISCUSSION PAPER SERIES

IZA DP No. 12273

**“And Yet, It Moves”:
Intergenerational Mobility in Italy**

Paolo Acciari
Alberto Polo
Giovanni L. Violante

APRIL 2019

DISCUSSION PAPER SERIES

IZA DP No. 12273

“And Yet, It Moves”: Intergenerational Mobility in Italy

Paolo Acciari

Ministry of Economy and Finance of Italy

Alberto Polo

New York University

Giovanni L. Violante

Princeton University, CEPR, CEPR, IFS, IZA and NBER

APRIL 2019

Any opinions expressed in this paper are those of the author(s) and not those of IZA. Research published in this series may include views on policy, but IZA takes no institutional policy positions. The IZA research network is committed to the IZA Guiding Principles of Research Integrity.

The IZA Institute of Labor Economics is an independent economic research institute that conducts research in labor economics and offers evidence-based policy advice on labor market issues. Supported by the Deutsche Post Foundation, IZA runs the world's largest network of economists, whose research aims to provide answers to the global labor market challenges of our time. Our key objective is to build bridges between academic research, policymakers and society.

IZA Discussion Papers often represent preliminary work and are circulated to encourage discussion. Citation of such a paper should account for its provisional character. A revised version may be available directly from the author.

ISSN: 2365-9793

IZA – Institute of Labor Economics

Schaumburg-Lippe-Straße 5–9
53113 Bonn, Germany

Phone: +49-228-3894-0
Email: publications@iza.org

www.iza.org

ABSTRACT

“And Yet, It Moves”: Intergenerational Mobility in Italy*

We link administrative data on tax returns across two generations of Italians to study the degree of intergenerational mobility. We estimate that a child with parental income below the median is expected to belong to the 44th percentile of its own income distribution as an adult, and the probability of moving from the bottom to the top quintile of the income distribution within a generation is 0.10. The rank-rank correlation is 0.25, and rank persistence at the top is significantly higher than elsewhere in the income distribution. Upward mobility is higher for sons, first-born children, children of self-employed parents, and for those who migrate once adults. The data reveal large variation in child outcomes conditional on parental income rank. Part of this variation is explained by the location where the child grew up. Provinces in Northern Italy, the richest area of the country, display upward mobility levels 3-4 times as large as those in the South. This regional variation is strongly correlated with local labor market conditions, indicators of family instability, and school quality.

JEL Classification: J31, J61, J62, R1

Keywords: intergenerational mobility, inequality, Italy, geographical variation

Corresponding author:

Gianluca Violante
Department of Economics
Princeton University
Princeton, NJ 08544
USA

E-mail: violante@princeton.edu

* The opinions expressed in this working paper are those of the authors and do not necessarily reflect those of their institutions. We are grateful to Alberto Alesina, Damien Capelle, Lorenzo Cappellari, Nicola Curci, David Lee, Costas Meghir, and Danny Yagan for useful comments. We thank Simon Boserup for sharing the intergenerational transition matrix for Denmark and Enrico Moretti for sharing his data on province-level cost-of-living indexes.

1 Introduction

Income mobility across generations is a key socio-economic indicator. It sheds light on the extent to which individuals with unequal initial conditions are offered equal opportunities to succeed and, as such, it is considered a proxy for a fair and fluid society.

In spite of its centrality to the academic and policy debate, the body of empirical evidence on intergenerational mobility that economists have collected over the years is rather thin. The reason is that the data requirements are formidable. Very few publicly available datasets around the world have information that allows to link parents and children and, at the same time, to construct reliable measures of permanent income for both cohorts.

Italy is no exception in this regard. There exists, so far, no study on intergenerational mobility on a national scale that uses high-quality data on incomes. Sociologists have filled this gap by studying intergenerational persistence of occupational classes ([Pisati and Schizzerotto, 2004](#)). Economists have opted for a variety of other approaches. [Checchi et al. \(2013\)](#) have documented persistence in educational attainment. [Mocetti \(2007\)](#) and [Piraino \(2008\)](#) have used imputation procedures to assign incomes to parents of children who report their income in the Survey of Household Income and Wealth (SHIW), Italy's main cross-sectional household survey. Finally, other authors have made creative use of surnames. [Barone and Mocetti \(2016\)](#) have focused on one particular city, Florence, and linked surnames of tax records in 1411 and 2011; [Güell et al. \(2015\)](#) have documented large variation in intergenerational mobility across geographical areas within Italy by exploiting the informational content of surnames.

Over the last decade or so, the empirical literature on intergenerational mobility has witnessed a strong revival thanks to the fact that economists have been able to access large administrative data in a handful of countries (e.g., United States, Canada, Denmark, Sweden, and Norway). These very large datasets have led to precise estimates of mobility indexes and have opened the possibility to analyze upward mobility patterns, within countries, at a very disaggregated geographical level. This variation has been exploited to learn about what socio-economic factors are strongly correlated with upward mobility across regions, while controlling for the institutional framework.

In this paper we add to this recent wave of studies and introduce a new dataset that allows us to develop the first systematic investigation of intergenerational income mobility for the

Italian economy. Our starting point is the administrative electronic database on individual tax returns from the Ministry of Economy and Finance.¹ From this data source, we extracted a sample of two cohorts of Italians born, respectively, between 1942-1963 and 1972-1983 and we matched parents and children through their social security numbers. Our final dataset contains nearly 650,000 parents-child pairs with detailed income information for three years in each cohort - 1998-99-00 for parents, 2011-12-14 for children.

We begin from the analysis of intergenerational mobility at the national level. We estimate that, in Italy, a child born from parents with income below the median of the parental income distribution (thus, on average the 25th percentile) is expected to reach the 44th percentile of her own income distribution as an adult. In other words, she is expected to move upward, but to remain below the median. When we examine the full intergenerational income transition matrix across deciles, for a child from parents in the top decile, the probability of keeping her parents' rank as an adult is 26%. For a child in the bottom decile, the probability of rising to the top decile is less than 4%. We also find that upward mobility is larger for sons, for first-born among siblings, for children of self-employed parents and for children who, once adult, migrate to other regions within Italy.

We also estimate the relationship between the average rank of the child and average rank of the parents in their respective national distributions to learn about relative mobility patterns. We confirm the finding of [Chetty et al. \(2014\)](#) that this relation is markedly linear, except at the very top where it bends upward. Its slope —the rank-rank slope (RRS)— is a measure of relative mobility for children with different initial conditions in terms of parental income. In Italy, the RRS is 0.25. To understand the meaning of this value, consider two children, one from parents in the top decile and one from parents in the bottom decile of the national distribution —a gap corresponding to a differential in their fathers' earnings of around 43,500 Euros. An RRS of 0.25 means that, when adults, these children will be on average still two deciles apart, a gap that translates into nearly 6,500 Euros of annual earnings. The median rank-rank slope is much higher, 0.365. The discrepancy between mean and median is due to the fact that the conditional distributions of child ranks are skewed - to the right at the bottom of the income

¹The cross-sectional dimension of this database, i.e. without any intergenerational matches, is the source of the statistics on top incomes in Italy documented by [Alvaredo and Pisano \(2010\)](#) and contained in the World Inequality Database (www.wid.world).

distribution of parents, and to the left at the top.

Even though the expected rank of a child, conditional on parental rank, has a tightly estimated slope, the R-squared of the rank-rank regression is low. One of our most striking results is that, conditional on a particular percentile of the parental income distribution, even controlling for all observable variables in our dataset, economic outcomes of children remain vastly different. For example, if we condition on children with parents in the 90th percentile, the bottom quarter of these children will be below the 35th percentile of their own national distribution. Among children from families at the 10th percentile, a quarter of them will be above the 60th percentile².

For completeness, we also compute a more traditional measure of intergenerational mobility, the intergenerational elasticity of income (IGE). We estimate an IGE of 0.25. However, we uncover that this elasticity varies dramatically across the distribution: at the bottom it is nearly zero, while above the 10th percentile its value exceeds 0.30. This sharp nonlinearity makes it less useful than the RRS as a single statistic to summarize mobility across the whole distribution.

The three main shortcomings of our data are: (i) an attenuation bias due to the short within-individual panel dimension; (ii) a selection bias due to the fact that we can only link parents to children when the latter are claimed as dependent by the former; (iii) possible distortions arising from tax evasion for the self-employed. These three corrections reduce somewhat our estimates of intergenerational mobility.

When placing our estimates in a comparative context, upward mobility in Italy is higher than in the United States, but lower than in Nordic European countries. However, when using alternative measures of mobility that account for the different level of income inequality between Italy and the United States, and hence distance between percentiles (the probability that the son earns at least 50% more than the father), we conclude that upward mobility in Italy is higher than in the United States only in the bottom tercile of the income distribution.

Next, we explore the geographical differences in upward mobility across the 110 Italian provinces. We document a staggering amount of variation, with a steep South-North gradient.

²The dispersion in the distribution of ranks is not substantially affected by gender. The interquartile range of the conditional distribution of child ranks, averaged across parents' ranks, is 0.468. When considering the income distribution of sons only, the interquartile range is 0.455.

Relative to the South of Italy, provinces in the North (especially in the North East), are both more egalitarian —i.e., they display higher relative mobility— and more upward mobile —i.e., they display higher absolute mobility (as measured, for example, by the expected rank of a child born by parents below the median). In the North, children from parents with unequal background are more similar in their economic outcomes when adults, and children from poor parents fare better when adults. The level of upward mobility in Northern Italy exceeds that of Scandinavia.

To give a sense of the magnitudes, we compare the province of Milano (ranked 10th in terms of upward mobility) to that of Palermo (ranked 107th), both very large provinces with 3.2M and 1.2M residents, respectively. In Milan, children from parents with income below the median in the national parental income distribution are expected to reach the 54th percentile of their own national income distribution, once adults. Children from parents with the same economic background who grow up in Palermo reach, on average, the 38th percentile. The probability of moving from the bottom quintile to the top quintile of the national income distribution is 0.22 for children who grow up in Milano and less than 0.06 for those raised in Palermo.

We uncover a Great Gatsby curve with a negative slope linking upward mobility and several measures of inequality across Italian provinces. However, surprisingly, the top income share correlates positively. One interpretation is that the top income share is high in areas where self-employment is prevalent and upward mobility is especially strong for these groups.

We then investigate what socio-economic indicators correlate, at the provincial level, with upward mobility. We use nearly 50 markers for productivity, labor market conditions, demographic structure, educational attainment, family instability, crime, and economic openness from ISTAT, the National Statistical Institute. In addition, we have several measures of social capital and a unique and very detailed set of indicators of school quality.

Most of these variables correlate with upward mobility with the expected sign. A limitation of this unconditional analysis is that all these socio-economic variables are also highly correlated among each other. We therefore proceed with a multivariate conditional correlation analysis, where we extract a small number of principal components for each broad category to collapse the number of covariates. Overall, the included categories explain a large portion of the geographic variation in rates of upward mobility (nearly 90%). The key explanatory variables are the local labor market conditions, indicators of family instability and two specific indexes

of school quality: students' grades and test scores and the quality of pre-school.

These correlations do not imply causality. We make an attempt to identify a causal link by exploiting households who are likely to have moved exogenously because of an earthquake that struck three provinces in the South of Italy in 1980. By comparing movers and stayers, we find statistically significant differences in upward mobility that are almost as large as the differences between mobility indexes of provinces of destination and provinces of origin. This exercise supports the idea that fixed characteristics of the province, over and above selection in the pool of residents, has an independent impact on the degree of intergenerational mobility.

The rest of the paper is organized as follows. Section 2 defines the measures of intergenerational mobility used in the analysis. Section 3 describes the data set, outlines the sample selection procedure, and provides some descriptive statistics. Section 4 discusses our findings on the degree of intergenerational mobility at the national level. Section 5 tackles some potential sources of sample selection bias. Section 6 compares mobility outcomes in Italy to those in other countries. Section 7 documents the patterns of geographical variation in upward mobility across provinces in Italy. Section 8 explores the correlation between upward mobility and local characteristics of provinces that could account for geographical variation. Section 9 concludes.

2 Measures of intergenerational mobility

In this section, we briefly discuss the measures of intergenerational mobility we use throughout the paper. No single measure is perfect. Each one has advantages and shortcomings over the others, and each one answers a specific question.

2.1 Relative mobility

Relative mobility is the subject of most prior investigations of intergenerational mobility (see [Solon, 1999](#); [Black and Devereux, 2011](#), for surveys of the literature). These studies focus on relative outcomes of children with different family backgrounds, and ask: what is the expected income of children of low-income families relative to those of high-income families?

Our main measure of relative mobility is the correlation between child and parent income ranks ([Dahl and DeLeire, 2008](#); [Chetty et al., 2014](#)), i.e. an index of positional mobility. Let

R_i denote child i 's percentile rank in the income distribution of children (from 0 to 99) and R_i^P denote the percentile rank of i 's parents in the income distribution of parents. A linear regression of children rank on parental rank yields

$$R_i = \alpha + \beta R_i^P + \varepsilon_i \quad (1)$$

where the constant α measures the expected rank of a child born from parents at the bottom of the income distribution ($R_i^P = 0$), and the rank-rank slope (RRS, or rank-rank persistence coefficient) β measures the strength of the correlation between a child's position in the income distribution and her parents' position in the income distribution.

By construction, this regression on national data has only one free parameter since it must be true, by taking averages of both sides of (1), that $50 \cdot (1 - \beta) = \alpha$. Values of β close to zero denote a very mobile society where the expected rank of children is always around the median independently of parental rank. Values close to one depict a society with high persistence in relative positions across generations.

For example, by computing $\Delta \cdot \beta$ we can answer the question: what is the difference in expected rank between two children with parents who are Δ percentiles apart in the national income distribution? And, by simple iteration, we can ask how many generations it would take, on average, for descendants of families originally Δ percentiles apart to belong to the same percentile of the income distribution, i.e. the value N that solves $\beta^N \Delta = 1$.

We are also interested in assessing whether mobility at the top differs from mobility in the rest of the distribution. For example, we may think that belonging to the upper class of society yields *disproportionately* better opportunities to perpetuate social status across generations. For this purpose, we construct an index of relative mobility at the top, or top mobility ratio (TMR), as follows. First we compute the RRS by running the rank-rank regression (1) on the top decile of the parental distribution (β^{90-99}). Next, we run it on the bottom 90 pct and obtain β^{0-89} . We then define

$$TMR = \frac{\beta^{90-99}}{\beta^{0-89}}. \quad (2)$$

The higher this ratio, the stronger persistence in ranks across generations at the top of the income distribution relative to the rest of the distribution.

The most commonly used index of relative mobility in the literature is the intergenerational income elasticity (IGE) which captures the elasticity of child income with respect to parental income and is estimated as the OLS coefficient of a linear regression of log child income y_i on log parental income y_i^P , i.e.

$$IGE = ICC \times \frac{SD(\log y_i)}{SD(\log y_i^P)}, \quad (3)$$

where ICC is the intergenerational correlation coefficient between log income of parent and child and SD is the standard deviation. An IGE of 0.5, for example, means that a 20 pct differential in parental income translates into a 10 pct differential in child income. [Mazumder \(2016\)](#) discusses the relation between RRS and IGE.³

There are three main advantages of the RRS compared to the IGE. First, the IGE is based on log income. As a result, one has to either drop the zeros in income or use an imputation procedure. Conclusions can be sensitive to selection and imputation assumptions. Second, the conditional expectation of log child income as a function of parental income, in practice, is often very nonlinear. As a result, a single elasticity is not a good summary of intergenerational mobility at all points in the distribution. Conversely, the empirical literature that uses measures of positional mobility showed that the rank-rank relation is remarkably close to linear. Third, the RRS can be used to measure mobility differentials among subgroups of the population because the RRS for different groups can be estimated based on ranks of the same national distribution.⁴ In our geographical analysis of Section 7, we exploit this property of the RRS, following [Chetty et al. \(2014\)](#).

2.2 Absolute mobility

Absolute mobility indexes measure the outcomes of children from families at a given income or rank in the parental income distribution. They are typically used to study the economic performance of children from poor families.

We follow [Chetty et al. \(2014\)](#) and report measures of absolute upward mobility (AUM),

³RRS and ICC are closely-related, scale-invariant measures of the extent to which child income depends on parental income. Theoretically, the IGE differs from the RRS only if income inequality changes significantly across generations: if, for example, $SD(\log y_i) > SD(\log y_i^P)$, then the effect of parental income on child income is larger and this is reflected in a higher IGE.

⁴Instead, the IGE estimated within groups is only informative about persistence or mobility with respect to the group specific mean, not the aggregate mean.

defined as the mean rank (in the national child income distribution) of children whose parents are below the median of their own national income distribution, or:

$$\bar{R}^{50} = \mathbb{E} \left[R_i | R_i^P \leq 50 \right]. \quad (4)$$

When the rank-rank relationship is linear, the average rank of children with below-median parental income equals the average rank of children with parents at the 25th percentile of the national income distribution, i.e., $\mathbb{E} [R_i | R_i^P = 25]$, which can be easily computed from (1) as $\alpha + 25 \cdot \beta = 50 - 25 \cdot \beta$.

Another measure of absolute mobility we analyze is the probability of rising from the lowest to the highest quintile of the income distribution (Corak and Heisz, 1999) —we call it Q1Q5. This probability can be interpreted as the fraction of those who make it to the top starting from the bottom:

$$Q1Q5 = \Pr \left\{ R_i \geq 80 | R_i^P < 20 \right\}. \quad (5)$$

Finally, we provide non-parametric transition matrices by percentile, and marginal distributions, that allow readers to construct alternative measures of mobility beyond those we document here.

2.3 Indicators for within-country comparisons across regions

We are interested in analyzing the geographical heterogeneity in intergenerational mobility within Italy. Let R_{ig} denote the rank in the national income distribution of children for a child i who grew up in geographical area (or region) g . Let R_i^P denote its parents' rank in the national distribution of parental income. By running regressions of the type

$$R_{ig} = \alpha_g + \beta_g R_i^P + \varepsilon_{ig}, \quad (6)$$

where we continue to rank both children and parents based on their positions in the national income distribution (rather than the distribution within their region), we obtain estimates of the region-specific indicators of relative (β_g) and absolute (\bar{R}_g^{50}) mobility.

It is important to note that, while in the linear national rank-rank relation (1) there is only

one free parameter, and a one-to-one mapping between AUM and RRS, this is not the case for the regional regressions, since the average national rank of residents of a specific region needs not be the median. However, as long as linearity holds, the AUM for region g can be accurately approximated as:

$$\bar{R}_g^{50} = \alpha_g + 25 \cdot \beta_g. \quad (7)$$

This is the measure of absolute upward mobility that we use throughout our regional analysis.⁵

2.4 Indicators for cross-country comparisons

We are also interested in comparing the level of intergenerational mobility in Italy with that of other countries. The key problem in this comparison is that the national income distribution differs markedly across countries and such differences can obscure the interpretation of the results.⁶

To overcome this problem, when we do cross-country comparisons, we report another measure beyond positional indexes. The measure has been used previously by [Chetty et al. \(2017\)](#) to compare mobility between cohorts in the United States. We compute, at each parental income rank r , the probability that the income of the child is higher than the income of the parents by a factor $\Phi > 1$, once the two distributions have been rescaled by their mean to capture aggregate growth over the period. Specifically, at each r , we calculate

$$\Pr \left\{ y_i \geq \Phi y_i^P \cdot \left(\frac{\bar{y}}{\bar{y}^P} \right) \mid R_i^P = r \right\}. \quad (8)$$

By measuring upward mobility this way, we quell the valid concern that different degrees of income dispersion across countries may bias our findings.

⁵Using directly the 25th percentile of the national income distribution avoids the problem that in poor provinces $\mathbb{E} [R_i \mid R_i^P = 25]$ can be much lower than in rich ones.

⁶Consider, for example, country A and country B , where country A is a lot more unequal than B . When using indexes of positional mobility, such as the RRS, there is a strong mechanical force towards measuring less mobility in A than in B . The reason is that it takes a lower absolute change in income in country B to move up (or down) any given percentile, compared to A , since in B the income distribution is more compressed.

3 Data

In this section, we describe our data set, outline our sample selection procedure and present some descriptive statistics. We argue that the earnings distribution in our sample is comparable to the distribution obtained from more standard survey data, hence it is representative.

3.1 Description of the data set

Our data source is the electronic database of Personal Income Tax returns assembled by the Department of Finance of the Italian Ministry of Economy and Finance. The accuracy of the information in this database is preliminarily statistically checked and validated by the Department of Finance.⁷ The database is used for the official tax return statistics published annually and for economic analysis supporting policy decisions. It is also the source of cross-sectional statistics on income inequality for Italy in the World Income Database ([Alvaredo and Pisano, 2010](#)). However, it is the first time that the dataset is used to link children to their parents in order to construct measures of intergenerational mobility. As of today, no other existing sources of income data allowed such link in Italy.

The database combines information from all three income tax forms available to Italian taxpayers: (i) form Modello Unico (MU), which is the most common, (ii) form 730, the simplified income tax form available to employees and pensioners, whose tax returns consist of only few items, and (iii) form 770 which is compiled by the withholding agent of employees or by self-employed workers, and is accepted by the Italian tax authorities when the taxpayer is not required to submit a tax return directly.⁸ This is mostly the case of individuals with only one source of income, no other dwellings than their primary home, and no itemized deductions (e.g., medical expenses, charitable donations, mortgage interests).⁹

Our extract comprises numerous variables on demographic characteristics and income. Demographics include the province of birth and residence, birth year, marital status, and an occu-

⁷This process is mainly performed by SOGEI SpA, an in-house company of the Ministry of Economy and Finance, through a series of algorithms that checks the coherence between data reported in different sections of tax returns, corrects abnormally high values, etc. In 2012, 100% of tax returns were transmitted electronically to the tax authorities.

⁸Form Modello Unico has been replaced by form Modello Redditi as of tax year 2016.

⁹Standard deductions such as allowances for children and dependent spouses are applied by the withholding agent.

pation/sector identifier (ATECO code).¹⁰ The income variables include total gross (before-tax) income and all its components, i.e. income from dependent labor, self-employment (divided into professional and entrepreneurial income), pensions, unemployment benefits, financial assets, housing, land and farms.^{11,12}

Our aim is to link parents and children in the database. This operation is possible because, in order to claim deductions for dependent children, parents must report the child's Social Security Number (SSN) on their own tax return. Figure A1 in the Online Appendix shows the corresponding section of the tax form. Data for parents are extracted from tax returns of tax year 1998 by selecting all taxpayers who claimed allowances for children born between 1972 and 1983 (age 15-26 in 1998).¹³ Through children's SSNs, we match the tax return of the parents to that of the children in tax year 2012. Our cohort of children in 2012 is therefore of age 29-40. We then add two years of data of tax returns for both parents and children, 1999-2000 and 2011-2014, respectively. For these two years we only have total income, not each of its components, and hence throughout most of the analysis our definition of income is total gross income.

This matching procedure inevitably misses some parent-child pairs for three reasons. First, certain individuals are not required to submit any tax form. These are individuals (i) with no income whatsoever, (ii) with only tax-exempted income such as social assistance payments, social transfers in kind, or fellowships, (iii) with only income from housing and land assets below 500 euros, (iv) with income exclusively from interests, dividends, and capital gains deriving from financial assets. Because of (i-iii), the very poor and the extreme tax evaders are not covered in our sample.¹⁴ Second, in 1998 the child's SSN was mandatory only for forms MU and 730. For those who filed form 770 (around 25 percent of taxpayers, typically low-income ones) a match is not possible. Third, a share of individuals aged 15-26 in 1998 are no longer dependent and

¹⁰The ATECO code is available only for self-employed individuals in our dataset. These individuals are required to report it in the tax return, as the code describes the specific economic activity that generates the income.

¹¹Some income sources we do not observe are fellowships/scholarships, child/family benefits, social assistance transfers.

¹²The difference between professional and entrepreneurial income is subtle. The key distinction is the extent to which the business uses extensively physical capital beyond human capital. For example, a lawyer or a free-lance journalist is considered, for tax purposes, a professional. An owner of a firm which produces clothes is considered an entrepreneur. Entrepreneurial income includes income from owned firms, i.e., firms where individuals own a share of total equity (partnerships, closely-held companies).

¹³Year 1998 is the first one in which parents were required to report the SSN of the dependent children.

¹⁴Individuals in group (iv) are very few because it is unlikely that someone in that group would not have other types of taxable income.

thus they cannot be matched to parents through tax returns. This lack of a match is more likely for the older children. In Section 5, we describe how we deal with these three possible sources of bias.

3.2 Sample selection

Our initial sample comprises 8,105,407 individuals. This is the universe of 2012 tax returns of children born between 1972-83. We then match them to the tax returns of parents who in 1998 claimed deductions for children born in those years.¹⁵ We only retain matched records with information on both the child and the father, leaving us with 2,846,994 matched records. Each record contains information on a child, her father, and her mother.¹⁶ Based only on the tax return, we cannot be sure that the individuals claiming the child deduction are the parents (e.g., they could be older brothers, or grandparents).¹⁷ Therefore, we drop records where the age difference between child and father is less than 15 or larger than 45 which reduces sample size to 2,835,920 records. This criterion minimizes instances where the individual claiming the dependent on the tax return is not the parent.

One shortcoming of our data is that we only have three years of income available, 1998-00 for parents and 2011-12-14 for children. As extensively discussed in the literature (e.g., Mazumder, 2016), this means that our analysis is susceptible to two sources of bias. First, a bias due to the presence of transitory income fluctuations. Without a long panel of income realizations, one is unable to properly filter out the more volatile component of income. As a result, intergenerational mobility can be overestimated: a fraction of the mobility measured could be spuriously due to the fact that transitory shocks attenuate the income correlation between parents and children. Second, a lifecycle bias. A danger in using only a short snapshot of lifetime income is that, if we catch children earlier in their working life relative to parents, we may understate income more for those with steep age-income profiles (e.g., the more educated), which also leads to an exaggerated estimate of intergenerational mobility when the age-income slopes are positively correlated between parents and children. Incidentally, income of young individuals tends to be

¹⁵In Italy, the tax unit is the individual.

¹⁶From the tax returns information, we can always match spouses unless they are divorced and live apart. We can retrace divorced couples when they both claim a positive percentage of deduction for the same individuals born in 1972-83.

¹⁷While tax filers have to specify if the dependent is a child by checking a box, there could be errors in reporting.

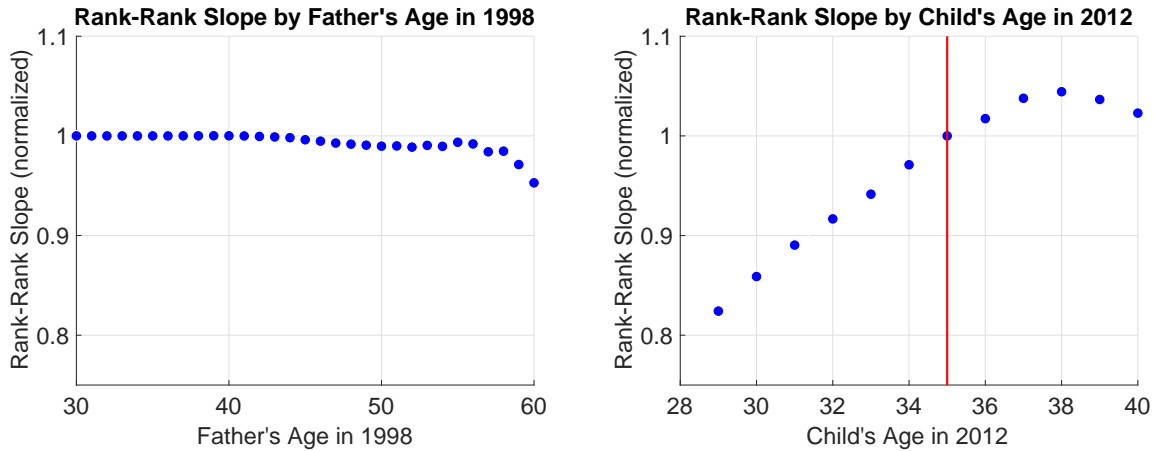


Figure 1: Left panel (a): Estimates of rank-rank slope (RRS) for different age cut-offs for the father. Right panel (b): Estimates of RRS for different age cut-offs for the child. In both cases, the RRS is normalized to one when the cut-off is age 35 (the one used in the analysis).

especially volatile, so without a proper age cut-off the first source of bias is even stronger.

To deal with the attenuation bias, throughout our analysis we use measures of income averaged over the three years for parents and children.¹⁸ We return on this point in Section 5, where we make an attempt to assess this bias by simulation. To deal with lifecycle bias, we impose two selection criteria. First, we only select children whose fathers and mothers in 1998 were between 35 and 55 years old. This stage reduces the sample size to 2,192,804 pairs. Second, we drop children younger than 35 in 2012. After imposing this second restriction, the sample size shrinks to 647,662 records. This large loss in data is due to the fact that the oldest child in our data set is 40 years old, and hence our final sample only covers a 6-year age range for children. This step is necessary to avoid severely distorted measures of mobility. Figure 1 explains the logic behind this choice. The figure plots the value of the RRS computed on samples with different age cut-off criteria for fathers and children. Panel (a) shows that moving the top age cut-off for fathers above 55 would induce a downward bias. Panel (b) shows that including children below age 35 would dramatically reduce our estimates of rank persistence, but after age 35 the estimate levels off.¹⁹

¹⁸Figure III.B in Chetty et al. (2014) shows that for the US data the attenuation bias is small: estimates of the RRS using 2 and 15 years of income are very close.

¹⁹Figure III.A in Chetty et al. (2014) is the counterpart of our Panel (b) for the US. There, the RRS levels off at around age 30, i.e. five years earlier. This is not surprising, since entry in the labor market in Italy is much delayed relative to the US.

3.3 Descriptive statistics

Table 1 contains selected descriptive statistics about parents and children in the final sample.

On average, fathers (mothers) are 51 (48) years old in 1998. Over 90% of the fathers are married. The data show that in 1998 the father is the top-earner in nearly 90% of the families in the sample, and around 2/3 of families have two sources of income. The median gross income of fathers is nearly 21,000 Euros in 1998 and that of mothers is approximately half of it.²⁰ The correlation between the two (which excludes zeros) is positive and significant, around 0.2.

Children are on average 37 years old in 2012, so there is a gap of around 13 years between the point in the lifecycle where we observe incomes for the two generations. Since our sample of children in 2012 is relatively young, less than half are married.

Median nominal income of male children is only 4% higher than that of their fathers 14 years earlier. This small difference reflects the age gap between the two groups, but also the dismal aggregate growth of the Italian economy over this period.²¹ Instead, women's income is substantially higher in 2012 reflecting the steady rise in female employment rate among the newer cohorts. The composition of income reveals that for nearly 72% of children compensation for dependent labor is the major component of income, followed by self-employment for 21% of the children population. Fewer than 6% of children are rentiers—their main source of income is financial and housing capital.

Additional statistics about income distributions and individual characteristics are presented in Table A1 in the Appendix. The table shows that, as expected, the income distribution is markedly right-skewed: the top 1% of the distribution accounts for 6.6% of total income in 2012.²²

3.4 Comparison with survey data

To gain more confidence in the reliability of our data, we verify that the distribution of labor earnings we obtain in the final dataset is consistent with survey data. The best source for com-

²⁰Italy adopted the Euro in 2002, thus incomes for 1998-99-00 are expressed in Italian Liras in the database. We transformed them in Euros, the currency in which they are reported in 2011-12-14.

²¹Average annual GDP growth per capita from 1998-2012 is less than 0.5%. Moreover, as in many developed countries, most of the growth accrued to the top earners so it is less visible for median income.

²²In the total Italian population, without the age restrictions we impose, this share is close to 10%. For comparison, in the U.S. this share is around 20%

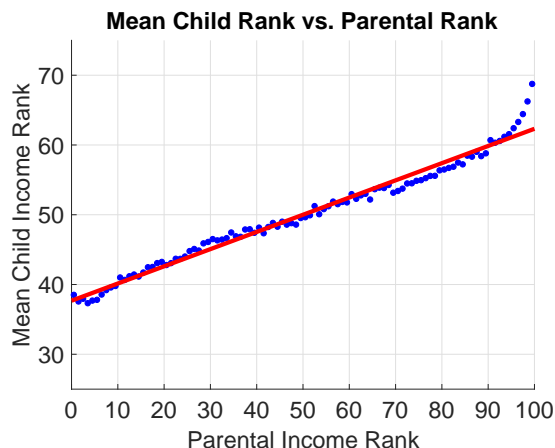


Figure 2: Child mean rank conditional on parental income rank. Blue dots: data. Red line: linear fit. The constant of the red line is 37.7 and the slope 0.246.

parison is the Survey on Household Income and Wealth (SHIW), administered by the Bank of Italy. On the SHIW data, we apply the same selection procedure described above. Two additional adjustments are performed. First, based on [Cannari et al. \(1997\)](#), we make SHIW data comparable to administrative data by dropping individuals who *i*) report zero or missing income in the survey, *ii*) report housing asset income below 185 Euros, and *iii*) report only interest income. These criteria exclude from SHIW individuals who do not file tax returns. Second, because our data set comprises only gross income, while SHIW reports after-tax income data, we apply an algorithm supplied by the Italian Ministry of Economy and Finance to reconstruct net wage income (by far, the largest component of income for the vast majority of the population, as mentioned above) in our data.

Table 2 compares statistics on the net wage distribution of individuals aged 35-40 in 2012 between SHIW and our dataset of tax returns. Overall, the two distributions line up well.

4 Intergenerational mobility in Italy

We begin our empirical analysis by documenting the relationship between child and parental income at the national level.

Our definition of income is total gross income. Parental income is the sum of total pre-tax income of both parents. Child income is always defined at the individual level. Unless otherwise specified, all incomes are nominal.

We measure the rank of parents R_i^P as their percentile in the distribution of parental incomes and the rank of children R_i as their percentile in the distribution of child incomes. Figure 2 presents a binned scatter plot of the mean percentile rank of children as a function of their parent rank, $\mathbb{E}[R_i | R_i^P = r]$.

Our first main finding is that the conditional expectation of a child's rank given her parents' rank is almost perfectly linear, except at the top of the income distribution where it bends upward.²³

Running the OLS regression in (1), we estimate that a one percentage point (ppt) increase in parental rank is associated with a 0.25 ppt increase in the child's mean rank, as reported in column (1) of Table 3. This estimate of the RRS implies that, if we take two families, one in the top decile of the income distribution and one in the bottom decile, a generation later the child of the rich family is expected to be still two deciles above the child from the poor family. On average, it would take three generations for these differences in initial conditions to be fully offset so that the descendants of the two families (i.e., their great-grandchildren) would belong to the same percentile.

The first column of Table 3 reports also other measures of mobility. The top mobility ratio (TMR) is 3.7, a reflection of the fact that in Figure 1, the rank-rank curve steepens towards the upper end. Thus, ranks persist a lot more at the top of the income distribution.²⁴ This value of the TMR implies that in the top decile the slope is close to 1: the children of two families, both in the top decile but at the two extremes of the decile, will still be nearly 10 percentiles apart a generation later.

The AUM index equals 0.44 which means that a child of parents with income below the median is expected to end up in the 44th percentile of her income distribution. The Q1Q5 index implies that, at the national level, the probability of belonging to the top quintile of the income distribution, for children born in the bottom quintile, is 10 percent.

Tables 7 and 8 contain the full national intergenerational transition matrix across quintiles

²³This linearity in the rank-rank relationship emerges also from other studies based on administrative records for Canada, Denmark, Sweden, Norway, and the United States (Boserup et al., 2013; Bratberg et al., 2017; Chetty et al., 2014; Corak and Heisz, 1999). In these studies, the data also show significant deviations from linearity (less mobility) only at the extremes of the distribution.

²⁴Mechanically, this happens because the distribution is right-skewed and percentiles are further apart at the top relative to the middle. They are also somewhat closer to each other at the bottom, which explains the flattening of the rank-rank relation for the first few percentiles.

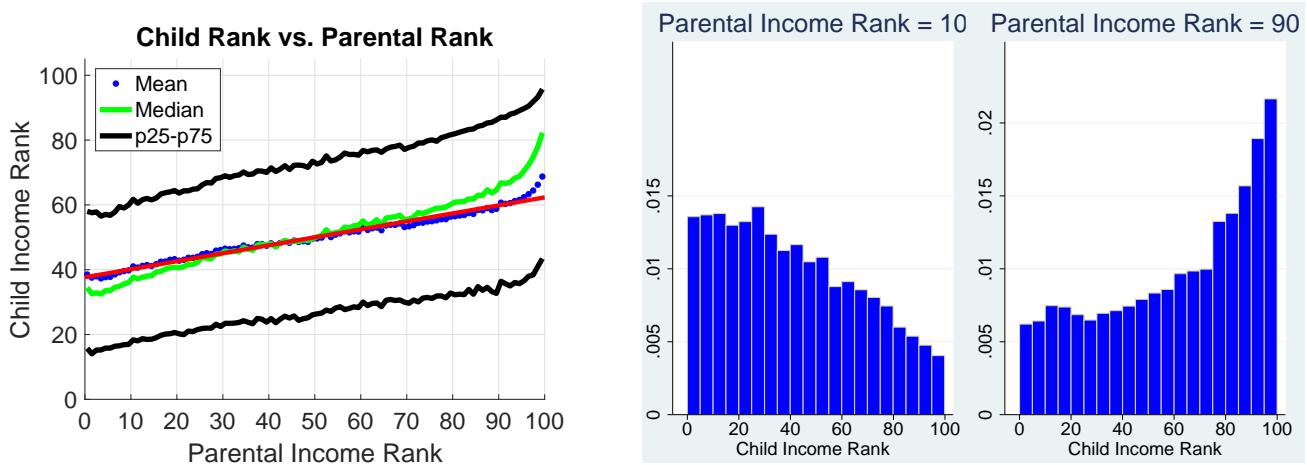


Figure 3: Left panel (a): Mean child rank, median child rank, and interquartile range of child ranks conditional on the parental income rank. Right panel (b): conditional distributions of child ranks at parental income percentiles 10 and 90.

and deciles. The probability that a child of a family from the top income decile remains in the top decile is over 25 percent, almost 7 times higher than the probability that a child from a family in the bottom decile ascends to the top one as an adult.

4.1 Robustness to deflating

A concern underlying our national statistical analysis is that all incomes are nominal, while purchasing power varies substantially across geographical areas in Italy. A given income value in the South, appropriately deflated, becomes higher than its counterpart in the North. A location-specific deflating procedure might therefore affect the ranks of parents and children in the national distribution.

To examine this issue, we used regional consumer price indexes constructed by the Bank of Italy for the year 2006 (Cannari and Iuzzolino, 2009). We explore four different indexes: the first one is a price index that allows for regional dispersion in prices of food, clothing, and furniture only. The other three indexes include alternative ways of accounting for the location-specific cost of housing services and other services. We also used an alternative deflating procedure based on the province-level price indexes for year 2005 constructed by Boeri et al. (2018) following the methodology proposed by Moretti (2013). The cross-regional correlation between

all these cost-of-living indexes is very high, ranging from 0.53 to 0.99.²⁵

Overall, these price indexes reveal cost-of-living differentials of up to 30 percent between the least expensive regions (e.g., Calabria) and the most expensive ones (e.g., Lombardia). Table 9 shows that our national results are quite robust to alternative deflating procedures. If anything, our estimates of relative mobility rise somewhat when we use these regional deflators, but indexes of absolute mobility are nearly identical.²⁶

4.2 Conditional distributions of child ranks

We now return to our core sample. Figure 3(a) reports the median child rank and the 25-75 percentile range of child ranks conditional on the parental income rank in addition to the mean rank already reported in Figure 2. First, note how the relationship between the median child rank and parental rank remains linear, except at the very top, but it is a lot steeper: the rank-rank slope is 0.365 for the median. The discrepancy between mean and median is due to the fact that the conditional distributions of child ranks are very skewed, as illustrated in Figure 3(b). At the bottom quantiles, most of the mass is in the bottom ranks, whereas at the top quantiles it is in the top ranks. Therefore, the median is lower than the mean for low parental ranks and higher than the mean for high parental ranks, which induces a steeper positive relationship between parents' rank and conditional child median rank.

Figure 3(a) also reports the 25-75 percentile range of child outcomes at each parental rank. The plot reveals a wide dispersion of outcomes around the mean. For example, at the 10th percentile of parental income, one quarter of children have incomes above the 60th percentile, and at the 90th percentile of the parents' distribution, one quarter of children have incomes below the 35th percentile²⁷. Put differently, even though the slope of the rank-rank relation is strongly statistically significant, the regression has a very low R^2 , around 0.06.

What explains the within quantile variability? To answer this question, we regress child rank in each percentile of parental rank (i.e., we run 100 separate regressions) on a large number

²⁵Table A2 in the Appendix reports all pairwise correlations between the indexes.

²⁶A dampening of relative rank persistence is what one would expect if high income areas are the high cost-of-living ones. However, when there is a great deal of within-province income variation, the attenuation is small.

²⁷The dispersion in the distribution of ranks is not substantially affected by gender. The interquartile range of the conditional distribution of child ranks, averaged across parents' ranks, is 0.468. When considering the income distribution of sons only, the interquartile range is 0.455.

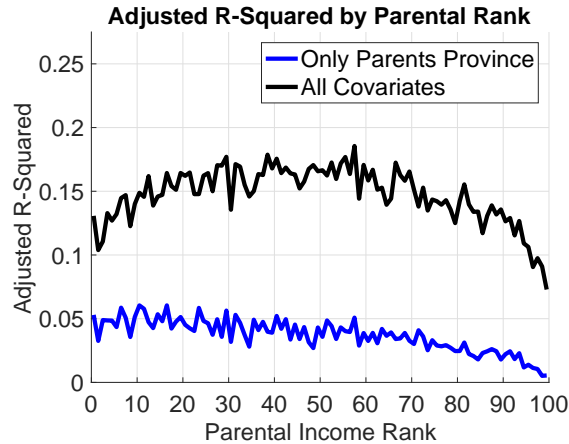


Figure 4: Adjusted R-squared of the 100 within-parental rank regressions of individual child rank in the national distribution on various parental and child covariates.

of individual covariates that include, for parents: marital status, age, province of residence, a self-employment dummy, and a geographical mover dummy; for children: marital status, age, gender, a self-employment dummy, and a geographical mover dummy. Figure 4 shows that, jointly, these variables explain around 15% of the within-parental-rank variation. The hump-shaped pattern suggests that they account for more variation in outcomes of children from middle-class parents, and less for children from poor and rich parents. Province of residence of the parents in 1998 (the location where the children grew up) accounts for a lot of the explained within-rank variation: around 1/3 up to the median, and less and less as parental rank rises. In Section 7, we will document in detail the existence of sharp differences across Italian provinces in the degree of intergenerational mobility.

The main conclusion, however, is that most of the conditional variability remains unexplained, suggesting that there is an enormous amount of unobserved heterogeneity left, even within parental rank and within province.

4.3 A more traditional indicator: the IGE

Historically, the most common indicator used in the literature to measure intergenerational mobility is the intergenerational elasticity of income (IGE) that we defined in Section 2. For completeness, we report this measure as well. Figure 5 plots the relation between log income of the child and log income of the parents, and the share of observations dropped among the

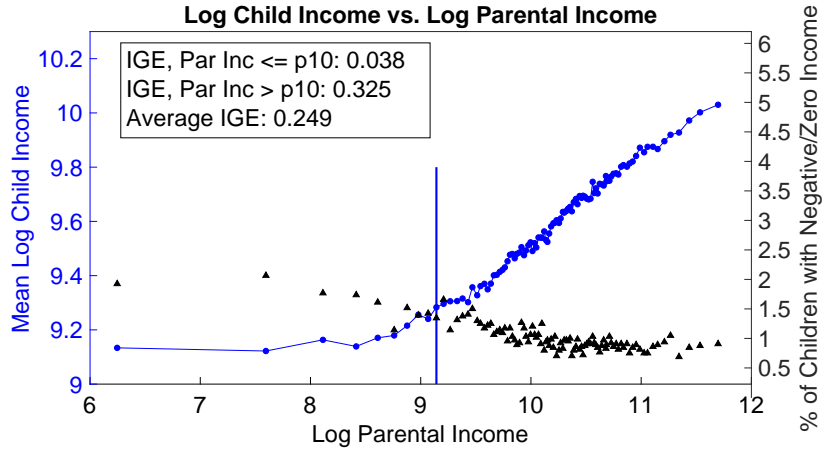


Figure 5: Relation between log income of the child and log income of the parents. The vertical line denotes the 10th percentile. The figure also reports the fraction of children with negative or zero income at each bin (i.e., the percentage of observations dropped).

children’s records. There is only 1.5% of observations dropped across the entire distribution, so this does not seem a serious problem for our dataset.²⁸

The figure reveals that the relationship is very far from linear, especially if one includes the bottom decile of the distribution. The overall IGE is 0.25, but for the bottom decile it is 0.04 and for the top nine deciles it is 0.32.²⁹ In other words, the IGE in our sample has the serious limitation that it is not a sufficient statistics to characterize mobility across the entire distribution.³⁰ In this regard, the linearity of the rank-rank relation offers a significant advantage even though, as we showed, deviations from linearity emerge at the top for this measure.

4.4 Analysis for different population subgroups

Tables 3 to 5 report results for various subgroups of the population of children. In all these cases, the position of parents and children remains the same: it is the national distribution of the core sample of column (1) of Table 3.

Comparing males and females and focusing on the RRS, it appears that relative mobility is

²⁸ Approximately 0.3% of observations are dropped because parents’ income is negative or zero, while the rest is dropped because children’s income is negative or zero.

²⁹ Berman (2017) proves that under log-normality of the income distribution the ratio of the RRS to the IGE converges to $\frac{3}{\pi}$, i.e. a number very close to 1. If we take the unconditional estimate of the IGE, our data offer sharp support to this approximation. However, if we exclude the bottom decile, the approximation is poor, possibly because of a Pareto tail in the empirical income distribution (estimated to be 2.5 in our data set).

³⁰ Chetty et al. (2014) show this is the case for the US as well. In their sample, the relation between log income of parents and children flattens out also at the top, differently from what emerges from Italian data.

higher for women. However, the AUM index and the Q1Q5 transition rate reveal that women have significantly lower absolute upward mobility. If we take a boy and a girl both from families in the bottom quintile, the probability for the boy of reaching the top quintile is almost twice as large. One of the determinants behind this result is that in Italy female labor force participation is still quite low (it was below 40 pct in 2013).

When we condition on the major source of parental income (labor, self-employment, and capital) in Table 4, we find significantly higher upward mobility only for the children of self-employed professionals (e.g., artisans, architects, lawyers, doctors, pharmacists): the Q1Q5 is three times larger than for sons of wage earners. Relative rank persistence at the top is extremely high for this group as well: the TMR is above 6.

Table 5 shows that children who, in 2012, reside in a different region from the one where their parents lived in 1998 (movers) display much higher economic mobility. For example, their Q1Q5 transition rate is 0.17 compared to a baseline value of 0.10, and their AUM index is the 54th percentile, relative to a baseline value equal to the 44th percentile. Therefore, a geographical move is strongly associated with an upward move in economic conditions. This is also true, but to a lesser extent, for children of fathers who are themselves movers, i.e., for those who in 1998 lived in a different region from the one where they were born, including foreign born (last column).

4.4.1 Alternative definition of parental income

Tables A3 to A5 in the Appendix repeat our analysis of national mobility and all these exercises on subgroups of the population for two alternative definitions of parental income: income of the father and income of the top earner of the household (which is the father in 87% of the cases). In both instances, results are very similar to those based on our baseline definition. Tables A6 to A9 in the Appendix report mobility measures and transition matrices considering only income of male children and income of fathers —thus the most comparable definitions across generations. Mobility estimates are very close to their baseline counterparts. The RRS and the Q1Q5 are 0.257 and 0.105, respectively, compared to 0.246 and 0.099 in the baseline.

4.5 Siblings: does birth-order matter for upward mobility?

Our data set does not contain explicit identifiers for siblings. Given the information available, we can however try to recover siblings by matching children that have the same parental record, i.e., a record for parents that coincides with respect to all the variables in our dataset. Through this procedure, we are able to identify around 70,000 parents with at least two children.³¹

We use this sample to ask the following question: is there any significant difference between first-born and later-born children in terms of upward mobility? Since later-born are older by definition, we restrict the sample to cases where, in our dataset, we see the siblings at approximately the same age. Specifically, we restrict to first-born children and later-born children who are 36 or 37 years old in 2012, leaving us with around 18,500 records of parents with at least two children.³²

Table 6 shows the results of our analysis. We find that the expected rank of first-born children is between 0.2 and 1.6 percentiles higher. Interestingly, this gap increases with parental income, and it doubles as one moves from the bottom to the top of the parental income distribution. It is statistically significant, however, only for families at the top of the income distribution.

5 Corrections for sample selection bias

In this Section, we verify the robustness of our analysis with respect to three potential sources of sample selection bias: (i) attenuation bias due to the combination of a short sample and volatile income; (ii) dependence bias stemming from the inability to link children who in 1998 are already independent taxpayers to their parents; (iii) the omission of certain types of taxpayers from our sample – including the poor – and the under-reporting of income for those in the sample because of tax evasion.

³¹By requiring a perfect match for all the variables in the dataset, we impose a very restrictive criterion, but we prefer to end up with a smaller sample where we are sure that there are no false positives to avoid any sort of measurement error.

³²The average age of first-born children is 38 while the average age of later-born children is 36. Therefore, the age range we consider is a middle-ground between the two ages.

5.1 Attenuation bias

Our dataset contains three observations on income for parents and children. A legitimate concern is that averaging only across three observations yields a noisy proxy of life-cycle income and will therefore lead to an upward bias in our estimate of intergenerational mobility.

In order to gauge the bias in our estimates, we perform the following simulation. We start by estimating a common life-cycle earnings profile from our data. To do this, we pool fathers and sons in order to have data for the longest possible age range and estimate a quartic polynomial in age.³³ Next, we residualize earnings with respect to this age profile. We assume a time-stationary persistent-transitory process for log residual earnings, a common representation in the literature on income dynamics:

$$\begin{aligned}\log y_{i,t}^j &= \rho^j \kappa_{i,t}^j + \epsilon_{i,t}^j \\ \kappa_{i,t}^j &= \kappa_{i,t}^j + \eta_{i,t}^j, \quad t > 0\end{aligned}$$

where $t = 0, \dots, 30$ is age, $j = f, s$ is an indicator for father or son, $\eta_{i,t}^j$ is a persistent shock with variance σ_η^j and the $\epsilon_{i,t}^j$ is an uncorrelated shock with variance σ_ϵ^j . The two shocks are orthogonal to each other, i.i.d. across all individuals and Normally distributed. Let $\sigma_{\kappa_0}^j$ be the initial standard deviation of the permanent component at age $t = 0$. The initial conditions $(\kappa_{i,0}^s, \kappa_{i,0}^f)$ of a son-father pair are drawn from a bivariate Normal distribution with correlation ρ_0 .

With a three-year panel for each generation, we can estimate the structural parameters $\{\rho^j, \sigma_\eta^j, \sigma_\epsilon^j, \sigma_{\kappa_0}^j\}$. We provide more details on the identification and estimation strategy in the Appendix. Table 10 reports these parameter estimates. It is remarkable how much more additional variability sons' earnings display relative to fathers' earnings. We conjecture this is the outcome of the Italian labor market reforms implemented over the last two decades.³⁴ These reforms introduced flexibility both at entry (with an expansion of temporary contracts) and at exit, but they affected only new hires as the vast majority of older cohorts was hired under the old permanent contracts that were not affected by these changes in legislation.

³³We normalize average earnings of the sons to the value of that of the fathers for the range over which they overlap, 30-40.

³⁴The two major reforms in our sample period were the Treu Package (1997) and the Biagi Law (2003).

The experiment then proceeds as follows. We run 100 simulations of a panel of 323,856 father-son pairs (the number of pairs in our data set) for 25 years, and compute for each father and son their average lifetime income (the ideal measure of permanent income) and the average income over three consecutive years (the noisy measure of permanent income that we have available): at ages 50-52 for fathers and 38-40 for sons. In these simulations we use both the estimated deterministic age profile and the stochastic component of income. We set $\rho_0 = 0.78$ in order to reproduce our estimated value of the rank-rank slope in the national distribution using the three-year proxy for income. Then we compute the rank-rank slope and other mobility statistics using average lifetime income.

Table 11 reports average mobility statistics across simulations. The bottom line is that the short sample induces a downward bias in relative mobility of around 20%, i.e. the true RRS would be 0.30 instead of 0.25. However, our estimates of absolute mobility are essentially unchanged.

5.2 Dependency bias

As explained, we can only link generations if children are claimed as dependent by their parents in 1998. In this section, we address this potential source of sample selection. Our dataset comprises of all individuals aged 29-40 in 2012, but we have to restrict the sample to children who are linked to parents through their 1998 tax returns.

From the Ministry of Economy and Finance, we obtained additional tabulations of the income distribution of all taxpayers in the same age group of the linked ones in 1998, i.e. all potential parents of those children. Figure 6 plots estimates of the unconditional and conditional (on having a dependent child) distributions of father's income in 1998.³⁵ The conditional distribution is shifted slightly to the right.

Our first step is to reweigh the sample of matched fathers in our dataset based on this information to realign their income distribution to the unconditional one. Second, we merge the sample of non-dependent children with the sample of dependents. We then estimate a Probit model of dependency status for children in 1998 as a function of their observable characteristics

³⁵We perform this exercise for fathers because the tabulations we received are at the individual level, by gender, but do not allow to match spouses.

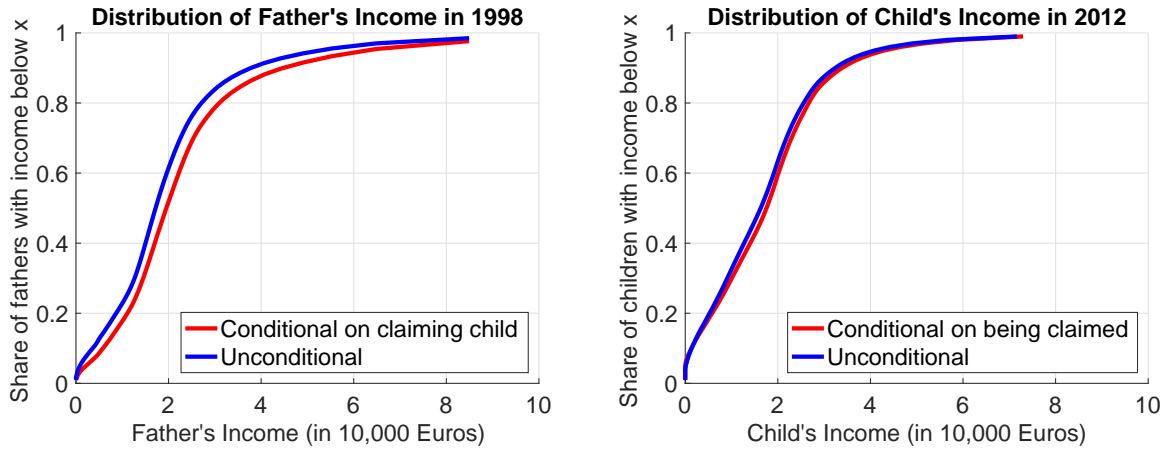


Figure 6: Unconditional and conditional distributions of father's and child's income.

(gender, age, province of birth, income percentile, major income component, and interactions). The R-squared of this regression is 0.21. Finally, we use these probabilities to reweigh the sample of linked parent-child pairs. If we let X_i be the set of observables for child i and d_i its dependency status, that observation is reweighed by dividing it by $\Pr(d_i = 1|X_i)$ as predicted by the regression. In essence, this correction is a propensity-score reweighing based on selection on observables. Our estimates of RRS, AUM and Q1Q5 with this correction are 0.262, 0.435 and 0.098, respectively. Therefore, we conclude that the sample selection induced by the dependence status leads us to overstate the degree of relative mobility (0.246 instead of 0.262), but absolute mobility measures are essentially unaffected.

5.3 Omission of certain taxpayers and tax evasion

5.3.1 Omission of taxpayers who filed form 770

In Section 3 we explained that our sample of 730 and MU tax returns does not include individuals who file tax form 770. These missing observations may distort our results because this group of individuals is not representative of the population in terms of income levels and sources of income. Therefore, our rank ordering may be incorrect.

Here we propose a simple correction for this selection bias. First, we collect aggregated data on the number of forms 770 submitted by region and by 20 income classes which are published yearly by the Ministry of Economy and Finance. Next, we identify the taxpayers in our dataset

of parents who are comparable with those who filed form 770.³⁶ We then split these taxpayers into the same 20 income groups, region by region. Finally, we reweigh each observation in an income/region cell by a factor equal to the ratio of total taxpayers (730+MU+770) to 730+MU taxpayers in that cell. Table 12 reports the results of this reweighing procedure and shows that our estimates of intergenerational mobility are robust to this correction.

5.3.2 Omission of poor children

We discussed in Section 3 how individuals with very low or no income are not required to file. Our data set contains records of parents with missing information on children. Under the assumption that these children did not file taxes in 2012 because their income fell below this threshold level, we can gauge the effect of omitting poor children from our sample.

We have 884,808 parents with missing information on children. Applying the same age selection criteria as in the core sample, we are left with 603,426 records for parents. In the core sample, we retain only records where children are at least 35 years old in 1998 (29% of the total). However, we do not have information on children age for non-filers, thus we keep a random sample of 29% of our 603,426 records. For each of these records, we construct an artificial observation of a child with zero income, add them to the core sample and re-estimate the national mobility measures. The impact of this correction is very small: the RRS increases from 0.246 to 0.250, AUM decreases from 0.438 to 0.437 and the Q1Q5 decreases from 0.99 to 0.092.

5.3.3 Tax evasion

Italy is notoriously a country with high tax evasion. The size of the non-observed economy was estimated by the Italian National Statistical Institute to be as large as 12.1 percent of GDP in 2014 - the last year considered in our study. A common rate of tax evasion across the population would not affect relative ranks and estimates of mobility, but this benchmark is far from reality. Tax evasion rates differ significantly across earner categories. For dependent workers and retirees, taxes are withheld at the source. Thus, evasion is nearly impossible for these cate-

³⁶Specifically, this means looking for taxpayers who have only labor income and rental income below 568 Euros in 1998. The key reason why these taxpayers opted for the forms 730 or MU instead of the form 770 is because they claim itemized deductions (e.g., for medical expenses, mortgage interests, charitable donations, etc.).

gories of earners, if we exclude illegal workers who are not in the sample.³⁷ Self-employment and rental income, instead, is much easier to hide.

The best available estimates of tax evasion are based on a comparison between survey data (the Survey of Household Income and Wealth - SHIW) and administrative tax return data. The key assumption is that self-reported income in surveys is much closer to the truth since survey respondents are protected by anonymity due to privacy laws. These studies compute average after-tax income from survey and tax returns for groups of earners with the same type of income, income decile, and region. They confirm rates of tax evasion near zero for dependent workers.³⁸ Tax evasion rates are, instead, estimated to be higher for other sources of income. [Marino and Zizza \(2012\)](#) estimate average rates of tax evasion around 40% for self-employment income and up to 80% for rental income. [Fiorio and D'Amuri \(2005\)](#) show that tax evasion rates decline steeply with the level of income. For example, for the self-employed, tax evasion rises from 8% of reported gross income in the top decile to 70% in the lowest decile.

We use these sources to inflate these types of income in all our records for both children and parents. The corrected estimates of intergenerational mobility in [Table 12](#) imply a sensible increase of the RRS and a reduction in the AUM index. Intuitively, if self-employed parents under-report income and their children do not, for example because they are dependent workers (or the other way around), mobility would be overestimated.

Combining both the omission of 770 taxpayers and tax evasion (column 4 of [Table 12](#)), the RRS rises by about 10 percent, but AUM is basically unchanged.³⁹

³⁷Tax evasion by illegal dependent workers accounted for 4.5% of total tax evasion in Italy between 2013 and 2015, according to official sources.

³⁸Recall that our comparison of [Section 3.4](#) is in fact based on wage income.

³⁹The Table also contains a correction for missing capital income. In order to impute missing capital income from tax returns we proceed as follows. We start with Bank of Italy's SHIW data and define two categories of capital income which are missing in our data: interest income earned on Italian government bonds, and other capital income (from deposits, stocks, bonds, and mutual funds). This definition is necessary because SHIW data are reported after tax, and the tax withheld on Italian government bonds is lower than on other sources of capital income. We convert data into before-tax capital income by using a proportional tax rate of 12.5% for government bonds, and 26% for other capital income. For each of these two categories, we regress capital income on a collection of dummy variables that capture i) quantile in the distribution of total income of an individual, ii) age above/below 45 years old, iii) gender, iv) year. Using the estimated coefficients from these regressions, we impute capital income for each child, parent and year in our dataset, relying on the assumption that the tax system being monotonic implies that the ranking of an individual in the before-tax and after-tax income distribution is the same. In the imputation, we take into account that dividends from holding stocks are subject to different tax rules depending on whether such holdings represent a substantial share of the stock of a firm ("azioni qualificate", qualified holdings) or not ("azioni non-qualificate", non-qualified holdings). We estimate that in 2015 (2000) approximately 36% (33%) of all dividends were earned on non-qualified holdings of stocks, while the remaining 64% (67%) corresponded

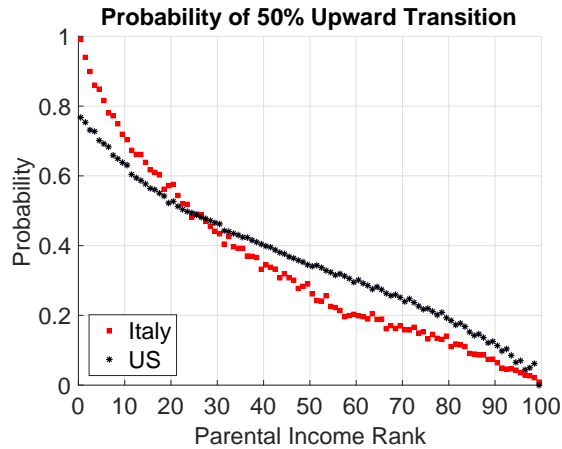


Figure 7: Probability that the income of the child is at least 50% higher than parental income. For the United States income is family income for both child and parents. For Italy, it is individual income of sons and their fathers.

6 Cross-country comparison

In our core sample, the rank-rank slope (RRS) is 0.25 and the index of absolute upward mobility is 0.44. How does this estimated level of intergenerational mobility in Italy compare to that estimated in other countries? We limit our comparison to studies that used large administrative data sets like ours.

Canada and Denmark have similar RRS, between 0.17 and 0.18, corresponding to an AUM index of 0.46 (Boserup et al., 2013; Corak and Heisz, 1999). Schnelle (2015) reports a RRS of 0.19 for Norway, and Heidrich (2017) estimates a RRS of 0.24 for Sweden. The United States have a higher RRS, around 0.34, corresponding to an AUM of 0.41 (Chetty et al., 2014). Thus, Italy's level of intergenerational mobility lies between that of Scandinavian countries and that of the United States.⁴⁰

As we argued in Section 2, these cross-country comparisons of positional mobility can be

to qualified holdings. Dividends from qualified holdings are included in tax returns, whereas dividends from non-qualified holdings are not, and therefore this is the portion of capital income we are missing from this source. We account for this adjustment as well as for the fact that starting 2004 only approximately 50% of dividends from qualified holdings have to be reported on tax returns. This exercise concludes that this potential source of bias is insignificant.

⁴⁰One important caveat, when comparing these measures is that, for all other countries, child income corresponds to family income, whereas for Italy it is individual income. Chetty et al. (2014) compute the RRS for both definitions of child income. Their estimates show that the RRS computed based on family income of the child is 20 pct higher than the RRS estimated on individual child income. Applying this correction coefficient to our estimate, the RRS for Italy would be 0.30 and thus even closer to the United States level.

misleading if countries differ in their level of income inequality. The OECD Income Distribution Database reports Gini indexes of gross income around 0.30 for Denmark, Norway, and Sweden, around 0.36 for Canada and Italy and 0.44 for the United States. Higher inequality in the United States compared to Italy translates mechanically in higher rank persistence, but this does not mean that mobility in the United States is necessarily lower: children from low income US families can increase their income, relative to their parents, even more than their Italian counterparts, and yet climb fewer percentiles in the distribution compared to Italian children.

To circumvent this problem, we explore the behavior of the measure in equation (8), the probability that the income of the child is 50 percent higher than parental income, after normalizing the parent and child distributions so that they have the same mean.⁴¹

Figure 7 depicts this probability of upward transition for both the United States and Italy at each percentile of the distribution of parental income. The plot shows that this index of upward mobility is significantly higher for Italy among poor households but, after the third decile or so, thus for the middle class as well, upward mobility becomes stronger for the United States.

7 Geographical variation

To investigate the variation in intergenerational mobility within the country, we focus on provinces. A province is an administrative division of intermediate level between a municipality and a region. Over the period 1998-2012 the number of provinces increased from 103 to 110. We use the geographic partition in 110 provinces established in 2009. Figure A2 in the Appendix contains a map of the Italian provinces and Tables A10-A12 list all the provinces, their population, region and macro area (North-East, North-West, Center, South and Islands). The average population of a province was 551,000 as of 2010, but there is large heterogeneity. The largest province, Rome, has over 4 million residents and contains 121 different municipalities. The smallest province, Ogliastra (Sardinia), has less than 60,000 residents and includes 23 municipalities.

In order to analyze the province-level variation in mobility measures, we assign each child to the province that her father indicated as the province of residence in his own 1998 tax return.

⁴¹This normalization corrects both for aggregate growth between 1998-99-00 and 2011-12-14 and for the fact that parental income includes income from both spouses while child income is for the individual only.

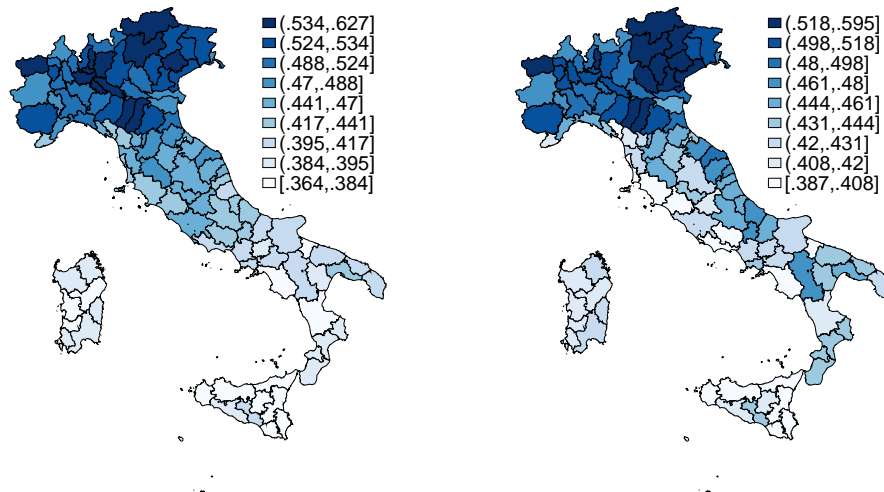


Figure 8: Heat map of Absolute Upward Mobility across provinces. Dark areas are more mobile. Left-panel (a): AUM computed on nominal income. Right-panel (b): AUM computed based on PPP-adjusted income (with regional price indexes)

Such province is interpreted as the area where the children grew up, not necessarily as the area where they live as adults, even though in our data the two provinces differ for less than 20% of children.

We document mobility at the provincial level using the same definitions of parental and child income and the same (core) sample we used for the national analysis of Section 4 and Table 3, column (1). Income ranks for children and parents are defined with respect to their national distributions. We also report mobility statistics on incomes adjusted for different purchasing power at the regional level as described in Section 4.1.⁴²

The extent of the difference in relative and upward mobility across provinces is summarized by Tables 13 and 14. These tables report mobility measure for the top-ten and bottom-ten provinces among the largest fifty provinces in Italy based on resident population in 2010. The full ranking of the 110 provinces is in the Appendix.

Figure 8 summarizes graphically geographic variation in AUM across the 110 provinces. In this heat map, darker colors correspond to more mobile areas. Two broad spatial patterns emerge from this figure. First, there is substantial heterogeneity in upward mobility across

⁴²We have used Index 9 for these figures, but our conclusions are robust to using other indexes. As discussed in that section, the different local price indexes we could use are all highly correlated. Figure A3 in the Appendix shows geographic variation in AUM and Q1Q5 after adjusting income for different purchasing power at the province level using the index constructed by Boeri et al. (2018).

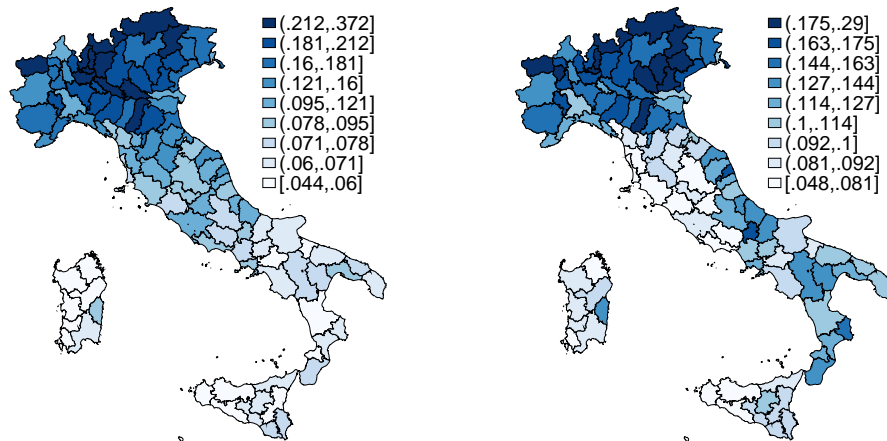


Figure 9: Heat map of Q1Q5 across provinces. Dark areas are more mobile. Left-panel (a): Q1Q5 computed on nominal income. Right-panel (b): Q1Q5 computed based on PPP-adjusted income (with regional price indexes)

provinces. Second, upward mobility has a clear North-South gradient, and is highest in the North-East of the country, especially in the regions of Veneto, Lombardia, and Emilia-Romagna. A within-between-macro area variance decomposition for AUM implies the between component, i.e. variation in AUM across the four macro areas (North-East, North-West, Center, South and Islands), accounts for 80% of the total variation of AUM across the 110 provinces. For example, the top province for AUM not in the North-East or North-West is Prato (Tuscany) at position 37/110. The bottom province for AUM not in the South and Islands macro-region is Latina (Lazio) at position 75/110.⁴³

Quantitatively these differences are meaningful. The province with the highest AUM is Bolzano (Trentino-Alto Adige), with a value of 0.63 and the one with the lowest AUM index is Ragusa (Sicily), with a value of 0.36. This expected rank differential corresponds to nearly 9,000 Euros of annual income in 2012, and hence, it translates into substantial gaps in children's lifetime incomes.

Panel (b) of Figure 8 reveals that, once adjusting for different cost-of-living levels across regions, the predominance of the North-East macro area in terms of upward mobility is accentuated. However, now a few pockets of upward mobility emerge also in Southern Italy.

These differences in upward mobility are equally pronounced for the Q1-Q5, i.e. the prob-

⁴³Interestingly, Prato is the province with the largest Chinese community in Italy (15% of population) because of its vibrant textile sector. Latina, on the contrary, is a rural area with a predominantly agricultural economy.

ability that a child from a family in the bottom quintile of the national income distribution makes it to the top quintile, as shown in Figure 9. The least mobile provinces have transition rates around 4-5% and the most mobile around 24-25%, i.e. larger by a factor of five. As evident from the heat maps, the correlation between AUM and Q1Q5 indicators is very strong (0.94).

Geographical dispersion is also high for relative mobility. For children growing up in Treviso (Veneto), being born from a family at the bottom of the national income distribution translates into only 12 percentiles of rank differential compared to someone born from parents at the top of the distribution. For children growing up in Bari (Puglia) —the one with the highest RRS among the largest provinces), it translates into a gap twice as big, i.e., 24 percentiles.

Figure 10 plots the full rank-rank relation in two of Italy's largest metropolitan areas, Milan and Bari. Milan (shown in blue) displays a rank-rank relationship that is both flatter and everywhere higher compared to Bari (shown in red). Through the lenses of a utilitarian planner, Milan dominates Bari: children who grow up in Milan fare uniformly better across the whole income distribution and ex-post their income distribution is less unequal. Notice also that the rank-rank relationships are quite linear even at the provincial level. We verified that this is true for all the largest provinces —especially so for those in the North. Many of the provinces in the South, with the lowest level of mobility, show the same sharp increase in slope at the top of the distribution that emerges at the national level. Figures A4 and A5 in the Appendix display the rank-rank relationship for the top and bottom eight provinces.

We conclude that areas in Northern Italy (especially the regions in the North East), relative to the South, are both more egalitarian (higher relative mobility) and more upward mobile (higher absolute mobility). In the North, children from parents with unequal background are more similar in their economic outcomes when adults, and children from poor parents fare better when adults. Recall that, as explained in Section 2, while at the national level RRS and AUM are tightly linked, at the level of a province it needs not be the case. Equation (7) makes it clear that the AUM can be higher either because the constant of the regression is high, or because the slope is high. In our data, it turns out that the two are quite correlated (the correlation coefficient is -0.78), but most of the variation in AUM across provinces is accounted for by the constant terms, suggesting that the province effect materializes mostly through moving every child raised in that province up or down in the national income distribution, independently of their parental rank.

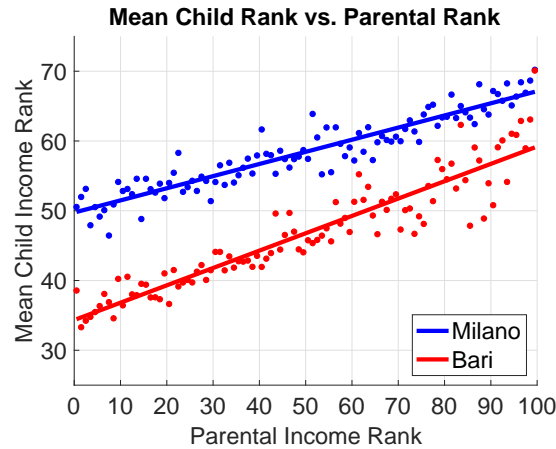


Figure 10: Child rank-parental rank relationship for children who grew up in Milano and Bari. The RRS are respectively, 0.18 and 0.24, and AUM indicators are 0.54 and 0.41.

7.1 Is there a Great Gatsby curve within Italy?

The term Great Gatsby curve refers to a negative relation between income inequality and inter-generational mobility. This relationship has been extensively documented using cross-country variation and often interpreted as the outcome of different institutions. The stark geographical heterogeneity across Italian provinces provides us with a source of variation while controlling for national-level institutions.

We report our results in Tables 15 and 16 for absolute and relative mobility, respectively. It is not surprising the relation exists: when inequality is higher, the rungs of the income ladder are further apart and it becomes more difficult to move. It is interesting to observe that, while the 90-10 income ratio is highly significant, the Gini coefficient is less so. The tables reveal that it is the Gini coefficient computed on the bottom 99% of the distribution that is strongly negatively related with mobility.⁴⁴ Somewhat surprisingly, the income share of the top 1% is positively correlated with mobility.⁴⁵ This result contrasts with the finding for the United States where the top income share is negatively correlated too (Table V in Chetty et al. (2014)).⁴⁶ In Italy, the top income share is highly positively correlated with the fraction of entrepreneurs and professionals in the province, and we observed earlier that upward mobility is higher for

⁴⁴Strong and significant negative correlation with AUM, and strong and significant positive correlation with RRS.

⁴⁵Strong and significant positive correlation with AUM, and strong and significant negative correlation with RRS.

⁴⁶The top income share instead is not significantly correlated with relative mobility in Chetty et al. (2014).

children of families with a large component of self-employment income.

7.2 Comparison with Informational Content of Surname indexes

Reliable estimates of intergenerational mobility require large data sets that link successive generations, like ours. Such data sets are available only for a handful of countries and, until few years ago, were not available at all. Therefore, it is useful to think about alternative approaches to the measurement of intergenerational mobility that have less strict data requirements.

Güell et al. (2015) proposed a new indicator that overcomes some of these difficulties, the Informational Content of Surnames (ICS). The minimal data required for this methodology is a cross-section of individual records with information on income and on the surname of the individual. The data are then used to construct an indicator of the capacity of family names to capture the variance of the outcomes. The basic idea is simple. Surnames are intrinsically irrelevant for the determination of economic outcomes, but they get passed from one generation to the next, alongside other determinants of outcomes, such as ability and wealth, for example. The more these inherited characteristics matter for economic outcomes, the more information surnames contain on the values of outcomes (the higher is the ICS index), and the lower the degree of social mobility.

In a recent paper, Güell et al. (2018) have constructed ICS indicators of social mobility at the level of Italian provinces and correlated them with many socio-economic indicators.⁴⁷ Here we have the opportunity, for the first time, to assess how well the ICS index correlates with more direct measures of intergenerational mobility based on rich administrative data. This validation exercise has never been performed before.

In Table 17 we report the cross-province correlation between the various ICS indexes calculated by Güell et al. (2018) and two of our measures of upward mobility, the AUM index and the Q1Q5 transition rates, also computed at the level of provinces. The Spearman rank correlation index (which takes values between -1 and 1) is negative, as expected, and highly statistically significant. We conclude that the ICS is a valid proxy of upward mobility that can be used in

⁴⁷Güell et al. (2018) use data from the universe of the official tax returns in Italy for the year 2005 which contain surnames. The origin of these data is peculiar. They appeared online on the website of the Italian Ministry of Finance on April 30th 2008. This act was supposed to be part of a general strategy to fight tax evasion through social stigma. The Italian Data Protection Authority quickly ordered the Ministry to take down the website but at that point the data had already been downloaded and became publicly available.

many contexts where better data are not available.

8 What correlates with upward mobility?

The goal of this section is to make a first step towards understanding what local characteristics can account for the divergence in upward mobility across Italian provinces that we documented in Section 7. We do not claim that the correlations we uncover should be interpreted as causal relations, but they surely serve to guide future research on the deeper determinants of intergenerational mobility. A similar analysis has been recently performed by [Chetty et al. \(2014\)](#) for the United States and by [Güell et al. \(2018\)](#) for Italy, using the ICS indicator.⁴⁸

We start from a large set of correlates based on the literature. The list includes numerous local socio-economic indicators (Sistema di Indicatori Territoriali, or Local Indicator System) compiled by the National Statistical Institute (ISTAT) for seven broad categories: (i) productivity (e.g., value added per resident); (ii) criminal activity of various types (e.g., scams, protested checks, drug offenses, thefts, murders); (iii) family instability (e.g., separations, divorces, children in custody); (iv) labor market conditions (e.g., unemployment rate, labor force participation rate); (v) life expectancy; (vi) openness to trade and migration; (vii) social capital (e.g., the indicators proposed by [Guiso et al. \(2004\)](#) and [Guiso et al. \(2016\)](#)).

To these, we add indicators of educational attainment and a vast array of markers of school quality obtained from a national report on the performance of the local school system ([Tuttoscuola, 2007](#)). This set of indicators is organized by school level and by broad category. School levels are four: pre-school, primary school, middle school, and high school. Categories are: school resources and structures (e.g., local government spending in education as a share of total spending), school organization and services (e.g. transportation, extended teaching time, administrative efficiency, students per class), teachers' composition (e.g., teaching hours, teachers' age and gender, teachers on temporary contracts), students' test and examination scores.⁴⁹ A detailed

⁴⁸There is a large overlap between the correlates used by [Güell et al. \(2018\)](#) and ours, but we also include indicators of school quality that turn out to be very important. Moreover, they only report unconditional correlations, while we go beyond that.

⁴⁹The Tuttoscuola report is based on the geographical partition of Italy into 103 provinces which had been adopted until 2001. Moreover, quality of schools indicators from this report exclude the provinces of Aosta, Bolzano and Trento due to limited data availability. As a result, whenever we use these school quality indicators our analysis is limited to 100 provinces.

description of our set of raw indicators is provided in Tables A16 and A17 in the Appendix.

We begin by documenting unconditional cross-province correlations between two measures of intergenerational mobility, AUM and Q1Q5, and these socio-economic markers. Tables 18, 19 and 20 summarize the results for a subset of these indicators. In general, most variables correlate with mobility indexes with the expected sign and those that do not are insignificant or mildly significant. The correlation with measures of economic and labor market conditions (in particular female participation, youth unemployment and long-term unemployment) are very strong. The educational attainment of residents in a province is also positively associated with upward mobility. Among the social capital indicators, the self-efficacy index is strongly correlated with upward mobility. This is an index measuring beliefs in one's own ability to complete tasks and reach goals among children that Guiso et al. (2016) take as a proxy of a local culture of individual empowerment. Crime statistics do not show a strong association (and when they do, the sign is generally unexpected), while the age structure and indexes of family instability do. The fraction of foreign-born and population inflows show a tight correlation with upward mobility. Finally, many of the measures of school quality —such as their structures, students per class, share of young teachers and test scores— are closely associated with upward mobility.⁵⁰ Adding macro-areas fixed effects reduces substantially the values of the correlations and many of them —in particular, a number of school quality indicators— lose their significance.

A limitation of these unconditional associations is that all socio-economic variables are strongly correlated among each other. We therefore move to a multivariate conditional correlation analysis. Given the sheer number of possible covariates, we begin by reducing the number of variables into a small number of principal components for each category which captures a significant portion of the variation of the original variables in the category. Each principal component that we retain is then weighted in the index in proportion to the overall variance it explains. We retain 4 principal components for school quality, 2 principal components for crime, and 1 principal component for all other indicators considered (family instability, labor market conditions, life expectancy, economic openness, social capital, educational attainment).⁵¹ We

⁵⁰It may appear surprising that the share of teachers with temporary contracts shows such robust positive correlation. The reason is that it is very collinear with the share of young teachers: the correlation between the two variables is 0.74 for pre-school teachers and it decreases monotonically to 0.33 for high-school teachers but remains statistically significant at 1% level. Indeed, our indicator of teachers' stability shows a strong positive correlation as well.

⁵¹When constructing the disaggregated indexes for school quality, we retain 1 principal component for school

also include a measure of productivity. Finally, we include in the regression a measure of income inequality (the 90-10 ratio) that we found strongly significant in our analysis of Section 7.1.⁵²

Table 21 presents the results of the multivariate regression of Absolute Upward Mobility (AUM) on the factors we construct for each dimension of interest.⁵³

Overall, the included categories explain a very large portion of the variation of AUM (nearly 90%). The state of the local labor market is the factor with the strongest correlation with AUM. This factor loads positively on various measures of occupation and labor force participation, and negatively on measures of unemployment. The second variable in terms of strength of correlation with AUM is school quality. When disaggregating this factor into sub-categories, we find that the factor summarizing teachers' composition is the one which more strongly correlates with AUM. This factor loads positively on the average number of teaching hours available to each class, the share of male and young teachers, and teachers' tenure and stability in their position, and negatively on measures of teachers employed under temporary contracts. Also students' test scores is highly significant. When disaggregating the school quality index into school levels, the strongest effect is found for pre-school quality.

With respect to other correlates, family instability has a sizable correlation with AUM. We observe that the social capital index (which loads positively on measures of blood donation, number of non-profit organizations, voter turnout in the election of the Italian House of Representatives, and self-efficacy) has no longer any statistically significant relationship with AUM. This appears to be due to the strong correlation between the social capital and state of the labor market indexes. Excluding the measure of labor market conditions, social capital has a positive and statistically significant relationship with AUM. Finally, we find a positive correlation between value added per resident and upward mobility. The crime factor has no systematic relationship with upward mobility conditional on other observables.⁵⁴

resources and structures, school organization and services, teachers' composition, students' grades and test scores, while we retain 3 to 4 principal components when constructing the indexes of school quality by school level (pre-school, primary school, middle school, and high school).

⁵²Tables A18-A22 in the Appendix describe the underlying markers used to construct each index in this conditional correlation analysis, and the source of each marker.

⁵³Variables are normalized to have mean 0 and standard deviation of 1, so regression coefficients can be interpreted as correlation coefficients.

⁵⁴Somewhat puzzling, life expectancy remains significant but not with the expected sign.

8.1 An attempt at establishing causality

Our geographical analysis has documented a large geographical variation in the level of economic mobility. We have also uncovered that certain fixed characteristics of provinces (such as school quality, labor market conditions, etc.) can, statistically, explain much of this cross-province variation. However, so far we did not establish direct causality. For example, it is conceivable that certain provinces display higher social mobility not just because of their better intrinsic qualities, but also because they attract families that are more concerned with the economic outcomes of their children and invest more time and resources in their upbringing. How do we distinguish the role of the province from the unobserved attitudes of parents who reside in those provinces?

We make an attempt to establish causality in the role of provinces as determinants of social mobility by exploiting an event that forced thousands of Italian families to migrate: the violent earthquake (6.9 on the Richter scale) which took place in November 1980 and hit two regions of the South of Italy, Basilicata and Campania, causing nearly three thousand fatalities and enormous damages to hundreds of local villages. Over one hundred thousand families were forced to relocate because their houses were destroyed or severely damaged by the seism.

In our data, we can identify children who were born (all before 1980) in the three provinces that were hit hardest by the earthquake (Salerno, Potenza, and Avellino). Some of them have parents who still resided in those provinces in 1998 (stayers), while others have parents who, over that period, migrated to a different province (movers).⁵⁵

We will work off two assumptions. First, these parents who migrated did so only because of the earthquake. Unfortunately, we cannot observe the precise year parents moved, so some of them may have migrated earlier or later, for different reasons. Support in favor of the hypothesis that many moves from those provinces over that period must have been induced by this unique event comes from comparing the migration rate of parents with children born in these three seism-hit provinces to the migration rate of parents with children born in all other provinces of the same two regions (Campania and Basilicata). We find that in the first group the migration rate is 0.074 and in the second group it is 0.028, and the difference is statistically significant at any level. The second assumption is that the selection between movers and stayers,

⁵⁵The provinces with the largest share of movers coming from the ones hit by the earthquake are still in the South: Napoli, Benevento, Matera, Caserta and Cosenza.

within parental income rank, was random.

We compute that the expected rank of movers is 0.45. As a benchmark of comparison, we compute the expected rank of stayers conditional on the joint distribution of province of origin and rank of movers. This number captures the counterfactual expected child rank that would have realized if the parents of movers did not migrate. This counterfactual expected rank is 0.39. The difference between these two numbers should be interpreted as the differential effect of the provinces of destination, controlling for selection in the population of residents.⁵⁶

Since the expected rank in a province/percentile pair is the sum of the province effect and the selection effect coming from the composition of the resident population, intuitively, we should find that the expected rank of residents of the destination provinces, conditional on the distribution of parental rank of movers, is certainly larger than 0.39 and larger than 0.45 only if this selection effect is strong. We estimate it to be 0.54.⁵⁷ Taken at face value, this result would suggest that around half of the province effect is due to selection of the resident population and the other half is the result of local socio-economic conditions.

9 Conclusions

Our paper is the first to estimate intergenerational income mobility in Italy. None of the publicly available surveys for Italy spans two generations. For this reason, thus far, the literature on intergenerational mobility in Italy has used other socio-economic outcomes such as education and occupation, other proxies such as the Informational Content of Surnames, or imputation procedures to obtain crude estimates of incomes for successive cohorts.

The micro data underlying our empirical analysis are obtained from an administrative database of tax returns, where we link two generations through SSNs of parents and children. As rich as they are, the data are not perfect and thus our analysis is not without caveats. Attenuation bias due to the short panel dimension, misreporting of income due to tax evasion, and sample selection because of our ability to link generations only when children are claimed as dependent are the main threats to the credibility of our estimates. In the paper, we dealt as best as we could

⁵⁶The 99% confidence interval for the difference, obtained through bootstrapping with 100 repetitions, is [0.04, 0.08].

⁵⁷The 99% confidence interval for the difference between the 0.54 and 0.45 point estimates, obtained through bootstrapping with 100 repetitions, is [0.08, 0.12].

with these shortcomings, quantified their importance and concluded that our main results are robust.

Our findings contain some good news and some bad news. On the one hand, they paint a somewhat less pessimistic picture of intergenerational mobility at the national level compared to many previous sociological studies that tend to represent Italy as a paralyzed society. On the other hand, they reveal acute inequality in the degree of upward mobility within the country: the North-East appears to be a land of equal and abundant opportunities, and the South to be a land where ranks in society endure across generations. Compared to the United States, once we adjust for the different levels of income inequality, Italy displays more upward mobility in the bottom tercile, but less everywhere else.

When we exploited this geographical variation to correlate a battery of socio-economic indicators with our measures of upward mobility, we uncovered that the quality of pre-school, children's test scores, indicators of family instability, and local labor market conditions have the strongest association to intergenerational mobility. An empirical exercise that exploits plausibly exogenous movers offers suggestive evidence that there is a causal effect of the province on upward mobility over and above the unobserved attributes of its resident population.

One of our most striking results is that, even conditional on a particular percentile of the parental national income distribution, and within a province, economic outcomes of children are vastly different. Looking ahead, explaining this unobserved heterogeneity is one of the main challenges of this literature, and progress in this direction requires richer data on characteristics and choices of parents and children.

The availability of reliable estimates for Italy allows to add one important data point to cross-country comparisons as already done recently, for example, by [Alesina et al. \(2018\)](#) in their comparative study on intergenerational mobility and preferences for redistributive policies.

References

- ALESINA, A., S. STANTCHEVA, AND E. TESO (2018): "Intergenerational Mobility and Preferences for Redistribution," *American Economic Review*, 108(2), 521–54.
- ALVAREDO, F., AND E. PISANO (2010): "Top Incomes in Italy, 1974–2004," in *Top Incomes: A Global Perspective*, ed. by A. Atkison, and T. Piketty. Oxford University Press.
- BARONE, G., AND S. MOCETTI (2016): "Intergenerational Mobility in the Very Long Run: Florence 1427–2011," *Bank of Italy WP*, 1060.
- BERMAN, Y. (2017): "Understanding the Mechanical Relationship between Inequality and Intergenerational Mobility," *SSRN 2796563*.
- BLACK, S., AND P. DEVEREUX (2011): "Recent Developments in Intergenerational Mobility," in *Handbook of Labor Economics*, ed. by O. Ashenfelter, and D. Card. North Holland Press.
- BOERI, T., A. ICHINO, E. MORETTI, AND J. POSCH (2018): "National Wage Equalization and Regional Misallocation: Evidence from Italian and German Provinces," Discussion paper, University of California Berkeley.
- BOSERUP, S. H., W. KOPCZUK, AND C. T. KREINER (2013): "Intergenerational Wealth Mobility: Evidence from Danish Wealth Records of Three Generations," Discussion paper, University of Copenhagen.
- BRATBERG, E., J. DAVIS, B. MAZUMDER, M. NYBOM, D. D. SCHNITZLEIN, AND K. VAAGE (2017): "A Comparison of Intergenerational Mobility Curves in Germany, Norway, Sweden, and the US," *The Scandinavian Journal of Economics*, 119(1), 72–101.
- CANNARI, L., V. CERIANI, AND G. D'ALESSIO (1997): "Il Recupero degli Imponibili Sottratti a Tassazione," *Bank of Italy, Ricerche Quantitative per la Politica Economica*.
- CANNARI, L., AND G. IUZZOLINO (2009): "Consumer Price Levels in Northern and Southern Italy," *Bank of Italy Occasional Paper No. 49*.
- CHECCHI, D., C. V. FIORIO, AND M. LEONARDI (2013): "Intergenerational Persistence of Educational Attainment in Italy," *Economics Letters*, 118(1), 229–232.
- CHETTY, R., D. GRUSKY, M. HELL, N. HENDREN, R. MANDUCA, AND J. NARANG (2017): "The Fading American Dream: Trends in Absolute Income Mobility Since 1940," *Science*, 356(6336), 398–406.
- CHETTY, R., N. HENDREN, P. KLINE, AND E. SAEZ (2014): "Where is the Land of Opportunity? The Geography of Intergenerational Mobility in the United States," *The Quarterly Journal of Economics*, 129(4), 1553–1623.
- CORAK, M., AND A. HEISZ (1999): "The Intergenerational Earnings and Income Mobility of Canadian Men: Evidence from Longitudinal Income Tax Data," *Journal of Human Resources*, pp. 504–533.
- DAHL, M. W., AND T. DELEIRE (2008): "The Association Between Children's Earnings and Fathers' Lifetime Earnings: Estimates Using Administrative Data," Discussion paper, University of Wisconsin-Madison, Institute for Research on Poverty.

- FIORIO, C. V., AND F. D'AMURI (2005): "Workers' Tax Evasion in Italy," *Giornale degli Economisti e Annali di Economia*, 64(2/3), 247–270.
- GÜELL, M., J. V. R. MORA, AND C. I. TELMER (2015): "The Informational Content of Surnames, the Evolution of Intergenerational Mobility, and Assortative Mating," *The Review of Economic Studies*, 82(2), 693–735.
- GÜELL, M., M. PELLIZZARI, G. PICA, AND J. V. R. MORA (2018): "Correlating Social Mobility and Economic Outcomes," *The Economic Journal*, 128(July), F353–F403.
- GUIO, L., P. SAPIENZA, AND L. ZINGALES (2004): "The Role of Social Capital in Financial Development," *The American Economic Review*, 94(3), 526–556.
- (2016): "Long-term Persistence," *Journal of the European Economic Association*, 14(6), 1401–1436.
- HEIDRICH, S. (2017): "Intergenerational Mobility in Sweden: A Regional Perspective," *Journal of Population Economics*, 30(4), 1241–1280.
- MARINO, M. R., AND R. ZIZZA (2012): "Personal Income Tax Evasion in Italy: An Estimate by Taxpayer Type," in *Tax Evasion and the Shadow Economy*, ed. by M. Pickhardt, and A. Prinz. Edward Elgar Publishing.
- MAZUMDER, B. (2016): "Estimating the Intergenerational Elasticity and Rank Association in the United States: Overcoming the Current Limitations of Tax Data," in *Inequality: Causes and Consequences*, pp. 83–129. Emerald Group Publishing Limited.
- MOCETTI, S. (2007): "Intergenerational Earnings Mobility in Italy," *The BE Journal of Economic Analysis & Policy*, 7(2), 5.
- MORETTI, E. (2013): "Real Wage Inequality," *American Economic Journal: Applied Economics*, 5(1), 65–103.
- PIRAINO, P. (2008): "Comparable Estimates of Intergenerational Income Mobility in Italy," *The BE Journal of Economic Analysis & Policy*, 7.
- PISATI, M., AND A. SCHIZZEROTTO (2004): "The Italian Mobility Regime: 1985-97," in *Social Mobility in Europe*, ed. by R. Breen. Oxford University Press.
- SCHNELLE, K. (2015): "Intergenerational Mobility in Norway: Transition Probabilities and Directional Rank Mobility," *Mimeo, University of Bergen*.
- SOLON, G. (1999): "Intergenerational Mobility in the Labor Market," *Handbook of Labor Economics*, 3, 1761–1800.
- TUTTOSCUOLA (2007): "Primo Rapporto Sulla Qualita' della Scuola," Discussion paper, Editoriale Tutto-scuola.

| Statistic | N | Value |
|---|----------|--------------|
| Parents in 1998 | | |
| Mean father's age | 647,662 | 51 |
| Mean mother's age | 453,974 | 48 |
| % Married father | 640,734 | 92.7% |
| % Father residing in North | 647,662 | 37.1% |
| % Father residing in Center | 647,662 | 22.3% |
| % Father residing in South | 647,662 | 40.6% |
| % Father residing in same region as were born | 647,662 | 80.6% |
| % Father residing in same province as were born | 647,662 | 72.0% |
| % Father born abroad | 647,662 | 1.7% |
| % Families top-earner = father | 647,662 | 87.5% |
| % Families with two positive incomes | 647,662 | 68.3% |
| Corr. father-mother income (both positive) | 453,974 | 0.2234 |
| Median total parental income | 647,662 | 27,032 |
| Median total father's income | 647,662 | 20,665 |
| Median total mother's income | 453,974 | 10,031 |
| Children in 2012 | | |
| Mean age | 647,662 | 37 |
| % Married | 647,662 | 46.4% |
| % Female | 647,662 | 50.0% |
| % Residing in North | 647,662 | 42.2% |
| % Residing in Center | 647,662 | 24.1% |
| % Residing in South | 647,662 | 33.7% |
| % Born abroad | 647,662 | 1.8% |
| Median total income | 647,662 | 19,174 |
| Median total income males | 323,856 | 21,445 |
| Median total income females | 323,806 | 16,894 |
| % Individuals whose major income component is: | | |
| Wage | 647,662 | 71.9% |
| Entrepreneurship | 647,662 | 12.1% |
| Other self-employment | 647,662 | 9.2% |
| Capital | 647,662 | 5.6% |

Table 1: Descriptive statistics for the final sample. Income is in nominal terms and expressed in Euros. See Table A1 in the Appendix for more detail on the income distribution and its components.

| Net Wage | Mean | SD | p99 | p95 | p90 | p75 | p50 | p25 | p10 | p5 | p1 |
|-------------|--------|--------|--------|--------|--------|--------|--------|-------|-------|----|----|
| SHIW | 12,649 | 9,117 | 42,000 | 26,000 | 22,400 | 18,500 | 14,300 | 5,000 | 0 | 0 | 0 |
| Tax Returns | 13,691 | 10,229 | 44,023 | 30,824 | 25,721 | 20,046 | 14,331 | 3,100 | 1,650 | 0 | 0 |

Table 2: Comparison between after-tax wage income distributions in SHIW (household survey) and in the administrative tax return data, for individuals aged 35-40 in 2012 (our sample of children). Income is expressed in Euros.

| | Core | Male | Female | Married Father | Div/Sep Father | 2 Earners |
|---------------------------------------|-------------------|-------------------|-------------------|-------------------|-------------------|-------------------|
| Dependent Variable: Child Income Rank | | | | | | |
| Parental income rank | 0.246 (0.0012) | 0.267 (0.0017) | 0.233 (0.0016) | 0.250 (0.0013) | 0.182 (0.0061) | 0.242 (0.0015) |
| Constant | 0.377 (0.0007) | 0.421 (0.0010) | 0.330 (0.0010) | 0.376 (0.0007) | 0.403 (0.0038) | 0.382 (0.0009) |
| AUM | 0.438 | 0.487 | 0.388 | 0.438 | 0.449 | 0.442 |
| Q1Q5 | 0.099 | 0.132 | 0.063 | 0.098 | 0.127 | 0.109 |
| TMR | 3.707 | 3.423 | 3.901 | 3.650 | 4.971 | 3.908 |
| N | 647,662 | 323,856 | 323,806 | 593,654 | 24,877 | 482,385 |

Table 3: National indicators of intergenerational mobility for the core sample and various subgroups. Standard errors in parentheses. "Male/Female" refers to children. "Married and Div/Sep Father" restricts to children whose fathers are married and divorced/separated in 1998. "2 Earners" restricts to children whose parents both earned positive income in 1998.

| | Only Wage | > 2/3 Wage | > 2/3 Entr. | > 2/3 Prof. | > 2/3 Cap. |
|---------------------------------------|-------------------|-------------------|-------------------|-------------------|-------------------|
| Dependent Variable: Child Income Rank | | | | | |
| Parental income rank | 0.280 (0.0047) | 0.268 (0.0017) | 0.228 (0.0030) | 0.209 (0.0065) | 0.216 (0.0077) |
| Constant | 0.359 (0.0022) | 0.358 (0.0010) | 0.382 (0.0013) | 0.423 (0.0049) | 0.390 (0.0023) |
| AUM | 0.429 | 0.425 | 0.439 | 0.476 | 0.444 |
| Q1Q5 | 0.055 | 0.075 | 0.100 | 0.158 | 0.118 |
| TMR | 3.060 | 2.889 | 5.379 | 6.043 | 3.873 |
| N | 54,361 | 375,529 | 102,461 | 21,494 | 21,797 |

Table 4: National indicators of intergenerational mobility for the core sample and various subgroups. Standard errors in parentheses. "Only Wage" is the restriction to children in a household who earns wage income only in 1998. "> 2/3 X" refers to the restriction to children in a household whose income in 1998 was made up by component X for more than 2/3. "Prof." means self-employment income, as opposed to entrepreneurial income (i.e. mostly from professional activity).

| | Father Top | Mother Top | Mover Reg., Father | Mover Reg. | Father Born Abroad |
|---------------------------------------|-------------------|-------------------|-----------------------|-------------------|-----------------------|
| Dependent Variable: Child Income Rank | | | | | |
| Parental Income Rank | 0.250 (0.0013) | 0.220 (0.0035) | 0.211 (0.0030) | 0.159 (0.0034) | 0.231 (0.0095) |
| Constant | 0.376 (0.0007) | 0.385 (0.0020) | 0.413 (0.0019) | 0.496 (0.0020) | 0.396 (0.0056) |
| AUM | 0.438 | 0.440 | 0.465 | 0.536 | 0.453 |
| Q1Q5 | 0.097 | 0.113 | 0.132 | 0.169 | 0.129 |
| TMR | 3.523 | 5.324 | 4.042 | 1.693 | 1.939 |
| N | 557,324 | 90,338 | 114,790 | 78,206 | 10,789 |

Table 5: National indicators of intergenerational mobility for the core sample and various subgroups. Standard errors in parentheses. "X Top" refers to the restriction to children whose parent X was the top-earner in 1998. "Mover Reg., Father" refers to the restriction to children whose fathers were born in a different region from their region of residence in 1998. "Mover Reg." refers to the restriction to children whose region of residence in 2012 is different from the region of residence of their fathers in 1998. "Father Born Abroad" restricts to children whose fathers were born abroad.

| Parental Rank | Mean Child Rank | | 95% CI for the Difference |
|---------------|-----------------|------------|---------------------------|
| | First Born | Later Born | |
| 100 | 60.2 | 58.6 | [0.3 , 2.9] |
| 80 | 52.9 | 51.4 | [0.1 , 2.8] |
| 60 | 48.7 | 47.4 | [0.0 , 2.6] |
| 40 | 44.5 | 44.3 | [-1.1, 1.5] |
| 20 | 39.4 | 38.5 | [-0.4, 2.0] |

Table 6: Expected rank of first-born children vs. later-born children by parental income ventile.

| Parental Quintile | Child Quintile | | | | |
|-------------------|----------------|-------|-------|-------|-------|
| | 1st | 2nd | 3rd | 4th | 5th |
| 1st | 28.66 | 25.40 | 20.66 | 15.36 | 9.92 |
| 2nd | 22.02 | 22.73 | 22.37 | 19.33 | 13.56 |
| 3rd | 18.81 | 20.20 | 21.51 | 21.82 | 17.66 |
| 4th | 16.23 | 17.32 | 20.10 | 23.08 | 23.27 |
| 5th | 14.27 | 14.34 | 15.38 | 20.41 | 35.60 |

Table 7: National quintile transition matrix (%)

| Parental Decile | Child Decile | | | | | | | | | |
|-----------------|--------------|-------|-------|-------|-------|-------|-------|-------|-------|-------|
| | 1st | 2nd | 3rd | 4th | 5th | 6th | 7th | 8th | 9th | 10th |
| 1st | 16.13 | 15.12 | 13.66 | 11.92 | 10.60 | 9.33 | 7.51 | 6.70 | 5.26 | 3.77 |
| 2nd | 13.04 | 13.02 | 13.09 | 12.13 | 11.20 | 10.18 | 8.72 | 7.80 | 6.21 | 4.60 |
| 3rd | 11.45 | 11.72 | 12.00 | 11.56 | 11.68 | 10.90 | 9.57 | 8.61 | 7.25 | 5.26 |
| 4th | 10.42 | 10.46 | 10.87 | 11.03 | 11.05 | 11.10 | 10.55 | 9.92 | 8.39 | 6.22 |
| 5th | 9.80 | 10.03 | 10.35 | 10.56 | 10.78 | 10.81 | 10.82 | 10.56 | 9.29 | 7.01 |
| 6th | 8.71 | 9.08 | 9.51 | 9.99 | 10.55 | 10.87 | 11.12 | 11.15 | 10.33 | 8.69 |
| 7th | 8.03 | 8.44 | 8.62 | 9.33 | 9.90 | 10.88 | 11.42 | 11.58 | 11.54 | 10.26 |
| 8th | 8.11 | 7.89 | 8.03 | 8.67 | 9.22 | 10.19 | 11.43 | 11.72 | 12.54 | 12.20 |
| 9th | 7.55 | 7.38 | 7.51 | 7.97 | 8.29 | 8.81 | 10.51 | 11.74 | 14.08 | 16.17 |
| 10th | 6.77 | 6.85 | 6.36 | 6.83 | 6.74 | 6.92 | 8.36 | 10.21 | 15.12 | 25.83 |

Table 8: National decile transition matrix (%)

| | Real 1 | Real 2 | Real 6 | Real 9 | Real "Moretti" |
|---------------------------------------|-------------------|-------------------|-------------------|-------------------|-------------------|
| Dependent Variable: Child Income Rank | | | | | |
| Parental Income Rank | 0.239 (0.0012) | 0.222 (0.0012) | 0.215 (0.0012) | 0.215 (0.0012) | 0.225 (0.0012) |
| Constant | 0.381 (0.0007) | 0.389 (0.0007) | 0.393 (0.0007) | 0.392 (0.0007) | 0.388 (0.0007) |
| AUM | 0.440 | 0.445 | 0.446 | 0.446 | 0.444 |
| Q1Q5 | 0.102 | 0.109 | 0.111 | 0.111 | 0.108 |
| TMR | 3.811 | 4.389 | 4.550 | 4.562 | 4.308 |
| N | 647,482 | 647,482 | 647,482 | 647,482 | 647,482 |

Table 9: National indicators of intergenerational mobility for the core sample based on PPP-adjusted income. Standard errors in parentheses. "Real 1" to "Real 9" are estimates on the core sample after incomes of parents and children have been adjusted for regional differences in the price level. The numbers 1, 2, 6 and 9 denote the type of price index used, taken from [Cannari and Iuzzolino \(2009\)](#). Specifically, Index 1 is constructed under the assumption that food, apparel and furniture are the only consumption categories who vary in terms of price level across regions. Index 2 also includes house price variation across regions based on data from "Osservatorio sul Mercato Immobiliare" (Housing Market Monitor) within the Italian Revenue Service. Index 6 uses rents from Bank of Italy's Survey on Household Income and Wealth (SHIW), instead of house prices from the Housing Market Monitor, in order to account for variation in the cost of housing services. Moreover, for expenditure categories other than food, apparel and furniture, regional price differences are imputed based on regression estimates using US data. Index 9 makes different assumptions. First, rents from SHIW used in this index are adjusted for house quality. Second, instead of imputing values based on US estimates, regional price differences in expenditure categories that fall into health care, maintenance, and other services (which account for 16% of consumption expenditure) are taken from data published by the Italian Ministry of Economic Development. These price differences are also adjusted for service quality. The remaining 22% of consumption expenditure for which there is no direct information is assumed to have no regional variation in price. This is the preferred index by the authors. The last column deflates incomes based on the local indexes constructed by [Boeri et al. \(2018\)](#) following the methodology proposed by [Moretti \(2013\)](#).

| | $\sigma_{\kappa_0}^j$ | ρ^j | σ_{η}^j | σ_{ϵ}^j |
|---------|-----------------------|----------|-------------------|-----------------------|
| Fathers | 0.320 | 0.998 | 0.107 | 0.123 |
| Sons | 0.471 | 0.989 | 0.164 | 0.294 |

Table 10: Parameter estimates of persistent-transitory process for log residual earnings used to assess attenuation bias.

| | RRS | AUM | Q1Q5 |
|-----------------|-------|-------|-------|
| 3-year average | 0.248 | 0.438 | 0.108 |
| Lifetime income | 0.297 | 0.426 | 0.094 |

Table 11: Average mobility statistics using 3-year average income or lifetime income based on simulations.

| | Core | With reweighting for missing 770 | With adjustment for tax evasion | Both missing 770 and tax evasion | Imputation for capital income |
|---------------------------------------|-------------------|-------------------------------------|------------------------------------|-------------------------------------|----------------------------------|
| Dependent Variable: Child Income Rank | | | | | |
| Parental inc. rank | 0.246 (0.0012) | 0.239 (0.0009) | 0.286 (0.0012) | 0.275 (0.0009) | 0.246 (0.0012) |
| Constant | 0.377 (0.0007) | 0.385 (0.0005) | 0.357 (0.0007) | 0.364 (0.0005) | 0.377 (0.0007) |
| AUM | 0.438 | 0.444 | 0.429 | 0.433 | 0.439 |
| N | 647,662 | 1,098,452 | 647,662 | 1,098,452 | 647,662 |

Table 12: National indicators of intergenerational mobility. Correction for missing 770 forms, tax evasion and missing capital income. Standard errors in parentheses. See the main text for details.

| Province Name | Population in 2010 | AUM | Q1Q5 | RRS |
|---------------|--------------------|-------|-------|-------|
| Bolzano | 507,657 | 0.627 | 0.372 | 0.098 |
| Trento | 529,457 | 0.561 | 0.161 | 0.124 |
| Bergamo | 1,098,740 | 0.549 | 0.215 | 0.171 |
| Reggio-Emilia | 530,343 | 0.548 | 0.177 | 0.153 |
| Monza-Brianza | 849,636 | 0.546 | 0.239 | 0.172 |
| Modena | 700,913 | 0.543 | 0.242 | 0.153 |
| Milano | 3,156,694 | 0.538 | 0.222 | 0.182 |
| Treviso | 888,249 | 0.536 | 0.210 | 0.128 |
| Udine | 541,522 | 0.534 | 0.176 | 0.135 |
| Brescia | 1,256,025 | 0.531 | 0.202 | 0.161 |

Table 13: Top 10 provinces by Absolute Upward Mobility.

| Province Name | Population in 2010 | AUM | Q1Q5 | RRS |
|-----------------|--------------------|-------|-------|-------|
| Cagliari | 563,180 | 0.395 | 0.062 | 0.193 |
| Reggio-Calabria | 566,977 | 0.388 | 0.078 | 0.214 |
| Agrigento | 454,002 | 0.387 | 0.047 | 0.207 |
| Catania | 1,090,101 | 0.383 | 0.060 | 0.219 |
| Trapani | 436,624 | 0.382 | 0.053 | 0.239 |
| Siracusa | 404,271 | 0.382 | 0.073 | 0.204 |
| Salerno | 1,109,705 | 0.379 | 0.065 | 0.214 |
| Palermo | 1,249,577 | 0.378 | 0.056 | 0.215 |
| Messina | 653,737 | 0.378 | 0.062 | 0.227 |
| Cosenza | 734,656 | 0.366 | 0.059 | 0.230 |

Table 14: Bottom 10 provinces by Absolute Upward Mobility.

| | AUM | AUM | AUM | AUM | AUM |
|---------------------|--------------------|--------------------|-------------------|--------------------|--------------------|
| Gini Coefficient | -0.199 (0.0943) | | | | |
| Gini Bottom 99% | | -0.416 (0.0875) | | | |
| Top 1% Income Share | | | 0.448 (0.0860) | | |
| 90-10 Ratio | | | | -0.565 (0.0794) | |
| SD log Income | | | | | -0.579 (0.0784) |
| R^2 | 0.040 | 0.173 | 0.201 | 0.319 | 0.335 |
| N | 110 | 110 | 110 | 110 | 110 |

Table 15: Absolute Upward Mobility and income inequality. Standard errors in parentheses. Variables are normalized to have mean 0 and standard deviation of 1, so coefficients can be interpreted as correlations.

| | RRS | RRS | RRS | RRS | RRS |
|---------------------|-------------------|-------------------|--------------------|-------------------|-------------------|
| Gini Coefficient | 0.192 (0.0944) | | | | |
| Gini Bottom 99% | | 0.351 (0.0901) | | | |
| Top 1% Income Share | | | -0.314 (0.0914) | | |
| 90-10 Ratio | | | | 0.459 (0.0855) | |
| SD log Income | | | | | 0.461 (0.0854) |
| R^2 | 0.037 | 0.123 | 0.099 | 0.210 | 0.213 |
| N | 110 | 110 | 110 | 110 | 110 |

Table 16: Rank-Rank Slope and income inequality. Standard errors in parentheses. Variables are normalized to have mean 0 and standard deviation of 1, so coefficients can be interpreted as correlations.

| | ICS-15 | ICS-20 | ICS-25 | ICS-30 |
|------|--------------------|--------------------|--------------------|--------------------|
| AUM | -0.535 (0.0000) | -0.531 (0.0000) | -0.519 (0.0000) | -0.523 (0.0000) |
| Q1Q5 | -0.429 (0.0000) | -0.423 (0.0000) | -0.411 (0.0000) | -0.414 (0.0000) |

Table 17: Cross-province correlation of ICS indicators from [Güell et al. \(2018\)](#) with AUM and Q1Q5 estimated on our data.

| | AUM Baseline | AUM Macroarea FE | Q1Q5 Baseline | Q1Q5 Macroarea FE |
|--|-----------------------|-----------------------|-----------------------|-----------------------|
| <i>Productivity</i> | | | | |
| Value added per resident | 0.691*** (0.0000) | 0.192*** (0.0007) | 0.624*** (0.0000) | 0.168** (0.0178) |
| Manufacturing share of value added | 0.659*** (0.0000) | 0.222*** (0.0000) | 0.601*** (0.0000) | 0.193*** (0.0013) |
| Public works started | 0.388*** (0.0000) | 0.124*** (0.0074) | 0.395*** (0.0000) | 0.146** (0.0102) |
| Public works completed | 0.261*** (0.0070) | 0.101** (0.0207) | 0.345*** (0.0003) | 0.196*** (0.0002) |
| <i>Labor market</i> | | | | |
| Unemployment rate | -0.812*** (0.0000) | -0.344*** (0.0000) | -0.723*** (0.0000) | -0.300*** (0.0024) |
| Youth unemployment rate (age 15-24) | -0.852*** (0.0000) | -0.454*** (0.0000) | -0.767*** (0.0000) | -0.426*** (0.0000) |
| Long-term unemployment rate | -0.763*** (0.0000) | -0.226*** (0.0030) | -0.686*** (0.0000) | -0.230** (0.0144) |
| Employment rate (college degree or higher) | 0.769*** (0.0000) | 0.223*** (0.0007) | 0.715*** (0.0000) | 0.194** (0.0184) |
| Labor force participation | 0.771*** (0.0000) | 0.230*** (0.0014) | 0.710*** (0.0000) | 0.266*** (0.0029) |
| Female labor force participation | 0.745*** (0.0000) | 0.194*** (0.0063) | 0.669*** (0.0000) | 0.192** (0.0293) |
| <i>Educational attainment</i> | | | | |
| Share of illiterates | -0.426*** (0.0000) | 0.006 (0.9006) | -0.373*** (0.0000) | 0.003 (0.9494) |
| Education level achieved | 0.519*** (0.0000) | 0.102** (0.0265) | 0.460*** (0.0000) | 0.086* (0.0949) |
| School dropouts | -0.254*** (0.0087) | -0.006 (0.9071) | -0.203** (0.0372) | -0.005 (0.9361) |
| <i>Social capital</i> | | | | |
| Blood bags collected per resident (GSZ 2004) | 0.456*** (0.0000) | 0.039 (0.4300) | 0.454*** (0.0000) | 0.085 (0.1586) |
| Self-efficacy measure (GSZ 2016) | 0.657*** (0.0000) | 0.209*** (0.0001) | 0.700*** (0.0000) | 0.358*** (0.0000) |
| Voter turnout, House of Representatives | 0.689*** (0.0000) | 0.181*** (0.0073) | 0.583*** (0.0000) | 0.128 (0.1288) |
| Voter turnout, European Parliament | 0.425*** (0.0000) | 0.039 (0.4587) | 0.326*** (0.0007) | -0.013 (0.8482) |
| Recycling to total waste ratio | 0.782*** (0.0000) | 0.253*** (0.0003) | 0.700*** (0.0000) | 0.180** (0.0380) |

Table 18: Unconditional correlation of AUM and Q1Q5 with various indicators (part 1/3). With and without macro-area fixed effects. p -values in parentheses. * $p < 0.10$, ** $p < 0.05$, *** $p < 0.01$

| | AUM Baseline | AUM Macroarea FE | Q1Q5 Baseline | Q1Q5 Macroarea FE |
|---|-----------------------|-----------------------|-----------------------|-----------------------|
| <i>Crime</i> | | | | |
| Thefts | 0.264*** (0.0062) | -0.119** (0.0107) | 0.282*** (0.0035) | -0.067 (0.2523) |
| Violent crimes | -0.119 (0.2257) | -0.054 (0.2160) | -0.090 (0.3581) | -0.043 (0.4228) |
| Distraints | -0.250*** (0.0097) | -0.056 (0.2098) | -0.264*** (0.0064) | -0.070 (0.2050) |
| Scam offenses | 0.492*** (0.0000) | 0.111** (0.0215) | 0.480*** (0.0000) | 0.122** (0.0398) |
| <i>Life expectancy</i> | | | | |
| Female life expectancy at birth | 0.431*** (0.0000) | 0.121** (0.0176) | 0.362*** (0.0001) | 0.113* (0.0736) |
| Male life expectancy at birth | -0.167* (0.0886) | 0.045 (0.3592) | -0.189* (0.0528) | 0.054 (0.3753) |
| Old-age index (residents above age 65 / below age 15) | 0.427*** (0.0000) | -0.193*** (0.0008) | 0.321*** (0.0008) | -0.264*** (0.0002) |
| Number of suicides | 0.431*** (0.0000) | -0.015 (0.7594) | 0.435*** (0.0000) | 0.035 (0.5730) |
| <i>Family instability</i> | | | | |
| Divorce rate | 0.623*** (0.0000) | -0.118* (0.0853) | 0.570*** (0.0000) | -0.122 (0.1485) |
| Children in custody due to divorce | 0.581*** (0.0000) | -0.087 (0.1701) | 0.519*** (0.0000) | -0.109 (0.1616) |
| Separation rate | 0.609*** (0.0000) | -0.016 (0.8139) | 0.548*** (0.0000) | -0.018 (0.8292) |
| Children in custody due to separation | 0.544*** (0.0000) | -0.052 (0.3943) | 0.467*** (0.0000) | -0.094 (0.2087) |
| <i>Openness</i> | | | | |
| Trade (exports+imports) | 0.315*** (0.0009) | 0.071 (0.1044) | 0.323*** (0.0006) | 0.093* (0.0833) |
| Net inter-province migration | 0.667*** (0.0000) | 0.127* (0.0748) | 0.560*** (0.0000) | 0.064 (0.4646) |
| Foreign-born residents | 0.755*** (0.0000) | 0.270*** (0.0002) | 0.675*** (0.0000) | 0.274*** (0.0024) |
| Inflow of graduates from other province or abroad | 0.593*** (0.0000) | 0.201*** (0.0001) | 0.545*** (0.0000) | 0.217*** (0.0005) |

Table 19: Unconditional correlation of AUM and Q1Q5 with various indicators (part 2/3). With and without macro-area fixed effects. p -values in parentheses. * $p < 0.10$, ** $p < 0.05$, *** $p < 0.01$

| | AUM Baseline | AUM Macroarea FE | Q1Q5 Baseline | Q1Q5 Macroarea FE |
|---|-----------------------|-----------------------|-----------------------|----------------------|
| <i>Quality of schools</i> | | | | |
| Local government spending in education | 0.102 (0.2778) | 0.009 (0.8148) | 0.127 (0.1614) | 0.034 (0.4397) |
| School assets | 0.293*** (0.0015) | 0.020 (0.6290) | 0.232*** (0.0096) | -0.022 (0.6393) |
| Availability of teaching materials and technologies | 0.267*** (0.0040) | 0.053 (0.1965) | 0.255*** (0.0043) | 0.049 (0.2755) |
| Quality of school buildings | 0.397*** (0.0000) | 0.044 (0.3098) | 0.381*** (0.0000) | 0.064 (0.1814) |
| Students using canteen, school bus and other services | 0.651*** (0.0000) | 0.142** (0.0121) | 0.576*** (0.0000) | 0.132** (0.0369) |
| Students per class | -0.681*** (0.0000) | -0.194*** (0.0006) | -0.563*** (0.0000) | -0.096 (0.1348) |
| Extended teaching-time availability | -0.050 (0.5940) | -0.005 (0.8971) | -0.016 (0.8580) | 0.013 (0.7655) |
| Processing time of teachers' rankings | 0.167* (0.0749) | -0.075* (0.0831) | 0.156* (0.0848) | -0.058 (0.2271) |
| Teaching hours per class | -0.235** (0.0117) | -0.114*** (0.0048) | -0.165* (0.0669) | -0.081* (0.0743) |
| Teachers below 40 years old: pre-school | 0.646*** (0.0000) | 0.138*** (0.0088) | 0.601*** (0.0000) | 0.121** (0.0422) |
| Teachers below 40 years old: primary school | 0.469*** (0.0000) | 0.096** (0.0312) | 0.445*** (0.0000) | 0.107** (0.0322) |
| Teachers below 40 years old: middle school | 0.376*** (0.0000) | 0.114*** (0.0075) | 0.399*** (0.0000) | 0.138*** (0.0040) |
| Teachers below 40 years old: high school | 0.101 (0.2839) | 0.071 (0.1029) | 0.131 (0.1492) | 0.058 (0.2294) |
| Teachers under temporary contracts: pre-school | 0.652*** (0.0000) | 0.212*** (0.0000) | 0.579*** (0.0000) | 0.192*** (0.0005) |
| Teachers under temporary contracts: primary school | 0.728*** (0.0000) | 0.183*** (0.0028) | 0.688*** (0.0000) | 0.246*** (0.0002) |
| Teachers under temporary contracts: middle school | 0.461*** (0.0000) | 0.088* (0.0502) | 0.450*** (0.0000) | 0.143*** (0.0038) |
| Teachers under temporary contracts: high school | 0.425*** (0.0000) | 0.024 (0.5855) | 0.400*** (0.0000) | 0.043 (0.3898) |
| Tenure and stability of teachers' position | 0.280*** (0.0025) | 0.122*** (0.0031) | 0.272*** (0.0022) | 0.091** (0.0494) |
| Students repeating school year | 0.152 (0.1068) | 0.067* (0.0886) | 0.100 (0.2729) | 0.021 (0.6274) |
| INVALSI test scores for primary and middle school | 0.487*** (0.0000) | 0.061 (0.1862) | 0.424*** (0.0000) | 0.034 (0.5064) |
| INVALSI test scores for high school | 0.551*** (0.0000) | 0.124*** (0.0081) | 0.473*** (0.0000) | 0.083 (0.1138) |

Table 20: Unconditional correlation of AUM and Q1Q5 with various indicators (part 3/3). With and without macro-area fixed effects. p -values in parentheses. * $p < 0.10$, ** $p < 0.05$, *** $p < 0.01$

| | AUM | AUM | AUM | AUM | AUM | AUM |
|----------------------------------|----------------------|----------------------|----------------------|----------------------|----------------------|----------------------|
| Value added per resident | 0.092* (0.068) | 0.133*** (0.009) | 0.103** (0.047) | 0.113*** (0.010) | 0.125*** (0.004) | 0.118*** (0.009) |
| Crime | 0.013 (0.734) | 0.009 (0.855) | 0.033 (0.393) | 0.015 (0.641) | -0.041 (0.314) | 0.030 (0.374) |
| Educational attainment | 0.001 (0.991) | 0.118** (0.035) | 0.020 (0.691) | -0.009 (0.808) | 0.070 (0.148) | -0.006 (0.892) |
| Family instability | -0.077 (0.183) | -0.055 (0.332) | -0.053 (0.376) | -0.170*** (0.002) | -0.185*** (0.001) | -0.159*** (0.005) |
| Strong labor market | 0.585*** (0.000) | 0.482*** (0.000) | 0.510*** (0.000) | 0.386*** (0.000) | 0.274*** (0.006) | 0.353*** (0.000) |
| Life expectancy | -0.214*** (0.000) | -0.180*** (0.000) | -0.165*** (0.000) | -0.098** (0.018) | -0.067 (0.114) | -0.078* (0.068) |
| Economic openness | -0.021 (0.700) | -0.011 (0.847) | 0.026 (0.649) | 0.022 (0.636) | -0.017 (0.723) | 0.043 (0.373) |
| Social capital | 0.038 (0.582) | 0.072 (0.320) | 0.058 (0.419) | 0.026 (0.660) | -0.002 (0.976) | 0.047 (0.457) |
| 90-10 ratio | -0.071 (0.148) | -0.086 (0.101) | -0.103** (0.050) | -0.109** (0.015) | -0.089* (0.052) | -0.120** (0.010) |
| School quality | 0.312*** (0.000) | | | 0.168** (0.011) | | |
| Pre-school quality | | 0.288*** (0.002) | | | 0.225*** (0.005) | |
| Primary school quality | | 0.067 (0.252) | | | 0.091* (0.075) | |
| Middle school quality | | 0.163*** (0.001) | | | 0.023 (0.612) | |
| High school quality | | -0.017 (0.755) | | | -0.024 (0.605) | |
| School structures and resources | | | 0.007 (0.874) | | | -0.007 (0.848) |
| School organization and services | | | 0.135* (0.052) | | | 0.098 (0.118) |
| Teachers' composition | | | 0.143*** (0.004) | | | 0.071 (0.111) |
| Students' grades and test scores | | | 0.139*** (0.004) | | | 0.088** (0.046) |
| Macroarea fixed effects | | | | Yes | Yes | Yes |
| Observations | 100 | 99 | 100 | 100 | 99 | 100 |
| Adjusted R ² | 0.87 | 0.88 | 0.87 | 0.91 | 0.91 | 0.91 |

Table 21: Conditional correlates of Absolute Upward Mobility. p -values in parentheses; * $p < 0.10$, ** $p < 0.05$, *** $p < 0.01$. Variables are normalized to have mean 0 and standard deviation of 1, so coefficients can be interpreted as correlations.

APPENDIX FOR ONLINE PUBLICATION

CODICE FISCALE

| | | | | | | | | | | | | | | | | | | | | |
|--|--|--|--|--|--|--|--|--|--|--|--|--|--|--|--|--|--|--|--|--|
| | | | | | | | | | | | | | | | | | | | | |
|--|--|--|--|--|--|--|--|--|--|--|--|--|--|--|--|--|--|--|--|--|

REDDITI
 FAMILIARI A CARICO
 QUADRO RP
 Oneri e spese

Mod. N.

| | |
|--|--|
| | |
|--|--|

FAMILIARI A CARICO

| | | Relazione di parentela | Codice fiscale (Indicare il codice fiscale del coniuge anche se non fiscalmente a carico) | N. mesi a carico | Percentuale di detrazione spettante |
|---|---|------------------------|--|---------------------|--|
| 1 | C | | | | |
| 2 | F | A | | | |
| 3 | F | A | | | |
| 4 | F | A | | | |
| 5 | F | A | | | |
| 6 | F | A | | | |
| 7 | F | A | | | |
| 8 | F | A | | | |

Figure A1: Form Modello Unico for 1999. Section on deduction for dependent relatives (familiari a carico). The top line indicates the SSN (codice fiscale) of the taxpayer. In the section, a parent must indicate the name, relationship (relazione di parentela), SSN (codice fiscale), number of months dependent (N. mesi a carico) and percentage of deduction claimed (Percentuale di detrazione spettante) of the relative for whom a dependency deduction is claimed. The name of the spouse (coniuge) must be indicated in all cases.

| Variable | N | Mean | SD | p99.9 | p99 | p95 | p90 | p75 | p50 | p25 | p10 | p5 | p1 |
|---------------------------------|---------|--------|--------|---------|---------|--------|--------|--------|--------|--------|-------|-------|------|
| Parental income 1998 | 647,662 | 34,633 | 35,891 | 383,451 | 156,125 | 86,305 | 64,530 | 42,177 | 27,032 | 16,875 | 9,097 | 5,078 | 425 |
| Top-earner's income 1998 | 647,662 | 27,520 | 30,967 | 337,215 | 132,042 | 69,614 | 50,697 | 30,625 | 21,362 | 14,811 | 7,951 | 4,548 | 400 |
| Father's income 1998 | | | | | | | | | | | | | |
| Total | 647,662 | 26,473 | 30,859 | 331,376 | 130,102 | 68,646 | 49,749 | 29,942 | 20,665 | 13,581 | 6,242 | 2,488 | 37 |
| Wage | 647,662 | 16,551 | 21,708 | 173,191 | 88,743 | 52,642 | 37,804 | 24,562 | 14,697 | 0 | 0 | 0 | 0 |
| Entrepreneurial | 647,662 | 3,772 | 14,344 | 153,134 | 51,630 | 20,762 | 12,769 | 0 | 0 | 0 | 0 | 0 | 0 |
| Professional | 647,662 | 2,998 | 18,486 | 218,166 | 71,069 | 15,430 | 0 | 0 | 0 | 0 | 0 | 0 | 0 |
| Capital | 647,662 | 1,254 | 14,856 | 83,333 | 17,535 | 4,463 | 2,133 | 658 | 190 | 7 | 0 | 0 | 0 |
| Pension | 647,662 | 1,950 | 5,923 | 47,025 | 25,231 | 16,369 | 8,910 | 0 | 0 | 0 | 0 | 0 | 0 |
| Mother's income 1998 | | | | | | | | | | | | | |
| Total | 453,974 | 11,642 | 13,717 | 129,383 | 55,549 | 29,290 | 23,299 | 18,312 | 10,031 | 982 | 186 | 78 | 0 |
| Wage | 453,974 | 7,543 | 10,046 | 65,302 | 37,134 | 23,200 | 20,665 | 16,112 | 0 | 0 | 0 | 0 | 0 |
| Entrepreneurial | 453,974 | 1,826 | 8,004 | 93,371 | 31,729 | 12,273 | 5,576 | 0 | 0 | 0 | 0 | 0 | 0 |
| Professional | 453,974 | 456 | 5,338 | 63,680 | 14,719 | 0 | 0 | 0 | 0 | 0 | 0 | 0 | 0 |
| Capital | 453,974 | 1,050 | 4,818 | 52,506 | 13,507 | 4,060 | 2,085 | 709 | 240 | 42 | 0 | 0 | 0 |
| Pension | 453,974 | 782 | 3,096 | 23,947 | 15,188 | 8,386 | 0 | 0 | 0 | 0 | 0 | 0 | 0 |
| Child's income 2012 | | | | | | | | | | | | | |
| Total | 647,662 | 21,653 | 24,520 | 205,127 | 91,590 | 54,416 | 41,503 | 27,656 | 19,174 | 9,254 | 1,968 | 51 | 0 |
| Wage | 647,662 | 16,857 | 19,405 | 148,053 | 74,783 | 46,887 | 36,057 | 24,820 | 15,561 | 0 | 0 | 0 | 0 |
| Entrepreneurial | 647,662 | 2,138 | 12,538 | 109,171 | 38,157 | 15,243 | 5,923 | 0 | 0 | 0 | 0 | 0 | -239 |
| Professional | 647,662 | 2,312 | 12,470 | 132,798 | 51,451 | 15,087 | 417 | 0 | 0 | 0 | 0 | 0 | 0 |
| Capital | 647,662 | 850 | 3,369 | 35,952 | 11,455 | 4,257 | 1,755 | 554 | 142 | 0 | 0 | 0 | 0 |
| Pension | 647,662 | 37 | 835 | 10,348 | 0 | 0 | 0 | 0 | 0 | 0 | 0 | 0 | 0 |

Table A1: Summary statistics on the income distribution and its components for parents and children. Income is in nominal terms and is measured in Euros. "Top-earner" is the parent - father or mother - who earns more income.

| | Index 1 | Index 2 | Index 6 | Index 9 | Index "Moretti" |
|-----------------|---------|---------|---------|---------|-----------------|
| Index 1 | 1.000 | | | | |
| Index 2 | 0.681 | 1.000 | | | |
| Index 6 | 0.823 | 0.899 | 1.000 | | |
| Index 9 | 0.809 | 0.905 | 0.999 | 1.000 | |
| Index "Moretti" | 0.538 | 0.837 | 0.692 | 0.695 | 1.000 |

Table A2: Cross-region correlation of cost of living indexes from [Cannari and Iuzzolino \(2009\)](#) and [Boeri et al. \(2018\)](#).

| Child's Outcome | Parent's Income Definition | Core | Core | Core | Male | Male | Male |
|-----------------|----------------------------|-------------------|-------------------|-------------------|-------------------|-------------------|-------------------|
| Income rank | Parental income rank | 0.246 (0.0012) | | | 0.267 (0.0017) | | |
| Income rank | Top-earner income rank | | 0.233 (0.0012) | | | 0.259 (0.0017) | |
| Income rank | Father income rank | | | 0.220 (0.0012) | | | 0.250 (0.0017) |
| Constant | | 0.377 (0.0007) | 0.383 (0.0007) | 0.390 (0.0007) | 0.421 (0.0010) | 0.424 (0.0010) | 0.428 (0.0010) |
| AUM | | 0.438 | 0.442 | 0.445 | 0.487 | 0.488 | 0.490 |
| Q1Q5 | | 0.099 | 0.103 | 0.114 | 0.132 | 0.136 | 0.150 |
| N | | 647,662 | 647,662 | 647,662 | 323,856 | 323,856 | 323,856 |
| Child's Outcome | Parent's Income Definition | Female | Female | Female | Married Father | Married Father | Married Father |
| Income rank | Parental income rank | 0.233 (0.0016) | | | 0.250 (0.0013) | | |
| Income rank | Top-earner income rank | | 0.211 (0.0016) | | | 0.236 (0.0013) | |
| Income rank | Father income rank | | | 0.192 (0.0016) | | | 0.224 (0.0013) |
| Constant | | 0.330 (0.0010) | 0.341 (0.0010) | 0.351 (0.0010) | 0.376 (0.0007) | 0.383 (0.0007) | 0.389 (0.0007) |
| AUM | | 0.388 | 0.394 | 0.399 | 0.438 | 0.442 | 0.445 |
| Q1Q5 | | 0.063 | 0.066 | 0.076 | 0.098 | 0.103 | 0.114 |
| N | | 323,806 | 323,806 | 323,806 | 593,654 | 593,654 | 593,654 |
| Child's Outcome | Parent's Income Definition | Div/Sep Father | Div/Sep Father | Div/Sep Father | 2 Earners | 2 Earners | 2 Earners |
| Income rank | Parental income rank | 0.182 (0.0061) | | | 0.242 (0.0015) | | |
| Income rank | Top-earner income rank | | 0.177 (0.0061) | | | 0.229 (0.0014) | |
| Income rank | Father income rank | | | 0.166 (0.0062) | | | 0.212 (0.0014) |
| Constant | | 0.403 (0.0038) | 0.399 (0.0040) | 0.406 (0.0040) | 0.382 (0.0009) | 0.396 (0.0009) | 0.406 (0.0008) |
| AUM | | 0.449 | 0.444 | 0.447 | 0.442 | 0.453 | 0.459 |
| Q1Q5 | | 0.127 | 0.123 | 0.136 | 0.109 | 0.115 | 0.129 |
| N | | 24,877 | 24,877 | 24,877 | 482,385 | 482,385 | 482,385 |

Table A3: Additional national indicators of intergenerational mobility for the core sample and various subgroups (part 1/3). Standard errors in parentheses. Results reported for three definition of parental income: family income, top-earner income, and father income. See Table 3 for details on the subgroups.

| Child's Outcome | Parent's Income Definition | Father Top | Father Top | Father Top | Mother Top | Mother Top | Mother Top |
|-----------------|----------------------------|-------------------|-------------------|-------------------|-------------------|-------------------|-------------------|
| Income rank | Parental income rank | 0.250 (0.0013) | | | 0.220 (0.0035) | | |
| Income rank | Top-earner income rank | | 0.237 (0.0013) | | | 0.227 (0.0037) | |
| Income rank | Father income rank | | | 0.245 (0.0013) | | | 0.240 (0.0042) |
| Constant | | 0.376 (0.0007) | 0.379 (0.0008) | 0.368 (0.0008) | 0.385 (0.0020) | 0.404 (0.0018) | 0.435 (0.0015) |
| AUM | | 0.438 | 0.438 | 0.430 | 0.440 | 0.460 | 0.494 |
| Q1Q5 | | 0.097 | 0.099 | 0.097 | 0.113 | 0.121 | 0.150 |
| N | | 557,324 | 557,324 | 557,324 | 90,338 | 90,338 | 90,338 |
| Child's Outcome | Parent's Income Definition | > 2/3 Wage | > 2/3 Wage | > 2/3 Wage | > 2/3 Entr. | > 2/3 Entr. | > 2/3 Entr. |
| Income rank | Parental income rank | 0.268 (0.0017) | | | 0.228 (0.0030) | | |
| Income rank | Top-earner income rank | | 0.258 (0.0018) | | | 0.221 (0.0029) | |
| Income rank | Father income rank | | | 0.236 (0.0017) | | | 0.221 (0.0030) |
| Constant | | 0.358 (0.0010) | 0.361 (0.0011) | 0.373 (0.0011) | 0.382 (0.0013) | 0.385 (0.0013) | 0.384 (0.0013) |
| AUM | | 0.425 | 0.425 | 0.432 | 0.439 | 0.441 | 0.439 |
| Q1Q5 | | 0.075 | 0.075 | 0.100 | 0.100 | 0.104 | 0.104 |
| N | | 375,529 | 375,529 | 375,529 | 102,461 | 102,461 | 102,461 |
| Child's Outcome | Parent's Income Definition | > 2/3 Prof. | > 2/3 Prof. | > 2/3 Prof. | > 2/3 Cap. | > 2/3 Cap. | > 2/3 Cap. |
| Income rank | Parental income rank | 0.209 (0.0065) | | | 0.216 (0.0077) | | |
| Income rank | Top-earner income rank | | 0.202 (0.0065) | | | 0.208 (0.0075) | |
| Income rank | Father income rank | | | 0.195 (0.0066) | | | 0.209 (0.0078) |
| Constant | | 0.423 (0.0049) | 0.422 (0.0051) | 0.427 (0.0051) | 0.390 (0.0023) | 0.392 (0.0023) | 0.391 (0.0023) |
| AUM | | 0.476 | 0.472 | 0.476 | 0.444 | 0.444 | 0.444 |
| Q1Q5 | | 0.158 | 0.157 | 0.169 | 0.118 | 0.120 | 0.121 |
| N | | 21,494 | 21,494 | 21,494 | 21,797 | 21,797 | 21,797 |

Table A4: Additional national indicators of intergenerational mobility for the core sample and various subgroups (part 2/3). Standard errors in parentheses. Results reported for three definition of parental income: family income, top-earner income, and father income. See Tables 4 and 5 for details on the subgroups.

| Child's Outcome | Parent's Income Definition | Lawyers & co. | Lawyers & co. | Lawyers & co. | Mover | Mover | Mover |
|-----------------|-------------------------------|-------------------|-------------------|-------------------|-------------------|-------------------|-------------------|
| Income rank | Parental income rank | 0.216 (0.0077) | | | 0.172 (0.0029) | | |
| Income rank | Top-earner income rank | | 0.206 (0.0076) | | | 0.161 (0.0029) | |
| Income rank | Father income rank | | | 0.183 (0.0071) | | | 0.148 (0.0029) |
| Constant | | 0.389 (0.0058) | 0.396 (0.0057) | 0.416 (0.0052) | 0.482 (0.0017) | 0.488 (0.0017) | 0.494 (0.0017) |
| AUM | | 0.443 | 0.447 | 0.462 | 0.525 | 0.528 | 0.531 |
| Q1Q5 | | 0.150 | 0.144 | 0.158 | 0.169 | 0.172 | 0.190 |
| N | | 20,886 | 20,886 | 20,886 | 115,974 | 115,974 | 115,974 |

Table A5: Additional national indicators of intergenerational mobility for the core sample and various subgroups (part 3/3). Standard errors in parentheses. Results reported for three definition of parental income: family income, top-earner income, and father income. "Lawyers & co." restricts to children for which the occupation of at least one parent in 1998 involved professional services (ATECO code 74 - including lawyers, accountants, consultants, architects, ...). "Mover" refers to the restriction to children whose province of residence in 2012 is different from the province of residence of their fathers in 1998.

| | Sons | Married | Div/Sep | Mover Reg., Father | Mover Reg. | Father Born Abroad |
|---------------------------------------|-------------------|-------------------|-------------------|-----------------------|-------------------|-----------------------|
| Dependent Variable: Son's Income Rank | | | | | | |
| Father's income rank | 0.257 (0.0017) | 0.261 (0.0018) | 0.195 (0.0090) | 0.181 (0.0072) | 0.163 (0.0080) | 0.259 (0.0132) |
| Constant | 0.371 (0.0010) | 0.370 (0.0010) | 0.389 (0.0059) | 0.432 (0.0045) | 0.499 (0.0046) | 0.383 (0.0078) |
| AUM | 0.436 | 0.435 | 0.438 | 0.477 | 0.539 | 0.448 |
| Q1Q5 | 0.105 | 0.104 | 0.140 | 0.147 | 0.133 | 0.119 |
| TMR | 4.460 | 4.439 | 5.830 | 4.655 | -2.344 | 1.205 |
| N | 323,856 | 297,154 | 12,018 | 24,916 | 16,440 | 5,415 |

Table A6: National indicators of intergenerational mobility for fathers and sons (part 1/2). Standard errors in parentheses. See Tables 3 and 5 for details on the subgroups.

| | Only Wage | > 2/3 Wage | > 2/3 Entr. | > 2/3 Prof. | > 2/3 Cap. |
|---------------------------------------|-------------------|-------------------|-------------------|-------------------|-------------------|
| Dependent Variable: Son's Income Rank | | | | | |
| Father's income rank | 0.281 (0.0026) | 0.280 (0.0025) | 0.263 (0.0041) | 0.236 (0.0073) | 0.224 (0.0104) |
| Constant | 0.348 (0.0016) | 0.349 (0.0015) | 0.370 (0.0018) | 0.410 (0.0053) | 0.389 (0.0027) |
| AUM | 0.418 | 0.419 | 0.436 | 0.469 | 0.445 |
| Q1Q5 | 0.071 | 0.074 | 0.103 | 0.162 | 0.126 |
| TMR | 3.480 | 3.569 | 4.636 | 5.567 | 7.863 |
| N | 178,624 | 191,514 | 60,352 | 15,300 | 16,249 |

Table A7: National indicators of intergenerational mobility for fathers and sons (part 2/2). Standard errors in parentheses. See Table 4 for details on the subgroups.

| Father's Quintile | Son's Quintile | | | | |
|--------------------------|-----------------------|-------|-------|-------|-------|
| | 1st | 2nd | 3rd | 4th | 5th |
| 1st | 29.43 | 26.14 | 19.25 | 14.72 | 10.46 |
| 2nd | 21.61 | 24.11 | 22.25 | 18.55 | 13.47 |
| 3rd | 17.89 | 19.80 | 23.22 | 22.10 | 17.00 |
| 4th | 16.61 | 17.11 | 20.67 | 23.51 | 22.09 |
| 5th | 14.46 | 12.83 | 14.61 | 21.13 | 36.98 |

Table A8: National quintile transition matrix - fathers and sons (%)

| Father's Decile | Son's Decile | | | | | | | | | |
|------------------------|---------------------|-------|-------|-------|-------|-------|-------|-------|-------|-------|
| | 1st | 2nd | 3rd | 4th | 5th | 6th | 7th | 8th | 9th | 10th |
| 1st | 16.80 | 15.26 | 13.90 | 11.87 | 10.25 | 8.35 | 7.33 | 6.59 | 5.22 | 4.42 |
| 2nd | 12.54 | 14.27 | 14.18 | 12.34 | 10.87 | 9.02 | 8.38 | 7.14 | 6.26 | 5.02 |
| 3rd | 10.81 | 12.05 | 12.30 | 12.78 | 11.45 | 10.23 | 9.14 | 8.36 | 7.16 | 5.72 |
| 4th | 9.81 | 10.56 | 11.11 | 12.03 | 11.78 | 11.04 | 10.35 | 9.25 | 7.80 | 6.27 |
| 5th | 8.97 | 9.23 | 9.83 | 10.82 | 11.66 | 11.74 | 11.04 | 10.14 | 9.11 | 7.47 |
| 6th | 8.91 | 8.67 | 9.12 | 9.83 | 11.11 | 11.94 | 11.94 | 11.07 | 9.61 | 7.80 |
| 7th | 8.69 | 8.40 | 8.65 | 9.10 | 10.39 | 11.50 | 11.87 | 11.42 | 10.92 | 9.06 |
| 8th | 8.20 | 7.93 | 8.14 | 8.34 | 9.04 | 10.41 | 11.70 | 12.03 | 12.66 | 11.54 |
| 9th | 7.82 | 7.19 | 6.96 | 7.29 | 7.90 | 9.19 | 10.40 | 12.51 | 15.05 | 15.71 |
| 10th | 7.46 | 6.45 | 5.81 | 5.59 | 5.55 | 6.59 | 7.84 | 11.51 | 16.20 | 27.00 |

Table A9: National decile transition matrix - fathers and sons (%)

Identification and Estimation of the Income Process

Recall the income process specified in Section 5.1 and consider first fathers. For each father in the sample, we have at most three consecutive observations at dates $t, t - 1, t - 2$. The cross-sectional moments we use for estimation are:

$$var(y_t) = var(\kappa_t) + \sigma_\varepsilon$$

and

$$\begin{aligned} cov(y_t, y_{t-1}) &= \rho var(\kappa_{t-1}) \\ cov(y_{t-1}, y_{t-2}) &= \rho var(\kappa_{t-2}) \\ cov(y_t, y_{t-2}) &= \rho^2 var(\kappa_{t-2}), \end{aligned}$$

where

$$var(\kappa_t) = \rho^2 var(\kappa_{t-1}) + \sigma_n = \rho^{2t} \sigma_{\kappa_0} + \sigma_n \sum_{j=1}^t \rho^{2(j-1)},$$

Identification can be achieved in different ways. For example:

$$\begin{aligned} \rho &= \frac{cov(y_t, y_{t-2})}{cov(y_{t-1}, y_{t-2})} \\ \sigma_\varepsilon &= var(y_{t-1}) - \rho^{-1} cov(y_t, y_{t-1}) \\ \sigma_\eta &= var(y_{t-1}) - cov(y_t, y_{t-2}) - \sigma_\varepsilon \\ \sigma_{\kappa_0} &= \left[var(y_t) - \sigma_\varepsilon - \sigma_n \sum_{j=1}^t \rho^{2(j-1)} \right] \cdot \rho^{-2t}. \end{aligned}$$

For sons, the logic of the identification is the same with the caveat that observations are at dates $t, t - 2, t - 3$. To avoid contamination by outliers, we trim the top and bottom 5% of the distribution of log-changes. The estimation methodology follows a standard minimum distance approach (Chamberlain, 1984).

References

CHAMBERLAIN, G. (1984). "Panel Data." *Handbook of Econometrics* 2, 1247-1318.



Figure A2: Map of the Italian provinces

| Province | Population in 2010 | Region | Macro area |
|---------------|-----------------------|---------------|------------|
| Genova | 882,718 | Liguria | |
| Imperia | 222,648 | Liguria | |
| La Spezia | 223,516 | Liguria | |
| Savona | 287,906 | Liguria | |
| Bergamo | 1,100,000 | Lombardia | |
| Brescia | 1,300,000 | Lombardia | |
| Como | 594,988 | Lombardia | |
| Cremona | 363,606 | Lombardia | |
| Lecco | 340,167 | Lombardia | |
| Lodi | 227,655 | Lombardia | |
| Mantova | 415,442 | Lombardia | |
| Milano | 3,200,000 | Lombardia | |
| Monza-Brianza | 849,636 | Lombardia | North-West |
| Pavia | 548,307 | Lombardia | |
| Sondrio | 183,169 | Lombardia | |
| Varese | 883,285 | Lombardia | |
| Alessandria | 440,613 | Piemonte | |
| Asti | 221,687 | Piemonte | |
| Biella | 185,768 | Piemonte | |
| Cuneo | 592,303 | Piemonte | |
| Novara | 371,802 | Piemonte | |
| Torino | 2,300,000 | Piemonte | |
| Verbania | 163,247 | Piemonte | |
| Vercelli | 179,562 | Piemonte | |
| Aosta | 128,230 | Valle d'Aosta | |

Table A10: Administrative divisions of Italy (part 1/3)

| Province | Population in 2010 | Region | Macro area |
|---------------|-----------------------|-----------------------|------------|
| Bologna | 991,924 | Emilia | |
| Ferrara | 359,994 | Emilia | |
| Forli-Cesena | 395,489 | Emilia | |
| Modena | 700,913 | Emilia | |
| Parma | 442,120 | Emilia | |
| Piacenza | 289,875 | Emilia | |
| Ravenna | 392,458 | Emilia | |
| Reggio-Emilia | 530,343 | Emilia | |
| Rimini | 329,302 | Emilia | |
| Gorizia | 142,407 | Friuli Venezia Giulia | North-East |
| Pordenone | 315,323 | Friuli Venezia Giulia | |
| Trieste | 236,556 | Friuli Venezia Giulia | |
| Udine | 541,522 | Friuli Venezia Giulia | |
| Bolzano | 507,657 | Trentino | |
| Trento | 529,457 | Trentino | |
| Belluno | 213,474 | Veneto | |
| Padova | 934,216 | Veneto | |
| Rovigo | 247,884 | Veneto | |
| Treviso | 888,249 | Veneto | |
| Venezia | 863,133 | Veneto | |
| Verona | 920,158 | Veneto | |
| Vicenza | 870,740 | Veneto | |
| Frosinone | 498,167 | Lazio | |
| Latina | 555,692 | Lazio | |
| Rieti | 160,467 | Lazio | |
| Roma | 4,200,000 | Lazio | |
| Viterbo | 320,294 | Lazio | |
| Ancona | 481,028 | Marche | |
| Ascoli Piceno | 214,068 | Marche | |
| Fermo | 177,914 | Marche | |
| Macerata | 325,362 | Marche | |
| Pesaro-Urbino | 366,963 | Marche | |
| Arezzo | 349,651 | Toscana | Center |
| Firenze | 998,098 | Toscana | |
| Grosseto | 228,157 | Toscana | |
| Livorno | 342,955 | Toscana | |
| Lucca | 393,795 | Toscana | |
| Massa-Carrara | 203,901 | Toscana | |
| Pisa | 417,782 | Toscana | |
| Pistoia | 293,061 | Toscana | |
| Prato | 249,775 | Toscana | |
| Siena | 272,638 | Toscana | |
| Perugia | 671,821 | Umbria | |
| Terni | 234,665 | Umbria | |

Table A11: Administrative divisions of Italy (part 2/3)

| Province | Population in 2010 | Region | Macro area |
|-----------------------|-----------------------|------------|-------------------|
| Chieti | 397,123 | Abruzzo | |
| L'Aquila | 309,820 | Abruzzo | |
| Pescara | 323,184 | Abruzzo | |
| Teramo | 312,239 | Abruzzo | |
| Matera | 203,726 | Basilicata | |
| Potenza | 383,791 | Basilicata | |
| Catanzaro | 368,597 | Calabria | |
| Cosenza | 734,656 | Calabria | |
| Crotone | 174,605 | Calabria | |
| Reggio-Calabria | 566,977 | Calabria | |
| Vibo Valentia | 166,560 | Calabria | |
| Avellino | 439,137 | Campania | |
| Benevento | 287,874 | Campania | |
| Caserta | 916,467 | Campania | |
| Napoli | 3,100,000 | Campania | |
| Salerno | 1,100,000 | Campania | |
| Campobasso | 231,086 | Molise | |
| Isernia | 88,694 | Molise | |
| Bari | 1,300,000 | Puglia | |
| Barletta-Trani-Andria | 392,863 | Puglia | |
| Brindisi | 403,229 | Puglia | South and Islands |
| Foggia | 640,836 | Puglia | |
| Lecce | 815,597 | Puglia | |
| Taranto | 580,028 | Puglia | |
| Cagliari | 563,180 | Sardegna | |
| Carbonia - Iglesias | 129,840 | Sardegna | |
| Medio Campidano | 102,409 | Sardegna | |
| Nuoro | 160,677 | Sardegna | |
| Ogliastra | 57,965 | Sardegna | |
| Olbia - Tempio | 157,859 | Sardegna | |
| Oristano | 166,244 | Sardegna | |
| Sassari | 337,237 | Sardegna | |
| Agrigento | 454,002 | Sicilia | |
| Caltanissetta | 271,729 | Sicilia | |
| Catania | 1,100,000 | Sicilia | |
| Enna | 172,485 | Sicilia | |
| Messina | 653,737 | Sicilia | |
| Palermo | 1,200,000 | Sicilia | |
| Ragusa | 318,549 | Sicilia | |
| Siracusa | 404,271 | Sicilia | |
| Trapani | 436,624 | Sicilia | |

Table A12: Administrative divisions of Italy (part 3/3)

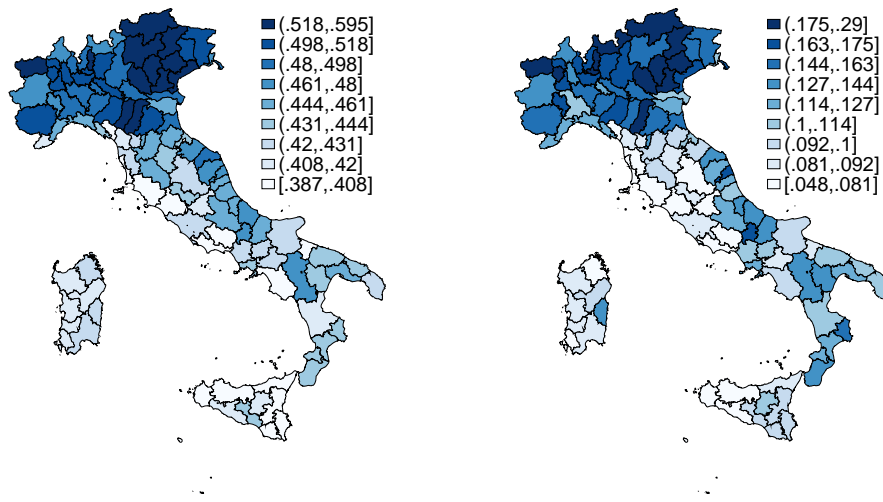


Figure A3: Heat map of Absolute Upward Mobility and Q1Q5 based on PPP-adjusted income (with province-level price indexes). Dark areas are more mobile. Left-panel (a): AUM. Right-panel (b): Q1Q5

| Upward Mob. Rank | Province Name | Population in 2010 | AUM | Q1Q5 | RRS | N |
|---------------------|---------------|-----------------------|-------|-------|-------|--------|
| 1 | Bolzano | 507,657 | 0.627 | 0.372 | 0.098 | 2,080 |
| 2 | Lecco | 340,167 | 0.573 | 0.260 | 0.129 | 2,651 |
| 3 | Trento | 529,457 | 0.561 | 0.161 | 0.124 | 3,736 |
| 4 | Aosta | 128,230 | 0.559 | 0.267 | 0.101 | 974 |
| 5 | Cremona | 363,606 | 0.551 | 0.224 | 0.137 | 3,029 |
| 6 | Bergamo | 1,098,740 | 0.549 | 0.215 | 0.171 | 7,046 |
| 7 | Reggio-Emilia | 530,343 | 0.548 | 0.177 | 0.153 | 3,814 |
| 8 | Monza-Brianza | 849,636 | 0.546 | 0.239 | 0.172 | 8,269 |
| 9 | Modena | 700,913 | 0.543 | 0.242 | 0.153 | 5,658 |
| 10 | Milano | 3,156,694 | 0.538 | 0.222 | 0.182 | 30,541 |
| 11 | Lodi | 227,655 | 0.537 | 0.192 | 0.165 | 1,872 |
| 12 | Treviso | 888,249 | 0.536 | 0.210 | 0.128 | 7,239 |
| 13 | Udine | 541,522 | 0.534 | 0.176 | 0.135 | 4,987 |
| 14 | Pordenone | 315,323 | 0.533 | 0.181 | 0.155 | 3,062 |
| 15 | Brescia | 1,256,025 | 0.531 | 0.202 | 0.161 | 7,819 |
| 16 | Vicenza | 870,740 | 0.531 | 0.203 | 0.154 | 6,143 |
| 17 | Belluno | 213,474 | 0.529 | 0.247 | 0.134 | 1,688 |
| 18 | Biella | 185,768 | 0.528 | 0.170 | 0.137 | 1,464 |
| 19 | Parma | 442,120 | 0.528 | 0.183 | 0.191 | 3,723 |
| 20 | Como | 594,988 | 0.527 | 0.221 | 0.152 | 4,433 |
| 21 | Padova | 934,216 | 0.527 | 0.194 | 0.130 | 8,509 |
| 22 | Cuneo | 592,303 | 0.526 | 0.176 | 0.169 | 4,161 |
| 23 | Venezia | 863,133 | 0.526 | 0.162 | 0.134 | 8,498 |
| 24 | Bologna | 991,924 | 0.525 | 0.211 | 0.163 | 7,664 |
| 25 | Pavia | 548,307 | 0.524 | 0.192 | 0.188 | 4,669 |
| 26 | Verona | 920,158 | 0.524 | 0.197 | 0.156 | 7,444 |
| 27 | Mantova | 415,442 | 0.521 | 0.222 | 0.145 | 3,531 |
| 28 | Varese | 883,285 | 0.521 | 0.200 | 0.175 | 7,521 |
| 29 | Piacenza | 289,875 | 0.515 | 0.212 | 0.187 | 2,314 |
| 30 | Sondrio | 183,169 | 0.513 | 0.214 | 0.177 | 1,497 |
| 31 | Vercelli | 179,562 | 0.513 | 0.170 | 0.168 | 1,553 |
| 32 | Novara | 371,802 | 0.512 | 0.150 | 0.184 | 3,417 |
| 33 | Trieste | 236,556 | 0.511 | 0.162 | 0.138 | 2,201 |
| 34 | Ravenna | 392,458 | 0.503 | 0.181 | 0.157 | 3,632 |
| 35 | Alessandria | 440,613 | 0.500 | 0.121 | 0.192 | 3,834 |
| 36 | Genova | 882,718 | 0.494 | 0.160 | 0.184 | 9,827 |
| 37 | Prato | 249,775 | 0.488 | 0.163 | 0.127 | 2,207 |
| 38 | Gorizia | 142,407 | 0.485 | 0.113 | 0.178 | 1,248 |
| 39 | Firenze | 998,098 | 0.484 | 0.135 | 0.151 | 9,785 |
| 40 | Savona | 287,906 | 0.483 | 0.163 | 0.221 | 2,568 |

Table A13: Inter-generational mobility across provinces (part 1/3)

| Upward Mob. Rank | Province Name | Population in 2010 | AUM | Q1Q5 | RRS | N |
|---------------------|---------------|-----------------------|-------|-------|-------|--------|
| 41 | Verbania | 163,247 | 0.479 | 0.117 | 0.174 | 1,271 |
| 42 | Forli-Cesena | 395,489 | 0.478 | 0.142 | 0.185 | 4,113 |
| 43 | Rovigo | 247,884 | 0.478 | 0.112 | 0.199 | 2,759 |
| 44 | Torino | 2,302,353 | 0.478 | 0.158 | 0.208 | 23,981 |
| 45 | Ferrara | 359,994 | 0.477 | 0.145 | 0.195 | 4,019 |
| 46 | Siena | 272,638 | 0.477 | 0.113 | 0.180 | 2,983 |
| 47 | Asti | 221,687 | 0.474 | 0.184 | 0.233 | 1,770 |
| 48 | Ancona | 481,028 | 0.472 | 0.132 | 0.174 | 5,595 |
| 49 | La Spezia | 223,516 | 0.470 | 0.159 | 0.172 | 2,641 |
| 50 | Arezzo | 349,651 | 0.468 | 0.135 | 0.177 | 3,573 |
| 51 | Pesaro-Urbino | 366,963 | 0.463 | 0.088 | 0.156 | 4,227 |
| 52 | Fermo | 177,914 | 0.458 | 0.156 | 0.108 | 1,722 |
| 53 | Pisa | 417,782 | 0.458 | 0.116 | 0.167 | 5,327 |
| 54 | Macerata | 325,362 | 0.456 | 0.100 | 0.126 | 3,252 |
| 55 | Pistoia | 293,061 | 0.455 | 0.103 | 0.194 | 2,798 |
| 56 | Rimini | 329,302 | 0.454 | 0.128 | 0.144 | 3,721 |
| 57 | Roma | 4,194,068 | 0.450 | 0.115 | 0.210 | 52,884 |
| 58 | Terni | 234,665 | 0.446 | 0.089 | 0.186 | 3,182 |
| 59 | Rieti | 160,467 | 0.445 | 0.117 | 0.191 | 2,155 |
| 60 | Perugia | 671,821 | 0.442 | 0.081 | 0.173 | 7,962 |
| 61 | Imperia | 222,648 | 0.441 | 0.134 | 0.175 | 1,688 |
| 62 | Lucca | 393,795 | 0.441 | 0.094 | 0.183 | 4,202 |
| 63 | Ascoli Piceno | 214,068 | 0.440 | 0.103 | 0.188 | 2,419 |
| 64 | Chieti | 397,123 | 0.439 | 0.100 | 0.181 | 5,759 |
| 65 | Livorno | 342,955 | 0.436 | 0.077 | 0.192 | 5,005 |
| 66 | Massa-Carrara | 203,901 | 0.433 | 0.095 | 0.173 | 2,760 |
| 67 | Pescara | 323,184 | 0.430 | 0.103 | 0.155 | 4,345 |
| 68 | Grosseto | 228,157 | 0.426 | 0.094 | 0.217 | 2,969 |
| 69 | Isernia | 88,694 | 0.425 | 0.095 | 0.208 | 1,254 |
| 70 | L'Aquila | 309,820 | 0.419 | 0.078 | 0.226 | 5,259 |
| 71 | Viterbo | 320,294 | 0.419 | 0.075 | 0.232 | 3,920 |
| 72 | Frosinone | 498,167 | 0.418 | 0.072 | 0.196 | 7,875 |
| 73 | Taranto | 580,028 | 0.418 | 0.080 | 0.216 | 10,284 |
| 74 | Teramo | 312,239 | 0.417 | 0.088 | 0.194 | 3,618 |
| 75 | Latina | 555,692 | 0.415 | 0.090 | 0.204 | 7,450 |
| 76 | Brindisi | 403,229 | 0.414 | 0.074 | 0.205 | 5,961 |
| 77 | Caltanissetta | 271,729 | 0.409 | 0.070 | 0.232 | 3,502 |
| 78 | Potenza | 383,791 | 0.408 | 0.077 | 0.193 | 5,361 |
| 79 | Bari | 1,258,706 | 0.407 | 0.071 | 0.242 | 17,223 |
| 80 | Napoli | 3,080,873 | 0.407 | 0.084 | 0.225 | 36,142 |

Table A14: Inter-generational mobility across provinces (part 2/3)

| Upward Mob. Rank | Province Name | Population in 2010 | AUM | Q1Q5 | RRS | N |
|---------------------|-----------------------|-----------------------|-------|-------|-------|--------|
| 81 | Campobasso | 231,086 | 0.406 | 0.068 | 0.190 | 3,552 |
| 82 | Caserta | 916,467 | 0.401 | 0.073 | 0.226 | 9,538 |
| 83 | Foggia | 640,836 | 0.399 | 0.063 | 0.231 | 9,927 |
| 84 | Lecce | 815,597 | 0.398 | 0.066 | 0.217 | 11,578 |
| 85 | Avellino | 439,137 | 0.397 | 0.060 | 0.184 | 5,291 |
| 86 | Cagliari | 563,180 | 0.395 | 0.062 | 0.193 | 7,761 |
| 87 | Matera | 203,726 | 0.395 | 0.076 | 0.225 | 3,254 |
| 88 | Benevento | 287,874 | 0.394 | 0.071 | 0.195 | 3,744 |
| 89 | Catanzaro | 368,597 | 0.394 | 0.069 | 0.220 | 4,966 |
| 90 | Crotone | 174,605 | 0.392 | 0.064 | 0.240 | 2,038 |
| 91 | Ogliastra | 57,965 | 0.390 | 0.079 | 0.158 | 622 |
| 92 | Olbia - Tempio | 157,859 | 0.389 | 0.051 | 0.169 | 1,337 |
| 93 | Reggio-Calabria | 566,977 | 0.388 | 0.078 | 0.214 | 5,689 |
| 94 | Vibo Valentia | 166,560 | 0.388 | 0.055 | 0.207 | 2,002 |
| 95 | Agrigento | 454,002 | 0.387 | 0.047 | 0.207 | 4,876 |
| 96 | Carbonia - Iglesias | 129,840 | 0.387 | 0.044 | 0.257 | 2,207 |
| 97 | Sassari | 337,237 | 0.386 | 0.059 | 0.205 | 4,735 |
| 98 | Enna | 172,485 | 0.384 | 0.070 | 0.197 | 1,933 |
| 99 | Catania | 1,090,101 | 0.383 | 0.060 | 0.219 | 10,655 |
| 100 | Oristano | 166,244 | 0.383 | 0.050 | 0.174 | 1,943 |
| 101 | Siracusa | 404,271 | 0.382 | 0.073 | 0.204 | 5,687 |
| 102 | Trapani | 436,624 | 0.382 | 0.053 | 0.239 | 4,516 |
| 103 | Barletta-Trani-Andria | 392,863 | 0.380 | 0.060 | 0.241 | 5,194 |
| 104 | Medio Campidano | 102,409 | 0.379 | 0.051 | 0.180 | 1,456 |
| 105 | Salerno | 1,109,705 | 0.379 | 0.065 | 0.214 | 13,349 |
| 106 | Messina | 653,737 | 0.378 | 0.062 | 0.227 | 7,771 |
| 107 | Palermo | 1,249,577 | 0.378 | 0.056 | 0.215 | 13,622 |
| 108 | Nuoro | 160,677 | 0.376 | 0.049 | 0.194 | 1,744 |
| 109 | Cosenza | 734,656 | 0.366 | 0.059 | 0.230 | 9,836 |
| 110 | Ragusa | 318,549 | 0.364 | 0.075 | 0.214 | 3,457 |

Table A15: Inter-generational mobility across provinces (part 3/3)

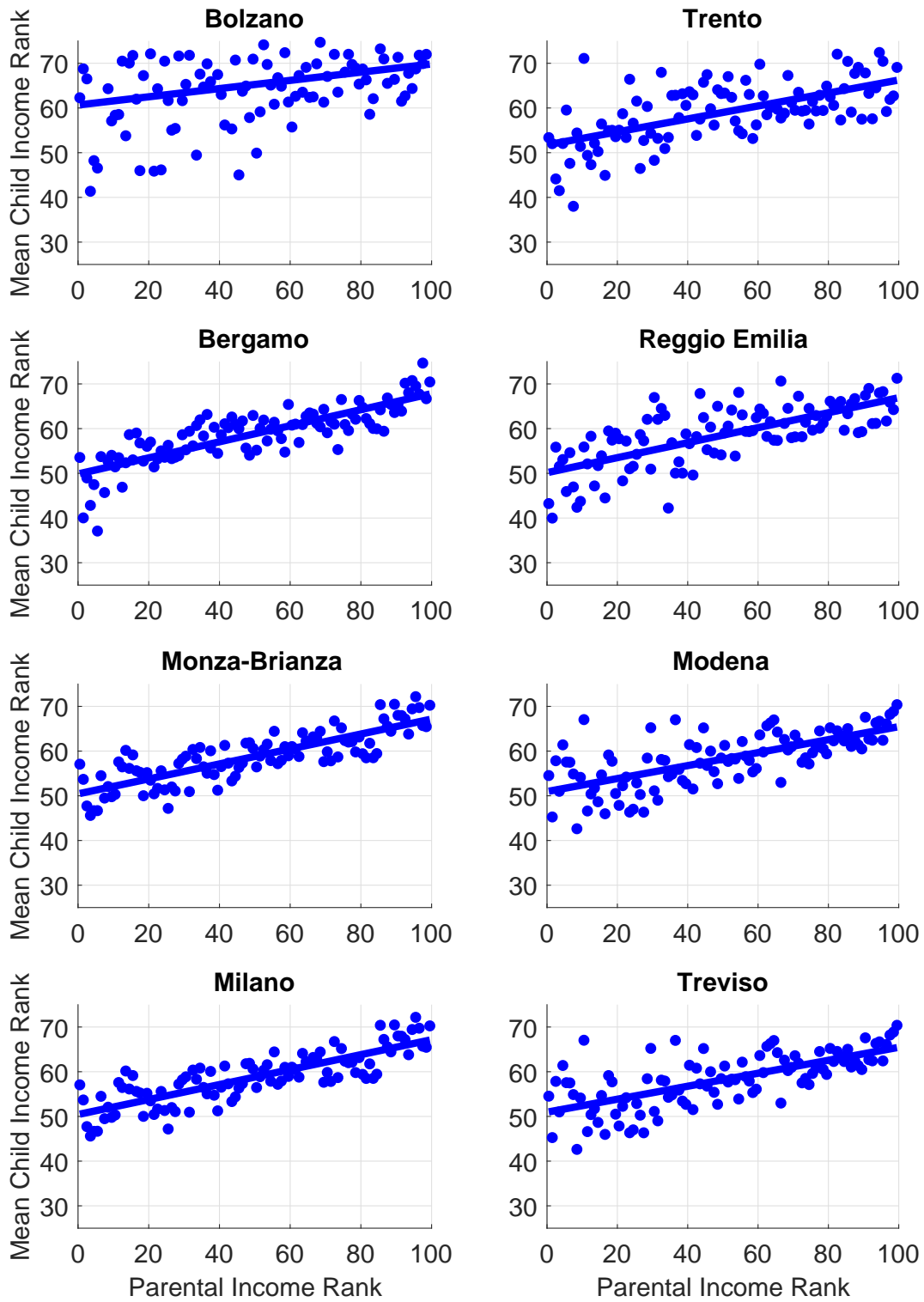


Figure A4: Child rank - parental rank relationship for children who grew up in top provinces for AUM.

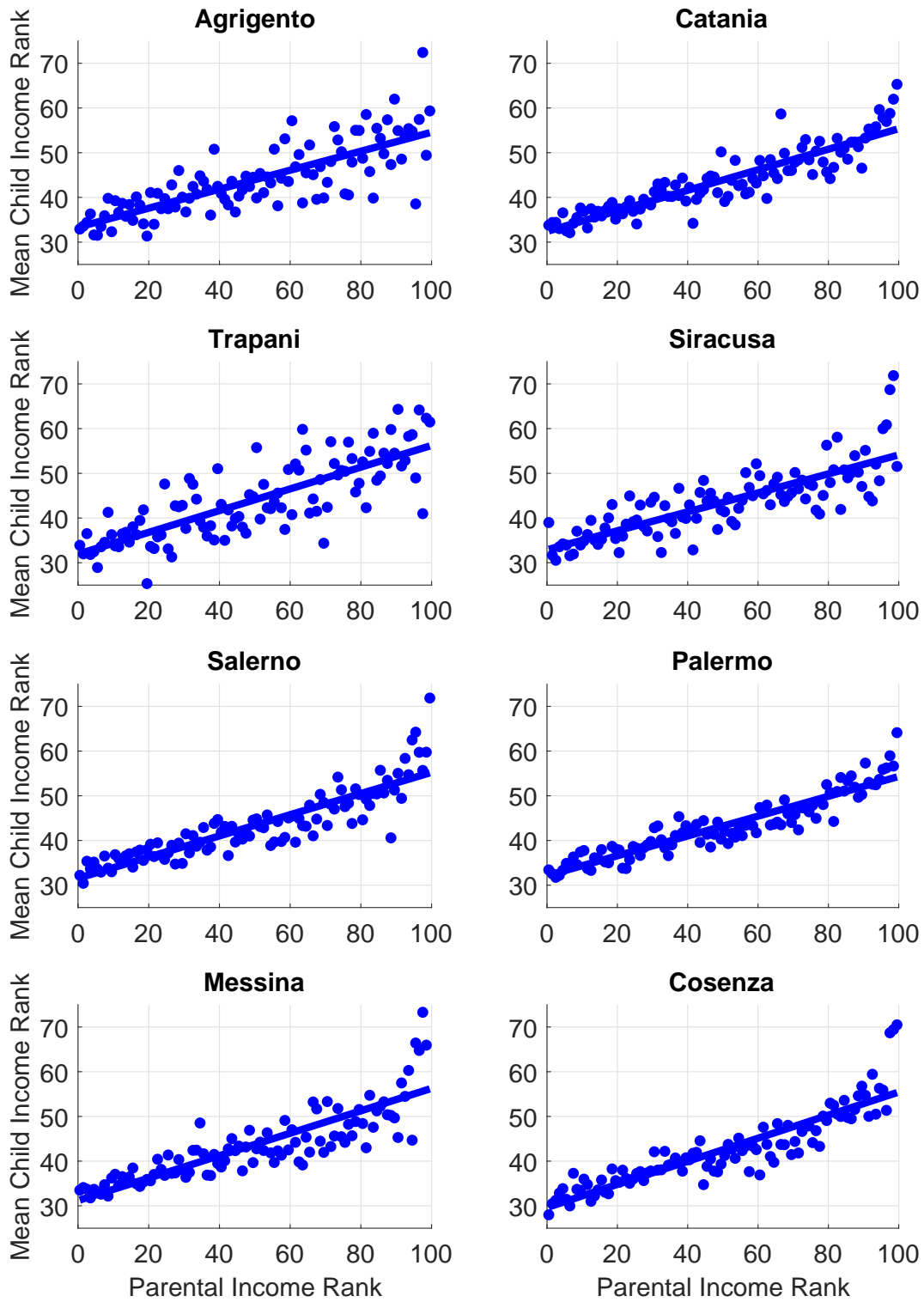


Figure A5: Child rank - parental rank relationship for children who grew up in bottom provinces for AUM.

| Variable | p90 | p50 | p10 |
|---|------------|------------|------------|
| <i>Productivity</i> | | | |
| Value added per resident (Euros) | 22,342 | 17,121 | 10,676 |
| Manufacturing share of value added | 29% | 18% | 7.5% |
| Public works started (1,000 Euros) | 267,223 | 67,500 | 29,925 |
| Public works completed (1,000 Euros) | 166,361 | 71,023 | 32,809 |
| <i>Labor market</i> | | | |
| Unemployment rate | 23% | 8.2% | 3.7% |
| Female unemployment rate | 36% | 12% | 5.8% |
| Male unemployment rate | 17% | 5.4% | 2.1% |
| Youth unemployment rate (age 15-24) | 61% | 25% | 9.9% |
| Long-term unemployment rate (12 months or more) | 9.2% | 2.1% | 0.96% |
| Female employment rate | 39% | 32% | 17% |
| Male employment rate | 63% | 57% | 48% |
| Youth employment rate (age 15-24) | 43% | 30% | 12% |
| Employment rate (high school diploma) | 82% | 76% | 60% |
| Employment rate (college degree or higher) | 87% | 81% | 73% |
| Labor force participation | 66% | 61% | 52% |
| Female labor force participation | 57% | 48% | 32% |
| Male labor force participation | 77% | 73% | 69% |
| Youth labor force participation (age 15-24) | 49% | 38% | 28% |
| <i>Educational attainment</i> | | | |
| Share of illiterates | 24% | 20% | 17% |
| School dropouts (per 100 residents) | 32 | 22 | 14 |
| <i>Social capital</i> | | | |
| Blood bags collected per resident (GSZ 2004) | 0.055 | 0.018 | 0 |
| Non-profit organizations per resident | 7.3 | 4.5 | 2.7 |
| Voter turnout, House of Representatives | 89% | 85% | 76% |
| Voter turnout, European Parliament | 81% | 75% | 63% |
| Recycling to total waste ratio | 31% | 14% | 1% |
| <i>Crime</i> | | | |
| Burglaries (per 100,000 residents) | 804 | 545 | 290 |
| Smuggling offenses (per 100,000 residents) | 65 | 1.6 | 0 |
| GTAs (per 100,000 residents) | 592 | 187 | 87 |
| Petty thefts (per 100,000 residents) | 463 | 93 | 17 |
| Thefts with tear (per 100,000 residents) | 80 | 21 | 4.5 |
| Murders (per 100,000 residents) | 2.4 | 0.92 | 0 |
| Distraints (per 1,000 residents aged 18 or more) | 12 | 6.1 | 3.4 |
| Exploitation-of-prostitution offenses (per 100,000 residents) | 9.7 | 2.9 | 0.44 |
| Protests of checks (per 1,000 residents) | 11 | 5.3 | 2.6 |
| Drug dealing offenses (per 100,000 residents) | 139 | 60 | 30 |
| Scam offenses (per 100,000 residents) | 138 | 66 | 33 |

Table A16: Statistics on province-level indicators used in the analyses of mobility and local characteristics (part 1/2)

| Variable | p90 | p50 | p10 |
|---|-----------|-----------|---------|
| <i>Life expectancy</i> | | | |
| Female life expectancy at birth (years) | 83 | 82 | 81 |
| Male life expectancy at birth (years) | 77 | 76 | 75 |
| Female life expectancy at 65 (years) | 21 | 20 | 19 |
| Male life expectancy at 65 (years) | 17 | 16 | 15 |
| Old-age index (ratio of residents above age 65 to below age 15) | 2.18 | 1.45 | 0.91 |
| Number of suicides (per 100,000 residents) | 10 | 6 | 1.5 |
| <i>Family instability</i> | | | |
| Divorce rate | 1 | 0.56 | 0.21 |
| Divorces (per 100 marriages) | 25 | 12 | 3.9 |
| Divorce rate of married women less than 35 years old | 57 | 28 | 9.1 |
| Divorce rate of married women aged 35-44 | 72 | 36 | 13 |
| Children in custody due to divorce (per 100 residents aged 0-17) | 0.31 | 0.17 | 0.058 |
| Separation rate | 1.7 | 1.2 | 0.46 |
| Separations (per 100 marriages) | 37 | 24 | 9.3 |
| Separation rate of married women less than 35 years old | 15 | 10 | 3.8 |
| Separation rate of married women aged 35-44 | 10 | 6.8 | 2.8 |
| Children in custody due to separation (per 100 residents aged 0-17) | 0.81 | 0.53 | 0.2 |
| <i>Openness</i> | | | |
| Trade (exports+imports, 1,000 Euros) | 9,063,175 | 1,865,859 | 128,255 |
| Net inter-province migration (per 1,000 residents) | 5.2 | 1.3 | -4.3 |
| Rate of inter-province mobility of resident population | 26 | 18 | 14 |
| Foreign-born residents (per 1,000 residents) | 57 | 35 | 9 |
| Inflow of graduates (per 100 graduates who left) | 221 | 111 | 47 |
| <i>Quality of schools</i> | | | |
| Teachers below 40 years old: pre-school | 26% | 18% | 7.4% |
| Teachers below 40 years old: primary school | 27% | 22% | 13% |
| Teachers below 40 years old: middle school | 13% | 7.8% | 4.7% |
| Teachers below 40 years old: high school | 12% | 7.6% | 5.3% |
| Teachers under temporary contracts: pre-school | 15% | 9.1% | 1.5% |
| Teachers under temporary contracts: primary school | 14% | 9.1% | 2.6% |
| Teachers under temporary contracts: middle school | 27% | 21% | 15% |
| Teachers under temporary contracts: high school | 28% | 22% | 15% |

Table A17: Statistics on province-level indicators used in the analyses of mobility and local characteristics (part 2/2)

| Variable | Source |
|---|-------------|
| Value added per resident | ISTAT |
| Crime: | |
| Burglaries (per 100,000 residents) | ISTAT |
| Smuggling offenses (per 100,000 residents) | ISTAT |
| GTAs (per 100,000 residents) | ISTAT |
| Petty thefts (per 100,000 residents) | ISTAT |
| Thefts with tear (per 100,000 residents) | ISTAT |
| Murders (per 100,000 residents) | ISTAT |
| Distraints (per 1,000 residents aged 18 or more) | ISTAT |
| Exploitation-of-prostitution offenses (per 100,000 residents) | ISTAT |
| Protests of checks (per 1,000 residents) | ISTAT |
| Drug dealing offenses (per 100,000 residents) | ISTAT |
| Scam offenses (per 100,000 residents) | ISTAT |
| Educational attainment: | |
| Students repeating school year | Tuttoscuola |
| School dropouts | Tuttoscuola |
| Education level achieved | Tuttoscuola |
| Family instability: | |
| Divorces (per 100 marriages) | ISTAT |
| Separations (per 100 marriages) | ISTAT |
| Children in custody due to divorce (per 100 residents aged 0-17) | ISTAT |
| Children in custody due to separation (per 100 residents aged 0-17) | ISTAT |
| Separation rate of married women less than 35 years old | ISTAT |
| Separation rate of married women aged 35-44 | ISTAT |
| Divorce rate of married women less than 35 years old | ISTAT |
| Divorce rate of married women aged 35-44 | ISTAT |
| Strong labor market: | |
| Youth unemployment rate (age 15-24) | ISTAT |
| Female unemployment rate | ISTAT |
| Male unemployment rate | ISTAT |
| Long-term unemployment rate (12 months or more) | ISTAT |
| Youth employment rate (age 15-24) | ISTAT |
| Female employment rate | ISTAT |
| Male employment rate | ISTAT |
| Youth labor force participation (age 15-24) | ISTAT |
| Female labor force participation | ISTAT |
| Male labor force participation | ISTAT |
| Employment rate (high school diploma) | ISTAT |
| Employment rate (college degree or higher) | ISTAT |

Table A18: Indicators used in the principal component analysis of Section 7 (part 1/5)

| Variable | Source |
|---|----------------|
| Life expectancy: | |
| Female life expectancy at birth | ISTAT |
| Male life expectancy at birth | ISTAT |
| Female life expectancy at 65 | ISTAT |
| Male life expectancy at 65 | ISTAT |
| Economic openness: | |
| Trade (exports+imports) | ISTAT |
| Rate of inter-province mobility of resident population | ISTAT |
| Net inter-province migration (per 1,000 residents) | ISTAT |
| Social capital: | |
| Blood bags collected per resident (average within province) | GSZ (2004) |
| Measure of self-efficacy (average within province) | GSZ (2016) |
| Non-profit organizations per resident (average within province) | GSZ (2016) |
| Voter turnout, House of Representatives | ISTAT |
| 90-10 ratio | Our estimation |
| School quality: | |
| School assets | Tuttoscuola |
| Local government spending in education | Tuttoscuola |
| Availability of teaching materials and technologies | Tuttoscuola |
| Quality of school buildings | Tuttoscuola |
| Students per class | Tuttoscuola |
| Students using canteen, school bus and other services | Tuttoscuola |
| Extended teaching-time availability | Tuttoscuola |
| Processing time of teachers' rankings | Tuttoscuola |
| Teaching hours per class | Tuttoscuola |
| Share of male and young teachers | Tuttoscuola |
| Teachers employed under temporary contracts | Tuttoscuola |
| Tenure and stability of teachers' position | Tuttoscuola |
| INVALSI scores for primary and middle schools | Tuttoscuola |
| INVALSI scores for high school | Tuttoscuola |
| End-of-year grades at middle and high school | Tuttoscuola |
| High-school graduation exam | Tuttoscuola |

Table A19: Indicators used in the principal component analysis of Section 7 (part 2/5)

| Variable | Source |
|---|-------------|
| Pre-school quality: | |
| Local government spending in pre-school education | Tuttoscuola |
| Students per class | Tuttoscuola |
| Students per class at private pre-school | Tuttoscuola |
| Share of students using canteen | Tuttoscuola |
| Share of students using canteen at private pre-school | Tuttoscuola |
| Share of students using school bus | Tuttoscuola |
| Share of students using school bus at private pre-school | Tuttoscuola |
| Share of students participating in earlier school start time | Tuttoscuola |
| Availability of saturday classes at private pre-school | Tuttoscuola |
| Share of students attending more than 40h/week at private pre-school | Tuttoscuola |
| Processing time of teachers' rankings (band I) | Tuttoscuola |
| Processing time of teachers' rankings (band III) | Tuttoscuola |
| Teaching hours per class | Tuttoscuola |
| Ratio of students to support teachers | Tuttoscuola |
| Share of male teachers | Tuttoscuola |
| Share of teachers below 40 years old | Tuttoscuola |
| Share of teachers employed under temporary contracts | Tuttoscuola |
| Share of teachers retiring/resigning | Tuttoscuola |
| Share of teachers transferred to other school/position | Tuttoscuola |
| Primary school quality: | |
| Local government spending in primary school education | Tuttoscuola |
| Students per class | Tuttoscuola |
| Share of classes with students of different age | Tuttoscuola |
| Share of primary schools with canteen | Tuttoscuola |
| Share of students using canteen | Tuttoscuola |
| Share of classes with extended teaching time | Tuttoscuola |
| Year-over-year change in share of classes with extended teaching time | Tuttoscuola |
| Year-over-year change in share of students using extended teaching time | Tuttoscuola |
| Processing time of teachers' rankings (band I) | Tuttoscuola |
| Processing time of teachers' rankings (band III) | Tuttoscuola |
| Teaching hours per class | Tuttoscuola |
| Ratio of students to support teachers | Tuttoscuola |
| Share of male teachers | Tuttoscuola |
| Share of teachers below 40 years old | Tuttoscuola |
| Share of teachers employed under temporary contracts | Tuttoscuola |
| Share of teachers retiring/resigning | Tuttoscuola |
| Share of teachers transferred to other school/position | Tuttoscuola |
| Share of students repeating school year | Tuttoscuola |

Table A20: Indicators used in the principal component analysis of Section 7 (part 3/5)

| Variable | Source |
|--|-------------|
| Middle school quality: | |
| Local government spending in middle school education | Tuttoscuola |
| Students per class | Tuttoscuola |
| Share of students using canteen | Tuttoscuola |
| Share of classes with extended teaching time | Tuttoscuola |
| Year-over-year change in share of classes with extended teaching time | Tuttoscuola |
| Year-over-year change in share of students using extended teaching time | Tuttoscuola |
| Processing time of teachers' rankings (band I) | Tuttoscuola |
| Processing time of teachers' rankings (band III) | Tuttoscuola |
| Teaching hours per class | Tuttoscuola |
| Ratio of students to support teachers | Tuttoscuola |
| Share of male teachers | Tuttoscuola |
| Share of teachers below 40 years old | Tuttoscuola |
| Share of teachers employed under temporary contracts | Tuttoscuola |
| Share of teachers retiring/resigning | Tuttoscuola |
| Share of teachers transferred to other school/position | Tuttoscuola |
| Share of students repeating school year | Tuttoscuola |
| High school quality: | |
| Value of books, teaching/office materials, and equipment available to high schools | Tuttoscuola |
| Students per class | Tuttoscuola |
| Share of students using canteen | Tuttoscuola |
| Share of classes with extended teaching time | Tuttoscuola |
| Year-over-year change in share of classes with extended teaching time | Tuttoscuola |
| Year-over-year change in share of students using extended teaching time | Tuttoscuola |
| Processing time of teachers' rankings (band I) | Tuttoscuola |
| Processing time of teachers' rankings (band III) | Tuttoscuola |
| Teaching hours per class | Tuttoscuola |
| Ratio of students to support teachers | Tuttoscuola |
| Share of male teachers | Tuttoscuola |
| Share of teachers below 40 years old | Tuttoscuola |
| Share of teachers employed under temporary contracts | Tuttoscuola |
| Share of teachers retiring/resigning | Tuttoscuola |
| Share of teachers transferred to other school/position | Tuttoscuola |
| Share of students repeating school year | Tuttoscuola |
| Share of students dropping out | Tuttoscuola |
| Share of students continuing to college | Tuttoscuola |

Table A21: Indicators used in the principal component analysis of Section 7 (part 4/5)

| Variable | Source |
|---|-------------|
| School structures and resources: | |
| School assets | Tuttoscuola |
| Local government spending in education | Tuttoscuola |
| Availability of teaching materials and technologies | Tuttoscuola |
| Quality of school buildings | Tuttoscuola |
| School organization and services: | |
| Students per class | Tuttoscuola |
| Students using canteen, school bus and other services | Tuttoscuola |
| Extended teaching-time availability | Tuttoscuola |
| Processing time of teachers' rankings | Tuttoscuola |
| Teachers' composition: | |
| Teaching hours per class | Tuttoscuola |
| Share of male and young teachers | Tuttoscuola |
| Teachers employed under temporary contracts | Tuttoscuola |
| Tenure and stability of teachers' position | Tuttoscuola |
| Students' grades and test scores: | |
| INVALSI scores for primary and middle schools | Tuttoscuola |
| INVALSI scores for high school | Tuttoscuola |
| End-of-year grades at middle and high school | Tuttoscuola |
| High-school graduation exam | Tuttoscuola |

Table A22: Indicators used in the principal component analysis of Section 7 (part 5/5)