

## **Money in a New-Keynesian model estimated with German data**

Jana Kremer  
Giovanni Lombardo  
Thomas Werner



Discussion paper  
Series 1: Studies of the Economic Research Centre  
No 15/2003

**Editorial Board:**

Heinz Herrmann  
Thilo Liebig  
Karl-Heinz Tödter

Deutsche Bundesbank, Wilhelm-Epstein-Strasse 14, 60431 Frankfurt am Main,  
P.O.B. 10 06 02, 60006 Frankfurt am Main

Tel +49 69 9566-1

Telex within Germany 41227, telex from abroad 414431, fax +49 69 5601071

Please address all orders in writing to: Deutsche Bundesbank,  
Press and Public Relations Division, at the above address or via fax No. +49 69 9566-3077

Reproduction permitted only if source is stated.

ISBN 3-935821-66-2

## **Abstract**

In this paper we estimate a simple New-Keynesian DSGE model with German data for the sample period 1970:q1 to 1998:q4. Contrary to a number of recent similar papers estimated with US and euro-area data, we find that real money balances contribute significantly to the determination of inflation and of the dynamics of output. We estimate our model using a maximum likelihood technique under a full set of structural shocks. We do not rule out indeterminate solutions a priori. Under multiple stable paths we close the model using the minimum-state-variable solution.

**Keywords:** Maximum-Likelihood, DSGE, MSV solution, New-Keynesian model, Germany.

**JEL:** E31, E32, E52.

## **Zusammenfassung**

In diesem Diskussionspapier schätzen wir ein einfaches Neukeynesianisches dynamisches Gleichgewichtsmodell für deutsche Daten und den Zeitraum zwischen dem ersten Quartal 1970 und dem letzten Quartal 1998. Im Unterschied zu einer Reihe von anderen Arbeiten für die Vereinigten Staaten von Amerika und dem Euroraum deuten unsere Ergebnisse darauf hin, dass die reale Geldmenge einen signifikanten Beitrag zur Erklärung der Inflation und der Dynamik des Bruttoinlandsprodukts leistet. Das Modell wird mit Hilfe eines Maximum-Likelihood-Verfahrens geschätzt und erlaubt die Identifikation von strukturellen Schocks. Parameterkonstellationen, die zu multiplen Gleichgewichten führen, werden nicht a-priori ausgeschlossen, sondern mit Hilfe des Minimum-State-Variable-Ansatzes behandelt.

# Contents

<b>1</b>	<b>Introduction</b>	<b>1</b>
<b>2</b>	<b>The model</b>	<b>3</b>
<b>3</b>	<b>Data</b>	<b>9</b>
<b>4</b>	<b>Estimation</b>	<b>10</b>
<b>5</b>	<b>Results</b>	<b>12</b>
5.1	Impulse responses . . . . .	15
5.2	Variance decomposition . . . . .	18
5.3	Empirical performance of the model . . . . .	20
<b>6</b>	<b>Conclusions</b>	<b>21</b>
<b>A</b>	<b>ML estimation of a Linear Rational Expectation model using the MSV solution</b>	<b>23</b>

## List of Figures

1	The log-likelihood function and the MSV solution. . . . .	26
2	Response of the economy to a policy shock. . . . .	37
3	Response of the economy to a preference shock. . . . .	37
4	Response of the economy to a productivity shock. . . . .	38
5	Response of the economy to a money demand shock. . . . .	38
6	Response of the economy to a policy shock: $\omega = 0.65, \gamma_2 = 1$ . . . . .	39
7	Response of the economy to a preference shock: $\omega = 0.65, \gamma_2 = 1$ . . . . .	39
8	Response of the economy to a productivity shock: $\omega = 0.65, \gamma_2 = 1$ . . . . .	40
9	Response of the economy to a money demand shock: $\omega = 0.65, \gamma_2 = 1$ . . . . .	40
10	Detrended per capita output and real balances. . . . .	41
11	Three-months nominal interest rate and quarterly inflation. . . . .	41
12	Actual and forecast values: a five year forecast horizon. . . . .	43

## List of Tables

1	Calibrated parameters . . . . .	29
2	ML estimates and t-values: Lagged vs. contemporaneous policy feed-backs. . . . .	29
3	ML estimates and t-values . . . . .	30
4	ML estimates and t-values . . . . .	31
5	ML estimates and t-values: Whole sample with i.i.d. measurement errors. . . . .	32
6	Variance decomposition: Whole sample. . . . .	33
7	Variance decomposition: 1970:q1-1989:q4. . . . .	34
8	Variance decomposition: the 1970s. . . . .	35
9	Variance decomposition: the 1980s. . . . .	36
10	Fit of the model in comparison to a VAR. . . . .	42
11	Out-of-sample forecast of the model in comparison to a VAR. . . . .	42

# Money in a New-Keynesian model estimated with German data\*

## 1 Introduction

In this paper we study the role of real balances in a stochastic general equilibrium model applied to German data. A number of recent papers have come to the conclusion that real money balances play no statistically significant role in estimated New-Keynesian models. This is, for example, the evidence provided by Peter Ireland (2002) for the USA and by Andrés et al. (2001) for the euro area. The main motivation of our paper is to check the robustness of those findings to the German experience as interpreted by the same simple New-Keynesian model used by those authors.<sup>2</sup> Our results suggest that real balances did indeed play an active role in Germany in the period 1970:q1-1998:q4.

Our model closely follows the work of Ireland (2002). In particular, we resort to the same simple New-Keynesian model, in which non-separable preferences are allowed between consumption and real balances. Non-separable preferences imply richer dynamics for output and inflation. Since the marginal utility of consumption is affected by the amount of real balances held by consumers, the intertemporal allocation of consumption is linked to the intertemporal allocation of real balances. This, in turn, affects the marginal propensity to supply labour and, hence, the real marginal cost of production. Under price rigidities (à la Calvo (1983) and Rotemberg (1982)) the real balances enter the Phillips curve through the marginal cost. Under non-separability of preferences it is therefore impossible to solve the model without referring to the evolution of the real stock of money.

Once we allow for an active role of real balances, it is conceivable that the central bank – in our case the Bundesbank – will adjust its instrument (the nominal short run interest rate) in response to the developments in the market for money, inter alia. Therefore, our model displays an interest rate rule that links the quarterly interest rate to the rate of inflation, the output gap and the growth rate of money

---

\*This paper represents the authors' personal opinions and does not necessarily reflect the views of the Deutsche Bundesbank.

<sup>2</sup>Andrés et al. (2001) also consider an extended version of the basic model in which they allow for habit formation. Nevertheless, the 'irrelevance' of real balances emerges already in the simple benchmark specification.

balances. Our estimation shows that the Bundesbank responded significantly to all these variables.

By computing the variance decomposition for the endogenous variables of our model (output, inflation, the interest rate and real money balances) with respect to the exogenous shocks that the model incorporates (a technology shock, unexpected deviations from the policy rule called ‘policy shock’, a shock to the elasticity of substitution between consumption and real balances called ‘money demand shock’ and a shock to the intertemporal elasticity of substitution called ‘preference shock’), we are able to indicate the most likely sources of volatility of the German economy from the 1970s to the introduction of the euro. The relative weight of the four shocks in the determination of the volatility of our four variables seems to have changed over time, at least to some extent. Nevertheless, in comparison to the 1990s, the 1970s and the 1980s seem to be rather more homogeneous. Overall, it is hard to single out one specific shock as the main source of the total volatility of the economy.

The estimation of dynamic stochastic general equilibrium models (DSGE) presents some serious difficulties. First of all, these models, even in their simplest representation, involve a large number of parameters relative to the number of variables. In order to increase the accuracy of the estimation it is therefore customary to calibrate some parameters at values taken from other empirical works. In this paper we follow this route, too, and we tend to do this in ways comparable with the work of Ireland (2002).

A second major problem is that linear rational equilibrium models – of which the DSGE models are an example – can produce multiple stationary solutions under some combinations of parameter values. This is in particular the case when the New-Keynesian models are ‘closed’ using a Taylor-type rule (Taylor, 1993). Under this assumption, if the central bank fails to move the real interest rate in an anti-inflationary manner, a saddle-path solution cannot be produced and an infinite number of alternative stationary solutions can be rationalized, including non-fundamental ones (see Woodford (2003)). Clarida et al. (1998) have studied interest rate rules for a number of countries. Using a different estimation technique these authors have claimed that, in some countries and in some historical periods (e.g. pre-Volker USA) the ‘Taylor principle’ did not apply, so that the underlying economy could have displayed indeterminacy and fluctuations driven by ‘non-fundamental’ forces. Most of the DSGE literature faced with this problem has simply circumvented it by constraining the estimates to lie within the range that yields saddle-path



stable solutions. In this paper we adopt a different solution technique. Following the work by McCallum on the minimum state variable solution (MSV) we allow for only one particular type of solution under multiple stable paths (McCallum, 1999, 2002, 2003). Consistently with the MSV solution technique we always pick a state-space representation with a state-dimension invariant to the number of stable roots.<sup>3</sup> While this solution is of ‘point-size’ in the set of admissible solutions under indeterminacy, it permits the construction of a smoother likelihood function, besides being seen by some authors as economically sensible (see McCallum (1999, 2002, 2003) and Evans and Honkapohja (2001)).

The rest of the paper is organized as follows. Section (2) describes the model and section (3) the data used in the estimation. Section (4) describes and discusses the estimation technique. Section (5) presents and discusses the results. Section (6) concludes.

## 2 The model

Our model is a variant of a simple New-Keynesian closed economy model (e.g. Woodford (2003) and Clarida et al. (1999)). That is to say, it is characterized by a continuum of identical forward-looking households and a continuum of monopolistically competitive firms that adjust their prices infrequently. We depart from the ‘purist’ New-Keynesian model in that we allow for non-separable preferences in consumption and real balances and in that we allow for a positive fraction of ‘backward-looking’ price setters (as in Andrés et al. (2001)). The policy-maker is represented by an interest rate rule in the spirit of Taylor (1993). The details of the model are presented in the following subsections.

### Households

An infinite number of identical households (of unit-mass) have preferences over a bundle of differentiated goods  $C_t$ , over labour  $l_t$  and over real balances  $m_t = M_t/P_t$ . Preferences over consumption goods and real balances are assumed to be non-additively separable. The household period-utility function takes the form

$$U(C_t, m_t, l_t) = a_t [V(C_t, g(m_t, e_t)) - L(l_t)]$$

---

<sup>3</sup>Cho and Moreno (2002) use a similar, although not identical, concept to select the solution under multiple stable roots.

where  $e_t$  is a money demand shock and where  $g(m_t, e_t) = \frac{m_t}{e_t}$ .

The household maximizes the expected discounted (at rate  $\beta$ ) infinite stream of its utility subject to the following budget constraint

$$s.t. B_s + M_s + P_s C_s = R_{s-1} B_{s-1} + M_{s-1} + w_s l_s + \Pi_s + T_s, s = t, t + 1 \dots$$

$B_s$  is nominal bonds (in zero aggregate net supply),  $M_s$  is end-of-period money balances,  $P_s$  is the price of the consumption basket  $C_s$ ,  $w_s$  is the nominal wage,  $\Pi_s$  is the share of monopoly profits accruing to the household from the ownership of the firms,  $T_s$  are ‘government’ transfers and  $R_s$  is the gross nominal market return on assets.

The consumption basket  $C$  is the CES aggregator

$$C_s = \left[ \int_0^1 c_{s,i}^{\frac{\theta-1}{\theta}} di \right]^{\frac{\theta}{\theta-1}} \quad (1)$$

where  $\theta$  is the elasticity of the demand with respect to the relative price.

The price of this basket is

$$P_s = \left[ \int_0^1 p_{s,i}^{1-\theta} di \right]^{\frac{1}{1-\theta}} \quad (2)$$

To this aggregator corresponds an optimal homothetic demand for each item  $i$ , i.e.

$$c_{s,i} = \left( \frac{p_{s,i}}{P_s} \right)^{-\theta} C_s \quad (3)$$

The solution of the household’s intertemporal problem yields the first-order conditions<sup>4</sup>

$$\begin{aligned} a_{t+1} E_t \left( V_{C_{t+1}} R_t \frac{P_t}{P_{t+1}} \right) &= a_t V_{C_t} \\ \frac{V_{m_t}}{V_{C_t}} &= (1 - R_t^{-1}) \\ \frac{L_{t+1}}{V_{C_t}} &= \frac{W_t}{P_t} \end{aligned}$$

In order to express the first-order conditions in log-linear form we note that

$$\begin{aligned} \hat{V}_{m,t} &\equiv \left( \hat{V}_2 + \hat{g}_m \right) = \frac{V_{2,2} m_{ss}}{V_m e_{ss}} \hat{m}_t + \left( -\frac{V_{2,2} m_{ss}}{V_m e_{ss}} - 1 \right) \hat{e}_t + \frac{V_{2,1}}{V_m} C_{ss} \hat{C}_t \\ \hat{V}_{c,t} &\equiv \hat{V}_1 = \frac{V_{1,2} m_{ss}}{V_1 e_{ss}} \hat{m}_t - \frac{V_{1,2} m_{ss}}{V_1 e_{ss}} \hat{e}_t + \frac{V_{1,1}}{V_1} C_{ss} \hat{C}_t \end{aligned}$$

---

<sup>4</sup>Subscripts of functions denote derivatives with respect to the stated variable or with respect to the function’s argument in the stated position.

where the subscript  $ss$  denotes steady-state values and  $\hat{x}_t \equiv \log(x_t) - \log(x_{ss})$ .

We also introduce the following notation, which makes use of the normalization  $e_{ss} = 1$ :

$$\begin{aligned} \frac{V_{1,1}}{V_1} C_{ss} &= -\sigma; & \frac{V_{2,2}}{V_m} m_{ss} &= -\phi \\ \frac{V_{1,2}}{V_1} m_{ss} &= \omega; & \frac{V_{1,2}}{V_m} C_{ss} &= \varphi = \omega \frac{R_{ss}}{R_{ss}-1} \left( \frac{C_{ss}}{m_{ss}} \right) \end{aligned}$$

$$\hat{V}_{m,t} = -\phi \hat{m}_t + (\phi - 1) \hat{e}_t + \varphi \hat{C}_t \quad (4)$$

$$\hat{V}_{c,t} = \omega (\hat{m}_t - \hat{e}_t) - \sigma \hat{C}_t \quad (5)$$

We can then write (in log-deviations) the consumption Euler equation as

$$\sigma E_t \hat{C}_{t+1} = \left( \hat{R}_t - E_t \hat{\pi}_{t+1} \right) + \sigma \hat{C}_t + \omega E_t (\hat{m}_{t+1} - \hat{m}_t) + \omega (1 - \rho_e) \hat{e}_t + (\rho_a - 1) \hat{a}_t \quad (6)$$

and the money demand equation as

$$\hat{m}_t = \gamma_1 \hat{C}_t - \gamma_2 \hat{R}_t + \gamma_3 \hat{e}_t \quad (7)$$

where  $\hat{R}_t$  is the log of the gross nominal interest rate (or, to a first-order approximation, the nominal interest rate),  $\hat{\pi}_{t+1} \equiv \hat{P}_{t+1} - \hat{P}_t$  is the inflation rate and

$$\begin{aligned} \gamma_2 &= \frac{1}{(R_{ss} - 1)(\phi + \omega)} \\ \gamma_1 &= \left( (R_{ss} - 1)\sigma + \omega R_{ss} \frac{C_{ss}}{m_{ss}} \right) \gamma_2 \\ \gamma_3 &= 1 - (R_{ss} - 1)\gamma_2 \end{aligned}$$

## Firms

An infinite number of firms (of unit-mass) sell their imperfectly substitutable goods in monopolistically competitive markets. The technology used by the firms to produce their goods is

$$y_{i,t} = z_t l_{i,t} = z_t l_t = y_t$$

where  $z_t$  is a stochastic productivity shock.

We assume that firms adjust prices only at random intervals, in accordance with the mechanism described in Calvo (1983). More precisely, in any period of time there is a probability  $\xi$  that a given firm does not adjust the price and hence it has to meet the demand for its goods at the price that was in place in the previous period.

Galí and Gertler (1999) and Galí et al. (2001) have shown that the dynamics of inflation (in the USA and euro-area, respectively) can be better captured by a Phillips curve that contains both forward-looking and backward-looking inflation terms: the so called ‘hybrid’ New-Keynesian Phillips curve. Like Andrés et al. (2001), we therefore estimate a hybrid New-Keynesian model. We assume that among the firms that adjust their price, a fraction  $(1 - \gamma_f)$  sets the price in a backward-looking fashion, namely

$$P_t^b = P_{t-1}\pi_{t-1}$$

That is, the backward-looking firms merely update their latest price by the inflation rate that prevailed during the previous quarter. The other  $\gamma_f$  firms choose the optimal price by solving the following problem

$$\max_{p_{i,t}} E_t \sum_{s=t}^{\infty} (\xi\beta)^{s-t} \left[ \frac{p_{i,t}}{P_s} y_{i,s} - \frac{TC_s}{P_s} \right]$$

where  $TC$  denotes the total costs of production.<sup>5</sup>

The solution to this problem yields

$$p_{i,t} = \frac{E_t \sum_{s=t}^{\infty} (\xi\beta)^{s-t} \eta mc_s y_{i,s}}{E_t \sum_{s=t}^{\infty} (\xi\beta)^{s-t} \frac{y_{i,s}}{P_s}} \quad (8)$$

where  $mc$  is the real marginal cost, and  $\eta = \frac{\theta}{\theta-1}$  is the mark-up. The market clearing condition is given by  $y_{t,i} = c_{t,i}$ .

The first-order approximation of the optimal price equation gives

$$\hat{p}_{i,t} - \hat{P}_t = \xi\beta E_t \hat{\pi}_{t+1} + (1 - \beta\xi) \hat{m}c_t + E_t \xi\beta (\hat{p}_{i,t+1} - \hat{P}_{t+1}) \quad (9)$$

where (using the household’s first-order condition and the labour-market clearing condition)

$$\hat{m}c_t = \left\{ (\zeta - 1 + \sigma) \hat{C}_t - \zeta \hat{z}_t - \omega (\hat{m}_t - \hat{e}_t) \right\} \quad (10)$$

and where  $(\zeta - 1)^{-1}$  is the Frish elasticity of labour supply. To a first order of approximation, the price index  $P_t$  can be written as

$$\hat{P}_t = \left[ (1 - \xi)\gamma_f \hat{p}_{i,t} + (1 - \xi)(1 - \gamma_f)(\hat{P}_{t-1} + \hat{\pi}) + \xi \hat{P}_{t-1} \right] \quad (11)$$

---

<sup>5</sup>Profit-maximizing firms will use the market discount factor to evaluate the current value of future profits. Nevertheless, to a first order of approximation the optimal price will depend on the steady-state discount rate and not on the market discount rate. For the sake of simplicity, in computing the optimal price we directly use the steady-state discount rate.

By subtracting  $\hat{P}_{t-1}$  on both sides of the last expression we obtain

$$\hat{p}_{i,t} - \hat{P}_t = \phi_1 \hat{\pi}_t - \phi_2 \hat{\pi}_{t-1} \quad (12)$$

where

$$\phi_1 = \frac{1 - (1 - \xi)\gamma_f}{(1 - \xi)\gamma_f} \quad (13)$$

$$\phi_2 = \frac{1 - \gamma_f}{\gamma_f} \quad (14)$$

Finally, replacing equation (12) into (9) yields the hybrid New-Keynesian Phillips curve

$$\hat{\pi}_t = \frac{1}{\phi_1 + \xi\beta\phi_2} [(1 - \xi\beta)\hat{m}c_t + E_t\xi\beta(1 + \phi_1)\hat{\pi}_{t+1} + \phi_2\hat{\pi}_{t-1}] \quad (15)$$

## Monetary policy

Following Ireland (2002), we assume that the monetary policy followed by the Bundesbank can be represented by a modified Taylor rule (Taylor, 1993). The short-run interest rate, in deviation from the steady-state value, is adjusted in response to inflation, the output deviation from trend and the growth rate of real balances.<sup>6</sup> We also allow for a white-noise policy shock. This can be best interpreted as quarterly deviations of the nominal interest rate from the policy rule. Furthermore, we allow for an auto-recursive component in the rule. This is typically found to improve the statistical fit of estimated policy rules (e.g. Clarida et al. (1998)). Woodford (2003) among others, argues that an inertial policy rule can result from the objective of the central bank. We do not explore the micro-foundations of the policy rule.

The results we report here are estimated with the interest rate rule

$$\hat{R}_t = \rho_R \hat{R}_{t-1} + \lambda_\pi \hat{\pi}_{t-1} + \lambda_y \hat{y}_{t-1} + \lambda_\mu \hat{\mu}_{t-1} + \hat{\nu}_t \quad (16)$$

where  $\hat{\mu}_t = \hat{m}_t - \hat{m}_{t-1}$ . We also estimated a version of the model where both lagged and contemporaneous variables appeared in the policy rule. The estimate of  $\omega$  is only marginally affected by this amendment and is still significantly different from zero. The reaction coefficients on the lagged variables remain positive and significant.

---

<sup>6</sup>Obviously, the rule can be expressed in terms of the growth rate of nominal balances. This simply requires a rearrangement of the variables in the rule. In this case the coefficient  $\lambda_\pi - \lambda_\mu$  can be interpreted as the response of the interest rate to inflation when the former responds to the nominal growth rate of money.

The reaction to output is not significantly different from zero. Surprisingly, the response of the policy instrument to the contemporaneous inflation rate and to the contemporaneous growth rate real balances is significantly negative. On the basis of a likelihood-ratio test we should reject the null that the central bank reacted only to lagged variables (see Table (2)). Interestingly, the point estimates are consistent with a policy rule that would react negatively to an acceleration of the stock of money as well as to the quarterly growth rate of inflation. We find this result difficult to interpret economically. In particular the impulse responses produced by the larger model are not closer to our economic intuition than those produced by the model with a backward-looking policy. For these reasons, and given that the other parameters are not affected by the specifications of the policy rule, in the rest of the paper we discuss the results relative to the backward policy rule only.<sup>7</sup>

## Exogenous disturbances

We assume that the exogenous stochastic forcing processes (in log deviation) can be described as follows

$$\begin{aligned}\hat{a}_t &= \rho_a \hat{a}_{t-1} + \epsilon_{a,t} \\ \hat{z}_t &= \rho_z \hat{z}_{t-1} + \epsilon_{z,t} \\ \hat{\nu}_t &= \epsilon_{R,t} \\ \hat{e}_t &= \rho_e \hat{e}_{t-1} + \epsilon_{e,t}\end{aligned}$$

where  $\epsilon_{i,t} \sim N(0, \sigma_i^2)$  and  $E(\epsilon_{i,t+u}, \epsilon_{j,t}) = 0$  for  $i \neq j$  and for all  $u$ .

## Reduced form of the model

The Euler equation (6), the money demand equation (7), the Phillips curve equation (15), the interest rate rule (16) and the four exogenous stochastic processes allow us to determine equilibrium values for output, inflation, the interest rate and the growth rate of the money stock. The reduced-form model in these four variables is estimated using the data series described in the following section.

---

<sup>7</sup>Identical problems arise if we restrict the sample to 1970:q1-1989:q4.

### 3 Data

We use quarterly (seasonally adjusted) data for Germany from 1970:q1 to 1998:q4. In particular we use series for real GDP per capita, the change in the CPI index as the measure of inflation,<sup>8</sup> the three-months money market interest rate and the money aggregate M3 per capita. All series are taken from the Bundesbank's data set.<sup>9</sup> Since in the first years after the re-unification the East-German data for output and the CPI index show an abnormal behaviour, we use West-German data through 1992:q4. The post 1992 series for output, population and CPI index are constructed using the TRIAN technique. This amounts to deriving the 1993:q1 observation from the (West-Germany) 1992:q4 observation updated by the growth rate of the corresponding series for the re-unified Germany from 1992:q4 to 1993:q1. From there onwards the series is constructed recursively using the growth rate of the series relative to the re-unified Germany. For M3 we use a TRIAN-series constructed by the Bundesbank. The series for per capita output and per capita real money balances are detrended using the HP filter.

Figures (10) and (11) show the time series used in the estimation. Detrended output seems to capture the main business cycle episodes of the 1970s, 1980s and 1990s. As for inflation and the interest rate, the inflationary episodes of the early 1970s and early 1980s are noticeable.

It is also worth stressing that the Bundesbank officially announced a monetary targeting strategy only in December 1974 (Deutsche Bundesbank, 1995), although it also paid particular attention to the developments in the market for money prior to that. In the period between the starting date of our series and March 1973, the policy of the Bundesbank was constrained by the Bretton Woods agreements. Nevertheless, excluding the first three years from our data set did not alter our

---

<sup>8</sup>The model does not distinguish between consumer prices and the GDP deflator. Moreover it is not clear which of the two indicators of inflation dominated the Bundesbank's monetary policy decisions. Most likely, both indicators were taken into consideration. In earlier experiments we re-estimated the model using the GDP deflator instead of the CPI index. This left the results largely unchanged.

<sup>9</sup>The Bundesbank mnemonics are US01FA (West-Germany CPI), USFA01 (whole Germany CPI post 1991), DB0728 (West-Germany real seasonally and calendar-adjusted GDP), JB9728 (whole Germany real seasonally and calendar-adjusted GDP post 1991), DQ3145 (West-Germany population), DQ9145 (whole German population post 1991), AS4303 (M3 TRIAN-series), SU0107 (tree-month money market interest rate). Seasonal adjustment is done by means of the Bundesbank procedure (based on X12).

findings.

## 4 Estimation

Following Ireland (2002), we use a maximum-likelihood estimation of our model. The model has a ‘full set’ of structural shocks so that it can be taken directly to the data without resorting to measurement errors (e.g. Ireland (2003a), McGrattan et al. (1997)). The model, despite its simplicity, has a large number of parameters. Not all these parameters can be precisely estimated. Therefore we set some of them at ‘reasonable’ values. Among these calibrated parameters is the Calvo-probability of price adjustment  $(1 - \xi)$ . When we tried to estimate this parameter, the estimation algorithm produces values close to the lower bound ( $\xi \rightarrow 1$ ), which is clearly not admissible.<sup>10</sup> Nevertheless, we believe that prices in Germany, in our sample period, were probably less flexible than in the USA, as some evidence in the literature seems to suggest (e.g. Galí et al. (2001), Hoffmann et al. (2003)). Hence we set  $\xi = 0.80$ , which amounts to the assumption that forward-looking firms typically adjust their prices after five quarters. It is similarly difficult to pin down a reasonable value for the Frish elasticity of labour supply ( $(\zeta - 1)^{-1}$ ). We follow Ireland (2002) and set  $\zeta = 1$ . Earlier experiments showed us that the estimated degree of risk aversion in consumption ( $\sigma$ ) is not significantly different from one. Since there are already a high number of estimated parameters, we set  $\sigma = 1$  for the results reported here.<sup>11</sup> The discount rate  $\beta$  is set equal to the ratio of the sample mean of inflation and the gross nominal interest rate. Table (1) shows the calibrated parameters.

As in Ireland (2002) and Andrés et al. (2001), the money demand equation requires an estimate for  $\gamma_2$  only, since the times series means together with  $\sigma$ ,  $\omega$  and  $\gamma_2$  give sufficient information to recover the values of the other money demand parameters. The estimated parameters are summarized in the following vector

$$\Theta = [\rho_R, \lambda_y, \lambda_\pi, \lambda_\mu, \rho_a, \rho_z, \rho_e, \sigma_a, \sigma_z, \sigma_e, \sigma_R, \omega, \gamma_2, \gamma_f]$$

---

<sup>10</sup>Christiano et al. (2001) argue that the precision of the estimates of the degree of nominal rigidity is very sensitive to the assumptions regarding the ‘real side’ of the economy. It is therefore not surprising that the Calvo probability cannot be easily estimated.

<sup>11</sup>It could also be argued that, for an instantaneous utility function that is additively separable in consumption and leisure,  $\sigma$  has to be set to one to allow for a balanced growth path in the model.



## The state-space form of the model and its solution

The model can be written as

$$AE_t w_{t+1} = Bw_t + Cu_t$$

where

$$w_t \equiv \begin{bmatrix} \hat{y}_t & \hat{y}_{t-1} & \hat{\pi}_t & \hat{\pi}_{t-1} & \hat{R}_{t-1} & \hat{m}_t & \hat{m}_{t-1} & \hat{\mu}_{t-1} \end{bmatrix}'$$

$$u_t \equiv \begin{bmatrix} \hat{a}_t & \hat{z}_t & \hat{\nu}_t & \hat{e}_t \end{bmatrix}'$$

and  $A$ ,  $B$  and  $C$  are matrices of coefficients. The structure of these matrices can easily be induced from the structural equations of the model presented in the previous section.

The model is solved using the method discussed in Klein (2000). In this way the model is cast in a state-space form and – based on this form – the Kalman filter and, hence, the loglikelihood function is constructed. Numerical algorithms are then used to search for the vector of parameters  $\Theta$  that maximizes the likelihood function. The likelihood function in terms of  $\Theta$  usually has several local maxima, therefore convergence to the global maximum is a daunting task for any algorithm. We use a combination of three algorithms for this purpose: namely two ‘gradient-based’ methods<sup>12</sup> and the ‘Simulated Annealing’ algorithm (see Goffe et al. (1994)).

Linear rational expectation (LRE) models are ‘vulnerable’ to indeterminacy, or multiple stable solutions. This is, for example, the case when the ‘Taylor principle’ does not hold (Woodford, 2003). When the response of the central bank to changes in inflation is not sufficiently aggressive, the real interest rate does not move in the correct direction, so that in principle any ‘prophecy’ of inflation is self-fulfilling. In this event there are potentially infinite ways in which the model can be closed.<sup>13</sup> This fact constitutes a major problem in estimating LRE general equilibrium models. Most of the research in this area imposes a rather strict assumption on the model by ruling out indeterminate solutions. The likelihood function is then maximized under the constraint that the parameter vector  $\Theta$  does not yield multiple

---

<sup>12</sup>One is the built-in `fminunc.m` code in MATLAB, while the other is a more sophisticated (and robust) algorithm (`SolvOpt`) written by Kuntsevich and Kappel (1997).

<sup>13</sup>Although in principle any assumption concerning the response of the variables to shocks will satisfy the first-order conditions of the model as well as the transversality conditions, not all solutions are consistent with the assumption of rational expectations. Evans and Honkapoja (2001) discuss the conditions under which solutions to LRE models are ‘learnable’ and ‘E-stable’.

stable solutions: for example, by imposing the constraint that the policy parameters obey the Taylor principle. One problem that might arise from this assumption is that estimated standard deviations and confidence intervals might be invalid, since they might embrace combinations of parameter values that yield indeterminacy and that, therefore, were deemed improbable to start with. Furthermore, the numeric maximization of the likelihood function might be corrupted by the impossibility to ‘wander’ through the indeterminacy region even when the maximum is beyond that region: that is, it is more likely to end up in a local maximum. Finally, when the maximum is too close to the indeterminacy region, it can be impossible to compute the Hessian and hence the standard errors for the estimates.

In this paper we follow a different strategy. We assume that the elements of the state vector, in the solution of the LRE model, as well as the size of the transition matrix of the state-space form of the model are invariant to the number of stable roots of the system. This amounts to the MSV solution advocated by McCallum in a number of papers (see McCallum 1999, 2002, 2003).<sup>14</sup> In order to make the solution unique, McCallum uses a more restrictive definition of the MSV solution than that used here. We use the broader definition of an MSV solution given in Evans and Honkapohja (2001) and which allows for multiplicity. Furthermore, we take a pragmatic approach to the issue concerning the relevance of the MSV solution. By allowing for an MSV solution in the estimation of our model, we are less restrictive – although to a limited extent – than those that restrict the domain of the likelihood function to parameters that lie within the determinacy region. We let the likelihood function decide whether the MSV solution under multiplicity is better than any other combination of parameters that yields saddle-path stability. The Appendix describes more in detail how the MSV solution can be combined with the ML estimation of a LRE model.

## 5 Results

Tables (3) and (4) report the ML estimates (and t-values) of the parameters of our model for the period 1970:q1-1998:q4. We also consider the possibility that the

---

<sup>14</sup>An alternative and promising strategy would be to test for indeterminacy in the first place. Lubik and Schorfheide (2002) discuss how this can be accomplished. Under indeterminacy it would then be possible, in principle, to test the MSV solution versus alternatives that imply a larger state vector. We leave this interesting issue for future research.

1970s the 1980s as well as the post-reunification period can be better described by different sets of parameters. This possibility is, for example, suggested by a casual look at the time series for output and money balances. In the 1970s the two series seem to have moved almost in step. A quite different picture emerges from the 1980s and 1990s. Therefore, Table (4) shows the estimates (t-statistics) relative to the pre-reunification period as well as relative to the 1970s and 1980s. The post reunification period is clearly more problematic for the quality of the data as well as for a clear transition of Germany (mainly East-Germany) to a new economic environment. Table (3) shows the result based on the whole sample (1970:q1-1998:q4) alongside the results relative to the short sub-sample 1993:q1-1998:q4. Qualitatively and quantitatively the results are very similar whether we include the 90s or not. Indeed, unreported results show that similar estimates can be obtained by using data on output and inflation relative West-Germany only.<sup>15</sup>

Our estimates seem not to be affected by the inclusion of i.i.d. measurement errors for the four time series at hand. Table (5) reports the point estimates and t-values of our model when four measurement errors are estimated simultaneously with the rest of the parameters. A notable difference between the point estimates obtained with measurement errors and those obtained in the restricted model is that technology is much more persistent in the former case than in the latter. While two of the four measurement errors are estimated to be significantly different from zero, the value of the log-likelihood function indicates that the null of no measurement errors cannot be rejected. Therefore, and for the sake of parsimony we focus our discussion on the model estimated without measurement errors.

An important difference between the ML estimates obtained for the whole sample and those obtained for the sub-sample 1970:q1-1989:q4 is that the former yields multiple stable equilibria, while the latter produce a unique saddle-path equilibrium. Nevertheless, the estimates for the whole sample seem to lie very close to the border of the indeterminacy region. Indeed it is easy to find a combination of parameters very similar to our ML estimates but that produces a saddle-path stable equilibrium. For example, by searching over the parameters that yield determinacy around the ML estimates we find

---

<sup>15</sup>One should notice that West-Germany is much larger than East-Germany. This fact, together with a certain degree of homogeneity in the dynamics of output and inflation of East and West-Germany can explain this result.

$\rho_R$	$\lambda_y$	$\lambda_\pi$	$\lambda_\mu$	$\rho_a$	$\rho_z$	$\rho_e$	$\sigma_a$	$\sigma_z$	$\sigma_R$	$\sigma_e$	$\gamma_2$	$\omega$	$\gamma_f$
0.813	0.084	0.189	0.051	0.778	0.546	0.762	0.02	0.041	0.002	0.013	1.264	0.796	0.874

The likelihood value for this set is 1792.4, i.e., compared to the value given in Table (3), the null of a saddle-path equilibrium cannot be rejected at any sensible s.l.. This set of parameters yields also the same dynamic response of the economy to the four shocks studied in this paper as the MSV-based estimates do. This result is not totally obvious since, contrary to McCallum's (2003) strict interpretation of the MSV solution, we do not impose a specific ordering of the stable eigenvalues.<sup>16</sup> In spite of this, the model displays a marked smoothness across the two regions.

As a central result, the estimates of the cross derivative of preferences over consumption and real balances ( $\omega$ ) are significantly different from zero.<sup>17</sup> The order of magnitude of the point estimate is not very different from that found by Andrés et al. (2001) for the euro area, although they find it not significantly different from zero. Our result stands instead in sharp contrast to the result of Peter Ireland (2002), who finds for the USA a point estimate virtually equal to zero and with a large standard error.

As for the policy rule, we find that the nominal interest rate is rather inertial and, apparently, more inertial than in the USA or in the euro area as a whole, although again this parameter is imprecisely estimated by Andrés et al. (2001). The Bundesbank seems to have responded significantly to inflation and to our measure of output deviation from trend. Consistently with the Bundesbank's monetary policy strategy up to the introduction of the euro, it also responded significantly to money growth (both as nominal and as real growth of M3). Notably, the response of the interest rate to M3 is very sensitive to the sample period. Including the post-reunification period yields an estimate for this coefficient that is half as large as that obtained for the pre-reunification period. Indeed, restricting the sample period to 1993:q1-1998:q4 yields a zero estimate for  $\lambda_\mu$  (approximated to the third digit). This result (although based on a rather small sample) could reflect a change of focus

---

<sup>16</sup>McCallum's ordering is intended to reduce the multiplicity of the MSV solutions. In most cases this ordering coincides with the set of smallest (in modulus) eigenvalues. Our point estimate does not conform to this criterion. Like McCallum, though, we keep constant the set of state variables made up of the exogenous shocks and predetermined variables that appear in the structural model.

<sup>17</sup>The ML estimate of the model under  $\omega = 0$  for the whole sample period gives a log-likelihood value of 1751.82. Using a likelihood ratio test this restriction can be rejected at the 1% significance level. The same s.l. is obtained for the sub-sample 1970:q1-1989:q4.

of the Bundesbank in the face of the increased erratic behaviour of M3.<sup>18</sup>

The estimate of the share of forward-looking firms is significantly different from zero. The point estimate suggests that roughly 89% (85% in the pre-reunification period) of the firms set prices in a way that is consistent with forward-looking behaviour. This number is larger than that found by Andrés et al. (2001) – i.e. about 61% – and by Galí et al. (2001) – about 66%.

Compared to values typically used in calibrated models of this type, the model produces a relatively small estimate of the persistence of the technology shock. Preference and money demand shocks are significantly different from white-noise processes.

The estimates for the 1970s and 1980s are comparable to those for the whole sample. The most noticeable differences are related to the reaction coefficient on inflation in the policy rule (higher in the two sub-samples) and the parameters describing the preference shock (lower autocorrelation in the sub-samples). For the 1980s we obtain less precise estimates (smaller t-values).

These differences might certainly account for differences in the relative dynamic pattern of our variables. Another factor that may have affected the relative pattern of the observed series, independently or in conjunction with the change in parameters, is the volatility of the underlying shocks. We will come back to this issue in discussing the variance decomposition of the endogenous variables with respect to the exogenous shocks (subsection 5.2).

## 5.1 Impulse responses

Figures (3) to (5) show the impulse responses for the four endogenous variables for the full sample estimates. The graphs also show 95% confidence bands.<sup>19</sup>

The possibility of constructing confidence intervals around the impulse responses is one of the advantages of adopting an ML estimation technique, as opposed to simple calibration. The Hessian of the log-likelihood function provides a measure of the

---

<sup>18</sup>This does not necessarily imply that monetary aggregates became less important for the conduct of monetary policy. Indeed the Bundesbank as many other central banks spends relatively large resources in filtering and interpreting the information contained in the monetary aggregates. The 90s were a period in which monetary aggregates were particularly noisy.

<sup>19</sup>The confidence bands are obtained by taking 10,000 draws of the parameter vector  $\Theta$  from a multivariate normal distribution with mean equal to the estimate of  $\Theta$  and variance covariance matrix equal to the inverse of the Hessian of the loglikelihood function.

statistical uncertainty related to our estimates. The simple plot of impulse responses based on the point estimate of  $\Theta$  neglects that information about the accuracy of the estimates. So, for example, the estimated parameters of the preference shock are statistically different from zero while the impact response of output to an innovation to this shock is not (Figure (3)).

Let us now consider each of the shocks in turn. An unexpected increase in the interest rate (a policy shock) is described in Figure (2). It implies a persistent departure of the nominal interest rate, real balances and the inflation rate from their long-run equilibrium. A non-standard response of inflation is responsible for the dynamics of these variables which is related to the estimated complementarity of consumption and real balances: The higher interest rate leads via the money demand equation to lower real balances. The fall in the latter raises the marginal costs of production (see equation (10)) and, thus, the inflation rate (see (15)). Higher inflation and the interest rate inertia lead to an only slow adjustment of the interest rate and, through the described channel, also of real balances and inflation.

In particular, given the estimated parameters the model produces a ‘price-puzzle’ (e.g. Christiano et al. (2001)), even though the increase in inflation is not significant. Christiano et al. (2001) and Altig et al. (2003) obtain a negative impact-response of inflation to an expansionary monetary policy shock from an estimated VAR model. Furthermore, these authors provide a DSGE model that, through the assumption of ‘working capital’ can reproduce the positive co-movement between inflation and the interest rate. Under the ‘working capital’ assumption the interest rate enters the marginal cost directly while in our model the interest rate affects the marginal cost only indirectly through the marginal utility of consumption (and real balances). It should be noted, though, that the non-separability brings about the price-puzzle for sufficiently large values of  $\omega$  only. For example, if we set  $\omega$  to 0.65 and  $\gamma_2$  to 1, the price puzzle disappears (see Figure (6)).<sup>20</sup>

There is only a small impact of the policy shock on the real interest rate. Output evolves in line with real money balances. Since  $\omega$  is smaller than one and changes in the real interest rate are only small the reaction of output is somewhat smaller (see equation(6)).

Turning to the consequences of a preference shock, Figure (3) shows an impact

---

<sup>20</sup>The confidence bands in this and the following figures are based on the maximum likelihood point estimate and are added only to illustrate that the impulse response functions based on  $\omega = 0.65$  and  $\gamma_2 = 1$  lie within the confidence bands of the point estimate.

response of output that is difficult to reconcile with simple economic intuition: i.e. an increase in the intertemporal marginal rate of substitution of consumption should increase current consumption relative to future consumption. On the contrary, the point estimate implies the opposite result. The confidence bands suggests, though, that the effect of a preference shock on output is rather imprecisely estimated. At the 5% significance level we cannot reject the null hypothesis that output does not vary at all. On this respect, it is worth noting that the model estimated with measurement errors produces a positive response of output and money balances (result not shown). The rest of the impulse responses remain nevertheless virtually unchanged.

Figure (3) also shows that the real interest rate is positive for some quarters and returns nearly to its steady-state value thereafter.

The dynamics of the other variables following a preference shock can again be linked to the relation between inflation and money balances described by the estimated Phillips curve. The impact-response of inflation depends on the insignificant response of output. Thereafter the stronger increase in real balances relative to output has a negative effect on marginal costs (see equation (10)) and, hence, a dampening effect on inflation. Given the estimated policy rule, the fall of inflation and the inertia in the interest rate dominate the increase in real balances and output. Therefore, the interest rate remains persistently under the long-run equilibrium. This is accompanied by a persistent deviation of real balances and inflation from their steady-state values.

The impulse responses were also derived under the assumption  $\omega = 0.65$  and  $\gamma_2 = 1$  (see Figure (7)). Now  $\hat{y}$  moves up directly – in line with economic intuition. This might indicate that the point estimate for  $\omega$  is somewhat too high.

A more ‘standard’ story emerges from the analysis of a productivity shock (Figure (4)). Except for the first period, output and real balances significantly increase in the short run (up to about the sixth quarter). Inflation drops marginally (though significantly) in the first two quarters and then remains slightly above equilibrium for a long time. The top-left panel indicates that the central bank reacts to a technology shock with a persistent, although marginal, increase in the interest rate.

Under smaller values for  $\omega$  and  $\gamma_2$  (as in Figure (8)) on impact a technology shock has a ‘contractionary’ effect on output that is reminiscent of Basu et al. (1998) findings. The interest rate ‘accommodates’ the expansionary effect of the productivity shock from the second period onwards. Inflation falls immediately and

then converges smoothly to the long run equilibrium.

Finally, an innovation to the money demand shock produces a significant fall in output followed by a persistent (and marginally significant) overshoot of the long-run equilibrium. Real balances, on the contrary, increase and remain (significantly) above the long-run equilibrium up until about the twelfth quarter. The nominal interest rate and inflation fall very slightly and the reaction is statistically insignificant. The alternative set of values for  $\omega$  and  $\gamma_2$  considered in Figure (9) seem to change mainly the response of inflation and the interest rate.

An interesting feature of the money demand shock – shared only to a very limited extent by the policy shock – is that real balances and output tend to move in opposite directions in the very short run. By observing the time series of detrended output and real balances (Figure (10)), we note that there are periods (e.g. the 1970s) when both series seem to move in the same direction, while in others (e.g. the 1980s and the 1990s) they seem to move in opposite directions. It is tempting to think that the two periods have been dominated by different sets of shocks. The variance decomposition of the endogenous variables presented in the following section seems to point in the same direction.

## 5.2 Variance decomposition

Table (6) shows the variance decomposition of our four endogenous variables with respect to the four shocks for the whole sample period. Compared with Table (7), relative to the sub-sample 1970:q1-1989:q4, it shows that the inclusion of the 90s dramatically changes the results. By including the post reunification period we obtain that most of the dynamics of output, interest rate and money balances is driven by preference shocks. Inflation is almost totally driven by technology shocks. Moreover, the forecasted output volatility can be attributed only minimally to money demand shocks. Given the poor quality of the post-reunification data we do not want to emphasize these results.

As for the pre-reunification period, Tables (7) to (9) suggest that there has been a shift in the balance of weights of the four shocks in accounting for the volatility of our four variables.

Let us consider first Table (7). The first panel shows that output volatility is mainly driven by technology and money demand shocks in the very short run. Technology shocks still account for the bulk of the volatility after 4 years, while



money demand shocks account for less than a quarter from the first year after the shock onwards. Preference shocks gradually increase their share in the total variance of output and become dominant only in the very long run. At business cycle frequency, it seems that the main source of German output volatility in the 1970s and 1980s was technology. Money demand shocks are relatively more important in the 1980s than in the 1970s. This latter fact seems to be consistent with the apparent change in correlation between real money balances and output documented in Figure (10).

The marked role for technology that emerges from the variance decomposition is consistent with the real business cycle (RBC) perspective. It has to be taken into account, though, that our model incorporates only one supply shock. Thus, part of the fluctuations of output that we attribute to technology shocks might actually come from a different type of supply shock. Ireland's (2003b) work for the USA, for example, suggests that cost-push shocks – modelled as unexpected changes in the elasticity of demand for intermediate goods – played a role, too. Because both types of shocks move inflation and output in different directions, they could not be identified in the model as it stands. Therefore, Ireland (2003b) adds the unobservable variable 'output gap', defined as the deviation of output from its socially optimal level, to the policy rule. Since the technology shock but not the cost-push shock shifts the socially optimal level of output they can in principle be identified by their different influence on the (observable) nominal interest rate. In reality it is difficult, though, to estimate the past, let alone the contemporaneous output gap. It is therefore not obvious how the model's output gap can be introduced into the policy rule.

Inflation in Germany's 1970s and 1980s has been mainly driven by preference shocks (between about 46% and 70%). The second most important shock, the policy shock, never accounted for more than about 29% of total volatility, in relation to the whole sample. Policy shocks seem to have had a more important role in the 80s, where they accounted for about 42% of inflation volatility in the medium to long run. Also interestingly, in the very short run inflation in the 80s seem to have been driven mainly by technology shocks.

As for the whole sample, the interest rate is driven in the shorter run, by assumption, by the policy shock. At horizons longer than two years, the preference shock takes over the main role as the driving force of the interest rate volatility. This picture emerges also from the analysis of the 70s. In the 80s the balance is

slightly tilted in ‘favour’ of the policy shock.

The forecast variance decomposition for the real money balances is markedly different across the two sub-periods. In the 1970s, preference shocks seem to have driven the volatility of real balances in the medium run. In the 1980s this role is more equally shared by the four shocks, although preference shocks play little role up to one year after the shock.

### 5.3 Empirical performance of the model

Finally, we discuss in this section the empirical performance of the DSGE model as compared with an unrestricted VAR estimated with the same data. The log-likelihood values and the  $R^2$  values for the model, the VAR(1) and the VAR(4) are collected in Table (10). The log-likelihood of the VAR(1) (1814.4) is higher than the log-likelihood of the model (1792.5) and a formal test would reject the restrictions implicit in the model against the VAR(1). Nevertheless, it should be noted that although the VAR(1) is based on 20 estimated parameters and the model only on 10 structural parameters the total number of restrictions (linear and non-linear) is larger than 10.<sup>21</sup> A comparison of the  $R^2$  values for the model with the corresponding values for the VAR(1) shows that the DSGE model fits output and money fairly well. With respect to inflation and the interest rate the model fits the data only to a lesser degree. The fit of the VAR(1) can be beaten by a VAR(4), but only at the cost of a rather large number of estimated parameters.

It is important to mention, that using the in-sample properties of a model is not necessarily the best way to assess the empirical validity of a model. A model can perform very well in-sample but perform badly in an out-of-sample exercise. In such a case the model over-fits the data. An interesting exercise is therefore a comparison of the out-of-sample forecast properties of the model relative to a VAR. For this exercise we have used the estimated DSGE model, the VAR(1) and the VAR(4) for the 1970s and then forecasted the first five years of the 1980s. The actual and forecast values based on the model are shown in Figure (12). Clearly, the model can not forecast all fluctuations of the data, but it nevertheless captures the overall movement of money and output very well. In Table (11) some formal

---

<sup>21</sup>The model consists of 14 parameters but 4 parameters are related to the variances of the innovations. In a VAR framework the variances of the residuals (innovations) are estimated separately from the other parameters.

measures of the forecast performance are summarized. Here RMSE is the Root Mean Square Error and MAPE is the Mean Absolute Percentage Error.<sup>22</sup> A lower value of these measures corresponds to smaller forecast errors. The DSGE model can beat the forecast performance of a VAR(1) for output and money. Both measures of the forecast errors are smaller for the model than for the VAR(1). Even a VAR(4) with a large number of estimated parameter (68) can not beat the DSGE model. For inflation and for the interest rate the DSGE model is clearly beaten by the VAR(1) and VAR(4).

Given the simplicity of our model, its ability to fit the data is remarkably good and comparable to the performance of unrestricted VAR models based on the same data set.

## 6 Conclusions

This paper has taken a simple New-Keynesian model with non-separable preferences in real balances and consumption to German data for the sample period 1970:q1 to 1998:q4. Following the recent related literature, we have used a maximum likelihood estimation under a full set of structural shocks. The main contribution of this paper is to show that the separability of preferences found for the USA by Peter Ireland (2002) and for the euro area by Andrés et al. (2001) is not borne out by German data. We can reject the null hypothesis that real balances do not enter the Phillips curve and the IS (consumption Euler) equation. Real balances seem to have played an active role in the determination of the dynamics of output and inflation from the 1970s through the 1990s. Our estimated interest rate rule – i.e. the rule that should reflect the policy of the Bundesbank – is consistent with this role of the real balances. The Bundesbank seems to have adjusted its short-run interest rate in response to variations in the growth rate of money, as well as in response to inflation and output variations. We deem our findings important since it has become customary to refer to the evidence on the separability as a stylized fact. Our result suggests that there might be cross-country differences in the role played by the stock of money. This might have consequences for the conduct of monetary policy within a monetary union that does not display homogeneity in terms of the role of real balances in the

---

<sup>22</sup>These measures are computed as  $RMSE = (1/H \sum_{t=1}^H (y_t - f_t)^2)^{1/2}$  and  $MAPE = 100/H \sum_{t=1}^H |y_t - f_t|/y_t$ , with actual values of the data  $y_t$  and forecasted values  $f_t$ . The forecast horizon is  $H$ .

business cycle. This normative aspect deserves further investigation.

The impulse-response analysis based on our ML estimates suggest that the estimated degree of complementarity between real money balances and consumption (together with the interest rate elasticity of money demand) is probably too large to produce economically sensible results. Nevertheless, we have shown that taking account of the parameter uncertainty more sensible impulse responses can be obtained under non-separable preferences.

Our model has also indicated the most likely sources of volatility of the German economy in the 1970s, 1980s and 1990s, although the results relative to the latter period might be strongly affected by the poor quality of the available data. At least up to the 1990s, preference and policy shocks seem to have driven the volatility of inflation and the interest rate. Less easy is to single out the major determinant of the volatility of output and real money balances. Nevertheless, we have also pointed out that there are possibly other shocks that could account for the volatility of the German economy and which we have not explicitly considered in our model. We have argued that to some extent it would be difficult to disentangle these alternative shocks from the four shocks considered here, at least in the current version of our model.

The impulse-response analysis together with the decomposition of the forecast variance and the values of the point estimates, lead us to believe that relative to the 1970s the 1980s have witnessed more pronounced money demand shocks (relative to the other shocks).

From a methodological point of view, our paper contributes to the existing literature in that we have combined the standard maximum-likelihood estimation of a DSGE model with the idea that multiple stable solutions, arising in LRE models for certain combinations of parameter values, can be modelled using the minimum state variable criterion advocated by McCallum (1999). Using this approach we have found that the ML estimate for the whole sample yields multiple stable solutions. Nevertheless we have also shown that the null of a determinate (saddle-path) equilibrium cannot be rejected at any sensible significance level. In the neighborhood of our point estimates the economy behaves in a way that is independent of the multiplicity of the stable solutions.

Whether our results are robust to extensions of our model as well as to alternative estimation technique is an issue for future research.

# Appendix

## A ML estimation of a Linear Rational Expectation model using the MSV solution

In this section we show how a LRE model can be estimated via ML after being solved with the MSV algorithm.

Let us write the LRE model as

$$\begin{aligned} AE_t[x_{t+1}] &= Bx_t + C\mu_t \\ \mu_t &= R\mu_{t-1} + \epsilon_t \\ \epsilon_t &\sim i.i.d(0, \Sigma_\epsilon) \end{aligned} \tag{17}$$

where  $x_t$  is a vector of endogenous variables and  $\mu_t$  is a vector of exogenous forcing processes. This dynamic problem can be written in its state-space form. For this purpose we note that  $x_t = [s_t, c_t]'$ , where  $s_t$  are  $n_s$  predetermined variables and  $c_t$  are  $n_c$  control variables. In order to write the stationary state-space form we need to decompose the matrices  $A$  and  $B$  in their spectral form (i.e. their generalized eigenvalue-eigenvector form) (e.g. Blanchard and Kahn (1980) or Klein (2000)). This decomposition is affected by the number of stable eigenvalues of the system.

**Definition 1** *Let  $\lambda$  be the  $(n_s + n_c) \times 1$  vector of the generalized eigenvalues of the matrix pencil  $A - \lambda B$ , ordered by their absolute value. Then we define the  $(n_s + n_c) \times 1$  indicator vector  $I_\lambda$  such that  $I_{\lambda,j} = 0 \Leftrightarrow |\lambda_j| > 1$  and  $I_{\lambda,j} = 1 \Leftrightarrow |\lambda_j| \leq 1$*

We furthermore refer to *determinacy* to indicate the existence of a unique saddle-path solution to system (17). We refer instead to *indeterminacy* to indicate that system (17) admits multiple stable solutions. Then we have that

$$\begin{aligned} m_\lambda &\equiv \sum_{j=1}^{n_s+n_c} I_{\lambda,j} = n_s \Leftrightarrow \text{determinacy} \\ m_\lambda &> n_s \Leftrightarrow \text{indeterminacy} \end{aligned}$$

Under determinacy, the solution of the dynamic system is uniquely pinned down by the initial conditions provided by the set of predetermined variables ( $s_t$ ) and

exogenous shocks ( $\mu_t$ ). The control variables ( $c_t$ ) can be determined as simple linear combinations of the state variables ( $s_t$  and  $\mu_t$ ). Under indeterminacy, the state variables are insufficient to pin down the process of the control variables. So, if for example  $m_\lambda - n_s = 1$ , one of the control variables can respond in any arbitrary way to the shocks and the system will still be stable, i.e. in the absence of shocks, it will converge to the non-stochastic steady state. One typical way to model the arbitrary response of the ‘free’ control variables under indeterminacy is via *sunspots*, i.e. non-fundamental stochastic processes (see Farmer (1999)). McCallum (1999) has instead suggested that even under indeterminacy the response of the control variables to the state of the economy should be modelled as it would occur under determinacy: This amounts to the ‘minimum state variable’ (MSV) solution.

Let us write the state-space form as

$$\begin{aligned} s_t &= \Phi_1 s_{t-1} + \Phi_2 \mu_{t-1} \\ c_t &= \Pi_1 s_t + \Pi_2 \mu_t \\ \mu_t &= R \mu_{t-1} + \epsilon_t \end{aligned} \tag{18}$$

By imposing this structure and by using the method of undetermined coefficients, it is possible to solve the system (17) (see for example McCallum (1999) and Uhlig (1999)) under determinacy as well as indeterminacy. Alternatively one can solve system (17) by a direct method (e.g. Klein (2000)) and select only  $n_s$  stable eigenvalues as the basis for the construction of the matrices  $\Phi_1$  and  $\Phi_2$  under determinacy as well as under indeterminacy. Under indeterminacy, the transformation matrices  $\Pi_1$  and  $\Pi_2$  are constructed by imposing the same forward-looking solution that would hold under determinacy (for details see McCallum (1999)).

From the solution technique just described it is clear that the MSV solution is generally not unique. If  $m_\lambda > n_s$  there are  $d \equiv \binom{m_\lambda}{n_s}$  alternative ordering of the eigenvalues that satisfy the MSV principle (e.g. Evans and Honkapohja (2001)).

Let us define the index of the alternative ordering by  $o$  such that  $o = 1 \dots d$ .

In practice,  $d$  is likely to be not very large. Among the  $m_\lambda$  roots, some could be zero. These roots should not be considered for permutation since they amount to linearly dependent equations of system (17). These can always be eliminated by re-writing the system without affecting its solution. Furthermore, some of the stable eigenvalues come in complex-conjugate pairs. These should not be split. Splitting

them would yield complex values for the variables of the system (this point is also discussed in Cho and Moreno (2002)).

The state-space form (18) is then a function of the set of structural parameters of the system (17), (i.e. the elements of the matrices  $A$ ,  $B$ ,  $C$  and  $R$ ) and the ordering of the eigenvalues ( $o$ ).

Let us define the overall set of parameters characterizing the state-space form by  $\Theta = [\tilde{\Theta}, o]$ , where  $\tilde{\Theta}$  denotes the set of structural parameters.

Following Hamilton (1994, chap. 13) we can construct the Kalman filter from the state-space form (18), and from the Kalman filter the log-likelihood function of the system (17). We can denote this log-likelihood function by  $\mathcal{L}(\Theta|y)$ , where  $y$  is the matrix of observations.

The maximization of the likelihood function, for a given matrix  $y$ , takes place with respect to  $\Theta$ , that is with respect to the structural parameters ( $\tilde{\Theta}$ ) as well as with respect to the ordering of the eigenvalues ( $o$ ). Hence, we have that

$$\tilde{\Theta}_{ML} = \arg \sup_{\tilde{\Theta}} \left[ \sup_o \mathcal{L}(o|\tilde{\Theta}, y) \right] \quad (19)$$

It is worth noting that  $m_\lambda = n_s$  for some  $\tilde{\Theta}$  so that, in these cases, the likelihood function is ‘flat’ with respect to  $o$ .

From a computational point of view, our estimation technique amounts to choosing the ordering that yields the maximum log-likelihood for each set of structural parameters ( $\tilde{\Theta}$ ) evaluated by the numerical optimization algorithm.

Figure (1) shows an example of multiple MSV solutions under indeterminacy. The Figure plots the log-likelihood function (LL) against the policy parameter  $\lambda_\pi$ . This example is constructed by perturbing the parameter set at the optimum in the direction of the response of the interest rate to inflation (i.e. all parameters except  $\lambda_\pi$  are held constant). When the response of the interest rate to inflation is too weak, the ‘Taylor principle’ does not hold and multiple stable solutions occur. While the model is solved in accordance with the MSV algorithm, under indeterminacy there are multiple values of the likelihood function for a give set of structural parameters  $\tilde{\Theta}$ . Each of these values corresponds to a particular combination of the stable eigenvalues (i.e. a particular  $o$ ).

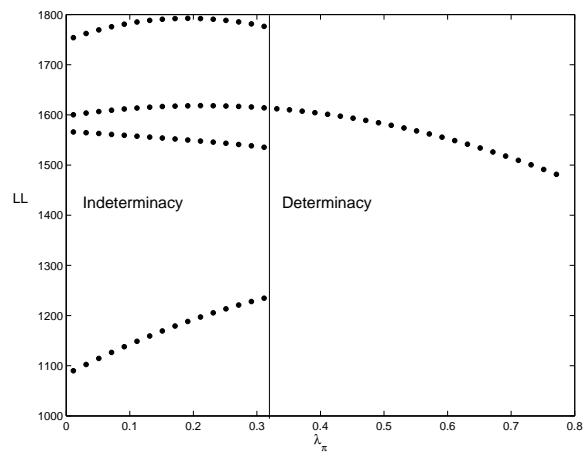


Figure 1: The log-likelihood function and the MSV solution.



## References

- Altig, David, Lawrence J. Christiano, Martin Eichenbaum, and Jesper Linde (2003) ‘Technology shocks and aggregate fluctuations.’ mimeo
- Andrés, J., J. D. López-Salido, and J. Vallés (2001) ‘Money in an Estimated Business Cycle Model of the Euro Area.’ Bank of Spain, working paper No. 0121
- Basu, Susanto, John Fernald, and Miles Kimball (1998) ‘Are technology improvements contractionary?’ FED, International Finance Discussion Papers No. 625
- Blanchard, Oliver, and Charles M. Kahn (1980) ‘The solution of difference models under rational expectations.’ *Econometrica* 48, 1305–1311
- Calvo, Guillermo A. (1983) ‘Staggered prices in a utility-maximizing framework.’ *Journal of Monetary Economics* 12, 383–98
- Cho, S., and A. Moreno (2002) ‘A Structural Estimation and Interpretation of the New Keynesian Macro Model.’ mimeo
- Christiano, Lawrence J., Martin Eichenbaum, and Charles Evans (2001) ‘Nominal rigidities and the dynamic effects of a shock to monetary policy.’ NBER working paper w8403
- Clarida, Richard, Jordi Galí, and Mark Gertler (1998) ‘Monetary policy rules in practice: Some international evidence.’ *European Economic Review* 42, 1033–1067
- (1999) ‘The science of monetary policy: A New Keynesian perspective.’ *Journal of Economic Literature* 37, 1661–1707
- Deutsche Bundesbank (1995) *The Monetary Policy of the Bundesbank* (Frankfurt am Main, Germany)
- Evans, G. W., and S. Honkapohja (2001) *Learning and Expectations in Macroeconomics* (Princeton, NJ: Princeton University Press)
- Farmer, Roger E. A. (1999) *The Macroeconomics of Self-Fulfilling Prophecies*, second ed. (MIT Press)
- Galí, Jordi, and Mark Gertler (1999) ‘Inflation dynamics: A structural econometric analysis.’ *Journal of Monetary Economics* 44, 195–222
- Galí, Jordi, Mark Gertler, and J. David López-Salido (2001) ‘European inflation dynamics.’ *European Economic Review* 45, 1237–1270
- Goffe, William L., Gary D. Ferrier, and John Rogers (1994) ‘Global optimization of statistical functions with simulated annealing.’ *Journal of Econometrics*

60, 65–99

- Hamilton, James D., ed. (1994) *Time Series Analysis* (Princeton University Press)
- Hoffmann, Johannes, Jeong-Ryeol Kim, and Hans-Georg Wels (2003) ‘Der Einfluss der Euro-Bargeldeinführung auf die Verbraucherpreise in Deutschland.’ mimeo, Deutsche Bundesbank
- Ireland, Peter N. (2002) ‘Money’s Role in the Monetary Business Cycle.’ mimeo, Boston College
- (2003) ‘A Method for Taking Models to the Data.’ mimeo, Boston College
- Klein, Paul (2000) ‘Using the generalized Schur form to solve a multivariate linear rational expectations model.’ *Journal of Economic Dynamics and Control* 24, 1405–1423
- Kuntsevich, A., and F. Kappel (1997) ‘SolvOpt – The solver for local nonlinear optimization problems.’ mimeo, University of Graz, Austria
- Lubik, Thomas A., and Frank Schorfheide (2002) ‘Testing for Indeterminacy: An Application to U.S. Monetary Policy.’ PIER working paper No. 02-025
- McCallum, Bennett T. (1999) ‘Role of the Minimal State Variable Criterion in Rational Expectations Models.’ *International Tax and Public Finance* 6, 621–639
- (2002) ‘The unique Minimum State Variable RE solution is E-stable in all well formulated linear models.’ mimeo, Carnegie Mellon University
- (2003) ‘Multiple-solution indeterminacy in monetary policy analysis.’ *Journal of Monetary Economics* 50, 1153–1175
- McGrattan, Ellen R., Richard Rogerson, and Randall Wright (1997) ‘An equilibrium model of the business cycle with household production and fiscal policy.’ *International Economic Review* 38, 267–290
- Rotemberg, Julio J. (1982) ‘Sticky prices in the United States.’ *Journal of Political Economy* 90, 1187–1211
- Taylor, John B. (1993) ‘Discretion versus policy rules in practice.’ *Carnegie-Rochester Conference Series on Public Policy* 39, 195–214
- Uhlig, Harald (1999) ‘A Toolkit for Analyzing Nonlinear Dynamic Stochastic Models Easily.’ In *Computational Methods for the Study of Dynamic Economies*, ed. Ramon Marimon and Andrew Scott (Oxford: Oxford University Press) chapter 3
- Woodford, Michael (2003) ‘Interest and Prices: Foundations of a theory of monetary policy.’ *forthcoming*

$\xi$	$\zeta$	$\sigma$	$\beta$				
0.8	1	1	(whole sample)	(1970:q1-1989:q4)	(1970s)	(1980s)	(1993:q1-1989:q4)
			0.9921	0.9926	0.9952	0.9900	0.9937

Table 1: Calibrated parameters

	Whole sample	
	estimate	t-value
$\rho_R$	0.842	19.969
$\lambda_{y,t-1}$	0.079	3.03
$\lambda_{\pi,t-1}$	0.399	5.347
$\lambda_{\mu,t-1}$	0.081	3.336
$\lambda_{y,t}$	0.025	0.956
$\lambda_{\mu,t}$	-0.07	-2.457
$\lambda_{\pi,t}$	-0.309	-3.659
$\rho_a$	0.797	15.169
$\rho_z$	0.545	5.387
$\rho_e$	0.78	12.571
$\sigma_a$	0.02	3.442
$\sigma_z$	0.035	5.29
$\sigma_R$	0.002	10.482
$\sigma_e$	0.012	10.093
$\gamma_2$	0.965	3.018
$\omega$	0.949	5.063
$\gamma_f$	1	NaN <sup>a</sup>
Log-likelihood	1808.3	

<sup>a</sup>The log-likelihood function is discontinuous to the right of this point estimate. The standard error are therefore not computed.

Table 2: ML estimates and t-values: Lagged vs. contemporaneous policy feedbacks.

	Whole sample		1993:q10-1998:q4	
	estimate	t-value	estimate	t-value
$\rho_R$	0.81	21.768	0.755	13.596
$\lambda_y$	0.085	6.524	0.026	0.988
$\lambda_\pi$	0.191	4.228	0.168	3.219
$\lambda_\mu$	0.045	2.216	0	1.329
$\rho_a$	0.784	15.316	0.843	15.326
$\rho_z$	0.57	4.567	0.191	0.919
$\rho_e$	0.769	12.286	0.768	6.951
$\sigma_a$	0.021	3.565	0.022	2.874
$\sigma_z$	0.039	2.928	0.003	0.785
$\sigma_R$	0.002	14.93	0.001	6.473
$\sigma_e$	0.012	8.643	0.014	6.331
$\gamma_2$	1.191	2.657	2.203	3.987
$\omega$	0.808	4.559	0.609	5.934
$\gamma_f$	0.888	9.879	1	NaN <sup>a</sup>
Log-likelihood	1792.50		420.01	

<sup>a</sup>The log-likelihood function is discontinuous to the right of this point estimate. The standard error are therefore not computed.

Table 3: ML estimates and t-values

	1970:q1-1989:q4		1970s		1980s	
	estimate	t-value	estimate	t-value	estimate	t-value
$\rho_R$	0.819	17.91	0.68	9.292	0.682	5.664
$\lambda_y$	0.072	3.156	0.116	3.93	0.089	3.612
$\lambda_\pi$	0.221	3.943	0.489	3.858	0.41	2.689
$\lambda_\mu$	0.085	3.641	0.106	2.675	0.154	2.9
$\rho_a$	0.751	12.79	0.597	5.997	0.417	1.954
$\rho_z$	0.407	2.558	0.585	3.3	0.224	1.007
$\rho_e$	0.65	6.987	0.54	3.679	0.75	7.01
$\sigma_a$	0.018	3.53	0.016	3.441	0.005	1.755
$\sigma_z$	0.049	4.21	0.04	2.658	0.049	2.864
$\sigma_R$	0.002	11.611	0.003	8.315	0.002	7.808
$\sigma_e$	0.012	8.1	0.012	6.677	0.012	3.733
$\gamma_2$	1.143	3.122	1.1	2.53	1.02	1.561
$\omega$	0.914	5.248	0.962	4.114	1.026	3.302
$\gamma_f$	0.846	14.619	0.84	9.493	0.857	6.778
Log-likelihood	1227.7		596.17		647.38	

Table 4: ML estimates and t-values

	estimate	t-value
$\rho_R$	0.79	19.698
$\lambda_y$	0.098	5.998
$\lambda_\pi$	0.216	4.375
$\lambda_\mu$	0.036	1.801
$\rho_a$	0.809	16.339
$\rho_z$	0.722	6.543
$\rho_e$	0.8	13.587
$\sigma_a$	0.022	3.431
$\sigma_z$	0.028	2.543
$\sigma_R$	0.002	13.93
$\sigma_e$	0.011	8.571
$\gamma_2$	1.374	2.432
$\omega$	0.739	3.851
$\gamma_f$	0.901	8.126
$\sigma_y$	0.005	4.295
$\sigma_\pi$	0.001	2.058
$\sigma_{policy}$	0	0
$\sigma_m$	0	0
Log-likelihood	1795.5	

Table 5: ML estimates and t-values: Whole sample with i.i.d. measurement errors.

Forecast horizon	1	4	8	12	16	$\infty$
output						
preference shock	75.9	70.56	70.35	70.35	70.35	70.35
technology shock	4.73	10.56	10.87	10.88	10.88	10.88
policy shock	19.31	18.28	18.16	18.15	18.14	18.14
money demand shock	0.07	0.6	0.62	0.62	0.62	0.62
inflation						
preference shock	4.41	5.68	5.96	6	6.01	6.01
technology shock	95.53	94.24	93.95	93.91	93.91	93.9
policy shock	0.05	0.04	0.04	0.04	0.04	0.04
money demand shock	0.01	0.04	0.04	0.04	0.04	0.04
interest rate						
preference shock	0	75.45	76.92	77.12	77.15	77.15
technology shock	0	10.17	9.66	9.58	9.56	9.56
policy shock	100	13.88	12.94	12.83	12.81	12.81
money demand shock	0	0.5	0.48	0.47	0.47	0.47
money balances						
preference shock	68.12	63.09	63.12	63.16	63.16	63.16
technology shock	4.25	10.62	10.8	10.8	10.8	10.8
policy shock	21.93	18.5	18.14	18.1	18.1	18.09
money demand shock	5.71	7.79	7.94	7.94	7.94	7.94

Table 6: Variance decomposition: Whole sample.

Forecast horizon	1	4	8	12	16	$\infty$
output						
preference shock	2.38	5.89	7.14	12.9	19.4	54.77
technology shock	51.78	67.88	62.69	55.96	49.62	17.42
policy shock	0.79	2.66	7.26	10.8	13.14	22.61
money demand shock	45.05	23.56	22.91	20.34	17.84	5.2
inflation						
preference shock	46.32	62.54	65.13	66.32	66.98	68.92
technology shock	28.67	8.16	6.38	5.72	5.37	4.41
policy shock	25.01	29.29	28.49	27.96	27.64	26.67
money demand shock	0	0	0	0	0	0
interest rate						
preference shock	0	32.62	49.12	56.12	59.64	67.78
technology shock	0	5.38	5.3	4.98	4.78	4.27
policy shock	100	62	45.59	38.9	35.58	27.95
money demand shock	0	0	0	0	0	0
money balances						
preference shock	2.86	3.25	18.14	32.4	41.32	64.48
technology shock	62.2	38.33	25.97	19.19	15.42	6.13
policy shock	4.01	18.33	27.12	28.66	28.53	26.83
money demand shock	30.93	40.1	28.77	19.75	14.73	2.56

Table 7: Variance decomposition: 1970:q1-1989:q4.



Forecast horizon	1	4	8	12	16	$\infty$
output						
preference shock	0.31	15.83	37.49	47.29	52.1	63.39
technology shock	70.09	61.01	37.44	28.25	23.93	13.86
policy shock	0.42	14.02	19.59	20.65	21	21.73
money demand shock	29.19	9.13	5.48	3.81	2.98	1.02
inflation						
preference shock	57.21	68.99	69.14	68.94	68.82	68.49
technology shock	19.18	5.97	6.83	7.54	7.94	8.96
policy shock	23.42	24.85	23.85	23.35	23.07	22.38
money demand shock	0.19	0.18	0.18	0.17	0.17	0.17
interest rate						
preference shock	0	49.36	59.11	62.27	63.73	66.99
technology shock	0	7.86	8.82	9.05	9.15	9.36
policy shock	100	42.57	31.87	28.5	26.94	23.47
money demand shock	0	0.21	0.2	0.19	0.18	0.17
money balances						
preference shock	0.27	30.58	50.38	56.84	59.7	65.86
technology shock	61.08	28.52	16.13	13.45	12.43	10.3
policy shock	9.93	25.76	26.07	24.88	24.2	22.66
money demand shock	28.72	15.13	7.42	4.83	3.67	1.17

Table 8: Variance decomposition: the 1970s.

Forecast horizon	1	4	8	12	16	$\infty$
output						
preference shock	4.17	6.95	11.6	18.13	22.93	38.71
technology shock	34.8	48.44	40.14	33.46	28.97	14.05
policy shock	0.26	4.99	13.48	19.36	23.1	34.81
money demand shock	60.77	39.62	34.78	29.05	25	12.43
inflation						
preference shock	23.66	42.28	45.97	47.48	48.28	50.37
technology shock	49.78	16.31	10.56	8.25	7.01	3.78
policy shock	25.37	39.8	41.76	42.48	42.86	43.81
money demand shock	1.19	1.62	1.71	1.79	1.85	2.04
interest rate						
preference shock	0	38.41	44.72	46.8	47.82	50.28
technology shock	0	2.17	2.02	1.94	1.89	1.77
policy shock	100	58.38	51.73	49.54	48.47	45.91
money demand shock	0	1.05	1.53	1.73	1.82	2.04
money balances						
preference shock	7.21	5	15.79	24.26	29.41	43.03
technology shock	60.1	28.94	18.85	14.59	12.22	5.82
policy shock	3.49	16.28	25.7	30.75	33.47	40.18
money demand shock	29.2	49.78	39.65	30.4	24.9	10.97

Table 9: Variance decomposition: the 1980s.

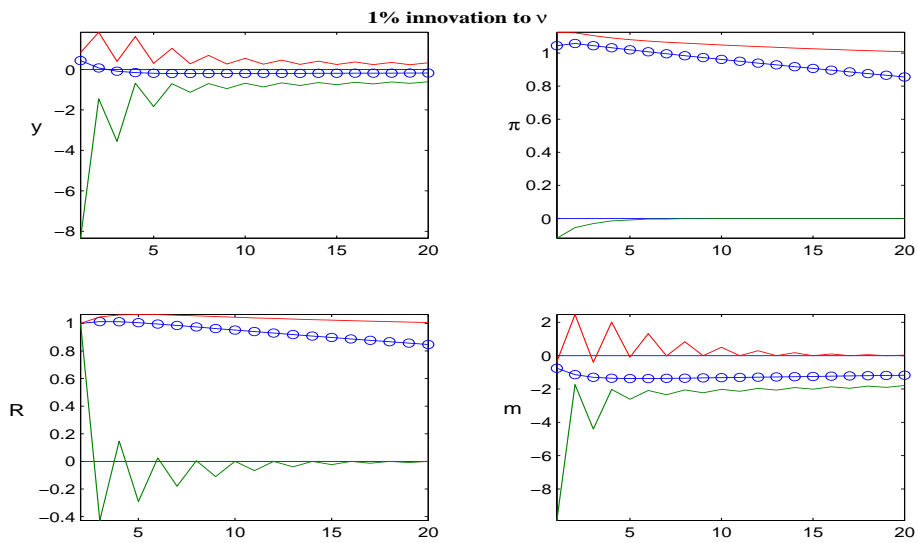


Figure 2: Response of the economy to a policy shock.

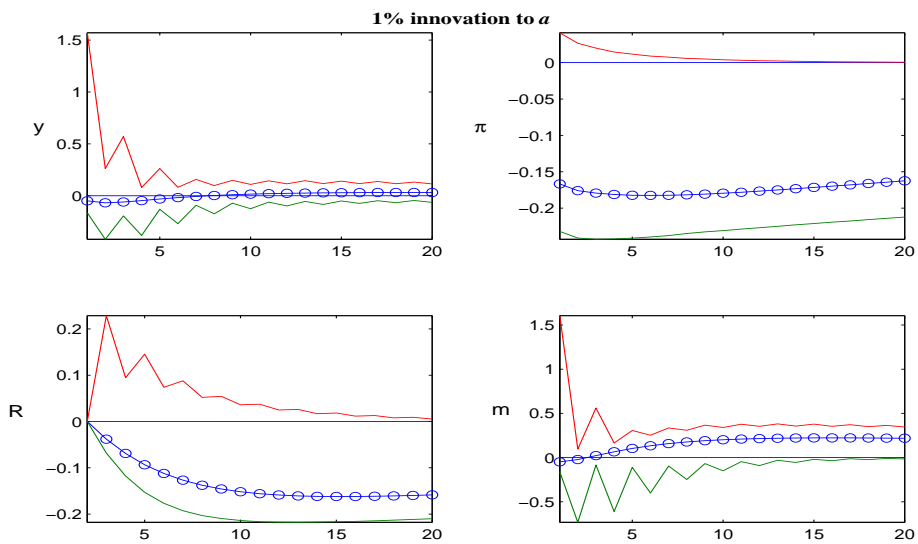


Figure 3: Response of the economy to a preference shock.

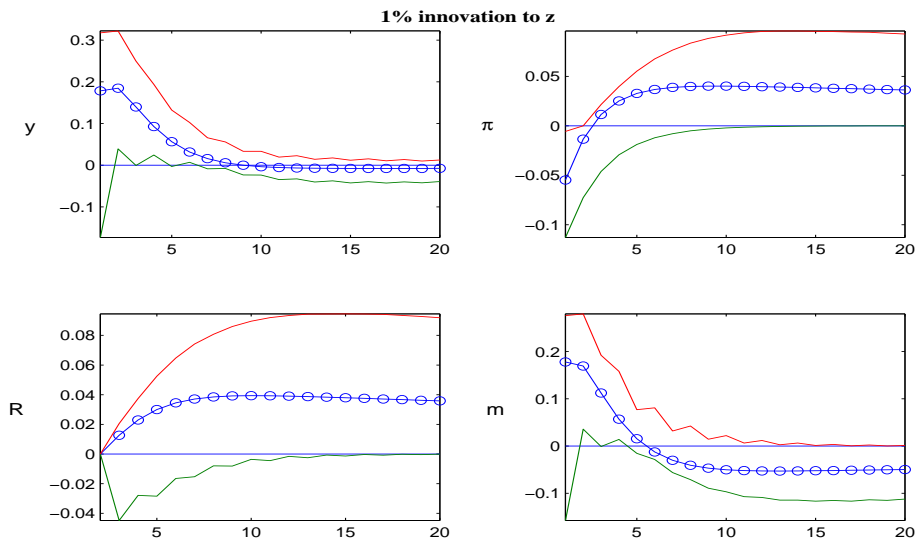


Figure 4: Response of the economy to a productivity shock.

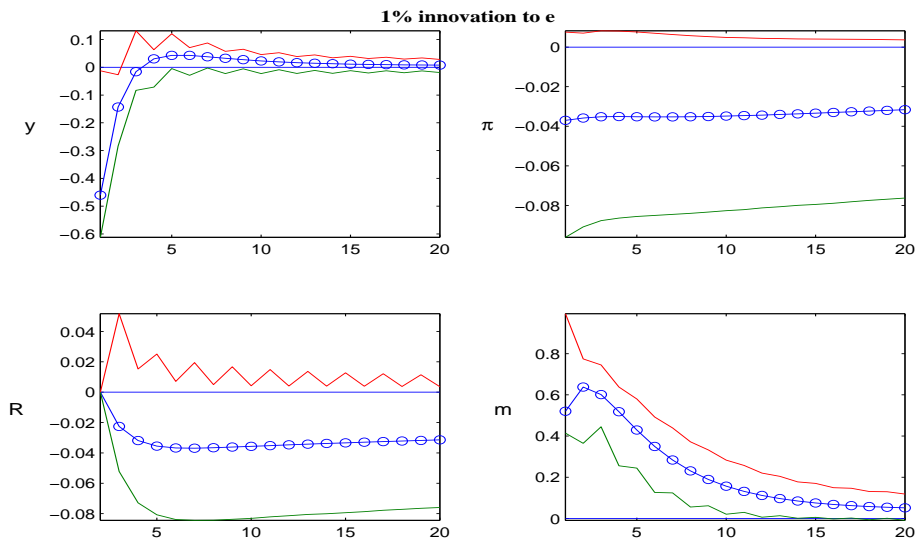


Figure 5: Response of the economy to a money demand shock.

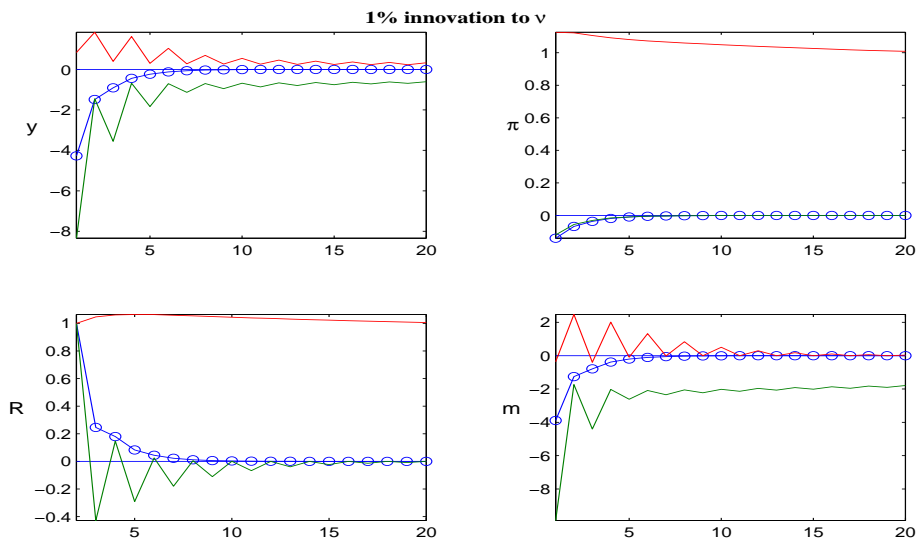


Figure 6: Response of the economy to a policy shock:  $\omega = 0.65$ ,  $\gamma_2 = 1$ .

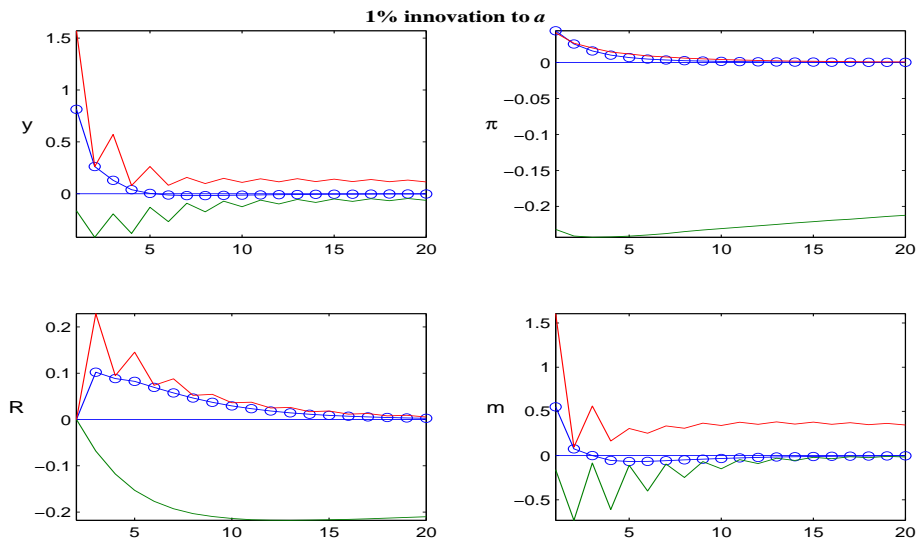


Figure 7: Response of the economy to a preference shock:  $\omega = 0.65$ ,  $\gamma_2 = 1$ .

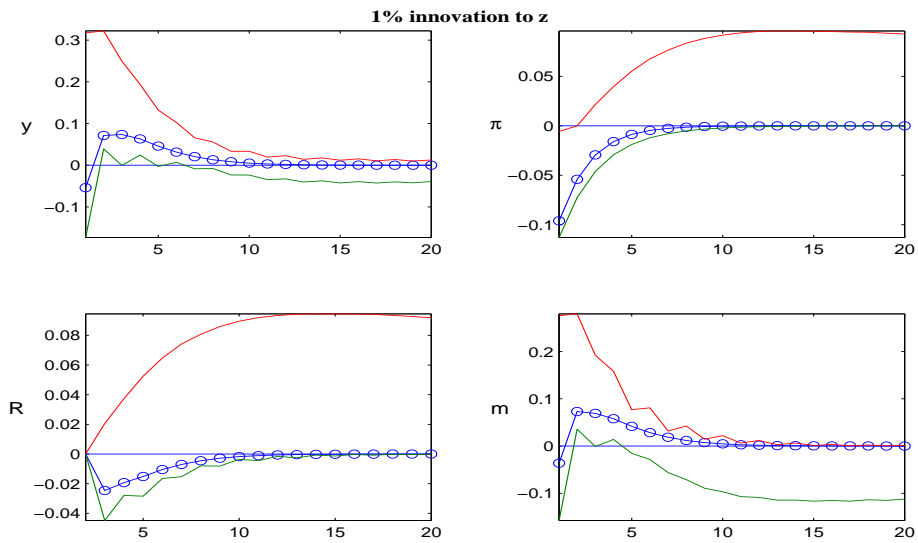


Figure 8: Response of the economy to a productivity shock:  $\omega = 0.65$ ,  $\gamma_2 = 1$ .

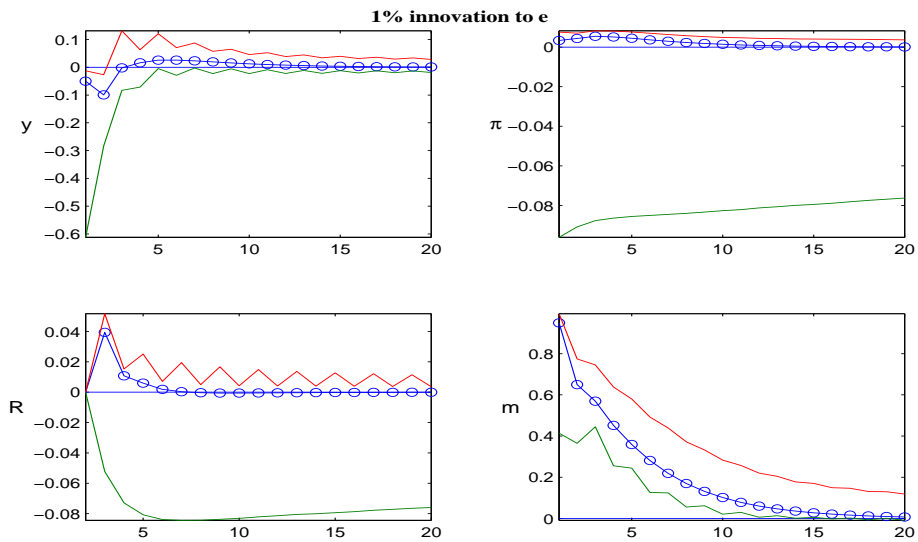


Figure 9: Response of the economy to a money demand shock:  $\omega = 0.65$ ,  $\gamma_2 = 1$ .

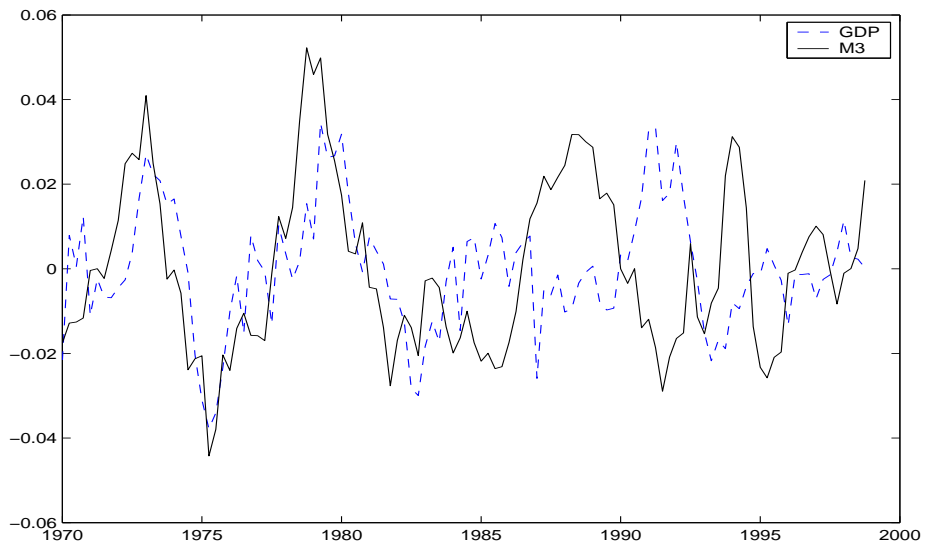


Figure 10: Detrended per capita output and real balances.

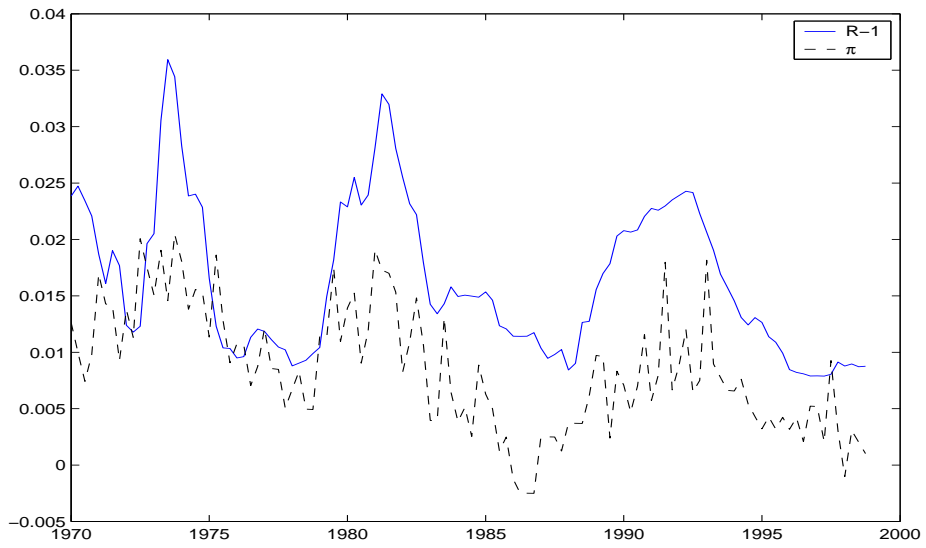


Figure 11: Three-months nominal interest rate and quarterly inflation.

			$R^2$			
	parameter	log-likelihood	output	money	inflation	interest rate
Model	10 (14)	1792.5	54%	78%	48%	89%
VAR(1)	20	1814.2	57%	79%	57%	92%
VAR(4)	68	1814.4	66%	82%	72%	94%

Table 10: Fit of the model in comparison to a VAR.

		output	money	inflation	interest rate
Model	RMSE	0.0107	0.0075	0.0079	0.0059
	MAPE	116.97	79.17	121.24	26.99
VAR(1)	RMSE	0.0121	0.0127	0.0049	0.0038
	MAPE	148.58	94.92	75.46	12.43
VAR(4)	RMSE	0.0169	0.0221	0.0056	0.0078
	MAPE	116.67	230.44	84.641	26.36

Table 11: Out-of-sample forecast of the model in comparison to a VAR.



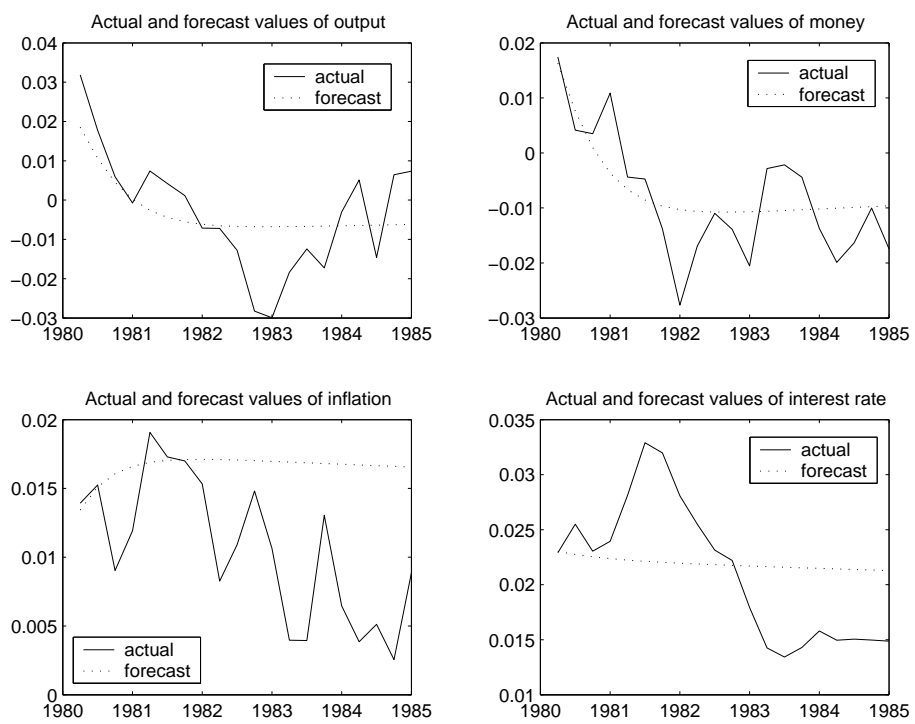


Figure 12: Actual and forecast values: a five year forecast horizon.

**The following papers have been published since 2002:**

January	2002	Rent indices for housing in West Germany 1985 to 1998	Johannes Hoffmann Claudia Kurz
January	2002	Short-Term Capital, Economic Transformation, and EU Accession	Claudia M. Buch Lusine Lusinyan
January	2002	Fiscal Foundation of Convergence to European Union in Pre-Accession Transition Countries	László Halpern Judit Neményi
January	2002	Testing for Competition Among German Banks	Hannah S. Hempell
January	2002	The stable long-run CAPM and the cross-section of expected returns	Jeong-Ryeol Kim
February	2002	Pitfalls in the European Enlargement Process – Financial Instability and Real Divergence	Helmut Wagner
February	2002	The Empirical Performance of Option Based Densities of Foreign Exchange	Ben R. Craig Joachim G. Keller
February	2002	Evaluating Density Forecasts with an Application to Stock Market Returns	Gabriela de Raaij Burkhard Raunig
February	2002	Estimating Bilateral Exposures in the German Interbank Market: Is there a Danger of Contagion?	Christian Upper Andreas Worms
February	2002	The long-term sustainability of public finance in Germany – an analysis based on generational accounting	Bernhard Manzke

March	2002	The pass-through from market interest rates to bank lending rates in Germany	Mark A. Weth
April	2002	Dependencies between European stock markets when price changes are unusually large	Sebastian T. Schich
May	2002	Analysing Divisia Aggregates for the Euro Area	Hans-Eggert Reimers
May	2002	Price rigidity, the mark-up and the dynamics of the current account	Giovanni Lombardo
June	2002	An Examination of the Relationship Between Firm Size, Growth, and Liquidity in the Neuer Markt	Julie Ann Elston
June	2002	Monetary Transmission in the New Economy: Accelerated Depreciation, Transmission Channels and the Speed of Adjustment	Ulf von Kalckreuth Jürgen Schröder
June	2002	Central Bank Intervention and Exchange Rate Expectations – Evidence from the Daily DM/US-Dollar Exchange Rate	Stefan Reitz
June	2002	Monetary indicators and policy rules in the P-star model	Karl-Heinz Tödter
July	2002	Real currency appreciation in accession countries: Balassa-Samuelson and investment demand	Christoph Fischer
August	2002	The Eurosystem's Standing Facilities in a General Equilibrium Model of the European Interbank Market	Jens Tapking

August	2002	Imperfect Competition, Monetary Policy and Welfare in a Currency Area	Giovanni Lombardo
August	2002	Monetary and fiscal policy rules in a model with capital accumulation and potentially non-superneutral money	Leopold von Thadden
September	2002	Dynamic Q-investment functions for Germany using panel balance sheet data and a new algorithm for the capital stock at replacement values	Andreas Behr Egon Bellgardt
October	2002	Tail Wags Dog? Time-Varying Information Shares in the Bund Market	Christian Upper Thomas Werner
October	2002	Time Variation in the Tail Behaviour of Bund Futures Returns	Thomas Werner Christian Upper
November	2002	Bootstrapping Autoregressions with Conditional Heteroskedasticity of Unknown Form	Sílvia Gonçalves Lutz Kilian
November	2002	Cost-Push Shocks and Monetary Policy in Open Economies	Alan Sutherland
November	2002	Further Evidence On The Relationship Between Firm Investment And Financial Status	Robert S. Chirinko Ulf von Kalckreuth
November	2002	Genetic Learning as an Explanation of Stylized Facts of Foreign Exchange Markets	Thomas Lux Sascha Schornstein
December	2002	Wechselkurszielzonen, wirtschaftlicher Aufholprozess und endogene Realignmentsrisiken *	Karin Radeck

\* Available in German only.

December	2002	Optimal factor taxation under wage bargaining – a dynamic perspective	Erkki Koskela Leopold von Thadden
January	2003	Testing mean-variance efficiency in CAPM with possibly non-gaussian errors: an exact simulation-based approach	Marie-Claude Beaul Jean-Marie Dufour Lynda Khalaf
January	2003	Finite-sample distributions of self-normalized sums	Jeong-Ryeol Kim
January	2003	The stock return-inflation puzzle and the asymmetric causality in stock returns, inflation and real activity	Jeong-Ryeol Kim
February	2003	Multiple equilibrium overnight rates in a dynamic interbank market game	Jens Tapking
February	2003	A comparison of dynamic panel data estimators: Monte Carlo evidence and an application to the investment function	Andreas Behr
March	2003	A Vectorautoregressive Investment Model (VIM) And Monetary Policy Transmission: Panel Evidence From German Firms	Joerg Breitung Robert S. Chirinko Ulf von Kalckreuth
March	2003	The international integration of money markets in the central and east European accession countries: deviations from covered interest parity, capital controls and inefficiencies in the financial sector	Sabine Herrmann Axel Jochem
March	2003	The international integration of foreign exchange markets in the central and east European accession countries: speculative efficiency, transaction costs and exchange rate premiums	Sabine Herrmann Axel Jochem

March	2003	Determinants of German FDI: New Evidence from Micro-Data	Claudia Buch Jörn Kleinert Farid Toubal
March	2003	On the Stability of Different Financial Systems	Falko Fecht
April	2003	Determinants of German Foreign Direct Investment in Latin American and Asian Emerging Markets in the 1990s	Torsten Wezel
June	2003	Active monetary policy, passive fiscal policy and the value of public debt: some further monetarist arithmetic	Leopold von Thadden
June	2003	Bidder Behavior in Repo Auctions without Minimum Bid Rate: Evidence from the Bundesbank	Tobias Linzert Dieter Nautz Jörg Breitung
June	2003	Did the Bundesbank React to Stock Price Movements?	Martin T. Bohl Pierre L. Siklos Thomas Werner
15	2003	Money in a New-Keynesian model estimated with German data	Jana Kremer Giovanni Lombardo Thomas Werner

## **Visiting researcher at the Deutsche Bundesbank**

The Deutsche Bundesbank in Frankfurt is looking for a visiting researcher. Visitors should prepare a research project during their stay at the Bundesbank. Candidates must hold a Ph D and be engaged in the field of either macroeconomics and monetary economics, financial markets or international economics. Proposed research projects should be from these fields. The visiting term will be from 3 to 6 months. Salary is commensurate with experience.

Applicants are requested to send a CV, copies of recent papers, letters of reference and a proposal for a research project to:

Deutsche Bundesbank  
Personalabteilung  
Wilhelm-Epstein-Str. 14

D - 60431 Frankfurt  
GERMANY

