

Altman, Edward I.

Article

Applications of distress prediction models: What have we learned after 50 years from the Z-Score models?

International Journal of Financial Studies

Provided in Cooperation with:

MDPI – Multidisciplinary Digital Publishing Institute, Basel

Suggested Citation: Altman, Edward I. (2018) : Applications of distress prediction models: What have we learned after 50 years from the Z-Score models?, International Journal of Financial Studies, ISSN 2227-7072, MDPI, Basel, Vol. 6, Iss. 3, pp. 1-15, <https://doi.org/10.3390/ijfs6030070>

This Version is available at:

<https://hdl.handle.net/10419/195727>

Standard-Nutzungsbedingungen:

Die Dokumente auf EconStor dürfen zu eigenen wissenschaftlichen Zwecken und zum Privatgebrauch gespeichert und kopiert werden.

Sie dürfen die Dokumente nicht für öffentliche oder kommerzielle Zwecke vervielfältigen, öffentlich ausstellen, öffentlich zugänglich machen, vertreiben oder anderweitig nutzen.

Sofern die Verfasser die Dokumente unter Open-Content-Lizenzen (insbesondere CC-Lizenzen) zur Verfügung gestellt haben sollten, gelten abweichend von diesen Nutzungsbedingungen die in der dort genannten Lizenz gewährten Nutzungsrechte.

Terms of use:

Documents in EconStor may be saved and copied for your personal and scholarly purposes.

You are not to copy documents for public or commercial purposes, to exhibit the documents publicly, to make them publicly available on the internet, or to distribute or otherwise use the documents in public.

If the documents have been made available under an Open Content Licence (especially Creative Commons Licences), you may exercise further usage rights as specified in the indicated licence.



<https://creativecommons.org/licenses/by/4.0/>

Article

Applications of Distress Prediction Models: What Have We Learned After 50 Years from the Z-Score Models?

Edward I. Altman

Leonard N. Stern School of Business, New York University, New York, NY 10012, USA; ealtman@stern.nyu.edu

Received: 31 May 2018; Accepted: 3 July 2018; Published: 2 August 2018



Abstract: Fifty years ago, I published the initial, classic version of the Z-score bankruptcy prediction models. This multivariate statistical model has remained perhaps the most well-known, and more importantly, most used technique for providing an early warning signal of firm financial distress by academics and practitioners on a global basis. It also has been used by scholars as a benchmark of credit risk measurement in countless empirical studies. Practical applications of the Altman Z-score model have also been numerous and can be divided into two main categories: (1) from an external analytical standpoint, and (2) from an internal to the distressed firm viewpoint. This paper discusses a number of applications from the former's standpoint and in doing so, we hope, also provides a roadmap for extensions beyond those already identified.

Keywords: Altman Z-score; bankruptcy prediction; fixed income investments; equity investments; ratings; regulators; auditors

1. Introduction

Over the last 50 years, I have learned a great deal from both academics and practitioners about the potential applications of the original Z-score models, [Altman \(1968\)](#), and have been motivated to build additional models to exploit and extend these applications as they became used in a variety of ways. I can now reflect on a large number of applications and can divide them into two main dichotomies: (1) those from analysts external to the firms in question, and (2) those by managers within the distressed itself, see Altman, Hotchkiss, and Wang ([Altman et al. forthcoming](#)). Table 1 lists more than a score of these applications into the mentioned categories. This paper provides a discussion of those applications in the first category: from an external to the firm viewpoint. This viewpoint is perhaps the more obvious and numerous of those applications that I have identified myself and also have been identified by many practitioners—for which I am most appreciative.

A large, but certainly not totally comprehensive list of applications is as noted, listed in Table 1. The external to the firm list (left column) includes analysis for the immensely important credit and fixed income markets. Perhaps more surprising is the growing number of applications in equity markets, which have actually been advocated for over two decades. In terms of third-party analysts, beyond the firm and its investors, are professionals in the security analysis, auditing, and financial advisory spaces. The associated fields of rating agencies and government regulators, both for banks and security transactions, can be identified as actually or potentially interested in accurate and cost-efficient techniques to not only provide early-warning measures of financial distress but also indicators of the probability of default (PD) of counterparties.

Table 1. Z-Score's Financial Distress Prediction Applications.

External (To The Firm) Analytics	Internal (To The Firm) and Research Analytics
Lenders (e.g., Pricing, Basel Capital Allocation) Bond Investors (e.g., Quality Junk Portfolio)	To File or Not (e.g., General Motors) Comparative Risk Profiles Over Time
Long/Short Investment Strategy on Stocks (e.g., Baskets of Strong Balance Sheet Companies & Indexes) e.g., STOXX, Goldman, Sachs, Morgan Stanley	Industrial Sector Assessment (e.g., Energy)
Security Analysts & Rating Agencies	Sovereign Default Risk Assessment
Regulators and Government Agencies	Purchasers, Suppliers Assessment
Auditors (Audit Risk, Going Concern Model)	Accounts Receivables Management
Advisors (e.g., Assessing Client's Health)	Chapter 22 Assessment
M&A (e.g., Bottom Fishing)	Researchers—Scholarly Studies
	Managers—Managing a Financial Turnaround (see Chapter 13)

2. Lenders and Loan Pricing

Perhaps the most obvious application of distress prediction/credit scoring models is in the lending function. Banks and other credit institutions are continuously involved in the assessment of credit risk of corporate, consumer, sovereign and structured products counter-parties. The importance of credit scoring models for specifying the PD has been heightened and motivated immensely by the requirements of Basel II and Basel III and the necessity for banks to develop and implement internal rating based (IRB) models. We hope that the decision of U.S. regulators (e.g., the Federal Reserve Board) not to require most banks in the United States to conform to Basel II will not serve to demotivate banks from developing these models—but we fear that it will, in many cases. On the other hand, banks in many other parts of the world, particularly Europe, have been encouraged, with great success, to modernize their credit risk systems by the requirements under Basel II.

One of the important dimensions of the lending function is to specify the 'price' of credit (i.e., the appropriate interest rate). The use of credit scoring models permits the specification of the PD in the determination of loss-given-default (LGD) in the pricing algorithm. For example, in Figure 1, we use a corporate loan rated as BBB by an internal scoring model to begin the LGD process and pricing decision. The PD and recovery rate assumptions are given (0.3% per year and 70.0%, respectively) and the expected loss of 0.09% per year is quantified.

The next step is to add the required amount to the loan price to account for the unexpected loss. We can do this in two ways—based on either economic capital criteria or regulatory capital requirements. Economic capital requires an additional cost in making the loan for unanticipated losses based on the degree of conservatism of the lending institution (i.e., its own risk preference). For example, the bank with a high-risk avoidance preference—that is, one that wants to attain a high credit rating for itself—will require a very high confidence interval for not exceeding a particular loss. In our example, we utilize a six-standard deviation requirement, sometimes referred to as the required average return on capital (RAROC) approach of an AA bank. The estimated standard deviation of 50 basis points per year (given) is then multiplied by 6 to arrive at the required amount of capital (300 bp) for this lending capital requirement, which is then multiplied by the bank's net opportunity cost or cost of equity capital (15%) for not investing and this product is added to the expected loss and other costs to arrive at the required economic capital (6.94%). We suggest using the net cost of equity (cost of equity minus the risk-free rate) for the calculation of the opportunity cost (15%). We also factor in other operating costs by adding an estimated 40 basis points per year to cover such noncredit items as overhead and operating risk charges, (the latter is required under Basel III).

<p>(1) Internal Model for Capital Allocation</p> <p>(2) BIS Capital Allocation Method</p> <p>Given: Five-Year Senior Unsecured Loan</p> <p>Risk Rating = BBB</p> <p>Expected Default Rate = 0.3% per year (30 bp)</p> <p>Expected Recovery Rate = 70%</p> <p>Unexpected Loss (=) 50 bp (0.5%) per year</p> <p>BIS Capital Allocation = 8%</p> <p>Cost of Equity Capital = 15%</p> <p>Overhead + Operations Risk Charge = 40 bp (0.4%) per year</p> <p>Cost of Funds = 6%</p> <p>Loan Price₍₁₎ = 6.0% + (0.3% × [1 - 0.7]) + (6[0.5%] × 15%) + 0.4% = 6.94%</p> <p>Or</p> <p>Loan Price₍₂₎ = 6.0% + (0.3% × [1 - 0.7]) + (8.0% × 15%) + 0.4% = 7.69%</p>

Figure 1. Risk-Based Pricing: An Example. BIS: Bank for International Settlement.

So, for the economic capital computation, Loan Price₍₁₎ in our example, the result is a required price, or interest rate, of 6.94%. The regulatory capital interest rate Loan Price₍₂₎ is higher by 0.75%, at 7.69%. This compares to the old Basel I regulatory capital requirement calculation, based on a flat 8%. One can now see why most banks preferred the Basel II framework. It should be noted that accurate scoring models are critical to the modern pricing structure. Even if a bank, or nonregulated institution, does not use or cannot use economic capital pricing criteria due to competitive conditions, the economic pricing analytics based on risk rating criteria will be helpful to ascertain how far from the actual price charged is the one based on economic pricing. Note that our example does not incorporate correlation and concentration issues in the pricing function. Such factors add to the complexity of credit decisions and should be considered by the portfolio management group of the financial institution.

In the various documents provided by the Bank for International Settlement (BIS) when Basel II was first introduced in 1999, and discussed until implemented with an agreed text in 2004 (BIS 2004), our Z-score approach was referenced extensively as an early template for bank internal rate based models to be used when external ratings are not available (foundation approach) and are to be based upon the portfolios of banks in determining PD, and for some very large banks, LGD (advanced approach).

3. Bond Investors

Beyond the financial institution lender of commercial loans, other financial institutions (e.g., shadow banks), institutions (e.g., pension, mutual and hedge funds), and individuals can profit from a well-tested and appropriate credit scoring system in their fixed income strategies. Perhaps the most obvious application is to determine whether to invest in a debt instrument selling at, or near, par value. The determination of PDs is important for investment-grade as well as more speculative, junk bonds. Indeed, about 22% of all defaulting issues from 1971–2017 and 19% from 2007–2017 were originally rated as investment grade by the professional rating agencies!¹ So the professional manager should include default risk analysis, as well as yield and concentration considerations, in his or her deliberations of investment grade decisions. If the investment-grade company has a financial profile of a lower-rated entity, the required rate of return should reflect that. The calculated financial requirement

¹ Our estimate of fallen-angel defaults is based on an analysis of about 3800 defaulting issues from the Altman/NYU Salomon Center's Master Default database.

can be determined by bond rating equivalent (BRE). Specification of the PD model. For example, the BREs of the original Z-Score model are given in Table 2, for various time periods.

Table 2. Median Z-Score by S&P Bond Rating for U.S. manufacturing firms: 1992–2017.

Rating	2017 (No.)	2013 (No.)	2004–2010	1996–2001	1992–1995
AAA/A	4.20 (14)	4.13 (15)	4.18	6.20*	4.80*
A	3.85 (55)	4.00 (64)	3.71	4.22	3.87
BBB	3.10 (137)	3.01 (131)	3.26	3.74	2.75
BB	2.45 (173)	2.69 (119)	2.48	2.81	2.25
B	1.65 (94)	1.66 (80)	1.74	1.80	1.87
CCC/CC	0.73 (4)	0.23 (3)	0.46	0.33	0.40
D	−0.10 (6) ¹	0.01 (33) ²	−0.04	−0.20	0.05

* AAA Only, ¹ From 1/2014–11/2017, ² From 1/2011–12/2013. **Sources:** S&P Global Market Intelligence’s Compustat Database, mainly S&P 500 firms, compilation by NYU Salomon Center, Stern School of Business.

For bonds selling in a distressed condition (i.e., 1000 basis points or more above Treasuries), the key question to ask is whether the company will continue to migrate to an even lower credit quality (or, in fact, default) or whether the PD is sufficiently low to conclude that its price will return to par (assuming it had already migrated down, perhaps even to a ‘fallen angel’ downgraded condition). The upside potential, from distressed to par, provides equity-type returns that are far greater than returns expected from a typical investment grade or even high-yield portfolio. Indeed, the average return on a portfolio of non-investment grade bonds in 2009 was about 60%, as a large proportion of those corporate bonds that were distressed as of the end of 2008 returned to par or above-par value in about one year. Probably the onset of the benign (forgiving) credit cycle had a lot to do with this incredible run, but one’s conviction to select securities that are selling at ‘deep junk’ or distressed-yield levels can be heightened when the credit model ascribes a higher BRE to the security than the one derived from the market. This ‘quality-junk’ investment strategy can be shown in Figure 2, whereby higher yield bonds from companies in quadrants A and B, with relatively strong BREs, are particularly attractive candidates. The Z-score model referenced in Figure 2 is actually our Z’’-score specification, developed for emerging market firms (Altman et al. 1997) and also advocated for non-manufacturers. This model has been used in several academic studies, as well, (see for example, Altman et al. 2014).

The Type II error—that of selling, or not buying, the distressed security when in fact its price returns to par—is always possible but the cost involved is not an important one for most traditional debt investors. Where it does matter, however, is in the case of a distressed debt or highly leveraged hedge fund investor. We strongly believe that a disciplined investor will find credit scoring and default risk models of considerable benefit in the investment process. Combining rigorous credit risk default probability models with the selection of low-volatility distressed securities (see Altman et al. 2014) for a discussion of this yield-spread criteria) will, in our opinion, provide a potentially very attractive fixed-income investment strategy. That is, to select distressed or attractively priced high yield spread companies with acceptable default probability attributes.

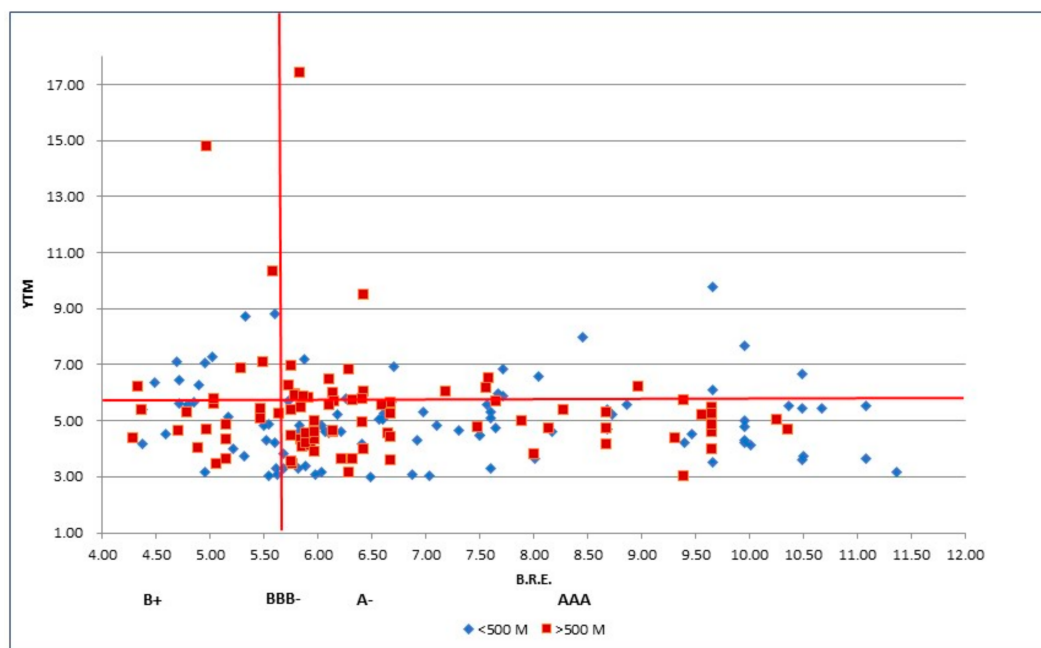


Figure 2. Return/Risk Tradeoffs— Distressed & High-Yield Bonds. BRE: bond rating equivalent.

4. Common Stock Investing

We were surprised to find that in our discussions with data vendors, like S&P Global’s Capital IQ (part of S&P Global’s Global Market Intelligence) and Bloomberg, LP, that there were more ‘hits’ from equity-market investors/analysts on the Altman Z-score “page” than from bond and fixed income investors/analysts. So, it seems that equity investors are interested in preservation of capital as well as in achieving ‘alpha’ returns or matching some index of performance. One way of preserving capital is to avoid investing in securities of companies that eventually go bankrupt. In most cases, defaulting companies’ equity securities are completely or mostly wiped-out.

In addition to avoiding financial distress of corporate issuers, investors take comfort with strategies that provide a ‘strong balance sheet’, whether for value investing or in the selection of companies that have desirable growth prospects and low probabilities of default. Such a strategy might fit into a long-short equity approach. We have found several investment management ‘packagers’ who offer investors this long-short strategy through equity ‘baskets’, whereby the selection of ‘long’ purchases are firms’ equities with high Z-scores and the ‘shorts’ are selected from those firms with low Z-scores. A variation on the long-short strategy approach is to just concentrate on going long or going short, but not both, based on the Z-score criterion.

Examples of equity selection “baskets” are Goldman Sachs’ “strategy baskets”, which combined the preservation of capital goal with dividend yields and growth prospects.² The main idea was that companies with strong balance sheets, based on Z-scores above a certain high level, e.g., 4.0, will outperform firms with weak balance sheets, e.g., below 2.0, especially in tight or stressed credit conditions. So, a long-short strategy based on these criteria will provide excess returns, especially when combined with high dividend growth prospects, if both are available. The Goldman Long GSTHWBAL/Short SPX strategy returned 12.9% for the period February 2008 to December 2008 compared to an S&P 500 performance of −31.2%, as reported in [Kostin et al. \(2008\)](#).

² See [Kostin et al. \(2008\)](#) for a more detailed discussion of this strategy basket. The Goldman strategy has been offered to investors now for about a decade.

A more recent example of a common stock strategy based on Z-scores is the “STOXX Strong Balance Sheet Indices”, a strategy that selects the financially fittest companies on the European, Japanese and U.S. stock exchanges.³ Launched in 2014, their indices are based on relatively high Z-score companies with a three-year track record of scores of 3.5 and higher. Financial firms are excluded from the STOXX indices since the Z-score model did not include this sector. Indeed, it is the case that the original Z-score model’s data contained only manufacturing firms (see discussion in [Altman and Hotchkiss 2006](#)), but it has been liberally applied across all industrial sectors in some cases. Indeed, I advocate using the Z”-score model when analyzing non-manufacturing firms, like retailers and technology companies.

Many of the vendors who reference the Z-score selection strategy discuss the approach with particular reference to distressed market conditions, see for example, [Gutzeit and Yozzo \(2011\)](#) and the aforementioned [Kostin et al. 2008](#). We believe that the strategy has both equity and fixed-income securities potential, in any market condition, but in most cases will trail market indices’ performance in strong bull markets. The opposite is likely to be the case for our earlier reference to bond markets. For one thing, the equity’s past performance is encompassed in the Z-score via the X_4 variable, market value of equity/total liabilities, and if the market has been strong, high Z-score firms may have peaked, or at least performed very well, already. Many times, low Z-score firms, if they do not default, will outperform market indices in strong bull markets.

5. Other Investment Applications

A number of other Investment Banks and their brokerage operations have used the Z-score for a variety of analytical purposes to serve their clients’ specific needs. For example, Morgan Stanley Dean Witter utilized a ‘Z-score’ methodology to quantify retail REIT portfolios credit risk exposure based on their tenants’ financial health (see [Ostrower and Calderon 2001](#)). JPMorgan’s Asia Pacific Equity Research, [Smith and Dion \(2008\)](#), applied Z-scores to information technology and health care sectors in Asia. Also, Merrill Lynch ([Bernstein 1990](#)) analyzed the financial health of S&P industrials during the entire decade of the 1980s and found that despite record levels of earnings and cash flows, the overall financial strength, based on Z-scores, had deteriorated. We addressed this seeming anomaly in our Z-score’s 50-year retrospective ([Altman forthcoming](#)). The financial health of firms in 2016 were compared to 2007. [Bernstein’s \(1990\)](#) concern was prescient as the market had serious problems with a big spike in defaults in late 1990 and early 1991. Stronger Z-score firms, however, made a remarkable comeback in their stock prices and also high-yield bond returns later in 1991.

Finally, [Altman and Brenner \(1981\)](#) utilized the Z-score to analyze a short-sale strategy, whereby a portfolio of ‘shorts’ was accumulated based on the first time a company’s Z-score dropped below a cutoff-score. After adjusting for market returns, this short-sale strategy demonstrated significant excess returns for at least 12 months after the Z-score’s deterioration was first indicated. Their analysis of a two-factor model’s findings indicated market inefficiency since the Z-Score’s variables and the weightings were public information at the time of our tests. A single-factor market model’s results, however, were mainly consistent with market efficiency tests in that the ‘new’ Z-scores seemed to be digested in market prices instantaneously.

6. Security Analysts

One of the fundamental axioms in finance is that the debt analyst is, and should be, far more focused on the possible downside movement of securities than is the common equity analyst. So, an obvious tool for the debt analyst is a default prediction model. Both traditional ratio analysis, and one or more distressed prediction models, would seem to be a prudent addition to the security

³ See [Eibl \(2014\)](#) for more detail on this Strategy-Index and various internet browsers for commentary and portfolio results.

analyst process. As noted earlier, we were surprised to learn that equity analysts log in to our Z-score model from data-providers more than do debt analysts.

The analyst should also consider a type of pro-forma distressed prediction treatment of the entity, especially where a heavily leveraged condition is likely to change through a series of steps, (e.g., asset sales and debt pay-downs) expected from management. We have seen that highly risky capital structures can lead either to a healthy and high return scenario or to a default, depending on management's success in reducing debt and improving its rating equivalent status. The analyst earns his or her analytical status, in our opinion, by providing realistic expectations and forecasts about the likely success of management to achieve its target capital structure and cash flow goals. It is clear that highly leveraged companies, especially just after a major restructuring transaction, will be evaluated by most credit scoring techniques as a distressed situation. We advocate realistic pro-forma scenario analytics, as well as current financial statement criteria, in the analysis process.

7. Regulators

Regulatory institutions, particularly bank examination department personnel, should be aware of and comfortable in evaluating credit risk systems used by constituent banks and other institutions. One of the challenges of the new Basel III framework is the role of the regulators, especially when evaluating the Pillar I capital requirement specifications of banks and in the Pillar II regulatory oversight function. Bank examiners need to be trained to evaluate the various credit scoring and probability of default/loss given default (PD/LGD) estimates used by banks. The various possible PD assessments, on the same counterparty, from numerous banks will serve as useful inputs in this process.

In addition, it is quite common for a nation's central bank, like the Banque de France, Banca Italia, (perhaps now the European Central Bank (ECB)), or the U.S. Federal Reserve, to utilize its own credit scoring evaluation system to assess the credit quality of bank portfolios and to monitor the assessments made by their individual bank customers.

8. Auditors

In a very early application of the original Z-score model, we discussed (Altman and McGough 1974) the potential use of credit scoring models to assist the accounting firm audit function to assess the going-concern qualification condition of customer accounts. We concluded, at that time, that while a reasonable proportion (about 40%) of bankrupt companies did receive a going-concern qualification in the year just prior to filing, the Z-score approach predicted well over 80% of those entities as in the 'distress-zone' at the same time. Note that we now advocate using the bond rating equivalent benchmark (see Table 2). Indeed, the accounting profession is very sensitive to its responsibility and has argued that it should not be liable for not qualifying a firm's financials just because it is in a highly risky, low rating-equivalent condition.

Our experience with accounting going-concern models involved building one for the now defunct Arthur Andersen franchise in their desire to establish criteria for going-concern qualifications and to use in assessing whether to take-on a new auditing client. We called that model 'A-score', which could be interpreted as either Altman, Arthur, or Andersen. Instead of using publicly available bankrupt firm data, like we did in building the Z-score model (1968), we utilized a combination of public firm bankruptcies and firms which defaulted from Arthur Andersen's historic database, as well as those that did not. Utilizing a logistical regression technique applied to this database, resulted in a highly accurate audit-risk model, which was used for many years at the discretion of their local offices. Unfortunately, it was apparently not used in the infamous Enron case, which led to Arthur Andersen's downfall. Tests using our Z''-score model did show that Enron's BRE fell to single-B where the ratings agencies' rating was triple-B.

Despite the obvious potential conflict between a very rigorous professional auditor's posture with respect to going-concern qualifications, and its desire to not cause problems for its customers and perhaps lose an account that it gives a going-concern qualification, it would seem that auditors

should be aware of and, indeed, use credit scoring models and other failure assessment techniques. These approaches can add objective feedback in their own assessments as well as in their discussions with the clients about their financial condition and plans going forward.

9. Bankruptcy Lawyers

One of the most prominent players in the bankruptcy and distressed firm arenas is the bankruptcy lawyer. The decision to take a firm into bankruptcy is a momentous one. While most bankruptcies are involuntary and decided on only as a last resort, whether to file and the timing of the filing are critical decisions. The longer a firm puts off the decision, the less likely, in most cases, it is that the reorganization will be successful. At the same time, if a successful turnaround can be managed out of court, then most likely the costs of financial distress will be lower than if the turnaround is achieved in bankruptcy (see [Gilson et al. 1993](#)). Usually, the bankruptcy lawyer is the prime adviser to the management of the firm as to whether to file and when to do so. Typically, the bankruptcy law firm will recommend to the ailing company potential consultants and paths of actions to take surrounding the bankruptcy or out-of-court restructuring decision. Such consultants, also discussed later in this chapter, might be turnaround and other restructuring specialists, bankers for bailout financing or debtor-in-possession (DIP) financing, and so forth.

While there may be unmistakable signals of financial distress, lawyers can also productively use financial distress prediction models in their advisory work for clients. Whether the firm is mildly or deeply distressed is an important determinant. Management itself can use such models in its determination, see [Altman and Hotchkiss \(2006, chp. 14\)](#) for a discussion of how management from inside the firm be guided in its efforts to turnaround a firm. Lawyers can benefit from the implications of a failure prediction model in such areas as the failing company doctrine (see below) and the once important issue of deepening insolvency. We now turn to these topics.

10. Legal Applications

Failure prediction models have had a number of direct applications in the legal arena over the years. These include such areas as (1) the failing company doctrine, (2) avoidance of pension obligations, and increasingly lately (3) the discussion of the fiduciary responsibility of owners, managers, directors, and other corporate insiders like professional advisers when a firm is insolvent. The last area relates to a concept and condition known as ‘deepening insolvency’.

11. Falling Company Doctrine

One defense against an antitrust violation by firms attempting to merge is the argument that an otherwise illegal merger should be permitted to occur if one or both of the merging entities would have failed anyway and its market share would likely have been absorbed by the other entity. We wrote in detail about this so-called “failing company doctrine” in ([Altman 1983](#)) and in [Altman and Goodman \(2002\)](#), but space limitations in this article preclude an exhaustive treatment.

Essentially, the failing company doctrine can be invoked if it can be shown that, while competitors that are trying to merge are unquestionably linked, either geographically or by market segment, at least one party was on the verge of bankruptcy and extinction. Examples might include two newspapers competing in a standard metropolitan area and one paper’s demise would almost certainly result in its market share going to its closest competitor. This occurred in the antitrust dispute involving the *Detroit News* and *Detroit Free Press* in the early 1980s. Using several of the Z-score models, I argued, in a deposition, that at least one of these entities would likely fail within a short period of time—both were in very bad shape. The court’s solution was to permit the merger but to require the independence of the editorial staffs. Both entities remained in existence but the ownership with respect to revenues, costs, and profits was combined. Concerns about newspaper costs, labor relations, and other negative antitrust results were outweighed by the likely scenario of a single major newspaper for the city if the merger was not permitted.

Another example was the potential combination of two low-priced beer companies in the Northeast of the United States in the early seventies—Schaefer Beer and Schmidt's of Philadelphia. Both firms competed for the low-end price customers of the beer market. We argued that Schaefer was a likely failing company and that while Schmidt's would surely absorb Schaefer's market share if the merger were permitted, that it would happen anyway if it were not. The plaintiff, in this case, Schaefer itself, which did not want to be taken over by Schmidt's, argued that it was not failing since it was not receiving a going-concern qualification from its auditors (see earlier discussion) and its major creditor was not calling in its now long overdue loans, which had been nonperforming for almost two years. The judge agreed and essentially ruled that Schaefer was not failing because it had not failed—yet! Another beer company, Stroh's of Milwaukee, which did not compete directly with either company, soon purchased Schaefer. A related issue to this case is whether the firm was in a so-called zone of insolvency or not. We now turn to that issue.

12. Deepening Insolvency

The theory of deepening insolvency originated with two federal cases in the early 1980s, *In re Investors Funding Corporation* (1981) and *Schacht v. Brown* (1983). The simple argument was made that a corporation is not a biological entity for which it can be assumed that any act that extends its existence is beneficial to it. This argument is in stark contrast to the fundamental premise of the turnaround management industry, and the principles underlying the *Bankruptcy Code* (1978), that the estate, involving creditors, shareholders, and employees, typically benefits if a distressed company can be reorganized successfully. A deepening insolvency argument, on the other hand, argues that the efforts to save an obviously dying entity can benefit some stakeholder at the considerable expense of others. For example, the managers, advisers, and others trying to save the entity receive payments during the failed turnaround period, which results in lower recoveries after bankruptcy to others, such as creditors.

Deepening insolvency was increasingly being recognized as an independent course of action. This action could argue that a bankrupt company, or its representatives, may recover damages caused by professionals—such as advisers, accountants, investment bankers, and attorneys—who have either facilitated the company's mismanagement or misrepresented its financial condition in such a way as to conceal its further deterioration from an insolvent condition into deepened insolvency and bankruptcy. One recognized method of calculating damages is to measure the extent of the company's deepening insolvency.

Several questions emerge around this legal argument. How do you know that a firm is in the zone of insolvency, and how do you measure its deepening condition? Is it enough to simply say that as long as a firm has not gone bankrupt, defaulted on its debt obligations, or participated in a distressed restructuring (e.g., an equity-for-debt swap), it is not in the zone of insolvency? I do not believe so! A firm may be in an insolvent condition, but still not be defaulted.

The courts seem to be relying on a comparison between the fair market value of the firm's assets and the market value of its liabilities to determine whether it is insolvent. This criteria is essentially the basis for distressed prediction from the Kealhofer, McQuown, and Vasicek (KMV) model, first commercialized in the 1990s and sold to Moody's in 2002. See our references to KMV in *Altman and Hotchkiss* (2006), and a more in-depth discussion in *Caouette et al.* (2008). Incidentally, we would argue that the appropriate comparison benchmark to be compared to assets is not the market value of debt, but its book value, since the latter is what needs to be repaid to creditors. This is especially true if you measure asset value as the sum of the market value of debt plus equity—as most financial economists do.

In any event, we would also argue that a reasonable test of whether a firm is in the insolvency zone is to calculate its bond rating equivalent or failure score using several statistical measures. In particular, we advocate using the Z-score models and other techniques, such as the Moody's/KMV expected default frequency (EDF) approach. If both classify the firm as 'in default' (e.g., a Z-score below zero

and a KMV EDF of 20 or more), then its likely survival as a non-bankrupt or non-defaulted entity is seriously in doubt. Deteriorating scores will indicate a deepening condition, although we cannot argue that the deterioration is linear with respect to the change in score. Certainly, a firm with a Z-score of -2.2 is in worse condition than one with a score of -0.2 . The use of the Z-score model in deepening insolvency cases and analyses was discussed by [Appenzeller and Parker \(2005\)](#).

A final note about the deepening insolvency legal claim. Most legal analysts point out that the original purpose of the argument was based on the bankruptcy that resulted after the insiders had perpetrated a type of Ponzi scheme or some other action that resulted in fraud or embezzlement, enriching its operators or advisers at the expense of unsuspecting creditors. It is argued that the guilty parties knew, or should have known, that the firm's chance of survival was unlikely. So, while we can help to specify whether or not the firm has a failing company profile, we cannot say for sure whether some turnaround strategy could not be successful.

Certainly, if the firm's true condition was known, but not revealed by those who could profit from continuing existence, then a legal cause for damages would seem to be valid. If, however, everything is revealed and best efforts are made to protect the remaining interests of owners, we would be reluctant to say that a firm's Z-score in the distressed zone, or a rating equivalent of D, means that it could not be saved. What we are arguing for is a clear and unambiguous metric of a firm's financial condition rather than relying only upon an expert's fair valuation of the firm's assets. Despite our arguments supporting the use of the 'zone-of-insolvency' in certain cases, the legal argument has not been invoked of late in many instances.

13. Bond Raters

While bond-rating agencies claim that they do not use failure prediction models to reach their rating conclusions, we would argue that the results of one or more well-tested and successful models could assist in the process. Obviously, Moody's saw great benefits in the output from the KMV EDF model since it paid a handsome sum to acquire KMV. Yet raters legitimately argue that such items as industry analysis, interviews with management, and a longer-perspective 'through the cycle' approach will determine their rating designations and that a model's point-in-time perspective should not be the basis for rating decisions. See [Loeffler \(2004\)](#), and [Altman and Rijken \(2004, 2006\)](#) for discussions on rating stability, accuracy, and comparisons between through-the-cycle versus point-in-time models. Yet, it is indisputable that in several-profile cases, a model like Z-score could have provided much earlier warning of impending downgrades, and even default. Two cases come to mind: IBM's decline in the late 1980s and early 1990s when the Z-score's BRE was even below investment grade, but the rating agencies still had 'Big Blue' as triple-A. Also, General Motors looked like a CCC company as early as 2005 while it was still investment grade according to the raters (see [Altman forthcoming](#)).

14. Risk Management and Strategy Advisory Consultants

Basel II has also been an important catalyst for the growth in risk-management consulting firms. Entities such as Oliver-Wyman, (purchased by Mercer in 2002), Algorithmics (purchased by Fitch Group in 2005 and sold to IBM, 2011), RiskMetrics, (purchased by MSCI in 2012), Kamakura, CreditSights, and the risk-management divisions of the other major rating agencies (e.g., KMV/Moody's, SPGlobal's Risk Solutions, Fitch Information Services) have prospered as the appetite for modern credit risk systems has grown. Most of these firms have developed credit risk tools that include scoring, structural, or hybrid combinations of credit-scoring models. In addition, consulting and credit risk assessment entities, providing services related to valuation and portfolio management, might find that objective credit risk tools are helpful in their assessment of clients, e.g., CreditRiskMonitor's FRISK system.

A related area of management consulting advice can be in mergers and acquisitions (M&A) strategies. A distressed firm could be encouraged to solicit a purchasing/strategic partner when its condition, assessed objectively, indicates going-concern problems. This would especially be helpful if potential acquirers do not share the same internal assessment or are confident that a turnaround can be

achieved. Obviously, the price of the acquisition will be reduced if it is generally known that the firm is in a highly distressed condition. Accurate early-warning models, however, can give a competitive advantage to users—whether they are the target or the acquiring firm.

15. Restructuring Advisers: Bankers, Turnaround Crisis Managers, and Accounting Firms

Four of the most prominent types of consultants and lenders that have emerged as important players in the distressed firm industry are (1) restructuring specialists, usually from boutique investment banks; (2) corporate turnaround or crisis managers from operations management consultants; (3) restructuring consultants from traditional accounting firms; and (4) asset-backed lenders. Asset-backed lenders, while not playing a formal consulting role, are intricate part of the restructuring process.

The competitive landscape in the turnaround consulting industry has evolved in the following way. In the mid to late 1980s, the market was led by accounting firms and the efforts by the larger investment banks that had placed large amounts of debt in the highly leveraged restructuring boom (primarily ill-fate leveraged buyouts and leveraged recapitalizations). For example, Drexel Burnham Lambert was a leading proponent of the out-of-court restructuring in the 1980s. In the early 1990s, with the huge increase in large Chapter 11 bankruptcies, some investment banks and new boutique divisions of smaller banks sprung up to fill the void caused by conflicts of interest from the larger investment bank under-writing firms. More of these boutiques, sometimes as offshoots from the large accounting firms or investment banks, emerged in the 2001–2005 period, and the larger underwriters put resources into distressed refinancing, especially since M&A activity slackened in that period.

In addition to these advisers and consultants, a fairly active banking market emerged to provide funding at the bankrupt stage, such as DIP financing, and exit-financing at the emergence stage. Many of the major commercial banks and also firms like GE Capital, Congress Finance, and CIT Finance became major players in this sector in the period 2000–2007. After the financial crisis of 2008/2009, however, distressed firm lenders abandoned the market due to their own capital constraints, e.g., GE and CIT. DIP lending has recovered, however, as the benign credit cycle ‘kick-in’ after the financial crisis and is, as of 2018, a common occurrence again for most large firms that file Chapter 11 petitions.

Although definitely not mutually exclusive, the turnaround consultants play a role as advisers for the restructuring of the firms’ assets (operations consultants known as crisis managers) and liabilities (restructuring bankers and accountants). The number of specialists in these fields swelled to over 20,000 globally in 2017, and many are members of the increasingly prominent Turnaround Management Association (TMA; web site: www.turnaround.org). This professional, educational, and networking organization, based in Chicago, Illinois, had 55 chapters globally (33 in the United States, and 22 abroad) with over 9000 members in 2017.⁴

Turnaround managers can be hired to assist a firm so as to avoid filing for bankruptcy or, once in a legal bankrupt condition, to assist in the reorganization of the firm’s assets and liabilities. Probably the three largest turnaround management consulting organizations are Alvarez and Marsal, AlixPartners, and FTI. These firms also typically provide financial and capital structure advice. While these three firms are relatively large, each with more than 1000 full-time employees, most turnaround management companies are quite small, with fewer than 10 full-time consultants. There are also a number of relatively large turnaround management specialists in the 20- to 100-employee range that can provide a full spectrum of advisory services. Often, these professional consultants have had prior experience as full-time corporate managers in such areas as finance, marketing, operations, human resources, and information systems and have chosen to work with ailing companies to assist in their corporate renewal. In addition to their primary operation functions, these firms often assist in such areas as

⁴ The author serves the TMA as Chairman of its Academic Advisory Council and contributes, along with market practitioners, to the organization’s monthly publication, the *Journal of Corporate Renewal*, as well as at periodic conferences, worldwide.

creditor negotiations, cash, and even strategic management. For example, McKinsey & Co. recently started a sizeable restructuring group. In the past 20 years, a new position has been created to deal with the many complex reorganization issues of companies in crisis—the chief restructuring officer (CRO)—not to be confused with another CRO acronym, the Chief Risk Officer.

Corporate restructuring advisers from investment banks tend to specialize on the ‘right-hand side’ of the balance sheet, with particular emphasis in assisting the management of distressed companies (or the operations turnaround specialist) to acquire needed capital during the restructuring period and to sell unprofitable or other assets to acquire cash. One type of financing that has proven to be crucial to the early phase of the Chapter 11 process is DIP financing, whereby the new creditors typically have a super priority status over all existing creditors. We noted this financing mechanism earlier.⁵ At the other end of the restructuring period is the so-called exit financing, whereby the firm needs to emerge from Chapter 11 with sufficient capital to conduct business on a going-concern basis. Again, the boutique investment bank is a key player in these exit-financings. Indeed, many times the provider of DIP financing is the same lender of exit financing and/or the distressed investor in the pre-emergence phase becomes the new owner of the emerged firms’ equity securities.

Some of the larger restructuring advisers that specialize in advising debtors are the boutique investment bankers like Lazard Freres, PJT Partners, (formerly the Blackstone Group), Miller Buckfire, N. M. Rothschild & Sons, Evercore, and Greenhill, although there are also several smaller successful operations. On the creditor advisory side, the largest advisers are Houlihan Lokey Howard & Zukin, Jefferies, Chanin, FTI, and Giuliani Partners. The last two are carve-outs or sales of divisions from accounting firms.

16. Bankruptcy Reform Bill Impact on Advisory Firms

Leading up to the “U.S. Bankruptcy Abuse Prevention and Consumer Protection Act of 2005” (BAPCPA 2005), restrictions in the [Bankruptcy Code \(1978\)](#) had historically limited participation of the larger investment banks in Chapter 11 restructuring work, especially if a bank was the underwriter of the debtor’s securities within three years before the bankruptcy. While there were exceptions to this restriction and sometimes a formal appeal from one of the stakeholders groups was necessary to eliminate a major investment banking firm (e.g., the switch from UBS to Lazard as the debtor’s adviser in the 2005 Trump Casinos & Entertainment Chapter 11), large underwriters were generally restricted under the premise that they were not disinterested professional.

With the passage of BAPCPA, the competitive landscape for distressed firm advisory work changed somewhat. Signed into law on 17 April 2005, and implemented 17 October 2005, this law impacted corporate bankruptcies, as well as consumer filings. It now permits heretofore excluded investment banks to be advisers as long as there is no clear conflict with the financing or other advisory work that helped cause the bankruptcy. Disinterestedness still requires that an entity not have an interest materially adverse to the interests of the estate or any class of creditors as equity security holders, by reason of any relationship or connection or interest in the debtor. So, while a current or former underwriter may be deemed not to still be disinterested, the prospect that other disinterested bulge-bracket firms will be eligible is very real. In fact, the large investment banks have not entered the financial advisory market in any material way, but continue to provide asset-backed financing, in the distressed firm market.

I advocate that both the turnaround managers (who are trying to save the business either before filing for Chapter 11 or while in bankruptcy-reorganization) and restructuring debtor advisers can effectively use distress-prediction credit scoring models as an early warning tool to assess the

⁵ DIP financing, so crucial to a firm’s restructuring success, is now being implemented in several other countries, with mixed success, so far. For example, a recent innovation in the Indian legal system provides for ‘interim financing’, since the conceptual ‘debtor in possession’ is not in effect.

financial health of an enterprise or as a type of post restructuring barometer of the health profile of an entity as it emerges. If the firm still looks like a distressed, failing entity upon emergence, then its chances for subsequent distress, indeed the Chapter 22 situation, would likely be higher than the renewal process should provide. Unfortunately, based on the frequent occurrence of Chapter 22 or other forms of continued distress (like distressed sales), it appears that the restructuring process is not always successful. In an early study, [Gilson \(1997\)](#) found that too often firms emerge with excessive leverage or operating problems, and [Hotchkiss \(1995\)](#) found that emerging firms often do not perform as well as their industry counterparts. On the other hand, Eberhart, Altman, and Aggarwal ([Eberhart et al. 1999](#)) found that emerging equities do extremely well in the post-Chapter 11 one-year trading period. In addition, in evidence (e.g., [Smith and Dion 2008](#)) supports that conclusion. Finally, [Altman and Branch \(2015\)](#), argue that using a distressed prediction model, like Z- and Z"-scores, to assess the likelihood whether an emerging firm from bankruptcy will or will not subsequently file for bankruptcy again, is a prudent strategy for bankruptcy courts. More details on this and other studies we have conducted on the Chapter 22 phenomena can be found in [Altman et al. \(forthcoming\)](#).

In conclusion, we advocate that firms be advised to emerge looking like going concerns and that equity like securities, including options, rights and warrants for junior creditors and old equity holders, be used wherever possible so as not to burden the "new" firm with too much fixed cost debt in the early years after emergence.

17. Government Agencies and other Purchasers

Many of the larger U.S. government agencies have a policy to screen their vendors as to their staying power and independence from government support should they become distressed. A related issue is whether the vendor will be able to deliver the goods and services that are contracted for. We have learned, over the years, that one of the screens used by government agencies and their auditing counterparts is the Z-score model(s). For example, the U.S. Department of Defense had this policy, as did the government's Accounting Audit Agency. If an entity fares poorly by the Z-score screen, then it will be screened even more closely and/or passed over as a possible vendor. As such, both the government and those firms seeking to become, or remain, suppliers to the federal or state government should understand the pros and cons of using an automated financial early-warning model, such as Z-score. We would especially suggest that any agency using such an approach do so in conjunction with other screening tools—especially qualitative methods like interviews with existing customers of the vendor.

The use of financial screening models by purchasing agents should not be restricted to public agencies. Indeed private enterprises should also be concerned about the health of their suppliers. This is especially true if the purchaser practices something like a just-in-time (JIT) inventory approach to its production process. For example, computer manufacturers, want to be assured that the keyboards in their PC fabrications be available at the precise time that the rest of the computer is about ready to be shipped. Another industry where the health of vendors, and of the manufacturers themselves, is of vital concern is the U.S. auto industry, especially in the 2005–2007 period. As its fragile condition became more obvious, going-concern and staying power probabilities were a pervasive issue. Indeed, many medium and large auto-part suppliers succumbed even before the major auto manufacturers bankruptcies in 2009 (i.e., Chrysler and GM); some as early as 2004–2005. A related issue to the manufacturer is the cost of supporting a vendor if the latter is sustaining continuing losses and is in jeopardy of failing and having to be bailed out. This was a common occurrence in Japan, and may still be.

18. M&A Applications

A final left-hand column of [Table 1](#) application potential of our Z-score model relates to both highly leveraged finance (e.g., leveraged buyout (LBOs)) takeovers and ordinary M&A selections. As noted earlier, distress predictions are fundamental to any merger transaction that involves massive debt financings. The high profile risk of default involving LBO takeovers was perhaps the major cause

of the financial crisis of the late 1980s–early 1990s. Analysis of the acquired firm’s existing default vulnerability, as well as past-LBO scenarios, should be a prominent focus for the private-equity fund.

With respect to ordinary M&A activity, acquirers are sometimes interested in ‘bottom-fishing’ to pay a very small price to a firm with good restructuring potential. A reasonable ‘rule-of-thumb’ is to purchase a firm in distress for no more than three-times Earnings Before Interest, Taxes, Depreciation and Amortization (EBITDA). Of course, many distressed firms have negative EBITDA, so a prospective estimate of cash-flow is relevant.

19. Concluding Remarks

Over the 50 years since the publication of the Z-score model for predicting firm financial distress and bankruptcy, a large number of practitioner applications have emerged, not to mention the enormous number of scholarly works that have utilized the Altman model as a reliable and easily replicable benchmark, e.g., see [Altman et al. 2017](#). The applications have taken two forms:

- (1) Those applied by analysts external to the firm, primarily for credit and investment purposes, and;
- (2) Those applied by managers and board members from within the distressed firm to gauge its strengths and weaknesses and, in some cases, to help guide the firm to a successful financial turnaround.

The external uses of the Altman Z-score model have become the standard paradigm for banks and other lending institutions to build internal models to estimate the probability of default and loss-given-default of counter-parties to comply with Basel II and III required capital allocations. With respect to financial markets, Z-scores are standard metrics in credit and capital market bond and loan and credit default swap analytics and, perhaps surprisingly, for equity investment strategies, including long/short equity baskets, private equity, and other M&A strategies.

The long list of existing, observed applications is more than likely not complete and the author is eager to learn about additional applications that have not been articulated in this article.

Funding: This research received no external funding.

Conflicts of Interest: The author declares no conflict of interest.

References

- Altman, Edward I. 1968. Financial Ratios, Discriminant Analysis and the Prediction of Corporate Bankruptcy. *Journal of Finance* 23: 189–209. [[CrossRef](#)]
- Altman, Edward I. 1983. *Corporate Financial Distress*. Hoboken: J. Wiley.
- Altman, Edward I., and Ben Branch. 2015. The Bankruptcy System’s Chapter 22 Recidivism Problem, How Serious is it? *The Financial Review* 50: 1–26. [[CrossRef](#)]
- Altman, Edward I., and Menachem Brenner. 1981. Information Effects and Stock Market Response to Signs of Firm Deterioration. *Journal of Financial Qualitative Analysis* 16: 35–51. [[CrossRef](#)]
- Altman, Edward I., and Laurie S. Goodman. 2002. An Economic & Statistical Analysis of the Failing Company Doctrine. In *Bankruptcy, Credit Risk and High Yield Bonds*. Edited by Edward I. Altman. Malden: Blackwell Publishers.
- Altman, Edward I., and Edith Hotchkiss. 2006. *Corporate Financial Distress & Bankruptcy*, 3rd ed. Hoboken: J. Wiley.
- Altman, Edward I., and Thomas McGough. 1974. Evaluation of a Company as a Going Concern. *Journal of Accountancy* 12: 50–57.
- Altman, Edward I., and Herbert A. Rijken. 2004. How Rating Agencies Achieve Rating Stability. *Journal of Banking & Finance* 28: 2679–714.
- Altman, Edward I., and Herbert A. Rijken. 2006. “A Point-in-time” Perspective on Through the Cycle Rating. *Financial Analysts Journal* 62: 54–70. [[CrossRef](#)]
- Altman, Edward I., John Hartzell, and Matthew Peck. 1997. Emerging Market Corporate Bonds: A Scoring System. New York: Salomon Brothers. In *Future of Emerging Market Flows*. Edited by Richard M. Levich and J. P. Mei. Amsterdam: Kluwer Publishing.

- Altman, Edward I., José F. Gonzalez-Heres, Ping Chen, and Steven S. Shin. 2014. The Return/Volatility Trade-Off of Distressed Corporate Debt Portfolios. *Journal of Portfolio Management* 40: 69–85. [CrossRef]
- Altman, Edward I., Małgorzata Iwanicz-Drezdowska, Erkki K. Latinen, and Arto Suvas. 2017. Financial Distress Prediction in an International Context: A Review and Empirical Analysis of Altman's Z-Score Models 2015. *Journal of International Financial Management and Accounting* 28: 131–71. [CrossRef]
- Altman, Edward I., Edith Hotchkiss, and Wei Wang. forthcoming. *Corporate Distress, Bankruptcy & Restructuring*, 4th ed. Hoboken: J. Wiley.
- Altman, Edward I. forthcoming. A 50-Year Retrospective on Credit Risk Models, the Altman Z-Score Family of Models and Their Applications to Financial Markets and Management Strategies. *Journal of Credit Risk*.
- Appenzeller, P., and R. Parker. 2005. Deepening Insolvency is a Liability Trap for the Unwary. *Journal of Corporate Renewal* 14: 12–18.
- Bankruptcy Code. Public Law 95—598—Nov. 6, 1978. Available online: <http://www.legisworks.org/GPO/STATUTE-92-Pg2549.pdf> (accessed on 1 August 2018).
- U.S. Bankruptcy Abuse Prevention and Consumer Protection Act of 2005. Public Law 109–8—Apr. 20, 2005. Available online: <https://www.gpo.gov/fdsys/pkg/STATUTE-119/pdf/STATUTE-119-Pg23.pdf> (accessed on 1 August 2018).
- Bernstein, Richard 1990. The Decaying Financial Infrastructure-Revisited. In *Quantitative Viewpoint*. New York: Merrill Lynch, pp. 1–7.
- Bank of International Settlements. 2004. *Basel II: International Convergence of Capital Measurement and Standards: A Revised Framework-Comprehensive Version*. Basel: Bank of International Settlements.
- Caouette, John B., Edward I. Altman, Paul Narayanan, and Robert Nimmo. 2008. *Managing Credit Risk*, 2nd ed. Hoboken: J. Wiley.
- Eberhart, Allan, Edward I. Altman, and Reena Aggarwal. 1999. The Equity Performance of Firms Emerging from Chapter 11. *Journal of Finance* 54: 1855–68. [CrossRef]
- Eibl, Angelika. 2014. STOXX Strong Balance Sheet Indices: A Family that Selects the Financially Fittest Companies. *STOXX PULSE* 3: 12–15.
- Gilson, Stuart C. 1997. Transactions Costs and Capital Structure Choice: Evidence from Financially Distressed Firms. *Journal of Finance* 52: 161–97. [CrossRef]
- Gilson, Stuart C., Kose John, and Larry Lang. 1993. Troubled Debt Restructuring: An Empirical Study of Reorganization of Firms in Default. In *Bankruptcy & Distressed Restructurings*. Edited by Edward I. Altman. Homewood: Business One Irwin, pp. 77–124.
- Gutzeit, G., and J. Yozzo. 2011. Z-Score Performance amid Great Recession. *ABI Journal* 44: 44–46.
- Hotchkiss, Edith. 1995. The Post Emergence Performance of Firms Emerging from Chapter 11. *Journal of Finance* 50: 3–21.
- Investors Funding Corp. of New York. 1981. 9 B.R. 962. U.S. District Court for the Southern District of New York.
- Kostin, David, Nicole Fox, Caesar Maasry, and Amanda Sneider. 2008. Strategy Baskets. In *US: Portfolio Strategy*. New York: Goldman Sachs, pp. 17–22.
- Loeffler, Gunter. 2004. An Anatomy of Rating through the Cycle. *Journal of Banking & Finance* 28: 695–720.
- Ostrower, M., and A. Calderon. 2001. Introducing Our Tenant Credit Index. In *Retail REITS, Equity Research, Morgan Stanley Dean Witter*. New York, pp. 1–5. June 19.
- Schacht, James W. v. Isadore Brown et al. 1983. 711 F. 2d 1343. United States Court of Appeals, Seventh Circuit.
- Smith, R., and M. Dion. 2008. Who Said Zed's dead? Reviving the Altman Z-Score. In *JPMorgan: Asia Pacific Equity Research*. New York: JPMorgan, pp. 1–60. September 25.

