

Assenmacher-Wesche, Katrin; Beyer, Andreas

Working Paper

A cointegration model of money and wealth

CFS Working Paper Series, No. 619

Provided in Cooperation with:

Center for Financial Studies (CFS), Goethe University Frankfurt

Suggested Citation: Assenmacher-Wesche, Katrin; Beyer, Andreas (2019) : A cointegration model of money and wealth, CFS Working Paper Series, No. 619, Goethe University Frankfurt, Center for Financial Studies (CFS), Frankfurt a. M.,
<https://nbn-resolving.de/urn:nbn:de:hebis:30:3-480560>

This Version is available at:

<https://hdl.handle.net/10419/193696>

Standard-Nutzungsbedingungen:

Die Dokumente auf EconStor dürfen zu eigenen wissenschaftlichen Zwecken und zum Privatgebrauch gespeichert und kopiert werden.

Sie dürfen die Dokumente nicht für öffentliche oder kommerzielle Zwecke vervielfältigen, öffentlich ausstellen, öffentlich zugänglich machen, vertreiben oder anderweitig nutzen.

Sofern die Verfasser die Dokumente unter Open-Content-Lizenzen (insbesondere CC-Lizenzen) zur Verfügung gestellt haben sollten, gelten abweichend von diesen Nutzungsbedingungen die in der dort genannten Lizenz gewährten Nutzungsrechte.

Terms of use:

Documents in EconStor may be saved and copied for your personal and scholarly purposes.

You are not to copy documents for public or commercial purposes, to exhibit the documents publicly, to make them publicly available on the internet, or to distribute or otherwise use the documents in public.

If the documents have been made available under an Open Content Licence (especially Creative Commons Licences), you may exercise further usage rights as specified in the indicated licence.

No. 619

Katrin Assenmacher and Andreas Beyer

A cointegration model of money and wealth

The CFS Working Paper Series

presents ongoing research on selected topics in the fields of money, banking and finance. The papers are circulated to encourage discussion and comment. Any opinions expressed in CFS Working Papers are those of the author(s) and not of the CFS.

The Center for Financial Studies, located in Goethe University Frankfurt's House of Finance, conducts independent and internationally oriented research in important areas of Finance. It serves as a forum for dialogue between academia, policy-making institutions and the financial industry. It offers a platform for top-level fundamental research as well as applied research relevant for the financial sector in Europe. CFS is funded by the non-profit-organization Gesellschaft für Kapitalmarktforschung e.V. (GfK). Established in 1967 and closely affiliated with the University of Frankfurt, it provides a strong link between the financial community and academia. GfK members comprise major players in Germany's financial industry. The funding institutions do not give prior review to CFS publications, nor do they necessarily share the views expressed therein.

A cointegration model of money and wealth

Katrin Assenmacher and Andreas Beyer

European Central Bank

August 7, 2018

Abstract

Extending the data set used in Beyer (2009) to 2017, we estimate $I(1)$ and $I(2)$ money demand models for euro area M3. After including two broken trends and a few dummies to account for shifts in the variables following the global financial crisis and the ECB's non-standard monetary policy measures, we find that the money demand and the real wealth relations identified in Beyer (2009) have remained remarkably stable throughout the extended sample period. Testing for price homogeneity in the $I(2)$ model we find that the nominal-to-real transformation is not rejected for the money relation whereas the wealth relation cannot be expressed in real terms.

Keywords: Money demand, wealth, cointegration, vector error correction model, $I(2)$ analysis.

JEL codes: E41, C32, C22

The views expressed in this paper do not necessarily reflect those of the European Central Bank or the Eurosystem. We wish to thank Anna-Camilla Drahonsky for providing us with the data on wealth.

1 Introduction

Money demand is one of the most researched relations in economics. It is particularly relevant for monetary policy makers because a stable money demand function is a prerequisite to use monetary aggregates as a target variable in order to achieve price stability. For those central banks that attach importance to the evolution of monetary aggregates, like e.g. the ECB, recurrent instabilities in estimated money demand functions have presented challenges when assessing the monetary policy stance from the perspective of the monetary analysis, the ECB's second pillar. Whereas specifications could be found up to the financial crisis that were reasonably stable,¹ the situation worsened with the financial crisis and the ensuing large shifts in macroeconomic variables such as real GDP and interest rates.

The analysis of money demand for the euro area is even more challenging than for other regions. First, the euro as a currency exists only since a relatively short period of time so that empirical studies have in general to rely on aggregated national data for the time before 1999. Second, the convergence between the euro area member states that took place before and after the introduction of a single currency might have caused changes in the dynamics of the system. Third, during the last decade the euro area was hit by large financial shocks that might have driven variables relatively far away from their equilibrium values and thus take more time to unwind.

In this paper, we revisit the money demand specification of Beyer (2009) who showed that shifts in velocity since the early 1980s can be explained when including housing wealth in a money demand system. We update the sample until the third quarter of 2017 (2017:3), thus including the period over which the Global Financial Crisis (GFC) and the euro area sovereign debt crisis unfolded. Overall, we find that, despite the large fluctuations in many economic and financial variables occurring during this time, the money demand relation that was identified by Beyer (2009) has remained reasonably stable. In addition, we investigate money demand in an $I(2)$ system that allows us to investigate a richer set of dynamic adjustments and to test price homogeneity assumptions instead of imposing them from the outset.

Motivated by the ECB's second pillar that reflects the importance of money growth for inflation developments, various money demand models have been estimated for the

¹See e.g. Calza et al. (2001), Brand and Cassola (2004).

euro area.² Many of the money demand specifications that have been proposed in the early 2000s became unstable over time. Beyer (2009) obtained a stable specification in a sample extending to 2007:4 when housing wealth was considered as an additional explanatory variable. The inclusion of wealth in a money demand system can be justified by considering money demand as part of the portfolio choice (see Gerdesmeier 1996).

In fact, most of the more recent studies indeed model money demand in a portfolio choice setting. De Santis et al. (2012), for instance, included the long-term government bond yield, the stock market price-earnings ratio and the USD/EUR exchange rate to identify three long-run relationships which they interpreted as euro area money demand, a relation for domestic assets and a relation for foreign assets. Dreger and Wolters (2015) included real housing prices as a proxy for real wealth and found a stable money demand function for a sample period spanning 1983:3 to 2010:4. Jung (2016) investigated the individual components in M3 and found stable relationships for each subcomponent with the exception of currency in circulation.

Though money demand has also been investigated in an $I(2)$ setting, the literature is relatively scarce and—to our knowledge—no study for the euro area exists. Norrbin and Reffett (1995) analysed money demand in the US in an $I(2)$ model and concluded that, like in their $I(1)$ models, stable representations of money demand can only be found for broad monetary aggregates such as M2. Juselius (2006) estimated an $I(2)$ money demand system on Danish data and found that, though nominal money and prices move one to one in the money equation, price homogeneity was violated, which seemed to be associated with the behaviour of money, prices and income in the price and income equation. Johansen (1992a) estimated the demand for M1 in the United Kingdom and found broadly similar coefficients in an $I(1)$ and an $I(2)$ setting. Kongsted (2005) re-examined the money demand models of Stock and Watson (1993) for M1 in the US, of Ericsson et al. (1998) for broad money in the UK and of Muscatelli and Spinelli (2000) for Italy in an $I(2)$ setting and concluded that the nominal-to-real transformation could not be rejected for the US and UK money demand relations whereas this was not the case with the Italian data.

The paper is structured as follows: Section 2 presents the data and the methodology, Section 3 provides an update of the $I(1)$ model for euro area money demand based on the results of Beyer (2009), Section 4 discusses our empirical results for the money demand

²See Beyer (2009) for an overview.

system in an $I(2)$ setting and Section 5 concludes.

2 Data and methodology

2.1 Data

The analysis in Beyer (2009) used data up to 2007:3. Model estimates based on provisory data until 2008:4 hinted, at the time, at a large structural break right at the end of the sample period. Almost ten years later, we investigate in this paper whether the model specification identified in Beyer (2009) has remained stable after the GFC. We explore how many breaks seem to be present and how they can be modelled. Overall, we find that the model still holds once these breaks are appropriately accounted for. For the empirical analysis in this paper we used the software PcGive (Doornik, 2014), CATS (Dennis et al. 2008) and SVAR (Warne, 2009).

We use the same variables as Beyer (2009), namely the euro area nominal money stock M3 (m_t); the GDP deflator (p_t), which we use to deflate the nominal variables; nominal housing wealth (wh_t); real GDP (y_t); the three-month money market interest rate (RS_t); and the own rate for M3 (RO_t). Our data starts in 1980:2, which is the first observation available and ends in 2017:3.³ As it is common practice, some of the macroeconomic time series have been revised backwards, even for observations covering the original sample period before 2007. To ensure comparability of the model over the extended sample with the original model, we extend Beyer's (2009) dataset by updating the levels of the original series with growth rates of the variables over the sample from 2008:1 to 2017:3. Apart from interest rates, all data are seasonally adjusted. Figures 1 and 2 show the time series.

To illustrate the enormous impact the GFC had on nominal as well as real GDP and money growth, Table 1 shows the means of Δm , $\Delta(m - p)$, Δy^n and Δy over the entire sample period and over subsamples. The three subsamples correspond to the pre-crisis period until 2008:3; the GFC starting with the bankruptcy of Lehman Brothers in 2008:4; and the ECB's quantitative easing period starting in 2014:3. During the second subsample, annualised nominal money and GDP growth were about 4 percentage points lower than in the pre-crisis period. Growth of real money fell by 3 percentage points,

³All data can be downloaded at the ECB's Statistical Data Warehouse webpage, see <http://sdw.ecb.europa.eu/>.

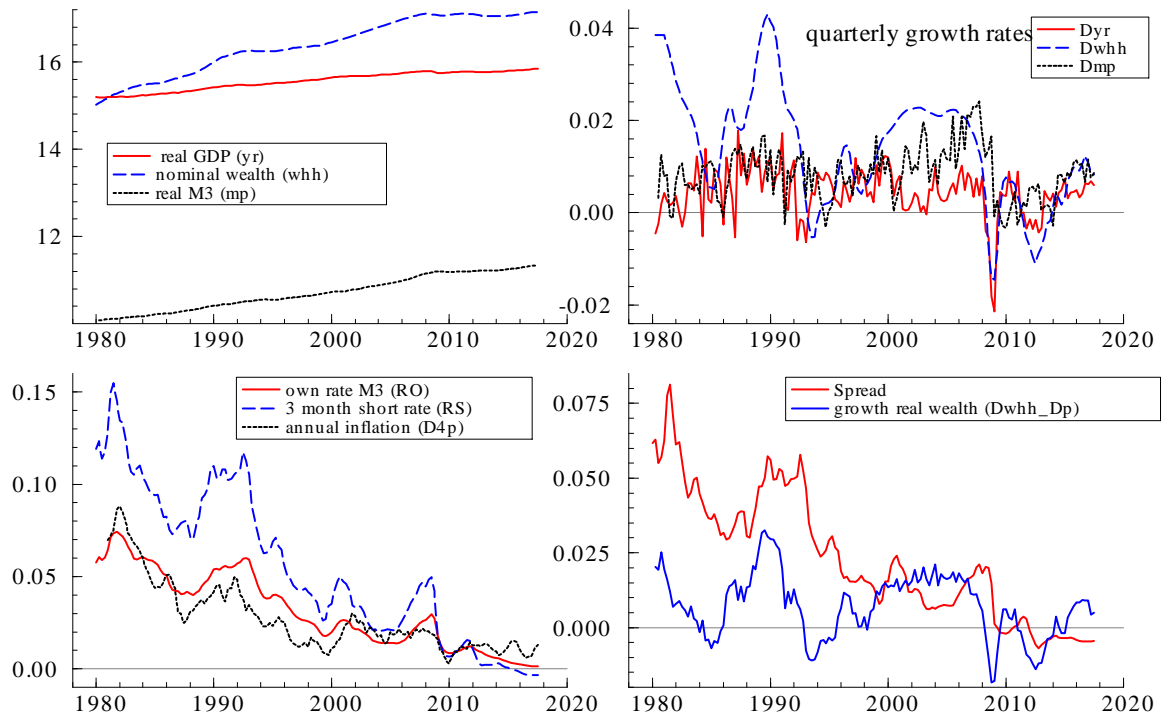


Figure 1: Time series of data

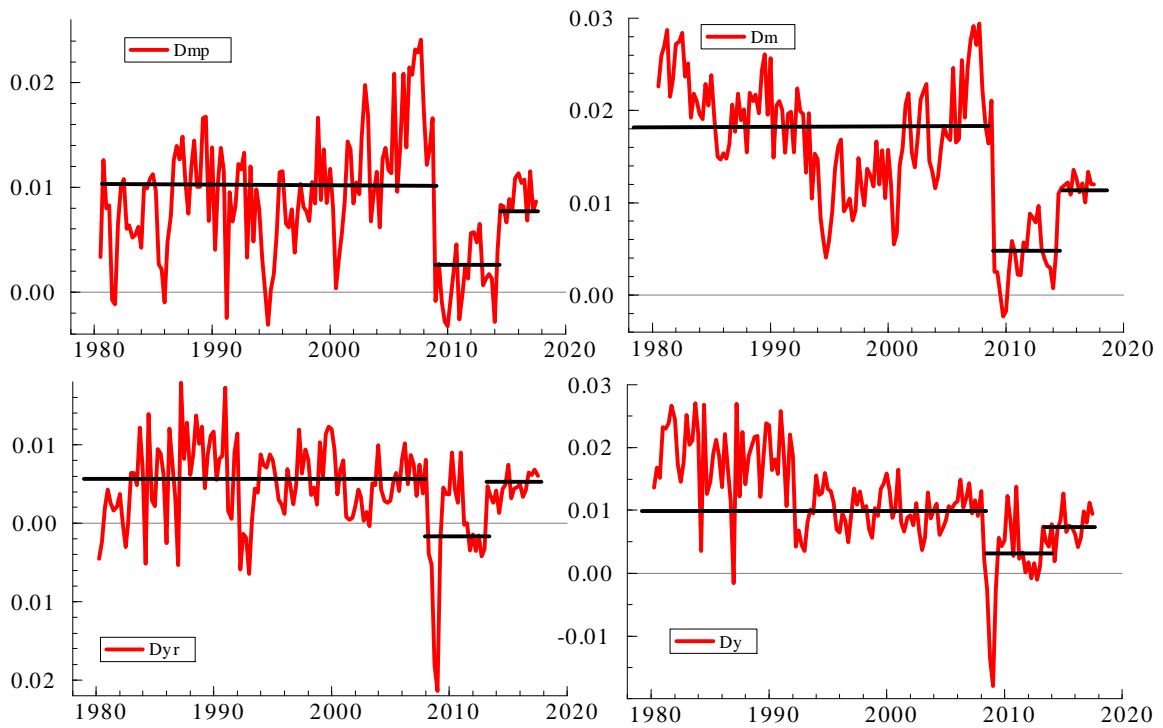


Figure 2: Real (left column) and nominal (right column) quarterly growth rates of M3 and GDP

Table 1: Annualised growth rates of nominal and real M3 and GDP

	1980:3-2017:3	1980:3-2008:3	2008:4-2014:2	2014:3-2017:3
Δm	6.18	7.22	1.84	4.79
$\Delta(m - p)$	3.40	3.89	0.81	3.65
Δy^n	4.54	5.43	0.94	3.21
Δy	1.77	2.11	-0.10	2.07

Quarter-on-quarter changes in per cent, multiplied by four.

Table 2: Augmented Dickey-Fuller tests

Variable	Data series	Order of integration
m	Nominal money stock M3	$I(2)$
p	GDP deflator	$I(2)$
$\Delta_4 p$	Annualised inflation rate	$I(1)$
$m - p$	Real money stock M3	$I(1)$
whh	Nominal housing wealth	$I(2)$
$whh - p$	Real housing wealth	$I(1)$
y	Real GDP	$I(1)$
RS	Three-month money market interest rate	$I(1)$
RO	Own rate for M3	$I(1)$

and real GDP growth by more than 2 percentage points. In the last subsample, during the period of the ECB's non-standard measures, real GDP growth recovered to its pre-crisis rate and also real money growth reached almost its pre-crisis value. Nevertheless, nominal growth rates still were around 2-2.5 percentage points lower than in the pre-crisis period, owing to protracted low inflation.

To investigate the time-series properties of our data, we first conduct univariate Augmented Dickey-Fuller (ADF) tests with a lag length that is determined by the Akaike Information Criterion (AIC). We include a trend in the test equation for the variables in levels (except for annual inflation and the interest rates) and a constant only for the first differences.

Table 2 shows that M3, the GDP deflator and nominal housing wealth are found to be $I(2)$, whereas real M3, real wealth, real GDP and the two interest rates seem to be $I(1)$. Notice that the first and fourth difference of the price level appear only borderline non-stationary, depending on the specification of the deterministic variables

in the test equation.⁴ These univariate ADF tests should be regarded as a first indication of the integration properties of the data. Later on, we will revisit the question of non-stationarity in the context of the estimated $I(1)$ and $I(2)$ systems. As these approaches rely on different models to test stationarity, one should not expect that they necessarily yield the same results. For the purpose of our analysis, we conclude that the first inspection of the data suggests the presence of at least two types of stochastic trends, namely a nominal one and at least one or more real trends, that potentially drive the dynamics of the time series.

2.2 Modelling structural breaks: deterministic variables

To account for the effects of the GFC and the subsequent impairment of the monetary transmission mechanism in the euro area, we include two broken trends in the $I(1)$ and the $I(2)$ model and a few dummy variables which are consistent with the specific time periods when the broken trends materialise. The first broken trend starts in 2008:4 when the bankruptcy of Lehman Brothers began to spill into the real economy and central banks around the world started to lower interest rates. The second broken trend starts in 2014:2, when the ECB began with credit easing through its Targeted Long-Term Refinancing Operations (TLTROs), reduced its policy rate to below zero and subsequently enacted its expanded asset purchase programme (see European Central Bank 2015, 2017).⁵

In the $I(1)$ model we further include two corresponding shift dummies $D_{08:4-14:2}$ and $D_{14:3-17:3}$, covering the periods from 2008:4 to 2014:2 and from 2014:3 to 2017:3 (i.e. to the end of our sample) to take account of the large shifts in the sample means of real money and GDP growth in the subperiods identified in Table 1. The dummies take a value of unity over the respective periods and zero otherwise. We also use an impulse dummy that is unity in 2008:4 and zero elsewhere.⁶ Our modelling strategy is to avoid the use of impulse dummy variables as much as possible. In particular we refrain from using outlier dummy variables to get a better fit or better test results.

⁴Results for the GDP deflator were puzzling in that trend stationarity could not be rejected for the level whereas stationarity was rejected for the first differences.

⁵The broken trends enter the cointegrating relation with one lag, which—according to the notation in CATS—requires specifying them as starting in 2009:1 and 2014:3, respectively.

⁶See Juselius (2006) for a discussion of different types of dummies and their effects on the dynamics in the $I(1)$ and the $I(2)$ model.

As dummies in the $I(2)$ model cumulate not only once like in the $I(1)$ model but twice, we are even more restrictive in the choice of dummy variables for the $I(2)$ analysis. We include three transitory impulse dummies in the $I(2)$ model for 2008:4, 2009:1 and 2014:3 to account for the structural breaks around these dates.⁷ However, we do include the shift and the impulse dummies as they could lead to higher-order trends if not appropriately restricted.

To avoid quadratic or cubic trends in the level VAR, we restrict the trend t and the two broken trends $t_{2008:4}$ and $t_{2014:2}$ to lie in the cointegrating space for the $I(1)$ and the $I(2)$ models. We leave the constant, the shift dummies $D_{08:4-14:2}$ and $D_{14:3-17:3}$ and the impulse dummy $D_{2008:4}$ unrestricted with respect to the cointegrating space in order to account for the trending behaviour of $(m - p)_t$, y_t and whh_t .⁸ The three transitory impulse dummies are unrestricted too since they cumulate to zero and therefore do not exert a permanent impact on the variables.

2.3 $I(1)$ versus $I(2)$: the economic rationale

Starting point for our empirical analysis is a p -dimensional vector autoregressive model (VAR) of order k ,

$$X_t = \Pi_1 X_{t-1} + \Pi_2 X_{t-2} + \dots + \Pi_k X_{t-k} + \Phi D_t + \varepsilon_t, t = 1 \dots T, \quad (1)$$

where the data vector is given by $X_t = [m_t, p_t, y_t, whh_t, RS_t, RO_t]$ as defined in Table 2 above. ε_t is a sequence of independent Gaussian error variables with zero mean and covariance matrix Ω , and D_t contains the deterministic variables as discussed above, namely, a constant, a trend, two broken trends, and a set of dummies to account for the shifts related to the effects of the GFC. The model in equation (1) will form the basis of our $I(1)$ and $I(2)$ analyses. For the $I(1)$ model, however, we will transform the variables appropriately in order to remove the $I(2)$ trends before the estimation. In the following, we will discuss some scenarios to illustrate this.

As nominal money, nominal housing wealth and the price level were found to be $I(2)$, we first discuss some scenarios for the potential driving forces for the order of integration

⁷The transitory impulse dummy for 2008:4, for example, is unity in 2008:4 and minus unity in 2009:1.

⁸We tried various specifications and combinations, with deterministic variables restricted or unrestricted with respect to the cointegrating space. The results concerning the likelihood, the p -value for the validity of the overidentifying restrictions on β , the point estimates and the recursive parameter stability properties are similar.

of the variables and how these could be represented in the empirical analysis (see Juselius 2006, 2017). We assume the existence of three independent stochastic shocks, which we could think of as a nominal demand shock, u_{1t} , a real supply shock, u_{2t} , and a shock to real housing wealth, u_{3t} . Starting point is a decomposition of the data vector into its driving shocks and the trend component, where we allow for the possibility of a deterministic trend in m_t , p_t , y_t and whh_t , but not in either of two interest rates:

$$\begin{bmatrix} m_t \\ p_t \\ y_t \\ whh_t \\ RS_t \\ RO_t \end{bmatrix} = \begin{bmatrix} c_{11} \\ c_{21} \\ 0 \\ c_{41} \\ 0 \\ 0 \end{bmatrix} \left(\sum \sum u_{1t} \right) + \begin{bmatrix} d_{11} & d_{12} & d_{13} \\ d_{21} & d_{22} & d_{23} \\ d_{31} & d_{32} & d_{33} \\ d_{41} & d_{42} & d_{43} \\ d_{51} & d_{52} & d_{53} \\ d_{61} & d_{62} & d_{63} \end{bmatrix} \begin{bmatrix} \sum u_{1t} \\ \sum u_{2t} \\ \sum u_{3t} \end{bmatrix} + \begin{bmatrix} g_1 \\ g_2 \\ g_3 \\ g_4 \\ 0 \\ 0 \end{bmatrix} t + stat.comp. \quad (2)$$

The nominal demand shock is cumulated twice and enters m_t , p_t and whh_t , inducing $I(2)$ behaviour in the variables. Long-run price homogeneity of money demand would require $c_{11} = c_{21}$, meaning that the nominal demand shocks affects money and prices in the same way in the long run, so that the $I(2)$ trends in nominal money and prices cancel out.⁹ Correspondingly, we can define long-run price homogeneity for nominal housing wealth, which was also found to be $I(2)$. If $c_{41} = c_{21}$ nominal housing wealth cointegrates with the GDP deflator to $I(1)$. With these assumptions, our system in equation (2) can be reformulated as follows:

$$\begin{bmatrix} m_t - p_t \\ \Delta p_t \\ y_t \\ whh_t - p_t \\ RS_t \\ RO_t \end{bmatrix} = \begin{bmatrix} d_{11} - d_{21} & d_{12} - d_{22} & d_{13} - d_{23} \\ c_{21} & 0 & 0 \\ d_{31} & d_{32} & d_{33} \\ d_{41} - d_{21} & d_{42} - d_{22} & d_{43} - d_{23} \\ d_{51} & d_{52} & d_{53} \\ d_{61} & d_{62} & d_{63} \end{bmatrix} \begin{bmatrix} \sum u_{1t} \\ \sum u_{2t} \\ \sum u_{3t} \end{bmatrix} + \begin{bmatrix} g_1 - g_2 \\ 0 \\ g_3 \\ g_4 - g_2 \\ 0 \\ 0 \end{bmatrix} t + stat.comp. \quad (3)$$

where the inflation rate is solely affected by the once-cumulated nominal shock whereas all the other variables can be affected by all three shocks in the medium run. While equation (3) assumes long-run price homogeneity, it allows for money and prices to

⁹See Juselius (2006).

deviate over the business cycle, i.e. real money is $I(1)$ as the three shocks cumulated once can enter the real money equation. This seems reasonable as e.g. real GDP might be affected differently by, for instance, the supply shocks, $\sum u_{2t}$, than real wealth or real M3, i.e. $d_{32} \neq d_{42} - d_{22} \neq d_{12} - d_{22}$ is unlikely to hold. The same is true for the medium-run impact of the real wealth shock on the variables.

If we suspect that the GDP deflator is not ideally suited to deflate real wealth, we alternatively can reformulate the system (2) by imposing price homogeneity for the money equation but including nominal wealth in first differences, as in Beyer (2009), which would lead to different coefficient restrictions, see equation (4).

$$\begin{bmatrix} m_t - p_t \\ \Delta p_t \\ y_t \\ \Delta whh_t \\ RS_t \\ RO_t \end{bmatrix} = \begin{bmatrix} d_{11} - d_{21} & d_{12} - d_{22} & d_{13} - d_{23} \\ c_{21} & 0 & 0 \\ d_{31} & d_{32} & d_{33} \\ c_{41} & 0 & 0 \\ d_{51} & d_{52} & d_{53} \\ d_{61} & d_{62} & d_{63} \end{bmatrix} \begin{bmatrix} \sum u_{1t} \\ \sum u_{2t} \\ \sum u_{3t} \end{bmatrix} + \begin{bmatrix} g_1 - g_2 \\ 0 \\ g_3 \\ 0 \\ 0 \\ 0 \end{bmatrix} t + stat.comp. \quad (4)$$

In the $I(2)$ analysis, we will start with the levels of the variables and investigate further the nominal-to-real transformation whereas the $I(1)$ analysis departs from equation(4).¹⁰

3 The statistical $I(1)$ model

Assuming long-run price homogeneity, we proceed treating the process $\{X_t\} = [(m - p)_t, \Delta_4 p_t, y_t, \Delta whh_t, RS_t, RO_t]$ as $I(1)$. This deviates slightly from the scenario in equation (4) as we use the annual difference of inflation to make it comparable to nominal interest rates that are also measured on an annual basis. The VAR model in equation (1) can be represented as a vector error correction model (VECM)

$$\Delta X_t = \Pi X_{t-1} + \sum_{i=1}^{k-1} \Gamma_i \Delta X_{t-i} + \Phi D_t + \varepsilon_t \quad (5)$$

where $\Pi = \sum_{i=1}^k \Pi_i - I$ and $\Gamma_i = -\sum_{j=i+1}^k \Pi_j$. If the variables in the model are cointegrated, $\Pi = \alpha\beta'$, where α and β are $(p \times r)$ matrices having full rank r , with β being the cointegrating vectors and α the loading coefficients. We assume that the

¹⁰Results in Section 4 show that price homogeneity for wealth is rejected.

characteristic polynomial

$$A(z) = I - \sum_{i=1}^k \Pi_i z^i \tag{6}$$

satisfies the condition that if $|A(z)| = 0$, then either $|z| > 1$ or $z = 1$.

3.1 Determining the lag length

As the next step, we determine the lag order k of the VAR model. The usual information criteria indicate a lag length of two. We start with a lag length of four and test whether all variables dated $t - 4$ can be excluded from the system. This hypothesis is rejected at the 5% level of significance, but not at the 1% level, with a likelihood ratio (LR) test statistic of $\chi^2(36) = 55.11$ (p -value of 0.03). By contrast, reducing the VAR(4) to a VAR(2) is rejected with a p -value of zero ($\chi^2(72) = 126.24$). Moreover, we find that results from misspecification tests did not improve when more lags were included, which lead us to opt for the VAR(3) model in order to conserve degrees of freedom.

Examining the residuals (see Table 3) shows that absence of serial correlation and heteroscedasticity (autoregressive conditional or squared regressors) are mostly not rejected. However, normality is strongly rejected in the GDP and interest rate equations due to some large outliers that occur mainly around 2009 (GDP) and 2011 (interest rates). Yet, we refrain from adding more impulse dummies (in addition to the one included for 2008:4). Instead we proceed with the estimation as inference is generally reasonably robust to the presence of kurtosis, thereby justifying the assumption of asymptotic normality; see e.g. the discussion in Hendry (1995) or Spanos (1986).

We hence choose a lag length of three, i.e. in the VECM formulation our model will include two lagged differences of the variables. We will use the same lag length also for the $I(2)$ model, as it includes the same variables, though in slightly different transformations. Performing the lag length tests with the variables for the $I(2)$ model yields broadly identical results.

3.2 Determining the cointegration rank

Next, we estimate the cointegration rank. For the null hypothesis “rank $\Pi \leq r$ ” Table 4 shows the trace-test statistic and the Bartlett-corrected trace-test statistic, marked with an asterisk, together with the 95% quantiles and the corresponding p -values. Bartlett-corrected trace statistics are applied to take into account small sample biases which

Table 3: Misspecification tests for the VAR(3) model

	$(m - p)$	y	Δwhh	$\Delta_4 p$	RS	RO
$AR(1-3)$, F(3,116)	0.67	5.97	1.69	1.70	0.38	1.71
p -value	[0.56]	[0.00]	[0.17]	[0.16]	[0.76]	[0.16]
$ARCH(1-3)$, F(3,138)	0.29	0.99	1.24	4.50	0.11	0.26
p -value	[0.86]	[0.39]	[0.29]	[0.01]	[0.95]	[0.84]
Hetero X_i^2 , F(44,98)	0.92	1.84	1.74	1.11	1.44	2.28
p -value	[0.60]	[0.01]	[0.01]	[0.32]	[0.06]	[0.00]
Normality, $\chi^2(2)$	1.85	21.16	1.65	9.51	17.44	23.19
p -value	[0.39]	[0.00]	[0.43]	[0.01]	[0.00]	[0.00]

$AR(1-3)$: residual autocorrelation up to 3 lags; $ARCH(1-3)$: conditional heteroscedasticity; Hetero X_i^2 unconditional heteroscedasticity (squared product of regressors). Significant test statistics at the 5% level are indicated in bold.

often yield over-sized tests, see Johansen (2000, 2002). As can be seen from Table 4, the standard test statistic clearly rejects the hypotheses of at most zero ($r = 0$) or at most one cointegrating vector ($r = 1$). The existence of at most two cointegrating vectors is rejected too, pointing towards a third relationship. Applying the Bartlett correction, the existence of at most two cointegrating vectors is rejected at the 5% level of significance but not at the 1% level.

It is well known that if non-standard deterministic variables are restricted to lie in the cointegrating space, standard tables for the trace test to determine the cointegrating rank are not valid. Instead, p -values have to be simulated from a bootstrap distribution. The simulated critical values are reported in Table 5. Overall, it turns out that also the simulated critical values point to the same choice of cointegration rank.

In practice, the decision about the cointegrating rank generally is a pragmatic one. Often not all criteria point to the same rank. Additional important information for the choice of the cointegrating rank is therefore the largest non-unit eigenvalue of the companion matrix of the characteristic polynomial in equation (6) after imposing $(p - r)$ unit roots, corresponding to cointegrating rank r . It is desirable for the largest non-unit eigenvalue to be as small as possible, as the inclusion of a cointegration vector that is in fact non-stationary would lead to a large characteristic root close to the unit circle see e.g. Juselius (2006, p. 142). The larger the modulus of the largest unrestricted root, the

Table 4: Trace test statistics for cointegrating rank

$p - r$	r	Eig.value	Trace	Trace*	Frac95	p -value	p -value*	Root ^a
6	0	0.40	214.31	186.32	138.95	0.00	0.00	0.99
5	1	0.27	140.46	118.54	106.84	0.00	0.01	0.85
4	2	0.25	94.72	81.14	78.97	0.00	0.04	0.85
3	3	0.16	52.56	45.26	55.27	0.08	0.26	0.93
2	4	0.13	27.61	23.61	34.29	0.21	0.40	0.92
1	5	0.05	8.07	4.53	17.53	0.56	0.89	0.98

^a Largest non-unit eigenvalue of the companion matrix of the characteristic polynomial when $(p - r)$ unit roots have been imposed. Trace* and p -value* are the Bartlett-corrected trace statistics and the corresponding p -values.

Table 5: Quantiles of the simulated rank test distribution

$p - r$	r	50%	75%	80%	85%	90%	95%	97.5%	99%
6	0	114.86	13.99	114.41	123.75	126.29	129.29	133.39	138.95
5	1	86.17	12.05	85.63	94.07	96.16	98.82	102.09	106.84
4	2	61.05	10.35	60.36	67.70	69.70	71.84	74.59	78.97
3	3	40.12	8.53	39.52	45.31	46.92	48.85	51.24	55.27
2	4	22.63	6.42	22.02	26.50	27.69	29.23	31.23	34.29
1	5	9.38	4.34	8.67	11.72	12.57	13.73	15.05	17.53

Table 6: Test for stationarity of individual variables as single cointegrating vectors

rank r	d.o.f.	5% c.v.	$m - p$	y	Δwhh	$\Delta_4 p$	RO	RS
1	5	11.07	44.20 [0.00]	48.92 [0.00]	45.55 [0.00]	41.58 [0.00]	42.23 [0.00]	42.65 [0.00]
2	4	9.49	19.81 [0.00]	25.99 [0.00]	24.17 [0.00]	13.65 [0.01]	17.54 [0.00]	18.66 [0.00]
3	3	7.82	23.90 [0.00]	24.68 [0.00]	20.55 [0.00]	10.39 [0.02]	14.76 [0.00]	16.26 [0.00]
4	2	5.99	9.79 [0.01]	6.86 [0.03]	7.64 [0.02]	2.88 [0.24]	6.67 [0.04]	5.76 [0.06]
5	1	3.84	3.47 [0.06]	2.30 [0.13]	3.15 [0.08]	0.03 [0.86]	0.03 [0.85]	0.25 [0.62]

Likelihood ratio test, $\chi^2(6 - r)$, p -values in brackets.

more persistence is left in the model, indicating that a return to the estimated long-run relations occurs only slowly. Table 4 reports those roots in the last column. It shows that for $r = 2$ (i.e. four unit roots imposed) the largest unconstrained root is much smaller (0.85) than when imposing three unit roots (0.93, corresponding to three cointegrating vectors). Hence, we follow Beyer (2009) and continue our analysis imposing $r = 2$.¹¹

Before proceeding to the identification of a long-run structure for the model, we complement our preliminary ADF test analysis and present formal unit root tests for stationarity of the individual variables in X_t . Table 6 shows χ^2 test statistics for each variable under the null hypothesis that a variable is a single cointegrating vector in itself. For $r = 2$ this is rejected for all variables, also for inflation (with a p -value just above one percent) which was only borderline non-stationary according to the ADF tests shown above. This confirms our $I(1)$ assumption for all variables in X_t . Next, we will identify and estimate two cointegrating relationships.

3.3 Identifying a long-run structure

The estimates of the overidentified cointegrating vectors are shown in Table 7. As in Beyer (2009) we impose overidentifying restrictions that are motivated by interpreting the long-run relations as a money demand and a real wealth equilibrium relationship.

To facilitate comparison, we also reproduce the estimates of Beyer (2009) for the

¹¹When all deterministic variables are unrestricted, the trace test yields basically the same results but the assumption of $r = 2$ is slightly more supported. Notice that the roots of the eigenvalues of the companion matrix are identical irrespectively of whether the broken trends are restricted to lie in the cointegration space or not.

Table 7: Over-identified cointegrating relationships

End of sample	2007:4	2017:3	2007:4	2017:3
$(m - p)$	1.00 (-)	1.00 (-)	0.00 (-)	0.00 (-)
y	-1.70 (0.04)	-1.72 (0.04)	-0.84 (0.01)	-0.85 (0.01)
Δwhh	4.11 (-)	4.49 (-)	1.00 (-)	1.00 (-)
$\Delta_4 p$	-4.11 (0.24)	-4.49 (0.24)	1.00 (-)	1.00 (-)
RS	0.00 (-)	0.00 (-)	1.37 (-)	1.35 (-)
RO	0.00 (-)	0.00 (-)	-1.37 (0.08)	-1.35 (0.09)
t	0.00 (-)	0.00 (-)	0.005 (-)	0.005 (-)
$t_{2008:1}$	n.a.	0.004 (0.002)	n.a.	-0.003 (0.001)
$t_{2014:2}$	n.a.	-0.011 (0.002)	n.a.	0.00 (-)
Restrictions on individual CIs	$\chi^2(3)=2.94$ [0.401]	$\chi^2(3)=1.22$ [0.748]	$\chi^2(3)=3.17$ [0.365]	$\chi^2(4)=5.98$ [0.200]
Joint restrictions on two CIs	$\chi^2(6)=5.02$ [0.540]	$\chi^2(7)=10.42$ [0.166]		

Trend restricted to lie in the cointegrating space. Restricted coefficients without standard errors, significant coefficients in bold, standard errors in round brackets and p -values in squared brackets. All p -values are asymptotically χ^2 distributed.

Trend coefficient in CI_2 restricted to 0.005; normalisation by $\beta_{2y} = 0.85$ ($0.005/0.85=0.0059$) yields average quarterly GDP growth, corresponding to average annual GDP growth of 2.3%.

Table 8: Loading coefficients α of the two cointegrating relationships

	$\Delta(m-p)$	Δy	$\Delta\Delta whh$	$\Delta\Delta_{4p}$	ΔRS	ΔRO
CI_1 2007	-0.04 [0.03]	0.12 [0.03]	0.01 [0.01]	0.04 [0.02]	0.10 [0.02]	0.01 [0.01]
CI_1 2017	-0.03 [0.02]	0.08 [0.02]	0.01 [0.01]	0.05 [0.02]	0.09 [0.02]	0.01 [0.01]
CI_2 2007	0.25 [0.11]	-0.27 [0.11]	-0.04 [0.03]	-0.08 [0.08]	-0.34 [0.09]	-0.02 [0.03]
CI_2 2017	0.22 [0.08]	-0.16 [0.08]	-0.04 [0.03]	-0.11 [0.06]	-0.25 [0.07]	-0.01 [0.02]

β restricted as above, standard errors in brackets; significant coefficients in bold.

Testing variables for weak exogeneity

$r = 2, \chi^2(2)$	15.67 (0.00)**	26.96 (0.00)**	1.89 (0.39)	15.18 (0.00)**	23.73 (0.00)**	6.96 (0.03)*
--------------------	-------------------	-------------------	--------------------------------	-------------------	-------------------	-----------------

β restricted as above, p-values in parentheses; * and ** denote significance on the 1% and 5% level, respectively.

sample period that ends in 2007:4. Parameters in bold are restricted and standard errors are shown in parentheses. We restricted the broken trends to lie in the cointegration space and, in line with the return of real GDP growth rates to their pre-crisis level, we imposed a zero restriction on the coefficient of $t_{2014:2}$ in the second cointegrating relation.

The seven overidentifying restrictions are not rejected with an asymptotically $\chi^2(7)$ distributed test statistic of 10.42 and an asymptotic p -value of 0.16. Based on simulated critical values for the restrictions on β , the corresponding $\chi^2(6)$ test statistic is also safely not rejected with a p -value of 0.63.¹²

For the specification of β in Table 7, Table 8 shows the corresponding α vectors with p -values in brackets. Again, the point estimates and the significance of the loading coefficients are almost identical to those of the pre-crisis model. A formal test for weak exogeneity of individual variables (i.e. none of the two cointegrating vectors enters the corresponding VECM equation) is reported at bottom of Table 8. As in the pre-crisis model, nominal wealth growth clearly turns out to be weakly exogenous.

As already motivated above, we interpret the first β vector in Table 7 as a money demand relation,

$$(m-p)_t^* = 1.72y_t - 4.49(\Delta whh - \Delta_{4p})_t - 0.004t_{2008:4} + 0.011t_{2014:2} \quad (7)$$

¹²Notice that for the bootstrap simulations we had to relax the restriction that the broken trend coefficients lie within β . Therefore we estimate β by only imposing six overidentifying restrictions.

and the second β vector as a real wealth relation.

$$(\Delta whh - \Delta_4 p)_t^* = 0.85y_t - 0.005t + 0.003t_{2008:4} - 1.35(RS - RO)_t \quad (8)$$

The point estimates for the updated model are remarkably similar compared to the pre-crisis model for which the sample ends in 2007. The economic interpretation obviously remains the same as in Beyer (2009). Equation (7) suggests that the income elasticity of money demand is positive and greater than unity, while the coefficient on real housing wealth is negative, indicating a substitution relation between money and real housing wealth, consistent with a portfolio balance approach. The zero restriction on the interest rate spread in the money relation is not rejected. Beyer (2009) discusses potential reasons for why this might be the case. The interest rate spread, however, enters the real wealth relation, and because linear combinations of cointegrating vectors are also potential valid cointegrating relationships, this does not rule out an influence from interest rates on money demand velocity.

Beyer (2009) includes a wealth variable to account for the 2003 break in velocity that occurred in standard quantity theory based money demand models and is depicted by the green dashed line in Figure 3. Quantity theory based velocity is defined as

$$v_{QT} = -(m - p - y). \quad (9)$$

Two alternative velocity specifications can be derived from the estimated cointegration relationships. The first variant reformulates the first money demand cointegration relation, solving for $-(m - p - y)$:

$$v_{CI,1} = 0.72y_t + 4.50(\Delta whh - \Delta_4 p)_t + 0.004t_{2008:4} - 0.011t_{2014:2} \quad (10)$$

The second variant is a linear combination of the two cointegrating relationships, again expressed with regard to $-(m - p - y)$:

$$v_{CI,2} = 3.65(\Delta whh - \Delta_4 p)_t - 1.15(RS - RO) \quad (11)$$

$$+ 0.007t_{2008:4} - 0.011t_{2014:2} - 0.005t \quad (12)$$

Figure 3 shows that the two empirical velocity variables remain broadly constant over long time spans. These sub-periods are related to the pre European Monetary Union (EMU) period in the 1990s, the introduction of the euro with a common monetary policy from 1999 onwards, and the period of the ECB's non-standard monetary policy measures as a response to the break in velocity induced by the GFC after 2008.

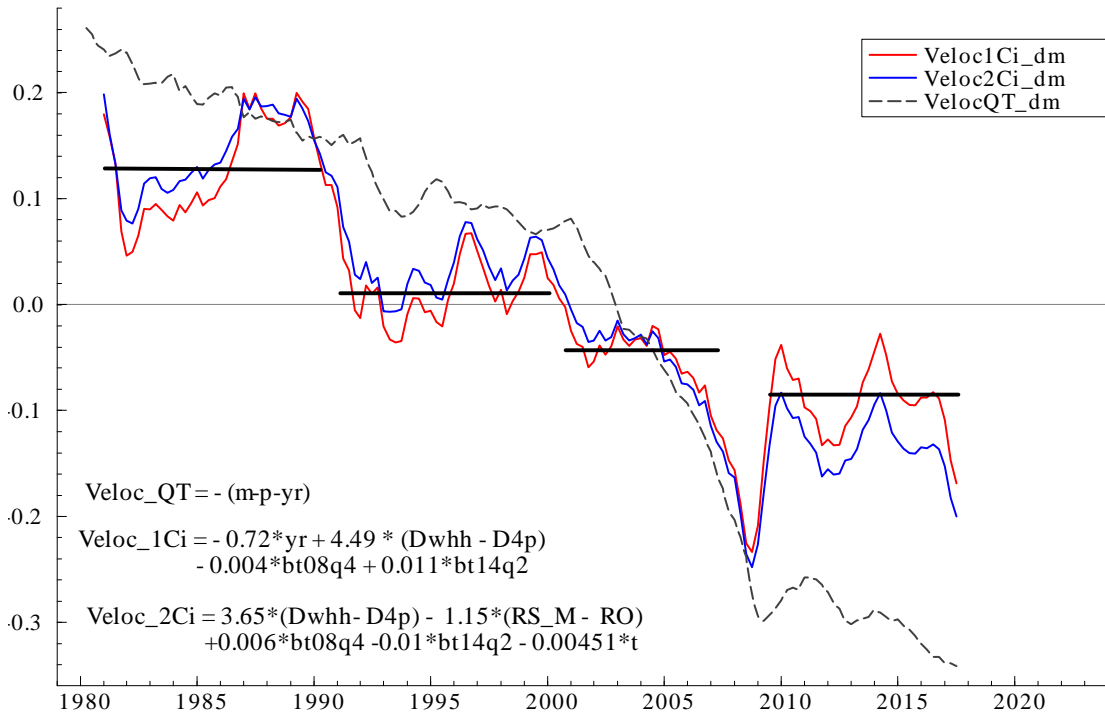


Figure 3: Naïve and model based empirical velocity

In terms of the scenario analysis discussed in Section 2.3, the case that velocity $-(m - p - y)_t \sim I(0)$ would require that $d_{11} - d_{21} - d_{31} = 0$ and $d_{12} - d_{22} - d_{33} = 0$ and that $g_1 - g_2 - g_3 = 0$. Stationarity of velocity implies common stochastic movements in money, prices and income. However, Figure 3 shows that this does not seem to be the case for euro area data. Nevertheless, non-stationary velocity cointegrates with interest rates or with real wealth growth, as derived from the estimated model above.

3.4 Stability, robustness and recursive estimation

Next we present formal tests for parameter stability of the estimated model, using Anders Warne's (2009) software "*Structural VAR*", in which these tests are implemented (see also Bruggeman et al. (2003) for a detailed discussion and applications of these tests). Table 9 shows misspecification tests for our cointegrated VAR model under the imposed restrictions on β (see Table 7). The presence of ARCH effects, a key driver for misspecification, is broadly rejected. Like in Table 3, standard χ^2 tests strongly reject normality, which is caused by some large outliers particularly in the GDP and interest rate equations, see the discussion in Section 3.1. No serial correlation can be rejected as well, though for the wealth growth, inflation and the own rate equations only at a

Table 9: Misspecification tests

	$(m - p)$	y	Δwhh	Δ_{4p}	RS	RO
LM test (ARCH)	1.04	4.93	0.98	2.62	0.10	0.39
$\chi^2(1)$ [p value]	[0.30]	[0.03]	[0.32]	[0.11]	[0.75]	[0.52]
LM test (ARCH)	4.12	6.89	5.79	11.33	2.10	3.47
$\chi^2(4)$ [p value]	[0.39]	[0.14]	[0.21]	[0.03]	[0.71]	[0.48]
Normality	1.81	14.15	8.02	10.12	32.12	34.46
$\chi^2(2)$ [p value]	[0.40]	[0.00]	[0.03]	[0.01]	[0.00]	[0.00]
AR(12) Portmanteau	13.84	10.62	23.78	26.05	11.86	19.07
$\chi^2(9)$ [p value]	[0.14]	[0.30]	[0.01]	[0.01]	[0.22]	[0.02]

LM tests for first and fourth order ARCH effects; non-normality and autocorrelation of residuals for each equation of the restricted VAR. Null hypothesis: no ARCH in equation p , normality is a Wald-type test with a null hypothesis of no non-normality; null hypothesis for Portmanteau test is no autocorrelation. Significant test statistics at the 5% level in bold.

significance level of 1%. Again, adding more impulse dummies to account for outliers would improve the test results but we refrain for the reasons explained above.

Figure 4 shows the recursive estimates of the β coefficients which remain remarkably stable over the entire sample throughout the GFC. The same applies for the recursive estimates of the two non-zero eigenvalues shown in Figure 5 which remain stable and clearly above zero over the entire estimation sample. This is consistent with Figure 6 which shows the results of the Hansen and Johansen (1999) fluctuation test for the sum of the two recursive eigenvalues when both eigenvalues are estimated under the imposed restrictions on β .

Finally, we present the results of the Nyblom (1989) tests for parameter constancy of β . We apply two different versions of the test, i.e. we test constancy when β is either restricted or unrestricted. The results presented in Table 10 show that constancy of β is not rejected.

Overall, the results from the re-estimation of Beyer (2009) with a data set that extends the previous sample ending in 2007 to 2017 and thus includes the aftermath of the GFC show that the model has kept its empirical properties. To account for the

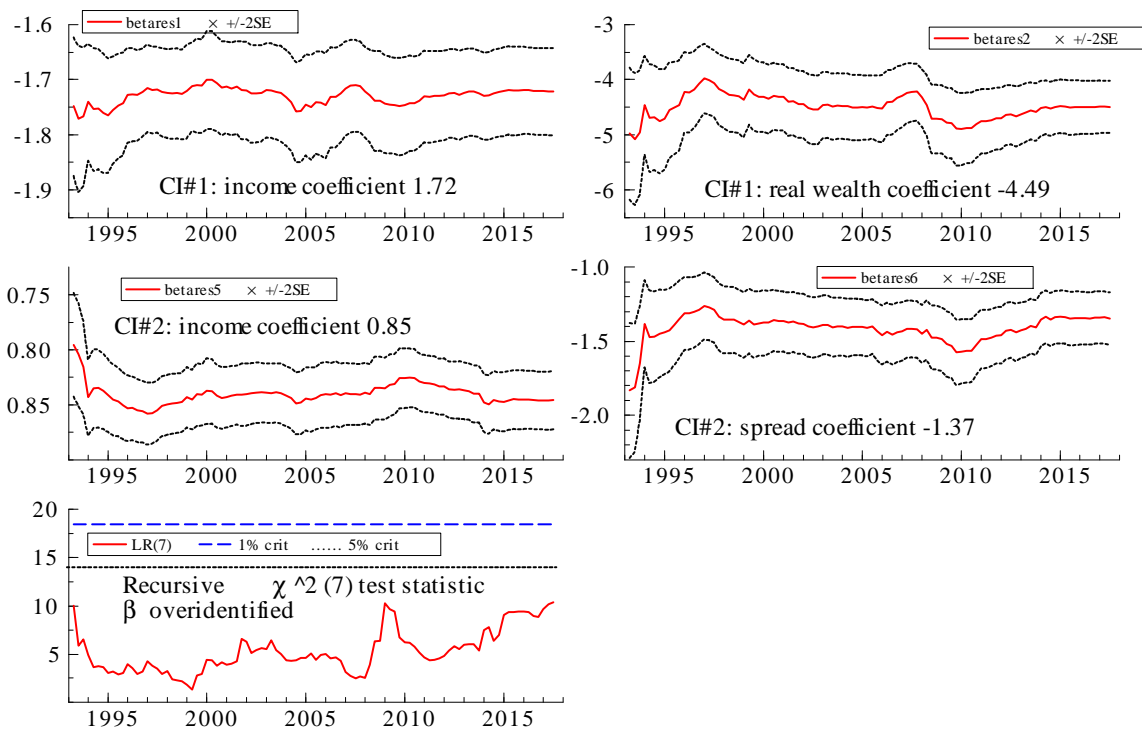
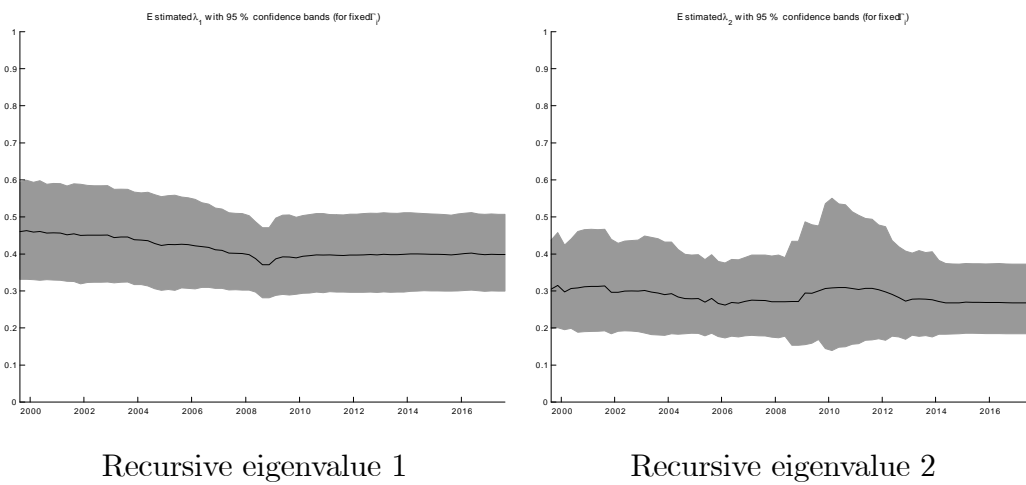


Figure 4: Recursive estimates



Recursive eigenvalue 1

Recursive eigenvalue 2

Figure 5: Recursive eigenvalues

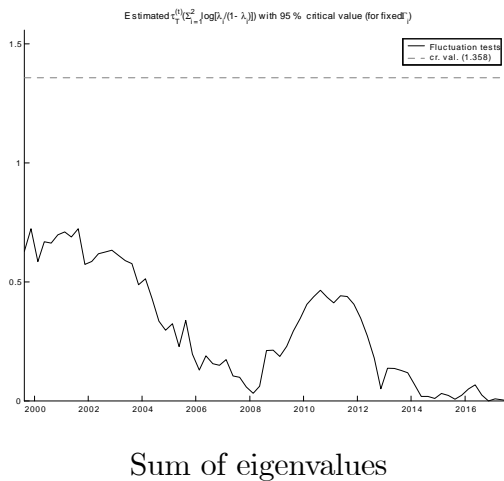


Figure 6: Fluctuation test

effects of the crisis, we have included two broken trends that mark the start of the crisis with the failure of Lehman Brothers in 2008:4 and the beginning of the ECB’s unconventional monetary policy measures in 2014:2. Together with two shift dummies and an impulse dummy for 2008:4 the estimated key parameters remain remarkably stable also throughout the financial crisis.

4 An $I(2)$ model for euro area money demand

We now turn to the analysis of money demand in an $I(2)$ system, which will allow us to formally test the nominal-to-real transformation. There are several reasons why nominal money or nominal wealth and the price level might not cointegrate empirically despite we would expect them to do so in theory. First, it is not clear which price index should be used to measure the price level. We use here the GDP deflator, which represents a comprehensive measure of prices in the economy, also covering price developments for investment and export goods. If households use money predominantly for purchasing consumer goods, the consumer price index might be a better price index to deflate money holdings. A similar argument can be made in the context of nominal housing wealth, where the appropriate deflator could be a house price index. In the long run, all these different price indices should move together so that differences between them would be

Table 10: Nyblom tests for parameter constancy of β

β unrestricted			
α : 12 free parameters; β : 12 free parameters			
sup_Q	103.72	Mean_Q	19.83
<i>p</i> -value bootstrap	[0.18]	<i>p</i> -value bootstrap	[0.16]
β restricted			
α : 12 free parameters; β : 4 free parameters			
sup_Q	0.54	Mean_Q	0.10
<i>p</i> -value bootstrap	[0.99]	<i>p</i> -value bootstrap	[0.98]

Γ_i fixed over full sample. Null hypothesis: β is constant, test statistics: sup_Q, Mean_Q $\{t=1992:1, \dots, 2017:3\}$, Q($t|T=2017:3$; $p = 6, r = 2, k = 3$). Bootstrap simulation of Nyblom tests with 1000 replications, 144 draws.

stationary and not affect long-run price homogeneity.¹³ However, data for the euro area are relatively short, which complicates inference about long-run trends. Second, like other studies of euro-area money demand, we use aggregated national data prior to the introduction of the euro in 1999 which may lead to aggregation issues (see Beyer et al. 2001) and complicate inference. Third, the recent decade was characterised by unusually large financial shocks that may not be fully captured by the deterministic variables that we include in the model.

For $I(2)$ variables, different forms of cointegration can occur, see Johansen (1992*b*). First, linear combinations of $I(2)$ variables may be $I(1)$ or even $I(0)$. If money demand is homogeneous in the price level, we would expect that nominal money cointegrates with the price level such that real money is $I(1)$. A similar relationship may exist for real wealth. Second, a linear $I(1)$ cointegrating relationship may cointegrate with $I(1)$ variables, such as interest rates, or with differences in $I(2)$ variables, which are again $I(1)$, like, for instance inflation. One example of a money demand model would be velocity cointegrating with interest rates or some other measure of opportunity cost for holding money, resulting in a stationary relationship.

The $I(2)$ CVAR model can be formulated in acceleration rates, changes and levels

¹³See Juselius (1997) for a study of the long-run relations between different price indices for the United States.

(see Juselius 2006). Based on the VAR model in equation (1) and assuming three lags, i.e. $k = 3$, the $I(2)$ model can be written as

$$\Delta^2 X_t = \Gamma_1 \Delta X_{t-1} + \Gamma_2 \Delta X_{t-2} + \Pi X_{t-1} + \mu_0 + \mu_1 t + \Phi D_t + \varepsilon_t, \varepsilon_t \sim N_p(0, \Omega). \quad (13)$$

The p -dimensional data vector X_t is different from the $I(1)$ model above and is now given by $X_t = [m_t, p_t, y_t, whh_t, RS_t, RO_t]$, as defined in Section 2.3. While the $I(1)$ model is formulated as a reduced rank hypothesis on $\Pi = \alpha\beta'$ where α is a $p \times r$ matrix of adjustment coefficients and β is a $p \times r$ matrix describing long-run relationships among the variables, the $I(2)$ model embodies an additional reduced rank hypothesis, $\alpha'_\perp \Gamma \beta_\perp = \xi\eta'$, where ξ, η are $(p-r) \times s_1$ matrices and $\alpha_\perp \beta_\perp$ are the orthogonal complements of α, β .

The maximum likelihood parametrisation first suggested by Johansen (1997) shows the stationary relations in the $I(2)$ model,

$$\Delta^2 X_t = \alpha(\beta' X_{t-1} + \delta' \Delta X_{t-1}) + \zeta \tau' \Delta X_{t-1} + \mu_0 + \mu_1 t + \Phi D_t + \varepsilon_t, \quad (14)$$

where $\delta = -((\alpha' \Omega^{-1} \alpha)^{-1} \alpha' \Omega^{-1} \Gamma) \tau_\perp (\tau'_\perp \tau_\perp)^{-1} \tau'_\perp$ is a $p \times r$ matrix of coefficients determined such that $(\beta' X_{t-1} + \delta' \Delta X_{t-1}) \sim I(0)$; $\tau = [\beta, \beta_{\perp 1}]$ is a $(p+1) \times (r+s_1)$ matrix describing stationary relationships among the differenced variables with $\beta_{\perp 1}$ being the orthogonal complement of $[\beta, \beta_{\perp 2}]$ and τ_\perp the orthogonal complement of τ , and ζ is a $p \times (p-s_2)$ matrix of restricted medium-run adjustment coefficients. The number of polynomially cointegrating relations¹⁴ is denoted by r , s_1 is the number of cointegration relations that become stationary by differencing, s_2 is the number of $I(2)$ trends, and $p = r + s_1 + s_2$. While the trend, t , and the broken trends are restricted to lie in $\beta' X_{t-1}$, the impulse dummies do not need such a restriction as they cumulate to zero, see the discussion in Section 2.1. The constant is restricted to be in $\delta' \Delta X_{t-1}$.

The determination of the reduced rank indices is based on the maximum likelihood trace test procedure in Nielsen and Rahbek (2007). The results are reported in Table 11. The procedure starts with the most restricted model ($r = 0, s_1 = 0, s_2 = 6$) and then moves on through the rows of Table 11 until the first non-rejection at the 5% level, which is at ($r = 2, s_1 = 1, s_2 = 3$). The subsequent models have in general higher p -values, as they imply less restricted specifications.

¹⁴In the $I(2)$ model, $\beta' x_{t-1}$ cointegrates with $\delta' \Delta X_{t-1}$ to become stationary. For this reason, the r stationary relations are called polynomially cointegrating relations.

With respect to our scenario analysis in equation (3), we would expect one nominal $I(2)$ trend, consistent with a choice of $(r = 2, s_1 = 3, s_2 = 1)$. By choosing $(r = 2, s_1 = 3, s_2 = 1)$, five of the $pk = 18$ roots of the VAR are restricted to unity.¹⁵ This specification, however, would still contain a lot of persistence, as can be seen from the largest unrestricted root with a modulus of 0.93, which is reported at the bottom of Table 11. For a choice of $(r = 2, s_1 = 4, s_2 = 0)$ and four unit roots, an equally large unrestricted root of 0.92 would result. This case would correspond to an $I(1)$ model as with $s_2 = 0$ the model does not allow for any $I(2)$ trends.¹⁶ Treating the variables as $I(1)$ thus would leave persistent deviations from the cointegration relations in the model.

If we assume that the nominal trends entering the GDP deflator and the house price index are driven by different sources, we could choose a specification with $(r = 2, s_1 = 2, s_2 = 2)$ and impose six unit roots. However, in this case the modulus of the largest unrestricted root is still quite large with 0.81. By contrast, the specification $(r = 2, s_1 = 1, s_2 = 3)$, which is indicated by the trace test, implies seven unit roots and a largest unrestricted root of 0.76. Hence, all large roots in the model are eliminated. We therefore proceed with a choice of $(r = 2, s_1 = 1, s_2 = 3)$, which implies two polynomially cointegrating relations $\beta' X_t + \delta' \Delta x_t$, one relation, $\beta'_{\perp 1} \Delta X_t$, that becomes stationary only by differencing, and three $I(2)$ trends.

4.1 Testing the nominal-to-real transformation

In the $I(2)$ model we can test whether homogeneity in the price level is satisfied in the data. If this hypothesis is accepted, the analysis of the $I(2)$ model and the corresponding $I(1)$ model would yield identical results and the cointegration relations between the variables would be retained. Kongsted (2005) discusses different dimensions in which the nominal-to-real transformation can fail. If this is the case, e.g. because a nominal variable does not evolve proportionally to the chosen price index, some $I(2)$ components remain in the model, which will have an influence on inference in the transformed $I(1)$ model.¹⁷

¹⁵In the $I(2)$ model, $s_1 + 2s_2$ of the roots of the VAR are restricted to unity.

¹⁶The $I(1)$ model in Section 2.1 is a different transformation of the $I(2)$ model analysed here so that it does not correspond to the case of $(r = 2, s_1 = 4, s_2 = 0)$, see Section 2.3.

¹⁷Kongsted and Nielsen (2004) conclude that the misspecification resulting from an invalid nominal-to-real transformation is often not severe.

Table 11: $I(2)$ trace tests

$p - r$	r	$s_2 = 6$	$s_2 = 5$	$s_2 = 4$	$s_2 = 3$	$s_2 = 2$	$s_2 = 1$	$s_2 = 0$
6	0	544.77 [0.00]	422.09 [0.00]	349.74 [0.00]	298.72 [0.00]	268.80 [0.00]	247.06 [0.00]	237.61 [0.00]
5	1		289.22 [0.00]	220.21 [0.00]	167.98 [0.00]	135.44 [0.01]	115.60 [0.01]	157.23 [0.00]
4	2			153.47 [0.01]	105.00 [0.22]	75.79 [0.50]	58.16 [0.58]	98.80 [0.00]
3	3				58.39 [0.93]	36.29 [0.99]	13.02 [1.00]	59.04 [0.00]
2	4					-6.11 [-]	-15.44 [-]	30.83 [0.01]
1	5						-42.78 [-]	6.66 [0.39]
Modulus of largest unrestricted root								
$CI(2, 1, 3)$			0.76		$CI(2, 3, 1)$		0.93	
$CI(2, 2, 2)$			0.81		$CI(2, 4, 0)$		0.92	

First non-rejection indicated in bold.

We first test some integration and cointegration hypotheses in the $I(2)$ model by the likelihood ratio tests described in Johansen et al. (2010), i.e. whether one of the τ vectors corresponds to real money or real wealth. This corresponds to a test of whether the $I(2)$ trends cancel and the variable in the system can be regarded as $I(1)$. The results of these tests are shown in Table 12. It turns out that neither real money nor real wealth can be regarded as $I(1)$. In addition, we test whether (naïve) velocity $-(m - p - y)$ cointegrates to an $I(1)$ variable which is rejected as well. Also interest rates as well as the interest rate spread seem to contain some $I(2)$ component.¹⁸ This means that to be considered as $I(1)$ in the context of this system, the variables would need to cointegrate with additional variables than those tested in Table 12.

While the tests of a known τ vector strongly reject that real money and real wealth are $I(1)$, homogeneity in the price level can also be investigated by testing whether all τ vectors can be restricted in a way that the transformation of the system as in equation (3) is not rejected (see Johansen et al. 2010). Testing whether money and

¹⁸Note that applying a near unit root correction to these tests is likely to increase the p -values to some extent. Such a correction has not been applied here as the correct size is unknown. While this may lead to an acceptance of interest rates and the interest rate spread being $I(1)$, the test statistics for real money and real wealth are much larger and it is therefore less likely that our conclusions would be changed.

wealth are homogeneous in the price level yields a test statistic of $\chi^2(6) = 23.35$ with a p -value of zero. Price homogeneity of only money (without any restriction on real wealth), cannot be rejected with a test statistic of $\chi^2(3) = 5.99$ and a p -value of 0.11. By contrast, price homogeneity of only wealth yields a test statistic of $\chi^2(3) = 20.31$ and a p -value of zero. Transforming the $I(2)$ system into an $I(1)$ system is thus possible for real money, but is rejected with regard to real wealth. The reason might be that the appropriate price indexes for these transformations differ, i.e. whereas the GDP deflator can be used to deflate the monetary aggregate M3, a house price index would be better suited to deflate nominal housing wealth. Put differently, our results would suggest that house price developments and the GDP deflator were driven by different stochastic shocks.

Though one would not expect a double unit root in relations like real money or real wealth, there are a number of reasons why we might not be able to empirically reject this hypothesis. The fact that the empirically preferred specification indicates three $I(2)$ trends suggests that the variables in the system are driven by stochastic shocks coming from three different sources. First, there might be measurement issues with regard to the appropriate index for the price level. Second, though we include several dummies to account for the shifts that have taken place in the wake of the financial crisis, there might be still some $I(2)$ component left that we have not appropriately modelled. Third, we have already mentioned convergence of euro area member states and data aggregation issues that might as well lead to some stochastic trends that are difficult to capture.¹⁹ We will look into this question further when we discuss the identified system.

4.2 An identified long-run structure for the $I(2)$ model

We next impose overidentifying restrictions on the two β vectors in order to interpret them in a structural way. The results are shown in Table 13. These restrictions are guided by our results for the $I(1)$ model. They are not rejected with a test statistic of $\chi^2(6) = 8.99$ and a p -value of 0.17.

We interpret the first β vector as a money demand relation where velocity reacts to wealth and the two interest rates. Neither the trend nor the two broken trends enter

¹⁹Beyer and Juselius (2010) indeed find that different data aggregation methods give rise to a small but highly persistent difference in the data series. The euro area money demand model estimated by Coenen and Vega (2001), however, is reasonably robust to the choice of the aggregation method.

Table 12: Testing hypotheses of $I(1)$ versus $I(2)$

	m	p	y	whh	RS	RO	$\chi^2(6)$	p -value
\mathcal{H}_1	1.00	-1.00	-	-	-	-	44.55	0.00
\mathcal{H}_2	-	-1.00	-	1.00	-	-	39.62	0.00
\mathcal{H}_3	1.00	-1.00	-1.00	-	-	-	26.19	0.00
\mathcal{H}_4	-	-	-	-	1.00	-	14.27	0.03
\mathcal{H}_5	-	-	-	-	-	1.00	13.89	0.03
\mathcal{H}_6	-	-	-	-	1.00	-1.00	14.93	0.02

Null hypothesis: the respective relation is $I(1)$, β is unrestricted.

the cointegrating relation, indicating that this equilibrium relationship remained stable over the sample period, once changes in the dynamic coefficients are taken into account by including appropriate deterministic variables as specified in Section 2.2. The second β vector is more difficult to interpret. As no clear pattern in the coefficients is visible, we impose only three restrictions, namely that money and income do not enter this vector, plus a restriction on the two broken trends, i.e. the coefficients are restricted to be equal but with opposite signs. This restriction is motivated by the idea that the trend in the equilibrium relation has shifted in the wake of the financial crisis but moved back following the ECB's nonstandard monetary policy measures. We can interpret this relation as a wealth relation, though price homogeneity for wealth is rejected, probably because the GDP deflator and house price developments deviated significantly in the run-up and the aftermath of the financial crisis. Though the nominal-to-real transformation was rejected, we can impose price homogeneity on one of the β vectors, but not on the other.

The lower panels of Table 13 report $\beta_{\perp 1}$ and $\beta_{\perp 2}$. Unfortunately, t -values for these coefficients are not available so that we can only inspect their size and quantitative importance. The vector $\beta_{\perp 1}$ contains the coefficients for the relation that becomes stationary by differencing only and defines a relation mainly between the first differences of income, the first difference of the short-term interest rate and inflation. We could interpret it as a monetary policy relation where the interest rate increases when output growth is high. However, the coefficient on inflation has the wrong sign, but—as we do not have the t -values—it could as well be insignificant. The vector $\beta_{\perp 2}$ gives the loadings of the $I(2)$ trends into X_t and the linear combinations $\beta'_{\perp 2} X_t$ remain $I(2)$.

Table 13: β' , δ' , $\beta'_{\perp 1}$ and $\beta'_{\perp 2}$ (normalized)

	m	p	y	whh	RS	RO	$t_{2008:4}$	$t_{2014:2}$	t
β_1	1.00 [-]	-1.00 [-]	-1.00 [-]	-0.17 [0.01]	-10.94 [0.79]	25.73 [1.68]	0.00 [-]	0.00 [-]	0.00 [-]
δ_1	-7.46	-18.34	-4.17	9.05	-0.12	-0.58	-0.17	0.01	7.57
β_2	0.00 [-]	7.45 [0.84]	0.00 [-]	1.00 [-]	76.11 [6.50]	-238.27 [14.71]	0.06 [-]	-0.06 [0.01]	-0.09 [0.00]
δ_2	0.57	261.17	44.09	-56.01	-33.29	-2.69	0.10	0.02	-42.04
$\beta_{\perp 1,1}$	-0.01	-0.22	1.00	0.00	-0.36	-0.12	0.00	-0.00	-0.01
$\beta_{\perp 2,1}$	1.00	-0.41	0.07	-0.11	0.37	0.11			
$\beta_{\perp 2,2}$	0.09	-0.02	-0.00	1.00	0.01	0.01			
$\beta_{\perp 2,3}$	0.39	1.00	0.22	-0.02	-0.01	0.03			

Standard errors in brackets. Test of overidentifying restrictions on β in the $I(2)$ model: $\chi^2(6) = 8.99$, p -value: 0.17.

$\beta_{\perp 2,1}$ loads mainly into money and prices, but not with proportional coefficients as we would expect if the nominal-to-real transformation was valid. $\beta_{\perp 2,2}$ loads almost exclusively into wealth, which would be consistent with our conjecture that the second $I(2)$ trend originates from non-homogeneity of nominal wealth in the GDP deflator. $\beta_{\perp 2,3}$ introduces an $I(2)$ component into money, income, and prices, which could fit with our conjecture that data aggregation might be responsible for the third $I(2)$ trend in the model.

4.3 Dynamic adjustment in the $I(2)$ model

When data are $I(2)$, $\beta'X_t$ is generally $I(1)$ and can be interpreted as an equilibrium error that exhibits pronounced persistence. The polynomially cointegrated relations incorporate a medium-term dynamic adjustment to $\beta'X_t$ through the term $\delta'\Delta X_t$ and thus can be seen as dynamic equilibrium relations. Long and persistent swings away from the long-run equilibrium values suggest the presence of some self-reinforcing feedback mechanisms in the system. We can distinguish between positive feedback, which increases the deviations from the equilibrium relation, and negative feedback, which drives the system back to the equilibrium relation. Such positive and negative feedback can take place either in the adjustment to the two polynomially cointegrating relations, $\alpha(\beta'X_t + \delta'\Delta X_t)$, or in the adjustment to the changes in the β relations, $\zeta\beta'\Delta X_t$.

Table 14: Loading coefficients α , $\alpha_{\perp 1}$ and $\alpha_{\perp 2}$

	α_1	α_2	$\alpha_{\perp 1,1}$	$\alpha_{\perp 2,1}$	$\alpha_{\perp 2,2}$	$\alpha_{\perp 2,3}$
$\Delta^2 m$	0.02 [0.01]	0.00 [0.00]	-0.00 [0.11]	0.00 [-]	-0.00 [-]	1.00 [-]
$\Delta^2 p$	-0.01 [0.01]	-0.00 [0.00]	-0.16 [-0.15]	0.48 [0.46]	-0.01 [0.40]	0.51 [0.09]
$\Delta^2 y$	0.03 [0.01]	0.00 [0.00]	0.50 [0.15]	0.28 [0.36]	0.09 [0.31]	-0.26 [0.07]
$\Delta^2 whh$	-0.01 [0.00]	0.00 [0.00]	0.01 [0.10]	1.00 [-]	0.00 [-]	0.00 [-]
$\Delta^2 RO$	0.03 [0.01]	0.00 [0.00]	-0.71 [0.10]	0.11 [0.23]	-0.11 [0.20]	-0.31 [0.05]
$\Delta^2 RS$	-0.00 [0.00]	0.00 [0.00]	-0.13 [0.03]	0.00 [-]	1.00 [-]	-0.00 [-]

Standard errors in brackets, significant coefficients at 5% level in bold.

The coefficients α and δ characterise two levels of equilibrium correction, as can be seen from equation (14): The α adjustment describes how the acceleration rates, $\Delta^2 X_t$, adjust to the dynamic equilibrium relations, $\beta' X_t + \delta' \Delta X_t$ and the δ adjustment describes how the growth rates, ΔX_t , adjust to the long-run equilibrium errors, $\beta' X_t$.²⁰

The signs of α , β and δ determine whether the variable $X_{i,t}$ is error increasing or error correcting in the medium and the long run. If $\alpha_{ij}\beta_{mj} < 0$ the acceleration rate, $\Delta X_{i,t}^2$, adjusts to the dynamic equilibrium relation ($\beta'_j X_t + \delta'_j \Delta X_t$). This is the case for income and the policy rate in the money relation, and for inflation in the wealth relation. An adjustment to ($\beta'_j X_t + \delta'_j \Delta X_t$) can also take place through $\alpha_{ij}\delta_{mj} < 0$. Looking at Table 13, we see that much more of the $\alpha_{ij}\delta_{mj}$ coefficients are negative. Thus, the adjustment through this channel seems to be more important than via $\alpha_{ij}\beta_{mj}$.

If $\delta_{mj}\beta_{mj} > 0$ (given $\alpha_{ij} \neq 0$) then $\Delta X_{i,t}$, is equilibrium error correcting to $\beta'_j X_t$. As all α coefficients are quite small—the largest being those for income, the short-term rate, money and prices in the money relation—this adjustment seems to quantitatively play a smaller role. Nevertheless, $\delta_{mj}\beta_{mj}$ is positive for income, the short-term rate and prices, indicating that some adjustment to $\beta'_j X_t$ should occur through this channel.

Stability of the system can also be ensured by an adjustment to the differenced relation through the loading coefficients ζ . If $\zeta_{ij}\beta_{mj} < 0$ then $\Delta^2 X_{i,t}$ is equilibrium correcting to $\beta'_j \Delta X_{t-1}$. Looking at the money relation, the acceleration rates of money, wealth and the three-month interest rate are equilibrium correcting. By contrast, in the wealth relation only the own rate is equilibrium correcting, whereas wealth and the

²⁰The interpretation of δ as a medium-run adjustment is conditional on $\alpha \neq 0$.

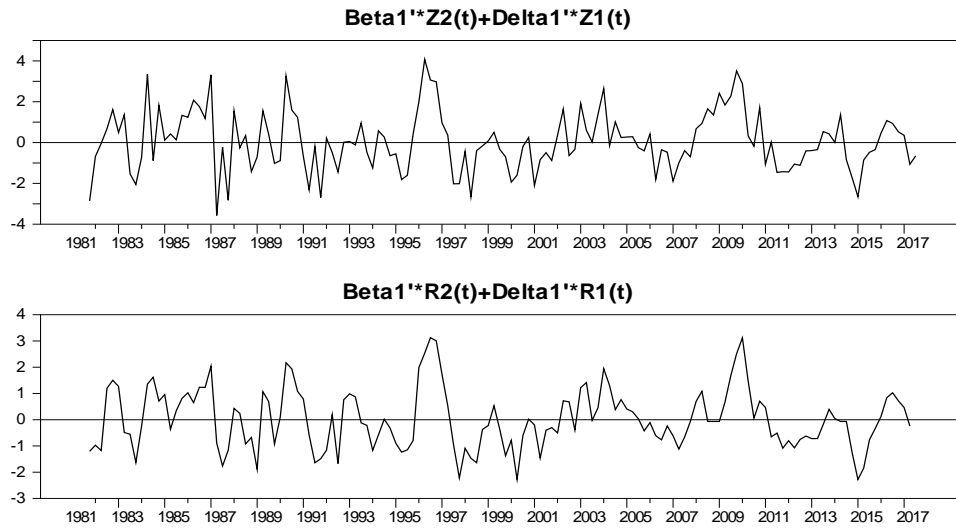


Figure 7: First multi-cointegrating relation

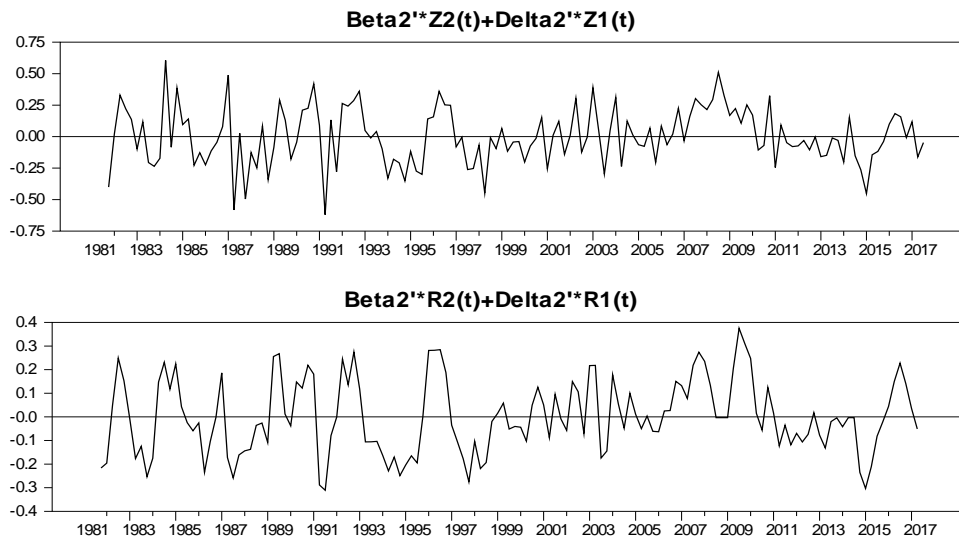


Figure 8: Second multi-cointegrating relation

Table 15: ζ (loadings to $\tau' \Delta X_t$)

	ζ_1	ζ_2	ζ_3
$\Delta^2 m$	-0.10 [0.02]	-0.02 [0.00]	-0.16 [0.10]
$\Delta^2 p$	-0.03 [0.02]	-0.00 [0.00]	0.23 [0.06]
$\Delta^2 y$	-0.01 [0.03]	0.00 [0.00]	-0.76 [0.13]
$\Delta^2 whh$	0.03 [0.01]	0.00 [0.00]	0.04 [0.04]
$\Delta^2 RS$	0.15 [0.02]	0.01 [0.00]	0.52 [0.09]
$\Delta^2 RO$	0.02 [0.01]	0.00 [0.00]	0.13 [0.03]

Standard errors in brackets, coefficients significant at the 5% level in bold.

short-term interest rate drive the relation away from equilibrium. That wealth exhibits positive feedback could be an indication for asset price bubbles, while the interest rate is not adjusting in a way that brings the wealth relation back to equilibrium. However, equilibrium error-increasing behaviour by one variable, $X_{i,t}$, can be compensated by error-correcting behaviour by another variable, $X_{k,t}$, to the same equilibrium error $\beta'_j X_t + \delta'_j \Delta X_t$. As long as all characteristic roots are either inside or on the unit circle²¹ the system is stable and any error-increasing behaviour is sooner or later compensated by error correcting behaviour. For example, a variable can be equilibrium error increasing in the medium run ($\delta_{mj} \beta_{mj} < 0$) but error correcting in the long-run ($\alpha_{ij} \beta_{mj} < 0$). While a variable can move away from its long-run equilibrium for extended periods of time, as long as the system is stable it will sooner or later be subject to its equilibrating forces.

Overall, a visual inspection of the two overidentified multi-cointegrating relations shown in Figures 7 and 8 indicate that they are stable throughout our sample period and show little persistence.

²¹Roots inside the unit disk imply non-explosive behaviour as they are calculated as eigenvalues of the characteristic polynomials (Juselius, 2006).

5 Conclusions

In this paper, we analysed the long-run relations between, money, prices, interest rates, income and wealth in an $I(1)$ and $I(2)$ framework.

In the $I(1)$ analysis, we found that the money demand relation estimated by Beyer (2009) remained remarkably stable when the sample period is extended to 2017:3, once we allow for two breaks in the trend that account for the outbreak of the Global Financial Crisis and the introduction of the ECB's non-standard monetary policy measures that helped to restore the working of the monetary transmission mechanism in the euro area (see European Central Bank 2015, 2017). We find two cointegrating relations that we interpret as a real money relation and a real wealth relation.

We then move on to expand the system into an $I(2)$ model in order to analyse in more detail the relation between nominal and real variables as well as the dynamic adjustment in the system. While for real money the nominal-to-real transformation is not rejected, the wealth relation cannot be expressed in real terms. We identify one of the cointegrating relations as money velocity, which is related to wealth and interest rates, but also needs the differenced processes to become stationary. Regarding the dynamic adjustment of the system, we find that much of the adjustment is coming from the growth rates of the variables that enter the polynomially cointegrating relations.

Comparing the two complementary modelling approaches, our $I(1)$ analysis appears robust and provides empirical results that allow for meaningful economic interpretations. The $I(2)$ analysis provides evidence for an alternative economic interpretation of the underlying shocks in the model. It helps understanding particular data-related issues and invites for a more detailed analysis of aggregation bias and to investigate further the choice of a suitable price deflator for housing wealth.

References

- Beyer, Andreas** 2009. A stable model for euro area money demand revisiting the role of wealth, *ECB Working Paper* No. 1111.
- Beyer, Andreas, Jürgen Doornik and David Hendry** 2001. Constructing Historical Euro-zone Data, *Economic Journal* 111, 102-121.
- Beyer, Andreas and Katarina Juselius** 2010. Does it matter how aggregates are measured? The case of monetary transmission mechanisms in the euro area, *ECB*

Working Paper 1149.

Brand, Claus, and Nuno Cassola 2004. A money demand system for euro area M3
Applied Economics 36, 817-838.

Bruggeman, Annick, Paola Donati, and Anders Warne 2003. Is the demand for
euro area M3 stable?, *ECB Working Paper* 255.

Calza, Alessandro, Dieter Gerdesmeier and Joaquim Levy 2001. Euro area
money demand: measuring the opportunity costs appropriately, *IMF Working Paper*
2001/179.

Coenen, Günter and Juan-Luis Vega 2001. The demand for M3 in the euro area,
Journal of Econometrics 16(6), 727-748.

Dennis, Jonathan, Katarina Juselius, Sören Johansen and Henrik Hansen
2008. CATS 2.0, Estima: Evanston.

De Santis, Roberto, Carlo A. Favero and Barbara Roffia 2013. Euro area money
demand and international portfolio allocation: a contribution to assessing risks to
price stability, *Journal of International Money and Finance* 32, 377-404.

Doornik, Jurgen A. 2014. Ox-Metrix 7, Timberlake.

Dreger, Christian and Jürgen Wolters 2015. Unconventional monetary policy and
money demand, *Journal of Macroeconomics* 46, 40-54.

Ericsson, N., Hendry, D.F., Prestwich, K.M. 1998. The demand for broad money
in the United Kingdom, 1878-1993, *Scandinavian Journal of Economics* 100(1), 289-
324.

European Central Bank 2015. The transmission of the ECB's recent non-standard
monetary policy measures, *Economic Bulletin* 7, 32-51.

European Central Bank 2017. MFI lending rate pass-through in the time of non-
standard monetary policy, *Economic Bulletin* 1, 40-65.

Gerdesmeier, Dieter 1996. The role of wealth in money demand, *Economic Research*
Group of the Deutsche Bundesbank, Discussion paper 5/96.

Hansen, Henrik, and Søren Johansen 1999. Some Tests for Parameter Constancy
in Cointegrated VAR-models, *Econometrics Journal*, 2, 306-333.

Hendry, David (1995), *Dynamic Econometrics*, Oxford University Press: Oxford.

Johansen, Søren 1992*a*. Testing weak exogeneity and the order of integration in UK
money demand data, *Journal of Policy Modelling* 14(3), 313-334.

Johansen, Søren 1992*b*. A Representation of Vector Autoregressive Processes Inte-

- grated of Order 2, *Econometric Theory* 8, 188-202.
- Johansen, Søren** 1997. Likelihood analysis of the $I(2)$ model, *Scandinavian Journal of Statistics* **244**: 433-462. DOI: 10.1111/1467-9469.00074
- Johansen, Søren** 2000. A Bartlett correction factor for tests on the cointegrating relations, *Econometric Theory* 16, 770-778
- Johansen, Søren** 2002. A small sample correction for the test of cointegrating rank in the vector autoregressive model, *Econometrica* 70, 1929-1961.
- Johansen, Søren** 2006. Statistical analysis of hypotheses on the cointegration relations in the $I(2)$ model, *Journal of Econometrics* 132, 81-115.
- Johansen Søren, Katarina Juselius, Roman Frydman, Michael D. Goldberg** 2010. Testing hypotheses in an $I2$ model with piecewise linear trends: an analysis of the persistent long swings in the Dmk/\$ rate, *Journal of Econometrics* **158**: 117-129. DOI: 10.1016/j.jeconom.2010.03.018
- Jung, Alexander** 2016. Is euro area money demand for M3 still stable? *Quarterly Review of Economics and Finance* 60, 29-39.
- Juselius, Katarina** 1997. Do prices move together in the long run? An $I(2)$ analysis of six price indices, *Discussion Papers 97-21, University of Copenhagen. Department of Economics*, revised Sep 1999.
- Juselius, Katarina** 2002. Monetary transmission in Italy, *Journal of Applied Econometrics* 16(3), 341-38.
- Juselius Katarina** 2006. *The Cointegrated VAR Model*, Oxford University Press: Oxford.
- Kongsted, Hans Christian** 2005. Testing the nominal-to-real transformation, *Journal of Econometrics* 124, 205-225.
- Kongsted, Hans Christian and Heino Bohn Nielsen** 2004. Analysing $I(2)$ systems by transformed vector autoregressions, *Oxford Bulletin of Economics and Statistics* 66(3), 379-397.
- Muscatelli, Vito A. and Franco Spinelli** 2000. The long-run stability of the demand for money: Italy 1861-1996, *Journal of Monetary Economics* 45(3), 717-739.
- Nielsen, Heino Bohn and Anders Rahbek** 2007. The likelihood ratio test for cointegration ranks in the $I2$ model, *Econometric Theory* **23**: 615-637.
- Norrbin, Stefan C. and Kevin L. Reffett** 1995. $I(2)$ representations of US money demand *Economics Letters* 49(4), 415-423.

- Nyblom, Jukka** 1989. Testing for the constancy of parameters over time, *Journal of the American Statistical Association*, 55, 324 - 330.
- Rahbek, Anders, Hans Christian Kongsted, and C. Jørgensen** 1999. Trend-Stationarity in the $I(2)$ Cointegration Model, *Journal of Econometrics* 90, 265-289.
- Spanos, Aris** (1986) *Statistical Foundations of Econometric Modelling*, Cambridge University Press: Cambridge.
- Stock, James H. and Mark W. Watson** 1993. A simple estimator of cointegrating vectors in higher order integrated systems. *Econometrica* 61(4), 783-720.
- Warne, Anders** 2009. *Structural VAR*, www.texlips.net/svar.

Recent Issues

All CFS Working Papers are available at www.ifk-cfs.de.

No.	Authors	Title
617	Volker Brühl	<i>Big Data, Data Mining, Machine Learning und Predictive Analytics – ein konzeptioneller Überblick</i>
616	Nikolaus Hautsch, Christoph Scheuch, and Stefan Voigt	<i>Limits to Arbitrage in Markets with Stochastic Settlement Latency</i>
615	Winfried Koeniger and Marc-Antoine Ramelet	<i>Home Ownership and Monetary Policy Transmission</i>
614	Christos Koulovatianos and Dimitris Mavridis	<i>Increasing Taxes After a Financial Crisis: Not a Bad Idea After All...</i>
613	John Donaldson, Christos Koulovatianos, Jian Li and Rajnish Mehra	<i>Demographics and FDI: Lessons from China's One-Child Policy</i>
612	Hans Gersbach	<i>Contingent Contracts in Banking: Insurance or Risk Magnification?</i>
611	Christian Leuz	<i>Evidence-Based Policymaking: Promise, Challenges and Opportunities for Accounting and Financial Markets Research</i>
610	Christian Leuz and João Granja	<i>The Death of a Regulator: Strict Supervision, Bank Lending and Business Activity</i>