

Kelly, Jane; Le Blanc, Julia; Lydon, Reamonn

Working Paper

Pockets of risk in European housing markets: then and now

ESRB Working Paper Series, No. 87

Provided in Cooperation with:

European Systemic Risk Board (ESRB), European System of Financial Supervision

Suggested Citation: Kelly, Jane; Le Blanc, Julia; Lydon, Reamonn (2019) : Pockets of risk in European housing markets: then and now, ESRB Working Paper Series, No. 87, ISBN 978-92-9472-073-3, European Systemic Risk Board (ESRB), European System of Financial Supervision, Frankfurt a. M., <https://doi.org/10.2849/694>

This Version is available at:

<https://hdl.handle.net/10419/193594>

Standard-Nutzungsbedingungen:

Die Dokumente auf EconStor dürfen zu eigenen wissenschaftlichen Zwecken und zum Privatgebrauch gespeichert und kopiert werden.

Sie dürfen die Dokumente nicht für öffentliche oder kommerzielle Zwecke vervielfältigen, öffentlich ausstellen, öffentlich zugänglich machen, vertreiben oder anderweitig nutzen.

Sofern die Verfasser die Dokumente unter Open-Content-Lizenzen (insbesondere CC-Lizenzen) zur Verfügung gestellt haben sollten, gelten abweichend von diesen Nutzungsbedingungen die in der dort genannten Lizenz gewährten Nutzungsrechte.

Terms of use:

Documents in EconStor may be saved and copied for your personal and scholarly purposes.

You are not to copy documents for public or commercial purposes, to exhibit the documents publicly, to make them publicly available on the internet, or to distribute or otherwise use the documents in public.

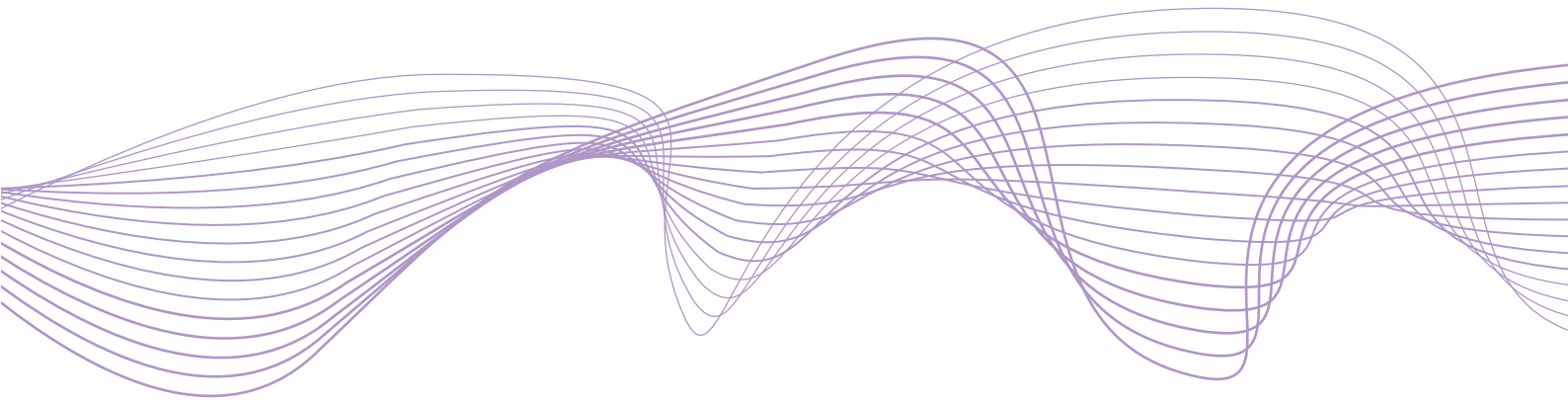
If the documents have been made available under an Open Content Licence (especially Creative Commons Licences), you may exercise further usage rights as specified in the indicated licence.

Working Paper Series

No 87 / February 2019

Pockets of risk in
European housing markets:
then and now

by
Jane Kelly
Julia Le Blanc
Reamonn Lydon



ESRB

European Systemic Risk Board

European System of Financial Supervision

Abstract

Using household survey data, we document evidence of a loosening of credit standards in Euro area countries that experienced a property price boom-and-bust cycle. Borrowers in these countries exhibited significantly higher loan-to-value (LTV) and loan-to-income (LTI) ratios in the run up to the financial crisis, and an increasing tendency towards longer-term loans compared to borrowers in other countries. In recent years, despite the long period of historically low interest rates and substantial house price increases in some countries, we do not find similar credit easing as before the crisis. Instead, we find evidence of a considerable change in borrower characteristics since 2010: new borrowers are older and have higher incomes than before the crisis.

JEL classification: E5, G01, G17, G28, R39. *Keywords:* real estate markets, macroprudential policy, systemic risk, financial crises, bubbles, financial regulation, financial stability indicators.

Nontechnical Summary

The financial crisis has sparked interest of policymakers and academics alike in analysing the liability side of households' balance sheets in order to understand why households in some countries were hit by the boom-bust episode of the financial crisis while others were not. While comparable household-level data do not exist for the crisis years, we extract historical information at the country level on lending standards and borrower characteristics from the Household Finance and Consumption Survey (HFCS). These micro data can be used to analyse distributions and thus the build-up of potential tail risks. The goal of this paper is to explore how such household-level micro data can be used for understanding macro-financial risks and linkages and eventually to mitigate risks through macroprudential policies in place.

We document the heterogeneous experiences of households in the Euro area in the run up to the financial crisis and after the bust. Following the literature, we divide countries into two groups: those that experienced a house price boom (Greece, Spain, Ireland, Italy, Netherlands, Slovenia, Latvia and Estonia) and those that did not (Belgium, Germany, France, Luxembourg, Austria and Portugal).

The paper first provides evidence of a loosening of credit standards in countries that experienced a property price boom-and-bust. At the onset of the financial crisis, borrowers in these countries exhibited significantly higher loan-to-value (LTV) and loan-to-income (LTI) ratios: 40-50% of all household main residence mortgages had LTVs of 90% or more, and both LTI ratios and loan terms had increased. Credit easing persisted when house prices increased and consequently induced high indebtedness and more credit expansion, which resulted in substantial pockets of risk before the Great Financial Crisis hit. In contrast, households in countries without a boom in real estate prices experienced no comparable declines in credit standards and most did not see substantial house price increases before and during the crisis.

Second, the paper analyses the composition of buyers in both country groups before and after the crisis. The loosening of credit standards before 2010 shifted the composition of buyers in boom-bust countries towards younger households with relatively low incomes compared to the group of countries without a housing boom. Contrary to this, we find evidence of a considerable change in borrower characteristics since 2010: new borrowers have become older and have higher incomes than before the crisis in most countries.

The paper then describes the impact of indebtedness on credit constraints. We find that borrowers with high levels of leverage are more likely to become credit constrained, and this effect is stronger for boom-bust countries than for countries that did not experience a boom before the crisis. In recent years, borrowers with high levels of leverage are more likely to become credit constrained in both groups.

Finally, the long period of historically low interest rates since the financial crisis raises the question of whether similar pockets of risk have emerged, considering substantial house price increases in recent years in some countries in our sample. However, we do not find similar credit easing as before the crisis in either group of countries. Instead, there is some evidence that more affluent households have shifted their portfolios towards housing at a time when real returns on deposits or other forms of (less) risky investments are at an all-time low.

1 Introduction

Up until the financial crisis, safeguards in Euro area macroeconomic policy primarily targeted low and stable inflation, the prevention of excessive government deficits, and structural reforms to underpin productivity growth. Potential instabilities arising from excessive household indebtedness, and financial fragility more generally, received far less attention. The financial crisis reinvigorated research into the causes and effects of financial instability, particularly credit-driven real estate boom-bust cycles.¹ Within the EMU, the inability of some Member States to credibly back-stop an over-sized domestic banking system contributed directly to a whole host of negative economic consequences that continue to be felt today. Policy reforms introduced since the crisis, such as the Single Supervisory Mechanism (SSM), the European System of Financial Supervision (ESFS), the EU Bank Recovery and Resolution Directive (BRRD) and fiscal governance reforms (for example, the six-pack, two-pack and fiscal compact) have sought to address some of these weaknesses in the EMU policy infrastructure.² Furthermore, macroprudential measures at both the Euro area and national levels, which explicitly recognise risks at the financial system level and how such financial sector developments affect the real economy, are becoming increasingly common in Europe.³ This includes measures related to real estate lending which generally aim to build resilience among households and banks to withstand a shock and to restrain the build-up of excessive imbalances between credit and real estate markets.⁴

One of the legacies of the inattention to the build-up of household financial fragilities in the early years of EMU is a distinct lack of *comparable* cross-country data on borrower and mortgage characteristics. One of the key contributions of this paper is to fill this information gap. We collate information on credit standards and borrower characteristics from the first two waves of the European Household Finance and

¹For an overview, see Claessens et al. (2009) or Crowe et al. (2013).

²The ESFS comprises the European Systemic Risk Board (ESRB), the European Banking Authority (EBA), the European Securities and Markets Authority (ESMA) and the European Insurance and Occupational Pensions Authority (EIOPA). The latter three are jointly referred to as the European Supervisory Authorities (ESAs).

³The ESRB has oversight across the EU. The ECB has topping up powers for certain macroprudential instruments (such as capital based tools) for banks in SSM countries but borrower based tools such as loan-to-value (LTV) or debt-to-income (DTI) limits are under the discretion of national macroprudential authorities.

⁴Limits on loan-to-value (LTV) and debt-to-income (DTI) ratios are found to be particularly effective in recent cross country empirical studies such as Claessens (2015).

Consumption Survey (HFCS 2010 and 2013), comparing patterns across countries and time.

Following Hartmann (2015) and the ESRB (2015), countries are separated into those that experienced a Residential Real Estate (RRE) boom-and-bust (Greece, Spain, Ireland, Italy, Netherlands, Slovenia, Latvia and Estonia) and those that did not (Belgium, Germany, France, Luxembourg, Austria and Portugal). Boom-bust countries experienced an average peak-to-trough fall in house prices of 36%; the peak-to-trough fall in non boom-bust countries was just 4% (see Table 1 for country-specific data). ESRB (2015) point out that most of the boom-bust countries also experienced a real estate related banking crisis following the Global Financial Crisis (GFC) with severe consequences for the real economy (the one exception is Estonia).⁵

TABLE 1. Peak-to-trough house price changes

	Peak year	Peak (2010=100)	Trough	Δ Peak-trough	Boom-bust
Ireland	2007	143.2	70.4	-50.8%	Yes
Estonia	2007	187.1	98.3	-47.4%	Yes
Greece	2007	117.5	67.1	-42.9%	Yes
Spain	2007	115.7	67.5	-41.7%	Yes
Netherlands	2008	116.5	81.1	-30.4%	Yes
Slovenia	2008	112.9	81.4	-27.9%	Yes
Italy	2007	107.5	80.2	-25.4%	Yes
Lativa	2007	121.3	100.0	-17.6%	Yes
Portugal	2007	105.0	90.4	-13.9%	No
France	2011	104.1	95.7	-8.1%	No
Belgium	2013	101.5	100.2	-1.3%	No
Germany	2015	123.7	123.7	0.0%	No
Luxembourg	2015	124.8	124.8	0.0%	No
Austria	2015	100.0	100.0	0.0%	No
Boom-bust				-35.5%	
Non-boom-bust				-3.9%	
<i>Excl. Portugal</i>				-1.6%	

Source: OECD data on real house prices.

Notes: The HFCS contains data for 15 countries in Wave 1 (2010) and 20 countries in Wave 2 (2014). We exclude the following countries: Poland, Hungary and Slovak Republic (outside the Euro Area for some/all of the sample period); Malta (small cell sizes for historic purchases); Cyprus (small sizes after 2010).

Our paper sheds new light on the sources of real estate boom-bust cycles in several different dimensions. We compare measures such as mean loan-to-value (LTV) and loan-

⁵In a prescient paper, Fagan and Gaspar (2005) show that many of the RRE boom-bust countries also experienced a large reduction in nominal interest rates upon joining the single currency. They highlighted the potential financial instability risks arising from a rapid drop in borrowing costs as a potentially negative side-effect of increased financial integration.

to-income (LTI) ratios, and we look at distributions and thus at the build-up of potential tail risks. Understanding the evolution of these tail risks is important because countries that have introduced borrower-based macro-prudential measures in recent years – such as LTV or LTI caps – target these tail risks. Looking at the entire distribution of borrowers provides important additional insights over averages and addresses questions such as whether particular borrower cohorts are more vulnerable (e.g. younger or low income groups) and of whether signs of credit easing can be observed along multiple dimensions (e.g. longer loan terms alongside higher LTVs).

As well as filling key data gaps, our paper contributes to two other literatures on how credit standards affect households and the economy more widely. First, we show that more indebted borrowers are significantly more likely to face credit constraints following an income shock with negative consequences for household spending, similar to the results in Dynan (2012) and Mian and Sufi (2015). Second, we provide cross-country evidence on how borrower composition both affects, and is affected by credit standards, building on papers by Laeven and Popov (2017) and Lydon and McCann (2017).

Our results are informative for early warning models of future vulnerabilities. ESRB (2015), Behn et al. (2016), Claessens (2015) and Cerutti et al. (2015) all highlight the usefulness of micro-based measures of indebtedness such as loan-to-value (LTV) and loan-to-income (LTI) ratios both as early warning indicators and as macro-prudential policy tools.⁶ However, the formal adoption of ‘borrower-based’ macroprudential policies is relatively recent in many Euro area countries and empirical evidence remains scarce.⁷ Most studies focus on whether a policy was in place or not, rather than the intensity of the policy relative to the prevailing regime beforehand. Our time-series evidence could help calibrate future policies. A cross-country perspective may also be helpful for informing public debate when measures are enacted, as the short-term costs

⁶At the country level, the Central Bank of Ireland has combined administrative data on loans with historical survey data – including the HFCS – to understand exactly how macro-financial linkages operate. See, amongst others, Le Blanc (2016), Kelly and Lydon (2017), Byrne et al. (2017), Kelly et al. (2015), Coates et al. (2015), Cussen et al. (2015) and CBI (2016). Similar country-level studies in other EA countries include Albacete et al. (2014) (Austria), Costa and Farinha (2012) (Portugal), de Caju (2016) (Belgium) and Room and Merikall (2017) (Estonia).

⁷Note, borrower-based macroprudential rules are distinct from rules or non-binding recommendations associated with particular *types* of mortgage lending. The latter would include LTV limits traditionally applicable to lending used as collateral for covered bonds, limits in place for lending granted by certain types of lenders such as Building Societies or for mortgages insured by the government, or supervisory recommended best practice guidelines rather than strictly-enforced rules.

– such as the additional time required to save for a deposit – are often more visible than the long-term benefits (higher household resilience to house price or income shocks).

Our findings can be summarised as follows: For countries that experienced a real estate boom-and-bust (Estonia, Ireland, Greece, Spain, Cyprus, Italy, Latvia, Netherlands and Slovenia), there is clear evidence of a deterioration of credit standards before the Financial Crisis: around half of all household main residence (HMR) mortgages had LTVs of 90% or more, and both LTI ratios and loan terms increased. Borrowers with high origin LTVs also exhibit higher debt service burdens, particularly among lower income (often younger) households. After 2008, and despite the prevailing low interest rate environment, we observe a sharp tightening of lending standards in the boom-bust countries with a decline in LTVs, LTIs and loan terms. In many countries, this pre-dates the introduction of explicit borrower based macroprudential limits. In contrast, we find broadly constant credit standards across the entire period we analyse (2000-2014) in non-boom-bust countries (Belgium, Germany, France, Luxembourg, Malta, Austria, Portugal and Slovakia). In addition to the systemic risks arising from a loosening of credit standards, we show that following an income shock, more indebted households are significantly more likely to be credit constrained. This is clear evidence of one of the channels through which over-indebtedness can weigh on economic activity.

Shifting attention to the more recent period of very low interest rates, we observe no comparable loosening of lending standards. Instead, we observe a shift in borrower composition towards older and higher income borrowers, irrespective of the country that households live in. In the majority of countries, the top two income quintiles account for roughly 70 per cent of mortgages in the more recent period, and the percentage of borrowers aged over 40 has increased. The reasons for such a shift in borrower composition vary. In boom-bust countries, the shift appears to be due to a tightening of credit standards after the bust, which has made it more difficult for younger and lower-income borrowers to obtain a mortgage. In non-boom-bust countries the dramatic fall in the cost of capital for housing due to the low interest rate environment may have shifted household portfolios from relatively low-return financial assets into higher-return real assets.

The remainder of the paper is structured as follows. Section 2 gives an overview of the HFCS dataset and explains how we construct the key variables in our analysis. Section 3 uses this data to revisit the evolution of credit standards during the boom-bust cycles and more recently. Section 4 focuses on shifts in borrower composition. Section

5 examines the relationship between borrower leverage and credit constraints from a cross-country perspective. Finally, Section 6 concludes.

2 Data – the Household Finance and Consumption Survey

The *Household Finance and Consumption Survey* (HFCS) is primarily a wealth survey with detailed information on income, assets, debts and the repayment burden on debt. The fieldwork for the first wave, covering 15 countries, took place in 2010 for most countries; the second wave, which expanded the survey to a further five countries, took place in 2014 for most countries. Table 2 provides an overview of the data; two ECB reports, ECB (2013) and ECB (2016), summarise the results from each wave.

TABLE 2. The Household Finance and Consumption Survey (HFCS)

	Survey years	# households pooled	# households with any mortgage debt	% households with mortgage debt
Belgium	2010, 2014	4,565	1,329	33%
Germany	2010, 2014	8,026	2,292	21%
Estonia	2013	2,220	566	21%
Ireland	2013	5,419	2,056	37%
Greece	2009, 2014	5,974	861	15%
Spain	2008, 2012	12,303	3,284	34%
France	2010, 2014	27,041	7,650	24%
Italy	2010, 2014	16,107	1,409	10%
Latvia	2014	1,202	250	17%
Luxembourg	2010, 2014	2,551	1,069	37%
Netherlands	2009, 2014	2,585	1,386	43%
Austria	2010, 2014	5,377	840	18%
Portugal	2010, 2013	10,611	3,484	36%
Slovenia	2014	2,895	285	11%

Source: HFCS waves 1 and 2. For countries with two waves of data, the figures relate to the pooled datasets.

The degree of access to detailed micro-level data varies considerably across the EU and national macroprudential authorities.⁸ In some Member States, detailed micro-data is available from the loan books of domestic banks or from central credit registers. For other countries, evidence has often relied upon bank surveys (for example Austria, Belgium, Finland and France). One of the difficulties for cross-country studies is that the

⁸For example, the Deutsche Bundesbank noted in its 2016 Financial Stability Review that access to granular data is limited and that the responsible authorities in Germany lacked the means to set minimum standards for the issuance of housing loans as a targeted macroprudential policy measure. See “Box on Macroprudential Policy Making Procedure”.

definition of variables often differs not only between banks but also across countries. The ESRB (2015) has compiled average statistics on LTV ratios for selected EU countries but warns that such estimates are based on divergent concepts.⁹ Differences may arise across lending types (e.g. new vs. outstanding lending and in some cases including credit lines), borrower types (First-time borrowers (FTBs) vs. all borrowers, Owner Occupiers or include Buy-to-Lets (BTLs)), loan purpose (purchasing, renovating), aggregation level (a loan, collateral or borrower view) and valuation concepts (origin, current and indexed LTV). Similarly for income based measures, such as debt service to income (DSTI) and loan or debt to income ratios (LTI or DTI) income can be defined on a gross or a net basis and include or exclude living expenses, bonuses and rental income.

We use the HFCS to extract historical information at the country level on lending standards and borrower characteristics. In this respect, the HFCS has some clear advantages over other potential data sources. For example, compared to RMBS pool data which may account for a smaller share of mortgage lending in some countries, it should be more representative of borrowers in any given year; see Thebault (2017). Furthermore, because we are using the same underlying survey data for all countries cross-country comparability should be less of a concern, in comparison to other studies, such as ESRB (2016) and ESRB (2015). However, the HFCS is not without potential problems. In terms of this exercise, we can think of two specific issues: (i) measurement error arising from recall problems; and (ii) survival bias. We discuss each in turn.

Recall issues

We use survey responses on property purchase price and loan drawn down at origination to construct historical LTV ratios. Accurately recalling historical financial information can be difficult for some households, potentially leading to non-response and measurement error. Item non-response to these questions is relatively low in most countries, at less than 5% of households in the dataset. For a non-response item in the HFCS, multiple imputation (MI) is used. We have run the analysis in this paper with and without the imputed observations, and our results do not change. Measurement error could be problematic if it is correlated with events such as house price booms-and-busts. However, comparing the historical house prices series with other sources such as the OECD (see Figure 1) suggests HFCS trends closely track other published data.

⁹See, for example, ESRB Report on residential real estate and financial stability in the EU (2015), ESRB Handbook on operationalising macro-prudential policy (2014), ESRB Vulnerabilities in the EU residential real estate sector (2016).

The first chart in Figure 1 compares house price trends in the HFCS for all countries with those from the OECD; the second chart is for non boom-bust countries and the final chart is for boom-bust countries.¹⁰ As well as the original house price, we also use information on the original loan drawn-down to construct the Loan-to-Value ratio (LTV) at origination. As discussed earlier, there is limited external information against which we can validate the HFCS trends on mortgage size at origination. However, country-specific assessments of the information on debt in the HFCS show that it is comparable with data from administrative sources; see Kelly and Lydon (2017) for Ireland and Albacete et al. (2016) for Austria.

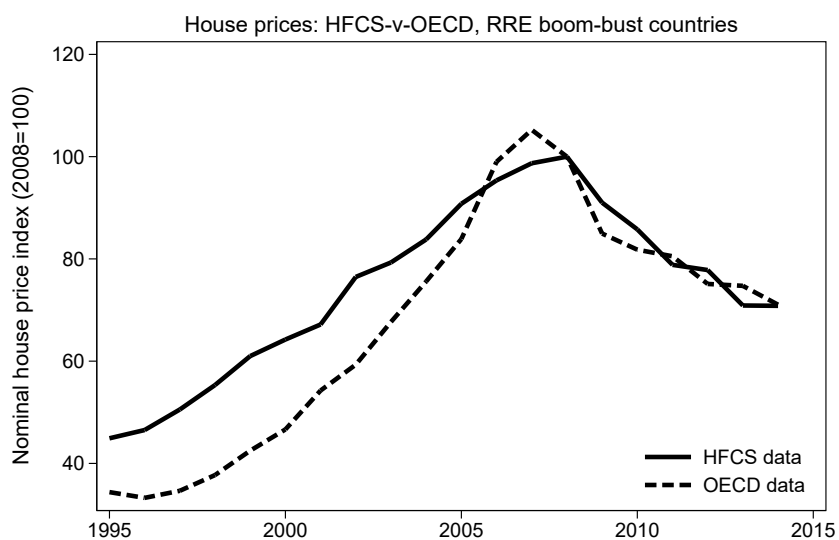
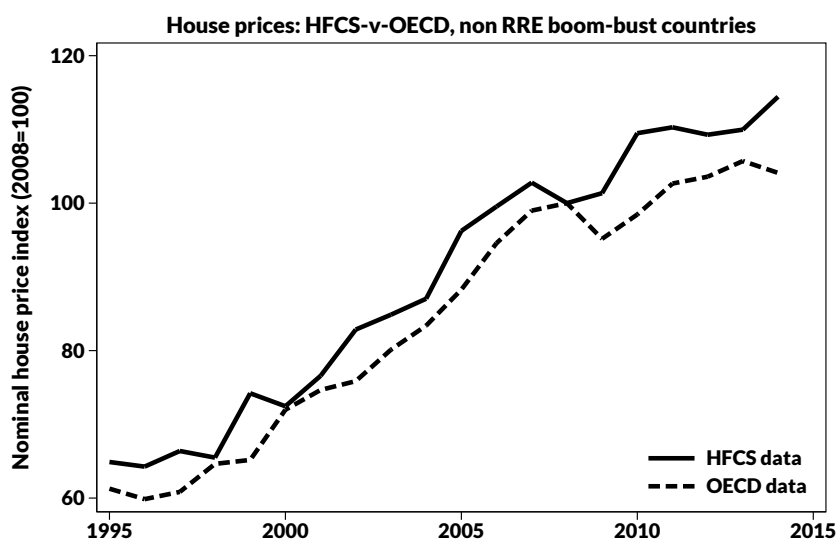
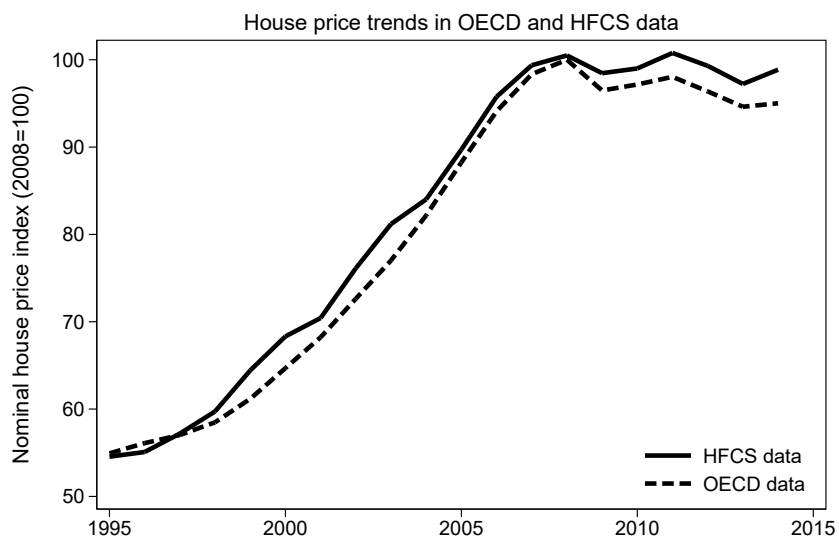
Survival bias

The HFCS dataset is a snapshot of households' balance sheets and incomes in 2010 (wave 1) and 2014 (wave 2). We rely on households who have mortgage debt *in each wave* to construct historic trends in lending standards. Survival bias can arise if loans originating in a given year do not appear in either snapshot – in other words, if some loans are repaid (or defaulted) between the origination year and the survey year.

For LTVs, this could bias past values upwards if loan term and originating LTV are positively correlated, as they tend to be. However, the comparable data that is available for individual countries does not lead us to believe that the potential biases are large. For example, in the case of Ireland, Kelly and Lydon (2017) show that historical LTVs extracted from the HFCS track loan-level administrative data very closely. Albacete et al. (2014) carries out a similar comparison for Austrian households and finds that the HFCS data tracks administrative data on average loan size (and LTV) quite closely. Beyond these publications, there is little published information against which we can compare the historical HFCS information – indeed, this is one of the motivations for the current exercise. We have done a comparison of the volume of new business loans for house purchase from the ECB Statistical Data Warehouse (SDW) with the HFCS. Whilst the trends are very similar across countries and time, the levels are quite different due to the fact that the definition of 'new business' in the SDW is not really comparable to new loans drawn down in the HFCS, as it includes interest rate resets, renegotiations and not-for profits serving households.

¹⁰Figure 17 in the appendix compares house price trends for each individual country in our sample with external sources. In all cases, we find that HFCS trends very closely track other data sources.

FIGURE 1. House price trends (2008=100)



Source: HFCS, waves 1 and 2 and OECD. The nominal price indices are means of HMR property purchase price by year of purchase for all mortgage-financed purchases. The following countries are in the boom-bust group: Estonia (from 2004 in HFCS data), Ireland, Greece, Spain, Cyprus, Italy, Latvia (from 2004), Netherlands and Slovenia (from 2004). The non-boom-bust group of countries are: Belgium, Germany, France, Luxembourg, Malta, Austria, Portugal and Slovakia.

3 Credit Standards for Residential Real Estate (RRE)

This section highlights that property bubbles and changes in credit standards go hand-in-hand. In the following, we analyse the HFCS to see whether common patterns emerge among our boom-bust group that might have triggered concerns at that time and whether we observe any comparable broad-based easing of credit standards in the more recent period. Figures 2 (boom-bust countries) and 3 (non-boom bust) provide context for the analysis: using OECD data, we present a top-down picture of trends in real house prices, house price-to-disposable income ratios and household debt-to-income ratios for the countries in the sample. A number of patterns emerge:

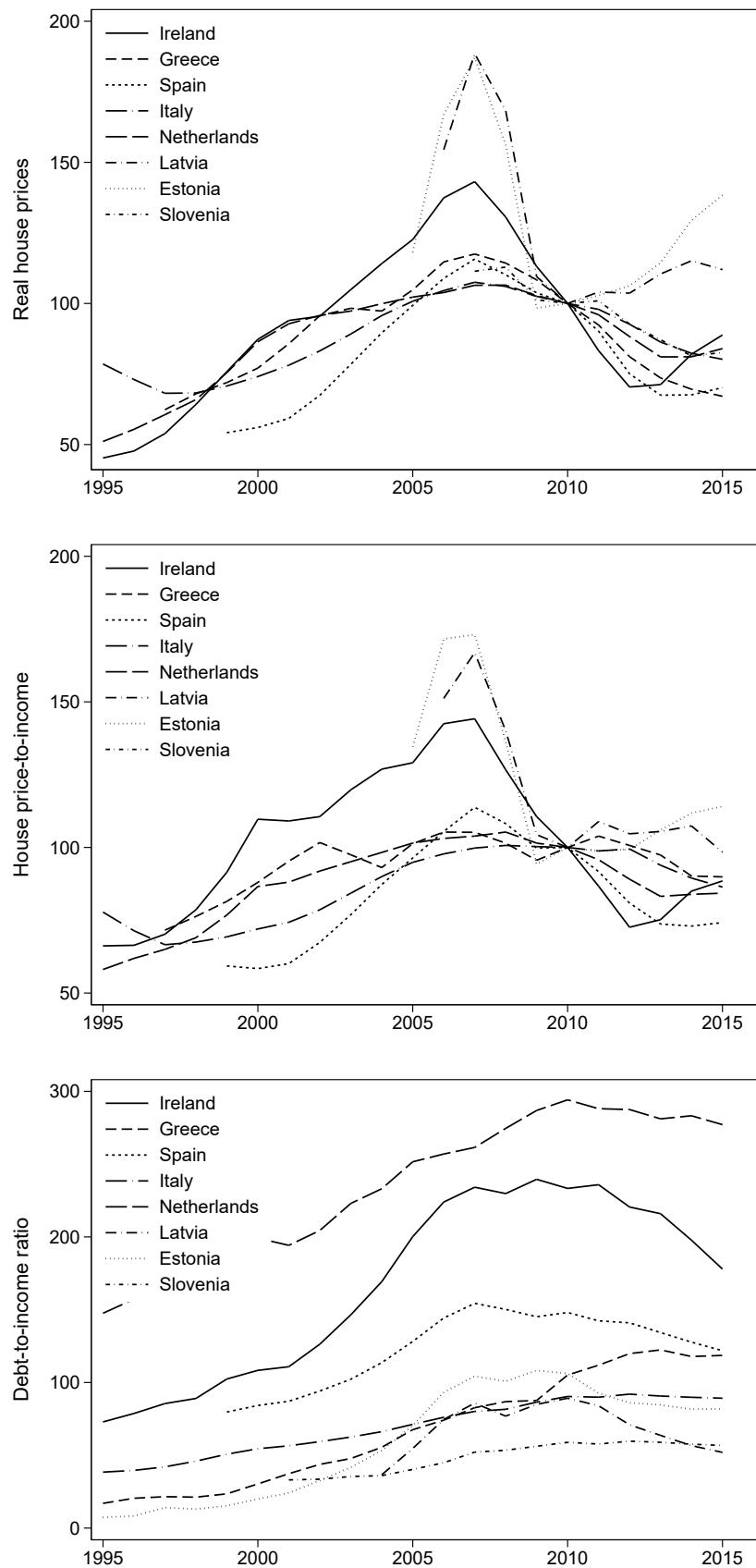
- Ireland, Estonia, Latvia and Spain stand out as countries that experienced large real-estate boom-and-busts. The run-up in house prices in these countries far surpassed income growth, and was fuelled to a large degree by rapid growth in household debt.
- Relative to incomes, house prices in non-boom-bust countries also increased during the early-2000s, albeit at about half the rate seen in boom-bust countries.¹¹
- Since 2010, Germany, Austria, Luxembourg and, to a lesser extent, Belgium are the only countries (in the non-boom bust group) with significant house price increases both in absolute levels and relative to incomes (middle panel). As the final panel (debt-to-income ratio) shows, however, this recent run-up in house prices does not appear to have been accompanied by a large increase in debt, with debt-to-income ratios either increasing more slowly or not at all.

LTV at origination

Figure 4 shows the rise in the share of new 'Household Main Residence' (HMR) mortgages with an LTV of 90 per cent or higher in the boom-bust group in the run-up to the GFC: at the peak, such mortgages account for just over 50 per cent of new lending. In contrast, the trend for the non-boom-bust country group is relatively stable over time, at between 30 and 35 per cent of loans. Figure 5 shows the same data for the pre- (2006-08) and post- (2011 onwards) crisis period for individual countries.

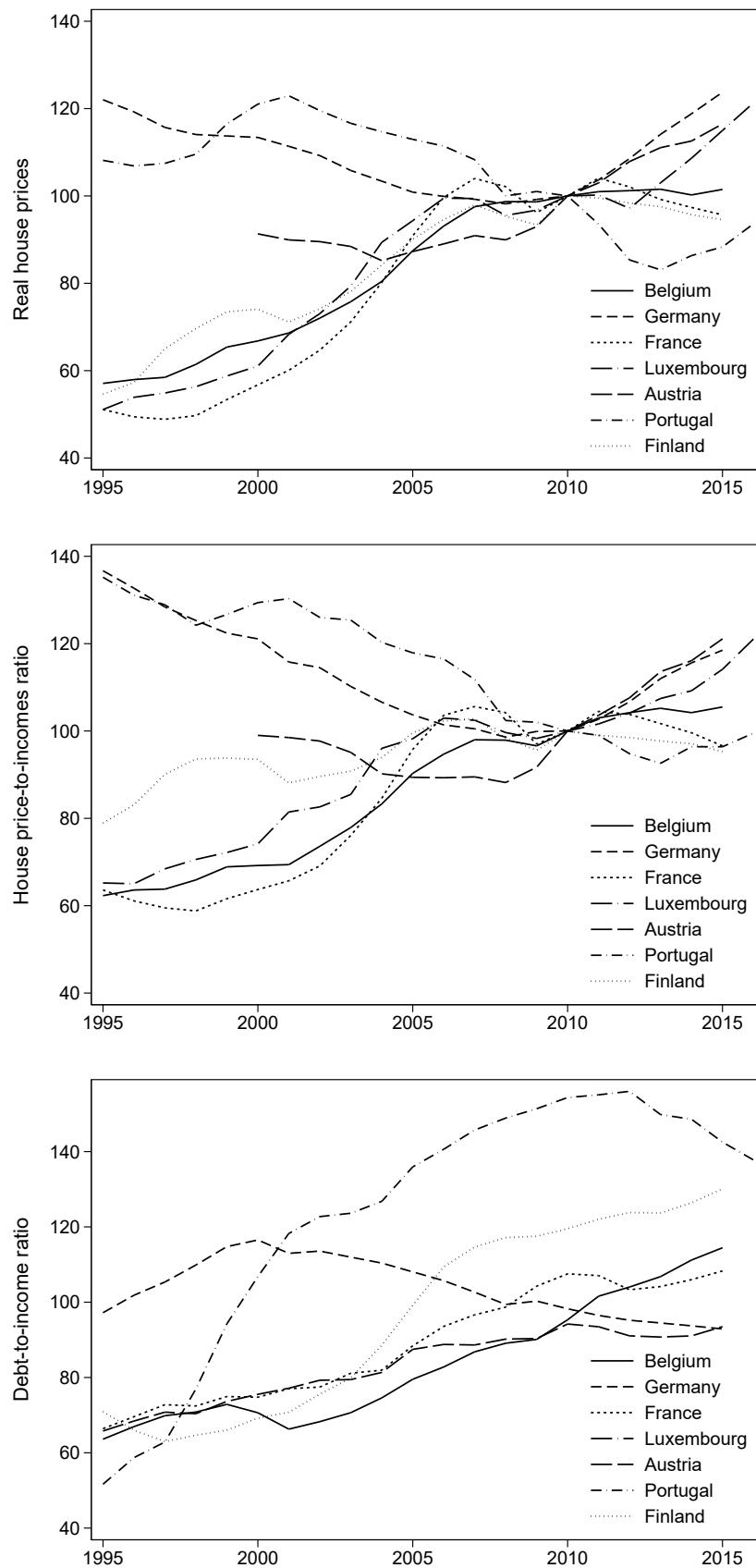
¹¹Portugal experienced an earlier credit boom (1995-2005), also covering consumer credit, not just mortgage credit. See Blanchard (2007) and Reis (2013) for more in-depth discussion on the Portuguese experience.

FIGURE 2. House prices, house-price-to-income ratio and debt-to-income ratio: countries that experienced a property boom-and-bust



Source: OECD housing and income statistics and authors' calculations. The house-price to income ratio is relative to its long-run mean, with 2010=100.

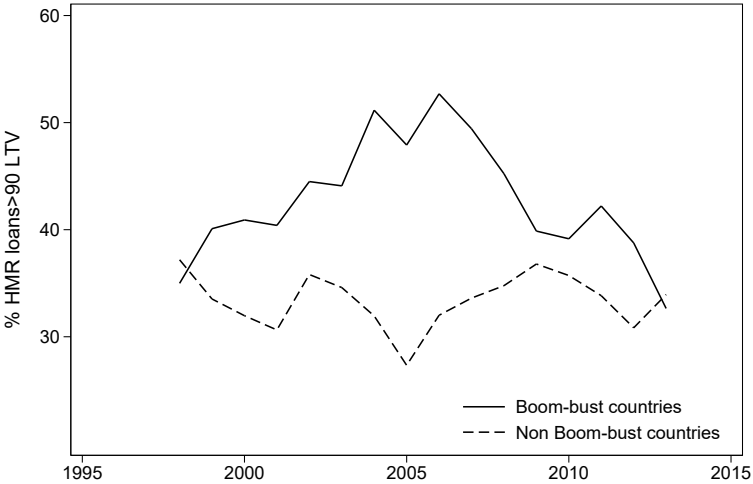
FIGURE 3. House prices, house-price-to-income ratio and debt-to-income ratio: countries that did not experience a property boom-and-bust



Source: OECD housing and income statistics and authors' calculations. The house-price to income ratio is relative to its long-run mean, with 2010=100.

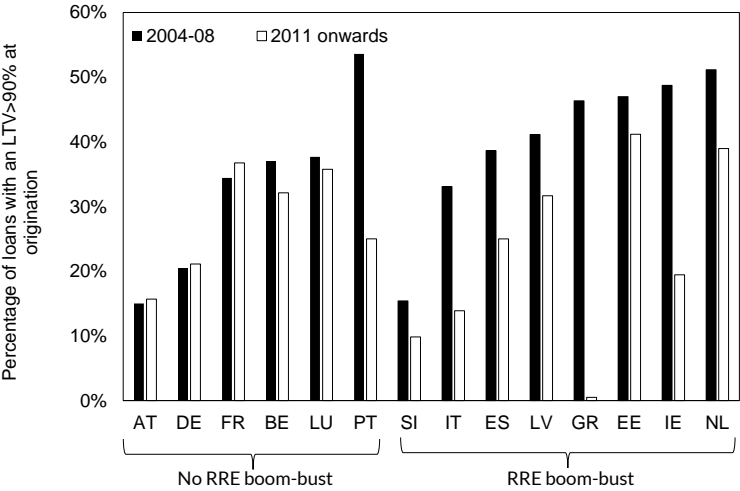
Countries that experienced a housing boom-bust saw a contraction in the share of very high LTV loans after the housing bubble burst. In countries like Ireland, for example, the proportion of these 90%-plus loans fell by more than a half, from just under 50% of loans to less than 20%. The share of high-LTV loans is more stable over time in non boom-bust countries, with the exception of Portugal. Real house prices in Portugal did fall during the financial crisis, but this appears to be part of a longer-term trend, beginning in the early 2000s.

FIGURE 4. Percentage of HMR loans with an LTV of 90% plus



Source: HFCS, waves 1 and 2. New loans for house purchase, i.e. excludes refinancing, renegotiating or topping-up existing loans.

FIGURE 5. Percentage of HMR loans with an LTV of 90% plus at origination (by country)

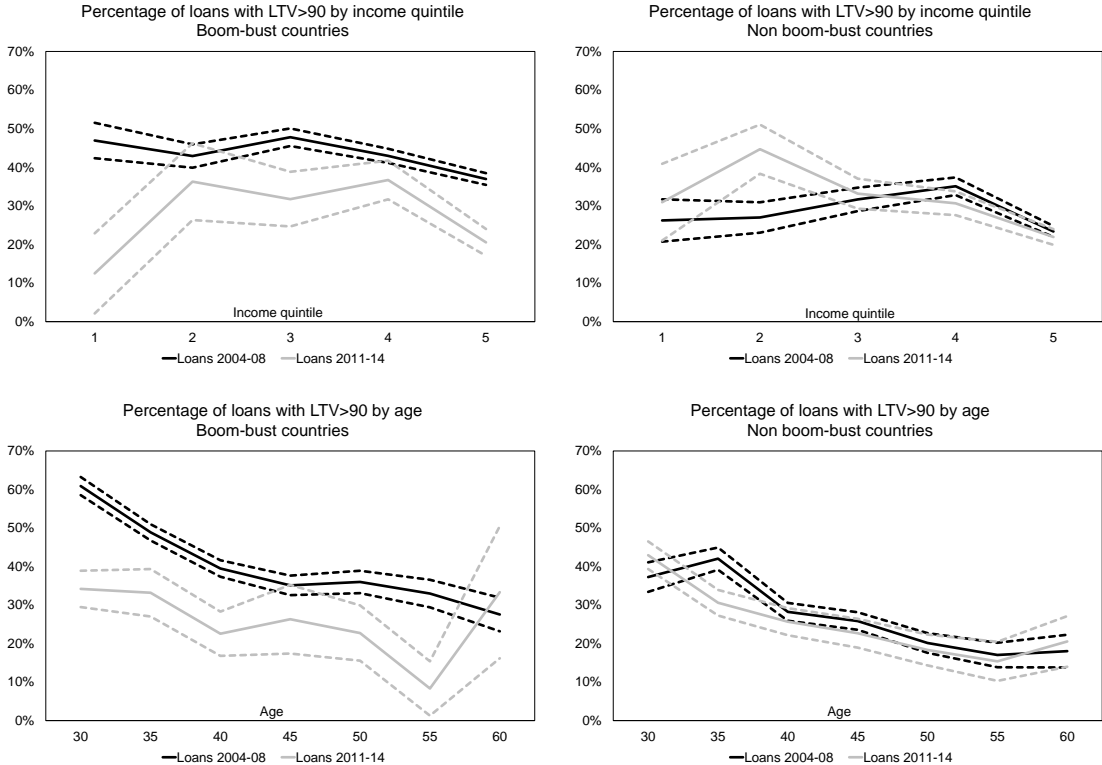


Source: HFCS, waves 1 and 2.

One challenge that arises when comparing loan characteristics across time is to identify separately changes in credit standards from changes in borrower composition. Using the HFCS, we observe substantial shifts in borrower composition in many countries – and not just those countries that experienced a property boom-bust – with a general shift towards older and higher-income buyers (see section 4, which discusses the compositional shifts in more detail).

To get a sense of the importance of compositional factors for these changes, we plot the percentage of high-LTV loans ($\geq 90\%$ LTV) by income quintile and age for loans originating between 2004 and 2008 (when we expect credit standards were looser in boom-bust countries) and loans originating from 2011-14 (when we expect to see a tightening of standards). Compared to non boom-bust countries, there is a clear reduction in average LTVs at origination in boom-bust countries after 2011. Importantly, from the perspective of compositional shifts, this pattern of changes is broadly consistent across the income and age distribution, indicating that the change in buyer characteristics is not the primary reason we observe a general tightening of credit standards in the bust.

FIGURE 6. Percentage of HMR loans with an LTV of 90% plus at origination (by income and age)



Source: HFCS. Dashed lines show the 95% confidence interval of the mean.

We can also use a regression to control for changes in borrower characteristics, as in Table 3. The first column is an OLS regression of LTV at origination on characteristics (age, education and income) and a dummy variable interaction for boom-bust countries and loans drawn-down after 2010. The absolute swing in average LTVs from boom-to-bust is given by summing the coefficients on the 2004-08 and 2011-14 periods. The coefficients suggest a fall in average LTVs in boom-bust countries after 2010 of 14 percentage points. The second column is a probit model where the dependent variable equals one if the loan at origination was 90 per cent or more of the property purchase price (i.e. $LTV \geq 90$). The coefficients confirm the patterns shown in the earlier charts, that of a sharp contraction in LTVs in boom-bust countries after the crash. The final column is similar to the second, but we restrict the sample to borrowers under the age of 40. Given that younger borrowers are likely to have a lower level of savings for a downpayment, we expect a larger coefficient on the dummy variable for the post-2010 period in boom-bust countries, which is indeed what we find. Interestingly, the regression results also suggest a tightening of LTVs in non boom-bust countries after 2010. This suggests that our observation of relatively unchanged credit standards in these countries – certainly in the period after 2010 – is partially driven by the greater concentration of older- and higher-income borrowers, a trend we discuss in more detail below.

TABLE 3. Average LTV at origination and borrower characteristics

Dependent variable	(1)	(2)	(3)
Model	LTV OLS	LTV \geq 90 Probit*	LTV \geq 90 Probit*
	All ages	All ages	Age $<$ 40
Non boom-bust countries			
Loans originating 2004-08	[Omitted]	[Omitted]	[Omitted]
Loans originating 2011-14	-4.586*** (0.900)	-0.0533*** (0.0137)	-0.0456*** (0.0177)
Boom-bust countries			
Loans originating 2004-08	10.36*** (0.688)	0.0463*** (0.0080)	0.0532*** (0.00979)
Loans originating 2011-14	-3.702*** (1.385)	-0.0496** (0.0250)	-0.0681*** (0.0322)
Age	-0.297*** (0.0315)	-0.00719*** (0.0003)	-0.0090*** (0.0006)
Primary education	[Omitted]	[Omitted]	[Omitted]
Secondary education	-3.143** (1.394)	-0.0617*** (0.0171)	-0.0717*** (0.0219)
Post-secondary education	-9.353*** (1.212)	-0.131*** (0.0149)	-0.144*** (0.0191)
Tertiary education	-11.10*** (1.251)	-0.147*** (0.0156)	-0.155*** (0.0198)
Log(income)	-2.423*** (0.411)	-0.0501*** (0.00499)	-0.0410*** (0.0061)
Observations	87,066	78,950	55,560

Standard errors in parentheses. *** p<0.01, ** p<0.05, * p<0.1

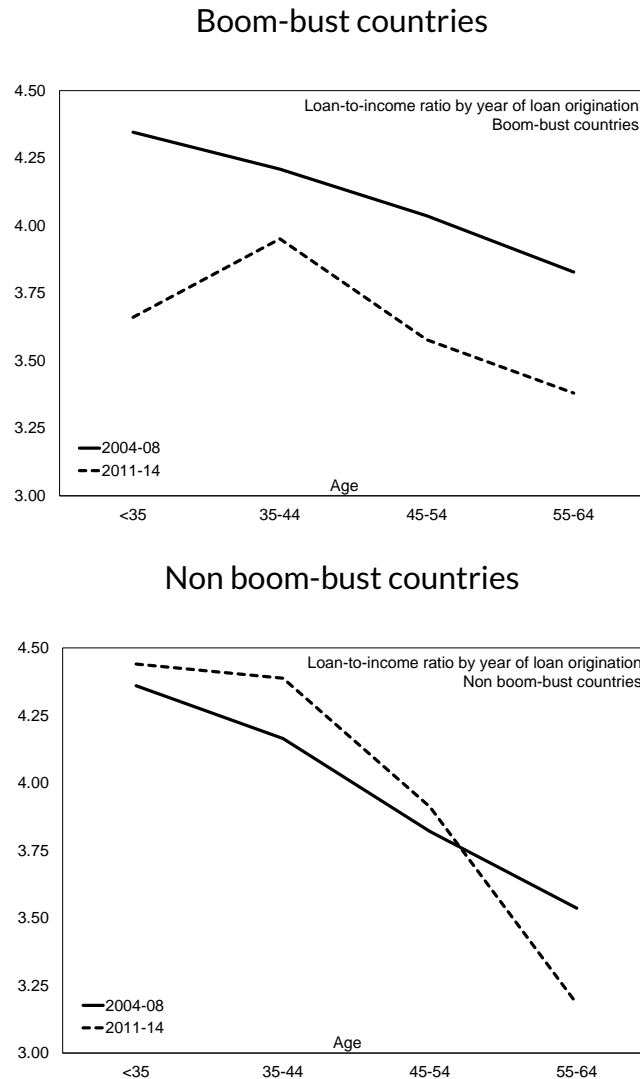
Source: HFCS waves 1 and 2. Households with a HMR ('household main residence') mortgage. Loans for house purchase only. (*) The reported probit results are estimated average marginal effects.

Loan-to Income, Loan terms and debt service ratios

Lenders can change the amount of available credit by lending more (or less) to households on a given income. This means increasing the loan-to-income ratio (LTI) and, for a given loan term and interest rate, increasing the debt-service ratio (DSR), the amount of income devoted to repaying the debt. Whilst the HFCS cross-sections have information on household income and its components, it is only recorded in the year of each survey wave. It is therefore not possible to construct a time-series measure of LTI at origination as we have done for LTV. Instead, we compare the *current* loan-to-income ratio for borrowers depending on when the loan originated.

Figure 7 illustrates average LTI by age for loans originating 2004-08 versus 2011-14. The drop in average LTI after 2010 is evident for the boom-bust group, particularly for borrowers under 35. For the non-boom bust group, very little change is apparent, although younger borrowers exhibit higher income multiples than older households.

FIGURE 7. Average HMR Loan-to-income by age



Source: HFCS Waves 1 & 2.

As with LTVs, compositional changes also distort comparisons of LTIs over time. To control for these changes, we estimate a regression with LTI at origination as the dependent variable, controlling for age, income and education (Table 4). We include a dummy variable interaction for boom-bust countries and loans originating after 2010 (when we assume credit standards tightened for boom-bust countries).

TABLE 4. Loan to income ratio and borrower characteristics

Dependent variable Model	(1)	(2)	(3)
	Loan-to-income ratio at survey year OLS	Loan-to-income ratio at survey year OLS	Loan-to-income ratio at survey year OLS
	All	Age <40	Age ≥ 40
Non Boom-bust countries			
Loans originating 2004-08	[Omitted]	[Omitted]	[Omitted]
Loans originating 2011-14	0.103*** (0.0287)	0.163*** (0.0394)	0.0377 (0.0421)
Boom-bust countries			
Loans originating 2004-08	0.115*** (0.0210)	-0.00617 (0.0310)	0.199*** (0.0289)
Loans originating 2011-14	-0.414*** (0.0470)	-0.559*** (0.0600)	-0.154** (0.0755)
Age	-0.0259*** (0.000930)		
Income Quintile 1	[Omitted]	[Omitted]	[Omitted]
Income Quintile 2	0.00925 (0.104)	0.168 (0.198)	0.0101 (0.127)
Income Quintile 3	-0.111 (0.0989)	0.173 (0.191)	-0.116 (0.118)
Income Quintile 4	-0.379*** (0.0976)	-0.242 (0.189)	-0.247** (0.117)
Income Quintile 5	-1.256*** (0.0972)	-1.225*** (0.189)	-1.060*** (0.116)
Primary education	[Omitted]	[Omitted]	[Omitted]
Secondart education	-0.0117 (0.0520)	-0.327*** (0.0984)	0.228*** (0.0631)
Post-secondary education	-0.266*** (0.0447)	-0.367*** (0.0874)	-0.0958* (0.0529)
Tertiary education	-0.214*** (0.0451)	-0.236*** (0.0874)	-0.0890* (0.0535)
Observations	27,972	12,541	15,431
R-squared	0.130	0.135	0.087

Standard errors in parentheses. *** p<0.01, ** p<0.05, * p<0.1

Source: HFCS waves 1 and 2. Households with a HMR ('household main residence') mortgage. Loans for house purchase only.

The regression results are broadly in line with the trends in the previous two charts. There is a sharp tightening of loan-to-income ratios in boom-bust countries after the bursting of the housing bubble in those countries, with a downward swing in LTIs of over 50 basis points. An LTI ratio of about 3.5 – 4.5 can be considered as quite high, although there is no international benchmark for LTIs and macro-prudential limits on LTI vary quite considerably in terms of both levels and implementation details.¹² As the charts

¹²For EU countries that have applied maximum LTI ratios in recent years (Ireland, the UK, Denmark and the Netherlands) both the limits and the way in which they apply varies. In Ireland, for example, a maximum of 20 per cent of new residential mortgage lending was allowable at an LTI of greater than 3.5 times income until end 2017, after which allowances were split among FTBs and second and subsequent buyers. In the UK, the corresponding figure is less than 15 per

suggested, the tightening affects mainly younger borrowers, although there is a decline for older borrowers (≥ 40) bringing them more in-line with average LTIs in non boom-bust countries. There is also a small *increase* in average LTIs in non boom-bust countries after 2010.

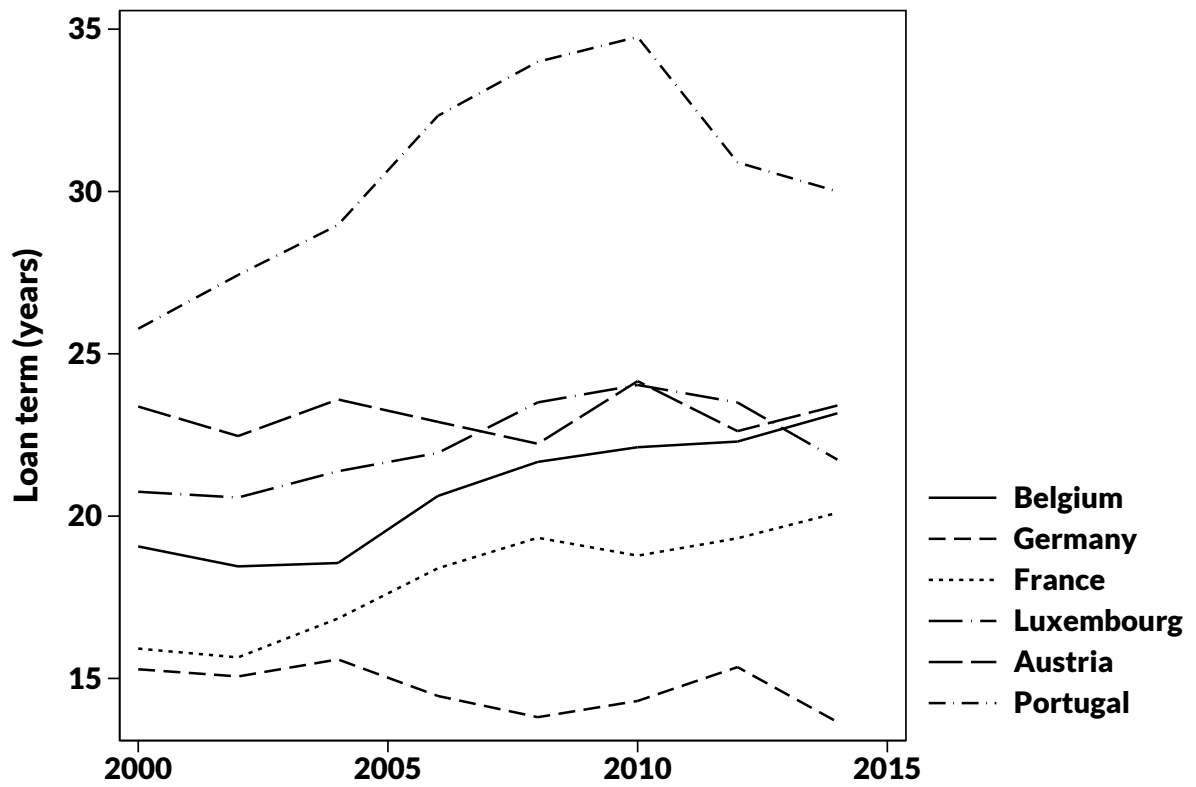
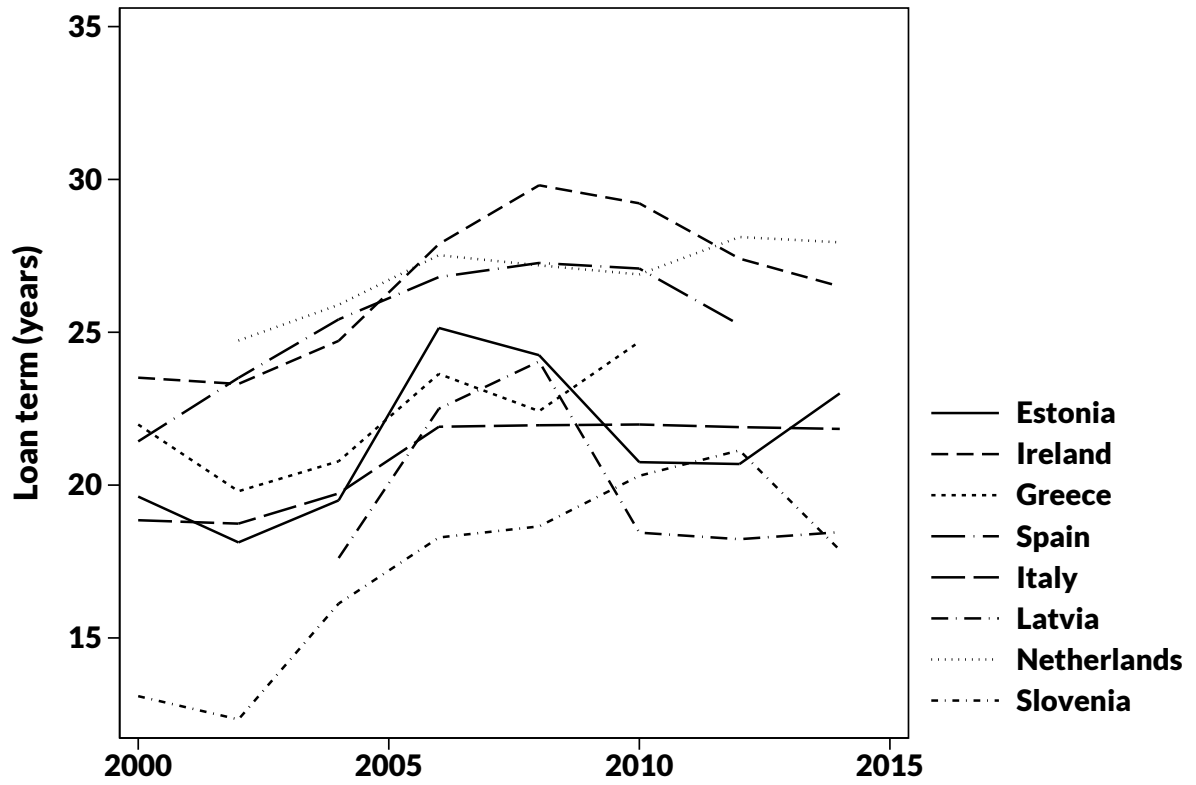
One way to ease the debt *repayment* burden when house prices and indebtedness are rising faster than income is to extend repayments over a longer period. The increase in loan terms in some boom-bust countries, such as Ireland, for example, where the average loan term increased from less than 25 years in the early 2000s to 30 years by 2007, is suggestive of increasing LTIs over the same period (Figure 8). Looking at the non-boom-bust group of countries, for example, Austria and Germany, there is very little change in loan terms over time. In others, such as France, Luxembourg and Belgium, loan terms increased a little in early- to mid-2000s, before levelling-off.

Households with higher origin LTVs also exhibit significantly higher debt-service burdens; that is, their HMR mortgage repayments represent a high proportion of their gross income. Figure 9 shows that borrowers on lower incomes tend to have higher debt service burdens. It also shows the borrowers with the heaviest repayment burden also have the highest origin LTVs. Low income, high leverage borrowers would appear to be the most vulnerable to an income or unemployment shock, a result consistent with the work of Ampudia et al. (2016).

The overall picture is one of a general easing of lending standards in the boom-bust countries prior to the Great Financial Crisis and a tightening of those standards in the ensuing years. The regression analysis, which aims to control for compositional changes in the borrower group suggests a slight loosening of credit standards in non boom-bust countries after 2010, when we look at Loan-to-income ratios (LTI) – i.e. an increase in LTIs relative to the mean controlling for characteristics. However, compared with changes observed in the boom-bust countries in earlier years, these increases are relatively small. In general, younger and lower income borrowers are the cohorts with the highest levels of leverage. Next, we consider compositional changes in more detail, followed by analysis of the consequences for borrowers of taking on too much debt, i.e. giving rise to credit constraints.

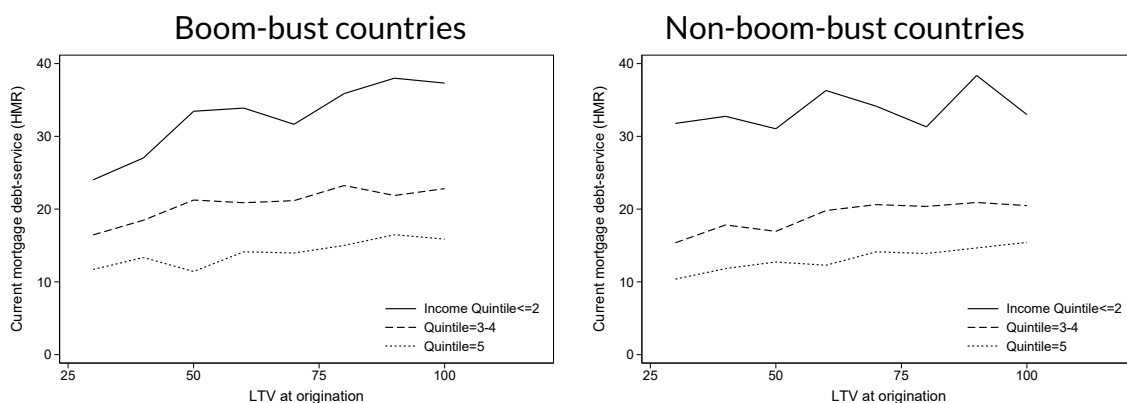
cent at an LTI of greater than 4.5. See ESRB “A review of macroprudential policy in the EU in 2016”, April 2017 for more details on these LTI measures. LTI limits may apply to gross income or net income and may also differ in what is included in income such as bonuses, rental income and so forth. One of the benefits of the HFCS is that one can construct reasonably comparable measures of LTI across countries, notwithstanding the structural differences that exist in mortgage markets and taxation.

FIGURE 8. Average HMR Loan-terms



Source: HFCS Wave 1 and 2. Loans for HMR purchase only, i.e. excluding refinancing/renegotiation of existing loans.

FIGURE 9. HMR mortgage debt-service burden and origin LTV



Source: HFCS Wave 1 and 2. Debt-service burden as at survey year based on gross income. Loans for HMR purchase only, i.e. excluding refinancing/renegotiation of existing loans.

4 Borrower Composition

The conflict between increasing access to housing finance without increasing the risk of a credit-fueled housing boom is well-known and discussed in Laeven and Popov (2017) amongst others. Despite numerous US government initiatives to support homeownership, the authors find that First-Time Buyers (FTBs) in metropolitan states with above average house price growth, are more likely to delay house purchase both during the 2000s US housing boom and in subsequent years. These FTBs are also more likely to delay household formation and having children. Marek (2017) examines falling homeownership rates among young German households using German survey data. He finds that households below age 45 are delaying home purchases as house prices have increased and they need to save substantially more for a downpayment. Despite this trend, the homeownership rate in Germany has increased as mainly older and richer households buy more real estate. In this section we use the two HFCS waves to shed further light on these compositional issues, before, during and after the housing boom-bust.

Homeownership across countries

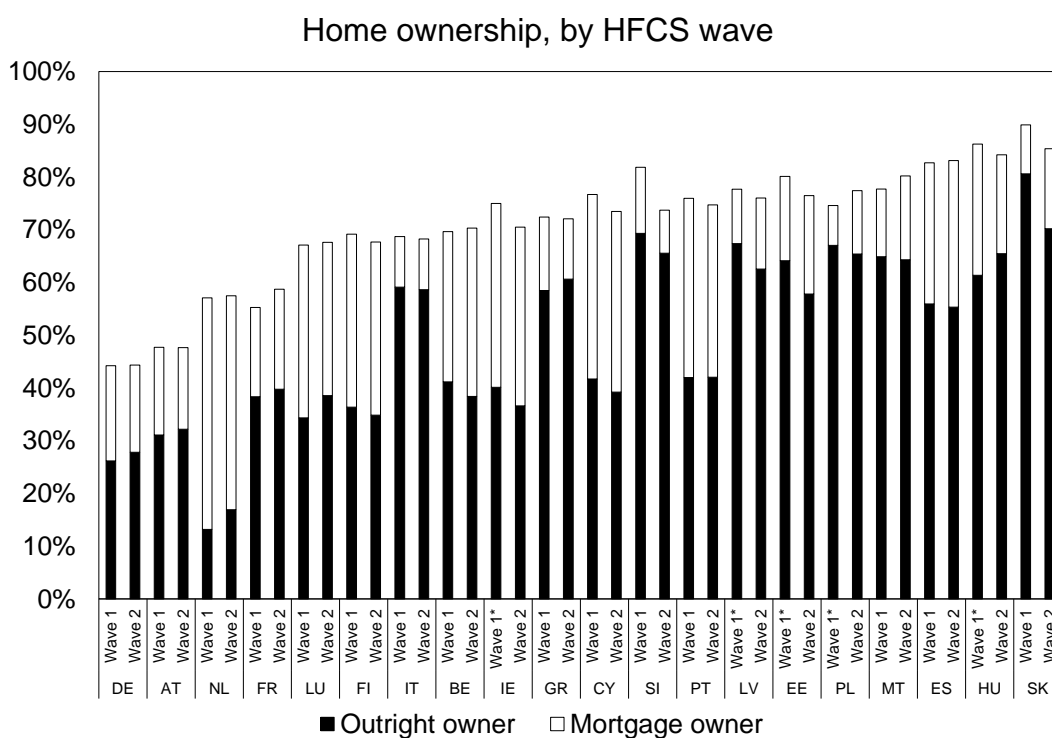
For most HFCS countries, the household main residence (HMR) constitutes the main asset and source of debt. Just under one-quarter (24%) of households have mortgage debt, and a subset (one-fifth) have HMR mortgage debt. As Figure 10 shows, there is considerable heterogeneity in these figures, with Germany and Austria having the lowest proportion of mortgage and outright homeowners and Spain and Eastern/Central

European countries amongst the highest. The proportions have shifted between HFCS waves. For example, Belgian households appear to have shifted into HMR-mortgage ownership since 2010, outright and mortgage-HMR ownership has increased in France, whereas German, Austrian, Dutch, Luxembourgish and Greek households have shifted into outright home-ownership. Irish, Slovenian and Cypriot households have shifted out of home-ownership completely during the same period, with substantial increases in the proportion of households renting (that is, the residual).

HMR borrower ages and incomes

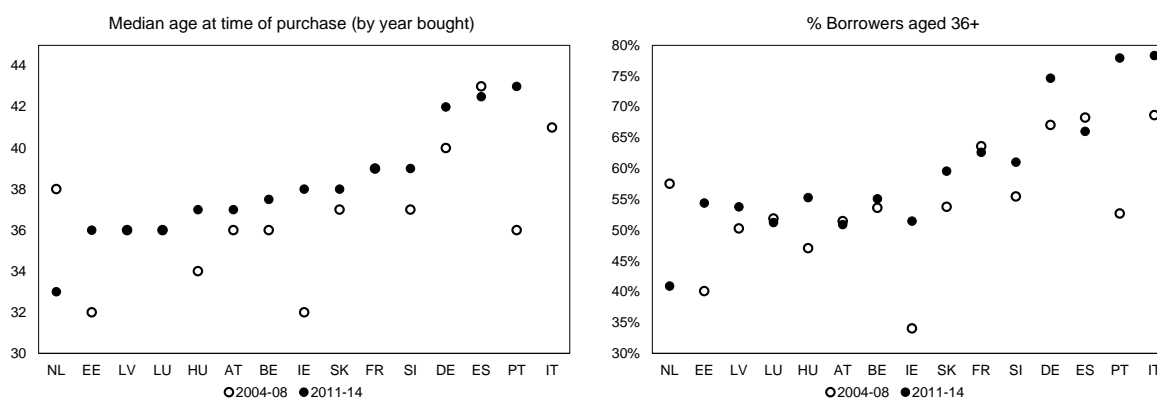
Looking at the median age of HMR homebuyers with a mortgage (Figure 11), there is a discernible shift in buyer characteristics in recent years. In Germany, for example, the median age of buyers with a mortgage has risen by two to three years along with increasing house prices, while average LTV, i.e. savings in terms of house value needed to make a downpayment, have remained stable. In Ireland and Portugal the age of borrowers has also been rising, albeit we think for different reasons; namely on the supply side, tighter lending standards, and, on the demand side, the fall in incomes and later participation in the work-force. In Ireland, Kinghan et al. (2017) show average age has continued to increase, reaching 37 on new lending in the first half of 2017.

FIGURE 10. Home-ownership shares (% households)



Source: HFCS, Waves 1 and 2. (*) EU-SILC 2010.

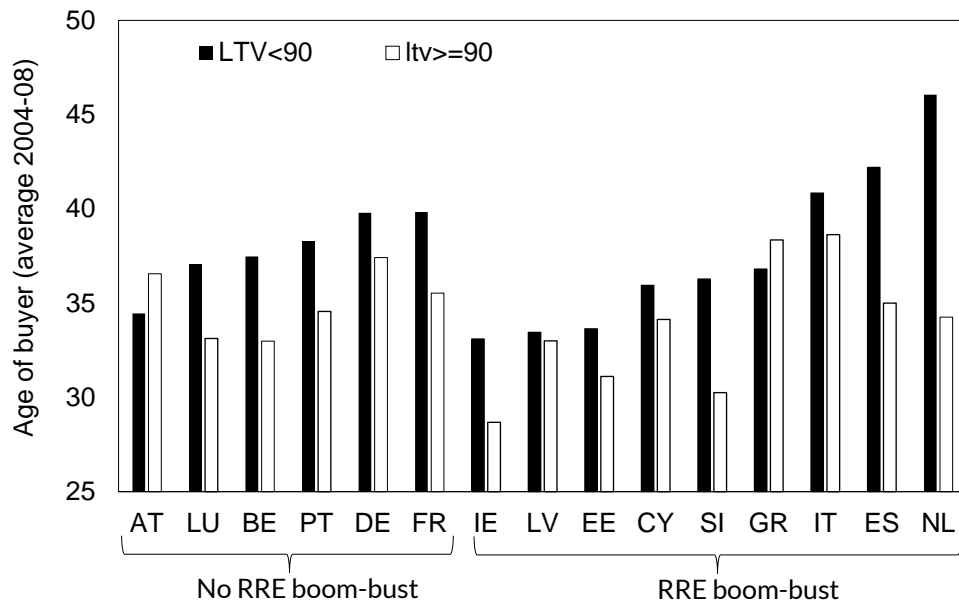
FIGURE 11. Age of home-buyers by year of purchase



Source: HFCS, Waves 1 and 2. Household Main Residence (HMR) only.

First-time buyers face a well-known downpayment constraint and ‘high’ LTV loans may have facilitated market access for younger borrowers, particularly in the period preceding the Great Financial Crisis (Figure 12). In most countries, borrowers with an LTV of 90%-plus are many years younger than those with an LTV of below 90%. At the extreme - in the Netherlands - there was a difference of over 10 years in average age between these two groups.

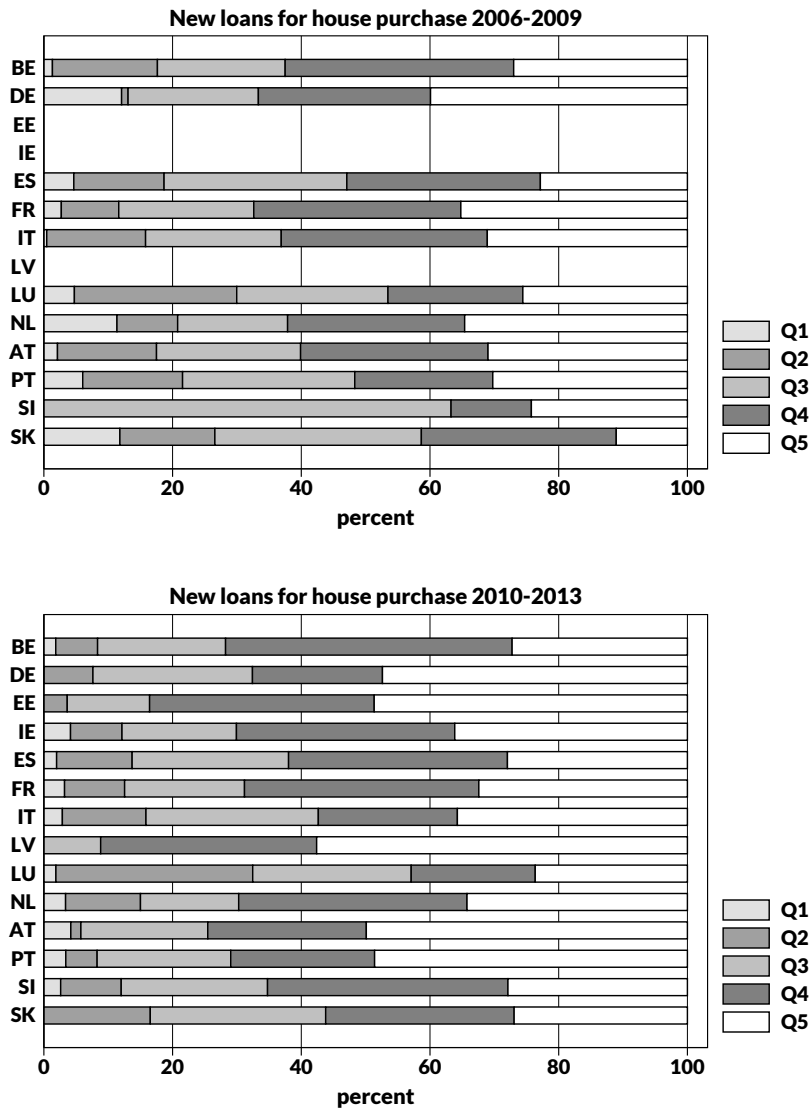
FIGURE 12. HMR borrower age at time of purchase, by LTV $\geq 90\%$



Source: HFCS.

The positive correlation between age and income also implies that more buyers are also coming from higher-up the income distribution (Figure 13). In the majority of countries, around 70% of borrowers come from the top two income quintiles in wave 2 up from closer to 60% in wave 1 for many of these countries. In Germany, Estonia, Latvia, Austria and Portugal, almost half of HMR mortgage borrowers are from the top 20% of the income distribution in the period after 2010. This compares to 36% in Ireland and 28% in Spain and Belgium. Borrowers in the bottom quintile of the income distribution account for less than 5% of HMR mortgages in all countries after 2010, whereas prior to this the percentage exceeded 10% in some countries (e.g. Germany and Netherlands).

FIGURE 13. HMR income distribution Borrowers 2006-09 vs. Borrowers 2010-13



Source: HFCS Wave 1 (top panel) and Wave 2. As income is only observed at each wave we restrict comparisons to borrowers in the three years prior to each wave.

HMR versus Non-HMR property

One explanation for the change in borrower composition towards higher ages and incomes that is pronounced in some of the countries is that it represents an increased appetite for real assets at a time when the real return on deposits or other forms of financial assets is at an all-time low. Real estate may therefore represent a more attractive investment, both in terms of an income stream and capital appreciation. Similar behaviour was evident in some boom-bust countries before the bust, when a combination of easy credit, low real interest rates, rising real house prices and favourable

tax treatment led to a large increase in buy-to-let investments.¹³ Table 5 shows that there has been a shift towards ownership of non-HMR real estate in some countries – such as Germany, Netherlands, Belgium and (surprisingly) Spain. In France, on the other hand, the increasing demand for real-estate assets is mainly evident in the substantial increase in HMR home-ownership.

TABLE 5. HMR and other real estate ownership across countries & waves

	HMR homeownership, %households			Non-HMR real estate ownership, %households			
	Wave 1	Wave 2	Change	Wave 1	Wave 2	Change	
SK	89.9%	85.4%	-4.5%	CY	51.6%	46.0%	-5.7%
CY	76.7%	73.5%	-3.2%	GR	37.9%	35.7%	-2.2%
FI	69.2%	67.7%	-1.5%	IT	24.9%	23.1%	-1.8%
PT	76.0%	74.7%	-1.3%	LU	28.2%	26.3%	-1.8%
IT	68.7%	68.2%	-0.5%	AT	13.4%	12.1%	-1.3%
GR	72.4%	72.1%	-0.3%	FR	24.7%	23.4%	-1.3%
AT	47.7%	47.7%	-0.1%	FI	30.0%	30.5%	0.5%
DE	44.2%	44.3%	0.1%	PT	29.1%	30.3%	1.2%
NL	57.1%	57.5%	0.4%	NL	6.1%	8.1%	2.0%
ES	82.7%	83.1%	0.4%	BE	16.4%	18.5%	2.1%
LU	67.1%	67.6%	0.5%	DE	17.8%	20.2%	2.4%
BE	69.6%	70.3%	0.7%	MT	31.2%	34.4%	3.2%
MT	77.7%	80.2%	2.5%	SK	15.3%	19.4%	4.1%
FR	55.3%	58.7%	3.5%	ES	36.2%	40.3%	4.2%
IE		70.5%		PL		18.9%	
SI		73.7%		HU		23.0%	
LV		76.0%		IE		23.0%	
EE		76.5%		SI		30.6%	
PL		77.4%		EE		32.0%	
HU		84.2%		LV		39.1%	

Source: HFCS waves 1 and 2. Country weights applied.

As we showed earlier, the headline ownership statistics hide considerable variation in the age-profile of real-estate ownership. In Figures 14 and 15 we show the rates of HMR and other real estate ownership by decade of birth for those countries in Table 5 where we observe the largest changes between waves. Most notably in Germany, HMR ownership has decreased for the youngest cohort (those born after 1980) while it has substantially increased for the older cohorts (born between 1950 and 1970). In contrast, in Belgium, the Netherlands, Spain and France households in the youngest cohort have

¹³Lydon and O'Hanlon (2012) show that from 2002 to 2007, the share of buy-to-let loans in Ireland increased more than five-fold, from less than 5% to over 25% of lending. When the property market crashed, these loans proved to be ex-post highly risky for lenders, with over 37% of balances in deep arrears at the trough of the crisis (June 2014), many of which were very long-term loans (30+ years), often with interest-only repayment arrangements.

increased their HMR ownership. As for Non-HMR ownership, this has increased for all cohorts in the depicted countries, including Germany between the two waves. This could indicate that real estate is increasingly becoming attractive for investment rather than just consumption purposes.

FIGURE 14. HMR ownership by decade born

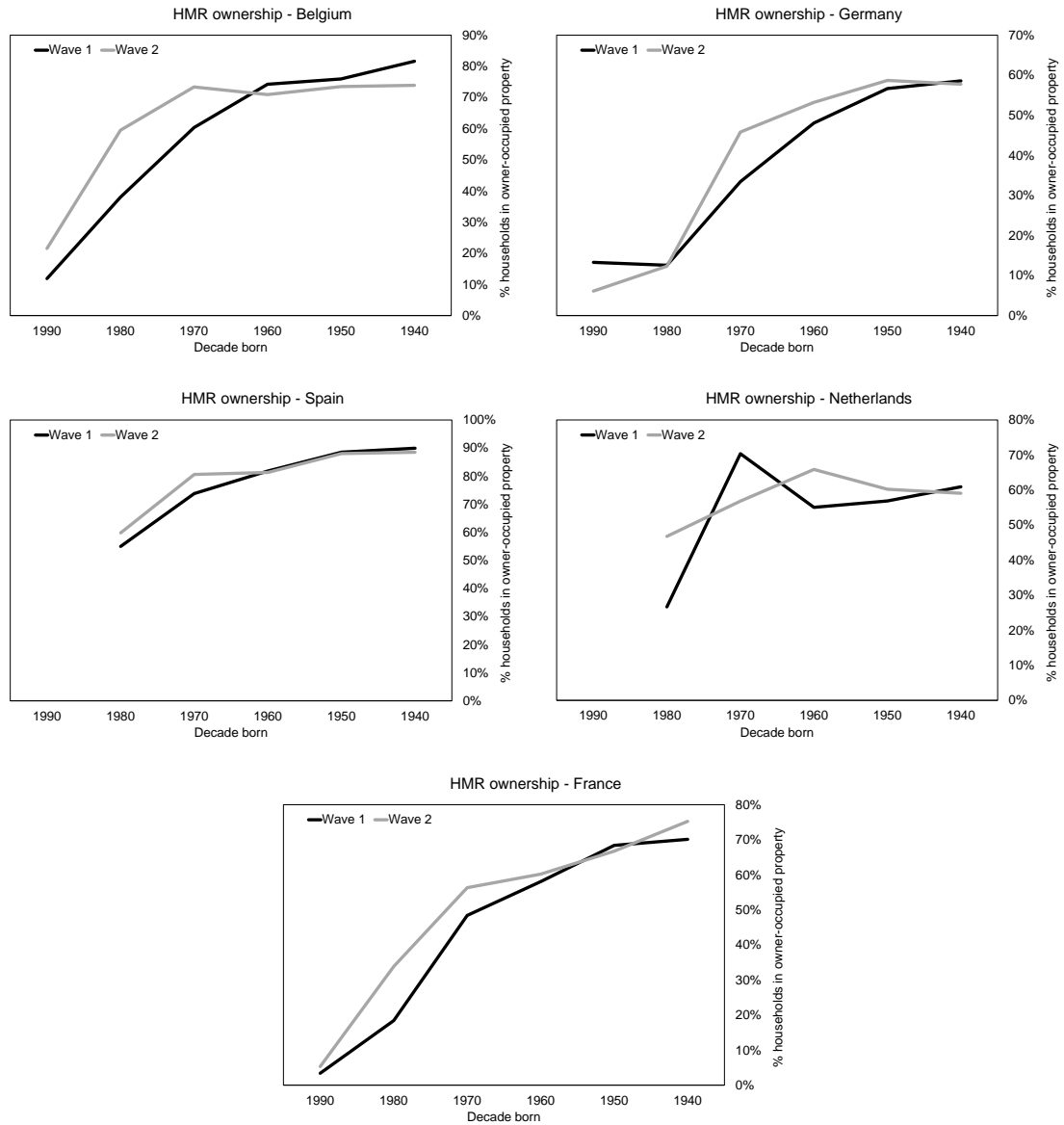
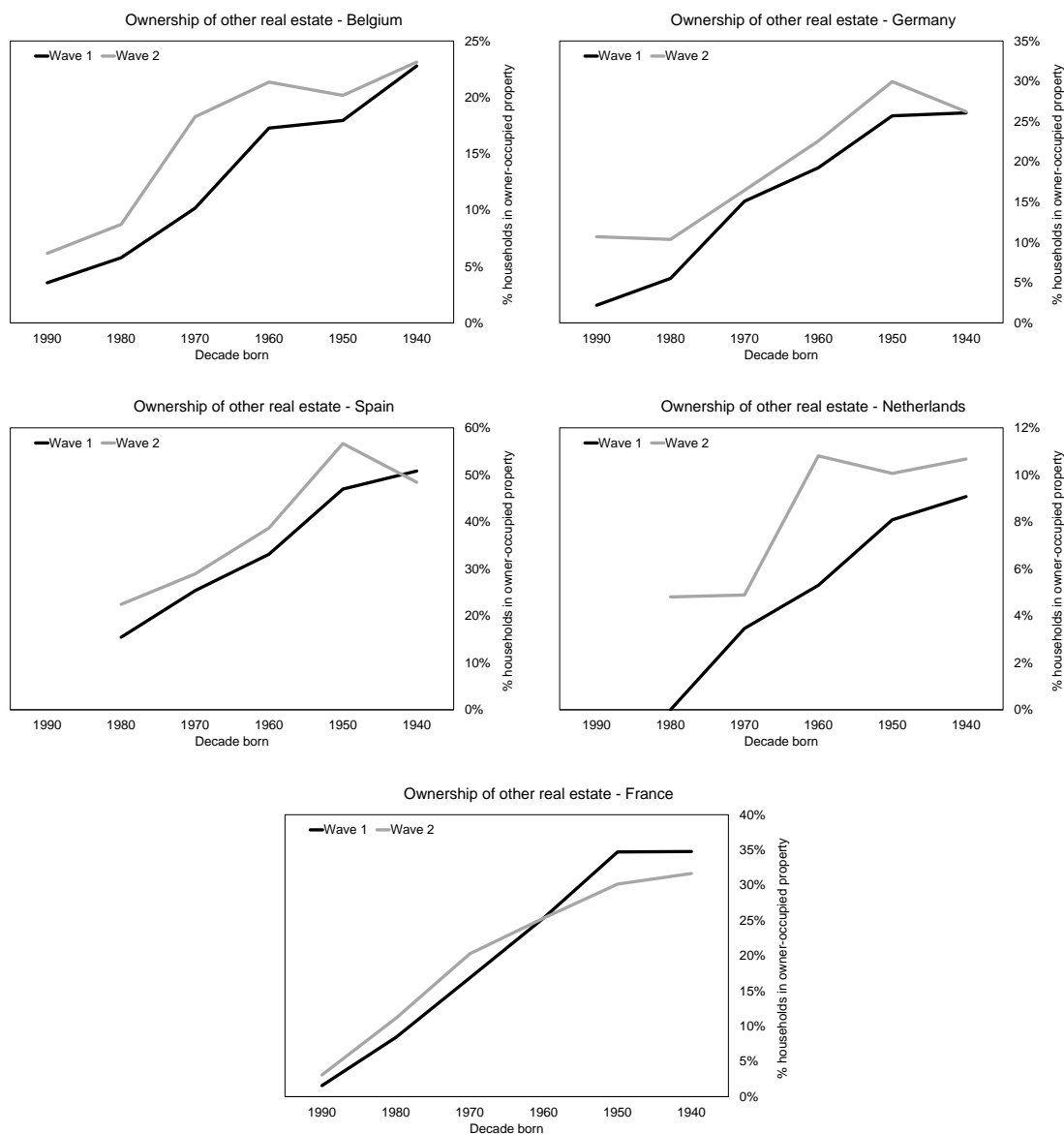


FIGURE 15. Other real estate ownership by decade born



Source: HFCS Wave 1 and Wave 2. Note: scales differ by country.

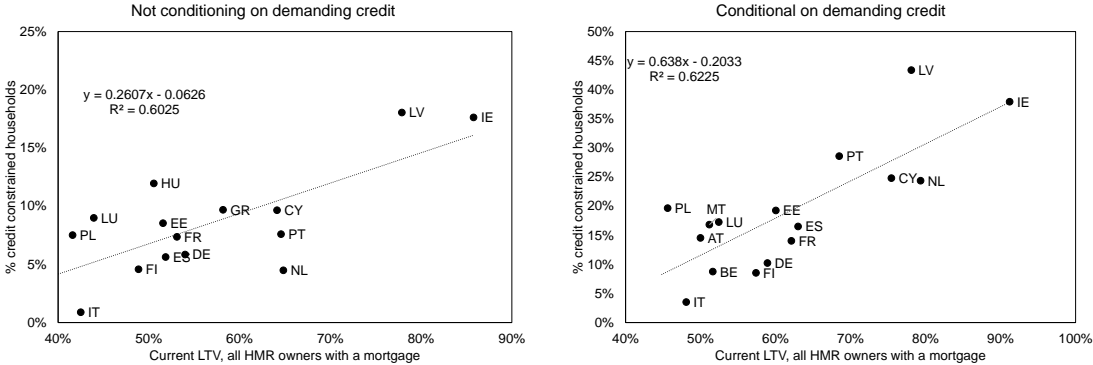
5 Credit Constraints

The financial instability consequences of a credit-driven boom-and-bust are generally well understood. For example, Kelly and O'Malley (2016) show that, in a down-turn, more leveraged borrowers and borrowers with heavier debt-service burdens tend to be the most likely to experience repayment problems. The consequences of over-indebtedness for the real economy have also been explored in Dynan (2012) and Mian and Sufi (2015), who show how balance sheet rebuilding and credit constraints can drag on household consumption after a credit bubble bursts. In this section, we use the HFCS

to analyse how the build-up of credit described in the previous section contributes to households being credit constrained.

In the HFCS, a household is defined as being credit constrained if it answers yes to either of the two following questions: (1) “In the last three years, has any lender or creditor turned down any request you [or someone in your household] made for credit, or not given you as much credit as you applied for?”; (2) “In the last three years, did you [or another member of your household] consider applying for a loan or credit but then decided not to, thinking that the application would be rejected?”¹⁴ We analyse the incidence of credit constraints conditional on demanding credit in the first place. That is, in our regression sample a household has either had to have asked for credit and been accepted or rejected, or not have asked for credit (but wanted it) for fear of rejection. This naturally gives rise to potential selection bias issues, which should be borne in mind when interpreting the results.

FIGURE 16. Credit constrained households and indebtedness



Source: Wave 2 HFCS, 2014 for most countries. Charts show the country level mean of credit constrained [0:1], as defined in the text, and current LTV for HMR households with a mortgage.

Figure 16 provides graphical evidence at the country level on the relationship between leverage and credit constraints. The charts show the percentage of HMR mortgage households in each country that are credit constrained and the mean current LTV for the same households. There is a positive correlation between leverage and the prevalence of credit constraints, regardless of whether we condition on demanding credit (right-hand side chart) or not, although the relationship is stronger in the conditional group. However, the fact that there is a clear positive relationship for the two groups gives some comfort that potential selection issues are unlikely to impact on

¹⁴See Jappelli et al. (1998) for an early paper using self-reported credit constraints.

the substantive results, namely that higher leverage tends to be strongly correlated with the incidence of credit constraints.

The country-level evidence in Figure 16 does not control for factors that might be positively correlated with the likelihood of a household being credit constrained, such as incomes or country-specific credit supply shocks. Therefore, we run a probit model on the household level data where the dependent variable takes a value of one if a household is credit constrained. The marginal effects from the probit model, in Table 6, confirm the country-level patterns reported above: more highly leveraged households and/or households with larger debt-repayment burdens are much more likely to experience credit constraints, controlling for income and other factors, including country fixed effects.

To allow for any additional effects common to boom-bust countries, we allow coefficients on leverage and debt service to vary by boom-bust/non boom-bust countries. We also employ piece-wise specifications (columns (2) and (4)) to allow the effects of indebtedness/debt-service to be non-linear. These specifications confirm that the effects of indebtedness on the probability of being credit constrained are indeed stronger for boom-bust countries, and highly non-linear. The average marginal effects can be interpreted as additive. Take column 1, Table 6 as an example. Going from a very low LTV to high LTV (100%) increases the likelihood of being credit constrained by 2.4%. In boom-bust countries, the marginal effect is almost doubled ($4.35\% = 2.4\% + 1.95\%$). Similarly, a higher income reduces the likelihood of being credit constrained by 9.6%, but the income effect is almost a third lower in boom-bust countries ($6.8\% = 9.6\% - 2.8\%$). The impact of LTV on the likelihood of being credit constrained is non-linear. For example, in column (2) households in negative equity in boom-bust countries ($LTV > 100$) are 6.6% more likely to experience credit constraints (versus a sample mean of 25.8%), compared with a figure of 1.75% for negative equity households in non boom-bust countries (sample mean of 14.5%). Similar effects are observed when we look at the debt-service ratio instead of LTV.

TABLE 6. Credit constraints regression results

Marginal effects from a probit model	(1)	(2)	(3)	(4)
Log income	-0.0958*** (0.00403)	-0.0957*** (0.00403)	-0.0922*** (0.00487)	-0.08912*** (0.00461)
Log income × boom-bust	0.0279*** (0.0059)	0.0276*** (0.0059)	0.0387*** (0.0074)	0.0353*** (0.0070)
Current LTV	0.0243*** (0.00502)			
Current LTV × boom-bust	0.01958*** (0.0071)			
LTV<75		[Omitted]		
LTV 75-100		-0.00919 (0.00653)		
LTV 75-100 × boom-bust		-0.00411 (0.0110)		
LTV>100		0.0175*** (0.0077)		
LTV>100 × boom-bust		0.0668*** (0.0106)		
Debt-service ratio			0.0843*** (0.01481)	
Debt-service ratio × boom-bust			-0.0177 (0.0240)	
Debt-service ratio < 30% of income				[Omitted]
Debt-service ratio 30-39%				0.0410*** (0.0088)
Debt-service ratio 30-39% × boom-bust				0.0247** (0.0142)
Debt-service ratio ≥40%				0.0740*** (0.0917)
Debt-service ratio ≥40% × boom-bust				-0.0431*** (0.0147)
Demographic controls	Yes	Yes	Yes	Yes
Country Fixed Effects	Yes	Yes	Yes	Yes
E[Credit-Constrained, non boom-bust]	14.5%	14.5%	14.5%	14.5%
E[Credit-Constrained, boom-bust]	25.8%	25.8%	25.8%	25.8%
Observations	39,778	39,874	39,109	39,109
R2	0.11	0.11	0.11	0.11

Source: HFCS waves 1 and 2, households with a HMR ('household main residence') mortgage. Conditional on HFCS definition of being credit constrained as defined in the text. Demographic and other controls include age, education, gender, survey wave and country fixed effects. The debt service ratio is as a percentage of gross household income. The table displays average marginal effects from a probit regression.

Endogeneity problems such as omitted variable bias (unobserved heterogeneity leading to credit constraints) and reverse causality (for example, if households prioritise debt repayments and reduce LTV to *avoid* future credit constraints) makes causal

interpretation of the coefficients difficult. We therefore estimate a differenced model where the dependent variable is equal to one if a household *becomes* credit constrained between the two survey waves. In order to become credit constrained a household has to have demanded credit in both waves, but only be rejected in wave 2 of the HFCS. Conditioning on demanding credit, combined with the fact that only a subset of countries have a panel element (Germany, Cyprus, Belgium, Spain, Malta and Netherlands) reduces our regression sample. Our primary focus here is comparing the signs and significance of the coefficients on the variable of interest with the earlier cross-section results. Table 7 shows the results. As we are only using a subset of countries, we do not include a boom-bust interaction term.

TABLE 7. Probability of *becoming* credit constrained regression results

Marginal effects from a probit model	(1)	(2)	(3)	(4)	(5)	(6)
Δ income	-0.0515*** (0.0121)	-0.0491*** (0.0121)	-0.0495*** (0.0120)	-0.0427*** (0.0135)	-0.0343** (0.0124)	-0.0452*** (0.0162)
Current LTV	0.0431*** (0.0093)					
LTV<75		[Omitted]				
LTV 75-100		0.0409*** (0.0133)				
LTV>100		0.0700*** (0.0120)				
Δ LTV			0.0698*** (0.0102)			
Current debt-service ratio				0.0720*** (0.0161)		
Debt-service ratio < 30%					[Omitted]	
Debt-service ratio 30-39%					0.0403** (0.0151)	
Debt-service ratio \geq 40%					0.0561*** (0.0131)	
Δ Debt-service ratio						0.0629** (0.0240)
Demographics	Yes	Yes	Yes	Yes	Yes	Yes
Country Fixed Effects	Yes	Yes	Yes	Yes	Yes	Yes
E[Become CC]	8.0%	8.0%	8.0%	8.0%	8.0%	8.0%
Observations	3,350	3,350	3,345	3,290	3,350	3,222
R-squared	0.067	0.075	0.078	0.069	0.067	0.069

Source: HFCS waves 1 and 2, only countries with panel component. Demographic controls are age, age-squared and change in household size. The table displays average marginal effects from a probit regression.

The key result is that all of the earlier results on income, leverage, repayment burden and non-linear effects also hold in the ‘differenced’ sample. In fact, if anything the impact of all of these factors has increased, relative to the sample mean outcome. For example, a household in negative equity ($LTV > 100$) in wave 2 is far more likely to be credit constrained versus a household with an LTV under 75%, controlling for income shocks, demographics and country fixed effects. Similar marginal effects are evident for the high debt-service households. We also estimate specifications where the current LTV and debt-service ratio is instrumented with the lag and the results are unchanged.

6 Conclusion

Using cross-country micro data, our paper provides evidence of the evolution of institutional features and of household behaviour with respect to real estate investment in boom-bust and non-boom-bust countries over time. For countries that experienced a real estate boom-and-bust there is evidence of a deterioration of credit standards before the Financial Crisis, with higher LTVs, LTIs and significantly longer loan terms. Borrowers with high origin LTVs also exhibit higher debt service burdens, particularly among lower income (often younger) households. Credit standards have become more restrictive after the crisis, in many cases anticipating the introduction of explicit borrower based macroprudential limits.

In contrast, the non-boom-bust group did not experience a similar easing of credit standards before the crisis or during the more recent period of historically low interest rates, even as house prices have been rising in some of these countries.

Turning to the real effects of over-indebtedness, we show that having too much debt is positively correlated with households being credit-constrained, exacerbating credit-driven boom-bust dynamics. Specifically, we should that borrowers with high levels of leverage are more likely to become credit constrained, even after controlling for income shocks, demographics and country fixed effects.

The typical borrower has changed since the Financial Crisis in all countries. Particularly older and more affluent households invest more in real estate, both in main residence and buy-to-let. This change may be driven by a portfolio shift and a search for yield that traditional low-risk financial assets do not give in times of low interest rates. In boom-bust countries, this compositional shift may reflect tighter lending standards, a fall in incomes and delayed labour market participation by young households. The social

implications are the same for both groups: younger households need to save longer in order to afford higher house prices and make down payments.

Our analysis has the following policy implications: given that monetary policy targets the Euro area as a whole, the high degree of heterogeneity in lending standards and borrower characteristics reveals the important role of macroprudential responses to risks in the financial system, in addition to micro-prudential policies. In this respect, the use of high quality micro data on households' balance sheets, including indebtedness, financial and real assets is a useful tool for the assessment of micro and macro prudential risk stemming from the household sector. Using such data can potentially uncover the build-up of pockets of risk within and across countries. Furthermore, it can uncover important societal changes in borrower composition: macroprudential policies are not implemented in a vacuum and policy makers therefore need to be aware of any such changes.

References

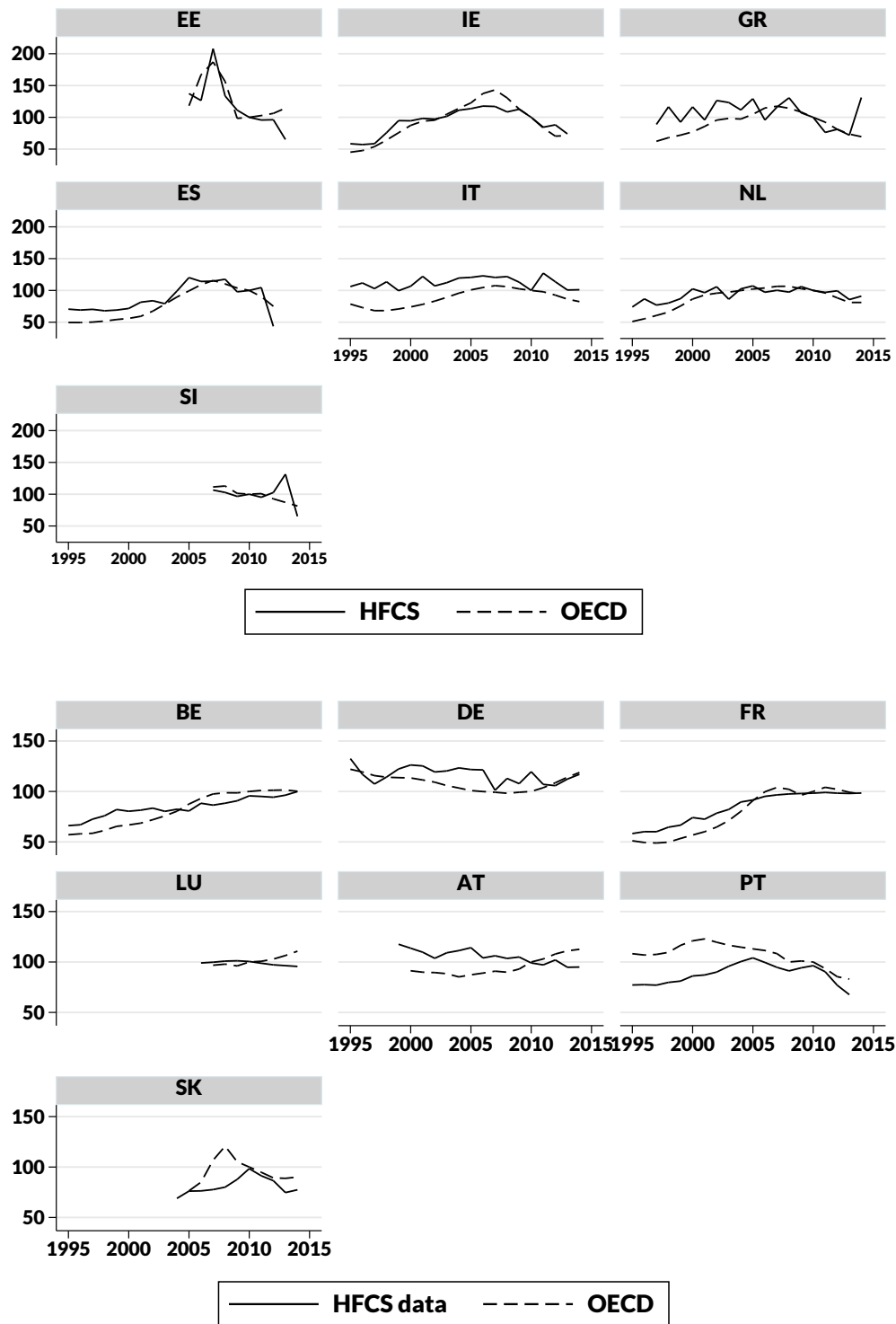
- Albacete, N., Eidenberger, J., Krenn, G., Lindner, P., and Sigmund, M. (2014). Risk-bearing capacity of households—linking micro-level data to the macroprudential toolkit. *Financial Stability Report*, 27:95–110.
- Albacete, N., Fessler, P., and Lindner, P. (2016). The distribution of residential property price changes across homeowners and its implications for financial stability in Austria. *Financial Stability Report*, 31:62–81.
- Ampudia, M., Pavlickova, A., Slacalek, J., and Vogel, E. (2016). Household heterogeneity in the euro area since the onset of the Great Recession. *Journal of Policy Modeling*, 38(1):181–197.
- Behn, M., Gross, M., and Peltonen, T. A. (2016). Assessing the costs and benefits of capital-based macroprudential policy.
- Blanchard, O. (2007). Adjustment within the euro. The difficult case of Portugal. *Portuguese Economic Journal*, 6(1):1–21.
- Byrne, D., Kelly, R., and O’Toole, C. (2017). How does monetary policy pass-through affect mortgage default? Evidence from the Irish mortgage market. *Central Bank of Ireland*, Research Technical Paper No. 04/RT/17.
- CBI (2016). Review of residential mortgage lending requirements. *Central Bank of Ireland Review*.
- Cerutti, E., Claessens, S., and Laeven, M. L. (2015). *The use and effectiveness of macroprudential policies: new evidence*. Number 15-61. International Monetary Fund.
- Claessens, S. (2015). An overview of macroprudential policy tools. *Annual Review of Financial Economics*.
- Claessens, S., Kose, M. A., and Terrones, M. E. (2009). What happens during recessions, crunches and busts? *Economic Policy*, 24(60):653–700.
- Coates, D., Lydon, R., and McCarthy, Y. (2015). House price volatility: the role of different buyer types. *Central Bank of Ireland*, Economic Letter Series 02-EL-2015.
- Costa, S. and Farinha, L. (2012). Households’ indebtedness: A microeconomic analysis based on the results of the households’ financial and consumption survey. *Financial stability report*. Banco de Portugal. May.
- Crowe, C., Dell Ariccia, G., Igan, D., and Rabanal, P. (2013). How to deal with real estate booms: Lessons from country experiences. *Journal of Financial Stability*, 9(3):300–319.
- Cussen, M., O’Brien, M., Onorante, L., and O’Reilly, G. (2015). Assessing the impact of macroprudential measures. *Central Bank of Ireland*, Economic Letter Series 03-EL-2015.
- de Caju, P. (2016). Survey evidence of pockets of risk in the Belgian mortgage market: A micro analysis based on HFCS data. *Mimeo*.

- Dynan, K. (2012). Is a household debt overhang holding back consumption? *Brookings Papers on Economic Activity*, pages 299–362.
- ECB (2013). The eurosystem Household Finance and Consumption Survey – Results from the first wave. *ECB Statistics Paper Series, No. 2*.
- ECB (2016). The eurosystem Household Finance and Consumption Survey – Results from the second wave. *ECB Statistics Paper Series, No. 18*.
- ESRB (2015). Report on residential real estate and financial stability in the EU. *ESRB Report*.
- ESRB (2016). Vulnerabilities in the eu residential real estate sector. *ESRB 2016*.
- Fagan, G. and Gaspar, V. (2005). Adjusting to the euro area: some issues inspired by the Portuguese experience. In *A Conference organized by the ECB on “What effects is EMU having on the euro area and its member countries”*, pages 16–37.
- Hartmann, P. (2015). Real estate markets and macroprudential policy in Europe. *Journal of Money, Credit and Banking*, 47(S1):69–80.
- Jappelli, T., Pischke, J.-S., and Souleles, N. S. (1998). Testing for liquidity constraints in euler equations with complementary data sources. *Review of Economics and statistics*, 80(2):251–262.
- Kelly, J. and Lydon, R. (2017). Home purchases, downpayments and savings. *Central Bank of Ireland, Economic Letter Series 02-EL-2017*.
- Kelly, R., McCann, F., and O Toole, C. (2015). Credit conditions, macroprudential policy and house prices. *Central Bank of Ireland, Research Technical Paper No. 06/RT/15, 6*.
- Kelly, R. and O’Malley, T. (2016). The good, the bad and the impaired: A credit risk model of the irish mortgage market. *Journal of Financial Stability*, 22:1–9.
- Kingham, C., Lyons, P., and McCarthy, Y. (2017). Macroprudential Measures and Irish Mortgage Lending: Insights from H1 2017. *Central Bank of Ireland, Economic Letter Series 13-EL-2017*.
- Laeven, L. and Popov, A. (2017). Waking up from the American dream: on the experience of young Americans during the housing boom of the 2000s. *Journal of Money, Credit and Banking*, 49(5):861–895.
- Le Blanc, J. (2016). Household Saving Behaviour in Ireland. *Central Bank of Ireland, Economic Letter Series 05-EL-2016*.
- Lydon, R. and McCann, F. (2017). The income distribution and the Irish mortgage market. *Central Bank of Ireland, Economic Letter Series 05-EL-2017*.
- Marek, P. (2017). Homeownership Rates of young households in Germany. Technical report.
- Mian, A. and Sufi, A. (2015). *House of debt: How they (and you) caused the Great Recession, and how we can prevent it from happening again*. University of Chicago Press.

- Reis, R. (2013). The Portuguese Slump and Crash and the Euro Crisis. *Brookings Papers on Economic Activity*, page 172.
- Room, T. and Merikall, J. (2017). The financial fragility of Estonian households: Evidence from stress tests on the HFCS microdata. *Bank of Estonia, Working Paper*.
- Thebault, L. (2017). The “v” in Itv and why it matters. *EMF Hypostat*.

Appendix charts

FIGURE 17. Cross-country house price trends in the HFCS data



Source: HFCS, waves 1 and 2.

Imprint and acknowledgements

We thank Gabriel Fagan and Fergal McCann and participants at the March 2017 HFCN meeting, the June 2017 meeting of the Heads of Research of the ESCB, Irish Economics Association Annual Conference, International Finance and Banking Society (Porto, 2018) and Central Bank of Ireland Economic Seminars for comments on earlier drafts that greatly improved the paper. The views in this paper are those of the authors only and not of the Central Bank of Ireland, the Deutsche Bundesbank or the ESCB.

Jane Kelly

Central Bank of Ireland, Dublin, Ireland; e-mail: jane.kelly@centralbank.ie

Julia Le Blanc

Deutsche Bundesbank, Frankfurt am Main, Germany; e-mail: julia.le.blanc@bundesbank.de

Reamonn Lydon (corresponding author)

Central Bank of Ireland, Dublin, Ireland; e-mail: reamonn.lydon@centralbank.ie

© European Systemic Risk Board, 2019

Postal address 60640 Frankfurt am Main, Germany
Telephone +49 69 1344 0
Website www.esrb.europa.eu

All rights reserved. Reproduction for educational and non-commercial purposes is permitted provided that the source is acknowledged.

Note:

The views expressed in ESRB Working Papers are those of the authors and do not necessarily reflect the official stance of the ESRB, its member institutions, or the institutions to which the authors are affiliated.

ISSN 2467-0677 (pdf)
ISBN 978-92-9472-073-3 (pdf)
DOI 10.2849/694 (pdf)
EU catalogue No DT-AD-19-001-EN-N (pdf)