

Bénétrix, Agustín S.; Lane, Philip R.

Working Paper

Cross-country exposures to the Swiss Franc

ESRB Working Paper Series, No. 6

Provided in Cooperation with:

European Systemic Risk Board (ESRB), European System of Financial Supervision

Suggested Citation: Bénétrix, Agustín S.; Lane, Philip R. (2016) : Cross-country exposures to the Swiss Franc, ESRB Working Paper Series, No. 6, ISBN 978-92-95081-33-8, European Systemic Risk Board (ESRB), European System of Financial Supervision, Frankfurt a. M., <https://doi.org/10.2849/889813>

This Version is available at:

<http://hdl.handle.net/10419/193513>

Standard-Nutzungsbedingungen:

Die Dokumente auf EconStor dürfen zu eigenen wissenschaftlichen Zwecken und zum Privatgebrauch gespeichert und kopiert werden.

Sie dürfen die Dokumente nicht für öffentliche oder kommerzielle Zwecke vervielfältigen, öffentlich ausstellen, öffentlich zugänglich machen, vertreiben oder anderweitig nutzen.

Sofern die Verfasser die Dokumente unter Open-Content-Lizenzen (insbesondere CC-Lizenzen) zur Verfügung gestellt haben sollten, gelten abweichend von diesen Nutzungsbedingungen die in der dort genannten Lizenz gewährten Nutzungsrechte.

Terms of use:

Documents in EconStor may be saved and copied for your personal and scholarly purposes.

You are not to copy documents for public or commercial purposes, to exhibit the documents publicly, to make them publicly available on the internet, or to distribute or otherwise use the documents in public.

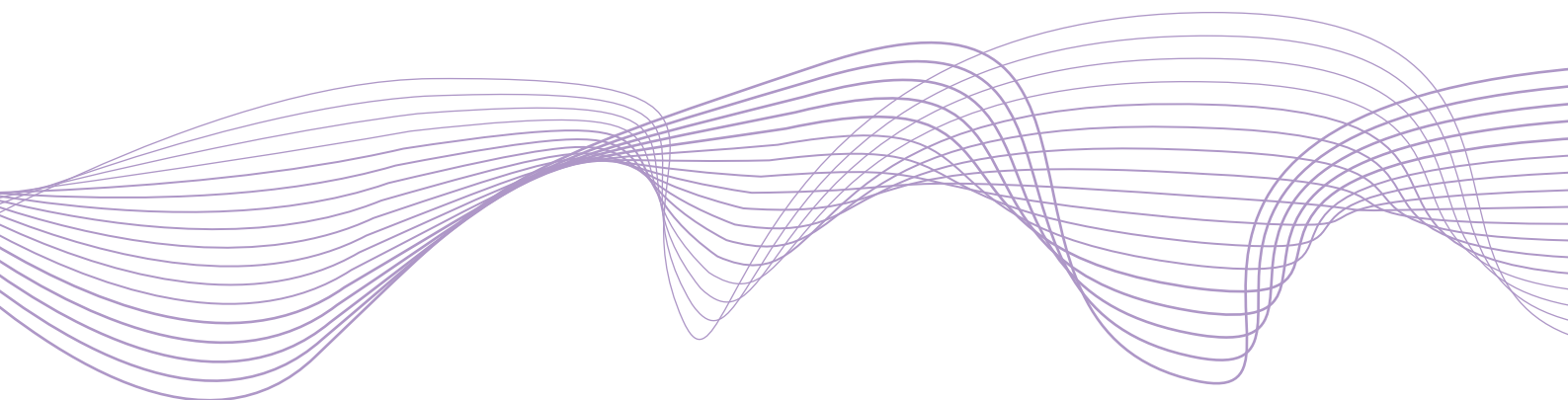
If the documents have been made available under an Open Content Licence (especially Creative Commons Licences), you may exercise further usage rights as specified in the indicated licence.

Working Paper Series

No 6 / March 2016

Cross-country exposures to the Swiss franc

by
Agustín S. Bénétrix
Philip R. Lane



ESRB
European Systemic Risk Board
European System of Financial Supervision

Abstract

This paper first documents the foreign currency exposures of Switzerland in the 2002-2012 period. We find that the large scale of the Swiss international balance sheet means that movements in the Swiss Franc generate large cross-border valuation effects. Second, we examine the Swiss Franc holdings of the rest of the world and highlight differences in exposures between advanced and emerging economies.

1 Introduction

This paper has two goals. First, we seek to understand the foreign currency exposures of Switzerland. In turn, in the spirit of Bénétrix et al (2015), we calculate the associated currency-induced valuations effects in the Swiss net international investment position over 2002-2012. Second, from the other side, we wish to explore the Swiss Franc exposures of the rest of the world. For a 116 country sample, we quantify gross and net holdings of Swiss Francs and explore the country characteristics that correlate with the cross-country variation in Swiss Franc positions. To this end, we exploit the database on international currency exposures reported in Bénétrix et al (2015).¹ Estimates of international currency positions are constructed by combining a wide range of datasets in order to extract estimates for the currency of denomination of foreign assets, foreign liabilities and their main subcomponents.

We report that Switzerland has become increasingly long in foreign currencies. Moreover, we quantify the adverse valuation impact generated by the appreciation of the Swiss Franc in recent years and find that this is large relative to GDP, given the outsized scale of the Swiss international balance sheet. The examination of the Swiss Franc positions held by other countries reveals that advanced economies exhibit a long position in Swiss Francs for the whole international balance sheet and a short position for debt. After the crisis, the overall long position became less positive and the debt short position became less negative. The average exposure across emerging and developing countries was a long position in the whole international balance sheet and also in the debt subcomponent. In contrast to the advanced group, these long positions became more positive after the crisis.

Our study of the determinants of cross-country exposures to the Swiss Franc produced several findings. In general, most of the action takes place in advanced economies. For these countries, exposures to other foreign currencies, international financial integration, imports, the covariance of GDP growth and exchange rate appreciations, exchange rate

¹This updates the dataset originally reported in Lane and Shambaugh (2010a) which ran from 1990-2004; the new dataset runs until 2012.

volatility, capital controls and country size matter for their aggregate Swiss Franc exposure. For the other samples, we also find a selection of covariates that are individually relevant from statistical point of view. Among them, the Swiss Franc position positively covaries with inflation volatility and negatively with exchange rate pegs. However, our empirical specifications are unable to explain more than 10 percent of the overall variation in Swiss Franc exposures for these samples. By contrast, specifications focusing on the Swiss Franc exposures in the debt category are more successful.

This paper relates to a growing literature on the role of the Swiss Franc in international balance sheets and international financial flows. Recent contributions include Auer (2015), Auer and Tille (2015), Habib and Sracca (2013) and Nitschka (2014) focusing on the safe heaven role of securities denominated in Swiss Francs or issued in Switzerland after the outbreak of the global financial crisis. This research reports that parties outside Switzerland substantially increased their assets in Swiss accounts and their exposure to Swiss Franc denominated bonds after mid-2011. In addition, it provides evidence showing that the bulk of the capital flows to Switzerland were bank flows and to a lesser extent Swiss residents reducing their purchases of foreign debt securities. As per the currency dimension, this literature shows that Swiss securities denominated in Swiss Francs were preferred by investors to international securities denominated in that currency. Recent papers looking at other dimensions of international capital flows from and to Switzerland include the work of Grisse and Nitschka (2015) and Yesin (2015). While the former focus on the predicted power of net foreign asset positions on exchange rate dynamics the latter documents the significant change in capital flows volatility after the crisis. Earlier contributions to this literature include Kugler and Weder (2004, 2005, 2009).

The structure of the paper is the following. Section 2 describes the data and the approach to estimating international currency exposures. Section 3 describes Swiss currency exposures vis-à-vis all currencies for selected years and decomposes these into several sub-components. Then, valuation effects associated with these exposures are reported. Section 4 describes the cross-country exposures to the Swiss Franc and compares it with exposures

to other foreign currencies. This section also studies the determinants of exposures to the Swiss Franc in advanced and emerging/developing countries. Finally, Section 5 concludes.

2 International Currency Exposures

This section describes the method to estimate international currency exposures. These estimates are based on the techniques developed by Lane and Shambaugh (2010a) and Bénétrix et al (2015) that construct estimates of international foreign currency positions by drawing on a range of datasets and inferential techniques. The method follows a two-step process in which the currency composition within individual investment categories are first calculated, before obtaining aggregate exposures by weighting across categories in line with their shares in the international balance sheet.

For equity-type assets, this approach asserts that currency exposures track geographic exposures.² Information on the geographical patterns in foreign equity assets can be obtained from the IMF's Coordinated Portfolio Investment Survey (CPIS) for portfolio equity assets, with the IMF's Coordinated Direct Investment Survey (CDIS) and the UNCTAD bilateral FDI database providing similar data for FDI holdings. The CPIS dataset also provides the geographical pattern in portfolio debt assets, while the BIS locational banking statistics contain information on the geography of bank-type debt assets.³ Since debt issuers in a given country can issue in foreign currencies as well as in domestic currency, the geographical data is combined with country-level and BIS data on the currency denomination of debt instruments to work out the currency exposures in cross-border debt positions. Finally, estimates of the currency composition of official reserve assets are calculated through a combination of national data sources, COFER data and the implementation of the empirical model developed by Eichengreen and Mathieson (2000).

²The process by which estimates of the currency composition of foreign liabilities are constructed is essentially symmetric.

³The BIS Statistics Department facilitated access to the underlying geographical and currency patterns in the locational banking data.

In the second step, the currency composition data for each category within foreign assets and foreign liabilities are combined to create aggregate weights, using the External Wealth of Nations dataset on the composition of international balance sheets (Lane and Milesi-Ferretti 2007).

The currency weights are given by the formulae

$$\omega_{ijt}^A = \sum_{k=1}^{k=N} \lambda_{it}^{Ak} * \omega_{ijt}^{Ak}, \quad \omega_{ijt}^L = \sum_{k=1}^{k=N} \lambda_{it}^{Lk} * \omega_{ijt}^{Lk} \quad (1)$$

where $\omega_{ijt}^A, \omega_{ijt}^L$ are the weights for currency j in period t in country i 's foreign assets and foreign liabilities, $\lambda_{it}^{Ak}, \lambda_{it}^{Lk}$ are the relative importance of category k (portfolio equity, FDI, debt, reserves) in country i 's assets and liabilities in period t and $\omega_{ijt}^{Ak}, \omega_{ijt}^{Lk}$ are the weights for currency j in period t in category k for country i 's assets and liabilities respectively. Accordingly, the aggregate weights are a function of the weights for currency j in period t for a particular k asset-class of country i 's assets or liabilities, and the weights across the k asset classes (represented by λ_{it}^k).

It is possible to define aggregate net financial weights

$$\omega_{ijt}^F = \omega_{ijt}^A s_{it}^A - \omega_{ijt}^L s_{it}^L \quad (2)$$

where $s_{it}^A = A_{it}/(A_{it} + L_{it})$ and $s_{it}^L = L_{it}/(A_{it} + L_{it})$ are the shares of foreign assets and foreign liabilities in total cross-border holdings. These weights indicate the direction of the valuation impact of a movement in currency j . If the net foreign asset position is zero, this reduces to simply subtracting the liability weights from the asset weights.

In turn, the quantitative exposure of country i to a shift in the bilateral exchange rate between i and j can be simply written as

$$NETFX_{ijt}^{BILAT} = \omega_{ijt}^F * IFI_{it} \quad (3)$$

where IFI_{it} is equal to assets plus liabilities as a percentage of GDP, or the total size of

the external balance sheet scaled by GDP, such that the valuation impact can be written as

$$VALXR_{ijt}^{BILAT} = NETFX_{ijt}^{BILAT} * \% \Delta E_{ijt}$$

where $\% \Delta E_{ijt}$ is the percentage change in the bilateral exchange rate in period t .

In terms of aggregation across all bilateral currency pairs, it is helpful to define asset- and liability-weighted currency indices

$$I_t^A = I_{t-1}^A (1 + \sum \omega_{ijt-1}^A * \% \Delta E_{ijt}) \quad (4)$$

$$I_t^L = I_{t-1}^L (1 + \sum \omega_{ijt-1}^L * \% \Delta E_{ijt}) \quad (5)$$

In turn, the aggregate net financial index can be written as

$$I_t^F = I_{t-1}^F (1 + \sum \omega_{ijt-1}^F * \% \Delta E_{ijt}) \quad (6)$$

and the aggregate impact of currency-based valuation effects can be equivalently written as

$$VALXR_{it} = \% \Delta I_{it}^F * IFI_{it-1} \quad (7)$$

or

$$VALXR_{it} = \sum VALXR_{ijt}^{BILAT} = \sum NETFX_{ijt}^{BILAT} * \% \Delta E_{ijt} \quad (8)$$

By way of illustration, if 20 percent of a country's assets are in U.S. dollars and 30 percent of its liabilities are in dollars in a given year, and the country has a balanced NFA position (that is, assets equal liabilities), then the $\omega_{ijt}^F = -0.05 = (0.2 * 0.5 - 0.3 * 0.5)$. If assets plus liabilities are equivalent to 200 percent of the country's output, then $NETFX_{ijt}^{BILAT}$ is -10 percent. Thus a 10 percent depreciation of its currency against the dollar (holding fixed all other bilateral exchange rates) would generate a one percent of GDP wealth loss.

3 Swiss Currency Exposures and Valuation Effects

Using the framework described above, we turn to the study of Switzerland's foreign currency exposures for selected years in the 2002-2012 period. The reasons for focusing on this period are: (i) it contains estimates for currency composition with the highest quality, as data from sources such as the CPIS are available from 2001; (ii) it accounts for the increase in international financial integration following the launch of the euro; and (iii) it contains a sufficiently long tranquil period as well as the recent crisis.

We define the aggregate foreign currency exposure at the end of period t by

$$FXAGG_{it} = \omega_{it}^A s_{it}^A - \omega_{it}^L s_{it}^L \quad (9)$$

where ω_{it}^A is the share of foreign assets denominated in foreign currencies, s_{it}^A is the share of foreign assets in the sum of foreign assets and foreign liabilities and ω_{it}^L, s_{it}^L are defined analogously. By construction, the $FXAGG$ index lies in the range $(-1, 1)$, where a value of -1 corresponds to a country that has zero foreign-currency foreign assets and only foreign-currency foreign liabilities, whereas $+1$ corresponds to a country that has only foreign-currency foreign assets and only domestic-currency foreign liabilities. In turn, the scale of the aggregate foreign currency exposure is given by

$$NETFX_{it} = FXAGG_{it} * IFI_{it}. \quad (10)$$

Table 1 shows Swiss foreign currency exposure for 2002, 2007 and 2012. We select these years, since 2002 marks the beginning of a general surge in cross-border financial trade, while 2007 represents the eve of the global financial crisis and 2012 is the final year in the sample (see also Lane 2013). It shows the $FXAGG$ index defined by equation (9). In addition, it reports a decomposition of $FXAGG$ between the net currency exposures embedded in the foreign asset position and foreign liability positions (each scaled by total foreign assets plus liabilities), plus the net foreign liability position in Swiss Francs. These

items are reported in rows (1), (2) and (3), respectively.

Furthermore, Table 1 also reports a decomposition of the net foreign asset position into the non-reserve net position and the reserve position in rows (4) and (5), respectively. Moreover, the net foreign liability position in Swiss Francs, reported in row (3), is decomposed into portfolio equity and FDI liabilities in row (6), debt liabilities in Swiss Francs in row (7), and non-reserve foreign assets denominated in Swiss Francs, in row (8).⁴

Finally, we also report the *NETFX* index as defined in equation (10) and the debt-only foreign currency exposure. The former explicitly accounts for the quantitative exposure to a uniform change in the value of domestic currency against all foreign currencies. More precisely, it measures the scale of the aggregate net currency exposure. The latter is an index analogous to the *FXAGG* but computed for foreign debt assets and liabilities only. This debt-only index helps to clarify the relative importance of debt and equity components in the aggregate index.

Table 1 shows that Switzerland was long in foreign currency in 2002, 2007 and 2012 and that this position has increased over time. Row (1) shows that *FXAGG* values were similar in 2002 and 2007 (29 and 28 percent, respectively) but rose to 37 percent in 2012. The change in the *FXAGG* between 2002 and 2012 was driven by an increase in the net foreign liability position $FXAGG^0$ that shifted from 0.14 to 0.23 as shown in row (3). The net foreign asset position as a share of the sum of assets and liabilities did not change. The change in $FXAGG^0$ was driven by an increase in portfolio equity and FDI liabilities denominated in Swiss Francs from 0.17 to 0.23 in row (6). Foreign debt liabilities in domestic currency also contributed to the increase in *FXAGG* shifting from 0.04 in 2002 to 0.07 in 2012. Foreign assets denominated in domestic currency (that is, Swiss Franc lending to foreign entities) did not contribute to this change in Swiss aggregate foreign exposure.

In terms of how exposures changed between 2007 and 2012, Table 1 shows that the

⁴Lane and Shambaugh (2010a) and Bénétrix et al (2015) assume that the currency exposures of portfolio equity and FDI positions track the geographic exposure. Thus, Switzerland's portfolio equity and FDI liabilities are assumed to be denominated in Swiss Francs. That is, the foreign-currency value of these assets moves with the value of the Swiss Franc.

shift in $FXAGG$ from 0.28 in 2007 to 0.37 in 2012 was explained by an increase in both the net foreign asset position and the net liability position in Swiss Francs. The former was driven by the increase in Swiss reserves from 0.01 to 0.07. The latter was mainly driven by an increase in foreign debt liabilities denominated in Swiss Francs, reflecting the high demand for Swiss Francs in the post-crisis environment in view of its safe haven properties. The increase of portfolio equity and FDI liabilities also contributed to this change but to a lesser extent.

The scale of the exposure to foreign currencies increased secularly across these years. This was not only driven by the change in $FXAGG$ but also by the increase in the scale of gross foreign assets and liability positions. More precisely, the $NETFX$ values in row (9) show that this long position in foreign currencies represented 2.6 times Swiss GDP in 2002, 3.4 times in 2007 and 3.7 times in 2012.

Finally, row (10) reports the debt-only foreign exposures to complement the previous assessment. In line with the aggregate measure, the debt-only exposure grew between 2002 and 2007 and between 2007 and 2012. However, this long position fell from 2002 to 2007.

Next, we employ the calculated international currency exposures to estimate the valuation impact of exchange rate movements on the net international investment position.

Figure 1 shows Swiss $VALXR$ for the period 2002-2012 as well as its cumulative value. As expected, the largest valuation loss was associated with the Swiss Franc appreciation (vis-à-vis all currencies) between 2007 and 2008. This exchange rate shift, combined with the long position in foreign currency in 2007, generated a valuation loss of nearly 41 percent of Swiss GDP. The second largest valuation loss in this period was associated with the appreciation of the Swiss Franc between 2009 and 2010. This created another valuation loss of 34 percent of GDP.

Overall, the Swiss long position in foreign currency combined with cumulative appreciation of the Swiss Franc generated sizable valuation losses.⁵ This adverse valuation

⁵Of course, valuation losses can be counterbalanced by valuation gains as a result of changes in the value of foreign assets or liabilities that are not associated with exchange rate movements. For instance,

impact of exchange rate appreciation has been accentuated in the years following the crisis as Switzerland exhibited an increase in the volume of foreign liabilities denominated in domestic currency and an increase in official reserve assets.

4 Cross-Country Exposures to the Swiss Franc: Stylised Facts

This section documents the exposure to the Swiss Franc using a sample of 116 countries, consisting of 21 advanced economies and 95 emerging and developing countries. As before, we focus on the period from 2002 to 2012.

Figure 2 reports the cross-country distributions exposures to Swiss Francs, using period averages for 2002-2012 of the $FXAGG^{CHF}$ index. It shows that more than half of the countries are long Swiss Francs. From the advanced economies group, 33 percent were long, while 62 percent of emerging and developing countries were long. A comparison between these two country types shows that, within the set of countries being long Swiss Franc, emerging and developing countries hold larger positions. For the set of countries that are short Swiss Francs, the advanced countries tend to have a more negative position than the emerging and developing countries.

Tables 2 and 3 complement these stylised facts by reporting several statistics to characterise the $FXAGG^{CHF}$ and $NETFX^{CHF}$ distributions and their evolution in time. We look at these measures for the overall international investment position and the debt-only subcomponent.

Table 2 shows that the average $FXAGG^{CHF}$ increased substantially for all countries between 2002 and 2012. The $FXAGG^{CHF}$ mean value rose from 0.08 to 0.38, while its median grew from 0.08 to 0.13. Looking at these statistics by country type reveals that this increase was driven by few emerging and developing countries. For this group, the

in 2007 Switzerland exhibited a valuation loss associated with exchange rate changes of 3.1 percent of GDP. However, the overall stock-flow adjustment for that year was a gain of 13 percent of GDP.

mean $FXAGG^{CHF}$ value increased substantially but the median value only increased marginally. This is confirmed by the changes in the tenth percentile for these countries between 2002 and 2012.

In terms of the values before and after the crisis, the average and the median $FXAGG^{CHF}$ also increased between 2007 and 2012. As for the full period, this is driven by the increase in the emerging market and developing countries exposure to the Swiss Franc in those years. The dynamics for the advanced group between 2007 and 2012 is different: the mean and median $FXAGG^{CHF}$ values decline but remain positive in 2012.

The second panel of Table 2 shows the same statistics for $NETFX^{CHF}$. Thus, these statistics explicitly account for the size of the international balance sheet, as measured by the *IFI* index in equation (10). An inspection of this panel shows that the relatively larger long positions in Swiss Francs for emerging and developing countries with respect to the advanced group did not mean a larger scale in their Swiss Franc position, in view of their smaller international balance sheets.

Next we look at a subcomponent of the previous exposures and focus on the debt-only component. Table 3 reports these statistics and the same country groups as before. We label $FXDEBT^{CHF}$ the debt-only version of $FXAGG^{CHF}$ and $NETFXDEBT^{CHF}$ the version debt-only version of $NETFX^{CHF}$. In contrast to the overall case for all countries, the exposure for the full country sample does not exhibit a secular pattern. In particular, the mean $FXDEBT^{CHF}$ changes from 0.11 to 0.01 between 2002 and 2007. The median $FXDEBT^{CHF}$ also falls.

Breaking down these statistics by country groups reveals that advanced countries were short Swiss Francs in foreign debt while emerging and developing countries were long. For the former group, the position became less negative in time. In contrast, the emerging market and developing countries group exhibited a reduction of its long position in Swiss Francs from 2002 to 2007 before increasing between 2007 and 2012. In line with the aggregate position described above, the scale of the debt-only exposure was substantially larger for advanced economies, as shown in the second panel of Table 3. Still, it is

interesting to report that the scale of the long position in Swiss Francs of emerging and developing countries has been increasing in magnitude and as a proportion of overall Swiss liabilities (Figure 3). The latter grew from being 3.9 percent of the overall assets denominated in Swiss Francs in 2002 to 11.4 percent in 2012.

Next, we put the focus on the exposures of these 116 countries to the Swiss Franc and compare it with the exposures to other foreign currencies.

To this end, Figure 4 reports the 2002-2012 period average of the *FXAGG* index for the Swiss Franc and the aggregate of other currencies and shows that the range of exposures vis-à-vis the Swiss Franc is much smaller than the cross-country exposure vis-à-vis other currencies. The shape of this distribution is dominated by the cross-country exposures to the US dollar, the euro and, to a lesser extent, the exposures vis-à-vis the British pound and the Japanese Yen. This is the case for the 2002-2012 period average and also for each individual year. In terms of the proportion of countries being long ‘other currencies’ and long Swiss Franc, Figure 4 shows that these shares were 38 and 58 percent, respectively.

Another way of looking at the relation between these exposures is by means of scatter plots and correlations for different years. To this end, Figure 5 reports the scatter plots for 2002, 2007, 2010 and 2012. The immediate message of these figures is that, independently of the year being studied, the correlations between *FXAGG* exposures for the Swiss Franc and other currencies were quite low. The correlation was positive and equal to 0.13 and 0.14 for 2002 and 2007 respectively, and negative and equal to -0.01 and -0.002 in 2010 and 2012 respectively.

However, the weak correlations in the full sample obscure some important differences between the advanced and emerging/developing subsamples. For advanced economies, exposures to the Swiss Franc were positively correlated with exposures to other currencies. This positive correlation reached its peak in 2005 with a value of 0.53 and then fell secularly until 2012.⁶ Correlations for the emerging and developing countries group were weak in the

⁶For the years 2002, 2007, 2010 and 2012 reported in the figures, the correlation coefficients for advanced economies were 0.27, 0.44, 0.31 and 0.18, respectively.

whole period.⁷ This indicates that the small change in the correlation coefficient in the overall sample from a small and positive correlation to a small and negative correlation was explained by the change in sign in the correlation for emerging and developing countries and the fall in the positive correlation coefficient in advanced economies.

Beyond the analysis of the unconditional correlation between these exposures, it is useful to take a closer look at the countries that hold a long position in Swiss Francs and a short position in other currencies. These countries are reported in Figure 5 for the same years as before. Almost all countries with this exposure profile are emerging or developing economies and their quantity represents 24-41 percent of all countries, depending on the year. This is in line with the previous finding that this country group exhibits a mild negative correlation for these currency exposures.

Finally, we focus on the changes in exposures following the crisis by graphically illustrating the heterogeneous changes in currency exposures between the years 2007 and 2012. To this end, we select the sub-sample of countries exhibiting a change towards a more positive (or less negative) net position in Swiss Francs in 2012. This represents 54 percent of our country sample (63 countries), including 53 emerging and developing countries. Figure 6 reports the initial and end exposures of these economies. Hollowed circles show exposures in Swiss Francs and other currencies in 2007 while filled circles show these in 2012. Dashed vectors indicate the direction of this change. As this figure shows, there has been substantial heterogeneity in the changes of exposures vis-à-vis other foreign currencies. Thirty-one countries moved to a more positive position, twenty-seven stayed long in Swiss and also in other currencies while only five countries were long both and became short in other currencies after the crisis. This simple exercise illustrates the large variety of changes in exposures only for those countries moving to a more positive position in Swiss Francs. Next, we follow a more systematic approach and look at the covariates of Swiss currency exposures.⁸

⁷For emerging and developing countries, these correlation were positive and equal to 0.13 and 0.11 in 2002 and 2007, but then turned to negative and equal to -0.04 and -0.007 in 2007 and 2012, respectively.

⁸Extensions of this work would include estimating the relative importance of exposures to the Swiss Franc in overall currency-induced valuations effects, as well as decomposition exercises to account for the

4.1 Covariates of Country Exposures to the Swiss Franc

This section studies the determinants of exposures to the Swiss Franc. As shown in Table 1, it is possible to compute a number of key covariates for aggregate foreign exposures. The aggregate net international investment position and the net liability position in domestic currencies are key covariates of the net foreign currency position. For a given net international investment position, the distribution of the non-reserve position is especially influential (in particular, the shares of portfolio equity and FDI in foreign liabilities). The level of reserves is also important in the variance decomposition of the $FXAGG$ positions.

In terms of the fundamental factors that covary with foreign currency positions, Lane and Shambaugh (2010b) and Bénétrix et al (2015) show that international trade, risk characteristics and institutional factors are associated with the cross-country variation of aggregate foreign exposures. Here, we adapt the empirical approach to study the cross-country variation of bilateral exposures to the Swiss Franc. To this end, we estimate equation (11),

$$\begin{aligned}
 FXAGG_{it}^{CHF} = & \beta_1 FXAGG_{it}^{OTH} + \beta_2 IFI_{it} + \beta_3 \mathbf{TRADE}_{it} + \beta_4 \mathbf{VOL}_{it} + \beta_5 COV_{it} + \\
 & \beta_6 IDIFF_{it} + \beta_7 \mathbf{Z}_{it} + \beta_8 GDP_{it}^{PC} + \beta_9 SIZE_{it} + \theta \mathbf{Y}_t + \varepsilon_{it}, \quad (11)
 \end{aligned}$$

where $FXAGG_{it}^{CHF}$ measures the degree of exposure to the Swiss Franc and $FXAGG_{it}^{OTH}$ is the exposure to other foreign currencies.⁹ As shown in the previous section, the unconditional correlation between the exposure to the Swiss Franc and to other currencies is small for the full sample and for emerging and developing economies. However, these indices are positively correlated in advanced countries. Thus, we include this indicator as a control variable, so that our focus is on how the other regressors covary with the relative importance of Swiss Francs compared to other currencies in the international balance sheet.

role of changes in the currency weights or in the scale of the international balance sheet.

⁹These two indicators are defined in equation (2).

In addition to the currency dimension of the international investment portfolio, we include an index to account for its size (IFI_{it}). This is the de-facto international financial integration indicator defined in Lane and Milesi-Ferretti (2007) as the sum of total foreign assets plus total foreign liabilities scaled by GDP.

In relation to other covariates, \mathbf{TRADE}_{it} is a vector that includes exports and imports to and from Switzerland. We add this to account for the fact bilateral financial positions are highly correlated with bilateral trade.¹⁰

Moreover, we include different volatility measures in vector \mathbf{VOL}_{it} . These are real GDP and inflation volatility to account for the effect of domestic instability and uncertainty, and bilateral exchange rate volatility to account for exchange rate risk. Furthermore, we add the covariance between the change in domestic wealth, proxied by real GDP per capita, and the exchange rate appreciation vis-à-vis the Swiss Franc (COV_{it}) as a possible factor determining long or short positions.¹¹

Taking into account that investors may engage in carry trade activities that could determine the extent of exposures to the Swiss Franc, we include interest rate differentials for long term bonds ($IDIFF_{it}$) as an additional explanatory variable.¹²

Since institutional and policy factors may alter the desired optimal currency exposure and/or restrict the ability to attain its desired level, we add indicators for exchange rate peggers, capital controls, quality of institutions and EMU membership in vector \mathbf{Z}_{it} . GDP_{it}^{PC} is the level of GDP per capita and it is included since many of the characteristics listed above are plausibly correlated with the level of development. $SIZE_{it}$ is country size measured with the logarithm of population. This is included as a general control variable, following the empirical evidence in Lane and Milesi-Ferretti (2000) and Eichengreen et

¹⁰Several papers exploit this strong correlation to generate estimates of bilateral financial positions. Examples of these works are Lane and Shambaugh (2010b) or Bénétrix, Lane and Shambaugh (2015) among others.

¹¹These variance and covariance measures are calculated for the log changes of each variable using a fifteen-year window. For instance, in year 1996 these statistics are computed using data for the period 1981-1995.

¹²It is well known that in the years preceding the crisis a common strategy was to raise funding in low-yield currencies such as the Japanese Yen or the Swiss Franc and take long positions backed by high interest rate currencies such as the Australian or New Zealand dollars.

al (2003) showing that larger countries are better able to issue liabilities in domestic currency.

We estimate this equation by pooling data for the years 1996, 2000, 2004, 2007 and 2012. We follow this approach, instead of including all years, to avoid potential problems that could be created by variables with high serial correlation. In addition, we want to minimize the impact of using regressors, such as the volatilities and covariances that are based on period windows that overlap with each other. Finally, there is also a data availability limitation, since the World Bank institutional quality indicators are only available in even years.

4.2 Aggregate Exposures

Table 4 reports the point estimates of the coefficients in equation (11) for five alternative country samples using $FXAGG_{it}^{CHF}$ as the dependent variable. First, we take all 116 countries together. Then, we split this in four alternative subsamples. Column (2) reports the results for a sample of 61 higher-income countries.¹³ Columns (3) and (4) report the results for the 21 advanced economies and 95 emerging plus developing countries while the estimates for 40 higher-income countries in the emerging plus developing sample are reported in column (5).

Table 4 shows that all the covariates described above explain less than 10 percent of the overall cross country variation in the aggregate Swiss Franc exposure in almost all samples. The exception is the model for the advanced economies with 57 percent of the overall variation being explained by the included regressors.

In terms of the non-significance of the individual explanatory variables we find that (i) there is no systematic link between exposures to the Swiss Franc and other currencies, in line with the unconditional correlations reported above (the exceptions are the specifications for the advanced and full samples showing a small and positive co-movement);

¹³This sample excludes very small and very poor countries (total dollar GDP below \$20 billion) on the presumption that these countries are more likely to suffer from data quality issues. For examples of papers using this high-quality sample see Bénétrix et al (2015) and Lane and Milesi-Ferretti (2012, 2014).

(ii) exports to Switzerland do not affect aggregate exposures; (iii) GDP volatility, EMU membership and GDP per capita are also unimportant; and (iv) the insignificance of the time dummies for 2000, 2004 and 2007 show that Swiss Franc exposures did not change in those years.

In terms of the individual significance of the included regressors, some interesting patterns emerge. As reported before using unconditional correlations, we find evidence of a positive link between long positions in Swiss Francs and long positions in other foreign currencies in advanced countries.¹⁴ In addition, the size of the international balance sheet matters for these countries and the high quality sample as larger international financial integration is associated with longer positions in Swiss Francs.

The link between Swiss Franc exposures and trade is present in advanced countries as well with imports from Switzerland being strongly associated with short aggregate positions in Swiss Francs. The strength of this negative link is such that its significance also emerges in the high-quality and full samples, although with coefficients of smaller magnitude as the number of countries included increases.

In terms of the covariance and risk measures, we find that a positive comovement between exchange rate depreciations vis-à-vis the Swiss Franc and slowdowns in GDP growth is relevant for the aggregate exposure in advanced countries. Since these are associated with long positions, they imply that exchange rate-induced valuation effects stabilise internal imbalances. More precisely, these countries will benefit from positive valuation effects associated with their positions denominated in Swiss Francs when GDP growth slows down and the exchange rate depreciates.

In terms of the risk measures proxied by the volatility indicators, we find that more volatility in bilateral exchange rates is associated with shorter positions in Swiss Francs in the advanced sample.¹⁵ Volatility measures included to account for domestic instability

¹⁴This positive link also emerges as statistically significant in the specification including all countries. However, since this coefficient is statistically zero in all the other samples, we interpret this results as being driven by the positive correlation exhibited in advanced countries. In line with this, the size of this coefficient in the full sample is smaller than in the advanced group.

¹⁵This effect also emerges in the high-quality sample including all advanced countries.

and uncertainty are relevant in the other country samples. In particular, we find that inflation volatility is positively associated with long positions in emerging plus developing as well as in the the high-quality and full samples. Domestic uncertainty proxied by GDP volatility, on the contrary, is insignificant across the board. This suggests that the uncertainty associated with prices plays a more important role for the determination of exposures than the uncertainty in relation to economic growth. In line with this, Table 4 shows that the exchange rate regime is relevant for Swiss Franc exposures in most country samples.

To account for the potential role of carry-trade activities in driving exposures to the Swiss Franc we also include the interest rate gap between Switzerland and the country in question. Table 4 shows that this variable is insignificant three country samples. The exceptions are the emerging plus developing and the full groups, where this variable is negative and statistically significant. To further check the robustness of this finding we also experimented with models including the change in the bilateral exchange rate as additional explanatory variable.¹⁶ Here, we find that the positive coefficient in the advanced sample becomes statistically significant and that the negative sign and significance of the coefficients in emerging plus developing and full samples do not change. In addition, we estimated a specification including the interaction term between the interest rate differential and the exchange rate with a dummy variable for 2012 to account for the impact of the recent global financial crisis. Here, we find that the interest rate coefficient in the pre-crisis years is positive but statistically zero in advanced, and negative and statistically significant in emerging plus developing and in the full samples. For the years after the crisis we find that the sign of the interest rate gap is positive in all samples and statistically significant in the high-quality and full samples only. Overall, these exercises show that once we condition for all the factors described above and also for the recent crisis, there is not a clear link between interest rate differentials and aggregate exposures to the Swiss Franc.

¹⁶These regression models are not included to save space. However, they are available upon request.

In relation to the institutional factors, we do not find strong evidence of institutions being relevant for aggregate exposures. The quality of institutions is relevant only for the emerging plus developing sample meaning that stronger institutions are associated with longer positions. However, this effect vanishes when this sample is restricted to its high-income subsample. In terms of the role of capital controls, Table 4 shows that this is important and negatively associated with aggregate short Swiss Franc positions in advanced economies only. Finally, country size appears to be positively related with long positions in Swiss Francs in the advanced and in the full samples.

4.3 Debt-Related Exposures

Next, we put the focus on the debt subcomponent of the international investment portfolio which means that we exclude exposures in portfolio equity, foreign direct investment and foreign exchange reserves from the analysis. As before, we add the exposure to other foreign currencies as explanatory variable as well as an indicator for the extent of international financial integration. The latter is now defined as the sum of foreign debt assets plus foreign debt liabilities scaled by GDP.

Table 5 reports the same set of regressions and country splits discussed before. It shows that the same set of regressors are able to explain a larger fraction of the variation in debt exposures in all samples.

Among the patterns that emerge in this specification there is importance of exposures to other currencies for both high quality samples. In relation to the role of international financial integration this table shows that this is associated with long positions in advanced, high-quality and full samples. As before, the trade channel is important with imports being associated with short positions in the advanced and high-quality samples. However, exports are now significantly associated with short positions in the latter.

As before, Swiss Franc exposures play a stabilizing role for internal imbalances as a positive covariance between GDP growth and the exchange rate is associated with long positions. This implies that slowdowns in the GDP growth in advanced economies with

their currency depreciating vis-à-vis the Swiss franc face capital gains in their net debt position denominated in the Swiss currency.

In relation to the risk measures, only few variables are statistically significant. These are the GDP volatility for the high quality sample and the exchange rate volatility for advanced. In contrast to the previous models, inflation volatility is not associated Swiss Franc exposures.

In relation to the role of carry trade activities, measured by interest rate differentials, this model gives evidence of a statistically significant link. More precisely, these are negative for all samples with the exception of advanced economies. In line with the previous strategy, we also estimated models including exchange rates and interaction terms with a crisis dummy. The former yields results with are in line with those reported in Table 5, with the exception of the advanced sample which shows a larger coefficient that is statistically significant. Therefore, if carry trade plays a role for these exposures, it does it for the debt component in advanced countries. Interestingly enough, the coefficients in all the other samples have the opposite sign.¹⁷

Debt exposures are also sensitive to exchange rate regimes. Peggers tend to be shorter in Swiss Francs in all samples with the exception of emerging plus developing.

In contrast to the aggregate exposure, better institutions are associated with short positions in the emerging plus developing, high-quality and full samples, while capital controls are associated with positive debt exposures in advanced economies only. EMU membership is now a relevant factor contributing to long positions in emerging plus developing countries.¹⁸ GDP per capita and country size negatively relate to long positions in high-quality emerging plus developing. Country size also presents a negative coefficient in emerging plus developing, high-quality and full samples. However, this is positively

¹⁷As before, we also estimated models including interaction terms for the interest rate differential and exchange rates with a crisis dummy variable and found that this specification does not yield statistically significant individual effects in the advanced sample. For emerging plus developing and high quality emerging plus developing the crisis period is not associated with a change on the impact of these variables. For the high quality and full samples, however, the interest rate differential is positive and statistically significant after the crisis.

¹⁸The following euro area countries are included in the emerging/developing sample: Estonia, Slovak Republic and Slovenia

associated with long debt positions in Swiss Fran in advanced countries.

In summary, models estimated for the debt component are more successful than those looking at the aggregate exposure in terms of the overall variation explained by our set of covariates. In terms of the country splits, we find that most of the action takes place in advanced economies.

5 Conclusions

This paper makes two contributions. First, we report the international currency exposures embedded in the Swiss international investment position. We show that Switzerland became increasingly long in foreign currencies over 2002-2012, which is consistent with the thirst by foreign investors for Swiss Franc assets (among other contributory factors). In addition, we exploit the estimated international currency exposures to quantify the adverse valuation impact generated by the appreciation of the Swiss Franc in recent years: this has been large relative to GDP, given the outsized scale of the Swiss international balance sheet.

Second, we examine the Swiss Franc positions held by a sample of 116 countries. We investigate the covariates of the cross-country and cross-time variation in these positions. We find that the average exposure across advanced economies was a long position in Swiss Francs for the aggregate international balance sheet and but a short net position in the debt category. After the crisis, these positions were compressed: the overall long position became less positive and the debt short position became less negative. The average exposure across emerging and developing countries was a long position both in the aggregate international balance sheet and in the debt subcomponent. In contrast to the advanced group, these long positions became more positive after the crisis. In terms of the relation between exposures to the Swiss Franc and exposures to other foreign currencies, we find evidence of positive correlation in advanced economies. However, this correlation was low in emerging and developing countries.

Our study of the determinants of cross-country exposures to the Swiss Franc produced several findings. In general, most of the action takes place in advanced economies. For these countries, exposures to other foreign currencies, international financial integration, imports, the covariance of GDP growth and exchange rate appreciations, exchange rate volatility, capital controls and country size matter for their aggregate Swiss Franc exposure. For the other samples, we also find a selection of covariates that are individually relevant from statistical point of view. Among them, the Swiss Franc position positively covaries with inflation volatility and negatively with exchange rate pegs. However, our empirical specifications are unable to explain more than 10 percent of the overall variation in Swiss Franc exposures for these samples. By contrast, specifications focusing on the Swiss Franc exposures in the debt category are more successful.

In terms of the research agenda, the empirical approach in this paper could be applied to other major currencies. In addition, in relation to the Swiss Franc, it would be interesting to study the impact on international balance sheets of the January 2015 step revaluation of the Swiss Franc against the euro. We defer these questions to future research.

Data Appendix

Country List

- Advanced countries (22): Australia (AUS), Austria (AUT), Belgium (BEL), Canada (CAN), Denmark (DNK), Finland (FIN), France (FRA), Germany (DEU), Greece (GRC), Iceland (ISL), Ireland (IRL), Italy (ITA), Japan (JPN), Netherlands (NLD), New Zealand (NZL), Norway (NOR), Portugal (PRT), Spain (ESP), Sweden (SWE), Switzerland (CHE), United Kingdom (GBR) and United States (USA)
- Emerging market economies and developing countries (95): Albania (ALB), Algeria (DZA), Argentina (ARG), Armenia (ARM), Azerbaijan (AZE), Bangladesh (BGD), Belarus (BLR), Benin (BEN), Bolivia (BOL), Bosnia and Herzegovina (BIH), Botswana (BWA), Brazil (BRA), Burkina Faso (BFA), Cambodia (KHM), Cameroon (CMR), Chad (TCD), Chile (CHL), China (CHN), Colombia (COL), Congo, Rep. (COG), Cote d'Ivoire (CIV), Croatia (HRV), Czech Republic (CZE), Dominican Republic (DOM), Egypt (EGY), El Salvador (SLV), Equatorial Guinea (GNQ), Estonia (EST), Ethiopia (ETH), Fiji (FJI), Gabon (GAB), Georgia (GEO), Ghana (GHA), Guatemala (GTM), Guinea (GIN), Haiti (HTI), Honduras (HND), Hong Kong (HKG), Hungary (HUN), India (IND), Indonesia (IDN), Iran (IRN), Israel (ISR), Jamaica (JAM), Jordan (JOR), Kazakhstan (KAZ), Kenya (KEN), Korea, Republic of (KOR), Kyrgyz Republic (KGZ), Latvia (LVA), Lithuania (LTU), Macedonia, FYR (MKD), Madagascar (MDG), Malawi (MWI), Malaysia (MYS), Mali (MLI), Mexico (MEX), Moldova (MDA), Morocco (MAR), Mozambique (MOZ), Nepal (NPL), Nicaragua (NIC), Niger (NER), Nigeria (NGA), Oman (OMN), Pakistan (PAK), Papua New Guinea (PNG), Paraguay (PRY), Peru (PER), Philippines (PHL), Poland (POL), Romania (ROM), Russian Federation (RUS), Rwanda (RWA), Senegal (SEN), Singapore (SGP), Slovak Republic (SVK), Slovenia (SVN), South Africa (ZAF), Sri Lanka (LKA), Syrian Arab Republic (SYR), Tanzania (TZA), Thailand (THA), Togo (TGO), Trinidad and Tobago (TTO), Tunisia (TUN), Turkey (TUR), Turkmenistan (TKM), Uganda (UGA), Ukraine (UKR), Uruguay (URY), Venezuela (VEN), Vietnam (VNM), Yemen, Republic of (YEM) and Zambia (ZMB)
- High-quality sample (61): Argentina (ARG), Australia (AUS), Austria (AUT), Belarus (BLR), Belgium (BEL), Brazil (BRA), Canada (CAN), Chile (CHL), China, P.R. (CHN), Colombia (COL), Croatia (HRV), Czech Republic (CZE), Denmark (DNK), Dominican Republic (DOM), El Salvador (SLV), Estonia (EST), Finland (FIN), France (FRA), Germany (DEU), Greece (GRC), Guatemala (GTM), Hong

Kong SAR of China (HKG), Hungary (HUN), Iceland (ISL), India (IND), Indonesia (IDN), Ireland (IRL), Israel (ISR), Italy (ITA), Japan (JPN), Korea, Republic of (KOR), Latvia (LVA), Lithuania (LTU), Malaysia (MYS), Mexico (MEX), Morocco (MAR), Netherlands (NLD), New Zealand (NZL), Norway (NOR), Pakistan (PAK), Peru (PER), Philippines (PHL), Poland (POL), Portugal (PRT), Romania (ROM), Russian Federation (RUS), Singapore (SGP), Slovak Republic (SVK), Slovenia (SVN), South Africa (ZAF), Spain (ESP), Sri Lanka (LKA), Sweden (SWE), Switzerland (CHE), Thailand (THA), Tunisia (TUN), Turkey (TUR), Ukraine (UKR), United Kingdom (GBR), United States (USA) and Uruguay (URY)

Data and Sources

The data to compute currency exposures are taken from Bénétrix, Lane and Shambaugh (2015), which is an updated and extended version of the original data in Lane and Shambaugh (2010a). The data sources for the variables in Tables 4 and 5 are the following: real GDP growth is from the International Monetary Fund’s (IMF) World Economic Outlook Database 2014. Stock-flow adjustment, net foreign assets and current account balance data are from the latest version of the External Wealth of Nations dataset (Lane and Milesi-Ferretti 2007). The source for stock market returns is MSCI Barra and national sources, while long term interest rates are taken from IMF’s International Financial Statistics (IFS) data base and from national sources. Exchange rate regime data (peg and no peg) are from Klein and Shambaugh (2008). Trade openness, population, and per capita income are taken from World Bank’s (WB) World Development Indicators. Nominal effective exchange rate (NEER) is sourced from IMF’s IFS and Bank for International Settlements. The source for consumer price index (CPI) and nominal exchange rate is IMF’s IFS; World Governance Indicators from World Bank; and the Chinn-Ito Capital Account Openness index from the website http://web.pdx.edu/~ito/Chinn-Ito_website.htm.

References

- Auer, Raphael (2015), “A safe haven: international demand for Swiss francs during the euro area debt crisis,” Quarterly Bulletin 2015/Q2, Swiss National Bank.
- Auer, Raphael and Cedric Tille (2015), “The Banking Sector and the Swiss Financial Account During the Financial and European Debt Crises,” *mimeo*, Swiss National Bank.
- Auer, Simone (2014), “Monetary Policy Shocks and Foreign Investment Income: Evidence from a Large Bayesian VAR,” *SNB Working Paper No. 2/2014*.

- Bénétrix, Agustín, Philip R. Lane and Jay C. Shambaugh (2015), “International Currency Exposures, Valuation Effects and the Global Financial Crisis,” *Journal of International Economics* 96, 98-109.
- Chinn, Menzie and Hiro Ito (2006), “What Matters for Financial Development? Capital Controls, Institutions, and Interactions,” *Journal of Development Economics* 81(1), 163-192.
- Eichengreen, Barry and Donald J. Mathieson (2000), “The Currency Composition of Foreign Exchange Reserves: Retrospect and Prospect,” *International Monetary Fund Working Paper 00/131*. FINAL REF
- Eichengreen, Barry, Ricardo Hausmann and Ugo Panizza (2003), *Currency Mismatches, Debt Intolerance and Original Sin: Why They Are Not the Same and Why it Matters*. National Bureau of Economic Research Working Paper 10036. FINAL REF
- Grisse, Christian and Thomas Nitschka (2015), “Exchange rate returns and external adjustment: Evidence from Switzerland,” *Open Economies Review*, forthcoming.
- Habib, Maurizio and Livio Stracca (2013), “Foreign investors and risk shocks: seeing a safe heaven or running for exit?,” *ECB Working Paper No. 1609*
- Nitschka, Thomas (2014), “Have investors been looking for exposure to specific countries since the global financial crisis? Insights from the Swiss franc bond market,” SNB Working Papers 13/2014
- Kugler, Peter and Beatrice Weder (2004), “International Portfolio Holdings and Swiss Franc Asset Returns,” *Swiss Journal of Economics and Statistics* 140(III), 301-325.
- Kugler, Peter and Beatrice Weder (2005), “Why Are Returns on Swiss Franc Assets So Low? Rare Events May Solve the Puzzle,” CEPR Discussion Papers 5181.
- Kugler Peter and Beatrice Weder (2009), “The Demise of the Swiss Interest Rate Puzzle,” mimeo, University of Basel..
- Lane, Philip R. (2013), “Capital Flows in the Euro Area,” *European Economy Economic Paper No. 497*.
- Lane, Philip R. and Gian Maria Milesi-Ferretti (2007), “The External Wealth of Nations Mark II,” *Journal of International Economics* 73, 223-250.
- Lane, Philip R. and Gian Maria Milesi-Ferretti (2012), “External Adjustment and the Global Crisis,” *Journal of International Economics* 88(2), 252-265.

- Lane, Philip R. and Gian Maria Milesi-Ferretti (2015), “Global Imbalances and External Adjustment After the Crisis,” in *Global Liquidity, Spillovers to Emerging Markets and Policy Responses* (edited by Claudio Raddatz, Diego Saravia and Jaume Ventura), Central Bank of Chile, 105-139.
- Lane, Philip R. and Jay C. Shambaugh (2010a), “Financial Exchange Rates and International Currency Exposures,” *American Economic Review* 100(1), 518-540.
- Lane, Philip R. and Jay C. Shambaugh (2010b), “The Long or Short of It: Determinants of Foreign Currency Exposure in External Balance Sheets,” *Journal of International Economics* 80(1), 33-44.
- Klein, Michael W. and Jay C. Shambaugh (2008), “The Dynamics of Exchange Rate Regimes: Fixes, Floats, and Flips,” *Journal of International Economics* 75(1), 70-92.
- Nitschka, Thomas (2014), “Have Investors Been Looking for Exposure to Specific Countries Since the Global Financial Crisis? - Insights from the Swiss Franc Bond Market,” *SNB Working Paper No. 13/2014*.
- Yesin, Pinar (2015), “Capital Flow Waves to and from Switzerland Before and After the Financial Crisis,” *Swiss Journal of Economics and Statistics* 151(1), 27-75.

Table 1: Decomposition of Swiss Foreign exposure

	2002	2007	2012
(1) $FXAGG$	0.29	0.28	0.37
(2) $(A - L)/(A + L)$	0.14	0.11	0.14
(3) $FXAGG^0$	0.14	0.17	0.23
$(A - L)/(A + L) = (4) + (5)$			
(4) $(A_{NR} - L)/(A + L)$	0.13	0.10	0.07
(5) $FXR/(A + L)$	0.02	0.01	0.07
$FXAGG^0 = (6) + (7) - (8)$			
(6) $(PEQL + FDIL)/(A + L)$	0.17	0.20	0.23
(7) $DEBTL^{DC}/(A + L)$	0.04	0.02	0.07
(8) $A_{NR}^{DC}/(A + L)$	0.07	0.06	0.07
(9) $NETFX$	2.63	3.38	3.74
(10) $FXDEBT$	0.15	0.11	0.22

Note: $FXAGG$ is the aggregate foreign exposure defined in equation (9), $(A - L)$ is the net foreign asset position. A are total foreign assets and L are foreign liabilities. Row (2) = (4) + (5). $FXAGG^0$ is the net foreign liability position in domestic currency and (3) = (6) + (7) - (8). $(A_{NR} - L)$ is the non-reserve net foreign asset position. FXR are foreign exchange reserves, $(PEQL + FDIL)$ are portfolio equity and FDI liabilities. These are denominated in Swiss Franc. $DEBTL^{DC}$ are debt liabilities in Swiss Francs. A_{NR}^{DC} are non-reserve foreign assets denominated in Swiss Francs. $NETFX$ is defined in equation (10) and measures the quantitative exposure to a uniform shift in the value of the domestic currency against all foreign currencies. $FXDEBT$ is a measure of foreign currency exposure analogous to $FXAGG$ but for debt only.

Table 2: Exposures to Swiss Franc.

 $FXAGG^{CHF}$

Group	Year	10 th Percentile	Mean	Median	90 th Percentile
ALL	2002	-0.28	0.08	0.08	0.65
	2007	-0.15	0.12	0.10	0.68
	2012	-0.10	0.38	0.13	0.82
ADV	2002	-0.09	0.06	0.28	0.83
	2007	-0.34	0.26	0.43	0.84
	2012	-0.32	0.22	0.28	0.82
EMDEV	2002	-0.28	0.09	0.07	0.51
	2007	-0.10	0.09	0.08	0.50
	2012	-0.004	0.41	0.11	0.77

 $NETFX^{CHF}$

Group	Year	10 th Percentile	Mean	Median	90 th Percentile
ALL	2002	-0.36	0.13	0.12	1.69
	2007	-0.21	0.36	0.12	1.86
	2012	-0.04	1.40	0.17	2.32
ADV	2002	-0.16	0.28	0.92	2.76
	2007	-3.98	1.44	1.86	5.36
	2012	-1.64	1.98	1.39	6.74
EMDEV	2002	-0.36	0.10	0.07	0.70
	2007	-0.18	0.12	0.08	0.80
	2012	-0.002	1.27	0.14	1.61

Note: Statistics computed using a sample of 21 advanced economies and 95 emerging and developing countries. $FXAGG^{CHF}$ is defined by equation (2) while $NETFX^{CHF}$ is defined by equation (3).

Table 3: Exposures to Swiss Franc. Foreign debt only.

$FXDEBT^{CHF}$

Group	Year	10 th Percentile	Mean	Median	90 th Percentile
ALL	2002	-1.16	0.11	0.24	1.19
	2007	-0.73	0.01	0.12	0.81
	2012	-0.84	0.15	0.13	1.23
ADV	2002	-1.63	-1.14	-0.62	-0.10
	2007	-1.17	-0.74	-0.39	0.06
	2012	-1.38	-0.64	-0.44	0.11
EMDEV	2002	-0.38	0.44	0.35	1.49
	2007	-0.07	0.21	0.17	0.87
	2012	-0.01	0.36	0.21	1.26

$NETFXDEBT^{CHF}$

Group	Year	10 th Percentile	Mean	Median	90 th Percentile
ALL	2002	-1.96	-0.27	0.15	1.08
	2007	-2.51	-0.49	0.06	0.69
	2012	-1.56	-0.01	0.09	1.17
ADV	2002	-3.73	-2.76	-1.52	-0.14
	2007	-4.89	-2.48	-1.26	0.19
	2012	-7.14	-1.31	-0.80	0.72
EMDEV	2002	-0.30	0.39	0.30	1.21
	2007	-0.05	0.04	0.09	0.78
	2012	-0.004	0.34	0.12	1.38

Note: Statistics computed using a sample of 21 advanced economies and 95 emerging and developing countries. $FXDEBT^{CHF}$ is analogous to equation (2) while $NETFXDEBT^{CHF}$ is analogous to equation (3) with the difference that these are based on foreign debt only.

Table 4: Determinants of exposures to the Swiss Franc

$FXAGG^{CHF}$	(1) ALL	(2) HQ	(3) ADV	(4) EMDEV	(5) EMDEV HQ
$FXBILAT^{OTH}$	0.004*	0.006	0.015*	0.002	0.000
	(0.002)	(0.004)	(0.008)	(0.002)	(0.006)
IFI	0.026	0.053**	0.056*	-0.016	0.040
	(0.017)	(0.024)	(0.032)	(0.028)	(0.047)
Exports	0.002	-0.234	-0.556	0.022	0.545
	(0.020)	(0.269)	(0.419)	(0.025)	(0.399)
Imports	-0.271**	-0.503***	-1.201***	0.015	-0.479
	(0.137)	(0.159)	(0.395)	(0.159)	(0.385)
Vol(GDP)	-0.005	0.033	0.214	-0.003	-0.019
	(0.014)	(0.035)	(0.171)	(0.014)	(0.031)
Cov(GDP,E)	-0.000	0.001	0.052***	-0.000	0.000
	(0.000)	(0.001)	(0.013)	(0.000)	(0.001)
Vol(π)	0.026***	0.020*	-0.440	0.021***	0.013
	(0.008)	(0.011)	(0.325)	(0.008)	(0.009)
Vol(E)	-0.008	-0.060**	-0.515***	-0.004	-0.022
	(0.010)	(0.030)	(0.164)	(0.010)	(0.029)
IDIFF	-0.013**	-0.010	0.026	-0.011*	-0.008
	(0.006)	(0.009)	(0.039)	(0.007)	(0.010)
Peg	-0.240***	-0.376**	-0.304	-0.249***	-0.385**
	(0.093)	(0.180)	(0.312)	(0.091)	(0.190)
Capital Controls	-0.021	-0.030	0.735***	-0.022	0.037
	(0.036)	(0.095)	(0.163)	(0.035)	(0.087)
Institutions	-0.036	-0.173	-0.002	0.154*	0.309
	(0.066)	(0.138)	(0.324)	(0.093)	(0.199)
EMU	-0.081	0.114	0.476	0.024	-0.240
	(0.219)	(0.322)	(0.426)	(0.308)	(0.593)
GDP^{PC}	0.081	0.047	0.513	0.070	-0.186
	(0.053)	(0.126)	(0.553)	(0.056)	(0.137)
Size	0.036*	0.010	0.333***	0.003	-0.084
	(0.021)	(0.041)	(0.090)	(0.024)	(0.057)
Year 1996	-0.879*	-0.175	-3.425	-0.522	2.310*
	(0.515)	(1.203)	(5.452)	(0.559)	(1.378)
Year 2000	0.291	0.379	0.345	0.109	0.065
	(0.189)	(0.255)	(0.337)	(0.214)	(0.345)
Year 2004	0.261	0.256	-0.007	0.094	0.035
	(0.187)	(0.250)	(0.423)	(0.216)	(0.330)
Year 2007	0.235	0.153	-0.017	0.088	-0.011
	(0.189)	(0.255)	(0.519)	(0.221)	(0.341)
Year 2012	0.470**	0.452	-0.120	0.403	0.553
	(0.232)	(0.395)	(0.443)	(0.273)	(0.568)
Observations	524	273	105	419	168
R^2	0.078	0.094	0.570	0.081	0.083

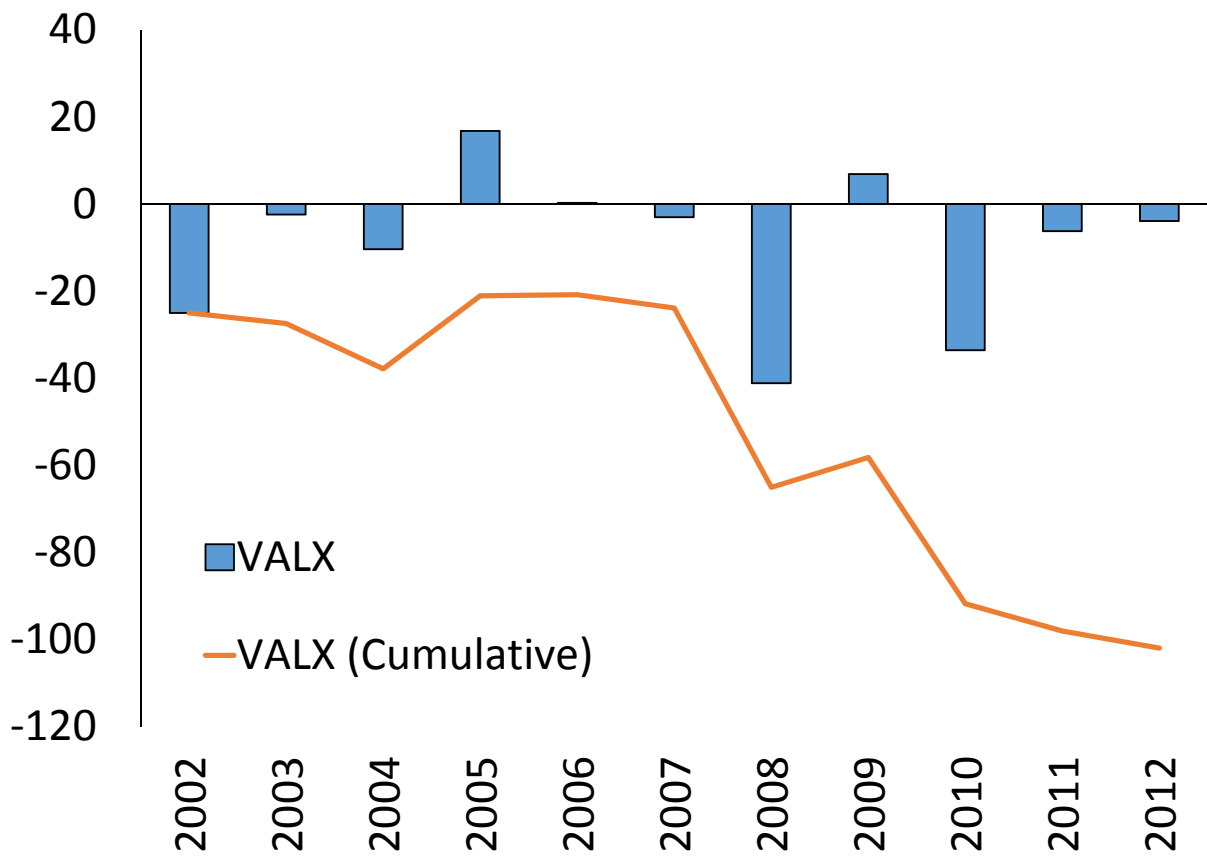
Note: Pooled regressions based on data for 1996, 2000, 2004, 2007 and 2012. Robust standard errors are in parentheses. Statistical significance is as follows *** $p < 0.01$, ** $p < 0.05$, * $p < 0.1$. $FXAGG^{CHF}$ is aggregate exposure in Swiss Francs; $FXAGG^{OTH}$ is the aggregate exposure in other foreign currencies; IFI is the sum of foreign assets plus foreign liabilities scaled by GDP; Exports and Imports are to and from Switzerland and are scaled by GDP; Vol(GDP) is the standard deviation of year-on-year GDP growth; Vol(π) is the standard deviation of month-on-month CPI inflation; Vol(E) is the standard deviation of month-on-month change in the bilateral nominal exchange; Cov(GDP,E) is the covariance between GDP growth and NEER change (All measures of volatilities and covariance are computed using a 15-year window.); IDIFF is the difference between the long term interest rates in Switzerland and the country in question; Peg is a dummy variable that takes value 1 for countries with either peg or soft pegs as defined by Shambaugh (2004); Capital controls are the Chinn-Ito's Capital Account Openness Index multiplied by -1; Institutions refers to World Bank Governance Indicators estimates; EMU is a dummy variable for EMU member countries; GDP^{PC} is GDP per capita in log levels. Size is the logarithm of population. Finally, Year 1996, 2000, 2004, 2007 and 2012 are year dummy variables.

Table 5: Determinants of exposures to the Swiss Franc (debt only)

$FXDEBT^{CHF}$	(1) ALL	(2) HQ	(3) ADV	(4) EMDEV	(5) EMDEV HQ
$FXDEBT^{OTH}$	-0.004 (0.005)	0.017*** (0.005)	0.004 (0.013)	-0.006 (0.006)	0.011** (0.005)
IFI^{DEBT}	0.085** (0.039)	0.163*** (0.054)	0.180** (0.072)	-0.043 (0.056)	0.003 (0.048)
Exports	0.036 (0.051)	-0.927** (0.409)	-0.702 (0.617)	0.088 (0.065)	0.323* (0.186)
Imports	-0.269 (0.254)	-0.437* (0.245)	-2.569*** (0.706)	0.340 (0.213)	0.125 (0.239)
Vol(GDP)	0.011 (0.031)	0.152** (0.063)	0.360 (0.289)	0.011 (0.030)	0.081 (0.051)
Cov(GDP,E)	-0.001 (0.001)	0.002 (0.002)	0.042** (0.019)	-0.001 (0.001)	0.001 (0.002)
Vol(π)	0.052 (0.037)	-0.010 (0.022)	-0.186 (0.470)	0.042 (0.037)	-0.019 (0.018)
Vol(E)	-0.029 (0.026)	-0.066 (0.057)	-0.515** (0.256)	-0.027 (0.026)	-0.019 (0.051)
IDIFF	-0.040*** (0.013)	-0.021* (0.011)	0.073 (0.072)	-0.038*** (0.014)	-0.032** (0.013)
Peg	-0.277* (0.149)	-0.605*** (0.229)	-0.819* (0.484)	-0.169 (0.144)	-0.297** (0.147)
Capital Controls	0.030 (0.058)	0.049 (0.074)	1.203*** (0.230)	0.009 (0.055)	0.051 (0.060)
Institutions	-0.564*** (0.160)	-0.546*** (0.191)	-0.702 (0.453)	-0.307* (0.175)	-0.088 (0.195)
EMU	-0.483 (0.363)	0.138 (0.341)	0.513 (0.600)	0.724*** (0.274)	0.468 (0.303)
GDP^{PC}	0.093 (0.119)	-0.189 (0.171)	-1.648* (0.935)	0.039 (0.117)	-0.514*** (0.159)
Size	-0.102** (0.046)	-0.132** (0.051)	0.338* (0.170)	-0.134** (0.055)	-0.171*** (0.054)
Year 1996	-0.831 (0.982)	2.363* (1.377)	19.532** (9.270)	-0.064 (0.972)	4.941*** (1.452)
Year 2000	0.405 (0.346)	0.592* (0.313)	1.061* (0.542)	0.103 (0.384)	0.282 (0.258)
Year 2004	0.453 (0.347)	0.595* (0.332)	0.939 (0.688)	0.137 (0.391)	0.538** (0.231)
Year 2007	0.320 (0.335)	0.367 (0.323)	1.385* (0.821)	-0.042 (0.372)	0.278 (0.241)
Year 2012	0.408 (0.337)	0.424 (0.333)	1.519** (0.712)	0.089 (0.375)	0.327 (0.283)
Observations	524	273	105	419	168
R^2	0.165	0.388	0.629	0.094	0.344

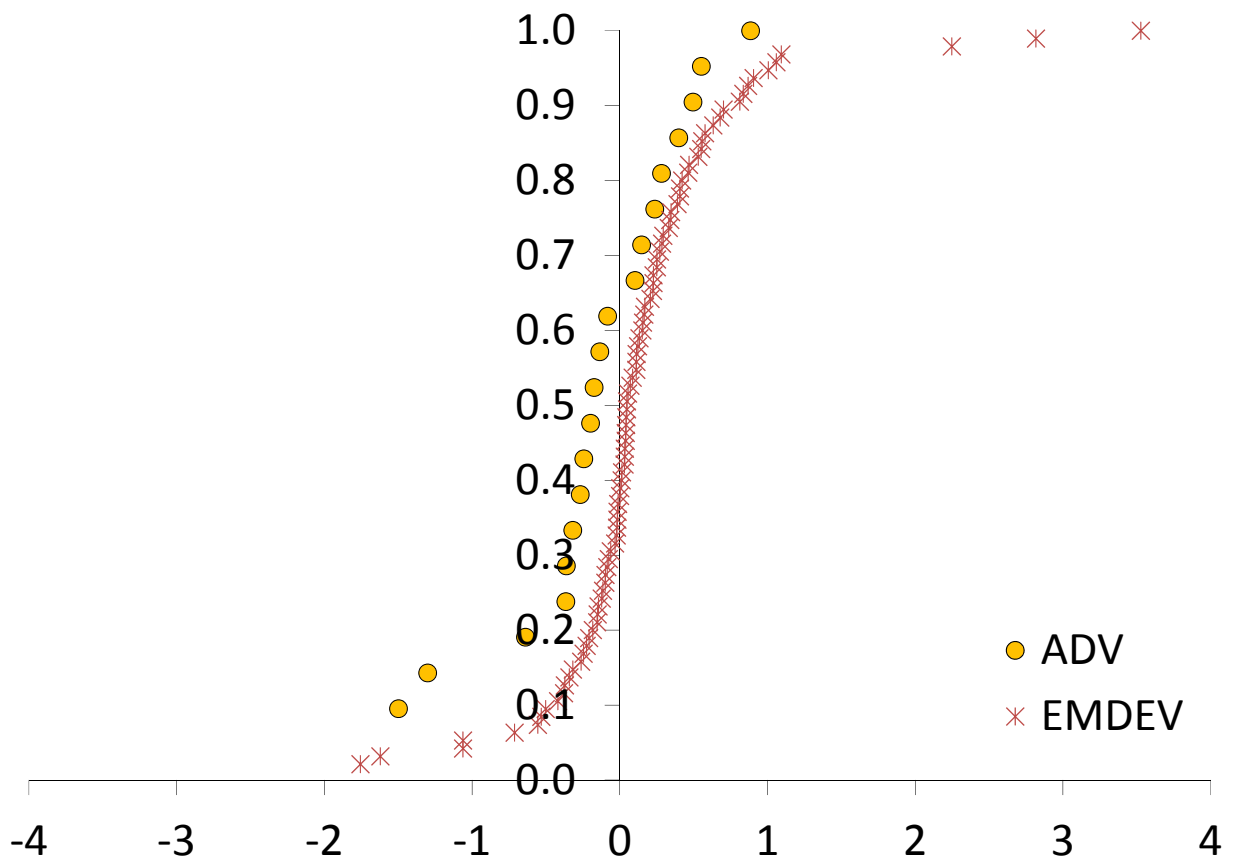
Note: Pooled regressions based on data for 1996, 2000, 2004, 2007 and 2012. Robust standard errors are in parentheses. Statistical significance is as follows *** $p < 0.01$, ** $p < 0.05$, * $p < 0.1$. $FXDEBT^{CHF}$ is debt-only exposure in Swiss Francs; $FXDEBT^{OTH}$ is the debt-only exposure in other foreign currencies; IFI^{DEBT} is the sum of foreign debt assets plus foreign debt liabilities scaled by GDP; Exports and Imports are to and from Switzerland and are scaled by GDP; Vol(GDP) is the standard deviation of year-on-year GDP growth; Vol(π) is the standard deviation of month-on-month CPI inflation; Vol(E) is the standard deviation of month-on-month change in the bilateral nominal exchange; Cov(GDP,E) is the covariance between GDP growth and NEER change (All measures of volatilities and covariance are computed using a 15-year window.); IDIFF is the difference between the long term interest rates in Switzerland and the country in question; Peg is a dummy variable that takes value 1 for countries with either peg or soft pegs as defined by Shambaugh (2004); Capital controls are the Chinn-Ito's Capital Account Openness Index multiplied by -1; Institutions refers to World Bank Governance Indicators estimates; EMU is a dummy variable for EMU member countries; GDP^{PC} is GDP per capita in log levels. Size is the logarithm of population. Finally, Year 1996, 2000, 2004, 2007 and 2012 are year dummy variables.

Figure 1: Swiss *VALX*



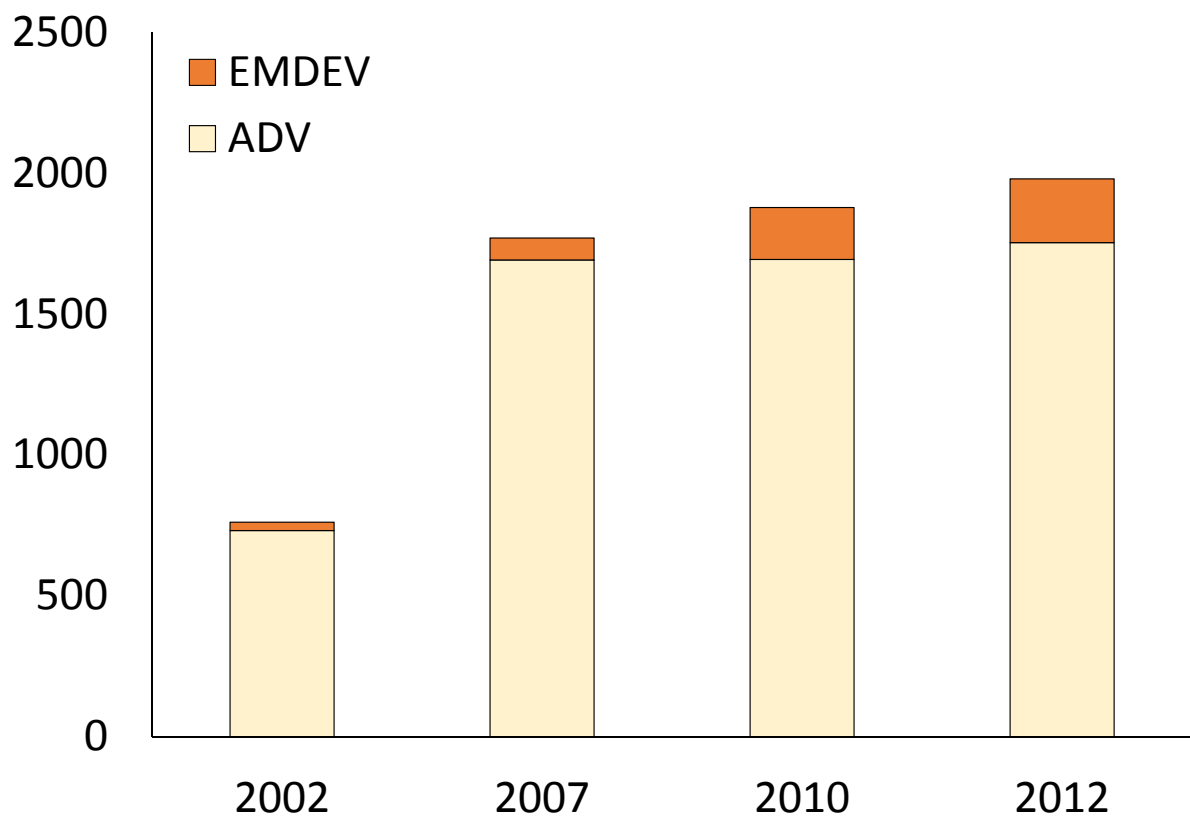
Note: *VALX* is the exchange rate-induced valuation effect as defined in equation (8).

Figure 2: Exposures to Swiss Franc (Average 2002-2012)



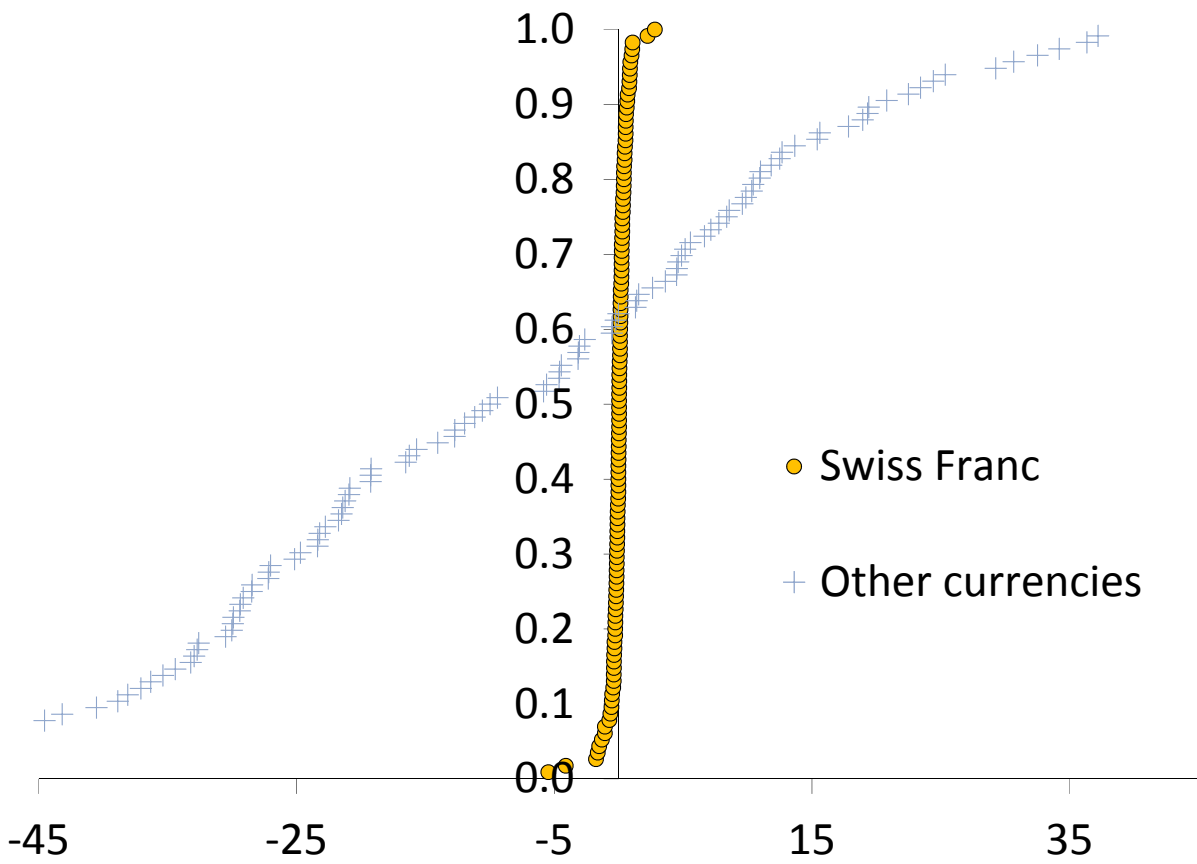
Note: Currency exposures are the average of $FXAGG^{CHF}$ for the 2002-2012 period.

Figure 3: Foreign Assets Denominated in Swiss Franc



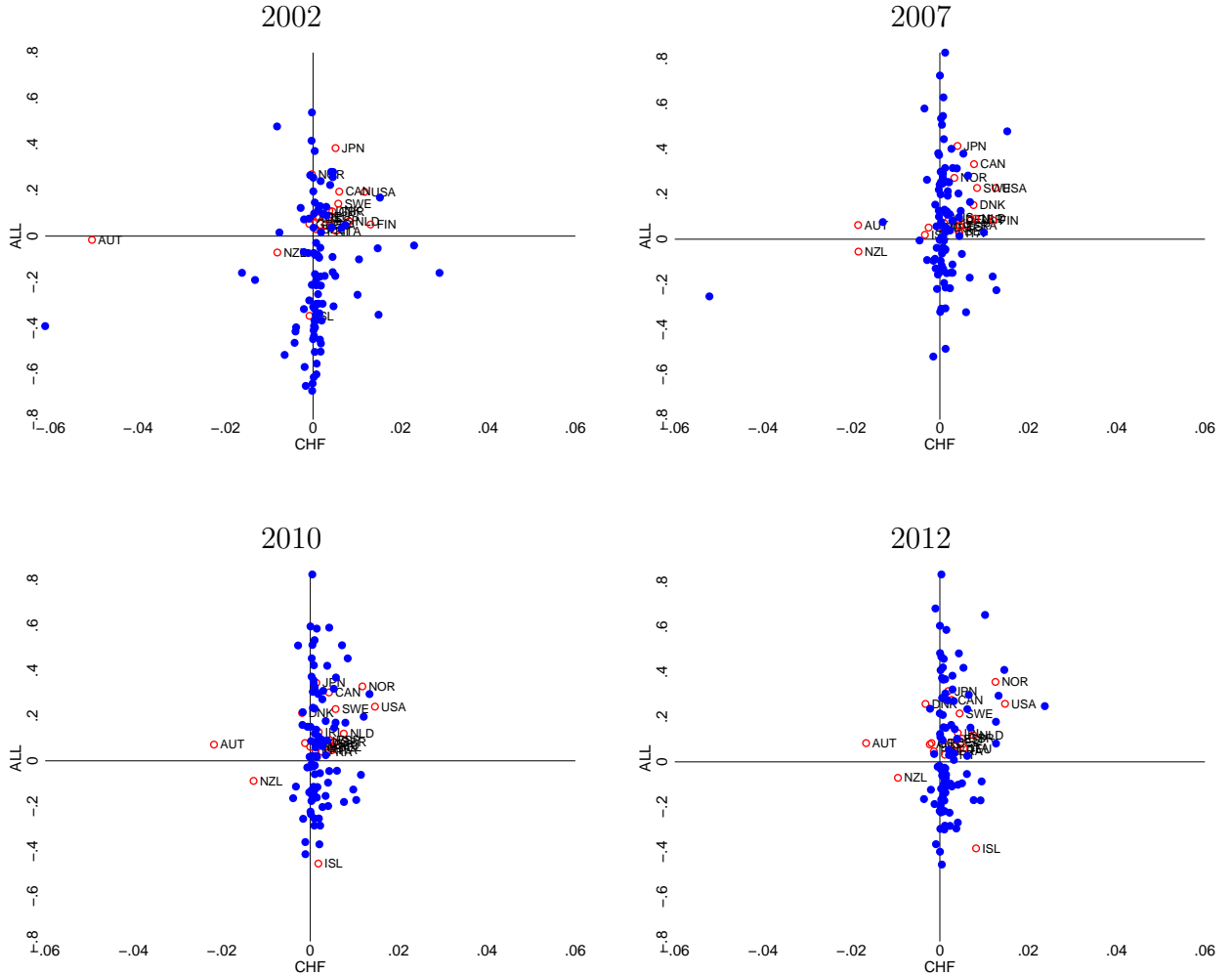
Note: Billion of US dollars. Estimates based on 116 countries.

Figure 4: Exposures to Swiss Franc and other currencies (Average 2002-2012)



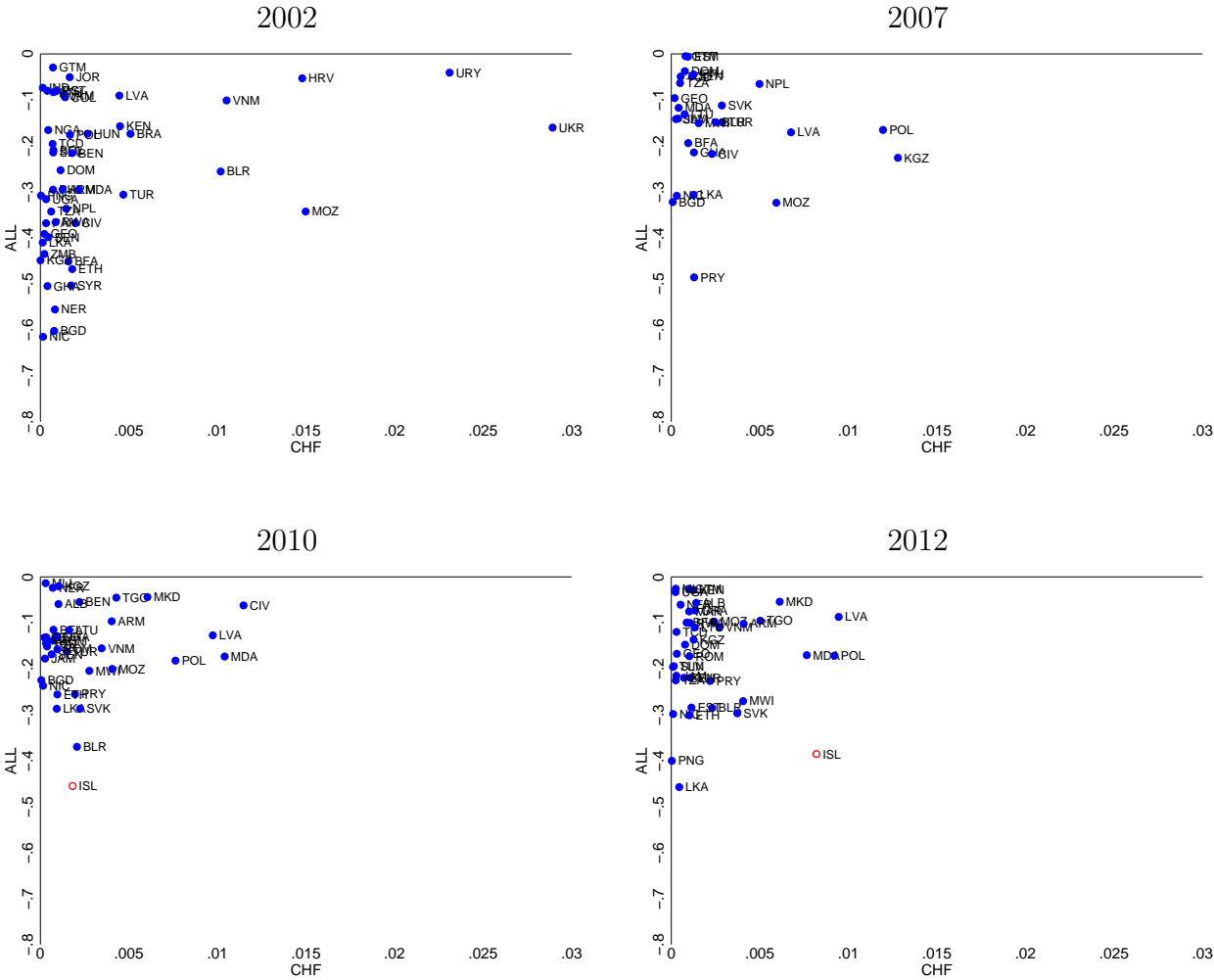
Note: Currency exposures are the average of *FXAGG* for the 2002-2012 period. These distributions are based on 116 countries.

Figure 5: Swiss Franc Exposure vs. Overall Exposure



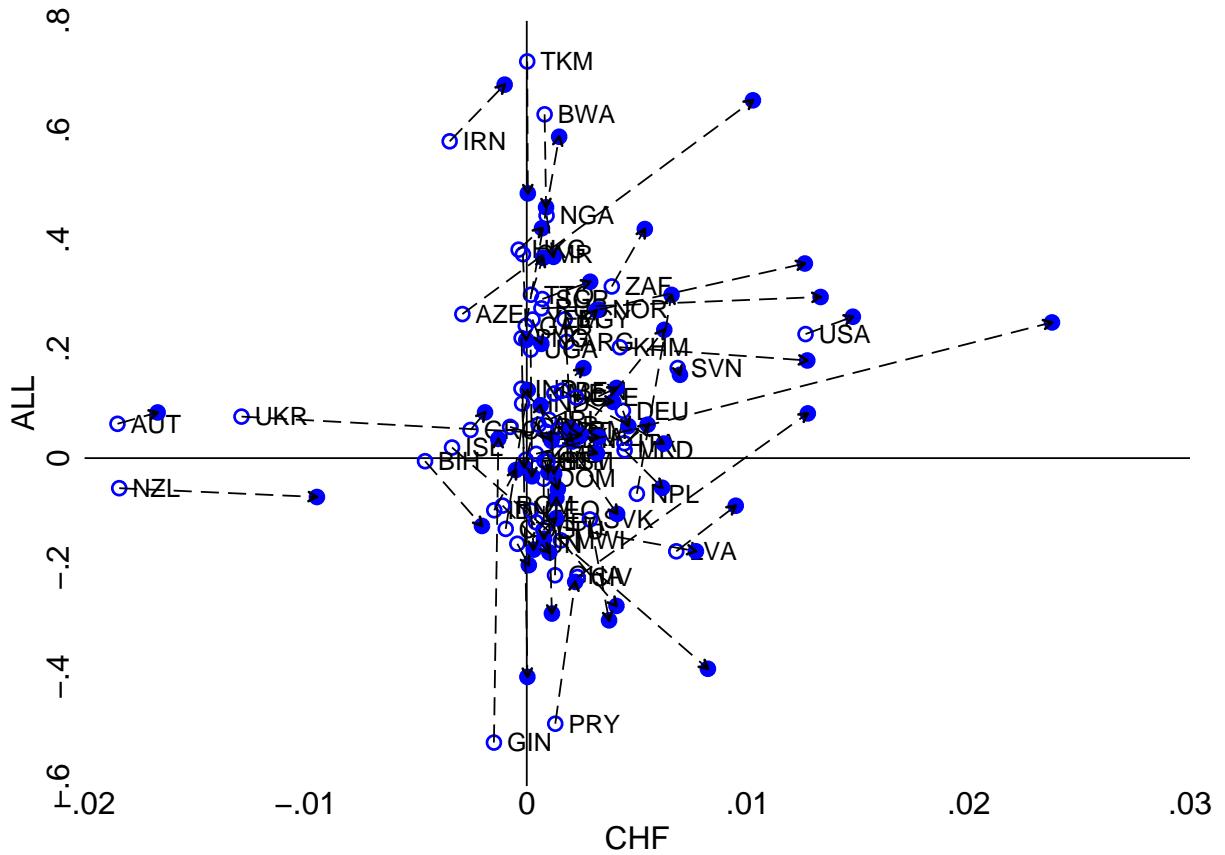
Note: *CHF* are cross-country exposures to Swiss Francs ($FXAGG^{CHF}$) while *ALL* are aggregate exposures to other foreign currencies ($FXAGG^{OTH}$). The correlation coefficient of these variables is positive for in 2002 and 2007 with values of 0.13 and 0.14, respectively. These correlations are negative in 2010 and 2012 with values of -0.01 and -0.002, respectively. Hollowed red circles are advanced countries while filled circles are emerging and developing countries.

captionSwiss Franc Exposure vs. Overall Exposure



Note: Countries long Swiss Franc but short in the rest of foreign currencies. CHF are cross-country exposures to Swiss Francs ($FXAGG^{CHF}$) while ALL are aggregate exposures to other foreign currencies ($FXAGG^{OTH}$). Hollowed red circles are advanced countries while filled circles are emerging and developing countries.

Figure 6: Dynamics of Currency Exposures (2007,2012)



Note: Countries with more positive (or less negative) Swiss Franc position after the crisis. *CHF* are cross-country exposures to Swiss Francs ($FXAGG^{CHF}$) while *ALL* are aggregate exposures to other foreign currencies ($FXAGG^{OTH}$). HOLLOWED circles are exposures in 2007 while filled circles represent exposures in 2012. Dashed vectors indicate the direction of the change in these exposures.

Acknowledgements

We thank Rudolfs Bems, Raphael Auer, Vladyslav Sushko and the participants of several conferences for comments. Bénétix thanks the Irish Research Council and Lane thanks the Institute for New Economic Thinking for financial support. This paper was written before Lane joined the Central Bank of Ireland.

Agustín S. Bénétix
Trinity College Dublin, benetria@tcd.ie

Philip R. Lane
Trinity College Dublin and CEPR, plane@tcd.ie

© European Systemic Risk Board, 2016

Postal address 60640 Frankfurt am Main, Germany
Telephone +49 69 1344 0
Website www.esrb.europa.eu

All rights reserved. Reproduction for educational and non-commercial purposes is permitted provided that the source is acknowledged.

Note: The views expressed in ESRB Working Papers are those of the authors and do not necessarily reflect the official stance of the ESRB, its member institutions, or the institutions to which the authors are affiliated.

ISSN 2467-0677 (online)
ISBN 978-92-95081-33-8 (online)
DOI 10.2849/889813 (online)
EU catalogue No DT-AD-16-006-EN-N (online)