

Bazen, Stephen; Marimoutou, Velayoudom

Article

Federal minimum wage hikes do reduce teenage employment: A replication study of Bazen & Marimoutou (Oxford Bulletin of Economics and Statistics, 2002)

International Journal for Re-Views in Empirical Economics (IREE)

Suggested Citation: Bazen, Stephen; Marimoutou, Velayoudom (2018) : Federal minimum wage hikes do reduce teenage employment: A replication study of Bazen & Marimoutou (Oxford Bulletin of Economics and Statistics, 2002), International Journal for Re-Views in Empirical Economics (IREE), ISSN 2566-8269, ZBW – Leibniz Information Centre for Economics, Kiel, Hamburg, Vol. 2, pp. 1-13, <https://doi.org/10.18718/81781.9>

This Version is available at:

<https://hdl.handle.net/10419/192940>

Standard-Nutzungsbedingungen:

Die Dokumente auf EconStor dürfen zu eigenen wissenschaftlichen Zwecken und zum Privatgebrauch gespeichert und kopiert werden.

Sie dürfen die Dokumente nicht für öffentliche oder kommerzielle Zwecke vervielfältigen, öffentlich ausstellen, öffentlich zugänglich machen, vertreiben oder anderweitig nutzen.

Sofern die Verfasser die Dokumente unter Open-Content-Lizenzen (insbesondere CC-Lizenzen) zur Verfügung gestellt haben sollten, gelten abweichend von diesen Nutzungsbedingungen die in der dort genannten Lizenz gewährten Nutzungsrechte.

Terms of use:

Documents in EconStor may be saved and copied for your personal and scholarly purposes.

You are not to copy documents for public or commercial purposes, to exhibit the documents publicly, to make them publicly available on the internet, or to distribute or otherwise use the documents in public.

If the documents have been made available under an Open Content Licence (especially Creative Commons Licences), you may exercise further usage rights as specified in the indicated licence.



<https://creativecommons.org/licenses/by/4.0/>

Federal minimum wage hikes do reduce teenage employment. A replication study of Bazen & Marimoutou (*Oxford Bulletin of Economics and Statistics*, 2002)

Stephen Bazen[‡] Velayoudom Marimoutou[†]

International Journal for Re-Views in Empirical Economics, Volume 2, 2018-5, DOI: [10.18718/81781.9](https://doi.org/10.18718/81781.9)

JEL: J21, J38, C22

Keywords: minimum wage; teenage employment; state space methods; unobserved components model; replication study

Data Availability: This paper uses data sets from the FRED, Federal Reserve Bank of St. Louis, all of which are obtainable from fred.stlouisfed.org. All series used were quarterly when downloaded by the authors, and are now presented as a monthly series. The used series in this paper correspond to the entries for January 1st, April 1st, July 1st, and October 1st of each year. An instruction for the access to the all data and a description of how the estimates were obtained are available from the website of the journal www.iree.eu.

Please Cite As: Bazen, S. and V. Marimoutou (2018). Federal minimum wage hikes do reduce teenage employment. A replication study of Bazen and Marimoutou (*Oxford Bulletin of Economics and Statistics*, 2002). *International Journal for Re-Views in Empirical Economics*, Vol 2(2018-5). DOI: [10.18718/81781.9](https://doi.org/10.18718/81781.9)

Abstract

In 2002 we published a paper in which we used state space time series methods to analyse the teenage employment-federal minimum wage relationship in the US (Bazen and Marimoutou, 2002). The study used quarterly data for the 46 year period running from 1954 to 1999. We detected a small, negative but statistically significant effect of the federal minimum wage on teenage employment, at a time when some studies were casting doubt on the existence of such an effect. In this note we re-estimate the original model with a further 16 years of data (up to 2015). We find that the

*Corresponding author e-mail: stephen.bazen@univ-amu.fr

[†]Aix-Marseille University (Aix-Marseille School of Economics), CNRS and EHESS. We are grateful to Andrew Harvey for helpful discussions, and to Dan Hamermesh and two anonymous referees for comments and suggestions based on an earlier draft.

model satisfactorily tracks the path of the teenage employment-population ratio over this 60 year period, and yields a consistently negative and statistically significant effect of minimum wages on teenage employment. The conclusion reached is the same as in the original paper, and the elasticity estimates very similar: federal minimum wage hikes lead to a reduction in teenage employment with a short run elasticity of around -0.13 . The estimated long run elasticity of between -0.37 and -0.47 is less stable, but is nevertheless negative and statistically significant.

1 Introduction

In 2002 we published a paper in which we used state space time series methods to analyse the teenage employment-federal minimum wage relationship in the US (Bazen and Marimoutou, 2002). The study used quarterly data for the 46 year period running from 1954 to 1999. We detected a small, negative but statistically significant effect of the federal minimum wage on teenage employment, at a time when some studies were casting doubt on the existence of such an effect.¹ After a lull in the production of studies of the effects of minimum wages in the mid 2000s, there has been renewed interest in the issue in recent years. This has coincided with more widespread increases in state level minimum wages since the last federal hike that came into effect in 2009 (see Alegretto et al, 2011; Neumark et al, 2014). In addition, countries like the United Kingdom and Germany have implemented national minimum wages and the impact has been assessed in a number of studies (see for example, Bossler et al, 2018).

In this note, we update our estimates using data spanning the period 1954 to 2015, bringing the sample to more than 60 years of quarterly data. The model treats the trend, cycle and seasonal components as stochastic. As explained in our earlier article, this approach allows for more flexibility than more rigid deterministic representations² and also enables the use of proxy variables to be avoided. The estimated effects of minimum and average earnings on the teenage employment population ratio for the 62 year period are found to be very similar in elasticity terms to those obtained in the earlier study. The robustness of this finding is rather surprising given the important changes that have occurred in the US teenage labour market in the last twenty years, in particular the fact that the teenage employment population ratio fell from 45% in 2000 to under 30% after 2010 (its lowest level since 1950), with particularly sharp decreases after 2006 and during the financial crisis (see Figure 1). In addition, real average earnings have stagnated since 1990 (Figure 2) while the real value of the federal minimum wage has remained below its pre-1990 level apart from the three years in which it was updated from 2007 to 2009. The nominal federal minimum has remained at \$7.25 since 2009.

The main finding presented here is that, other things equal, over the 62 year period from 1954 to 2015 federal minimum wage hikes reduced teenage employment, the short run elasticity being -0.13. This is almost identical to estimate found in our earlier article. Due solely to a larger autoregressive coefficient, the long run elasticity of -0.4 is higher in absolute value.

In section 2 we summarize the approach used in Bazen and Marimoutou (2002), and then re-estimate the same model over the extended data set up to the end of 2015 (section 3). In order to check the robustness of the estimates, we re-estimate the model for different sub-periods in section 4. Finally, in section 5, we suggest an explanation for the results obtained and underline the fact that the results pertain to the effects on the employment of 16 to 19 year olds, before concluding in section 6.

¹Studies appearing in the 1990s using cross-section and panel data produced conflicting results (see for example Neumark and Wascher, 1992 and Card, 1992).

²The stochastic representation contains the deterministic specification as a special case.

2 The Bazen-Marimoutou 2002 study

Following Card and Krueger’s (1995) critique of the ‘consensus’ that had grown up around the conclusion of Brown, Gilroy and Kohen’s (BGK) (1982) survey that “a 10 per cent increase in the minimum wage reduced teenage employment by one to three per cent” (p.524), we undertook a re-examination of the time series approach to evaluating the impact of federal minimum wages on teenage employment. Cracks had already appeared in this consensus and were visible in the studies by BGK (1983) and Solon (1985) and were rigorously analysed by Card and Krueger (1995, Chapter 6). In our re-examination we found first, that earlier approaches using deterministic trends, seasonal dummies, proxy variables and autoregressive error terms were unable to satisfactorily account for the time path of teenage employment. Second, using an unobserved components approach to modelling trend, cycle and seasonality in which these different components are treated as stochastic rather than deterministic (as set out in Harvey, 1989, and Harvey and Scott, 1994), produced a model that provided better in-sample and out-of-sample predictions of teenage employment than the approach adopted in BGK (1983) or Solon (1985). We also found that there was a negative and significant effect of federal minimum wages on teenage employment. This finding remained robust to the incorporation of different episodes of federal minimum wage fixing in the period between 1981 and 1997.

The Bazen-Marimoutou model of teenage employment (in which the teenage employment – population ratio is expressed in logarithms and denoted EP) is a standard time series model, with trend (μ_t), seasonality (γ_t), cycle (ψ_t) and irregular (ϵ_t) components, augmented to include the logs of the real value of the minimum (MW) and average (AW) wages³ in a partial adjustment process:

$$EP_t = \alpha EP_{t-1} + \beta_1 MW_t + \beta_2 AW_t + \mu_t + \gamma_t + \psi_t + \epsilon_t \quad (1)$$

In the traditional approach such as BGK (1983), the unobserved trend component is represented by a deterministic time trend (and sometimes its square) along with demographic proxy variables (such as the teenage population share); the cycle is represented by a proxy variable (usually the unemployment rate of prime age males); and the seasonality is captured by a set of dummy variables.

In this specification, the unobserved trend component is a random walk with drift:

$$\mu_t = \mu_{t-1} + \beta + \eta_t \quad \eta_t \sim N(0, \sigma_\eta^2) \quad (2)$$

where β is the slope⁴ of the trend and η_t is the stochastic component with zero mean. If the variance of the latter component (σ_η^2) is zero, the trend is deterministic ($\mu_t = \mu_{t-1} + \beta$) rather than stochastic. The cycle and seasonal components are also defined with a stochastic element, and reduce to a deterministic specification when the stochastic component has zero variance (see Harvey, 1989, for a more detailed treatment).

³The series used were non-seasonally adjusted: average earnings of production and non supervisory workers; the CPI for All Urban Consumers and the employment population ratio for 16 to 19 year olds. All series were obtained from the Federal Reserve of St Louis Database.

⁴The slope can also be treated as stochastic: $\beta_t = \beta_{t-1} + \xi_t$ where $\xi_t(0, \sigma_\xi^2)$. The slope is fixed ($\beta_t = \beta_{t-1}$) when $\sigma_\xi^2 = 0$. However in all cases here the slope was found to be fixed.

In that study, we estimated the model over various sub-periods in the period 1954:1 to 1999:2 in order to compare its tracking performance with other approaches and to evaluate the robustness of the findings. Special attention was paid to different episodes of federal minimum wage hikes after 1981 which occurred in 1990–91 and 1996–97. The data set here extends the sample period to 2015 and includes the hikes implemented in the period 2007 to 2009.

3 Estimates for the period 1954:1 to 2015:3

The results for the whole data run up to the third quarter of 2015 are presented in the second column of Table 1. For purposes of comparison the model is estimated for the period 1954 to 1999 (column 1). Due to data revisions and in particular the periodic re-basing of the consumer price index, there are some minor differences in these results and those presented in Bazen and Marimoutou (2002). The trend, seasonal and cyclical components are all stochastic since the variances of the stochastic elements are non-zero. In Figure 3, the stochastic nature of these components is clearly visible. The contribution of the trend is substantial and underlies the decline in the teenage employment population ratio observed after 2000—Figure 3a. The amplitude of the cycle in teenage employment varies through the period, and becomes more pronounced from the mid 1990s (3b). Finally the stochastic nature of the seasonal component is quite clear from the plot of the individual seasonals in Figure 3d (these would be parallel horizontal straight lines in the deterministic case). The seasonal variation in teenage employment is less pronounced in 1980 compared to the 1960s, and even less so by the mid 2000s (3c).

Turning to the regression part of the model, the effect of the real federal minimum wage on employment is negative and significant ($t = -3.8$). The estimated short run elasticity is -0.13 , rising in absolute value to -0.43 in the long run. The short run elasticity is almost identical to the estimate for the period up to 1999:2. The long run elasticity is slightly larger in absolute terms than the estimate⁵ of -0.37 obtained with the revised data over the period 1954:1 to 1999:2 (column 1). The difference in these estimated long run elasticities is due solely to the size of the autoregressive coefficient. The negative, statistically significant effect of the minimum wage on teenage employment is based on the coefficient on the minimum wage variable which is almost identical in the period up to 2015 as that for 1954–99. In the context of the model used, the earlier conclusion that federal minimum wage hikes have a negative effect on teenage employment is reinforced.

4 Robustness checks

The estimated effect of minimum wages is negative and statistically significant, and the short run elasticity appears to be highly stable (and this is supported by the predictive failure test). This stability is confirmed when we add the variables (EP_{t-1} , MW_t , AW_t) each multiplied by a dummy variable equal to one for observations after 1999(2)—Table 1, column 3. The t statistics for the coefficients are all less than one in absolute value. In order to further check the robustness of the results, the model is re-estimated for two sub-periods. The first is defined so as to *exclude* the most recent hikes in the federal minimum wage and runs from 1954:1 to 2006:4. The federal minimum was left unchanged at \$5.15 from 1997:3 and its real value had declined by some seven per cent

⁵The estimated short and long run elasticities were -0.12 and -0.27 in Bazen and Marimoutou (2002).

before the increase implemented in July 2007. The results are presented in column (4) of Table 1. As with the full sample period, the unobserved components are all stochastic with non-zero variances for the period 1954:1 to 2006:4. The estimated short run minimum wage elasticity is -0.13 and significant ($t = -3.62$), and the long run estimate -0.37 (slightly smaller in absolute value than that for the full period).

We next incorporate the increases that were implemented in the period 2007 to 2009, taking the federal minimum from \$5.15 first to \$5.85 in July 2007, then to \$6.55 in July 2008 and finally to \$7.25 in July 2009, where it has remained until the time of writing (May 2018). Although the minimum wage increased by 41% in nominal terms between June 2007 and July 2009, it is probably more relevant to note that it increased by 24% between July 2007 and July 2009, representing a real increase of nearly 20% over a two year period. Given the lags involved in the effect that shocks have on teenage employment, the model is estimated up to the end of 2010 (around 18 months after the last minimum wage hike) and the estimates are presented in column (5) of Table 1. The estimated short run elasticity hardly changes (-0.127 , $t = -3.85$) but the long run value is higher in absolute value (-0.47) due solely to a larger autoregressive coefficient. Finally, following a suggestion made by a referee, we estimated the model excluding the log of average real earnings from the specification due to possible endogeneity. Removing a statistically significant trending, cyclical variable from a time series model would be expected to modify the estimates to some extent—see Table 1 column (6). The estimated elasticities are still negative and statistically significant, albeit slightly smaller in absolute value (0.106 and 0.257 in the short and long run, respectively).

5 Discussion

On the basis of these time series estimates, it is difficult to deny that hikes in the federal minimum wage have a negative impact on teenage employment. The result holds over a very long data run of more than 60 years, as well as for shorter sub-periods in which the real value of the minimum wage changed by varying amounts.

The advantages of using time series data as a means of evaluating the effects of minimum wages however have been ignored or understated in much of the literature since 1990. Yet it is well-known that it is very difficult to identify the effects of federal hikes using other forms of data due to their correlation with any common time effects (see for example, and Bazen and Le Gallo, 2009).

The estimates presented here provide clear evidence that federal hikes have a negative effect on teenage employment. Taking the conclusion of the current paper as given, it is important to bear in mind that it concerns the employment of 16 to 19 year olds, a group whose employment population ratio has declined from 50% in the 1970s to less than 30% currently, and the minimum wage is not responsible for this trend decline (as is clear from Figure 3a). Indeed the teenage employment rate from 0.46 in 2000 to 0.35 in 2006 and the minimum wage was unchanged at \$5.15 between 1997 and late 2007. The reduction in employment cannot have been due to the minimum wage. It is associated with a decrease of similar magnitude in the teenage labour force participation rate.

Unlike countries such as France and the United Kingdom, federal minimum wage hikes are rare events in the United States and their impact is reversed by the subsequent erosion of the real value

of the minimum. The duration between federal hikes after the 1981 increase was 9 years; after the 1991 increase five and half years, and after the 1997 one, ten years. It has been more than eight years since the last increase in 2009. In between federal hikes, the minimum rates set in certain states become the relevant binding minimum wage. One possible reason behind the effect detected here is that in states where the only binding minimum wage is the federal rate, real labour costs for minimum wage workers are declining between hikes and are subject to substantial discrete increases when the next hike comes along. For an employer of low wage labour in a state where there is no binding state minimum, there is a strong incentive to base hiring and firing decisions on movements in the real value of the federal minimum wage due to the low frequency of federal level hikes.

6 Conclusion

This note updates and confirms the findings of our earlier study of the impact of minimum wages using time series data. The time series model used satisfactorily tracks the path of the teenage employment-population ratio over a period of more than 60 years, and yields a consistently negative and statistically significant effect of federal minimum wages on teenage employment. One conclusion is clear: federal minimum wage hikes lead to a reduction in teenage employment with a particularly stable short run elasticity of around -0.13 . The estimated long run elasticity of between -0.37 and -0.47 is less stable, but is nevertheless negative and statistically significant. These estimates are not dissimilar to those in recent studies of minimum wages in other contexts and using different methods such as Beaudry, Green and Sand (2018) for cities in the United States and Bossler, Oberfichter and Schnabel (2018) for Germany.

7 References

- Allegretto, S., A. Dube, and M. Reich (2011).** “Do minimum wages really reduce teen employment? Accounting for heterogeneity and selectivity in state panel data.” *Industrial Relations* 50 (2), 205-240. DOI: [j.1468-232X.2011.00634.x](https://doi.org/10.1468-232X.2011.00634.x).
- Bazen, S. and V. Marimoutou (2002).** “Looking for a needle in a haystack ? A re-examination of the time series relationship between teenage employment and minimum wages in the United States.” *Oxford Bulletin of Economics and Statistics* 64, 699-724. DOI: [1468-0084.64.s.7](https://doi.org/10.1468-0084.64.s.7).
- Bazen, S. and J. Le Gallo (2009).** “The state-federal dichotomy in the impact of minimum wages on teenage employment in the US.” *Economics Letters* 105, September, 267-269. DOI: [j.econlet.2009.08.017](https://doi.org/10.1016/j.econlet.2009.08.017).
- Beaudry, P., D. Green and B. Sand (2018).** “In search of labor demand.” *American Economic Review* 108 (9), September, 2714-2757. DOI: [aer.20141374](https://doi.org/10.1016/j.aer.20141374).
- Belman, D., P. Wolfson, and K. Nawakitphaitoon (2015).** “Who is affected by the minimum wage?” *Industrial Relations* 54 (4), 582-621. DOI: [irel.12107](https://doi.org/10.1016/j.irel.12107).
- Bossler, M., M. Oberfichter, and C. Schnabel (2018).** “Employment adjustments following rises and reductions in minimum wages: new insights from a survey experiment.” *IZA Discussion Paper* No 11747, August.
- Brown, C., C. Gilroy and A. Kohen (1982).** “The effect of the minimum wage on employment and unemployment.” *Journal of Economic Literature* 20, 487-528.
- Brown, C., C. Gilroy and A. Kohen (1983).** “Time series evidence on the effect of the minimum wage on teenage employment and unemployment.” *Journal of Human Resources* Winter, 18, 3-31. DOI: [10.2307/145654](https://doi.org/10.2307/145654).
- Card, D. (1992).** “Using regional variation in wages to measure the effects of the federal minimum wage.” *Industrial and Labor Relations Review* 46, 22-37. DOI: [001979399204600103](https://doi.org/10.1016/001979399204600103).
- Card, D. and A. Krueger (1995).** *Myth and measurement: the new economics of the minimum wage*. Princeton University Press, Princeton, NJ.
- A. Harvey (1989).** *Forecasting, structural time series models and the Kalman filter*. Cambridge University Press, Cambridge.
- Harvey, A. and A. Scott (1994).** “Seasonality in dynamic regression models.” *Economic Journal* 104, 1324-1345. DOI: [10.2307/2235451](https://doi.org/10.2307/2235451).
- Koopman, S.J., A. Harvey, J. Doornik, and N. Shephard (2010).** “STAMP Version 8.3.” Timberlake Consultants, London.

Neumark, D., I. Salas and W. Wascher (2014). “Re-visiting the minimum wage-employment debate: Throwing the baby out with the bathwater?” *Industrial and Labor Relations Review* 67 (2), 608-648. DOI: [10.1177/00197939140670S307](https://doi.org/10.1177/00197939140670S307).

Neumark, D. and W. Wascher (1992). “Employment effects of minimum wages and subminimum wages: panel data on state minimum wage laws.” *Industrial and Labor Relations Review* 46, 55-81. DOI: [10.1177/001979399404700309](https://doi.org/10.1177/001979399404700309).

Solon, G. (1985). “The minimum wage and teenage employment: the role of serial correlation and seasonality.” *Journal of Human Resources* 20, 292-297. DOI: [10.2307/146014](https://doi.org/10.2307/146014).

Table 1: Teenage employment population ratio regressions 1954:1 to 2015:3

	(1)	(2)	(3)	(4)	(5)	(6)
<i>Dependent variable:</i> EP_t	1954:1– 1999:2	1954:1– 2015:3	1954:1– 2015:3	1954:1– 2006:4	1954:1– 2010:4	1954:1– 2015:3
EP_{t-1}	0.664 (0.051)	0.704 (0.043)	0.675 (0.049)	0.665 (0.049)	0.731 (0.043)	0.587 (0.051)
MW_t	-0.124 (0.033)	-0.127 (0.033)	-0.129 (0.037)	-0.123 (0.034)	-0.127 (0.033)	-0.104 (0.033)
AW_t	0.669 (0.129)	0.479 (0.123)	0.474 (0.129)	0.571 (0.130)	0.513 (0.125)	
$EP_{t-1} \times D_{POST99}$			0.055 (0.078)			
$MW_t \times D_{POST99}$			0.041 (0.109)			
$AM_t \times D_{POST99}$			0.025 (0.167)			
<i>Estimated hyper-parameters</i>						
Trend	0.00006	0.000059	0.000059	0.000007	0.000063	0.00013
Cycle	0.0000001	0.0000085	0.000010	0.000009	0.0000066	0.00000001
Seasonal	0.00001	0.0000099	0.0000095	0.00001	0.000011	0.000009
Prediction error variance	0.00043	0.00048	0.00047	0.00043	0.00048	0.00049
<i>Diagnostic tests</i>						
Autocorrelation up to 20 th order (d) ^a	14.01 (12)	14.7 (14)	13.8 (14)	15.52 (13)	16.85 (13)	13.15 (14)
Heteroscedasticity (df) ^b	0.409 (58)	0.817 (79)	0.807 (78)	0.55 (68)	0.76 (73)	0.705 (80)
Normality ^c	0.531	1.825	2.004	0.822	0.76	1.67
Prediction test ^d (quarters, <i>p</i> -value)	69.5 (65, 0.32)	-	-	46.2 (35, 0.098)	16.54 (19, 0.12)	-
Number of observations	182	247	247	212	228	247

^aBox-Ljung Q statistic distributed as χ^2_d .

^bDistributed as F(df,df).

^cBowman-Shenton test distributed as χ^2_2 .

^dPredictive failure test for *q* quarters distributed as χ^2_q .

Figure 1: Teenage employment population ratio 1954:1 to 2015:3

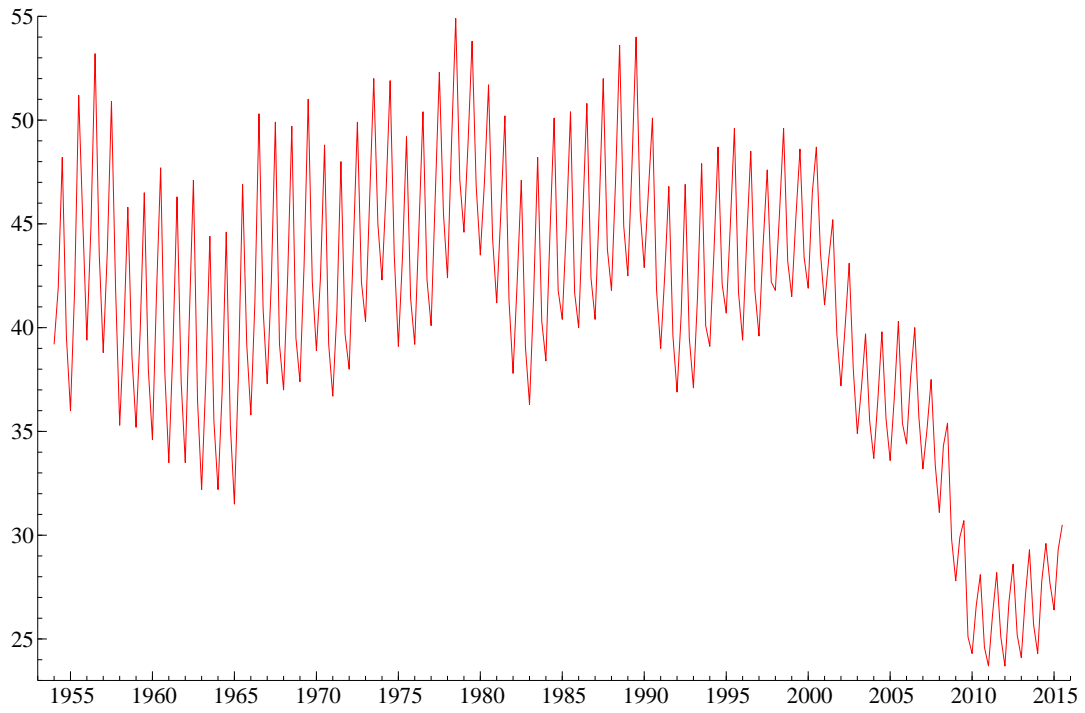


Figure 2: Minimum wage and real average earnings 1954–2015

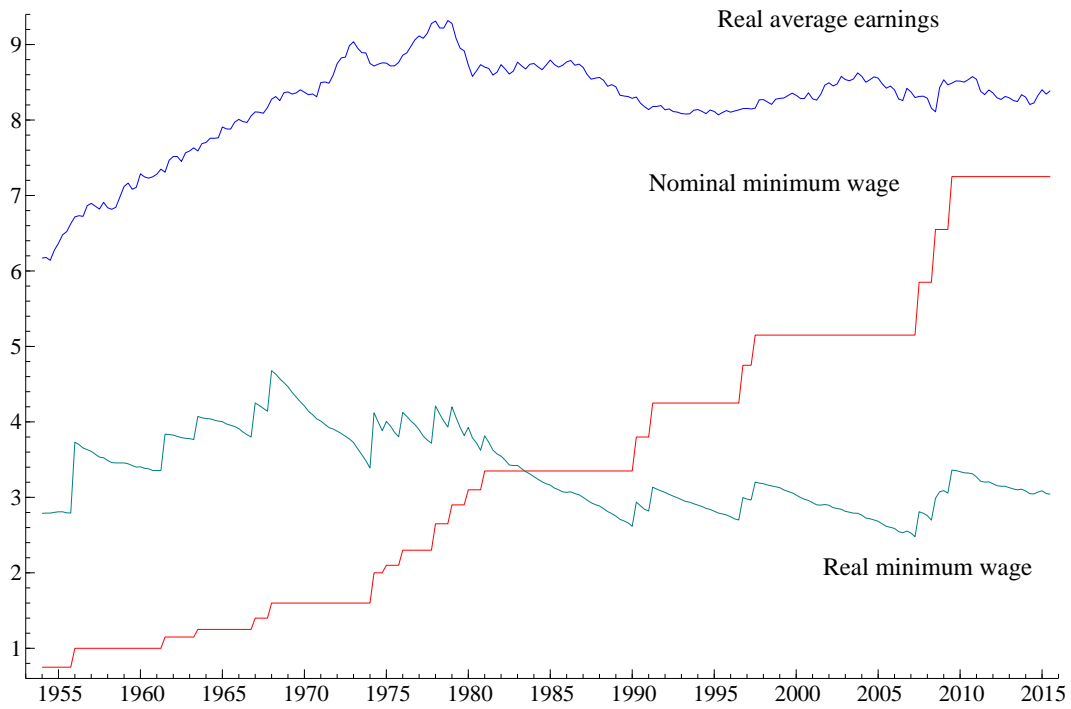


Figure 3: Trend, cyclical and seasonal components 1954:1 to 2015:3

