

Böhringer, Christoph; Bye, Brita; Fæhn, Taran; Rosendahl, Knut Einar

**Working Paper**

## Targeted carbon tariffs. Carbon leakage and welfare effects

Discussion Papers, No. 805

**Provided in Cooperation with:**

Research Department, Statistics Norway, Oslo

*Suggested Citation:* Böhringer, Christoph; Bye, Brita; Fæhn, Taran; Rosendahl, Knut Einar (2015) : Targeted carbon tariffs. Carbon leakage and welfare effects, Discussion Papers, No. 805, Statistics Norway, Research Department, Oslo

This Version is available at:

<https://hdl.handle.net/10419/192787>

**Standard-Nutzungsbedingungen:**

Die Dokumente auf EconStor dürfen zu eigenen wissenschaftlichen Zwecken und zum Privatgebrauch gespeichert und kopiert werden.

Sie dürfen die Dokumente nicht für öffentliche oder kommerzielle Zwecke vervielfältigen, öffentlich ausstellen, öffentlich zugänglich machen, vertreiben oder anderweitig nutzen.

Sofern die Verfasser die Dokumente unter Open-Content-Lizenzen (insbesondere CC-Lizenzen) zur Verfügung gestellt haben sollten, gelten abweichend von diesen Nutzungsbedingungen die in der dort genannten Lizenz gewährten Nutzungsrechte.

**Terms of use:**

*Documents in EconStor may be saved and copied for your personal and scholarly purposes.*

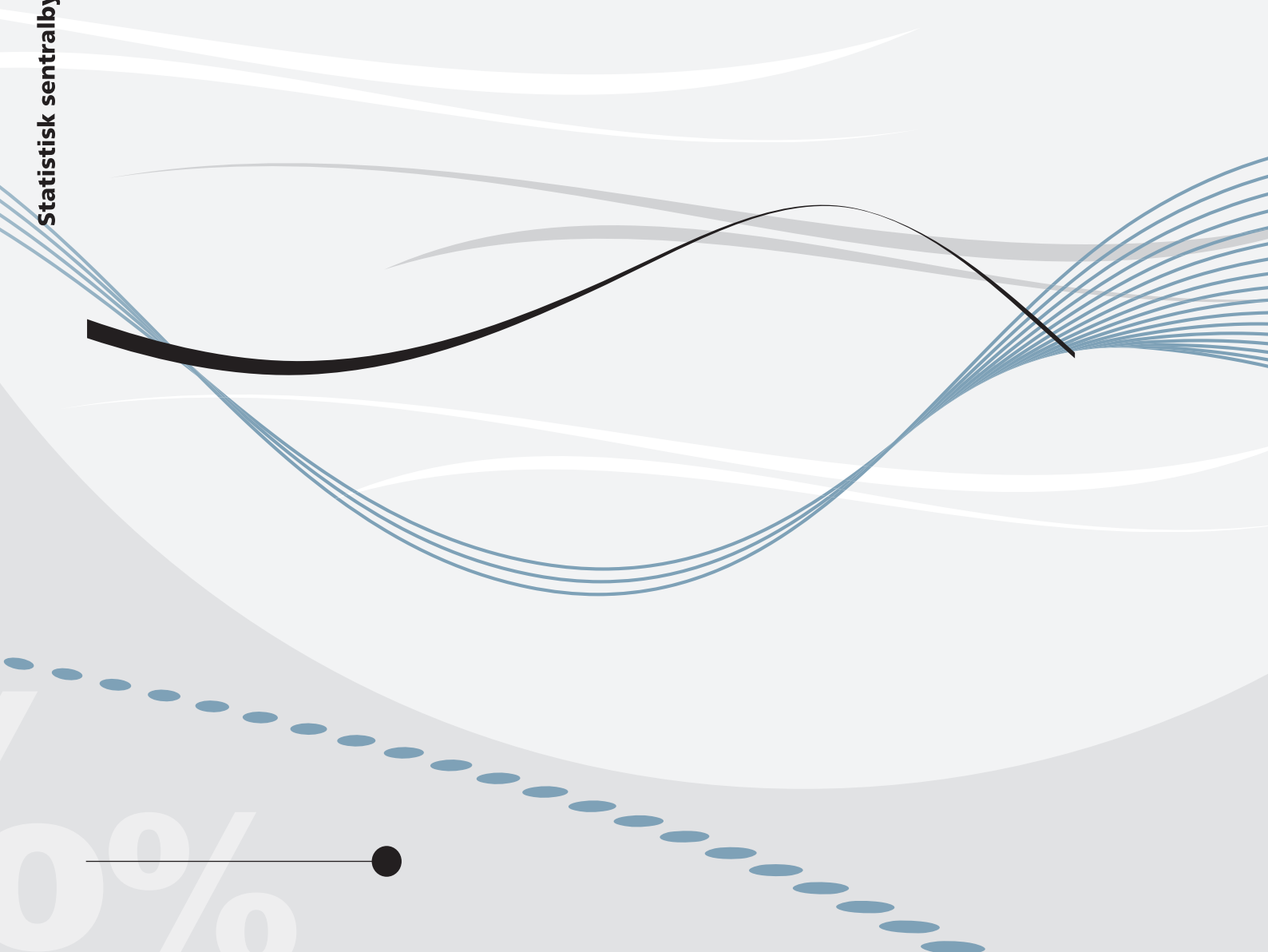
*You are not to copy documents for public or commercial purposes, to exhibit the documents publicly, to make them publicly available on the internet, or to distribute or otherwise use the documents in public.*

*If the documents have been made available under an Open Content Licence (especially Creative Commons Licences), you may exercise further usage rights as specified in the indicated licence.*

*Christoph Böhringer, Brita Bye, Taran Fæhn  
and Knut Einar Rosendahl*

## **Targeted carbon tariffs**

Carbon leakage and welfare effects





*Christoph Böhringer, Brita Bye, Taran Fæhn,  
and Knut Einar Rosendahl*

## **Targeted carbon tariffs** Carbon leakage and welfare effects

**Abstract:**

Climate effects of unilateral carbon policies are undermined by carbon leakage. To counteract leakage and increase global cost-effectiveness carbon tariffs can be imposed on the emissions embodied in imports from non-regulating regions. We present a theoretical analysis on the economic incentives for emission abatement of producers subjected to carbon tariffs. We quantify the impacts of different carbon tariff designs by an empirically based multi-sector, multi-region CGE model of the global economy. We find that firm-targeted tariffs can deliver much stronger leakage reduction and higher efficiency gains than tariff designs operated at the industry level. In particular, because the exporters are able to reduce their carbon tariffs by adjusting emissions, their competitiveness and the overall welfare of their economies will be less randomly and less adversely affected than in previously studied carbon tariff regimes. This beneficial distributional impact could facilitate a higher degree of legitimacy and legality of carbon tariffs.

**Keywords:** carbon leakage, border carbon adjustment, carbon tariffs, computable general equilibrium (CGE)

**JEL classification:** Q43, Q54, H2, D61

**Acknowledgements:** Financial support from the European Community's Seventh Framework Programme, Project ENTRACTE (No 308481) and The Research Council of Norway, Project WILL (No 235689) are acknowledged. While carrying out this research, all the authors have been associated with CREE – Oslo Centre for Research on Environmentally friendly Energy. The CREE centre acknowledges financial support from the Research Council of Norway, University of Oslo and user partners.

**Address:** Christoph Böhringer, Department of Economics, University of Oldenburg, Germany. E-mail: [boehringer@uni-oldenburg.de](mailto:boehringer@uni-oldenburg.de)

Brita Bye, Statistics Norway, Research Department. E-mail: [brita.bye@ssb.no](mailto:brita.bye@ssb.no)

Taran Fæhn, Statistics Norway, Research Department. E-mail: [taran.faehn@ssb.no](mailto:taran.faehn@ssb.no)

Knut Einar Rosendahl, Norwegian University of Life Sciences, School of Economics and Business. E-mail: [knut.einar.rosendahl@nmbu.no](mailto:knut.einar.rosendahl@nmbu.no)

---

**Discussion Papers**

comprise research papers intended for international journals or books. A preprint of a Discussion Paper may be longer and more elaborate than a standard journal article, as it may include intermediate calculations and background material etc.

© Statistics Norway  
Abstracts with downloadable Discussion Papers  
in PDF are available on the Internet:  
<http://www.ssb.no/en/forskning/discussion-papers>  
<http://ideas.repec.org/s/ssb/disppap.html>

ISSN 1892-753X (electronic)

## Sammendrag

Vi analyserer hvordan ulike utforminger av et system med karbontoll kan øke effektiviteten til klimapolitikken til en gruppe av land (koalisjon). I vårt eksempel ser vi på et kvotesystem for CO<sub>2</sub> i EU, mens resten av verden ikke fører noen aktiv klimapolitikk. Dersom EU kombinerer CO<sub>2</sub>- (kvote)prising med å legge toll på importerte varer som inneholder karbon, vil det føre til mindre karbonlekkasje og dermed ha en større klimaeffekt.

I prinsippet skal tollsatsene utformes slik at karboninnholdet i hver enkelt importerte vare beskattes med samme sats som CO<sub>2</sub>-prisen i koalisjonen, og karboninnholdet som medregnes skal inkludere alle direkte og indirekte utslippseffekter produksjonen av importvaren har forårsaket utenfor koalisjonen. I praksis er det imidlertid mange administrative, politiske og legale hindringer i veien for å få på plass et slikt optimalt system for karbontoll.

Vi ser derfor på ulike praktiske utforminger av et system for karbontoll. Først utleder vi analytiske resultater i en partiell modell for to regioner – koalisjonen og resten av verden. Deretter kvantifiserer vi, ved hjelp av en numerisk global likevektsmodell (SNoW), hvordan tollsystemene påvirker karbonlekkasje, velferd og fordeling mellom koalisjonen og landene utenfor.

Vi finner at karbontoll som rettes direkte mot karbonutslippene til den enkelte bedrift utenfor koalisjonen reduserer karbonlekkasjen og øker den økonomiske effektiviteten sammenliknet med karbontollsatser som er utformet i forhold til gjennomsnittlig karbonutslipp i en næring. Karbontoll er en implisitt CO<sub>2</sub>-pris. I et system hvor tollsatsen er beregnet ut fra karbonutslippene i den enkelte bedrift, vil den enkelte produsent kunne tilpasse sin produksjon til den implisitte CO<sub>2</sub>-prisen. Dersom tollsystemet også rettes mot indirekte utslipp knyttet til elektrisitetsforbruket i bedriftene utenfor koalisjonen, vil insentivene til å kutte utslipp bli enda sterkere. Dermed faller kostnadene for produsentene og økonomiene utenfor koalisjonen. I tillegg til at målrettede karbontollsatser gjør reduksjoner i de globale utslippene billigere, vil det kunne bidra til å redusere de politiske og legale problemene knyttet til å innføre karbontoll.

# 1. Introduction

The climate effect of unilateral carbon pricing is undermined if emission-intensive production is relocated to less regulated jurisdictions, so-called carbon leakage. Seminal theoretical papers by Markusen (1975) and Hoel (1996) suggest that a region should supplement its unilateral carbon pricing with border carbon adjustments (BCAs). BCAs are tariffs designed so as to tax, equally to domestic emissions, the carbon emissions directly and indirectly embodied in imports (carbon tariffs), combined with rebates of emission payments for exports from the unilaterally regulating region. Markusen (1975) and Hoel (1996) show that the most cost-effective BCA system for reducing carbon leakage is one that incentivises foreign producers to abate until their marginal abatement costs equal the carbon price of the unilaterally regulating region.

Although carbon tariffs have not been implemented so far, they are assessed and debated in several OECD countries. In the US and Australia the discussions have been closely linked to proposed cap-and-trade systems.<sup>1</sup> The EU, that already has a cap-and-trade system, has been nearest to a system taxing imports by its attempt in 2012 to incorporate into the EU Emission Trading System (ETS) all flights to and from EU airports (Directive 2008/101/EC). The plan has been put on hold due to fierce opposition from the international aviation community and major non-EU countries such as the US and China (Ireland, 2012). The ongoing political debate on measures for pricing emission from aviation at a global scale highlights the importance of distributional and legal issues at stake.

Various empirical studies have quantified the implications of carbon tariffs with alternative designs on the coverage of embodied carbon and the range of sectors (goods) subjected to the tariff (see e.g. the EMF 29 model cross-comparison study summarised in Böhringer et al., 2012a). However, the carbon tariff designs investigated so far are not targeted towards the individual firm or shipment, but based on the average carbon content of regions or industries. Such tariffs, however, do not give individual polluters responsible for the upstream emissions included in embodied carbon metrics a direct incentive to reduce the emission intensity of their production. To our knowledge, the only exception in the literature is Winchester (2011) who analyses systems designed to incentivise low-carbon production processes abroad. The aim of our contribution is to elaborate further on the possibilities, limitations, and implications of various carbon tariff systems designed particularly for targeting the emission intensities of foreign producers, which we will refer to as (firm-)targeted tariffs. Succeeding

---

<sup>1</sup> E.g., The American Clean Energy and Security Act, which was passed by the House of Representatives (2009) but not by the U.S. Senate.

to design and implement such systems could improve the economic efficiency and environmental effectiveness of BCA.

Compared to Winchester (2011), our contribution is threefold. First, we investigate analytically how alternative tariff designs affect firms' incentives for emission abatement. Second, our numerical simulation model is much more disaggregated at the industry- and region-level thereby enhancing the policy relevance of our assessment. Third, we cover a broader range of alternative tariff designs which offer policy makers more comprehensive insights into the trade-off across different policy options.

Over the last decade, a large number of computable general equilibrium (CGE) studies of BCAs have been carried out. The majority of the studies focus on carbon tariffs on imports, only; i.e. they do not consider simultaneous export subsidies. They confirm that carbon tariffs reduce the carbon leakage problem of unilateral policies. Also, the coalition's efficiency costs of its carbon policies, as well as the competitiveness losses of its emission-intensive industries, decline, while the opposite is true for non-coalition countries. See Branger and Quirion (2014), Böhringer et al. (2012a), and Zhang (2012) for recent overviews. The numerical studies have increased our knowledge of the role of various factors like coalition size, the coverage of the carbon tariffs, and how embodied emissions are calculated. Many studies include indirect emissions in the tariff calculations. Only rarely are all embodied emissions accounted for (e.g., Böhringer et al., 2012b), but rather often are the emissions arising from the use of electricity accounted for (e.g. Mattoo et al. 2009, Winchester 2011, Böhringer et al. 2012a).

However, most previous studies look at carbon tariffs calculated based on the industry's average emission intensities in the exporting countries/regions. They depart from the theoretical principle that the carbon tariff should adjust according to the specific embodied emissions in each imported good shipped to the border. Only by responding to the actual emission intensity of the good will the system be able to incentivise exporters oriented towards the coalition to reduce the carbon intensity of own production and also look for inputs with low carbon contents, as they would be remunerated with a lower carbon tariff. Our intention is to analyse carbon tariff regimes that go further in this direction. In practice, simplifications and generalisations need to be made in order to make the systems realistic and manageable. Winchester (2011) studied carbon tariffs that were based on the exporting firms' actual emissions and that would, therefore, adjust to producers' unit emission changes. In a global model with only two regions and one emission-intensive, trade-exposed industry, he found very modest effects of allowing for exporter emission responses. We take his ideas further, first, by including far



more details in the numerical model and, second, by also allowing for flexible carbon tariffs in response to low-carbon choices of electricity input.

Our results are more promising with respect to carbon tariffs than previous findings. Firm-targeted tariffs can deliver much stronger leakage reduction and higher global efficiency gains than region-specific tariffs. In particular, because the exporters are able to reduce their carbon tariffs by adjusting to the implicit carbon taxation of the system, both their competitiveness and the overall welfare of their economies will be less adversely affected than with region-specific tariff regimes. This beneficial distributional impact could facilitate a higher degree of legitimacy and legality. We discuss possible practical designs of targeted carbon tariffs in Section 2, then model these systems analytically in Section 3 and within a computable framework in Section 4. The numerical results are discussed in Section 5, and Section 6 concludes.

## **2. Feasibility aspects of targeted carbon tariffs**

According to Hoel (1996), the welfare-maximising carbon tariff on an imported good to a region with unilateral carbon pricing should equal the unilateral carbon price times the emissions embodied in the good. In practice, proposed and analysed systems depart from the ideal system for legal, practical and political reasons. There are particularly two criteria for optimal carbon tariffs that encounter such restrictions:

- (i) Embodiment of emissions: The tariff calculations must encompass all carbon emissions involved in the production of the good exported from the non-regulating region to the regulating region.
- (ii) The targeting of the tariffs: Carbon tariff rates must be product and firm targeted. Only when each shipment gets an individual treatment based on its embodied emissions, will exporters face the correct incentives to reduce the embodied emissions per unit of export, and not just the total export volume as for conventional tariff rates.

When comes to criteria (i) previous studies have discussed how to practically delimit the emission embodiment in the tariff calculations; see, e.g., Böhringer et al. (2012b). Total embodied carbon can be decomposed into three components; *a*) the carbon emissions directly originating from the production process of a good, *b*) indirect emissions involved in generating the electricity that is used in the production of the good and *c*) all other indirect carbon emissions caused when producing all the inputs in the production of the good. The tracking of embodied emissions will, obviously, be more complex and costly the more comprehensive the coverage.

Carbon tariff designs proposed and analysed so far adopt aggregate measures of embodiment. Most designs refer to region-specific averages for each traded good where either the exporting region or the importing region is taken as the reference. Ismer and Neuhoff (2007) suggest using the carbon content of the best available technology globally. Common to all aggregate approaches is that they do not target emissions at the firm (product) level. As a consequence, exporters in atomistic markets perceive the tariff rate as given. This will bring about reductions in exports to the unilaterally regulating region and more so the more embodied emissions are included. Since the tariff rate is taken as given, however, it provides no incentives to reduce embodied emissions *per unit* of exports. This clearly limits the efficiency of the tariff system.

Criteria (ii) on targeting, above, would ensure correct incentives to reduce unit emissions. The strength of these incentives for a particular firm would depend on the share of the firm's sales to the regulating region versus non-regulating regions and its flexibility in terms of specialising in either of the markets or building separate market-specific production lines.

One important barrier for designing systems in accordance with theory is administration (transaction) cost. The more targeted the tariff system, and the more of the indirect emission content to account, the more bureaucracy will be involved. Unless a (high) default tariff is accepted by the exporter, the information on emissions content would have to be collected by the producers (exporters) or importers and validated by some external body. A resembling system exists for food products.<sup>2</sup> The responsibility of providing, managing and controlling compliance with a certificate system can be given to the exporting countries and be administered at the exit border. This would give incentives for the administration to rationalise the information and certificate procedures, but there may also be a risk of cheating.

To our knowledge, no calculations have been undertaken so far of costs associated with the governments' administration of, and firms' compliance with, alternative carbon tariff designs. Persson (2010) presents scattered estimates of transaction cost components in international trading and carbon accounting. Evans (2003) reviews studies of administrative costs of tax systems. He observes that in cases where individual companies, not only centralised public bodies, bear a substantial part of the

---

<sup>2</sup> The ISO 22000 standards are established for the purpose of food safety management. A previous system in the EU regulated food imports for the purpose of applying variable input levies to protect agricultural production. These two systems have in common with an information system for targeted carbon tariffs that inputs of the imported goods have to be mapped on a detailed level.

paperwork, the administrative costs of tax systems rise substantially. Especially in developing countries with inefficient trading environments this would add to already high transaction costs.

However, communications and data technologies develop fast and, recently, novel emissions inventories and standards designed for tracking carbon contents have been established that could ease the administrative load. One such promising data system is the international standards of carbon footprints launched in 2013 – the ISO standard of carbon footprint (ISO 14067: 2013). Until recently there has been no common operational definition of the carbon footprint (CPA) of a product. The ISO standard of carbon footprint defines CPA as the sum of greenhouse gas (GHG) emissions and removals in a product system expressed as CO<sub>2</sub> equivalents and based on a life-cycle assessment. The product system includes inputs of other products, materials and energy flows, starting from the deployment of the raw material of natural resources (see also ISO 14044:2006). The life-cycle assessment implies that for all products the carbon emissions from both the initial raw material depletion, and the final disposal are included, a feature that makes it less relevant for direct use in carbon tariff calculations. Offsetting impacts as, e.g., investments in new renewable energy technologies, energy efficiency measures, or afforestation/reforestation, are also included.

Another relevant guide to calculating carbon contents is The Greenhouse Gas Protocol (2010), which is an updated version of the first Greenhouse Gas (GHG) Protocol. The GHG Protocol provides guidance and standards for companies and organisations preparing a GHG emissions inventory. The objective is to harmonise GHG accounting and reporting standards internationally. This shall ensure that different regimes for emission regulation adopt consistent approaches to GHG accounting. The GHG Protocol also includes adjustments for indirect emissions from electricity production, c.f. b) above.

Another possibility for documenting the carbon content of products could be to apply procedures similar to those practised for the Clean Development Mechanism (CDM), UNFCCC (2012). In contrast to, e.g., ISO certificates, the CDM certificates are based on reports from a Designated National Authority (DNA), a body in the country receiving the CDM project, which is granted the responsibility to authorise and approve participation in CDM projects.<sup>3</sup> In addition, the system requires an external validator which has technical expertise in assessing the abatement potential of the project. The DNAs are regulated by a CDM accreditation standard (UNFCCC 2014), and must report to the CDM Executive Board (nominated by the UNFCCC), which takes the final decision on whether the

---

<sup>3</sup> <http://cdm.unfccc.int/DNA/index.html>

project qualifies as a CDM project. A main issue in the CDM procedure is the assessment of the project's additionality, i.e., the abatement it adds compared to a baseline in the absence of the CDM project. This task is not relevant when settling carbon tariff rates. Another difference is that only direct emissions are measured in CDM projects, which limits the usefulness of the CDM standards. Other drawbacks are that the standards appear less transparent than the ISO standards and the procedures are labour-consuming as both the DNA, the external validator and the CDM Executive Board have to approve the assessments.

From the discussion above, it seems that the new ISO certification procedure would be the most accurate and easiest to implement. In this context, experiences from existing and previous border procedures for food products could be highly relevant for an ISO carbon footprint system.

Along with the practical obstacles of implementing and operating firm-targeted carbon tariffs come several legal and political hindrances. Böhringer et al. (2012b) discuss these issues in more detail. The main legal challenge is to comply with the World Trade Organisation (WTO) law. Discrimination of equal goods based on their production methods is not legal. Though it may be legal to take action based on environmental considerations, the rules are strict. Allowing exporters to affect their tariff rate by adjusting their carbon input could be more acceptable than rigid average tariff rates. On the other hand, comprehensive documentation requirements can be regarded as non-tariff trade barriers.

The international political implications of carbon tariffs are also a critical issue. Trade disputes can deteriorate the political climate for international cooperation and hurt further climate negotiations. The danger of retaliation from large countries must also be taken into account. This became obvious in the dispute on EU's attempt to include international flights into the EU ETS, as alluded above. Previous studies of carbon tariff systems show that the distributional effects are in disfavour of the countries subjected to them (Branger and Quirron, 2014). Distributional aspects could strengthen the case for firm-targeted tariffs, as these allow exporting firms to reduce their tariff costs and competitiveness losses.

Based on the discussion above, we cannot unambiguously conclude that a targeted system which treats firms individually increases the political, legal and practical barriers. Some aspects of firm-targeted systems can actually be politically and legally superior to less targeted systems because they have distributional advantages and can be regarded as more fair. Furthermore, practical barriers have

diminished during recent years as complex electronic data bases are developed and border registration procedures established.

### 3. Theoretical analysis

In this section we show analytically how different tariff designs may affect firms' incentives for emission abatement. We consider a region with a carbon price  $t$ , which imposes carbon tariffs  $\tau_j$  per unit of imports of goods  $j$  from various non-regulating regions.

#### 3.1 Region-specific tariffs on direct emissions

A firm  $i$  producing good  $j$  in the non-regulating region and exporting to the regulating region has the following profit function:

$$(1) \quad \pi_{ij} = p_j^y y_{ij} - p_j^x x_{ij} - \tau_j y_{ij} \quad \text{s.t.} \quad y_{ij} = f_{ij}(x_{ij}, e_{ij})$$

$p_j^y$  is the product price of good  $j$  in the market of the regulating region,  $y_{ij}$  is exported quantity,  $e_{ij}$  denotes emissions and  $p_j^x$  is the price of the input,  $x_{ij}$  (to simplify notation and without loss of generality for tariffs on direct emissions, only, we consider only one input).  $f_{ij}$  is the production function, which is assumed to be concave and increasing in both  $x_{ij}$  and  $e_{ij}$

$$(\partial f_{ij} / \partial x_{ij} > 0, \partial^2 f_{ij} / \partial (x_{ij})^2 < 0, \partial f_{ij} / \partial e_{ij} > 0, \partial^2 f_{ij} / \partial (e_{ij})^2 < 0).$$

The level of the tariff  $\tau_j$  is generally given by the product of the carbon price  $t$  and some emission intensity  $\varepsilon_j$  for good  $j$ :  $\tau_j = t\varepsilon_j$ . To start with, we assume that the tariff only targets direct emissions.

The conventional assumption in the literature is that  $\varepsilon_j$  facing the firm  $i$  is determined by the average emission intensity  $\hat{\varepsilon}_j$  of producing good  $j$  in the region in which the firm operates. Hence, assuming that each firm is too small to have a notable influence on  $\hat{\varepsilon}_j$ , the tariff  $\tau_j$  is considered exogenous for the individual firm. This is how carbon tariffs are modelled in almost all numerical studies so far (cf. the introduction).<sup>4</sup> In this case, the first-order conditions for the exporting firm  $i$  in the non-regulating region are:

---

<sup>4</sup> Alternatively, the tariffs can be based on average emission intensities over exporting countries. They can also be based on emission intensities in the regulating countries (see Böhringer et al., 2012b for an analysis of different tariff designs). Further,  $\hat{\varepsilon}_j$  can be determined either exogenously based on base-year emission intensities, or endogenously based on emission intensities in the new equilibrium. The tariff payments are usually allocated to the import country, but they could alternatively be allocated to the export country.

$$(2) \quad \partial \pi_{ij} / \partial y_{ij} = p_j^y - \tau_j - \mu_{ij} = 0$$

$$(3) \quad \partial \pi_{ij} / \partial e_{ij} = \mu_{ij} \left( \partial f_{ij} / \partial e_{ij} \right) = 0$$

$\mu_{ij}$  denotes the shadow price on the production constraint  $y_{ij} = f_{ij}(x_{ij}, e_{ij})$ , which also can be interpreted as the marginal costs of production. Equation (2) states that the firm will expand production until the price minus the (exogenous) tariff equal the marginal costs of production. Equation (3) says that the firm will not make any efforts to reduce its emissions intensity, as it does not pay off in terms of lower tariff payments.

### 3.2 Firm-targeted tariffs on direct emissions

Alternatively, the carbon tariff can be firm-targeted.<sup>5</sup>

$$(4) \quad \pi_{ij} = p_j^y y_{ij} - p_j^x x_{ij} - t \frac{e_{ij}}{y_{ij}} y_{ij} = p_j^y y_{ij} - p_j^x x_{ij} - t e_{ij} \quad \text{s.t.} \quad y_{ij} = f_{ij}(x_{ij}, e_{ij})$$

The first-order conditions for the exporting firm are:

$$(5) \quad \partial \pi_{ij} / \partial y_{ij} = p_j^y - \mu_{ij} = 0$$

$$(6) \quad \partial \pi_{ij} / \partial e_{ij} = -t + \mu_{ij} \left( \partial f_{ij} / \partial e_{ij} \right) = 0$$

We see that the firm now will expand production (export) until price equals marginal production costs. Further, the firm will increase emissions until the marginal benefits of higher emissions,  $p_j^y \left( \partial f_{ij} / \partial e_{ij} \right)$ , equal the price of emissions  $t$ . In other words, the firm will reduce emissions until marginal abatement costs equal the carbon price. Notice that a firm inside the regulating region will have the same first-order conditions, given either a carbon tax or a quota price equal to  $t$ .

By comparing the first-order conditions in equations (2)-(3) with equations (5)-(6) we notice that the first-order effect of changing from a region-specific tariff to a firm-targeted carbon tariff is to lower emissions and increase production (i.e., exports to the regulating region).

---

<sup>5</sup> In reality, this could e.g. be implemented as an option for exporting firms, where the default tariff is the country-specific tariff.

### 3.3 Region-specific tariffs on direct and indirect emissions

So far we have only considered emissions at the production plant, and disregarded indirect emissions from generating electricity or other inputs that are used in producing good  $j$ . For various goods, electricity is an important input into production, accounting for a significant share of the total carbon footprint of producing these goods. To increase the outreach and effectiveness proposals of carbon tariffs often include indirect emissions from electricity production when calculating the tariff. Again, the conventional assumption in the literature is that the tariff gets an additional term which is determined based on average emission intensities in the electricity sector and the average use of electricity per unit production of good  $j$ . In this case equations (1)-(3) are unchanged, except that the value of the tariff has increased.

### 3.4 Firm-targeted tariffs on direct and region-specific on indirect emissions

We now assume that firm-targeted tariffs are based on direct emissions (as in Equation (4)) *and* indirect emissions from own use of electricity (denoted  $x_{ij}^E$ ). Furthermore, we consider the case where the average emission intensity in the electricity sector  $\hat{\varepsilon}_E$  is used to calculate the second part of the tariff. Hence, the tariff for firm  $i$  is equal to  $t(\varepsilon_{ij} + (x_{ij}^E / y_{ij})\hat{\varepsilon}_E)$ . The profit function of the firm then becomes:

$$(7) \quad \pi_{ij} = p_j^y y_{ij} - p_j^x x_{ij} - p_j^E x_{ij}^E - t \left( \frac{e_{ij}}{y_{ij}} + \frac{x_{ij}^E}{y_{ij}} \hat{\varepsilon}_E \right) y_{ij} = p_j^y y_{ij} - p_j^x x_{ij} - p_j^E x_{ij}^E - t(e_{ij} + x_{ij}^E \hat{\varepsilon}_E)$$

$$\text{s.t. } y_{ij} = f_{ij}(x_{ij}, x_{ij}^E, e_{ij})$$

Without the tariff the optimal use of electricity is given by the standard first-order condition

$\partial \pi_{ij} / \partial x_{ij}^E = -p_j^E + \mu_{ij} (\partial f_{ij} / \partial x_{ij}^E) = 0$ , similar to equation (6) for emissions. With the tariff, however, the first-order condition for electricity use becomes (the first-order conditions given in equations (5)-(6) carry over with this tariff):

$$(8) \quad \partial \pi_{ij} / \partial x_{ij}^E = -p_j^E - t \hat{\varepsilon}_E + \mu_{ij} (\partial f_{ij} / \partial x_{ij}^E) = 0$$

We notice that the tariff enhances incentives for firms to cut back on electricity use, as the shadow price of electricity is equal to the electricity price *plus* the extra tariff payments per unit of electricity use.

### 3.5 Firm-targeted tariffs on direct and indirect emissions

Finally, we consider the case where the firm can reduce its tariff payments further if it can demonstrate that its electricity use comes from electricity plants with lower than average emission intensities.<sup>6</sup> The tariff then becomes  $t(\varepsilon_{ij} + (x_{ij}^E / y_{ij})\varepsilon_{iE})$ , where  $\varepsilon_{iE}$  denotes the emission intensity of the electricity bought by firm  $i$ . The firm now has an incentive to pay electricity generators an additional amount if they can deliver cleaner than average electricity. A reduction in the emission intensity  $\varepsilon_{iE}$  will lower the tariff payment by  $t$  for every unit of electricity used. Hence, the firm will be willing to pay up to  $t x_{ij}^E$  for every unit reduction in  $\varepsilon_{iE}$ . To investigate the outcome of such a tariff, we first consider the case where the firm owns the electricity plant delivering electricity to the firm (in other words: the firm does own generation). In this case, the firm internalizes all costs and benefits from electricity generation. Its profit function becomes:

$$(9) \quad \begin{aligned} \pi_{ij} &= p_j^y y_{ij} - p_j^x x_{ij} - p_j^E x_{ij}^E - t \left( (e_{ij} / y_{ij}) + (x_{ij}^E / y_{ij}) (e_{ij}^E / x_{ij}^E) \right) y_{ij} + p_j^E x_{ij}^E - p_E^x x_{iE}^E \\ &= p_j^y y_{ij} - p_j^x x_{ij} - p_j^E x_{ij}^E - t (e_{ij} + e_{ij}^E) + p_j^E x_{ij}^E - p_E^x x_{iE}^E \\ \text{s.t.} \quad y_{ij} &= f_{ij}(x_{ij}, x_{ij}^E, e_{ij}) \quad \text{and} \quad x_{ij}^E = f_{iE}(x_{iE}, e_{iE}) \end{aligned}$$

where  $f_{iE}$  is the production function for electricity generation, and  $x_{iE}$  denotes input into this production. Note that we keep  $-p_j^E x_{ij}^E$  and  $+p_j^E x_{ij}^E$  in the expression to explicitly state the (internal) payment for electricity.

The first-order conditions are given by Equations (5), (6) and:

$$(10) \quad \partial \pi_{ij} / \partial x_{ij}^E = \mu_{ij} \left( \partial f_{ij} / \partial x_{ij}^E \right) - \mu_{ij}^E = 0$$

$$(11) \quad \partial \pi_{ij} / \partial e_{ij}^E = -t + \mu_{ij}^E \left( \partial f_{iE} / \partial e_{ij}^E \right) = 0$$

where  $\mu_{ij}^E$  denotes the shadow price on the electricity production constraint  $x_{ij}^E = f_{iE}(x_{iE}, e_{iE})$ , which can be interpreted as the marginal costs of generating electricity. Equation (10) simply states that the marginal costs of generating electricity should equal the marginal benefits through its impact on firm output. Equation (11) states that the marginal costs of reducing emissions in electricity generation

---

<sup>6</sup> Alternatively, since electricity usually comes from the grid and not from one or a few specific plants, the firm could possibly buy green certificates or in other ways pay for greener than average electricity production, see footnote 9.



should equal the carbon price  $t$ . Hence, the electricity generation used to supply the firms exporting to the regulating region faces the same incentives as electricity producers inside the regulating region. Finally, we drop the assumption that the firm does own generation. In this case electricity generation is “outsourced”, and the firm makes an agreement with an electricity producer. A likely outcome is that the two firms will come to an agreement that optimizes their joint profit. If so, the first order conditions above still hold.

## 4. Numerical analysis

### 4.1 Scenarios

Our numerical analysis is designed to compare alternate carbon tariff designs that combine variations of the two dimensions presented in Section 2: (i) the embodiment of emissions and (ii) the degree of targeting. When it comes to (i) we look at systems including direct emissions (*Dir*) and both direct and indirect emissions from electricity (*Indir*). In terms of (ii) we study region-specific (*Reg*) and firm-targeted (*Firm*) tariffs.

We consider six different carbon policy scenarios, which we compare against the business-as-usual (*BaU*) without carbon policy regulation. In the *benchmark* scenario (*Bench*) we introduce uniform carbon pricing via a domestic cap-and-trade regime in the regulating region. The five remaining scenarios combine carbon pricing with tariffs based on embodied carbon. The combinations are in line with the five systems analysed in our theoretical exposition in Section 3; see Table 1. Beyond the four scenarios representing all combinations of the dimensions (i) and (ii), they include the system studied by Winchester (2011) that combines firm-targeting of direct emissions with embodiment of indirect emissions from electricity in a region-specific manner (*FirmDirRegIndir*).

We impose the same cap on global emissions across all policy scenarios at the level that emerges from the *Bench* scenario.<sup>7</sup> Thus, welfare outcomes can be compared across scenarios irrespective of the evaluation of emissions. In our core simulations we take Europe (EU28 plus EFTA) as the unilaterally abating region. Carbon tariff systems apply to emission-intensive and trade-exposed goods (industries) imported to Europe from all other regions, see Table 2 for details.

---

<sup>7</sup> Technically, we adjust the emission cap of the regulating region endogenously such that the carbon price in the regulating region ensures the global emissions to be ceiled at the emission level of the *Bench* scenario.

**Table 1: Overview of scenarios**

Scenario	Description	Theoretical analysis
Bench	Uniform carbon price in EUR	
RegDir	Uniform carbon price + tariffs based on a <i>region's</i> average <i>direct</i> emissions in the industry	See section 3.1
FirmDir	Uniform carbon price + tariffs based on <i>firm-specific direct</i> emissions	See section 3.2
RegIndir	Uniform carbon price + tariffs based on a <i>region's</i> average <i>direct</i> emissions per industry and <i>indirect</i> emissions from electricity	See section 3.3
FirmDirRegIndir	Uniform carbon price + tariffs based on <i>firm-specific direct</i> emissions and region-specific <i>indirect</i> emissions from electricity	See section 3.4
FirmIndir	Uniform carbon price + tariffs based on <i>firm-specific direct</i> emissions and <i>indirect</i> emissions from electricity	See section 3.5

## 4.2 The computable general equilibrium model

For our quantitative economic impact analysis of targeted border carbon tariffs we use a multi-region, multi-sector CGE model of global trade and energy established for the analysis of GHG emission control strategies (see, e.g., Böhringer et al., 2010, for a detailed algebraic description). The CGE approach makes it possible to address both economy-wide efficiency as well as distributional impacts of the carbon policy reforms.

Our model features a representative household in each region that receives income from three primary factors: labour, capital and fossil fuel resources. Labour and capital are intersectorally mobile within a region but immobile between regions. Fossil fuel resources are specific to fossil fuel production sectors in each region. Production of commodities other than primary fossil fuels is captured by three-level constant elasticity of substitution (CES) cost functions describing the price-dependent use of capital, labour, energy and materials (KLEM). At the top level, a CES composite of intermediate material demands trades off with an aggregate of energy, capital and labour. At the second level, a CES function describes the substitution possibilities between intermediate demand for the energy aggregate and a value-added composite of labour and capital. At the third level, capital and labor substitution possibilities within the value-added composite are captured by a CES function whereas different energy inputs (coal, gas, oil, and electricity) enter the energy composite subject. In the production of fossil fuels, all inputs, except for the sector-specific fossil fuel resource, are aggregated in fixed proportions. This aggregate trades off with the sector-specific fossil fuel resource at a constant elasticity of substitution.

Final consumption demand in each region is determined by the representative agent who maximizes welfare subject to a budget constraint with fixed investment (i.e., a given demand for savings) and exogenous government provision of public goods and services. Total income of the representative agent consists of net factor income and tax revenues net of subsidies. Consumption demand of the representative agent is given as a CES composite that combines consumption of composite energy and an aggregate of other (non-energy) consumption goods. Substitution patterns within the energy bundle as well as within the non-energy composite are reflected by means of CES functions.

Bilateral trade is specified following the Armington's differentiated goods approach, where domestic and foreign goods are distinguished by origin (Armington, 1969). All goods used on the domestic market in intermediate and final demand correspond to a CES composite that combines the domestically produced good and the imported good from other regions. A balance of payment constraint incorporates the base-year trade deficit or surplus for each region.

CO<sub>2</sub> emissions are linked in fixed proportions to the use of fossil fuels, with CO<sub>2</sub> coefficients differentiated by the specific carbon content of fuels. Restrictions to the use of CO<sub>2</sub> emissions in production and consumption are implemented through a CO<sub>2</sub> tax or (in the sensitivity analysis) as an (equivalent) exogenous emission constraint. CO<sub>2</sub> emission abatement takes place by fuel switching (interfuel substitution) or energy savings (either by fuel-non-fuel substitution or by a scale reduction of production and final consumption activities).

### **4.3 Implementation of firm-targeted tariffs**

We differentiate trade flows at the bilateral level. Each industry (sector) in each region disposes of production lines distinguished by destination.<sup>8</sup> When firm-targeted tariffs are introduced on bilateral trade flows, the export production lines subjected to tariffs will have incentives to change the input mix as shown in the theory part, Section 3.

We consider tariffs based on both direct emissions and indirect emissions from electricity use. When the latter part of the tariff is based on average emission intensities in the region, electricity will become more expensive for exporters inducing them to use less electricity than before. When the tariff is based on the individual firm's indirect emissions, i.e., emissions from the electricity used by the

---

<sup>8</sup> All production lines within a sector share the same CES production technology (see section 4.2). Thus, *BaU* production across the different lines split proportionally to *BaU* supply shares.

individual firm, the firm has a direct incentive to buy less emission-intensive electricity. To represent this mechanism, we distinguish electricity supply to the different production lines

Obviously, with a national electricity grid, it is not possible to know where exactly the electricity comes from (unless it is produced in the firm through own generation). Our setting can be interpreted as if a market will emerge for some labelling or certificate system, providing firms with credible documentation on the carbon content of their electricity input. This system could resemble systems already existing in countries with regulations, including several US states, the UK and the common Swedish-Norwegian green certificate market.<sup>9</sup>

It should be noted that our implementation of tariffs in the model still keeps the assumption that firms within each industry and region have homogenous technologies. This simplifying assumption significantly reduces the necessary data input of the already comprehensive and detailed model. However, this comes at some loss in real-world heterogeneity. Even before introducing carbon tariffs emission intensities will likely vary across firms within the same sector. Carbon tariffs could, thus, lead to sorting where the least emission-intensive firms export to the regulating region, while the most emission-intensive firms supply to the other regions. Although the least emission-intensive firms may still find it profitable to reduce emissions further when tariffs are firm-targeted rather than region-specific, our model setting will probably overestimate the difference. This is also the case when we consider emissions from electricity generation. Instead of reducing emission intensities in some plants, the reality could be that the exporters switch to electricity plants with relatively low emissions. Thus, the options could be more discrete than our modelling implicitly assumes and, again, the firm-targeting will have smaller impacts compared to a setting where agents are representative.

#### **4.4 Data**

Our CGE analysis is based on the most recent version of the Global Trade, Assistance and Production (GTAP) database which includes detailed national accounts on production and consumption (input–output tables) together with bilateral trade flows and CO<sub>2</sub> emissions for the year 2007 (version 8 of GTAP – see Narayanan et al., 2012). GTAP can be flexibly aggregated towards a composite dataset that accounts for the specific requirements of the policy issue under investigation. As to sectoral disaggregation our composite dataset includes all major primary and secondary energy carriers: coal, crude oil, natural gas, refined oil products and electricity. This disaggregation is essential in order to

---

<sup>9</sup> See [http://www.cleanpowermarkets.com/green\\_certificates.php](http://www.cleanpowermarkets.com/green_certificates.php) for states in the US, <http://www.greenenergyscheme.org/> for the UK, and <http://www.nve.no/en/Electricity-market/Electricity-certificates/> for Norway-Sweden.

distinguish energy goods by CO<sub>2</sub> intensity and the degree of substitutability. In addition, we separate the main emission-intensive and trade-exposed (EITE) sectors: chemical products, non-metallic minerals, iron and steel products, and non-ferrous metals, as they will be potentially most affected by emission control policies and therefore are the prime candidates for compensatory measures such as carbon tariffs.<sup>10</sup> The remaining industries covered in our dataset include three transport sectors, as well as a composite sector of all remaining manufacturers and services. Regarding regional coverage, we explicitly include major industrialised and developing countries to capture international market responses to unilateral emission regulation. Table 1 summarises the sectors (commodities) and regions present in our actual impact analysis of alternative carbon tariff schemes.

**Table 2: Model sectors and regions**

Sectors and commodities	Countries and regions
Energy	Europe – EU-28 plus EFTA (EUR)
Coal (COA)	United States of America (USA)
Crude oil (CRU)	Russia (RUS)
Natural gas (GAS)	Remaining Annex 1** (RA1)
Refined oil products* (OIL)	Energy exporting countries (EEX)
Electricity (ELE)	China (CHN)
	India (IND)
Emission-intensive & trade-exposed sectors*	Other middle income countries (MIC)
Chemical products (CRP)	Other low income countries (LIC)
Non-metallic minerals (NMM)	
Iron and steel industry (I_S)	
Non-ferrous metals (NFM)	
Other sectors	
Air transport (ATP)	
Water transport (WTP)	
Other transport (OTP)	
All other manufactures and services (AOG)	

\*Included in the composite *Emission-intensive, trade-exposed industries* (EITE) when implementing tariffs on EITE goods.

\*\*Includes Canada, Japan, Belarus, Ukraine, Australia, New Zealand, and Turkey.

For model parameterisation, we follow the standard calibration procedure in CGE analysis: the base-year input-output data determine the free parameters of the functional forms — cost and expenditure functions — such that the economic flows represented in the data are consistent with the optimising behaviour of the model agents. The responses of agents to price changes are determined by a set of exogenous elasticities taken from the pertinent econometric literature. Elasticities in international trade (Armington elasticities) indicate the substitutability between varieties of each good between three regions, which is a key characteristic in the analysis. These Armington elasticities are taken from the GTAP database which also provides estimates for substitution elasticities among factor inputs to

<sup>10</sup> Note that *Refined oil products* also classify as an EITE good when we implement tariffs on EITE goods.

production. The elasticities of substitution in fossil fuel sectors are calibrated to match exogenous estimates of fossil fuel supply elasticities (Graham et al., 1999; Krichene, 2002).

#### **4.5 Simulation results**

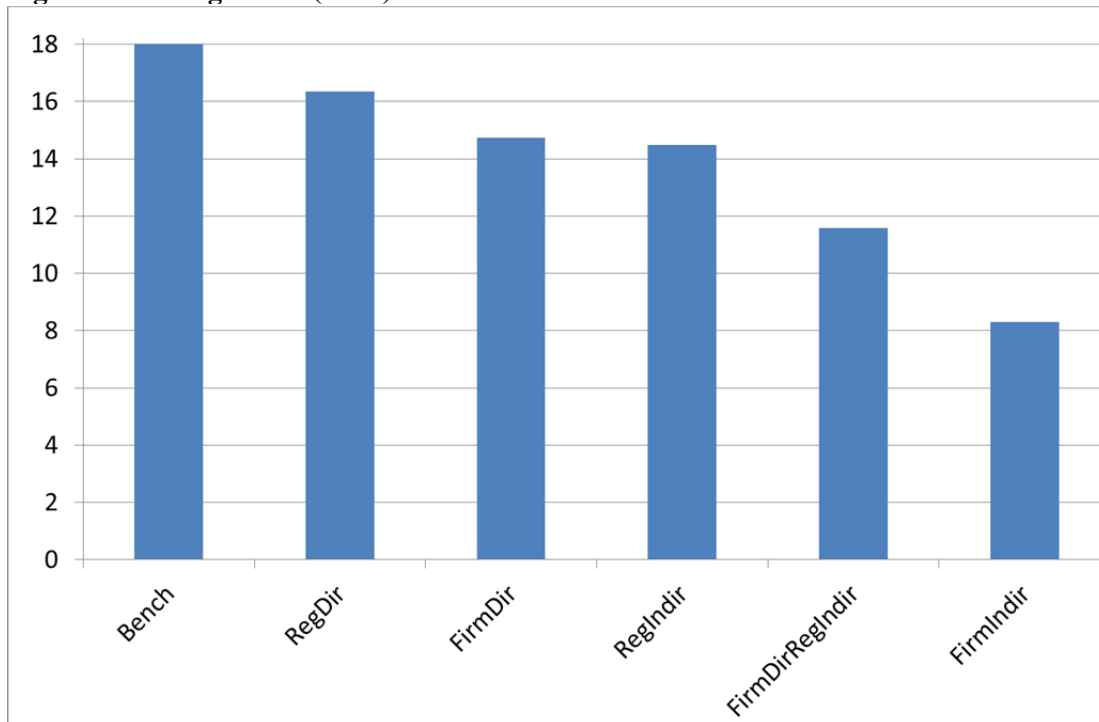
Our core simulations refer to unilateral emission regulation of Europe. The *Bench* scenario involves a 20% reduction in domestic CO<sub>2</sub> emissions for Europe as compared to its *BaU* emission levels. The remaining five climate policy scenarios achieve the same global emission reduction as *Bench* for alternative assumptions on the design of supplemental carbon tariffs that are applied to EITE goods. If not stated otherwise, the effects of policy regulation are reported as percentage change from the *BaU* situation. In our exposition below, we use the acronym EUR to refer to Europe and the acronym non-EUR to denote all other regions.

##### ***Carbon leakage***

Figure 1 shows the carbon leakage rates in the policy scenarios, i.e. the increase in emissions in the non-EUR regions divided by the emissions reduction in EUR resulting from its policy. In *Bench*, the scenario with no carbon tariffs, the leakage rate is 18.0%. In line with previous studies (see e.g. Fischer and Fox, 2012, and the EMF study summarised by Böhringer et al., 2012a), we see that tariffs based on average regional embodied emissions reduce the leakage rates, and particularly so if they also take into account indirect emissions from electricity production. The resulting leakage rates in the *RegDir* and *RegIndir* scenarios are 16.4% and 14.5%, respectively.

Our analysis of *firm-targeted* tariffs provides new insight compared to the existing literature. As Figure 1 shows, carbon leakage declines further as the exporting firms face incentives to abate. Moving from *RegDir* to *FirmDir*, when the tariffs are based on direct embodied emissions, only, yields a modest reduction in the leakage rate, from 16.4% to 14.7%. The drop is considerably larger when the tariffs are based on indirect emissions from electricity use, too; leakage drops from 14.5% under *RegIndir* to 8.3% under *FirmIndir*. As mentioned above, Winchester (2011) considers a hybrid variant where the embodied emissions that are accounted for by the tariff consist of firm-specific direct emissions and region-specific indirect emissions from electricity. For comparison, we also include this scenario in our analysis (*FirmDirRegIndir*). It yields a carbon leakage rate of 11.6%, i.e., a reduction of one third from the benchmark level (*Bench*), quite similar to the results reported by Winchester (2011).

**Figure 1: Leakage rates (in %)**



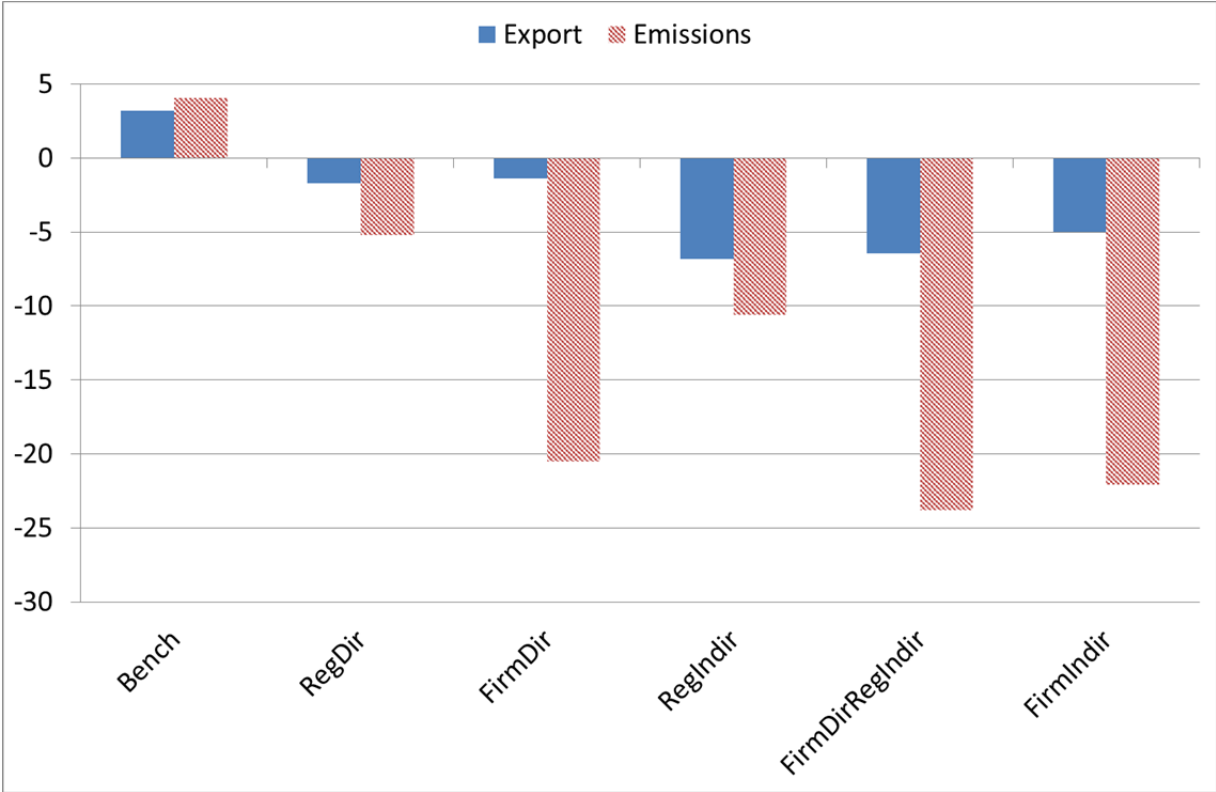
### ***EITE exports, emissions and tariff payments***

Figure 2 shows how EITE export from non-EUR regions to EUR are affected in the five policy scenarios compared to *BaU*. It also shows the impact on emissions from this export activity. In the *Bench* scenario, we notice that export increases, which is as expected. We also see that emissions increase slightly more than output – increased emission intensities are due to lower world market prices of fossil fuels caused by reduced consumption of these fuels in EUR.

When we consider the tariff scenarios, we see that EITE export from the non-EUR regions to EUR is reduced for all tariff scenarios and that the related emissions decrease even more than the export levels, i.e., emission intensities decline. At first glance this may seem counter-intuitive in the cases with region-specific tariffs: First, as we showed in the analytical part, region-specific tariffs do not give firms incentives to reduce emissions per output. Second, fossil fuel prices are still reduced in these tariff scenarios, suggesting substitution towards, not away from, these fuels. The explanation is that the composition of EITE export changes towards less emission-intensive EITE goods. In particular, export from regions with high emissions intensities is partly replaced by export from regions with lower emissions per output, as the tariffs are based on the average emissions intensities in the particular region.

Figure 2 highlights two important effects of moving from *RegDir* to *FirmDir*. First of all, emissions related to the EITE export from the non-EUR regions to EUR are drastically reduced. This reduction is much larger than the corresponding output reduction, reflecting a significant decline in average emission intensities. This suggests that firms' emission intensities have fallen as a response to the incentives that firm-targeted tariffs create for reducing emission intensities, thereby avoiding parts of the tariff burdens. In addition, compositional changes of the exports take place. However, by studying the emission intensities region by region and sector by sector, we find that the former explanation is, indeed, the dominant. The second observed effect when moving from *RegDir* to *FirmDir* in Figure 2 is that the tariffs in *FirmDir* lead to smaller cutbacks in export from the non-EUR regions to EUR than do *RegDir* tariffs. This is consistent with our analytical discussion and the observation of emission intensities above: As long as firms find it profitable to reduce their emission intensity, their tariffs are reduced and, hence, it becomes more profitable to export to EUR.

**Figure 2: EITE exports from non-EUR regions to EUR and associated emissions (% change from BaU)**



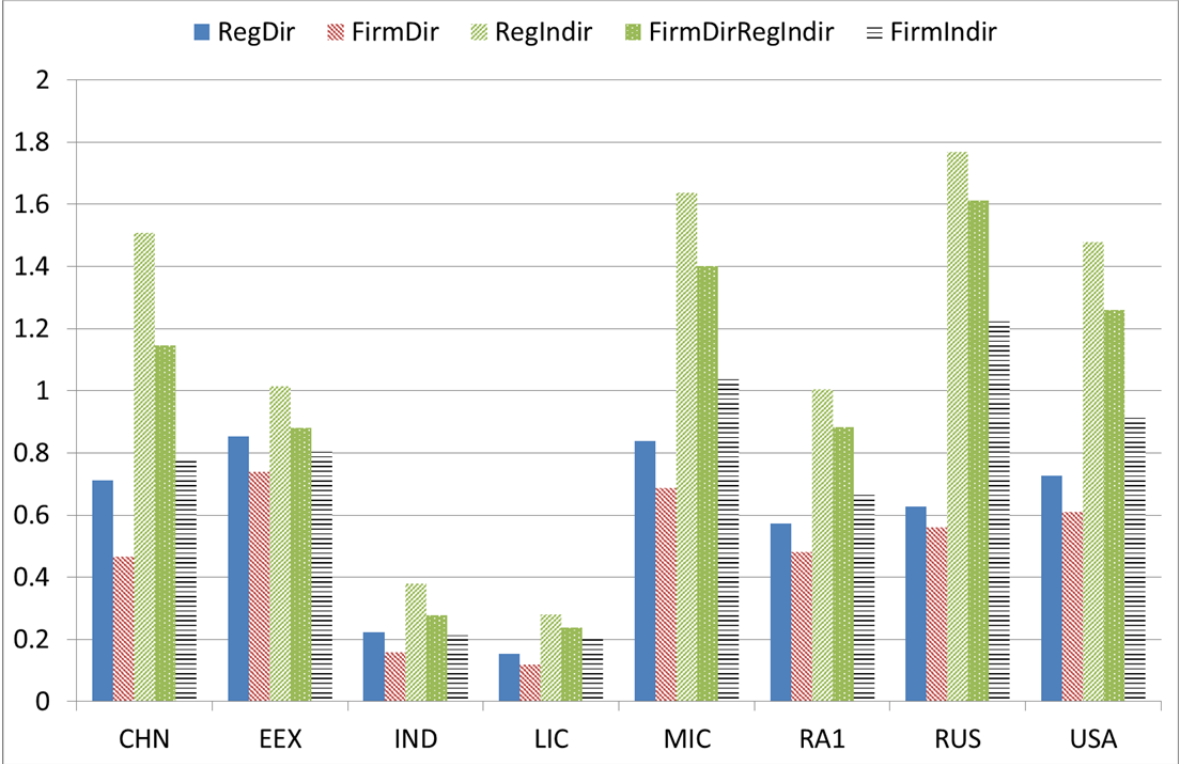
When comparing the *RegDir* and *FirmDir* scenarios with the corresponding scenarios where indirect emissions from electricity are accounted for (*RegIndir* and *FirmIndir*) we observe, as expected, that the EITE export to EUR declines as the tariffs are increased and include more embodied carbon (see Figure 2). The hybrid case *FirmDirRegIndir* also has smaller export than the two *Dir*-scenarios, and



also lower (direct) emissions associated with this production. However, we notice that emissions do not decline as much as exports when moving from *FirmDir* to *FirmIndir*, i.e., average emission intensities at the EITE plants increase. This is partly due a lower CO<sub>2</sub> price in EUR (see Figure 4). Lower carbon leakage and, thus, less CO<sub>2</sub> cuts necessary in EUR in order to keep global emissions unchanged, explain the drop in the CO<sub>2</sub> price. This is carried over to the carbon tariff, which thus gives a weaker incentive to reduce emissions at the EITE firm. An additional explanation for the increased emission intensity is that when the tariff also includes indirect emissions from electricity, the EITE firms have incentives to switch away from the use of electricity towards other inputs such as fossil fuels (in the *FirmIndir* and *FirmDirRegIndir* scenarios). The *economy-wide* emission responses of including indirect emissions are, however, far larger in the *Firm* than in the *Reg* cases, because of the additional abatement incentives in the electricity sector of the former.

The carbon tariff payments of different non-EUR regions are illustrated in Figure 3. We see that for all regions, the tariff payments decrease when moving from *RegDir* to *FirmDir*. This comes in spite of larger exports from all the non-EUR regions in *FirmDir* and reflects a drop in the tariff rates. The main explanation is that the embodied emissions in the exports fall when the firms have the incentive to reduce their emission intensities.

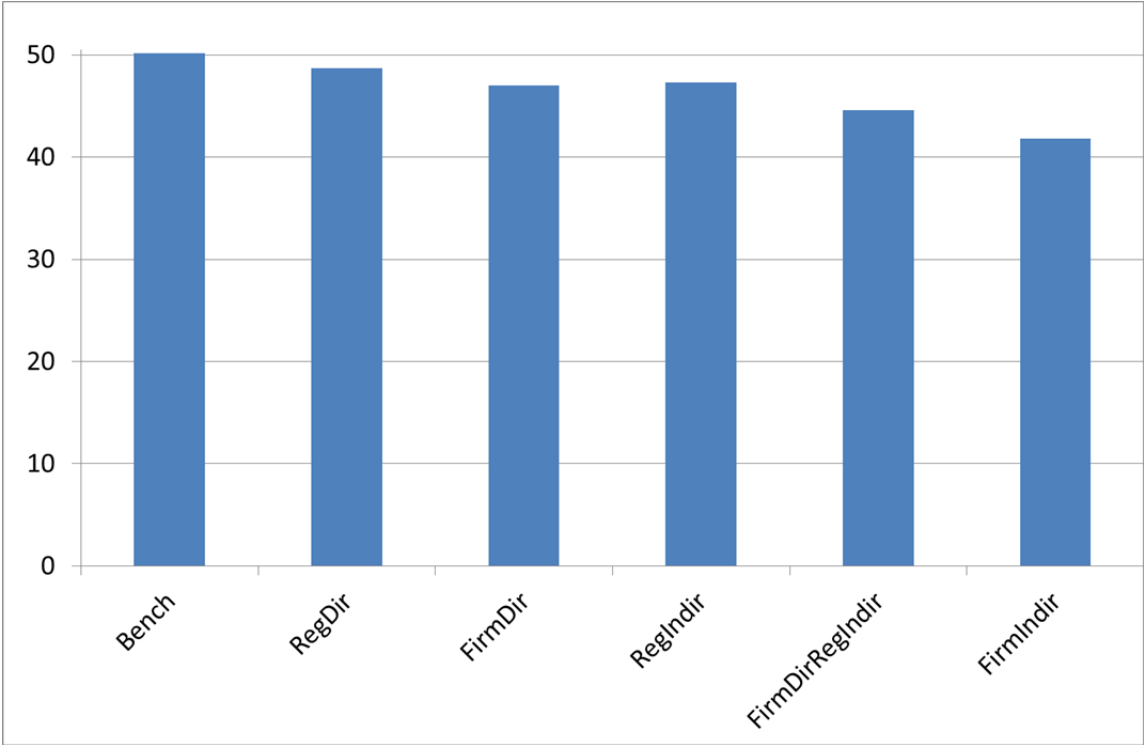
**Figure 3: Carbon tariff payments by non-EUR regions (billion USD<sub>2007</sub>)**



Note: See Table 2 for regional acronyms

The reduction in tariff payments of the non-EUR regions is even stronger when moving from *RegIndir* to *FirmIndir*. There are two mechanisms driving this result. First, emissions from the electricity generating plants that supply the EITE producers exporting to EUR, decline by 18%. This is due to a combination of lower emission intensity among these plants, and the reduction in electricity use for the EITE producers. These behavioural changes illustrate the potential benefits of additionally targeting indirect emissions from electricity generation when firm-specific tariffs are used. The second explanation is that the necessary CO<sub>2</sub> price to reach the global emission reduction target is reduced by 12% in the *FirmIndir* case compared to *RegIndir*; see Figure 4. As explained above, reduced carbon leakage allows for a drop in the domestic EUR emission price.

**Figure 4: CO<sub>2</sub> price (USD<sub>2007</sub> per ton CO<sub>2</sub>)**



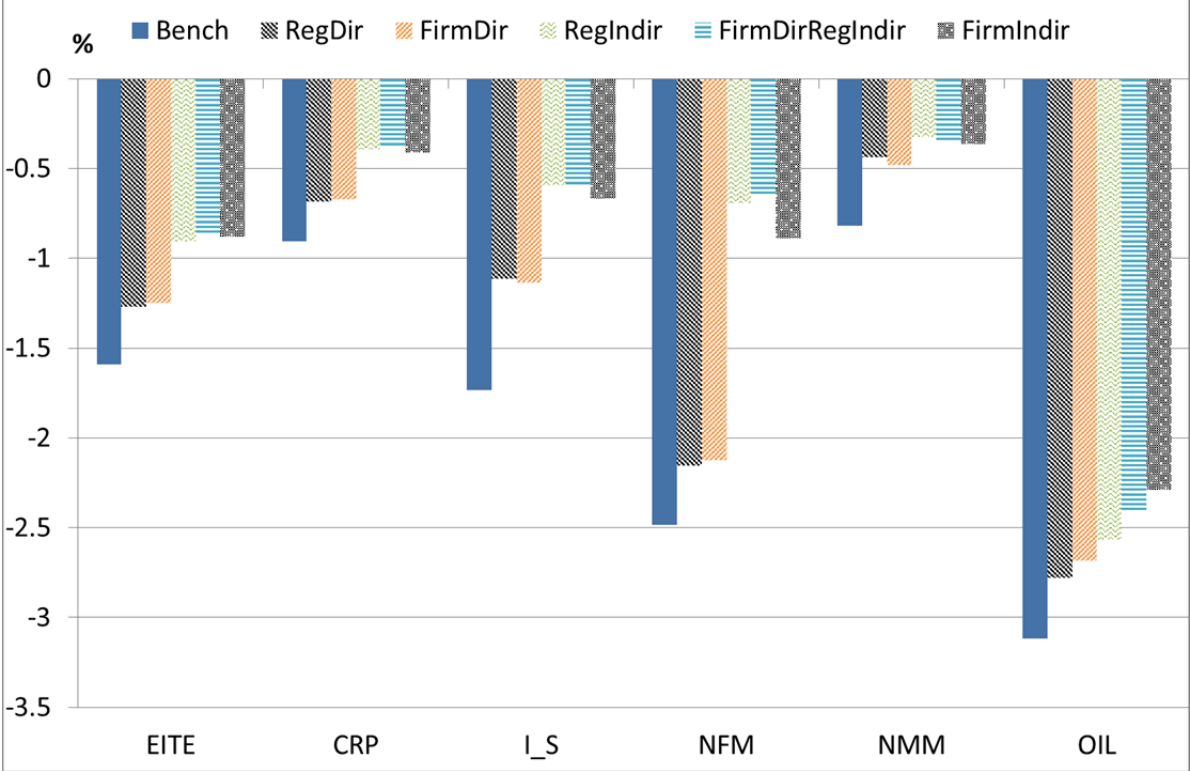
The hybrid regime *FirmDirRegIndir* provides incentives in the EITE industries to use less electricity than in the *FirmDir* case. However, as for *RegIndir*, the emission intensities of power generators do not respond. This case, thus, reduces tariff payments for all non-EUR regions compared to *RegIndir*, but not as much as is seen for the *FirmIndir* case.

***EITE output***

The introduction of carbon pricing in EUR (the *Bench* scenario) leads to lower output of EITE goods; see Figure 5. EITE goods are emission-intensive such that carbon pricing induces a non-negligible

increase in production costs. Even in a closed market we would expect reduced EITE output as a consequence of structural change towards a lower carbon economy. In an open economy, unilateral emissions pricing will decrease international competitiveness of domestic EITE production with a relocation of EITE production to non-EUR regions. Figure 5 reveals differences across the EITE sectors, which are due to differences in emission intensities and trade exposure, the latter being reflected in initial trade shares and Armington elasticities.

**Figure 5: EITE production in EUR (% change from BaU)**



Note: See Table 2 for sectoral acronyms

Supplementing the carbon pricing with carbon tariffs attenuates the EITE output losses in EUR. We find this irrespective of the tariff scenario and across all EITE sectors (cf. Figure 5). Comparing *RegDir* with *FirmDir* reveals mixed results across industries. As EITE exports from the non-EUR regions to EUR slightly increase when moving from *RegDir* to *FirmDir* (Figure 2), one might expect the EUR output to move in the opposite direction, as a competitiveness effect. However, we see this only for two of the EITE industries: *Iron & steel* and *Non-metal minerals*. For the remainder we find that *FirmDir* results in a smaller fall from *BaU* in the EUR outputs than *RegDir*. For *Refined oil* the output increase is substantial and dominates the overall output result for the EITE aggregate. The explanation for these mixed results on output is that there are two driving forces that go in different directions: One is the increased competition from imports, which is due to lower tariffs for non-EUR

firms under *FirmDir*. The other is lower production costs due to lower CO<sub>2</sub> and energy prices in *FirmDir* than in *RegDir* (see e.g. Figure 4), which tends to stimulate domestic output. In the same vein, we can explain the sector-specific output effects of moving from region-specific to firm-targeted tariffs when indirect emissions from electricity are accounted for (from *RegIndir* to *FirmIndir*). In this case, the competition effect dominates the effects of lower production costs for all EITE industries, except *Refined oil* and, thus, output is lower. Aggregate EITE output also drops.

### ***Welfare effects***

Previous studies have shown that carbon tariffs are likely to reduce the welfare costs of climate policies, both for the unilaterally abating region and for the world as a whole, while non-abating regions suffer from the imposition of tariffs (Böhringer et al., 2012a; Fischer and Fox, 2012; Mattoo et al., 2009).

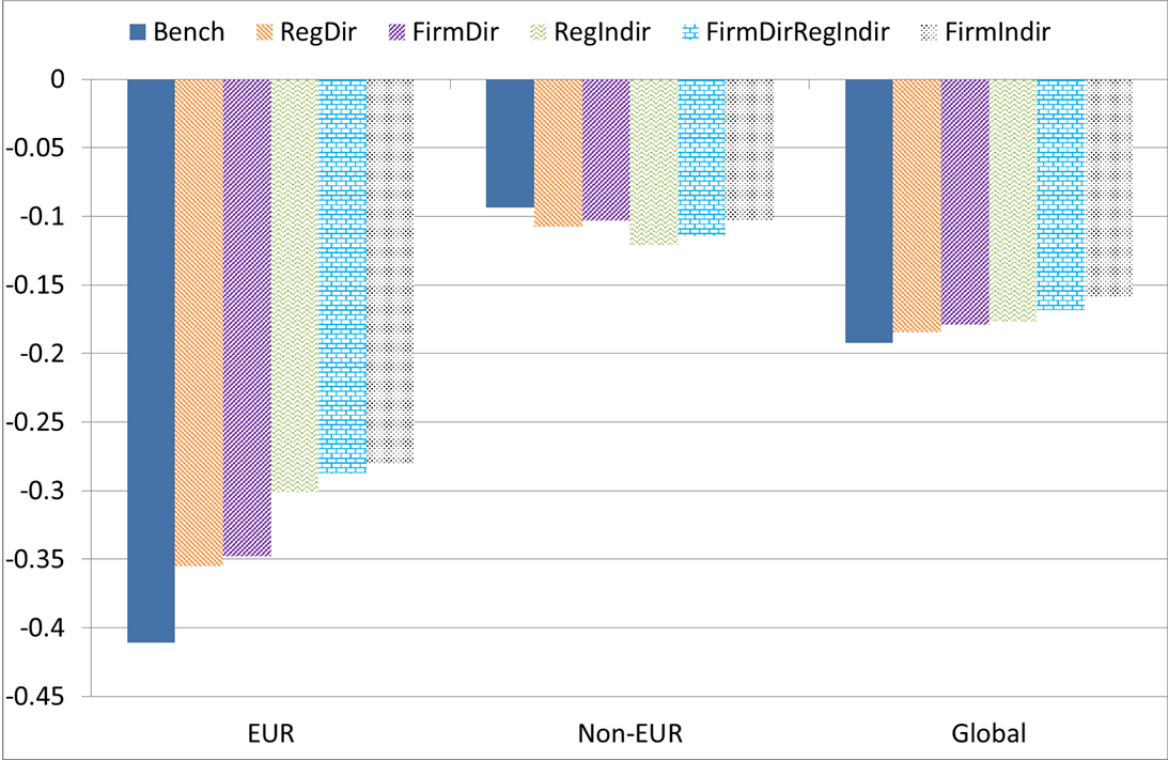
Figure 6 confirms these findings. Welfare effects are stated in Hicksian equivalent variation in income. Carbon tariffs moderate the welfare costs of unilateral action for EUR, while the costs for non-EUR rise. For EUR, moving to more targeted systems either by including indirect emissions and/or by giving non-EUR firms incentives to reduce emissions is beneficial. The most targeted system (*FirmIndir*) reduces the welfare costs of EUR by as much as 32% compared to *Bench*. The gain reflects both lower competition from non-EUR exporters (see Figure 2 and 5), and lower carbon leakage which allows for higher emissions in EUR (see Figure 2 and 4).

A main observation from Figure 6 is that trade-offs between the welfare effects for EUR and non-EUR are not severe. In particular, we notice that firm-targeted tariffs are better than region-specific tariffs for both EUR and non-EUR. This is true whether the tariffs are based on direct emissions, only, or both direct and indirect. Furthermore, including indirect emissions in firm-targeted tariffs (*FirmIndir* vs. *FirmDir*) benefits EUR without increasing the costs for non-EUR, because firm-targeted tariffs ensure non-EUR firms the opportunity to reduce their tariff rates by reducing emission intensities both in own production and their electricity input. This possibility is absent when tariffs on similar goods are common for all firms in a non-EUR region. Then, including indirect embodied emissions in the basis for the tariff rates (*RegIndir* vs. *RegDir*) will unavoidably increase the rates, and the costs for the non-EUR regions increase by 12%. Interestingly, the most targeted system, where firms exporting to the coalition are tariffed according to their direct and indirect emissions (*FirmIndir*) is slightly less costly for the non-EUR regions than the least targeted (*RegDir*). Moreover, welfare costs for EUR are

reduced by 21%. *FirmIndir*, the cheapest carbon policy regime for the world as an entity is, thus, not riddled by severe distributional dilemmas.

All these tariff regimes reduce global welfare costs of EUR’s carbon policies compared to *Bench*; the most effective, *FirmIndir*, by as much as 18%. This is a larger benefit of carbon tariffs than in the previous studies listed above. The reason is that this carbon tariff regime is based on firm-specific information and account for indirect emissions. As shown in the theoretical section, such carbon tariffs are more targeted than previously studied designs, because they motivate unit emission reductions in the firms (both directly and indirectly) involved in exporting to EUR. While introducing region-specific tariffs based on the direct emissions (*RegDir*) reduces global welfare loss by merely 4%, going from *RegDir* to *FirmDir* implies an additional 3 percentage points reduction in welfare costs (see Figure 6). Further, also including indirect emissions in *FirmIndir* saves another 11 percentage points of the welfare costs – in total 18% – compared to *Bench*.

**Figure 6. Regional welfare effects (% change in Hicksian equivalent variation)**

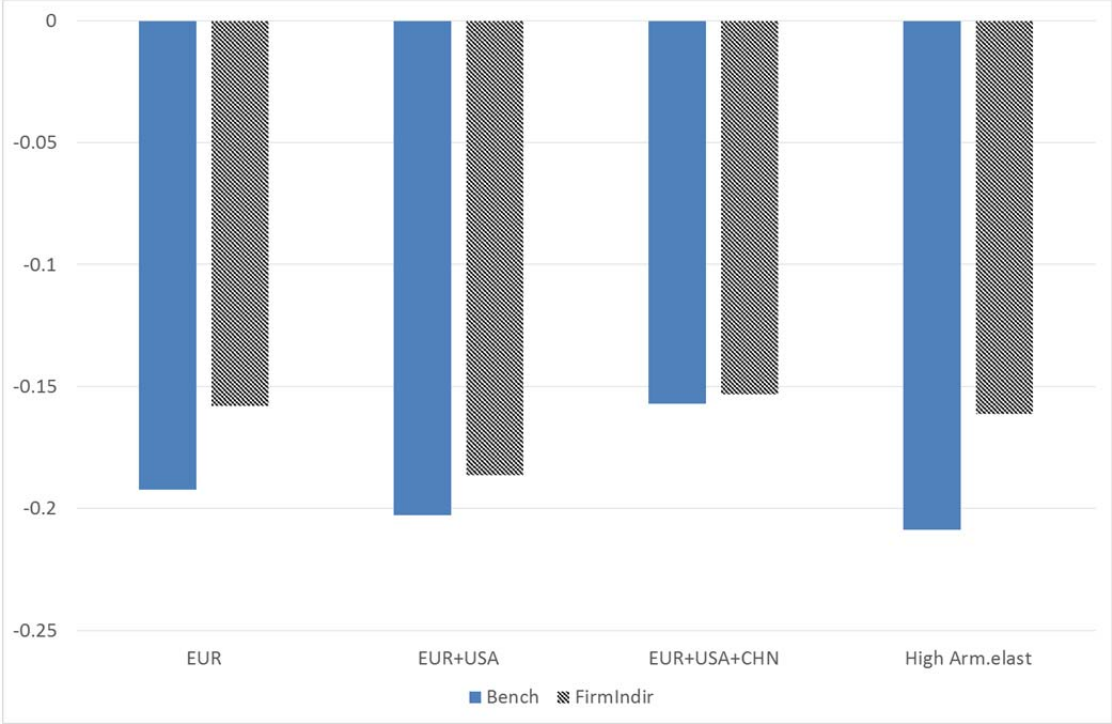


**Sensitivity analysis**

To investigate the robustness of our insights we perform sensitivity analysis with respect to two key drivers of economic impacts: the regional coverage of unilateral abatement on the one hand, and the trade responsiveness, captured by the Armington elasticities of substitution between domestic and

foreign products. We focus, hereby, on the most targeted tariff alternative with firm-targeted tariffs including emissions from the electricity input – *FirmIndir*. Figure 7 shows that as we expand unilateral emission regulation from EUR to include also the United States (EUR+USA) and both the USA and China (EUR+USA+CHN) there are gradually less global benefits. This is as expected – when the coalition becomes larger, the leakage rate drops substantially, i.e., by more than 50% with the EUR+USA coalition, and by additional 50% when China is included (both under *Bench* and *FirmIndir*). The welfare loss of carbon policies is largest with the EUR+US coalition. This is intuitive when compared to the EUR coalition, as global emissions are further reduced when more countries join the coalition.<sup>11</sup> When China also joins the coalition, Europe and the US get access to cheaper abatement options, and we see that this benefit actually dominates the cost effects of larger emission reductions.

**Figure 7: Global welfare changes with different coalitions and Armington elasticities (% change in Hicksian equivalent variation).**



Compared to the effects of regional expansion the benefits from targeted tariffs are less sensitive to the choice of Armington elasticities (the last column in Figure 7 examines the case of unilateral emission regulation in EUR). The welfare benefits of firm-targeted tariffs increase with higher Armington elasticities (which are doubled compared to the central case settings). This is also as expected – the

<sup>11</sup> Global emission reductions are 2.6% with the EUR coalition, 6.8% with the EU+US and 10.9% with EU+US+China.

larger the trade sensitivity the bigger is the leakage rates and, thus, the higher are the benefits of targeted carbon tariffs.

## **5. Conclusions**

The climate effect of unilateral carbon pricing is undermined due to carbon leakage. To mitigate leakage and increase global cost-effectiveness of unilateral abatement action, the literature suggests supplementing unilateral carbon pricing with carbon tariffs designed so as to tax all the carbon emissions directly and indirectly embodied in net imports equally to domestic emissions. In this paper we discuss the possibilities, limitations, and implications of alternative carbon tariff systems designed to capture the carbon footprint of producers in non-regulating countries. In particular, we propose practical carbon tariff systems designed to mimic the theoretical principle that the carbon tariff should adjust according to the specific embodied emissions in each imported good. We first present a theoretical analysis on the economic incentives for emission abatement of producers in unregulated countries that are subjected to different designs of carbon tariffs. We then operationalise these carbon tariff systems in a multi-sector, multi-region CGE model of the global economy to quantify the different impacts based on empirical data and practical systems.

Theoretical analysis shows that introducing carbon tariffs increases the efficiency of a region's carbon policy more the more targeted the carbon tariffs are and the more emissions they embody. Our numerical analysis indicates that implementable firm-targeted systems have substantial welfare advantages compared to previously studied systems. Particularly promising are systems that also target embodied indirect emissions from electricity supply in the non-regulating regions. The reductions in carbon leakage and the gains in global welfare that we find are significantly larger than suggested by previous studies.

Furthermore, the exporters' competitiveness and the overall welfare of their economies will be less randomly and less adversely affected. This beneficial distributional impact of a more targeted approach could facilitate a higher degree of legitimacy and legality of carbon tariffs as a supplemental instrument in unilateral climate policy.

## References

- Armington, P.S. (1969), A Theory of Demand for Producers Distinguished by Place of Production, *IMF Staff Papers* 16(1), 159–78.
- Balistreri, E.J., Al-Qahtani, A., Dahl, C.A. (2010), Oil and Petroleum Product Armington Elasticities: A New-Geography-of-Trade Approach to Estimation, *The Energy Journal* 31(3), 167-179.
- Böhringer, C., Fischer, C., Rosendahl, K.E. (2010), The Global Effects of Subglobal Climate Policies, *The B.E. Journal of Economic Analysis & Policy* 10(2) (Symposium): Article 13.
- Böhringer, C., Balistreri, E., Rutherford, T. (2012a), The Role of Border Carbon Adjustment in Unilateral Climate Policy: Overview of an Energy Modeling Forum Study (EMF29), *Energy Economics*, 34 Supplement 2, 97-110.
- Böhringer, C., Bye, B. , Fæhn, T., Rosendahl, K. E. (2012b), Alternative designs for tariffs on embodied carbon: A global cost-effectiveness analysis, *Energy Economics*, 34 Supplement 2, 143-152.
- Branger, F., Quirion, P. (2014), Would border carbon adjustments prevent carbon leakage and heavy industry competitiveness losses? Insights from a meta-analysis of recent economic studies, *Ecological Economics* 99, 29–39.
- Directive 2008/101/EC (2008), Amending Directive 2003/87/EC so as to include aviation activities in the scheme for greenhouse gas emission allowance trading within the Community, The European Parliament and The Council of the European Union (<http://eur-lex.europa.eu/legal-content/EN/TXT/?uri=CELEX:32008L0101>)
- Evans, C. (2003), Studying the studies: An overview of recent research into taxation operating costs, *Journal of Tax Research* 1(1), 64-92.
- Fischer, C., Fox, A. K. (2012), Comparing policies to combat emissions leakage: Border carbon adjustments versus rebates, *Journal of Environmental Economics and Management*.
- Graham, P., Thorpe, S., Hogan, L. (1999), Non-competitive market behaviour in the international coking coal market, *Energy Economics* 21, 195-212.
- Hoel, M. (1996), Should a carbon tax be differentiated across sectors?, *Journal of Public Economics* 59, 17–32.
- House of Representatives (2009), The American Clean Energy and Security Act (H.R. 2454), Bill Text as Passed by House of Representatives.
- Ireland, R. (2012), The EU Aviation Emissions Policy and Border Tax Adjustments, WCO Policy Research Brief, WCO Research Paper No. 26
- Ismer R. ,Neuhoff, K. (2007), Border tax adjustment: a feasible way to support stringent emission trading, *European Journal of Law and Economics* 24(2), 137-164.
- ISO 14044:2006, Environmental management – Life cycle assessment – Requirements and guidelines, <https://www.iso.org/obp/ui/#iso:std:iso:14044:ed-1:v1:en>



ISO/TS 14067:2013, Greenhouse gases – Carbon footprints of products – Requirements and guidelines for quantification and communication,  
[http://www.iso.org/iso/catalogue\\_detail?csnumber=59521](http://www.iso.org/iso/catalogue_detail?csnumber=59521)

Krichene, N. (2002), World crude oil and natural gas: a demand and supply model, *Energy Economics* 24, 557-576.

Markusen, J.R. (1975), International Externalities and Optimal Tax Structures, *Journal of International Economics* 5, 15–29.

Mattoo, A., Subramanian, A., van der Mensbrugghe, D., and He, J. (2009), Reconciling Climate Change and Trade Policy, Policy Research Working Paper Series 5123, the World Bank.

Narayanan, G.B., Aguiar, A., McDougall, R. (2012), Global Trade, Assistance, and Production: The GTAP 8 Data Base. Center for Global Trade Analysis, Purdue University.

Persson, S. (2010), Practical Aspects of Border Carbon Adjustment Measures: Using a Trade Facilitation Perspective to Assess Trade Costs, Issue Paper No. 13, International Centre for Trade and Sustainable Development (ICTSD), Geneva, Switzerland. <http://ictsd.org/i/publications/129482/>

The Greenhouse Gas Protocol (2010), Corporate Accounting and Reporting Standards, World Resource Institute, WRI, Washington, USA and the World Business Council for Sustainable Development, WBCSD, Geneva, Switzerland, <http://www.ghgprotocol.org/files/ghgp/public/ghg-protocol-revised.pdf>

UNFCCC (2012), Procedure Development, revision and clarification of baseline and monitoring methodologies and methodological tools, Version 01.1, CDM-EB70-A36-PROC, United Nations Framework Convention on Climate Change,  
[http://cdm.unfccc.int/Reference/Procedures/meth\\_proc09.pdf](http://cdm.unfccc.int/Reference/Procedures/meth_proc09.pdf)

UNFCCC (2014), CDM accreditation standard, Version 06.0, CDM-EB46-A02-STAN, United Nations Framework Convention on Climate Change,  
[http://cdm.unfccc.int/sunsetcms/storage/contents/stored-file-20140721152731014/accr\\_stan01.pdf](http://cdm.unfccc.int/sunsetcms/storage/contents/stored-file-20140721152731014/accr_stan01.pdf)

Winchester, N. (2011), The impact of border carbon adjustments under alternative producer responses, *American Journal of Agricultural Economics*, 94(2), 354-359.

Zhang, Z. X. (2012), Competitiveness and Leakage Concerns and Border Carbon Adjustments, *International Review of Environmental and Resource Economics* 6 (3), 225-287.



## Statistics Norway

Postal address:  
PO Box 8131 Dept  
NO-0033 Oslo

Office address:  
Akersveien 26, Oslo  
Oterveien 23, Kongsvinger

E-mail: [ssb@ssb.no](mailto:ssb@ssb.no)  
Internet: [www.ssb.no](http://www.ssb.no)  
Telephone: + 47 62 88 50 00

ISSN: 1892-753X



**Statistisk sentralbyrå**  
Statistics Norway