

Fiva, Jon H.; Hægeland, Torbjørn; Rønning, Marte; Syse, Astri

Working Paper

Access to treatment and educational inequalities in cancer survival

Discussion Papers, No. 735

Provided in Cooperation with:

Research Department, Statistics Norway, Oslo

Suggested Citation: Fiva, Jon H.; Hægeland, Torbjørn; Rønning, Marte; Syse, Astri (2013) : Access to treatment and educational inequalities in cancer survival, Discussion Papers, No. 735, Statistics Norway, Research Department, Oslo

This Version is available at:

<https://hdl.handle.net/10419/192717>

Standard-Nutzungsbedingungen:

Die Dokumente auf EconStor dürfen zu eigenen wissenschaftlichen Zwecken und zum Privatgebrauch gespeichert und kopiert werden.

Sie dürfen die Dokumente nicht für öffentliche oder kommerzielle Zwecke vervielfältigen, öffentlich ausstellen, öffentlich zugänglich machen, vertreiben oder anderweitig nutzen.

Sofern die Verfasser die Dokumente unter Open-Content-Lizenzen (insbesondere CC-Lizenzen) zur Verfügung gestellt haben sollten, gelten abweichend von diesen Nutzungsbedingungen die in der dort genannten Lizenz gewährten Nutzungsrechte.

Terms of use:

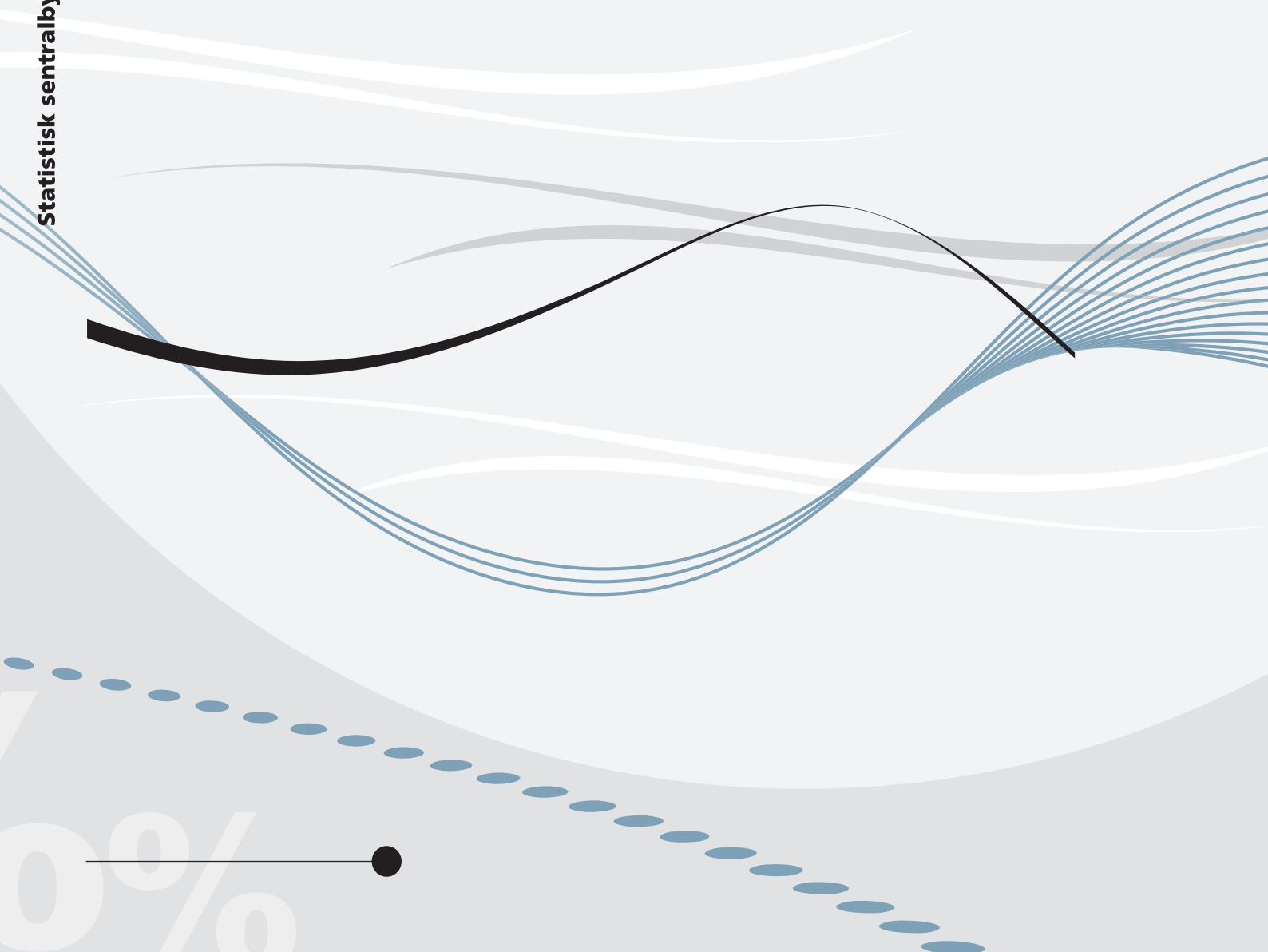
Documents in EconStor may be saved and copied for your personal and scholarly purposes.

You are not to copy documents for public or commercial purposes, to exhibit the documents publicly, to make them publicly available on the internet, or to distribute or otherwise use the documents in public.

If the documents have been made available under an Open Content Licence (especially Creative Commons Licences), you may exercise further usage rights as specified in the indicated licence.

*Jon H. Fiva, Torbjørn Hægeland,
Marte Rønning and Astri Syse*

**Access to treatment and educational
inequalities in cancer survival**



*Jon H. Fiva, Torbjørn Hægeland,
Marte Rønning and Astri Syse*

Access to treatment and educational inequalities in cancer survival

Abstract:

The public health care systems in the Nordic countries provide high quality care almost free of charge to all citizens. However, social inequalities in health persist. Previous research has, for example, documented substantial educational inequalities in cancer survival. We investigate to what extent this may be driven by differential access to and utilization of high quality treatment options. Quasi-experimental evidence based on the establishment of regional cancer wards indicates that i) highly educated individuals utilized centralized specialized treatment to a greater extent than less educated patients and ii) the use of such treatment improved these patients' survival.

Keywords: Education, Health, Inequality

JEL classification: I10, I20

Acknowledgements: We are grateful to Sara Cools, Morten Tandberg Eriksen, Øystein Kravdal, Edwin Leuven, Adriana Lleras-Muney, Imran Rasul, Kjell Gunnar Salvanes, Marcello Sartarelli and Steinar Tretli, and seminar participants at the Cancer Registry of Norway, VATT Helsinki, University of Oslo, the 2012 NTNU Workshop in Educational Governance, the 2013 North American Winter Meeting of the Econometric Society, for helpful comments and suggestions. Some of the data in this article are from the Cancer Registry of Norway. The Cancer Registry of Norway is not responsible for the analysis or interpretation of the data presented. This paper is part of the research activities at the center of Equality, Social Organization, and Performance (ESOP) at the Department of Economics at the University of Oslo. ESOP is supported by the Research Council of Norway.

Address: Jon H. Fiva, Department of Economics, BI Norwegian Business School.
E-mail: jon.h.fiva@bi.no

Torbjørn Hægeland, Statistics Norway, Research Department. E-mail: thd@ssb.no

Marte Rønning, Statistics Norway, Research Department. E-mail: mro@ssb.no

Astri Syse, Norwegian Social Research. E-mail: astri.syse@nova.no

Discussion Papers

comprise research papers intended for international journals or books. A preprint of a Discussion Paper may be longer and more elaborate than a standard journal article, as it may include intermediate calculations and background material etc.

© Statistics Norway

Abstracts with downloadable Discussion Papers
in PDF are available on the Internet:

<http://www.ssb.no>

<http://ideas.repec.org/s/ssb/dispap.html>

For printed Discussion Papers contact:

Statistics Norway

Telephone: +47 62 88 55 00

E-mail: Salg-abonnement@ssb.no

ISSN 0809-733X

Print: Statistics Norway

Sammendrag

Det offentlige helsevesenet i nordiske land sørger for tilnærmet gratis helsetjenester av høy kvalitet til alle innbyggerne. Likevel er det ulikheter i helse og helseutfall på tvers av sosioøkonomiske grupper. Tidligere forskning har for eksempel dokumentert betydelige forskjeller i kreftoverlevelse mellom utdanningsgrupper. Vi undersøker i hvilken grad slike forskjeller kan være drevet av forskjeller i tilgang til og bruk av spesialisert behandling. Våre kvasi-eksperimentelle resultater basert på etablering av regionale kreftavdelinger indikerer at i) høyt utdannede pasienter brukte spesialisert og sentralisert behandling i større grad enn de med lav utdanning, og ii) slik behandling bedret sjansen for overlevelse.

1 Introduction

Educational inequalities in mortality rates have been documented across a wide range of countries. Differences in lifestyle and health behaviors are major factors driving the positive association between education and health, but the quality of treatment of various diseases could also play a role. Treatment quality is expected to depend on income when health services must be bought in the open market, such as in the United States. This is less obvious in egalitarian welfare states such as the Nordic countries, where public health care systems aim to offer equal access to high quality health care, regardless of socioeconomic status and geographic location. This is particularly true for cancer diagnosis, treatment, and care, where private options are virtually nonexistent. Against this background, it is surprising that educational inequalities in cancer mortality are of a similar magnitude in the United States and in the Nordic countries (cp. Kinsey et al. 2008; Elstad et al. 2012).

A difference in economic resources is not the only possible mechanism behind the relationship between education and health. Highly educated individuals may utilize better treatment options within the health care system for various reasons. People with higher education could, for example, have a better understanding of the relationship between health inputs (behavior and treatment) and health outcomes (Kenkel, 1991). Glied and Lleras-Muney (2008) find that better educated individuals have a greater survival advantage from diseases where there has been more health-related technological progress. This indicates that people with higher education are the first to take advantage of technological advances that improve health.

A related hypothesis is that more highly educated people may be better at finding their way through the health bureaucracy, claiming their rights, acquiring relevant information, and communicating their symptoms. Several studies show that patient-provider communication varies with patients' socioeconomic status, with the level of education being of particular importance (e.g., Smith et al. 2009; Marks et al. 2010, Grytten et al. 2011). Bago d'Uva and Jones (2009) document that more highly educated individuals use specialist care more frequently in many European countries, irrespective of actual needs.

In this paper, we investigate how access to and utilization of highly specialized treatment affects survival after cancer, and how this is related to educational attainment. We use individual level data covering all primary cancer diagnoses in Norway in the period 1980-2000. During this period, patients were

allocated to local hospitals based on their residential addresses, and they were only transferred to other hospitals if specialized treatment was deemed necessary. Typically, patients would be transferred to the national hospitals located in Oslo for specialized treatment (Kravdal, 2006).¹ However, patient-doctor interactions could also play a role since referral practices and treatment protocols are not fully codified. In our analysis, being treated in the health region where the national hospitals are located is a proxy for specialized treatment. To analyze how specialized treatment affects survival probabilities, we make use of the fact that regional cancer wards opened at different points in time in cities with universities outside the Oslo area.

Several studies document that there are fewer complications and improved survival chances at more specialized centers (for example, Black and Johnston, 1990; Kelly and Hellinger, 1986). Hospital volume and surgeon competency have been shown to be particularly important (Porter et al., 1998, Wibe et al., 2005). In our context, the care provided in the newly opened regional cancer wards could therefore have been of lower quality than the care provided at the well-established national hospitals, especially in the period shortly after their establishment. The opening of the new wards can therefore be interpreted as representing a decrease in access to specialized treatment for patients residing in these regions. The opening of the regional wards and the subsequent build-up of local knowledge and expertise meant that transferring patient groups with common cancer forms between health regions was no longer warranted. The decentralization process was therefore accompanied by stricter regulations concerning which cases should be treated centrally versus locally. The opening of regional wards therefore meant that there was less scope for differences in access to and the use of specialized treatment at the national hospitals that were not directly related to disease characteristics.

We use the time variation in the establishment of the regional cancer wards as a quasi-experiment providing exogenous variation in access to specialized treatment. Within a differences-in-differences framework, we thus exploit the sudden fall in the transfer rate to the national hospitals in Oslo in two out of three health regions (Central and Northern) to investigate how specialized treatment affects survival. The Western health region serves as the control group, as its transfer rate to Oslo was stable during the period under investigation. By applying a differences-in-differences-in-differences set-up, we also investigate

¹This is largely due to the availability of surgical equipment and expertise, but also because of the absence of comprehensive oncology teams in regions outside the Oslo area.

the extent to which educational inequalities in cancer survival were affected by the opening of the regional cancer wards.

Our estimates yield two important insights. Firstly, after controlling for the general time trend, survival rates declined in regions where cancer wards were opened. The effect was particularly pronounced for patients living close to a newly established ward. Secondly, we document that the survival probability fell most strongly for patients with a university level education. This entails a reduction in educational inequalities in cancer survival. Prior to the decentralization, patients with a university level education were much more likely to be transferred to the national hospitals than patients without such education. A plausible explanation for the drop in the transfer probability differentials is that stricter transfer regulations made it more difficult to use a possible information or competency advantage to gain access to specialized treatment. Our results thereby suggest that educational inequalities may depend upon health sector organization.

Our paper is related to the rapidly growing literature on the causal effects of education on health, typically using compulsory schooling laws as a source of identification. The results of these studies are, however, mixed. Lleras-Muney (2005), who was the first to make use of such laws in the US context, finds a strong reduction in mortality for each year of additional schooling.² This is in contrast to, for example, Clark and Royer (2012) and Meghir et al. (2012), who fail to find beneficial effects on health of compulsory schooling reforms in the United Kingdom and Sweden.³ Our paper fits with this literature by empirically substantiating a plausible channel for the creation of health disparities by education.

2 Institutional Setting

The public health care system in Norway offers treatment, including highly specialized cancer care, universally and almost free of charge (Molven and Ferkis, 2011). In the period 1980-2000, hospitals were financed by the central government, but were owned and run by the regional authorities. Patients could be treated either at local hospitals, typically covering one or more municipality (n=431), at regional hospitals covering all municipalities within a county (n=19),

²Later research has shown that this result is sensitive to the inclusion of state specific trends (Mazumder, 2008).

³Cutler and Lleras-Muney (2012) and Mazumder (2012) review this literature.

or at one of the two highly specialized hospitals with national responsibilities.⁴

As shown in Figure 1, the counties are organized in four health regions (South-Eastern; Western; Central; Northern).⁵ The national hospitals, Rikshospitalet University Hospital and the Norwegian Radium Hospital, are located in Oslo, the capital of Norway, in the South-Eastern health region.⁶ We refer to this region as the Oslo region.

In the period covered by our study, patients were allocated to local hospitals based on their residential addresses.⁷ The decision to either treat patients at local hospitals or transfer them to more specialized care depended on an overall assessment of patients' age, cancer form and spread, likely outcomes, and the availability of specialized treatment, including surgical, radiation and chemotherapeutic options within the catchment area. Since referral practices and treatment protocols were not fully codified, patient-doctor interaction is also likely to have played a role.

As radiation treatment requires a series of treatments at designated hospitals, it is the treatment form most strongly related to place of residence. Closeness to a radiation unit strongly predicts its use (NOU 1997: 20). Until the early 1970's, Oslo was the only health region that offered adjuvant radiation and chemotherapy.⁸ Hence, prior to the establishment of regional cancer

⁴Hospital ownership was transferred to the central government in 2002. In the 1970's, hospitals received 50-75% of their operating expenditure as per diem reimbursements from the state. The remainder was provided by the regional government from tax revenues with the overall tax rate set at the national level. This highly centralized financing system implicitly rewarded hospitals with inherently high costs. To provide incentives for cost-efficiency, state reimbursements were replaced in 1980 by a block grant system based on demographic criteria (Carlsen, 1994). This reform was partly reversed in 1997, when activity based financing was introduced (Hagen and Kaarbøe, 2006).

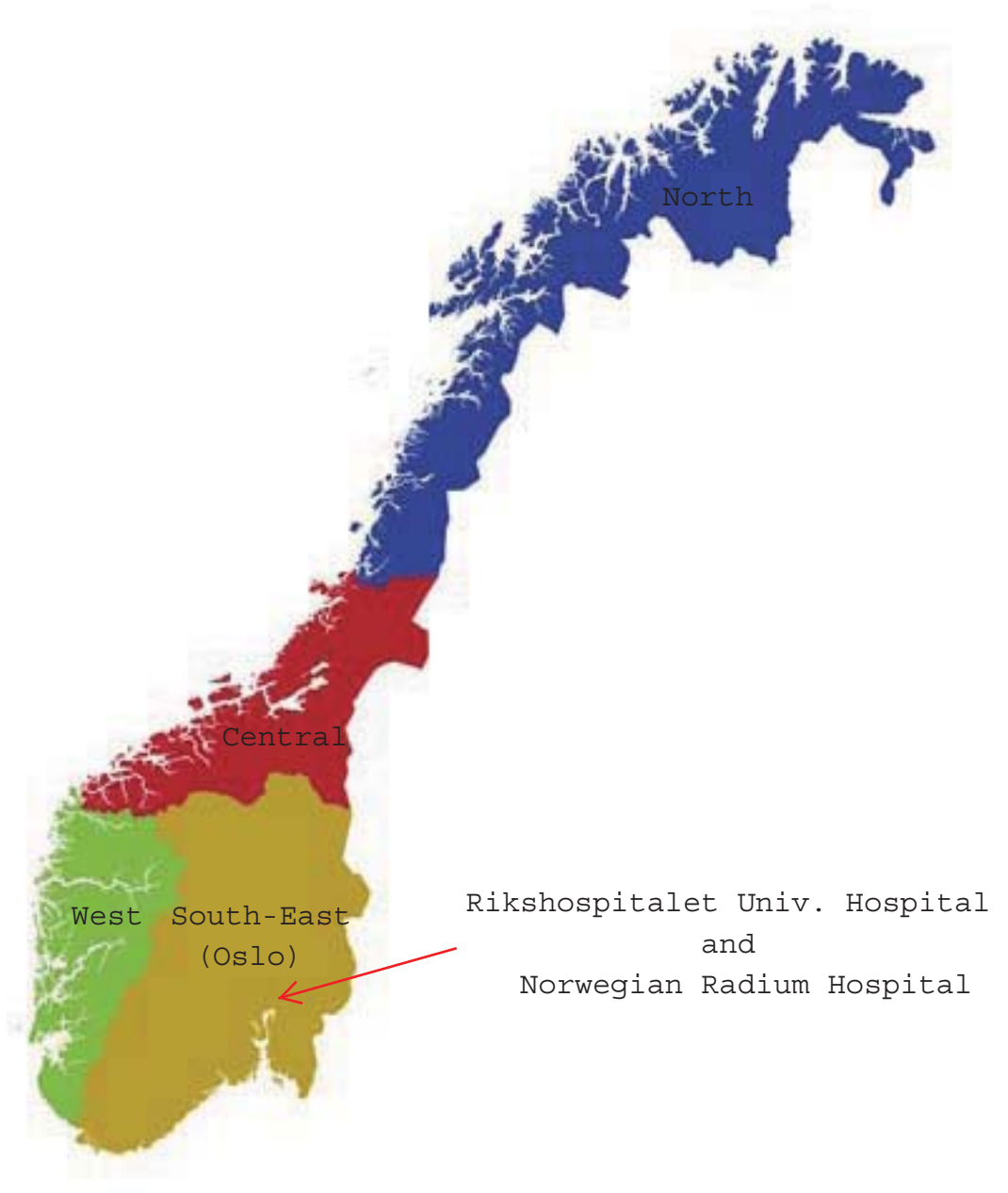
⁵Five health regions existed up until 2002, after which two of them (Southern and Eastern) merged. Our data follow the most recent health region structure.

⁶Today, they both belong to the Oslo University Hospital, along with other teaching hospitals in the Oslo area.

⁷Our register data allow us to follow patients up until the end of 2008. This means that we can study five-year survival rates for patients diagnosed with cancer in 2003 at the latest. We have therefore chosen to exclude data for the period after the system of free hospital choice within care levels was introduced in 2001. Our main results are not altered in any substantial way if we include data through 2003.

⁸Surgical treatment, which has been available in Norway for more than 150 years, is the primary treatment for most cancer forms. Patients may also be treated with radiation (available in Oslo since the 1950's) and/or chemotherapy (available since the early 1970s). According to a Norwegian Government White Paper from 1997 (NOU 1997: 20, Omsorg og kunnskap!) around 85% of cured Norwegian patients received surgery. During the period we study, radiation therapy was involved in around 40% of the cases, whereas chemotherapeutic drugs were estimated to have been involved in around 14% of treatments. The use of radiation was limited until the late 1950's, but it gradually became more prevalent in the 1960's and 1970's. Today, multimodal treatment regimens, i.e., various combinations of surgery, radiation, and chemotherapy, predominate.

Figure 1: Health Regions in Norway



wards in 1972, 1985, and 1987 for the Western, Northern, and Central regions, respectively, patients were required to travel to the Oslo region to obtain this type of treatment.

Prior to the opening of the regional oncological wards, the standard practice at local hospitals was to consult oncological surgeons at the Radium Hospital in Oslo prior to diagnosis and treatment, as well as during the course of treatment. The Radium Hospital was the primary oncological hospital in Norway prior to the 1980's, and referrals were made almost exclusively to this hospital.⁹

Referral patterns changed after the opening of the regional oncological wards, so that patients were primarily sent to these regional wards for diagnosis and, when necessary, treatment. In cases where further treatment was deemed necessary, referrals to the Radium Hospital were primarily initiated by these regional oncological wards, typically after telephone consultations between the two. After the opening of the regional wards, transfers of large patient groups with common cancer forms *between* regions was thus no longer warranted.¹⁰ By the year 2000, comprehensive oncological teams comprising pathologists, radiologists, oncologists, oncological surgeons, and other relevant health personnel were present in all four health regions, and the regional hospitals in Bergen, Tromsø and Trondheim were all incorporated in university settings.¹¹

3 Data and Descriptive Statistics

Our analyses are based on individual level data from the Cancer Registry of Norway matched with data on patients' level of education from administrative registers from Statistics Norway. We distinguish between patients who have

⁹Searches in newspaper archives indicate that doctors from the Northern health region received training in Oslo prior to the opening of the regional wards.

¹⁰Due to a lack of information about patients' exact residential addresses and the treating hospitals within the regions, we are unable to investigate transfers within health regions.

¹¹National guidelines for the diagnosis and treatment of the most prevalent cancer forms were introduced from the mid-1990's, and cancer care was gradually standardized and centralized within the respective health regions in order to ensure optimal treatment and outcomes (see e.g., Wibe et al. (2003) and Kalager et al. (2009) for descriptions of surgical and oncological management of colorectal and breast cancer, respectively). In practice, this resulted in a substantial decline in the number of hospitals performing cancer surgery, from around 65 in the late 1980's to around 20 in the late 1990's and in the emergence of multidisciplinary oncology teams providing high-quality care at designated regional hospitals. Throughout the period assessed, guidelines have been in place that require specialized treatment at national hospitals (also after the establishment of the regional cancer wards) for pediatric cancer patients and young adult patients with fertility issues, as well as for patients with certain rare cancer forms. This is in order to ensure that patients are handled by experienced medical personnel in units that are familiar with relevant diagnostic and treatment protocols.

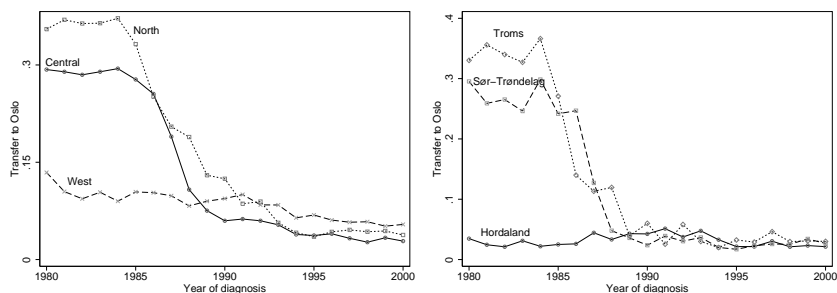


Figure 2: Proportion of patients transferred to Oslo by health region and county with university hospital

university level education (*higher education*)¹² and patients without a university level education (*lower education*).

The Cancer Registry contains detailed information about the date of diagnosis, the patient's age at diagnosis, and gender, tumor location (International Classification of Diseases, 10th revision (ICD-10)), stage at diagnosis (local, regional, distant or unknown), residential municipality on the date of diagnosis (first course of treatment), and about which health region the patient was treated and/or examined in.

We limit our sample to individuals residing outside the Oslo region who were between 30 and 75 years old when first diagnosed with cancer.¹³ This results in 99,988 individuals in total, 10% of whom have a higher education.

A descriptive overview of the variables used in this paper is provided in Appendix Table 5. The main outcome variable in our study is a dummy variable equal to one if the patient is alive five years after diagnosis, and zero otherwise (*survival*). A patient is assumed to receive high quality treatment if she/he has been treated and/or examined in the Oslo region, where the two national hospitals are located (referred to as *transfer* in the following).

¹²This includes education at university colleges.

¹³We restrict the analyses to individuals aged 30 years or older, because, at this age, most individuals have completed their education and because cancer treatment for children and young adults is largely centralized in Norway. We also exclude cancer patients who were older than 75 years at diagnosis. Transfer and survival rates are low for this age group (1.38% and 23.38%, respectively), and comorbid conditions must be taken into account when considering treatment. About 10% of all patients are diagnosed with more than one form of cancer. We restrict the analyses to patients diagnosed with their first cancer only. The median age at diagnosis was 64.

3.1 Transfer and survival

The left panel of Figure 2 documents the extent of transfers from the Western, Central and Northern regions to the Oslo region. The extent of transfers has decreased over time or all health regions. These changes are mostly due to university hospitals outside Oslo having become better equipped over time in terms of personnel, laboratories, and surgical and radiological equipment. The opening of a cancer ward in Trondheim in 1987 resulted in a drop in the transfer probability from 0.25 in 1986 to 0.11 in 1988. Similarly, the opening of a cancer ward in Tromsø in 1985 resulted in a more gradual drop in the transfer probability from 0.37 in 1984 to 0.13 in 1989.¹⁴ For patients from the Western health region, there was no substantial change in the transfer probability during the 1980's. The university hospital in the Western health region opened a cancer ward already in 1972, which was fully operational by 1976.

Because Norway is a outstretched country, travelling distances within health regions are great for many patients. For example, the Northern region covers an area that would take about 20 hours to drive across (about 1,000 miles).¹⁵ The traveling distance to the nearest cancer ward may be long even after the establishment of regional cancer wards. Traveling by plane is therefore an option that is likely to be utilized by many patients, and that could also affect the health authorities' decision whether or not to transfer patients to Oslo. The right panel of Figure 2 shows transfer rates for the counties where the university hospitals are located. The decline in transfer rates is more pronounced for this sub-sample. This is reasonable, since traveling time was reduced most for this group of patients.

The five-year all-cause survival rate following a cancer diagnosis increased from 0.43 in 1980 to 0.59 in 2000. As documented in Figure 3, there are some differences between the health regions.¹⁶ In the early 1980's, survival rates were very similar across all health regions, but the survival rate in Northern Norway started to lag behind from about 1985. This coincided with the opening of the cancer ward in Tromsø. The same pattern is also evident when the analysis is

¹⁴There a slight reduction in the transfer rate in the Central region prior to the opening of a regional cancer ward. This reflects the fact that a small proportion of patients received treatment in the newly opened cancer ward in the Northern region in 1985-1986.

¹⁵According to Google Maps, the Central region, the Western region and the Oslo region each cover an area that would take about 9 to 10 hours to drive across (about 350 to 450 miles).

¹⁶Although individuals living in the Oslo region are not included in the analyses, we include the five-year survival rate for the Oslo region in Appendix Figure 8 for comparison and completeness purposes.

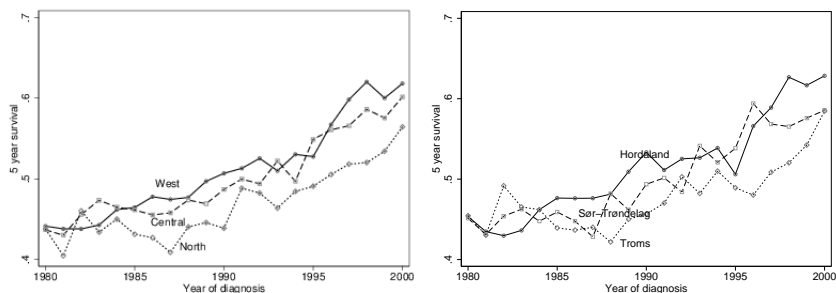


Figure 3: Five-year survival rates by year of diagnosis and health region

limited to patients residing in the counties where the university hospitals are located (right panel of Figure 3).

As cancer is a serious disease, local physicians are generally quick to refer patients with a suspected malignancy to an appropriate diagnostic work-up. Such work-ups have been available at hospitals at all levels (i.e., local, regional, and national) throughout the period we have studied. It has been possible for local hospitals without their own laboratories to send specimens to either private laboratories or laboratories at larger hospitals for the necessary analyses. It is therefore not surprising that the opening of regional cancer wards does not appear to have had a significant impact on the number of patients *diagnosed* with cancer. Figure 4 plots the development in the number of patients across health regions.¹⁷ Stage at diagnosis also shows a similar development in the Western, Central and Northern regions (see Figure 5). The pronounced change in the number of cancer cases with unknown stage is the result of changes in the coding practice at the Cancer Registry of Norway in the mid-1980's.¹⁸

3.2 Educational inequalities in transfer and survival

Treatment in Oslo and cancer survival are both strongly related to the patients' level of education. In columns (1) and (2) of Table 1, we present results from regressing patients' level of education on transfer and survival using a linear probability model for the whole study period. The results for transfer are re-

¹⁷Neither did the opening of regional cancer wards significantly impact on the number of cancer patients in the Oslo region (see Appendix Figure 9).

¹⁸Unless it was positively confirmed that there was no distant spread, cases were from this point onwards coded as having an unknown spread whereas such cases were previously assigned a stage based on their reported degree of spread, locally or regionally. Before the mid-1980's it was thus assumed that, if no distant spread was noted, there was none.

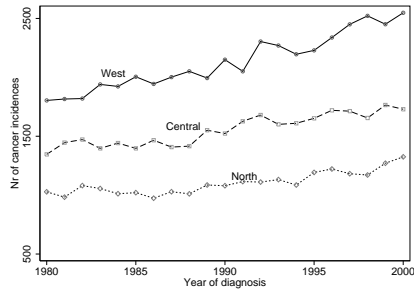


Figure 4: Cancer incidence by health region

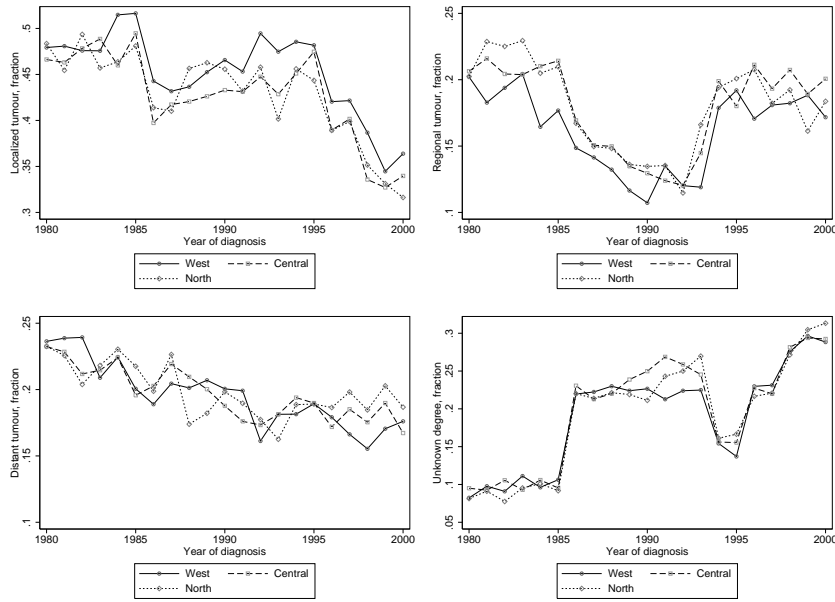


Figure 5: Stage at diagnosis by health region

ported in the upper panel of the table, whereas the results for survival are reported in the lower panel.¹⁹ The probability of being transferred to the Oslo region is 1.7 percentage points higher for patients with a higher education relative to those with a lower education. The effect is statistically significant at the one percent level. Individual with a higher education are also more likely to survive cancer. This result has previously been documented for Norway and other countries (see, for example, Kravdal 2000, Du et al. 2006, Lang et al. 2009, Fiva, Hægeland and Rønning, 2010, Kravdal and Syse, 2011).

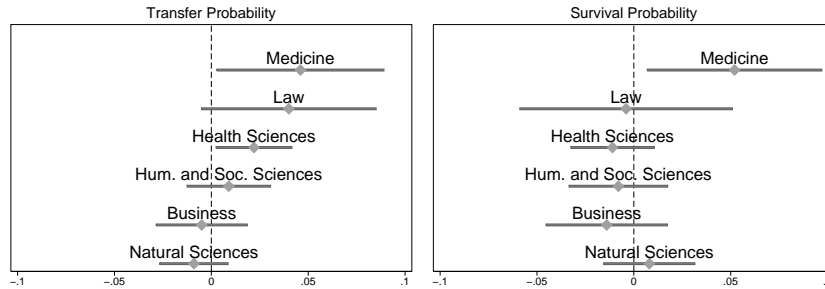
Cancer covers many diagnoses that differ greatly with respect to severity and treatability. If diagnosis is correlated with education, this may bias our estimates. When controlling for disease characteristics such as cancer type and stage at diagnosis (column (2)), the model improves considerably (the R-squared roughly doubles), and the association between level of education and transfer probability increases to 2.6 percentage points. This indicates that patients with a university level education tend to be less in need of specialized care at national hospitals. This is consistent with previous studies that have documented that people with higher education are more likely to be diagnosed at an earlier stage (Clegg et al. 2009). The effect of education on survival, on the other hand, decreases when disease controls are added. Part of the (unadjusted) educational inequality in cancer survival is therefore due to differences in disease severity.

We also relate the probability of transfer and survival, respectively, to patients' type of education. The left panel of Figure 6 shows that being educated as a doctor increases the probability of being transferred to Oslo by about five percentage points relative to those educated as teachers (the reference group). This is an increase of around 40% in the transfer probability relative to the baseline transfer rate (13%). Doctors also have about a five percentage points higher probability of surviving cancer. Lawyers and other health care professionals also have a statistically significant higher probability of receiving treatment in Oslo, but this does not manifest itself in a higher survival probability for these groups.

Estimates reported in Figure 6 are from specifications that include a full battery of patient and disease characteristics. Together with the differences with respect to level of education, these findings indicate that, even in an egalitarian welfare state, access to treatment appears to depend on socioeconomic status. More highly educated and better informed patients appear to receive better treatment than others.

¹⁹Since all our control variables are discrete, we estimate linear probability models (as recommended by Angrist, 2001).

Figure 6: Differences across educational disciplines in patients with higher education



Note: Estimates and corresponding 95% confidence intervals from linear probability models are reported. The sample is limited to patients with a university level education (n=10,071). Patients educated as teachers comprise the reference group. Time fixed effects, county fixed effects and a full battery of patient and disease characteristics are included. The mean for survival is 0.65. The mean for transfer is 0.13.

3.3 Regional cancer wards and educational inequalities in transfer and survival

In columns (3)-(8) of Table 1, we show separate results for educational inequalities for each health region.²⁰ We examine the periods before and after the opening of the regional cancer wards separately (henceforth the *pre* and *post* periods).²¹

During the pre-reform period in the Central region, the probability of being transferred was 4.8 percentage points higher for a patient with a higher education (relative to a patient with a lower education). The difference fell to 1.5 percentage points during the post-reform period, 1987-2000 (see upper panel columns (3) and (4)). A similar pattern was also found for survival (see lower panel columns (3) and (4)). Before the opening of a regional cancer ward, the difference in survival probability between patients with higher and lower education was 7.2 percentage points, compared to 3.4 after the opening. This difference is substantial. To put this into perspective, overall survival probability increased from 0.43 to 0.59 from 1980 to 2000, corresponding to an annual increase of 0.8 percentage points. If all the educational inequalities were due to

²⁰ Unfortunately, we have too few observations in the pre-reform period to conduct a meaningful statistical analysis based on patients' *type* of education.

²¹ The Western region is assigned the same pre-reform and post-reform periods as the Central region.

Table 1: The relationship between education and transfer, and education and five-year survival, at regional levels

	Central/North/West		Central		North		West	
	(1)	(2)	(3)	(4)	(5)	(6)	(7)	(8)
Higher education	0.017 (0.004)***	0.026 (0.004)***	0.048 (0.016)***	0.015 (0.005)***	0.025 (0.040)	0.042 (0.008)***	0.048 (0.010)***	0.023 (0.006)***
Higher education	0.084 (0.005)***	0.038 (0.004)***	0.072 (0.016)***	0.034 (0.006)***	0.036 (0.025)	0.043 (0.010)***	0.023 (0.012)*	0.037 (0.007)***
Controlling for disease char	No	Yes	Yes	Yes	Yes	Yes	Yes	Yes
No of obs	99,988	99,988	9920	22,565	5124	17,951	13,126	31,302

Note: The dependent variable in the upper panel is a dummy variable that equals one if the patient was examined and/or received treatment in the Oslo region. The dependent variable in the lower panel is a dummy variable that equals one if the patient is alive five years after cancer diagnosis. Each cell represents coefficients from OLS regressions. Standard errors within brackets are heteroscedastic robust and corrected for clustering at the (residential) municipality level at the time of diagnosis. A constant term and dummy variables for age at diagnosis, gender, year of diagnosis and county of residence are included in all specifications. */**/*** denote statistical significance at the 10/5/1 percent levels, respectively.

Table 2: The relationship between education and transfer, and education and five-year survival, at county levels

	Sør-Trøndelag (Central)		Troms (Northern)		Hordaland (West)	
	Pre 1980-86 (1)	Post 1987-2000 (2)	Pre 1980-84 (3)	Post 1985-2000 (4)	Pre 1980-86 (5)	Post 1987-2000 (6)
Higher education	0.057 (0.013)***	0.008 (0.004)**	0.036 (0.052)	0.015 (0.008)*	0.024 (0.006)***	0.018 (0.007)***
Higher education	0.077 (0.008)***	0.038 (0.007)***	0.038 (0.030)	0.023 (0.017)	0.026 (0.016)	0.040 (0.011)***
Controlling for disease char	Yes	Yes	Yes	Yes	Yes	Yes
No of obs	4269	9462	1563	5594	6481	15,293

See Table 1.

differences in treatment, this means that the difference in survival before the reform corresponded to nine years of progress in cancer treatment (assuming that all changes in cancer survival rates are due to better treatment).

In the Northern health region, the differences in both survival and transfer probabilities for patients with a higher education (relative to patients with a lower education) was highest in the post-reform period (columns (5) and (6)). The point estimates for the pre-reform period are not statistically significant, however. In the Western health region, which had a regional cancer ward during the entire period under consideration, the difference in transfer probability between education groups was also highest in the period 1980-1986. However, the reverse was true for the difference in survival probabilities, which indicates a general compression of inequalities in cancer survival over time in Norway.

Table 2 reports results based on the sample of patients residing in the counties where the university hospitals are located (Troms, Sør-Trøndelag and Hordaland). The results do not change much for the Central and Western health regions when the counties furthest from the university hospitals are excluded. For the Northern health region, on the other hand, the estimated effect of education becomes considerably smaller in the post-reform period for both transfer and survival compared to the baseline analysis.

In summary, after the opening of regional cancer wards, the proportion of cancer patients receiving treatment at the national hospitals in Oslo fell dramatically. Moreover, the fall in the transfer rate was relatively steeper for patients with higher education than for patients with lower education (especially when focusing on the county in which the regional cancer ward is located). At the same time, we also saw a decline in the difference in the survival probability between patients with higher and lower education. Taken together, these findings indicate that the newly opened regional cancer wards may have been of lower quality than the wards at the well-established hospitals in Oslo, and that access to or utilization of specialized treatment may be part of the explanation of why patients with higher education survive cancer to a greater extent than patients with a lower education. We explore this in more detail in the next section.

4 The effect of specialized treatment on overall cancer survival

The opening of regional cancer wards at the teaching hospitals in Tromsø (Northern region) and Trondheim (Central region) in the 1980's led to sudden and large drops in transfer probability from the Northern and Central health regions. At the same time, the transfer probability in the Western health region remained almost unchanged (recall Figure 2). This motivates the following difference-in-difference (*DiD*) specification:

$$sur_{ijt+5} = CN_{it} + post_{jt} + \psi(CN_{it} * post_{jt}) + X_i\nu + \theta_j + d_t + u_{ijt} \quad (1)$$

sur_{ijt+5} is a dummy variable that equals one if patient i in county j was still alive five years after being diagnosed with cancer, CN_{it} is a dummy variable taking the value one if the patient was resident in the Central or Northern health region at the time of diagnosis (the 'treatment group') and zero if the patient was resident in the Western health region (the 'control group'), while, $post_{jt}$ is a dummy variable taking the value one if diagnosis year \geq the year of the opening of the regional cancer ward (1985 for the Northern and 1987 for the Central region), and zero otherwise. Our parameter of interest is the differences-in-differences parameter ψ . As discussed above, the care provided at newly opened cancer wards may have been of lower quality than the care provided at the well-established national hospitals, especially during the period shortly after they were established. If this is the case, we should expect that $\psi < 0$. To take account of such temporary start-up effects, we allow for different effects in the short and long run and provide separate results for the first five years after the opening of a regional cancer ward ($post1_{jt}$) and the succeeding period ($post2_{jt}$).²² Furthermore, X_i is a vector of observed characteristics of the patient (such as type of cancer (ICD10), stage, age at diagnosis, gender and education), whereas θ_j and d_t are county and year of diagnosis dummies. Finally, u_{ijt} is an error term.

Table 3 reports the results from estimating Eq.(1). It shows that the relative prospects for surviving cancer deteriorated substantially for patients when new wards were established in their region. When regional cancer wards were estab-

²²Post1 = 1987-1991 for the Central region and 1985-1989 for the Northern region. Post2 = 1992-2000 for the Central region and 1990-2000 for the Northern region.

lished in the Central and Northern regions, the survival probability declined by 1.6 percentage points for patients residing in those regions compared to those living in the Western region. The effect is statistically significant at the one percent level (see column (1)). The effect does not seem to be transitory, i.e., it is present both in the first five years after the opening (post1) and thereafter (post2) (see column 2). As already discussed, the establishment of regional cancer wards may have been of particular relevance to those residing close to the university hospitals (due to long travel distances, especially in the North). In order to take this into account, we also conducted separate analyses for the counties where the university hospitals are located (Troms, Sør-Trøndelag and Hordaland). The results, which are presented in columns (3) and (4), show that the point estimates increase slightly relative to column (2). Even though the sample is reduced by 60%, the effect is statistically significant for both post-reform periods at the five percent level. A relative decline in cancer survival of more than two percentage points is substantial, when we take into account that the overall survival probability was around 50%. It strongly suggests that the treatment received by patients from the counties of Sør-Trøndelag and Troms deteriorated relative to national best practice standards after the establishment of the new wards.

In a differences-in-differences research design, it is always a concern that the parameter estimate of interest may be biased by differential time trends. In our case, if characteristics not controlled for in our analysis, but still affecting cancer survival, changed over time but differently in the regions studied, this could have affect our results. Such changes would typically be gradual. To check the robustness of our results in this respect, we estimate year-specific DiD estimates, which are shown in 7. It is evident that the survival rate in the Northern health region started to deviate the year after the regional cancer ward opened. This effect is also visible in the raw data (recall Figure 3). The pattern is less clear for the Central Region, although point estimates are also negative here for the period 1989-91 compared to the period before the establishment of a regional cancer ward. Importantly, there is no trace of any 'reform' effect prior to the actual reform. The results are reported in more detail in Appendix Table 8.

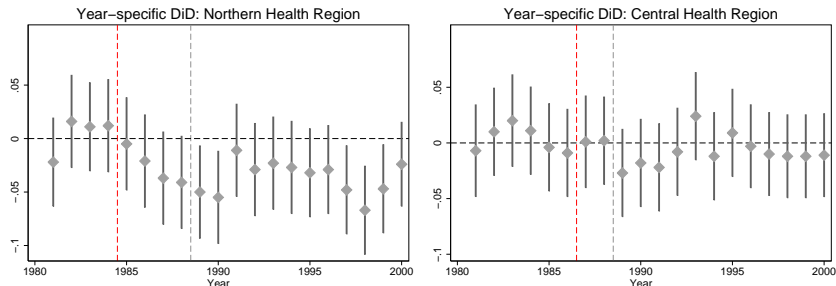
Another concern is that the opening of regional cancer wards also changed the composition of the cancer patients, which could potentially bias our results. Figures 4 and 5, which document an equal trend in both cancer incidences and stage at diagnosis in the Western, Central and Northern health regions, suggest

Table 3: The effect of the hospital reforms on survival five years after diagnosis, DiD estimates

	(1)	(2)	(3)	(4)
Treatment*Post	-0.016 (0.006)***		-0.023 (0.008)***	
Treatment*Post1		-0.017 (0.007)**		-0.026 (0.011)**
Treatment*Post2		-0.016 (0.006)***		-0.022 (0.008)**
Dep var (mean)	0.502	0.502	0.508	0.508
Treatment Control	Central/North West	Central/North West	Troms/Sør-Trøndelag Hordaland	Troms/Sør-Trøndelag Hordaland
R-square	0.3605	0.3605	0.3684	0.3684
No of obs	99,988	99,988	42,662	42,662

Note: The dependent variable is a dummy variable that equals one if the patient is alive five years after diagnosis. Standard errors within brackets are heteroscedastic robust and corrected for clustering at the (residential) municipality level at the time of diagnosis. A constant term, dummy variables for educational level, gender, age at diagnosis, disease characteristics, diagnosis year, and county of residence are included in all specifications. */**/***/ denote statistical significance at the 10/5/1 percent levels, respectively.

Figure 7: Year specific DiD estimates, survival probabilities



Note: The first vertical lines indicate the opening of the regional cancer wards. The second vertical lines indicate when transfer rates were at the same level as in the Western Health Region.

that such compositional effects are not driving our results, however.

According to national guidelines, certain rare cancer forms would continue to be treated at highly specialized hospitals in the Oslo region, also after the opening of the regional cancer wards (see Appendix Table 6). Examples of such cancer forms include most bone cancer forms, many of the head-and-neck cancer forms, many of the CNS tumors, and most soft-tissue sarcomas. As a robustness check, we limit our analysis to only include the four most common cancer types in our cohort (colorectal, lung, breast, and prostate cancer). Appendix Table 9 shows the results based on the inclusion of these four cancer types only. The results are basically similar to those reported in Table 3.

Overall, the results consistently show that the establishment of regional cancer wards had a negative effect on cancer survival. The results are thus informative about the quality of care provided by the highly specialized national hospitals located in Oslo.

5 The effect of specialized treatment on educational inequalities

As already documented in Tables 1 and 2, the difference in both transfer and survival probability between patients with higher and lower education appears to have decreased after the opening of the regional cancer wards. To investigate this pattern in more detail, we estimate the following differences-in-differences-in-differences (*DiDiD*) specification:

$$sur_{ijt+5} = CN_{it} + post_{jt} + \theta Ed_i + \psi(CN_{it} * post_{jt}) + \mu(Ed_i * post_{jt} * CN_{it}) \quad (2)$$

$$+ \rho(Ed_i * post_{jt}) + \pi(CN_{it} * Ed_i) + X_i\nu + \theta_j^* + d_t^* + u_{ijt}^*$$

As in equation (1), the differences-in-differences parameter ψ measures the average effect of regional cancer treatment on survival. The interaction terms between higher education, Ed_i , the region dummy CN_i and the decentralization dummy $post_{jt}$ are new in equation (2) compared to equation (1).

The new parameter of interest is the differences-in-differences-in-differences parameter μ . A negative μ implies that educational inequalities in survival probabilities fell after the opening of regional cancer wards. The total effect of restricting access to treatment in Oslo for a patient with a higher education is $\psi + \mu$, while it is ψ for a patient with a low education.

The DiDiD estimates are presented in Table 4. The results clearly indicate that it was the highly educated who suffered most strongly as a result of the reform. All specifications indicate a decrease in the differences in survival rates of about four percentage points, e.g., in column (1), where the decline for those with lower education was 1.3 percentage points, whereas it was 5.6 percentage points for the highly educated. The effect is statistically significant at the five percent level when conducting the analysis at health region level (column (1)). When we split the post-reform period into two, we find statistically significant effects of a similar magnitude for both periods. At the county level, the point estimates are statistically insignificant, but of a similar magnitude as in the baseline analysis.²³

As in the analysis in the previous section, different time trends in the educational composition of the treatment and control groups may give grounds for concern. In Appendix Figure 10, we report the trend in the proportion of the whole population (between 16 and 75 years) with a higher education separately for the different regions.²⁴ As the trend is very similar across regions, compositional effects in education are unlikely to drive our results.

Previous research has shown that individuals with a lower education also

²³Appendix Table 10 shows the results from including only the four most common cancer types. The results are basically similar to those reported in Table 4.

²⁴The figure is constructed using separate data collected at the regional level from the Norwegian Social Science Data Service (NSD).

Table 4: The effect of the hospital reforms on educational inequality in survival probability five years after diagnosis, DiDiD estimates

	(1)	(2)	(3)	(4)
High ed*Treatment*Post	-0.043 (0.017)**		-0.034 (0.020)*	
High ed*Treatment*Post1		-0.043 (0.019)**		-0.032 (0.024)
High ed*Treatment*Post2		-0.043 (0.018)**		-0.036 (0.020)*
Treatment*Post	-0.013 (0.006)**		-0.021 (0.008)**	
Treatment*Post1		-0.014 (0.007)**		-0.024 (0.011)**
Treatment*Post2		-0.013 (0.006)**		-0.019 (0.007)**
Dep var (mean)	0.502	0.502	0.508	0.508
Treatment	North/Central	North/Central	Troms/Sør-Trøndelag	Troms/Sør-Trøndelag
Control	West	West	Hordaland	Hordaland
R-square	0.3607	0.3607	0.3687	0.3687
No of obs	99,988	99,988	42,662	42,662

Note: The dependent variable is a dummy variable that equals one if the patient is alive five years after diagnosis. Standard errors within brackets are heteroscedastic robust and corrected for clustering at the (residential) municipality level at the time of diagnosis. In all specifications we include dummies for treatment, higher education and year of diagnosis, as well as interactions between year of diagnosis and higher education, and interactions between treatment and higher education. A constant term and dummy variables for gender, disease characteristics, age at diagnosis and county of residence, are also included. */**/** denote statistical significance at the 10/5/1 percent levels, respectively.

tend to suffer from other serious diseases and therefore receive different types of treatment for such co-morbidities (Aarts et al, 2012). This may further necessitate modifications in the cancer treatment protocol. Unfortunately, we do not have information about such co-morbidities. However, given that the trend in such co-morbidities is likely to be the same in the treatment and control regions, this should not be a source of bias in our research design.

All in all, a very clear pattern emerges from the results reported in this section. Differences in survival rates with respect to education fell substantially after the opening of the new regional cancer wards. As we documented earlier, this went hand in hand with a decline in transfer probability, which was greatest for the highly educated. The results strongly suggest that the relative fall in survival probability for the highly educated was the result of a reduction in the advantage they had as regards access to highly specialized treatment at the national hospitals.

6 Conclusion

The point of departure for this paper is the well-known fact that highly educated individuals survive cancer to a greater extent than others. We test the hypothesis that this may in part be driven by highly educated individuals having better access to, or to a greater extent utilizing, specialized cancer treatment. In a welfare state with strong egalitarian preferences and a publicly financed health care system, differential use of selected treatment options could be seen as an indication that the system is functioning sub-optimally.

We document that, among cancer patients residing outside the Oslo region, highly educated patients, and doctors in particular, are more likely than other patients to be transferred to the two specialized hospitals in the capital. Since these hospitals are likely to offer more advanced treatment provided by a highly skilled staff, such transfers would also be expected to increase survival probabilities. This is hard to investigate empirically, since patients who suffer from the most severe diseases are the ones that are most likely to be transferred. However, we find that the educational inequalities in transfer become more pronounced when we condition on a rich set of disease characteristics. It is also striking that patients who have a medical education are the ones with the highest transfer and survival probabilities conditional on disease characteristics. It is possible, of course, that unobserved patient and disease characteristics vary systematically

differently across types and levels of education compared to the observed characteristics, but we find this unlikely. While these findings in themselves suggest that educated patients utilize specialized treatment to a greater extent, they do not establish that this explains (part of) the educational inequality in survival.

To do this, we need an exogenous source of variation in access to specialized treatment. The approach we used to investigate this empirically was to utilize a reform in cancer treatment in Norway in the 1980's, when specialized cancer wards were established in the Central and Northern health regions. As a consequence of this, the proportion of patients transferred to the national specialized hospitals fell dramatically because of increased regional capacity and more explicit transfer regulations. We find that the reform had a negative effect on survival probability for patients residing in the regions where the new wards were established (i.e., survival improved less than in other regions). This was particularly true for highly educated patients. These results indicate that the initial quality of treatment or care at the new regional wards may have been lower than that offered at the national hospitals, but also that the reform reduced the educational inequalities in cancer survival. Taken at face value, the point estimates suggest that a substantial part of the educational difference in cancer survival in these regions was due to differences in access to and utilization of specialized treatment.

It is not surprising that a fully privatized health care system can produce social inequalities. Our results suggest that, even in a public health care system, socioeconomic inequalities in cancer survival can arise when health personnel have substantial discretion as regards referral practices. They also highlight that the organization of health care may involve a painful trade-off between proximity and quality of treatment.

References

- [1] Aarts MJ, Koldewijn EL, Poortmans PMP, Coebergh JWW, Louwman WJ. The impact of socioeconomic status on prostate cancer treatment and survival in the Southern Netherlands. Unpublished manuscript 2012, Erasmus Universiteit Rotterdam
- [2] Angrist J. Estimation of limited dependent variable models with dummy endogenous regressors: Simple strategies for empirical practice. *Journal of Business and Economic Statistics* 2001; 19, 2-16.
- [3] Bago d'Uva T, Jones MA. Health care utilisation in Europe: New evidence from the ECHP. *Journal of Health Economics* 2009; 28, 265-279.
- [4] Black N, Johnston A. Volume and outcome in hospital care: evidence, explanations and implications. *Health Services Management Research* 1990; 3, 108-114.
- [5] Carlsen F. Hospital Financing in Norway. *Health Policy* 1994; 28, 79-88.
- [6] Clark D, Royer H. The effect of education on adult mortality and health: Evidence from Britain. *American Economic Review* 2013, forthcoming.
- [7] Clegg LX, Reichman ME, Miller BA, Hankey BF, Singh GK, Lin YD, Goodman MT, Lynch CF, Schwartz SM, Chen VW, Bernstein L, Gomez SL, Graff JJ, Lin CC, Johnson NJ, Edwards BK. Impact of socioeconomic status on cancer incidence and stage at diagnosis: selected findings from the surveillance, epidemiology, and end results: National longitudinal mortality study. *Cancer Causes Control* 2009; 20, 417-435.
- [8] Cutler D, Lleras-Muney A. Understanding differences in health behaviour by education. *Journal of Health Economics* 2010; 29, 1-28.
- [9] Du XL, Fang S, Coker AL, Sanderson M, Aragaki C, Cormier JN, Xing Y, Gor BJ, Chan W. Racial disparity and socioeconomic status in association with survival in older men with local/regional

- stage prostate carcinoma: findings from a large community-based cohort. *Cancer* 2006; 106, 1276-1285.
- [10] Elstad JI, Torstensen R, Lyngstad TH, Kravdal O. Trends in educational inequalities in mortality, seven types of cancers. Norway 1971-2002, *European Journal of Public Health* 2012; 22, 771-776.
 - [11] Fiva JH, Hægeland T, Rønning M. Health status after cancer: Does it matter which hospital you belong to? *BMC Health Services Research* 2010; 10: 204.
 - [12] Glied S, Lleras-Muney, A. Technological innovation and inequality in health. *Demography* 2008; 45, 741-761.
 - [13] Grytten J, Skau I, Sørensen R. Do expert patients get better treatment than others? Agency discrimination and statistical discrimination in obstetrics. *Journal of Health Economics* 2011; 30, 163-180.
 - [14] Hagen TP, Kaarbøe OM. The Norwegian hospital reform of 2002: Central government takes over ownership of public hospitals. *Health Policy* 2006; 76, 320-333.
 - [15] Kalager M, Haldorsen T, Bretthauer M, Hoff G, Thoresen SO, Adami H-O. Improved breast cancer survival following introduction of an organized mammography screening program among both screened and unscreened women: a population-based cohort study. *Breast Cancer Research* 2009; 4, R44.
 - [16] Kenkel DS. Health behavior, health knowledge, and schooling. *Journal of Political Economy* 1991; 99, 287-305.
 - [17] Kelly JV, Hellinger FJ. Physician and hospital factors associated with mortality of surgical patients. *Medical Care* 1986; 24, 785-800.
 - [18] Kinsey T, Jemal A, Liff J, Ward E, Thun M. Secular trends in mortality from common cancers in the United States by educational attainment, 1993-2001. *Journal of the National Cancer Institute* 2008; 100, 1003-1012.
 - [19] Kravdal Ø. Social inequalities in cancer survival. *Population Studies* 2000; 54, 1-18.

- [20] Kravdal Ø. Does place matter for cancer survival in Norway? A multilevel analysis of the importance of hospital affiliation and municipality socio-economic resources. *Health and Place* 2006; 12, 527-537.
- [21] Kravdal H, Syse A. Changes over time in the effect of marital status on cancer survival. *BMC Public Health* 2011; 11, 804.
- [22] Lang K, Korn JR, Lee DW, Lines LM, Earle CC, Menzin J. Factors associated with improved survival among older colorectal cancer patients in the US: a population-based analysis. *BMC Cancer* 2009; 9, 227.
- [23] Lleras-Muney A. The relationship between education and adult mortality in the United States. *Review of Economic Studies* 2005; 72, 189-221.
- [24] Marks R, Ok H, Joung H, Allegrante JP. Perceptions about collaborative decisions: Perceived provider effectiveness among 2003 and 2007 health information national trends survey (HINTS) respondents. *Journal of Health Communication* 2010; 15(S3), 135-146.
- [25] Mazumder B. Does education improve health: A reexamination of the evidence from compulsory schooling laws. *Economic Perspectives* 2008; 32, 2-16.
- [26] Mazumder B. The effects of education on health and mortality. *Nordic Economic Policy Review* 2012; 1, 261-301
- [27] Meghir C, Palme M, Simeonova E. Education, health and mortality: Evidence from a social experiment. NBER 2012, Working paper no. 17932.
- [28] Molven O. and Ferkis J. Healthcare, welfare and law. Health legislation as a mirror of the Norwegian welfare state. Gyldendal Akademisk, Oslo, 2011.
- [29] Norges offentlig utredninger (NOU) . Omsorg og kunnskap! NOU 1997;20.

- [30] Porter GA, Soskolne CL, Yakimets WW, Newman SC. Surgeon-related factors and outcome in rectal cancer. *Annals of Surgery* 1998; 227, 157-67.
- [31] Smith SK, Dixon A, Trevena L, Nutbeam D, McCaffery KJ. Exploring patient involvement in healthcare decision making across different education and functional health literacy groups. *Social Science & Medicine* 2009; 69, 1805-1812.
- [32] Wibe A, Eriksen MT, Syse A, Myrvold HE, Søreide O, Norwegian Rectal Cancer Group. Total mesorectal excision for rectal cancer—what can be achieved by a national audit? *Colorectal Disease* 2003; 5, 471-477.
- [33] Wibe A, Eriksen MT, Syse A, Tretli S, Myrvold HE, Søreide O, Norwegian Rectal Cancer Group. Effect of hospital caseload on long-term outcome after standardization of rectal cancer surgery at a national level. *British Journal of Surgery* 2005; 92, 217-224.

A Appendix

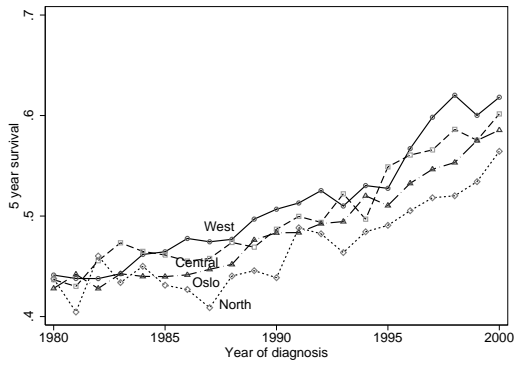


Figure 8: Survival five years after diagnosis, Oslo region included

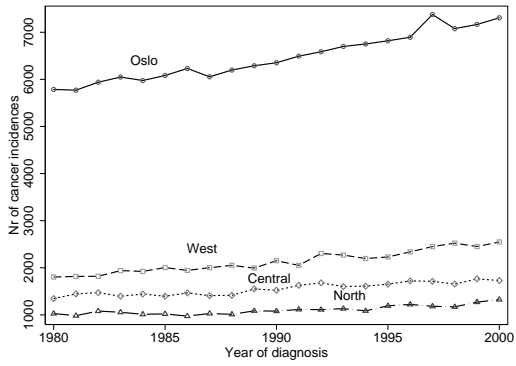


Figure 9: Cancer incidence by health region

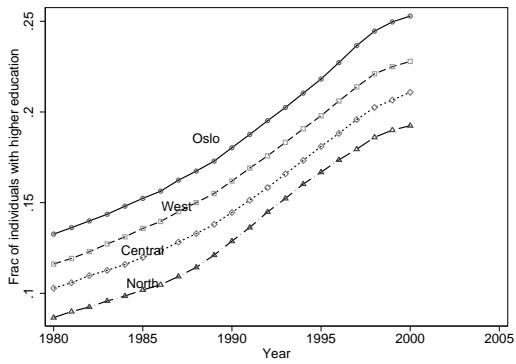


Figure 10: Fraction of the population (between 16 and 75 years) with high education by health region.

Table 5: Summary statistics of the variables used in the analyses

	Mean	St.dev	Min	Max
Survival five years after diagnosis	0.502	0.500	0	1
Transfer to the Oslo region	0.115	0.320	0	1
Age at diagnosis	61.4	11.03	30	75
Year of diagnosis	1991	6.07	1980	2000
University level education (15 years or more)	0.101	0.301	0	1
Gender dummy (1=Female, 0=Male)	0.470	0.500	0	1
STAGE AT DIAGNOSIS				
Localized	0.437	0.500	0	1
Regional spread	0.171	0.377	0	1
Distant spread	0.195	0.396	0	1
Unknown spread	0.197	0.398	0	1
CANCER TYPE (ENCODED BY ICD-10)				
Head and neck, incl eye (C00-14, C30-32, C69)	0.034	0.180	0	1
Esophageal (C15)	0.007	0.081	0	1
Stomach (C16)	0.045	0.207	0	1
Small intestine (C17)	0.004	0.059	0	1
Colorectal (C18-C21)	0.141	0.348	0	1
Hepatic/biliary (C22-C24)	0.010	0.101	0	1
Pancreatic (C25)	0.030	0.171	0	1
Lung (C34, C39)	0.099	0.299	0	1
Endocrine (C37, C73-75)	0.019	0.136	0	1
Bone (C40-C41)	0.002	0.041	0	1
Skin (C43-44)	0.067	0.250	0	1
Soft tissue (C45-49)	0.004	0.061	0	1
Peritoneal (C48)	0.002	0.041	0	1
Breast (C50)	0.122	0.327	0	1
Cervical/uterine (C53-55)	0.049	0.216	0	1
Ovarian (C56)	0.028	0.166	0	1
Other female gyn. (C51-52, C57-58)	0.004	0.063	0	1
Prostate (C61)	0.107	0.309	0	1
Testicular (C62)	0.011	0.103	0	1
Penile/other male genital (C60, C63)	0.002	0.040	0	1
Renal/bladder (C64-68)	0.082	0.274	0	1
CNS tumor (C69-72, D32-33)	0.035	0.183	0	1
Leukemia/lymphoma (C81-85, C90-95)	0.070	0.255	0	1
Other or unspecified (C26, C38, C76-80, C86-88, C96-97)	0.028	0.166	0	1

No of observations = 99,988.

Table 6: Transfer proportions before and after the opening of regional cancer hospitals

ICD10	Central		North	
	0	1	0	1
Head and neck	0.688	0.234	0.724	0.364
Esophageal	0.356	0.062	0.568	0.057
Stomach	0.037	0.022	0.034	0.027
Small intestine	0.125	0.147	0.182	0.143
Colorectal	0.103	0.037	0.137	0.057
Hepatic/biliary	0.127	0.068	0.127	0.080
Pancreatic	0.042	0.018	0.069	0.024
Lung	0.466	0.044	0.584	0.080
Endocrine	0.337	0.096	0.490	0.186
Bone	0.667	0.417	0.667	0.692
Skin	0.122	0.031	0.228	0.066
Soft tissue	0.520	0.169	0.828	0.417
Peritoneal	0.462	0.167	0.200	0.250
Breast	0.232	0.039	0.358	0.087
Cervical/uterine	0.912	0.183	0.919	0.296
Ovarian	0.718	0.191	0.819	0.265
Other female gyn.	0.780	0.170	0.714	0.287
Prostate	0.062	0.013	0.133	0.033
Testicular	0.776	0.069	0.884	0.167
Penile/other male genital	0.467	0.062	0.429	0.118
Renal/bladder	0.234	0.037	0.267	0.062
CNS tumor	0.458	0.089	0.747	0.183
Leukemia/lymphoma	0.264	0.054	0.293	0.091
Other or unspecified	0.170	0.033	0.231	0.079

Table 7: The effect of the hospital reforms on educational inequality in survival probability, separate results for the Northern and Central health region

	(1)	(2)	(3)	(4)	(5)	(6)
High ed*Treatment*Post	-0.047 (0.027)*			-0.042 (0.020)*		
High ed*Treatment*Post1		-0.068 (0.036)*	-0.106 (0.044)**		-0.031 (0.023)	-0.010 (0.021)
High ed*Treatment*Post2		-0.041 (0.026)	-0.045 (0.034)		-0.047 (0.020)**	-0.040 (0.019)**
Treatment*Post	-0.035 (0.008)***			-0.007 (0.007)		
Treatment*Post1		-0.030 (0.010)**	-0.038 (0.014)**		-0.014 (0.009)*	-0.029 (0.012)**
Treatment*Post2		-0.037 (0.009)***	-0.050 (0.012)***		-0.003 (0.006)	-0.011 (0.007)
Dep var (mean)	0.502	0.502	0.511	0.512	0.512	0.514
Treatment	North	North	Troms	Central	Central	Sør-Trøndelag
Control	West	West	Hordaland	West	West	Hordaland
R-square	0.3566	0.3591	0.3673	0.3553	0.3574	0.3651
No of obs	67,503	67,503	28,931	76,913	76,913	35,505

Note: The dependent variable is a dummy variable that equals one if the patient is alive five years after diagnosis. Standard errors within brackets are heteroscedastic robust and corrected for clustering at the (residential) municipality level at the time of diagnosis. A constant term and dummy variables for gender, disease characteristics, age at diagnosis and county of residence are included in all specifications. */**/** denote statistical significance at the 10/5/1 percent levels, respectively.

Table 8: The effect of transfer on survival five years after diagnosis, year-specific DiD estimates

	(1)		(2)	
Treatment	-0.005	(0.017)	0.015	(0.016)
Treatment*Year (1980=ref)				
1981	-0.022	(0.022)	-0.007	(0.021)
1982	0.016	(0.022)	0.010	(0.020)
1983	0.011	(0.022)	0.020	(0.021)
1984	0.012	(0.022)	0.011	(0.020)
1985	-0.005	(0.022)	-0.004	(0.020)
1986	-0.021	(0.022)	-0.009	(0.020)
1987	-0.037	(0.022)*	0.001	(0.021)
1988	-0.041	(0.022)*	0.002	(0.020)
1989	-0.050	(0.022)**	-0.027	(0.020)
1990	-0.055	(0.022)**	-0.018	(0.020)
1991	-0.011	(0.022)	-0.022	(0.020)
1992	-0.029	(0.022)	-0.008	(0.020)
1993	-0.023	(0.022)	0.024	(0.020)
1994	-0.027	(0.022)	-0.012	(0.020)
1995	-0.032	(0.021)	0.009	(0.020)
1996	-0.029	(0.021)	-0.003	(0.019)
1997	-0.048	(0.021)**	-0.010	(0.019)
1998	-0.067	(0.021)**	-0.012	(0.019)
1999	-0.047	(0.021)**	-0.012	(0.019)
2000	-0.024	(0.020)	-0.011	(0.019)
Dep var (mean)	0.110		0.102	
Treatment	North		Central	
Control	West		West	
R-square	0.3626			
No of obs	67,503		76,913	

Note: The dependent variable is a dummy variable that equals one if the patient is alive five years after diagnosis. Standard errors within brackets are heteroscedastic robust. Included in all specifications are a constant term, dummy variables for educational level, gender, age at diagnosis, disease characteristics, year of diagnosis and county of residence. */**/** denote statistical significance at the 10/5/1 percent levels, respectively.

Table 9: The effect of the hospital reforms on survival five years after diagnosis when only including the four most common cancer types, DiD estimates.

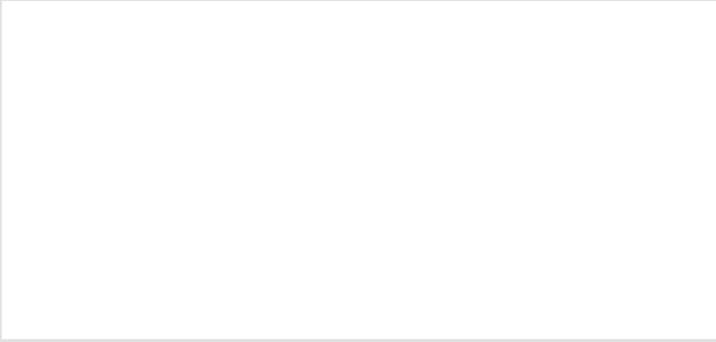
	(1)	(2)	(3)	(4)
Treatment*Post	-0.014 (0.009)		-0.034 (0.011)***	
Treatment*Post1		-0.015 (0.011)		-0.035 (0.013)**
Treatment*Post2		-0.013 (0.009)		-0.033 (0.013)***
Dep var (mean)	0.502	0.502	0.510	0.510
Treatment	Central/North	Central/North	Sør-Trøndelag/Troms	Sør-Trøndelag/Troms
Control	West	West	Hordaland	Hordaland
R-squared	0.3548	0.3548	0.3653	0.3653
No of obs	46,941	46,941	20,130	20,130

Note: The included cancer types are: colorectal, lung, breast and prostate.
See also Table 3.

Table 10: The effect of the hospital reform on educational inequality in survival probabilities five years after diagnosis when only including the most common cancer types, DiDiD estimates.

	(1)	(2)	(3)	(4)
High ed*Treatment*Post	-0.058 (0.030)*		0.001 (0.026)	
High ed*Treatment*Post1		-0.069 (0.036)*		-0.012 (0.036)
High ed*Treatment*Post2		-0.053 (0.032)		0.006 (0.026)
Treatment*Post	-0.011 (0.009)		-0.035 (0.011)***	
Treatment*Post1		-0.011 0.011		-0.035 (0.014)**
Treatment*Post2		-0.011 0.009		-0.035 (0.011)**
Dep var (mean)	0.502	0.502	0.510	0.510
Treatment	Central/North	Central/North	Sør-Trøndelag/Troms	Sør-Trøndelag/Troms
Control	West	West	Hordaland	Hordaland
R-square	0.3551	0.3551	0.3659	0.3659
No of obs	46,941	46,941	20,130	20,130

Note: The included cancer types are: colorectal, lung, breast and prostate.
See also Table 4.



B Return to:
Statistisk sentralbyrå
NO-2225 Kongsvinger

From:
Statistics Norway

Postal address:
PO Box 8131 Dept
NO-0033 Oslo

Office address:
Kongens gate 6, Oslo
Oterveien 23, Kongsvinger

E-mail: ssb@ssb.no
Internet: www.ssb.no
Telephone: + 47 62 88 50 00

ISSN 0809-733X



Statistisk sentralbyrå
Statistics Norway