

Basten, Christoph; Fagereng, Andreas; Telle, Kjetil

**Working Paper**

## Cash-on-Hand and the duration of job search. Quasi-experimental evidence from Norway

Discussion Papers, No. 679

**Provided in Cooperation with:**

Research Department, Statistics Norway, Oslo

*Suggested Citation:* Basten, Christoph; Fagereng, Andreas; Telle, Kjetil (2012) : Cash-on-Hand and the duration of job search. Quasi-experimental evidence from Norway, Discussion Papers, No. 679, Statistics Norway, Research Department, Oslo

This Version is available at:

<https://hdl.handle.net/10419/192661>

**Standard-Nutzungsbedingungen:**

Die Dokumente auf EconStor dürfen zu eigenen wissenschaftlichen Zwecken und zum Privatgebrauch gespeichert und kopiert werden.

Sie dürfen die Dokumente nicht für öffentliche oder kommerzielle Zwecke vervielfältigen, öffentlich ausstellen, öffentlich zugänglich machen, vertreiben oder anderweitig nutzen.

Sofern die Verfasser die Dokumente unter Open-Content-Lizenzen (insbesondere CC-Lizenzen) zur Verfügung gestellt haben sollten, gelten abweichend von diesen Nutzungsbedingungen die in der dort genannten Lizenz gewährten Nutzungsrechte.

**Terms of use:**

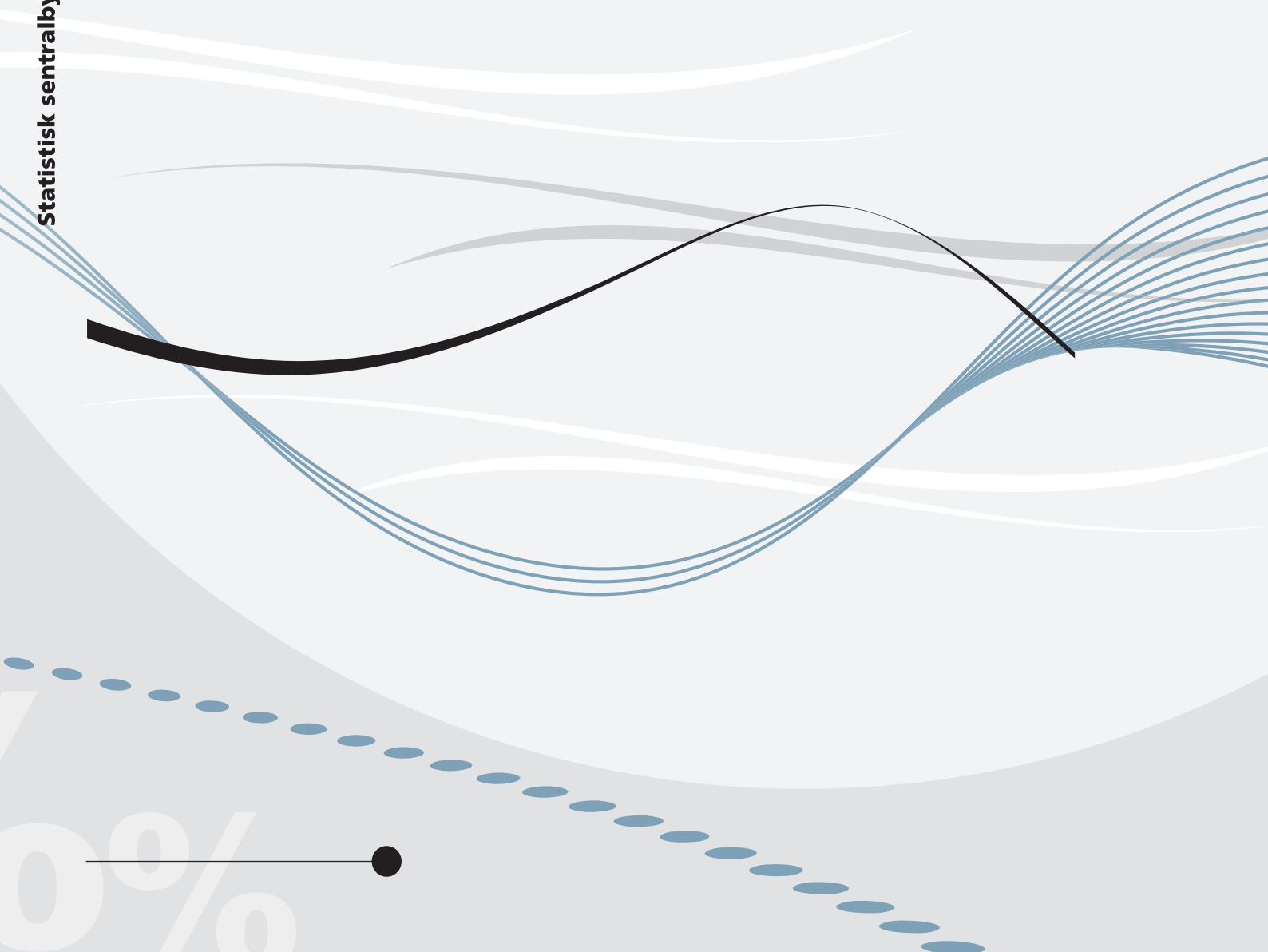
*Documents in EconStor may be saved and copied for your personal and scholarly purposes.*

*You are not to copy documents for public or commercial purposes, to exhibit the documents publicly, to make them publicly available on the internet, or to distribute or otherwise use the documents in public.*

*If the documents have been made available under an Open Content Licence (especially Creative Commons Licences), you may exercise further usage rights as specified in the indicated licence.*

*Christoph Basten, Andreas Fagereng and  
Kjetil Telle*

**Cash-on-Hand and the duration of job search**  
Quasi-experimental evidence from Norway



*Christoph Basten, Andreas Fagereng and  
Kjetil Telle*

## **Cash-on-Hand and the duration of job search** Quasi-experimental evidence from Norway

**Abstract:**

We identify the causal effect of lump-sum severance payments on non-employment duration in Norway by exploiting a discontinuity in eligibility at age 50. We find that a severance payment worth 1.2 months' earnings at the median lowers the fraction re-employed after a year by six percentage points. Data on household wealth enable us to verify that the effect is decreasing in prior wealth, which supports the view that the severance pay effect should be interpreted as evidence of liquidity constraints. Finding liquidity constraints in Norway, despite its equitable wealth distribution and generous welfare state, means they are likely to exist also in other countries.

**Keywords:** Unemployment, Optimal Unemployment Insurance, Liquidity Constraints, Mental Accounting, Severance Pay, Regression Discontinuity Design

**JEL classification:** C41, E21, E24, J65

**Acknowledgements:** Christoph Basten would like to thank Statistics Norway for their hospitality during the work on this project. We are indebted to Luigi Guiso, Andrea Ichino and Erzo Luttmer for helpful guidance, and grateful to seminar audiences at the EUI, Harvard, Statistics Norway, Zurich, IZA, CES-ifo, WISE, the 2010 Christmas Meeting of German Economists Abroad, and the 2011 Congress of the EEA. The usual disclaimer applies.

**Address:** Kjetil Telle, Statistics Norway, Research Department. E-mail: [kjetil.telle@ssb.no](mailto:kjetil.telle@ssb.no)

Christoph Basten, KOF Swiss Economic Institute, ETH Zurich. E-mail: [basten@kof.ethz.ch](mailto:basten@kof.ethz.ch)

Andreas Fagereng, European University Institute and Statistics Norway.  
E-mail: [andreas.fagereng@eui.eu](mailto:andreas.fagereng@eui.eu)

---

**Discussion Papers**

comprise research papers intended for international journals or books. A preprint of a Discussion Paper may be longer and more elaborate than a standard journal article, as it may include intermediate calculations and background material etc.

© Statistics Norway

Abstracts with downloadable Discussion Papers  
in PDF are available on the Internet:

<http://www.ssb.no>

<http://ideas.repec.org/s/ssb/dispap.html>

For printed Discussion Papers contact:

Statistics Norway

Telephone: +47 62 88 55 00

E-mail: [Salg-abonnement@ssb.no](mailto:Salg-abonnement@ssb.no)

ISSN 0809-733X

Print: Statistics Norway

## Sammendrag

Vi estimerer effekten av en lump-sum utbetaling på tiden en arbeidstaker står uten arbeid. En diskontinuitet ved alder 50 i retten til sluttvederlag for arbeidstakere som mister jobben, benyttes til å identifisere den kausale effekten. En utbetaling som svarer til en medianlønnsinntekt på 1,2 måneder, reduserer andelen som er tilbake i jobb etter et år, med seks prosentpoeng. Data over husholdningsformue fra året før arbeidstakeren mister jobben gjør det mulig å bekrefte at effekten avtar med formue. Dette gir støtte til synspunktet om at sluttvederlagseffekten skal tolkes som tegn på at de som mister jobben er likviditetsbeskranket. Når vi finner likviditetsbeskrankninger i Norge, til tross for landets relativt jevne formuesfordeling og sjenerøse velferdsordninger, kan det tyde på at slike beskrankninger også finnes i andre land.

# 1 Introduction

Are unemployed households liquidity-constrained, so that they have to accept a job offer earlier than would be optimal? This is the argument implied by Card et al. (2007a), based on evidence that Austrian job losers eligible for lump-sum severance payments take more time until their next job than do their non-eligible counterparts. Together with Chetty (2008), which shows theoretically how liquidity constraints can affect job search duration and found longer durations for those with greater financial resources (possibly endogenous) in the United States, this has transformed the unemployment duration literature, which hitherto had assumed that unemployment insurance (UI) prolonged search duration exclusively by distorting the relative price of being unemployed rather than employed (“moral hazard”).<sup>1</sup>

Yet two questions remain: First, how generalizable are these findings from Austria and the United States to other countries? The question arises because both countries grant UI only for a relatively short period, maximally 6 months in normal times,<sup>2</sup> and because especially the United States has a more unequal wealth distribution than the majority of OECD economies. Hence, one might think that smaller or no liquidity constraints will exist in most other OECD economies. Second, does the reduced-form effect of severance payments indeed reflect liquidity constraints in the sense that households are unable to spend more resources while out of work, or is some alternative mechanism at play? As a possible alternative we suggest *mental accounting*, whereby households do have enough resources of their own, or could borrow them from financial institutions, but after job loss are less willing to spend prior savings than to spend severance pay money.

---

<sup>1</sup>For examples, see Katz and Meyer (1990) or Lalive et al. (2006).

<sup>2</sup>After that period, households can still receive “unemployment assistance”, which is however lower and means-tested.

The present paper addresses both of these questions. First, we investigate whether severance payments prolong job search in Norway, which has one of the world’s most generous UI systems, replacing 62% of prior income for up to 2 years, and also has one of the rich world’s most equitable wealth distributions. Despite these circumstances, which may be thought to render liquidity constraints less likely, we find clear evidence of a causal severance pay effect. The severance pay amounts to about 1.2 months of net-of-tax median earnings, which allow the job-seeker to “top up” from the 62% replacement rate provided by the UI system to 100% of his prior income for about 3.2 months. These payments are found to increase average non-employment duration by just below a month, and to reduce the fractions re-employed after 12 months by 6 percentage points, which corresponds to a relative reduction of about 10 percent. Thus, severance pay effects do not seem to be specific to countries with relatively short maximum UI durations.

Second, we investigate whether this effect does indeed reflect liquidity constraints, as put forward in Card et al. (2007a) and Chetty (2008). In particular, we discuss the alternative interpretation of mental accounting in the spirit of Shefrin and Thaler (1988), under which even households with enough other financial resources prolong their job search only if they receive severance payments, because they hesitate to tap the other resources for the purpose of longer job search. Under the assumption that the strength of potential mental accounting is invariant to prior wealth<sup>3</sup> we can discriminate between the two scenarios, because in a world of liquidity constraints the severance pay effect will clearly be decreasing in prior (liquid) wealth. Since, in contrast to Card et al. (2007a), we are able to observe various measures of household wealth, we can test this, and we find that the effect is indeed clearly decreasing in prior wealth. In fact,

---

<sup>3</sup> We return to the credibility of this assumption in Section 5.

no statistically significant effect is found for those with above-median wealth. This evidence favors an interpretation of the severance pay effect as reflecting liquidity constraints rather than mental accounting.

Our identification exploits the fact that in severance pay agreements concluded between the Confederation of Norwegian Enterprise and the Norwegian Confederation of Trade Unions, only those aged above 50 on the day of their job separation are eligible for payments. This allows us to implement a regression discontinuity design (RDD), comparing those aged just above 50 to those aged just below. A number of tests verify that the two groups are statistically identical along relevant dimensions. Furthermore, the mechanism of the pay-outs, which are made by a joint fund financed by firms in a not experience-rated way, ensures that, as we verify in the data, there is no selective lay-off behavior.

The remainder of the paper is structured as follows: Section 2 outlines the Norwegian severance pay program and discusses our empirical strategy. Section 3 introduces the data. Section 4 presents the general results on the effect of lump-sum severance payments on job search duration, and Section 5 addresses theoretically and empirically the possibility of mental accounting behavior. Section 6 concludes.

## **2 Empirical Strategy**

The challenge in identifying the causal effect of severance payments in most empirical setups is that eligibility or amounts typically depend on factors like age, tenure or prior earnings, which however are likely to be correlated with non-employment duration also through other channels. To address this problem, we exploit a rule under which employees separated from their job just before the age of 50 are not eligible for severance pay, whereas those aged just above 50



are. In the immediate neighborhood of the discontinuity all other factors that might influence our outcomes of interest can be expected to be statistically identical, so that any discontinuity in outcomes can be attributed credibly to the discontinuity in severance pay.

While many firms in Norway have heterogeneous severance pay rules at the firm level, those who are members of Norway's Confederation of Trade Unions, "Landsorganisasjonen i Norge" (LO) and the Confederation of Norwegian Enterprise, "Næringslivets Hovedorganisasjon" (NHO), have agreed on common rules about eligibility and amounts of severance pay ("Sluttvederlag", SLV) paid to employees who are involuntarily separated from their jobs. The LO is Norway's largest and most influential workers' organization, covering about 850,000 Norwegian employees, or one-third of the Norwegian labor force. A key advantage of the LO-NHO agreement for our identification is that actual payments are made not by firms, but by a fund to which firms contribute each month according to their number of full-time employees, and not according to past layoffs. As our sensitivity tests verify, this ensures that there is no manipulation of the threshold in the sense of firms trying to systematically lay off workers just below or just above age 50.<sup>4</sup>

For the 15 years for which we have data, 1995-2010, the assigned amount of severance pay varied along three dimensions: By job tenure, by age, and across 4 periods. Firstly individuals were required to have at least 10 years of tenure in their current plant or at least 15 years of tenure in a combination of participating plants. In our data we observe any job start date after 1992. Therefore we know exact tenure for those who started their last job in or after 1992. By contrast for someone who started his last job in, say, 1990 and quit in

---

<sup>4</sup>For further information on LO, NHO, and their joint scheme, see <http://www.lo-nho-ordningene.no/>

1998, we will only know that he must have started before 1992 and hence have at least 8 years of tenure, but we do then not know whether or not his tenure does also exceed the 10 years required for severance pay eligibility. Therefore we are not able to exploit tenure as a RDD assignment variable, and we restrict our sample to those *known* to have had at least 10 years of tenure, so that everyone in our sample did satisfy the tenure requirement for severance pay.

The second dimension and the one we exploit is age. As Figure I shows, severance pay amounts increased from zero to NOK 18,000 at age 50.<sup>5</sup> This provides a setup for RDD analysis. There are also further increases at ages 52, 54, 56, 58, 59 and 60, as well as annual decreases after age 60. However the other increases until and including the one at age 59 are rather small, and at and above 60 other simultaneous discontinuities apply, in particular in access to early retirement, thus violating the exclusion restriction required for identification. Therefore we restrict our sample to those aged between 48 and 52 on the day of their job separation. Our main estimates do then fully exploit this bandwidth of 2 years per side. Subsequent sensitivity checks show that the results remain robust to using alternative bandwidths, including those declared optimal by the Imbens and Kalyanaraman (2009) algorithm.

Finally, within our period of observation the precise amount paid out at age 50 was adjusted twice. It amounted to NOK 12,000 until September 1995, NOK 14,400 until July 2002, and NOK 18,000 thereafter. Most of our observations come from the last period, and so the average amount individuals in our sample were eligible for if aged above 50 is NOK 16,924 or \$2,500 at 2004 exchange rates.<sup>6</sup> It is worth noting that these amounts do not depend on prior earnings, so we may expect the same amount to have a larger effect on those with lower

---

<sup>5</sup>At the 2004 exchange rate of 6.7 NOK per USD, this corresponds to about \$2,700.

<sup>6</sup>For an overview of the exact severance pay amounts by period and age, see Table II.

previous incomes than on those with higher incomes. Median monthly earnings after taxes (the relevant point of reference, since severance payments are not being taxed) amounted to \$ 2,158 (see Table I), so the payments amounted to about 1.2 monthly after-tax incomes for the median earner. It would thus have allowed him to “top up” from the 62% UI replacement rate to 100% of his former income for about 3 months, and top up to lower replacement rates correspondingly longer.

On those aged between 48 and 52, and known to have had 10 or more years of tenure, we estimate the following equation for different outcome measures  $y$ :

$$y_i = \alpha + \beta T_i + \gamma z_i + \delta T_i z_i + \varepsilon_i \tag{1}$$

Here  $T$  is an indicator for being aged above 50,  $z$  is the forcing variable (age-50), and  $\varepsilon$  is a mean-zero error term. So essentially we estimate the effect of being aged above 50, while controlling for the effect of age *per se*. Since we can make the interval small, we rely on a linear control for age,<sup>7</sup> and we allow the effect of age to differ on the two sides of the discontinuity. The specification does also allow us to add an interaction of  $T$  with different measures of wealth when we investigate how the severance pay effect varies with prior wealth. To maximize transparency and facilitate interaction of the treatment indicator with further covariates, our baseline specification uses a rectangular kernel, thus weighting each observation equally. This can be implemented by simply estimating Equation 1 by Ordinary Least Squares. The sensitivity checks

---

<sup>7</sup>Our point estimates change very little if we instead control for age using a second order polynomial.

reveal that our results are robust to the alternative use of a triangular kernel, which assigns greater weight to observations closer to the threshold and which Fan and Gijbels (1996) showed in general to be preferable for RDD purposes.<sup>8</sup>

### 3 Data

We use administrative data from the *FD-Trygd* events database of Statistics Norway, covering the universe of Norwegian residents. We start with information on all job separations by male employees occurring between 1995 and 2010.<sup>9</sup> We then merge in information obtained from the LO-NHO office on which plants were participating in the agreement and restrict to those that were.<sup>10</sup> Furthermore, we add information from *FD-trygd* on exact age at the day of the job separation, and we restrict the main sample to those aged between 48 (inclusive) and 52 (exclusive) on the day of their job separation.

Since we do not explicitly observe which of the job separations are involuntary (another requirement for receiving severance pay), we exclude cases (using information from *FD-Trygd*) in which the job separation is likely to occur because of some other event, after which individuals are likely not to be searching for a new job. These are, first, separators receiving disability pension in the year of their job separation, second, those on parental leave (given the age range of the sample, there are very few), and third, those who start a new job just the day after the separation or return to the same firm within 3 months. All these restrictions will reduce the fraction of voluntary quitters, but they may also introduce bias due to endogenous sample selection. Luckily, however, we

---

<sup>8</sup>For background papers on the RDD approach, see Trochim (1984), Lee and Lemieux (2009), Imbens and Lemieux (2008).

<sup>9</sup>We focus on males as even in Norway females earn significantly less than their husbands and they typically work part time.

<sup>10</sup>General employment information is available from 1992 onward, but it is only from 1995 onward that we know plant identifiers.

find that our point estimates change very little when we lift any or all of these restrictions.

Since severance pay eligibility requires at least 10 years of plant tenure, we restrict the sample accordingly. We drop individuals who started their last job before 1992 (for whom we cannot observe the exact start date) *and* who are separated from it before 2002 since we are unable to know whether their full tenure was above or below 10 years. This reduces the sample size significantly, but it guarantees that everyone in our sample does satisfy the tenure requirement for severance pay, so that the discontinuity at the age threshold reflects as closely as possible the full treatment effect of the payment.

A last restriction from our data is that we do not observe the amounts actually received, as would be necessary to compute the Wald estimate of the effect of actual severance pay on job search duration. Instead, like Card et al. (2007a), we can only estimate the reduced-form or intention-to-treat (ITT) effect of severance pay eligibility, which constitutes a lower bound on the effect of actual severance pay. But with the other sample restrictions in place, as explained above, and since the claim forms are sent to the LO-NHO office by the employer together with the layoff notification, we can expect compliance to be rather high, and so our ITT estimates are expected to be not much below the corresponding Wald estimates.

We follow Card et al. (2007a) in using as outcome variable "non-employment duration", defined as the number of days from layoff until the start of a new job, as opposed to the duration of registered unemployment. Their argument, based on the findings in Card et al. (2007b), is that people may cease to register as unemployed once their benefit eligibility runs out.<sup>11</sup>

---

<sup>11</sup>An additional reason in our case is that, as maintained for instance by Bratsberg et al.

Our first and most natural outcome measure then is the completed duration of job search. One drawback of this measure is that we observe it only for those who start a new job by December 2010. Furthermore, this measure is somewhat sensitive to the choice of the duration after which we censor. Card et al. (2007a) censor after 6 months, on the grounds that this is the maximum UI duration in their sample. In our case the same argument speaks for censoring after 2 years. However, for someone who has not returned to work after 18 months we do not know whether his complete non-employment duration is 19 months or 24 or 40, yet we *do* know that he was not back in work after 12 months. Therefore, in addition to duration, we also look at three other outcome variables, i.e. the fraction reemployed after 12, 15, and 18 months.<sup>12</sup>

A final data issue to be discussed is the measure of wealth. In view of the previous literature on liquidity constraints of households (Gruber (2001), Chetty and Szeidl (2007)), the most suitable definition of wealth should be financial wealth – including deposits, bonds, stocks and mutual funds, but not real estate – and measured at the household rather than the individual level, i.e. adding in also the wealth, if any, of the spouse. Nonetheless it is conceivable that transaction costs for stocks and bonds are so high that households use only deposits, or that transaction costs for real estate are so low that they can also use their real estate, or that many married individuals keep their budgets sufficiently separate that individual holdings matter more than a household's total holdings. Fortunately, our data set is comprehensive enough that we can

---

(2010), many individuals who would be labeled as unemployed in other countries draw on disability insurance instead of unemployment insurance in Norway. Similar considerations about moral hazard vs. liquidity constraints apply to those on disability pension as to those on regular unemployment insurance (see for instance Autor and Duggan (2007)). In any case, when we perform the analyses excluding any household ever receiving disability pension in our observation window, our main results remain unchanged.

<sup>12</sup>We have also looked at shorter and longer horizons. Effects there go in the same direction, but tend to be smaller. Likely this is the case because at shorter horizons constraints are not yet binding, whereas at longer horizons only a smaller and more selected sample of individuals are still without a job.

use total wealth, financial wealth and deposits alone, and each of these both at the individual and at the household level, thus allowing us to see how robust findings are to the use of different measures.<sup>13</sup>

Of course how long someone can sustain the household with a given amount of savings will depend on the monthly expenditures such as monthly rent, insurance payments etc, which in turn will largely depend on prior income. On these grounds we have also repeated our analyses using, not absolute wealth, but wealth relative to average income (across 3 years) before the job separation. This yields results similar to those based on absolute wealth.

Table I shows in the left panel the summary statistics for the sample on which our main results are based, and in the right panel those for a placebo sample – used for some of the sensitivity checks below – subject to all the same constraints but coming from plants not participating in the severance pay agreement. Both samples have mean and median ages of about 50, and tenure of about 16 years at the mean and 14 at the median. Uncensored non-employment duration among those for whom the next job-start is observed in the sample (corresponding figure for the placebo sample in parentheses) is about 9 (10.5) months at the mean and 2 (3) at the median. About 40 (46) percent have less than high-school education, 25 (30) percent have a high school degree, and 35 (23) percent have a college degree. Average annual income before taxes is about US\$ 43,000 and household financial wealth about US\$ 40,000 at the mean.

---

<sup>13</sup>All wealth measures are recorded at the end of the last calendar year before the one of the job separation. The quality of the real estate values in the data set is highly questionable, and it is thus reassuring that our results do not depend on one particular measure of wealth.

## 4 Results

### 4.1 Main Results

Our main results are displayed in Table III. The table reports the coefficients from estimating Eq. 1 with our baseline bandwidth of 2 years on each side and a simple rectangular kernel, implemented by estimating Equation 1 by Ordinary Least Squares.  $T$  denotes the indicator for being aged above 50, while  $z$  and  $Tz$  are the controls for a linear effect of (age-50), allowing it to differ on the left and right side of the discontinuity. To illustrate these regressions graphically, Figure II plots the average re-employment fraction for each 6-month bin of age against each bin's midpoint, ranging from the age 45 until age 55. We also plot the two separate fitted lines (as provided in Table III) for the sample within 2 years of the threshold at age 50 (along with 90% confidence intervals around this curve).

Looking at the plot for the wider age range (45 to 55) clearly shows the fractions re-employed after different periods are decreasing in age – this confirms the need for a quasi-experiment. Although a lot of noise remains given the limited final sample size, the discontinuity at age 50 is clearly visible. Looking at the estimation results reported in Table III, we find an effect on duration of 28 days or about 1 month, and an effect on the fractions re-employed after 12, 15 and 18 months of respectively 6, 8 and 7 percentage points. The effect on duration is not statistically significant at conventional levels, but those on the different fractions are.

How does the size of the effect compare to the one Card et al. (2007a) found for Austria? In their case a payment worth 2 months' wages lowered the re-employment probability by 8-12 percent on average over the first 20 weeks after job loss. In our case, a payment worth 1.2 months' wages at the median



lowers the re-employment probability by on average 7 percentage points or. This corresponds to a relative decline of about 12%, as the average fraction reemployed after 12 to 18 months is about 0.6 (see Table I). Hence relative to the size of the payment our effects appear somewhat larger. One likely reason for this is the fact that we measure the effect at later points in the spell, where many of the Austrian job losers are presumably already back in a new job. Another is the more generous UI: If households are willing to remain unemployed as long as they can maintain consumption at say 80% of previous income (or any other percentage above the UI replacement rate), then any given severance pay amount will “last longer” the greater the fraction already covered by UI. <sup>14</sup>

## 4.2 Sensitivity Checks

The first possible concern that may arise about the credibility of our estimates is that our controls for the effect of age may not suffice. After all, such an effect is apparent from all of the figures and is also reflected in the coefficients on  $z$  and  $Tz$  in Table III. To test this, Table IV displays the discontinuities in our outcomes of interest for different placebo age thresholds, going in half-year intervals from age 47 all the way until age 51, after which the small discontinuity at 52 will come into play. The table shows that indeed the only age threshold at which we observe significant discontinuities in our outcomes of interest is that at age 50.

The exclusion restriction represents another possible concern. What if other policies that are correlated with non-employment duration do also change at

---

<sup>14</sup>By the Paradigm of Revealed Preferences, the fact that households choose to use some of the severance pay money for longer search durations implies that the availability of the payment makes them better off. To see if the severance pay results in a better subsequent job, we have followed Card et al. (2007a) and performed the analysis on wage growth from previous to new job. Like them, however, we find no significant effects. Unfortunately, we are not able to analyze duration on the next job (a common measure of non-monetary job satisfaction) as most of the subsequent jobs have only just started by the end of our panel.

age 50? While there are discontinuities in early retirement access at ages 60 and 62, we are not aware of other policy discontinuities at age 50. One may worry that some policy discontinuities do nonetheless exist. To explore this, we repeat our analysis on a placebo sample of individuals who satisfy all the same requirements as those in our main sample, except that they are separated from plants which were not affiliated with LO-NHO and hence did not participate in the severance pay agreements. The results of this test are displayed in Table V. Indeed, no significant effect of being aged above 50 is found here, supporting our findings that the exclusion restriction is satisfied.

As in any RDD, we need to explore whether there could have been selection around the threshold. As mentioned above, severance payments under the LO-NHO agreement are made by a joint fund and financed in a not experience-related way, thus alleviating concerns that firms might choose to lay off (a selected group of) individuals just before they turn 50. By contrast the fund has an incentive to ensure that firms and employees do not collude to systematically postpone layoffs until after age 50, but how well does it enforce this in practice? A first check is to test for discontinuities at the threshold in the density of observations, following McCrary (2008). In the present case, this test yields a coefficient for the log difference in density of -0.018, with a standard error of .134, so we fail to reject the null hypothesis of no difference. While this suggest that there is no systematic selection of the number of individuals to either side of the threshold, one may still worry that the individuals on each side differ in type. To check this, Table VI reports the results of repeating our main regressions on a set of variables of which the values should be predetermined at the time of the job separation. Here we look in particular at the financial variables also used to investigate the plausibility of the liquidity constraints explanation, as well as an indicator for secondary or higher education (other

education categories were also tried and yielded similar results). These analyses, using the exact same methodology as for our main outcome variables, does not reveal any discontinuities at the age 50 threshold. They thus lend further support to the view that our main findings can be given a causal interpretation.

Another concern that always arises in a RDD is how sensitive the results are to the choice of different bandwidths or kernels. In general the trade-off is between limited precision at very narrow bandwidths and potential bias at too wide bandwidths. Our default choice of 2 years on each side has been motivated by choosing the widest-possible bandwidth under which our estimates do not get biased by effects of the next, albeit small, discontinuity in severance pay amounts at age 52 (cf. Figure I). This choice yields a relatively narrow range (and correspondingly limited precision) compared to previous papers in the literature. Card et al. (2007a), for instance, choose a bandwidth of 3 years per side. This said, Table VII displays the results of varying the bandwidth. The four columns show these for the same four outcomes (completed duration, and fractions re-employed after 12, 15 and 18 months). The top panel provides the results from varying the bandwidth but keeping the rectangular kernel. The bottom panel provides results using a triangular kernel. In both panels we show first the results obtained under the Imbens and Kalyanaraman (2009) “optimal bandwidth”, which varies a bit across outcome variables, but is around 3 years in the top and around 4 years in the bottom panel. Then we show results obtained when using half the optimal bandwidth. The point estimates are slightly larger than with our conservative 2-year bandwidth choice and are also somewhat more significant (this added significance might be related to the small next policy discontinuity at age 52). We see these results as confirming our main results.

## 5 Liquidity Constraints vs. Mental Accounting

In the previous section we have shown that the causal effect of lump-sum severance payments on job search duration which Card et al. (2007a) found for Austria is also present in Norway, making it plausible that the finding applies also to other OECD economies. But given that Norway has both a more egalitarian wealth distribution and a more generous welfare state than for instance Austria or the United States, the question arises whether the severance pay effect does indeed reflect liquidity constraints, or whether it could reflect another mechanism. In particular, it is conceivable that households who could financially afford longer search durations also absent the severance payments would nonetheless be unwilling to do so (and hence respond to severance payments) because they have “earmarked” their savings for other purposes.<sup>15</sup>

Such behavior could be interpreted as an instance of mental accounting in the spirit of Shefrin and Thaler (1988). There individuals behave *as if* there coexisted two selves: A myopic "doer self" concerned only with the current period, and a "planner self" concerned with maximizing a function of lifetime doer utilities. If the choices of consumption each period were left to the “doer self”, too much would be consumed in early periods, leading to a sub-optimal lifetime path of consumption. Restricting current consumption to a level below what is available in any given period however costs willpower. To address this problem, the "planner self" is then assumed to place constraints on future consumption choices already in advance, either through external commitment devices like pension plans or internal ones like rules-of-thumb. One such rule is mental accounting: Rather than considering all money as fungible, households mentally assign all funds to different "Mental Accounts". The simplest version contains

---

<sup>15</sup> Furthermore, Basten et al. (2012) find that some Norwegian households do indeed prepare for unemployment by increasing their savings rate in the years before job loss, although the use of these savings after job loss is rather limited.

one account for "Current Income" (C), one for "Current Assets" (A) and one for "Future Income" (F). The rule-of-thumb then has the marginal propensity to consume (MPC) – the fraction of each additional dollar consumed right away – be highest for money classified as “Current Income”, lower for “Assets”, and lowest for “Future Income”.<sup>16</sup> In the words of Shefrin and Thaler (1988), “households treat components of their wealth as non-fungible, even in the absence of credit rationing” (p. 609). There are important parallels between mental accounting and standard liquidity constraints. In both cases households would have the necessary (lifetime) wealth to increase spending now, yet cannot do so because the wealth is not available at that specific point in time or for that specific purpose. The difference is first, that mental accounting arises through constraints that are internal rather than external, and second, that – given the individual’s temptation to spend excessively absent any commitment devices – the internal constraints can be optimal as a second-best solution. Such mental accounting could be relevant also in the present context of job loss and severance payments, because such payments, received when households lose their jobs and see regular income drop, would likely be classified as "Current Income" and thus attract a higher marginal propensity to consume than prior savings.

So if the severance pay effect identified above could also reflect mental accounting rather than liquidity constraints, it is worthwhile to investigate which interpretation finds greater support in the data. To do so, we make use of our information on prior wealth. Clearly, if the correct interpretation is one of liquidity constraints, then the same payment should have a smaller effect on those with higher prior wealth than on those with lower prior wealth. We can exploit

---

<sup>16</sup>In practice, households are likely to have more than just those three accounts, and different households will have different accounts. Furthermore, exactly which consumption choices this classification results in will depend on the exact "framing", i.e. on which categories each account is defined to include and over which horizon each account is to be balanced. This categorization into three main accounts however is thought to be a good first approximation for the average household.

this fact to discriminate between liquidity constraints and mental accounting if and only if plausibly the degree of mental accounting does not covary with wealth. It is however conceivable that education or some personality trait correlated with education, such as discipline, will affect both the degree of mental accounting and the amount of prior wealth held on the day of the job separation. However, none of our results do significantly change when we control for different measures of education.<sup>17</sup> This suggests that plausibly the severance pay effect should be invariant to prior wealth under mental accounting, and that hence any such variation would speak in favor of liquidity constraints.

To proceed with our test, Table VIII augments the baseline regressions from Table 1 with continuous measures of income (column 1), financial wealth (column 2), total wealth (financial wealth plus real estate; column 3) and deposits (column 4) – all measured prior to the job separation. We find that the effect on all 3 re-employment fractions is clearly decreasing in both total and financial wealth, whereas the interaction with deposits is not statistically significant.<sup>18</sup> In Table IX we interact instead with indicators for whether someone’s value of the different wealth measures exceeds the respective sample median. The table displays for each outcome variable and each interaction variable the main effect,  $T$ , which is now the effect for only those below the median, then the coefficient on the interaction between  $T$  and the dummy for being above the median, and finally the sum of those two. Consistent with the results from the interactions with the continuous measures, we find that the effect is always smaller for those above than for those below the median and in fact we always fail to reject at the 90% confidence level the hypothesis that the effect is zero for those above

---

<sup>17</sup>Moreover, further results suggest that the size of the severance pay effect does not vary across individuals holding and not holding a university degree.

<sup>18</sup>The fact that we find significant interaction effects for total and financial wealth, but not for deposits (which account for only a limited fraction of households’ assets) suggests that assets other than deposits either are not as illiquid for our sample as one might have thought, or that those households who do have them are able to borrow against them.

the median. These results do lend additional support to the view expressed in Card et al. (2007a) that the severance pay effect should indeed be interpreted as evidence of liquidity constraints.

## 6 Conclusion

We have documented a causal effect of lump-sum severance payments on the duration of job search in Norway. To our knowledge, this is only the second paper in the literature to find such an effect (Card et al. (2007a)), and the first to find it in a Scandinavian-type welfare state. This makes it likely that such effects hold also in other OECD economies.

But given that Norway has both a more egalitarian wealth distribution and a more generous welfare state than for instance Austria or the United States, the question arises whether the severance pay effect does indeed reflect liquidity constraints, or whether it could reflect another mechanism. In particular, it is conceivable that households who could financially afford longer search durations also absent the severance payments would nonetheless be unwilling to do so (and hence respond to severance payments) because they have “earmarked” their savings for other purposes. We have therefore proceeded to discuss whether the severance pay effect should indeed be interpreted as evidence of liquidity constraints, as in the previous literature, or alternatively as evidence of mental accounting behavior. To discriminate between the two scenarios empirically, we have investigated how the size of the severance pay effect varies with prior wealth and find it to be decreasing therein. This lends additional support to the view expressed by Card et al. (2007a) that the observed severance pay effect does indeed reflect liquidity constraints.

The implication of this finding is that in most OECD economies there exists

a subset of job losers who, with no or insufficiently generous unemployment insurance, have to accept a new job offer earlier than would be optimal. An efficient way to improve their situation would be to lend them additional resources, as this policy response would not come at the cost of increased moral hazard. Where such lending is not possible for political reasons, the choice of the optimal generosity of unemployment insurance must still weight the effects of the liquidity constraints against that of potential moral hazard.

## References

- Autor, D. H and M. G Duggan**, “Distinguishing income from substitution effects in disability insurance,” *The American Economic Review*, 2007, *97* (2), 119–124.
- Basten, C., A. Fagereng, and K. Telle**, “Saving and Portfolio Allocation Before and After Job Loss,” *Discussion Paper Statistics Norway*, 2012, (No. 672).
- Bratsberg, B., E. Fevang, and K. Roed**, “Disability in the welfare state: An unemployment problem in disguise?,” *IZA Discussion Paper*, April 2010, *4897*.
- Card, D., R. Chetty, and A. Weber**, “Cash-on-Hand and Competing Models of Intertemporal Behavior: New Evidence from the Labor Market.,” *Quarterly Journal of Economics*, 2007, *122* (4), 1511–1560.
- , —, and —, “The spike at benefit exhaustion: Leaving the unemployment system or starting a new job?,” *American Economic Review*, 2007, *97* (2), 113–118.



- Chetty, R.**, “Moral hazard versus liquidity and optimal unemployment insurance,” *Journal of Political Economy*, 2008, 116 (2), 173–234.
- **and A. Szeidl**, “Consumption Commitments and Risk Preferences,” *The Quarterly Journal of Economics*, 2007, 122 (2), 831–877.
- Fan, J. and I. Gijbels**, *Local Polynomial Modelling and Its Applications*, Chapman and Hall, 1996.
- Gruber, J.**, “The wealth of the unemployed,” *Industrial and Labor Relations Review*, 2001, 55 (1), 79–94.
- Imbens, G. and K. Kalyanaraman**, “Optimal bandwidth choice for the regression discontinuity estimator,” Technical Report, National Bureau of Economic Research 2009.
- **and T. Lemieux**, “Regression Discontinuity Designs: A Guide to Practice,” *Journal of Econometrics*, 2008, 142, 615–635.
- Katz, L.F. and B.D. Meyer**, “The impact of the potential duration of unemployment benefits on the duration of unemployment,” *Journal of public economics*, 1990, 41 (1), 45–72.
- Lalive, R., J. Van Ours, and J. Zweimueller**, “How changes in financial incentives affect the duration of unemployment,” *Review of Economic Studies*, 2006, 73 (4), 1009–1038.
- Lee, D. and T. Lemieux**, *Regression discontinuity designs in economics*, National Bureau of Economic Research, Cambridge M.A., 2009.
- McCrary**, “Manipulation of the Running Variable in the Regression Discontinuity Design: A Density Test,” *Journal of Econometrics*, 2008.

**Shefrin, H.M. and R.H. Thaler**, “The behavioral life-cycle hypothesis,” *Economic Inquiry*, 1988, 26 (4), 609–643.

**Trochim, W.M.K.**, *Research design for program evaluation: The regression-discontinuity approach*, Sage Beverly Hills, Calif., 1984.

## Figures and Tables

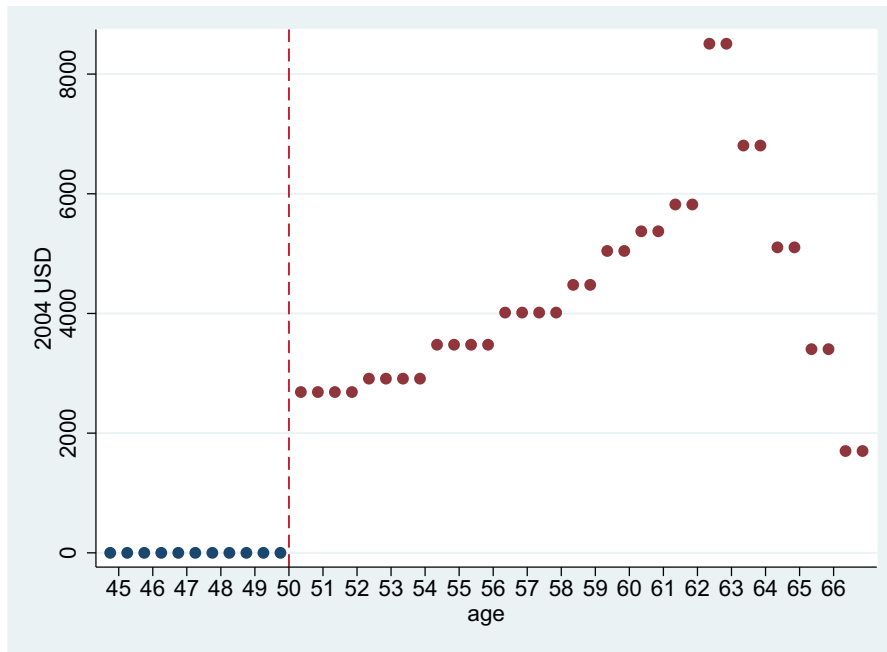


Figure I: Severance Pay Amounts 2002-2009 in 2004 USD

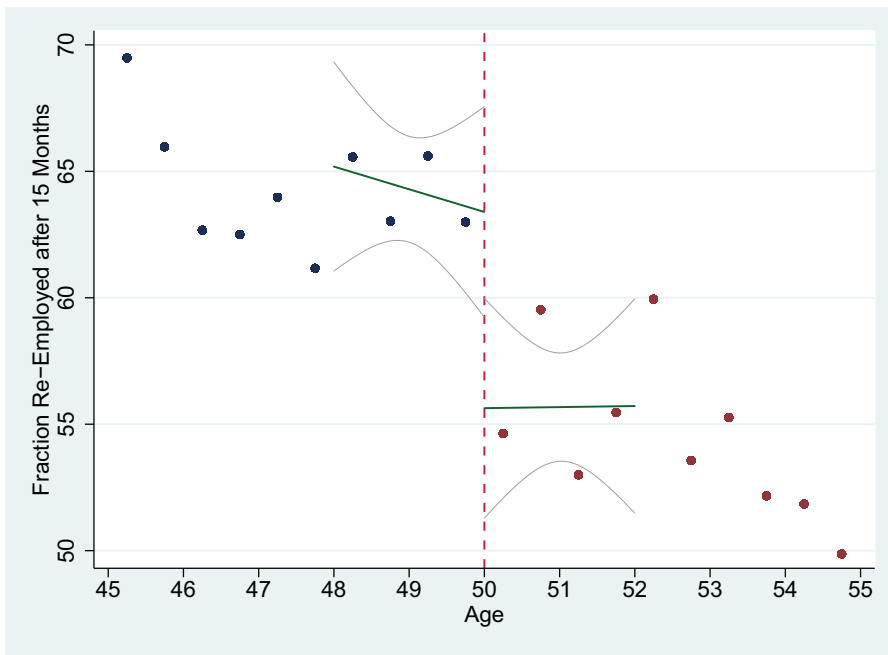


Figure II: **Fraction Re-Employed 15 months after Job Loss**

*Note:* The figure plots the fraction re-employed after 15 months by age, in bins averaging over 6 months. In addition fitted linear curves (corresponding to the the estimation of Eq. 1 as reported in Table III plus 90% confidence intervals are included for the bandwidth of 2 years around the threshold at age 50.

Table I: Summary Statistics, Estimation and Placebo Samples, Age 48-52

	Estimation (N=2,882)			Placebo (N=11,065)		
	Mean	Std Dev	Median	Mean	Std Dev	Median
Year	2,004	4.25	2,005	2,004	4.37	2,004
Age	50.02	1.17	50.02	50.00	1.16	50.00
Tenure (in years)	15.90	5.48	14.20	16.06	5.49	14.52
Dur NonEmpl (in days)	273.77	473.33	63.00	318.09	537.13	95.00
Fraction Re-Employed After (in %):						
12 Months	56.94			53.66		
15 Months	59.92			57.13		
18 Months	62.87			59.99		
<b>Education (in %)</b>						
Less than Highschool	39.3			46.0		
High School	25.2			30.7		
College	35.4			23.3		
<b>Education Main Field (in %)</b>						
General	28.3			33.2		
Humanities	4.4			1.7		
Teaching	5.7			1.3		
Econ/Adm	12.5			9.3		
Science/Eng	33.9			45.4		
Health/Sports	4.2			1.0		
Services	6.1			3.7		
<b>Industry (in %)</b>						
Manufacturing	14.0			32.9		
Construction	8.7			7.9		
Wholesale / Retail	14.8			19.8		
Transport / Communication	10.4			9.8		
Real estate	8.5			10.9		
Public adm / Defense	12.6			0.2		
Education	8.4			1.0		
Health / Social work	6.1			2.4		
<b>Financial Variables (in 2004 USD):</b>						
Annual Earnings	42,671	22,098	37,001	43,109	23,368	37,965
Monthly Earnings After Tax	2,489	1,289	2,158	2,515	1,363	2,215
HH Annual Earnings	56,933	29,282	52,342	58,360	31,274	52,936
Deposits	12,924	28,210	3,349	14,600	30,780	3,611
HH Deposits	17,461	34,343	5,591	19,530	36,489	6,386
Financial Wealth	31,475	90,124	4,686	32,878	83,586	5,869
HH Financial Wealth	39,446	103,107	8,095	41,053	96,484	10,231
Wealth	72,151	117,529	41,962	76,259	113,280	44,633
HH Wealth	88,287	133,935	54,462	93,457	129,952	56,979

*Note:* This table displays in the left panel summary statistics for the estimation sample of 2,882 households, aged between 48 and 52 and satisfying all the criteria described in Section 3. Additionally, summary statistics for the placebo sample of 11,065 households (satisfying all the same criteria except that the plant of separation was not participating in the severance pay agreements) are displayed in the right panel. For the duration of non-employment, summary statistics are reported for households who have found jobs within the sample window (before 31 Dec 2010). Education Fields and Industries with shares less than 4% are omitted. Financial variables and income are measured two years before the year of job separation and the values are denoted in 2004 USD.

Table II: Severance Pay Amounts in NOK by Age and Period

Age	Oct 1993-	Oct 1995-	Mar 1998-	Aug 2002-
$\leq 49$	0	0	0	0
50	12,000	14,400	14,400	18,000
51	12,000	14,400	14,400	18,000
52	13,000	15,600	15,600	19,500
53	13,000	15,600	15,600	19,500
54	15,500	18,600	18,600	23,300
55	15,500	18,600	18,600	23,300
56	18,000	21,500	21,500	26,900
57	18,000	21,500	21,500	26,900
58	20,000	24,000	24,000	30,000
59	22,500	27,000	27,000	33,800
60	24,000	28,800	28,800	36,000
61	26,000	31,200	31,200	39,000
62	28,500	34,200	57,000	57,000
63	28,500	34,200	45,600	45,600
64	34,200	34,200	34,200	34,200
65	22,800	22,800	22,800	22,800
66	11,400	11,400	11,400	11,400

*Note:* The table displays predicted Severance Pay in NOK by age and period, according to the Severance Pay agreements between the Confederation of Norwegian Enterprise (NHO) and the Norwegian Confederation of Trade Unions (LO). For details, see <http://www.sluttvederlag.no/>. For a plot of predicted amounts (in the last period) in 2004 USD, see Figure I.

Table III: Baseline Specification, Main Outcomes

	Completed Duration	Fraction Re-Employed After:		
		12 Months	15 Months	18 Months
T	28.45 (22.50)	-6.20* (3.56)	-7.76** (3.54)	-7.06** (3.55)
z	14.37 (13.62)	-1.41 (2.17)	-0.90 (2.15)	-2.44 (2.11)
Tz	-6.06 (19.69)	0.64 (3.16)	0.94 (3.12)	3.31 (3.07)
Cons	336.24*** (16.26)	59.78*** (2.60)	63.39*** (2.55)	64.80*** (2.53)
N	2,882	2,882	2,882	2,882

*Note:* The table provides the regression discontinuity estimates based on Eq. 1 and using our baseline bandwidth of 2 years on each side. T is the indicator for being aged above 50 and hence eligible for severance pay, z is the age control (age-50) on the left side and Tz allows another age control on the right side of the threshold. The effect on non-employment duration in days is estimated with durations censored after 2 years. Standard errors, clustered by plant, are reported in parentheses. \*  $p < 0.10$ , \*\*  $p < 0.05$ , \*\*\*  $p < 0.01$ .

Table IV: Placebo Thresholds, Ages 47-51, Employment Fraction Outcomes

	T=47	T=47.5	T=48	T=48.5	T=49	T=49.5	T=50	T=50.5	T=51
Completed Duration	-3.04 (22.85)	13.47 (21.33)	-31.42 (22.14)	-0.16 (22.67)	-21.36 (23.02)	32.02 (22.88)	28.45 (22.50)	7.55 (23.37)	9.98 (22.69)
Fraction Re-Employed After 12 Months	1.47 (3.64)	-2.94 (3.41)	4.59 (3.55)	2.98 (3.62)	1.03 (3.67)	-4.79 (3.66)	-6.20* (3.56)	-0.56 (3.78)	-3.27 (3.59)
Fraction Re-Employed After 15 Months	2.69 (3.61)	-1.35 (3.32)	2.67 (3.53)	1.80 (3.53)	1.73 (3.61)	-4.68 (3.61)	-7.76** (3.54)	-1.06 (3.77)	-1.75 (3.61)
Fraction Re-Employed After 18 Months	1.99 (3.50)	-2.68 (3.32)	4.26 (3.47)	0.52 (3.50)	0.44 (3.61)	-5.24 (3.55)	-7.06** (3.55)	-1.35 (3.67)	-0.69 (3.59)
N	3,019	2,975	2,900	2,876	2,910	2,910	2,882	2,876	2,870

*Note:* The table provides the regression discontinuity estimates of Eq. 1 around the true Threshold (T) at age 50, as well as around 8 other placebo thresholds above and below 50. Above we go until age 51, because at 52 there is the next true discontinuity (see Table II). The forcing variable  $z$  is defined as ' $z = \text{age} - \text{placebo threshold}$ ', and the baseline bandwidth is 2 years. Standard errors, clustered by plant, are reported in parentheses. \*  $p < 0.10$ , \*\*  $p < 0.05$ , \*\*\*  $p < 0.01$



Table V: Placebo Plants: Baseline Specification, Main Outcomes

	Completed	Fraction Re-Employed After:		
	Duration	12 Months	15 Months	18 Months
T	-0.11 (18.16)	-0.46 (1.89)	-0.75 (1.86)	-0.80 (1.86)
z	17.12 (11.377)	-1.39 (1.173)	-1.17 (1.158)	-0.94 (1.144)
Tz	-9.82 (16.06)	0.39 (1.65)	0.71 (1.64)	0.55 (1.62)
Constant	479.12*** (16.11)	53.70*** (1.54)	57.15*** (1.51)	60.12*** (1.48)
N	11,065	11,065	11,065	11,065

*Note:* This table repeats the main regressions from Table III for our placebo sample of individuals separated from plants that were not affiliated with LO-NHO and hence did not participate in the severance pay agreements (see Section 3 for details). As before, we estimate Eq. 1, using our baseline bandwidth of 2 years on each side. T is the indicator for being aged above 50 and hence eligible for severance pay, z is the control for (age-50) on the left side, and Tz allows for another age control on the right side of the threshold. The effect on non-employment duration in days is estimated with durations censored after 2 years. Standard errors, clustered by plant, are reported in parentheses. \*  $p < 0.10$ , \*\*  $p < 0.05$ , \*\*\*  $p < 0.01$ .

Table VI: Placebo Outcome Variables, Baseline Specification

	Income HH	Wealth HH	Fin Wealth HH	Deposits HH	Second. Edu.
T	-9,945 (6,501)	-39,459 (55,769)	-28,811 (71,124)	-3,745 (3,928)	0.032 (0.038)
z	4,574 (4,715)	26,319 (23,632)	36,890 (26,166)	1,121 (2,490)	-0.052** (0.023)
Tz	-2,629 (4,920)	-20,840 (37,716)	-51,951 (41,778)	2,056 (3,422)	0.014 (0.033)
Constant	65,799*** (6,323)	155,278*** (36,100)	123,604*** (41,607)	20,529*** (3,155)	0.516*** (0.028)
N	2,692	2,692	2,692	2,692	2,701

*Note:* This table repeats the main regressions from Table III for a set of outcomes that should not exhibit discontinuities at age 50. Displayed are annual income, total wealth, financial wealth and deposits, all at the household level, as well as an indicator for whether the household has completed high school or a higher degree. Results for financial variables at the individual level or other education categories are not displayed, but do not show discontinuities either. As before, we estimate Eq. 1, using our baseline bandwidth of 2 years on each side. T is the indicator for being aged above 50 and hence eligible for severance pay, z is the control for (age-50) on the left side, and Tz allows for another age control on the right side of the threshold. The effect on non-employment duration in days is estimated with durations censored after 2 years. Standard errors, clustered by plant, are reported in parentheses. \*  $p < 0.10$ , \*\*  $p < 0.05$ , \*\*\*  $p < 0.01$ . An estimation of the density of observations, following McCrary (2008), yields a coefficient of -0.018 and a standard error of .134, thus failing to reject the null hypothesis of no difference in densities.

Table VII: Alternative Optimal Bandwidths: Main Outcomes

Rectangular Kernel:	Completed	Fraction Re-Employed After		
	Duration	12 Months	15 Months	18 Months
Optimal Bandwidth	37.09** (18.65)	-7.06** (2.99)	-8.48*** (3.02)	-7.72*** (2.78)
N	4,391	4,367	4,352	4,796
0.5*Opt Bw	40.58 (26.51)	-7.17* (4.19)	-7.83* (4.20)	-5.71 (4.01)
N	2,172	2,153	2,146	2,363
Optimal Bandwidth	3.02	3.00	2.99	3.32
Triangular Kernel:				
Optimal Bandwidth	39.12** (18.05)	-7.56*** (2.88)	-8.50*** (2.88)	-7.65*** (2.70)
N	5,594	5,530	5,456	6,184
0.5* Opt Bw	29.27 (25.62)	-6.53 (4.06)	-7.43* (4.09)	-6.37* (3.84)
N	2747	2725	2,684	3037
Optimal Bandwidth	3.85	3.81	3.76	4.23

*Note:* This table displays only the coefficients, and in parentheses the standard errors clustered by plant, on being aged above 50, now for different bandwidths and kernels. The top panel follows our main estimates in using a rectangular kernel, with equal weighting of observations. The bottom panel uses a triangular kernel, putting greater weight on observations closer to the threshold. Within each panel, we display first the estimates based on the Imbens and Kalyanaraman (2009) optimal bandwidth and then those based on half the optimal bandwidth. The respective optimum bandwidth itself is displayed at the bottom of each panel. Stars denote statistical significance as follows: \*  $p < 0.10$ , \*\*  $p < 0.05$ , \*\*\*  $p < 0.01$ .

Table VIII: Stratifying by continuous wealth measures (W)

		Income	Wealth	Fin Wealth	Deposits
Completed Duration	T	38.84 (34.06)	41.69 (34.13)	43.12 (34.02)	39.39 (34.05)
	T*W	-80.18 (52.90)	-53.81 (93.96)	-40.94 (95.83)	44.20 (33.85)
Re-Employed After 12 Months:	T	-5.96 (3.63)	-6.04* (3.62)	-5.96 (3.62)	-5.84 (3.63)
	T*W	2.90 (5.06)	6.56** (2.68)	11.89*** (3.60)	-3.65 (3.29)
Re-Employed After 15 Months:	T	-7.38** (3.66)	-7.53** (3.65)	-7.47** (3.65)	-7.32** (3.66)
	T*W	4.97 (5.29)	7.16*** (2.52)	11.56*** (3.87)	-2.68 (3.31)
Re-Employed After 18 Months:	T	-7.07* (3.62)	-7.24** (3.60)	-7.17** (3.60)	-7.03* (3.61)
	T*W	6.69 (5.07)	7.37*** (2.54)	12.39*** (3.88)	-1.85 (3.40)
N		2,692	2,692	2,692	2,692

*Note:* This table provides the regression discontinuity estimates of Eq. 1, augmented by continuous measures of wealth and income (deflated to 2004 values), as well as their interaction with each of the other regressors. Each column uses a different income or wealth measure as indicated. The top panel uses as outcome variable non-employment duration in days, the following ones use the fraction re-employed after respectively 12, 15 and 18 months. Standard errors, clustered by plant, are reported in parentheses. \*  $p < 0.10$ , \*\*  $p < 0.05$ , \*\*\*  $p < 0.01$ .

Table IX: Stratifying by wealth measures: Above Median (D)

		Income	Wealth	Fin Wealth	Deposits
Completed Duration	T	78.15	58.48	115.09**	125.46**
		(47.54)	(47.28)	(49.41)	(49.60)
	T*D	-79.78	-38.19	-146.10**	-164.79**
		(69.50)	(68.49)	(72.55)	(71.78)
	T + T*D	-1.64	20.28	-31.01	-39.33
	Prob > F(1,2684)	0.97	0.68	0.53	0.42
Re-Employed After 12 Months:	T	-9.71*	-8.25	-14.95***	-15.87***
		(5.40)	(5.45)	(5.39)	(5.41)
	T*D	7.87	4.95	18.04**	19.84***
		(7.64)	(7.65)	(7.63)	(7.63)
	T + T*D	-1.83	-3.29	3.09	3.98
	Prob > F(1,2684)	0.73	0.54	0.57	0.46
Re-Employed After 15 Months:	T	-12.20**	-9.35*	-15.09***	-16.41***
		(5.34)	(5.40)	(5.36)	(5.38)
	T*D	9.85	4.16	15.50**	17.88**
		(7.56)	(7.57)	(7.56)	(7.55)
	T + T*D	-2.34	-5.19	0.41	1.46
	Prob > F(1,2684)	0.66	0.33	0.94	0.78
Re-Employed After 18 Months:	T	-12.73**	-9.95*	-15.40***	-16.51***
		(5.26)	(5.32)	(5.30)	(5.32)
	T*D	11.50	5.95	16.64**	18.58**
		(7.46)	(7.48)	(7.47)	(7.46)
	T + T*D	-1.22	-4.01	1.23	2.07
	Prob > F(1,2684)	0.82	0.45	0.81	0.69
	N	2,692	2,692	2,692	2,692

*Note:* This table provides the regression discontinuity estimates of Eq. 1, augmented by an indicator variable for whether the value of different income and wealth measures (all deflated to 2004 values) exceeds the sample median, as well as interactions between that indicator and the other regressors. Standard errors, clustered by plant, are reported in parentheses. \*  $p < 0.10$ , \*\*  $p < 0.05$ , \*\*\*  $p < 0.01$ . The table does also provide the sum of the coefficient on being above the threshold and the coefficient on the interaction of the threshold dummy with the dummy for income or wealth above the median. The p-value for the F-test with the null hypothesis that this sum is zero is reported in the line below. None of these 16 tests rejects this Null at the 10% level.

**B** Returadresse:  
Statistisk sentralbyrå  
NO-2225 Kongsvinger

**Statistics Norway**

*Oslo:*

PO Box 8131 Dept

NO-0033 Oslo

Telephone: + 47 21 09 00 00

Telefax: + 47 21 09 00 40

*Kongsvinger:*

NO-2225 Kongsvinger

Telephone: + 47 62 88 50 00

Telefax: + 47 62 88 50 30

E-mail: [ssb@ssb.no](mailto:ssb@ssb.no)

Internet: [www.ssb.no](http://www.ssb.no)

ISSN 0809-733X



**Statistisk sentralbyrå**  
Statistics Norway