

Bhuller, Manudeep; Mogstad, Magne; Salvanes, Kjell G.

**Working Paper**

## Life-cycle bias and the returns to schooling in current and lifetime earnings

Discussion Papers, No. 666

**Provided in Cooperation with:**

Research Department, Statistics Norway, Oslo

*Suggested Citation:* Bhuller, Manudeep; Mogstad, Magne; Salvanes, Kjell G. (2011) : Life-cycle bias and the returns to schooling in current and lifetime earnings, Discussion Papers, No. 666, Statistics Norway, Research Department, Oslo

This Version is available at:

<https://hdl.handle.net/10419/192648>

**Standard-Nutzungsbedingungen:**

Die Dokumente auf EconStor dürfen zu eigenen wissenschaftlichen Zwecken und zum Privatgebrauch gespeichert und kopiert werden.

Sie dürfen die Dokumente nicht für öffentliche oder kommerzielle Zwecke vervielfältigen, öffentlich ausstellen, öffentlich zugänglich machen, vertreiben oder anderweitig nutzen.

Sofern die Verfasser die Dokumente unter Open-Content-Lizenzen (insbesondere CC-Lizenzen) zur Verfügung gestellt haben sollten, gelten abweichend von diesen Nutzungsbedingungen die in der dort genannten Lizenz gewährten Nutzungsrechte.

**Terms of use:**

*Documents in EconStor may be saved and copied for your personal and scholarly purposes.*

*You are not to copy documents for public or commercial purposes, to exhibit the documents publicly, to make them publicly available on the internet, or to distribute or otherwise use the documents in public.*

*If the documents have been made available under an Open Content Licence (especially Creative Commons Licences), you may exercise further usage rights as specified in the indicated licence.*

*Manudeep Bhuller, Magne Mogstad and  
Kjell G. Salvanes*

## **Life-cycle bias and the returns to schooling in current and lifetime earnings**

**Abstract:**

his paper uses a unique data set with nearly career-long earnings histories to provide evidence on the returns to schooling in current and lifetime earnings. We use these results to assess the importance of life-cycle bias in earnings regressions using current earnings as a proxy for lifetime earnings. To account for the endogeneity of schooling, we apply three commonly used identification strategies. Our estimates demonstrate a strong life-cycle bias, often exceeding the bias from assuming that schooling is exogenous. We further explore the problems caused by life-cycle bias in research on the economic returns to schooling, and discuss possible remedies.

**Keywords:** Returns to schooling, life-cycle bias, lifetime earnings, current earnings, errors-in-variables model

**JEL classification:** 24, J31

**Acknowledgements:** We thank Paul Bingley, Anders Björklund, Sandra Black, Paul J. Devereux, Per-Anders Edin, Monique de Haan, Steven J. Haider, Dan Hamermesh, Colm Harmon, James J. Heckman, Matthew Lindquist, Philip Oreopolous, Oddbjørn Raaum, Gary Solon, Petra Todd, Ian Walker and participants at a number of seminars and conferences for helpful comments. Financial support from the Research Council of Norway (194339) is gratefully acknowledged. The project is part of the research activities at the ESOP center at the Department of Economics, University of Oslo. ESOP is supported by the Research Council of Norway. An earlier version of this paper was circulated as NHH Discussion Paper 2011/4, dated February 29, 2011.

**Address:** Manudeep Bhuller, Statistics Norway, Research Department. E-mail: [msi@ssb.no](mailto:msi@ssb.no)

Magne Mogstad Department of Economics, University College London Statistics Norway, ESOP, and IZA [magne.mogstad@ucl.ac.uk](mailto:magne.mogstad@ucl.ac.uk)

Kjell G. Salvanes Department of Economics, Norwegian School of Economics, IZA, CES-ifo and CEE [kjell.salvanes@nhh.no](mailto:kjell.salvanes@nhh.no)

---

**Discussion Papers**

comprise research papers intended for international journals or books. A preprint of a Discussion Paper may be longer and more elaborate than a standard journal article, as it may include intermediate calculations and background material etc.

© Statistics Norway

Abstracts with downloadable Discussion Papers  
in PDF are available on the Internet:

<http://www.ssb.no>

<http://ideas.repec.org/s/ssb/dispap.html>

For printed Discussion Papers contact:

Statistics Norway

Telephone: +47 62 88 55 00

E-mail: [Salg-abonnement@ssb.no](mailto:Salg-abonnement@ssb.no)

ISSN 0809-733X

Print: Statistics Norway

## **Sammendrag**

I denne artikkelen måler vi den økonomiske avkastningen av utdanning i både årlig lønn og livstidslønn basert på et unikt datamateriale som inneholder lønnsopplysninger over nesten hele yrkeskarrieren for enkelte fødselskohorter. Vi bruker disse resultatene til å vurdere viktigheten av livssyklusskjevhet i lønnsregresjoner der man tidligere har brukt årlig lønn som en approksimasjon for livstidslønn. For å ta hensyn til såkalte endogenitetsproblemer i beregningen av avkastning av utdanning, utnytter vi tre ulike identifikastrategier. Våre beregninger viser en sterk livssyklusskjevhet som ofte overstiger skjevhet som oppstår ved antagelsen om at utdanningsvalgene er eksogene. Vi utforsker ytterligere problemer forårsaket av livssyklusskjevhet i den empiriske forskningen på den økonomiske avkastningen av utdanning, og diskuterer mulige løsninger.

# 1. Introduction

Earnings regressions are at the heart of labor economics, and have been widely used to capture how the labor market rewards productivity attributes such as schooling. They can be derived from economic theory assuming that individuals choose a schooling level to maximize their present value of lifetime earnings, taking as given the postschool earnings profile. Yet empirical evidence on the returns to schooling usually comes from cross-sectional studies, regressing (log) current earnings on schooling conditional on age or (potential) experience.<sup>1</sup>

The common practice of using current earnings to proxy for lifetime earnings is due to the simple fact that researchers seldom have access to data on long-run or lifetime earnings. Unfortunately, this empirical simplification does not come without a price. Haider and Solon (2006) demonstrate that the association between current and lifetime earnings varies systematically over the life cycle. They further show that regression models, using current earnings as a proxy for lifetime earnings, will therefore produce inconsistent estimates (i.e. life-cycle bias) of the regression coefficients. Importantly, this misspecification leads to inconsistent estimates above and beyond the bias because of classical measurement error, and the inconsistency will occur even when the current earnings proxy is used as a dependent variable. Therefore, a critical element in identifying the returns to schooling is to assess the role of life-cycle bias in earnings regressions. That is the focus of this study.

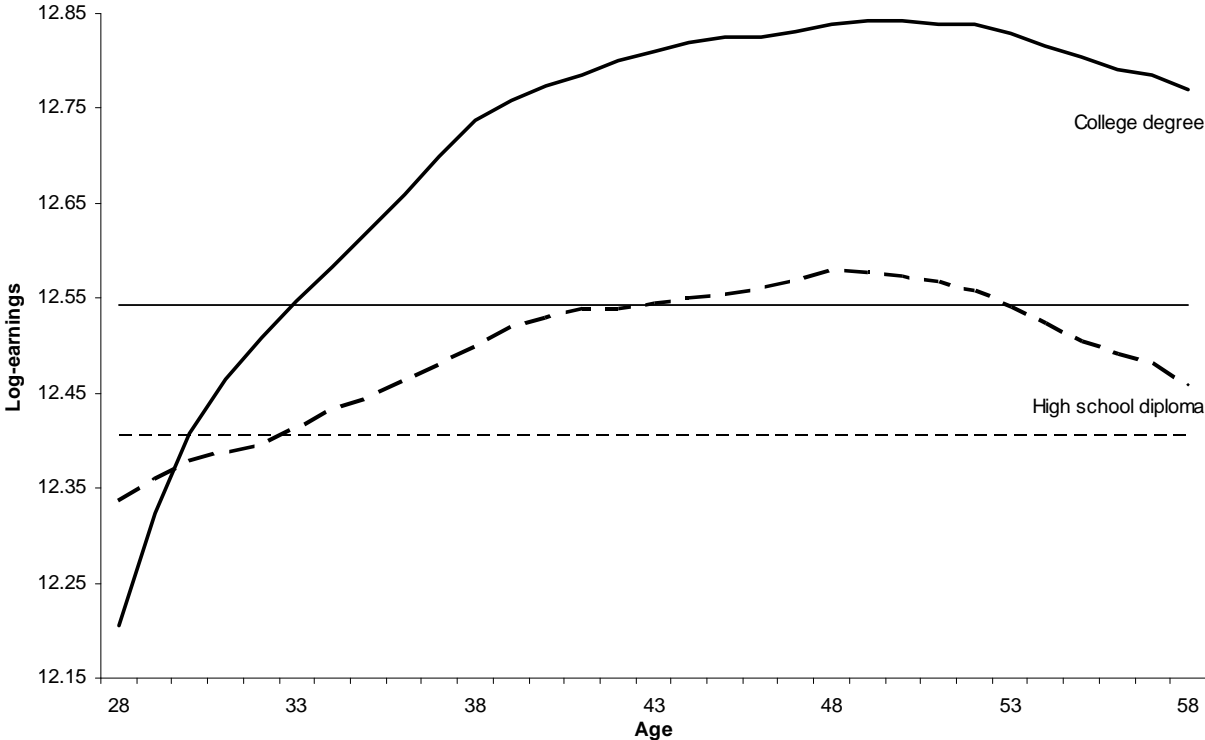
Figure 1 illustrates the large amount of life-cycle bias that may be embedded in returns to schooling estimates based on current earnings. This figure plots the log-earnings age profiles for college- and high-school-educated Norwegian men born in the years 1948–1950. Both earnings profiles display the familiar concave shape documented and analyzed by Mincer (1974), but the college-educated workers experience more rapid earnings growth through most of the life cycle. The horizontal lines depict the log of lifetime earnings, measured as the annuitized value of real earnings from age 20 to 58. The difference in the log of lifetime earnings between college- and high-school-educated workers is simply the vertical distance between the two horizontal lines. The life-cycle bias in the returns to schooling at a particular age depends on how well the difference in the log of current earnings approximates the difference in the log of lifetime earnings. The figure suggests that the current earnings gap between college- and high-school-educated workers late (early) in their careers tends to overstate (understate) the lifetime earnings gap. Taken at face value and assuming that schooling is exogenous, this would mean that there is an upward (downward) life-cycle bias in the returns to schooling, when earnings are

---

<sup>1</sup> See Heckman et al. (2006, 2008) for a critical review of the large empirical literature on earnings regressions based on Mincer's (1974) seminal models of earnings and schooling choices.

measured late (early) in the working lifespan. Controlling for age or potential experience will not correct the life-cycle bias, because life-cycle bias is due to changes in earnings variation around the central tendency of earnings growth

**Figure 1 Log-earnings – age profiles**



*Note:* The figure plots log current earnings and log lifetime earnings for males born 1948-1950, with either high school diploma or college/university degree as highest completed education at age 40. See Section 3 for details about sample selection and definition of earnings variables.

The main objectives of this paper are: (a) to estimate the returns to schooling in lifetime and current earnings, and (b) to assess the life-cycle bias in returns to schooling. Previous evidence on life-cycle bias in the returns to schooling comes from studies that have assumed that schooling is exogenous, and constructed synthetic cohort-based earnings profiles from short panels of earnings data spanning only a segment of the life cycle.<sup>2</sup> We use a unique Norwegian data set with nearly career-long earnings histories for certain cohorts. Our analytic sample is restricted to males. To account for the endogeneity of schooling, we apply three different identification strategies that are currently in use in the literature: i) within-twin-pair estimation, ii) controls for ability test scores, and iii) compulsory schooling reform

<sup>2</sup> See e.g. Heckman et al. (2006, 2008), who examine life-cycle variation in the returns to schooling, as well as several other important aspects of earnings regressions, such as functional form assumptions, the consequences of tuition and taxes, and uncertainty. However, these studies assume that schooling is exogenous, and they rely on synthetic cohort-based earnings profiles.

as an instrument for schooling. It should be emphasized that our focus is not on the validity of these identification strategies: our aims are to estimate the returns to schooling in lifetime earnings, and to assess the importance of life-cycle bias in earnings regressions using current earnings as a proxy for lifetime earnings, applying commonly used identification strategies.

Our returns to schooling estimates can be summarized by three important conclusions. First, we find evidence of substantial life-cycle bias in the returns to schooling, often exceeding the bias from assuming that schooling is exogenous. The life-cycle bias is minimized when individuals' earnings are measured in their early 30s, and there is a large positive (negative) life-cycle bias with earnings measured after age 40 (before age 30). A possible remedy for cross-sectional estimates of the returns to schooling is to restrict the sample to individuals around age 32–33. Second, the common practice of using cross-sectional data when estimating the returns to schooling is shown to be highly sensitive to the age composition of the sample. They tend to increase with mean age, reflecting that highly educated workers experience more rapid earnings growth through most of the life cycle. This means that it is necessary to pay close attention to differences in age composition when comparing estimates of the returns to schooling across countries, subgroups, or time. Third, the returns to schooling in lifetime earnings are relatively low compared with what previous studies using cross-sectional data have suggested. This means that we may need to reconsider how much the labor market actually rewards an additional year of schooling.

After assessing the life-cycle bias in cross-sectional estimates of the returns to schooling, we investigate whether it is likely to be merely an econometric peculiarity or a real cause for concern in empirical research. Using our Norwegian data, we first show that the large increase in the returns to schooling since the 1980s disappears once life-cycle bias is minimized by restricting the cross-sectional estimates to the sample of individuals aged 32–33. This raises the question of whether the rise in the returns to schooling observed in most developed countries in recent decades is an artifact of changes in life-cycle bias.<sup>3</sup>

Next, we perform a meta-analysis of the studies reported in the review articles by Card (1999), Harmon, Oosterbeek and Walker (2003), Oreopolous (2006), and Devereux and Fan (2011). Consistent with a story of life-cycle bias, our analysis shows a strong positive correlation between the mean age in the sample and the estimated returns to schooling. Our meta-analysis also reveals that the sample mean age

---

<sup>3</sup> The rise in the returns to schooling and the associated increase in earnings inequality in almost all developed countries since the early 1980s is one of the most extensively researched topics in economics (see, e.g. Lemieux, 2008). While there is substantial agreement about the facts, there is no consensus about the underlying causes. A number of explanations have

generally exceeds the age at which life-cycle bias in our estimates is minimized. This raises the concern that previous evidence may have overstated how much the labor market actually rewards schooling.

Lastly, we provide OLS estimates of the returns to schooling in current and lifetime earnings based on U.S. data. We find that the returns to schooling increase over most of the life-cycle. The association between the returns to schooling in lifetime and current earnings is strongest when individuals are in their mid 30s, and there is positive (negative) life-cycle bias with earnings measured after age 40 (before age 30). The similarity across the two countries in the association between the returns to schooling in lifetime and current earnings indicates that life-cycle bias is a generic cause for concern in research on the economic returns to schooling.

We conclude the empirical analysis with an examination of the usefulness of errors-in-variables models for analyzing and correcting for life-cycle bias in earnings regressions. Our findings echo the conclusion of Haider and Solon (2006), in that we need to exercise due caution in applying the generalized errors-in-variables model to address life-cycle bias in applied research.<sup>4</sup> On the one hand, the generalized errors-in-variables model predicts well the age at which life-cycle bias in the returns to schooling is minimized. On the other hand, the model appears to be less useful in correcting for life-cycle bias at other ages and in backing out the life-cycle profile in the returns to schooling. The main limitation of the generalized errors-in-variables model appears to be the assumption that the measurement error is uncorrelated with the determinants of earnings, and not that schooling is assumed to be uncorrelated with the error term. That said, the generalized errors-in-variables model is clearly a significant improvement over the textbook model, and highlights well the problems due to life-cycle bias in a wide range of research that uses current earnings variables as proxies for long-run earnings.

This paper unfolds as follows. Section 2 presents a theoretical framework that relates the returns to schooling in current and lifetime earnings and illustrates the possible role of life-cycle bias in earnings regressions. Section 3 describes our data. Section 4 presents the identification strategies and reports summary statistics. Section 5 provides the estimates of the returns to schooling in lifetime and current earnings, before assessing the life-cycle bias. Section 6 examines the usefulness of the generalized

---

been proposed and scrutinized, including skill-biased technical change, international trade and globalization, and changes in labor market institutions such as a decline in unionization and an erosion of the minimum wage.

<sup>4</sup> Haider and Solon (2006) use U.S. data to examine life-cycle bias by showing how the association between current and lifetime earnings varies over the life cycle. See also Björklund (1993) for an early study of the correlation between current and lifetime income. Haider and Solon's empirical analysis has been replicated and extended for Sweden (Böhlmark and Lindquist, 2006), Germany (Brenner, 2010), and Norway (Nilsen, Vaage, Aakvik and Jacobsen, 2010). Stuhler (2010) and Nybom and Stuhler (2011) provide a critical assessment of life-cycle bias in intergenerational mobility estimation, with particular emphasis on the generalized errors-in-variables model.



errors in-variables model in analyzing and correcting for life-cycle bias in the returns to schooling. Section 7 concludes.

## 2. Theoretical framework

This section uses a framework of compensating differences, originally proposed by Mincer (1958), to relate the returns to schooling in current and lifetime earnings and illustrate the possible role of life-cycle bias in earnings regressions.

Following Willis and Rosen (1979), suppose that individuals choose between two levels of schooling, labeled college (A) and high school (B), to maximize the present value of lifetime earnings. Assume that credit markets are perfect and the environment is perfectly certain, but occupations differ in the amount of schooling required. If an individual chooses college, his/her current earnings stream is

$$y^A_t = \begin{cases} 0, & t \leq s' \\ \bar{y}_A e^{g_A(t-s')}, & t > s' \end{cases}$$

where  $s'$  is the number of years it takes to get a college degree,  $t$  represents age (measured as years since high-school graduation),  $\bar{y}_A$  is initial wage, and  $g_A$  is the growth rate in wages. If the individual chooses high school, his/her current earnings stream is

$$y^B_t = \bar{y}_B e^{g_B(t)}, \quad t \geq 0.$$

Additional schooling entails opportunity costs in the form of foregone earnings (but no direct cost such as tuition). Assume an infinite horizon, and an exogenously determined interest rate  $r$ , with  $r > g_A > g_B > 0$ . Then, the present value of earnings is

$$Y^A = \int_0^{\infty} e^{-rt} y^A_t dt = \frac{e^{-rs'} \bar{y}_A}{r - g_A}$$

if college is chosen, and

$$Y^B = \int_0^{\infty} e^{-rt} y^B_t dt = \frac{\bar{y}_B}{r - g_B}$$

if high school is chosen. To induce a worker to choose college, foregone earnings while in school must be compensated by higher future earnings, such that  $Y^A > Y^B$ . In the long-run competitive equilibrium, the relationship between lifetime earnings and schooling is such that: (i) the supply and demand for workers of each schooling level are equated, and (ii) no worker wishes to alter his/her schooling level.

In the basic framework of compensating differences, individuals are ex ante identical. In this case, equilibrium requires that individuals are indifferent between schooling levels such that the return to college in lifetime earnings is zero,  $\log Y^A = \log Y^B$ . However, the return to college in current earnings,  $\log y_t^A - \log y_t^B$ , will generally be nonzero in equilibrium. Moreover, the difference in the returns to college in lifetime and current earnings will vary as a function of the age (or experience level) at which current earnings are observed,  $\partial(\log y_t^A - \log y_t^B) / \partial t = g_A - g_B > 0$ . Following Haider and Solon (2006), we define  $(\log y_t^A - \log y_t^B) - (\log Y^A - \log Y^B)$  as the *life-cycle bias* in using current earnings at age  $t$  as a proxy for lifetime earnings.

More realistic models of earnings allow for ex ante heterogeneous individuals, such as in initial wages, growth rates, and the interest rate (see, e.g. Willis and Rosen, 1979; Cameron and Taber, 2004; Heckman, Lochner and Todd, 2006). Even so, the crucial insight of the basic framework of compensating differences still applies: to induce a worker to undertake additional schooling, foregone earnings while in school must be compensated by higher future earnings. This may generate changes in earnings variation around the central tendency of earnings growth, causing life-cycle bias in earnings regressions using cross-sectional data.

To circumvent the issue of life-cycle bias, the data used to estimate the returns to schooling would ideally consist of complete longitudinal life histories of earnings. Unfortunately, such ideal data are seldom available. Mincer (1974) therefore suggested two simple approaches to approximate the returns to schooling in lifetime earnings from cross-sectional data. In the remainder of the paper, we will estimate the returns to schooling in lifetime earnings from nearly career-long earnings histories, and assess how well the two approaches address the issue of life-cycle bias in earnings regressions based on cross-sectional data.

The first, much-used approach assumes separability between schooling and age (or experience), in which case controlling for age (or experience) addresses the issue of life-cycle bias. In our case, the separability assumption would imply that  $g_A = g_B$ . Unfortunately, data do not support the

separability assumption; moreover, it is at odds with more realistic models of earnings (see, e.g. Heckman et al., 2006).

The second approach relies on the so-called overtaking age (or experience level), at which  $\log y_t^A - \log y_t^B$  equates with  $\log Y^A - \log Y^B$ . In our case, the overtaking age is unique because the age–earnings profiles of the two schooling levels will not cross more than once,

$$t^* = \frac{s'(g_A - r) + \log(r - g_B) - \log(r - g_A)}{(g_A - g_B)}. \text{ Knowledge of the overtaking age provides an}$$

empirically useful short-cut method for estimating the returns to schooling in lifetime earnings directly from  $\log y_{t^*}^A - \log y_{t^*}^B$ . In particular, the generalized errors-in-variables model proposed by Haider and Solon (2006) can be used to identify the overtaking age under transparent assumptions.<sup>5</sup>

### 3. Data

Our empirical analysis utilizes several registry databases maintained by Statistics Norway. This allows us to construct a rich longitudinal data set containing records for every Norwegian from 1967 to 2008. The variables captured in this data set include individual demographic information (sex, birth year) and socioeconomic data (annual earnings, years of schooling). Importantly, the data set includes personal identifiers, allowing us to link children to their parents and siblings. We can therefore merge the longitudinal data set with census data from 1960 and 1970. This allows us to add family background variables, including family income (in quartiles), parental education, and childhood municipality of residence. Family income is obtained by summing the father’s and the mother’s incomes. The father’s and the mother’s educational attainments are represented by a dummy variable indicating whether or not they had college education. Detailed descriptions of all the variables used in the empirical analysis are given in Table A.1 in the Appendix.

Our measure of earnings is the sum of pretax market income (from wages and self-employment) and work-related cash transfers, such as unemployment benefits, sickness benefits, and parental leave benefits. We define *current earnings* as the annual real earnings in a given year, adjusted for inflation

---

<sup>5</sup>A third approach is to assume a stationary economy, with zero aggregate productivity change and constant population growth rate, in which case cross-sectional earnings–age profiles can be used to construct synthetic cohort-based earnings–age profiles. However, recent analyses reveal that earnings patterns have changed dramatically across cohorts: as a result, constructing synthetic cohort-based earnings profiles from cross-sectional data will generate bias in earnings regressions (see, e.g. Heckman et al., 2006).

and real wage growth. Following Haider and Solon (2006), our measure of *lifetime earnings* is the annuity value of the discounted sum of annual real earnings. To calculate the annuity value we use a real interest rate of 2.3 percent, which corresponds to the average real interest rate on deposits and loans in Norway over the period 1967–2006 (Aaberge, Mogstad and Peragine, 2011).

The Norwegian earnings data have several advantages over those available in many other countries. First, there is no attrition from the original sample because of the need to ask permission from individuals to access their tax records. In Norway, these records are in the public domain. Second, our earnings data pertain to all individuals, and not only to jobs covered by social security. Third, we have nearly career-long earnings histories for certain cohorts, and do not need to extrapolate the earnings profiles to ages not observed in the data. And fourth, top-coding is only performed at very high earnings levels. In fact, less than 3 percent of the observations have right-censored earnings in any given year. Yet to make sure that top-coding is not driving our results, we have also estimated the returns to schooling using a Pareto distribution to simulate earnings above the top-coding threshold. Appendix B describes the results from this robustness check.

Our regressor of interest is the number of years of schooling. To ensure that virtually everyone has completed their education, we will measure schooling at age 40 throughout this paper. Educational attainment is reported by the educational establishment directly to Statistics Norway, thereby minimizing any measurement error due to misreporting.

Our main results focus on the 1948–1950 cohorts, in order to ensure complete records on earnings from age 20 to 58. Our analytic sample is restricted to males, to minimize selection issues because of the low labor market participation rates for women in the early periods. We exclude immigrants as well as individuals with missing information on years of schooling, place of residence, or family background variables. Our key dependent variables are the log of the annuitized value of earnings from age 20 to 58, as well as the log of current earnings at every age from 28 to 58. To ensure that our sample is the same for all dependent variables, we exclude individuals with zero earnings in one or more years between age 28 and 58. Applying these restrictions provided us with what we will refer to as the *full sample*, consisting of 56,832 individuals.

## 4. Identification strategies

In the absence of experimental evidence, it is difficult to know whether the higher earnings observed among highly educated workers are caused by their additional schooling, or whether individuals with greater earning capacity have chosen to acquire more schooling. To address this concern of selection bias in earnings regressions, a number of identification strategies have been proposed and scrutinized. In this paper, we apply three different identification strategies that are currently in use in the literature.

Our earnings regressions are summarized by the following two equations:

$$(1) \quad y_i = \alpha + \rho s_i + \chi' F_i + \delta^c + \delta^m + \varepsilon_i$$

$$(2) \quad y_{it} = \alpha_t + \rho_t s_i + \chi'_t F_i + \mu^c + \mu^m + \varepsilon_{it}.$$

In equations (1) and (2),  $s$  is the number of years of schooling, and  $F$  is a vector of control variables for family background, comprising family income and parental education. The only difference between the two earnings regressions is the specification of the dependent variable: equation (1) uses lifetime earnings,  $y$ , whereas equation (2) uses current earnings at age  $t$ ,  $y_t$ . Both equations include a full set of indicators for childhood municipality of residence,  $\delta^m$  and  $\mu^m$ , and a full set of birth cohort indicators,  $\delta^c$  and  $\mu^c$ . The birth cohort indicators control for a (possibly nonlinear) common trend in earnings growth over the life-cycle. The standard errors are always clustered at the municipality level and robust to heteroskedasticity.

*Within-twin-pair estimation.* Our first identification strategy is to use within-twin-pair estimation (see, e.g. Griliches, 1979; Ashenfelter and Krueger, 1994). This strategy identifies the returns to schooling by comparing the difference in schooling of the twins in a pair with the difference in their earnings. The idea is that twins share genetics and the same family background environment, possibly reducing the extent of ability bias.<sup>6</sup>

Our *twin sample* consists of 702 individuals, amounting to around 1.3 percent of the full sample. Unfortunately, our data do not allow us to distinguish between monozygotic and dizygotic twins. This

---

<sup>6</sup> Although much used, within-twin-pair estimation has been criticized. First, there could be other differences between the twins that are unobservable to the researcher and that affect both the schooling decision and earnings. Second, within-pair estimates will suffer from greater attenuation bias if measurement error is greater for schooling measured in differences than levels. However, we reduce the problem of measurement error in schooling, by measuring completed education at age 40 and by using administrative data rather than self-reported surveys. See, e.g. Bound and Solon (1999) and Isacson (2004) for a discussion of attenuation bias in within-twin-pair estimation.

means that our within-twin-pair estimates might be confounded by unobserved heterogeneity in genetics. As we only consider male twin pairs, we know from Weinberg's rule that about half of the twin sample is monozygotic.

*Controls for ability.* In the second identification strategy, we attempt to control for differences in ability (see, e.g. Griliches, 1977), through information on IQ test scores from Norwegian military records. In Norway, military service is compulsory for all able males. Before entering the service, their medical and psychological suitability is assessed: this occurs for the great majority around their 18th birthday. However, the IQ test scores are only available for cohorts born in 1950 or later. Our *IQ sample* therefore consists of 14,936 individuals who were born in 1950 and had nonmissing IQ test scores.

The IQ measure is a composite score from three speeded IQ tests—arithmetic, word similarities, and figures<sup>7</sup>. The composite IQ test score is an unweighted mean of the three subtests. The IQ score is reported in stanine (Standard Nine) units, a method of standardizing raw scores into a nine-point standard scale with a normal distribution, a mean of 5, and a standard deviation of 2. We add a full set of test score indicators to the earnings regressions.

*Instrumental variables strategy.* Our third identification strategy follows Black, Devereux and Salvanes (2005) and Aakvik, Salvanes and Vaage (2010) in using the staged implementation of a Norwegian compulsory schooling law reform as a source of exogenous variation in schooling. The reform increased compulsory schooling from seven to nine years, and was implemented over a 12-year period from 1960 to 1971 in different municipalities (the lowest level of local administration) at different times. Thus, for more than a decade, Norwegian schools were divided into two separate systems, where the years of compulsory schooling depended on the year that you were born and the municipality in which you lived.

We are able to successfully identify the year in which the reform was implemented for as many as 671 out of the 728 municipalities. In line with Black et al. (2005) and Aakvik et al. (2010), we drop individuals who were residing in a municipality to which we could not assign a reform indicator. Applying this sample restriction we get an *IV sample* consisting of 53,915 individuals, which is nearly 95 percent of the full sample.

---

<sup>7</sup> The arithmetic test is quite similar to the arithmetic test in the Wechsler Adult Intelligence Scale (WAIS) (Sundet et al., 2005; Cronbach, 1964). The word test is similar to the vocabulary test in WAIS, and the figures test is similar to the Raven Progressive Matrix test (Cronbach, 1964). See Sundet et al. (2004, 2005) and Thrane (1977) for details.

Our instrumental variables (IV) strategy is summarized by the second stages expressed in equations (1) and (2), and the first stage

$$(3) \quad s_i = \gamma_0 + \gamma_1 R_i + \gamma_2 F_i + \gamma_3 R_i F_i + \gamma_4 R_i A_i + \pi_i^c + \pi_i^m + \eta_i$$

where  $R$  is the compulsory schooling reform dummy, equal to 1 if the individual was exposed to the reformed schooling law and 0 otherwise. Following the baseline specification in Aakvik et al. (2010), we add interaction terms between the reform dummy and family background variables,  $RF$ , and between the reform dummy and variables indicating availability of different school types,  $RA$ . The vector  $A$  includes indicator variables for the availability of upper secondary school, vocational college, regional college and university in the municipality in which the individual grew up. By adding the interaction terms, we allow the response to the compulsory schooling reform to vary with family background and availability of different school types. As the availability of different schools at the municipality level is unchanged over this time period, the full set of municipality indicators,  $\pi^m$ , capture the direct effects of school availability on years of schooling. The full set of birth cohort indicators,  $\pi^c$ , allows for a (possibly nonlinear) secular trend in educational attainment.<sup>8</sup>

We refer to Black et al. (2005) and Aakvik et al. (2010) for detailed discussions of instrument validity and of relevant institutional details. For example, they show that there is no relationship between the timing of the implementation of the schooling reform and municipality characteristics such as average earnings, education levels, average age, urban/rural status, industry or labor force composition, municipality unemployment rates, or the share of individuals who were members of the Labor Party (the most pro-reform of the dominant political parties).

*Summary statistics.* Table 1 reports summary statistics for each sample. There are common patterns in the summary statistics across the samples. First, average current earnings display the familiar concave shape over the life cycle, increasing from age 28 to 48, and declining slightly afterwards. Second, average current earnings are most similar to average lifetime earnings when individuals are in their mid 30s. Third, the increase in average current earnings over the life cycle is accompanied by an increase in the variance of current earnings. This is an important observation, because life-cycle bias is due to changes in earnings variation around the central tendency of earnings growth. The main

---

<sup>8</sup> Black et al. (2005) and Aakvik et al. (2010) also test for a municipality-specific linear trend and find that this does not impact the results. The same holds true for our analysis.

difference across the samples is that twins have somewhat lower earnings and educational attainment, in line with the findings of previous studies (see, e.g. Bound and Solon, 1999).

**Table 1 Descriptive statistics**

| Variables          | Full sample |                 | Twins sample |                 | IQ sample   |                 | IV sample   |                 |
|--------------------|-------------|-----------------|--------------|-----------------|-------------|-----------------|-------------|-----------------|
|                    | (1)<br>Mean | (2)<br>Std.dev. | (3)<br>Mean  | (4)<br>Std.dev. | (5)<br>Mean | (6)<br>Std.dev. | (7)<br>Mean | (8)<br>Std.dev. |
| Current earnings   |             |                 |              |                 |             |                 |             |                 |
| Age 28             | 235 063     | (78 512)        | 232 509      | (74 640)        | 236 010     | (77 833)        | 235 378     | (78 603)        |
| Age 38             | 306 293     | (123 271)       | 296 695      | (102 809)       | 313 922     | (128 760)       | 307 102     | (123 656)       |
| Age 48             | 336 366     | (220 884)       | 322 534      | (167 777)       | 342 822     | (220 417)       | 337 457     | (223 535)       |
| Age 58             | 314 267     | (201 531)       | 307 529      | (154 548)       | 319 568     | (201 888)       | 314 846     | (202 647)       |
| Lifetime earnings  |             |                 |              |                 |             |                 |             |                 |
| Age 20–58          | 255 859     | (85 364)        | 249 850      | (66 021)        | 259 289     | (88 793)        | 256 445     | (85 854)        |
| Years of schooling | 11.5        | (3.0)           | 11.2         | (3.0)           | 11.6        | (3.0)           | 11.5        | (3.0)           |
| Father college     | 0.11        | (0.32)          | 0.11         | (0.31)          | 0.11        | (0.32)          | 0.11        | (0.32)          |
| Mother college     | 0.05        | (0.21)          | 0.05         | (0.21)          | 0.05        | (0.21)          | 0.05        | (0.21)          |
| Observations       | 56,832      |                 | 702          |                 | 14,938      |                 | 53,915      |                 |

*Notes:* Full sample: males born 1948–1950 with positive earnings from age 28–58. Twins sample: male twins born 1948–1950, with positive earnings from age 28–58. IQ sample: males born 1950, with positive earnings from age 28–58 and nonmissing observations on IQ tests scores. IV sample: male cohorts born 1948–1950, with positive earnings from age 28–58 and childhood municipality of residence for which we are able to identify the timing of the compulsory schooling reform. Schooling is measured at age 40. Father’s and mother’s education are represented by indicators for whether they have attained a college/university degree by 1960.

## 5. Returns to schooling estimates

We begin by reporting estimates of the returns to schooling in lifetime and current earnings from a cohort-based analysis, following individuals over their working life span. This allows us to assess the life-cycle profile in the returns to schooling, and identify the ages at which life-cycle bias is minimized. Next, we follow standard practice in the literature on earnings regressions and use cross-sectional data to estimate the returns to schooling. By comparing these results to those produced by the cohort-based analysis, we learn how well the cross-sectional estimates of the returns to schooling approximate the returns to lifetime earnings. Furthermore, by comparing the cross-sectional estimates from different years, we can examine the sensitivity of returns to schooling estimates to changes in the age composition of the sample. We conclude this section with a discussion of our findings, assessing whether life-cycle bias is likely to be merely an econometric peculiarity or a real cause for concern in empirical research.



## 5.1 Cohort-based analysis

*Main analytical sample.* As described above, our main analytical sample consists of the 1948–1950 cohorts, for which we have complete records on earnings from age 20 to 58. Table 2 shows the estimated returns to schooling in lifetime earnings and current earnings at different ages for these cohorts. The table reports results for the full sample (column 1), the IQ sample (columns 2–3), the twin sample (columns 4–5), and the IV sample (columns 6–7).<sup>9</sup> Each cell represents a separate regression. Figure 2 plots the estimated returns to schooling in lifetime earnings and current earnings, age 28–58.

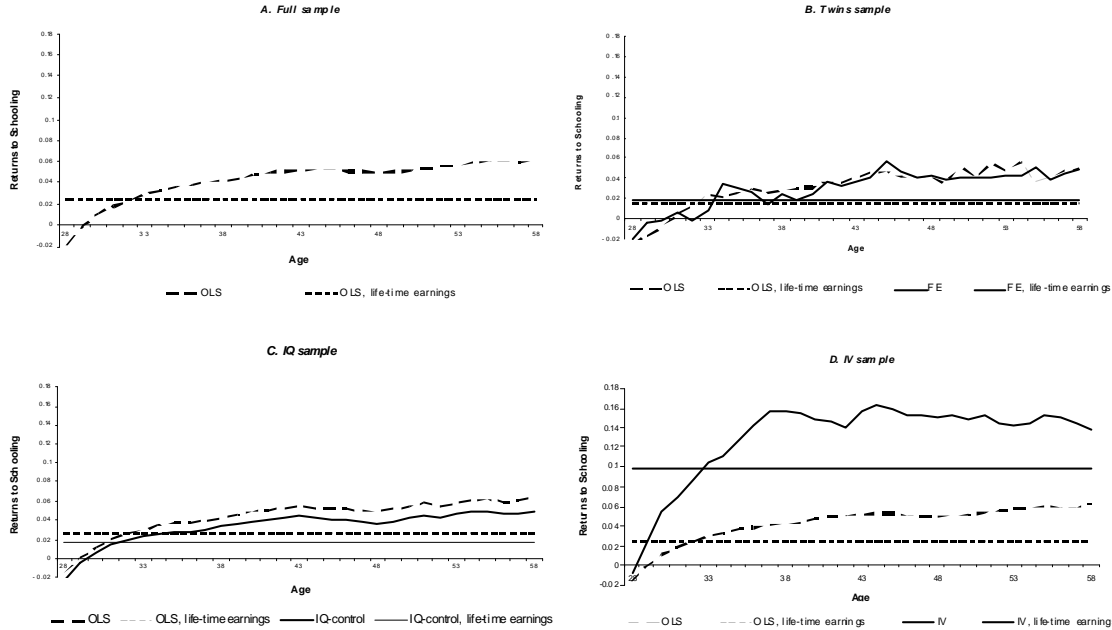
**Table 2 Returns to schooling in current and lifetime earnings**

|                            | Dependent variable: Log (earnings) |                     |                     |                      |                      |                      |                     |  |
|----------------------------|------------------------------------|---------------------|---------------------|----------------------|----------------------|----------------------|---------------------|--|
|                            | Full sample                        |                     | Twins sample        |                      | IQ sample            |                      | IV sample           |  |
|                            | (1)                                | (2)                 | (3)                 | (4)                  | (5)                  | (6)                  | (7)                 |  |
|                            | OLS                                | OLS                 | FE                  | OLS                  | IQ-control           | OLS                  | IV                  |  |
| Panel A: Current earnings  |                                    |                     |                     |                      |                      |                      |                     |  |
| Age 28                     | –0.018***<br>(0.002)               | –0.027**<br>(0.013) | –0.020<br>(0.015)   | –0.016***<br>(0.002) | –0.025***<br>(0.003) | –0.017***<br>(0.002) | –0.008<br>(0.009)   |  |
| Age 33                     | 0.029***<br>(0.001)                | 0.024***<br>(0.007) | 0.009<br>(0.010)    | 0.030***<br>(0.001)  | 0.024***<br>(0.002)  | 0.029***<br>(0.001)  | 0.105***<br>(0.007) |  |
| Age 38                     | 0.042***<br>(0.001)                | 0.029***<br>(0.007) | 0.025**<br>(0.011)  | 0.042***<br>(0.000)  | 0.033***<br>(0.002)  | 0.042***<br>(0.001)  | 0.155***<br>(0.009) |  |
| Age 43                     | 0.052***<br>(0.001)                | 0.041***<br>(0.006) | 0.037***<br>(0.011) | 0.055***<br>(0.001)  | 0.045***<br>(0.002)  | 0.052***<br>(0.001)  | 0.155***<br>(0.010) |  |
| Age 48                     | 0.050***<br>(0.001)                | 0.041***<br>(0.006) | 0.044***<br>(0.014) | 0.049***<br>(0.001)  | 0.037***<br>(0.002)  | 0.050***<br>(0.001)  | 0.150***<br>(0.009) |  |
| Age 53                     | 0.057***<br>(0.001)                | 0.048***<br>(0.011) | 0.044***<br>(0.008) | 0.058***<br>(0.000)  | 0.046***<br>(0.002)  | 0.057***<br>(0.001)  | 0.143***<br>(0.008) |  |
| Age 58                     | 0.061***<br>(0.001)                | 0.049***<br>(0.009) | 0.049***<br>(0.013) | 0.065***<br>(0.002)  | 0.050***<br>(0.001)  | 0.061***<br>(0.001)  | 0.137***<br>(0.009) |  |
| Panel B: Lifetime earnings |                                    |                     |                     |                      |                      |                      |                     |  |
| Age 20–58                  | 0.025***<br>(0.001)                | 0.016***<br>(0.005) | 0.019**<br>(0.008)  | 0.026***<br>(0.001)  | 0.018***<br>(0.001)  | 0.025***<br>(0.000)  | 0.099***<br>(0.006) |  |
| Age 20–52                  | 0.021***<br>(0.001)                | 0.012**<br>(0.005)  | 0.015*<br>(0.008)   | 0.021***<br>(0.001)  | 0.014***<br>(0.001)  | 0.021***<br>(0.001)  | 0.092***<br>(0.006) |  |
| Observations               | 56,832                             | 702                 |                     | 14,938               |                      | 53,915               |                     |  |

*Note:* \*  $p < 0.1$ , \*\*  $p < 0.05$ , \*\*\*  $p < 0.01$ . Standard errors in parentheses are robust to heteroskedasticity and clustered at the municipality level. See notes in Table 1 for sample details. Cohort dummies, municipality fixed effects and family background variables are included in all regressions. First stage IV estimation results are given in Table A.2.

<sup>9</sup> The first-stage estimates are provided in Table A.2 in Appendix A. We can see that the first stages are strong with F-statistics on the excluded instruments exceeding 43, which means that we do not need to worry about problems due to weak instruments.

**Figure 2 Returns to schooling in current and lifetime earnings**



Note: This figure plots estimates of the returns to schooling in current and lifetime earnings by identification strategy. Cohort dummies, municipality fixed effects and family background variables are included in all regressions. First stage IV estimation results are given in Table A.2. See notes in Table 1 for sample details.

There are clear patterns in our results, independent of identification strategy. We see that the returns to schooling increase over most of the life cycle. The estimates start out negative when these men are young, reflecting that some individuals taking higher education are still in school, and that the lowly educated workers have considerably more work experience early in their careers. The returns to schooling rise quickly until individuals are in their late 30s, after which they increase modestly. The association between the returns to schooling in lifetime and current earnings is strongest when individuals are 32–33 years old, and there is positive (negative) life-cycle bias with earnings measured after age 40 (before age 30).

There are, however, some noticeable differences in the results across the identification strategies. These differences are unlikely to be due to the discrepancies in sample selection, as the OLS estimates are quite similar across the samples. Instead, they likely reflect population heterogeneity in the returns to schooling or omitted variables bias. The IV strategy produces the highest returns to schooling in lifetime earnings and the most pronounced life-cycle bias. A common interpretation of the relatively high IV estimates of the returns to schooling is that the effect of another year of schooling varies across individuals, and that the instruments used change the educational choice of a subgroup with

relatively high returns.<sup>10</sup> An often-cited example is studies that measure the returns to schooling among persons obliged to stay in school longer because of compulsory school laws. The argument is that compulsory schooling laws mostly affect the education decision of persons with poor family background, and that the returns to more schooling in this subset of the population are relatively high. Along the same lines, an interpretation of our results is that the subgroup induced to take more schooling because of the compulsory schooling law reform not only achieves an increase in earnings levels, but also a more rapid earnings growth over the life cycle.

Turning our attention to the within-twin-pairs estimation and the strategy of controlling for test scores, we find that the OLS estimates generally exceed the within-twin returns to schooling estimates. A common interpretation of this finding is that endogeneity of schooling leads to upward bias in OLS estimates of the returns to schooling. However, our results suggest that this ability bias is fairly stable over the life cycle.

*Extended analytical sample.* Our estimates from the 1948–1950 cohorts may not necessarily extend to other cohorts, because of changes in skill prices or cohort quality. We therefore examine the external validity of our results by changing the cohorts included in the analytical sample. Specifically, we look separately at cohorts born 1951–1953 and 1954–1956, using the complete records of earnings from age 20 to 55 and age 20 to 52, respectively. The results are presented in the Appendix, in panel A of Table A.3 and in Figure A.1. We find no significant difference across cohorts in the estimated returns to schooling over the life cycle: our cross-sectional analysis discussed in the next subsection will therefore use cohorts born in the period 1948–1956.

For cohorts born after 1950, our data do not allow us to calculate the annuitized value of earnings from age 20 to 58. Instead, we construct an alternative measure of lifetime earnings, defined as the annuitized value of earnings from age 20 to 52. The results for the 1951–1956 cohorts are presented in panel B of Table A.3, whereas the results from the 1948–1950 cohorts are reported in panel B of Table 2. We find no significant difference across the cohorts in the estimated returns to schooling in this measure of lifetime earnings.

In an attempt to construct measures of lifetime earnings from age 20 to 58 for cohorts born in 1950–1956, we impute earnings for cohorts born after 1950. Specifically, we use a nearest-neighbor

---

<sup>10</sup> An alternative explanation is that measurement error in schooling leads to a downward bias in the OLS estimates of the returns to schooling. Card (2001) concludes, however, that it is unlikely that so many studies would find large positive gaps

matching algorithm to impute the missing earnings history above age 55 for the 1951–1953 cohorts, and above age 52 for the 1954–1956 cohorts. The matching algorithm is described in detail in the Appendix, but to focus our ideas, consider an individual born in 1953. Conditional on the individual’s level of schooling, family background characteristics, childhood county of residence, and a dummy variable for exposure to compulsory schooling reform, the matching algorithm identifies the best individual match from the 1948–1950 cohorts. The best individual match is defined as the one minimizing the Mahalanobis distance in annual real earnings from age 20 to age 55, between the individual and the potential matches. The missing earnings observations after age 55 are then imputed from the earnings record of the best individual match.<sup>11</sup> The results based on this alternative measure of lifetime earnings are reported in panel B of Table A.3. The key finding is that there is no significant difference in the estimated returns to schooling in lifetime earnings across the cohorts.

## 5.2 Cross-sectional analysis

Table 3 reports cross-sectional estimates of the returns to schooling for the years 1985, 1995, and 2005 (panel A), and estimates of the returns to schooling for two different measures of lifetime earnings (panel B). Each cell represents a separate regression. Both panels use the sample of males born during the period 1948–1956. The first lifetime earnings measure is based on complete records of earnings for all cohorts from age 20 to 52, whereas the second measure of lifetime earnings is based on imputed earnings for some cohorts at ages 53–58. For each cross section, the table reports the mean age of the sample.

There are clear patterns in our results. Even with flexible controls for age, the cross-sectional estimates tend to seriously overstate the returns to schooling in lifetime income. The estimates of the returns to schooling from the 1985 cross section are most similar to the estimates using lifetime earnings as the dependent variable. The reason is that the individuals are in their early 30s, when the returns to schooling in current earnings are most similar to the returns to schooling in lifetime earnings. The cross-sectional estimates of the returns to schooling are much higher in 1995, mirroring that the returns to schooling in current earnings rise quickly until individuals are in their late 30s. From 1995 to 2005, we see a smaller increase in the cross-sectional estimates, consistent with the modest increase in the returns to schooling in current earnings after individuals turn 40. In fact, there is no increase in

---

between their IV and OLS estimates simply because of measurement error.

<sup>11</sup> To test the matching method, we have performed an out-of-sample check for ages where we have complete earnings records for all cohorts. These out-of-sample results suggest that the matching method performs very well in predicting individuals’ current earnings.

the IV estimates from 1995 to 2005, attributable to the fact that the IV estimates in the returns to schooling in current earnings change little after age 38.

**Table 3 Returns to schooling in cross-sectional and lifetime earnings**

|  | Dependent variable: Log (earnings) |                     |                     |                     |                     |                     |                     |  |
|--|------------------------------------|---------------------|---------------------|---------------------|---------------------|---------------------|---------------------|--|
|  | Full sample                        |                     | Twins sample        |                     | IQ sample           |                     | IV sample           |  |
|  | (1)                                | (2)                 | (3)                 | (4)                 | (5)                 | (6)                 | (7)                 |  |
|  | OLS                                | OLS                 | FE                  | OLS                 | IQ-control          | OLS                 | IV                  |  |
| <i>Panel A: Cross-sectional earnings</i> |                                    |                     |                     |                     |                     |                     |                     |  |
| Cross section 1985                       |                                    |                     |                     |                     |                     |                     |                     |  |
| Returns to schooling                     | 0.030***<br>(0.001)                | 0.022***<br>(0.004) | 0.011<br>(0.009)    | 0.029***<br>(0.001) | 0.019***<br>(0.001) | 0.030***<br>(0.001) | 0.109***<br>(0.005) |  |
| Mean age                                 | 32.9                               | 32.9                |                     | 31.9                |                     | 32.9                |                     |  |
| Cross section 1995                       |                                    |                     |                     |                     |                     |                     |                     |  |
| Returns to schooling                     | 0.050***<br>(0.000)                | 0.049***<br>(0.004) | 0.043***<br>(0.009) | 0.050***<br>(0.000) | 0.039***<br>(0.001) | 0.050***<br>(0.000) | 0.139***<br>(0.006) |  |
| Mean age                                 | 42.9                               | 42.9                |                     | 41.9                |                     | 42.9                |                     |  |
| Cross section 2005                       |                                    |                     |                     |                     |                     |                     |                     |  |
| Returns to schooling                     | 0.060***<br>(0.001)                | 0.052***<br>(0.006) | 0.048***<br>(0.009) | 0.061***<br>(0.001) | 0.049***<br>(0.001) | 0.060***<br>(0.001) | 0.135***<br>(0.005) |  |
| Mean age                                 | 52.9                               | 52.9                |                     | 51.9                |                     | 52.9                |                     |  |
| <i>Panel B: Lifetime earnings</i>        |                                    |                     |                     |                     |                     |                     |                     |  |
| Age 20–58 (imputed)                      | 0.026***<br>(0.001)                | 0.025***<br>(0.003) | 0.019***<br>(0.005) | 0.027***<br>(0.000) | 0.019***<br>(0.000) | 0.026***<br>(0.000) | 0.087***<br>(0.006) |  |
| Age 20–52                                | 0.021***<br>(0.000)                | 0.019***<br>(0.003) | 0.015***<br>(0.005) | 0.023***<br>(0.000) | 0.015***<br>(0.000) | 0.021***<br>(0.001) | 0.082***<br>(0.006) |  |
| Observations                             | 180,730                            | 2,288               |                     | 113,247             |                     | 171,703             |                     |  |

*Note:* \*  $p < 0.1$ , \*\*  $p < 0.05$ , \*\*\*  $p < 0.01$ . Standard errors in parentheses are robust to heteroskedasticity and clustered at the municipality level. Cohort dummies, municipality fixed effects and family background variables are included in all regressions. First stage IV estimation results are given in Table A.2. Full sample: males born 1948–1956 with positive earnings from age 28–58. Twins sample: male twins born 1948–1956, with positive earnings from age 28–58. IQ sample: males born 1950–1956, with positive earnings from age 28–58 and nonmissing observations on IQ tests scores. IV sample: male cohorts born 1948–1956, with positive earnings from age 28–58 and childhood municipality of residence for which we are able to identify the timing of the compulsory schooling reform. See Appendix for a detailed description of the method used to impute earnings.

The cross-sectional estimates of the returns to schooling reported in Table 3 control flexibly for age through the full set of birth cohort indicators. This approach allows researchers to approximate the returns to schooling in lifetime income from cross-sectional data, insofar the true earnings function is multiplicative separable in age and schooling. An alternative approach taken in some cross-sectional studies is to control for potential experience (usually defined as age – years of schooling – school starting age); such a specification approximates the returns to schooling in lifetime income if the true earnings function is multiplicative separable in potential experience and schooling.

Table A.5, presented in the Appendix, shows that neither (flexible) controls for age nor (flexible) controls for potential experience correct for life-cycle bias in earnings regressions based on cross-sectional data. The reason is that both types of specifications fail to capture the changes in earnings variation around the central tendency of earnings growth, implying nonseparability between schooling and age/potential experience. For brevity, Table A.5 only reports OLS estimates of the returns to schooling for the years 1985, 1995, and 2005.<sup>12</sup> Column 1 repeats the baseline estimates from Table 3, while columns 2-4 employ alternative specifications of the controls for age/potential experience. As is evident from the table, cross-sectional estimates with controls for age/experience tend to seriously overstate the returns to schooling in lifetime income.<sup>13</sup>

### 5.3 Discussion

An important insight from our analysis is that cross-sectional estimates of the returns to schooling are highly sensitive to the age composition of the sample. In particular, they tend to increase with mean age, reflecting that highly educated workers experience more rapid earnings growth through most of the life cycle. This means that we need to pay close attention to differences in age composition when comparing cross-sectional estimates of the returns to schooling across countries, subgroups, or time. Below, we illustrate by three examples the possible implications of life-cycle bias for the conclusions drawn about the returns to schooling.

First, we use our Norwegian data to examine how changes in the age composition of the sample may affect the evolution of the returns to schooling from 1967 to 2008. In each year, we estimate the returns to schooling for males aged 16–64 and for the subsample of males aged 32–33. Figure 3 displays the result. We see that the returns to schooling for males aged 16–64 increased over the 1980s and into the late 1990s. However, the large increase in the returns to schooling disappears once we minimize life-cycle bias by restricting the cross-sectional estimates to the sample of individuals aged 32–33. Although we cannot rule out that the differential time trends reflect differences in cohort quality, it raises the question of whether the increase in the returns to schooling for males aged 16–64 is an artifact of changes in life-cycle bias. In particular, since the 1980s, the large baby boom cohorts

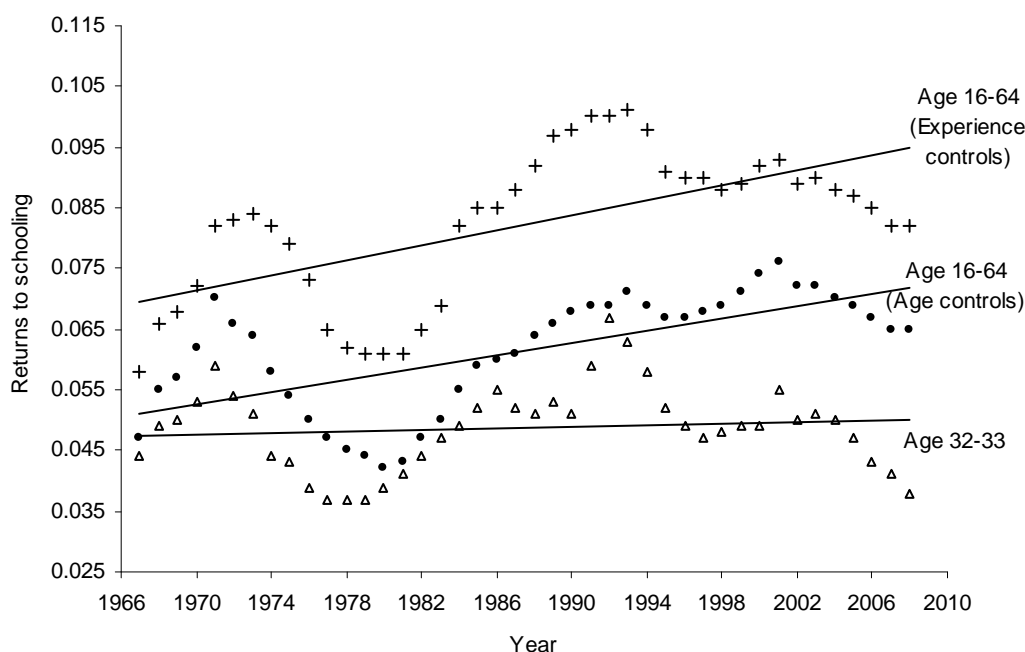
---

<sup>12</sup> When controlling for potential experience, the identification strategies also produce cross-sectional estimates that seriously overstate the returns to schooling in lifetime income.

<sup>13</sup> An alternative approach to correct for life-cycle bias in cross-sectional estimates of the returns to schooling is to interact age/potential experience with schooling. This approach assumes a stationary economy, with zero aggregate productivity change and constant population growth rate, in which case cross-sectional earnings–age profiles can be used to construct synthetic cohort-based earnings–age profiles. However, recent analyses reveal that earnings patterns have changed dramatically across cohorts: as a result, constructing synthetic cohort-based earnings profiles from cross-sectional data will generate bias in earnings regressions (see, e.g. Heckman et al., 2006).

have made their way along the earnings–age profile: we would therefore expect an increase in (upward) life-cycle bias in cross-sectional estimates of the returns to schooling.<sup>14</sup>

**Figure 3 Cross-sectional returns to schooling in Norway**



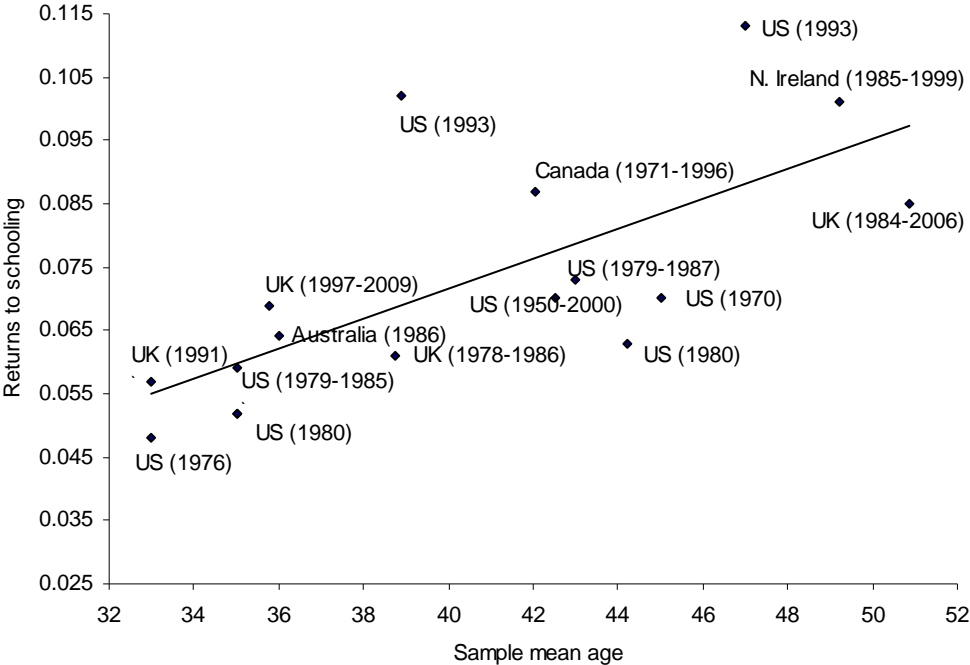
*Note:* This figure plots OLS estimates of the returns to schooling based on Norwegian cross-sections from 1967 to 2008. In each year, we estimate the returns to schooling separately for the sample of males aged 16-64 (with positive earnings) and for the subsample of males aged 32-33 (with positive earnings). Each cross represents an estimate of the return to schooling for the sample aged 16-64 in a given year, with controls for potential years of experience and potential years of experience squared. Each circular dot represents an estimate of the return to schooling for the sample aged 16-64 in a given year, with controls for age and age squared. Each triangular dot represents an estimate of the return to schooling for the sample aged 32-33 in a given year. The figure also includes linear trends for the three sets of returns to schooling estimates.

Next, we perform a meta-analysis of the cross-sectional studies reported in the review articles by Card (1999), Harmon et al. (2003), Oreopoulos (2006), and Devereux and Fan (2011). We restrict the analysis to the studies from the Anglo-Saxon countries, which include information about the mean age of the sample. Figure 4 plots the estimated returns to schooling and the sample mean age. Consistent with a story of life-cycle bias, the figure shows a strong positive association between the mean age in the sample and the estimated returns to schooling, with a correlation of 0.71. In fact, the positive association between mean age and the returns to schooling holds up even if we limit the comparison to cross-sectional estimates taken from the U.S. in the same year (1980 or 1993). We also see that the sample mean age generally exceeds the age at which life-cycle bias in our estimates is minimized.

<sup>14</sup> As in almost all developed countries, Norway experienced a large increase in its population growth rate following World War II, more familiarly called the baby boom. The baby boomers usually include children born from 1946 to about 1960.

This raises the concern that previous evidence may have overstated how much the labor market actually rewards an additional year of schooling.

**Figure 4 Returns to schooling reported in commonly cited studies**



*Note:* This figure displays OLS estimates of the returns to schooling from the cross-section studies reported in the review articles by Card (1999), Harmon et al. (2003), Oreopolous (2006) and Devereux and Fan (2011). We only report estimates from the Anglo-Saxon countries, which includes information about the mean age in the sample (17 observations). The years in which earnings and age are measured are reported in parentheses.

Lastly, we provide OLS estimates of the returns to schooling in current and lifetime earnings based on U.S. data. We use the Panel Survey of Income Dynamics (PSID). The data set contains information on birth cohort, years of schooling, and earnings for the period 1968-2005. We focus on the males born 1946-1950, in order to ensure nearly career-long earnings histories. Table A.6, presented in the Appendix, reports the estimated returns to schooling in lifetime earnings and current earnings at different ages for these cohorts. Each cell represents a different regression. Column 1 follows Haider and Solon (2006) in restricting the sample to males with positive earnings in at least ten years during the period 1968-2005; column 2 uses the subsample of males with positive earnings in at least 20 years during this period; column 3 uses an even more restrictive subsample with positive earnings in at

---

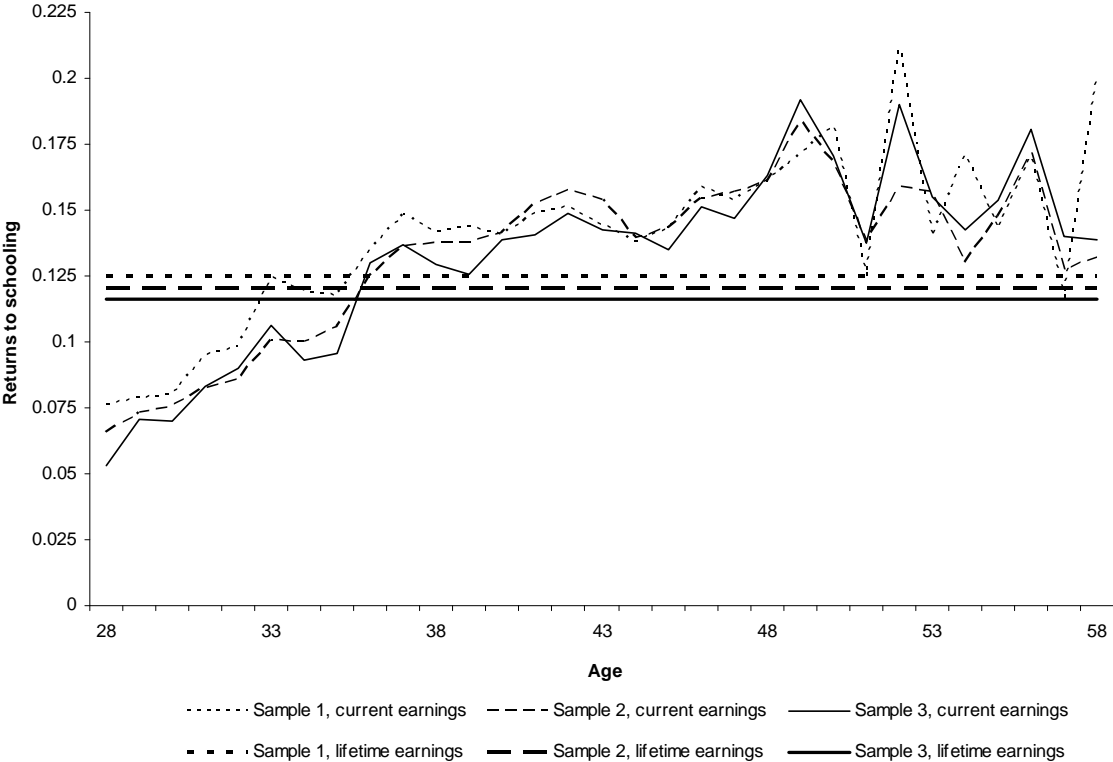
For example, the US Census Bureau considers a baby boomer to be someone born during the demographic birth boom between 1946 and 1964. Source: <http://www.census.gov/population/www/socdemo/age/general-age.html>.



least 25 years during this period. For each sample, we follow Haider and Solon (2006) in calculating lifetime earnings as the annuity value of the discounted sum of annual real earnings.<sup>15</sup>

As in Norway, there are clear patterns in the U.S. results. Figure 5 illustrates by plotting the estimated returns to schooling in lifetime and current earnings, age 28-58. We see that the returns to schooling increase over most of the life-cycle. The association between the returns to schooling in lifetime and current earnings is strongest when individuals are in their mid 30s, and there is positive (negative) life-cycle bias with earnings measured after age 40 (before age 30).

**Figure 5 Returns to schooling in current and lifetime earnings in the U.S.**



*Note:* This figure plots OLS estimates of the returns to schooling in lifetime and current earnings, age 28-58. The estimates are based on the Panel Survey of Income Dynamics (PSID). We consider the sample of males born 1946-1950. Sample 1 consists of males with positive earnings in at least ten years during the period 1968-2005 (770 observations). Sample 2 consists of males with positive earnings in at least 20 years during the period 1968-2005 (509 observations). Sample 3 consists of males with positive earnings in at least 25 years during the period 1968-2005 (373 observations). In each sample, lifetime earnings are measured as the annuity value of the discounted sum of annual real earnings. The calculations of the annuity value use a real interest rate of 2 percent and excludes years with missing information on earnings. The coefficients and their standard errors are reported in Table A.6.

There are, however, some noticeable differences in the results from the U.S. and Norway. As shown in previous studies, OLS estimates of the returns to schooling tend to be larger in Anglo-Saxon countries

<sup>15</sup> As in Haider and Solon (2006), our calculations of the annuity value use a real interest rate of 2 percent and excludes years with missing information on earnings.

as compared to other European countries, such as Norway (see e.g. Harmon et al., 2003).<sup>16</sup>

Furthermore, the estimates based on PSID suffer from attrition from the original sample, especially after age 50. Yet, the similarity across the two countries in the association between the returns to schooling in lifetime and current earnings indicate that life-cycle bias is a generic cause for concern in research on the economic returns to schooling. Moreover, the similarity in the age at which life-cycle bias is minimized lends support to the short-cut method for approximating the returns to schooling in lifetime income, by restricting the cross section sample to individuals in their early or mid 30s.

## 6. Errors-in-variables models

This section examines the usefulness of errors-in-variables models for analyzing and correcting for life-cycle bias in earnings regressions. In our context, the textbook and generalized errors-in-variables model can be summarized by the following equations:

$$(4) \quad y_{it} = \lambda_t y_i + v_{it}$$

$$(5) \quad y_i = \rho s_i + \varepsilon_i$$

$$(6) \quad y_{it} = \rho_t s_i + \varepsilon_{it}$$

where the error term  $\varepsilon$  is assumed to be uncorrelated with schooling  $s$ , and the measurement error  $v_t$  is assumed to be uncorrelated with each separate determinant of  $y$  ( $s$  and  $\varepsilon$ ).<sup>17</sup> Under these assumptions, the widespread use of  $y_t$  as a proxy for  $y$  in equation (5) gives a probability limit of the slope coefficient equal to  $\lambda_t \rho$ . In the textbook case where  $\lambda_t = 1$ ,  $\rho$  will be consistently estimated by OLS. Haider and Solon's (2006) generalized model relaxes this assumption, implying that  $\rho$  is biased by a factor of  $\lambda_t$ , and the inconsistency varies as a function of the age at which current earnings are observed.

The generalized-errors-in-variables model implies that knowing  $\rho_t$  and  $\lambda_t$  at any age  $t$  is sufficient to infer the returns to schooling in lifetime earnings,  $\rho$ ; and *vice versa*, to infer the returns to schooling in current earnings at any age  $t$ ,  $\rho_t$ , it is sufficient to know  $\rho$  and  $\lambda_t$ . Hence, if the generalized errors-

---

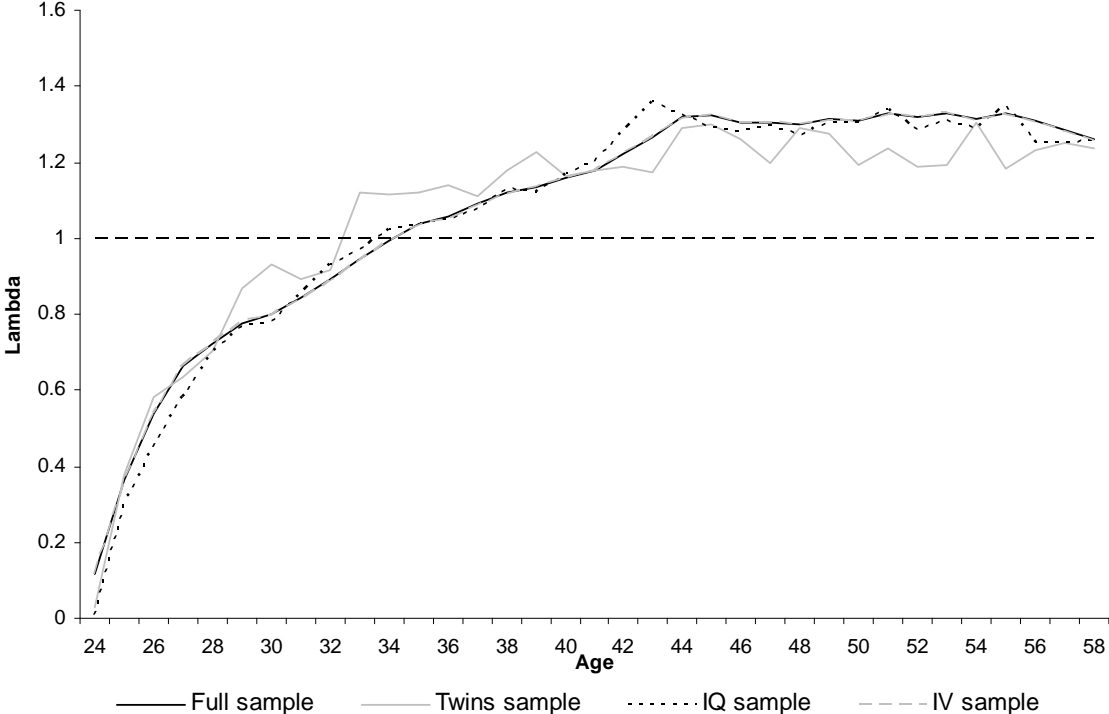
<sup>16</sup> In Norway, OLS estimates of the returns to schooling based on cross section data range between 3 and 6 percent (Hægeland, Klette and Salvanes, 1999; Aakvik et al., 2010).

<sup>17</sup> Throughout this section, we follow Haider and Solon (2006) in suppressing control variables as well as the intercepts by expressing all variables as deviations from their population means.

in-variables assumptions hold, the model can be used to back out the life-cycle profile in the returns to schooling, and to correct for life-cycle bias in cross-sectional estimates of the returns to schooling.

We begin by estimating equation (4). Figure 6 presents the estimates of  $\lambda_t$  for the full sample, the twin sample, the IQ sample, and the IV sample. We can see that the associations between current and lifetime earnings are generally different from one, and vary systematically over the life cycle. Thus, our results confirm the findings of Haider and Solon (2006) in suggesting that the textbook errors-in-variables model provides an incorrect characterization of the association between current and lifetime earnings.<sup>18</sup>

**Figure 6 Association between current and lifetime earnings**

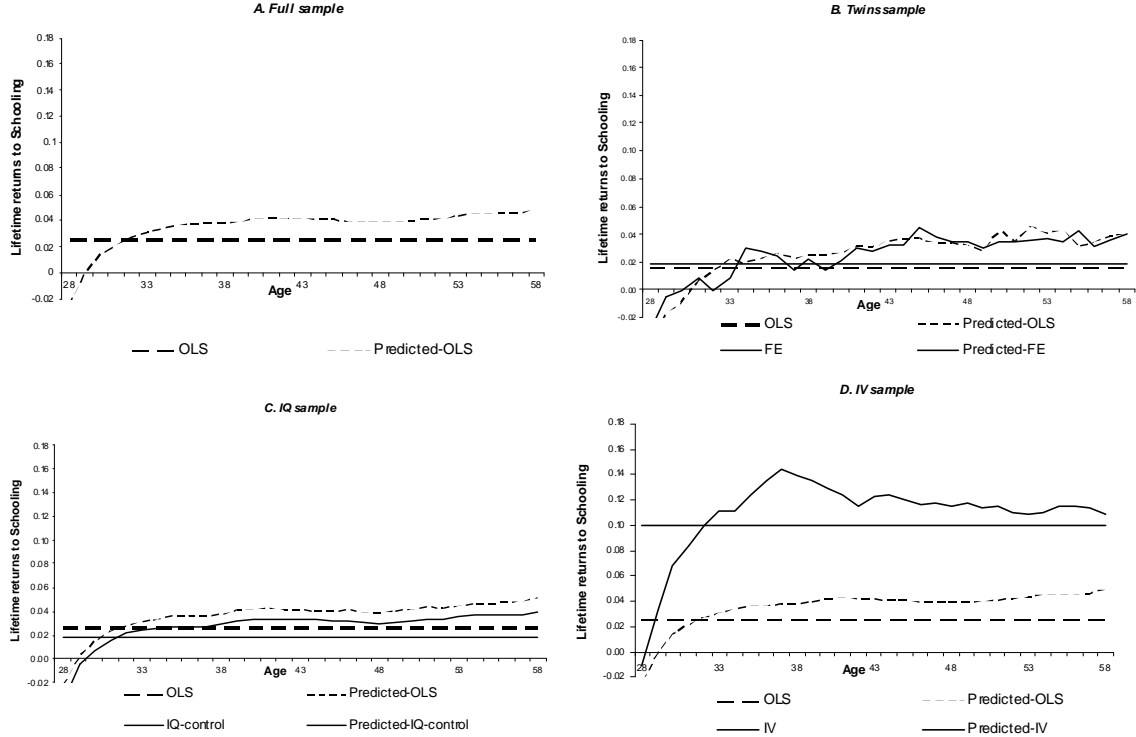


Note: This figure plots estimates of the slope coefficient  $\lambda_t$  from a regression of current earnings at age  $t$  on lifetime earnings, see equation (4). All regressions are performed separately for each sample. See notes in Table 1 for sample details.

<sup>18</sup> Haider and Solon’s (2006) estimate of  $\lambda_t$  starts out at 0.24 at age 19, increases steadily until it rises to 1 at age 32, and then declines somewhat in the late 40s. Our estimates are quite similar until individuals are in their mid 30s, but we do not find evidence of any decline after age 40. In addition, our estimates of  $\lambda_t$  are much more precisely estimated, reflecting our relatively large sample size.

Next, we use our estimates of  $\rho_t$  and  $\lambda_t$  at every  $t$  to construct a set of age-specific predictions for the returns to schooling in lifetime earnings, and compare them with the estimated returns to schooling in lifetime earnings. The difference between the predicted and the estimated returns to schooling in lifetime earnings tells us how well the generalized errors-in-variables model corrects for life-cycle bias at a given year  $t$ . Figure 7 displays the results for each sample. We see that the predicted returns to schooling in lifetime earnings are negative when these men are younger than 30. They rise quickly, crossing the estimated returns to schooling in lifetime earnings in the early 30s, after which they diverge. There is generally large positive (negative) bias in the predicted returns to schooling in lifetime earnings after age 35 (before age 30).

**Figure 7 Estimated and predicted lifetime return to schooling**

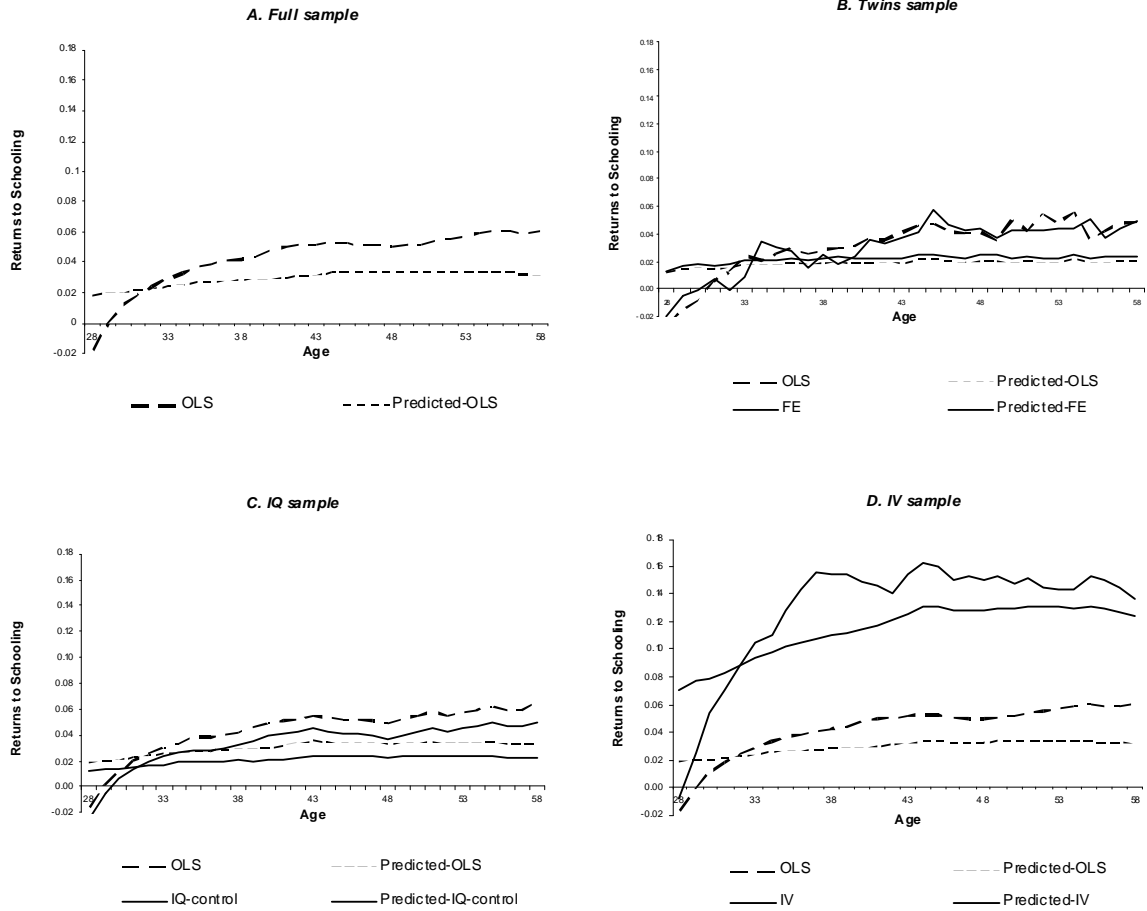


Note: This figure uses estimates of  $\lambda_t$  and estimates of the returns to schooling in current earnings at age  $t$ ,  $\rho_t$ , to plot the age-specific predicted returns to schooling in lifetime earnings,  $\hat{\rho}(t) = \frac{\rho_t}{\lambda_t}$ . See notes in Table 1 for sample details.

Finally, we use our estimates of  $\rho$  and  $\lambda_t$  to construct a set of predictions for the life-cycle profile in the returns to schooling. Figure 8 displays the results for each sample. We see that the predicted returns are not able to reveal the life-cycle profile in the estimated returns to schooling. The predicted returns start out positive and substantial when the estimated returns are negative. They coincide when

individuals are in their early 30s, after which the predicted returns increase much less than the estimated returns.

**Figure 8 Estimated and predicted life-cycle variation in returns to schooling**



Note: This figure uses estimates of  $\lambda_t$  and estimates of the returns to schooling in lifetime earnings,  $\rho$ , to plot the predicted returns to schooling in current earnings at age  $t$ ,  $\hat{\rho}_t = \rho \cdot \lambda_t$ . See notes in Table 1 for sample details.

Our findings echo the conclusion of Haider and Solon (2006), in that we need to exercise due caution in applying the generalized errors-in-variables model to address life-cycle bias in applied research. On the one hand, the generalized errors-in-variables model predicts well the age at which life-cycle bias in the returns to schooling is minimized. On the other hand, the model is not able to predict the life-cycle profile in the returns to schooling. Moreover, the model predictions of the returns to schooling in lifetime earnings are severely biased upward (downward), when current earnings are measured after age 35 (before age 30). The prediction errors occur independently of the identification strategy: this suggests that the main limitation of the generalized errors-in-variables model in the returns to schooling application is the assumption that the measurement error is uncorrelated with the

determinants of earnings, and not that schooling is assumed to be uncorrelated with the error term. That said, the generalized errors-in-variables model is clearly a significant improvement over the textbook model, and highlights well the problems due to life-cycle bias in a wide range of research that uses current earnings variables as proxies for long-run earnings.

## **7. Conclusion**

Research on the economic returns to schooling has a long history in economics. In particular, considerable effort has been directed toward examining the implicit assumption of the Mincer (1957, 1974) model that schooling is exogenous, and a number of identification strategies have been proposed and scrutinized. In contrast, much less attention has been devoted to the life-cycle bias that may arise from the widespread use of current earnings as a proxy for lifetime earnings.

This paper provides evidence on the returns to schooling in current and lifetime earnings. We use these results to assess the importance of life-cycle bias in earnings regressions using current earnings as a proxy for lifetime earnings. To account for the endogeneity of schooling, we apply three different identification strategies that are currently in use in the literature: i) within-twin-pair estimation, ii) controls for ability test scores, and iii) compulsory schooling reform as an instrument for schooling.

We find evidence of substantial life-cycle bias in the returns to schooling, often exceeding the bias from assuming that schooling is exogenous. The life-cycle bias is minimized when current earnings are measured for men in their early 30s, and there is a large positive (negative) life-cycle bias with current earnings measured after age 40 (before age 30). A possible remedy for cross-sectional estimates of the returns to schooling is to restrict the sample to individuals aged 30–35. Another important finding is that the cross-sectional estimates of the returns to schooling are highly sensitive to the age composition of the sample. They tend to increase with mean age, reflecting that highly educated workers experience more rapid earnings growth through most of the life cycle. This means that it is necessary to pay close attention to differences in age composition when comparing estimates of the returns to schooling across countries, subgroups, or time. Our study also shows that the returns to schooling in lifetime earnings are relatively low compared with what cross-sectional estimates typically suggest. This means that we may need to reconsider how much the labor market actually rewards an additional year of schooling.

However, caution is in order. Because we use observational data, we cannot rule out that our estimates suffer from omitted variables bias. Nevertheless, it is reassuring that the main patterns in our results

hold true across identification strategies. Another caveat is that the pattern in life-cycle bias for the Norwegian cohorts born in the late 1940s and the early 1950s may differ from those for other cohorts or other countries. The similarity between Norway and the U.S. in the association between the returns to schooling in lifetime and current earnings is somewhat reassuring. Yet, we advise readers to exercise due caution in importing our estimates of life-cycle bias to other earnings data. The general lesson to be drawn from our paper is rather that more attention needs to be devoted to life-cycle bias, if we want to continue using earnings regressions to capture how the labor market rewards productivity attributes such as schooling.

## References

Aaberge, R., M. Mogstad and V. Peragine (2011): Measuring Long-term Inequality of Opportunity, *Journal of Public Economics*, 95, 193–204.

Aakvik, A., K. G. Salvanes and K. Vaage (2010): Measuring Heterogeneity in the Returns to Education using an Education Reform, *European Economic Review*, 54, 483–500.

Ashenfelter, O. and A. Krueger (1994): Estimates of the Economic Return to Schooling From a New Sample of Twins. *American Economic Review*, 84, 1157–1173.

Atkinson, A. (2005): Top Incomes in the UK over the 20<sup>th</sup> Century, *Journal of the Royal Statistical Society: Series A (Statistics in Society)*, 168, 325–343.

Björklund, A. (1993): A Comparison between Actual Distributions of Annual and Lifetime Income: Sweden 1951–1989, *Review of Income and Wealth*, 39, 377–386.

Black, S. E., P. J. Devereux and K. G. Salvanes (2005): Why the Apple Doesn't Fall Far: Understanding Intergenerational Transmission of Human Capital, *American Economic Review*, 95, 437–449.

Böhlmark, A. and M. J. Lindquist (2006): Life-Cycle Variations in the Association between Current and Lifetime Income: Replication and Extension for Sweden, *Journal of Labor Economics*, 24, 876–896.

Bound, J. and G. Solon (1999): Double Trouble: On the Value of Twins-Based Estimation of the Returns to Schooling, *Economics of Education Review*, 18, 169–182.

Brenner, J. (2010): Life-Cycle Variations in the Association between Current and Lifetime earnings: Evidence for German Natives and Guest Workers, *Labour Economics*, 17, 392–406.

Cameron, S. and C. Taber (2004): Estimation of Educational Borrowing Constrains Using Returns to Schooling, *Journal of Political Economy*, 112, 132–182.



Card, D. (1999): The causal effect of education on earnings, *Handbook of Labor Economics*, vol. 3, part 1, 1801–1863.

Card, D. (2001): Estimating the Return to Schooling: Progress on Some Persistent Econometric Problems, *Econometrica*, 69, 1127–1160.

Cronbach, L. J. (1964): *Essentials of Psychological Testing, 2nd Edition*, London, UK: Harper and Row.

Devereux, P. J. and W. Fan (2011): Earnings Returns to the British Education Expansion, mimeo.

Griliches, Z. (1977): Estimating the Returns to Schooling: Some Econometric Problems, *Econometrica*, 45, 1–22.

Griliches, Z. (1979): Sibling Models and Data in Economics: beginning of a Survey, *Journal of Political Economy*, 87, 2, 37–64.

Haider, S. and G. Solon (2006): Life-Cycle Variation in the Association between Current and Lifetime Earnings, *American Economic Review*, 96, 1308–1320.

Harmon, C., H. Oosterbeek and I. Walker (2003): The Returns to Education: Microeconomics, *Journal of Economic Surveys*, 17, 115–155.

Heckman, J. J., L. J. Lochner and P. E. Todd (2006): Earnings Functions, Rates of Return and Treatment Effects: The Mincer Equation and Beyond, *Handbook of the Economics of Education*, 1, 307–458.

Heckman, J. J., L. J. Lochner and P. E. Todd (2008): Earnings Functions and Rates of Return, *Journal of Human Capital*, 2, 1–31.

Hægeland, T., T. J. Klette and K.G. Salvanes (1999): Declining Returns to Education in Norway? Comparing Estimates across Cohorts, Sectors and over Time, *Scandinavian Journal of Economics*, 101(4), 555-576.

Isacsson, G. (2004): Estimating the Economic Return to Educational Levels Using Data on Twins, *Journal of Applied Econometrics*, 19, 99–119.

Lemieux, T. (2008): The changing nature of wage inequality, *Journal of Population Economics*, 21, 21–48.

Lie, S. S. (1973): The Norwegian comprehensive school reform. Strategies for implementation and complying with regulated social change. A diffusion study. Part 1 and II. The American University. Ph.D. dissertation.

Lie, S. S. (1974): Regulated social change: a diffusion study of the Norwegian comprehensive school reform. *Acta Sociologica*, 16, 332–350.

Mincer, J. (1957): A Study of Personal Income Distribution. Unpublished Ph.D. dissertation, Columbia University.

Mincer, J. (1958): Investment in Human Capital and Personal Income Distribution, *Journal of Political Economy*, 66 (4), 281–302.

Mincer, J. (1974): *Schooling, Earnings and Experience*. Columbia University Press: New York.

Nilsen, Ø. A., K. Vaage, A. Aakvik, K. Jacobsen (2010): Intergenerational Earnings Mobility Revisited: Estimates Based on Lifetime Earnings, forthcoming *Scandinavian Journal of Economics*.

Nybom, M. and J. Stuhler (2011): Heterogeneous Income Profiles and Life-Cycle Bias in Intergenerational Mobility Estimation, IZA Discussion Paper 5697.

Oreopolous, P. (2006): Estimating Average and Local Average Treatment Effects of Education when Compulsory Schooling Laws Really Matter, *American Economic Review*, 96, 152–175.

Rosenbaum, P. R. and D. B. Rubin (1985): Constructing a Control Group Using Multivariate Matched Sampling Methods That Incorporate the Propensity Score, *The American Statistician*, 39, 33–38.

Stuhler, J. (2010): Empirical Strategies to Eliminate Life-Cycle Bias in the Intergenerational Elasticity of Earnings Literature, IZA Discussion Paper 5245.

Sundet, M. J., D. G. Barlaug, and T. M. Torjussen (2004): The End of the Flynn Effect? A Study of Secular Trends in Mean Intelligence Test Scores of Norwegian Conscripts During Half a Century, *Intelligence*, XXXII, 349–362.

Sundet, J. M., K. Tambs, J. R. Harris, P. Magnus, and T. M. Torjussen (2005): Resolving the Genetic and Environmental Sources of the Correlation Between Height and Intelligence: A Study of Nearly 2600 Norwegian Male Twin Pairs, *Twin Research and Human Genetics*, VII, 1–5.

Telhaug, A. O. (1969): Den 9 årige skolen og differensieringsproblemet. En oversikt over den historiske utvikling og den aktuelle debatt. Lærerstudentenes Forlag, Oslo (in Norwegian).

Thrane, V. C. (1977): *Evnepøving av Utskrivingspliktige i Norge 1950–53*, Arbeidsrapport nr. 26, INAS (in Norwegian).

# Appendix

## Table A.1 Description of variables

| Variables                   | Description   | Data source   |
|-----------------------------|---|---|
| <b>Earnings</b>             |   |   |
| Current earnings            | The log of annual real earnings in a given year. Our earnings measure (“ <i>pensjonsgivende inntekt</i> ”), which is the sum of pretax market income from wages, self-employment and work-related cash transfers, including unemployment benefits, sick leave benefits, and parental leave benefits. Annual earnings are adjusted for inflation and real wage growth using the standards of the Norwegian social security system. | Administrative Tax Records, 1967–2008                 |
| Lifetime earnings           | The log of the annuitized value of annual real earnings from age 20 to 58, calculated using an annual real interest rate of 2.3 percent.  | Administrative Tax Records, 1967–2008                 |
| Lifetime earnings (imputed) | Cohorts 1948–1950: the log of the annuitized value of annual real earnings from age 20 to 58.<br>Cohorts 1950–1953: the log of the annuitized value of the sum of annual real earnings from age 20 to 55 and imputed earnings from age 56 to 58.<br>Cohorts 1954–1956: the log of the annuitized value of the sum of annual real earnings from age 20 to 52 and imputed earnings from age 53 to 58.                               | Administrative Tax Records, 1967–2008                 |
| <b>Education</b>            |   |   |
| Years of schooling          | The number of years of schooling corresponding to the highest completed level of education the individual has attained before turning 40.   | National Education Database, 1970–2008                |
| <b>Family background</b>    |   |   |
| Mother college              | Indicator for whether the mother has attained a college degree according to the 1960 census data.   | National Population and Housing Census, 1960          |
| Father college              | Indicator for whether the father has attained a college degree according to the 1960 census data.   | National Population and Housing Census, 1960          |
| Family income               | Indicators for parents’ position (quartile) in the distribution of family income (sum of mother’s and father’s taxable income) in 1970.   | National Population and Housing Census, 1970          |
| <b>Other variables</b>      |   |   |
| IQ test score               | Full set of indicators for IQ test scores. The test scores are reported on a standard nine scale.   | Norwegian Military Records, 1968–2008                 |
| Reform indicator            | Indicator for whether the individual grew up in a municipality that implemented the education reform increasing the compulsory schooling from seven to nine years by the time the individual was expected to complete seven years of prereform compulsory schooling (normally at age 14).   | Lie (1973, 1974), Telhaug (1969), Aakvik et al (2010) |
| Vocational college          | Indicator for whether the individual grew up in a municipality that had a vocational college in close proximity prior to the compulsory schooling reform.   | Historical Education Records, 1963                    |
| Upper secondary             | Indicator for whether the individual grew up in a municipality that had an upper secondary school in close proximity prior to the compulsory schooling reform.  | Historical Education Records, 1963                    |
| Regional college            | Indicator for whether the individual grew up in a municipality that had a regional college in close proximity prior to the compulsory schooling reform.   | Historical Education Records, 1963                    |
| University                  | Indicator for whether the individual grew up in a municipality that had a university in close proximity prior to the compulsory schooling reform.   | Historical Education Records, 1963                    |

### First-stage results

Table A.2 presents results from separate estimations of equation (3) for cohorts 1948–1950 (columns 1 and 2), 1951–1953 (columns 3 and 4), 1954–1956 (columns 5 and 6), and the pooled sample of cohorts 1948–1956 (columns 7 and 8). We see that exposure to the compulsory education reform increased the number of years of schooling by nearly one-third of a year. There is also some evidence of heterogeneous responses to the reform. The change in compulsory schooling law had a smaller impact on the educational attainment of individuals with highly educated mothers and rich parents. Moreover, we see that the reform effects were stronger among individuals who grew up in

municipalities in close proximity to other school types, especially regional colleges and universities, and therefore had the option of pursuing higher education after completing compulsory schooling.

The first-stage results are fairly similar across cohorts. We can also see that the first stages are strong with F-statistics on the excluded instruments exceeding 43, which means that we do not need to worry about problems associated with weak instruments.

**Table A.2 First-stage results with years of schooling as dependent variable**

|                             | Cohorts   |         | Cohorts   |         | Cohorts   |         | Cohorts   |         |
|-----------------------------|-----------|---------|-----------|---------|-----------|---------|-----------|---------|
|                             | 1948–1950 |         | 1951–1953 |         | 1954–1956 |         | 1948–1956 |         |
|                             | (1)       | (2)     | (3)       | (4)     | (5)       | (6)     | (7)       | (8)     |
|                             | Coef      | SE      | Coef      | SE      | Coef      | SE      | Coef      | SE      |
| <u>Controls</u>             |           |         |           |         |           |         |           |         |
| Father college              | 1.400***  | (0.043) | 1.305***  | (0.048) | 1.215***  | (0.071) | 1.346***  | (0.028) |
| Mother college              | 1.170***  | (0.061) | 1.277***  | (0.069) | 1.106***  | (0.102) | 1.204***  | (0.041) |
| Family income 2             | 0.393***  | (0.035) | 0.502***  | (0.042) | 0.325***  | (0.061) | 0.431***  | (0.024) |
| Family income 3             | 0.848***  | (0.037) | 0.935***  | (0.044) | 0.665***  | (0.062) | 0.868***  | (0.025) |
| Family income 4             | 1.692***  | (0.039) | 1.632***  | (0.045) | 1.361***  | (0.068) | 1.637***  | (0.026) |
| <u>Instruments</u>          |           |         |           |         |           |         |           |         |
| Reform dummy                | 0.331**   | (0.149) | 0.356***  | (0.085) | 0.295***  | (0.088) | 0.426***  | (0.043) |
| Reform × Mother college     | −0.433**  | (0.192) | −0.170    | (0.105) | 0.020     | (0.114) | −0.113*   | (0.059) |
| Reform × Father college     | −0.077    | (0.125) | 0.086     | (0.073) | 0.081     | (0.080) | −0.032    | (0.041) |
| Reform × Family income 2    | −0.101    | (0.110) | −0.030    | (0.070) | 0.074     | (0.072) | −0.020    | (0.039) |
| Reform × Family income 3    | −0.034    | (0.111) | −0.189*** | (0.070) | 0.070     | (0.073) | −0.129*** | (0.039) |
| Reform × Family income 4    | −0.103    | (0.115) | −0.158**  | (0.071) | −0.042    | (0.078) | −0.267*** | (0.040) |
| Reform × Vocational college | 0.195***  | (0.045) | 0.106**   | (0.051) | 0.149***  | (0.072) | 0.161***  | (0.029) |
| Reform × Upper secondary    | 0.093***  | (0.045) | 0.175***  | (0.050) | 0.030     | (0.069) | 0.110***  | (0.028) |
| Reform × Regional college   | 0.422***  | (0.046) | 0.486***  | (0.052) | 0.587***  | (0.068) | 0.496***  | (0.029) |
| Reform × University         | 0.330***  | (0.051) | 0.449***  | (0.057) | 0.318***  | (0.073) | 0.450***  | (0.032) |
| F-value (instruments)       | 43.17     |         | 64.01     |         | 85.91     |         | 192.84    |         |
| Observations                | 53,915    |         | 57,332    |         | 60,456    |         | 171,703   |         |

Note: \*  $p < 0.1$ , \*\*  $p < 0.05$ , \*\*\*  $p < 0.01$ . Standard errors in parentheses are robust to heteroskedasticity and clustered at the municipality level. See notes in Table 1 and Table 3 for sample details. Cohort dummies and municipality fixed effects are included in all regressions.

### ***Nearest-neighbor matching for imputation of missing earnings for cohorts born 1951–1956***

Consider an individual  $i$  born in 1953, for whom we want to impute earnings for ages 56–58. The nearest-neighbor matching algorithm identifies the best individual match  $j^*$  among the 1948–1950 cohorts. The best match is defined as the individual observation that minimizes the Mahalanobis

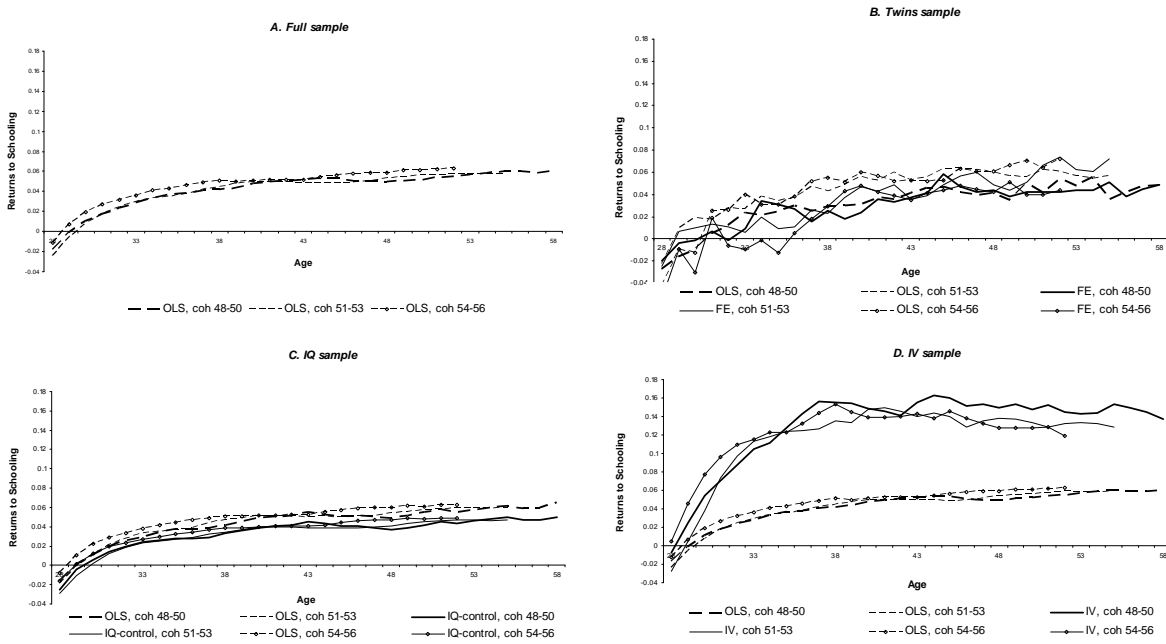
distance in annual real earnings from age 20 to age 55, between the individual and the potential matches, conditional on a set of covariates (see Rosenbaum and Rubin, 1985).

The minimization problem is expressed as finding an individual match  $j^*$  for individual  $i$  such that

$$(6) \quad j^* = \min_{j \in D} \left\{ \sqrt{\sum_{t=20}^{55} \left( \frac{Y_{it} - Y_{jt}}{Z_t} \right)^2} \right\}$$

where  $Y_{it}$  is annual real earnings at age  $t$  for individual  $i$ , and  $Y_{jt}$  is annual real earnings at age  $t$  for a potential match  $j \in D$ , where  $D$  contains all individuals born 1948–1950 who have the same value of the reform indicator, level of schooling, family background characteristics, and childhood county, as individual  $i$ . To construct the Mahalanobis distance, we must weight the deviations  $Y_{it} - Y_{jt}$  by the sample variance in annual earnings at age  $t$ , denoted by  $Z_t$ .

**Figure A.1 Returns to schooling in current earnings for birth cohorts 1948-1956**



*Note:* See notes in Table 1 for sample details. Cohort dummies, municipality fixed effects and family background variables are included in all regressions. First stage IV estimation results are given in Table A.2

By following this procedure, we find for each individual born 1951–1953 and 1954–1956, the best match from cohorts born 1948–1950: this is done by minimizing the Mahalanobis distance in annual real earnings from age 20 to age 55 and from age 20 to 52, respectively. Next, we impute the missing

earnings observations after age 52 for cohorts 1954–1956, and after age 55 for cohorts 1951–1953, based on the earnings records of the individual matches.<sup>19</sup> The matching algorithm allows us to construct measures of lifetime earnings from age 20 to 58 and estimate returns to schooling in lifetime earnings for cohorts born 1951–1956. The results are given in panel B of Table A.3.

**Table A.3 Returns to schooling in current and lifetime earnings for birth cohorts 1951–1956**

| Dependent variable: Log (earnings) |                      |                     |                     |                     |                     |                     |                         |                     |                     |                     |                     |                     |                     |                     |                    |
|------------------------------------|----------------------|---------------------|---------------------|---------------------|---------------------|---------------------|-------------------------|---------------------|---------------------|---------------------|---------------------|---------------------|---------------------|---------------------|--------------------|
| Birth cohorts 1951–1953            |                      |                     |                     |                     |                     |                     | Birth cohorts 1954–1956 |                     |                     |                     |                     |                     |                     |                     |                    |
| Full sample                        |                      | Twins Sample        |                     | IQ sample           |                     | IV Sample           |                         | Full sample         |                     | Twins sample        |                     | IQ sample           |                     | IV sample           |                    |
| (1)                                | (2)                  | (3)                 | (4)                 | (5)                 | (6)                 | (7)                 | (8)                     | (9)                 | (10)                | (11)                | (12)                | (13)                | (14)                |                     |                    |
| OLS                                | OLS                  | FE                  | OLS                 | IQ-control          | OLS                 | IV                  | OLS                     | OLS                 | FE                  | OLS                 | IQ-control          | OLS                 | IV                  |                     |                    |
| Panel A: <i>Current earnings</i>   |                      |                     |                     |                     |                     |                     |                         |                     |                     |                     |                     |                     |                     |                     |                    |
| Age 28                             | -0.024***<br>(0.002) | -0.022**<br>(0.011) | -0.025<br>(0.018)   | -                   | -                   | -                   | -                       | -0.042**<br>(0.017) | -                   | -                   | -                   | -                   | 0.005               |                     |                    |
| Age 33                             | 0.030***<br>(0.001)  | 0.027***<br>(0.010) | 0.006<br>(0.012)    | 0.033***<br>(0.001) | 0.023***<br>(0.001) | 0.030***<br>(0.001) | 0.113***<br>(0.009)     | 0.036***<br>(0.001) | 0.040***<br>(0.012) | -                   | 0.009<br>(0.018)    | 0.038***<br>(0.001) | 0.027***<br>(0.001) | 0.036***<br>(0.001) | 0.115**<br>(0.008) |
| Age 38                             | 0.045***<br>(0.001)  | 0.043***<br>(0.007) | 0.023**<br>(0.010)  | 0.047***<br>(0.001) | 0.034***<br>(0.001) | 0.045***<br>(0.001) | 0.135***<br>(0.010)     | 0.051***<br>(0.001) | 0.055***<br>(0.015) | 0.029**<br>(0.013)  | 0.051***<br>(0.001) | 0.039***<br>(0.001) | 0.051***<br>(0.001) | 0.153**<br>(0.008)  |                    |
| Age 43                             | 0.049***<br>(0.001)  | 0.053***<br>(0.009) | 0.036**<br>(0.016)  | 0.050***<br>(0.001) | 0.039***<br>(0.002) | 0.050***<br>(0.001) | 0.140***<br>(0.010)     | 0.052***<br>(0.001) | 0.053***<br>(0.012) | 0.035**<br>(0.011)  | 0.053***<br>(0.001) | 0.041***<br>(0.002) | 0.052***<br>(0.001) | 0.140**<br>(0.007)  |                    |
| Age 48                             | 0.053***<br>(0.001)  | 0.060***<br>(0.009) | 0.049***<br>(0.017) | 0.054***<br>(0.001) | 0.041***<br>(0.001) | 0.054***<br>(0.001) | 0.138***<br>(0.009)     | 0.059***<br>(0.001) | 0.061***<br>(0.012) | 0.042***<br>(0.013) | 0.060***<br>(0.001) | 0.047***<br>(0.001) | 0.059***<br>(0.001) | 0.128**<br>(0.007)  |                    |
| Age 52                             | 0.058***<br>(0.001)  | 0.061***<br>(0.009) | 0.074***<br>(0.019) | 0.060***<br>(0.001) | 0.047***<br>(0.001) | 0.059***<br>(0.001) | 0.132***<br>(0.010)     | 0.063***<br>(0.001) | 0.072***<br>(0.016) | 0.044**<br>(0.017)  | 0.063***<br>(0.001) | 0.049***<br>(0.001) | 0.063***<br>(0.001) | 0.119**<br>(0.007)  |                    |
| Age 55                             | 0.058***<br>(0.001)  | 0.057***<br>(0.009) | 0.072***<br>(0.018) | 0.060***<br>(0.001) | 0.047***<br>(0.001) | 0.059***<br>(0.001) | 0.129***<br>(0.009)     | -                   | -                   | -                   | -                   | -                   | -                   | -                   |                    |
| Panel B: <i>Lifetime earnings</i>  |                      |                     |                     |                     |                     |                     |                         |                     |                     |                     |                     |                     |                     |                     |                    |
| Age 20–58 (imputed)                | 0.024***<br>(0.001)  | 0.029***<br>(0.005) | 0.025***<br>(0.008) | 0.026***<br>(0.001) | 0.017***<br>(0.001) | 0.024***<br>(0.001) | 0.086***<br>(0.007)     | 0.029***<br>(0.000) | 0.030***<br>(0.009) | 0.015*<br>(0.008)   | 0.030***<br>(0.001) | 0.021***<br>(0.001) | 0.029***<br>(0.001) | 0.086**<br>(0.007)  |                    |
| Age 20–52                          | 0.019***<br>(0.001)  | 0.025***<br>(0.005) | 0.021**<br>(0.008)  | 0.021***<br>(0.001) | 0.013***<br>(0.001) | 0.019***<br>(0.001) | 0.080***<br>(0.007)     | 0.025***<br>(0.001) | 0.025***<br>(0.009) | 0.010<br>(0.010)    | 0.026***<br>(0.001) | 0.017***<br>(0.001) | 0.025***<br>(0.001) | 0.083**<br>(0.005)  |                    |
| Obs.                               | 60,416               | 810                 |                     | 47,221              |                     | 57,332              |                         | 63,482              | 774                 |                     | 51,088              |                     | 60,977              |                     |                    |

Note: \*  $p < 0.1$ , \*\*  $p < 0.05$ , \*\*\*  $p < 0.01$ . Robust standard errors adjusted for clustering at the municipality level are given in parentheses. See notes in Table 1 and Table 3 for sample details. Cohort dummies, municipality fixed effects and family background variables are included in all regressions. First stage IV estimation results are given in Table A.2. See Appendix for a detailed description of the method used to impute earnings.

### Top-coded earnings data

Prior to 1986, our earnings data are top-coded, although at fairly high levels. In fact, less than 3 percent of the observations have right-censored earnings in any given year.<sup>20</sup> To make sure that top-coding is not driving our results, we follow Atkinson (2005) in using a Pareto distribution to simulate

<sup>19</sup> To test the matching method, we performed out-of-sample checks for ages where we have complete earnings records. These out-of-sample results suggest that the matching method performs very well.

<sup>20</sup> The top-coding in the Norwegian earnings data is considerably less severe than in the earnings data provided by the US Social Security Administration, where between 22.5 and 62.2 percent of the sample is right-censored in the years 1960–1980

earnings above the top-coding threshold. The Pareto distribution is known to be a desirable approximation of the uppermost part of earnings distributions.

The Pareto distribution has the following CDF:

$$(7) \quad G(y) = 1 - \left(\frac{\theta}{y}\right)^\alpha, \theta > 0, \alpha > 0, y \geq \theta,$$

and is thus fully characterized by parameters  $\alpha$  and  $\theta$ .  $G^{-1}(q)$  denotes the  $q$ -quantile in the distribution  $G$ . Let  $G^{-1}(q_2)$  be the top-censoring earnings threshold, where  $q_2$  is the share of population with earnings below this threshold. Following Atkinson (2005), we estimate  $\alpha$  by the following estimator:

$$(8) \quad \hat{\alpha} = \frac{\log\left(\frac{1-q_2}{1-q_1}\right)}{\log\left(\frac{G^{-1}(q_1)}{G^{-1}(q_2)}\right)},$$

where  $G^{-1}(q_1)$  is some lower level of earnings with cumulative share given by  $q_1$ . For a given year, we choose the following three values of  $G^{-1}(q_1)$ : 90 percent, 95 % and 99 % of the year's top-censoring threshold. From the estimator given in equation (8), we get three different estimates of  $\alpha$  corresponding to the three choices of  $G^{-1}(q_1)$ . Using the average value of the three estimates of  $\alpha$ , we estimate parameter  $\theta$  as  $\hat{\theta} = (1 - q_2)^{1/\hat{\alpha}} G^{-1}(q_2)$ , after inverting the CDF given in equation (7).

---

(Haider and Solon, 2006). Moreover, our calculations show that most individuals in our sample escaped top-coding during 1971–1975 and top-coding is not present in the earnings data for 1981.



**Table A.4 Returns to schooling using simulated top-earnings**

| Dependent variable: Log (earnings) |                      |                     |                     |                      |                      |                      |                     |  |
|------------------------------------|----------------------|---------------------|---------------------|----------------------|----------------------|----------------------|---------------------|--|
|                                    | Full sample          |                     | Twins sample        |                      | IQ sample            |                      | IV sample           |  |
|                                    | (1)                  | (2)                 | (3)                 | (4)                  | (5)                  | (6)                  | (7)                 |  |
|                                    | OLS                  | OLS                 | FE                  | OLS                  | IQ-control           | OLS                  | IV                  |  |
| Panel A: Current earnings          |                      |                     |                     |                      |                      |                      |                     |  |
| Age 28                             | -0.017***<br>(0.002) | -0.027**<br>(0.013) | -0.019<br>(0.015)   | -0.016***<br>(0.002) | -0.025***<br>(0.003) | -0.017***<br>(0.002) | -0.008<br>(0.009)   |  |
| Age 33                             | 0.029***<br>(0.001)  | 0.024***<br>(0.007) | 0.009<br>(0.010)    | 0.030***<br>(0.001)  | 0.024***<br>(0.002)  | 0.029***<br>(0.001)  | 0.105***<br>(0.007) |  |
| Age 38                             | 0.042***<br>(0.001)  | 0.029***<br>(0.007) | 0.025**<br>(0.011)  | 0.042***<br>(0.000)  | 0.033***<br>(0.002)  | 0.042***<br>(0.001)  | 0.155***<br>(0.009) |  |
| Age 43                             | 0.052***<br>(0.001)  | 0.041***<br>(0.006) | 0.037***<br>(0.011) | 0.055***<br>(0.001)  | 0.045***<br>(0.002)  | 0.052***<br>(0.001)  | 0.155***<br>(0.010) |  |
| Age 48                             | 0.050***<br>(0.001)  | 0.041***<br>(0.006) | 0.044***<br>(0.014) | 0.049***<br>(0.001)  | 0.037***<br>(0.002)  | 0.050***<br>(0.001)  | 0.150***<br>(0.009) |  |
| Age 53                             | 0.057***<br>(0.001)  | 0.048***<br>(0.011) | 0.044***<br>(0.012) | 0.058***<br>(0.000)  | 0.046***<br>(0.002)  | 0.057***<br>(0.001)  | 0.143***<br>(0.008) |  |
| Age 58                             | 0.061***<br>(0.001)  | 0.049***<br>(0.009) | 0.049***<br>(0.013) | 0.065***<br>(0.002)  | 0.050***<br>(0.001)  | 0.061***<br>(0.001)  | 0.137***<br>(0.009) |  |
| Panel B: Lifetime earnings         |                      |                     |                     |                      |                      |                      |                     |  |
| Age 20–58                          | 0.025***<br>(0.001)  | 0.017***<br>(0.005) | 0.019**<br>(0.008)  | 0.026***<br>(0.001)  | 0.018***<br>(0.001)  | 0.025***<br>(0.000)  | 0.099***<br>(0.006) |  |
| Age 20–52                          | 0.021***<br>(0.001)  | 0.012*<br>(0.005)   | 0.015*<br>(0.008)   | 0.021***<br>(0.001)  | 0.014***<br>(0.001)  | 0.021***<br>(0.001)  | 0.092***<br>(0.006) |  |
| Observations                       | 56,832               | 702                 |                     | 14,938               |                      | 53,915               |                     |  |

Note: \* p < 0.1, \*\* p < 0.05, \*\*\* p < 0.01. Standard errors in parentheses are robust to heteroskedasticity and clustered at the municipality level. See notes in Table 1 for sample details. Top-censored earnings are simulated from a Pareto distribution. Cohort dummies, municipality fixed effects and family background variables are included in all regressions. First stage IV estimation results are given in Table A.2.

We estimate  $\alpha$  and  $\theta$  separately for each year between 1967 and 1985. In each year, we simulate as many observations from the estimated Pareto distribution as the number of top-censored observations. Next, the top-censored earnings are then replaced by the simulated earnings. Finally, we estimate returns to schooling in current and lifetime earnings using the simulated top-earnings data, for each of our samples. The results are given in Table A.4.<sup>21</sup> It is reassuring to find that the estimates of returns to schooling barely move.

#### *Alternative specifications of the controls for age and potential experience*

Table A.5 reports OLS estimates of the returns to schooling for the years 1985, 1995, and 2005. Column 1 repeats the baseline estimates from Table 3, while columns 2-4 employ alternative specifications of the controls for age/potential experience.

<sup>21</sup> As an out-of-sample test of the simulation method, we perform the same exercise using earnings data for 1986 where there is no top-censoring. The simulated earnings using the Pareto method are very similar to the actual earnings. In fact, there is hardly any difference in the Gini coefficients (and other inequality measures) for the actual earnings distribution and the earnings distribution with simulated top-coded earnings.

**Table A.5 OLS estimates of the returns to schooling with alternative specifications for age and potential experience**

|  | Dependent variable: Log (earnings) |                              |                                  |                              |
|--|------------------------------------|------------------------------|----------------------------------|------------------------------|
|  | Age                                |                              | Potential experience             |                              |
|  | (1)<br>Full set of<br>indicators   | (2)<br>Linear &<br>Quadratic | (3)<br>Full set of<br>indicators | (4)<br>Linear &<br>Quadratic |
| <i>Panel A: Cross-sectional earnings</i> |                                    |                              |                                  |                              |
| Cross section 1985                       |                                    |                              |                                  |                              |
| Returns to schooling                     | 0.030***<br>(0.001)                | 0.035***<br>(0.001)          | 0.056***<br>(0.001)              | 0.045***<br>(0.001)          |
| Mean age                                 | 32.9                               |                              | 32.9                             |                              |
| Cross section 1995                       |                                    |                              |                                  |                              |
| Returns to schooling                     | 0.050***<br>(0.001)                | 0.056***<br>(0.000)          | 0.058***<br>(0.000)              | 0.051***<br>(0.000)          |
| Mean age                                 | 42.9                               |                              | 42.9                             |                              |
| Cross section 2005                       |                                    |                              |                                  |                              |
| Returns to schooling                     | 0.060***<br>(0.001)                | 0.066***<br>(0.001)          | 0.056***<br>(0.001)              | 0.048***<br>(0.001)          |
| Mean age                                 | 52.9                               |                              | 52.9                             |                              |
| <i>Panel B: Lifetime earnings</i>        |                                    |                              |                                  |                              |
| Age 20–58 (imputed)                      |                                    |                              | 0.026***<br>(0.001)              |                              |
| Age 20–52                                |                                    |                              | 0.021***<br>(0.000)              |                              |

*Note:* \*  $p < 0.1$ , \*\*  $p < 0.05$ , \*\*\*  $p < 0.01$ . This table presents OLS estimates of the returns to schooling in the cross section data from 1985, 1995, and 2005. Standard errors in parentheses are robust to heteroskedasticity and clustered at the municipality level. All regressions are for the full sample consisting of males born 1948–1956 with positive earnings at age 28–58, and include municipality fixed effects and family background variables. Column (1) includes a full set of age indicators. Column (2) replaces the age indicators with controls for age and age squared. Column (3) replaces the age indicators with a full set of indicators for potential experience. Column (4) replaces the age indicators with controls for potential experience and potential experience squared. Potential experience is defined as age – years of schooling – 6.

### ***Returns to schooling in current and lifetime earnings in the U.S.***

Below, we provide OLS estimates of the returns to schooling in current and lifetime earnings based on U.S. data. We use the Panel Survey of Income Dynamics (PSID). The data set contains information on birth cohort, years of schooling, and earnings for the period 1968–2005. We focus on the males born 1946–1950, in order to ensure nearly career-long earnings histories. Table A.6 reports the estimated returns to schooling in lifetime earnings and current earnings at different ages for these cohorts. Each cell represents a different regression. Column 1 restricts the sample to males with positive earnings in at least ten years during the period 1968–2005; column 2 uses the subsample of males with positive earnings in at least 20 years during this period; column 3 uses an even more restrictive subsample with positive earnings in at least 25 years during this period. For each sample, we calculate lifetime earnings as the annuity value of the discounted sum of annual real earnings.

**Table A.6 Returns to schooling in current and lifetime earnings in the U.S.**

|                            | Dependent variable: Log (earnings)               |         |  |         |  |         |
|----------------------------|--|---------|--|---------|--|---------|
|                            | Sample 1: Positive earnings<br>at least 10 years |         | Sample 2: Positive earnings<br>at least 20 years |         | Sample 3: Positive<br>earnings at least 25 years |         |
|                            | (1)  |         | (2)  |         | (3)  |         |
| Panel A: Current earnings  |  |         |  |         |  |         |
| Age 28                     | 0.076***   | (0.010) | 0.066***   | (0.012) | 0.053***   | (0.013) |
|                            | N=635  |         | N=469  |         | N=363  |         |
| Age 33                     | 0.125***   | (0.012) | 0.101***   | (0.011) | 0.106***   | (0.013) |
|                            | N=672  |         | N=501  |         | N=371  |         |
| Age 38                     | 0.142***   | (0.011) | 0.138***   | (0.012) | 0.129***   | (0.013) |
|                            | N=632  |         | N=497  |         | N=367  |         |
| Age 43                     | 0.145***   | (0.014) | 0.154***   | (0.014) | 0.143***   | (0.016) |
|                            | N=564  |         | N=478  |         | N=370  |         |
| Age 48                     | 0.161***   | (0.021) | 0.161***   | (0.023) | 0.163***   | (0.027) |
|                            | N=394  |         | N=343  |         | N=293  |         |
| Age 53                     | 0.140***   | (0.027) | 0.157***   | (0.031) | 0.155***   | (0.032) |
|                            | N=204  |         | N=175  |         | N=151  |         |
| Age 58                     | 0.201***   | (0.061) | 0.132**  | (0.064) | 0.139**  | (0.067) |
|                            | N=67   |         | N=61   |         | N=58   |         |
| Panel B: Lifetime earnings |  |         |  |         |  |         |
| Age 18–59                  | 0.125***   | (0.007) | 0.120***   | (0.008) | 0.116***   | (0.009) |
|                            | N=770  |         | N=509  |         | N=378  |         |

Note: \*  $p < 0.1$ , \*\*  $p < 0.05$ , \*\*\*  $p < 0.01$ . This table reports OLS estimates of the returns to schooling in lifetime earnings and current earnings at certain ages between 28 and 58. The estimates are based on the Panel Survey of Income Dynamics (PSID). We consider the sample of males born 1946–1950. Sample 1 consists of males with positive earnings in at least ten years during the period 1968–2005. Sample 2 consists of males with positive earnings in at least 20 years during the period 1968–2005. Sample 3 consists of males with positive earnings in at least 25 years during the period 1968–2005. In each sample, lifetime earnings are measured as the annuity value of the discounted sum of annual real earnings. The calculations of the annuity value use a real interest rate of 2 percent and excludes years with missing information on earnings.