

Armelius, Hanna; Hull, Isaiah; Köhler, Hanna Stenbacka

Working Paper

The timing of uncertainty shocks in a small open economy

Sveriges Riksbank Working Paper Series, No. 334

Provided in Cooperation with:

Central Bank of Sweden, Stockholm

Suggested Citation: Armelius, Hanna; Hull, Isaiah; Köhler, Hanna Stenbacka (2016) : The timing of uncertainty shocks in a small open economy, Sveriges Riksbank Working Paper Series, No. 334, Sveriges Riksbank, Stockholm

This Version is available at:

<https://hdl.handle.net/10419/189934>

Standard-Nutzungsbedingungen:

Die Dokumente auf EconStor dürfen zu eigenen wissenschaftlichen Zwecken und zum Privatgebrauch gespeichert und kopiert werden.

Sie dürfen die Dokumente nicht für öffentliche oder kommerzielle Zwecke vervielfältigen, öffentlich ausstellen, öffentlich zugänglich machen, vertreiben oder anderweitig nutzen.

Sofern die Verfasser die Dokumente unter Open-Content-Lizenzen (insbesondere CC-Lizenzen) zur Verfügung gestellt haben sollten, gelten abweichend von diesen Nutzungsbedingungen die in der dort genannten Lizenz gewährten Nutzungsrechte.

Terms of use:

Documents in EconStor may be saved and copied for your personal and scholarly purposes.

You are not to copy documents for public or commercial purposes, to exhibit the documents publicly, to make them publicly available on the internet, or to distribute or otherwise use the documents in public.

If the documents have been made available under an Open Content Licence (especially Creative Commons Licences), you may exercise further usage rights as specified in the indicated licence.

SVERIGES RIKSBANK
WORKING PAPER SERIES

334



The timing of uncertainty shocks in a small open economy

Hanna Armelius, Isaiah Hull and Hanna Stenbacka Köhler

December 2016

WORKING PAPERS ARE OBTAINABLE FROM

www.riksbank.se/en/research

Sveriges Riksbank • SE-103 37 Stockholm

Fax international: +46 8 21 05 31

Telephone international: +46 8 787 00 00

The Working Paper series presents reports on matters in the sphere of activities of the Riksbank that are considered to be of interest to a wider public.

The papers are to be regarded as reports on ongoing studies and the authors will be pleased to receive comments.

The opinions expressed in this article are the sole responsibility of the author(s) and should not be interpreted as reflecting the views of Sveriges Riksbank.

The timing of uncertainty shocks in a small open economy*

Hanna Armelius Isaiah Hull
Ministry of Finance *Sveriges Riksbank*

Hanna Stenbacka Köhler
Sveriges Riksbank

Sveriges Riksbank Working Paper Series
No. 334
December 2016

Abstract

Foreign measures of uncertainty, such as the US EPU index, are often used as proxies for domestic uncertainty in small open economies. We construct an EPU index for Sweden and demonstrate that shocks to the domestic index yield different impulse response functions for GDP growth than shocks to the US index. In particular, a one standard deviation shock to the Swedish index delivers its maximum impact in the same quarter, lowering GDP growth by 0.2 percentage points. In contrast, a shock to the US index delivers its maximum impact with a one-quarter delay. Other foreign proxies, such as the EU and German indices, also generate effects that peak with a one-quarter delay. (*JEL* D80, E66, F41, F42)

Keywords: economic uncertainty, policy uncertainty, business cycles, small open economy

*Correspondence Address: Research Division, Sveriges Riksbank, SE-103 37, Stockholm, Sweden. Email: isaiah.hull@riksbank.se. Tel: +46 76-589 06 61. Fax: +46 8 0821 05 31. We would like to thank Scott Baker, Nicholas Bloom, Carl-Johan Belfrage, Jesper Lindé, André Reslow, and Jonas Ahlberg for valuable comments and discussions. The opinions expressed in this article are the sole responsibility of the authors and should not be interpreted as reflecting the views of Sveriges Riksbank or the Ministry of Finance.

1 Introduction

Since the 2008 financial crisis, the world economy has been hit by a series of policy-related uncertainty shocks, such as the Eurozone debt crisis in 2011, the U.S. “fiscal cliff” episode in 2012, and the British referendum to leave the European Union (“Brexit”) in 2016. Disagreement remains over the extent to which such shocks affect the macroeconomy. While an earlier literature and recent empirical work suggest that uncertainty significantly affects output growth and other macrovariables, DSGE model analyses typically find smaller effects (Leland, 1968; Hartman, 1972; Abel, 1983; Bernanke, 1983; Bloom, 2009; Bachmann et al., 2013). Another line of literature suggests that the magnitude of the impact may depend critically on interactions with financial frictions (Cesa-Bianchi and Fernandez-Corugedo, 2014; Bonciani and van Roye, 2015).

Much of the work on uncertainty shocks concentrates on large economies, such as the US and UK. Only a few studies (e.g. Stockhammar and Österholm, 2016a; Stockhammar and Österholm, 2016b; Colombo, 2013) analyze the international transmission of uncertainty shocks to small open economies (SOEs) or measure the impact of domestic uncertainty on SOEs. We contribute to the literature by developing a Swedish economic policy uncertainty index (EPU), following the methods outlined in Baker et al. (2013). We then demonstrate how this index differs from foreign proxies, which are often used by SOE researchers, forecasters, and policymakers. In particular, we compute impulse response functions (IRFs) for shocks to Swedish, US, EU, and German EPU indices, and show that Swedish GDP growth responds faster to domestic EPU shocks than to foreign proxies. This provides support for the following two claims: 1) foreign proxies for uncertainty do not capture an important component of domestic uncertainty in SOEs; and 2) the domestic component of uncertainty may impact GDP growth faster than uncertainty that originates elsewhere. These findings have implications for both policy and forecasting in SOEs.

2 Methods

Sweden is a small open economy and is therefore affected by uncertainty abroad (Stockhammar and Österholm, 2016a,b). Even though policymakers often refer to uncertainty as an important factor that affects the economy, such a quantitative index has been missing for most SOEs, including Sweden. Although the US series can be used as a proxy, it does not capture uncertainty that originates domestically in Sweden, but is given little to no foreign media coverage. A Swedish EPU index could therefore potentially be of great use for understanding and analyzing GDP growth, trade, investment, and other economic relationships in Sweden.

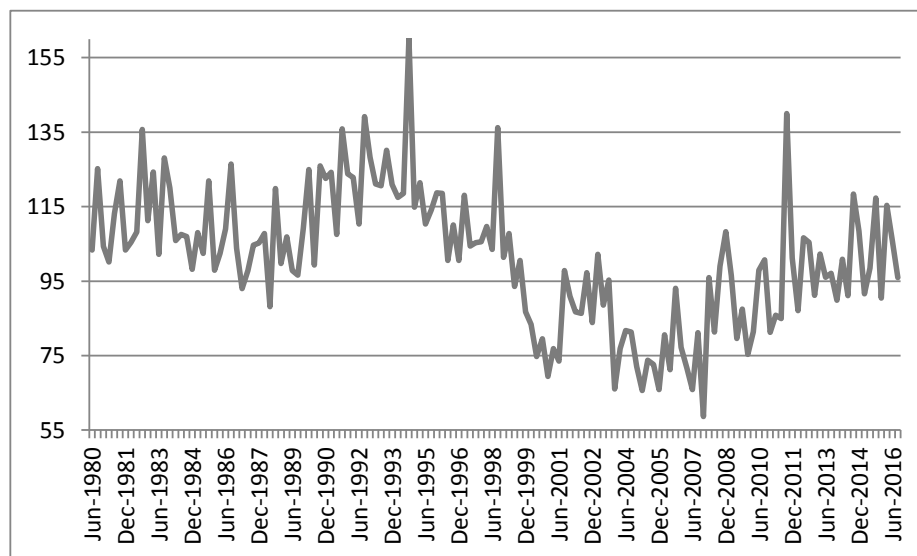
In this paper, we follow the methodology developed by Baker et al. (2013) and construct a monthly EPU index for Sweden that measures uncertainty related to economic policy. Baker et al. (2013) compiled the original index by searching for articles that contained “economic” (E), “policy” (P), and “uncertainty” (U) in major newspapers. They then normalized the index to account for trends in word usage and newspaper composition. The robustness of this approach is demonstrated in Baker et al. (2016).

We constructed a Swedish EPU index by scraping the National Library of Sweden’s online newspaper archive. We queried the archive for Swedish keyphrases that correspond to their English equivalents of “economic,” “policy,” and “uncertainty.”¹ The final index included articles from four of Sweden’s largest newspapers: Aftonbladet, Expressen, Dagens Industri, and Svenska Dagbladet. We standardized the data and then normalized by the total number of articles that contained keywords for the “economic” component of the index.

Figure 1 shows the Swedish EPU index, starting in 1980. Notice that the

¹We use the Swedish words “ekonomi” and “ekonomisk” for economic; “riksbank,” “centralbank,” “regering,” “departement,” and “reglering” for policy; and “osäker” and “oro” for uncertainty. We also included all keywords that contained the aforementioned words as roots.

Figure 1: Swedish EPU Index



index value increases during the Nordic Banking crisis in the early 1990s, and has a local peak in the fall of 1998 when the Stockholm stock exchange experienced its biggest fall since 1900, coinciding with the Russian financial crisis. It also increases around the IT bubble crash and 9/11 terrorist attacks in the early 2000s; and around the global financial crisis in 2008. It had another local peak during the European sovereign debt crisis in 2011 and has remained elevated since then, as has the EU index.

3 Results

We first analyze the relationship between the Swedish EPU index and Swedish GDP growth using a bivariate VAR. We later add more variables in a subsequent exercise to demonstrate the validity of the index. Since the domestic index also contains uncertainty originating in the US, EU, and Germany,

we use a specification that includes only one EPU index per VAR to avoid building in a high degree of multicollinearity.

The system is identified following the standard recursive ordering procedure with the EPU index ordered first.² The appropriate lag-length for the VAR is chosen to be four lags, using the Akaike information criterion. The data spans the period from 1981:Q2 to 2016:Q2. GDP enters as a growth rate, while the EPU index is included in levels. In Figure 2, the Swedish EPU is shown together with Swedish GDP growth. Casual observation suggests a negative relationship between the two variables.

Figure 2: Swedish GDP Growth (Q/Q%) and Swedish EPU Index

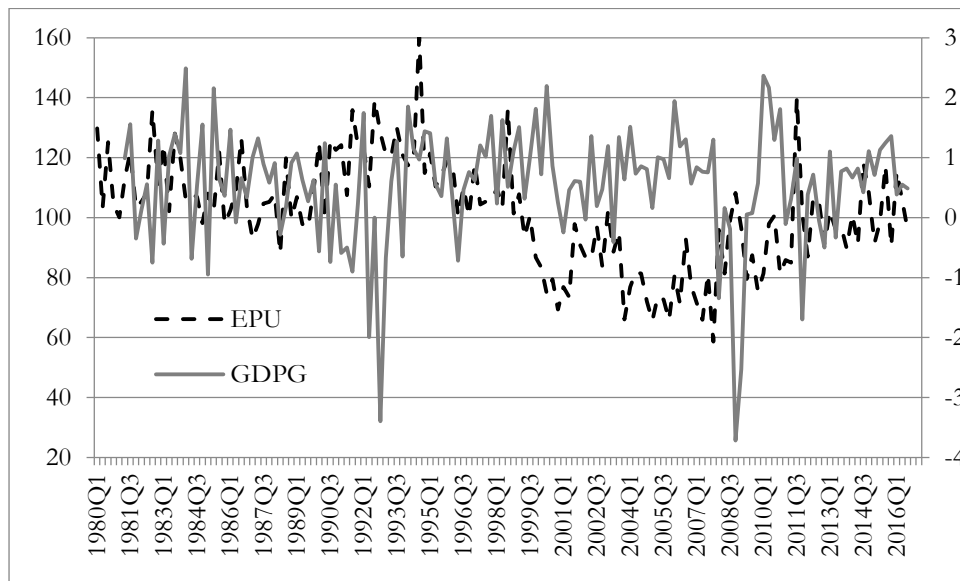
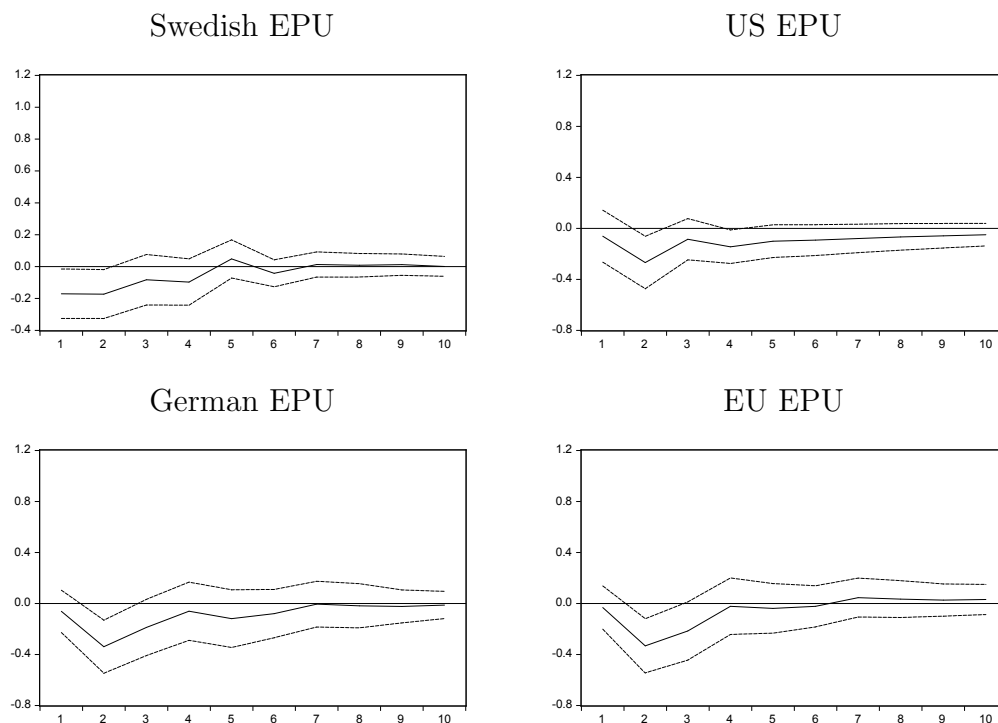


Figure 3 shows how Swedish GDP growth responds to a one standard deviation EPU index shock, along with the associated 95% confidence interval. The impulse response functions were calculated using a Cholesky decomposition.

²We have also tried ordering the EPU second in the VAR, which generates similar but not identical results.

Figure 3: Impulse Response Functions for Swedish GDP Growth



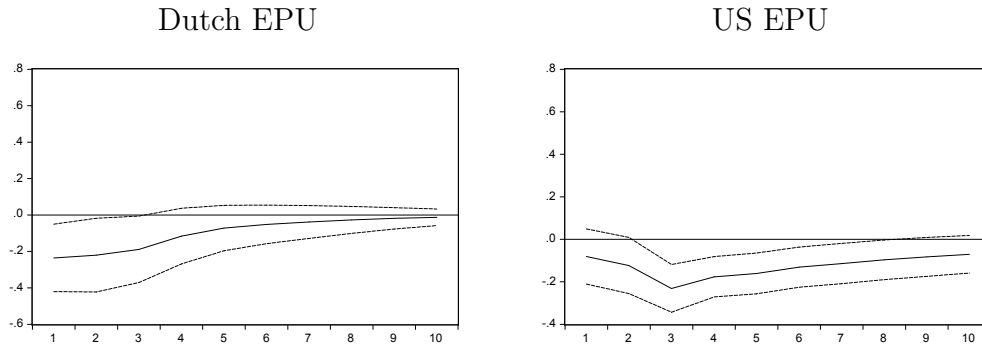
Notes. Each IRF is computed for a separate bivariate VAR that includes Swedish GDP growth and the EPU index referenced in the plot's title. We use quarterly data and a sample period of 1981:Q2 to 2016:Q2. Quarters are shown on the horizontal axis. Percentage points are shown on the vertical axis.

Notice that GDP growth in Sweden drops by 0.2 percentage points in the same quarter as the one standard deviation shock to the Swedish EPU. The effect then dissipates over the following four quarters. We also find a significant response to a US index shock, but it arrives with a one-quarter delay. EU and German EPU shocks also have a maximum impact after two quarters.

We also repeat the same exercise for the Netherlands, which is the other non-Anglosphere SOE in Europe with an EPU index. The results, shown in Figure 4, are nearly identical: a one standard deviation shock to the Dutch

EPU index has its largest impact on Dutch GDP growth in the same quarter; however, a shock to the US index takes two additional quarters to have its maximum impact on Dutch GDP.

Figure 4: Impulse Response Functions for Dutch GDP Growth

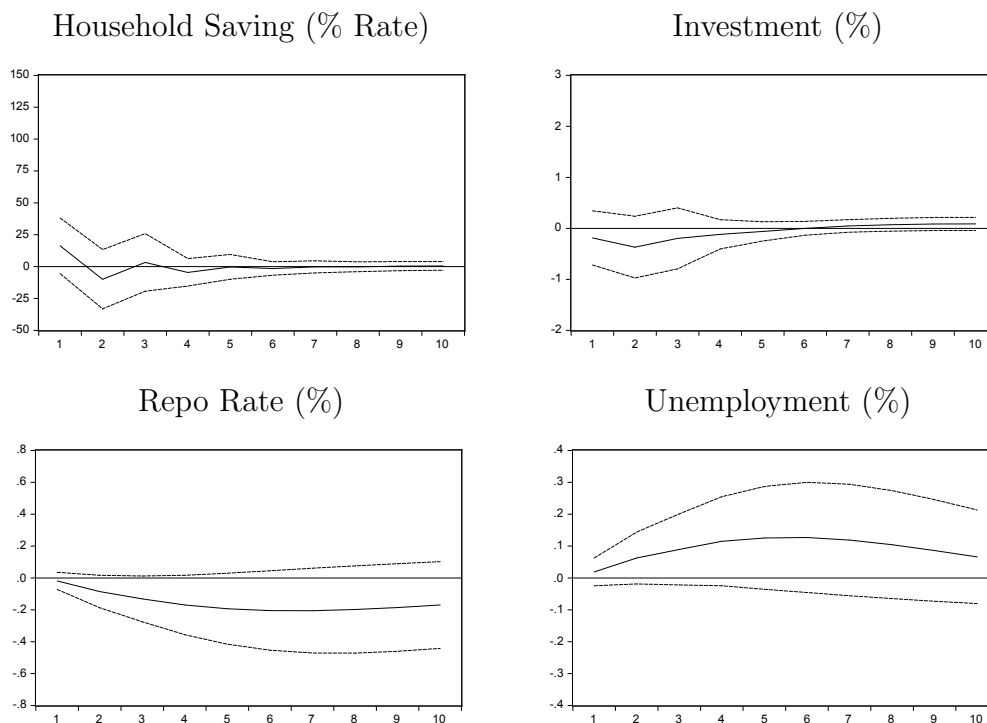


Notes. Each IRF is computed for a separate bivariate VAR that includes Dutch GDP growth and the EPU index referenced in the plot's title. We use quarterly data and a sample period of 2003:Q1-2016:Q1. Quarters are shown on the horizontal axis. Percentage points are shown on the vertical axis.

We next consider a larger VAR to verify that shocks to the Swedish EPU index generate the expected IRFs. Since Swedish newspapers provide a substantial amount of coverage for the US, EU, and Germany, we expect the Swedish EPU index to contain much of the information embodied in the other indices. For that reason, we abstain from including foreign EPU indices in the VAR. We add household saving, investment, the repo rate, and unemployment. Finally, we order the EPU first in the VAR.

Figure 5 shows the impulse responses generated from a one standard deviation shock to the Swedish EPU. In line with the existing literature, we find that an increase in uncertainty tends to 1) increase household saving; 2) decrease the repo rate; and 3) increase unemployment. We also find a statistically insignificant, but persistently negative investment response, which provides support for the hypothesis advanced in Bloom (2009). Overall, these

Figure 5: Impulse Response Functions for Augmented VAR



Notes. Each IRF is computed for the same VAR, which includes household saving, investment, the repo rate, unemployment, and the Swedish EPU. We use quarterly data and a sample period of 1993:Q1-2016:Q1. Quarters are shown on the horizontal axis.

results suggest that the index developed in this paper captures economic policy uncertainty well in Sweden.

4 Conclusion

Following the approach in Baker et al. (2013), we construct a Swedish EPU index. Such indices remain rare for SOEs in Europe. Employing a series of VARs, we find that a one standard deviation shock to the Swedish EPU index reduces Swedish GDP growth by 0.2 percentage points in the same quarter. Shocks to the US, EU, and German indices all arrive slower, achieving a

maximum impact on Swedish GDP growth with a one-quarter delay. We demonstrate external validity by showing that the same result holds for the Netherlands. Our results indicate that researchers, forecasters, and policy-makers in SOEs may benefit from constructing domestic EPU indices, rather than relying on foreign proxies.

References

- Abel, A.**, “Optimal investment under uncertainty,” *The American Economic Review*, 1983, 73 (1), 228–33.
- Bachmann, R., S. Elstner, and E.R. Sims**, “Uncertainty and economic activity: evidence from business survey data,” *American Economic Journal: Macroeconomics*, 2013, 5 (2), 217–249.
- Baker, S.R., N. Bloom, and Davis S. J.**, “The Quarterly Journal of Economics (Forthcoming),” *NBER Working Paper 21633*, 2016.
- , – , and **S.J. Davis**, “Uncertainty and the economy,” *Policy Review* 175, 2013.
- Bernanke, B.S.**, “Irreversibility, uncertainty, and cyclical investment,” *Quarterly Journal of Economics*, 1983, 98 (1), 85–106.
- Bloom, N.**, “The impact of uncertainty shocks,” *Econometrica*, 2009, 77 (3), 623–685.
- Boncianni, D. and B. van Roye**, “Uncertainty shocks, banking frictions and economic activity,” *ECB Working Paper 1825*, 2015.
- Cesa-Bianchi, A. and E. Fernandez-Corugedo**, “Uncertainty in a model with credit frictions,” *Bank of England Working Paper 496*, 2014.

- Colombo, V.**, “Economic policy uncertainty in the US: Does it matter for the Euro area?,” *Economics Letters*, 2013, *121* (1), 39–42.
- Hartman, R.**, “The effects of price and cost uncertainty on investment,” *Journal of Economic Theory*, 1972, *5* (2), 258–266.
- Leland, H.E.**, “Saving and uncertainty: the precautionary demand for saving,” *Quarterly Journal of Economics*, 1968, *82*, 465–473.
- Stockhammar, P. and P. Österholm**, “Effects of US policy uncertainty on Swedish GDP growth,” *Empirical Economics*, 2016, *50* (2), 443–462.
- **and** –, “The impact of US uncertainty shocks on small open economies,” *Örebro Universitet Working Paper 5*, 2016.

Earlier Working Papers:

For a complete list of Working Papers published by Sveriges Riksbank, see www.riksbank.se

Estimation of an Adaptive Stock Market Model with Heterogeneous Agents <i>by Henrik Amilon</i>	2005:177
Some Further Evidence on Interest-Rate Smoothing: The Role of Measurement Errors in the Output Gap <i>by Mikael Apel and Per Jansson</i>	2005:178
Bayesian Estimation of an Open Economy DSGE Model with Incomplete Pass-Through <i>by Malin Adolphson, Stefan Laséen, Jesper Lindé and Mattias Villani</i>	2005:179
Are Constant Interest Rate Forecasts Modest Interventions? Evidence from an Estimated Open Economy DSGE Model of the Euro Area <i>by Malin Adolphson, Stefan Laséen, Jesper Lindé and Mattias Villani</i>	2005:180
Inference in Vector Autoregressive Models with an Informative Prior on the Steady State <i>by Mattias Villani</i>	2005:181
Bank Mergers, Competition and Liquidity <i>by Elena Carletti, Philipp Hartmann and Giancarlo Spagnolo</i>	2005:182
Testing Near-Rationality using Detailed Survey Data <i>by Michael F. Bryan and Stefan Palmqvist</i>	2005:183
Exploring Interactions between Real Activity and the Financial Stance <i>by Tor Jacobson, Jesper Lindé and Kasper Roszbach</i>	2005:184
Two-Sided Network Effects, Bank Interchange Fees, and the Allocation of Fixed Costs <i>by Mats A. Bergman</i>	2005:185
Trade Deficits in the Baltic States: How Long Will the Party Last? <i>by Rudolfs Bems and Kristian Jönsson</i>	2005:186
Real Exchange Rate and Consumption Fluctuations following Trade Liberalization <i>by Kristian Jönsson</i>	2005:187
Modern Forecasting Models in Action: Improving Macroeconomic Analyses at Central Banks <i>by Malin Adolphson, Michael K. Andersson, Jesper Lindé, Mattias Villani and Anders Vredin</i>	2005:188
Bayesian Inference of General Linear Restrictions on the Cointegration Space <i>by Mattias Villani</i>	2005:189
Forecasting Performance of an Open Economy Dynamic Stochastic General Equilibrium Model <i>by Malin Adolphson, Stefan Laséen, Jesper Lindé and Mattias Villani</i>	2005:190
Forecast Combination and Model Averaging using Predictive Measures <i>by Jana Eklund and Sune Karlsson</i>	2005:191
Swedish Intervention and the Krona Float, 1993-2002 <i>by Owen F. Humpage and Javiera Ragnartz</i>	2006:192
A Simultaneous Model of the Swedish Krona, the US Dollar and the Euro <i>by Hans Lindblad and Peter Sellin</i>	2006:193
Testing Theories of Job Creation: Does Supply Create Its Own Demand? <i>by Mikael Carlsson, Stefan Eriksson and Nils Gottfries</i>	2006:194
Down or Out: Assessing The Welfare Costs of Household Investment Mistakes <i>by Laurent E. Calvet, John Y. Campbell and Paolo Sodini</i>	2006:195
Efficient Bayesian Inference for Multiple Change-Point and Mixture Innovation Models <i>by Paolo Giordani and Robert Kohn</i>	2006:196
Derivation and Estimation of a New Keynesian Phillips Curve in a Small Open Economy <i>by Karolina Holmberg</i>	2006:197
Technology Shocks and the Labour-Input Response: Evidence from Firm-Level Data <i>by Mikael Carlsson and Jon Smedsaas</i>	2006:198
Monetary Policy and Staggered Wage Bargaining when Prices are Sticky <i>by Mikael Carlsson and Andreas Westermark</i>	2006:199
The Swedish External Position and the Krona <i>by Philip R. Lane</i>	2006:200

Price Setting Transactions and the Role of Denominating Currency in FX Markets <i>by Richard Friberg and Fredrik Wilander</i>	2007:201
The geography of asset holdings: Evidence from Sweden <i>by Nicolas Coeurdacier and Philippe Martin</i>	2007:202
Evaluating An Estimated New Keynesian Small Open Economy Model <i>by Malin Adolfson, Stefan Laséen, Jesper Lindé and Mattias Villani</i>	2007:203
The Use of Cash and the Size of the Shadow Economy in Sweden <i>by Gabriela Guibourg and Björn Segendorf</i>	2007:204
Bank supervision Russian style: Evidence of conflicts between micro- and macro-prudential concerns <i>by Sophie Claeys and Koen Schoors</i>	2007:205
Optimal Monetary Policy under Downward Nominal Wage Rigidity <i>by Mikael Carlsson and Andreas Westermarck</i>	2007:206
Financial Structure, Managerial Compensation and Monitoring <i>by Vittoria Cerasi and Sonja Daltung</i>	2007:207
Financial Frictions, Investment and Tobin's q <i>by Guido Lorenzoni and Karl Walentin</i>	2007:208
Sticky Information vs Sticky Prices: A Horse Race in a DSGE Framework <i>by Mathias Trabandt</i>	2007:209
Acquisition versus greenfield: The impact of the mode of foreign bank entry on information and bank lending rates <i>by Sophie Claeys and Christa Hainz</i>	2007:210
Nonparametric Regression Density Estimation Using Smoothly Varying Normal Mixtures <i>by Mattias Villani, Robert Kohn and Paolo Giordani</i>	2007:211
The Costs of Paying – Private and Social Costs of Cash and Card <i>by Mats Bergman, Gabriella Guibourg and Björn Segendorf</i>	2007:212
Using a New Open Economy Macroeconomics model to make real nominal exchange rate forecasts <i>by Peter Sellin</i>	2007:213
Introducing Financial Frictions and Unemployment into a Small Open Economy Model <i>by Lawrence J. Christiano, Mathias Trabandt and Karl Walentin</i>	2007:214
Earnings Inequality and the Equity Premium <i>by Karl Walentin</i>	2007:215
Bayesian forecast combination for VAR models <i>by Michael K. Andersson and Sune Karlsson</i>	2007:216
Do Central Banks React to House Prices? <i>by Daria Finocchiaro and Virginia Queijo von Heideken</i>	2007:217
The Riksbank's Forecasting Performance <i>by Michael K. Andersson, Gustav Karlsson and Josef Svensson</i>	2007:218
Macroeconomic Impact on Expected Default Frequency <i>by Per Åsberg and Hovick Shahnazarian</i>	2008:219
Monetary Policy Regimes and the Volatility of Long-Term Interest Rates <i>by Virginia Queijo von Heideken</i>	2008:220
Governing the Governors: A Clinical Study of Central Banks <i>by Lars Frisell, Kasper Roszbach and Giancarlo Spagnolo</i>	2008:221
The Monetary Policy Decision-Making Process and the Term Structure of Interest Rates <i>by Hans Dillén</i>	2008:222
How Important are Financial Frictions in the U S and the Euro Area <i>by Virginia Queijo von Heideken</i>	2008:223
Block Kalman filtering for large-scale DSGE models <i>by Ingvar Strid and Karl Walentin</i>	2008:224
Optimal Monetary Policy in an Operational Medium-Sized DSGE Model <i>by Malin Adolfson, Stefan Laséen, Jesper Lindé and Lars E. O. Svensson</i>	2008:225
Firm Default and Aggregate Fluctuations <i>by Tor Jacobson, Rikard Kindell, Jesper Lindé and Kasper Roszbach</i>	2008:226

Re-Evaluating Swedish Membership in EMU: Evidence from an Estimated Model <i>by Ulf Söderström</i>	2008:227
The Effect of Cash Flow on Investment: An Empirical Test of the Balance Sheet Channel <i>by Ola Melander</i>	2009:228
Expectation Driven Business Cycles with Limited Enforcement <i>by Karl Walentin</i>	2009:229
Effects of Organizational Change on Firm Productivity <i>by Christina Håkanson</i>	2009:230
Evaluating Microfoundations for Aggregate Price Rigidities: Evidence from Matched Firm-Level Data on Product Prices and Unit Labor Cost <i>by Mikael Carlsson and Oskar Nordström Skans</i>	2009:231
Monetary Policy Trade-Offs in an Estimated Open-Economy DSGE Model <i>by Malin Adolfson, Stefan Laséen, Jesper Lindé and Lars E. O. Svensson</i>	2009:232
Flexible Modeling of Conditional Distributions Using Smooth Mixtures of Asymmetric Student T Densities <i>by Feng Li, Mattias Villani and Robert Kohn</i>	2009:233
Forecasting Macroeconomic Time Series with Locally Adaptive Signal Extraction <i>by Paolo Giordani and Mattias Villani</i>	2009:234
Evaluating Monetary Policy <i>by Lars E. O. Svensson</i>	2009:235
Risk Premiums and Macroeconomic Dynamics in a Heterogeneous Agent Model <i>by Ferre De Graeve, Maarten Dossche, Marina Emiris, Henri Sneessens and Raf Wouters</i>	2010:236
Picking the Brains of MPC Members <i>by Mikael Apel, Carl Andreas Claussen and Petra Lennartsdotter</i>	2010:237
Involuntary Unemployment and the Business Cycle <i>by Lawrence J. Christiano, Mathias Trabandt and Karl Walentin</i>	2010:238
Housing collateral and the monetary transmission mechanism <i>by Karl Walentin and Peter Sellin</i>	2010:239
The Discursive Dilemma in Monetary Policy <i>by Carl Andreas Claussen and Øistein Røisland</i>	2010:240
Monetary Regime Change and Business Cycles <i>by Vasco Cúrdia and Daria Finocchiaro</i>	2010:241
Bayesian Inference in Structural Second-Price common Value Auctions <i>by Bertil Wegmann and Mattias Villani</i>	2010:242
Equilibrium asset prices and the wealth distribution with inattentive consumers <i>by Daria Finocchiaro</i>	2010:243
Identifying VARs through Heterogeneity: An Application to Bank Runs <i>by Ferre De Graeve and Alexei Karas</i>	2010:244
Modeling Conditional Densities Using Finite Smooth Mixtures <i>by Feng Li, Mattias Villani and Robert Kohn</i>	2010:245
The Output Gap, the Labor Wedge, and the Dynamic Behavior of Hours <i>by Luca Sala, Ulf Söderström and Antonella Trigari</i>	2010:246
Density-Conditional Forecasts in Dynamic Multivariate Models <i>by Michael K. Andersson, Stefan Palmqvist and Daniel F. Waggoner</i>	2010:247
Anticipated Alternative Policy-Rate Paths in Policy Simulations <i>by Stefan Laséen and Lars E. O. Svensson</i>	2010:248
MOSES: Model of Swedish Economic Studies <i>by Gunnar Bårdsen, Ard den Reijer, Patrik Jonasson and Ragnar Nymoén</i>	2011:249
The Effects of Endogenous Firm Exit on Business Cycle Dynamics and Optimal Fiscal Policy <i>by Lauri Vilmi</i>	2011:250
Parameter Identification in a Estimated New Keynesian Open Economy Model <i>by Malin Adolfson and Jesper Lindé</i>	2011:251
Up for count? Central bank words and financial stress <i>by Marianna Blix Grimaldi</i>	2011:252

Wage Adjustment and Productivity Shocks <i>by Mikael Carlsson, Julián Messina and Oskar Nordström Skans</i>	2011:253
Stylized (Arte) Facts on Sectoral Inflation <i>by Ferre De Graeve and Karl Walentin</i>	2011:254
Hedging Labor Income Risk <i>by Sebastien Betermier, Thomas Jansson, Christine A. Parlour and Johan Walden</i>	2011:255
Taking the Twists into Account: Predicting Firm Bankruptcy Risk with Splines of Financial Ratios <i>by Paolo Giordani, Tor Jacobson, Erik von Schedvin and Mattias Villani</i>	2011:256
Collateralization, Bank Loan Rates and Monitoring: Evidence from a Natural Experiment <i>by Geraldo Cerqueiro, Steven Ongena and Kasper Roszbach</i>	2012:257
On the Non-Exclusivity of Loan Contracts: An Empirical Investigation <i>by Hans Degryse, Vasso Ioannidou and Erik von Schedvin</i>	2012:258
Labor-Market Frictions and Optimal Inflation <i>by Mikael Carlsson and Andreas Westermarck</i>	2012:259
Output Gaps and Robust Monetary Policy Rules <i>by Roberto M. Billi</i>	2012:260
The Information Content of Central Bank Minutes <i>by Mikael Apel and Marianna Blix Grimaldi</i>	2012:261
The Cost of Consumer Payments in Sweden <i>by Björn Segendorf and Thomas Jansson</i>	2012:262
Trade Credit and the Propagation of Corporate Failure: An Empirical Analysis <i>by Tor Jacobson and Erik von Schedvin</i>	2012:263
Structural and Cyclical Forces in the Labor Market During the Great Recession: Cross-Country Evidence <i>by Luca Sala, Ulf Söderström and Antonella Trigari</i>	2012:264
Pension Wealth and Household Savings in Europe: Evidence from SHARELIFE <i>by Rob Alessie, Viola Angelini and Peter van Santen</i>	2013:265
Long-Term Relationship Bargaining <i>by Andreas Westermarck</i>	2013:266
Using Financial Markets To Estimate the Macro Effects of Monetary Policy: An Impact-Identified FAVAR* <i>by Stefan Pitschner</i>	2013:267
DYNAMIC MIXTURE-OF-EXPERTS MODELS FOR LONGITUDINAL AND DISCRETE-TIME SURVIVAL DATA <i>by Matias Quiroz and Mattias Villani</i>	2013:268
Conditional euro area sovereign default risk <i>by André Lucas, Bernd Schwaab and Xin Zhang</i>	2013:269
Nominal GDP Targeting and the Zero Lower Bound: Should We Abandon Inflation Targeting?*	2013:270
<i>by Roberto M. Billi</i>	
Un-truncating VARs* <i>by Ferre De Graeve and Andreas Westermarck</i>	2013:271
Housing Choices and Labor Income Risk <i>by Thomas Jansson</i>	2013:272
Identifying Fiscal Inflation* <i>by Ferre De Graeve and Virginia Queijo von Heideken</i>	2013:273
On the Redistributive Effects of Inflation: an International Perspective* <i>by Paola Boel</i>	2013:274
Business Cycle Implications of Mortgage Spreads* <i>by Karl Walentin</i>	2013:275
Approximate dynamic programming with post-decision states as a solution method for dynamic economic models <i>by Isaiah Hull</i>	2013:276
A detrimental feedback loop: deleveraging and adverse selection <i>by Christoph Bertsch</i>	2013:277
Distortionary Fiscal Policy and Monetary Policy Goals <i>by Klaus Adam and Roberto M. Billi</i>	2013:278
Predicting the Spread of Financial Innovations: An Epidemiological Approach <i>by Isaiah Hull</i>	2013:279

Firm-Level Evidence of Shifts in the Supply of Credit <i>by Karolina Holmberg</i>	2013:280
Lines of Credit and Investment: Firm-Level Evidence of Real Effects of the Financial Crisis <i>by Karolina Holmberg</i>	2013:281
A wake-up call: information contagion and strategic uncertainty <i>by Toni Ahnert and Christoph Bertsch</i>	2013:282
Debt Dynamics and Monetary Policy: A Note <i>by Stefan Laséen and Ingvar Strid</i>	2013:283
Optimal taxation with home production <i>by Conny Olovsson</i>	2014:284
Incompatible European Partners? Cultural Predispositions and Household Financial Behavior <i>by Michael Haliassos, Thomas Jansson and Yigitcan Karabulut</i>	2014:285
How Subprime Borrowers and Mortgage Brokers Shared the Piecial Behavior <i>by Antje Berndt, Burton Hollifield and Patrik Sandås</i>	2014:286
The Macro-Financial Implications of House Price-Indexed Mortgage Contracts <i>by Isaiah Hull</i>	2014:287
Does Trading Anonymously Enhance Liquidity? <i>by Patrick J. Dennis and Patrik Sandås</i>	2014:288
Systematic bailout guarantees and tacit coordination <i>by Christoph Bertsch, Claudio Calcagno and Mark Le Quement</i>	2014:289
Selection Effects in Producer-Price Setting <i>by Mikael Carlsson</i>	2014:290
Dynamic Demand Adjustment and Exchange Rate Volatility <i>by Vesna Corbo</i>	2014:291
Forward Guidance and Long Term Interest Rates: Inspecting the Mechanism <i>by Ferre De Graeve, Pelin Ilbas & Raf Wouters</i>	2014:292
Firm-Level Shocks and Labor Adjustments <i>by Mikael Carlsson, Julián Messina and Oskar Nordström Skans</i>	2014:293
A wake-up call theory of contagion <i>by Toni Ahnert and Christoph Bertsch</i>	2015:294
Risks in macroeconomic fundamentals and excess bond returns predictability <i>by Rafael B. De Rezende</i>	2015:295
The Importance of Reallocation for Productivity Growth: Evidence from European and US Banking <i>by Jaap W.B. Bos and Peter C. van Santen</i>	2015:296
SPEEDING UP MCMC BY EFFICIENT DATA SUBSAMPLING <i>by Matias Quiroz, Mattias Villani and Robert Kohn</i>	2015:297
Amortization Requirements and Household Indebtedness: An Application to Swedish-Style Mortgages <i>by Isaiah Hull</i>	2015:298
Fuel for Economic Growth? <i>by Johan Gars and Conny Olovsson</i>	2015:299
Searching for Information <i>by Jungsuk Han and Francesco Sangiorgi</i>	2015:300
What Broke First? Characterizing Sources of Structural Change Prior to the Great Recession <i>by Isaiah Hull</i>	2015:301
Price Level Targeting and Risk Management <i>by Roberto Billi</i>	2015:302
Central bank policy paths and market forward rates: A simple model <i>by Ferre De Graeve and Jens Iversen</i>	2015:303
Jump-Starting the Euro Area Recovery: Would a Rise in Core Fiscal Spending Help the Periphery? <i>by Olivier Blanchard, Christopher J. Erceg and Jesper Lindé</i>	2015:304
Bringing Financial Stability into Monetary Policy* <i>by Eric M. Leeper and James M. Nason</i>	2015:305

SCALABLE MCMC FOR LARGE DATA PROBLEMS USING DATA SUBSAMPLING AND THE DIFFERENCE ESTIMATOR <i>by MATIAS QUIROZ, MATTIAS VILLANI AND ROBERT KOHN</i>	2015:306
SPEEDING UP MCMC BY DELAYED ACCEPTANCE AND DATA SUBSAMPLING <i>by MATIAS QUIROZ</i>	2015:307
Modeling financial sector joint tail risk in the euro area <i>by André Lucas, Bernd Schwaab and Xin Zhang</i>	2015:308
Score Driven Exponentially Weighted Moving Averages and Value-at-Risk Forecasting <i>by André Lucas and Xin Zhang</i>	2015:309
On the Theoretical Efficacy of Quantitative Easing at the Zero Lower Bound <i>by Paola Boel and Christopher J. Waller</i>	2015:310
Optimal Inflation with Corporate Taxation and Financial Constraints <i>by Daria Finocchiaro, Giovanni Lombardo, Caterina Mendicino and Philippe Weil</i>	2015:311
Fire Sale Bank Recapitalizations <i>by Christoph Bertsch and Mike Mariathasan</i>	2015:312
Since you're so rich, you must be really smart: Talent and the Finance Wage Premium <i>by Michael Böhm, Daniel Metzger and Per Strömberg</i>	2015:313
Debt, equity and the equity price puzzle <i>by Daria Finocchiaro and Caterina Mendicino</i>	2015:314
Trade Credit: Contract-Level Evidence Contradicts Current Theories <i>by Tore Ellingsen, Tor Jacobson and Erik von Schedvin</i>	2016:315
Double Liability in a Branch Banking System: Historical Evidence from Canada <i>by Anna Grodecka and Antonis Kotidis</i>	2016:316
Subprime Borrowers, Securitization and the Transmission of Business Cycles <i>by Anna Grodecka</i>	2016:317
Real-Time Forecasting for Monetary Policy Analysis: The Case of Sveriges Riksbank <i>by Jens Iversen, Stefan Laséen, Henrik Lundvall and Ulf Söderström</i>	2016:318
Fed Liftoff and Subprime Loan Interest Rates: Evidence from the Peer-to-Peer Lending <i>by Christoph Bertsch, Isaiah Hull and Xin Zhang</i>	2016:319
Curbing Shocks to Corporate Liquidity: The Role of Trade Credit <i>by Niklas Amberg, Tor Jacobson, Erik von Schedvin and Robert Townsend</i>	2016:320
Firms' Strategic Choice of Loan Delinquencies <i>by Paola Morales-Acevedo</i>	2016:321
Fiscal Consolidation Under Imperfect Credibility <i>by Matthieu Lemoine and Jesper Lindé</i>	2016:322
Challenges for Central Banks' Macro Models <i>by Jesper Lindé, Frank Smets and Rafael Wouters</i>	2016:323
The interest rate effects of government bond purchases away from the lower bound <i>by Rafael B. De Rezende</i>	2016:324
COVENANT-LIGHT CONTRACTS AND CREDITOR COORDINATION <i>by Bo Becker and Victoria Ivashina</i>	2016:325
Endogenous Separations, Wage Rigidities and Employment Volatility <i>by Mikael Carlsson and Andreas Westermark</i>	2016:326
Renovatio Monetæ: Gesell Taxes in Practice <i>by Roger Svensson and Andreas Westermark</i>	2016:327
Adjusting for Information Content when Comparing Forecast Performance <i>by Michael K. Andersson, Ted Aranki and André Reslow</i>	2016:328
Economic Scarcity and Consumers' Credit Choice <i>by Marieke Bos, Chloé Le Coq and Peter van Santen</i>	2016:329
Uncertain pension income and household saving <i>by Peter van Santen</i>	2016:330
Money, Credit and Banking and the Cost of Financial Activity <i>by Paola Boel and Gabriele Camera</i>	2016:331
Oil prices in a real-business-cycle model with precautionary demand for oil <i>by Conny Olovsson</i>	2016:332



Sveriges Riksbank
Visiting address: Brunkebergs torg 11
Mail address: se-103 37 Stockholm

Website: www.riksbank.se
Telephone: +46 8 787 00 00, Fax: +46 8 21 05 31
E-mail: registratorn@riksbank.se