

Duarte, Fernando; Jones, Collin

Working Paper

Empirical network contagion for U.S. financial institutions

Staff Report, No. 826

Provided in Cooperation with:

Federal Reserve Bank of New York

Suggested Citation: Duarte, Fernando; Jones, Collin (2017) : Empirical network contagion for U.S. financial institutions, Staff Report, No. 826, Federal Reserve Bank of New York, New York, NY

This Version is available at:

<https://hdl.handle.net/10419/189867>

Standard-Nutzungsbedingungen:

Die Dokumente auf EconStor dürfen zu eigenen wissenschaftlichen Zwecken und zum Privatgebrauch gespeichert und kopiert werden.

Sie dürfen die Dokumente nicht für öffentliche oder kommerzielle Zwecke vervielfältigen, öffentlich ausstellen, öffentlich zugänglich machen, vertreiben oder anderweitig nutzen.

Sofern die Verfasser die Dokumente unter Open-Content-Lizenzen (insbesondere CC-Lizenzen) zur Verfügung gestellt haben sollten, gelten abweichend von diesen Nutzungsbedingungen die in der dort genannten Lizenz gewährten Nutzungsrechte.

Terms of use:

Documents in EconStor may be saved and copied for your personal and scholarly purposes.

You are not to copy documents for public or commercial purposes, to exhibit the documents publicly, to make them publicly available on the internet, or to distribute or otherwise use the documents in public.

If the documents have been made available under an Open Content Licence (especially Creative Commons Licences), you may exercise further usage rights as specified in the indicated licence.

Federal Reserve Bank of New York
Staff Reports

Empirical Network Contagion for U.S. Financial Institutions

Fernando Duarte
Collin Jones

Staff Report No. 826
November 2017



This paper presents preliminary findings and is being distributed to economists and other interested readers solely to stimulate discussion and elicit comments. The views expressed in this paper are those of the authors and do not necessarily reflect the position of the Federal Reserve Bank of New York or the Federal Reserve System. Any errors or omissions are the responsibility of the authors.

Empirical Network Contagion for U.S. Financial Institutions

Fernando Duarte and Collin Jones

Federal Reserve Bank of New York Staff Reports, no. 826

November 2017

JEL classification: D85, G21

Abstract

We construct an empirical measure of expected network spillovers that arise through default cascades for the U.S. financial system for the period 2002-16. Compared to existing studies, we include a much larger cross section of U.S. financial firms that comprises all bank holding companies, all broker-dealers, and all insurance companies, and consider their entire empirical balance sheet exposures instead of relying on simulations or on exposures arising just through one specific market (like the fed funds market) or one specific financial instrument (like credit default swaps). We find negligible expected spillovers from 2002 to 2007 and from 2013 to 2016. However, between 2008 and 2012, we find that default spillovers can amplify expected losses by up to 25 percent, a significantly higher estimate than previously found in the literature.

Key words: systemic risk, contagion, financial network

Duarte and Jones: Federal Reserve Bank of New York (emails: fernando.duarte@ny.frb.org, collin.jones@ny.frb.org). The authors thank Rui Yu for outstanding research assistance and Tobias Adrian, Dong Beom Choi, Thomas Eisenbach, Andreas Fuster, Beverly Hirtle, Anna Kovner, and James Vickery for helpful comments. The views expressed in this paper are those of the authors and do not necessarily reflect the position of the Federal Reserve Bank of New York or the Federal Reserve System.

1 Introduction

The financial crisis of 2007-2008 renewed economic interest in the network structure of the financial system and the interactions between the financial sector and the real economy. Since then, academic research on financial networks has grown substantially, vastly improving our understanding of how interconnectedness among economic agents arises, evolves and ultimately affects the economy. Because detailed empirical data on financial networks is almost always insufficient to perform consequential analyses, the literature has predominantly focused on theoretical aspects, while acknowledging the limitations that a lack of empirical results imposes on our understanding. Although there is a decent understanding of certain empirical aspects of the structure of the financial network, like its core-periphery topology or its increasing complexity, there is not as much knowledge about welfare-relevant attributes of networks, such as the size of network spillovers, the degree of propagation and amplification of shocks through network effects, or how network vulnerability varies as a function of the shock size. In general, the literature approaches welfare-relevant questions by constructing top-down measures of systemic risk or interconnectedness that rely on more-readily available data (such as stock market returns) instead of actual network-specific data. To tie non-network specific data to welfare-relevant network variables requires a model, or at least some auxiliary assumptions that are difficult to test without network-specific data.

In this paper, using node-specific data, we empirically estimate a measure of expected network default spillovers for the US financial system for the period 2002-2016. Although default spillovers are only one dimension of potential network effects, they have been repeatedly cited as a major factor during the financial crisis, motivating existing regulation and studies by the theoretical network literature. We build our measure of spillovers by using the general and elegant framework of Eisenberg and Noe. The nodes of the network are US financial institutions, including bank holding companies, broker-dealers, and insurance companies. The connections between nodes are defined by the bilateral payment obligations between them. We refer to these claims as *inside* assets or liabilities. In addition, each node has assets from and liabilities to the *outside* sector, composed of non-financial firms, households, governments, and financial firms outside the US. Our primary measure of network vulnerability will quantify expected network spillovers in the face of an exogenous shock to these outside assets. The primary method for contagion in the model is a “default cascade”, whereby a shock to outside assets can cause some institutions to default on their in-network counterparties, which could in turn

cause those counterparties to default on their own inside obligations, and so on. This domino effect can propagate through the financial system, creating network spillovers.

Empirically estimating the expected value of these spillovers requires knowledge of the bilateral claims between each pair of nodes. Such granularity of data is not publicly available¹. However, Glasserman and Young (2015) show that, for a large family of exogenous shock distributions, a meaningful upper bound on the expected value of default spillovers can be constructed with knowledge of node-specific information only (i.e. without a precise breakdown of the nodes’ counterparties or the magnitudes of obligations to them). In particular, the bound is based on each node’s probability of default, its total outside assets and its ratio of inside liabilities to total liabilities. The empirical measure of spillovers that we estimate is this upper bound on the expected value of default spillovers proposed by Glasserman and Young (2015). Thus, at the cost of estimating an upper bound on spillovers instead of their actual values, the data requirements are greatly reduced. For a significant portion of all US financial institutions (constituting 21% of total assets in the network), we use detailed balance sheet data from the FR-Y9C reporting form to construct all relevant variables. When detailed line-item balance sheets are unavailable (as is the case for most insurance companies and broker-dealers in our sample), we combine remaining firms into more-aggregated, sector-level nodes, and use the Federal Reserve’s Financial Accounts of the United States (formerly known as Flow of Funds) to estimate outside assets at the sector level². We obtain the last ingredient, firm-specific probabilities of default, from Moodys Analytics’ (formerly KMV) Expected Default Frequency series.

We find that between 2002 and 2007 the upper bound on default spillovers is rather small, which means that the financial network is robust to contagion arising from counterparty risk. However, between 2008 and 2012, the upper bound on spillovers is meaningfully above zero. Our results suggest that the financial network is most fragile in the first quarter of 2009, when we estimate that network default spillovers can amplify initial losses by up to 25 percent. After 2012, the upper bound on default spillovers starts to decline and reverts to pre-crisis levels by 2015. In 2016 and 2017, the last two years of our sample, our measure of spillovers starts to increase again — slowly but consistently.

¹In the network simulation literature, a common method to compute exact payments in the response to a shock is to assume a “maximum entropy” form to inside obligations. In the presence of any uncertainty about the structure of bilateral claims, this essentially spreads a node’s inside obligations as evenly as possible across potential counterparties.

²Including these additional assets brings the quantity of assets in the domestic financial sector accounted for in our sample up to 35%

One way to understand our results is to decompose the upper bound on default spillovers into two factors: A weighted average default probability for the sample and a *connectivity multiplier* that captures how the initial losses in outside assets could be transmitted and amplified by a default cascade. We find that both factors are important in explaining the overall dynamics of spillovers. Between 2002 and 2007, default likelihoods were negligible and the connectivity multiplier declined by around 10 percent. In 2008, default probabilities spiked, but financial connectivity declined sharply as financial institutions reduced exposures among each other amidst stressed financial and economic conditions. Even though our estimates for expected spillovers in 2008 increased, the reduction in financial connectivity was an important mitigant. In 2009, both default likelihoods and financial connectivity increased, leading to a large jump in our spillover estimates.

Another way to analyze our results is by constructing a node-specific “contagion index”, which quantifies the ability of a node to transmit and amplify losses. We find that JP Morgan Chase, Bank of America, Citigroup and Wells Fargo have the largest contagion indices. Similarly to the network-wide measure, we can decompose the contagion index into two sub-components, the node-specific financial connectivity and the size of each node’s outside assets relative to its equity capital. While the contagion index of JP Morgan Chase, Bank of America and Citigroup are generally driven by their large financial connectivity, the contagion index of Wells Fargo is mainly driven by its outside assets being large relative to equity capital.

To the best of our knowledge, our paper is the first to empirically assess network spillovers across many years and for a wide cross-section of US financial institutions. Having a panel has several advantages. First, it allows us to better identify the drivers of spillovers. Second, it places tighter restrictions on theoretical models that seek to model default spillovers. Third, it provides information that is potentially useful to policymakers and regulators, such as the quantitative contribution of spillovers to systemic risk.

Related Literature. Some of the first studies into financial network topologies and the relative vulnerabilities of different networks were the seminal theoretical models of Allen and Gale (2000) and Freixas, Parigi, and Rochet (2000), both of which model liquidity crises at depository institutions. In both, the central takeaways were that different configurations of networks (all of which, in their studies, were purely hypothetical) could either alleviate the risk of contagion or exacerbate it. Since then, many papers have used simulations to estimate the severity of losses in interconnected banking networks

in the face of a variety of shocks. Examples include Upper and Worms (2004) for the German banking system, Elsinger, Lehar, and Summer (2006a) and Elsinger, Lehar, and Summer (2006b) for the Austrian Banking System, and van Lelyved and Liedorp (2006) for Dutch Banks³. Drehmann and Tarashev (2013) develop and test bank-specific, simulation-based measures of systemic risk for 20 large financial institutions.

Another strand of the literature focuses on characterizing the topology of financial networks, using either degree distributions as in Boss, Elsinger, Summer, Thurner, et al. (2004) or searches for a core-periphery structure in banking systems as in Craig and von Peter (2014)⁴. For these studies, the lack of usable data on bilateral claims in the financial system has necessitated assumptions to fill gaps in balance sheet data or, in the case of van Lelyved and Liedorp (2006), incomplete bilateral claims data restricted to a subset of the balance sheet of a subset of all financial institutions. Studies quantifying losses through simulation require explicit and potentially-stringent assumptions about shock distributions.

A separate subset of papers sheds the analysis of counterfactual shocks entirely, in favor of strictly empirical analysis. Gropp, Io Duca, and Vesala (2009), for instance, find evidence of comovement in market-based estimates of probability of default for large European financial institutions which, they argue, are reasonably attributable to contagion effects. Similarly, Hawkesby, Marsh, and Stevens (2007) analyze comovements between asset prices of several large multinational financial institutions. As Hawkesby, Marsh, and Stevens (2007) note, while they may give interesting insight into market perceptions of interconnectedness or potential co-exposure to common factors, these studies do not attempt to ‘capture the degree of contagion that may occur during periods of financial stress’. Another related strategy has been to use market data, such as stock returns, to construct “top down” measures of systemic risk that indirectly relate to the actual network structure, as in Adrian and Brunnermeier (2016), Acharya, Pedersen, Philippon, and Richardson (2017), or Brownlees and Engle (2016).

The framework of Eisenberg and Noe (2001) is a common thread through much of the recent financial networks literature. Their model presents an intuitive and general system for intra-network defaults and payment shortfalls in the presence of fully general shocks to assets outside the network, bound by simple rules such as limited liability and

³See Upper (2011) for a useful survey of simulation-based contagion risk estimations

⁴See Glasserman and Young (2016) for a general survey of the networks literature, including a dedicated discussion of networks specific-measures such as degree distributions, core-periphery structures, and the related concept of node depth.

debt seniority⁵. Building on their findings, Glasserman and Young (2015) derive useful bounds on contagion losses without additional assumptions regarding bilateral claims, and for a broad family of shock distributions. A substantial portion of our paper can be viewed as an empirical estimation of these bounds.

After deriving their theoretical upper bounds, Glasserman and Young (2015) employ data from the European Banking Authority’s (EBA) 2011 stress test and simplifying assumptions to argue that default spillovers, on their own, are likely to be small unless further frictions, such as bankruptcy costs or bank runs, are also present. Much of the literature supports this view (e.g. Upper and Worms (2004)). We find that even for pure default spillovers that do not interact with any other frictions, we cannot dismiss the possibility of sizable spillover effects (for the first quarter of 2009, we find that default spillovers can amplify initial exogenous losses by up to 25%). The main reason why other studies find negligible spillovers while we do not is that the default probabilities for the financial institutions we analyze are substantially larger than the probabilities of default of the institutions used in other studies (which are almost always European banks). In addition, the share of in-network liabilities to total liabilities (a measure of network connectivity) that we empirically estimate are also somewhat larger than those in Glasserman and Young (2015) and the rest of the literature.

2 Network Model

2.1 Overview

The network model we use is exactly as in Eisenberg and Noe (2001) and Glasserman and Young (2015). The nodes of the network are all US domestic financial institutions. The connections between nodes are defined by institutions borrowing from and lending to one another. There is a link from node i to node j if i has any payment obligations towards node j . In addition to lending to one another, nodes can borrow and lend to the rest of the domestic and global economy. These assets and liabilities are termed as *outside* the financial system. In our application, the *outside* sector is comprised of domestic and foreign non-financial institutions, governments, and households, as well as foreign financial institutions.

Figure 1 shows an example of a simple network, taken from Glasserman and Young

⁵Particularly, many simulation-based studies of contagion risk rely on the Eisenberg and Noe (2001) algorithm to find a sequence of network ‘clearing’ payments after a shock to assets outside the network.

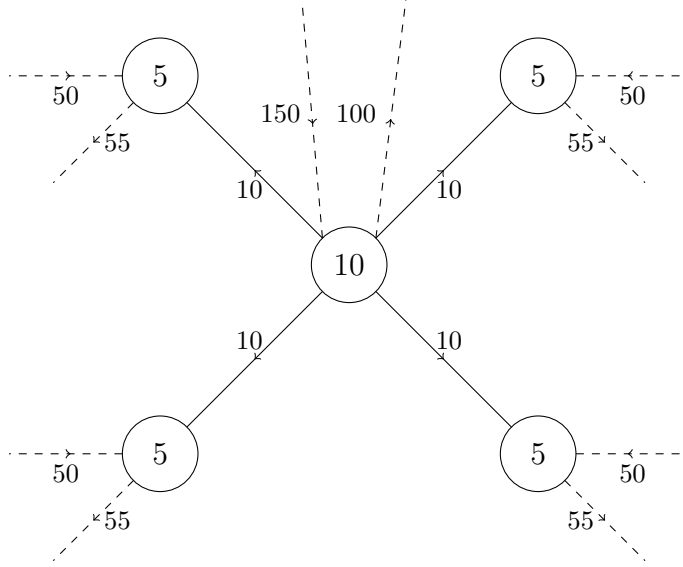


Figure 1: **A simple network.** Nodes are financial institutions. There is a connection from node i to node j if i is a net borrower from j . The dashed lines show connections to the outside sector.

(2015). The four arrows originating in the central node and pointing to the four peripheral nodes show that the central node owes 10 to each of the peripheral nodes. The four peripheral nodes have no borrowing or lending among themselves. For this network, we say that the central node has *inside liabilities* of 40, while each of the peripheral nodes has *inside assets* of 10. In practice, we find that inside assets and liabilities for US financial institutions are primarily composed of deposits, loans and securities lending transactions.

In addition to its claims inside the network, the central node has lent 150 and has borrowed 100 from the outside sector, depicted by the dashed lines with arrows going into and out of the central node. We refer to positive claims with respect to the outside sector as *outside assets* and to negative claims as *outside liabilities*. Outside assets typically consist of securities, loans to firms and households (including mortgages), and public debt. Outside liabilities mostly involve deposits and lines of credit.

The difference between all assets and all liabilities gives each node's net worth. The central node has a net worth of 10, shown inside the circle that represents the node. Each of the peripheral nodes has outside assets of 50, outside liabilities of 55 and an inside asset of 10 with respect to the central node, for a net worth of 5.

2.2 Shocks and Propagation

The shocks we consider are exogenous reductions in the value of outside assets. Therefore, all initial losses always originate outside the network. One example of such a shock is an increase in defaults for residential mortgages held by financial institutions.

For sufficiently high initial losses in outside assets, some nodes in the network will be unable to pay their creditors in full. When this happens, all debts for the defaulting node (including those outside the network) are written down pro rata and creditors receive only a fraction of their promised payments. Note that under a pro rata allocation, a node defaults on either all of its creditors or none of them. When creditors for some node are not paid in full, they may themselves be unable to pay their own creditors, and so on. Initial losses thus get transmitted inside the network through this “domino” effect. We do not include in our analysis any liquidity or equity injections, and only net claims between two nodes are assumed to be of relevance (as opposed to gross positions). In addition, nodes do not renegotiate claims, even if it may be mutually beneficial to do so.

As a numerical example, consider what happens when the outside assets of the central node in Figure 1 receive a shock of size 80. Outside assets for the central node decrease from 150 to 70. Total liabilities are initially 140. After the shock, under a pro rata allocation, only 50 percent of each liability is repaid as the central node only has 70 remaining in assets. Each of the peripheral nodes receives 5 from the central node, just enough to balance their assets and liabilities. A shock to the outside assets of the central node of magnitude greater than 80 would reduce the value of assets for peripheral nodes below the value of their liabilities. In this case, the peripheral nodes would default on their creditors. In this case, the central node has created contagion to the peripheral nodes through network contagion. The peripheral nodes default even though none of their outside assets were affected by the initial shock.

2.3 The Disconnected Network

To quantify the amplification of losses stemming from the network structure –as opposed to the initial losses from exogenous shock to outside assets– we compare expected losses for the system (the network plus the outside sector) to the losses in a hypothetical system in which all connections inside the network have been severed. Both networks are subject to the same distribution of exogenous shocks to outside assets, and to no other shocks. We create this hypothetical *disconnected* system by removing all connections between

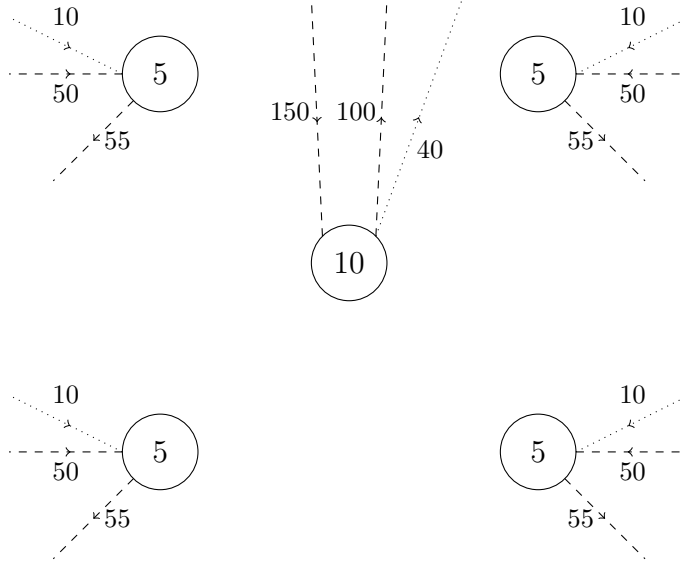


Figure 2: **A Simple Disconnected Network.** The disconnected version of the networks in Figure 1 are obtained by removing all connections between nodes inside the original network but keeping the links with the outside sector intact. Net worth remains unchanged by creating fictitious outside assets or liabilities. Dashed lines indicate actual balance sheet assets and liabilities, and dotted lines indicate fictitious assets from or liabilities to the outside sector.

nodes inside the original network but keeping the links with the outside sector intact. We also assume the net worth at each node remains unchanged by creating, for each node, a fictitious claim to the outside sector equal in value to the net value of all the connections that were removed. Depending on the sign of the net value of removed connections, the new fictitious claim can be an asset or a liability. If it is an asset, we assume it is not subject to the shocks to outside assets to keep the set of assets initially shocked identical to that of the original network. If the new fictitious claim is a liability, we assume it has the same priority as all other liabilities. In case of default, the new fictitious liability gets haircut pro rata just like all other non-fictitious liabilities, and any “losses” imposed on that obligation are counted towards the value of total system losses. Figure 2 shows the disconnected version of network displayed in Figure 1.

2.4 An Upper Bound on Network Spillovers

We are interested in whether the expected system losses in our real-world, interconnected system are substantially greater than those in the hypothetical *disconnected* system,

where node connections have been excised. We define R to be the ratio of expected losses for the actual network to the expected losses in the disconnected network. That is, if L denotes total system losses,

$$R = \frac{E(L_{\text{Actual}})}{E(L_{\text{Disconnected}})} \quad (1)$$

The value of R gives the relative magnitude of additional losses imposed on the system because of the interconnected structure of the network - to wit, network effect losses. With perfect information on the bilateral claims in the system, this ratio could be calculated exactly in response to a variety of shocks by using the Eisenberg and Noe (2001) algorithm to compute the set of node payments that ‘clear’ the system (i.e. follow the system’s rules of limited liability and pro rata allocation). In the United States financial system, detailed and publicly-available data on bilateral obligations between financial firms does not exist.

The main result in Glasserman and Young (2015) is that a useful upper-bound on R can be derived without any information on the makeup of each node’s bilateral claims. We call this upper-bound B . If the tails of the distribution of exogenous shocks to outside assets are not too fat-tailed, then B can be calculated using node-specific information only⁶. Glasserman and Young (2015) show that B depends only on each node’s total outside assets c , each firm’s probability of default due to direct shocks to outside assets δ , and the maximum *liability connectivity* among nodes in the system β^+ . Each node’s liability connectivity is defined as its ratio of inside liabilities to total liabilities.

Glasserman and Young (2015) show that

$$B = 1 + \frac{1}{(1 - \beta^+)} \frac{\sum_{i \in S} \delta_i c_i}{\sum_{i \in S} c_i}, \quad (2)$$

⁶More technically, we consider shocks that have an “increasing failure rate” (IFR). A random variable with distribution function $G(x)$ and density $g(x)$ is said to have an IFR if $g(x)/(1 - G(x))$ is an increasing function of x . This family encompasses the normal, exponential, and uniform distributions. There are no restrictions on the correlation structure of shocks.

In addition, the joint distribution of potential shocks is assumed to be invariant to scale (homogeneous in assets). For example, if total assets of a node double, expected losses are assumed to also double.

- δ_i : probability of default from outside shocks for node i ,
- c_i : the dollar value of outside assets for node i ,
- β^+ : maximum liability connectivity, i.e., $\beta^+ = \max_{i \in S} \beta_i$, with β_i = the fraction of firm i 's liabilities held by other nodes in the networks,
- S : Set of financial institution nodes within the network.

The upper bound B for network spillovers is increasing in the maximum financial connectivity of the system, β^+ , and in the quantity $\sum \delta_i c_i / \sum c_i$, most-easily interpretable as a weighted average probability of default for the system (with each firm's weight given by its share of total outside assets). When β^+ is close to 1, aggregate financial connectivity is high and any initial shock to outside assets has the potential to be transmitted broadly across the network. In contrast, when β^+ is close to zero, any initial shock dissipates quickly and expected losses should be similar to those in a truly disconnected network.

For most systems calibrated to real-world data, previous studies have found that the upper bound B is small. For example, picking $\beta^+ = 0.8$ and $\delta_i = 1$ percent for all nodes i , we get $B = 1 + 0.01/(1 - 0.8) = 1.05$. This means that the connected system has expected losses that are at most 5 percent larger than those in the system of isolated nodes. In their example exercise, Glasserman and Young (2015) find an even smaller upper bound of 1.0175 for European banks using data from the the 2011 European Banking Authority stress test.

2.5 The Network Vulnerability Index

We define the *Network Vulnerability Index* (NVI) to be the upper bound on the magnitude of additional expected losses created in the system by network spillovers, expressed as a share of expected disconnected system:

$$NVI = (B - 1) = \frac{1}{(1 - \beta^+)} \frac{\sum \delta_i c_i}{\sum c_i}. \quad (3)$$

Being an upper bound, the *NVI* is most useful when its value is small, since the model then clearly indicates low vulnerability to potential network spillovers. When the index is large it is less informative. In this case, the true value of potential network

spillovers could be as large as the upper bound or as low as zero, as dictated by the bilateral claims between nodes. The model does not produce any additional information that can help pinpoint the true value of network spillovers within that the range $[0, NVI]$. As an extreme, when the NVI is equal to infinity, it provides no information⁷.

2.6 A Firm-Specific Risk Measure: The ‘Contagion Index’

Glasserman and Young (2015) also presents a firm-specific measure of the potential to cause contagion, which they term a firm’s ‘contagion index’. For a wide family of shocks, the index is defined as

$$\text{contagion index} = w_i \beta_i \lambda_i$$

where w_i is a firm’s net worth, β_i is liability connectivity as in equation 3, and $\lambda_i = \frac{c_i}{w_i}$ is the leverage of firm i ’s outside assets.

Given that the magnitude of exogenous shocks to outside assets in the model is bounded by each firm’s actual quantity of outside assets, the contagion index calculates the total payment shortfall that a firm could potentially pass on to other nodes following a shock to its own outside assets. Glasserman and Young (2015) show that an outside asset shock to node i cannot possibly cause default to node j if node j ’s net worth is greater than node i ’s contagion index. They also show that the *probability* of node j defaulting solely because of a shock to node i ’s assets *must* be less than the probability of node j defaulting from a shock to its own assets if i ’s contagion index is less than j ’s quantity of outside assets, c_j ⁸.

3 Data and Empirical Methodology

This paper combines a number of different data sources to estimate the fields in equation 3. What follows is a description of those data sources and any decisions made in how to best utilize them. The resulting datasets yields a quarterly series for the NVI spanning 2002:Q1 to 2016:Q4.

⁷In this section, we have used the words “small” and “large” to characterize different levels of the NVI without being explicit about their meaning. This was a deliberate choice, since the model provides no welfare analysis and no other indication on how to evaluate the overall magnitude of the NVI . In short, the burden of interpreting what constitutes small or large values for the NVI is the policymaker’s.

⁸The bounds derived by Glasserman and Young (2015) are actually stronger than this - applying to the probability of node i causing default through contagion to a given *group* of firms.

3.1 Assets and Liabilities of Bank Holding Companies

Line-item balance sheet information for bank holding companies comes from quarterly filings of the Federal Reserve’s FR-Y9C reporting form⁹. The public nature of this data, as well as the level of granularity in reported asset and liability classes, make this form particularly well-suited to our analysis.

Our objective in using FR-Y9C data is to estimate the outside assets and liability connectivity of each firm in the FR-Y9C’s sample. This involves classifying each of the form’s asset and liability line items as *inside* or *outside* the financial system. We produce this classification for each of the line items in the current FR-Y9C balance sheet, and apply those classifications across each firm in the sample¹⁰. In cases where this binary classification seems inappropriate, we split the value of the field, classifying fifty percent of its magnitude as inside the system and fifty percent as outside the system¹¹. The final two columns of Tables 8 and 9 provide these classification breakdowns for current variables (or groups of variables) in the form.

In past versions of the form, line-items were often less granular. To apply our inside-vs-outside classifications (made based on the current form’s line-items) backward to previous form versions, we find the variables in each past form that include the same assets or liabilities as a given group of variables in the current form (the latter group of variables is typically larger, reflecting a movement towards increasing form granularity over time). We then compute a firm-specific percentage of the total value of the current-form variable group that is attributable to each individual variable in the group during the first year that the variable group was reported¹². By applying this estimated share back through time to 2002, we create a series for each FR-Y9C variable that is roughly consistent over time¹³. For a detailed view of the current-form variable groups identified,

⁹An FR-Y9C filing is required by each domestic bank holding company (BHCs), savings and loan holding company, US intermediate holding company, and securities holding company with total assets exceeding one billion dollars

¹⁰The ‘current’ iteration of the form used in this paper is that from December 2016. For brevity, we will continue to refer to this as the ‘current’ form.

¹¹Section 5 shows that our estimates are not very sensitive to alternative assumptions about the share of inside and outside assets and liabilities in these more ambiguous categories.

¹²To consider a simple but illustrative example - say we have determined that the asset categories contained in variables Y1 and Y2 of the current form are the same as those in variable X from some earlier version of the form. We then define $P_{Y1,i}$ and $P_{Y2,i}$ for firm i as the average of $\frac{Y1_i}{Y1_i+Y2_i}$ and $\frac{Y2_i}{Y1_i+Y2_i}$ in the first year that both Y1 and Y2 are reported. Firm i ’s imputed values for Y1 and Y2 in the early sample then becomes $P_{Y1,i}X$ and $P_{Y2,i}X$.

¹³In practice, these breakdowns are only important when the group of current-form variables includes two or more different in-vs-out classifications. Otherwise, the total sum of variables is directed into the same categorization, and any variable-by-variable divisions within the total sum become irrelevant.

and the method used to extend them back to 2002, see Tables 8 and 9.

3.2 FDIC-Insured Deposits of BHCs

We wish to avoid classifying any FDIC-insured deposits from the commercial bank subsidiaries of BHCs as inside the financial system, since those deposits are likely not held by financial firms and are ultimately government liabilities (which reside outside the network). To separate FDIC-insured deposits from a BHC’s total deposits, we use quarterly data from the FFIEC 041 (also known as the Call Report), as collected by the Federal Financial Institutions Examination Council¹⁴. After matching each commercial bank to its BHC parent, we subtract the estimated quantity of FDIC-insured deposits, as reported in the Call Report, from the BHC’s total deposits. Only this final “uninsured” value of deposits is considered inside the financial system, for the purposes of further analysis¹⁵.

3.3 Probabilities of Default

The probabilities of default δ for each firm in equation 3 are the true - or physical - probabilities of default. As such, any risk-neutral estimate of a firm’s default probability (such as those commonly extracted from credit default swaps or corporate bond spreads) would be inappropriate for calculating our NVI.

We consider Moody’s Analytics’ (formerly KMV’s) Expected Default Frequency (EDF) series to be suitable for our analysis. The EDF measure uses typical lognormal assumptions and an options-pricing approach to equities to determine which variables should theoretically be important for determining a given firm’s probability of default. They then use them to fit an empirical model of default probabilities using Moody’s extensive

¹⁴More specifically, our primary variables of interest from the form are RCON2200 (total domestic deposits) and RCON5597 (estimate of uninsured domestic deposits). Our estimate of insured deposits becomes the difference between these two fields. It is worth noting that our final estimate of uninsured deposits (which is then used in our index) is the difference between this estimate of insured deposits and the FR-Y9C form’s value for firm domestic deposits (*not* the Call Report’s domestic deposits variable). It is our understanding that the FR-Y9C form, as it pertains to entire BHCs instead of just commercial bank subsidiaries, includes a better estimate of total deposits for our purposes.

¹⁵In our benchmark setup for the NVI, 100% of uninsured domestic deposits are counted as *inside* the system. While this is likely close to accurate for the custodian banks (banks whose deposits are primarily safeguards of the assets of other banks) in our sample – namely State Street and Bank of New York Mellon – this is certainly unrealistic for many of the other BHCs in our panel. Section 5 includes robustness exercises on different configurations, including one allowing for more firm-specific allocation percentages. In short, this decision makes little difference in our final NVI series.

database of historical defaults, as explained in Nazeran and Dwyer (2015)¹⁶.

Equation 3 calls for the probability of default due to shocks to outside assets, although Moody’s Analytics’ EDF makes no distinction between the actual sources of default losses. Rather than attempt to back out the theoretically-appropriate default probability from these EDFs, we simply include the EDF value itself as δ_i for each firm in equation 3, with the understanding that this probability is in fact an upper-bound on the direct default probability. Relying on the fact that the NVI is itself an upper-bound, the bounds obtained from an NVI calculated this way will still be valid.

Moody’s EDF model produces a daily series of physical expected default frequencies at one-year horizons. We define a firm’s quarterly EDF measure to be the average of its daily measures over a given quarter.

3.4 Non-BHC Financial Firms

For financial firm subsectors whose firms do not file FR-Y9C forms, we include nodes into the NVI using less granular firm-level balance sheet information and subsector-level data on assets and liabilities from the Financial Accounts of the United States, maintained by the Board of Governors of the Federal Reserve System.

To incorporate a new firm (or, in this case, group of firms) into our NVI measure requires us to know each firm’s individual default probability δ_i , its outside assets c_i , and that firm’s liability connectivity β if that firm’s β becomes the new β^+ for the system. We first make the necessary simplifying assumption that the β^+ selected from the firms in our FR-Y9C sample correctly identifies the β^+ for the entire network¹⁷.

Left to determine is how the inclusion of other financial subsectors affects the other component of the NVI, the weighted average default probability $\frac{\sum \delta_i c_i}{\sum c_i}$. We approximate the value of this component for the subsectors not covered by the FR-Y9C by first constructing an estimate of the total outside assets of each of those subsectors from the Financial Accounts of the United States and then computing an average default probability weighted by assets for each new subsector using total firm asset values and

¹⁶Moody’s historical defaults dataset considers government rescues as default events, if the rescue specifically saved the firm from default. So, in that sense, the EDF series can be considered as a probability of default without government intervention. As the model of Glasserman and Young (2015) does not include the possibility of government rescue, this empirically estimated probability closely matches its model counterpart.

¹⁷In fact, the β^+ we select from the FR-Y9C sample for the NVI is the highest financial connectivity found in the top 20 BHCs by assets. See 5 for a discussion of this decision, and an analysis of robustness to different selections.

Moody’s EDF measures. Total quarterly assets for each firm, compiled from that firm’s financial releases and filings, are also available in the Moody’s EDF dataset¹⁸.

More explicitly, let Y denote the set of firms in our FR-Y9C sample, $S = \{S_1, S_2, \dots\}$ denote a set of sets, with each individual element S_j being the set of firms belonging to some new financial subsector, and let A denote the entire financial network $Y \cup S$. Then,

$$\frac{\Sigma_A \delta_i c_i}{\Sigma_A c_i} = \frac{\Sigma_Y \delta_i c_i + \Sigma_{S_j \in S} (\Sigma_{i \in S_j} \delta_i c_i)}{\Sigma_Y c_i + \Sigma_{S_j \in S} (\Sigma_{i \in S_j} c_i)} \approx \frac{\Sigma_Y \delta_i c_i + \Sigma_{S_j \in S} (\bar{\delta}_{S_j} \Sigma_{i \in S_j} c_i)}{\Sigma_Y c_i + \Sigma_{S_j \in S} (\Sigma_{i \in S_j} c_i)} \quad (4)$$

$$\text{where } \bar{\delta}_{S_j} = \frac{\Sigma_{i \in S_j} \delta_i a_i}{\Sigma_{i \in S_j} a_i}, \text{ with } a = \text{total assets of firm } i \quad (5)$$

This computation is only an approximation of the true $\frac{\Sigma_A \delta_i c_i}{\Sigma_A c_i}$ for two reasons. First, the weighted average probability of default per sector $\bar{\delta}_{S_j}$ is weighted here by *total assets* per firm, where a more precise measure for the NVI would be weighted by *outside assets* per firm. Second, and more significantly, our sample of average default probability is limited to those firms for which we have a Moody’s EDF measure - namely, to publicly-traded firms. Provided that our computed averages are good representations of the entire sector, then the NVI constructed using this approximation should remain a useful upper-bound on network spillovers that allows us to include a much larger portion of the US financial system than the FR-Y9C sample alone would allow.

3.5 Subsector EDF Samples

Per Section 3.4, we wish to include subsector-wide averages in our NVI for security broker dealers, insurance companies, real estate investment trusts, and an ‘other’ category for several other types of financial firms. To determine which firms should comprise each subsector’s sample in equation 5, we use Moody’s Analytics’ own internal sectoral classification system, pairing their categorizations with the subsector definitions given in the Financial Accounts of the United States. For the purposes of calculating outside assets c for the ‘other’ sector, we sum across the Financial Accounts subsectors for credit unions, finance companies, funding corporations, and issuers of asset-backed securities¹⁹.

¹⁸This is done using a method similar to that for the FR-Y9C, categorizing different Financial Accounts asset classes as inside or outside the system. See Table 11 for the precise ‘inside’ vs ‘outside’ classification used for different variables in the release. Line-items from the Financial Accounts are much coarser than those in the FR-Y9C, making this an admittedly cruder method of classification. As Section 5 shows, however, this breakdown has very little effect on the final NVI measure.

¹⁹The ‘other’ category is the only one for which finding an appropriate subsample within the EDF dataset is not straightforward. We choose to include any firms with sectoral tags of ‘Finance Companies’,

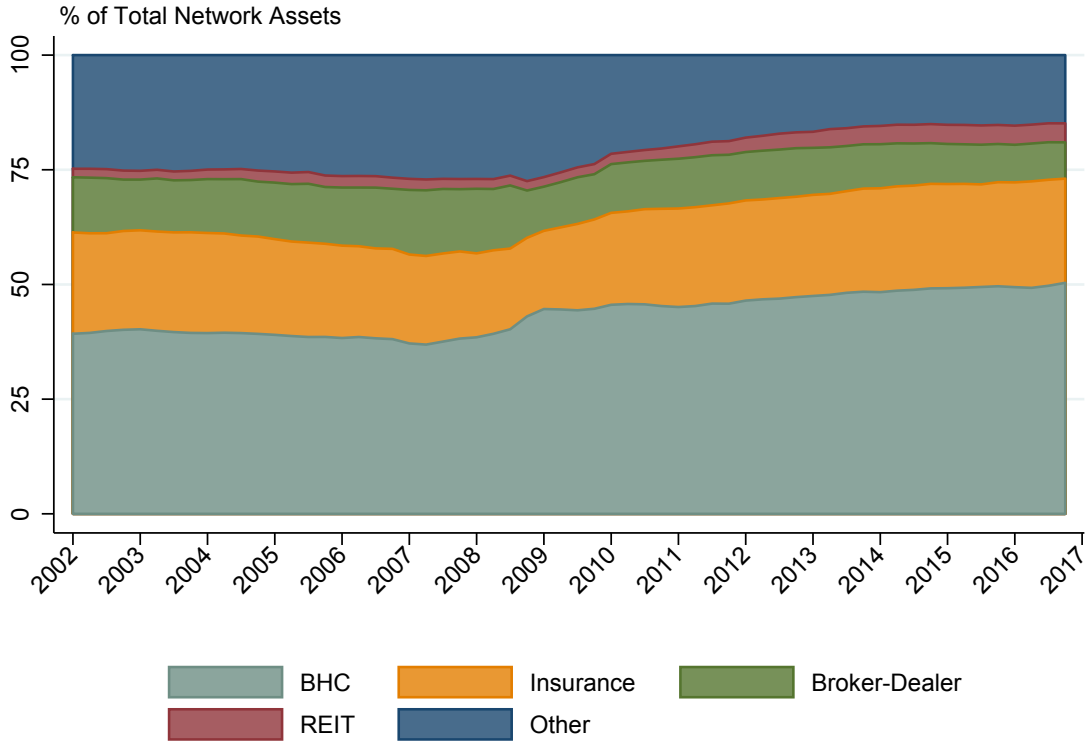


Figure 3: **Total Financial Assets for each Network Subsector, as a Percentage of Total Network Assets.** According to the Financial Accounts of the United States, BHCs comprise by far the largest percentage of network assets

To show the relative magnitude of assets assigned to these different subsectors by the Financial Accounts of the United States, we plot the percentage of total network assets (defined as the sum of total financial assets in each subsector described above, plus the Financial Accounts' total financial assets for BHCs) attributable to each of these subsectors in Figure 3. As Figure 3 shows, BHCs are by far the largest financial subsector by assets, meaning that the weights given to BHCs' default probabilities will, in aggregate, be larger than the weights assigned to any of the included subsectors.

To assess whether the samples used to compute each of the default probabilities within equation 4, in Figure 4 we plot the percentage of total network assets (with the 'network' defined as the sum of total financial assets in the subsectors of Figure 3) that

'Investment Management', or 'Finance Not Elsewhere Classified' in this node's average probability calculation.

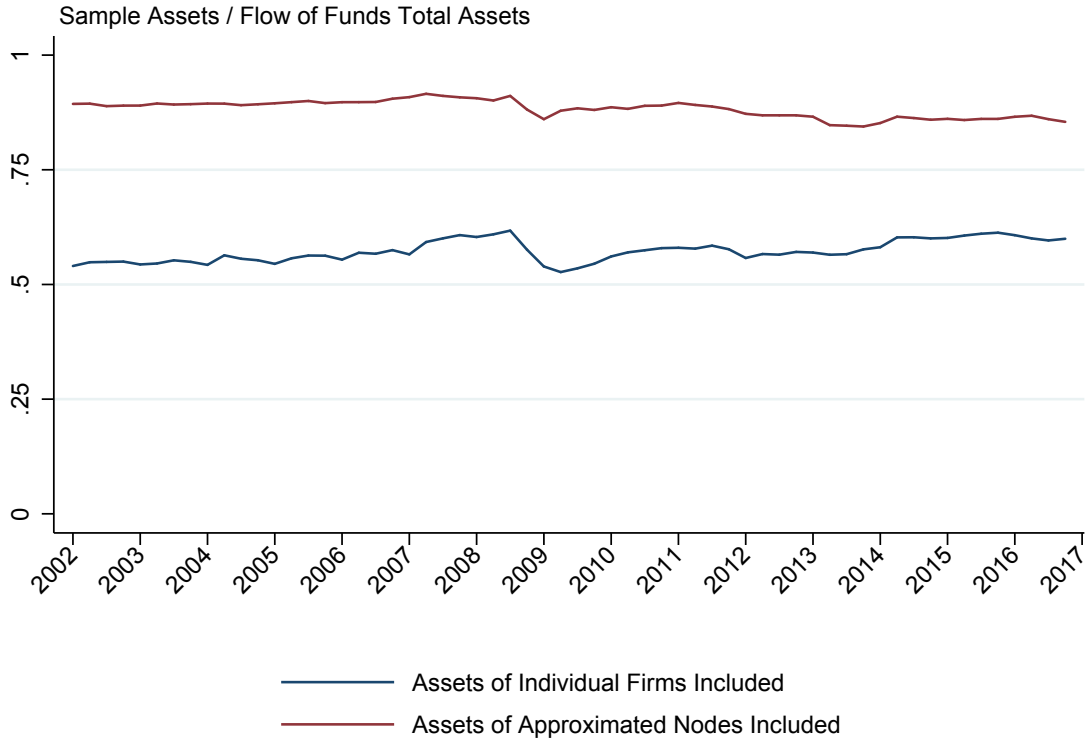


Figure 4: **Data Coverage of EDF Sample for NVI, Against Total Network Assets.** Only a subsample of firms in each subsector have their default probabilities directly enter the NVI. The first line sums the total assets of firms whose EDF measures enter the NVI in some form - either individually if that firm filed an FR-Y9C, or as part of a subsector average default probability sample - divided by total network assets from the Financial Accounts of the United States. The second line plots the same, if we instead consider each approximated subsector node per equation 4 to cover the entire sum of that subsector's assets.

are accounted for by the total assets of firms whose default probabilities directly enter into the NVI - either individually if that firm files an FR-Y9C, or as part of the sample for computed a subsector's average default probability. The red line in Figure 4 plots the same value, if we consider each approximated node in equation 4 to cover all of the assets from that subsector's Financial Accounts entries. The blue line shows that even the most conservative measure covers consistently more than 50% of the assets of the entire U.S. financial system. If we consider our network to cover the sectors of each approximated subsector node, that coverage becomes even higher, as shown in the red

line of Figure 4²⁰.

3.6 Defaulting firms

The model of Glasserman and Young (2015) includes an explicit assumption that no nodes included in the system are initially in default (defined as having book liabilities greater than book assets). To avoid including any such firms in our estimates of equation 4, we use Moody’s Analytics’ Default and Recovery Database to identify dates of bankruptcy filing. If a firm files for bankruptcy at any point during our sample period (2002-Q1 to 2016-Q4), then no expected default frequency data is used for that firm after the date of filing.

4 Results

4.1 Network Vulnerability Index Estimates

Figure 5 plots the NVI — the upper bound on expected network default spillovers. The figure shows the main result of our paper: When estimated empirically, vulnerability to network spillovers can range from negligible to large.

The NVI was essentially zero from 2002-Q1 to 2007-Q4, with only a slight increase in 2007-Q3 and 2007-Q4, which immediately implies that expected vulnerability to network default spillovers were negligible for this period. Contrary to some narratives of the crisis, we do not observe any substantial buildup of network fragility of the kind we study in the years leading up to the crisis. To understand this result, we decompose our spillover measure into two factors: the weighted average of probabilities of default ($\frac{\sum \delta_i c_i}{\sum c_i}$) and a ‘connectivity multiplier’ ($\frac{1}{1-\beta+}$) that captures the magnitude with which initial losses in outside assets can be transmitted and amplified through network connections. The final NVI measure is the product of these two components.

As Figure 6 shows, both factors contribute to the low spillover measure in the period 2002-Q1 to 2007-Q4. Because probabilities of default were miniscule in this period, the weighted average default probabilities were close to zero. Since Moody’s EDF probabilities are physical, they are adjusted for risk and thus unlikely to arise because of any

²⁰Note that the actual assets attributed to each subsector for the purposes of calculating these coverage statistics are total subsector assets after any deductions from FR-Y9C sample overlap. This adjustment, as well as the fact that FR-Y9C coverage of BHC assets in the Financial Accounts is not 100%, are why the second line in Figure 4 is not mechanically 100%.

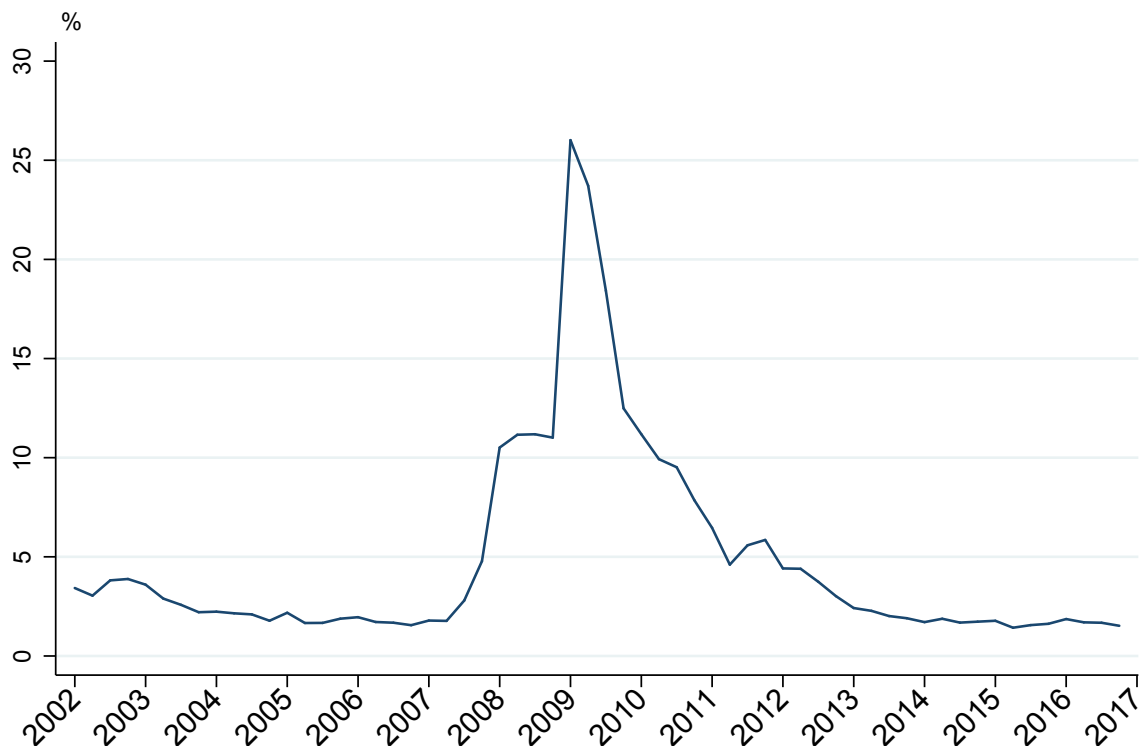


Figure 5: **Network Vulnerability Index (NVI)**. The NVI is an upper bound on expected losses due to default network spillovers in the U.S. financial system, expressed as a share of initial (exogenous) losses to assets outside the network. Between 2008 and 2012, network default network spillovers amplified expected losses by between 5 and 25 percent.

low risk premium observed during this period²¹. Over the same period, the connectivity multiplier declined by 10 percent. Thus, neither the vulnerability of firms to default nor the inner topology of the financial network signaled any increased vulnerability.

During the height of the crisis, between 2008-Q1 and 2008-Q4, outside assets (especially real estate) experienced sharp declines in realized and future expected values, pushing up our measure of spillovers. The connectivity multiplier, in contrast, was a mitigating factor, as it noticeably declined, reflecting financial institutions desire to reduce their counterparty exposure to each other in times of stress. In fact, the decline

²¹In addition, version 9 of KMV generally adjusts probabilities of default (upwards) for this period taking into account the ex-post defaults observed during the crisis that were not expected before it, minimizing the concern that our results are driven by any potential underestimation of default probabilities before the crisis.

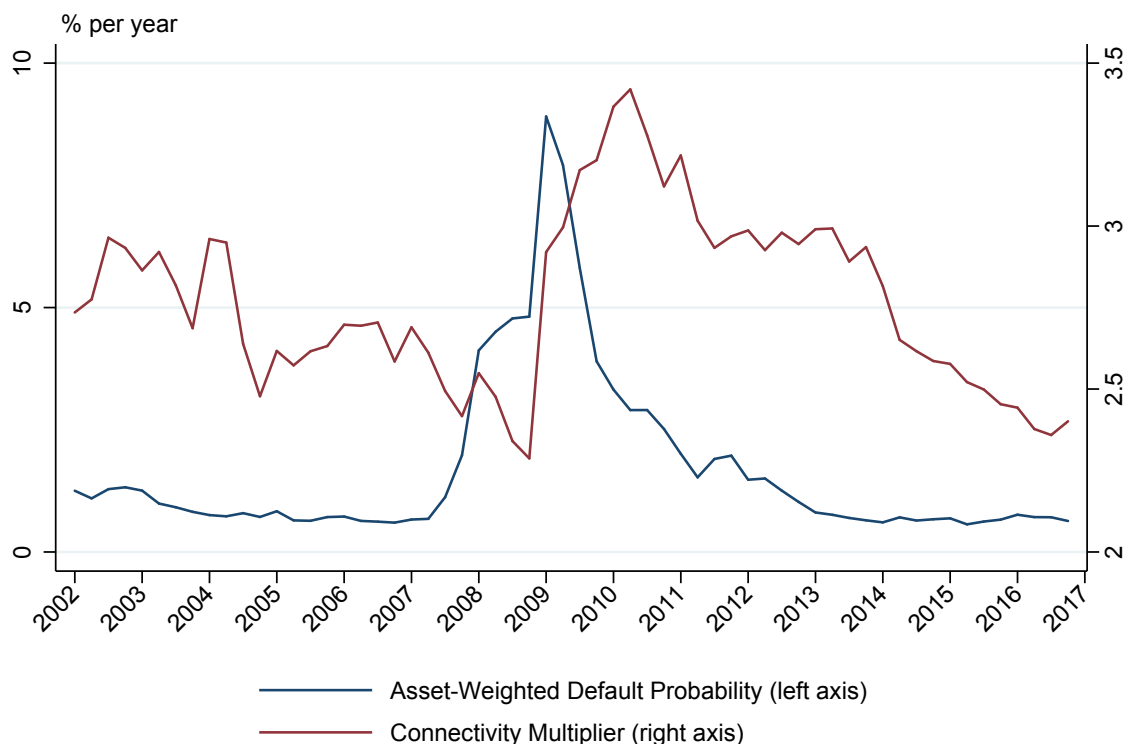


Figure 6: **NVI Decomposition.** The NVI is the product of the asset-weighted probability of default of firms inside the network and a “connectivity multiplier” that captures the degree of amplification and transmission created by defaults inside the network..

in the connectivity multiplier over 2008 was as large as the decline observed over the six preceding years 2002-2007. Figure 7 shows β^+ , the maximum liability connectivity selected at each point of the sample, which drives this dynamic. Overall, in late 2008 the increase in default probabilities outweighed any mitigation from lower connectivity. Our estimates indicate that expected network default spillovers over this period could amplify total initial losses by at most 11.4 percent. Whether 11.4 percent should be considered a small or large number is in the eye of the beholder.

In 2009-Q1, after the failure of several financial institutions and with the crisis now global in scope, the spillover measure jumped markedly, with our estimates indicating that expected network default spillovers over this period could amplify total initial losses by up to 25 percent, the largest value observed in our sample. The large increase from 2008-Q4 to 2009-Q1 was driven by both default probabilities and financial connectivity.

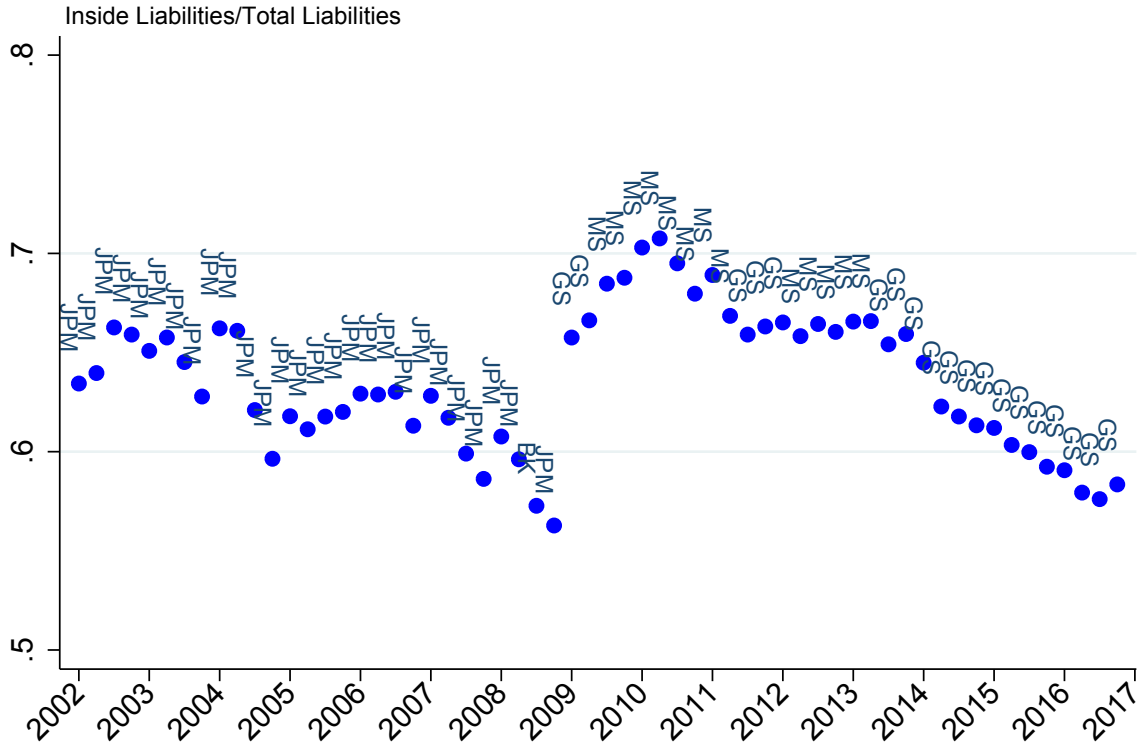


Figure 7: **Maximum Liability Connectivity Among Large BHCs (β^+)**. The most interconnected BHC before the financial crisis was JP Morgan & Chase. After Goldman Sachs and Morgan Stanley join the BHC sample in 2009, they become the most interconnected firms for the remainder of the sample.

Expected losses increased not only because real estate kept deteriorating, but also because the slowdown in real economic activity induced an increase in expected losses for almost all categories of outside assets, including commercial, industrial and consumer loans. Financial connectivity also increased, driven by the failure of some network nodes and the merger and consolidation of various other nodes. Keeping in mind that our estimates are always upper bounds and not point forecasts, to the best of our knowledge, a 25 percent amplification is the largest empirical estimate for network spillovers in the literature. Estimates that exceed 25 percent in the literature usually rely on additional amplification mechanisms (like bankruptcy costs – see Section 5 – or the interaction of default cascades with other phenomena, such as runs and fire-sales. The NVI remains highly elevated in 2009-Q2 at 23 percent before dropping to 18.6 percent and 12.5 percent in 2009-Q3 and 2009-Q4, respectively.

After 2009, our spillover measure hovered between 5 and 10 percent until 2012, when the European crisis started to recede. From 2013 onward, the measure steadily decreased and reached pre-crisis levels by 2015. The most important contributor to this decrease was the reduction in the probability of default of financial institutions, particularly bank holding companies that strengthened their equity capital positions substantially over this period. Financial connectivity remained elevated until 2014 and has been declining ever since. Starting in 2015, average default probabilities have slightly increased. However, because financial connectivity has continued to decline between 2015 and 2017, our overall measure of spillovers is little changed.

4.2 Results of FR-Y9C Asset and Liability Line-Item Classifications

Tables 1 and 2 show what percentage of BHC inside and outside assets and liabilities are attributable to each of several broad categories of balance sheet items, based on our classifications in Tables 8 and 9.

These being BHCs, it is unsurprising that deposits comprise a large portion of both inside and outside liabilities. Inside assets are mostly comprised of repurchase agreements, federal funds, and deposits, while outside assets are mostly loans and mortgage-backed securities.

BHC Assets Inside Financial System (%)		BHC Assets Outside Financial System(%)	
Repos and Fed Funds	39.37	Loans	58.18
Interest Bearing Deposits	24.42	Agency MBS	12.96
Other Trading Assets	6.92	State, Treasury, and Agency Debt	7.79
Private Label ABS	4.74	Other Securities	5.06
Goodwill	4.49	Interest Bearing Deposits	3.85
Derivatives	4.02	Other Trading Assets	2.05
Private Label MBS	1.47	Noninterest Bearing Deposits	1.67
Other	14.58	Goodwill	1.33
		Derivatives	1.19
		Other	5.91
% of BHC Assets	22.85	% of BHC Assets	77.15

Table 1: **Shares of BHC Assets Inside and Outside the Financial System By Category, 2016-Q4.**

BHC Liabilities Inside Financial System (%)		BHC Liabilities Outside Financial System (%)	
Uninsured Domestic Deposits	54.98	Insured Domestic Deposits	58.52
Repos and Fed Funds	11.74	Foreign Deposits	17.15
Longer Term Debt	10.73	Longer Term Debt	9.82
Trading Liabilities	6.22	Short Term Debt	3.53
Short Term Debt	3.86	Subordinated Debt	2.96
Derivatives	3.78	Other	8.03
Other	8.70		
% of BHC Liabilities	47.79	% of BHC Liabilities	52.21

Table 2: **Shares of BHC Liabilities Inside and Outside Financial System by Category, 2016-Q4.**

4.3 Sector-Specific Average Default Probabilities

As we discuss in Section 3.4, we calculate an asset-weighted average default probability for several different groupings of firms as proxies for the actual average EDF measure of their entire respective financial subsectors, so that the assets of firms in those subsectors can be incorporated into the final NVI. Figure 8 shows the final series for these average default frequencies at each point in our quarterly sample. For ease of comparison, we also plot an analogous average default probability (again asset-weighted) for the portion of our sample included in the FR-Y9C report. Figure 8 shows that the default probabilities for each subsector exhibit similar movements. All sectors show greatly heightened default probabilities during the financial crisis, with the average default probabilities of broker dealers and the ‘other’ category elevating earliest in the crisis and remaining heightened for the longest. The largest default probability magnitudes come from the ‘other’ category, and from real estate investment trusts, which experienced a number of defaults around this time²².

²²To see the firms whose default probabilities are included in each sector subsample at a snapshot of our data sample (2016-Q4), as well as the asset-weights assigned to them, see Tables 4, 5, 6, and 7.

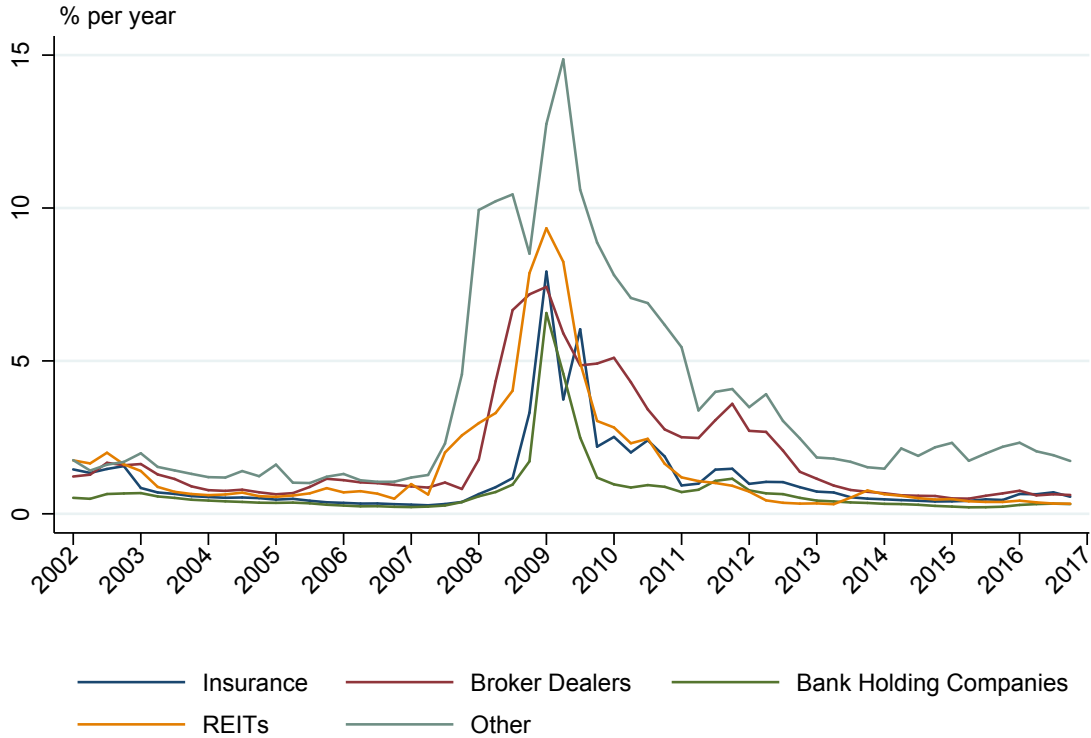


Figure 8: **Sector-Wide Asset-Weighted Average Probabilities of Default.** Using firm-specific EDF measures and total firm assets, we calculate asset-weighted average expected default frequencies for each financial subsector in the estimated network at each quarter in our sample. These probabilities are used in our final network vulnerability measure to fill in portions of the financial sector not covered by the FR-Y9C. All sectors show greatly heightened default probabilities during the financial crisis.

4.4 Firm-Specific Contagion Indices

A useful understanding of our NVI measure can come from investigating the NVI's variables of interest for some of the largest firms in our sample. Figure 9 plots several important firm-specific variables that contribute to the NVI for four large BHCs - JP Morgan & Chase, Wells Fargo, Bank of America, and Citigroup. Measures that feed directly into the NVI - outside assets c and connectivity β - are plotted alongside the contagion index measure defined in Section 2.

Figure 9 shows how the general, system-wide dynamics described above play out for a few important financial institutions. The path of financial connectivity for these firms differs from 2002-2008, but falls or remains steady for each of them either during the

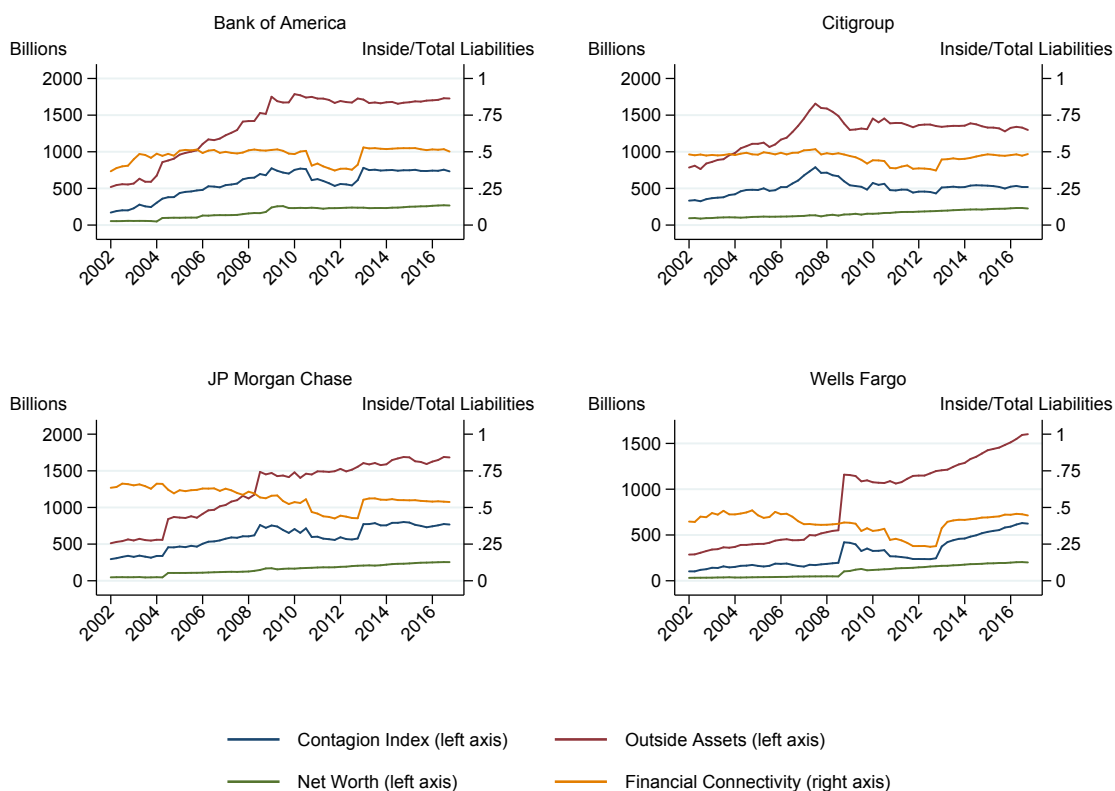


Figure 9: **Firm-Specific Variables for Select Large BHCs.** The figures show the net worth (the difference between total liabilities and total assets), total assets outside the financial system, the ratio of inside liabilities to total liabilities (connectivity), and the contagion index for several large BHCs.

financial crisis or soon thereafter. Financial connectivity for each of these large firms had risen back to pre-crisis levels by the end of 2016.

Three of these four firms were parties to large-scale acquisitions of other financial firms at the time of the crisis (Bear Stearns for JPM, Merrill Lynch for BAC, and Wachovia for WFC), which caused their outside assets (and assets generally) to increase around that time. Naturally, this causes increases in the ‘contagion index’, which is linked to the probability of a failure by that firm causing subsequent contagion defaults. As the smallest of these four firms’ contagion index is larger than any one of their net worths, we cannot rule out the possibility that a large exogenous shock to one firms’ assets could cause a contagion failure in another of these four firms. However, given the large size of each of these firms’ outside assets compared to each other’s contagion indices, we know that the probability of a shock to one firm’s assets causing default in any other

of these firms must be lower than the probability of that firm defaulting because of its own exogenous shock (see Glasserman and Young (2015)). Table 3 shows the same field values for 19 of the largest BHCs in the sample for the final period of our data, 2016-Q4.

	Contagion Index	Financial Connectivity	Outside Assets	Net Worth
JPMORGAN CHASE CO	767.62	0.54	1683.01	254.40
BANK OF AMER CORP	732.66	0.50	1727.24	266.84
WELLS FARGO CO	624.17	0.45	1601.25	200.50
CITIGROUP	519.09	0.48	1297.92	226.14
MORGAN STANLEY	198.72	0.55	441.43	77.18
GOLDMAN SACHS GROUP THE	169.89	0.58	378.56	87.40
U S BC	164.01	0.45	415.33	47.93
PNC FNCL SVC GROUP	104.62	0.39	316.84	46.85
BANK OF NY MELLON CORP	91.46	0.52	216.21	39.58
CAPITAL ONE FC	80.22	0.28	332.25	47.51
BBT CORP	75.87	0.44	203.87	29.93
SUNTRUST BK	73.89	0.44	193.30	23.62
CITIZENS FNCL GRP	67.63	0.55	141.88	19.75
FIFTH THIRD BC	56.52	0.49	131.46	16.23
STATE STREET CORP	54.03	0.49	131.97	21.22
KEYCORP	53.33	0.46	130.03	15.24
AMERICAN EXPRESS CO	52.00	0.43	140.27	20.50
ALLY FNCL	38.53	0.28	148.69	13.32
REGIONS FC	37.28	0.37	117.42	16.66

Table 3: **Select Firm-Specific Variables for Large BHCs, 2016-Q4.** The table shows the net worth (the difference between total liabilities and total assets), total assets outside the financial system, the ratio of inside liabilities to total liabilities (connectivity), and the contagion index for BHCs in the last period of our sample.

5 Robustness

We next test the robustness of our results to changes in a number of data treatment procedures and model assumptions.

5.1 Bankruptcy Costs

A common choice in the financial contagion literature is to impose additional costs of bankruptcy on firms that default. These additional costs are frequently cited as a potential factor for contagion risk. A necessarily incomplete list of the reasons for such costs includes: Delay of payments, inefficient liquidations, penalties, funding shortages, downgrades on debt instruments, runs, legal fees, administrative expenses and, more generally, disruptions to the provision of financial intermediation services necessary to the real economy²³. The Eisenberg and Noe (2001) framework can be easily modified to include these sorts of costs, and Glasserman and Young (2015) find a new upper bound on relative network spillovers in their presence. This new upper bound is

$$B = 1 + \frac{1}{(1 - (1 + \gamma)\beta^+)} \frac{\sum \delta_i c_i}{\sum c_i}, \quad (6)$$

where $\gamma \in [0, 1]$ are imposed when a firm defaults by reducing asset values by a share γ of payment shortfalls..

As Glasserman and Young (2016) note, estimating γ empirically can be quite challenging. To test whether different bankruptcy costs change the central story of our NVI, Figure 10 plots the new upper bound in the presence bankruptcy costs of different magnitudes.

The dynamics of the NVI are the same under reasonable levels of bankruptcy costs. The level of the NVI under different γ specifications also remains similar for every γ except for the largest bankruptcy cost we consider, $\gamma = 30\%$. Even in the case of $\gamma = 30\%$, the conclusions to be drawn from the measure are much the same as those from our benchmark setting. That is, when the upper-bound is small enough to draw meaningful conclusions, it is small in both setups. In times when the benchmark NVI is too large to make definitive statements about the relative magnitude of contagion losses, it is similarly too-large in both configurations.

²³For a good example on these and other costs of failure, see the study of Lehman Brothers' case by Fleming and Sarkar (2014).

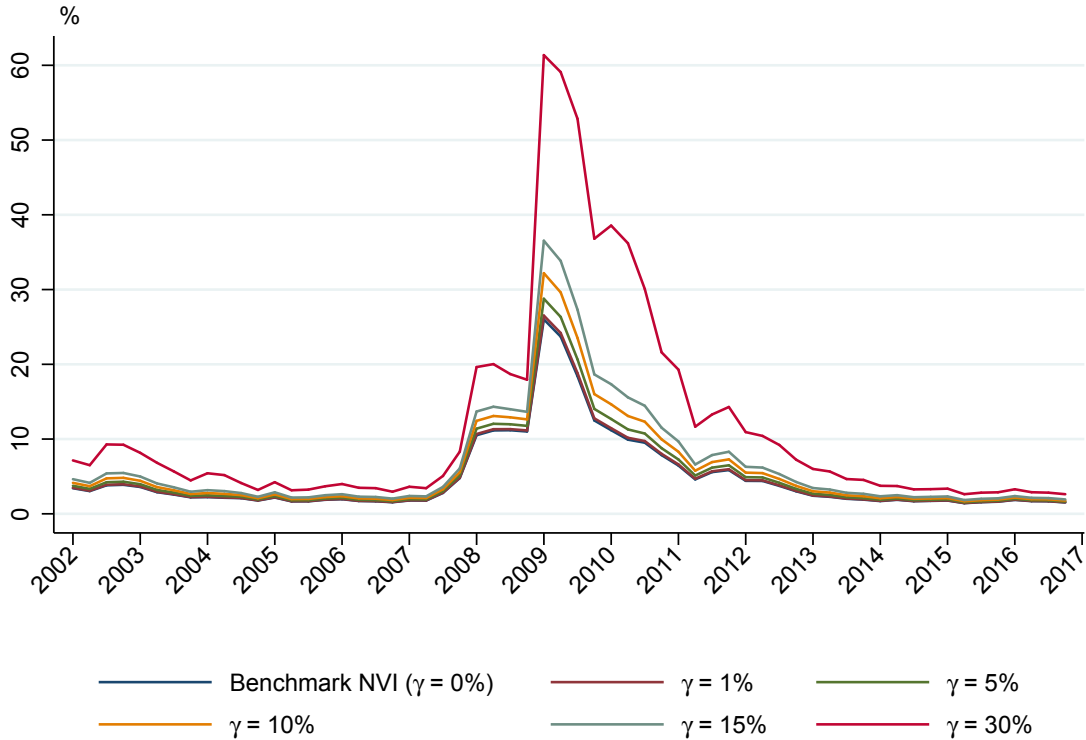


Figure 10: **Network Vulnerability with Additional Costs of Bankruptcy.** Adding bankruptcy costs to the model increases the vulnerability of the system to network spillovers, but does not change the qualitative nature of our results.

5.2 FR-Y9C Balance Sheet Classifications

Whenever a more absolute classification seemed inappropriate for a particular line item, we allocated 50% of the line item as inside and 50% as outside the financial system. Figure 11 shows how different allocations of these more uncertain balance sheet items as inside or outside the financial system change the NVI. The allocation of these fields can have a material effect on the magnitude of the series, particularly around the financial crisis. However, much as before, the conclusions to be drawn from the NVI, considering its nature as an upper-bound, are qualitatively the same across different allocation schemes of these assets and liabilities.

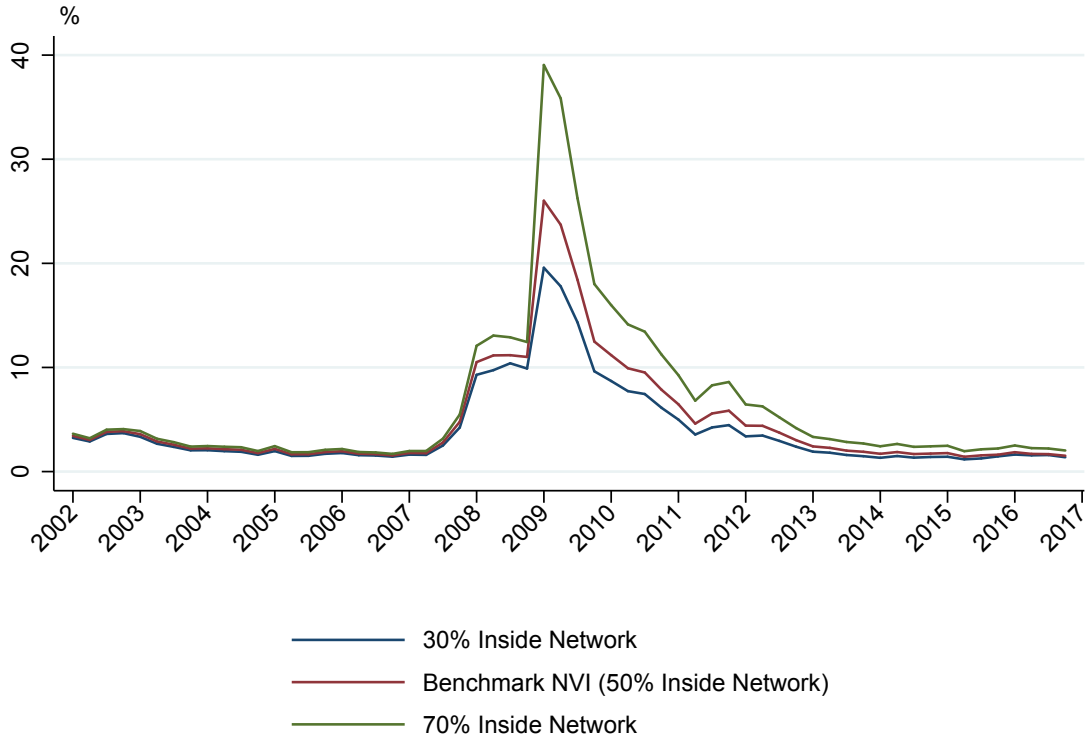


Figure 11: **Network Vulnerability Under Different Classifications of Hard-To-Classify and Liabilities.** The lines of this figure show the upper bound on expected network spillovers when we make different classification decisions for balance sheet items that are neither clearly inside nor outside the network. While different schemes can alter the magnitude of the measure, especially in the financial crisis, the measure remains qualitatively similar.

5.3 β^+ Selection Sample

We are also interested in learning how sensitive our NVI measure is to different selections of firm liability connectivity β to use as the maximum connectivity β^+ in the NVI. In the benchmark setup, β^+ is chosen as the largest β^+ among the top 20 BHCs by assets at any point in the sample.

Figure 12 assesses the importance of this selection by applying different criteria for choosing a specific firm's β as β^+ for the quarter. Panel (a) shows the NVI under these different criteria and Panel (b) shows the maximum liability connectivity β^+ chosen under each scheme.

In two of the test cases, we simply select β^+ as the second or third highest connectivity

among large BHCs, instead of the highest. This can have a large impact on the size of the connectivity value β^+ in the measure, but ultimately any magnitude shifts are insufficient to cause any notable differences in the NVI itself.

Another potential selection method would be to select β^+ as the largest financial connectivity among all firms in a given quarter, regardless of the size of that firm. This setup could lend the measure more theoretical validity, as β^+ in the model of Glasserman and Young (2015) is in fact the largest of *any* node in the system. Figure 12 shows that this can have a dramatic impact on both β^+ and the NVI. Panel (b) of Figure 12 shows why this is the case. Early in the sample, the Investors Financial Services Corporation (ticker IFIN) has a very high β , consistently higher than 0.95. Following IFIN’s acquisition by State Street in 2007, the full-sample β^+ drops substantially, coming much close to that chosen from the largest BHCs. Panel (a) of Figure 12 shows that, at this same time, the NVI calculated from this unrestricted β^+ becomes more similar in magnitude to that from the benchmark setup. Even though it is more theoretically appealing to use the largest β across all firms in our sample, we judge the NVI to be more useful as an empirical gauge of network spillovers when it is not driven by the balance sheet composition of a single small firm²⁴.

5.4 Comparison with FR Y-15 Data

Beginning in 2012, the Board of Governors of the Federal Reserve System began requiring large US BHCs to file an FR-Y15 Systemic Risk Report, which reports (among other indicators) certain variables relating to total intrafinancial assets and liabilities²⁵. The low yearly frequency, short sample, and narrower panel of firms available with this data make this form less appealing as a main source of data. However, information from the form is still useful as a cross-check, especially given that the form line items more closely correlate to the model’s variables. The following figures incorporate these fields into our NVI measure in a variety of different ways.

First, Figure 13 uses FR-Y15 data by the most direct method, substituting applicable FR-Y15 fields into the NVI equation 3. One setup in Figure 13 uses the FR-Y15 value for intrafinancial liabilities to construct liability connectivity β for firms who file an FR-

²⁴However, the fact that IFIN has the largest β in the sample is unsurprising, and serves as a reassuring check on the validity of our inside/outside liability classifications. IFIN specifically provided asset management services to US financial services industry, making it the perfect candidate for large financial connectivity.

²⁵Available at time of publication at <https://www.ffiec.gov/nicpubweb/nicweb/Y15SnapShot.aspx>.

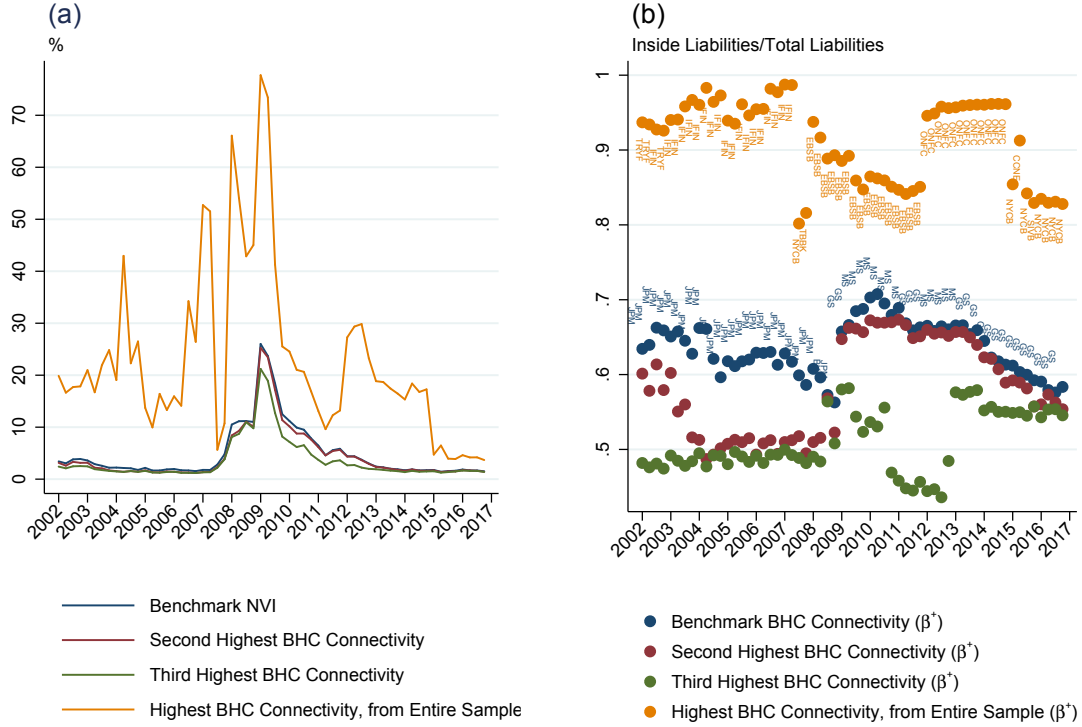


Figure 12: **Network Vulnerability and Maximum Connectivity, Different Selection Criteria.** Panel (a) shows the upper bound on network spillover effects when we make different selection decisions for which BHC to have its liability connectivity counted as the largest liability connectivity for the system. When we limit ourselves to the top BHCs by assets, it does not materially affect the NVI if we select the highest connectivity, second highest, or third highest. If we relax our restriction of high-asset BHCs, however, and allow any firm in the FR-Y9C to have the highest connectivity, then the movements of the NVI become unpredictable. Panel (b) shows the level of connectivity chosen as the highest under each of those four selection criteria. Selecting the highest connectivity from any FR-Y9C firm allows several small, highly connected firms to have an undue influence on this value.

Y15, then subsequently chooses the maximum of those newly-generated β values as the maximum connectivity β^+ for the NVI. Another of Figure 13's configurations directly uses FR-Y15 data for all balance-sheet items in the NVI's computation. To do this, we first limit our sample to those firms who have filed an FR-Y15 at some point from 2012-2016 (this limits our BHC sample, and completely removes our non-BHC approximated subsector nodes). With our panel reduced in this way, we are able to both use the FR-Y15 for maximum connectivity β^+ as before, and use intrafinancial assets to calculate c_i for each firm in the sample. To differentiate the effects of the FR-Y15 data from those

of a panel size reduction, we also plot a version of the NVI computed with our standard data sources, but that limits its sample to those same firms.

While these new data sources cause changes that are moderately-sized in relative terms, they only serve to shift downward our upper bound measure, in a period when that upper bound was already quite low. To that extent, the FR-Y15 data does not change the conclusions of the NVI as an upper bound in these periods - namely, that the potential for network spillover losses from direct counterparty exposures is very small from 2013-2016.

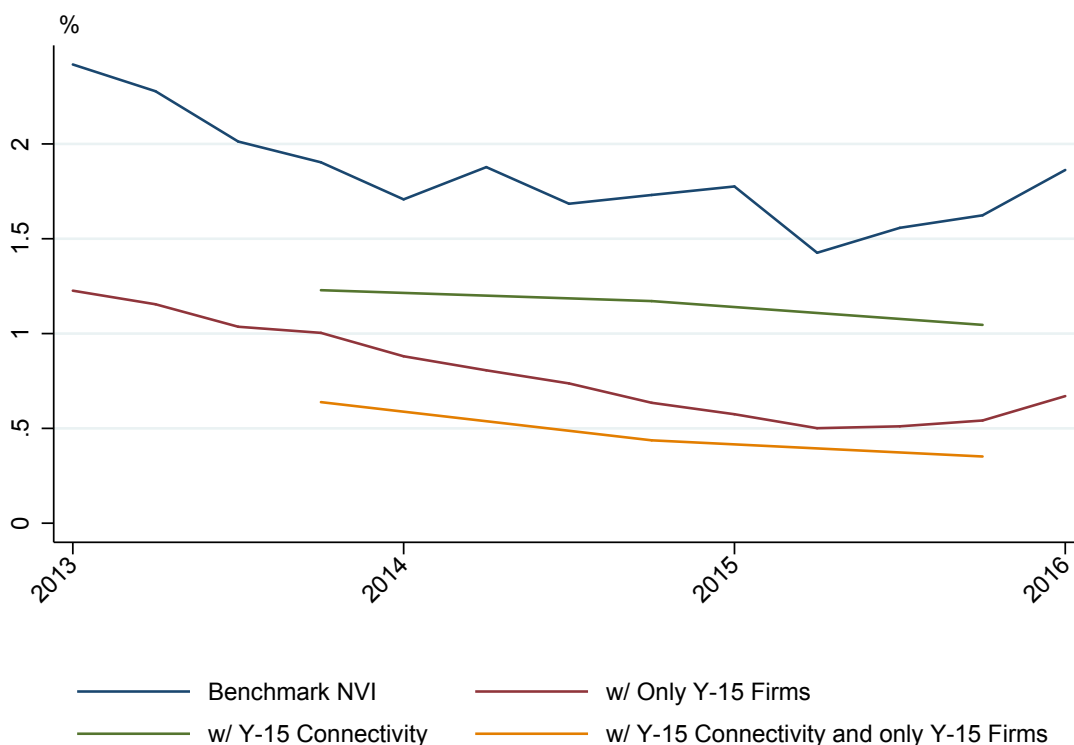


Figure 13: **Network Vulnerability Calculated with FR-Y15 Data.** The green line uses FR-Y15 data, when available, to calculate the maximum liability connectivity β^+ that enters the NVI. The red line limits the panel of firms in the NVI to the FR-Y15 sample, then uses the FR-Y15 for all relevant balance sheet fields. Finally, the orange line calculates the NVI using our standard data sources, but only for the panel or firms with FR-Y15 data. This different data source yields fairly different NVI results in magnitude, but the conclusions to be drawn from that measure in this period remain unchanged.

A second way to use FR-Y15 data is to use the reported fields for intrafinancial deposit liabilities to help inform our classification of deposit liabilities. Figure 14 shows

the NVI with this change. Specifically, we find a firm-specific average percentage of non-insured deposits inside the financial system from the FR-Y15 sample, then assume that that same percentage of non-insured deposits are inside the system for the entire sample. This allows us to recalculate β for firms that filed an FR-Y15 from 2013-2016 (which roughly includes the same firms from which we select β^+ in the benchmark setup), and select a new β^+ for the NVI. Figure 14 also includes a much-coarser robustness check that changes the quantity of non-insured domestic deposits classified as inside the system, from 100% in the benchmark, to 20%.

While these adjustments have some impact on the measure - particularly in mid-to-late 2008 - they certainly do not change the nature of any of our conclusions. We view this as reassuring that our 100% inside-system assignment for non-insured deposits, while unrealistic for most firms, has little impact on our actual upper-bound.

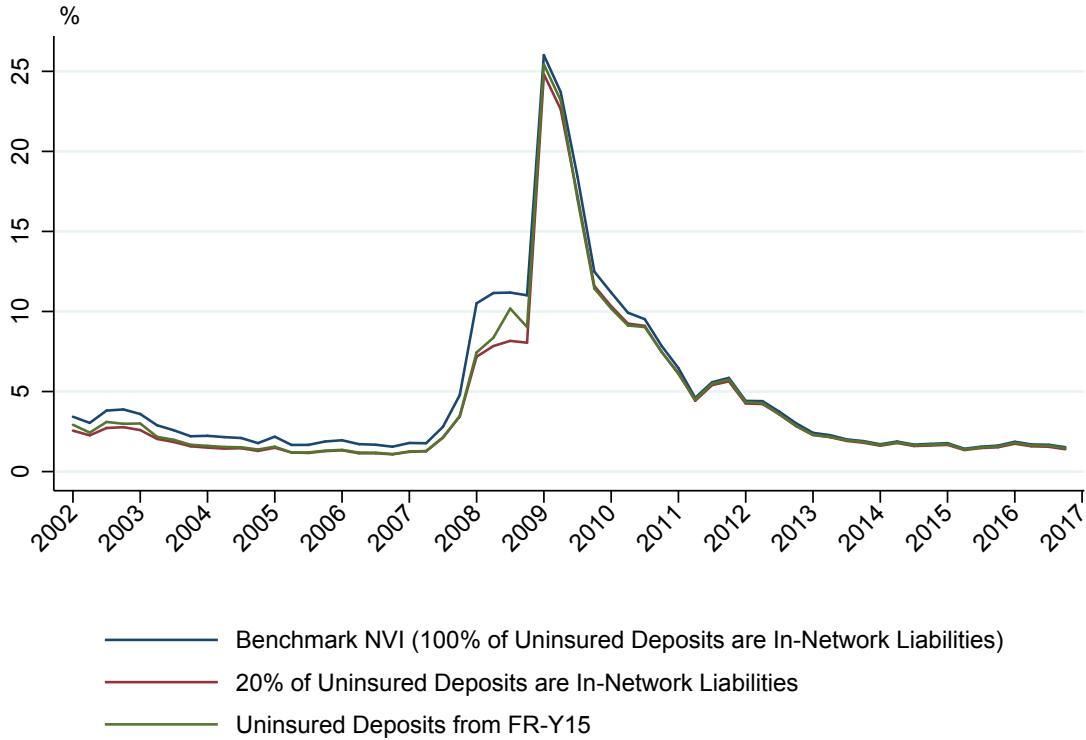


Figure 14: **Network Vulnerability with Alternate Percentages of Uninsured Deposits Inside the Network.** The red line above shows the NVI when only 20% of uninsured domestic deposits are classified as ‘inside’ the financial system, for the purpose of calculating liability connectivity (as opposed to 100% in the Benchmark setup). The green line uses FR-Y15 data to construct an average percentage of non-insured deposits inside the system for those firms who file the FR-Y15. That average percentage from the FR-Y15 sample period is then applied for that firm uniformly across each quarter. Neither of these configurations alter the NVI in any substantial way.

Lastly, we wish to see whether any of the off-balance sheet fields on the FR-Y15 can, when combined with our FR-Y9C classifications, alter our NVI in any way. Particularly, the fields allowing firms to record the magnitudes of any undrawn lines of credit with financial institutions and the magnitude of any potential future exposure on over-the-counter derivatives are potentially practically-meaningful assets or liabilities for a firm, but would not appear on the FR-Y9C balance sheet. Figure 15 incorporates information from the FR-Y15 on these quantities into the measure in a similar way to Figure 14. We limit our NVI sample to FR-Y15 filing firms, then estimate a firm-specific average percentage of total firm assets or liabilities added by including these fields on the balance sheet. Finally, we add extra inside assets or liabilities to that firm in each quarter

using those percentages and the firm’s total assets or liabilities at the time. Figure 15 shows that, while these values can change the NVI (primarily by increasing liability connectivity) the connectivity increases implied by their magnitudes in 2013-2016 are not sufficient to impact the NVI in any meaningful way.

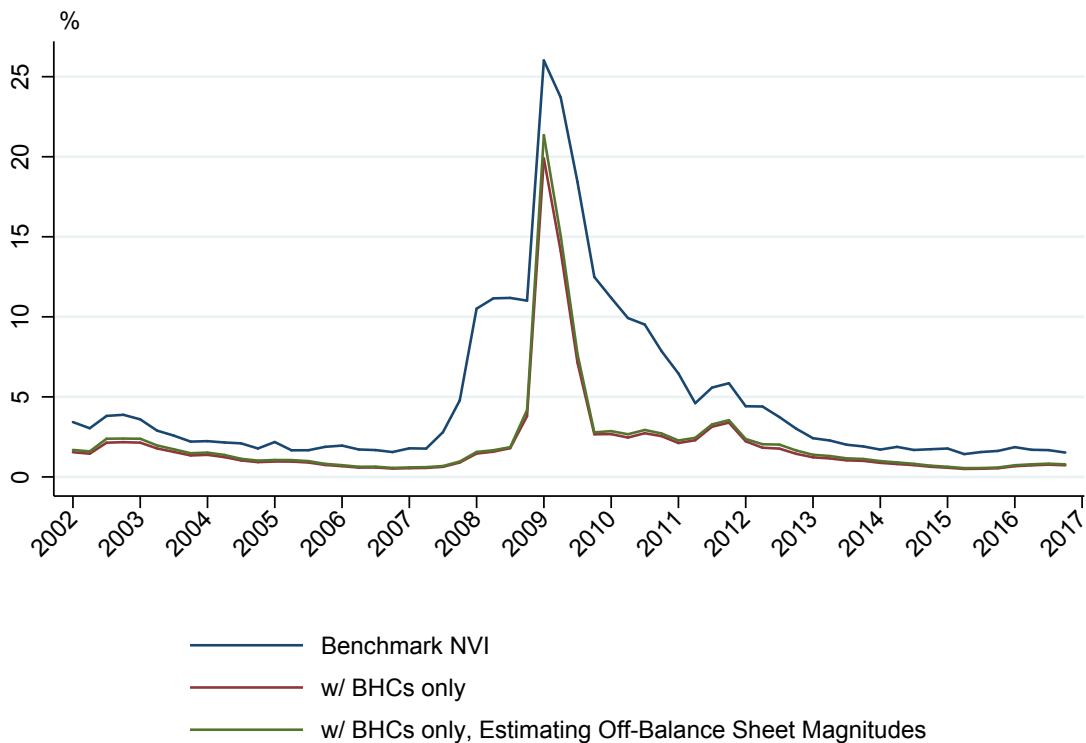


Figure 15: **Network Vulnerability with Extrapolated Quantities for FR-Y15 Off-Balance Sheet Items.** The green line shows the value of the NVI when limited to FR-Y15 filing firms, and when certain off-balance sheet items from the FR-Y15 are applied to earlier quarters in the sample. This is done by constructing an average percentage of total firm assets or liabilities attributable to those fields, and assuming that same percentage of assets or liabilities should be added as ‘inside’ the financial system throughout the sample. The NVI constructed only from FR-Y15 filing firms (i.e. removing all approximated subsector firms) is included in the red line, for reference. These changes have no discernible impact on the NVI, when compared to the benchmark setup over the same panel of firms.

6 Conclusion

By using detailed data on balance sheet exposures for US financial firms, we have constructed a measure of network spillovers that arise through default cascades in the period

2002-2016. We find that default spillovers, on their own, can amplify expected losses by up to 25% during the financial crisis, but are close to zero before 2008 and after 2012. Default spillovers can be large when nodes inside the network are more exposed to losses outside the network or when the topology of the network implies a higher degree of connectivity among nodes. We find that both elements are important contributors to the time-series dynamics of spillovers and that they can move together or in opposite directions depending the time period examined. In contrast to some narratives of the crisis, we find that neither the exposure to the outside sector nor the connectivity of the financial network increased before the financial crisis. Instead, we find that the events *during* the crisis made the network fragile. After the crisis, our measure of spillovers returned to its low pre-crisis levels, although in the last two years of our sample (2015 and 2016) it has shown a slight increase that may provide a useful signal for policymakers. Considering further amplification mechanisms, such as bankruptcy costs, exacerbates the magnitude of default spillover losses but does not change the conclusion that spillovers were important in 2008-2012 and negligible in the rest of our sample.

References

- ACHARYA, V. V., L. H. PEDERSEN, T. PHILIPPON, AND M. RICHARDSON (2017): “Measuring systemic risk,” *The Review of Financial Studies*, 30(1), 2–47.
- ADRIAN, T., AND M. K. BRUNNERMEIER (2016): “CoVaR,” *The American Economic Review*, 106(7), 1705–1741.
- ALLEN, F., AND D. GALE (2000): “Financial contagion,” *Journal of political economy*, 108(1), 1–33.
- BOSS, M., H. ELSINGER, M. SUMMER, S. THURNER, ET AL. (2004): “An empirical analysis of the network structure of the Austrian interbank market,” *Oesterreichische Nationalbanks Financial stability Report*, 7, 77–87.
- BROWNLEES, C., AND R. F. ENGLE (2016): “SRISK: A conditional capital shortfall measure of systemic risk,” *The Review of Financial Studies*, 30(1), 48–79.
- CRAIG, B., AND G. VON PETER (2014): “Interbank tiering and money center banks,” *Journal of Financial Intermediation*, 23, 322–347.
- DREHMANN, M., AND N. TARASHEV (2013): “Measuring the systemic importance of interconnected banks,” *Journal of Financial Intermediation*, 22, 586–607.
- EISENBERG, L., AND T. H. NOE (2001): “Systemic risk in financial systems,” *Management Science*, 47(2), 236–249.
- ELSINGER, H., A. LEHAR, AND M. SUMMER (2006a): “Risk assessment for banking systems,” *Management science*, 52(9), 1301–1314.

- (2006b): “Using market information for banking system risk assessment,” *International Journal of Central Banking*, 2, 137–165.
- FLEMING, M. J., AND A. SARKAR (2014): “The Failure Resolution of Lehman Brothers,” *Federal Reserve Bank of New York Economic Policy Review*, 20(2), 175.
- FREIXAS, X., B. M. PARIGI, AND J.-C. ROCHET (2000): “Systemic risk, interbank relations, and liquidity provision by the central bank,” *Journal of money, credit and banking*, pp. 611–638.
- GLASSERMAN, P., AND H. P. YOUNG (2015): “How likely is contagion in financial networks?,” *Journal of Banking & Finance*, 50, 383–399.
- (2016): “Contagion in Financial Networks,” *Journal of Economic Literature*, 54, 779–831.
- GROPP, R., M. LO DUCA, AND J. VESALA (2009): “Cross-border bank contagion in Europe,” *International Journal of Central Banking*, pp. 97–139.
- HAWKESBY, C., I. MARSH, AND I. STEVENS (2007): “Comovements in the equity prices of large complex financial institutions,” *Journal of Financial Intermediation*, 2, 391–411.
- NAZERAN, P., AND D. DWYER (2015): “Credit Risk Modeling of Public Firms: EDF9,” .
- UPPER, C. (2011): “Simulation methods to assess the danger of contagion in interbank markets,” *Journal of Financial Stability*, 7, 111–125.
- UPPER, C., AND A. WORMS (2004): “Estimating bilateral exposures in the German interbank market: Is there a danger of contagion?,” *European Economic Review*, 48(4), 827–849.
- VAN LELYVED, I., AND F. LIEDORP (2006): “Interbank Contagion in the Dutch Banking Secgtor: A Sensitivity Analysis,” *International Journal of Central Banking*, 2, 99–133.

7 Appendix A: Additional Robustness Exercises

What follows is a continuation of the robustness exercises in Section 5, showing how our central Network Vulnerability Index (NVI) measure changes with different empirical decisions.

Financial Subsectors Included

Figure 16 shows how the NVI changes with the addition of each new financial subsector using the approximation procedure outlined in Section 3.4. The mostbasic version of our measure, which only uses data from the FR-Y9C form (that is, only large Bank Holding Companies) serves as a base sample, to which other subsectors are individually added through the equation 4 approximation. As FR-Y9C data is used for us to find the maximum liability connectivity β^+ for the sample, those firms must be included in each of the configurations. Our ‘other’ category is the only sector whose addition into the NVI alters the measure in any substantial way.

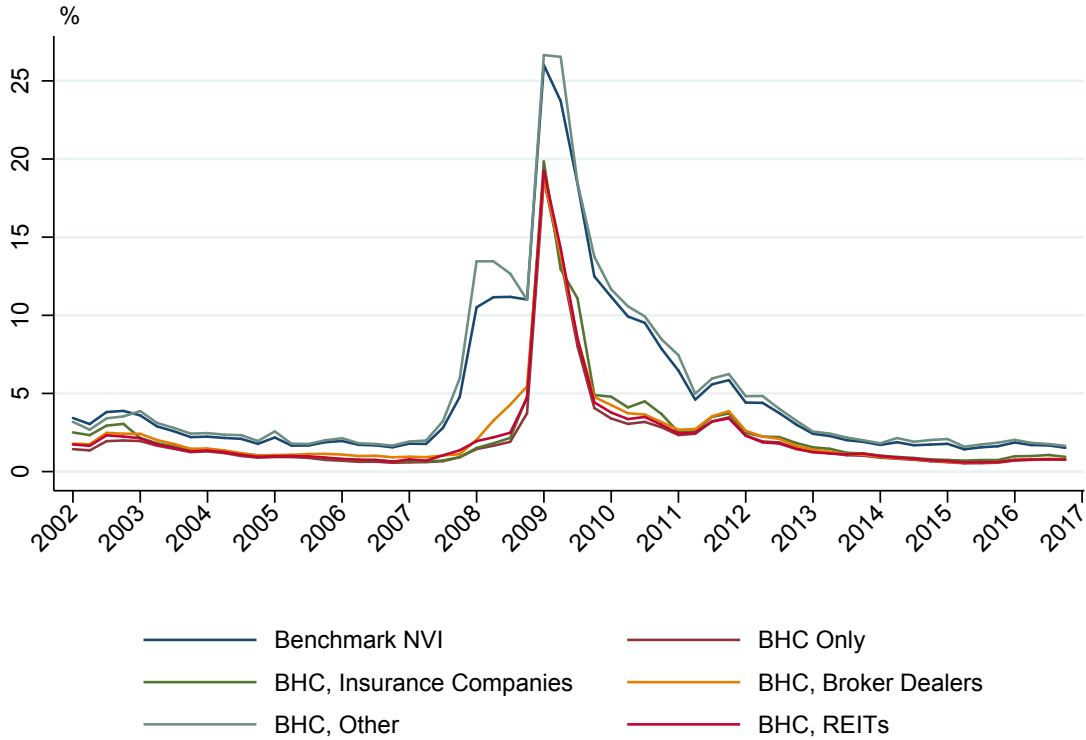


Figure 16: **Network Vulnerability Index in Different Subsamples.** This figure shows the NVI where only FR-Y9C firms are included in the network, and then a series of other configurations with other financial subsectors added to the network. The addition of the ‘other’ category, with its moderately large quantity of assets and very high probabilities of default, has the most impact on the NVI.

Moody’s EDF Version

As Nazeran and Dwyer (2015) describe in some detail, there were several notable changes made to the Moody’s EDF methodology between versions 8 and 9 of the data. A non-exhaustive list include changes to: the maximum allowable EDF for financial firms, the assumed informational value of financial firms’ balance sheets, and a large increase in financial firm defaults with which to inform estimation of the final empirical fitting of the model. While we are convinced that these changes improve the EDF measure’s applicability for our purposes, they do mean that the EDFs can look notably different depending on which version is being used.

Figure 17 shows the benchmark NVI (using EDF version 9), as well as an NVI series computed identically save for a switch from EDF version 9 to EDF version 8. When compared to an NVI calculated with version 8, the benchmark NVI increases earlier and more dramatically in the crisis, peaks somewhat higher in 2009, but then is lower from

the end of the financial crisis until 2014. Figure 18 shows a subsector breakdown of how average default probabilities change between the new and old data versions. BHCs, in particular, have very different EDF magnitudes in the peak of the crisis, and most other subsectors show some differences in the timing and duration of crisis EDFs.

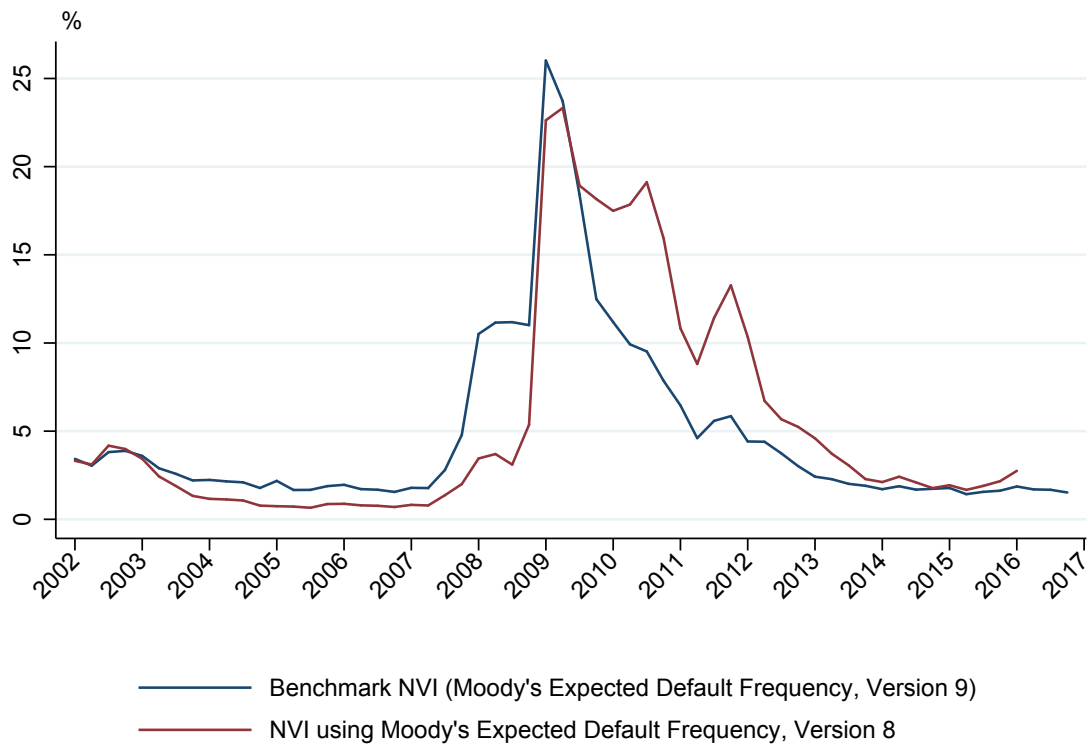


Figure 17: **Network Vulnerability Index with Different Versions of Moody's Expected Default Frequency.** The changes that Moody's Analytics implemented to their Expected Default Frequency (EDF) series between versions 8 and 9 have a material effect on our spillover measure. Particularly, under version 9 the measure rises earlier leading to the 2008 financial crisis, reaches higher magnitudes, then drops more rapidly after the most-severe parts of the crisis have passed.

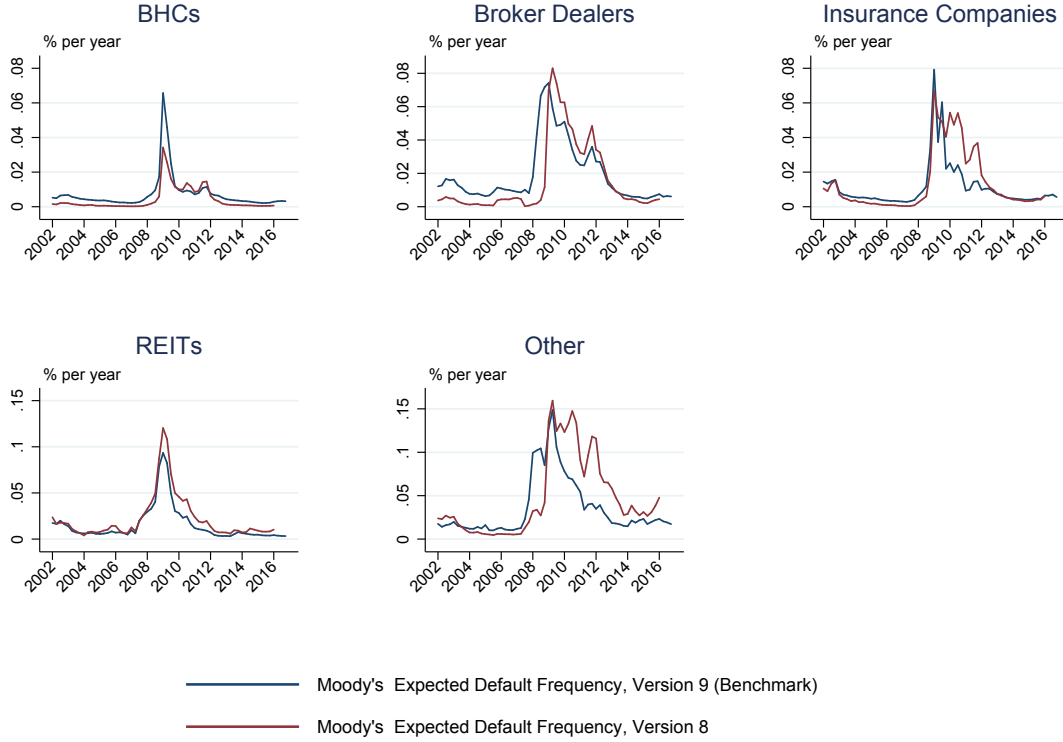


Figure 18: **Sector-Wide Asset-Weighted Default Probabilities with Different Versions of Moody's Expected Default Frequency.** Different versions of Moody's Analytics' Expected Default Frequency series suggest somewhat different default probability dynamics around the Financial Crisis. For certain types of firms, the new version gives much higher probabilities in the peak of the crisis. For other firm types, general magnitudes remain similar, but the timing and duration of high EDF spells change.

Balanced vs Unbalanced FR-Y9C Panel

Throughout 2002-2016, a number of firms enter and exit our FR-Y9C sample. Notable changes include the additions of Morgan Stanley and Goldman Sachs during the financial crisis, the departure of Metlife from the sample in 2012, and the temporary inclusion of American International Group in 2013 and 2014. We check whether the path or magnitudes of our NVI change when we restrict ourselves to a balanced panel of firms for the portions of our measure relying on the FR-Y9C data.

As Figure 19 illustrates, different balanced panel treatments have noticeable but relatively modest effects on the measure. In one Figure 19 configuration, we entirely drop any FR-Y9C balance sheet information unless the firm has filed the FR-Y9C for the entirety of our sample period. In the second alternate setup, we use all available FR-Y9C balance sheet information (as in the benchmark case), but we restrict our selection

of maximum connectivity β^+ to those BHCs whose data is available for the entire time series. As Goldman Sachs or Morgan Stanley occupy the position of most-connected firm in the benchmark case after their inclusion in the FR-Y9C sample in 2008, this second change does have a noticeable effect²⁶.

Figure 20 shows how subsector average default probabilities (which, aside from the maximum connectivity changes described above, are the primary way that a balanced panel can change our measure) change when a balance panel restriction is imposed. Most subsectors show very similar average default probabilities under the benchmark setup and a balanced panel treatment. The major exceptions are securities brokers and dealers, whose average default probability decreases much quicker after the height of the 2008 financial crisis. This shows the the effect outlined above - in a balanced panel setup, the default probabilities and assets of Morgan Stanley and Goldman Sachs are permitted to factor into the subsector average, which has a stabilizing effect on its magnitude.

²⁶Although this configuration is identical to the benchmark setup before 2008, as JP Morgan (which has FR-Y9C data in each quarter) is selected as the most-connected firm in those quarters.

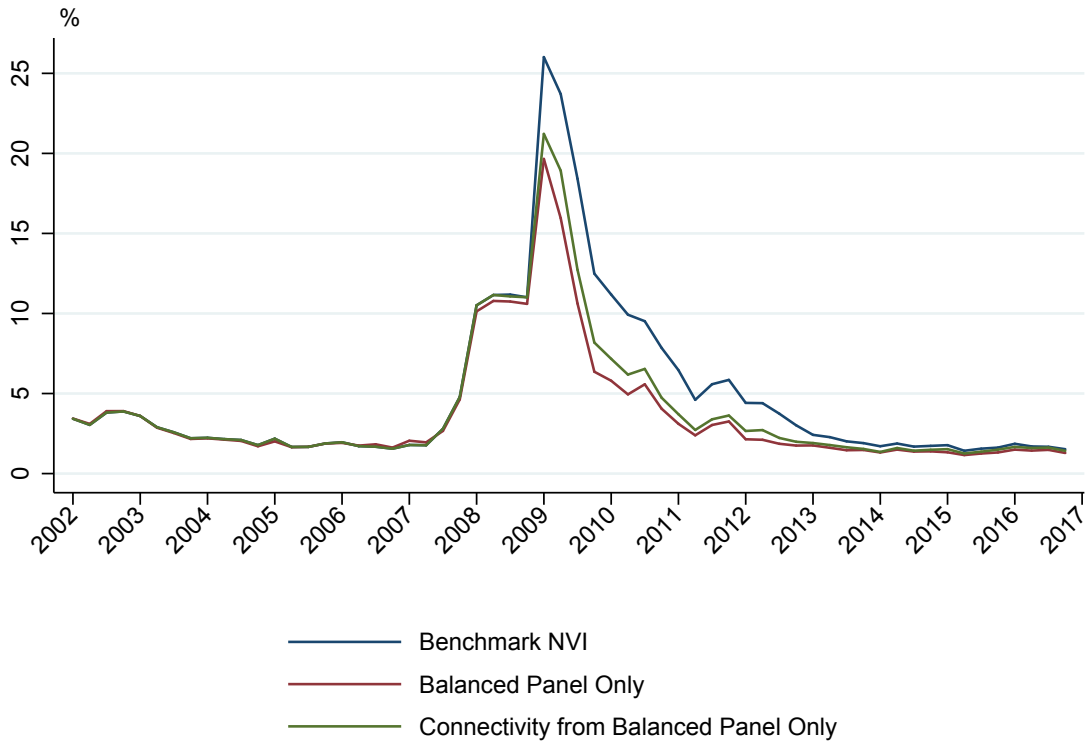


Figure 19: **Network Vulnerability Index with Balanced FR-Y9C Panels.** The red line of the figure shows our network spillover measure when we restrict our FR-Y9C sample to only those firms where data is available for our entire sample period, 2002-Q1 to 2016-Q4. The green line shows the spillover measure when we restrict the firms eligible to have their connectivity chosen as the maximum connectivity for the measure in equation 3 to the same balanced panel. Both treatments have noticeable, but relatively modest effects.

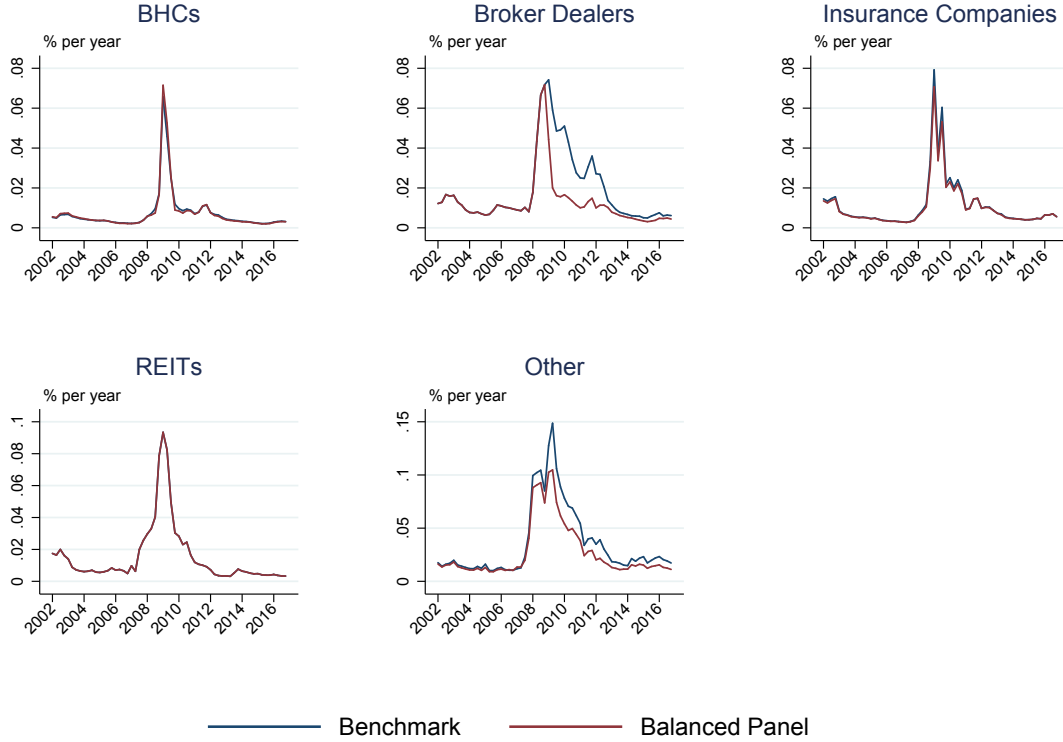


Figure 20: **Sector-Wide Asset-Weighted Default Probabilities with Balanced FR-Y9C Panels.** The subsector with the largest default probability change under a balanced panel treatment are security brokers and dealers. This happens because a balanced panel allows several large broker dealers who became BHCs during the Financial Crisis to remain in the subsector sample after 2008.

High, Fixed Default Probability

Next we show the behavior of our NVI when we assume crisis-like default conditions in every quarter of the sample - fixing default probabilities for all firms (in the FR-Y9C and in approximated subsector nodes) at 6% - which is close to the maximum average default probability in the BHC subsample. Figure 21 shows that the NVI remains relatively high throughout the entirety of the sample when this restriction is imposed. This shows that, while some variation in the NVI comes from connectivity dynamics reflected through β^+ , that majority of variation over time comes from the credit risk of firms.

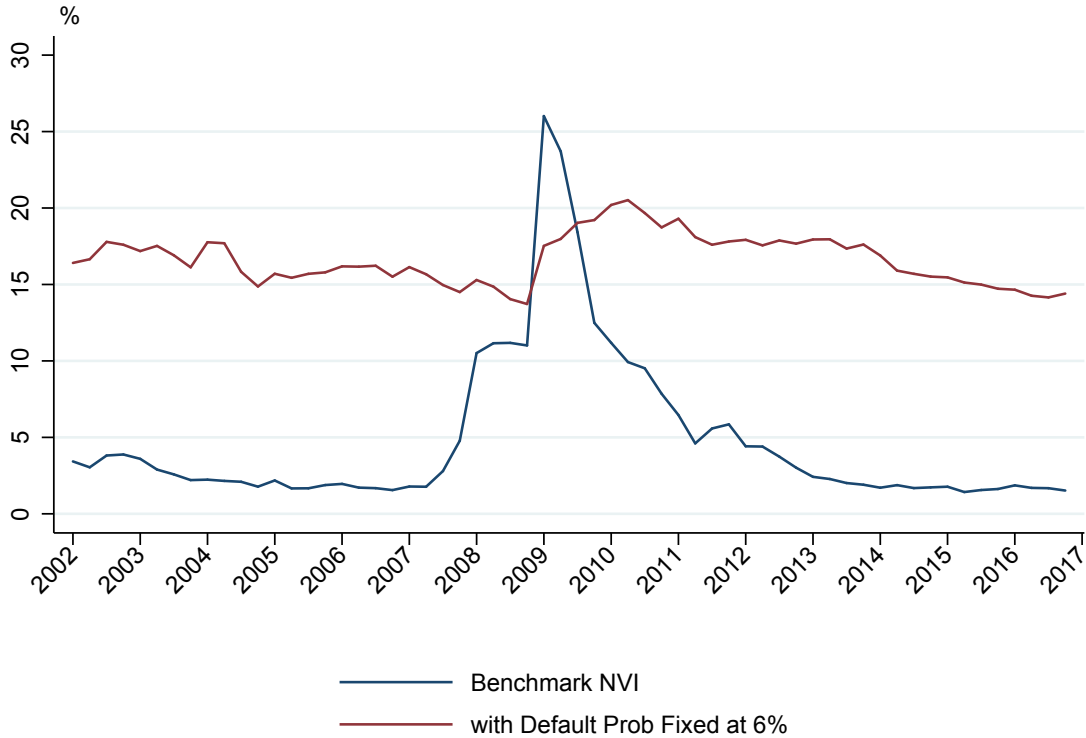


Figure 21: **Network Vulnerability Index Under a Fixed and High Default Probability of 6%.** The red line above shows the NVI when we assume that all firms in the network have a constant default probability of 6%. This shows that most time variation in the measure is driven by firm credit risk dynamics. As the NVI becomes linear in default probabilities when they are uniform across firms, the second line can be scaled to represent the NVI at any possible fixed default probability.

8 Appendix B: Subsector Firm Sample

As Section 3.4 describes, we use our Expected Default Frequency database from Moody's Analytics to compute an asset-weighted average probability of default for those firms where firm-level balance sheet data is less readily-accessible. Tables 4 to 7 show the asset weightings assigned to firms in each included subsector for 2016-Q4, that last period in our sample. For display purposes, any firms assigned less than a 1% weighting are not included in the table, although each table's final line shows what portion of total weights are assigned to all such firms. Note that these samples exclude any firms whose data is already included in our FR-Y9C sample (note the absence of Goldman Sachs or Morgan Stanley in the sample for security brokers and dealers, for instance).

Security Broker and Dealer	Asset Weighting
AMERIPRISE FINANCIAL INC	0.34
INTERCONTINENTAL EXCHANGE	0.18
CME GROUP INC	0.15
INTERACTIVE BROKERS GROUP	0.13
TD AMERITRADE HOLDING CORP	0.07
NASDAQ OMX GROUP INC	0.03
KCG HOLDINGS INC	0.02
INTL FCSTONE INC	0.01
BGC PARTNERS INC	0.01
LPL FINANCIAL HOLDINGS INC	0.01
Number of Firms in Sample	39
Weighting from Rest of Sample	0.05

Table 4: **Asset Weighting in Average Default Probabilities for Securities Brokers and Dealers, 2016-Q4.** Note that any firms with less than a 1% weighting are not displayed.

Insurance Company	Asset Weighting
METLIFE INC	0.20
PRUDENTIAL FINANCIAL INC	0.18
AMERICAN INTERNATIONAL GROUP	0.11
LINCOLN NATIONAL CORP	0.06
HARTFORD FINANCIAL SERVICES	0.05
VOYA FINANCIAL INC	0.05
AFLAC INC	0.03
UNITEDHEALTH GROUP INC	0.03
GENWORTH FINANCIAL INC	0.02
ALLSTATE CORP	0.02
TRAVELERS COS INC	0.02
LOEWS CORP	0.02
AETNA INC	0.02
ANTHEM INC	0.01
UNUM GROUP	0.01
CIGNA CORP	0.01
CNA FINANCIAL CORP	0.01
AMERICAN EQTY INVT LIFE HLDG	0.01
REINSURANCE GROUP AMER INC	0.01
AMERICAN FINANCIAL GROUP INC	0.01
Number of Firms in Sample	93
Weighting from Rest of Sample	0.11

Table 5: **Asset Weighting in Average Default Probabilities for Insurance Companies, 2016-Q4.** Note that any firms with less than a 1% weighting are not displayed.

Real Estate Investment Trust	Asset Weighting
ANNALY CAPITAL MANAGEMENT	0.06
STARWOOD PROPERTY TRUST INC	0.06
AMERICAN CAPITAL AGENCY CORP	0.04
SIMON PROPERTY GROUP INC	0.02
PROLOGIS INC	0.02
AMERICAN TOWER CORP	0.02
HEALTH CARE REIT INC	0.02
VENTAS INC	0.02
CROWN CASTLE INTL CORP	0.02
TWO HARBORS INVESTMENT CORP	0.02
EQUITY RESIDENTIAL	0.02
HCP INC	0.02
VORNADO REALTY TRUST	0.02
BOSTON PROPERTIES INC	0.01
NEW RESIDENTIAL INV CP	0.01
AVALONBAY COMMUNITIES INC	0.01
CHIMERA INVESTMENT CORP	0.01
INVESCO MORTGAGE CAPITAL INC	0.01
AMERICAN RLTY CAP PPTY INC	0.01
SL GREEN REALTY CORP	0.01
CAPSTEAD MORTGAGE CORP	0.01
Number of Firms in Sample	230
Weighting from Rest of Sample	0.54

Table 6: **Asset Weighting in Average Default Probabilities for Real Estate Investment Trusts, 2016-Q4.** Note that any firms with less than a 1% weighting are not displayed.

Other Financial Firm	Asset Weighting
PRINCIPAL FINANCIAL GRP INC	0.22
NAVIENT CORP	0.12
BLACKROCK INC	0.07
VISA INC	0.06
OAKTREE CAPITAL GROUP LLC	0.05
SANTANDER CONSUMER USA HLDGS	0.04
KKR CO LP	0.04
NELNET INC	0.03
INVESCO LTD	0.02
BLACKSTONE GROUP LP	0.02
MARSH MCLENNAN COS	0.02
SPRINGLEAF HOLDINGS INC	0.02
SLM CORP	0.02
WALTER INVESTMENT MGMT CORP	0.02
MASTERCARD INC	0.02
FRANKLIN RESOURCES INC	0.02
FEDERAL AGRICULTURE MTG CP	0.02
NATIONSTAR MORTGAGE HOLDINGS	0.02
FIDELITY NATL FINL FNF GROUP	0.01
ARTHUR J GALLAGHER CO	0.01
Number of Firms in Sample	128
Weighting from Rest of Sample	0.18

Table 7: **Asset Weighting in Average Default Probabilities for Other Financial Firms, 2016-Q4.** Note that any firms with less than a 1% weighting are not displayed.

9 Appendix C: Balance Sheet Asset and Liability Classifications

Table 8: Asset Variables

FR Y-9C Variable	2002-Q2 - 2005-Q4	2006-Q1 - 2007-Q4	2008-Q1 - 2009-Q1	2009-Q2 - 2010-Q4	2011-Q1 - Present	%In	%Out
Interest-Bearing Balances, Foreign Offices	BHCK0397	BHCK0397	BHCK0397	BHCK0397	BHCK0397	100	0
HTM: Other Residential MBS	(BHCK1709+ BHCK1733)* F ₁	(BHCK1709+ BHCK1733)* F ₁	(BHCK1709+ BHCK1733)* F ₁	BHCKG320	BHCKG320	100	0
HTM: ABS	BHCKB838+ BHCKB842+ BHCKB846+ BHCKB850+ BHCKB854+ BHCKB858	BHCKC026	BHCKC026	BHCKC026+ BHCKG336+ BHCKG340+ BHCKG344	BHCKC026+ BHCKG336+ BHCKG340+ BHCKG344	100	0
For-Sale: Other Residential MBS	(BHCK1713+ BHCK1736)* F ₂	(BHCK1713+ BHCK1736)* F ₂	(BHCK1713+ BHCK1736)* F ₂	BHCKG323	BHCKG323	100	0
Available-For-Sale: ABS	BHCKB841+ BHCKB845+ BHCKB849+ BHCKB853+ BHCKB857+ BHCKB861	BHCKC027	BHCKC027	BHCKC027+ BHCKG339+ BHCKG343+ BHCKG347	BHCKC027+ BHCKG339+ BHCKG343+ BHCKG347	100	0
Fed Funds	BHDMB987	BHDMB987	BHDMB987	BHDMB987	BHDMB987	100	0
Repo Purchases	BHCKB989	BHCKB989	BHCKB989	BHCKB989	BHCKB989	100	0
Trading: Structured Financial Products	BHCK3537* F ₃	BHCK3537* F ₃	BHCK3537* F ₃	BHCKG383+ BHCKG384+ BHCKG385	BHCKG383+ BHCKG384+ BHCKG385	100	0
Subsidiary Investments	BHCK2130	BHCK2130	BHCK2130	BHCK2130	BHCK2130	100	0
Domestic Interest-Bearing Deposits	BHCK0395	BHCK0395	BHCK0395	BHCK0395	BHCK0395	50	50
Available-For-Sale: Mutual Fund Investments	BHCKA511	BHCKA511	BHCKA511	BHCKA511	BHCKA511	50	50
Goodwill	BHCK3163	BHCK3163	BHCK3163	BHCK3163	BHCK3163	50	50
Available-For-Sale: Other Residential MBS, Govt Guaranteed	(BHCK1717+ BHCK1732)* F ₄	(BHCK1717+ BHCK1732)* F ₄	(BHCK1717+ BHCK1732)* F ₄	BHCKG319	BHCKG319	50	50
HTM: Other Residential MBS, Govt Guaranteed	(BHCK1714+ BHCK1718)* F ₅	(BHCK1714+ BHCK1718)* F ₅	(BHCK1714+ BHCK1718)* F ₅	BHCKG316	BHCKG316	50	50

Table 8: Asset Variables

FR Y-9C Variable	2002-Q2 - 2005-Q4	2006-Q1 - 2007-Q4	2008-Q1 - 2009-Q1	2009-Q2 - 2010-Q4	2011-Q1 - Present	%In	%Out
Interest Strips, Mortgages	BHCKA519	BHCKA519	BHCKA519	BHCKA519	BHCKA519	50	50
Life Insurance, General Account	-	-	-	-	BHCKK201	50	50
Life Insurance, Separate Account	-	-	-	-	BHCKK202	50	50
Life Insurance, Hybrid Account	-	-	-	-	BHCKK270	50	50
Trading: Other Loans	-	-	BHCKF618	BHCKF618	BHCKF618	50	50
HTM: Non-Agency Pass-Through MBS	(BHCK1709+ BHCK1733)* F ₆	(BHCK1709+ BHCK1733)* F ₆	(BHCK1709+ BHCK1733)* F ₆	(BHCKG308+ BHCKG320+ BHCKG324+ BHCKG328)* F ₆	BHCKG308+ BHCKK146+ BHCKK154	50	50
Available-For-Sale: Non-Agency Pass-Through MBS	(BHCK1713+ BHCK1736)* F ₇	(BHCK1713+ BHCK1736)* F ₇	(BHCK1713+ BHCK1736)* F ₇	(BHCKG311+ BHCKG323+ BHCKG327+ BHCKG331)* F ₇	BHCKG311+ BHCKK149+ BHCKK157	50	50
Trading: Other MBS	BHCK3536	BHCK3536	BHCKM3536	(BHCKG381+ BHCKG382)	BHCKG381+ BHCKK198	50	50
Trading: Other	BHCK3541	BHCK3541	BHCKM3541	BHCKM3541	BHCKM3541	50	50
Trading: Derivatives	(BHCK3543+ BHFN3543)	(BHCK3543+ BHFN3543)	BHCKM3541	BHCKM3543	BHCKM3543	50	50
Mortgage Servicing Assets	BHCK6438	BHCK6438	BHCK6438	BHCK6438	BHCK6438	50	50
Credit Card Relationships	BHCKB026	BHCKB026	BHCKB026	BHCKB026	BHCKB026	50	50
Other Intangible	BHCK5507	BHCK5507	BHCK5507	BHCK5507	BHCK5507	50	50
Accrued Interest	BHCKB556	BHCKB556	BHCKB556	BHCKB556	BHCKB556	50	50
Other Interest-only Strips	BHCKA520	BHCKA520	BHCKA520	BHCKA520	BHCKA520	50	50
Other	BHCK2168	BHCK2168	BHCK2168	BHCK2168	BHCK2168	50	50
Noninterest-Bearing Deposits	BHCK0081	BHCK0081	BHCK0081	BHCK0081	BHCK0081	0	100
HTM: Treasuries	BHCK0211	BHCK0211	BHCK0211	BHCK0211	BHCK0211	0	100
HTM: Agency Debt	BHCK1289	BHCK1289	BHCK1289	BHCK1289	BHCK1289	0	100
HTM: GSE Debt	BHCK1294	BHCK1294	BHCK1294	BHCK1294	BHCK1294	0	100
HTM: State Debt	BHCK8496	BHCK8496	BHCK8496	BHCK8496	BHCK8496	0	100
HTM: GSE MBS	BHCKK1698+ BHCK1703	BHCKK1698+ BHCK1703	BHCKK1698+ BHCK1703	BHCKG300+ BHCKG304	BHCKG300+ BHCKG304+ BHCKK142	0	100

Table 8: Asset Variables

FR Y-9C Variable	2002-Q2 - 2005-Q4	2006-Q1 - 2007-Q4	2008-Q1 - 2009-Q1	2009-Q2 - 2010-Q4	2011-Q1 - Present	%In	%Out
HTM: Agency MBS	BHCK1714+ BHCK1718- BHCKG316	BHCK1714+ BHCK1718- BHCKG316	BHCK1714+ BHCK1718- BHCKG316	BHCKG312	BHCKG312+ BHCKK150	0	100
HTM: Other Domestic Debt Securities	BHCK1737	BHCK1737	BHCK1737	BHCK1737	BHCK1737	0	100
HTM: Foreign Debt Securities	BHCK1742	BHCK1742	BHCK1742	BHCK1742	BHCK1742	0	100
Available-For-Sale: Treasuries	BHCK1287	BHCK1287	BHCK1287	BHCK1287	BHCK1287	0	100
Available-For-Sale: Agency Debt	BHCK1293	BHCK1293	BHCK1293	BHCK1293	BHCK1293	0	100
Available-For-Sale: GSE Debt	BHCK1298	BHCK1298	BHCK1298	BHCK1298	BHCK1298	0	100
Available-For-Sale: State Debt	BHCK8499	BHCK8499	BHCK8499	BHCK8499	BHCK8499	0	100
Available-For-Sale: GSE MBS	BHCK1702+ BHCK1707	BHCK1702+ BHCK1707	BHCK1702+ BHCK1707	BHCKG303+ BHCKG307	BHCKG303+ BHCKG307+ BHCKK145	0	100
Available-For-Sale: Agency MBS	BHCK1717+ BHCK1732- BHCK319	BHCK1717+ BHCK1732- BHCK319	BHCK1717+ BHCK1732- BHCK319	BHCKG315	BHCKG315+ BHCKK153	0	100
Available-For-Sale: Other Domestic Debt Securities	BHCK1741	BHCK1741	BHCK1741	BHCK1741	BHCK1741	0	100
Available-For-Sale: Foreign Debt Securities	BHCK1746	BHCK1746	BHCK1746	BHCK1746	BHCK1746	0	100
Loans and Leases Held for Sale	BHCK5369	BHCK5369	BHCK5369	BHCK5369	BHCK5369	0	100
Loans and Leases, Net Unearned Income and Loss Allowance	BHCKB529	BHCKB529	BHCKB529	BHCKB529	BHCKB529	0	100
Trading: Treasuries	BHCK3531	BHCK3531	BHCK3531	BHCK3531	BHCK3531	0	100
Trading: Agency Debt	BHCK3532	BHCK3532	BHCK3532	BHCK3532	BHCK3532	0	100
Trading: State Debt	BHCK3533	BHCK3533	BHCK3533	BHCK3533	BHCK3533	0	100
Trading: GSE MBS	BHCK3534+ BHCK3535	BHCK3534+ BHCK3535	BHCK3534+ BHCK3535	BHCKG379+ BHCKG380	BHCKG379+ BHCKG380+ BHCKK197	0	100
Trading: Other Debt Securities	BHCK3537- BHCKG383- BHCKG384- BHCKG385	BHCK3537- BHCKG383- BHCKG384- BHCKG385	BHCK3537- BHCKG383- BHCKG384- BHCKG385	BHCKG386	BHCKG386	0	100

Table 8: Asset Variables

FR Y-9C Variable	2002-Q2 - 2005-Q4	2006-Q1 - 2007-Q4	2008-Q1 - 2009-Q1	2009-Q2 - 2010-Q4	2011-Q1 - Present	%In	%Out
Trading: Real Estate Loans	-	-	BHCKF610	BHCKF610	BHCKF610	0	100
Trading: Commercial Loans	-	-	BHCKF614	BHCKF614	BHCKF614	0	100
Trading: Credit Cards	-	-	BHCKF615	BHCKF615	BHCKF615	0	100
Trading: Revolving Credit	-	-	BHCKF616	BHCKF616	BHCKF616	0	100
Trading: Consumer Loans	-	-	BHCKF617	BHCKF617	BHCKK199+ BHCKK210	0	100
Premises	BHCK2145	BHCK2145	BHCK2145	BHCK2145	BHCK2145	0	100
Other Real Estate Owned	BHCK2150	BHCK2150	BHCK2150	BHCK2150	BHCK2150	0	100
Real Estate Venture Investment	BHCK3656	BHCK3656	BHCK3656	BHCK3656	BHCK3656	0	100
Deferred Tax Assets	BHCK2148	BHCK2148	BHCK2148	BHCK2148	BHCK2148	0	100
Equities of Indeterminable Value	BHCK1752	BHCK1752	BHCK1752	BHCK1752	BHCK1752	0	100

Source: FR-Y9C, FFIEC031. Sample 2002-Q2 - 2016-Q4. More information on each variable is available from the Board of Governors of the Federal Reserve System at <https://www.federalreserve.gov/apps/mdrm/>. Cells filled with '-' denote fields that are unavailable (and with no discernible substitute) in particular timespans.

Table 9: Liabilities Variables

FR Y-9C Variable	2002-Q2 - 2005-Q4	2006-Q1 - 2007-Q4	2008-Q1 - 2008-Q4	2009-Q1 - Present	%In	%Out
Noninterest-bearing deposits (uninsured)	BHCB2210	BHCB2210	BHCB2210	BHCB2210	100	0
Noninterest-bearing deposits (insured)	BHCB2210	BHCB2210	BHCB2210	BHCB2210	0	100
Noninterest-bearing deposits (Non-Commercial Banks)	BHOD3189	BHOD3189	BHOD3189	BHOD3189	50	50
Interest-bearing deposits (uninsured)	BHCB3187	BHCB3187	BHCB3187	BHCB3187	100	0
Interest-bearing deposits (insured)	BHCB3187	BHCB3187	BHCB3187	BHCB3187	0	100
Interest-bearing deposits (Non-Commercial Banks)	BHOD3187	BHOD3187	BHOD3187	BHOD3187	50	50
Savings deposits (uninsured)	BHCB2389	BHCB2389	BHCB2389	BHCB2389	100	0
Savings deposits (insured)	BHCB2389	BHCB2389	BHCB2389	BHCB2389	0	100
Savings deposits (Non-Commercial Banks)	BHOD2389	BHOD2389	BHOD2389	BHOD2389	50	50
Time deposits <\$100,000 (uninsured)	BHCB6648	BHCB6648	BHCB6648	BHCB6648	100	0
Time deposits <\$100,000 (insured)	BHCB6648	BHCB6648	BHCB6648	BHCB6648	0	100
Time deposits <\$100,000 (Non-Commercial Banks)	BHOD6648	BHOD6648	BHOD6648	BHOD6648	50	50
Time deposits >\$100,000 (uninsured)	BHCB2604	BHCB2604	BHCB2604	BHCB2604	100	0
Time deposits >\$100,000 (insured)	BHCB2604	BHCB2604	BHCB2604	BHCB2604	0	100
Time deposits >\$100,000 (Non-Commercial Banks)	BHOD2604	BHOD2604	BHOD2604	BHOD2604	50	50
Subordinated debt	BHCK4062	BHCK4062	BHCK4062	BHCK4062	0	100
Net deferred taxes	BHCK3049	BHCK3049	BHCK3049	BHCK3049	0	100
Other short term debt	BHCK2332	BHCK2332	BHCK2332	BHCK2332	50	50

Table 9: Liabilities Variables

FR Y-9C Variable	2002-Q2 - 2005-Q4	2006-Q1 - 2007-Q4	2008-Q1 - 2008-Q4	2009-Q1 - Present	%In	%Out
Other longer term debt	BHCK2333	BHCK2333	BHCK2333	BHCK2333	50	50
Noninterest-bearing deposits, foreign	BHFN6631	BHFN6631	BHFN6631	BHFN6631	50	50
Interest-bearing deposits, foreign	BHFN6636	BHFN6636	BHFN6636	BHFN6636	50	50
Commercial paper	BHCK2309	BHCK2309	BHCK2309	BHCK2309	50	50
Subordinated notes to trusts	-	BHCKC699	BHCKC699	BHCKC699	50	50
Off-balance sheet credit losses	BHCKB557	BHCKB557	BHCKB557	BHCKB557	50	50
Other	BHCKB984	BHCKB984	BHCKB984	BHCKB984	50	50
Repos	BHCKB995	BHCKB995	BHCKB995	BHCKB995	100	0
Liabilities for short positions	BHCK3546	BHCK3546	BHCK3546	BHCKG209+ BHCKG210+ BHCKG211	100	0
Derivatives with Negative Fair Value	BHCK3547	BHCK3547	BHCK3547	BHCK3547	100	0
Other trading liabilities	-	-	BHCKF624	BHCKF624	100	0
Revaluation losses	BHCK3547	BHCK3547	BHCK3547	BHCK3547	100	0
Fed funds	BHDMB993	BHDMB993	BHDMB993	BHDMB993	100	0

Source: FR-Y9C, FFIEC031. Sample 2002-Q2 - 2016-Q4. More information on each variable is available from the Board of Governors of the Federal Reserve System at <https://www.federalreserve.gov/apps/mdrm/>. Cells filled with '-' denote fields that are unavailable (and with no discernible substitute) in particular timespans.

Table 10: Proportional Adjustments

Code	Fraction
F_1	$\frac{BHCKG320}{BHCKG320+BHCKG308+BHCKG324+BHCKG328}$
F_2	$\frac{BHCKG323}{BHCKG311+BHCKG323+BHCKGBHCKG327+BHCKG331}$
F_3	$\frac{BHCKG383+BHCKG384+BHCKG385}{BHCKG383+BHCKG384+BHCKG385+BHCKG386}$
F_4	$\frac{BHCKG319}{BHCKG319+BHCKG315}$
F_5	$\frac{BHCKG316}{BHCKG316+BHCKG312}$
F_6	$\frac{BHCKG308+BHCKK146+BHCKK154}{BHCKG308+BHCKG320+BHCKK146+BHCKK154}$
F_7	$\frac{BHCKG311+BHCKK149+BHCKK157}{BHCKG311+BHCKK149+BHCKK157+BHCKG323}$

The final number used in Table 8 is constructed as the average of these values over every quarter where all relevant series are available.

Asset Classification	%In	%Out	% Of Sector Assets
Insurance Companies			
Corporate and Foreign Bonds	50	50	35.2
Mutual Fund Shares	50	50	18.0
Corporate Equities	50	50	9.3
Municipal Securities	0	100	6.0
Mortgages	0	100	5.5
Agency and GSE-backed securities	0	100	5.4
Treasury Securities	0	100	3.8
US direct investment	0	100	2.0
Checkable Deposits and Currency	100	0	1.1
Market Paper	50	50	0.7
Money Market Mutual Fund Shares	50	50	0.7
Deferred and Unpaid Life ins Premiums	0	100	0.4
Security Repurchase Agreements	100	0	0.0
Equity in FHLB	0	100	0.0
Other Loans and Advances	50	50	1.9
Other/Unallocated Claims	50	50	10.0
Securities Brokers and Dealers			
Security Repurchase Agreements	100	0	36.8
US Direct Investment	0	100	7.5
Corporate Equities	50	50	5.8
Checkable Deposits and Currency	100	0	3.9
Treasury Securities	0	100	3.2
Agency and GSE-Backed Securities	0	100	3.1
Corporate and Foreign Bonds	50	50	2.6
Municipal Securities	0	100	0.7
Market Paper	50	50	0.5
Other Loans	50	50	10.9
Other	50	50	24.9
Real Estate Investment Trusts			
Nonfinancial Assets	0	100	57.7
Loans	0	100	14.2
Agency and GSE-backed securities	0	100	13.3
Checkable Deposits and Currency	100	0	2.3
Corporate and Foreign Bonds	50	50	2.5
Other	50	50	10.0
Other: Credit Unions			
Loans	0	100	71.5
Agency and GSE-Backed	0	100	13.9
Reserves	0	100	4.2

Treasury Securities	0	100	1.1
Corporate and Foreign Bonds	50	50	0.9
Municipal Bonds	0	100	0.4
Mutual Fund Shares	0	100	0.2
Fed Funds and Repos	100	0	0.0
Open Market Paper	50	50	0.0
Other	50	50	7.9
Other: Finance Companies:			
Consumer Credit	0	100	35.9
Other Loans	50	50	25.4
US Direct Investment Abroad	0	100	16.5
Mortgages	0	100	9.1
Corporate and Foreign Bonds	50	50	4.8
Time and Savings Deposits	100	0	4.1
Checkable Deposits and Currency	100	0	1.4
Other	50	50	25.4
Other: Funding Corporations:			
Investment in Brokers and Dealers	100	0	41.2
Money Market Fund Shares	0	100	32.6
Open Market Paper	50	50	15.2
Investment in Foreign Banks	0	100	6.0
Corporate and Foreign Bonds	50	50	4.1
Loans	50	50	1.0
Corporate Equities	50	50	0.0
Security Repurchase Agreements	100	0	0.0
Other: ABS Issuers:			
Mortgages	0	100	72.9
Other Loans	50	50	12.9
Consumer Credit	0	100	4.1
Trade Credit	0	100	2.8
Treasury Securities	0	100	1.6
Agency and GSE-Backed Securities	0	100	0.0
Other	50	50	12.9

Table 11: **Classification of Financial Accounts of the United States Asset Classes Into ‘Inside’ or ‘Outside’ the Financial System** Using variables from the Financial Accounts of the United States, we categorize assets of each financial subsector as either ‘inside’ or ‘outside’ the financial system.