

Tannady, Hendy; Maimury, Yona

Article

Increasing the efficiency and productivity in the production of low voltage switchboard using resource constrained project scheduling

Journal of Industrial Engineering and Management (JIEM)

Provided in Cooperation with:

The School of Industrial, Aerospace and Audiovisual Engineering of Terrassa (ESEIAAT), Universitat Politècnica de Catalunya (UPC)

Suggested Citation: Tannady, Hendy; Maimury, Yona (2018) : Increasing the efficiency and productivity in the production of low voltage switchboard using resource constrained project scheduling, Journal of Industrial Engineering and Management (JIEM), ISSN 2013-0953, OmniaScience, Barcelona, Vol. 11, Iss. 1, pp. 1-33, <https://doi.org/10.3926/jiem.2228>

This Version is available at:

<https://hdl.handle.net/10419/188847>

Standard-Nutzungsbedingungen:

Die Dokumente auf EconStor dürfen zu eigenen wissenschaftlichen Zwecken und zum Privatgebrauch gespeichert und kopiert werden.

Sie dürfen die Dokumente nicht für öffentliche oder kommerzielle Zwecke vervielfältigen, öffentlich ausstellen, öffentlich zugänglich machen, vertreiben oder anderweitig nutzen.

Sofern die Verfasser die Dokumente unter Open-Content-Lizenzen (insbesondere CC-Lizenzen) zur Verfügung gestellt haben sollten, gelten abweichend von diesen Nutzungsbedingungen die in der dort genannten Lizenz gewährten Nutzungsrechte.

Terms of use:

Documents in EconStor may be saved and copied for your personal and scholarly purposes.

You are not to copy documents for public or commercial purposes, to exhibit the documents publicly, to make them publicly available on the internet, or to distribute or otherwise use the documents in public.

If the documents have been made available under an Open Content Licence (especially Creative Commons Licences), you may exercise further usage rights as specified in the indicated licence.



<https://creativecommons.org/licenses/by-nc/4.0/>

Increasing the Efficiency and Productivity in the Production of Low Voltage Switchboard Using Resource Constrained Project Scheduling

Hendy Tannady , Yona Maimury 

Industrial Engineering, Bunda Mulia University (Indonesia)

hendytannady@yahoo.com, maimury@gmail.com

Received: January 2017

Accepted: December 2017

Abstract:

Purpose: This research was made with the aim to give a scheduling proposal for the assembly activity and the proposal to allocate those activities into available resources using the resource-constrained project scheduling.

Design/methodology/approach: The research begins with the problem exposition in the existing system on the Assembly Department of panel manufacturer company. To overcome the problem, several scheduling alternatives are formulated to yield better productivity. The performance of proposed system using RCPS is assessed using simulation method. Considering the circumstance of demand rate, the scenarios chosen are based on the parameter such as product departure cycle time, resource utilization, product output, and number of resource required.

Findings: The scheduling alternatives provides the better arrangement of work elements in the assembly activity, especially for the product that represent the highest demand rate. For further research, the paper gives encouragement so that the application of RCPS can be used broader in the manufacturing area.

Research limitations/implications: Although the findings were addressed to improve the existing system on the Assembly Department, the practical application haven't been undergone and the performance assessment only based on the simulation method.

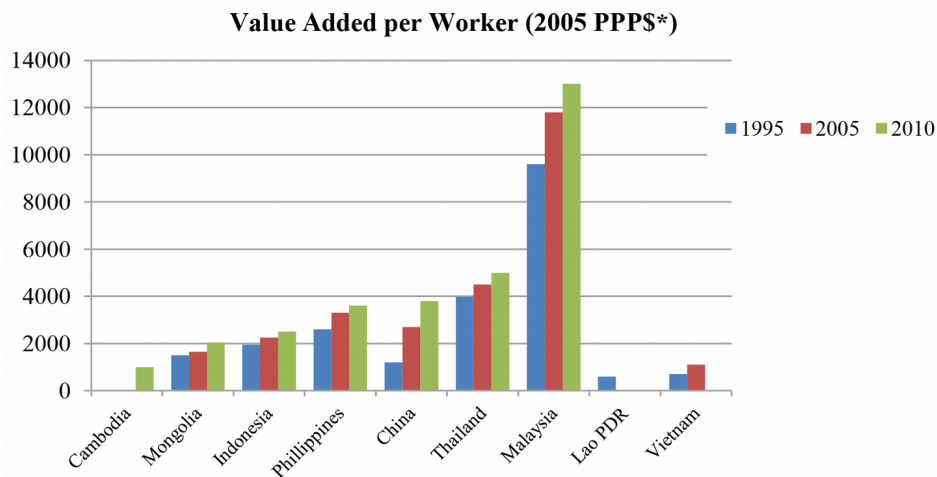
Practical implications: By implementing the proposed scheduling, the company will experience several benefits. First, the company could increase its productivity by better utilization of its resources. Second, based on the simulation result, the company could avoid the backorder option while dealing with the high demand rate, and even can fully maximize its resource utilization without adding more worker or apply the overtime policy. Finally, the proposed scheduling that converted into the work instruction could help the company to perform the knowledge transfer from the existing worker or resigned worker to the newly-hired worker.

Originality/value: The outcome of the research could become the guidance for other companies which have similar assembly system to apply the same method. This is the best paper that represents the application of RCPS in the large-sized component assemblies, where the walking worker is responsible for carrying tasks to each unmoved unit.

Keywords: resource-constrained project scheduling, made-to-order, ACTIM, ACTRES, TIMERES, assembly system, simulation

1. Introduction

Nowadays, the rise in wages at the developed country had impacted on the direction of the manufacturing industry development more likely towards the developing country, such as Indonesia. In the developing country, particularly Indonesia, the cheaper wages have made attraction to many foreign investors to open their factory in Indonesia. However, the affordable wages that paid by the company, turned out to be unsupported by the company productivity. From the data provided by Figure 1, it is shown that Indonesia apparently on the quite retarded position in the term of workforce productivity compared with the other neighbourhood country, such as Malaysia, Thailand, and Philippines.



*PPP\$ stand for Purchasing Power Parity in US Dollar

Figure 1. Indonesia Productivity Rate Compared with the Neighborhood Country (World Bank, 2015)

Moreover, a huge number of challenge in the labor intensive company that involving many processing activity as well as manual assembly activity, cause the productivity issue obviously more likely to be encountered. It often causes the query that emerge from the stakeholder, about how to increase the productivity and create a flexible production system to overcome the business trend that rapidly change?

Many previous research have been discussed about efforts to escalate the efficiency and productivity of production process. Naveen and Babu (2015) tried to improve the productivity in manufacturing industry using set of industrial engineering tools, namely bottleneck analysis, Pareto analysis, cause and effect diagram and counter measures. Adnan, Arbaai and Ismail (2016) using line balancing to improve the efficiency of production line, whereas line balancing combined with Yamazumi chart and Takt Time, the other way to improve the efficiency is using lean manufacturing tool (Haragovics & Miscey, 2014). This research focused on how to increase the efficiency and productivity using the application of resource constrained project scheduling (RCPS).

The research was held in the panel manufacturer and electrical appliance company. In regards to fulfill the customer demand, the company uses the made-to-order production system. During the deadline compliance, especially for the government segment, the company often being forced to choose the backorder option, hire more contract employee, and apply the overtime policy to the permanent employee. It is because the inability of production system to fulfill the existing demand.

Production is carried out according to the agreement that is determined in the beginning through the standard procedure series, by attending the process of tendering (for the government segment). In the production of electrical panel/switchboard, there are consecutive processes, where one of the primary process being done is the assembly activity. The task being executed on the assembly process is distinct and different. In addition, the order of the task is constrained by particular rule, where some of the activities are avoided to be completed foremost before the predecessor activities done. The company offers around 58 variants of electrical panel, therefore its typical assembly system doesn't have similar process, although some of the variant only differ at the voltage level. It causes the assembly system that should be arranged as flexible as

possible to deal with the demand with high customization rate, with also considers the operation cost, fulfillment of delivery deadline, and available resource.

The planning and arrangement of assembly system should be improved as well as possible under the limited resource of man power, equipment, time, and relationship between subprocess in the assembly activity. The planning could be done by determining the sequence of the tasks, when each task should be done, and how to move between the tasks (Alharkan, 2011). One of the method to actualize the good planning of manufacturing process, by also considering the time and resource limitation is the scheduling method. Scheduling is the method to determine the start and finish time of the collection of process by allocation number of processes into the available resources. Scheduling consists of several tools, which every tools have the different characteristic and being used under different condition. Between them are machine scheduling, flow shop scheduling, job shop scheduling, project scheduling, and so on. (Alharkan, 2011). One of them, project scheduling, is generally used for the project management/construction management planning. Yet as the science is getting more developed, this method then has begun to broaden its application in the manufacturing area, especially to handle the made-to-order as well as engineering to order system production. (Markus, Vancza, Kis & Kovacs, 2003). As the research done by Kolisch (2006), modelling using RSCP (resource-constrained project scheduling) is applied in the just-in time scheduling for the make-to-order assembly system. This research is also supported by former research with the same topic authored by Agrawal, Harhalakis, Minis and Nagi (1996).

The product with the highest demand according to the historical data owned by the company is the Low Voltage Switch Board 2 Line for Outdoor. This product type consists of sub type product PHB-TR 402 and PHB-TR 252. No significant difference between the two of the subtype product, where the slight difference is only on the Ampere capacity, therefore in this research, the observation is made only at the PHB-TR 252, that automatically be able to represent the PHB-TR 402. Observation is done at one of the subtype of the Low Voltage Switch Board 2 Line for Outdoor, so that the result of this research could facilitate the refinement of the assembly process, particularly for the product with the highest demand based on the historical data for year 2015.

Due to the absence of workload balancing of each operator at assembly department, it causes a high idle rate. Also because of the absence of the standard work procedure explaining the order of assembly job, the assembly flow works ineffectively. Blocking often occurred in between of the operators, which in one product, job processing is done by more than one person with more than 1 work element. However, in another side, it had decreased the speed of certain operator because the process that being done is distracted by another activity. Thus, this condition has become the background of the necessity of the arrangement and scheduling of the work element effectively using the resource-constrained project scheduling method, so that the allocation of the workload for each operator would be balanced and would lead to the increase of productivity and decrement of the backorder rate.

Based on those background, this research was made with the aim to give a scheduling proposal for the assembly activity and the proposal to allocate those activities into available resources using the resource-constrained project scheduling. Some of the scheduling scenario are formulated and the election of the best scenario will be assisted by the method of simulation, through the calculation of idle time, resource utilization, and product departure cycle time.

Several assumptions were made to facilitate the tabulation of data:

1. Because of the uncertain work hour in a week, where the operator sometimes works overtime when the on-going project is dealing with high quantity, therefore the work hour is assumed to be 7 hours per day with total work day in a month is 24 days (including half day work in Saturday)
2. In regards of the simulation execution, the number of demand to predict the system performance is assumed to be similar to the year 2015.
3. There are some work elements that could be done by 2 or 3 people, where the reduction of completion time is assumed to be linear following the number of operator added.

This paper is arranged as follows: Begins with the introduction, then continued with the literature review, discussing about the resource constrained project scheduling method, as a method that being used to schedule and allocate the resource for the assembly activity. The next section is research method, methodology, and research object. Then followed by the data collection and tabulation. Finally, the conclusion is discussed with the recommendation for the development of further research and for the concerned company.

2. Literature Review

2.1. Resource-Constrained Project Scheduling (RCPS)

Resource constrained project scheduling (RCPS) is a scheduling technique that embrace the consideration of the resource limitation, where the predecessor method, that is CPM/PERT only emphasize on the time factor in regards of the project completion. According to Abello and Michalewicz (2014) scheduling as a solution to any RCPS is composed of tasks obeying some precedence relationship, in this method, number of resources of the same type utilized by all ongoing tasks are constrained not to exceed a predefined limit, in dynamic environment, an implemented schedule can turn into an infeasible. RCPS has two primary objectives, those are:

1. Minimize the project time completion (C_{max})
2. Allocate each work element to each resource to achieve the optimum utilization.

The purpose of this scheduling is reached by the well utilization of the resource such as man power, machine, and other physical item that support the execution of the project. Many research being done to yield the solution by using heuristic method for the scheduling case, and some of them had been successfully applied in the real environment. (Alharkan, 2011). This method is adjusted in several categories of case, those are:

1. Single-resource, single-capacity

This category denotes that the available resource only composed from single type of resource, with also single capacity possessed. For example, the company only has a single man that only has a single ability to fix the drilling machine. This case is equivalent to the classical single machine scheduling problem.

2. Single-resource, multiple-capacity

In this type of scheduling, only one type of resource is considered in multiple quantities. For instances, the company has 5 workers with the ability to fix the drilling machine.

3. Multiple-resource, single-capacity

This type of scheduling problem is encountered in the environment where more than one type of resource is available, in a single quantity. The example is the company who had several types of workers, each worker is classified into specific ability, those are fixing drilling machine, using cutting machine, and welding. For each category of those abilities, it only contains one person.

4. Multiple-resource, multiple-capacity

Finally, in the last category, the resource is available for more than one type with more than one capacity possessed. For example, the company has several workers classified into specific skill, those are fixing the drilling machine, using cutting machine, and welding. For each category of those abilities, it contains five persons.

In this research, the literature review is only focusing on the second category, to adjust with the real condition happened in the concerned field.

2.2. Single-Resource, Multiple-Capacity RCPS

In the allocation of the task for the available resource, we should start from defining the rule used to prioritize the work element. This paper uses the ACTIM (Activity Time) rule that derived from the Brooks’ Algorithm. The iteration of the ACTIM rule is explained as follow.

1. Construct the AOA (Activity on Arrow) or AON (Activity on Node) diagram. The example is shown by Figure 2.

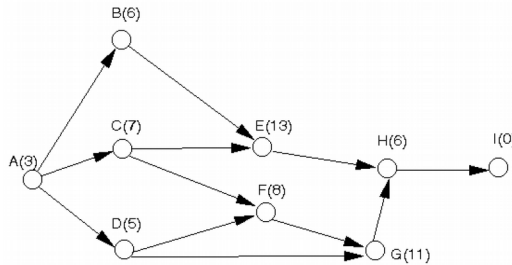


Figure 2. Example of the Activity on Node Diagram

2. Determine for each activity, the maximum time it controls through network, so-called the ACTIM score. The formula of the calculation is as follows:

$$ACTIM = critical\ path\ time - activity\ latest\ start\ time \tag{1}$$

ACTIM (Whitehouse & Brown, 1979) is one of the earlier activity sequencing rule. The rule was developed by George H. Brooks and used in his algorithm, called Brooks’ algorithm (Badiru, 1996). The original algorithm considered only the single project, single resource case, but it lends itself to extensions for the multiresource cases.

Rank the activities in the decreasing order of ACTIM. This order is placed in the uppermost row (see Table 1), where the activity with the highest ACTIM value is on the leftmost. Duration and resource requirement are determined in the early step. The rows TEARL, TSCHED, TFIN, and TNOW are explained as follow: TEARL (early start) is the earliest time of an activity determined by traditional CPM calculation. TSCHED is the actual scheduled starting time of an activity as determined by Brooks’ Algorithm. TFIN is the completion time of each activity. And TNOW is the time at which the resource allocation decision is being made.

Activity	<i>i</i> = 1	<i>i</i> = 2	...	<i>i</i> = <i>n</i>
Duration (days)				
ACTIM				
Scaled ACTIM				
Resource required				
TEARL				
TSCHED				
TFIN				
TNOW				
Resource available				
Activities allowed				
Iteration number				

Table 1. Heuristic Scheduling Using ACTIM Source: Project Management in Manufacturing and High Technology Operations (Badiru, 1996)

3. Set TNOW to 0. The allowable activities to be considered for scheduling at TNOW = 0 are those activities with TEARL of 0. These are placed in the activities allowed in the decreasing order of ACTIM. Ties are broken by scheduling the activity with longest duration first.
4. Allocate the resource based on the chosen activity in regards of its ACTIM and TEARL score, input the TSCHED as well as TFIN.
5. Input the TFIN with the closest value to the TNOW that just being filled, at the next TNOW cell.
6. Return to the step 5 and 6 if there are activities that haven't been assigned. Otherwise, stop the scheduling.

Beside of the ACTIM rule, this research was also using the ACTRES (Activity Resource) and TIMRES (Time Resource) rule in the case where the activity done by more than one operator, as the comparison for the scheduling result yielded by the ACTIM rule. ACTRES and TIMRES calculation are shown below:

$$ACTRES = Activity\ time \times Resource\ Requirement \quad (2)$$

$$TIMRES = 0,5 (ACTIM) + 0,5 (ACTRES) \quad (3)$$

The stage after the calculation is similar to the ACTIM step. They differ only in the priority election, where they are based on the ACTRES and TIMRES score rather than ACTIM score.

3. Research Method

3.1. Method

The method used in this research is the resource-constrained project scheduling. Moreover, the proposal system will be visualized in the ProModel software using the simulation method. The data collection is conducted for 1 month between January 5, 2016 – February 5, 2016.

Research data consists of both primary and secondary data. The collection process of primary data is done by interview and observation, while for the secondary data, collection is done by gathering information through official report issued by the company. Furthermore, to support the process of data processing and analysing, the Author also perform reading activity from the textbook, articles, journal, and other scientific media.

3.2. Research Methodology

Research methodology diagram is a flow diagram used to show the procedure sequence being done to assist the achievement of research objective. The methodology is depicted as follows.

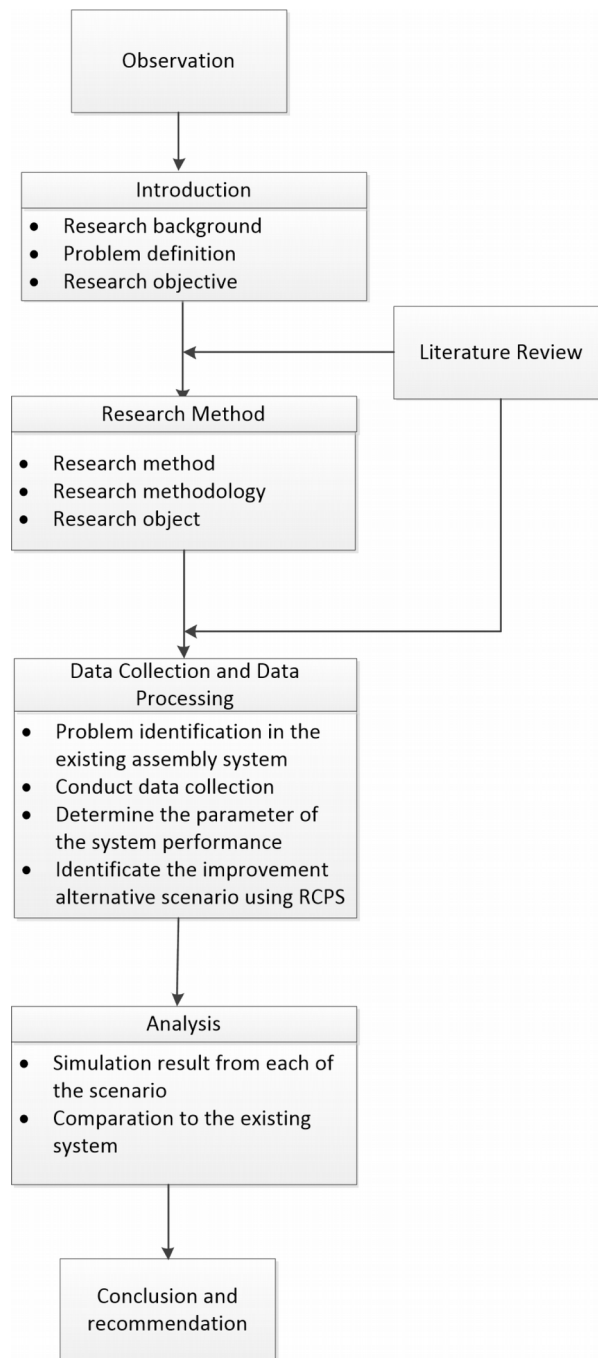


Figure 3. Research Methodology Diagram

3.3. Research Object

3.3.1. Company Overview

The company is a panel manufacturer and electrical appliances specialist where it serves the provision of national electrical needs, both in the government institution as well as private institution. The company has been established since 1994. The company currently serves the provision of switchboard in the low voltage network and home connection such as: low voltage switchboard for outdoor and indoor, KWH panel Automated Meter Reading, kiosk outdoor for cubicle, trafo, electrical accessories, and others.

Beside of the product mentioned above, the company also offers the electrical needs for the property sector such as: Main Distribution Board, Capacitor Bank, integrated box meter for Mall, Hotel, Apartment, Industry, and so on. Its products are already used widely by electrical national company in Indonesia in many areas across the nation, such as West Java and Banten, East Java, Batam, Bali, Manado, Bangka, and others. The total number of employee is 172 people, consists of 140 people on the factory and 32 people on the headoffice.

3.3.2. Assembly Department Overview

The research is conducted on the Department of Assembly, specifically in the *Inkom* area, where the assembly of electrical component takes place. Another area under Department of Assembly are *CPT Bar* and *Plating*. These are the areas of the supporting activity of the assembly process. *CPT Bar* is the place where the busbar production being held. The busbar is used in the assembly process at the *Inkom* area. Fabrication of busbar isn't made based on the demand (push production), but more likely to adapt the *made-to-stock* production system. It contradicts the *Inkom* area, where the assembly process occurred is based on the customer order (made-to-order). Another area, *Plating*, holds the activity of busbar tin coating, so that the busbar will not easily corroded and more solid.

3.3.3. Switchboard Fabrication Process

There are series of processes that must be gone through before the product is ready to be delivered. The processes are shown in the diagram below.

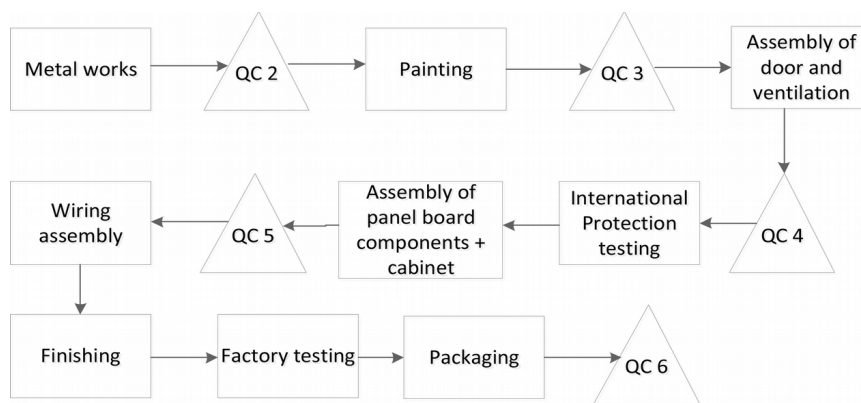


Figure 4. Switchboard Fabrication Process

The process is begun from the metal works, which involving the utilization of heavy machinery, such as cutting, bending, punching, notching, grinding, and welding machine. Most of the activity done in the metal works department is forming the raw material of metal sheet into the shape of ventilation, door, base, and others, to be assembled as cabinet box. Furthermore, the half-finished cabinet box with the supporting accessories is pushed to the quality control inspection (QC2). The first inspection (QC1) itself is the process of checking the conformance of the raw material from the supplier.

After that, it is continued to the painting process. It occurs outside the factory, where the company uses outsourcing service. Generally, before being delivered to the painting process, certain number of half-finished product (batch) is collected. Then, the half-finished boxes along with the supporting accessories will be re-inspected to check its painting quality (QC3). Further, the assembly of door and ventilation to the box then takes place. Again, the quality control is conducted to inspect the quality of the assembly (QC4). Then, boxes is brought to the *International Protection Testing* area, where the boxes were tested for the anti-leakage. Boxes that didn't pass will be quarantined and fixed, so that it will passed the next test. The boxes that passed the test will be send into the panel board component assembly area. The fifth quality control then takes place and continued to the wiring assembly process. After that, finishing process is conducted to clean up the protrude sheet metal resulted from the cutting process, or the messy paint resulted at the surface area of the box. Furthermore, it leads to the factory testing process, which is the test of the electric current and voltage of the switchboard. After that, the switchboard is covered by plastic wrap and continued to the sixth quality control, and finally is ready to be delivered to the customer.

4. Data Collection and Tabulation

4.1. Work Element of the PHB-TR 252 Assembly Process

The work element is divided into 26 elements, shown by the table below.

No	Work element	Information
1	Clean up the paper tape stucked to the bolt	Per bolt
2	Assemble the MCCB into the MCCB base	
3	Insert busbar N M10 bolt	
4	Assemble the R, S, T, N recolit	Per bolt
5	Install the connector busbar and busbar tongue into the MCCB	
5-1	Busbar tongue installment	
5-2	Connector busbar installment	
6	Insert the busbar N	
7	Measure the hole position of busbar R, S	Per busbar
8	Drill the busbar R, S	Per busbar
9	Assemble the left side bolt of busbar R, S, T	
10	Assemble the CT-R, CT-S and CT-T	
10-1	Assemble the CT-R and CT-S (including wrap detachment)	
10-2	Open the CT-T wrap	
10-3	Assemble the CT-T	
11	Insert the right-side bolt of busbar R, S, T	
12	Install the MCCB into phase busbar	
13	Insert the mould to straighten the busbar	
14	Fasten the M10 connector bolt	
15	Fasten the MCCB L8 bolt	
16	Fasten the R, S, T recolit bolt	
17	Insert the roofing bolt to the MCCB base	
18	Insert the MCCB valve	
19	Assemble the fuse rail	
19-1	Insert the bolt	
19-2	Assemble the fuse rail	
19-3	Fasten the bolt manually	
20	Drilling the busbar tongue recolit hole	
21	Fasten the fuse rail bolt	
22	Assemble the busbar tongue recolit	
23	Assemble the CT fastener	
24	Insert the busbar tongue M10 bolt	
25	Fasten the busbar N and busbar tongue bolt	
26	Fasten the overall bolt through backside	

Note:

- CT (Current Transformer) is used to measure the electric current and monitoring the operation of electric network.
- MCCB is abbreviated from Molded Case Circuit Breaker. Used to cut off and connect the electricity. MCCB will automatically cut off the electricity if there is an electrical fault.
- Fuse rail is called as power distribution protector, because it protects the electrical circuit component from the damage caused by exaggrate electrical current.
- Roofing Bolt is the bolt used to be inserted between MCCB base and main base, so that the MCCB will merge with the main base.
- Phase Busbar is a metallic bar to distribute the power within the electrical system. Consist of busbar R (red), S (yellow), T (black), dan N (blue).
- Recolit is the pad for busbar, so that busbar will not directly touch the main base.
- Busbar Tongue is a small size busbar. Often called as the outgoing busbar.

Table 2. Work element of the PHB-TR 252 Assembly Process

Work element 5, 10, and 19 have the subordinate elements, that being observed separately. Those subordinate elements, actually can be merged as one element, but considering the field observation where those elements is often conducted separately and sometime interfered by another work element, and even performed by different operator. Therefore, to obtain the cycle time for those element, time record can't be made for the whole activity, instead should be conducted separately.

The 26-work element have their own sequence that form activity series related to each other. Figure 5 shows the precedence rule.

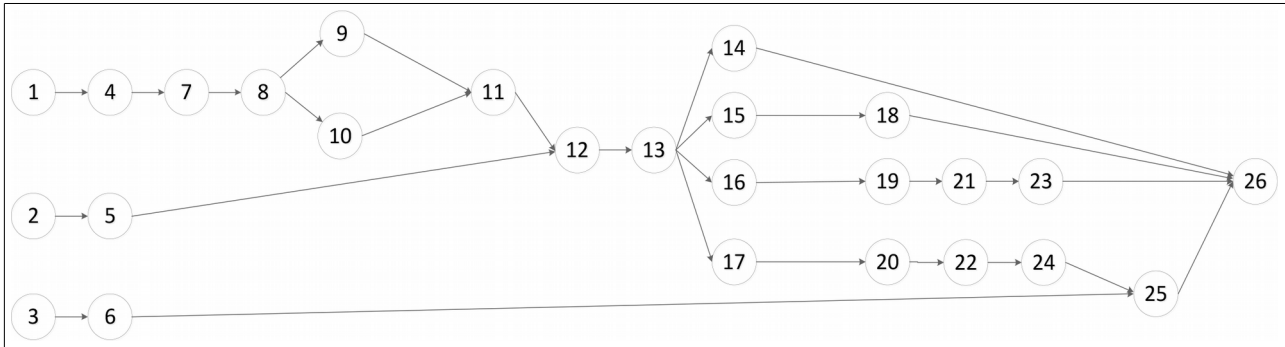
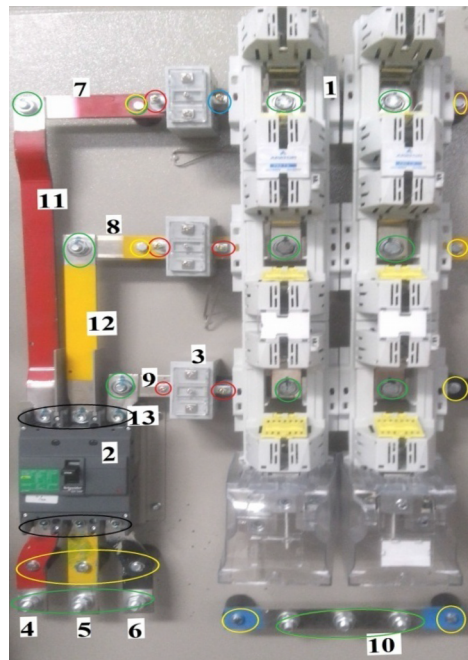


Figure 5. AON for the PHB-TR 252 Component Assembly Process

4.2. Dimension Data of PHB-TR 252 Electrical Circuit Component

To obtain a good understanding about the product being assembled, the dimension data of length, breadth, and height from each component was collected. These data also used to determine the allowance and performance rating, so that the standard time from each element would be obtained and well-represent the real condition. The following table show the dimension data.

The following figure provide the general image of the electrical circuit being assembled for the PHB-TR 252.



Note: The colour of the mark shows the type of the bolt being used (Refer to Table 2).

Figure 6. PHB-TR 252 Electrical Circuit

No.	Name	Dimension (cm)			Required unit per base
		l	B	h	
1	Fuse rail	68	10	15	2
2	MCCB	17	11	6	1
3	Current transformer 250 A	7.5	4	8	3
4	Busbar tongue R	14	3	5	1
5	Busbar tongue S	14	3	5	1
6	Busbar tongue T	14	3	5	1
7	Phase busbar R	43	3	5	1
8	Phase busbar S	39	3	5	1
9	Phase busbar T	35	3	5	1
10	Phase busbar N	24	3	5	1
11	Connector busbar R	43.5	3	5	1
12	Connector busbar S	25	3	5	1
13	Connector busbar T	7	3	5	1
14	CT fastener bolt			3.8	3 set
15	Bolt + Nut + Ring M10				15
16	Bolt + Nut + Ring M6				10
17	Bolt + Nut + Ring L8				6
18	Recolit				10
19	Main base	100	50		1
20	MCCB base	17	15	1,5	1
21	MCCB valve				1 pair

Table 3. Dimension of the PHB-TR 252 Electrical Circuit Component

4.3. Determination of Critical Path and Time for the PHB-TR 252 Assembly Activities

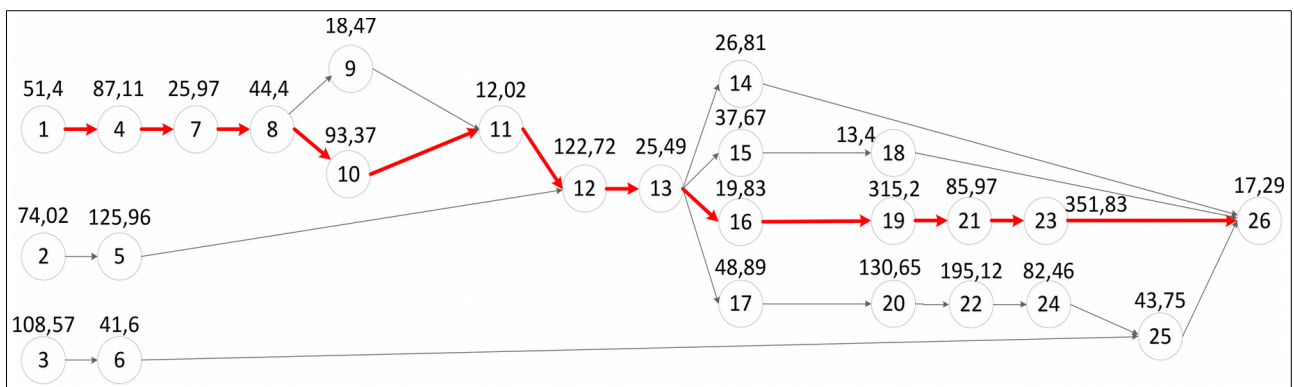


Figure 7. Critical Path Development

Critical path in this research is used as the scheduling reference, where the delay of one work element that part of this critical path, will distract the whole activity completeness time (see Figure 7). The critical time is 1252,6 seconds. It is the minimum duration of completeness time for PHB-TR 252 assembly activity. However, on the next sub section the Author will try to reduce the critical time, by adding more operator at the activity that enabling the additional operator.

4.4. Work Element Scheduling Using ACTIM, ACTRES, and TIMRES Rule

In the made-to-order production system, where the high customization rate along with the relatively low order quantity per type of order per period, RCPS could be applied to arrange the assembly activity of PHB-TR 252 electrical circuit component, by scheduling and allocating work element to the available resource. In the single resource-multiple capacity environment, several methods can be used. Between them are ACTIM (Activity time), TIMRES (Time resource), and ACTRES (Activity Resource). The difference from these three methods is the priority value of each work element. This priority value is used to determine which of the work element required to be firstly assigned if it is possible. If impossible, for example because of there is a precedence activity that hasn't been done yet, then the work element with second highest priority value will be assigned. This priority value itself are ACTIM, ACTRES, and TIMRES (the term of the rule actually refers to the priority value). ACTIM is calculated by subtracting the critical time with the late start value. Whilst, the ACTRES value is obtained by multiplying the ACTIM value with the resource requirement, and finally the TIMRES is calculated by averaging the ACTIM value with the ACTRES value.

To be able to define the ACTIM value, calculation of LS (late start) for each work element should be conducted. This calculation must be simultaneously done with the calculation of ES (early start), EF (early finish), and LF (late finish), because those values are interrelated to each other. The following table shows the result of the calculation.

In this research, all the standard time is obtained through the time study process, by adjusting its performance rating and allowance. The standard time on the Table 4 is the completion time of the work element that only performed by one operator, therefore, using ACTRES and TIMRES rule, priority yielded will be the same with ACTIM. However, if several work elements are added, more required resources ACTRES and TIMRES rule could become the comparison of ACTIM rule.

Work Element	Standard Time	ES	EF	LS	LF	ACTIM	ACTIM Rank
26	17.29	1235.31	1252.6	1235.31	1252.6	17.29	26
14	26.81	462.48	489.29	1208.5	1235.31	44.1	24
18	13.4	500.15	513.55	1221.91	1235.31	30.69	25
23	351.83	883.48	1235.31	883.48	1235.31	369.12	17
25	43.75	919.6	963.35	1191.56	1235.31	61.04	23
15	37.67	462.48	500.15	1184.24	1221.91	68.36	22
21	85.97	797.51	883.48	797.51	883.48	455.09	16
19	315.2	482.31	797.51	482.31	797.51	770.29	13
24	82.46	837.14	919.6	1109.1	1191.56	143.5	20
22	195.12	642.02	837.14	913.98	1109.1	338.62	18
20	130.65	511.37	642.02	783.33	913.98	469.27	15
16	19.83	462.48	482.31	462.48	482.31	790.12	12
17	48.89	462.48	511.37	734.44	783.33	518.16	14
6	41.6	108.57	150.17	1149.96	1191.56	102.64	21
3	108.57	0	108.57	1041.39	1149.96	211.21	19
13	25.49	436.99	462.48	436.99	462.48	815.61	11
12	122.72	314.27	436.99	314.27	436.99	938.33	10
11	12.02	302.25	314.27	302.25	314.27	950.35	9
5	125.96	74.02	199.98	188.31	314.27	1064.29	6
2	74.02	0	74.02	114.29	188.31	1138.31	3
9	18.47	208.88	227.35	283.78	302.25	968.82	8

Work Element	Standard Time	ES	EF	LS	LF	ACTIM	ACTIM Rank
10	93.37	208.88	302.25	208.88	302.25	1043.72	7
8	44.4	164.48	208.88	164.48	208.88	1088.12	5
7	25.97	138.51	164.48	138.51	164.48	1114.09	4
4	87.11	51.4	138.51	51.4	138.51	1201.2	2
1	51.4	0	51.4	0	51.4	1252.6	1

Table 4. Calculation of ES, EF, LS, dan LF

Table 5 shows the scheduling using ACTIM rule, where each of the work element only requires maximum one resource ($R_{max} = 1$) and number of resource being assigned for one unit PHB-TR 252 electrical circuit is two people ($n(r) = 2$).

	1	4	2	7	8	5	10	9	11
Duration (second)	51.4	87.11	74.02	25.97	44.4	125.96	93.37	18.47	12.02
ACTIM	1252.6	1201.2	1138.31	1114.09	1088.12	1064.29	1043.72	968.82	950.35
Scaled ACTIM	100	95.8965	90.8758	88.9422	86.8689	84.9665	83.3243	77.3447	75.8702
Resource required	1	1	1	1	1	1	1	1	1
TEARL	0	51.4	0	138.51	164.48	74.02	208.88	208.88	302.25
TSCHEd	0	51.4	0	138.51	164.48	74.02	208.88	302.25	320.72
TFIN	51.4	138.51	74.02	164.48	208.88	199.98	302.25	320.72	332.74
TNOW	0	51.4	74.02	138.51	164.48	199.98	208.88	302.25	308.55
Resource available	–	–	–	–	–	–	–	–	–
Activities allowed	1,2,3	4,3	5,3	7,3	8,3	3	10,9	9	6
Iteration number	1	2	3	4	5	6	7	8	9

12	13	16	19	17	20	21	23
122.72	25.49	19.83	315.2	48.89	130.65	85.97	351.83
938.33	815.61	790.12	770.29	518.16	469.27	455.09	369.12
74.9106	65.1134	63.0784	61.49529	41.36675715	37.46368	36.33163	29.4683
1	1	1	1	1	1	1	1
314.27	436.99	462.48	482.31	462.48	511.37	797.51	883.48
332.74	455.46	480.95	500.78	480.95	529.84	815.98	901.95
455.46	480.95	500.78	815.98	529.84	660.49	901.95	1253.78
320.72	332.74	350.15	455.56	480.95	500.78	529.84	660.49
–	–	r2	r1	–	–	–	–
11	12	–	13	16,17,15,14	19,15,14	20,15,14	22,15,14
10	11	12	13	14	15	16	17
			Second	Percentage			
		idler r1	219.57	17.27			
		idler r2	122.6	9.65			

22	3	24	6	15	25	14	18	26
195.12	108.57	82.46	41.6	37.67	43.75	26.81	13.4	17.29
338.62	211.21	143.5	102.64	68.36	61.04	44.1	30.69	17.29
27.03337	16.8617	11.4562	8.19416	5.45745	4.87306	3.52068	2.4501	1.38033
1	1	1	1	1	1	1	1	1
642.02	0	837.14	108.57	462.48	919.6	462.48	500.15	1235.31
660.49	199.98	855.61	308.55	938.07	975.74	1019.49	1046.3	1253.78
855.61	308.55	938.07	350.15	975.74	1019.49	1046.3	1059.7	1271.07
815.98	855.61	901.95	938.07	975.74	1019.49	1046.3	1059.7	1253.78
–	–	–	–	–	–	–	r1	r2
21,15,14	24,15,14	23,15,14	15,25,14	25,14,18	14,18	18	26	–
18	19	20	21	22	23	24	25	26

Table 5. ACTIM Scheduling, Rmax = 1, n(r) = 2 (Scenario 1)

The scheduling table is then converted to the easy-to-interpret diagram, that is Gantt Chart (Figure 8). The time completion for whole activities are 1271.07 seconds, while idle rate for the resource 1 is 17.27% and resource 2 is 9.65%.

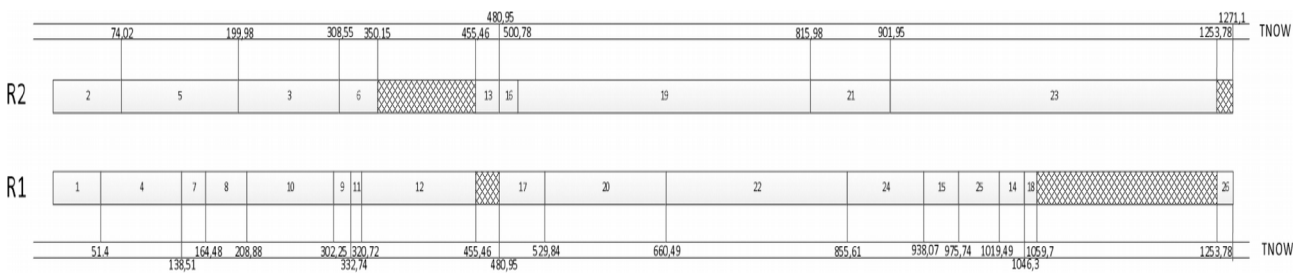


Figure 8. Gantt Chart for the ACTIM Scheduling (Scenario 1)

Moreover, for the Rmax = 1, the attempt is made for the assignment of 3 resources or n(r) = 3 to accomplish 1 unit electrical circuit. Table 6 shows the heuristic scheduling using ACTIM rule for n(r) = 3 and follows by the Gantt Chart diagram to visualize the scheduling (Figure 9). The time completion for whole activities are 1252.6 seconds, while the idle rate for resource 1 is 27.5%, resource 2 is 48.16%, and resource 3 is 48.8%. It indicates that when the number of resource assignment is increased, idle rate will raise and the completion time is reducing but not significant, that is only 18.47 seconds.

	1	4	2	7	8	5	10	9	11
Duration (second)	51.4	87.11	74.02	25.97	44.4	125.96	93.37	18.47	12.02
ACTIM	1281.66	1230.26	1167.37	1143.15	1117.18	1093.35	1072.78	997.88	979.41
Scaled ACTIM	102.32	98.2165	93.1958	91.2622	89.1889	87.2864	85.6443	79.6647	78.1902
Resource required	1	1	1	1	1	1	1	1	1
TEARL	0	51.4	0	138.51	164.48	74.02	208.88	208.88	302.25
TSCHED	0	51.4	0	138.51	164.48	74.02	208.88	208.88	302.25
TFIN	51.4	138.51	74.02	164.48	208.88	199.98	302.25	227.35	314.27
TNOW	0	51.4	74.02	108.57	138.51	150.17	164.48	198.88	208.88
Resource available	–	–	–	–	–	r3	r1	r1,r3	r3
Activities allowed	1,2,3	4	5	6	7	–	8	–	9,10
Iteration number	1	2	3	4	5	6	7	8	9

12	13	16	19	17	20	21	23
122.72	25.49	19.83	315.2	48.89	130.65	85.97	351.83
967.39	844.67	819.18	799.36	547.22	498.33	484.15	398.18
77.2306	67.4333	65.3984	63.815526	43.6867316	39.78365	38.6516	31.7883
1	1	1	1	1	1	1	1
314.27	436.99	462.48	482.31	462.48	511.37	797.51	883.48
314.27	436.99	462.48	482.31	462.48	511.37	797.51	883.48
436.99	462.48	482.31	797.51	511.37	642.02	883.48	1235.31
227.35	302.25	314.27	436.99	462.28	482.31	500.15	511.37
r2,r3	r1,r2	r1,r3	r2,r3	–	–	–	–
–	11	12	13	16,17,15,14	19,14	14,18	20,18
10	11	12	13	14	15	16	17
			Second	Percentage			
			idler r1	344.43	27.50		
			idler r2	603.27	48.16		
			idler r3	611.23	48.80		

22	3	24	6	15	25	14	18	26
195.12	108.57	82.46	41.6	37.67	43.75	2681	13.4	17.29
367.68	240.27	172.56	131.7	97.42	90.1	73.16	59.75	46.35
29.35335	19.1819	13.7761	10.5141	7.77742	7.19304	5.84065	4.77008	3.7003
1	1	1	1	1	1	1	1	1
642.02	0	837.14	108.57	462.48	919.6	462.48	500.15	1235.31
642.02	0	837.14	108.57	462.48	919.6	500.15	526.96	1235.31
837.14	108.57	919.6	150.17	500.15	963.35	526.96	540.36	1252.6
526.96	540.36	642.02	797.51	837.14	883.48	919.6	963.35	1235.31
–	r1	r2	r3	r1	r2	r3	r2,r3	r1,r2
18	–	22	21	24	23	25	–	26
18	19	20	21	22	23	24	25	26

Table 6. ACTIM Scheduling, Rmax = 1, n(r) = 3 (Scenario 2)

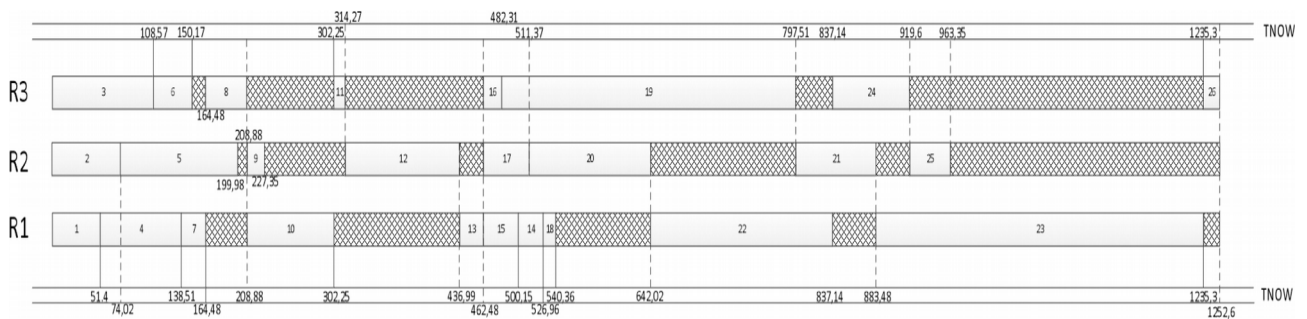


Figure 9. Gantt Chart for the ACTIM Scheduling (Scenario 2)

Then, the other scenarios are formulated by making a list of the work element that enabling the accomplishment using 2 or 3 resources, so that the standard time assumed to be reduced linearly based on the number of resource being assigned. The list is made by conducting an interview to the Head of Assembly Department, regarding which of these work elements could be conducted by 2 or 3 people without interrupting the processing flow of the other work elements. The result is depicted by the following table.

No	Work Element	Possibility being conducted by		Information
		2 people	3 people	
1	Clean up the paper tape stuck to the bolt	Yes	Yes	Per bolt
2	Assemble the MCCB into the MCCB base	Yes*	No	
3	Insert busbar N M10 bolt	Yes*	No	
4	Assemble the R, S, T, N, recolt	Yes	Yes	Per bolt
5	Install the connector busbar and busbar tongue into the MCCB	Yes*	No	
5-1	Busbar tongue installment			
5-2	Connector busbar installment			
6	Insert the busbae N	Yes*	No	
7	Measure the hole position of busbar R, S	No	No	Per busbar
8	Drill the busbar R, S	Yes*	No	Per busbar
9	Assemble the left side bolt of busbar R, S, T	No	No	
10	Assemble the CT-R, CT-S, and CT-T	Yes*	No	
10-1	Assemble the CT-R and CT-S (including wrap detachment)			
10-2	Open the CT-T wrap			
10-3	Assemble the CT-T			
11	Insert the right side bolt of busbar R, S, T	No	No	
12	Install the MCCB into phase busbar	Yes*	No	
13	Insert the mould to straighten the busbar	No	No	
14	Fasten the M10 connector bolt	No	No	
15	Fasten the MCCB L8 bolt	No	No	
16	Fasten the R, S, T recolt bolt	No	No	
17	Insert the foofing bolt to the MCCB base	No	No	
18	Insert the MCCB valve	No	No	
19	Assemble the fuse rail	Yes	Yes	
19-1	Insert the bolt			
19-2	Assemble the fuse rail			
19-3	Fasten the bolt manually			
20	Drilling the busbar tongue recolt hole	No	No	
21	Fasten the fuse rail bolt	No	No	
22	Assemble busbar tongue recolt	Yes*	No	
23	Assemble the CT fastener	Yes	No	
24	Insert the baut busbar tongue M10 bolt	Yes	No	
25	Fasten the busbar N and busbar tongue bolt	No	No	
26	Fasten the overall bolt through backside	Yes*	No	

Table 7. Check List of the Work Element that Enabling the Accomplishment Using 2 or 3 Resources

On the Table 7, if the yes appears with the sign of (*), then the work element is enabled to be conducted by 2 or 3 people, but if that is happened, the reduction of the time completion isn't appeared to be linear, because the characteristic of the task is not made from the similiar subelement. Also, the assistance from the additional worker wouldn't give a significant effect. Therefore, for the answer yes using sign (*), is assumed to be not included in the work element list that could be conducted by additional worker.

The precedence diagram along with its critical path on below, shows the change in the standard time for several work elements that is given the additional worker.

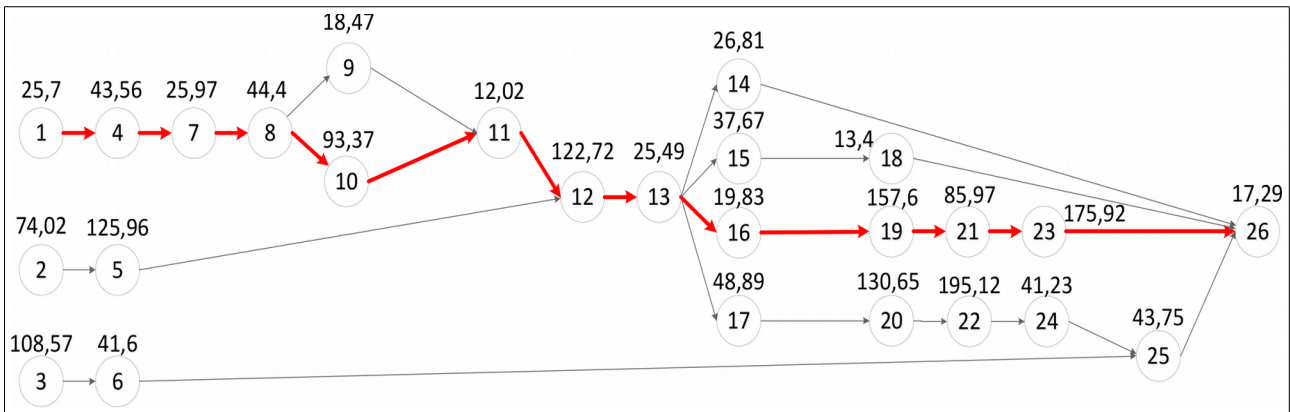


Figure 10. The AON for the PHB-TR 252 Assembly Process Using One Additional Worker for Particular Work Element ($R_{max} = 2$)

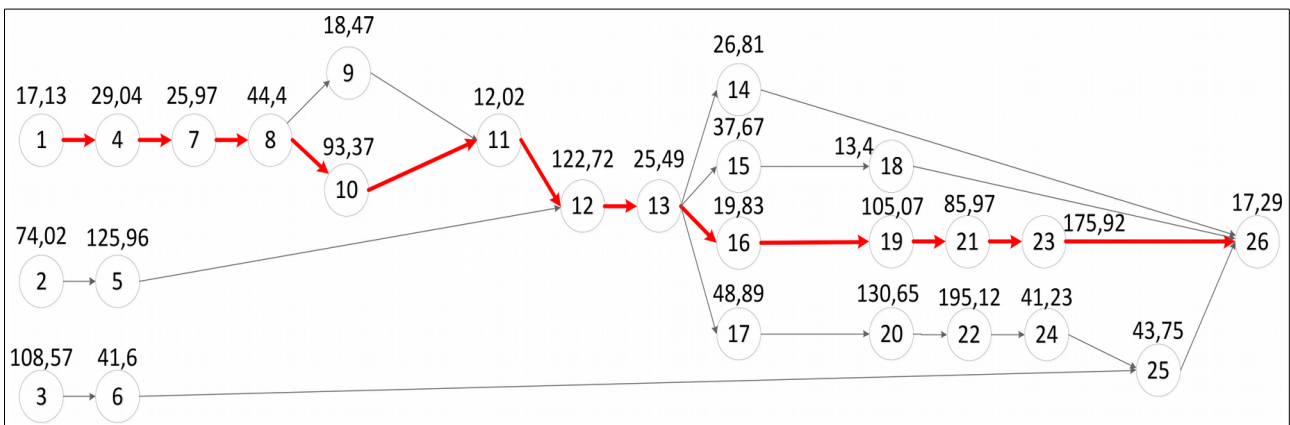


Figure 11. The AON for the PHB-TR 252 Assembly Process Using Two Additional Worker for Particular Work Element ($R_{max} = 3$)

Furthermore, the calculation result of ES, LS, EF, LF, ACTIM, ACTRES, and TIMRES after being adjusted with one additional worker for several work elements ($R_{max} = 2$), are provided on the table below.

Work Element	Resource Max = 2	Standard Time with Adjustment of the Additional Worker	ES	EF	LS	LF	ACTIM	ACTIM Rank	ACTRES	ACTRES Rank	TIMERES	TIMERES Rank
26	1	17.29	852.87	870.16	852.87	870.16	17.29	26	17.29	26	17.29	26
14	1	26.81	393.23	420.04	826.06	852.87	44.10	24	44.1	24	44.10	24
18	1	13.40	430.90	444.30	839.47	852.87	30.69	25	30.69	25	30.69	25
23	2	175.92	656.63	832.55	676.95	852.87	193.21	19	386.42	16	289.82	17
25	1	43.75	809.12	852.87	809.12	852.87	61.04	23	61.04	23	61.04	23
15	1	37.67	393.23	430.90	801.80	839.47	68.36	22	68.36	22	68.36	22
21	1	85.97	570.66	656.63	590.98	676.95	279.18	17	279.18	18	279.18	18
19	2	157.60	413.06	570.66	433.38	590.98	436.78	14	873.56	3	655.17	9
24	2	41.23	767.89	809.12	767.89	809.12	102.27	21	204.54	20	153.41	20
22	1	195.12	572.77	767.89	572.77	767.89	297.39	16	297.39	17	297.39	16
20	1	130.65	442.12	572.77	442.12	572.77	428.04	15	428.04	15	428.04	15
16	1	19.83	393.23	413.06	413.55	433.38	456.61	13	456.61	14	456.61	14
17	1	48.89	393.23	442.12	393.23	442.12	476.93	12	476.93	13	476.93	13
6	1	41.6	108.57	150.17	767.52	809.12	102.64	20	102.64	21	102.64	21
3	1	108.57	0	108.57	658.95	767.52	211.21	18	211.21	19	211.21	19
13	1	25.49	367.74	393.23	367.74	393.23	502.42	11	502.42	12	502.42	12
12	1	122.72	245.02	367.74	245.02	367.74	625.14	10	625.14	11	625.14	11
11	1	12.02	233.00	245.02	233.00	245.02	637.16	9	637.16	10	637.16	10
5	1	125.96	74.02	199.98	119.06	245.02	751.10	6	751.1	7	751.10	6
2	1	74.02	0	74.02	45.04	119.06	825.12	3	825.12	4	825.12	3
9	1	18.47	139.63	158.10	214.53	233.00	655.63	8	655.63	9	655.63	8
10	1	93.37	139.63	233.00	139.63	233.00	730.53	7	730.53	8	730.53	7
8	1	44.4	95.23	139.63	95.23	139.63	774.93	5	774.93	6	774.93	5
7	1	25.97	69.26	95.23	69.26	95.23	800.90	4	800.9	5	800.90	4
4	2	43.56	25.70	69.26	25.70	69.26	844.46	2	1688.92	2	1266.69	2
1	2	25.70	0	25.70	0.00	25.70	870.16	1	1740.32	1	1305.24	1

Table 8. Calculation of ES, LS, EF, LF, ACTIM, ACTRES, and TIMERES for Rmax = 2

While Table 9 shows the calculation result of ES, LS, EF, LF, ACTIM, ACTRES, and TIMERES after being adjusted with two additional workers for several work elements (Rmax = 3).

Work Element	Resource Max = 3	Standard Time with Adjustment of the Additional Worker	ES	EF	LS	LF	ACTIM	ACTIM Rank	ACTRES	ACTRES Rank	TIMERES	TIMERES Rank
26	1	17.29	829.78	847.07	829.78	847.07	17.29	26	17.29	26	17.29	26
14	1	26.81	370.14	396.95	802.97	829.78	44.10	24	44.1	24	44.10	24
18	1	13.40	407.81	421.21	816.38	829.78	30.69	25	30.69	25	30.69	25
23	2	175.92	581.01	756.93	653.86	829.78	193.21	19	386.42	16	289.82	17
25	1	43.75	786.03	829.78	786.03	829.78	61.04	23	61.04	23	61.04	23
15	1	37.67	370.14	407.81	778.71	816.38	68.36	22	68.36	22	68.36	22
21	1	85.97	495.04	581.01	567.89	653.86	279.18	17	279.18	18	279.18	18
19	3	105.07	389.97	495.04	462.82	567.89	384.25	15	1152.75	3	768.50	6
24	2	41.23	744.80	786.03	744.80	786.03	102.27	21	204.54	20	153.41	20
22	1	195.12	549.68	744.80	549.68	744.80	297.39	16	297.39	17	297.39	16
20	1	130.65	419.03	549.68	419.03	549.68	428.04	13	428.04	14	428.04	14
16	1	19.83	370.14	389.97	442.99	462.82	404.08	14	404.08	15	404.08	15
17	1	48.89	370.14	419.03	370.14	419.03	476.93	12	476.93	13	476.93	13
6	1	41.6	108.57	150.17	744.43	786.03	102.64	20	102.64	21	102.64	21
3	1	108.57	0	108.57	635.86	744.43	211.21	18	211.21	19	211.21	19
13	1	25.49	344.65	370.14	344.65	370.14	502.42	11	502.42	12	502.42	12
12	1	122.72	221.93	344.65	221.93	344.65	625.14	10	625.14	11	625.14	11
11	1	12.02	209.91	221.93	209.91	221.93	637.16	9	637.16	10	637.16	10
5	1	125.96	74.02	199.98	95.97	221.93	751.10	6	751.1	7	751.10	7
2	1	74.02	0	74.02	21.95	95.97	825.12	3	825.12	4	825.12	3
9	1	18.47	116.54	135.01	191.44	209.91	655.63	8	655.63	9	655.63	9
10	1	93.37	116.54	209.91	116.54	209.91	730.53	7	730.53	8	730.53	8
8	1	44.4	72.14	116.54	72.14	116.54	774.93	5	774.93	6	774.93	5
7	1	25.97	46.17	72.14	46.17	72.14	800.90	4	800.9	5	800.90	4
4	3	29.04	17.13	46.17	17.13	46.17	829.94	2	2489.82	2	1659.88	2
1	3	17.13	0	17.13	0.00	17.13	847.07	1	2541.21	1	1694.14	1

Table 9. Calculation of ES, LS, EF, LF, ACTIM, ACTRES, and TIMERES for Rmax = 3

When there is a difference on the resource requirement between the work elements, the ACTRES and TIMERES rule could be applied as the comparison, because the ACTRES and TIMERES value consider the number of resource requirement on each of the work element. The scheduling using ACTIM, ACTRES, and TIMERES respectively shown by the following tables.

	1	4	2	7	8	5	10	9	11
Duration (second)	25.70	43.56	74.02	25.97	44.4	125.96	93.37	18.47	12.02
ACTIM	870.16	844.46	825.12	800.90	774.93	751.10	730.53	65.63	637.16
Scaled ACTIM	100	97.0465	94.8239	92.0405	89.056	86.3175	83.9535	75.3459	73.2233
Resource required	2	2	1	1	1	1	1	1	1
TEARL	0	25.70	0	69.26	95.23	74.02	139.63	139.63	302.25
TSCHEd	0	25.70	69.26	95.23	74.02	139.63	139.63	233	251.47
TFIN	25.7	69.26	143.28	95.23	139.63	269.24	233	251.47	263.49
TNOW	0	25.7	69.26	95.23	139.63	143.28	233.33	251.47	263.49
Resource available	–	–	–	–	–	–	–	–	–
Activities allowed	1,2,3	4,2,3	2,7,3	8,3	10,9,3	5,9,3	9,3	11,3	3
Iteration number	1	2	3	4	5	6	7	8	9

12	13	17	16	19	20	22	21
122.72	25.49	48.89	19.83	157.60	130.65	195.12	85.97
625.14	502.42	476.93	456.61	436.78	428.04	297.39	279.18
71.842	57.7388	54.8095	52.474258	50.19536637	49.191	34.1765	32.0838
1	1	1	1	2	1	1	1
314.27	436.99	462.48	482.31	462.48	511.37	797.51	883.48
263.49	391.96	417.45	466.34	437.28	754.59	596.99	949.71
391.96	417.45	466.34	437.28	754.59	569.99	949.71	840.56
269.24	372.06	391.96	413.66	417.45	437.28	466.34	474.95
–	–	–	r2	–	–	–	–
12	6	13	–	17,16,15,14	19,15,14	19,20,14	19,14,18
10	11	12	13	14	15	16	17

	Second	Percentage
idler r1	125.58	10.23
idler r2	130.23	10.61

3	23	6	24	15	25	14	18	26
108.57	1751.92	41.6	41.23	37.67	43.75	26.81	13.40	17.29
211.21	193.21	102.64	102.27	68.36	61.04	44.10	30.69	17.29
24.2725	22.204	11.7955	11.753	7.85603	7.0148	5.06803	3.52694	1.98699
1	2	1	2	1	1	1	1	1
0	656.63	108.57	767.89	393.23	809.12	393.23	430.90	852.87
263.49	949.71	372.06	1125.63	437.282	1166.86	474.95	501.76	1210.61
372.06	1125.63	413.66	1166.86	474.95	1210.61	501.76	515.16	1227.9
501.76	515.16	596.99	754.59	840.56	949.71	1125.63	1166.86	1210.61
–	r1	–	–	r2	–	–	r1	r2
19,18	19	19,22	22,21	23	23,24	24	25	26
18	19	20	21	22	23	24	25	26

Table 10. ACTIM Scheduling, Rmax = 2, n(r) = 2 (Scenario 3)

	1	4	2	7	8	5	10	9	11
Duration (second)	25.70	43.56	74.02	25.97	44.4.	125.96	93.37	18.47	12.02
ACTIM	870.16	844.46	825.12	800.90	774.93	751.10	730.53	655.63	637.16
Scaled ACTIM	100	97.0465	94.8239	92.0405	89.056	86.3175	83.9535	75.3459	73.2233
Resource required	2	2	1	1	1	1	1	1	1
TEARL	0	25.70	0	69.26	95.23	74.02	139.63	139.63	233.00
TSCHEd	0	25.7	0	69.26	95.23	74.02	139.63	177.83	233
TFIN	25.7	69.26	74.02	95.23	139.63	199.98	233	196.3	245.02
TNOW	0	25.7	69.26	74.02	95.23	139.63	177.83	196.3	199.98
Resource available	–	–	–	–	–	–	–	–	r3
Activities allowed	1,2,3	4,3	7,3	5	8	10,9	9,6	6	–
Iteration number	1	2	3	4	5	6	7	8	9

12	13	17	16	19	20	22	21
122.72	25.49	48.89	19.83	157.60	130.65	195.12	85.97
625.14	502.42	476.93	456.61	436.78	428.04	297.39	279.18
71.842	57.7388	54.8095	52.474258	50.19536637	49.191	34.1765	32.0838
1	1	1	1	2	1	1	1
245.02	367.74	393.23	393.23	413.06	442.12	572.77	570.66
245.02	367.74	393.23	393.23	442.12	444.3	574.95	599.72
367.74	393.23	442.12	413.06	599.72	574.95	770.07	685.69
233	237.9	245.02	367.74	393.23	413.06	430.9	439.87
r1	r1,r2	r1,r2	r1,r3	–	–	–	r1
11	–	12	13	17,16,15,14	19,14	19,18	19
10	11	12	13	14	15	16	17

	Second	Percentage
idler r1	221	22.93
idler r2	265.13	27.51

3	23	6	24	15	25	14	18	26
108.57	1751.92	41.6	41.23	37.67	43.75	26.81	13.40	17.29
211.21	193.21	102.64	102.27	68.36	61.04	44.10	30.69	17.29
24.2725	22.204	11.7955	11.753	7.85603	7.0148	5.06803	3.52694	1.98699
1	2	1	2	1	1	1	1	1
0	656.63	108.57	767.89	393.23	809.12	393.23	430.90	852.87
69.26	685.69	196.3	861.61	393.23	902.84	413.06	430.9	946.59
177.83	861.61	237.9	902.84	430.9	946.59	439.87	444.3	963.88
442.12	444.3	574.95	599.72	685.69	770.07	861.61	902.84	946.59
–	–	–	r3	–	r2	r1	r2,r3	r1,r3
19,20	20	22	21	23	24	24	25	26
18	19	20	21	22	23	24	25	26

Table 11. ACTIM Scheduling, Rmax = 2, n(r) = 3 (Scenario 4)

	1	4	19	2	7	8	5	10	9
Duration (second)	25.70	43.56	157.60	74.02	25.97	44.4	125.96	93.37	18.47
ACTIM	1740.32	1688.92	873.56	852.12	800.9	774.93	751.1	730.53	655.63
Scaled ACTIM	100	97.0465	50.1954	47.412	46.0203	44.528	43.1587	41.9768	37.673
Resource required	2	2	2	1	1	1	1	1	1
TEARL	0	25.70	413.60	0	69.26	95.23	74.02	139.63	139.63
TSCHEd	0	25.7	596.99	69.26	69.26	95.23	143.28	139.63	233
TFIN	25.7	69.26	754.59	143.28	95.23	139.63	269.24	233	251.47
TNOW	0	25.7	69.26	95.23	139.63	143.28	233	251.47	263.49
Resource available	–	–	–	–	–	–	–	–	–
Activities allowed	1,2,3	4,2,3	2,7,3	8,3	10,9,3	5,9,3	9,3	11,3	3
Iteration number	1	2	3	4	5	6	7	8	9

11	12	13	17	16	20	23	22
12.02	122.72	25.49	48.89	19.83	130.65	175.92	195.12
637.16	625.14	502.42	476.93	456.61	428.04	386.42	297.39
36.6117	35.921	28.8694	27.40473	26.2371288	24.5954767	22.204	17.0882
1	1	1	1	1	1	2	1
233.00	245.02	367.74	393.23	393.23	442.12	656.63	572.77
251.47	269.24	391.96	417.45	417.45	466.34	949.71	754.59
263.49	391.96	417.45	466.34	437.28	596.99	1125.63	949.71
269.24	372.06	391.96	413.66	417.45	437.28	466.34	474.95
–	–	–	r2	–	–	–	–
12	6	13	–	17,16,15,14	19,15,14	19,20,14	19,14,18
10	11	12	13	14	15	16	17

	Second	Percentage
idler r1	125.58	10.23
idler r2	130.23	10.61

21	3	24	6	15	25	14	18	26
85.97	108.57	41.23	41.6	37.67	43.75	26.81	13.40	17.29
279.18	211.21	204.54	102.64	68.36	61.04	44.10	30.69	17.29
16.0419	12.1363	11.753	5.89777	3.92801	3.5074	2.53402	1.76347	0.9935
1	1	2	1	1	1	1	1	1
570.66	0	767.89	108.57	393.23	809.12	393.23	430.90	852.87
754.59	263.49	1125.63	372.06	437.28	1166.86	474.95	501.76	1210.61
840.56	372.06	1166.86	413.66	474.95	1210.61	501.76	515.16	1227.9
501.76	515.16	596.99	754.59	840.56	949.71	1125.63	1166.86	1210.61
–	r1	–	–	r2	–	–	r1	r2
19,18	19	19,22	22,21	23	23,24	24	25	26
18	19	20	21	22	23	24	25	26

Table 12. ACTRES Scheduling, Rmax = 2, n(r) = 2 (Scenario 3)

	1	4	19	2	7	8	5	10	9
Duration (second)	25.70	43.56	157.60	74.20	25.97	44.4	125.96	93.37	18.47
ACTIM	1740.32	1688.92	873.56	825.12	800.9	774.93	751.7	730.53	655.63
Scaled ACTIM	100	97.0465	50.1954	47.412	46.0203	44.528	43.1587	41.9768	37.673
Resource required	2	2	2	1	1	1	1	1	1
TEARL	0	25.70	413.06	0	69.26	95.23	74.02	139.63	139.63
TSCHED	0	25.7	442.12	0	69.26	95.23	74.02	139.63	177.83
TFIN	25.70	69.26	599.72	74.02	95.23	139.63	199.98	233	196.3
TNOW	0	25.7	69.26	74.02	95.23	139.63	177.83	196.3	199.98
Resource available	–	–	–	–	–	–	–	–	r3
Activities allowed	1,2,3	4,3	7,3	5	8	10,9	9,6	6	–
Iteration number	1	2	3	4	5	6	7	8	9

11	12	13	17	16	20	23	22
12.02	122.72	25.49	48.89	19.83	130.65	175.92	195.12
637.16	625.14	502.42	476.93	456.61	428.04	297.39	279.18
36.6117	35.921	28.8694	27.40473	26.2371288	24.5954767	22.204	17.0882
1	1	1	1	1	1	2	1
233.00	245.02	367.74	393.23	393.23	442.12	656.63	572.77
233	245.02	367.74	393.23	393.23	444.3	685.69	574.95
245.02	367.74	393.23	442.12	413.06	574.95	861.61	770.07
233	237.9	245.02	367.74	393.23	413.06	430.9	439.87
r1	r1,r2	r1,r2	r1,r3	–	–	–	r1
11	–	12	13	17,16,15,14	19,14	19,18	19
10	11	12	13	14	15	16	17

	Second	Percentage
idler r1	221	22.93
idler r2	265.13	27.51
idler r3	205.52	21.32

21	3	24	6	15	25	14	18	26
85.97	108.57	41.23	41.6	37.67	43.75	26.81	13.40	17.29
279.18	211.21	204.54	102.64	68.36	61.04	44.1	30.69	17.29
16.0419	12.1363	11.753	5.89777	3.92801	3.5074	2.53402	1.76347	0.9935
1	1	2	1	1	1	1	1	1
570.66	0	767.89	108.57	393.23	809.12	393.23	430.90	852.87
599.72	69.26	861.61	196.3	393.23	902.84	413.06	430.9	946.59
685.69	177.83	902.84	237.9	430.9	946.59	439.87	444.3	963.88
442.12	444.3	574.95	599.72	685.69	770.07	861.61	902.84	946.59
–	–	–	r3	–	r2	r1	r2,r3	r1,r3
19,20	20	22	21	23	24	24	25	26
18	19	20	21	22	23	24	25	26

Table 13. ACTRES Scheduling, Rmax = 2, n(r) = 3 (Scenario 4)

	1	4	2	7	8	5	10	9	19
Duration (second)	25.70	43.56	74.02	25.97	44.4	125.96	93.37	18.47	157.60
ACTIM	1305.24	1266.69	852.12	800.90	774.93	751.10	730.53	655.63	655.17
Scaled ACTIM	100	97.0465	63.216	61.3604	59.3707	57.545	55.969	50.2306	50.1954
Resource required	2	2	1	1	1	1	1	1	2
TEARL	0	25.70	0	69.26	95.23	74.02	139.63	139.63	413.06
TSCHEd	0	25.7	69.26	69.26	95.23	143.28	139.63	233	596.99
TFIN	25.7	69.26	143.28	95.23	139.63	269.24	233	251.47	754.49
TNOW	0	25.7	69.26	95.23	139.63	143.28	233	251.47	263.49
Resource available	–	–	–	–	–	–	–	–	–
Activities allowed	1,2,3	4,2,3	2,7,3	8,3	10,9,3	5,9,3	9,3	11,3	3
Iteration number	1	2	3	4	5	6	7	8	9

11	12	13	17	16	20	22	23
12.02	122.72	25.49	48.89	19.83	130.65	195.12	175.92
637.16	625.14	502.42	476.93	456.61	428.04	297.39	289.82
48.8155	47.8946	38.4925	36.53964	34.98283841	32.794	22.7843	22.204
1	1	1	1	1	1	1	2
233.00	245.02	367.74	393.23	393.23	442.12	572.77	656.63
251.47	269.24	391.96	417.45	417.45	466.34	754.59	949.71
263.49	391.96	417.45	466.34	437.28	596.99	949.71	1125.63
269.24	372.06	391.96	413.66	417.45	437.28	466.34	474.95
–	–	–	r2	–	–	–	–
12	6	13	–	17,16,15,14	19,15,14	19,20,14	19,14,18
10	11	12	13	14	15	16	17

	Second	Percentage
idler r1	125.58	10.2272172
idler r2	130.23	10.60591253

21	3	24	6	15	25	14	18	26
85.97	108.57	41.23	41.6	37.67	43.75	26.81	13.40	17.29
279.18	211.21	153.41	102.64	68.36	61.04	44.10	30.69	17.29
21.3892	16.1817	11.753	7.86369	5.23735	4.67653	3.37869	2.35129	1.32466
1	1	2	1	1	1	1	1	1
570.66	0	767.89	108.57	393.23	809.12	393.23	430.90	852.87
754.59	263.49	1125.63	372.06	437.28	1166.86	474.95	501.76	1210.61
840.56	372.06	1166.86	413.66	474.95	1210.61	501.76	515.16	1227.9
501.76	515.16	596.99	754.59	840.56	949.71	1125.63	1166.86	1210.61
–	r1	–	–	r2	–	–	r1	r2
19,18	19	19,22	22,21	23	23,24	24	25	26
18	19	20	21	22	23	24	25	26

Table 14. TIMRES Scheduling, Rmax = 2, n(r) = 2 (Scenario 3)

	1	4	2	7	8	5	10	9	19
Duration (second)	25.70	43.56	74.20	25.97	44.4	125.96	93.37	18.47	157.60
ACTIM	1305.24	1266.69	825.12	800.9	774.93	751.1	730.53	655.63	655.63
Scaled ACTIM	100	97.0465	62.216	61.3604	59.3707	57.545	55.969	50.2306	50.1954
Resource required	2	2	1	1	1	1	1	1	2
TEARL	0	25.70	0	69.26	95.23	74.02	139.63	139.63	413.06
TSCHEd	0	25.7	0	69.26	95.23	74.02	139.63	177.83	442.12
TFIN	25.70	69.26	74.02	95.23	139.63	199.98	233	196.3	599.72
TNOW	0	25.7	69.26	74.02	95.23	139.63	177.83	196.3	199.98
Resource available	–	–	–	–	–	–	–	–	r3
Activities allowed	1,2,3	4,3	7,3	5	8	10,9	9,6	6	–
Iteration number	1	2	3	4	5	6	7	8	9

11	12	13	17	16	20	22	23
12.02	122.72	25.49	48.89	19.83	130.65	195.12	175.92
637.16	625.14	502.42	476.93	456.61	428.04	297.39	289.82
48.8155	47.8946	38.4925	36.53964	34.98283841	32.794	22.7843	22.204
1	1	1	1	1	1	1	2
233	245.02	367.74	393.23	393.23	442.12	572.77	656.63
233	245.02	367.74	393.23	393.23	444.3	574.95	685.69
245.02	367.74	393.23	442.12	413.06	574.95	770.07	861.61
233	237.9	245.02	367.74	393.23	413.06	430.9	439.87
r1	r1,r2	r1,r2	r1,r3	–	–	–	r1
11	–	12	13	17,16,15,14	19,14	19,18	19
10	11	12	13	14	15	16	17
			Second	Percentage			
			idler r1	221	22.93		
			idler r2	265.13	27.51		

21	3	24	6	15	25	14	18	26
85.97	108.57	41.23	41.6	37.67	43.75	26.81	13.40	17.29
279.18	211.21	153.41	102.64	68.36	61.04	44.1	30.69	17.29
21.3892	16.1817	11.753	7.86369	5.23735	4.67653	3.37869	2.35129	1.32466
1	1	2	1	1	1	1	1	1
570.66	0	767.89	108.57	393.23	809.12	393.23	430.90	852.87
599.72	69.26	861.61	196.3	393.23	902.84	413.06	430.9	946.59
685.69	177.83	902.84	237.9	430.9	946.59	439.87	444.3	963.88
442.12	444.3	574.95	599.72	685.69	770.07	861.61	902.84	946.59
–	–	–	r3	–	r2	r1	r2,r3	r1,r3
19,20	20	22	21	23	24	24	25	26
18	19	20	21	22	23	24	25	26

Table 15. TIMRES Scheduling, Rmax = 2, n(r) = 3 (Scenario 4)

	1	4	2	7	8	5	10	9	11
Duration (second)	17.13	29.04	74.02	25.97	44.4	125.96	93.37	18.47	12.02
ACTIM	847.07	829.94	825.12	800.90	774.93	751.10	730.53	655.63	637.16
Scaled ACTIM	100	97.9777	97.4087	94.5494	91.4836	88.6704	86.242	77.3997	75.2193
Resource required	3	3	1	1	1	1	1	1	1
TEARL	0	17.13	0	46.17	72.14	74.02	116.54	116.54	209.91
TSCHEd	0	17.13	46.17	46.17	72.14	120.19	116.54	154.74	209.91
TFIN	17.13	46.17	120.19	72.14	116.54	246.15	209.91	173.21	221.93
TNOW	0	17.13	46.17	72.14	116.54	120.19	154.74	173.21	209.91
Resource available	–	–	–	–	–	–	–	–	–
Activities allowed	1,2,3	4,2,3	2,7,3	8	10,9	5,9	9,6	6	11
Iteration number	1	2	3	4	5	6	7	8	9

12	13	17	20	16	19	22	21
122.72	25.49	48.89	130.65	19.83	105.07	195.12	85.97
625.14	502.42	476.93	428.04	404.08	384.25	297.39	279.18
73.8003	59.3127	56.3035	50.531833	47.70325947	45.3622	35.1081	32.9583
1	1	1	1	1	3	1	1
221.93	344.65	370.14	419.03	370.14	389.97	549.68	495.04
246.15	368.87	394.36	443.25	394.36	573.9	678.97	678.97
368.87	394.36	443.25	573.9	414.19	678.97	874.09	764.94
214.81	221.93	246.15	368.87	394.36	41.19	432.03	441
r3	r2,r3	r1,r2	r1,r3	–	–	–	r3
–	–	12	13	17,16,15,14	19,14	19,18	19
10	11	12	13	14	15	16	17

	Second	Percentage
idler r1	295.22	28.30
idler r2	333.93	32.01
idler r3	300.25	28.78

3	23	6	24	15	25	14	18	26
108.57	175.92	41.6	41.23	37.67	43.75	26.81	13.40	17.29
211.21	193.21	102.64	102.64	68.36	61.04	44.10	30.69	17.29
24.9342	22.8092	12.1171	12.0734	8.07017	7.20602	5.20618	3.62308	2.041154
1	2	1	2	1	1	1	1	1
0	581.01	108.57	744.80	370.14	786.03	370.14	407.81	829.78
46.17	764.94	173.21	940.86	394.36	982.09	414.19	432.03	1025.84
154.74	940.86	214.81	982.09	432.03	1025.84	441	445.45	1034.13
443.25	445.43	573.9	678.97	764.94	874.09	940.86	982.09	1025.84
r3	r2,r3	–	r1	–	r3	r2	r1,r3	r1,r2
19,20	19	19,22	22,21	23	24	24	25	26
18	19	20	21	22	23	24	25	26

Table 16. ACTIM Scheduling, Rmax = 3, n(r) = 3 (Scenario 5)

	1	4	19	2	7	8	5	10	9
Duration (second)	17.13	29.04	105.07	74.02	25.97	44.4	125.96	93.37	18.47
ACTIM	2541.21	2489.82	1152.75	825.12	800.9	774.93	751.1	730.53	655.63
Scaled ACTIM	100	97.9777	45.3622	32.4696	31.5165	30.4945	29.5568	28.7473	25.7999
Resource required	3	3	3	1	1	1	1	1	2
TEARL	0	17.13	389.97	0	46.17	72.14	74.02	116.54	116.54
TSCHEd	0	17.13	573.9	46.17	46.17	72.14	120.19	116.54	154.74
TFIN	17.13	46.17	678.97	120.19	72.14	116.54	246.15	209.92	173.21
TNOW	0	17.13	46.17	72.14	116.54	120.19	154.74	173.21	209.91
Resource available	–	–	–	–	–	–	–	–	–
Activities allowed	1,2,3	4,2,3	2,7,3	8	10,9	5,9	9,6	6	11
Iteration number	1	2	3	4	5	6	7	8	9

11	12	13	17	20	16	23	22
12.02	122.72	25.49	48.89	130.65	19.83	175.92	195.5.12
637.16	625.14	502.42	476.93	428.04	404.08	386.42	297.18
25.0731	24.6001	19.7709	18.767831	16.84394442	15.9011	15.2061	11.7027
1	1	1	1	1	1	2	1
209.91	221.93	344.65	370.14	419.03	370.14	581.001	549.68
209.91	246.15	368.87	394.36	443.25	394.36	764.94	678.97
221.93	368.87	394.36	443.25	573.9	414.19	940.86	874.09
214.81	221.93	246.15	368.87	394.36	414.19	432.03	441
r3	r2,r3	r1,r2	r1,r3	–	–	–	r3
–	–	12	13	17,16,15,14	19,14	19,18	19
10	11	12	13	14	15	16	17

	Second	Percentage
idler r1	295.22	28.30
idler r2	333.93	32.01
idler r3	300.25	28.78

21	3	24	6	15	25	14	18	26
85.97	108.57	41.23	41.6	37.67	43.75	26.81	13.40	17.29
279.18	211.21	204.54	102.64	68.36	61.04	44.1	30.69	17.29
10.9861	8.31139	8.04892	4.03902	2.69006	2.40201	1.73539	1.20769	0.68038
1	1	2	1	1	1	1	1	1
495.04	0	744.80	108.57	370.14	786.03	370.14	407.81	829.78
678.97	46.17	940.86	173.21	394.36	982.09	414.19	432.03	1025.84
764.94	154.74	982.09	214.81	432.03	1025.84	441	445.43	1043.13
443.25	445.43	573.9	678.97	764.94	874.09	940.86	982.09	1025.84
r3	r2,r3	–	r1	–	r3	r2	r1,r3	r1,r2
19,20	19	19,22	22,21	23	24	24	25	26
18	19	20	21	22	23	24	25	26

Table 17. ACTRES Scheduling, Rmax = 3, n(r) = 3 (Scenario 5)

	1	4	2	7	8	19	5	10	9
Duration (second)	17.13	29.04	74.02	25.97	44.4	105.07	125.96	93.37	18.47
ACTIM	1694.14	1659.88	825.12	800.90	774.93	768.50	751.10	730.53	655.63
Scaled ACTIM	100	97.9777	48.7044	47.2747	45.7418	45.3622	44.3352	43.121	38.6999
Resource required	3	3	1	1	1	3	1	1	1
TEARL	0	17.13	0	46.17	72.14	389.97	74.02	116.54	116.54
TSCHEd	0	17.13	46.17	46.17	72.14	573.9	120.19	116.54	154.74
TFIN	17.13	46.17	120.19	72.14	116.54	678.97	246.15	209.91	173.21
TNOW	0	17.13	46.17	72.14	116.54	120.19	154.74	173.21	209.91
Resource available	–	–	–	–	–	–	–	–	–
Activities allowed	1,2,3	4,2,3	2,7,3	8	10,9	5,9	9,6	6	11
Iteration number	1	2	3	4	5	6	7	8	9

11	12	13	17	20	16	22	23
12.02	122.72	25.49	48.89	130.65	19.83	195.12	175.92
637.17	625.14	502.14,502.42	476.93	428.04	404.08	297.39	289.82
37.6096	36.9001	29.6563	28.151747	25.26591883	23.8516	17.554	17.1069
1	1	1	1	1	1	1	2
209.91	221.93	344.65	370.14	419.03	370.14	549.68	581.01
209.91	246.15	368.87	394.36	443.25	394.36	678.97	764.94
221.93	368.87	394.36	443.25	573.9	414.19	874.09	940.86
214.81	221.93	246.15	368.87	394.36	41.19	432.03	441
r3	r2,r3	r1,r2	r1,r3	–	–	–	r3
–	–	12	13	17,16,15,14	19,14	19,18	19
10	11	12	13	14	15	16	17
			Second	Percentage			
			idler r1	295.22	28.30		
			idler r2	333.93	32.01		
			idler r3	300.25	28.78		

21	3	24	6	15	25	14	18	26
85.97	108.57	41.23	41.6	37.67	43.75	26.81	13.40	17.29
279.18	211.21	153.41	102.64	68.36	61.04	44.10	30.69	17.29
16.4792	12.4671	9.05504	6.05853	4.03509	3.60301	2.60309	1.81154	1.02058
1	1	2	1	1	1	1	1	1
495.04	0	744.80	108.57	370.14	786.03	370.14	407.81	829.78
678.97	46.17	940.86	173.21	394.36	982.09	414.19	432.03	1025.13
764.94	154.74	982.09	214.81	432.03	1025.84	441	445.45	1043.13
443.25	445.43	573.9	678.97	764.94	874.09	940.86	982.09	1025.84
r3	r2,r3	–	r1	–	r3	r2	r1,r3	r1,r2
19,20	19	19,22	22,21	23	24	24	25	26
18	19	20	21	22	23	24	25	26

Table 18. TIMRES Scheduling, Rmax = 3, n(r) = 3 (Scenario 5)

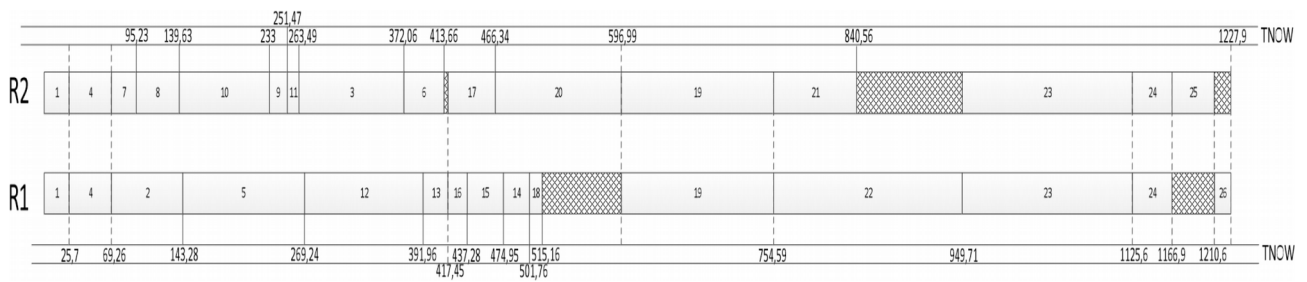


Figure 12. Gantt Chart for the ACTIM, ACTRES, dan TIMRES Scheduling (Scenario 3)

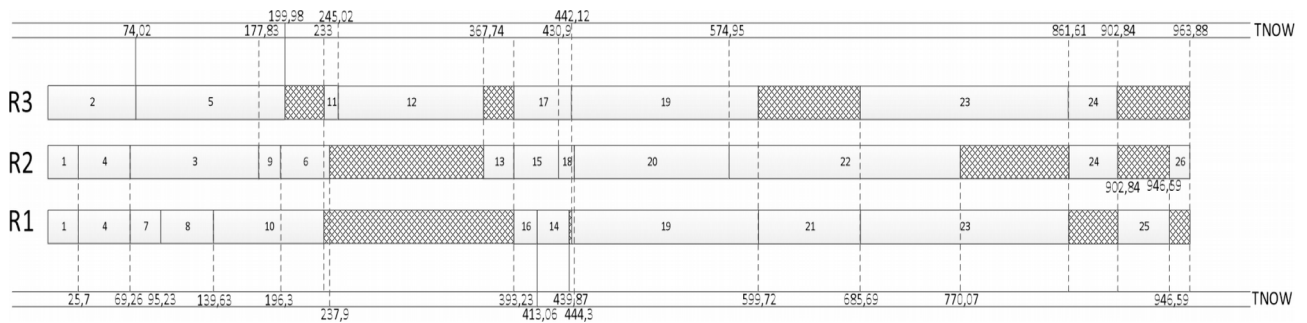


Figure 13. Gantt Chart for the ACTIM, ACTRES, dan TIMRES Scheduling (Scenario 4)

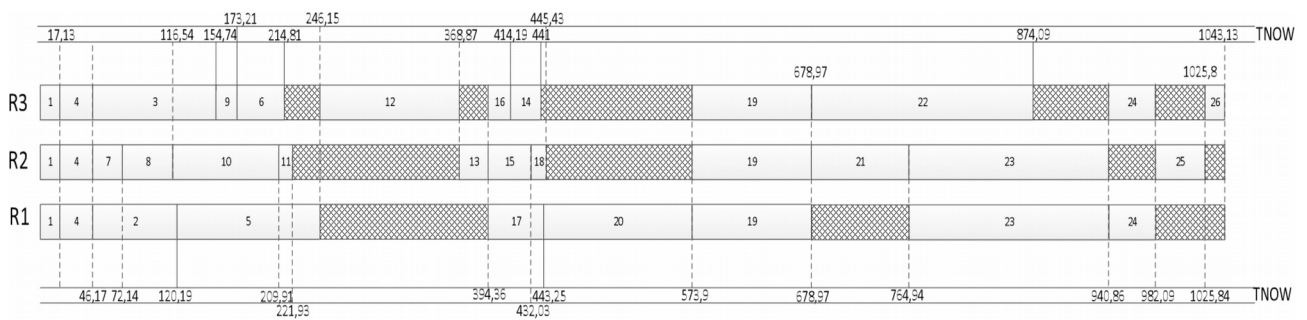


Figure 14. Gantt Chart for the ACTIM, ACTRES, dan TIMRES Scheduling (Scenario 5)

The scheduling obtained from the ACTIM, ACTRES, and TIMRES rule yield the similar completion time (C_{max}) and assignment of work element for each scenario. For the scenario where the maximum number of resource required for each work element is 2 people ($R_{max} = 2$) and number of people being assigned is 2 per assembly unit, the value of C_{max} is 1227,9 seconds. For the scenario with $R_{max} = 2$ and $n(r) = 3$, the C_{max} value is 963,88 seconds. While for the scenario with $R_{max} = 3$ and $n(r) = 3$, the C_{max} value is 1043,1 seconds.

4.5. Simulation Approach to Assess the Scheduling Performance for Each Scenario

Because of the application of ACTIM, ACTRES, and TIMRES rule yield the same scheduling result, therefore in this simulation approach, the scheduling result only consist of 5 scenarios, those are:

1. Scenario 1, where the maximum number of resource required for each work element (R_{max}) is 1 person, and 2 people being assigned per assembly unit.
2. Scenario 2, where the maximum number of resource required for each work element (R_{max}) is 1 person, and 3 people being assigned per assembly unit.
3. Scenario 3, where the maximum number of resource required for each work element (R_{max}) is 2 people, and 2 people being assigned per assembly unit.
4. Scenario 4, where the maximum number of resource required for each work element (R_{max}) is 2 people, and 3 people being assigned per assembly unit.
5. Scenario 5, where the maximum number of resource required for each work element (R_{max}) is 3 people, and 3 people being assigned per assembly unit.

To know whether those scenarios would overcome the demand, therefore the calculation of production rate per hour is needed to assess each of the scenario performance. Based on the company report, the average cycle time for the metal works process (fabrication of cabinet box) is 9823,91 seconds (2,73 hours). While the cabinet box is being manufactured, the main base for assembly of the electrical circuit is also manufactured, therefore when a batch of 40 units' cabinet box is accomplished. It is brought along with the particular number of electrical circuit main base (the amount is based on the customer order, unlike the cabinet box) to the painting area. The painting process takes around 3 days. After the painting process, the electrical circuit main base can be used for the assembly process.

Moreover, the manufacture of the switchboard has the average deadline of 1 month after the order placement, according to the interview conducted with the Head of Assembly Department. Considering the quantity of order variation, the number of resource being assigned will be adjusted to that quantity order, by hiring the contract employee if it is predicted that the current number of employee isn't adequate to meet the demand.

Based on the last year (2015) demand, the cycle time of the metal works process (CT1), and cycle time of the painting process (CT2), the Author could calculate the TAKT time as the following.

For the high demand rate of 700 units/ month (based on Company report):

$$\begin{aligned}
 \text{TAKT} &= \frac{\text{Available time per month}}{\text{demand per month}} \\
 &= \frac{\text{work hour/month} - \text{CT1} - \text{CT2}}{\text{demand per month}} \\
 &= \frac{7 \times 26 - 40 \times 2,73 - 3 \times 7}{700} \text{ hour} \\
 &= \frac{182 - 109,2 - 21}{700} \text{ hour} \\
 &= \frac{51,8}{700} = 0,074 \text{ hour} = 4,44 \text{ minutes}
 \end{aligned}$$

To be able to meet the demand of 700 units per month, therefore the production rate has to be set so that the product can be released at least every 4,44 minutes.

For the average demand rate of 111 units/month (based on Company report):

$$\begin{aligned}
 \text{TAKT} &= \frac{7 \times 26 - 40 \times 2,73 - 3 \times 7}{111} \text{ hour} \\
 &= \frac{51,8}{111} \text{ hour} \\
 &= 0,467 \text{ hours} \\
 &= 28,02 \text{ minutes}
 \end{aligned}$$

Whilst for the low demand rate (50 units), there is no need to make a calculation, because the low seasonal period can be handled within 1 month based on the Cmax obtained for each scheduling.

4.6. Comparing the Proposed System and Existing System

Based on the observation conducted to the existing condition, the assembly process of PHB-TR 252 electrical circuit still doesn't have the standard work instruction that is systematically written. The execution of those activities does not follow any rule, and every worker freely specify the next activity that will be performed. This turns out to be inefficient, caused by several factors, those are:

1. The worker often assists the other worker's task. It eventually causes waste to takes place, when the task's characteristic isn't suitable performed by more than one person. Besides, the worker could be allocated to another pending activity.
2. Some of the particular task could cause the blocking activity that obstruct the completion of other activities. Therefore, it is needed to develop the precedence diagram. So that, it will be known which of the activities that could be done simultaneously with others activities.
3. The absent of the job specialization had caused the worker typically had a well understanding at every work element composing the assembly process. It is instead will not increasing the productivity. Citing the term of labor division, that was applied by Henry Ford at the car assembly area, the division of task for each resource instead will increase the productivity. Worker specialization could increase the productivity by developing a very good skill at each simple activity, compared with the skill at all the process but doesn't has good performance in the execution of each process.

Preliminary study had been done by the concerned company to discover the existing system performance, where the result is 9 workers involved had yield 4 units' assemblies for 50,5 minutes. This data is used as the reference for improvement.

The following table summarize the information gathered by simulation method, that is the performance for each scenario. The parameter being assessed are resource utilization, product departure time, number of worker required, and product output.

	Scenario 1	Scenario 2	Scenario 3	Scenario 4	Scenario 5
Product departure with 6 workers	6.44	7.63	6.91	7.14	7.14
Product output with 6 workers	482.50	406	449	435	435
% utilization of resource 1 (high demand rate)	78.8	85.09	82.5	92.65	69.94
%utilization of resource 2 (high demand rate)	86.03	60.79	82.12	87.09	66.46
%utilization of resource 3 (high demand rate)	–	58.01	–	94.69	69.6
Resource required (high demand rate)	10 people	12 people	10 people	9 people	12 people
%utilization of resource 1 (average demand)	62.78	54.02	65.54	44.44	44.54
%utilization of resource 2 (average demand)	68.19	38.69	65.41	41.41	42.14
%utilization of resource 3 (average demand)	–	36.81	–	45.11	44.24
Resource required (average demand)	2 people	3 people	2 people	3 people	3 people

Table 19. Performance for Each Improvement Scenario

For the average demand rate, the scenario 1 and scenario 3 tend to yield better performance. Where for scenario 1 and 3, number of resource being assigned for each assembly unit is 2 people. While for scenario 2, 4, and 5, number of worker being assigned are 3 people. For the high demand rate, scenario 4 yields the best performance. However, all the scenarios provided eventually better than the existing system. Because in the existing system, by using 9 workers for the duration 50,5 minute, it only yields 4 assemblies. Therefore, the product departure time is $50,5/4 = 12,625$ minutes.

In the existing condition, workers are not required to complete 1 assembly unit before continue to the next assembly, rather they are more likely to adapt the batch system. Every work element is done for every unit provided in the assembly table, before they can continue to the next work element (Process focus). The proposed system contradicts it, every unit must complete all the work elements, before assembling the next unit (Product focus).

Based on the existing system performance, the product departure time is 12,625 minutes, where this value is obtained if the number of worker is 9 people. If this value is compared with the demand rate/TAKT time for the high demand rate of 700 units, that is 4.44 minutes. Then if the worker is doubled to 18 people, the product departure is only $12,625/2 = 6,313$ minutes. It shows that the demand still can't be fulfilled, if the

TAKT time for the high demand rate less than the product departure time. Therefore, the number of worker in assembly department that is only 12 people, often caused the company to choose the backorder option, hire more contract employee, and apply the overtime policy to the permanent employee. However, if we use the improvement scenarios, even in regards to overcome the high demand rate, the maximum workers needed is only 12 people, those are on scenario 2 and 5. For the other scenarios, scenario 1,3, and 4, only need less than 12 workers for the high demand rate. Therefore, there is no need for the overtime policy, additional worker, as well as backorder policy to be conducted.

Moreover, other improvement can be obtained from this research is the omission of the WIP inventory. By adapting the proposed scenario, the procedure is to complete every work elements for each assembly unit before begin to the next assembly. It is done in order to immediately process the assemblies and reduce the WIP inventory. Changing the batch production system into per unit processing, also automatically can reduce the movement of worker.

5. Conclusion and Recommendation

5.1. Conclusion

Based on the analysis and discussion, the Author can draw several conclusions, those are:

1. For the PHB-TR 252 assembly process, several issues take place, between them are the absent of the written standard work instruction about the sequence of the activity and work element allocation for each resource, therefore causes inefficiency. Proven by the existing system product departure time of 12,625 minutes, where it uses 9 people. Besides, the company often had to choose the backorder option, apply the overtime policy, and hire the contract employee for particular time especially in the high demand rate
2. The sequence of the activity assigned to each of the resource based on scenario 1,3, and 4 (yield better performance) using the resource-constrained project scheduling method are shown by the table below.

Scenario	Resource Type	Work Element
Scenario 1	Resource 1	1, 4, 7, 8, 10, 9, 11, 12, 17, 20, 22, 24, 15, 25, 14, 18, 26
	Resource 2	2, 5, 3, 6, 13, 16, 19, 21, 23
Scenario 3	Resource 1	1, 4, 2, 5, 12, 13, 16, 15, 14, 18, 19, 22, 23, 24, 26
	Resource 2	1, 4, 7, 8, 10, 9, 11, 3, 6, 17, 20, 19, 21, 23, 24, 25
Scenario 4	Resource 1	1, 4, 7, 8, 10, 16, 14, 19, 21, 23, 25
	Resource 2	1, 4, 3, 9, 6, 13, 15, 18, 20, 22, 24, 26
	Resource 3	2, 5, 11, 12, 17, 19, 23, 24

Table 20. Work Element Assignment for Scenario 1,3, and 4

3. There are 5 improvement scenarios that being proposed by the Author to schedule and sort the work element for each resource available. The performance of these scenario is shown by Table 19 that already being discussed in the previous section. The product departure time, worker utilization, and idle rate for each scenario is also provided on the Table 19. Based on these parameter, scenario 1 and 3 are chosen for the average demand rate, while scenario 4 is chosen for the high demand rate.

5.2. Recommendation

Several recommendations for the future research and for the concerned company are:

1. The improvement at the assembly department must be done simultaneously with the other department, such as metal works department, wiring department, and so on. This is important, because if only one department is improved but the other department is still lacking of attention, the improvement result can only affect the related department. Yet it has an insignificant effect for the whole system.
2. The application of scheduling using RCPS can be converted into the work instruction and the further research could be conducted at the product other than PHB-TR 252.

Declaration of Conflicting Interests

The authors declared no potential conflicts of interest with respect to the research, authorship, and/or publication of this article.

Funding

The authors received no financial support for the research, authorship, and/or publication of this article.

References

- Abello, M.B., & Michalewicz, Z. (2014). Multiobjective Resource-Constrained Project Scheduling with a Time-Varying of Tasks. *The Scientific World Journal*, 2014, 1-36.
- Adnan, A.N., Arbaai, N.A., & Ismail, A. (2016). Improvement of Overall Efficiency of Production Line By Using Line Balancing. *ARPJ Journal of Engineering and Applied Sciences*, 11(2), 7752-7758.
- Agrawal, A., Harhalakis G., Minis I., & Nagi, R. (1996). Just-in-time production of large assemblies. *IIE Transactions Journal*, 28(8), 653-667.
- Alharkan, I.M. (2011). *Algorithm for sequencing and scheduling*. Industrial Engineering, Department College of Engineering, King Saud University, Riyadh, Saudi Arabia.
- Badiru, A.B. (1996). *Project management in manufacturing and high technology operation*. New York: John Wiley & Sons.
- Haragovich, M., & Miscey, P. (2014). A Novel Application of Energy Analysis: Lean Manufacturing Tool to Improve Energy Efficiency and Flexibility of Hydrocarbon Processing. *Energy*, 77, 382-390.
- Kolisch, R. (2006). Just-in-time production of large assemblies using project scheduling models and methods. *Perspective on Operation Research, Klaus Neumann's Research*, 211-224.
- Markus, A., Vancza, J., Kis, T., & Kovacs A. (2003). *Project scheduling approach to production planning*. Computer and Automation Research Institute, Hungarian Academy of Sciences, Faculty of Electrical Engineering and Informatics, Budapest University of Technology and Economics, Budapest, Hungary.
- Naveen, B., & Babu, T.R. (2015). Productivity Improvement in Manufacturing Industry Using Industrial Engineering Tools. *IOSR Journal of Mechanical and Civil Engineering*, 3(2), 11-18.
- Whitehouse, G., & Brown, J. (1979). GENRES: An Extension of Brooks algorithm for project scheduling with resource constraints. *Computers & Industrial Engineering*, 3, 261-268.
- World Bank. (2015). World Development Report. Retrieved from <http://www.worldbank.org>

Journal of Industrial Engineering and Management, 2018 (www.jiem.org)



Article's contents are provided on an Attribution-Non Commercial 4.0 Creative commons International License. Readers are allowed to copy, distribute and communicate article's contents, provided the author's and Journal of Industrial Engineering and Management's names are included. It must not be used for commercial purposes. To see the complete license contents, please visit <http://creativecommons.org/licenses/by-nc/4.0/>.