

Kocher, Martin; Schindler, David; Trautmann, Stefan; Xu, Yilong

Working Paper

Risk, Time Pressure, and Selection Effects

Discussion Paper, No. 84

Provided in Cooperation with:

University of Munich (LMU) and Humboldt University Berlin, Collaborative Research Center
Transregio 190: Rationality and Competition

Suggested Citation: Kocher, Martin; Schindler, David; Trautmann, Stefan; Xu, Yilong (2018) : Risk, Time Pressure, and Selection Effects, Discussion Paper, No. 84, Ludwig-Maximilians-Universität München und Humboldt-Universität zu Berlin, Collaborative Research Center Transregio 190 - Rationality and Competition, München und Berlin

This Version is available at:

<https://hdl.handle.net/10419/185754>

Standard-Nutzungsbedingungen:

Die Dokumente auf EconStor dürfen zu eigenen wissenschaftlichen Zwecken und zum Privatgebrauch gespeichert und kopiert werden.

Sie dürfen die Dokumente nicht für öffentliche oder kommerzielle Zwecke vervielfältigen, öffentlich ausstellen, öffentlich zugänglich machen, vertreiben oder anderweitig nutzen.

Sofern die Verfasser die Dokumente unter Open-Content-Lizenzen (insbesondere CC-Lizenzen) zur Verfügung gestellt haben sollten, gelten abweichend von diesen Nutzungsbedingungen die in der dort genannten Lizenz gewährten Nutzungsrechte.

Terms of use:

Documents in EconStor may be saved and copied for your personal and scholarly purposes.

You are not to copy documents for public or commercial purposes, to exhibit the documents publicly, to make them publicly available on the internet, or to distribute or otherwise use the documents in public.

If the documents have been made available under an Open Content Licence (especially Creative Commons Licences), you may exercise further usage rights as specified in the indicated licence.

Risk, Time Pressure, and Selection Effects

Martin Kocher (University of Vienna)
David Schindler (Tilburg University)
Stefan Trautmann (University of Heidelberg)
Yilong Xu (University of Heidelberg)

Discussion Paper No. 84

March 14, 2018

RISK, TIME PRESSURE, & SELECTION EFFECTS

Martin G. Kocher¹

University of Vienna, Austria; IHS Vienna, Austria & University of Gothenburg, Sweden

David Schindler²

Tilburg University, Netherlands

Stefan T. Trautmann^{2,3}

University of Heidelberg, Germany & Tilburg University, Netherlands

Yilong Xu³

University of Heidelberg, Germany

March 2, 2018

Abstract

Time pressure is a central aspect of economic decision making nowadays. It is therefore natural to ask how time pressure affects decisions, and how to detect individual heterogeneity in the ability to successfully cope with time pressure. In the context of risky decisions, we ask whether a person's performance under time pressure can be predicted by measurable behavior and traits, and whether such measurement itself may be affected by selection issues. We find that the ability to cope with time pressure varies significantly across decision makers, leading to selected subgroups that differ in terms of their observed behaviors and personal traits. Moreover, measures of cognitive ability and intellectual efficiency jointly predict individuals' decision quality and ability to keep their decision strategy under time pressure.

KEYWORDS: risk, cognitive ability, selection, time pressure

JEL CLASSIFICATIONS: C91, D81

Corresponding author: Stefan Trautmann, trautmann@uni-hd.de.

1. Institute for Advanced Studies, Josefstaedter Str. 39, 1080 Vienna, Austria.

2. Department of Economics and CentER, Tilburg University, P.O. Box 90153, 5000LE Tilburg, The Netherlands.

3. Chair of Behavioral Finance, Alfred-Weber-Institute for Economics, University of Heidelberg, Bergheimer Str. 58, 69115 Heidelberg, Germany.

Acknowledgement: Financial support by Deutsche Forschungsgemeinschaft through CRC TRR 190 is gratefully acknowledged.

1. INTRODUCTION

Many, if not most, decisions in the workplace are made under time pressure today (Reid and Ramarajan, 2016; Wheatley, 2000). Consequently, research in decision making has recently started to investigate how a time constraint influences individuals' preferences and choices (for an overview, Spiliopoulos and Ortmann, 2017). By randomly allocating subjects into time pressure conditions, the literature has successfully identified its causal effects in a variety of domains, including risky, social, and strategic behavior (e.g., Sutter et al., 2003, on bargaining; Kocher and Sutter, 2006, on beauty contests; Baillon et al., 2013, on decisions under ambiguity; Kirchler et al., 2017, on risky decisions; Buckert et al., 2017, on imitation in strategic games; Haji et al., 2016, on bidding in auctions).

However, these causal effects should be interpreted with caution, because of two potentially serious problems, both relating to issues of self-selection. First, because people differ in their ability to cope with time pressure (e.g., Claessens et al., 2007; Eisenhardt, 1989; Maruping et al., 2015, and references therein), we expect people self-select into decision environments with a different degree of time pressure. That is, outside the experimental laboratory, candidates self-select into activities and occupations and thus into job-related decision-making environments. In contrast, participants in experiments are exogenously assigned to treatment conditions that may not fit well with their tastes and skills (Omar and List, 2015). External validity of the observed experimental behavior thus cannot be taken for granted. Despite similarity of the experimental and the natural decision environments (in term of time pressure), the decision makers may systematically differ across the two settings in a self-selected way. Importantly, while external validity is an issue in any empirical study, it is a more central aspect in laboratory experiments that explicitly aim to mimic natural decision environments.¹ Understanding the personal traits associated with the ability to perform under time pressure would allow an assessment of selection in the field, and thus of the external validity of average causal effects based on the distribution of traits in actual decision environments. Identifying such traits is one aim of the current paper.

¹ External validity may be less of a problem in other contexts, for example time-limited offers to consumers (Sugden et al., 2015), where self-selection is less likely.

Second, if time pressure is substantial and relevant in an experiment, some people will violate the time constraint. This leads to problems of the internal, rather than the external validity of the time pressure effects, because the sample of decisions observed in the data set is self-selected.² Failure to take these selection effects into account may therefore result in a false interpretation of the observed behavior in terms of population averages. For example, Tinghög et al. (2013) argue that failures to replicate time pressure effects on cooperation in ethical dilemmas (Rand et al., 2012) may be due to the original studies excluding about half of the participants because of a failure to meet the time constraint (Casari et al., 2007, make a similar observation in the context of auction bidding).

The current study aims to shed light on such heterogeneity and the resulting selection effects in the presence of exogenously imposed time pressure. To this end, we separately analyze subsamples of subjects who fail, respectively succeed, to react in time, in terms of their behavior and traits. We demonstrate that overlooking the selection issue in this context would result in a very different assessment of the performance under time pressure. We focus on the domain of risky decisions. In appendix A.1., we review the findings of the experimental literature in this domain. We indicate for each study whether there is a potential threat to internal validity because of substantial violations of the time constraints, or whether there is low time pressure, questioning relevance. Table A1 suggests that selection problems should be taken seriously in the interpretation of causal time pressure effects on risk taking.

Observing that selection issues are at the heart of experiments with time pressure and other adverse conditions, we are the first to (1) directly measure the empirical relevance of selection effects and (2) test whether there are individual-level correlates based on observable background variables that can be used as predictors for the ability of a decision maker to cope with time pressure, and thus the propensity to self-select into time-pressure environments. The fact that decision makers differ in their ability to deal with time pressure requires us to predict this ability if we aim to ensure that decision

² A similar problem exists in studies on the effect of stress on decision making, where analyses of data are typically restricted to those participants who show a cortisol reaction under stress (Trautmann, 2014).

makers are allocated to environments in an efficient way.³ We use the term *time pressure resistance* for such ability. It relates to differences in the decision process, including the decision maker's time management. Our study aims to provide insights into these processes, and how they differ between decision makers. To this end, we collect data on risky decisions under time pressure, augmenting a design used in Kocher et al. (2013) to allow for both between-subject and within-subject analyses of behavior across time-constrained conditions. That is, we observe each decision maker's risky choice behavior both in the presence and in the absence of time pressure for a similar set of risky alternatives.

To test whether individual differences predict decision quality under time pressure, we assess participants' scores on a measure of cognitive ability, on a measure of intellectual efficiency, and a set of personality traits. Importantly, while performance under time pressure can be measured in many ways, a risky decision task requires complex reasoning and has no obvious solution from the perspective of the decision maker (because optimal choices depend on preferences). Consequently, the decision maker has to choose a decision strategy, and this strategy may be affected by time pressure (Ordóñez and Benson, 1997). Our performance measures aim to detect such shifts in strategy. The details of the experimental design, including our measures of cognitive ability and intellectual efficiency are described in the next section.

Employing this design to study person-environment interactions in the context of time pressure, we observe the following results. First, we observe clear differences in decision styles across people in the absence of time pressure, which are then associated with the success in mastering the time constraint when it is present. That is, selection is highly relevant for internal validity. Second, in attempting to then predict the ability to perform under time pressure, we find that those who score high in cognitive measures and have high self-efficacy perform better and are less likely to miss the deadline, although cognitive measures only possess predictive power jointly. Moreover, individuals' decision style (defined below) in the absence of time pressure correlates with

³E.g. HR managers of investments firms should be able to predict the ability to resist time pressure of prospective traders when making hiring decisions.

performance under time pressure. Yet, we note that there is still an important role of unobserved factors. We discuss the implications of our findings for the external validity of time pressure effects in decision making in the wild.

2. STUDYING SELF-SELECTION IN AN ADVERSE TIME-PRESSURE ENVIRONMENT:

EXPERIMENTAL DESIGN

We implement an experimental structure that allows us to observe both between- and within-subject differences in risky decision-making behavior in a time-constrained versus an unconstrained environment. This is how we can causally identify the effects of time pressure on risky decision making at the individual level. As decision makers are likely to show different reactions to adverse decision environments, we measure potentially selection-relevant individual characteristics that may explain these differences. We can, for instance, examine how time pressure affects different groups of people, say people who can vis-à-vis those who cannot cope with time pressure, and provide insights into their behaviors absent time pressure. Within time pressure or no time pressure conditions we can also correlate personal traits with our performance measures to understand why some people can cope with time pressure better than others.

More specifically, for each participant we observe (i) risky choices in the absence of time pressure; (ii) risky choices in the presence of time pressure; (iii) a measure of cognitive ability (“IQ”); and (iv) a measure of intellectual efficiency (“IE”). We discuss the different tasks and measures in detail below. The general structure of the experiment carefully counterbalances the order of the different parts as shown in Table 1. The setup allows us to test the hypotheses (1) that those who violate the time constraint under time pressure make substantially different choices in the absence of time pressure; and (2) that behavior under the adverse influence of time pressure is predicted by decision makers’ behavior in the absence of time pressure and their observable traits.

Table 1: Treatment Design

Treatment (#obs)	Part 1: Individ. Differences	Part 2: Risky Choices Set 1	Part 3: Risky Choices Set 2 ^a	Part 4: Individ. Differences
1 (93)	IQ	Time pressure	No time pressure	IE
2 (94)	IQ	No time pressure	Time pressure	IE
3 (96)	IE	Time pressure	No time pressure	IQ
4 (96)	IE	No time pressure	Time pressure	IQ

Notes: IQ: measurement of cognitive ability; IE: measurement of intellectual efficiency; a: a set of pure gain choices was added after Set 2 to give subjects the possibility to earn back potential losses in sets 1 and 2 (see section 2.3). Note that the IQ and IE tasks allowed subjects to move back and forth across items while this was not possible in the risky choice tasks.

Each set of risky choices (Set 1 and Set 2) consisted of 24 binary choices (see Table A2 in the appendix for a full description). Time pressure was imposed by setting time limits for each of two 12-item subsets of choices within each of these two sets of risky choices. In particular, each set consisted of (i) one subset of 12 binary choices that compared pure loss lotteries with mixed lotteries of lower expected value (“prominent gain”); and (ii) one subset of 12 binary choices that compared pure gain lotteries with mixed lotteries of higher expected value (“prominent loss”). A detailed description and motivation of these choice tasks is given in Section 2.3.⁴ An important feature of the time pressure implementation is that the time limit was imposed on the subset level, not on each choice item.⁵ That is, participants could go through the items in each subset at their own pace and therefore had to organize the allocation of time to the different choices efficiently. However, subjects were not allowed to go back and reconsider earlier choices.

⁴ Because losses were possible in the lottery choices, we included another set of lottery choices after the main task (Set 2 / Part 3) that gave subjects the possibility to earn back any losses from sets 1 or 2. See section 2.3 for details.

⁵ Both forms of time pressure are commonly observed in real-life and therefore important to study. Gabaix et al. (2006) offer a good analogy of these two forms of time pressure in a context of a shopper at Walmart: time pressure imposed on individual items is analogue to buying a TV while considering its many attributes; time pressure imposed on set levels is similar to a situation where the shopper wants to buy other products (each with different attributes) within her time budget.

In contrast to situations where time pressure is imposed on individual items, varying time pressure at the subset level adds an additional layer of complexity: Decision makers have to simultaneously allocate their time budget to the respective items, while considering the decision problem in the face of time pressure. This allows us to identify time management abilities and strategies to cope with time pressure of those who violate the time limit, and those who do not.

To make time pressure and no time pressure conditions as similar as possible in the presentation of the instructions and the task design, the unconstrained task also involved a time limit. However, this limit was selected such that it would not provide a binding constraint for subjects, namely at 420 seconds in all subsets. The extent of the time constraint in the time pressure conditions was calibrated in pre-test sessions such that there would be significant time pressure, while not making it impossible for the subjects to perform the decision task. In particular, under time pressure, the time limits were set at 120 seconds for the set with the prominent gains and at 80 seconds for the set with the prominent losses. In both cases, this value implied a 20% reduction of the median decision times in the absence of constraints that we observed in six pilot sessions (details about the pre-test sessions are given in the Web Appendix⁶).

2.1 Cognitive ability and intellectual efficiency

We employed Raven's Advanced Progressive Matrices (APM) test to measure *cognitive ability* ("IQ") and *intellectual efficiency* ("IE"). Cognitive ability assesses a subject's cognitive reasoning power, i.e. the extent to which complex information can be processed. Intellectual efficiency measures cognitive reasoning speed, i.e. how fast incoming information can be processed (Raven et al., 1998). We hypothesized that IQ positively predicts decision quality, whereas lower IE predicts increases in the likelihood to violate the time constraint.

⁶ The web appendix is available at https://www.dropbox.com/s/61xvk4izh3flt9l/KSTX_webappendix_march9_2018_final.pdf?dl=0

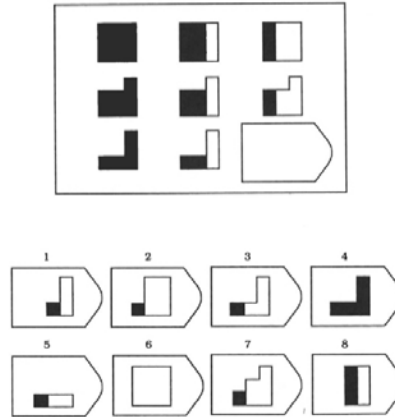


Figure 1: A Sample Screen from Raven's APM

Cognitive ability constitutes a non-verbal estimate of fluid intelligence, the ability to reason and solve novel problems. Individuals with high fluid ability are thought to be able to better cope with time pressure, because they typically possess larger working memory (Shelton et al., 2010). In addition, De Paola and Gioia (2016) report that cognitive ability has a positive impact on performance under time pressure. Intellectual efficiency in turn imposes exogenous time pressure on the problem, such that we expect cognitive ability to be positively related to decision quality (defined in section 3), but intellectual efficiency to be predictive for the ability to complete all necessary decisions when time is scarce.

Raven's Advanced Progressive Matrices are aimed at subjects in the high cognitive ability ranges such as university students. In each item, subjects were presented with a 3-by-3 matrix of abstract symbols, with the symbol in the lower right corner missing. They were asked to choose, among eight possible alternatives, the one that completed the pattern in the matrix. We communicated to subjects that the items in the task were arranged in ascending order of difficulty and that they could go back and forth within the (possibly non-binding) time limit to revise their answers. An example can be seen in Figure 1, where the correct answer is option 3.

Instead of running the full 48-item test, a short-form⁷ containing 12 selected items from the APM test was administered to obtain a measure of IQ, as it has been argued that conducting the full APM does not add much predictive power (the correlation between the two formats is $\rho = 0.88$, see Bors and Stokes, 1998). As we are interested in the cognitive capacities of subjects, we allowed subjects to answer all twelve items at their own pace. To keep instructions as close as possible to our measure of intellectual efficiency (details below), we implemented a non-binding time constraint of 25 minutes, which was again calibrated in pre-tests.

We used the remaining 34 items⁸ from the APM to construct a measure of intellectual efficiency, i.e. the speed of cognitive reasoning, following Raven et al. (1998, Section 4, APM15ff.) and Yates (1966). By imposing a severe time limit on subjects (13 minutes to solve all 34 items), we measure how fast and how efficiently they can process information. They could again reconsider earlier choices at any time. The timing constraint proved to be binding in pre-tests: no participant was able to finish all questions within the time limit.

Based on the tasks, we define our measures IQ and IE as the number of correct items in the cognitive ability and the intellectual efficiency tasks, respectively. There was no additional reduction of the score for wrong answers or missing items. Note that, as shown in Table 1, the IQ and IE tasks were counterbalanced separately for each ordering of the time pressure tasks. The IQ and IE tasks were incentivized such that (1) a higher score yielded a higher chance to win a monetary prize, and (2) subjects could never identify their number of correct answers exactly. We provide more details on the rationale and the procedure in Appendix A.4.

⁷ The short form of the APM test we used here was introduced by Bors and Stokes (1998), consisting of items 3, 10, 12, 15, 16, 18, 21, 22, 28, 30, 31, and 34 of the APM (Set II). It is more difficult, and therefore suits university students better, than the other short version proposed earlier by Arthur and Day (1994).

⁸ We used the first two items in Set I of the APM test as instructional items, leaving 34 items for our intellectual efficiency measure. The items' increasing difficulty was taken into account by preserving the items' ordering.

2.2 Personality measures

At the end of the experiment, we elicited several personality measures that have often been linked to decision making (e.g., Nadkarni and Herrmann, 2010), and are potentially relevant to the ability of coping with time pressure. The Generalized Self-Efficacy Scale (Schwarzer and Jerusalem, 1995) is a ten-item questionnaire which aims at measuring the “belief in one’s competence to tackle novel tasks and to cope with adversity in a broad range of stressful or challenging encounters” (Luszczynska et al., 2005, p. 80). Time pressure is thus a natural environment in which self-efficacy may have an effect on decision-making quality. In particular, in line with previous research showing a positive correlation between measures of self-efficacy and good financial planning behavior (Kuhnen and Melzer, 2014), we hypothesized that higher level of self-efficacy may be associated with better decision quality under time pressure. Rotter’s (1966) Locus of Control questionnaire is a 28-item survey that assesses the extent to which individuals believe that they have control over events that affect them in their lives. Whenever individuals feel to be in control, they might be less likely to perceive stress (e.g. generated by time pressure) as a threat (Chan, 1977). It has been shown that internally-oriented individuals are more likely to appraise stressful situations as a controllable challenge and focus on coping with stress, while externally-oriented individuals are more likely to be threatened by stressors (Bernardi, 1997; Folkman, 1984; Parkes, 1984). We therefore hypothesized that stronger internal orientation mitigates the effects of time pressure on decision making. A Big Five Ten Item questionnaire, measuring the Big Five personality characteristics with ten questions was also administered (see Gosling et al. (2003) for a comparison between this inventory and a widely used 44-item inventory). Here we predicted that traits such as neuroticism could become a burden under time pressure, as previous research has shown that this trait is positively associated with task avoidance (Matthews and Campbell, 1998), and Byrne et al. (2015) have found that neuroticism is negatively correlated with performance in tasks with social and time pressure. Finally, we elicited general demographics and background data.

2.3 Risk preference measures

Our main task involved binary risky choices. We build on the design in Kocher et al. (2013), who analyzed risky decisions under time pressure. That study found strong time pressure effects for lottery choices involving mixed gambles, i.e., including both gains and losses. In particular, under time pressure, decision makers seem to be prone to prefer mixed gambles over pure loss gambles with higher expected value (thus being drawn by the prominent gain in the mixed gambles); similarly, decision makers seem to prefer pure gain gambles over mixed gambles with a higher expected value (thus being repelled by the prominent loss in the mixed gamble). Both Saqib and Chan (2015) and Conte et al. (2016) find similar prominence effects under time pressure. Because we want to study the role of selection effects under time pressure, we deliberately employed this particular structure of lottery choices, expecting to induce robust time pressure effects with the design. As described before, we presented subjects with two sets of choices, one set being time-constrained, and the other de facto unconstrained. Each set consisted of a subset of 12 choices of the prominent-gain format, and 12 choices of the prominent-loss format. The order of the two subsets was fixed, each subject first worked on the subset in the prominent-gain format, before moving on to the prominent-loss format. The two subsets were separately time-constrained as described above. Within each subset, subjects had to proceed through the choice problems in a given order (fixed over all subjects and conditions) and could not go back to revise previous choices. A list of all choices is given in Appendix A.2. A screenshot of the presentation of the choices is given in Appendix A.3.

Subjects made as many choices as possible within the time constraint. At the end of the experiment, one choice was selected randomly from all the potential choice problems in Set 1 and Set 2, and payoffs depended on the decision made, i.e. the lottery chosen, in this choice problem (this procedure prevented wealth or house money effects, which we considered relevant in the context of risky choice). If a subject violated the time constraint and thus failed to answer some of the questions, she would receive the lowest possible outcome (i.e., the highest possible loss) if one of the unanswered decision problems was selected for payment. This severe form of punishment encouraged subjects to always make a decision, and it is a common feature of many real-life decision

environments with time pressure (e.g. air traffic control, emergency room doctors).⁹ For example, if the selected choice problem involved a choice between the lottery (15%: -€15, 85%: -€11) and (15%: €12, 85%: -€17) (see S1 / G11 in Table A2), the earnings for a person who did not submit a decision was -€17.

Because the risky choices of sets 1 and 2 involved potential losses, we needed to endow the participants with sufficient funds to cover any losses they might incur in parts 2 and 3 of the experiment. Therefore, an additional task was added after Set 2 that involved six risky choices between lotteries in which the lowest possible gain amounted to €20. By adding the endowment task after all Part 2 and Part 3 choices had been made, and by endowing with the help of risky choices, we prevented subjects from integrating the endowment easily with the loss outcomes in the choices in earlier parts. This method was adapted from Kocher et al. (2013). We did not impose a time limit on the endowment task. At the end of the experiment, one of the six choices was randomly selected for payment, and earnings were added to earnings from the lottery selected from sets 1 and 2. When working on Set 1 and Set 2, subjects were not aware how the subsequent task would look like; they only knew that other parts were to follow and that they would not incur overall net losses from the experiment. In the analyses below, we always report performance based on behavior in sets 1 and 2, thus not incorporating the endowment task.

2.4 Laboratory details

The experiment was programmed using z-Tree (Fischbacher, 2007) and recruitment was done with the help of ORSEE (Greiner, 2015). We conducted 16 experimental sessions at the MELESSA laboratory at the University of Munich in July and September 2014. In total, 379 subjects took part in the experiment, up to 24 in each session. 60% of the

⁹ We intended to study an environment in which failing to meet the time constraint has clear and severe consequences. In particular, we wanted to implement a trade-off between making more thoughtful decisions and answering all decision problems. We did not want to add risky decision considerations to this trade-off by, for example, paying some metric like the expected value or selecting one option randomly. We observe that in most real world settings agents do not receive a randomly selected option, or an average payment, if they fail to choose in time.

subjects were female with an average age of 24 years. They were mostly undergraduate and graduate students from the diverse set of programs that the university offers.¹⁰ Payoffs were determined by randomly selecting one of the four parts for payment, with payment details then depending on the procedures described in the previous subsections. A typical session lasted for about 75 minutes, and subjects earned on average about €16.63 (approximately \$21.32 at that time). In addition, we ran several pilot studies in Tilburg and Munich to calibrate the appropriate timing constraints. Information on the pilots, as well as the experimental instructions, can be found in the Web Appendix.

3. TIME PRESSURE AND RISKY DECISIONS: MANIPULATION CHECK

We first consider whether the time pressure manipulation for the risky decisions was effective in terms of time-use, in terms of the number of participants violating the time constraint, and in terms of the number of unanswered decision items. Table 2 shows the results using the within-subject comparison.

Clearly, subjects made substantially faster decisions under time pressure, were more likely to violate the time constraint, and had more missing items. The manipulation of time pressure was successful in providing a highly adverse decision environment.

Table 2: Time Pressure Manipulation for Risky Decisions

Treatment	Actual time used (average, in sec.)	# of subjects violating the time constraint	# of missing items per person	Expected value (choices made; €) ^{a,b}	Expected value (all decision problems; €) ^{a,c}	Percent of choices avoiding prominent loss	Percent of choices seeking prominent gain
No time pressure	246***	3***	0.01***	-1.17**	-1.18**	53.56%**	57.41%
Time pressure	158	90	0.69	-1.24	-1.47	54.80%	57.78%

Notes: Decision times reported show the sum of time used for the two subsets, S1 and S2. Total time constraint was 200 seconds under time pressure, and 840 seconds in the absence of time pressure. a: averages reported; b: numbers reflect the expected value implied by choices actually made; c: numbers reflect the expected value implied by all choice problems, including missing items; *, **, *** indicates significance of difference from time pressure condition at the 10%, 5%, and 1% level, Wilcoxon signed-rank test.

¹⁰ 15% majored in economics, 16% in business administration, while 10% were enrolled in other social sciences programs. Furthermore, 4% were psychologists, 10% majored in the humanities, 5% in law, 21% in the natural sciences or technology and the remaining rest 19% came from other fields.

We next consider the effect of time pressure on risky decisions. The last four columns in Table 2 show, for time-unconstrained and for time-constrained choices, the average expected payoff that is implied by the choices the subject actually made, the average expected payoff that is implied by all choice problems including missing items (which count as the highest loss)¹¹, the percentage of choices that avoid a prominent loss, and the percentage of choices that seek a prominent gain. The latter two percentages are conditional on the items that a person has answered.

We observe that overall, time pressure significantly reduces decision quality.¹² The expected value (EV) implied by choices actually made is lower under time pressure. Additionally, missing items lead to losses and further reduce payoffs under time pressure. Under time pressure, participants make significantly more choices that avoid a prominent loss than in the absence of time pressure, at a loss of expected value. That is, choices are more heuristic under time pressure, being affected by salient attractive aspects of the lottery and sacrificing expected payoff. We observe that, despite the fact that the time constraint is imposed on the set level rather than the individual task level as in Kocher et al. (2103), our findings replicate the effects reported in their study.

Participants realize a lower expected value under time pressure. In the subsequent analyses, we consider expected value as a measure of decision quality. This interpretation is supported by the direct (inverse) link of expected value to heuristic choices (loss avoiding and gain seeking). Expected payoff is also a criterion that is applied in many professional settings outside the laboratory to assess decision success. However, participants may not necessarily aim to maximize expected value in the experiment. In the Web Appendix, we therefore present the main results also under the alternative assumption that participants' decisions may reflect cumulative prospect theory

¹¹ As a benchmark for the subsequent analyses we observe that the highest realizable expected value was €-0.39, and the lowest was €-2.28, if all choices were actually answered. Not answering any item would yield an expected payoff of €-11.23.

¹² Results are even more pronounced if we only consider data in Set 1 using between-subjects comparison. Set 2 behavior might be influenced by experience. We discuss possible learning effects in the Web Appendix, section B.5.

preferences. In Section 5.2, we report results taking the stability of the decision process (based on a fitted decision model) across settings as an alternative quality criterion.

4. RESULTS: IDENTIFYING SELECTION

We first approach the question whether selection is relevant under time pressure. To this end, we compare those decision makers who violate the time constraint under time pressure ($N = 90$) to those who do not ($N = 289$). A violator is defined as a decision maker who ran out of time before making all 12 choices, in at least one of the two subsets of risky decisions in her time-constrained part.¹³ Clearly, these two groups will thus differ under time pressure. However, the within-person design also allows us to study whether these groups differ when they are *not* time-constrained.¹⁴

Table 3 shows results of the comparison between the two groups for various measures. The left panel shows behavior in the absence of time pressure. Subjects who violate the time constraint differ substantially from those who do not violate the constraint in the way they approach the risky decision task. In terms of decision processes, violators use more time and distribute their time less evenly across choices. Moreover, violators are less affected by salient loss or gain features of the lotteries. They consequently perform significantly better on average in terms of the implied expected value of their choices than non-violators, when not exposed to time pressure. In the right panel of Table 3, we compare the two groups in the presence of time pressure. Also, under a time constraint, violators use more time and have a higher variance of time used across choice problems. They perform significantly worse on the full set of choices. This effect is driven by the relatively strong punishment for not answering a choice problem,

¹³ We do not wish to invoke normative statements with respect to violating rules by choosing the term violator.

¹⁴ In section 4 and 5, we report the average treatment effects of time pressure, pooling all decisions in Set 1 and Set 2 irrespective of order. Web Appendix B.5 provides additional analyses, reporting results based on either Set 1 or Set 2 data. Results do not differ qualitatively across the two sets. In Web Appendix B.4, we also report on a continuous measure number of items missed rather than the violator indicator. Results replicate results presented in the main text.

which they seem not to take sufficiently into consideration in their strategy. Moreover, under time pressure, violators do not perform better than non-violators on the choices they actually made. However, violators do not perform significantly worse than non-violators on these items either.

Table 3: Differences between Time-constraint Violators and Non-violators

Performance measure	No time pressure		Time pressure	
	Violators (N=90)	Non-violators (N=289)	Violators (N=90)	Non-violators (N=289)
Actual time used (in sec.)	323.79	221.13***	188.87	148.72***
Variance of time used per item	77.75	37.29***	30.82	10.30***
Expected value (choices made; €)	-1.06	-1.21***	-1.29	-1.22
Expected value (all decision problems; €)	-1.08	-1.21***	-2.29	-1.22***
Expected value (items w/o violations; €) ^a	-3.69	-3.90***	-3.68	-3.90***
Percent of choices avoiding prominent loss	49.63%	54.79%*	52.72%	55.45
Percent of choices seeking prominent gain	46.96%	60.67%***	47.95%	60.84%***

Notes: Violator status for each subject is assigned if at least one item in at least one time-constrained subset was not answered; *, **, *** at the entries for non-violators indicate that these values differ from those for violators, at the 10%, 5% , and 1% significance level, two-sided Mann-Whitney tests. a: expected value calculated on the basis of those items in the prominent gain and prominent loss subsets that *all* subjects were able to answer under time pressure.

Table 3 also shows the expected value over the set of choices for which no subject violated the time constraint (row five).¹⁵ This includes the first seven choices in the prominent gain sets and the first three choices in the prominent loss sets. Apparently, on this subset of early choices, the violators perform much better than the non-violators do,

¹⁵ For this row, we removed one subject, a violator, from the analysis in this table, as she is the only participant violating the time constraint already at the fourth item for the subset of prominent gain lotteries, while others violate only after the seventh item. The results remain the same if we include all subjects but we lose a substantial amount of information for the subset of prominent gain lotteries.

and this holds true in both the time pressure and the no-time pressure condition. Moreover, comparing this performance measure across time pressure conditions, we observe that the expected payoffs do not differ for either group of decision makers (for both groups, $p > 0.7$, Wilcoxon signed-rank test). Thus, under time pressure, initially the violators can fully implement the same decision strategy as in the absence of time pressure. However, in later decision items when less time is available, they lose out, harming their overall performance for the choices they actually make (shown in row three in Table 3) and even more so for the full set of choices (shown in row four in Table 3).

Table 4: Differences between Time-constraint Violators and Non-violators across Choice Items under Time Pressure (Expected Value of Choices Made)

Choice problem (prominent gain)	Violators	Non-Violators	Choice problem (prominent loss)	Violators	Non-Violators
1	-9.89 (N=90)	-10.08 (N=289)	13	8.56 (N=90)	8.55 (N=289)
2	-5.09 (N=90)	-5.14	14	8.93 (N=90)	8.59*
3	-12.37 (N=90)	-12.56*	15	4.61 (N=90)	4.49
4	-5.57 (N=89)	-5.75**	16	8.33 (N=89)	8.30
5	-14.17 (N=89)	-14.56***	17	6.12 (N=89)	6.15
6	-8.94 (N=89)	-9.11**	18	9.42 (N=88)	9.39
7	-3.22 (N=89)	-3.44***	19	11.74 (N=87)	11.57
8	-11.71 (N=87)	-11.85**	20	5.61 (N=84)	5.68
9	-9.42 (N=83)	-9.70**	21	7.50 (N=77)	7.54
10	-13.11 (N=77)	-13.24	22	4.31 (N=66)	4.22
11	-12.28 (N=63)	-12.34	23	4.25 (N=47)	4.41
12	-8.37 (N=45)	-8.38	24	8.02 (N=19)	8.03

Notes: Entries are expected values (€) of choices made; averages over participants in the subgroup; *, **, *** at the entries for Non-violators indicate that these values differ from those for Violators, at the 10%, 5% , and 1% significance level, Mann-Whitney test. Number of observations in parentheses (constant for Non-violators).

This dynamic pattern of performance is shown in more detail in Table 4. The table shows for each item, in the order of appearance, the implied expected value of the choices made by violators and non-violators under time pressure. In the set of prominent gains (items 1-12), violators perform better early on. In the set of prominent losses (item 13-24), the effect is less pronounced, but points in the same direction. As they move on with the task, violators do not make better decisions than the non-violators anymore, possibly because time become scarce. This is especially true in the set with prominent gains. Additionally, violators at some point violate the time constraint (shown by the

decrease in sample sizes indicated for each choice item), leading to significant losses in expected value over all decision problems. We also observe that violation of the time constraint for prominent-loss choices leads to an additional loss of expected payoffs for the set of choices made. This is caused by the fact that lotteries in this subset had positive expected payoffs, and thus a participant’s average expected payoff over choices made is harmed by simply reducing the number of prominent-loss choices that are completed. This effect leads to the negative effect on expected value for choices actually made under time pressure, shown in row three of Table 3.

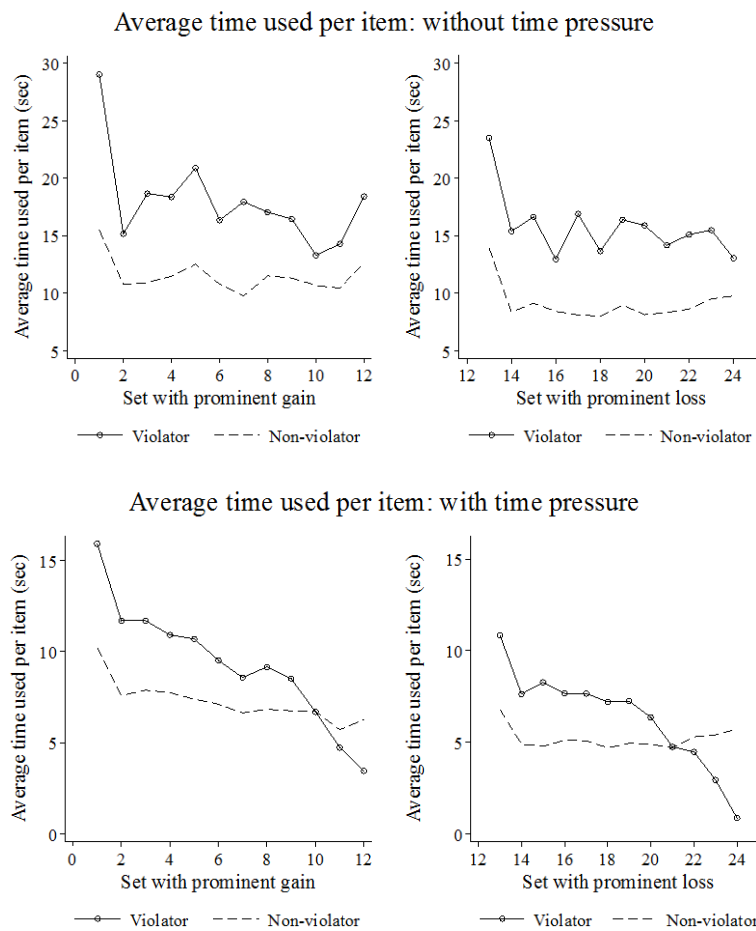


Figure 2: Time Use of Violators and Non-violators

Figure 2 further illustrates different time-use strategies employed by violators and non-violators by plotting the average decision time they spend on each item. The strategy violators employed resembles the notion of “maximizer”, first discussed by Simon (1955,

1956) and formalized by Schwartz et al. (2002), in which decision makers only settle for the best option. On the other hand, non-violators seem to use a strategy in line with the notion of “satisficers,” who settle for an option that seems good enough. In the absence of time pressure (upper panel), violators clearly spend more time on each item than non-violators, and use a substantial amount of time for some items that might be perceived as more difficult by them, leading to higher variance in terms of the average time-used per item. In the Web Appendix (Section B3) we provide additional analyses. Using panel regressions to explain the time used on each item in the absence of a time constraint, we find that violators on average use 6 seconds more on each item and that they are much more sensitive to the difficulty of the expected value calculation than non-violators. These results further support the notion that violators seem to behave as “maximizers”. Under time pressure (lower panel in Figure 2), violators initially use much time and then almost monotonically reduce their time used per item as they progress through the task.¹⁶ Compared to the non-violators who remain relatively stable in their time use per item as they proceed through the task, violators thus initially use more time, and later have even less time than the (on average) non-violators take for the last few items. That is, given the significant punishment for violation of the time constraint, violators exhibit poor time management.

An important question regarding the external validity of experimental observations of choice behavior concerns the correlation between time-constrained and unconstrained behavior in at the individual level. We observe that behavior and outcomes are positively correlated across environments. Yet, correlations are larger for non-violators than for violators.¹⁷ While non-violators seem to be able to implement similar decision strategies both in the absence and in the presence of time pressure, violators are less able to sustain

¹⁶ All items that a person cannot answer because time ran out are counted as zero time used. This is consistent with the person having indeed used zero seconds to make the decision. Note that the non-zero time use for later items in each subset by each group of violators is caused by the definition of violator based on a violation in *at least* one of the two subsets. Thus, not all violators run out of time in the prominent gain subset (prominent loss subset).

¹⁷ Results can be found in the Web Appendix, Table W11.

the same strategy in the different decision environments, especially for the last few items when they run out of time.

To sum up, we document substantial selection effects under time pressure: those participants who cannot cope with the time constraint have very different time-use and decision strategies in the absence of time pressure. They make better decisions when sufficient time is available (i.e., under no-time pressure conditions) than those subjects who are not violating time-constraints under time pressure. However, under time pressure they are not able to sustain these strategies anymore and therefore lose out against the non-violators in terms of performance.

5. RESULTS: TIME PRESSURE RESISTANCE – PREDICTING WHO CAN BETTER COPE WITH TIME PRESSURE

5.1. The effect of observable traits: Non-parametric analyses

Having observed that there are systematic differences in behavior between those who can and those who cannot cope with time pressure well, we now investigate whether there are observable traits or characteristics that allow predicting time pressure resistance in risky decision making. We observe significant lower intellectual efficiency and self-efficacy among violators (IE: 22.47 versus 23.27 for non-violators, SE: 28.36 versus 29.80 for non-violators, Mann-Whitney tests, both $p < 0.05$). While not significant on conventional levels, there exist suggestive differences in gender (29.31% male versus 40.46% male for non-violators, Mann-Whitney test, $p = 0.14$).¹⁸ For none of the Big Five items were there any differences between violators and non-violators. Moreover, in the previous section we have already shown the pronounced differences in time use strategies between violators and non-violators. In the following we therefore study the differences between low and high IQ, low and high IE, low and high self-efficacy, and small and large amounts of time used / variance of time used (in the absence of time pressure). Importantly, these differences are observed for *all* subjects, irrespective of whether they violate the deadline under time pressure or not. That is, we can also make use of variation

¹⁸ We analyze gender effects in Web Appendix B.1.

in performance within the groups of violators and non-violators. Below we will use these measures also jointly in a multivariate analysis as predictors of decision performance under time pressure.

Cognitive ability and intellectual efficiency. We consider the role of IQ and IE on risky behavior, in time-constrained and unconstrained settings. Despite being positively correlated (0.5760, $p < 0.01$, Spearman rank correlation), the correlation between IQ and IE is far from perfect, suggesting that the two measures capture separate traits. Since we are interested in outcomes and in selection effects, we report effects on the implied expected value from the choices made and from all choice problems, the percentage of time-constraint violators, the number of missing items per subject, and the incidence of avoiding prominent losses and seeking prominent gains. Columns 1 to 4 of Table 5 report the results for IQ and IE.

To allow for direct group comparisons, we split the sample at the median values of IQ and IE.¹⁹ As shown in the table, in the absence of time pressure, low IQ and low IE subjects perform worse in terms of expected payoffs, and they are affected more strongly by salient features of the lottery than high IQ and IE groups. These results are consistent with previous findings in the literature (e.g., Dohmen et al., 2010). The table also suggests that the amount of time used by high IQ/IE subjects and relatively low IQ/IE subjects is similar, in both conditions.²⁰ Interestingly, the table shows that IQ is correlated with decision quality under time pressure, while IE is not. The fact that IQ effects remain significant under time pressure suggests that the absence of an effect for IE is not simply due to a larger noise under time pressure. Note that we consider univariate correlations, and IE and IQ may be differently affected by other variables that are related with behavior under time pressure (e.g., gender), which will be controlled for in the multivariate analyses below.

¹⁹ The median IQ is 10. We split the sample such that $IQ < 10$ defines the “low” group. The median for IE is 23. We split the sample such that $IE < 23$ defines “low” group. In Web Appendix B.4 we consider continuous measures as robustness checks replicating the results qualitatively.

²⁰ This finding might derive from high-ability participants more carefully considering the decision, and low-ability participants taking more time to understand the problem.

Self-Efficacy. Columns 5 and 6 of Table 5 show results for self-efficacy. Although self-efficacy directly measures individuals' ability to cope with hassles, similar to IE, there is no raw correlation with behavior and performance under time pressure and without time pressure.

Time-use strategies. As seen before, time-use strategies differ strongly across subjects and correlate with violator status. Measuring the total time use and the variance across choice items in the conditions with no time pressure for all subjects, we confirm the importance of the measures. Table 6 shows strong effects on violator status and missing items: those who make more careful decisions (higher time use and variance) are more likely to violate the time constraint and miss out on answering items.²¹ However, these careful decision makers do not perform worse on average than the less careful ones. If they manage to meet the time constraint, they realize a higher performance. Moreover, more careful decision makers are less prone to salience effects and obtain higher expected payoffs on the choices they make.

²¹ Similar to the previous analysis, we provide continuous measures in Web Appendix section B.4.

Table 5: Effects of Personal Trait Measures and Performance

Performance measure	No time pressure (840 sec = 420+420)		Time pressure (200 sec = 120 +80)		No time pressure (840 sec = 420+420)		Time pressure (200 sec = 120 +80)		No time pressure (840 sec = 420+420)		Time pressure (200 sec = 120 +80)	
	IQ _{High}	IQ _{Low}	IQ _{High}	IQ _{Low}	IE _{High}	IE _{Low}	IE _{High}	IE _{Low}	SE _{High}	SE _{Low}	SE _{High}	SE _{Low}
Actual time used (in sec.)	257.72	228.62	159.29	156.82	250.96	237.38	157.44	159.48	357.02	230.75	158.38	158.10
Expected value (choices made; €)	-1.10	-1.27***	-1.14	-1.37***	-1.13	-1.24***	-1.19	-1.30	-1.17	-1.18	-1.28	-1.18
Expected value (all decision problems; €)	-1.11	-1.27***	-1.41	-1.56**	-1.13	-1.24***	-1.42	-1.54	-1.17	-1.18	-1.47	-1.48
Percent time-constraint violators	1.36%	0	24.09%	23.27%	1.32%	0	22.47%	25.66%	0.47%	1.20%	20.66%	27.71%
Number of missing items per person	0.01	0	0.70	0.68	0.01	0	0.63	0.78	0.005	0.012	0.62	0.78
Percent of choices avoiding prominent loss	49.17%	59.64%***	50.33%	61.00%***	49.71%	59.32%***	51.92%	59.11%**	52.82%	54.52%	54.58%	55.08%
Percent of choices seeking prominent gain	52.17%	64.68%***	54.56%	62.24%***	54.56%	61.68%**	57.57%	58.09%	57.52%	57.28%	57.99%	57.50%

Notes: *, **, *** at the entries for IQ_{Low}, IE_{Low}, and SE_{Low} indicate that these values differ from those for IQ_{High}, IE_{High}, SE_{High}, at the 10%, 5% , and 1% significance level, two-sided Mann-Whitney tests. The median IQ score is 10. The median IE score is 23. The median SE score is 29.

Table 6: Effects of Variance of Time Used Per Item and Total Time Used (in the Absence of Time Pressure) on Outcomes under Time Pressure

Performance measure	VAR _{High} (N=189)	VAR _{Low} (N=190)	Time _{High} (N=191)	Time _{Low} (N=188)
Actual time used (in sec.)	172.55	144.04***	176.46	139.77***
Expected value (choices made; €)	-1.15	-1.32***	-1.15	-1.32***
Expected value (all decision problems; €)	-1.53	-1.42	-1.57	-1.37
Percent time-constraint violators	34.39%	13.16%***	36.65%	10.64%***
Number of missing items per person	1.06	0.33***	1.19	0.19***
Percent of choices avoiding prominent loss	50.80%	58.79%**	49.57%	60.12%***
Percent of choices seeking prominent gain	49.73%	65.78%***	48.74%	66.97%***

Notes: *, **, *** at the entries for VAR_{Low} and Time_{Low} indicate that these values differ from those for VAR_{High} and Time_{High}, at the 10%, 5% , and 1% significance level, two-sided Mann-Whitney tests. The median variance of time used per item under no time constraint is 12.74. We split the sample such that VAR < 12.74 is the low variance group; and Time < 201 seconds is the low time (faster) group. Total time was 200 (in time pressure conditions).

5.2. Fitting a Cumulative Prospect Theory decision model

Tables 5 and 6 demonstrate that observable characteristics are strongly associated with risky behavior in the presence and absence of time pressure. A natural question is whether we can link observable traits to a person's ability to maintain her decision processes under a tight time constraint. To answer this question, we make use of the within-subject design to estimate a simplified cumulative prospect theory model (CPT, Tversky and Kahneman, 1992) for each participant on the basis of her 24 time-unconstrained choices, assuming that these unconstrained reflect her preferences. We then assess how successfully these preferences are implemented under time pressure. Predictive success is then related to observable characteristics.

Detailed methods and results are in Web Appendix A. Here we concisely state the main results. The fitted CPT model has good predictive power.²² The overall average success rate of predicting choices made under time pressure using time-unconstrained fitted parameters is above 65%, which is significantly better than a random prediction ($p < 0.01$, Wilcoxon signed-rank tests). We find strong links between observables and predictive success. For decision makers with higher measures of IE, higher measures of self-efficacy, and less time-use in the absence of time pressure, the fitted model predicts behavior under time pressure more successfully than for those with lower measures in the respective comparison categories. For IQ and variance in decision times, we find insignificant results. Thus, there is clear evidence that observables relate to a person's time pressure resistance. Importantly, in contrast to an evaluation based on expected payoffs, the current approach presumes no normative measure of success apart from stability of preferences between the two environments; each person is evaluated on the basis of her own choice behavior in the absence of time pressure, possibly showing loss aversion and/or probability weighting.

5.3. Multivariate analyses

We next provide multivariate analyses for our main dependent variables of interest. We study the partial correlations of IE, IQ, self-efficacy, gender, as well as our two time-use measures with the expected payoffs for the choices made (columns 1 and 2 in Table 7) and with the expected value over all choices (columns 3 and 4 in Table 7), under time pressure. That is, we aim to identify whether using a set of observables allows us to predict outcomes under time pressure. In addition, we also conduct multivariate analyses for predictive success of the fitted CPT model under time pressure, both for choices made (column 5 in Table 7) and for all decision problems (column 6 in Table 7).

²² It turns out that violators are significantly more loss averse ($p < 0.001$) and have a lower probability weighting parameter ($p < 0.06$). This suggests another pathway through which violators may differ systematically from non-violators.

Table 7: Multivariate Analysis of Performance Measures under Time Pressure

Covariates	Expected value (choices made; €)	Expected value (choices made; €)	Expected value (all decision problems; €)	Expected value (all decision problems; €)	Predictive success (choices made; %)	Predictive success (all decision problems; %)
IE	0.0140 (0.0127)	0.0178 (0.0128)	0.0348 (0.0164)**	0.0333 (0.0163)**	0.0046 (0.0032)	0.0062 (0.0033)*
IQ	0.0399 (0.0169)**	0.0321 (0.0175)*	0.0019 (0.0228)	0.0048 (0.0224)	0.0006 (0.0050)	-0.0008 (0.0052)
F-test IE = IQ = 0	F=7.18***	F=5.73***	F=3.76**	F=3.60**	F=1.82	F=2.57*
Self-Efficacy	-0.0085 (0.0074)	-0.0097 (0.0068)	0.0036 (0.0070)	0.0040 (0.0070)	0.0026 (0.0017)	0.0034 (0.0018)*
Female	-0.0414 (0.0696)	0.0276 (0.0740)	-0.0779 (0.0863)	-0.1067 (0.0875)	-0.0273 (0.0199)	-0.0333 (0.0208)
Variance of time used per item when no time-constraint		0.0001 (0.0006)		-0.0001 (0.0006)	0.0001 (0.0001)	0.0001 (0.0001)
Total time used when no time-constraint		0.0012 (0.0003)***		-0.0005 (0.0005)	-0.0001 (0.0001)	-0.0002 (0.0001)*
Controls	Yes	Yes	Yes	Yes	Yes	Yes
# obs	379	379	379	379	342	342
R ²	7.24%	13.95%	8.68%	9.45%	8.59%	10.34%

Notes: Results show coefficients from OLS regressions using robust standard errors, reported in parentheses. Controls include swiftness on the computer (Cappelen et al., 2016) and math score. All regressions control for treatment (Table 1); *, ** and *** indicate significance at the 10%, 5% and 1 % significance level, respectively.

The results confirm our earlier findings but show overall modest explanatory power of background variables for variations in expected payoff and predictive power of individual decision models under time pressure. IQ and IE, which are positively correlated, are significant predictors of expected value and predictive success. As expected, IE seems more relevant for all choices (including missed items), while IQ is more relevant for choices made. F-tests suggest that IE and IQ jointly determine the decision quality, with higher ability participants making better choices (EV) and more consistent choice across time pressure settings. Total time used in the absence of time pressure predicts better decisions over choices made, but lower predictive success over

all choices. We find no significant effect of gender. Self-Efficacy has a significant effect only for predictive success over all choices made.

Overall, we can explain only a small amount of the variance in expected value and in predictive success of the fitted CPT model. Although IE, IQ and time used strategy under unconstrained conditions are helpful in predicting decisions, our results still emphasize the necessity of finding better instruments to predict the ability to perform under time pressure.

6. DISCUSSION

We set out to study the role of selection in time-pressured decision environments, and how it is linked to observable characteristics of the decision maker, including those characteristics that can be made observable using survey and experimental techniques. Clearly, different decision styles play an important role. Those who can and those who cannot easily cope with the time constraint in risky decisions differ along various dimensions. People who violate time constraints, i.e. those with lower time pressure resistance, make more careful (more variance, more time used), and consequently more successful decisions (higher EV, less affected by salient outcomes) when unconstrained. They also initially perform better under time pressure. However, as they run out of time, they cannot implement their strategy anymore, leading to considerable losses. Consequently, their performance and behavior are also much less correlated between the time pressure and the no-pressure conditions than it is the case for non-violators. A fitted decision model on the basis of behavior in the absence of time pressure, is less predictive of their decisions under time pressure than is the case for non-violators. Violators try to make good decisions, sacrificing time, and violating the time constraint despite severe punishment (payment of maximum loss in the current design): they have poor time management. Because violators and non-violators differ on a range of characteristics, causal effects observed in non-violators may not be representative for the population as a whole.

The results have implications in practical contexts. Different people fit into different environments in terms of decision style. Making good decisions in one setting does not necessarily predict good decision-making in another setting. For instance, maximizers

who perform well given the time to thoroughly seek and compare alternatives might not fit well in rapid decision making environments. More problematic from a practical perspective is the fact that our results suggest a trade-off between good decision-making in adverse versus good decision-making in a less constrained decision context. For a position with varying environmental conditions, it might thus be difficult to find a good candidate.

In terms of predicting who performs well under time pressure, it is important to identify different types of individuals in terms of time pressure resistance. Our experiment aimed at making the differences in decision style under time pressure observable by considering measures of ability, personality and decision process/strategy. We find that various measures correlate with outcomes under time pressure and with the proneness to being attracted by salient features of prospects. Including these variables in a multivariate analysis, we identify IQ, IE and time-use in the absence of time pressure as moderate predictors of success under time pressure. Corroborating previous results by Kuhnen and Melzer (2014), self-efficacy is the only personality trait that has a weak systematic influence on decision-making. Overall, predictive power of observables is low, suggesting that we miss out important unobservable aspects of the decision strategies. This seems particularly important for practical applications in the workplace, as identifying people based on tests for cognitive abilities and standard questionnaires appear to be of limited use when selecting agents that should perform well under time pressure. More complex, experimental-based assessments of decision strategies under time pressure seem warranted.

We also obtain results regarding the determinants of risky decision strategies. The finding that cognitive ability relates to higher realized expected payoffs is consistent with the extant literature. In a representative sample of the German population, Dohmen et al. (2010) find that subjects with higher cognitive skills are willing to take more risks. Similarly, Benjamin et al. (2013) report for Chilean high school students a significant correlation of risk aversion and cognitive capacities. With the average participant being risk averse, these directional effects are consistent with higher expected payoffs in our setting. However, other researchers have questioned the evidence on cognitive ability and risk taking. Andersson et al. (2016) provide evidence that these correlations may be

spurious. They assert that, in fact, cognitive capacities are related to making errors and that the specific design of choice lists triggers the interpretation of differential risk attitudes. Our design does not involve choice lists, suggesting the cognitive ability effects are not merely driven by these design issues. However, our results suggest that the link between cognitive ability and risk behavior may be more moderate compared to the effects reported by Dohmen et al. (2010).

In conclusion, we find that selection is a very important factor in adverse decision environments. The relevance of selection effects has implications for the interpretation of the average laboratory behavior in terms of population parameters, and for the interpretation in terms of external validity of realistic decision-making scenarios (Ganster, 2005). We identify predictors of time pressure resistance. However, more work is needed to make aspects of decision style and the use of heuristics predictable. If behavioral measures are shown to be of limited explanatory power, neurological markers may provide an interesting alternative (e.g., Buckert et al., 2014; Kandasamy et al., 2014). Identifying people's ability to cope with time pressure is not a straightforward task. Tests for cognitive ability or intellectual efficiency and standard questionnaires need to be accompanied by additional measures.

REFERENCES

- Andersson, O., Tyran, J. R., Wengström, E., and Holm, H. J. (2016). Risk aversion relates to cognitive ability: Preferences or Noise? *Journal of the European Economic Association*, 14(5), 1129-1154.
- Arthur, W., and Day, D. (1994). Development of a short form for the Raven Advanced Progressive Matrices test. *Educational and Psychological Measurement*, 54, 395-403.
- Baillon, A., Huang, Z., Selim, A., and Wakker, P.P. (2013). Ambiguity attitudes under time pressure. Working paper, Erasmus University.

- Benjamin, D. J., Brown, S. A., and Shapiro, J. M. (2013). Who is 'behavioral'? Cognitive ability and anomalous preferences. *Journal of the European Economic Association*, 11(6), 1231-1255.
- Ben-Zur, H., and Breznitz, S. J. (1981). The effect of time pressure on risky choice behavior. *Acta Psychologica*, 47, 89-104.
- Bernardi, R. A. (1997). The relationships among self-control, perceptions of stress, and performance. *Journal of Applied Business Research*, 13(4), 1-9.
- Bors, D. A., and Stokes, T. L. (1998). Raven's Advanced Progressive Matrices: Norms for first-year university students and the development of a short form. *Educational and Psychological Measurement*, 58(3), 382-398.
- Buckert, M., Oechssler, J., & Schwieren, C. (2017). Imitation under stress. *Journal of Economic Behavior & Organization*, 139, 252–266.
- Buckert, M., Schwieren, C., Kudielka, B., and Fiebach, C. J. (2014). Acute stress affects risk taking but not ambiguity aversion. *Frontiers in Neuroscience* 8, article 82.
- Busemeyer, J. R. (1985). Decision making under uncertainty: a comparison of simple scalability, fixed-sample, and sequential-sampling models. *Journal of Experimental Psychology: Learning, Memory, and Cognition*, 11, 538-564.
- Byrne, K. A., Silasi-Mansat, C. D., and Worthy, D. A. (2015). Who chokes under pressure? The Big Five personality traits and decision-making under pressure. *Personality and Individual Differences*, 74, 22-28.
- Cappelen, A.W., Nielsen, U.H., Tungodden, B., Tyran, J.R., and Wengström, E. (2016) Fairness is intuitive. *Experimental Economics*, 19 (4), 727-740.
- Casari, M., Ham, J. C., and Kagel, J. H. (2007). Selection bias, demographic effects, and ability effects in common value auction experiments. *American Economic Review*, 97(4): 1278-1304.
- Chan, K. B. (1977). Individual differences in reactions to stress and their personality and situational determinants: Some implications for community mental health. *Social Science & Medicine*, 11(2), 89-103.

- Chandler J.J., and Pronin E. (2012). Fast thought speed induces risk taking. *Psychological Science*, 23:370-374.
- Claessens, B. J. C., van Eerde, W., Rutte, C. G., and Roe, R. A. (2017). A review of time management literature. *Personnel Review*, 36 (2), 255-276.
- Conte, A., Scarsini, M., and Sürücü, O. (2016). The impact of time limitation: Insights from a queueing experiment. *Judgment and Decision Making*, 11(3), 260-274.
- De Paola, M., and Gioia, F. (2016). Who performs better under time pressure? Results from a field experiment. *Journal of Economic Psychology*, 53, 37-53.
- Dohmen, T., Falk, A., Huffman, D., and Sunde, U. (2010). Are Risk Aversion and Impatience Related to Cognitive Ability? *American Economic Review*, 100, 1238-1260.
- Dror, I. E., B. Basola, and J. R. Busemeyer (1999). Decision making under time pressure: An independent test of sequential sampling models. *Memory & Cognition* 27(4), 713-725.
- Eisenhardt, K. M. (1989). Making Fast Strategic Decisions in High-Velocity Environments. *Academy of Management Journal*, 32, 543-576.
- Fischbacher, U. (2007). z-Tree: Zurich toolbox for ready-made economic experiments. *Experimental Economics*, 10(2), 171-178.
- Folkman, S. (1984). Personal control and stress and coping processes: A theoretical analysis. *Journal of Personality and Social Psychology*, 46, 839-852.
- Ganster, D. C. (2005). Executive Job Demands: Suggestions from a Stress and Decision-Making Perspective. *Academy of Management Journal*, 30, 492-502.
- Gabaix, X., Laibson D., Moloche G., and Weinberg S. (2006). Costly Information Acquisition: Experimental Analysis of a Boundedly Rational Model. *American Economic Review*, 96(4), 1043-1068.
- Gawryluk, K., and Krawczyk, M. (2017). Probability weighting under time pressure: applying the double-response method, Working paper, University of Warsaw.
- Gonzalez, R., and Wu, G. (1999). On the shape of the probability weighting function. *Cognitive Psychology*, 38, 129-166.

- Gosling, S. D., Rentfrow, P. J., and Swann, W. B. (2003). A very brief measure of the Big-Five personality domains. *Journal of Research in Personality*, 37(6), 504-528.
- Greiner, B. (2015). Subject pool recruitment procedures: organizing experiments with ORSEE. *Journal of the Economic Science Association*, 1(1), 114-125.
- Haji, A.E., Krawczyk, M., Sylwestrzak, M., and Zawojka, E. (2016). Time pressure and risk taking in auctions: A field experiment. Working paper, University of Warsaw.
- Hu, Y., Wang, D., Pang, K., Xu, G., and Guo, J. (2015). The effect of emotion and time pressure on risk decision-making. *Journal of Risk Research*, 18, 637-650.
- Huber, O., and U. Kunz. 2007. "Time Pressure in Risky Decision Making: Effect on Risk Defusing." *Psychology Science*, 49: 415-426.
- Kandasamy, N. Hardy, B., Page, L., Schaffner, M., Graggaber, J., Powlson, A. S., et al. (2014). Cortisol shifts financial risk preferences. *Proceedings of the National Academy of Sciences*, 111, 3608-3613.
- Kirchler, M., Andersson, D., Bonn, C., Johannesson, M., Sørensen, E. Ø., Stefan, M., Tinghög, G., and Västfjäll, D. (2017). The effect of fast and slow decisions on risk taking. *Journal of Risk and Uncertainty*, 54, 37-59.
- Kocher, M. G., Pahlke, J., and Trautmann, S. T. (2013). Tempus fugit: Time pressure in risky decisions. *Management Science*, 59, 2380-2391.
- Kocher, M. G., and Sutter, M. (2006). Time is money – Time pressure, incentives, and the quality of decision-making. *Journal of Economic Behavior and Organization*, 61, 375-392.
- Kuhnen, C. M., and Melzer, B. (2014). Non-cognitive abilities and loan delinquency. UNC Working Paper.
- Luszczynska, A., Gutiérrez-Doña, B., and Schwarzer, R. (2005). General self-efficacy in various domains of human functioning: Evidence from five countries. *International Journal of Psychology*, 40(2), 80-89.
- Madan, C. R., Spetch, M. L., and Ludvig, E. A. (2015). Rapid makes risky: Time pressure increases risk seeking in decisions from experience. *Journal of Cognitive Psychology*, 27(8), 921-928.

- Maruping, V., Venkatesh, V., Thatcher, S. M. B., and Patel, P. C. (2015). Folding under Pressure or Rising to the Occasion? Perceived Time Pressure and the Moderating Role of Team Temporal Leadership. *Academy of Management Journal*, 58(5), 1313-1333.
- Matthews, G., and Campbell, S. E. (1998). Task-induced stress and individual differences in coping. *Proceedings of the Human Factors and Ergonomics Society Annual Meeting*, 42(11), 821-825.
- Maule, A. J., G. R. J. Hockey, and L. Bdzola (2000). Effects of time-pressure on decision-making under uncertainty: changes in affective state and information processing strategy. *Acta Psychologica*, 104(3), 283-301.
- Nadkarni, S. and Herrmann, P. (2010). CEO Personality, Strategic Flexibility, and Firm Performance: the Case of the Indian Business Process Outsourcing Industry. *Academy of Management Journal*, 53 (3), 1050-1073.
- Nursimulu, A. D., and Bossaerts, P. (2013). Risk and reward preferences under time pressure. *Review of Finance*, 1-24.
- Omar, A., and List, J. A. (2015). Do natural field experiments afford researchers more or less control than laboratory experiments? *American Economic Review*, 105(5), 462-466.
- Ordóñez, L., and Benson III., L. (1997). Decisions under time pressure: How time constraint affects risky decision making. *Organizational Behavior and Human Decision Processes*, 71(2), 121–140.
- Parkes, K. R. (1984). Locus of control, cognitive appraisal, and coping in stressful episodes. *Journal of Personality and Social Psychology*, 46, 655-668.
- Payne, J.W., Bettman, J.R. and Luce, M.F. (1996) When Time is Money: Decision Behavior under Opportunity-Cost Time Pressure. *Organizational Behavior and Human Decision Processes*, 66(2), 131–152.
- Rand, D. G., Greene, J. D., and Novak, M. A. (2012). Spontaneous giving and calculated greed. *Nature*, 489, 427-430.

- Raven, J., Raven, J. C., and Court, J. H. (1998). *Manual for Raven's Progressive Matrices and Vocabulary Scales*. Section 4: The Advanced Progressive Matrices. San Antonio, TX: Harcourt Assessment.
- Reid, E., and Ramarajan, L. (2016). Managing the high intensity workplace. *Harvard Business Review*, 94(6), 84-90.
- Rotter, J. B. (1966). Generalized expectancies for internal versus external control of reinforcement. *Psychological Monographs: General and Applied*, 80(1), 1-28.
- Saqib, N. U., and Chan, E. Y. (2015). Time pressure reverses risk preferences. *Organizational Behavior and Human Decision Processes*, 130, 58–68.
- Schwartz, B., Ward, A., Monterosso, J., Lyubomirsky, S., White, K., & Lehman, D. R. (2002). Maximizing versus satisficing: happiness is a matter of choice. *Journal of Personality and Social Psychology*, 83(5), 1178-1197.
- Schwarzer, R., and Jerusalem, M. (1995). Generalized Self-Efficacy scale. In J. Weinman, S., Wright, S., and Johnston, M. (editors), *Measures in health psychology: A user's portfolio. Causal and control beliefs* (pp. 35-37). Windsor, UK: NFER-NELSON.
- Shelton, J. T., Elliott, E., Matthews, R., Hill, B., and Gouvier, W. (2010). The relationships of working memory, secondary memory, and general fluid intelligence: Working memory is special. *Journal of Experimental Psychology: Learning, Memory, and Cognition*, 36, 813-820.
- Simon, H. A. (1955). A behavioral model of rational choice. *Quarterly Journal of Economics*, 69, 99-118.
- Simon, H. A. (1956). Rational choice and the structure of the environment. *Psychological Review*, 63, 129-138
- Spiliopoulos, L., and Ortmann, A. (2017). The BCD of response time analysis in experimental economics. *Experimental Economics*, forthcoming
- Sugden, R., Wang, M., and Zizzo, D. (2015). Take it or leave it: experimental evidence on the effect of time-limited offers on consumer behaviour. Working Paper UEA.

- Sutter, M., Kocher, M.G. and Strauß, S. (2003). Bargaining under time pressure in an experimental ultimatum game. *Economics Letters*, 81, 341-347.
- Tinghög, G., Andersson, D., Bonn, C., Böttinger, H., Josephson, C., Lundgren, G., Västfjäll, D., Kirchler, M., and Johannesson, M. (2013). Intuition and cooperation reconsidered. *Nature*, 498, E1-E3.
- Trautmann, S.T. (2014). Risk taking under stress: The role(s) of self-selection. A comment on Buckert et al. (2014). *Frontiers in Neuroscience*, article 197.
- Tversky, A., and Kahneman, D. (1992). Advances in Prospect Theory: Cumulative representation of uncertainty. *Journal of Risk and Uncertainty*, 5, 297-323.
- Wheatley, R. (2000). Taking the strain: a survey of managers and workplace stress. Institute of Management.
- Yates, A. J. (1966) Level, speed and personality factors in the intellectual performance of young children. *British Journal of Educational Psychology*, 36, 312–316.
- Young, D. L., Goodie, A. S., Hall, D. B., and Wu, E. (2012). Decision making under time pressure, modeled in a prospect theory framework. *Organizational Behavior and Human Decision Processes*, 118(2), 179-188.

APPENDIX

A.1. Risky Behavior under Time Pressure: Summary of Results

Table A1: Related Literature on the Effect of Time Pressure on Decisions under Risk

	Effect of Time Pressure	Potential Selection Problems?	Weak Time Pressure?
Ben-Zur and Breznitz (1981)	Risk aversion ↑	No	Yes
Busemeyer (1985)	Risk aversion ↓ for losses, Risk aversion ↑ for gains	No	No
Dror et al. (1999)	Risk aversion ↑ or ↓ (dep. on level of risk)	No	Yes
Maule et al. (2000)	Risk aversion ↓ for losses, no effect for gains	No	Yes
Huber and Kunz (2007)	Risk aversion ↓	No	Yes
Chandler and Pronin (2012)	Risk aversion ↓	No	Yes
Young et al. (2012)	Probability weighting ↑ (for gains), no effect for losses	Yes	No
Kocher et al. (2013)	Loss aversion ↑, no effect for gains, for mixed gambles: more loss averse and gain seeking.	Yes	No
Nursimulu and Bossaerts (2014)	Risk aversion ↓	Yes	Yes
Madan et al. (2015)	Risk aversion ↓ (for gains)	Yes	No.
Saqib and Chan (2015)	Risk preferences reverse: risk seeking for gains and risk aversion for losses.	Unclear	No
Hu et al. (2015)	Risk aversion ↓	Unclear	Unclear
Haji et al. (2016)	Risk aversion ↑	Yes	No
Kirchler et al. (2017)	Risk aversion ↑ for gains, Risk aversion ↓ for losses	Yes	No
Gawryluk and Krawczyk (2017)	Risk aversion ↑	No	Unclear

Notes: Column 3 indicates whether due to violation of the time constraint, internal validity might not hold, as the sample of violators is potentially self-selected. Column 4 indicates that there was no imposition of substantial time pressure which led to negative payout consequences (for example a time limit that could not be exceeded or a time limit under which hardly anyone misses the time limit).

A.2. List of Binary Risky Choices

Table A2: Lotteries Used in Risky Choice Tasks

#Set/ # Lottery	Lottery A					Lottery B				
	Payoff 1	Prob. 1	Payoff 2	Prob. 2	EV	Payoff 1	Prob. 1	Payoff 2	Prob. 2	EV
S1 / G1	- 19.00	27.14 %	- 5.00	72.86 %	- 8.80	4.50	21.50 %	- 15.50	78.50 %	- 11.20
S1 / G2	- 8.00	15.00 %	- 4.00	85.00 %	- 4.60	3.00	15.00 %	- 7.00	85.00 %	- 5.50
S1 / G3	- 16.00	23.34 %	- 10.00	76.66 %	- 11.40	8.50	13.00 %	- 16.50	87.00 %	- 13.25
S1 / G4	- 9.00	40.00 %	- 2.00	60.00 %	- 4.80	7.00	40.00 %	- 15.00	60.00 %	- 6.20
S1 / G5	- 15.50	30.00 %	- 12.50	70.00 %	- 13.40	5.50	12.08 %	- 18.50	87.92 %	- 15.60
S1 / G6	- 15.00	12.00 %	- 7.50	88.00 %	- 8.40	5.00	27.50 %	- 15.00	72.50 %	- 9.50
S1 / G7	- 7.50	14.55 %	- 2.00	85.45 %	- 2.80	3.00	33.33 %	- 7.50	66.67 %	- 4.00
S1 / G8	- 16.00	40.00 %	- 8.00	60.00 %	- 11.20	4.00	10.00 %	- 14.00	90.00 %	- 12.20
S1 / G9	- 15.00	28.89 %	- 6.00	71.11 %	- 8.60	3.50	24.86 %	- 15.00	75.14 %	- 10.40
S1 / G10	- 16.00	10.00 %	- 12.00	90.00 %	- 12.40	6.00	10.00 %	- 16.00	90.00 %	- 13.80
S1 / G11	- 15.00	15.00 %	- 11.00	85.00 %	- 11.60	12.00	15.00 %	- 17.00	85.00 %	- 12.65
S1 / G12	- 11.00	30.00 %	- 6.00	70.00 %	- 7.50	5.00	30.00 %	- 15.00	70.00 %	- 9.00
S1 / L1	6.50	80.62 %	14.50	19.38 %	8.05	13.50	79.00 %	- 6.50	21.00 %	9.30
S1 / L2	5.00	80.00 %	15.00	20.00 %	7.00	15.00	75.00 %	- 5.00	25.00 %	10.00
S1 / L3	3.00	76.66 %	6.00	23.34 %	3.70	10.00	72.06 %	- 7.00	27.94 %	5.25
S1 / L4	6.00	75.00 %	14.00	25.00 %	8.00	14.00	80.00 %	- 12.00	20.00 %	8.80
S1 / L5	4.50	60.00 %	7.50	40.00 %	5.70	12.50	71.25 %	- 7.50	28.75 %	6.75
S1 / L6	7.50	70.00 %	12.50	30.00 %	9.00	14.50	80.44 %	- 8.50	19.56 %	10.00
S1 / L7	9.50	81.66 %	15.50	18.34 %	10.60	14.50	87.65 %	- 2.50	12.35 %	12.40
S1 / L8	4.00	75.00 %	9.00	25.00 %	5.25	14.00	70.00 %	- 11.00	30.00 %	6.50
S1 / L9	6.00	70.00 %	10.00	30.00 %	7.20	12.50	84.00 %	- 15.00	16.00 %	8.10
S1 / L10	2.00	65.00 %	7.00	35.00 %	3.75	7.00	85.00 %	- 7.00	15.00 %	4.90
S1 / L11	2.00	65.00 %	5.00	35.00 %	3.05	10.00	70.00 %	- 5.00	30.00 %	5.50
S1 / L12	5.00	75.00 %	15.00	25.00 %	7.50	10.00	90.00 %	- 4.00	10.00 %	8.60
S2 / G1	- 20.00	30.00 %	- 4.00	70.00 %	- 8.80	4.00	20.00 %	- 15.00	80.00 %	- 11.20
S2 / G2	- 8.00	32.00 %	- 3.00	68.00 %	- 4.60	4.00	13.64 %	- 7.00	86.36 %	- 5.50
S2 / G3	- 15.00	10.00 %	- 11.00	90.00 %	- 11.40	8.00	15.00 %	- 17.00	85.00 %	- 13.25
S2 / G4	- 10.00	30.67 %	- 2.50	69.33 %	- 4.80	7.00	41.33 %	- 15.50	58.67 %	- 6.20
S2 / G5	- 15.00	20.00 %	- 13.00	80.00 %	- 13.40	6.00	10.00 %	- 18.00	90.00 %	- 15.60
S2 / G6	- 14.00	20.00 %	- 7.00	80.00 %	- 8.40	4.00	25.00 %	- 14.00	75.00 %	- 9.50
S2 / G7	- 6.00	20.00 %	- 2.00	80.00 %	- 2.80	3.00	30.00 %	- 7.00	70.00 %	- 4.00
S2 / G8	- 17.00	31.76 %	- 8.50	68.24 %	- 11.20	4.50	12.11 %	- 14.50	87.89 %	- 12.20
S2 / G9	- 14.00	40.00 %	- 5.00	60.00 %	- 8.60	4.00	20.00 %	- 14.00	80.00 %	- 10.40
S2 / G10	- 16.00	20.00 %	- 11.50	80.00 %	- 12.40	6.50	9.78 %	- 16.00	90.22 %	- 13.80
S2 / G11	- 15.50	29.10 %	- 10.00	70.90 %	- 11.60	11.00	14.00 %	- 16.50	86.00 %	- 12.65
S2 / G12	- 12.00	30.77 %	- 5.50	69.23 %	- 7.50	5.00	26.31 %	- 14.00	73.69 %	- 9.00
S2 / L1	7.00	85.00 %	14.00	15.00 %	8.05	12.00	85.00 %	- 6.00	15.00 %	9.30
S2 / L2	4.50	72.22 %	13.50	27.78 %	7.00	13.50	80.56 %	- 4.50	19.44 %	10.00
S2 / L3	3.00	65.00 %	5.00	35.00 %	3.70	9.00	75.00 %	- 6.00	25.00 %	5.25
S2 / L4	6.50	82.35 %	15.00	17.65 %	8.00	15.00	77.86 %	- 13.00	22.14 %	8.80
S2 / L5	5.00	65.00 %	7.00	35.00 %	5.70	12.00	75.00 %	- 9.00	25.00 %	6.75
S2 / L6	8.00	80.00 %	13.00	20.00 %	9.00	15.00	80.00 %	- 10.00	20.00 %	10.00
S2 / L7	10.00	85.00 %	14.00	15.00 %	10.60	14.00	90.00 %	- 2.00	10.00 %	12.40
S2 / L8	3.50	70.83 %	9.50	29.17 %	5.25	14.00	70.59 %	- 11.50	29.41 %	6.50
S2 / L9	6.00	60.00 %	9.00	40.00 %	7.20	12.00	85.00 %	- 14.00	15.00 %	8.10
S2 / L10	3.00	85.00 %	8.00	15.00 %	3.75	8.00	80.63 %	- 8.00	19.37 %	4.90
S2 / L11	2.50	78.00 %	5.00	22.00 %	3.05	11.50	64.71 %	- 5.50	35.29 %	5.50
S2 / L12	4.50	66.66 %	13.50	33.34 %	7.50	11.00	82.86 %	- 3.00	17.14 %	8.60

Notes: Payoffs and expected values in €; S=set; G=prominent gain; L prominent loss

A.3. Graphical Presentation of Risky Choices



A.4. Incentivization of Cognitive Ability Tasks

The IQ and IE tasks were incentivized in the following way. In each task we count the number of correct items. This number then determines the probability to win a fixed prize of €10 in the IQ and of €20 in the IE task. The probability is calculated as $P(\text{win } €10) = (\text{Number of correct items} + 1) / (12 + 1)$ in the IQ task; and as $P(\text{win } €20) = (\text{Number of correct items} + 1) / (34 + 1)$ in the IE task. That is, subjects have a clear incentive to solve as many items as possible, since their expected payoff is monotonically increasing in the number of correct items. At the same time, they always have a positive probability of winning the prize.

The procedure was chosen to make sure that participants could never draw clear conclusions regarding their score or regarding the correct answer of single items. We wanted to avoid such inference because we did not want subjects to draw strong inference regarding their cognitive ability from our experiment. Note that subjects learned about the outcome of the random payment draw only at the end of the experiment if either Part 1 or Part 4 were randomly selected for real payment.