

Azar, José; Vives, Xavier

Working Paper

Oligopoly, Macroeconomic Performance, and Competition Policy

CESifo Working Paper, No. 7189

Provided in Cooperation with:

Ifo Institute – Leibniz Institute for Economic Research at the University of Munich

Suggested Citation: Azar, José; Vives, Xavier (2018) : Oligopoly, Macroeconomic Performance, and Competition Policy, CESifo Working Paper, No. 7189, Center for Economic Studies and ifo Institute (CESifo), Munich

This Version is available at:

<https://hdl.handle.net/10419/185387>

Standard-Nutzungsbedingungen:

Die Dokumente auf EconStor dürfen zu eigenen wissenschaftlichen Zwecken und zum Privatgebrauch gespeichert und kopiert werden.

Sie dürfen die Dokumente nicht für öffentliche oder kommerzielle Zwecke vervielfältigen, öffentlich ausstellen, öffentlich zugänglich machen, vertreiben oder anderweitig nutzen.

Sofern die Verfasser die Dokumente unter Open-Content-Lizenzen (insbesondere CC-Lizenzen) zur Verfügung gestellt haben sollten, gelten abweichend von diesen Nutzungsbedingungen die in der dort genannten Lizenz gewährten Nutzungsrechte.

Terms of use:

Documents in EconStor may be saved and copied for your personal and scholarly purposes.

You are not to copy documents for public or commercial purposes, to exhibit the documents publicly, to make them publicly available on the internet, or to distribute or otherwise use the documents in public.

If the documents have been made available under an Open Content Licence (especially Creative Commons Licences), you may exercise further usage rights as specified in the indicated licence.

Oligopoly, Macroeconomic Performance, and Competition Policy

José Azar, Xavier Vives

Impressum:

CESifo Working Papers

ISSN 2364-1428 (electronic version)

Publisher and distributor: Munich Society for the Promotion of Economic Research - CESifo GmbH

The international platform of Ludwigs-Maximilians University's Center for Economic Studies and the ifo Institute

Poschingerstr. 5, 81679 Munich, Germany

Telephone +49 (0)89 2180-2740, Telefax +49 (0)89 2180-17845, email office@cesifo.de

Editors: Clemens Fuest, Oliver Falck, Jasmin Gröschl

www.cesifo-group.org/wp

An electronic version of the paper may be downloaded

- from the SSRN website: www.SSRN.com
- from the RePEc website: www.RePEc.org
- from the CESifo website: www.CESifo-group.org/wp

Oligopoly, Macroeconomic Performance, and Competition Policy

Abstract

We develop a macroeconomic framework in which firms are large and have market power with respect to both products and labor. Each firm maximizes a share-weighted average of shareholder utilities, which makes the equilibrium independent of price normalization. In a one-sector economy, if returns to scale are non-increasing, then an increase in “effective” market concentration (which accounts for overlapping ownership) leads to declines in employment, real wages, and the labor share. Moreover, if the goal is to foster employment then (i) controlling common ownership and reducing concentration are complements and (ii) government jobs are a substitute for either policy. Yet when there are multiple sectors, due to an intersectoral pecuniary externality, an increase in common ownership can stimulate the economy when the elasticity of labor supply is high relative to the elasticity of substitution in product markets. We find that neither the monopolistically competitive limit of Dixit and Stiglitz nor the oligopolistic one of Neary (when firms become small relative to the economy) are attained unless there is incomplete portfolio diversification with no intra-industry common ownership.

JEL-Codes: L130, L210, L410, G110, E600, D630.

Keywords: ownership, portfolio diversification, labor share, market power, oligopsony, antitrust policy.

José Azar
IESE Business School
Avinguda Pearson 21
Spain – 08034 Barcelona
jazar@iese.edu

Xavier Vives
IESE Business School
Avinguda Pearson 21
Spain – 08034 Barcelona
xvives@iese.edu

August 2, 2018

We are grateful to participants in a seminar at UC Davis for helpful comments and to Orestis Vravosinos for excellent research assistance.

1 Introduction

Oligopoly is widespread and seems to be on the rise. Many industries are characterized by oligopolistic conditions—including, but not limited to, the digital ones dominated by FAMGA: Facebook, Apple, Microsoft, Google (now Alphabet), and Amazon. Yet oligopoly is seldom considered by macroeconomic models, which focus on monopolistic competition because of its analytical tractability.¹ In this paper we build a tractable general equilibrium model of oligopoly allowing for common ownership, characterize its equilibrium and comparative statics properties, and then use it to derive welfare-improving policies.

Recent empirical research has renewed interest in the issue of aggregate market power and its consequences for macroeconomic outcomes. [Grullon et al. \(2016\)](#) claim that concentration has increased in more than 75% of US industries over the last two decades and also that firms in industries with larger increases in product market concentration have enjoyed higher profit margins and positive abnormal stock returns, which suggests that market power is the driver of these outcomes. [Barkai \(2016\)](#) and [De Loecker and Eeckhout \(2017\)](#) document an increase in economic profits and markups in the economy overall and use cross-industry regressions to show that increases in market concentration are correlated with declines in the labor share.² In addition to increases in concentration as traditionally measured, recent research has shown that increased overlapping ownership of firms by financial institutions (in particular, funds)—what we refer to as *common ownership*—has led to substantial increases in effective concentration indices in the airline and banking industries, and that this greater concentration is associated with higher prices ([Azar et al., 2016, Forthcoming](#)). [Gutiérrez and Philippon \(2016\)](#) suggest that the increase in index and quasi-index fund ownership has played a role in declining aggregate investment. [Summers \(2016\)](#) and [Stiglitz \(2017\)](#) link then the increase in market power to the potential secular stagnation of developed economies.

The concern over market power is now a subject of policy debate. For example, the Council of Economic Advisers has produced two reports ([CEA, 2016a,b](#)) on the issue of market power. The first one presents evidence of increasing concentration in most product markets, and the second presents evidence of substantial monopsony power in the labor market.³ The increase in common ownership has also raised antitrust concerns ([Baker, 2016; Elhauge, 2016](#)) and some bold proposals for remedies ([Posner et al., 2016; Scott Morton and Hovenkamp, 2017](#)) as well as calls for caution ([O'Brien and Waehrer, 2017; Rock and Rubinfeld, 2017](#)).

Our paper contributes to this growing literature by developing a model of oligopoly in general equilibrium. The difficulties of incorporating oligopoly into a general equilibrium framework have hindered

¹This statement applies also in international trade theory; the few exceptions include [Neary \(2003a,b, 2010\)](#) and [Head and Spencer \(2017\)](#).

²[Blonigen and Pierce \(2016\)](#) attribute the US increase in markups to increased merger activity. [Autor et al. \(2017\)](#) argue that globalization and technological change lead to concentration and the rise of what they call “superstar” firms, which have high profits and a low labor share. As the importance of superstar firms rises (with the increase in concentration), the aggregate labor share falls.

³For instance, Samsung and Hyundai are large relative to Korea’s economy ([Gabaix, 2011](#)). Although even General Motors and Walmart have never employed more than 1% of the US workforce, those firms may figure prominently in *local* labor markets.

the modeling of market power in macroeconomics. With price-taking firms, a firm's shareholders agree unanimously that the objective of the firm should be to maximize its own profits. This result is called the "Fisher Separation Theorem" (Ekern and Wilson, 1974; Radner, 1974; Leland, 1974; Hart, 1979; DeAngelo, 1981). Under imperfect competition, however, the Fisher Separation Theorem does not apply, and therefore there is no simple objective function for the firm (Hart, 1982a). The presence of firms that are large in relation to the economy raise questions about whether the firm's objective truly is to maximize profits—since, for example, high prices may harm shareholders as consumers (Farrell, 1985). In addition, in general equilibrium, a firm with pricing power will influence not only its own profits but also the wealth of consumers and therefore demand (these feedback effects are sometimes called Ford effects). Firms that are large relative to factor markets also have to take into account their impact on factor prices. At the same time, if a firm's shareholders have holdings in competing firms, they would benefit from high prices through their effect not only on their own profits, but also on the profits of rival firms, as well as internalizing other externalities between firms (Rotemberg, 1984; Gordon, 1990; Hansen and Lott, 1996).

In the literatures on monopolistic competition (e.g., Hart, 1982b) and oligopoly (Neary, 2003a), it is widely assumed that firms are small in relation to the economy; this approach makes for a tractable model, but it is not appropriate in the presence of monopsony power. Large firms will influence their own local labor markets at least and, as we will see, common ownership may amplify the effect of large firms on product and factor prices. Gabszewicz and Vial (1972) originally proposed the concept of a Cournot–Walras equilibrium to deal with oligopoly in general equilibrium while assuming that firms seek to maximize profits. One problem related to general equilibrium feedback effects is that the Cournot–Walras equilibrium, when it exists, depends on the choice of numéraire.⁴ This problem is often sidestepped by assuming that firms' owners care about only one good (an outside good or numéraire); see, for example, Mas-Colell (1982).

We build a tractable model of oligopoly under general equilibrium, allowing firms to be large in relation to the economy, and then examine the effect of oligopoly on macroeconomic performance. We assume that firms maximize a weighted average of shareholder utilities in Cournot–Walras equilibrium. The weights in a firm's objective function are given by the influence or "control weight" of each shareholder.⁵ This solves the numéraire problem because indirect utilities depend only on relative prices and not on the choice of numéraire. Firms are assumed to make strategic decisions that account for the effect of their actions on prices and wages. When making decisions about hiring, for instance, a firm realizes that increasing employment could put upward pricing pressure on real wages—reducing not only its own profits but also the profits of all other firms in its shareholders' portfolios. The model is parsimonious and identifies the key parameters driving equilibrium: the elasticity of substitution across industries, the elasticity of labor supply, the market concentration of each industry, and the ownership structure (i.e., extent of diversification) of investors.

⁴The existence problem was highlighted early on by Roberts and Sonnenschein (1977).

⁵This objective function can be "microfounded" with competition among managers to run the firm (Azar, 2012; Brito et al., 2017). Azar (2017) shows that, even in uncontested elections, this objective function of the firm can be microfounded if one assumes that dissenting votes by shareholders are costly for the incumbent directors.

We seek answers to a number of key questions. How do output, labor demand, prices, and wages depend on market concentration and the degree of common ownership? To what extent are markups in product markets, and markdowns in the labor market, affected by how much the firm internalizes other firms' profits? Are all types of common ownership anti-competitive? Can common ownership be pro-competitive in a general equilibrium framework? How do common ownership effects change when the number of industries increases? In the presence of common ownership, is the monopolistically competitive limit (as described by [Dixit and Stiglitz, 1977](#)) attained when firms become small relative to the market?—and, more generally, how does ownership structure affect this limit? Is antitrust policy a complement or rather a substitute with respect to other government policies aimed at boosting employment?

In the base model we develop here, there is one good in addition to leisure; also, the model assumes both oligopoly in the product market and oligopsony in the labor market. Firms compete by setting their labor demands à la Cournot and thus have market power. There is a continuum of risk-neutral owners, who have a proportion of their respective shares invested in one firm and have the balance invested in the market portfolio (say, an index fund). This formulation is numéraire-free and allows us to characterize the equilibrium. The extent to which firms internalize competing firms' profits depends on market concentration and investor diversification. We demonstrate the existence and uniqueness of a symmetric equilibrium, and then characterize its comparative static properties, under the assumption that labor supply is upward sloping (while allowing for some economies of scale). Our results show that, in the one-sector model, the markdown of real wages with respect to the marginal product of labor is driven by the common ownership–modified Herfindahl–Hirschman index (MHHI) for the labor market and also by labor supply elasticity (but *not* by product market power). We perform comparative statics on the equilibrium (employment and real wages) with respect to market concentration and degree of common ownership, and we develop an example featuring Cobb–Douglas firms and consumers with constant elasticity of substitution (CES). We find that increased market concentration—due either to fewer firms or to more common ownership—depresses the economy by *reducing* employment, output, real wages, and the labor share (if one assumes non-increasing returns to scale). The model determines the interest rate by incorporating both investment in productive capital and household savings; our results indicate that market concentration depresses both real interest rates and investment levels.

We also extend our base model to allow for multiple sectors and differentiated products across sectors (with CES aggregators as in [Dixit and Stiglitz, 1977](#)). The firms supplying each industry's product are finite in number and engage in Cournot competition. We allow here for investors to diversify both in an intra-industry fund and in an economy-wide index fund. In this extension, a firm deciding whether to marginally increase its employment must consider the effect of that increase on three relative prices: (i) the increase would reduce the relative price of the firm's own products, (ii) it would boost real wages, and (iii) it would increase the relative price of products in other industries—that is, because overall consumption would increase. This third effect, referred to as *inter-sector pecuniary externality*, is internalized only if there is common ownership involving the firm and firms in other industries. In this case, the markdown of real wages relative to the marginal product of labor increases with the MHHI values for

the labor market and product markets but decreases with the pecuniary externality (weighted by the extent of competitor profit internalization due to common ownership). We find that common ownership always has an anti-competitive effect when increasing intra-industry diversification but that it can have a pro-competitive effect when increasing economy-wide diversification if the elasticity of labor supply is high in relation to the elasticity of substitution among product varieties. In this case the relative impact of profit internalization in the level of market power in product markets is higher than in the labor market. It is worth to remark that when the elasticity of labor supply is very high, an increase in economy-wide common ownership has always a pro-competitive effect.

We then consider the limiting case when the number of sectors tends to infinity.⁶ This formulation allows us to check for whether—and, if so, under what circumstances—the monopolistically competitive limit of [Dixit and Stiglitz \(1977\)](#) is attained, in the presence of common ownership, when firms become small relative to the market; it also enables a determination of how ownership structure affects that competitive limit. If portfolios are incompletely diversified and there is no intra-industry common ownership then, as the number of sectors grows without bound, the [Dixit and Stiglitz \(1977\)](#) monopolistically competitive (wage-taking) limit is attained if there is one firm per sector *or* the oligopolistic limit of [Neary \(2003b\)](#) is reached if sectors comprise multiple firms. Otherwise, those limits are modified and the ownership structure affects the markups.

Competition policy in the one-sector economy can foster employment and increase real wages by reducing market concentration (with non-increasing returns) and/or the level of common ownership, which serve as complementary tools. We also find that government employment can have an expansionary effect on the economy by reducing firms’ monopsonistic labor market power, which reduces the markdown of wages relative to marginal product of labor and thereby induces upward movement along the labor supply curve. This mechanism has a “Kaleckian” flavor and differs from that of government spending’s Keynesian multiplier effect. When there are multiple sectors, it is optimal for worker-consumers to have full diversification (common ownership) economy wide, but no diversification intra-industry, when the elasticity of substitution in product markets is low in relation to the elasticity of labor supply. In this case, competition policy should seek to alter only intra-industry ownership structure.

The rest of our paper proceeds as follows. Section 2 reviews the related literature. Section 3 develops a one-sector model of general equilibrium oligopoly with labor as the only factor of production; this is where we derive comparative statics results with respect to the effect of market concentration on employment, wages, and the labor share. In Section 4 we extend the model to allow for multiple sectors with differentiated products, and we then derive results that characterize the limit economy as the number of sectors approaches infinity. Section 5 discusses the implications for competition and government jobs policies, and we conclude in Section 6 with a summary and suggestions for further research. The proofs of most results are given in Appendix A. An online appendix provides charts with empirics, and a formalization of our equilibrium concept’s numéraire-free property.

⁶See [d’Aspremont et al. \(1996\)](#) for rigorous formulations of those large economies.

2 Literature review

2.1 Observed trends: Increased concentration and common ownership

There is substantial evidence that market concentration is high in many product markets and has increased over time. [Autor et al. \(2017\)](#) use US Census data to calculate 4-firm and 20-firm concentration ratios based on revenue shares; these authors find that the ratios have increased (on average) between 1982 and 2012, and especially since the early 1990s, for 4-digit industries in manufacturing, finance, services, utilities and transportation, retail trade, and wholesale trade (see Figure A.1 in online appendix). [De Loecker and Eeckhout \(2017\)](#) document sharp increases in markups, dividends, and stock market valuations since the early 1980s. Using a different methodology, [Hall \(2018\)](#) also finds a large increase in markups over the period 1988-2015. [Head and Spencer \(2017\)](#) report that, starting in the mid-2000s, many industries have become more dominated by oligopolies (a notable exception is mobile phones; see Figure 4 in their paper). According to [Giandrea and Sprague \(2017\)](#), this period has also seen a secular decline in the labor share (Figure A.2). [Barkai \(2016\)](#) and [Autor et al. \(2017\)](#) show that increases over time in industry-level concentration are correlated with declines in the industry-level labor share.

There is also considerable evidence that large firms have market power not just in product markets but also in labor markets. A thriving literature in labor economics documents that individual firms face labor supply curves that are imperfectly inelastic, which is indicative of substantial labor market power ([Falch, 2010](#); [Ransom and Sims, 2010](#); [Staiger et al., 2010](#); [Matsudaira, 2013](#)). In more recent work, [Azar et al. \(2017, 2018\)](#) provide labor market Herfindahl-Hirschman indices for commuting zones covering most of the United States and 6-digit occupational codes (e.g., Registered Nurses) capturing the most populated occupations; these authors find that, with the exception of big cities, labor markets are generally concentrated. This research finds also that commuting zones and occupations characterized by higher labor market concentration have significantly lower real wages. [Benmelech et al. \(2018\)](#) likewise report high levels of local market concentration; their approach employs US Census data and defines markets by industry instead of by occupation. The authors show that labor market concentration has increased over the period 1977–2009 (Figure A.3 in online appendix).

In addition to the recently increasing average market share of the top firms in each industry, common ownership has risen to prominence following an increase in the ownership of firms by institutional investors and especially by index and quasi-index funds. [Gutiérrez and Philippon \(2016\)](#) report that these quasi-index funds' fraction of US stock shareholding increased from less than a fifth in 1980 to nearly two fifths in 2015 (Figure A.4). These authors also examine private fixed investment in the United States since the early 2000s and report underinvestment relative to standard valuation measures such as Tobin's Q. Using proxies for competition and ownership, they argue that this investment gap is driven by firms owned by quasi-indexers and belonging to industries that have high concentration and high common ownership. Under those circumstances, firms spend a disproportionate amount of free cash flow on share buybacks. [Brun and González \(2017\)](#) also document an increase in Tobin's Q; in the model they develop, an increase in Q due to product market power (which they assume to be determined

exogenously by a constant elasticity parameter) is associated with lower investment.

Gutiérrez and Philippon (2017) calculate MHHIs, which account for common ownership by institutional investors, for publicly traded firms in various US industries. They find that the average industry is highly concentrated (in terms of MHHI) and also document an upward trend of both the average MHHI and the average markup (Figure A.5 in the online appendix). Azar et al. (2016, Forthcoming) offer evidence that higher market concentration is associated with higher prices in geographically defined airline and retail banking markets. Anton et al. (2018) and Liang (2016) provide evidence on the transmission mechanism of common institutional ownership on managers' incentives; they find that relative performance evaluation is lower in industries with more common ownership.

2.2 Theoretical developments

The most closely related theoretical papers are perhaps Hart (1982b), d'Aspremont et al. (1990), and Neary (2003a).⁷ In Hart (1982b), each firm (which is small relative to the economy as a whole) is assumed to maximize profits as a Cournot oligopolist in its product market (or "island") and to take the wage rate as given; unions are assumed to have market power in labor markets. No firm can affect the income of consumers in its market, and firms are small in relation to their labor market. The resulting general equilibrium model can generate underemployment and has Keynesian features.⁸ Hart's work differs from ours in assuming that firms are small relative to the overall economy and have separate owners—and thus have no market power. Unions have the labor market power in his model and so equilibrium real wages are higher than the marginal product of labor; in our model's equilibrium, real wages are lower than that marginal product. Finally, Hart (1982b) assumes that firms maximize profits in terms of money, which is the numéraire in his model.

d'Aspremont et al. (1990) explain the emergence of involuntary unemployment in terms of imperfect price competition while accounting for general equilibrium feedback effects. Here firms are large relative to the economy, but it is still assumed that firms maximize profits in terms of an arbitrary numéraire and that they compete in prices while taking wages as given. The authors also assume that labor supply is completely inelastic, which means that market power reduces employment in their model by driving real wages to zero. We consider instead the more realistic case of an increasing labor supply, which yields a positive equilibrium real wage even when market power reduces employment to below the competitive level. Our focus differs from theirs also in that we derive measures of market concentration, discuss competition policy in general equilibrium, and consider effects on the labor share. Furthermore, we explore what happens in a sequence of economies as the number of sectors becomes large.

⁷See Silvestre (1993) for a survey of the market power foundations of macroeconomic policy. Gabaix (2011) also considers firms that are large in relation to the economy but with no strategic interaction among them; his aim is to show how microeconomic shocks to large firms can create meaningful aggregate fluctuations. Acemoglu et al. (2012) pursue a similar goal but assume that firms are price takers.

⁸Silvestre (1990) relaxes an assumption in Hart's model to show that unemployment is possible when there is product market power but not labor market power. See also Mankiw (1988) and Rotemberg and Woodford (1992) for models in which firms take factor prices as given and have little effect on macroeconomic variables.

Neary (2003a) considers a continuum of industries with Cournot competition in each industry, taking the marginal utility of wealth (instead of the wage) as given. Workers supply labor inelastically and firms maximize profits. He finds a negative relationship between the labor share and market concentration. Our work differs by considering the case in which firms are large relative to the economy and therefore have market power in both product and labor markets. We also consider the effects of firms' ownership structure and do not assume that firms maximize profits. He also assumes a perfectly inelastic labor supply, so that changes in market power can affect neither employment nor output in equilibrium. In contrast, we allow for an increasing labor supply function and examine more possible effects of competition policy.⁹ Suppose we take, as a starting point, our framework with multiple sectors and then allow the number of sectors to approach infinity. Then our sequence of equilibria converges to the same equilibrium as in Neary (2003a) when firms are separately owned—or when there is some common ownership but the sequence of portfolios is such that firms in the limit economy do not put positive weights on the profits of other firms. In the general case, however, there can be sequences of economies in which the economy does *not* converge to the Neary equilibrium (as when all shareholders hold market portfolios).

There is another crucial difference between our paper and those cited here. All of them assume the existence of a set of identical consumer-worker-owners, whereas we follow Kalecki (1954) and distinguish between two groups: worker-consumers and owner-consumers. Absent this heterogeneity, the firm would completely internalize its effects on consumers and workers—because they would be its owners—with the result that price would equal marginal cost. If firms are assumed to maximize profits, as in the literature, then their market power will be used to set prices above marginal cost *despite* the objections of owners. Our model has Kaleckian flavor also in relating product market power to the labor share; recall that, in Kalecki (1938), the labor share is determined by the economy's average Lerner index.

Some of the macroeconomic papers already mentioned, in addition to documenting the facts that motivated our paper, also develop theoretical frameworks that link changes in market power to the labor share (Barkai, 2016; De Loecker and Eeckhout, 2017; Eggertsson et al., 2018) and to investment and interest rates (Brun and González, 2017; Gutiérrez and Philippon, 2017; Eggertsson et al., 2018). The models described by Barkai (2016), Brun and González (2017), Gutiérrez and Philippon (2017), and Eggertsson et al. (2018) are based on the monopolistic competition framework of Dixit and Stiglitz (1977); hence markups are determined exogenously by the parameter reflecting elasticity of substitution preferences, which cannot be affected by competition policy. In the partial equilibrium model of De Loecker and Eeckhout (2017), the level of market power is exogenously determined by a “conduct” parameter. In all cases, only product market power is considered and the firms are assumed to have *no* market power in labor or capital markets. Our theoretical framework differs from these because we explicitly model oligopoly and strategic interaction between firms in general equilibrium, which enables our study of how competition policy affects the macroeconomy. We also allow for market power in both product and

⁹Shleifer (1986) and Murphy et al. (1989) also consider models involving more than one firm per sector and some strategic interaction.

factor markets.

3 One-sector economy with large firms

In this section we first describe the model in detail. We then characterize the equilibrium and comparative static properties before providing a constant elasticity example.

3.1 Model setup

We consider an economy with (a) a finite number of firms, each of them large relative to the economy as a whole, and (b) an infinite number (a continuum) of people, each of them infinitesimal relative to the economy as a whole. There are two types of people: workers and owners. Workers and owners both consume the good produced by firms. The workers obtain income to pay for their consumption by offering their time to a firm in exchange for wages. The owners do not work for the firms. Instead, an owner's income derives from ownership of the firm's shares, which entitles the owner to control the firm as well as a share of its profits. There is a unit mass of workers and a unit mass of owners, and we use I_W and I_O to denote (respectively) the set of workers and the set of owners. There are a total of J firms in the economy.

There are two goods: a consumer good, with price p ; and leisure, with price w . Each worker has a time endowment of T hours but owns no other assets. Workers have preferences over consumption and leisure; this is represented by the utility function $U(C_i, L_i)$, where C_i is worker i 's level of consumption and L_i is i 's labor supply. We assume that the utility function is twice continuously differentiable and satisfies $U_C > 0$, $U_L < 0$, $U_{CC} < 0$, $U_{LL} < 0$, and $U_{CL} \leq 0$.¹⁰ The last of these expressions implies that the marginal utility of consumption is decreasing in labor supply.

The owners hold all of the firms' shares. We assume that the owners are divided uniformly into J groups, one per firm, with owners in group j owning $1 - \phi + \phi/J$ of firm j and ϕ/J of the other firms; here $\phi \in [0, 1]$. Thus ϕ can be interpreted as representing the level of portfolio diversification, or (quasi-)indexation, in the economy.¹¹ Owners in group j own $1 - \phi + \phi/J$ in firm j , and ϕ/J of the other firms.

¹⁰In the notation used here, U_x is the partial derivative of U with respect to variable x , and U_{xy} is the cross derivative of U with respect to x and y .

¹¹Each owner in group j is endowed with a fraction $(1 - \phi + \phi/J)/(1/J)$ of firm j and a fraction $(\phi/J)/(1/J) = \phi$ of each of the other firms. Since the mass of the group is $1/J$, it follows that the combined ownership in firm j of all the owners in group j is $1 - \phi + \phi/J$ and that their combined ownership in each of the other firms is ϕ/J . The combined ownership shares of all shareholders sum to 1 for every firm:

$$\underbrace{\frac{1 - \phi + \phi/J}{1/J}}_{\text{Ownership of firm } j \text{ by an owner in group } j} \times \underbrace{\frac{1/J}{1/J}}_{\text{Mass of group } j} + (J - 1) \times \underbrace{\frac{\phi/J}{1/J}}_{\text{Ownership of firm } j \text{ by an owner in group } k \neq j} \times \underbrace{\frac{1/J}{1/J}}_{\text{Mass of group } k} = 1.$$

If we use π_k to denote the profits of firm k , then the financial wealth of owner i in group j is given by

$$W_i = \frac{1 - \phi + \phi/J}{1/J} \pi_j + \sum_{k \neq j} \phi \pi_k.$$

Total financial wealth is $\sum_{k=1}^J \pi_k$, the sum of the profits of all firms. The owners obtain utility from consumption only, and for simplicity we assume that their utility function is $U^O(C_i) = C_i$. A firm produces using only labor as a resource, and it has a twice continuously differentiable production function $F(L)$ with $F' > 0$ and $F(0) \geq 0$. We use L_j to denote the amount of labor employed by firm j . Firm j 's profits are $\pi_j = pF(L_j) - wL_j$.

We assume that the objective function of firm j is to maximize a weighted average of the (indirect) utilities of its owners, where the weights are proportional to the number of shares. That is, we suppose that ownership confers control in proportion to the shares owned.¹² In this simple case, because shareholders do not work and there is only one consumption good, their indirect utility (as a function of prices, wages, and their wealth level) is $V^O(p, w; W_i) = W_i/p$. Hence the objective function of the firm's manager is

$$\underbrace{\left(1 - \phi + \frac{\phi}{J}\right)}_{\text{Control share of group } j \text{ in firm } j} \underbrace{\frac{(1 - \phi + \frac{\phi}{J})\pi_j + \frac{\phi}{J} \sum_{k \neq j} \pi_k}{p}}_{\text{Indirect utility of shareholder group } j} + \sum_{k \neq j} \underbrace{\frac{\phi}{J}}_{\text{Control share of group } k \text{ in firm } j} \underbrace{\frac{(1 - \phi + \frac{\phi}{J})\pi_k + \frac{\phi}{J} \sum_{s \neq k} \pi_s}{p}}_{\text{Indirect utility of shareholder group } k}.$$

After regrouping terms, we can write the objective function as

$$\left[\left(1 - \phi + \frac{\phi}{J}\right)^2 + (J-1) \left(\frac{\phi}{J}\right)^2 \right] \frac{\pi_j}{p} + \left[2 \left(1 - \phi + \frac{\phi}{J}\right) \frac{\phi}{J} + (J-2) \left(\frac{\phi}{J}\right)^2 \right] \sum_{k \neq j} \frac{\pi_k}{p}.$$

After some algebra we obtain that, for firms' managers, the objective function simplifies to maximizing (in terms of the consumption good) the sum of own profits and the profits of other firms—discounted by a coefficient λ . Formally, we have

$$\frac{\pi_j}{p} + \lambda \sum_{k \neq j} \frac{\pi_k}{p},$$

where

$$\lambda = \frac{(2 - \phi)\phi}{(1 - \phi)^2 J + (2 - \phi)\phi}.$$

We interpret λ as the weight—due to common ownership—that each firm's objective function assigns to the profits of other firms relative to its own profits. This term was called the coefficient of “effective sympathy” between firms by Edgeworth. It increases with ϕ , the level of portfolio diversification in the economy, and also with market concentration $1/J$. We remark that $\lambda = 0$ if $\phi = 0$ and $\lambda = 1$ if $\phi = 1$, so all firms behave “as one” when portfolios are fully diversified.

¹²See O'Brien and Salop (2000) for other possibilities that allow for cash flow and control rights to differ.

Next we define our concept of equilibrium. We provide a more general version of this concept (and prove that the equilibrium is independent of price normalization) in the online appendix.

3.2 Equilibrium concept

An *imperfectly competitive equilibrium with shareholder representation* consists of (a) a price function that assigns consumption good prices to the production plans of firms, (b) an allocation of consumption goods, and (c) a set of production plans for firms such that the following statements hold.

- (1) The prices and allocation of consumption goods are a competitive equilibrium relative to the production plans of firms.
- (2) Production plans constitute a Cournot–Nash equilibrium when the objective function of each firm is a weighted average of shareholders' indirect utilities.

It follows then that if a price function, an allocation of consumption goods, and a set of production plans for firms is an imperfectly competitive equilibrium with shareholder representation, then also a scalar multiple of prices will be an equilibrium with the same allocation of goods and productions. The reason is that the indirect utility function is homogenous of degree zero in prices and income and if a consumption and production allocation satisfies (1) and (2) with the original price function then it will continue to do so when prices are scaled. (See the online appendix for additional details.)

We start by defining a competitive equilibrium relative to the firms' production plans—in the particular model of this section, a Walrasian equilibrium conditional on the quantities of output announced by the firms. To simplify notation, we proxy firm j 's production plan by the quantity L_j of labor demanded, leaving the planned *production quantity* implicitly equal to $F(L_j)$.

Definition 1 (Competitive equilibrium relative to production plans). *A competitive equilibrium relative to (L_1, \dots, L_J) is a price system and allocation $[\{w, p\}; \{C_i, L_i\}_{i \in I_W}, \{C_i\}_{i \in I_O}]$ such that the following statements hold.*

- (i) For $i \in I_W$, (C_i, L_i) maximizes $U(C_i, L_i)$ subject to $pC_i \leq wL_i$; for $i \in I_O$, $C_i = W_i/p$.
- (ii) Labor supply equals labor demand by the firms: $\int_{i \in I_W} L_i di = \sum_{j=1}^J L_j$.
- (iii) Total consumption equals total production: $\int_{i \in I_W \cup I_O} C_i di = \sum_{j=1}^J F(L_j)$.

A price function $W(\mathbf{L})$ and $P(\mathbf{L})$ assigns prices $\{w, p\}$ to each labor (production) plan vector $\mathbf{L} \equiv (L_1, \dots, L_J)$, such that for any \mathbf{L} , $[W(\mathbf{L}), P(\mathbf{L}); \{C_i, L_i\}_{i \in I_W}, \{C_i\}_{i \in I_O}]$ is a competitive equilibrium for some allocation $\{\{C_i, L_i\}_{i \in I_W}, \{C_i\}_{i \in I_O}\}$. A given firm makes employment and production plans conditional on the price function, which captures how the firm expects prices will react to its plans as well as its expectations regarding the employment and production plans of other firms. The economy is in equilibrium when every firm's employment and production plans coincide with the expectations of all the other firms.

Definition 2 (Cournot–Walras equilibrium with shareholder representation). *A Cournot–Walras equilibrium with shareholder representation is a price function $(\mathbb{W}(\cdot), \mathbb{P}(\cdot))$, an allocation $(\{C_i^*, L_i\}_{i \in I_W}, \{C_i^*\}_{i \in I_O})$, and a set of production plans \mathbf{L}^* such that the next two statements hold.*

- (i) $[\mathbb{W}(\mathbf{L}^*), \mathbb{P}(\mathbf{L}^*); \{C_i^*, L_i\}_{i \in I_W}, \{C_i^*\}_{i \in I_O}]$ is a competitive equilibrium relative to \mathbf{L}^* .
- (ii) The production plan vector \mathbf{L}^* is a pure-strategy Nash equilibrium of a game in which players are the J firms, the strategy space of firm j is $[0, T]$, and the firm's payoff function is

$$\frac{\pi_j}{p} + \lambda \sum_{k \neq j} \frac{\pi_k}{p};$$

here $p = \mathbb{P}(\mathbf{L})$, $w = \mathbb{W}(\mathbf{L})$, and $\pi_j = pF(L_j) - wL_j$ for $j = 1, \dots, J$.

Note that the objective function of firm j depends only on the real wage $\omega = w/p$, which is invariant to normalizations of prices.

3.3 Characterization of equilibrium

Given firms' production plans, we derive the real wage—under a competitive equilibrium—by assuming that workers maximize their utility $U(C_i, L_i)$ subject to the budget constraint $C_i \leq \omega L_i$. This constraint is always binding because utility is increasing in consumption but decreasing in labor. Substituting the budget constraint into the utility function of the representative worker yields the following equivalent maximization problem:

$$\max_{L_i \in [0, T]} U(\omega L_i, L_i).$$

Our assumptions on the utility function guarantee that the second-order condition holds. Thus the first-order condition for an interior solution implicitly defines a labor supply function $h(\omega)$ for worker i such that labor supply is given by $L_i = \min\{h(\omega), T\}$ (which coincides with aggregate (average) labor supply is then $\int_{i \in I} L_i di$). Let η denote the elasticity of labor supply. We assume that preferences are such that $h(\cdot)$ is increasing.¹³

Maintained assumption. $h'(\omega) > 0$ for $\omega \in [0, \infty)$.

This assumption is consistent with a wide range of empirical studies that show that the elasticity of labor supply with respect to wages is positive. A meta-analysis of empirical studies based on different methodologies (Chetty et al., 2011) concludes that the long-run elasticity of aggregate hours worked with respect to the real wage is about 0.59. We also assume that the range of the labor supply function is $[0, T]$. This together with the maintained assumption, guarantees the existence of an increasing inverse labor supply function h^{-1} that assigns a real wage to every possible labor supply level on $[0, T]$. In a

¹³We can obtain the slope of h by taking the derivative with respect to the real wage in the first-order condition. This procedure yields

$$\text{sgn}\{h'\} = \text{sgn}\{U_C + (U_{CC}\omega + U_{CL}) \int_{i \in I} L_i di\}.$$

competitive equilibrium relative to the vector of labor demands by the firms, labor demand has to equal labor supply:

$$\sum_{j=1}^J L_j = \int_{i \in I} L_i di.$$

Any competitive equilibrium relative to firms' production plans \mathbf{L} must satisfy $\omega = h^{-1}(L)$ if $L = \sum_{j=1}^J L_j < T$ or $\omega \geq h^{-1}(T)$ if $L = T$.¹⁴ In what follows we will use the price function that assigns $\omega = h^{-1}(T)$ if $L = T$. Given that the relative price depends only on L , we can define (with some abuse of notation) the competitive equilibrium real-wage function $\omega(L) = h^{-1}(L)$.

3.4 Cournot–Walras equilibrium: Existence and characterization

Here we identify the conditions under which symmetric equilibria exist. We shall also provide a characterization that relates the markdown of wages relative to the marginal product of labor to the level of market concentration in the economy.

The objective of the manager of firm j is to choose L_j so that the following expression is maximized:

$$F(L_j) - \omega(L)L_j + \lambda \sum_{k \neq j} [F(L_k) - \omega(L)L_k].$$

First of all, note that firm j 's best response depends only on the aggregate response of its rivals: $\sum_{k \neq j} L_k$. This claim follows because the marginal return to firm j is $F'(L_j) - \omega(L) - (L_j + \lambda \sum_{k \neq j} L_k) \omega'(L)$. Let $E_{\omega'} \equiv -\omega''L/\omega'$ denote the elasticity of the inverse labor supply's slope. Then a sufficient condition for the game (among firms) to be of the "strategic substitutes" variety is that $E_{\omega'} < 1$. In this case, one firm's increase in labor demand is met by reductions in labor demand by the other firms and so there is an equilibrium (Vives, 1999, Thm. 2.7). Furthermore, if $F'' \leq 0$ and $E_{\omega'} < 1$, then the objective of the firm is strictly concave and the slope of its best response to a rival's change in labor demand is greater than -1 . In that event, the equilibrium is unique (Vives, 1999, Thm. 2.8).

Proposition 1. *Let $E_{\omega'} < 1$. Then the game among firms is one of strategic substitutes and an equilibrium exists. Moreover, if returns are non-increasing (i.e., if $F'' \leq 0$), then the equilibrium is unique, symmetric, and locally stable under continuous adjustment (unless $F'' = 0$ and $\lambda = 1$). In an interior symmetric equilibrium with $L^* \in (0, T)$, the following statements hold.*

(a) *The markdown of real wages is given by*

$$\mu \equiv \frac{F'(L^*/J) - \omega(L^*)}{\omega(L^*)} = \frac{H}{\eta(L^*)}, \quad (3.4.1)$$

where $H \equiv (1 + \lambda(J - 1))/J$ is the MHHL.

(b) *The total employment level L^* and the real wage ω^* are each increasing in J and decreasing in ϕ .*

¹⁴The implication here is that the competitive equilibrium real wage as a function of (L_1, \dots, L_J) depends on firms' individual labor demands *only* through their effect on aggregate labor demand L .

(c) The share of income going to workers, $(\omega(L^*)L^*)/(JF(L^*/J))$, decreases with ϕ .

Remark. To ensure a unique equilibrium it is enough that $-F''(L_j) + (1 - \lambda)\omega'(L) > 0$ if the second-order condition holds. In this case we may have a unique (and symmetric) equilibrium with moderate increasing returns. Note that $F'' < 0$ is required if the condition is to hold for all λ .

Remark. If $F'' = 0$ (constant returns) and $\lambda = 1$ ($\phi = 1$, firm cartel), then there is a unique symmetric equilibrium and also multiple asymmetric equilibria, with each firm employing an arbitrary amount between zero and the monopoly level of employment and the total employment by firms equal to that under monopoly. The reason is that the shareholders in this case are indifferent over which firm engages in the actual production

The Lerner-type misalignment of the marginal product of labor and the real wage (i.e., the mark-down μ of real wages) is equal to the MHHI divided by the elasticity η of labor supply. The question then arises: Why does there seem to be no effect of product market power? The reason is that, when there is a single good, this effect (equal to product market MHHI divided by demand elasticity) is exactly compensated by the effect of owners internalizing their consumption—that is, since they are also consumers of the product that the oligopolistic firms produce. Owners use firms' profit only to purchase the good.¹⁵ In the appendix we present a developed explanation of the full internalization by owners of market power in the product market.

3.5 CES preferences and Cobb–Douglas production

We now consider a special case of the model, one in which consumer-workers have separable CES preferences over consumption and leisure:

$$U(C_i, L_i) = \frac{C_i^{1-\sigma}}{1-\sigma} - \chi \frac{L_i^{1+\xi}}{1+\xi},$$

where $\sigma \in (0, 1)$ and $\chi, \xi > 0$. The elasticity of labor supply is $\eta = (1 - \sigma)/(\xi + \sigma) > 0$, and the equilibrium real wage in the competitive equilibrium—given firms' aggregate labor demand—can be written as

$$\omega(L) = \chi^{1/(1-\sigma)} L^{1/\eta}$$

with elasticities

$$\frac{\omega' L}{\omega} = \frac{1}{\eta} \quad \text{and} \quad E_{\omega'} = 1 - \frac{1}{\eta} < 1.$$

Because $E_{\omega'} < 1$, firms' decisions are strategic substitutes. The production function is $F(L_j) = AL_j^\alpha$, where $A > 0$ and $\alpha > 0$.

¹⁵Note that, unlike in the partial equilibrium model of Farrell (1985), in our model the equilibrium markdown is not zero even when ownership is proportional to consumption because of the labor market power effect. If the labor market is competitive, i.e., $\eta = \infty$, then the equilibrium markdown is zero. See also Mas-Colell and Silvestre (1991).

Non-increasing returns to scale ($\alpha \leq 1$) In this case, the objective function of each firm is strictly concave and Proposition 1 applies. It is easily checked that total employment under the unique symmetric equilibrium is

$$L^* = \left(\chi^{-1/(1-\sigma)} J^{1-\alpha} \frac{A\alpha}{1 + H/\eta} \right)^{1/(1-\alpha+1/\eta)}.$$

Figure 1 illustrates that an increase in common ownership (or a decrease in the number of firms) reduces equilibrium employment and real wages. With increasing returns to scale, however, reducing the number of firms involves a trade-off between market power and efficiency. In that case, a decline in the number of firms can increase real wages under some conditions.

[[INSERT Figure 1 about Here]]

The symmetric equilibrium is locally stable if $\alpha - 1 < (1 - \lambda)(J\eta)^{-1}(1 + H/\eta)^{-1}$, so that a range of increasing returns may be allowed provided that it exists.

Increasing returns to scale If $\alpha > 1$, then neither the inequality $-F'' + (1 - \lambda)\omega' > 0$ nor the payoff global concavity condition need hold. We characterize the situation where $\alpha \in (1, 2)$ and $\eta \leq 1$. Then, with respect to L_j , firm j 's objective function has a convex region below a certain threshold and a concave region above that threshold. Hence we conclude that there are no more than two candidate maxima for L_j , when given the other firms' decisions, at a *symmetric* equilibrium: $L_j = 0$; and the critical point in the concave region (if there is any). We identify the following necessary and sufficient condition for the candidate interior solution to be a symmetric equilibrium: $\alpha \leq (1 + H/\eta)\{1 + \lambda(J - 1)[1 - (1 - 1/J)^{1/\eta}]\}^{-1}$ (see Claim in the Appendix).¹⁶ For small λ we have that when an equilibrium exists it is stable. Here L^* is decreasing in ϕ , but it may either increase or decrease with J :

$$\frac{\partial \log L^*}{\partial J} = \frac{1}{1 - \alpha + 1/\eta} \frac{1}{J} \left(\underbrace{(1 - \lambda) \frac{H/\eta}{1 + H/\eta}}_{\text{Markdown effect}} - \underbrace{(\alpha - 1)}_{\text{Economies of scale effect}} \right).$$

Increasing the number of firms has two effects on a symmetric equilibrium with increasing returns to scale: a positive effect from fewer markdowns, and a negative effect from diminished economies of scale. That is, a merger between two firms (decreasing J) would involve a so-called Williamson trade-off between higher market power and efficiencies from a larger scale of production. In our example, a merger would increase equilibrium employment if α were high enough to dominate the markdown effect.

[[INSERT Figure 2 about Here]]

A higher MHHI (the H in our formulation) makes it more difficult for the scale effect to dominate.

¹⁶The symmetric equilibrium is locally stable under continuous adjustment provided that $\alpha - 1 \leq (1 - \lambda)(J\eta)^{-1}(1 + H/\eta)^{-1}$.

Yet for a given H , a higher internalization λ makes it easier for that effect to dominate because if λ is high enough then firms will act jointly irrespective of the total number J of firms. In fact, if they act fully as one firm i.e., in the case of $\lambda = 1$, the condition is always fulfilled. Indeed, reducing J then improves scale yet does not affect the markdown because it is already at the monopoly level. It is easy to generate examples where, under increasing returns, some firms do not produce (see Figure 2).

3.6 Summary and investment extension

To summarize our results so far, the simple model developed in this section can help make sense of some recent macroeconomic stylized facts, including persistently low output, employment and wages in the presence of high corporate profits and financial wealth, as a response to a permanent increase in effective concentration (due either to common ownership or to a reduced number of competitors). Because we have yet to incorporate investment decisions into the model, there is no real interest rate and so we have nothing to say about how it is affected. However, the model can be extended to include saving, capital, investment, and the real interest rate. In [Azar and Vives \(2018\)](#) we present a model with workers, owners and savers and show that—for a Cobb–Douglas CES specification, and investors who are not fully diversified—either a fall in the number J of firms or a rise in ϕ , the common ownership parameter, will lead to an equilibrium with *lower* levels of capital stock, employment, real interest rate, real wages, output, and labor share of income.

When firms are large relative to the economy, an increase in market power implies that firms have an incentive to reduce both their employment and investment below the competitive level; this follows because, even though such firms sacrifice in terms of output, they benefit from lower wages and lower interest rates on every unit of labor and capital that they employ. The effect described here is present only when firms' shareholders perceive that they can affect the economy's equilibrium level of real wages and real interest rates by changing their production plans. Thus, when oligopolistic firms have market power over the economy as a whole, their owners can extract rents from both workers and savers.¹⁷

4 Multiple sectors

In this section we extend the model to multiple sectors in a Cobb–Douglas CES environment. We characterize the equilibrium, uncover new and richer comparative static results, and have a look at large markets.

4.1 Model setup

Consider now the case in which there are N sectors, each offering a different consumer product. We assume that both the mass of workers and the mass of owners are equal to N . So as we scale the economy by increasing the number of sectors, the number of people in the economy scales proportionally. The

¹⁷Our model does not account for possible technological spillovers among firms due to investment. [López and Vives \(Forthcoming\)](#) show that if spillovers are high enough then increasing common ownership may increase R&D investment as well.

utility function of worker i is as in the CES model: $U(C_i, L_i) = C_i^{1-\sigma}/(1-\sigma) - \chi L_i^{1+\xi}/(1+\xi)$ for $\sigma \in (0, 1)$ and $\chi, \xi > 0$, where

$$C_i = \left[\left(\frac{1}{N} \right)^{1/\theta} \sum_{n=1}^N c_{ni}^{(\theta-1)/\theta} \right]^{\theta/(\theta-1)};$$

where c_{ni} is the consumption of worker i in sector n , and $\theta > 1$ is the elasticity of substitution indicating a preference for variety.¹⁸

For each product, there are J firms that can produce it using labor as input. The profits of firm j in sector n are given by

$$\pi_{nj} = p_n F(L_{nj}) - w L_{nj};$$

here, as before, the production function is $F(L_{nj}) = A L_{nj}^\alpha$ for $A > 0$ and $\alpha > 0$.

The ownership structure is similar to the single-sector case, except now there are $J \times N$ groups of shareholders and that now shareholders can diversify both in an industry fund and in a economy-wide fund. Group nj owns a fraction $1 - \phi - \tilde{\phi} \geq 0$ in firm nj directly; an industry index fund with a fraction $\tilde{\phi}/J$ in every firm in sector n ; and an economy-wide index fund with a fraction ϕ/NJ in every firm. The owners' utility is simply their consumption of the composite good C_i . Solving the owners' utility maximization problem yields the indirect utility function of shareholder i , or $V(P, w; W_i) = W_i/P$, when: prices are $\{p_n\}_{n=1}^N$, the level of wages is w , the shareholder's wealth is W_i , and $P \equiv (\frac{1}{N} \sum_{n=1}^N p_n^{1-\theta})^{1/(1-\theta)}$ is the price index.

The objective function of the manager of firm j in sector n is to choose the firm's level of employment, L_{nj} , that maximizes a weighted average of shareholder (indirect) utilities. By rearranging coefficients so that the coefficient for own profits equals one, we obtain the following objective function:

$$\underbrace{\frac{\pi_{nj}}{P}}_{\text{own profits}} + \lambda_{intra} \underbrace{\sum_{k \neq j} \frac{\pi_{nk}}{P}}_{\text{industry } n \text{ profits, other firms}} + \lambda_{inter} \underbrace{\sum_{m \neq n} \sum_{k=1}^J \frac{\pi_{mk}}{P}}_{\text{profits, other industries}},$$

where the lambdas are a function of $(\phi, \tilde{\phi}, J, N)$.

The Edgeworth sympathy coefficient for other firms in the same sector as the firm is given by:

$$\lambda_{intra} = \frac{(2 - \phi)\phi + [2(1 - \phi) - \tilde{\phi}] \tilde{\phi}N}{(1 - \phi)^2 JN + (2 - \phi)\phi - [2(1 - \phi) - \tilde{\phi}] \tilde{\phi}N(J - 1)},$$

while the Edgeworth sympathy coefficient for firms in other sectors is given by:

$$\lambda_{inter} = \frac{(2 - \phi)\phi}{(1 - \phi)^2 JN + (2 - \phi)\phi - [2(1 - \phi) - \tilde{\phi}] \tilde{\phi}N(J - 1)}$$

¹⁸The form of C_i is the one used by [Allen and Arkolakis \(2015\)](#). The weight $(1/N)^{1/\theta}$ in C_i implies that, as N grows, the indirect utility derived from C_i does not grow unboundedly but is consistent with a continuum formulation for the sectors (replacing the summation with an integral) of unit mass. More precisely: if the equilibrium is symmetric then, regardless of N , C_i is equal to the consumer's income divided by the price.

We can show (see Lemma in the Appendix) that λ_{intra} and λ_{inter} are always in $[0, 1]$, increasing in ϕ and $\tilde{\phi}$, and, for $\phi > 0$ and $\phi + \tilde{\phi} < 1$, decreasing in N and in J .

When $\phi + \tilde{\phi} = 1$, we have $\lambda_{intra} = 1$ and $\lambda_{inter} = (1 - \tilde{\phi}^2) / [1 + \tilde{\phi}^2(N - 1)]$, so when agents are fully invested in the two index funds, $\lambda_{intra} = 1$ regardless of the share in each fund, while the sympathy for firms in other sectors λ_{inter} decreases as shares are moved from the economy index fund to the own industry index fund $\tilde{\phi}$.¹⁹ And, indeed, when $\tilde{\phi} = 1$, $\lambda_{intra} = 1$ and $\lambda_{inter} = 0$. When $\phi = 0$ (only industry index funds), $\lambda_{inter} = 0$ and $\lambda_{intra} = \frac{(2-\tilde{\phi})\tilde{\phi}}{J-(2-\tilde{\phi})\tilde{\phi}(J-1)}$. When $\tilde{\phi} = 0$ (only economy-wide index fund), $\lambda_{intra} = \lambda_{inter} = \frac{(2-\phi)\phi}{(1-\phi)^2JN+(2-\phi)\phi}$,²⁰ and when $\phi = 1$, $\lambda_{intra} = \lambda_{inter} = 1$.

Thus the firm accounts for the effects of its actions not only on same-sector rivals but also on firms in other sectors. Note that the manager's objective function depends on $N + 1$ relative prices: w/P in addition to $\{p_n/P\}_{n=1}^N$ for $N > 1$.

4.2 Cournot–Walras equilibrium with N sectors

Given the production plans of the J firms operating in the N sectors, $\mathbf{L} \equiv \{\mathbf{L}_1, \dots, \mathbf{L}_J\}$ where $\mathbf{L}_j \equiv (L_{1j}, \dots, L_{Nj})$, we characterize first the competitive equilibrium in terms of w/P , and $\{p_n/P\}_{n=1}^N$. Second, we characterize the equilibrium in the plans of the firms.

4.2.1 Relative prices in a competitive equilibrium given firms' production plans

Because the function that aggregates the consumption of all sectors is homothetic, workers face a two-stage budgeting problem. First, workers choose their consumption across sectors (conditional on their aggregate level of consumption) to minimize expenditures; second, they choose labor supply L_i and consumption level C_i to maximize their utility $U(C_i, L_i)$ subject to $PC_i = wL_i$, where P is the aggregate price level.

We can therefore write the first-stage problem as

$$\min_{\{c_{ni}\}_{n=1}^N} \sum_{n=1}^N p_n c_{ni}$$

subject to

$$\left[\sum_{n=1}^N \left(\frac{1}{N} \right)^{1/\theta} c_{ni}^{(\theta-1)/\theta} \right]^{\theta/(\theta-1)} = C_i.$$

The solution to this problem yields the standard demand for each consumer product conditional on aggregate consumption:

$$c_{ni} = \frac{1}{N} \left(\frac{p_n}{P} \right)^{-\theta} C_i. \quad (4.2.1)$$

¹⁹Note that when $\phi + \tilde{\phi} = 1$, two firms in the same industry have the same ownership structure, each with ϕ and $\tilde{\phi}$ proportions of each fund. Therefore, there is shareholder unanimity in maximizing joint industry profits and $\lambda_{intra} = 1$.

²⁰Here λ is the resulting Edgeworth sympathy coefficient, given as in the one-sector economy by replacing J with JN .

It follows from homotheticity that, for every consumer, total expenditure equals the price index multiplied by their respective level of consumption:

$$\sum_{n=1}^N p_n c_{ni} = PC_i.$$

In the second stage, the first-order condition for an interior solution is

$$\frac{w}{P} = - \frac{U_L\left(\frac{w}{P}L_i, L_i\right)}{U_C\left(\frac{w}{P}L_i, L_i\right)}. \quad (4.2.2)$$

Since workers are homogeneous, it follows that total labor supply $\int_{i \in I} L_i di$ is simply N times the individual labor supply L_i ; moreover, because total labor demand L must equal total labor supply, equation (4.2.2) implicitly defines the equilibrium real wage (now relative to the price of the composite good) as a function $\omega(L)$ of the firms' total employment plans. We retain the assumptions for increasing labor supply that ensure $\omega' > 0$. When elasticity is constant we have $\omega(L) = \chi^{1/(1-\sigma)}(L/N)^{1/\eta}$; once again, $\eta = (1 - \sigma)/(\zeta + \sigma)$ is the elasticity of labor supply.

Shareholders maximize their aggregate consumption level conditional on their income. Their consumer demands, conditional on their respective levels of consumption, are identical to those of workers. Adding up the demands across both owners and workers, we obtain

$$\underbrace{\int_{i \in I_W \cup I_O} c_{ni} di}_{c_n} = \frac{1}{N} \left(\frac{p_n}{P} \right)^{-\theta} \underbrace{\int_{i \in I_W \cup I_O} C_i di}_C.$$

In a competitive equilibrium, consumption demand must equal the sum of all firms' production of each product:

$$c_n = \sum_{j=1}^J F(L_{nj}). \quad (4.2.3)$$

Using equation (4.2.1) and integrating across consumers, we have that $c_n = \frac{1}{N} \left(\frac{p_n}{P} \right)^{-\theta} C$. So given firms' production plans, the following equality holds in a competitive equilibrium:

$$\frac{p_n}{P} = \left(\frac{1}{N} \right)^{1/\theta} \left(\frac{c_n}{C} \right)^{-1/\theta}. \quad (4.2.4)$$

The elasticity of the relative price of sector n , p_n/P , in relation to the aggregate production of the sector c_n for given productions in the other sectors, c_m for $m \neq n$, evaluated at a symmetric equilibrium, is given by $-(1 - 1/N)/\theta$. Its absolute value is decreasing in the elasticity of substitution of the varieties θ and increasing in the number of sectors N . Increasing c_n has a direct negative impact on p_n/P of $-1/\theta$ for a given C , and an indirect positive impact on p_n/P by increasing aggregate real income C , yielding $1/\theta N$. When there is only one sector ($N = 1$) there is obviously no impact on the relative price. Furthermore,

the overall impact increases in the number of sectors N since then the indirect effect diminishes.

We can now use equations (4.2.3) and (4.2.4) to obtain an expression for p_n/P in a competitive equilibrium (ρ_n) conditional on firms' production plans \mathbf{L} :

$$\rho_n(\mathbf{L}) = \left(\frac{1}{N} \right)^{1/\theta} \left\{ \frac{\sum_{j=1}^J F(L_{nj})}{\left[\sum_{m=1}^N \left(\frac{1}{N} \right)^{1/\theta} \left(\sum_{j=1}^J F(L_{mj}) \right)^{(\theta-1)/\theta} \right]^{\theta/(\theta-1)}} \right\}^{-1/\theta}.$$

Observe that—unlike the previous case of a real-wage function, where the dependence was only through total employment plans—relative prices under a competitive equilibrium depend directly on the employment plans of each individual firm.

Proposition 2. *Given the production plans $\mathbf{L} \equiv \{L_{mj}\}$ of firms with aggregate labor demand L , the competitive equilibrium is given by the real wage $\omega(L)$ and on the relative price in sector n : $\rho_n(\mathbf{L})$ for $n = 1, \dots, N$. If firm j in sector n expands its employment plans, then ω increases; in addition, ρ_n decreases ($\partial \rho_n / \partial L_{nj} < 0$) while ρ_m , $m \neq n$, increases ($\partial \rho_m / \partial L_{nj} > 0$).*

An increase in employment by a firm in sector n increases the relative supply of the consumption good of that sector relative to other sectors, thereby reducing the relative price of that sector's good. Since the increased employment increases overall supply of the aggregate consumption good while leaving supply of the other sectors unchanged, the relative prices of goods in the other sectors increase.

4.2.2 Cournot-Walras equilibrium

The optimization problem of firm j in sector n is given by

$$\max_{L_{nj}} \left\{ \underbrace{\frac{\pi_{nj}}{P}}_{\text{own profits}} + \lambda_{intra} \underbrace{\sum_{k \neq j} \frac{\pi_{nk}}{P}}_{\text{industry } n \text{ profits, other firms}} + \lambda_{inter} \underbrace{\sum_{m \neq n} \sum_{k=1}^J \frac{\pi_{mk}}{P}}_{\text{profits, other industries}} \right\},$$

where $\pi_{nj}/P = \rho_n F(L_{nj}) - \omega(L)L_{nj}$. The first-order condition for the firm is

$$\begin{aligned} & \underbrace{\rho_n(\mathbf{L}) F'(L_{nj})}_{\text{VMPL}} - \underbrace{\omega(L)}_{\text{real wage}} - \underbrace{\frac{\partial \omega}{\partial L_{nj}} \left[L_{nj} + \lambda_{intra} \sum_{k \neq j} L_{nk} + \lambda_{inter} \sum_{m \neq n} \sum_{k=1}^J L_{mk} \right]}_{(+)} \\ & + \underbrace{\frac{\partial \rho_n}{\partial L_{nj}} \left[F(L_{nj}) + \lambda_{intra} \sum_{k \neq j} F(L_{nk}) \right]}_{(-)} + \underbrace{\lambda_{inter} \sum_{m \neq n} \frac{\partial \rho_m}{\partial L_{nj}} \left[\sum_{k=1}^J F(L_{mk}) \right]}_{(+)} = 0 \end{aligned}$$

(i) wage effect

(ii) own-industry relative price effect (iii) other industries' relative price effect

When a firm in a given sector considers expanding employment, it faces the following trade-offs. On the one hand, expanding employment increases profits by the value of the marginal product of labor (VMPL), which the shareholders can consume after paying the new workers the real wage. On the other hand, expanding employment will increase real wages for all workers because the labor supply is upward sloping. So when there is common ownership, the owners will take into account the wage effect not only for firms that expand employment (or just for the firms in the same industry) but for firms in all industries. Furthermore, expanding employment increases output in the firm's sector and thereby reduces relative prices in that sector, which again the owners internalize not just for the firm itself but for all firms in the sector in which they have common ownership. Finally, expanding output in the firm's sector increases overall consumption and thus increases relative prices in all the other sectors; the owners of the firm, if they have common ownership involving other sectors, internalize these increased relative prices as a positive pecuniary externality. However, we will show that the own-sector negative price effect always dominates the effect of increased demand in other sectors.

As we show in the Appendix, a firm's objective function is strictly concave if $\alpha \leq 1$. We can thus establish the following existence and characterization result.²¹

Proposition 3. *Consider a multi-sector economy with CES preferences and a Cobb–Douglas production function under non-increasing returns to scale ($\alpha \leq 1$). There exists a unique symmetric equilibrium, and equilibrium employment is given by*

$$L^* = N \left(J^{1-\alpha} \frac{\chi^{-1/(1-\sigma)} A \alpha}{1 + \mu^*} \right)^{1/(1-\alpha+1/\eta)}.$$

The equilibrium markdown of real wages is

$$\mu^* = \frac{1 + H_{JN}/\eta}{1 - (H_J - \lambda_{inter})(1 - 1/N)/\theta} - 1,$$

where $H_{JN} \equiv (1 + \lambda_{intra}(J - 1) + \lambda_{inter}(N - 1)J)/NJ$ is the labor market MHHI and $H_J \equiv (1 + \lambda_{intra}(J - 1))/J$ is each sector's product market MHHI.

The markdown μ^* decreases with J (for $\phi + \tilde{\phi} < 1$, with $\mu^* \rightarrow 0$ as $J \rightarrow \infty$), η , and θ (for $\phi < 1$), increases in $\tilde{\phi}$, and can be nonmonotone in ϕ . When $\tilde{\phi} = 0$ (no industry fund, $\lambda_{intra} = \lambda_{inter} = \lambda$), $H_J - \lambda = (1 - \lambda)/J$ and

$$\text{sgn} \left\{ \frac{\partial \mu^*}{\partial \phi} \right\} = \text{sgn} \left\{ \frac{\theta}{1 + \eta} - \frac{N - 1}{JN - 1} \right\}.$$

Remark: Simulations show that μ^* may be nonmonotone in ϕ also if $\tilde{\phi} > 0$. Furthermore, μ^* is found to be either increasing or decreasing in N .

As the elasticity of substitution parameter θ tends to infinity, the products of the different sectors become close to perfect substitutes; then the equilibrium is as in the one-industry case but with JN firms

²¹As in the one-sector case, if $\phi = 1$ and $\alpha = 1$ then there is a unique symmetric equilibrium and there also exist asymmetric equilibria, since shareholders are indifferent to *which* firms employ the workers as long as total employment is at the monopoly level.

instead of J firms. This outcome should not be surprising given that, in the case of perfect substitutes, all firms produce the same good and so—for all intents and purposes—there is but a single industry in the economy.

In the multiple-industry case we find that the equilibrium real wage, employment, and output are analogous—as a function of the markdown—to those in the single-industry case. The only difference is that the markdown is now more complicated owing to the existence of multiple sectors and of product differentiation across firms in different sectors. An important result that contrasts with the single-sector case is that employment, output, and the real wage may all be increasing in the diversification in the economy-wide fund ϕ .

The markdown of wages below the marginal product of labor can be thought of as consisting of two “wedges”, one reflecting labor market power, and one reflecting product market power. In particular, the labor market wedge is $1 + H_{JN}/\eta$. The markdown is increasing in H_{JN}/η , which reflects the level of labor market power (and so is decreasing in JN and η). The product market wedge is $1 - (H_J - \lambda_{inter})(1 - 1/N)/\theta$. This wedge has two components: the first is $H_J(1 - 1/N)/\theta$ reflecting the level of market power in the firm’s sector, and the second is $\lambda_{inter}(1 - 1/N)/\theta$, reflecting the inter-sectoral externality. The markdown is increasing in the first component of the product market wedge, and decreasing in the second component. Recall that, when evaluated at a symmetric equilibrium, the (absolute value of the) elasticity of “inverse demand” p_n/P with respect to c_n is $(1 - 1/N)/\theta$; this explains why $H_J(1 - 1/N)/\theta$ is the indicator of product market power (note that the indicator decreases with J and θ but increases with N). This explains that μ^* is positively associated with λ_{intra} since both H_{JN} and H_J are increasing in λ_{intra} .

However, μ^* may be positively or negatively associated with λ_{inter} . This is so since when $\lambda_{inter} > 0$, the effect of expanding employment by firm j in sector n on the profits of other firms must be taken into account. Expanding employment in one sector benefits firms in other sectors by increasing the relative prices in those sectors (pecuniary externality) via the increase in overall consumption generated by firm nj ’s expanded employment plans. The result is that H_J is diminished then by λ_{inter} (note that $H_J \geq \lambda_{inter}$ always). When an increase in λ_{inter} increases the labor market wedge more than it reduces the product market wedge, then μ^* is decreasing in λ_{inter} (and conversely).

When $\tilde{\phi} = 0$ (no industry fund, $\lambda_{intra} = \lambda_{inter} = \lambda$), the net effect is that an increase in λ (due to an increase in ϕ) will *more than* compensate for the product market power’s effect on the equilibrium markdown. To see this, note that $(H_J - \lambda)(1 - 1/N)/\theta = (1 - \lambda)(1 - 1/N)/\theta J$. In the limit, when $\lambda = 1$ (or $N = 1$), we have a cartel or monopoly and the two product market effects cancel each other out exactly. The $N = 1$ case is the one-sector model developed in Section 3. Here $\lambda = 1$ can be understood in similar terms, except that in this case we have an aggregate good C . When portfolios are perfectly diversified ($\phi = 1$), we can view the economy as consisting of a single large firm that produces the composite good. Since the owner-consumers own shares in each of the components of the composite good in the same proportion, and since they use profits only to purchase that good, these owner-consumers are to the same extent shareholders and consumers of the composite good. So just as in the single-sector economy, the effects cancel out exactly. It is worth noting that μ^* may either increase

or decrease with portfolio diversification ϕ depending on whether labor market effects or rather product market effects prevail. The markdown will be decreasing in ϕ when the increase in the labor market wedge due to the higher ϕ is more than compensated by the lower product market wedge due to the pro-competitive intersector pecuniary externality. That is, when the relative impact of profit internalization in the level of market power in product markets is higher than in the labor market. This happens when the elasticity of substitution θ is small in relation to the elasticity of labor supply η . When $\eta \rightarrow \infty$, common ownership has always a pro-competitive effect.

4.3 Large economies

Most of the literature on oligopoly in general equilibrium considers the case of an infinite number of sectors such that each sector, and therefore each firm, is small relative to the economy. Monopolistic competition can be considered a special case of a model with infinite sectors in which there is only one firm per industry. Here we consider what happens when the number of sectors, N , tends to infinity.

Consider first the case where the degree of diversification on funds ϕ , $\tilde{\phi}$ is constant. If there is an economy-wide fund with imperfect diversification $\phi < 1$ and no intra-industry fund, $\tilde{\phi} = 0$, then our model converges to Neary's general oligopolistic equilibrium model (when there is more than one firm) or to the Dixit–Stiglitz monopolistic competition model (when there is one firm per industry):

$$\lambda_{intra} = \lambda_{inter} \rightarrow 0, \text{ and } \mu^* \rightarrow 1/(\theta J - 1) \text{ as } N \rightarrow \infty.$$

Note that the market power friction at a symmetric equilibrium can also be expressed in terms of the markup of product prices over effective marginal cost of labor ($mc \equiv \frac{w}{F'(L/JN)}$),

$$\tilde{\mu} \equiv \frac{p - mc}{p} = \frac{\mu}{1 + \mu},$$

rather than in terms of the markdown

$$\mu = \frac{F' - w/p}{w/p} = \frac{p - mc}{mc}.$$

We have then $\tilde{\mu}^* \rightarrow 1/\theta J$ (Neary's oligopoly markup) or $\tilde{\mu}^* \rightarrow 1/\theta$ (Dixit–Stiglitz's monopolistic competition markup).

However, if $\tilde{\phi} > 0$, then as $N \rightarrow \infty$, $\lambda_{inter} \rightarrow 0$ (and oligopsony power vanishes since $H_{JN} \rightarrow \lambda_{inter(\infty)} = 0$), but

$$\lambda_{intra} \rightarrow \lambda_{intra(\infty)} \equiv \frac{2\gamma - 1}{\gamma^2 J - (2\gamma - 1)(J - 1)},$$

where $\gamma \equiv (1 - \phi) / \tilde{\phi} > 0$ ($\lambda_{intra(\infty)} = 1$ if $\gamma = 1$) and the Dixit–Stiglitz–Neary equilibrium is modified:

$$\mu^* \rightarrow \mu_{\infty}^* \equiv \frac{1 + (J - 1) \lambda_{intra(\infty)}}{J\theta - (1 + (J - 1) \lambda_{intra(\infty)})}.$$

More in general, if the sequence of economies is such that the limit of the intra-industry profit internalization is positive then the mark up will be higher than in the latter model.

Let us illustrate it in the case with no industry fund ($\tilde{\phi} = 0$, $\lambda_{intra} = \lambda_{inter} = \lambda$). Consider a sequence of economies (ϕ_N, N) with varying degrees ϕ_N of (economy-wide) common ownership. We use λ_N, μ_N to denote the lambda, markdown of economy N in the sequence. If $\phi_N \rightarrow \phi < 1$ then $\lambda_N \rightarrow 0$ —as, for example, when $\phi_N = \phi < 1$ for all N . To have $\lambda_N \rightarrow \lambda \in (0, 1]$, we need for ϕ_N to approach unity at least as rapidly as $1/\sqrt{N}$ (i.e., $\sqrt{N}(1 - \phi_N) \rightarrow k$ for $k \in [0, \infty)$). If the convergence rate is faster than $1/\sqrt{N}$ with $k = 0$, then the limiting λ is always equal to 1. For sequences $1 - \phi_N$ with convergence rates equal to $1/\sqrt{N}$, the value of λ in the limit is determined by k , the constant of convergence. Therefore, if $\sqrt{N}(1 - \phi_N) \rightarrow k$ then $\lim_{N \rightarrow \infty} \lambda_N = \frac{1}{1+k^2}$.²² If $\lambda_N \rightarrow \lambda$, then the limit markdown is:

$$\mu_\infty^* \equiv \lim_{N \rightarrow \infty} \mu_N^* = \frac{1 + \lambda/\eta}{1 - (1 - \lambda)/\theta J} - 1.$$

The impact of λ on the markdown depends, as before, on whether its effect on the labor market wedge effect dominates its effect on the product market wedge. The labor market wedge effect dominates the product market wedge effect if and only if the elasticity η of labor supply is *lower* than $\theta J - 1$. These results are summarized in our next proposition.

Proposition 4. *Consider a sequence of economies $(\tilde{\phi}_N, \phi_N, N)$ where $\tilde{\phi}_N = 0$ for all N . If $\sqrt{N}(1 - \phi_N) \rightarrow k$ for $k \in [0, \infty)$, then, as $N \rightarrow \infty$, $\lambda_N \rightarrow 1/(1 + Jk^2)$ which is increasing in concentration $1/J$ and in the speed of convergence of $\phi_N \rightarrow 1$ as measured by the constant $1/k$. The limit markdown is $\mu_\infty^* = \frac{1 + \lambda_\infty/\eta}{1 - (1 - \lambda_\infty)/\theta J} - 1$, which is increasing in λ_∞ if and only if $\theta J - 1 > \eta$.*

If $\lambda_\infty = 0$ then the labor market is competitive, $\mu_\infty^* = 1/(J\theta - 1)$. When $\lambda_\infty > 0$, however, the labor market is oligopsonistic. In this case, if $J \rightarrow \infty$ then there is no product market power and so the markdown λ_∞/η is due only to labor market power. When $\lambda_\infty = 1$, we obtain the monopoly solution $\mu_\infty^* = 1/\eta$.

5 Government policy

In this section, we show that equilibrium outcomes in oligopolistic economies are suboptimal from a social welfare perspective. We then consider the effects of government policies that could have a positive effect on aggregate equilibrium outcomes. Our model is static and should therefore be interpreted as capturing only long-run phenomena. In this model, then, the low levels of output and employment are of a long-run nature and so would not be affected by monetary policy. Hence we consider instead the effects of competition policy and government employment.

²²This result follows from the expression for λ_N by noting that $(1 - \phi_N)^2 N$ is of order k^2 and that $\phi_N \rightarrow 1$ as $N \rightarrow \infty$. Note that the limit sympathy coefficient λ is increasing in concentration $1/J$ and also in the speed of convergence of $\phi_N \rightarrow 1$, as measured by the constant $1/k$. When diversification increases faster (k smaller), profit internalization is larger. Hence, in order for λ to be positive, the limiting portfolio must be fully diversified: $\phi_N \rightarrow 1$. Indeed, if $\phi_N = 1$ for all N then also $\lambda_N = 1$ for all N . For λ to be constant for all N , we need the sequence $\phi_N = 1 - \sqrt{(1 - \lambda)/(\lambda J N + (1 - \lambda))}$.

Competition policy can influence aggregate outcomes by directly affecting product and labor market concentration—that is, by affecting the number of firms and also the extent of their ownership overlap. Alternatively, the government could tax the oligopolistic firms’ profits and then use those revenues to employ people, thereby also changing the labor market’s effective level of concentration.²³ Because profits in our model are based solely on rents from market power, there is no distortion in the model from taxation. While this is useful to gain intuition within a relatively simple framework, it would not be hard to think of models in which taxation is distortionary. The fact that government employment has a “Kaleckian” effect—driving down markdowns—is in contrast to the monopolistic competition model, where markups are exogenous, and firms take wages as given, and therefore government expenditure has zero impact on markdowns.

We illustrate the analysis with the one-sector model constant elasticity specification. We look in turn at the social planner allocation (first best), then competition policy and government jobs (second best).

5.1 Social planner’s solution

Here we characterize, in the one-sector Cobb–Douglas CES model, the allocation that would be chosen by a benevolent social planner who maximizes a weighted sum of the utilities of all worker-consumers with weight $1 - \kappa$ and the utilities of all owner-consumers with weight $\kappa \in [0, 1]$.²⁴ We assume that the social planner can choose the allocation of labor and consumption as well as the number of firms (with access to a large number J^{\max}). Let (C, L) be the consumption and labor supply of a representative worker, and let C_O be the consumption of a representative owner; then the social planner’s problem is constrained by $C + C_O \leq JA(L/J)^\alpha = AL^\alpha(1/J)^{\alpha-1}$. This constraint will always hold with equality, since otherwise it would be possible to increase welfare by increasing workers’ consumption until the constraint binds. Therefore, the problem can be rewritten as

$$\max_{C, L, J} (1 - \kappa) \left(\frac{C^{1-\sigma}}{1-\sigma} - \chi \frac{L^{1+\xi}}{1+\xi} \right) + \kappa [AL^\alpha J^{1-\alpha} - C].$$

We solve this problem in two steps. First we choose the welfare-maximizing C and L conditional on the number J of firms that are used (symmetrically) in production. Second, we maximize over J to obtain the optimal number of firms from the social planner’s perspective.

The first-order conditions (which are sufficient under non-increasing returns to scale) for the first maximization problem ensure that, in an interior solution, $C^{-\sigma}$, the marginal utility of workers’ consumption, is equal to $\kappa/(1 - \kappa)$ multiplied by the owners’ marginal utility of consumption (which is constant and equals 1) and that it is equal also to the marginal disutility from working divided by the

²³The model assumes that government expenditures are useless so we can focus on the government’s labor market impact. Of course, public good provision would lead to a higher desired level of government employment.

²⁴One can interpret κ as determining the welfare standard used by society. Thus $\kappa = 0$ represents the case of a “worker-consumer welfare standard” in which owners’ utilities are assigned zero weight; this case is analogous—in our general equilibrium oligopoly model—to that of the usual *partial equilibrium consumer* welfare standard. The case $\kappa = 1/2$ corresponds to a “total welfare standard” in which all agents’ utilities are equally weighted.

marginal product of labor: $\chi L^\xi / (A\alpha(L/J)^{\alpha-1})$.²⁵ This condition cannot hold in an oligopolistic equilibrium because the markdown of wages relative to the marginal product of labor is positive; that outcome follows, in turn, because worker-consumers equalize the marginal utility of labor to the ratio of the marginal disutility of work and the real wage. Thus a positive markdown introduces a wedge between the marginal product of labor and the real wage:

$$\underbrace{C^{-\sigma} = \frac{\chi L^\xi}{w/p} = \frac{\chi L^\xi}{A\alpha(L/J)^{\alpha-1}}(1 + \mu)}_{\text{Oligopoly equilibrium condition}} > \frac{\chi L^\xi}{A\alpha(L/J)^{\alpha-1}}.$$

How many firms will the social planner choose to use in the production process? If there are *decreasing* returns to scale, then social benefits are increasing in J and so the optimal choice is J^{\max} . With *constant* returns to scale, the number of firms in operation is irrelevant. Under *increasing* returns to scale, the social planner would choose to produce using only one firm; however, the planner would still set—contra the monopolistic outcome—the marginal product of labor equal to the marginal rate of substitution between consumption and labor.²⁶ Thus, from the viewpoint of a social planner, there is no Williamson trade-off because the planner can set the “shadow” markdown to zero and still benefit fully from the economies of scale due to producing with only one firm. Next we address the second-best allocation, where the planner can affect the oligopoly equilibrium only by controlling the variables J and ϕ .

5.2 Competition policy

The models developed so far illustrate how the level of competition in the economy has macroeconomic consequences, from which it seems reasonable to conclude that competition policy may stimulate the economy by boosting output and inducing a more egalitarian distribution of income. We showed that if returns to scale are non-increasing then employment, output, real wages, and the labor share all decrease under higher market concentration and more common ownership.

In the one-sector case, the equilibrium MHHI (our H) was the same for the product and labor markets and also was proportional to the markdown of wages relative to the marginal product of labor in the economy. In the multi-sector case, the markdown was a function of both the within-industry and the economy-wide MHHIs, of which the latter are most relevant for the labor market. (In practice, labor markets are segmented and so the labor market MHHI would differ from the economy-wide MHHI; however, the insight would be similar.)

²⁵It is possible, however, for low enough values of κ , to have a corner solution, such that all the output is assigned to the workers, and the consumption of the owners is zero, i.e., $C = AL^\alpha$ and $C_O = 0$.

²⁶With increasing returns to scale, and $\alpha < 1 + \xi$, the objective of the social planner is convex in L below a threshold, and concave in L above that threshold. This guarantees that the optimal L is strictly positive (however, just like in the non-increasing returns case, there can be a corner solution for the consumption of the workers and the owners, that is $C = AL^\alpha$ and $C_O = 0$). If $\alpha > 1 + \xi$, in some cases there could be a corner solution with $L = 0$.

5.2.1 Worker-consumer welfare

We can think of the competition policy in our model as setting a policy environment that affects—in a symmetric equilibrium—the number of firms per industry and/or the extent of common ownership. We start by showing that $1 - \phi$ and J are complements as policy tools. Then common ownership mitigates the effect of “traditional” competition policy on employment because increasing the number of firms has a diminished effect on concentration when firms have more similar shareholders.

Proposition 5. *Let $\alpha < 1 + 1/\eta$ and let L^* be a symmetric equilibrium. Then reducing common ownership (increasing $1 - \phi$) and reducing concentration (increasing J) are complements as policy tools to increase equilibrium employment.*

The proposition follows because $\text{sgn}\left\{\frac{\partial^2 \log L^*}{\partial(1-\phi)\partial J}\right\} = \text{sgn}\left\{-(J-1)(1-\lambda)\frac{\partial \lambda}{\partial(1-\phi)}\right\} > 0$ for $J > 1$, $\eta < \infty$ and $\frac{\partial \lambda}{\partial(1-\phi)} < 0$. We remark that this proposition holds under decreasing returns and also in our increasing returns example with $\eta \leq 1$ and $\alpha \in (1, 2)$.

We claim that, under either constant or decreasing returns to scale, it is always welfare-increasing for worker-consumers if the planner’s policy decreases common ownership and increases the number of firms—although the latter claim need not apply under increasing returns. Under non-increasing returns, the result follows because L^* increases with both $1 - \phi$ and J , equilibrium real wages increase with employment, and worker-consumer utility increases with real wages. Under increasing returns, however, there is a trade-off between market power and efficiency; in this scenario, the optimal number of firms (from the perspective of worker-consumer welfare) is limited.²⁷ In short: if returns to scale are increasing, then a decrease in the equilibrium markdown does not always translate into an increase in worker-consumer welfare. The following proposition presents these results formally.

Proposition 6. *Employment, real wages, and the welfare of worker-consumers are maximized by setting $\phi = 0$ and:*

- (a) $J = J^{\max}$ with non-increasing returns ($\alpha \leq 1$); and
- (b) J equal to the greatest integer less than $\frac{2-\alpha}{\alpha-1}\eta^{-1}$ when returns are increasing, $\alpha \in (1, 2)$ and $\eta \leq 1$.²⁸

In the case of non-increasing returns, competition policy can lead to equilibria arbitrarily close to the social planner’s as J^{\max} becomes large. This is because the markdown then becomes arbitrarily close to zero.

5.2.2 Positive weight on owner-consumer welfare

The polar case of $\kappa = 1$, when the social planner maximizes the utility of the owner-consumers only, implies, under the assumption that $\eta \leq 1$, setting $\phi = 1$ to have a completely concentrated economy

²⁷One can easily check that, under our assumptions, L^* is increasing in $1 - \phi$ and that it peaks for J (when considered as a continuous variable) at $\eta^{-1}(2 - \alpha)/(\alpha - 1)$.

²⁸If $J > \eta^{-1}(2 - \alpha)/(\alpha - 1)$, then $\alpha - 1 > (\eta J)^{-1}(1 + (\eta J)^{-1})^{-1}$ and the equilibrium would be unstable (see Section 2.5).

in terms of the MHHI, while choosing the number of firms to produce as efficiently as possible, which implies setting $J = J^{\max}$ in the case of decreasing returns, $J = 1$ in the case of increasing returns, and any $J \in \{1, \dots, J^{\max}\}$ in the case of constant returns. (This claim is proved in the Appendix).

[[INSERT Figure 3 about Here]]

For intermediate values of κ , there is no simple analytic solution to the problem of choosing a competition policy that maximizes social welfare. Yet we do know that, as κ increases, owner-consumer welfare increases while worker-consumer welfare declines; this implies that equilibrium employment and wages are both lower, in equilibrium, when κ is higher. In the figures that follow, we present results of simulations from which we derive the optimal policy—and the resulting employment and welfare of each type of agent—as a function of κ . Figure 3 shows the results when $\alpha = 0.8$. The optimal policy always sets $J = J^{\max}$ ($= 100$ in this simulation). The parameter ϕ starts at 0 and remains there for an interval corresponding to κ values between 0 and about 0.4; thereafter, ϕ increases rapidly and reaches $\phi = 1$ when $\kappa = 1$. Employment and worker welfare are highest in the range of κ for which $\phi = 0$, after which they both decrease monotonically and achieve their lowest value at $\kappa = 1$. Owner-consumer welfare is lowest for low values of κ ; then it increases because larger κ values result in larger values of ϕ , the common ownership parameter.

[[INSERT Figure 4 about Here]]

In Figure 4, $\alpha = 1.2$. The optimal policy always sets $\phi = 0$. We have that $J = 4$ when $\kappa = 0$, which implies that it is optimal—even from the worker-consumers' standpoint—if some market power is allowed so as to exploit economies of scale. The number of firms declines as κ increases, and the optimal policy is a single firm when κ is slightly above one-half. Employment and worker welfare are largest for low values of κ , and both decrease monotonically as κ increases.²⁹

5.2.3 Competition policy with multiple sectors

In the one-sector case, with the worker-consumer welfare standard ($\kappa = 0$) it is always efficient to force completely separate ownership of firms—that is, regardless of how many firms there are—because there are no efficiencies associated with common ownership. In the multi-sector case, however, common ownership is associated with internalization of demand effects in other sectors; this means that—depending on the elasticity of substitution, the elasticity of labor supply, and the number of firms per industry—worker-consumers could be better-off under complete indexation of the economy. In any case, it is better to eliminate intra-industry common ownership (i.e, letting $\tilde{\phi} = 0$) and reach the maximum number of

²⁹Although ϕ is always zero in this example and market power increases when there are fewer firms, this is not true in general with increasing returns to scale. For example, if $\alpha = 1.001$ then, as κ increases, at first the policy achieves a higher H by reducing the number of firms. Yet as κ continues to increase, in some parts of the range it becomes optimal (since the number of firms is a discrete quantity) for the policy to increase concentration—say, by increasing ϕ above zero—before decrementing the number J again. The implication is that ϕ here increases monotonically with κ but then “jumps back” to zero when κ reaches the level that leads to the next decline in the number of firms J .

firms J^{\max} if the goal is to maximize employment. Along these lines, our next result is a corollary of Proposition 5.

Proposition 7. *Suppose the economy has N sectors and non-increasing returns to scale. Then employment, real wages, and the welfare of worker-consumers are maximized when $J = J^{\max}$, $\tilde{\phi} = 0$, and when $\phi = 0$ (resp., $\phi = 1$) if $\theta(J^{\max} - 1/N) > (1 + \eta)(1 - 1/N)$ (resp., if inequality is reversed).³⁰*

So if the product market wedge effect dominates the labor market wedge effect (i.e., with low θ and high η), then allowing full economy-wide common ownership increases equilibrium employment. Conversely, if the labor market wedge effect dominates the product market wedge effect then the optimal policy is no common ownership, as in the one-sector case.

For large economies, the following analogous proposition holds. There is an \hat{N} such that, to maximize employment, for economies with $N > \hat{N}$: (i) set $\tilde{\phi} = 0$, $J = J^{\max}$; and (ii) set $\phi = 0$ if $\theta J - 1 > \eta$, but $\phi = 1$ if $\theta J - 1 < \eta$. (Note that the inequality $\theta J - 1 > \eta$ is the limit of $\theta(J^{\max} - 1/N) > (1 + \eta)(1 - 1/N)$ as $N \rightarrow \infty$.) It is noteworthy that, even under Neary's (2003b) assumption of no common ownership, competition policy has an effect when firms across all sectors employ the same constant-returns technology. This result follows because we have an elastic supply of labor (and so changes in the real wage affect both employment and output) and because we have two types of agents. If our model included only worker-owner-consumers, then the representative agent would always choose the optimal level of employment.

5.3 Government employment policy

Suppose that the government decides to hire a given number of workers for some purpose and that this scheme is financed by a proportional tax on profits. We show that government hiring would compete with hiring by oligopolistic firms and, in so doing, would tend to reduce the markdown of real wages relative to the marginal product of labor and/or the markup over marginal costs. This result is in stark contrast to the standard monopolistic competition model, where the markup is exogenously given (by the elasticity of substitution parameter) and is not affected by government policy; however, it is consistent with the idea that government hiring competes with private-sector hiring and thereby reduces the private sector's labor market power.³¹

Given private employment plans \mathbf{L} and public employment plans L_G , we now have a competitive equilibrium. Hence the overall equilibrium must be redefined accordingly, as follows.

Definition 3 (Cournot–Walras equilibrium with shareholder representation and fiscal policy). *A Cournot–Walras equilibrium with shareholder representation and government policy (L_G, τ) consists of a price function $(\mathbb{W}(\cdot), \mathbb{P}(\cdot))$, an allocation $\{C_i^*, L_i^*\}_{i \in I_W}$, $\{C_i^*\}_{i \in I_O}$, and a set of production plans $(\mathbf{L}^*; L_G)$ such that the following statements hold.*

³⁰When the inequality becomes an equality, the employment-population ratio, real wages, and worker-consumer welfare are maximized (in a large economy) by $J = J^{\max}$ for any $\phi \in [0, 1]$.

³¹Related ideas were presented by Kalecki (1943).

- (i) $[\mathbf{W}(\mathbf{L}^*; L_G), \mathbf{P}(\mathbf{L}^*; L_G); \{C_i^*, L_i^*\}_{i \in I_W}, \{C_i^*\}_{i \in I_O}]$ is a competitive equilibrium relative to $(\mathbf{L}^*; L_G)$.
- (ii) The vector \mathbf{L}^* is a pure-strategy Nash equilibrium of the game in which players are the J firms, the strategy space of firm j is $[0, T]$, and the firm's payoff function is

$$(1 - \tau) \left(\frac{\pi_j}{p} + \lambda \sum_{k \neq j} \frac{\pi_k}{p} \right);$$

here $p = \mathbb{P}(\mathbf{L}; L_G)$, $w = \mathbb{W}(\mathbf{L}; L_G)$, and $\pi_j = pF(L_j) - wL_j$ for $j = 1, \dots, J$.

- (iii) The policy (L_G, τ) satisfies the government budget constraint at the equilibrium prices and employment plans of the firms:

$$\mathbb{W}(\mathbf{L}^*; L_G)L_G \leq \tau \left(\sum_{j=1}^J \pi_j^* \right).$$

The worker-consumer's problem is unchanged from that in the model with one sector and no government policy. Because the firm's objective function is multiplied by the constant $(1 - \tau)$, the first-order condition for firm j is the same as before. Overall labor demand L is now the sum of demand by firms $(\sum_{k=1}^J L_k)$ and demand by the government (L_G) . It follows as an immediate consequence that the equilibrium markdown in a symmetric equilibrium for firms is

$$\mu = \frac{H}{\eta}(1 - s_G);$$

here $s_G \equiv L_G/L$ is the government's share of total employment and, once again, $H \equiv (1 + \lambda(J - 1))/J$ denotes the MHHI of the private sector.

In what follows, we solve the case of constant returns ($\alpha = 1$) and constant elasticity so we can focus on the model's main insights while keeping the analysis simple. We show that there is an upper bound \bar{L}_G on how much government employment can be compatible with an equilibrium.

Proposition 8. *Let $\alpha = 1$ and*

$$\bar{L}_G = \bar{s} \left[\frac{A\chi^{-1/(1-\sigma)}}{1 + \frac{H}{\eta}(1 - \bar{s})} \right]^\eta, \text{ where } \bar{s} \equiv 1 + \eta/(2H) - \sqrt{[1 + \eta/(2H)]^2 - 1}.$$

If $L_G < \bar{L}_G$, then there is a $\tau < 1$ such that a symmetric equilibrium exists under government policy (L_G, τ) . The equilibrium level of total employment L^ is implicitly determined by*

$$L^* = \left[\frac{A\chi^{-1/(1-\sigma)}}{1 + \frac{H}{\eta}(1 - L_G/L^*)} \right]^\eta.$$

The government can increase its share of employment by taxing corporate profits—but only up to a point, because (as we will see) government employment reduces private-sector employment and hence the amount of profits subject to taxation. A zero markdown under government policy would require

that $s_G \rightarrow 1$ as the tax rate increases. However, this limit is impossible to reach because even a tax rate that approaches unity can add only so much s_G to the economy. More specifically: the limit of s_G as the tax rate $\tau \rightarrow 1$ is given by \bar{s} , and the limit of government employment is \bar{L}_G . We are now in a position to characterize the (balanced-budget) multiplier of government employment.

Proposition 9. *Let $\alpha = 1$ and $L_G < \bar{L}_G$. Then the multiplier of government employment is*

$$\frac{\partial L^*}{\partial L_G} = \frac{1}{H^{-1} + (1 - s_G)\eta^{-1} + s_G} < 1.$$

Consider the following heuristic dynamic. An increase in government employment increases s_G ; that increase reduces the markdown, which is proportional to $H(1 - s_G)$. The reduced markdown, in turn, increases real wages and also (because labor supply is increasing) total employment. The consequence is a reduction of s_G , which attenuates the initial increase in overall employment that resulted from the government policy. These higher-round effects end up mitigating the initial effects, multiplying them by a factor

$$\left(1 - \frac{\partial \log L^*}{\partial \log L_G}\right) = \left(1 + \frac{1 + \frac{H}{\eta}(1 - s_G)}{s_G H}\right)^{-1} < 1.$$

Employment decisions are strategic substitutes: firm j 's desired employment is reduced if the other firms increase employment. The same effect operates when the government increases employment. Namely, it reduces the desired employment level of private-sector firms and generates a “crowding out” effect under which the multiplier becomes less than 1.

While the existence of a multiplier in the model is in a way similar to Keynesian models of fiscal policy under imperfect competition (see e.g., [Hart, 1982b](#); [Mankiw, 1988](#); [Startz, 1989](#); [Silvestre, 1993](#); [Matsuyama, 1995](#)), the mechanism through which government employment increases overall employment in the Keynesian models is different from the one developed in this paper. In those models, the multiplier does not operate by reducing firms's market power. Instead of competing with the firms in either the labor market or the product market, the government purchases consumption goods from the monopolistic firms, financed through lump-sum taxes. This fiscal policy shifts demand from a non-produced good (as in [Hart](#)) or from leisure (as in [Startz](#) and in [Mankiw](#)) to the produced-goods sector, increasing demand for those goods; in turn, this shift increases income and generates higher-round effects that end up increasing overall demand in the produced-goods sector by *more* than the shortfall resulting from taxation. In our model, then, government spending—rather than increasing demand for the oligopolistic firms' products—increases competition for workers in the labor market and thereby reduces the market power of those oligopolistic firms. Hence wages increase, which leads to upward movement along the labor supply curve.³²

We can also show that, as policy tools, competition policy and government employment are substitutes. Note that if $\eta = 1$, then an immediate consequence of Proposition 9 is that $\partial L^* / \partial L_G$ increases with concentration H . Our final proposition generalizes this result.

³²In this case, government spending is assumed to be unproductive. It therefore also introduces an inefficiency even if worker-consumers are better-off thanks to higher wages.

Proposition 10. *Let $\alpha = 1$ and $L_G < \bar{L}_G$. With respect to the policy tool of increasing government employment L_G , both reducing common ownership (i.e., increasing $1 - \phi$) and reducing concentration (increasing J) are substitutes if the goal is to affect total equilibrium employment L^* .*

Thus a failure of competition policy, which implies a higher H , should *increase* the effectiveness of government employment policy. The converse also holds: a successful competition policy makes government employment policy less effective. It is intuitive that, when firms have oligopsony power, government employment policy can increase overall employment by reducing the equilibrium markdown of real wages relative to the marginal product of labor. Yet if the markdown is already low because of competition policy, then there is less scope for government employment policy to reduce the markdown further.³³

6 Conclusion

In our macroeconomic oligopoly model, firms' employment decisions affect prices in both product and factor markets; furthermore, a higher *effective* market concentration (which accounts for common ownership) can reduce both real wages and employment. When there are multiple industries, common ownership can have a positive or negative effect on the equilibrium markup: the sign of the effect depends on the relative magnitudes of the elasticities of product substitution and of labor supply.

Competition policy can increase employment and improve welfare. In the one-sector economy we find that controlling common ownership and reducing concentration are complements with respect to fostering employment, whereas government employment is a substitute for those policies. With multiple sectors, to foster employment traditional competition policy on market concentration is adequate. However, common ownership can have a positive or negative effect on employment. It will be negative for intra-industry common ownership but can be positive for economy-wide common ownership. This happens when the elasticity of labor supply is high relative to the elasticity of product substitution since then the positive effect of the inter-industry pecuniary externality dominates the negative effect from labor market oligopsony power. In the latter case the relative impact of profit internalization in the level of market power in product markets is higher than in the labor market.

The consideration of vertical relations and possible different patterns of consumption between owners and workers provide caveats to the results. For example, vertical relations imply that products in one sector may be inputs for another sector. Then common ownership may lead to partial internalization of double marginalization and decrease markups.³⁴ In general, our results indicate a need to go beyond the traditional partial equilibrium analyses of competition policy, where consumer surplus is king. Competition policy should be the advocate of worker-consumers since owner-consumers will already have a voice in corporate decision-making and, because of political economy considerations, in the regulatory process. If this is so then traditional competition policy (e.g., lowering market concen-

³³Nonconstant returns to scale complicate the analysis significantly. Even so, a similar result holds as long as the equilibrium is such that competition policy still has the effect of increasing employment and reducing markdowns.

³⁴Azar (2012) finds that common ownership links across industries are associated with lower markups.

tration) is fully valid, as well as limiting intra-industry ownership, while policy towards economy-wide common ownership should depend on the relative levels of the elasticities of labor supply and product substitution.

The models presented here are extremely stylized. The ownership structure is exogenous with a separation between owners and workers, we consider neither the benefits of diversification in an uncertain world nor the effects of unions' market power on the labor market for example. In other words, there is ample room in future research for extensions and generalizations of our approach.

References

- Acemoglu, Daron, Vasco M Carvalho, Asuman Ozdaglar, and Alireza Tahbaz-Salehi (2012) "The network origins of aggregate fluctuations," *Econometrica*, Vol. 80, pp. 1977–2016.
- Allen, Treb and Costas Arkolakis (2015) "Elements of advanced international trade," *Available at: <http://www.econ.yale.edu/~ka265/teaching/GradTrade/notes/ClassNotes.pdf>*. *Armington, PS*.
- Anton, Miguel, Florian Ederer, Mireia Gine, and Martin C Schmalz (2018) "Common ownership, competition, and top management incentives," *CEPR Discussion Paper*.
- Autor, David, David Dorn, Lawrence F Katz, Christina Patterson, and John Van Reenen (2017) "Concentrating on the fall of the labor share," *American Economic Review*, Vol. 107, pp. 180–85.
- Azar, José (2012) "A new look at oligopoly: Implicit collusion through portfolio diversification," *Ph.D. Thesis, Princeton University*.
- (2017) "Portfolio diversification, market power, and the theory of the firm," *Working Paper*.
- Azar, José, Ioana Marinescu, and Marshall Steinbaum (2017) "Labor market concentration," *NBER Working Paper*.
- Azar, José, Ioana Marinescu, Marshall Steinbaum, and Bledi Taska (2018) "Concentration in U.S. labor markets: Evidence from online vacancy data," *NBER Working Paper*.
- Azar, José, Sahil Raina, and Martin C Schmalz (2016) "Ultimate ownership and bank competition," *Working Paper*.
- Azar, José, Martin C Schmalz, and Isabel Tecu (Forthcoming) "Anti-competitive effects of common ownership," *Journal of Finance*.
- Azar, José and Xavier Vives (2018) "Oligopoly, aggregate investment, and interest rates," *Working Paper*.
- Baker, Jonathan (2016) "Overlapping financial investor ownership, market power, and antitrust enforcement: My qualified agreement with Professor Elhauge," *Harvard Law Review*.
- Barkai, Simcha (2016) "Declining labor and capital shares," *Working Paper*.

- Benmelech, Efraim, Nittai Bergman, and Hyunseob Kim (2018) “Strong employers and weak employees: how does employer concentration affect wages?” *NBER Working Paper*.
- Blonigen, Bruce A and Justin R Pierce (2016) “The effect of mergers and acquisitions on market power and efficiency,” *NBER Working Paper*.
- Brito, Duarte, C Osório, M António, Ricardo Ribeiro, and Helder Vasconcelos (2017) “Unilateral effects screens for partial horizontal acquisitions: The generalized HHI and GUPPI,” *Working Paper*.
- Brun, Lúcia and Ignacio González (2017) “Tobin’s Q and inequality,” *Working Paper*.
- CEA (2016a) “Benefits of competition and indicators of market power,” Technical report, White House Council of Economics Advisors.
- (2016b) “Labor market monopsony: trends, consequences, and policy responses,” Technical report, White House Council of Economics Advisors.
- Chetty, Raj, Adam Guren, Day Manoli, and Andrea Weber (2011) “Are micro and macro labor supply elasticities consistent? A review of evidence on the intensive and extensive margins,” *The American Economic Review*, Vol. 101, pp. 471–475.
- d’Aspremont, Claude, Rodolphe Dos Santos Ferreira, and Louis-André Gérard-Varet (1990) “On monopolistic competition and involuntary unemployment,” *The Quarterly Journal of Economics*, Vol. 105, pp. 895–919.
- (1996) “On the Dixit-Stiglitz model of monopolistic competition,” *The American Economic Review*, pp. 623–629.
- De Loecker, Jan and Jan Eeckhout (2017) “The rise of market power and the macroeconomic implications,” *NBER Working Paper*.
- DeAngelo, H. (1981) “Competition and unanimity,” *The American Economic Review*, Vol. 71, pp. 18–27.
- Dixit, Avinash (1986) “Comparative statics for oligopoly,” *International Economic Review*, pp. 107–122.
- Dixit, Avinash K and Joseph E Stiglitz (1977) “Monopolistic competition and optimum product diversity,” *The American Economic Review*, Vol. 67, pp. 297–308.
- Eggertsson, Gauti, Jacob Robbins, and Ella Getz Wold (2018) “Kaldor and Piketty’s facts: the rise of monopoly power in the United States,” *Working Paper*.
- Ekern, S. and R. Wilson (1974) “On the Theory of the Firm in an economy with incomplete markets,” *Bell Journal of Economics*, Vol. 5, pp. 171–180.
- Elhauge, Einer Richard (2016) “Horizontal shareholding,” *Harvard Law Review*, Vol. 109.

- Falch, Torberg (2010) "The elasticity of labor supply at the establishment level," *Journal of Labor Economics*, Vol. 28, pp. 237–266.
- Farrell, Joseph (1985) "Owner-consumers and efficiency," *Economics Letters*, Vol. 19, pp. 303–306.
- Gabaix, Xavier (2011) "The granular origins of aggregate fluctuations," *Econometrica*, Vol. 79, pp. 733–772.
- Gabszewicz, Jean Jaskold and Jean-Philippe Vial (1972) "Oligopoly "a la Cournot" in a general equilibrium analysis," *Journal of Economic Theory*, Vol. 4, pp. 381–400.
- Giandrea, Michael D and Shawn A Sprague (2017) "Estimating the US labor share," *Monthly Lab. Rev.*, Vol. 140, p. 1.
- Gordon, R.H. (1990) "Do publicly traded corporations act in the public interest?" Technical report, National Bureau of Economic Research.
- Grullon, Gustavo, Yelena Larkin, and Roni Michaely (2016) "Are US industries becoming more concentrated?" *Working Paper*.
- Gutiérrez, Germán and Thomas Philippon (2016) "Investment-less growth: an empirical investigation," *NBER Working Paper*.
- (2017) "Declining competition and investment in the US," *Working Paper*.
- Hall, Robert E (2018) "New evidence on the markup of prices over marginal costs and the role of mega-firms in the US economy," *NBER Working Paper*.
- Hansen, R.G. and J.R. Lott (1996) "Externalities and corporate objectives in a world with diversified shareholder/consumers," *Journal of Financial and Quantitative Analysis*, Vol. 31.
- Hart, Oliver (1979) "On Shareholder unanimity in large stock market economies," *Econometrica*, Vol. 47, pp. 1057–1083.
- Hart, Oliver D (1982a) *Imperfect competition in general equilibrium: an overview of recent work*.
- (1982b) "A model of imperfect competition with Keynesian features," *The Quarterly Journal of Economics*, pp. 109–138.
- Head, Keith and Barbara J Spencer (2017) "Oligopoly in international trade: rise, fall and resurgence," *Canadian Journal of Economics*, Vol. 50, pp. 1414–1444.
- Kalecki, Michal (1938) "The determinants of distribution of the national income," *Econometrica*, pp. 97–112.
- (1943) "Political aspects of full employment," *The Political Quarterly*, Vol. 14, pp. 322–330.

- (1954) *Theory of economic dynamics an essay on cyclical and long-run changes in capitalist economy*: Unwin Brothers Limited.
- Leland, Hayne E (1974) "Production theory and the stock market," *The Bell Journal of Economics and Management Science*, pp. 125–144.
- Liang, Lantian (2016) "Common Ownership and Executive Compensation," *Working Paper*.
- López, Ángel L and Xavier Vives (Forthcoming) "Overlapping ownership, R&D spillovers, and antitrust policy," *Journal of Political Economy*.
- Mankiw, N Gregory (1988) "Imperfect competition and the Keynesian cross," *Economics Letters*, Vol. 26, pp. 7–13.
- Mas-Colell, Andreu (1982) "The Cournotian foundations of Walrasian equilibrium theory: an exposition of recent theory," in *Advances in Economic Theory: Invited Papers for the Fourth World Congress of the Econometric Society*, pp. 183–224.
- Mas-Colell, Andreu and Joaquim Silvestre (1991) "A note on cost-share equilibrium and owner-consumers," *Journal of Economic Theory*, Vol. 54, pp. 204–214.
- Matsudaira, Jordan D. (2013) "Monopsony in the low-wage labor market? Evidence from minimum nurse staffing regulations," *The Review of Economics and Statistics*, Vol. 96, pp. 92–102.
- Matsuyama, Kiminori (1995) "Complementarities and cumulative processes in models of monopolistic competition," *Journal of Economic Literature*, Vol. 33, pp. 701–729.
- Murphy, Kevin M, Andrei Shleifer, and Robert W Vishny (1989) "Industrialization and the big push," *Journal of Political Economy*, Vol. 97, pp. 1003–1026.
- Neary, J Peter (2003a) "Globalization and market structure," *Journal of the European Economic Association*, Vol. 1, pp. 245–271.
- (2003b) "The road less travelled: oligopoly and competition policy in general equilibrium," in *Economics for an imperfect world: essays in honor of Joseph Stiglitz*.
- (2010) "Two and a half theories of trade," *The World Economy*, Vol. 33, pp. 1–19.
- O'Brien, Daniel P and Steven C Salop (2000) "Competitive effects of partial ownership: financial interest and corporate control," *Antitrust Law Journal*, Vol. 67, pp. 559–614.
- O'Brien, Daniel P and Keith Waehrer (2017) "The competitive effects of common ownership: we know less than we think," *Working Paper*.
- Posner, Eric A, Fiona M Scott Morton, and E Glen Weyl (2016) "A proposal to limit the anti-competitive power of institutional investors," *Working Paper*.

- Radner, R. (1974) "A note on unanimity of stockholders' preferences among alternative production plans: a reformulation of the Ekern-Wilson model," *The Bell Journal of Economics and Management Science*, pp. 181–184.
- Ransom, Michael R and David P. Sims (2010) "Estimating the firm's labor supply curve in a "new monopsony" framework: schoolteachers in Missouri," *Journal of Labor Economics*, Vol. 28, pp. 331–355.
- Roberts, John and Hugo Sonnenschein (1977) "On the foundations of the theory of monopolistic competition," *Econometrica*, pp. 101–113.
- Rock, Edward B and Daniel L Rubinfeld (2017) "Defusing the antitrust threat to institutional investor involvement in corporate governance," *Working Paper*.
- Rotemberg, Julio (1984) "Financial transaction costs and industrial performance."
- Rotemberg, Julio J and Michael Woodford (1992) "Oligopolistic pricing and the effects of aggregate demand on economic activity," *Journal of Political Economy*, Vol. 100, pp. 1153–1207.
- Scott Morton, Fiona M and Herbert J Hovenkamp (2017) "Horizontal shareholding and antitrust policy," *Working Paper*.
- Shleifer, Andrei (1986) "Implementation cycles," *Journal of Political Economy*, Vol. 94, pp. 1163–1190.
- Silvestre, Joaquim (1990) "There may be unemployment when the labour market is competitive and the output market is not," *The Economic Journal*, Vol. 100, pp. 899–913.
- (1993) "The market-power foundations of macroeconomic policy," *Journal of Economic Literature*, Vol. 31, pp. 105–141.
- Staiger, Douglas O, Joanne Spetz, and Ciaran S Phibbs (2010) "Is there monopsony in the labor market? Evidence from a natural experiment," *Journal of Labor Economics*, Vol. 28, pp. 211–236.
- Startz, Richard (1989) "Monopolistic competition as a foundation for Keynesian macroeconomic models," *The Quarterly Journal of Economics*, Vol. 104, pp. 737–752.
- Stiglitz, Joseph (2017) "Inequality, stagnation, and market power," Technical report, Roosevelt Institute Working Paper.
- Summers, Lawrence (2016) "Corporate profits are near record highs. Here's why that's a problem.," *Washington Post*.
- Vives, Xavier (1999) *Oligopoly pricing: old ideas and new tools*: MIT press.

A Proofs

PROOF OF PROPOSITION 1: The objective of the manager of firm j is to maximize

$$\zeta(\mathbf{L}) = F(L_j) - \omega(L)L_j + \lambda \sum_{k \neq j} [F(L_k) - \omega(L)L_k].$$

The first derivative $\partial \zeta / \partial L_j$ is given by $F' - \omega - \omega' \left(L_j + \lambda \sum_{k \neq j} L_k \right)$ and therefore the best response of firm j depends only on $\sum_{k \neq j} L_k$. The cross derivative $(\partial^2 \zeta / \partial L_j \partial L_m)$ equals

$$-\omega' (1 + \lambda) - \left(L_j + \lambda \sum_{k \neq j} L_k \right) \omega'' = -\omega' (1 + \lambda) - (s_j + \lambda s_{-j}) \omega'' L,$$

where $s_j \equiv L_j / L$ and $s_{-j} \equiv \sum_{k \neq j} L_k / L$. If $E_{\omega'} \equiv -\omega'' L / \omega' < 1$, it follows that the cross derivative is negative since $s_j + \lambda s_{-j} \leq 1$ and

$$-(1 + \lambda) - (s_j + \lambda s_{-j}) \omega'' L / \omega' < -(1 + \lambda) + (s_j + \lambda s_{-j}) < -\lambda.$$

In this case Thm. 2.7 in [Vives \(1999\)](#) guarantees the existence of equilibrium. The second derivative $(\partial^2 \zeta / (\partial L_j)^2)$ equals $F'' - 2\omega' - \left(L_j + \lambda \sum_{k \neq j} L_k \right) \omega''$, and is negative provided that $F'' \leq 0$ also. Let $L_{-j} \equiv \sum_{k \neq j} L_k$ and $R(L_{-j})$ denote the best response of firm j . Under the assumptions,

$$R' = - \frac{-(1 + \lambda) \omega' + \left(L_j + \lambda \sum_{k \neq j} L_k \right) \omega''}{F'' - \left(2\omega' + \left(L_j + \lambda \sum_{k \neq j} L_k \right) \omega'' \right)}.$$

If the SOC holds, then $R' > -1$ whenever $-F'' + (1 - \lambda) \omega' > 0$ and indeed when $F'' \leq 0$ (except when $F'' = 0$ and $\lambda = 1$). When $R' > -1$, Thm. 2.8 in [Vives \(1999\)](#) guarantees that the equilibrium is unique.

Given that $E_{\omega'} < 1$ and $F'' \leq 0$ we have that $\partial^2 \zeta / (\partial L_j)^2 < 0$ and $\partial^2 \zeta / \partial L_j \partial L_k < 0$ for $k \neq j$. Then the equilibrium is locally stable under continuous adjustment dynamics if $\partial^2 \zeta / (\partial L_j)^2 < \partial^2 \zeta / \partial L_j \partial L_k$ (see, e.g., [Dixit \(1986\)](#)). This holds if $F'' < (1 - \lambda) \omega'$, which is true if $F'' < 0$ or if $F'' \leq 0$ and $\lambda < 1$.

(a) Dividing the FOC by $\omega(L)$ we have that:

$$\frac{F'(L_j) - \omega(L)}{\omega(L)} = \frac{\omega'(L)L}{\omega(L)} \left(s_j + \lambda \sum_{k \neq j} s_k \right).$$

In a symmetric equilibrium $s_j = 1/J$ for every j . Thus,

$$\frac{F'\left(\frac{L}{J}\right) - \omega(L)}{\omega(L)} = \frac{\omega'(L)L}{\omega(L)} \left(\frac{1}{J} + \lambda \frac{J-1}{J} \right).$$

(b) The symmetric equilibrium is given by the fixed point of $L_{-j}/(J-1) = R(L_{-j})$. Total employment is $L = L_{-j} + R(L_{-j})$, which is increasing in L_{-j} since $R' > -1$. Furthermore, R is decreasing in λ since the first derivative of the objective function is decreasing in λ . This implies that L_{-j} and therefore L and $\omega(L)$ are also decreasing in λ (and in ϕ). We have also that L_{-j} is increasing in J since $R' < 0$ and R itself is increasing in J (since R is decreasing in λ and λ is decreasing in J). It follows then that, in equilibrium, L and $\omega(L)$ are increasing in J .

(c) The labor share is $\frac{\omega(L)L}{JF(L/J)}$. The derivative with respect to total employment L is

$$\frac{\omega'(L)L + \omega(L) \left[F\left(\frac{L}{J}\right) - \frac{L}{J} F'\left(\frac{L}{J}\right) \right]}{J(F(\frac{L}{J}))^2} > 0$$

given that returns to scale are non-increasing, $F\left(\frac{L}{J}\right) - \frac{L}{J} F'\left(\frac{L}{J}\right) \geq 0$.³⁵ Since employment is decreasing in ϕ , that implies the labor share is decreasing in ϕ as well. \square

Claim: In the CES-Cobb-Douglas model with increasing returns $\alpha \in (1, 2)$ and $\eta \leq 1$, a necessary and sufficient condition for the candidate interior solution to be a symmetric equilibrium is that

$$\alpha \leq \left(1 + \frac{H}{\eta}\right) \left\{1 + \lambda(J-1) \left[1 - \left(\frac{J-1}{J}\right)^{\frac{1}{\eta}}\right]\right\}^{-1}.$$

PROOF: For $\alpha \in (1, 2)$ and $\eta \leq 1$, we can check that the third-order derivative of the objective function of firm j with respect to L_j is negative,

$$A\alpha(\alpha-1)(\alpha-2)L_j^{\alpha-3} - 3\omega''(L) - \omega'''(L)(L_j + \lambda L_{-j}) < 0.$$

It follows that the second derivative is decreasing in L_j conditional on L_{-j} . Since the second derivative tends to $+\infty$ as $L_j \rightarrow 0$, and to $-\infty$ as $L_j \rightarrow \infty$ and is continuous, then it must be zero at some $L_j > 0$ (which can depend on L_{-j}). The objective function is strictly convex below that value, and strictly concave above that value. Therefore, the global maximum must be either at the local maximum of the concave region (assuming that T is larger than the candidate symmetric equilibrium) or at zero. We obtain a condition for the existence of symmetric equilibria by comparing the objective function of the firm at the candidate for a symmetric equilibrium $\tilde{l} = \left(\frac{A\alpha J^{1-\alpha} \chi^{-\frac{1}{1-\sigma}}}{1+H/\eta}\right)^{\frac{1}{\frac{1}{\eta}+1-\alpha}} / J$ and the corner solution in which the firm produces zero, when the other firms produce at \tilde{l} . On the revenue side, when the firm produces at \tilde{l} , it obtains $A(\tilde{l})^\alpha$. On the cost side, if the firm produces, the real wage is $\chi^{\frac{1}{1-\sigma}} (\tilde{l}J)^{\frac{1}{\eta}}$, while if it doesn't produce and the other firms produce at \tilde{l} , the real wage is $\chi^{\frac{1}{1-\sigma}} [\tilde{l}(J-1)]^{\frac{1}{\eta}}$, which is lower. If the firm produces, it must pay wages for its employees, plus it internalizes partially the effect of the higher wage on the cost of the competing firms. If the firm employs zero, then it doesn't pay wages, and it internalizes the lower wage that competing firms pay. Firm j wants to produce at \tilde{l} if its objective

³⁵If $F(x)$ is increasing and concave for $x \geq 0$, with $F(0) \geq 0$, then $F(x)/x \geq F'(x)$.

function evaluated at \tilde{l}

$$A(\tilde{l})^\alpha + \lambda(J-1)A(\tilde{l})^\alpha - \chi^{\frac{1}{1-\sigma}}(\tilde{l}J)^{\frac{1}{\eta}}[\tilde{l} + \lambda(J-1)\tilde{l}]$$

is greater than its objective function evaluated when other firms produce at \tilde{l} and it produces zero:

$$\lambda(J-1)A(\tilde{l})^\alpha - \chi^{\frac{1}{1-\sigma}}[\tilde{l}(J-1)]^{\frac{1}{\eta}}\lambda(J-1)\tilde{l}.$$

After some simplifications and substituting in this condition the expression for \tilde{l} , we obtain that the condition is equivalent to the following:

$$\alpha \leq \left(1 + \frac{H}{\eta}\right) \left\{1 + \lambda(J-1) \left[1 - \left(\frac{J-1}{J}\right)^{\frac{1}{\eta}}\right]\right\}^{-1}.$$

If the condition doesn't hold, then \tilde{l} cannot be an equilibrium, since every firm would (unilaterally) choose to produce zero instead. Therefore, the condition is necessary for a symmetric equilibrium to exist. If the condition holds it ensures that producing at \tilde{l} is a global maximum for every firm, conditional on the other firms producing at the candidate symmetric equilibrium, and therefore it is also sufficient for a symmetric equilibrium to exist. \square

Full internalization by owners of market power in the product market.

Consider the objective function of a firm explicitly in terms of nominal wages and prices. Then the objective function of firm j 's manager is

$$\frac{1}{p} \left\{ pF(L_j) - wL_j + \lambda \sum_{k \neq j} [pF(L_k) - wL_k] \right\},$$

where $p = \mathbb{P}(\mathbf{L})$, $w = \mathbb{W}(\mathbf{L})$, and \mathbf{L} is the J -dimensional vector of firms' employment plans. The first-order condition (without simplifying the expression, as we did before to put it in terms of the real wage) with respect to L_j yields

$$\underbrace{\frac{\partial \mathbb{P} / \partial L_j}{p} \left(F(L_j) + \lambda \sum_{k \neq j} F(L_k) \right) + F'(L_j)}_{\text{Marginal revenue effect}} - \underbrace{\frac{\partial \mathbb{W} / \partial L_j}{p} \left(L_j + \lambda \sum_{k \neq j} L_k \right) - \frac{w}{p}}_{\text{Marginal cost effect}} - \underbrace{\frac{\partial \mathbb{P} / \partial L_j}{p^2} \left(\pi_j + \lambda \sum_{k \neq j} \pi_k \right)}_{\text{Purchasing power of profits effect}} = 0.$$

Thus, a marginal increase in employment by firm j has three effects on the utility of the owner-consumers. First, it changes revenues by increasing output at the margin and changing prices (relative to the numéraire), which changes the revenues of firm j and also of the other firms; here the latter is

internalized by the owners of firm j according to λ . The second effect is that this marginal increase changes costs by increasing employment and altering nominal wages (relative to the numéraire). Note that the change in (nominal) prices and wages is subject to renormalization and so could go in either direction. Third, the increase affects the purchasing power of profits, which in turn affects utility because it changes the price of the consumption good purchased by the owners with their profits.

Absent the “purchasing power of profits” effect—for example, in a model with quasi-linear utility where owners consume an outside good instead of the oligopolistic good—the equilibrium markdown would reflect both labor market power and product market power. Yet since there is only one good and since owners use their profits only to purchase that good, they fully internalize the effect of product market power and so the markdown reflects only labor market power (because, although owners are consumers, they are not workers). To see how the purchasing power of profits effect cancels out the effect of product market power, we can regroup and cancel terms in the preceding equation to obtain the first-order condition in terms of ω as follows:

$$\underbrace{F'(L_j) - \frac{w}{p}}_{\omega} = \underbrace{\left(\frac{\partial W / \partial L_j}{p} + \frac{\partial \mathbb{P} / \partial L_j}{p} \frac{w}{p} \right)}_{\omega'} \left(L_j + \lambda \sum_{k \neq j} L_k \right);$$

this equality yields the expression (3.4.1) at the symmetric solution. Hence, as previously explained, the equilibrium in (3.4.1) can be characterized strictly in terms of the elasticity of labor supply and without any reference to the effect of product market power.

Lemma. λ_{intra} and λ_{inter} are: (1) increasing in ϕ and $\tilde{\phi}$, (2) for $\phi > 0$ and $\phi + \tilde{\phi} < 1$, and for $\phi \in (0, 1)$, respectively, decreasing in N ; otherwise constant as functions of N , (3) for $\phi + \tilde{\phi} < 1$ decreasing in J ; if $\phi + \tilde{\phi} = 1$ constant as functions of J , and (4) always in $[0, 1]$.

PROOF:

1. Consider the first point. The sign of the derivative of λ_{intra} with respect to ϕ is given by:

$$\text{sgn} \left\{ \frac{\partial \lambda_{intra}}{\partial \phi} \right\} = \text{sgn} \left\{ (1 - \phi) (1 - \phi - \tilde{\phi})^2 + (1 - \phi - \tilde{\phi}) [(2 - \phi)\phi + (1 - \phi)\tilde{\phi}N] \right\}$$

where the first term is always non-negative and positive if $1 - \phi - \tilde{\phi} > 0$ and the second one is always non-negative and positive if $1 - \phi - \tilde{\phi} > 0$ and $(\phi > 0 \text{ or } \tilde{\phi} > 0)$. Thus, the derivative is positive in the interior of ϕ 's domain, so λ_{intra} is increasing in ϕ .

The sign of the derivative of λ_{inter} with respect to ϕ is given by:

$$\text{sgn} \left\{ \frac{\partial \lambda_{inter}}{\partial \phi} \right\} = \text{sgn} \left\{ \begin{aligned} &(2 - \phi)\phi [(1 - \phi - \tilde{\phi})J + \tilde{\phi}] + 2(1 - \phi)J [(1 - \phi)^2 - [2(1 - \phi) - \tilde{\phi}] \tilde{\phi}] \\ &+ [2(1 - \phi) - \tilde{\phi}] \tilde{\phi} \end{aligned} \right\}$$

where the first term is always non-negative and positive if $0 < \phi < 1$, the middle one is always non-negative and positive if $1 - \phi - \tilde{\phi} > 0$ and last term is always non-negative and positive if $\tilde{\phi} > 0$. Thus, the derivative is positive in the interior of ϕ 's domain, so λ_{inter} is increasing in ϕ .

The sign of the derivative of λ_{intra} with respect to $\tilde{\phi}$ is given by:

$$\begin{aligned} \text{sgn} \left\{ \frac{\partial \lambda_{intra}}{\partial \tilde{\phi}} \right\} &= \text{sgn} \left\{ \frac{(1 - \phi - \tilde{\phi}) 2N [(1 - \phi)^2 J N + (2 - \phi)\phi - [2(1 - \phi) - \tilde{\phi}] \tilde{\phi} N (J - 1)]}{(1 - \phi - \tilde{\phi}) 2JN [(1 - \phi)^2 N + (2 - \phi)\phi]} \right\} \\ &= \text{sgn} \left\{ (1 - \phi - \tilde{\phi}) 2JN [(1 - \phi)^2 N + (2 - \phi)\phi] \right\} \end{aligned}$$

so the derivative is positive in the interior of $\tilde{\phi}$'s domain and, given this λ_{intra} is increasing in $\tilde{\phi}$.

The derivative of λ_{inter} with respect to $\tilde{\phi}$ is given by:

$$\frac{\partial \lambda_{inter}}{\partial \tilde{\phi}} = \frac{(1 - \phi - \tilde{\phi}) 2N(J - 1) [(2 - \phi)\phi + [2(1 - \phi) - \tilde{\phi}] \tilde{\phi} N]}{[\cdot]^2}$$

$(2 - \phi)\phi \geq 0$ (with inequality if $\phi > 0$); also $[2(1 - \phi) - \tilde{\phi}] \tilde{\phi} \geq 0$ (with inequality if $\tilde{\phi} > 0$). Thus, the derivative is positive in the interior of $\tilde{\phi}$'s domain, and so λ_{inter} is increasing in $\tilde{\phi}$.

2. Now consider the second point. The sign of the derivative of λ_{intra} with respect to N is given by:

$$\begin{aligned} \text{sgn} \left\{ \frac{\partial \lambda_{intra}}{\partial N} \right\} &= \text{sgn} \left\{ [2(1 - \phi) - \tilde{\phi}] \tilde{\phi} (2 - \phi)\phi - (2 - \phi)\phi [(1 - \phi)^2 J - [2(1 - \phi) - \tilde{\phi}] \tilde{\phi} (J - 1)] \right\} \\ &= -\text{sgn} \left\{ (2 - \phi)\phi [(1 - \phi)^2 J - [2(1 - \phi) - \tilde{\phi}] \tilde{\phi} J] \right\} \\ &= -\text{sgn} \left\{ (2 - \phi)\phi [(1 - \phi)^2 - [2(1 - \phi) - \tilde{\phi}] \tilde{\phi}] \right\} \\ &= -\text{sgn} \left\{ (2 - \phi)\phi (1 - \phi - \tilde{\phi})^2 \right\} \end{aligned}$$

Thus, if $\phi > 0$ and $1 - \phi - \tilde{\phi} > 0$, λ_{intra} is decreasing in N .

Also, for the denominator of λ_{inter} we have $(1 - \phi)^2 J - [2(1 - \phi) - \tilde{\phi}] \tilde{\phi} (J - 1) = J(1 - \phi - \tilde{\phi})^2 + [2(1 - \phi) - \tilde{\phi}] \tilde{\phi}$, which is positive for $\phi < 1$. The numerator is positive for $\phi > 0$, so λ_{inter} is decreasing in N for $\phi \in (0, 1)$.

3. Now consider the third point. $((1 - \phi)^2 - [2(1 - \phi) - \tilde{\phi}] \tilde{\phi}) = (1 - \phi - \tilde{\phi})^2 \geq 0$ with equality for $\tilde{\phi} = 1 - \phi$, so the denominators of λ_{intra} and λ_{inter} are both increasing in J as long as $1 - \phi - \tilde{\phi} > 0$ (we have shown already that if $1 - \phi - \tilde{\phi} = 0$, they do not depend on J), and, given this condition λ_{intra} and λ_{inter} are decreasing in J .

4. Last, consider the fourth point. Since $[2(1 - \phi) - \tilde{\phi}] \geq 0$ with equality for $\phi = 1$ it is immediate that the minimum value λ_{intra} and λ_{inter} can assume is 0. We have shown that λ_{intra} and λ_{inter} are either decreasing or constant in N . Thus, they attain their maxima for $N = 1$, for which value we have:

$$\lambda_{intra} = \frac{(2 - \phi)\phi + [2(1 - \phi) - \tilde{\phi}] \tilde{\phi}}{(1 - \phi)^2 J + (2 - \phi)\phi - [2(1 - \phi) - \tilde{\phi}] \tilde{\phi} (J - 1)}$$

$$\lambda_{inter} = \frac{(2 - \phi)\phi}{(1 - \phi)^2 J + (2 - \phi)\phi - [2(1 - \phi) - \tilde{\phi}] \tilde{\phi} (J - 1)}$$

Notice that $\lambda_{intra} \geq \lambda_{inter}$. Also, $((1 - \phi)^2 - [2(1 - \phi) - \tilde{\phi}] \tilde{\phi}) \geq 0$ with equality for $\tilde{\phi} = 1 - \phi$, so for $J = 1$, they both attain their maxima with the one for λ_{intra} given by:

$$\lambda_{intra} = \frac{(2 - \phi)\phi + [2(1 - \phi) - \tilde{\phi}] \tilde{\phi}}{(1 - \phi)^2 + (2 - \phi)\phi} = (2 - \phi)\phi + [2(1 - \phi) - \tilde{\phi}] \tilde{\phi} = (2 - \phi - \tilde{\phi})(\phi + \tilde{\phi})$$

which is maximized for $\tilde{\phi} + \phi = 1$, which gives a value of 1.

We conclude that $\lambda_{intra} \in [0, 1]$ and $\lambda_{inter} \in [0, 1]$. \square

PROOF OF PROPOSITION 2:

The change in the relative price of the firm's own sector is:

$$\begin{aligned} \frac{\partial \rho_n}{\partial L_{nj}} &= -\frac{1}{\theta} \left(\frac{1}{N} \right)^{\frac{1}{\theta}} \left(\frac{c_n}{C} \right)^{-\frac{1}{\theta}-1} \frac{F'(L_{nj})C - c_n^{\frac{\theta}{\theta-1}} \frac{C}{C^{\frac{\theta-1}{\theta}}} \left(\frac{1}{N} \right)^{\frac{1}{\theta}} \frac{\theta-1}{\theta} c_n^{\frac{\theta-1}{\theta}-1} F'(L_{nj})}{C^2} \\ &= -\frac{1}{\theta} \left(\frac{1}{N} \right)^{\frac{1}{\theta}} \left(\frac{c_n}{C} \right)^{-\frac{1}{\theta}} \left[1 - \left(\frac{1}{N} \right)^{\frac{1}{\theta}} \left(\frac{c_n}{C} \right)^{\frac{\theta-1}{\theta}} \right] \frac{F'(L_{nj})}{c_n} \\ &= -\frac{1}{\theta} \rho_n \left[1 - \left(\frac{p_n c_n}{PC} \right) \right] \frac{F'(L_{nj})}{c_n} < 0. \end{aligned}$$

The change in the relative price of the other sectors ($m \neq n$) is:

$$\begin{aligned} \frac{\partial \rho_m}{\partial L_{nj}} &= -\frac{1}{\theta} \left(\frac{1}{N} \right)^{\frac{1}{\theta}} \left(\frac{c_m}{C} \right)^{-\frac{1}{\theta}-1} \frac{c_m - 1}{C} \frac{\theta}{C} \frac{C}{C^{\frac{\theta-1}{\theta}}} \left(\frac{1}{N} \right)^{\frac{1}{\theta}} \frac{\theta-1}{\theta} c_n^{\frac{\theta-1}{\theta}-1} F'(L_{nj}) \\ &= \frac{1}{\theta} \left(\frac{1}{N^2} \right)^{\frac{1}{\theta}} \left(\frac{c_m}{C} \right)^{1-\frac{1}{\theta}} \left(\frac{c_n}{C} \right)^{-\frac{1}{\theta}} \frac{F'(L_{nj})}{c_m} \\ &= \frac{1}{\theta} \left(\frac{p_m c_m}{PC} \right) \rho_n \frac{F'(L_{nj})}{c_m} > 0. \square \end{aligned}$$

PROOF OF PROPOSITION 3:

The expressions in the proof of 2 imply the following relationship between the change in the relative price of sector n and the changes in the relative prices of the other sectors:

$$\frac{\partial \rho_n}{\partial L_{nj}} c_n = - \sum_{m \neq n} \frac{\partial \rho_m}{\partial L_{nj}} c_m. \quad (\text{A.1})$$

Multiplying and dividing by L in the wage effect term, by c_n in the own-industry relative price effect term, and by c_m in the other industry relative price terms, and using equation (A.1), the first-order condition simplifies to:

$$\begin{aligned} &\rho_n F'(L_{nj}) - \omega(L) - \omega'(L)L \left[s_{nj}^L + \lambda_{intra} s_{n,-j}^L + \lambda_{inter} (1 - s_{nj}^L - s_{n,-j}^L) \right] \\ &+ \frac{\partial \rho_n}{\partial L_{nj}} c_n [s_{nj} + \lambda_{intra}(1 - s_{nj}) - \lambda_{inter}] = 0, \end{aligned}$$

where $s_{nj} \equiv \frac{F(L_{nj})}{c_n}$ is the share of firm j in the total production of sector n , $s_{nj}^L \equiv \frac{L_{nj}}{L}$ and $s_{n,-j}^L \equiv \left(\sum_{k \neq j} L_{nk} \right) / L$.

The second derivative of the objective function of firm j in sector n is:

$$\begin{aligned} & \frac{\partial \rho_n}{\partial L_{nj}} F'(L_{nj}) + \rho_n F''(L_{nj}) - 2\omega'(L) - \omega''(L) \left[L_{nj} + \lambda_{intra} \sum_{k \neq j} L_{nk} + \lambda_{inter} \sum_{m \neq n} \sum_{k=1}^J L_{mk} \right] \\ & + \frac{\partial \rho_n}{\partial L_{nj}} F'(L_{nj})(1 - \lambda_{inter}) + \frac{\partial^2 \rho_n}{(\partial L_{nj})^2} [F(L_{nj})(1 - \lambda_{inter}) + (\lambda_{intra} - \lambda_{inter})(c_n - F(L_{nj}))]. \end{aligned}$$

The second derivative of the relative price of firm j in sector n with respect to its own employment is

$$\frac{\partial^2 \rho_n}{(\partial L_{nj})^2} = \frac{\partial \rho_n}{\partial L_{nj}} \left[\frac{\partial \rho_n}{\partial L_{nj}} \frac{1}{\rho_n} \left(1 + (\theta - 1) \frac{\frac{p_n c_n}{PC}}{1 - \frac{p_n c_n}{PC}} \right) + \frac{F''(L_{nj})}{F'(L_{nj})} - \frac{F'(L_{nj})}{c_n} \right].$$

Replacing this in the second derivative and grouping terms yields

$$\begin{aligned} & \frac{\partial \rho_n}{\partial L_{nj}} F'(L_{nj}) \left\{ 1 - \lambda_{inter} - \left[(1 - \lambda_{inter}) \frac{F(L_{nj})}{c_n} + (\lambda_{intra} - \lambda_{inter}) \frac{c_n - F(L_{nj})}{c_n} \right] \left[\frac{1}{\theta} \left(1 - \frac{p_n c_n}{PC} \right) + \left(1 - \frac{1}{\theta} \right) \frac{p_n c_n}{PC} \right] \right\} \\ & + \frac{\partial \rho_n}{\partial L_{nj}} F'(L_{nj}) \left\{ 1 - \left[(1 - \lambda_{inter}) \frac{F(L_{nj})}{c_n} + (\lambda_{intra} - \lambda_{inter}) \frac{c_n - F(L_{nj})}{c_n} \right] \right\} \\ & + \rho_n F''(L_{nj}) + \frac{\partial \rho_n}{\partial L_{nj}} c_n \frac{F''(L_{nj})}{F'(L_{nj})} \left[(1 - \lambda_{inter}) \frac{F(L_{nj})}{c_n} + (\lambda_{intra} - \lambda_{inter}) \frac{c_n - F(L_{nj})}{c_n} \right] \\ & - 2\omega'(L) - \omega''(L) \left[L_{nj} + \lambda_{intra} \sum_{k \neq j} L_{nk} + \lambda_{inter} \sum_{m \neq n} \sum_{k=1}^J L_{mk} \right]. \end{aligned}$$

The first row of this expression is negative because $\frac{\partial \rho_n}{\partial L_{nj}}$ is negative, F' is positive, and the expression in curly brackets is positive because $\left[\frac{1}{\theta} \left(1 - \frac{p_n c_n}{PC} \right) + \left(1 - \frac{1}{\theta} \right) \frac{p_n c_n}{PC} \right] < 1$. The term of the second row is clearly negative. The first term of the third row is non-positive, but the second term is non-negative. The two combined, however, can be rewritten as

$$\frac{\partial \rho_n}{\partial L_{nj}} c_n \frac{F''(L_{nj})}{F'(L_{nj})} \left\{ -\frac{\theta}{1 - \frac{p_n c_n}{PC}} + \left[(1 - \lambda_{inter}) \frac{F(L_{nj})}{c_n} + (\lambda_{intra} - \lambda_{inter}) \frac{c_n - F(L_{nj})}{c_n} \right] \right\},$$

which is the product of three nonpositive factors and therefore the whole expression is non-positive. The fourth row is strictly negative because, with the constant-elasticity utility functional form, it is equal to $-\frac{\omega}{L} \frac{1}{\eta} \left\{ 2 + \left(\frac{1}{\eta} - 1 \right) \left[s_{nj}^L + \lambda_{intra} s_{n,-j}^L + \lambda_{inter} \left(1 - s_{nj}^L - s_{n,-j}^L \right) \right] \right\}$. The expression

$$\left\{ 2 + \left(\frac{1}{\eta} - 1 \right) \left[s_{nj}^L + \lambda_{intra} s_{n,-j}^L + \lambda_{inter} \left(1 - s_{nj}^L - s_{n,-j}^L \right) \right] \right\}$$

is greater than one, and it is multiplying a factor $-\frac{\omega}{L} \frac{1}{\eta}$ that is negative, and therefore the fourth row of

the second-order condition is negative.

The objective function of each firm is thus globally strictly concave, and therefore any solution to the system of equation implied by the first-order conditions is an equilibrium. To find the symmetric equilibria, we thus start by simplifying the first-order condition of firm nj when it is evaluated at a symmetric equilibrium, with $c_n = c$ for all n , and $p_n = p$ for all n . Note first that in the symmetric case $c_n/C = c/C = 1/N$.

In a symmetric equilibrium, the marginal product of labor is equal to $F'(\frac{L}{JN})$. Using that fact and replacing $\frac{c_n}{C} = \frac{c_m}{C} = \frac{1}{N}$ in the expression for the change in the relative price of the firm's industry when the firm expands employment plans it simplifies to

$$\frac{\partial \rho_n}{\partial L_{nj}} = -\frac{1}{\theta} \left(1 - \frac{1}{N}\right) \frac{F'(\frac{L}{JN})}{c}.$$

Dividing the first-order condition by the real wage and substituting the derivatives of the relative price that we just derived yields:

$$\begin{aligned} \frac{F'(\frac{L}{JN}) - \omega(L)}{\omega(L)} &= \frac{\omega'(L)L}{\omega(L)} \left[s_{nj}^L + \lambda_{intra} s_{n,-j}^L + \lambda_{inter} (1 - s_{nj}^L - s_{n,-j}^L) \right] \\ &\quad + \frac{1}{\theta} \left(1 - \frac{1}{N}\right) \frac{F'(\frac{L}{JN})}{\omega(L)} [s_{nj} + \lambda_{intra}(1 - s_{nj}) - \lambda_{inter}]. \end{aligned}$$

In a symmetric equilibrium, the employment share of firm j in sector n is equal to $\frac{L_{nj}}{L} = \frac{1}{JN}$ for all sectors n and all firms j within the sector, since the employment shares of all firms are the same. Similarly, the product market share of firm j in sector n is $\frac{F(L_{nj})}{c} = \frac{1}{J}$. Replacing these in the previous equation implies

$$\mu = \frac{1}{\eta} [1/NJ + \lambda_{intra}(J-1)/NJ + \lambda_{inter}(N-1)/N] + \frac{1+\mu}{\theta} \left(1 - \frac{1}{N}\right) [1/J + \lambda_{intra}(J-1)/J - \lambda_{inter}].$$

We can then express this in terms of MHHIs for the labor market and product markets as follows:

$$\mu = \frac{1}{\eta} \underbrace{[1/NJ + \lambda_{intra}(J-1)/NJ + \lambda_{inter}(N-1)/N]}_{H_{JN}} + \frac{1+\mu}{\theta} \left\{ \underbrace{[1/J + \lambda_{intra}(J-1)/J]}_{H_J} - \lambda_{inter} \right\} \left(1 - \frac{1}{N}\right).$$

In this expression, H_{JN} is the MHHI for the labor market, which equals $(1 + \lambda_{intra}(J-1) + \lambda_{inter}(N-1))/NJ$, and H_J is the MHHI for the product market of one industry, which equals $\frac{1}{J} + \lambda_{intra} \left(1 - \frac{1}{J}\right)$.

The expression for the markup provides an equation in L :

$$\omega(L) = \frac{F' \left(\frac{L}{JN} \right)}{1 + \frac{H_{JN}}{\eta}} \cdot \frac{1}{1 - \frac{1}{\theta} (H_J - \lambda_{inter}) \left(1 - \frac{1}{N} \right)}.$$

Combining this equation in L and w/P with the inverse labor supply and imposing labor market clearing yields an equation for the equilibrium level of employment L :

$$-\frac{U_L \left(\frac{w}{P} \frac{L}{N}, \frac{L}{N} \right)}{U_C \left(\frac{w}{P} \frac{L}{N}, \frac{L}{N} \right)} = \frac{F' \left(\frac{L}{JN} \right)}{1 + \frac{H_{JN}}{\eta}} \cdot \frac{1}{1 - \frac{1}{\theta} (H_J - \lambda_{inter}) \left(1 - \frac{1}{N} \right)}.$$

We can obtain a closed-form solution for the constant-elasticity labor supply and Cobb-Douglas production function case. In this case, the equation for equilibrium total employment level is:

$$\chi^{\frac{1}{1-\sigma}} \left(\frac{L}{N} \right)^{\frac{\xi+\sigma}{1-\sigma}} = \frac{A\alpha \left(\frac{L}{JN} \right)^{\alpha-1}}{1 + \frac{H_{JN}}{\eta}} \cdot \frac{1}{1 - \frac{1}{\theta} (H_J - \lambda_{inter}) \left(1 - \frac{1}{N} \right)}.$$

This equation has a unique solution for L :

$$L^* = N \left(\frac{\chi^{-\frac{1}{1-\sigma}} A\alpha}{1 + \mu^*} \right)^{\frac{1}{\frac{1}{\eta} - (\alpha-1)}} J^{-\frac{\alpha-1}{\frac{1}{\eta} - (\alpha-1)}},$$

where $1 + \mu^*$ is

$$1 + \mu^* = \frac{1 + \frac{H_{JN}}{\eta}}{1 - \frac{1}{\theta} (H_J - \lambda_{inter}) \left(1 - \frac{1}{N} \right)}.$$

We show the following: the equilibrium markdown of real wages μ^* is (1) increasing in $\tilde{\phi}$, (2) for $\phi + \tilde{\phi} < 1$ decreasing in J ; if $\phi + \tilde{\phi} = 1$ constant as function of J , (3) decreasing in the elasticity of labor supply η , and (4) for $\phi < 1$ decreasing in the elasticity of substitution among goods by consumers θ ; otherwise constant as function of θ .

Consider the first point. From the Lemma we know that λ_{intra} and λ_{inter} are increasing in $\tilde{\phi}$ and, thus, so is H_{JN} . We also have:

$$\frac{\partial(H_J - \lambda_{inter})}{\partial \tilde{\phi}} = \frac{J-1}{J} \frac{\partial \lambda_{intra}}{\partial \tilde{\phi}} - \frac{\partial \lambda_{inter}}{\partial \tilde{\phi}}$$

We can check that its sign is given by:

$$\begin{aligned} \operatorname{sgn} \left\{ \frac{\partial(H_J - \lambda_{inter})}{\partial \tilde{\phi}} \right\} &= \operatorname{sgn} \left\{ \frac{\frac{J-1}{J} (1 - \phi - \tilde{\phi}) 2JN [(1 - \phi)^2 N + (2 - \phi)\phi]}{-(1 - \phi - \tilde{\phi}) 2N(J - 1) [(2 - \phi)\phi + [2(1 - \phi) - \tilde{\phi}] \tilde{\phi} N]} \right\} \\ &= \operatorname{sgn} \{ (1 - \phi - \tilde{\phi}) [(1 - \phi)^2 N - [2(1 - \phi) - \tilde{\phi}] \tilde{\phi} N] \} \\ &= \operatorname{sgn} \{ (1 - \phi - \tilde{\phi})^3 \} \end{aligned}$$

which is positive for $(1 - \phi - \tilde{\phi}) > 0$, so $(H_J - \lambda_{inter})$ is increasing in $\tilde{\phi}$. Also, $(H_J - \lambda_{inter}) \leq 1$ (it is equal to 1 for $\tilde{\phi} = 1$), so in the fraction in the expression of $\mu^* > 0$ the numerator is increasing and the denominator is decreasing in $\tilde{\phi}$, so μ^* is increasing in $\tilde{\phi}$.

Now consider the second point. Examine $H_J - \lambda_{inter}$:

$$\begin{aligned} H_J - \lambda_{inter} &= \frac{1 + \lambda_{intra}(J - 1)}{J} - \lambda_{inter} = \frac{1 + \frac{(J - 1) [(2 - \phi)\phi + [2(1 - \phi) - \tilde{\phi}] \tilde{\phi} N]}{(1 - \phi)^2 JN + (2 - \phi)\phi - [2(1 - \phi) - \tilde{\phi}] \tilde{\phi} N(J - 1)}}{J} - \lambda_{inter} \\ &= \frac{(1 - \phi)^2 JN + J(2 - \phi)\phi}{J [(1 - \phi)^2 JN + (2 - \phi)\phi - [2(1 - \phi) - \tilde{\phi}] \tilde{\phi} N(J - 1)]} - \lambda_{inter} \\ &= \frac{(1 - \phi)^2 N}{(1 - \phi)^2 JN + (2 - \phi)\phi - [2(1 - \phi) - \tilde{\phi}] \tilde{\phi} N(J - 1)} \end{aligned}$$

which is decreasing in J as long as $1 - \phi - \tilde{\phi} > 0$, since $((1 - \phi)^2 - [2(1 - \phi) - \tilde{\phi}] \tilde{\phi}) = (1 - \phi - \tilde{\phi})$; if $\phi + \tilde{\phi} = 1$, then $H_J - \lambda_{inter}$ is constant in J .

Consider now H_{JN} :

$$\begin{aligned} H_{JN} &= \frac{1 + \lambda_{intra}(J - 1) + \lambda_{inter}(N - 1)J}{NJ} = \frac{1}{N} \left[\frac{1 + \lambda_{intra}(J - 1)}{J} + (N - 1)\lambda_{inter} \right] \\ &= \frac{1}{N} \left[\frac{(1 - \phi)^2 N + (2 - \phi)\phi}{(1 - \phi)^2 JN + (2 - \phi)\phi - [2(1 - \phi) - \tilde{\phi}] \tilde{\phi} N(J - 1)} + (N - 1)\lambda_{inter} \right] \\ &= \frac{1}{N} \frac{(1 - \phi)^2 N + (2 - \phi)\phi + (N - 1)(2 - \phi)\phi}{(1 - \phi)^2 JN + (2 - \phi)\phi - [2(1 - \phi) - \tilde{\phi}] \tilde{\phi} N(J - 1)} \\ &= \frac{1}{(1 - \phi)^2 JN + (2 - \phi)\phi - [2(1 - \phi) - \tilde{\phi}] \tilde{\phi} N(J - 1)} \end{aligned}$$

which is decreasing in J as long as $1 - \phi - \tilde{\phi} > 0$; otherwise constant in J . We conclude that if $1 - \phi - \tilde{\phi} > 0$ the numerator and the denominator in the fraction in the expression of μ^* are decreasing and increasing in J , respectively, and if $\phi + \tilde{\phi} = 1$, they are both constant as functions of J . Thus, if $1 - \phi - \tilde{\phi} > 0$, the equilibrium markdown is decreasing in J ; otherwise it does not change with J .

Points (3) and (4) are straightforward given that $H_J - \lambda_{inter} \leq 1$ always, $H_J - \lambda_{inter} > 0$ for $\phi < 1$, and $H_{JN} > 0$ always.

We check now that when $\tilde{\phi} = 0$, μ^* is nonmonotone in ϕ and N . We have that

$$\frac{\partial \log(1 + \mu^*)}{\partial \phi} = \left\{ \frac{\frac{1}{\eta} \left(1 - \frac{1}{N}\right)}{1 + \frac{1}{\eta} \left[\frac{1}{N} + \lambda \left(1 - \frac{1}{N}\right) \right]} - \frac{\frac{1}{\theta J} \left(1 - \frac{1}{N}\right)}{1 - \frac{1-\lambda}{\theta J} \left(1 - \frac{1}{N}\right)} \right\} \frac{\partial \lambda}{\partial \phi}.$$

This is negative whenever $\frac{\theta J}{1 - \frac{1}{N}} - 1 < \frac{\eta}{1 - \frac{1}{N}} + \frac{1}{JN-1}$ or $\theta (JN - 1) < (1 + \eta) (N - 1)$. \square

PROOF OF PROPOSITION 5: We have that

$$\frac{\partial^2 \log L^*}{\partial(1 - \phi) \partial J} = \frac{1}{\frac{1}{\eta} - (\alpha - 1)} \frac{\frac{1}{\eta} \frac{\partial^2 H}{\partial(1 - \phi) \partial J} \left(1 + \frac{H}{\eta}\right) - \frac{1}{\eta^2} \frac{\partial H}{\partial(1 - \phi)} \frac{\partial H}{\partial J}}{\left(1 + \frac{H}{\eta}\right)^2} > 0$$

since $\text{sgn} \left\{ \frac{\partial^2 H}{\partial(1 - \phi) \partial J} \left(1 + \frac{H}{\eta}\right) - \frac{1}{\eta} \frac{\partial H}{\partial(1 - \phi)} \frac{\partial H}{\partial J} \right\} = \text{sgn} \left\{ - \left(1 - \frac{1}{J}\right) (1 - \lambda) \frac{\partial \lambda}{\partial(1 - \phi)} \right\}$, which is positive for $J > 1$ since $\frac{\partial \lambda}{\partial(1 - \phi)} < 0$. \square

PROOF OF PROPOSITION 8: The government's budget constraint is given by

$$\omega L_G = \tau \sum_{j=1}^J \frac{\pi_j}{p}$$

and the sum of profits in a symmetric equilibrium are:

$$\sum_{j=1}^J \frac{\pi_j}{p} = \omega \frac{H}{\eta} (1 - s_G) (L - L_G) = \omega \frac{H}{\eta} (1 - s_G)^2 L.$$

Combining this with the government's budget constraint, we obtain

$$s_G = \tau \frac{H}{\eta} (1 - s_G)^2 < \frac{H}{\eta} (1 - s_G)^2,$$

since τ has to be less than one. This is a quadratic inequality that implies an upper bound for the equilibrium share of government employment:

$$s_G < \underbrace{1 + \frac{\eta}{2H} - \sqrt{\left(1 + \frac{\eta}{2H}\right)^2 - 1}}_{\bar{s}}. \quad (\text{A.2})$$

The first-order condition of firm j evaluated at a symmetric equilibrium implies:

$$\omega(L) = \frac{A}{1 + \frac{H}{\eta} (1 - s_G)}.$$

Combining this with the expression for the inverse labor supply $\omega(L)$ and imposing labor market

clearing we obtain

$$L^* = \left[\frac{A\chi^{-\frac{1}{1-\sigma}}}{1 + \frac{H}{\eta} \left(1 - \frac{L_G}{L^*}\right)} \right]^\eta.$$

Any equilibrium also needs to satisfy condition (A.2). We obtain:

$$s_G = L_G \left[\frac{1 + \frac{H}{\eta} (1 - s_G)}{A} \right]^\eta \chi^{\frac{\eta}{1-\sigma}}.$$

The right-hand side of this equation is decreasing in s_G . Therefore, it will cross the 45 degree line at an $s_G < \bar{s}$ if and only if $L_G < \bar{s} \underbrace{\left[\frac{A\chi^{-\frac{1}{1-\sigma}}}{1 + \frac{H}{\eta} (1 - \bar{s})} \right]^\eta}_{\bar{L}_G}$. \square

PROOF OF PROPOSITION 9: We have that

$$\frac{\partial \log L^*}{\partial \log L_G} = \underbrace{-\eta}_{\frac{\partial \log L^*}{\partial \log(1+\mu)}} \underbrace{\frac{-\frac{H}{\eta}}{1 + \frac{H}{\eta} (1 - s_G)}}_{\frac{\partial \log(1+\mu)}{\partial s_G}} s_G \underbrace{\left(1 - \frac{\partial \log L^*}{\partial \log L_G}\right)}_{\frac{\partial s_G}{\partial \log L_G}}.$$

Solving for $\frac{\partial \log L^*}{\partial \log L_G}$ yields:

$$\frac{\partial \log L^*}{\partial \log L_G} = \frac{\frac{H s_G}{1 + \frac{H}{\eta} (1 - s_G)}}{1 + \frac{H s_G}{1 + \frac{H}{\eta} (1 - s_G)}},$$

and noting that $\frac{\partial \log L^*}{\partial \log L_G} = \frac{\partial L^*}{\partial L_G} s_G$, it follows that

$$\frac{\partial L^*}{\partial L_G} = \frac{H}{1 + \frac{H}{\eta} (1 - s_G) + H s_G} < 1$$

since $H \leq 1$ and $1 + \frac{H}{\eta} (1 - s_G) + H s_G > 1$. \square

PROOF OF PROPOSITION 10: Using $\frac{\partial \log L^*}{\partial H} = -\frac{1-s_G}{1 + \frac{H}{\eta} (1 - s_G)}$, we have that

$$\begin{aligned} \frac{\partial^2 L^*}{\partial L_G \partial J} &= \frac{\frac{1}{H^2} + \left(\frac{1}{\eta} - 1\right) \frac{s_G(1-s_G)}{1 + \frac{H}{\eta} (1 - s_G)}}{\left[\frac{1}{H} + \frac{1}{\eta} (1 - s_G) + s_G\right]^2} \frac{\partial H}{\partial J} < 0 \\ \frac{\partial^2 L^*}{\partial L_G \partial (1 - \phi)} &= \frac{\frac{1}{H^2} + \left(\frac{1}{\eta} - 1\right) \frac{s_G(1-s_G)}{1 + \frac{H}{\eta} (1 - s_G)}}{\left[\frac{1}{H} + \frac{1}{\eta} (1 - s_G) + s_G\right]^2} \frac{\partial H}{\partial (1 - \phi)} < 0 \end{aligned}$$

since $\frac{1}{H^2} \geq 1$, $\left(\frac{1}{\eta} - 1\right) \frac{s_G(1-s_G)}{1 + \frac{H}{\eta} (1 - s_G)} > -1$, $\frac{\partial H}{\partial J} < 0$, and $\frac{\partial H}{\partial (1 - \phi)} < 0$. \square

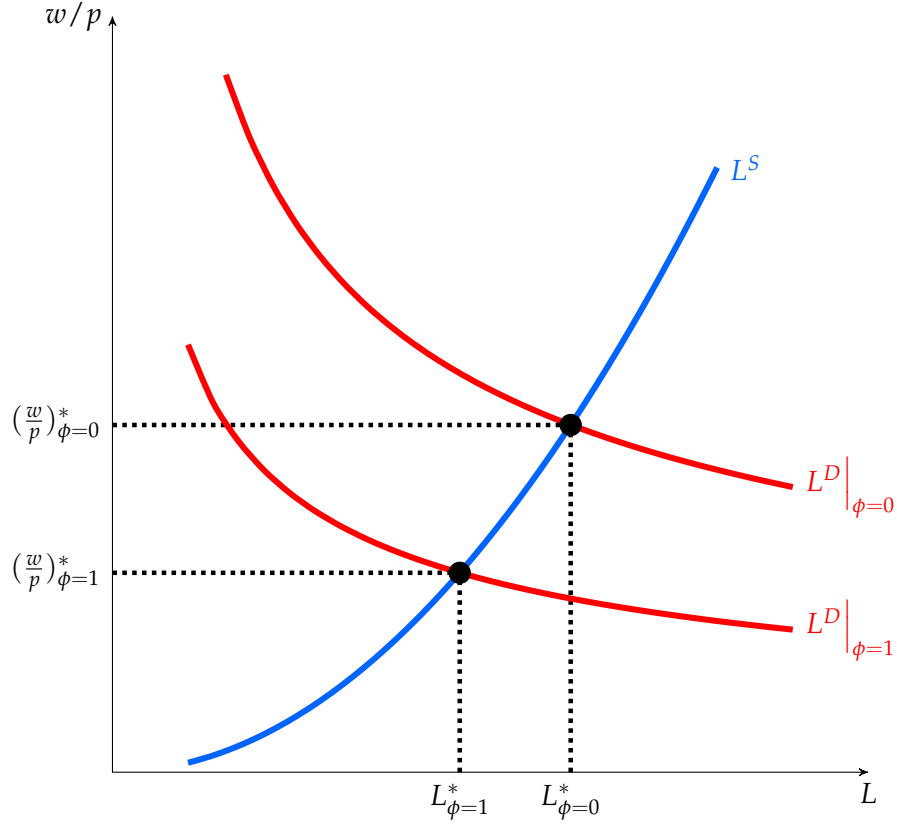


Figure 1. Effect of an increase in market concentration on equilibrium real wages and employment in the one-sector model. The model parameters for the plot are: $A = 6$, $J = 4$, $\alpha = 0.5$, $\xi = 0.5$, $\sigma = 0.5$, $\chi = 0.5$. In the case of $\phi = 0$, the MHHI is $H = 0.25$. In the case of $\phi = 1$, the MHHI is $H = 1$. L^S refers to the labor supply curve. L^D refers to the labor demand curve.

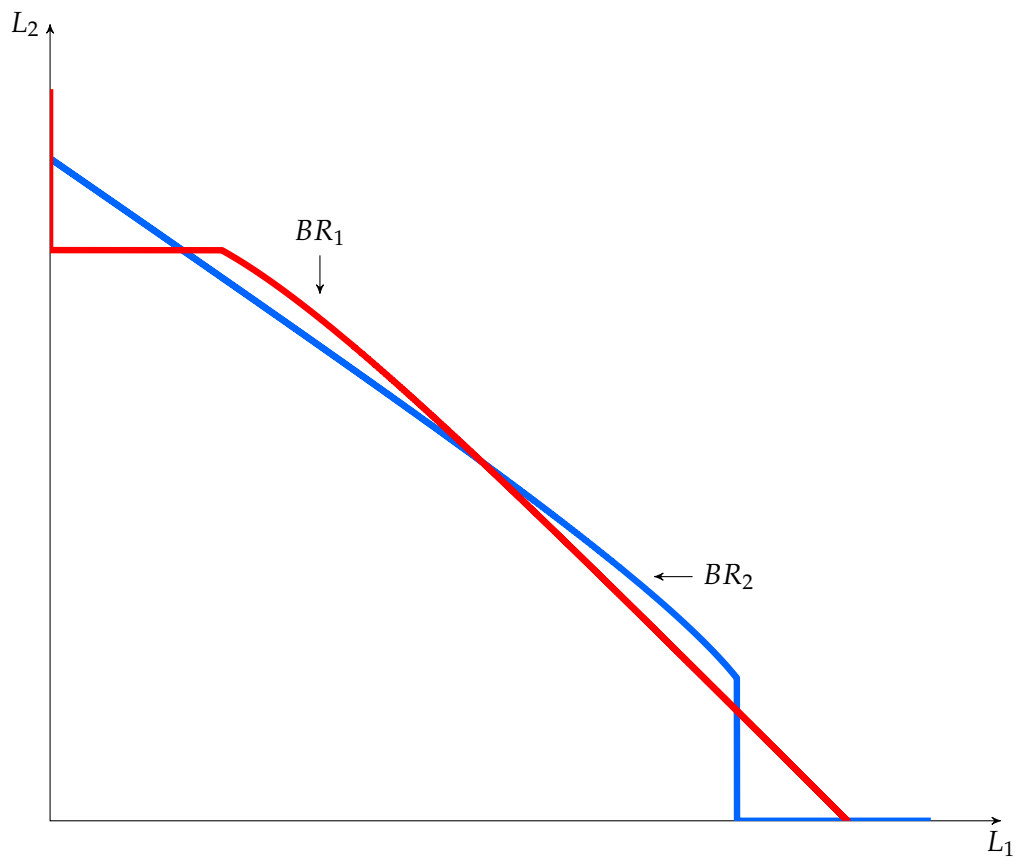


Figure 2. Best-response functions in a two-firm example with increasing returns and multiple equilibria ($\alpha = 1.4$). The model parameters for the plot are: $A = 6$, $J = 2$, $\phi = 0$, $\xi = 0.5$, $\sigma = 0.5$, $\chi = 0.5$.

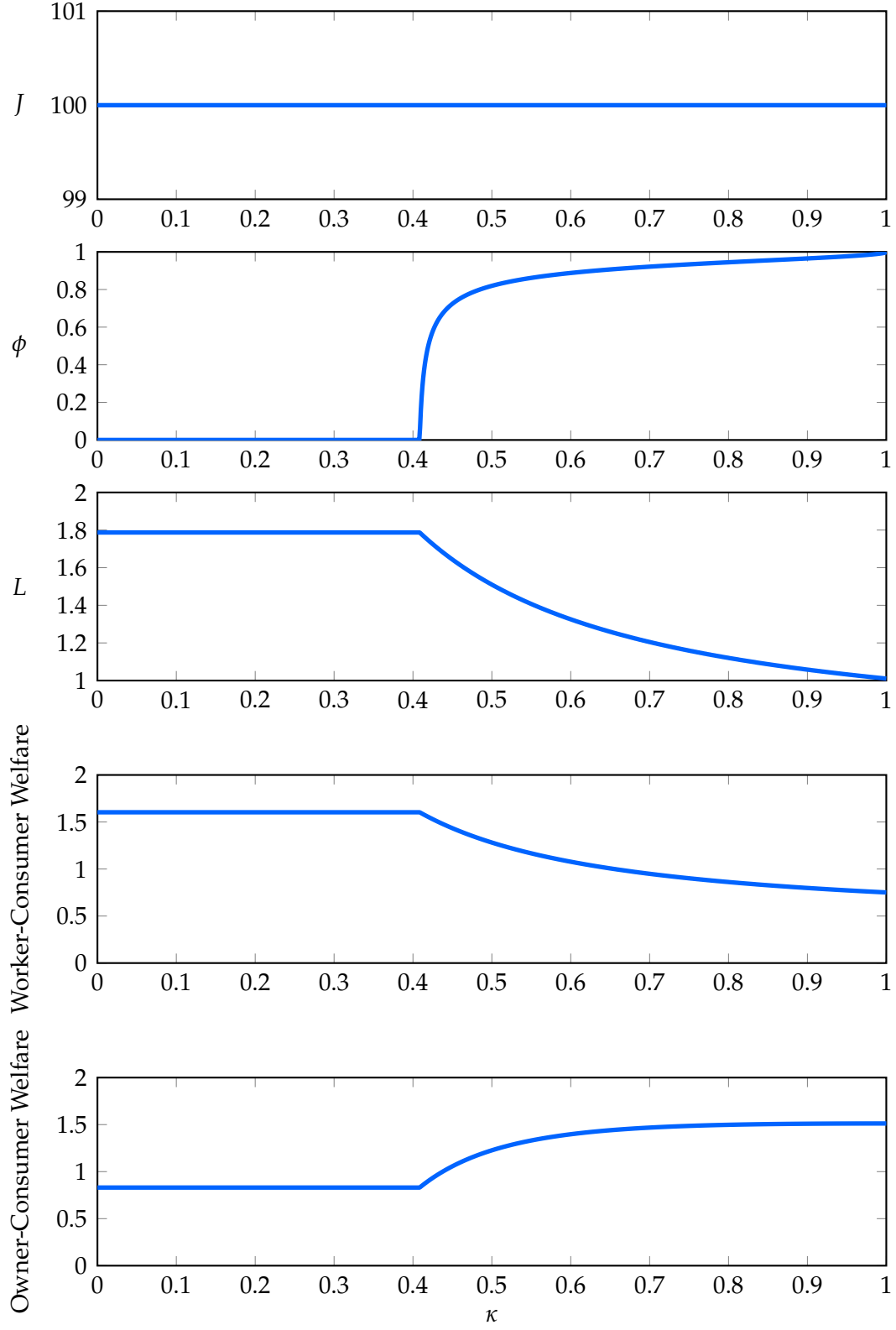


Figure 3. Optimal Competition Policy with Decreasing Returns to Scale ($\alpha = 0.8$). The model parameters for the plot are: $A = 1$, $\chi = 1$, $\sigma = 1/3$, $\xi = 1/3$, $J^{\max} = 100$.

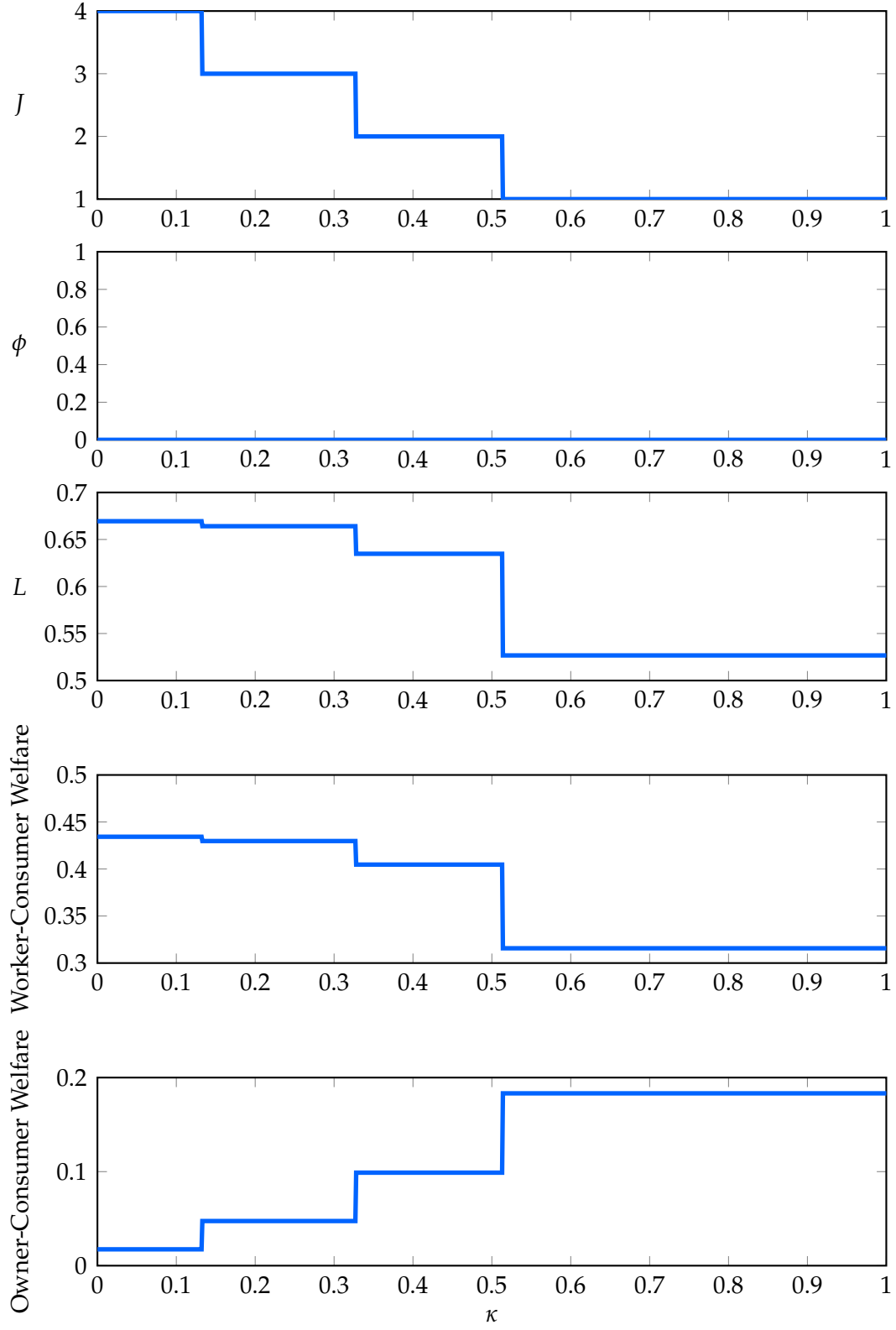


Figure 4. Optimal Competition Policy with Increasing Returns to Scale ($\alpha = 1.2$). The model parameters for the plot are: $A = 1, \chi = 1, \sigma = 1/3, \xi = 1/3, J^{\max} = 100$.

Online Appendix for “Oligopoly, Macroeconomic Performance, and Competition Policy”

by José Azar and Xavier Vives

In this appendix we provide some trends for concentration, market power, labor share and common ownership for the US economy in Section A.1; a general equilibrium oligopoly framework with invariance to price normalization in Section A.2; and a mapping of the general model to the different models in the paper in Section A.3.

A.1 Trends in the US economy

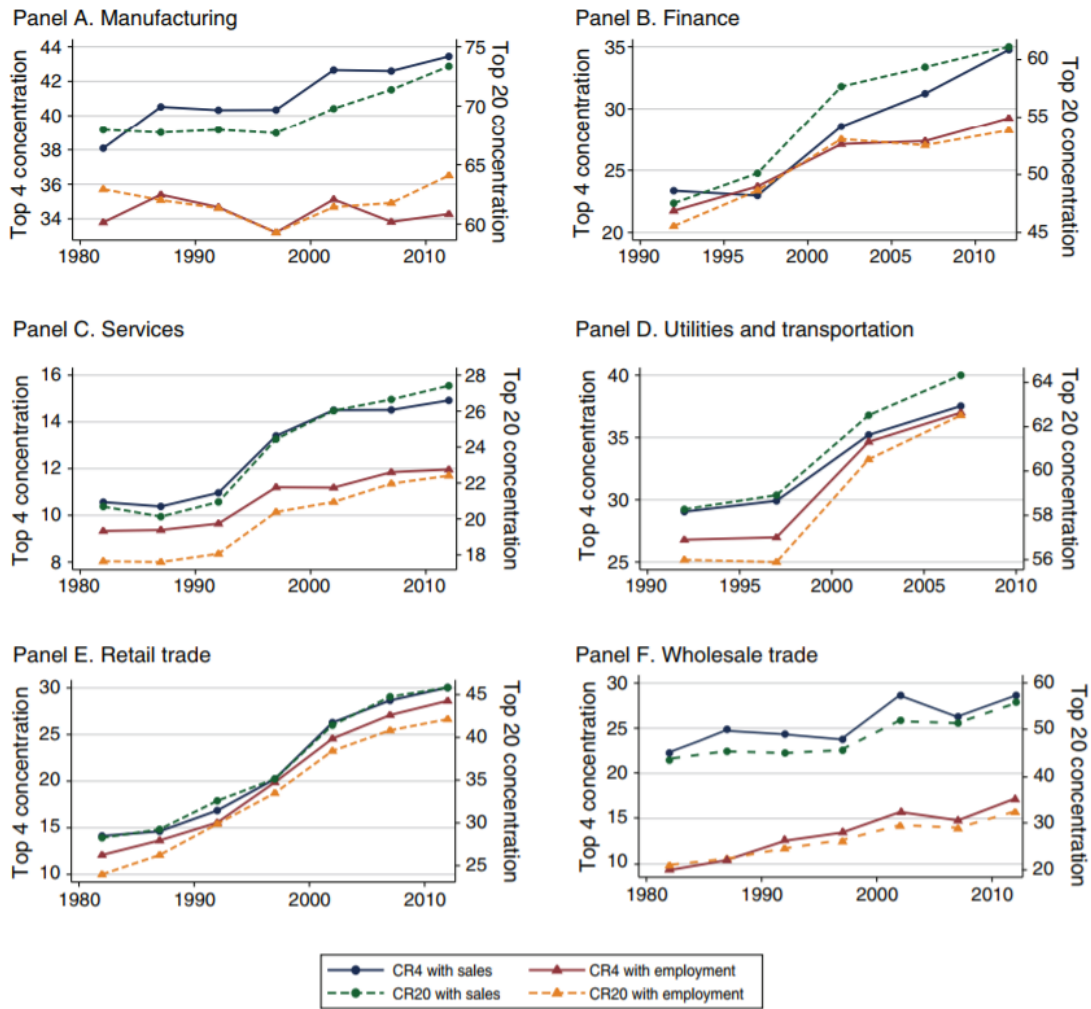
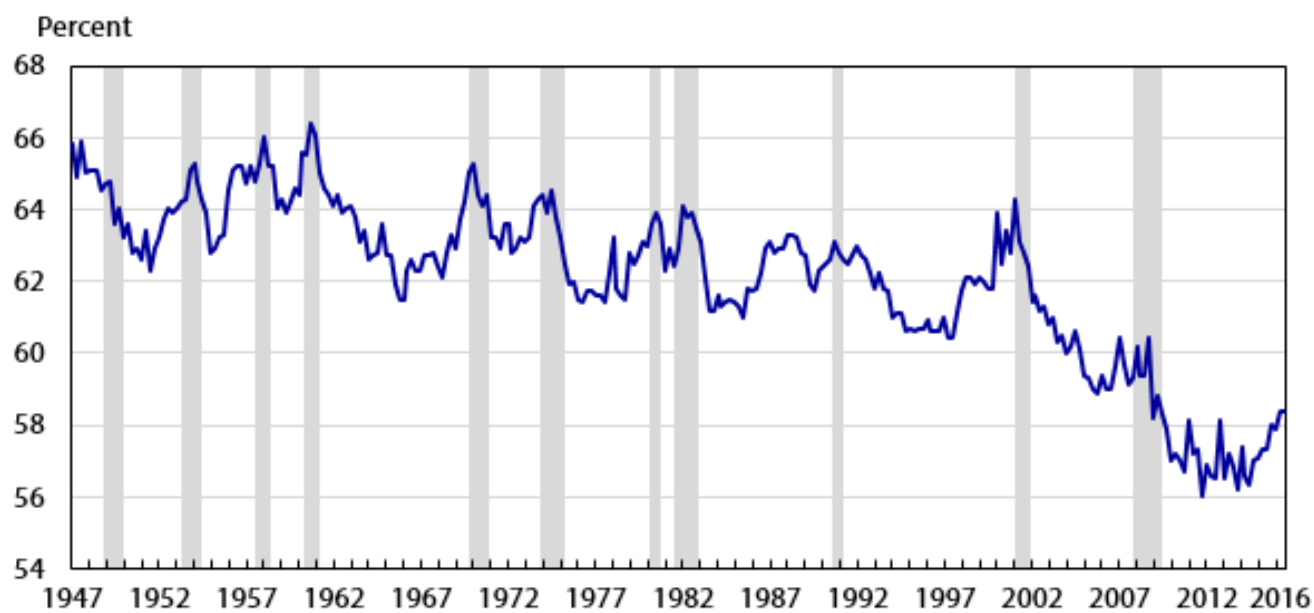


Figure A.1. Average CR4 across industries (Census). Source: Autor et al. (2017).



Note: Shaded areas indicate recessions, as determined by the National Bureau of Economic Research.
Source: U.S. Bureau of Labor Statistics.

Figure A.2. Labor Share of Nonfarm Business Sector Output. Source: [Giandrea and Sprague \(2017\)](#).

This figure plots trends in the employment-weighted average of the Herfindahl-Hirschman Index (HHI) of employment by firms computed at the county-three-digit industry-year level. The computed HHI is averaged across county-three-digit industry-year cells within each of the five-year periods (the last period includes eight years, 2002–2009) using the number of employees in each cell as the weight. Thus, the average HHI represents the degree of employer concentration the average worker faces in the labor market.

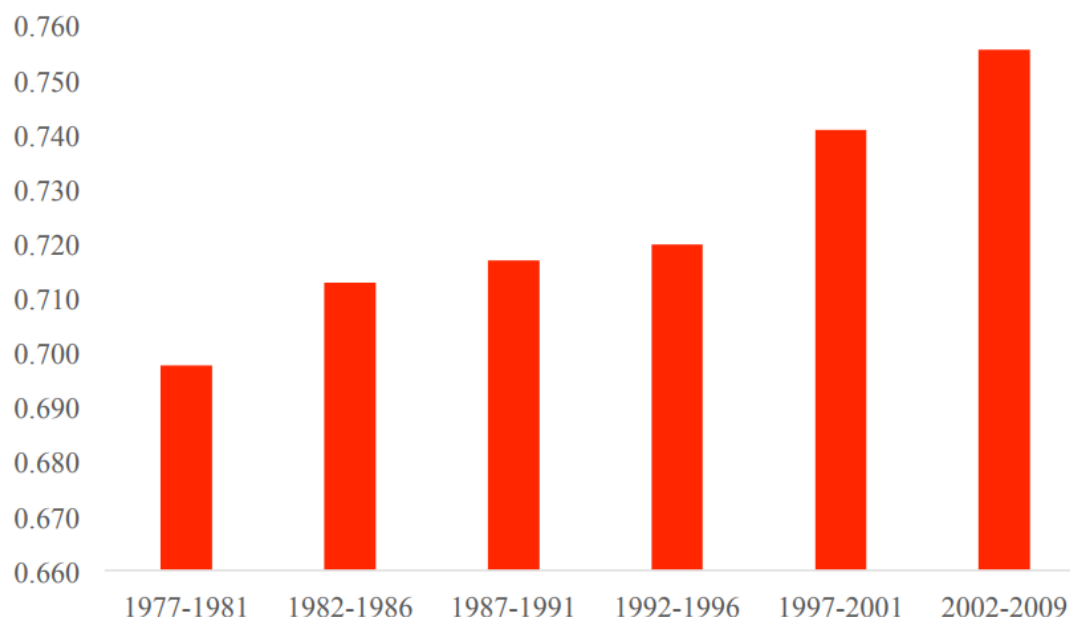


Figure A.3. Trends in Average Local-Level Employment Concentration, 1977–2009. Source: [Benmelech et al. \(2018\)](#).

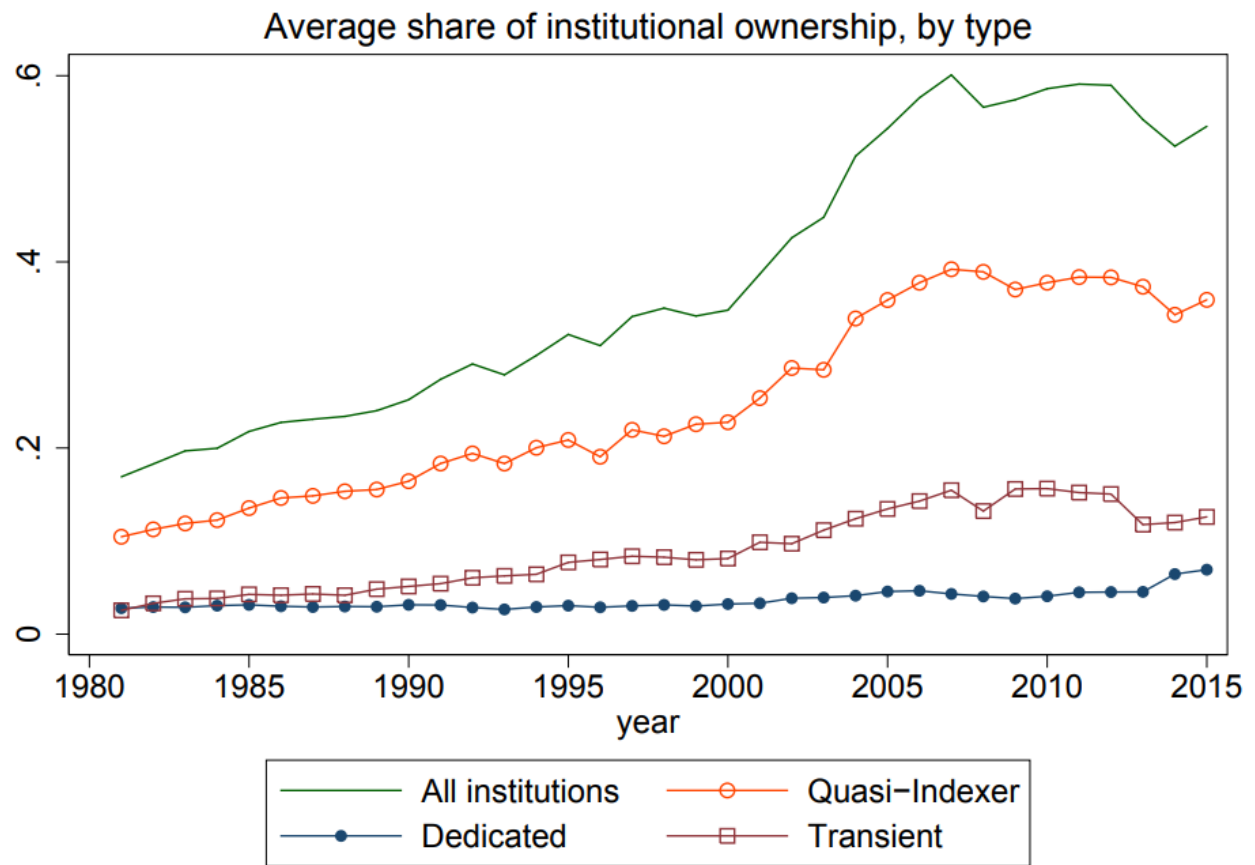


Figure A.4. Ownership share of quasi-indexers. Source: [Gutiérrez and Philippon \(2016\)](#).

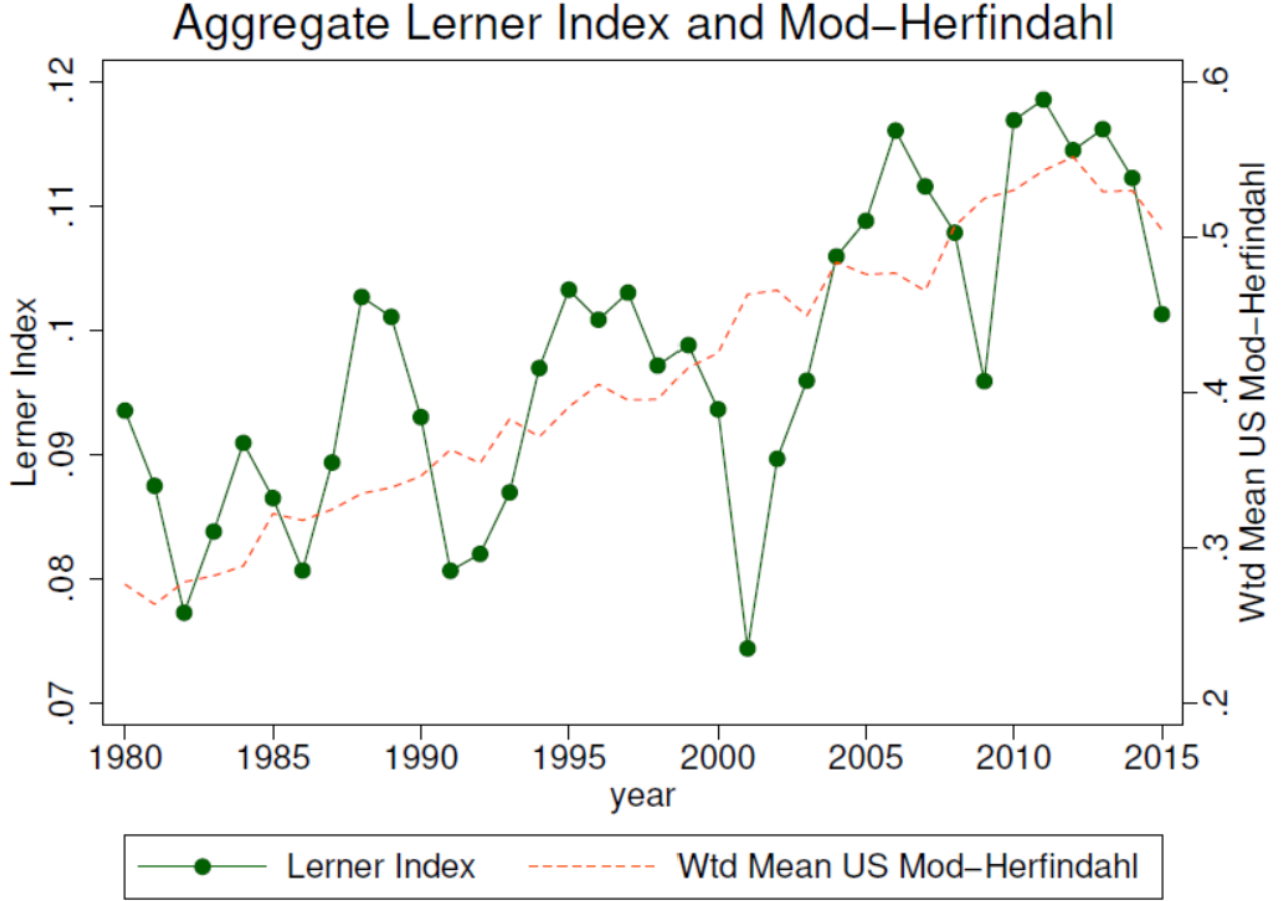


Figure A.5. Average Lerner Index and MHHI across industries (Compustat). Source: [Gutiérrez and Philippon \(2017\)](#).

A.2 A general framework for oligopoly in general equilibrium, and a general proof of invariance to price normalization

In this section, we introduce a general framework for oligopoly in general equilibrium where firms are assumed to maximize a weighted average of shareholder utilities instead of profits. We show that the equilibrium does not depend on the choice of price normalization.

Consider an economy with a finite number J of firms, and a continuum I of agents (who both consume the output of the firms and provide the factors of production) of measure M . There are Q goods, including factors of production.

Consumers. Each consumer i has an endowment \mathbf{e}_i of the Q goods, and ownership shares in the firms θ_i , with ownership and control not necessarily equal. For all j , $\int_{i \in I} \theta_{ij} = 1$ and $\int_{i \in I} \gamma_{ij} = 1$. Consumer i gets utility $U_i(\mathbf{x}_i)$ from consuming a vector \mathbf{x}_i of the Q goods.

Firms. Firm j has a production set $G_j \in \mathbb{R}^Q$. A production plan for firm j is a point $\mathbf{y}_j \in G_j$. Firms return profits to the owners in proportion to their ownership shares θ_{ij} .

Definition 4 (Competitive Equilibrium Relative to Firms' Production Plans). A price system \mathbf{p} is a non-null element of \mathbb{R}_+^Q . A competitive equilibrium relative to $(\mathbf{y}_1, \dots, \mathbf{y}_J)$ is a price system and an allocation pair $(\mathbf{p}, \{\mathbf{x}_i\}_{i \in I})$ such that:

1. Budget constraints are satisfied, that is, for each $i \in I$, $\mathbf{p} \cdot \mathbf{x}_i \leq \mathbf{p} \cdot \left(\mathbf{e}_i + \sum_{j=1}^J \theta_{ij} \mathbf{y}_j \right)$
2. There is no other element in the budget set that could achieve higher utility for any consumer.

Let the set Y be the production plan vectors $\mathbf{Y} = (\mathbf{y}_1, \dots, \mathbf{y}_J)$ for which there is at least one equilibrium. If an equilibrium exists for a given set of production plans, then an infinite set of renormalized equilibria exist for that set of production plans, with prices multiplied by a constant.

A price function \mathbb{P} assigns a price vector $\mathbb{P}(\mathbf{Y})$ to each production plan vector $\mathbf{Y} \in Y$, such that for any \mathbf{Y} , $(\mathbb{P}(\mathbf{Y}), \{\mathbf{x}_i\}_{i \in I})$ is a competitive equilibrium for some allocation $\{\mathbf{x}_i\}_{i \in I}$. Note that the price normalization does not necessarily imply that one of the prices is equal to one, and the normalization constant can be different for each set of production plans. A numéraire normalization is a special case of normalization in which the price of a given good is set to one.

Consumer i has indirect utility $V_i \left(\mathbf{p}, \mathbf{p} \cdot \left(\mathbf{e}_i + \sum_{j=1}^J \theta_{ij} \mathbf{y}_j \right) \right)$ when the price system is \mathbf{p} . In the following definition, we assume that a firm maximizes a control-share weighted average of consumer indirect utility functions.

Definition 5 (Cournot-Walras Equilibrium with Shareholder Representation). A Cournot-Walras equilibrium with shareholder representation is a price function \mathbb{P} , an allocation $\{\mathbf{x}_i^*\}_{i \in I}$, and a set of production plans \mathbf{Y}^* such that:

1. The pair $[\mathbb{P}(\mathbf{Y}^*); \{\mathbf{x}_i^*\}_{i \in I}]$ is a competitive equilibrium relative to $(\mathbf{y}_1^*, \dots, \mathbf{y}_J^*)$.
2. For each firm j , the objective function $\int_{i \in I} \gamma_{ij} V_i \left(\mathbb{P}(\mathbf{y}_j, \mathbf{y}_{-j}^*), \mathbb{P}(\mathbf{y}_j, \mathbf{y}_{-j}^*) \cdot \left(\mathbf{e}_i + \theta_{ij} \mathbf{y}_j + \sum_{k \neq j} \theta_{ik} \mathbf{y}_k^* \right) \right) di$ achieves its maximum on G_j at $\mathbf{y}_j = \mathbf{y}_j^*$ (where \mathbf{y}_{-j} denotes the vector production plans of all the firms except j).

Theorem 1 (Numeraire independence). If $\{\mathbb{P}; \{\mathbf{x}_i^*\}_{i \in I}; \mathbf{Y}^*\}$ is a Cournot-Walras equilibrium with shareholder representation, and $\tilde{\mathbb{P}}(\mathbf{Y}) = \Gamma(\mathbf{Y})\mathbb{P}(\mathbf{Y})$ for every $\mathbf{Y} \in Y$, where $\Gamma(\mathbf{Y})$ is a scalar-valued function, then $\{\tilde{\mathbb{P}}; \{\mathbf{x}_i^*\}_{i \in I}; (\mathbf{Y}^*)\}$ is also a Cournot-Walras equilibrium with shareholder representation.

Proof. Since $\{\mathbb{P}; \{\mathbf{x}_i^*\}_{i \in I}; \mathbf{Y}^*\}$ is a Cournot-Walras equilibrium with shareholder representation, then $[\mathbb{P}(\mathbf{Y}^*); \{\mathbf{x}_i^*\}_{i \in I}]$ is a competitive equilibrium relative to \mathbf{Y}^* . Since $\tilde{\mathbb{P}}(\mathbf{Y}^*) = \Gamma(\mathbf{Y}^*)\mathbb{P}(\mathbf{Y}^*)$, then $[\tilde{\mathbb{P}}(\mathbf{Y}^*); \{\mathbf{x}_i^*\}_{i \in I}]$ is also a competitive equilibrium relative to \mathbf{Y}^* . This establishes item 1 from the definition.

To show point 2 from the definition, note that, for each firm j ,

$$\int_{i \in I} \gamma_{ij} V_i \left(\mathbb{P}(\mathbf{Y}), \mathbb{P}(\mathbf{Y}) \cdot \left(\mathbf{e}_i + \sum_{k=1}^J \theta_{ik} \mathbf{y}_k \right) \right) di$$

is equal to

$$\int_{i \in I} \gamma_{ij} V_i \left(\Gamma(\mathbf{Y}) \mathbb{P}(\mathbf{Y}), \Gamma(\mathbf{Y}) \mathbb{P}(\mathbf{Y}) \cdot \left(\mathbf{e}_i + \sum_{k=1}^J \theta_{ik} \mathbf{y}_k \right) \right) di$$

for every set of production plans \mathbf{Y} because $\Gamma(\mathbf{Y})$ is a scalar-valued function, and indirect utility functions are homogenous of degree zero in prices and wealth. Therefore, if

$$\int_{i \in I} \gamma_{ij} V_i \left(\mathbb{P}(\mathbf{y}_j, \mathbf{y}_{-j}^*), \mathbb{P}(\mathbf{y}_j, \mathbf{y}_{-j}^*) \cdot \left(\mathbf{e}_i + \theta_{ij} \mathbf{y}_j + \sum_{k \neq j} \theta_{ik} \mathbf{y}_k^* \right) \right) di$$

achieves its maximum on G_j at \mathbf{y}_j^* , then

$$\int_{i \in I} \gamma_{ij} V_i \left(\tilde{\mathbb{P}}(\mathbf{y}_j, \mathbf{y}_{-j}^*), \tilde{\mathbb{P}}(\mathbf{y}_j, \mathbf{y}_{-j}^*) \cdot \left(\mathbf{e}_i + \theta_{ij} \mathbf{y}_j + \sum_{k \neq j} \theta_{ik} \mathbf{y}_k^* \right) \right) di$$

also achieves its maximum on G_j at \mathbf{y}_j^* . □

The intuition of the proof is straightforward: the change of numéraire is simply a renormalization of prices, in which the constant by which prices are renormalized is different depending on the production plans of the firms. The indirect utility function does not change with renormalization, and therefore neither does the objective function of the firm, which is a weighted average of indirect utility functions.

A.3 Mapping of the general model to the particular models in the paper

A.3.1 One-sector model

- $I = I_W \cup I_O$. I_O , the group of owners, is divided into J subgroups.
- $Q = 2$ (consumption good and leisure).
- $e_{1,i} = 0$ for all i .
- $e_{2,i} = T$ if $i \in I_W$.
- $\theta_{ij} = \frac{1-\phi+\frac{\phi}{J}}{1/J}$ if $i \in I_O$ and is in group j .
- $\theta_{ij} = \frac{\frac{\phi}{J}}{1/J}$ if $i \in I_O$ and is in group k .
- $\theta_{ij} = 0$ for $i \in I_W$.
- $\gamma_{ij} = \theta_{ij}$ (proportional control assumption).
- $U_i(\mathbf{x}_i) = U_i(C_i, L_i)$ if $i \in I_W$ (where L_i is labor supply).
- $U_i(\mathbf{x}_i) = U_i(C_i) = C_i$ if $i \in I_O$.

- $G_j = \{(y_j, -L_j) | y_j \leq F(L_j)\}$, where y_j is the amount of the consumption good produced by firm j and L_j is the amount of labor used by firm j in the production process.

A.3.2 Multi-sector model

- $I = I_W \cup I_O$. I_O , the group of owners, is divided into $N \times J$ subgroups.
- $Q = N + 1$ (N consumption goods and leisure).
- $e_{n,i} = 0$ for all $i, n = 1 \dots N$.
- $e_{n+1,i} = T$ if $i \in I_W$, zero otherwise.
- $\theta_{inj} = \frac{1-\phi+\phi/NJ}{1/NJ}$ if $i \in I_O$ and is in group nj .
- $\theta_{inj} = \frac{\phi}{1/NJ}$ if $i \in I_O$ and is not in group nj .
- $\theta_{inj} = 0$ for $i \in I_W$.
- $\gamma_{inj} = \theta_{inj}$ (proportional control assumption).
- $U_i(\mathbf{x}_i) = U_i(\{c_{ni}\}_{n=1}^N, L_i) = \frac{\left\{ \left[\sum_{n=1}^N \left(\frac{1}{N} \right)^{\frac{1}{\theta}} c_{ni}^{\frac{\theta-1}{\theta}} \right]^{\frac{\theta}{\theta-1}} \right\}^{1-\sigma}}{1-\sigma} - \chi \frac{L_i^{1+\xi}}{1+\xi}$ if $i \in I_W$ (L_i is labor supply).
- $U_i(\mathbf{x}_i) = U_i(\{c_{ni}\}_{n=1}^N, L_i) = \left[\sum_{n=1}^N \left(\frac{1}{N} \right)^{\frac{1}{\theta}} c_{ni}^{\frac{\theta-1}{\theta}} \right]^{\frac{\theta}{\theta-1}}$ if $i \in I_O$
- $G_{nj} = \{(\mathbf{0}_{n-1}, y_{nj}, \mathbf{0}_{N-n}, -L_{nj}) | y_{nj} \leq F(L_{nj})\}$, where $\mathbf{0}_k$ is a k -dimensional vector of 0's, y_{nj} is the amount of the consumption good produced by firm nj and L_{nj} is the amount of labor used by firm nj in the production process.