

Stockhammer, Engelbert; Rabinovich, Joel; Reddy, Niall

Working Paper

Distribution, wealth and demand regimes in historical perspective. USA, UK, France and Germany, 1855-2010

FMM Working Paper, No. 14

Provided in Cooperation with:

Macroeconomic Policy Institute (IMK) at the Hans Boeckler Foundation

Suggested Citation: Stockhammer, Engelbert; Rabinovich, Joel; Reddy, Niall (2018) : Distribution, wealth and demand regimes in historical perspective. USA, UK, France and Germany, 1855-2010, FMM Working Paper, No. 14, Hans-Böckler-Stiftung, Macroeconomic Policy Institute (IMK), Forum for Macroeconomics and Macroeconomic Policies (FMM), Düsseldorf

This Version is available at:

<https://hdl.handle.net/10419/181472>

Standard-Nutzungsbedingungen:

Die Dokumente auf EconStor dürfen zu eigenen wissenschaftlichen Zwecken und zum Privatgebrauch gespeichert und kopiert werden.

Sie dürfen die Dokumente nicht für öffentliche oder kommerzielle Zwecke vervielfältigen, öffentlich ausstellen, öffentlich zugänglich machen, vertreiben oder anderweitig nutzen.

Sofern die Verfasser die Dokumente unter Open-Content-Lizenzen (insbesondere CC-Lizenzen) zur Verfügung gestellt haben sollten, gelten abweichend von diesen Nutzungsbedingungen die in der dort genannten Lizenz gewährten Nutzungsrechte.

Terms of use:

Documents in EconStor may be saved and copied for your personal and scholarly purposes.

You are not to copy documents for public or commercial purposes, to exhibit the documents publicly, to make them publicly available on the internet, or to distribute or otherwise use the documents in public.

If the documents have been made available under an Open Content Licence (especially Creative Commons Licences), you may exercise further usage rights as specified in the indicated licence.

FMM WORKING PAPER

No. 14 · January, 2018 · Hans-Böckler-Stiftung

DISTRIBUTION, WEALTH AND DEMAND REGIMES IN HISTORICAL PERSPECTIVE

USA, UK, France and Germany, 1855-2010

Engelbert Stockhammer*, Joel Rabinovich**, Niall Reddy***

ABSTRACT

Most empirical macroeconomic research limited to the period since World War II. This paper analyses the effects of changes in income distribution and in private wealth on consumption and investment covering a period from as early as 1855 until 2010 for the UK, France, Germany and USA, based on the dataset of Piketty and Zucman (2014). We contribute to the post-Keynesian debate on the nature of demand regimes, mainstream analyses of wealth effects and the financialisation debate. We find that overall domestic demand has been wage-led in the USA, UK and Germany. Total investment responds positively to higher wage shares, which is driven by residential investment. For corporate investment alone, we find a negative relation. Wealth effects are found to be positive and significant for consumption in the USA and UK, but weaker in France and Germany. Investment is negatively affected by private wealth in the USA and the UK, but positively in France and Germany.

* Kingston University London & FMM Fellow.

** Université Paris 13.

*** New York University.

Distribution, wealth and demand regimes in historical perspective. USA, UK, France and Germany, 1855-2010

Engelbert Stockhammer*, Joel Rabinovich and Niall Reddy*****

* Kingston University London, ** Université Paris 13, *** New York University

Version 1.04 Oct 2017

Abstract

Most empirical macroeconomic research limited to the period since World War II. This paper analyses the effects of changes in income distribution and in private wealth on consumption and investment covering a period from as early as 1855 until 2010 for the UK, France, Germany and USA, based on the dataset of Piketty and Zucman (2014). We contribute to the post-Keynesian debate on the nature of demand regimes, mainstream analyses of wealth effects and the financialisation debate. We find that overall domestic demand has been wage-led in the USA, UK and Germany. Total investment responds positively to higher wage shares, which is driven by residential investment. For corporate investment alone, we find a negative relation. Wealth effects are found to be positive and significant for consumption in the USA and UK, but weaker in France and Germany. Investment is negatively affected by private wealth in the USA and the UK, but positively in France and Germany.

Keywords: historical macroeconomics, demand regimes, Bhaduri-Marglin model, wealth effects, financialisation

JEL codes: B50, E11, E12, E20, E21, N10

Acknowledgements: This paper is part of the research project ‘Income Distribution, Asset Prices and Aggregate Demand Formation, 1850-2010: A post-Keynesian Approach to Historical Macroeconomic Data’ (INO16-00008) with financial support by the Institute for New Economic Thinking. Earlier versions of this paper have been presented at The authors are grateful to Paul Auerbach, Erik Bengtsson, Giorgos Gouzoulis, Rob Jump, Karsten Kohler, Ozlem Onaran, and Rafael Wildauer for helpful comments. All remaining errors are ours.

1. INTRODUCTION

Empirical research in macroeconomics overwhelmingly analyses recent experience and utilises data of the past three or four decades. However, economic historians have compiled macroeconomic data that go back into the 19th century for several countries. With the renewed interest in financial crises some studies have taken a longer view. Reinhart and Rogoff (2010) offer broad historical coverage of financial crises while Piketty (2014) provides an analysis of wealth inequality, but neither of them offers an econometric analysis. Jorda et al (2016) compile long historic series on private debt and present an econometric analysis of the severity of recessions. However, important contemporary debates in macroeconomics on the effects of changes in income distribution and changes in wealth are marred by historical shortsightedness. The contribution of this paper is to analyse the effects of changes in functional income distribution and of private wealth for long periods for the UK (1855-2010), USA (1929-2010), France (1896-2010) and Germany (1870-2010), using the dataset compiled by Piketty and Zucman (2014). This is the first study that presents results for macroeconomic behavioural equations that cover most of the history of capitalism for the European countries and more than 80 years in the case of the USA.

The paper contributes to two debates. The first is on the nature of demand regimes and the effects of changes in functional income distribution. The Bhaduri Marglin model has become a widely used workhorse model for post-Keynesian economists. Its hallmark is that it can depict wage-led as well as profit-led demand regimes depending on the relative size of the saving differential between capital and labour and the profit sensitivity of investment. The model provides a framework for the controversy between the Kaleckian and Marxist-inspired Goodwinians and has sparked a substantial empirical literature with impressive geographical scope (Bowles & Boyer, 1995; Stockhammer and Onaran 2005; Naastepad & Storm, 2006; Hein & Vogel, 2008; Stockhammer, Onaran, & Ederer, 2009; Onaran & Galanis, 2014; Hartwig 2015; Kiefer & Rada, 2015; Stockhammer & Wildauer, 2016; Onaran & Obst 2016). The demand regime approach has recently also been taken up by comparative political economists (Baccaro and Pontusson 2016). However, all existing studies have so far been limited to the postwar era.

The second debate that we contribute concerns the effect of wealth on consumption

and investment. Consumption studies commonly use mainstream frameworks based on life time utility maximizing individuals who may be credit-constrained and consume part of their wealth (Slacalek 2009, Ludwig and Slok 2004). There are disagreements on the size of wealth effects and whether they differ for financial and housing wealth (Case et al 2005) but these studies rarely cover the period before 1970. The discussion on the impact of wealth on (business) investment has largely taken place outside the mainstream under the heading of financialisation, where several authors have highlighted the negative impact of financial activity on real investment (Stockhammer 2004, Krippner 2005, Onaran and Tori 2017). Again, these contributions cover only the past few decades.

This paper builds on Stockhammer & Wildauer (2016), who synthesise these effects in a post-Keynesian macro model, and apply this framework to historic macroeconomic data. We estimate error correction models (ECM) for each country. For consumption we find positive long-run effect of wages for the USA, the UK, and Germany. Our investment results are potentially surprising – they indicate positive or no effects of the wage share on total investment, which comprises business and residential accumulation. For France and the USA we also perform estimations for corporate investment and find that the wage share has a negative effect. This suggests that the residential component is driving the outcome in total investment estimations. Since total investment responds positively to an increase in the wage share, overall domestic private demand is wage-led in the USA, UK and Germany. Regarding wealth effects, we find that effects on consumption are large in the USA and UK and smaller and less significant in France and Germany, which is consistent with the distinction between market-based and bank-based financial systems (Jackson and Deeg 2006). For the investment equation we find a negative effect in the USA and UK, but positive effects in Germany and France. While these effects are not always statistically significant, they suggest that financialisation effects on investment have been operating for longer than previously recognized.

The paper is structured as follows. Section 2 motivates our consumption and investment functions and analyses demand regimes with respect to changes in distribution and wealth. Section 3 reviews the existing empirical literature. Section 4 presents data sources and the econometric methodology. Section 5 presents the

econometric results and section 6 analyses demand regimes and results for subperiods. Finally, section 7 concludes.

2. DISTRIBUTION, WEALTH AND DEMAND REGIMES

We will use general consumption (C) and investment (I) functions that depend on income (Y), the functional distribution of income measured by the wage share (WS) and private wealth (PW):

$$C = C(Y, WS, PW), \text{ with } \partial C/\partial Y, \partial C/\partial WS, \partial C/\partial PW > 0$$

Consumption depends positively on income ($\partial C/\partial Y > 0$). Following a long tradition in classical, Marxist and post-Keynesian theory we assume that the marginal propensity to consume is higher for workers (or recipients of wage incomes) than for capitalists (or recipients of capital incomes), therefore a higher wage share will positively affect consumption ($\partial C/\partial WS > 0$). Neoclassical economics usually does not attribute any effect on consumption arising from the distribution of income. Wealth is generally expected to have a positive effect on consumption ($\partial C/\partial PW > 0$), although there are varying theoretical explanations for this.¹ In mainstream economics this result is generally derived from the utility maximization of rational households (e.g. Aron et al 2012), whereas the financialisation literature emphasises the active role of lenders and non-rational consumption norms (Cynamon & Fazzari, 2008). For New Keynesians, households (and businesses) are generally assumed to confront credit constraints, which higher asset values help to relax, feeding through to consumption (Muellbauer 2007). Recent heterodox research also highlights the importance of rising house prices as a supply of collateral, with important effects on consumption as households with risky mortgages refinance to free up disposable income (Barba and Pivetti, 2009; Cynamon and Fazzari, 2008).

Ideally we would use distinct measures of household wealth and corporate wealth but this is not available in the Piketty-Zucman data for the required time frame. We are

¹ Theoretically, mainstream economics has for a long time shown less interest in financial variables. This is due in part to the frequent assumption of efficient capital markets, in part to the assumption about life time utility maximization which leads to consumption smoothing. Net wealth matters, but it will be consumed slowly. Some mainstream economists question wealth effects for housing wealth, like Buiter (2008) who contends that aggregate impacts of housing price increases are likely to be neutral as the gains to owners are offset by higher costs for renters.

thus restricted to a net national aggregate measure of real and financial wealth across the private sector.

The investment function has a similar form

$$I = I(Y, WS, PW, i), \text{ with } \partial I/\partial Y > 0, \partial I/\partial WS, \partial I/\partial PW = ?, \partial I/\partial i < 0$$

It depends on income, the wage share, net private wealth and the (real) rate of interest (i). Again there is little disagreement about the fact that income will have positive effects on investment. There are, however, differences in interpretation, with Keynesians regarding firms as demand constraint. The accelerator hypothesis claims that the *change* in demand will affect (the level of) investment. While this is not in the centerpiece of our analysis, it appears in our model as the short run effect on income. Profitability affects investment in classical, Marxist and post-Keynesian theories as well as in versions of New Keynesian theory, where firms are credit constrained (Stiglitz 1981). Total investment consists of business investment (IB) and residential investment (IR), although most of the literature (including that on the Bhaduri Marglin model and the controversy between Kaleckians and Marxists) neglects this crucial distinction. Only business investment is dealt with theoretically, whilst empirical estimates generally use total investment. For our context the distinction is important because higher wage shares are expected to reduce business investment as lower profit margins impact on profit expectations and retained earnings. In contrast, residential investment decisions are made by households or by construction firms who will face demand for housing depending on the volume of mortgage loans. For most households wages are the most important income source; if housing demand is predominantly from wage earners, then higher wages will enable workers to obtain larger mortgages. Thus to the extent that the working classes are homeowners we expect a positive effect of the wage share ($\partial IR/\partial WS > 0$). Therefore the total effect of a change in the wage share on total investment is ambiguous ($\partial I/\partial WS = ?$).

Financial wealth has received less attention for its effects on investment expenditure. In the New Keynesian literature, financial wealth is usually held to positively related with investment for much the same reasons as consumption (due to a relaxation of credit constraints) (Stiglitz and Weiss 1981). However, our data does not allow to disaggregate household from corporate wealth. In so far as the measure of private

household wealth we use includes business liabilities,² private wealth could have negative effect on investment ($\partial I/\partial PW < 0$). Similarly, if higher net worth comes with higher assets and liabilities and firms react more strongly to changes in the value of liabilities than changes in the value of assets, this could lead to negative effect on investment. The financialisation literature (Lazonick & O’Sullivan, 2000) posits a negative effect of financial wealth and investment. Financialisation is regarded as associated with changes in corporate governance that shift managerial goals away from growth.

Aggregate expenditures equal consumption, investment, net exports (NX) and government consumption (G):

$$Y = C + I + G + NX$$

We can calculate demand regimes following Bhaduri and Marglin (1990), who proposed a general macroeconomic framework that allows for wage-led as well as for profit-led regimes. The paper has become an important reference point for heterodox macroeconomics because it synthesizes Kaleckian arguments, which emphasize the consumption demand coming from workers’ income and the central role of profitability for investment in Marxian and classical economics. The framework suggests that demand regimes can differ across countries and over time and has given rise to substantial literature trying to identify demand regimes empirically.

This paper focuses on the domestic private economy so both net export and government expenditures are assumed to be given. Differentiating equilibrium income, Y^* , with respect to the wage share gives:

$$\frac{dY^*}{dWS} = \frac{h_2}{1 - h_1}, \quad \text{where } h_2 = \frac{\partial C}{\partial WS} + \frac{\partial I}{\partial WS} \quad \text{and } h_1 = \frac{\partial C}{\partial Y} + \frac{\partial I}{\partial Y} + \frac{\partial NX}{\partial Y}$$

The numerator of this equation, h_2 , is the partial effect of a change in distribution on the domestic demand components, which is also called private *excess* demand: the increase in demand due to a distributive change *for a given level of income*. The denominator $\frac{1}{1-h_1}$ is similar to a standard multiplier but includes investment effects. It

² Only in 1950 (Germany), 1961 (US), 1970 (France) and 1988 (UK) we are able to identify an approximate percentage of bonds in net wealth. In all cases except the US, bonds are included into the category “other assets” which averages 28% for Germany, 6% for US, 23% for France and 15% for UK.

measures the second-round effects of changes in distribution. Assuming that the multiplier is positive, the sign of the total effect of a change in income distribution will depend on the sign of the effect on excess demand, i.e. h_2 . The overall distributive dynamics of the economy will be determined by the relative strength of consumption and investment responses to higher wage shares. If higher consumption more than outweighs the reduction of investment due to lower profit margins, the economy as a whole will be wage-led ($\frac{dY^*}{dWS} > 0$). In the reverse case it will be profit-led ($\frac{dY^*}{dWS} < 0$).

We can calculate the effects of a change in private wealth in a similar way. Total wealth effects will depend on the combination of consumption and investment effects:

$$\frac{dY^*}{dPW} = \frac{h_3}{1 - h_1}, \quad \text{where } h_3 = \frac{\partial C}{\partial PW} + \frac{\partial I}{\partial PW}$$

If h_3 is positive we call the economy wealth led, if it is negative is it wealth burdened. The terminology is based on Dutt (2006) and Hein (2012). The expression summarizes the effect of financialisation, here defined as an increase in private wealth, on aggregate demand. This is particularly interesting in the context of the financialisation literature which posits a positive effect of wealth on consumption, but a negative one on investment. The overall effect is thus a priori indeterminate.

Demand regimes measure the effect of a one unit change in income distribution or private wealth on aggregate demand. However, in different historical periods or with different institutional arrangements, the key variables may exhibit different degrees of volatility or different trends - like phases with high financial volatility, where the size asset values can move sharply. It is thus often useful to calculate growth drivers by multiplying the marginal effect, i.e. the demand regime, with the volatility or change of the explanatory variable.

It should be clear that the demand regime analysis is partial equilibrium analysis. It is appropriate if one believes that changes in demand factors (as opposed to changes in the supply side) are the main drivers of actual growth processes. It is worth clearly stipulating what has been left out, if only as a guide to how such analyses can be enriched. First, supply side factors are assumed to be given; this is due to the post-

Keynesian theory that demand is the active variable and the supply conditions will, to a substantial degree, adjust. Simply put, there is no natural (supply-side determined) rate of growth and no natural rate of unemployment. This does not mean that technology has to be static - Storm and Naastepad (2013) model productivity growth as a function of wage and demand growth. Second, we are privileging changes in income distribution and financialisation as explanatory factors. This is a matter of emphasis – there are other factors such as the relation between national economies or the role of the state that could be analyzed within this framework. Third, we treat distribution and private wealth as exogenous in the sense that demand is not affecting the wage share and private wealth contemporaneously.³ This is in the interest of keeping the model tractable. A fuller approach would allow feedback between demand and distribution and between demand and financialisation (specifically asset prices) which is attempted in Minsky models (see Nikolaidi and Stockhammer 2017 for a survey).

What cross-country differences in demand regimes do we expect? Comparative Political Economy has highlighted differences between liberal market economies (in our case USA and UK) and organized market economies (in our case Germany, with France as an intermediate case), but it has not offered a systematic analysis of demand regimes (Hall and Soskice. 2001; Engelen and Konings 2010). As regards wealth effects it has been argued that market-based financial systems of the liberal economies should lead to larger wealth effects (as financial assets are more frequently revalued) than the bank-based financial systems of the organized market economies (Slacalek, 2009).

3 RELATED EMPIRICAL LITERATURE

The empirical studies inspired by the Bhaduri Marglin model show a range of methodological approaches and a variety of findings, with recent interest in the role of personal income inequality and financial cycles. Broadly, estimations of demand regimes can be divided into two main strands. First, the behavioral equation approach (Stockhammer 2017), also referred to as structural approach (Blecker 2016), is based

³ Econometrically, this can lead to endogeneity bias in our estimates. However, we expect this bias to be minor in our case as we focus our analysis on the long-run effects. We also report specifications which only include lagged, i.e. predetermined, variables, which are not subject to endogeneity bias.

on estimating separate behavioral equations for the components of aggregate demand, in our case consumption and investment.⁴ These effects are then totaled to obtain the overall effect of income distribution shifts on output. In contrast, the reduced-form approach directly regresses aggregate income on the wage share and various lags thereof, along with a set of control variables. Individual component effects are then retrieved from the overall results. Reduced-form VAR models are the most commonly employed in this strand of the literature (Barbosa-Filho & Taylor, 2006; Carvalho & Rezai, 2016; Kiefer & Rada, 2015; Stockhammer & Onaran, 2004). The advantage of the behavioural equations approach is that the estimated equations have a direct interpretation and the investment and consumption effects are identified. However, it is open to endogeneity problems if, as is often the case, contemporaneous explanatory variables are included. The reduced-form approach addresses endogeneity problems but does not allow the identification the behavioural parameters and it cannot disentangle consumption and investment effects without additional assumptions.

Table 1 summarises the existing studies for the UK, France, Germany and the USA. We note, first, that all existing studies are restricted to the postwar era. Second, only a few studies control for financial variables. Third, the majority of studies find wage-led (domestic) demand regimes. However, there is a pattern in terms of the estimation strategy with behavioural equations more likely to find wage-led and reduced form equations more likely to report profit-led demand regimes, although there are some exceptions (Jump & Mendieta-Muñoz, 2017).

Table 1: Demand Regime Empirical literature

Paper	Period	Data	Domestic demand regime				Panel	Wealth effects	Estimation strategy
			Gr	Fr	UK	US			
Bowles & Boyer (1995)	1961-1987	TS	W	W	W	W		BE	
Barbosa-Filho & Taylor (2006)	1948-2002	TS	-	-	-	P		RF	
Ederer & Stockhammer (2007)	1960-2004	TS	-	W	-	-		BE	
Naastepad & Storm (2007)	1960-2000	TS	W	W	W	P		BE	
Hein & Vogel (2008)	1960-2010	TS	W	W	W	W		BE	
Stockhammer & Stehrer (2011)	1970-2007	TS	W	W	P	W		BE	
Onaran, Stockhammer, Grafl (2011)	1962-2007	TS	-	W	-	-	Y	BE	

⁴ Stockhammer (2017) uses the terms ‘behavioural equations approach’ versus ‘reduced form approach’. Blecker (2016) distinguishes between ‘structural approach’ and ‘aggregative approach’. Blecker argues that the reduced form approach is more likely to detect short-run effects, whereas the behavioural equations are focusing on the long-run effects.

Stockhammer, Hein and Grafl (2011)	1970-2010	TS	W	-	-	-		BE
Onaran & Galanis (2014)	1960-2007	TS	W	W	W	W		BE
Hartwig (2014)	1970-2011	Panel					W	BE
Rada & Kiefer (2015)	1971-2012	Panel					P	RF
Onaran & Obst (2016)	1960-2013	TS	W	W	W			BE
Stockhammer & Wildauer (2016)	1980-2013	Panel					W Y	BE
Jump & Mendieta-Muñoz (2017)	1971-2007	TS					W	RF

Notes BE = Behavioural Equations, RF=Reduced Form, TS=time series, W = wage-led; P= Profit-led, Y = wealth effects included.

Among the multi-country time series studies Bowles and Boyer (1995), Hein and Vogel (2008) and Onaran and Galanis (2014) find all four countries regarded in this study to be domestically wage-led while Nastepad and Storm (2007) found the USA to be profit-led. Rada and Kiefer (2015) for a panel of 13 OECD countries and Barbosa-Filho and Taylor (2006) for the USA employ the reduced-form method and also find profit-led demand regimes. However, as Stockhammer & Stehrer (2011, p. 510) report, the Barbosa-Filho and Taylor's findings are highly sensitive to lag length – extending from two to four period lags changes the demand regime from profit to wage led (for the USA). Systematic distinctions between so-called liberal (Anglo-Saxon) and coordinated (Germany, France) economies are not a strong finding of this literature.

In post-Keynesian economics the analyses of the effects of changes in income distribution and of changes in wealth have largely proceeded separately, which mirrors the Kaleckian and Minskyan streams. Only two within the demand regime literature control for wealth effects. Onaran et al (2011), employ variables for net financial and gross housing wealth in the US economy; and Stockhammer and Wildauer (2016) use data on house prices, equity prices and household and business debt for a panel of 13 OECD countries for the period 1980-2011. They both follow the behavioural equations approach, find wage-led demand regimes and report sizable wealth effects, both in consumption and investment.

In the Minsky-inspired literature, Kim et al (2015) estimate an aggregate consumption function for the USA (1952–2011) controlling for wealth and borrowing and find that borrowing has positive effects. Zezza (2009) finds that net worth (which is similar to our measure of private wealth) has a positive impact on private expenditures

(consumption plus investment) in the USA. Neither of these studies control for income distribution. Overall it is fair to say that wealth considerations have not played a major role in post-Keynesian analysis of consumption until the early 2000s. Since then wealth and debt feature prominently in increasingly popular stock-flow consistent models, on which there is yet limited empirical research.

Mainstream empirical research on how wealth affects consumption is more substantial. For example Ludwig and Sløk (2004) and Slacalek (2009) include housing wealth and financial wealth in standard consumption functions and find a higher marginal propensity to consume out of housing relative to financial wealth in the USA and UK. For European countries the marginal propensity to consume out of housing wealth is often small. In a variation emphasising the importance of credit availability, Muellbauer (2007) and Aron et al. (2012) argue that rise housing wealth feeds in positively to consumption through a relaxation of credit constraints. Linder (2013) argues that changes in both demographics and mortgage institutions precipitated a shift in the consumption effect of housing wealth, which became positive only after the mid 1980s. Slacalek (2009) and Goodhart and Hoffman (2008) also find stronger effects from the late 1980s. Jorda et al. (2016, p. 115) present historical data on aggregated bank balance sheets showing a phenomenal increase in bank lending to GDP ratios since the 1970s, a marker of the financialization in advanced economies, has been almost entirely due to mortgage lending.

Table 2: Wealth Effects Literature

Paper	Period *	Sample	Method	Main finding	
Ludwig and Slok (2004)	1980 - 2000	16 OECD Countries	Panel (w sub-groups)	BE	Positive effect of housing and stock market wealth on consump.; much stronger in market-based economies (US, UK).
Muellbauer (2007)	1975-2001	UK; US; South Africa; Japan	Separate	BE	Large positive effect of wealth on consump.; esp. liquid assets; Little effect of housing wealth before 1980, large thereafter in market-based economies.
Goodhart and Hofmann (2008)	1970 - 2006	17 Industrialized Countries	Panel	VAR	Multidirectional relationships between housing wealth, consumption and other macroeconomic variables; much stronger effects after 1985.

Slacalek (2009)	1970 - 2003	17 OECD Countries	Separate	BE	Positive effect of housing and stock market wealth on consump.; much stronger in market-based economies (US, UK); housing effect grows after 1988.
Aron et al. (2012)	1979 - 2009	US; UK; Japan	Separate	BE	Liberalization and improved credit access has shifted up consumption curve in market-based economies (US, UK) since 1980s; indebtedness and lower wealth likely to negatively effect consumption.
Linder (2013)	1959 - 2010	US	-	VAR	Little to no effect of housing wealth on consumption prior ti 1980s; substantial thereafter
Kim et al (2015)	1952 - 2011	US	-	BE	Little effect of wealth on short run consumption for either whole period or post-1980 sub sample (except during crises).

*Periods often differ between countries in sample.

The recent literature on financialisation builds on Marxist, post-Keynesian and political economy theories of finance (van der Zwan 2014). One of its main contributions has been an analysis of how changes in corporate governance regimes have affected investment behavior, specifically the way that shareholder oriented management principles have dampened real accumulation at the expense of deepened involvement in financial activities. Krippner (2005) was among the first to document the growing share of financial incomes in the total profit statement of US firms. Stockhammer (2004) showed econometrically, using national accounts data, that these increased financial incomes in the USA, UK and France have been associated with lower rates of capital formation. The same finding was derived from firm-level data for the USA by Orhangazi (2008) and for the UK and European countries by Tori and Onaran (2015, 2017). Hecht (2014) also applied firm level data from China, France, Germany, Great Britain, India, Japan, and the United States and found negative effects of financial profit in China, France, Germany, India and the USA. In Clévenot et al. (2010) financialization is measured by firms' financial asset accumulation. Both were found not be negatively related to investment. Similarly, Tomaskovic-Devey et al. (2015) measure financialisation as the proportion of financial assets over total assets and find negative impact for value added.

Table 3: Financialization Empirical Literature

Paper	Period	Data	Variables	Effect on Investment
Stockhammer (2004)	1963 - 1997	National Accounts	Financial income	Negative, except Germany
Orhangazi (2008)	1973-2003	Panel of US nonfinancial firms	Financial profit; financial payout	Negative
Clévenot (2010)	1978 - 2003	Panel of French nonfinancial firms	Equity demand and accumulation	Negative
Hecht (2014)	1998 - 2008	Panel of 7 countries nonfinancial firms	Financial profit; financial payout	Negative in a few cases
Tomaskovic-Devey et al. (2015)	1970-2008	Panel of US nonfinancial industries	Financial Assets	Negative
Tori and Onaran (2015)	1983 - 2013	Panel of UK nonfinancial firms	Financial income; financial payout	Negative
Tori and Onaran (2017)	1995 - 2015	Panel of European nonfinancial firms	Financial income; financial payout	Negative

While the demand regime literature as well as the wealth effects and financialisation literature cover only a fairly recent time frame, it appears that few papers in the economic history literature attempt an estimation of macroeconomic investment functions over long periods, as we do here. Greasley and Oxley (2010) provide a survey of papers using time series methods in major economic history journals between 2000 and 2009 - only one of which concerns investment. Most research examines specific sectors over a circumscribed time range, and while demand and profitability are common concerns, they do not systematically analyse the effects of a change in income distribution. One study of investment in earlier stages of capitalism is Eichengreen (1982) who models fluctuation in investment in Victorian England using an asset market approach in which the shadow price of capital is proxied by Tobin's q . He argues that monetary factors, as a result of gold expansion, were likely the most important factor behind increasing shadow prices and investment after 1890. One fairly long-range study is Collins and Williams (2001), who use a dataset of 13 developed economies between 1870 and 1950 to show that relative prices of capital goods are significant in explaining cross-country variation in investment. They find an elasticity of the price of capital goods with the investment share of -0.68. Investment research in the pre- and post-WWII period and before the Mogdliani-Miller revolution concentrated strongly on financial considerations like the influence of retained earnings (Fazzari et al., 1988 p.143).

From a historical perspective consumption has mostly been studied as social practice,

focusing on cultures and real quantities, rather than as a demand component or macroeconomic phenomenon (McCracken 1987 chronicles the rise of consumption histories). Gazeley and Newell (2015), for example, study caloric and vitamin intakes of different income strata cultures of distribution within British working class families in 1904. One study of consumption determinants is Greasley, Madson and Oxley (2001) use stock market variation to proxy income uncertainty in a simple model that includes lags of consumption and wealth effects. They find that most categories of consumption in the USA, especially durables, were strongly affected by uncertainty around the Great Depression which may help to account for the slow recovery.

4 DATA AND ECONOMETRIC METHODOLOGY

The dataset used in this article is drawn from Piketty and Zucman's (2014) *Capital is back: wealth-income ratios in rich countries 1700-2010*. The Piketty-Zucman dataset supplies data on national income, labour share, consumption, investment and national wealth for all relevant countries up to 2010, but with different start dates. All relevant variables begin in 1855 for the UK and 1870 for Germany. For France and the USA we are constrained by wage share information, which only begins in 1896, and in 1929 respectively. Our estimations thus cover different time ranges for different countries. Corporate (non-residential) investment is available for France and the USA. The the long-term interest rate was obtained from Jordà, Schularick, & Taylor (2016). National account information in the Piketty-Zucman dataset is drawn from economic history scholarship and official statistics when available – it is not related to their work on top income shares⁵.

Private wealth is defined as the net wealth (non-financial assets plus financial assets minus liabilities) of households and non-profit institutions serving households (NPISH). In addition to individuals, the household sector includes most unincorporated enterprises. Corporations are part of this private wealth through the

⁵ Most of the debate on Piketty-Zucman has focused on taxation and wealth data and their claims on inequality. Magness and Murphy (2015) criticize the way in which the “U-shaped” trend of wealth inequality is constructed. This measure can be calculated from historical estate-tax records or by Federal Reserve’s Survey of Consumer Finances (SCF), while Piketty uses variations of each of them. Magness and Murphy (2015) quote previous works, which use estate-tax records to show that such “U-shape” trend might not be necessarily true. In a similar direction goes Giles’ (2014) critique in the Financial Times, not only for US figures but also for France, Sweden and the UK. We are not aware, however, of major issues pertaining to the aggregate measure of wealth, nor to the national accounts statistics that they compile. A list of their sources is provided in appendix 1

equity and corporate bond holdings of households. Enterprise capital is calculated based on the market capitalization. A separate measure of corporate wealth is available only from 1970 for the UK, Germany and France, and from 1946 for the USA, and is therefore excluded.

The wage share is defined as the sum of all labor income identifiable in national accounts: wage and salaries, imputed labor income in the non-corporate business sector, and net foreign labor income, as a percentage of GDP at current prices. Measuring factor shares always entails some difficulties, primarily the problem of self-employment. Piketty and Zucman (2014) deal with this by assuming the same income shares in the non-corporate and corporate business sectors.

Augmented Dickey-Fuller (ADF) tests for unit roots were performed with 2 lags, including either intercept or trend and intercept. ADF results are reported in Appendix 2 - almost all our variables have a unit root. The null hypothesis is rejected at the 10% level. Only the wage share does not have a stochastic trend. When we perform the test on the first difference of all variables, none are found to have unit root (also reported in Appendix 2). We will use is error-correction model (ECM) to identify long-run relationship and use the critical values for cointegration tests from Banerjee, Dolado, & Mestre (1998), which are 3.47, 3.82 and 4.49 at the 10%, 5% and 1% for three explanatory variables and 3.67, 4.03 and 4.71 respectively for four explanatory variables (for a sample size of 100, which is approximately our sample).

5 ECONOMETRIC RESULTS

Our consumption baseline model (specification 1) is

$$\Delta c_t = \alpha_0 + \alpha_1 c_{t-1} + \alpha_2 y_{t-1} + \alpha_3 pw_{t-1} + \alpha_4 ws_{t-1} + \sum_{j=0}^2 \beta_{1j} \Delta y_{t-j} + \sum_{j=0}^2 \beta_{2j} \Delta pw_{t-j} + \sum_{j=0}^2 \beta_{3j} \Delta ws_{t-j} + \sum_{j=1}^2 \beta_{4j} \Delta c_{t-j} + \varepsilon_t$$

Where consumption, c , national income, y , wealth, pw , and the wage share, ws , are all in log form. Our main interest is the cointegration equation, where we expect positive

signs for all the variables. Specification 1 includes contemporaneous short-run effects and lagged effects. We will also report two variations on this specification as robustness checks. Specification 2 offers a more parsimonious specification by dropping the second lag of the differences. If multicollinearity is an issue, this should improve the precision of the estimates. Specification 3 excludes contemporaneous effects: this follows the Goodwin-inspired models (e.g. Kiefer and Rada 2014) and has the advantage of not being subject to endogeneity problems. Dummy variables were included for years with residuals higher than 1.5 standard deviations of the first stage regression without dummies. These years are indicated for each country in the tables below. We follow convention and report Durbin-Watson (DW) statistics, but its standard critical values are not applicable because a lagged dependent variable is included. Thus we also report Breusch-Godfrey (BG) Serial Correlation LM Test with the null hypothesis that there is no serial correlation in the residuals up to 3 lags.

Tables 4 report our results for consumption for the USA and UK. Specifications including contemporaneous effects present higher t-ratios for the error correction term with specifications 1 and 2 for the USA and for the UK passing the critical ratio for cointegration (at the 10% level). All estimations (except specification 2 in the USA) report large and statistically significant long-term wage share and wealth effects. Excluding contemporaneous effects (specification 3) results in autocorrelation problems (the BG test rejects the null of no autocorrelation at the 5% level for both the USA and the UK) and the t-value of the error correction term falls clearly short of the critical value for cointegration. We thus regard specification 3 as less reliable.

In specification 1 the wage share elasticity in the USA is 0.94 and statistically significant at the 1% level. Wealth effects are also statistically significant at the 1% level with an elasticity of 0.43. However, this specification suffers from autocorrelation. Therefore, we prefer specification 2, which gives a similar elasticity of wealth effect, 0.41 (statistically significant at the 1% level), but a lower wage share elasticity of 0.52 (not statistically significant). For the UK specification 1 passes the cointegration critical value and has no signs of autocorrelation. The wage share elasticity is 0.69 and statistically significant at the 1% level. Wealth effects are smaller than the USA, at 0.24, also significant. Specification 2 gives similar results.

[INSERT TABLE 4]

Table 5 reports the consumption equations for France and Germany. For France t -ratios for the error correction term pass the critical values in specification 1. However, that specification returns a perverse (and statistically significant) long-run wage share effect. Specification 3 is the only one that presents a positive wage share, but it is small and not statistically significant. However, this sign is not robust when we repeat the estimation for subperiods (reported in section 6). Wealth effects are not statistically significant in any specification and are consistently low (relative to the USA and UK). For Germany cointegration tests are passed in all specifications. Wage share effects are small and statistically insignificant for all specifications. Similarly to France, wealth effects are never statistically significant. Specification 1 reports a valid ECM and no autocorrelation so is also preferred. The wage share and wealth elasticities of consumption are 0.30 and 0.06 respectively. Overall WS and PW do not seem to play a major role in the consumption equations for France and Germany.

[INSERT TABLE 5]

The income elasticity of consumption presents large and statistically significant values across models for almost all countries (the only exception is specification 3 in the UK). Moreover, results are stable across different specifications for each country. The effect is lower in Anglo-Saxon countries, with values averaging 0.55 for the USA and 0.63 for the UK. In the case of France, values average 0.85 and 0.91 in Germany.

Our baseline model for investment is:

$$\begin{aligned} \Delta i_t = & \alpha_0 + \alpha_1 i_{t-1} + \alpha_2 y_{t-1} + \alpha_3 pw_{t-1} + \alpha_4 ws_{t-1} + \alpha_5 LTR_{t-1} + \sum_{j=0}^2 \beta_{1j} \Delta y_{t-j} \\ & + \sum_{j=0}^2 \beta_{2j} \Delta pw_{t-j} + \sum_{j=0}^2 \beta_{3j} \Delta ws_{t-j} + \sum_{j=0}^2 \beta_{4j} \Delta LTR_{t-j} + \sum_{j=1}^2 \beta_{5j} \Delta i_{t-j} \\ & + \varepsilon_t \end{aligned}$$

All variables are in log form, with the exception of the long-term real interest rate (LTR). The different specifications follow the same logic as above. For France and the USA we also report results with corporate investment (instead of total investment) as dependent variable.

Table 6 reports the results for USA and UK while Table 7, for France and Germany. For all countries the results suggest cointegration; for the USA, UK and France specification 1 clearly passes the cointegration critical value of Banerjee et al (1998), for Germany specification 2 presents the highest t-ratio.

[INSERT TABLE 6]

For the USA, specification 1 returns a negative statistically significant value at the 10% level of private wealth and a positive value, although not significant, for the wage share. In specification 2, private wealth and wage share have the same signs but the former is no longer significant. In the UK, all specifications show robust, negative and statistically significant (at the 1% level) relations with private wealth. The wage share is not significant but presents positive values for specifications 1 and 3, the only ones without autocorrelation problems.

[INSERT TABLE 7]

In France wage share effects are positive in all specifications and statistically significant in specification 3, which suffers from autocorrelation problems. Specifications 1 and 2, on the other hand, present wage share elasticities ranging between 0.45 and 0.29. Wealth effects display positive values ranging between 0.03 and 0.02, although statistically insignificant. For Germany only specification 2 is close to the critical value for cointegration. Wage share elasticities are positive and large: a 1 percent increase in wage share is associated with an *increase* in investment of 1.62 percent. Wealth effects are statistically significant in specifications 1 and 2, ranging between 0.66 and 0.49.

Notably, almost all specifications report a *positive* long-term effect of the wage share on investment. This is the reverse of what is usually assumed in the Bhaduri-Marglin framework. These findings change considerably when only corporate investment is considered: higher wage shares seem to have a substantial and significant *negative* impact on *corporate* investment. In the case of France wage share elasticities are reasonably robust to the inclusion of one or two lags when contemporaneous effects are present, and they are statistically significant in both cases. In specification 2 the wage share effect is largest, with a coefficient of -0.93. It does not suffer from autocorrelation and all signs are as expected. The US wage share elasticity is

comparable for specification 2, at -0.62. Wealth effects on French corporate investment are positive (and statistically significant) and larger than for total investment. They largely invariant to the inclusion of lags – a 1 percent increase in wealth is associated with around a 0.13 percent increase in non-residential investment. In the USA wealth effects are negative and larger (and statistically significant) for corporate investment.

The income elasticity of investment in the long-term is found to be large and statistically significant across models and countries. The effect is largest in the USA, especially for corporate investment alone, where all models report an elasticity above 3. Contrary to this, the elasticity is smaller for French corporate than total investment, although it is still substantial – at around 0.84. The effect is smallest in Germany, in our preferred estimation (specification 1), the elasticity is only 0.66. In the UK, investment is again highly responsive to income – our preferred specification reports an elasticity of 1.71.

Given the long period over which we estimate consumption and investment equations, the results perform reasonably well. However the question arises whether coefficients can be considered stable over time. Unfortunately simple breakpoint test are not applicable because we use dummy variables for the war years. We did perform recursive estimation to investigate coefficient stability (without controlling for war years). This starts with a small sample and then adds observations to check whether this affects the coefficient estimate. This exercise suggested that coefficient estimates are rather stable (Appendix 3)⁶.

Finally, we performed robustness checks for distribution results by excluding *PW* (Appendix 4). For consumption equations, elasticities' values are alike in sign and value for USA and France across all specifications. In the case of the UK and Germany, signs remain invariant in almost all specifications although absolute values tend to be smaller for the wage share elasticity and higher the for income elasticity. For investment equations, results are less stable. In the case of France we find the same sign and similar values, although systematically lower both for total and corporate investment for the wage share elasticity and higher for the income elasticity. For Germany, elasticities without *PW* maintain sign but are lower in some

⁶ In the following section we will report summary results for subperiods to investigate changes over time.

specifications and higher in others when compared to original results. In the case of USA and UK, signs can vary across specifications indicating a higher sensitivity to the exclusion of private wealth. In terms of statistical significance and autocorrelations, outcomes are also similar in all equations.

6 DEMAND REGIMES

As our model is defined in logarithms, the results we have presented so far are the elasticities of consumption and investment to the wage share, GDP and private wealth (in the case of long term interest rate, since it is defined in levels, we have a semi-elasticity). Clearly, the marginal effect will depend on the date on which the relation is measured.⁷ Table 8 presents total domestic demand effects calculated at the mean of each sample and also reports the statistical significance of the total effect, a Wald test whose null hypothesis is that the combined effects, which are a non-linear parameter restriction, is equal to 0.⁸ For the UK and France (with total investment), we find statistically significant effects both for distribution and wealth. For corporate investment, in all cases, results are statistically insignificant. For Germany, distribution effects are statistically significant while wealth effects are close to the 10% threshold while for the USA as a whole, wealth effects have a p-value of 0.0015 and distribution, 0.1537.

Table 8: Private excess demand* and wealth effects (in percentage points of GDP) caused by a 1%-point increase of the wage share and private wealth respectively**

	C'_{WS}	I'_{WS}	$C'_{WS}+I'_{WS}$	p -value	C'_{PW}	I'_{PW}	$C'_{PW}+I'_{PW}$	p -value
USA (total investment)	0.503	0.204	0.707	0.154	0.089	-0.028	0.061	0.002
USA (corporate investment)	0.503	-0.218	0.284	0.544	0.089	-0.056	0.033	0.160
UK	0.716	0.033	0.750	0.003	0.052	-0.021	0.031	0.017
France (total investment)	-0.440	0.124	-0.316	0.065	0.013	0.003	0.016	0.027
France (corporate investment)	-0.440	-0.113	-0.553	0.181	0.013	0.006	0.019	0.259
Germany	0.262	0.543	0.805	0.002	0.022	0.075	0.097	0.118

* For total investment, column $C'_{WS}+I'_{WS}$ is private domestic demand. For Corporate Investment, column $C'_{WS}+I'_{WS}$ is the sum of the partial effect on consumption and corporate investment.

** All calculations refer to specification 1 except for Consumption in the USA (specification 3) and Investment in Germany (specification 3).

⁷ In the case of the marginal effect of changes in consumption due to income distribution, we have: $\frac{\partial c}{\partial WS} = e_{c,WS} \cdot \frac{C_t}{WS_t}$

⁸ Both equations were estimated as a system, which allows for testing restrictions across equations. Estimations were performed with EViews.

For the whole economy, all countries except France display a positive private excess demand when we consider the marginal effects of distribution on consumption and investment together. Regarding total investment, none of our countries conform to the standard post-Keynesian (or Marxist) hypothesis that higher wage shares have a direct contracting effect on investment. It is this positive effect of the wage share on investment which ensures positive private excess demand in USA, UK and Germany (since effects on consumption are positive as expected). In Germany, the elasticity of consumption with respect to the wage share was found to be in line with what is found in most of literature (Hein & Vogel, 2008, p. 491; Onaran & Galanis, 2014, p. 12; Stockhammer & Stehrer, 2011, p. 515). In contrast, in the USA and the UK, consumption elasticities are found to be substantially above those reported by other researchers, around double what is found in Onaran and Galanis (2014, p. 35) for example – adding to the positive excess demand from investment. For France the perverse negative effect on consumption overpowers the positive investment effect.

Significantly however, the unexpected sign that we find on the long-term investment coefficient reverses when we consider only corporate non-residential investment in France and the USA, where the data is available. The difference between corporate investment and total investment is primarily residential investment. We thus conclude that changes in income distribution have opposite effects on corporate and residential investment. Higher wages seem to encourage higher spending on residential construction by recipients of labour income. We find these effects to be large enough to more than offset the negative impact on business investment that results from lower profit margins. Non-corporate investment typically makes up a substantial amount of the total – at the mean of our samples for the USA and France it comprised just over 50 percent. Most of the empirical literature on demand regimes does not make the distinction – our results add empirical support to theoretical reasons for treating the two separately. If our findings are accurate, the positive effect on residential investment has dominated the negative in corporate investment over the long durée of capitalism – meaning advanced economies are likely to have been even more strongly wage-led than previously supposed.

Another important finding is that wealth effects on consumption largely follow what is predicted by the literature that contrasts market-based (Anglo-Saxon) from bank-

based financial systems (see Jackson & Deeg, 2006 pp.13-15 for a review). The former is characterized by market-based financial systems with larger and more dominant capital markets and lower state involvement in housing and social provision. Households therefore tend to have greater access to and be more dependent on financial and residential wealth – consistent with the finding above that increases in wealth indexes have strong effects on the level of consumption. So-called coordinated market economies, of which Germany is emblematic, are defined by stronger state control over housing and social provision and a more prominent place for banks relative to equity markets in investment financing. Our findings, as we would expect, show that consumption in these economies is less correlated with national wealth.

This pattern is reversed when it comes to investment – net wealth effects are positive in France and Germany and negative in the UK and especially the USA, where effects were unusually high. This may be partly explained by the fact that corporate bonds are part of net wealth. Significantly, the results are consistent with the financialisation literature discussed above. Greater financial accumulation by non-financial corporations will show up ultimately on household balance sheets in our data. The negative correlation with investment private wealth is therefore likely to reflect the same orientation of managers towards financial outcomes that was found in Stockhammer (2004), Orhangazi (2008) and Tori and Onaran (2017).

Overall effects of a wealth increases on domestic spending are positive in all countries, i.e. the consumption effects outweigh the investment effects. Total effects are statistically significant (at the 5% level) for USA, UK and France. Thus economies seem to have been wealth led.

Results in Table 8 are based on our preferred specification, which may suffer from endogeneity problems. To check whether our main findings are robust to choosing specifications that only rely on predetermined explanatory variables, in Appendix 5 we report results based on specification 3, i.e. without contemporaneous effects, for all equations. The results are qualitatively similar (but statistical significance deteriorates). Regarding wage share effects, seven out of ten equations report the same sign. A switch in sign occurs in the following cases: consumption in France, which turns positive (but very small); consumption in Germany, which turns negative

(but very slightly); and (total) investment in the USA, which turns negative. As regards wealth effects, signs switch in four equations, but coefficients are very small in all cases. Overall demand regimes do not change.

Our data also allows us to check whether there have been significant changes in demand regimes and wealth effects throughout history. In order to do so we carry out two exercises. First we re-estimate consumption and investment equations for the periods before and after 1945 for the UK, France and Germany (for the USA the prewar period is too short).⁹ Regression results are presented in Appendix 6. For each country we use specification 1, since it performed better for the whole period. Table 9 summarises total private domestic demand effects for France and the UK. Germany fails to pass the cointegration critical value for all specifications. The UK presents statistically significant ECMs for consumption in the first period and close to the 10% threshold in the second, while for investment statistical significance is only registered in the second period. Moreover, all of them pass the autocorrelation test with statistically significant values for wealth and distribution effects in some cases. For France, we find statistically significant ECMs for consumption and investment in the first period and investment in the second, without autocorrelation in all cases.

Table 9: Private excess demand and wealth effects (in percentage points of GDP) caused by a 1%-point increase of the wage share and private wealth respectively. Before and after WW2, France and the UK

	C'_{ws}	I'_{ws}	$C'_{ws}+I'_{ws}$	C'_{pw}	I'_{pw}	$C'_{pw}+I'_{pw}$
France, before WW2	0.459	-0.005	0.454	0.019	0.017	0.035
France, after WW2	0.254	0.210	0.464	0.006	0.015	0.020
UK, before WW2	0.902	-0.454	0.448	0.023	-0.083	-0.061
UK, after WW2	0.823	0.286	1.109	0.079	-0.021	0.059

We note that for France we get positive wage share effects on consumption for both sub-periods. Table 9 sheds some light on the results obtained for the whole period. Wage share effects on consumption and investment change between the pre- and post-WW2 period in similar ways for both countries. The marginal effect of the wage share on consumption decreases from 0.46 in the pre-War period to 0.25 in France and from 0.90 in to 0.82 in the UK. A number of factors could explain the decreasing sensitivity of consumption to higher labour shares over time. Firstly, at lower levels of

⁹ We also experimented with splitting the post-war period into two periods (1945-1980 and 1981-2010), however results for these periods were unstable and failed cointegration tests. This suggests that these samples are too short for our ECM specification.

development, marginal propensities to consume have likely been higher, as a greater proportion of workers live close to or at subsistence, with little option of saving. Secondly, labour income in the earlier period made up a greater proportion of the total income for a greater share of the total workforce, whilst capital ownership for was highly concentrated amongst the wealthy. Less developed financial systems may also have meant that ambitions to save and smooth consumption could not be realized, leading to higher current consumption out of income.

Interestingly, the positive association of higher wage shares with investment that was found for the whole period changes when the sample is split – for the pre-war period in both France and the UK, higher wages have a negative effect on investment: -0.005 for France and -0.45 for the UK. For the later period effects change to 0.21 and 0.29 respectively. Long-run positive investment-wage share relations that were described above are thus driven by the post-war period. This too is consistent with our earlier attempt to understand these putatively perverse relationship, which hinges on the importance of residential expenditure in total investment. With the general increase of income and population, a greater proportion of the population was able to afford buying their own residence.

Results for wealth effects confirm the findings for estimations covering the whole period. Effects on consumption are positive and larger in the UK in both periods. Wealth effects on consumption in France have declined since World War II, but increased in the UK. Effects on investment are positive for France and negative for the UK for both periods. The investment effects have been stable in France, but declines for the UK. Despite the negative effects of financialization on investment, the UK has become more finance-led since World War II, owing to the relatively stronger impact of consumption effects. While there is change within countries the differences in the financial systems seem to be persist over time.

7. CONCLUSION

This paper has extended the analysis of growth regimes and of financialisation to a much longer historical scale, using a sample that covers more than a century for the UK, France and Germany and more than 80 years for the USA, based on a dataset compiled by Piketty and Zucman (2014). This is relatively uncharted field in

historical macroeconomics and we should be clear that historical data may not have the same degree of reliability as recent data. Results should thus be interpreted with a measure of caution and future research will need to corroborate our findings with other data sources. Keeping these qualifications in mind, we have some interesting findings. For the USA and UK we find economically large effects of distribution on consumption. For France we find a negative consumption differential, but that is not robust to dropping the contemporaneous short-run effects and it does not hold for subperiods. Perhaps surprisingly we find that wage shares are positively related to total investment in all countries. We explain these seemingly perverse signs as caused by residential investment, which can react positively to an increasing wage share. In contrast, wage share effects on corporate investment (available only for the USA and France) show the expected negative effects. Overall our main finding is that USA, UK and Germany have exhibited a wage-led domestic private demand regime.

We find evidence for financialisation effects for the full sample, but effects differ by country. For the USA and the UK we find positive wealth effects in consumption and negative wealth effects on investment. For France and Germany we fail to find wealth effects on consumption, but we find (some evidence for) positive wealth effects in investment. A possible explanation for this is that the financialisation patterns recently highlighted by the financialisation literature, i.e. rising consumption but dampened business investment, has been a feature of Anglo-Saxon capitalism for a long time. In contrast, results for France and Germany seem to be consistent with a story of consumption not being tied to wealth and investment benefiting from increased wealth. This could reflect wealth accumulation by firms, which loosens their liquidity constraints.

When we split our whole sample into the pre-WW2 and post-WW2 period for France and UK, we find higher consumption elasticities for the first period. This suggests higher marginal propensities to consume of the working classes at earlier stages of capitalist development (or rising consumption propensities of the upper classes in mature capitalism). We also find that the perverse sign in investment functions only holds for the post-WW2 period, but not before. This is consistent with the increasing importance of residential investment driven by the working classes. Wealth effects on consumption are larger in economies with market-based financial systems and smaller

and less significant in more bank-based countries. For the investment equation this reverses, with negative effects of higher wealth on investment in the UK and USA. This suggests that the negative impact of financialisation on investment has been a feature of market based financial systems for a long time.

Our findings have several implications for future research. First, it is notable how small the historic macroeconomic literature is. We think this promising area of research can raise interesting questions about continuity and change in economic regimes. Second, future research should explore structural breaks and structural change more systematically; these are interesting both for distribution effects and for the role of wealth and debt. Third, independent of the time period, our findings highlight the need to distinguish between business investment and residential investment. Fourth, this paper has investigated the determinants of private expenditures. Capitalist market economies, however, are shaped by government activities, both in terms of regulation and in terms of expenditure and income stream. Future research should investigate the impact of changing role of the state.

REFERENCES

- Aron, J., Duca, J.V., Muellbauer, J., Murata, K. and Murphy, A. 2012. Credit, Housing Collateral, and Consumption: Evidence From Japan, the U.K., and the U.S. *Review of Income and Wealth*, 58(3), 397–423.
- Baccaro, L, Pontusson, J, 2016. Rethinking Comparative Political Economy: the growth model perspective. *Politics and Society* 44(2), 175-207
- Banerjee, A., Dolado, J., & Mestre, R. (1998). Error-correction mechanism tests for cointegration in a single-equation framework. *Journal of Time Series Analysis*, 19(3), 267–283.
- Barba, A., & Pivetti, M. (2009). Rising household debt: Its causes and macroeconomic implications—a long-period analysis. *Cambridge Journal of Economics*, 33(1), 113–137.
- Barbosa-Filho, N. H., & Taylor, L. (2006). Distributive and demand cycles in the US economy—a structuralist Goodwin model. *Metroeconomica*, 57(3), 389–411.
- Bhaduri, A., & Marglin, S. (1990). Unemployment and the real wage: the economic basis for contesting political ideologies. *Cambridge Journal of Economics*, 14(4), 375–393.

- Blecker, R. A. (2016). Wage-led versus profit-led demand regimes: the long and the short of it. *Review of Keynesian Economics*, 4(4), 373–390.
- Bowles, S. & Boyer, R. (1995) 'Wages, aggregate demand, and employment in an open economy: an empirical investigation', in Epstein, G. and Gintis, H. (eds) *Macroeconomic policy after the conservative*. Cambridge: Cambridge University Press, pp. 143–71.
- Buiter, W. H. (2008). *Housing wealth isn't wealth*. No. w14204. National Bureau of Economic Research. Retrieved from <http://www.nber.org/papers/w14204>
- Carvalho, L., & Rezai, A. (2016). Personal income inequality and aggregate demand. *Cambridge Journal of Economics*, 40(2), 491–505.
- Case, K, Quigle, J, Shiller, R, 2005. "Comparing Wealth Effects: The Stock Market versus the Housing Market," *Advances in Macroeconomics*, vol. 5(1), pages 1235-1235.
- Clévenot, M., Guy, Y., & Mazier, J. (2010). Investment and the rate of profit in a financial context: the french case. *International Review of Applied Economics*, 24(6), 693–714.
- Collins, W. J. & Williamson, J. G. (2001) Capital-goods prices and investment, 1870–1950', *The Journal of Economic History*, 61(1), pp. 59–94.
- Cynamon, B. Z., & Fazzari, S. M. (2008). Household debt in the consumer age: source of growth–risk of collapse. *Capitalism and Society*, 3(2), 1–30.
- Davis, L. E., De Souza, J. P. A., & Hernandez, G. (2017). An empirical analysis of Minsky regimes in the US economy. Working Paper. University of Massachusetts Amherst.
- Dutt, Amitava, 2006. Maturity, stagnation and consumer debt: a Steindlian approach", *Metroeconomica*, 57(3), 339-64.
- Ederer, S., & Stockhammer, E. (2007). Wages and aggregate demand in France: an empirical investigation. In E, Hein Y A. Truger (eds) *Money, Distribution, and Economic Policy—alternatives to Orthodox Macroeconomics*. Cheltenham, United Kingdom: Edward Elgar, 119-139
- Engelen, E. & Konings, M. (2010). Financial capitalism resurgent: comparative institutionalism and the challenges of financialization. In Morgan, G. et al. (eds) *The Oxford handbook of comparative institutional analysis*. Oxford: Oxford University Press, 601–624.
- Engle, R. F., & Granger, C. W. (1987). Co-integration and error correction: representation, estimation, and testing. *Econometrica: Journal of the Econometric Society*, 251–276.
- Fazzari, S. M. et al. (1988) 'Financing Constraints and Corporate Investment', *Brookings Papers on Economic Activity*, 1988(1), 141–206.
- Gazeley, I. & Newell, A. (2015) Urban working-class food consumption and nutrition in Britain in 1904. *The Economic History Review*, 68(1), 101–122.

- Giles, C. (2014). Data problems with Capital in the 21st Century. *Financial Times*, 23. Retrieved from <http://www.marcellodibello.com/PHI169/resources/FT23052014c.pdf>
- Granger, C. W. (1981). Some properties of time series data and their use in econometric model specification. *Journal of Econometrics*, 16(1), 121–130.
- Greasley, D., Madsen, J. B. & Oxley, L. (2001). Income Uncertainty and Consumer Spending during the Great Depression. *Explorations in Economic History*, 38(2), 225–251.
- Greasley, D. & Oxley, L. (2010). Cliometrics and Time Series Econometrics: Some Theory and Applications. *Journal of Economic Surveys*, 24(5), 970–1042.
- Hall, P.A. & Soskice, D. eds., (2001). *Varieties of capitalism: The institutional foundations of comparative advantage*. OUP Oxford.
- Hein, E., & Vogel, L. (2008). Distribution and growth reconsidered: empirical results for six OECD countries. *Cambridge Journal of Economics*, 32(3), 479–511.
- Hein, Eckhard 2012. Finance-dominated capitalism, re-distribution, household debt and financial fragility in a Kaleckian distribution and growth model, *PSL Quarterly Review*, 65(260), 11-51.
- Hecht, J. (2014). Is net stock issuance relevant to capital formation? Comparing heterodox models of firm-level capital expenditures across the advanced and largest developing economies. *Cambridge Journal of Economics*, 38(5), 1171–1206.
- Jackson, G. & Deeg, R. (2006) *How Many Varieties of Capitalism? Comparing the Comparative Institutional Analyses of Capitalist Diversity*. Discussion Paper 06/2. Cologne: Max Planck Institute for the Study of Societies Cologne.
- Jordà, Ò., Schularick, M., & Taylor, A. M. (2016). Macrofinancial History and the New Business Cycle Facts. In *NBER Macroeconomics Annual 2016, Volume 31*. University of Chicago Press.
- Jump, R., & Mendieta-Muñoz, I. (2017). Wage led aggregate demand in the United Kingdom. *International Review of Applied Economics*, 1–20.
- Kalecki, M. (1954). *Theory of Economic Dynamics: An Essay on Cyclical and Long-run Changes in Capitalist Economy:(2. Impr.)*. George Allen & Unwin.
- Keen, S. (1995). Finance and economic breakdown: modeling Minsky's "financial instability hypothesis." *Journal of Post Keynesian Economics*, 17(4), 607–635.
- Kiefer, D., & Rada, C. (2015). Profit maximising goes global: the race to the bottom. *Cambridge Journal of Economics*, 39(5), 1333–1350.
- Kim, Y. K., Setterfield, M., & Mei, Y. (2015). Aggregate consumption and debt accumulation: an empirical examination of US household behaviour. *Cambridge Journal of Economics*, 39(1), 93-112.
- Krippner, Greta, 2005. The financialization of the American economy. *Socio-Economic Review*, 3(2), 173-208

- Lazonick, W., & O'sullivan, M. (2000). Maximizing shareholder value: a new ideology for corporate governance. *Economy and Society*, 29(1), 13–35.
- Lindner, F. (2013). The housing wealth effect on consumption reconsidered. IMK working paper 115.
- Ludwig, A. and Sløk, T. 2004. The relationship between Stock Prices, House Prices and Consumption in OECD Countries. *The B.E. Journal of Macroeconomics*, 4(1), pp.1-28.
- Magness, P. W., & Murphy, R. P. (2015). Challenging the Empirical Contribution of Thomas Piketty's Capital in the Twenty-First Century. *Journal of Private Enterprise*, 30(1), 1.
- McCracken, G. (1987). The history of consumption: A literature review and consumer guide. *Journal of Consumer Policy*, 10(2), 139–166.
- Minsky, H. P. (1978). *The financial instability hypothesis: a restatement*. Thames Polytechnic.
- Muellbauer, J.N. 2007. Housing , Credit and Consumer Expenditure. In *Proceedings - Economic Policy Symposium - Jackson, Hole, Federal Reserve Bank of Kansas City*, pp. 267–334.
- Naastepad, C. W. M., & Storm, S. (2006). OECD demand regimes (1960-2000). *Journal of Post Keynesian Economics*, 29(2), 211–246.
- Onaran, Ö., & Galanis, G. (2014). Income Distribution and Growth: A Global Model. *Environment and Planning*, 46(10), 2489-2513.
- Onaran, Ö., Stockhammer, E., & Grafl, L. (2011). Financialisation, income distribution and aggregate demand in the USA. *Cambridge Journal of Economics*, 35(4), 637–661.
- Orhangazi, Ö. (2008). Financialisation and capital accumulation in the non-financial corporate sector: A theoretical and empirical investigation on the US economy: 1973–2003. *Cambridge Journal of Economics*, 32(6), 863–886
- Piketty, T., & Zucman, G. (2014). Capital is back: Wealth-income ratios in rich countries 1700–2010. *The Quarterly Journal of Economics*, 129(3), 1255–1310.
- Piketty, T. (2014). *Capital in the 21st Century*. Harvard University Press.
- Reinhart, C. and Rogoff, K. 2010. Growth in a Time of Debt, *American Economic Review*, 100(2), 573-578.
- Ryoo, S. (2013). Bank profitability, leverage and financial instability: a Minsky–Harrod model. *Cambridge Journal of Economics*, 37(5), 1127–1160.
- Slacalek, J. (2009) What Drives Personal Consumption? The Role of Housing and Financial Wealth. *The B.E. Journal of Macroeconomics*, 9(1), Article 37, 1-35
- Stiglitz, J. E., & Weiss, A. (1981). Credit rationing in markets with imperfect information. *American Economic Review*, 71(3), 393-410.

- Stockhammer, E., Hein, E., & Grafl, L. (2011). Globalization and the effects of changes in functional income distribution on aggregate demand in Germany. *International Review of Applied Economics*, 25(1), 1–23.
- Stockhammer, E., & Onaran, Ö. (2004). Accumulation, distribution and employment: a structural VAR approach to a Kaleckian macro model. *Structural Change and Economic Dynamics*, 15(4), 421–447.
- Stockhammer, E., Onaran, Ö., & Ederer, S. (2009). Functional income distribution and aggregate demand in the Euro area. *Cambridge Journal of Economics*, 33(1), 139–159.
- Stockhammer, E., & Stehrer, R. (2011). Goodwin or Kalecki in demand? Functional income distribution and aggregate demand in the short run. *Review of Radical Political Economics*, 43(4), 506–522.
- Stockhammer, E., & Wildauer, R. (2016). Debt-driven growth? Wealth, distribution and demand in OECD countries. *Cambridge Journal of Economics*, 40(6), 1609–1634.
- Stockhammer, E. (2004). Financialisation and the slowdown of accumulation. *Cambridge Journal of Economics*, 28(5), 719–741.
- Stockhammer, E. (2017). Wage-led versus profit-led demand: what have we learned? A Kalecki-Minsky view. *Review of Keynesian Economics*, 5(1), 25–42
- Storm, S. and C.W.M. Naastepad (2013), ‘Wage-led or profit-led supply: wages, productivity and investment’, in M. Lavoie and E. Stockhammer (eds), *Wage-Led Growth; An Equitable Strategy for Economic Recovery*, Basingstoke: Palgrave Macmillan, pp. 100–124.
- Tomaskovic-Devey, D., Lin, K.-H., & Meyers, N. (2015). Did financialization reduce economic growth? *Socio-Economic Review*, 13(3), 525–548.
- Tori, D., & Onaran, Ö. (2015). The effects of financialization on investment: evidence from firm-level data for the UK. Working paper. The Open University
- Tori, D., & Onaran, Ö. (2017). The effects of financialisation and financial development on investment: Evidence from firm-level data in Europe. Working paper. The Open University
- van der Zwan, N. (2014). Making sense of financialisation. *Socio-Economic Review*, 12(1), 99–129.
- Zeza, G. (2009). Fiscal policy and the economics of financial balances. *European Journal of Economics and Economic Policies: Intervention*, 6(2), 289–310.

Table 2: Regression results for consumption equations, USA and UK

	USA ¹			UK ²		
	1	2	3	1	2	3
c(-1)	-0.254 ^{††}	-0.214	-0.220	-0.176 ^{†††}	-0.178 ^{†††}	-0.096
t-stat	-4.308	-3.576	-2.565	-4.777	-4.846	-1.584
ws(-1)	0.239 ^{***}	0.110	0.355 ^{***}	0.123 ^{***}	0.126 ^{***}	0.147 ^{**}
t-stat	2.858	1.364	3.084	3.179	3.529	2.465
pw(-1)	0.110 ^{***}	0.088 ^{***}	0.104 ^{**}	0.043 ^{***}	0.043 ^{***}	0.039 ^{**}
t-stat	3.372	2.679	2.229	3.667	3.900	2.113
y(-1)	0.144 ^{***}	0.124 ^{***}	0.114 ^{**}	0.122 ^{***}	0.122 ^{***}	0.049
t-stat	4.464	3.752	2.413	4.287	4.326	1.048
Δws	-0.221 [*]	-0.140		0.056	0.030	
t-stat	-1.756	-1.045		0.755	0.417	
Δpw	0.140 ^{***}	0.156 ^{***}		0.175 ^{***}	0.171 ^{***}	
t-stat	3.095	3.305		4.078	4.429	
Δy	0.292 ^{***}	0.340 ^{***}		0.628 ^{***}	0.628 ^{***}	
t-stat	4.547	4.910		11.757	11.857	
Δc(-1)	0.303 ^{***}	0.221 ^{**}	0.119	0.069	0.103 ^{**}	-0.201 ^{**}
t-stat	2.748	2.051	0.798	1.191	1.862	-2.219
Δws(-1)	-0.117	0.031	-0.754 ^{***}	-0.077	-0.106	-0.302 ^{***}
t-stat	-0.855	0.233	-4.466	-1.090	-1.649	-2.672
Δpw(-1)	0.041	0.010	0.252 ^{***}	0.010	-0.005	0.362 ^{***}
t-stat	0.693	0.166	3.802	0.200	-0.112	6.227
Δy(-1)	-0.126	-0.064	-0.165	-0.063	-0.081	0.126
t-stat	-1.570	-0.822	-1.580	-0.969	-1.385	1.186
Δc(-2)	-0.057		0.077	0.110		0.109
t-stat	-0.555		0.519	1.578		0.956
Δws(-2)	-0.080		0.021	-0.062		-0.131
t-stat	-0.647		0.116	-0.972		-1.217
Δpw(-2)	-0.107 [*]		-0.266 ^{***}	-0.022		-0.204 ^{***}
t-stat	-1.896		-3.428	-0.495		-3.053
Δy(-2)	0.165 ^{**}		0.288 ^{***}	-0.110		-0.108
t-stat	2.289		2.764	-1.565		-0.936
obs	79	80	79	153	154	153
r ²	0.833	0.790	0.611	0.896	0.893	0.696
DW	1.721	1.912	1.519	2.174	2.195	1.724
BG Serial Correl.	0.0247	0.8031	0.0005	0.4586	0.2993	0.0350
Long run effects						
ws	0.940	0.515	1.614	0.696	0.710	1.528
pw	0.432	0.414	0.472	0.244	0.244	0.403
y	0.565	0.580	0.517	0.690	0.689	0.513

¹Estimation period 1929-2010. Dummies for 1942, 1943, 1944 and 1945.

²Estimation period 1855-2010. Dummies for 1914, 1915, 1916, 1917, 1918, 1919, 1921, 1939, 1940, 1941, 1942, 1943, 1944 and 1945

*, ** and *** denote statistical significance at the 10%, 5% and 1% level based on standard t values. †, †† and ††† denote statistical significance at the 10%, 5% and 1% level based Banerjee, Dolado, & Mestre (1998) ECM test

Table 3: Regression results for consumption equations, France and Germany

	France ¹			Germany ²		
	1	2	3	1	2	3
c(-1)	-0.220 ^{††}	-0.162	-0.361	-0.157 ^{††}	-0.122 ^{††}	-0.182 [†]
t-stat	-4.070	-3.254	-3.638	-4.574	-4.037	-3.786
ws(-1)	-0.113 ^{**}	-0.049	0.022	0.048	0.052	-0.003
t-stat	-2.081	-0.914	0.215	1.314	1.479	-0.062
pw(-1)	0.009	0.010	-0.002	0.009	0.007	-0.007
t-stat	1.086	1.233	-0.128	1.541	1.358	-0.893
y(-1)	0.187 ^{***}	0.135 ^{***}	0.312 ^{***}	0.139 ^{***}	0.107 ^{***}	0.175 ^{***}
t-stat	3.930	3.131	3.639	4.459	3.962	4.058
Δws	0.032	0.007		0.263 ^{***}	0.351	
t-stat	0.408	0.087		2.766	4.032	
Δpw	0.019	0.050		0.099	0.081	
t-stat	0.189	0.506		1.318	1.097	
Δy	1.058 ^{***}	1.140 ^{***}		0.465 ^{***}	0.508 ^{***}	
t-stat	12.223	14.255		8.511	10.096	
Δc(-1)	-0.229 ^{**}	-0.172 [*]	-0.537 ^{***}	0.185 [*]	0.123	0.320 ^{**}
t-stat	-2.472	-1.827	-3.009	1.894	1.292	2.293
Δws(-1)	-0.018	-0.058	-0.056	-0.040	-0.082	-0.244 [*]
t-stat	-0.241	-0.748	-0.382	-0.412	-0.864	-1.801
Δpw(-1)	-0.029	-0.148	0.634 ^{***}	-0.103	0.005	0.017
t-stat	-0.204	-1.485	3.423	-1.275	0.082	0.162
Δy(-1)	-0.136	-0.209	0.134	-0.032	-0.072	0.056
t-stat	-0.973	-1.426	0.487	-0.445	-1.037	0.540
Δc(-2)	0.081		-0.268	-0.193		-0.220
t-stat	0.911		-1.592	-1.993		-1.579
Δws(-2)	0.172 ^{**}		0.315 ^{**}	0.117		0.209
t-stat	2.301		2.160	1.207		1.480
Δpw(-2)	-0.128		-0.739 ^{***}	0.061		-0.110
t-stat	-1.208		-3.952	0.943		-1.222
Δy(-2)	-0.199		-0.076	0.063		0.074
t-stat	-1.495		-0.288	0.895		0.731
obs	100	102	100	111	114	111
r ²	0.897	0.874	0.572	0.789	0.780	0.532
DW	1.800	2.172	1.714	1.786	1.715	2.004
BG Serial Correl.	0.1592	0.4350	0.1703	0.2932	0.0675	0.4427
Long run effects						
ws	-0.514	-0.303	0.060	0.304	0.424	-0.017
pw	0.039	0.059	-0.005	0.057	0.061	-0.040
y	0.852	0.832	0.865	0.888	0.881	0.962

¹ Estimation period 1896-2010. Dummies for 1903, 1910, 1917 and 1932. Data for 1940-1948 is missing

² Estimation period 1869-2010. Dummy for 1990. Data for 1914-1924 and 1939-1949 is missing.

*, ** and *** denote statistical significance at the 10%, 5% and 1% level based on standard t values. †, †† and ††† denote statistical significance at the 10%, 5% and 1% level based Banerjee, Dolado, & Mestre (1998) ECM test.

Table 4: Regression results for investment equations, USA and UK

	USA ¹			USA. Corporate Investment ²			UK ³		
	1	2	3	1	2	3	1	2	3
i(-1)	-0.258***	-0.248***	-0.222	-0.390	-0.241	-0.587	-0.373***	-0.316***	-0.373***
t-stat	-4.788	-4.877	-1.479	-3.570	-2.421	-2.883	-6.853	-6.027	-6.387
y(-1)	0.383***	0.338***	0.206	1.277***	0.904***	1.309**	0.640***	0.567***	0.657***
t-stat	3.447	3.103	0.668	3.667	2.729	1.903	5.652	5.239	5.504
pw(-1)	-0.114*	-0.080	-0.036	-0.729***	-0.553**	-0.616	-0.216***	-0.194***	-0.236***
t-stat	-1.876	-1.327	-0.216	-2.881	-2.306	-1.260	-2.851	-2.647	-3.073
ws(-1)	0.181	0.349	-0.696	-0.626	-0.148	-0.375	0.070	-0.050	0.038
t-stat	0.584	1.358	-0.889	-0.675	-0.187	-0.246	0.250	-0.184	0.135
LTR(-1)	-0.636***	-0.621***	1.174**	-0.815	-1.317**	1.365	-1.098**	-0.296	-0.471
t-stat	-3.000	-3.509	2.202	-1.447	-2.517	1.268	-2.316	-0.724	-1.113
Δy	2.854***	2.878***		5.099***	5.238***		1.705***	1.417***	
t-stat	14.688	15.796		8.853	9.184		3.328	2.701	
Δpw	-0.085	-0.130		-1.118***	-1.171***		-0.267	-0.389	
t-stat	-0.651	-0.983		-3.323	-3.565		-0.979	-1.473	
Δws	-0.257	0.159		0.346	-0.024		0.327	0.255	
t-stat	-0.599	0.386		0.306	-0.022		0.467	0.386	
ΔLTR	-0.868***	-0.648***		-2.471***	-2.505***		-0.556	-0.762*	
t-stat	-4.282	-3.148		-3.538	-3.659		-1.329	-1.978	
Δi(-1)	-0.208**	-0.096	-0.002	-0.009	-0.125	-0.325	0.078	0.030	0.083
t-stat	-2.153	-1.140	-0.009	-0.057	-0.909	-1.125	1.335	0.549	1.401
Δy(-1)	0.282	-0.526**	-0.878	-1.359	-1.708*	0.572	-0.848	-0.382	-0.784
t-stat	0.842	-2.045	-0.913	-1.421	-1.788	0.317	-1.610	-0.742	-1.483
Δpw(-1)	0.385**	0.455***	1.155***	1.495***	1.465***	1.981***	0.381	0.817**	0.533*
t-stat	2.617	3.280	3.654	3.335	3.609	3.219	0.861	2.348	1.893
Δws(-1)	0.168	-1.110***	-1.922	-0.260	-1.968**	-1.597	-1.006	-0.569	-1.576**
t-stat	0.390	-3.126	-1.657	-0.226	-2.138	-0.779	-1.537	-0.967	-2.555
ΔLTR(-1)	-0.052	0.149	-0.845	0.385	0.018	-0.634	-0.298	-0.420	-0.738**
t-stat	-0.254	0.800	-1.433	0.551	0.029	-0.491	-0.912	-1.330	-2.276
Δi(-2)	0.266***		0.239	0.263*		0.214	-0.094*		-0.099*
t-stat	3.294		1.081	1.870		0.801	-1.676		-1.766
Δy(-2)	-1.373***		-0.585	-1.495		-1.413	0.890*		1.022*
t-stat	-4.592		-0.684	-1.417		-0.742	1.778		1.917
dpw(-2)	0.138		-1.089***	0.057		0.236	0.736*		0.553
t-stat	0.873		-2.800	0.117		0.266	1.813		1.502
Δws(-2)	0.013		0.636	0.870		1.011	0.049		0.151
t-stat	0.037		0.611	0.922		0.544	0.086		0.246
dLTR(-2)	0.123		-0.688	1.034*		1.075	-0.070		-0.014
t-stat	0.669		-1.352	1.713		0.888	-0.234		-0.045
obs	77	78	78	60	61	61	130	132	131
r2	0.979	0.972	0.795	0.903	0.876	0.567	0.828	0.797	0.791
DW	1.973	2.423	2.107	1.712	1.928	1.549	2.149	2.174	2.202
BG Serial Correl.	0.3999	0.1175	0.3674	0.3609	0.8411	0.0195	0.2959	0.0505	0.1179
Long run effects									
ws	0.703	1.404	-3.136	-1.608	-0.615	-0.640	0.188	-0.159	0.101
pw	-0.441	-0.321	-0.161	-1.871	-2.299	-1.049	-0.579	-0.613	-0.632
y	1.488	1.359	0.929	3.279	3.755	2.231	1.717	1.796	1.763

¹ Estimation period 1929-2010. Dummies for 1932, 1933, 1942, 1943 and 1945.² Estimation period 1946-2010. No dummies.³ Estimation period 1855-2010. Dummies for 1876, 1880, 1908, 1940, 1941, 1942, 1943, 1944, 1945 and 1946.

*, ** and *** denote statistical significance at the 10%, 5% and 1% level based on standard t values. †, †† and ††† denote statistical significance at the 10%, 5% and 1% level based Banerjee, Dolado, & Mestre (1998) ECM test

Table 5: Regression results for investment equations, France and Germany

	France ¹			France. Corporate Investment ¹			Germany ²		
	1	2	3	1	2	3	1	2	3
i(-1)	-0.429 ^{†††}	-0.389 ^{†††}	-0.280 [†]	-0.698 ^{†††}	-0.650 ^{†††}	-0.528 ^{††}	-0.084	-0.137	-0.063
t-stat	-7.425	-8.065	-3.866	-6.379	-7.890	-4.323	-1.753	-3.317	-0.572
y(-1)	0.417 ^{†††}	0.386 ^{†††}	0.277 ^{†††}	0.596 ^{†††}	0.563 ^{†††}	0.437 ^{†††}	0.044	0.091 [*]	0.081
t-stat	6.249	6.560	3.237	5.635	6.629	3.664	0.743	1.695	0.586
pw(-1)	0.013	0.007	-0.001	0.091 ^{**}	0.079 ^{**}	0.073 [*]	0.055 [*]	0.068 ^{**}	-0.033
t-stat	0.433	0.248	-0.040	2.284	2.274	1.721	1.820	2.567	-0.482
ws(-1)	0.193	0.112	0.304 [*]	-0.595 ^{†††}	-0.602 ^{†††}	-0.149	0.294 [*]	0.222	0.147
t-stat	1.377	0.844	1.716	-2.644	-3.171	-0.614	1.968	1.596	0.429
LTR(-1)	0.194 [*]	0.110	-0.061	-0.328 ^{**}	-0.338 ^{**}	-0.357 ^{**}	-1.648 ^{†††}	-1.319 ^{†††}	-0.665
t-stat	1.774	1.186	-0.492	-2.026	-2.586	-2.181	-3.716	-3.704	-0.744
Δy	1.595 ^{†††}	1.467 ^{†††}		1.456 ^{†††}	1.386 ^{†††}		3.192 ^{†††}	3.319 ^{†††}	
t-stat	6.509	6.295		4.733	4.902		17.134	17.557	
Δpw	-0.281	-0.319		-0.802 [*]	-0.844 ^{**}		0.495	0.681 ^{**}	
t-stat	-0.896	-1.042		-1.955	-2.154		1.594	2.316	
Δws	0.524 ^{**}	0.555 ^{**}		0.182	0.191		0.435	0.702 ^{**}	
t-stat	2.094	2.283		0.570	0.629		1.222	2.070	
ΔLTR	0.326 ^{†††}	0.296 ^{†††}		0.071	0.056		-1.923 ^{†††}	-1.924 ^{†††}	
t-stat	2.712	2.682		0.458	0.397		-5.747	-6.036	
Δi(-1)	0.066	0.049	0.129	0.177 [*]	0.151	0.201 [*]	-0.005	-0.030	-0.116
t-stat	0.841	0.659	1.443	1.686	1.632	1.756	-0.053	-0.362	-0.503
Δy(-1)	0.612 ^{**}	0.677 ^{†††}	0.642 ^{**}	0.762 ^{†††}	0.851 ^{†††}	0.796 [*]	-0.472	-0.581 [*]	0.709
t-stat	2.618	3.105	2.087	2.638	3.158	2.388	-1.197	-1.698	0.739
Δpw(-1)	0.760 ^{**}	1.071 ^{†††}	1.283 ^{†††}	1.248 ^{**}	1.341 ^{†††}	1.428 ^{†††}	-0.239	0.031	1.213
t-stat	1.766	3.724	3.174	2.168	3.683	2.951	-0.620	0.109	1.532
Δws(-1)	0.218	0.332	0.351	0.782 ^{**}	0.815 ^{**}	0.777 [*]	0.158	0.120	-0.505
t-stat	0.904	1.397	1.110	2.303	2.530	1.966	0.441	0.357	-0.615
ΔLTR(-1)	-0.149	-0.157 [*]	-0.158	0.064	0.003	0.103	-0.077	-0.121	-1.519 ^{**}
t-stat	-1.257	-1.687	-1.046	0.400	0.028	0.562	-0.237	-0.522	-2.079
Δi(-2)	0.055		-0.021	0.080		0.082	0.112 [*]		0.084
t-stat	0.714		-0.216	0.826		0.730	1.725		0.522
Δy(-2)	0.140		-0.206	0.077		-0.287	-0.400		-0.085
t-stat	0.614		-0.700	0.269		-0.890	-1.259		-0.108
Δpw(-2)	0.247		-0.256	0.026		-0.493	0.079		-1.171 [*]
t-stat	0.726		-0.617	0.059		-1.039	0.264		-1.669
Δws(-2)	-0.235		-0.314	-0.016		-0.082	-0.343		-0.821
t-stat	-0.922		-0.944	-0.044		-0.192	-1.042		-1.026
dLTR(-2)	0.002		0.071	0.054		0.068	0.172		0.231
t-stat	0.024		0.560	0.440		0.467	0.757		0.414
obs	110	111	111	110	111	111	105	108	106
r2	0.872	0.860	0.761	0.732	0.723	0.615	0.947	0.939	0.649
DW	1.975	1.926	2.366	2.066	2.036	2.287	1.759	1.932	2.000
BG Serial Correl.	0.2397	0.2300	0.0002	0.5867	0.7919	0.0022	0.1511	0.3216	0.0424
Long run effects									
ws	0.451	0.287	1.083	-0.853	-0.926	-0.282	3.516	1.623	2.349
pw	0.029	0.017	-0.005	0.130	0.122	0.138	0.659	0.494	-0.523
y	0.972	0.992	0.988	0.855	0.866	0.828	0.523	0.664	1.290

¹ Estimation period 1896-2010. Dummies for 1919, 1925, 1930, 1936, 1938, 1939, 1940, 1941, 1942, 1943 and 1945.² Estimation period 1869-2010. Dummies for 1930, 1931, 1932, 1933 and 1990. Data for 1914-1919 and 1939-1945 is missing. Depreciation information starts in 1925, we computed a constant rate of depreciation before.

*, ** and ††† denote statistical significance at the 10%, 5% and 1% level based on standard t values. †, †† and ††† denote statistical significance at the 10%, 5% and 1% level based Banerjee, Dolado, & Mestre (1998) ECM test

Appendix 1: Original sources of Piketty and Zucman (2014)

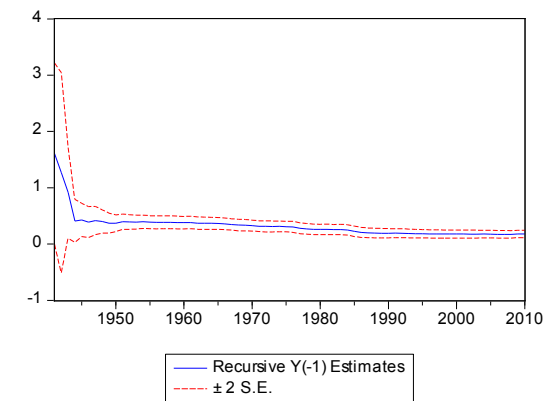
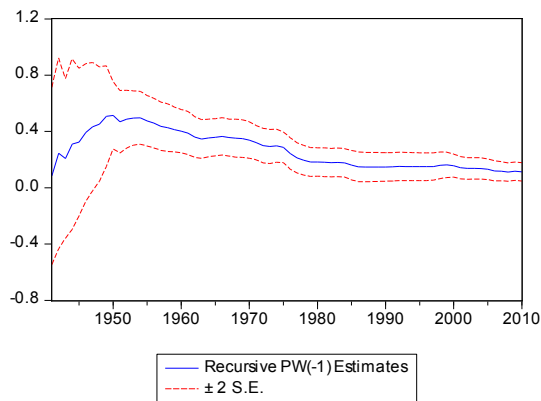
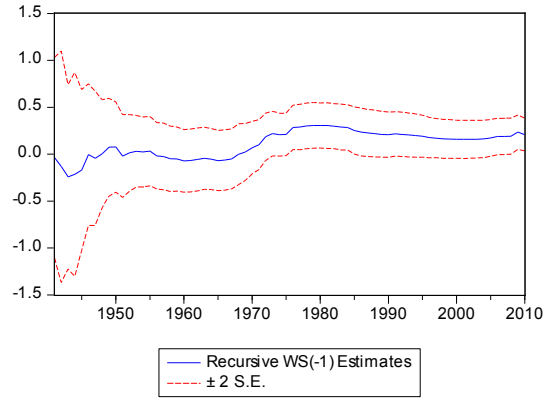
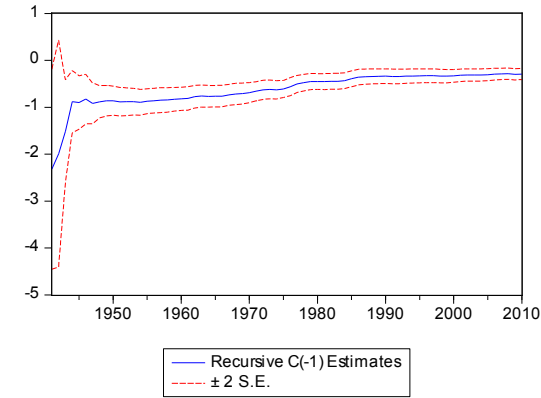
Country	Variable	Periods	Sources
USA	National Income	1869-1929	Balke and Gordon (1989)
		1929-2012	Integrated Macroeconomic Accounts and NIPA
	Private Wealth	1870-1916	Goldsmith (1952, 1962, 1985).
		1916-1945	Kopczuk and Saez (2004)
		1945-2010	Integrated Macroeconomic Accounts
Germany	National Income	1870-1914	Hoffman (1965)
		1914-1924	Ritschl and Spoerer (1997)
		1925-1938	Ritschl
		1939-1959	Ritschl and Spoerer (1997)
		1950-1991	Accounts compiled for West Germany by the Statistisches Bundesamt / Destatis
	Private Wealth	1991-2011	Destatis (the official statistical institute)
		1870-1914	Hoffman (1965)
		1914-1950	1927 Census (Statistisches Jahrbuch für das Deutsche Reich) and then obtain yearly 1914-1950 private wealth series by cumulating private saving flows and accounting for war destructions.
		1950-1991	Accounts compiled for West Germany by the Statistisches Bundesamt / Destatis
		1991-2011	Destatis (the official statistical institute)
France	National Income	1820-1896	Bourguignon and Lévy-Leboyer (1985).
		1896-1948	Piketty (2010, 2011) based on Villa (1994)
		1949-2010	Institut national de la statistique et des études économiques
	Private Wealth	1820-1913	Lévy-Leboyer (1977), Foville (1893), Colson (1903)
		1913-1970	Piketty (2010, 2011)
UK	National Income	1970-2010	Institut national de la statistique et des études économiques
		1855-1948	Feinstein (1972)
	Private Wealth	1948-2010	Office for National Statistics (ONS)
		1855-1920	Feinstein (1972)
		1920-1948	Solomou and Weale (1997)
		1948-1975	Blake and Orszag (1999)
1975-2010	Office for National Statistics (ONS)		

Appendix 2: Unit root Tests

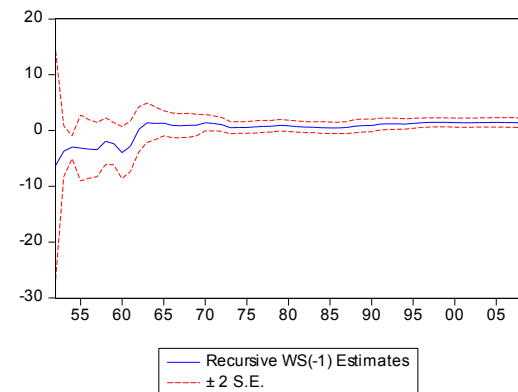
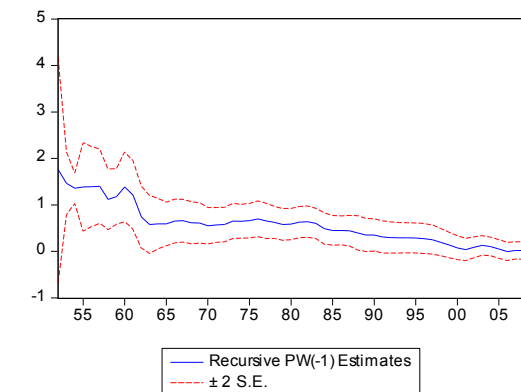
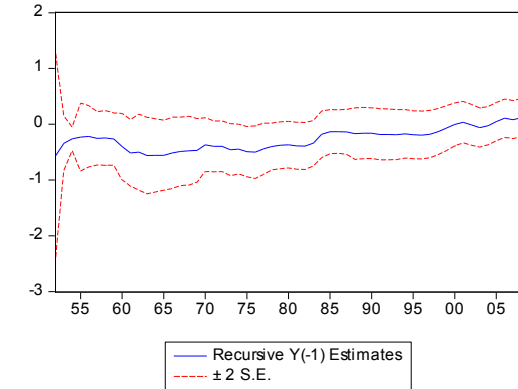
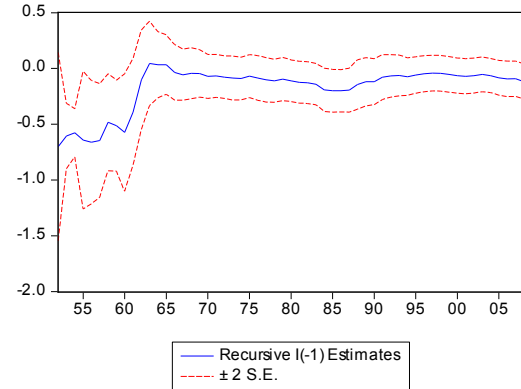
USA							
	Y	PW	WS	C	C	I corp.	LTR
ADF	-0.911792	-0.114225	-2.092	-0.495984	-3.063	-3.161	-2.248
p value	0.9490	0.9938	0.2484	0.9818	0.1238	0.1020	0.4555
Unit Root	yes	yes	yes	yes	yes	yes	yes
	dY	dPW	dWS	dC	dI	dIcorp	
ADF	-6.353	-6.652	-6.044	-4.393	-5.676	-5.514	
p value	0.0000	0.0000	0.0000	0.0039	0.0001	0.0001	
Unit Root	no	no	no	no	no	no	
UK							
	Y	PW	WS	C	C	LTR	
ADF	1.858	3.058	-2.680	1.477	-1.254	-4.931	
p value	1.000	1.000	0.2464	1.000	0.8948	0.0005	
Unit Root	yes	yes	yes	yes	yes	no	
	dY	dPW	dWS	dC	dI		
ADF	-4.850	-6.111	-7.661	-4.885	-8.270		
p value	0.0006	0.0000	0.0000	0.0005	0.0000		
Unit Root	no	no	no	no	no		
France							
	Y	PW	WS	C	C	I corp.	LTR
ADF	-1.214	3.921	-2.985	-1.673	-1.721	-1.674	-3.117
p value	0.9024	1.000	0.1410	0.7561	0.7357	0.7562	0.1075
Unit Root	yes	yes	yes	yes	yes	yes	yes
	dY	dPW	dWS	dC	dI	dIcorp	
ADF	-4.311	-2.352	-6.854	-5.011	-6.419	-6.585	
p value	0.0044	0.0187	0.0000	0.0004	0.0000	0.0000	
Unit Root	no	no	no	no	no	no	
Germany							
	Y	PW	WS	C	C	LTR	
ADF	-1.587	4.168	-3.447	-1.084	-2.532	-3.447	
p value	0.7928	1.000	0.0502	0.9264	0.3123	0.0502	
Unit Root	yes	yes	no	yes	yes	no	
	dY	dPW	dWS	dC	dI		
ADF	-9.708	-9.500	-6.937	-5.110	-6.474		
p value	0.0000	0.0000	0.0000	0.0003	0.0000		
Unit Root	no	no	no	no	no		

Appendix 3.1: Recursive estimations for consumption parameters, USA and UK

USA

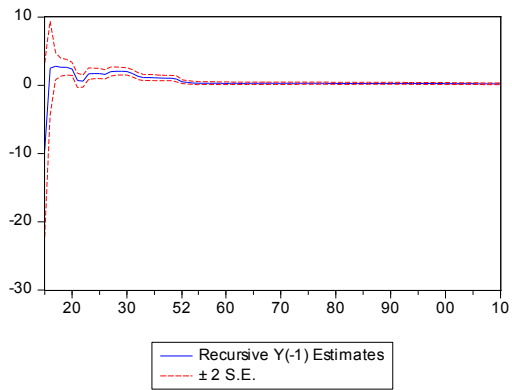
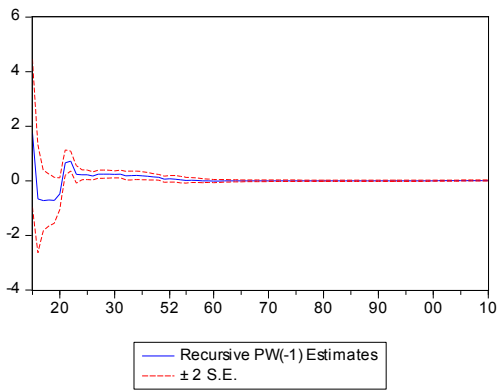
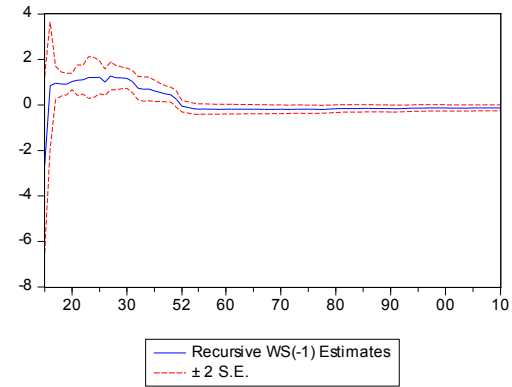
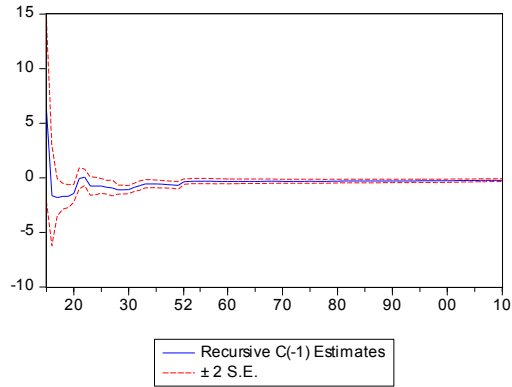


UK

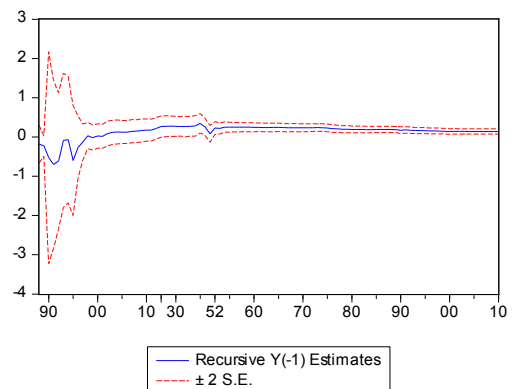
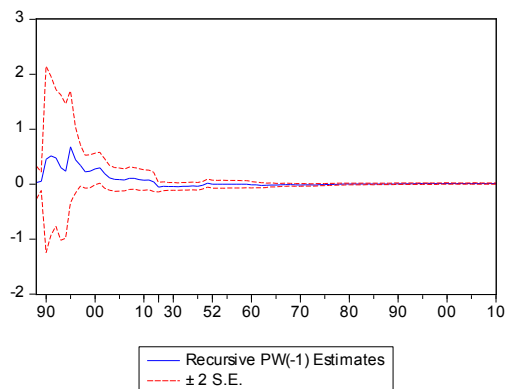
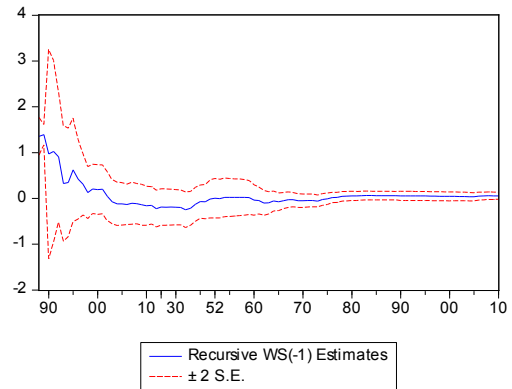
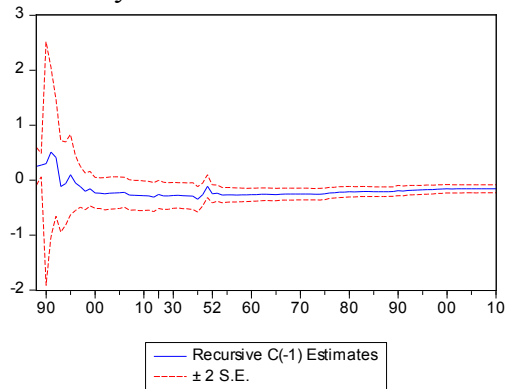


Appendix 3.2: Recursive estimations for consumption parameters, France and Germany

France

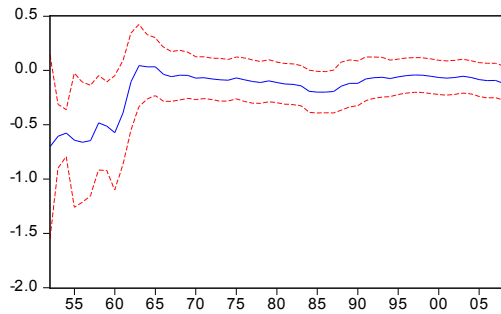


Germany

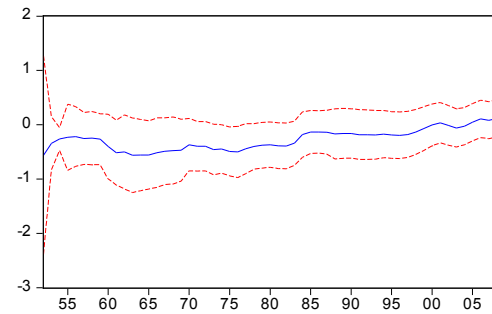


Appendix 3.3: Recursive estimations for investment parameters, USA and UK

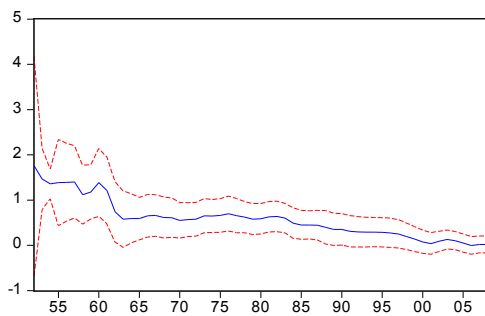
USA



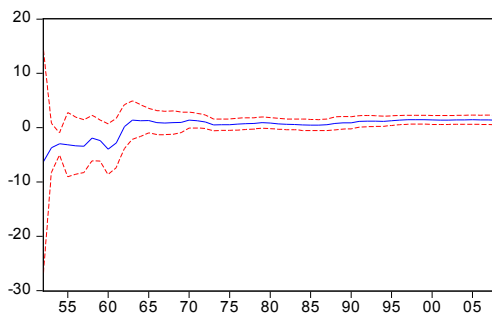
— Recursive I(-1) Estimates
- - ± 2 S.E.



— Recursive Y(-1) Estimates
- - ± 2 S.E.

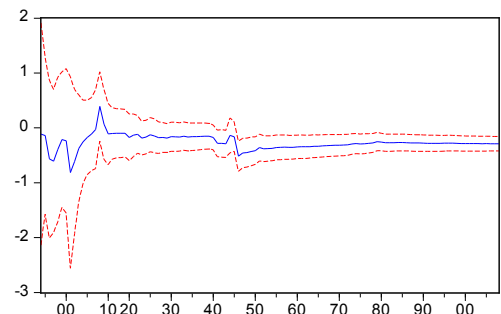


— Recursive PW(-1) Estimates
- - ± 2 S.E.

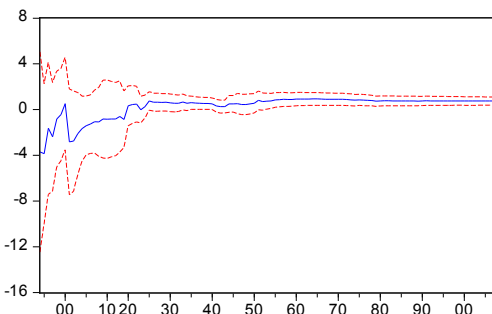


— Recursive WS(-1) Estimates
- - ± 2 S.E.

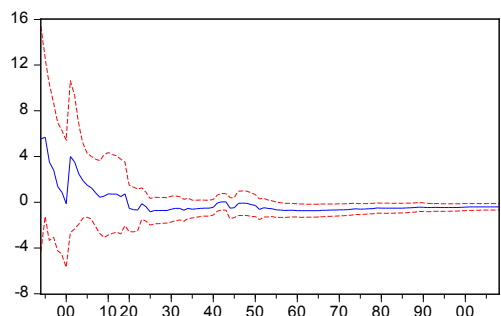
UK



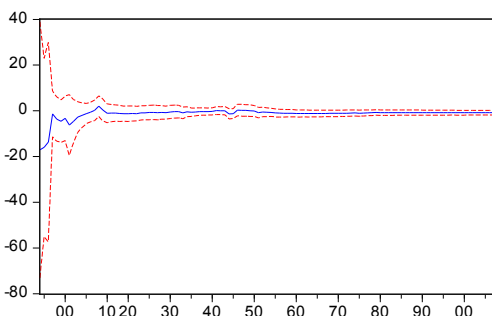
— Recursive I(-1) Estimates
- - ± 2 S.E.



— Recursive Y(-1) Estimates
- - ± 2 S.E.



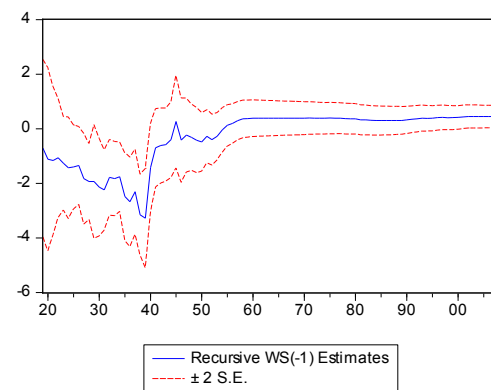
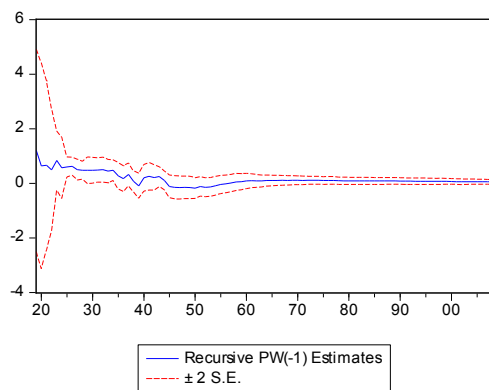
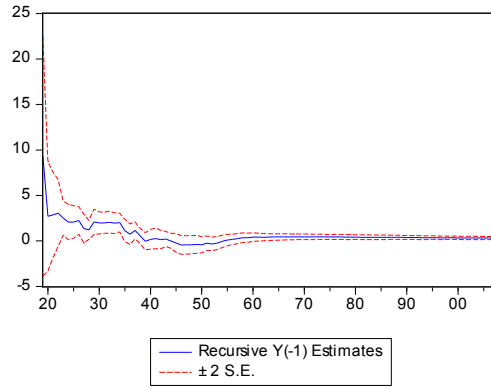
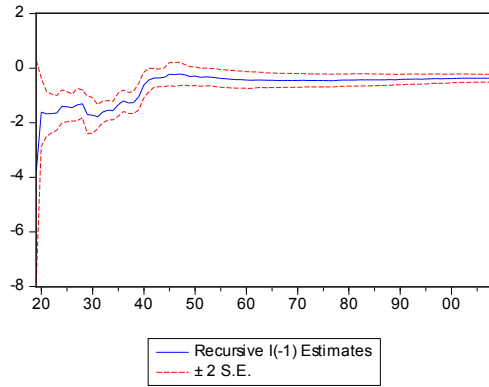
— Recursive PW(-1) Estimates
- - ± 2 S.E.



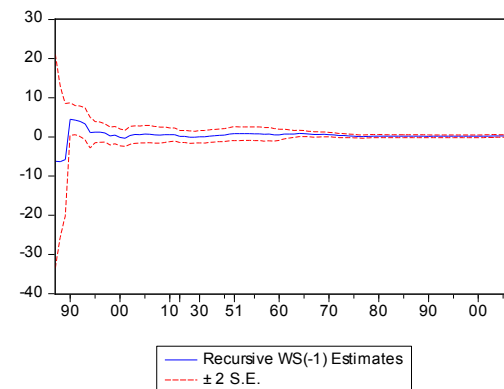
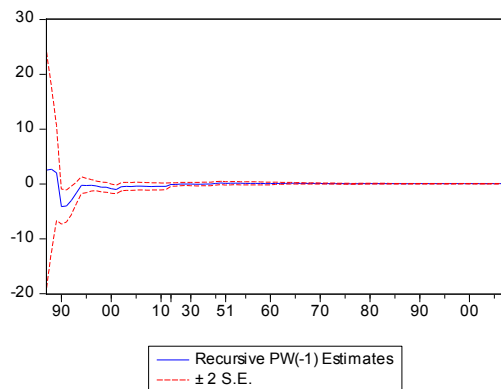
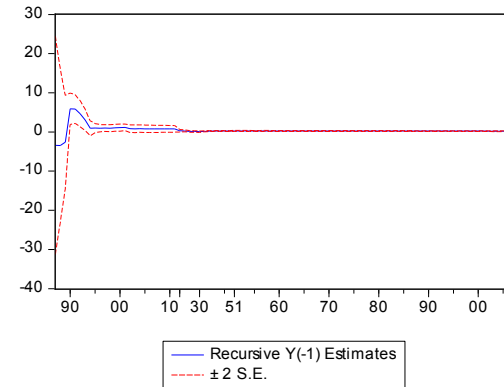
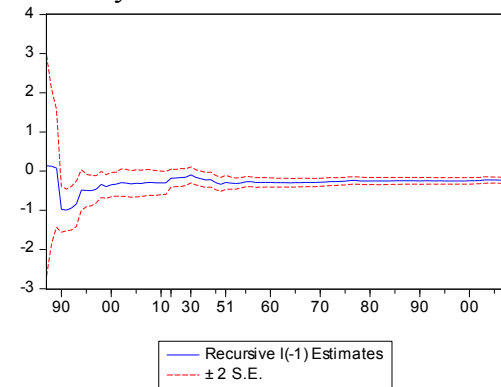
— Recursive WS(-1) Estimates
- - ± 2 S.E.

Appendix 3.4: Recursive estimations for investment parameters, France and Germany

France

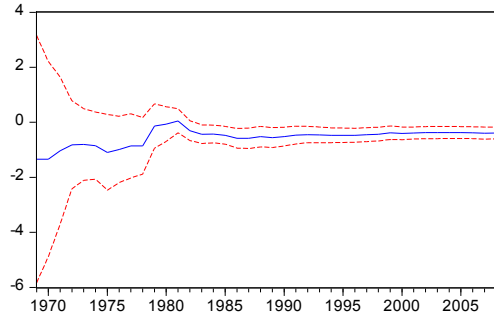


Germany

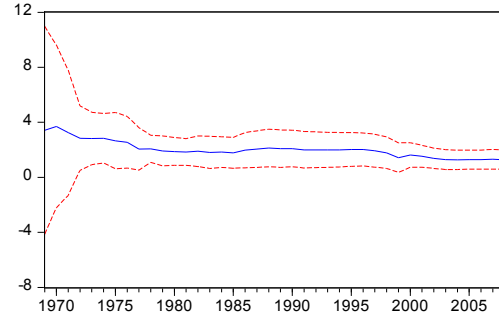


Appendix 3.5: Recursive estimations for corporate investment parameters, USA and France

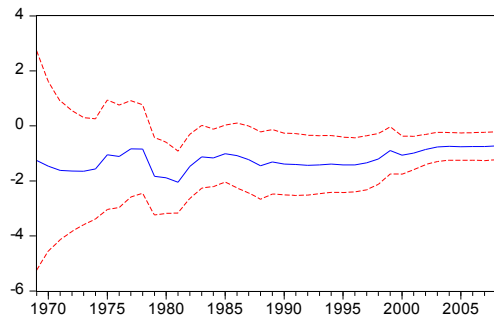
USA



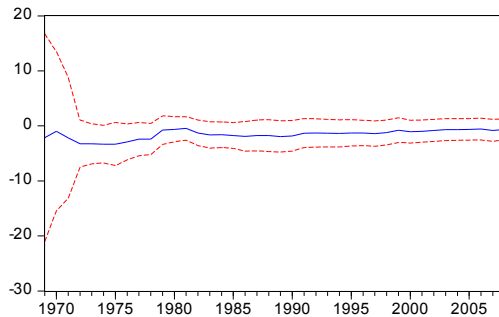
Recursive I CORP(-1) Estimates
± 2 S.E.



Recursive Y(-1) Estimates
± 2 S.E.

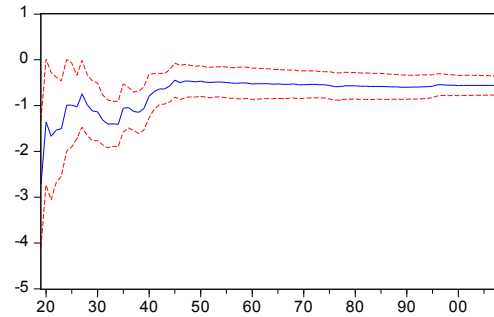


Recursive PW(-1) Estimates
± 2 S.E.

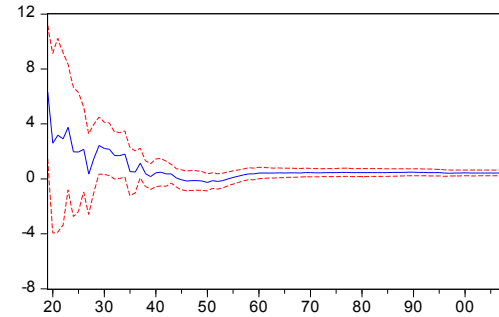


Recursive WS(-1) Estimates
± 2 S.E.

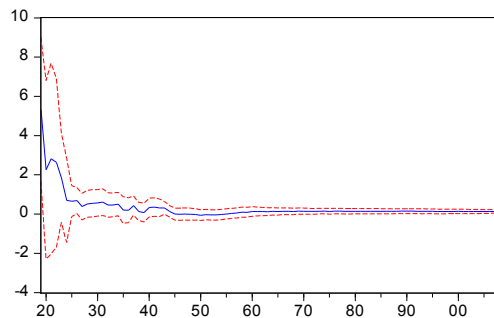
France



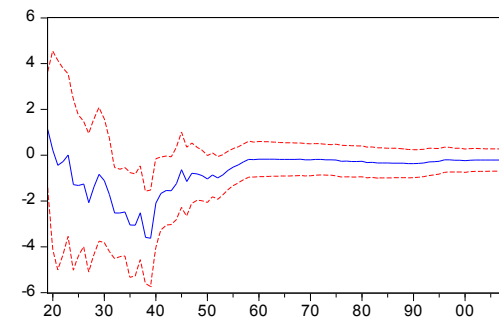
Recursive I CORP(-1) Estimates
± 2 S.E.



Recursive Y(-1) Estimates
± 2 S.E.



Recursive PW(-1) Estimates
± 2 S.E.



Recursive WS(-1) Estimates
± 2 S.E.

Appendix 4.1: Regression results for consumption equations without private wealth, USA and UK

	USA ¹			UK ²		
	1	2	3	1	2	3
c(-1)	-0.232	-0.220	-0.227	-0.071	-0.070	0.023
t-stat	-4.028	-3.687	-2.655	-2.255	-2.253	0.446
ws(-1)	0.234	0.129	0.371	0.013	0.016	0.071
t-stat	2.557	1.503	2.914	0.531	0.679	1.710
y(-1)	0.080	0.076	0.093	0.065	0.064	-0.026
t-stat	2.569	2.396	2.023	2.210	2.194	-0.533
Δ ws	-0.162	-0.110		-0.061	-0.077	
t-stat	-1.167	-0.772		-0.771	-1.021	
Δ y	0.397	0.424		0.701	0.697	
t-stat	5.975	6.077		12.191	12.432	
Δ c(-1)	0.246	0.191	0.202	0.057	0.075	-0.198
t-stat	2.407	1.900	1.342	0.879	1.226	-1.917
Δ ws(-1)	-0.184	-0.035	-0.819	-0.026	-0.054	-0.267
t-stat	-1.190	-0.241	-4.247	-0.322	-0.742	-2.062
Δ y(-1)	-0.172	-0.070	-0.189	-0.078	-0.092	0.200
t-stat	-1.880	-0.817	-1.585	-1.070	-1.402	1.696
Δ c(-2)	-0.167		-0.241	0.031		-0.011
t-stat	-1.655		-1.620	0.414		-0.088
Δ ws(-2)	-0.164		-0.158	-0.046		-0.129
t-stat	-1.225		-0.798	-0.618		-1.050
Δ y(-2)	0.159		0.279	-0.066		-0.154
t-stat	1.944		2.341	-0.838		-1.196
obs	79	80	79	153	154	153
r2	0.767	0.740	0.470	0.855	0.853	0.588
DW	1.913	2.020	1.756	2.078	2.086	1.662
BG Serial Correl.	0.5544	0.1064	0.3879	0.6938	0.7872	0.0005
Long run effects						
ws	1.007	0.586	1.637	0.190	0.234	-3.082
y	0.345	0.348	0.410	0.916	0.910	1.114

¹Estimation period 1929-2010. Dummies for 1942, 1943, 1944 and 1945.

²Estimation period 1855-2010. Dummies for 1914, 1915, 1916, 1917, 1918, 1919, 1921, 1939, 1940, 1941, 1942, 1943, 1944 and 1945.

Appendix 4.2: Regression results for consumption equations without private wealth, France and Germany

	France ¹			Germany ²		
	1	2	3	1	2	3
c(-1)	-0.156	-0.112	-0.324	-0.144	-0.116	-0.193
t-stat	-3.464	-2.603	-3.704	-4.522	-4.189	-4.373
ws(-1)	-0.080	-0.026	0.049	0.019	0.028	0.025
t-stat	-1.592	-0.512	0.482	0.625	0.919	0.575
y(-1)	0.138	0.099	0.276	0.134	0.108	0.179
t-stat	3.544	2.669	3.653	4.540	4.200	4.371
Δ ws	0.023	-0.008		0.269	0.345	
t-stat	0.293	-0.101		2.938	4.062	
Δ y	1.055	1.115		0.476	0.523	
t-stat	13.134	14.055		10.149	12.086	
Δ c(-1)	-0.236	-0.178	-0.455	0.164	0.121	0.314
t-stat	-2.614	-1.912	-2.407	1.714	1.308	2.274
Δ ws(-1)	-0.051	-0.076	-0.169	-0.075	-0.099	-0.246
t-stat	-0.703	-0.988	-1.096	-0.786	-1.051	-1.832
Δ y(-1)	-0.181	-0.255	0.044	-0.048	-0.070	0.070
t-stat	-1.318	-1.777	0.151	-0.686	-1.024	0.704
Δ c(-2)	0.067		-0.189	-0.155		-0.251
t-stat	0.775		-1.059	-1.665		-1.856
Δ ws(-2)	0.146		0.293	0.126		0.195
t-stat	1.996		1.891	1.315		1.412
Δ y(-2)	-0.215		-0.193	0.048		0.062
t-stat	-1.655		-0.700	0.689		0.623
obs	100	102	100.000	111	114	111
r ²	0.889	0.868	0.483	0.779	0.774	0.522
DW	1.832	2.200	1.801	1.806	1.735	1.942
BG Serial Correl.	0.1484	0.2739	0.3536	0.2685	0.0980	0.5941
Long run effects						
ws	-0.515	-0.233	0.150	0.134	0.239	0.132
y	0.884	0.884	0.851	0.933	0.932	0.929

¹ Estimation period 1896-2010. Dummies for 1903, 1910, 1917 and 1932. Data for 1940-1948 is missing

² Estimation period 1869-2010. Dummy for 1990. Data for 1914-1924 and 1939-1949 is missing.

Appendix 4.3: Regression results for investment equations without private wealth, USA and UK

	USA ¹			USA. Corporate Investment ²			UK ³		
	1	2	3	1	2	3	1	2	3
i(-1)	-0.200	-0.209	-0.286	-0.333	-0.163	-0.483	-0.342	-0.293	-0.328
t-stat	-5.336	-5.867	-2.745	-2.876	-1.573	-2.501	-6.250	-5.614	-5.590
y(-1)	0.211	0.220	0.229	0.421	0.218	0.515	0.407	0.363	0.387
t-stat	5.029	5.455	1.928	3.085	1.806	2.262	5.692	5.242	5.058
ws(-1)	0.340	0.452	-0.153	1.394	0.884	1.221	0.657	0.476	0.669
t-stat	1.438	2.108	-0.236	2.074	1.522	1.128	3.471	2.579	3.378
LTR(-1)	-0.832	-0.785	1.066	-0.270	-0.957	2.042	-1.026	-0.341	-0.532
t-stat	-4.047	-4.390	1.935	-0.451	-1.715	1.951	-2.516	-0.975	-1.443
Δy	2.840	2.863		5.652	5.543		2.045	1.943	
t-stat	14.724	14.717		9.262	8.965		4.147	3.905	
Δws	-0.115	0.138		2.007	0.981		1.182	1.014	
t-stat	-0.258	0.327		1.633	0.836		1.725	1.606	
ΔLTR	-1.101	-0.982		-2.548	-2.756		-0.474	-0.521	
t-stat	-5.575	-5.506		-3.342	-3.742		-1.334	-1.527	
Δi(-1)	-0.258	-0.126	-0.305	0.085	-0.061	-0.558	0.127	0.070	0.087
t-stat	-2.924	-1.518	-1.132	0.483	-0.394	-1.937	2.207	1.321	1.436
Δy(-1)	0.515	-0.280	0.394	-1.183	-1.297	2.935	-0.157	0.194	0.175
t-stat	1.579	-1.104	0.423	-1.096	-1.267	1.647	-0.306	0.394	0.354
Δws(-1)	0.102	-1.066	-2.764	-0.518	-1.274	-3.822	-1.068	-0.361	-1.557
t-stat	0.226	-2.880	-2.265	-0.421	-1.286	-1.895	-1.576	-0.610	-2.410
ΔLTR(-1)	0.003	0.236	-0.076	1.166	0.752	-0.206	-0.051	-0.237	-0.365
t-stat	0.014	1.217	-0.125	1.580	1.156	-0.153	-0.155	-0.749	-1.139
Δi(-2)	0.232		-0.047	0.198		0.059	-0.096		-0.103
t-stat	2.958		-0.215	1.236		0.209	-1.670		-1.823
Δy(-2)	-1.306		-0.381	-0.559		0.199	1.330		1.437
t-stat	-4.024		-0.413	-0.482		0.105	2.688		2.770
Δws(-2)	-0.123		-0.537	0.031		-0.616	0.337		0.361
t-stat	-0.339		-0.499	0.031		-0.336	0.581		0.575
dLTR(-2)	0.201		-0.763	1.024		0.706	0.205		0.258
t-stat	1.038		-1.402	1.580		0.588	0.675		0.785
obs	77	78	78	60	61	61	130	132	131
r2	0.973	0.967	0.737	0.855	0.826	0.457	0.804	0.778	0.760
DW	1.871	2.265	2.012	1.717	1.912	1.598	2.142	2.143	2.150
BG Serial Correl.	0.2843	0.2515	0.9569	0.0762	0.6875	0.0197	0.2857	0.2477	0.1880
Long run effects									
ws	1.705	2.168	-0.536	4.186	5.427	2.528	1.924	1.625	2.043
y	1.056	1.053	0.801	1.264	1.342	1.066	1.193	1.238	1.181

¹ Estimation period 1929-2010. Dummies for 1932, 1933, 1942, 1943 and 1945.

² Estimation period 1946-2010. No dummies.

³ Estimation period 1855-2010. Dummies for 1876, 1880, 1908, 1940, 1941, 1942, 1943, 1944, 1945 and 1946.

Appendix 4.4: Regression results for investment equations without private wealth, France and Germany

	France ¹			France. Corporate Investment ¹			Germany ²		
	1	2	3	1	2	3	1	2	3
i(-1)	-0.377	-0.329	-0.221	-0.650	-0.603	-0.563	-0.082	-0.148	-0.021
t-stat	-6.991	-6.448	-3.192	-6.226	-6.845	-4.750	-1.812	-3.684	-0.198
y(-1)	0.386	0.344	0.232	0.633	0.592	0.549	0.083	0.156	0.013
t-stat	6.626	6.145	3.061	6.087	6.706	4.641	1.717	3.584	0.112
ws(-1)	0.124	0.054	0.195	-0.618	-0.617	-0.333	0.170	0.048	0.214
t-stat	0.851	0.390	1.032	-2.684	-3.104	-1.320	1.279	0.376	0.718
LTR(-1)	0.294	0.171	-0.012	-0.123	-0.180	-0.228	-1.704	-1.322	-0.274
t-stat	2.870	1.853	-0.101	-0.866	-1.420	-1.538	-3.899	-3.635	-0.314
Δy	1.636	1.560		1.287	1.254		3.168	3.339	
t-stat	6.517	6.232		4.193	4.290		17.629	18.892	
Δws	0.607	0.699		0.154	0.221		0.265	0.571	
t-stat	2.356	2.715		0.469	0.706		0.757	1.657	
ΔLTR	0.397	0.339		0.092	0.067		-1.747	-1.794	
t-stat	3.244	2.855		0.606	0.457		-6.138	-6.165	
Δi(-1)	0.074	0.008	0.105	0.225	0.190	0.240	0.032	0.058	-0.145
t-stat	0.891	0.100	1.075	2.020	1.921	1.980	0.348	0.760	-0.649
Δy(-1)	0.517	0.659	0.756	0.402	0.511	0.753	-0.711	-0.987	0.900
t-stat	2.190	2.924	2.360	1.405	1.909	2.318	-1.934	-3.343	1.011
Δws(-1)	0.185	0.286	0.335	0.572	0.616	0.728	0.101	-0.020	-0.650
t-stat	0.725	1.101	0.971	1.598	1.801	1.776	0.283	-0.057	-0.796
ΔLTR(-1)	-0.141	-0.106	-0.087	-0.016	-0.045	0.108	-0.109	0.018	-1.113
t-stat	-1.197	-1.101	-0.565	-0.103	-0.377	0.626	-0.386	0.082	-1.652
Δi(-2)	0.013		-0.086	0.094		0.092	0.163		0.078
t-stat	0.166		-0.826	0.916		0.781	2.688		0.520
Δy(-2)	0.383		0.170	0.138		-0.028	-0.734		-0.006
t-stat	1.678		0.553	0.503		-0.088	-2.603		-0.008
Δws(-2)	-0.148		-0.185	-0.008		0.064	-0.499		-1.030
t-stat	-0.549		-0.509	-0.022		0.146	-1.559		-1.321
dLTR(-2)	0.049		0.146	0.002		0.038	0.299		-0.123
t-stat	0.511		1.123	0.014		0.262	1.469		-0.245
obs	110	111	111	110	111	111	105	108	106
r2	0.845	0.822	0.700	0.673	0.663	0.549	0.943	0.931	0.634
DW	1.778	1.640	2.040	1.953	1.900	2.109	1.674	1.989	1.922
BG Serial Correl.	0.0826	0.0088	0.0056	0.1395	0.1255	0.0438	0.0550	0.5935	0.1008
Long run effects									
ws	0.329	0.165	0.885	-0.950	-1.024	-0.591	2.089	0.326	10.227
y	1.024	1.046	1.053	0.973	0.982	0.976	1.023	1.056	0.606

¹ Estimation period 1896-2010. Dummies for 1919, 1925, 1930, 1936, 1938, 1939, 1940, 1941, 1942, 1943 and 1945.

² Estimation period 1869-2010. Dummies for 1930, 1931, 1932, 1933 and 1990. Data for 1914-1919 and 1939-1945 is missing. Depreciation information starts in 1925, we computed a constant rate of depreciation before.

Appendix 5: Marginal effects of consumption, total investment and corporate investment to WS, PW and Y, calculated at the mean of the sample

Consumption	Preferred specification vs. Specification 3	WS	PW	Y
USA	2	0.503	0.089	0.434
	3	1.575	0.102	0.391
UK	1	0.716	0.052	0.518
	3	1.574	0.085	0.385
France	1	-0.443	0.013	0.576
	3	0.052	-0.002	0.585
Germany	1	0.262	0.022	0.581
	3	-0.015	-0.015	0.629
Investment	Preferred specification vs. Specification 3	WS	PW	Y
USA	1	0.204	-0.028	0.334
	3	-0.911	-0.010	0.209
UK	1	0.033	-0.021	0.220
	3	0.018	-0.023	0.226
France	1	0.124	0.003	0.210
	3	0.297	-0.001	0.213
Germany	2	0.543	0.075	0.168
	3	0.786	-0.006	0.059
Corporate investment	Preferred specification vs. Specification 3	WS	PW	Y
USA	1	-0.218	-0.056	0.344
	3	-0.087	-0.031	0.234
France	1	-0.113	0.007	0.089
	3	-0.037	0.007	0.086

Appendix 6.1: Subsamples estimation for consumption equations, France, Germany and UK.

	France ¹		Germany ²		UK ³	
	1896-1946	1946-2010	1869-1946	1946-2010	1855-1946	1946-2010
c(-1)	-0.708	-0.162	-0.111	0.042	-0.377	-0.179
t-stat	-3.838	-1.465	-1.059	0.616	-5.605	-3.050
ws(-1)	0.250	0.048	-0.012	0.049	0.219	0.152
t-stat	1.387	0.884	-0.060	1.103	3.156	2.789
pw(-1)	0.055	0.008	0.017	0.002	0.037	0.104
t-stat	1.001	0.603	0.481	0.072	1.447	3.888
y(-1)	0.917	0.139	0.079	-0.056	0.313	0.038
t-stat	4.071	1.302	0.744	-1.028	4.718	0.797
Δ ws	0.157	0.134	0.332	0.361	0.076	0.031
t-stat	1.004	1.157	1.864	2.940	0.654	0.372
Δ pw	0.115	-0.007	0.043	0.147	0.111	0.258
t-stat	0.529	-0.102	0.298	1.238	1.133	6.566
Δ y	1.235	0.696	0.459	0.625	0.701	0.506
t-stat	7.359	5.664	5.022	7.066	8.959	6.310
Δ c(-1)	-0.063	-0.019	0.148	-0.183	-0.006	0.122
t-stat	-0.324	-0.104	0.846	-1.325	-0.072	1.129
Δ ws(-1)	-0.260	-0.014	0.074	0.059	-0.069	-0.157
t-stat	-1.800	-0.138	0.369	0.414	-0.580	-1.936
Δ pw(-1)	-0.394	0.089	-0.191	-0.141	0.017	-0.018
t-stat	-1.261	0.894	-1.490	-1.012	0.131	-0.344
Δ y(-1)	-0.184	-0.039	0.082	0.193	0.005	-0.115
t-stat	-0.730	-0.181	0.649	1.296	0.054	-1.122
Δ c(-2)	0.289	0.011	-0.402	-0.195	0.018	-0.028
t-stat	1.666	0.061	-2.425	-1.525	0.165	-0.273
Δ ws(-2)	-0.023	-0.046	0.176	0.229	-0.146	0.019
t-stat	-0.151	-0.523	0.901	1.919	-1.351	0.251
Δ pw(-2)	-0.371	-0.061	0.151	-0.018	-0.071	0.038
t-stat	-1.234	-0.670	1.514	-0.173	-0.737	0.778
Δ y(-2)	-0.521	-0.077	0.157	0.193	-0.055	0.016
t-stat	-2.242	-0.388	1.360	1.554	-0.517	0.160
obs	41	59	52	59	89	65
r2	0.910	0.831	0.781	0.896	0.927	0.889
DW	1.924	2.001	2.181	2.069	2.218	2.021
BG Serial Correl.	0.7851	0.5630	0.1063	0.8470	0.3826	0.6780
Long run effects						
ws	0.353	0.297	-0.112	-1.163	0.580	0.848
pw	0.078	0.051	0.155	-0.052	0.099	0.582
y	1.296	0.858	0.716	1.325	0.831	0.211

¹ Dummies for 1903, 1910, 1917 and 1932. Data for 1940-1948 is missing

² Dummy for 1990. Data for 1914-1924 and 1939-1949 is missing

³ Dummies for 1914, 1915, 1916, 1917, 1918, 1919, 1921, 1939, 1940, 1941, 1942, 1943, 1944, 1945 and 1955.

Appendix 6.2: Subsamples estimation for investment equations, France, Germany and UK.

	France ¹		Germany ²		UK ³	
	1896-1946	1946-2010	1869-1946	1946-2010	1855-1946	1946-2010
i(-1)	-0.753	-0.325	-0.270	-0.234	-0.172	-0.645
t-stat	-3.967	-5.733	-2.270	-2.830	-1.822	-4.579
y(-1)	1.048	0.181	0.212	0.538	0.775	1.228
t-stat	1.810	1.699	1.807	2.962	3.654	3.980
pw(-1)	0.258	0.124	0.109	-0.204	-0.676	-0.411
t-stat	1.160	1.979	0.610	-2.175	-2.417	-2.642
ws(-1)	-0.013	0.239	0.717	-0.212	-0.550	0.793
t-stat	-0.025	1.330	0.840	-1.079	-0.870	2.129
LTR(-1)	-0.041	0.578	-3.285	-0.298	-3.554	0.853
t-stat	-0.102	7.740	-3.240	-0.466	-3.451	1.862
Δy	0.501	2.111	2.977	3.330	1.711	3.295
t-stat	1.154	7.161	9.970	9.279	2.228	5.452
Δpw	-0.256	-0.175	0.686	-0.171	-0.087	-0.271
t-stat	-0.396	-0.719	0.979	-0.376	-0.160	-0.980
Δws	-0.206	-0.483	0.929	0.953	0.676	1.552
t-stat	-0.572	-1.242	1.238	2.126	0.535	2.381
ΔLTR	0.563	0.124	-2.790	-0.681	-1.665	0.547
t-stat	2.007	1.278	-3.544	-1.437	-2.044	1.217
Δi(-1)	0.538	-0.257	0.108	0.124	-0.301	0.232
t-stat	2.253	-3.251	0.751	0.786	-2.334	3.933
Δy(-1)	0.525	1.125	-0.213	-1.484	-0.479	-0.293
t-stat	0.987	3.485	-0.366	-2.538	-0.591	-0.455
Δpw(-1)	1.591	0.887	-1.119	-0.032	0.414	0.413
t-stat	1.611	2.687	-1.421	-0.057	0.441	1.130
Δws(-1)	0.755	-0.814	0.851	-0.021	-1.913	0.168
t-stat	1.985	-2.329	1.119	-0.042	-1.447	0.250
ΔLTR(-1)	0.166	-0.065	0.621	0.016	-0.292	-1.124
t-stat	0.480	-0.590	0.855	0.043	-0.598	-3.015
Δi(-2)	0.555	-0.209	0.161	0.193	-0.298	-0.003
t-stat	2.250	-2.569	1.565	1.216	-2.332	-0.048
Δy(-2)	-0.045	1.072	-0.317	-0.725	0.666	0.019
t-stat	-0.096	4.223	-0.554	-1.231	0.948	0.030
Δpw(-2)	-1.041	0.082	-0.346	0.749	1.682	0.125
t-stat	-1.030	0.269	-0.464	1.732	2.074	0.376
Δws(-2)	0.404	0.287	0.073	0.067	-0.279	-0.068
t-stat	1.040	0.832	0.123	0.169	-0.228	-0.131
dLTR(-2)	0.366	0.060	0.596	0.218	0.302	-0.350
t-stat	1.381	0.768	0.997	0.854	0.655	-0.982
obs	48	63	49	56	68	62
r2	0.962	0.899	0.977	0.891	0.913	0.851
DW	2.078	1.999	2.327	1.947	2.071	2.041
BG Serial Correl.	0.8538	0.5838	0.3925	0.7791	0.8528	0.6256
Long run effects						
ws	-0.018	0.736	2.659	-0.906	-3.206	1.229
pw	0.342	0.383	0.406	-0.874	-3.944	-0.637
y	1.393	0.556	0.787	2.301	4.518	1.903

¹ Dummies for 1919, 1925, 1930, 1936, 1938, 1939, 1940, 1941, 1942, 1943, 1945, 1976 and 1993.

² Dummies for 1930, 1931, 1932, 1933 and 1990. Data for 1914-1919 and 1939-1945 is missing. Depreciation information starts in 1925, we computed a constant rate of depreciation before

³ Dummies for 1876, 1880, 1908, 1940, 1941, 1942, 1943, 1944, 1945, 1946, 1950 and 1951.

Appendix 7: Descriptive Statistics

USA						UK					
1929-1946						1855 1946					
	C	I	I	PWE	WS		C	I	I	PWE	WS
Mean	6.77	5.21	7.14	8.43	-0.27	Mean	4.78	2.71	4.99	6.78	-0.38
Std. Dev.	0.21	0.72	0.36	0.15	0.05	Std. Dev.	0.41	0.53	0.45	0.34	0.08
Obs.	17	17	17	17	17	Obs.	88	88	88	88	88
1946 1980						1946 1980					
	C	I	I	PWE	WS		C	I	I	PWE	WS
Mean	7.73	6.60	8.19	9.34	-0.27	Mean	5.75	4.48	6.10	7.27	-0.26
Std. Dev.	0.37	0.41	0.38	0.35	0.03	Std. Dev.	0.21	0.42	0.25	0.22	0.05
Obs.	35	35	35	35	35	Obs.	35	35	35	35	35
1980 2010						1980 2010					
	C	I	I	PWE	WS		C	I	I	PWE	WS
Mean	8.83	7.58	9.22	10.48	-0.27	Mean	6.50	5.22	6.84	8.28	-0.28
Std. Dev.	0.31	0.25	0.28	0.38	0.02	Std. Dev.	0.27	0.24	0.27	0.43	0.05
Obs.	31	31	31	31	31	Obs.	31	31	31	31	31
France						Germany					
1896-1946						1869 1946					
	C	I	I	PWE	WS		C	I	I	PWE	WS
Mean	5.01	3.41	5.21	6.78	-0.33	Mean	4.69	3.30	4.93	6.59	-0.30
Std. Dev.	0.14	0.20	0.13	0.22	0.06	Std. Dev.	0.38	0.46	0.39	0.26	0.04
Obs.	43	43	43	43	43	Obs.	54	54	54	54	54
1946 1980						1946 1980					
	C	I	I	PWE	WS		C	I	I	PWE	WS
Mean	5.84	4.91	6.37	7.26	-0.24	Mean	6.20	5.39	6.65	7.36	-0.26
Std. Dev.	0.40	0.51	0.45	0.61	0.03	Std. Dev.	0.40	0.40	0.40	0.55	0.03
Obs.	31	31	31	31	31	Obs.	31	31	31	31	31
1980 2010						1980 2010					
	C	I	I	PWE	WS		C	I	I	PWE	WS
Mean	6.77	5.69	7.32	8.53	-0.25	Mean	7.05	6.01	7.45	8.65	-0.29
Std. Dev.	0.17	0.19	0.18	0.38	0.04	Std. Dev.	0.18	0.16	0.17	0.30	0.06
Obs.	31	31	31	31	31	Obs.	31	31	31	31	31

Appendix 8. Growth contributions for sub-periods

Table A8 reports the growth contributions for the sub-periods up to 1946 (prewar liberalism), 1946-1980 (Fordism) and 1980-2010 (neoliberalism). We calculate this by multiplying the long run elasticities of the whole period with change of the explanatory variable over the subperiod, i.e. its medium-term trend. To avoid distortions through business cycle volatility we take the averages over a five year period for the starting and endpoints. In all countries the wage seems to explain a relatively low proportion of consumption and investment. The pattern for the USA, UK and Germany suggest that medium-term wage trends have had a negative impact on growth during liberalism and neoliberalism, but a positive one in the Fordist era. This is consistent with wage-driven growth process in the postwar era, but effects are small. Wealth has had a rising trend relative to GDP throughout our sample. Growth contributions of wealth differ between Anglo-Saxon and continental European countries. In the USA and UK there are positive effects on consumption and negative ones on investment. For the USA these effects approximately cancel out; for the UK we consistently observe negative overall growth contributions. For France and Germany we find positive effects on both consumption and investment. Contrary to the findings in Stockhammer and Wildauer (2017), who use a somewhat different measure, we do not find that growth was wealth driven in the Anglo-Saxon countries in the neoliberal era, but we do find evidence for wealth-driven growth for France and Germany.

Table A8: Growth contributions for sub-periods

			PW	WS
US	C	1929-1946	0.122	-0.014
		1946 1980	0.506	0.025
		1980 2010	0.531	-0.040
	I	1929-1946	-0.122	-0.016
		1946 1980	-0.505	0.028
		1980 2010	-0.529	-0.044
	C+I	1929-1946	0.000	-0.030
		1946 1980	0.001	0.052
		1980 2010	0.001	-0.084
UK	C	1855-1946	0.266	0.129
		1946 1980	0.084	0.027
		1980 2010	0.326	-0.100
	I	1855-1946	-0.629	0.035
		1946 1980	-0.199	0.007
		1980 2010	-0.772	-0.027
	C+I	1855-1946	-0.364	0.164
		1946 1980	-0.115	0.034
		1980 2010	-0.446	-0.127
France	C	1896-1946	-0.272	0.021
		1946 1980	0.312	-0.069
		1980 2010	0.046	0.040
	I	1896-1946	-0.207	-0.018
		1946 1980	0.237	0.061
		1980 2010	0.035	-0.035
	C+I	1896-1946	-0.479	0.003
		1946 1980	0.549	-0.009
		1980 2010	0.080	0.005
Germany	C	1869-1946	0.019	-0.006
		1946 1980	0.083	0.019
		1980 2010	0.061	-0.048
	I	1869-1946	0.165	-0.034
		1946 1980	0.716	0.103
		1980 2010	0.528	-0.255
	C+I	1869-1946	0.184	-0.040
		1946 1980	0.798	0.123
		1980 2010	0.589	-0.303

Impressum

Publisher: Hans-Böckler-Stiftung, Hans-Böckler-Straße 39, 40476 Düsseldorf, Germany

Contact: fmm@boeckler.de, www.fmm-macro.net

FMM Working Paper is an online publication series available at:

https://www.boeckler.de/imk_108537.htm

ISSN: 2512-8655

The views expressed in this paper do not necessarily reflect those of the IMK or the Hans-Böckler-Foundation.

All rights reserved. Reproduction for educational and non-commercial purposes is permitted provided that the source is acknowledged.