

Töpfer, Marina

Working Paper

The effect of women directors on innovation activity and performance of corporate firms: Evidence from China

Hohenheim Discussion Papers in Business, Economics and Social Sciences, No. 15-2018

Provided in Cooperation with:

Faculty of Business, Economics and Social Sciences, University of Hohenheim

Suggested Citation: Töpfer, Marina (2018) : The effect of women directors on innovation activity and performance of corporate firms: Evidence from China, Hohenheim Discussion Papers in Business, Economics and Social Sciences, No. 15-2018, Universität Hohenheim, Fakultät Wirtschafts- und Sozialwissenschaften, Stuttgart,
<https://nbn-resolving.de/urn:nbn:de:bsz:100-opus-15034>

This Version is available at:

<https://hdl.handle.net/10419/180363>

Standard-Nutzungsbedingungen:

Die Dokumente auf EconStor dürfen zu eigenen wissenschaftlichen Zwecken und zum Privatgebrauch gespeichert und kopiert werden.

Sie dürfen die Dokumente nicht für öffentliche oder kommerzielle Zwecke vervielfältigen, öffentlich ausstellen, öffentlich zugänglich machen, vertreiben oder anderweitig nutzen.

Sofern die Verfasser die Dokumente unter Open-Content-Lizenzen (insbesondere CC-Lizenzen) zur Verfügung gestellt haben sollten, gelten abweichend von diesen Nutzungsbedingungen die in der dort genannten Lizenz gewährten Nutzungsrechte.

Terms of use:

Documents in EconStor may be saved and copied for your personal and scholarly purposes.

You are not to copy documents for public or commercial purposes, to exhibit the documents publicly, to make them publicly available on the internet, or to distribute or otherwise use the documents in public.

If the documents have been made available under an Open Content Licence (especially Creative Commons Licences), you may exercise further usage rights as specified in the indicated licence.



UNIVERSITY OF
HOHENHEIM

200
1818 2018
YEARS

Hohenheim Discussion Papers in Business, Economics and Social Sciences

THE EFFECT OF WOMEN DIRECTORS ON INNOVATION ACTIVITY AND PERFORMANCE OF CORPORATE FIRMS – EVIDENCE FROM CHINA –

Marina Töpfer
University of Erlangen-Nuremberg

Research Area INEF

15-2018

Discussion Paper 15-2018

**The Effect of Women Directors on Innovation Activity and
Performance of Corporate Firms
- Evidence from China -**

Marina Töpfer

Research Area “INEF – Innovation, Entrepreneurship, and Finance”

Download this Discussion Paper from our homepage:

<https://wiso.uni-hohenheim.de/papers>

ISSN 2364-2084

Die Hohenheim Discussion Papers in Business, Economics and Social Sciences dienen der schnellen Verbreitung von Forschungsarbeiten der Fakultät Wirtschafts- und Sozialwissenschaften. Die Beiträge liegen in alleiniger Verantwortung der Autoren und stellen nicht notwendigerweise die Meinung der Fakultät Wirtschafts- und Sozialwissenschaften dar.

Hohenheim Discussion Papers in Business, Economics and Social Sciences are intended to make results of the Faculty of Business, Economics and Social Sciences research available to the public in order to encourage scientific discussion and suggestions for revisions. The authors are solely responsible for the contents which do not necessarily represent the opinion of the Faculty of Business, Economics and Social Sciences.

The Effect of Women Directors on Innovation Activity and Performance of Corporate Firms – Evidence from China –*

Marina Töpfer[†]
University of Erlangen-Nuremberg, Germany

June 15, 2018

Abstract

This paper elaborates whether women bringing their diversity, cross-cultural awareness and transformational leadership skills to corporate boards offer strategic advantages for firms. In the analysis the effect of women in the board room on innovation activity and corporate firm performance as well as the joint consequences of female directors and innovation activity on the firm's success are examined. The latter may be particularly important in the context of gender diversity as more gender-diverse boards allow for higher levels of creativity and hence innovation. In order to account for endogeneity issues, different model specifications are employed (two-way fixed effects models and linear dynamic panel data models). Unconditional quantile regressions are used in order to go beyond the mean. The analysis is conducted using Chinese firm-level data from 2006-2015. The results suggest positive effects of gender diversity in corporate boards and patenting activities on firm performance. Women directors are found to have statistically significant effects on both input-(positive) and output-oriented (negative) innovation activity.

Keywords: Women Directors, Innovation Activity, Firm Performance, Gender-diverse Boards, Unconditional Quantile Regression.

JEL Classification: G30, J16

*Special thanks to Peng Xu and Mingfeng Tang from the School of Business Administration, Southwestern University of Finance and Economics Chengdu, China, for data provision. I am particularly grateful to the INEF thematic network for financial support.

[†]Correspondence to: University of Erlangen-Nuremberg, Institute of Economics, Lange Gasse 20, 90402 Nuremberg. E-mail: marina.toepfer@fau.de

1 Introduction

Changes in the workforce in Europe, Asia and America may increase the importance of female representation on boards. Although women are joining the labor force in increasing numbers around the world, they remain proportionately under-represented in the top tiers of management (International Labour Office (ILO) Geneva, 2012). The lack of female representation on corporate boards of directors is a global phenomenon. Women comprise less than 15% of corporate executive board members in the USA, around 7% in European countries but only around 3% in Asian countries.¹ In Europe, several countries have introduced legally-binding female board quotas in order to ensure gender-diversity in the board room.²

Research has shown that women bringing different perspectives and experience to the board may have positive effects on firm performance (Adler, 1997; Terjesen and Singh, 2008; Levi et al., 2014). Moreover, gender diversity in the board room allows to gather diverse views on problem solving, what is supposed to be particularly relevant for creative solutions such as innovation (van Knippenberg et al., 2004). In this context, the aspect of innovation and gender-induced differences in management has not yet been properly studied.

The effects of female directors on firm performance have been particularly studied for the USA and European countries (Adams and Ferreira, 2009; Ahern and Dittmar, 2012; Dezsö and Ross, 2012; Matsa, Miller et al., 2013), but rarely for Asian countries (Bai et al., 2004; Liu et al., 2014). The underlying paper considers the case of China assuming less pressure to recruit women only due to their gender given the absence of legally-binding female board quotas. There are also no spill-over effects from neighboring countries having implemented quotas as it might be the case in Europe. China has one of the world's highest female labor force participation rates amounting to 63.9% in 2013 (Dasgupta et al., 2015). The latter may be partly the heritage of the Communist Party's rule in China providing inter alia extensive state-provided child-care. Also, China's constitution states that women are equal to men in all areas of life. Despite these policy commitments and high labor force participation rates, women are particularly present in traditional female occupations such as textiles and health care, while women remain under-represented in science and technological professions for example. Recent studies on China have pointed to the increasing gender gap in employment and wages, especially at the higher management (for a survey see: Dasgupta et al., 2015). Another reason, why the case of China is interesting is that corporate governance is weaker in China compared to Western industrialized countries. This could be offset – at least in parts – by more gender-diverse board rooms given the well-known result in the literature that women are more active in monitoring

¹In the respective top-101 performing firms (Government UK, 2011). MSC World using 4,218 global companies reports the following percentages of women directors: around 12% for Pacific-Asia, 12% (23% in 2015) for Europe and 18-19% for the USA from 2014-2015 counting both independent and executive board members (MSCI ESG Research Inc., 2015).

²Starting with Norway in 2003 and requiring 40% of board members to be women. Followed inter alia by Spain (law passed in 2007; requiring 40% women by 2015), France (2011; 40% women on boards by 2017), Italy (2011, at least 33% female directors by 2015) and Germany (2015; 30% female directors by 2016).

activities (Allen et al., 2005; Gul et al., 2008; Adams and Ferreira, 2009). This suggests that, given China’s relatively weak corporate governance, gender-diverse boards may have beneficial effects on firm performance due to higher monitoring activity of women (Allen et al., 2005; Liu et al., 2014). Liu et al. (2014) considering the case of China and find significant positive effects of female board members on firm performance for legal person firms, while they find an insignificant effect for state-controlled firms. The authors argue that useful insights on policy implementations can be derived when studying gender diversity in the board room and its effect on firm performance.

Why should women in the board room have positive effects on firm performance? The idea is that more gender-diverse boards allow for different views, knowledge and motivation (e.g. Dezsö and Ross, 2012). On the one hand, this may increase the quality of the decision-making process. On the other hand, too diverse groups may create communication problems and have negative effects on the quality of the decision-making process. Taste-based employer or client satisfaction may also be negatively affected by more diverse boards (Becker, 1971). Yet, discussion and development of alternatives may help to improve both decision making and firm performance. In line with the literature (e.g. Dezsö and Ross, 2012), given low levels of female board representation around the world and in China, we expect that there is room for positive effects of group diversity. Indeed, Figure 5 shows that the percentage of women in the board room and the percentage of executive female board members is increasing but still low.³ Recently, the number is rather stagnating. In particular, the percentage of women CEOs in China is stagnating and in the last year observed even slightly decreasing.

Why should female board representation affect innovation activity of firms? The positive effects of diversity may particularly pin-down in increased innovation activity (van Knippenberg et al., 2004). In fact, tasks requiring creative solutions may particularly benefit from distinct views and problem-solving practices. Gender-diverse board rooms fostering cooperation within the firm can therefore have positive effects on the firm’s innovation activity. Therefore, we consider not only executive but also independent and manager positions in our definition of female board representation.

There is a broad literature providing empirical support for many different factors that affect firm performance (e.g. Smith et al., 2006; Adams and Ferreira, 2009; Liu et al., 2014; Ahern and Dittmar, 2012; Matsa et al., 2013). Women may self-select themselves in better performing firms and hence female representation in a firm may endogenously depend on current firm performance. Reverse causality may drive the positive effects of women directors on firm performance and innovation activity. Indeed, more successful firms have more resources to comply with the principles of gender diversity in the board room. In the underlying study, besides standard controls (discussed in detail in Section 2), in order to catch firm heterogeneity, firm-level fixed effects are included in the regression analysis. Additionally, it is controlled for intertemporal

³Women directors include executive and independent board members as well as top managers.

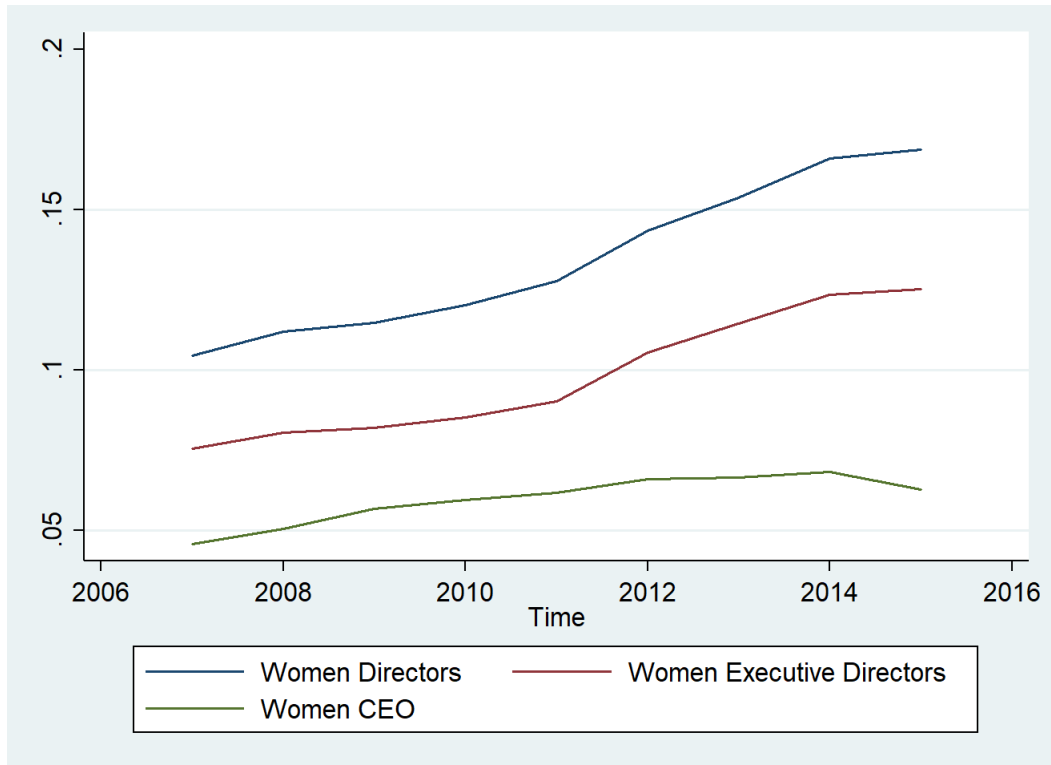


Figure 1: Female Board Representation by Position over Time (in %)

differences using time-varying control variables as well as year-fixed effects in order to control for cyclical shocks. In order to explicitly control for potential endogeneity, reverse causality and multicollinearity issues, several model specifications are employed. The base model consists of a two-way fixed effects model controlling for firm-level heterogeneity and time effects. The empirical strategy is heavily based on Liu et al. (2014) that analyze the effect of female directors on Chinese firms' performance using the same data set from 1999-2011. Instead, this paper considers the period 2006-2015 and has additional information on patenting activity of the firms. In order to improve efficiency, the analysis is conducted with lagged levels as well as lagged differences, i.e. the Blundell-Bond estimator. In order to look at different levels of gender diversity, innovation activity and corporate firm performance, we use Unconditional Quantile Regressions (UQRs). In Appendix B and Appendix C alternative model (e.g. the Arellano-Bond one-step estimator) specifications and sensitivity analysis (different types of board position as well as ownership and women directors) are presented.

This paper adds to the literature by analyzing whether gender diversity has effects on corporate firms' innovation activity. And if so, whether there are different effects for input- and output- oriented measures of innovation activity. So far, most studies look either at output- () or input-oriented innovation activity (Dezső and Ross, 2012). Input-oriented innovation activity is measured by R&D intensity, while output-oriented innovation activity is measured by patenting

intensity. The latter measures the actual quality or productivity of innovation and is caught via a firm’s patenting intensity over time. Finally, the paper examines how this is related to firm performance. Indeed, different effects of input- and output-oriented measures and female board representation are found. This paper is, to the author’s best knowledge, the first investigation on gender diversity in the board room, firm innovation activity and firm performance in China, the world’s largest developing economy. The focus on China allows to gather interesting insights of the effect of women directors and innovation activity of firms on performance without female board legislation. Further, it is the first paper that uses UQRs in the framework of female board representation.

In line with the literature, the overall effects of gender-diversity in corporate boards are found to be positive for firm performance (for China, e.g. Liu et al., 2014; Chen et al., 2015). A main finding of the study is that input- and output-oriented measures impact differently on firm performance. In particular, the effect of women directors on firm performance for firms with no innovation activity turns statistically insignificant. Additionally, the effects of independent and executive directors, respectively, are examined. As expected, executive female directors are found to have a stronger impact than independent female board members. The paper is organized as follows. Section 2 describes the data. In Section 3, the estimation strategy is outlined. Section 4 discusses the empirical results and Section 5 conducts a robustness test. Section 6 concludes.

2 Data and Descriptive Statistics

The empirical estimation is based on data from the Chinese Securities Market and Accounting Research (CSMAR) organization. The initial sample contains all listed firms in Shanghai and Shenzhen Stock Exchanges for the period 2006-2015. The data was gathered in the odd years, i.e. every two years, and is an unbalanced panel. We drop missing values of the variables of interest and restrict the analysis to firms with directors that are at least 18 years old. Data on patent information was obtained from the Chinese Patent Office in Chengdu and merged to the data via the firm identifier. The final sample size consists of 15,871 firm-year observations.

We follow previous studies on China (e.g. Liu et al., 2014) and use Return on Assets (ROA) and Return on Sales (ROS) as dependent variables. Given the high share of state-owned enterprises and the related non-tradable shares in the secondary market, Tobin’s Q was not considered an appropriate measure of a firm’s financial performance (Bai et al., 2004; Markóczy et al., 2013; Liu et al., 2014).

As this study analyzes the effect of women directors, innovation activity and firm performance, measures of innovation activity and gender diversity in the board room are the key variables. Following Liu et al. (2014), we use the percentage of female directors on the board (*women*) as the main measure for board gender diversity. The variables considers executive and independent board members as well as top managers. As we are interested in how a more gender diverse management style impacts on a firm’s innovation activity and performance, we do not

restrict ‘women directors’ or ‘women in the board room’ to executive board members only. As a robustness test, we repeat the analysis with dummies for different levels of women directors (*D_1Women*, *D_2Women* and *D_3Women*, for one, two or at least three female directors).

Output-oriented innovation activity is defined as the ratio of the number of patents and firm age. Input-oriented innovation activity is calculated as the ratio of R&D expenditures and one-year lagged firm assets value. Input-oriented innovation activity is thus represented by R&D intensity and output-oriented innovation activity by patenting intensity. Following Chen et al. (2015) firm-years with missing R&D information are assigned a zero value. Despite employing only an input-oriented measure (*RD_int*), which may fail to capture the quality of innovation, also an output-oriented measure of registered patents (*pat_int*) to capture how effectively a firm has utilized its innovation input is included. *RD_int* and *pat_int* are positively correlated (see Table 2). That is effective usage has positive effects on firm performance. The gender-specific effects on innovation activity are estimated via interactive effects of innovation activity for both input- and output-oriented measures and the percentage of women in the board room.

Additionally, traditional control variables including firm, board and ownership characteristics are used. For a description of the covariates used in the analysis see Table A1 in Appendix A. The set of covariates used extends the one in Liu et al. (2014) by the age and educational attainment of the directors. Education is represented as the weighted grade point average (GPA). In our case, the $GPA \in [0, 5]$.⁴ Descriptive statistics of some of the variables used in the analysis are shown in Table 1. On average 14% of all directors (independent, executive or top managers) are female. and about 6% of the firms are led by a female CEO. Patenting activity amounts to 9 patents on average. Only 0.145% of total last years assets are invested in R&D. About 37% of all directors are independent, while the rest holds either executive or management positions. About 20% of all firms in the sample are state-owned. On average directors are 51 years old.

Table 2 shows the correlation matrix among some of the independent variables used in the analysis.⁵ As a rule of thumb, a correlation of $|0.7|$ or higher may indicate multicollinearity issues. The correlation among the variables used in the regression is only above $|0.7|$, when the variables are not used jointly in the regression or are part of a robustness or sensitivity analysis.

In order to have variables measured on the same scale, we use z-scores. That is, we subtract the mean of the corresponding variable and divide this difference by the variable’s standard deviation. we use the standardized values throughout the empirical analysis. The coefficients of the untransformed regression do not change in sign or level of significance (see Table 5). However, the coefficient estimates of female board representation on patenting intensity are large in the untransformed regression. As multicollinearity is unlikely to be an issue, the large coefficient estimate may be due to different measurement scales of the variables. Therefore, we prefer to

⁴Students in honors classes, AP classes, or IB classes may be graded for those courses on a 0.0 to 4.5 GPA scale or a 0.0 to 5.0 GPA scale.

⁵The correlation matrix including all variables considered in the analysis (except the RIFs and *Executive Women* and *Independent Women*) is shown in Table A2. For the variables not shown, multicollinearity is not an issue as correlation is $<< |0.7|$.

use the transformed variables. All figures use the standardized controls.

Table 1: Descriptive Statistics

Variable	Obs	Mean	Std.Dev.	Min	Max
<i>Performance Measures:</i>					
ROA	15,871	0.0417	0.0481	-0.0996	0.494
ROS	15,871	0.0876	0.186	-5.486	1.864
<i>Board Characteristics:</i>					
women	15,871	0.140	0.132	0	0.889
D_1Women	15,871	0.358	0.480	0	1
D_2Women	15,871	0.211	0.408	0	1
D_3Women	15,871	0.131	0.338	0	1
pat_int	15,871	9.181	76.11	0	3268
RD_int	15,871	0.0015	0.021	-0.084	2.133
Independent	15,871	0.369	0.054	0.091	0.800
ExecutiveWomen	15,871	0.102	0.127	0	0.889
IndependentWomen	15,871	0.038	0.056	0	0.333
Ln_BoardSize	15,871	2.176	0.208	1.099	3.091
Duality	15,871	0.204	0.403	0	1
DirAge	15,871	50.54	3.756	18.33	65.14
DirEduc	15,871	1.730	1.571	0	4.714
<i>Firm & Ownership Characteristics:</i>					
State	15,871	0.200	0.226	0	0.891
LegalPerson	15,871	0.171	0.204	0	0.900
Management	15,871	0.0006	0.0142	0	0.543
Ln_Shareholders	15,871	10.44	0.962	7.745	14.42
womenCEO	15,871	0.0613	0.240	0	1
Ln_FirmSize	15,871	7.623	1.392	2.197	13.22
Leverage	15,871	0.469	0.217	0.0071	1.994
Ln_FirmAge	15,871	2.571	0.434	0	3.611

Notes: The table shows the non-standardized descriptive statistics.

3 Estimation Strategy

The empirical strategy consists in first of all analyzing the effect of women directors on corporate firm's innovation activity, both input- and output-oriented. Next, the joint effect of innovation and gender-diverse boards on firm performance is estimated. The quality or productivity of innovation as well as expenditures in R&D are taken thereby into account.

The base model is a two-way fixed effects model that takes firm and time-level variation into account. Firm-level heterogeneity is thereby assumed to be constant over time. Due to endogeneity of female board representation, alternative model specifications are applied. In particular, the full model is the one-step Blundell-Bond estimator. The Blundell-Bond estimator is applied in the sense of Blundell and Bond (1998) in order to improve efficiency. In Appendix B, a two-way fixed effects model with lagged board characteristics and lagged dependent variables as well as the Arellano-Bond one-step estimator are applied.

As patents may start to pay-off for a firm only some time after they have been registered and the first products have been brought to the market. We thus assume that the effect of

Table 2: Correlation Matrix, Selected Variables

(obs=15,871)														
women	pat_int	RD_int	womenCEO	DirAge	DirEduc	Independent	Ln_BoardSize	Ln_FirmSize	Leverage	State				
1														
pat_int	1													
RD_int	0.002	1												
womenCEO	-0.01	-0.01	1											
DirAge	0.07	-0.02	-0.04	1										
DirEduc	0.06	0.00	0.03	-0.02	1									
Independent	0.31	0.00	-0.05	0.00	-0.01	1								
Ln_BoardSize	-0.11	-0.02	-0.06	0.10	-0.01	-0.13	1							
Ln_FirmSize	-0.12	-0.02	-0.06	0.27	0.04	-0.01	0.28	1						
Leverage	-0.07	-0.02	-0.01	0.06	-0.11	-0.02	0.19	0.27	1					
State	-0.18	-0.02	-0.08	0.24	-0.12	-0.03	0.24	0.28	0.24	1				

Notes: The table shows the non-standardized descriptive statistics.

output-oriented measures of innovation activity and women on the board takes some time to be effective. We therefore apply an efficient dynamic panel data model that allows to account for unobserved heterogeneity as well as dynamic relationships between the composition of the board and past firm performance. In all models, it is controlled for heteroskedasticity by using robust standard errors.

The Base Model

The base model used in the study is a two-way fixed effects model. The model is used in order to catch the effect of gender diversity on innovation activity and firm performance. Thereby it is not only controlled for firm fixed effects but also for year fixed effects in order to account for socio-economic changes over time. The base model for firm i at time t with $i = 1, \dots, N$ and $t = 1, \dots, T$ reads as:

$$y_{it} = \alpha + x_{it}\beta + r_i + v_t + \epsilon_{it} \quad (1)$$

where y_{it} is the corresponding dependent variable. That is either ROA or ROS as measures for firm performance or patenting and R&D intensity as measures for innovation activity of firm i . x_{it} is a $1 \times k$ vector of time- and group-variant observable characteristics and β is the corresponding $k \times 1$ coefficient vector. The model has a three-part error structure; r_i accounting for group fixed-effects, i.e. for permanent differences between firms or firm effects, and v_t controls for effects common to all groups but variant over time, i.e. year fixed effects. Finally, ϵ_{it} is an idiosyncratic error and the constant term is measured by α .

Going beyond the Mean: UQR

In order to estimate the effect of women directors on innovation activity and vice versa for different levels of innovation activity and women directors, respectively, we use linear UQRs (Firpo et al., 2009). That is, we estimate the RIF. The RIF is defined as:

$$RIF(Y; q_\tau) = q_\tau + \frac{\tau - \mathbb{1}\{Y \leq q_\tau\}}{f_y(q_\tau)} \quad (2)$$

where q_τ is the value of the variable of interest, Y , at the quantile, τ . $f_y(q_\tau)$ is the density of Y at q_τ . The quantile-specific two-way fixed effects model is then estimated by running equation (1) with the RIF as dependent variable.⁶

The Full Model: Accounting for Endogeneity

Concerns about endogeneity arise from the endogeneity between the number of female directors and firm performance since improved firm performance may lead to more women in the board

⁶We use the Gaussian kernel and the Silverman optimal bandwidth.

room. Also, the traditionally low percentage of women in top management positions may allow those women that actually made it to the top to self-select into better performing firms. Similarly, more successful firms may be more likely to respond to social pressure of gender diversity in the board room because of greater need for legitimacy or more resources to do so (Meyer and Rowan, 1977; Adams and Ferreira, 2009). These theories suggest that female representation in the board room and firm performance may be driven by reverse causality. Similarly, female representation in a firm may endogenously depend on current firm performance. Therefore, reverse causality may drive the positive effects of women directors on firm performance and innovation activity.

In order to account for these issues, we use the one-step Blundell-Bond estimator. The model uses additional moment conditions, where variables in levels are instrumented by lagged differences. The method calculates moment conditions using lagged-levels of the dependent variable as well as the pre-determined variables with first-differences of the disturbances. The model requires the assumption that these differences are uncorrelated with the unobserved effects (Blundell and Bond, 1998).

All independent variables that may be influenced by a firm's policy in year t are considered to be endogenous. That is all independent variables except the time dummies and $Ln_FirmAge$ are considered to be endogenous (Dezső and Ross, 2012; Liu et al., 2014). Table 3 shows that the Blundell-Bond one step estimator passes the Arellano-Bond test of serial autocorrelation for AR(2). Therefore, the second to fourth lag of the endogenous and the dependent variable are included in the regression. The Hansen test testing the null-hypothesis that the instruments are exogenous controls for validity of the instruments used in the Arellano-Bond regression. Our χ^2 test-statistic is insignificant at a 10% level and hence, the statistic of the Hansen test shows that the null-hypothesis that the instruments are exogenous is not rejected. The lags of the endogenous and dependent variables from lag two up to lag four as well as all lags of the exogenous variables are used as instruments.⁷ The transient error correlation is controlled for by using only the odd years in the regression of the full model (Wintoki et al., 2012; Liu et al., 2014).

The Blundell-Bond model accounting for unobserved heterogeneity, simultaneity and dynamic relationships between the composition of the board and past firm performance may be particularly sensitive to different effects over time. As innovation activity and in particular patenting intensity starts to pay-off after some time, the dynamic panel data model may be particularly adequate for estimation of the effect of innovation activity, women directors and firm performance.

⁷We include instruments from lag two of the endogenous variables as autocorrelation exists up to lag two. We include instruments up to lag four as lag five covariates show statistically insignificant coefficient estimates.

Table 3: Test of Serial Autocorrelation

VARIABLES	(1) ROS	(2) ROA
<i>Blundell-Bond Estimator</i>		
Arellano-Bond test for AR(2)	$z = 1.13$ Prob > $z = 0.258$	$z = 1.32$ Prob > $z = 0.188$
Hansen test χ^2 (df)	3.28 (9) Prob > $\chi^2 = 0.952$	13.49 (9) Prob > $\chi^2 = 0.142$

4 Estimation Results

In this Section, the effects of women directors on innovation activity as well as on firm performance are discussed. For a discussion of the effects of different types of board members and legal or state-ownership on firm performance and female directors see Appendix C.

As we use z-scores, we obtain the effect of women directors at corporate firms' average innovation activity on firm performance.

Female Board Members and Innovation Activity

In order to test, whether women in the board room positively affect firm's innovation activity, we look, first, at the effect of the percentage of women directors on the innovation activity controls. Second, we regress innovation controls on the percentage of female board members. In both settings, we include the set of covariates controlling for board, firm and ownership characteristics.

Table 4 shows that R&D and patenting intensity are not affected by gender-diversity on average. This holds for the base as well as for the full model. Patenting activity is at no level affected by female directors. That is gender diversity in the board room has no statistically significant effect on RD_int or pat_int . The system-estimator confirms this finding.

Using a UQR model reveals that only high innovative active firms are affected by gender diverse board rooms. Therefore, we run a regression of $RIF(pat_int; q_\tau)$ on $women$ and $RIF(RD_int; q_\tau)$ on $women$, respectively. The confidence intervals are bootstrapped (250 replications). Figure 2 shows that firms that are barely engaged in innovation activity both patenting ($Women_Pat$) and R&D ($Women_RD$) are not affected by women directors. Contrary, for high-innovative firms, gender diverse boards become effective. Women directors impact positively on patenting intensity but negatively on R&D intensity.

More innovative firms are more likely to have women at the top (see Figure 3). The coefficient estimates are obtained from separate regressions of pat_int and RD_int on the percentage of women directors in a firm using UQRs. This effect is most pronounced at the 30th quantile of the distribution of women directors. Other levels of gender diversity are not affected by patenting or R&D activity of a firm. These results suggest that there are significant effects of innovation activity on gender-diversity and that the effect of both input- and output-oriented innovation activity impact similar at the 30th quantile on women directors. Hence, the level of women

directors is important. Therefore, we analyze in Section 5, for robustness, different levels of women directors on innovation activity as well as on firm performance.

Table 4: Effect of Women Directors on Innovation Activity

VARIABLES	(1)	(2)	(3)	(4)
	Base Model RD_int	Full Model RD_int	Base Model pat_int	Full Model pat_int
women	0.0138 (0.012)	0.0118 (0.014)	0.0046 (0.004)	0.0445 (0.045)
DirAge	-0.0218 (0.021)	0.0247 (0.031)	0.0187 (0.013)	0.0433 (0.039)
DirEduc	-0.0105 (0.011)	-0.0047 (0.019)	0.0031 (0.007)	-0.0699 (0.053)
Independent	0.0004 (0.013)	0.0021 (0.015)	-0.0005 (0.008)	0.0185 (0.024)
Ln_BoardSize	-0.0056 (0.013)	-0.0123 (0.011)	0.0014 (0.010)	0.0338 (0.045)
Duality	0.0164 (0.015)	-0.0077 (0.011)	-0.0003 (0.005)	0.0311 (0.046)
State	-0.0249 (0.066)	-0.0144 (0.027)	-0.0221 (0.013)	-0.0728 (0.077)
LegalPerson	0.0553 (0.044)	-0.0439 (0.033)	-0.0063 (0.006)	-0.0258 (0.049)
Management	-0.0069 (0.008)	-0.0032 (0.005)	-0.0012 (0.001)	0.0461* (0.026)
Ln_Shareholders	-0.0422*** (0.014)	-0.0509* (0.030)	0.0297 (0.030)	0.1313 (0.119)
womenCEO	0.0059 (0.009)	-0.0050 (0.008)	0.0005 (0.002)	0.0126 (0.018)
Ln_FirmSize	-0.0186 (0.022)	0.0192 (0.016)	-0.0045 (0.011)	0.1024 (0.082)
Leverage	-0.0089 (0.013)	-0.0081 (0.020)	0.0055 (0.006)	0.0631 (0.039)
Ln_FirmAge	0.0014 (0.032)	-0.0137 (0.009)	0.0403 (0.027)	-0.1041*** (0.036)
Year Fixed Effects	Yes	Yes	Yes	Yes
Firm Fixed Effects	Yes	Yes	Yes	Yes
Observations	15,871	15,871	2,792	15,871
R-squared	0.004		0.017	
Number of firms	2,653	1,204	2,653	1,204

Robust standard errors in parentheses

*** $p < 0.01$, ** $p < 0.05$, * $p < 0.1$

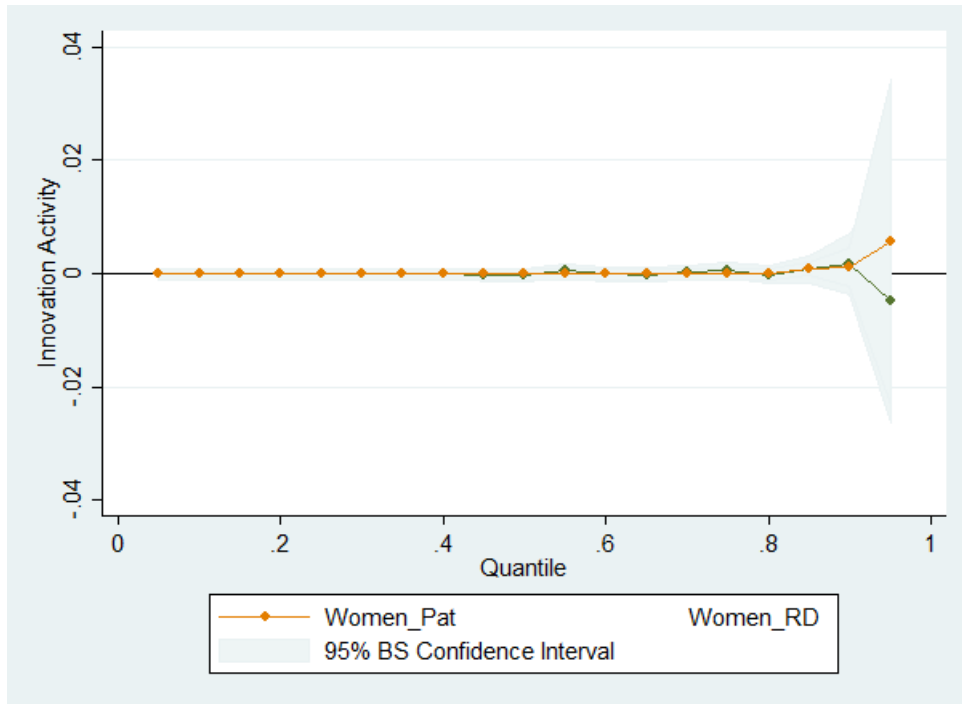


Figure 2: The Effect of Women Directors on Innovation Activity, UQR

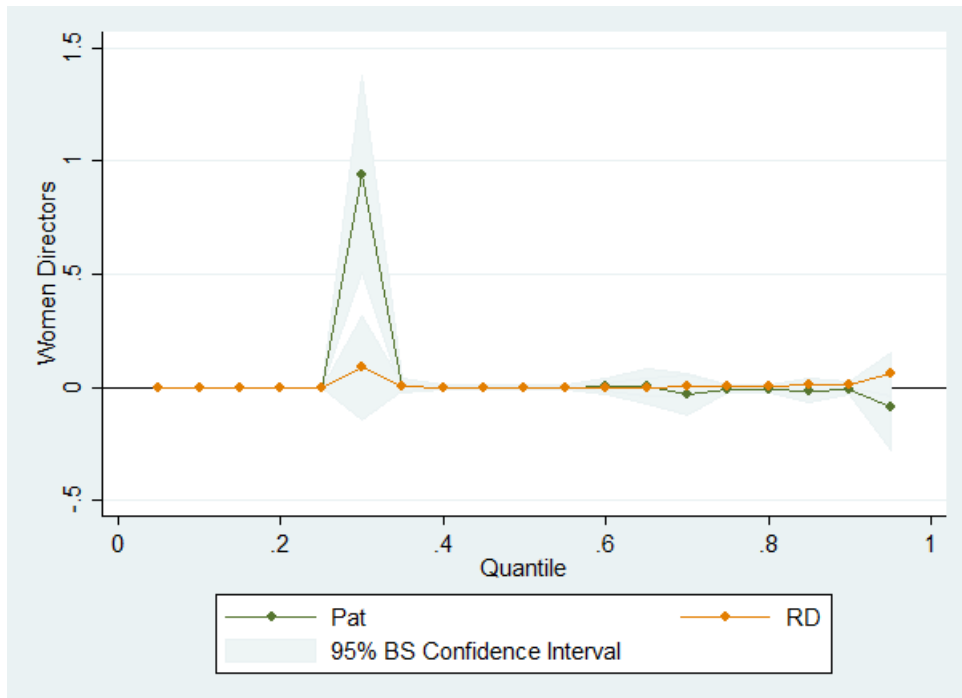


Figure 3: The Effect of Innovation Activity on Women Directors, UQR

The Effect on Firm Performance

Before looking at the effect of female board representation and innovation activity, both income- and output-oriented, we test whether the data delivers the same result as obtained by Liu et al. (2014). That is positive effects of women directors on corporate firm performance. Table 5 shows that using the same set of covariates, the effect of female directors on firm performance is statistically significant and positive also in the period 2006-2015 in China. The result holds for both ROA and ROS as dependent variable and for the transformed regressions, column (2) and (4), as well as for the untransformed regressions, column (1) and (3).⁸ A one percent increase in *women* increases ROS and ROA by 0.036% and 0.01%, respectively. In the case of the standardized variables, we find that a one percent increase in *women* increases average ROS and average ROA each by 0.026%.

The estimation outcome of the base and full described in Section 3 with ROS and ROA as dependent variables and augmented by a firm's innovation activity and gender board diversity are shown in Table 6. The coefficient estimate of *women* represents the effect of gender-diversity in the board room on firm performance that is not related to innovation. The percentage of women in the board room impacts positively on corporate firm performance. In the alternative two-way fixed effects specification, the coefficient estimate is similar in magnitude (see AppendixB, Table B.1 and Table B.2). In the efficient dynamic panel data model, taking-away the innovative component, female board representation impacts negatively, though statistically insignificant, on firm performance. This result is in line with other studies in the literature that consider the effect of women at the top and input-oriented innovation activity on firm performance (e.g. Dezső and Ross, 2012). In the Arellano-Bond model, i.e. the alternative dynamic panel data model, the effect of women in firms with no innovation activity is again zero. R&D intensity in firms with women directors (*RD_fem*) impacts statistically significantly on firm performance only in the base model. The negative coefficient estimate of *RD_int* suggests that in firms with no women directors, increased R&D intensity in year t lowers ROA in the same year. Contrary, in firms with female board representation, ROS and ROA are affected positively. Using the one-step Blundell-Bond estimator turns the sign of *RD_fem*. Firms with a gender-diverse management and increases in *RD_int* in previous periods lowers a firm's ROA today.

Patenting intensity has no statistically significant effect on firm performance in firms with no gender diversity in the board room. However, past output-oriented innovation activity increases ROA in the current period. Positive patenting activity in firms with female directors in the past increases thus both ROS and ROA today. In the dynamic system GMM model, the output-oriented measures turns statistically significant and positive. This suggests that controlling for endogeneity, only output-oriented firm performance in combination with gender-group diversity in the board room positively and statistically significantly affects firm performance. Firms with zero innovation activity experience no effect of female board representation on both ROS and

⁸Liu et al. (2014) conduct untransformed regressions.

ROA. Hence, female board representation is particularly attractive for firms with focus on innovation and in this case can offer strategic advantages. The negative effect of RD_fem in the dynamic panel data model underpins that firms have to invest first in R&D before earning a positive premium from innovation.

Patenting activity and R&D intensity have no joint impact on a firm's performance, what is, what we expect from Table 2.⁹ The other covariates impact as expected.

Table 5: The Effect of Female Board Representation on ROA and ROS, with standardized and non-standardized variables

	(1)	(2)	(3)	(4)
	Base Model			
	ROS	ROS	ROA	ROA
VARIABLES	Not Standardized ROS	Standardized ROS	Not Standardized ROA	Standardized ROA
women	0.036** (0.017599)	0.026** (0.012489)	0.010** (0.004840)	0.026** (0.013307)
Independent	0.001 (0.042463)	0.0001 (0.012337)	-0.003 (0.011153)	-0.004 (0.012556)
Ln_BoardSize	0.017 (0.015380)	0.019 (0.017202)	0.005 (0.004731)	0.023 (0.020505)
Duality	-0.002 (0.008615)	-0.005 (0.018629)	0.001 (0.001508)	0.009 (0.012632)
State	0.061* (0.037008)	0.074* (0.044903)	0.026** (0.010351)	0.122** (0.048665)
LegalPerson	0.172*** (0.038632)	0.188*** (0.042276)	0.050*** (0.010391)	0.210*** (0.044063)
Management	0.062 (0.054960)	0.005 (0.004188)	0.030 (0.021013)	0.009 (0.006204)
Ln_Shareholders	-0.016*** (0.004327)	-0.081*** (0.022338)	-0.009*** (0.001075)	-0.185*** (0.021493)
womenCEO	0.009 (0.012643)	0.011 (0.016274)	0.001 (0.002598)	0.005 (0.012957)
Ln_FirmSize	0.002 (0.005132)	0.018 (0.038324)	0.003*** (0.001079)	0.083*** (0.031226)
Leverage	-0.165*** (0.025487)	-0.193*** (0.029743)	-0.077*** (0.006138)	-0.348*** (0.027754)
Ln_FirmAge	0.014 (0.017016)	0.032 (0.039618)	-0.001 (0.004632)	-0.011 (0.041788)
Firm Fixed Effects	Yes	Yes	Yes	Yes
Year Fixed Effects	Yes	Yes	Yes	Yes
Observations	15,871	15,871	15,871	15,871
R-squared	0.027	0.027	0.113	0.113
Number of firms	2,653	2,653	2,653	2,653

Robust standard errors in parentheses

*** $p < 0.01$, ** $p < 0.05$, * $p < 0.1$

⁹The correlation between the two variables is almost zero: 0.002.

Table 6: Effect of Women Directors and Innovation Activity on Firm Performance

VARIABLES	(1) Base Model ROS	(2) Full Model ROS	(3) Base Model ROA	(4) Full Model ROA
women	0.0259** (0.012)	-0.0195 (0.038)	0.0258* (0.013)	-0.0131 (0.027)
pat_int	0.0093 (0.007)	0.0125 (0.012)	-0.0119 (0.014)	0.0238* (0.013)
pat_fem	0.0044 (0.009)	0.0559** (0.022)	0.0005 (0.020)	0.0483* (0.025)
RD_fem	0.0107* (0.006)	-0.0871 (0.065)	0.0238*** (0.008)	-0.1249** (0.063)
RD_int	-0.0081 (0.010)	-0.0132 (0.058)	-0.0209* (0.012)	0.0400 (0.072)
pat_RD	0.0066 (0.008)	-0.0006 (0.006)	0.0072 (0.018)	-0.0045 (0.008)
DirAge	0.0130 (0.017)	0.0520 (0.073)	0.0043 (0.016)	0.0274 (0.047)
DirEduc	-0.0136 (0.020)	-0.0393 (0.050)	-0.0121 (0.017)	-0.0664* (0.037)
Independent	-0.0010 (0.012)	0.0528 (0.053)	-0.0050 (0.013)	0.0155 (0.031)
Ln_BoardSize	0.0192 (0.017)	0.0872* (0.049)	0.0233 (0.020)	0.0330 (0.039)
Duality	-0.0043 (0.019)	-0.1108 (0.097)	0.0101 (0.013)	0.0235 (0.038)
State	0.0722 (0.045)	-0.0228 (0.078)	0.1192** (0.048)	0.0238 (0.052)
LegalPerson	0.1881*** (0.042)	0.1042 (0.070)	0.2094*** (0.044)	0.1165** (0.056)
Management	0.0045 (0.004)	0.0080 (0.022)	0.0083 (0.006)	0.0341** (0.015)
Ln_Shareholders	-0.0829*** (0.023)	-0.0168 (0.055)	-0.1851*** (0.022)	-0.1258*** (0.046)
womenCEO	0.0112 (0.016)	-0.0186 (0.028)	0.0049 (0.013)	-0.0188 (0.025)
Ln_FirmSize	0.0168 (0.038)	0.0714 (0.099)	0.0821*** (0.031)	0.1039** (0.043)
Leverage	-0.1929*** (0.030)	-0.0855* (0.045)	-0.3479*** (0.028)	-0.1266*** (0.041)
Ln_FirmAge	0.0291 (0.039)	0.0380 (0.030)	-0.0134 (0.042)	0.0576** (0.024)
Year Fixed Effects	Yes	Yes	Yes	Yes
Firm Fixed Effects	Yes	Yes	Yes	Yes
Observations	15,871	2,792	15,871	2,792
R-squared	0.027		0.113	
Number of firms	2,653	1,204	2,653	1,204

Robust standard errors in parentheses

*** $p < 0.01$, ** $p < 0.05$, * $p < 0.1$

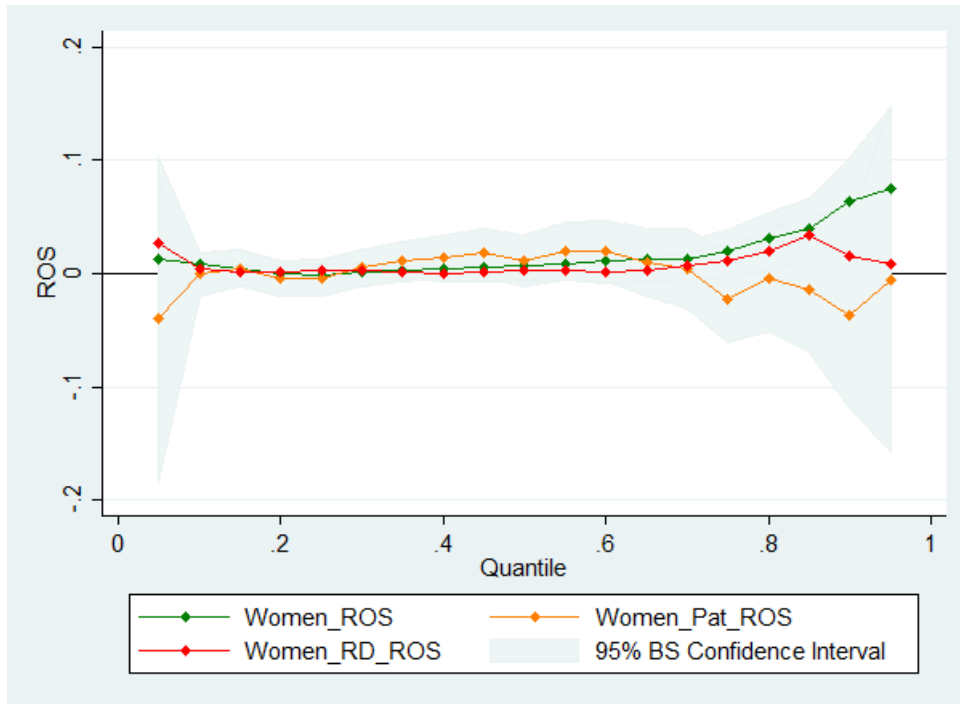


Figure 4: Effect of Female Board Representation on ROS, UQR

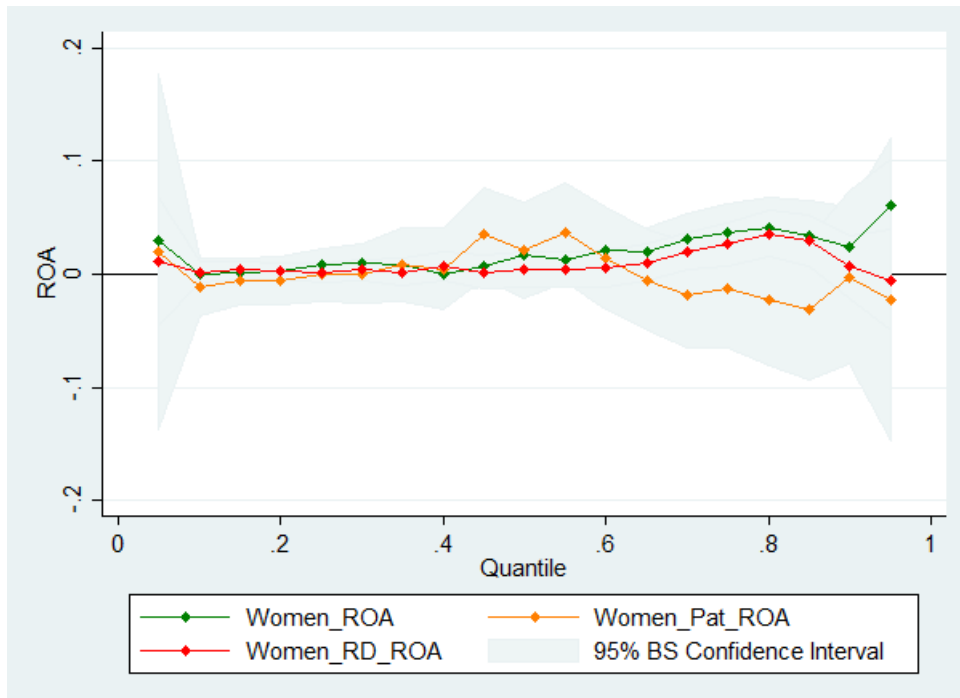


Figure 5: Effect of Female Board Representation on ROA, UQR

5 Robustness Test: The Level of Gender-Board Diversity

Different levels of gender-diversity may have different effects on firm performance. Therefore, we repeat the analysis in Section 4 by using dummies for the number of women directors interacted with the innovation activity controls. We use the number of female directors on the board as the measures for board gender diversity following the literature on the critical mass theory. That is D_1Women , D_2Women , D_3Women ; measuring whether at least one woman, two or three women are present in the board room, respectively. The critical mass theory states that a ‘critical mass’ of female directors needs to be reached before women directors have an influence on a firm’s performance (Simpson et al., 2010).

The effect of different levels of female directors on innovation activity is represented in Table 7. The effect of different amounts of female directors on innovation activity, both input- and output-oriented, is positive. However, the gender diversity does impact statistically significant on patenting intensity only for a minimum of three women directors. This suggests that a ‘critical mass’ is needed in order for gender diversity to have (positive) effects on patenting intensity in China. For firms with high innovation activity, no statistically significant effect of different levels of female board representation on patenting or R&D activity is found. Similarly, using the Blundell-Bond one-step estimator, no statistically significant effect is found.

Table 8 shows the effect of innovation activity and female board representation on ROS and ROA, respectively. The full model specification with ROS and ROA, respectively, pass both the Arellano-Bond test of second order autocorrelation and the Hansen test of exogeneity of the instruments (see Table 9). For ROA as dependent variables, the latter holds only at a 5% level. In line with the ‘critical mass’ theory stating that a certain number of female directors is needed in order for women directors to have a significant effect on firm performance, it is found that two or more women directors in firms with R&D activity are needed in order to have a statistically significant and positive on ROA. Higher levels of women in the board room in firms with non-zero R&D activity impact negatively and statistically significant on both ROS and ROA in the full model. The negative coefficient estimate of RD_3Women in the full model is in line with the results in Section 4. More gender-diverse boards trigger R&D expenditures in previous periods, what impacts negatively on current firm performance. More female directors in firms with non-zero patenting activity have positive and statistically significant effects on both ROS and ROA in the linear dynamic panel data model. Again the results from Section 4 are confirmed. However, we gain the additional insight that at least three women are needed in order to provide these effects.

These results underline that there are opposing effects of gender diversity in the board room and input- and output-oriented innovative firm on firm performance. We find positive and significant effects in the latter case and negative effects in the previous case. In particular, it is important to account for endogeneity due to reverse causality of current board composition, innovation activity and firm performance.

Table 7: Number of Women in the Board Room and Innovation Activity

VARIABLES	(1) Base Model RD_int	(2) Full Model RD_int	(3) Base Model pat_int	(4) Full Model pat_int
D_1Women	0.0069 (0.012)	-0.0040 (0.014)	0.0260 (0.018)	0.1608 (0.163)
D_2Women	0.0048 (0.011)	0.0095 (0.014)	0.0174 (0.011)	0.1240 (0.108)
D_3Women	0.0107 (0.009)	0.0070 (0.012)	0.0153* (0.009)	0.0364 (0.046)
DirAge	-0.0225 (0.022)	-0.0133 (0.013)	0.0185 (0.013)	-0.0754 (0.108)
DirEduc	-0.0114 (0.011)	0.0221 (0.031)	0.0023 (0.007)	0.0344 (0.039)
Independent	0.0005 (0.013)	-0.0003 (0.018)	-0.0005 (0.008)	-0.0901 (0.077)
Ln_BoardSize	-0.0080 (0.013)	0.0048 (0.016)	-0.0005 (0.009)	0.0428 (0.032)
Duality	0.0164 (0.015)	-0.0123 (0.011)	-0.0003 (0.005)	0.0750 (0.085)
State	-0.0250 (0.066)	-0.0085 (0.011)	-0.0222 (0.014)	0.0563 (0.048)
LegalPerson	0.0553 (0.044)	-0.0237 (0.024)	-0.0063 (0.006)	-0.1142 (0.115)
Management	-0.0069 (0.008)	-0.0454 (0.035)	-0.0010 (0.001)	-0.0066 (0.053)
Ln_Shareholders	-0.0419*** (0.014)	-0.0059 (0.005)	0.0300 (0.030)	0.0366** (0.018)
womenCEO	0.0063 (0.009)	-0.0546* (0.030)	-0.0009 (0.002)	0.1081 (0.100)
Ln_FirmSize	-0.0188 (0.022)	-0.0032 (0.008)	-0.0040 (0.011)	-0.0076 (0.020)
Leverage	-0.0090 (0.013)	0.0191 (0.016)	0.0056 (0.006)	0.1046 (0.082)
Ln_FirmAge	0.0009 (0.032)	-0.0041 (0.018)	0.0395 (0.027)	0.0552 (0.039)
Year Fixed Effects	Yes	Yes	Yes	Yes
Firm Fixed Effects	Yes	Yes	Yes	Yes
Observations	15,871	2,792	15,871	2,792
R-squared	0.004	0.019		
Number of firms	2,653	1,204	2,653	1,204

Robust standard errors in parentheses

*** $p < 0.01$, ** $p < 0.05$, * $p < 0.1$

Table 8: Number of Women Directors, Innovation Activity and Corporate Firm Performance

VARIABLES	(1) Base Model ROS	(2) Full Model ROS	(3) Base Model ROA	(4) Full Model ROA
RD_int	-0.0030 (0.015)	0.0603 (0.086)	-0.0264 (0.016)	0.0165 (0.077)
D_1Women	0.0121 (0.012)	0.0050 (0.036)	-0.0078 (0.012)	0.0106 (0.000)
RD_1Women	0.0004 (0.010)	-0.1276 (0.113)	0.0267 (0.021)	-0.1059 (0.096)
D_2Women	0.0111 (0.013)	-0.0436 (0.075)	0.0064 (0.012)	-0.0518* (0.031)
RD_2Women	0.0077 (0.008)	-0.0492 (0.097)	0.0328** (0.016)	-0.1602 (0.097)
D_3Women	0.0161 (0.012)	0.0129 (0.030)	0.0174 (0.014)	0.0121 (0.027)
RD_3Women	0.0165 (0.019)	-0.1308* (0.078)	0.0138 (0.016)	-0.1419** (0.071)
pat_int	0.0190 (0.012)	-0.0222 (0.022)	-0.0141 (0.026)	0.0253 (0.017)
pat_1Women	-0.0055 (0.007)	0.0424 (0.028)	0.0046 (0.014)	0.0087 (0.016)
pat_2Women	0.0040 (0.008)	0.0322 (0.028)	0.0123 (0.016)	0.0306 (0.023)
pat_3Women	0.0035 (0.008)	0.0832* (0.045)	0.0026 (0.019)	0.0627* (0.035)
DirAge	0.0116 (0.017)	0.0496 (0.059)	0.0041 (0.016)	0.0287 (0.043)
DirEduc	-0.0153 (0.020)	-0.0389 (0.043)	-0.0120 (0.017)	-0.0729** (0.034)
Independent	-0.0006 (0.012)	0.0536 (0.046)	-0.0049 (0.013)	0.0174 (0.029)
Ln_BoardSize	0.0149 (0.017)	0.0716* (0.043)	0.0182 (0.020)	0.0356 (0.037)
Duality	-0.0041 (0.019)	-0.0922 (0.082)	0.0096 (0.013)	0.0156 (0.036)
State	0.0720 (0.045)	0.0172 (0.060)	0.1200** (0.048)	0.0454 (0.051)
LegalPerson	0.1891*** (0.042)	0.0814 (0.063)	0.2096*** (0.044)	0.1262** (0.051)
Management	0.0047 (0.004)	0.0030 (0.019)	0.0081 (0.006)	0.0428*** (0.013)
Ln_Shareholders	-0.0821*** (0.023)	0.0087 (0.048)	-0.1852*** (0.022)	-0.1362*** (0.046)
womenCEO	0.0120 (0.016)	-0.0002 (0.027)	0.0062 (0.013)	-0.0222 (0.023)
Ln_FirmSize	0.0158 (0.038)	0.0876 (0.085)	0.0808*** (0.031)	0.1194*** (0.043)
Leverage	-0.1929*** (0.030)	-0.1040** (0.045)	-0.3478*** (0.028)	-0.1555*** (0.040)
Ln_FirmAge	0.0282 (0.039)	0.0377 (0.030)	-0.0124 (0.042)	0.0605*** (0.023)
Year Fixed Effects	Yes	Yes	Yes	Yes
Firm Fixed Effects	Yes	Yes	Yes	Yes
Observations	15,871	2,792	15,871	2,792
R-squared	0.027		0.114	
Number of firms	2,653	1,204	2,653	1,204

Robust standard errors in parentheses

*** $p < 0.01$, ** $p < 0.05$, * $p < 0.1$

Table 9: Test of Serial Autocorrelation

VARIABLES	(1) ROS	(2) ROA
<i>Blundell-Bond Estimator</i>		
Arellano-Bond test for AR(2)	$z = 1.12$	$z = 1.30$
Hansen test χ^2 (df)	2.95 (9)	16.62 (9)
	Prob > $z = 0.262$	Prob > $z = 0.192$
	Prob > $\chi^2 = 0.966$	Prob > $\chi^2 = 0.055$

6 Conclusion

This paper elaborates whether women bringing their diversity, cross-cultural awareness and leadership skills to the boards offer strategic advantages for firms (Adler, 1997; Terjesen and Singh, 2008). The study provides evidence of positive effects of gender-diverse boards and output-oriented innovation activity on firm performance in China. It adds to the empirical literature on the impact of female board representation on corporate firm performance (BarNir, 2012; Dezsö and Ross, 2012). The focus on China allows a more precise distinction of the effectiveness of gender-diverse boards given the absence of legally-induced female board rules. Mandatory female board quotas may result in more heterogeneous boards in terms of experience and age of its members (Ahern and Dittmar, 2012) as well as in an insufficient number of qualified female employees for recruitment in the board (Smith et al., 2006). This may result in inefficient boards due to legally-imposed board rules (Böhren and Staubo, 2014).

The base specification is the two-way fixed effects model allowing to control for both firm and year fixed effects. We use UQRs to reveal potential differences in the effect of female directors, innovation activity and firm performance at different points of the corresponding distribution. In order to account for autocorrelation issues, the Blundell-Bond one-step estimator is used. The Arellano-Bond test for second order autocorrelation as well as the Hansen test control for validity of the instruments used. We look at the effect of women directors on corporate firm's innovation activity as well as on performance. In particular, the analysis accounts for both input- and output-oriented measures of innovation activity.

Women are found to have a positive impact on patenting intensity, while negative effects of female board members on input-oriented innovation are found. This holds for highly active firms in innovation activity. Corollary, we find negative effects of past years R&D intensity on current firm performance and positive effects of past patenting intensity in firms with female directors, respectively. This suggests that output-oriented measures of innovation activity such as patenting intensity and women on the board may take some time to become effective and hence are detected in the linear dynamic panel but not in the baseline model. The dynamic Blundell-Bond model allows to catch the effect of women directors and patenting intensity on firm performance as it accounts for unobserved heterogeneity, simultaneity and dynamic relationships between the composition of the board and past firm performance. Using different levels of women directors as measures for female board representation, we find that a critical mass of three or more female directors. In the base model, the effect of gender-diverse management and patenting activity is not statistically significant. Contrary, R&D intensity in firms with women directors impacts positively on ROS and ROA in the base model. This shows that it is important to take endogeneity issues into account.

All in all, positive effects of female directors and output-oriented innovation activity on firm performance are found. More women on the board are found to have positive effects on performance of Chinese firms. Hence, more gender-diverse boards today may offer strategic

advantages for firms in terms of output-oriented innovation activity and firm performance. To the author’s best knowledge, this is the first study that establishes such a relationship for China.

References

- ADAMS, R. B. AND D. FERREIRA (2009): “Women in the Boardroom and their Impact on Governance and Performance,” *Journal of Financial Economics*, 94, 291–309.
- ADLER, N. (1997): “Global Leadership: Women Leaders,” *Management International Review*, 37, 171–196.
- AHERN, K. AND A. DITTMAR (2012): “The Changing of the Boards: The Impact on Firm Valuation of Mandated Female Board Representation,” *The Quarterly Journal of Economics*, 127, 137–197.
- ALLEN, F., J. QIAN, AND M. QIAN (2005): “Law, Finance, and Economic Growth in China,” *Journal of Financial Economics*, 77, 57–116.
- ARELLANO, M. AND S. BOND (1991): “Some Tests of Specification for Panel Data: Monte Carlo Evidence and an Application to Employment Equations,” *Review of Economic Studies*, 58, 277–297.
- BAI, C.-E., Q. LIU, J. LU, F. M. SONG, AND J. ZHANG (2004): “Corporate Governance and Market Valuation in China,” *Journal of Comparative Economics*, 32, 599–616.
- BARNIR, A. (2012): “Starting Technologically Innovative Ventures: Reasons, Human Capital, and Gender,” *Management Decision*, 50, 399–419.
- BECKER, G. (1971): *The Economics of Discrimination*, University of Chicago Press Economics Books, University of Chicago Press, 2 ed.
- BLUNDELL, R. AND S. BOND (1998): “Initial Conditions and Moment Restrictions in Dynamic Panel Data Models,” *Journal of Econometrics*, 87, 115–143.
- BØHREN, Ø. AND S. STAUBO (2014): “Does Mandatory Gender Balance Work? Changing Organizational form to Avoid Board Upheaval,” *Journal of Corporate Finance*, 28, 152–168.
- CHEN, J., W. S. LEUNG, AND K. P. EVANS (2015): “Board Gender Diversity, Innovation and Firm Performance,” *Innovation and Firm Performance (Nov 30, 2015)*.
- DASGUPTA, S., M. MATSUMOTO, AND X. CUNTAO (2015): “Women in the Labour Market in China,” Tech. rep., International Labour Office (ILO) Geneva.
- DEZSÖ, C. AND D. ROSS (2012): “Does Female Representation in Top Management Improve Firm Performance? A Panel Data Investigation,” *Strategic Management Journal*, 33.
- FIRPO, S., N. M. FORTIN, AND T. LEMIEUX (2009): “Unconditional Quantile Regressions,” *Econometrica*, 77, 953–973.
- GOVERNMENT UK (2011): “Women on Boards,” https://www.gov.uk/government/uploads/system/uploads/attachment_data/file/31480/11-745-women-on-boards.pdf, accessed: 2016-11-24.

- GUL, F. A., B. SRINIDHI, AND J. S. TSUI (2008): “Board Diversity and the Demand for Higher Audit Effort,” *Available at SSRN 1359450*.
- INTERNATIONAL LABOUR OFFICE (ILO) GENEVA (2012): “Global Employment Trends for Women,” Tech. rep.
- LEVI, M., K. LI, AND F. ZHANG (2014): “Director Gender and Mergers and Acquisitions,” *Journal of Corporate Finance*, 28, 185–200.
- LIU, Y., Z. WEI, AND F. XIE (2014): “Do Women Directors Improve Firm Performance in China?” *Journal of Corporate Finance*, 28, 169–184.
- MARKÓCZY, L., S. LI SUN, M. W. PENG, B. REN, ET AL. (2013): “Social Network Contingency, Symbolic Management, and Boundary Stretching,” *Strategic Management Journal*, 34, 1367–1387.
- MATSA, D. A., A. R. MILLER, ET AL. (2013): “A Female Style in Corporate Leadership? Evidence from Quotas,” *American Economic Journal: Applied Economics*, 5, 136–69.
- MEYER, J. W. AND B. ROWAN (1977): “Institutionalized Organizations: Formal Structure as Myth and Ceremony,” *American Journal of Sociology*, 340–363.
- MSCI ESG RESEARCH INC. (2015): “Global Trends in Gender Diversity on Corporate Boards,” <http://ideas.repec.org/p/ilo/trends/480188.html>, accessed: 2016-11-24.
- SIMPSON, W. G., D. CARTER, AND F. P. D’SOUZA (2010): “What Do We Know About Women On Boards?” *Journal of Applied Finance (Formerly Financial Practice and Education)*, 20.
- SMITH, N., V. SMITH, AND M. VERNER (2006): “Do Women in Top Management Affect Firm Performance? A Panel Study of 2500 Danish Firms,” *International Journal of Productivity and Performance Management*, 55, 569–593.
- TERJESEN, S. AND V. SINGH (2008): “Female Presence on Corporate Boards: A Multi-Country Study of Environmental Context,” *Journal of Business Ethics*, 83, 55–63.
- VAN KNIPPENBERG, D., C. K. DE DREU, AND A. C. HOMAN (2004): “Work Group Diversity and Group Performance: An Integrative Model and Research Agenda,” *Journal of Applied Psychology*, 89, 1008.
- WINTOKI, M. B., J. S. LINCK, AND J. M. NETTER (2012): “Endogeneity and the Dynamics of Internal Corporate Governance,” *Journal of Financial Economics*, 105, 581–606.

Appendix

A Definition and Correlation of Variables

Table A1: Definition of Variables

Variable Name	Definition
Dependent Variables	
Firm Performance	
ROA	Return on assets; net income divided by total assets (measured in percent)
ROS	Return on sales; net income divided by total sales (measured in percent)
Tobin_Q	Tobin's Q is defined as the market value of a firm in a respective year divided by the firm's total assets in that year
RIF_XXq	RIF function of XX at quantile q , with $XX \in [RD, pat, ROS, ROA]$ and $q \in [5, 90]$
Independent Variables	
Gender Diversity Measures	
Women	The percentage of women on the board
D_1Women	One if one woman on the board, zero otherwise
D_2Women	One if two women on the board, zero otherwise
D_3Women	One if at least three women on the board, zero otherwise
Innovative Activity Measures	
RD_int	R&D intensity; R&D expenditure divided by firm's total sales from last year
RD_fem	Interactive effect of RD_int & women
pat_int	Patent intensity; number of patents registered since a firm's existence divided by the age of the firm
pat_fem	Interactive effect of pat_int & women
pat_RD	Interactive effect of pat_int & RD_int
pat_XWomen	Interactive effect of pat_int & D_XWomen, with $X = 1, 2, 3$
RD_XWomen	Interactive effect of RD_int & D_XWomen, with $X = 1, 2, 3$

Board Characteristics

Independent	The percentage of independent board directors
IndependentWomen	The percentage of female independent board directors
ExecutiveWomen	The percentage of female executive board directors
Ln_BoardSize	Natural logarithm of the size of the board
Duality	One if CEO and board chair are held by the same person, zero otherwise
DirAge	Age of the directors in years
DirEduc	GPA of the directors

Ownership Characteristics

State	The percentage of shares owned by the government
LegalPerson	The percentage of shares owned by foreign and domestic legal persons
Management	The percentage of shares owned by the firm management
womstat	Interactive effect State times Women_ %
womlegal	Interactive effect LegalPerson times Women_ %
Ln_Shareholders	Natural logarithm of the number of shareholders

Firm Characteristics

womenCEO	One if the CEO is female, zero otherwise
Ln_FirmSize	Natural logarithm of the number of employees
Leverage	Book value of debt divided by total assets of a firm
Ln_FirmAge	Natural logarithm of the firm age in years

Table A2: Correlation Matrix, Main Variables

(obs=15,871)														
	ROS	ROA	women	pat_int	RD_int	pat_fem	pat_RD	RD_fem	D_1Women	D_2Women	D_3Women	RD_1Women	RD_2Women	RD_3Women
ROS	1													
ROA	0.515	1												
women	0.031	0.007	1											
pat_int	-0.018	0.006	-0.012	1										
RD_int	0.019	0.018	0.007	0.002	1									
pat_fem	0.007	0.014	-0.017	-0.016	-0.396	1								
pat_RD	-0.012	-0.015	-0.011	0.144	-0.396	-0.116	1							
RD_fem	0.012	0.009	0.004	-0.002	0.694	-0.003	-0.346	1						
D_1Women	-0.008	-0.008	-0.132	0.019	0.001	-0.011	0.012	-0.004	1					
D_2Women	0.010	0.010	0.350	-0.007	0.011	0.004	-0.011	0.018	-0.387	1				
D_3Women	0.035	-0.001	0.705	-0.010	-0.008	-0.020	-0.001	-0.016	-0.29	-0.201	1			
RD_1Women	-0.007	0.001	-0.006	0.004	-0.538	0.002	0.238	-0.016	0.000	-0.010	0.007	1		
RD_2Women	0.011	0.008	0.013	-0.002	0.787	-0.002	-0.367	0.886	-0.005	0.010	0.000	0.000	1	
RD_3Women	-0.008	-0.013	-0.039	0.000	-0.649	0.001	0.264	-0.385	0.011	0.000	0.000	0.000	0.000	1
pat_1Women	-0.007	-0.013	-0.006	0.76	0.002	-0.576	0.167	0.000	0.009	-0.004	-0.034	-0.034	0.315	-0.79
pat_2Women	0.005	0.011	0.004	-0.553	-0.004	0.687	-0.135	0.000	-0.007	0.000	0.000	0.000	0.004	0.004
pat_3Women	0.006	0.021	-0.024	-0.578	0.000	0.76	-0.102	-0.003	-0.007	-0.015	0.012	-0.001	-0.001	-0.001
DirAge	0.002	-0.018	-0.090	0.069	-0.019	-0.054	0.002	-0.001	-0.005	0.015	-0.040	-0.004	-0.004	-0.004
DirEduc	0.060	0.056	0.009	0.062	-0.001	-0.028	0.004	-0.008	0.036	-0.009	0.005	-0.008	-0.008	-0.008
Independent	-0.011	-0.025	0.022	0.015	0.007	-0.024	-0.011	-0.008	0.012	-0.020	0.005	-0.004	-0.009	-0.009
Ln_BoardSize	0.036	-0.008	-0.112	0.058	-0.016	-0.064	0.021	-0.025	-0.019	0.028	0.087	0.012	0.012	0.012
Duality	0.010	0.038	0.102	0.007	0.016	0.037	-0.007	-0.006	-0.010	0.030	0.045	0.019	0.019	0.019
State	-0.009	-0.064	-0.183	0.044	-0.024	-0.056	0.002	0.006	0.014	-0.050	-0.103	-0.103	0.006	0.006
LegalPerson	0.061	0.151	0.171	-0.016	0.016	0.032	-0.010	0.013	-0.013	0.045	0.077	-0.006	-0.006	-0.006
Management	0.002	0.003	0.006	0.003	0.004	0.005	0.004	-0.003	-0.001	-0.001	0.005	-0.002	-0.002	-0.002
Ln_Shareholders	0.000	-0.154	-0.129	0.103	-0.039	-0.070	0.002	-0.005	-0.012	-0.038	-0.043	0.006	0.006	0.006
womenCEO	0.016	0.022	0.241	-0.009	-0.008	-0.007	-0.002	-0.008	-0.017	0.064	0.167	-0.001	-0.001	-0.001
Ln_FirmSize	-0.050	0.016	-0.122	0.175	-0.018	-0.073	0.019	-0.009	-0.004	-0.046	-0.030	0.002	0.002	0.002
leverage	-0.177	-0.358	-0.069	0.023	-0.020	-0.021	0.025	0.012	0.015	-0.022	-0.018	-0.014	-0.014	-0.014
Ln_FirmAge	-0.042	-0.121	0.053	-0.027	-0.014	-0.014	-0.004	0.020	-0.020	0.029	0.052	-0.016	-0.016	-0.016
RD_2Women	1													
RD_3Women	-0.62	1												
pat_1Women	-0.0002	-0.0023	1											
pat_2Women	-0.0015	0.002	-0.697	1										
pat_3Women	0.001	0.0059	-0.61	0.294	1									
DirAge	0.005	-0.0001	0.04	-0.05	-0.04	1								
DirEduc	-0.002	0.0014	0.02	-0.03	-0.02	-0.0172	1							
Independent	0.018	-0.006	0.002	0.012	-0.002	0.090	0.037	1						
Ln_BoardSize	-0.018	0.013	0.036	-0.047	-0.048	0.102	-0.008	-0.41	1					
Duality	-0.008	-0.003	-0.01	0.02	0.02	-0.10	0.12	0.09	-0.17	1				
State	-0.008	0.014	0.014	-0.04	-0.03	0.24	-0.12	-0.03	0.24	-0.259	1			
LegalPerson	0.010	-0.012	-0.019	0.026	0.028	-0.187	0.157	-0.03	-0.274	0.251	-0.74	1		
Management	-0.001	-0.003	-0.003	0.004	0.012	0.007	0.020	0.0819	0.003	-0.012	-0.036	-0.034	1	
Ln_Shareholders	-0.007	0.014	0.034	-0.040	-0.057	0.251	-0.107	-0.006	0.258	-0.185	0.310	-0.374	-0.034	-0.034
womenCEO	-0.004	0.002	-0.009	0.009	-0.002	-0.037	0.032	0.025	-0.063	-0.018	-0.081	0.101	0.101	0.101
Ln_FirmSize	-0.005	0.006	0.055	-0.044	-0.073	0.273	0.041	0.008	0.280	-0.110	0.282	-0.193	-0.193	-0.193
Leverage	0.009	0.001	0.020	-0.007	-0.032	0.056	-0.109	-0.028	0.189	-0.151	0.235	-0.263	-0.263	-0.263
Ln_FirmAge	0.017	-0.002	0.009	-0.006	-0.010	0.089	-0.140	-0.041	0.031	-0.087	0.046	-0.202	-0.202	-0.202
Management	1													
Ln_Shareholders	-0.03	1												
womenCEO	-0.0004	-0.06	1											
Ln_FirmSize	-0.004	0.46	-0.06	1										
Leverage	0.006	0.30	-0.008	0.27	1									
Ln_FirmAge	0.018	0.192	0.004	-0.014	0.20	1								

Notes: The table shows the correlation among the standardized variables.

B Alternative Model Specifications

As alternatives to the above discussed base and full model, we use use lagged board and innovation controls and lagged firm performance as additional regressors in the two-way fixed effects model. This should eliminate the positive association between female representation and firm performance. Additionally, the Arellano-Bond one-step estimator is applied. This dynamic panel estimator controls for endogeneity deriving from unobserved heterogeneity, reverse causality and dynamic relation between the composition of the board and past firm performance (Arellano and Bond, 1991).

The Arellano-Bond test is satisfactory since there is no autocorrelation of second order (see Table B.3). The χ^2 test-statistic is insignificant at a 10% level and hence, the statistic of the Hansen test shows that the null-hypothesis that the instruments are exogenous is not rejected. Again, only the odd years are used in the regression. All lags of the exogenous variables up to lag four are included in the regression, while the regression is augmented by lags two to four of the endogenous variables and the dependent variable.

Table B.1 and Table B.2 show the estimation outcome of the alternative specifications on ROS and ROA, respectively. In terms of economic significance, the coefficient estimates are similar to the base model. Statistically, the effects are significant only in the model in column(2) on ROS.

Table B.1: Effect on ROS, Alternative Model Specifications

VARIABLES	(1)	(2)	(3)
	Lagged Board Char. ROS	Two-way Fixed Effects Lagged Board Char. + Lagged Dep. Var. ROS	Arellano-Bond ROS
women	0.0281 (0.019)	0.0317* (0.019)	-0.0997 (0.12274)
pat_int	0.0041 (0.007)	0.0042 (0.007)	0.0974 (0.08267)
pat_fem	0.0031 (0.011)	0.0031 (0.011)	0.0331 (0.04371)
RD_fem	0.0028 (0.005)	0.0033 (0.005)	0.1599 (0.14948)
RD_int	-0.0020 (0.018)	-0.0030 (0.019)	-0.0247 (0.07856)
pat_RD	0.0242 (0.031)	0.0213 (0.030)	0.0158 (0.01142)
Year Fixed Effects	Yes	Yes	Yes
Firm Fixed Effects	Yes	Yes	Yes
Board, Firm & Ownership Covariates	Yes	Yes	Yes
Observations	12,302	12,302	1,794
R-squared	0.035	0.040	
Number of firms	2,478	2,478	1,059

Robust standard errors in parentheses

*** $p < 0.01$, ** $p < 0.05$, * $p < 0.1$

Table B.2: Effect on ROA, Alternative Model Specifications

VARIABLES	(1)	(2)	(3)
	Lagged Board Char. ROA	Two-way Fixed Effects Lagged Board Char. + Lagged Dep. Var. ROA	Arellano-Bond ROA
women	0.0257 (0.016)	0.0245 (0.015)	-0.1186 (0.07749)
pat_int	-0.0179 (0.015)	-0.0147 (0.014)	-0.0015 (0.11929)
pat_fem	0.0005 (0.023)	-0.0008 (0.021)	-0.0315 (0.06146)
RD_fem	0.0045 (0.007)	0.0009 (0.006)	0.0520 (0.17173)
RD_int	0.0030 (0.023)	0.0012 (0.020)	0.0707 (0.07022)
pat_RD	0.0731 (0.077)	0.0554 (0.067)	-0.0090 (0.00647)
Year Fixed Effects	Yes	Yes	Yes
Firm Fixed Effects	Yes	Yes	Yes
Board, Firm & Ownership Covariates	Yes	Yes	Yes
Observations	12,302	12,302	1,794
R-squared	0.120	0.143	
Number of firms	2,478	2,478	1,059

Robust standard errors in parentheses
 $***p < 0.01, **p < 0.05, *p < 0.1$

Table B.3: Test of Serial Autocorrelation

TABLE 2: Test of Serial Correlation				
VARIABLES		(1) ROS		(2) ROA
<i>Arellano-Bond Estimator</i>				
Arellano-Bond test for AR(2)	z = 0.58	Prob > z = 0.560	z = 1.32	Prob > z = 0.188
Hansen test χ^2 (df)	0.48 (6)	Prob > χ^2 = 0.998	1.31 (6)	Prob > χ^2 = 0.971

C Sensitivity Analysis

In this Section, we briefly look at the effect of different board positions on firm performance. Further, we analyze the effect of firm ownership on female directors and corporate firm performance. For a more thorough discussion of the effects see Liu et al. (2014).

Independent and Executive Board Members

It is important to distinguish between the effects of independent and executive board members. Independent directors are more likely to influence the firm via monitoring activities, while executive directors influence the firm's performance via their leadership and management skills. In line with the literature, we find more pronounced effects of female executive directors than independent female board members on firm performance (see e.g. Liu et al., 2014, that also consider the case of China). Executive female directors have a statistically significant and positive effect on firm performance (see Table B.4). The effect is economically always higher for executive than for independent female directors and the latter is never statistically significant. A female CEO is found to have no statistically significant effect on firm performance.

Table B.4: Independent versus Executive Women Directors on Firm Performance

VARIABLES	(1) ROS	(2) ROA
ExecutiveWomen	0.0257* (0.014)	0.0235* (0.014)
IndependentWomen	0.0116 (0.009)	0.0135 (0.011)
Independent	-0.0036 (0.013)	-0.0080 (0.012)
Year Fixed Effects	Yes	Yes
Firm Fixed Effects	Yes	Yes
Observations	15,871	15,871
R-squared	0.010	0.045
Number of firm	2,653	2,653
Robust standard errors in parentheses		
*** $p < 0.01$, ** $p < 0.05$, * $p < 0.1$		

Firm Ownership and Female Board Representation

In Table B.5, the effect of different types of firm ownership on female board representation and firm performance is shown. Using the percentage of female board members as dependent variable, Neither state nor legal ownership have a statistically significant effect on the presence of women on the board. Women in state-owned enterprises have a statistically significant and negative effect on firm performance (*womstat*). For female board members in firms with legal-person ownership (*womlegal*), the effect is statistically insignificant.

Table B.5: Ownership and Board Gender Diversity

VARIABLES	(1) women	(2) ROS	(3) ROA
women		0.0832** (0.036)	0.0327 (0.033)
State	-0.0552 (0.036)	0.1209*** (0.045)	0.1580*** (0.054)
womstat		-0.0576** (0.025)	-0.0241 (0.029)
LegalPerson	0.0060 (0.032)	0.2455*** (0.048)	0.2634*** (0.047)
womlegal		-0.0559 (0.037)	0.0137 (0.039)
Year Fixed Effects	Yes	Yes	Yes
Firm Fixed Effects	Yes	Yes	Yes
Observations	15,871	15,871	15,871
R-squared	0.051	0.015	0.055
Number of firm	2,653	2,653	2,653

Robust standard errors in parentheses

*** p<0.01, ** p<0.05, * p<0.1

Hohenheim Discussion Papers in Business, Economics and Social Sciences

The Faculty of Business, Economics and Social Sciences continues since 2015 the established “FZID Discussion Paper Series” of the “Centre for Research on Innovation and Services (FZID)” under the name “Hohenheim Discussion Papers in Business, Economics and Social Sciences”.

Institutes

510	Institute of Financial Management
520	Institute of Economics
530	Institute of Health Care & Public Management
540	Institute of Communication Science
550	Institute of Law and Social Sciences
560	Institute of Economic and Business Education
570	Institute of Marketing & Management
580	Institute of Interorganizational Management & Performance

Research Areas (since 2017)

INEPA	“Inequality and Economic Policy Analysis”
TKID	“Transformation der Kommunikation – Integration und Desintegration”
NegoTrans	“Negotiation Research – Transformation, Technology, Media and Costs”
INEF	“Innovation, Entrepreneurship and Finance”

Download Hohenheim Discussion Papers in Business, Economics and Social Sciences from our homepage: <https://wiso.uni-hohenheim.de/papers>

No.	Author	Title	Inst
01-2015	Thomas Beissinger, Philipp Baudy	THE IMPACT OF TEMPORARY AGENCY WORK ON TRADE UNION WAGE SETTING: A Theoretical Analysis	520
02-2015	Fabian Wahl	PARTICIPATIVE POLITICAL INSTITUTIONS AND CITY DEVELOPMENT 800-1800	520
03-2015	Tommaso Proietti, Martyna Marczak, Gianluigi Mazzi	EUROMIND-D: A DENSITY ESTIMATE OF MONTHLY GROSS DOMESTIC PRODUCT FOR THE EURO AREA	520
04-2015	Thomas Beissinger, Nathalie Chusseau, Joël Hellier	OFFSHORING AND LABOUR MARKET REFORMS: MODELLING THE GERMAN EXPERIENCE	520
05-2015	Matthias Mueller, Kristina Bogner, Tobias Buchmann, Muhammed Kudic	SIMULATING KNOWLEDGE DIFFUSION IN FOUR STRUCTURALLY DISTINCT NETWORKS – AN AGENT-BASED SIMULATION MODEL	520
06-2015	Martyna Marczak, Thomas Beissinger	BIDIRECTIONAL RELATIONSHIP BETWEEN INVESTOR SENTIMENT AND EXCESS RETURNS: NEW EVIDENCE FROM THE WAVELET PERSPECTIVE	520
07-2015	Peng Nie, Galit Nimrod, Alfonso Sousa-Poza	INTERNET USE AND SUBJECTIVE WELL-BEING IN CHINA	530

No.	Author	Title	Inst
08-2015	Fabian Wahl	THE LONG SHADOW OF HISTORY ROMAN LEGACY AND ECONOMIC DEVELOPMENT – EVIDENCE FROM THE GERMAN LIMES	520
09-2015	Peng Nie, Alfonso Sousa-Poza	COMMUTE TIME AND SUBJECTIVE WELL-BEING IN URBAN CHINA	530
10-2015	Kristina Bogner	THE EFFECT OF PROJECT FUNDING ON INNOVATIVE PERFORMANCE AN AGENT-BASED SIMULATION MODEL	520
11-2015	Bogang Jun, Tai-Yoo Kim	A NEO-SCHUMPETERIAN PERSPECTIVE ON THE ANALYTICAL MACROECONOMIC FRAMEWORK: THE EXPANDED REPRODUCTION SYSTEM	520
12-2015	Volker Grossmann Aderonke Osikominu Marius Osterfeld	ARE SOCIOCULTURAL FACTORS IMPORTANT FOR STUDYING A SCIENCE UNIVERSITY MAJOR?	520
13-2015	Martyna Marczak Tommaso Proietti Stefano Grassi	A DATA–CLEANING AUGMENTED KALMAN FILTER FOR ROBUST ESTIMATION OF STATE SPACE MODELS	520
14-2015	Carolina Castagnetti Luisa Rosti Marina Töpfer	THE REVERSAL OF THE GENDER PAY GAP AMONG PUBLIC-CONTEST SELECTED YOUNG EMPLOYEES	520
15-2015	Alexander Opitz	DEMOCRATIC PROSPECTS IN IMPERIAL RUSSIA: THE REVOLUTION OF 1905 AND THE POLITICAL STOCK MARKET	520
01-2016	Michael Ahlheim, Jan Neidhardt	NON-TRADING BEHAVIOUR IN CHOICE EXPERIMENTS	520
02-2016	Bogang Jun, Alexander Gerybadze, Tai-Yoo Kim	THE LEGACY OF FRIEDRICH LIST: THE EXPANSIVE REPRODUCTION SYSTEM AND THE KOREAN HISTORY OF INDUSTRIALIZATION	520
03-2016	Peng Nie, Alfonso Sousa-Poza	FOOD INSECURITY AMONG OLDER EUROPEANS: EVIDENCE FROM THE SURVEY OF HEALTH, AGEING, AND RETIREMENT IN EUROPE	530
04-2016	Peter Spahn	POPULATION GROWTH, SAVING, INTEREST RATES AND STAGNATION. DISCUSSING THE EGGERTSSON- MEHROTRA-MODEL	520
05-2016	Vincent Dekker, Kristina Strohmaier, Nicole Bosch	A DATA-DRIVEN PROCEDURE TO DETERMINE THE BUNCHING WINDOW – AN APPLICATION TO THE NETHERLANDS	520
06-2016	Philipp Baudy, Dario Cords	DEREGULATION OF TEMPORARY AGENCY EMPLOYMENT IN A UNIONIZED ECONOMY: DOES THIS REALLY LEAD TO A SUBSTITUTION OF REGULAR EMPLOYMENT?	520

No.	Author	Title	Inst
07-2016	Robin Jessen, Davud Rostam-Afschar, Sebastian Schmitz	HOW IMPORTANT IS PRECAUTIONARY LABOR SUPPLY?	520
08-2016	Peng Nie, Alfonso Sousa-Poza, Jianhong Xue	FUEL FOR LIFE: DOMESTIC COOKING FUELS AND WOMEN'S HEALTH IN RURAL CHINA	530
09-2016	Bogang Jun, Seung Kyu-Yi, Tobias Buchmann, Matthias Müller	THE CO-EVOLUTION OF INNOVATION NETWORKS: COLLABORATION BETWEEN WEST AND EAST GERMANY FROM 1972 TO 2014	520
10-2016	Vladan Ivanovic, Vadim Kufenko, Boris Begovic Nenad Stanisic, Vincent Geloso	CONTINUITY UNDER A DIFFERENT NAME. THE OUTCOME OF PRIVATISATION IN SERBIA	520
11-2016	David E. Bloom Michael Kuhn Klaus Prettnner	THE CONTRIBUTION OF FEMALE HEALTH TO ECONOMIC DEVELOPMENT	520
12-2016	Franz X. Hof Klaus Prettnner	THE QUEST FOR STATUS AND R&D-BASED GROWTH	520
13-2016	Jung-In Yeon Andreas Pyka Tai-Yoo Kim	STRUCTURAL SHIFT AND INCREASING VARIETY IN KOREA, 1960–2010: EMPIRICAL EVIDENCE OF THE ECONOMIC DEVELOPMENT MODEL BY THE CREATION OF NEW SECTORS	520
14-2016	Benjamin Fuchs	THE EFFECT OF TEENAGE EMPLOYMENT ON CHARACTER SKILLS, EXPECTATIONS AND OCCUPATIONAL CHOICE STRATEGIES	520
15-2016	Seung-Kyu Yi Bogang Jun	HAS THE GERMAN REUNIFICATION STRENGTHENED GERMANY'S NATIONAL INNOVATION SYSTEM? TRIPLE HELIX DYNAMICS OF GERMANY'S INNOVATION SYSTEM	520
16-2016	Gregor Pfeifer Fabian Wahl Martyna Marczak	ILLUMINATING THE WORLD CUP EFFECT: NIGHT LIGHTS EVIDENCE FROM SOUTH AFRICA	520
17-2016	Malte Klein Andreas Sauer	CELEBRATING 30 YEARS OF INNOVATION SYSTEM RESEARCH: WHAT YOU NEED TO KNOW ABOUT INNOVATION SYSTEMS	570
18-2016	Klaus Prettnner	THE IMPLICATIONS OF AUTOMATION FOR ECONOMIC GROWTH AND THE LABOR SHARE	520
19-2016	Klaus Prettnner Andreas Schaefer	HIGHER EDUCATION AND THE FALL AND RISE OF INEQUALITY	520
20-2016	Vadim Kufenko Klaus Prettnner	YOU CAN'T ALWAYS GET WHAT YOU WANT? ESTIMATOR CHOICE AND THE SPEED OF CONVERGENCE	520

No.	Author	Title	Inst
01-2017	Annarita Baldanzi Alberto Bucci Klaus Prettner	CHILDRENS HEALTH, HUMAN CAPITAL ACCUMULATION, AND R&D-BASED ECONOMIC GROWTH	INEPA
02-2017	Julius Tennert Marie Lambert Hans-Peter Burghof	MORAL HAZARD IN VC-FINANCE: MORE EXPENSIVE THAN YOU THOUGHT	INEF
03-2017	Michael Ahlheim Oliver Frör Nguyen Minh Duc Antonia Rehl Ute Siepmann Pham Van Dinh	LABOUR AS A UTILITY MEASURE RECONSIDERED	520
04-2017	Bohdan Kukharskyy Sebastian Seiffert	GUN VIOLENCE IN THE U.S.: CORRELATES AND CAUSES	520
05-2017	Ana Abeliasky Klaus Prettner	AUTOMATION AND DEMOGRAPHIC CHANGE	520
06-2017	Vincent Geloso Vadim Kufenko	INEQUALITY AND GUARD LABOR, OR PROHIBITION AND GUARD LABOR?	INEPA
07-2017	Emanuel Gasteiger Klaus Prettner	ON THE POSSIBILITY OF AUTOMATION-INDUCED STAGNATION	520
08-2017	Klaus Prettner Holger Strulik	THE LOST RACE AGAINST THE MACHINE: AUTOMATION, EDUCATION, AND INEQUALITY IN AN R&D-BASED GROWTH MODEL	INEPA
09-2017	David E. Bloom Simiao Chen Michael Kuhn Mark E. McGovern Les Oxley Klaus Prettner	THE ECONOMIC BURDEN OF CHRONIC DISEASES: ESTIMATES AND PROJECTIONS FOR CHINA, JAPAN, AND SOUTH KOREA	520
10-2017	Sebastian Till Braun Nadja Dwenger	THE LOCAL ENVIRONMENT SHAPES REFUGEE INTEGRATION: EVIDENCE FROM POST-WAR GERMANY	INEPA
11-2017	Vadim Kufenko Klaus Prettner Vincent Geloso	DIVERGENCE, CONVERGENCE, AND THE HISTORY-AUGMENTED SOLOW MODEL	INEPA
12-2017	Frank M. Fossen Ray Rees Davud Rostam-Afschar Viktor Steiner	HOW DO ENTREPRENEURIAL PORTFOLIOS RESPOND TO INCOME TAXATION?	520
13-2017	Steffen Otterbach Michael Rogan	SPATIAL DIFFERENCES IN STUNTING AND HOUSEHOLD AGRICULTURAL PRODUCTION IN SOUTH AFRICA: (RE-) EXAMINING THE LINKS USING NATIONAL PANEL SURVEY DATA	INEPA
14-2017	Carolina Castagnetti Luisa Rosti Marina Töpfer	THE CONVERGENCE OF THE GENDER PAY GAP – AN ALTERNATIVE ESTIMATION APPROACH	INEPA

No.	Author	Title	Inst
15-2017	Andreas Hecht	ON THE DETERMINANTS OF SPECULATION – A CASE FOR EXTENDED DISCLOSURES IN CORPORATE RISK MANAGEMENT	510
16-2017	Mareike Schoop D. Marc Kilgour (Editors)	PROCEEDINGS OF THE 17 TH INTERNATIONAL CONFERENCE ON GROUP DECISION AND NEGOTIATION	NegoTrans
17-2017	Mareike Schoop D. Marc Kilgour (Editors)	DOCTORAL CONSORTIUM OF THE 17 TH INTERNATIONAL CONFERENCE ON GROUP DECISION AND NEGOTIATION	NegoTrans
18-2017	Sibylle Lehmann-Hasemeyer Fabian Wahl	SAVING BANKS AND THE INDUSTRIAL REVOLUTION IN PRUSSIA SUPPORTING REGIONAL DEVELOPMENT WITH PUBLIC FINANCIAL INSTITUTIONS	520
19-2017	Stephanie Glaser	A REVIEW OF SPATIAL ECONOMETRIC MODELS FOR COUNT DATA	520
20-2017	Dario Cords	ENDOGENOUS TECHNOLOGY, MATCHING, AND LABOUR UNIONS: DOES LOW-SKILLED IMMIGRATION AFFECT THE TECHNOLOGICAL ALIGNMENT OF THE HOST COUNTRY?	INEPA
21-2017	Micha Kaiser Jan M. Bauer	PRESCHOOL CHILD CARE AND CHILD WELL-BEING IN GERMANY: DOES THE MIGRANT EXPERIENCE DIFFER?	INEPA
22-2017	Thilo R. Huning Fabian Wahl	LORD OF THE LEMONS: ORIGIN AND DYNAMICS OF STATE CAPACITY	520
23-2017	Matthias Busse Ceren Erdogan Henning Mühlen	STRUCTURAL TRANSFORMATION AND ITS RELEVANCE FOR ECONOMIC GROWTH IN SUB-SHARAN AFRICA	INEPA
24-2017	Sibylle Lehmann-Hasemeyer Alexander Opitz	THE VALUE OF POLITICAL CONNECTIONS IN THE FIRST GERMAN DEMOCRACY – EVIDENCE FROM THE BERLIN STOCK EXCHANGE	520
25-2017	Samuel Mburu Micha Kaiser Alfonso Sousa-Poza	LIVESTOCK ASSET DYNAMICS AMONG PASTORALISTS IN NORTHERN KENYA	INEPA
26-2017	Marina Töpfer	DETAILED RIF DECOMPOSITION WITH SELECTION – THE GENDER PAY GAP IN ITALY	INEPA
27-2017	Robin Jessen Maria Metzinger Davud Rostam-Afschar	OPTIMAL TAXATION UNDER DIFFERENT CONCEPTS OF JUSTNESS	INEPA
28-2017	Alexander Kressner Katja Schimmelpfeng	CLUSTERING SURGICAL PROCEDURES FOR MASTER SURGICAL SCHEDULING	580
29-2017	Clemens Lankisch Klaus Prettnner Alexia Prskawetz	ROBOTS AND THE SKILL PREMIUM: AN AUTOMATION-BASED EXPLANATION OF WAGE INEQUALITY	INEPA

No.	Author	Title	Inst
30-2017	Ann-Sophie Adelhelm Melanie Bathelt Mirjam Bathelt Bettina Bürkin Sascha Klein Sabrina Straub Lea Wagner Fabienne Walz	ARBEITSWELT: DIGITAL – BELASTUNG: REAL? DER ERLEBTE WANDEL DER ARBEITSWELT INNERHALB DER IT-BRANCHE AUS SICHT DER ARBEITNEHMER	550
31-2017	Annarita Baldanzi Klaus Prettner Paul Tscheuschner	LONGEVITY-INDUCED VERICAL INNOVATION AND THE TRADEOFF BETWEEN LIFE AND GROWTH	520
32-2017	Vincent Dekker Kristina Strohmaier	THE EFFECT OF TRANSFER PRICING REGULATIONS ON INTRA-INDUSTRY TRADE	520
01-2018	Michael D. Howard Johannes Kolb	FOUNDER CEOS AND NEW VENTURE MEDIA COVERAGE	INEF
02-2018	Peter Spahn	UNCONVENTIONAL VIEWS ON INFLATION CONTRAOL: FORWARD GUIDANCE, THE NEO- FISHERIAN APPROACH, AND THE FISCAL THEORY OF THE PRICE LEVEL	520
03-2018	Aderonke Osikominu Gregor Pfeifer	PERCEIVED WAGES AND THE GENDER GAP IN STEM FIELDS	INEPA
04-2018	Theresa Grafeneder- Weisssteiner Klaus Prettner Jens Südekum	THREE PILLARS OF URBANIZATION: MIGRATION, AGING, AND GROWTH	INEPA
05-2018	Vadim Kufenko Vincent Geloso Klaus Prettner	DOES SIZE MATTER? IMPLICATIONS OF HOUSEHOLD SIZE FOR ECONOMIC GROWTH AND CONVERGENCE	INEPA
06-2018	Michael Trost	THE WHOLE IS GREATER THAN THE SUM OF ITS PARTS – PRICING PRESSURE INDICES FOR MERGERS OF VERTICALLY INTEGRATED FIRMS	520
07-2018	Karsten Schweikert	TESTING FOR COINTEGRATION WITH TRESHOLD ADJUSTMENT IN THE PRESENCE OF STRUCTURAL BREAKS	520
08-2018	Evanthia Fasoula Karsten Schweikert	PRICE REGULATIONS AND PRICE ADJUSTMENT DYNAMICS: EVIDENCE FROM THE AUSTRIAN RETAIL FUEL MARKET	520
09-2018	Michael Ahlheim Jan Neidhardt Ute Siepmann Xiaomin Yu	WECHAT – USING SOCIAL MEDIA FOR THE ASSESSMENT OF TOURIST PREFERENCES FOR ENVIRONMENTAL IMPROVEMENTS IN CHINA	520

No.	Author	Title	Inst
10-2018	Alexander Gerybadze Simone Wiesenauer	THE INTERNATIONAL SALES ACCELERATOR: A PROJECT MANAGEMENT TOOL FOR IMPROVING SALES PERFORMANCE IN FOREIGN TARGET MARKETS	570
11-2018	Klaus Prettner Niels Geiger Johannes Schwarzer	DIE WIRTSCHAFTLICHEN FOLGEN DER AUTOMATISIERUNG	INEPA
12-2018	Martyna Marczak Thomas Beissinger	COMPETITIVENESS AT THE COUNTRY-SECTOR LEVEL: NEW MEASURES BASED ON GLOBAL VALUE CHAINS	520
13-2018	Niels Geiger Klaus Prettner Johannes Schwarzer	AUTOMATISIERUNG, WACHSTUM UND UNGLEICHHEIT	INEPA
14-2018	Klaus Prettner Sebastian Seiffert	THE SIZE OF THE MIDDLE CLASS AND EDUCATIONAL OUTCOMES: THEORY AND EVIDENCE FROM THE INDIAN SUBCONTINENT	INEPA
15-2018	Marina Töpfer	THE EFFECT OF WOMEN DIRECTORS ON INNOVATION ACTIVITY AND PERFORMANCE OF CORPORATE FIRMS - EVIDENCE FROM CHINA -	INEF

FZID Discussion Papers

(published 2009-2014)

Competence Centers

IK	Innovation and Knowledge
ICT	Information Systems and Communication Systems
CRFM	Corporate Finance and Risk Management
HCM	Health Care Management
CM	Communication Management
MM	Marketing Management
ECO	Economics

Download FZID Discussion Papers from our homepage: https://wiso.uni-hohenheim.de/archiv_fzid_papers

Nr.	Autor	Titel	CC
01-2009	Julian P. Christ	NEW ECONOMIC GEOGRAPHY RELOADED: Localized Knowledge Spillovers and the Geography of Innovation	IK
02-2009	André P. Slowak	MARKET FIELD STRUCTURE & DYNAMICS IN INDUSTRIAL AUTOMATION	IK
03-2009	Pier Paolo Saviotti, Andreas Pyka	GENERALIZED BARRIERS TO ENTRY AND ECONOMIC DEVELOPMENT	IK
04-2009	Uwe Focht, Andreas Richter and Jörg Schiller	INTERMEDIATION AND MATCHING IN INSURANCE MARKETS	HCM
05-2009	Julian P. Christ, André P. Slowak	WHY BLU-RAY VS. HD-DVD IS NOT VHS VS. BETAMAX: THE CO-EVOLUTION OF STANDARD-SETTING CONSORTIA	IK
06-2009	Gabriel Felbermayr, Mario Larch and Wolfgang Lechthaler	UNEMPLOYMENT IN AN INTERDEPENDENT WORLD	ECO
07-2009	Steffen Otterbach	MISMATCHES BETWEEN ACTUAL AND PREFERRED WORK TIME: Empirical Evidence of Hours Constraints in 21 Countries	HCM
08-2009	Sven Wydra	PRODUCTION AND EMPLOYMENT IMPACTS OF NEW TECHNOLOGIES – ANALYSIS FOR BIOTECHNOLOGY	IK
09-2009	Ralf Richter, Jochen Streb	CATCHING-UP AND FALLING BEHIND KNOWLEDGE SPILLOVER FROM AMERICAN TO GERMAN MACHINE TOOL MAKERS	IK

Nr.	Autor	Titel	CC
10-2010	Rahel Aichele, Gabriel Felbermayr	KYOTO AND THE CARBON CONTENT OF TRADE	ECO
11-2010	David E. Bloom, Alfonso Sousa-Poza	ECONOMIC CONSEQUENCES OF LOW FERTILITY IN EUROPE	HCM
12-2010	Michael Ahlheim, Oliver Frör	DRINKING AND PROTECTING – A MARKET APPROACH TO THE PRESERVATION OF CORK OAK LANDSCAPES	ECO
13-2010	Michael Ahlheim, Oliver Frör, Antonia Heinke, Nguyen Minh Duc, and Pham Van Dinh	LABOUR AS A UTILITY MEASURE IN CONTINGENT VALUATION STUDIES – HOW GOOD IS IT REALLY?	ECO
14-2010	Julian P. Christ	THE GEOGRAPHY AND CO-LOCATION OF EUROPEAN TECHNOLOGY-SPECIFIC CO-INVENTORSHIP NETWORKS	IK
15-2010	Harald Degner	WINDOWS OF TECHNOLOGICAL OPPORTUNITY DO TECHNOLOGICAL BOOMS INFLUENCE THE RELATIONSHIP BETWEEN FIRM SIZE AND INNOVATIVENESS?	IK
16-2010	Tobias A. Jopp	THE WELFARE STATE EVOLVES: GERMAN KNAPPSCHAFTEN, 1854-1923	HCM
17-2010	Stefan Kirn (Ed.)	PROCESS OF CHANGE IN ORGANISATIONS THROUGH eHEALTH	ICT
18-2010	Jörg Schiller	ÖKONOMISCHE ASPEKTE DER ENTLOHNUNG UND REGULIERUNG UNABHÄNGIGER VERSICHERUNGSVERMITTLER	HCM
19-2010	Frauke Lammers, Jörg Schiller	CONTRACT DESIGN AND INSURANCE FRAUD: AN EXPERIMENTAL INVESTIGATION	HCM
20-2010	Martyna Marczak, Thomas Beissinger	REAL WAGES AND THE BUSINESS CYCLE IN GERMANY	ECO
21-2010	Harald Degner, Jochen Streb	FOREIGN PATENTING IN GERMANY, 1877-1932	IK
22-2010	Heiko Stüber, Thomas Beissinger	DOES DOWNWARD NOMINAL WAGE RIGIDITY DAMPEN WAGE INCREASES?	ECO
23-2010	Mark Spoerer, Jochen Streb	GUNS AND BUTTER – BUT NO MARGARINE: THE IMPACT OF NAZI ECONOMIC POLICIES ON GERMAN FOOD CONSUMPTION, 1933-38	ECO

Nr.	Autor	Titel	CC
24-2011	Dhammika Dharmapala, Nadine Riedel	EARNINGS SHOCKS AND TAX-MOTIVATED INCOME-SHIFTING: EVIDENCE FROM EUROPEAN MULTINATIONALS	ECO
25-2011	Michael Schuele, Stefan Kirn	QUALITATIVES, RÄUMLICHES SCHLIEßEN ZUR KOLLISIONSERKENNUNG UND KOLLISIONSVERMEIDUNG AUTONOMER BDI-AGENTEN	ICT
26-2011	Marcus Müller, Guillaume Stern, Ansger Jacob and Stefan Kirn	VERHALTENSMODELLE FÜR SOFTWAREAGENTEN IM PUBLIC GOODS GAME	ICT
27-2011	Monnet Benoit, Patrick Gbakoua and Alfonso Sousa-Poza	ENGEL CURVES, SPATIAL VARIATION IN PRICES AND DEMAND FOR COMMODITIES IN CÔTE D'IVOIRE	ECO
28-2011	Nadine Riedel, Hannah Schildberg- Hörisch	ASYMMETRIC OBLIGATIONS	ECO
29-2011	Nicole Waidlein	CAUSES OF PERSISTENT PRODUCTIVITY DIFFERENCES IN THE WEST GERMAN STATES IN THE PERIOD FROM 1950 TO 1990	IK
30-2011	Dominik Hartmann, Atilio Arata	MEASURING SOCIAL CAPITAL AND INNOVATION IN POOR AGRICULTURAL COMMUNITIES. THE CASE OF CHÁPARRA - PERU	IK
31-2011	Peter Spahn	DIE WÄHRUNGSKRISEUNION DIE EURO-VERSCHULDUNG DER NATIONALSTAATEN ALS SCHWACHSTELLE DER EWU	ECO
32-2011	Fabian Wahl	DIE ENTWICKLUNG DES LEBENSSTANDARDS IM DRITTEN REICH – EINE GLÜCKSÖKONOMISCHE PERSPEKTIVE	ECO
33-2011	Giorgio Triulzi, Ramon Scholz and Andreas Pyka	R&D AND KNOWLEDGE DYNAMICS IN UNIVERSITY-INDUSTRY RELATIONSHIPS IN BIOTECH AND PHARMACEUTICALS: AN AGENT-BASED MODEL	IK
34-2011	Claus D. Müller- Hengstenberg, Stefan Kirn	ANWENDUNG DES ÖFFENTLICHEN VERGABERECHTS AUF MODERNE IT SOFTWAREENTWICKLUNGSVERFAHREN	ICT
35-2011	Andreas Pyka	AVOIDING EVOLUTIONARY INEFFICIENCIES IN INNOVATION NETWORKS	IK
36-2011	David Bell, Steffen Otterbach and Alfonso Sousa-Poza	WORK HOURS CONSTRAINTS AND HEALTH	HCM
37-2011	Lukas Scheffknecht, Felix Geiger	A BEHAVIORAL MACROECONOMIC MODEL WITH ENDOGENOUS BOOM-BUST CYCLES AND LEVERAGE DYNAMICS	ECO
38-2011	Yin Krogmann, Ulrich Schwalbe	INTER-FIRM R&D NETWORKS IN THE GLOBAL PHARMACEUTICAL BIOTECHNOLOGY INDUSTRY DURING 1985–1998: A CONCEPTUAL AND EMPIRICAL ANALYSIS	IK

Nr.	Autor	Titel	CC
39-2011	Michael Ahlheim, Tobias Börger and Oliver Frör	RESPONDENT INCENTIVES IN CONTINGENT VALUATION: THE ROLE OF RECIPROCITY	ECO
40-2011	Tobias Börger	A DIRECT TEST OF SOCIALLY DESIRABLE RESPONDING IN CONTINGENT VALUATION INTERVIEWS	ECO
41-2011	Ralf Rukwid, Julian P. Christ	QUANTITATIVE CLUSTERIDENTIFIKATION AUF EBENE DER DEUTSCHEN STADT- UND LANDKREISE (1999-2008)	IK

Nr.	Autor	Titel	CC
42-2012	Benjamin Schön, Andreas Pyka	A TAXONOMY OF INNOVATION NETWORKS	IK
43-2012	Dirk Foremny, Nadine Riedel	BUSINESS TAXES AND THE ELECTORAL CYCLE	ECO
44-2012	Gisela Di Meglio, Andreas Pyka and Luis Rubalcaba	VARIETIES OF SERVICE ECONOMIES IN EUROPE	IK
45-2012	Ralf Rukwid, Julian P. Christ	INNOVATIONSPOTENTIALE IN BADEN-WÜRTTEMBERG: PRODUKTIONSCLUSTER IM BEREICH „METALL, ELEKTRO, IKT“ UND REGIONALE VERFÜGBARKEIT AKADEMISCHER FACHKRÄFTE IN DEN MINT-FÄCHERN	IK
46-2012	Julian P. Christ, Ralf Rukwid	INNOVATIONSPOTENTIALE IN BADEN-WÜRTTEMBERG: BRANCHENSPEZIFISCHE FORSCHUNGS- UND ENTWICKLUNGSAKTIVITÄT, REGIONALES PATENTAUFKOMMEN UND BESCHÄFTIGUNGSSTRUKTUR	IK
47-2012	Oliver Sauter	ASSESSING UNCERTAINTY IN EUROPE AND THE US - IS THERE A COMMON FACTOR?	ECO
48-2012	Dominik Hartmann	SEN MEETS SCHUMPETER. INTRODUCING STRUCTURAL AND DYNAMIC ELEMENTS INTO THE HUMAN CAPABILITY APPROACH	IK
49-2012	Harold Paredes- Frigolett, Andreas Pyka	DISTAL EMBEDDING AS A TECHNOLOGY INNOVATION NETWORK FORMATION STRATEGY	IK
50-2012	Martyna Marczak, Víctor Gómez	CYCLICALITY OF REAL WAGES IN THE USA AND GERMANY: NEW INSIGHTS FROM WAVELET ANALYSIS	ECO
51-2012	André P. Slowak	DIE DURCHSETZUNG VON SCHNITTSTELLEN IN DER STANDARDSETZUNG: FALLBEISPIEL LADESYSTEM ELEKTROMOBILITÄT	IK
52-2012	Fabian Wahl	WHY IT MATTERS WHAT PEOPLE THINK - BELIEFS, LEGAL ORIGINS AND THE DEEP ROOTS OF TRUST	ECO
53-2012	Dominik Hartmann, Micha Kaiser	STATISTISCHER ÜBERBLICK DER TÜRKISCHEN MIGRATION IN BADEN-WÜRTTEMBERG UND DEUTSCHLAND	IK
54-2012	Dominik Hartmann, Andreas Pyka, Seda Aydin, Lena Klauß, Fabian Stahl, Ali Santircioglu, Silvia Oberegelsbacher, Sheida Rashidi, Gaye Onan and Suna Erginkoç	IDENTIFIZIERUNG UND ANALYSE DEUTSCH-TÜRKISCHER INNOVATIONSNETZWERKE. ERSTE ERGEBNISSE DES TGIN- PROJEKTES	IK
55-2012	Michael Ahlheim, Tobias Börger and Oliver Frör	THE ECOLOGICAL PRICE OF GETTING RICH IN A GREEN DESERT: A CONTINGENT VALUATION STUDY IN RURAL SOUTHWEST CHINA	ECO

Nr.	Autor	Titel	CC
56-2012	Matthias Strifler Thomas Beissinger	FAIRNESS CONSIDERATIONS IN LABOR UNION WAGE SETTING – A THEORETICAL ANALYSIS	ECO
57-2012	Peter Spahn	INTEGRATION DURCH WÄHRUNGSUNION? DER FALL DER EURO-ZONE	ECO
58-2012	Sibylle H. Lehmann	TAKING FIRMS TO THE STOCK MARKET: IPOS AND THE IMPORTANCE OF LARGE BANKS IN IMPERIAL GERMANY 1896-1913	ECO
59-2012	Sibylle H. Lehmann, Philipp Hauber and Alexander Opitz	POLITICAL RIGHTS, TAXATION, AND FIRM VALUATION – EVIDENCE FROM SAXONY AROUND 1900	ECO
60-2012	Martyna Marczak, Víctor Gómez	SPECTRAN, A SET OF MATLAB PROGRAMS FOR SPECTRAL ANALYSIS	ECO
61-2012	Theresa Lohse, Nadine Riedel	THE IMPACT OF TRANSFER PRICING REGULATIONS ON PROFIT SHIFTING WITHIN EUROPEAN MULTINATIONALS	ECO

Nr.	Autor	Titel	CC
62-2013	Heiko Stüber	REAL WAGE CYCLICALITY OF NEWLY HIRED WORKERS	ECO
63-2013	David E. Bloom, Alfonso Sousa-Poza	AGEING AND PRODUCTIVITY	HCM
64-2013	Martyna Marczak, V́ctor Ǵmez	MONTHLY US BUSINESS CYCLE INDICATORS: A NEW MULTIVARIATE APPROACH BASED ON A BAND-PASS FILTER	ECO
65-2013	Dominik Hartmann, Andreas Pyka	INNOVATION, ECONOMIC DIVERSIFICATION AND HUMAN DEVELOPMENT	IK
66-2013	Christof Ernst, Katharina Richter and Nadine Riedel	CORPORATE TAXATION AND THE QUALITY OF RESEARCH AND DEVELOPMENT	ECO
67-2013	Michael Ahlheim, Oliver Frör, Jiang Tong, Luo Jing and Sonna Pelz	NONUSE VALUES OF CLIMATE POLICY - AN EMPIRICAL STUDY IN XINJIANG AND BEIJING	ECO
68-2013	Michael Ahlheim, Friedrich Schneider	CONSIDERING HOUSEHOLD SIZE IN CONTINGENT VALUATION STUDIES	ECO
69-2013	Fabio Bertoni, Tereza Tykvová	WHICH FORM OF VENTURE CAPITAL IS MOST SUPPORTIVE OF INNOVATION? EVIDENCE FROM EUROPEAN BIOTECHNOLOGY COMPANIES	CFRM
70-2013	Tobias Buchmann, Andreas Pyka	THE EVOLUTION OF INNOVATION NETWORKS: THE CASE OF A GERMAN AUTOMOTIVE NETWORK	IK
71-2013	B. Vermeulen, A. Pyka, J. A. La Poutré and A. G. de Kok	CAPABILITY-BASED GOVERNANCE PATTERNS OVER THE PRODUCT LIFE-CYCLE	IK
72-2013	Beatriz Fabiola López Ulloa, Valerie Møller and Alfonso Sousa- Poza	HOW DOES SUBJECTIVE WELL-BEING EVOLVE WITH AGE? A LITERATURE REVIEW	HCM
73-2013	Wencke Gwozdz, Alfonso Sousa-Poza, Lucia A. Reisch, Wolfgang Ahrens, Stefaan De Henauw, Gabriele Eiben, Juan M. Fernández-Alvira, Charalampos Hadjigeorgiou, Eva Kovács, Fabio Lauria, Toomas Veidebaum, Garrath Williams, Karin Bammann	MATERNAL EMPLOYMENT AND CHILDHOOD OBESITY – A EUROPEAN PERSPECTIVE	HCM

Nr.	Autor	Titel	CC
74-2013	Andreas Haas, Annette Hofmann	RISIKEN AUS CLOUD-COMPUTING-SERVICES: FRAGEN DES RISIKOMANAGEMENTS UND ASPEKTE DER VERSICHERBARKEIT	HCM
75-2013	Yin Krogmann, Nadine Riedel and Ulrich Schwalbe	INTER-FIRM R&D NETWORKS IN PHARMACEUTICAL BIOTECHNOLOGY: WHAT DETERMINES FIRM'S CENTRALITY-BASED PARTNERING CAPABILITY?	ECO, IK
76-2013	Peter Spahn	MACROECONOMIC STABILISATION AND BANK LENDING: A SIMPLE WORKHORSE MODEL	ECO
77-2013	Sheida Rashidi, Andreas Pyka	MIGRATION AND INNOVATION – A SURVEY	IK
78-2013	Benjamin Schön, Andreas Pyka	THE SUCCESS FACTORS OF TECHNOLOGY-SOURCING THROUGH MERGERS & ACQUISITIONS – AN INTUITIVE META- ANALYSIS	IK
79-2013	Irene Probstlupow, Andreas Pyka and Barbara Heller-Schuh	TURKISH-GERMAN INNOVATION NETWORKS IN THE EUROPEAN RESEARCH LANDSCAPE	IK
80-2013	Eva Schlenker, Kai D. Schmid	CAPITAL INCOME SHARES AND INCOME INEQUALITY IN THE EUROPEAN UNION	ECO
81-2013	Michael Ahlheim, Tobias Börger and Oliver Frör	THE INFLUENCE OF ETHNICITY AND CULTURE ON THE VALUATION OF ENVIRONMENTAL IMPROVEMENTS – RESULTS FROM A CVM STUDY IN SOUTHWEST CHINA –	ECO
82-2013	Fabian Wahl	DOES MEDIEVAL TRADE STILL MATTER? HISTORICAL TRADE CENTERS, AGGLOMERATION AND CONTEMPORARY ECONOMIC DEVELOPMENT	ECO
83-2013	Peter Spahn	SUBPRIME AND EURO CRISIS: SHOULD WE BLAME THE ECONOMISTS?	ECO
84-2013	Daniel Guffarth, Michael J. Barber	THE EUROPEAN AEROSPACE R&D COLLABORATION NETWORK	IK
85-2013	Athanasios Saitis	KARTELLBEKÄMPFUNG UND INTERNE KARTELLSTRUKTUREN: EIN NETZWERKTHEORETISCHER ANSATZ	IK

Nr.	Autor	Titel	CC
86-2014	Stefan Kirn, Claus D. Müller-Hengstenberg	INTELLIGENTE (SOFTWARE-)AGENTEN: EINE NEUE HERAUSFORDERUNG FÜR DIE GESELLSCHAFT UND UNSER RECHTSSYSTEM?	ICT
87-2014	Peng Nie, Alfonso Sousa-Poza	MATERNAL EMPLOYMENT AND CHILDHOOD OBESITY IN CHINA: EVIDENCE FROM THE CHINA HEALTH AND NUTRITION SURVEY	HCM
88-2014	Steffen Otterbach, Alfonso Sousa-Poza	JOB INSECURITY, EMPLOYABILITY, AND HEALTH: AN ANALYSIS FOR GERMANY ACROSS GENERATIONS	HCM
89-2014	Carsten Burhop, Sibylle H. Lehmann-Hasemeyer	THE GEOGRAPHY OF STOCK EXCHANGES IN IMPERIAL GERMANY	ECO
90-2014	Martyna Marczak, Tommaso Proietti	OUTLIER DETECTION IN STRUCTURAL TIME SERIES MODELS: THE INDICATOR SATURATION APPROACH	ECO
91-2014	Sophie Urmetzer, Andreas Pyka	VARIETIES OF KNOWLEDGE-BASED BIOECONOMIES	IK
92-2014	Bogang Jun, Joongho Lee	THE TRADEOFF BETWEEN FERTILITY AND EDUCATION: EVIDENCE FROM THE KOREAN DEVELOPMENT PATH	IK
93-2014	Bogang Jun, Tai-Yoo Kim	NON-FINANCIAL HURDLES FOR HUMAN CAPITAL ACCUMULATION: LANDOWNERSHIP IN KOREA UNDER JAPANESE RULE	IK
94-2014	Michael Ahlheim, Oliver Frör, Gerhard Langenberger and Sonna Pelz	CHINESE URBANITES AND THE PRESERVATION OF RARE SPECIES IN REMOTE PARTS OF THE COUNTRY – THE EXAMPLE OF EAGLEWOOD	ECO
95-2014	Harold Paredes-Frigolett, Andreas Pyka, Javier Pereira and Luiz Flávio Autran Monteiro Gomes	RANKING THE PERFORMANCE OF NATIONAL INNOVATION SYSTEMS IN THE IBERIAN PENINSULA AND LATIN AMERICA FROM A NEO-SCHUMPETERIAN ECONOMICS PERSPECTIVE	IK
96-2014	Daniel Guffarth, Michael J. Barber	NETWORK EVOLUTION, SUCCESS, AND REGIONAL DEVELOPMENT IN THE EUROPEAN AEROSPACE INDUSTRY	IK

IMPRINT

University of Hohenheim
Dean's Office of the Faculty of Business, Economics and Social Sciences
Palace Hohenheim 1 B
70593 Stuttgart | Germany
Fon +49 (0)711 459 22488
Fax +49 (0)711 459 22785
wiso@uni-hohenheim.de
wiso.uni-hohenheim.de