

Reinhold, Mario; Thomsen, Stephan

Article

The changing situation of labor market entrants in Germany

Journal for Labour Market Research

Provided in Cooperation with:

Institute for Employment Research (IAB)

Suggested Citation: Reinhold, Mario; Thomsen, Stephan (2017) : The changing situation of labor market entrants in Germany, Journal for Labour Market Research, ISSN 2510-5027, Springer, Heidelberg, Vol. 50, Iss. 1, pp. 161-174, <https://doi.org/10.1007/s12651-017-0227-3>

This Version is available at:

<https://hdl.handle.net/10419/180119>

Standard-Nutzungsbedingungen:

Die Dokumente auf EconStor dürfen zu eigenen wissenschaftlichen Zwecken und zum Privatgebrauch gespeichert und kopiert werden.

Sie dürfen die Dokumente nicht für öffentliche oder kommerzielle Zwecke vervielfältigen, öffentlich ausstellen, öffentlich zugänglich machen, vertreiben oder anderweitig nutzen.

Sofern die Verfasser die Dokumente unter Open-Content-Lizenzen (insbesondere CC-Lizenzen) zur Verfügung gestellt haben sollten, gelten abweichend von diesen Nutzungsbedingungen die in der dort genannten Lizenz gewährten Nutzungsrechte.

Terms of use:

Documents in EconStor may be saved and copied for your personal and scholarly purposes.

You are not to copy documents for public or commercial purposes, to exhibit the documents publicly, to make them publicly available on the internet, or to distribute or otherwise use the documents in public.

If the documents have been made available under an Open Content Licence (especially Creative Commons Licences), you may exercise further usage rights as specified in the indicated licence.



<https://creativecommons.org/licenses/by/4.0/>

The changing situation of labor market entrants in Germany

A long-run analysis of wages and occupational patterns

Mario Reinhold¹ · Stephan Thomsen²

Accepted: 31 March 2017 / Published online: 25 April 2017
© The Author(s) 2017. This article is an open access publication.

Abstract Concurrently with a steady increase of the supply of college educated workers, recent evidence for the U.S. indicated a decline in the demand for and the real wages of this group after 2000. We investigate empirically, whether there has been a similar trend in Germany. Based on comprehensive, long-run administrative data for the years 1975 to 2010, we use a set of employment indicators to analyze labor market patterns of job market entrants. Besides consideration of the developments of education attainment and wages over time, we put a particular focus on changes of the task composition, the chances of entering top-paying jobs, entry wages and wage growth, and skill premia over time. To allow for a detailed analysis, we distinguish four education groups. The empirical picture shows that since the year 2000 job entrants with higher education have experienced decreasing employment shares in top-paying positions. Moreover, starting wages and wage growth have both decreased until the end of the observation period, too. A reason for this has been the substitution of jobs that were formerly executed by lower qualifications. Our findings reveal similarities between Germany and the U.S. in terms of some declining fortunes of the young. However, whereas in the U.S. college educated workers have been affected, the results indicate that in Germany the medium-skilled and low-skilled have been particularly impaired.

Keywords Labor demand · Labor supply · Occupational sorting · Wages · Education groups

JEL-Classification J21 · J23 · J24

Die veränderliche Situation für Berufseinsteiger in Deutschland

Eine Langzeitanalyse von Löhnen und Beschäftigungsmustern

Zusammenfassung Jüngere empirische Evidenz für den US-amerikanischen Arbeitsmarkt zeigt, dass gleichzeitig mit dem stetigen Anstieg des Arbeitsangebots von Hochschulabsolventen die Nachfrage und die Reallöhne für diese Gruppe seit dem Jahr 2000 gesunken sind. Die vorliegende Studie untersucht, ob es einen vergleichbaren Trend auch in Deutschland gab. Auf der Grundlage umfangreicher administrativer Daten für die Jahre 1975 bis 2010 berechnen wir eine Reihe von Arbeitsmarktindikatoren, um die Beschäftigungsmuster von Berufseinsteigern zu untersuchen. Neben der Berücksichtigung der Entwicklungen in der Bildungsbeteiligung sowie den Löhnen gehen wir hierzu auf die Änderungen in den beruflichen Tätigkeiten, den Chancen auf eine höherbezahlte Tätigkeit, die Eintrittslöhne sowie das Lohnwachstum und die Bildungsprämien ein. Darüber hinaus betrachten wir vier unterschiedliche Qualifikationsgruppen. Die empirischen Ergebnisse zeigen, dass sich der Anteil von hochqualifizierten Berufseinsteigern in höherbezahlten Tätigkeiten seit dem Jahr 2000 verringert hat. Deutlich wird überdies, dass bis zum Jahr 2010 die Einstiegsgehälter gesunken sind und sich das individuelle Lohnwachstum in den ersten fünf Berufsjahren verringert hat. Ein Grund dafür liegt in der Beschäftigung von Absolventen in Tätigkeiten, die früher von Personen

✉ Stephan Thomsen
thomsen@wipol.uni-hannover.de

¹ Wirtschaftswissenschaftliche Fakultät, Leibniz Universität Hannover, Königsworther Platz 1, 30167 Hannover, Germany

² Institut für Wirtschaftspolitik, Leibniz Universität Hannover, Königsworther Platz 1, 30167 Hannover, Germany

mit geringeren Bildungsabschlüssen ausgeführt wurden. Unsere Ergebnisse bestätigen daher einige Ähnlichkeiten zwischen dem deutschen und dem US-amerikanischen Arbeitsmarkt bezüglich verschlechterter Arbeitsmarktchancen für Berufseinsteiger. Ein wesentlicher Unterschied liegt aber in den Bildungsniveaus: während im US-amerikanischen Arbeitsmarkt vor allem College-Absolventen von diesen Änderungen betroffen sind, sind in Deutschland vor allem die mittel- und geringqualifizierten Berufseinsteiger hinsichtlich ihrer Arbeitsmarktchancen beeinträchtigt.

1 Introduction

During the last decades, Germany and many other countries have experienced an upskilling of the workforce accompanied by a technological shift towards highly educated labor. Recent evidence for the U.S. labor market indicates declining wages for college graduates in the aftermath of the tech bust in 2000, while post-college workers (i. e., those with postbaccalaureate degree) face continuously high employment and wage opportunities (Beaudry et al. 2014, 2016). If similar patterns had occurred in Germany, this would indicate, “declining fortunes of the young” (Beaudry et al. 2014) to be more than a phenomenon of the U.S. labor market.

To investigate empirically, whether there has been a corresponding trend in Germany, we have selected a set of employment indicators to analyze the chances and performance of labor market entrants in Germany over time. We focus on young workers since general changes in the labor market are first apparent for them (Kambourov and Manovskii 2009). The empirical analysis uses long-run information of a comprehensive sample of registered employees in the German social security system for the years 1975 to 2010 with about 11.5 million observations. Besides consideration of education attainment and wages overall, we put a particular focus of our study on the developments of the task composition, the chances of receiving a top-paying job, entry wages and wage growth, and wage premia for job market entrants over three and a half decades. Moreover, to allow for a detailed picture we distinguish four different education levels in the analysis. These comprise two distinct types of higher qualification (university and university of applied sciences), medium qualification (persons with completed vocational training in the German apprenticeship system) and low qualification (persons lacking completed vocational education). The data allow conducting a detailed descriptive analysis comparing a large number of cohorts of job market entrants over time.

Summarizing the empirical picture obtained from the indicators clearly indicates that there was a turning point of the labor market chances of young job market entrants

around the year 2000: highly-educated workers have faced declining employment opportunities in top-paying jobs and, partly, in analytical jobs after 2000. Real entry wages have fallen for each new entry cohort since then until the end of the observation period. Moreover, wage growth after five years has substantially declined for cohorts entering the labor market in this period in Germany, too. In particular medium-skilled and higher-skilled labor market entrants have been affected by this development. Whereas the share of young high-skilled workers performing analytical jobs has declined only slightly after the tech bust (similar to the U.S.), our results indicate a general decline of wages for young workers. Falling wages are more profound for medium-skilled and low-skilled workers than for high-skilled workers. Wage premia for higher education slightly rose relative to medium-skilled and low-skilled workers. Moreover, the displacement effects, shrinking wages, and flattening wage growth for medium-skilled and low-skilled workers further signify the impacts of the increase in graduation rates in higher education.

The remainder of the paper is organized as follows. The next section gives a more detailed discussion of the related literature for the analysis at hand. Sect. 3 introduces the data used for the empirical analysis. The empirical results of the considered aspects are presented in Sect. 4. The final section provides the conclusions.

2 Background

Wage inequality in the U.S. labor market increased during the 1980s, notably at the upper tail of the wage distribution (Katz and Murphy 1992). In particular, technological change complementing high-skilled workers and substituting low-skilled workers contributed as a major driving force to this process (Acemoglu 2002). Related to this, the skill-biased technological change hypothesis (SBTC) emphasized the exceeding growth in the demand for high-skilled workers with respect to its supply, at the expense of less-skilled workers (Katz and Autor 1999). Despite the convincing characterization in explaining the labor market development during the 1970s and 1980s, the more recent literature puts stronger focus on the increasing concentration of employment at both tails of the wage distribution associated with a strong decline of medium-skilled occupations. This development has been called job polarization, e. g. Autor et al. (2003, 2006, 2008).

Increasing wage inequality has long been thought of being a phenomenon solely present in Anglo-Saxon labor markets. From this perspective, wage inequality in Anglo-Saxon countries and high unemployment rates of low-skilled workers in Continental Europe appeared as ‘two sides of the same coin’, both stemming from the relative fall

in the demand for low-skilled labor (Krugman 1994). Labor market adjustment in Germany occurred through an alteration of employment rather than wages (Antonczyk et al. 2010; Naticchioni et al. 2014). Despite the developments of the U.S. labor market until the early 2000s, a recent strand of the literature on inequality portrays the demand for high-skilled labor as a boom-bust cycle ceasing with the tech bust in 2000. Beaudry et al. (2016) argue that the reversal in the demand for high-skilled workers led to a cascade effect in which college workers perform jobs that have been previously performed by medium-skilled workers, who for their parts pushed low-skilled workers further down on the occupational ladder or even out of employment. Beaudry et al. (2014) underline the trend of an increasing share of the working-age population with a college degree but declining cognitive employment shares, i. e. a declining share of workers in jobs with high intensity of abstract thinking, and declining wages after 2000. In contrast to that, job entrants with a post-college degree faced stable cognitive employment shares and wage profiles.

Starting in the 1990s, rising wage inequality has also occurred in Germany. The high and rising (long-term) unemployment after German reunification forced several fundamental reforms of the labor market. At the same time, wage setting in Germany began to erode due to a diminishing importance of collective bargaining between employer associations and unions (Ochel 2005). A sharp decline in union coverage, especially at the end of the 1990s, has accompanied this development and can explain a major part of the lower tail inequality (Dustmann et al. 2009). In the course of slow growth and persistent unemployment after 2000, the ‘sick man of Europe’ (The Economist 1999) reformed the labor market even further (the so-called ‘Agenda 2010’ reforms). These reforms lowered implicit minimum wages by reducing benefit entitlement with respect to level and duration. Overall, the reforms were particularly designed for decreasing wages and increasing employment at the lower tail of the wage distribution (Dustmann et al. 2014).

In stark contrast with most European countries, unemployment in Germany was hardly affected neither by the 2008/2009 recession, despite a dramatic fall in gross domestic product, nor the recent Euro crisis. The relative strength of the labor market can be assigned to a number of reasons, including the extensive labor market reforms that have increased flexibility and allowing greater wage inequality, and declining unit labor costs for the past two decades, i. e. productivity growth exceeding wage growth (Dustmann et al. 2014). For that reason, Fitzenberger et al. (2011) note that the process of increasing lower tail wage inequality in Germany is characterized by episodic events, and not due to the lower tail polarization hypothesis suggested by Autor and Dorn (2013). Decomposing wage variance into transitory

and permanent parts, Myck et al. (2011) found that permanent inequality peaked in 2001 and declined afterwards. However, a polarization of wages still occurred thereafter but seems to due to transitory factors only.

In comparison, the influence of institutional factors upon upper tail wage inequality is limited in Germany. It slightly increased during the 1980s, mainly driven by the changing composition of the workforce (Dustmann et al. 2009). In contrast to the U.S., growth in supply and demand for high-skilled workers moved in parallel resulting in less upper tail wage inequality (Acemoglu 2003). The share of high-skilled workers increased at a roughly linear rate. Similarly to the U.S. in the 1970s (Katz and Murphy 1992), the expansion in the supply of high-skilled workers occurred at the pace of rising demand for these qualifications (Antonczyk et al. 2010).

Autor et al. (2003) describe that the growth of information and communication technology (ICT) is the crucial trigger for job polarization. ICT has caused a rapid decline of costs due to increasing speed of performing codifiable tasks by computers, which has induced employers to substitute technology for labor. These tasks were characteristic for medium-skilled workers. Advanced communication technologies also support offshoring to foreign worksites for information-based tasks (Blinder 2009). At the same time, they may enhance the productivity of abstract tasks, such as managing or programming, at the top of the wage distribution where productivity strongly relies upon information as an input (Autor et al. 2003). Over the last decades, the impact of information technology can be supposed to have reached some kind of limit for jobs at the bottom of the wage distribution, where tasks are typically non-routine manual and require non-codifiable physical, verbal or visual activities. The increasing importance of ICT has thus be supposed to have intensified job polarization that complements high-paying jobs and substitutes medium-paying jobs, while only having a small impact on low-paying jobs. In the past decade, ICT became a general-purpose technology affecting the entire economy. The shrinking costs and simplification of usage led to a breakthrough in private households and firms. In 2014, 99% of German firms had access to the internet (Eurostat 2015b). Similarly, 89% of private households in Germany had access to a computer (Eurostat 2015c). In 2014, 72% of the individuals used the internet daily (Eurostat 2015d). In addition, computerization and digitalization found its broad way into employment. The share of workers using a computer increased from 45% in 2003 to 61% in 2013 (Eurostat 2015a). Thus, with the increasing coverage of ICT in the workplace, ICT might also gain importance for routine jobs resulting in complementarities rather than substitution, see, e. g., Autor et al. (2014).

However, evidence on the increasing importance of ICT in routine jobs is scarce. Using regional differences in broadband internet coverage, Akerman et al. (2015) show that access to high-speed internet further complements skilled workers in non-routine abstract jobs and impairs labor market outcomes of unskilled workers in routine jobs. Moreover, Forman et al. (2012) find that, despite vast internet investment across U.S. counties, only 6% of the counties that had the highest concentration in IT activities before the investment benefitted from it in terms of wages, while the remaining counties did not. Similarly, Acemoglu et al. (2014) conclude that increasing IT intensity across manufacturing industries does not increase productivity outside computer manufacturing. Hence, a potential reversal of the job polarization hypothesis in the recent decade through a higher adaptability of ICT skills among unskilled workers and higher IT intensity in manufacturing cannot be empirically affirmed (yet). To the contrary, the scarce available evidence indicates that the introduction of ICT in these sectors seems to have further amplified job polarization.

3 Data

The empirical analysis uses data for West Germany for the years 1975 to 2010, obtained from the Sample of Integrated Labor Market Biographies (SIAB). It is a 2% random sample of the German social security records provided by the Institute for Employment Research (IAB) containing more than 11.5 million observations. The social security records represent about 80% of the working population in Germany, excluding e. g. civil servants, soldiers, and self-employed. The data are highly reliable due to the mandatory and administrative nature, where misreporting on wages would cause severe penalties for the employer.

Since the data stem from administrative processes, wages are right-censored at the social security contribution assessment ceiling. For male workers, the share of censored wages varies between 9% and 14% annually, for women censoring affects less than 5% of the observations. Right-censoring will, however, only marginally affect our analysis, since we mainly focus on median wages and on young workers receiving starting wages. For calculating wage premia in the analysis below, we impute wages above the censoring threshold according to Gartner (2005). In line with Dustmann et al. (2009), we further impose the restriction that the daily wage observation is at least 20 Deutschmark (in 1995 DM). In addition, we correct for a structural break of the wage variable from 1983 to 1984, when bonus payments have been included in the data. Thereby, we follow the approach by Dustmann et al. (2009) that extends the solution suggested by Fitzenberger (1999). Lastly, we adjust wages to inflation.

To investigate the role of education level, we distinguish between four types of education with two types of higher education. Graduates from university are the highest skill group in this classification (high-uni-skilled), the second highest group consists of graduates from university of applied sciences (*Fachhochschule*, high-fh-skilled). It refers to graduation from a unique kind of tertiary schools in German-speaking countries. The major distinction between the two high-skilled groups is that university has a more theoretically based education and usually longer duration of education (at least until the implementation of the so-called Bologna reform, introducing bachelors' degrees and masters' degrees at all tertiary education institutions in Germany). The university of applied sciences is further characterized by a lower focus on abstract skills. Enrollment in university of applied sciences requires a technical diploma (*Fachabitur*) with lower admission criteria; for university, students generally need to possess a university entrance diploma (Abitur). In the 2011 International Standard Classification of Education (ISCED) (OECD, European Union, UNESCO Institute for Statistics 2015), university of applied sciences (Germany) is assigned level 6, i. e. programs designed to provide intermediate academic skills leading to a first degree with a typical duration of three to four years. The on average younger age of labor market entry reflects the shorter study duration. University (Germany) is defined as level 7, covering scientifically more complex studies designed to provide advanced academic skills leading to a second degree. In addition to these two groups, we regard medium-skilled workers who possess a university entrance diploma and/or a completed a vocational training in the German apprenticeship system, and low-skilled workers without any formal vocational qualification.

To analyze the composition of tasks over time, jobs are assigned to tasks according to the classification by Dengler et al. (2014) for the year 2011 (annual variation of the task composition is low). It is comparable to the U.S. dictionary of occupational titles. Each occupation is composed of five tasks, the main task is determined by the largest task fraction: (1) Analytical non-routine (e. g. research, evaluation, planning, and interpret rules). (2) Interactive non-routine (e. g. negotiate, teach, entertain, or manage personnel). (3) Cognitive routine (e. g. calculating, measuring, or bookkeeping). (4) Manual routine (e. g. operate, or control machines). (5) Manual non-routine (e. g. repair, renovate, restore, or nurse).

Finally, we have imposed a number of restrictions on the analysis' sample for consistency reasons. Since there is no exact information on working hours, we consider only full-time employed persons. Moreover, the education variable is subject to missing values and inconsistencies as noted by Fitzenberger et al. (2006). We correct it using forward and backward extrapolation. The analysis sample contains

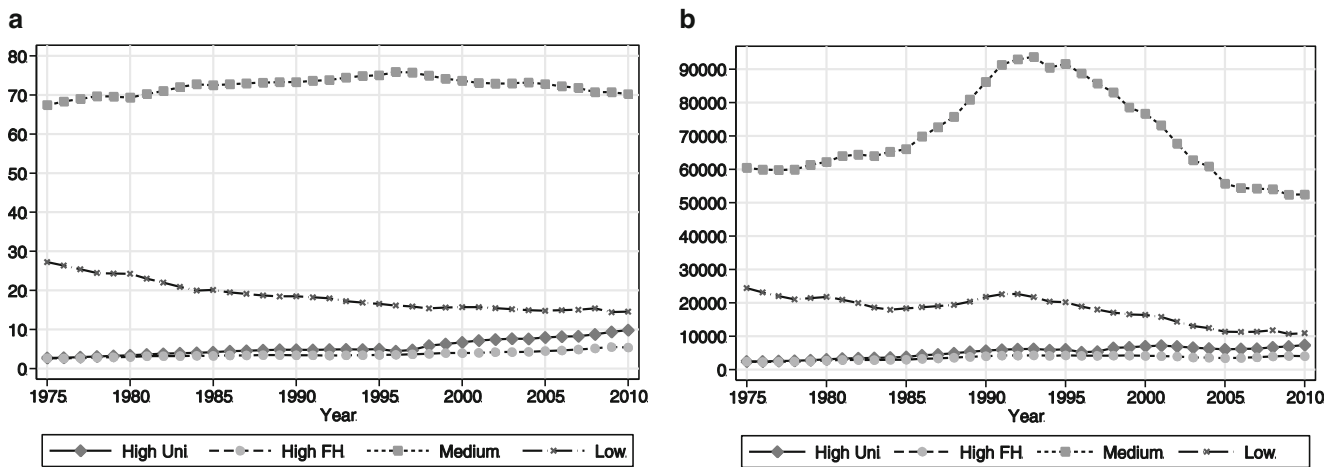


Fig. 1 Education Distribution (Shares and Absolute Numbers, 25–35 Years, 1975–2010) (Source: 2% IABS Sample for full-time workers between 25 and 35 years of age. $N = 3,489,383$)

only employees between 20 and 60 years of age; we will focus on the age group between 25 and 35 years in particular. Since labor market entry is not directly observable in the data, we approximate it by potential experience calculated as the difference between the individual age and the typical qualification-controlled starting age in the labor market. We assume that persons possess their final education attainment at age 35 and compute the fraction of observations for each education attainment and age group based on the number of observations at the reference age in the four education groups. We define the age of labor market entry, when the fraction exceeds 50%. It is 19 years for low-skilled, 20 years for medium-skilled, 26 years for high-fh-skilled and 28 years for high-uni-skilled workers.

4 Empirical results

4.1 A review of trends in education and wage development

Germany faced a constant increase in educational attainment. The first panel of Fig. 1 shows the distribution of the four education levels for young workers over time. The number of young workers without any vocational qualification has decreased considerably – from about one quarter in 1975 to about one tenth in 2010. Obviously, workers with vocational training (medium-skilled) are the backbone covering more than two thirds of the young labor force over the whole time span. The share of medium-skilled workers had grown until the mid-1990s at the expense of low skills. Its share has declined from then onwards at the expense of higher education. The share of young workers with higher education had doubled from the mid-1970s to the mid-1990s – but was still of smaller importance by

the mid-1990s with 14% of the working population only. The growth of the share of high-skilled workers has gained pace thereafter, notably for high-uni-skilled workers. By 2010, more than one quarter of the young workforce has completed higher education; and the share high-uni-skilled workers has been larger than the share of workers without vocational training.

This impression fully reverses, however, when regarding the absolute numbers displayed in the second panel. The proportional shift observed for shares of education attainment is not present anymore. Although the share of high-skilled workers increased over time and doubled from 1995 to 2010, the absolute number has remained nearly constant. Beginning in the 1990s, the effects of demographic change in Germany have induced a sharp decrease in the number of young persons.¹ The number of 25-year-old persons had decreased from 1990 to 1999 by more than one third and has maintained this level during the 2000s (East and West Germany combined).² Due to that, even though the relative number of high-skilled workers has increased continually, it is important to note that the absolute number has hardly changed.

How did these shifts of the skill distribution affect the wage structure? Fig. 2 displays the development of log median daily wages separately for experienced workers between 36 and 60 years and for younger workers (25 to 35 years of age) with a further distinction by the four

¹ Until the mid-1960s, Germany grew strong due to a pronounced “baby boom” generation. However, the boom was followed by a lack of strong birth cohorts, and from 1964 to 1974 the number of births shrunk by roughly 41%.

² The decreases in other industrialized countries were much smaller, e. g. about 19.4% in the United Kingdom, 12.1% in the U.S., and 4.5% in metropolitan France, the part of France in Europe (Eurostat 2015e; U.S. Census Bureau 2012).

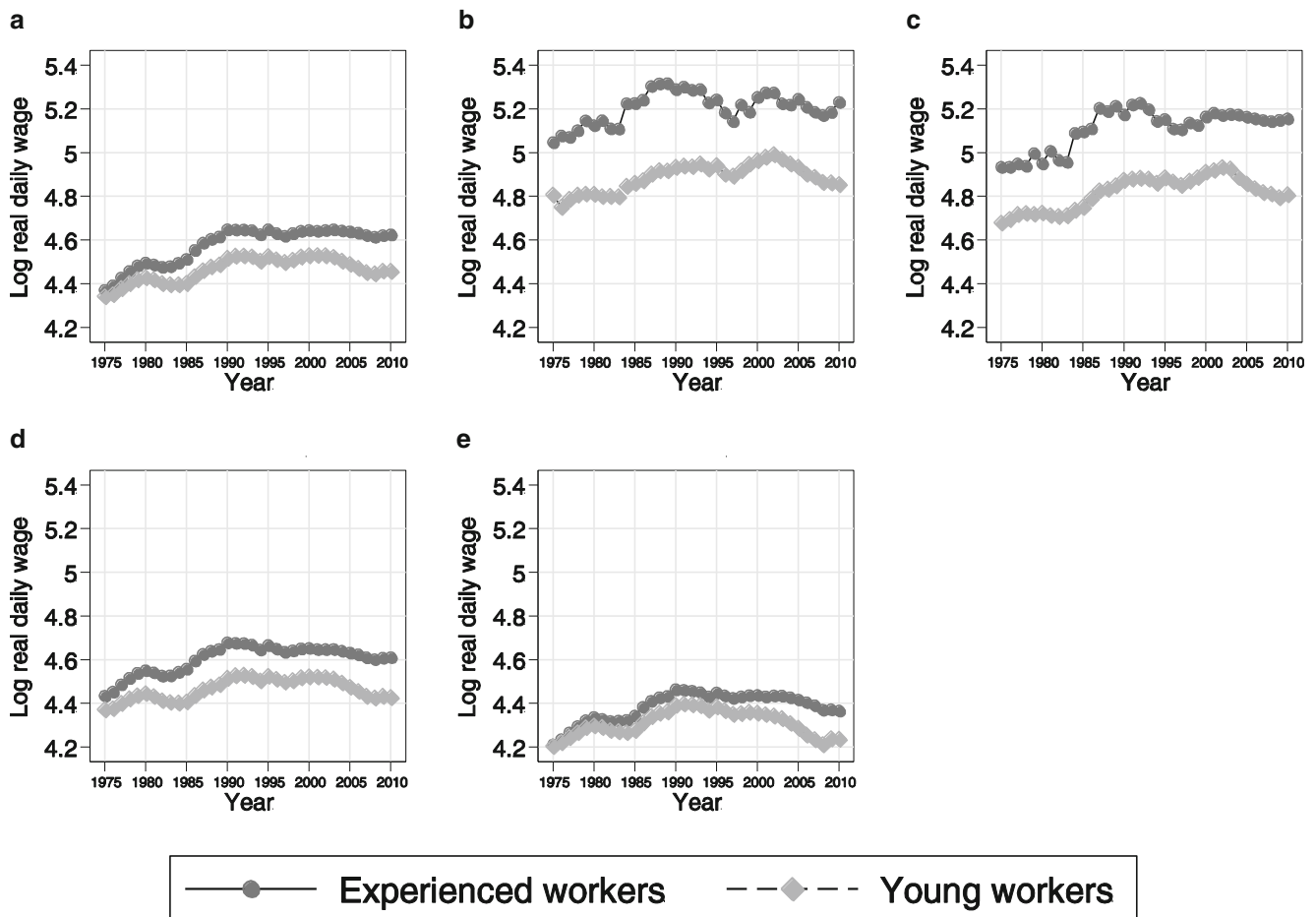


Fig. 2 Median Log Real Daily Wages of Experienced Workers and of Young Workers (1975–2010) (Source: 2% IABS Sample for full-time workers. $N = 7,182,868$ for experienced workers (36 to 60 years) and $N = 3,752,250$ for young workers (25 to 35 years))

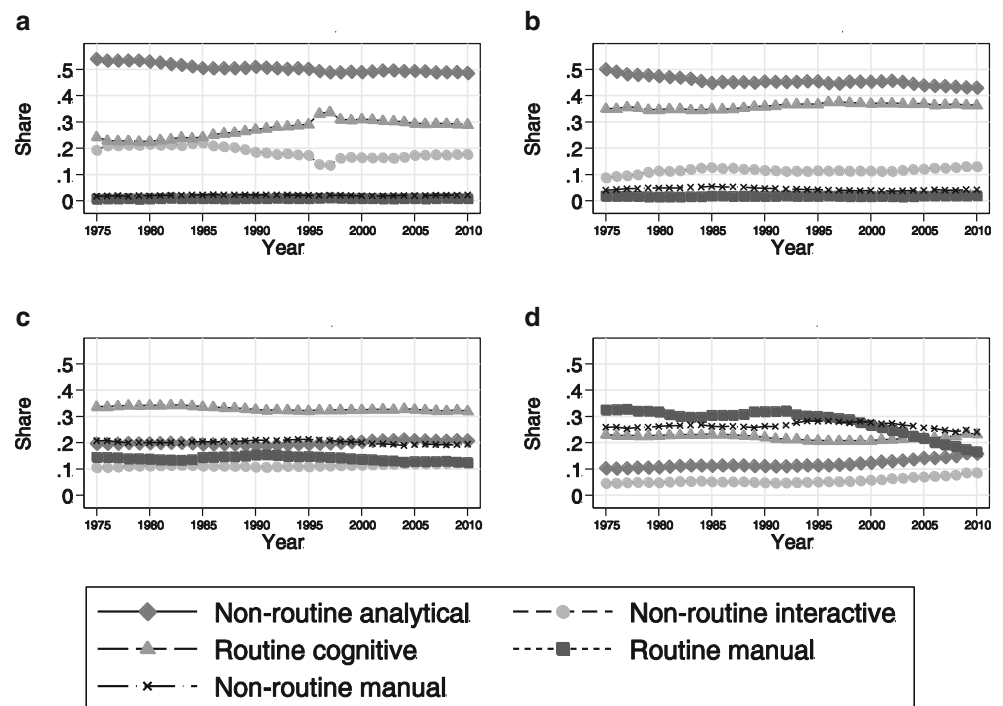
education groups. For the whole groups, the median real wage had increased monotonously from 1975 to 1990 – with a short episode of negative growth between 1980 and 1982. A volatile but more or less stable development of wages characterizes the development during the 1990s. After 2003, real wages have started to decrease for all workers but more considerably for the group of young workers. More importantly, the figure indicates that the wages of experienced workers and that of young workers have started to diverge over time. In the beginning of the sample period, the wage gap between young and experienced workers was merely 3%. It has increased to 16% until 2010. The growing wage gap has occurred in two periods, namely until 1990, and after the year 2002/2003, coinciding with the tech bust and the implementation of the ‘Agenda 2010’ labor market reforms in 2003. This evidence may be interpreted as a rise in wage inequality, notably for the young (and) labor market entrants, see e. g. Gernandt and Pfeiffer (2007), Antonczyk et al. (2010) or Eichhorst and Tobsch (2015).

Consideration of the four education groups shows some heterogeneity between groups. While the overall trends in

the development can be seen – more or less – for all groups, the gaps between wages of experienced and young workers are clearly larger for the two high-skilled groups. On the other hand, the widening of the within-education-group wage gap is less emphasized for those groups over the 36 years of analysis. Since the turn of the century, however, the stronger decrease of median wages of the young compared to the experienced has nevertheless imposed more inequality.³ The trends of median wages of the medium-skilled, who are the largest group (see above), are similar to the overall picture. Vice versa, the divergence between experienced and younger workers’ wages is stronger than in the two high-skilled groups. Finally, for the low-skilled, wages have risen more or less steadily from 1975 to around 1990, and have started to decrease slightly and

³ According to the results of Klein (2016), this may not be explained by a change in composition of the graduates’ field of study. He analyzes the association between graduates’ field of study and occupational attainment in West Germany between 1980 and 2008 and shows that field of study differences in terms of risk of unemployment and of access to the service class did not increasingly diverge over time.

Fig. 3 Shares of Performed Tasks (Education Groups, 25–35 Years) (Source: 2% IABS Sample for full-time workers between 25 and 35 years of age. $N = 3,754,656$. The kinks for the high-uni-skilled workers stem from an underrepresentation of doctors and pharmacists in the years 1996 and 1997 in the sample (see vom Berge et al. 2013))



monotonously thereafter. Also for this group, the decrease of median wages has been a bit stronger for the young than the experienced, which contributes to a widening wage gap pattern.

There is some literature analyzing the relationship between education attainment and wages with particular focus on the role of cohort size (e. g. Freeman 1979; Welsh 1979; Berger 1983; Fertig and Schmidt 2004; Morin 2015; Moffat and Roth 2016). The key assumption of the studies is that workers of different ages or experiences are only imperfectly substitutable; therefore, an increase in the size of a specific experience-education group will mainly affect the wages of workers in this group. Empirical evidence in favor of this hypothesis is given by, e. g. Freeman (1979), Wright (1991) or Morin (2015) besides others. However, for Germany the effects may be less clear due to opposing effects of wage rigidities and the bargaining process between employer associations and unions as noted by Fertig and Schmidt (2004). While changes in cohort size may result in education-experience specific unemployment in face of rigid wages, larger cohorts may possess a greater bargaining power, which mitigates the expected negative effect of cohort size. The decreasing level of collective pay agreements in the German economy overall and particularly for higher-skilled workers over the years of analysis may therefore point towards lower wages due to larger relative cohorts.

4.2 Are there declining fortunes of the young in Germany?

4.2.1 The task composition of young workers

While the workforce has become more skilled due to the increasing share of high-skilled workers, the average employment share of non-routine analytical tasks has remained largely stable. This can imply some kind of occupational downgrading for high-skilled workers. A possible reason would be a shrinking average task share of non-routine analytical tasks in that group. Therefore, we decompose the average task performance by education groups to reveal a potential shift of high-skilled workers to jobs that do not require their expected analytical skills.⁴

Fig. 3 displays these shifts in the performed tasks. The average employment share in analytical jobs sorts according to education attainment. Expectedly, it is highest for employees with a university degree and lowest for persons without vocational training. Overall, the average shares show a high persistence but there had been a small decline for high-skilled workers until 1985. For the high-fh-skilled workers, we further observe a decrease after 2000. However, the share of non-routine analytical tasks for each

⁴ Related to that, Rohrbach-Schmidt and Tiemann (2016) analyze the educational match and skill utilization based on an employment survey for 2006. The results indicate that large shares of formally over- or under-educated workers in Germany have skills that correspond to the skill requirements of their jobs.

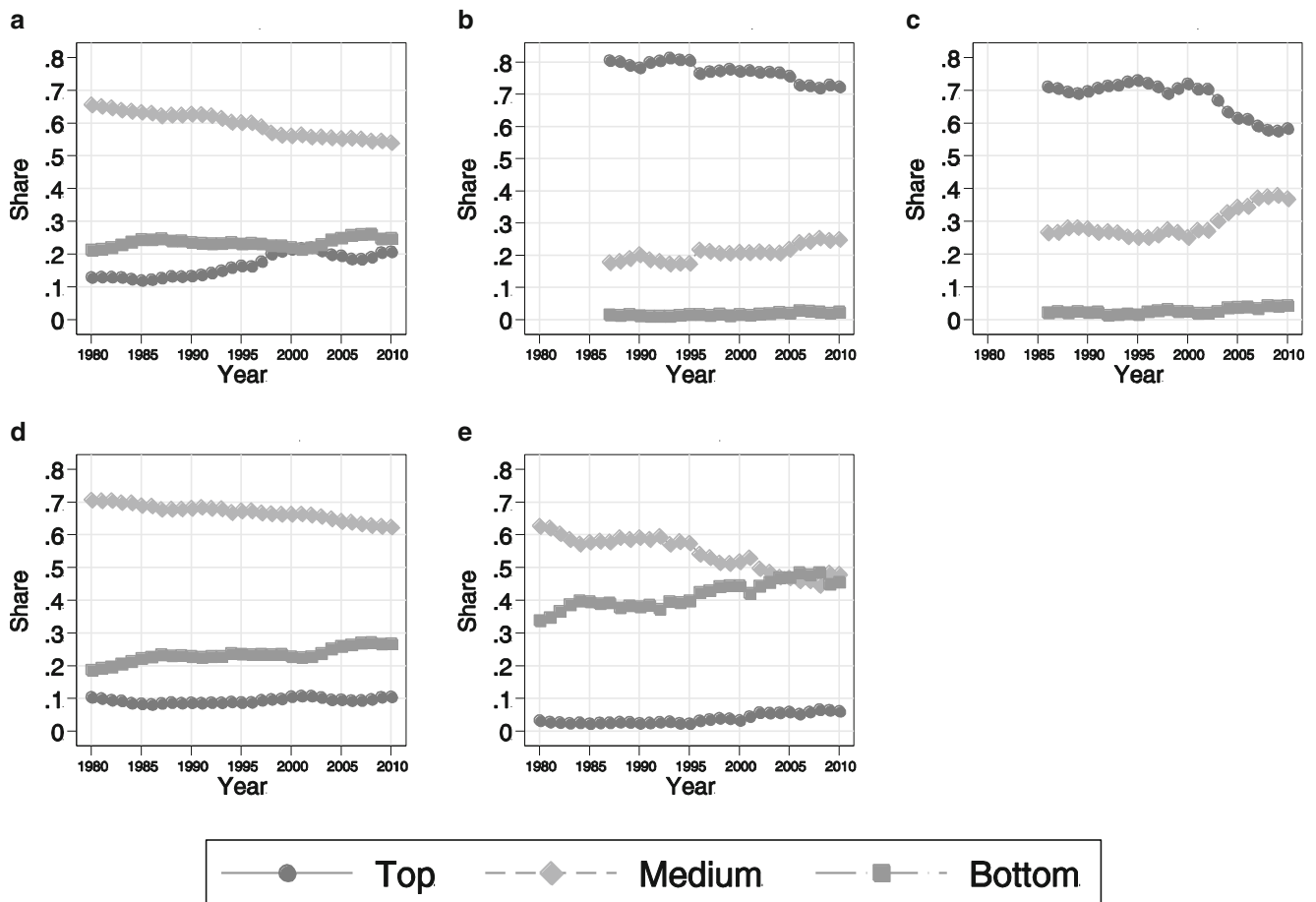


Fig. 4 Job Ordering (Four to Six Years of Experience) (Source: 2% IABS Sample for full-time workers between 25 and 35 years of age with information on job. $N = 2,000,214$ for all workers. Note: Jobs are ordered according to their mean wage and assigned to a percentile in the wage distribution. The calculation of mean wages is based on imputed wages following Gartner (2005). Top-jobs have a mean wage above the 70% percentile, bottom-jobs below the 30% percentile, the remaining jobs are medium-jobs. Lines represent annual shares of workers with four to six years of potential experience)

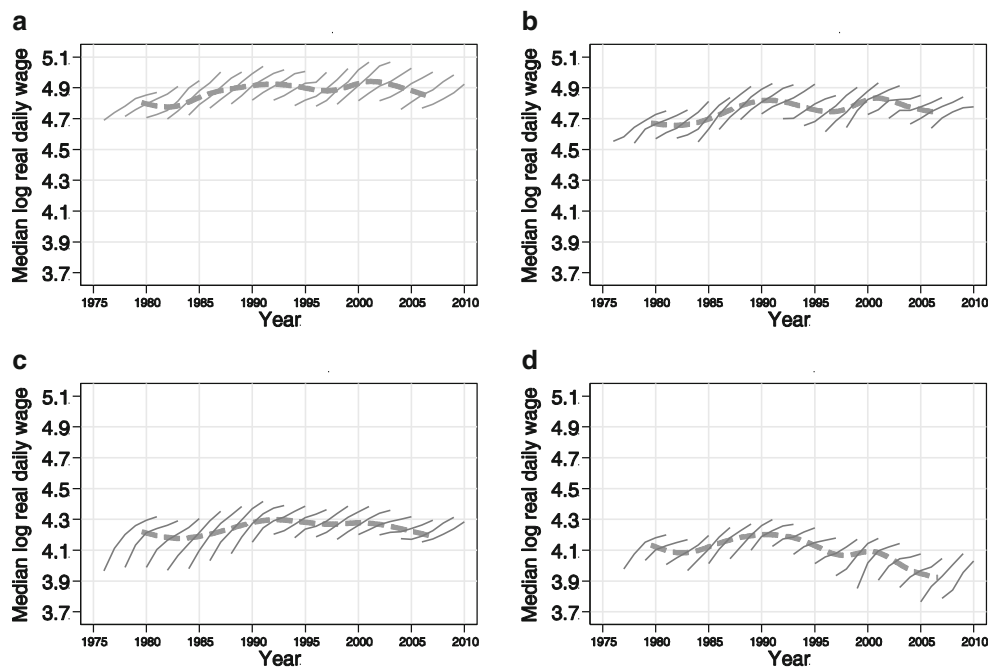
education group has maintained a rather stable level over time, which can be interpreted as an equilibrium between the increasing demand for analytical tasks and the educational expansion in Germany. This is in line with findings of Beaudry and Green (2003).

The non-routine interactive employment share (that has slightly increased for the young workforce overall) has decreased for high-uni-skilled until the mid-1990. For the high-fh-skilled workers, it has remained stable after 1990. Contrary to that, routine cognitive tasks have become more important for high-skilled workers until 1997. After that year, however, their fraction in the task composition has begun to fall slowly. For the high-fh-skilled, the share has risen similarly until the mid-1990s, and has maintained that level more or less since then. For high-skilled workers, routine manual and non-routine tasks have played a minor role only over the whole period of analysis.

To summarize, the empirical figures indicate that the share of high-skilled workers performing non-routine an-

alytical jobs has remained rather constant for long periods, but there is some heterogeneity between high-uni-skilled and high-fh-skilled employees. The increase of high-skilled workers in routine cognitive jobs may hint at an academization of these jobs. For the high-uni-skilled, the share of routine cognitive tasks has increased continuously at the expense of non-routine interactive tasks, whereas the remaining task shares have remained on rather constant levels over time. For the high-fh-skilled, the share of routine cognitive tasks has increased similarly at the expense of two groups: on the one hand, the shares of non-routine analytical tasks before 1985 and after 2003 have decreased, and on the other hand, non-routine interactive tasks had decreased between 1987 and 1992. Overall, besides these tendencies, a clear cascading pattern – as described in Beaudry et al. (2014) – cannot be confirmed for the two groups of high-skilled workers in Germany since the pattern of the task composition is too persistent to provide unambiguous indications for declining labor market chances of the young.

Fig. 5 Median Log Real Daily Wage Profiles for Labor Market Entrants (Potential Experience) (Source: 2% IABS Sample for full-time workers with less than five years of potential experience and a positive log real daily wage. $N = 1,703,254$. Note: Displayed are log real median wage by potential experience for two-year-cohorts (*solid lines*). *Dashed lines* denote the median wage for each cohort from 1976/77 to the 2006/07 cohort in the first five years of labor market entry. See Table 1 in the appendix for further information)



4.2.2 Development of young workers in top-paying jobs

Do high-skilled labor market entrants receive the best-paying jobs? To answer this question, we order jobs according to their average wage in all years.⁵ We distinguish between three job categories: top-paying jobs pay above the 70th wage percentile, bottom-paying jobs below the 30th wage percentile; all others are medium-paying jobs.⁶ Fig. 4 plots the developments and shares of labor market entrants with four to six years of potential experience in the three job categories over time and takes the different levels of education into account. Since the first cohorts in consideration entered the labor market in 1975, the plots of experienced employees start in 1980. Due to data restrictions for some groups (small number of observations), some plots have to start in the mid-1980s. The first panel shows that, overall, the share of young workers employed in top-paying occupations after four to six years of experience had risen from 14% (1980) to 21% (1998), but has stagnated thereafter.

⁵ Occupations are defined following the Classification of Occupations, issue 1988 (KldB 1988) provided by the Statistics of the Federal Agency of Employment. Despite the several revisions of this classification since that date, there is a strong persistence and high correlation between the issues. Since we consider data from 1975 to 2010 in the analysis, we selected the issue 1988 for our empirical analysis.

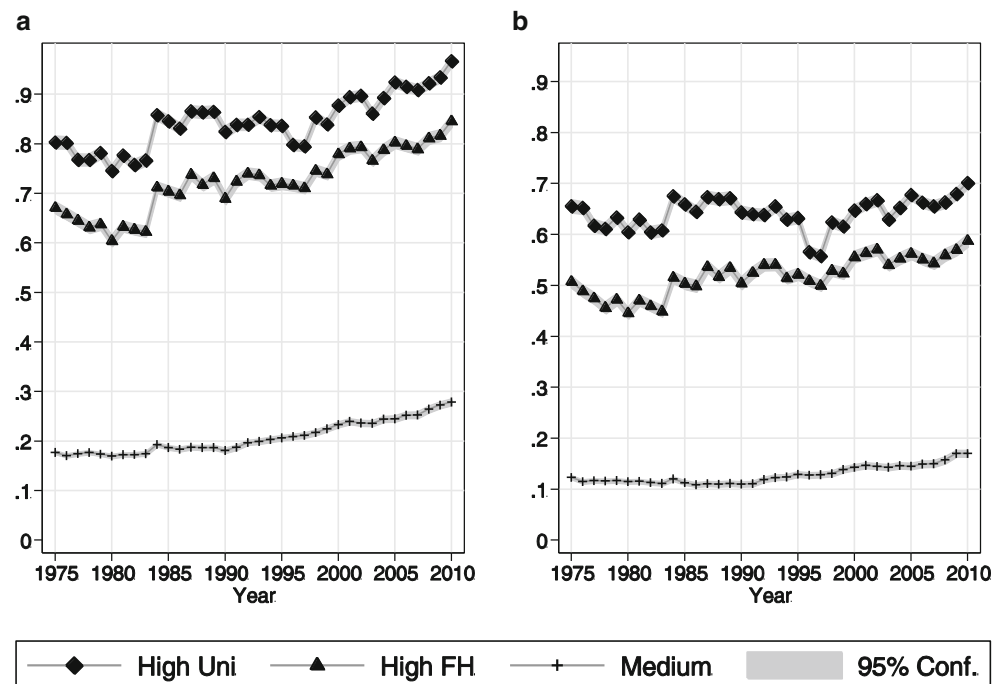
⁶ Assigning jobs to the three categories by average wages and the relative position in the wage distribution leaves out information available in the original individual-level data. Occupations usually comprise different levels of education and therefore some wage interval. For example, some high-skilled workers may be assigned to having a medium-paying job, even if they individually receive a high wage. Thus, the presented results provide an overview of changes in the job composition on a highly aggregated level only.

Moreover, the main rise has occurred during the 1990s. At the same time, the fraction of workers in the bottom-paying jobs has remained largely constant over the full observation period with a small increase after 2003. Hence, these patterns imply that the shift towards more workers in top-paying occupations reflects a declining share of workers in medium-paying jobs.

To get a more detailed picture, distinguishing between education attainments can further reveal the adverse opportunities for high-skilled workers in recent years. As becomes obvious from the pattern, university graduates have faced a decreasing chance of working in top-paying jobs. The fraction declined from 81% (1985) to 72% (2010). A major part of this drop has occurred after the year 2000 and notably in support of medium-paying jobs. The shift is even more profound for high-fh-skilled workers, who have faced a drastic drop in top-paying jobs from 72 to 58% between 2000 and 2010 in favor of medium-paying jobs. In line with this, the picture for medium-skilled workers shows that the chance of obtaining a medium-paying job has slightly fallen after the year 2000, concurrently with an increasing share in bottom-paying jobs. A similar pattern can also be derived for low-skilled workers. Their chances of obtaining a medium-paying job have constantly fallen, especially after 1995, and the risk of obtaining a bottom-paying job has increased and has surpassed the share of medium-paying jobs by 2010.

Hence, with respect to job quality we find a clear cascading pattern across skill groups after 2000, which may hint at an oversupply of high-skilled workers (since skills have grown over time, see above). Although the share of all young workers in top-paying jobs has remained relatively

Fig. 6 Wage Premia for Education Groups (25 to 35 years) (Source: 2% IABS Sample for full-time workers between the age of 25 and 35 years. *Left panel*: $N = 6,738,035$. *Right panel*: 6,569,463. Note: Wage premia are indicated by coefficients obtained from year-by-year estimations of Mincer earnings equations with education attainment (in reference to low education), potential experience, potential experience squared and a female dummy variable (*left panel*), and task categories in addition (*right panel*). All coefficients plotted are statistically significant at the 1% confidence level. Wages above the social security contributions ceiling (right-censoring) have been imputed using a Tobit estimation)



stable over the 2000s (after an increase over the 1990s), for the groups of high-skilled workers there have been clear declines in the respective shares. This means that less young workers have obtained a top-paying job after 2000. On the contrary, their share in medium-paying jobs has risen continuously. Concurrently with that, the share of medium- and low-paying workers in medium-paying jobs has shrunk, while – vice versa – their share in bottom-paying jobs has increased. These patterns clearly indicate that relatively better skilled groups have crowded out relatively lower skilled groups in Germany – at least over the first decade of this century.

4.2.3 Wage growth and entry wages over time

The empirical results just presented document a cascading pattern across skill groups since the year 2000 in Germany. At the same time, the level of skills, and in particular the share of high-skilled young workers overall, have increased tremendously. This translates into a rather stable job ordering for all young workers (top left panel in Fig. 4). Fig. 2 above displayed that the increasing wage gap between the young and the experienced workers has widened notably after 2003. The stable shares in top-, medium- and low-paying jobs and the contemporaneously rising wage gap from 2003 onwards can therefore only be reconciled with declining wages within jobs or falling skill premia. Wages and wage growth must have fallen over time for young workers – independently of their skills.

Fig. 5 provides empirical evidence on this development.⁷ It shows how job entrants have performed in their first five years of work with consideration of education attainment and potential experience.⁸ Each line refers to two consecutive annual entry cohorts. As becomes obvious, starting wages and wages after five years have both tended to increase until the year 2000. After that year, however, entry wages have started to fall. Moreover, wage growth slowed down considerably (indicated by the shorter and less steep wage profiles), resulting in lower wages after five years of work. These are quite important findings for understanding the changing situation for labor market entrants in Germany.

Looking at the changes around the turn of the century in more detail, the initial five-year wage growth declined for high-uni-skilled workers from about 28% (1996/97-cohort) to 19% (2002/03-cohort). Over the same period, newly arriving cohorts of high-fh-skilled workers experienced an even stronger reduction from 32 to 14%. All other groups suffered from quite substantial declines of wage growth, too; from about 20 to 10% for medium-skilled and from about 24 to 19% for low-skilled workers. Hence, the moderation of wage growth affected all skill groups.

However, by consideration of the long-run development the picture indicates some kind of cyclicity in wage growth for high-skilled workers: wage growth and entry wages increased for cohorts entering the labor market after

⁷ In addition, Table 1 in the appendix shows the median log wage growth for all labor market entrants by education group.

⁸ Due to right-censoring at the observation window, the last considered cohort enters the labor market in 2006.

the mid-1980s. This changed by declining wage growth and entry wages in the early 1990s. About a decade later, this pattern repeated with increasing wage growth from the mid-1990s and falling wage growth from the early 2000s. In contrast to these patterns for the high-skilled, entry wages and wage growth for low-skilled workers have already started to fall from the early 1990s onwards, and wage growth for medium-skilled workers has shrunk continuously from the 2000s.

This cyclical in wages and wage growth, promptly accelerating for cohorts entering the labor market in the mid-1990s and recapturing its former path after the millennium, still cannot completely explain the increasing wage gap between young and experienced workers (see Fig. 2 above). The cyclical in wages and wage growth can be observed for both high-uni and high-fh-skilled workers, and there is no convergence to narrowing the wage gap between young and experienced workers in the late 1990s. At the same time and in contrast to the higher-skilled groups, there is no clear cyclical movement for medium- and low-skilled workers: medium-skilled young workers had faced constant wages and wage growth in the 1990s, which have declined after the millennium. For low-skilled workers, the corresponding fall in wages has begun already a decade earlier. Both developments are easy to reconcile with falling chances to obtain medium-paying jobs and increasing risks to get bottom-paying jobs as well as the cascading pattern across skill groups, starting by the millennium for medium-skilled workers and about a decade earlier for low-skilled workers. Still, the increasing wage gap between young and experienced workers is difficult to explain in light of the increasing share of high-skilled workers and the declining share of medium-skilled and low-skilled workers. Hence, a further possible reason for the wage gap remains in a decline of wage premia for skills, i. e. lower returns to education levels over time.⁹

4.2.4 Wage premia

Having discussed aspects of education, jobs and wages, we will consider the development of returns to education (wage premia) over time as the final step in analyzing the chances of job market entrants. Declining opportunities of young high-skilled workers getting a high-paying job can also result in lower wage premia for higher degrees. However, since wage premia are the returns relative to other education groups, the evolution of (entry) wages of those groups is of particular importance. If (entry) wages of the other groups have decreased even more strongly, than wage premia for high-skilled workers could increase independently of the overall development of wages of that group. We estimate a variant of the Mincer earnings equation that considers the

effect of potential experience, education level (categorical) and gender (dummy). We augment the model in a second step by dummy variables for tasks (reference category: non-routine manual jobs).¹⁰ To analyze wage premia over time, we estimate the models for each year separately.

Fig. 6 plots the estimated coefficients of wage premia to education levels over time, both with and without controlling for tasks (left and right panel). Wage premia have continually increased from the mid-1990s for high-skilled individuals. The wage premium for the medium-skilled, however, has increased only slightly. The wage gap between medium-skilled and high-skilled workers, therefore, has widened over time. Higher education, independently of having a degree from a university or from a university of applied sciences was thus associated with an increasing wage premium relative to low and medium education. Nevertheless, the gaps in the wage premia between the different groups of higher education have remained rather persistent over the whole analysis period.

When task groups are considered in the estimation, they reduce the absolute level and the relative increase of the estimated wage premia of high-skilled workers. Despite this level effect, the relative increase of wage premia has followed a similar pattern. For high-skilled workers, wage premia have increased after the mid-1990s, but the rise has been smaller in size. However, the increase in the wage premium of medium-skilled workers relative to low-skilled workers has halved when taking the effects of tasks into account. Both panels show the increase in wage premia relative to low-skilled and medium-skilled workers. Figs. 4 and 5 above revealed already a decline of starting wages for low-skilled workers. The increase in wage premia of high-skilled workers may thus further imply a relative fall of demand and of wages for low-skilled workers. With respect to the timing, it should be noted that most of the increase of the wage premia has occurred after the mid-1990s. From the beginning of the 2000s, however, real wages of high-skilled labor market entrants have fallen, but not as strong as those of low-skilled and medium-skilled workers.

5 Conclusion

With the aim of providing a picture of the labor market chances of job market entrants in Germany, we have analyzed the labor market patterns of this group over a long period of time from 1975 to 2010 considering aspects of

⁹ See also Pikos and Thomsen (2016).

¹⁰ Task groups correlate with education and education may partially determine the tasks set. Therefore, tasks are – to some extent – potentially endogenous. Nevertheless, there is still a considerable amount of variation between education and tasks, i. e. tasks are no direct mapping of education. We try to control for this variation in the respective specification of the Mincer equation.

education attainment, wages and jobs. The empirical results indicate that real wages had stagnated from the mid-1990s onwards and have even declined since the mid-2000s, a period characterized by an increasing importance of ICT. Also since the mid-1990s, the share of young workers with a higher education attainment has started to increase markedly in Germany. At the same time, a shrinking size of young cohorts reveals the effects of the accelerated demographic change.

We demonstrate that the wage gap between young and experienced workers has increased over time, although the absolute cohort size of young workers has declined and the share of high-skilled young workers has increased. In contrast to the findings for the U.S., this is associated with a slight decline in the chances of high-skilled workers to obtaining analytical jobs only. At the same time, however, we have found a clear decrease in the opportunity of young workers to work in top-paying jobs. Although the share of young workers in top-paying occupations has overall risen (particularly during the 1990s), the relative chances of obtaining a top-paying occupation have fallen slightly within the groups of high-skilled labor market entrants. Besides the reduced probability of getting a top-paying job, wage growth has declined substantially, in particular for the two groups of high-skilled workers considered and for medium-skilled workers. Nevertheless, with consideration of the long-run picture our empirical evidence does not speak for a distinct reversal in wage expectations of high-skilled workers. Although wage growth for cohorts entering the labor market after 2000 has been smaller than for cohorts entering in the 1990s, it recaptured its magnitude from around the year 1990. For medium-skilled labor market entrants, in contrast, wages and wage growth have continually and remarkably declined.

The most important results of our analysis are the indications of a cascading pattern in which the decline in the share of labor market entrants in top-paying jobs was profound for high-uni-skilled workers and for high-fh-skilled workers. In addition, the share of high-skilled workers in medium-paying jobs increased at the expense of the share in top-paying jobs. The shares of medium-skilled and low-skilled workers in bottom-paying positions have risen, while the share of medium-paying jobs has fallen.

Hence, in difference to the results reported for the U.S. by Beaudry et al. (2014) that report pronounced effects for college graduates, our results confirm some kind of cascade of jobs, but it is not limited to the group of high-skilled workers. The analysis of the development of wage premia to education levels over time can be interpreted as evidence in the opposite direction: within the two considered groups of high-skilled, wage premia have remained rather stable over time and have even grown relative to medium-skilled and low-skilled workers. Nevertheless, the results overall

indicate some similarities between the trends of the U.S. and the German labor market during the last decade with regard to displacement effects of lower qualifications. However, the obtained patterns differ in terms of the particular skill groups affected.

Acknowledgements We would like to thank Bernd Fitzenberger and two anonymous referees for their helpful comments. This study has benefited from discussions at the annual conferences of the European Society for Population Economics, Izmir 2015, the Canadian Economic Association (CEA), Toronto 2015, the Associazione Italiana Economisti del Lavoro (AIEL), Cagliari 2015, and the German Economic Association (VfS), Muenster 2015.

Open Access This article is distributed under the terms of the Creative Commons Attribution 4.0 International License (<http://creativecommons.org/licenses/by/4.0/>), which permits unrestricted use, distribution, and reproduction in any medium, provided you give appropriate credit to the original author(s) and the source, provide a link to the Creative Commons license, and indicate if changes were made.

Appendix

Table 1 Median Log Wage Growth for All Labor Market Entrants by Education Group

Cohort	High-Uni	High-FH	Medium	Low
1976/77	18.1	19.8	35.2	22
1978/79	19.6	21.4	30.2	13.5
1980/81	23.9	24.2	31.8	18.8
1982/83	30.3	26.4	38.3	27.8
1984/85	27.9	36.1	40.3	25.7
1986/87	27.1	29.7	38.5	25.3
1988/89	22.1	22.5	31.2	16.8
1990/91	18.5	19.2	23.4	12.2
1992/93	18	14.8	16	10.6
1994/95	23.9	25	20.4	15.6
1996/97	28.4	31.6	19.7	24.2
1998/99	27.4	27.1	18.7	29.3
2000/01	21.1	12.6	11.6	17
2002/03	18.7	13.5	9.5	18.9
2004/05	22.2	17.7	13.9	31.3

Source: 2% IABS Sample for full-time workers between 25 and 35 years of age. $N = 438,414$. Note: The table displays the difference between the median log wage for workers with a potential experience of five years and a potential experience of 0 years multiplied by 100 for each educational attainment.

References

- Acemoglu, D.: Technical change, inequality, and the labor market. *J Econ Lit* **40**(1), 7–72 (2002)
- Acemoglu, D.: Cross-country inequality trends. *Econ J* **113**(485), F121–F149 (2003)
- Acemoglu, D., Autor, D., Dorn, D., Hanson, G.H., Price, B.: Return of the Solow paradox? IT, productivity, and employment in US manufacturing. *Am Econ Rev* **104**(5), 394–399 (2014)
- Akerman, A., Gaarder, I., Mogstad, M.: The skill complementarity of broadband internet. *Q J Econ* **130**(4), 1781–1842 (2015)
- Antonczyk, D., DeLeire, T., Fitzenberger, B.: Polarization and rising wage inequality: comparing the US and Germany. ZEW Discussion Papers 4842. Centre for European Economic Research, Mannheim (2010)
- Autor, D., Dorn, D., Hanson, G.H., Song, J.: Trade adjustment: worker level evidence. *Q J Econ* **129**(4), 1799–1860 (2014)
- Autor, D.H., Dorn, D.: The growth of low-skill service jobs and the polarization of the US labor market. *Am Econ Rev* **103**(5), 1553–1597 (2013)
- Autor, D.H., Katz, L.F., Kearney, M.S.: The polarization of the U.S. labor market. *Am Econ Rev* **96**(2), 189–194 (2006)
- Autor, D.H., Katz, L.F., Kearney, M.S.: Trends in U.S. wage inequality: revising the revisionists. *Rev Econ Stat* **90**(2), 300–323 (2008)
- Autor, D.H., Levy, F., Murnane, R.J.: The skill content of recent technological change: An empirical exploration. *Q J Econ* **118**(4), 1279–1333 (2003)
- Beaudry, P., Green, D.A.: Wages and employment in the United States and Germany: what explains the differences? *Am Econ Rev* **93**(3), 573–602 (2003)
- Beaudry, P., Green, D.A., Sand, B.M.: The declining fortunes of the young since 2000. *Am Econ Rev* **104**(5), 381–386 (2014)
- Beaudry, P., Green, D.A., Sand, B.M.: The great reversal in the demand for skill and cognitive tasks. *J Labor Econ* **34**(1), 199–247 (2016)
- Berger, M.: Changes in labor force composition and male earnings: a production approach. *J Hum Resour* **18**(2), 177–196 (1983)
- Blinder, A.S.: How many U.S. jobs might be offshorable? *World Econ* **10**(2), 41–78 (2009)
- Dengler, K., Matthes, B., Paulus, W.: Occupational tasks in the German labour market – an alternative measurement on the basis of an expert database. FDZ Methodenreport 12/2014. Institute for Employment Research, Nuremberg (2014)
- Dustmann, C., Fitzenberger, B., Schönberg, U., Spitz-Oener, A.: From sick man of Europe to economic superstar: Germany's resurgent economy. *J Econ Perspect* **28**(1), 167–188 (2014)
- Dustmann, C., Ludsteck, J., Schönberg, U.: Revisiting the German wage structure. *Q J Econ* **124**(2), 843–881 (2009)
- Eichhorst, W., Tobsch, V.: Not so standard anymore? Employment duality in Germany. *J Labour Mark Res* **48**(2), 81–95 (2015)
- Eurostat: Employees - availability of computers (NACE Rev. 2 activity) (2015a). <http://ec.europa.eu/eurostat/data/database>, Accessed 7 Oct 2015
- Eurostat: Enterprises - level of internet access (NACE Rev. 2 activity) (2015b). <http://ec.europa.eu/eurostat/data/database>, Accessed 7 Oct 2015
- Eurostat: Households - availability of computers (2015c). <http://ec.europa.eu/eurostat/data/database>, Accessed 7 Oct 2015
- Eurostat: Individuals - frequency of internet use (2015d). <http://ec.europa.eu/eurostat/data/database>, Accessed 7 Oct 2015
- Eurostat: Population on 1 January by age and sex (2015e). <http://ec.europa.eu/eurostat/data/database>, Accessed 20 Aug 2015
- Fertig, M., Schmidt, C.: Gerontocracy in motion: European cross-country evidence on the labor market consequences of population ageing. In: Wright, R. (ed.) *Scotland's demographic challenge*. Scottish Economic Policy Network, Stirling Glasgow (2004)
- Fitzenberger, B.: Wages and employment across skill groups: an analysis for West Germany. *Physica*, Heidelberg (1999)
- Fitzenberger, B., Kohn, K., Wang, Q.: The erosion of union membership in Germany: determinants, densities, decompositions. *J Popul Econ* **24**(1), 141–165 (2011)
- Fitzenberger, B., Osikominu, A., Völter, R.: Imputation rules to improve the education variable in the IAB employment subsample. *Schmollers Jahrb* **126**(3), 405–436 (2006)
- Forman, C., Goldfarb, A., Greenstein, S.: The Internet and local wages: a puzzle. *Am Econ Rev* **102**(1), 556–575 (2012)
- Freeman, R.: The effect of demographic factors on age-earnings profiles. *J Hum Resour* **14**(3), 289–318 (1979)
- Gartner, H.: The imputation of wages above the contribution limit with the German IAB employment sample. Technical Report 2/2015, FDZ method report. Institute for Employment Research, Nuremberg (2005)
- Gernandt, J., Pfeiffer, F.: Rising wage inequality in Germany. *J Econ Stat* **227**(4), 358–380 (2007)
- Kambourov, G., Manovskii, I.: Occupational mobility and wage inequality. *Rev Econ Stud* **76**(2), 731–759 (2009)
- Katz, L.F., Autor, D.H.: Changes in the wage structure and earnings inequality. In: Ashenfelter, O., Card, D. (eds.) *Handbook of labor economics*, vol. III, pp. 1463–1555. Elsevier, Amsterdam (1999)
- Katz, L.F., Murphy, K.M.: Changes in relative wages, 1963–1987: supply and demand factors. *Q J Econ* **107**(1), 35–78 (1992)
- Klein, M.: The association between graduates' field of study and occupational attainment in West Germany, 1980–2008. *J Labour Mark Res* **49**(1), 43–58 (2016)
- Krugman, P.: Past and prospective causes of high unemployment. *Econ Rev (Kansas)* **79**, 23–23 (1994)
- Moffat, J., Roth, D.: The cohort size-wage relationship. *Labour* **30**(4), 415–432 (2016)
- Morin, L.: Cohort size and youth earnings: evidence from a quasi-experiment. *J Labor Econ* **32**(C), 99–111 (2015)
- Myck, M., Ochmann, R., Qari, S.: Dynamics of earnings and hourly wages in Germany. *Econ Lett* **113**(2), 143–146 (2011)
- Naticchioni, P., Ragusa, G., Massari, R.: Unconditional and conditional wage polarization in Europe. IZA Discussion Papers 8465. Institute for the Study of Labor, Bonn (2014)
- Ochel, W.: Decentralizing wage bargaining in Germany – a way to increase employment? *Labour* **19**(1), 91–121 (2005)
- OECD, European Union, UNESCO Institute for Statistics: ISCED 2011 operational manual: guidelines for classifying national education programmes and related qualifications. Technical report. OECD Publishing, Paris (2015)
- Pikos, A.K., Thomsen, S.: Rising work complexity but decreasing returns. IZA Discussion Paper 9878. Institute for the Study of Labor, Bonn (2016)
- The Economist: The sick man of the Euro. <http://www.economist.com/node/209559> (1999)
- Rohrbach-Schmidt, D., Tiemann, M.: Educational (Mis)match and skill utilization in Germany: Assessing the role of worker and job characteristics. *J Labour Mark Res* **49**(2), 99–119 (2016)
- U.S. Census Bureau: National intercensal estimates (1990–2000) (2012). <http://www.census.gov/popest/data/intercensal/national/files/US-EST90INT-09.csv>, Accessed 20 Aug 2015
- vom Berge, P., König, M., Seth, S.: Sample of Integrated Labour Market Biographies (SIAB) 1975–2010. Technical Report 01/2013, FDZ data report. Institute for Employment Research, Nuremberg (2013)
- Welsh, F.: Effects of cohort size on earnings: the baby boom babies' financial bust. *J Polit Econ* **87**(5), S65–79 (1979)
- Wright, R.: Cohort size and earnings in Great Britain. *J Popul Econ* **4**(4), 295–305 (1991)

Mario Reinhold was a researcher at Leibniz Universität Hannover. His research interests include demography, wage inequality and employment polarization.

Stephan Thomsen is Professor of Economics (Applied Economic Policy) and director of the Center für Wirtschaftspolitische Studien (CWS, Center for Economic Policy Studies) at Leibniz Universität Hannover. He is further a research associate at ZEW Mannheim and a research fellow at IZA Bonn. His main research interests include labor economics, education economics and policy evaluation.