

Gaviglio, Anna; Bertocchi, Mattia; Marescotti, Maria Elena; Demartini, Eugenio; Pirani, Alberto

Article

The social pillar of sustainability: a quantitative approach at the farm level

Agricultural and Food Economics

Provided in Cooperation with:

Italian Society of Agricultural Economics (SIDEA)

Suggested Citation: Gaviglio, Anna; Bertocchi, Mattia; Marescotti, Maria Elena; Demartini, Eugenio; Pirani, Alberto (2016) : The social pillar of sustainability: a quantitative approach at the farm level, Agricultural and Food Economics, ISSN 2193-7532, Springer, Heidelberg, Vol. 4, Iss. 15, pp. 1-19,
<https://doi.org/10.1186/s40100-016-0059-4>

This Version is available at:

<https://hdl.handle.net/10419/179077>

Standard-Nutzungsbedingungen:

Die Dokumente auf EconStor dürfen zu eigenen wissenschaftlichen Zwecken und zum Privatgebrauch gespeichert und kopiert werden.

Sie dürfen die Dokumente nicht für öffentliche oder kommerzielle Zwecke vervielfältigen, öffentlich ausstellen, öffentlich zugänglich machen, vertreiben oder anderweitig nutzen.

Sofern die Verfasser die Dokumente unter Open-Content-Lizenzen (insbesondere CC-Lizenzen) zur Verfügung gestellt haben sollten, gelten abweichend von diesen Nutzungsbedingungen die in der dort genannten Lizenz gewährten Nutzungsrechte.

Terms of use:

Documents in EconStor may be saved and copied for your personal and scholarly purposes.

You are not to copy documents for public or commercial purposes, to exhibit the documents publicly, to make them publicly available on the internet, or to distribute or otherwise use the documents in public.

If the documents have been made available under an Open Content Licence (especially Creative Commons Licences), you may exercise further usage rights as specified in the indicated licence.



<https://creativecommons.org/licenses/by/4.0/>

RESEARCH

Open Access



The social pillar of sustainability: a quantitative approach at the farm level

Anna Gaviglio*, Mattia Bertocchi, Maria Elena Marescotti, Eugenio Demartini and Alberto Pirani

* Correspondence:
anna.gaviglio@unimi.it
Department of Health, Animal
Science and Food Safety, University
of Milan, Via Celoria 2, 20133
Milano, Italy

Abstract

The present research proposes a model for the assessment of the social pillar of sustainability at the farm scale. Contrary to what is available for the environmental and economic pillars, there is a considerable lack of exhaustive approaches able to evaluate the social dimension of sustainability in rural areas. Thus, the idea was to create a mean by which a quantitative evaluation of the social characteristics of farms could be made. The study involved farms of the South Milan Agricultural Park, located in northern Italy. Thirty sampled farms were selected in order to represent the different livestock systems, land areas, economic dimensions and levels of multifunctionality of the area. The framework is based on a set of 15 indicators able to evaluate five main social "components": (i) quality of the products and the region, (ii) short supply chain and related activities, (iii) work, (iv) ethical and human development and (v) society, culture and ecology. The work was structured using the following steps: identification of the relevant variables for the social sustainability of farms, determination of the framework of indicators, assignment of their range scores, data collection, calculation of the score for each farm, data analysis and visualization. The method allows different types of analysis in relation to the objective of the research. Three main approaches were individuated: (1) the comparison among farms is the "farms' ranking" and the "aggregate ranking"; (2) the evaluation of single themes of sustainability is the "single indicator evaluation" approach and (3) the temporal comparison of the farm's result is the "score evolution" approach. The method showed a high sensitivity to the multifunctionality and the type of farm production, especially organic vs conventional, while other characteristics, such as the type of livestock and the land area, seem to differentiate the sample less or to characterize it in only a few social components. The work has underlined the importance and the advancement in the study of the social dimension that, however, needs further in-depth analysis through comparison with the other two pillars and among various social states in different rural areas.

Keywords: Social sustainability, Agricultural sustainability, Indicators, Farm performance, Multi-attribute analysis

Background

Over the past 30 years, interest in the evaluation of agricultural activities' sustainability has grown considerably, many studies have been proposed and several assessment methods developed. The literature offers approaches at different spatial scales, ranging

from field and farm to regional, national, and even international scale (Jacobs 1995, Hansen 1996, Smith and McDonald 1998). Researchers that opted for a farm/local scale in their studies (Van der Werf and Petit 2002, Häni et al. 2003, Pacini et al. 2004, Rasul and Thapa 2004, Van Cauwenbergh et al. 2007, Meul et al. 2008, Vilain 2008, Gómez-Limón and Riesgo 2009, Reig-Martinez et al. 2011, Paracchini et al. 2015, Thiollet-Scholtus and Bockstaller 2015) took advantage of the possibility of an in-depth investigation of farm dynamics, while research studies that used a regional/territorial scale (Paracchini et al. 2011, Mazzocchi et al. 2013, Demartini et al. 2015) could limit the cost of analysis, ensuring transparency of data and repeatability of measurements (Demartini et al. 2015).

Although the environmental, social and economic pillars of sustainability are linked to each other, a single integrated approach seems to be difficult (Wells 2001, Zimmerer and Basset 2003). This reflects problems of data requirement and incommensurability between different facets or dimensions of sustainability that become stronger as the analysis moves to the system beyond the farm boundaries (Rigby et al. 2001). As a result, research studies tend to include these three pillars in their studies, treating them separately or with a different relevance (Singh et al. 2009). Furthermore, the different pillars have attracted varying levels of attention.

The environmental assessment is more studied, because of the growing social sensitivity of the community to ecological issues, and therefore, many approaches have been discussed and developed and researchers have multiple analytical opportunities. On the other hand, the evaluation of economic and, especially, social sustainability suffers from a lack of accepted and well-grounded frameworks (Chatzinikolaou and Manos 2012).

Although contemporary society recognizes agriculture as having an important responsibility in safeguarding the region, its culture and traditions (Gaviglio et al. 2014a), the measurement of social sustainability seems to be less studied. Moreover, most of the approaches that seek to involve a complete evaluation of the sustainability use qualitative assessments of the social pillar, based on observations and opinions or indicators that require difficult to find data (see Häni et al. 2003, Van Cauwenbergh et al. 2007, Meul et al. 2008, Vilain 2008).

As a matter of fact, finding a match between the social sustainability objectives and their corresponding indicators is a challenging task. According to Omann and Spangenberg (2002), this assessment concerns some relevant problems. Firstly, the perception of social issues is heterogeneous in different territorial contexts and this causes a lack of conceptual clarity. Secondly, when scientists suggest a great number of social indicators they still hesitate to formulate normative targets. Thus, the complexity of the concept might not be manageable in the current institutional settings. All this considered, the assessment of social sustainability seems to be particularly dependent on the local context and the socio-political goals proposed by policy-makers (Littig and Griessier 2005). Thus, the choice of indicators used in the analysis probably represents the most critical step of the research. Particularly, the scientific literature underlines the importance of the balance between a validated approach, reliability and significance of the indicators and the objectives to be achieved (Girardin et al. 1999), under the constraints of data availability.

The aim of this paper is to present a method for the evaluation of social sustainability of farms that uses quantitative indicators. The framework consists of 15 indicators able to assess the social performances of the farms that could have relevant reflection on their role for the rural area. The method offers useful easy-to-read results for farmers, decision-makers and researchers. Furthermore, a wide selection of indicators is presented which seems to represent a good (if not exhaustive) review that could be useful for further studies on this theme.

The remainder of the text is organized into three sections. The “Methods” section presents the features of the method: the approach to the social evaluation, the framework, its indicators and the case study. The “Results” section presents the results and their discussion. Finally, a concluding paragraph offers a summary of the research and some reflections on its potentialities and limitations.

Methods

Framework

The present method aims at the assessment of social sustainability at farm level using quantitative indicators. It is worth noting that the proposed approach excludes the evaluation of some social dimension that could be described by qualitative analysis; nonetheless, the definition of a system of quantitative measures allows researchers and farmers for direct comparisons between themes and farms that would not be possible otherwise.

Table 1 and Fig. 1, respectively, summarize the indicators used in the method and the component derived, and provide a brief idea of the framework adopted (in-depth details are available in Appendix).

The choice of indicators is based on the literature review, even if the lack of a shared framework for the social assessment at the farm scale often forces the researchers to an arbitrary choice of indicators (Van Cauwenbergh et al. 2007). The

Table 1 Social sustainability indicators and components used in the analysis

Code	Indicator	Max score	Code	Component	Max score
S_1	Quality of the products	20	CS_1	Quality of the products and the region	50
S_2	Rural buildings	12			
S_3	Landscape and territory	18			
S_4	Short food supply chain	30	CS_2	Short food supply chain and related activities	50
S_5	Related activities	20			
S_6	Work	25	CS_3	Work	50
S_7	Sustainability of the employment	15			
S_8	Training	10	CS_4	Ethical and human development	50
S_9	Livestock management	25			
S_10	Associations and social implications	15			
S_11	Cooperation	10	CS_5	Society, culture and ecology	50
S_12	Waste management	15			
S_13	Accessibility to the farm spaces	10			
S_14	Sustainable use of materials	15			
S_15	Education	10			

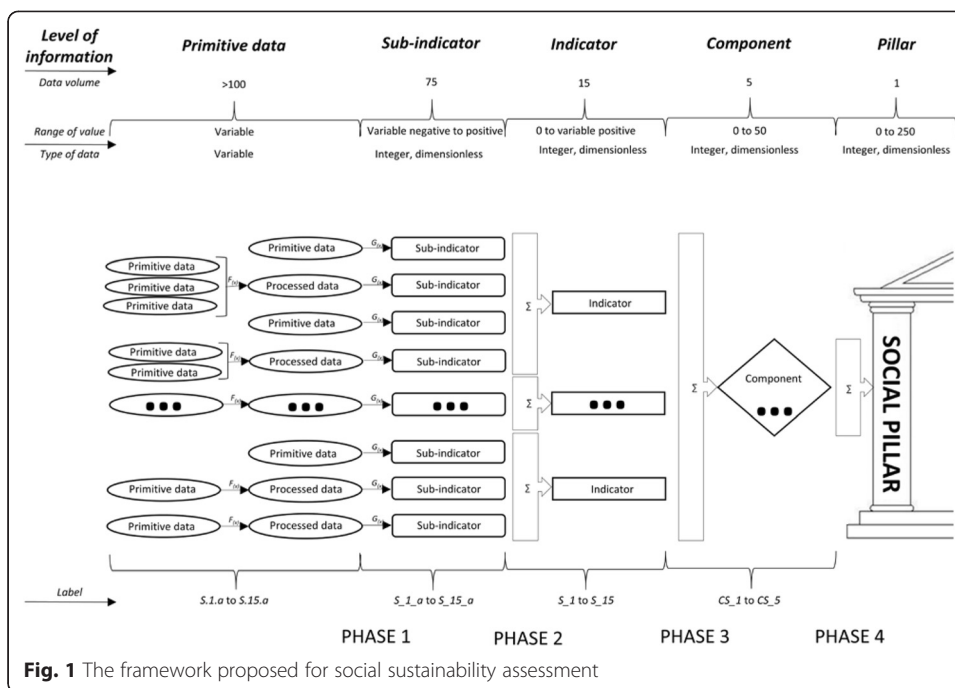


Fig. 1 The framework proposed for social sustainability assessment

selection process was carried out through the collection of the indicators detected from currently available methods. Among these, the choice was based on a combination of the best characteristics of simplicity, data requirements and significance for the case study.

The following components of agricultural activities were observed, considering their social dimension (Table 1): (*CS_1*) the products and regional management; (*CS_2*) the short food supply chain and related activities; (*CS_3*) employment and working conditions; (*CS_4*) the ethical and human development about animal welfare and the cooperation and association; and (*CS_5*) cultural and ecological themes. Note that the evaluation of these components involves the main social themes of the agricultural activities; nevertheless, some topics reported in the literature are not treated in order to avoid the use of qualitative indicators of data. In particular, we refer to food hygiene and safety and quality of life.¹

In the proposed method, the measurements of farm characteristics are converted into dimensionless values that represent an easy-to-read score of the raw data according to the desirability of the measured performance. For example, when measuring the indicator “S_1 Quality of the products” higher scores rationally correspond to higher measures. Furthermore, each indicator can range from a minimum or a maximum score (single scores are reported in Appendix); while the minimum score is always zero, the maximum scores vary depending on the social relevance attributed to the indicator, and therefore, more relevant indicators have higher maximum scores. This weighting procedure derived from a subjective evaluation typical of these types of studies that assigned the scores in accordance to the relevance attributed by the literature (when available) and the characteristics of the case study and its objectives (von Wirén_Lehr 2001). This process, which is convenient for adaptation to the local

context, involves the typical risks connected to subjective norms. In order to reduce this possible source of errors, some studies used the principle of equality among the indicators (Meul et al. 2008); nonetheless, other studies argue that indicators cannot be considered equally relevant with reference to sustainability assessment (Vilain 2008, Zahm et al. 2008). In this sense, researchers should be aware of the trade-off between the two options and carefully adopt the one that they consider the best in the research context.

The method is characterized by an aggregative structure (Fig. 1) aimed at reducing data from farm characteristics to a unique value of the social pillar. As shown in Fig. 1, the process is divided into four basic phases:

- Phase 1: collection and analysis ($F_{(x)}$ and $G_{(x)}$) of the farms' characteristics, classified from $S_{1.a}$ to $S_{15.a}$, in order to obtain a raw data set;
- Phase 2: elaboration of 75 sub-indicators, classified from $S_{1.a}$ to $S_{15.a}$, leads to integer and dimensionless values that range from negative to positive values, according to their maximum scores;
- Phase 3: calculation of the 15 indicators, classified from S_{1} to S_{15} , reported in Table 1, obtained through the sum of two or more sub-indicators. A minimum [0] and a maximum [variable] score is applied depending on the case (see Appendix);
- Phase 4: the sum of two or more indicators provides the value of five components of the social sustainability pillar, classified from CS_{1} to CS_{5} . A minimum [0] and a maximum [50] score is applied. In turn, the sum of the components leads to the overall value of the social dimension of sustainability, which can range from 0 to 250.

The components

In the following sections, we describe the indicators listed in Table 1, classified by component.

Component 1 (CS_{1}): quality of the products and the region

The social inclusion of rural areas highly depends on the connection between them and the citizenship. One of the most important means is the consumers' perception of the farm's products. Often people assign good environmental standards to high-quality products that contribute to a higher social acceptance of the agriculture and its production systems.

There are wide ranges of categories of consumers, defined as ethical consumers or citizen-consumers, who associate a very high value to the attribute of the quality of the product and the region where they are produced. Among these products, the CS_{1} component identified two main categories: quality-certified commodities and food products ($S_{1.a}$ and $S_{1.b}$) and organic products ($S_{1.c}$ and $S_{1.d}$).

In the first case, the literature review on consumers' perceptions shows some social relation between protected denomination of origin (PDO) products and the attributes of support in order to sustain regional manufacturers (Van Ittersum et al. 2007, Verbeke et al. 2012) and to contribute to the survival of the social identity

of the region (Vilain 2008). Thus, nowadays, these recent purchasing motivations are assigned a comparable importance with the typical attributes such as high standards (Van Ittersum et al. 2007), the tradition (Verlegh and Steenkamp 1999, Dimara and Skuras 2003), the taste (Platania and Privitera 2006, Vanhonacker et al. 2010) and food safety (Dimara and Skuras 2003).

Regarding organic food consumption, many researches stated the importance of the socio-economic traits of consumers (Hamm and Gronefeld 2004, Falguera et al. 2012), in particular tradition (Chinnici et al. 2002) and animal welfare (Magnusson et al. 2003, Makatouni 2002). In this case too, these attributes seem to have a primary relevance, besides those historically associated with organic consumption: first of all, environmentally friendly behaviour and also, as stated by some recent studies, the importance of the intrinsic attributes of the products (Gaviglio and Pirani 2015a), such as the healthiness (Pieniak et al. 2010), the high quality (Chinnici et al. 2002) and the taste (Fotopoulos and Krystallis 2002, Zanolini and Naspetti 2002, Kihlberg and Risvik 2007).

While the establishment of organic and labelled products is easy because of certification, there is a wide range of attempts to define local products (Hand and Martinez 2010). Because of the difficulties in defining the standard of quality of products without certification, this component only considers labelled products. The evaluation of local and typical products is treated by the *CS_2* component, without taking into account the attribute of their quality.

Finally, conscious social behaviour also involves issues not closely linked to the products, such as the functional and aesthetic roles of rural buildings (*S_2*) and the farm landscape (*S_3*). These are important features that characterize the architecture (Meul et al. 2008) and they represent positive or negative externalities in the social acceptance of rural areas (Van Cauwenbergh et al. 2007).

Component 2 (CS_2): short food supply chain and related activities

Among the most important motivations in buying local products, the literature found some social attributes such as tradition (Bessi re 1998), supporting local economies and trust in producers (Seyfang 2006, Lockie 2009). These are indicated by consumers as relevant means able to connect the citizenship with the countryside.

Selling products through short chain systems involves different types of opportunities, such as direct sales (*S_4_a*, *S_4_c* and *S_4_d*), online sales (*S_4_b*), ethical purchasing groups (*S_4_e*), farmers' markets (*S_4_f*), restaurants and shops (*S_4_g*) and canteens (*S_4_h*). The direct sales formula is mainly dedicated to local products and creates a close relationship between producers and consumers that cannot be explained just within an economic rationality (Gaviglio et al. 2015b).

The implications on other activities besides the agricultural production, such as the maintenance and management of public spaces and resources (*S_5_a*), related activities like agritourism, restaurants, bed and breakfast (*S_5_b*) and educational farms (*S_5_c* and *S_5_d*) are other important means of linking the town and the countryside (Vilain 2008). Citizens often use these systems to get to know the rural world and to learn about production processes and agro-food systems (Santini and Paloma 2013).

Component 3 (CS_3): work

Employment in the agriculture sector has fallen considerably in the last decades; therefore, the maintenance of a sustainable level of employment (S_7) is relevant for the social and economic development (S_6) of the agricultural area (Häni et al. 2003, Meul et al. 2008, Vilain 2008, Gómez-Limón and Fernandez 2010, Reig-Martinez et al. 2011, Bonneau et al. 2014). In this context, training (S_8) is a key aspect for the growth of the agricultural sector (Vilain 2008) by which farms play a leading role in development and innovation because of the requirement for high-profile skilled jobs involved in related activities, research and breeding.

Component 4 (CS_4): ethics and human development

The human and ethical development of agriculture involves multiple issues. Among these, animal welfare is today a primary requirement of society (Fortun-Lamothe et al. 2009, Broom 2010). Livestock management involves animal health and the farm's ability to implement innovations in the agricultural sector. This is a very complex issue, and the use of a single approach able to evaluate different types of livestock is difficult. Therefore, the indicator (S_9) is based on the diversification of the most common species of animals (cattle, pigs, poultry, sheep/goats) bred in the area. In this way, we only evaluated the management of the most important livestock of the farm (through the calculation of the LSU, "livestock units").

Cooperation and association are relevant instruments of innovation of agricultural systems (Vilain 2008) and they are important indicators of human development in rural areas. Among these factors, the social dynamism and vitality of an area heavily depend on membership in associations (S_{10_a} and S_{10_b}), consortia (S_{10_c}) and cooperation with other farms in the surrounding area in direct sales (S_{11_a} and S_{11_b}), agritourism activities (S_{11_c}), the production structures (S_{11_d}) and the workforce (S_{11_e}).

Component 5 (CS_5): society, culture and ecology

The inclusion of rural areas involves the recognition of the ecological, cultural and social effort of farms in their production process. In this sense, the component takes into account four main aspects. A proper waste management through recycling processes (S_{12_a}) and the use of recycled materials (S_{12_b} , S_{12_c} and S_{12_d}) has a great environmental importance but it also involves the social acceptance of the agriculture systems. The farm's open spaces (S_{13_a} and S_{13_b}) have important recreational functions useful for the population of a rural area.

Moreover, a proper landscape management can be a relevant source of income for the multifunctional farm's activities (Vilain 2008). The agricultural production systems involve the use of materials, such as feed (S_{14_a}), fertilizers (S_{14_b}), water (S_{14_c}) and seeds (S_{14_e}) that characterizes the sustainability of the farm management (Vilain 2008). A high dependence from the outset, even the buying of animals (S_{14_c}), often causes a reduction of autonomy in making production, marketing and management decisions. It also alters the resilience of the system and the ability to adapt to economic, environmental and social changes.

The educational level (S_{15_a}) of the farm personnel is important for the cultural and social growth of agricultural areas (Van Cauwenbergh et al. 2007). As found

by Elfküh et al. 2012, there is a probable positive effect of educational level on the achievement of overall sustainability. The education of the workforce and the entrepreneur is also able to encourage openness to new knowledge and innovation in agriculture.

Case study

The survey was carried out on the region of the South Milan Agricultural Park. The park is an area located on the Po plain (northern Italy), in one of the most intensively agricultural regions in Europe (INEA 2014). This is an agricultural park that involves the peri-urban area around the city of Milan. It covers more than 40,000 ha of lowland where farms are characterized by intensive production systems, a wide range of land areas, livestock and economic dimensions. The main crops are maize, rice and grassland (Migliorini and Scaltriti 2012), while the main livestock are cattle, poultry and pigs. The high population density confers the typical attributes of peri-urban areas, such as fragmentation and high economic value of the land (Gaviglio et al. 2014b).

We carried out the sample stratification considering farm size, the main production and geographical location. The selection was also linked to the willingness of farmers to respond to interviews and to provide some administrative data (Briquel et al. 2001; Viglizzo et al. 2006).

Thirty farms with different breeding systems were selected: cattle (for milk or meat production), poultry, pigs, sheep and goats. Table 2 reports some of the main features of the sampled farms.

Data were collected using (i) interviews through questionnaire to farm personnel that provided an easy method to detect information, (ii) the Sistema Informativo Agricoltura Regione Lombardia (SIARL) database and (iii) estimations when not available from the other sources.

Results

The output of the method provides the values of each sub-indicator, indicator and component that contribute to the overall score of the social pillar. In relation to the objective of the research, the method still allows the use of different types of analysis.

Farm comparison by ranking of indicators

When the case study is focused on social sustainability aspects of individual farms, the method allows an in-depth analysis of farms through the evaluation of the basic indicators. Figure 2 shows a possible application of the results of two farms. Farm 1 has a conventional production system, the livestock are cattle for milk production and the land area is large. Farm 2 has the same characteristics but it also practises multifunctional activities, while farm 1 can be defined as non-multifunctional. These two farms are discussed as an example of how the method performs and how data can be interpreted to identify key actions to be adopted to improve farm performance. In general, farmers who have direct contact with consumers achieve higher social results that can also lead to higher environmental performance (Gafsi

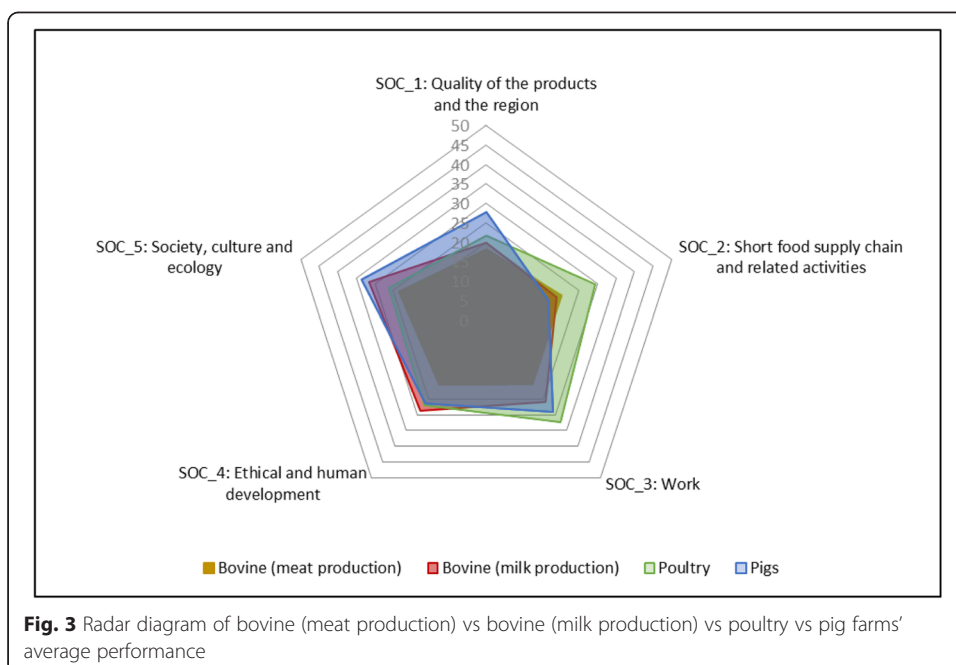
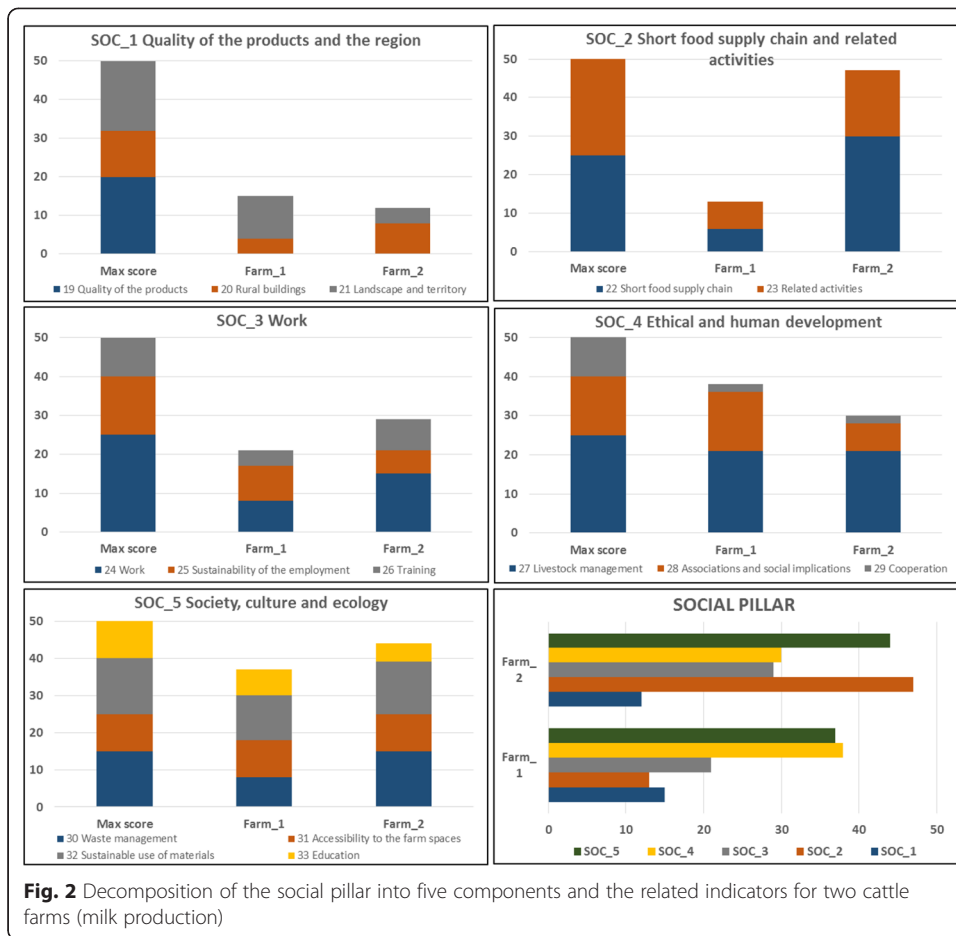
Table 2 Characteristics of the farms in the sample

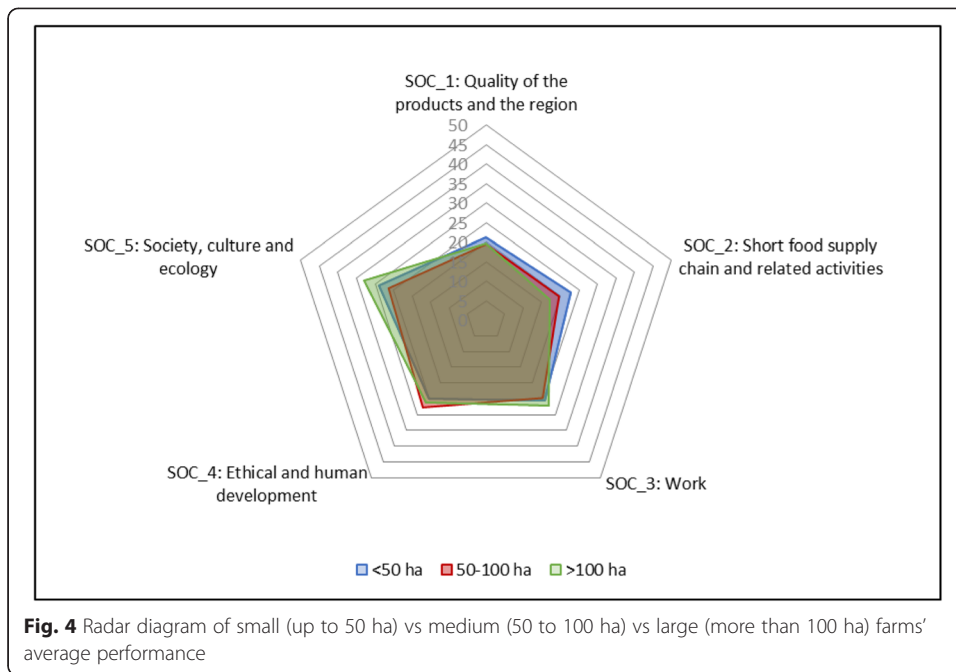
Farm characteristic	Quantity <i>N</i>	Percentage %
Type of breeding		
Bovine (meat prod.)	7	23.33
Bovine (milk prod.)	15	50.00
Poultry	4	13.33
Pigs	3	10.00
Sheep/goat	1	3.33
Land size—utilized agricultural area		
<50 ha	14	46.66
50–100 ha	9	30.00
>100 ha	7	23.33
Multifunctionality		
Non-multifunctional	9	30.00
Multifunctional	21	70.00
Type of production		
Conventional	25	83.33
Organic	5	16.66
Economic size—standard output (SO)		
SO < 100	13	43.33
100 < SO < 300	9	30.00
SO > 300	8	26.66
Total	30	100.00

and Favreau 2010). In our sample, farm 2 obtained higher scores in the *CS_2*, *CS_3* and *CS_5* components while farm 1 showed better scores in the *CS_4* component. The *short food supply chain related activities* component result is a direct consequence of the different characteristics on multifunctionality. The third component underlined the higher contribution of multifunctionality to employment in the rural context. On the contrary, the other components seem to be less dependent on the multifunctionality level. Their scores are probably more influenced by other farm characteristics such as land area, type of production or the management choices of each farm. However, both farms could improve their sustainability level in the *quality of the products and the region (CS_1)* and *work (CS_3)*. Farm 1 seems to show no interest in diversification of income and activities. Both farms showed high performance in ethical and human development (*CS_4*) and social, cultural and ecological sustainability (*CS_5*).

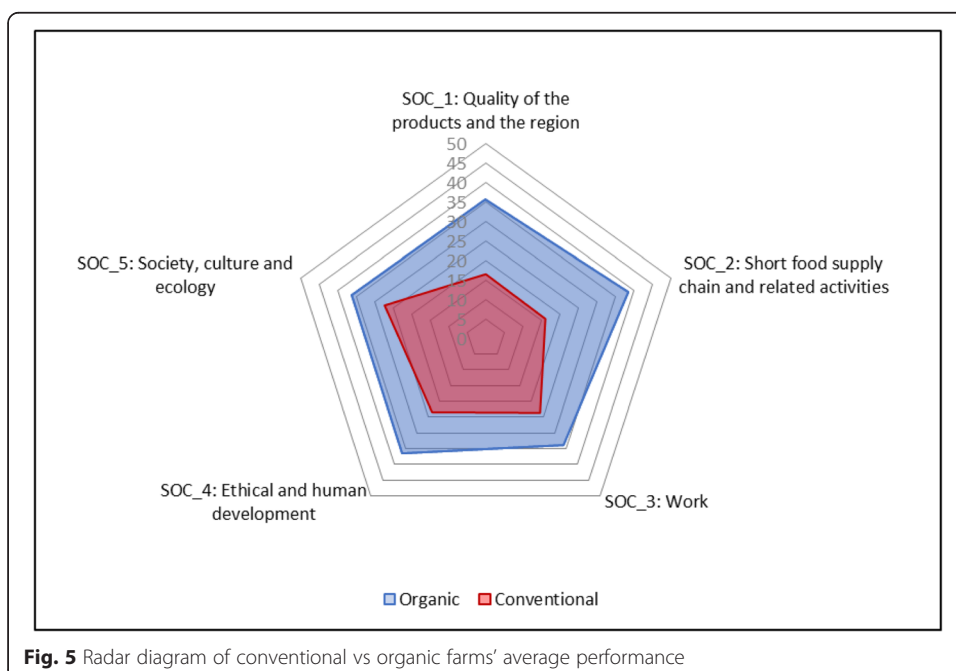
Farm comparison by aggregate component ranking

Radar diagrams are able to represent the overall performance of farms in the five components. This method is able to provide different approaches of farm ranking in relation to the sample features. The following figures show the farms' results, classified by livestock type (Fig. 3), land area (Fig. 4) and type of production (conventional vs organic) (Fig. 5).





In Fig. 3, the sample is divided into four categories of livestock type. Cattle farms (Fig. 3) showed generally lower values, in particular for meat production. These are often large farms that are not interested and do not have the necessary conditions to diversify production and to develop systems of short chain and related activities. In the *CS_2* component (*short food supply chain and related activities*), they reached an overall score of 19 and 20, respectively, for milk and meat production, while poultry



achieved 29.5 out of 50. This is probably because their product types are often sold to only a few large clients. On the contrary, pigs and especially poultry farms achieved the highest average values in almost all components, because of the diversification of production and income and the greater ability to offer sales services and other social functions. Similar results were noticed in the *CS_3* component (*work*). This is probably due to the higher level of multifunctionality of these farms, rather than a greater demand for workers with livestock, that leads to a higher contribution to employment. On the other hand, the *CS_4* (*ethical and human development*) and the *CS_5* (*society, culture and ecology*) components are characterized by higher scores in the cattle, particularly for milk production, and the pig samples. This result is rather interesting and suggests the need for further evaluation. The fact that the high level of knowledge requested for these types of systems could also influence education and culture or that, traditionally, these farmers are more involved in innovation processes are only two of many potential interpretations.

Figure 4 shows the results of the farms, aggregated by land area classes. Only a few differences were noted. In particular, the *CS_2* component seems to allow some relevant considerations; smaller farms tend to achieve higher results (22.9 out of 50) because of their predisposition to finding different types of income. The results of the *CS_3* component (*work*) seems to not be influenced by the land area of the farms. In the literature, these results have contradictory feedbacks. Our data is in accord with that of Häni et al. 2003, which did not find any substantial difference in the corresponding social component (*work condition*) of the RISE method. On the other hand, it is in disaccord with Gavrilesu et al. 2012 who, applying the IDEA method, attributed lower scores to family farms compared to legal entities mostly because of their rigidity in creating new jobs, low professional training and a lower minimum wage. Reig-Martinez et al. 2011 found an overall high level of sustainability, even social, of larger farms that could be explained through the opportunity to develop a more diversified range of crops and the generation of sufficient income that has permitted the continuity of agricultural activity. It can be supposed that these great differences are probably due to the high dissimilarity of the samples involved in the studies.

Finally, in Fig. 5, the performances of conventional and organic farms are compared. The differences between the two types of production were considerable: organic farms achieved higher scores in every component. The result of the *CS_1* component was expected, in consideration of the relevance of organic certification. The excellent results in the *short chain and the related activities* (*CS_2*) and *work* (*CS_3*) components are a direct consequence of their higher regard for multifunctionality. These aspects also involve the *CS_4* and *CS_5* components, as confirmation of the higher level of culture, education and training required for the practice of organic production.

Discussion and conclusions

A new method for the evaluation of the social sustainability of farms has been proposed. It provides easy-to-read results and information at different scales of interpretation. The method seems adequate to perform an evaluation of the social sustainability of agricultural activities allowing for different approaches, such as:

- 1) *Farm comparison by ranking of indicators and farm comparison by aggregate component ranking*: the comparison among farms, or groups of farms, that seems to be useful for policy-makers to identify agriculturally sustainable practices and the farm features that influence social sustainability, such as the type of animal production, land area and multifunctional activities, individual and detailed aspects of sustainability, as well as a high variability of aspects aggregated together to a more comprehensive vision of the evaluation;
- 2) *Single indicator evaluation*: the evaluation of a single or few aspects of social sustainability is able to provide synthetic information to farmers who want to evaluate the level reached by their farm and to know the ways to improve by comparison with other farms;
- 3) *Score evolution*: the temporal comparison looks at the evolution of the results achieved by farms over time and those that are predictable in the future. This approach was not calculated in this research, because of the lack of farm data for different years, but it is still worth being cited because of its potential multiple utilizations. For example, farmers could use it to evaluate the trend of their own work, while policy-makers, comparing the performance of different farms systems over time, could obtain useful information for decision-making.

The assessment of social sustainability involves some relevant issues, considering that the current objectives of policy-makers are dedicated to the improvement of the environment and the landscape (e.g. Greening's conditions in the new Common Agricultural Policy) and the social value of agriculture (e.g. the Measures of the Rural Development Plan).

From a practical point of view, the social pillar often involves themes highly dependent on the farms' characteristics that still seem hard to measure because of the lack of a shared knowledge. Because of this, we believe we have shown an approach able to avoid the problems of qualitative assessments. Nevertheless, we point out the need for periodical revision of the method, in order to keep in step with the evolution of the social issues of the rural sector and improve the quantity and quality of information provided. For example, as the indicators used in the analysis relates specifically to social condition inside the farms, an interesting improvement may involve the direct assessment of social impact of farms' activities in their territories.

In addition, the study underlined that the integration of the method with assessments of environmental and economic performances could be a valid way to the validation of the social dimension. Because of its particular sensitivity to the local situation, a further approach might involve the comparison of the results of farms located in different geographical contexts.

Endnotes

¹See Häni et al. (2003), Rasul and Thapa (2004), Van Cauwenbergh et al. (2007), Meul et al. (2008), Vilain et al. (2008), Zahm et al. (2008), Gómez-Limón and Fernandez (2010), Parachini et al. (2011), Bonneau et al. (2014).

Appendix

Table 3 Framework: sub-indicators, indicators and dimensions

Farm characteristic	Source	Code	Sub-indicator	Score range	Code	Indicator	Max score
Number of products involved in quality certified products	Questionnaire	S_1_a	Quality certified commodities	0–∞	S_1	Quality of the products	20
Number of quality certified products	Questionnaire	S_1_b	Quality certified food products	0–∞			
Number of vegetal organic products	Questionnaire	S_1_c	Vegetal organic production	0–∞			
Number of animal organic products	Questionnaire	S_1_d	Animal organic production	0–∞			
Aesthetics care of rural buildings	Questionnaire	S_2_a	Aesthetics of rural buildings	0–4	S_2	Rural buildings	12
Maintenance of the original use of the rural buildings	Questionnaire	S_2_b	Maintenance of the original use of the rural buildings	0–4			
Number of buildings built or renovate using “green techniques”	Questionnaire	S_2_c	Green building techniques	0–∞			
Maintenance of the farm green spaces	Questionnaire	S_3_a	Green maintenance	0–4	S_3	Landscape and territory	18
Presence of hedges, rows and wooded bands	Questionnaire	S_3_b	Hedges, rows and wooded bands	0–4			
Maintenance of the roads and paths	Questionnaire	S_3_c	Maintenance of the roads and paths	0–4			
Number of crop species/UAA (N/ha)	SIARL Database	S_3_d	Crop diversification	0–6			
Selling through direct sale (farm shop)	Questionnaire	S_4_a	Direct sales	0–3	S_4	Short food supply chain	30
Selling through online website, portals, etc.	Questionnaire	S_4_b	Online sales	0–1			
Income from short chain channels/income from conventional channels (%)	Questionnaire	S_4_c	Direct sales relevance	0–20			
Number of product sold through direct sale channels	Questionnaire	S_4_d	Product sold through direct sales	0–∞			
Sales through ethical purchasing groups	Questionnaire	S_4_e	Sales through ethical purchasing groups	0–3			
Sales through farmers’ markets	Questionnaire	S_4_f	Sales through farmers’ markets	0–2			
Sales to restaurant and shops	Questionnaire	S_4_g	Sales to restaurant and shops	0–2			
Sales to dining halls	Questionnaire	S_4_h	Sales to dining halls	0–3			
Social services (e.g. snow removal, composting, maintenance of private and public green areas)	Questionnaire	S_5_a	Social services	0–2	S_5	Related activities	20

Table 3 Framework: sub-indicators, indicators and dimensions (*Continued*)

Type of related activities (e.g. agritourism, B&B, restaurant)	Questionnaire	S_5_b	Type of related activities	0–10			
Educational farm, teaching	Questionnaire	S_5_c	Educational farm	0–5			
Presence of other social activities (e.g. disadvantaged people, children, social inclusion)	Questionnaire	S_5_d	Social activities	0–5			
UAA/annual amount of work (ha/h)	SIARL Database, Questionnaire	S_6_a	Annual Work Unit (AWU)	0–8	S_6	Work	25
Number of new employments (in the last 5 years)	Questionnaire	S_6_b	New employments	0–∞			
Number of farm products processing	Questionnaire	S_6_c	Farm products processing	0–∞			
Number of workers who resided in the farm buildings	Questionnaire	S_7_a	Workers who resides in the farm buildings	0–2	S_7	Sustainability of the employment	15
Number of local workers/ total number of employee (%)	Questionnaire	S_7_b	Local workers	0–1			
Number of female workers/ total number of workers (%)	Questionnaire	S_7_c	Female workers	0–4			
Age of the entrepreneur	Questionnaire	S_7_d	Youth entrepreneurship	0–4			
Youth workers/total number of workers (%)	Questionnaire	S_7_e	Youth employment	0–4			
Training courses for workers formation	Questionnaire	S_8_a	Training courses	0–∞	S_8	Training	10
Presence of trainees from schools and universities	Questionnaire	S_8_b	Trainees	0–2			
Training activities unfold in farm	Questionnaire	S_8_c	Training activities unfold in the farm	0–2			
Employment of disadvantaged people among the workers	Questionnaire	S_8_d	Disadvantaged people hired	0–5			
Number of animal species bred	SIARL Database	S_9_a	Animal species	0–∞	S_9	Livestock management	25
S_9_b1 Type of stable	Questionnaire	S_9_b	Cattle	0–20			
S_9_b2 Management by physiological phases							
S_9_b3 Systems of ventilation or heat reduction							
S_9_b4 Quality/quantity control of the feed							
S_9_b5 Attendance at birth							
S_9_b6 Systems of cleaning							
S_9_c1 Type of flooring	Questionnaire	S_9_c	Swine	0–20			
S_9_c2 Systems of ventilation or heat reduction							
S_9_c3 Handling systems of animals							
S_9_c4 Presence of materials of environmental enrichment							
S_9_d1 Type of stable	Questionnaire	S_9_d	Poultry	0–20			
S_9_d2 Systems of ventilation or heat reduction							

Table 3 Framework: sub-indicators, indicators and dimensions (*Continued*)

S_9_d3 Presence of openings and/or windows									
S_9_d4 Quality/quantity control of the feed									
S_9_e1 Outdoor spaces and pasturage	Questionnaire	S_9_e	Sheep and goats	0–20					
S_9_e2 Quality/quantity of the feed									
S_9_e3 Attendance at birth									
S_9_e4 Systems of cleaning									
Participation in associations	Questionnaire	S_10_a	Association	0–5	S_10	Associations and social implications	15		
Position of responsibility in associations	Questionnaire	S_10_b	Responsibility in the associations	0–5					
Participation in consortium	Questionnaire	S_10_c	Consortium	0–5					
The entrepreneur resides in farm	Questionnaire	S_10_d	Residence of the entrepreneur in farm	0–2					
Direct sales managed in cooperation with other farms and associations	Questionnaire	S_11_a	Direct sales managed in cooperation	0–2	S_11	Cooperation	10		
Selling of other farm's products in the direct sale	Questionnaire	S_11_b	Selling of other farm's products	0–2					
Agritourism managed in cooperation	Questionnaire	S_11_c	Agritourism managed in cooperation	0–2					
Farm structures and/or machineries managed in cooperation	Questionnaire	S_11_d	Farm structures and machineries managed in cooperation	0–2					
Workforce managed in cooperation	Questionnaire	S_11_e	Workers managed in cooperation	0–2					
Separate waste management	Questionnaire	S_12_a	Waste management	0–4	S_12	Waste management	15		
Use of recyclable materials for the farm activities	Questionnaire	S_12_b	Recyclable materials for the farm activities	0–4					
Use of compost	Questionnaire	S_12_c	Use of compost	0–3					
Mulching	Questionnaire	S_12_d	Mulching	0–4					
Presence of public farm spaces	Questionnaire	S_13_a	Public farm spaces	0–5	S_13	Accessibility to the farm spaces	10		
Presence of recreational farm spaces	Questionnaire	S_13_b	Recreational farm spaces	0–5					
Self produced feed/Feed requirement (%)	Questionnaire	S_14_a	Self-produced feed	0–5	S_14	Sustainable use of materials	15		
Self-produced fertilizer/fertilizer requirement (% of nitrogen)	Questionnaire	S_14_b	Self-produced fertilizers	–1–5					
Amount of livestock comeback	Questionnaire	S_14_c	Livestock comeback	0–4					
Use of methods for the water saving	Questionnaire	S_14_d	Saving water	0–2					
Self-produced seeds and plants	Questionnaire	S_14_e	Self-produced seeds and plants	0–2					
Schooling level of the farm workers	Questionnaire	S_15_a	Schooling level of the farm workers	0–10	S_15	Education	10		

Abbreviations

PASM, Parco Agricolo Sud Milano, in English “South Milan Agricultural Park”; PDO, Protected Denomination of Origin; SIARL, Sistema informativo Agricoltura Regione Lombardia

Acknowledgements

The authors would thank the Città Metropolitana di Milano, the Parco Agricolo Sud Milano and the Fondazione Cariplo for their support.

Authors' contributions

This paper is the result of the contribution between all Authors. The “Background” section is attributable to AP, the “Method: Framework” to AG, the “Method: The components” to ED, “Method: Case study” to MEM, the “Results and discussion” to MB and the “Conclusion” to all authors. All authors read and approved the final manuscript.

Authors' information

AG is Associate Professor at the University of Milan (Department of Health, Animal Science and Food Safety, VESPA). MB is PhD student at the University of Milan (Department of Health, Animal Science and Food Safety, VESPA). MME is PhD student at the University of Milan (Department of Health, Animal Science and Food Safety, VESPA). ED is Researcher at the University of Milan (Department of Health, Animal Science and Food Safety (VESPA)). AP is Full Professor at the University of Milan (Department of Health, Animal Science and Food Safety, VESPA).

Competing interests

This research was financed by the Fondazione Cariplo and it was supported by the Città Metropolitana di Milano and the Parco Agricolo Sud Milano.

Received: 30 October 2015 Accepted: 11 July 2016

Published online: 21 July 2016

References

- Bessière J (1998) Local development and heritage: traditional food and cuisine as tourist attractions in rural areas. *Sociol Rural* 38(1):21–34
- Bonneau M, Klauke TN, González J, Rydhmer L, Ilari-Antoine E, Dourmad JY, de Greef K, Houwers HWJ, Cinar MU, Fàbrega E, Zimmer C, Hviid M, van der Oever B, Edwards SA (2014) Evaluation of the sustainability of contrasted pig farming systems: integrated evaluation. *Animal* 8(12):2058–2068
- Briquel V, Vilain L, Bourdais J-L, Girardin P, Mouchet C, Viaux P (2001) La méthode IDEA (indicateurs de durabilité des exploitations agricoles): une démarche pédagogique. *Ingénieries EAT* 25:29–39
- Broom DM (2010) Animal welfare: an aspect of care, sustainability, and food quality required by the public. *J Vet Med Educ* 37(1):83–88
- Chatzinikolaou P, Manos B (2012) Review of existing methodologies and tools for measuring sustainability in rural areas. http://www.feem-project.net/belpasso_2012/files/studpapers/Paper_Chatzinikolaou.pdf
- Chinnici G, D'Amico M, Pecorino B (2002) A multivariate statistical analysis on the consumers of organic products. *Br Food J* 104(3/4/5):187–199
- Demartini E, Gaviglio A, Bertoni D (2015) Integrating agricultural sustainability into policy planning: a geo-referenced framework based on rough set theory. *Environ Sci Pol* 54:226–239
- Dimara E, Skuras D (2003) Consumer evaluations of product certification, geographic association and traceability in Greece. *Eur J Mark* 37(5/6):690–705
- Elfkhi S, Guldara I, Mtimet N (2012) Are Tunisian olive growing farms sustainable? An adopted IDEA approach analysis. *Span J Agric Res* 10(4):877–889
- Falguera V, Aliguer N, Falguera M (2012) An integrated approach to current trends in food consumption: moving toward functional and organic products? *Food Control* 26(2):274–281
- Fortun-Lamothe L, Combes S, Gidenne T (2009) Contribution of intensive rabbit breeding to sustainable development, a semi-quantitative analysis of the production in France. *World Rabbit Sci* 17:79–85
- Fotopoulos C, Krystallis A (2002) Organic product avoidance: reasons for rejection and potential buyers' identification in a countrywide survey. *Br Food J* 104(3/4/5):233–260
- Gafsi M, Favreau JL (2010) Appropriate method to assess the sustainability of organic farming systems. In: Proceedings of the 9th European IFSA Symposium, Vienna, 4-7 July 2010: 912-921.
- Gaviglio A, Pirani A (2015) Consumer perception of cured pork meats: the added value of the organic attribute food analysis. *Czech J Food Sci* 33(1):32–36
- Gaviglio A, Pirani A, Bertocchi M (2014a) Development of the environmental, social and economic sustainability in the peri-urban agricultural areas: governance opportunities in the South Milan Agricultural Park. *Adv Eng Forum* 11:417–423
- Gaviglio A, Bertocchi M, Silvestri S, Pirani A (2014b) The use of environmental, economic and social indicators as decision support for the advancement of farms towards Sustainability. In: Sustainability of the agri-food system: strategies and performances. Proceedings of the 50th SIDEA conference, Lecce, 26-28 September 2013: 215-225.
- Gaviglio A, Demartini E, Pirani A, Marescotti ME, Bertocchi M (2015b) National brands versus private labels versus niche products: a graphical representation of consumers' perception. Paper prepared for presentation at the EAAE-AAEA Joint Seminar ‘Consumer Behavior in a Changing World: Food, Culture, Society. March 25 to 27, 2015 Naples, Italy.
- Gavrilescu C, Toma C, Turtoi C (2012) Assessment of the sustainability of agricultural holdings in macroregion 1 using the IDEA method. *Bulletin UASVM Horticulture* 69(2):122–130
- Girardin P, Bockstaller C, van der Werf HMG (1999) Indicators: tools to evaluate the environmental impacts of farming systems. *J Sustain Agric* 13:5–21
- Gómez-Limón JA, Riesgo L (2009) Alternative approaches to the construction of a composite indicator of agricultural sustainability: an application to irrigated agriculture in the Duero basin in Spain. *J Environ Manag* 90(11):3345–3362

- Gómez-Limón JA, Sanchez-Fernandez G (2010) Empirical evaluation of agricultural sustainability using composite indicators. *Ecol Econ* 69(5):1062–1075
- Hamm U, Gronefeld F (2004) The European market for organic food: revised and updated analysis, The European market for organic food: revised and updated analysis
- Hand MS, Martinez S (2010) Just what does local mean. *Choices* 25(1):13–18
- Häni F, Braga F, Stämpfli A, Keller T, Fisher M, Porche H (2003) RISE, a tool for holistic sustainability assessment at the farm level. *Int Food Agribus Man Rev* 6(4):78–90
- Hansen JW (1996) Is agricultural sustainability a useful concept? *Agric Syst* 50(2):117–143
- INEA (2014) L'agricoltura Lombardia Conta 2014. <http://dspace.inea.it/handle/inea/1037>
- Jacobs M (1995) Sustainable development—from broad rhetoric to local reality. Conference Proceedings from Agenda 21 in Cheshire. Cheshire County Council, Document No. 493.
- Kihlberg J, Risvik E (2007) Consumers of organic foods—value segments and liking of bread. *Food Qual Prefer* 18(3):471–481
- Littig B, Griessler E (2005) Social sustainability: a catchword between political pragmatism and social theory. *Int J Sustain Dev* 8(1/2):65–79
- Lockie S (2009) Responsibility and agency within alternative food networks: assembling the “citizen consumer”. *Agric Hum Values* 26(3):193–201
- Magnusson MK, Arvola A, Hursti UKK, Åberg L, Sjöden PO (2003) Choice of organic foods is related to perceived consequences for human health and to environmentally friendly behaviour. *Appetite* 40(2):109–117
- Makatouni A (2002) What motivates consumers to buy organic food in the UK? Results from a qualitative study. *Br Food J* 104(3/4/5):345–352
- Mazzocchi C, Sali G, Corsi S (2013) Land use conversion in metropolitan areas and the performance of agriculture: Sensitivity Index of Agricultural Land (SIAL), a tool for territorial analysis. *Land Use Policy* 35:155–162
- Meul M, Van Passel S, Nevens F, Desein J, Rogge E, Mulier A, Van Hauwermeiren A (2008) MOTIFS: a monitoring tool for the integrated farm sustainability. *Agron Sustain Dev* 28:321–332
- Migliorini P, Scaltriti B (2012) Evaluation of sustainability of the farms in the Agricultural Park of South Milan and their production chain. Special issue *New Medit* 4:53–56
- Omann I, Spangenberg JH (2002) Assessing social sustainability. The social dimension of sustainability in a socio-economic Scenario. Presented at the 7th Biennial Conference of the International Society for Ecological Economics” in Sousse (Tunisia), 6–9 March 2002.
- Pacini C, Giesen G, Wossink A, Omodei-Zorini L, Huirne R (2004) The EU’s Agenda 2000 reform and the sustainability of organic farming in Tuscany: ecological-economic modelling at field and farm level. *Agr Syst* 80(2):171–197
- Paracchini ML, Pacini C, Jones MLM, Pérez-Soba M (2011) An aggregation framework to link indicators associated with multifunctional land use to the stakeholder evaluation of policy options. *Ecol Indic* 11(1):71–80
- Paracchini ML, Bulgheroni C, Borreani G, Tabacco E, Banterle A, Bertoni D, Rossi G, Parolo G, Origgi R, De Paola C (2015) A diagnostic system to assess sustainability at a farm level: The SOSTARE model. *Agric Syst* 133:35–53
- Pieniak Z, Aertsens J, Verbeke W (2010) Subjective and objective knowledge as determinants of organic vegetables consumption. *Food Qual Prefer* 21(6):581–588
- Platania M, Privitera D (2006) Typical products and consumer preferences: the ‘soppressata’ case. *Br Food J* 108(5):385–395
- Rasul G, Thapa GB (2004) Sustainability of ecological and conventional agricultural systems in Bangladesh: an assessment based on environmental, economic and social perspectives. *Agric Syst* 79:327–351
- Reig-Martinez E, Gómez-Limón JA, Picazo-Tadeo AJ (2011) Ranking farms with a composite indicator of sustainability. *Agric Econ* 42:561–575
- Rigby D, Woodhouse P, Young T, Burton M (2001) Constructing a farm level indicator of sustainable agricultural practice. *Ecol Econ* 39:463–478
- Santini F, Paloma SG (2013) Short food supply chains and local food systems in the EU: a state of play of their socio-economic characteristics, Publications Office
- Seyfang G (2006) Ecological citizenship and sustainable consumption: examining local organic food networks. *J Rural Stud* 22(4):383–395
- Singh RK, Murty HR, Gupta SK, Dikshit AK (2009) An overview of sustainability assessment methodologies. *Ecol Indic* 9(2):189–212
- Smith CS, McDonald GT (1998) Assessing the sustainability of agriculture at the planning stage. *J Environ Manag* 52:15–37
- Thiollet-Scholts M, Bockstaller C (2015) Using indicators to assess the environmental impacts of wine growing activity: The INDIIGO® method. *Eur J Agron* 62:13–25
- Van Cauwenbergh N, Biala K, Biolders C, Brouckaert V, Franchois L, Garcia Ciudad V, Hermy M, Mathijs E, Muys B, Reijnders J, Sauvenier X, Valckx J, Vanclooster M, Van der Veken B, Wauters E, Peeters A (2007) SAFE—a hierarchical framework for assessing the sustainability of agricultural systems. *Agric Ecosyst Environ* 120(2–4):229–242
- Van Der Werf HMG, Petit J (2002) Evaluation of the environmental impact of agriculture at the farm level: a comparison and analysis of 12 indicator based methods. *Agric Ecosyst Environ* 93(1):131–145
- Van Ittersum K, Meulenbergh MT, Van Trijp H, Candel MJ (2007) Consumers’ appreciation of regional certification labels: a Pan-European study. *J Agric Econ* 58(1):1–23
- Vanhonacker F, Lengard V, Hersleth M, Verbeke W (2010) Profiling European traditional food consumers. *Br Food J* 112(8):871–886
- Verbeke W, Pieniak Z, Guerrero L, Hersleth M (2012) Consumers’ awareness and attitudinal determinants of European Union quality label use on traditional foods. *Bio-based Appl Econ* 1(2):213–229
- Verlegh PW, Steenkamp JBE (1999) A review and meta-analysis of country-of-origin research. *J Econ Psychol* 20(5):521–546
- Viglizzo EF, Frank F, Bernardos J, Buschiazzo DE, Cabo S (2006) A rapid method for assessing the environmental performance of commercial farms in the Pampas of Argentina. *Environ Monit Assess* 117:109–134
- Vilain L (2008) La méthode IDEA. Edicagri éditions, France
- Von Wiren-Lehr S (2001) Sustainability in agriculture—an evaluation of principal goals-oriented concepts to close the gap between theory and practice. *Agric Ecosyst Environ* 93:131–145
- Wells S (2001) Pandora’s seed: the unforeseen cost of civilization. Random House, New York, New York, USA

- Zahm F, Viaux P, Girardin P, Vilain L, Mouchet C (2008) Assessing farm sustainability with the IDEA method—from the concept of farm sustainability to case studies on French farms. *Sustain Dev* 16:271–281
- Zanoli R, Naspetti S (2002) Consumer motivations in the purchase of organic food: a means end approach. *Br Food J* 104(8):643–653
- Zimmerer KS, Bassett TJ (2003) *Political ecology: an integrative approach to geography and environment-development studies*. Guilford Press.

Submit your manuscript to a SpringerOpen[®] journal and benefit from:

- ▶ Convenient online submission
- ▶ Rigorous peer review
- ▶ Immediate publication on acceptance
- ▶ Open access: articles freely available online
- ▶ High visibility within the field
- ▶ Retaining the copyright to your article

Submit your next manuscript at ▶ springeropen.com
