

Bachmann, Ronald; Cim, Merve; Green, Colin

Working Paper

Long-run patterns of labour market polarisation: Evidence from German micro data

DICE Discussion Paper, No. 292

Provided in Cooperation with:

Düsseldorf Institute for Competition Economics (DICE), Heinrich Heine University Düsseldorf

Suggested Citation: Bachmann, Ronald; Cim, Merve; Green, Colin (2018) : Long-run patterns of labour market polarisation: Evidence from German micro data, DICE Discussion Paper, No. 292, ISBN 978-3-86304-291-2, Heinrich Heine University Düsseldorf, Düsseldorf Institute for Competition Economics (DICE), Düsseldorf

This Version is available at:

<https://hdl.handle.net/10419/179037>

Standard-Nutzungsbedingungen:

Die Dokumente auf EconStor dürfen zu eigenen wissenschaftlichen Zwecken und zum Privatgebrauch gespeichert und kopiert werden.

Sie dürfen die Dokumente nicht für öffentliche oder kommerzielle Zwecke vervielfältigen, öffentlich ausstellen, öffentlich zugänglich machen, vertreiben oder anderweitig nutzen.

Sofern die Verfasser die Dokumente unter Open-Content-Lizenzen (insbesondere CC-Lizenzen) zur Verfügung gestellt haben sollten, gelten abweichend von diesen Nutzungsbedingungen die in der dort genannten Lizenz gewährten Nutzungsrechte.

Terms of use:

Documents in EconStor may be saved and copied for your personal and scholarly purposes.

You are not to copy documents for public or commercial purposes, to exhibit the documents publicly, to make them publicly available on the internet, or to distribute or otherwise use the documents in public.

If the documents have been made available under an Open Content Licence (especially Creative Commons Licences), you may exercise further usage rights as specified in the indicated licence.

DISCUSSION PAPER

No 292

Long-run Patterns of Labour Market Polarisation: Evidence from German Micro Data

Ronald Bachmann,
Merve Cim,
Colin Green

May 2018

IMPRINT

DICE DISCUSSION PAPER

Published by

düsseldorf university press (dup) on behalf of
Heinrich-Heine-Universität Düsseldorf, Faculty of Economics,
Düsseldorf Institute for Competition Economics (DICE), Universitätsstraße 1,
40225 Düsseldorf, Germany
www.dice.hhu.de

Editor:

Prof. Dr. Hans-Theo Normann
Düsseldorf Institute for Competition Economics (DICE)
Phone: +49(0) 211-81-15125, e-mail: normann@dice.hhu.de

DICE DISCUSSION PAPER

All rights reserved. Düsseldorf, Germany, 2018

ISSN 2190-9938 (online) – ISBN 978-3-86304-291-2

The working papers published in the Series constitute work in progress circulated to stimulate discussion and critical comments. Views expressed represent exclusively the authors' own opinions and do not necessarily reflect those of the editor.

Long-run Patterns of Labour Market Polarisation: Evidence from German Micro Data

Ronald Bachmann (RWI, DICE/Heinrich-Heine-Universität Düsseldorf, and IZA)
RWI, Hohenzollernstr. 1-3, 45128 Essen, Germany. E-mail: bachmann@rwi-essen.de.

Merve Cim (RWI and RGS)
RWI, Hohenzollernstr. 1-3, 45128 Essen, Germany. E-mail: cim@rwi-essen.de.

Colin Green (Norwegian University of Science and Technology)
Department of Economics, Norwegian University of Science and Technology, Dragvoll,
N-7491 Trondheim, Norway, e-mail: Colin.Green@ntnu.no.

May 2018

Abstract

The past four decades have witnessed dramatic changes in the structure of employment. In particular, the rapid increase in computational power has led to large-scale reductions in employment in jobs that can be described as intensive in routine tasks. These jobs have been shown to be concentrated in middle skill occupations. A large literature on labour market polarisation characterises and measures these processes at an aggregate level. However to date there is little information regarding the individual worker adjustment processes related to routine-biased technological change. Using an administrative panel data set for Germany, we follow workers over an extended period of time and provide evidence of both the short-term adjustment process and medium-run effects of routine task intensive job loss at an individual level. We initially demonstrate a marked, and steady, shift in employment away from routine, middle-skill, occupations. In subsequent analysis, we demonstrate how exposure to jobs with higher routine task content is associated with a reduced likelihood of being in employment in both the short term (after one year) and medium term (five years). This employment penalty to routineness of work has increased over the past four decades. More generally, we demonstrate that routine task work is associated with reduced job stability and more likelihood of experiencing periods of unemployment. However, these negative effects of routine work appear to be concentrated in increased employment to employment, and employment to unemployment transitions rather than longer periods of unemployment.

JEL codes: J23, J24, J62, E24

Keywords: polarization, occupational mobility, worker flows, tasks.

We thank Peggy Bechara, Britta Matthes, Joscha Schwarzwälder (Bertelsmann Foundation) and participants at the 2018 AEA meetings, the 2016 IWAAE conference, and the 2016 Scottish Economic Society meetings as well as seminars at IAB, RWI, and the University of Dusseldorf for helpful comments and suggestions, and Anja Rösner and Jan Wergula for excellent research assistance. We also gratefully acknowledge financial support from the Bertelsmann Foundation.

1 Introduction

The past four decades have seen dramatic changes in the structure of employment. As documented by Autor et al. (1998), the US witnessed a large reduction in the employment of middle skill workers. At the same time, there have been increases in the employment of high skill, and to some extent, low skill workers. This pattern of employment polarisation has also been demonstrated for the UK by Goos/Manning (2007) and across Europe by Goos et al. (2009), and is likely to continue in the future (Autor 2015).

These changes have been ascribed to the fact that these middle skill jobs involved tasks that were intensively routine in nature. As a result, they were most readily substituted with capital as computer technology became cheaper (Autor et al. 2003). This same technology is factor augmenting to high skilled workers which in turn leads to a growth of complementary, high skill, non-routine intensive jobs. Along these lines, Autor et al. (1998) demonstrate that increased employment of high-skill labour largely occurred within computer intensive industries. The growth in low-skill employment that has occurred has also been concentrated in jobs that are not routine intensive (e.g. personal services). One argument is that this reflects a compositional change in consumption due to the increase in high skill workers (Mazzolari, Ragusa 2013).

This literature provides a compelling view of the impact of structural change on the labour market over the past four decades. With this said, the existing empirical evidence largely takes the form of comparisons of decade upon decade employment numbers and shares at aggregated levels of occupational detail. Until relatively recently, the dynamics of employment transitions implicit in the process of polarisation have been inferred from comparisons of these cross-sectional changes. An almost wholly US literature has developed that uses micro data to examine the contribution of different flows to the evolution of employment polarisation. For instance, both Jaimovich/Siu (2012) and Smith (2013) highlight the decline in inflows to routine work particularly from unemployment. The latter paper in addition provides some evidence of increases in inflows into high and low skilled employment, and more generally that overall job finding rates into non-routine jobs have been rising. Along similar lines, Cortes et al. (2014) examine which specific labour market flows can account for rising job market polarization. They find that the disappearance of routine jobs is mainly due to falling worker flows from both unemployment and non-participation to routine employment, and to rising worker flows from routine employment to non-participation. For Germany, Bechara (2017) finds that the employment contraction in routine occupations is largely attributable to young workers and women who increasingly leave routine-intensive jobs and subsequently enter other occupations or into non-participation.¹

In practice, little is known regarding the actual process of job-loss and reemployment at the individual worker level, particularly the nature of individual worker transitions that result from the reduction in demand for routine intensive work. This seems an important gap in our knowledge as any potential losses due to this pattern of structural change is likely to be most concentrated among routine workers. An exception is the recent paper by Cortes (2016) who uses the Panel Studies of Income Dynamics (PSID) to look at long-run effects of labour-market polarization in the US. He finds evidence of selection on ability for workers switching out of routine jobs. In particular, while low-ability routine workers are more likely to switch to non-routine manual jobs, high-ability routine workers are more likely to switch to non-routine cognitive jobs. With respect to wages, his results suggest that workers staying in routine jobs

¹ In contrast to our paper, Bechara (2017) focuses on occupational inflow and outflow rates at the 2-digit level as well as differences between men and women in this context.

experience less wage growth than workers staying in any other type of occupation. This is characterised by a reduction in the wage premium for routine occupations of 17% between 1972 and the mid-2000s. Furthermore, Cortes et al. (2014) use CPS data to analyse what role labour market flows play for the disappearance of routine jobs in the US since the 1980s.

This paper uses administrative data for Germany to characterise the individual level patterns underlying the process of labour market polarization. Our data is particularly well suited to addressing these issues as it allows us to follow individuals across a long span of time. Specifically we can examine individual level transitions but also how these have changed over the past four decades. In doing so we provide evidence on the secular pattern of polarisation over a long time period at a high frequency of observation. As a result, we can characterise the evolution of polarisation over time. In addition, we provide evidence on a range of individual level job transitions. Initially, we provide a range of descriptive evidence on the relative job stability, unemployment experiences and job-to-job transitions for routine task intensive workers. We then move to multivariate analysis in an attempt to assess the role of compositional effects. Finally, we provide suggestive evidence on welfare losses, in terms of unemployment duration and job instability related to employment polarisation.

The contribution of our paper to the existing literature on routinisation is therefore twofold. First, we are, to the best of our knowledge, the first to provide encompassing micro evidence on the long-run effects of labour-market polarization for a European country, thus complementing the evidence provided by Cortes (2016) and Cortes et al. (2014) for the US. Second, our analysis goes beyond the existing literature by providing detailed evidence on the nature of the labour market experiences of routine workers, also taking into account occupation-specific measures of task intensity that vary over time. This type of analysis is only possible with the type of panel data at our disposal, which we complement with survey information on occupational task content, i.e. routine intensity.

The paper is structured as follows. In the next section, we provide information on the data used including the administrative data set as well as the data on the task intensity of different occupations. The third section presents the empirical methodology, while the fourth section reports and discusses the results, and the final section summarizes and concludes the discussion.

2 Data

2.1 Worker-level data

Our main data source is the Sample of Integrated Labour Market Biographies (SIAB) for 1975-2014, which is provided by the Institute for Employment Research (IAB). The SIAB is a representative 2% random sample of the Integrated Employment Biographies (IEB) which contains the labour market history of all individuals in Germany that are employed subject to social security contributions, those in part-time employment not earning enough to make social security contributions, those receiving unemployment or social benefits, and those officially registered as job-seeking at the German Federal Employment Agency or participating in programs of active labour market policies. Civil servants and self-employed workers are not included in the data.² The information on labour market states is exact to the day. A detailed description of the Sample of Integrated Labour Market Biographies is provided in vom Berge et al. (2013).

² *Caliendo/Uhlendorff (2008) find that only 3% of all non-employed workers and only 1% of all wage-employed workers in Germany enter the state of self-employment annually, implying that transitions into and out of this state only play a minor role for our analyses.*

The SIAB provides information on workers' employment status, age, gender, occupation and education as well as limited information on establishment characteristics (economic sector, establishment size). This data set is representative for all dependent-status workers, and contains information on all employment and unemployment spells of the workers covered. From this sample, we further exclude, apprentices, trainees, homeworkers, and individuals older than 65.³ In line with previous research we focus on male full-time workers aged 18-65. As our period (1975-2014) covers the pre-unification period, we focus on West Germany only.

The data allows us to characterise individuals as being in one of three labour market states at any point in time: employment covered by social security (E), unemployment with benefit receipt (U), and non-participation (N). Non-participants are those individuals not recorded in the data sets. Therefore, this state includes those workers out of the labour market, as well as workers not covered by social security legislation, e.g. civil servants and self-employed workers.

Because of the way the data are collected, both establishments' reports of a new employee and individuals' notifications of moving into or out of unemployment may not be exactly consistent with the actual change of labour market state. For example, workers might report to the unemployment office only a few days after they are laid off. We take this potential measurement error into account in the following way: If the time lag between two employment spells at different establishments does not exceed 30 days, this is defined as a direct transition between the two states recorded. We count it as an intervening spell of non-employment if the time interval between the two records is larger than 30 days.

Since the data set used contains daily information on the employment and unemployment history of every individual in the sample, it is possible to calculate worker flows taking into account every change of labour market state that occurs to an individual within a given time period. We are thus able to compute the flows between employment and non-employment, as well as direct job-to-job transitions (EE flows) using the establishment identification number.

2.2 Measuring routine intensity and related worker flows

The analysis of the employment consequences of routinisation requires the classification of employment into occupations according to task types. In the literature there exist two broad approaches to this. The first is a parsimonious approach as per Goos/Manning (2007), Goos et al. (2009) and Cortes (2016) whereby workers are assigned to routine, non-routine manual and non-routine cognitive categories based on groups of standardised occupational codes. A chief virtue of this approach is that it does not require the measurement of task content at an occupational level, while using relatively aggregated occupational information makes this approach more robust to periodic reclassifications of disaggregated occupational classifications. This comes at the potential cost of the introduction of measurement error due both to within-occupational variation in task intensity, and changes in occupational task intensity over time.

The second approach, as in Autor et al. (2003), relies on occupational task analysis from additional sources to classify jobs in terms of task intensity. In the US context this comes from the Dictionary of Occupation Titles (DOT) (and later O*NET) information on the task composition of occupations. This information is generated from periodic expert evaluations of job task content. This approach more clearly mitigates some of the issues of measurement error inherent

³ *Excluding part-time workers from our sample and treating them as non-participants artificially increases our transitions into and out of non-participation. However, as the SIAB data only distinguish between two categories of part-time employment and the number of working hours can be relatively low, we decided to focus on core full-time workers.*

in the first approach. However, the relative infrequency of DOT still leads to likely variation between the defined task content of an occupation and what tasks any given worker's job is likely to actually consist of as one moves further away from the DOT date. One of the aims of the O*NET replacement was to limit this information lag by providing more frequent job task information.

In the German context, the main approaches used in the literature to date can be viewed as alternatives of this DOT approach where, instead of expert evaluations, survey-based information on task content is used. This reflects the availability of data from BIBB/IAB and BIBB/BAuA Employment Surveys (herein BIBB data) that provide a representative sample of workers and include questions regarding the task content of jobs.⁴ In previous work, three different task intensity measures have been generated using this data. Spitz-Oener (2006) and Antonczyk et al (2009) generate different measures of relative task intensity at occupation levels using worker self-reports on the task content of their work. While Baumgarten (2015) computes an alternative measure of routinisation focusing on the use of tools on the job.

We follow the approach of Antonczyk et al (2009) and categorize the activities employees perform at the workplace into routine (R), non-routine cognitive (NRC) and non-routine manual tasks (NRM). This is computed for 54 occupational categories following Tiemann et al. (2008), and for each occupation-time period combination provides a R, NRC and NRM share that sums to 100%. This measure can be expressed as:

$$T_{ij,t} = \frac{\text{number of activities in category } j \text{ performed by } i \text{ in cross section } t}{\text{total number of activities performed by } i \text{ over all categories at time } t} \quad (1)$$

As an example, for routine tasks, this implies taking the number of routine tasks performed by a person at a specific point in time, and relating this to the total number of activities performed in all task categories (routine, non-routine manual and non-routine cognitive). Taking the averages of individual task intensities provides a continuous measure of Routine Task Intensity (RTI) over time for a given occupational group.⁵

A key advantage of this data is that the survey is conducted at regular six to seven year intervals throughout our period of analysis (1979, 1985/86, 1991/92, 1998/99, 2006 and 2012). This allows us to have time-varying task intensity by occupational groups. As mentioned above, earlier literature has tried to explain the long-term relative decline of different task intensities, while other research has focused on quite short periods. In both cases this leads naturally to an approach where occupation task intensity is fixed at an initial or pre-sample period. A focus of our paper is how worker outcomes at a particular time period are influenced by exposure to different task mixes. Hence, it seems inappropriate to, for instance, examine outcomes of workers in the 1990s based on the task intensity of their occupation fixed at 1979 values. Our main approach is to use the BIBB data to update occupation task intensities over time. This has the advantage that worker outcomes are evaluated more closely to their actual task composition at the time of observation.

A cost of this approach is that, when compared to using initial task values only, there is the potential of marked discontinuities in the task intensity shares at BIBB survey dates. These are not large in practice in terms of continuous measures of task intensity. However, any analysis

⁴ Details about how we deal with the different waves of the task data set are spelt out in the appendix.

⁵ In unreported estimates we use the alternative approach set out by Spitz-Oener (2006). The nature of our results are largely unaffected by this.

that, like previous work, is based on categorising workers into different, discrete task intensity groups (e.g. R, NRM and NRC) faces a naturally greater probability of discontinuities at BIBB survey dates in the proportion of occupations (and hence workers) belonging to any given task group. We use a number of approaches to dealing with this issue, but stress that none of these choices ‘drive’ our results. Initially we provide descriptive evidence that aims at being comparable with longer, but ‘snapshot’ based, evidence for the US, UK and elsewhere. In doing so, we adopt a similar approach to this particular strand of the literature and fix occupations into three categories at the start of the data. These categories are:

- i. Routine (R): Administrative support, operatives, maintenance and repair occupations, production and transportation occupations (among others).
- ii. Non-Routine Cognitive (NRC): Professional, technical, management, business and financial occupations.
- iii. Non-Routine Manual (NRM): Service workers.

Our next step is to try to examine the evolution of worker outcomes over the periods, focusing on two sets of complementary outcomes. First, we seek to provide results on the effect of RTI on the employment probabilities of workers over the short run (one year) and long run (five years). Note that this means that our analyses using the RTI measure start in 1979, whereas the analyses using the three task groups start in 1975; furthermore, the analyses following individual workers for 5 years stop in 2008 in order to avoid the problem of right-censoring. We then subsequently extend this to duration modelling of the effect of RTI on labour market transitions more broadly. In both of these cases, we use RTI as a continuous measure. We deal with the issue of revisions of occupational task shares across BIBB waves by splitting our data into a number of BIBB-Survey data specific periods (e.g. 1979-1984; 1985-1991; 1992-1998; 1999-2005; 2006-2011 and 2012 to present). This allows us to provide evidence on how the effect of task intensity on worker outcomes has changed over the past 3 decades. We again stress, however, that the main thrust of our findings are not materially affected by alternative approaches such as pooling our data across the whole survey period.

3 Methodology

3.1 Descriptive Evidence

We first provide descriptive evidence that aims to paint a picture of the labour market situation of workers according to the task content of their work. Specifically, we provide univariate descriptive statistics on the evolution of task-specific employment shares and unemployment rates, and transition rates between different labour market states and task categories. We exploit a particular strength of our data and examine how these patterns have changed over a long period.

In the first step of our descriptive analysis, we provide evidence on employment stocks for the three task categories. To aid comparability over time we adopt a variant of the classification approach used by Cortes (2015) and group occupations into task categories that are fixed across time (see Appendix tables A1 to A3). This has the additional benefit of allowing us to more readily compare changes in occupational/task structure in Germany to existing evidence for the US and elsewhere. We then turn to the BIBB data to provide evidence where, as described above, we allow the task shares of given occupations to vary reflecting underlying changes in job content over time. The distribution of each task type for each wave is provided using the occupation-level employment shares from the BIBB survey data. Finally, we take the occupational level task measures generated from the BIBB data to the SIAB data. This allows the task shares of employment to vary in between BIBB waves according to annual changes in

occupational employment. This, in theory, allows for any cyclical variations in task shares to be apparent. In practice, all three approaches provide an estimate of the share of tasks in the labour market at a point in time. As we discuss in the results, these are not always entirely congruent, but provide similar views on the change in task shares over the entire period.

We then proceed from this to examine worker transitions between labour market states, again paying particular attention to the three task groups. In order to do so, we first display a transition matrix between workers employed in the different task groups and unemployed workers who were previously employed in these three task groups. This provides evidence on the probability of a switch between task groups, both directly (job-to-job) and indirectly (through unemployment). Next, we compute the probability of job exit by task group over time. This yields a measure of job stability for routine, non-routine manual and non-routine cognitive workers. We then examine where workers who have separated from their previous job, and who make a direct job-to-job transition, end up in terms of task category. In a similar vein, we provide evidence on unemployed workers according to the task affiliation in their previous job. We thus show the evolution of the unemployment exit rates by task type over time, as well as the destination task groups where workers end up.

3.2 Econometric Analysis

With this as initial information, we then examine how the employment probabilities of workers with a given RTI evolve over the short (one year) and medium (five years) term. In order to investigate the determinants of these employment probabilities, we estimate logit models of the form

$$Pr[y_{it} = 1|x_{it}, \beta, \alpha, \gamma] = \Lambda(\alpha_i + RTI_{it}\beta + x_{it}\gamma) \quad (2)$$

where $\Lambda(\cdot)$ is the logistic cdf with $\lambda(z) = ez/(1 + ez)$. X_{it} is a vector of individual- and job-specific variables including age, skill level, economic sector, firm size, region (Bundesland) fixed effects, month dummies, as well as the regional unemployment rate. To avoid issues regarding discontinuous changes in RTI due to changes in BIBB based classifications we stack observations from each BIBB year (1979, 1985, 1992, 1999, 2006, 2012). As a result, RTI is the routine task intensity of it th individuals job at time t described in equation (1) above. β is the coefficient of interest and provides the conditional (average) effect of RTI on an individual's future employment probability. We include BIBB wave dummies in all models.

In the empirical results we extend (2) in a number of ways. One main extension relates to time variation and non-linearities in task effects. Estimates of β provide the average effect of RTI on employment outcomes of workers across our period of observation. A main interest is in how this has changed over time. To examine this we first interact RTI with a time trend. This provides an estimate of changes in the employment effect of RTI over time. We subsequently include industrial sector – time interactions to isolate this RTI-time effect separately from sector – year specific shocks to employment.

Any differential patterns in employment by task group that are revealed reflect a range of underlying types of labour market transitions, including those related to job loss and re-employment patterns. To examine this we again provide descriptive evidence related to job loss rates and re-employment rates by task group. This is provided overall and by decade, and with a focus on the extent to which re-employment occurs within the same task type or via transitions to alternative types. This is important as it provides evidence of where routine job workers go after job loss. Do they experience lower re-employment probabilities (and hence are more likely to experience longer unemployment durations)?

Examining this again leads directly into multivariate analysis. The most appropriate approach is to estimate models that recognise the underlying duration nature of the data. This leads to the estimation of hazard rate models. As our dataset contains daily information on individual workers' employment histories, we use a semi-parametric specification in continuous time, i.e. a piecewise-constant exponential (PCE) model. As the PCE model is a proportional hazard model, the conditional hazard rate of leaving employment $\lambda(t|X, RTI)$ satisfies the separability condition:

$$\lambda(t|x_{it}, RTI_{it}) = \lambda_0(t)\exp(\gamma x_{it} + \beta RTI_{it}) \quad (3)$$

where X is a vector of individual, potentially time-varying, characteristics, and λ_0 denotes the baseline hazard. Again, RTI measures the task intensity of the it h worker's job and β is the parameter of interest. The PCE model assumes that the baseline hazard is constant within a specified time interval, and thus follows a step function with k segments.

$$\lambda_0(t) = \lambda_j, \quad a_{j-1} \leq t < a_j, \quad j = 1, \dots, k. \quad (4)$$

We specify six such segments: 0 to 30 days of employment duration, 31 to 182 days, 183 to 365 days, 366 to 1095 days, 1096 to 2920 days, and more than 2920 days. We estimate (3) separately for job to job, job to unemployment transitions, and unemployment to job transitions. The first set of estimates provides an estimate of the impact of RTI on overall job stability. The second relates to the potentially most negative outcome, job loss coincident with unemployment. While the last provides estimates of the effect of RTI on ongoing difficulties in re-entering employment. An issue with this last set of estimates is how to define an unemployed individual's RTI. Our approach is to use the RTI of their last employment spell. This has the added effect that we can only estimate these models for unemployed individuals who we observe in our data in a job prior to this.

Even though we control for a wide array of observable characteristics, the hazard rates of observationally equivalent individuals may still differ from each other. Ignoring such unobserved heterogeneity in duration models produces incorrect results (cf. Lancaster 1990). To account for unobserved heterogeneity, the proportional hazard model is extended in robustness checks to allow for a multiplicative unobserved heterogeneity term u , which yields a mixed proportional hazard model.⁶ The hazard function then becomes:

$$\lambda(t|x_{it}, RTI_{it}, u) = \lambda_0(t)\exp(\gamma x_{it} + \beta RTI_{it}) \quad (5)$$

where u follows a Gamma distribution (Abbring and van den Berg, 2007) and is assumed to be independent of regressors and censoring time. The heterogeneity term is shared across different spells of a given individual, causing observations within groups to be correlated. Including unobserved heterogeneity basically leaves the estimation results unchanged.

In all duration models our control vector, X , largely follows that for (2). We include industry, region, year fixed effects and regional unemployment rates to capture differences in economic conditions over time and across regions. Again, we explore time variation and non-linearities in the effect of exposure to different levels of RTI on labour market outcomes.

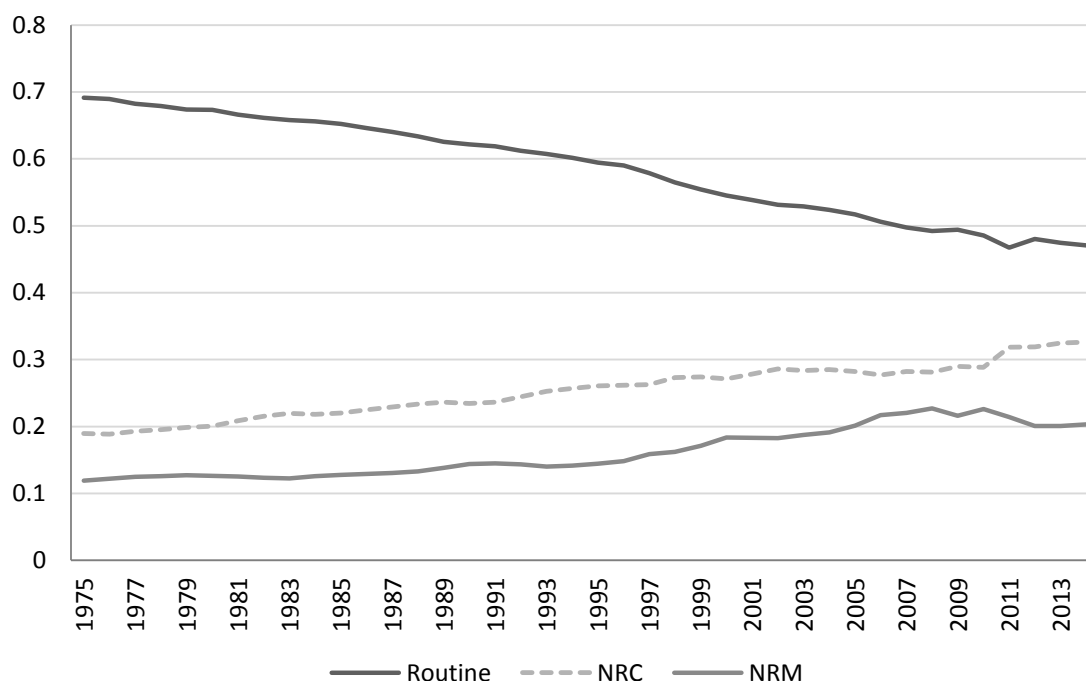
⁶ See van den Berg (2001) for a survey of this model class.

4 Results

4.1 The Evolution of Task Shares and Intensities 1979 to 2013

Figure 1 displays the annual employment shares by task type for the period 1975 to 2014 based on the initial, Cortes style, classification approach. It is clear that the employment share of routine jobs has strongly declined over the time period under observation, from 69% in 1975 to 48% in 2014 for men (Figure 1a). This represents a dramatic reduction in the employment share for these types of jobs. By contrast, the employment shares of non-routine manual have increased from 12% to 20% and from 19% to 32% for non-routine cognitive jobs during the same time period. Again, this fits broadly with the existing evidence for other countries.⁷ For comparison, we also provide the corresponding figure for female workers (Figure 1b). While the levels of the task types differ, the patterns of change over the period are essentially the same. The notable difference is that non-routine cognitive tasks become the predominant job type for women after 2009.

Figure 1a: Employment shares of task categories, 1975-2014, men

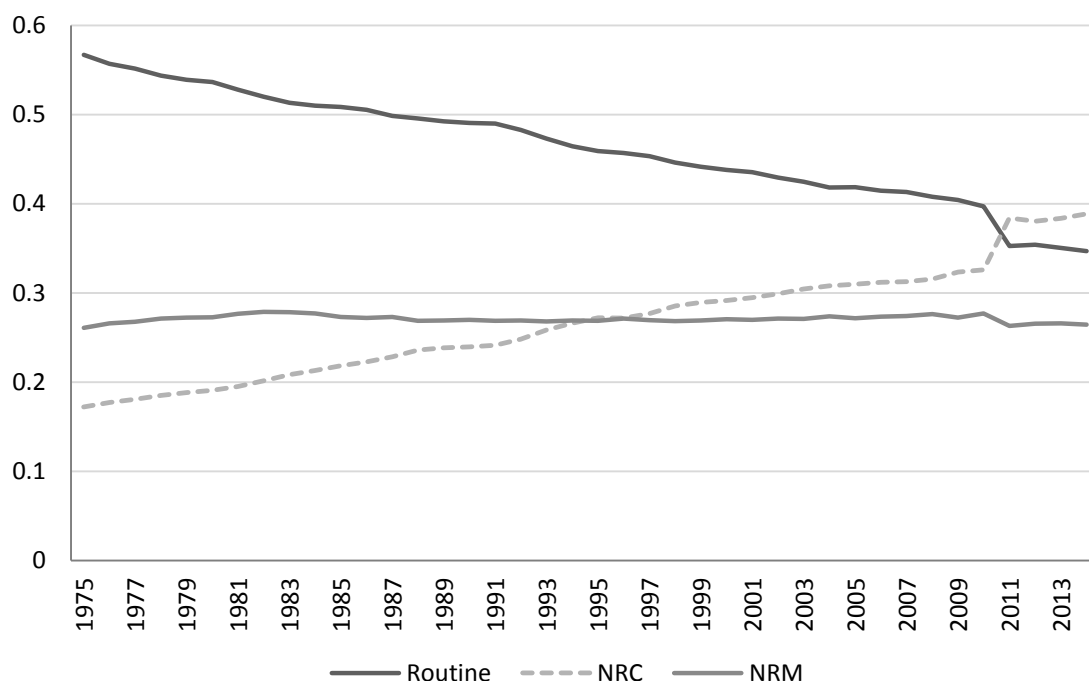


Source: SIAB 1975-2014, own calculation.

The relatively smooth nature of this process over the period is also noticeable. Our data suggest that polarization has been an on-going, gradual, process in Germany. Moreover, there is little evidence of substantive cyclical variations, or at the least these variations are dominated by the secular patterns. This is important as, based on decennial comparisons, the existing literature has sometimes suggested that polarisation has been concentrated in specific decades or

⁷ For instance, Goos et al. (2014) find for 16 European countries that while the employment shares of the highest-paying occupations (mainly characterized by non-routine cognitive tasks) have increased over the time period 1993-2010, the employment shares of the middle-paying occupations (mainly routine jobs) have declined.

Figure 1b: Employment shares of task categories, 1975-2014, women



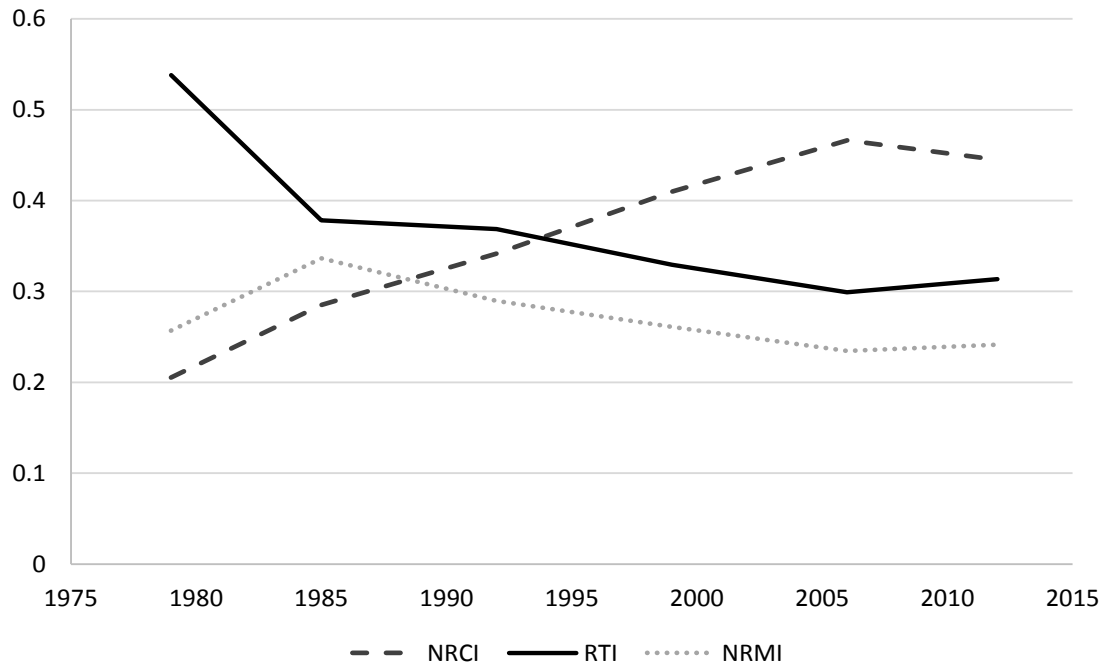
Source: SIAB 1975-2014, own calculation.

episodes. At the same time previous research that focuses on relatively short periods has suggested that business cycle dynamics may speed up the polarisation process. To our knowledge, this is the first time that evidence has been provided allowing for a long-period, and relatively high frequency, view of the polarisation process.

As an alternative view of the same process, Figure 2 provides the average share of workers' job task intensities across the 6 BIBB waves. These numbers result, in effect, from computing the intensities of R, NRC and NRM tasks from the BIBB survey data. This differs from Figure 1 insofar as (a) it provides a measure of overall 'routineness' of work across time (and of the overall intensity in NRC and NRM) and (b) by using the BIBB information we allow the task intensities of any given occupation to change over time. Nonetheless, the general view is the same. There has been a marked reduction in routine task intensity over the past 35 years. The drop is steady from 54% of all tasks in 1979 to about 30% in 2006. After this point there is essentially no change in the routine task share.⁸ Despite the high frequency of the BIBB surveys, the task intensities sometimes change markedly at the beginning of each BIBB period. The reason behind is twofold. First, holding the task intensities constant within the BIBB periods ignores within-occupation changes and causes a dramatic change at the period beginnings. Second, the questions in the BIBB surveys vary to some extent over time. We therefore focus on the survey questions that are repeated across waves, and furthermore merge specific questions with similar content to adjust the number of questions in order to obtain a similar number of questions in each wave and task category.

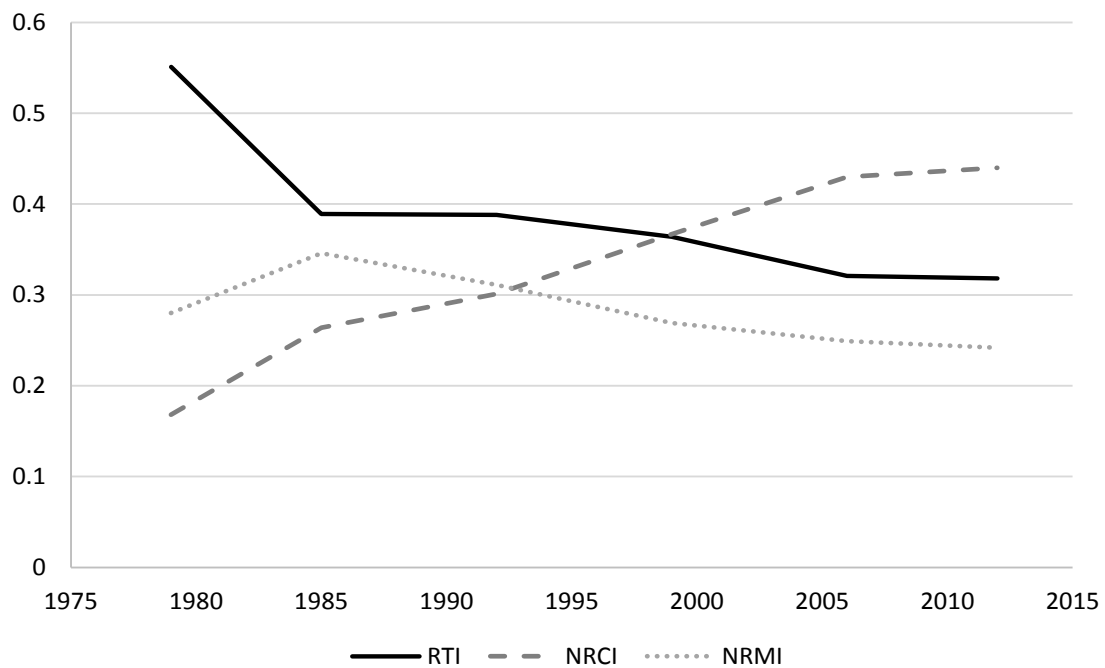
⁸ In addition to our baseline approach, we applied further specifications to estimate the task intensities. The decreasing pattern of routine task intensity is visible in all approaches. See Figure A1 for more detail on the different approaches applied.

Figure 2: Average Task Intensities of Employment from the BIBB data



Source: BIBB/BAuA/IAB surveys, own calculation.

Figure 3: Average Task Intensities of Employment from the IAB data, 1979 to 2012



Source: SIAB 1975-2014, BIBB/BAuA/IAB surveys, own calculation. – RTI: Routine task intensity; NRCI: Non-routine cognitive task intensity; NRMI: non-routine manual task intensity.

Finally, Figure 3 reports the routine task share where we weight the BIBB occupation task share by the SIAB employment data. As both represent samples of the same underlying population, the overall patterns of the evolution of task shares are quite similar. However, this approach

allows for within BIBB period variation in task shares and hence variation from more short-term employment changes. Taken together this provides a body of evidence that there has been a quite dramatic reduction in routine-intensive tasks in Germany since the 1970s.

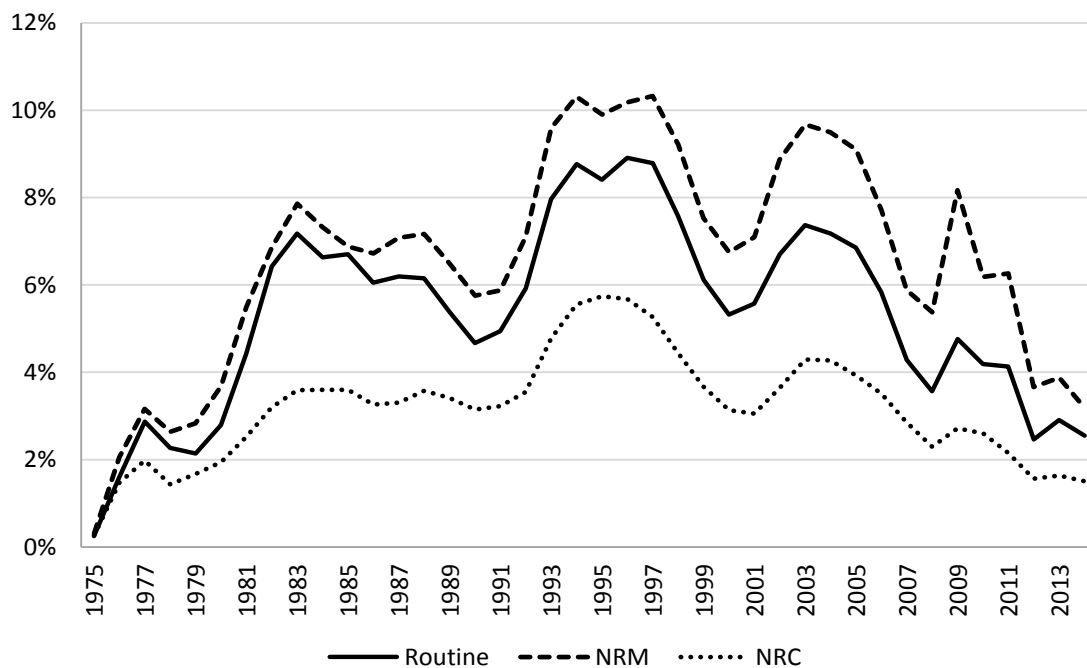
Are these changes in task shares associated with differing worker compensation over the period? Table 1 presents unconditional mean differences of wages according to task group. A number of points are worth emphasising. The pattern for wages shows a clear ordering of non-routine cognitive workers, routine workers then non-routine manual workers. This fits with the distribution of these skills predominantly over higher, medium and lower skills occupations, respectively. More importantly, for our purposes these wage gaps appear to be increasing over time. This, when combined with the earlier evidence is suggestive of a process of quantity adjustments (employment) to labour demand for routine tasks workers.

Table 1: Average wages by task group, 1975-2014

	Routine	NRC	NRM	Overall
1970s	81.65	101.29	75.76	85.06
1980s	89.65	115.41	81.93	94.83
1990s	100.40	130.40	89.99	107.24
2000s	101.65	137.31	85.98	110.33
2010s	99.16	137.24	85.29	110.61
Total	94.87	127.30	84.90	

Source: SIAB 1975-2014, own computation. Note: Wages refer to daily wages in Euro for the time periods 1975-79, 1980-89, 1990-99, 2000-09, 2010-14, and 1975-2014 (total).

Figure 4: Task-specific unemployment rates, 1979-2014



Source: SIAB 1975-2014, own calculation.

Given these reductions in employment, an obvious question to ask is whether this has led to changes in the unemployment levels associated with previously being in a given job-task category. Figure 4 reports task-specific unemployment rates over time. Non-routine cognitive workers and non-routine manual workers feature the lowest and highest unemployment rates,

respectively, while the unemployment rate of routine workers is between these two across the period.

4.2 Descriptive Evidence on the Links between Tasks and Employment Transitions.

We next provide descriptive evidence on labour market transitions according to job tasks performed by workers. These are most readily reported using discrete categorisation of workers into Routine, Non-Routine Manual and Non-Routine Cognitive groups. The most straightforward means of doing this is, again, in the spirit of Cortes et al (2014).

Table 2 provides evidence regarding the transition probabilities from one year to the next between employment in different task types, unemployment, and non-participation. Employment probabilities are highest for non-routine cognitive workers, followed by routine workers and non-routine manual workers. The latter workers also fare worst in terms of job-finding probabilities. Somewhat surprisingly, routine workers have the highest job-finding probabilities, which seems to be an indication of a high level of churning for this type of worker.

Table 2: Transition matrix between different labour market states and task categories

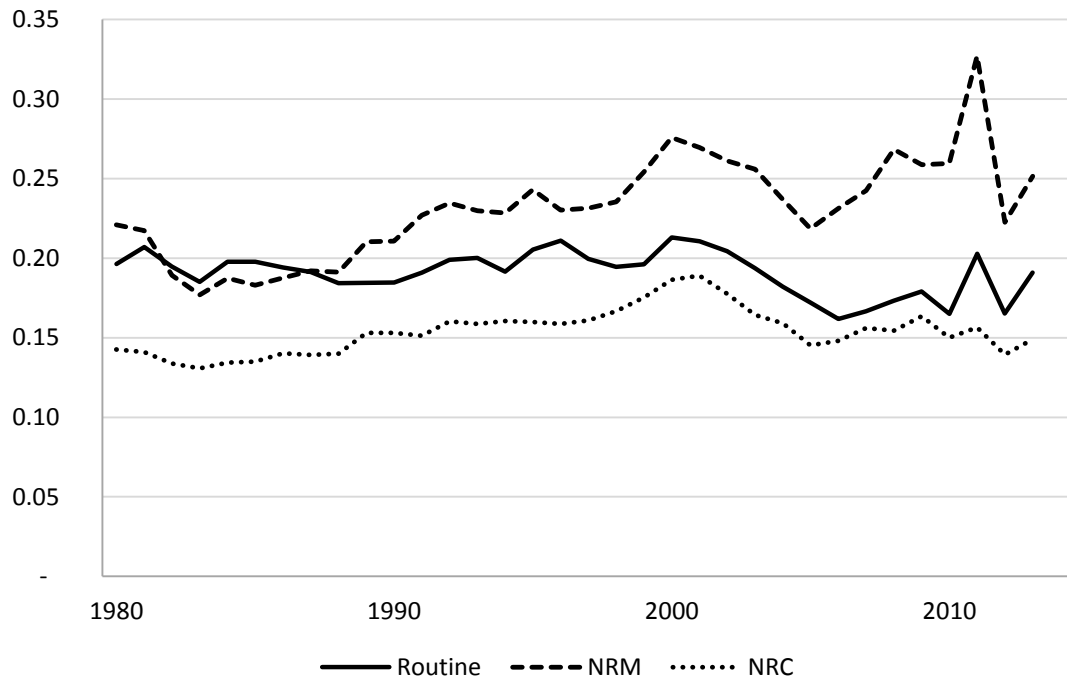
		year t+1				
		Routine E	NRC E	NRM E	U	N
year t	Routine E	90.08	1.28	1.33	2.95	4.37
	NRC E	2.02	92.23	0.57	1.91	3.27
	NRM E	5.69	1.39	83.04	4.06	5.82
	Routine U	21.64	3.38	5.48	56.91	12.59
	NRC U	8.07	17.83	3.13	60.01	10.97
	NRM U	12.53	2.90	12.56	56.53	15.48

Source: SIAB 1975-2014, own computation.

It also becomes apparent that direct changes between different task categories for employed workers are uncommon, the corresponding annual transition rates are generally below 2%. An exception to this are transition rates from non-routine manual to routine employment, which amount to nearly 6%. Switching task categories is more common for unemployed individuals, although still relatively low. For example, the probability that a (previously) routine worker who is unemployed finds a job as a non-routine cognitive worker is 3.38%. Again, the transition rate from (previously) non-routine manual workers to a routine job is the exception. Non-routine manual workers who are unemployed display an equal probability of being in non-routine manual work and of being in routine work one year later.

Figure 5 provides additional information regarding transitions over time by task type. Specifically, it provides the probability of a job episode ending according to a worker's task type. The main driving force behind these job exit probabilities seem to be cyclical during most of the observation period, e.g. with an increase during the bursting of the dot-com bubble of the early 2000s. In a similar vein to Figure 1, non-routine manual workers have the highest probability of job exit across the period of 1980-2010. Routine workers have lower job exit probabilities than non-routine manual workers, but higher exit rates than non-routine cognitive workers.

Figure 5: Probability of job exit, by task categories, 1980-2014

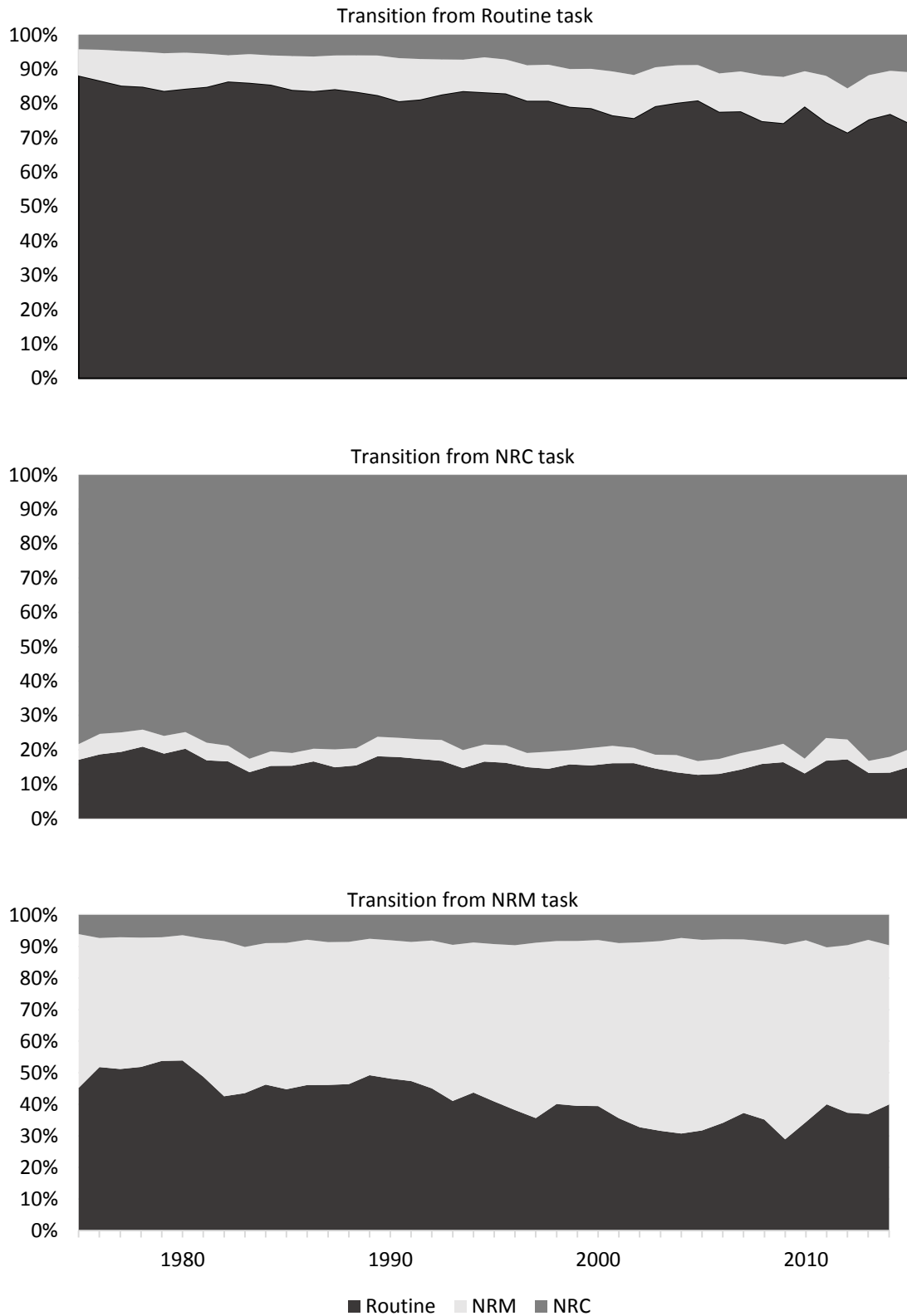


Source: SIAB 1975-2014, own calculation. Note: Job exit defined as making a transition to a different establishment, a different task category, or to unemployment.

Figure 6 provides information on transitions conditional on a worker making a job-to-job transition and according to their initial task type. For each task type there are high levels of state dependence. A worker who makes a transition is substantially more likely to move to another job in the same task category. More importantly, there is evidence that this level of state dependence has increased over time for two task types. Both non-routine cognitive and non-routine manual workers are more likely to transit between jobs in the same task type at the end of our observation period than at the start. This appears to follow a steady path over time, and is most marked for non-routine manual workers. At the same time as this, routine workers witnessed a marked reduction in this state dependence. Moreover, this change appears to have been driven at least in part by what could be considered movements up the occupational ladder into non-routine cognitive work. This provides initial evidence that part of the patterns seen earlier in Figures 1, 2 and 3 reflect differences in transitions across tasks.

Turning to workers who have become unemployed, Figure 7 features the unemployment exit rate of workers in the three task categories. First, it becomes apparent that unemployment exit rates showed a marked decline in the 1980s and early 1990s, reflecting the structural worsening of labour market conditions in Germany. Since the mid-1990s, and particularly since the mid-2000s, this trend has been reversed with unemployment exit rates constantly increasing, which is in line with the strengthening performance of the German labour market highlighted by (Dustmann et al. 2014). Somewhat surprisingly, previously routine workers are the most likely group to exit unemployment over the entire observation period. As Figure 8 shows, these unemployed workers mainly return to a routine job. Non-routine manual workers also largely

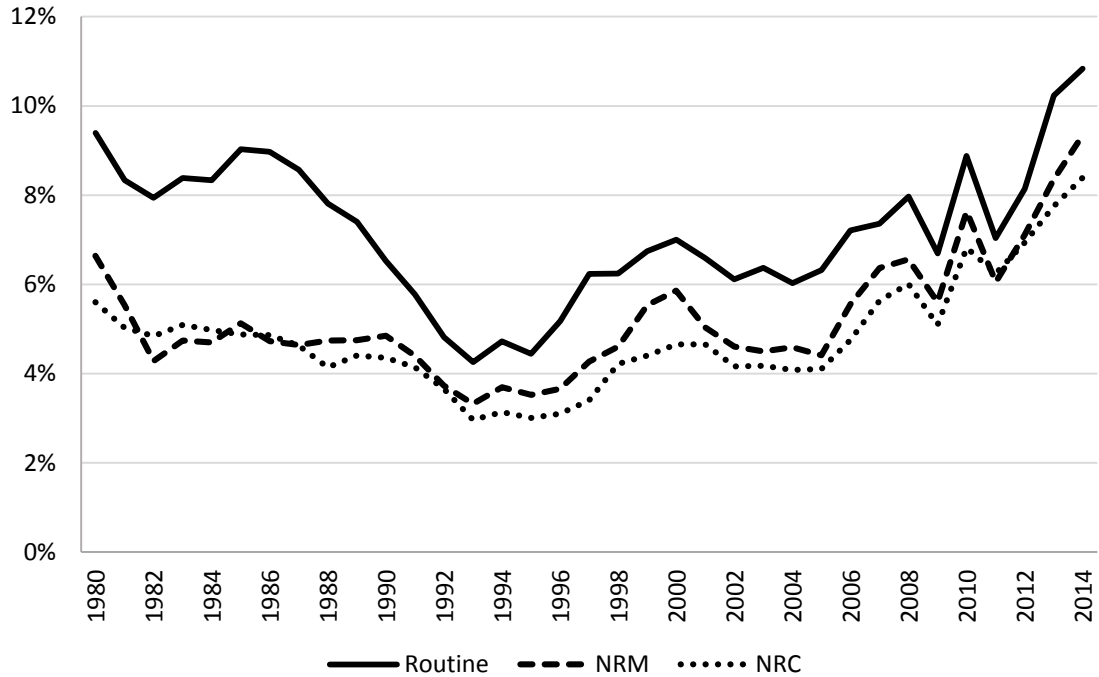
Figure 6: Transition shares from employment, conditional on making a transition, by task categories, 1975-2014



Source: SIAB 1975-2014, own calculation.

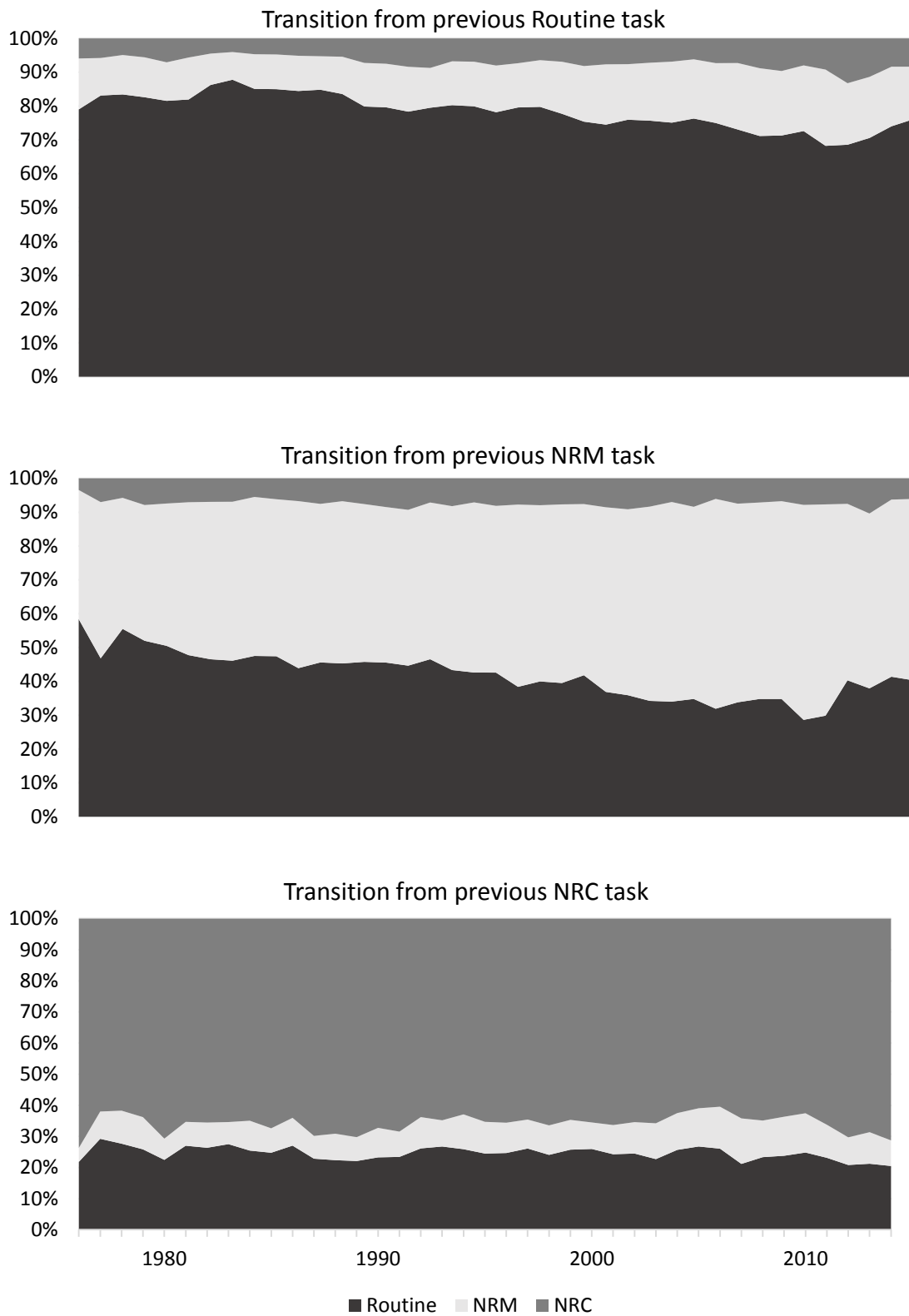
return to the same task category after a spell of unemployment, however with a much lower probability. Many of them actually switch to routine jobs. However, this transition from non-routine manual unemployment to routine employment has become less frequent over the observation period. For non-routine cognitive workers, there is also strong state dependence, with no obvious time trends.

Figure 7: Unemployment exit rate, by task category, 1979-2014



Source: SIAB 1975-2014, own calculation.

Figure 8: Transition shares from unemployment, conditional on exiting unemployment, by task category, 1975-2010



Source: SIAB 1975-2010, own calculation.

4.3 Labour market histories over the short and medium run

We now turn to multivariate estimation of the effect of RTI exposure on employment. Employed workers are stacked in 6-7 year intervals (i.e. according to the BIBB wave years described above: 1979, 1985, 1992 etc.) in order to estimate the probability of remaining in employment after one year and five years, respectively, using the logit model described in equation (2). We include a range of controls along with our variable of interest, the RTI of the job. The resultant estimates are presented in Table 3. The first column provides the average conditional effect of RTI exposure on employment probability at $t+1$. This demonstrates that higher RTI is associated with a lower probability of still being in employment one year in the future. The corresponding marginal effect amounts to -0.026. Since RTI is measured on a 0-1 continuum, this marginal effect can be interpreted as a 2.6 percentage point reduction in the likelihood of being employed one year later if a worker moved from a job with zero routine task intensity to a job that is entirely routine. As such a change in RTI is unrealistic, we compute the change in employment probability if the RTI of a job increases by one standard deviation. The standard deviation of RTI across our time period is 0.202, hence a one standard deviation increase in RTI is associated with a decrease in the likelihood of being employed one year later of 0.53 percentage points ($2.6 * 0.202$). Given that the mean rate of employment loss over one year amounts to 13 percent, this can be viewed as a small, but substantial, reduction in employment probability due to a worker being exposed to RTI tasks.

Column 2 displays results that extend this to ask whether this RTI penalty has changed over the sample period. It reports coefficients on RTI and RTI interacted with a time trend. Whilst caution must be taken with adding interaction and main effects in a non-linear model, the signs and relative magnitude of these terms are informative. The initial RTI effect, which can be interpreted as the effect of RTI on employment stability at the start of our period, is essentially zero. RTI exposure was unrelated to employment stability in the late 1970s. The interaction term suggests that this changed over the past decades. Interpreting interaction terms in non-linear models is difficult. To provide a rough guide, we re-estimated this model using a linear probability model. The estimates suggest that a worker who was in an entirely routine job (i.e. RTI intensity = 100 per cent) would face an annual decrease in one year employment stability of 1.5 percentage points when compared to a worker who performed no routine tasks. Again, recognizing that this is an unrealistic comparison we rescale this effect by the standard deviation of RTI across our period of analysis. Doing so suggests that a one standard deviation increase in RTI was associated with a reduction in one-year employment stability of just over 10 percentage points over the past 35 years. This, we believe, is a quite dramatic reduction in employment stability. Column 3 includes industrial sector and year interaction terms. This is motivated by a concern that occupations are not distributed evenly across industrial sectors. Hence, conditional associations between RTI and employment could, at least in part, reflect sector-specific temporal shocks. In practice, this introduction does not markedly affect our estimates. The initial RTI effect moves closer to zero, but the rate of change over the period is essentially unaltered.

Columns 4 to 6 report analogous estimates for employment probability after five years, where again we include sector and year interaction terms. As column 4 shows, the probability of employment probability after 5 years is negatively affected by exposure to RTI. This average effect across the period is of a similar magnitude to that reported for employment after one year. Computing the marginal effect shows that workers in completely routine jobs (i.e. RTI=1) have a 6 percentage points lower likelihood of being in employment after five years than workers with completely non-routine jobs. Again we standardize the size of this effect. A one standard deviation increase in the RTI of a job is associated with a 1.2 percentage point reduction in being in employment after five years.

Column 5 and 6 report estimates where again we include an interaction between RTI and time. In the case of employment probability after five years, the introduction of industrial sector and time interactions is more consequential than for the employment probability in t+1, i.e. the coefficients of interest change more when comparing specification 5 and 6 than when comparing specification 2 and 3. This is an indication that controlling for sectoral shocks matters more in the longer run (t+5) than in the short run (t+1). The estimates reported in column 6 suggest that exposure to RTI was, in the late 1970s, associated with greater employment stability over a five year period. However, this changed dramatically over the following 35 years, as evidenced by the interaction term between RTI and time. It is furthermore noticeable that the employment penalties associated with RTI exposure are larger for employment probability in t+5 (compare columns 3 and 6).

Again, to aid interpretation, we re-estimated the model from column 6 as a linear probability model. These results suggest that RTI exposure was associated with a reduction of five year employment stability of 1.3 percentage points every year across the period. This, when again scaled by a one standard deviation increase in RTI, means that five year employment stability falls by approximately 9 percentage points across the 35 year period. Taken together, this suggests short term negative effects of RTI exposure on individual's employment stability that are exacerbated over the longer-term.

Table 3: Routine Task Intensity of Current Job and Probability of Employment after 1 year and 5 years, 1979-2013, Logit Odds ratios

	After 1 year			After 5 years		
	(1)	(2)	(3)	(4)	(5)	(6)
RTI	0.732***	1.055	0.993	0.706***	0.800***	1.326***
Time	0.990***	1.055***	0.940***	0.384***	0.716***	0.720***
RTI x Time		0.852***	0.845***		0.939***	0.731***
Year Dummies	X	X	X	X	X	X
Sector x Year Dummies			X			X

*Source: SIAB 1975-2014, BIBB/BAuA/IAB survey, own computation. Control variables included in all regressions, age groups, skill groups, economic sectors, establishment size, region (Bundesland), year, regional unemployment rate, constant. ***, ** and * indicate statistical significance at the 1%, 5% and 10% level respectively.*

The estimates reported in Table 3 reflect conditional effects averaged across all workers. One question that naturally arises is the extent to which these effects are likely to be heterogeneous over different worker types. Two main dimensions likely to be particularly important are the age and skill levels of workers. Table 4 reports estimates that correspond to the specifications in columns (1) and (2) from Table 3. Hence the first column reports the average effect (across the period) of RTI exposure on employment stability, while the 2nd and 3rd column provide the starting (1979) effect on employment stability such that they provide the effect of RTI at the start of the period and trend effect of RTI on employment stability across the whole period. In terms of average effects, the negative effects on employment stability are concentrated among prime-age workers (26-35), with some indication that the negative effects are greater for medium skill workers. For all age groups RTI exposure decreases employment stability over our period of observation. There is variation in the initial effect of RTI on employment stability by skill levels. Low skill workers, even in 1979, faced lower employment stability if in jobs with high RTI. This RTI effect remains constant for these workers, while for both medium and high skill workers RTI is increasingly associated with employment instability over time.

Table 4: Routine Task Intensity of Current Job and Probability of Employment after 1 year, 1979-2013, Logit Odds Ratios

	Specification 1		Specification 2
	RTI	RTI	RTI x Time
Age			
18-25	0.91**	1.1	0.90***
26-35	0.65***	1.04	0.82***
36-45	0.62***	0.9	0.85***
46-55	0.54***	0.72***	0.89***
56-65	0.90**	1.34***	0.85***
Skill			
Low	0.78***	0.78***	0.99
Medium	0.73***	1	0.87***
High	0.82*	1.60***	0.76***

Source: SIAB 1975-2014, BIBB/BAuA/IAB survey, own computation. Models correspond to columns 1 and 3 in Table 3. Control variables included in all regressions, age groups, skill groups, economic sectors, establishment size, region (Bundesland), year fixed effects and regional unemployment rate, constant. ***, ** and * indicate statistical significance at the 1%, 5% and 10% level respectively.

4.4 Task-specific job stability and unemployment exit rates

These differences in employment probabilities by task intensity could reflect a mixture of two different factors. Specifically, task intensity could influence job stability, and/or exit rates out of unemployment. We try to disentangle these channels.

Table 5 provides estimates of the probability of exiting from employment to any other employment state (employed or un-employed). In this way, it provides estimates of the effect of RTI exposure on job stability. All estimates are reported as hazard ratios. We follow a similar strategy to the earlier models of employment stability by reporting models with increasingly complex specifications. The first column reports the average effect of RTI on the probability of making an employment transition. This effect is sizeable, again scaling this effect shows that a one percentage point increase in RTI leads to an approximate 0.4% increase ($\exp(0.34)-1$) in the likelihood of exiting your current job. Recalling that the standard deviation of RTI is 0.202, this again is a large effect. Interacting this effect with time (column 2 and 3) reveals that this risk of exit is increasing at approximately 0.04 percentage points every year, this represents a non-negligible increase in job instability over our period of analysis.

Table 5: Routine Task Intensity and the Risk of Job Exit (to employment/unemployment), hazard ratios

	(1)	(2)	(3)
RTI	0.340***	0.340***	-0.190***
time		0.002***	-0.012***
RTI x time			0.035***

Source: SIAB 1975-2014, BIBB/BAuA/IAB survey, own computation. Control variables included in all regressions: Duration dummies: 0 "0 - 3 months", 1 "4 - 12 months", 2 "1 - 2 years", 3 "2 - 5 years", 4 "5 - 10 years", 5 "> 10 years"; Age groups, skill groups, economic sectors, establishment size, region (Bundesland), regional unemployment rate, year dummies. ***, ** and * indicate statistical significance at the 1%, 5% and 10% level respectively.

These overall exit rates may hide a mixture of job-to-job transitions and job-to-unemployment transitions. Welfare losses attached to technological change are most likely to be concentrated in the latter transitions. This leads us to re-estimate our duration models where instead the hazard state is exit from employment to unemployment. These results are reported in Table 6 and reveal more dramatic patterns of the effect of RTI exposure on job stability. RTI exposure is

associated with markedly higher risk of subsequent exit to unemployment. A one percentage point higher RTI leads to an increase in the likelihood of entering unemployment of approximately 0.65%. This risk has trended up rapidly across the last 4 decades. This provides evidence that a feature of job polarization has been an increasing risk of experiencing a period of unemployment for workers performing routine tasks.

Table 6: Routine Task Intensity and the Risk of Exit to Unemployment, hazard rates

	(1)	(2)	(3)
RTI	0.498***	0.498***	-0.244***
time		0.005***	-0.017***
RTI x time			0.050***

Source: SIAB 1975-2014, BIBB/BAuA/IAB survey, own computation. Control variables included in all regressions: Duration dummies: 0 "0 - 3 months", 1 "4 - 12 months", 2 "1 - 2 years", 3 "2 - 5 years", 4 "5 - 10 years", 5 "> 10 years"; Age groups, skill groups, economic sectors, establishment size, region (Bundesland), regional unemployment rate, year dummies. ***, ** and * indicate statistical significance at the 1%, 5% and 10% level respectively.

This leads to an obvious question regarding the ability of these workers to subsequently exit unemployment and how this has changed over time. We estimate hazard models of the likelihood of exiting unemployment to employment where we use the RTI of the last employment spell as the main variable of interest. Insofar as this has any effect on re-employment probabilities this is informative of potential labour market scarring effects of RTI exposure. In practice, we find no evidence of this (Table 7). Previously holding an RTI-intensive job is associated, if anything, with a *higher* likelihood of re-entering employment, and this is trending upwards over time. This suggests that the increasing job instability of RTI-intensive work over the period has been coincident with countervailing effects on re-employment probabilities. This has the potential to have mitigated some of the welfare losses associated with this job instability and the changes in occupational structure, more generally.

Table 7: Routine Task Intensity and the Risk of Exiting Unemployment to Employment, hazard rates

	(1)	(2)	(3)
RTI	0.124***	0.124***	-0.443***
time		0.452***	0.438***
RTI x time			0.032***

Source: SIAB 1975-2014, BIBB/BAuA/IAB survey, own computation. Control variables included in all regressions: Duration dummies: 0 "0 - 3 months", 1 "4 - 12 months", 2 "1 - 2 years", 3 "2 - 5 years", 4 "5 - 10 years", 5 "> 10 years"; Age groups, skill groups, economic sectors, establishment size, region (Bundesland), regional unemployment rate, year dummies. ***, ** and * indicate statistical significance at the 1%, 5% and 10% level respectively.

The effects reported in Tables 5 to 7 are averaged across all workers. Again we seek to explore heterogeneity of effect across age groups and skill level. These results are reported in Table 8 grouped by the effect on risk of job exit, risk of job exit to unemployment, and subsequent likelihood (risk) of finding a job for the unemployed. For risk of job exit, and job exit to unemployment there is little evidence of variation by age, although workers in jobs with high RTI aged 26 to 35 appear to face a higher likelihood of job exit to unemployment. The effects on subsequent job finding are more pronounced, RTI exposure for workers aged 36 and above is associated with an increased subsequent job finding rate. There is no effect for younger workers. Furthermore, we find evidence for strong heterogeneous effects with respect to skills, i.e. routine intensity strongly increases the unemployment exit probability of high-skilled workers. This is not apparent for low-skilled workers.

Table 8: Routine Task Intensity and the Risk of Job Exit (to employment/unemployment) by age and skill group, hazard ratios

	(1) RTI: Risk of job exit	(2) RTI: Risk of job exit to unemployment	(3) RTI: Job-finding rate of unemployed
Age			
18-25	0.272***	0.327***	0.001
26-35	0.454***	0.791***	0.042
36-45	0.267***	0.383***	0.143***
46-55	0.371***	0.419***	0.216***
56-65	0.336***	0.375***	0.320***
Skill			
Low	0.336***	0.314***	-0.145***
Medium	0.298***	0.433***	0.166***
High	0.694***	1.474***	0.537***

Source: SIAB 1975-2014, BIBB/BAuA/IAB survey, own computation. Models correspond to column 2 in Tables 5, 6 and 7. Control variables included in all regressions, age groups, skill groups, economic sectors (not for column 3), establishment size, region (Bundesland), year fixed effects and regional unemployment rate, constant. ***, ** and * indicate statistical significance at the 1%, 5% and 10% level respectively.

4.5 RTI Wage Penalties

As a final step we provide some evidence on wage premia attached to RTI exposure, and in particular, how this has changed over our period of analysis. As a first step, we estimate a number of models where the dependent variable is log real wages and our main right hand side variable of interest is the RTI of the job. These are reported in Table A.8. The controls are listed in the table notes, but the coefficients are omitted for the sake of brevity. We pool our sample period and the first two columns report the relationship between current job RTI and wages. The first column provides the average wage effect of RTI across the 1975 to 2014 period, which is 0.378 log points lower. A one standard deviation increase in RTI exposure is associated with an approximate 7.6% wage penalty. The second column includes an interaction between RTI and time, such that the RTI coefficient now provides the initial wage penalty. This is -0.259, while the interaction term indicates that the RTI wage penalty increased, and quite substantially, over the period. The following 4 columns provide similar results but where instead the relationship under examination is current RTI and wages in the next year, or five years later, respectively. The estimates for these are very similar to those for the contemporaneous relationship between RTI and wages. Our reading of this is that there are substantial wage penalties that have increased markedly over the past four decades associated with RTI. However, there is no evidence of additional scarring effects on individual's wages due to past exposure to RTI.

Table A.9. reports RTI exposure effects on wages by age and skill level of workers, respectively. Again, we report contemporaneous effects along with those for one year and five years on, respectively. There is a clear age gradient to the wage penalties. All age groups suffer wage penalties through RTI exposure, however the magnitude of these effects are over 3 times larger for 46 to 65 year old workers when compared to those aged 18-25. Again these effects do not change markedly over one and five year windows. A skill gradient is also apparent. High skill workers in jobs suffer a very large wage penalty through RTI exposure. There are substantial penalties for medium skill workers, and smaller effects for low skill workers. The high skill-RTI penalty diminish by approximately one third over a five-year period, perhaps reflecting the greater ease with which high skill workers can change job. These penalties are, in contrast, quite stable for low and medium skill workers.

5 Conclusion

The past four decades have seen dramatic changes in the structure of the labour market. Rapid decreases in computing costs have led to a sharp reduction in the demand for jobs that are intensive in routine tasks. The existing literature highlights the aggregate patterns of labour market polarisation associated with this. We revisit this issue using German administrative data that allows us to address a range of questions currently unanswered in the literature. We present, to our knowledge, the first evidence on changes in task intensity of jobs over a long period and at an annual level. This allows us to examine the trend in polarisation over time which is important as the previous literature has suggested both periods of heightened polarisation and/or accentuated cyclical patterns. Our first main finding is to show that neither are the case in Germany. In this context, polarisation represents a steady secular change over the period of 1975 to 2014. Any cyclical patterns are dominated by this process. This is important as it suggests ongoing structural change without episodes of heightened changes in employment task shares.

With this as a starting point we seek to understand the worker transitions contributing to these patterns. Again, this is an analysis for which our data is particular well suited and where there is little existing evidence. Our results suggest that exposure to jobs with higher routine-task content is associated with higher risk of being out of employment in both the short term (after one year) and medium term (five years). Subsequent results show that this employment penalty to routineness of work has increased over the past four decades.

The reasons for the employment penalty to routineness of work were then traced back to routine task work being associated with reduced job stability and an associated higher likelihood of making a transition to unemployment and thus experiencing periods of unemployment. By contrast, we find that previous work with high RTI for unemployed persons is associated with higher job-finding rates out of unemployment which thus at least partly compensates for the negative effects of RTI on employment stability. Further research is required to understand the extent to which these patterns of labour market transitions for routine workers are associated with individual welfare losses.

References

- Abbring, J.H. and G.J. van den Berg (2007), The unobserved heterogeneity distribution in duration analysis. *Biometrika*, 94 (1): 87-99.
- Antonczyk, D., B. Fitzenberger and U. Leuschner (2009), Can a task-based approach explain the recent changes in the German wage structure? *Jahrbücher für Nationalökonomie und Statistik* 229 (2-3): 214-238.
- Autor, D. (2015), Why Are There Still So Many Jobs? The History and Future of Workplace Automation. *Journal of Economic Perspectives* 29 (3): 3-30.
- Autor, D.H., L. Katz and A. Krueger (1998). 'Computing Inequality: Have Computers Changed the Labor Market?' *Quarterly Journal of Economics* 113 (4): 1169-1213.
- Autor, D.H., F. Levy and R.J. Murnane (2003), The Skill Content of Recent Technological Change: An Empirical Exploration. *Industrial and Labor Relations Review* 118 (4): 1279-1333.
- Baumgarten, D. (2015), Offshoring, the nature of tasks, and occupational stability: empirical evidence for Germany. *The World Economy* 38 (3): 479-508.
- Bechara, P. (2017), Employment polarization and occupational dynamics, mimeo, RWI.
- Caliendo, M. and A. Uhlendorff (2008), Self-Employment Dynamics, State Dependence and Cross-Mobility Patterns. IZA Discussion Papers 3900, Institute for the Study of Labor (IZA).
- Cortes, G.M. (2016), Where Have the Middle-Wage Workers Gone? A Study of Polarization Using Panel Data. *Journal of Labor Economics* 34 (1): 63-105.
- Cortes, G.M., N. Jaimovic, C.J. Nekarda and H.E. Siu (2014), The micro and macro of disappearing routine jobs: A flows approach. NBER Working Paper 20307, National Bureau of Economic Research.
- Dustmann, C., B. Fitzenberger, U. Schönberg and A. Spitz-Oener (2014), From sick man of Europe to economic superstar: Germany's resurgent economy. *The Journal of Economic Perspectives* 28 (1): 167-188.
- Goos, M. and A. Manning, A. (2007), Lousy and Lovely Jobs: The Rising Polarization of Work in Britain. *Review of Economics and Statistics* 89 (1): 118-133.
- Goos, M., A. Manning and A. Salomons (2009), Job Polarization in Europe'. *American Economic Review* 99 (2): 58-63.
- Goos, M., A. Manning and A. Salomons (2014), Explaining Job Polarization: Routine-Biased Technological Change and Offshoring. *American Economic Review* 104 (8): 2509-2526.
- Jaimovich, N. and H.E. Siu (2012), The trend is the cycle: Job polarization and jobless recoveries. NBER Working Paper 18334, National Bureau of Economic Research.
- Lancaster, T. (1990), *The Econometric Analysis of Transition Data*. Cambridge: University Press.
- Mazzolari, F. and G. Ragusa (2013), Spillovers from high-skill consumption to low-skill labor markets. *Review of Economics and Statistics* 95 (1): 74-86.
- Smith, C.L. (2013), The dynamics of labor market polarization. Finance and Economics Discussion Series, Division of Research & Statistics and Monetary Affairs 57. Federal Reserve Board, Washington, D.C.
- Spitz-Oener, A. (2006), Technical Change, Job Tasks and Rising Educational Demands: Looking Outside the Wage Structure. *Journal of Labor Economics* 24 (2): 235-270.

Tiemann, M., H.J. Schade, R. Helmrich, A. Hall, U. Braun and P. Bott (2008). Berufsfeld-Definitionen des BIBB. Bonn: Bundesinstitut für Berufsbildung.

van den Berg, G.J. (2001), Duration models: specification, identification and multiple durations. In: Heckman, J. and E. Leamer (eds.), Handbook of Econometrics. Amsterdam: Elsevier, 3381-3460.

vom Berge, P., M. König and S. Setz (2013), Sample of Integrated Labour Market Biographies (SIAB) 1975-2010'. FDZ-Datenreport 01/2013. Nürnberg: IAB.

APPENDIX

The BIBB data and Computation of Task Intensity Measures

The first four waves of the task data were conducted under the name “Qualification and Career Survey” in a collaboration of German Federal Institute for Vocational Education and Training (Bundesinstitut für Berufsbildung: BIBB) and the Institute for Employment Research (Institut für Arbeitsmarkt- und Berufsforschung: IAB). The 2006 and 2012 waves were conducted as “BIBB/BAuA Labour Force Survey”, which were jointly carried out by BIBB and the Federal Institute for Occupational Safety and Health (Bundesanstalt für Arbeitsschutz und Arbeitsmedizin: BAuA).

In the cross-section BIBB surveys, workers state which activities they perform at their workplace from a given list. Although the surveys include a rich set of workplace activities, the number and the definition of the surveyed activities differ across waves. While the 1979 wave covers approximately 90 activities, the number of activities decreased to 19 in the 2012 wave. In order to create a task intensity measure that is consistent over time, we excluded the activities that appeared only in one wave. We merged some of the activities into one variable in order to deal with the changing definitions of the variables and to maintain a total number of activities which is similar in each survey. For example, the activity “buying, selling, advertising” in the 1985 wave was split into two separate variables as “buying and selling” and “advertising” in 1999; we thus merged these two variables to make the comparison to the previous wave easier.

The answer categories in the surveys were also different across waves. While in some waves the answer category was binary, in other waves workers were asked whether they performed an activity “often”, “sometimes”, or “never”. In case of three-category answers, we classified the answer categories “sometimes” and “never” together to have a consistent binary variable.

We tested the robustness of our results by applying four alternative definitions of task intensity measures to deal with the inconsistencies across waves mentioned above. In the “restricted” approach, we merge even more survey questions compared to the baseline approach in order to keep the number of questions in all three task categories as close to each other as possible. The “lenient” definition assumes that an activity is applied when the answer to survey questions is “always” or “sometimes” whereas the baseline category uses only the answer category “always”. “Lenient-Restricted” approach applies the lenient definition to the restricted set of merged variables. Finally the “excluded variables” definition ignores the survey questions which were not repeated in all the waves. The results of these robustness analyses are available from the authors upon request.

Table A1: List of routine tasks

No.	Description	Occupation	No.	Description	Occupation
71	Miners		263	Pipe and tube fitters	
72	Mining shot firers and blasters		270	Locksmiths and fitters, not further specified	
81	Stone crushers		271	Building fitters	
82	Earth, gravel and sand quarry workers		272	Sheet metal worker, plastics fitters	
83	Gas and crude oil quarry workers		273	Engine fitters	
91	Mineral and stone processing plant operators		274	Plant and maintenance fitters	
102	Precious-stone workers, jewel preparers		275	Steel construction fitters, steel ship builders	
111	Brickmaker and other stoneware makers		281	Motor vehicle repairers	
112	Cement and concrete block makers		282	Agricultural machinery repairers	
121	Ceramics plant operators		286	Watch-, clockmakers	
141	Chemical products plant and machine operators		291	Toolmakers, instrument mechanics	
142	Chemical laboratory workers		301	Precious fitters otherwise undisclosed	
143	Rubber products machine operators		302	Precious metal smiths	
144	Tyre vulcanisers		306	Doll, model makers, taxidermists	
151	Plastic products machine operators		311	Electrical fitters, mechanics	
161	Pulp and cellulose plant operators		312	Telecommunications mechanics, craftsmen	
162	Packaging makers		313	Electric motor, transformer fitters	
171	Type setters, pre-press workers		315	Radio, sound equipment mechanics	
172	Stereotypers and electrotypers		321	Electrical appliance and equipment assemblers	
173	Book printers, letterpress		331	Spinner, fibre-preparer	
174	Flat screen, gravure and intaglio printers		332	Spoolers, twisters, ropemakers	
175	Special, silk-screen printers		341	Weaving- and knitting-machine preparers	
176	Hecto- and mimeo-graphers		342	Weavers and weaving-machine operators	
182	Woodworking machine setters and setter-operators, and appropriate occupations		343	Tufted textile-, fur- and leather-products makers	
191	Ore and metal furnace operators, metal melters		351	Tailors and dressmakers	
192	Rolling-mill operators		441	Bricklayers and masons	
193	Metal drawers and extruders		442	Steel fixers, concreters	
201	Moulders and coremakers		451	Carpenters	
202	Casters		452	Roofers	
203	Casters of semi-finished products and other mould casters		453	Scaffolders	
211	Sheet metal pressers, drawer and puncher		492	Upholsterers, mattresses makers	
212	Wire moulder, cable splicers		501	Cabinetmakers, carpenters and joiners	
221	Metal lathe operators		502	Pattern and mold carpenters	
222	Metal milling cutters		504	Other wood-products makers, Boat-, glider- and wooden sports-equipment-building experts	
223	Metal planers		512	Goods painters and varnishers	
224	Metal borers		513	Wood surface finishers, veneers	
225	Metal grinders		514	Glass, ceramics and related decorative painters, glass engravers and etchers	
231	Metal polishers		521	Products testers, sorters otherwise undisclosed	
232	Engravers, chasers		522	Product packagers, balers, wrappers, qualifiers and other loading agents	
233	Metal finishers		541	Power production plant operators	
234	Galvanisers, metal colourers		542	Winding-, conveyor- and ropeway-machine operators	
235	Enamellers, zinc platers and other metal surface finishers		543	Pump-, compressor-, assembly line-, boring and other machines operators	
241	Welder, oxy-acetylene cutters		544	Crane and hoist plant operators	
242	Solderers		545	Earth-moving and related plant operators	
243	Riveters		546	Construction plant operators	
244	Metal bonders and other metal connectors		547	Machine maintenance operators, machinists' assistants	
251	Steel-, black-, hammersmiths and forging press workers				
252	Tank and container builders, coppersmiths and related occupations				
261	Thinsmiths				
262	Plumbers				

Table A 1 (ctd.2)

Occupation		Occupation	
No.	Description	No.	Description
548	Boilerpersons, incinerators and related plant operators	724	Inland boatmans and related ships' decks crews
629	Forepersons and other operations managers	725	Ferrymans, lockmasters, coastguards and other water traffic occupations
634	Photo laboratory technicians	741	Stocks administrators and clerks
713	Other brake, signal and switch operators, transport guides and conductors, fleet managers	742	Lift, lifting-trucks and other materials handling equipment operators
714	Car, taxi, bus, (heavy) truck and other motor vehicle drivers	834	Decorators, sign painters
723	Seagoing ships' deck crews	836	Interior architects, visual merchandiser
		837	Photographers, camera and retouching operateurs

Source: *Klassifizierung der Berufe (Kldb) 1988. – Classification of occupations 1988. Own compilation following Cortes (2016).*

Table A2: List non-routine cognitive tasks

No.	Description	Occupation	No.	Description	Occupation
283	Aircraft mechanics		753	Financial, tax accountants and accounting clerks	
284	Precision mechanics		761	Legislators, ministers and elected officials	
285	Other mechanics		762	Senior and administrative state officials	
303	Dental technicians		763	Senior and administrative officials of humanitarian and other special-interest organisations	
304	Ophthalmic opticians		774	Computer scientists, equipment operators, computing and data processing professionals	
305	Musical instrument makers		804	Chimney sweepers	
314	Electrical appliance fitters		811	Judges and prosecutors	
411	Cooks		812	Law officers	
601	Mechanical and automotive engineers		813	Lawyers, notaries, legal representatives, advisors and other legal professionals	
602	Electrical and electronics engineers		821	Authors, journalists, editors and announcers	
603	Architects, civil and structural engineers		822	Interpreters, translators	
604	Cartographers and survey engineers		823	Librarians, archivists, documentalists, curators, library and filing clerks	
605	Mining, metallurgy, foundry engineers		831	Composers, music directors and musicians	
606	Other production engineers		832	Film, stage and related directors, actors, singers and dancers	
607	Industrial and other operating engineers		833	Sculptors, painters, graphic and related artists	
611	Chemists, chemical engineers		835	Set designer, light board, image and sound recording engineers, technicians and operators	
612	Physicists, physics engineers, mathematicians		838	Clowns, magicians, acrobats, professional sportspersons, mountain guides and models	
621	Mechanical engineering technicians		841	Medical doctors	
622	Electrical, electronics and telecommunications engineering technicians		842	Dentists	
623	Civil engineering technicians		843	Veterinaries	
624	Survey engineering technicians		844	Pharmacists	
625	Mining, metallurgy, foundry engineering technicians		851	Non-medical practitioners, psychotherapists	
626	Chemical and physical engineering technicians		853	Nurses, midwives, nursing and midwifery associate professionals	
627	Other production technicians		855	Dieticians, nutritionists and pharmacy technicians	
628	Industrial and other operating technicians		857	Medical technical, laboratory, radiological assistants	
631	Agronomy, forestry and life science technicians		861	Social work, welfare, health care professionals and workers; geriatric nurses	
632	Physical and mathematical science technicians		862	Housemasters, social pedagogues, deacons	
633	Chemical science technicians		863	Housemasters, social pedagogues, deacons	
635	Draftspersons		871	University, college professors and related teaching professionals	
681	Wholesaler, retail salespersons and buying agents		872	Grammar school teacher and related teaching professionals	
683	Publishers, management assistants in publishing and booksellers		873	Primary, secondary school, special education teachers and related teaching professionals	
691	Banking experts including tellers, finance clerks as well as finance dealers and brokers		874	Vocational, professional college teachers and related teaching professionals	
694	Life, property insurance experts including representative as well as clerks		875	Art, music and voice teachers and related teaching professionals, otherwise undisclosed	
703	Advertising and public relations experts		876	PE teachers, related teaching professionals, skiing and other sports instructors	
704	Finance, stock, trade, ship, real estate, insurance brokers		877	Driving, flying, hygienic and other instructors, otherwise undisclosed	
705	Landlords, hirers, agents, bookers, auctioneers				
711	Locomotive engine, tram and subway drivers				
721	Navigators, nautical ships' officers and pilots				
722	Technical ship's officers, engineers, technicians and machinists				
726	Aircraft pilots, flight engineers and other air traffic occupations				
751	Entrepreneurs, managing directors and division managers				
752	Management, personnel and other business consultants				

Table A 2 (ctd.2)

Occupation		Occupation	
No.	Description	No.	Description
881	Economists, psychologists, sociologists, political scientists, statisticians	892	Nuns, friars and other religious associate professionals
882	Philologists, historians, philosophers and other humanities scientists, otherwise undisclosed	893	Sextons, cantors and other religious assistants
883	Biologists, geographers, meteorologists and other natural scientists, otherwise undisclosed	911	Hoteliers, innkeepers, restaurateurs and management assistants in hotels and restaurants
891	Bishops, pastors, chaplains and other religious professionals	921	Housekeepers and related workers

Source: Klassifizierung der Berufe (Kldb) 1988. – Classification of occupations 1988. Own compilation following Cortes (2016).

Table A3: Non-routine manual tasks

No.	Occupation Description
164	Other paper products machine operators
177	Printer's hands
213	Other metal moulders non cutting deformation
226	Other metal-cutting occupations
322	Metal-, rubber-, plastic-, paperboard-, textile and related products assemblers
323	Metal plant operators no further specification
471	Earth-moving labourers
472	Building construction labourers and other construction and maintenance labourers otherwise undisclosed
531	Labourers no further specified
549	Machine-tool setters and setter-operators no further specified
682	Shop, stall and market salespersons and demonstrators
684	Chemists in drugstores
685	Chemist's assistants in pharmacies
686	Filling station attendants
688	Street or travelling vendors
701	Logistics managers and transport clerks
702	Travel agency clerks, attendants, stewards, consultants, organisers and guides
712	Railway brake, signal and switch operators, shunters and railway guards and conductors
715	Cabby
732	Mail carriers, sorting clerks, porters and deliverers
734	Telephone switchboard operators
743	Longshoremans, furniture removers
744	Stock, loading and other transport workers
773	Cashiers and ticket clerks
791	Factories security offices, store, hotel and other detectives
792	Watchpersons, custodians, attendants and related workers
793	Door-, gatekeepers and caretakers
794	Menials, bellmans, ushers and groundkeepers
801	Soldiers, border guards, police officers
802	Firefighters
803	Safety inspectors, trade controllers, gauging, and environmental protection officers
805	Disinfectors, morticians, meat and other health inspectors
852	Masseurs, physiotherapists and health care professionals
854	Paramedics and nursing auxiliary workers
856	Doctor's receptionists and assistants
864	Kindergarden teachers, child care workers and paediatric nurses
901	Hairdressers, barbers, wigmakers and related workers
902	Beauticians, manicurists, pedicurists and related workers
912	Waiters, waitresses, stewards, stewardesses and buspersons
913	Porters, bartenders and other hotel and restaurant attendants
923	Valets, chambermaids and other housekeeping attendants
934	Windows, frontages and buildings cleaners
935	Sweepers, streets and sewerages cleaners, dustmans and other waste disposal workers
937	Machinery, plant, tube and container cleaners

Source: *Klassifizierung der Berufe (Kldb) 1988. – Classification of occupations 1988. Own compilation following Cortes (2016).*

Table A4: List of routine tasks according to BIBB data, 1979 wave

Task category	Occupational Field
Non-routine cognitive	Sales occupations (retail) Occupations in wholesale and retail sales Other commercial occupations (not including wholesale, retail, banking) Managing directors, auditors, management consultants Social occupations Legal occupations Engineers Surveying and mapping Chemists, physicists, scientists Designers, photographers, advertising creators Advertising specialists Teachers Technical draughtsmen/draughtswomen, related occupations
Routine	Security Workers Occupations in aircraft and ship operation Vehicle and aircraft construction, maintenance occupations Building caretakers Personal protection, guards Packers, warehouse operatives, transport processors Technicians Administrative occupations in the public sector Specialist skilled technicians Miners and mineral extraction workers Journalists, librarians, translators, related academic research occupations Textile processing, leather manufacture Occupations in insurance and financial services Auxiliary office occupations, telephone operators Commercial office occupations Metal, plant, and sheet metal construction, installation, fitters Goods examiners, Packagers, despatchers Production of beverages, food and tobacco Artists and musicians Unskilled workers Precision engineering and related occupations Paper manufacture, paper processing, printing Occupations in finance and accounting Mechanics and tool makers Butchers Occupations in production and the processing of glass- and ceramic Cooks Agriculture, animal husbandry, forestry, horticulture IT professions Occupations in plastic and chemistry -making and –processing Bakers, pastry cooks, production of confectionary goods Metal production and processing Occupations in spinning and rope-making
Non-routine manual	Occupations in mechatronics, energy electronics and electrical engineering Transport occupations Medical and health care occupations Construction, wood and plastics manufacture and processing occupations Hotel and restaurant occupations, housekeeping Medical and health care occupations without medical medical licence Body care occupations Cleaning and disposal occupations

Source: *Klassifizierung der Berufe (Kldb) 1988. – Classification of occupations 1988. Own calculation using BIBB/BAuA/IAB surveys.*

Table A5: List of routine tasks according to BIBB data, 2012 wave

Task category	Occupational Field	
Non-routine cognitive	Cooks	
	Occupations in aircraft and ship operation	
	Medical and health care occupations without medical medical licence	
	Textile processing, leather manufacture	
	Hotel and restaurant occupations, housekeeping	
	Technicians	
	Occupations in security	
	Designers, photographers, advertising creators	
	Artists and musicians	
	Medical and health care occupations with medical licence	
	Social occupations	
	Occupations in finance and accounting	
	Sales occupations (retail)	
	IT professions	
	Surveying and mapping	
	Chemists, physicists, scientists	
	Technical draughtsmen/draughtswomen, related occupations	
	Other commercial occupations (not including wholesale, retail, banking)	
	Engineers	
	Commercial office occupations	
	Body care occupations	
	Body care occupations	
	Occupations in wholesale and retail	
	Teachers	
	Managing directors, auditors, management consultants	
	Auxiliary office occupations, telephone operators	
	Administrative occupations in the public sector	
	Legal occupations	
	Journalists, librarians, translators, related academic research occupations	
	Occupations in insurance and financial services	
	Advertising specialists	
	Routine	Occupations in mechatronics, energy electronics and electrical engineering
		Construction occupations, wood and plastics manufacture and processing occupations
Specialist skilled technicians		
Goods examiners, Packers, despatchers		
Butchers		
Occupations in mechanics and tool making		
Production of beverages, foods and tobacco, other nutrition occupations		
Metal, plant, and sheet metal construction, installation, fitters		
Bakers, pastry cooks, production of confectionary goods		
Occupations in spinning and rope-making		
Miners and mineral extraction workers		
Occupations in production and processing of glass- and ceramic		
Paper manufacture, paper processing, printing		
Precision engineering and related occupations		
Occupations in plastic and chemistry -making and -processing		
Non-routine manual	Unskilled workers	
	Metal productions and processing	
	Vehicle and aircraft construction, maintenance occupations	
	Agriculture, husbandry, forestry, horticulture	
	Building caretakers	
	Cleaning and disposal occupations	
	Personal protection, guards	
Transport occupations		

Source: *Klassifizierung der Berufe (Kldb) 1988. – Classification of occupations 1988. Own calculation using BIBB/BAuA/IAB surveys.*

Table A.6: List of the 10 occupational fields with the lowest RTI in 1979 and 2012

1979		2012	
RTI	Occupational Field	RTI	Occupational Field
0.0939	Technical draughtsmen/draughtswomen, related occupations	0.0565	Social occupations
0.0983	Body care occupations	0.0795	Auxiliary office occupations, telephone operators
0.2190	Medical and health care occupations	0.0819	Legal occupations
0.2196	Medical and health care occupations without medical medical licence	0.0894	Advertising specialists
0.2561	Teachers	0.1165	Occupations in insurance and financial services
0.2615	Social occupations	0.1216	Administrative occupations in the public sector
0.2691	Advertising specialists	0.1288	Other commercial occupations (not including wholesale, retail, banking)
0.2718	Designers, photographers, advertising creators	0.1316	Occupations in wholesale and retail
0.2724	Hotel and restaurant occupations, housekeeping	0.1470	Teachers
0.2739	Cleaning and disposal occupations	0.1539	Occupations in security

Table A.7: List of the 10 occupational fields with the highest RTI in 1979 and 2012

1979		2012	
RTI	Occupational Field	RTI	Occupational Field
0.7407	Mechanics and tool makers	0.4956	Metal, plant, and sheet metal construction, installation, fitters
0.7463	Butchers	0.5175	Bakers, pastry cooks, production of confectionary goods
0.7489	Occupations in production and the processing of glass- and ceramic	0.5388	Occupations in spinning and rope-making
0.7661	Cooks	0.5552	Miners and mineral extraction workers
0.7782	Agriculture, animal husbandry, forestry, horticulture	0.5562	Occupations in production and processing of glass- and ceramic
0.7844	IT professions	0.5696	Paper manufacture, paper processing, printing
0.7893	Occupations in plastic and chemistry -making and -processing	0.6170	Precision engineering and related occupations
0.8540	Bakers, pastry cooks, production of confectionary goods	0.6275	Occupations in plastic and chemistry -making and -processing
0.8808	Metal production and processing	0.6558	Unskilled workers
0.8838	Occupations in spinning and rope-making	0.6564	Metal productions and processing

Table A.8: Wages at different time horizons and RTI, coefficients from OLS regression

	t=0		t=1		t=5	
	(1)	(2)	(3)	(4)	(5)	(6)
RTI	-0.378***	-0.259***	-0.382***	-0.267***	-0.368***	-0.287***
time	0.012***	0.032***	0.008***	0.027***	-0.006***	0.010***
RTI x time		-0.052***		-0.050***		-0.041***

Source: SIAB 1975-2014, BIBB/BAuA/IAB survey, own computation. Dependent variable: log wages. RTI refers to time 0 in all regressions. Control variables included in all regressions: Duration dummies: 0 "0 - 3 months", 1 "4 - 12 months", 2 "1 - 2 years", 3 "2 - 5 years", 4 "5 - 10 years", 5 "> 10 years"; Age groups, skill groups, economic sectors, establishment size, region (Bundesland), regional unemployment rate, year dummies. ***, ** and * indicate statistical significance at the 1%, 5% and 10% level respectively.

Table A.9: Wages at different time horizons and RTI by age and skill group, coefficients from OLS regression

	(1) t=0	(2) t=1	(3) t=5
Age			
18-25	-0.141***	-0.123***	-0.134***
26-35	-0.304***	-0.303***	-0.308***
36-45	-0.455***	-0.441***	-0.398***
46-55	-0.523***	-0.514***	-0.446***
56-65	-0.535***	-0.535***	-0.501***
Skill			
Low	-0.114***	-0.097***	-0.116***
Medium	-0.440***	-0.433***	-0.383***
High	-0.600***	-0.577***	-0.401***

Source: SIAB 1975-2014, BIBB/BAuA/IAB survey, own computation. Dependent variable: log wages. RTI refers to time 0 in all regressions. Control variables included in all regressions: Duration dummies: 0 "0 - 3 months", 1 "4 - 12 months", 2 "1 - 2 years", 3 "2 - 5 years", 4 "5 - 10 years", 5 "> 10 years"; Age groups, skill groups, economic sectors, establishment size, region (Bundesland), regional unemployment rate, year dummies. ***, ** and * indicate statistical significance at the 1%, 5% and 10% level respectively.

Figure A1: Average Task Intensities of Employment from the BIBB data, different measures

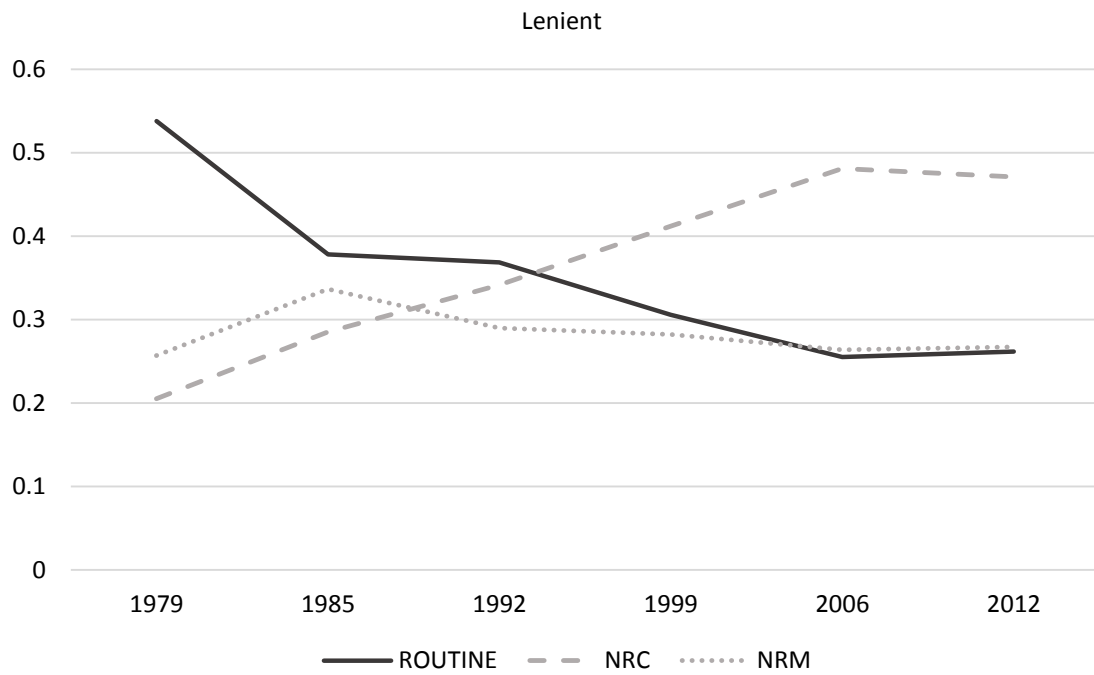
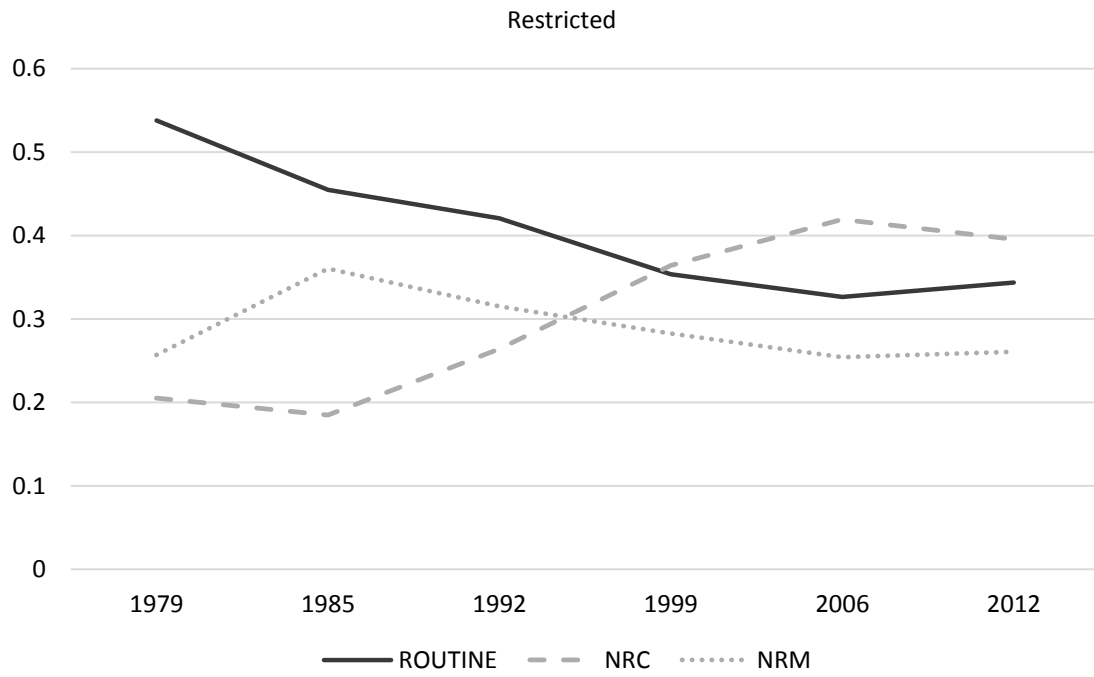
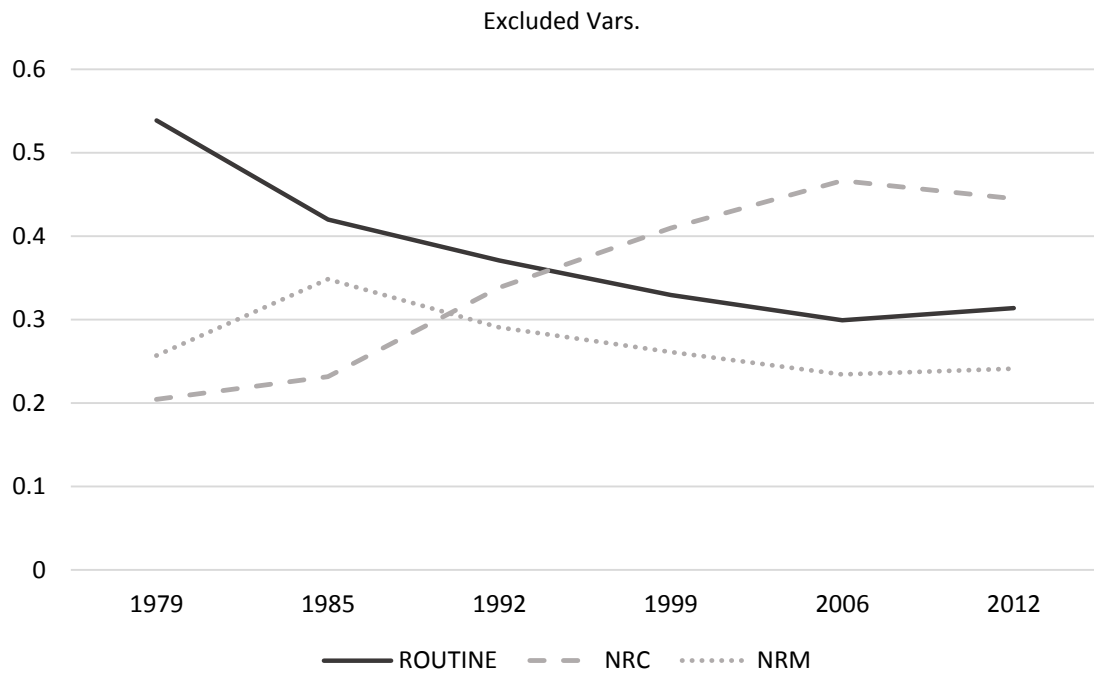
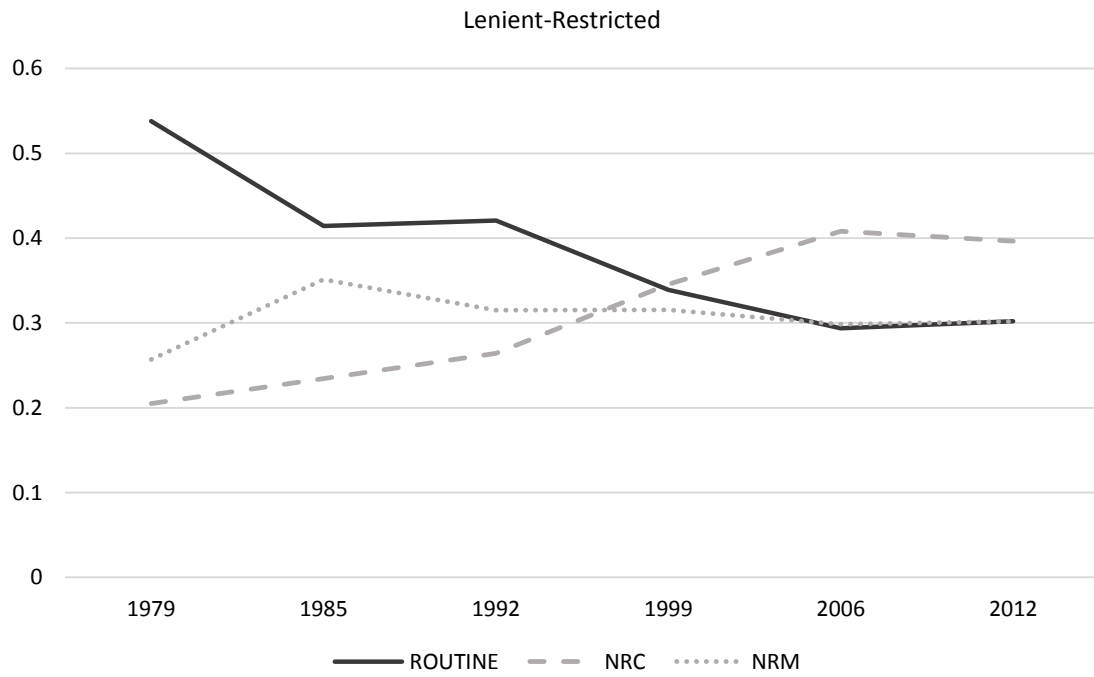


Figure A 1 (ctd.2)



Source: BIBB/BAuA/IAB surveys, own calculation.

PREVIOUS DISCUSSION PAPERS

- 292 Bachmann, Ronald, Cim, Merve and Green, Colin, Long-run Patterns of Labour Market Polarisation: Evidence from German Micro Data, May 2018.
- 291 Chen, Si and Schildberg-Hörisch, Hannah, Looking at the Bright Side: The Motivation Value of Overconfidence, May 2018.
- 290 Knauth, Florian and Wrona, Jens, There and Back Again: A Simple Theory of Planned Return Migration, May 2018.
- 289 Fonseca, Miguel A., Li, Yan and Normann, Hans-Theo, Why Factors Facilitating Collusion May Not Predict Cartel Occurrence – Experimental Evidence, May 2018. Forthcoming in: Southern Economic Journal.
- 288 Benesch, Christine, Loretz, Simon, Stadelmann, David and Thomas, Tobias, Media Coverage and Immigration Worries: Econometric Evidence, April 2018.
- 287 Dewenter, Ralf, Linder, Melissa and Thomas, Tobias, Can Media Drive the Electorate? The Impact of Media Coverage on Party Affiliation and Voting Intentions, April 2018.
- 286 Jeitschko, Thomas D., Kim, Soo Jin and Yankelevich, Aleksandr, A Cautionary Note on Using Hotelling Models in Platform Markets, April 2018.
- 285 Baye, Irina, Reiz, Tim and Sapi, Geza, Customer Recognition and Mobile Geo-Targeting, March 2018.
- 284 Schaefer, Maximilian, Sapi, Geza and Lorincz, Szabolcs, The Effect of Big Data on Recommendation Quality. The Example of Internet Search, March 2018.
- 283 Fischer, Christian and Normann, Hans-Theo, Collusion and Bargaining in Asymmetric Cournot Duopoly – An Experiment, March 2018.
- 282 Friese, Maria, Heimeshoff, Ulrich and Klein, Gordon, Property Rights and Transaction Costs – The Role of Ownership and Organization in German Public Service Provision, February 2018.
- 281 Hunold, Matthias and Shekhar, Shiva, Supply Chain Innovations and Partial Ownership, February 2018.
- 280 Rickert, Dennis, Schain, Jan Philip and Stiebale, Joel, Local Market Structure and Consumer Prices: Evidence from a Retail Merger, January 2018.
- 279 Dertwinkel-Kalt, Markus and Wenzel, Tobias, Focusing and Framing of Risky Alternatives, December 2017. Forthcoming in: Journal of Economic Behavior and Organization.
- 278 Hunold, Matthias, Kesler, Reinhold, Laitenberger, Ulrich and Schlütter, Frank, Evaluation of Best Price Clauses in Online Hotel Booking, December 2017 (First Version October 2016). Forthcoming in: Journal of Industrial Organization.
- 277 Haucap, Justus, Thomas, Tobias and Wohlrabe, Klaus, Publication Performance vs. Influence: On the Questionable Value of Quality Weighted Publication Rankings, December 2017.
- 276 Haucap, Justus, The Rule of Law and the Emergence of Market Exchange: A New Institutional Economic Perspective, December 2017. Published in: von Alemann, U., D. Briesen & L. Q. Khanh (eds.), The State of Law: Comparative Perspectives on the Rule of Law, Düsseldorf University Press: Düsseldorf 2017, pp. 143-172.

- 275 Neyer, Ulrike and Sterzel, André, Capital Requirements for Government Bonds – Implications for Bank Behaviour and Financial Stability, December 2017.
- 274 Deckers, Thomas, Falk, Armin, Kosse, Fabian, Pinger, Pia and Schildberg-Hörisch, Hannah, Socio-Economic Status and Inequalities in Children’s IQ and Economic Preferences, November 2017.
- 273 Defever, Fabrice, Fischer, Christian and Suedekum, Jens, Supplier Search and Re-matching in Global Sourcing – Theory and Evidence from China, November 2017.
- 272 Thomas, Tobias, Heß, Moritz and Wagner, Gert G., Reluctant to Reform? A Note on Risk-Loving Politicians and Bureaucrats, October 2017.
Published in: *Review of Economics*, 68 (2017), pp. 167-179.
- 271 Caprice, Stéphane and Shekhar, Shiva, Negative Consumer Value and Loss Leading, October 2017.
- 270 Emch, Eric, Jeitschko, Thomas D. and Zhou, Arthur, What Past U.S. Agency Actions Say About Complexity in Merger Remedies, With an Application to Generic Drug Divestitures, October 2017.
Published in: *Competition: The Journal of the Antitrust, UCL and Privacy Section of the California Lawyers Association*, 27 (2017/18), pp. 87-104.
- 269 Goeddeke, Anna, Haucap, Justus, Herr, Annika and Wey, Christian, Flexibility in Wage Setting Under the Threat of Relocation, September 2017.
Published in: *Labour: Review of Labour Economics and Industrial Relations*, 32 (2018), pp. 1-22.
- 268 Haucap, Justus, Merger Effects on Innovation: A Rationale for Stricter Merger Control?, September 2017.
Published in: *Concurrences: Competition Law Review*, 4 (2017), pp.16-21.
- 267 Brunner, Daniel, Heiss, Florian, Romahn, André and Weiser, Constantin, Reliable Estimation of Random Coefficient Logit Demand Models, September 2017.
- 266 Kosse, Fabian, Deckers, Thomas, Schildberg-Hörisch, Hannah and Falk, Armin, The Formation of Prosociality: Causal Evidence on the Role of Social Environment, July 2017.
- 265 Friehe, Tim and Schildberg-Hörisch, Hannah, Predicting Norm Enforcement: The Individual and Joint Predictive Power of Economic Preferences, Personality, and Self-Control, July 2017.
Published in: *European Journal of Law and Economics*, 45 (2018), pp. 127-146.
- 264 Friehe, Tim and Schildberg-Hörisch, Hannah, Self-Control and Crime Revisited: Disentangling the Effect of Self-Control on Risk Taking and Antisocial Behavior, July 2017.
Published in: *European Journal of Law and Economics*, 45 (2018), pp. 127-146.
- 263 Golsteyn, Bart and Schildberg-Hörisch, Hannah, Challenges in Research on Preferences and Personality Traits: Measurement, Stability, and Inference, July 2017.
Published in: *Journal of Economic Psychology*, 60 (2017), pp. 1-6.
- 262 Lange, Mirjam R.J., Tariff Diversity and Competition Policy – Drivers for Broadband Adoption in the European Union, July 2017.
Published in: *Journal of Regulatory Economics*, 52 (2017), pp. 285-312.
- 261 Reisinger, Markus and Thomes, Tim Paul, Manufacturer Collusion: Strategic Implications of the Channel Structure, July 2017.

- 260 Shekhar, Shiva and Wey, Christian, Uncertain Merger Synergies, Passive Partial Ownership, and Merger Control, July 2017.
- 259 Link, Thomas and Neyer, Ulrike, Friction-Induced Interbank Rate Volatility under Alternative Interest Corridor Systems, July 2017.
- 258 Diermeier, Matthias, Goecke, Henry, Niehues, Judith and Thomas, Tobias, Impact of Inequality-Related Media Coverage on the Concerns of the Citizens, July 2017.
- 257 Stiebale, Joel and Wößner, Nicole, M&As, Investment and Financing Constraints, July 2017.
- 256 Wellmann, Nicolas, OTT-Messaging and Mobile Telecommunication: A Joint Market? – An Empirical Approach, July 2017.
- 255 Ciani, Andrea and Imbruno, Michele, Microeconomic Mechanisms Behind Export Spillovers from FDI: Evidence from Bulgaria, June 2017.
Published in: *Review of World Economics*, 153 (2017), pp. 704-734.
- 254 Hunold, Matthias and Muthers, Johannes, Capacity Constraints, Price Discrimination, Inefficient Competition and Subcontracting, June 2017.
- 253 Dertwinkel-Kalt, Markus and Köster, Mats, Salient Compromises in the Newsvendor Game, June 2017.
Published in: *Journal of Economic Behavior and Organization*, 141 (2017), pp. 301-315.
- 252 Siekmann, Manuel, Characteristics, Causes, and Price Effects: Empirical Evidence of Intraday Edgeworth Cycles, May, 2017.
- 251 Benndorf, Volker, Moellers, Claudia and Normann, Hans-Theo, Experienced vs. Inexperienced Participants in the Lab: Do they Behave Differently?, May 2017.
Published in: *Journal of the Economic Science Association*, 3 (2017), pp.12-25.
- 250 Hunold, Matthias, Backward Ownership, Uniform Pricing and Entry Deterrence, May 2017.
- 249 Kreickemeier, Udo and Wrona, Jens, Industrialisation and the Big Push in a Global Economy, May 2017.
- 248 Dertwinkel-Kalt, Markus and Köster, Mats, Local Thinking and Skewness Preferences, April 2017.
- 247 Shekhar, Shiva, Homing Choice and Platform Pricing Strategy, March 2017.
- 246 Manasakis, Constantine, Mitrokostas, Evangelos and Petrakis, Emmanuel, Strategic Corporate Social Responsibility by a Multinational Firm, March 2017.
- 245 Ciani, Andrea, Income Inequality and the Quality of Imports, March 2017.
- 244 Bonnet, Céline and Schain, Jan Philip, An Empirical Analysis of Mergers: Efficiency Gains and Impact on Consumer Prices, February 2017.
- 243 Benndorf, Volker and Martinez-Martinez, Ismael, Perturbed Best Response Dynamics in a Hawk-Dove Game, January 2017.
Published in: *Economics Letters*, 153 (2017), pp. 61-64.
- 242 Dauth, Wolfgang, Findeisen, Sebastian and Suedekum, Jens, Trade and Manufacturing Jobs in Germany, January 2017.
Published in: *American Economic Review, Papers & Proceedings*, 107 (2017), pp. 337-342.

- 241 Borrs, Linda and Knauth, Florian, The Impact of Trade and Technology on Wage Components, December 2016.
- 240 Haucap, Justus, Heimeshoff, Ulrich and Siekmann, Manuel, Selling Gasoline as a By-Product: The Impact of Market Structure on Local Prices, December 2016.
- 239 Herr, Annika and Normann, Hans-Theo, How Much Priority Bonus Should be Given to Registered Organ Donors? An Experimental Analysis, November 2016.
- 238 Steffen, Nico, Optimal Tariffs and Firm Technology Choice: An Environmental Approach, November 2016.
- 237 Behrens, Kristian, Mion, Giordano, Murata, Yasusada and Suedekum, Jens, Distorted Monopolistic Competition, November 2016.
- 236 Beckmann, Klaus, Dewenter, Ralf and Thomas, Tobias, Can News Draw Blood? The Impact of Media Coverage on the Number and Severity of Terror Attacks, November 2016.
Published in: *Peace Economics, Peace Science and Public Policy*, 23 (1) 2017, pp. 1-16.
- 235 Dewenter, Ralf, Dulleck, Uwe and Thomas, Tobias, Does the 4th Estate Deliver? Towards a More Direct Measure of Political Media Bias, November 2016.
- 234 Egger, Hartmut, Kreickemeier, Udo, Moser, Christoph and Wrona, Jens, Offshoring and Job Polarisation Between Firms, November 2016.
- 233 Moellers, Claudia, Stühmeier, Torben and Wenzel, Tobias, Search Costs in Concentrated Markets – An Experimental Analysis, October 2016.
- 232 Moellers, Claudia, Reputation and Foreclosure with Vertical Integration – Experimental Evidence, October 2016.
- 231 Alipranti, Maria, Mitrokostas, Evangelos and Petrakis, Emmanuel, Non-comparative and Comparative Advertising in Oligopolistic Markets, October 2016.
Forthcoming in: *The Manchester School*.
- 230 Jeitschko, Thomas D., Liu, Ting and Wang, Tao, Information Acquisition, Signaling and Learning in Duopoly, October 2016.
- 229 Stiebale, Joel and Vencappa, Dev, Acquisitions, Markups, Efficiency, and Product Quality: Evidence from India, October 2016.
Forthcoming in: *Journal of International Economics*.
- 228 Dewenter, Ralf and Heimeshoff, Ulrich, Predicting Advertising Volumes: A Structural Time Series Approach, October 2016.
Published in: *Economics Bulletin*, 37 (2017), Volume 3.
- 227 Wagner, Valentin, Seeking Risk or Answering Smart? Framing in Elementary Schools, October 2016.
- 226 Moellers, Claudia, Normann, Hans-Theo and Snyder, Christopher M., Communication in Vertical Markets: Experimental Evidence, July 2016.
Published in: *International Journal of Industrial Organization*, 50 (2017), pp. 214-258.
- 225 Argentesi, Elena, Buccirosi, Paolo, Cervone, Roberto, Duso, Tomaso and Marrazzo, Alessia, The Effect of Retail Mergers on Prices and Variety: An Ex-post Evaluation, June 2016.

- 224 Aghadadashli, Hamid, Dertwinkel-Kalt, Markus and Wey, Christian, The Nash Bargaining Solution in Vertical Relations With Linear Input Prices, June 2016. Published in: *Economics Letters*, 145 (2016), pp. 291-294.
- 223 Fan, Ying, Kühn, Kai-Uwe and Lafontaine, Francine, Financial Constraints and Moral Hazard: The Case of Franchising, June 2016. Published in: *Journal of Political Economy*, 125 (2017), pp. 2082-2125.
- 222 Benndorf, Volker, Martinez-Martinez, Ismael and Normann, Hans-Theo, Equilibrium Selection with Coupled Populations in Hawk-Dove Games: Theory and Experiment in Continuous Time, June 2016. Published in: *Journal of Economic Theory*, 165 (2016), pp. 472-486.
- 221 Lange, Mirjam R. J. and Saric, Amela, Substitution between Fixed, Mobile, and Voice over IP Telephony – Evidence from the European Union, May 2016. Published in: *Telecommunications Policy*, 40 (2016), pp. 1007-1019.
- 220 Dewenter, Ralf, Heimeshoff, Ulrich and Lüth, Hendrik, The Impact of the Market Transparency Unit for Fuels on Gasoline Prices in Germany, May 2016. Published in: *Applied Economics Letters*, 24 (2017), pp. 302-305.
- 219 Schain, Jan Philip and Stiebale, Joel, Innovation, Institutional Ownership, and Financial Constraints, April 2016.
- 218 Haucap, Justus and Stiebale, Joel, How Mergers Affect Innovation: Theory and Evidence from the Pharmaceutical Industry, April 2016.
- 217 Dertwinkel-Kalt, Markus and Wey, Christian, Evidence Production in Merger Control: The Role of Remedies, March 2016.
- 216 Dertwinkel-Kalt, Markus, Köhler, Katrin, Lange, Mirjam R. J. and Wenzel, Tobias, Demand Shifts Due to Salience Effects: Experimental Evidence, March 2016. Published in: *Journal of the European Economic Association*, 15 (2017), pp. 626-653.
- 215 Dewenter, Ralf, Heimeshoff, Ulrich and Thomas, Tobias, Media Coverage and Car Manufacturers' Sales, March 2016. Published in: *Economics Bulletin*, 36 (2016), pp. 976-982.
- 214 Dertwinkel-Kalt, Markus and Riener, Gerhard, A First Test of Focusing Theory, February 2016.
- 213 Heinz, Matthias, Normann, Hans-Theo and Rau, Holger A., How Competitiveness May Cause a Gender Wage Gap: Experimental Evidence, February 2016. Forthcoming in: *European Economic Review*, 90 (2016), pp. 336-349.
- 212 Fudickar, Roman, Hottenrott, Hanna and Lawson, Cornelia, What's the Price of Consulting? Effects of Public and Private Sector Consulting on Academic Research, February 2016. Forthcoming in: *Industrial and Corporate Change*.
- 211 Stühmeier, Torben, Competition and Corporate Control in Partial Ownership Acquisitions, February 2016. Published in: *Journal of Industry, Competition and Trade*, 16 (2016), pp. 297-308.
- 210 Muck, Johannes, Tariff-Mediated Network Effects with Incompletely Informed Consumers, January 2016.
- 209 Dertwinkel-Kalt, Markus and Wey, Christian, Structural Remedies as a Signalling Device, January 2016. Published in: *Information Economics and Policy*, 35 (2016), pp. 1-6.

- 208 Herr, Annika and Hottenrott, Hanna, Higher Prices, Higher Quality? Evidence From German Nursing Homes, January 2016.
Published in: Health Policy, 120 (2016), pp. 179-189.
- 207 Gaudin, Germain and Mantzari, Despoina, Margin Squeeze: An Above-Cost Predatory Pricing Approach, January 2016.
Published in: Journal of Competition Law & Economics, 12 (2016), pp. 151-179.
- 206 Hottenrott, Hanna, Rexhäuser, Sascha and Veugelers, Reinhilde, Organisational Change and the Productivity Effects of Green Technology Adoption, January 2016.
Published in: Energy and Resource Economics, 43 (2016), pp. 172–194.
- 205 Dauth, Wolfgang, Findeisen, Sebastian and Suedekum, Jens, Adjusting to Globalization – Evidence from Worker-Establishment Matches in Germany, January 2016.

Older discussion papers can be found online at:

<http://ideas.repec.org/s/zbw/dicedp.html>

Heinrich-Heine-University of Düsseldorf

**Düsseldorf Institute for
Competition Economics (DICE)**

Universitätsstraße 1_ 40225 Düsseldorf
www.dice.hhu.de