

Chang, Chia-Lin; Hsu, Hui-Kuang; McAleer, Michael

Working Paper

A Tourism Financial Conditions Index for Tourism Finance

Tinbergen Institute Discussion Paper, No. 17-071/III

Provided in Cooperation with:

Tinbergen Institute, Amsterdam and Rotterdam

Suggested Citation: Chang, Chia-Lin; Hsu, Hui-Kuang; McAleer, Michael (2017) : A Tourism Financial Conditions Index for Tourism Finance, Tinbergen Institute Discussion Paper, No. 17-071/III, Tinbergen Institute, Amsterdam and Rotterdam

This Version is available at:

<https://hdl.handle.net/10419/177639>

Standard-Nutzungsbedingungen:

Die Dokumente auf EconStor dürfen zu eigenen wissenschaftlichen Zwecken und zum Privatgebrauch gespeichert und kopiert werden.

Sie dürfen die Dokumente nicht für öffentliche oder kommerzielle Zwecke vervielfältigen, öffentlich ausstellen, öffentlich zugänglich machen, vertreiben oder anderweitig nutzen.

Sofern die Verfasser die Dokumente unter Open-Content-Lizenzen (insbesondere CC-Lizenzen) zur Verfügung gestellt haben sollten, gelten abweichend von diesen Nutzungsbedingungen die in der dort genannten Lizenz gewährten Nutzungsrechte.

Terms of use:

Documents in EconStor may be saved and copied for your personal and scholarly purposes.

You are not to copy documents for public or commercial purposes, to exhibit the documents publicly, to make them publicly available on the internet, or to distribute or otherwise use the documents in public.

If the documents have been made available under an Open Content Licence (especially Creative Commons Licences), you may exercise further usage rights as specified in the indicated licence.

TI 2017-071/III
Tinbergen Institute Discussion Paper



A Tourism Financial Conditions Index for Tourism Finance

Chia-Lin Chang¹
Hui-Kuang Hsu²
Michael McAleer³

1: Department of Applied Economics, Department of Finance, National Chung Hsing University, Taiwan

2: Department of Finance, National Pingtung University, Taiwan

3: Department of Quantitative Finance, National Tsing Hua University, Taiwan, and Discipline of Business Analytics, University of Sydney Business School, Australia, and Econometric Institute, Erasmus School of Economics, Erasmus University Rotterdam, The Netherlands, and Department of Quantitative Economics, Complutense University of Madrid, Spain, and Institute of Advanced Sciences, Yokohama National University, Japan

Tinbergen Institute is the graduate school and research institute in economics of Erasmus University Rotterdam, the University of Amsterdam and VU University Amsterdam.

Contact: discussionpapers@tinbergen.nl

More TI discussion papers can be downloaded at the [Tinbergen Site](#)

Tinbergen Institute has two locations:

Tinbergen Institute Amsterdam
Gustav Mahlerplein 117
1082 MS Amsterdam
The Netherlands
Tel.: +31(0)20 598 4580

Tinbergen Institute Rotterdam
Burg. Oudlaan 50
3062 PA Rotterdam
The Netherlands
Tel.: +31(0)10 408 8900

A Tourism Financial Conditions Index for Tourism Finance*

Chia-Lin Chang

Department of Applied Economics
Department of Finance
National Chung Hsing University, Taiwan

Hui-Kuang Hsu

Department of Finance
National Pingtung University, Taiwan

Michael McAleer

Department of Quantitative Finance
National Tsing Hua University, Taiwan

and

Discipline of Business Analytics
University of Sydney Business School, Australia

and

Econometric Institute, Erasmus School of Economics
Erasmus University Rotterdam, The Netherlands

and

Department of Quantitative Economics
Complutense University of Madrid, Spain

And

Institute of Advanced Sciences
Yokohama National University, Japan

Revised: August 2017

*For financial support, the first author wishes to thank the National Science Council, Ministry of Science and Technology (MOST), Taiwan, and the third author wishes to acknowledge the Australian Research Council and the National Science Council, Ministry of Science and Technology (MOST), Taiwan.

Abstract

The paper uses monthly data on tourism related factors from April 2005 - June 2016 for Taiwan that applies factor analysis and Chang's (2015) novel approach for constructing a tourism financial indicator, namely the Tourism Financial Conditions Index (TFCI). The TFCI is an adaptation and extension of the widely-used Monetary Conditions Index (MCI) and Financial Conditions Index (FCI) to tourism stock data. However, the method of calculation of the TFCI is different from existing methods of constructing the MCI and FCI in that the weights are estimated empirically. The empirical findings show that TFCI is statistically significant using the estimated conditional mean of the tourism stock index returns (RTS). Granger Causality tests show that TFCI shows strong feedback on RTS. An interesting insight is that the empirical results show a significant negative correlation between F1_visitors and RTS, implying that tourism authorities might promote travel by the "rich", and not only on inbound visitor growth. The use of market returns on the tourism stock sub-index as the sole indicator of the tourism sector, as compared with the general activity of economic variables on tourism stocks, is shown to provide an exaggerated and excessively volatile explanation of tourism financial conditions.

Keywords : Monetary Conditions Index, Financial Conditions Index, Model-based Tourism Financial Conditions Index, Unbiased Estimation.

JEL: B41,E44, E47, G32.

1. Introduction

Despite political upheaval, economic uncertainty and natural disasters around the world in recent years, the global travel, tourism and hospitality industry, which is one of the world's leading economic and financial industries, has experienced continued growth. According to the World Tourism Organization (UNWTO), international tourist arrivals worldwide have more than doubled since 1990, rising from 435million to 675 million in 2000, to 940 million in 2010, growing by a further 4% in 2012 to reach 1.035 billion, and increasing by 4.4% in 2015 with a record of 1.184 billion. 2015 marks the sixth consecutive year of above-average growth, with international arrivals increasing by 4% or more every year since the post-crisis year of 2010¹.

Results from the UNWTO Confidence Index remain largely positive for 2016, though at a slightly lower level as compared with the previous two years. Based on the current trend and this outlook, UNWTO projects international tourist arrivals to grow by 4% worldwide in 2016. These figures are in line with the UNWTO long term forecast for 2030, namely 3.8%increase per year, on average, between 2010 and 2020. Moreover, tourism arrivals are expected to increase by 3.3% each year from 2010 to 2030, representing 43 million additional international tourist arrivals annually, reaching a total of 1.8 billion arrivals by 2030.

The latest annual findings from the World Travel and Tourism Council (WTTC) and Oxford Economics show that Travel & Tourism's contribution to GDP grew for the sixth consecutive year in 2015. The total contribution comprised 9.8% of global GDP (US \$7.2trillion) and generated over 284 million jobs, that is, 1 in 11 of global

¹UNWTO Annual Report 2015, World Tourism Organization, UNWTO / [WWW2.unwto.org/](http://www2.unwto.org/) About / Annual Report / UNWTO Annual Report 2015 <http://www2.unwto.org/publication/unwto-annual-report-2015>

employment.² With a stronger performance than the rest of the economy, the importance of the Travel & Tourism sector for economic growth and development is undisputed. In order to provide further support to enable accurate forecasts of the tourism and economic environments, a tourism index that is closely related to economic growth and development would be helpful to public and private decision makers, such as government, business executives and investors.

Recent years have shown increasing attention being paid to establishing tourism indexes for both the public and private sectors. For example, (i) the tourism industry stock index represents the performance of stocks of tourism-related firms listed on the stock market; (ii) the tourism index published by the World Economic Forum assesses the obstacles and drivers of Travel & Tourism development; (iii) the Travel and Tourism Competiveness Index (TTCI) (World Economic Forum, 2015); and (iv) the statistical information of tourism listed on Tourism Bureau Executive Information System available on the government's website, are just a few of the available tourism-related indexes.

However, from the global economics viewpoint, in general, tourism is sensitive to the impacts from the international economic environment, such as price levels, exchange rates, and industry promotion policies, especially in the tourism industry. On the other hand, as foreign visitors who travel to a country will purchase that country's tourist experience, the tourism industry is considered to be an export industry. The impacts arising from exchange rates affect the tourism and economic environments, such as the growth in international visitor arrivals, and domestic and international of business investment.

Therefore, a composite Tourism Conditions Indicator (TCI), taking account of

²WTTC, <http://www.wttc.org/research/economic-research/economic-impact-analysis/>
Copyright @ WTTC 2016

both the economy and tourism environments as a whole, is desirable to assist in decision making for public and private policy makers. However, such an analysis pertaining to tourism indicators is limited. In order to incorporate greater information for purposes of forecasting future tourism and economic environments in a straightforward manner, this paper proposes a new tourism financial indicator, namely the Tourism Financial Conditions Index (TFCI).

The premise underlying the TFCI index is that it should be linked closely to both the economic and tourism environments. Therefore, three key components comprise the TFCI, namely the macro-economy, foreign visitor arrivals, and tourism related prices, respectively. The tourism industry stock index return (RTS), an observable variable, as a financial tourism performance indicator, is desirable to construct a lantern TFCI since RTS is closely linked to the components of the TFCI.

The foundation of the proposed the Tourism Financial Conditions Index (TFCI) is an application of the Financial Conditions Index (FCI), which is derived from the Monetary Conditions Index (MCI). As stated by the Bank of Canada, the MCI is an index number calculated from a linear combination of two variables, namely the short-run interest rate and an exchange rate, that are deemed relevant for monetary policy. Based on the MCI, the FCI takes account of an extra factor, namely real asset prices, such as house prices and stock prices, to assess the conditions of financial markets (see Beaton, Lalonde, and Luu,2009; Brave and Butters, 2011; Ericsson, Jansen, Kerbeshian, and Nymoan, 1997;Freedman, 1994, 1996a, b; Hatzius, Hooper, Mishkin, Schoenholtz, and Watson, 2010;Lin, 1999; Matheson, 2012; and Thompson, Eyden, and Gupta, 2015).

The aim of the paper is to construct a Tourism Financial Conditions Index (TFCI) to summarize current economy and tourism conditions into a single statistical index. There are two macro-economic indicators which represent the economic conditions,

namely the composite leading indicator (LI) and composite coincident indicator (CI). The components of the Trend-Adjusted Leading Indicators (LI) are the following: Building permits, Index of export orders (2011=100), TAIEX average closing price, the TIER manufacturing composite indicator, Net accession rate of employees on payrolls of industry and services, Real Monetary aggregates M1B, and SEMI book-to-bill ratio (Council for Economic Planning and Development, Taiwan).

The components of the coincident indicators (CI) are the following: industrial production index (2006=100), electric power consumption (billion kWh), index of producer's shipment for manufacturing (2006=100), sale index of wholesale retail and food services (2006=100), nonagricultural employment (1,000), real customs-cleared exports (NT\$ billion), and real machinery and electrical equipment import (NT\$ billions) (Council for Economic Planning and Development, Taiwan). The data on foreign visitor arrivals, foreign visitor arrivals by pleasure, real effective exchange rates, and consumer price index represent the tourism conditions.

The remainder of the paper is structured as follows. Section 2 explains the proxy variables for analyzing the tourism and economic environments. Section 3 presents the model-based approach and estimation method for constructing the TFCI. Section 4 describes the data used in the analysis, and presents the descriptive and summary statistics. Section 5 discusses the empirical results. Section 6 concludes the paper by summarizing the key empirical results and findings.

2. Definitions and Construction of MCI and FCI

In this section we describe the foundations of the Tourism Financial Conditions Index (TFCI), which is an adaptation and extension of the widely-used Financial Conditions Index (FCI). The FCI, in turn, is derived from the well-known Monetary

Conditions Index (MCI). For an application of some of these ideas to daily data, including modelling the volatility that is inherent in daily data, see Chang (2015).

2.1 MCI

Freedman (1994, 1996a, 1996b) discussed the units of measurement of the MCI in terms of real interest rate changes. The MCI is defined deterministically as:

$$MCI_t = \theta_1(e_t - e_0) + \theta_2(r_t - r_0). \quad (1)$$

The subscripts t and 0 denote the current and base periods, respectively, and θ_1 and θ_2 are the weights attached to real effective exchange rates (e) (in logarithms) and real interest rates (r), respectively. The presentation of MCI in equation (1) is linear, though this is not essential. The weights on the components of the MCI (that is, θ_1 and θ_2) are the results of empirical studies that estimate the effect on real aggregate demand over six to eight quarters of changes in real exchange rates and real interest rates.

Typically, in analyzing the constructed values of MCI, there is no allowance made for the fact that the weights in equation (1) are estimated from other studies, and hence contain sampling variation. An exception to the general rule is Chang (2014), who analyses the conditional volatility in daily economic and financial data series.

Based on equation (1), the MCI may be interpreted as the percentage point change in monetary conditions arising from the combined change in real exchange rates and real interest rates from the base period. As the MCI is measured relative to a given base period, subtracting the MCI at two points in time gives a measure of the degree of tightening or easing between these two points. Lack (2003) discusses the

experience of various countries that have used the MCI as an operating target, such as Canada and New Zealand.

2.2 FCI

Owing to the recent high volatility in stock and property prices, the influence of asset prices on monetary policy has drawn greater attention of policy makers. Significant efforts have been made recently to extend additional asset variables, such as stocks and housing prices into the MCI as a new indicator, namely the Financial Conditions Index (FCI) (see Goodhart and Hofmann (2001) for the G7 countries, Mayes and Virén (2001) for 11 European countries, and Lack (2003) for Canada and New Zealand).

Just as in the case of MCI, the FCI reveals the offsetting influences among real effective exchange rates, real interest rates, and real asset prices. The FCI is defined deterministically as:

$$FCI_t = \theta_1(e_t - e_0) + \theta_2(r_t - r_0) + \theta_3(a_t - a_0). \quad (2)$$

As in the case of the MCI, the subscripts t and 0 denote the current and base periods, respectively, and θ_1, θ_2 , and θ_3 are the weights attached to real effective exchange rates (e) (in logarithms), real interest rates (r), and real assets (a) (in logarithms), respectively. Furthermore, the relative weights on the components of the FCI, namely θ_1, θ_2 , and θ_3 , are the outcomes of empirical estimation. The presentation of FCI in equation (2) is linear, though this is not essential. As in the case of MCI, when analyzing the alternative constructed values of FCI, there is no allowance made for the fact that the weights in equation (2) are estimated from other studies, and hence contain sampling variation. The exception to the rule would seem to be the analysis in

Chang (2015).

3. Model-based TFCI

The MCI and FCI are constructed in such a way that the respective weights are first obtained from a separate empirical model, and are then used to construct a data series using the definitions given in equations (1) and (2), respectively. This is in marked contrast to the approach taken in this paper, whereby model-based estimates of the TFCI are calculated directly from empirical data. Such a contrast is explained in greater detail in this section.

3.1 TFCI

The Tourism Financial Conditions Index (TFCI) proposed in the paper focuses on economic activities related to the tourism industry. Unlike the construction of the MCI and FCI, where the weights are based on a wide range of considerations rather than using direct model-based estimates, the TFCI is based on estimation of a linear regression model. The model-based weights for the components will be estimated by OLS.

As the models to be estimated below are linear in the variables, with the appropriate weights to be estimated empirically, the percentage change in a variable is used to denote simple returns rather than logarithmic differences (or log returns). The latter would be more appropriate for calculating continuously compounded returns.

Accordingly, TFCI is defined as:

$$TFCI_t = c + \theta_1 Factor1 + \theta_2 Factor2 + \theta_3 Factor3 + \dots + u_t, u_t \sim D(0, \sigma_u^2) \quad (3)$$

where c denotes the constant term, and u denotes the shocks to TFCI, which need not be independently or identically distributed. The parameters θ_1, θ_2 , and θ_3 are the weights attached to the various Factors. Unlike the standard approach to estimating MCI and FCI, in this paper the weights will be estimated empirically and explicit allowance can be made for the sampling variation in the parameter estimates.

3.2 RTS

As TFCI is unobservable, it is necessary to relate TFCI to observable data. The unobservable variable is defined as being the conditional mean of an observable variable, namely the returns on a Tourism Stock Index (RTS), which reflects the tourism industry stock sub-index that is listed on the Taiwan Stock Exchange (specifically, the Taiwan Stock Exchange Tourism Sub-index), as follows:

$$RTS_t = TFCI_t + v_t, v_t \sim D(0, \sigma_v^2) \quad (4)$$

where RTS is observed, TFCI is not observed, and the measurement error in RTS is denoted by v , which need not be independently or identically distributed.

As mentioned above, RTS, a financial tourism performance indicator, an observable variable, combines both impacts from tourism supply and tourism demand, including lag effects. It is necessary and desirable to construct a latent tourism financial indicator (TFCI) based on RTS. Six attributes which are related to the tourism industry are examined (see Table 1), including lagged effects of the predictor which are distributed across one time period.

A function of RTS is shown as:

$$RTS = f(REE, RTCPI, RLTCCL, RLTCCL, RLTVAP, RLTVAP),$$

where REE, RTCPI, RLTCCL, RLTCCL, RLTVAP, and RLTVAP denote the rate of change in real effective exchange rates, rate of change rate in the consumer price index, rate of change in the composite coincident index (lag1), rate of change rate in the composite leading index (lag1), rate of change rate in visitor arrivals (lag1), and rate of change in visitor arrivals by pleasure (lag1). These variables represent tourism arrival costs, the macro-economy, and tourism arrival demand conditions, respectively.

For estimating the variables that influence RTS the most, the paper examined the six attributes perceived as determinants of RTS by factor analysis. Factor scores are estimated and then regressed against RTS. A test of statistical significance of the extracted factors was used in constructing RTS.

3.3 Results of Factor Analysis

As mentioned above, the paper categorized six variables into three groups by factor analysis (the details are in the appendix 1), as follows:

1) Factor 1 is related to Foreign Visitor Arrivals, namely F1_visitors: two factors, RLTVAP, RLTVAP, are grouped into F1_visitors. According to the fundamental equation in tourism finance (see McAleer (2015)), the primary purpose of tourism authorities in the public and private sectors is to achieve high daily returns on total tourism. Therefore, foreign visitor arrivals should be an important factor for RTS.

2) Factor 2 is related to the index of the macro-economy, namely F2_macro: two factors, RLTCCL, RLTCCL, that are designed to explain the nation's macroeconomic situation, are included in the group. Tang and Tan (2015) indicated that tourism Granger-causes economic growth in the short- and long-run, and policies to promote inbound tourism could effectively stimulate economic growth. Pratt (2015) also

mentioned that tourism provides economic benefits for Small Island Developing States (SIDS). Kasimati (2016) analyzed and confirmed the contribution of tourism to the economic growth in Greece.

3) Factor 3 is related to the own price of tourism, namely F3_price: two variables, REE, RTCPI, are categorized into one group to test whether the factors of the “own price of tourism” has any significant influence on RTS. Song and Witt (2006) mentioned that, in theory, the “own price of tourism” should contain two components, namely the cost of living for tourists at the destination and the travel cost to the destination. Previous research, such as Dritsakis (2004), Lim and McAleer (2001, 2002), Qiu and Zhang (1995), Song and Witt (2006), and Witt and Witt (1992), shows that the cost of living in the destination is normally measured by the destination consumer price index (CPI) relative to the origin CPI, and travel costs to the destination are measured by the exchange rate between the origin country and destination country currencies.

3.4 RTS and TFCI

Given the zero mean assumption for v , the means of RTS and TFCI will be identical, as will their estimates. Using equations (3) and (4), the empirical model for estimating the weights for TFCI is given as:

$$RTS_t = c + \theta_1 F1_visitors + \theta_2 F2_macro + \theta_3 F3_price + u_t + v_t, \quad (5)$$

$$\varepsilon_t = u_t + v_t \sim D(0, \sigma_\varepsilon^2)$$

where $\varepsilon_t = u_t + v_t$ need not be independently or identically distributed.

The parameters in equation (5) can be estimated by OLS to yield unbiased and

consistent estimates of RTS. In view of the definition in equation (4), the unbiased and consistent estimates of RTS will also be unbiased and consistent estimates of the unobservable TFCI.

This paper proposes unbiased and consistent estimation of TFCI in equations (3) and (5) by Ordinary Least Squares (OLS), with consistent Newey-West HAC standard errors to accommodate the possibility of serial correlation and heteroskedasticity in the errors in equation (5).

4. Data

In this section we present the data used for the empirical analysis. Monthly data are used from April 2005 to June 2016. The sources of data are the Taiwan Stock Exchange (TWSE), Taipei Foreign Exchange Market Development Foundation for the tourism industry stock index, and the real effective exchange rate, respectively.

As discussed in Section 3 above, six observable variables that will be used to estimate the unobservable monthly TFCI are as follows (see Table 1):

- 1) rate of change in real effective exchange rates (REE);
- 2) rate of change in the Taiwan Consumer Price Index (RTCPI);
- 3) rate of change in the Taiwan Composite Leading Index Lagged 1 (RLTCL) ;
- 4) rate of change in the Taiwan Composite Coincident Index, Lagged 1 (RLTCC) ;
- 5) rate of change in Taiwan's Visitor Arrivals, Lagged 1 (RLTVA) ;
- 6) rate of change in Taiwan's Visitor Arrivals by Pleasure, Lagged 1 (RLTVAP).

This paper categorizes six observable variables into three groups by factor analysis. After the factor scores are estimated, the data will be used in the regression of RTS in equation (5) by OLS. The estimates of monthly RTS in equation (5), which are equivalent to the estimates of monthly TFCI, are defined as TFCI (OLS).

[Table 1 goes here]

[Figure 1 goes here]

The time series plots in Figure 1 are instructive. The returns on the tourism stock index, RTS, exhibit standard stock market returns, with some volatility clustering, namely periods of relatively high volatility interspersed with periods of relatively low volatility. The lowest value of RTS occurs at the end of 2008. The rate of change in real effective exchange rates, REE, exhibit similar patterns of variation to those of RTS, with some periods of relatively high volatility mixed with periods of relatively low volatility. Both variables, the rate of change in the Taiwan composite coincident index (lag 1), RLTC, and the rate of change in the Taiwan Composite leading index (lag 1), RLTL, are reasonably smooth throughout the sample period, apart from a sharp fall at the end of 2008, followed by an even larger positive correction during 2009.

However, both the rate of change in Taiwan Visitor Arrivals, TVA, and the rate of change in Taiwan Visitor Arrivals by Pleasure, TVAP, show a strong increasing trend, with strong seasonality. There is no evidence of any cyclical behavior.

The descriptive statistics of the variables that are used to estimate the parameters in equation (5) are given in Table 2. There are 134 monthly observations in total (133 for factor scores). The means and medians of the four variables are reasonably close to zero.

[Table 2 goes here]

Estimation of TFCI, as defined in Table 1, will be examined in the next section to

determine an unbiased estimate of TFCI for purposes of sensible public and private policy considerations that focus on economic activities that are related to the tourism industry, using factor scores based on the results of factor analysis.

5. Empirical Results

This section discusses the construction of the monthly TFCI based on the regression model in equation (5) which estimates RTS on F1_visitors, F2_macro, and F3_price. Estimation of the model in equation (5) by OLS is undertaken using the EViews econometric software package.

The descriptive statistics of the estimated monthly TFCI from equation (5) are given in the last column of Table 2, where the estimates are given as TFCI (OLS). The OLS estimates of TFCI are given in Figure 2. The mean of TFCI (OLS) is identical to that of RTS, as expected, but the medians are different. The range, or difference between the largest and smallest TFCI estimates, is much smaller for TFCI (OLS) than for RTS. The distribution of TFCI (OLS) is found to be significantly different from the normal distribution, as shown by the Jarque-Bera Lagrange multiplier test of normality. The departure from symmetry is relatively small, but the kurtosis suggests a significant departure from what would be expected under normality.

[Figure 2 goes here]

The time series plots of the OLS estimates of TFCI, TFCI (OLS), resemble the plots of F1_visitors. These two variables are given in Figure 3, where it is clear that

the overall pattern of TFCI (OLS), though not the extreme values observed in 2008 and 2009, are tracked reasonably well by the variations in F1_visitors.

[Figure 3 goes here]

The OLS estimates of TFCI obtained from equation (5) are given in Table 3. The F1_visitors have a negative and significant impact on the estimated TFCI, while F2_macro has a significant positive effect. The F3_price has a significant and negative effect on the estimated TFCI, using both the OLS and robust Newey-West HAC standard errors. It is not surprising that F2_macro should have a statistically significant impact on the tourism stock index returns as F2_macro is based on the industrial production index, electric power consumption, index of producer's shipment for manufacturing, sale index of wholesale retail and food services, nonagricultural employment, real customs-cleared exports, and real machinery and electrical equipment import. Finally, the Jarque-Bera Lagrange multiplier statistic for normality indicates that the residuals from the OLS regression are not normally distributed.

It is interesting that the empirical results show a significantly negative correlation between F1_visitors and RTS, implying the tourism authorities might promote travel by the "rich", and not only on inbound visitor growth.

[Table 3 goes here]

The differences in the magnitudes of RTS and the OLS estimates of TFCI, TFCI (OLS), which is equivalently an estimate of RTS from equation (5), indicate the importance of the model-based estimates of TFCI in discussing the tourism sector.

The use of RTS as the sole indicator of the tourism sector, as compared with the general activity of the economic variables on the tourism stock variable, would seem to provide an exaggerated and excessively volatile explanation of tourism financial conditions. The use of the estimated TFCI, TFCI (OLS), exhibits far less volatility than does RTS, as can be seen clearly in Figure 4.

[Figure 4 goes here]

This paper used the Granger causality test between a latent variable, TFCI, and an observable variable, RTC. Empirical data indicate that TFCI shows strong feedback on RTS, while RTS reveals slight feedback on TFCI (see Table 4). The empirical findings suggest that Granger causality is bi-directional, that is, runs both ways between TFCI and RTS.

[Table 4 goes here]

6. Conclusion

The paper used monthly rates of change of data on the composite coincident index (lag1), composite leading index (lag1), foreign visitor arrival (lag1), foreign visitors by pleasure (lag1), real effective exchange rates and consumer price index from April 2005 to June 2016 for Taiwan to construct a novel monthly tourism financial indicator, namely the Tourism Financial Conditions Index (TFCI).

The TFCI is an adaptation and extension of the widely-used Monetary Conditions Index (MCI) and Financial Conditions Index (FCI) to the tourism industry stock data that is listed on the Taiwan Stock Exchange (specifically, the Taiwan Stock Exchange Tourism Sub-index). However, the method of calculation of the monthly

TFCI is different from existing methods of constructing the MCI and FCI in that the weights are estimated empirically from a regression model using publicly available data. The empirical results showed that TFCI can be estimated quite accurately using a regression model to explain the tourism stock index returns.

The monthly TFCI is straightforward to use and interpret, and provides interesting insights in predicting the current economic and financial environment for tourism stock index returns. The use of returns on the tourism stock index as the sole indicator of the tourism sector, as compared with the general activity of the economic variables on the tourism stock variable, was shown to provide an exaggerated and excessively volatile explanation of tourism financial conditions.

It is interesting that the empirical results show a significantly negative correlation between $F1_visitors$ and RTS , implying the tourism authorities might promote travel by the “rich”, and not only on inbound growth of visitors. Using the Granger causality test, the empirical findings indicate that TFCI shows strong feedback on RTS , and also a slight feedback on TFCI.

Overall, the empirical findings should be helpful for public and private decision makers, such as government, business executives and investors, as the TFCI provides useful insights that can be based on straightforward calculations and interpretations of publicly available information.

The TFCI was related to the fundamental equation in tourism finance, whereby the primary purpose of tourism authorities in the public and private sectors is to achieve high daily returns on total tourism.

References

Beaton, K., R. Lalonde and C. Luu (2009), A financial conditions index for the United States, Bank of Canada Discussion Paper.

Brave, S. and R.A. Butters (2011), Monitoring financial stability: A financial conditions index approach, Federal Reserve Bank of Chicago, Economic Perspectives, 1, 22-43.

Chang, C.-L. (2015), Modelling a latent daily Tourism Financial Conditions Index, *International Review of Economics & Finance*, 40(C), 113-126.

Dritsakis, N. (2004), Cointegration analysis of German and British tourism demand for Greece, *Tourism Management*, 25(1), 111-119.

Ericsson, N.R., E.S. Jansen, N.A. Kerbeshian and R. Nymoen (1997), Understanding a monetary conditions index, Paper presented at the November 1997 meeting of the Canadian Macroeconomic Study Group, Toronto, Canada.

Freedman, C. (1994), The use of indicators and of the monetary conditions index in Canada, Washington, D.C., USA.

Freedman, C. (1996a), The role of monetary conditions and the monetary conditions index in the conduct of policy, *The Transmission of Monetary Policy in Canada*, Bank of Canada, pp. 81-86.

Freedman, C. (1996b), The use of indicators and of the monetary conditions index in Canada, *The Transmission of Monetary Policy in Canada*, Bank of Canada, pp. 67-80.

Goodhart, C. and B. Hofmann (2001), Asset prices, financial conditions, and the transmission of monetary policy, Paper presented at Conference on Asset Prices, Exchange Rates and Monetary Policy, sponsored by Federal Reserve Bank of San Francisco and Stanford Institute for Economic Policy Research, March 2001.

Hatzius, J., P. Hooper, F.S. Mishkin, K.L. Schoenholtz and M.W. Watson (2010), Financial conditions indexes: A fresh look after the financial crisis, Working Paper No. 16150, National Bureau of Economic Research.

Kasimati, E. (2016),. Does tourism contribute significantly to the Greek economy? A multiplier analysis, *European Journal of Tourism, Hospitality and Recreation*, 7(1), 55-62.

Lack, C.P. (2003), A financial conditions index for Switzerland, Monetary policy in a changing environment, *Bank for International Settlements*, 2003, 19, 398-413.

Lim, C. and M. McAleer (2001), Cointegration analysis of quarterly tourism demand by Hong Kong and Singapore for Australia, *Applied Economics*, 33, 1599-1619.

Lim, C. and M. McAleer (2002), A cointegration analysis of tourism demand by Malaysia for Australia, *Mathematics and Computers in Simulation* 59, 197-205.

Lin, J.-L. (1999), The monetary conditions index in Taiwan, *Academia Economic Papers*, 27(4), 459-479.

Matheson, T.D. (2012), Financial conditions indexes for the United States and Euro area, *Economics Letters*, 115(3), 441-446.

Mayes, D. and M. Viren (2001), Financial conditions indexes, *Bank of Finland Discussion Paper 17/2001*, Helsinki, Finland.

McAleer, M. (2015), The fundamental equation in tourism finance, *Journal of Risk Financial Management*. 8, 369-374.

Qiu, H. and J. Zhang (1995), Determinants of tourist arrivals and expenditures in Canada. *Journal of Travel Research*, 34, 43-49

Pratt, S. (2015), The economic impact of tourism in SIDS, *Annals of Tourism Research*, 52, 148-160

Song, H. and S. F. Witt (2006), Forecasting International Tourist Flows to Macau. *Tourism Management*, 27(2), 214-224.

Tang, C.F. and Tan, E.C. (2015), Does tourism effectively stimulate Malaysia's economic growth?, *Tourism Management*, 46, 158-163.

Thompson K., Eyden R.V., and Gupta R. (2015), Identifying an index of financial conditions for South Africa, *Studies in Economics and Finance*, 32(2), 256-274.

The World Economic Forum (2015), *The Travel & Tourism Competitiveness Report*, 2015.

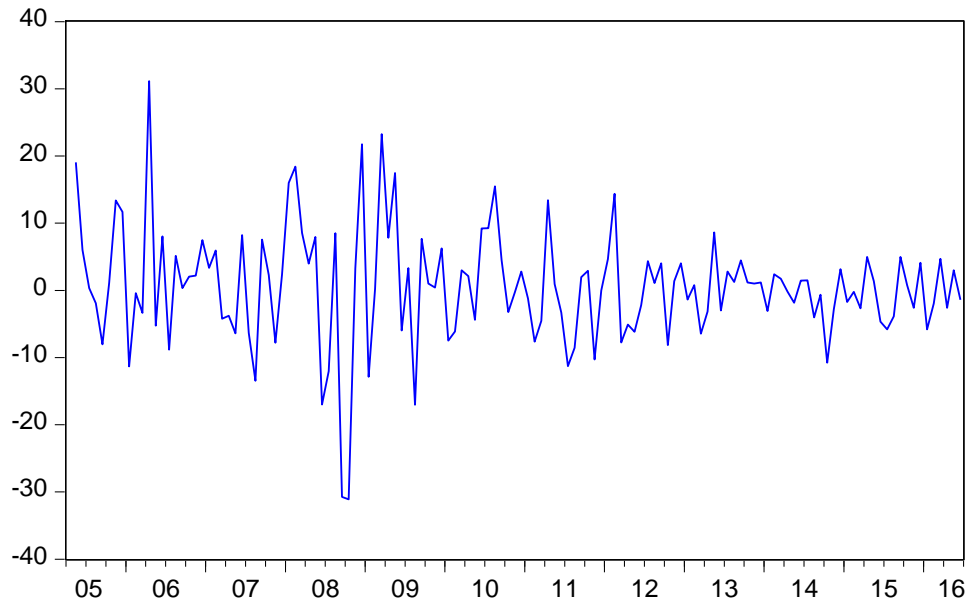
<http://reports.weforum.org/travel-and-tourism-competitiveness-report-2015/economy-rankings/>

UNWTO Annual Report (2015), World Tourism Organization, UNWTO / [WWW2.unwto.org/](http://www.unwto.org/) About / Annual Report / UNWTO Annual Report 2015.

Witt, S.F. and C.A. Witt (1992), *Modeling and forecasting demand in tourism*, Academic Press, London.

WTTC, <http://www.wttc.org/research/economic-research/economic-impact-analysis/>
Copyright @ WTTC 2016.

(a) Returns on Tourism Stock Index (RTS)



(b) Rate of Change of Real Effective Exchange Rates (REE)

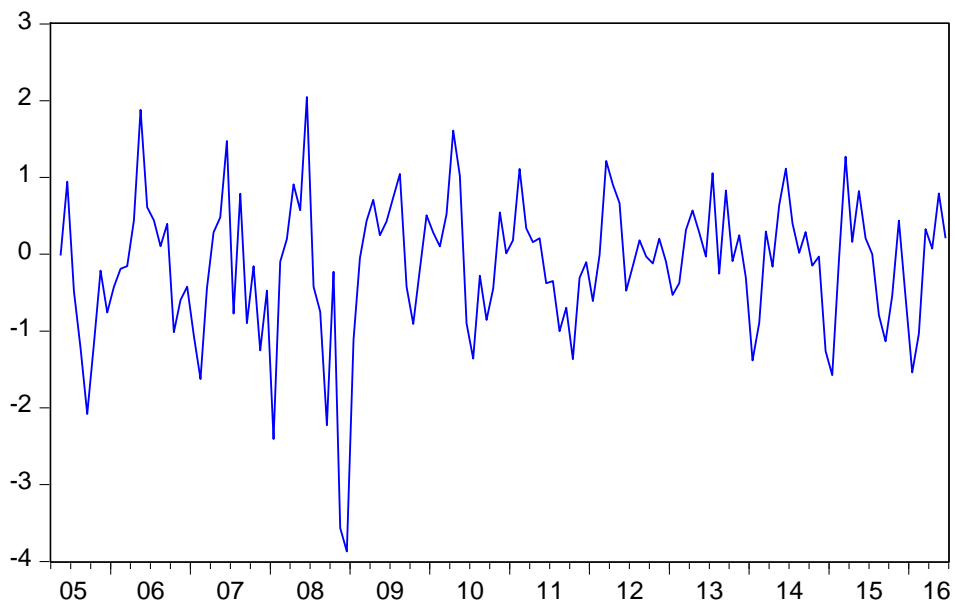
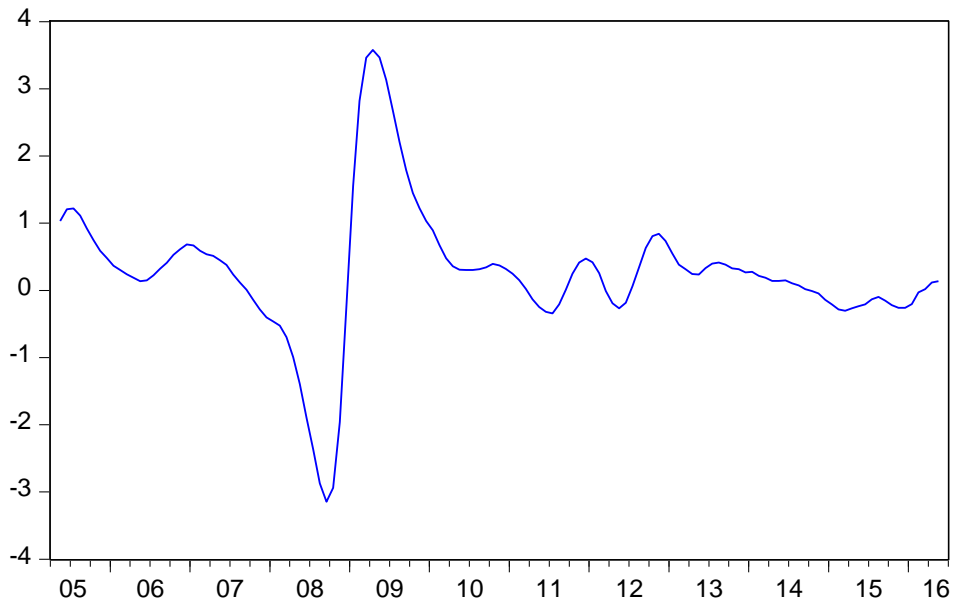


Figure 1

Time Series of Tourism Variables (April 2005 - June 2016)

**(c) Change rate on the Taiwan Composite Leading Index
with a one-period lag (RLTCL)**

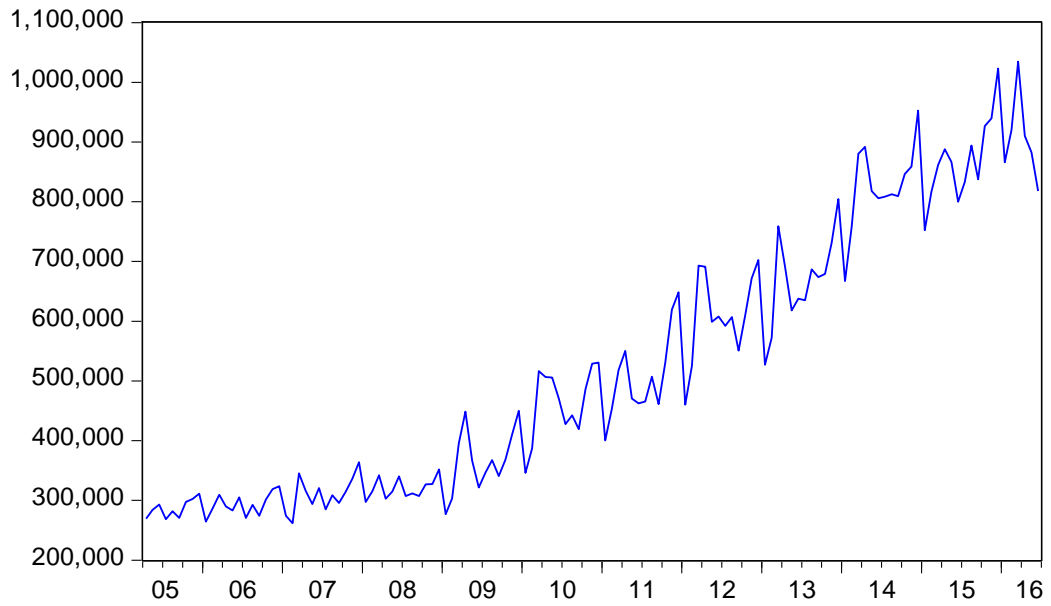


**(d) Rate of Change of the Taiwan Composite Coincident Index
with a one-period lag (RLTCC)**

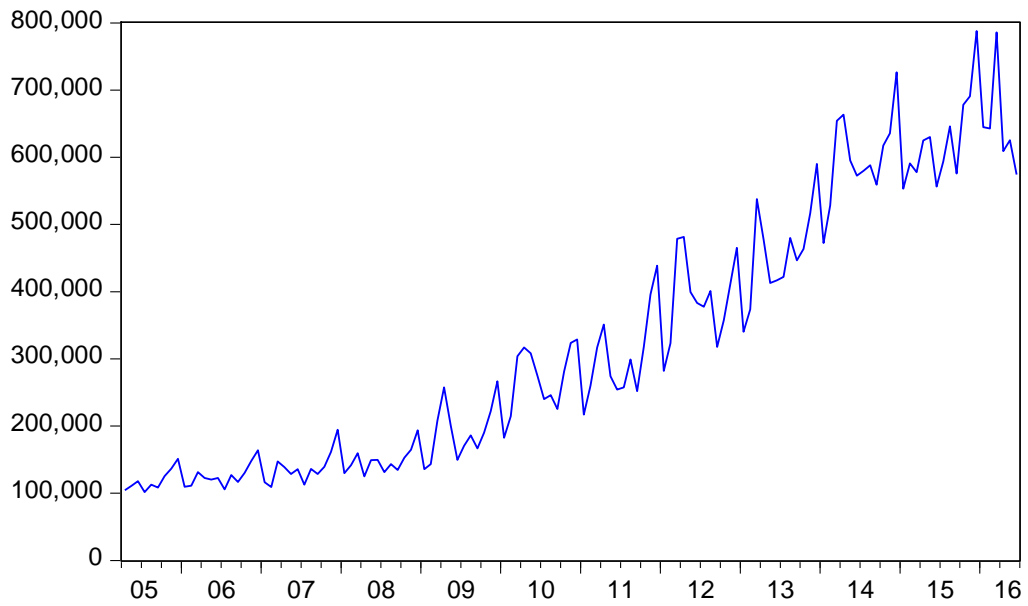


Figure 1
Time Series Plots for Tourism Variables (April 2005 - June 2016) (Continued)

(e) Taiwan Visitor Arrivals (TVA)

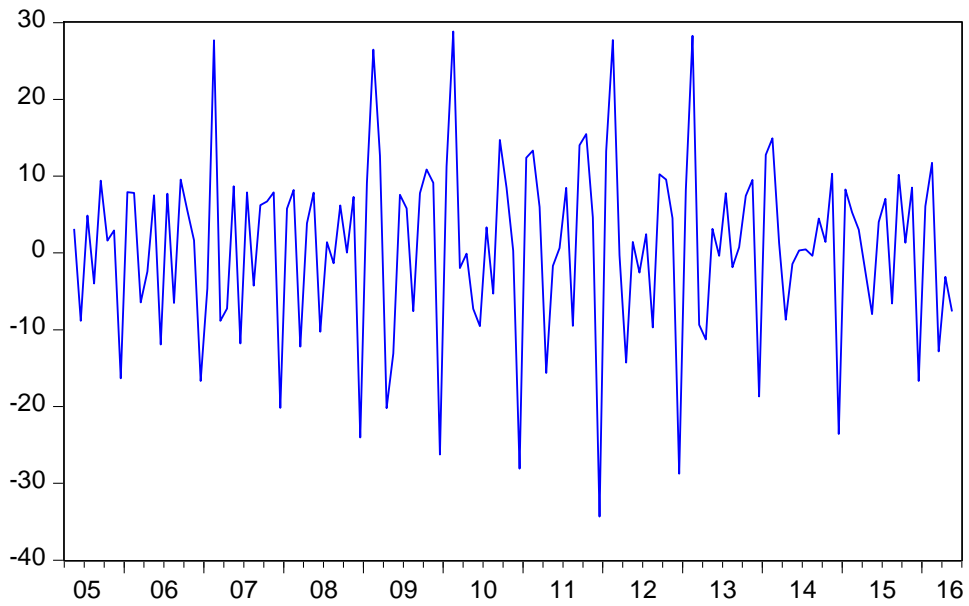


(f) Taiwan Visitor Arrivals by Pleasure (TVAP)



Time Series Plots for Tourism Variables (April 2005 - June 2016) (Continued)

**(g) Rate of Change of Taiwan Visitor Arrivals
with a one-period lag (RLTVA)**



**(h) Rate of Change of Taiwan Visitor Arrivals by Pleasure
with a one-period lag (RLTVAP)**

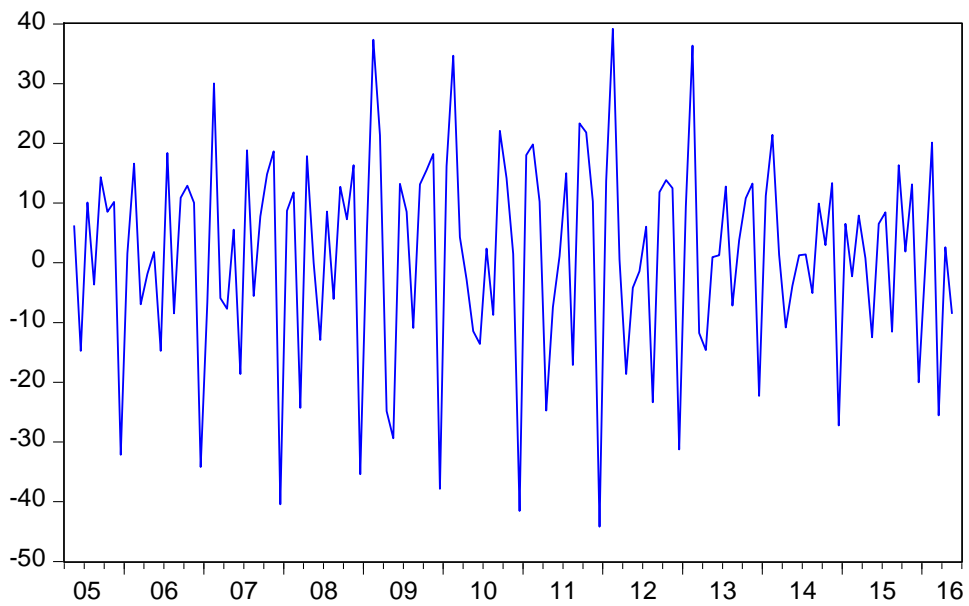


Figure 1
Time Series Plots for Tourism Variables (April 2005 - June 2016) (Continued)

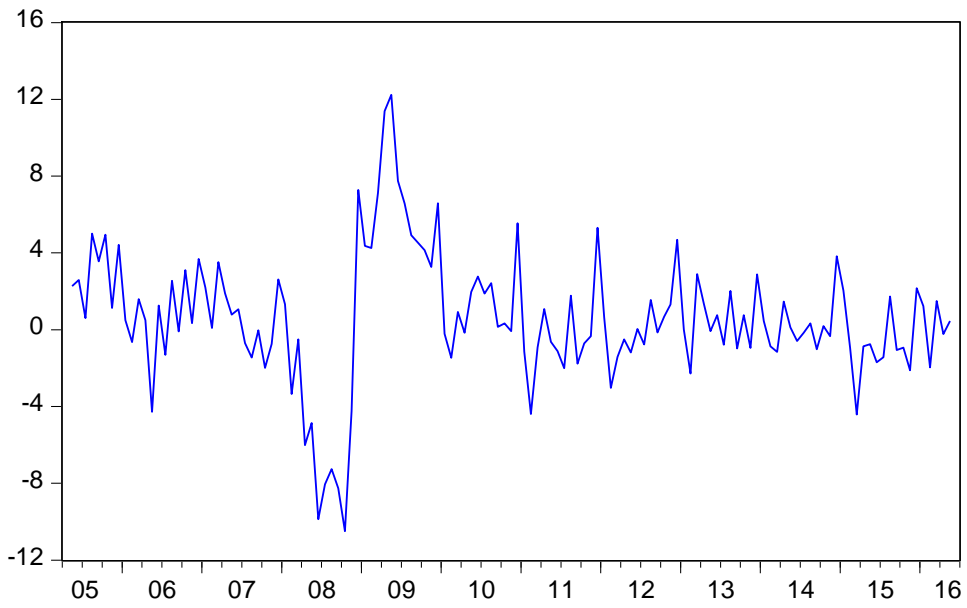


Figure 2
Time Series for OLS Estimates of TFCI (April 2005 - June 2016)

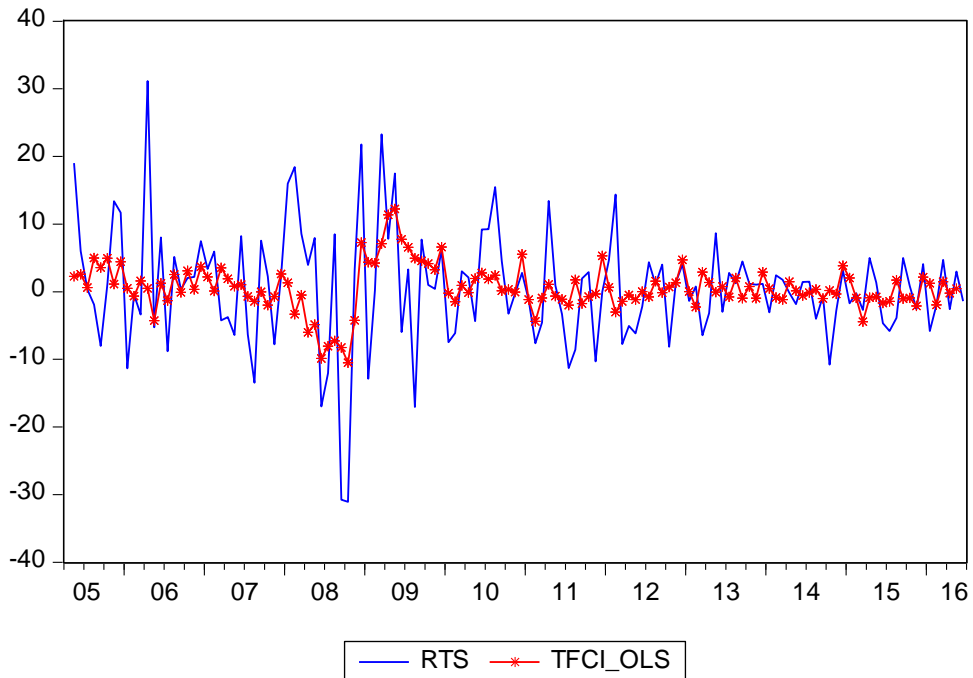
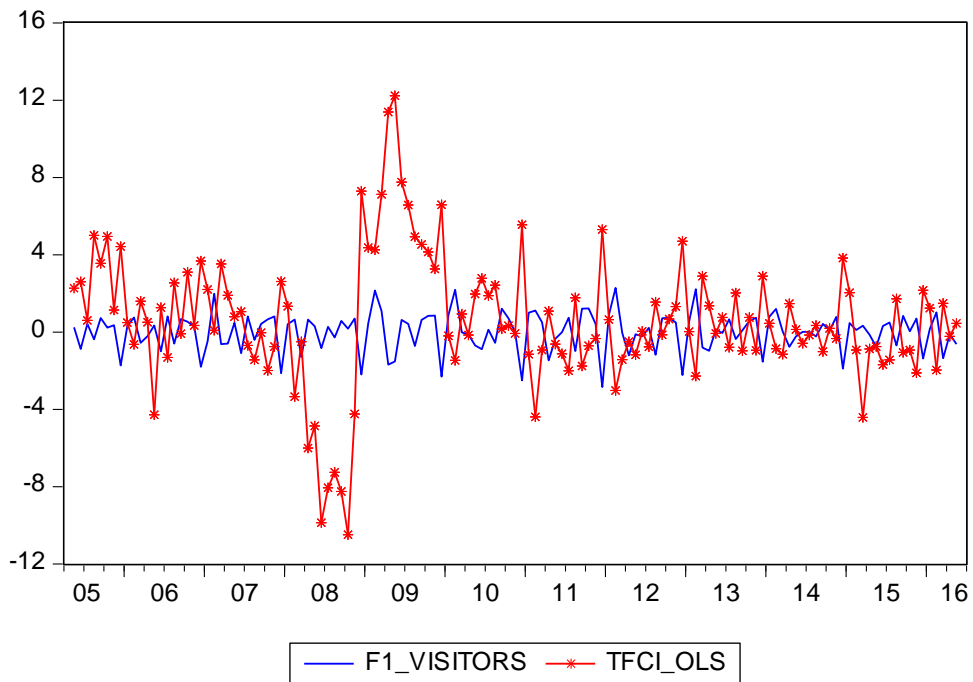


Figure 3
RTS and OLS Estimates of TFCI for April 2005 - June 2016

(a) F1_visitors and TFCI_OLS



(b) F2_macro and TFCI_OLS

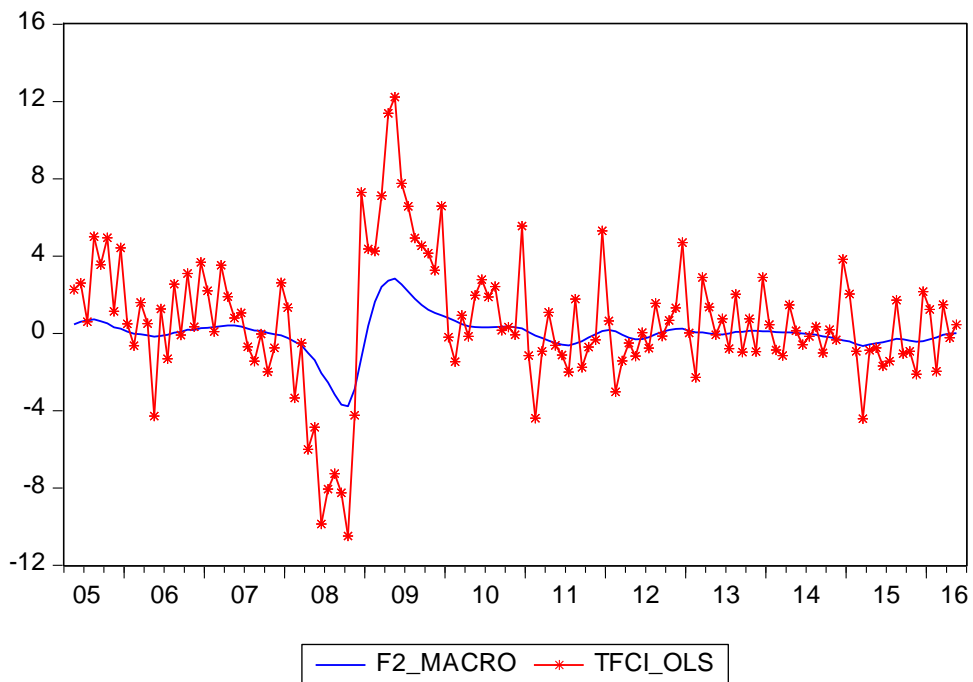


Figure 4
Time Series for Factors and TFCI (April 2005 - June 2016)

(c) F3_price and TFCI_OLS

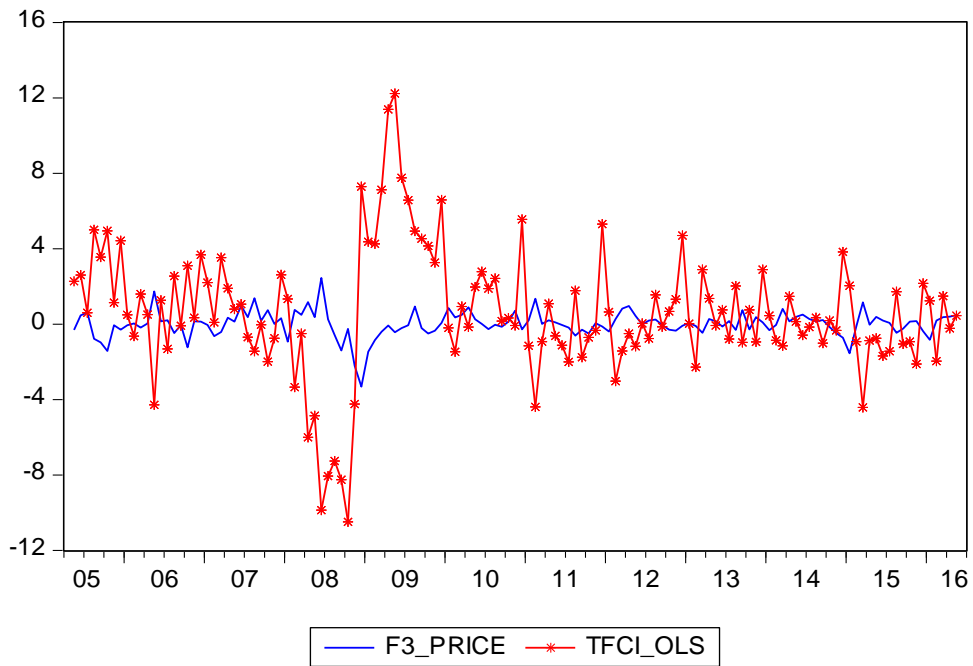


Figure 4

Time Series for Factors and TFCI (April 2005 - June 2016) (continued)

(a) F1_visitors and RTS

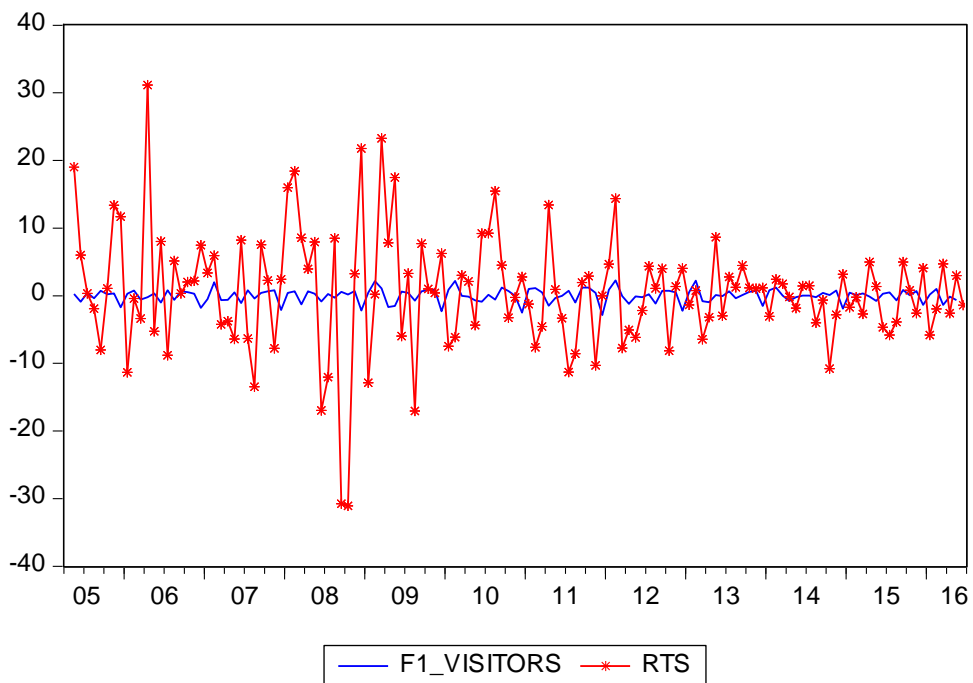
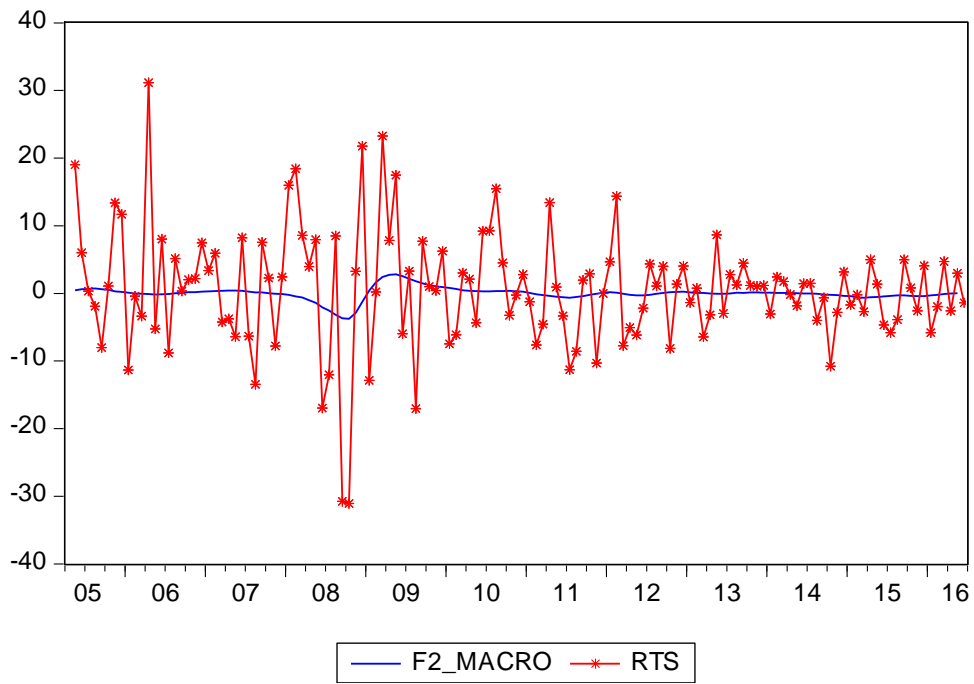


Figure 5

Time Series for Factors and RTS (April 2005 - June 2016)

(b) F2_macro and RTS



(c) F3_price and RTS

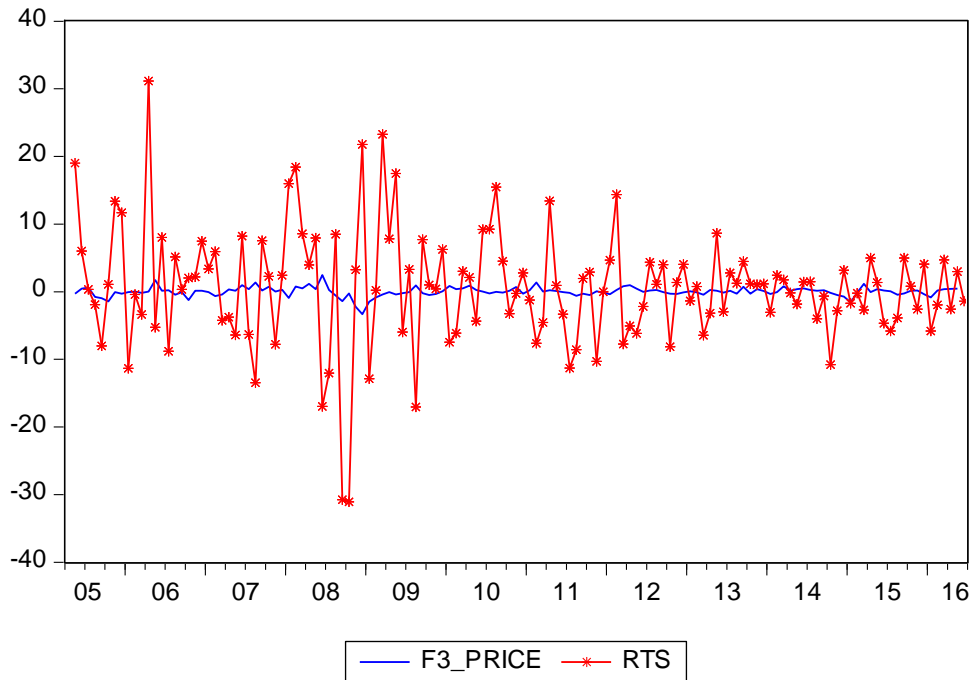


Figure 5
Time Series for Factors and RTS (April 2005 - June 2016) (continued)

Table 1
Description of Variables

| Variables | Description |
|------------------|---|
| RTS | Monthly returns on Taiwan Stock Exchange Tourism Subindex |
| REE | Monthly change rate on Real Effective Exchange Rates |
| RTCPI | Monthly change rate on the Taiwan Consumer Price Index |
| RLTCC | Monthly change rate on the Taiwan Composite Coincident Index with a one period of lag |
| RLTCL | Monthly change rate on the Taiwan Composite Leading Index with a one period of lag |
| RLTVA | Monthly change rate on the Taiwan's Visitors Arrival with a one period of lag |
| RLTVAP | Monthly change rate on the Taiwan's Visitors Arrival by Pleasure with a one period of lag |
| TFCI(OLS) | OLS estimates of monthly Tourism Financial Conditions Index |

Table 2
Descriptive Statistics of Variables for April 2005– June 2016

| Variables | RTS | F1_ visitors | F2_ macro | F3_ price | TFCI (OLS) |
|---------------------|------------|-------------------------|----------------------|----------------------|-----------------------|
| Mean | 0.5380 | 4.67E-17 | 1.25E-17 | 6.68E-17 | 0.5526 |
| Median | 0.9590 | 0.1760 | 0.0294 | 0.0284 | 0.3245 |
| Maximum | 31.1559 | 2.2789 | 2.8293 | 2.4543 | 12.2306 |
| Minimum | -31.0804 | -2.8514 | -3.7720 | -3.3111 | -10.4946 |
| Std. Dev. | 8.6865 | 0.9837 | 0.9410 | 0.6873 | 3.4082 |
| Skewness | -0.0706 | -0.4881 | -0.8188 | -0.7351 | -0.0313 |
| Kurtosis | 5.7145 | 3.3795 | 8.4540 | 7.9237 | 5.2995 |
| Jarque-Bera | 41.25 | 6.08 | 179.71 | 146.32 | 29.33 |
| Prob-value | 0 | 0.0479 | 0 | 0 | 0 |
| Sum | 72.0952 | 4.00E-15 | 8.40E-16 | 9.16E-15 | 73.5002 |
| Sum Sq. Dev. | 10035.48 | 127.72 | 116.89 | 62.35 | 1533.29 |
| Observations | 134 | 133 | 133 | 133 | 133 |

Notes: RTS is return on Taiwan Stock Exchange Tourism Subindex. F1_visitors, F2_visitors, and F3_price are factor scores. TFCI(OLS) denotes OLS estimates of the monthly Tourism Financial Conditions Index.

Table 3
OLS Estimates of TFCI for April 2005 - June 2016

| Parameters | OLS |
|-------------------------|---------------------------------|
| Constant | 0.553 (0.434) [0.704] |
| θ_1 | -1.446 (0.046)** [0.718] |
| θ_2 | 3.011 (0.0001)*** [0.753] |
| θ_3 | -2.216 (0.034)** [1.031]* |
| Diagnostics | |
| Adjusted R ² | 0.133 |
| F-statistic | 7.758*** |
| Jarque-Bera | 20.120*** |

Notes: The dependent variable is RTS, the returns on the Taiwan Stock Exchange Over the Counter Tourism Subindex. The numbers in parentheses (brackets) are standard OLS (robust Newey-West HAC) standard errors. ***, **, and * denote the estimated coefficients are statistically significant at the 1%, 5%, and 10% levels, respectively.

\

Table 4
Granger Causality Tests on TFCI and RTS for April 2005 - June 2016

| Null Hypothesis: | F-Statistic | Prob. |
|---------------------------------|-------------|--------|
| TFCI does not Granger Cause RTS | 4.225** | 0.0168 |
| RTS does not Granger Cause TFCI | 2.396* | 0.0952 |

Notes: ** and * denote the estimated coefficients are statistically significant at the 5% and 10% levels, respectively.

Appendix: Factor Analysis

Rotation Method: Orthogonal Varimax

Factor: Untitled

Initial loadings: Unrotated

Convergence achieved after 7 iterations

Rotated loadings: $L * \text{inv}(T)'$

| | F1 | F2 | F3 |
|--------|---------|---------|---------|
| REE | -0.118 | 0.2196 | 0.5572 |
| RTCPI | 0.0091 | 0.0648 | 0.5459 |
| RLTCL | 0.01823 | 0.9070 | -0.0303 |
| RLTCC | 0.00161 | 0.9057 | 0.1570 |
| RLTVA | 0.9699 | 0.0187 | -0.0228 |
| RLTVAP | 0.9700 | -0.0032 | -0.0188 |

Note: Kaiser's measure of sampling adequacy (MSA) = 0.512.