

Bouchaud, Jean-Philippe; Gualdi, Stanislao; Tarzia, Marco; Zamponi, Francesco

Article

Optimal inflation target: Insights from an agent-based model

Economics: The Open-Access, Open-Assessment E-Journal

Provided in Cooperation with:

Kiel Institute for the World Economy – Leibniz Center for Research on Global Economic Challenges

Suggested Citation: Bouchaud, Jean-Philippe; Gualdi, Stanislao; Tarzia, Marco; Zamponi, Francesco (2018) : Optimal inflation target: Insights from an agent-based model, Economics: The Open-Access, Open-Assessment E-Journal, ISSN 1864-6042, Kiel Institute for the World Economy (IfW), Kiel, Vol. 12, Iss. 2018-15, pp. 1-27,
<https://doi.org/10.5018/economics-ejournal.ja.2018-15>

This Version is available at:

<https://hdl.handle.net/10419/176338>

Standard-Nutzungsbedingungen:

Die Dokumente auf EconStor dürfen zu eigenen wissenschaftlichen Zwecken und zum Privatgebrauch gespeichert und kopiert werden.

Sie dürfen die Dokumente nicht für öffentliche oder kommerzielle Zwecke vervielfältigen, öffentlich ausstellen, öffentlich zugänglich machen, vertreiben oder anderweitig nutzen.

Sofern die Verfasser die Dokumente unter Open-Content-Lizenzen (insbesondere CC-Lizenzen) zur Verfügung gestellt haben sollten, gelten abweichend von diesen Nutzungsbedingungen die in der dort genannten Lizenz gewährten Nutzungsrechte.

Terms of use:

Documents in EconStor may be saved and copied for your personal and scholarly purposes.

You are not to copy documents for public or commercial purposes, to exhibit the documents publicly, to make them publicly available on the internet, or to distribute or otherwise use the documents in public.

If the documents have been made available under an Open Content Licence (especially Creative Commons Licences), you may exercise further usage rights as specified in the indicated licence.



<http://creativecommons.org/licenses/by/4.0/>

Optimal inflation target: insights from an agent-based model

*Jean-Philippe Bouchaud, Stanislao Gualdi, Marco Tarzia,
and Francesco Zamponi*

Abstract

Which level of inflation should Central Banks be targeting? The authors investigate this issue in the context of a simplified Agent Based Model of the economy. Depending on the value of the parameters that describe the behaviour of agents (in particular inflation anticipations), they find a rich variety of behaviour at the macro-level. Without any active monetary policy, our ABM economy can be in a high inflation/high output state, or in a low inflation/low output state. Hyper-inflation, deflation and “business cycles” between coexisting states are also found. The authors then introduce a Central Bank with a Taylor rule-based inflation target, and study the resulting aggregate variables. The main result is that too-low inflation targets are in general detrimental to a CB-monitored economy. One symptom is a persistent under-realization of inflation, perhaps similar to the current macroeconomic situation. Higher inflation targets are found to improve both unemployment and negative interest rate episodes. The results are compared with the predictions of the standard DSGE model.

(Published in Special Issue [Agent-based modelling and complexity economics](#))

JEL E31 E32 E52

Keywords Agent based models; monetary policy; inflation target; Taylor rule

Authors

Jean-Philippe Bouchaud, ✉ CFM, 23 rue de l'Université, 75007 Paris, France, Jean-Philippe.Bouchaud@cfm.fr

Stanislao Gualdi, CFM, 23 rue de l'Université, 75007 Paris, France

Marco Tarzia, Université Pierre et Marie Curie – Paris 6, Laboratoire de Physique Théorique de la Matière Condensée, 4, Place Jussieu, Tour 12, 75252 Paris Cedex 05, France

Francesco Zamponi, Laboratoire de physique théorique, Département de physique de l'ENS, École normale supérieure, PSL Research University, Sorbonne Universités, UPMC Univ. Paris 06, CNRS, 75005 Paris, France

Citation Jean-Philippe Bouchaud, Stanislao Gualdi, Marco Tarzia, and Francesco Zamponi (2018). Optimal inflation target: insights from an agent-based model. *Economics: The Open-Access, Open-Assessment E-Journal*, 12 (2018-15): 1–26. <http://dx.doi.org/10.5018/economics-ejournal.ja.2018-15>

1 Introduction

Most Central Banks around the world nowadays adjust their monetary policy to reach a 2%/year inflation target. The rationale for choosing 2% rather than 1% or 3% is however not clear, as with many other “magic numbers” religiously used in economic policy. The recent crisis has put to the fore the problem of negative nominal interest rates, which can be seen as a consequence of low inflation targets and thus low baseline rates. As emphasized by O. Blanchard in 2010 (Clift, 2010), *“As a matter of logic, higher average inflation and thus higher average nominal interest rates before the crisis would have given more room for monetary policy to be eased during the crisis.”* This view is however disputed by many economists, who strongly argue against a raise of the inflation target (see e.g. Ball (2014) and Bernanke (2016) for a recent overview, and for a discussion of the historical origin of the 2% target). A major argument to that effect is the credibility of Central Banks, who have succeeded in anchoring low-inflation expectations in the minds of economic agents. If the inflation target is changed in the face of new circumstances, these expectations may un-moor, and the very efficiency of monetary policy may suffer as a consequence. Clearly, the fear of a lurking run-away inflation is weighing heavily on the debate.

Yet, the question of an “optimal” inflation level is well worth considering, and policy makers are eager to receive inputs from academic research. As Federal Reserve Chairwoman J. Yellen recently declared: *“We very much look forward to seeing research by economists that will help inform our future decisions on this”* (Financial Times, 2017). Of course, optimality needs to be defined and different criteria (i.e. welfare functions) may lead to different results. More important still is the modelling framework used to describe the economy. A clear puzzle is that standard monetary theories imply zero or negative optimal inflation rates, at variance with Central Banks’ inflation targets (Schmitt-Grohe and Uribe, 2011). The standard DSGE machinery – the “workhorse” of monetary economists (Galí, 2008) – has recently been extended to cope with non-zero inflation rates, and generally concludes that the optimal inflation rate should be smaller than 2% (Coibion et al., 2012). However, DSGE models are based on a series of highly debatable assumptions, and have been under intense fire after the 2007 crisis: see the insightful set of contributions in the Oxford Review of Economic Policy (Vines and Wills, 2018; see also Colander et al., 2008; Buiter, 2009; Solow, 2010; Bookstaber, 2017).

Another route is provided by Agent Based Models (ABM) in which reasonable behavioural rules replace the representative DSGE agent with a fully rational long-term plan. ABMs can include a number of economically relevant features which would be very difficult to accommodate within the DSGE straight-jacket (Deissenberg et al., 2008; Dawid et al., 2011; Dosi et al., 2005, 2010, 2015; Mandel et al., 2009; Fagiolo and Roventini, 2012;¹ Haldane and Turrel, 2017). Many simplifying, sometimes ad-hoc assumptions are of course necessary, but a considerable advantage of ABMs is that interaction-induced, collective effects are present, whereas DSGE models reduce the whole economy to a small number of representative agents. As a consequence, the global “equilibrium” state of the economy is an emergent property in the former case, while it is a *deus ex machina* in the latter case.

¹ Here, a comparative review of DSGE and macroeconomics ABMs is provided.

In particular, *crises* (i.e. large swings in the output) can occur endogenously within ABMs (Gaffeo et al., 2008; Delli Gatti et al., 2008, 2011;² Gualdi et al., 2015). DSGE models, on the other hand, only describe small, mean-reverting fluctuations around the postulated equilibrium and crises can only result from exogenous, unpredictable shocks.³ As a case in point, we found in Gualdi et al. (2016) that the aggregate behavior of the economy is not a smooth function of the baseline interest rate: the fact that firms are risk averse and fear going into debt leads to more unemployment that can spiral into a destabilizing feedback loop. This is one of the “dark corners” (Blanchard, 2014) that ABMs can help uncovering.

While there is a growing literature on monetary policies in ABMs (Dosi et al., 2005, 2010, 2015; Salle et al., 2013; Anufriev et al., 2010; Arifovic et al., 2010; De Grauwe, 2014), the optimal inflation target question has not been investigated using ABMs (although see Salle et al., 2013) where the success of *targeting policies* is discussed within the framework of an ABM). In this paper, we take on this issue using an arguably over-simplified, bare-bone ABM dubbed “Mark-0”, studied in great details in Gualdi et al. (2015, 2016), following previous work by the group of Delli Gatti et al. (Gaffeo et al., 2008; Delli Gatti et al., 2008, 2011) (see also Lengnick, 2013; Salle et al., 2013). As discussed in Gualdi et al. (2015), the Mark-0 economy can be in different “macro-states” (HIHO: high inflation/high input, or LILO: low inflation/low output), depending on various parameters of the model. These parameters describe in a phenomenological way the behaviour of agents (firms, households and banks), and their response to different economic stimuli. Interestingly, small changes in the value of these parameters can indeed induce sharp variations in aggregate output, unemployment or inflation (Gualdi et al., 2015, 2016).⁴ This allows us to consider different baseline economies and study the influence of the chosen inflation target on the total output, on the real interest rate and on the probability of negative nominal interest rates.

Our main conclusion is that in general, increasing the inflation target reduces unemployment and reduces the probability of negative rates. Unsurprisingly, it also reduces real interest rates on savings. In fact, trying to impose low inflation on an economy that would naturally run at full steam with high inflation can lead to an output collapse. On the other hand, high inflation policies can be dangerous and may generate hyper-inflation if agents lose faith in the ability of Central Banks to fulfill their mandate.

2 Methodological remarks and scope of the paper

Before going into the technical discussion about the model and the results, we want to stress here some methodological aspects, and state a few disclaimers.

- As recalled above, we are fully aware that our stylized ABM relies on somewhat arbitrary assumptions and is unrealistic on several counts. We have discussed in detail the logic of

² These sources elaborate the Mark I family of models.

³ R. Lucas famously argued that the 2008 crisis was not predicted because economic theory predicts that such events cannot be predicted (Lucas, 2009). However, as discussed in Vines and Wills (2018), a benchmark macroeconomic model should be able to account for crises because it is crises that have the largest effects on individual well-being.

⁴ In fact, as will be shown below, HIHO and LILO states can even coexist for some parameter range, see Figure 1 below.

our approach in Gualdi et al. (2015). While micro-rules should *in fine* be justified by direct empirical data on the behaviour of households and firms, many results are in fact generic and robust against changes of these micro-rules – allowing one to draw important qualitative conclusions from such stylized models. It thus seems to us more relevant, at this stage of the ABM research agenda, to stick with the now well-studied Mark-0 model and explore the issue of inflation target in a “proof of concept” manner. A number of possible improvements are listed in the conclusion of the present paper.

- Although far from perfect, Mark-0 contains plausible ingredients that are most probably present in reality. For example, our model encodes in a schematic manner the consumption behavior of households facing inflation, that is in fact similar to the standard Euler equation for consumption in general equilibrium models (Gali, 2008). We also account for the effect of inflation on the policy of indebted firms, which appears to be absent in DSGE models. The fact that our results strongly contrast with those of standard DSGE models is in our opinion enough to motivate in-depth investigations of more realistic ABMs, and more empirical work on the micro/behavioural assumptions that underpin these models.
- Our approach is not normative, in the sense that we do not consider any specific welfare function that should be maximized. Our aim is rather to provide a synthetic “dashboard” of the simulated economies, with inflation, unemployment, probability of negative rates and real rates on deposits, as a function of the target inflation level. Although not formalized, it will be clear from these dashboards that some inflation targets are qualitatively better than others. Remaining at the level of qualitative statements seems to us a way to avoid the “pretense of knowledge” syndrome (Caballero, 2010; Buiter, 2009). As Keynes said, *it is better to be roughly right than exactly wrong*.
- The Mark-0 model can exhibit very different behaviours depending on the parameters (Gualdi et al., 2015), with regions where the economy collapses. It is important to stress that the behavioral rules that define our model are supposed to be reasonable when the economy behaves normally, and we believe that they correctly describe how such a normal state can become unstable. However, once the instability happens and the economy truly collapses, it is of course unreasonable to expect that agents will keep acting according to the same rules, in particular the Central Bank and other institutions. However, this is besides the point we want to make in this paper.
- It is somehow unavoidable that complex ABMs can lead to non-intuitive results, in particular concerning the detailed shape of the phase diagrams, for example the appearance of a region of parameters where good and bad states of the economy can coexist. Although it might seem unsatisfactory not to have a fully analytical understanding of these transitions, we claim that it is in fact one of the strength of ABMs: to be able to elicit scenarios that are hard to imagine for the unaided human mind, because they are the result of non-linearities and sometimes antagonist feedback loops.
- Finally, an important disclaimer: the parameters chosen in the following are not the result of a precise calibration. We only made reasonable guesses in order to have reasonable

numbers as outputs of the model (e.g. reasonable values of yearly inflation). All the numbers quoted below are not intended to be taken literally (although we believe they should be taken seriously!).

3 A short recap on Mark-0

The Mark-0 model with a Central Bank (CB) and interest rates has been described in full details in Gualdi et al. (2015, 2016), where pseudo-codes are also provided. We will not repeat here the full logic of the model, but only focus on the elements that are relevant for determining inflation in the three sectors: households, firms and the CB. The pseudo-code of Mark-0, where all the modelling choices are made explicit, can be found in Appendix A.

First, we need some basic notions. The model is defined in discrete time, where the unit time between t and $t + 1$ is plausibly of the order of months. For definiteness, we will choose in the following the unit time scale to be 6 months. Each firm i at time t produces a quantity $Y_i(t)$ of perishable goods that it attempts to sell at price $p_i(t)$, and pays a wage $W_i(t)$ to its employees. The demand $D_i(t)$ for good i depends on the global consumption budget of households $C_B(t)$, itself determined as an inflation rate-dependent fraction of the household savings. D_i is a decreasing function of the firm price p_i , with a price sensitivity parameter that can be tuned. To update their production, price and wage policy, firms use reasonable “rules of thumb” (Gualdi et al., 2015) that also depend on the inflation rate through their level of debt (see below). For example, production is decreased and employees are made redundant whenever $Y_i > D_i$, and vice-versa.⁵ The model is fully “stock-flow consistent” (i.e. all the stocks and flows within the toy economy are properly accounted for).

The instantaneous inflation rate $\pi(t)$ is defined as:

$$\pi(t) = \frac{\bar{p}(t) - \bar{p}(t-1)}{\bar{p}(t-1)}; \quad \bar{p}(t) = \frac{\sum_i p_i(t) Y_i(t)}{\sum_i Y_i(t)}, \quad (1)$$

where $\bar{p}(t)$ is the production-weighted average price. We will assume that firms, households and the CB do not react to the instantaneous value of $\pi(t)$, but rather to a smoothed, exponential moving average $\pi^{\text{ema}}(t)$ of the realised inflation, computed as

$$\pi^{\text{ema}}(t) = \omega \pi(t) + (1 - \omega) \pi^{\text{ema}}(t-1), \quad (2)$$

where we fix $\omega = 0.2$, which corresponds to an averaging time of ≈ 4.5 time steps, i.e. roughly 2 years in our setting. Note that all quantities noted with the superscript “ema” in the following are defined in the same way, with the same numerical value of ω .

In Mark-0 we assume a linear production function with a constant unit productivity, which means that output and employment coincide. The unemployment rate u is defined as:

$$u(t) = 1 - \frac{\sum_i Y_i(t)}{N}, \quad (3)$$

⁵ As a consequence of these adaptive adjustments, the economy is on average always ‘close’ to the global market clearing condition one would posit in a fully representative agent framework. However, small fluctuations persists in the limit of large system sizes giving rise to a rich phenomenology (Gualdi et al., 2015), including business cycles.

where N is the number of firms, which also coincides with the total workforce (Gualdi et al., 2015). Note that firms cannot hire more workers than available, so that $u(t) \geq 0$ at all times – see Eq. (9) below.

3.1 The Central Bank policy

In this work, for simplicity we consider a single-mandate CB that attempts to steer the economy towards a target inflation level π^* (in Gualdi et al. (2016), we in fact considered a double-mandate CB also targeting a certain employment level ε^*). The monetary policy followed by the CB for fixing the base interest rate is described by a Taylor-like rule of the form (Mankiw, 2014 and Gali, 2008):⁶

$$\rho_0(t) = \rho^* + \phi_\pi [\pi^{\text{ema}}(t) - \pi^*] \quad (4)$$

where ρ^* is the baseline interest rate and $\phi_\pi > 0$ quantifies the intensity of the policy.⁷ In the following, we do not impose a Zero Lower Bound to the base-line interest rate, in view of the recent monetary policy; imposing it does not affect substantially our conclusions. Note that here ρ^* cannot be interpreted as the “natural” interest rate, which is itself an emergent property of the model, that depends on all the parameters. In this sense, ρ^* is just another parameter of the model, that contributes to the determination of the macroeconomic state (see Fig. 2 below).

We assume that the banking sector – described at the aggregate level by a single “representative bank” – sets the interest rates on deposits and loans ($\rho^d(t)$ and $\rho^\ell(t)$ respectively) uniformly for all lenders and borrowers⁸. Therefore, the rate ρ^ℓ increases and ρ^d decreases when the firm default rate increases, in such a way that the banking sector (i.e., the representative bank) – which fully absorbs these defaults – makes zero profit at each time step (see Gualdi et al., 2016 and the pseudo-code provided in Appendix A for more details).

3.2 Households

The effect of inflation on households is the standard trade-off between saving (at rate ρ^d) and consumption. We therefore assume that the total consumption budget of households $C_B(t)$ is given by:

$$C_B(t) = c(t) [S(t) + W(t) + \rho^d(t)S(t)] \quad \text{with} \quad c(t) = \llbracket c_0 [1 + \alpha_c(\widehat{\pi}(t) - \rho^{d,\text{ema}}(t))] \rrbracket, \quad (5)$$

where $S(t)$ is the savings, $W(t)$ the total wages, $\widehat{\pi}(t)$ is the *expected* inflation in the next period – see Eq. (7) below – and $c(t)$ is the consumption propensity, which is clipped to the interval $[0, 1]$. This is expressed by the symbol $\llbracket x \rrbracket$ which means that the quantity x is boxed between 0 and 1, i.e.

⁶ The original Taylor rule reads (Taylor, 1993): $\rho_0(t) = \rho^* + \pi^{\text{ema}}(t) + \phi'_\pi [\pi^{\text{ema}}(t) - \pi^*]$ which amounts to the substitution $\rho^* \rightarrow \rho^* + \pi^*$ and $\phi_\pi \rightarrow 1 + \phi'_\pi$ in Eq. (4).

⁷ Note that this is the only action taken by the CB to achieve the target; in particular, no actions on the quantity of circulating money, such as quantitative easing or printing money can be taken by the CB.

⁸ This is, in our model, the only role played by the banking sector: a transmission belt of the CB policy. In reality, the banking sector has much more freedom, and can sometimes make the CB policy ineffective, e.g. by restricting credit even in presence of a strong incentive from the CB.

$\llbracket x \rrbracket = 1$ if $x > 1$, $\llbracket x \rrbracket = 0$ if $x < 0$, and $\llbracket x \rrbracket = x$ otherwise. This propensity is equal to a baseline value c_0 when the difference between expected inflation and the interest paid on their savings is zero, and increases (decreases) when this difference is positive (negative). The parameter $\alpha_c > 0$ determines the sensitivity of households to the real interest rate. Eq. (5) describes a feedback of inflation on consumption similar to the standard Euler equation of DSGE models (see e.g. Mankiw, 2014 and Gali, 2008). The total household savings evolve according to:

$$S(t+1) = S(t) + W(t) + \rho^d(t)S(t) - C(t), \quad (6)$$

where $C(t) \leq C_B(t)$ is the actual consumption of households, see Gualdi et al. (2015).

We furthermore posit that the expected inflation $\hat{\pi}(t)$ is given by a linear combination of the realised inflation $\pi^{\text{ema}}(t)$ and the CB target inflation π^* (see also Salle et al., 2013):

$$\hat{\pi}(t) = \tau^R \pi^{\text{ema}}(t) + \tau^T \pi^*. \quad (7)$$

The parameters τ^R and τ^T (“R” for realised and “T” for target) can be interpreted as capturing the importance of past inflation and the trust of economic agents in the ability of the CB to enforce its inflation target. When $\tau^R = 0$ and $\tau^T = 1$, agents fully trust that the target inflation will be realised. When $\tau^R > 0$, they are also influenced by the past realised inflation when they form their expectations. When $\tau^R > 1$, they expect more inflation to be realised in the next period. As we will see below, this can give rise to hyper-inflation episodes, which is the scenario that prevents (in the mind of many policy makers and of the public opinion) higher inflation targets.

In principle, τ^R and τ^T should depend on the commitment of the Central Bank, captured by the parameter ϕ_π . In particular, the function $\tau^T(\phi_\pi)$ should be, for consistency, such that $\tau^T = 0$ when $\phi_\pi = 0$. In fact, in the absence of an active CB ($\phi_\pi = 0$), one should assume that the inflation expectation parameter τ^T is zero, since there is no anchoring force to a definite inflation target. Although we do not introduce a precise model for $\tau^T(\phi_\pi)$, below we always assume that $\tau^T = 0$ when $\phi_\pi = 0$. Also, τ^R and τ^T might be time dependent, as economic agents compare the realised inflation to the target inflation and “learn” about the credibility of the CB – see below and Salle et al., 2013 for a discussion of this particular point. In the present paper, we will treat τ^R and τ^T as time independent, leaving this interesting development for future work.

3.3 Firms

Financial fragility

The model contains N_F firms, each firm being characterized by its production Y_i (equal to its workforce in our zero growth economy), demand for its goods D_i , price p_i , wage W_i and its cash balance \mathcal{E}_i which, when negative, is the debt of the firm. We characterize the *financial fragility* of the firm through the debt-to-payroll ratio

$$\Phi_i = -\frac{\mathcal{E}_i}{W_i Y_i}. \quad (8)$$

Negative Φ ’s describe healthy firms with positive cash balance, while indebted firms have a positive Φ . If $\Phi_i < \Theta$, i.e. when the flux of credit needed from the bank is not too high compared to the

size of the company (measured as the total payroll), the firm i is allowed to continue its activity. If on the other hand $\Phi_i \geq \Theta$, the firm i defaults and the corresponding default cost is absorbed by the banking sector, which adjusts the loan and deposit rates ρ^ℓ and ρ^d accordingly. The defaulted firm is replaced by a new one, initialised (with probability φ at each time step) using the average parameters of other firms. The parameter Θ controls the maximum leverage in the economy, and models the risk-control policy of the banking sector.

Production update

If the firm is allowed to continue its business, it adapts its price, wages and production according to reasonable (but of course debatable) “rules of thumb” – see Gualdi et al. (2015, 2016). In particular, the production update is chosen as:

$$\begin{aligned} \text{If } Y_i(t) < D_i(t) &\Rightarrow Y_i(t+1) = Y_i(t) + \min\{\eta_i^+(D_i(t) - Y_i(t)), u_i^*(t)\} \\ \text{If } Y_i(t) > D_i(t) &\Rightarrow Y_i(t+1) = Y_i(t) - \eta_i^-[Y_i(t) - D_i(t)] \end{aligned} \quad (9)$$

where $u_i^*(t)$ is the maximum number of unemployed workers available to the firm i at time t (see Appendix A; Gualdi et al., 2016). The coefficients $\eta^\pm \in [0, 1]$ express the sensitivity of the firm’s target production to excess demand/supply. We postulate that the production adjustment depends on the financial fragility Φ_i of the firm: firms that are close to bankruptcy are arguably faster to fire and slower to hire, and vice-versa for healthy firms. In order to model this tendency, we posit that the coefficients η_i^\pm for firm i (belonging to $[0, 1]$) are given by:

$$\begin{aligned} \eta_i^- &= \llbracket \eta_0^- (1 + \Gamma \Phi_i(t)) \rrbracket \\ \eta_i^+ &= \llbracket \eta_0^+ (1 - \Gamma \Phi_i(t)) \rrbracket, \end{aligned} \quad (10)$$

where η_0^\pm are fixed coefficients, identical for all firms. The factor $\Gamma > 0$ measures how the financial fragility of firms influences their hiring/firing policy, since a larger value of Φ_i then leads to a faster downward adjustment of the workforce when the firm is over-producing, and a slower (more cautious) upward adjustment when the firm is under-producing.

In Gualdi et al. (2016) we argued that Γ should in fact depend on the difference between the interest rate and the inflation: high cost of credit makes firms particularly wary of going into debt and their sensitivity to their financial fragility is increased. Therefore, we postulate that interest rates influence the firm’s policy through the financial fragility sensitivity Γ , as:

$$\Gamma = \max\{\alpha_\Gamma(\rho^{\ell, \text{ema}}(t) - \hat{\pi}(t)), \Gamma_0\}, \quad (11)$$

where α_Γ (similarly to α_c above) captures the influence of the real interest rate on loans on the hiring/firing policy of the firms. This feedback of inflation on firms policy is one of the important features of our model.

Price update

Following the initial specification of the Mark series of models (Gaffeo et al., 2008; Delli Gatti et al., 2008, 2011) prices are updated through a random multiplicative process which takes into

account the production-demand gap experienced in the previous time step and if the price offered is competitive (with respect to the average price). The update rule for prices reads:

$$\begin{aligned} \text{If } Y_i(t) < D_i(t) &\Rightarrow \begin{cases} \text{If } p_i(t) < \bar{p}(t) &\Rightarrow p_i(t+1) = p_i(t)(1 + \gamma\xi_i(t))(1 + \hat{\pi}(t)) \\ \text{If } p_i(t) \geq \bar{p}(t) &\Rightarrow p_i(t+1) = p_i(t)(1 + \hat{\pi}(t)) \end{cases} \\ \text{If } Y_i(t) > D_i(t) &\Rightarrow \begin{cases} \text{If } p_i(t) > \bar{p}(t) &\Rightarrow p_i(t+1) = p_i(t)(1 - \gamma\xi_i(t))(1 + \hat{\pi}(t)) \\ \text{If } p_i(t) \leq \bar{p}(t) &\Rightarrow p_i(t+1) = p_i(t)(1 + \hat{\pi}(t)) \end{cases} \end{aligned} \quad (12)$$

where $\xi_i(t)$ are independent uniform $U[0, 1]$ random variables and γ is a parameter setting the relative magnitude of the price adjustment, chosen to be 0.1 throughout this work. The $(1 + \hat{\pi}(t))$ factor implies that firms also anticipate inflation when they set their prices. This is precisely the dreaded self-reflexive mechanism that may lead to hyper-inflation when expected future inflation is dominated by past realised inflation (the parameter τ^R), rather than by the CB inflation target (the parameter τ^T).

Wage update

The wage update rule follows the choices made for price and production. Similarly to workforce adjustments, we posit that at each time step firm i updates the wage paid to its employees as:

$$\begin{aligned} W_i^T(t+1) = W_i(t)[1 + \gamma(1 - \Gamma\Phi_i)(1 - u(t))\xi'_i(t)][1 + g\hat{\pi}(t)] &\text{ if } \begin{cases} Y_i(t) < D_i(t) \\ \mathcal{P}_i(t) > 0 \end{cases} \\ W_i(t+1) = W_i(t)[1 - \gamma(1 + \Gamma\Phi_i)u(t)\xi'_i(t)][1 + g\hat{\pi}(t)] &\text{ if } \begin{cases} Y_i(t) > D_i(t) \\ \mathcal{P}_i(t) < 0 \end{cases} \end{aligned} \quad (13)$$

where $\mathcal{P}_i(t)$ is the profit of the firm at time t and $\xi'_i(t)$ an independent $U[0, 1]$ random variable. If $W_i^T(t+1)$ is such that the profit of firm i at time t with this amount of wages would have been negative, $W_i(t+1)$ is chosen to be exactly at the equilibrium point where $\mathcal{P}_i(t) = 0$; otherwise $W_i(t+1) = W_i^T(t+1)$. Finally, g is a certain parameter modulating the way wages are indexed to inflation. We will assume in the following full indexation ($g = 1$), but choosing $g < 1$ can be useful to stabilize the Mark-0 economy in periods of hyper-inflation.

Note that within the current model the productivity of workers is not related to their wages. The only channel through which wages impact production is that the quantity $u_i^*(t)$ that appears in Eq. (9), which represents the share of unemployed workers accessible to firm i , is an increasing function of W_i . Hence, firms that want to produce more (hence hire more) do so by increasing W_i , as to attract more applicants (see Appendix A; Gualdi et al., 2016 for details).

The above rules are meant to capture the fact that deeply indebted firms seek to reduce wages more aggressively, whereas flourishing firms tend to increase wages more rapidly:

- If a firm makes a profit and it has a large demand for its good, it will increase the pay of its workers. The pay rise is expected to be large if the firm is financially healthy and/or if unemployment is low because pressure on salaries is high.

- Conversely, if the firm makes a loss and has a low demand for its good, it will attempt to reduce the wages. This reduction is more drastic if the company is close to bankruptcy, and/or if unemployment is high, because pressure on salaries is then low.
- In all other cases, wages are not updated.

3.4 Parameters of the model

The model, as presented above, has several free parameters, that are specified at the beginning of the pseudo-code presented in Appendix A. Some values are fixed throughout this work, using values that have been found in previous work to yield reasonable results (Gualdi et al., 2015, 2016): their list is given in Table 1.

The parameters that remain to be specified, and whose value is varied in this work to explore the corresponding phase diagram, are the ratio of hiring/firing propensities R , the Taylor rule parameters ϕ_π , π^* and ρ^* , and the inflation expectation parameters τ^R and τ^T .

Number of firms	N_F	10000
Baseline propensity to consume	c_0	0.5
Intensity of choice parameter	β	2
Baseline price adjustment parameter	γ	0.1
Baseline firing propensity	η_-^0	0.2
Baseline hiring propensity	η_+^0	$R\eta_-^0$
Fraction of dividends	δ	0.02
Bankruptcy threshold	Θ	3
Frequency of firm revival	φ	0.1
Share of bankruptcies supported by the firms	f	0.5
Reaction of consumption to inflation	α_c	4
Reaction of firms to interest rates	α_Γ	50
Baseline financial fragility sensitivity	Γ_0	0
Exponentially moving average (ema) parameter	ω	0.2
Indexation of wages to inflation	g	1

Table 1: Parameters of the Mark 0 model that are kept fixed throughout this work, together with their symbol and value.

4 The “native” state of the economy

In Gualdi et al. (2015, 2016), we have shown that the Mark-0 economy, once set in motion, can settle in a variety of stationary macro-states, where the aggregate variables behave very differently. The strength of Agent Based modelling is precisely to show that very different macro-states can emerge from very similar micro-rules, as parameters are varied. We will not repeat such an analysis in full here, but focus on the role of a few variables, relevant to the topic of this paper. We start by analyzing the case where the CB does not react to inflation (i.e. the Taylor rule Eq. (4) is with

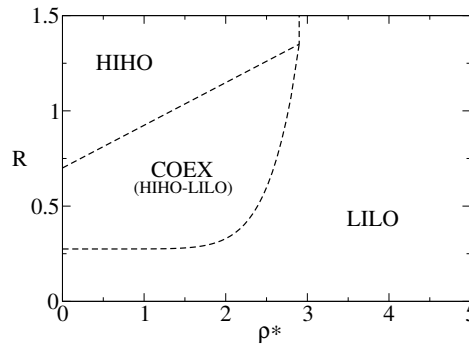


Figure 1: Phase diagram of the model in the (ρ^*, R) plane, with $\tau^R = 0.5$ and inactive central bank ($\tau^T = 0$ and $\phi_\pi = 0$). The HIHO phase in the top region of the graph is separated from the LILO phase in the bottom region by a discontinuous transition line $\rho^\dagger(R)$. This transition becomes a coexistence region for intermediate values of R , where the dynamics is non-ergodic: depending on the initial condition, the system ends up either in the LILO state or in the HIHO state.

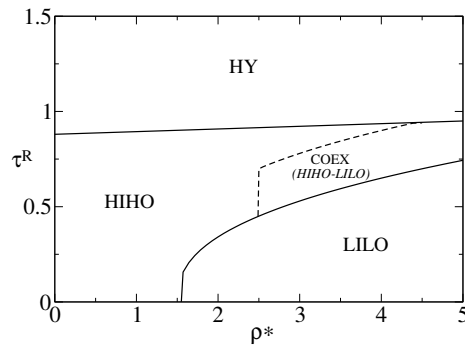


Figure 2: Phase diagram in the (ρ^*, τ^R) plane, with $R = 1.3$ and inactive central bank ($\tau^T = 0$ and $\phi_\pi = 0$), showing a HIHO region, a LILO region and a coexistence region. Note that hyper-inflation is avoided when agents' expectations are sufficiently mean-reverting.

$\phi_\pi = 0$ and, as a consequence, $\tau^T = 0$). We will see later how a Taylor-rule based policy of the CB allows it to steer the economy towards a target level of inflation, and when such a policy fails.

Fig. 1 shows the phase diagram of the model in the plane (ρ^*, R) , where ρ^* is the baseline interest rate and $R = \eta_0^+ / \eta_0^-$ is the ratio of the hiring propensity to the firing propensity, that was shown in Gualdi et al. (2015) to play a crucial role for determining the overall state of the economy. We indeed see that for $R \lesssim 0.28$ the economy is in a LILO state (low inflation and low output/high unemployment). For sufficiently large R and small ρ^* , the economy is in a HIHO state (high inflation and high output/low unemployment) and tips over to a LILO state when $\rho^* > \rho^\dagger(R)$. This transition is driven by a drop in household consumption and an increased wariness of firms, induced by high yield on savings and high cost of loans, see Eqs. (5) and (11). As noted in the Introduction, the HIHO/LILO transition occurs discontinuously while the change of interest rate is continuous. The transition line $\rho^\dagger(R)$ is, as expected, an increasing function of R (the economy is more stable when the hiring rate is larger than the firing rate); it is also a decreasing function of α_T since firms refrain from taking loans to continue their business when α_T increases (Gualdi et al., 2016). In the proximity of the phase boundaries, the native state of the economy may thus display endogenous “business cycles” corresponding to jumps between these two states.

An interesting observation is the presence of a coexistence region where both the LILO state and the HIHO state can be selected by the dynamics, depending on initial conditions.⁹ For a large system, the dynamics is *non-ergodic* and appears to be permanently trapped in one of these two states.

It is interesting to investigate the role of inflation expectations in this framework, by varying the value of τ^R . Fig. 2 shows the phase diagram of the model in the plane (ρ^*, τ^R) for a fixed value of $R = 1.3$. We find again a HIHO region, a LILO region and a coexistence region for large enough ρ^* and τ^R . As anticipated, a transition to a hyper-inflation state (HY) occurs when expectations amplify inflation, more precisely when $\tau^R > \tau^\dagger \approx 0.9$. The full phase diagram is quite complex, with possible coexistence between hyper-inflation and full employment (HYHO), hyper-inflation and collapse (HYLO) or even hyper-deflation.

Note that the HIHO region is characterized, on average, by negative firm profits, and negative real interest rate on deposits (see Figs. 3 and 4). This might appear counterintuitive, but it happens because our closed economy is characterised by imperfect market clearing (inducing some waste of goods), and a constant productivity of firms, such that the growth rate of the economy is zero. One could introduce exogenously a non zero growth rate by allowing productivity to increase as $(1 + G)^t$, where G is the growth rate. By slightly amending the rules of the model, this growth rate can be exactly rescaled away by simply shifting all interest rates by G , and inflating the money supply by $(1 + G)^t$. The real interest rate on deposits, in particular, is increased by G , and the purchasing power of households increases with time.

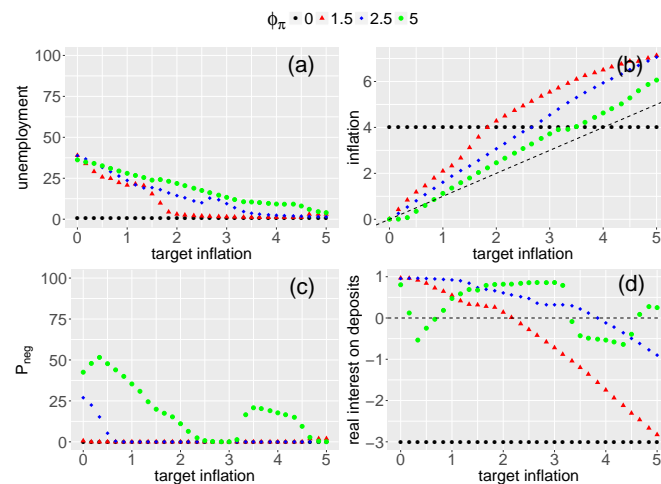


Figure 3: HIHO native state: Average unemployment (panel a), average realised inflation (panel b), probability that the CB must set nominal rates to negative values (panel c) and average real interest rate paid on deposits (panel d) as a function of the CB target inflation π^* for the native state ($\phi_\pi = 0$, $\tau^T = 0$, $\tau^R = 0.5$, black circles) and for $\tau^R = \tau^T = 0.5$ and $\phi_\pi = 1.5$ (red triangles), $\phi_\pi = 2.5$ (blue rhombuses), $\phi_\pi = 5$ (green circles). In the last case, large oscillations around these average values appear, as discussed in Gualdi et al. (2015). Other parameters are: $\rho^* = 1\%$ and $R = 1.3$. Both inflation and rates are expressed as %/year, unemployment is expressed in % of the workforce.

⁹ In fact, very specific initial conditions can also lead to a near collapse of the economy. The possible coexistence between a good state and a bad state of the economy was also discussed recently by Carlin and Soskice (2018).

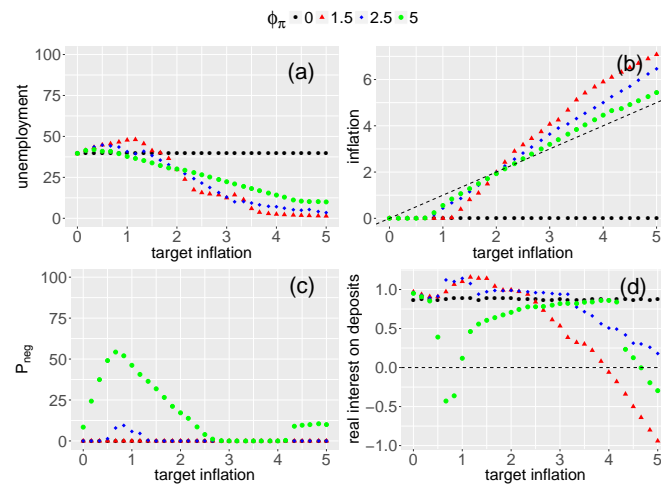


Figure 4: LILO native state: Average unemployment (panel a), average realised inflation (panel b), probability that the CB must set nominal rates to negative values (panel c) and average real interest rate paid on deposits (panel d) as a function of the CB target inflation π^* for the native state ($\phi_\pi = 0$, $\tau^T = 0$, $\tau^R = 0.5$, black circles) and for $\tau^R = \tau^T = 0.5$ and $\phi_\pi = 1.5$ (red triangles), $\phi_\pi = 2.5$ (blue rhombuses), $\phi_\pi = 5$ (green circles). In the last case, large oscillations around these average values appear, as discussed in Gualdi et al. (2016). Other parameters are: $\rho^* = 3\%$ and $R = 1.3$. Both inflation and rates are expressed as %/year, unemployment is expressed in % of the workforce.

5 Inflation targeting

We now pick two representative native states of the economy, both for $R = 1.3$, in order to be outside of the coexistence region. The first state is with $\rho^* = 1\%$ /year, corresponding to the HIHO state, and the second one is with $\rho^* = 3\%$ /year corresponding to the LILO state. The inflation level of these native states is, respectively, 4.0% and 0% while the unemployment rate is, respectively, 0% and 39%. The long run real return on savings $\langle \rho^d - \pi \rangle$ is, respectively, -3.0% and 0% . The HIHO state discourages long term savings while the LILO state is vastly inefficient in terms of output.

The CB steps in and modulates the interest rate according to the Taylor rule, Eq. (4), with different values of ϕ_π : 1.5, 2.5 and 5 (the standard value is 2.5, i.e. an increase of inflation by 1% leads to the CB increasing the nominal base-line rate by 2.5%).¹⁰ We assume that firms and agents form their inflation expectations by giving an equal weight to the target inflation π^* and the realised inflation π^{ema} ; in other words we set $\tau^R = \tau^T = \frac{1}{2}$. The results when agents fully trust the CB policy ($\tau^R = 0$, $\tau^T = 1$) are not radically different, although, as expected, realised inflation is closer to target. In the other extreme case ($\tau^R = 1$, $\tau^T = 0$), the economy is fraught with instabilities.

The resulting states of the monitored economy are summarized in Figs. 3 and 4. In these “dashboards” we show, as a function of the inflation target: the average unemployment $\langle u \rangle$, the

¹⁰ It would be interesting to extend the present study to dual-mandate CBs.

average realised inflation $\langle \pi \rangle$, the probability P_{neg} that the CB rate is negative and finally the average real interest rate paid on deposits $\langle \rho^d - \pi \rangle$, for $\phi_\pi = 1.5, 2.5$ and 5 .¹¹

Starting from the coexistence region (say $R = 0.8$) leads to a more complicated discussion, where history plays a role and where economies may be fragile to small perturbations. We do not investigate further this intriguing possibility here, but we note that if bistability were to occur in real situations, it would probably urge a radical rethinking of macroeconomic policy.

5.1 High inflation/high output (HIHO) native state

Starting from a HIHO native state, one sees that targeting a low inflation rate by increasing $\rho_0(t)$ according to the Taylor-rule has a destabilizing effect on output. Unemployment rockets to 40%, while realised inflation is indeed low and on target (see Fig. 3, panel a). For our particular “from-the-hip” choice of parameters, realised inflation significantly overshoots target when $\pi^* \gtrsim 1\%$, but this allows unemployment, and the probability of negative rates, to be significantly reduced. For example, for $\phi_\pi = 2.5$, P_{neg} plummets from ≈ 0.25 when $\pi^* = 0.25\%$ to zero when $\pi^* > 1\%$.

However, the problem with inflation targeting in the HIHO case is that unemployment only falls below 10% when the inflation target is above 3%, in which case the realised inflation is already larger than the natural state inflation of 4%! In other words, as the CB increases the base interest rate in order to control inflation, it drives the natural HIHO state into a monitored LILO state. Hence the CB finds it very difficult to achieve simultaneously low inflation and high output. The only upside of the CB policy is that the real interest rate on deposits goes from significantly negative (-3.0%) in the native HIHO state to positive when $\pi^* \lesssim 3.5\%$ in the monitored economy.

The situation improves slightly when agents fully trust the ability of the CB to reach its target (i.e. $\tau^T = 1$ and $\tau^R = 0$). Hence, stronger anchoring of inflation expectations is beneficial in our ABM setting, in agreement with the intuition gained from DSGE models. At variance with DSGE models, however, large Taylor coefficients (e.g. $\phi_\pi = 5$) lead to instabilities, see Gualdi et al. (2016), and increase significantly the probability of negative nominal rates, see Fig. 3, panel c).

5.2 Low inflation/low output (LILO) native state

Let us now assume that the underlying economic mechanisms (as described by the parameters of Mark 0) are such that the native state of the economy is LILO, for example when R is small (firms are more reluctant to hire than to fire) or when ρ^* or α_T are large (firms are reluctant to take loans). In this case, the role of the CB is to kick start the economy by lowering the interest rate.

The results of a Taylor-rule based policy are shown in Fig. 4 as a function of the inflation target π^* , again for $\phi_\pi = 1.5, 2.5$ and 5 , and $\tau^T = \tau^R = 0.5$. Surprisingly, the dependence of $\langle u \rangle$ on π^* is found to be *non-monotonic*. For $\phi_\pi = 2.5$ and $0 < \pi^* \leq 1.0\%$, unemployment is in fact *higher* than in the native state, while realised inflation is below target.

Unemployment only dips below 10% when π^* is large enough. For example, when $\pi^* = 4\%$, unemployment is around 7.5% (down from 40% in the native state), long term real savings rate is

¹¹ Note however that for $\phi_\pi = 5$, there are large oscillations (“business cycles”) around these average values. As discussed in Gualdi et al. (2016), an aggressive CB policy can destabilise the economy.

0.5% and the probability of negative nominal rates is zero. Realised inflation is however above target: $\langle \pi \rangle \approx 5\%$.

Fig. 4 clearly shows that a symptom of a too-low target is under-realisation of inflation. Hence, although quantitative values should not be taken at face value, our analysis suggests that whenever $\langle \pi \rangle < \pi^*$ it is likely that π^* is too low, in the sense that output can be increased by increasing the inflation target.

5.3 Economic interpretation

The transmission channels that are responsible for the positive impact of inflation in our model are the following. First of all, from the update equation for the consumption budget, Eq. (5), it is clear that steering the economy to a state with higher inflation increases the agents' propensity to consume, thereby boosting demand. Perhaps more importantly, increased inflation reduces the real interest rate on loans, and thus the sensitivity of firms on their financial fragility: indebted firms are less likely to fire and more likely to hire when real interest rates are lower. Similarly, higher inflation is favourable to the wage policy, see Eq. (13). These effects result in a decrease of the unemployment level and a higher demand that generates a feedback loop that stabilizes the economy and increases the total output.

In a sense, this is the classical “Keynesian” positive feedback between the increase of consumption \rightarrow increase of output \rightarrow decrease of unemployment. A clear indication that such mechanism is at play is that whenever the CB is successful in stabilizing the economy, reducing the unemployment, and increasing the total output, we always find that the realised inflation is larger than π^* , due to the fact that the economy tends to amplify the effect of the CB. As we will argue below, this feedback is absent in DSGE models.

Another general argument which allows to rationalize our results is based on our previous observation that the bad states of the economy of the Mark-0 model and of its generalizations are often associated with a large amount of “inactive” money, stored in the agents' and firms' savings (Gualdi et al., 2015, 2016). Increasing the inflation rate induces an erosion of savings and an increased demand, thereby increasing the total amount of money circulating in the economy.

5.4 Phillips Curves

It is interesting to draw the Phillips curves predicted by our framework. There are two ways to think about these curves:

1. One is to draw realised inflation as a function of unemployment for a fixed set of parameters, as the economy fluctuates over time around a unique equilibrium.
2. The second is to represent the average realised inflation versus the average unemployment rate as the parameters of the economy, such as the inflation target of the CB, are changed. This amounts to represent parametrically the results of panel b) versus those of panel a) in Figs. 3 and 4.

In both cases we find a downward sloping relation (see Fig. 5), compatible with the standard wisdom. Note however that the dynamical scatter plot obtained with procedure 1 leads to a noisy

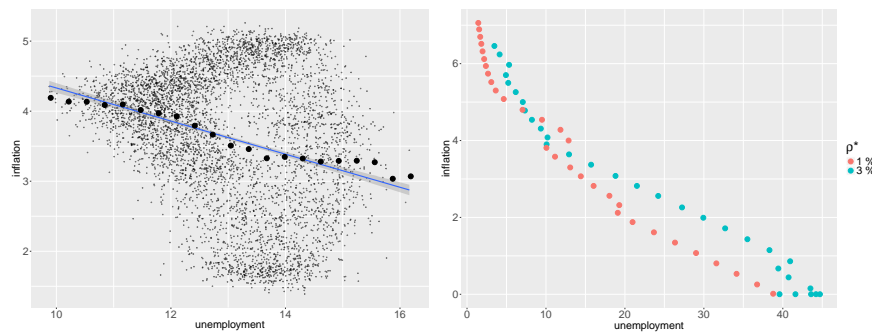


Figure 5: Phillips curves, following two procedures: (Left) scatter plot of inflation vs. unemployment during the time evolution of the economy around a single equilibrium, obtained with $R = 1.3$, $\rho^* = 3\%$, $\phi_\pi = 2.5$ and $\pi^* = 4\%$, and $\tau^T = \tau^R = 0.5$. (Right) scatter plot of the average inflation vs. average unemployment, extracted from panel b) and panel a) of Figs. 3 and 4, both for $\phi_\pi = 2.5$.

blob of points, with a downward sloping regression line. The second procedure leads to a nice looking graph, since each point is itself an average quantity. Reality should be in between, as one expects the underlying parameters of the economy to be themselves time dependent. But in any case, substantial deviations from a perfect downward sloping relation are expected.

5.5 Discussion

The results of this section suggest that independently of the nature of its native state, low inflation targets are detrimental to a CB-controlled economy.¹² Interestingly, our results show that a situation where the realised inflation is lower than the target inflation cannot be optimal; in fact, realised inflation should rather *overshoot* target inflation on average (at least up to the point where savings are wiped out by inflation). This is the case for example in the LILO state discussed above, when unemployment reaches 8% for a target inflation of 4%, and a realised inflation of 5% (see Fig. 4 for $\phi_\pi = 2.5$).

Note that the coefficients τ^R and τ^T , which here have been assumed to be constant for simplicity, should in reality be time dependent and related to other quantities in the model. For example, persistent inflation overshoots may result in a loss in the credibility of CB, which in the present model means an increase of the value of τ^R and/or a decrease of τ^T , as economic agents start looking for guidance in past realised inflation rather than in the CB target.

Such an increase can lead to a run-away inflation state (see Fig. 2), which cannot be controlled anymore using Taylor-rule based policies. Within our model, such a hyper-inflation scenario can be tamed if firms do not fully index wages on expected inflation (i.e. set the parameter g to a value less than unity in Eq. (13)). This has the effect of reducing realised inflation as households reduce consumption, pushing the hyper-inflation threshold τ^\dagger to higher values (for example, $\tau^\dagger \approx 1.4$ for $g = 0.5$). The smoothing parameter ω might itself depend on inflation, as more volatility inflation could lead agents to become more short-sighted, such that $\omega \rightarrow 1$. It would therefore be extremely

¹² We should again insist that the numbers quoted should not be taken at face value since no attempt has been made to calibrate Mark-0 on real data. In particular, the chosen elementary time scale of 6-months is quite arbitrary but directly scales all inflation and interest rates.

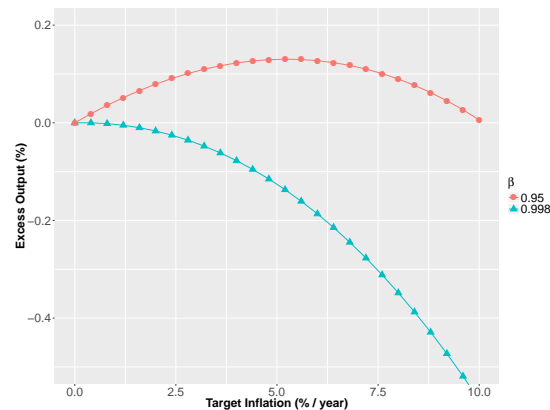


Figure 6: Effect of inflation on output in the DSGE model, following Ascari and Ropele, 2007 and Coibion et al., 2012. All parameters are as in Coibion et al., 2012, but the subjective discount factor β is changed from 0.998 (corresponding to a horizon of 125 years) to 0.95 (corresponding to a horizon of 5 years). In the former case, inflation causes output to decrease except for a very small window $\pi < 0.12\%$ /year, invisible in the graph. A shorter horizon leads to a positive marginal effect of the inflation on output as long as $\pi < 5.2\%$.

interesting to extend the present model to include a dynamic coupling between τ^R , τ^T , and the target and realised inflation, as well as a dynamic dependence of g and ω on inflation. We leave such a study for future work.

6 Comparison with DSGE & Conclusion

The issue of an optimal inflation target has only recently been considered within the mainstream DSGE macroeconomic model (Ascari, 2004; Andrade, 2017) (see also De Grauwe, 2014 for a direct comparison of ABMs and DSGE models on a related topic). In this framework, the main cost of inflation comes from price dispersion and is a consequence of the following string of assumptions (Ascari, 2004): a) firms face friction costs and cannot update their prices as often as they would like; b) inflation leads to a stronger dispersion of (stale) prices across different sectors of the economy; c) stronger price deviations from equilibrium lowers economic efficiency.

However, while crucial in determining the optimal inflation rate within DSGE, such a dispersion induced cost has little empirical support (Nakamura, 2016). Embracing the choice of parameters and welfare function made by Coibion et al., 2012, the optimal inflation rate is found to be 1.5%/year. This number is highly dependent on the assumption made about the subjective discount factor β used by the representative household, i.e. how far in the future do economic agents assess the consequences of their present decision. In many DSGE calibrations, the discounting horizon is extremely long, for example 125 years (!) in Coibion et al. (2012). Although rooted in market efficiency arguments and based on the empirical value of bond rates, such an enormous time scale is in our eyes totally unreasonable. In line with the behavioral arguments used to construct ABMs, where agents are assumed to be myopic, we believe that this time scale should be rather on the scale of a few – perhaps 5 – years. This substantially changes the conclusions of DSGE models, as the total output would then be an *increasing* function of inflation up to 5.2%, see Fig. 6.

The fact that a higher inflation tends to stabilize the Mark-0 economy is fully consistent with our previous results (Gualdi et al., 2015, 2016). Increasing the inflation rate discourages savings and motivates indebted firms to continue their business, with the effect of lowering the unemployment rate and increasing global output. Hence, Mark-0 emphasizes the benefits of inflation while it completely neglects all inflation costs, including the price dispersion induced cost present (but probably overestimated) in DSGE models.

More fundamentally, the most interesting difference between the DSGE and ABM modelling strategies is that the nature of native state of the economy is *itself* an output of the ABM. This emergent state can change radically when the parameters characterizing the micro-behaviour of the different agents are only slightly modified. For example the LILO, HIHO or hyper-inflation states considered in this paper are emergent properties of the model, and not postulated a priori. Not surprisingly, a rough knowledge of where the economy is “naturally” poised to go is needed to determine an adequate monetary policy. Trying to steer the economy too far from its native state is detrimental (as for the HIHO state) or even lead to instabilities and crises (see Gualdi et al., 2016). Quite interestingly, we have even found non-ergodic regions where the economy can be either in a LILO state or in a HIHO state depending on the initial conditions. This corresponds to potentially fragile situations where monetary policy would become extremely tricky.

Mark-0 is a bare-bone ABM where many important effects are left out, that need to be considered in future studies. For example the network structure of firms (Acemoglu et al., 2012; Bonart et al., 2014) and the feedback of investment on growth are clearly among the most urgent ingredients to be added in Mark-0. The difference with DSGE is that missing effects are straightforward to include in an ABM, while quite a bit of arm-twisting is usually necessary to include them in a DSGE framework without ruining the mathematical tractability of the model. In this sense, the much touted “micro-founded” nature of DSGE is quickly buried under a number of ad-hoc assumptions (such as Calvo’s sticky price mechanism (Calvo, 1983)), which are not much more convincing than the equally ad-hoc assumptions made in ABMs.

In any case, the main result of our study is that the optimal inflation rate could be somewhat higher than the currently accepted 2% target. One clear symptom of a too-low target is a persistent under-realisation of inflation, perhaps similar to the current macroeconomic situation in the U.S. and in Europe. In our model, this predicament is alleviated by higher inflation targets that are found to improve both unemployment/output and negative interest rate episodes, up to the point where persistent over-realisation of inflation would lead to a loss of faith in the Central Bank and potential instabilities.

Although our results are based on an arguably over-simplified model, it certainly militates for more work along these lines (Farmer and Foley, 2009; Bookstaber, 2017). After all, DSGE models are themselves over-simplified and, as recently emphasized by O. Blanchard (Blanchard, 2016; Vines and Wills, 2018), *they have to become less imperialistic and accept to share the scene with other approaches to modelisation.*

Acknowledgements The input and comments of O. Blanchard, R. Bookstaber, H. Dawid, D. Delli Gatti, D. Farmer, R. Farmer, X. Gabaix, C. Hommes and A. Kirman have been extremely useful. We also thank

the anonymous referees and commentators of the first version of this paper, their comments have helped improving its quality.

A Pseudo-code of Mark 0 with inflation expectations

We present here the pseudo-code for the Mark 0 code described in Sec. 3. The source code is available on demand.

Algorithm 1 Mark 0

Require: $N_F(10000)$; $c_0(0.5)$; $\beta(2)$; $\gamma(0.1)$; R ; $\eta_+^0(R\eta_-^0)$; $\eta_-^0(0.2)$; $\delta(0.02)$; $\Theta(3)$; $\varphi(0.1)$; $f(0.5)$; $\alpha_c(4)$; ϕ_π ; $\alpha_\Gamma(50)$; $\Gamma_0(0)$; π^* ; ρ^* ; $\omega(0.2)$; $g(1)$; τ^R ; τ^T ; $T(10000)$. Numbers between parentheses indicate the value used for the present work, the parameters with no default number have been varied in this work. We start computing averages after $T_{eq}(5000)$ time steps.

▷ **Initialization**

$Y_0 \leftarrow 0.1 + 0.9\text{random}$

for ($i \leftarrow 0; i < N_F; i \leftarrow i + 1$) **do**

$p[i] \leftarrow 1 + 0.1(2\text{random} - 1)$

$Y[i] \leftarrow Y_0 + 0.1(2\text{random} - 1)$

$D[i] \leftarrow Y_0$

$W[i] \leftarrow 1$

▷ Initial employment is random

$\mathcal{E}[i] \leftarrow 2W[i]Y[i]\text{random}$

$\mathcal{P}[i] \leftarrow p[i] \min(D[i], Y[i]) - W[i]Y[i]$

$a[i] \leftarrow 1$

▷ binary variable: active (1) / inactive (0) firm

end for

$S \leftarrow N_F - \sum_i \mathcal{E}[i]$

if $\phi_\pi == 0$ **then**

$\pi^* \leftarrow 0$

$\tau^T \leftarrow 0$

end if

▷ **Main loop**

for ($t \leftarrow 1; t \leq T; t \leftarrow t + 1$) **do**

$\varepsilon \leftarrow \frac{1}{N_F} \sum_i Y[i]$

$u \leftarrow 1 - \varepsilon$

$\bar{p} \leftarrow \frac{\sum_i p[i]Y[i]}{\sum_i Y[i]}$

$\bar{w} \leftarrow \frac{\sum_i W[i]Y[i]}{\sum_i Y[i]}$

$u^*[i] \leftarrow \frac{\exp(\beta W[i]/\bar{w})}{\sum_i a[i] \exp(\beta W[i]/\bar{w})} N_F u$

$x^{\text{ema}} \leftarrow \omega x + (1 - \omega)x^{\text{ema}}$ where x are $\pi, \rho^d, \rho^\ell, u$

▷ **Central Bank policy**

$\hat{\pi} \leftarrow \tau^R \pi^{\text{ema}} + \tau^T \pi^*$

$\rho_0 \leftarrow \rho^* + \phi_\pi(\pi^{\text{ema}} - \pi^*)$

$\Gamma \leftarrow \max\{\alpha_\Gamma(\rho^{\ell, \text{ema}} - \hat{\pi}), \Gamma_0\}$

$\mathcal{D} \leftarrow \mathcal{E}^- \leftarrow \mathcal{E}^+ \leftarrow 0$

▷ **Firms update prices, productions and wages**

Algorithm 2 Mark0 (continued)

```

for ( $i \leftarrow 0; i < N_F; i \leftarrow i + 1$ ) do
  if  $a[i] == 1$  then
    if  $\mathcal{E}[i] > -\Theta W[i]Y[i]$  then
       $\mathcal{E}^+ \leftarrow \mathcal{E}^+ + \max\{\mathcal{E}[i], 0\}$ 
       $\mathcal{E}^- \leftarrow \mathcal{E}^- - \min\{\mathcal{E}[i], 0\}$ 
       $\Phi[i] \leftarrow -\frac{\mathcal{E}[i]}{W[i]Y[i]}$ 
       $\eta_+ \leftarrow \llbracket \eta_+^0(1 - \Gamma\Phi[i]) \rrbracket$ 
       $\eta_- \leftarrow \llbracket \eta_-^0(1 + \Gamma\Phi[i]) \rrbracket$ 
      if  $Y[i] < D[i]$  then
        if  $\mathcal{P}[i] > 0$  then
           $W[i] \leftarrow W[i][1 + \gamma(1 - \Gamma\Phi[i])\varepsilon \text{ random}]$ 
           $W[i] \leftarrow \min\{W[i], (P[i] \min[D[i], Y[i]] + \rho^d \max\{\mathcal{E}[i], 0\} + \rho^\ell \min\{\mathcal{E}[i], 0\})/Y[i]\}$ 
        end if
         $Y[i] \leftarrow Y[i] + \min\{\eta_+(D[i] - Y[i]), u^*[i]\}$ 
        if  $p[i] < \bar{p}$  then  $p[i] \leftarrow p[i](1 + \gamma \text{ random})$ 
        end if
      else if  $Y[i] > D[i]$  then
        if  $\mathcal{P}[i] < 0$  then
           $W[i] \leftarrow W[i][1 - \gamma(1 + \Gamma\Phi[i])u \text{ random}]$ 
        end if
         $Y[i] \leftarrow \max\{0, Y[i] - \eta_-(D[i] - Y[i])\}$ 
        if  $p[i] < \bar{p}$  then  $p[i] \leftarrow p[i](1 - \gamma \text{ random})$ 
        end if
      end if
       $p[i] \leftarrow p[i](1 + \hat{\pi})$ 
       $W[i] \leftarrow W[i](1 + g\hat{\pi})$ 
       $W[i] \leftarrow \max(W[i], 0)$ 
    else if  $\mathcal{E}[i] \leq -\Theta W[i]Y[i]$  then
       $a[i] \leftarrow 0$ 
       $\mathcal{D} \leftarrow \mathcal{D} - \mathcal{E}[i]$ 
    end if
  end if
end for

```

Algorithm 3 Mark0 (continued)

$u \leftarrow 1 - \frac{1}{N_F} \sum_i Y[i]$ ▷ Update u and \bar{p}
 $\bar{p} \leftarrow \frac{\sum_i p[i] Y[i]}{\sum_i Y[i]}$
▷ **Private bank sets interest rates**
 $\rho^\ell = \rho_0 + (1 - f) \mathcal{D} / \mathcal{E}^-$
 $\rho^d = \frac{\rho^\ell \mathcal{E}^- - \mathcal{D}}{S + \mathcal{E}^+}$
▷ **Households decide the demand**
 $S \leftarrow (1 + \rho^d) S + \sum_i W[i] Y[i]$
 $c \leftarrow c_0 [1 + \alpha_c (\hat{\pi} - \tilde{\rho}^{d, \text{ema}})]$
 $C_B \leftarrow c S$

for ($i \leftarrow 0; i < N_F; i \leftarrow i + 1$) **do**
 $D[i] \leftarrow \frac{C_B a[i] \exp(-\beta p[i] / \bar{p})}{p[i] \sum_i a[i] \exp(-\beta p[i] / \bar{p})}$ ▷ Inactive firms have no demand
end for
▷ **Accounting**
 $\mathcal{E}^+ \leftarrow 0$
for ($i \leftarrow 0; i < N_F; i \leftarrow i + 1$) **do**
if $a[i] == 1$ **then**
 $S \leftarrow S - p[i] \min\{Y[i], D[i]\}$
 $\mathcal{P}[i] \leftarrow p[i] \min\{Y[i], D[i]\} - W[i] Y[i] + \rho^d \max\{\mathcal{E}[i], 0\} + \rho^\ell \min\{\mathcal{E}[i], 0\}$
 $\mathcal{E}[i] \leftarrow \mathcal{E}[i] + \mathcal{P}[i]$
if $\mathcal{P}[i] > 0 \ \&\& \ \mathcal{E}[i] > 0$ **then** ▷ Pay dividends
 $S \leftarrow S + \delta \mathcal{E}[i]$
 $\mathcal{E}[i] \leftarrow \mathcal{E}[i] - \delta \mathcal{E}[i]$
end if
 $\mathcal{E}^+ \leftarrow \mathcal{E}^+ + \max\{\mathcal{E}[i], 0\}$
end if
end for
▷ **Revivals**

Algorithm 4 Mark0 (continued)

```

 $\mathcal{R} \leftarrow 0$ 
for ( $i \leftarrow 0; i < N_F; i \leftarrow i + 1$ ) do
    if  $a[i] == 0$  then
        if  $\text{random} < \varphi$  then
             $Y[i] \leftarrow u \text{ random}$ 
             $a[i] \leftarrow 1$ 
             $P[i] \leftarrow \bar{p}$ 
             $W[i] \leftarrow \bar{w}$ 
             $\mathcal{E}[i] \leftarrow W[i]Y[i]$ 
             $\mathcal{R} \leftarrow \mathcal{R} + \mathcal{E}[i]$ 
             $\mathcal{E}^+ \leftarrow \mathcal{E}^+ + \max \{ \mathcal{E}[i], 0 \}$ 
        end if
    end if
end for
for ( $i \leftarrow 0; i < N_F; i \leftarrow i + 1$ ) do
    if  $a[i] == 1$  then
        if  $\mathcal{E}[i] > 0$  then
             $\mathcal{E}[i] \leftarrow \mathcal{E}[i] - \mathcal{R}\mathcal{E}[i]/\mathcal{E}^+$ 
        end if
    end if
end for
end for

```

References

- [1] Acemoglu, D. Carvalho, V., Ozdaglar, A. and Tahbaz-Salehi, A. (2012). The network origins of aggregate fluctuations. *Econometrica*, 80(5): 1977–2016.
<https://economics.mit.edu/files/8135>
- [2] Anufriev, M., Assenza, T., Hommes, C. and Massaro, D. (2013). Interest rate rules and macroeconomic stability under heterogeneous expectations *Macroeconomic Dynamics*, 17(8): 1574–1604. <https://www.aeaweb.org/conference/2014/retrieve.php?pdfid=580>
- [3] Arifovic, J., Dawid, H., Deissenberg, C. and Kostyshyna, O. (2010). Learning benevolent leadership in a heterogenous agents economy. *Journal of Economic Dynamics and Control*, 34(9): 1768–1790.
https://www.researchgate.net/publication/222650208_Learning_Benevolent_Leadership_in_a_Heterogenous_Agents_Economy
- [4] Ascari, G. (2004) Staggered prices and trend inflation: Some nuisances. *Review of Economic Dynamics*, 7: 642–667. <https://doi.org/10.1016/j.red.2004.01.002>
- [5] Ascari, G. Ropele, T. (2007). Trend inflation, Taylor principle, and indeterminacy. *Journal of Money, Credit and Banking*, 48(1), 1557–1584. <http://www.jstor.org/stable/20685075>
- [6] Andrade, P. Gali, J., Le Bihan, H. and Matheron, J. (2017). The optimal inflation target and the natural rate of interest. *Economics Working Paper Series*, Working Paper No. 1591.
<http://www.nber.org/papers/w24328>
- [7] Ball, L. (2014). The Case for a long-run inflation target of four percent. *IMF Working Paper*.
<https://www.imf.org/en/Publications/WP/Issues/2016/12/31/The-Case-for-a-Long-Run-Inflation-Target-of-Four-Percent-41625>
- [8] Blanchard, O. (2014). Where danger lurks. *Finance & Development*, 51(3).
<http://www.imf.org/external/pubs/ft/fandd/2014/09/blanchard.htm>
- [9] Blanchard, O. (2016). Do DSGE Models have a future? *Policy Report*, PB-1611, Peterson Institute for International Economics. <https://piie.com/system/files/documents/pb16-11.pdf>
- [10] Buiter, W. (2009). The unfortunate uselessness of most 'state of the art' academic monetary economics. *Financial Times*. ft.com/maverecon
- [11] Bookstaber, R. (2017). *The end of theory: financial crises, the failure of economics, and the sweep of human interaction*. Princeton University Press.
- [12] Bonart, J., Bouchaud, J. P., Landier, A. and Thesmar, D. (2014). Instabilities in large economies: aggregate volatility without idiosyncratic shocks. *Journal of Statistical Mechanics: Theory and Experiment*, P10040. <https://arxiv.org/abs/1406.5022>

- [13] Caballero, R. J. (2010). Macroeconomics after the crisis: time to deal with the pretense-of-knowledge syndrome. *The Journal of Economic Perspectives*, 24(4), 85–102.
https://www.researchgate.net/publication/226647897_Macroeconomics_after_the_Crisis_Time_to_Deal_with_the_Pretense-of-Knowledge_Syndrome
- [14] Calvo, G. (1983). Staggered prices in a utility-maximizing framework. *Journal of monetary Economics*, 12(3), 383–398. [https://doi.org/10.1016/0304-3932\(83\)90060-0](https://doi.org/10.1016/0304-3932(83)90060-0)
- [15] Carlin, W. and Soskice, D. (2018). Stagnant productivity and low unemployment: stuck in a Keynesian equilibrium. *Oxford Review of Economic Policy*, 34, 169–94.
https://papers.ssrn.com/sol3/papers.cfm?abstract_id=3053897
- [16] Clift, J. (2010). IMF survey: IMF explores contours of future macroeconomic policy. Interview with Olivier Blanchard. IMF survey interview.
<http://www.imf.org/en/News/Articles/2015/09/28/04/53/soint021210a>
- [17] Bernanke, B. (2016). Modifying the Fed’s policy framework: Does a higher inflation target beat negative interest rates? <https://www.brookings.edu/blog/ben-bernanke>
- [18] Coibion, O., Gorodnichenko, Y. and Wieland, J. (2012). The Optimal inflation rate in new Keynesian models: should central banks raise their inflation targets in light of the zero lower bound? *Review of Economic Studies*, 79(4): 1371–1406.
https://www.researchgate.net/publication/267220767_The_Optimal_Inflation_Rate_in_New_Keynesian_Models_Should_Central_Banks_Raise_Their_Inflation_Targets_in_Light_of_the_ZLB_We_are_grateful_to
- [19] Colander, D., Howitt, P., Kirman, A., Leijonhufvud, A. and Mehrling, P. (2008). Beyond DSGE models: toward an empirically based macroeconomics. *The American Economic Review*, 98(2): 236–240. <https://www.aeaweb.org/articles?id=10.1257/aer.98.2.236>
- [20] Dawid, H., Gemkow, S., Harting, P., van der Hoog, S. and Neugarty, M. (2011). The Eurace@Unibi Model: An agent-based macroeconomic model for economic policy analysis. Working paper, Bielefeld University.
<https://pub.uni-bielefeld.de/download/2622498/2643911>
- [21] Deissenberg, C., van der Hoog, S. and Dawid, H. (2008). Eurace: a massively parallel agent-based model of the european economy. *Applied Mathematics and Computation*, 204: 541–552. <https://pub.uni-bielefeld.de/publication/1585850>
- [22] Delli Gatti, D., Gaffeo, E., Gallegati, M., Giulioni, G. and Palestrini, A. (2011). *Emergent macroeconomics: an agent-based approach to business fluctuations*. Springer: Berlin.
- [23] Delli Gatti, D., Desiderio, S., Gaffeo, E., Cirillo, P. and Gallegati, M. (2011). *Macroeconomics from the bottom-up*. Springer: Berlin.
- [24] Dosi, G., Fagiolo, G. and Roventini, A. (2005). An evolutionary model of endogenous business cycles. *Computational Economics*, 27: 3–24.
<https://link.springer.com/article/10.1007/s10614-005-9014-2>

- [25] Dosi, G., Fagiolo, G. and Roventini, A. (2010). Schumpeter meeting Keynes: A policyfriendly model of endogenous growth and business cycle. *Journal of Economic Dynamics and Control*, 34: 1748–1767. <https://doi.org/10.1016/j.jedc.2010.06.018>
- [26] Dosi, G., Fagiolo, G., Napoletano, M., Roventini, A. and Treibich, T. (2015). Fiscal and monetary policies in complex evolving economies. *Journal of Economic Dynamics and Control*, 52: 166–189. <https://doi.org/10.1016/j.jedc.2014.11.014>
- [27] Fagiolo, G., Roventini, A. (2012). Macroeconomic policy in DSGE and agent-based models. *Journal of Artificial Societies and Social Simulation*, 20 (1). Working Paper. <http://jasss.soc.surrey.ac.uk/20/1/1.html>
- [28] Farmer, D. and Foley, D. (2009). The economy needs agent-based modelling. *Nature*, 460: 685–686. <http://www.nature.com/nature/journal/v460/n7256/full/460685a.html?foxtrotcallback=true>
- [29] Financial Times (2017). Janet Yellen stirs global debate about raising inflation targets. <https://www.ft.com/content/419c6bc2-537b-11e7-9fed-c19e2700005f>
- [30] Gaffeo, E., Delli Gatti, D., Desiderio, S. and M. Gallegati (2008). Adaptive microfoundations for emergent macroeconomics, *Eastern Economic Journal*, 34: 441–463. <https://link.springer.com/article/10.1057/eej.2008.27>
- [31] Galí, J. (2008). *Monetary policy, inflation and the business cycle*. Princeton University Press.
- [32] De Grauwe, P. (2014). Animal spirits and monetary policy. *Exchange Rates and Global Financial Policies*, 473–520. <http://www.jstor.org/stable/41485845>
- [33] Gualdi, S., Tarzia, M., Zamponi, F. and Bouchaud, J.-P. (2015). Tipping points in macroeconomic agent-based models. *Journal of Economic Dynamics and Control*, 50, 29–61. <https://doi.org/10.1016/j.jedc.2014.08.003>
- [34] Gualdi, S., Tarzia, M., Zamponi, F. and Bouchaud, J.-P. (2016). Monetary policy and dark corners in a stylized agent-based model. *Journal of Economic Interaction and Coordination*, 1–31. <https://link.springer.com/article/10.1007/s11403-016-0174-z>
- [35] Haldane, A. and Turrell, A. (2017) An interdisciplinary model for macroeconomics. *Oxford Review of Economic Policy*, 34: 219–251. <https://www.bankofengland.co.uk/working-paper/2017/an-interdisciplinary-model-for-macroeconomics>
- [36] Lengnick, M. (2013). Agent-based macroeconomics: A baseline model. *Journal of Economic Behavior & Organization*, 86: 102–120. <https://doi.org/10.1016/j.jebo.2012.12.021>
- [37] Lucas, R. (2009). In defense of the dismal science. *The Economist*. <http://www.economist.com/node/14165405>

- [38] Mandel, A., Furst, S., Lass, W., Meissner, F. and Jaeger, C. (2009). Lagom generic: an agent-based model of growing economies. *ECF Working Paper*.
http://www.globalclimateforum.org/fileadmin/ecf-documents/publications/ecf-working-papers/mandel-fuerst-lass-meissner-jaeger__ecf-working-paper_2009-01.pdf
- [39] Mankiw, G. (2014) *Principles of Macroeconomics*. Cengage Learning. Ch. 14.
- [40] Nakamura, E., Steinsson, J., Sun, P. and Villar, D. (2016). The elusive costs of inflation: price dispersion during the U.S. great inflation. Working Paper No. 22505.
<http://www.nber.org/papers/w22505>
- [41] Salle, I., Yildizoglu, M. and Sénégas, M.-A. (2013). Inflation targeting in a learning economy: an ABM perspective. *Economic Modelling*, 34: 114–128.
<https://doi.org/10.1016/j.econmod.2013.01.031>
- [42] Salle, I., Sénégas, M.-A. and Yildizoglu, M. (2013). How transparent about its inflation target should a central bank be? An agent-based model assessment. *Cahiers du GREThA*, 24: 1–41.
<http://cahiersdugretha.u-bordeaux4.fr/2013/2013-24.pdf>
- [43] Schmitt-Grohe, S. and Uribe, M. (2011) The optimal rate of inflation. In: *Handbook of Monetary Economics*, 3B: 653–722.
https://www.researchgate.net/publication/228222577_The_Optimal_Rate_of_Inflation
- [44] Solow, R. (2010). Building a science of economics for the real world. Prepared Statement to the House Committee on Science and Technology.
<https://www.gpo.gov/fdsys/pkg/CHRG-111hhrg57604/pdf/CHRG-111hhrg57604.pdf>
- [45] Taylor, J. (1993). Discretion versus policy rules in practice. *Carnegie-Rochester Conference Series on Public Policy*. 39: 195–214. [https://doi.org/10.1016/0167-2231\(93\)90009-L](https://doi.org/10.1016/0167-2231(93)90009-L)
- [46] Vines, D. and Wills, S. (2018). Rebuilding macroeconomic theory. *Oxford Review of Economic Policy*, 34 (12): 1–42. <https://doi.org/10.1093/oxrep/grx062>

Please note:

You are most sincerely encouraged to participate in the open assessment of this article. You can do so by either recommending the article or by posting your comments.

Please go to:

<http://dx.doi.org/10.5018/economics-ejournal.ja.2018-15>

The Editor