

Firpo, Sergio; Fortin, Nicole M.; Lemieux, Thomas

Working Paper

Unconditional Quantile Regressions

Texto para discussão, No. 533

Provided in Cooperation with:

Departamento de Economia, Pontifícia Universidade Católica do Rio de Janeiro

Suggested Citation: Firpo, Sergio; Fortin, Nicole M.; Lemieux, Thomas (2006) : Unconditional Quantile Regressions, Texto para discussão, No. 533, Pontifícia Universidade Católica do Rio de Janeiro (PUC-Rio), Departamento de Economia, Rio de Janeiro

This Version is available at:

<https://hdl.handle.net/10419/176016>

Standard-Nutzungsbedingungen:

Die Dokumente auf EconStor dürfen zu eigenen wissenschaftlichen Zwecken und zum Privatgebrauch gespeichert und kopiert werden.

Sie dürfen die Dokumente nicht für öffentliche oder kommerzielle Zwecke vervielfältigen, öffentlich ausstellen, öffentlich zugänglich machen, vertreiben oder anderweitig nutzen.

Sofern die Verfasser die Dokumente unter Open-Content-Lizenzen (insbesondere CC-Lizenzen) zur Verfügung gestellt haben sollten, gelten abweichend von diesen Nutzungsbedingungen die in der dort genannten Lizenz gewährten Nutzungsrechte.

Terms of use:

Documents in EconStor may be saved and copied for your personal and scholarly purposes.

You are not to copy documents for public or commercial purposes, to exhibit the documents publicly, to make them publicly available on the internet, or to distribute or otherwise use the documents in public.

If the documents have been made available under an Open Content Licence (especially Creative Commons Licences), you may exercise further usage rights as specified in the indicated licence.

TEXTO PARA DISCUSSÃO

No. 533

Unconditional Quantile Regressions

Sergio Firpo
Nicole M. Fortin
Thomas Lemieux



DEPARTAMENTO DE ECONOMIA
www.econ.puc-rio.br

Unconditional Quantile Regressions*

Sergio Firpo,

Pontifícia Universidade Católica - Rio

Nicole M. Fortin, and Thomas Lemieux

University of British Columbia

November 2006

Abstract

We propose a new regression method to estimate the impact of explanatory variables on quantiles of the unconditional distribution of an outcome variable. The proposed method consists of running a regression of the (recentered) influence function (RIF) of the unconditional quantile on the explanatory variables. The influence function is a widely used tool in robust estimation that can easily be computed for each quantile of interest. We show how standard partial effects, as well as policy effects, can be estimated using our regression approach. We propose three different regression estimators based on a standard OLS regression (RIF-OLS), a Logit regression (RIF-Logit), and a nonparametric Logit regression (RIF-NP). We also discuss how our approach can be generalized to other distributional statistics besides quantiles.

Keywords: *Influence Functions, Unconditional Quantile, Quantile Regressions.*

*We are indebted to Joe Altonji, Richard Blundell, David Card, Vinicius Carrasco, Marcelo Fernandes, Chuan Goh, Joel Horowitz, Shakeeb Khan, Roger Koenker, Thierry Magnac, Whitney Newey, Geert Ridder, Jean-Marc Robin, Hal White and seminar participants at Yale University, CAEN-UFC, CEDEPLAR-UFMG, PUC-Rio, IPEA-RJ and Econometrics in Rio 2006 for useful comments on this and earlier versions of the manuscript. We thank Kevin Hallock for kindly providing the birthweight data used in one of the applications, and SSHRC for financial support.

Contents

1	Introduction	1
2	Model Setup and Parameters of Interest	4
3	General Concepts	8
3.1	Definition and Properties of Recentered Influence Functions	8
3.2	Impact of General Changes in the Distribution of X	11
4	Application to Unconditional Quantiles	14
4.1	Recentered Influence Functions for Quantiles	14
4.2	The UQPE and the structural form	16
4.2.1	Case 1: Linear, additively separable model	16
4.2.2	Case 2: Non-linear, additively separable model	17
4.2.3	Case 3: Linear, separable, but heteroskedastic model	18
4.2.4	General case	19
5	Estimation	22
5.1	Recentered Influence Function and its Components	23
5.2	Three estimation methods	24
5.2.1	RIF-OLS Regression	24
5.2.2	RIF-Logit Regression	25
5.2.3	Nonparametric-RIF Regression (RIF-NP)	26
6	Empirical Applications	27
6.1	Determinants of Birthweight	27
6.2	Unions and Wage Inequality	28
6.2.1	Estimates of the Partial Effect of Unions	28
6.2.2	Estimates of the Policy Effect	31
7	Conclusion	32
8	Appendix	33

1 Introduction

One important reason for the popularity of OLS regressions in economics is that they provide consistent estimates of the impact of an explanatory variable, X , on the *population unconditional mean* of an outcome variable, Y . This important property stems from the fact that the conditional mean, $E[Y|X]$, averages up to the unconditional mean, $E[Y]$, due to the law of iterated expectations. As a result, a linear model for conditional means, $E[Y|X] = X\beta$, implies that $E[Y] = E[X]\beta$, and OLS estimates of β also indicate what is the impact of X on the population average of Y . Many important applications of regression analysis crucially rely on this important property. For example, Oaxaca-Blinder decompositions of the earnings gap between blacks and whites or men and women, and policy intervention analyses (average treatment effect of education on earnings) all crucially depend on the fact that OLS estimates of β also provide an estimate of the effect of increasing education on the average earnings in a given population.

When the underlying question of economic and policy interest concerns other aspects of the distribution of Y , however, estimation methods that “go beyond the mean” have to be used. A convenient way of characterizing the distribution of Y is to compute its quantiles.¹ This explains why conditional quantile regressions (Koenker and Bassett, 1978; Koenker, 2005) have become increasingly popular. Unlike conditional means, however, conditional quantiles do not average up to their unconditional population counterparts. As a result, the estimates obtained by running a quantile regression cannot be used to estimate the impact of X on the corresponding unconditional quantile. This implies that existing methods cannot be used to answer a question as simple as “what is the impact on median earnings of increasing everybody’s education by one year, holding everything else constant?”.

In this paper, we propose a new computationally simple regression method to estimate the impact of changes in the explanatory variables on the unconditional quantiles of the outcome variable. The method consists of running a regression of a transformation—the recentered influence function defined below—of the outcome variable on the explanatory variables. To distinguish our approach from commonly used *conditional* quantile regressions, we call our regression method an *unconditional quantile regression*.² Our approach

¹Discretized versions of the distribution functions can be calculated using quantiles, as well many inequality measurements such as, for instance, quantile ratios, inter-quantile ranges, concentration functions, and the Gini coefficient. This suggests modelling quantiles as a function of the covariates to see how the whole distribution of Y responds to changes in the covariates.

²We obviously do not use the term “unconditional” to imply that we are not interested in the role of covariates, X . The “unconditional quantiles” are the quantiles of the marginal distribution of the

builds upon the concept of influence function (IF), a widely used tool in the robust estimation of statistical or econometric models. The IF represents, as its name suggests, the influence of an individual observation on a distributional statistic of interest. Influence functions of commonly used statistics are either well known or easy to derive. For example, the influence function of the mean $\mu = E[Y]$ is the demeaned value of the outcome variable, $Y - \mu$.

Adding back the statistic to the influence function yields what we call the *Recentered Influence Function* (RIF). More generally, the RIF can be viewed as the contribution of an individual observation to a given distributional statistic. It is easy to compute the RIF for quantiles or most distributional statistics. For a quantile, the influence function $IF(Y, q_\tau)$ is known to be equal to $(\tau - \mathbb{I}\{Y \leq q_\tau\}) / f_Y(q_\tau)$, where $\mathbb{I}\{\cdot\}$ is an indicator function, $f_Y(\cdot)$ is the density of the marginal distribution of Y , and $q_\tau = Q_\tau[Y]$ is the population τ -quantile of the unconditional distribution of Y .³ As a result, $RIF(Y; q_\tau)$ is simply equal to $q_\tau + IF(Y, q_\tau)$.

We call the conditional expectation of the RIF $(Y; \nu)$ modelled as a function of the explanatory variables, $E[RIF(Y; \nu) | X] = m_\nu(X)$, the *RIF-regression model*. In the case of the mean, since the RIF is simply the value of the outcome variable, Y , a regression of $RIF(Y; \mu)$ on X is the same as the standard regression of Y on X . This explains why, in our framework, OLS estimates are valid estimates of the effect of X on the unconditional mean of Y . More importantly, we show that this property extends to any other distributional statistic. For the τ -quantile, we show the conditions under which a regression of $RIF(Y; q_\tau)$ on X can be used to consistently estimate the effect of X on the unconditional τ -quantile of Y . In the case of quantiles, we call the RIF-regression model, $E[RIF(Y; q_\tau) | X] = m_\tau(X)$, an *unconditional quantile regression*. We define, in Section 4, the exact population parameters that we estimate using this regression. The first parameter is the partial (or marginal) effect of shifting the distribution of a covariate on the unconditional quantile. The second parameter is the effect of a more general change in the distribution of covariates that corresponds to Stock’s (1989) “policy effect”.

Importantly, we show that these two parameters are nonparametrically identified under sufficient assumptions that guarantee that the conditional distribution of the out-

outcome variable Y , i.e. the distribution obtained by integrating the conditional distribution of Y given X over the distribution of X . Using “marginal” instead of “unconditional” would be confusing, however, since we also use the word “marginal” to refer to the impact of small changes in covariates (marginal effects).

³We define the unconditional quantile operator as $Q_\tau[\cdot] \equiv \inf_q \Pr[\cdot \leq q] \geq \tau$. Similarly, the conditional (on $X = x$) quantile operator is defined as $Q_\tau[\cdot | X = x] \equiv \inf_q \Pr[\cdot \leq q | X = x] \geq \tau$.

come variable Y does not change in response to a change in the distribution of covariates. We view our approach as an important contribution to the literature concerned with the identification of quantile functions. However, unlike contributions to that area such as Chesher (2003), Florens, Heckman, Meghir, and Vytlačil (2003), and Imbens and Newey (2005), which consider the identification of structural functions defined from conditional quantile restrictions, our approach is concerned solely with parameters that capture changes in the unconditional quantiles.

We also view our method as a very important complement to conditional quantile regressions. Of course, in some settings quantile regressions are the appropriate method to use.⁴ For instance, quantile regressions are a useful descriptive tool that provide a parsimonious representation of the conditional quantiles. Unlike standard OLS regression estimates, however, quantile regression estimates cannot be used to assess the more general economic or policy impact of a change of X on the corresponding quantile of the unconditional distribution of Y . While OLS estimates can be used as estimates of the effect of X on either the conditional or the unconditional mean, one has to be much more careful in deciding what is the ultimate object of interest in the case of quantiles.

For instance, consider one example of quantile regressions studied by Chamberlain (1994): the effect of union status on log wages. An OLS estimate of the effect of union on log wages of 0.2, for example, means that a decline of 1 percent in the rate of unionization would lower average wages by 0.2 percent. But if the estimated effect of unions (using quantile regressions) on the *conditional* 90th quantile is 0.1, this does not mean that a decline of 1 percent in the rate of unionization would lower the *unconditional* 90th quantile by 0.1 percent. In fact, we show in an empirical application in Section 6 that unions have a positive effect on the *conditional* 90th quantile, but a negative effect on the *unconditional* 90th quantile. If we are interested in the overall effect of unions on wage inequality, our unconditional quantile regressions should be used to obtain the effect of unions at different quantiles of the unconditional distribution. Using conditional quantile regressions to estimate the overall effect of unions on wage inequality would yield a misleading answer in this particular case.

The structure of the paper is as follows. In the next section, we present the basic model and define two key objects of interest in the estimation: the “unconditional quantile partial effect” (UQPE) and the “policy effect”. In Section 3, we present the general properties of recentered influence functions. We formally show how the recentered in-

⁴See, for example, Buchinsky (1994) and Chamberlain (1994) for applications of conditional quantile regressions to various issues related to the wage structure.

fluence function can be used to compute what happens to a distributional statistic ν when the distribution of the outcome variable Y changes in response to a change in the distribution of the covariates X . In Section 4, we focus on quantiles and show how unconditional quantile regressions can be used to estimate either the policy effect or the UQPE. Considering an explicit structural model between Y and X , we discuss the links between the structural parameters and the UQPE for some specific examples and for the general case. Estimation issues are addressed in Section 5. Section 6 presents two applications of our method: the determinants of the distribution of infants' birthweight (as in Koenker and Hallock, 2001) and the impact of unions on the distribution of log wages. We conclude in Section 7.

2 Model Setup and Parameters of Interest

Before presenting the estimation method, it is important to clarify exactly what the unconditional quantile regressions seek to estimate. Assume that we observe Y in the presence of covariates X , so that Y and X have a joint distribution, $F_{Y,X}(\cdot, \cdot) : \mathbb{R} \times \mathcal{X} \rightarrow [0, 1]$, and $\mathcal{X} \subset \mathbb{R}^k$ is the support of X . Assume that the dependent variable Y is a function of observables X and unobservables ε , according to the following model:

$$Y = h(X, \varepsilon),$$

where $h(\cdot, \cdot)$ is an unknown mapping. Note that using a flexible function $h(\cdot, \cdot)$ is important for allowing for rich distributional effect of X on Y .⁵

We are primarily interested in estimating two population parameters, the unconditional quantile partial effect and the policy effect, using unconditional quantile regressions. We now formally define these two parameters.

Unconditional Quantile Partial Effect (UQPE)

By analogy with a standard regression coefficient, our first object of interest is the effect on an unconditional quantile of a small increase t in the explanatory variable

⁵A number of recent studies also use general nonseparable models to investigate a number of related issues. See, for example, Chesher (2003), Florens, Heckman, Meghir, and Vytlačil (2003), and Imbens and Newey (2005).

X . This effect of a small change in a continuous variable X on the τ^{th} quantile of the unconditional distribution of Y , is defined as:

$$\alpha(\tau) = \lim_{t \downarrow 0} \frac{Q_\tau[h(X+t, \varepsilon)] - Q_\tau[Y]}{t}$$

where $Q_\tau[Y]$ is the τ^{th} quantile of the unconditional distribution of the random variable Y .⁶

We call this parameter, $\alpha(\tau)$, the *unconditional quantile partial effect* (UQPE), by analogy with Wooldridge (2004) unconditional average partial effect (UAPE), which is defined as $E[\partial E[Y|X]/\partial x]$. The link between $\alpha(\tau)$ and Wooldridge’s UAPE can be established using a result of Section 3 where we show that for any statistic ν defined as a functional of the unconditional distribution of Y , $\alpha(\nu)$ is exactly equal to $E[\partial E[\text{RIF}(Y, \nu)|X]/\partial x]$. In the case of the mean, since $\text{RIF}(Y, \mu) = Y$, $\alpha(\mu)$ is indeed equal to Wooldridge’s UAPE = $\lim_{t \downarrow 0} (E[h(X+t, \varepsilon)] - E[Y])/t$. In the case of quantiles, derived in Section 4, our parameter of interest $\alpha(\tau)$ corresponds to $E[\partial E[\text{RIF}(Y, q_\tau)|X]/\partial x]$ and is named UQPE.

Similarly, by analogy with Wooldridge’s (2004) conditional average partial effect (CAPE) defined as $\partial E[Y|X]/\partial x$, we can think of conditional quantile regressions as a method for estimating the partial effects of the conditional quantiles of Y given a particular value X . We refer to this type of quantile partial effects as “conditional quantile partial effects” (CQPE) and define them as $\partial Q_\tau[Y|X]/\partial x = \lim_{t \downarrow 0} (Q_\tau[h(X+t, \varepsilon)|X] - Q_\tau[Y|X])/t$ in Section 4.

Note that while the UAPE equals the average CAPE, the same relationship does not hold between the UQPE and the CQPE. We will indeed show in Section 4 that the UQPE is equal to a complicated weighted average of the CQPE over the whole range of conditional quantiles (i.e. for τ going from 0 to 1).

Policy Effect

We are also interested in estimating the impact of a more general change in X on the τ^{th} quantile of Y . Consider the “intervention” or “policy change” proposed by Stock

⁶To simplify the exposition we are treating X as univariate. However, this is easily generalized to the multivariate case by defining for each $j = 1, \dots, k$,

$$\alpha_j(\tau) = \lim_{t_j \downarrow 0} \frac{Q_\tau[h([X_j + t_j; X_{-j}], \varepsilon)] - Q_\tau[Y]}{t_j}$$

where $X = [X_j + t_j; X_{-j}]$. We also discuss the case where X is a discrete variable in section 3.2.

(1989) and Imbens and Newey (2005), where X is replaced by the function $\ell(X)$, $\ell : \mathcal{X} \rightarrow \mathcal{X}$.⁷ For example, if X represents years of schooling, a compulsory high school completion program aimed at making sure everyone completes grade twelve would be captured by the policy function $\ell(\cdot)$, where $\ell(X) = 12$ if $x \leq 12$, and $\ell(X) = x$ otherwise. We define $\delta_\ell(\tau)$ as the effect of the policy on the τ^{th} quantile of Y , where

$$\delta_\ell(\tau) = Q_\tau[h(\ell(X), \varepsilon)] - Q_\tau[Y].$$

In the case of the mean we have

$$\delta_\ell(\mu) = E[h(\ell(X), \varepsilon)] - E[Y] = E[E[h(\ell(X), \varepsilon) - h(X, \varepsilon) | X]]$$

which corresponds to the mean of the policy effect proposed by Stock (1989).

The main contribution of the paper is to show that a regression framework where the outcome variable Y is replaced by RIF(Y, q_τ) can be used to estimate the unconditional partial effect $\alpha(\tau)$ and the policy effect $\delta_\ell(\tau)$ for quantiles. We show this formally in Section 3, after having introduced some general concepts. Since these general concepts hold for any functional of the distribution of interest, the proposed regression framework extends to other distributional statistics such as the variance or the Gini coefficient.

Before introducing these general concepts, however, a few remarks are in order. First, both the UQPE and the policy effect involve manipulations of the explanatory variables that can be modelled as changes in the distribution of X , $F_X(x)$. Under the “policy change”, $\ell(X)$, the resulting counterfactual distribution is given by $G_X(x) = F_X(\ell^{-1}(x))$.⁸ Representing manipulations of X in terms of the counterfactual distribution, $G_X(x)$, makes it easier to derive the impact of the manipulation on $F_Y(y)$, the unconditional distribution of the outcome variable Y . By definition, the unconditional (marginal) distribution function of Y can be written as

$$F_Y(y) = \int F_{Y|X}(y|X=x) \cdot dF_X(x). \quad (1)$$

Under the assumption that the conditional distribution $F_{Y|X}(\cdot)$ is unaffected by manipulations of the distribution of X , a counterfactual distribution of Y , G_Y , can be

⁷Here, we focus first on a policy function that is independent of the error term ε . That is, where non-compliance, for example, would be random.

⁸If $\ell(\cdot)$ is not globally invertible, we may actually break down the support of X in regions where the function is invertible. This allows $G_X(x) = F_X(\ell^{-1}(x))$ to be very general.

obtained by replacing $F_X(x)$ with $G_X(x)$:

$$G_Y(y) \equiv \int F_{Y|X}(y|X=x) \cdot dG_X(x). \quad (2)$$

Although the construction of this counterfactual distribution looks purely mechanical, important economic conditions are imbedded in the assumption that $F_{Y|X}(\cdot)$ is unaffected by manipulations of X . Because $Y = h(X, \varepsilon)$, a sufficient condition for $F_{Y|X}(\cdot)$ to be unaffected by manipulations of X is that ε is independent of X . For the sake of simplicity, we implicitly maintain this assumption throughout the paper, although it may be too strong in specific cases.⁹ Since $h(X, \varepsilon)$ can be very flexible, independence of ε and X still allows for unobservables to have rich distributional impacts.

A second remark is that, as in the case of a standard regression model for conditional means, there is no particular reasons to expect RIF regression models to be linear in X . In fact, in the case of quantiles we show in Section 4 that even for the most basic linear model, $h(X, \varepsilon) = X\beta + \varepsilon$, the RIF regression is not linear. Fortunately, the non-linear nature of the RIF regression is closely related to the problem of estimating a regression model for a dichotomous dependent variable. Widely available estimation procedures (Probit or logit) can thus used to deal the special nature of the RIF for quantiles. In the empirical Section 6 we show that, in practice, different regression methods yield very similar estimates of the UQPE. This finding is not surprising in light of the “common empirical wisdom” that Probits, logits, and linear probability models all yield very similar estimates of average marginal effects in a wide variety of cases.

A final remark is that while our regression method yields exact estimates of the UQPE, it only yields a first order approximation of the policy effect $\delta_\ell(\tau)$. In other words, how accurate our estimates of $\delta_\ell(\tau)$ are in the case of larger changes in the distribution of X turns out to be an empirical question. We show in Section 6 that, in the case of unions and wage inequality, our method yields very accurate results even in case of economically large changes in the rate of unionization.

⁹The independence assumption can easily be relaxed. For instance, if $X = (X_1, X_2)$ and only X_1 is being manipulated, it is sufficient to assume that ε is independent of X_1 conditional on X_2 . This conditional independence assumption is similar to the “ignorability” or “unconfoundedness” assumption commonly used in the program evaluation literature. Independence between ε and of X could also be obtained by conditioning on a control function constructed using instrumental variables, as in Chesher (2003), Florens et al., (2003), and Imbens and Newey (2005).

3 General Concepts

In this section we first review the concept of the influence function, which arises in the von Mises (1947) approximation and is largely used in the robust statistics literature. We then introduce the *recentered influence function*, which is central to the derivation of unconditional quantile regressions. Finally, we apply the von Mises approximation, defined for a general alternative or counterfactual distribution, to the case of where this counterfactual distribution arises from changes in the covariates. The derivations are developed for general functionals of the distribution; they will be applied to quantiles (and the mean) in the next section.

3.1 Definition and Properties of Recentered Influence Functions

We begin by recalling the theoretical foundation of the definition of the influence function, following Hampel et al. (1986). For notational simplicity, in this subsection we drop the subscript Y on F_Y and G_Y . Hampel (1968, 1974) introduced the influence function as a measure to study the infinitesimal behavior of real-valued functionals $\nu(F)$, where $\nu : \mathcal{F}_\nu \rightarrow \mathbb{R}$, and where \mathcal{F}_ν is a class of distribution functions such that $F \in \mathcal{F}_\nu$ if $|\nu(F)| < +\infty$. In our setting, F is the CDF of the outcome variable Y , while $\nu(F)$ is a distributional statistic such as a quantile. Following Huber (1977), we say that $\nu(\cdot)$ is Gâteaux differentiable at F if there exists a real kernel function $a(\cdot)$ such that for all G in \mathcal{F}_ν :

$$\lim_{t \downarrow 0} \frac{\nu(F_{t,G}) - \nu(F)}{t} = \frac{\partial \nu(F_{t,G})}{\partial t} \Big|_{t=0} = \int a(y) \cdot dG(y), \quad (3)$$

where $0 \leq t \leq 1$, and where the mixing distribution $F_{t,G}$

$$F_{t,G} \equiv (1-t) \cdot F + t \cdot G = t \cdot (G - F) + F \quad (4)$$

is the probability distribution that is t away from F in the direction of the probability distribution G .

The expression on the left hand side of equation (3) is the directional derivative of ν at F in the direction of G . When we replace $dG(y)$ on the right hand side of equation

(3) by $d(G - F)(y)$, we get:

$$\lim_{t \downarrow 0} \frac{\nu((1-t) \cdot F + t \cdot G) - \nu(F)}{t} = \frac{\partial \nu(F_{t,G})}{\partial t} \Big|_{t=0} = \int a(y) \cdot d(G - F)(y) \quad (5)$$

since $\int a(y) \cdot dF(y) = 0$, which follows by considering the case where $G = F$.

The concept of influence function arises from the special case where G is replaced by Δ_y , the probability measure that put mass 1 at the value y in the mixture $F_{t,G}$. This yields F_{t,Δ_y} , the distribution that contains a blip or a contaminant at the point y ,

$$F_{t,\Delta_y} \equiv (1-t) \cdot F + t \cdot \Delta_y.$$

The influence function of the functional ν at F for a given point y is defined as

$$\begin{aligned} \text{IF}(y; \nu, F) &\equiv \lim_{t \downarrow 0} \frac{\nu(F_{t,\Delta_y}) - \nu(F)}{t} = \frac{\partial \nu(F_{t,\Delta_y})}{\partial t} \Big|_{t=0} \\ &= \int a(y) \cdot d\Delta_y(y) = a(y). \end{aligned} \quad (6)$$

By a normalization argument, $\text{IF}(y; \nu, F)$, the influence function of ν evaluated at y and at the starting distribution F will be written as $\text{IF}(y; \nu)$. Using the definition of the influence function, the functional $\nu(F_{t,G})$ itself can be represented as a von Mises linear approximation (VOM):¹⁰

$$\nu(F_{t,G}) = \nu(F) + t \cdot \int \text{IF}(y; \nu) \cdot d(G - F)(y) + r(t; \nu; G, F) \quad (7)$$

where $r(t; \nu; G, F)$ is a remainder term that converges to zero as t goes to zero at the general rate $o(t)$. Depending on the functional ν considered, the remainder may converge faster or even be identical to zero. For example, for the mean μ , $r(t; \mu; G, F) = 0$, while for the quantile q_τ , $r(t; q_\tau; G, F) = o(t)$. Also, if $F = G$, then $r(t; \nu; F, F) = 0$ for any t or ν . More generally, the further apart the distributions F and G are, the larger the remainder term should be.¹¹

Now consider the leading term of equation (7) as an approximation for $\nu(G)$, that is,

¹⁰This expansion can be seen as a Taylor series approximation of the real function $A(t) = \nu(F_{t,G})$ around $t = 0$: $A(t) = A(0) + A'(0) \cdot t + \text{Rem}_1$. But since $A(0) = \nu(G)$, and $A'(0) = \int a_1(y) d(G - F)(y)$, where $a_1(y)$ is the influence function, we get the VOM approximation.

¹¹If we fix ν and t (for example, by making it equal to 1) and allow F and G to be empirical distributions \hat{F} and \hat{G} , we should expect the magnitude of the remainder term to be an empirical question.

for $t = 1$:

$$\nu(G) \approx \nu(F) + \int \text{IF}(y; \nu) \cdot dG(y). \quad (8)$$

By analogy with the influence function, for the particular case $G = \Delta_y$, we call this first order approximation term the *Recentered Influence Function* (RIF)

$$\text{RIF}(y; \nu, F) = \nu(F) + \int \text{IF}(y; \nu) \cdot d\Delta_y(y) = \nu(F) + \text{IF}(y; \nu). \quad (9)$$

Again, by a normalization argument, we write $\text{RIF}(y; \nu, F)$ as $\text{RIF}(y; \nu)$. The recentered influence function $\text{RIF}(y; \nu)$ has several interesting properties:

PROPERTY 1 [*Mean and Variance of the Recentered Influence Function*]:

i) the $\text{RIF}(y; \nu)$ integrates up to the functional of interest $\nu(F)$

$$\int \text{RIF}(y; \nu) \cdot dF(y) = \int (\nu(F) + \text{IF}(y; \nu)) \cdot dF(y) = \nu(F). \quad (10)$$

ii) the variance of $\text{RIF}(y; \nu)$ under F equals the asymptotic variance of the functional $\nu(F)$

$$\int (\text{RIF}(y; \nu) - \nu(F))^2 \cdot dF(y) = \int (\text{IF}(y; \nu))^2 \cdot dF(y) = AV(\nu, F) \quad (11)$$

where $AV(\nu, F)$ is the asymptotic variance of functional ν under the probability distribution F .

PROPERTY 2 [*Recentered Influence Function and the Directional Derivative*]:

i) the derivative of the functional $\nu(F_{t,G})$ in the direction of the distribution G is obtained by integrating up the recentered influence function at F over the distributional differences between G and F

$$\left. \frac{\partial \nu(F_{t,G})}{\partial t} \right|_{t=0} = \int \text{RIF}(y; \nu) \cdot d(G - F)(y). \quad (12)$$

ii) the Von Mises approximation (7) can be written in terms of the $\text{RIF}(y; \nu)$ as

$$\nu(F_{t,G}) = \nu(F) + t \cdot \int \text{RIF}(y; \nu) \cdot d(G - F)(y) + r(t; \nu; G, F) \quad (13)$$

where the remainder term is

$$r(t; \nu; G, F) = \int (\text{RIF}(y; \nu, F_{t,G}) - \text{RIF}(y; \nu)) \cdot dF_{t,G}(y).$$

These properties follow straightforwardly from previous definitions and therefore no

proof is provided here. In fact, Property 1 follows from the usual definition of the influence function, while Property 2 combines equations (5), (6) and (9), and follows from the fact that densities integrate to one. Finally, note that properties 1 *ii*) and 2 *i*) and *ii*) are also shared by the influence function.

3.2 Impact of General Changes in the Distribution of X

We now show that the recentered influence function provides a convenient way of assessing the impact of changes in the covariates on the distributional statistic ν without having to compute the corresponding counterfactual distribution of Y which is, in general, a difficult estimation problem. We first consider general changes in the distribution of covariates, from $F_X(x)$ to the counterfactual distribution $G_X(x)$. We then consider the special case of a marginal change from X to $X + t$, and of the policy change $\ell(X)$ introduced in Section 2.

In the presence of covariates X , we can use the law of iterated expectations to express ν in terms of the conditional expectation of $\text{RIF}(y; \nu)$ given X ,

PROPERTY 3 [*The functional $\nu(F_Y)$ and the RIF-regression*]:

The conditional expectation of $\text{RIF}(y; \nu)$ given X integrates up to the functional of interest $\nu(F_Y)$

$$\nu(F_Y) = \int \text{RIF}(y; \nu) \cdot dF_Y(y) = \int E[\text{RIF}(Y; \nu)|X = x] \cdot dF_X(x) \quad (14)$$

where we have substituted equation (1) into equation (10), and used the fact that $E[\text{RIF}(Y; \nu)|X = x] = \int_y \text{RIF}(y; \nu) \cdot dF_{Y|X}(y|X = x)$. Property 3 is central to our approach. It provides a simple way of writing any functional ν of the distribution as an expectation and, furthermore, to write ν as the mean of the RIF-regression $E[\text{RIF}(Y; \nu)|X]$. Comparing equation (1) and property 3 illustrates how our approach greatly simplifies the modelling of the effect of covariates on distribution statistics. In equation (1), the whole conditional distribution, $F_{Y|X}(y|X = x)$, has to be integrated over the distribution of X to get the unconditional distribution of Y , F_Y .¹² When we are only interested in a specific distribution statistic $\nu(F_Y)$, however, we simply need to integrate over $E[\text{RIF}(Y; \nu)|X]$, which is easily estimated using regression methods.

¹²This is essentially what Machado and Mata (2005) suggest to do, since they propose estimating the whole conditional distribution by running (conditional) quantile regressions for each and every possible quantile. See also Albrecht, Björklund and Vroman (2003), Gardeazabal and Ugidos (2005), and Melly (2005) for related attempts at performing Oaxaca-Blinder type decompositions of unconditional quantiles using conditional quantile regressions.

Property 3 also suggests that the counterfactual values of ν can be obtained by integrating over a counterfactual distribution of X instead of $F_X(x)$. The following theorem indeed states that the effect (on the functional ν) of a small change in the distribution of covariates from F_X in the direction of G_X is given by integrating up the RIF-regression function with respect to the change in distribution of the covariates, $d(G_X - F_X)$.

THEOREM 1 [*Marginal Effect of a Change in the Distribution of X*]:

$$\begin{aligned}\pi_G(\nu) &\equiv \left. \frac{\partial \nu(F_{Y,t,G})}{\partial t} \right|_{t=0} = \lim_{t \downarrow 0} \frac{\nu(F_{Y,t,G_Y}) - \nu(F_Y)}{t} \\ &= \int \text{RIF}(y; \nu) \cdot d(G_Y - F_Y)(y) \\ &= \int E[\text{RIF}(Y; \nu) | X = x] \cdot d(G_X - F_X)(x)\end{aligned}$$

The proof, provided in the appendix, is based on applying the law of iterated expectations to equation (12).

Consider the implications of Theorem 1 for the policy effect and the unconditional partial effect introduced in Section 2. Given that $\pi_G(\nu)$ captures the marginal effect of moving the distribution of X from F_X to G_X , it can be used as the leading term of an approximation, just like equation (12) is the leading term of the von Mises approximation (equation (13)). Our first corollary shows how this fact can be used to approximate the policy effect $\delta_\ell(\nu)$.

COROLLARY 1 [*Policy Effect*]: *If a policy change from X to $\ell(X)$ can be described as a change in the distribution of covariates, that is, $\ell(X) \sim G_X$, where $G_X(x) = F_X(\ell^{-1}(x))$, then $\delta_\ell(\nu)$, the policy effect on the functional ν , consists of the marginal effect of the policy, $\pi_\ell(\nu)$, and a remainder term $r(\nu, G_Y, F_Y)$:*

$$\delta_\ell(\nu) = \nu(G_Y) - \nu(F_Y) = \pi_\ell(\nu) + r(\nu; G_Y, F_Y)$$

where

$$\begin{aligned}\pi_\ell(\nu) &= \int E[\text{RIF}(Y; \nu) | X = x] \cdot (dF_X(\ell^{-1}(x)) - dF_X(x)), \text{ and} \\ r(\nu; G_Y, F_Y) &= \int (E[\text{RIF}(Y; \nu, G_Y) | X = x] - E[\text{RIF}(Y; \nu) | X = x]) \cdot dF_X(\ell^{-1}(x))\end{aligned}$$

No proof for Corollary 1 is provided since, given Theorem 1, it is an immediate consequence of Property 2 *ii*) making $t = 1$. Note that the approximation error $r(\nu; G_Y, F_Y)$ depends

on how different the means of $\text{RIF}(Y; \nu)$ and $\text{RIF}(Y; \nu, G_Y)$ are under the new distribution of covariates G_X .¹³

The next case is the unconditional partial effect of X on ν , defined as $\alpha(\nu)$ in Section 2. The implicit assumption here is that X is a continuous covariate that is being increased from X to $X + t$. We consider the case where X is discrete in the third corollary below.

COROLLARY 2 [*Unconditional Partial Effect: Continuous Covariate*]: Consider increasing a continuous covariate X by t , from X to $X + t$. This change results in the counterfactual distribution $F_{Y,t}^*(y) = \int F_{Y|X}(y|x) \cdot dF_X(x - t)$. The effect of X on the distributional statistic ν , $\alpha(\nu)$, is

$$\begin{aligned} \alpha(\nu) &\equiv \lim_{t \downarrow 0} \frac{\nu(F_{Y,t}^*) - \nu(F_Y)}{t} \\ &= \int \frac{dE[\text{RIF}(Y; \nu) | X = x]}{dx} \cdot dF(x). \end{aligned}$$

The proof is provided in the appendix. The corollary simply states that the effect (on ν) of a small change in covariate X is equal to the average derivative of the recentered influence function with respect to the covariate.¹⁴

Finally, we consider the case where X is a dummy variable. The manipulation we have in mind here consists of increasing the probability that X is equal to one by a small amount t

COROLLARY 3 [*Unconditional Partial Effect: Dummy Covariate*]: Consider the case where X is a discrete (dummy) variable, $X \in \{0, 1\}$. Define $P_X \equiv \Pr[X = 1]$. Consider an increase from P_X to $P_X + t$. This results in the counterfactual distribution $F_{Y,t}^*(y) = F_{Y|X}(y|1) \cdot (P_X + t) + F_{Y|X}(y|0) \cdot (1 - P_X - t)$. The effect of a small increase in the probability that $X = 1$ is given by

$$\begin{aligned} \alpha_D(\nu) &\equiv \lim_{t \downarrow 0} \frac{\nu(F_{Y,t}^*) - \nu(F_Y)}{t} \\ &= E[\text{RIF}(Y; \nu, F) | X = 1] - E[\text{RIF}(Y; \nu, F) | X = 0] \end{aligned}$$

The proof is, once again, provided in the appendix.

¹³We discuss this issue in more detail in Section 6.

¹⁴In the case of a multivariate X , the relevant concept is the average partial derivative.

4 Application to Unconditional Quantiles

In this section, we apply the results of Section 3 to the case of quantiles. We first derive the functional form of the RIF for quantiles and show that the UQPE can be obtained using RIF-regressions without reference to a specific functional form for the structural model $Y = h(X, \varepsilon)$. We then look at a few specific structural models that help interpret the RIF-regressions in terms the underlying structural model and provide some guidance on the functional form of the RIF-regressions. We finally consider the case of a general model $Y = h(X, \varepsilon)$ and derive the link between the UQPE and the underlying structural form. We also show the precise link between the UQPE and the CQPE, which is closely connected to the structural form.

4.1 Recentered Influence Functions for Quantiles

As a benchmark, first consider the case of the mean, $\nu(F) = \mu$. Applying the definition of the influence function (equation (6)) to $\mu = \int y \cdot dF(y)$, we get $\text{IF}(y; \mu) = y - \mu$, and $\text{RIF}(y; \mu) = \mu + \text{IF}(y; \mu) = y$. When the VOM linear approximation of equation (13) is applied to the mean, the remainder $r(t; \mu; G, F)$ equals zero since $\text{RIF}(y; \mu) = \text{RIF}(y; \mu, F_{t,G}) = y$.

Turning to our application of interest, consider the τ^{th} quantile, $\nu(F) = q_\tau$. Applying the definition of the influence function to q_τ , it follows that

$$\text{IF}(y; q_\tau) = \frac{\tau - \mathbb{I}\{y \leq q_\tau\}}{f_Y(q_\tau)}.$$

The influence function is simply a dichotomous variable that takes on the value $-(1 - \tau)/f_Y(q_\tau)$ when Y is below the quantile q_τ , and $\tau/f_Y(q_\tau)$ when Y is above the quantile q_τ . The recentered influence function can thus be written as

$$\begin{aligned} \text{RIF}(y; q_\tau) = q_\tau + \text{IF}(y; q_\tau) &= q_\tau + \frac{\tau - \mathbb{I}\{y \leq q_\tau\}}{f_Y(q_\tau)} \\ &= \frac{\mathbb{I}\{y > q_\tau\}}{f_Y(q_\tau)} + q_\tau - \frac{1 - \tau}{f_Y(q_\tau)} \\ &= c_{1,\tau} \cdot \mathbb{I}\{y > q_\tau\} + c_{2,\tau}. \end{aligned}$$

where $c_{1,\tau} = 1/f_Y(q_\tau)$ and $c_{2,\tau} = q_\tau - c_{1,\tau} \cdot (1 - \tau)$. Note that equation (10) implies that the mean of the recentered influence function is the quantile q_τ itself, and equation (11) implies that its variance is $\tau \cdot (1 - \tau) / f_Y^2(q_\tau)$.

The main results in Section 3 all involve the conditional expectation of the RIF. In the case of quantiles, we have

$$\begin{aligned} E[\text{RIF}(Y; q_\tau)|X = x] &= c_{1,\tau} \cdot E[\mathbb{1}\{Y > q_\tau\}|X = x] + c_{2,\tau} \\ &= c_{1,\tau} \cdot \Pr[Y > q_\tau|X = x] + c_{2,\tau}. \end{aligned} \quad (15)$$

Since the conditional expectation $E[\text{RIF}(Y; \nu)|X = x]$ is a linear function of $\Pr[Y > q_\tau |X = x]$, it can be estimated using Probit or Logit regressions, or a simple OLS regression (linear probability model). The parameters $c_{1,\tau}$ and $c_{2,\tau}$ can be estimated using the sample estimate of q_τ and a kernel density estimate of $f_Y(q_\tau)$.¹⁵ Note that for other functionals ν besides quantiles, the estimation of the model $E[\text{RIF}(Y; \nu)|X = x] = m_\nu(X)$ may be more appropriately pursued by nonparametric methods. These estimation issues are discussed in detail in the next section.

The estimated model can then be used to compute either the policy effect or the UQPE defined in Corollaries 1 to 3. From Corollary 2, we have that the unconditional partial effect with continuous regressors, $\alpha(\tau)$, is

$$UQPE(\tau) = \alpha(\tau) = \int \frac{dE[\text{RIF}(Y; q_\tau)|X = x]}{dx} \cdot dF_X(x) \quad (16)$$

$$= \frac{1}{f_Y(q_\tau)} \cdot \int \frac{d\Pr[Y > q_\tau|X = x]}{dx} \cdot dF_X(x) \quad (17)$$

$$= c_{1,\tau} \cdot \int \frac{d\Pr[Y > q_\tau|X = x]}{dx} \cdot dF_X(x) \quad (18)$$

The integral in the above equation is the average “marginal” effect of the covariates in a probability response model (see, e.g., Wooldridge (2002)).¹⁶

Interestingly, the UQPE for a dummy regressor is also closely linked to a standard marginal effect in a probability response model. In this case, it follows from Corollary 3 that

$$\begin{aligned} UQPE(\tau) &= \alpha_D(\tau) \\ &= \frac{1}{f_Y(q_\tau)} \cdot (\Pr[Y > q_\tau|X = 1] - \Pr[Y > q_\tau|X = 0]) \\ &= c_{1,\tau} \cdot (\Pr[Y > q_\tau|X = 1] - \Pr[Y > q_\tau|X = 0]). \end{aligned}$$

¹⁵See Section 5 for more detail.

¹⁶Note that the marginal effect is often computed as the effect of X on the probability for the “average observation”, $d\Pr[Y \geq q_\tau|X = \bar{x}]/dx$. This is how STATA, for example, computes marginal effects. The more appropriate marginal effect here is, however, the average of the marginal effect for each observation.

At first glance, the fact that the UQPE is closely linked to standard marginal effects in a probability response model is a bit surprising. Consider a particular value y_0 of Y that corresponds to the τ^{th} quantile of the distribution of Y , q_τ . Except for the scaling factor $1/f_Y(q_\tau)$, our results mean that a small increase in X has the same impact on the probability that Y is above y_0 , than on the τ^{th} unconditional quantile of Y . In other words, we can transform a probability impact into an unconditional quantile impact by simply multiplying the probability impact by $1/f_Y(q_\tau)$. Roughly speaking, the reason why the scaling factor $1/f_Y(q_\tau)$ provides the right transformation is that the function that transforms probabilities into unconditional quantiles is the inverse of the cumulative distribution function, $F_Y^{-1}(y)$, and the slope of $F_Y^{-1}(y)$ is the inverse of the density, $1/f_Y(q_\tau)$. In essence, the proposed approach enables us to turn a difficult estimation problem (the effect of X on unconditional quantiles of Y) into an easy estimation problem (the effect of X on the probability of being above a certain value of Y).

4.2 The UQPE and the structural form

In Section 2, we first defined the UQPE and the policy effect in terms of the structural form $Y = h(X, \varepsilon)$, where $h(\cdot)$ is now assumed to be strictly monotonic in ε . We now re-introduce the structural form to show how it is linked to the RIF-regression model, $E[\text{RIF}(Y; q_\tau) | X = x] = m_\tau(X)$. This is useful for interpreting the parameters of the RIF-regression model, and for suggesting possible functional forms for the regression.

We explore these issues using three specific examples of the structural form, and then discuss the link between the UQPE and the structural form in the most general case where $h(\cdot)$ is completely unrestricted (aside from the monotonicity in ε). Even in this general case, we show that the UQPE can be written as a weighted average of the CQPE, which is closely connected to the structural form, for different quantiles and values of X .

4.2.1 Case 1: Linear, additively separable model

We start with the simplest linear model $Y = h(X, \varepsilon) = X^\top \beta + \varepsilon$. As discussed in Section 2, we limit ourselves to the case where X and ε are independent. The linear form of the model implies that a small change t in a covariate X_j simply shifts the location of the distribution of Y by $\beta_j \cdot t$, but leaves all other features of the distribution unchanged. As a result, the UQPE for any quantile is equal to β_j . While β could be estimated using a standard OLS regression in this simple case, it is nonetheless useful to see how it could also be estimated using our proposed approach.

For the sake of simplicity, assume that ε follows a distribution F_ε . The resulting probability response model is¹⁷

$$\Pr [Y > q_\tau | X = x] = \Pr [\varepsilon > q_\tau - x^\top \beta] = 1 - F_\varepsilon (q_\tau - x^\top \beta).$$

Thus if ε was normally distributed, the probability response model would be a standard Probit model. Taking derivatives with respect to X_j yields

$$\frac{d \Pr [Y > q_\tau | X = x]}{dX_j} = \beta_j \cdot f_\varepsilon (q_\tau - x^\top \beta),$$

where f_ε is the density of ε , and the marginal effects are obtained by integrating over the distribution of X

$$\int \frac{d \Pr [Y > q_\tau | X = x]}{dx_j} \cdot dF_X (x) = \beta_j \cdot E [f_\varepsilon (q_\tau - X^\top \beta)],$$

where the expectation on the right hand side is taken over the distribution of X and the expression inside the expectation operator is simply the conditional density of Y evaluated at $Y = q_\tau$: $f_\varepsilon (q_\tau - x^\top \beta) = f_{Y|X}(q_\tau | X = x)$. It follows that

$$\int \frac{d \Pr [Y > q_\tau | X = x]}{dx_j} \cdot dF_X (x) = \beta_j \cdot E [f_{Y|X}(q_\tau | X = x)] = \beta_j \cdot f_Y(q_\tau),$$

and by substituting back in equation (17), the UQPE is indeed found to equal β_j

$$UQPE_j (\tau) = \frac{1}{f(q_\tau)} \cdot \beta_j \cdot f_Y(q_\tau) = \beta_j.$$

4.2.2 Case 2: Non-linear, additively separable model

A simple extension of the linear model is the index model $h(X, \varepsilon) = \tilde{h}(X^\top \beta + \varepsilon)$, where \tilde{h} is differentiable and strictly monotonic. When \tilde{h} is non-linear, a small change t in a covariate X_j does not correspond to a simple location shift of the distribution of Y , and the UQPE is no longer equal to β . One nice feature of the model, however, is that it yields the same probability response model as in Case 1. We have

$$\Pr [Y > q_\tau | X = x] = \Pr [\varepsilon > \tilde{h}^{-1}(q_\tau) - x^\top \beta] = 1 - F_\varepsilon (\tilde{h}^{-1}(q_\tau) - x^\top \beta).$$

¹⁷Since q_τ is just a constant, it can be absorbed in the usual constant term.

The average marginal effects are now

$$\int \frac{d\Pr[Y > q_\tau | X = x]}{dx_j} \cdot dF_X(x) = \beta_j \cdot E \left[f_\varepsilon \left(\tilde{h}^{-1}(q_\tau) - X^\top \beta \right) \right],$$

and the UQPE is

$$UQPE_j(\tau) = \beta_j \cdot \frac{E \left[f_\varepsilon \left(\tilde{h}^{-1}(q_\tau) - X^\top \beta \right) \right]}{f_Y(q_\tau)} = \beta_j \cdot \tilde{h}' \left(\tilde{h}^{-1}(q_\tau) \right),$$

where the last equality follows from the fact that

$$\begin{aligned} f_Y(q_\tau) &= \frac{d\Pr[Y \leq q_\tau]}{dq_\tau} = \frac{dE[\Pr[Y \leq q_\tau | X]]}{dq_\tau} \\ &= \frac{dE \left[F_\varepsilon \left(\tilde{h}^{-1}(q_\tau) - X^\top \beta \right) \right]}{dq_\tau} = E \left[\frac{f_\varepsilon \left(\tilde{h}^{-1}(q_\tau) - X^\top \beta \right)}{\tilde{h}' \left(\tilde{h}^{-1}(q_\tau) \right)} \right]. \end{aligned}$$

Since $\tilde{h}' \left(\tilde{h}^{-1}(q_\tau) \right)$ depends on q_τ , it follows that the UQPE is proportional, but not equal, to the underlying structural parameter β . Also, the UQPE does not depend on the distribution of ε . The intuition for this result is simple. From Case 1, we know that the effect of X_j on the τ^{th} quantile of the index $(X^\top \beta + \varepsilon)$ is β_j . But since Y and $(X^\top \beta + \varepsilon)$ are linked by a rank preserving transformation $\tilde{h}(\cdot)$, the effect on the τ^{th} quantile of Y corresponds to the effect on the τ^{th} quantile of the index $(X^\top \beta + \varepsilon)$ times the slope of the transformation function evaluated at this point, $\tilde{h}' \left(\tilde{h}^{-1}(q_\tau) \right)$.¹⁸

4.2.3 Case 3: Linear, separable, but heteroskedastic model

A more standard model used in economics is the linear, but heteroskedastic model $h(X, \varepsilon) = X^\top \beta + \sigma(X) \cdot \varepsilon$, where X and ε are still independent, but where $Var(Y|X) = \sigma^2(X)$.¹⁹ The special case where $\sigma(X) = X^\top \psi$ has the interesting implication that the conventional conditional quantile regression functions are also linear in X , an assumption

¹⁸Note that the UQPE could also be obtained by estimating the index model using a flexible form for $\tilde{h}(\cdot)$ (see, for example, Fortin and Lemieux (1998)). Estimating a flexible form for $\tilde{h}(\cdot)$ and taking derivatives is more difficult, however, than just computing average marginal effects and dividing them by the density $f(q_\tau)$. More importantly, since the index model is somewhat restrictive, it is important to use a more general approach that is robust to the specifics of the structural form $h(X, \varepsilon)$.

¹⁹There is no loss in generality in assuming that $Var(\varepsilon) = 1$.

typically used in practice. To see this, consider the τ^{th} conditional quantile of Y ,

$$Q_\tau[Y|X = x] = Q_\tau[X^\top\beta + (X^\top\psi) \cdot \varepsilon|X = x] = x^\top(\beta + Q_\tau[\varepsilon] \cdot \psi),$$

where $Q_\tau[\varepsilon]$ is the τ^{th} quantile of ε .²⁰ This particular specification of $h(X, \varepsilon)$ can also be related to the quantile structural function (QSF) of Imbens and Newey (2005). In the case where ε is univariate, Imbens and Newey define the QSF as $Q_\tau[Y|X = x] = h(x, Q_\tau[\varepsilon])$, which simply corresponds to $x^\top(\beta + Q_\tau[\varepsilon] \cdot \psi)$, the special linear case considered here.

The implied probability response model is the heteroskedastic model

$$\Pr[Y > q_\tau|X = x] = \Pr\left[\varepsilon > \frac{-(x^\top\beta - q_\tau)}{x^\top\psi}\right] = 1 - F_\varepsilon\left(\frac{q_\tau - x^\top\beta}{x^\top\psi}\right). \quad (19)$$

As is well known (e.g. Wooldridge, 2002), introducing heteroskedasticity greatly complicates the interpretation of the structural parameters (β and ψ here). The problem is that even if β_j and ψ_j are both positive, a change in X increases both the numerator and the denominator in equation (19), which has an ambiguous effect on the probability. In other words, it is no longer possible to express the marginal effects as simple functions of the structural parameter, β , as we did in Cases 1 and 2.

Strictly speaking, after imposing a parametric assumption on the distribution of ε , such as $\varepsilon \sim N(0, 1)$, one could take this particular model at face value and estimate the implied non-linear Probit model using maximum likelihood, and then compute the Probit marginal effects to get the UQPE. A more practical solution, however, is to estimate a more standard flexible probability response model and compute the average marginal effects. We propose such a nonparametric approach in Section 5.

4.2.4 General case

One potential drawback of estimating a flexible probability response model, however, is that we then lose the tight connection between the UQPE and the underlying structural parameters highlighted, for example, in Case 2 above. Fortunately, it is still possible to

²⁰For example, if ε is normal, the median $Q_{.5}[\varepsilon]$ is zero and the conditional median regression is $Q_{.5}[Y|X = x] = x^\top\beta$. Similarly, the 90th quantile $Q_{.9}[\varepsilon]$ is 1.28 and the corresponding regression for the 90th quantile is $Q_{.9}[Y|X = x] = x^\top(\beta + 1.28 \cdot \psi)$. Note also that this specific model yields a highly restricted set of quantile regressions in a multivariate setting, since the vector of parameters ψ is multiplied by a single factor $Q_\tau[\varepsilon]$. Allowing for a more general specification would only make the results even more cumbersome.

draw a useful connection between the UQPE and the underlying structural form, even in the general case.

By analogy with the UQPE, consider the conditional quantile partial effect (CQPE), which represents the effect of a small change of X on the conditional quantile of Y

$$\begin{aligned} CQPE(\tau, x) &\equiv \lim_{t \downarrow 0} \frac{Q_\tau[h(X+t, \varepsilon)|X=x] - Q_\tau[Y|X=x]}{t} \\ &= \frac{\partial Q_\tau[h(X, \varepsilon)|X=x]}{\partial x}. \end{aligned}$$

The CQPE is the derivative of the conditional quantile regression with respect to X . In the standard case of a linear quantile regression, the $CQPE(\tau, x)$ simply corresponds to the quantile regression coefficient for all $X = x$, which may be a source of misspecification.²¹ Using the definition of the QSF, we can also express the CQPE as

$$CQPE(\tau, x) = \frac{\partial Q_\tau[h(X, \varepsilon)|X=x]}{\partial x} = \frac{\partial h(x, Q_\tau[\varepsilon])}{\partial x}.$$

Before we establish the link between the UQPE and the CQPE, let us define the following three auxiliary functions. The first one, $\omega_\tau : \mathcal{X} \rightarrow \mathbb{R}^+$, will be used as a weighting function and is basically the ratio between the conditional density given $X = x$, and the unconditional density:

$$\omega_\tau(x) \equiv \frac{f_{Y|X}(q_\tau|x)}{f_Y(q_\tau)}.$$

The second function, $\varepsilon_\tau : \mathcal{X} \rightarrow \mathbb{R}$, is the inverse h function $h^{-1}(\cdot, q_\tau)$, which exists under the assumption that h is strictly monotonic in ε :

$$\varepsilon_\tau(x) \equiv h^{-1}(x, q_\tau).$$

Finally, the third function, $\zeta_\tau : \mathcal{X} \rightarrow (0, 1)$, can be thought as a “matching” function that shows where the unconditional quantile q_τ falls in the conditional distribution of Y :

$$\zeta_\tau(x) \equiv \{s : Q_s[Y|X=x] = q_\tau\} = F_{Y|X}(q_\tau|X=x).$$

We can now state our general result on the link between the UQPE and the CQPE

²¹Chamberlain (1994) shows that the union effects at different quantiles are also different by levels of experiences and manufacturing vs. non-manufacturing industries.

PROPOSITION 1 [*UQPE and its relation to the structural form*]:

i) Assuming that the structural form $Y = h(X, \varepsilon)$ is strictly monotonic in ε and that X and ε are independent, the parameter $UQPE(\tau)$ will be:

$$UQPE(\tau) = E \left[\omega_\tau(X) \cdot \frac{\partial h(X, \varepsilon_\tau(X))}{\partial x} \right]$$

ii) We can also represent $UQPE(\tau)$ as a weighted average of $CQPE(\zeta_\tau(x), x)$:

$$UQPE(\tau) = E [\omega_\tau(X) \cdot CQPE(\zeta_\tau(X), X)].$$

The proof is provided in the Appendix. Under the hypothesis that X and ε are independent and h is strictly monotonic in ε , we may invoke the results of Matzkin (2003) that guarantee that both the distribution of ε , F_ε , and the link function h are nonparametrically identified under an additional normalization assumption. It follows that $UQPE(\tau)$ is also identified since it is a function of the structural h function and the distribution of unobservables F_ε that are nonparametrically identified. The important point to be made here is that although h and F_ε may be identified, we do not need to estimate them in order to estimate the UQPE. In fact, as we will see, all we need to do is to estimate some average marginal effects. This is an important simplification when considering the alternative of comparing the original quantiles to those constructed from nonparametric estimates of h and F_ε and a new counterfactual distribution of X .

The proposition also shows formally that the effect of X on conditional quantiles does not average up to the effect on the corresponding unconditional quantile, i.e. $UQPE(\tau) \neq E[CQPE(\tau, X)]$. Instead, the proposition shows that $UQPE(\tau)$ is equal to a weighted average (over the distribution of X) of the $CQPE(\zeta_\tau(X), X)$ at the $\zeta_\tau(X)$ conditional quantile corresponding to the τ^{th} unconditional quantile of the distribution of Y , q_τ .

This is better illustrated with a simple example. Suppose that we are looking at the UQPE for the median, $UQPE(.5)$. If X has a positive effect on Y , then the overall median $q_{.5}$ may correspond, for example, to the 30th quantile for observations with a high value of X , but to the 70th quantile for observations with low values of X . In terms of the $\zeta_\tau(\cdot)$ function, we have $\zeta_{.5}(X = high) = .3$ and $\zeta_{.5}(X = low) = .7$. Thus, $UQPE(.5)$ is an average of the CQPE at the 70th and 30th quantiles, respectively, which may arbitrarily differ from the CQPE at the median. More generally, whether or not the $UQPE(\tau)$ is “close” to $CQPE(\tau, X)$ depends on the functional form of $h(X, \varepsilon)$ and on

the distribution of X (and $\omega_\tau(X)$).

In Case 1 above, the CQPE is the same for all quantiles ($CQPE(\tau, X) = \beta$ for all τ). Since UQPE is a weighted average of the CQPE's, it trivially follows that $UQPE(\tau) = CQPE(\tau, X) = \beta$. Another special case is when the function $\zeta_\tau(X)$ does not vary very much and is more or less equal to τ for all values of X . This would tend to happen when the model has little explanatory power, i.e. when most of the variation in Y is in the “residuals”. In the simple example above, we may have for instance $\zeta_{.5}(X = high) = .49$ and $\zeta_{.5}(X = low) = .51$. By a simple continuity argument, $CQPE(.49, X)$ and $CQPE(.51, X)$ would be very close to each other (and to $CQPE(.5, X)$) and we would have

$$UQPE(\tau) = E[\omega_\tau(X) \cdot CQPE(\zeta_\tau(X), X)] \approx E[\omega_\tau(X) \cdot CQPE(\tau, X)]. \quad (20)$$

When quantile regressions are linear ($Q_\tau[Y|X = x] = x^\top \beta_\tau$), we implicitly assume that $CQPE(\tau, X) = CQPE(\tau) = \beta_\tau$, for all X . Then the right hand side of equation (20) is equal to $CQPE(\tau)$ and it follows that $UQPE(\tau) \approx CQPE(\tau)$. These issues will be explored further in the context of the empirical examples in Section 6.

5 Estimation

In this section, we discuss the estimation of the $UQPE(\tau)$ and of the policy effect $\delta_\ell(\tau)$, as approximated by the parameter $\pi_\ell(\tau)$ in Corollary 1 using unconditional quantile regressions. Before discussing the regression estimators, we first consider the estimation of the recentered influence function, which depends on two unknown objects: the quantile and the density of the unconditional distribution of Y . We thus start by presenting formally the estimators for q_τ , $f_Y(\cdot)$, and $RIF(y; q_\tau)$.

As discussed in Section 4, estimating the RIF-regression for quantiles, is closely linked to the estimation of a probability response model since

$$m_\tau(x) \equiv E[RIF(Y; q_\tau)|X = x] = c_{1,\tau} \cdot \Pr[Y > q_\tau|X = x] + c_{2,\tau}.$$

It follows from equation (16) that:

$$UQPE(\tau) \equiv \int \frac{dm_\tau(x)}{dx} \cdot dF_X(x) = c_{1,\tau} \cdot \int \frac{d\Pr[Y > q_\tau|X = x]}{dx} \cdot dF_X(x).$$

For the sake of convenience, we also define the random variable $T_\tau = \mathbb{1}\{Y > q_\tau\}$.

The remainder of the section present estimators of $UQPE(\tau)$ and $\pi_\ell(\tau)$ based on three specific regression methods: (i) RIF-OLS, (ii) RIF-Logit, and (iii) RIF-nonparametric, where the latter estimation method is based on a nonparametric version of the Logit model. Since, as show in Section 4, the $UQPE(\tau)$ is a function of average marginal effects, all three estimators may yield relative accurate estimates of $UQPE(\tau)$ given that marginal effects from a linear probability model (RIF-OLS) or a Logit (RIF-Logit or RIF-nonparametric) are often very similar, in practice. This issue will be explored in more detail in the empirical section (Section 6). The main asymptotic results for the estimators of $UQPE(\tau)$ for each one of these estimation methods can be found in the supplemental material to the paper.²²

Though we discuss the estimation of RIF-regressions for the case of quantiles, the estimation approach can be easily extended to a general functional of the unconditional distribution of Y , $\nu(F_Y)$. In that general case, the parameters of interest $\alpha(\nu)$ and $\delta_\ell(\nu)$ would involve estimation of both $E[\text{RIF}(Y; \nu)|X = x]$ and the expectation of its derivative, $E[dE[\text{RIF}(Y; \nu)|X]/dX]$ (in the case of the unconditional partial effect, $\alpha(\nu)$). As in the case of quantiles, one could, in principle, estimate those two objects using either an OLS regression or nonparametric methods (e.g. a series estimator). Estimators suggested in the literature on average derivative estimation (e.g., Härdle and Stoker, 1989) could be used to estimate $E[dE[\text{RIF}(Y; \nu)|X]/dX]$.

5.1 Recentered Influence Function and its Components

In order to estimate $UQPE(\tau)$ and $\pi_\ell(\tau)$, we first have to obtain the estimated recentered influence functions. Since T_τ is a non-observable random variable that depends on the true unconditional quantile q_τ , we use a feasible version of that variable

$$\widehat{T}_\tau = \mathbf{1}\{Y > \widehat{q}_\tau\}.$$

The corresponding feasible version of the RIF is

$$\begin{aligned} \widehat{\text{RIF}}(Y; \widehat{q}_\tau) &= \widehat{q}_\tau + \frac{\tau - \mathbf{1}\{Y \leq \widehat{q}_\tau\}}{\widehat{f}_Y(\widehat{q}_\tau)} \\ &= \widehat{c}_{1,\tau} \cdot \widehat{T}_\tau + \widehat{c}_{2,\tau}, \end{aligned}$$

²²Estimators of the parameter $\pi_\ell(\tau)$ will depend on the particular choice of policy change and therefore will not have their asymptotic properties analyzed here.

which also involves two unknown quantities to be estimated, \hat{q}_τ and $\hat{f}_Y(\hat{q}_\tau)$. The estimator of the τ^{th} population quantile of the marginal distribution of Y is \hat{q}_τ , the usual τ^{th} sample quantile, which can be represented, as in Koenker and Bassett (1978), as

$$\hat{q}_\tau = \arg \min_q \sum_{i=1}^N (\tau - \mathbb{I}\{Y_i - q \leq 0\}) \cdot (Y_i - q).$$

The estimator of the density of Y is $\hat{f}_Y(\cdot)$, the kernel density estimator. In the empirical section we propose using the Gaussian kernel with associated optimal bandwidth. The actual requirements for the kernel and the bandwidth are described in the asymptotics section of the appendix. Let $K_Y(z)$ be a kernel function and b_Y a positive scalar bandwidth, such that

$$\hat{f}_Y(\hat{q}_\tau) = \frac{1}{N \cdot b_Y} \cdot \sum_{i=1}^N K_Y\left(\frac{Y_i - \hat{q}_\tau}{b_Y}\right). \quad (21)$$

Finally, the parameters $c_{1,\tau}$ and $c_{2,\tau}$ are estimated as $\hat{c}_{1,\tau} = 1/\hat{f}_Y(\hat{q}_\tau)$ and $\hat{c}_{2,\tau} = \hat{q}_\tau - \hat{c}_{1,\tau} \cdot (1 - \tau)$, respectively.

5.2 Three estimation methods

5.2.1 RIF-OLS Regression

The first estimator for $UQPE(\tau)$ and $\pi_\ell(\tau)$ uses a simple linear regression. As in the familiar OLS regression, we implicitly assume that the recentered influence function is linear in the covariates, X , which may however include higher order or non-linear transformations of the original covariates. If the linearity assumption seems inappropriate in particular applications, one can always turn to a more flexible estimation method proposed next. Moreover, OLS is known to produce the linear function of covariates that minimizes the specification error.

The RIF-OLS estimator for $m_\tau(x)$ is

$$\hat{m}_{\tau, \text{RIF-OLS}}(x) = x^\top \cdot \hat{\gamma}_\tau,$$

where $\hat{\gamma}_\tau$ is also the estimator for the derivative $dm_\tau(x)/dx$. The estimated coefficient

vector is simply a projection coefficient

$$\widehat{\gamma}_\tau = \left(\sum_{i=1}^N X_i \cdot X_i^\top \right)^{-1} \cdot \sum_{i=1}^N X_i \cdot \widehat{\text{RIF}}(Y_i; \widehat{q}_\tau). \quad (22)$$

As mentioned earlier, the RIF-OLS estimator is closely connected to a linear probability model for $\mathbb{1}\{Y \leq \widehat{q}_\tau\}$. The projection coefficients $\widehat{\gamma}_\tau$ (except for the constant) are equal to the coefficients in a linear probability model divided by the rescaling factor $\widehat{f}_Y(\widehat{q}_\tau)$.

The estimators for $UQPE(\tau)$ and $\pi_\ell(\tau)$ are

$$\begin{aligned} \widehat{UQPE}_{\text{RIF-OLS}}(\tau) &= \widehat{\gamma}_\tau, \\ \widehat{\pi}_{\ell, \text{RIF-OLS}} &= \widehat{\gamma}_\tau^\top \cdot \frac{1}{N} \cdot \sum_{i=1}^N (\ell(X_i) - X_i). \end{aligned}$$

5.2.2 RIF-Logit Regression

The second estimator exploits the fact that the regression model is closely connected to a probability response model since $m_\tau(x) = c_{1,\tau} \cdot \Pr[T_\tau = 1|X = x] + c_{2,\tau}$. Assuming a logistic model

$$\Pr[T_\tau = 1|X = x] = \Lambda(x^\top \theta_\tau),$$

where $\Lambda(\cdot)$ is the logistic CDF, we can estimate θ_τ by maximum likelihood by replacing T_τ by its feasible counterpart \widehat{T}_τ :

$$\widehat{\theta}_\tau = \arg \max_{\theta_\tau} \sum_i^N \widehat{T}_{\tau,i} \cdot X_i^\top \theta_\tau + \log(1 - \Lambda(X_i^\top \theta_\tau))$$

The main advantage of the Logit model over the linear specification for $m_\tau(x)$ is that it allows heterogenous marginal effects, that is, for $dm_\tau(x)/dx$ to depend on x :

$$\frac{dm_\tau(x)}{dx} = c_{1,\tau} \cdot \frac{d\Pr[T_\tau = 1|X = x]}{dx} = c_{1,\tau} \cdot \theta_\tau \cdot \Lambda(x^\top \theta_\tau) \cdot (1 - \Lambda(x^\top \theta_\tau)).$$

Thus, we propose estimating $UQPE(\tau)$ and $\pi_\ell(\tau)$ as²³

$$\begin{aligned}\widehat{UQPE}_{\text{RIF-Logit}}(\tau) &= \widehat{c}_{1,\tau} \cdot \widehat{\theta}_\tau \cdot \frac{1}{N} \cdot \sum_{i=1}^N \Lambda(X_i^\top \widehat{\theta}_\tau) \cdot \left(1 - \Lambda(X_i^\top \widehat{\theta}_\tau)\right), \\ \widehat{\pi}_{\ell, \text{RIF-Logit}}(\tau) &= \widehat{c}_{1,\tau} \cdot \frac{1}{N} \cdot \sum_{i=1}^N \left(\Lambda(\ell(X_i)^\top \widehat{\theta}_\tau) - \Lambda(X_i^\top \widehat{\theta}_\tau)\right).\end{aligned}$$

5.2.3 Nonparametric-RIF Regression (RIF-NP)

The third estimator does not make any functional form assumption about $\Pr[Y > q_\tau | X = x]$. We use the method proposed by Hirano, Imbens and Ridder (2003) to estimate a probability response model nonparametrically by means of a polynomial approximation of the log-odds ratio of $\Pr[Y > q_\tau | X = x]$.²⁴ The specifics of the problem are the following. We estimate a vector $\rho_K(\tau)$ of length $K(\tau)$ by finding the solution to the problem

$$\widehat{\rho}_K(\tau) = \arg \max_{\rho_{K(\tau)}} \sum_i^N \widehat{T}_{\tau,i} \cdot H_{K(\tau)}(X_i)^\top \rho_{K(\tau)} + \log(1 - \Lambda(H_{K(\tau)}(X_i)^\top \rho_{K(\tau)})),$$

where $H_{K(\tau)}(x) = [H_{K(\tau),j}(x)]$ ($j = 1, \dots, K(\tau)$), a vector of length $K(\tau)$ of polynomial functions of $x \in \mathcal{X}$ satisfying the following properties: (i) $H_{K(\tau)} : \mathcal{X} \rightarrow \mathbb{R}^{K(\tau)}$; (ii) $H_{K(\tau),1}(x) = 1$, and (iii) if $K(\tau) > (n+1)^r$. $H_{K(\tau)}(x)$ includes, thus, all polynomials up to order n .²⁵ In what follows, we assume that $K(\tau)$ is a function of the sample size N such that $K(\tau) \rightarrow \infty$ as $N \rightarrow \infty$.²⁶ Our estimate of $\Pr[T_\tau = 1 | X = x]$ is now

$$\widehat{p}_{K,\tau}(x) \equiv \Lambda(H_{K(\tau)}(x)^\top \widehat{\rho}_K(\tau)).$$

²³We only show the estimate of the UQPE in the case of continuous regressors. It is easy to extend this to the case of discrete regressors.

²⁴The log odds ratio of $\Pr[Y > q_\tau | X = x]$ is equal to $\log(\Pr[Y > q_\tau | X = x] / (1 - \Pr[Y > q_\tau | X = x]))$.

²⁵Further details regarding the choice of $H_{K(\tau)}(x)$ and its asymptotic properties can be found in Hirano, Imbens and Ridder (2003).

²⁶Some criterion should be used in order to choose the length $K(\tau)$ as function of the sample size. For example, one could use a cross-validation method to choose the order of the polynomial.

Thus, we propose estimating $UQPE(\tau)$ and $\pi_\ell(\tau)$ as

$$\begin{aligned}\widehat{UQPE}_{\text{RIF-NP}}(\tau) &= \widehat{c}_{1,\tau} \cdot \widehat{\rho}_K(\tau) \cdot \frac{1}{N} \cdot \sum_{i=1}^N \frac{dH_{K(\tau)}(X_i)^\top}{dx} \cdot \widehat{p}_{K,\tau}(X_i) \cdot (1 - \widehat{p}_{K,\tau}(X_i)) \\ \widehat{\pi}_{\ell,\text{RIF-NP}}(\tau) &= \widehat{c}_{1,\tau} \cdot \frac{1}{N} \cdot \sum_{i=1}^N (\widehat{p}_{K,\tau}(\ell(X_i)) - \widehat{p}_{K,\tau}(X_i))\end{aligned}$$

It is interesting to see how this nonparametric approach relates to the previous method based on a Logit specification. If $H_{K(\tau)}(x) = x$ for all x , that is, if $H_{K(\tau)}(\cdot)$ is the identity function, then the two methods coincide. Thus, our nonparametric approach generalizes the RIF-Logit method. The nonparametric approach can also be interpreted as a flexible Logit model that incorporates not only a linear function inside the logistic, but a richer polynomial that includes interactions, squares and cubics.

6 Empirical Applications

In this section, we present two empirical applications to illustrate how the unconditional quantile regressions work in practice, and how the results compare to standard (conditional) quantile regressions. In the first application, we revisit the analysis of birthweight of Koenker and Hallock (2001), where quantile regressions are used to show that there are differential impacts of being a boy or having a black mother, for example, at different quantiles of the conditional birthweight distribution. The second application looks at the effect on unions on male wages, which is well known to be different at different points of the wage distribution (see, for example, Chamberlain, 1994, and Card, 1996).

6.1 Determinants of Birthweight

In the case of infant birthweight, “just looking at conditional means” is too restrictive from a public health perspective, since we may be particularly concerned with the lower tail of the birthweight distribution, and in particular with cases that fall below the “low birthweight” threshold of 2500 grams. In this setting, the limitation of quantile regressions as a distributional tool is that the low birthweight threshold may well fall at different quantiles depending on the characteristics of the mother. For example, the 10th quantile for infants of black high school dropout mothers who also smoke (2183 grams) is well below the low birthweight threshold of 2500 grams. By contrast, the 10th quantile for infants of white college educated mothers who do not smoke (2880 grams) is

well above the low birthweight threshold. The quantile regression estimate at the 10th conditional quantile thus mixes the impact of prenatal care for some infants above and below the low birthweight threshold.

Proposition 1 shows that the precise link between the effect of covariates on conditional (CQPE) and unconditional (UQPE) quantiles depends on a complicated mix of factors. In practice, the CQPE and the UQPE turn out to be fairly similar in the case of birthweight. For instance, Table 1 compares standard OLS estimates to the RIF-OLS regressions and the conventional (conditional) quantile regression estimates at the 10th, 50th, and 90th percentiles of the birthweight distribution. While estimates tend to vary substantially across the different quantiles, the difference between RIF-OLS and quantile regression coefficients tends to be small, relative to the standard errors.

Figure 1a also shows that the point estimates from conditional and unconditional (both RIF-OLS and RIF-Logit) quantile regressions are generally very close and rarely statistically different for the various covariates considered.²⁷ This reflects the fact that, despite a large sample of 198,377 observations, the standard errors are quite large, a pattern that can also be found in Figure 4 of Koenker and Hallock (2001).²⁸ In other words, the covariates do not seem to be explaining much of the overall variation in birthweight. This is confirmed in Figure A1, which shows that covariates (gender in this example) explain little of the variation in birthweight since the conditional and unconditional distributions are very similar (both look like Gaussian distributions slightly shifted one from another). This corresponds to the case discussed after Proposition 1 where the function $\zeta_\tau(X)$ does not vary very much, and is more or less equal to τ for all values of X . As a result, it is not very surprising that the UQPE and CQPE are quite close to each other.

6.2 Unions and Wage Inequality

6.2.1 Estimates of the Partial Effect of Unions

There are several reasons why the impact of unions on log wages may be different at different quantiles of the wage distribution. First, unions both increase the conditional

²⁷Confidence intervals are not reported in figure 1, but they almost always overlap for conditional and unconditional quantile regression estimates. The differences between the RIF-OLS and RIF-Logit for cigarettes come from the difficulty of defining marginal effects for a variable whose distribution is actually a mixture of a categorical and a continuous variable. For comparability, we used the same specification as Koenker and Hallock (2001).

²⁸We use the same June 1997 Detailed Natality Data (published by the National Center for Health Statistics) as Koenker and Hallock (2001).

mean of wages (the “between” effect) and decrease the conditional distribution of wages (the “within” effect).²⁹ This means that unions tend to increase wages in low wage quantiles where both the between and within group effects go in the same direction, but can decrease wages in high wage quantiles where the between and within group effects go in opposite directions. These ambiguous effects are compounded by the fact that the union wage gap generally declines as a function of the (observed) skill level.³⁰

Table 2 reports the RIF-OLS estimates of the log wages model for the 10th, 50th and 90th quantiles using a large sample of U.S. males from the 1983-85 Outgoing Rotation group (ORG) supplement of the Current Population Survey.³¹ The results (labelled as UQR for unconditional quantile regressions) are also compared with the OLS benchmark, and with standard quantile regressions (QR) at the corresponding quantiles. Interestingly, the UQPE of unions first increases from 0.198 at the 10th quantile to 0.349 at the median, before turning negative (-0.137) at the 90th quantile. These findings strongly confirm the well known result that unions have different effects at different points of the wage distribution.³² The quantile regression estimates reported in the corresponding columns show, as in Chamberlain (1994), that unions increase the location of the conditional wage distribution (i.e. positive effect on the median) but also reduce conditional wage dispersion. This explains why the effect of unions monotonically declines from 0.288, to 0.195 and 0.088 as quantiles increase, which is very different from the unconditional quantile regressions estimates.

The difference between conditional and unconditional quantile regression estimates is illustrated in detail in Figure 2, which plots both conditional and unconditional quantile regression estimates for each covariate at 19 different quantiles (from the 5th to the 95th). Both the RIF-OLS and RIF-Logit estimates are reported. While the estimated union effect is very different for conditional and unconditional quantiles, results obtained using RIF-OLS or RIF-Logit regressions are very similar. This confirms the “common wisdom” in empirical work that marginal effects from a linear probability model (RIF-OLS) or a Logit (RIF-OLS) are very similar. The unconditional effect is highly non-monotonic,

²⁹The “between” and the “within” effect refer to the analysis of variance described below.

³⁰See Card, Lemieux, and Riddell (2004) for a detailed discussion and survey of the literature on the distributional effects of unions.

³¹We start with 1983 because it is the first year in which the ORG supplement asked about union status. The dependent variable is the real log hourly wage for all wage and salary workers, and the explanatory variables including human capital variables and demographic characteristics. Other data processing details can be found in Lemieux (2006). We have run the models for different time periods, but only present the 1983-85 results here.

³²Note that the effects are very precisely estimated for all specifications, given the large available sample sizes (266,956 observations) and the sizeable R-squared (close to 0.40) for cross-sectional data.

while the conditional effect declines monotonically. In particular, the unconditional effect first increases from about 0.1 at the 5th quantile to about 0.4 at the 35th quantile, before declining and eventually reaching a large negative effect of over -0.2 at the 95th quantile. The large effect at the top end reflects the fact that compression effects dominate everything else there. By contrast, traditional (conditional) quantile regression estimates decline almost linearly from about 0.3 at the 5th quantile, to barely more than 0 at the 95th quantile.

So unlike the birthweight example, the union effect on log wages represent a case where there are large and important differences between the UQPE and the CQPE. This is consistent with the fact that the conditional and unconditional distribution of log wages are more dissimilar than in the case of birthweight. Figure A2 shows that the distribution of log wages, conditional on being covered by a union, is not only shifted to the right of the unconditional distribution, but it is also a more compressed and skewed distribution. By contrast, the distribution of wages for nonunion workers is closer to a normal distribution, though it also has a mass point in the lower tail at the minimum wage.

Figure 3 illustrates some sensitivity analyses showing the robustness of the RIF-OLS regression estimates of the underlying parameter of interest, the UQPE. The first two panels of Figure 3 compares the confidence intervals of RIF-OLS estimates to those obtained by estimating conditional quantile regressions (Panel A) or by computing the marginal effects from RIF-Logit (Panel B).³³ These two figures show that unconditional regression estimates are robust to the estimation method used in the sense that confidence intervals are hardly distinguishable from each other. This conclusion is reinforced by Panel C of Figure 3, which shows that using the fully nonparametric estimator (RIF-NP) yields estimates that are virtually identical to those obtained with the RIF-Logit or RIF-OLS estimator.³⁴ This is in sharp contrast with the very big difference in confidence intervals comparing the RIF-OLS estimates with the conditional quantile regression estimates.

The last panel of Figure 3 shows, however, that even if the density is precisely estimated, the choice of the bandwidth does matter for some of the estimates (at the 15th, 20th, and 25th quantiles). The problem is that there is a lot of heaping at \$5 and \$10

³³We use bootstrap standard errors for the Logit marginal effects to also take account of the fact that the density (denominator in the RIF) is estimated. Accounting for this source of variability has very little impact on the confidence intervals because densities are very precisely estimated in our large sample.

³⁴We fully interact union status with all the other variables shown in Table 1 to get a “nonparametric” effect for unions.

in this part of the wage distribution, which makes the kernel density estimates erratic when small bandwidths (0.02 or even 0.04) are used. The figure suggests it is better to oversmooth a bit the data with a larger bandwidth (0.06) even when the sample size is very large.³⁵ The larger bandwidth makes the estimates better behaved between the 15th and the 25th quantile, but has very little impact at other quantiles.

6.2.2 Estimates of the Policy Effect

Having established that the RIF-OLS method works very well in practice, we return to the important question of how well it can approximate the effect of “larger changes” in covariates such as those contemplated for the policy effect of Corollary 1. To assess the importance of the approximation error, $r(\nu; G, F)$, we conduct a small experiment looking at the effect of unions but ignoring all other covariates. To predict the effect of changes in unionization using our approach, we run RIF-OLS regressions using only the union status as explanatory variable. We then predict the value of the quantile at different levels of unionization by computing the predicted value of the RIF for different values of the unionization rate. The straight lines in Figures 4a to 4g show the result of this exercise for changes ranging from -10 percent to 10 percent, as shown on the horizontal axis, in the unionization rate relative to the baseline rate of 26.2 percent in 1983-85.

Since we only have a dummy covariate, it is also straightforward to compute an “exact” effect of unionization by simply changing the proportion of union workers, and recomputing the various quantiles in this “reweighted” sample.³⁶ The resulting estimates are the diamonds reported in Figures 4a to 4g. Generally speaking, the RIF-OLS estimates are remarkably close to the “exact” estimates, even for large changes in unionization (plus or minus 10 percentage points). So while this is only a special case, the results suggest that our approach can yield a very good approximation that works both for small and larger changes in the distribution of covariates.

The very last panel of Figure 4 (Figure 4h) repeats the same exercise for the variance. Unlike quantiles, an exact closed form expression for the effect of unions on the variance can be computed using the classic analysis of variance formula. It is easy to show that

³⁵The “oversmoothing” is only by reference to Silverman’s rule of thumb for the normal distribution, this “larger” bandwidth for a log wages distribution is actually in the range suggested by cross-validation exercises.

³⁶This can be viewed as a special case of DiNardo and Lemieux (1997)’s reweighting estimator of the effect of unions, where they perform a conditional reweighting where other covariates are also controlled for.

running a RIF-OLS regression for the variance and using it to predict the effect of changes in unionization on the variance yields the approximation given in the appendix by equation (A-2), while the exact effect is given by equation (A-1). The approximation error is, thus, a second order term $O(P_X^2)$ where P_X is the proportion of unionized workers. Such approximation error corresponds to the difference between the straight line and the diamonds in Figure 4g. The diamonds are on a parabolic curve because of the quadratic nature of the second order term, but the linear curve approximates the quadratic very well even for large changes in the unionization rate. In other words, the RIF-OLS approach yields results very similar to those from the analysis of variance formula, that has been widely used in the literature. The fact that the approximation errors for both the quantiles and the variance are very small gives us great confidence that our approach can be used to generalize the distributional analysis of unions (or other factors) to any quantile of the unconditional distribution.

7 Conclusion

In this paper, we propose a new regression method to estimate the effect of explanatory variables on the unconditional quantiles of an outcome variable. The proposed unconditional quantile regression method consists of running a regression of the (recentered) influence function of the unconditional quantile of the outcome variable on the explanatory variables. The influence function is a widely used tool in robust estimation that can easily be computed for each quantile of interest. We show how standard partial effects, that we call unconditional quantile partial effects (UQPE) for the problem studied here, can be estimated using our regression approach. The regression estimates can also be used to approximate the effect of a more general change in the distribution of covariates (policy effect) on unconditional quantiles of the outcome variable. We propose three different regression estimators based on a standard OLS regression (RIF-OLS, where the recentered influence function is the dependent variable), a Logit regression (RIF-Logit), and a nonparametric Logit regression (RIF-NP).

We show in the empirical section that our estimators are very easy to use in practice, and that RIF-OLS, RIF-Logit, and RIF-NP all yield very similar estimates of the UQPE in the applications considered. We present two applications that illustrate well the differences between conditional and unconditional quantile regressions. In the first application, the analysis of infant birthweight of Koenker and Hallock (2001), conditional and unconditional quantile regression estimates are very close to each other. In

the second application, the effect of unions on the wage distribution, the results are more strikingly different. While traditional quantile regressions indicate that unions have a positive effect on wages even at the top quantiles of the wage distribution, we actually find a strong negative effect of unions at the highest quantiles of the wage distribution. We also show that our unconditional quantile regressions approximate very well the effect of larger changes in the rate of unionization on unconditional quantiles of the wage distribution.

Another important advantage of the proposed method is that it can be easily generalized to other distributional statistics such as the Gini, the log variance or the Theil coefficient. Once the recentered influence function for these statistics is computed, all that is required is running regression of the resulting RIF on the covariates. We discuss in a companion paper (Firpo, Fortin, and Lemieux, 2005) how our regression method can be used to generalize traditional Oaxaca-Blinder decompositions, devised for means, to any distributional statistic.

One limitation of the proposed regression method is the assumption that the covariates, X , are independent of unobservables, ε , in the general model $Y = h(X, \varepsilon)$ for the outcome variable, Y . While the independence assumption combined with a flexible form of $h(X, \varepsilon)$ still allows for rich distributional effects of X on Y (such as heteroskedasticity in a standard regression model), it is nonetheless highly restrictive in many problems of economic interest, such as the effect of schooling on the distribution of wages. As is well known, there are good economic reasons why schooling may be correlated with unobservables such as ability (Card, 2001). We plan to show in future work how the independence assumption can be relaxed when instrumental variables are available for the endogenous covariates, and how consistent estimates of the UQPE can be obtained by adding a control function in the unconditional quantile regressions.

8 Appendix

Proof of Theorem 1:

The effect on the functional ν of the distribution of Y of an infinitesimal change in the distribution of X from F_X towards G_X is defined as $\partial\nu(F_{Y,t,G_Y})/\partial t|_{t=0}$. Recall from Property 2 *i*) that

$$\frac{\partial\nu(F_{Y,t,G_Y})}{\partial t}\Big|_{t=0} = \int \text{RIF}(y; \nu) \cdot d(G_Y - F_Y)(y).$$

Substituting in equations (1) and (2), and applying the fact from Property 3 that $E[\text{RIF}(Y; \nu)|X = x] = \int_y \text{RIF}(y; \nu) \cdot dF_{Y|X}(y|X = x)$ yields

$$\begin{aligned} \frac{\partial \nu(F_{Y,t}, G_Y)}{\partial t} \Big|_{t=0} &= \int \left(\int \text{RIF}(y; \nu) \cdot dF_{Y|X}(y|X = x) \right) \cdot d(G_X - F_X)(x) \\ &= \int E[\text{RIF}(Y; \nu)|X = x] \cdot d(G_X - F_X)(x) \end{aligned}$$

■

Proof of Corollary 2:

Consider an increase t in the variable X . This yields the variable $Z = X + t$, where the density of Z is $f_X(z - t)$.³⁷ Consider the resulting counterfactual distribution $F_{Y,t}^*$ of Y :

$$\begin{aligned} F_{Y,t}^*(y) &= \int F_{Y|X}(y|x) \cdot f_X(x - t) \cdot dx \\ &= \int F_{Y|X}(y|x) \cdot f_X(x) \cdot dx - t \cdot \int F_{Y|X}(y|x) \cdot \frac{f'_X(x)}{f_X(x)} \cdot f_X(x) \cdot dx + \chi_t \\ &= F_Y(y) + t \cdot \int F_{Y|X}(y|x) \cdot l_X(x) \cdot f_X(x) \cdot dx + \chi_t, \end{aligned}$$

where

$$l_X(x) = -\frac{d \ln(f_X(x))}{dx} = -\frac{f'_X(x)}{f_X(x)},$$

and where the second line is obtained using a first order expansion. Therefore, $\chi_t = O(t^2)$. Now, define

$$\begin{aligned} g_X(x) &= f_X(x) \cdot (1 + l_X(x)), \\ G_X(x) &= \int^x g_X(\xi) \cdot d\xi. \end{aligned}$$

Since

$$G_Y(y) = \int F_{Y|X}(y|x) \cdot g_X(x) \cdot dx,$$

it follows that

$$G_Y(y) = F_Y(y) + \int F_{Y|X}(y|x) \cdot l_X(x) \cdot f_X(x) \cdot dx.$$

³⁷The density of X is $f_X(\cdot)$, and by definition of densities, $\int^x f_X(\xi) \cdot d\xi = F_X(x)$.

We can write

$$F_{Y,t}^*(y) = F_Y(y) + t \cdot (G_Y(y) - F_Y(y)) + \chi_t = F_{Y,t \cdot G_Y}(y) + \chi_t.$$

Hence,

$$\begin{aligned} \alpha(\nu) &\equiv \lim_{t \downarrow 0} \frac{\nu(F_{Y,t}^*) - \nu(F_Y)}{t} \\ &= \lim_{t \downarrow 0} \left(\frac{\nu(F_{Y,t \cdot G_Y}) - \nu(F_Y)}{t} \right) + \lim_{t \downarrow 0} \left(\frac{\nu(F_{Y,t}^*) - \nu(F_{Y,t \cdot G_Y})}{t} \right) \\ &= \pi_G(\nu) + \lim_{t \downarrow 0} \left(\frac{\nu(F_{Y,t \cdot G_Y} + \chi_t) - \nu(F_{Y,t \cdot G_Y})}{t} \right) \\ &= \pi_G(\nu) + \lim_{t \downarrow 0} \left(\frac{O(\chi_t)}{t} \right) = \pi_G(\nu) + \lim_{t \downarrow 0} (O(|t|)) = \pi_G(\nu) + O(1) \cdot \lim_{t \downarrow 0} t \\ &= \pi_G(\nu). \end{aligned}$$

Using Theorem 1, it follows that

$$\begin{aligned} \alpha(\nu) &= \pi_G(\nu) = \int E[\text{RIF}(Y; \nu) | X = x] \cdot d(G_X - F_X)(x) \\ &= \int E[\text{RIF}(Y; \nu) | X = x] \cdot l_X(x) \cdot f_X(x) \cdot dx, \end{aligned}$$

and by partial integration

$$\int E[\text{RIF}(Y; \nu) | X = x] \cdot l_X(x) \cdot f_X(x) \cdot dx = \int \frac{dE[\text{RIF}(Y; \nu) | X = x]}{dx} \cdot f_X(x) \cdot dx.$$

Hence

$$\alpha(\nu) = \int \frac{dE[\text{RIF}(Y; \nu, F) | X = x]}{dx} \cdot f_X(x) \cdot dx. \quad \blacksquare$$

Proof of Corollary 3:

Consider an increase t in the probability P_X that $X = 1$. The original distribution of X is $F_X(x) = (1 - P_X) \cdot \mathbb{I}\{0 \leq x < 1\} + \mathbb{I}\{1 \leq x\}$, while the resulting distribution of X after the increase t is $F_{X,t}^*(x) = (1 - P_X - t) \cdot \mathbb{I}\{0 \leq x < 1\} + \mathbb{I}\{1 \leq x\}$. Since X is a dummy variable, we have

$$F_Y(y) = F_{Y|X}(y|1) \cdot P_X + F_{Y|X}(y|0) \cdot (1 - P_X),$$

while the counterfactual distribution $F_{Y,t}^*$ of Y is

$$\begin{aligned} F_{Y,t}^*(y) &= F_{Y|X}(y|1) \cdot (P_X + t) + F_{Y|X}(y|0) \cdot (1 - P_X - t) \\ &= F_Y(y) + t \cdot [F_{Y|X}(y|1) - F_{Y|X}(y|0)]. \end{aligned}$$

We define $G_Y(y)$ as

$$G_Y(y) \equiv F_{Y|X}(y|1) - F_{Y|X}(y|0) + F_Y(y).$$

Therefore

$$\begin{aligned} F_{Y,t}^*(y) &= F_Y(y) + t \cdot [G_Y(y) - F_Y(y)] \\ &= F_{Y,t;G_Y}(y). \end{aligned}$$

Now, note that

$$\begin{aligned} G_Y(y) &= F_{Y|X}(y|1) - F_{Y|X}(y|0) + F_{Y|X}(y|0) \cdot (1 - P_X) + F_{Y|X}(y|1) \cdot P_X \\ &= F_{Y|X}(y|1) \cdot P_X^* + F_{Y|X}(y|0) \cdot (1 - P_X^*) \end{aligned}$$

where

$$P_X^* = 1 + P_X$$

and we define

$$G_X(x) \equiv (1 - P_X^*) \cdot \mathbb{1}\{0 \leq x < 1\} + \mathbb{1}\{1 \leq x\}.$$

By the definition, the marginal effect is

$$\begin{aligned} \alpha_D(\nu) &\equiv \lim_{t \downarrow 0} \frac{\nu(F_{Y,t}^*) - \nu(F_Y)}{t} \\ &= \lim_{t \downarrow 0} \frac{\nu(F_{Y,t;G_Y}) - \nu(F_Y)}{t}. \end{aligned}$$

Using Theorem 1, and the fact that

$$d(G_X - F_X)(x) = (P_X^* - P_X) \cdot \mathbb{1}\{0 \leq x < 1\} + (1 - P_X^* - (1 - P_X)) \cdot \mathbb{1}\{1 \leq x\},$$

it follows that

$$\begin{aligned}
\alpha_D(\nu) &= \int E[\text{RIF}(Y; \nu) | X = x] \cdot d(G_X - F_X)(x) \\
&= E[\text{RIF}(Y; \nu) | X = 1] \cdot (P_X^* - P_X) \\
&\quad + E[\text{RIF}(Y; \nu) | X = 0] \cdot (1 - P_X^* - (1 - P_X)) \\
&= E[\text{RIF}(Y; \nu) | X = 1] - E[\text{RIF}(Y; \nu) | X = 0]
\end{aligned}$$

■

Proof of Proposition 1:

i) Starting from equation (17)

$$UQPE(\tau) = -\frac{1}{f_Y(q_\tau)} \cdot \int \frac{d\Pr[Y \leq q_\tau | X = x]}{dx} \cdot dF_X(x),$$

and assuming that the structural form $Y = h(X, \varepsilon)$ is monotonic in ε , so that $\varepsilon_\tau(x) = h^{-1}(x, q_\tau)$, we can write

$$\begin{aligned}
\Pr[Y \leq q_\tau | X = x] &= \Pr[\varepsilon \leq \varepsilon_\tau(X) | X = x] \\
&= F_{\varepsilon|X}(\varepsilon_\tau(x); x) = F_\varepsilon(\varepsilon_\tau(x)).
\end{aligned}$$

Taking the derivative with respect to x , we get

$$d \frac{\Pr[Y \leq q_\tau | X = x]}{dx} = f_\varepsilon(\varepsilon_\tau(x)) \cdot \frac{\partial h^{-1}(x, q_\tau)}{\partial x}.$$

Define

$$H(x, \varepsilon_\tau(x), q_\tau) = h(x, \varepsilon_\tau(x)) - q_\tau.$$

It follows that

$$\begin{aligned}
\frac{\partial h^{-1}(x, q_\tau)}{\partial x} &= \frac{\partial \varepsilon_\tau(x)}{\partial x} = -\frac{\partial H(x, \varepsilon_\tau, q_\tau) / \partial x}{\partial H(x, \varepsilon_\tau, q_\tau) / \partial \varepsilon_\tau} \\
&= -\frac{\partial h(x, \varepsilon_\tau) / \partial x}{\partial h(x, \varepsilon_\tau) / \partial \varepsilon_\tau} = -\frac{\partial h(x, \varepsilon_\tau)}{\partial x} \cdot \left(\frac{\partial h(x, \varepsilon)}{\partial \varepsilon} \Big|_{\varepsilon=\varepsilon_\tau} \right)^{-1}.
\end{aligned}$$

Similarly

$$\frac{\partial h^{-1}(x, q_\tau)}{\partial q_\tau} = -\frac{\partial H(x, \varepsilon_\tau, q_\tau) / \partial q_\tau}{\partial H(x, \varepsilon_\tau, q_\tau) / \partial \varepsilon_\tau} = \left(\frac{\partial h(x, \varepsilon)}{\partial \varepsilon} \Big|_{\varepsilon=\varepsilon_\tau} \right)^{-1}.$$

Hence:

$$\begin{aligned}
f_{Y|X}(q_\tau; x) &= d \frac{\Pr[Y \leq q_\tau | X = x]}{dq_\tau} = d \frac{F_\varepsilon(h^{-1}(x, q_\tau))}{dq_\tau} \\
&= f_\varepsilon(\varepsilon_\tau(x)) \cdot \frac{\partial h^{-1}(x, q_\tau)}{\partial q_\tau} \\
&= \left(\frac{\partial h(x, \varepsilon)}{\partial \varepsilon} \Big|_{\varepsilon=\varepsilon_\tau} \right)^{-1} \cdot f_\varepsilon(\varepsilon_\tau(x)).
\end{aligned}$$

Substituting in these expressions yields

$$\begin{aligned}
UQPE(\tau) &= -(f_Y(q_\tau))^{-1} \cdot \int d \frac{\Pr[Y \leq q_\tau | X = x]}{dx} \cdot dF_X(x) \\
&= (f_Y(q_\tau))^{-1} \cdot \int \left(f_\varepsilon(\varepsilon_\tau(x)) \cdot \frac{\partial h(x, \varepsilon_\tau)}{\partial x} \cdot \left(\frac{\partial h(x, \varepsilon)}{\partial \varepsilon} \Big|_{\varepsilon=\varepsilon_\tau} \right)^{-1} \right) \cdot dF_X(x) \\
&= (f_Y(q_\tau))^{-1} \cdot E \left[f_{Y|X}(q_\tau | X) \cdot \frac{\partial h(X, \varepsilon_\tau(X))}{\partial x} \right] \\
&= E \left[\frac{f_{Y|X}(q_\tau | X)}{f_Y(q_\tau)} \cdot \frac{\partial h(X, \varepsilon_\tau(X))}{\partial x} \right] \\
&= E \left[\omega_\tau(X) \cdot \frac{\partial h(X, \varepsilon_\tau(X))}{\partial x} \right].
\end{aligned}$$

■

ii) The CQPE can be defined as

$$CQPE(\tau, x) = d \frac{Q_\tau[Y|X = x]}{dx}$$

where τ denote the quantile of the conditional distribution: $\tau = \Pr[Y \leq Q_\tau[Y|X = x] | X = x]$.

Since $Y = h(X, \varepsilon)$ is monotonic in ε

$$\begin{aligned}
\tau &= \Pr[Y \leq Q_\tau[Y|X = x] | X = x] \\
&= \Pr[\varepsilon \leq h^{-1}(X, Q_\tau[Y|X = x]) | X = x] \\
&= F_\varepsilon(h^{-1}(x, Q_\tau[Y|X = x])).
\end{aligned}$$

Thus, by the implicit function theorem

$$\begin{aligned}
CQPE(\tau, x) &= d \frac{Q_\tau[Y|X=x]}{dx} \\
&= - \frac{f_\varepsilon(h^{-1}(x, Q_\tau[Y|X=x])) \cdot \partial h^{-1}(x, Q_\tau[Y|X=x]) / \partial x}{f_\varepsilon(h^{-1}(x, Q_\tau[Y|X=x])) \cdot \partial h^{-1}(x, q) / \partial q|_{q=Q_\tau[Y|X=x]}} \\
&= - (-\partial h(x, h^{-1}(x, Q_\tau[Y|X=x]))) / \partial x \\
&\quad \cdot \left(\frac{\partial h(x, \varepsilon)}{\partial \varepsilon} \Big|_{\varepsilon=h^{-1}(x, Q_\tau[Y|X=x])} \right)^{-1} / \left(\frac{\partial h(x, \varepsilon)}{\partial \varepsilon} \Big|_{\varepsilon=h^{-1}(x, Q_\tau[Y|X=x])} \right)^{-1} \\
&= \frac{\partial h(x, h^{-1}(x, Q_\tau[Y|X=x]))}{\partial x},
\end{aligned}$$

and

$$CQPE(\tau, x) = d \frac{Q_\tau[Y|X=x]}{dx} = \frac{\partial h(x, h^{-1}(x, Q_\tau[Y|X=x]))}{\partial x}.$$

Using the matching function $\zeta_\tau(x) \equiv \{s : Q_s[Y|X=x] = q_\tau\}$, we can write $CQPE(s, x)$ for the s -th conditional quantile at a fixed x ($Q_s[Y|X=x]$) that equals (matches) the τ -th unconditional quantile (q_τ) as:

$$\begin{aligned}
CQPE(s, x) &= CQPE(\zeta_\tau(x), x) \\
&= \frac{\partial h(x, h^{-1}(x, Q_s[Y|X=x]))}{\partial x} \\
&= \frac{\partial h(x, h^{-1}(x, q_\tau))}{\partial x} \\
&= \frac{\partial h(X, \varepsilon_\tau(X))}{\partial x}.
\end{aligned}$$

Therefore

$$\begin{aligned}
UQPE(\tau) &= E \left[\omega_\tau(X) \cdot \frac{\partial h(X, \varepsilon_\tau(X))}{\partial x} \right] \\
&= E [\omega_\tau(X) \cdot CQPE(\zeta_\tau(X), X)].
\end{aligned}$$

■

Example: The variance. We now consider the expression for the variance of Y when we allow for a small change in the probability P_X . Using the well known analysis of variance formula we can write

$$V[Y] = P_X \cdot V[Y|X=1] + (1 - P_X) \cdot V[Y|X=0] \\ + P_X \cdot (1 - P_X) \cdot (E[Y|X=1] - E[Y|X=0])^2,$$

where $V[\cdot]$ is the variance operator. The total effect of a change ΔP_X on the variance is

$$\Delta V[Y] = \Delta P_X \cdot \left[(V[Y|X=1] - V[Y|X=0]) + (1 - 2P_X) \cdot (E[Y|X=1] - E[Y|X=0])^2 \right] - (\Delta P_X)^2 \cdot (E[Y|X=1] - E[Y|X=0])^2. \quad (\text{A-1})$$

For an infinitesimal change in P_X , the derivative of $V[Y]$ with respect to P_X is

$$\frac{dV[Y]}{dP_X} = V[Y|X=1] - V[Y|X=0] + (1 - 2P_X) \cdot (E[Y|X=1] - E[Y|X=0])^2 \quad (\text{A-2})$$

which corresponds to the term multiplying ΔP_X in equation A-1. Thus, of course, when $\Delta P_X = 1$, equation A-2 will be exactly the first order approximation. We now check that this result matches the one of Corollary 3. In order to do that, we use the definition of $\text{RIF}(Y; \sigma^2) = (Y - \mu)^2 + \sigma^2$, where $\sigma^2 = V[Y]$ and $\mu = E[Y]$

$$\begin{aligned} & E[\text{RIF}(Y; \sigma^2)|X=1] - E[\text{RIF}(Y; \sigma^2)|X=0] \\ &= E[(Y - \mu)^2|X=1] - E[(Y - \mu)^2|X=0] \\ &= E[(Y - E[Y|X=1] + (E[Y|X=1] - \mu))^2|X=1] \\ &\quad - E[(Y - E[Y|X=0] + (E[Y|X=0] - \mu))^2|X=0] \\ &= E[(Y - E[Y|X=1])^2|X=1] + (E[Y|X=1] - \mu)^2 \\ &\quad - E[(Y - E[Y|X=0])^2|X=0] - (E[Y|X=0] - \mu)^2 \\ &= V[Y|X=1] + (1 - P_X)^2 \cdot (E[Y|X=1] - E[Y|X=0])^2 \\ &\quad - V[Y|X=0] - P_X^2 \cdot (E[Y|X=1] - E[Y|X=0])^2 \\ &= V[Y|X=1] - V[Y|X=0] + (1 - 2P_X) \cdot (E[Y|X=1] - E[Y|X=0])^2. \end{aligned}$$

■

References

- ALBRECHT, J., A. BJÖRKLUND, AND S. VROMAN (2003): “Is There a Glass Ceiling in Sweden?” *Journal of Labor Economics*, 21: 145-178
- BUCHINSKY, M. (1994): Changes in the U.S. Wage Structure 1963-1987: Application of Quantile Regression, *Econometrica*, 62, 405–58.
- CARD, D. (1996): The Effect of Unions on the Structure of Wages: A Longitudinal Analysis, *Econometrica*, 64, 957–79.
- CARD, D. (2001): Estimating the Return to Schooling: Progress on Some Persistent Econometric Problems, *Econometrica*, 69, 1127–60.
- CARD, D., T. LEMIEUX, AND W.C. RIDDELL (2004): Unions and Wage Inequality, *Journal of Labor Research*, 25, 519–62.
- CHAMBERLAIN, G. (1994): Quantile Regression Censoring and the Structure of Wages, in *Advances in Econometrics* ed. by C. Sims. Elsevier: New York.
- CHESHER, A. (2003): Identification in Nonseparable Models, *Econometrica*, 71, 1401–1444.
- DIÑARDO, J., AND T. LEMIEUX (1997): Diverging Male Wage Inequality in the United States and Canada, 1981-1988: Do Institutions Explain the Difference?, *Industrial and Labor Relations Review*, 50, 629–651.
- FLORENS, J.P., J. J. HECKMAN, C. MEGHIR, AND E. VYTLACIL (2003): Instrumental Variables, Local Instrumental Variables and Control Functions, IDEI Working Paper.
- FORTIN, N.M., S. FIRPO, AND T. LEMIEUX (2005): Decomposing Wage Distributions: Estimation and Inference, Unpublished Manuscript, UBC and PUC-Rio.
- FORTIN, N.M., AND T. LEMIEUX (1998): Rank Regressions, Wage Distributions, and the Gender Gap, *Journal of Human Resources*, 33, 610–643.
- GARDEAZABAL, JAVIER AND A. UGIDOS (2005): Gender Wage Discrimination at Quantiles, *Journal of Population Economics* 18, 165–179

- HAMPEL, F.R. (1968): Contribution to the Theory of Robust Estimation, Ph.D. Thesis, University of California at Berkeley.
- HAMPEL, F.R. (1974): The Influence Curve and Its Role in Robust Estimation, *Journal of the American Statistical Association*, 60, 383–393.
- HAMPEL, F.R., E.M. RONCHETTI, P.J. ROUSSEEUW, AND W.A. STAHEL (1986): *Robust Statistics: The Approach Based on Influence Functions*, New York: Wiley.
- HÄRDLE, W., AND T.M. STOKER (1989): Investigating Smooth Multiple Regression by the Method of Average Derivatives, *Journal of the American Statistical Association*, 84, 986–95.
- HIRANO, K., G.W. IMBENS, AND G. RIDDER (2003): Efficient Estimation of Average Treatment Effects Using the Estimated Propensity Score, *Econometrica*, 71, 1161–1189.
- IMBENS, G.W., AND W.K. NEWEY (2005): Identification and Estimation of Triangular Simultaneous Equations Models Without Additivity, Unpublished Manuscript, MIT and Berkeley.
- KOENKER, R. (2005): *Quantile Regression*, Cambridge University Press: New York.
- KOENKER, R., AND G. BASSETT (1978): Regression Quantiles, *Econometrica*, 46, 33–50.
- KOENKER, R., AND K.F. HALLOCK (2001): “Quantile Regression, *Journal of Economic Perspectives*, 15, 143–56.
- LEMIEUX, T. (2006): Increasing Residual Wage Inequality: Composition Effects, Noisy Data, or Rising Demand for Skill?, *American Economic Review*, 96, 461–98.
- MACHADO, A.F., AND J. MATA. (2005): Counterfactual decomposition of changes in wage distributions using quantile regression, *Journal of Applied Econometrics*, 20, 445–465.
- MATZKIN, R.L. (2003): Nonparametric Estimation of Nonadditive Random Functions, *Econometrica*, 71, 1339–1375.
- MELLY, B. (2005): “Decomposition of differences in distribution using quantile regression,” *Labour Economics*, 12: 577-590.

- NEWHEY, W. K., AND T.M. STOKER (1993): Efficiency of Weighted Average Derivative Estimators and Index Models, *Econometrica*, 61, 1199–1223.
- NEWHEY, W.K. (1994): The Asymptotic Variance of Semiparametric Estimators, *Econometrica*, 62, 1349–1382.
- STOCK, J.H. (1989): Nonparametric Policy Analysis, *Journal of the American Statistical Association*, 89, 567–575.
- VON MISES, R. (1947): On the asymptotic distribution of differentiable statistical functions. *The Annals of Mathematical Statistics*, 18, 309—348.
- WOOLDRIDGE, J.M. (2004). Estimating Average Partial Effects Under Conditional Moment Independence Assumptions, Unpublished Manuscript, Michigan State University.

Table 1: Comparing OLS, Conditional Quantile Regressions (CQR) and Unconditional Quantile Regressions (UQR), Birthweight Model (Koenker and Hallock, 2001)

	OLS	10th centile		50th centile		90th centile	
		UQR	CQR	UQR	CQR	UQR	CQR
Boy	108.867 (2.418)	64.126 (4.827)	67.749 (4.625)	120.147 (2.688)	118.872 (3.613)	143.710 (3.932)	134.691 (3.613)
Married	60.426 (3.250)	85.505 (7.113)	75.129 (6.345)	52.064 (3.624)	51.584 (3.461)	48.923 (4.850)	52.510 (4.841)
Black	-198.931 (3.577)	-281.568 (8.623)	-238.387 (6.852)	-173.713 (3.922)	-174.072 (3.810)	-133.556 (4.828)	-164.536 (5.365)
Mother's Age	36.392 (1.996)	50.536 (4.300)	44.713 (3.848)	34.857 (2.205)	32.150 (2.125)	29.132 (3.196)	32.643 (3.002)
Mother's Age ²	-0.547 (0.035)	-0.888 (0.074)	-0.762 (0.067)	-0.505 (0.038)	-0.461 (0.037)	-0.350 (0.057)	-0.416 (0.052)
<u>Mother's Education</u>							
High school	15.140 (3.757)	24.038 (8.374)	13.805 (7.191)	15.767 (4.135)	13.293 (4.001)	5.226 (5.454)	15.855 (5.617)
Some college	31.210 (4.187)	50.088 (8.918)	33.061 (8.034)	33.268 (4.645)	30.690 (4.459)	15.396 (6.426)	24.522 (6.292)
College	36.648 (4.508)	61.596 (9.216)	53.715 (8.695)	42.736 (5.015)	35.970 (4.801)	17.153 (7.284)	14.290 (6.785)
No Prenatal	-183.742 (13.585)	-386.957 (39.048)	-309.842 (25.887)	-111.221 (13.439)	-145.072 (14.464)	-10.767 (17.191)	-83.174 (20.274)
Prenatal Second	12.047 (3.772)	20.675 (8.109)	18.339 (7.239)	0.836 (4.167)	-0.062 (4.017)	12.847 (5.778)	7.202 (5.657)
Prenatal Third	30.605 (8.305)	60.692 (18.131)	68.382 (15.928)	-5.581 (9.119)	-0.659 (8.844)	-13.023 (11.433)	-9.816 (12.394)
Smoker	-167.933 (6.288)	-205.904 (15.516)	-164.017 (11.819)	-166.276 (6.756)	-167.468 (6.696)	-136.094 (7.737)	-169.148 (9.687)
Cigarettes per day	-3.695 (0.447)	-6.742 (1.155)	-4.796 (0.829)	-3.478 (0.476)	-3.581 (0.476)	-2.747 (0.513)	-3.169 (0.701)
Mother's Weight Gain	10.158 (0.303)	19.044 (0.666)	21.184 (0.568)	5.934 (0.345)	5.978 (0.323)	0.801 (0.530)	1.125 (0.447)
Mother's Weight Gain ²	-0.019 (0.000)	-0.123 (0.008)	-0.146 (0.008)	0.020 (0.005)	0.024 (0.005)	0.102 (0.008)	0.008 (0.006)
Constant	2447.741 (27.808)	1545.573 (60.725)	1583.787 (53.727)	2574.531 (30.620)	2600.281 (29.611)	3305.305 (43.567)	3216.766 (41.686)

Table 2: Comparing OLS, Conditional Quantile Regressions (CQR) and Unconditional Quantile Regressions (UQR), 1983-85 CPS data men

	OLS	10th centile		50th centile		90th centile	
		UQR	CQR	UQR	CQR	UQR	CQR
Union coverage	0.179 (0.002)	0.198 (0.002)	0.288 (0.003)	0.349 (0.003)	0.195 (0.002)	-0.137 (0.004)	0.088 (0.004)
Non-white	-0.134 (0.003)	-0.118 (0.005)	-0.139 (0.004)	-0.169 (0.004)	-0.134 (0.003)	-0.101 (0.005)	-0.120 (0.005)
Married	0.140 (0.002)	0.197 (0.003)	0.166 (0.003)	0.162 (0.004)	0.146 (0.002)	0.044 (0.004)	0.089 (0.004)
<u>Education</u>							
Elementary	-0.351 (0.004)	-0.311 (0.008)	-0.279 (0.006)	-0.469 (0.006)	-0.374 (0.004)	-0.244 (0.005)	-0.357 (0.007)
HS Dropout	-0.19 (0.003)	-0.349 (0.006)	-0.127 (0.004)	-0.202 (0.004)	-0.205 (0.003)	-0.069 (0.004)	-0.227 (0.005)
Some college	0.133 (0.002)	0.059 (0.004)	0.058 (0.003)	0.185 (0.004)	0.133 (0.003)	0.156 (0.005)	0.172 (0.004)
College	0.406 (0.003)	0.199 (0.004)	0.252 (0.004)	0.481 (0.005)	0.414 (0.003)	0.592 (0.008)	0.548 (0.005)
Post-graduate	0.478 (0.004)	0.140 (0.004)	0.287 (0.004)	0.541 (0.005)	0.482 (0.003)	0.859 (0.010)	0.668 (0.005)
<u>Experience</u>							
0-4	-0.545 (0.004)	-0.599 (0.007)	-0.333 (0.005)	-0.641 (0.006)	-0.596 (0.004)	-0.454 (0.008)	-0.650 (0.007)
5-9	-0.267 (0.004)	-0.082 (0.005)	-0.191 (0.005)	-0.36 (0.006)	-0.279 (0.004)	-0.377 (0.008)	-0.319 (0.006)
10-14	-0.149 (0.004)	-0.04 (0.004)	-0.098 (0.005)	-0.185 (0.006)	-0.152 (0.004)	-0.257 (0.009)	-0.188 (0.006)
15-19	-0.056 (0.004)	-0.024 (0.004)	-0.031 (0.005)	-0.069 (0.006)	-0.06 (0.004)	-0.094 (0.009)	-0.077 (0.007)
25-29	0.028 (0.004)	0.001 (0.005)	0.001 (0.006)	0.034 (0.007)	0.029 (0.005)	0.063 (0.011)	0.038 (0.007)
30-34	0.034 (0.004)	0.004 (0.005)	-0.007 (0.006)	0.038 (0.007)	0.033 (0.005)	0.063 (0.011)	0.064 (0.008)
35-39	0.042 (0.005)	0.021 (0.005)	-0.014 (0.006)	0.041 (0.007)	0.043 (0.005)	0.073 (0.011)	0.095 (0.008)
40+	0.005 (0.005)	0.042 (0.006)	-0.066 (0.007)	0.002 (0.007)	0.017 (0.005)	-0.030 (0.010)	0.061 (0.008)
Constant	1.742 (0.004)	0.970 (0.005)	1.145 (0.005)	1.732 (0.006)	1.744 (0.004)	2.512 (0.008)	2.332 (0.006)

Figure 1. Unconditional and Conditional Quantile Regressions Estimates for the Birthweight Model

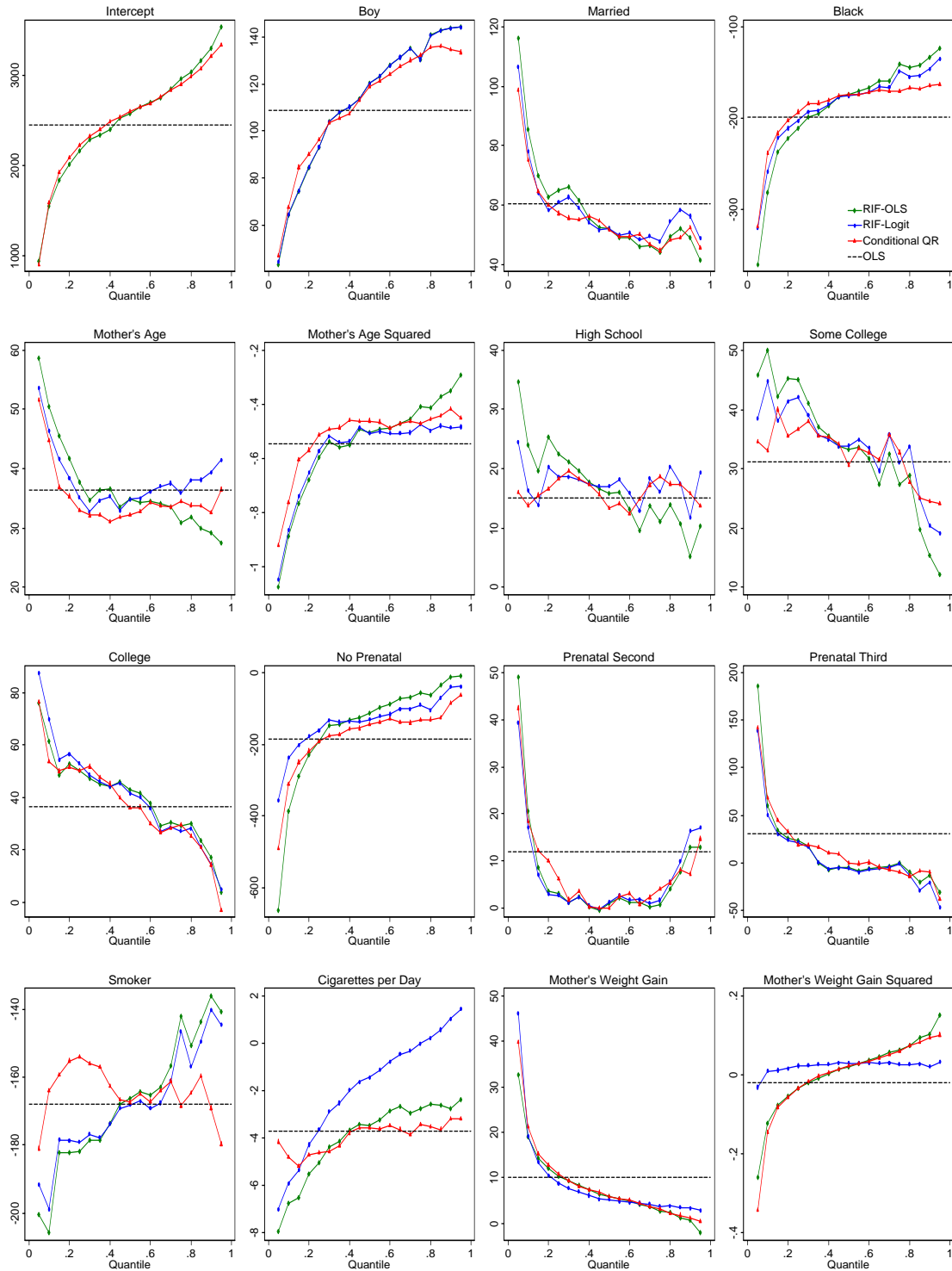


Figure 2. Unconditional and Conditional Quantile Estimates for the Log Wages Model, Men 1983-1985

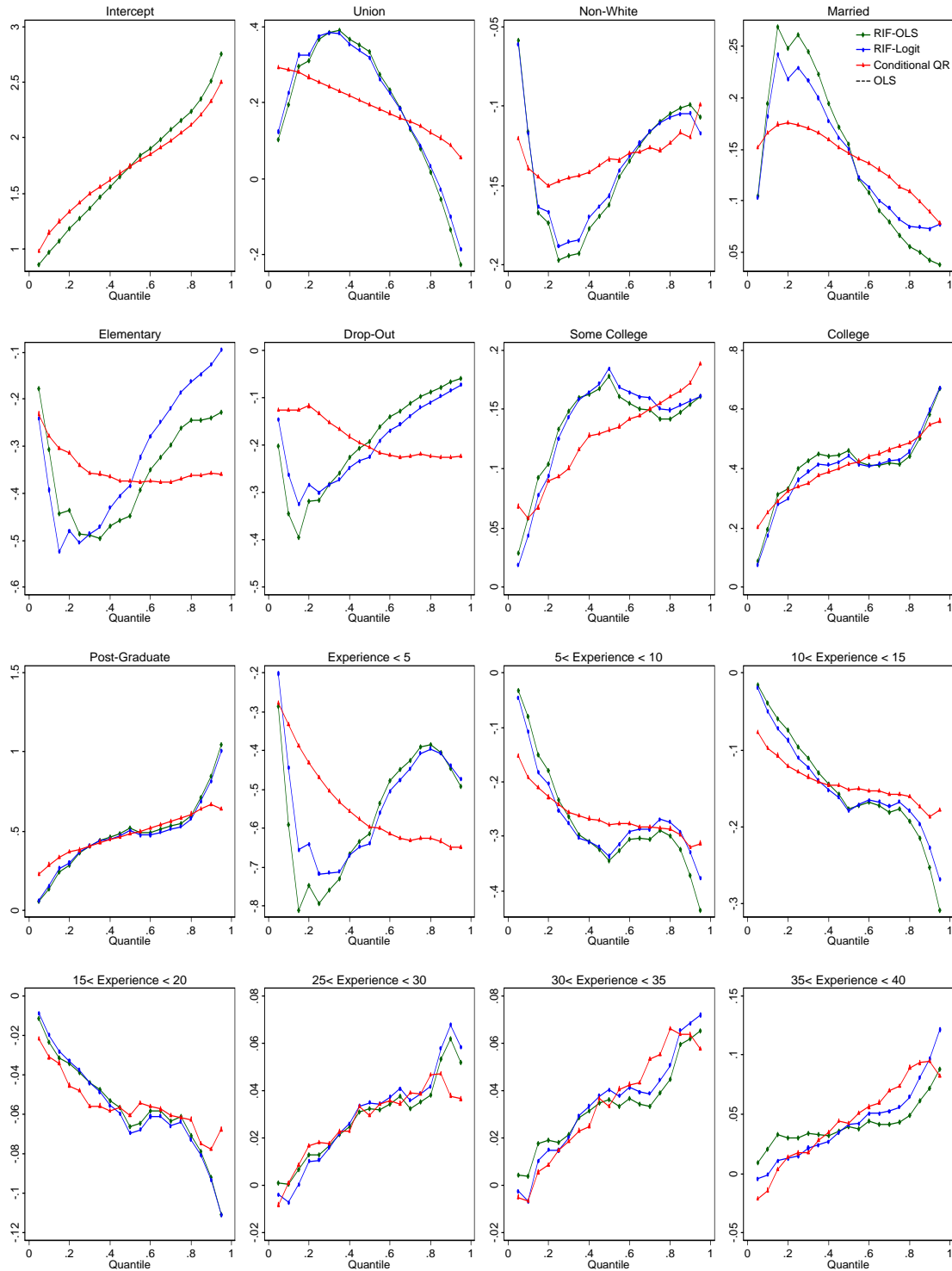


Figure 3. Sensitivity of Unconditional Estimates for the Log Wages Model, Men 1983-1985

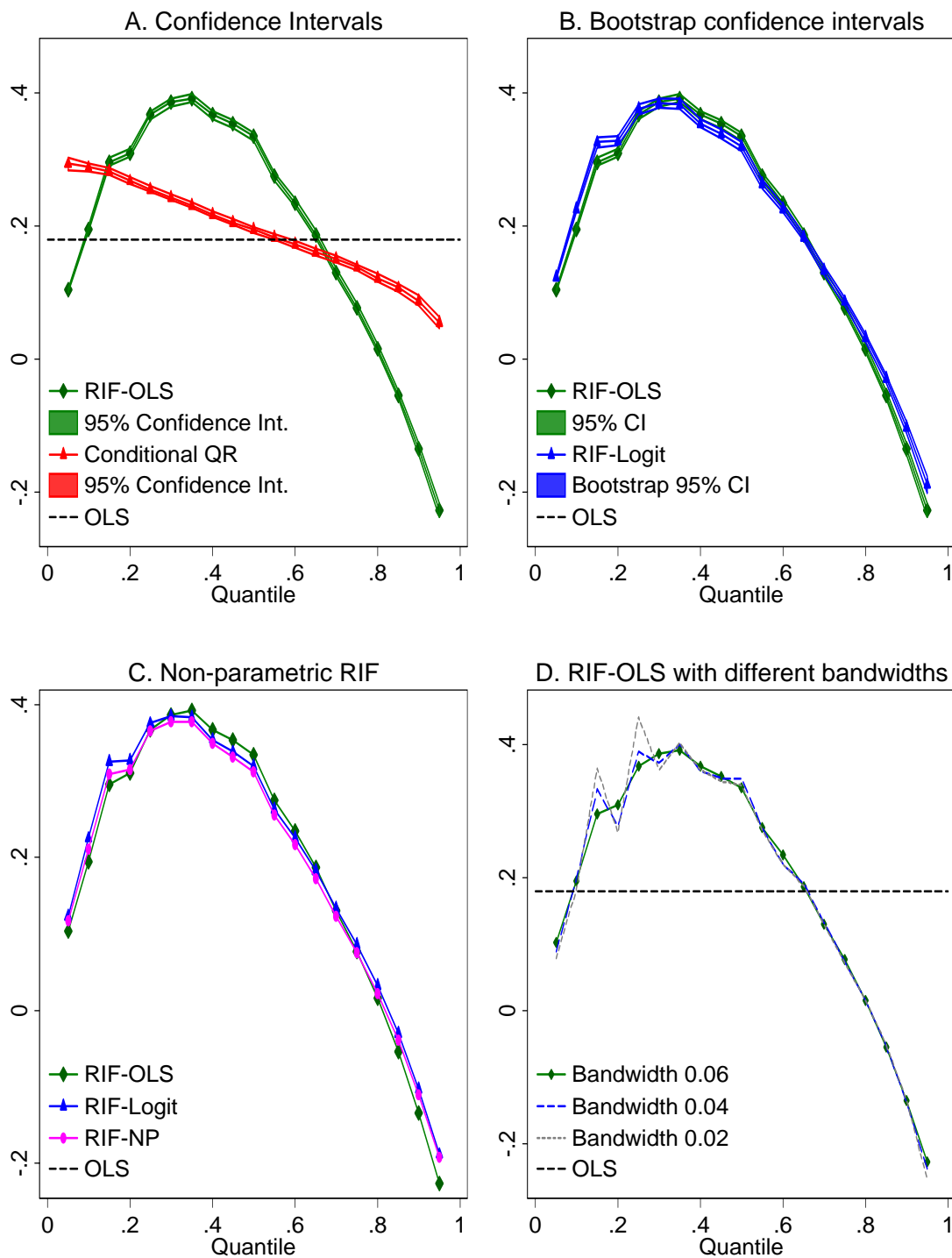


Figure 4: Approximation error (relative to reweighting) when predicting the effect of changes in the unionization rate using the unconditional quantile regression

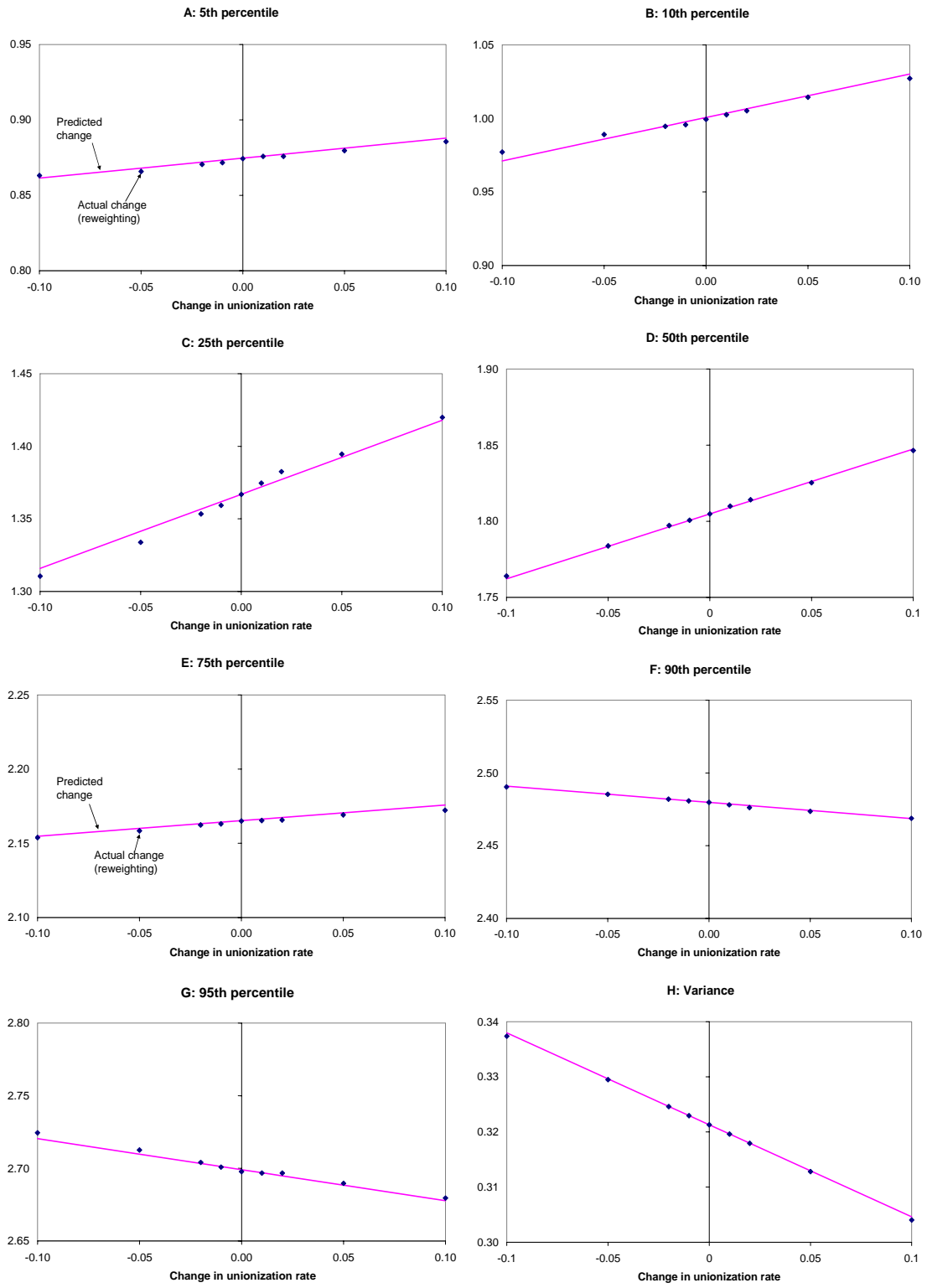


Figure A1. Probability Density Functions of Birthweight

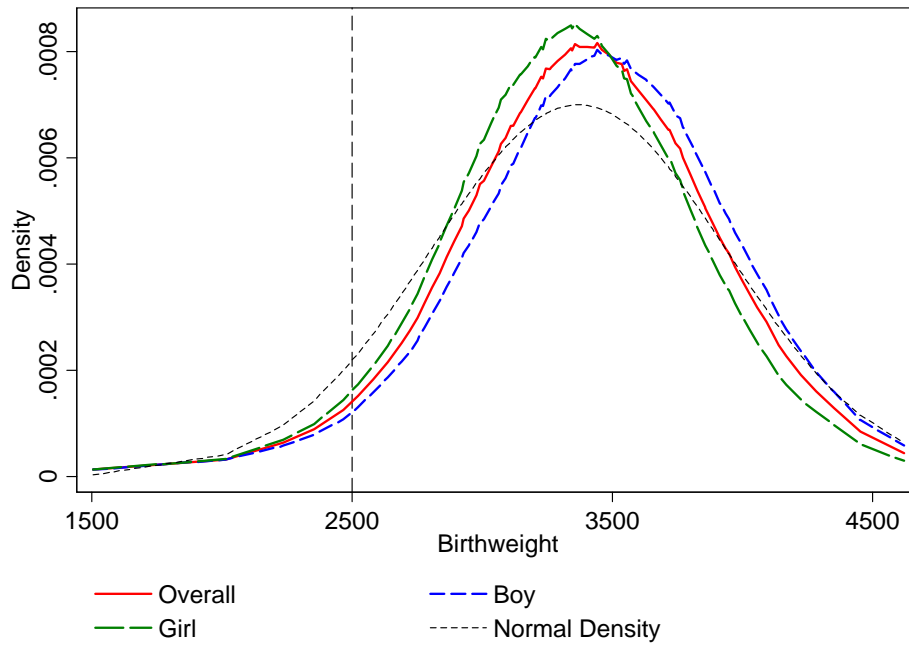
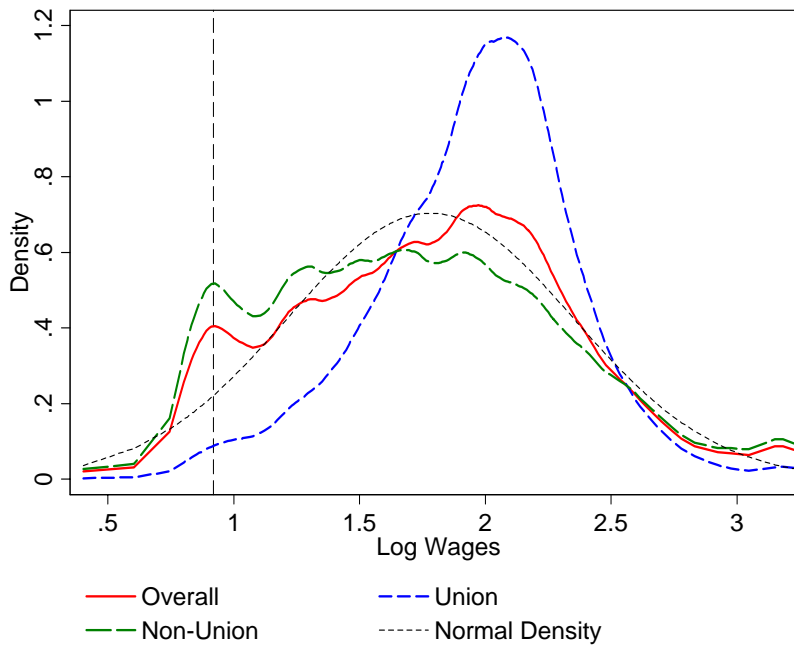


Figure A2. Probability Density Functions of Log Wages, Men 1983-85



Departamento de Economia PUC-Rio
Pontifícia Universidade Católica do Rio de Janeiro
Rua Marques de São Vicente 225 - Rio de Janeiro 22453-900, RJ
Tel.(21) 31141078 Fax (21) 31141084
www.econ.puc-rio.br
flavia@econ.puc-rio.br