

Dosi, Giovanni; Yu, Xiaodan

**Working Paper**

## Technological catching-up, sales dynamics and employment growth: Evidence from China's manufacturing firms

LEM Working Paper Series, No. 2017/27

**Provided in Cooperation with:**

Laboratory of Economics and Management (LEM), Sant'Anna School of Advanced Studies

*Suggested Citation:* Dosi, Giovanni; Yu, Xiaodan (2017) : Technological catching-up, sales dynamics and employment growth: Evidence from China's manufacturing firms, LEM Working Paper Series, No. 2017/27, Scuola Superiore Sant'Anna, Laboratory of Economics and Management (LEM), Pisa

This Version is available at:

<https://hdl.handle.net/10419/174577>

**Standard-Nutzungsbedingungen:**

Die Dokumente auf EconStor dürfen zu eigenen wissenschaftlichen Zwecken und zum Privatgebrauch gespeichert und kopiert werden.

Sie dürfen die Dokumente nicht für öffentliche oder kommerzielle Zwecke vervielfältigen, öffentlich ausstellen, öffentlich zugänglich machen, vertreiben oder anderweitig nutzen.

Sofern die Verfasser die Dokumente unter Open-Content-Lizenzen (insbesondere CC-Lizenzen) zur Verfügung gestellt haben sollten, gelten abweichend von diesen Nutzungsbedingungen die in der dort genannten Lizenz gewährten Nutzungsrechte.

**Terms of use:**

*Documents in EconStor may be saved and copied for your personal and scholarly purposes.*

*You are not to copy documents for public or commercial purposes, to exhibit the documents publicly, to make them publicly available on the internet, or to distribute or otherwise use the documents in public.*

*If the documents have been made available under an Open Content Licence (especially Creative Commons Licences), you may exercise further usage rights as specified in the indicated licence.*

INSTITUTE  
OF ECONOMICS



Scuola Superiore  
Sant'Anna

LEM | Laboratory of Economics and Management

Institute of Economics  
Scuola Superiore Sant'Anna

Piazza Martiri della Libertà, 33 - 56127 Pisa, Italy  
ph. +39 050 88.33.43  
institute.economics@sssup.it

# LEM

## WORKING PAPER SERIES

**Technological catching-up, sales dynamics and  
employment growth: evidence from China's  
manufacturing firms**

Giovanni Dosi <sup>°</sup>  
Xiaodan Yu <sup>\*°</sup>

<sup>°</sup> Institute of Economics, Scuola Superiore Sant'Anna, Pisa, Italy  
<sup>\*</sup> University of Nottingham Ningbo China, and IBIMET-CNR, Florence, Italy

**2017/27**

**October 2017**

**ISSN(ONLINE) 2284-0400**

# Technological catching-up, sales dynamics and employment growth: evidence from China's manufacturing firms\*

Giovanni Dosi<sup>†,§</sup> and Xiaodan Yu<sup>†,§,¶</sup>

<sup>†</sup>Institute of Economics, Scuola Superiore Sant'Anna, Pisa, Italy

<sup>§</sup>IBIMET-CNR, Firenze, Italy

<sup>¶</sup>Nottingham University Business School China, University of Nottingham Ningbo China, Ningbo, China

October 24, 2017

## Abstract

This paper investigates the microeconomics of employment dynamics, using a Chinese manufacturing firm-level dataset over the period 1998-2007. It does so in the light of a scheme of “circular and cumulative causation”, whereby firms’ heterogeneous productivity gains and sales dynamics, and innovation activities ultimately shape the patterns of employment dynamics. Using firm’s productivity growth as a proxy for process innovation, our results show that the latter correlates negatively with firm-level employment growth. Conversely, relative productivity levels, as such a general proxy for the broad technological advantages/disadvantages of each firm, do show positive effect on employment growth in the long-run through replicator-type dynamics. Moreover, firm-level demand dynamics play a significant role in driving employment growth, which more than compensate the labour-saving effect due to

---

\*We thank Jiasu Lei, without whom we would not have been able to access this rich dataset, and thank several participants to the 10th EMAEE Conference, Strasbourg, June 2017; the 2017 China Meeting of the Econometric Society, Wuhan, June 2017; the 2nd World Congress of Comparative Economics, St. Petersburg, June 2017. The usual disclaimer applies. We gratefully acknowledge project PROCOPE, IBIMET and the support by the European Union Horizon 2020 Research and Innovation programme under grant agreement No. 649186 - ISIGrowth.

technological progress. Finally, and somewhat puzzlingly, the direct effects of product innovation and patenting activities on employment growth appear to be negligible.

*JEL codes:* D22, J01, O33

*Keywords:* Employment Growth, Demand, Product Innovation, Process Innovation, Export, China catching-up

## 1. Introduction

For those who believe that the economy is characteristically in a General Equilibrium and Say's Law applies, the impact of technical change upon employment is no big deal: *structural unemployment* can only be considered a temporary problem, in that the labour-saving effect of technological progress can be automatically adjusted by the market (see Freeman, Clark, and Soete, 1982; Vivarelli, 1995; Vivarelli, 2014; Dosi, 1984 and Calvino and Virgillito, 2017, for discussions and critiques of the implied 'compensation theory').

However, the historical evidence militates against any self-equilibrating market mechanism, with long spells of unemployment both in now-developed and developing countries. Indeed, the broad *duality* of technological change, implies that the utilization of labour force is endogenously generated by demand creation due to product innovation or expanding existing markets, on the one hand, and continuous labour displacement due to process innovation, on the other hand. In that, the homeostasis between the two forces cannot be guaranteed, because of the major discontinuities in technological innovation, the long-term changes in the balance process vs. product innovation, the 'stickiness' of consumption baskets and the long-term fluctuations in the rates of innovation themselves (more on this in Dosi, 1982, 1984).

If this is the case, however, it becomes crucial to understand the determinants of employment dynamics also at sectoral and firm levels. This is what we shall do in the following, examining the impact of technological catching-up, sales dynamics, and innovation activities on employment growth in China, mak-

ing using of a large representative sample of Chinese manufacturing firms covering the period of Chinese economic boom before the global financial crisis. Our approach to the relationship between technological change and employment dynamics is a *partial disequilibrium* one, grounded on heterogenous patterns of firm-level learning and catching-up, fuelled by Kaldorian processes of “circular causation” - that is of dynamic increasing returns -, linking productivity, sales growth and further efficiency gains (Freeman, Clark, and Soete, 1982; Freeman and Soete, 1994; Dosi, 1984; Dosi, Pavitt, and Soete, 1990; Dosi, Grazzi, and Moschella, 2015; Lee, 2013; Vivarelli and Pianta, 2000; Bogliacino et al., 2017). In turn, sales dynamics, at least in the case of China, have been driven to a good extent by export growth. We interpret the latter in a ‘technology-gap’ perspective, whereby the absolute advantages/disadvantages of sectors and firms evolve according to (i) the dynamics of the technology they master compared to their foreign competitors, (ii) their cost competitiveness (i.e. relative unit labour cost), and (iii) the elasticity of their sales to world income dynamics. Exports, as such an important indicator for country’s international competitiveness, but also play an important role in stimulating macroeconomic activities and employment growth through the ‘foreign-trade multiplier’ (Thirlwall, 1979, 1980; MacCombie and Thirlwall, 1994).<sup>1</sup> Of course the overall dynamic is affected by the sectoral ones which in turn sums up the dynamics of a large number of highly heterogenous firms.

Hence, in the following we start by studying the sectoral-level employment dynamics as the outcome of sectoral average productivity growth and sales growth. In turn, exports are an important component of sales and they are jointly affected by world income growth, variations on sectoral unit labour cost (relative to the “rest of the world”), and (relative) innovativeness.

Behind sectoral dynamics, however, rest a multiplicity of heterogenous dynamics. Thus, next, we investigate the *microeconomics* of employment as the outcome of firm-specific technological learning, capital accumulation and sales variation within narrowly defined sectors. The question is the extent to which firm-

---

<sup>1</sup>Kaldor (1970) and Thirlwall (1979) suggest that “if balance of payments equilibrium must be maintained, a country’s long run growth rate will be determined by the ratio of its rate of growth of exports to its income elasticity of demand for imports” (Thirlwall’s Law). As known, China overshot the constraint and ran throughout a significant surplus.

level employment dynamics is affected by the labour displacement associated with productivity growth as compared to the labour creation induced by product innovation and sales growth. Furthermore, we address the two-sided impact of sales growth on employment growth: firm-level demand expansion creates, other things being equal, job opportunities, but it also plays a significant role in driving up productivity due to Kaldorian increasing returns and capability accumulation (Cimoli, Dosi, and Stiglitz, 2009).

In brief, we find that Chinese employment dynamics reveals a *Keynesian-Kaldorian adjustment* story, in presence of a fast and very successful *technological catching-up*. At the sectoral level, labour demand is largely driven by sectoral sales growth while the growth of productivity is markedly labour displacing, even if it helps cost competitiveness (proxied by relative unit labour cost). In turn, sectoral sales growth is primarily determined (via exports) by world income growth and to a less extent by the variations of sectoral unit labor cost. Interestingly, during the period under investigation, proxies for product innovativeness do not seem to contribute directly to sales/or export growth, except few sectors (probably a sign that sectors as a whole have not reached the international technological frontier). At the firm-level, the labour-displacing effects of productivity growth is often overcompensated by the dramatic growth in sales. Together, productivity levels do show positive effect on employment growth through the replicator-type dynamics: more productive firms grow more in terms of employees. Finally, at micro level, product innovation do appear to have positive effect on labour demand. Conversely, firms' patenting activities (in the US) do not correlate with employment growth (note however that the surge in Chinese patenting abroad is a quite recent phenomenon).

The paper is organized as follows. Section 2 briefly discusses the state-of-the-art on the evidence both at sectoral and firm-level. Section 3 presents our simple interpretative models. Section 4 describes the data. Section 5 presents the broad patterns of growth, export and employment dynamics in China up to the Crisis. Section 6 presents our sectoral- and firm-level empirical results. Section 7 concludes.

## 2. Employment dynamics at sectoral and firm-level: a brief review of the evidence

### 2.1. Sectoral-level employment dynamics

The empirical literature on the relationship between technical change and employment at both sectoral and firm-level is critically reviewed in Calvino and Virgillito (2017) to which we refer for all details. Here let us just mention the thrust of the findings.

In general the literature - both theoretical and empirical - on sectoral level employment dynamics is based on *partial disequilibrium framework* interpreting it as a result of structural change involving both embodied and disembodied technological change and changing patterns of consumption (for a seminal theoretical model see Pasinetti, 1981). On the empirical side Pianta et al. (1996) and Vivarelli et al. (1995) found an overall positive relationship between structural change, proxied by relative sectoral value added growth and growth in employment for six largest OECD countries. Nevertheless, European countries are undergoing a heavy restructuring of their industries displaying a clear negative relationship between productivity growth and employment growth. In that product innovations (proxied by the growth of patenting) and investment (linked to the expansion of production capacity but also to process innovations) appear to have positive and significant effect on sectoral employment growth.

Exploring deeper the distinct effects of process and product innovations on employment, a stream of studies has made use, in Europe of the Community Innovation Surveys (CIS) and similar data elsewhere. Process innovation leads to improvements in the efficiency of production, replacing labour and lowering prices, while product innovations - either incremental or radical - increase the quality and variety of products and may create new markets, production and jobs, if the replacement of old products is not the dominant pattern within product innovations. Pianta (2000) finds that demand growth and prevalence of

product innovations are crucial positive factors for sectoral employment growth in five European countries, while Bogliacino and Pianta (2010) find that technological competitiveness has a significant effect on labour demand while cost competitiveness has negative one in 38 manufacturing and services industries in eight European countries. Mastrostefano and Pianta (2009) show that employment change is shaped by demand growth and product innovation (with a positive sign) and wage reduction. The positive employment impact of product innovation is particularly significant in high-tech manufacturing sectors: so, Bogliacino and Vivarelli (2012) find that R&D expenditure, mainly fostering product innovation, do have a job-creating effect.

A second stream of literature adopts the Haltiwanger-type job flow measure (Davis and Haltiwanger, 1990; Davis et al., 1998). Greenan and Guellec (2000) find that sectors with more process innovation have a higher job destruction rate and a lower net employment growth rate, while sectors with more product innovation have a higher job creation rate and a lower job destruction rate. Similarly Meriküll (2010) find that product innovation has strong effect on changes in job flows in Estonian industries. A higher share of firms with product innovation is related to a higher job creation rate and net employment growth in a sector.<sup>2</sup>

Notice that most of the foregoing studies refer to developed countries. An interesting question is whether the differential impact of product vs. process innovation applies also to the sectors on a catching-up country, like China. We shall address that in the following.

Finally, a third stream of studies which is not generally associated with the analyses of sectoral dynamics is based on a technology-gap trade framework and emphasizes in the first instance the *intercountry* differences in innovativeness (within the same sector) as the basis of international trade flows and implicitly sectoral dynamics. Rather than interindustry variations in the technological ‘endowments’ of a specific country, it is the variation in innovativeness within each sector across countries which is deemed to be

---

<sup>2</sup>On such an evidence, process innovation, too, appears to be positively related to job flows, but this effect is much weaker and less significant.



crucial. Indeed, in Dosi et al. (1990, 2015) one suggests that countries' sectoral market shares are mainly shaped by technological factors while cost advantages/disadvantages do not seem to play any significant role. However, the technology-gap framework has never been extended to the studies on employment dynamics. This is another task that we shall undertake in the following.

## 2.2. Firm-level employment dynamics

To repeat this is no place for a thorough review of the literature: let us recall again Calvino and Virgillito (2017), Vivarelli (2014) and Freeman, Clark, and Soete (1982). Only some remarks are in order. Notice, first, that a much wider literature addresses the issue, but also that the methodologies are quite different mostly employing to different degrees some *equilibrium* assumptions concerning micro decisions on the demand for labor together with in our view equally questionable assumptions on the existence of some well-behaved production function.<sup>3</sup> This notwithstanding, some relatively robust patterns have emerged.

A large number of micro-econometric studies detects the direct impact of innovation on employment, without identifying the compensation mechanism (the indirect effect) through lowering cost competitiveness and creating/enlarging markets. They tend to confirm the positive impact of innovation on job creation, though adopting various proxies for innovation inputs - i.e. R&D, investment in fixed assets - and innovation output - i.e., patents, commercialized innovation count - without explicitly distinguishing product and process innovation.

Van Reenen (1997) based on a panel of British firms finds technological innovation (proxied by the innovation count data from SPRU - including both product and process innovation) associated with higher firm-level employment, while the direct effects of spillover from industry innovations to industry wages or union power is not confirmed. Greenhalgh et al. (2001) find that employment is fostered by R&D and patent for a panel of UK firms. The employment impact of R&D is bigger in high-tech sectors, while the

---

<sup>3</sup>The roots of our scepticism are discussed in Dosi and Grazzi (2006); Dosi and Nelson (2010) and Dosi et al. (2016).

employment increase from UK patenting activity is bigger in mature technology sectors. Piva and Vivarelli (2005) detect a significant, although small in size, positive effect of embodied technological change (proxied by investments in new machinery and equipment) upon employment for Italian manufacturing firms.<sup>4</sup> Coad and Rao (2011) build an index of ‘innovativeness’ using firm’s patenting and R&D expenditures and find that the employment of US manufacturing firms in high-tech sectors is positively associated with innovativeness, and innovation has a stronger impact in high-growth firms. Bogliacino et al. (2012) confirms the job creation effect of R&D, gross investment and sales for large publicly-traded European companies only in services and high-tech manufacturing, but not in traditional sectors. Ciriaci et al. (2015) based on a sample of Spanish firms and CIS surveys find that innovative, smaller and younger firms are more likely to experience high employment growth episodes than non-innovative firms, and only innovative high-growth firms are able to sustain high growth over time.<sup>5</sup> Van Roy et al. (2015) find that citation-weighted patent counts has positive and significant effect on employment in firms from 22 EU countries. However, this positive employment impact is significant only in high and medium-tech manufacturing sectors.

A number of empirical works have tried to disentangle the effect of process and product innovation on firm-level employment. Most studies have found a positive impact of product innovation on employment via new demand, especially when the new products cannot perfectly substitute the old products within the same firm, while the impact of process innovation seems more ambiguous. The direct impact of process innovation is to increase productivity, implying a labour-displacement effect. However, there can be an indirect effect of process innovation on employment, that the increasing productivity may be associated with sales growth and employment growth driven by strengthening cost competitiveness.

Greenan and Guellec (2000), using a large panel of French manufacturing firms and Innovation Survey carried out by French Ministry of Industry, show that innovating firms (having either product or process innovations) create jobs more than others, and process innovation is more job creating than product

---

<sup>4</sup>The caveat is that ‘investment’ includes both substitution investment and expansion-related one.

<sup>5</sup>Their definition of innovative firms are those introduced product/process new to the market and/or to the firm and declared that they invest in intramural R&D.

innovation. Based on CIS survey on Italian firms, Hall et al. (2008) find no evidence of significant job displacement stemming from process innovation. The sources of employment growth are split equally between the net contribution of product innovation and the net contribution from sales growth of old products. By exploiting the CIS surveys for four European countries, Harrison et al. (2014) argue that a) productivity trend and process innovation destroy jobs, but the growth of demand for the old products is strong enough to compensate for all this; b) product innovation increases jobs because the firm-level creation of jobs in the manufacturing of the new products is bigger than the eliminated jobs due to the substitution of new to old products. Evangelista and Vezzani (2012) exploiting CIS surveys of several European countries show that the indirect impact of product, process and organizational innovation - through growth of sales - on employment is positive and strong. The direct effect of organizational innovation on employment is positive and significant while process innovation does not show any direct negative effect. However, Lachenmaier and Rottmann (2011), based on the German Ifo innovation survey, find that the effects of all types of innovation on employment are positive and robust.

Some studies look at the effects of process and product innovation on employment growth, distinguishing among high-growth and shrinking firms. Herstad et al. (2015), linking Norwegian CIS data with the Business Register, suggest that both product and process innovations strengthen employment growth, especially for high-growth firms. Zimmermann (2009) confirms that innovation has a positive effect of employment for both growing and shrinking SMEs in Germany, with stronger effects on high-growth SMEs, and also, counterintuitively, that process innovation has a larger impact on employment than product innovation. In a similar vein, Triguero et al. (2014) show in the Spanish case a positive link between persistent process innovation activities and employment growth, and this positive link is stronger for SMEs.

There have been few empirical studies on the employment impact of innovation or technological catching-up in the context of developing countries. Using a methodology similar to Harrison et al. (2014),

Benavente and Lauterbach (2008) investigate the case of Chile and find a positive and significant impact of product innovation on Chilean firm-level employment, with no apparent impact of process innovation. In this same vein, exploring the employment dynamics for four Latin American countries (Argentina, Chile, Costa Rica, and Uruguay), Crespi and Tacsir (2011) suggest that product innovations are an important source of firm-level employment growth while no evidence of displacement effects due to the process innovation was observed.

Mairesse et al. (2011) and Mairesse and Wu (2014) extend Harrison et al. (2014) model and investigate also the effects of exports on Chinese manufacturing firm’s employment growth. They find that demand for old products and for domestic markets mainly, but also for new products and export markets, overcompensate the displacement effects related mostly to catching up in productivity and to a lesser extent to wage increases.

Note that the foregoing results stem implicitly or explicitly from an equilibrium framework whereby labour demand is derived from an underlying “production function”. What does one see when one abandons such a perspective and considers the evidence of microeconomic employment dynamics in a (micro-founded) disequilibrium framework? This is one of the questions that we shall address in the following.

### 3. Interpretative models

#### 3.1. Sectoral-level employment dynamics: the model

Let us consider sectoral employment change starting from the simple *identity*:

$$N_{jt} \equiv \frac{Y_{jt}}{\Pi_{jt}} \tag{1}$$

where  $N_{jt}$  is sectoral employment (sector  $j$  at time  $t$ ),  $Y_{jt}$  is sectoral output,<sup>6</sup>  $\Pi_{jt}$  is sectoral (weighted-) average labour productivity. The dynamic version of (1) is

$$\frac{\Delta N_{jt}}{N_{jt}} = \frac{\Delta Y_{jt}}{Y_{jt}} - \frac{\Delta \Pi_{jt}}{\Pi_{jt}} \quad (2)$$

where  $\Delta N_{jt}$  is  $N_{jt} - N_{j,t-1}$ . Here, obviously, sectoral employment dynamics is positively associated with sectoral-level output/demand growth which, however, we shall argue on the interpretative side, is shaped by the sector's absolute competitiveness in the international market, and negatively associated with sectoral labour productivity growth. Notice that, labour productivity, as measured in real data, does not capture only physical productivity, but also reflects variations in value added generated, for example, by high-quality products which are sold at higher prices. More generally, productivity is related to the way in which the process of production is carried on (on average) in the sector, and thus also reflects the efficiency of organizational routines and the dynamic capabilities of the firms in that sector and country.

Next, let us derive the determinants of the dynamics of sectoral absolute competitiveness as a function of the dynamics of technological absolute advantage, cost advantages and world income growth. In a first approximation suppose that the variation of demand of sector  $j$  of a country  $i$ , say China, depends on the change of the commodities' prices in sector  $j$  ( $P_{jit}$ ) compared to the "world" price and the variation of world income ( $Y_{wt}$ ).

$$\frac{\Delta Y_{jit}}{Y_{jit}} = \eta_p \frac{\Delta P_{jit}/P_{jit}}{\Delta P_{jwt}/P_{jwt}} + \eta_y \frac{\Delta Y_{wt}}{Y_{wt}} \quad (3)$$

where  $\eta_p$  is the price elasticity of demand (plausibly  $\eta_p < 0$ ) (i.e., an increase in price leads to some proportional decrease of demand),  $\eta_y$  is the income elasticity of demand ( $\eta_y > 0$ ) (i.e., the degree to which increases in world income leads to proportional increases of demand).

The average (domestic) price of commodities of sector  $j$  is a function of sectoral average wage per

---

<sup>6</sup>Here we assume for simplicity sectoral output equals demand.

employee ( $W_{jt}$ ), average productivity of sector  $j$  ( $\Pi_{jt}$  is defined as the ratio between real value added and the number of employees) and the markup ( $m$ ), which in a first approximation we assume to be constant, i.e.,  $P_{jt} = (1 + m)W_{jt}/\Pi_{jt}$ . The variation of the average price in sector  $j$  is

$$\frac{\Delta P_{jt}}{P_{jt}} = \mu_1 + \frac{\Delta W_{jt}}{W_{jt}} - \frac{\Delta \Pi_{jt}}{\Pi_{jt}} \quad (4)$$

In comparison with the “world” the dynamics of sectoral *cost advantages/disadvantages* captures the joint effect of wages and labour productivity, thus, the average (international) price of sector  $j$  ( $P_{jt}^*$ ) can be expressed as a function of relative unit labour cost (RULC)

$$\frac{\Delta P_{jt}^*}{P_{jt}^*} = \mu_2 + \frac{\Delta RULC_{jt}}{RULC_{jt}} \quad (5)$$

where relative unit labour cost is the relative (Chinese) ULC of sector  $j$  to the world ULC of the same sector. The RULC can be expressed as  $\frac{ULC_{China,jt} \times E_t}{ULC_{World,jt}}$  where  $E_t$  is the trade-weighted bilateral exchange rate index, and the dynamic version of relative ULC can be expressed as  $\frac{\Delta ULC_{China,jt}}{ULC_{China,jt}} + \frac{\Delta E_t}{E_t} - \frac{\Delta ULC_{World,jt}}{ULC_{World,jt}}$ .

We can plug the price variation Equation (5) into the demand growth Equation (3). Thus:

$$\frac{\Delta Y_{jt}}{Y_{jt}} = \mu_3 + \eta_p \frac{\Delta RULC_{jt}}{RULC_{jt}} + \eta_y \frac{\Delta Y_{wt}}{Y_{wt}} \quad (6)$$

sales growth of sector  $j$  is a function of the growth of relative unit labour cost of China and world income growth. Indeed, Equation (6) just states that sectoral sales growth is jointly determined by some cost effect and some world income effect. Sectoral sales growth is the outcome of an *absolute measure of competitiveness* (i.e. *independent of the competitiveness of other sectors within China*). The cost effect is measured by (the variation of) relative unit labour cost, as a proxy of *cost advantages*, which is jointly determined by (the dynamics in) wage gap (measured in international currency) and the dynamics in labour

productivity gaps, which, it is important to note, reflect underlying technological catching-up dynamics.

Finally, we augment the estimates with a patent-based variable, a measure of sectoral *technological absolute advantages*, as compared to sectors/countries ‘on the frontier’, specially in product innovations.

Thus:

$$\frac{\Delta Y_{jt}}{Y_{jt}} = \alpha + \eta_p \frac{\Delta RULC_{jt}}{RULC_{jt}} + \eta_y \frac{\Delta Y_{wt}}{Y_{wt}} + \beta \frac{\Delta PATS_{jt}}{PATS_{jt}} \quad (7)$$

where  $PATS_{jt}$  proxies the sectoral “frontier” innovativeness. In this work, the proxy are Chinese patents in the USPTO.

After estimating Equation (7) and evaluating its robustness, we shall use it to estimate the overall sectoral employment effect of export dynamics.

### 3.2. Micro-foundation of technology-gap theory and employment dynamics: a general disequilibrium firm-level model

In line with the theoretical interpretation of the sectoral-level employment growth, our firm-level employment dynamics is jointly shaped by the overall market growth, the firm-specific labour productivity, the dynamics of firm-specific competitiveness (influencing firm’s sales growth) within a narrowly defined (4-digit) sector. We state from the simple relation

$$\frac{\Delta N_{ijt}}{N_{ijt}} = g \left( \frac{\Delta \Pi_{ijt}}{\Pi_{ijt}}, \frac{\Delta Y_{ijt}}{Y_{ijt}} \right) \quad (8)$$

where  $\Delta N_{ijt}/N_{ijt}$  denotes the employment growth of firm  $i$  at sector  $j$  in year  $t$ ;  $\Delta \Pi_{ijt}/\Pi_{ijt}$  is firm’s labour productivity growth;  $\Delta Y_{ijt}/Y_{ijt}$  stands for the growth of sales of the firm.

Of course, the growth of sales of a firm depends on the growth of the market  $\Delta Y_j/Y_j$  and the dynamics of the share in it of  $i$ ,  $\Delta S_{ij}/S_{ij}$ . The latter, we suggest in an evolutionary perspective, depend on firm-specific *competitiveness*. The notion is grounded on the persistent heterogeneity among firms and the systematic

processes of competitive selection among them. Firms persistently differ over all dimensions one is able to detect. Idiosyncratic capabilities and, dynamically, idiosyncratic patterns of learning by individual firms are the general rule. In turn, such persistently heterogeneous firms are nested in competitive environments which shape their individual economic performances and collectively the evolution of the forms of industrial organization. Differences in product characteristics, and in the processes of production are central features of the competitive process by which some firms grow, some decline, and some go out of business.

Evolutionary approaches have often modeled the competitive process by different instantiations of some *replicator dynamics*. The bottom line is a relation between some corporate features - that is, technological, organizational, or behavioral traits - which the particular interactive environment “favors”, on the one hand, and the dynamic performance in the *carriers* of such characters in the relevant population on the other (see, among others, Silverberg et al. (1988); Dosi et al. (1995), and the discussion in Dosi and Nelson (2010). In its linear specification

$$\frac{\Delta S_{ijt}}{S_{ijt}} = f(E_{ijt} - \bar{E}_{jt})S_{ij,t-1} \quad (9)$$

where  $\Delta S_{ijt}/S_{ijt}$  is the rate of change in the share of firm  $i$  in the total production of the sector;  $E_{ijt}$  represents firm’s competitiveness (capture the firm’s technological and cost advantages) and  $\bar{E}_{jt}$  is the average of the variable(s) over all firms within the sectors.

Below we shall proxy competitiveness with the productivity levels of firm  $i$  ( $\Pi_{ij}$ ) relative to the sectoral average, and, in some specifications, with the shares of new products in the total output of the firm.

In the opposite direction, in the spirit of the circular and cumulative causation scheme, increasing returns in the accumulation of capabilities imply a positive association with demand dynamics, that is the dynamic version of Kaldor-Verdoorn Law:

$$\frac{\Delta \Pi_{ijt}}{\Pi_{ijt}} = h \left( \frac{\Delta Y_{ijt}}{Y_{ijt}} \right) \quad (10)$$



Hence, the micro-founded “technology-gap” theory of employment growth, based on the interaction between growth in productivity and demand variation, develops along three different sequences. First, increases in labour productivity are likely to lead to labour shedding, other things being equal. However, second, relative labour productivities affect the competitiveness of each firm and through that the dynamics of market shares and thus its demand. Finally, third, increases in productivity are stimulated by growth in production through increasing returns, learning and the accumulation of capabilities.

## 4. Data and descriptive statistics

### 4.1. Database description: firm-level data

This work draws upon firm level data from the Annual Survey of Industrial Enterprise collected by the Chinese National Bureau of Statistics (NBS). The dataset includes all industrial firms with sales above 5 million RMB covering period 1998-2007 and has already been employed in other empirical investigations, including Dong and Xu (2009), Yu et al. (2015) and Yu et al. (2017).<sup>7</sup> The surveys cover approximately 55 to 79 million workers, accounting for about 7.5% to 10.5% of the total employment. Each firm is assigned to a sector according to the 4-digit Chinese industry Classification (CIC) system that closely matches the Standard Industrial Classification (SIC) employed by the U.S. Bureau of Census.<sup>8</sup> Out of the comprehensive set of all firms, we focus on manufacturing firms only (CIC 13 - 42). Table A.1 (in the Appendix) shows the summary statistics of manufacturing firms. The total number of employees in the manufacturing sector has increased from 50 in 1998 to 68 million in 2007. (In fact, it decreased by 5.7 million during period 1998 and 2001, then increased thereafter.)<sup>9</sup>

---

<sup>7</sup>Industry if defined to include mining, manufacturing and public utilities, according to NBS of China. Five million RMB is approximately \$US 600,000.

<sup>8</sup>In 2003, the classification system was revised. Some sectors were further disaggregated, while others were merged together. To make the industry code comparable over time, we adopted the harmonized classification proposed in Brandt et al. (2012).

<sup>9</sup>We have applied a few cleaning procedures to the dataset in order to eliminate visible recording errors. We dropped firms with missing, zero or negative output, value-added, sales, original value of fixed assets, employment ( $< 8$ ). And we keep firms existing for at least two consecutive years.

## 4.2. Variables used in firm-level analysis

We measure the firm-level employment growth rate as the log difference of employment levels of two consecutive years:  $\Delta n_{ijt} = n_{ijt} - n_{ij,t-1}$ , where  $n_{ijt}$  is  $\ln(N_{ijt})$ . Productivity ( $\pi_{ijt}$ ) is the (log) ratio of value added (at constant prices) over the number of employees. Productivity growth ( $\Delta\pi_{ijt}$ ) is the log difference of productivity levels of two consecutive years. Productivity levels and growth can be considered proxies for process efficiency and process innovation. We define firm’s sales growth ( $\Delta g_{ijt}$ ) as the log difference of (constant price) sales in two consecutive years. We use two-year moving average of investment intensity as proxy for investment:  $I_{ijt} = \frac{INV_{ijt} + INV_{ij,t-1}}{VA_{ijt} + VA_{ij,t-1}}$ , where  $INV_{ijt}$  is real investment and  $VA_{ijt}$  denotes real value added.<sup>10</sup> We use the percentage share of new products in total output as our proxy for product innovation (NEWPROD).<sup>11</sup> Note that, only less than 5% firms display positive shares of new products. Firm age is computed using information on firm’s foundation year. Our proxies for firm size are (log-) number of employees and (log-) sales. Table 1 provide basic descriptive statistics of the main variables used in the empirical analysis. Finally, we use as yet another proxy for innovativeness the patents granted in the US identified through a procedure discusses in Appendix B.<sup>12</sup>

## 4.3. Sectoral data

For our sectoral analysis, our firm-level dataset has been aggregated at 4-digit sectoral level, in order to obtain total (real) value-added, total employment, total (real) sales, total (real) exports for each 4-digit sector. Sectoral employment growth, sales growth and labour productivity growth are calculated as above.

Table A.2 provide basic descriptive statistics of the main variables used in the empirical analysis. The

---

<sup>10</sup>Notice that, we compute real investment at time  $t$  as the difference of firm’s real capital stock between time  $t$  and  $t - 1$ . The time series of real capital stock are computed following Brandt et al. (2012), that apply a standard perpetual inventory method, with a 9% rate of depreciation.

<sup>11</sup>According to NBS of China, “new products” are defined as product adopting new technology and/or new design, or products that have been significantly improved in performances and functions over existing ones by improving their structure, materials and/or process technics. Hence, these “new products” are new to the enterprises but not new to the market. Because output of new product are not available for years 2001 and 2004, we fill in the gaps using the averages between the the values of previous year and the next year for each firm.

<sup>12</sup>A dummy variable distinguishes firms holding patent for at least one year in the USPTO during 198-2007.

Table 1: Summary statistics (mean) on the firm-level dataset (after cleaning).

| Year | Number of Firms | Employment | Sales   | Labour Productivity | Employment Growth | Sales Growth | Labour Productivity Growth | Ratio of New Product in Output | 2-year MA Investment Intensity |
|------|-----------------|------------|---------|---------------------|-------------------|--------------|----------------------------|--------------------------------|--------------------------------|
| 1998 | 108286          | 379        | 43 847  | 44                  | NA                | NA           | NA                         | 0.029                          | NA                             |
| 1999 | 125917          | 348        | 45 266  | 48                  | -0.038            | 0.016        | 0.070                      | 0.028                          | NA                             |
| 2000 | 126054          | 337        | 53 875  | 54                  | -0.022            | 0.049        | 0.061                      | 0.029                          | 0.291                          |
| 2001 | 138410          | 307        | 55 577  | 59                  | -0.024            | 0.007        | 0.046                      | 0.031                          | 0.269                          |
| 2002 | 149189          | 292        | 60 690  | 68                  | -0.001            | 0.071        | 0.083                      | 0.028                          | 0.266                          |
| 2003 | 162086          | 285        | 73 925  | 76                  | 0.018             | 0.129        | 0.099                      | 0.027                          | 0.253                          |
| 2004 | 211534          | 235        | 73 162  | 88                  | 0.013             | 0.118        | 0.047                      | 0.034                          | 0.242                          |
| 2005 | 238160          | 242        | 87 461  | 97                  | 0.051             | 0.189        | 0.154                      | 0.036                          | 0.236                          |
| 2006 | 265912          | 233        | 98 964  | 114                 | 0.024             | 0.178        | 0.171                      | 0.039                          | 0.229                          |
| 2007 | 248299          | 245        | 128 191 | 137                 | 0.032             | 0.199        | 0.177                      | 0.038                          | 0.205                          |

Note: Sales are in current price; labour productivity and investment intensity are in 1998 constant price; unit 1000 RMB. Growth rates are calculated as log differences of real value, at 1998 constant price.

growth rate of relative unit labour cost of sector  $j$  at time  $t$  can be derived based on: a) the growth rate of Chinese unit labour cost of sector  $j$  at time  $t$ ; b) the growth of trade-weighted bilateral exchange rate index (i.e. trade-weighted “world currency” per Chinese yuan);<sup>13</sup> c) growth of world unit labour cost.<sup>14</sup> We proxy world income growth using growth rate of world gross domestic product.<sup>15</sup> We use the share of Chinese patents in total foreign patents granted in the United States for sector  $j$  year  $t$  as a proxy for sectoral innovativeness (source: PATSTAT Version 2014a, USPTO patents only. For details, see Appendix B).<sup>16</sup>

## 5. The general picture

There are five fundamental characteristics of China’s “economic miracle” which place the discussion that follow in the proper context.

First, Chinese economic growth has occurred and is occurring in *dual* economic system, characterized by the persistent coexistence of a relatively ‘modern’ sector and a ‘traditional rural’ one. The *unlimited supplies of labour* from the traditional sector served as a source of cheap labour for almost three decades of rapid capital accumulation and industrialization in China, without dramatic increase in wages (see Lewis,

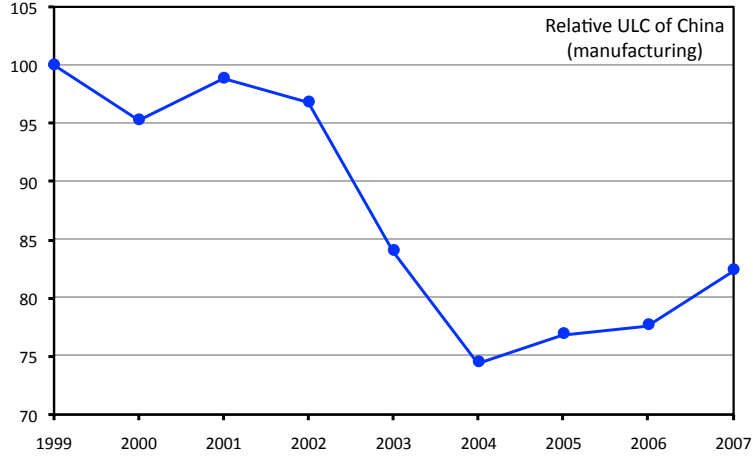
<sup>13</sup>To calculate it, we use two variables 1) G7 trade weights, calculated by authors based on NBSC statistical yearbook; 2) bilateral exchange rates between Chinese yuan and G7 currencies, directly available from IMF.

<sup>14</sup>We proxy it using the G7 countries’ manufacturing ULC growth rates: source OECD.stat.

<sup>15</sup>Source: IMF World Economic Outlook Database, gross domestic product, constant prices, percentage change.

<sup>16</sup>The United States as a major technology ‘market’ indeed appears to be a good mirror of the OECD or world technology market: more in Dosi et al. (1990).

Figure 1: Unit labour cost of Chinese manufacturing relative to the world (proxied by G7 countries).



Source: Chinese firm-level dataset (Chinese unit labour cost); OECD.stat (G7 unit labour cost); China Statistical Yearbook (China-G7 trade weights); IMF (exchange rates between China and G7 countries).

1954; Lutz, 2014; see Cai and Wang, 2010 for China). This is also reflected in the limited role of wages in the growth of Chinese aggregate demand during the early phase of transition, and in a rather stable import propensity. Indeed, Chinese manufacturing relative unit labour cost shows a *decreasing* trend until 2004 and kept stable/or mildly increased afterwards (see Figure 1), suggesting an increasing *cost advantages*, too, until 2004.

Second, the dramatic productivity growth and catching-up has been well documented. For example, Yu et al. (2015) estimates a 10% labour productivity growth and Brandt et al. (2012) a 7.7% TFP growth, intimately coupled with process of technological and organizational learning and knowledge accumulation (see Fu and Gong, 2011 and Yu et al., 2017).

Third, export grew at a spectacular rate even if the export share into the total Chinese manufacturing output has increased only mildly from 18.3% in 1998 to 22% in 2006 (see Table A.1). The foreign-trade multiplier played an important role during the Chinese catching-up process, via export fuelled effective demand, leading to overall increasing output and employment (see Lin and Li, 2003 and Fu and Balasubramanyam, 2005).

Fourth, the employment growth has been much lower than the overall income growth of China. This is hold both for the economy as a whole and for the industrial sector alone, as shown in Figure 2.<sup>17</sup>

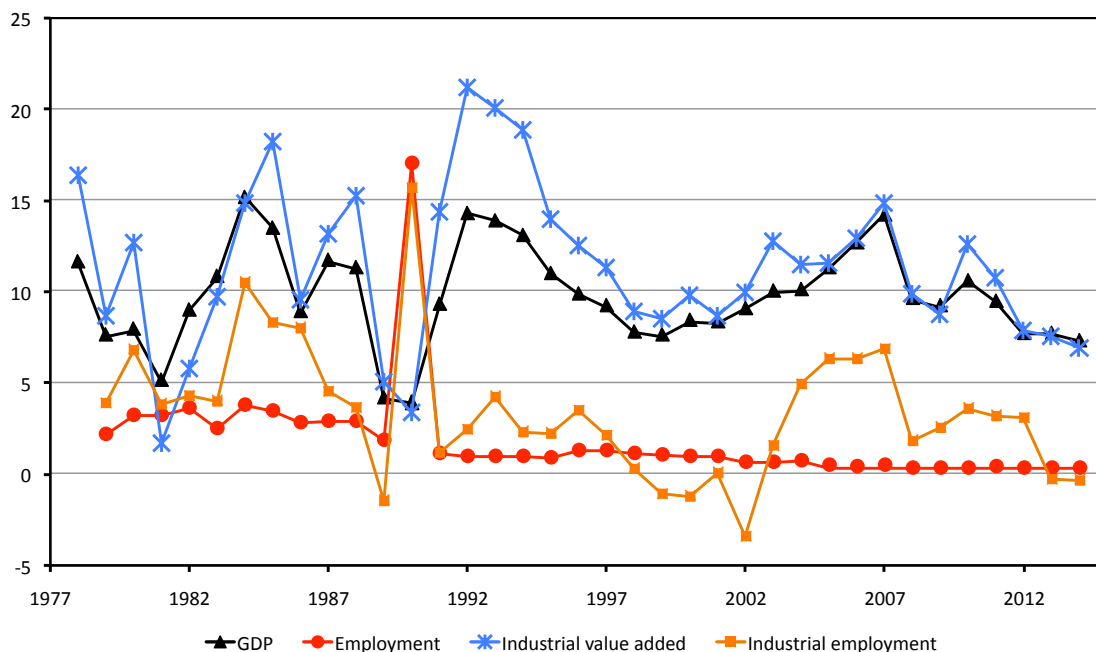


Figure 2: Growth rates of GDP, industrial value added, total employment and industrial employment. Note: The employment growth rate time series are discontinuous in 1990 as the employment statistics before 1990 are from a different data collection method. Source: National Bureau of Statistics of China.

The elasticity of employment to output, measured as ratio between the rate of growth of employment and the rate of growth of production (cf. Figure 3), shows a steady decreasing trend from 0.15 in 1998 to 0.04 in 2010, and more volatile for the industrial sector. Such an elasticity was even negative between 1998 and 2003, due to the massive layoff of employees in the State-owned enterprises (SOEs) coupled with the ‘ownership transformation’ process.<sup>18</sup> It surged to around 0.5 during 2004-07, dropped again significantly to 0.2 in 2008, the year of the global financial crisis. Both in the overall economy and in the industrial sector, (almost) *jobless growth* appears to have precociously emerged as a dominant characteristic.

Fifth, “on the frontier” innovative activities are a quite recent phenomenon in China. Table 2 shows the patenting activities in the USPTO. The number of Chinese patents granted has increased from 151

<sup>17</sup>Industry is composed by mining, manufacturing, construction and utilities.

<sup>18</sup>For the labour restructuring process associated with the ownership transformation in China, see Dong and Xu (2009) and Yu et al. (2015).

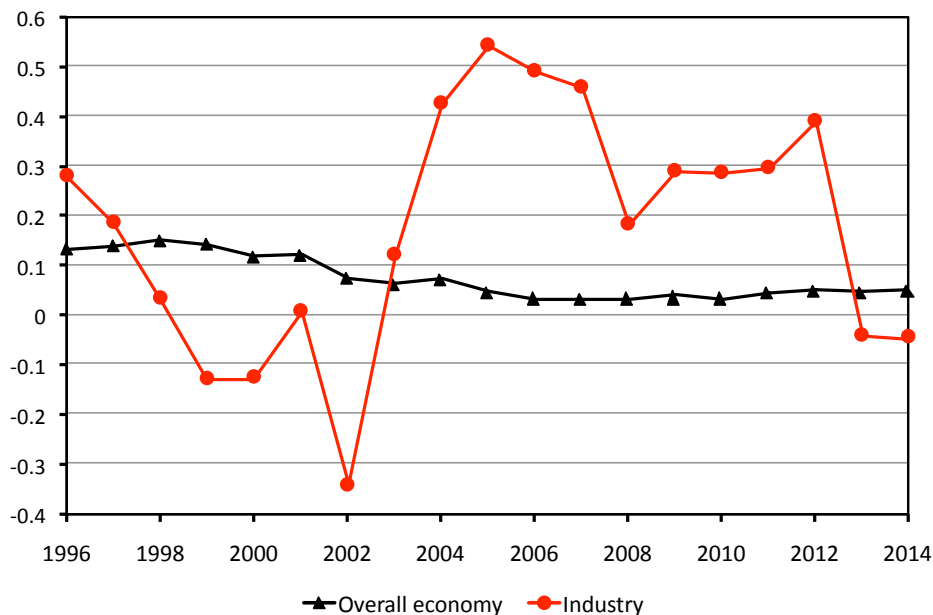


Figure 3: The elasticity of employment growth to GDP growth/or industrial value added growth. Source: National Bureau of Statistics of China.

Table 2: Summary statistics of the patenting activities in the USPTO.

| Year | Number of Chinese patents | % of Chinese patents in non-US patents | % of Chinese patents in world patents |
|------|---------------------------|--|---------------------------------------|
| 1998 | 151                       | 0.17                                   | 0.08                                  |
| 1999 | 226                       | 0.23                                   | 0.11                                  |
| 2000 | 345                       | 0.31                                   | 0.15                                  |
| 2001 | 579                       | 0.39                                   | 0.19                                  |
| 2002 | 821                       | 0.54                                   | 0.26                                  |
| 2003 | 1130                      | 0.68                                   | 0.35                                  |
| 2004 | 2091                      | 1.11                                   | 0.57                                  |
| 2005 | 2880                      | 1.40                                   | 0.72                                  |
| 2006 | 3963                      | 2.11                                   | 1.01                                  |
| 2007 | 4527                      | 2.46                                   | 1.15                                  |

Source: PATSTAT (version 2014a). Year refers to patent application year. Note: if one patent corresponds to multiple assignee persons (possibly from multiple countries), we assign equal weights to each of the assignee persons.

to 4527, accounting for 0.17% in 1998 and 2.46% in 2007 of the non-US assignees's patents (i.e. the year refers to the filing year of the granted patents). Indeed, patenting has exploded since then.

## 6. Empirical results

### 6.1. Sectoral-level empirical estimates

First, we estimate Equation (2) for each 2-digit sector, that is sectoral-level employment dynamics as the joint outcome of productivity growth and sales growth. Results are shown in Table 3. Productivity growth displays very significant negative association with employment growth at the sectoral level, while sectoral sales growth contributes significantly to employment growth.

Adopting the same model, we estimate the association between *export growth* and employment dynamics. Results are shown in Table 4. The strong positive association of export growth on employment growth appears in the majority of sectors, and in particular, in the manufacturing of furnitures, chemical and metal products, communication equipment and computers, and measuring instruments. The significant labour-displacing effect of productivity growth is particularly revealed in textile, wood products, furnitures, paper and plastics.

Second, we estimate Equation (6), that is sectoral sales growth as the joint outcome of the variation of Chinese relative unit labour cost and world income growth. The estimates are shown in Table 5.<sup>19</sup> The effect of income elasticities dominates that of price elasticities. The degrees of income elasticity vary across sectors, that the most income elastic (around 4 to 5) sectors include the manufacturing of communication equipment and computers, electric machinery, measuring instruments, transport equipments.

We also estimated the effects of the variations of RULC and world income on *export growth*. Table 6 shows the results. Again, income elasticity dominates price elasticity in determining Chinese sectoral export growth. The most income elastic sectors include metal products, machinery, transport equipments,

---

<sup>19</sup>Here, we adopt “regression through the origin (RTO)”: it implies that the dependent variable is assumed to be zero when independent variables are zeros. In our case, it means that we assume that when the growth rates of RULC and world income are nil, the growth of Chinese sectoral sales/export is equally nil. In fact, the assumption stands for a time zero equilibrium assumption, which, in this case, as rough as it is, appear much better than assuming some exogenous drift thereafter. We also compared the results between OLS regression (with constant) and RTO. We find that 1) the standard errors of the estimates of RULC are very similar in two methods; 2) the standard errors of the estimates of world income growth is much smaller in RTO than under OLS.

Table 3: Sectoral-level employment dynamics ( $\Delta n_{jt}$ ) Equation (2) - sales growth.

| CIC | SECTOR                                       | $\Delta\pi_{jt}$        | $\Delta g_{jt}$        | Constant               | # Obs. | R2     |
|-----|--|-------------------------|------------------------|------------------------|--------|--------|
|     | All manufacturing                            | -0.4803***<br>(0.025 5) | 0.7743***<br>(0.021 9) | -0.0031<br>(0.009 8)   | 3812   | 0.7475 |
| 13  | Food from agriculture products               | -0.4819***<br>(0.051 5) | 0.8164***<br>(0.063 4) | 0.0099<br>(0.025 8)    | 135    | 0.8272 |
| 14  | Food   | -0.5414***<br>(0.131 9) | 0.8692***<br>(0.060 5) | 0.0036<br>(0.026 9)    | 171    | 0.8460 |
| 15  | Beverages                                    | -0.5135***<br>(0.074 2) | 0.6470***<br>(0.060 6) | 0.0418*<br>(0.018 6)   | 108    | 0.7605 |
| 16  | Tobacco                                      | -0.4539***<br>(0.120 8) | 0.3500*<br>(0.144 1)   | 0.0379<br>(0.066 8)    | 27     | 0.6967 |
| 17  | Textile                                      | -0.7809***<br>(0.077 2) | 0.8860***<br>(0.031 5) | -0.0200<br>(0.023 9)   | 180    | 0.8773 |
| 18  | Textile wearing apparel etc.                 | -0.5273***<br>(0.134 5) | 0.9245***<br>(0.082 8) | 0.0653<br>(0.053 6)    | 27     | 0.9097 |
| 19  | Leather etc.                                 | -0.4610***<br>(0.090 1) | 0.8897***<br>(0.092 4) | -0.0452<br>(0.043 7)   | 90     | 0.7785 |
| 20  | Timber, wood, bamboo                         | -0.6740***<br>(0.077 7) | 0.7005***<br>(0.068 5) | 0.0528<br>(0.032 2)    | 72     | 0.8268 |
| 21  | Furniture                                    | -0.5555***<br>(0.090 1) | 0.8217***<br>(0.075 3) | -0.0699<br>(0.068 4)   | 45     | 0.9198 |
| 22  | Paper products                               | -0.7136***<br>(0.067 0) | 0.4840***<br>(0.076 0) | 0.0528*<br>(0.025 0)   | 45     | 0.8386 |
| 23  | Printing, reproduction and recording media   | -0.2803**<br>(0.106 5)  | 0.9117***<br>(0.055 4) | -0.0482<br>(0.031 1)   | 45     | 0.9431 |
| 24  | Articles for culture, education, sports      | -0.3238**<br>(0.121 5)  | 0.7602***<br>(0.103 3) | 0.0362<br>(0.030 4)    | 126    | 0.6465 |
| 25  | Petroleum, coking, nuclear power             | -0.6094***<br>(0.087 2) | 0.8040***<br>(0.108 0) | 0.0759<br>(0.081 7)    | 36     | 0.9064 |
| 26  | Raw chemical materials and chemical products | -0.6045***<br>(0.054 1) | 0.8904***<br>(0.045 8) | -0.0208<br>(0.018 4)   | 270    | 0.8043 |
| 27  | Medicines                                    | -0.3175***<br>(0.094 0) | 0.4989***<br>(0.064 6) | 0.0365*<br>(0.018 3)   | 54     | 0.7837 |
| 28  | Chemical fibers                              | -0.4152**<br>(0.127 0)  | 0.7422***<br>(0.096 3) | -0.0146<br>(0.044 7)   | 63     | 0.7234 |
| 29  | Rubber                                       | -0.4274***<br>(0.126 7) | 0.6851***<br>(0.089 8) | -0.0323<br>(0.036 2)   | 81     | 0.6527 |
| 30  | Plastics                                     | -0.6164***<br>(0.074 4) | 0.9718***<br>(0.086 8) | -0.0444<br>(0.025 1)   | 81     | 0.8532 |
| 31  | Non-metallic mineral products                | -0.5255***<br>(0.070 3) | 0.7926***<br>(0.078 1) | -0.0150<br>(0.014 6)   | 270    | 0.7565 |
| 32  | Ferrous metals                               | -0.3637**<br>(0.122 5)  | 0.9252***<br>(0.092 6) | -0.0649<br>(0.052 5)   | 36     | 0.8482 |
| 33  | Non-ferrous metals                           | -0.6812***<br>(0.097 9) | 1.0312***<br>(0.075 9) | -0.0883*<br>(0.038 0)  | 135    | 0.7981 |
| 34  | Metal products                               | -0.4436***<br>(0.077 5) | 0.8207***<br>(0.075 4) | -0.0181<br>(0.017 1)   | 162    | 0.7994 |
| 35  | General purpose machinery                    | -0.5642***<br>(0.053 2) | 0.7077***<br>(0.041 4) | -0.0278*<br>(0.011 7)  | 279    | 0.7863 |
| 36  | Special purpose machinery                    | -0.5344***<br>(0.080 4) | 0.8323***<br>(0.059 8) | -0.0530*<br>(0.021 1)  | 378    | 0.7739 |
| 37  | Transport equipment                          | -0.2476***<br>(0.071 1) | 0.6464***<br>(0.062 9) | -0.0459<br>(0.030 9)   | 207    | 0.7522 |
| 39  | Electrical machinery                         | -0.6826***<br>(0.070 1) | 0.8758***<br>(0.063 0) | -0.0012<br>(0.019 8)   | 216    | 0.8377 |
| 40  | Communication equipment, computers etc.      | -0.3269***<br>(0.052 7) | 0.7512***<br>(0.083 4) | -0.1002**<br>(0.031 7) | 140    | 0.8363 |
| 41  | Measuring instruments etc.                   | -0.2524**<br>(0.081 7)  | 0.6315***<br>(0.061 7) | -0.0307<br>(0.047 5)   | 225    | 0.7109 |
| 42  | Artwork and other manufacturing              | -0.5954***<br>(0.094 9) | 0.8637***<br>(0.049 7) | 0.0213<br>(0.029 4)    | 108    | 0.8554 |

Note: OLS regression. Robust standard errors are in parenthesis.  $\Delta n_{jt}$  4-digit sectoral employment variation;  $\Delta\pi_{jt}$  4-digit sectoral productivity growth;  $\Delta g_{jt}$  4-digit sectoral sales growth. Year dummies are included in all estimations. 2-digit sectoral dummies are included in the “all manufacturing” estimation. \*\*\*  $p < 0.01$ , \*\*  $p < 0.05$ , \*  $p < 0.10$ .

electrical machinery, communication equipments, computers and measuring instruments.

Third, we estimated the sales/or exports dynamics equation augmenting with the variation of sectoral innovativeness (Equation 7), proxied by the growth of the share of Chinese patents in the non-US assignee’s ones. The estimates are shown in Table 7. Together, Table 8 shows the OLS estimates for the export dynamics equation. The variation of innovativeness in Chinese manufacturing sectors seems neither



Table 4: Sectoral-level employment dynamics ( $\Delta n_{jt}$ ) Equation (2) - export growth.

| CIC | SECTOR                                       | $\Delta\pi_{jt}$       | $\Delta EXPORT_{jt}$  | Constant              | # Obs. | R2     |
|-----|--|------------------------|-----------------------|-----------------------|--------|--------|
|     | All manufacturing                            | -0.1736***<br>(0.0437) | 0.1280***<br>(0.0169) | 0.0831***<br>(0.0151) | 2904   | 0.2115 |
| 13  | Food from agriculture products               | -0.2524**<br>(0.0828)  | 0.0763*<br>(0.0342)   | 0.1391***<br>(0.0369) | 105    | 0.3245 |
| 14  | Food   | -0.3675<br>(0.2329)    | 0.2390**<br>(0.0875)  | 0.0681<br>(0.0526)    | 130    | 0.3676 |
| 15  | Beverages                                    | -0.1822*<br>(0.0920)   | 0.0329<br>(0.0226)    | 0.1191***<br>(0.0302) | 84     | 0.2219 |
| 16  | Tobacco                                      | -0.1990<br>(0.1944)    | 0.1187**<br>(0.0410)  | 0.1374*<br>(0.0560)   | 21     | 0.5197 |
| 17  | Textile                                      | -0.7340***<br>(0.1987) | 0.2179*<br>(0.0943)   | 0.0965*<br>(0.0375)   | 140    | 0.4682 |
| 18  | Textile wearing apparel etc.                 | -0.1300<br>(0.1895)    | 0.3380<br>(0.1927)    | 0.0616<br>(0.0374)    | 21     | 0.7112 |
| 19  | Leather etc.                                 | -0.1492<br>(0.1328)    | 0.2722**<br>(0.0829)  | 0.0534<br>(0.0487)    | 70     | 0.3273 |
| 20  | Timber, wood, bamboo                         | -0.6905***<br>(0.1099) | 0.0249<br>(0.0425)    | 0.2606***<br>(0.0427) | 56     | 0.5799 |
| 21  | Furniture                                    | -0.7510***<br>(0.1129) | 0.2182***<br>(0.0366) | 0.1325***<br>(0.0210) | 34     | 0.8375 |
| 22  | Paper products                               | -0.3846***<br>(0.1144) | -0.0185<br>(0.0280)   | 0.1143*<br>(0.0572)   | 35     | 0.5061 |
| 23  | Printing, reproduction and recording media   | 0.3308<br>(0.4636)     | 0.5034*<br>(0.2263)   | 0.0122<br>(0.0985)    | 35     | 0.3554 |
| 24  | Articles for culture, education, sports      | -0.0014<br>(0.1118)    | 0.2707***<br>(0.0678) | 0.0693<br>(0.0416)    | 98     | 0.3627 |
| 25  | Petroleum, coking, nuclear power             | -0.2189<br>(0.2879)    | 0.0292<br>(0.0985)    | 0.0683<br>(0.0673)    | 21     | 0.3486 |
| 26  | Raw chemical materials and chemical products | -0.0890<br>(0.1286)    | 0.1600***<br>(0.0377) | 0.0805*<br>(0.0330)   | 208    | 0.2588 |
| 27  | Medicines                                    | -0.1654<br>(0.1357)    | 0.0300<br>(0.0687)    | 0.1244***<br>(0.0301) | 42     | 0.2549 |
| 28  | Chemical fibers                              | -0.2499*<br>(0.1198)   | 0.3533***<br>(0.0708) | 0.1848***<br>(0.0507) | 49     | 0.5821 |
| 29  | Rubber                                       | -0.2912<br>(0.1803)    | 0.0843<br>(0.0465)    | 0.0730*<br>(0.0332)   | 57     | 0.3557 |
| 30  | Plastics                                     | -0.4728***<br>(0.1029) | 0.2137**<br>(0.0758)  | 0.1298***<br>(0.0323) | 63     | 0.5163 |
| 31  | Non-metallic mineral products                | -0.1976<br>(0.1073)    | 0.0617<br>(0.0331)    | 0.0947***<br>(0.0210) | 205    | 0.2104 |
| 32  | Ferrous metals                               | 0.2610<br>(0.1942)     | 0.1028<br>(0.0815)    | -0.0025<br>(0.0516)   | 28     | 0.3190 |
| 33  | Non-ferrous metals                           | -0.5080<br>(0.2784)    | 0.0545<br>(0.0445)    | 0.0770<br>(0.1032)    | 101    | 0.2001 |
| 34  | Metal products                               | -0.3540**<br>(0.1138)  | 0.1600***<br>(0.0468) | 0.0996***<br>(0.0227) | 126    | 0.3817 |
| 35  | General purpose machinery                    | -0.2664**<br>(0.0815)  | 0.0691*<br>(0.0295)   | 0.0270<br>(0.0204)    | 217    | 0.2367 |
| 36  | Special purpose machinery                    | -0.3835***<br>(0.1117) | 0.1057*<br>(0.0424)   | 0.0461<br>(0.0271)    | 287    | 0.2821 |
| 37  | Transport equipment                          | 0.1189<br>(0.1750)     | 0.1022*<br>(0.0460)   | 0.0329<br>(0.0346)    | 145    | 0.2177 |
| 39  | Electrical machinery                         | -0.4222*<br>(0.1840)   | 0.2923*<br>(0.1380)   | 0.0809*<br>(0.0344)   | 168    | 0.4241 |
| 40  | Communication equipment, computers etc.      | -0.0358<br>(0.0981)    | 0.4237***<br>(0.1036) | -0.0298<br>(0.0410)   | 108    | 0.6920 |
| 41  | Measuring instruments etc.                   | 0.0051<br>(0.1105)     | 0.1302***<br>(0.0333) | -0.0083<br>(0.0534)   | 166    | 0.2215 |
| 42  | Artwork and other manufacturing              | -0.2764<br>(0.1981)    | 0.2148<br>(0.1708)    | 0.1145*<br>(0.0516)   | 84     | 0.3789 |

OLS regression. Robust standard errors are in parenthesis.  $\Delta n_{jt}$  4-digit sectoral employment variation;  $\Delta\pi_{jt}$  4-digit sectoral productivity growth;  $\Delta EXPORT_{jt}$  4-digit sectoral exports growth. Year dummies are included in all estimations. 2-digit sectoral dummies are included in the “all manufacturing” estimation. \*\*\*  $p < 0.01$ , \*\*  $p < 0.05$ , \*  $p < 0.10$ .

contribute to sales growth nor exports growth, but, to repeat, our data refer to a stage of catching-up which by now is mostly over.

Table 5: Sectoral-level sales growth ( $\Delta g_{jt}$ ) Equation (6).

| CIC | SECTOR                                       | $\Delta RULC_{jt}$     | $\Delta WorldIncome_t$ | # Obs. | R2     |
|-----|--|------------------------|------------------------|--------|--------|
|     | All manufacturing                            | -0.3999***<br>(0.0502) | 2.2096***<br>(0.3007)  | 3389   | 0.4120 |
| 13  | Food from agriculture products               | -0.3746***<br>(0.1107) | 3.3838***<br>(0.4132)  | 120    | 0.4279 |
| 14  | Food   | -0.2750<br>(0.2419)    | 3.8097***<br>(0.4103)  | 152    | 0.3631 |
| 15  | Beverages                                    | -0.0696<br>(0.0618)    | 3.5956***<br>(0.3842)  | 96     | 0.4864 |
| 16  | Tobacco                                      | -0.1413<br>(0.2353)    | 0.8681<br>(1.0114)     | 24     | 0.0539 |
| 17  | Textile                                      | -0.5028<br>(0.2863)    | 3.4455***<br>(0.3737)  | 160    | 0.3776 |
| 18  | Textile wearing apparel etc.                 | 0.5447<br>(0.5989)     | 2.6520***<br>(0.7066)  | 24     | 0.4712 |
| 19  | Leather etc.                                 | -0.1250<br>(0.1133)    | 3.5231***<br>(0.4744)  | 80     | 0.4403 |
| 20  | Timber, wood, bamboo                         | 0.1690<br>(0.1446)     | 4.9863***<br>(0.3549)  | 64     | 0.7517 |
| 21  | Furniture                                    | -0.1153<br>(0.1585)    | 5.8782***<br>(1.0115)  | 40     | 0.5792 |
| 22  | Paper products                               | -0.8346*<br>(0.3720)   | 3.6052***<br>(1.0286)  | 40     | 0.4902 |
| 23  | Printing, reproduction and recording media   | -0.0891<br>(0.3410)    | 3.1436***<br>(0.8925)  | 40     | 0.2367 |
| 24  | Articles for culture, education, sports      | -0.5025***<br>(0.1098) | 3.5183***<br>(0.5161)  | 112    | 0.4127 |
| 25  | Petroleum, coking, nuclear power             | -0.1463<br>(0.2046)    | 3.9839***<br>(1.1295)  | 32     | 0.2958 |
| 26  | Raw chemical materials and chemical products | -0.3028**<br>(0.1028)  | 3.5387***<br>(0.2586)  | 240    | 0.5019 |
| 27  | Medicines                                    | -0.0553<br>(0.2137)    | 4.2665***<br>(0.4313)  | 48     | 0.6790 |
| 28  | Chemical fibres                              | -0.0484<br>(0.2215)    | 3.6989***<br>(0.8071)  | 56     | 0.2964 |
| 29  | Rubber                                       | 0.0268<br>(0.1505)     | 3.8619***<br>(0.4822)  | 72     | 0.5036 |
| 30  | Plastics                                     | -0.1204<br>(0.1617)    | 3.9038***<br>(0.3780)  | 72     | 0.6577 |
| 31  | Non-metallic mineral products                | -0.3606***<br>(0.0847) | 4.1649***<br>(0.2725)  | 240    | 0.5951 |
| 32  | Ferrous metals                               | -0.0450<br>(0.2859)    | 4.5735***<br>(0.4751)  | 32     | 0.6546 |
| 33  | Non-ferrous metals                           | -0.4032**<br>(0.1499)  | 4.6229***<br>(0.5463)  | 120    | 0.4659 |
| 34  | Metal products                               | -0.3197*<br>(0.1485)   | 4.0841***<br>(0.3282)  | 144    | 0.5394 |
| 35  | General purpose machinery                    | -0.5464***<br>(0.1525) | 4.4158***<br>(0.3771)  | 248    | 0.5979 |
| 36  | Special purpose machinery                    | -0.4970**<br>(0.1658)  | 3.7850***<br>(0.3447)  | 336    | 0.4167 |
| 37  | Transport equipment                          | -0.3200<br>(0.1992)    | 4.0589***<br>(0.7822)  | 184    | 0.2140 |
| 39  | Electrical machinery                         | -0.4117***<br>(0.1051) | 4.4734***<br>(0.3063)  | 192    | 0.5207 |
| 40  | Communication equipment, computers etc.      | -0.7244***<br>(0.2156) | 5.8529***<br>(0.6855)  | 125    | 0.5119 |
| 41  | Measuring instruments etc.                   | -0.5966***<br>(0.1704) | 4.7346***<br>(0.7199)  | 200    | 0.3378 |
| 42  | Artwork and other manufacturing              | 0.0542<br>(0.1910)     | 4.1972***<br>(0.5691)  | 96     | 0.3776 |

OLS regression without constant. Robust standard errors are in parenthesis.  $\Delta g_{jt}$  4-digit sectoral sales growth;  $\Delta RULC_{jt}$  4-digit sectoral manufacturing relative unit labour cost growth;  $\Delta WorldIncome_t$  world income growth. 2-digit sectoral dummies are included in the “all manufacturing” estimation. \*\*\*  $p < 0.01$ , \*\*  $p < 0.05$ , \*  $p < 0.10$ .

## 6.2. Firm-level evidence

### 6.2.1. The econometric strategies

Let us turn to firm-level data to analyze the drivers of manufacturing employment through a three-step estimation in line with the theoretical framework of Section 3.2. In the first step, firm-level employment

Table 6: Sectoral-level export growth ( $\Delta EXPORT_{jt}$ ) Equation (6).

| CIC | SECTOR                                       | $\Delta RULC_{jt}$      | $\Delta WorldIncome_t$ | # Obs. | R2     |
|-----|--|-------------------------|------------------------|--------|--------|
|     | All manufacturing                            | -0.2861**<br>(0.099 1)  | 1.3538<br>(0.736 9)    | 2494   | 0.1185 |
| 13  | Food from agriculture products               | -0.1733<br>(0.574 8)    | 2.1071<br>(1.379 0)    | 90     | 0.0301 |
| 14  | Food   | -0.6468<br>(0.344 1)    | 3.1172**<br>(0.999 4)  | 112    | 0.1458 |
| 15  | Beverages                                    | -0.9427**<br>(0.350 5)  | 0.6623<br>(1.814 7)    | 72     | 0.0747 |
| 16  | Tobacco                                      | 0.0087<br>(0.317 3)     | 1.7506<br>(2.243 8)    | 18     | 0.0596 |
| 17  | Textile                                      | -1.0004<br>(0.600 6)    | 3.3597***<br>(0.881 2) | 120    | 0.1431 |
| 18  | Textile wearing apparel etc.                 | -0.0854<br>(0.292 8)    | 2.6872***<br>(0.548 9) | 18     | 0.5824 |
| 19  | Leather etc.                                 | -0.0731<br>(0.233 9)    | 2.5289***<br>(0.689 2) | 60     | 0.1782 |
| 20  | Timber, wood, bamboo                         | 0.2777<br>(0.563 1)     | 5.0083***<br>(1.140 1) | 48     | 0.2534 |
| 21  | Furniture                                    | 0.1025<br>(0.577 6)     | 4.7932***<br>(1.292 6) | 30     | 0.3124 |
| 22  | Paper products                               | -0.5685<br>(0.619 8)    | -0.9199<br>(2.670 3)   | 30     | 0.0248 |
| 23  | Printing, reproduction and recording media   | 0.2193<br>(0.519 3)     | 3.3716**<br>(1.132 2)  | 30     | 0.1829 |
| 24  | Articles for culture, education, sports      | -0.5368***<br>(0.114 7) | 3.2427***<br>(0.680 7) | 84     | 0.3335 |
| 25  | Petroleum, coking, nuclear power             | -0.7607<br>(0.595 1)    | 2.4491<br>(1.520 6)    | 18     | 0.2496 |
| 26  | Raw chemical materials and chemical products | 0.2848<br>(0.297 5)     | 4.1778***<br>(0.739 9) | 178    | 0.1362 |
| 27  | Medicines                                    | -0.1460<br>(0.243 3)    | 3.3119***<br>(0.699 1) | 36     | 0.3458 |
| 28  | Chemical fibers                              | -0.3386<br>(0.326 7)    | 3.3711*<br>(1.501 0)   | 42     | 0.1484 |
| 29  | Rubber                                       | -0.8314<br>(0.851 4)    | 2.6221<br>(1.838 0)    | 49     | 0.1148 |
| 30  | Plastics                                     | -0.4792**<br>(0.167 2)  | 3.8852***<br>(0.401 0) | 54     | 0.5501 |
| 31  | Non-metallic mineral products                | 0.3800*<br>(0.158 9)    | 3.3200***<br>(0.830 6) | 176    | 0.0895 |
| 32  | Ferrous metals                               | 0.0872<br>(0.325 9)     | 4.4827**<br>(1.405 9)  | 24     | 0.3353 |
| 33  | Non-ferrous metals                           | 0.1449<br>(0.445 5)     | 0.5339<br>(2.294 5)    | 87     | 0.0038 |
| 34  | Metal products                               | -0.1287<br>(0.195 4)    | 4.7038***<br>(0.500 4) | 108    | 0.4462 |
| 35  | General purpose machinery                    | -0.6804<br>(0.448 2)    | 4.0836***<br>(0.555 5) | 186    | 0.2018 |
| 36  | Special purpose machinery                    | -0.4601<br>(0.308 9)    | 5.1026***<br>(0.900 2) | 247    | 0.1221 |
| 37  | Transport equipment                          | -0.0706<br>(0.563 7)    | 4.8187**<br>(1.649 3)  | 126    | 0.0520 |
| 39  | Electrical machinery                         | -0.0697<br>(0.424 3)    | 4.8119***<br>(0.581 6) | 144    | 0.2286 |
| 40  | Communication equipment, computers etc.      | -1.2105**<br>(0.414 5)  | 7.4075***<br>(0.968 2) | 93     | 0.5180 |
| 41  | Measuring instruments etc.                   | -0.6679**<br>(0.229 3)  | 5.9891***<br>(1.236 4) | 142    | 0.2106 |
| 42  | Artwork and other manufacturing              | 0.3236<br>(0.233 3)     | 2.9500***<br>(0.570 6) | 72     | 0.2794 |

OLS regression without constant. Robust standard errors are in parenthesis.  $\Delta EXPORT_{jt}$  4-digit sectoral exports growth;  $\Delta RULC_{jt}$  4-digit sectoral manufacturing relative unit labour cost growth;  $\Delta WorldIncome_t$  world income growth. 2-digit sectoral dummies are included in the “all manufacturing” estimation. \*\*\*  $p < 0.01$ , \*\*  $p < 0.05$ , \*  $p < 0.10$ .

dynamics is jointly determined by productivity growth and sales growth. In the second step, we estimate the replicator-type dynamics linking firm’s relative competitiveness, the dynamics of the overall market and firm’s sales growth. In the third step, we integrate replicator-type dynamics into the first step, directly linking firm’s relative competitiveness, sectoral sales and productivity dynamics with employment growth

Table 7: Sectoral-level sales growth ( $\Delta g_{jt}$ ) Equation (7).

| ISIC | SECTOR  | $\Delta RULC_{jt}$     | $\Delta WorldIncome_t$ | $\Delta Patent_{jt}$  | # Obs. | R2     |
|------|---|------------------------|------------------------|-----------------------|--------|--------|
|      | All manufacturing   | -0.3251***<br>(0.0949) | 3.1001***<br>(0.2209)  | 0.0018<br>(0.0082)    | 908    | 0.6464 |
| 15   | Food products and beverage  | -0.0383<br>(0.0999)    | 3.7216***<br>(0.2591)  | -0.0110<br>(0.0117)   | 127    | 0.6745 |
| 16   | Tobacco   | 0.2575<br>(0.2453)     | 0.6598<br>(0.8479)     | 0.0113<br>(0.0665)    | 8      | 0.1972 |
| 17   | Textile   | -0.0801<br>(0.1998)    | 3.5598***<br>(0.4102)  | 0.0054<br>(0.0225)    | 56     | 0.6666 |
| 18   | Wearing apparel, dressing and dyeing of fur                       | -0.1416<br>(0.2138)    | 3.1763**<br>(1.0847)   | 0.0872<br>(0.1316)    | 16     | 0.7623 |
| 19   | Tanning and dressing of leather; manuf. of luggage, handbags etc. | 0.0930<br>(0.1513)     | 3.4483***<br>(0.3690)  | 0.0495<br>(0.0304)    | 23     | 0.8839 |
| 20   | Wood and wood products  | 0.1891<br>(0.2843)     | 4.5522***<br>(0.4325)  | -0.0006<br>(0.0128)   | 30     | 0.7958 |
| 21   | Paper and paper products  | -0.0764<br>(0.2028)    | 3.9369***<br>(0.5110)  | 0.0405*<br>(0.0205)   | 16     | 0.9154 |
| 22   | Publishing, printing and reproduction of recorded media           | -0.2566<br>(0.4701)    | 1.4286<br>(1.4820)     | 0.0908<br>(0.1532)    | 24     | 0.1662 |
| 23   | coke, refined petroleum products and nuclear fuel                 | -0.2619*<br>(0.1262)   | 3.5028***<br>(0.5684)  | 0.0623***<br>(0.0181) | 24     | 0.7316 |
| 24   | Chemical and chemical products                                    | -0.1876**<br>(0.0650)  | 3.4560***<br>(0.2722)  | 0.0313<br>(0.0192)    | 72     | 0.7468 |
| 25   | Rubber and plastic products                                       | -0.3250*<br>(0.1618)   | 3.9810***<br>(0.3212)  | 0.0018<br>(0.0159)    | 23     | 0.9173 |
| 26   | Other non-metallic mineral products                               | -0.1509<br>(0.1053)    | 4.2416***<br>(0.2305)  | 0.0194<br>(0.0125)    | 63     | 0.8914 |
| 27   | Basic metals  | -0.3589*<br>(0.1479)   | 4.3760***<br>(0.5277)  | 0.0512<br>(0.0687)    | 32     | 0.8390 |
| 28   | Fabricated metal products   | -0.4095<br>(0.2259)    | 4.5638***<br>(0.4176)  | -0.0152<br>(0.0194)   | 40     | 0.8029 |
| 29   | Machinery and equipment   | -0.6351***<br>(0.1929) | 4.0282***<br>(0.3060)  | -0.0359*<br>(0.0171)  | 118    | 0.6197 |
| 30   | Office, accounting and computing machinery                        | -0.0345<br>(0.1079)    | 4.3684*<br>(1.7949)    | 0.3837<br>(0.3013)    | 8      | 0.8219 |
| 31   | Electrical machinery and apparatus n.e.c.                         | -0.3737**<br>(0.1212)  | 4.6059***<br>(0.3652)  | 0.0314<br>(0.0210)    | 48     | 0.8543 |
| 32   | Radio, tv and communication equipment and apparatus               | -0.4287***<br>(0.0933) | 4.7009***<br>(0.8688)  | 0.0788<br>(0.0898)    | 24     | 0.8815 |
| 33   | Medical, precision and optical instruments, watches and clocks    | -0.3791***<br>(0.0785) | 3.9597***<br>(0.5186)  | 0.0920<br>(0.0778)    | 40     | 0.8413 |
| 34   | Motor vehicles, trailers and semi-trailers                        | -0.2525<br>(0.1361)    | 4.1594***<br>(0.5808)  | 0.0917*<br>(0.0456)   | 24     | 0.8200 |
| 35   | Other transport equipment   | -0.7190<br>(0.3711)    | 3.9348***<br>(0.9903)  | -0.0630<br>(0.0557)   | 44     | 0.4021 |
| 36   | Furniture and others  | 0.1649<br>(0.2021)     | 3.8030***<br>(0.3520)  | -0.0008<br>(0.0204)   | 48     | 0.7276 |

OLS regression without constant.  $\Delta g_{jt}$  4-digit sectoral sales growth;  $\Delta URLC_{jt}$  4-digit sectoral relative unit labour costs growth;  $\Delta WorldIncome_t$  world income growth;  $\Delta Patent_{jt}$  growth of the percentage share of Chinese patents in the foreign patent granted by the USPTO. 2-digit sectoral dummies are included in the “all manufacturing” estimation. Robust standard errors are in parenthesis. \*\*\*  $p < 0.01$ , \*\*  $p < 0.05$ , \*  $p < 0.10$ .

(adding also product innovation and investment). Finally, we estimate the dynamic version of Kaldor-Verdoorn Law. We resort to an autoregressive distributed lag model, that enables us to estimate both the short-run and the long-run effects. We estimate the models for each 4-digit sector in order to ideally identify the level of competition, where replicator dynamics operates. At least as important, this regression framework also allows to control both for unobserved heterogeneity and for endogeneity of all our main regressors through a “system GMM” estimation (Blundell and Bond, 1998).<sup>20</sup>

<sup>20</sup>The dynamic panel estimations were estimated using the Stata command xtabond2, written by David Roodman (Roodman, 2009). Blundell and Bond (1998) have experimented via Monte Carlo studies that this estimator is preferable to GMM difference estimator.

Table 8: Sectoral-level export growth ( $\Delta EXPORT_{jt}$ ) Equation (7).

| ISIC | SECTOR  | $\Delta RULC_{jt}$      | $\Delta WorldIncome_t$  | $\Delta Patent_{jt}$   | # Obs. | R2     |
|------|---|-------------------------|-------------------------|------------------------|--------|--------|
|      | All manufacturing   | -0.4294<br>(0.359 2)    | 1.6378**<br>(0.623 9)   | 0.0319<br>(0.028 5)    | 677    | 0.2654 |
| 15   | Food products and beverage  | -0.5383*<br>(0.269 5)   | 1.3957*<br>(0.688 3)    | 0.0361<br>(0.027 2)    | 94     | 0.1327 |
| 16   | Tobacco   | 0.4333*<br>(0.220 2)    | 0.5359<br>(1.203 7)     | 0.0057<br>(0.100 7)    | 6      | 0.4299 |
| 17   | Textile   | -0.0434<br>(0.184 1)    | 1.9522***<br>(0.430 9)  | 0.0066<br>(0.029 5)    | 42     | 0.4228 |
| 18   | Wearing apparel, dressing and dyeing of fur                       | -0.3001<br>(0.254 9)    | 0.0133<br>(1.831 9)     | 0.3537<br>(0.190 8)    | 12     | 0.6359 |
| 19   | Tanning and dressing of leather; manuf. of luggage, handbags etc. | -0.2040<br>(0.259 1)    | 2.1342***<br>(0.498 1)  | 0.0865<br>(0.054 2)    | 17     | 0.7077 |
| 20   | Wood and wood products  | 0.0537<br>(0.667 0)     | 3.7377***<br>(0.971 6)  | 0.0470<br>(0.047 5)    | 22     | 0.4779 |
| 21   | Paper and paper products  | -0.5528<br>(0.877 7)    | 4.0459*<br>(1.824 9)    | 0.0067<br>(0.082 3)    | 12     | 0.5360 |
| 22   | Publishing, printing and reproduction of recorded media           | 0.6047<br>(0.826 3)     | 1.4024<br>(1.986 7)     | 0.1534<br>(0.151 1)    | 18     | 0.1408 |
| 23   | coke, refined petroleum products and nuclear fuel                 | -0.6215<br>(0.586 7)    | 1.8061<br>(1.613 6)     | 0.0706*<br>(0.028 4)   | 18     | 0.3310 |
| 24   | Chemical and chemical products                                    | -0.4498**<br>(0.174 5)  | 3.4953***<br>(0.457 7)  | 0.0285<br>(0.018 2)    | 54     | 0.6247 |
| 25   | Rubber and plastic products                                       | -0.5963<br>(0.352 0)    | 3.9078***<br>(0.664 5)  | -0.0211<br>(0.030 5)   | 17     | 0.8294 |
| 26   | Other non-metallic mineral products                               | -0.3627<br>(0.444 8)    | 2.9418***<br>(0.717 4)  | -0.0200<br>(0.038 9)   | 47     | 0.1906 |
| 27   | Basic metals  | -0.6460<br>(0.349 7)    | 3.6810***<br>(0.843 6)  | 0.0795<br>(0.145 8)    | 24     | 0.5456 |
| 28   | Fabricated metal products   | -0.4619<br>(0.517 3)    | 3.9784***<br>(0.725 6)  | -0.0219<br>(0.032 6)   | 30     | 0.5330 |
| 29   | Machinery and equipment   | -1.4630<br>(0.891 3)    | 3.9738***<br>(0.657 5)  | 0.0144<br>(0.043 0)    | 88     | 0.4195 |
| 30   | Office, accounting and computing machinery                        | -0.0533<br>(0.326 0)    | 5.2227*<br>(2.137 7)    | 0.8330**<br>(0.305 0)  | 6      | 0.9224 |
| 31   | Electrical machinery and apparatus n.e.c.                         | -0.7022***<br>(0.195 2) | 4.6842***<br>(0.342 8)  | -0.0109<br>(0.025 1)   | 36     | 0.7877 |
| 32   | Radio, tv and communication equipment and apparatus               | -0.3681**<br>(0.130 5)  | 3.8336***<br>(0.993 6)  | 0.2773***<br>(0.083 4) | 18     | 0.9029 |
| 33   | Medical, precision and optical instruments, watches and clocks    | -0.2136<br>(0.340 6)    | 1.3197<br>(2.257 7)     | 0.4252*<br>(0.212 9)   | 30     | 0.4150 |
| 34   | Motor vehicles, trailers and semi-trailers                        | 0.1333<br>(0.400 4)     | 5.8306***<br>(1.250 0)  | 0.0386<br>(0.038 8)    | 18     | 0.6362 |
| 35   | Other transport equipment   | 0.1404<br>(1.900 9)     | 10.0552***<br>(3.034 3) | 0.2117<br>(0.357 9)    | 32     | 0.1666 |
| 36   | Furniture and others  | -0.1843<br>(0.226 0)    | 3.4836***<br>(0.486 4)  | -0.0068<br>(0.029 4)   | 36     | 0.6323 |

OLS regression without constant.  $\Delta EXPORT_{jt}$  4-digit sectoral exports growth;  $\Delta URLC_{jt}$  4-digit sectoral relative unit labour costs growth;  $\Delta WorldIncome_t$  world income growth;  $\Delta Patent_{jt}$  growth of the percentage share of Chinese patents in the foreign patent granted by the USPTO. 2-digit sectoral dummies are included in the “all manufacturing” estimation. Robust standard errors are in parenthesis. \*\*\*  $p < 0.01$ , \*\*  $p < 0.05$ , \*  $p < 0.10$ .

### 6.2.2. Step 1: employment dynamics

In the first step let us simply account for firm-level employment dynamics ( $\Delta n_{i,t}$ ) as the joint outcome of productivity growth ( $\Delta \pi_{i,t}$ ) and sales growth ( $\Delta g_{i,t}$ ). Employment growth rates varies path-dependently with contemporaneous and past productivity and sales dynamics which reads:

$$\Delta n_{i,t} = \sum_{k=1}^K \eta_k \Delta n_{i,t-k} + \sum_{l=0}^L \alpha_l \Delta \pi_{i,t-l} + \sum_{l=0}^L \beta_l \Delta g_{i,t-l} + \rho CONTROL_{i,t-1} + \epsilon_{i,t} \quad (11)$$

where control variables involve (lagged) firm size (in terms of employment) and age.<sup>21</sup> The long-run coefficients are calculated from the short-run ones according to formula

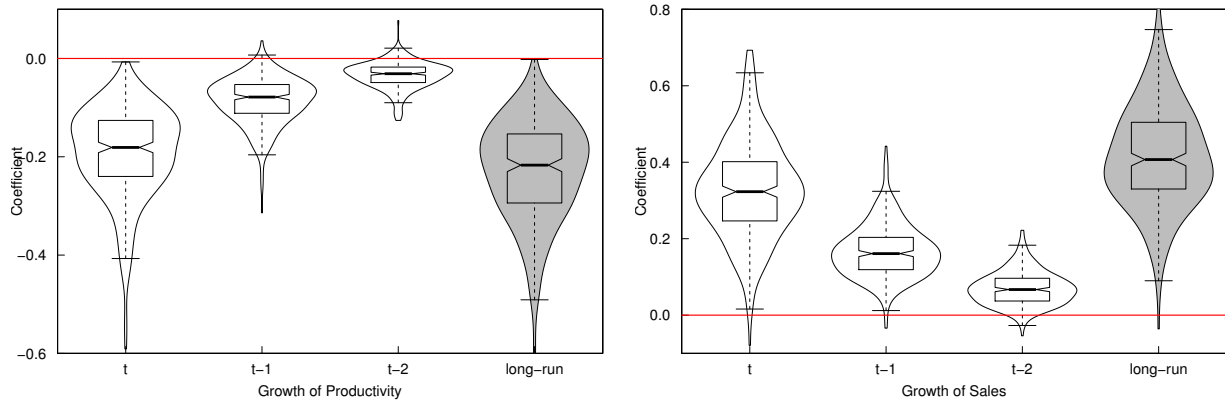
$$x_{long-run} = \frac{\sum_{l=0}^L X_l}{1 - \sum_{k=1}^K \eta_k} \quad (12)$$

where  $x \in \alpha, \beta$ .

In order to decide how many lags in the dependent variable to be included into the model, we test the autoregressive structure for employment growth for each 4-digit sector. Lags of employment growth of an order higher than two are not significant.<sup>22</sup> Hence, we choose  $K = 2$  and  $L = 2$  after some experiments.

We use system GMM to estimate Equation (11) for each 4-digit sector.<sup>23</sup>

Figure 4: Employment growth model: system GMM results of Equation (11).



Distributions of the estimated coefficients and the long-run effects of labour productivity growth and sales growth, across 284 4-digit sectors. The shaded-violins denote the long-run effects. Only 4-digit sectors with a number of firms greater than 160.

<sup>21</sup>Here we do not control for year dummies, because we focus on the *absolute* employment growth, productivity growth and sales growth. But we also test the model including year dummies as a robustness check. The results are very similar.

<sup>22</sup>The empirical evidences, in the literature, of the autocorrelation structure of growth rates are mixed: Coad and Hölzl (2009) shows negative autocorrelation to the order 2 in terms of employment growth, which is very similar to the finding here.

<sup>23</sup>The algorithm for choosing instruments is as follows. First, we treat lagged employment growth, productivity growth and sales growth as endogenous variables. Their instruments are set from lag 2 to lag 5. We check the p values of AR(2) test and Hansen test after running the system GMM. Second, if either of the two tests are rejected (AR(2)  $p < 0.1$  or Hansen  $p < 0.45$ ), we adopt further lags as instruments: lag 3~lag 6 for lag employment growth, lag 2~lag 5 for other variables. Then, we check again the p values of AR(3) and Hansen tests. Third, if either of these two tests are rejected at the second step, we instrument all independent variables using lag3~lag6.

Table 9: Summary statistics (median) of the distributions in Figure 4.

|                                   | $t$       | $t - 1$   | $t - 2$   | Long-run  |
|-----------------------------------|-----------|-----------|-----------|-----------|
| <i>Model without year dummies</i> |           |           |           |           |
| productivity growth               | -0.181*** | -0.079*** | -0.031*** | -0.217*** |
| sales growth                      | 0.323***  | 0.161***  | 0.067***  | 0.407***  |
| <i>Model with year dummies</i>    |           |           |           |           |
| productivity growth               | -0.181*** | -0.079*** | -0.029*** | -0.213*** |
| sales growth                      | 0.321***  | 0.162***  | 0.067***  | 0.402***  |

Median of the distribution of estimates based on the baseline model (the upper panel) and the model including year dummies (at the bottom). Wilcoxon signed-rank test for zero median. Significant at \*\*\*  $p < 0.01$ , \*\*  $p < 0.05$ , \*  $p < 0.10$ .

Figure 4 shows the distributions of system GMM estimates and the corresponding long-run effects over 4-digit sectors. Table 9 shows the median of the distributions of coefficient estimates.<sup>24</sup> Contemporaneous and lagged productivity growth display a remarkable labour-displacing effect. Conversely, contemporaneous and lagged sales growth show significant contributions to employment growth.

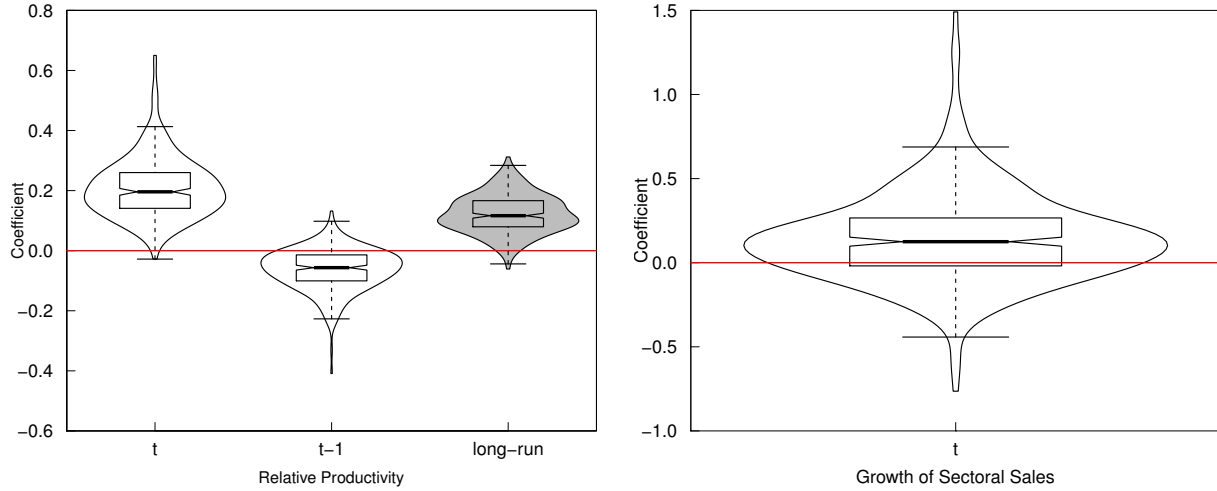
### 6.2.3. Step 2: replicator dynamics

Firm's sales can be obviously written as the product of the overall market size  $M_t$  and firm's market share  $S_{i,t}$ . Firm's sales growth is the log difference of sales of two consecutive years  $\Delta g_{i,t} = \ln(S_{i,t}M_t) - \ln(S_{i,t-1}M_{t-1})$ . Hence,  $\Delta g_{i,t} = \Delta s_{i,t} + \Delta m_t$ . The growth rate of sales of firm  $i$  at time  $t$  is clearly the sum of the growth rates of its market share and the growth rate of the overall market size. Here, we measure market size at 4-digit sectoral level. In turn the dynamics of a firm's market share ( $\Delta s_{i,t}$ ) can be interpreted using a replicator type process as driven by the firm's relative competitiveness. Therefore,

$$\Delta g_{i,t} = \sum_{k=1}^K \eta_k \Delta g_{i,t-k} + \sum_{l=0}^L \alpha_l \tilde{X}_{i,t-l} + \gamma \Delta m_t + \rho \text{CONTROL}_{i,t-1} + \epsilon_{i,t} \quad (13)$$

<sup>24</sup>As a robustness check, we estimate the same model including year dummies. The results are very similar. Distributions of GMM estimates are available upon request. The median values of the distributions are shown in the bottom panel of Table 9.

Figure 5: Sales growth model: system GMM results of Equation (13) - productivity.



Distributions of the estimated coefficients and the long-run effects of (relative) labour productivity *level* and sectoral sales growth, across 284 4-digit sectors. The shaded-violins denote the long-run effects. Only 4-digit sectors with a number of firms greater than 160.

where  $\Delta g_{i,t}$  absolute sales growth of firm  $i$  at time  $t$ ,  $\tilde{X}_{i,t}$  is relative competitiveness which shall be defined below,  $\Delta m_t$  is the growth of market size. We control for firm's (lagged) size and age.<sup>25</sup>

In order to decide how many lags of dependent variable to be included into the model, we test the autoregressive structure for sales growth for each 4-digit sector. Lags on sales growth of an order higher than two are not significant.<sup>26</sup>

We use two measures to proxy firm's relative competitiveness: relative productivity level (i.e. a broader proxy for firm's technological and organizational advantages) and relative productivity growth rate (i.e. process innovation).

First, let's estimate Equation (13) using *relative productivity level* as a proxy for relative competitiveness.<sup>27</sup> Here, we choose  $K = 2$  and  $L = 1$  after some experiments. We use system GMM for each 4-digit

<sup>25</sup>Here, in our baseline estimation, we do not control for year dummies, because we include the growth of market size of 4-digit sector which is perfectly collinear with year dummies. However, in the robustness check, the estimates of the models with year dummies are very similar to our baseline model.

<sup>26</sup>Notice that, a comparison of the estimation methods for the autoregressive structure of sales growth is available upon request.

<sup>27</sup>In line with Bottazzi et al. (2010) and Dosi et al. (2015).



Table 10: Summary statistics (median) of the distributions in Figure 5.

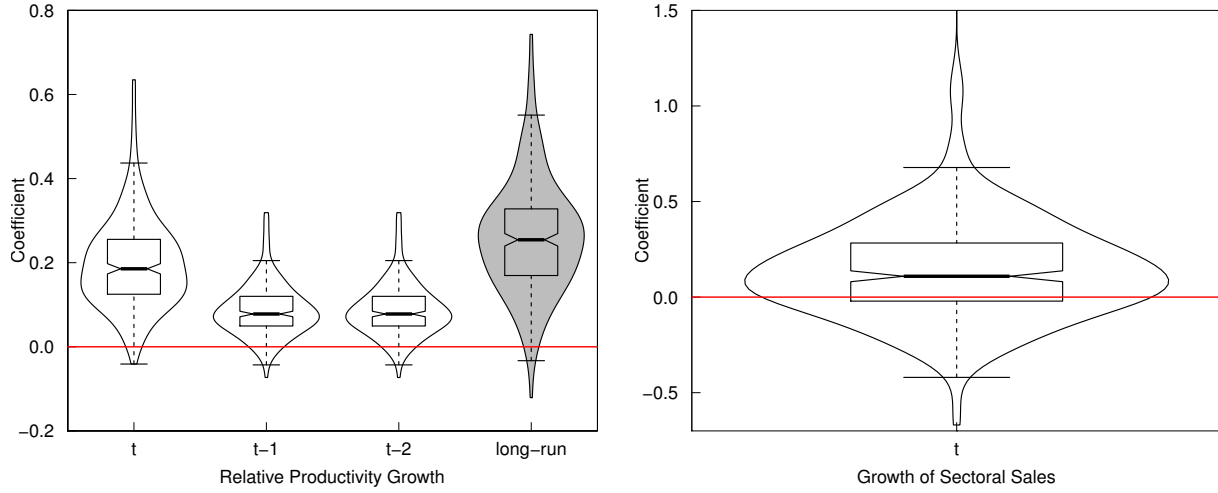
|                                   | $t$      | $t - 1$   | Long-run |
|-----------------------------------|----------|-----------|----------|
| <i>Model without year dummies</i> |          |           |          |
| relative productivity level       | 0.196*** | -0.057*** | 0.117*** |
| sectoral sales growth             | 0.125*** |           |          |
| <i>Model with year dummies</i>    |          |           |          |
| relative productivity level       | 0.196*** | -0.060*** | 0.114*** |
| sectoral sales growth             | dropped  |           |          |

Median of the distribution of estimates based on the baseline model (the upper panel) and the model including year dummies (at the bottom). Wilcoxon signed-rank test for zero median. Significant at \*\*\*  $p < 0.01$ , \*\*  $p < 0.05$ , \*  $p < 0.10$ .

sector. Figure 5 shows the distribution of the estimates. Table 10 shows the median of the distribution of coefficient estimates both for the baseline model and for the robustness check. The contemporaneous productivity level displays significant positive effect on sales growth, however, the lagged one shows some negative effect (indeed as in (Bottazzi, Dosi, Jacoby, Secchi, and Tamagni, 2010) and (Dosi, Moschella, Pugliese, and Tamagni, 2015)). The long-run effect of relative productivity level on sales growth is positive and significant. The growth rate of the overall market reveals a mild positive effect on firm’s sales growth [the median of the “Growth of Sectoral Sales” distribution is significantly different from zero].

Second, we use *relative productivity growth* as a proxy for relative competitiveness. Here, we choose  $K = 2$  and  $L = 2$  after some experiments, and, again, system GMM to estimate Equation (13) for each 4-digit sector. Figure 6 shows the distribution of estimates across 284 4-digit sectors, and Table 11 the median of the distributions. The positive effect of relative productivity growth on sales growth - in tune with previous studies - is very significant both in the short-run and in the long-run. The effect of overall market size growth on firm-level sales growth seems significant.

Figure 6: Sales growth model: system GMM results of Equation (13) - productivity growth.



Distributions of the estimated coefficients of (relative) labour productivity *growth* (left) and sectoral sales growth (right), across 284 4-digit sectors. The shaded-violins denote the long-run effects. Only 4-digit sectors with a number of firms greater than 160.

Table 11: Summary statistics (median) of the distributions in Figure 6.

|                                   | $t$      | $t - 1$  | $t - 2$  | Long-run |
|-----------------------------------|----------|----------|----------|----------|
| <i>Model without year dummies</i> |          |          |          |          |
| relative productivity growth      | 0.186*** | 0.078*** | 0.031*** | 0.255*** |
| sectoral sales growth             | 0.109*** |          |          |          |
| <i>Model with year dummies</i>    |          |          |          |          |
| relative productivity growth      | 0.198*** | 0.076*** | 0.027*** | 0.258*** |
| sectoral sales growth             | dropped  |          |          |          |

Median of the distribution of estimates based on the baseline model (the upper panel) and the model including year dummies (at the bottom). Wilcoxon signed-rank test for zero median. Significant at \*\*\*  $p < 0.01$ , \*\*  $p < 0.05$ , \*  $p < 0.10$ .

### 6.2.4. Step 3: integrate replicator dynamics into employment dynamics model

Finally, we plug the model of step 2 into step 1 and add other variables (product innovation and investment intensity) to estimate directly the effect of firm's relative competitiveness, product innovation and investment intensity on employment growth

$$\begin{aligned} \Delta n_{i,t} = & \sum_{k=1}^K \eta_k \Delta n_{i,t-k} + \sum_{l=0}^L \alpha_l \tilde{X}_{i,t-l} + \sum_{l=0}^L \gamma_l \text{NEWPROD}_{i,t-l} + \sum_{l=0}^L \theta_l I_{i,t-l} \\ & + \gamma \Delta m_t + \zeta \Delta \Pi_{t-1} + \rho \text{CONTROL}_{i,t-1} + d_t + \epsilon_{i,t} \end{aligned} \quad (14)$$

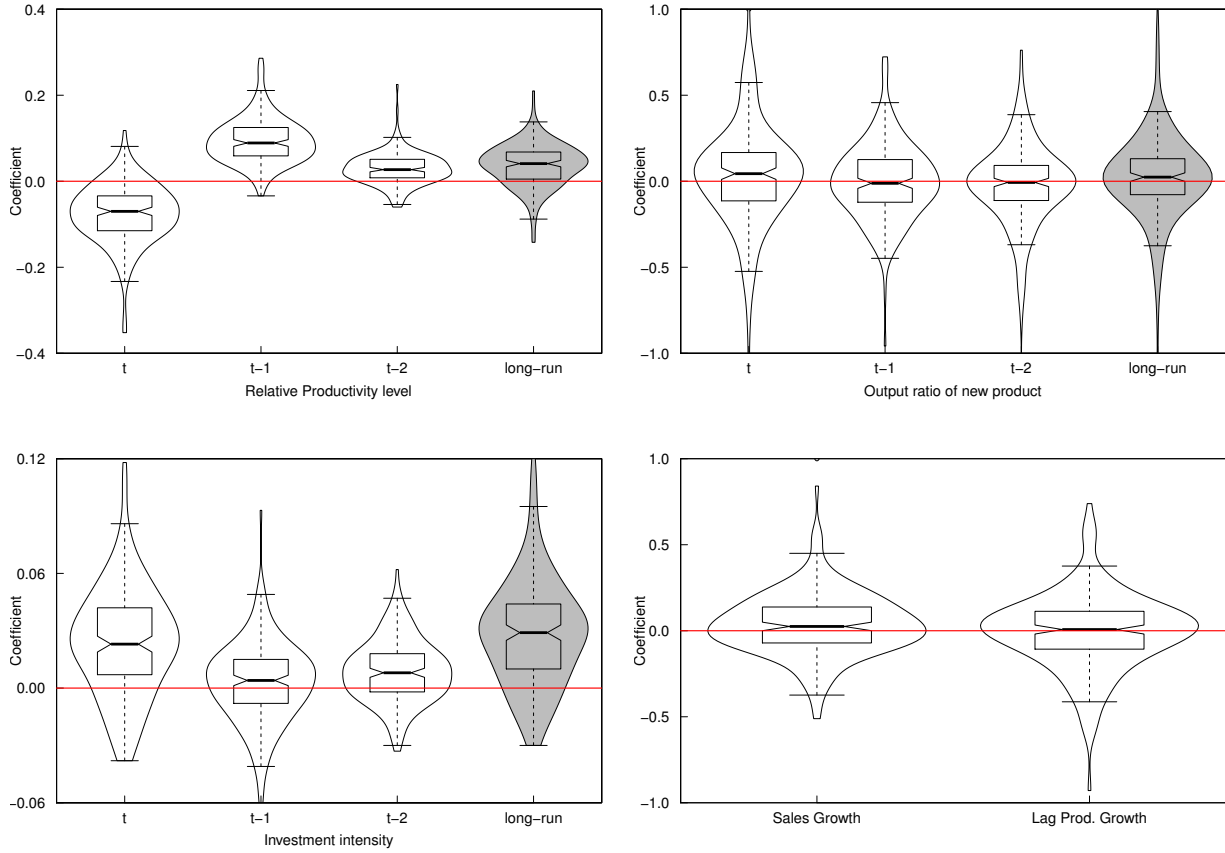
where  $\tilde{X}_{i,t}$  is *relative competitiveness*, either in terms of relative productivity level or relative productivity growth. We also include sectoral productivity growth  $\Delta \Pi_{t-1}$  and sectoral sales growth  $\Delta m_t$  to control for sector-wide dynamics in process technology and market size.

First, let us consider relative productivity levels as proxy for competitiveness (see Figure 7 and Table 12). Firm's *relative productivity levels* display significant contemporaneous negative effect on employment growth. However, the lagged and long-run effects are significantly positive. Product innovation does not show significant effect on employment growth (but recall the caveats above). Investment intensity seems display a significant positive effect on employment growth. Sectoral sales growth shows a mild positive effect on employment growth while sectoral productivity growth does not display any role.

Second, let us use relative productivity growth as proxy for competitiveness (results see Figure 8 and Table 13). Such a variable has negative and significant effect on employment growth both in the short-run and in the long-run. Product innovation displays very mild positive effect in the short-run. Investment intensity has significant positive effect on employment growth. Sectoral sales growth display very mild positive effect on employment growth while sectoral productivity growth does not show any effect at all.

According to our matching results between our firm-level dataset and firm's *patenting* activities in the USPTO, 99% of Chinese patents granted in the USPTO is from the manufacturing of communication equipments computers etc. (CIC 40) during the period 1998-2007. We further investigate the effect of patenting activities on firm's employment growth for each 4-digit sector within the broad CIC 40 sector. (There are 16 4-digit sectors in CIC 40.) We create a time invariant dummy variable distinguishing

Figure 7: Employment growth model: system GMM results of Equation (14) - productivity level.



Distributions of the estimated coefficients and the long-run effects of (relative) labour productivity *level* (top left), new product ratio (top right), investment intensity (bottom left), sectoral sales growth and productivity growth (bottom right), across 177 4-digit sectors. The shaded-violins denote the long-run effects. Only 4-digit sectors with a number of firms greater than 160.

patenting firms from the others, that the dummy equals to one if a firm has been granted a patent for at least one year. We re-estimate Equation (14) including also the patenting dummies. The patenting one displays significant positive effect on firm's employment growth only in two 4-digit sectors, which are the manufacturing of communication exchange equipment (CIC 4012) and semiconductor discrete devices (CIC 4052).<sup>28</sup>

<sup>28</sup>Results are available upon request.

Table 12: Summary statistics (median) of the distribution in Figure 7.

|                              | $t$       | $t - 1$  | $t - 2$  | Long-run |
|------------------------------|-----------|----------|----------|----------|
| <i>without year dummies</i>  |           |          |          |          |
| relative productivity level  | -0.070*** | 0.089*** | 0.027*** | 0.041*** |
| new product                  | 0.044**   | -0.012   | -0.007   | 0.024*   |
| investment intensity         | 0.023***  | 0.004**  | 0.008*** | 0.029*** |
| sectoral sales growth        | 0.025***  |          |          |          |
| sectoral productivity growth | 0.007     |          |          |          |
| <i>with year dummies</i>     |           |          |          |          |
| relative productivity level  | -0.076*** | 0.090*** | 0.027*** | 0.041*** |
| new product                  | 0.058**   | -0.018   | -0.007   | 0.031**  |
| investment intensity         | 0.021***  | 0.005    | 0.007*** | 0.026*** |
| sectoral sales growth        | dropped   |          |          |          |
| sectoral productivity growth | dropped   |          |          |          |

Median of the distribution of estimates based on baseline model (the upper panel) and the model including year dummies (at the bottom). Wilcoxon signed-rank test for zero median. Significant at \*\*\*  $p < 0.01$ , \*\*  $p < 0.05$ , \*  $p < 0.10$ .

Table 13: Summary statistics (median) of the distribution in Figure 8.

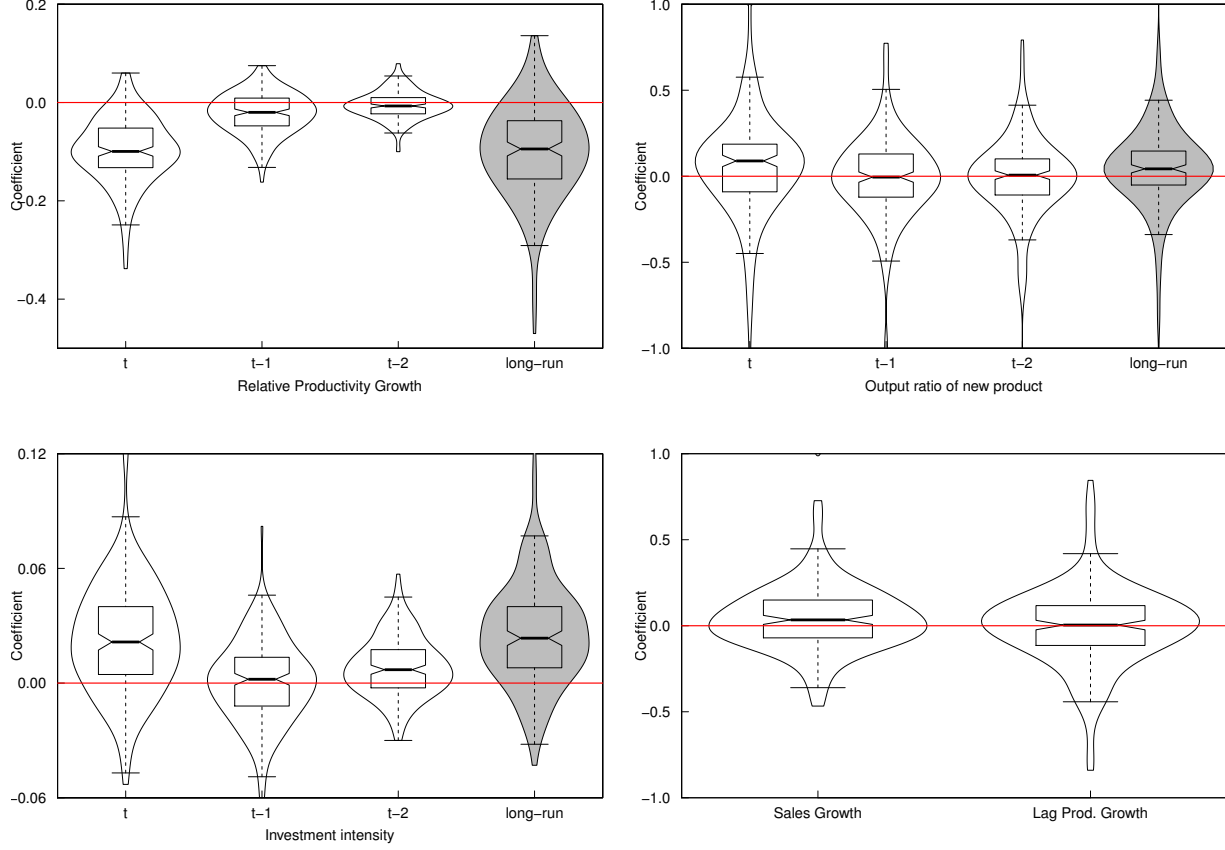
|                              | $t$       | $t - 1$   | $t - 2$   | Long-run  |
|------------------------------|-----------|-----------|-----------|-----------|
| <i>without year dummies</i>  |           |           |           |           |
| relative productivity growth | -0.100*** | -0.020*** | -0.007*** | -0.095*** |
| new product                  | 0.089***  | -0.005    | 0.007     | 0.043***  |
| investment intensity         | 0.022***  | 0.002     | 0.007***  | 0.024***  |
| sectoral sales growth        | 0.034***  |           |           |           |
| sectoral productivity growth | 0.004     |           |           |           |
| <i>with year dummies</i>     |           |           |           |           |
| relative productivity growth | -0.100*** | -0.019*** | -0.006*** | -0.093*** |
| new product                  | 0.099***  | -0.017    | -0.001    | 0.056***  |
| investment intensity         | 0.020***  | 0.001     | 0.007***  | 0.022***  |
| sectoral sales growth        | dropped   |           |           |           |
| sectoral productivity growth | dropped   |           |           |           |

Median of the distribution of estimates based on the baseline model (the upper panel) and the model including year dummies (at the bottom). Wilcoxon signed-rank test for zero median. Significant at \*\*\*  $p < 0.01$ , \*\*  $p < 0.05$ , \*  $p < 0.10$ .

### 6.2.5. Verdoorn-Kaldor Law: increasing returns from increasing absolute competitiveness

We have shown a very significant contribution of sales growth to firm-level employment growth for narrowly defined sectors. Here, let us consider the reverse relation and estimate the Verdoorn-Kaldor coefficients,

Figure 8: Employment growth: system GMM results of Equation (14) - productivity growth.



Distributions of the estimated coefficients and the long-run effects of (relative) labour productivity *growth* (top left), new product ratio (top right), investment intensity (bottom left), sectoral sales growth and productivity growth (bottom right), across 177 4-digit sectors. The shaded-violins denote the long-run effects. Only 4-digit sectors with a number of firms greater than 160.

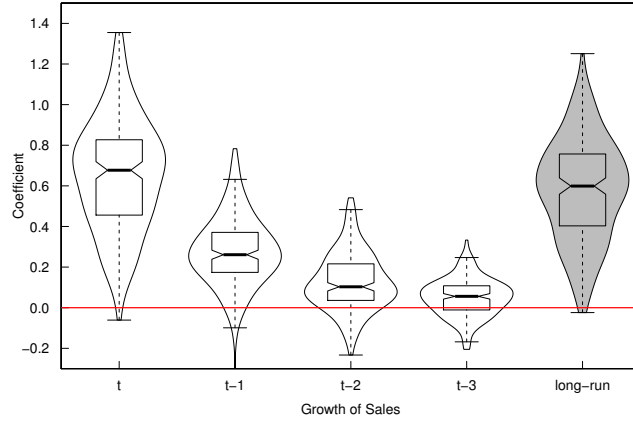
that is the effect of sales growth on productivity growth due to increasing returns:

$$\Delta\pi_{i,t} = \sum_{k=1}^K \eta_k \Delta\pi_{i,t-k} + \sum_{l=0}^L \beta_l \Delta g_{i,t-l} + \rho CONTROL_{i,t-1} + d_t + \epsilon_{i,t} \quad (15)$$

where control variables involve (lagged) firm size (in terms of employment) and age.<sup>29</sup> Here, we take  $K = 3$  and  $L = 3$ . Three lags of productivity growth are included in the model to obtain consistent estimates, while the controlled lagged dependent variables display significant negative effects. Sales growth contributes

<sup>29</sup>We do not include year dummies in order to address the association between *absolute* growth of sales and *absolute* growth of productivity. As a robustness check, the estimates for models with year dummies are shown at the bottom panel of Table 14.

Figure 9: Dynamic Verdoorn-Kaldor Law: system GMM results of Equation (15).



Distributions of the coefficients and the long-run effects of growth rates of sales across 193 4-digit sectors. The shaded-violins denote the distribution of long-run effects. Only 4-digit sectors with a number of firms greater than 160.

Table 14: Summary statistics (median) of the distribution in Figure 9.

|                             | $t$      | $t - 1$  | $t - 2$  | $t - 3$  | Long-run |
|-----------------------------|----------|----------|----------|----------|----------|
| <i>without year dummies</i> |          |          |          |          |          |
| sales growth                | 0.677*** | 0.261*** | 0.103*** | 0.056*** | 0.599*** |
| <i>with year dummies</i>    |          |          |          |          |          |
| sales growth                | 0.677*** | 0.284*** | 0.126*** | 0.054*** | 0.621*** |

Median of the distribution of estimates based on the baseline model (the upper panel) and the model including year dummies (at the bottom). Wilcoxon signed-rank test for zero median. Significant at \*\*\*  $p < 0.01$ , \*\*  $p < 0.05$ , \*  $p < 0.10$ .

significantly to productivity growth both in the short and long run (the distribution of coefficient estimates are shown in Figure 9 and the median values are shown in Table 14). To summarize, the result shows very significant increasing returns just mitigated by some regression-to-the-mean.

## 7. Conclusions

This paper contributes to the analysis of employment dynamics both at the sectoral level and at the firm-level for Chinese manufacturing during the period of a striking economic boom.

First, employment dynamics at the sectoral level derives from the joint outcome of the dynamics of labour productivity growth, as a measure of technological progress under conditions of increasing returns, on the one hand, and absolute competitiveness in the market, proxied by sales growth and exports growth, on the other hand. The results reveal a powerful labour-displacement effect of productivity growth and the significant contribution of sales growth and exports on employment. Together, Chinese sectoral absolute competitiveness is primarily associated with specialization characterized by high elasticities to world income growth. In turn such specialization patterns have been shaped by long-term industrial policies (Dahlman, 2009) and are rooted in profound processes of catching-up, imitation, ‘creative adaptation’ and organizational innovation (more in Yu, Dosi, Lei, and Nuvolari, 2015 and Yu, Dosi, Grazzi, and Lei, 2017.)

Second, we consider that employment dynamics at the firm level is jointly affected by (relative) productivity level/growth, product innovation, investment intensities, and sectoral sales and productivity dynamics. We find that relative productivity levels (i.e. a higher relative competitiveness) contributes to employment growth in the long-run, while process innovation (proxied by productivity *growth*) displays significant labour-displacement effect. Firm’s investment positively contributes to employment growth. Moreover, we emphasize the two-sided role of firm’s sales growth. It contributes directly to employment growth, on the one hand, but it drives also productivity growth (through increasing returns) thus moderating its labour-creating effect.

Third, the insignificant role of innovativeness (proxied by product innovation and patenting activities) suggests that in the period covered by our data China had not yet reached the technological frontier in most sectors. It is a condition, we conjecture, which has been rapidly changing thereafter.

## References

- Benavente, J. M. and R. Lauterbach (2008). Technological innovation and employment: complements or substitutes? *The European Journal of Development Research* 20(2), 318–329.



- Blundell, R. and S. Bond (1998). Initial conditions and moment restrictions in dynamic panel data models. *Journal of econometrics* 87(1), 115–143.
- Bogliacino, F., M. Lucchese, L. Nascia, and M. Pianta (2017). Modeling the virtuous circle of innovation. A test on Italian firms. *Industrial and Corporate Change* 26(3), 467–484.
- Bogliacino, F. and M. Pianta (2010). Innovation and employment: a reinvestigation using revised Pavitt classes. *Research Policy* 39(6), 799–809.
- Bogliacino, F., M. Piva, and M. Vivarelli (2012). R&D and employment: an application of the LSDVC estimator using European microdata. *Economics Letters* 116(1), 56–59.
- Bogliacino, F. and M. Vivarelli (2012). The job creation effect of R&D expenditure. *Australian Economic Papers* 51(2), 96–113.
- Bottazzi, G., G. Dosi, N. Jacoby, A. Secchi, and F. Tamagni (2010, December). Corporate performances and market selection: some comparative evidence. *Industrial and Corporate Change* 19(6), 1953–1996.
- Brandt, L., J. Van Biesebroeck, and Y. Zhang (2012). Creative accounting or creative destruction? Firm-level productivity growth in Chinese manufacturing. *Journal of Development Economics* 97(2), 339–351.
- Cai, F. and M. Wang (2010). Growth and structural changes in employment in transition China. *Journal of Comparative Economics* 38, 71–81.
- Calvino, F. and M. E. Virgillito (2017). The innovation-employment nexus: a critical survey of theory and empirics. *Journal of Economic Surveys* 10.1111/joes.12190.
- Cimoli, M., G. Dosi, and J. Stiglitz (Eds.) (2009). *Industrial policy and development: the political economy of capabilities accumulation*. Oxford, Oxford University Press.
- Ciriaci, D., P. Moncada-Paternò-Castello, and P. Voigt (2015). Innovation and job creation: a sustainable relation? *Eurasian Business Review*, 1–25.
- Coad, A. and W. Hölzl (2009). On the autocorrelation of growth rates. *Journal of Industry, Competition and Trade* 9(2), 139–166.

- Coad, A. and R. Rao (2011). The firm-level employment effects of innovations in high-tech US manufacturing industries. *Journal of Evolutionary Economics* 21(2), 255–283.
- Crespi, G. and E. Tacsir (2011). Effects of innovation on employment in Latin America. In *Science and Innovation Policy, 2011 Atlanta Conference on*, pp. 1–11. IEEE.
- Dahlman, C. J. (2009). Growth and development in China and India: the role of industrial and innovation policy in rapid catch-up. In M. Cimoli, G. Dosi, and J. Stiglitz (Eds.), *Industrial policy and development: the political economy of capabilities accumulation*. Oxford, Oxford University Press.
- Davis, S. J. and J. Haltiwanger (1990). Gross job creation and destruction: microeconomic evidence and macroeconomic implications. In *NBER Macroeconomics Annual 1990, Volume 5*, pp. 123–186. MIT Press.
- Davis, S. J., J. C. Haltiwanger, S. Schuh, et al. (1998). Job creation and destruction. *MIT Press Books 1*.
- Dong, X.-y. and L. C. Xu (2009). Labor restructuring in China: toward a functioning labor market. *Journal of Comparative Economics* 37(2), 287–305.
- Dosi, G. (1982). Technological paradigms and technological trajectories: a suggested interpretation of the determinants and directions of technical change. *Research policy* 11(3), 147–162.
- Dosi, G. (1984). Technology and conditions of macroeconomic development. In C. Freeman (Ed.), *Design, innovation and long cycles in economic development*. London: Design Research Publications.
- Dosi, G. and M. Grazzi (2006). Technologies as problem-solving procedures and technologies as input–output relations: some perspectives on the theory of production. *Industrial and Corporate Change* 15(1), 173–202.
- Dosi, G., M. Grazzi, L. Marengo, and S. Settepanella (2016). Production theory: accounting for firm heterogeneity and technical change. *The Journal of Industrial Economics* 64(4), 875–907.
- Dosi, G., M. Grazzi, and D. Moschella (2015). Technology and costs in international competitiveness: from countries and sectors to firms. *Research Policy* 44(10), 1795–1814.
- Dosi, G., O. Marsili, L. Orsenigo, and R. Salvatore (1995). Learning, market selection and the evolution of industrial structures. *Small Business Economics* 7(6), 411–436.

- Dosi, G., D. Moschella, E. Pugliese, and F. Tamagni (2015). Productivity, market selection, and corporate growth: comparative evidence across US and Europe. *Small Business Economics* 45, 643–672.
- Dosi, G. and R. R. Nelson (2010). Technical change and industrial dynamics as evolutionary processes. In B. H. Hall and N. Rosenberg (Eds.), *Handbook of the Economics of Innovation*, Volume 1, Chapter 4, pp. 51–127. Amsterdam: Elsevier.
- Dosi, G., K. Pavitt, and L. Soete (1990). The economics of technical change and international trade. *LEM Book Series*.
- Evangelista, R. and A. Vezzani (2012). The impact of technological and organizational innovations on employment in European firms. *Industrial and Corporate Change* 21(4), 871–899.
- Freeman, C., J. Clark, and L. Soete (1982). *Unemployment and technical innovation: a study of long waves and economic development*. London: Printer.
- Freeman, C. and L. Soete (1994). *Work for All or Mass Unemployment? Computerised Technical Change into the Twenty-first Century*. London and New York: Printer.
- Fu, X. and V. N. Balasubramanyam (2005). Exports, foreign direct investment and employment: the case of China. *The World Economy* 28(4), 607–625.
- Fu, X. and Y. Gong (2011). Indigenous and foreign innovation efforts and drivers of technological upgrading: evidence from China. *World development* 39(7), 1213–1225.
- Greenan, N. and D. Guellec (2000). Technological innovation and employment reallocation. *Labour* 14(4), 547–590.
- Greenhalgh, C., M. Longland, and D. Bosworth (2001). Technological activity and employment in a panel of UK firms. *Scottish Journal of Political Economy* 48(3), 260–282.
- Hall, B. H., F. Lotti, and J. Mairesse (2008). Employment, innovation, and productivity: evidence from Italian microdata. *Industrial and Corporate Change* 17(4), 813–839.

- Harrison, R., J. Jaumandreu, J. Mairesse, and B. Peters (2014). Does innovation stimulate employment? A firm-level analysis using comparable micro-data from four European countries. *International Journal of Industrial Organization* 35, 29–43.
- Herstad, S. J., T. Sandven, et al. (2015). Innovation and corporate employment growth revisited. *Lund University, CIRCLE-Center for Innovation, Research and Competences in the Learning Economy*.
- Kaldor, N. (1970). The case for regional policies. *Scottish journal of political economy* 17(3), 337–348.
- Lachenmaier, S. and H. Rottmann (2011). Effects of innovation on employment: a dynamic panel analysis. *International journal of industrial organization* 29(2), 210–220.
- Lee, K. (2013). How can Korea be a role model for catch-up development? A ‘capability-based’ view. In A. K. Fosu (Ed.), *Achieving Development Success: Strategies and Lessons from the Developing World*. Oxford, Oxford University Press.
- Lewis, W. A. (1954). Economic development with unlimited supplies of labour. *The Manchester School* 22(2), 139–191.
- Lin, J. Y. and Y. Li (2003). Export and economic growth in China: a demand-oriented analysis. *China Economic Quarterly* 2, 779–794.
- Lutz, V. C. (2014). The growth process in a “dual” economic system. *PSL Quarterly Review* 11(46).
- Lybbert, T. J. and N. J. Zolas (2014). Getting patents and economic data to speak to each other: an ‘algorithmic links with probabilities’ approach for joint analyses of patenting and economic activity. *Research Policy* 43(3), 530–542.
- MacCombie, J. and A. Thirlwall (1994). *Economic growth and the balance-of-payments constraint*. London: Macmillan.
- Mairesse, J. and Y. Wu (2014). An assessment of the firm-level impacts of innovation, exports, catch-up and wage on employment growth in Chinese manufacturing. *mimeo, CREST*.

- Mairesse, J., Y. Wu, Y. Zhao, and F. Zhen (2011). Employment growth and innovation in China: A firm-level comparison across regions, industries, ownership types and size classes. *mimeo, CREST*.
- Mastrostefano, V. and M. Pianta (2009). Technology and jobs. *Economics of innovation and new technology* 18(8), 729–741.
- Meriküll, J. (2010). The impact of innovation on employment: firm-and industry-level evidence from a catching-up economy. *Eastern European Economics* 48(2), 25–38.
- Pasinetti, L. L. (1981). *Structural change and economic growth*. Cambridge: Cambridge University Press.
- Pianta, M. (2000). The employment impact of product and process innovations. In M. Vivarelli and M. Pianta (Eds.), *The employment impact of innovation: evidence and policy*, pp. 77–95. London: Routledge.
- Pianta, M., R. Evangelista, and G. Perani (1996). The dynamics of innovation and employment: an international comparison. *Science Technology Industry Review, OECD* 18, 67–93.
- Piva, M. and M. Vivarelli (2005). Innovation and employment: Evidence from Italian microdata. *Journal of Economics* 86(1), 65–83.
- Roodman, D. (2009). How to do xtabond2: an introduction to difference and system GMM in Stata. *Stata Journal* 9(1), 86–136.
- Silverberg, G., G. Dosi, and L. Orsenigo (1988). Innovation, diversity and diffusion: a self-organisation model. *The Economic Journal* 98(393), 1032–1054.
- Thirlwall, A. P. (1979). The balance of payments constraint as an explanation of the international growth rate differences. *PSL Quarterly Review* 32(128).
- Thirlwall, A. P. (1980). *Balance of payments theory and the United Kingdom experience*. London, Macmillan.
- Triguero, A., D. Córcoles, and M. C. Cuerva (2014). Persistence of innovation and firm’s growth: evidence from a panel of SME and large Spanish manufacturing firms. *Small business economics* 43(4), 787–804.

- Van Reenen, J. (1997). Employment and technological innovation: evidence from UK manufacturing firms. *Journal of labor economics*, 255–284.
- Van Roy, V., D. Vertesy, and M. Vivarelli (2015). Innovation and employment in patenting firms: empirical evidence from Europe. *IZA Discussion Paper*.
- Vivarelli, M. (1995). *The economics of technology and employment*. Aldershot: Elgar.
- Vivarelli, M. (2014). Innovation, employment and skills in advanced and developing countries: a survey of economic literature. *Journal of Economic Issues* 48(1), 123–154.
- Vivarelli, M., R. Evangelista, and M. Pianta (1995). Innovation and employment: evidence from Italian manufacturing. *Research Policy* 25, 1013–26.
- Vivarelli, M. and M. Pianta (2000). *The employment impact of innovation: evidence and policy*. London: Routledge.
- Yu, X., G. Dosi, M. Grazzi, and J. Lei (2017). Inside the virtuous cycle between productivity, profitability, investment and corporate growth: an anatomy of Chinese industrialization. *Research Policy* 46(5), 1020–1038.
- Yu, X., G. Dosi, J. Lei, and A. Nuvolari (2015). Institutional change and productivity growth in China’s manufacturing: the microeconomics of knowledge accumulation and “creative restructuring”. *Industrial and Corporate Change* 24(3), 565–602.
- Zimmermann, V. (2009). The impact of innovation on employment in small and medium enterprises with different growth rates. *Jahrbücher für Nationalökonomie und Statistik*, 313–326.

## A. Table Appendix

Table A.1: Summary statistics (total) of the Chinese manufacturing firm-level dataset.

| Year | Number of Firms | Value Added | Sales | Output | Employment | Sales Value | Export (%) | Original value of fixed assets |
|------|-----------------|-------------|-------|--------|------------|-------------|------------|--------------------------------|
| 1998 | 148 661         | 1.52        | 5.48  | 5.94   | 50.72      | 5.72        | 18.34      | 4.48                           |
| 1999 | 146 075         | 1.68        | 5.96  | 6.37   | 47.36      | 6.17        | 18.14      | 4.85                           |
| 2000 | 147 246         | 1.96        | 7.14  | 7.48   | 45.83      | 7.29        | 19.43      | 5.17                           |
| 2001 | 155 659         | 2.22        | 7.99  | 8.40   | 44.95      | 8.18        | 19.38      | 5.54                           |
| 2002 | 165 793         | 2.62        | 9.37  | 9.79   | 45.87      | 9.58        | 20.51      | 5.95                           |
| 2003 | 181 001         | 3.40        | 12.38 | 12.72  | 48.71      | 12.44       | 21.30      | 6.59                           |
| 2004 | 258 869         | 4.80        | 17.14 | 17.74  | 56.52      | NA          | NA         | 7.82                           |
| 2005 | 250 952         | 5.71        | 21.34 | 21.74  | 59.21      | 21.29       | 22.11      | 9.02                           |
| 2006 | 278 644         | 7.23        | 26.99 | 27.40  | 63.32      | 26.85       | 22.29      | 10.54                          |
| 2007 | 312 284         | 9.37        | 34.70 | 35.27  | 68.38      | 34.56       | 21.08      | 12.35                          |

Source: our original firm-level dataset (only after adjustment of sectors changes between 2002/03). Note: all values are denoted in trillion RMB and employment in millions of workers. All manufacturing firms are included. Exports is the percentage of export in total sales value. The value-added of year 2004 is not directly available from the original dataset, thus, we proxy it using “sales - year beginning inventory + year end inventory + value added tax”.

Table A.2: Summary statistics (mean) of the Chinese manufacturing 4-digit sectoral-level dataset.

| Year | Number of 4-digit Sectors | Employment | Sales | Labour Productivity | Exports | Wage per Employee | Employment Growth | Sales Growth | Labour Productivity Growth | Exports Growth | Growth of (nominal) wage per employee |
|------|---------------------------|------------|-------|---------------------|---------|-------------------|-------------------|--------------|----------------------------|----------------|---------------------------------------|
| 1998 | 424                       | 96711      | 11    | 36                  | 2       | 7                 | NA                | NA           | NA                         | NA             | NA                                    |
| 1999 | 423                       | 103649     | 13    | 40                  | 3       | 8                 | 0.067             | 0.186        | 0.120                      | 0.095          | 0.060                                 |
| 2000 | 424                       | 100313     | 16    | 47                  | 3       | 9                 | -0.030            | 0.125        | 0.141                      | 0.247          | 0.126                                 |
| 2001 | 423                       | 100470     | 18    | 53                  | 4       | 10                | 0.010             | 0.136        | 0.126                      | 0.114          | 0.086                                 |
| 2002 | 424                       | 102602     | 21    | 61                  | 5       | 11                | 0.043             | 0.178        | 0.141                      | 0.152          | 0.077                                 |
| 2003 | 424                       | 108984     | 28    | 71                  | 6       | 12                | 0.075             | 0.242        | 0.153                      | 0.287          | 0.098                                 |
| 2004 | 424                       | 117450     | 37    | 89                  | NA      | 13                | 0.064             | 0.202        | 0.200                      | NA             | 0.139                                 |
| 2005 | 424                       | 135751     | 49    | 93                  | 11      | 15                | 0.160             | 0.303        | 0.089                      | NA             | 0.144                                 |
| 2006 | 424                       | 145965     | 62    | 108                 | 14      | 18                | 0.081             | 0.239        | 0.158                      | 0.218          | 0.141                                 |
| 2007 | 424                       | 143572     | 75    | 129                 | 16      | 21                | -0.025            | 0.158        | 0.178                      | 0.059          | 0.189                                 |

Source: the cleaned firm-level dataset. Note: values of sales and exports are denoted in billion RMB; labour productivity and wage per employee are denoted in 1000 RMB. Labour productivity is in 1998 constant price. Growth rates re calculated as log differences of real value.

## B. The procedure to construct firm-level and sectoral proxies for innovativeness

In order to identify whether the firms in the NBS database hold patents in the USPTO or not during 1998-2007 (according to the application filing dates), we match several databases as follows. 1) The PATSTAT (version 2014a) has been matched with Orbis to sort out patents filed in the USPTO by Chinese firms during 1998-2007. The firms are identified by the BvD ID. We have identified 2828 patents (exclude design patents) in the USPTO which are filed by Chinese firms. 2) We get the BvD ID and NBS ID matches from the Oriana database (version 2017 January,

Table B.3: Number of patents in the USPTO filed by Chinese firms. Note: Years refer to the application filing year. Exclude design patents.

| Year  | Number of Patents in PATSTAT | Number of Matched Patents between PATSTAT and NBS firms |
|-------|------------------------------|---|
| 1998  | 3                            | 0   |
| 1999  | 0                            | 0   |
| 2000  | 0                            | 0   |
| 2001  | 21                           | 8   |
| 2002  | 36                           | 25  |
| 2003  | 104                          | 92  |
| 2004  | 290                          | 270   |
| 2005  | 481                          | 412   |
| 2006  | 870                          | 779   |
| 2007  | 1023                         | 910   |
| Total | 2828 [96 firms]              | 2496 [52 firms]   |

BvD Asian-pacific regions). 3) We match NBS firm-level database with PATSTAT through the NBS ID and BvD ID. Finally, as shown in Table B.3, we get the the annual number of patents filed by NBS Chinese firms in the USPTO. We successfully matched 2496 patents with NBS firms (matching rate 88%), among which 2464 patents (99%) are filed by firms in the telecommunication equipments and computers manufacturing (CIC 40).<sup>30</sup> Therefore, we only include patent dummy as an additional explanatory variable in the firm-level employment growth model for each 4-digit sectors in telecommunication manufacturing (CIC 40).

To estimate the effect of innovativeness at *sectoral* level, we merge our 4-digit aggregated Chinese manufacturing dataset with the patent dataset (source: PATSTAT version 2014a, USPTO patents only) according to the procedures: 1) convert 4-digit Chinese Industry Classification into 4-digit ISIC (Rev3) codes; 2) match the 4-digit patent IPC code with the 4-digit ISIC (Rev3) code adopting the Lybbert and Zolas (2014) method (we use the probability weight) and count the number of Chinese, non-US and world patents in each 4-digit ISIC sector respectively; 3) merge the above two datasets by the unique ISIC code.

<sup>30</sup> Among the others, 12 patents are from medicines (CIC 27); 9 are from electrical machinery (CIC 39); 9 are from measuring instruments (CIC 41); 1 is from printing, reproduction and recording media (CIC 23); 1 is from special purpose machinery (CIC 36).