

Mosca, Irene; Wright, Robert E.

Working Paper

Use it or lose it: Irish evidence

ESRI Working Paper, No. 531

Provided in Cooperation with:

The Economic and Social Research Institute (ESRI), Dublin

Suggested Citation: Mosca, Irene; Wright, Robert E. (2016) : Use it or lose it: Irish evidence, ESRI Working Paper, No. 531, The Economic and Social Research Institute (ESRI), Dublin

This Version is available at:

<https://hdl.handle.net/10419/174264>

Standard-Nutzungsbedingungen:

Die Dokumente auf EconStor dürfen zu eigenen wissenschaftlichen Zwecken und zum Privatgebrauch gespeichert und kopiert werden.

Sie dürfen die Dokumente nicht für öffentliche oder kommerzielle Zwecke vervielfältigen, öffentlich ausstellen, öffentlich zugänglich machen, vertreiben oder anderweitig nutzen.

Sofern die Verfasser die Dokumente unter Open-Content-Lizenzen (insbesondere CC-Lizenzen) zur Verfügung gestellt haben sollten, gelten abweichend von diesen Nutzungsbedingungen die in der dort genannten Lizenz gewährten Nutzungsrechte.

Terms of use:

Documents in EconStor may be saved and copied for your personal and scholarly purposes.

You are not to copy documents for public or commercial purposes, to exhibit the documents publicly, to make them publicly available on the internet, or to distribute or otherwise use the documents in public.

If the documents have been made available under an Open Content Licence (especially Creative Commons Licences), you may exercise further usage rights as specified in the indicated licence.

Working Paper No. 531

April 2016

Use It or Lose It: Irish Evidence

Irene Mosca and Robert E Wright*

Abstract: A small but growing body of research suggests that retirement and cognitive decline are related. In fact, some have argued that retirement causes cognitive decline. The aim of this paper is to add to this literature using data of older women from The Irish Longitudinal Study on Ageing (TILDA). Ordinary least square (OLS) regressions show a significant negative association between retirement duration - defined as time elapsed since last job ended - and cognition. This association is, however, very small when compared to the association of age or education with cognition. As retirement is potentially endogenous to cognition, instrumental variable (IV) methods are also used. The instrument employed is the abolition of the so-called “Marriage Bar”. In simple terms, the Marriage Bar was the requirement that women leave paid employment on getting married. It was established in the 1930s and removed in the 1970s. When IV estimations are used, the effect of retirement duration is statistically insignificant. Differences between OLS and IV estimates are compared with a standard test. OLS estimates are preferred as there is no statistical evidence that retirement duration is endogenous. As OLS estimates are very small, it is extremely unlikely that working into old age has much of an impact on slowing cognitive decline amongst older people.

Corresponding Author(s): Irene Mosca, The Irish Longitudinal Study on Ageing (TILDA) Trinity College Dublin and Robert E Wright Department of Economics, University of Strathclyde

**Address for correspondence:* Dr. Irene Mosca, The Irish Longitudinal Study of Ageing (TILDA), Lincoln Gate, Trinity College, Dublin 2, Republic of Ireland. Tel: +353 1 896 4580, email: MOSCAI@tcd.ie

Key Words : cognition, ageing, retirement

JEL Codes : J14, J26

Acknowledgements: Financial support was provided by Irish Government, the Atlantic Philanthropies, Irish Life plc and the Health and Research Board. These funders had no involvement in the study design, collection, analysis and interpretation of data, writing of the paper or submission for publication. Any views expressed in this report are not necessarily those of the Department of Health and Children or of the Minister for Health.

Use It or Lose It: Irish Evidence

1. Introduction

It is universally agreed that population ageing is one of the key social and economic challenges facing high-income countries. In these countries, life expectancy has increased dramatically with people expecting to live many years after retirement. Large increases in the number of people aged 65 and older are expected in the coming decades. However, only a small share of people in this age group are in employment. In Ireland, for example, the number of people aged 65 and older is expected to almost triple in the next four decades, with currently only around 4.6% of women and 14% of men in this age group employed (CSO, 2011 and 2013). Given these numbers, it is not difficult to understand the serious financial pressure this will put on the ability of governments to pay benefits targeted at older people such as pensions.

Another important policy challenge caused by population ageing is the need to preserve cognitive function (Hendrie et al., 2006). Cognitive function, or “cognition” for short, has been defined as “an individual’s perceptions, memory, thinking, reasoning and awareness” (O’Regan et al., 2010). It is the process of acquiring, storing, interpreting and using information. Unfortunately, cognition declines in old-age. In particular, research suggests that ageing is associated with a decline in the ability to perform specific cognitive tasks defined as “fluid cognition” (e.g. Dixon et al., 2004; Schaie, 1994). Fluid cognition concerns “the capacity to think logically and solve problems in novel situations, independent of acquired knowledge” (Cattell, 1987).

As more people are living into older age, the number of people living with dementia or other forms of cognitive decline is on the rise. For example, it has been estimated that the numbers with dementia across the world could triple by 2015 (WHO and Alzheimer’s

Disease International, 2012). Living with cognitive decline makes it more difficult—and eventually impossible—to maintain a self-sufficient lifestyle. Unsurprisingly, a recent survey indicated that dementia is the most feared disease among Americans aged 55 and older (Gatz, 2007).

The causes of cognitive decline are still not fully understood. Research shows that only a fraction of the total between-person variation in cognition is explained by age-related variation in cognition (Salthouse, 2011, p.18). In other words, there are two key research questions. The first is what factors are responsible for cognitive decline? The second is what factors are responsible for the variation in cognition at a given age?

An influential conceptual framework for understanding why cognitive decline is not homogenous has been put forth by Stern (2002, 2003). He assumes that some form of brain damage or lesion occurs, due to normal aging or a pathological process. If one is willing to accept this assumption, then the focus comes to understanding why individuals cope with, or react to, such damage, differently. There are two main hypotheses. The first states that coping is a “passive process” with physiological factors being responsible for the degree to which the brain responds. Individuals with more “brain reserve” (i.e. larger brain, more neurons and more synapses) can sustain more damage before cognitive decline begins. The second hypothesis states that coping is an “active” process. Coping relies on the capacity of the brain to use networks more efficiently or recruit alternative networks or cognitive strategies. Individuals with more capacity can tolerate more brain lesions before cognitive impairment becomes apparent. Crucially, it is believed that this capacity is influenced by life-style choices individuals make and/or by life-style changes they are required to make.

It is therefore not surprising that considerable attention is being paid to examining what factors (other than age) affect cognition. Among the non-physiological factors being investigated are those thought to require “cognitive stimulation”. These include “social

engagement” (such as visiting family or friends, membership in a sport club and membership in a volunteer organisation), “active life-style” (such as physical activity and exercise and travel for pleasure) and “leisure activity” (such as having a hobby, attending cultural events, reading regularly, playing music, singing and attending classes and lectures). Lower rates of cognitive decline have been observed for people who have more engagement of this type (Fratiglioni et al., 2004). A meta-analysis of 22 studies found that adults who engage in such activities are almost 50% less likely than adults with little or no cognitive engagement to develop dementia (Valenzuela and Sachdev, 2006). However, there is little consensus on which types of activities are the most cognitively stimulating (Salthouse, 2011, p. 145).

Economics is also making a contribution to understanding the factors that impact on cognitive decline. There is a small—but growing—body of research suggesting that one way to remain cognitively active is to work in the labour market. This suggests that there may be a relationship between retirement and cognitive decline. In fact, some have argued that retirement is a “cause” of cognitive decline. If this is the case, then continuing to work brings clear benefits in terms of at least slowing the rate of cognitive decline. This possibility has been referred to as “use it or lose it” hypothesis (see Rohwedder and Willis, 2010). The main underpinning is that people who work engage in more mental exercise than retirees because work environments provide more cognitively challenging and stimulating environments than do non-work environments.

This paper adds to this small but growing body of research and empirically tests the “use it or lose it” hypothesis using data from Ireland. Section 2 critically reviews the research that has examined the relationship between retirement duration and cognitive decline in countries other than Ireland. Section 3 is an empirical investigation of this relationship that addresses some of the weaknesses of previous studies, using data collected in *The Irish Longitudinal Study on Ageing* (TILDA). As retirement is potentially endogenous with respect

to cognition, instrumental variable (IV) estimation is used. The analysis is mainly based on Irish women since the abolition of the so-called “Marriage Bar”, which restricted the employment of women, is used as the identifying instrument in the IV estimation. Some analysis for Irish men is also carried out for comparative purposes. Results are discussed in Section 4. Conclusions follow in Section 5.

It is important to note that retirement and retirement duration have been defined in a number of different ways in the previous studies. Following Bonsang et al. (2012), our definition is based on the economic convention of working or not “for pay”. An individual is defined as “Working” if he/she claims to be currently working for pay and “Retired” if he/she reports not to be currently working for pay. As information about the year and the month the individual’s last job ended is collected in TILDA, this is used to measure retirement duration.

The main finding for women is that there is a negative and statistically significant relationship between retirement duration and cognition. There is no evidence that retirement is endogenous. The findings are found to be robust to alternative empirical specifications. However, the magnitude of this effect is very small. In addition, under the assumption of exogeneity, a larger (but still small) relationship is found for men.

2. Previous Research

Assessing the causal effect of retirement on cognition is complicated by two empirical challenges. The first is unobserved heterogeneity, which arises because of the presence of non-measured factors, which likely affects both the decision to retire and cognitive functioning. Examples of such individual-specific factors are motivation, personality traits, productivity and time preference. The second challenge is establishing the direction of causality. One causal direction is the impact of retirement on cognition: retirement *causes* cognitive decline. The other causal direction is the impact of cognition on retirement:

cognitive decline *causes* retirement. The key is to establish which (if any) causal direction dominates since this has important implications for policy (as discussed in Section 5).

To our knowledge, there are only five economics-based studies that have focused empirically on the “use it or lose it” hypothesis: Bonsang et al. (2012), Coe et al. (2012), de Grip et al. (2015), Mazzonna and Peracchi (2012) and Rohwedder and Willis (2010). Four of these studies find a negative statistical relationship between retirement duration and cognition. That is, on average the longer an individual has been retired, the lower their level of cognition. However, as a group they generate conflicting evidence on whether retirement *causes* cognitive decline. This hypothesis is supported by Mazzonna and Peracchi (2012), Rohwedder and Willis (2010) and Bonsang et al. (2012), but receives only partial support from de Grip et al. (2015). No support is found by Coe et al. (2012). One potential explanation for the diversity of findings is differences in the statistical methodologies employed to address the potential endogeneity of retirement.

With the exception of de Grip et al. (2015), these studies used instrumental variables estimation (IV) in order to explore the endogeneity of retirement. This approach requires a variable (referred to as an “instrument”) that is directly correlated with retirement decision but only correlated with cognition indirectly through its effect on retirement. It also needs to be “exogenous” in the sense that it is not a direct outcome of individual decision-making. (The IV approach is described in more technical detail in Section 3). Rohwedder and Willis (2010), Mazzonna and Peracchi (2012) and Bonsang et al. (2012) relied on changes in public policies affecting the legislated early and normal ages of eligibility for a public old-age pension to generate cross-country or cross-individual variation in retirement behaviour. We argue that there are several problems with such an approach. A key one is that it assumes that the policy changes are known and fully understood by individuals and such individuals act

upon these changes in an economically rational way. There is evidence that this is not the case (Barrett et al., 2015).

Another potential explanation of the differences in findings in these studies relates to the cognition variables used and their measurement. With the exception of de Grip et al. (2015), the other studies used cognitive variables that measure word recall, verbal fluency or numeracy tests in face-to-face or telephone interviews. Measuring cognition in such a way has at least three important limitations. First, as they are measured in an informal setting (such as respondent's home), they are more prone to differences in test motivation of participants (de Grip et al., 2015). Previous research has shown that under low-stakes research conditions, test motivation can affect test results as some individuals try harder than others (Duckworth et al, 2011). Second, as respondents can witness the tests of another household member before being interviewed, intra-household learning effects can also occur (Mazzonna and Peracchi, 2012). Third, they do not measure important aspects of fluid cognition such as processing speed or cognitive flexibility. The study of De Grip et al. (2015) is the only study that investigated the effect of retirement on measures of fluid cognition. In that study, the cognitive tests carried out in a hospital-lab setting were employed as outcome variables.

With the exception of Mazzonna and Peracchi (2012), the existing studies did not specify a model that distinguished between men and women. Coe et al. (2012) restricted the analysis to men. Bonsang et al. (2012) and Rohwedder and Willis (2010) did not disaggregate their analysis by gender. de Grip et al. (2015) presented results for men and women together clarifying that they also estimated models for men and women separately and found no significant differences. As the employment histories of women are generally more intermittent than those of men, largely due to the impact of child-bearing and rearing, we argue that it is crucial to analyse men and women separately.

As a consequence, the main focus of this paper is the impact of retirement duration on cognitive decline amongst women. In fact, we believe that more can be learned about this relationship from the experience of women rather than men. The main reason is that a more convincing IV estimation strategy can be constructed based on the experience of Irish women than for Irish men. However, estimates are also provided for men for comparative purposes.

3. Methodology

3.1. Data

The data-set used in this paper to assess whether retirement affects cognition is *The Irish Longitudinal Study on Ageing* (TILDA). TILDA is a nationally representative sample of community dwelling individuals aged 50+ resident in Ireland and collects information on the economic, health and social aspects of the respondents' lives. It is modelled closely on the Health and Retirement Study (HRS), the English Longitudinal Study on Ageing (ELSA) and the Survey of Health, Retirement and Ageing in Europe (SHARE). The main analysis of this paper is based on data from the third wave of TILDA. Data from the first and second waves are also employed to construct the relevant variables or for robustness checks. The first wave of data was collected between October 2009 and July 2011. A total of 8,504 participants were recruited. Of these, 8,175 were aged 50+ and 329 were younger partners of eligible individuals.

Respondents first completed a computer-assisted personal interview (CAPI) in their own homes and were invited to travel to one of two health centres (based in Trinity College Dublin and University College Cork) for a comprehensive health assessment. If unable or unwilling to travel to one of the health centres, respondents were offered a modified and partial assessment in their own home. All assessments were carried out by qualified and trained research nurses. Of the 8,175 participants aged 50 and older, 5,897 underwent a health

assessment (85% in one of the dedicated health centres and 15% in their own home). The availability of home-based health assessments likely reduced the potential selection bias associated with the need to travel to a health centre (Savva et al. 2013). For more detail on the first wave of TILDA ad health assessments see Kearney et al. (2011); Whelan and Savva (2013) and Cronin et al. (2013).

The second wave of data was collected between April 2012 and January 2013 and a response rate of 86% was achieved (Dooley et al, 2014). Respondents completed a CAPI in their own homes but there was no health assessment at Wave 2. The health assessment component of the study was reintroduced at Wave 3. Respondents were given the choice to undertake the assessment either in their own home or in the dedicated health centre in Trinity College Dublin (the centre in University College Cork was closed). The third wave of data (CAPI interviews) was collected between March 2014 and October 2015. The response rate was 85%. A total of 5,395 respondents undertook the health assessment (80% in the Trinity College Dublin health centre and 20% in their own home).

3.2. Statistical Model

As explained above, testing the hypothesis that retirement affects cognition is complicated by the potential problems of unobserved heterogeneity and reverse or two-way causation. In our statistical model, we assume that cognition, “*Cog*”, is a function of retirement duration, “*RetDur*”, and a vector of other controls, “*X_j*” (such as *j* = age and education) and an error term, “*u*”. In regression form:

$$Cog_i = \beta_0 + \beta_1 RetDur_i + \sum_j \beta_j X_{ij} + u_i \quad (1)$$

where the subscript “*i*” denotes the individual, $i = 1, 2, \dots, N$. If there is a negative relationship between retirement and cognition, one would expect $\beta_1 < 0$. That is, people with a longer

retirement duration have lower cognition after controlling for other factors thought to affect cognition.

If $RetDur$ is correlated with u , then OLS estimates of β_1 will be biased and inconsistent. This is the problem of the “potential endogeneity of retirement duration”. In order to address endogeneity, a process is needed that generates exogenous variation in $RetDur$. Instrumental variables estimations (IV) can be used to incorporate this variation into the estimation in order to “purge” the relationship of this bias. Key to IV estimation is the availability of at least one variable, “ Z ” (the so-called “instrument”) that has the following two key properties: (1) Variation in Z is associated with variation in $RetDur$; and (2) Variation in Z is not associated with variation in Cog (apart from the indirect route via $RetDur$). If one has available a variable that satisfies these properties, then one can estimate the following regression:

$$RetDur_i = \pi_0 + \pi_1 Z_i + \sum_j \pi_j X_{ij} + w_i \quad (2)$$

where $RetDur$ is as a function of Z , X_j and an error term “ w ”. By estimating this “first stage” regression, one can then form predictions for $RetDur$:

$$\widehat{RetDur}_i = \widehat{\pi}_0 + \widehat{\pi}_1 Z_i + \sum_j \widehat{\pi}_j X_{ij} \quad (3)$$

As can be seen in Eq. (3), the unobservable component is purged and the variation in $RetDur$ that is not correlated with u has been used to identify parameters.

Finally, one can use OLS to estimate the so-called “second-stage” regression:

$$Cog_i = b_0 + b_1 \widehat{RetDur}_i + \sum_j b_j X_{ij} + e_i \quad (4)$$

where predicted values of *RetDur* from Eq. (3) are used. Assuming all assumptions are met, the error term in this regression, “*e*”, is random and not correlated with *RetDur*. If this is the case then Eq. (4) will provide an unbiased estimate, “*b*₁”, of the relationship between retirement duration and cognition. More importantly, it will provide an estimate of the *causal* impact of retirement duration on cognition. On the other hand, if $b_1 = \beta_1$ (which is a testable hypothesis), then retirement duration is exogenous, and OLS provides such an estimate. The instrument used in our empirical estimation is discussed below.

3.3 Variables

3.3.1. Cognition

In TILDA, cognition is measured both in a face-to-face interview (CAPI) and in a medical centre-based health or home-based assessment (HA). The HA includes a battery of in-depth pen-and-paper and computer-based tasks probing global cognition, verbal memory, attention, processing speed and executive function. Crucially, all these tests are administered and scored by specially-trained qualified nurses. They are also the first tests each respondent is asked to perform during the assessment to avoid the problem of fatigue potentially influencing the results. The CAPI interview comprises tests of verbal and prospective memory and verbal fluency. These are shorter than the tests administered in the health assessment and are primarily verbally administered by a team of specially-trained interviewers.

We believe that the choice of what cognitive measures to use is critical in the evaluation of the relationship between retirement duration and cognition. In fact, it is our view that the lack of consensus in this respect has contributed to the mixed empirical results of the existing literature.

We also believe that the cognitive tests carried out in the HA are preferable to the cognitive tests administered as part of the CAPI interview. Centre-based HA measures prevent that estimation results are affected by intra-household learning which occurs when respondents witness the test of another household member (Mazzonna and Peracchi, 2012). Centre-based HAs, as opposed to CAPI interviews, also potentially improve test motivation of all respondents and possibly mitigate any difference in test motivation by employed and retired individuals. For example, retirees might be more motivated to perform well in the cognitive tests compared to employed individuals as they are potentially less stressed or have more time to spend on the interview. Home-based HA measures are also less prone than CAPI measures to intra-household learning effects and to differences in test motivation as they are administered by trained and qualified nurses as opposed to CAPI interviewers who are not health professionals.

Among the different cognitive tests administered in the HA, the “Color Trail Task 1” (*CTT1*) and the “Color Trail Task 2” (*CTT2*) are best suited to address our research question. These two tests measure key aspects of fluid cognition, a dimension of cognition that tends to decrease sharply at older ages and concerns the capacity to think logically and solve problems in novel situations. *CTT1* captures visual scanning and processing speed while *CTT2* captures visual scanning, attention, and mental flexibility, thereby making it an executive function task (D’Elia et al, 1996). Executive function includes “a set of cognitive skills that are responsible for the planning, initiation, sequencing, and monitoring of complex goal-directed behaviour” (Royall et al., 2002). In our view, all these components have a clear and intuitive link with tasks that form most types of work. In fact, one would expect mental flexibility, processing speed, initiation and sequencing to be central to effectively carrying out employment-based tasks. Everyday problem-solving assessments may also better capture the skills needed in late

life as the ability to navigate everyday challenges is particularly important for self-sufficiency, successful adaptation and resilience in late life (Martin et al. 2010).

Focusing on how these tests are administered and scored, respondents are handed a sheet of paper containing numbers in yellow or pink circles. For the *CTT1*, respondents are instructed to rapidly draw a line connecting the circles numbered 1 through 25 in consecutive order, using a pencil. Respondents complete a practice trial prior to proceeding with the actual *CTT1*. Respondents are told to perform the task as quickly as possible without making errors. If an error is made, the nurse administering the test points it out and instructs the respondent to correct the error and proceed with the task. Up to 10 seconds are allowed for the respondent to make a connection between one circle and the next. After the 10 second period has elapsed, the nurse provides a non-verbal prompt (i.e. by pointing) indicating the position of the next correct circle. In the *CTT2*, respondents are asked to connect numbered circles alternating between pink and yellow circles, e.g., pink 1, yellow 2, pink 3. The respondent then completes a practice trial before proceeding with the *CTT2*. As for *CTT1*, a non-verbal prompt is provided after 10 seconds. The performance indicator is time taken to successfully complete *CTT1* and the time taken to successfully complete *CTT2* (in seconds), with shorter completion times indicative of better performance.

At Wave 3 interview, 2,956 women undertook the health assessment. Of these, 2,889 successfully completed *CTT1* in either a centre-based health assessment (N = 2,343) or a home-based health assessment (N = 546). A total of 65 women who successfully completed *CTT1* could not complete *CTT2*. Figures 1 and 2 plot the age-profile of average test scores separately for *CTT1* and *CTT2* for the women in our sample. As expected, the time taken to successfully complete *CTT2* is greater than *CTT1*, and increases with age, indicative of cognitive decline.

<<<< Figures 1 and 2 About Here >>>>

3.3.2. Retirement Duration

During the CAPI interview, respondents were asked to report the status that best described their current labour market situation. The choices are: (1) retired; (2) employed; (3) self-employed; (4) unemployed; (5) permanently sick or disabled; (6) looking after home or family; (7) in education or training; and 8) other. It should be noted that these are self-reports: respondents were asked to choose the response that “best” described their situation. They could only select one status since they were designed to be mutually exclusive. A total of 34.5% of women in the sample were employed or self-employed and another 40.5% were retired at Wave 3 interview. A total of 19.4% were looking after home or family. A further 5.6% were permanently sick or disabled, 3.1% were unemployed and 1.9% in education or in the other category.

In the economics literature, there are several definitions of retirement. Our definition is based on the economic convention of working or not “for pay”. Therefore, an individual is “retired” if she was not working for pay at the time of the Wave 3 interview. Retired women are those who chose categories (1) and (4) to (8). Working women are those who chose in categories (2) and (3). Thus strictly speaking, our study analyses the effect of “not working for pay” at older ages. Robustness checks concerned with the reliability of our definition are reported in Section 4. Respondents not working at the time of the interview were then asked whether they had done any paid work in the week prior to the interview. Women who reported to have done some paid work in that week ($N = 56$), as well as respondents who reported to have never worked ($N = 160$), were excluded from the sample.

Respondents who chose categories (1) and (4) to 8) were asked to report the month and year when they stopped working. “Retirement duration” is defined as the time elapsed between the date the respondent stopped working and the date of the health assessment for that respondent. Retirement duration in full months was calculated and converted to years of

retirement for ease of interpretation. For those at work, retirement duration was set to zero. As information on labour market status was also collected at Waves 1 and 2 in a similar form, this information was used to construct a more robust measure of retirement duration, especially when inconsistent answers were provided across the three waves.¹ Retirement duration could not be calculated for 117 women because of missing information, and these women needed to be excluded from the sample.

3.3.3. Control Variables

In addition to retirement duration, additional control variables were included. These include age and education as well as a set of variables aimed at capturing childhood characteristics. The main aim was to keep the list of control variables to those that are clearly exogenous and not subject to same endogeneity considerations as retirement duration. This was primarily achieved by selecting variables measured when the respondent was young.

The relationship between education and cognition has been studied extensively in the literature. It is clear that there is a positive relationship between education and cognition. Evidence that education affects cognition in later-life has been found in a number of studies, including Banks and Mazzonna (2012) and Schneeweis et al. (2014). Since most schooling amongst older Irish women is completed when they are young, and before they enter the labour market, it is exogenous. In our analysis, education, “*School*”, is measured in years of schooling completed.

Several childhood characteristics have been shown to be associated with cognition in later-life (Brown, 2010; Borenstein et al, 2006; Everson-Rose et al., 2003). In our analysis, we use a set of dummy variables based on respondent’s self-reporting of childhood

¹ If inconsistent answers are provided, we consider as most reliable the measure of retirement duration constructed based on wave 1 reports, followed by wave 2 reports and wave 3 reports. This might minimize recall bias as the time elapsed between the date of retirement and the date of interview is shorter as chronologically wave 1 occurs before wave 2 and wave 3.

conditions before the age of 14. They are: *NoBooks*=1 if there were no or very few books in the home the respondent grew up in (0=otherwise); *PoorHealth* = 1 if the respondent was in fair/poor health (0=otherwise); *PoorFam* = 1 if respondent grew up in a poor family (0=otherwise); *MothNotWork* = 1 if respondent's mother never worked outside the home (0=otherwise); and *FatherNotWork* = 1 if respondent's father never worked outside the home (0=otherwise). For 37 women, information is missing on one or more of these variables, and these women needed to be excluded from the sample.

The final samples are 2,519 women for the model based on *CTT1* and 2,481 women for model based on *CTT2*. Descriptive statistics for retirement duration and the controls variables are given in Table 1. The average age for women in the sample is 66 years and the average retirement duration is 12 years. The mean number of years of schooling completed is around 12. 34% of respondents reported that there were few or no books in the home they grew up in. Only 6% reported their health was poor when they were aged less than 14. Only 15.4% reported growing up in a poor household. 70% of respondents reported that their mother never worked outside the home when they were aged less than 14. This compares to only 6.5% for fathers.

<<<< Table 1 About Here >>>>

3.4. Instrumental Variable

In our analysis, exogenous variation is generated by the abolition of the so-called “Marriage Bar”. In simple terms, the marriage bar was the legal requirement that women leave paid employment in certain sectors on getting married. It was established in the 1930s, a time of high unemployment amongst males, and abolished in the 1970s. It was justified by the Irish Government as a policy aimed at reducing male unemployment and it was intended to limit households to one income earner, “one man one job”. It applied mainly to white-

collar occupations, in both the public and private sectors, rather than to industrial or service occupations. However, there is evidence that it was practised by many employers not legally required to comply with the law.

The marriage bar was established for primary school teachers in 1933, for civil servants in 1956 and for female police officers in 1958. A similar bar applied in many semi-state and private organisations, such as Aer Lingus, Jacobs Biscuits and Guinness Brewers. Data from the 1961 Census show that at least two thirds of the female labour force were employed in sectors or occupations where the marriage bar was enforced. Women who had to resign on getting married were often received a cash payment from the organisation/company they were working for, which was presented to them by a member of the senior management in a spirit of congratulations (Connolly, 2003). Married women could only be reinstated in cases of hardship, meaning where they could prove desertion (Pyle, 1990).

The marriage bar for primary schooling teaching was lifted in 1958 on the basis that teaching would not prevent a married woman from carrying out “her duties and obligations in regard to the creation and maintenance of a home”. The marriage bar was removed completely over the four year period 1973-1977. In 1973 it was rescinded for the Civil Service and it was later removed by the Local Authorities and Health Authorities. In 1977, discrimination in employment on the grounds of sex or marital status was made illegal. Ireland is not the only country where women were required to leave paid employment on getting married. A similar ban was enforced, for example, in the United Kingdom and the Netherlands. The ban was, however, abolished much earlier in these countries.

Ireland is unique in the duration of the enforcement of the marriage bar, as discrimination on the basis on marriage was made illegal only in 1977. Many women who were affected by the marriage bar are still alive and are in the TILDA sample. In Wave 3, women were asked the following question: “Did you ever have to leave a job because of the

marriage bar?”. For women in occupations covered by the marriages bar, leaving employment was not a “choice”. We believe it generates both a unique and exogenous source of variation in retirement duration. Of the 2,519 women in our final sample, 318 reported they had to leave a job because of the marriage bar.

The instrument used in our analysis is a dummy variable, “*MarBar*”, coded “1” if a woman reported having to leave employment on getting married and “0” otherwise. We believe that this variable conceptually satisfies the requirement of being a “good instrument” for two reasons. The first is that it is clearly exogenous since it was a Government decision. The second is that there is no evidence that it forced women to “choose” between either working or getting married. For example, Figure 3 shows female activity rates by marital status (married versus single) in 1970 in Ireland and other countries. It is clear that while activity rates of single women in Ireland were closely aligned to activity rates of single women in other countries, married women in Ireland were significantly less likely to be active than in the other countries in focus. This suggests that “an exogenous factor” preventing married women from working in Ireland was present.

<<<< Figure 3 About Here >>>>

Additional evidence consistent with this view is shown in Figures 4 to 6. Figure 4 shows the proportions of never married and married women calculated from the *TILDA* and *SHARE* surveys by birth cohort. In Ireland, like in many other countries, the proportion of “never married” women is very small, suggesting that marriage was the norm for women born in the first half of the 20th century. Figure 5 shows the historical crude marriage rate and the general marriage rate for Ireland. One would expect that if women were “forced” to choose between marriage and work, then after the abolition of the marriage bar the marriage rate would increase. As the figure shows, if anything, the marriage rate stabilised and then decreased after the abolition of the marriage bar. That is, it moved in the opposite direction.

Finally, Figure 6 shows that the participation rate of married women doubled from 1971 to 1975, jumping from 7.5 percent to 14.5 percent. Since this sharp response was not the result of demographic changes, it reflects the termination of this constraint on labour force participation of married women in those occupations closed to them by the marriage bar.

<<<< Figures 4, 5 and 6 About Here >>>>

4. Results

4.1. Main Empirical Findings

Table 2 shows the OLS regression estimates for *CTT1* and *CTT2*, respectively. Both variables were transformed by taking the natural logarithm in order ensure normality of the residuals. The transformed scores were then multiplied by “-1”. Therefore, a higher value of these transformed variables suggests a higher level of cognitive functioning and vice versa, which makes interpretation of the estimates more intuitive.

<<<< Table 2 About Here >>>>

The coefficient of *RetDur* is negative for both cognition measures, which is consistent with the hypothesis that a longer retirement duration is associated with lower cognition. Even though these associations are statistically significant at the 1% level, the magnitude is very small. An additional year of retirement corresponds to a 0.19% reduction in *CTT1* and a 0.14% reduction in *CTT2*. In fact, these associations are very small when compared to the associations of age and education despite the high level of statistical significance. As expected, the coefficient of *Age* is negative for both cognition measures and is statistically significant at the 1% level, suggesting that cognition declines with age. However, the magnitudes of these associations are at least 10 times larger than for *RetDur*. The age estimates suggest that an additional year of age is associated with a 2.1% reduction in *CTT1* and a 1.7% reduction in *CTT2*. Likewise, the coefficient of *School* is positive and statistically significant at the 1% level for both cognition measures. More schooling is associated with a

higher cognitive functioning. The estimates suggest that an additional year of schooling is associated with a 1.1% increase in *CTT1* and a 1.3% increase in *CTT2*.

As a group, the remaining variables included in the regressions should proxy well the socio-economic conditions in the home in which the respondent grew up in. As mentioned above, there is research that suggests that early-life conditions impacts on later-life cognition. However, only two of these five variables are statistically significant. There appears to be no impact of self-reported poor family background (*PoorFam*), having a mother who never worked outside the home (*MothNotWork*), and having a father who never worked outside the home (*FatherNotWork*). This said, the signs of these coefficients are all negative, which is consistent with a positive impact of early-life socio-economic conditions on cognition. Stronger support for this hypothesis is found for the variable “growing up in a household with no or few books”. The coefficient of *NoBooks* is negative and statistically significant at the 1% level for both cognition variables. The magnitude of this association is sizeable—cognition is around 5.7% lower for *CTT1* and 8.4% lower for *CTT2* growing up in a household with no or few books. However, it is not clear if this is a socio-economic effect or an early-reading effect. Self-reported health is also important. The coefficient of *PoorHealth* is negative and statistically significant at the 1% level. The magnitude of this association is also sizeable. Having poor health in childhood implies a 7.1% lower value for *CTT1* and a 4.9% lower value for *CTT2*. However, the reasons behind poor childhood health can be caused by socio-economic conditions but also by factors largely independent of socio-economic conditions (such as contagious disease).

The estimates in Table 2 are based on the assumption that retirement duration is exogenous. The IV estimates that test for the potential endogeneity are shown in Table 3. This table shows the “first stage”, “reduced form” and “second stage”, or IV, estimates. As discussed above, the instrument employed is whether the women reported having to leave a

job because of the marriage bar. Columns 1 and 2 show the first-stage for *CTT1* and *CTT2*. There are only slight differences between the two columns because of the small differences in sample sizes. It is clear that *MarBar* is an important predictor of *RetDur*. The coefficient of *MarBar* in both equations is positive, large in magnitude and statistically significant at well below the 1% level (t-statistics in both of 5.9). In short, women who had to leave work because of the marriage bar have a longer retirement duration (or more correctly a longer current period of not working) even after controlling for age and education. The requirement that the instrument must be a “strong” predictor of the potentially endogenous variable is clearly satisfied.

<<<< Table 3 About Here >>>>

Unfortunately, it is not possible to directly test the second requirement, which is that there is no relationship between the *MarBar* and any other determinant of cognition, which would be captured in the error term in Eq. (1). However, some information can be obtained by considering the reduced-form regressions. In these regressions, *CTT1* and *CTT2* are expressed as a function of the *MarBar* and of the other variables. These estimates are shown for *CTT1* and *CTT2* in Columns 3 and 4 of Table 3. *MarBar* is not statistically significant in either regression. In fact, the t-statistics are very small—0.2 and 0.6 for *CTT1* and *CTT2*, respectively. This lack of statistical significance is very encouraging and suggests that a causal relationship between the instrumental variable and the outcome of interest is unlikely to exist (Angrist and Krueger, 2001; French and Popovici, 2011).

Finally, Columns 5 and 6 in Table 3 show the estimates of the second-stage regression results for *CTT1* and *CTT2*, respectively. For both cognition measures, the coefficient of *RetDur* is negative but not statistically significant at the 10% level. Differences between the estimators of the OLS and IV models are compared by employing the Hausman test. If OLS and IV estimators are found to have a different probability limit, then there is evidence that

endogeneity is present and OLS estimators will be inconsistent. If OLS and IV estimators are found to have the same probability limit, then there is no evidence that endogeneity is present. Both estimators will be consistent and OLS estimation is preferred. The results of the Hausman test is given in the Table 3. For both cognition measures, the χ^2 values are not statistically significant. This implies that the null hypothesis that retirement duration is exogenous cannot be rejected at any level of statistical significance. This leads us to conclude that the OLS estimates are preferred. More generally, there is no statistical evidence that retirement duration is endogenous.

4.2. Robustness Checks

In order to consider the robustness of the findings, a set of additional regressions are estimated. The focus is on whether the coefficient of *RetDur* is significantly different in magnitude under these alternative specifications compared to what is found in the OLS “baseline” regressions (Table 2). Regressions are fit with restricted samples or with different/modified lists of explanatory factors. A Wald test is used to test the cross-equation restriction that the coefficient of *RetDur* from each of these regressions is not statistically different from the coefficient of *RetDur* of the baseline regression. Results of these tests are summarised in Table 4.

<<<< Table 4 About Here >>>>

There are two tests that consider how robust the estimate of *RetDur* is to excluding “older” women from the sample, as employment rates among “older” women are very low. This is done by restricting the sample to women less than age 80, and then to women less than age 70. In both sample restrictions, the coefficient of *RetDur* remains negative and statistically significant at the 1% level. The Wald test confirms that these estimates are not statistically different to the baseline estimates.

The next test excludes those women who performed the health assessment in their homes. A priori, one might expect these women to be different from those who travelled to the health centre in Trinity College Dublin to undertake the health assessment. In this sense, the women who undertook the health assessment in the health centre may be a self-selected sample. When the sample is restricted in this way, the coefficient of *RetDur* remains negative and statistically significant at the 5% level or lower. The Wald test confirms that these estimates are not statistically different to the baseline estimates.

There are three tests that examine how robust the estimate of *RetDur* is to different definitions of retirement. The first excludes unemployed women from the sample. The second excludes sick and disabled women from the sample. The third defines as being retired those who have a retirement duration of at least one year. When unemployed women are excluded, the coefficient of *RetDur* remains negative and statistically significant at the 1% level, with the Wald test confirming that the estimates are not statistically different to the baseline estimates. When the sick and disabled are excluded, the coefficient of *RetDur* remains negative but is smaller in magnitude. The Wald test confirms that this difference is statistically significant at the 5% level for *CTT1* and 10% level for *CTT2*. However, in our view, these small estimated effects are only slightly smaller than the already very small effects estimated by OLS in the baseline model. The estimates appear to be robust to the using of a one year threshold to define retirement.

In the baseline estimates, age is assumed to impact on cognition in a linear manner, which implies a constant “on average” percentage decline with age. There is some evidence that the relationship between age and cognition is non-linear, declining with age but at a diminishing rate. In order to explore this, regressions were estimated with quadratic and cubic terms in age added as explanatory factors. As Table 4 suggests, the hypothesis of non-linearity is supported. The table shows the point estimate of the coefficient of *RetDur*

evaluated at the mean age of the sample. In all cases, this effect is negative. The Wald test indicated that this estimate is smaller than the baseline estimate at the 10% level or below in three of the four tests carried out. However, examination of the predicted relationship between age and cognition implied by these quadratic and cubic specifications of age suggest that the turning points are beyond the age of 90, implying a negative relationship across the age range observed in the sample.

The empirical focus has been on the impact of time not working since the woman stopped working the “final time”. There is no information in TILDA about employment earlier in the woman’s life since detailed life histories have not been collected. It is reasonable to hypothesize that time out of work earlier in life might impact on later-life cognition. This is explored by including variables relating to whether the woman has children. The first is a dummy variable for whether she has children or not while the second is the number of children. Since it was common in Ireland for women to stop working when they had children, such variables might proxy time out of the labour force when younger. As Table 4 shows, the coefficient of *RetDur* is negative and statistically significant at the 1% level. The Wald test suggests that these estimated effects are larger than the baseline estimated effects at the 5% level of lower. Although this is not shown in Table 4, it is interesting to note that the coefficients of the variables, capturing whether the woman has children or the number of children the woman has, are positive and statistically significant, implying that having children has a positive impact on later-life cognition, a finding needing further investigation.

As a final robustness check, the longitudinal dimension of the data is used in an attempt to control for time-invariant but persistent differences across individuals. Both measures of cognition were collected at Wave 1. In addition, it is possible to calculate retirement duration at Wave 1 based on the same definition. Given the date of the health

assessment differs across the waves (i.e. for all individuals it is not exactly four years), age also varies. Therefore it is possible to fit the following “first difference” regression, for both *CTT1* and *CTT2*, that differences out persistent differences: $\Delta \ln CTT(k) = a + b_1 \Delta RetDur + b_2 \Delta Age + e$, where $\Delta CTT(k)$ is the between waves (-ln) difference in the value of the two cognition measures ($k=1,2$); $\Delta RetDur$ is the between wave difference in retirement duration; ΔAge is the between wave difference in age; and e is a random error term. Since the remaining explanatory factors are time-invariant, they do not enter into the specification.

As Table 4 shows, for $\Delta CTT1$ the parameter of $\Delta RetDur$ is negative and statistically significant at the 10% level. For this cognition measure, the Wald test suggests that this estimate is not different to the baseline estimate at the 10% level. For $\Delta CTT2$, the parameter of $\Delta RetDur$ is negative and statistically significant at the 1% level. The Wald test suggests that this effect is considerably larger (more negative) than the baseline estimate at the 1% level. The baseline estimates implies that $\Delta CTT2$ declines on average by 0.14% per year of age. The first difference estimate suggests that this effect is much larger, a decline of 1.1% per year of age.

4.3. Results for Men

We now briefly compare the estimates obtained for women to those for men. Since the marriage bar is not relevant to men, we cannot explore the potential endogeneity of retirement duration. Therefore, the results are OLS estimates where it is assumed that retirement duration is exogenous. Following the same inclusion criteria as for women, the sample consists of 2,091 men.

The distribution of labour market status for men, not surprisingly, is different from that of women. A total of 72.4% of men in the sample were employed or self-employed and another 19.2% were retired at Wave 3 interview. These compare to 34.5% and 40.5%, respectively, for women. Also, virtually no men were “looking after the home” whereas

almost 20% of women self-reported being in this category. Descriptive statistics for retirement duration and the other controls are shown in Table 5. The average age for men in our sample is 67.5 and the average retirement duration is 7.2 years.

<<<< Table 5 About Here >>>>

Table 6 shows OLS estimates for *CTT1* and *CTT2*, respectively. The results are similar to women. The key estimates are the coefficients of *RetDur*, *Age* and *School*. The coefficient of *RetDur* is negative and statistically significant at the 5% level or below. The coefficient of *Age* is also negative and statistically significant at the 1% level. Finally the coefficient of *School* is positive and statistically significant at the 1% level. Table 7 expresses the coefficients of these three variables in percentage terms for both women and men. For both cognitive measures, the effect of retirement duration is more negative for men compared to women. In fact, the effects are around twice as large for men but still small in percentage terms.

<<<< Tables 6 and 7 About Here >>>>

The impact of age is similar for men and women. In addition, the impact of age for both women and men is considerably larger than the impact of retirement duration. There is a big difference between women and men with respect to the impact of schooling. For both measures of cognition, the positive impact of schooling for men is twice that of women. While these estimates suggests both similarities and differences between men and women are worth of more empirical investigation, the results for men confirm the results for women in that the impact of retirement duration on cognition is very small.

5. Conclusions

Previous research has identified a negative relationship between retirement duration and cognition. It appears that on average people who have been retired longer have lower

(fluid) cognition even after other factors known to impact on both, such as education and age, are held constant. However, there is less agreement, and even less good empirical evidence, about whether this observed statistical relationship is a causal relationship. Both directions of causation are feasible. The so-called “use it or lose it” hypothesis emphasises the causal impact of retirement on cognition, with the state of retirement itself being one of the factors responsible for cognitive decline in old age. However, an alternative view is that cognitive decline results in older people being less capable of carrying out the tasks and responsibilities of their job. In economic terms, cognitive decline causes “productivity decline”, which is in itself one of the factors contributing to the retirement decision.

It is important to establish which one—if either—of these causal directions are more important since the policy implications are different. If retirement causes cognitive decline, then policies that help older workers remain in their current job are potentially a way of “slowing” cognitive decline. If cognitive decline causes retirement, then policies that help older workers remain in employment are also warranted. However, as evidence has shown that productivity peaks around age 50 to 54 and then declines (Cardoso et al., 2010; Skirbekk, 2004), it is unlikely that older workers will be able to stay employed in their current job. These workers will need to be employed in jobs that match closer their productivity that has been reduced through cognitive decline. However, our finding suggest that the latter causal direction is of limited importance.

In keeping with other studies, our analysis finds a negative statistical relationship between retirement duration and cognition for both sexes. It is also worth noting that the finding of larger effects for men is consistent with the view that the transition between professional activity and retirement seems to be steeper for men compared with women, perhaps as a results of men being more work-catered than women and family centrality being greater for women than for men (Sharabi and Harp, 2001). This suggests that there is likely

considerable value in analysing differences between men and women separately. Studies that have grouped men and women together have likely masked important differences between them. In addition, it should not be assumed that the findings for men are representative of women.

The employment histories for men and women are considerably different. In most high income countries, it is typical for men to work uninterrupted from the time that they complete schooling to the time that they retire, with ill-health and unemployment being the main factors causing deviation from this pattern. The pattern for women is typically different since children often result in mothers leaving the labour force, often for a considerable period of time (e.g. until children reach school age). Our findings indicate that “time not working”, measured from the last time a woman stopped working, has a negative association with cognition. If it is the case that “time not working” does have an impact on cognition, it is likely that time not working earlier in the life-cycle will also have an impact. Therefore, it is important to analyse how the time spent out of the labour force, associated with children, impacts on later-life cognition since it is not a rare event in the lives of a large number of women. Interestingly in our analysis, the children exhibit a positive association with cognition. It could be the case that the positive impact that child-rearing has on cognition outweighs the negative impact of time not working. This is a new, and potentially important, hypothesis that needs to be explored. However, to do this with rigour would require the collection of detailed employment and life histories, which are not usually a priority in ageing surveys.

In our analysis we used cognition measures that we believe best capture the aspects of cognition most relevant to the execution of tasks typically required by most forms of paid employment. Previous studies simply use the cognition measures included in the data-set with little if any justification. In this sense, the findings of these studies may be an outcome

of using cognition measures that are not relevant or measured with error. More research is needed to develop cognition measures more relevant to this problem, and these measures should routinely be included in ageing studies.

In closing, the purpose of this paper was to examine empirically the relationship between retirement and cognition amongst older Irish women, and to a lesser extent amongst older Irish men. Statistical analysis, based on a set of precise assumptions, suggests that at least for women, the impact of retirement duration on cognition is causal, which is consistent with the “use it or lose it” hypothesis. However, it must be stressed that these effects are very small, if not tiny, when compared to the effects of age or education. In other words, it is extremely unlikely that working into old age has much of an impact on slowing cognitive decline amongst older people.

References

- Angrist, J.D. and A.B. Krueger, (2001), “Instrumental Variables and the Search for Identification: from Supply and Demand to Natural Experiments”, *Journal of Economic Perspectives*, vol. 15, no. 4, pp. 69-85
- Banks, J. and F. Mazzonna, (2012), “The Effect of Education on Old Age Cognitive Abilities: Evidence from a Regression Discontinuity Design”, *Economic Journal*, vol. 122, no. 560, pp. 418-448
- Barrett, A., I. Mosca and B. Whelan, (2015), “How Well-Informed are Pension Scheme Members on Their Future Pension Benefits? Evidence from Ireland”, *Journal of Aging and Social Policy*, vol. 27, no. 4, pp. 295-313
- Bonsang, E., S. Adam and S. Perelman, (2012), “Does Retirement Affect Cognitive Functioning?”, *Journal of Health Economics*, vol. 31, no. 2, pp. 490-501
- Borenstein, A.R., C.I. Copenhaver and J.A. Mortimer, (2006), “Early-life Risk Factors for Alzheimer Disease”, *Alzheimer’s Disease & Associated Disorders*, vol 20, no. 1, pp. 63-72
- Brown, M.T., (2010), “Early-Life Characteristics, Psychiatric History, and Cognition Trajectories in Later Life”, *The Gerontologist*, doi:10.1093/geront/gnq049
- Cardoso, A.R., P. Guimaraes and J. Varejao, (2011), “Are Older Workers Worthy of Their Pay? An Empirical Investigation of Age-Productivity and Age-Wage Nexuses”, *De Economist*, vol. 159, no. 2, pp. 95-111
- Cattell, R.B., (1987), *Intelligence: Its Structure, Growth and Action*, Amsterdam, North-Holland
- Central Statistics Office, (2011), *Survey on Income and Living Conditions. Thematic Report on the Elderly 2004 and 2009*, Dublin: Central Statistics Office

- Central Statistics Office, (2013), *Population and Labour Force Projections 2016-2046*, Dublin: Central Statistics Office
- Coe, N.B., H.M. von Gaudecker, M. Lindeboom and J. Maurer, (2012), “The Effect of Retirement on Cognitive Functioning”, *Health Economics*, vol. 21, no. 8, pp. 913-927
- Connolly, E., (2003), “Durability and Change in State Gender Systems. Ireland in the 1950s”, *The European Journal of Women’s Studies*, vol. 10, no. 1, pp. 65-86
- Cronin, H., C. O’Regan, P. Kearney, C. Finucane and R.A. Kenny, (2013), “Health and Ageing: Development of the TILDA Health Assessment”, *Journal of American Geriatrics Society*, vol. 61, no s2, pp. S269-S278
- D’Elia, L.F., P. Satz, C.L. Uchiyama and T. White, (1996), *Color Trails Test. Professional Manual*. Odessa, FL: Psychological Assessment Resources
- De Grip, A., A. Dupuy, J. Jolles and M. Van Boxtel, (2015), “Retirement and Cognitive Development in the Netherlands: Are the Retired really Inactive?”, *Economics & Human Biology*, vol. 19, no. 4, pp.157-169
- Dixon, R.A., L. Bäckman and L.G. Nilsson, (2004), *New Frontiers in Cognitive Aging*, Oxford University Press, Oxford
- Dooley, C., (2014), “Methodology”, In: A. Nolan, C. O’Regan, C. Dooley, D. Wallace, A. Hever et al., (eds.), *The Over 50s in a Changing Ireland: Economic Circumstances, Health and Well-Being*, Trinity College Dublin
- Duckworth, A., P. Quinn, D. Lynamc, R. Loeber and M. Stouthamer-Loeber, (2011), “Role of Test Motivation in Intelligence Testing”, *Proceedings of the National Academy of Sciences of the United States of America*, vol. 108, no. 19, pp.7717-7720

- Everson-Rose, S.A., C.F. Mendes de Leon, J.L. Bienias, R.S. Wilson and D.A. Evans, (2003), “Early Life Conditions and Cognitive Functioning in Later Life”, *American Journal of Epidemiology*, vol. 158, no. 11, pp.1083-1089
- Fratiglioni, L., S. Paillard-Borg and B. Winblad, (2004), “An Active and Socially Integrated Lifestyle in Late Life Might Protect Against Dementia”, *Lancet Neurology*, vol. 3, no. 6, pp. 343-353
- French, M.T. and I. Popovici, (2011), “That Instrument Is Lousy! In Search of Agreement when Using Instrumental Variables Estimation in Substance Use Research”, *Health Economics*, vol. 20, no. 2, pp.127-146
- Gatz, M., (2007), “Genetics, Dementia, and the Elderly”, *Current Directions in Psychological Science*, vol. 16, no. 3, pp. 123-127
- Hendrie H.C., M.S. Albert, M.A. Butters, S. Gao, D.S. Knopman et al., (2006), “The NIH Cognitive and Emotional Health Project. Report of the Critical Evaluation Study Committee”, *Alzheimer’s & Dementia*, vol. 2, no. 1, pp. 12-32
- Kearney P.M., H. Cronin H, C. O'Regan, Y. Kamiya, G.M. Savva et al., (2011), “Cohort Profile: the Irish Longitudinal Study on Ageing”, *International Journal of Epidemiology*, vol. 40, no. 4, pp. 877-884.
- Mazzonna, F. and F. Peracchi, (2012), “Ageing, Cognitive Abilities and Retirement”, *European Economic Review*, vol. 56, no. 4, pp. 691-710
- Martin, P., M. MacDonald, J. Margaret, L.W. Poon, (2010), “Resilience and Longevity: Expert Survivorship of Centenarians”, In: P.S. Fry and C.L.M. Keyes (eds.), *New Frontiers in Resilient Aging: Life Strengths and Well-Being in Later Life*, Cambridge University Press

- Pyle, J.L., (1990), *The State and Women in the Economy: Lessons from Sex Discrimination in the Republic of Ireland*, Albany, New York: State University of New York Press
- O'Regan, C., H. Cronin and R.A. Kenny, (2010), "Mental Health and Cognitive Function", In: A. Barrett, G. Savva, V. Timonen and R.A. Kenny (eds.), *Fifty Plus in Ireland 2011: First Results from The Irish Longitudinal Study on Ageing (TILDA)*, Trinity College Dublin
- Rohwedder, S. and R.J. Willis, (2010), "Mental Retirement", *Journal of Economic Perspectives*, vol 24, no. 1, pp. 119-138
- Royall, D.R., E.C. Lauterbach, J.L Cummings, A. Reeve, T.A. Rummans et al., (2002), "Executive Control Function: A Review of Its Promise and Challenges for Clinical Research. A Report from the Committee on Research of the American Neuropsychiatric Association", *The Journal of Neuropsychiatry & Clinical Neurosciences*, vol. 14, no. 4, pp. 377-405
- Salthouse, T.A., (2011), *Major Issues in Cognitive Aging*, Oxford University Press
- Savva, G.M., S.C. Maty, A. Setti and J. Feeney, (2013), "Cognitive and Physical Health of the Older Populations of England, the United States, and Ireland: International Comparability of The Irish Longitudinal Study on Ageing", *Journal of American Geriatrics Society*, vol. 61, no. 2, pp. S291-S298
- Schaie, K.W., (1994), "The Course of Adult Intellectual Development", *American Psychologist*, vol. 49, no. 4, pp. 304-313
- Schneeweis, N., V. Skirbekk and R. Winter-Ebmer, (2014), "Does Education Improve Cognitive Performance Four Decades After School Completion?", *Demography*, vol. 51, no. 2, pp. 619-643

- Skirbekk, V., (2004), Age and Individual Productivity: A Literature Survey, Vienna Yearbook of Population Research, vol. 2, no. 1 pp. 133-154
- Stern, Y., (2002), "What is Cognitive Reserve? Theory and Research Application of the Reserve Concept", Journal of the International Neuropsychological Society, vol. 8, no. 3, pp. 448-460
- Stern, Y., (2003), "The Concept of Cognitive Reserve: a Catalyst for Research", Journal of Clinical and Experimental Neuropsychology, vol. 25, no. 5, pp. 589-593
- Valenzuela, M.J. and P. Sachdev, (2006), "Brain Reserve and Dementia: a Systematic Review", Psychological Medicine, vol. 36, no. 4, pp. 441-454
- Whelan B.J. and G.M. Savva, (2013), "Design and Methodology of the TILDA Study", Journal of American Geriatrics Society, vol. 61, no. (s2), pp. S265-S268
- World Health Organization (WHO) and Alzheimer's Disease International, (2012), *Dementia: A Public Health Priority*. Geneva

Table 1
Means and Standard Deviations of Regression
Independent Variables, Women

Variable	Mean	St. Dev.
<i>Age (years)</i>	65.8	9.0
<i>RetDur (years)</i>	12.0	15.7
<i>School (years)</i>	12.4	2.7
<i>NoBooks</i>	34.0%	--
<i>PoorHealth</i>	6.1%	--
<i>PoorFam</i>	15.4%	--
<i>MotherNotWork</i>	70.1%	--
<i>FatherNotWork</i>	6.5%	--

Table 2
OLS Regression Results, Irish Women

Reg. #:	(1)	(2)
Dependent:	<i>-ln(CTT1)</i>	<i>-ln(CTT2)</i>
<i>RetDur</i>	-0.00193 ^{***} (-3.4)	-0.00142 ^{***} (-3.2)
<i>Age</i>	-0.0211 ^{***} (-21.2)	-0.0167 ^{***} (-21.6)
<i>School</i>	0.0111 ^{***} (3.7)	0.0133 ^{***} (5.8)
<i>NoBooks</i>	-0.0555 ^{***} (-3.3)	-0.0811 ^{***} (-6.3)
<i>PoorHealth</i>	-0.0683 ^{**} (-2.2)	-0.0476 ^{**} (-2.0)
<i>PoorFam</i>	-0.00944 (-0.4)	-0.0172 (-1.0)
<i>MotherNotWork</i>	-0.00444 (-0.3)	-0.0156 (-1.2)
<i>FatherNotWork</i>	-0.0313 (-1.0)	-0.0240 (-1.0)
<i>Constant</i>	-2.566 ^{***} (-33.6)	-3.613 ^{***} (-61.2)
<i>R</i> ² (%)	26.2	29.4
<i>N</i>	2,519	2,481
Notes: <i>t</i> statistics in parentheses: * $p < 0.10$, ** $p < 0.05$, *** $p < 0.01$		

Table 3
IV Regression Results, Irish Women

	First Stage IV		Reduced form		Second Stage IV	
Reg #:	(1)	(2)	(3)	(4)	(5)	(6)
Dependent:	<i>RetDur</i>	<i>RetDur</i>	$-\ln(CTT1)$	$-\ln(CTT2)$	$-\ln(CTT1)$	$-\ln(CTT2)$
<i>MarBar</i>	4.777*** (5.9)	4.794*** (5.9)	0.00481 (0.2)	0.0100 (0.6)	-- --	-- --
<i>RetDur</i>	--	--	--	--	0.0010 (0.2)	0.0021 (0.6)
<i>Age</i>	0.892*** (29.7)	0.882*** (28.9)	-0.0230*** (-26.3)	-0.0181*** (-26.6)	-0.024*** (-5.1)	-0.020*** (-5.6)
<i>School</i>	-0.566*** (-5.6)	-0.560*** (-5.5)	0.0122*** (4.1)	0.0141*** (6.2)	0.013*** (3.1)	0.015*** (4.9)
<i>NoBooks</i>	0.458 (0.8)	0.552 (1.0)	-0.0563*** (-3.4)	-0.0817*** (-6.3)	-0.057*** (-3.4)	-0.083*** (-6.3)
<i>PoorHealth</i>	0.180 (0.2)	0.113 (0.1)	-0.0682** (-2.2)	-0.0472* (-2.0)	-0.068** (-2.2)	-0.047* (-1.9)
<i>PoorFam</i>	0.657 (0.9)	0.744 (1.0)	-0.00990 (-0.5)	-0.0173 (-1.0)	-0.011 (-0.5)	-0.019 (-1.1)
<i>MotherNotWork</i>	1.048* (1.9)	1.160** (2.0)	-0.00689 (-0.4)	-0.0178 (-1.4)	-0.0079 (-0.5)	-0.020 (-1.5)
<i>FatherNotWork</i>	0.690 (0.7)	0.736 (0.7)	-0.0322 (-1.1)	-0.0244 (-1.0)	-0.033 (-1.1)	-0.026 (-1.1)
<i>Constant</i>	-41.29*** (-16.4)	-40.87*** (-16.1)	-2.480*** (-33.8)	-3.546*** (-62.6)	-2.44*** (-10.8)	-3.46*** (-19.9)
$R^2(\%)$	33.2	32.7	25.9	29.1	--	--
<i>N</i>	2,519	2,481	2,519	2,481	2,519	2,481
Hausman test (H_0 : RetDur is exogenous)						
χ^2	--		--		0.37	0.89
<i>P-value</i>	--		--		0.54	0.34
<i>OLS or IV?</i>	--		--		OLS	OLS
Notes: <i>t</i> statistics in parentheses: * $p < 0.10$, ** $p < 0.05$, *** $p < 0.01$						

Table 4
Wald Test for Robustness of Retirement Duration Effects,
Coefficient of *RetDur*, Irish Women

	(1)	(2)
Dependent:	$-\ln(CTT1)$	$-\ln(CTT2)$
(1) Baseline	-0.00193 ^{***}	-0.00142 ^{***}
(2) Exclude aged 80+	-0.00182 ^{***}	-0.00157 ^{***}
χ^2	0.14	0.65
p-value	0.71	0.42
(3) Exclude aged 70+	-0.00246 ^{***}	-0.00202 ^{***}
χ^2	0.53	1.42
p-value	0.47	0.23
(4) Exclude home assessment	-0.00161 ^{**}	-0.00145 ^{***}
χ^2	0.73	0.01
p-value	0.39	0.92
(5) Exclude unemployed	-0.00194 ^{***}	-0.00145 ^{***}
χ^2	0.07	0.27
p-value	0.79	0.60
(6) Exclude sick/disabled	-0.00145 ^{**}	-0.00120 ^{***}
χ^2	4.97	3.21
p-value	0.03	0.07
(7) Retired if <i>RetDur</i> > 1 year	-0.00193 ^{***}	-0.00142 ^{***}
χ^2	0.40	0.10
p-value	0.52	0.75
(8) Add Age²	-0.00149 ^{**}	-0.00128 ^{***}
χ^2	13.37	2.96
p-value	<0.001	0.09
(9) Add Age² and Age³	-0.00150 ^{**}	-0.00126 ^{***}
χ^2	8.93	2.58
p-value	<0.001	0.11
(10) Add has children	-0.00204 ^{***}	-0.00153 ^{***}
χ^2	3.98	7.92
p-value	0.05	<0.001
(11) Add number of children	-0.00221 ^{***}	-0.00157 ^{***}
χ^2	5.83	4.84
p-value	0.02	0.03
(12) Fixed effects W1 and W3	-0.00594 [*]	-0.0113 ^{***}
χ^2	1.47	18.3
p-value	0.22	<0.001

Notes: See text for explanation of test.

Table 5
Means and Standard Deviations of Regression
Variables, Irish Men

Variable	Mean	St. Dev.
<i>Age</i>	67.5	8.8
<i>RetDur</i>	7.2	8.6
<i>School</i>	12.0	3.1
<i>NoBooks</i>	43.2%	--
<i>PoorHealth</i>	5.7%	--
<i>PoorFam</i>	23.5%	--
<i>MotherNotWork</i>	69.1%	--
<i>FatherNotWork</i>	6.6%	--

Table 6
OLS Regression Results, Irish Men

Reg #:	(1)	(2)
Dependent:	<i>-ln(CTT1)</i>	<i>-ln(CTT2)</i>
<i>RetDur</i>	-0.00370*** (-3.1)	-0.00201** (-2.0)
<i>Age</i>	-0.0227*** (-19.5)	-0.0198*** (-20.0)
<i>School</i>	0.0228*** (8.2)	0.0254*** (10.9)
<i>NoBooks</i>	-0.0604*** (-3.4)	-0.0683*** (-4.6)
<i>PoorHealth</i>	-0.0192 (-0.5)	0.0125 (0.4)
<i>PoorFam</i>	0.0235 (1.2)	0.0185 (1.1)
<i>MotherNotWork</i>	0.00923 (0.5)	0.0204 (1.4)
<i>FatherNotWork</i>	-0.0750** (-2.3)	-0.0418 (-1.5)
<i>Constant</i>	-2.703*** (-32.0)	-3.639*** (-51.2)
<i>N</i>	2,091	2,052
<i>R² (%)</i>	31.0%	33.2%
Notes: <i>t</i> statistics in parentheses: * $p < 0.10$, ** $p < 0.05$, *** $p < 0.01$		

Table7
Comparison of *RetDur*, *Age* and *School* Coefficients,
Irish Men and Women

	(1)		(2)	
Dependent	<i>-ln(CTT1)</i>		<i>-ln(CTT2)</i>	
	Women	Men	Women	Men
<i>RetDur</i>	-0.2%	-0.4%	-0.1%	-0.2%
<i>Age</i>	-2.1%	-2.2%	-1.7%	-2.0%
<i>School</i>	1.1%	2.3%	1.3%	2.6%

Figure 1
Age and Color Trail Task 1 (CTT1), Irish Women

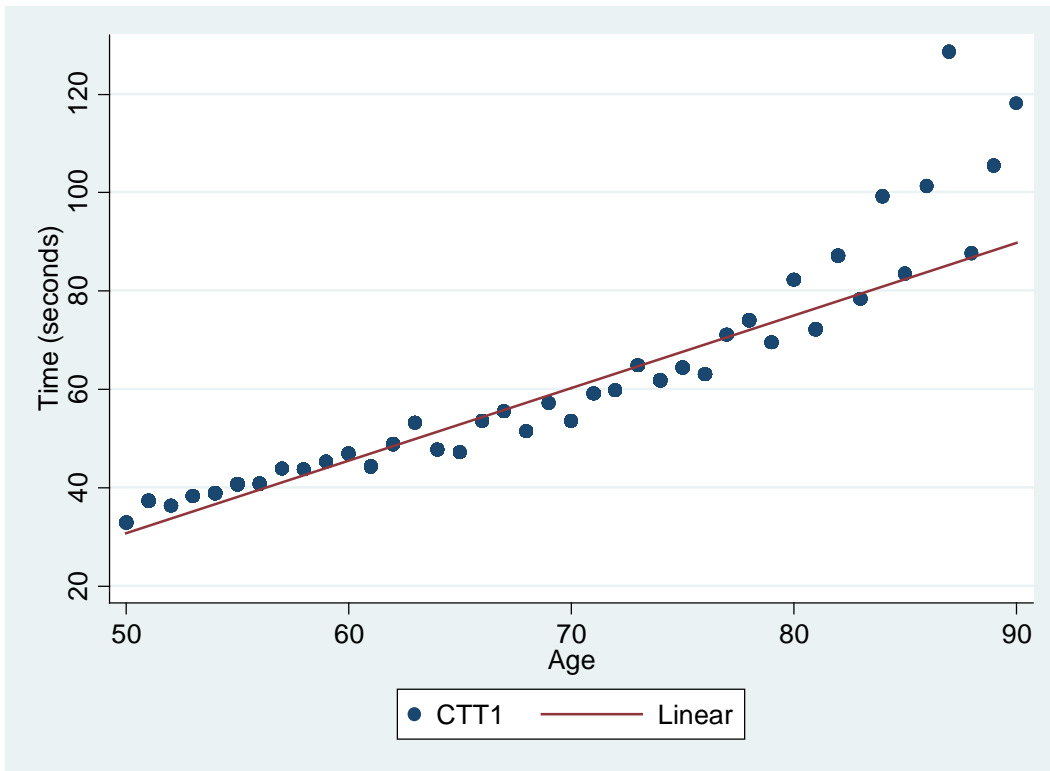


Figure 2
Age and Color Trail Task 2 (CTT2), Irish Women

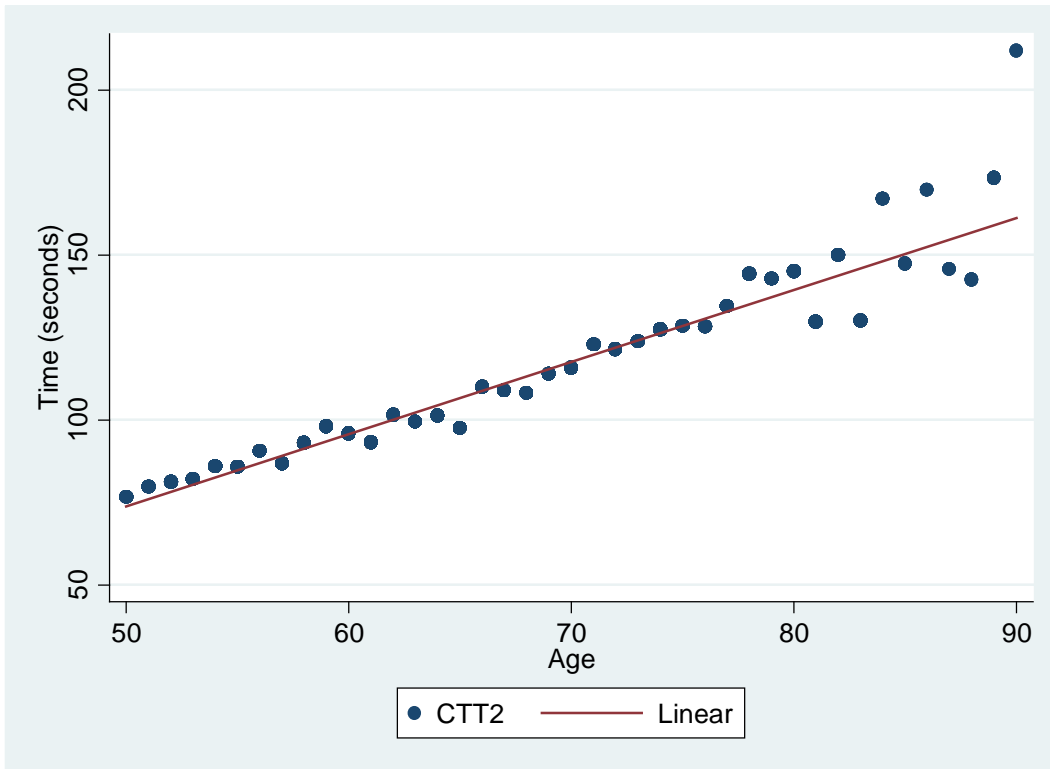


Figure 3
Activity rates (%) by Marital Status, Woman Aged 15+,
Various Countries, 1970

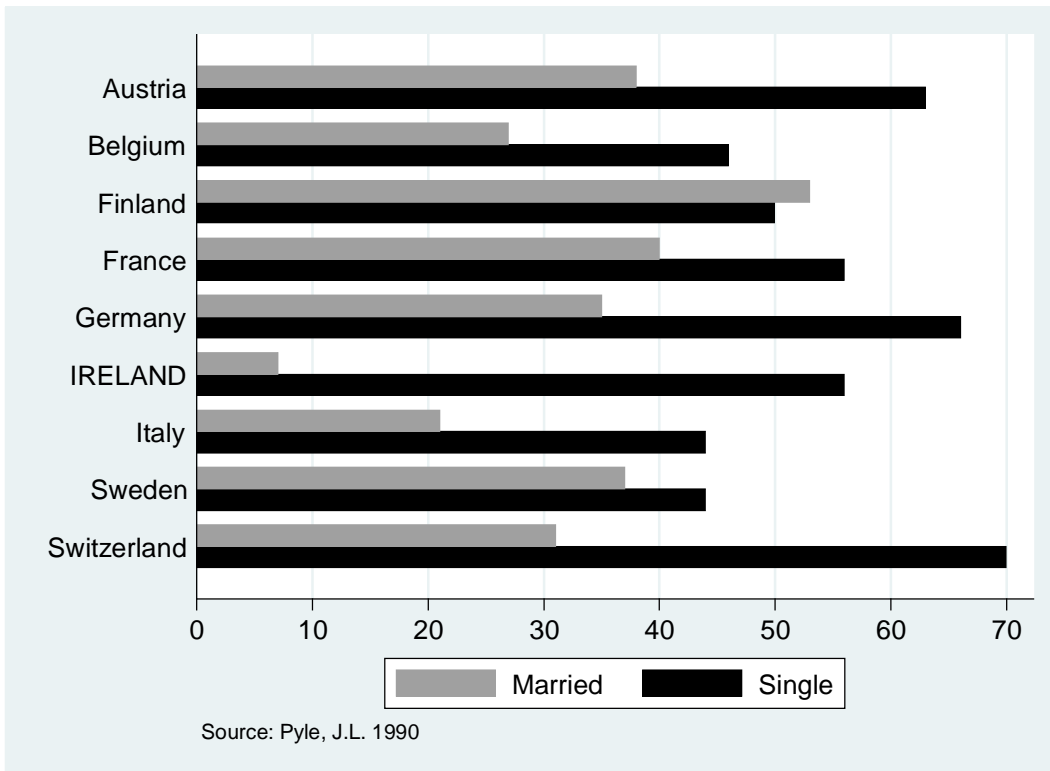


Figure 4
Proportions of Never-married and Married Women
by Birth Cohort, Various Countries

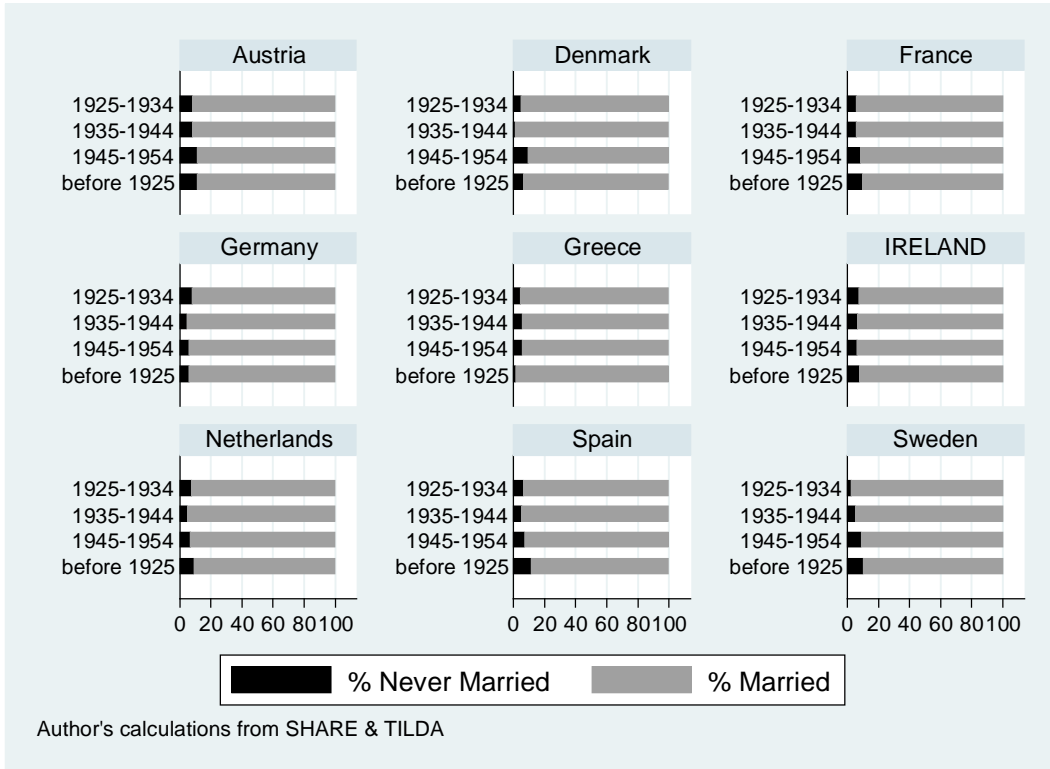


Figure 5
Crude and General Marriage Rate, Ireland, 1925-1996

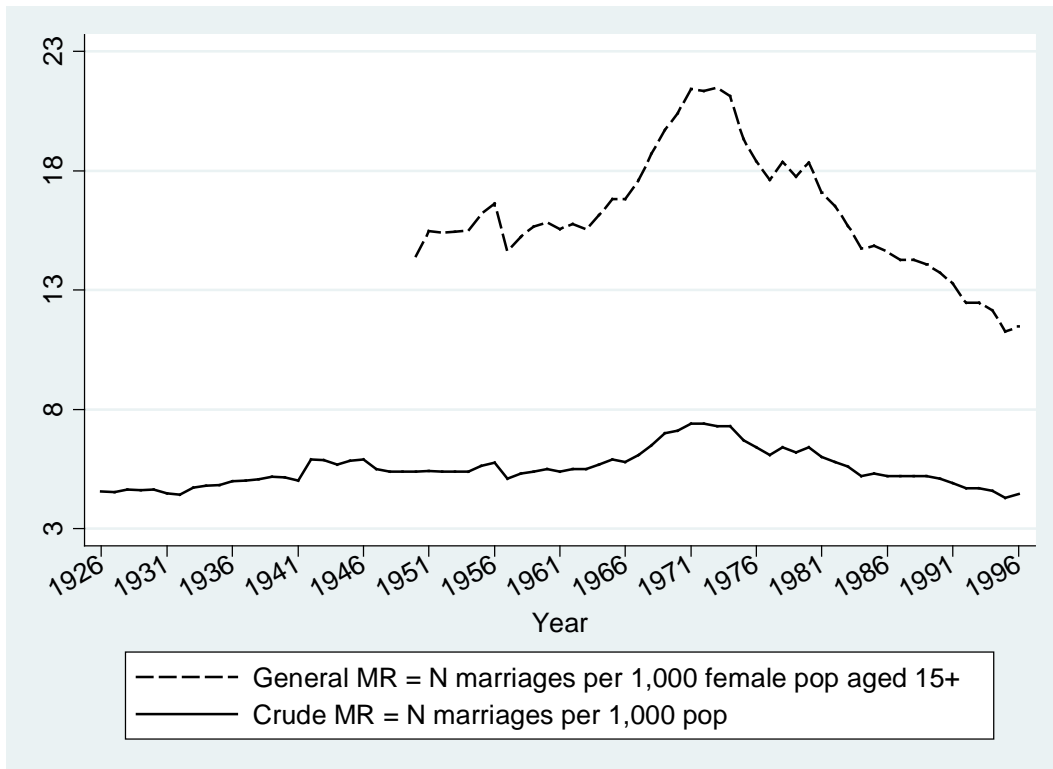
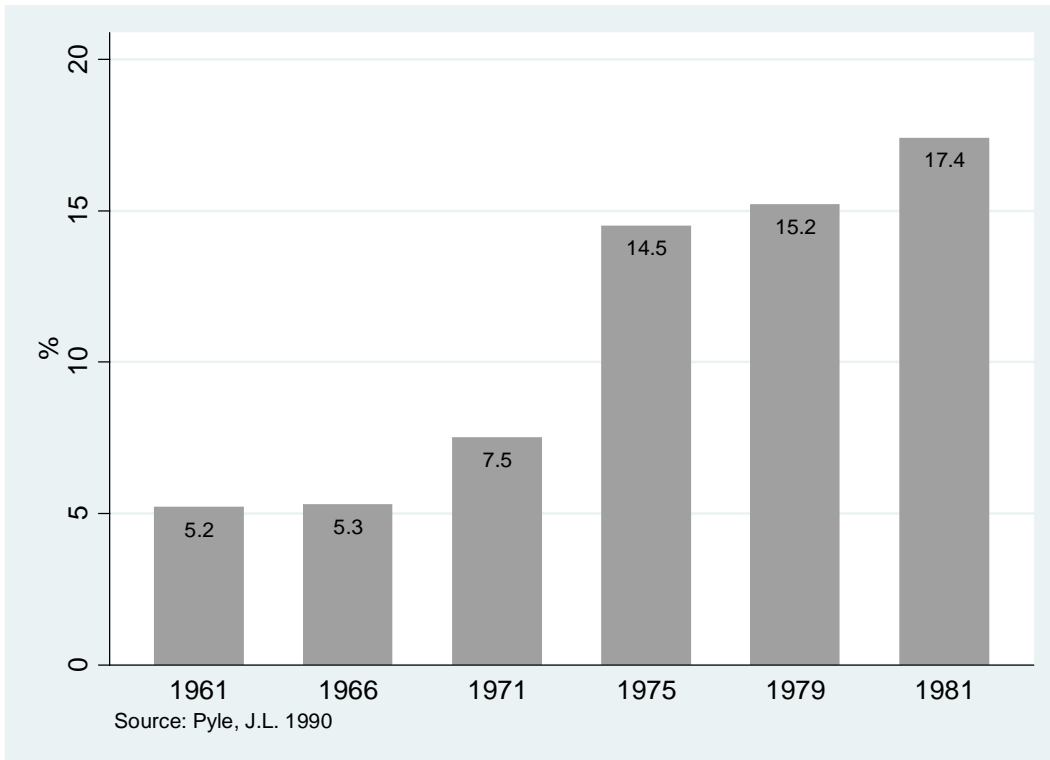


Figure 6
Labour Force Participation Rate, Married Women Aged 15+,
Ireland, 1961-1981



Year	Number	Title/Author(s) ESRI Authors/Co-authors <i>Italicised</i>
2016	530	Exporting under Financial Constraints : Firm-level evidence from EU countries Gavin Murphy and <i>Iulia Siedschlag</i>
	529	Fisheries Management for different angler types <i>John Curtis and Benjamin Breen</i>
	528	Poorest made Poorer? Decomposing income losses at the bottom of the income distribution during the Great Recession <i>Michael Savage</i>
	527	Profile of second-level students exempt from studying Irish <i>Emer Smyth and Merike Darmody</i>
	526	Modelling the Vietnamese Economy Pho Chi , <i>John FitzGerald</i> , Do Lam , Hoang Ha , Luong Huong, Tran Dung
	525	Attitudes to Irish as a school subject among 13-year-olds <i>Emer Smyth and Merike Darmody</i>
	524	Attitudes of the non-Catholic Population in Northern Ireland towards the Irish Language in Ireland <i>Merike Darmody</i>
	523	An auction framework to integrate dynamic transmission expansion planning and pay-as-bid wind connection auctions <i>Niall Farrell, Mel T. Devine and Alireza Soroudi</i>
	2015	522
521		Water Quality and Recreational Angling Demand in Ireland <i>John Curtis</i>
520		Predicting International Higher Education Students' Satisfaction with their Study in Ireland Mairead Finn and <i>Merike Darmody</i>

