

Zhou, Peng

Working Paper

Separating yolk from white: A filter based on economic properties of trend and cycle

Cardiff Economics Working Papers, No. E2017/1

Provided in Cooperation with:

Cardiff Business School, Cardiff University

Suggested Citation: Zhou, Peng (2017) : Separating yolk from white: A filter based on economic properties of trend and cycle, Cardiff Economics Working Papers, No. E2017/1, Cardiff University, Cardiff Business School, Cardiff

This Version is available at:

<https://hdl.handle.net/10419/174123>

Standard-Nutzungsbedingungen:

Die Dokumente auf EconStor dürfen zu eigenen wissenschaftlichen Zwecken und zum Privatgebrauch gespeichert und kopiert werden.

Sie dürfen die Dokumente nicht für öffentliche oder kommerzielle Zwecke vervielfältigen, öffentlich ausstellen, öffentlich zugänglich machen, vertreiben oder anderweitig nutzen.

Sofern die Verfasser die Dokumente unter Open-Content-Lizenzen (insbesondere CC-Lizenzen) zur Verfügung gestellt haben sollten, gelten abweichend von diesen Nutzungsbedingungen die in der dort genannten Lizenz gewährten Nutzungsrechte.

Terms of use:

Documents in EconStor may be saved and copied for your personal and scholarly purposes.

You are not to copy documents for public or commercial purposes, to exhibit the documents publicly, to make them publicly available on the internet, or to distribute or otherwise use the documents in public.

If the documents have been made available under an Open Content Licence (especially Creative Commons Licences), you may exercise further usage rights as specified in the indicated licence.

Cardiff Economics Working Papers



Working Paper No. E2017/1

Separating Yolk from White: A Filter based on Economic Properties of Trend and Cycle

Peng Zhou

March 2017

ISSN 1749-6010

Cardiff Business School
Cardiff University
Colum Drive
Cardiff CF10 3EU
United Kingdom
t: +44 (0)29 2087 4000
f: +44 (0)29 2087 4419
business.cardiff.ac.uk

This working paper is produced for discussion purpose only. These working papers are expected to be published in due course, in revised form, and should not be quoted or cited without the author's written permission.

Cardiff Economics Working Papers are available online from:

<http://econpapers.repec.org/paper/cdfwpaper/> and

business.cardiff.ac.uk/research/academic-sections/economics/working-papers

Enquiries: EconWP@cardiff.ac.uk

**Separating Yolk from White:
A Filter based on Economic Properties of Trend and Cycle**

Peng Zhou¹

Cardiff University, United Kingdom

Abstract

This paper proposes a new filter technique to separate trend and cycle based on stylised economic properties of trend and cycle, rather than relying on *ad hoc* statistical properties such as frequency. Given the theoretical separation between economic growth and business cycle literature, it is necessary to make the measures of trend and cycle match what the respective theories intend to explain. The proposed filter is applied to the long macroeconomic data collected by the Bank of England (1700-2015).

Key Words: Filter, Trend, Cycle

JEL Classification: C32

¹ D47, Aberconway Building, Cardiff University, Cardiff, CF10 3EU, UK. Tel: +44 (0)2920688778.
Email: zhoup1@cardiff.ac.uk

Separating Yolk from White: A Filter based on Economic Properties of Trend and Cycle

1. Introduction

The two fundamental issues in macroeconomic theory are long-run economic growth (driven by low-frequency changes) and short-run business cycle (driven by high-frequency changes). The literatures on these two issues are separated because the foci of the models are quite different. However, the data for economic growth and business cycle are not collected separately. A common practice to test/estimate an economic growth theory is simply to use the growth rate of the raw data, ignoring the possible role of business cycles². Meanwhile, to test/estimate a business cycle theory, the raw data are usually filtered by some statistical procedures, ranging from de-meaning, linear de-trending and de-seasoning to sophisticated filters such as HP filter, band-pass filter and wavelet filter, but these procedures either fail to account for the possible variation in the trend component or tend to over-smooth the cycle component. A consequence of applying these statistical procedures before economic analysis is that the economic growth models are likely to over-state the importance of economic growth, while business cycle models are likely to under-state the importance of business cycle, because the filtered data may contain both trend and cycle. Without a proper measurement, the validity and reliability of the empirical inferences are questionable.

It very much resembles separating the yolk from the white, before a cook can use them for different recipes. The statistical procedures are like using a sharp knife to cut yolk out, but inevitably leaving some white behind and probably losing some yolk due to the inflexibility of the knife. A smart cook's trick is to make use of the physical properties of the yolk/white (different densities): simply squeeze a plastic bottle and press against the yolk, and the power of air suction will nicely separate the dense yolk from the thin white. The filter proposed in this paper follows a similar logic: we make use of some stylised economic properties of trend and cycle to separate them, rather than relying on some *ad hoc* assumptions on statistical properties such as frequency.

An earlier approach similar to the proposed filter can be found in Crafts, Leybourne and Mills (1989, CLM hereinafter) who use a flexible procedure to isolate the trend and cycle components using the Kalman filter. Their approach has the advantage over

² For example, Sala-i-Martin (2004), Badinger (2010) and Asimakopoulos and Karavias (2016).

de-meaning, de-trending and de-seasoning in that it allows for time-varying trend component. It also has the advantage over the sophisticated filters (e.g. HP filter, band-pass filter, wavelet filter) in that it uses a state-space model to incorporate some economic features into the filtering process. However, the CLM procedure only applies to $I(1)$ series. The present paper develops a more general filtering procedure which can be applied to both $I(0)$ and $I(1)$ processes. Any time series regardless of its stationarity property can be decomposed into a time-varying trend component and a cycle component without an assumption on frequency. A key advantage of this new filter over the traditional statistical procedures is that it incorporates some stylised economic properties of the trend and cycle into the filter design.

2. The Filter

A raw data series z_t , either $I(0)$ or $I(1)$, can be decomposed into a time-varying trend component (μ_t) driven by low-frequency changes and a cycle component (ψ_t) driven by high-frequency changes:

$$z_t = \mu_t + \psi_t \quad (1)$$

The cycle component ψ_t is modelled as a zero-mean stationary AR(2) process, which is a well-established stylised economic property in the business cycle literature³.

$$\psi_t = \rho_1 \psi_{t-1} + \rho_2 \psi_{t-2} + \omega_t, \text{ where } \omega_t \sim WN(0, \sigma_\omega^2) \quad (2)$$

The AR(2) specification implies a pseudo-cyclical behavior (Harvey, 1985). The periodicity $\lambda \equiv 2\pi / \arccos(|\rho_1|/2\sqrt{|\rho_2|})$ can be used to measure the average duration of the cycle component and provide an intuitive measure of frequency. That is another reason why AR(2) is preferred to AR(1) in the specification of the cycle component.

The trend component μ_t depends on whether the series is $I(1)$ or $I(0)$:

$$\mu_t = \mu_{t-1} + \beta_t + \eta_t, \text{ where } \eta_t \sim WN(0, \sigma_\eta^2) \quad (3A)$$

$$\mu_t = \rho \mu_{t-1} + (1 - \rho)\beta_t + \eta_t, \text{ where } \eta_t \sim WN(0, \sigma_\eta^2) \quad (3B)$$

The specification of the trend component again makes use of some well-established

³ Most business cycle models assume AR(1) or AR(2) in the structural equations and shock processes. Very few models have longer than 2-period lag. See for example Smets and Wouters (2007).

stylised economic properties⁴. In the $I(1)$ case (e.g. log GDP), equation (3A) can also be written in the first difference form: $\Delta\mu_t = \mu_t - \mu_{t-1} = \beta_t + \eta_t$ to see that the trend growth ($\Delta\mu_t$) contains a time-varying deterministic component (β_t) and a stochastic component (η_t). $\Delta\mu_t$, rather than the raw growth Δy_t , is what most economic growth models actually try to explain. In the $I(0)$ case (e.g. unemployment rate, inflation and interest rate), equation (3B) is a mean-reverting process, allowing for a time-varying mean β_t . Lastly, the time-varying mean/trend is modelled as a random walk:

$$\beta_t = \beta_{t-1} + \xi_t, \text{ where } \xi_t \sim WN(0, \sigma_\xi^2) \quad (4)$$

The equation system (1), (2), (3A) and (4) defines the dynamic behavior of an $I(1)$ process, while (1), (2), (3B) and (4) defines the counterpart of an $I(0)$ process. If we denote $\mathbf{x}_t \equiv [\mu_t; \beta_t; \psi_t; \psi_{t-1}]$ as the unobserved state vector, z_t as the observed raw data and v_t as a white noise process with a standard normal distribution, the equation system can be written in the state space form:

- State Equation: $\mathbf{x}_t = \mathbf{A}\mathbf{x}_{t-1} + \mathbf{B}v_t$;
- Measurement Equation: $z_t = \mathbf{C}\mathbf{x}_t + \mathbf{D}v_t$.

The matrices are defined as:

$$\mathbf{A} = \mathbf{A}_0^{-1} \begin{bmatrix} 1 & 0 & 0 & 0 \\ 0 & 1 & 0 & 0 \\ 0 & 0 & \rho_1 & \rho_2 \\ 0 & 0 & 1 & 0 \end{bmatrix}, \quad \mathbf{B} = \mathbf{A}_0^{-1} \begin{bmatrix} \sigma_\eta \\ \sigma_\xi \\ \sigma_\omega \\ 0 \end{bmatrix}, \quad \mathbf{C} = [1 \quad 0 \quad 1 \quad 0], \quad \mathbf{D} = 0, \text{ where:}$$

$$\mathbf{A}_0 \equiv \begin{bmatrix} 1 & -1 & 0 & 0 \\ 0 & 1 & 0 & 0 \\ 0 & 0 & 1 & 0 \\ 0 & 0 & 0 & 1 \end{bmatrix} \text{ if } z_t \sim I(1), \text{ and } \mathbf{A}_0 \equiv \begin{bmatrix} 1 & 1 - \rho & 0 & 0 \\ 0 & 1 & 0 & 0 \\ 0 & 0 & 1 & 0 \\ 0 & 0 & 0 & 1 \end{bmatrix} \text{ if } z_t \sim I(0).$$

Note that the measurement error is assumed to be equal to zero ($\mathbf{D} = 0$) here, but in general, it can be non-zero. The above state space model can be estimated numerically using the Kalman filter. This procedure of decomposing a time series z_t into trend and cycle based on the stylised economic properties of trend and cycle is termed as the Z-filter for the convenience of comparison with other procedures⁵.

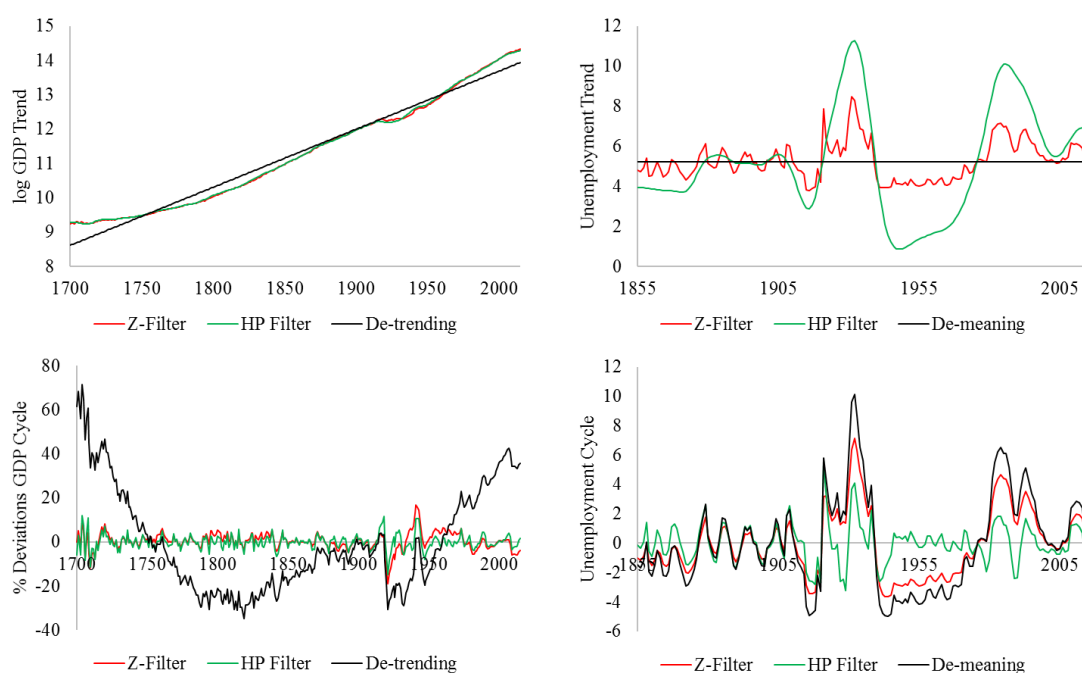
⁴ For example, see Nelson and Plosser (1982) for an early discussion of the model specification of trend.

⁵ Another reason is because of the initial of the author's last name.

3. Application

To demonstrate, we apply the Z-filter to probably the longest macroeconomic data series in the world accumulated by the Bank of England⁶. We compare the filtered trend and cycle components of (log) GDP (an $I(1)$ process) and unemployment rate (an $I(0)$ process) with other statistical procedures in Figure 1.

Figure 1 The Comparison of De-trend, De-mean, HP-filter and Z-filter



Notes: De-trending is based on a simple linear regression with an intercept and a deterministic time trend.

One expected feature of the Z-filtered trend component is its high volatility (both for $I(1)$ and $I(0)$ processes). It is because the Z-filter is more flexible and does not restrict the frequency of changes in the trend component. Arguably, there is no good reason and no good basis to restrict the frequency of changes in the trend. The resulting trend shows that the fluctuations of the economy can well come from the fluctuations in the trend as much as in the cycle. However, if de-meaning, de-trending or HP filter are used, the fluctuations will be mainly assigned to cycle components.

The state-space models of (log) GDP and unemployment rate are estimated using the Kalman filter and the results are shown in Table 1. The most informative conclusion is the periodicity (λ) of the two series. A complete cycle in the output market takes about

⁶ Bank of England, November, 2016. *Three Centuries of Macroeconomic Data* (version 2.3). Available at: <http://www.bankofengland.co.uk/research/pages/onebank/threecenturies.aspx>.

5 years (similar to the findings in CLM), while that in the labour market is about 20 years. Different cycle lengths imply that recessions of different severity may be due to composition of different cycles. If only the output market experiences the trough, then the recession is mild (minor trough). If more than one markets are at the trough simultaneously, then it may form a Great Recession (medium trough) or even a Great Depression (major trough). Combined with financial cycles (which can be estimated using interest rate), the composition of cycles with different lengths may be more complicated, but has more potential to explain the observed patterns of business cycles.

Table 1 Summary of the Estimated State Space Models

	Log (GDP)	Unemployment Rate
ρ_1	0.8338 (0.060)	1.2749 (0.481)
ρ_2	-0.0451 (0.039)	-0.3674 (0.344)
ρ		0.8624 (0.135)
σ_η	0.0114 (0.008)	0.4917 (0.930)
σ_ξ	0.0013 (0.001)	0.0027 (35.232)
σ_ω	0.0242 (0.007)	0.7548 (2.391)
λ	4.8507	19.6279

Notes: Standard deviations are in parentheses. $\lambda \equiv 2\pi / \arccos(|\rho_1|/2\sqrt{|\rho_2|})$ measures the periodicity.

4. Conclusion

This paper introduces a new filter, the Z-filter, to decompose any time series into the trend and cycle consistent to the stylised economic properties of trend and cycle in the theoretical literature. In contrast, the traditional filters mainly rely on statistical properties such as frequency. Arguably, economic properties are more relevant than statistical properties in separating trend and cycle. The Z-filter can improve the consistency in empirical inference by a better measure of what the theories are intended to explain. In other words, it can greatly reduce the measurement error in empirical studies.

To bake a good cake, the cook needs to separate yolk from white. To verify a specific model, the economist needs to isolate trend from cycle.

References

- Asimakopoulou, S. and Karavias, Y. 2016. "The impact of government size on economic growth: A threshold analysis." *Economics Letters*, 139 (2): 65-68.
- Badinger, H. 2010. "Output volatility and economic growth." *Economics Letters*, 106, (1): 15-18.
- Crafts, N. Leybourne, S. and Mills, T. 1989. "Trends and Cycles in British Industrial Production, 1700-1913." *Journal of the Royal Statistical Society. Series A (Statistics in Society)*, 152 (1): 43-60.
- Harvey, A. 1985. "Trends and cycles in macroeconomic time series." *Journal of Business Economics and Statistics*, 3: 216-227.
- Nelson, R. and Plosser, C. 1982. "Trends and random walks in macroeconomic time series." *Journal of Monetary Economics*, 10 (2): 139-162.
- Smets, F. and R. Wouters. 2007. "Shocks and Frictions in US Business Cycles: A Bayesian DSGE Approach." *The American Economic Review*, 97 (3): 586-606.
- Sala-i Martin, X., G. Doppelhofer, and R. Miller. 2004. "Determinants of long-term growth: a Bayesian averaging of classical estimates (BACE) approach." *American Economic Review*, 94 (4): 813-835.