

Arango Thomas, Luis Eduardo; Castellani, Francesca; Obando, Nataly

Working Paper

It is mainly about where you work!: Labor demand in the Colombian manufacturing sector

IDB Working Paper Series, No. IDB-WP-712

Provided in Cooperation with:

Inter-American Development Bank (IDB), Washington, DC

Suggested Citation: Arango Thomas, Luis Eduardo; Castellani, Francesca; Obando, Nataly (2016) : It is mainly about where you work!: Labor demand in the Colombian manufacturing sector, IDB Working Paper Series, No. IDB-WP-712, Inter-American Development Bank (IDB), Washington, DC,
<https://doi.org/10.18235/0000503>

This Version is available at:

<https://hdl.handle.net/10419/173813>

Standard-Nutzungsbedingungen:

Die Dokumente auf EconStor dürfen zu eigenen wissenschaftlichen Zwecken und zum Privatgebrauch gespeichert und kopiert werden.

Sie dürfen die Dokumente nicht für öffentliche oder kommerzielle Zwecke vervielfältigen, öffentlich ausstellen, öffentlich zugänglich machen, vertreiben oder anderweitig nutzen.

Sofern die Verfasser die Dokumente unter Open-Content-Lizenzen (insbesondere CC-Lizenzen) zur Verfügung gestellt haben sollten, gelten abweichend von diesen Nutzungsbedingungen die in der dort genannten Lizenz gewährten Nutzungsrechte.

Terms of use:

Documents in EconStor may be saved and copied for your personal and scholarly purposes.

You are not to copy documents for public or commercial purposes, to exhibit the documents publicly, to make them publicly available on the internet, or to distribute or otherwise use the documents in public.

If the documents have been made available under an Open Content Licence (especially Creative Commons Licences), you may exercise further usage rights as specified in the indicated licence.



<http://creativecommons.org/licenses/by-nc-nd/3.0/igo/legalcode>

IDB WORKING PAPER SERIES N° IDB-WP-712

It is mainly about where you work! Labor demand in the Colombian manufacturing sector

Luis Eduardo Arango
Francesca Castellani
Nataly Obando

Inter-American Development Bank
Country Department Andean Group

August 2016

It is mainly about where you work!
Labor demand in the Colombian manufacturing
sector

Luis Eduardo Arango
Francesca Castellani
Nataly Obando

Cataloging-in-Publication data provided by the
Inter-American Development Bank
Felipe Herrera Library
Arango, Luis E.

It is mainly about where you work!: labor demand in the Colombian manufacturing sector / Luis E. Arango, Francesca Castellani, Nataly Obando.

p. cm. — (IDB Working Paper Series ; 712)

Includes bibliographic references.

1. Labor demand-Colombia. 2. Manufacturing industries-Colombia. I. Castellani, Francesca. II. Obando, Nataly. III. Inter-American Development Bank. Country Department Andean Group. IV. Title. V. Series.

IDB-WP-712

<http://www.iadb.org>

Copyright © 2016 Inter-American Development Bank. This work is licensed under a Creative Commons IGO 3.0 Attribution-NonCommercial-NoDerivatives (CC-IGO BY-NC-ND 3.0 IGO) license (<http://creativecommons.org/licenses/by-nc-nd/3.0/igo/legalcode>) and may be reproduced with attribution to the IDB and for any non-commercial purpose, as provided below. No derivative work is allowed.

Any dispute related to the use of the works of the IDB that cannot be settled amicably shall be submitted to arbitration pursuant to the UNCITRAL rules. The use of the IDB's name for any purpose other than for attribution, and the use of IDB's logo shall be subject to a separate written license agreement between the IDB and the user and is not authorized as part of this CC-IGO license.

Following a peer review process, and with previous written consent by the Inter-American Development Bank (IDB), a revised version of this work may also be reproduced in any academic journal, including those indexed by the American Economic Association's EconLit, provided that the IDB is credited and that the author(s) receive no income from the publication. Therefore, the restriction to receive income from such publication shall only extend to the publication's author(s). With regard to such restriction, in case of any inconsistency between the Creative Commons IGO 3.0 Attribution-NonCommercial-NoDerivatives license and these statements, the latter shall prevail.

Note that link provided above includes additional terms and conditions of the license.

The opinions expressed in this publication are those of the authors and do not necessarily reflect the views of the Inter-American Development Bank, its Board of Directors, or the countries they represent.



It is mainly about where you work!
Labor demand in the Colombian manufacturing sector

Luis E. Arango*
Banco de la República

Francesca Castellani
Inter-American Development Bank

Nataly Obando
Inter-American Development Bank

Abstract

Using the Colombian Annual Manufacturing Survey (EAM) between 2000 and 2013, this paper investigates the existence of heterogeneity in the labor demand within the industrial sector. Long run own-price, output and TFP elasticities vary across a variety of dimensions such as regions, sectors and plant sizes depending on workers' skills and contract modalities (open-ended or temporary). Hence, it matters where one works. Such disparities should be taken into account in the design of policies that promote labor market performance, as outcomes, beyond intentions, are unlikely to be homogenous.

Key words: labor demand, skilled workers, unskilled workers, regional disparities, sector disparities.

JEL classification: J23, R32.

* The opinions expressed here are not necessarily those of neither the Banco de la República nor its Board of Directors nor IADB. We appreciate comments, corrections and suggestions by Giulia Lotti. Research assistance by María Paula Medina, Álvaro José Pinzón and Sergio Rivera is greatly acknowledged. Usual disclaimers apply. Corresponding author: Francesca Castellani francescac@iadb.org.

1. Introduction

The Colombian labor market is fraught with regional differences. While these might not be particular to Colombia, their intensity and persistence over time is quite significant (Arango, 2013). Labor market outcomes such as participation, occupation and unemployment rates show geographic disparities above 10 percentage points across cities. National unemployment rates¹ (11.9%) are unevenly spread, from 7.6% (Bucaramanga) to 16% (Quibdó). Participation rates range from 59% (Quibdó) to 71.4% (Bogota) and occupation rates from 49% (Quibdó) to 64% (Bogota). Employment patterns also vary considerably depending on gender. Recent research (Arango, 2013 and Cárdenas, Hernández and Torres, 2014) identifies the importance of the functioning of local labor markets in explaining these differences.

For policy makers, private sector, workers (trade unions) and job-seekers, understanding such heterogeneity and its features is crucial. In these contexts, labor market policies might produce diverse outcomes, even unintended ones, if not correctly factored in. Moreover, a clear grasp of these elements is likely to affect employment location and skill development strategies. Exploring these disparities requires insights on dimensions such as local productive structures, firm size and location. Labor demand is a natural point to start with. Investigating this at the industry level, given its employment potential, is the next one. While several efforts have been made to estimate the labor demand in the manufacturing sector at national level, few propose a regional focus.

This paper sheds some light on these aspects. Using the information of the Annual Manufacturing Survey (EAM from its Spanish acronym) between 2000 and 2013, it addresses the heterogeneity of labor demand across regions, industrial subsectors and plant sizes.

Going beyond the estimation of aggregate labor demand elasticities to own-price, output and total factor productivity (TFP), as in previous literature, the paper innovates by discriminating across skills and contract modalities. By doing so, a clearer picture emerges as to the implications of shocks on skilled and unskilled, as well as permanent and temporary, labor force. Results confirm that disparities do exist and labor markets are heterogeneous.

Complementing existing studies, the original contribution of this paper is to illustrate the nature of the regional, sector and size differences in the Colombian labor market and draw attention to the implication of this heterogeneity for labor policy design and outcomes.

The paper develops in five sections beyond this introduction. The second section presents a short literature review. The third offers stylized facts of the manufacturing sector. The fourth section describes the theoretical approach and the fifth presents the empirical model and the results. The sixth section concludes.

2. Literature review

Existing research on the determinants of labor demand in Colombia does not reach unanimous conclusions. Roberts y Skoufias (1997), using EAM data between 1981 and 1987, find that unskilled workers have a higher long run wage elasticity (-0.65) than skilled ones (-0.42). That is, the former are likely to be more effected by increasing labor costs. Output elasticities are higher for skilled labor (0.89)

¹ Based on January 2016 data from the Colombian Statistical Office (DANE).

than for unskilled (0.76), suggesting that output and skilled labor demand move almost proportionally. Regional dummies were included among the control variables.

Using data from the EAM and household surveys between 1980 and 1996, Vivas, Farné and Urbano (1998) find long run real wage and output elasticities of -0.71 and 1.10, respectively. Exploring the effects of trade liberalization on manufacturing labor demand between 1997 and 1999, Arango and Rojas (2004) obtain elasticities of -0.78 and 0.76 for real wage and output respectively. For a more recent subsample, the estimates turn to -0.92 and 0.67.

For Bernal and Cárdenas (2003), based on the information of 2570 EAM establishments between 1978 and 1991, the long-run real wage elasticity is 2.27 and the output elasticity 0.24. With a panel of 91 manufacturing sectors, they obtain a short-run real wage elasticity of -0.6 and a long run one of -1.43. Eslava, Haltiwanger, Kugler, and Kugler (2010), focusing on joint factor demand and the incidence of adjustment costs, find that the latter are significant and substitutability- rather than complementarity- among factors emerge during the adjustment process.

Medina, Posso, Tamayo and Monsalve (2013) study the unconditional labor demand for the period 1993-2009, concluding that industrial employment is highly persistent. Production shocks generate a larger response by skilled and unskilled employment than shocks on capital and wages. Less skilled workers face higher adjustment costs.

Resting on this literature and the findings of Arango (2013), this paper explores the industrial labor demand taking into account the potential regional, subsector and size disparities in Colombia, in the line of Adam and Moutos (2014) for the case of European countries.²

3. Some facts about the Colombian manufacturing sector

Colombian economic structure has considerably changed over the past four decades. In 1960s the manufacturing sector represented over 17% of GDP while in 2013 its share was 11.5%. The natural decline of agriculture and manufacturing sectors in GDP participation matched the rise of construction, trade and services. Between 2000 and 2013, the industrial sector maintained a 3.1% annual growth rate, severely interrupted by the 2008 crisis (Figure 1). In the aftermath, growth rate resumed at 1.8% per year, well below the rest of the economy (4.4%). The lackluster performance since then has been attributed to the real exchange rate appreciation and the consequent loss of competitiveness; trade-related demand disruptions, increasing labor costs, and poor infrastructure supply.³ Still, manufacture remains as one of the sectors that employs most labor in the economy, being the fourth contributor to employment with 12.1%, according to the *Great Integrated Household Survey* (GEIH for its the Spanish acronym), after trade (27.4%), services (19.4%) and agriculture (17%). In 2013, the industrial sector accounted for 2.5 million jobs at national level.

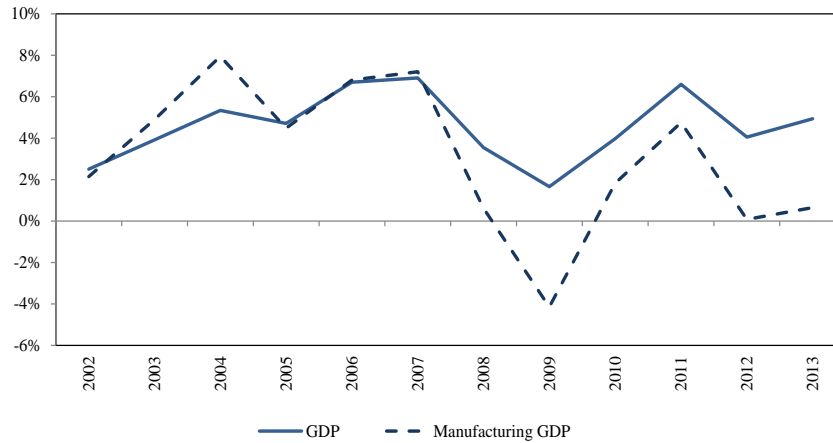
Hereafter, the paper uses the *Colombian Manufacturing Survey* (EAM) data, which includes 9,158 establishments (681,452 jobs) located in the 9 major cities (Barranquilla, Bogotá, Bucaramanga, Cali,

² Another strand of literature on labor market disparities relates to this paper. According to Dumais, Ellison and Glaeser (2002) geographic concentration in the U.S manufacturing industries has been declining over time. Dao, Furceri and Loungani (2014) observe lower migration rate among US states during the past 40 years due to higher labor market flexibility. In Europe, the participation rate response to labor demand shocks has been affected by migration. Beaudry, Green and Sand (2014) explore differences in labor demand introducing a special set of instruments and the local population size as a determinant of employment demand (see also Bartik, 2014).

³ See Griffin (2015) for a discussion.

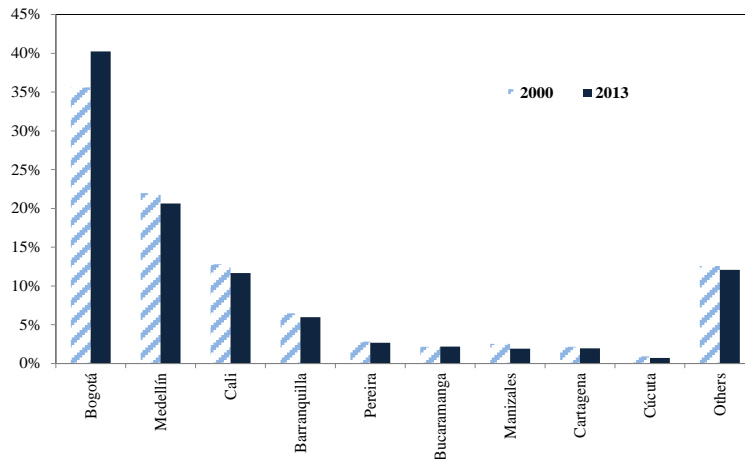
Cartagena, Cúcuta, Manizales, Medellín, and Pereira) and “others”.⁴ The stylized facts from EAM endorse the heterogeneity identified by Arango (2013).⁵ Around 80% of manufacturing employment concentrates in 4 cities (Bogotá, Medellín, Cali and Barranquilla), and Bogotá accounts for 40%. With the exceptions of Bogotá and Bucaramanga, all cities experienced a decline in their employment share since 2000 (Figure 2).

Figure 1. GDP and manufacturing GDP annual growth rates



Source: DANE-EAM; authors' calculations.

Figure 2. Contribution to employment of manufacturing sector by city (% of total)



Source: Dane-EAM; authors' calculations.

Over the period, industrial employment expanded annually at 2.1%; however, geographically, patterns are uneven. Employment in Bogotá grew at 3.1% per year - with an average annual growth rate of 4.6% before the crisis of 2008-2009, 2.1% during that episode⁶ and 1.1% since 2010. In Cartagena employment grew at 2.1% but remained constant during 2008 and 2009. Manizales showed an average

⁴ 12,683 jobs are excluded as they are generated in small plants (less than 10 employees).

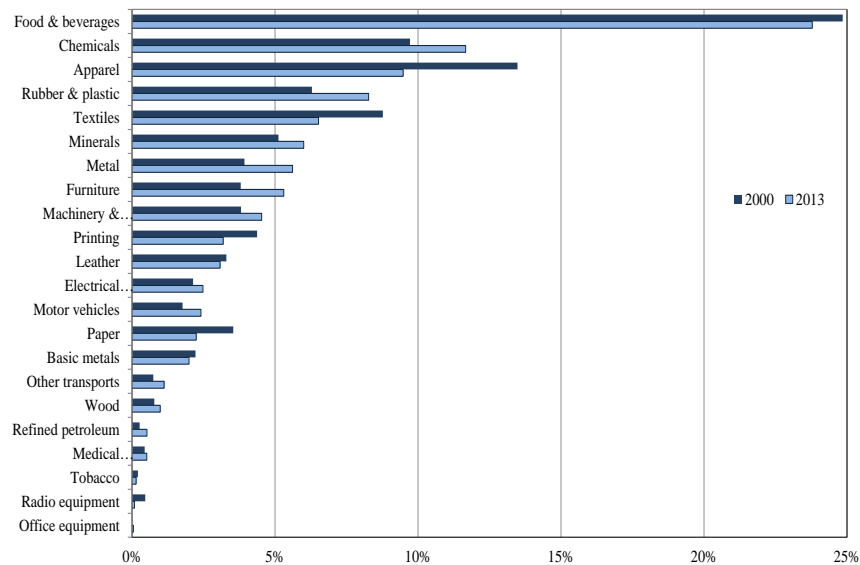
⁵ The GEIH and the EAM differ as the first includes employment generated by firms with up to 5 employees (formal and informal).

⁶ In 2009, the annual growth rate was -0.9%.

growth rate of 1.4% during the period 2000 and 2007 and 6.3% decline during the crisis. In Pereira volatility was significant along the sample period. Barranquilla provides an interesting case: with an unappealing evolution before 2009, employment increased at 3% annually since 2010. Cúcuta and Manizales displayed dismal growth rates of 0.4% and 0.2%, respectively.

Six sectors - food and beverages, chemicals, apparel, rubber and plastic, textiles, and minerals- account for 66% of total employment.⁷ While remaining the largest employment generating sectors, their participation to employment varies overtime in an unsteady fashion. Chemicals, rubber and plastic, mineral, metals record sizable increments overtime while food and textile decline (Figure 3).

Figure 3. Employment generation by sector and city 2000 – 2013



Source: Dane-EAM; authors' calculations.

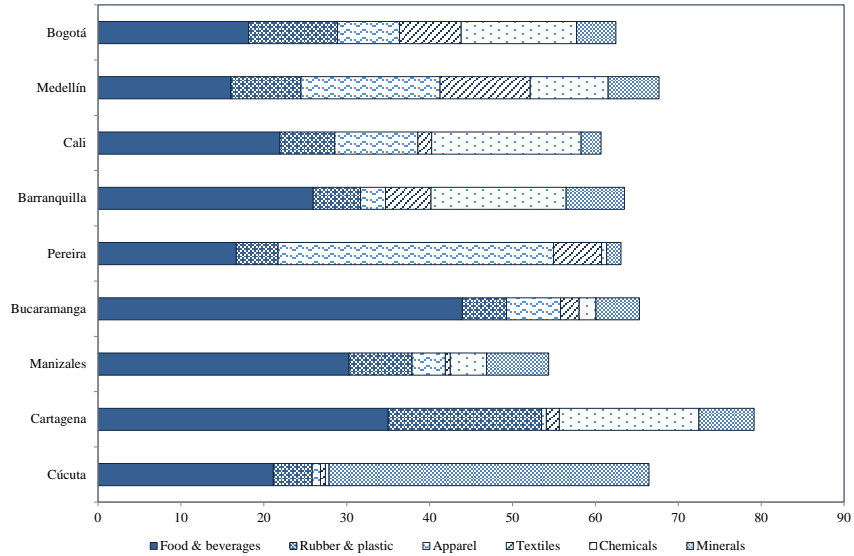
Employment generation varies across cities. Barranquilla generates only a few jobs in apparel while Cali does so in textiles. Food is the largest job generator with 44% of total employment in Bucaramanga, 35% in Cartagena and 30% in Manizales (Figure 4). Apparel has been a very important employer sector in Pereira, Medellin and Cali. Bogotá, Medellin, Cali and Barranquilla have plants devoted to the production of all six subsectors.

Colombian business landscape is populated by small and medium sized establishments and manufacturing is not an exception. On average, medium size manufacturing plants account for 48% of the total sample, generating 15% of the employment.⁸ Large and very large ones represent 32% of establishments and 83% of the total employment; small plants - 21% of total - contribute to employment for 1.8% (Figure 5).

⁷ If we add metal and furniture, the total employment corresponds to 76.7% of the sample in 2013.

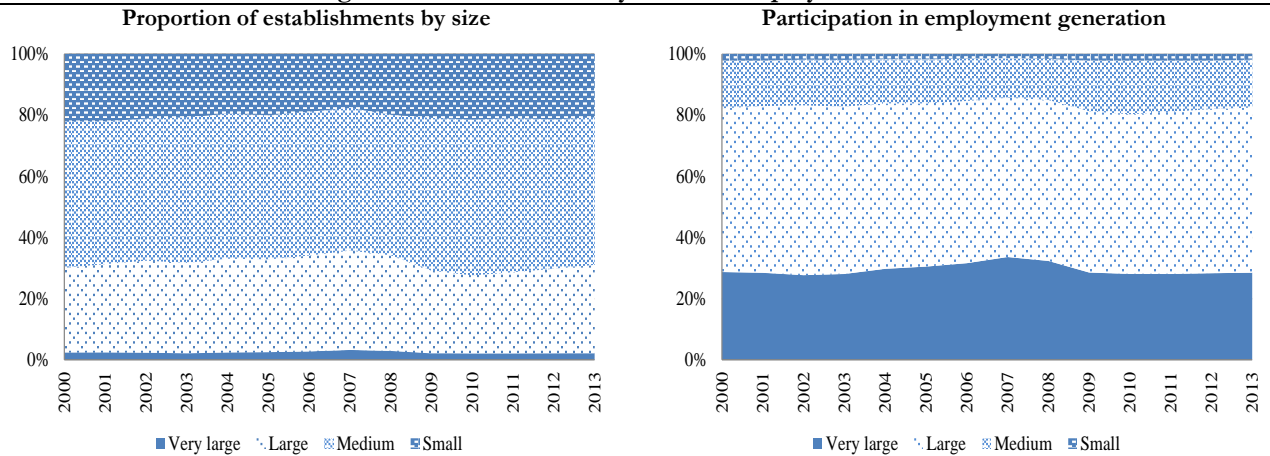
⁸ In this study, small sized establishments are those that employ 10 people or less, medium sized between 11 and 50, large between 51 and 500 and very large more than 500. This size definition allows sufficient degrees of freedom for estimation purposes. Kanbur and Venables (2005) use similar categories.

Figure 4. Employment generation by subsector and city 2013



Source: Dane-EAM; authors' calculations.

Figure 5. Establishments by size and employment shares



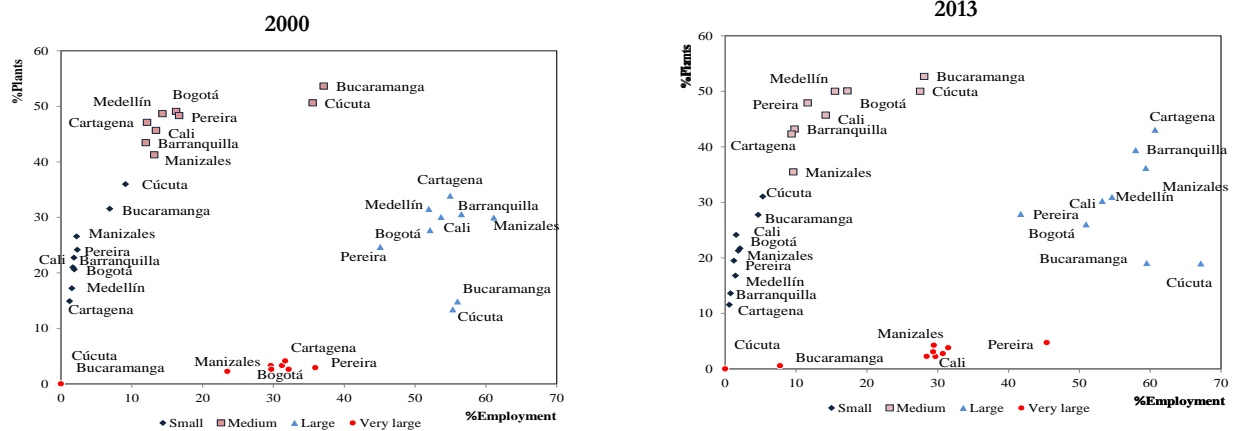
Source: Dane-EAM; authors' calculations.

Large and very large firms generate the bulk of employment at local level too. Bucaramanga and Cucuta constitute an exception due to the absence of very large firms and an employment contribution by small and medium firm above other cities. Figure 6 shows an increase on the number of large establishments in Cartagena, Barranquilla, Cucuta and Manizales and larger contribution to employment. In Cucuta large firms passed from 13% to 19% of total, and its participation in employment from 55% to 67%. Interestingly, Barranquilla experiences a surge in the number of larger plants from 31% in 2000 to 39% in 2013. In line with 2013 data, Bogotá, Medellín and Cali are the preferred locations, concentrating 73% of the establishments. Since 2000, a growing proportion of businesses have opted for Bogotá and very large establishments preferred Bogotá over Medellín and Cali.

No clear relation emerges between sector of specialization and firm size. Food and beverages, textiles, rubber and chemicals are characterized by plants of all sizes yet very large plants seem more likely to specialize in the production of textiles, food and beverages and electrical machinery.

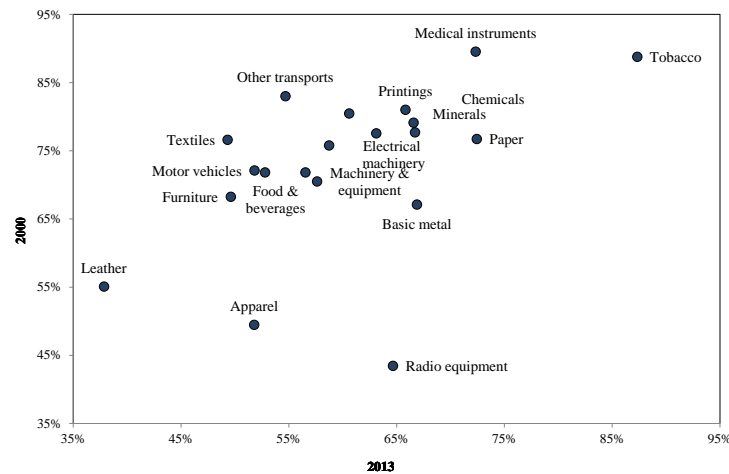
Overtime contract modalities in the manufacturing sector show remarkable changes, with the share of open-ended contracts declining from 71% (2000) to 61% (2013) in favor of temporary ones. While this shift applies generally to all subsectors, intensities vary (Figure 7).⁹

Figure 6. Establishment distribution by size and cities (% of total)



Source: Dane-EAM; authors' calculations.

Figure 7. Permanent (open-ended) contracts by subsector in 2000 and 2013. % of total.



Source: Dane-EAM; authors' calculations.

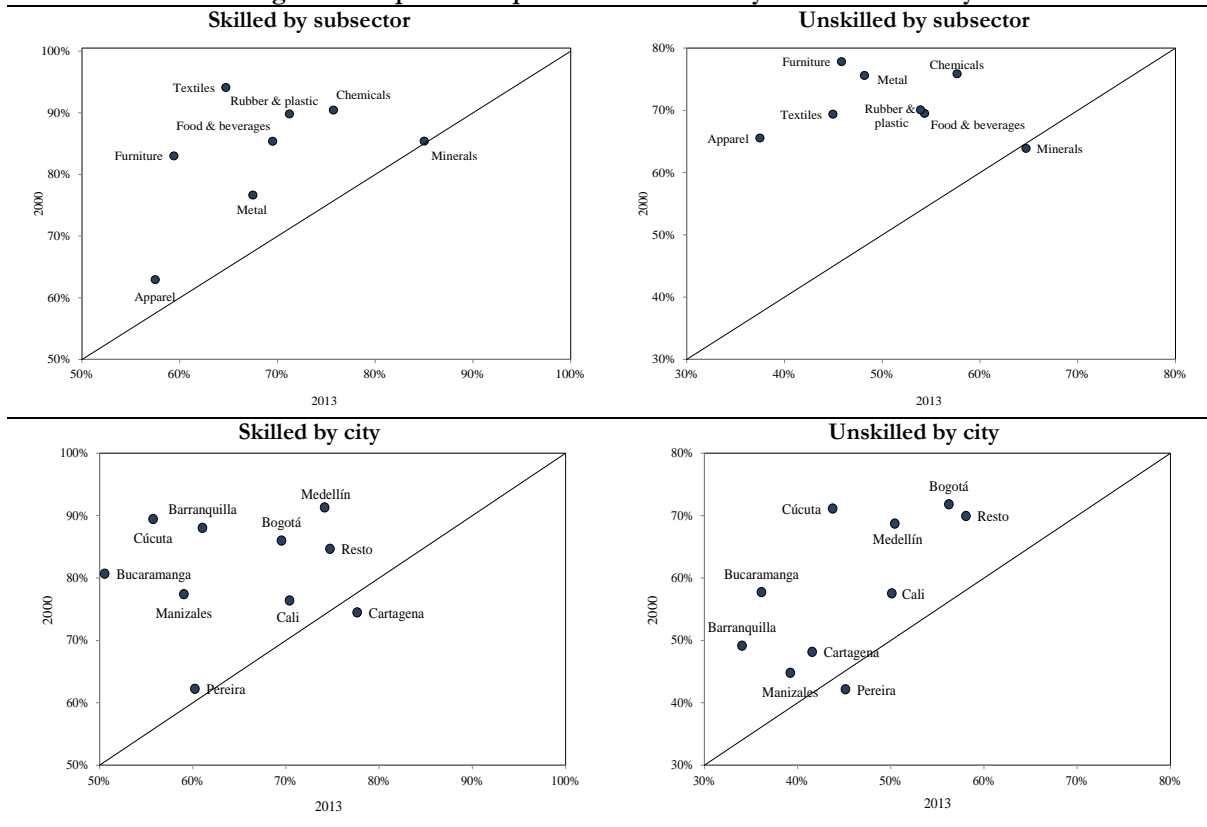
The proportion of open-ended contracts among skilled workers¹⁰ decreases considerably in subsectors such as textiles, rubber and plastic, food and beverages, chemicals and furniture. Unskilled

⁹ According to the EAM, open ended contracts refer to the staff with direct employment relation with the firm through an indefinite contract. Temporary staff is recruited by the firm for specific tasks on a defined term contract, with established remuneration. It includes outsourced labor.

workers with this type of contracts experienced a higher substitution between 2000 and 2013. In apparel, the proportion of unskilled employees with open-ended contracts as a percentage of total unskilled employment almost halves from 66% to 37%. In textiles, this proportion changes from 69% to 45%. Cúcuta, Bucaramanga and Barranquilla witness the largest switch to temporary contracts (Figure 8).

The preference for less permanent forms of contracting might relate to high labor costs- minimum wage and non-wage labor cost. The latter until 2011 accounted for nearly 60 percentage points of the wage¹¹ for workers earning less than ten minimum wages. At the same time, the real minimum wage has systematically increased above inflation and labor productivity, amplifying labor costs (Figure 9).

Figure 8. Proportion of permanent workers by subsector and city

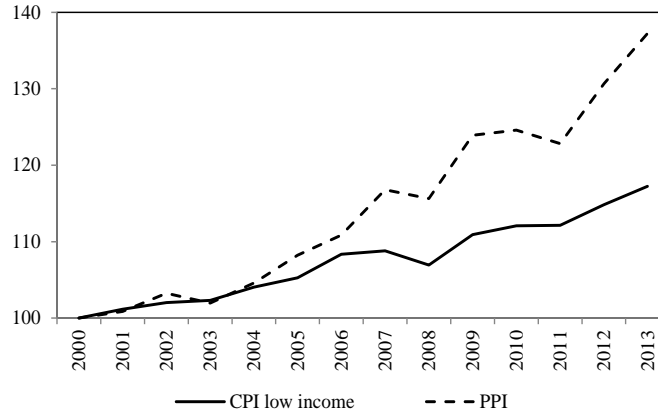


Source: Dane-EAM; authors' calculations.

¹⁰ Based on EAM definition, skilled workers include professionals, technicians and specialists such as mechanical engineers, chemical, industrial, electrical, mining and oil, etc. Unskilled labor refers to workers involved in activities such as manufacture, processing, assembly, installation, maintenance, inspection, storage, packing, loading and unloading.

¹¹ The 2012 tax reform, among other things, modified the non-wage labor costs reducing them by 13.5 percentage points.

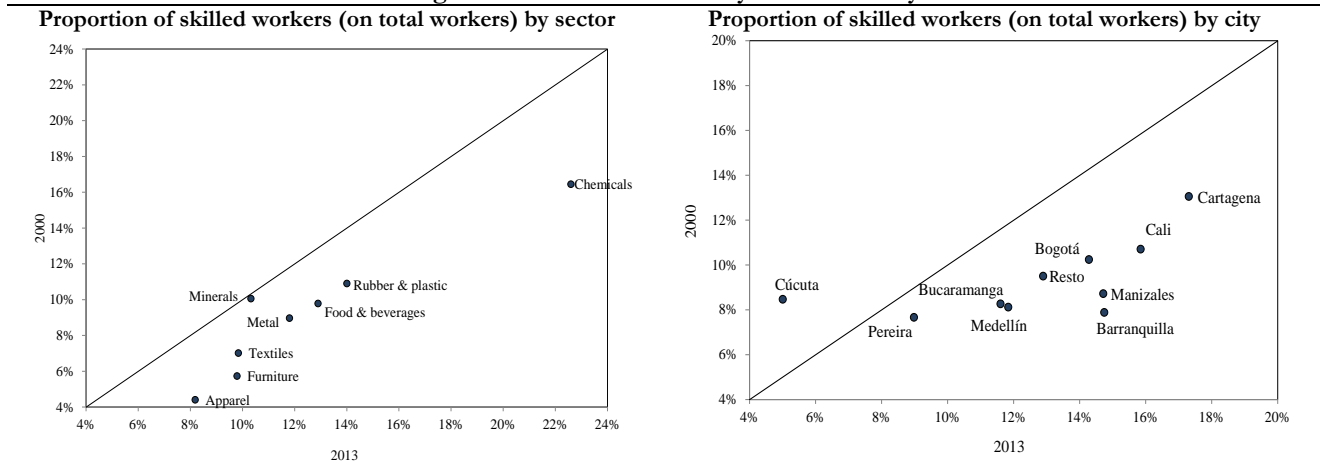
Figure 9. Real minimum wage (2000=100)



Note: CPI= consumer price index; PPI= producer price index. Source: Dane-EAM and Banco de la República; authors' calculations.

More flexible contract modalities coincide with a broader share of skilled labor force throughout the industry. The largest increases in the skill-content of production take place in chemicals, furniture, and apparel. Chemicals, rubber and plastic, and food and beverages show the highest ratios of skilled to total workers while apparel, furniture and textiles the smallest ones (Figure 10). Minerals is the only subsector where no changes occur. By cities, Cartagena, Cali and Barranquilla have the highest proportion of skilled workers whereas Cúcuta, Pereira, and Bucaramanga use the smallest proportion. Barranquilla, Manizales and Cali double the proportion of skilled labor force over time.

Figure 10. Skill distribution by sector and city



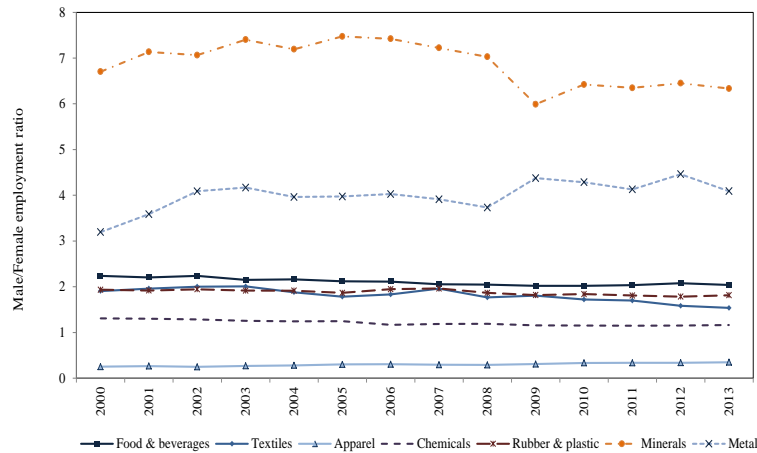
Source: Dane-EAM; authors' calculations.

Employment shows a gender bias, captured by the male-female labor ratio. The minerals subsector displays the largest bias towards male workers with a ratio of 6.3 men to each woman, followed by metal with a ratio of 4 (Figure 11). Apparel is biased towards female labor force with the proportion of 3 to 1. Basic metals, motor vehicles and machinery and equipment employ more men than women.¹²

¹² The ratios of these three subsectors are not shown in Figure 10 since they are not among the ones that contribute most to employment within the industrial sector.

Skilled employment features higher gender bias than unskilled. Permanent positions are more often male dominated than temporary ones.

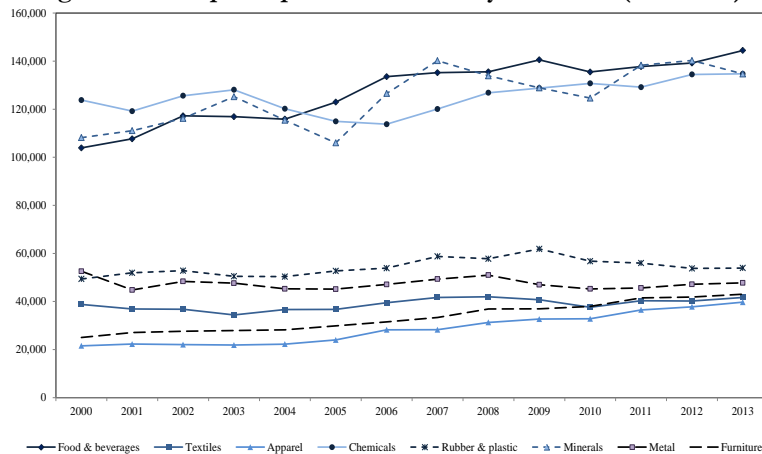
Figure 11. Gender intensity ratio by (selected) sector: male to female employment ratio



Source: Dane-EAM; authors' calculations.

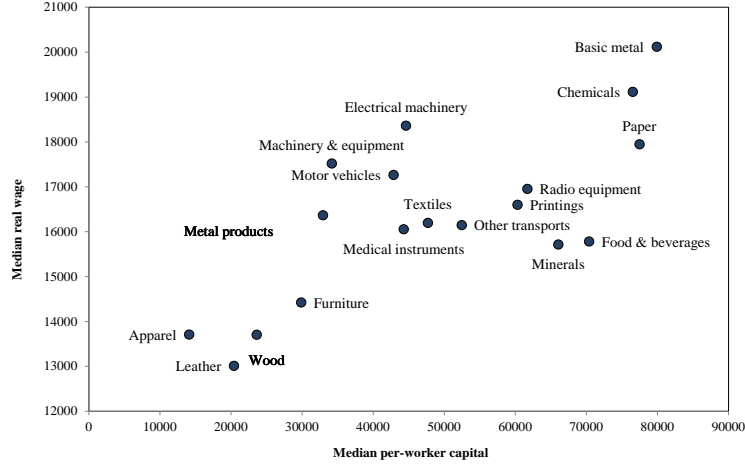
Food and beverages, chemicals and minerals exhibit the highest labor productivity while apparel generates the lowest output per-worker, among the sectors that contribute most to employment (Figure 12). At the same time, this subsector has a low real wage and capital per worker. Apparently, the higher the capital per worker, the higher the real wage (Figure 13).

Figure 12. Real per-capita added value by subsector (2000=100)



Source: Dane-EAM; authors' calculations.

Figure 13. Median real wage and median capital per-capita (2000=100)



Source: DANE-EAM; authors' calculations.

4. Theoretical approach and empirical model

Labor demand theory sets out the variables considered by firms to hire or dismiss employees, such as product demand, labor cost and other costs (capital, energy power, etc.), technology, taxes, subsidies, among others. Within a static framework of the competitive model, the conditional labor demand is obtained by minimizing the total costs subject to a given level of production and depends on product demand, technology and relative factor prices. Thus, if there is a change in the latter, everything else constant, labor and capital will be combined in different proportions since they are substitutable.¹³ Labor and capital demands depend on relative prices and production levels; that is: $l(r/w, y, A; \alpha)$ and $k(w/r, y, A; \alpha)$, where w , r , y , A and α are real wages¹⁴, real rental price of capital, output, technology and parameters of the production function. The unconditional factor demands, derived from the utility maximization process, take the form: $l(w, r, A; \alpha)$ and $k(w, r, A; \alpha)$.

However, given the presence of adjustment costs, generated by firms' desires to reach a certain equilibrium level of labor in the production process, and uncertainty within a dynamic context, factor demand turns out to be different from the above specifications (see Hamermesh, 1993; Cahuc and Zylberberg, 2004; Wickens, 2011). The framework used to address the estimation of the labor demand includes quadratic and symmetric adjustment costs. Typically, the firm maximizes:

$$\Pi_t = E_t \left\{ \sum_{j=0}^{\infty} (1+r)^{-j} \left[F(l_{t+j}, A_{t+j}) - w_{t+j} l_{t+j} - 0.5a(l_{t+j} - l_{t+j-1})^2 \right] \right\}$$

where E_t represents the expectations operator, r_t the interest rate, l_t the number of employees, and A_t shocks of different nature that affects the firm's product supply. From the first order conditions:

$$\Delta l_{t+j} = E_t \left\{ \frac{F_l(l_{t+j}, A_{t+j}) - w_{t+j}}{a} + \frac{\Delta l_{t+j+1}}{(1+r)^{j+1}} \right\} \quad j = 0, 1, ..$$

By replacing forward, this expression can be rewritten as:

¹³ If capital, k , and labor, l , are both strictly required for the production process in given proportions, then they are said to be complementary.

¹⁴ Permanent worker wages include social contributions. Temporary worker wages correspond to the total employment cost for the firm.

$$\Delta l_{t+j} = E_t \left\{ \sum_{j=0}^{\infty} \frac{F_l(l_{t+j}, A_{t+j}) - w_{t+j}}{a(1+r)^j} \right\}$$

Thus, if the present value of the marginal product of labor is greater than the present value of wages, the number of employees will increase. Assuming rational expectations, the model (see Sargent, 1978; Nickel, 1984; Hamermersh, 1993; and, Cahuc and Zylberberg, 2004) can be written as:

$$l_t = \lambda l_{t-1} + \sum_{m=1}^K \sum_{j=0}^{J_m} \mu_{mj} X_{m,t-j}$$

By using the notation of Hamermesh (1993, chapter 7), the empirical model can be written as:

$$l_{i,t} = \lambda l_{i,t-1} + \sum_{m=1}^K \sum_{j=0}^{J_m} \mu_{m,j} X_{i,m,t-j} + \omega_{i,t}$$

where index i accounts for plant i , $X_{i,m,t-j}$ is the vector of observable variables including the average real wage paid by the firm, added value¹⁵ of the firm, TFP indicator, etc.; $\mu_{m,j}$ is the vector of coefficients to be estimated, and $\omega_{i,t}$ is the residual term. With the aim of having information about the adjustment costs, the empirical model holds just one autoregressive element (Hamermersh, 1993) which can be separated from the expectations of remaining variables based on past realizations.

Potentially, the residual term is the sum of different elements: $\omega_{i,t} = \eta_i + v_{i,t} + \varepsilon_{i,t}$. The first component, η_i , accounts for unobserved heterogeneity directly linked to plant characteristics other than the price of inputs and usual determinants of labor demand (see Roberts and Skoufias, 1997). The list of plausible candidates includes especial properties of output, the relative advantages to combine inputs in the production process, etc. The second element, $v_{i,t}$, can be related with shocks to the demand product or to the supply of labor specific to the production of the plant, etc. These first two elements of the unobserved heterogeneity could eventually be correlated to the output of the plant as well as the wage [$E(\eta_i | X_{i,m,t}) \neq 0$] and [$E(v_{i,t} | X_{i,m,t}) \neq 0$]; as a result the respective coefficients could be biased upwards. The third element, $\varepsilon_{i,t}$, is a well behaved random component.

To address the potential endogeneity (reverse causality) of real wage and the establishment output, instrumental variables as well as some moment conditions are used. Arellano and Bover (1995) and Blundell and Bond (1998) indicate that lagged levels are often rather poor instruments for first differenced variables, especially if the variables are close to a random walk. Thus, the paper adopts the Blundell and Bond (1998) GMM estimator where both lagged levels and lagged first differences can be combined as instruments to improve efficiency of the estimator. As the two-step system GMM estimator presents downwards bias, the Windmeijer (2005) correction is also used.

The paper combines skilled and unskilled, permanent and temporary employment, and explores the regional, sector and size dimensions of heterogeneity. The resulting estimations provide elasticities for (i) the 9 major cities (Barranquilla, Bogotá, Bucaramanga, Cali, Cartagena, Cúcuta, Manizales, Medellín, and Pereira) and “others”; (ii) the largest employment generating sectors (food and beverages, chemicals, apparel, rubber and plastic, textiles, mineral, metals and furniture) and plant sizes (medium sized, large and very large). For each of these dimensions the elasticities are estimated for skilled and unskilled workers with permanent and temporary contracts.

To take advantage of the panel structure of the Annual Manufacturing Survey the paper uses information at establishment level between 2000 and 2013. The smallest number of plants of our

¹⁵ In the EAM, added value is calculated as the difference between gross production and intermediate consumption.

unbalanced panel is 6801 in 2003 while the highest is 9867 in 2010. The number of plants was 9158 in 2013, the last year of the sample.

The empirical specification sets demand for labor in terms of its own lag, contemporary and lagged values of real wages, output, total factor productivity, the real minimum wage, energy prices and the real interest rate. The log of number of employees is the dependent variable. The variables on the right-hand side are: the lag of the dependent variable, the log of the current and lagged value of: average real wage, added value of the firm, real minimum wage, real interest rate, TFP and energy price. The specification also includes the current value of the depreciation rate¹⁶. Average real wage, minimum wage and added value starting at lag two are used as instruments. Most of the results below correspond to long-run elasticities which are computed as: $\epsilon_j = (\mu_{m,0} + \mu_{m,1})/(1 - \lambda)$, m is real wage, output and TFP, respectively.

As the EAM does not have information about individual real wages, these were computed by dividing, respectively, the payroll in real terms among the number of skilled and unskilled workers. Output corresponds to the total added value in each plant, as well as the energy prices and the depreciation rate. The total factor productivity was computed by using the Levinshon and Petrin (2003) algorithm. Finally, the real interest rate corresponds to ordinary and preferential interest rates,¹⁷ since the real rental price of each plant is not available.

5. Results¹⁸

Table 1 shows own real price, output, and TFP long-run elasticities under conditional and unconditional specifications of labor demand for skilled and unskilled workers. Wage elasticities of skilled (-0.591) and unskilled workers (-0.415) are both significant. Contrary to existing literature (see Litcher *et al.*, 2014 and, for the case of Colombia, Roberts and Skoufias, 1997), skilled employment shows a larger sensitivity to its own price. When estimations take into account contract modalities, the long-run real wage elasticity of open-ended contracts workers is larger than temporary, irrespective of their skills. Increased flexibility in the labor market institutions and growth in labor intermediation over the sample period might explain this larger response. Unskilled workers are generally more sensitive than skilled ones, in line with previous research. Moreover, under the conditional specification, the temporary unskilled workers show an elasticity of -0.438 and the skilled of -0.256. Similarly, the elasticity to the real wage of demand for unskilled workers with open-ended contracts is -1.109 and -0.682 for the skilled permanent workers.¹⁹

¹⁶ According to the EAM, the depreciation corresponds the annual value set as replacement for the deterioration, use or obsolescence of the firm fixed assets during their lifetime.

¹⁷ The difference between these two interest rates is the size of the plant. Preferential is the interest rate of loans granted to large and very large establishments (about 32% of the plants) while ordinary is the interest rate of credits requested by medium size establishments.

¹⁸ Estimations do not include small size establishments (< 10 employees) neither as residual city category nor as “others”, regardless that both are included in the descriptive statistics.

¹⁹ In general, according to the Hansen test, the set of instruments is accurate and the Ar2 test shows that the errors do not exhibit autocorrelation of order two.

Table 1. Long-run labor demand elasticities (2000-2013).

Specification	Conditional	Unconditional
Skilled workers		
Own-price	-0.591***	-0.316***
Output	1.122***	
TFP	-1.016***	0.326*
No. observations (plants)	14.579	14.579
Sargan test (p-value)	7.68e-10	0.000381
Hansen test (p-value)	0.102	0.808
Ar2 (p-value)	0.540	0.969
Skilled permanent workers		
Own-price	-0.682***	-0.517***
Output	0.949***	
TFP	-0.773***	0.753***
No. observations (plants)	13.062	13.062
Sargan test (p-value)	0.000466	1.73e-05
Hansen test (p-value)	0.213	0.514
Ar2 (p-value)	0.700	0.398
Skilled temporary workers		
Own-price	-0.256***	-0.251***
Output	0.710***	
TFP	-0.621***	0.590*
No. observations (plants)	4.477	4.477
Sargan test (p-value)	3.11e-07	0.000946
Hansen test (p-value)	0.467	0.761
Ar2 (p-value)	0.443	0.464
Unskilled workers		
Own-price	-0.415***	0.074
Output	1.051***	
TFP	-0.951***	0.261
No. observations (plants)	20.470	20.470
Sargan test (p-value)	0.0353	0.730
Hansen test (p-value)	1.21e-05	0.000113
Ar2 (p-value)	0.618	0.346
Unskilled permanent workers		
Own-price	-1.109***	-0.865***
Output	1.198***	
TFP	-1.043***	0.429
No. observations (plants)	17.502	17.502
Sargan test (p-value)	6.32e-08	1.06e-07
Hansen test (p-value)	0.637	0.589
Ar2 (p-value)	0.339	0.513
Unskilled temporary workers		
Own-price	-0.438***	-0.107
Output	0.760***	
TFP	-0.730***	0.223
No. observations (plants)	12.579	12.579
Sargan test (p-value)	0	0
Hansen test (p-value)	0.000153	0.00401
Ar2 (p-value)	0.702	0.00624

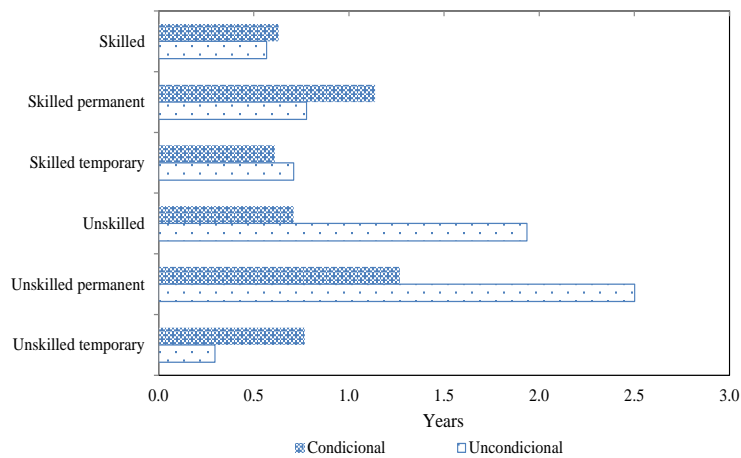
Source: Dane-EAM; authors' calculations.

The output long-run elasticity is higher than the real wage elasticity as in earlier studies. Permanent workers (0.949-skilled and 1.198-unskilled) show larger responsiveness than temporary ones (0.710-skilled and 0.760-unskilled). However, skilled (1.122) are more sensitive than unskilled workers (1.051). The theory predicts a negative sign of the response to TFP in the case of the conditional labor demand and a positive one for the unconditional demand. These predictions match the estimates for both types of workers, with a larger response for permanent employees. The respective elasticities, corresponding to the conditional demand specification, for skilled workers are: -0.773 and -0.621 while for unskilled

workers the elasticities are -1.043 and -0.73. Demand for skilled workers, regardless of the type of contract, display lower TFP elasticity and more resilience to changes in technology.

Under the unconditional specification, the own-price elasticity is significant for skilled workers and for unskilled permanent. At the same time, TFP elasticity is significant only for skilled workers and has in the three cases the right sign. This labor demand specification does not seem appropriate for unskilled employees. The empirical specification allows estimating the speed of adjustment of labor demand (halfway or half-life of the adjustment) to shocks in output or factor prices. The median length is computed by solving for t^* the expression $\lambda^{t^*} = 0.5$. Under the conditional specification, the halfway ranks between 0.61 and 1.27 years (Figure 14), corresponding to skilled temporary workers and unskilled permanent ones, pointing at a shorter adjustment period for higher level of skills and more flexible contracts. These results are consistent with existing estimates using annual data which show halfways of 5.5 quarters (Hamermesh, 1993, page, 253).

Figure 14. Halfways of labor demand adjustments (2000-2013).



Source: Dane-EAM; authors' calculations.

5.1 Regional heterogeneity

In this and the next two sections, regional, sector and size heterogeneity are analyzed based on the conditional labor demand, which corresponds to the constant product specification. The reason for this selection is the consistency of results with the theory.

As mentioned before, labor market outcomes present significant disparities across metropolitan areas in Colombia. Elasticities are estimated across 9 major cities to verify labor market regional heterogeneity (Figure 15). Results indicate that besides Cartagena and Cúcuta, whose elasticities are not statistically significant, real wage long-run elasticities of permanent skilled workers are negative and significant and range between -1.3 (Manizales) and -0.632 (Medellin).²⁰

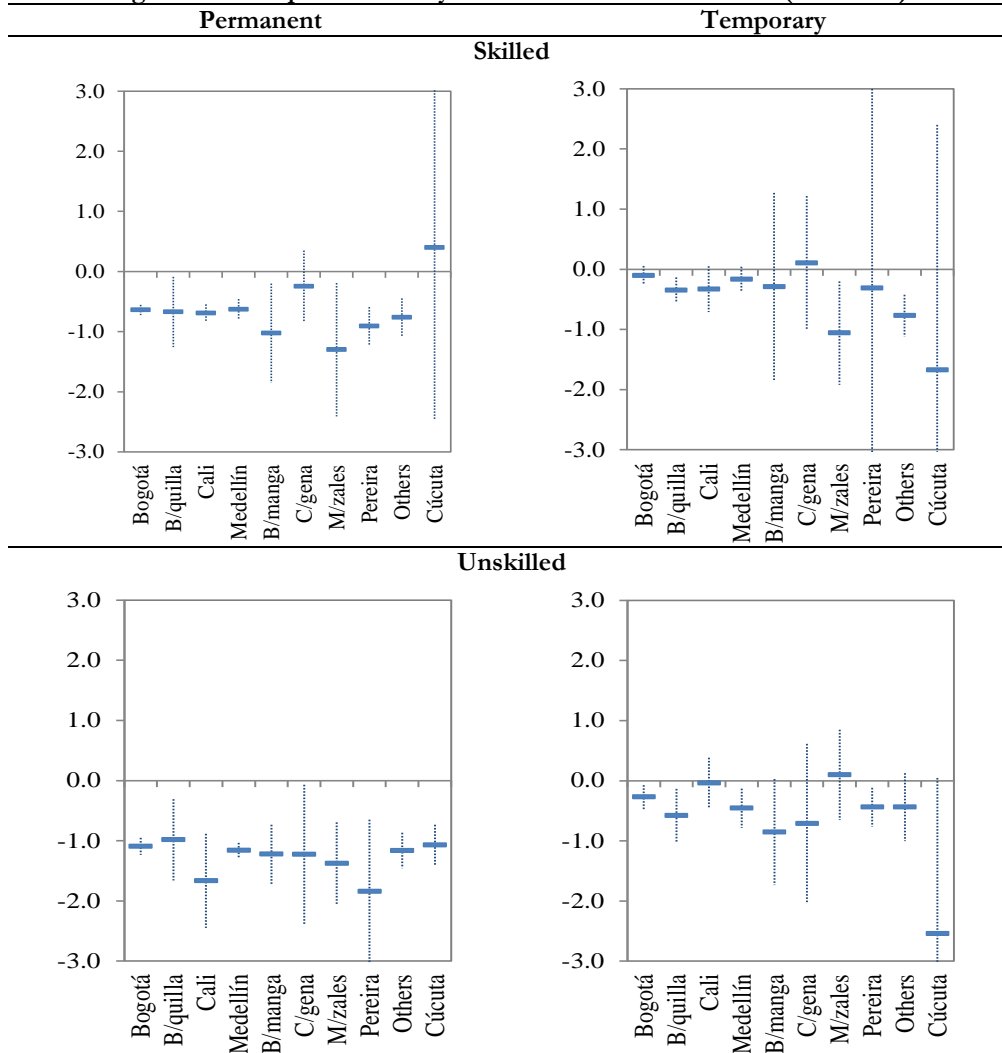
In the case of skilled workers with temporary contracts, the highest own price elasticity corresponds to Manizales (-1.061). For permanent unskilled workers, the greatest value is found in Pereira (-1.843)

²⁰ These results are shown in the Appendix with the corresponding statistics.

and the smallest in Barranquilla (-0.983). In the case of unskilled temporary workers, the elasticity varies between -0.27 (Bogotá) and -0.58 (Barranquilla) and only these two cities, together with Medellín and Pereira, hold significant long-run elasticities. Consistently with Figure 15, the geographic breakdown confirms that demand for temporary workers, both skilled and unskilled, is less responsive to its own price than permanent ones.

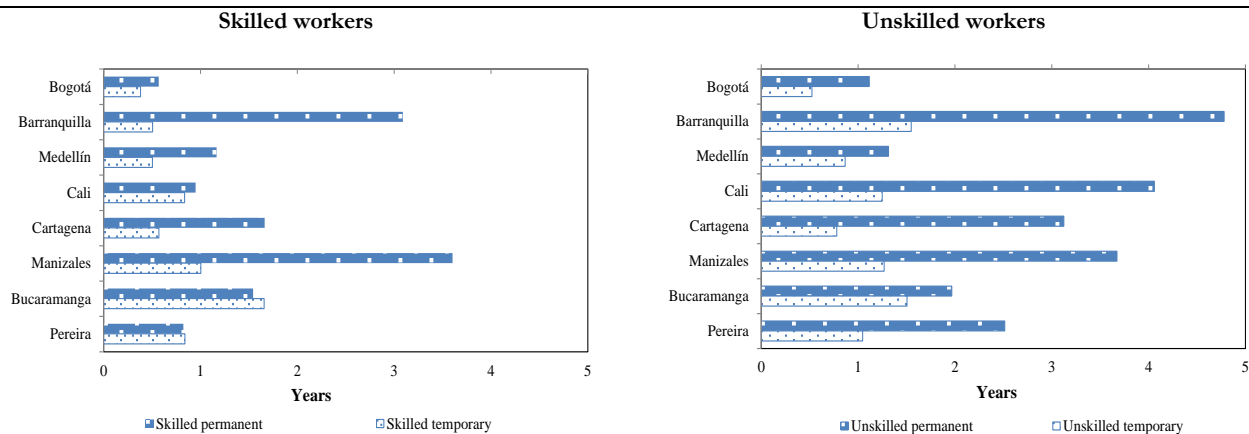
The length of adjustment to shocks is greater for unskilled and permanent workers. Once there is a change in the real wage, permanent workers are more likely to be displaced and possibly replaced by temporary ones. Bogotá shows consistently faster adjustment speed than the rest of the cities across skills and contract modalities (Figure 16).

Figure 15. Own price elasticity of conditional labor demand (2000-2013).



Note: 95% confidence intervals. Source: Dane-EAM; authors' calculations.

Figure 16. Halfway of labor demands adjustments of a real wage movement by city.
Conditional demand for labor

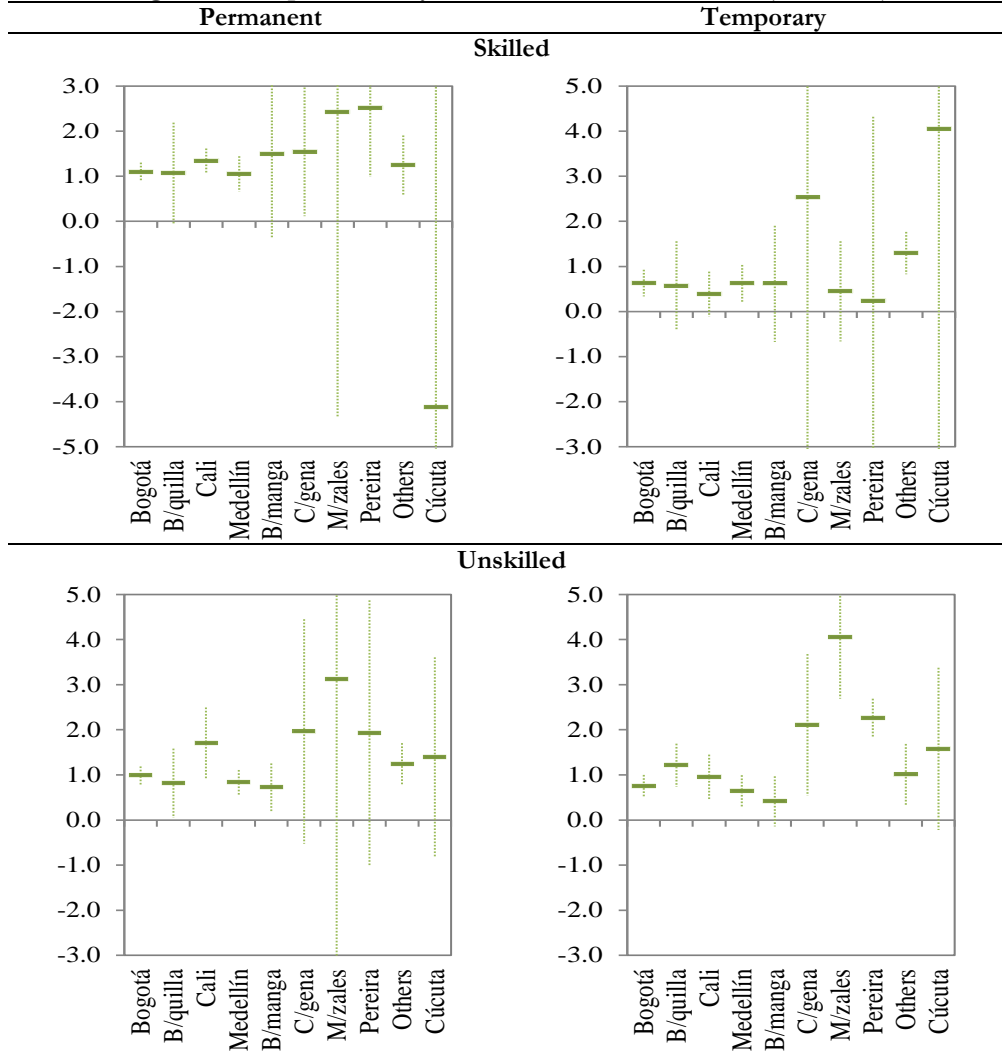


Source: Dane-EAM; authors' calculations.

Output elasticities, with the exception of Cúcuta, all are positive (Figure 17). However, significant long-run reactions to output for permanent skilled labor are obtained for plants in Bogotá, Cali, Cartagena, Medellín, and Pereira. In the case of temporary skilled workers, only Bogotá and Medellín are significant. Demand for permanent unskilled employees is significant in Cali (1.702), “others” (1.241), Bogotá (0.987), Medellín (0.833), Barranquilla (0.814) and Bucaramanga (0.723). The lowest estimate for temporary unskilled workers is found in Medellín (0.619) and the highest in Manizales (4.047). Elasticities to TFP are negative in most cases as predicted by the theory under the conditional specification (Figure 18).

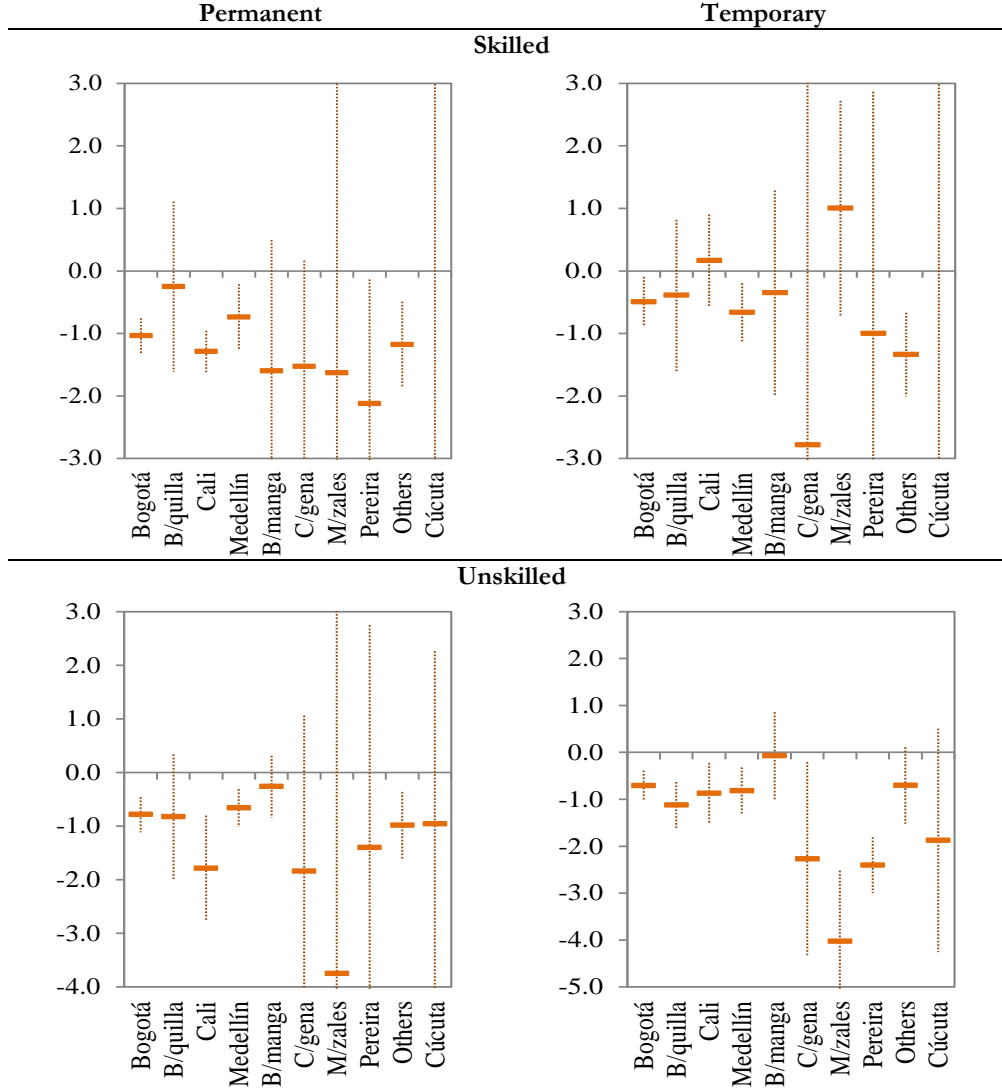
The heterogeneity of the determinants of conditional labor demand seems a prevalent characteristic of the manufacturing sector in Colombia. The hypothesis that the difference between each pair of coefficients is equal to zero can be rejected in most cases (Tables 2 and 3). Based on the tests of mean-differences carried out under the assumption that distributions are independent, the null hypothesis that the elasticities of each type of demand for labor are equal for most of combinations of cities can be rejected. In Table 2, for the case of permanent contracts, the lower part of the matrix (below the diagonal), the labels “O” indicates that the null hypothesis that the long-run wage elasticities of skilled workers are equal between each pair of cities cannot be rejected at 5% level of significance. Cali and Barranquilla are the only metropolitan areas where long-run wage elasticities are statistically equal. With respect to output elasticity of demand for skilled workers, the null hypothesis that the coefficients are the same between each pair of cities cannot be rejected at 5% level of significance in the following cases: Bogotá-Barranquilla, Medellín-Barranquilla, Bucaramanga-Cartagena, and Manizales-Pereira. For TFP elasticities, the pairs of cities in which the coefficients are statistically similar are: Bucaramanga-Cartagena, Manizales-Bucaramanga, Cali-Manizales and Cartagena-Manizales.

Figure 17. Output elasticity of conditional labor demand (2000-2013).



Note: 95% confidence intervals. Source: Dane-EAM; authors' calculations.

Figure 18. TFP elasticity of conditional labor demand (2000-2013).



Note: 95% confidence intervals. Source: Dane-EAM; authors' calculations.

In the upper-right section of Table 2 (above the diagonal), where the equality of unskilled elasticities is tested, the labels “X” suggest that the null hypothesis cannot be rejected at 5% of significance. As a result, in the case of real wage elasticity, Bogotá and Cúcuta have the same coefficient as well as Medellín and “others” but most of the coefficients are not statistically equal to each other. For output, similar elasticities are found in the following pairs: Medellín-Barranquilla, Pereira-Cartagena, and Cúcuta-Pereira. TFP elasticities are similar in: Cúcuta-Bogotá, Cúcuta-Barranquilla, and Cúcuta-“others”.

Table 2. Similarity of elasticities tests on conditional labor demand for permanent workers

Unskilled → Skilled ↓	Bogotá	Barranquilla	Bucaramanga	Cali	Cartagena	Manizales	Medellin	Pereira	Others	Cúcuta
	w y tfp	w y tfp	w Y tfp	w y tfp	w y tfp	w Y tfp	w y tfp	w y tfp	w y tfp	w y tfp
Bogotá										X X
Barranquilla	O						X			X
Bucaramanga					X					
Cali		O								
Cartagena			O O					X		
Manizales			O	O	O					
Medellin		O							X	
Pereira						O				X
Others										X
Cúcuta										

Source: Dane-EAM; authors' calculations.

The tests in Table 3 -temporary employees- suggest that the null hypothesis cannot be rejected for 8 out of 45 possible combinations of cities for real wage elasticity in the case of skilled workers; these pairs are: Bogotá-Pereira, Cali-Barranquilla, Bucaramanga-Barranquilla, Cali-Bucaramanga, Pereira-Barranquilla, Pereira-Bucaramanga, Pereira-Cali, and Pereira-Medellin. Similar output elasticities are found for Bogotá-Bucaramanga, Bogotá-Medellin, Barranquilla-Bucaramanga, Barranquilla-Medellin, Bucaramanga-Medellin, Cali-Manizales, Cali-Pereira, and Manizales-Pereira. TFP elasticity for temporary skilled workers is similar in Barranquilla-Bucaramanga and Cartagena-Cúcuta.

Thus, the employment in the industrial sector shows a high geographic heterogeneity. Nevertheless, Bucaramanga and Barranquilla are similar in some dimensions of industrial temporary employment. Recall, that according to Figure 8 above, lower panels, in these two cities an important reduction of permanent workers took place between years 2000 and 2013.

Table 3. Similarity of elasticities tests on conditional labor demand for temporary workers

Unskilled → Skilled ↓	Bogotá	Barranquilla	Bucaramanga	Cali	Cartagena	Manizales	Medellin	Pereira	Others	Cúcuta
	w y tfp	w y tfp	w Y tfp	w y tfp	w y tfp	w y Tfp	w y tfp	w y tfp	w y tfp	w Y tfp
Bogotá									X	
Barranquilla										
Bucaramanga	O	O O O								
Cali		O	O							
Cartagena										
Manizales				O						
Medellin	O	O	O					X		
Pereira	O	O	O	O O		O	O			
Others										
Cúcuta					O					

Source: Dane-EAM; authors' calculations.

5.2 Sector heterogeneity

Disparities of labor demand also emerge across industrial subsectors. To simplify the analysis, estimates are restricted to the largest employment generating subsectors (Figure 3)²¹ under the conditional specification. The demand for permanent skilled workers displays larger responses to real wages than temporary employees (Figure 19). At the same time, permanent unskilled workers are more sensitive than skilled ones. Food products, chemicals, and rubber and plastic show significant elasticities. The lowest value is found for temporary skilled workers in chemical plants (-0.284) and the highest for unskilled workers in textile plants (-2.157).

For skilled workers, the median adjustment length by subsector varies between 0.5 (temporary) and 2.26 years (permanent). The shortest halfway corresponds to rubber and plastic subsector and the longest to chemicals (Figure 20). For unskilled workers, the halfways range between 0.97 (mineral products) and 6.2 (textiles) years. A partial conclusion is that adjustment costs for unskilled workers are lower.

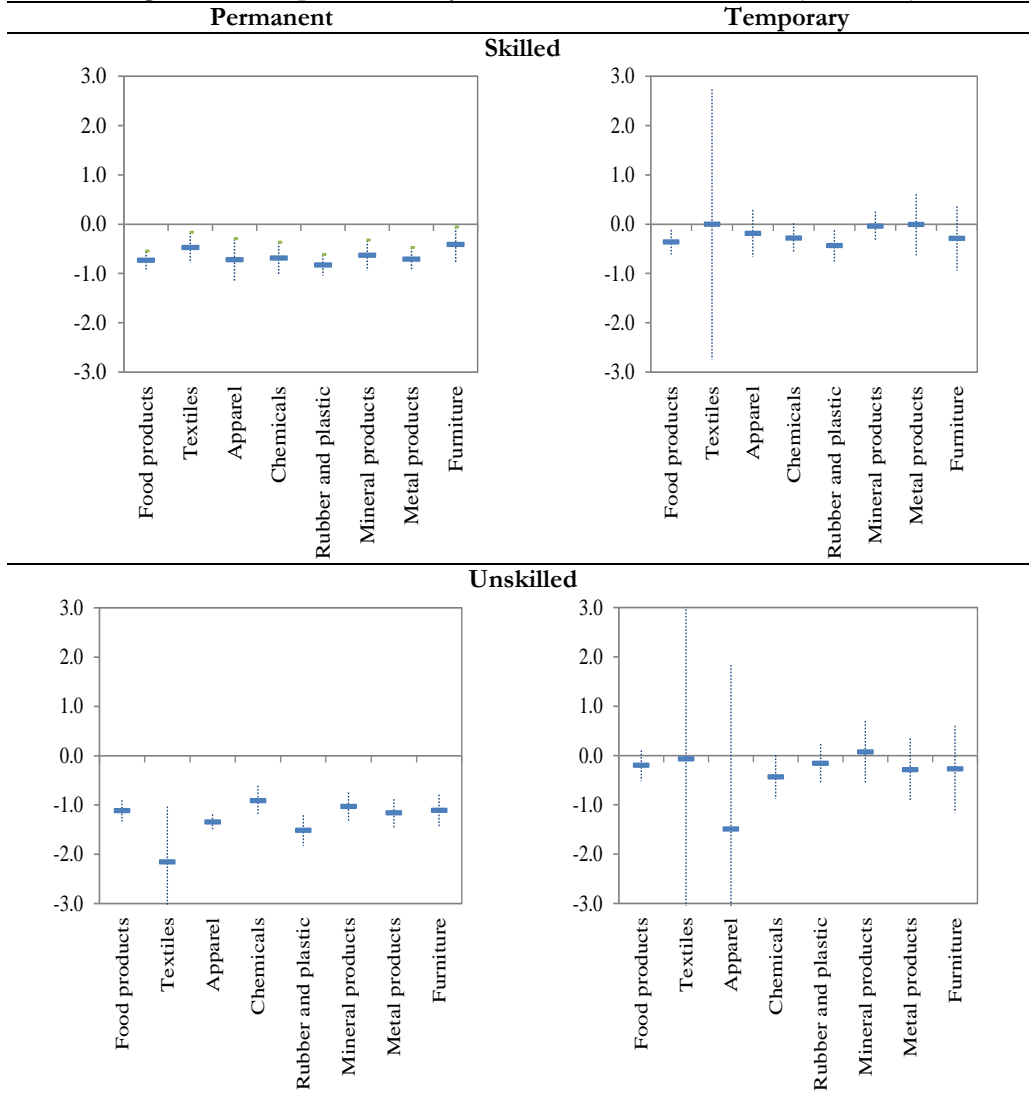
For skilled permanent labor force, the highest value of output elasticity corresponds to chemicals (1.7) and the smallest to furniture (0.98). This estimate is greater for permanent skilled workers than for temporary ones in each industrial subsector. Mineral products for unskilled temporary workers (1.87) and metal products (0.82) represent the extreme values of output elasticities. In the case of unskilled permanent workers, besides rubber and plastic whose coefficients are not statistically significant, output elasticities fluctuate between 0.85 and 1.42. This hints at a myriad of technologies and production functions across subsectors (Figure 21).

The TPF elasticity of labor demand is negative in general; when slightly positive it becomes not statistically significant. This is the case of metal (temporary skilled) and rubber and plastic (permanent unskilled). The TFP elasticity of permanent skilled workers fluctuates between -1.5 and -1.0 for almost all subsectors (Figure 22).

Tables 4 and 5 show the prevalence of heterogeneity across industrial subsectors. In the case of unskilled permanent workers (Table 4, upper-side), the TFP elasticity of labor demand in rubber and plastics is similar to that of food products, textiles, apparel and chemicals subsectors. By the same fashion, the null hypothesis that chemical subsector has the same long run elasticity to TFP as mineral, metal and furniture cannot be rejected in the case of unskilled permanent workers. As for temporary workers, the demand for unskilled labor in the textile subsector shows similarities with others (Table 5, upper-side).

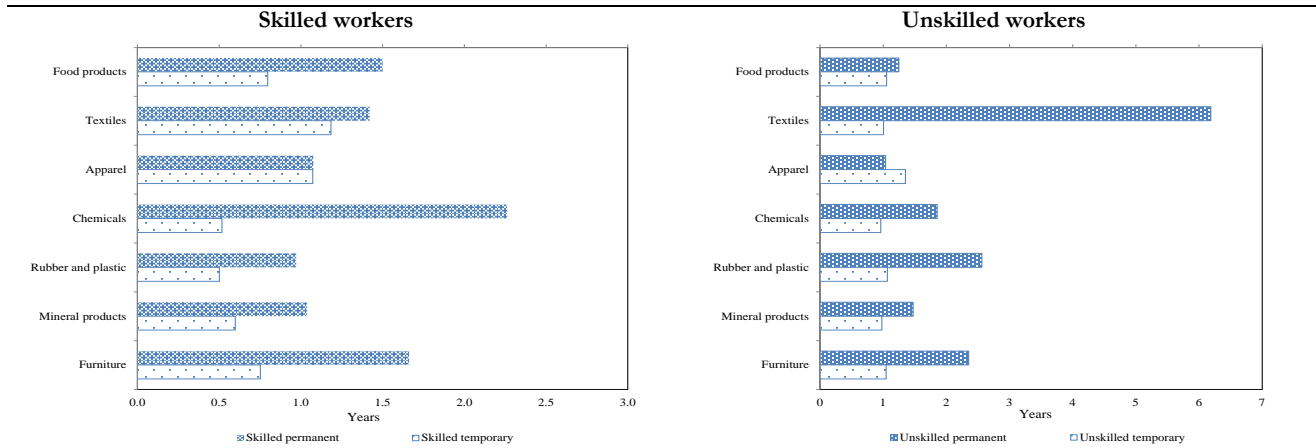
²¹ Recent evidence for Colombian establishments shows that the ones that exit the market are the least productive ones (Casas, Carranza, and González, 2014).

Figure 19. Own price elasticity of conditional labor demand (2000-2013).



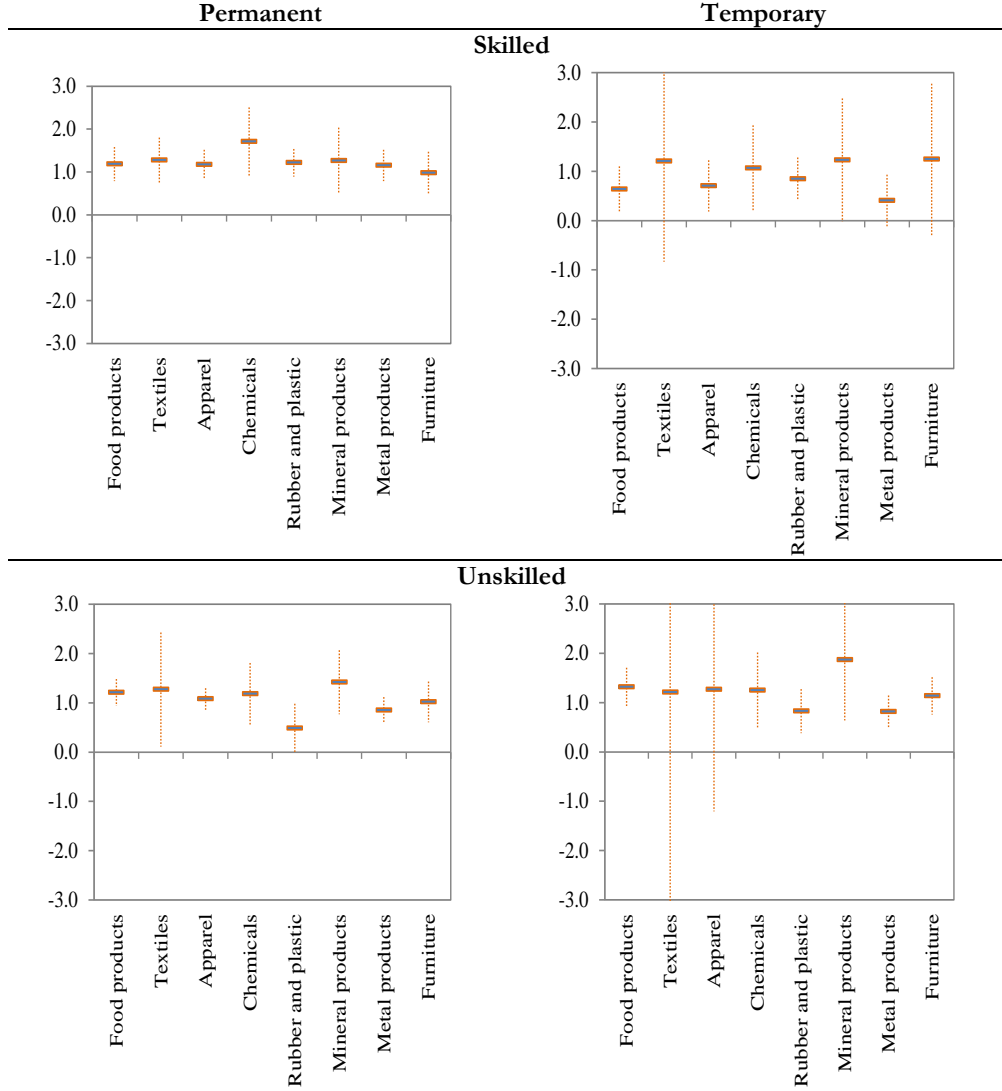
Note: 95% confidence intervals. Source: Dane-EAM; authors' calculations.

Figure 20. Halfway of labor demands adjustments of a real wage movement by subsector. Conditional labor demand.



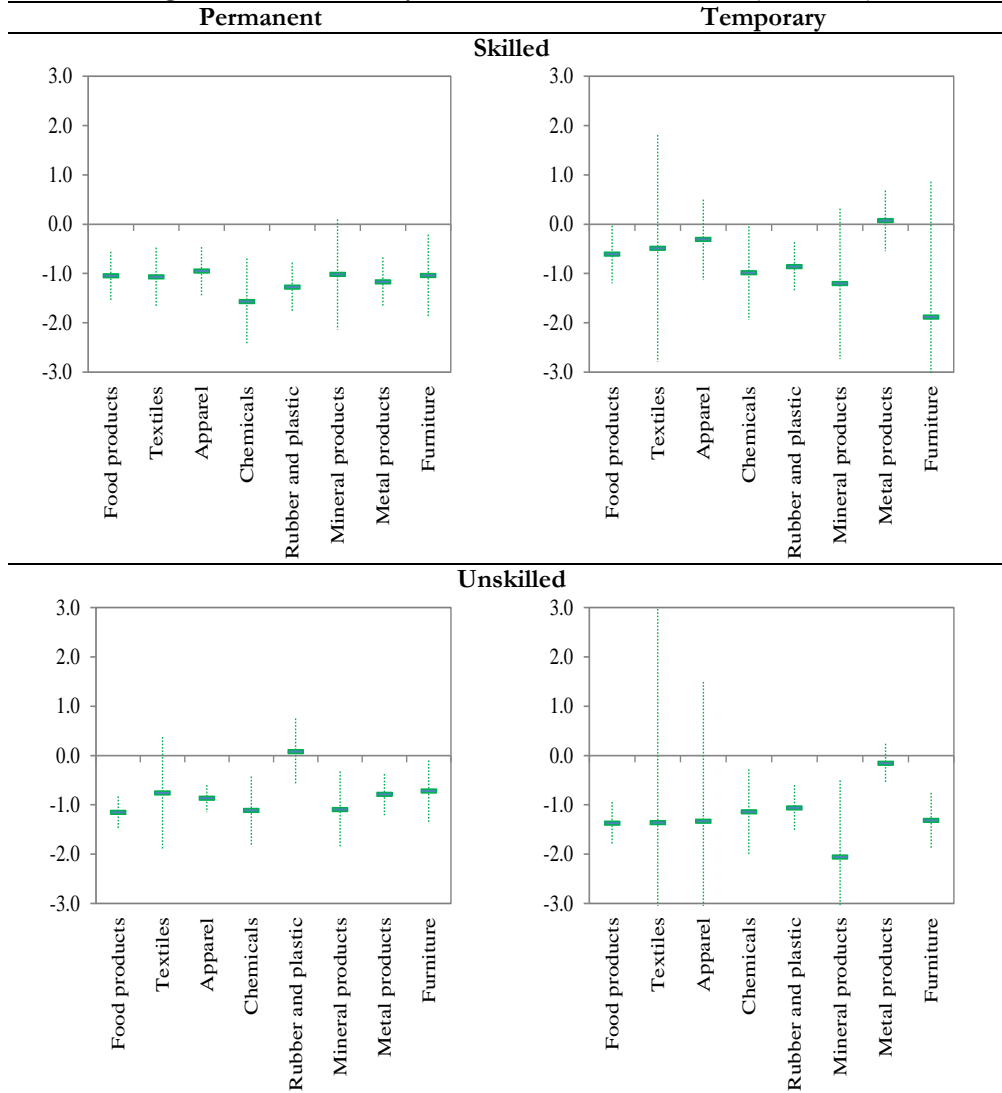
Source: Dane-EAM; authors' calculations.

Figure 21. Output elasticity of conditional labor demand (2000-2013).



Note: 95% confidence intervals. Source: Dane-EAM; authors' calculations.

Figure 22. TFP elasticity of conditional labor demand (2000-2013).



Note: 95% confidence intervals. Source: Dane-EAM; authors' calculations.

Table 4. Similarity of elasticities tests on conditional labor demand for permanent workers

Unskilled	Food products	Textiles	Apparel	Chemicals	Rubber and plastic	Mineral products	Metal products	Furniture
	<i>w y tfp</i>	<i>w y tfp</i>	<i>w y tfp</i>	<i>w y tfp</i>	<i>w y tfp</i>	<i>w y tfp</i>	<i>w y tfp</i>	<i>w y tfp</i>
Skilled								
Food products					X			X
Textiles					X		X	X
Apparel	O O				X			
Chemicals					X	X	X	X
Rubber and plastic								
Mineral products	O	O						
Metal products			O					
Furniture	O	O				O		

Source: Dane-EAM; authors' calculations.

Table 5. Similarity of elasticities tests on conditional labor demand for temporary workers

Unskilled temporary	Food products	Textiles	Apparel	Chemicals	Rubber and plastic	Mineral products	Metal products	Furniture
Skilled temporary	<i>w y tfp</i>	<i>w y tfp</i>	<i>w y tfp</i>	<i>w y tfp</i>	<i>w y tfp</i>	<i>w y tfp</i>	<i>w y tfp</i>	<i>w y tfp</i>
Food products		X X X	X X					
Textiles	O		X X	X	X	X	X	X X X
Apparel				X				X
Chemicals								
Rubber and plastic							X	
Mineral products		O O						
Metal products		O				O		
Furniture		O		O		O		

Source: Dane-EAM; authors' calculations.

5.3 Size heterogeneity

Another source of heterogeneity is plant sizes. Here, medium size plants employ between 11 and 50 workers, large between 51 and 500 and very large more than 500 workers. In all cases, but temporary workers (both skilled and unskilled) in very large plants, the demand for labor is well defined in the sense that elasticities are significant and with the expected signs. Demand for skilled labor is highly sensitive to output in large plants; the highest real wage elasticities are found in very large plants for skilled workers. With respect to TFP elasticities, no clear patterns emerge in either the type of workers or the size of plants. Median adjustment length is higher in very large plants and for permanent workers (Table 6).

Table 6. Long-run labor demand elasticities (2000-2013).

Specification	Permanent	Temporary	Permanent	Temporary
	Skilled		Unskilled	
Medium size establishments				
Own-price	-0.514***	-0.382***	-1.008***	-0.351***
Autoregressive coefficient	0.228**	0.252***	0.469***	0.370***
Halfway of adjustment	0.469	0.503	0.915	0.697
Output	1.081***	0.769***	0.486***	0.750***
TFP	-0.983***	-0.601*	-0.353*	-0.906***
No. observations (plants)	4937	1090	8320	4533
Sargan test (p-value)	0.000	0.000	0.000	0.000
Hansen test (p-value)	0.595	0.480	0.249	0.356
Ar2 (p-value)	0.233	0.652	0.000	0.986
Large size establishments				
Own-price	-0.722***	-0.170***	-1.150***	-0.231***
Autoregressive coefficient	0.394***	0.195***	0.547***	0.239***
Halfway of adjustment	0.744	0.424	1.149	0.484
Output	1.295***	1.087***	0.986***	0.356***
TFP	-1.105***	-0.914***	-0.863***	-0.212
No. observations (plants)	8435	3433	9850	8365
Sargan test (p-value)	0.000	0.000	0.000	0.000
Hansen test (p-value)	0.247	0.593	0.370	0.130
Ar2 (p-value)	0.954	0.806	0.536	0.089
Very large size establishments				
Own-price	-1.106***	-0.591***	-1.018***	-0.387
Autoregressive coefficient	0.671***	0.379***	0.692***	0.522***
Halfway of adjustment	1.737	0.714	1.883	1.066
Output	1.215***	-0.055	1.503**	0.333
TFP	-1.113**	-0.029	-1.722**	0.469
No. observations (plants)	984	529	1023	1007
Sargan test (p-value)	0.000	0.000	0.000	0.000
Hansen test (p-value)	1.000	1.000	1.000	1.000
Ar2 (p-value)	0.794	0.426	0.158	0.590

Source: Dane-EAM; authors' calculations.

The heterogeneity across size of plants is another property of industrial demand for labor in Colombia (Tables 7 and 8). Indeed, only with a few exceptions all the responses to real wage, output and TFP are different depending on the type of workers and size of plants.

Table 7. Similarity of elasticities tests on conditional labor demand for permanent workers

Unskilled	Medium			Large			Very large		
	w	y	tfp	w	y	tfp	w	y	tfp
Skilled									
Medium							X		
Large									
Very large						O			

Source: Dane-EAM; authors' calculations.

Table 8. Similarity of elasticities tests on conditional labor demand for temporary workers

Unskilled	Medium			Large			Very large		
	w	y	tfp	w	y	tfp	w	y	tfp
Skilled									
Medium									
Large									X
Very large									

Source: Dane-EAM; authors' calculations.

6. Conclusions

Using the Colombian Annual Manufacturing Survey (EAM) between 2000 and 2013, this paper estimates the determinants of skill-specific labor demand accounting for heterogeneity across several dimensions. The descriptive statistics shows three noticeable aspects. First, the rhythm of the employment in the manufacturing sector in Colombia seems to be driven by the paces of the four major cities: Bogotá, Barranquilla, Cali, and Medellín. Food and beverages, chemicals, apparel, rubber and plastic, and textiles, contribute the most to employment generation while with respect to size large and very large plants dominate employment creation. Second, the use of temporary contracts has increased remarkably overtime. This points at the quest for lower labor costs and more flexible modalities; however, it creates a challenge as larger number of temporary workers might affect firm productivity in the long run. Temporary contracts have been associated with fewer incentives to establish solid labor relations, training, etc. (Alaimo *et al.* 2015; Pierre and Scarpetta, 2013; Addison y Texeira, 2003). Third, the deep employment decline in the wake of the 2008-9 economic crisis links industrial employment to the demand for the goods produced by the establishments.

The paper finds that permanent workers (open-ended hiring), both skilled and unskilled, display a higher long-run elasticity to real wage than temporary ones. This finding is in line with the substitution between temporary and permanent labor during the sample period. Skilled permanent and temporary workers have lower real wage elasticities than the respective unskilled employees. Under the conditional specification of labor demand, the temporary unskilled workers show an elasticity of -0.438 and the skilled -0.256. The elasticity to the real wage of demand for unskilled workers with open-ended contracts is -1.109 and -0.682 for the skilled permanent workers.

The estimation of long-run output elasticities confirms the well-established result that labor demand is more responsive to output than to its own price. Permanent workers show elasticities of 0.949 (skilled) and 1.198 (unskilled), larger than temporaries' (0.710-skilled and 0.760-unskilled).

The conclusions reached in this paper highlight the importance of taking heterogeneity into account in the design of labor market policies. The determinants of industrial labor demand are quantitatively heterogeneous, across regions, subsectors and plant sizes. Shocks to the real wage affect more strongly permanent workers, in particular in cities such as Manizales and Pereira. In the case of expansions or contractions of product demand, demand for permanent skilled workers has significant responses, mainly in cities such as Pereira. Demand for temporary unskilled workers shows high output elasticities in places like Manizales, Cartagena and Pereira. While Manizales and Pereira have similar levels of employment, their industry composition is different as most of the employment in Pereira is driven by apparel while in Manizales by food and beverages. The skilled own price elasticity is larger in Manizales than Pereira, but output elasticity is quite larger in Pereira. As a result, their labor markets are heterogeneous.

At sector level, the demand for workers with temporary contracts exhibits the highest own-price elasticity. The response of industrial subsectors to the business cycle varies greatly and avoiding its vagaries is "mainly about where one works". Sectors with smaller output elasticity, like rubber and plastic, might be safe heavens during slumps, but less appealing than chemical products during expansions. The paper also finds that larger establishments exhibit larger responses to both output and wages.

References

- Addison, J.T., and Teixeira, P., 2003, The Economics of Employment Protection, *Journal of Labor Research*, Vol. 24, pp. 85-129, Transaction Publishers.
- Adam, A., and Moutos, T., 2014, Industry-level labour demand elasticities across the Eurozone: will there be any gain after the pain of internal devaluation?, *Bank of Greece Working Papers*.
- Alaimo, V., Bosch, M., Kaplan, D.S., Pagés, C., and Ripani, L., 2015, Empleos para crecer, *InterAmerican Development Bank*.
- Arango, L.E., 2103, Mercado de trabajo en Colombia: suma de partes heterogéneas, Chapter 4, in *Mercado de trabajo en Colombia: hechos, tendencias e instituciones*, Arango L.E and F. Hamann (eds.), Banco de la República, co-editor, 2013. Available at: <http://www.banrep.gov.co/es/libro-mercado-colombia>.
- Arango, L.E., Castellani, F., and Lora, E., 2016, Desempleo femenino en Colombia, Banco de la República – Banco Interamericano de Desarrollo, *forthcoming*.
- Arango, C.A., and Rojas, A.M., 2003, Demanda laboral en el Sector Manufacturero Colombiano: 1977-1999, *Borradores de Economía*, No. 247, Banco de la República.
- Arellano, M., and Bover, O., 1995, Another look at the instrumental variable estimation of error-components models, *Journal of Econometrics*, Vol. 68, pp. 29-51.
- Bartik, T.J., 2014, How Effects of Local Demand Shocks Vary with Local Labor Market Conditions, *Upjohn Institute Working Paper*, No. 14-202.
- Beaudry, P., Green, D.A., and Sand, B.M., 2014, In search of labor demand, *NBER Working Papers* WP 20568.
- Bernal, R., and Cardenas, M., 2003, Determinants of labor demand in Colombia: 1976-1996, *NBER Working Papers* WP 10077.
- Blundell, R., and Bond, S., 1998, Initial conditions and moment restrictions in dynamic panel data models, *Journal of Econometrics*, Vol. 87, pp. 115-143.
- Cahuc, P., Carcillo, S., and Zylberberg A., 2004, Labor economics, *MIT Press*, Cambridge, Massachusetts.
- Cárdenas, C., Hernández, A., and Torres J.E., 2014, An Exploratory Analysis of Heterogeneity on Regional Labour Markets and Unemployment Rates in Colombia: An MFACT approach, *Borradores de Economía*, No. 802, Banco de la República.
- Casas, C., Carranza, J.E., González, A., 2014, Relación entre productividad y supervivencia de las firmas industriales colombianas entre 2005 y 2013, *mimeo*, Banco de la República, BR-CEEII Cali.
- Dao, M., Furceri, D., and Loungani, P., 2014, Regional Labor Market Adjustments in the United States and Europe, *IMF Working Paper*, No. 14/26, IMF Washington DC.
- Dumais, G., Ellison, G., and Glaeser, E.L., 2002, Geographic concentration as a dynamic process, *The Review of Economics and Statistics*, Vol 84, No. 2, pp. 193-204.

- Eslava, M., Haltiwanger, J., Kugler, A., and Kugler, M., 2010, Factor adjustments after deregulations: panel evidence from Colombian plants, *The Review of Economic Studies*, Vol. 51, No. 4, pp. 529-557.
- Fajnzylber, P., and Maloney, W., 2001, How comparable are labor demand elasticities across countries?, *Police Research Working Papers* 658, World Bank.
- Griffin, N., 2015, Determinants of Firm Profitability in Colombia's Manufacturing Sector: Exchange Rate or Structural?, *IMF Working Paper*, No. 15/97, IMF Washington DC.
- Hamermesh, D., 1993, *Labor demand*, New Jersey, Princeton Academic Press, pp. 444.
- Kanbur, R and A. Venables, 2005, *Spatial Inequality and Development*, OUP Oxford
- Lichter, A., Peichl, A., and Siegloch, S., 2014, The Own-Wage Elasticity of Labor Demand: A Meta-Regression Analysis, *IZA Discussion Paper Series*, No. 7958.
- Levinsohn, J., and Petrin, A., 2003, Estimating Production Functions Using Inputs to Control for Unobservables, *The Review of Economic Studies*, No. 70, pp. 317-341.
- Medina, C., Posso, C., Tamayo, J., and Monsalve, E., 2103, Dinámica de la demanda laboral en la industria manufacturera colombiana 1993-2009: una estimación panel VAR, Chapter 7, in *Mercado de trabajo en Colombia: hechos, tendencias e instituciones*, Arango L.E and F. Hamann (eds.), Banco de la República, co-editor, 2013. Available at: <http://www.banrep.gov.co/es/libro-mercado-colombia>.
- Nickel, S., 1984, An Investigation of the Determinants of Manufacturing Employment in the United Kingdom, *The Review of Economic Studies*, Vol. 51, No. 4, pp. 529-557.
- Pierre, G., and Scarpetta, S., 2013, Do Firms Make Greater Use of Training and Temporary Employment When Labor Adjustment Costs are High?, *IZA Journal of Labor Policy*, Vol. 2:15 (Springer Open Journal).
- Roberts, M., and Skoufias, E., 1997, The long-run demand for skilled and less skilled labor in the Colombian manufacturing plants, *The Review of Economics and Statistics*, Vol. 79, No. 2, pp. 330-334.
- Sargent, T., 1978, Estimation of Dynamic Labor Demand Schedules under Rational Expectations, *The Journal of Political Economy*, Vol. 86, No. 6, pp. 1009-1044.
- Vivas, A., Farne, S., and Urbano, D., 1998, Estimaciones de funciones de demanda de trabajo dinámicas para la economía colombiana, 1980-1996, *Archivos de Macroeconomía*, No. 092, Departamento Nacional de Planeación.
- Wickens, M., 2011, *Macroeconomic Theory: A Dynamic General Equilibrium Approach*, Princeton University Press.
- Windmeijer, F., 2005, A finite sample correction for the variance of linear efficient two-step GMM estimators, *Journal of Econometrics*, Vol. 126, pp. 25-51.

Appendix

Table A1. Estimates properties labor demand elasticities (2000-2013).

City	Long-run elasticities			Properties			
	Own price	Output	TFP	Sample size	Sargan test (p-value)	Hansen test (p-value)	Ar2 (p-value)
Permanent skilled							
Bogotá	-0.638*** 0.000	1.092*** 0.000	-1.037*** 0.000	5318	0	0.413	0.454
Barranquilla	-0.673** 0.024	1.067* 0.063	-0.254 0.716	731	0	1	0.834
Cali	-0.694*** 0.000	1.340*** 0.000	-1.292*** 0.000	1485	0	0.353	0.690
Medellín	-0.632*** 0.000	1.052*** 0.000	-0.739*** 0.006	2625	0	0.338	0.253
Bucaramanga	-1.026** 0.015	1.493 0.119	-1.599 0.135	343	0	1	0.334
Cartagena	-0.249 0.416	1.543** 0.034	-1.528* 0.077	351	0	1	0.569
Manizales	-1.300** 0.022	2.426 0.482	-1.632 0.675	355	0.210	1	0.271
Pereira	-0.911*** 0.000	2.517*** 0.001	-2.126** 0.037	235	0.0119	1	0.278
Cúcuta	0.398 0.785	-4.128 0.708	5.154 0.627	124	0.0381	1	0.752
Temporary skilled							
Bogotá	-0.105 0.200	0.629*** 0.000	-0.496** 0.015	1589	0	0.311	0.364
Barranquilla	-0.349*** 0.001	0.569 0.260	-0.392 0.525	287	0	1	0.443
Cali	-0.331* 0.090	0.386 0.130	0.163 0.667	539	0	1	0.859
Medellín	-0.168 0.120	0.619*** 0.004	-0.665 0.005	766	0	0.583	0.812
Bucaramanga	-0.291 0.715	0.614 0.351	-0.352 0.675	184	0	1	0.388
Cartagena	0.102 0.858	2.525 0.480	-2.785 0.539	147	0.00542	1	0.543
Manizales	-1.061** 0.016	0.447 0.430	1.000 0.255	183	0.141	1	0.778
Pereira	-0.316 0.871	0.238 0.909	-1.004 0.611	160	0.102	1	0.280
Cúcuta	-1.676 0.420	4.048 0.383	-3.929 0.392	55	0.00945	1	0.944
Permanent unskilled							
Bogotá	-1.094*** 0.000	0.987*** 0.000	-0.787*** 0.000	6857	0	0.859	0.921
Barranquilla	-0.983*** 0.004	0.814** 0.038	-0.828 0.164	927	0	1	0.297
Cali	-1.666*** 0.000	1.702*** 0.000	-1.790*** 0.000	1866	0	0.586	0.659
Medellín	-1.163*** 0.000	0.833*** 0.000	-0.661*** 0.000	3736	0	0.395	0.0835
Bucaramanga	-1.225*** 0.000	0.723*** 0.008	-0.266 0.368	574	0	1	0.161
Cartagena	-1.230** 0.038	1.960 0.123	-1.844 0.214	440	0	1	0.525
Manizales	-1.378*** 0.000	3.118 0.427	-3.752 0.464	433	0.00207	1	0.0901
Pereira	-1.843*** 0.002	1.924 0.201	-1.401 0.508	349	0.00292	1	0.610
Cúcuta	-1.073*** 0.000	1.393 0.217	-0.958 0.560	196	0.00342	1	0.791
Temporary unskilled							
Bogotá	-0.270*** 0.008	0.750*** 0.000	-0.714*** 0.000	4252	0	0.0782	0.0355
Barranquilla	-0.580** 0.010	1.214*** 0.000	-1.125*** 0.000	818	0.0204	1	0.385
Cali	-0.042 0.847	0.956*** 0.000	-0.874*** 0.008	1549	0	0.479	0.957
Medellín	-0.456*** 0.006	0.646*** 0.000	-0.822*** 0.001	2571	0	0.452	0.0586
Bucaramanga	-0.854* 0.058	0.415 0.143	-0.076 0.874	543	0	1	0.0169
Cartagena	-0.715 0.292	2.108*** 0.008	-2.276** 0.031	317	0	1	0.422
Manizales	0.096 0.803	4.047*** 0.000	-4.032*** 0.000	416	0	1	0.680
Pereira	-0.440*** 0.008	2.263*** 0.000	-2.405*** 0.000	375	0	1	0.649
Cúcuta	-2.545* 0.054	1.575* 0.086	-1.876 0.123	167	0.000369	1	0.990

Table A2. Estimates properties labor demand elasticities by subsector and size (2000-2013).

Subsector/ size	Long-run elasticities			Properties			
	Own price	Output	TFP	Sample size	Sargan test (p-value)	Hansen test (p-value)	Ar2(p-value)
By subsector							
Permanent skilled							
Food products	-0.736*** 0.000	1.182*** 0.000	-1.049*** 0.000	3146	0	0.269	0.305
Textiles	-0.475*** 0.002	1.271*** 0.000	-1.074*** 0.000	709	0	1	0.632
Apparel	-0.722*** 0.001	1.173*** 0.000	-0.958*** 0.000	640	0	1	0.557
Chemicals	-0.693*** 0.000	1.708*** 0.000	-1.572*** 0.000	1856	0	0.204	0.754
Rubber and plastic	-0.831*** 0.000	1.214*** 0.000	-1.282*** 0.000	1321	0	0.703	0.998
Mineral products	-0.635*** 0.000	1.264*** 0.001	-1.022* 0.073	915	0	0.993	0.588
Metal products	-0.711*** 0.000	1.150*** 0.000	-1.175*** 0.000	731	0	1	0.590
Furniture	-0.413** 0.022	0.978*** 0.000	-1.048** 0.014	585	0	1	0.920
Temporary skilled							
Food products	-0.365*** 0.004	0.635*** 0.007	-0.615** 0.039	1303	0	0.448	0.0821
Textiles	-0.004 0.998	1.202 0.247	-0.493 0.674	276	0.0253	1	0.381
Apparel	-0.189 0.440	0.703*** 0.008	-0.316 0.448	307	0.140	1	0.769
Chemicals	-0.284* 0.066	1.063** 0.016	-0.991** 0.041	469	0	1	0.819
Rubber and plastic	-0.440*** 0.007	0.845*** 0.000	-0.867*** 0.001	414	0	1	0.876
Mineral products	-0.044 0.772	1.227* 0.054	-1.208 0.121	235	0.000137	1	0.992
Metal products	-0.011 0.972	0.403 0.133	0.069 0.826	222	0	1	0.657
Furniture	-0.290 0.383	1.242 0.113	-1.888 0.178	228	0	1	0.655
Permanent unskilled							
Food products	-1.118*** 0.000	1.209*** 0.000	-1.160*** 0.000	4214	0	0.0535	0.326
Textiles	-2.157*** 0.000	1.269** 0.032	-0.762 0.189	984	0	0.999	0.535
Apparel	-1.347*** 0.000	1.079*** 0.000	-0.873*** 0.000	1059	0	0.933	0.554
Chemicals	-0.915*** 0.000	1.180*** 0.000	-1.118*** 0.002	2003	0	0.201	0.438
Rubber and plastic	-1.518*** 0.000	0.482* 0.060	0.074 0.829	1762	0	0.251	0.464
Mineral products	-1.036*** 0.000	1.417*** 0.000	-1.101*** 0.005	1362	0	0.750	0.878
Metal products	-1.164*** 0.000	0.849*** 0.000	-0.791*** 0.000	952	0	1	0.301
Furniture	-1.115*** 0.000	1.019*** 0.000	-0.725** 0.024	876	0	1	0.160
Temporary unskilled							
Food products	-0.204 0.192	1.317*** 0.000	-1.379*** 0.000	3109	0	0.736	0.653
Textiles	-0.074 0.984	1.207 0.697	-1.364 0.622	824	0	0.231	0.672
Apparel	-1.493 0.379	1.268 0.315	-1.335 0.355	1073	0	0.829	0.624
Chemicals	-0.436* 0.055	1.247*** 0.001	-1.148*** 0.010	1274	0	0.366	0.345
Rubber and plastic	-0.165 0.418	0.829*** 0.000	-1.068*** 0.000	1205	0	0.604	0.418
Mineral products	0.070 0.828	1.866*** 0.003	-2.063*** 0.010	904	0	0.991	0.972
Metal products	-0.289 0.373	0.816*** 0.000	-0.165 0.427	628	0	1	0.0484
Furniture	-0.275 0.539	1.137*** 0.000	-1.322*** 0.000	611	0	1	0.751

Note: the accompanying value of estimated coefficient corresponds to the p-value. Source: Dane-EAM; authors' calculations.

Table A3. Estimates properties labor demand elasticities by subsector and size (2000-2013).

Subsector/ size	Long-run elasticities			Properties			
	Own price	Output	TFP	Sample size	Sargan test (p-value)	Hansen test (p-value)	Ar2(p-value)
Permanent skilled							
Medium	-0.514*** 0.000	1.081*** 0.000	-0.983*** 0.000	4937	0	0.595	0.816
Large	-0.722*** 0.000	1.295*** 0.000	-1.105*** 0.000	8435	0	0.247	0.954
Very large	-1.106*** 0.000	1.215*** 0.005	-1.113** 0.015	984	0	1	0.794
Temporary skilled							
Medium	-0.382*** 0.000	0.769*** 0.004	-0.601* 0.073	1090	0	0.480	0.652
Large	-0.170** 0.014	1.087*** 0.001	-0.914** 0.014	3433	0	0.591	0.806
Very large	-0.591*** 0.000	-0.055 0.947	-0.029 0.973	529	0	1	0.426
Permanent unskilled							
Medium	-1.008*** 0.000	0.436*** 0.007	-0.353* 0.086	8320	0	0.249	0.281
Large	-1.150*** 0.000	0.986*** 0.000	-0.863*** 0.000	9850	0	0.370	0.536
Very large	-1.018*** 0.000	1.503** 0.014	-1.722** 0.014	1023	0	1	0.158
Temporary unskilled							
Medium	-0.351*** 0.002	0.750** 0.011	-0.906*** 0.006	4533	0	0.356	0.986
Large	-0.231*** 0.002	0.356*** 0.007	-0.212 0.229	8365	0	0.130	0.0886
Very large	-0.387 0.333	0.333 0.658	0.469 0.457	1007	0	1	0.590

Note: the accompanying value of estimated coefficient corresponds to the p-value. Source: Dane-EAM; authors' calculations.