

Wolszczak-Derlacz, Joanna; Parteka, Aleksandra

Working Paper

The effects of offshoring to low-wage countries on domestic wages – A worldwide industrial analysis

GUT FME Working Paper Series A, No. 6/2016 (36)

Provided in Cooperation with:

Gdańsk University of Technology, Faculty of Management and Economics

Suggested Citation: Wolszczak-Derlacz, Joanna; Parteka, Aleksandra (2016) : The effects of offshoring to low-wage countries on domestic wages – A worldwide industrial analysis, GUT FME Working Paper Series A, No. 6/2016 (36), Gdańsk University of Technology, Faculty of Management and Economics, Gdańsk

This Version is available at:

<https://hdl.handle.net/10419/173332>

Standard-Nutzungsbedingungen:

Die Dokumente auf EconStor dürfen zu eigenen wissenschaftlichen Zwecken und zum Privatgebrauch gespeichert und kopiert werden.

Sie dürfen die Dokumente nicht für öffentliche oder kommerzielle Zwecke vervielfältigen, öffentlich ausstellen, öffentlich zugänglich machen, vertreiben oder anderweitig nutzen.

Sofern die Verfasser die Dokumente unter Open-Content-Lizenzen (insbesondere CC-Lizenzen) zur Verfügung gestellt haben sollten, gelten abweichend von diesen Nutzungsbedingungen die in der dort genannten Lizenz gewährten Nutzungsrechte.

Terms of use:

Documents in EconStor may be saved and copied for your personal and scholarly purposes.

You are not to copy documents for public or commercial purposes, to exhibit the documents publicly, to make them publicly available on the internet, or to distribute or otherwise use the documents in public.

If the documents have been made available under an Open Content Licence (especially Creative Commons Licences), you may exercise further usage rights as specified in the indicated licence.



<https://creativecommons.org/licenses/by-nc-nd/3.0/deed.pl>



GDAŃSK UNIVERSITY OF TECHNOLOGY

FACULTY OF MANAGEMENT AND ECONOMICS

THE EFFECTS OF OFFSHORING TO LOW-WAGE COUNTRIES ON DOMESTIC WAGES – A WORLDWIDE INDUSTRIAL ANALYSIS

Joanna Wolszczak-Derlacz*, Aleksandra Parteka**

GUT Faculty of Management and Economics
Working Paper Series A (Economics, Management, Statistics)
No 6/2016 (36)

forthcoming in: *Empirica - Journal of European Economics*

June 2016

*Gdansk University of Technology, Faculty of Management and Economics,
jwo@zie.pg.gda.pl (corresponding author)

**Gdansk University of Technology, Faculty of Management and Economics,
aparteka@zie.pg.gda.pl



The effects of offshoring to low-wage countries on domestic wages – a worldwide industrial analysis

Joanna Wolszczak-Derlacz* and Aleksandra Parteka**

This version (revised): 06 June 2016

forthcoming in: *Empirica - Journal of European Economics*

Abstract

This paper extends the literature on the implications of offshoring for labour markets by investigating its effect on the wages of different skill groups in a broad global context. The analysis draws on input-output data from the WIOD project, and in the panel analysed (13 manufacturing industries, 40 countries, 1995 – 2009) we capture up to 96% of the international trade in manufacturing inputs. Being particularly interested in the wage effects of offshoring to low wage countries (LWC), we employ precise LWC classifications (varying across industries and time) to decompose overall offshoring by source country. We employ a decomposition of the conventional offshoring measure in order to capture its pure international component, which is further instrumented using a gravity-based strategy. According to the estimation results, the negative impact of offshoring on wages mainly concerns low and medium skilled workers. However, in terms of magnitude, the downward pressure on domestic wages exhibited by offshoring to LWC is relatively small.

JEL: F14, F16, F66, C67

Keywords: wage, offshoring, input-output, low-wage countries

LWC (Low wage countries) classifications employed in this paper are downloadable at:

<http://zie.pg.edu.pl/aparteka/publications>

[file [LowWageCountries](#) classifications [WolszczakDerlacz](#) [Parteka](#)]

* Gdańsk University of Technology, Faculty of Management and Economics, Narutowicza 11/12, 80-233 Gdańsk, Poland (corresponding author: jwo@zie.pg.gda.pl)

**Gdańsk University of Technology, Faculty of Management and Economics, Narutowicza 11/12, 80-233 Gdańsk, Poland.

Acknowledgments: The research has been conducted within the project financed by the National Science Centre (NCN), Poland (decision number DEC-2013/11/B/HS4/02134).

1. Introduction

The increasing importance of offshoring (defined conventionally as the geographical separation of production activities across two or more countries, as in the classic paper by Feenstra and Hanson, 1999), matched with an improved accessibility of data, has boosted the empirical literature on its effects on domestic labour markets¹. The main emphases have been placed on the effects of offshoring on the employment/labour demand structure and wages (including the evolution of the skilled-unskilled wage gap)². So far, the main focus has been put on developed countries, as they are the countries whose labour markets are at risk of “losing” as a consequence of transferring parts of production (or tasks) abroad to less developed destinations. Unsurprisingly, much of the attention has been given to outcomes visible in the US labour market, considering primarily the effects of offshoring to such developing countries as Mexico (e.g., Sethupathy, 2013), China or India (e.g. Liu and Trefler, 2008), or to the results of occupational exposure to globalization due to rising import competition from China and other developing countries (e.g. Autor et al., 2013; Ebenstein et al. 2014; Acemoglu et al., 2014). Similar analyses have been performed to assess the offshoring response of labour markets in single advanced Western European countries (e.g. UK: Amiti and Wei, 2005; Austria: Egger and Egger, 2003; Belgium: Michel and Rycx, 2012; Denmark: Hummels et al., 2014; Germany: Geishecker and Görg, 2008, and Baumgarten et al., 2013).

Many factors can affect wages³. In this paper, we focus on the industry-level response of wages paid in domestic industries (in which imported inputs are employed) to offshoring, in particular to low-wage countries (LWC).⁴ However, as will be explained, we adopt a much wider perspective than that taken so far. Before describing our contribution, we will shed some light on the existing related evidence. Given the scope of our paper, we leave aside country-specific analyses based on worker-level or firm-level micro-data – as surveyed in Crinò (2009) or Castellani et al. (2015). Focusing on industry-level studies, most papers address the impact of the international sourcing of inputs on industry-level outcomes in terms of reduced employment/overall labour demand (e.g. Amiti and Wei, 2005 for the

¹ A comprehensive review of the offshoring effects on labour markets is provided by Feenstra (2010).

² An important parallel stream of research underlined the impact of technological progress on wages (especially of low-skilled workers, e.g. through computerization). In particular, skill biased technological change (SBTC), identified as the tendency of new technology to complement skilled-workers and to substitute unskilled labour, can result in labour demand shifts and increase in wage inequalities (among others: Card and Di Nardo, 2002). Technical change can be linked to offshoring activity: Baldwin and Robert-Nicoud (2014) demonstrate in their ‘integrating framework’ that trade in tasks is similar to technical change while Acemoglu et al. (2015) introduce directed technical change into a Ricardian model of offshoring and show that offshoring and technical change are substitutes in the short run but complements in the long run.

³ Several streams of labour economics literature are related to wage determination process, covering such aspects as: the interplay between skill demand and supply (Card and Lemieux, 2001; Acemoglu and Autor, 2011), wage effects of the assignment of skills to tasks (Autor, 2013); job and wage polarisation (Goos et al., 2014); relations between worker and employer in the presence of imperfect competition on labour markets (Manning, 2011), decentralisation of wage bargaining (Dahl et al., 2013); collective bargaining and the role of labour unions (Cahuc et al., 2014, 401-478); the evolution of participation rates, part-time work and other factors affecting labour supply (Cahuc et al., 2014, 3-76).

⁴ Throughout the paper we use the term ‘offshoring’ to capture the allocation of business activities to another country, assuming that it involves flows of intermediates (inputs) across borders, visible in international input-output tables (Feenstra, 1998). Offshoring to low-wage countries (LWC) refers to inputs imported from LWC.

UK; Acemoglu et al., 2014 for the US; Cadarso et al, 2008 for Spain; Falk and Wolfmayr, 2005 and 2008 for a small sample of EU countries; Hijzen and Swaim, 2007 for 17 OECD countries; Michel and Rycx, 2012 for Belgium). Overall, most of these studies tend to fail to support the view that substantial statistically significant job losses can be observed at the industry level directly due to offshoring. Import competition in industries exposed to foreign competition can have a stronger impact, as illustrated in a study by Acemoglu et al. (2014) – their estimates suggest net job losses in the US of 2.0 to 2.4 million stemming from the rise in import competition from China over the period 1999 to 2011.

Additionally, the impact of offshoring on changes in the skill composition of labour demand has been analysed, pointing towards a negative influence on the demand for less skilled workers. Regarding wider panel data studies, Foster-McGregor et al. (2013) employ WIOD data (40 countries, 1995-2009) and find that medium-skilled workers suffer the most in terms of shrinking labour demand as a response to offshoring (similar effects are documented in Timmer et al., 2013). Offshoring of services also appears to raise the relative demand for high- and medium-skilled workers (see Crinò, 2012, covering 20 industries and nine Western EU countries over 1990-2004).

Is the source of imports important when assessing the labour market effects of offshoring? Egger and Egger (2003) introduced a crucial distinction between offshoring to low-wage and high-wage countries, while Bernard et al. (2006) distinguished between imports from high-income versus low-income countries. Since then, a division of offshoring by the source country has been employed in other studies too, including ones performed at the industry level. Despite conventional worries, Falk and Wolfmayr (2005) estimate that rising intermediate imports from low-wage countries may account for a relatively small reduction in manufacturing employment of only 0.25 percentage points per year in their sample of seven EU countries (1995-2000), while a study by Falk and Wolfmayr (2008) finds no significant effect of services purchased from low-wage countries on manufacturing employment.

There is not so much broad evidence on the effects of offshoring on wages. The recent micro-level papers investigating the impact of international outsourcing on the wages of individual workers are country-specific and limited to countries with good access to micro-data (such as the US: Ebenstein et al, 2014; Autor et al., 2014; Germany: Geishecker and Görg, 2008; Denmark: Hummels et al., 2014; UK: Geishecker and Görg, 2013) or limited to very small samples of countries. Again, contrary to common fears, the estimated wage cuts due to outsourcing appear to be rather small in economic terms⁵. For instance, Geishecker et al. (2010) use data for Germany, the UK and Denmark (1991-1999) and find a small negative and weakly statistically significant effect of offshoring on wages in Germany, a positive effect in the UK and no statistically significant effect in Denmark. When they consider different skill categories of workers, a negative effect found only for Germany accrues to low-skilled

⁵ This is also confirmed by more general studies about the relationship between trade and wages (e.g. Polgár and Wörz, 2010).

workers (but it is small⁶) while for low-skilled UK and Danish workers they cannot identify any outsourcing effect. For the UK, a sizable negative and statistically significant wage effect stems only from outsourcing to CEEC but it vanishes when put in the perspective of real data.⁷ In their industry-level study performed for a wide sample of EU27 countries, Parteka and Wolszczak-Derlacz (2015) also conclude that offshoring reduces the wage growth of domestic medium- and low-skilled workers. However, they show that this negative effect is economically small.

Building upon the existing literature briefly summarized above, our aim is to provide worldwide evidence on the offshoring-wage nexus using industry-level data and hopefully complementing the existing studies performed at other levels of detail but limited along the country dimension. We aim to fill some important gaps in the related empirical literature.

First, we consider a long panel of industrial data (13 manufacturing industries in 40 countries over the period 1995–2009⁸) derived from the World Input-Output Database (WIOD – Timmer et al., 2015) which covers between 82 and 96% of the international trade in intermediate goods (depending on the sector and year of analysis). We thus provide representative evidence on the global trends in offshoring and, in contrast to the many country-level studies, exploit its wage effects in a multi-country setting.

Moreover, given the crucial heterogeneity of workers in international trade analysis (Grossman, 2013), we consider the wages of three skill groups separately (low, medium and highly skilled), focusing on the effects on the workers who are potentially most at danger – the low and medium skilled ones. Even though WIOD has already been used (in a more restricted manner) in some related studies (e.g. Foster-McGregor et al., 2013; Schwörer, 2013; and Parteka and Wolszczak-Derlacz, 2015), to the best of our knowledge this is the first time that the response of skill-specific wages to offshoring has been analysed in a worldwide cross-country perspective over a significant time period.

In addition, while we correlate the wage levels of workers with offshoring intensity, we decompose the latter by country of origin⁹. This is done in order to explicitly check for the effects of offshoring to developing¹⁰ and low-wage countries (LWC) on domestic wages. In particular, we use four alternative

⁶ They estimate that on average in Germany a one percentage point increase in outsourcing intensity lowers wages for low-skilled workers by a little more than one percent. The overall effect is small, as over the period analysed average outsourcing increased by 1.6 percent. Hence, outsourcing cumulatively reduced wages in Germany by about 2.5 percent. This result is in line with the estimates by Geishecker and Görg (2008), also for Germany.

⁷ UK outsourcing to CEEC increased by 0.07 percentage points, which implies a very modest cumulative wage reduction of 2.7 percent over the period analysed (Geishecker et al., 2010, p.196).

⁸ WIOD (release November 2013) provides data for the period 1995–2011, but the statistics needed for the computation of the wages of different skill groups of workers is only available up to 2009.

⁹ Following the nomenclature used in input-output analysis, ‘source country’ or ‘country of origin’ is the country from which inputs are imported (hence, the country to which the offshoring takes place), while ‘destination country’ is the country where the imported inputs are used.

¹⁰ Throughout the paper, developing countries are defined as low- and middle-income countries, according to the classification by the World Bank, 2014 (see Table A2 in the Appendix).

LWC classifications¹¹. Importantly, we go beyond standard very rough groupings of LWC based on comparisons of income per capita or an arbitrary attribution of countries to the low-wage category. Due to the use of industry-level wage data, we obtain flexible classification of LWC over time and by industry. Moreover, drawing on bilateral input-output tables, we directly split imported inputs according to the country of origin of the imports (rather than using a proportional method based on shares of total imports, which is employed instead of using tables of imports by country of origin, as in Falk and Wolfmayr, 2008 and Hertveldt and Michel, 2013). We also allow for changes in the relative positions of LWC over time, and the existence of industry-specific wage advantages.

Finally, we adopt a decomposition of conventional overall offshoring measures (calculated – in the spirit of Feenstra and Hanson, 1999 – as the sum of imported inputs related to the total value of production of the industry in which they are used) into purely international and domestic components. As Castellani et al. (2013) argue, typical measures of offshoring tend to overestimate the role of international components (imported inputs) and neglect the role played by structural changes and flows of intermediates within the domestic economy. Consequently, the adopted decomposition allows us to distinguish between the wage effects of the international component of outsourcing and the effects of domestic outsourcing practices.

The rest of the paper is organised as follows. In Section 2, we present the data used in our empirical analysis, and in Section 3 we present some crucial facts concerning the trends in offshoring and wages in the period analysed. Section 4 focuses on the estimated empirical model and the results, starting from the most general setting and then taking into account specificities of source countries and destination countries. Endogeneity in the wage-offshoring relationship is addressed through the use of a gravity-based instrument. Finally, Section 5 concludes.

In a nutshell, the main results of our analysis are the following. We document that in the period analysed the intensity of manufacturing offshoring to LWC rose (on average) from 0.025 to 0.075 of the industry value added. However, we find that increasing offshoring (in particular to LWC) is related to a decrease in the industry-level wages of domestic low- and medium-skill workers, but this effect, albeit statistically significant, is relatively small. We estimate that, *ceteris paribus*, a rise in offshoring to LWC of 1% can be associated with a decline in domestic low (medium) skill workers' wages of approximately 0.08% (0.07%).¹²

¹¹ Two more are used in the robustness check section (see footnote 21). The classifications are obtainable in a separate file as additional online material accompanying the paper - downloadable at: [http://zie.pg.edu.pl/aparteka/publications\[file_LowWageCountries_classifications_WolszczakDerlacz_Parteka\]](http://zie.pg.edu.pl/aparteka/publications[file_LowWageCountries_classifications_WolszczakDerlacz_Parteka]).

¹² LWC classification 4 – see Table 1. Intensity of offshoring measured according to eq.1. The values on offshoring refer to weighted averages across 13 manufacturing industries in 40 destination countries, with weights corresponding to industry size (employment) – see Figure 2. Elasticities based on estimation results reported in Tables 5 and 6.

2. Data and measurement of offshoring

Our data come from the World Input-Output Database (WIOD – described in Timmer et al. 2015), consisting of the World Input-Output Tables, WIOT (release: November 2013) and the WIOD Socio Economic Accounts, SEA (update: July 2014). The database reports industry-specific data on socio-economic accounts (value added, gross output etc.) and international input–output tables across 35 industries and 40 countries (plus the rest of the world). After careful inspection of the data, we chose to deal with a broad country sample but restrict our analysis to the 13 manufacturing industries reporting more reliable statistics and excluding raw materials¹³ (see Table A1 and Table A2 in the Appendix for a list of the industries and countries). In particular, using information on labour compensation and hours worked over the period 1995-2009 (see footnote 8), we compute the real hourly wages expressed in 2005 USD¹⁴ of three distinct skill groups of workers (h – high-, m – medium- and l – low-skilled; the classification is based on educational attainment) for each country, industry and time period.

Input-output data serve to compute offshoring measures. In the first instance, using information on imported intermediates from WIOD, we calculate conventional industry-specific offshoring indices (Feenstra and Hanson, 1999), defined as the ratio of imported intermediate inputs to the value added in the industry in which they are employed.¹⁵ In all the specifications, we take into account a broad measure of offshoring¹⁶, OFF (also called inter-industry offshoring), which is given by the ratio of intermediate purchases (m) imported by industry j in destination country i at time t , supplied by all industries $k=1, \dots, K$ ($k=j$ and $k \neq j$) to industry j 's value added (VA):

$$OFF_{ijt} = \frac{\sum_{k=1}^K m_{ikjt}}{VA_{ijt}} \quad (1)$$

¹³ In particular, we exclude from the set of manufacturing industries the sector “Coke, refined petroleum and nuclear fuel”, imports of which might not represent offshoring practice but rather a purchase of inputs in the form of natural resources not available domestically. The same approach is adopted, for instance, by Hummels et al. (2014).

¹⁴ The original dataset reports labour compensation in current local currencies, so following the OECD method we compute real wages (deflated by a household consumption deflator, 2005=100, from Penn World Table 8.0), and express them in USD (using 2005 exchange rates from WIOD, Sept 2012 update). An alternative way of obtaining wages comparable across time and countries involves either using current exchange rates or PPPs. Our findings are not sensitive to such changes as the three series of wages are highly correlated (for instance, for low skilled wages the coefficient of correlation between our series of wages and the aforementioned two alternatives equals 0.95 and 0.96, respectively).

¹⁵ We are aware that the measure based on the data on imported intermediate inputs obtained from input-output tables should be treated as a proxy of offshoring practice. For example, caveats on indirect offshoring measures are discussed in Michel and Ryck (2012). We discuss the potential limits of our offshoring indices and how to address them in the robustness section.

¹⁶ Alternatively, as put forward by Feenstra and Hanson (1999), a narrow (intra-industry) measure of offshoring could be employed. This measures the share of imported intermediate inputs from the same industry in terms of its value added. Formally, narrow offshoring for industry j is computed as (Hijzen and Swaim, 2007): $OFF_j^N = I_{k=j} / VA_j$. However, given caveats of such a measure we considered another formulation of offshoring used in the literature (Hijzen and Swaim, 2007; Parteka and Wolszczak-Derlacz, 2015), and sometimes called ‘differential’ outsourcing (Hijzen et al., 2005), covers inputs from all industries k other than j $OFF_j^B = \sum_{k=1}^K I_{k \neq j} / VA_j$. The correlation between our preferred measure of offshoring intensity (as in eq. 1) and differential outsourcing equals 0.72.

This broad measure allows us to capture the inter-industry effects of offshoring on the performance of industries incorporating cross-industry spillovers, which need not be the same as intra-industry effects.¹⁷

Furthermore, following Castellani et al. (2013), we decompose the offshoring index (1) into its international and domestic components:

$$OFF_{ijt} = \frac{\sum_{k=1}^K m_{ikjt}}{VA_{ijt}} = \underbrace{\left[\frac{\sum_{k=1}^K m_{ikjt}}{\sum_{k=1}^K d_{ikjt}} \right]}_{IntOUT} \times \underbrace{\left[\frac{\sum_{k=1}^K d_{ikjt}}{VA_{ijt}} \right]}_{DomOUT} \quad (2)$$

where d is the value of the inputs coming from domestic industries employed in industry j . The first expression is the ratio of imported inputs to domestic ones ($IntOUT$ – international outsourcing) while the second reflects the intensity of domestic outsourcing ($DomOUT$)¹⁸. As Castellani et al. (2013) argue, offshoring indices calculated as the share of imported inputs over production (eq. 1) ignore the role played by structural changes in the domestic economy, reflected in the $DomOUT$ component, and tend to overestimate the role played by sourcing to foreign destinations.

Our database comprises many different countries, so we adopt a gradual analysis, taking into account the heterogeneity of both the source countries (to which offshoring takes place) and the destination countries (where we examine the wage effects of offshoring). In the first instance, we consider flows of intermediates imported from all 40 countries (so we consider all the countries of origin) and then disentangle the effects of offshoring. To do this, the measures defined in eq. 1 and eq. 2 are recalculated taking into account the source of imports. In particular, we go beyond the standard consideration of imports from developing countries and explicitly assess the wage effects of offshoring to low-wage countries (LWC), denoted by OFF_LWC or $IntOUT_LWC$ and only take into account inputs imported from LWC.

In the absence of wage data which are comparable across many countries, most previous papers have used a rather indirect way of defining low-wage countries (LWC), assuming that countries with a low income per person also have low wages. The common definition of LWC relies on a comparison of GDP per capita to a benchmark country (e.g. the US) setting some arbitrary threshold. For instance, Federico (2014) defines LWC as countries whose GDP per capita was less than 10% of US GDP per capita in the final year of his sample; while Bernard et al. (2006) and Khandelwal (2010) adopt a threshold of 5% of US GDP per capita. We overcome this limit by using the WIOD socio-economic accounts data, which allow us to compare wages across a wide sample of countries. Hence, an important novelty of our approach lies in the fact that we quantify offshoring to LWC on the basis of a precise identification constructed with wage data at the industry level.

¹⁷ This view is supported by the findings of Hijzen and Swaim (2007) and Baumgarten et al. (2013), who report modest wage effects of within-industry offshoring and substantial wage effects of offshoring if cross-industry spillovers are allowed for.

¹⁸ Castellani et al. (2013) call these components: the imported inputs ratio and structural change.

We employ four alternative definitions of low wage countries (LWC), which are summarized in Table 1. A file containing full set of LWC classifications can be downloaded from the journal’s webpage as additional online material accompanying the paper. The first definition is similar to that adopted by Federico (2014), but we take into account changes in relative income per capita¹⁹ taking place over time (note that in 1995 – the first year of our analysis – eight countries were below the threshold, while in 2009 – the last year of analysis – only three were, so keeping this classification constant and basing it only on the final year would have been over-simplistic). Similarly, classifications (2)-(4), based on a direct comparison of wages, allow for changes in relative wage levels over time. Classification (2) defines as low wage those countries where the average wage (reported in industry “Total”) in year t was below 10% of the US wage level²⁰ in year t . This classification is constant across industries but varies over time, as some countries might have experienced a convergence of wages towards US levels. However, a decision to outsource parts of production abroad is likely to be based on the evaluation of cross-border labour cost differentials in specific industries, and not in the economy as a whole, so classification (3) is even more detailed. This comparison of wages is performed within every industry: a given country is defined as a LWC for industry j and year t if the wage level in this industry is below the threshold set at 10% of the US wage in the same industry j and at time t . Finally, classification (4) – the most detailed and our preferred one – uses the average sectoral wage in the whole sample of countries as a benchmark (and not the US wage as before): a given country is defined as a LWC for industry j and year t if the wage level in this industry is below a threshold set at 30% of the average wage²¹ paid globally in the same industry j and at time t . The examples shown in Table 1 confirm two things: (i) classification (1) is likely to be biased, and (ii) the cross-industry variability of wages, visible when classifications (3) and (4) are employed, should be taken into account, as some countries are revealed as ‘low wage’ only for certain industries. This is clearly visible in Table A3 (in the Appendix): in 2009 countries such as Bulgaria and China could be put in the LWC category for all manufacturing sectors, but this is not true in the case of, for instance, countries such as Romania and Turkey.

[Table 1 about here]

3. Descriptive evidence

¹⁹ We use dollar-denominated non-PPP adjusted per capita GDP data, from PWT 8.0.

²⁰ We have chosen not to adopt a 5% threshold, as in Khandelwal (2010), because by doing so only three countries (namely China, India and Indonesia) would have been classified as low-wage countries.

²¹ As a robustness check, we also adopt two other classifications: modifying the threshold set for our benchmark classification (4) and setting it at 50% of the average wage; and 100% of the average wage (hence, LWC are those countries which have sectoral wages below half of the average wage, or below the average wage). Results available from authors upon request.

Our data confirm a substantial rise in offshoring in recent decades. The manufacturing offshoring intensity in our sample of 40 countries – measured in the broad sense as the ratio of imported intermediate inputs to the value added, as in eq. (1) – rose from 0.24 in 1995 to 0.30²² in 2008 (and then there was a drop in 2009 due to the global crisis). This is illustrated in Figure 1. The common view, nourishing fears of cross-border labour substitution and/or a downward pressure on domestic wages, is that intermediates are sourced mainly from developing countries. Is this really the case? In order to answer this question, we shall first show the evidence concerning the classic developing/developed countries division and then move on to using a country grouping based on explicit wage information.

Table 2 reports the relative shares of different source countries (or country groups) in the total value of intermediates imported by the 40 countries in our sample (panel A) or only by developed countries (panel B) in the border years of our analysis (1995 and 2009). In reality, the majority of intermediate goods (approx. 81% in 2009) are still imported from developed countries. However, a change in the direction of offshoring is evident: the share of imports of intermediates from developing countries more than doubled. In 2009, over 10% of all manufacturing intermediates came from China (four times more than in 1995). India's share is significantly lower, but despite its specialization in services offshoring, this country managed to improve its position as a source market of intermediate manufacturing goods. Considering developed countries as countries of origin, the importance of the EU15 and G8 as source markets of intermediate goods strongly decreased, whereas for the U.S. the fall was less pronounced but still visible. The figures reported in panel A and panel B are fairly similar, with only a few differences concerning a slightly greater relative importance of the EU15 as sources of imports for developed countries than in the overall sample (especially in 2009, when half of the inputs imported by developed countries came from the EU15).

[Table 2 about here]

Figure 1 shows how the intensity of manufacturing offshoring to developing countries evolved in time in comparison with overall offshoring intensity and offshoring to developed countries. Here, the numbers refer to the share of the value of imported inputs with respect to the industry value added (calculated as in eq. 1). Plot A shows the trends typical for all 40 destination countries in our sample, while plot B refers to the restricted sample of destination countries: only developed countries. When the sample is restricted (plot B), we note that the offshoring intensity in this group is generally higher. In line with Table 2, it is notable that offshoring to developed countries accounts for most overall offshoring (but a decline, probably due to the global crisis, is clearly visible). However, offshoring to developing countries was constantly growing (for all the 40 countries in our sample – plot A – in 1995

²² The weighted averages across 40 countries are listed in Table A2, weighted according to sector size (total hours worked by persons engaged). The values refer to imports from these 40 countries (excluding RoW – rest of the world, present in the WIOD data).

on average it accounted for 2% of manufacturing value added, and already for 7% in 2009; for developed countries – plot B – the values are 3% in 1995 and 8.5% in 2009 respectively).

[Figure 1 about here]

Given our interest in offshoring to low-wage markets, Figure 2 shows the trends concerning offshoring intensity calculated only with imports from LWC. Independently of the LWC classification adopted (see Table 1), a constant rise in offshoring to countries characterized by low wages is observed. The solid black line, referring to our benchmark LWC classification (4) and based on a comparison of wages within industries and with respect to the global level, indicates that the offshoring to LWC directed to the 40 countries in our sample (plot A) rose from 2.5 % of value added in 1995 to 7.5 % in 2009. Plot B shows that the offshoring from developed countries to LWC rose from 2.8% of the developed countries' value added in 1995 to 8.5% in 2009.

[Figure 2 about here]

An important question thus emerges: is there any relationship between the rise in offshoring to LWC and the wages paid in domestic industries sourcing parts of their production processes to LWC? Typically, low- and medium-skilled workers (whose tasks are easily outsourced) in developed countries are afraid of pressure from foreign low-wage competitors. Figure 3 shows simple plots relating the log of low-skilled workers' wages paid in manufacturing industries in developed countries to industry exposure to offshoring. Plot A, obtained with the overall offshoring measure, shows that there is practically no relationship between the two variables. Here, offshoring is measured independently of the type of source country of the imported inputs. However, when we account for offshoring to LWC only (plot B), a negative relationship emerges. This evidence, so far unconditional on any other factors possibly affecting wages, will be tested with the formal empirical model.

[Figure 3 about here]

4. The model

4.1 Theoretical foundations

The description of mechanisms relating trade (including trade in parts and components due to offshoring) and wages is present in several strands of international economics literature²³. Importantly from the point of view of our empirical analysis, the theories evolved in the direction of showing that wage effects stemming from outsourcing/trade shocks can vary across skill classes of workers.

The first wave of research on trade and wages (eg. Borjas et al., 1997) relied on Hecksher-Ohlin (HO) framework which emphasizes differences in factor intensities across sectors and factor endowments across countries. Less educated workers (whose tasks are easier to be moved to foreign destinations) have been typically perceived to be more at risk of experiencing a wage loss. As we will show in the empirical analysis, this indeed is true (albeit the effect is small). Stolper-Samuelson theorem

²³ See Baldwin and Robert-Nicoud (2014) for a recent review of the related theoretical literature on the effects of trade in intermediate goods.

was used to address the implications of trade (especially with less developed countries) for the labour markets: trade-induced industry level shocks result in changes in goods prices, which in turn change factor prices (wages). The ‘cone of diversification’ was assumed to be fixed, so the next class of models (eg. Feenstra and Hanson, 1999; Grossman and Rossi-Hansberg, GRH, 2008) allowed for the change in the set of goods produced in the country. In particular, GRH introduced the ‘task trade’ approach and focused on the adjustment of the bundle of domestically provided intermediate inputs, resulting from the division of tasks into those which are performed at home and those which are offshored. In terms of guidelines for the empirical analysis, GRH show that there is no unique outcome of trade/offshoring shock: e.g. the evolution of low skill wages will depend on the net effects of offshoring on productivity, prices and labour supply.

In general, the attempts in the recent years have been focused on building models which incorporate features of various theoretical frameworks, moving the theory as close to the reality as possible. The Ricardian framework (focusing on productivity differences across countries), has been modified by Rodríguez-Clare (2010) who embodied the GRH approach in a Ricardian model à la Eaton and Kortum (2002). There have also been attempts to match HO and Ricardian explanations. Burnstein and Vogel (2011) present an interesting unifying framework which links traditional mechanism featuring sectoral productivity and factor endowment differences with the development of new-new trade theory. They incorporate firm heterogeneity into the modelling of the link between globalization and factor prices. Wages are defined by firm productivity: more productive firms use more intensively high skilled labour, so free trade affects wages through Melitz-type mechanism of firm selection and within-industry shifts of employment towards the most productive firms. Finally, Baldwin and Robert-Nicoud (2014) proposed an analytical model in which both trade in goods and trade in tasks arise, so they matched HO and GRH frameworks.

Our empirical specification is rooted in the Ricardian model of skills, tasks and technologies presented by Acemoglu and Autor (2011)²⁴. They explicitly distinguish between tasks and skills, with the former understood as units of work activity that produce output, and the latter as workers’ endowments of capabilities for performing various tasks. The model incorporates three types of labour: h – high-, m – medium- and l – low-skilled, all of which can perform given tasks, with the assumption that more complex tasks are performed by high-skilled workers, routine tasks by middle-skilled and manual by low-skilled labour²⁵. Generally, tasks can be performed by workers with different types of

²⁴ We present here only the basic assumptions of this model. For the detail mathematical notation of the model and the exact steps to obtain the wage equation, see Acemoglu and Autor (2011, pp. 1096-1147).

²⁵ In the recent literature dealing with labour market consequences of cross border production sharing, medium skill workers (performing routine tasks), are often perceived to be at risk. This phenomenon is linked to the polarisation of labour markets (Goos and Manning, 2003) observed in the US (Autor and Dorn, 2013; Autor et al., 2015) and in European countries (Goos et al., 2014; Michaels et al., 2014). The polarization is generally explained by “computerization of routine job tasks which may lead to the simultaneous growth of high-education, high-paid jobs at one end and low-education, low-wage jobs at the other end, both at the expense of middle-wage, middle-education jobs” (Autor, 2015, p. 12). Employment

skills, automated using machines, or offshored and performed by workers in other countries. This concept of offshoring competing for tasks follows the model in Grossman and Rossi-Hansberg (2008).

To sum up, the wages of workers with different skills are defined simply as a function of the labour supply (L_s) and task assignments (I_s), with $s = \{h, m, l\}$. The allocation of tasks is further determined by capital (K), which can also supply tasks by substituting labour and through offshoring opportunities: $I_s = f(OFF)$. This yields the skill-specific wage function: $W_s = f(L_s, K, OFF)$, which is the basis of our empirical setting.

4.2 Empirical specification

In order to empirically examine the link between offshoring and wages, we estimate different variants of the following regression:

$$\ln w_{sijt} = \alpha + \beta_1 \ln k_{ijt} + \beta_2 \ln L_{sijt} + \beta_3 \ln OFF_{ijt-1} + D_{it} + D_{ij} + D_t + \varepsilon_{sijt} \quad \forall s = \{h, m, l\} \quad (3)$$

where i denotes the country, j the industry, t is time and s is the skill category. Variable k refers to the capital to labour ratio²⁶, L is the total number of hours worked per person engaged and OFF is the measure of offshoring intensity defined in (1). To take into account a possible time delay between offshoring and wage adjustment, the offshoring intensity (OFF) is introduced as a lagged variable (the same approach is used in Ebenstein et al., 2014). In order to pick up any other unmeasurable specific effects (e.g. technological change, business cycle), we include a set of year dummies, as well as country-time dummies and country-industry fixed effects²⁷.

In an augmented specification we also include the offshoring components ($DomOUT$ and $IntOUT$ – domestic and international outsourcing) obtained from decomposition (2):

$$\ln w_{sijt} = \alpha + \beta_1 \ln k_{ijt} + \beta_2 \ln L_{sijt} + \beta_3 \ln DomOUT_{ijt-1} + \beta_4 \ln IntOUT_{ijt-1} + D_{it} + D_{ij} + D_t + \varepsilon_{sijt} \quad \forall s = \{h, m, l\} \quad (4)$$

Finally, to allow for the possibility that offshoring to low-wage countries (LWC) might have different effects to offshoring to high-wage countries (HWC), we include intermediate imports from LWC and HWC as separate regressors, yielding the following equation:

$$\ln w_{sijt} = \alpha + \beta_1 \ln k_{ijt} + \beta_2 \ln L_{sijt} + \beta_3 \ln DomOUT_{ijt-1} +$$

polarisation implies the shift of employment and earnings from mid-level wage jobs to both high- and low-wage jobs while wage polarization refers to earnings growth at the tails of the distribution. Goos et al. (2014) provide a theoretical framework in which they distinguish between different channels driving polarisation: routine-biased technological change (RBTC) and offshoring.

²⁶In the absence of direct skill-specific productivity data, we assume that productivity is related to the capital intensity of the industry (captured by variable k) and, following Acemoglu and Autor (2011), we assume that workers' productivity follows a positive time trend (time dummies, country-sector and country-time effects are included in the model).

²⁷Due to the data constraints we were not able to include into our model the division of capital stock into ICT and a non-ICT elements with the ICT component capturing directly the effects of SBTC (as it was done e.g. by Michaels et al., 2014). Following, Foster-McGregor et al. (2013) we control for SBTC indirectly through the inclusion of a set of dummies and fixed effects.

$$\beta_4 \ln IntOUT_LWC_{ijt-1} + \beta_5 \ln IntOUT_HWC_{ijt-1} + D_{it} + D_{ij} + D_t + \varepsilon_{sijt} \quad \forall s = \{h, m, l\}$$

(5)

5. Results

5.1 Overall effect of offshoring on wages – all source countries, full sample of destination countries

In this section we present the results of the most general estimation of the empirical models (eqs. 3 and 4) taking into account the full sample of countries and offshoring independently of the source country of imports. We start with a fixed effects estimator (which allows for time-invariant country-industry specific effects). Table 3 presents the estimation results of the wage regression model for low- (Columns 1 and 2), medium- (Columns 3 and 4) and high-skilled workers (Columns 5 and 6). As predicted by theory, for all the skill categories we obtain statistically significant and positive parameters associated with the capital-labour ratio (k) and negative parameters in the case of skill-specific labour supplies (L). Offshoring intensity is, however, our main variable of interest. OFF (calculated as in eq. 1), appears to have a significant negative impact on the wages of low-, medium- and high-skilled workers employed in domestic manufacturing sectors. However, as reported in columns 2, 4 and 6, when OFF is decomposed into pure international and domestic parts, in the empirical model (4), then the negative and statistically significant effect of $IntOUT$ on wages is only sustained in the case of low-skilled labour. Additionally, domestic outsourcing ($DomOUT$) does not affect the wages of any skill category in a statistically significant way.

[Table 3 about here]

However, we are aware of potential endogeneity issues in the models estimated. First, regarding labour (L) as the explanatory variable, industry-level wages and employment by skill level may be determined simultaneously. Second, there can be a two-way relationship between offshoring and wages e.g. the level of wages where the production is offshored is crucial. On the basis of endogeneity tests (Table A4 in the Appendix) we cannot reject the hypothesis that L and $DomOUT$ can be treated as exogenous, while exogeneity of the offshoring variables (OFF , $IntOUT$) is strongly rejected.

To address this issue, we adopt a gravity-based strategy (extending Frankel and Romer's, 1999 traditional approach to sectoral-level data as in Di Giovanni and Levchenko, 2009) to construct an instrument for our offshoring indices. Using the data on bilateral imports in the panel analysed (40 countries, 13 manufacturing industries, 1995-2009), we estimate a gravity model in which bilateral trade in intermediate goods is regressed on the log of the reporter's and the partner's value added, the log of the distance between the countries, and dummy variables for a common land border, common official language, common currency, former colonial relationship and membership in a common regional trade agreement. For each of the industries and reporter countries, the predicted values of trade flows are

then summed across all the partner countries or, alternatively, across selected partners to obtain an instrument for intermediate goods trade with the groups considered in our analysis (e.g. LWC)²⁸.

The IV results, corresponding to the Table 3 FE estimations, are reported in Table 4. The instrument validity is confirmed by under-identification and weak identification tests. In this specification, only offshoring (*OFF*), measured globally, has a significant and negative impact on the wages of low- and medium-skilled workers, with low estimated elasticity (approx. -0.1).

[Table 4 about here]

The results in Table 3 and Table 4 should be treated as a first step in the deeper examination of the offshoring-wage nexus. In the first instance, we shall take into account the characteristics of the countries from which inputs are imported.

From now on, we will concentrate on the results obtained with the use of IV estimates employing the gravity-based instrument.

5.2 Exploring the heterogeneity of source countries: the wage effect of offshoring to low-wage countries

Table 5 and Table 6 report the results referring to the effects of offshoring when we distinguish between intermediate imports from low-wage (LWC) and high-wage countries (HWC). In order to assure the maximum level of detail and to allow for structural change effects and domestic outsourcing, we report the results obtained once the decomposition (eq. 2) of the general *OFF* measure is taken into account using empirical specification (5). We focus on the wages of workers who are potentially most at danger: the low- (Table 5) and medium-skilled (Table 6)²⁹.

The subsequent columns in Table 5 show the results of the regression estimations employing alternative classifications of LWC (summarized in Table 1 – classification 4 is our preferred one) for the low-skilled workers. Whichever alternative classification of LWC we use, we find a negative effect of offshoring to LWC on the wages of low-skilled labour. The estimated elasticities are, however, very small (in the absolute terms below 0.1). For instance, sticking with classification (4) of LWC and when we account for domestic structural change (results in column 4 of Table 5), a rise in offshoring to LWC of 1% is associated with a decrease in the wages paid to domestic low-skilled workers of only 0.085%. There is no significant impact of offshoring to HWC. Additionally, a negative effect of domestic fragmentation on wages emerges (a negative parameter associated with *DomOUT*).

[Table 5 about here]

²⁸ The data on bilateral trade in intermediate goods come from WIOT (release: November 2013), the data on value added from the WIOD Socio Economic Accounts, SEA (update: July 2014) and the information on all the other regressors are taken from CEPII databases. The Poisson Pseudo Maximum Likelihood method – PPML (Santos Silva and Tenreyro, 2006) is employed to estimate the gravity equation separately for each of the sectors. Thanks to this we do not lose information about zero trade flows. A similar approach is employed, e.g., by Parteka and Wolszczak-Derlacz (2015).

²⁹ The corresponding results concerning high-skilled workers are presented in Table A5 in the Appendix. In general, have intermediate imports purchases neither from LWC nor from HWC a statistically significant impact on the wages of domestic high-skilled workers. Only when classification 1 is employed the parameter is statistically significant but, as described in Section 2, such a classification is over simplistic.

In Table 6 we present the analogous results for medium-skilled labour. In general, the results for medium-skilled workers are similar to those for the low skilled. However, the magnitude of the parameter is slightly lower e.g. for classification (4) for medium-skilled workers it is equal to -0.068 (column 4 of Table 6).³⁰

[Table 6 about here]

5.3 Exploring the heterogeneity of destination countries: the effect of offshoring on wages in developed countries

The big advantage of our dataset is its wide country coverage (40 countries). We have already shown the importance of distinguishing the country of origin of intermediate imports but we have not yet explored the heterogeneity on the left-hand side of the estimated equations (eq. 3 to eq. 5). Given that approximately three-quarters of imported manufacturing intermediates are directed to developed countries³¹, and following worries of workers in these countries concerning foreign competition, we will explicitly deal with the effects of offshoring on wages in developed economies³².

Table 7 presents the results obtained for the restricted sample of destination countries (excluding developing countries), corresponding to the estimates concerning all 40 countries reported in Table 4. Overall offshoring (*OFF*, imports from all countries – independently of type) turn out to exhibit a downward pressure on the wages of low- and medium-skilled workers employed in developed countries (results in columns 1 and 3). This negative impact of foreign sourcing is also sustained when *OFF* is decomposed (a negative and statistically significant parameter for *IntOUT* is reported in columns 2 and 4). Again the magnitude of the parameters are relatively low, with elasticities both for low and medium-skilled workers lower than $|0.1|$. There is no effect on high skilled workers in developed countries.

[Table 7 about here]

The next step is to explicitly assess the role of offshoring to LWC on the wages of low-skilled workers employed in developed countries. As Table 8 shows, after separating the role of domestic sourcing, the parameter associated with international offshoring to LWC (*IntOUT_LWC*) turns out to be negative and statistically significant, but small. Alternative LWC classifications do not significantly alter this result.

[Table 8 about here]

5.4 Alternative specifications and robustness checks

³⁰ As described in the introduction, papers employing industry level data and showing negative consequences on medium skilled workers deal primarily with the effects of outsourcing on employment or labour demand structure (Foster-Mc Gregor et al., 2013; Timmer et al., 2013). In our paper, we focus on the effect on wages, so the results shown in the two strands of literature are not directly comparable.

³¹ The share of developed countries (as destination countries) in the overall imported inputs from all 40 source countries is 77% in 2009 (for comparison, 88% in 1995). Taking into account only imports from developing countries, in 2009 77% were also sent to developed countries (92% in 1995). Own calculations, based on data from WIOD, industries and countries listed in Tables A1 and A2 respectively.

³² We also run all the estimates for the subsample of developing countries. However, in none of the specifications are offshoring indices among the statistically significant parameters. Results obtainable upon request.

In this study, we are primarily interested in the effect of offshoring on domestic wages. Hence, our baseline specification (3) assumes that the main channel of the offshoring impact on the labour market is through wage adjustment. In the model we observe this outcome (wages) only for the employed. However, we are aware that there are other channels to be considered. First of all, and especially if wages are rigid, the adjustment of domestic labour markets to the movement of some parts of production abroad can materialize through a drop in employment.³³ Autor et al. (2013) argue that in such cases estimates of wage adjustment can be biased. Additionally, offshoring can impact domestic wages indirectly – through productivity changes (this argument is present in theoretical models of trade in tasks, such as Grossman and Rossi-Hansberg, 2008), e.g. an increase in productivity due to global production sharing should raise wage levels. If offshoring really lowers employment and/or raises productivity, then the inclusion of labour and capital³⁴ controls in the estimated wage regression eliminates important channels through which offshoring impacts wages. In the first robustness check we thus compare our baseline specification (in which we hold employment and capital fixed) with the model allowing employment and capital intensity to change in response to offshoring.³⁵ The results are presented in Tables A6 and A7 (columns 1 and 2) in Appendix. The modified model yields a very similar response of low and medium-skilled workers' wages to offshoring to LWC to that obtained when employment and capital are both controlled for³⁶.

Our second robustness check is motivated by the fact that wage rigidity varies substantially across countries, due to the diversity of labour market institutions. So far, domestic labour market conditions and regulations have not been explicitly taken into account, as the set of dummies and fixed effects should have picked up the effects specific to single countries and industries. Nevertheless, we augment the baseline regression with some additional country-specific covariates, such as the unemployment rate³⁷ and the degree of wage-setting coordination³⁸. After controlling for diversity in

³³ This issue is also linked to the time of labour markets' response to offshoring. Short term wage effects arise when workers are immobile across countries and industries; while in the long run worker and firm mobility is more probable, so the adjustment can also pass through employment. Theoretical mechanisms of short and long run effects of increased fragmentation and offshoring on wages can be found in Rodríguez-Clare's (2010) Ricardian model. Their short-run analysis shows that when fragmentation is sufficiently high, further increases in fragmentation lead to a deterioration (improvement) in the real wage in the rich (poor) country. In the long-run these effects may be reversed as countries adjust their research efforts in response to increased offshoring.

³⁴ We do not include an additional productivity measure, e.g. value added per hour worked, since its correlation with the capital-labour ratio is very high (the coefficient of correlation equals 0.87).

³⁵ Hummels et al. (2014) propose a similar approach to distinguish between the direct and indirect effects of offshoring on wages. In their study, they possess data at the firm level and compare the estimates with and without firm controls.

³⁶ We further check whether this result does not stem from the fact that the 'productivity effect' and the 'labour substitution effect' exhibit opposite impacts on wages and thus offset each other. However, this is not confirmed by a comparison of the point estimates from two regressions: one controlling only for employment (allowing for capital changes) and a second controlling only for capital (allowing for employment changes). Taking into account the results obtained with the baseline LWC classification 4, the point estimates of offshoring to LWC on low-skilled wages in these two models are equal to -0.098 and -0.085, respectively.

³⁷ Data from the World Bank.

³⁸ The information comes from the database on Institutional Characteristics of Trade Unions, Wage Setting, State Intervention and Social Pacts, 1960-2011 (ICTWSS), constructed by Jelle Visser (version 4.0, April 2013). There is no data

labour market conditions in this way, the results (reported in Tables A7 - columns 3 and 4 and in Table A8 in Appendix) do not change dramatically: the negative effect of offshoring on domestic wages materializes through imports from LWC and concerns mainly low- and medium-skilled workers. As expected, unemployment negatively affects the wages of all the skills groups and the wage bargaining setting is important for the determination of wages. Assuming that centralized wage-bargaining systems are less flexible than decentralized ones, in countries with rigid wages offshoring should have stronger effects on employment than on wages³⁹. Indeed, the magnitude of the estimated elasticity between wages and *IntOUT* and *IntOUT_LWC* is here lower (-0.054 for low-skilled and -0.036 for medium-skilled) than in the results reported in the main text (Tables 5 and 6).

A third robustness check considers sector heterogeneity⁴⁰. Our panel consists of 13 manufacturing sectors which differ in offshoring intensity and can differ in their reaction to its changes. The country-sector and sector-year individual effects incorporated in our baseline specification (eq. 3) should have controlled for this. However, we do some additional robustness checks. In order to check whether the results are driven by any specific industry (note that manufacturing coke and petrol products has already been eliminated from the sample), we repeat all the estimates, eliminating each of our 13 sectors one by one and running the regression for the remaining 12. The results are very similar to the baseline ones. In particular, the point estimates obtained for the *IntOUT_LWC* variable (analogous to those in Table 5) are between -0.079 (when industry “Manufacturing not elsewhere classified; Recycling” is eliminated) to -0.097 (when “Electrical And Optical Equipment” is not taken into account). This exercise also addresses the problem of interpreting machinery intermediate imports as an offshoring practice, which is raised by some authors⁴¹, since our results are robust to the exclusion of machinery imports from the sample (point estimate -0.083).

Next, in order to check the relationship between offshoring and the technological content of the activities of an industry (for example, Hertveldt and Michel, 2013 argue that offshoring is less common for high-tech industries as it requires more sophisticated inputs), we test for differences between high-tech and low-tech industries⁴². We introduce into the model an interaction term between offshoring and a high-tech industry dummy (or a term for interaction between offshoring to LWC/HWC and the high-tech dummy). Following Wooldridge (2010), we instrument this using an interaction between high-tech and our instruments for offshoring. Table A9 presents the results.

for MEX, RUS, TUR and TWN. Coordination of wage-setting is expressed as a number ranging between 1 (fragmented wage bargaining, confined largely to individual firms or plants) to 5 (centralized wage bargaining).

³⁹ As noted by Geishecker et al. (2010), the problem can be more complex. For example, it is possible that in countries with rigid wages (with a centralized wage bargaining system) which are at the same time characterized by low flexibility of employment (e.g. due to a high level of employment protection) offshoring impacts the labour market through wage adjustment rather than employment corrections.

⁴⁰ The detailed results are available upon request.

⁴¹ For example, Hummels et al. (2014) argue that machinery imports may affect wages through access to foreign technology rather than through offshoring *per se*.

⁴² Our division between high- and low-tech manufacturing industries follows Foster-McGregor et al. (2013) and is reported in Table A1 in the Appendix.

Indeed, the wage drop due to offshoring is stronger for low-tech industries; for high-tech industries a positive and statistically significant coefficient on the interaction term suggests that the effect of offshoring on wages is weaker.

The final robustness check considers the possible interdependence of wages of different skill categories of workers. To take this issue into account, we estimated the model through three-stage least squares (3SLS) in which we combine the system estimation of SUR with the instrumental variables method of 2SLS (Zellner and Theil, 1962). The results of this exercise are very similar to our baseline specification as far as the significance of the parameters and their magnitude are considered (see Table A10 in Appendix).

6. Conclusions

This paper extends the literature on the implications of offshoring for labour markets by investigating its effect on the wages of different skill groups in a broad global context. Outsourcing can be viewed as a specific facet of deepening trade integration, in particular the recent wave of globalisation and the so-called second unbundling (expression coined by Baldwin). The aim of our study is to test ambiguous effects of offshoring on wages in the presence of task relocation. Our analysis draws on input-output data from the WIOD project and in the panel analysed (13 manufacturing industries, 40 countries, 1995 – 2009) we have captured up to 96% of international trade in manufacturing inputs. Being particularly interested in the wage effects of offshoring to developing and low-wage countries (LWC), we employ novel, precise LWC classifications (varying across industries and time) to decompose global offshoring by source country.

Some shortcomings of this study need to be admitted, mainly regarding the specification of our offshoring measure, which is expressed as imported intermediate inputs. First, in order to guarantee that we consider the process of production fragmentation rather than purchasing natural resources we excluded raw materials from our industry sample. Second, the increased use of inputs (together with imported inputs) can be simply the consequence of production growth. We minimized this problem by taking into account the size of the industry through an employment variable and a set of dummies, especially country-industry and industry-time. Third, it may be that offshoring is the result of domestic structural changes e.g. through substituting foreign inputs for inputs previously purchased from another domestic supplier. Since we are explicitly interested in the case when foreign inputs substitute inputs previously produced within the firm, we performed the decomposition ruling out domestic outsourcing. However, it should be noted that a limitation of our study (and other papers which use input-output tables to compute offshoring indices) is that we are unable to account for offshoring of final production stages or of products which are not re-imported but exported to third markets (Hijzen et al. 2005).

We find that the negative effect of offshoring on the domestic wages of low- and medium- skilled workers is connected with imports from low-wage countries, but in terms of magnitude this effect is rather small. The negative effect is not found for high-skilled workers. These results are confirmed in a number of robustness checks.

Our findings that domestic wages do not dramatically decrease due to offshoring is in line with the results of some other industry-level studies, such as Edwards and Lawrence (2010), Ebenstein et al (2014), or Parteka and Wolszczak-Derlacz (2015). A possible explanation is that the downward pressure from offshoring is cancelled by increased productivity, which may raise wages. Autor et al. (2013) oppose the lack of significant effects of import exposure on manufacturing wages to the impact felt outside manufacturing sectors. Alternatively, Ebenstein et al. (2014) conclude that wage adjustment materializes not at the level of industries but at the level of occupations. However, due to the industry nature of our data we have not been able to address this issue. There is a trade-off between our extensive data coverage (40 countries, 13 manufacturing sectors) and the detail of micro-level information usually available for a limited number of countries. The link between offshoring and wages is of great importance for policy recommendations and hence needs to be analysed comprehensively both from macro- and micro-level perspectives.

References

- Acemoglu D, Autor DH (2011) Skills, Tasks and Technologies: Implications for Employment and Earnings. In: Ashenfelter O, Card DE (eds.) *Handbook of Labor Economics*, Volume 4. Amsterdam, Elsevier, 1043-1171
- Acemoglu D, Dorn D, Hanson GH, Price B (2014) Import competition and the Great US Employment Sag of the 2000s, NBER Working Paper No. 20395
- Acemoglu D., Gancia G., Zilibotti F. (2015). Offshoring and Directed Technical Change, *American Economic Journal: Macroeconomics*, American Economic Association, vol. 7(3): 84-122.
- Amiti M, Wei SJ (2005) Fear of service outsourcing: is it justified? *Economic policy* 20(42): 308-347
- Autor D.H. (2013). The "task approach" to labor markets: an overview. *Journal for Labour Market Research*, 46(3), 185-199.
- Autor D.H. (2015). Why are there still so many jobs? The history and future of workplace automation. *The Journal of Economic Perspectives*, 29(3), 3-30.
- Autor D.H., & Dorn, D. (2013). The growth of low-skill service jobs and the polarization of the US labor market. *The American Economic Review*, 103(5), 1553-1597
- Autor DH, Dorn, D., Hanson GH (2013). The China Syndrome: Local Labor Market Effects of Import Competition in the United States. *American Economic Review* 103(6): 2121-2168
- Autor, D.H., Dorn D, Hanson GH, Song J (2014) Trade Adjustment: Worker-Level Evidence. *The Quarterly Journal of Economics* 129(4): 1799-1860
- Autor, D.H., Dorn, D., & Hanson, G. H. (2015). Untangling Trade and Technology: Evidence from Local Labor Markets. *The Economic Journal*, 2015, 125 (May), 621–646.

- Baldwin, R., Robert-Nicoud, F. (2014) Trade-in-goods and trade-in-tasks: An integrating framework. *J. Int. Econ.*92(1): 51–62
- Baumgarten, D., Geishecker, I., & Görg, H. (2013). Offshoring, tasks, and the skill-wage pattern. *European Economic Review*, 61, 132-152.
- Bernard AB, Jensen JB, Schott PK (2006) Survival of the best fit: Exposure to low-wage countries and the (uneven) growth of US manufacturing plants. *Journal of International Economics* 68(1): 219-237
- Borjas, G. J., Freeman, R. B., Katz, L. F., Di Nardo, J., & Abowd, J. M. (1997). How much do immigration and trade affect labor market outcomes?. *Brookings Papers on Economic Activity*, 1-90.
- Burstein, A., & Vogel, J. (2011). Factor prices and international trade: A unifying perspective. NBER Working Paper No.16904). National Bureau of Economic Research.
- Cadarso MÁ, Gómez N, López LA, Tobarra MÁ (2008) The EU enlargement and the impact of outsourcing on industrial employment in Spain, 1993–2003. *Structural Change and Economic Dynamics* 19(1): 95-108
- Cahuc, P., Carcillo, S., Zylberberg, A., & McCuaig, W. (2014). *Labor Economics*. MIT press.
- Card, D., & Lemieux, T. (2001). Can Falling Supply Explain the Rising Return to College for Younger Men? A Cohort-Based Analysis. *The Quarterly Journal of Economics*, 116(2), 705-746.
- Castellani D, De Benedictis L, Horgos D (2013) Can we really trust offshoring indices? *Structural Change and Economic Dynamics* 25: 159-172
- Castellani D, Mancusi ML, Santangelo GD, Zanfei A (2015) Special section: Offshoring, immigration and the labour market: a micro-level perspective. *Economia e Politica Industriale* 42(2): 157-162
- Crinò R (2009) Offshoring, multinationals and labour market: A review of the empirical literature. *Journal of Economic Surveys* 23(2): 197-249
- Crinò R (2012) Service Offshoring and the Skill Composition of Labour Demand. *Oxford Bulletin of Economics and Statistics* 74(1): 20-57
- Dahl, C. M., Le Maire, D., & Munch, J. R. (2013). Wage dispersion and decentralization of wage bargaining. *Journal of Labor Economics*, 31(3), 501-533.
- Di Giovanni J, Levchenko AA (2009) Trade openness and volatility. *The Review of Economics and Statistics* 91(3): 558-585
- Eaton, J., & Kortum, S. (2002). Technology, geography, and trade. *Econometrica*, 70(5), 1741-1779.
- Ebenstein A, Harrison A, McMillan M, Phillips S (2014) Estimating the impact of trade and offshoring on American workers using the current population surveys, *The Review of Economics and Statistics* VOL. XCVI, No 4: 581–595
- Edwards L, Lawrence RZ (2010) US trade and wages: the misleading implications of conventional trade theory, NBER Working Paper No. 16106
- Egger H, Egger P (2003) Outsourcing and skill-specific employment in a small economy: Austria after the fall of the Iron Curtain. *Oxford Economic Papers* 55(4): 625-643
- Falk M, Wolfmayr Y (2005) Employment Effects of Trade in intermediate Inputs with the EU Member States and Asia. *Aussemwirtschaft* 60(4): 441-462
- Falk M, Wolfmayr Y (2008) Services and materials outsourcing to low-wage countries and employment: Empirical evidence from EU countries. *Structural Change and Economic Dynamics* 19: 38–52.
- Federico S (2014) Industry Dynamics and Competition from Low-Wage Countries: Evidence on Italy. *Oxford Bulletin of Economics and Statistics* 76(3): 389-410
- Feenstra RC (1998) Integration of trade and disintegration of production in the global economy. *The Journal of Economic Perspectives* 12(4): 31-50

- Feenstra RC (2010) *Offshoring in the global economy: microeconomic structure and macroeconomic implications*. Cambridge, MA, MIT Press
- Feenstra RC, Hanson GH (1999) The impact of outsourcing and high-technology capital on wages: Estimates for the United States, 1979-1990. *Quarterly Journal of Economics* 114: 907-941
- Foster-McGregor N, Stehrer R, de Vries GJ (2013) Offshoring and the skill structure of labour demand. *Review of World Economics* 149(4): 631-662
- Frankel JA, Romer D (1999) Does trade cause growth? *American Economic Review* 89(3): 379-
- Geishecker I, Görg H (2008) Winners and losers: A micro-level analysis of international outsourcing and wages. *Canadian Journal of Economics* 41(1): 243-270
- Geishecker I, Görg H (2013) Services offshoring and wages: Evidence from micro data. *Oxford Economic Papers* 65(1): 124-146
- Geishecker I, Görg H, Munch JR (2010) Do labour market institutions matter? Micro-level wage effects of international outsourcing in three European countries. *Review of World Economics* 146(1): 179-198
- Goos, M., & Manning, A. (2003). *McJobs and MacJobs: the growing polarisation of jobs in the UK*. Palgrave Macmillan UK.
- Goos, M., Manning, A., & Salomons, A. (2014). Explaining job polarization: Routine-biased technological change and offshoring. *The American Economic Review*, 104(8), 2509-2526
- Grossman GM (2013) Heterogeneous workers and international trade. *Review of World Economics* 149(2): 211-245
- Grossman GM, Rossi-Hansberg E (2008). Trading tasks: A simple theory of offshoring. *American Economic Review* 98(5): 1978 - 97
- Hertveldt, B., & Michel, B. (2013). Offshoring and the skill structure of labour demand in Belgium. *De Economist* 161(4): 399-420
- Hijzen A, Görg H, Hine RC (2005) International Outsourcing and the Skill Structure of Labour Demand in the United Kingdom. *The Economic Journal* 115(506): 860-878
- Hijzen A, Swaim P (2007) Does offshoring reduce industry employment? *National Institute Economic Review* 201(1): 86-96
- Hummels D, Jørgensen R, Munch J, Xiang Ch (2014) The Wage Effects of Offshoring: Evidence from Danish Matched Worker-Firm Data. *American Economic Review* 104(6): 1597-1629
- Khandelwal A (2010) The long and short (of) quality ladders. *The Review of Economic Studies* 77(4): 1450-1476
- Liu R, Trefler D (2008) Much ado about nothing: American jobs and the rise of service outsourcing to China and India, NBER Working Paper No. 14061
- Manning (2011). Imperfect competition in the labour market. In: Ashenfelter O, Card DE (eds.) *Handbook of Labor Economics*, Vol. 4B, Amsterdam, Elsevier, 973-1041
- Michaels, G., Natraj, A., van Reenen, J. (2014). Has ICT polarized skill demand? Evidence from eleven countries over 25 years. *Review of Economics and Statistics*, 96(1): 60–77.
- Michel B, Rycx F (2012) Does offshoring of materials and business services affect employment? Evidence from a small open economy. *Applied Economics* 44(2): 229-251
- Parteka A, Wolszczak-Derlacz J (2015) Integrated Industries - Diversified Earnings: The (Missing) Impact of Offshoring on Wages and Wage Convergence in the EU27. *Journal of Economic Inequality* 13(3): 325-350
- Polgár ÉK, Wörz, J (2010) No risk and some fun? Trade and wages in the enlarged European Union. *Empirica* 37(2): 127-163

- Rodríguez-Clare, A. (2010). Offshoring in a Ricardian World. *American Economic Journal: Macroeconomics*, 2(2), 227-258.
- Santos Silva MC, Tenreyro S (2006) The log of gravity. *The Review of Economics and Statistics* 88(4): 641-658
- Santos Silva MC, Tenreyro S (2006) The log of gravity. *The Review of Economics and Statistics* 88(4): 641-658
- Schwörer T (2013) Offshoring, domestic outsourcing and productivity: evidence for a number of European countries. *Review of World Economics* 149(1): 131-149
- Sethupathy G (2013) Offshoring, wages, and employment: Theory and evidence. *European Economic Review* 62: 73-97
- Staiger D, Stock J (1997) Instrumental variables regression with weak instruments. *Econometrica* 65: 557-586
- Timmer MP, Dietzenbacher E, Los B, Stehrer R, de Vries GJ (2015) An Illustrated User Guide to the World Input–Output Database: the Case of Global Automotive Production. *Review of International Economics*. 23(3), 575-605.
- Timmer MP, Los B, Stehrer R, Vries GJ (2013) Fragmentation, incomes and jobs: an analysis of European competitiveness. *Economic Policy* 28(76): 613-661
- Wooldridge JM (2010) *Econometric analysis of cross section and panel data*. MIT press
- Zellner, A., Theil H. (1962) Three stage least squares: Simultaneous estimate of simultaneous equations. *Econometrica* 29: 54-78.

TABLES AND FIGURES

Table 1. Low wage countries (LWC) – alternative classifications adopted

classification	$LWC_{ijt}=1$ if	Time specific	Industry specific	Example
(1)	$GDP_{pc_{it}} < 10\%$ of $GDP_{pc_{t}^{US}}$	yes	no	1995: BGR, CHN, IDN, IND, LTU, LVA, ROU, RUS 2009: CHN, IND, IDN
(2)	$w_{it} < 10\%$ of w_t^{US}	yes	no	1995: BGR, BRA, CHN, IDN, IND, LTU, ROU, RUS 2009: BGR, BRA, CHN, IDN, IND, MEX
(3)	$w_{ij} < 10\%$ of w_{jt}^{US}	yes	yes	1995: industry 15t16: CHN, IDN, IND, RUS industry 17t18: BGR, BRA, CHN, IDN, IND, ROU, RUS 2009: industry 15t16: BGR, CHN, IND industry 17t18: BGR, BRA, CHN, IDN, IND, MEX, RUS; etc.
(4) [benchmark classification]	$w_{ij} < 30\%$ of $\overline{w_{jt}}$	yes	yes	1995: industry 15t16: BGR, BRA, CHN, CZE, EST, IDN, IND, LTU, LVA, MEX, ROU, RUS, SVK, TUR; industry 17t18: BGR, BRA, CHN, CZE, EST, HUN, IDN, IND, LTU, LVA, MEX, POL, ROU, RUS, SVK, TUR; etc. 2009: industry 15t16: BGR, BRA, CHN, HUN, IDN, IND, LVA, MEX, RUS, SVK, TUR industry 17t18: BGR, BRA, CHN, HUN, IDN, IND, LTU, LVA, MEX, POL, ROU, RUS, SVK, TUR; etc.

Note: classification (2) is based on the comparison of hourly wages reported in industry “Total”; classifications (3) and (4) are based on the comparison of hourly wages reported for single industries. i – country, j – industry, t – time. Full set of LWC classification is included in the supplementary file (available online as additional material accompanying the paper)
Source: own elaboration based on wage data from WIOD and GDP and population statistics from PWT 8.0.

Table 2. Imported manufacturing intermediates split by country of origin, shares (in %)

Countries of origin	A. Sample of destination countries: all countries (40)		B. Sample of destination countries: developed countries (31)	
	1995	2009	1995	2009
Developing countries	8.7	19.1	9.1	19.2
China	2.5	10.4	2.6	10.6
India	0.8	1.3	0.8	1.3
Developed countries	91.3	80.9	90.9	80.8
G8	61.5	49.3	60.9	48.9
US	14.1	12.2	12.5	9.9
EU15	50.8	44.2	53.9	50.1
TOTAL (40)	100	100	100	100

Note: The statistics present the shares (in %) of imported intermediates from specific regions/countries of origin in the overall value of intermediate good imports from all 40 countries analysed (listed in Table A2 in the Appendix). Division between developing and developed countries from the World Bank.
Source: own elaboration with input-output data from WIOD.

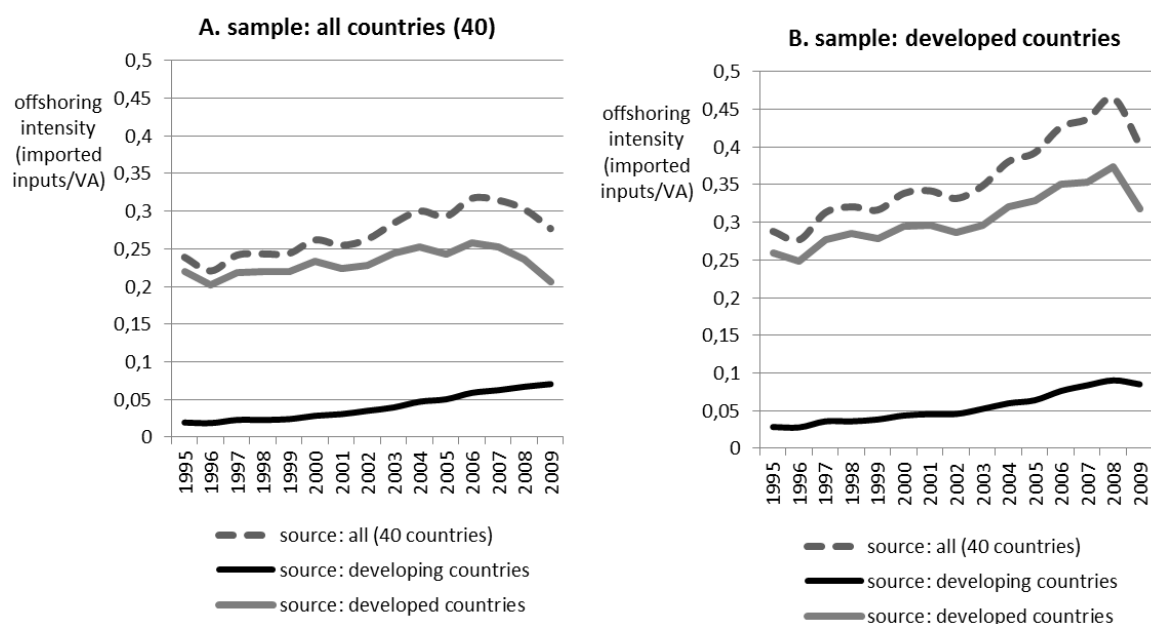


Figure 1. Trends in manufacturing offshoring – overall and by source countries

Note: Offshoring intensity is measured in a broad sense as the ratio of imported intermediate inputs to the value added (eq.1). Weighted averages across 13 manufacturing industries (Table A1 in the Appendix). The weights correspond to industry size (employment). A: all 40 destination countries, B: only developed countries retained as destination countries (countries listed in Table A2 in the Appendix).

Source: own elaboration with input-output data from WIOD.

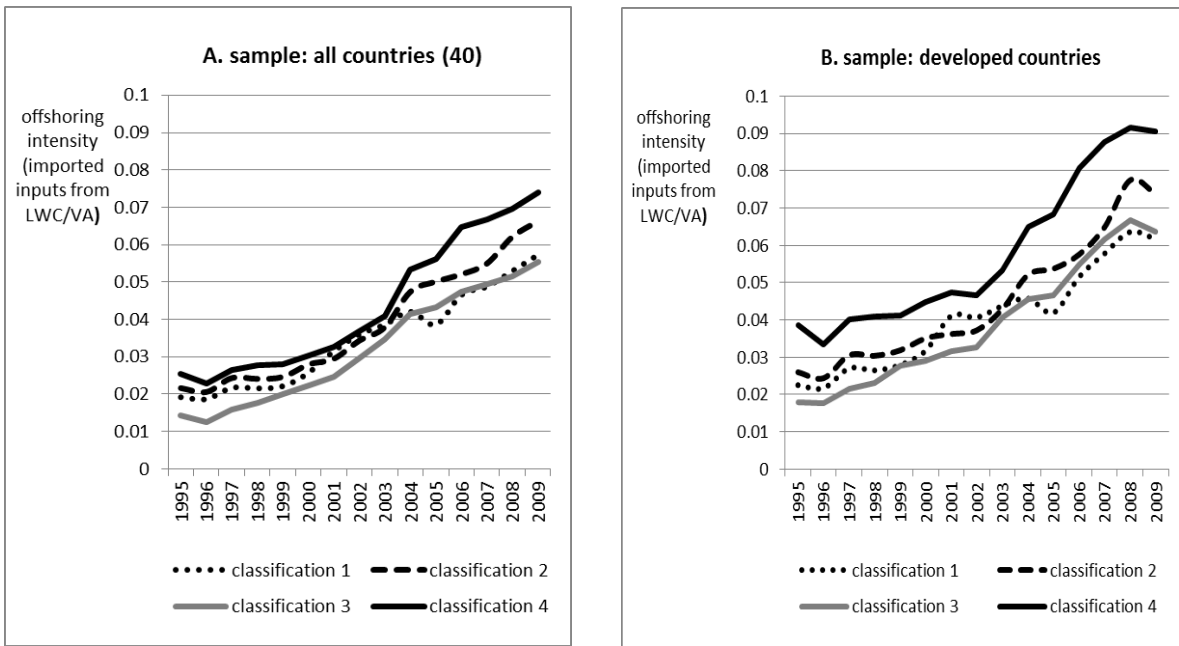


Figure 2. Trends in manufacturing offshoring to low wage countries (LWC)

Note: Offshoring intensity measured in a broad sense as the ratio of intermediate inputs imported from low wage countries (classifications in Table 1) to the value added. Weighted averages across 13 manufacturing industries (Table A1 in the Appendix). The weights correspond to industry size (employment). A: all 40 destination countries, B: only developed countries retained as destination countries (countries listed in Table A2 in the Appendix).

Source: own elaboration with input-output data from WIOD

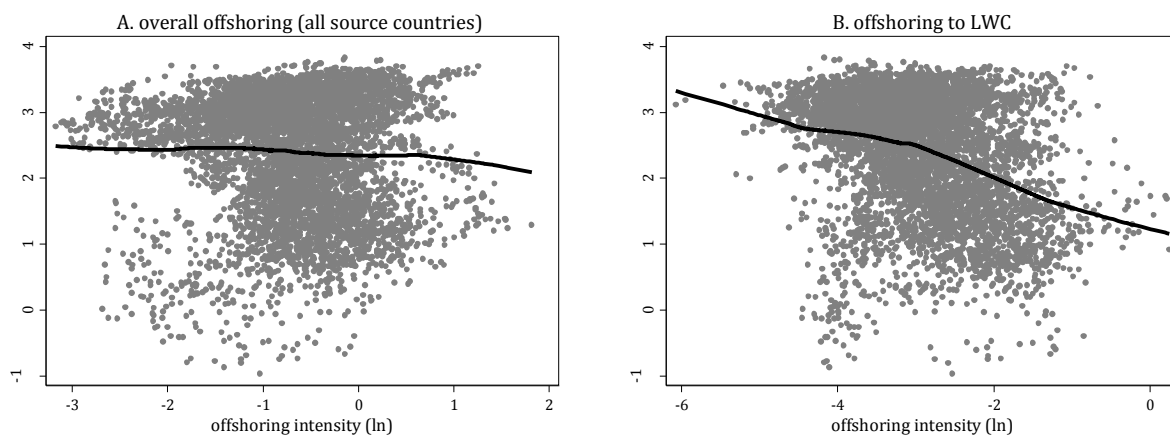


Figure 3. Relationship between offshoring intensity and low skilled wages in developed countries

Note: Offshoring measured in a broad sense as the ratio of imported intermediate inputs to the value added (eq. 1). Sample analysed: 13 manufacturing industries (Table A1 in the Appendix), 31 developed countries (Table A2 in the Appendix), 1995-2009. A: offshoring to all 40 countries, B: offshoring only to LWC (according to classification 4). The lines correspond to LOWESS approximations (span=0.8), the dots represent country-industry-year observations.

Source: own elaboration with input-output data from WIOD.

Table 3. The impact of global offshoring on wages ($\ln w_{ijt}$) – FE estimation

	Sample: all destination countries (40)					
	Low-skill wage		Medium-skill wage		High-skill wage	
	(1)	(2)	(3)	(4)	(5)	(6)
$\ln k_{ijt}$	0.398***	0.398***	0.312***	0.311***	0.315***	0.315***
	[0.044]	[0.044]	[0.038]	[0.038]	[0.038]	[0.037]
$\ln L_{ijt}$	-0.074**	-0.077**	-0.176***	-0.179***	-0.191***	-0.194***
	[0.035]	[0.034]	[0.032]	[0.032]	[0.034]	[0.033]
$\ln \text{OFF}_{ijt-1}$	-0.087***		-0.079***		-0.062***	
	[0.023]		[0.022]		[0.024]	
$\ln \text{DomOUT}_{ijt-1}$		-0.034		-0.013		0.02
		[0.032]		[0.031]		[0.030]
$\ln \text{IntOUT}_{ijt-1}$		-0.047*		-0.037		-0.013
		[0.024]		[0.024]		[0.025]
R ²	0.404	0.398	0.395	0.389	0.331	0.328
Observations	7209	7209	7221	7221	7205	7205

Notes: Constant included – not reported. Robust standard errors in parentheses, clustered at the country-industry level. Statistically significant at ***1, ** 5, * 10 percent level. In all specifications, year dummies, country-industry and country-year fixed effects are included. Estimates obtained with the broad offshoring measure. Global offshoring: countries of origin = all 40 countries listed in Table A2 + Rest of the World.

Source: own calculations with data from WIOD.

Table 4. The impact of global offshoring on wages ($\ln w_{ijt}$) – IV estimation

	Sample: all destination countries (40)					
	Low-skill wage		Medium-skill wage		High-skill wage	
	(1)	(2)	(3)	(4)	(5)	(6)
$\ln k_{ijt}$	0.391***	0.390***	0.314***	0.314***	0.314***	0.312***
	[0.043]	[0.043]	[0.038]	[0.038]	[0.038]	[0.038]
$\ln l_{ijt}$	-0.079**	-0.082**	-0.163***	-0.166***	-0.188***	-0.193***
	[0.034]	[0.033]	[0.032]	[0.032]	[0.032]	[0.031]
$\ln \text{OFF}_{ijt-1}$	-0.101***		-0.092***		-0.041	
	[0.032]		[0.030]		[0.033]	
$\ln \text{DomOUT}_{ijt-1}$		-0.035		-0.016		0.025
		[0.030]		[0.028]		[0.030]
$\ln \text{IntOUT}_{ijt-1}$		-0.045		-0.042		0.016
		[0.035]		[0.033]		[0.036]
Observations	6692	6692	6702	6702	6687	6687
Under-identification	0.000	0.000	0.000	0.000	0.000	0.000
Weak identification	767.8	713.0	775.9	734.9	771.7	675.3

Notes: Robust standard errors in parentheses, clustered at the country-industry level. Statistically significant at ***, **, *, * 10 percent level. In all specifications, year dummies, country-industry and country-year fixed effects included. Estimates obtained with the broad offshoring measure. Global offshoring: countries of origin = all 40 countries listed in Table A2 + Rest of the World. Offshoring ($\ln \text{OFF}_{ijt}$) and international outsourcing ($\ln \text{IntOUT}_{ijt}$) treated as endogenous variables and instrumented on the basis of the gravity equation as explained in the main text. The figures reported for the under-identification test are the p-values and refer to the Kleibergen-Paap rk LM test statistic, where a rejection of the null indicates that the instruments are not under-identified. The weak identification test refers to the Kleibergen-Paap Wald rk F statistic test for the presence of weak instruments. As a “rule of thumb” the statistic should be at least 10 for weak identification not to be considered a problem (Staiger and Stock, 1997).

Source: own calculations with data from WIOD.

Table 5. The impact of offshoring on wages of low-skilled workers (lnw_{ijt}) – IV estimation, source countries split into low-wage and high-wage countries (LWC and HWC).

	Sample: all destination countries (40)			
	LWC class.1	LWC class.2	LWC class.3	LWC class.4
	(1)	(2)	(3)	(4)
lnk_{ijt}	0.356***	0.363***	0.366***	0.381***
	[0.040]	[0.041]	[0.042]	[0.042]
lnL_{ijt}	-0.112***	-0.101***	-0.098***	-0.083**
	[0.032]	[0.032]	[0.033]	[0.033]
$lnDomOUT_{ijt-1}$	-0.070**	-0.073**	-0.063*	-0.061*
	[0.032]	[0.032]	[0.032]	[0.032]
$lnIntOUT_LWC_{ijt-1}$	-0.077***	-0.075***	-0.077***	-0.085***
	[0.011]	[0.014]	[0.015]	[0.018]
$lnIntOUT_HWC_{ijt-1}$	-0.025	-0.038	-0.008	-0.004
	[0.032]	[0.032]	[0.035]	[0.034]
Observations	6692	6692	6692	6692
Under-identification	0.000	0.000	0.000	0.000
Weak identification	150.1	163.8	168.2	137.6

Notes: Robust standard errors in parentheses, clustered at the country-industry level. Statistically significant at ***, **, *, 10 percent level. In all specifications, year dummies, country-industry and country-year fixed effects included. Estimates obtained with the broad offshoring measure. International outsourcing ($lnIntOUT_LWC_{ijt}$ and $lnIntOUT_HWC_{ijt}$) treated as endogenous variables and instrumented on the basis of the gravity equation, as explained in the main text. The figures reported for the under-identification test are the p-values and refer to the Kleibergen-Paap rk LM test statistic, where a rejection of the null indicates that the instruments are not under-identified. The weak identification test refers to the Kleibergen-Paap Wald rk F statistic test for the presence of weak instruments. As a “rule of thumb” the statistic should be at least 10 for weak identification not to be considered a problem (Staiger and Stock, 1997).

Source: own calculations with data from WIOD.

Table 6. The impact of offshoring on wages of medium-skilled workers (lnw_{ijt}) – IV estimation, source countries split into low wage and high wage countries (LWC and HWC)

	Sample: all destination countries (40)			
	LWC class.1	LWC class.2	LWC class.3	LWC class.4
	(2)	(3)	(4)	(5)
lnk_{ijt}	0.292***	0.298***	0.299***	0.307***
	[0.037]	[0.038]	[0.038]	[0.038]
lnL_{ijt}	-0.183***	-0.176***	-0.175***	-0.166***
	[0.031]	[0.032]	[0.032]	[0.031]
$lnDomOUT_{ijt-1}$	-0.051*	-0.054*	-0.040	-0.041
	[0.030]	[0.030]	[0.031]	[0.031]
$lnIntOUT_LWC_{ijt-1}$	-0.055***	-0.044***	-0.049***	-0.068***
	[0.010]	[0.011]	[0.013]	[0.016]
$lnIntOUT_HWC_{ijt-1}$	-0.044	-0.060	-0.028	-0.016
	[0.029]	[0.059]	[0.032]	[0.031]
Observations	6702	6702	6702	6702
Under-identification	0.000	0.000	0.000	0.000
Weak identification	156	165	173	145

Notes: as below Table 5.

Source: own calculations with data from WIOD.

Table 7. The impact of global offshoring on wages ($\ln w_{ij,t}$) in developed countries – IV estimation results

	Sample of destination countries: developed countries					
	Low-skill wage		Medium-skill wage		High-skill wage	
	(1)	(2)	(3)	(4)	(5)	(6)
$\ln k_{ijt}$	0.333***	0.336***	0.233***	0.236***	0.228***	0.230***
	[0.049]	[0.049]	[0.040]	[0.040]	[0.036]	[0.036]
$\ln L_{ijt}$	-0.03	-0.028	-0.104***	-0.102***	-0.166***	-0.165***
	[0.037]	[0.036]	[0.036]	[0.035]	[0.033]	[0.032]
$\ln OFF_{ijt-1}$	-0.119***		-0.092***		-0.049	
	[0.035]		[0.031]		[0.034]	
$\ln DomOUT_{ijt-1}$		-0.043		-0.032		0.001
		[0.035]		[0.033]		[0.033]
$\ln IntOUT_{ijt-1}$		-0.095***		-0.077**		-0.033
		[0.036]		[0.034]		[0.038]
Observations	5177	5177	5187	5187	5172	5172
Under-identification	0.000	0.000	0.000	0.000	0.000	0
Weak identification	488	731	494	755	487	664.97

Notes: as below Table 4.

Source: own calculations with data from WIOD.

Table 8. The impact of offshoring on wages of low-skilled workers (lnw_{ijt}) in developed countries – IV estimation, source countries split into low wage and high wage countries (LWC and HWC)

	Sample of destination countries: developed countries			
	LWC class.1	LWC class.2	LWC class.3	LWC class.4
	(1)	(2)	(3)	(4)
lnk_{ijt}	0.284***	0.296***	0.301***	0.323***
	[0.041]	[0.043]	[0.044]	[0.047]
lnl_{ijt}	-0.081**	-0.062*	-0.058*	-0.037
	[0.033]	[0.034]	[0.035]	[0.036]
$lnDomOUT_{ijt-1}$	-0.072*	-0.077**	-0.074**	-0.073*
	[0.037]	[0.037]	[0.038]	[0.038]
$lnIntOUT_LWC_{ijt-1}$	-0.103***	-0.099***	-0.100***	-0.095***
	[0.012]	[0.014]	[0.016]	[0.019]
$lnIntOUT_HWC_{ijt-1}$	-0.055	-0.064	-0.045	-0.048
	[0.034]	[0.054]	[0.039]	[0.038]
Observations	5177	5177	5177	5177
Under-identification	0.000	0.000	0.000	0.000
Weak identification	118	123	148	106

Notes: as below Table 5.

Source: own calculations with data from WIOD.

Appendix

Table A1 List of manufacturing industries

Industry code	Description	Industry type
15t16	Food , Beverages And Tobacco	Low-tech
17t18	Textiles And Textile Products	Low-tech
19	Leather, Leather And Footwear	Low-tech
20	Wood and Products of Wood and Cork	Low-tech
21t22	Pulp, Paper, Printing And Publishing	Medium-tech
24	Chemicals and Chemical Products	High tech
25	Rubber And Plastics	Medium tech
26	Other Non-Metallic Mineral Products	Low tech
27t28	Basic Metals And Fabricated Metal	Low tech
29	Machinery not elsewhere classified	High tech
30t33	Electrical And Optical Equipment	High tech
34t35	Transport Equipment	High tech
36t37	Manufacturing not elsewhere classified; Recycling	Medium tech

Notes: Division into high-, medium- and low-tech manufacturing according to Foster-McGregor et al. (2013).

Table A2 List of countries and division between developed and developing countries

Country code	Country name	=1 if Developing
AUS	Australia	0
AUT	Austria	0
BEL	Belgium	0
BGR	Bulgaria	1
BRA	Brazil	1
CAN	Canada	0
CHN	China	1
CYP	Cyprus	0
CZE	Czech Republic	0
DEU	Germany	0
DNK	Denmark	0
ESP	Spain	0
EST	Estonia	0
FIN	Finland	0
FRA	France	0
GBR	United Kingdom	0
GRC	Greece	0
HUN	Hungary	1
IDN	India	1
IND	Indonesia	1
IRL	Ireland	0
ITA	Italy	0
JPN	Japan	0
KOR	Korea	0
LTU	Lithuania	0
LUX	Luxembourg	0
LVA	Latvia	0
MEX	Mexico	1
MLT	Malta	0
NLD	Netherlands	0
POL	Poland	0
PRT	Portugal	0
ROM	Romania	1
RUS	Russia	0
SVK	Slovak Republic	0
SVN	Slovenia	0
SWE	Sweden	0
TUR	Turkey	1
TWN	Taiwan	0
USA	United States of America	0

Notes: Developing countries defined as low- and middle-income countries according to the World Bank, 2014.

Table A3 Countries classified as low wage according to classification 4 (2009)*

Industry code	15t16	17t18	19	20	21t22	24	25	26	27t28	29	30t33	34t35	36t37
AUS	0	0	0	0	0	0	0	0	0	0	0	0	0
AUT	0	0	0	0	0	0	0	0	0	0	0	0	0
BEL	0	0	0	0	0	0	0	0	0	0	0	0	0
BGR	X	X	X	X	X	X	X	X	X	X	X	X	X
BRA	X	X	X	X	X	0	X	X	X	0	0	0	X
CAN	0	0	0	0	0	0	0	0	0	0	0	0	0
CHN	X	X	X	X	X	X	X	X	X	X	X	X	X
CYP	0	0	0	0	0	0	0	0	0	0	0	0	0
CZE	0	0	0	0	0	0	0	0	0	0	0	0	0
DEU	0	0	0	0	0	0	0	0	0	0	0	0	0
DNK	0	0	0	0	0	0	0	0	0	0	0	0	0
ESP	0	0	0	0	0	0	0	0	0	0	0	0	0
EST	0	0	0	0	0	X	0	0	0	0	0	0	0
FIN	0	0	0	0	0	0	0	0	0	0	0	0	0
FRA	0	0	0	0	0	0	0	0	0	0	0	0	0
GBR	0	0	0	0	0	0	0	0	0	0	0	0	0
GRC	0	0	0	0	0	0	0	0	0	0	0	0	0
HUN	X	X	0	X	0	0	0	0	0	0	0	0	X
IDN	X	X	X	X	X	0	X	X	X	0	0	0	X
IND	X	X	X	X	X	X	X	X	X	X	X	X	X
IRL	0	0	0	0	0	0	0	0	0	0	0	0	0
ITA	0	0	0	0	0	0	0	0	0	0	0	0	0
JPN	0	0	0	0	0	0	0	0	0	0	0	0	0
KOR	0	0	0	0	0	0	0	0	0	0	0	0	0
LTU	0	X	X	X	0	X	X	X	X	0	0	X	0
LUX	0	0		0	0	0	0	0	0	0	0	0	0
LVA	X	X	X	X	0	X	0	0	0	X	X	X	X
MEX	X	X	X	X	X	X	X	X	X	X	X	X	X
MLT	0	0	0	0	0	X	0	0	0	0	0	0	0
NLD	0	0	0	0	0	0	0	0	0	0	0	0	0
POL	0	X	X	X	0	0	0	0	0	0	0	X	X
PRT	0	0	0	0	0	0	0	0	0	0	0	0	0
ROU	0	X	X	X	X	0	X	0	X	X	X	X	X
RUS	X	X	X	X	X	X	X	X	X	X	X	X	X
SVK	X	X	X	X	0	X	0	0	0	X	X	X	0
SVN	0	0	0	0	0	0	0	0	0	0	0	0	0
SWE	0	0		0	0	0	0	0	0	0	0	0	0
TUR	X	X	X	X	0	0	X	X	X	X	X	X	X
TWN	0	0	X	X	X	0	0	X	0	0	X	X	X
USA	0	0	0	0	0	0	0	0	0	0	0	0	0

Notes: X means the given country is classified as LWC (according to classification 4 based on comparison of wages paid within industries, threshold: 30%). Industries in separate columns.

Complete classification table (for all countries, sectors and years) is available as additional supplementary material (online) - downloadable at: <http://zie.pg.edu.pl/aparteka/publications> [file LowWageCountries_classifications_WolszczakDerlacz_Parteka]

Table A4. Endogeneity tests

	$\ln I_{ijt}$	$\ln \text{OFF}_{ijt}$	$\ln \text{DomOUT}_{ijt}$	$\ln \text{IntOUT}_{ijt}$
Test stat [χ^2 (1)]	1.132	7.968	0.010	5.312
p-value	0.287	0.005	0.9191	0.0212

Notes: GMM distance test based on one-year lag of: $\ln I_{ijt}$, $\ln \text{DomOUT}_{ijt}$ and gravity instrument of: $\ln \text{OFF}_{ijt}$ and $\ln \text{IntOUT}_{ijt}$. H0: the regressor can be treated as exogenous; computed with `xtivreg2` in STATA. Results of the tests when the regressors are offshoring indices to specific regions: LWC and HWC are available upon request.

Table A5. The impact of offshoring on wages of high-skilled workers ($lnw_{ij,t}$) – IV estimation, source countries split into low wage and high wage countries (LWC and HWC)

	Sample: all destination countries (40)			
	LWC class.1	LWC class.2	LWC class.3	LWC class.4
	(2)	(3)	(4)	(5)
lnk_{ijt}	0.303***	0.311***	0.311***	0.313***
	[0.037]	[0.038]	[0.038]	[0.038]
lnl_{ijt}	-0.197***	-0.188***	-0.189***	-0.188***
	[0.032]	[0.032]	[0.032]	[0.032]
$lnDomOUT_{ijt-1}$	-0.023	-0.028	-0.016	-0.013
	[0.033]	[0.033]	[0.033]	[0.033]
$lnIntOUT_LWC_{ijt-1}$	-0.034***	-0.017	-0.014	-0.026
	[0.011]	[0.012]	[0.014]	[0.017]
$lnIntOUT_HWC_{ijt-1}$	-0.041	-0.065	-0.044	-0.032
	[0.031]	[0.051]	[0.034]	[0.032]
Observations	6687	6687	6687	6687
Under-identification	0.000	0.000	0.000	0.000
Weak identification	147	162	165	133

Notes: as below Table 5.

Source: own calculations with data from WIOD.

Table A6. Robustness check: the impact of global offshoring on wages ($lnw_{ij,t}$) – IV estimation, specification without labour or capital controls

	Sample: all destination countries (40)					
	Low-skill wage		Medium-skill wage		High-skill wage	
	(1)	(2)	(3)	(4)	(5)	(6)
$lnOFF_{ijt-1}$	-0.112***		-0.104***		-0.064	
	[0.034]		[0.032]		[0.056]	
$lnDomOUT_{ijt-1}$		-0.046		-0.041		-0.005
		[0.038]		[0.036]		[0.038]
$lnIntOUT_{ijt-1}$		-0.051		-0.04		0.001
		[0.036]		[0.036]		[0.039]
Observations	6693	6693	6703	6703	6688	6688
Under-identification	0.000	0.000	0.000	0.000	0.000	0.000
Weak identification	774.3	724.5	778	721.3	771	690.2

Notes: as below Table 4.

Source: own calculations with data from WIOD.

Table A7. Robustness check: the impact of offshoring on wages of low and medium-skilled workers. Secification without labour and capital controls (columns 1 and 2); specification with additional variables (columns 3 and 4)

	Specification without labour and capital controls		Specification with additional control variables	
	Low-skilled wage	Medium-skilled wage	Low-skilled wage	Medium-skilled wage
	(1)	(2)	(3)	(4)
$\ln \text{DomOUT}'_{ijt-1}$	-0.089**	-0.075**	-0.012***	-0.061*
	[0.039]	[0.037]	[0.002]	[0.031]
$\ln \text{IntOUT_LWC}_{ijt-1}$	-0.107***	-0.084***	-0.054***	-0.036**
	[0.021]	[0.020]	[0.018]	[0.016]
$\ln \text{IntOUT_HWC}_{ijt-1}$	-0.008	-0.018	-0.013	-0.036
	[0.038]	[0.036]	[0.037]	[0.035]
$\ln k_{ijt}$			0.399***	0.324***
			[0.047]	[0.043]
$\ln L_{ijt}$			-0.061*	-0.117***
			[0.035]	[0.037]
UN_{it}			-0.071**	-0.012***
			[0.033]	[0.002]
Coord_{it}			0.013***	0.008*
			[0.005]	[0.004]
Observations	6693	6703	5692	5702
Under-identification	0.000	0.000	0.000	0.000
Weak identification	139	144	118	128

Notes: Columns 1 and 2 : notes as below Table 4, specification without labour and capital controls. Columns 3 and 4 - notes as below Table 5, countries split into low-wage (LWC) and high-wage (HWC) according to classification (4), additional variables: unemployment rate (UN), degree of wage-setting coordination (Coord)

Source: own calculations with data from WIOD, UN from World Bank, and Coord from ICTWSS.

Table A8. Robustness check: the impact of global offshoring on wages ($\ln w_{ijt}$) – additional variables: unemployment rate (UN), degree of wage-setting coordination ($Coord$)

	Sample: all countries (40)					
	Low-skill wage		Medium-skill wage		High-skill wage	
	(1)	(2)	(3)	(4)	(5)	(6)
$\ln k_{ijt}$	0.407***	0.407***	0.329***	0.330***	0.304***	0.304***
	[0.047]	[0.048]	[0.043]	[0.043]	[0.041]	[0.041]
$\ln L_{ijt}$	-0.056	-0.056	-0.115***	-0.114***	-0.182***	-0.183***
	[0.036]	[0.035]	[0.037]	[0.036]	[0.032]	[0.031]
UN_{it}	-0.012***	-0.012***	-0.012***	-0.012***	-0.006***	-0.006***
	[0.002]	[0.002]	[0.002]	[0.002]	[0.002]	[0.002]
$Coord_{it}$	0.015***	0.015***	0.009**	0.009**	0.010*	0.010*
	[0.005]	[0.005]	[0.004]	[0.004]	[0.005]	[0.005]
$\ln OFF_{ijt-1}$	-0.083**		-0.066*		-0.021	
	[0.036]		[0.034]		[0.036]	
$\ln DomOUT_{ijt-1}$		-0.044		-0.042		0.006
		[0.040]		[0.038]		[0.040]
$\ln IntOUT_{ijt-1}$		-0.054*		-0.04		0.009
		[0.029]		[0.027]		[0.028]
Observations	5692	5692	5702	5702	5690	5690
Under-identification	0.000	0.000	0.000	0.000	0.000	0.000
Weak identification	568.4	532	575.8	551	567.9	523

Notes: as below Table 4. IV estimation, source countries split into low wage and high wage countries (LWC and HWC). Source: own calculations with data from WIOD, UN from World Bank, and Coord from ICTWSS.

Table A9. Robustness check: sector heterogeneity (high-tech versus low-tech industries)

	Low-skilled wage	Medium-skilled wage	High-skilled wage
	(1)	(2)	(3)
$\ln k_{ijt}$	0.370***	0.292***	0.302***
	[0.042]	[0.037]	[0.037]
$\ln L_{ijt}$	-0.094***	-0.182***	-0.198***
	[0.034]	[0.032]	[0.032]
$\ln \text{DomOUT}_{ijt-1}$	-0.074**	-0.059*	-0.029
	[0.033]	[0.031]	[0.034]
$\ln \text{IntOUT_LWC}_{ijt-1}$	-0.132***	-0.124***	-0.074***
	[0.025]	[0.023]	[0.024]
$\text{HT} \times \ln \text{IntOUT_LWC}_{ijt-1}$	0.094***	0.109***	0.082**
	[0.034]	[0.032]	[0.033]
$\ln \text{IntOUT_HWC}_{ijt-1}$	0.013	0.007	-0.001
	[0.046]	[0.042]	[0.044]
$\text{HT} \times \ln \text{IntOUT_HWC}_{ijt-1}$	-0.036	-0.073	-0.096
	[0.087]	[0.084]	[0.090]
Observations	6692	6702	6687
Under-identification	0.000	0.000	0.000
Weak identification	17	17	17

Notes: as below Table 5. IV estimation, model includes an additional interaction term between high-tech industry dummy, HT, and offshoring. Classification (4) of LWC, division of industries into high tech and low tech as in Table A1.

Source: own calculations with data from WIOD.

Table A10. Robustness check: three-stage least squares SUR regression

	Sample: all countries (40)			
	Low-skill wage	Medium-skill wage	Low-skill wage	Medium-skill wage
$\ln k_{ijt}$	0.414***	0.353***	0.403***	0.345***
	[0.010]	[0.010]	[0.010]	[0.009]
$\ln L_{ijt}$	-0.052***	-0.093***	-0.054***	-0.095***
	[0.006]	[0.005]	[0.005]	[0.005]
$\ln \text{DomOUT}_{ijt-1}$	-0.040***	-0.023*	-0.062***	-0.046***
	[0.013]	[0.012]	[0.015]	[0.014]
$\ln \text{IntOUT}_{ijt-1}$	-0.060***	-0.057***		
	[0.015]	[0.014]		
$\ln \text{IntOUT_LWC}_{ijt-1}$			-0.087***	-0.069***
			[0.007]	[0.007]
$\ln \text{IntOUT_HWC}_{ijt-1}$			-0.007	-0.023
			[0.015]	[0.014]
Observations	6671	6671	6671	6671

Notes: Statistically significant at ***, ** 5, * 10 percent level. In all specifications, year dummies, country-industry and country-year dummies included. Estimates obtained through three-stage least squares SUR regression with simultaneous estimates for low, medium and high-skilled wages. For high-skilled wages in none of the specifications are offshoring indices among the statistically significant parameters. Results obtainable upon request. International outsourcing ($\ln \text{IntOUT}_{ijt}$, $\ln \text{IntOUT_LWC}_{ijt}$ and $\ln \text{IntOUT_HWC}_{ijt}$) treated as endogenous variables and instrumented on the basis of the gravity equation as explained in the main text. Countries split into low-wage (LWC) and high-wage (HWC) according to the classification (4)

Source: own calculations with data from WIOD

Original citation: Wolszczak-Derlacz J., Parteka A. (2016). The effects of offshoring to low-wage countries on domestic wages – a worldwide industrial analysis. GUT FME Working Papers Series A, No 6/2016(36). Gdansk (Poland): Gdansk University of Technology, Faculty of Management and Economics.

All GUT Working Papers are downloadable at:
<http://zie.pg.edu.pl/working-papers>

GUT Working Papers are listed in Repec/Ideas <https://ideas.repec.org/s/gdk/wpaper.html>



GUT FME Working Paper Series A jest objęty licencją [Creative Commons Uznanie autorstwa-Użycie niekomercyjne-Bez utworów zależnych 3.0 Unported](https://creativecommons.org/licenses/by-nc-nd/3.0/).



GUT FME Working Paper Series A is licensed under a [Creative Commons Attribution-NonCommercial-NoDerivs 3.0 Unported License](https://creativecommons.org/licenses/by-nc-nd/3.0/).

Gdańsk University of Technology, Faculty of Management and Economics
Narutowicza 11/12, (premises at ul. Traugutta 79)
80-233 Gdańsk, phone: 58 347-18-99 Fax 58 347-18-61
www.zie.pg.edu.pl

