

Guvenen, Fatih; Schulhofer-Wohl, Sam; Song, Jae; Yogo, Motohiro

Working Paper

Worker betas: Five facts about systematic earnings risk

Working Paper, No. 2017-04

Provided in Cooperation with:

Federal Reserve Bank of Chicago

Suggested Citation: Guvenen, Fatih; Schulhofer-Wohl, Sam; Song, Jae; Yogo, Motohiro (2017) : Worker betas: Five facts about systematic earnings risk, Working Paper, No. 2017-04, Federal Reserve Bank of Chicago, Chicago, IL

This Version is available at:

<https://hdl.handle.net/10419/172942>

Standard-Nutzungsbedingungen:

Die Dokumente auf EconStor dürfen zu eigenen wissenschaftlichen Zwecken und zum Privatgebrauch gespeichert und kopiert werden.

Sie dürfen die Dokumente nicht für öffentliche oder kommerzielle Zwecke vervielfältigen, öffentlich ausstellen, öffentlich zugänglich machen, vertreiben oder anderweitig nutzen.

Sofern die Verfasser die Dokumente unter Open-Content-Lizenzen (insbesondere CC-Lizenzen) zur Verfügung gestellt haben sollten, gelten abweichend von diesen Nutzungsbedingungen die in der dort genannten Lizenz gewährten Nutzungsrechte.

Terms of use:

Documents in EconStor may be saved and copied for your personal and scholarly purposes.

You are not to copy documents for public or commercial purposes, to exhibit the documents publicly, to make them publicly available on the internet, or to distribute or otherwise use the documents in public.

If the documents have been made available under an Open Content Licence (especially Creative Commons Licences), you may exercise further usage rights as specified in the indicated licence.



Federal Reserve Bank of Chicago

**Worker Betas: Five Facts about
Systematic Earnings Risk**

*Fatih Guvenen, Sam Schulhofer-Wohl, Jae
Song, and Motohiro Yogo*

January 2017

WP 2017-04

Worker Betas:

Five Facts about Systematic Earnings Risk

Fatih Guvenen, Sam Schulhofer-Wohl, Jae Song, and Motohiro Yogo*

January 18, 2017

Abstract

The magnitude of and heterogeneity in systematic earnings risk has important implications for various theories in macro, labor, and financial economics. Using administrative data, we document how the aggregate risk exposure of individual earnings to GDP and stock returns varies across gender, age, the worker's earnings level, and industry. Aggregate risk exposure is U-shaped with respect to the earnings level. In the middle of the earnings distribution, males, younger workers, and those in construction and durable manufacturing are more exposed to aggregate risk. At the top of the earnings distribution, older workers and those in finance are more exposed to aggregate risk. Workers in larger employers are less exposed to aggregate risk, but they are more exposed to a common factor in employer-level earnings, especially at the top of the earnings distribution. Within an employer, higher-paid workers have higher exposure to the employer-level risk than lower-paid workers. (*JEL* D31, G11)

*Guvenen: Department of Economics, University of Minnesota, 4-101 Hanson Hall, 1925 S Fourth Street, Minneapolis, MN 55455, and NBER (e-mail: guvenen@umn.edu); Schulhofer-Wohl: Economic Research Department, Federal Reserve Bank of Chicago, 230 S LaSalle Street, Chicago IL 60604 (e-mail: sam@frbchi.org); Song: Social Security Administration, One Skyline Tower, 5107 Leesburg Pike, Falls Church, VA 22041 (e-mail: jae.song@ssa.gov); Yogo: Department of Economics, Princeton University, Julis Romo Rabinowitz Building, Princeton, NJ 08544, and NBER (e-mail: myogo@princeton.edu). We thank Gerald Ray at the Social Security Administration for assistance with the data. The views expressed herein are those of the authors and not necessarily those of the Federal Reserve Bank of Chicago, the Social Security Administration, or the National Bureau of Economic Research.

How are the labor earnings of a worker tied to the fortunes of the aggregate economy, his employer, and his industry? How do these risk exposures vary by gender, age, the worker’s earnings level, industry, and the size of his employer? The answers to these questions have important implications for various theories in macro, labor, and financial economics. In this paper, we use a large and clean panel dataset on individual earnings from the U.S. Social Security Administration to answer these questions. In particular, we estimate the risk exposure of a worker’s earnings to three important risk factors: the aggregate economy, the performance of the worker’s employer, and the performance of the worker’s industry.

Our main empirical approach is a pooled ordinary least squares (OLS) regression of a worker’s real annual earnings growth on either real gross domestic product (GDP) growth or real stock returns, the average earnings growth of the worker’s employer, and the average earnings growth of the worker’s industry. The use of big data allows to estimate these risk exposures, which we call “worker betas”, more accurately and at a granular level, resulting in a clearer picture of how income risk from various sources is distributed across the population.

We document five main facts:

1. Aggregate risk exposure (to either GDP growth or stock returns) is U-shaped with respect to the earnings level.
2. Males are more exposed to aggregate risk than females.
3. Younger workers are more exposed to aggregate risk than older workers, except at the top of the earnings distribution where the relation reverses.
4. In the middle of the earnings distribution, males, younger workers, and those in construction and durable manufacturing have the highest aggregate risk exposure. At the top of the earnings distribution, those in finance have the highest aggregate risk exposure. Workers in health and education have the lowest aggregate risk exposure throughout the earnings distribution.
5. Workers in larger employers are less exposed to aggregate risk, but they are more exposed to a common factor in employer-level earnings, especially at the top of the earnings distribution. Within an employer, higher-paid workers have higher exposure to employer-level risk than lower-paid workers.

Our measurement exercise has important implications for several literatures in macro, labor, and financial economics.

For example, our findings relate to a large literature that estimates or calibrates individual income processes motivated by an incomplete markets model. This literature usually specifies

a worker's log earnings as the sum of an aggregate shock (modeled as a time fixed effect), a Mincer earnings function of age and education, and the residual that is interpreted as an idiosyncratic shock. According to our findings, the standard approach underestimates systematic risk by ignoring the differential exposure across workers to aggregate risk as well as employer- and industry-level risk. Thus, the standard approach misinterprets the residual from the wage regression as purely idiosyncratic when in fact it contains several sources of systematic risk. Properly decomposing earnings through a factor model, as we do in this paper, makes the residual closer to the theoretical concept of idiosyncratic risk that is unrelated to aggregate outcomes and pertains only to the circumstances of the individual worker.

The decomposition of earnings into systematic versus idiosyncratic components is a key input into the macro debate on the cost of business cycles and the benefits of stabilization policies (Krusell and Smith 1999, Lucas 2003, Krebs 2006, Krusell, Mukoyama, Şahin and Smith 2009). The standard specification of earnings based on time fixed effects that we described above would imply that business cycles and stabilization policies have homogeneous effects on income growth across the population. In contrast, our estimates based on heterogeneous exposure to risk factors imply that the cost of business cycles is borne asymmetrically across the population depending on gender, age, the worker's earnings level, and industry. Therefore, monetary or fiscal policies that stabilize business cycles would also have heterogeneous benefits across the population.

Our findings also have implications for the importance of intergenerational risk sharing through a social security system (Allen and Gale 1997, Ball and Mankiw 2007). In an overlapping generations economy, an important source of market incompleteness arises from the inability of generations that live in different periods to insure aggregate risk through financial markets. A government can improve welfare through a fully funded social security system that transfers income from lucky to unlucky generations. This transfer system could be improved with better knowledge of how aggregate income risk is distributed across the population.

Turning to another important issue, a theory of risk sharing under heterogeneous risk preferences implies that more risk-averse individuals should bear less aggregate consumption risk. One mechanism through which efficient risk sharing could be achieved is for more risk-averse individuals to choose jobs or occupations where *income* has less aggregate risk exposure (Schulhofer-Wohl 2011, Mazzocco and Saini 2012). When combined with estimates of risk preferences (e.g., from survey data), our estimates of aggregate risk exposure could be used to test this theory more precisely. Our finding that higher-paid workers have higher exposure to the employer-level risk than lower-paid workers could also be consistent with

theories of risk sharing within firms (Guiso, Pistaferri and Schivardi 2005). Lower-paid workers need more income insurance if they are more risk averse or have more limited self-insurance opportunities.

A theory of portfolio choice in the presence of risky labor income implies that the optimal allocation to stocks depends on the covariance of income growth with stock returns (Bodie, Merton and Samuelson 1992). More specifically, the formula for the optimal portfolio share in stocks is a weighted average of the mean-variance portfolio and the hedging portfolio (Campbell and Viceira 2002, equation 6.11). Hedging demand implies that the optimal portfolio share in stocks decreases with stock return beta, which is exactly what we estimate in this paper. Therefore, our estimates of stock return beta could be used for normative advice on how investors with different income risk should tilt their allocation to stocks. When combined with data on portfolio choice, our estimates of stock return beta could be used to test the theory of portfolio choice.

I. Administrative Data on Earnings

Our annual panel data on earnings are from the Master Earnings File of the Social Security Administration from 1978 to 2013. These administrative data are representative, complete, and free of measurement error because they are based on all employer filings of Form W-2 for all U.S. workers with a Social Security number. Importantly, the earnings data are not top coded and include all wages, salaries, bonuses, and exercised stock options as reported in Box 1 of Form W-2.¹ For each worker, we aggregate earnings across all his/her employers in a given year. We deflate earnings to 2009 real dollars using the GDP implicit price deflator.

In addition to earnings, we use demographic information from the Master Earnings File including gender, year of birth (or age), and the Standard Industrial Classification (SIC) code of the primary employer. Because of computing resource constraints, our analysis is based on a 10 percent representative sample of the Master Earnings File. We further limit our sample to workers that are in their prime working years from age 26 to 65.

We compute real earnings growth as the difference in log real earnings between year t and $t - 1$. As a proxy for “permanent income”, we also compute average real earnings over five years from year $t - 6$ to $t - 2$. When five years of earnings history are not available for a worker (primarily in the first four years of the panel from 1978 to 1981), we use the longest consecutive period (between one to four years) that is available. We emphasize that there is no overlap between the period over which earnings growth is computed (i.e., year $t - 1$ to t) and the period over which average earnings are computed (i.e., year $t - 6$ to $t - 2$). This

¹In addition to W-2 wages, the Master Earnings File contains self-employment income. However, we do not use self-employment income in our analysis because it was top coded prior to 1994.

ensures that there is no mechanical correlation between our measures of earnings growth and average earnings. The data requirements for computing earnings growth and average earnings imply that to enter our sample, a worker must have positive earnings in years t , $t - 1$, and at least one year between $t - 6$ and $t - 2$.

In each year, we group our sample into four age groups: 26–35, 36–45, 46–55, and 56–65. We also group our sample into 12 earnings percentiles (i.e., 10th to 90th, 99th, and 99.9th) conditional on gender and age group, based on average earnings that we described above. Finally, we group our sample into 10 industries based on the four-digit SIC code of the primary employer: construction (1521–1799), nondurable manufacturing (111–1499, 2011–2399, 2611–3199, and 3951–3999), durable manufacturing (2411–2599 and 3211–3949), transportation (4011–4971), retail and wholesale (5012–5999), finance (6011–6799), services (7011–7999, 8111, and 8322–8999), health and education (8011–8099 and 8211–8299), and other industries (9111–9999 and missing SIC code).

Table 1 summarizes our sample by gender and age. An advantage of our administrative data is that our sample is much larger than in typical studies of household finance that are based on surveys. For example, we have 5.073 million observations of males aged 36–45 who fall between the 50th and 60th percentiles of the earnings distribution. The median earnings for this group is \$45,000. We also have 457,000 observations of males aged 36–45 that fall between 99th and 99.9th percentiles of the earnings distribution, where median earnings is \$333,000. We even have 51,000 observations above the 99.9th percentile, where median earnings is \$1.073 million.

II. GDP and Stock Return Beta

A. GDP Beta

Let $\Delta y_{n,t}$ be the log real earnings growth of individual n in year t , and let Δy_t be the log real GDP growth in year t . Our main regression specification is

$$(1) \quad \Delta y_{n,t} = \alpha_g + \beta_g \Delta y_t + \epsilon_{n,t}.$$

We estimate the coefficients α_g and β_g by pooled OLS, separately by gender, four age groups, and 12 earnings percentile bins. The assumption, for example, is that males aged 36–45 whose earnings fall between the 50th and 60th percentiles have the same GDP beta.

Figure 1 reports GDP beta across the earnings distribution at age 36–45 by gender. For both males and females, GDP beta is U-shaped in the earnings level. That is, workers at the tails of the earnings distribution have the highest aggregate risk exposure. In particular,

Table 1: Sample Description by Gender and Age

Earnings percentile	Male				Female			
	26–35	36–45	46–55	56–65	26–35	36–45	46–55	56–65
<i>Panel A. Observations (thousands)</i>								
0	5,567	5,073	3,997	2,333	4,758	4,472	3,709	2,088
10	5,567	5,073	3,997	2,333	4,758	4,472	3,709	2,088
20	5,567	5,073	3,997	2,333	4,758	4,472	3,709	2,088
30	5,567	5,073	3,997	2,333	4,758	4,472	3,709	2,088
40	5,567	5,073	3,997	2,333	4,758	4,472	3,709	2,088
50	5,567	5,073	3,997	2,333	4,758	4,472	3,709	2,088
60	5,567	5,073	3,997	2,333	4,758	4,472	3,709	2,088
70	5,567	5,073	3,997	2,333	4,758	4,472	3,709	2,088
80	5,567	5,073	3,997	2,333	4,758	4,472	3,709	2,088
90	5,011	4,566	3,597	2,100	4,282	4,025	3,339	1,879
99	501	457	360	210	428	402	334	188
99.9	56	51	40	23	48	45	37	21
<i>Panel B. Median earnings (thousands of 2009 dollars)</i>								
0	3	6	7	6	2	2	3	3
10	9	16	20	19	5	6	9	9
20	14	25	29	28	9	11	15	15
30	18	31	37	35	13	16	20	20
40	22	38	45	43	16	21	26	25
50	27	45	53	51	20	26	32	30
60	32	53	62	61	24	32	38	37
70	39	62	74	74	29	39	46	45
80	48	78	94	95	36	50	58	56
90	68	118	150	155	51	72	81	79
99	137	333	504	546	98	159	186	169
99.9	349	1,073	1,714	2,062	192	397	526	480

males at the 99.9th percentile of the earnings distribution have a GDP beta of 3.70. Parker and Vissing-Jorgensen (2009) also find that income is most cyclical at the top of the earnings distribution. Throughout the earnings distribution, males have higher GDP beta than females. For example, males at the 50th percentile of the earnings distribution have a GDP beta of 1.09, compared with 0.69 for females.

Figure 1 also reports GDP beta across the earnings distribution for males by age group. Within each age group, GDP beta is U-shaped in the earnings level. Below the 90th percentile of the earnings distribution, younger males have higher GDP beta than older males. For

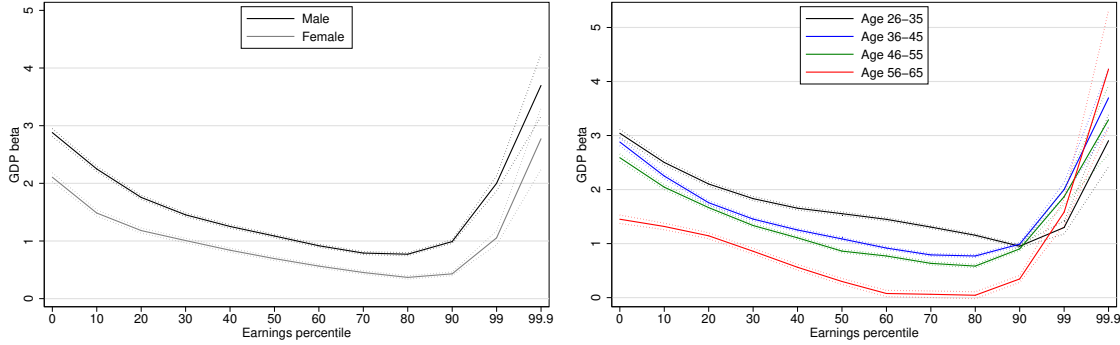


Figure 1: GDP Beta at Age 36–45 by Gender and for Males by Age Group

Note: Earnings percentiles (conditional on gender and age group) are based on average real earnings from year $t - 6$ to $t - 2$, while real earnings growth used to estimate GDP beta is from year $t - 1$ to t . The dotted lines represent the 95 percent confidence interval.

example, males aged 26–35 at the 50th percentile of the earnings distribution have a GDP beta of 1.55, compared with 0.30 for males aged 56–65. Above the 90th percentile of the earnings distribution, however, this relation reverses so that older males have higher GDP beta than younger males. For example, males aged 56–65 at the 99.9th percentile of the earnings distribution have a GDP beta of 4.23, compared with 2.90 for males aged 26–35.

Figure 2 reports GDP beta across the earnings distribution for males aged 36–45 by industry. There are significant differences in GDP beta across industries. At the 50th percentile of the earnings distribution, the industries (and corresponding GDP beta) ranked from the most to least cyclical are construction (2.31), durable manufacturing (1.97), services (1.17), retail and wholesale (1.05), nondurable manufacturing (0.88), finance (0.87), transportation (0.47), and health and education (0.23). This ranking should not be surprising, except for the fact that finance is one of the less cyclical industries. However, the cyclicity of earnings in the finance industry is highly dependent on the earnings level. At the 99th percentile of the earnings distribution, finance is actually the most cyclical industry with a GDP beta of 3.05.

B. Stock Return Beta

We now repeat regression (1) with real stock returns instead of real GDP growth as the explanatory variable. Real stock returns are the Center for Research in Securities Prices value-weighted index² deflated by the GDP implicit price deflator. In aligning earnings growth with stock returns, we use the beginning-of-period timing convention, which leads to

²Source: CRSP®, Center for Research in Security Prices, Booth School of Business, The University of Chicago. Used with permission. All rights reserved. crsp.uchicago.edu.

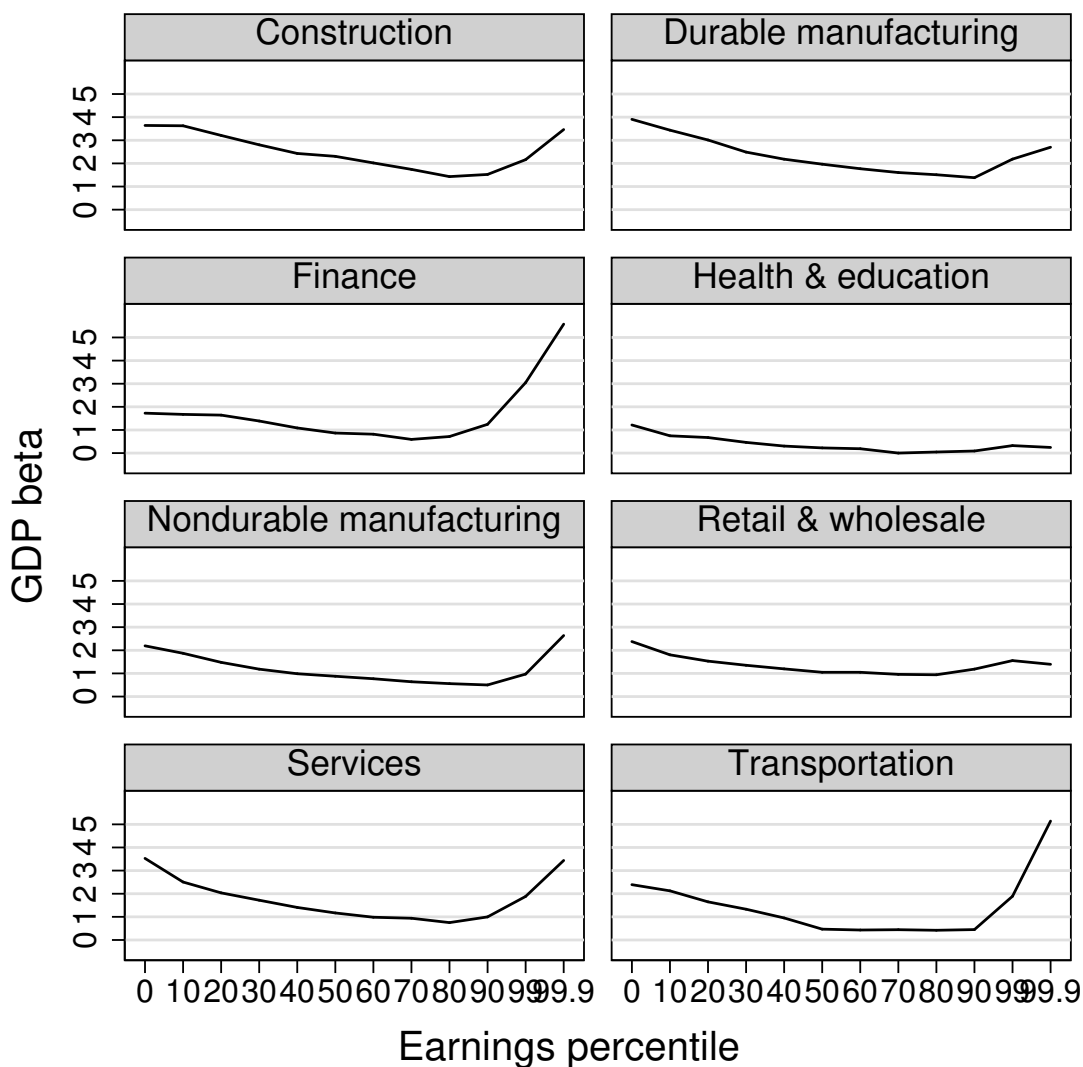


Figure 2: GDP Beta for Males by Industry

Note: Earnings percentiles (conditional on gender and age group) are based on average real earnings from year $t - 6$ to $t - 2$, while real earnings growth used to estimate GDP beta is from year $t - 1$ to t .

a higher correlation between GDP growth and stock returns than the end-of-period timing convention (Campbell 2003). That is, we align earnings growth from year $t - 1$ to t with stock returns during year $t - 1$.

Figures 3 and 4 reports results that are analogous to Figures 1 and 2 for stock returns. In our sample from 1980 to 2013, the correlation between real stock returns and real GDP growth is 0.59. Therefore, it should not be surprising that our main findings for stock return beta are similar to those for GDP beta.

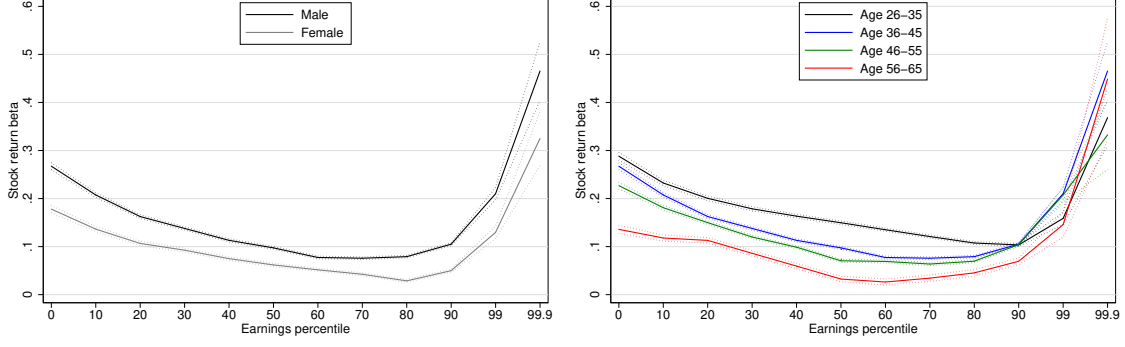


Figure 3: Stock Return Beta at Age 36–45 by Gender and for Males by Age Group

Note: Earnings percentiles (conditional on gender and age group) are based on average real earnings from year $t - 6$ to $t - 2$, while real earnings growth used to estimate stock return beta is from year $t - 1$ to t . The dotted lines represent the 95 percent confidence interval.

III. Employer and Industry Beta

Variation in earnings growth that remains after taking out the aggregate exposure to GDP growth need not be purely idiosyncratic. In particular, earnings growth could be correlated across workers within the same employer or industry. To examine the importance of factor structure in earnings growth at the employer and industry levels, we modify regression (1) to include employer- and industry-level factors.

Let $\Delta y_{e \setminus n, t}$ be the log real growth rate of average earnings for worker n 's employer (defined by the Employer Identification Number) in year t , where we exclude worker n in computing average earnings. By excluding worker n from the average, we avoid any mechanical correlation in earnings growth between the worker and the employer. Similarly, let $\Delta y_{i \setminus n, t}$ be the log real growth rate of average earnings for worker n 's industry in year t , where we again exclude worker n from the average. Our regression specification is

$$(2) \quad \Delta y_{n, t} = \alpha_e + \beta_g \Delta y_t + \beta_{g, e} \Delta y_{e \setminus n, t} + \beta_{g, i} \Delta y_{i \setminus n, t} + \nu_{n, t},$$

where α_e are employer fixed effects.

To isolate meaningful factors in employer-level earnings, we limit our sample to employers with at least ten observations in our sample. In each year, we group our sample by employer size with cutoffs at 50th, 90th, and 99th percentiles. Our four groups correspond to median employer sizes of 13, 31, 154, and 1,210 observations in our sample. Because we start with a 10 percent representative sample, these employers on average have 130, 310, 1,540, and 12,100 workers. To estimate regression (2), we first take out the employer fixed effects by

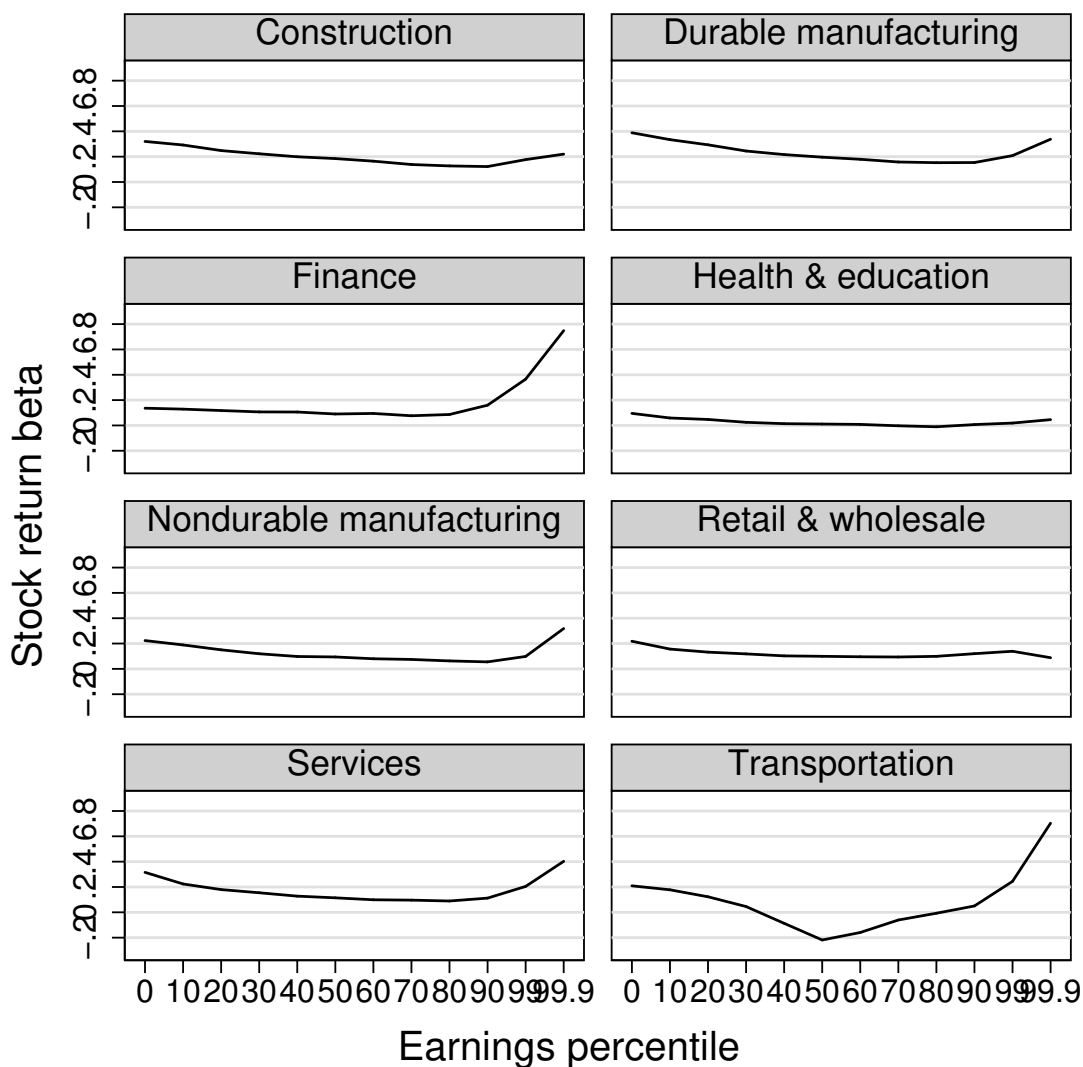


Figure 4: Stock Return Beta for Males by Industry

Note: Earnings percentiles (conditional on gender and age group) are based on average real earnings from year $t - 6$ to $t - 2$, while real earnings growth used to estimate stock return beta is from year $t - 1$ to t .

cross-sectionally demeaning. We then estimate the coefficients by pooled OLS, separately by gender, 12 earnings percentile bins, and four employer-size groups.

Figure 5 reports GDP, employer, and industry beta across the earnings distribution for males by employer-size groups. Two important facts emerge. First, GDP beta decreases in employer size, while employer beta increases in employer size. GDP beta decreases from 1.13, 0.83, 0.68, to 0.31 by employer size at the 50th percentile of the earnings distribution. At the same time, employer beta increases from 0.37, 0.45, 0.48, to 0.54 in employer size.

There is no such monotonic pattern in the industry beta. Second, employer beta increases in the earnings level. This means that within an employer, higher-paid workers absorb a higher share of the employer-level risk.

In summary, we have uncovered interesting heterogeneity in risk exposure across workers coming from aggregate-, employer-, and industry-level sources. A further exploration of the implications of systematic earnings risk for macro, labor, and financial economics is an exciting area of research, which we intend to undertake in future work.

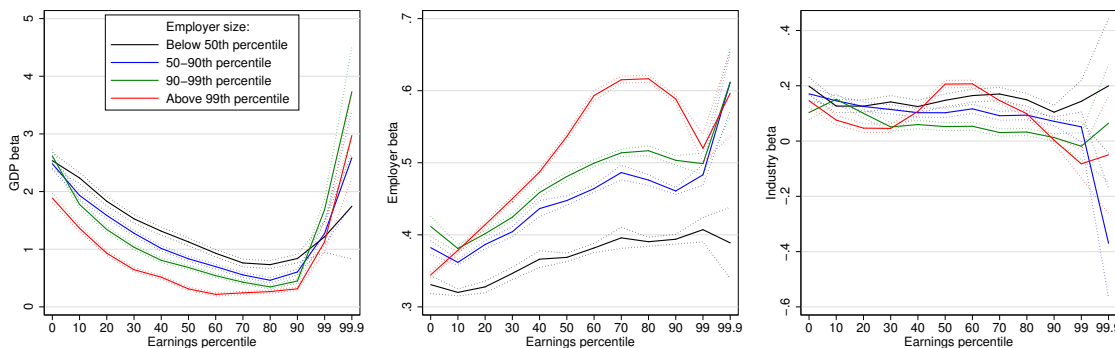


Figure 5: GDP, Employer, and Industry Beta for Males

Note: Earnings percentiles (conditional on gender and age group) are based on average real earnings from year $t - 6$ to $t - 2$, while real earnings growth used to estimate GDP, employer, and industry beta is from year $t - 1$ to t . The dotted lines represent the 95 percent confidence interval.

References

- Allen, Franklin and Douglas Gale**, “Financial Markets, Intermediaries, and Intertemporal Smoothing,” *Journal of Political Economy*, 1997, 105 (3), 523–546.
- Ball, Laurence and N. Gregory Mankiw**, “Intergenerational Risk Sharing in the Spirit of Arrow, Debreu, and Rawls, with Applications to Social Security Design,” *Journal of Political Economy*, 2007, 115 (4), 523–547.
- Bodie, Zvi, Robert C. Merton, and William F. Samuelson**, “Labor Supply Flexibility and Portfolio Choice in a Life Cycle Model,” *Journal of Economic Dynamics and Control*, 1992, 16 (3–4), 427–449.
- Campbell, John Y.**, “Consumption-Based Asset Pricing,” in George M. Constantinides, Milton Harris, and René M. Stulz, eds., *Handbook of the Economics of Finance*, Vol. 1B, Amsterdam: Elsevier, 2003, chapter 13, pp. 801–885.

- and **Luis M. Viceira**, *Strategic Asset Allocation: Portfolio Choice for Long-Term Investors* Clarendon Lectures in Economics, New York: Oxford University Press, 2002.
- Guiso, Luigi, Luigi Pistaferri, and Fabiano Schivardi**, “Insurance within the Firm,” *Journal of Political Economy*, 2005, 113 (5), 1054–1087.
- Krebs, Tom**, “Multi-Dimensional Risk and the Cost of Business Cycles,” *Review of Economic Dynamics*, 2006, 9 (4), 640–658.
- Krusell, Per and Anthony A. Smith**, “On the Welfare Effects of Eliminating Business Cycles,” *Review of Economic Dynamics*, 1999, 2 (1), 245–272.
- , **Toshihiko Mukoyama, Ayşegül Şahin, and Anthony A. Smith**, “Revisiting the Welfare Effects of Eliminating Business Cycles,” *Review of Economic Dynamics*, 2009, 12 (3), 393–404.
- Lucas, Jr., Robert E.**, “Macroeconomic Priorities,” *American Economic Review*, 2003, 93 (1), 1–14.
- Mazzocco, Maurizio and Shiv Saini**, “Testing Efficient Risk Sharing with Heterogeneous Preferences,” *American Economic Review*, 2012, 102 (1), 428–468.
- Parker, Jonathan A and Annette Vissing-Jorgensen**, “Who Bears Aggregate Fluctuations and How?,” *American Economic Review*, 2009, 99 (2), 399–405.
- Schulhofer-Wohl, Sam**, “Heterogeneity and Tests of Risk Sharing,” *Journal of Political Economy*, 2011, 119 (5), 925–958.

Appendix A. GDP Beta

Table A1: GDP Beta by Gender and Age

Earnings percentile	Male				Female			
	26–35	36–45	46–55	56–65	26–35	36–45	46–55	56–65
0	3.04 (0.04)	2.88 (0.03)	2.59 (0.03)	1.45 (0.04)	2.32 (0.04)	2.11 (0.04)	1.45 (0.04)	1.11 (0.04)
10	2.50 (0.03)	2.25 (0.02)	2.04 (0.02)	1.32 (0.03)	1.61 (0.03)	1.49 (0.03)	1.11 (0.03)	0.68 (0.03)
20	2.10 (0.02)	1.76 (0.02)	1.67 (0.02)	1.14 (0.03)	1.34 (0.03)	1.18 (0.02)	0.89 (0.02)	0.54 (0.03)
30	1.83 (0.02)	1.45 (0.02)	1.33 (0.02)	0.86 (0.03)	1.09 (0.02)	1.01 (0.02)	0.77 (0.02)	0.47 (0.03)
40	1.66 (0.02)	1.25 (0.02)	1.11 (0.02)	0.56 (0.03)	0.91 (0.02)	0.84 (0.02)	0.69 (0.02)	0.30 (0.03)
50	1.55 (0.02)	1.09 (0.01)	0.86 (0.02)	0.30 (0.03)	0.80 (0.02)	0.69 (0.02)	0.60 (0.02)	0.20 (0.03)
60	1.45 (0.02)	0.92 (0.01)	0.77 (0.02)	0.08 (0.03)	0.67 (0.02)	0.57 (0.02)	0.45 (0.02)	0.11 (0.03)
70	1.31 (0.01)	0.79 (0.01)	0.63 (0.02)	0.06 (0.03)	0.53 (0.02)	0.45 (0.02)	0.36 (0.02)	-0.04 (0.03)
80	1.15 (0.01)	0.77 (0.01)	0.58 (0.02)	0.04 (0.03)	0.41 (0.02)	0.37 (0.02)	0.29 (0.02)	-0.06 (0.03)
90	0.95 (0.01)	0.99 (0.02)	0.90 (0.02)	0.35 (0.03)	0.37 (0.02)	0.43 (0.02)	0.30 (0.02)	-0.24 (0.03)
99	1.30 (0.06)	2.00 (0.07)	1.87 (0.08)	1.58 (0.12)	0.73 (0.07)	1.05 (0.06)	1.09 (0.07)	0.22 (0.11)
99.9	2.90 (0.25)	3.70 (0.28)	3.29 (0.33)	4.23 (0.55)	2.26 (0.21)	2.77 (0.27)	2.79 (0.26)	3.09 (0.47)

Note: Earnings percentiles (conditional on gender and age group) are based on average real earnings from year $t-6$ to $t-2$, while real earnings growth used to estimate GDP beta is from year $t-1$ to t . Heteroscedasticity-robust standard errors are reported in parentheses.

Table A2: GDP Beta by Gender and Age: Construction

Earnings percentile	Male					Female				
	26–35	36–45	46–55	56–65	All	26–35	36–45	46–55	56–65	All
0	3.37 (0.18)	3.61 (0.17)	3.58 (0.19)	3.52 (0.29)	3.64 (0.10)	1.95 (0.64)	2.91 (0.54)	2.38 (0.43)	1.87 (0.47)	2.58 (0.27)
10	3.46 (0.13)	3.46 (0.12)	3.59 (0.12)	3.63 (0.19)	3.63 (0.07)	2.24 (0.43)	2.40 (0.34)	2.29 (0.31)	2.33 (0.38)	2.50 (0.19)
20	3.04 (0.11)	3.12 (0.10)	3.28 (0.10)	2.80 (0.17)	3.21 (0.06)	2.05 (0.37)	2.55 (0.30)	1.97 (0.30)	1.53 (0.39)	2.25 (0.17)
30	2.75 (0.10)	2.62 (0.09)	2.83 (0.10)	2.44 (0.15)	2.80 (0.05)	2.28 (0.34)	1.81 (0.25)	2.18 (0.26)	2.23 (0.38)	2.23 (0.15)
40	2.35 (0.09)	2.26 (0.09)	2.52 (0.10)	2.17 (0.15)	2.43 (0.05)	1.83 (0.30)	1.97 (0.27)	1.54 (0.23)	1.38 (0.33)	1.81 (0.14)
50	2.46 (0.09)	2.13 (0.08)	2.16 (0.09)	1.83 (0.14)	2.31 (0.05)	0.93 (0.26)	1.72 (0.22)	1.33 (0.21)	1.37 (0.30)	1.41 (0.12)
60	2.25 (0.08)	1.76 (0.07)	1.94 (0.08)	1.52 (0.14)	2.02 (0.04)	1.36 (0.24)	1.61 (0.21)	1.41 (0.21)	0.99 (0.29)	1.44 (0.12)
70	2.08 (0.08)	1.61 (0.07)	1.41 (0.08)	1.21 (0.14)	1.74 (0.04)	1.41 (0.23)	1.31 (0.22)	0.99 (0.21)	1.05 (0.33)	1.25 (0.12)
80	1.70 (0.07)	1.40 (0.07)	1.13 (0.09)	0.61 (0.17)	1.43 (0.04)	0.82 (0.24)	1.38 (0.22)	1.22 (0.24)	1.56 (0.36)	1.20 (0.13)
90	1.44 (0.07)	1.42 (0.11)	1.72 (0.13)	1.34 (0.19)	1.52 (0.05)	0.88 (0.32)	1.55 (0.30)	1.73 (0.31)	1.49 (0.43)	1.39 (0.17)
99	1.05 (0.36)	2.97 (0.54)	2.62 (0.61)	2.63 (0.72)	2.16 (0.26)	1.17 (1.02)	3.15 (1.16)	4.29 (1.03)	2.21 (0.93)	2.88 (0.52)
99.9	0.30 (1.35)	2.99 (2.02)	10.38 (4.17)	4.79 (3.13)	3.46 (1.16)	-1.43 (3.31)	4.02 (4.30)	0.16 (2.87)	8.99 (4.38)	3.04 (1.95)

Note: Earnings percentiles (conditional on gender and age group) are based on average real earnings from year $t-6$ to $t-2$, while real earnings growth used to estimate GDP beta is from year $t-1$ to t . Heteroscedasticity-robust standard errors are reported in parentheses.

Table A3: GDP Beta by Gender and Age: Nondurable Manufacturing

Earnings percentile	Male					Female				
	26–35	36–45	46–55	56–65	All	26–35	36–45	46–55	56–65	All
0	2.26 (0.16)	2.08 (0.15)	2.13 (0.15)	1.37 (0.21)	2.19 (0.08)	2.63 (0.22)	2.26 (0.24)	1.70 (0.23)	1.12 (0.27)	2.29 (0.12)
10	2.32 (0.11)	1.69 (0.09)	1.53 (0.09)	1.10 (0.12)	1.87 (0.05)	1.70 (0.14)	1.72 (0.14)	1.66 (0.14)	1.17 (0.18)	1.73 (0.08)
20	1.92 (0.09)	1.33 (0.07)	1.13 (0.07)	0.83 (0.10)	1.48 (0.04)	1.60 (0.12)	1.34 (0.11)	1.15 (0.11)	1.11 (0.14)	1.43 (0.06)
30	1.49 (0.08)	1.14 (0.06)	0.97 (0.07)	0.53 (0.10)	1.18 (0.04)	1.30 (0.10)	1.25 (0.09)	1.15 (0.08)	1.02 (0.11)	1.26 (0.05)
40	1.26 (0.07)	0.93 (0.06)	0.86 (0.05)	0.29 (0.10)	0.99 (0.03)	1.10 (0.09)	1.03 (0.07)	1.00 (0.07)	0.55 (0.10)	1.01 (0.04)
50	1.21 (0.06)	0.76 (0.05)	0.72 (0.05)	0.20 (0.10)	0.88 (0.03)	0.99 (0.08)	0.89 (0.07)	0.84 (0.07)	0.45 (0.10)	0.88 (0.04)
60	0.93 (0.06)	0.72 (0.05)	0.72 (0.06)	0.08 (0.11)	0.77 (0.03)	0.89 (0.08)	0.70 (0.07)	0.62 (0.07)	0.23 (0.11)	0.70 (0.04)
70	0.88 (0.05)	0.49 (0.05)	0.53 (0.06)	-0.06 (0.11)	0.64 (0.03)	0.57 (0.09)	0.54 (0.07)	0.45 (0.08)	0.13 (0.12)	0.50 (0.04)
80	0.76 (0.05)	0.46 (0.05)	0.45 (0.06)	-0.20 (0.12)	0.56 (0.03)	0.39 (0.08)	0.34 (0.07)	0.32 (0.08)	0.04 (0.14)	0.33 (0.04)
90	0.42 (0.05)	0.57 (0.07)	0.46 (0.09)	0.05 (0.14)	0.50 (0.04)	0.38 (0.08)	0.37 (0.08)	0.36 (0.09)	-0.03 (0.15)	0.34 (0.05)
99	0.15 (0.25)	1.72 (0.32)	0.93 (0.35)	1.17 (0.54)	0.97 (0.17)	0.22 (0.28)	1.09 (0.29)	1.10 (0.36)	0.59 (0.42)	0.79 (0.16)
99.9	3.33 (0.91)	-0.40 (1.34)	0.77 (1.29)	6.11 (1.62)	2.64 (0.64)	1.62 (1.38)	1.83 (1.60)	3.08 (1.39)	-0.53 (1.63)	1.69 (0.74)

Note: Earnings percentiles (conditional on gender and age group) are based on average real earnings from year $t-6$ to $t-2$, while real earnings growth used to estimate GDP beta is from year $t-1$ to t . Heteroscedasticity-robust standard errors are reported in parentheses.

Table A4: GDP Beta by Gender and Age: Durable Manufacturing

Earnings percentile	Male					Female				
	26–35	36–45	46–55	56–65	All	26–35	36–45	46–55	56–65	All
0	3.73	3.84	3.83	2.90	3.91	3.96	3.64	3.11	2.44	3.84
	(0.16)	(0.15)	(0.16)	(0.22)	(0.08)	(0.33)	(0.35)	(0.32)	(0.48)	(0.18)
10	3.50	3.45	3.09	2.80	3.44	3.19	3.30	3.22	2.85	3.42
	(0.10)	(0.08)	(0.08)	(0.12)	(0.05)	(0.19)	(0.20)	(0.20)	(0.34)	(0.11)
20	3.34	2.92	2.60	2.38	3.01	2.90	2.97	3.08	2.47	3.12
	(0.08)	(0.06)	(0.06)	(0.09)	(0.04)	(0.16)	(0.14)	(0.15)	(0.20)	(0.08)
30	3.01	2.39	2.06	1.73	2.49	2.52	2.50	2.25	2.11	2.55
	(0.07)	(0.05)	(0.06)	(0.09)	(0.03)	(0.13)	(0.11)	(0.11)	(0.16)	(0.06)
40	2.79	2.07	1.78	1.27	2.18	2.41	2.10	1.92	1.66	2.18
	(0.06)	(0.05)	(0.05)	(0.08)	(0.03)	(0.12)	(0.09)	(0.09)	(0.13)	(0.05)
50	2.61	1.85	1.45	0.98	1.97	1.94	1.71	1.70	1.42	1.81
	(0.05)	(0.05)	(0.05)	(0.08)	(0.03)	(0.10)	(0.09)	(0.08)	(0.12)	(0.05)
60	2.48	1.62	1.23	0.61	1.77	1.80	1.67	1.44	0.87	1.57
	(0.05)	(0.04)	(0.05)	(0.09)	(0.03)	(0.09)	(0.07)	(0.08)	(0.13)	(0.04)
70	2.34	1.46	1.02	0.37	1.61	1.51	1.35	1.12	0.69	1.28
	(0.04)	(0.04)	(0.05)	(0.09)	(0.03)	(0.09)	(0.07)	(0.08)	(0.14)	(0.05)
80	2.29	1.35	0.95	0.14	1.51	1.41	1.24	1.09	0.74	1.21
	(0.04)	(0.05)	(0.06)	(0.10)	(0.03)	(0.08)	(0.09)	(0.08)	(0.16)	(0.05)
90	1.72	1.15	1.25	0.76	1.38	1.26	1.15	1.03	0.48	1.07
	(0.05)	(0.06)	(0.07)	(0.11)	(0.03)	(0.09)	(0.09)	(0.10)	(0.19)	(0.05)
99	1.61	2.63	3.00	1.27	2.19	-1.17	1.32	1.51	-0.20	0.33
	(0.28)	(0.27)	(0.33)	(0.41)	(0.16)	(1.00)	(0.44)	(0.61)	(0.99)	(0.41)
99.9	3.25	2.65	1.90	2.39	2.70	4.03	2.89	2.36	1.50	2.80
	(0.87)	(1.25)	(1.20)	(1.65)	(0.61)	(1.80)	(1.35)	(1.53)	(2.08)	(0.83)

Note: Earnings percentiles (conditional on gender and age group) are based on average real earnings from year $t-6$ to $t-2$, while real earnings growth used to estimate GDP beta is from year $t-1$ to t . Heteroscedasticity-robust standard errors are reported in parentheses.

Table A5: GDP Beta by Gender and Age: Transportation

Earnings percentile	Male					Female				
	26–35	36–45	46–55	56–65	All	26–35	36–45	46–55	56–65	All
0	2.95 (0.29)	2.30 (0.26)	2.05 (0.24)	1.29 (0.25)	2.39 (0.13)	3.24 (0.39)	3.28 (0.41)	2.63 (0.35)	0.99 (0.39)	3.14 (0.20)
10	2.22 (0.19)	2.26 (0.15)	1.89 (0.16)	1.19 (0.20)	2.13 (0.09)	2.08 (0.25)	1.94 (0.24)	0.87 (0.21)	0.91 (0.30)	1.82 (0.13)
20	1.95 (0.15)	1.52 (0.13)	1.38 (0.13)	0.81 (0.23)	1.65 (0.08)	1.89 (0.21)	1.56 (0.18)	1.10 (0.21)	0.70 (0.29)	1.63 (0.11)
30	1.84 (0.13)	1.08 (0.10)	1.09 (0.11)	0.58 (0.22)	1.33 (0.06)	1.34 (0.18)	1.51 (0.16)	1.57 (0.18)	0.98 (0.40)	1.56 (0.10)
40	1.41 (0.11)	1.23 (0.10)	0.50 (0.09)	0.15 (0.16)	0.95 (0.05)	1.27 (0.15)	1.37 (0.17)	1.16 (0.16)	-0.16 (0.27)	1.31 (0.09)
50	1.17 (0.09)	0.80 (0.07)	-0.17 (0.06)	-0.32 (0.12)	0.47 (0.04)	0.94 (0.13)	0.82 (0.13)	0.59 (0.18)	0.30 (0.25)	0.90 (0.08)
60	0.98 (0.07)	0.19 (0.05)	0.05 (0.05)	-0.35 (0.11)	0.43 (0.03)	0.74 (0.11)	0.63 (0.13)	0.52 (0.12)	0.32 (0.24)	0.78 (0.07)
70	0.94 (0.07)	0.18 (0.04)	-0.05 (0.04)	-0.53 (0.10)	0.45 (0.03)	0.59 (0.10)	0.24 (0.08)	-0.30 (0.10)	-0.16 (0.18)	0.36 (0.05)
80	0.73 (0.06)	0.19 (0.04)	0.08 (0.04)	-0.63 (0.12)	0.42 (0.03)	0.41 (0.07)	-0.15 (0.06)	-0.09 (0.06)	0.06 (0.13)	0.20 (0.04)
90	0.38 (0.04)	0.57 (0.06)	0.39 (0.09)	-0.31 (0.19)	0.45 (0.03)	0.14 (0.05)	0.02 (0.05)	-0.03 (0.07)	-0.36 (0.15)	0.21 (0.03)
99	1.09 (0.27)	2.48 (0.60)	2.30 (0.78)	2.71 (1.48)	1.89 (0.28)	-0.03 (0.19)	0.64 (0.25)	1.11 (0.32)	-1.22 (0.60)	0.34 (0.14)
99.9	3.26 (1.59)	5.32 (2.28)	2.69 (3.68)	11.28 (4.39)	5.14 (1.40)	0.80 (0.57)	1.27 (0.98)	-0.60 (1.18)	-2.94 (1.73)	0.69 (0.46)

Note: Earnings percentiles (conditional on gender and age group) are based on average real earnings from year $t-6$ to $t-2$, while real earnings growth used to estimate GDP beta is from year $t-1$ to t . Heteroscedasticity-robust standard errors are reported in parentheses.

Table A6: GDP Beta by Gender and Age: Retail and Wholesale

Earnings percentile	Male					Female				
	26–35	36–45	46–55	56–65	All	26–35	36–45	46–55	56–65	All
0	2.62	2.44	2.02	1.33	2.38	2.26	2.29	1.59	1.41	2.10
	(0.10)	(0.10)	(0.09)	(0.11)	(0.05)	(0.12)	(0.12)	(0.10)	(0.12)	(0.06)
10	2.23	1.76	1.42	0.90	1.80	1.70	1.34	1.01	0.82	1.38
	(0.07)	(0.06)	(0.06)	(0.07)	(0.03)	(0.08)	(0.08)	(0.07)	(0.08)	(0.04)
20	1.95	1.38	1.19	0.75	1.53	1.40	1.20	0.99	0.59	1.18
	(0.06)	(0.05)	(0.05)	(0.07)	(0.03)	(0.08)	(0.07)	(0.06)	(0.07)	(0.04)
30	1.74	1.29	0.93	0.62	1.35	1.16	0.90	0.67	0.51	0.90
	(0.05)	(0.05)	(0.05)	(0.07)	(0.03)	(0.07)	(0.06)	(0.05)	(0.07)	(0.03)
40	1.59	1.01	0.85	0.49	1.20	0.90	0.84	0.66	0.33	0.76
	(0.05)	(0.04)	(0.05)	(0.07)	(0.03)	(0.07)	(0.06)	(0.06)	(0.07)	(0.03)
50	1.27	0.90	0.79	0.38	1.05	0.83	0.76	0.75	0.40	0.75
	(0.04)	(0.04)	(0.05)	(0.08)	(0.03)	(0.07)	(0.06)	(0.06)	(0.08)	(0.03)
60	1.28	0.90	0.72	0.32	1.05	0.76	0.61	0.44	0.23	0.59
	(0.04)	(0.05)	(0.06)	(0.09)	(0.03)	(0.07)	(0.06)	(0.06)	(0.09)	(0.03)
70	1.05	0.90	0.82	0.22	0.96	0.73	0.56	0.52	0.03	0.55
	(0.04)	(0.05)	(0.06)	(0.10)	(0.03)	(0.07)	(0.07)	(0.07)	(0.11)	(0.04)
80	0.91	0.98	0.89	0.34	0.94	0.54	0.59	0.20	0.31	0.46
	(0.04)	(0.05)	(0.06)	(0.10)	(0.03)	(0.07)	(0.08)	(0.08)	(0.13)	(0.04)
90	1.02	1.26	1.14	0.98	1.19	0.53	0.46	0.46	-0.07	0.43
	(0.05)	(0.05)	(0.06)	(0.09)	(0.03)	(0.08)	(0.08)	(0.10)	(0.15)	(0.05)
99	1.20	1.51	1.94	1.62	1.55	0.61	0.91	0.93	0.25	0.72
	(0.16)	(0.26)	(0.25)	(0.32)	(0.12)	(0.23)	(0.29)	(0.30)	(0.41)	(0.15)
99.9	0.94	2.27	1.29	0.63	1.39	1.43	2.03	1.38	4.29	2.13
	(0.66)	(0.90)	(1.03)	(1.37)	(0.47)	(0.91)	(1.21)	(1.04)	(1.37)	(0.56)

Note: Earnings percentiles (conditional on gender and age group) are based on average real earnings from year $t-6$ to $t-2$, while real earnings growth used to estimate GDP beta is from year $t-1$ to t . Heteroscedasticity-robust standard errors are reported in parentheses.

Table A7: GDP Beta by Gender and Age: Finance

Earnings percentile	Male					Female				
	26–35	36–45	46–55	56–65	All	26–35	36–45	46–55	56–65	All
0	2.31 (0.26)	1.71 (0.27)	1.22 (0.22)	0.32 (0.19)	1.73 (0.12)	2.87 (0.30)	2.05 (0.29)	1.45 (0.23)	0.34 (0.20)	2.23 (0.13)
10	1.98 (0.18)	1.68 (0.18)	1.50 (0.17)	-0.01 (0.20)	1.67 (0.09)	1.50 (0.20)	1.60 (0.18)	1.52 (0.17)	-0.09 (0.20)	1.61 (0.09)
20	1.99 (0.14)	1.32 (0.15)	1.32 (0.16)	0.33 (0.21)	1.64 (0.08)	1.68 (0.15)	1.47 (0.15)	1.06 (0.14)	0.47 (0.21)	1.57 (0.08)
30	1.95 (0.14)	1.04 (0.13)	1.05 (0.15)	0.28 (0.21)	1.39 (0.08)	1.39 (0.13)	1.30 (0.12)	0.96 (0.12)	0.29 (0.19)	1.36 (0.07)
40	1.71 (0.12)	1.00 (0.12)	0.57 (0.14)	-0.09 (0.20)	1.09 (0.07)	0.90 (0.10)	0.82 (0.10)	0.81 (0.10)	0.06 (0.16)	0.93 (0.05)
50	1.49 (0.11)	0.65 (0.12)	0.30 (0.13)	0.00 (0.22)	0.87 (0.07)	0.75 (0.08)	0.82 (0.08)	0.54 (0.09)	0.15 (0.14)	0.78 (0.05)
60	1.42 (0.10)	0.69 (0.10)	0.36 (0.12)	-0.27 (0.21)	0.82 (0.06)	0.80 (0.07)	0.84 (0.07)	0.46 (0.07)	0.11 (0.13)	0.76 (0.04)
70	1.23 (0.10)	0.46 (0.09)	0.29 (0.10)	-0.75 (0.20)	0.59 (0.06)	0.52 (0.06)	0.73 (0.06)	0.43 (0.07)	0.05 (0.13)	0.59 (0.04)
80	1.21 (0.09)	0.65 (0.08)	0.43 (0.09)	-0.22 (0.17)	0.72 (0.05)	0.71 (0.06)	0.49 (0.06)	0.31 (0.07)	-0.14 (0.14)	0.54 (0.04)
90	1.03 (0.09)	1.42 (0.08)	1.33 (0.08)	0.80 (0.16)	1.25 (0.05)	0.63 (0.07)	0.61 (0.07)	0.46 (0.08)	-0.31 (0.17)	0.59 (0.04)
99	2.32 (0.22)	3.61 (0.23)	2.80 (0.25)	3.00 (0.41)	3.05 (0.13)	1.83 (0.25)	2.16 (0.26)	2.57 (0.28)	2.15 (0.54)	2.29 (0.15)
99.9	4.25 (0.69)	6.90 (0.68)	5.40 (0.81)	4.74 (1.29)	5.58 (0.39)	3.39 (0.70)	6.34 (1.00)	4.20 (0.89)	4.10 (1.36)	4.72 (0.47)

Note: Earnings percentiles (conditional on gender and age group) are based on average real earnings from year $t-6$ to $t-2$, while real earnings growth used to estimate GDP beta is from year $t-1$ to t . Heteroscedasticity-robust standard errors are reported in parentheses.

Table A8: GDP Beta by Gender and Age: Services

Earnings percentile	Male					Female				
	26–35	36–45	46–55	56–65	All	26–35	36–45	46–55	56–65	All
0	3.71	3.71	3.58	1.87	3.53	2.71	2.19	1.81	1.38	2.26
	(0.10)	(0.10)	(0.09)	(0.11)	(0.05)	(0.11)	(0.10)	(0.09)	(0.10)	(0.05)
10	2.76	2.55	2.33	1.37	2.51	1.85	1.80	1.47	0.82	1.70
	(0.07)	(0.07)	(0.07)	(0.08)	(0.04)	(0.08)	(0.07)	(0.07)	(0.08)	(0.04)
20	2.30	2.00	1.75	1.11	2.04	1.50	1.47	1.12	0.71	1.38
	(0.07)	(0.07)	(0.07)	(0.08)	(0.04)	(0.07)	(0.07)	(0.06)	(0.08)	(0.04)
30	2.01	1.62	1.41	0.86	1.72	1.33	1.22	0.98	0.54	1.18
	(0.06)	(0.06)	(0.06)	(0.09)	(0.03)	(0.07)	(0.06)	(0.06)	(0.08)	(0.04)
40	1.84	1.30	0.94	0.42	1.41	1.00	0.93	0.83	0.40	0.92
	(0.06)	(0.06)	(0.07)	(0.09)	(0.03)	(0.07)	(0.06)	(0.06)	(0.08)	(0.03)
50	1.67	1.10	0.59	-0.04	1.17	0.92	0.78	0.64	0.20	0.77
	(0.06)	(0.06)	(0.06)	(0.10)	(0.03)	(0.06)	(0.06)	(0.06)	(0.08)	(0.03)
60	1.41	0.95	0.61	-0.39	0.98	0.67	0.68	0.42	0.15	0.60
	(0.05)	(0.05)	(0.06)	(0.11)	(0.03)	(0.06)	(0.06)	(0.06)	(0.08)	(0.03)
70	1.29	0.95	0.59	-0.21	0.94	0.53	0.44	0.20	-0.13	0.39
	(0.05)	(0.05)	(0.06)	(0.10)	(0.03)	(0.06)	(0.06)	(0.06)	(0.09)	(0.03)
80	1.08	0.84	0.43	-0.33	0.75	0.41	0.33	0.17	-0.41	0.29
	(0.05)	(0.04)	(0.05)	(0.09)	(0.03)	(0.05)	(0.05)	(0.06)	(0.09)	(0.03)
90	1.02	1.14	0.94	0.08	1.00	0.32	0.49	0.13	-0.62	0.28
	(0.05)	(0.05)	(0.05)	(0.08)	(0.03)	(0.06)	(0.06)	(0.06)	(0.10)	(0.03)
99	1.65	2.32	1.97	0.87	1.88	0.93	1.01	1.07	0.07	0.93
	(0.17)	(0.19)	(0.22)	(0.32)	(0.10)	(0.16)	(0.19)	(0.21)	(0.28)	(0.10)
99.9	3.65	3.42	3.09	3.26	3.44	2.23	3.31	3.82	4.06	3.20
	(0.77)	(0.80)	(0.89)	(1.22)	(0.44)	(0.58)	(0.76)	(0.72)	(0.99)	(0.36)

Note: Earnings percentiles (conditional on gender and age group) are based on average real earnings from year $t-6$ to $t-2$, while real earnings growth used to estimate GDP beta is from year $t-1$ to t . Heteroscedasticity-robust standard errors are reported in parentheses.

Table A9: GDP Beta by Gender and Age: Health and Education

Earnings percentile	Male					Female				
	26–35	36–45	46–55	56–65	All	26–35	36–45	46–55	56–65	All
0	1.40 (0.15)	0.98 (0.17)	0.73 (0.15)	0.64 (0.16)	1.22 (0.08)	1.24 (0.13)	1.20 (0.09)	0.67 (0.08)	0.60 (0.11)	1.21 (0.05)
10	0.96 (0.12)	0.55 (0.11)	0.49 (0.09)	0.20 (0.11)	0.75 (0.06)	0.73 (0.09)	0.74 (0.06)	0.40 (0.05)	-0.02 (0.08)	0.71 (0.04)
20	0.78 (0.11)	0.61 (0.10)	0.60 (0.09)	0.10 (0.11)	0.67 (0.05)	0.58 (0.08)	0.43 (0.06)	0.30 (0.05)	-0.09 (0.07)	0.49 (0.03)
30	0.64 (0.11)	0.28 (0.08)	0.40 (0.08)	-0.00 (0.12)	0.46 (0.05)	0.35 (0.07)	0.35 (0.05)	0.13 (0.04)	0.00 (0.07)	0.36 (0.03)
40	0.53 (0.10)	0.19 (0.07)	0.22 (0.07)	-0.26 (0.11)	0.30 (0.04)	0.34 (0.06)	0.22 (0.05)	0.12 (0.04)	-0.24 (0.07)	0.26 (0.03)
50	0.50 (0.10)	0.12 (0.06)	0.10 (0.06)	-0.42 (0.11)	0.23 (0.04)	0.10 (0.06)	0.01 (0.05)	0.11 (0.04)	-0.39 (0.07)	0.09 (0.03)
60	0.51 (0.09)	0.10 (0.06)	-0.01 (0.06)	-0.45 (0.11)	0.19 (0.04)	0.01 (0.05)	-0.09 (0.04)	-0.01 (0.04)	-0.38 (0.07)	0.01 (0.02)
70	0.23 (0.09)	-0.01 (0.07)	-0.02 (0.07)	-0.61 (0.12)	0.00 (0.04)	-0.16 (0.05)	-0.08 (0.04)	0.04 (0.04)	-0.41 (0.07)	-0.01 (0.02)
80	0.26 (0.09)	-0.08 (0.08)	-0.04 (0.08)	-0.21 (0.12)	0.05 (0.05)	-0.34 (0.05)	-0.04 (0.04)	0.01 (0.03)	-0.18 (0.07)	0.01 (0.02)
90	0.23 (0.12)	0.12 (0.08)	0.03 (0.06)	-0.32 (0.09)	0.09 (0.04)	-0.48 (0.06)	-0.16 (0.05)	-0.13 (0.04)	-0.48 (0.07)	-0.16 (0.03)
99	0.12 (0.29)	0.37 (0.10)	0.24 (0.11)	-0.11 (0.19)	0.33 (0.07)	-0.32 (0.30)	-0.11 (0.22)	-0.37 (0.20)	-0.38 (0.29)	-0.25 (0.12)
99.9	0.43 (0.96)	0.20 (0.43)	-0.08 (0.60)	0.11 (1.03)	0.25 (0.31)	0.26 (1.00)	0.75 (0.48)	0.12 (0.54)	-0.30 (0.93)	0.40 (0.33)

Note: Earnings percentiles (conditional on gender and age group) are based on average real earnings from year $t-6$ to $t-2$, while real earnings growth used to estimate GDP beta is from year $t-1$ to t . Heteroscedasticity-robust standard errors are reported in parentheses.

Table A10: GDP Beta by Gender and Age: Other Industries

Earnings percentile	Male					Female				
	26–35	36–45	46–55	56–65	All	26–35	36–45	46–55	56–65	All
0	3.06	2.79	2.47	1.39	2.72	2.30	2.24	1.47	1.09	2.04
	(0.05)	(0.05)	(0.05)	(0.05)	(0.03)	(0.06)	(0.06)	(0.05)	(0.06)	(0.03)
10	2.47	2.21	2.07	1.37	2.26	1.64	1.54	1.16	0.77	1.49
	(0.04)	(0.03)	(0.03)	(0.05)	(0.02)	(0.04)	(0.04)	(0.04)	(0.05)	(0.02)
20	1.97	1.66	1.65	1.19	1.79	1.34	1.18	0.88	0.56	1.18
	(0.03)	(0.03)	(0.03)	(0.04)	(0.02)	(0.04)	(0.03)	(0.03)	(0.04)	(0.02)
30	1.68	1.37	1.30	0.84	1.47	1.07	1.02	0.79	0.43	0.99
	(0.03)	(0.02)	(0.03)	(0.04)	(0.01)	(0.03)	(0.03)	(0.03)	(0.04)	(0.02)
40	1.52	1.21	1.12	0.56	1.30	0.91	0.86	0.69	0.34	0.84
	(0.02)	(0.02)	(0.02)	(0.04)	(0.01)	(0.03)	(0.03)	(0.03)	(0.04)	(0.01)
50	1.47	1.08	0.94	0.31	1.16	0.85	0.73	0.60	0.22	0.73
	(0.02)	(0.02)	(0.02)	(0.04)	(0.01)	(0.03)	(0.02)	(0.02)	(0.04)	(0.01)
60	1.40	0.91	0.83	0.05	1.02	0.70	0.58	0.49	0.16	0.60
	(0.02)	(0.02)	(0.02)	(0.04)	(0.01)	(0.02)	(0.02)	(0.02)	(0.04)	(0.01)
70	1.28	0.78	0.70	0.15	0.93	0.57	0.51	0.44	0.04	0.51
	(0.02)	(0.02)	(0.02)	(0.05)	(0.01)	(0.02)	(0.02)	(0.02)	(0.04)	(0.01)
80	1.13	0.77	0.63	0.15	0.87	0.45	0.43	0.39	-0.04	0.43
	(0.02)	(0.02)	(0.02)	(0.05)	(0.01)	(0.02)	(0.02)	(0.02)	(0.04)	(0.01)
90	0.94	0.95	0.89	0.25	0.94	0.41	0.48	0.36	-0.16	0.42
	(0.02)	(0.02)	(0.03)	(0.05)	(0.01)	(0.02)	(0.02)	(0.02)	(0.05)	(0.01)
99	1.23	1.98	2.22	2.05	1.88	0.84	1.09	1.13	0.22	0.96
	(0.09)	(0.11)	(0.14)	(0.24)	(0.06)	(0.08)	(0.08)	(0.09)	(0.15)	(0.05)
99.9	2.58	3.69	4.01	5.28	3.70	2.31	2.47	3.17	3.53	2.79
	(0.35)	(0.51)	(0.59)	(1.07)	(0.28)	(0.28)	(0.39)	(0.40)	(0.85)	(0.21)

Note: Earnings percentiles (conditional on gender and age group) are based on average real earnings from year $t-6$ to $t-2$, while real earnings growth used to estimate GDP beta is from year $t-1$ to t . Heteroscedasticity-robust standard errors are reported in parentheses.

Appendix B. Stock Return Beta

Table B1: Stock Return Beta by Gender and Age

Earnings percentile	Male				Female			
	26–35	36–45	46–55	56–65	26–35	36–45	46–55	56–65
0	0.29 (0.00)	0.27 (0.00)	0.23 (0.00)	0.14 (0.00)	0.21 (0.00)	0.18 (0.00)	0.12 (0.00)	0.09 (0.00)
10	0.23 (0.00)	0.21 (0.00)	0.18 (0.00)	0.12 (0.00)	0.16 (0.00)	0.14 (0.00)	0.10 (0.00)	0.06 (0.00)
20	0.20 (0.00)	0.16 (0.00)	0.15 (0.00)	0.11 (0.00)	0.13 (0.00)	0.11 (0.00)	0.07 (0.00)	0.04 (0.00)
30	0.18 (0.00)	0.14 (0.00)	0.12 (0.00)	0.09 (0.00)	0.10 (0.00)	0.09 (0.00)	0.07 (0.00)	0.04 (0.00)
40	0.16 (0.00)	0.11 (0.00)	0.10 (0.00)	0.06 (0.00)	0.09 (0.00)	0.08 (0.00)	0.06 (0.00)	0.03 (0.00)
50	0.15 (0.00)	0.10 (0.00)	0.07 (0.00)	0.03 (0.00)	0.08 (0.00)	0.06 (0.00)	0.05 (0.00)	0.03 (0.00)
60	0.14 (0.00)	0.08 (0.00)	0.07 (0.00)	0.03 (0.00)	0.07 (0.00)	0.05 (0.00)	0.04 (0.00)	0.02 (0.00)
70	0.12 (0.00)	0.08 (0.00)	0.06 (0.00)	0.03 (0.00)	0.06 (0.00)	0.04 (0.00)	0.02 (0.00)	0.00 (0.00)
80	0.11 (0.00)	0.08 (0.00)	0.07 (0.00)	0.05 (0.00)	0.05 (0.00)	0.03 (0.00)	0.03 (0.00)	-0.00 (0.00)
90	0.10 (0.00)	0.11 (0.00)	0.10 (0.00)	0.07 (0.00)	0.05 (0.00)	0.05 (0.00)	0.04 (0.00)	0.01 (0.00)
99	0.16 (0.01)	0.21 (0.01)	0.21 (0.01)	0.15 (0.01)	0.11 (0.01)	0.13 (0.01)	0.12 (0.01)	0.05 (0.01)
99.9	0.37 (0.03)	0.47 (0.03)	0.33 (0.04)	0.45 (0.07)	0.29 (0.02)	0.33 (0.03)	0.28 (0.03)	0.32 (0.05)

Note: Earnings percentiles (conditional on gender and age group) are based on average real earnings from year $t - 6$ to $t - 2$, while real earnings growth used to estimate stock return beta is from year $t - 1$ to t . Heteroscedasticity-robust standard errors are reported in parentheses.

Table B2: Stock Return Beta by Gender and Age: Construction

Earnings percentile	Male					Female				
	26–35	36–45	46–55	56–65	All	26–35	36–45	46–55	56–65	All
0	0.34 (0.02)	0.31 (0.02)	0.29 (0.02)	0.27 (0.03)	0.32 (0.01)	0.17 (0.07)	0.20 (0.05)	0.22 (0.04)	0.17 (0.05)	0.22 (0.03)
10	0.29 (0.01)	0.27 (0.01)	0.30 (0.01)	0.30 (0.02)	0.29 (0.01)	0.20 (0.05)	0.20 (0.04)	0.24 (0.03)	0.19 (0.04)	0.22 (0.02)
20	0.24 (0.01)	0.23 (0.01)	0.25 (0.01)	0.23 (0.02)	0.25 (0.01)	0.24 (0.04)	0.21 (0.03)	0.16 (0.03)	0.11 (0.04)	0.20 (0.02)
30	0.22 (0.01)	0.21 (0.01)	0.22 (0.01)	0.19 (0.02)	0.22 (0.01)	0.15 (0.04)	0.16 (0.03)	0.16 (0.03)	0.21 (0.04)	0.17 (0.02)
40	0.20 (0.01)	0.18 (0.01)	0.21 (0.01)	0.17 (0.02)	0.20 (0.01)	0.18 (0.03)	0.15 (0.03)	0.12 (0.02)	0.09 (0.03)	0.15 (0.01)
50	0.19 (0.01)	0.18 (0.01)	0.18 (0.01)	0.15 (0.01)	0.19 (0.00)	0.08 (0.03)	0.14 (0.02)	0.09 (0.02)	0.11 (0.03)	0.11 (0.01)
60	0.18 (0.01)	0.14 (0.01)	0.16 (0.01)	0.14 (0.01)	0.16 (0.00)	0.17 (0.03)	0.15 (0.02)	0.13 (0.02)	0.06 (0.03)	0.14 (0.01)
70	0.17 (0.01)	0.13 (0.01)	0.11 (0.01)	0.10 (0.02)	0.14 (0.00)	0.15 (0.02)	0.16 (0.02)	0.11 (0.02)	0.10 (0.04)	0.14 (0.01)
80	0.15 (0.01)	0.11 (0.01)	0.10 (0.01)	0.08 (0.02)	0.13 (0.00)	0.06 (0.03)	0.12 (0.02)	0.10 (0.02)	0.08 (0.04)	0.09 (0.01)
90	0.13 (0.01)	0.11 (0.01)	0.13 (0.01)	0.09 (0.02)	0.12 (0.01)	0.08 (0.03)	0.13 (0.03)	0.12 (0.03)	0.13 (0.04)	0.11 (0.02)
99	0.10 (0.04)	0.21 (0.06)	0.23 (0.06)	0.14 (0.08)	0.18 (0.03)	-0.03 (0.12)	0.36 (0.11)	0.41 (0.11)	0.22 (0.09)	0.27 (0.05)
99.9	-0.08 (0.20)	0.47 (0.24)	0.46 (0.37)	0.17 (0.43)	0.22 (0.14)	-0.27 (0.36)	0.82 (0.34)	0.15 (0.24)	0.71 (0.42)	0.37 (0.18)

Note: Earnings percentiles (conditional on gender and age group) are based on average real earnings from year $t - 6$ to $t - 2$, while real earnings growth used to estimate stock return beta is from year $t - 1$ to t . Heteroscedasticity-robust standard errors are reported in parentheses.

Table B3: Stock Return Beta by Gender and Age: Nondurable Manufacturing

Earnings percentile	Male					Female				
	26–35	36–45	46–55	56–65	All	26–35	36–45	46–55	56–65	All
0	0.24 (0.02)	0.20 (0.02)	0.22 (0.02)	0.14 (0.03)	0.22 (0.01)	0.23 (0.03)	0.21 (0.03)	0.18 (0.02)	0.14 (0.03)	0.21 (0.01)
10	0.24 (0.01)	0.16 (0.01)	0.16 (0.01)	0.12 (0.01)	0.19 (0.01)	0.18 (0.02)	0.17 (0.02)	0.15 (0.01)	0.11 (0.02)	0.17 (0.01)
20	0.19 (0.01)	0.14 (0.01)	0.11 (0.01)	0.11 (0.01)	0.15 (0.00)	0.18 (0.01)	0.13 (0.01)	0.11 (0.01)	0.11 (0.02)	0.14 (0.01)
30	0.15 (0.01)	0.12 (0.01)	0.10 (0.01)	0.06 (0.01)	0.12 (0.00)	0.14 (0.01)	0.13 (0.01)	0.10 (0.01)	0.08 (0.01)	0.12 (0.01)
40	0.13 (0.01)	0.09 (0.01)	0.09 (0.01)	0.04 (0.01)	0.10 (0.00)	0.13 (0.01)	0.10 (0.01)	0.09 (0.01)	0.06 (0.01)	0.11 (0.00)
50	0.13 (0.01)	0.08 (0.01)	0.08 (0.01)	0.04 (0.01)	0.09 (0.00)	0.11 (0.01)	0.08 (0.01)	0.09 (0.01)	0.04 (0.01)	0.09 (0.00)
60	0.10 (0.01)	0.07 (0.01)	0.08 (0.01)	0.03 (0.01)	0.08 (0.00)	0.11 (0.01)	0.08 (0.01)	0.07 (0.01)	0.01 (0.01)	0.08 (0.00)
70	0.10 (0.01)	0.06 (0.01)	0.06 (0.01)	0.03 (0.01)	0.07 (0.00)	0.05 (0.01)	0.06 (0.01)	0.05 (0.01)	0.02 (0.01)	0.05 (0.00)
80	0.08 (0.01)	0.05 (0.01)	0.05 (0.01)	0.01 (0.01)	0.06 (0.00)	0.07 (0.01)	0.02 (0.01)	0.03 (0.01)	-0.03 (0.02)	0.03 (0.01)
90	0.05 (0.01)	0.05 (0.01)	0.06 (0.01)	0.02 (0.02)	0.06 (0.00)	0.05 (0.01)	0.03 (0.01)	0.03 (0.01)	-0.01 (0.02)	0.03 (0.01)
99	0.03 (0.03)	0.12 (0.04)	0.09 (0.04)	0.13 (0.07)	0.10 (0.02)	0.06 (0.03)	0.11 (0.03)	0.04 (0.04)	0.01 (0.05)	0.06 (0.02)
99.9	0.29 (0.14)	0.12 (0.17)	0.11 (0.16)	0.71 (0.21)	0.32 (0.09)	0.12 (0.16)	0.06 (0.15)	0.25 (0.14)	0.09 (0.19)	0.14 (0.08)

Note: Earnings percentiles (conditional on gender and age group) are based on average real earnings from year $t - 6$ to $t - 2$, while real earnings growth used to estimate stock return beta is from year $t - 1$ to t . Heteroscedasticity-robust standard errors are reported in parentheses.

Table B4: Stock Return Beta by Gender and Age: Durable Manufacturing

Earnings percentile	Male					Female				
	26–35	36–45	46–55	56–65	All	26–35	36–45	46–55	56–65	All
0	0.36 (0.02)	0.39 (0.02)	0.37 (0.02)	0.32 (0.03)	0.39 (0.01)	0.38 (0.04)	0.31 (0.04)	0.29 (0.03)	0.26 (0.05)	0.35 (0.02)
10	0.31 (0.01)	0.34 (0.01)	0.31 (0.01)	0.28 (0.01)	0.33 (0.01)	0.31 (0.02)	0.32 (0.02)	0.32 (0.02)	0.30 (0.03)	0.33 (0.01)
20	0.33 (0.01)	0.27 (0.01)	0.26 (0.01)	0.26 (0.01)	0.29 (0.00)	0.32 (0.02)	0.30 (0.02)	0.30 (0.01)	0.24 (0.02)	0.32 (0.01)
30	0.29 (0.01)	0.23 (0.01)	0.21 (0.01)	0.21 (0.01)	0.24 (0.00)	0.29 (0.02)	0.26 (0.01)	0.23 (0.01)	0.25 (0.02)	0.27 (0.01)
40	0.28 (0.01)	0.19 (0.01)	0.19 (0.01)	0.17 (0.01)	0.22 (0.00)	0.27 (0.01)	0.21 (0.01)	0.18 (0.01)	0.19 (0.01)	0.22 (0.01)
50	0.25 (0.01)	0.17 (0.00)	0.17 (0.01)	0.13 (0.01)	0.20 (0.00)	0.23 (0.01)	0.18 (0.01)	0.18 (0.01)	0.16 (0.01)	0.19 (0.01)
60	0.24 (0.01)	0.16 (0.00)	0.15 (0.01)	0.11 (0.01)	0.18 (0.00)	0.21 (0.01)	0.18 (0.01)	0.16 (0.01)	0.12 (0.01)	0.18 (0.00)
70	0.21 (0.00)	0.14 (0.00)	0.13 (0.01)	0.09 (0.01)	0.16 (0.00)	0.18 (0.01)	0.14 (0.01)	0.13 (0.01)	0.09 (0.02)	0.15 (0.01)
80	0.20 (0.00)	0.14 (0.00)	0.12 (0.01)	0.08 (0.01)	0.15 (0.00)	0.18 (0.01)	0.13 (0.01)	0.13 (0.01)	0.09 (0.02)	0.14 (0.01)
90	0.16 (0.01)	0.14 (0.01)	0.15 (0.01)	0.13 (0.01)	0.15 (0.00)	0.15 (0.01)	0.13 (0.01)	0.13 (0.01)	0.10 (0.02)	0.13 (0.01)
99	0.15 (0.02)	0.25 (0.03)	0.31 (0.04)	0.06 (0.05)	0.21 (0.02)	0.01 (0.06)	0.17 (0.04)	0.17 (0.04)	-0.07 (0.08)	0.09 (0.03)
99.9	0.33 (0.11)	0.31 (0.14)	0.47 (0.16)	0.17 (0.19)	0.34 (0.07)	0.17 (0.20)	0.13 (0.14)	0.32 (0.16)	0.02 (0.17)	0.17 (0.09)

Note: Earnings percentiles (conditional on gender and age group) are based on average real earnings from year $t - 6$ to $t - 2$, while real earnings growth used to estimate stock return beta is from year $t - 1$ to t . Heteroscedasticity-robust standard errors are reported in parentheses.

Table B5: Stock Return Beta by Gender and Age: Transportation

Earnings percentile	Male					Female				
	26–35	36–45	46–55	56–65	All	26–35	36–45	46–55	56–65	All
0	0.26 (0.03)	0.21 (0.03)	0.19 (0.02)	0.10 (0.03)	0.21 (0.01)	0.37 (0.04)	0.29 (0.04)	0.20 (0.03)	0.09 (0.04)	0.28 (0.02)
10	0.18 (0.02)	0.17 (0.02)	0.17 (0.02)	0.10 (0.02)	0.18 (0.01)	0.22 (0.03)	0.19 (0.02)	0.09 (0.02)	0.14 (0.03)	0.18 (0.01)
20	0.20 (0.02)	0.11 (0.01)	0.06 (0.01)	0.05 (0.02)	0.12 (0.01)	0.21 (0.02)	0.12 (0.02)	0.09 (0.02)	0.06 (0.03)	0.15 (0.01)
30	0.16 (0.01)	0.04 (0.01)	-0.05 (0.01)	-0.03 (0.02)	0.05 (0.01)	0.18 (0.02)	0.14 (0.02)	0.12 (0.02)	0.09 (0.03)	0.15 (0.01)
40	0.13 (0.01)	-0.03 (0.01)	-0.22 (0.01)	-0.25 (0.02)	-0.09 (0.01)	0.15 (0.02)	0.10 (0.02)	0.06 (0.02)	0.01 (0.03)	0.11 (0.01)
50	0.11 (0.01)	-0.16 (0.01)	-0.34 (0.01)	-0.37 (0.01)	-0.22 (0.00)	0.08 (0.01)	0.02 (0.01)	-0.00 (0.01)	0.01 (0.03)	0.04 (0.01)
60	0.05 (0.01)	-0.25 (0.01)	-0.18 (0.01)	-0.22 (0.01)	-0.16 (0.00)	0.06 (0.01)	-0.05 (0.01)	-0.05 (0.01)	-0.08 (0.02)	-0.01 (0.01)
70	-0.01 (0.01)	-0.11 (0.00)	-0.07 (0.00)	-0.12 (0.01)	-0.06 (0.00)	0.03 (0.01)	-0.14 (0.01)	-0.28 (0.01)	-0.25 (0.02)	-0.16 (0.01)
80	-0.07 (0.01)	-0.00 (0.00)	0.01 (0.00)	-0.07 (0.01)	-0.01 (0.00)	-0.04 (0.01)	-0.22 (0.01)	-0.16 (0.01)	-0.17 (0.02)	-0.15 (0.00)
90	0.01 (0.00)	0.09 (0.01)	0.06 (0.01)	0.01 (0.02)	0.05 (0.00)	-0.06 (0.01)	-0.06 (0.01)	-0.05 (0.01)	-0.15 (0.02)	-0.05 (0.00)
99	0.12 (0.04)	0.20 (0.07)	0.32 (0.08)	0.58 (0.17)	0.24 (0.04)	0.07 (0.03)	0.19 (0.03)	0.16 (0.04)	-0.02 (0.08)	0.13 (0.02)
99.9	0.74 (0.25)	0.73 (0.31)	0.30 (0.36)	1.02 (0.41)	0.70 (0.17)	0.37 (0.12)	0.28 (0.19)	0.35 (0.18)	-0.22 (0.24)	0.28 (0.09)

Note: Earnings percentiles (conditional on gender and age group) are based on average real earnings from year $t - 6$ to $t - 2$, while real earnings growth used to estimate stock return beta is from year $t - 1$ to t . Heteroscedasticity-robust standard errors are reported in parentheses.

Table B6: Stock Return Beta by Gender and Age: Retail and Wholesale

Earnings percentile	Male					Female				
	26–35	36–45	46–55	56–65	All	26–35	36–45	46–55	56–65	All
0	0.25 (0.01)	0.24 (0.01)	0.17 (0.01)	0.14 (0.01)	0.22 (0.01)	0.21 (0.01)	0.21 (0.01)	0.14 (0.01)	0.12 (0.01)	0.19 (0.01)
10	0.20 (0.01)	0.16 (0.01)	0.12 (0.01)	0.08 (0.01)	0.16 (0.00)	0.18 (0.01)	0.14 (0.01)	0.10 (0.01)	0.08 (0.01)	0.14 (0.00)
20	0.18 (0.01)	0.12 (0.01)	0.10 (0.00)	0.07 (0.01)	0.13 (0.00)	0.14 (0.01)	0.12 (0.01)	0.09 (0.01)	0.06 (0.01)	0.11 (0.00)
30	0.16 (0.01)	0.11 (0.00)	0.09 (0.00)	0.06 (0.01)	0.12 (0.00)	0.12 (0.01)	0.10 (0.01)	0.07 (0.01)	0.05 (0.01)	0.09 (0.00)
40	0.14 (0.01)	0.09 (0.00)	0.08 (0.00)	0.05 (0.01)	0.10 (0.00)	0.11 (0.01)	0.08 (0.01)	0.07 (0.01)	0.04 (0.01)	0.08 (0.00)
50	0.12 (0.00)	0.09 (0.00)	0.08 (0.00)	0.06 (0.01)	0.10 (0.00)	0.10 (0.01)	0.08 (0.01)	0.07 (0.01)	0.04 (0.01)	0.08 (0.00)
60	0.11 (0.00)	0.09 (0.00)	0.08 (0.01)	0.05 (0.01)	0.10 (0.00)	0.09 (0.01)	0.06 (0.01)	0.06 (0.01)	0.03 (0.01)	0.07 (0.00)
70	0.10 (0.00)	0.09 (0.00)	0.08 (0.01)	0.04 (0.01)	0.09 (0.00)	0.08 (0.01)	0.07 (0.01)	0.07 (0.01)	0.02 (0.01)	0.07 (0.00)
80	0.09 (0.00)	0.09 (0.00)	0.09 (0.01)	0.08 (0.01)	0.10 (0.00)	0.09 (0.01)	0.08 (0.01)	0.06 (0.01)	0.04 (0.02)	0.07 (0.00)
90	0.11 (0.01)	0.12 (0.01)	0.12 (0.01)	0.10 (0.01)	0.12 (0.00)	0.08 (0.01)	0.07 (0.01)	0.09 (0.01)	0.04 (0.02)	0.07 (0.00)
99	0.11 (0.02)	0.14 (0.02)	0.19 (0.03)	0.09 (0.04)	0.14 (0.01)	0.10 (0.02)	0.18 (0.03)	0.14 (0.03)	0.03 (0.04)	0.13 (0.02)
99.9	0.10 (0.07)	0.28 (0.11)	-0.00 (0.20)	-0.15 (0.18)	0.09 (0.07)	0.10 (0.09)	0.39 (0.11)	0.07 (0.10)	0.40 (0.15)	0.23 (0.05)

Note: Earnings percentiles (conditional on gender and age group) are based on average real earnings from year $t - 6$ to $t - 2$, while real earnings growth used to estimate stock return beta is from year $t - 1$ to t . Heteroscedasticity-robust standard errors are reported in parentheses.

Table B7: Stock Return Beta by Gender and Age: Finance

Earnings percentile	Male					Female				
	26–35	36–45	46–55	56–65	All	26–35	36–45	46–55	56–65	All
0	0.22 (0.03)	0.15 (0.03)	0.11 (0.02)	0.01 (0.02)	0.14 (0.01)	0.26 (0.03)	0.13 (0.03)	0.10 (0.02)	-0.01 (0.02)	0.13 (0.01)
10	0.17 (0.02)	0.16 (0.02)	0.10 (0.02)	-0.01 (0.02)	0.13 (0.01)	0.16 (0.02)	0.12 (0.02)	0.12 (0.02)	0.02 (0.02)	0.13 (0.01)
20	0.16 (0.02)	0.10 (0.02)	0.09 (0.02)	0.02 (0.02)	0.12 (0.01)	0.16 (0.02)	0.13 (0.02)	0.08 (0.01)	0.02 (0.02)	0.12 (0.01)
30	0.14 (0.01)	0.10 (0.01)	0.09 (0.02)	0.01 (0.02)	0.11 (0.01)	0.14 (0.01)	0.11 (0.01)	0.06 (0.01)	0.01 (0.02)	0.11 (0.01)
40	0.15 (0.01)	0.10 (0.01)	0.07 (0.01)	0.03 (0.02)	0.11 (0.01)	0.09 (0.01)	0.05 (0.01)	0.05 (0.01)	0.00 (0.02)	0.07 (0.01)
50	0.13 (0.01)	0.08 (0.01)	0.06 (0.01)	0.01 (0.02)	0.09 (0.01)	0.07 (0.01)	0.05 (0.01)	0.04 (0.01)	0.00 (0.01)	0.05 (0.00)
60	0.14 (0.01)	0.10 (0.01)	0.07 (0.01)	-0.01 (0.02)	0.09 (0.01)	0.07 (0.01)	0.08 (0.01)	0.04 (0.01)	0.00 (0.01)	0.06 (0.00)
70	0.12 (0.01)	0.07 (0.01)	0.07 (0.01)	-0.04 (0.02)	0.08 (0.01)	0.06 (0.01)	0.06 (0.01)	0.04 (0.01)	-0.01 (0.01)	0.05 (0.00)
80	0.14 (0.01)	0.07 (0.01)	0.07 (0.01)	-0.01 (0.02)	0.09 (0.01)	0.09 (0.01)	0.05 (0.01)	0.04 (0.01)	-0.01 (0.01)	0.06 (0.00)
90	0.17 (0.01)	0.17 (0.01)	0.15 (0.01)	0.12 (0.02)	0.16 (0.00)	0.09 (0.01)	0.08 (0.01)	0.06 (0.01)	0.02 (0.02)	0.08 (0.00)
99	0.36 (0.02)	0.40 (0.02)	0.31 (0.03)	0.35 (0.05)	0.37 (0.01)	0.32 (0.03)	0.25 (0.03)	0.22 (0.03)	0.21 (0.05)	0.26 (0.02)
99.9	0.68 (0.07)	0.89 (0.07)	0.66 (0.09)	0.58 (0.15)	0.75 (0.04)	0.61 (0.07)	0.77 (0.10)	0.37 (0.08)	0.29 (0.13)	0.57 (0.05)

Note: Earnings percentiles (conditional on gender and age group) are based on average real earnings from year $t - 6$ to $t - 2$, while real earnings growth used to estimate stock return beta is from year $t - 1$ to t . Heteroscedasticity-robust standard errors are reported in parentheses.

Table B8: Stock Return Beta by Gender and Age: Services

Earnings percentile	Male					Female				
	26–35	36–45	46–55	56–65	All	26–35	36–45	46–55	56–65	All
0	0.34 (0.01)	0.34 (0.01)	0.31 (0.01)	0.17 (0.01)	0.32 (0.01)	0.25 (0.01)	0.19 (0.01)	0.17 (0.01)	0.12 (0.01)	0.20 (0.00)
10	0.26 (0.01)	0.24 (0.01)	0.20 (0.01)	0.12 (0.01)	0.22 (0.00)	0.19 (0.01)	0.18 (0.01)	0.14 (0.01)	0.08 (0.01)	0.16 (0.00)
20	0.22 (0.01)	0.17 (0.01)	0.15 (0.01)	0.10 (0.01)	0.18 (0.00)	0.16 (0.01)	0.15 (0.01)	0.10 (0.01)	0.08 (0.01)	0.14 (0.00)
30	0.19 (0.01)	0.14 (0.01)	0.12 (0.01)	0.08 (0.01)	0.15 (0.00)	0.13 (0.01)	0.12 (0.01)	0.10 (0.01)	0.05 (0.01)	0.11 (0.00)
40	0.17 (0.01)	0.12 (0.01)	0.10 (0.01)	0.05 (0.01)	0.13 (0.00)	0.11 (0.01)	0.10 (0.01)	0.08 (0.01)	0.04 (0.01)	0.09 (0.00)
50	0.16 (0.01)	0.11 (0.01)	0.07 (0.01)	0.03 (0.01)	0.11 (0.00)	0.10 (0.01)	0.08 (0.01)	0.07 (0.01)	0.02 (0.01)	0.08 (0.00)
60	0.13 (0.01)	0.10 (0.01)	0.08 (0.01)	0.02 (0.01)	0.10 (0.00)	0.08 (0.01)	0.07 (0.01)	0.04 (0.01)	0.03 (0.01)	0.06 (0.00)
70	0.13 (0.00)	0.10 (0.00)	0.07 (0.01)	0.02 (0.01)	0.10 (0.00)	0.08 (0.01)	0.07 (0.01)	0.03 (0.01)	0.01 (0.01)	0.06 (0.00)
80	0.12 (0.00)	0.10 (0.00)	0.07 (0.00)	0.01 (0.01)	0.09 (0.00)	0.07 (0.01)	0.05 (0.00)	0.03 (0.01)	-0.01 (0.01)	0.04 (0.00)
90	0.12 (0.00)	0.13 (0.00)	0.11 (0.01)	0.04 (0.01)	0.11 (0.00)	0.06 (0.01)	0.07 (0.00)	0.05 (0.01)	0.01 (0.01)	0.06 (0.00)
99	0.21 (0.02)	0.23 (0.02)	0.22 (0.02)	0.09 (0.03)	0.20 (0.01)	0.12 (0.02)	0.14 (0.02)	0.14 (0.02)	0.06 (0.03)	0.12 (0.01)
99.9	0.34 (0.09)	0.43 (0.08)	0.43 (0.09)	0.46 (0.13)	0.40 (0.05)	0.19 (0.05)	0.37 (0.08)	0.33 (0.07)	0.50 (0.10)	0.32 (0.04)

Note: Earnings percentiles (conditional on gender and age group) are based on average real earnings from year $t - 6$ to $t - 2$, while real earnings growth used to estimate stock return beta is from year $t - 1$ to t . Heteroscedasticity-robust standard errors are reported in parentheses.

Table B9: Stock Return Beta by Gender and Age: Health and Education

Earnings percentile	Male					Female				
	26–35	36–45	46–55	56–65	All	26–35	36–45	46–55	56–65	All
0	0.12 (0.02)	0.08 (0.02)	0.07 (0.01)	0.05 (0.02)	0.10 (0.01)	0.14 (0.01)	0.11 (0.01)	0.05 (0.01)	0.04 (0.01)	0.10 (0.00)
10	0.07 (0.01)	0.07 (0.01)	0.04 (0.01)	0.01 (0.01)	0.06 (0.01)	0.08 (0.01)	0.06 (0.01)	0.03 (0.00)	-0.01 (0.01)	0.05 (0.00)
20	0.07 (0.01)	0.04 (0.01)	0.04 (0.01)	0.01 (0.01)	0.05 (0.00)	0.04 (0.01)	0.04 (0.01)	0.02 (0.00)	-0.01 (0.01)	0.03 (0.00)
30	0.03 (0.01)	0.02 (0.01)	0.02 (0.01)	0.00 (0.01)	0.02 (0.00)	0.04 (0.01)	0.03 (0.01)	0.01 (0.00)	0.02 (0.01)	0.03 (0.00)
40	0.04 (0.01)	0.01 (0.01)	0.01 (0.01)	-0.02 (0.01)	0.01 (0.00)	0.03 (0.01)	0.02 (0.00)	0.01 (0.00)	0.00 (0.01)	0.02 (0.00)
50	0.03 (0.01)	0.01 (0.01)	0.01 (0.01)	-0.03 (0.01)	0.01 (0.00)	0.02 (0.01)	0.00 (0.00)	-0.00 (0.00)	-0.02 (0.01)	0.00 (0.00)
60	0.03 (0.01)	-0.01 (0.01)	-0.00 (0.01)	-0.02 (0.01)	0.01 (0.00)	0.00 (0.01)	-0.01 (0.00)	-0.00 (0.00)	-0.03 (0.01)	-0.00 (0.00)
70	0.01 (0.01)	-0.01 (0.01)	-0.01 (0.01)	-0.03 (0.01)	-0.00 (0.00)	-0.01 (0.00)	-0.00 (0.00)	0.00 (0.00)	-0.02 (0.01)	0.00 (0.00)
80	0.00 (0.01)	-0.03 (0.01)	-0.03 (0.01)	-0.01 (0.01)	-0.01 (0.00)	-0.02 (0.00)	-0.00 (0.00)	0.00 (0.00)	-0.01 (0.01)	0.00 (0.00)
90	-0.02 (0.01)	0.02 (0.01)	0.01 (0.01)	-0.02 (0.01)	0.01 (0.00)	-0.02 (0.01)	-0.01 (0.00)	-0.01 (0.00)	-0.02 (0.01)	-0.01 (0.00)
99	0.05 (0.03)	0.03 (0.01)	0.02 (0.01)	-0.05 (0.02)	0.02 (0.01)	-0.07 (0.03)	-0.03 (0.02)	0.01 (0.02)	-0.02 (0.03)	-0.02 (0.01)
99.9	0.13 (0.13)	0.13 (0.06)	-0.12 (0.08)	0.00 (0.13)	0.05 (0.04)	0.10 (0.10)	-0.01 (0.05)	0.04 (0.06)	-0.12 (0.08)	0.01 (0.03)

Note: Earnings percentiles (conditional on gender and age group) are based on average real earnings from year $t - 6$ to $t - 2$, while real earnings growth used to estimate stock return beta is from year $t - 1$ to t . Heteroscedasticity-robust standard errors are reported in parentheses.

Table B10: Stock Return Beta by Gender and Age: Other Industries

Earnings percentile	Male					Female				
	26–35	36–45	46–55	56–65	All	26–35	36–45	46–55	56–65	All
0	0.29 (0.01)	0.26 (0.00)	0.22 (0.00)	0.14 (0.01)	0.25 (0.00)	0.21 (0.01)	0.18 (0.01)	0.11 (0.01)	0.09 (0.01)	0.16 (0.00)
10	0.24 (0.00)	0.21 (0.00)	0.19 (0.00)	0.13 (0.00)	0.21 (0.00)	0.15 (0.00)	0.13 (0.00)	0.09 (0.00)	0.06 (0.00)	0.12 (0.00)
20	0.20 (0.00)	0.17 (0.00)	0.16 (0.00)	0.12 (0.00)	0.17 (0.00)	0.12 (0.00)	0.10 (0.00)	0.07 (0.00)	0.04 (0.00)	0.09 (0.00)
30	0.18 (0.00)	0.14 (0.00)	0.12 (0.00)	0.09 (0.00)	0.15 (0.00)	0.10 (0.00)	0.09 (0.00)	0.06 (0.00)	0.03 (0.00)	0.08 (0.00)
40	0.16 (0.00)	0.12 (0.00)	0.12 (0.00)	0.08 (0.00)	0.13 (0.00)	0.08 (0.00)	0.07 (0.00)	0.06 (0.00)	0.03 (0.00)	0.07 (0.00)
50	0.15 (0.00)	0.11 (0.00)	0.10 (0.00)	0.07 (0.00)	0.12 (0.00)	0.08 (0.00)	0.06 (0.00)	0.05 (0.00)	0.03 (0.00)	0.07 (0.00)
60	0.14 (0.00)	0.10 (0.00)	0.09 (0.00)	0.05 (0.00)	0.11 (0.00)	0.07 (0.00)	0.05 (0.00)	0.05 (0.00)	0.03 (0.00)	0.06 (0.00)
70	0.13 (0.00)	0.09 (0.00)	0.08 (0.00)	0.06 (0.01)	0.10 (0.00)	0.06 (0.00)	0.05 (0.00)	0.04 (0.00)	0.02 (0.00)	0.05 (0.00)
80	0.11 (0.00)	0.08 (0.00)	0.08 (0.00)	0.07 (0.01)	0.09 (0.00)	0.05 (0.00)	0.04 (0.00)	0.04 (0.00)	0.02 (0.00)	0.05 (0.00)
90	0.10 (0.00)	0.10 (0.00)	0.10 (0.00)	0.08 (0.01)	0.10 (0.00)	0.06 (0.00)	0.05 (0.00)	0.05 (0.00)	0.02 (0.00)	0.05 (0.00)
99	0.13 (0.01)	0.21 (0.01)	0.26 (0.01)	0.21 (0.03)	0.20 (0.01)	0.11 (0.01)	0.13 (0.01)	0.13 (0.01)	0.04 (0.02)	0.11 (0.01)
99.9	0.28 (0.04)	0.34 (0.05)	0.30 (0.06)	0.54 (0.12)	0.35 (0.03)	0.30 (0.03)	0.29 (0.04)	0.32 (0.04)	0.40 (0.11)	0.32 (0.03)

Note: Earnings percentiles (conditional on gender and age group) are based on average real earnings from year $t - 6$ to $t - 2$, while real earnings growth used to estimate stock return beta is from year $t - 1$ to t . Heteroscedasticity-robust standard errors are reported in parentheses.

Working Paper Series

A series of research studies on regional economic issues relating to the Seventh Federal Reserve District, and on financial and economic topics.

The Effects of the Massachusetts Health Reform on Financial Distress <i>Bhashkar Mazumder and Sarah Miller</i>	WP-14-01
Can Intangible Capital Explain Cyclical Movements in the Labor Wedge? <i>François Gourio and Leena Rudanko</i>	WP-14-02
Early Public Banks <i>William Roberds and François R. Velde</i>	WP-14-03
Mandatory Disclosure and Financial Contagion <i>Fernando Alvarez and Gadi Barlevy</i>	WP-14-04
The Stock of External Sovereign Debt: Can We Take the Data at ‘Face Value’? <i>Daniel A. Dias, Christine Richmond, and Mark L. J. Wright</i>	WP-14-05
Interpreting the <i>Pari Passu</i> Clause in Sovereign Bond Contracts: It’s All Hebrew (and Aramaic) to Me <i>Mark L. J. Wright</i>	WP-14-06
AIG in Hindsight <i>Robert McDonald and Anna Paulson</i>	WP-14-07
On the Structural Interpretation of the Smets-Wouters “Risk Premium” Shock <i>Jonas D.M. Fisher</i>	WP-14-08
Human Capital Risk, Contract Enforcement, and the Macroeconomy <i>Tom Krebs, Moritz Kuhn, and Mark L. J. Wright</i>	WP-14-09
Adverse Selection, Risk Sharing and Business Cycles <i>Marcelo Veracierto</i>	WP-14-10
Core and ‘Crust’: Consumer Prices and the Term Structure of Interest Rates <i>Andrea Ajello, Luca Benzoni, and Olena Chyruk</i>	WP-14-11
The Evolution of Comparative Advantage: Measurement and Implications <i>Andrei A. Levchenko and Jing Zhang</i>	WP-14-12
Saving Europe?: The Unpleasant Arithmetic of Fiscal Austerity in Integrated Economies <i>Enrique G. Mendoza, Linda L. Tesar, and Jing Zhang</i>	WP-14-13
Liquidity Traps and Monetary Policy: Managing a Credit Crunch <i>Francisco Buera and Juan Pablo Nicolini</i>	WP-14-14

Working Paper Series *(continued)*

Quantitative Easing in Joseph's Egypt with Keynesian Producers <i>Jeffrey R. Campbell</i>	WP-14-15
Constrained Discretion and Central Bank Transparency <i>Francesco Bianchi and Leonardo Melosi</i>	WP-14-16
Escaping the Great Recession <i>Francesco Bianchi and Leonardo Melosi</i>	WP-14-17
More on Middlemen: Equilibrium Entry and Efficiency in Intermediated Markets <i>Ed Nosal, Yuet-Yee Wong, and Randall Wright</i>	WP-14-18
Preventing Bank Runs <i>David Andolfatto, Ed Nosal, and Bruno Sultanum</i>	WP-14-19
The Impact of Chicago's Small High School Initiative <i>Lisa Barrow, Diane Whitmore Schanzenbach, and Amy Claessens</i>	WP-14-20
Credit Supply and the Housing Boom <i>Alejandro Justiniano, Giorgio E. Primiceri, and Andrea Tambalotti</i>	WP-14-21
The Effect of Vehicle Fuel Economy Standards on Technology Adoption <i>Thomas Klier and Joshua Linn</i>	WP-14-22
What Drives Bank Funding Spreads? <i>Thomas B. King and Kurt F. Lewis</i>	WP-14-23
Inflation Uncertainty and Disagreement in Bond Risk Premia <i>Stefania D'Amico and Athanasios Orphanides</i>	WP-14-24
Access to Refinancing and Mortgage Interest Rates: HARPing on the Importance of Competition <i>Gene Amromin and Caitlin Kearns</i>	WP-14-25
Private Takings <i>Alessandro Marchesiani and Ed Nosal</i>	WP-14-26
Momentum Trading, Return Chasing, and Predictable Crashes <i>Benjamin Chabot, Eric Ghysels, and Ravi Jagannathan</i>	WP-14-27
Early Life Environment and Racial Inequality in Education and Earnings in the United States <i>Kenneth Y. Chay, Jonathan Guryan, and Bhashkar Mazumder</i>	WP-14-28
Poor (Wo)man's Bootstrap <i>Bo E. Honoré and Luojia Hu</i>	WP-15-01
Revisiting the Role of Home Production in Life-Cycle Labor Supply <i>R. Jason Faberman</i>	WP-15-02

Working Paper Series *(continued)*

Risk Management for Monetary Policy Near the Zero Lower Bound <i>Charles Evans, Jonas Fisher, François Gourio, and Spencer Krane</i>	WP-15-03
Estimating the Intergenerational Elasticity and Rank Association in the US: Overcoming the Current Limitations of Tax Data <i>Bhashkar Mazumder</i>	WP-15-04
External and Public Debt Crises <i>Cristina Arellano, Andrew Atkeson, and Mark Wright</i>	WP-15-05
The Value and Risk of Human Capital <i>Luca Benzoni and Olena Chyruk</i>	WP-15-06
Simpler Bootstrap Estimation of the Asymptotic Variance of U-statistic Based Estimators <i>Bo E. Honoré and Lujia Hu</i>	WP-15-07
Bad Investments and Missed Opportunities? Postwar Capital Flows to Asia and Latin America <i>Lee E. Ohanian, Paulina Restrepo-Echavarria, and Mark L. J. Wright</i>	WP-15-08
Backtesting Systemic Risk Measures During Historical Bank Runs <i>Christian Brownlees, Ben Chabot, Eric Ghysels, and Christopher Kurz</i>	WP-15-09
What Does Anticipated Monetary Policy Do? <i>Stefania D'Amico and Thomas B. King</i>	WP-15-10
Firm Entry and Macroeconomic Dynamics: A State-level Analysis <i>François Gourio, Todd Messer, and Michael Siemer</i>	WP-16-01
Measuring Interest Rate Risk in the Life Insurance Sector: the U.S. and the U.K. <i>Daniel Hartley, Anna Paulson, and Richard J. Rosen</i>	WP-16-02
Allocating Effort and Talent in Professional Labor Markets <i>Gadi Barlevy and Derek Neal</i>	WP-16-03
The Life Insurance Industry and Systemic Risk: A Bond Market Perspective <i>Anna Paulson and Richard Rosen</i>	WP-16-04
Forecasting Economic Activity with Mixed Frequency Bayesian VARs <i>Scott A. Brave, R. Andrew Butters, and Alejandro Justiniano</i>	WP-16-05
Optimal Monetary Policy in an Open Emerging Market Economy <i>Tara Iyer</i>	WP-16-06
Forward Guidance and Macroeconomic Outcomes Since the Financial Crisis <i>Jeffrey R. Campbell, Jonas D. M. Fisher, Alejandro Justiniano, and Leonardo Melosi</i>	WP-16-07

Working Paper Series *(continued)*

Insurance in Human Capital Models with Limited Enforcement <i>Tom Krebs, Moritz Kuhn, and Mark Wright</i>	WP-16-08
Accounting for Central Neighborhood Change, 1980-2010 <i>Nathaniel Baum-Snow and Daniel Hartley</i>	WP-16-09
The Effect of the Patient Protection and Affordable Care Act Medicaid Expansions on Financial Wellbeing <i>Luojia Hu, Robert Kaestner, Bhashkar Mazumder, Sarah Miller, and Ashley Wong</i>	WP-16-10
The Interplay Between Financial Conditions and Monetary Policy Shock <i>Marco Bassetto, Luca Benzoni, and Trevor Serrao</i>	WP-16-11
Tax Credits and the Debt Position of US Households <i>Leslie McGranahan</i>	WP-16-12
The Global Diffusion of Ideas <i>Francisco J. Buera and Ezra Oberfield</i>	WP-16-13
Signaling Effects of Monetary Policy <i>Leonardo Melosi</i>	WP-16-14
Constrained Discretion and Central Bank Transparency <i>Francesco Bianchi and Leonardo Melosi</i>	WP-16-15
Escaping the Great Recession <i>Francesco Bianchi and Leonardo Melosi</i>	WP-16-16
The Role of Selective High Schools in Equalizing Educational Outcomes: Heterogeneous Effects by Neighborhood Socioeconomic Status <i>Lisa Barrow, Lauren Sartain, and Marisa de la Torre</i>	WP-16-17
Monetary Policy and Durable Goods <i>Robert B. Barsky, Christoph E. Boehm, Christopher L. House, and Miles S. Kimball</i>	WP-16-18
Interest Rates or Haircuts? Prices Versus Quantities in the Market for Collateralized Risky Loans <i>Robert Barsky, Theodore Bogusz, and Matthew Easton</i>	WP-16-19
Evidence on the within-industry agglomeration of R&D, production, and administrative occupations <i>Benjamin Goldman, Thomas Klier, and Thomas Walstrum</i>	WP-16-20
Expectation and Duration at the Effective Lower Bound <i>Thomas B. King</i>	WP-16-21

Working Paper Series *(continued)*

The Term Structure and Inflation Uncertainty <i>Tomas Breach, Stefania D'Amico, and Athanasios Orphanides</i>	WP-16-22
The Federal Reserve's Evolving Monetary Policy Implementation Framework: 1914-1923 <i>Benjamin Chabot</i>	WP-17-01
Neighborhood Choices, Neighborhood Effects and Housing Vouchers <i>Morris A. Davis, Jesse Gregory, Daniel A. Hartley, and Keron T. K. Tan</i>	WP-17-02
Wage Shocks and the Technological Substitution of Low-Wage Jobs <i>Daniel Aaronson and Brian J. Phelan</i>	WP-17-03
Worker Betas: Five Facts about Systematic Earnings Risk <i>Fatih Guvenen, Sam Schulhofer-Wohl, Jae Song, and Motohiro Yogo</i>	WP-17-04