

Rezaee, Mustafa Jahangoshai; Yousefi, Samuel; Hayati, Jamileh

Article

A multi-objective model for closed-loop supply chain optimization and efficient supplier selection in a competitive environment considering quantity discount policy

Journal of Industrial Engineering International

Provided in Cooperation with:

Islamic Azad University (IAU), Tehran

Suggested Citation: Rezaee, Mustafa Jahangoshai; Yousefi, Samuel; Hayati, Jamileh (2017) : A multi-objective model for closed-loop supply chain optimization and efficient supplier selection in a competitive environment considering quantity discount policy, Journal of Industrial Engineering International, ISSN 2251-712X, Springer, Heidelberg, Vol. 13, Iss. 2, pp. 199-213, <https://doi.org/10.1007/s40092-016-0178-2>

This Version is available at:

<https://hdl.handle.net/10419/172553>

Standard-Nutzungsbedingungen:

Die Dokumente auf EconStor dürfen zu eigenen wissenschaftlichen Zwecken und zum Privatgebrauch gespeichert und kopiert werden.

Sie dürfen die Dokumente nicht für öffentliche oder kommerzielle Zwecke vervielfältigen, öffentlich ausstellen, öffentlich zugänglich machen, vertreiben oder anderweitig nutzen.

Sofern die Verfasser die Dokumente unter Open-Content-Lizenzen (insbesondere CC-Lizenzen) zur Verfügung gestellt haben sollten, gelten abweichend von diesen Nutzungsbedingungen die in der dort genannten Lizenz gewährten Nutzungsrechte.

Terms of use:

Documents in EconStor may be saved and copied for your personal and scholarly purposes.

You are not to copy documents for public or commercial purposes, to exhibit the documents publicly, to make them publicly available on the internet, or to distribute or otherwise use the documents in public.

If the documents have been made available under an Open Content Licence (especially Creative Commons Licences), you may exercise further usage rights as specified in the indicated licence.



<http://creativecommons.org/licenses/by/4.0/>

A multi-objective model for closed-loop supply chain optimization and efficient supplier selection in a competitive environment considering quantity discount policy

Mustafa Jahangoshai Rezaee¹ · Samuel Yousefi¹ · Jamileh Hayati¹

Received: 26 April 2016 / Accepted: 11 November 2016 / Published online: 18 November 2016
© The Author(s) 2016. This article is published with open access at Springerlink.com

Abstract Supplier selection and allocation of optimal order quantity are two of the most important processes in closed-loop supply chain (CLSC) and reverse logistic (RL). So that providing high quality raw material is considered as a basic requirement for a manufacturer to produce popular products, as well as achieve more market shares. On the other hand, considering the existence of competitive environment, suppliers have to offer customers incentives like discounts and enhance the quality of their products in a competition with other manufacturers. Therefore, in this study, a model is presented for CLSC optimization, efficient supplier selection, as well as orders allocation considering quantity discount policy. It is modeled using multi-objective programming based on the integrated simultaneous data envelopment analysis–Nash bargaining game. In this study, maximizing profit and efficiency and minimizing defective and functions of delivery delay rate are taken into accounts. Beside supplier selection, the suggested model selects refurbishing sites, as well as determining the number of products and parts in each network's sector. The suggested model's solution is carried out using global criteria method. Furthermore, based on related studies, a numerical example is examined to validate it.

Keywords Closed-loop supply chain · Data envelopment analysis · Nash bargaining game · Supplier selection · Quantity discount policy

Introduction

Production based on the needs and customers' satisfaction, as well as material and products flow cost control are considered the main goals of manufacturers in different industries. Moreover, for a constant presence in the current competitive markets, it is particularly important to develop the relationships between suppliers and big manufacturers, efficiency control, maximize the value of returned items, and guarantee their systematic disposal, as well as increase environmental and/or legal concerns. Due to the overall mentioned issues, the concept of reverse logistic and closed-loop supply chain (CLSC) is significantly important (Francas and Minner 2009). In fact, the reverse logistic in the CLSC involves the precise transport, on time, and accurate transition of customer's usable and unusable products to the right unit through the supply chain. This type of supply chain requires an essential concern in environmental issues to enhance the performance of overall supply chain regarding consistency and business operational criteria (Das and Posinasetti 2015). During recent years, researchers have been interested in this process in CLSC optimization. For example, Lee et al. (2009) formulated a mathematical model for a general network of CLSC with a supplier defining optimal amount of process and disassembly centers. Shi et al. (2010) developed a mathematical model for optimizing regeneracy system profit by developing a solution approach based on Lagrangian and Gradient algorithm. Moreover, in another research, Shi et al. (2011) studied a CLSC network in

✉ Mustafa Jahangoshai Rezaee
m.jahangoshai@uut.ac.ir

Samuel Yousefi
s.yousefi@ine.uut.ac.ir

Jamileh Hayati
hayati.jamileh@ine.uut.ac.ir

¹ Faculty of Industrial Engineering, Urmia University of Technology, Urmia, Iran

which demand and returned items are uncertain. Roghanian and Pazhoheshfar (2014) suggested a potential model using integer linear programming for designing a multi-product reverse logistic network and estimating demand with the minimum cost in an uncertain environment applied by production and recycle centers. In another study, Kaya and Urek (2016) suggested a mixed integer nonlinear programming model along with innovative solutions for decision making in location, inventory control, and pricing problems in a CLSC. A review of studies on the subject reveals that most researchers were involved with formulation of CLSC networks using facility location while not many of them used supplier selection to configure an integrated CLSC. Accordingly, in their research, Amin and Zhang (2012) suggested a multi-objective integrated model for configuration and supplier selection in the CLSC. Afterwards, Ramezani et al. (2013) presented a stochastic multi-objective model for designing an onward three-level logistic network (including supplier, manufacturer, and distribution centers), as well as a bi-level reverse logistic network (including collector and disposal sites) considering profit optimization, quality level, and responding to customer. Bottani et al. (2015) examined a model with multi-objective optimization of CLSC asset management including a pallet supplier, manufacturer, and seven retails based on Economic Order Quantity (EOQ) policy. Zhang et al. (2015) proposed a dual channel closed-loop supply chain model that improves the sustainability of products. They also used a two-stage optimization technique and Nash bargaining game to evaluate the impact of retail services and the degree of customer loyalty to the retail channel on the pricing of players in the centralized and decentralized dual-channel supply chain.

In general, in a buyer–supplier system, inventory decision making is structured independently. Inventory control problems have been investigated in many studies (Taleizadeh et al. 2009, 2010a; Hsueh 2011). Suppliers sometimes offer special sale prices to decrease inventories of certain items (Kim and Hwang 1989; Taleizadeh et al. 2010b, 2012, 2013a; Duan et al. 2010). Therefore, the supplier sets its favorable policies based on the product's output and demand while the buyer may set its favorable policies to calculate order from supplier. Besides, in a competitive environment, one policy for suppliers to hold shares in the market is offering customers some incentives like discounts (Dahel 2003; Kokangul and Susuz 2009; Taleizadeh et al. 2013b; Taleizadeh and Pentico 2014). Because a mass purchase buyer would like to buy a larger amount of products with a lower unit price. A supplier offering quantity discounts is a common strategy to entice the buyers to purchase more (Monahan 1984; Taleizadeh et al. 2015). The main assumption underlying this policy is that competition is dynamic and the existing competition

features may change after a new competitor arrives. Kamali et al. (2011) developed a multi-objective mixed nonlinear integer programming model for the first time to coordinate the system of single buyer and multi-vendors' multi-period with certain demand under all-unit quantity discount policy for vendors. In the study, they used quantity discount policy per every unit of products for vendors as an incentive factor against the buyer. Accordingly, Hammami et al. (2014) suggested a stochastic model for supplier selection aiming at optimization of multi-period system's total cost with diverse buyers and quantity discount.

During last years, considering the increased necessity of availability assurance of an efficient and coordinated supply chain, supplier selection is as a basic component. Because, one of the most important relationships between the supply chain members is the coordination between the focal company and the suppliers (Yousefi et al. 2016). Studies on supplier selection are mostly focused on decision-making methods (Ho et al. 2010). In the CLSC, the relationship between manufacturer and supplier is set in a closed-loop while in reverse logistic, new parts are provided from external suppliers. The point is that, compared to open-loop supply chains (OLSC), criteria related to production performance and parts' features should be more important in CLSCs and reverse logistics. Because not only parts and supplier criteria should be considered, but also process criteria such as process ability and flexibility are essential. Furthermore, criteria related to environment and environmental protection is among reverse logistic and CLSC goals (Amin and Zhang 2012). Therefore, a close attention should be paid to process elements in supplier selection process of reverse logistic.

Although many researches have been carried out on the supplier selection in the open-loop supply chain, supplier selection in a closed-loop supply chain is a new issue. Govindan et al. (2015) studied 33 articles on green supplier selection examining different criteria and methods up to 2011. In their perspective, popular approaches in green supplier selection include Analytic Hierarchy Process (AHP), Analytic Network Process (ANP), and Data Envelopment Analysis (DEA). Most of these methods have been offered for open-loop supply chain networks. Gradually, regarding the increased existing needs, researchers started either to make use of integrated methods or offer complicated mathematical models. For example, Kannan et al. (2013) used an integrated multi-criteria decision-making and multi-objective programming method for supplier selection and allocation in a certain green supply chain. On the other hand, due to the management focus on the efficiency and previous performance improvement in a competitive market, integrated approaches based on DEA are particularly important. To explain the competitive

condition of market, an appropriate option is to use the game theory of cooperation, which has a considerable potential in management applications and supply chain performance improvement. Due to the ability of game theory to be integrated with most sciences, many studies have been executed in the field of designing and coordinating of supply chain's different levels including effective designing and supply chain management (Talluri and Baker 2002), coordination of single-vendor multi-buyer supply chain (Chan and Kingsman 2007; Leng and Parlar 2010), and optimal supplier selection, pricing and inventory policy making in supply chain (Huang et al. 2012).

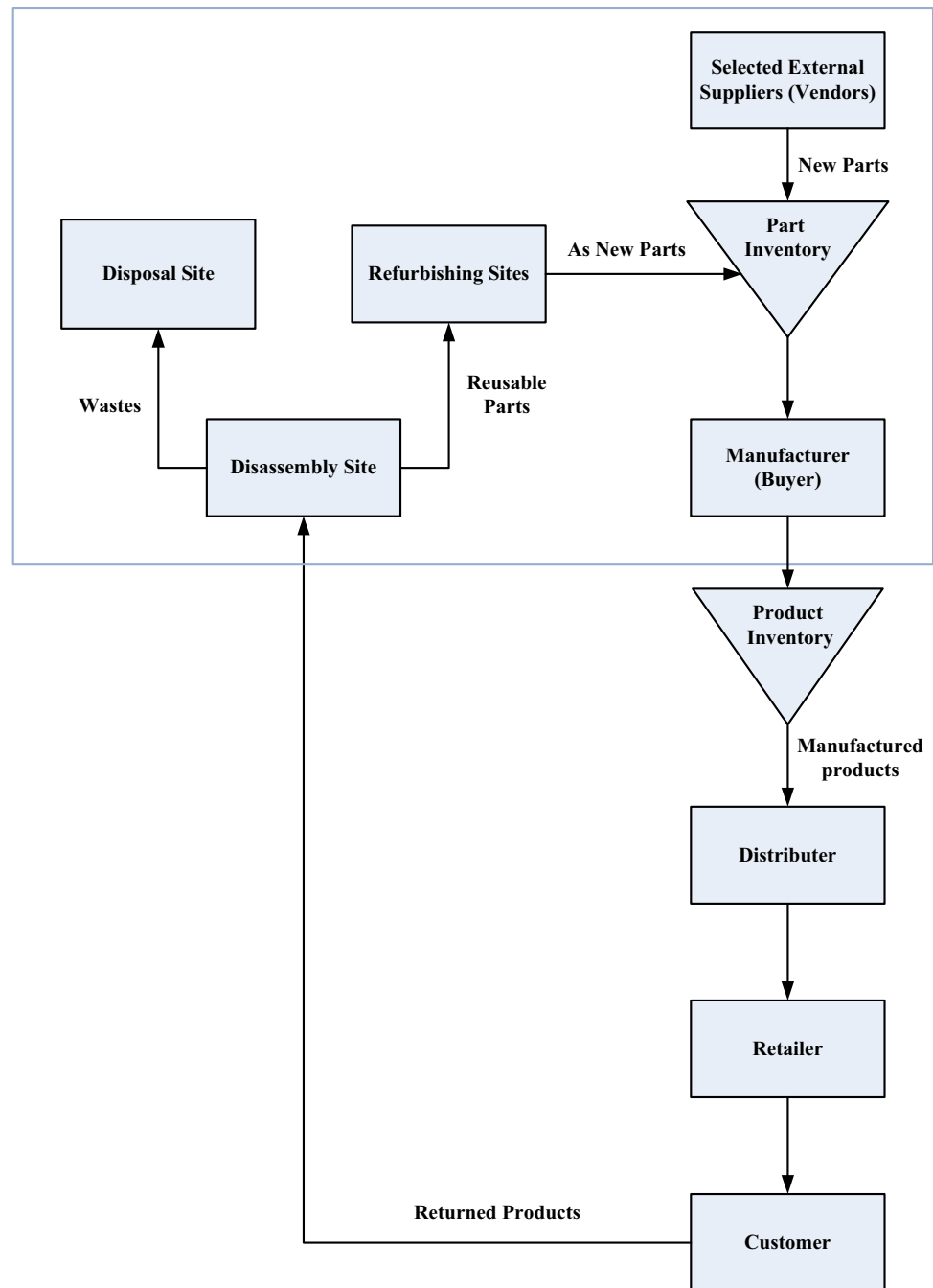
Therefore, from the previous studies, it can be concluded that for the first time, using multi-objective programming based on DEA–Nash bargaining game, the present study optimizes the CLSC with quantity discount policy and efficient supplier selection in a competitive environment. In fact, in this study, in addition to the maximization of profit, the concept of efficiency and competition, utilizing integrated DEA and Nash bargaining game approach has been added. In addition to synchronized evaluation and efficient supplier selection for different parts in a competitive environment, the proposed model makes decisions for set-up of refurbishing and disassembly sites. The general structure of the present study is as follows; the second section of the study is devoted to statement of the problem. The third section examines the proposed model. “[Solution approach](#)” prepares for an example to be tested in “[Analysis of the results](#)” in which computational results are presented and analyzed. Finally, in the last section, conclusion is presented along with suggestions for future more extended researches.

Statement of the problem

In this study, a CLSC network is studied that consist of disassembly and refurbishing sectors, as well as a sector for dispose of used products. Being under the control of manufacturer, this network's production is in accordance with demand. After the product was used by the customer and some of them were returned, they are sent to the disassembly site. Afterwards, the returned products are separated into reusable and waste parts. The waste parts are sent to the disposal site while the reusable parts are sent to the refurbishing site to be remade and used as new parts in the inventory. It should be noted that disassembly, disposal and refurbishing sites have limited capacity. Meanwhile, according to demand and refurbished parts, the manufacturer attempts to purchase new parts from external suppliers. In the following, the operational flows between members in a CLSC network are shown in Fig. 1.

On the other hand, as expressed, one of the most essential relationships between members of the supply chain is coordinating manufacturer (buyer) and suppliers in the supply chain, including the CLSC. So, with coordination among the members can be achieved an efficient supply chain. In the meantime, selecting suppliers based on the perspective of the buyer and allocating orders to their suppliers are one of the main issues to optimize the supply chain in various aspects such as reducing costs in the various policies available on the market that each member considers it. The aim of this study is modeling selection of suppliers in the CLSC considering various dimensions of the real world and using mathematical methods. So in this study, in addition to the maximization of profit and minimization of defective and delivery delay rates (using multi-objective programming), the concept of efficiency and competition, utilizing integrated DEA and Nash bargaining game approach has been added. Also, in this study for consideration the available policies between members of the chain, it is assumed that external suppliers—to increase their sales—perform the quantity discount policy. Also, the buyer to produce final products, to increase customer satisfaction, consider a policy based on controlling the supplier evaluation criteria such as safety and green packaging in the form of efficiency. Likewise, the external suppliers try to achieve the minimum efficiency interested by buyers per each needed part due to the competitive environment. This competition so that suppliers competing with others to sell their parts and improve the supply parts criteria from the perspective of the buyer's (green supply criteria) and on the other hand, buyer is trying to select a supplier that have necessary efficiency as green choice score and had a higher score in competition with others. Therefore, in this study in addition to purchase price, criteria such as efficiency (according to the CLSC criteria), defective, and delivery delay rates are of great importance in supplier selection and order allocation. Because, coordination and cooperation between the two resources of manufacturer namely refurbishing site and suppliers can affect the production rate and finally change the products cost. Moreover, lack of returned parts and new parts lead to an increase in the inventory maintenance costs. Therefore, another strategic decision is choosing the refurbishing site location. When there are several alternatives for parts refurbishing site, manufacturer prefers to select the one with the lowest cost. In the following, the proposed model based on the problem is presented so the results demonstrate selection of suppliers in the competitive environment, with selecting the refurbishing sites, and determine the number of products and parts in each sector of the CLSC network.

Fig. 1 The operational flows between members in a CLSC network



Proposed model

In this section, the CLSC is formulized using multi-objective programming model. The four-objective model is based on DEA–Nash bargaining game approach in which some efficient suppliers are selected within a competitive environment with considering quantity discount intervals, so that, the supply chain profit increases while delivery delay and defective rates decrease. Not only it can help to make decisions in supplier selection, as well as set-up of refurbishing and disassembly sites considering objectives

such as profit optimization, but also it determines the number of products and parts in each network's sector. In the following, assumptions, indexes, parameters, and the decision variables of the problem are presented in Table 1. Then, the problem is formulized as a mathematical four-objective model.

As mentioned above, the proposed model is a multi-objective programming model. The objective functions include total profit, defective rate, delivery delay rate, and efficiency in competitive environment that are investigated in the following.

Table 1 Assumptions, indexes, parameters, and decision variables of the proposed model

Assumptions

- The proposed model is assumed as a multi-product model
- The proposed model is a single-period model
- There's no inventory shortage
- The maximum production capacity for part i equals to the highest quantity of the latest discount interval
- The products demand is certain and defined
- The manufacturer (buyer) faces limited budget
- The offered discount by each supplier is applied to whole order volume
- There are no pre-determined suppliers, and there is a competition between suppliers on the efficiency of the part

Indexes

- j : Product set index ($j = 1, 2, \dots, J$)
- l : Refurbishing sites set index ($l = 1, 2, \dots, L$)
- n : Index for output set of each unit of decision making ($n = 1, 2, \dots, N$)
- d : Discount intervals index ($d = 1, 2, \dots, D_{ik}$)
- i : Part set index ($i = 1, 2, \dots, I$)
- k : Supplier set index ($k = 1, 2, \dots, K$)
- m : Index for input set of each unit of decision making ($m = 1, 2, \dots, M$)

Parameters

- p_i : Disassembly site maximum capacity for part i
- f_i : Disassembly cost for each unit of part i
- O_i : Optimal percentage of reusable of part i
- S_j : Sale price for unit of product j
- H_j : Optimal percentage of returned product j
- D_j : Demand for product j
- O_{il} : Refurbishing cost for each unit of part i in refurbishing site l
- g_{il} : Applied resources per each part i unit refurbishing in refurbishing site l
- q_{ij} : Required number of part i for production of each product j unit
- H_{ik} : Delivery delay rate of part i supplied by supplier k (a value between 0 and 1)
- u^*_{ikd} : An amount a little bit less than u_{ikd}
- I_{mki} : m input amount for supplier k for part i
- O_{nki} : n output amount for supplier k for part i
- W : Maximum purchase budget available to manufacturer
- ε : A very small positive number
- a_j : Applied resources for producing one unit of product j
- h_j : Disposal cost for each unit of part j
- e_i : Applied resources for one unit of part i disassembly
- E_i : Minimum acceptable amount of supplier efficiency for part i in the view of buyer (a value between 0 and 1)
- N_i : Maximum number of selectable suppliers
- C_j : Direct cost for producing one unit of product j
- d_j : Set-up cost of disassembly site for product j
- P_{il} : Set-up cost of refurbishing site l for part i
- G_{il} : of refurbishing site's optimal capacity for part i refurbishing
- S_{ik} : Defective rate for part i supplied by supplier k (a value between 0 and 1)
- u_{ikd} : Maximum d discount interval suggested by supplier k for part i
- r_{ikd} : Proposed price per each part i unit by supplier k in discount interval d [$u_{i,k,d-1}, u_{ikd}$)
- A : Maximum capacity of manufacturer factory
- C : Maximum number of refurbishing sites
- M : Very large number

Decision making variables

- V_i : Number of discarded part i
- R_j : Number of returned product j to be disassembled
- e_{ik} : Amount of supplier k th inefficiency for part i th
- q_{ikd} : Amount of part i purchase from supplier k in discount interval d
- y_{ikd} : Binary variable; if part i is bought from supplier k in interval d , it equals to 1, otherwise it's 0
- y_j : Binary variable to set-up disassembly site for product j
- U_{kin} : n output weight for supplier k for part i
- T_i : Number of part i obtained in disassembly site
- P_j : Number of produced product j
- q_{ik} : Number of part i purchased from external supplier k
- X_{il} : Number of part i to be renovated in refurbishing site l
- y_{ik} : Binary variable; if part i is ordered from supplier k it equals to 1, otherwise it's 0
- y_{il} : Binary variable to set-up refurbishing site l for part i
- V_{kin} : m input weight for supplier k for part i

Total profit

Objective function z_1 mentioned in Eq. (1) maximizes the total profit. The first section of this objective function indicates the profit resulted from product selling. The

second section indicates the cost of buying parts from suppliers considering quantity policy. So that, when it falls into a discount interval, the proposed price is exerted to all purchase quantity. The third section indicates cost of disassembly taken place in disassembly site, and it consisted

of disassembly cost of each unit multiply the number of parts to be disassembled. The cost of refurbishing and disposal sites is calculated in sections four and five. Furthermore, the sixth and seventh sections indicate the set-up cost of refurbishing and disassembly sites. It is to be noted that refurbishing sites are selected based on the maximum profit.

$$\begin{aligned} \text{Max } z_1 = & \sum_{j=1}^J P_j(S_j - C_j) - \sum_{i=1}^I \sum_{k=1}^K \sum_{d=1}^{D_{ik}} r_{ikd} q_{ikd} \\ & - \sum_{i=1}^I f_i T_i - \sum_{i=1}^I \sum_{l=1}^L O_{il} X_{il} - \sum_{i=1}^I h_i V_i \\ & - \sum_{l=1}^L \sum_{i=1}^L P_{il} y_{il} - \sum_{j=1}^J d_j y_j \end{aligned} \quad (1)$$

Defective rate

Objective function z_2 mentioned in Eq. (2) minimizes the defective rate of parts bought from selected external suppliers. So that, as much as possible, suppliers with less defective rates are selected.

$$\text{Min } z_2 = \sum_{i=1}^I \sum_{k=1}^K S_{ik} q_{ik} \quad (2)$$

Delivery delay rate

Objective function z_3 mentioned in Eq. (3) minimizes the delivery delay rate of parts bought from selected external suppliers. So that, as much as possible, suppliers with less delivery delay rates are selected.

$$\text{Min } z_3 = \sum_{i=1}^I \sum_{k=1}^K H_{ik} q_{ik} \quad (3)$$

Efficiency in competitive environment

In today's world, DEA is known as one of the most important methods for efficiency evaluation. In general, the efficiency is defined as the level and quality at which total interested goals are achieved (Färe et al. 1985). In 1957, Farrell (1957) suggested this method by measuring performance of one production unit. In his model, only one input and one output were considered. He failed to develop his model in multi-input/output conditions. Afterwards, other scientists like Lee et al. (2001) developed Farrell model proposing a new model that was able to measure efficiency considering multi-input/multi-output and was then named data envelopment analysis (DEA). This method in various fields such as energy systems (Rezaee

et al. 2012a), manufacturing systems (Bagheri et al. 2016; Rezaee et al. 2016a), banking systems (Shafiee et al. 2016) and healthcare systems (Rezaee et al. 2016b), have been used. In general, DEA popularity comes from its ability to examine complicated and often unclear relationships between several inputs and outputs. Principally, using mathematical models, efficiency of one unit is optimized over other units; that is, relative efficiency of each Decision Making Unit (DMU) is evaluated based on its inputs and outputs. However, it should be noted that the evaluated units should be quite equal, i.e., with quite similar inputs and outputs. In some cases, due to excess of decision-making units, too many linear programming models are required resulting in a time consuming solution process. In this regard, in their study of integrated locating-DEA models, Klimberg and Ratick (2008) proposed a model named Simultaneous Data Envelopment Analysis (SDEA) to remove the problem in 2008. Accordingly, in the present study, SDEA model is used to simultaneously calculate the efficiency of candidate suppliers.

On the other hand, this study made use of game theory to create a competitive environment between suppliers. This theory widely deals with multi-factor decision-making problems in the state of conflict and cooperation. Therefore, in this research, to demonstrate competitive state, Nash bargaining game is used which is known as a cooperative game. This game in various fields such as performance evaluation of health centers (Rezaee et al. 2012b), supplier evaluation (Wang and Li 2014), power plants evaluation (Rezaee 2015), network design (Avrachenkov et al. 2015), and comparison of operational and spatial efficiencies in urban transportation systems (Rezaee et al. 2016c), have been used. In Nash bargaining game, players (suppliers) try to find optimal solutions in a competition. In this regard, Nash (1950) suggested a bargaining solution known as Pareto optimization for bargaining game. Nash's solution in a bargaining state is an agreement through which individuals' utility multiplication is optimized. This model requires a feasible compact and convex set including some resultant vectors; so that, each individual result is larger than result obtained from single breakdown point. For traditional bargaining problem, Nash (1950) indicated that there is an exceptional solution called Nash solution that satisfies invariance quadruple conditions, Pareto optimization, independence of irrelevant alternative, and symmetry. This solution is attainable through solving the following optimization problem:

$$\text{Max}_{\vec{u} \in S, \vec{u} \geq \vec{b}} = \prod_{i=1}^I (u_i - b_i) \quad (4)$$

The function mentioned in Eq. (4) leads to Nash solution when players' utility u is attainable from the strategy



set S . Also, the resulted utilities should be larger and/or equal to the minimum utility of players b . So in this section, aiming at efficiency optimization, supplier selection is examined using DEA model. This model aims to find states in which buyer who need different parts to produce their final product, seek efficient suppliers. In a competitive environment, it is assumed that the buyer defines a minimum efficiency level of supplier selection per each part. This issue creates a competitive environment for suppliers to build better parts according to buyer’s criteria. Combining SDEA with Nash bargaining game, and considering the minimum required efficiency per each part (E_i), we have the following objective function for supplier selection in a competitive environment:

$$\text{Max } Z_4 = \sum_{i=1}^I \prod_{k=1}^K ((1 - e_{ik}) - E_i) \tag{5}$$

The above mentioned function seeks more efficient supplier selection for each part creating competition between suppliers. Constraints for this objective function, as well as for other objective functions are stated in the following.

$$q_{ik} = \sum_{d=1}^{D_{ik}} q_{ikd} \quad \forall i, k \tag{6}$$

$$q_{ikd} \leq u'_{ikd} y_{ikd} \quad \forall i, k, d \tag{7}$$

$$q_{ikd} \geq u_{ik,d-1} y_{ikd} \quad \forall i, k, d \tag{8}$$

$$\sum_{d=1}^{D_{ik}} y_{ikd} \leq 1 \quad \forall i, k \tag{9}$$

$$\sum_{d=1}^{D_{ik}} y_{ikd} = y_{ik} \quad \forall i, k \tag{10}$$

$$\sum_{j=1}^J q_{ij} P_j = \sum_{l=1}^L X_{il} + \sum_{k=1}^K q_{ik} \quad \forall i \tag{11}$$

$$\sum_{i=1}^I \sum_{k=1}^K \sum_{d=1}^{D_{ik}} r_{ikd} q_{ikd} \leq W \tag{12}$$

$$\sum_{l=1}^L X_{il} + V_i = T_i \quad \forall i \tag{13}$$

$$T_i = \sum_{j=1}^J q_{ij} R_j \quad \forall i \tag{14}$$

$$\sum_{j=1}^J a_j P_j \leq A \tag{15}$$

$$e_i T_i \leq P_i \quad \forall i \tag{16}$$

$$g_{il} X_{il} \leq G_{il} y_{il} \quad \forall i, l \tag{17}$$

$$P_j = D_j \quad \forall j \tag{18}$$

$$\sum_{i=1}^I X_{il} \leq O_i T_i \quad \forall i \tag{19}$$

$$V_i \leq (1 - O_i) T_i \quad \forall i \tag{20}$$

$$R_j = H_j P_j \quad \forall j \tag{21}$$

$$\sum_{l=1}^L \sum_{i=1}^I y_{il} \leq C \tag{22}$$

$$R_j \leq M y_j \quad \forall j \tag{23}$$

$$1 - e_{ik} \geq E_i \quad \forall i, k \tag{24}$$

$$\sum_{i=1}^I V_{kpi} I_{ikp} = e_{ik} \quad \forall i, k \tag{25}$$

$$\sum_{n=1}^N U_{kin} O_{nki} + e_{ik} = y_{ik} \quad \forall i, k \tag{26}$$

$$\sum_{n=1}^N U_{kin} O_{nzq} - \sum_{m=1}^M V_{kim} I_{mzq} \leq 0 \tag{27}$$

$$\forall k, \forall z (k \neq z), \forall i, \forall q (i \neq q)$$

$$U_{kin} \geq \varepsilon y_{ik} \quad \forall i, k, n \tag{28}$$

$$V_{kim} \geq \varepsilon y_{ik} \quad \forall i, k, m \tag{29}$$

$$U_{kin} O_{nki} \leq y_{ik} \quad \forall i, k, n \tag{30}$$

$$\sum_{k=1}^K y_{ik} = N_i \quad \forall i \tag{31}$$

$$u'_{ikd} = u_{ikd} - \varepsilon \quad \forall i, k, d \tag{32}$$

$$u_{ik0} = \varepsilon \quad \forall i, k \tag{33}$$

$$y_{il}, y_{ik}, y_{ij}, y_{ikd} \in \{0, 1\} \quad \forall i, j, k, l, d \tag{34}$$

$$P_j, R_j, q_{ik}, q_{ikd}, e_{ik}, T_i, V_i, X_{il}, U_{kin}, V_{kim} \geq 0 \quad \forall i, j, k, l, d \tag{35}$$

Equation (6) guarantees that the amount of part i ordered from supplier k equals to total part i order in discount intervals offered by supplier k . Equations (7) and (8) show that the amount part i ordered from supplier k falls into discount interval offered by supplier k . Equation (9) states that in the case of selection supplier k for part i , order should be accomplished in only one of offered discount intervals. Equation (10) indicates the relationship between y_{ik} and y_{ikd} . Equation (11) guarantees that the number of produced parts equals to the total number of refurbished and purchased parts. Equation (12) indicates that costs of buying different parts for each selected supplier should not exceed the purchase budget available to the buyer. Equation (13) states that the disassembled parts equals to reusable and waste parts. Equation (14) indicates the relationship

between parts and products. Equation (15) suggests that the amount of product manufacturing should be less than or equal to maximum production capacity. Equation (16) states that the amount of resources applied in part i for disassembly should be less than or equal to maximum capacity of disassembly site of part i . Equation (17) indicates that the applied resources for part i to be disassembled in set-up site l should be less than or equal to maximum capacity of refurbishing site l for part i . Equation (18) shows that the number of manufactured products should be equal to demand. Equations (19) and (20) indicate the optimal percentage of reusable and waste parts. Equation (21) implies the constraint of maximum percentage of returned parts. Equation (22) shows that the number of set-up refurbishing sites should be less than and/or equal to maximum number of launchable refurbishing sites. Equation (23) guarantees that if there is j returned production, disassembly site for production j is to be set up. Constraint (24) indicates that per each part those suppliers are selected who have the

Solution approach

It is obvious that the above mentioned objective functions are in conflict with each other; and optimization according to a certain objective function in a certain time, leads to deviation from optimal solutions of other objective functions. Therefore, to optimize all four objective functions mentioned above, a method is required through which all objectives are optimized simultaneously (Miettinen 1999). In such circumstances, the global criteria method works toward finding an agreement between all objectives, so that it minimizes the total relative deviance of all objectives from its optimal values (z_i^*). This section aims to change a multi-objective function into a single-objective function changing the objective functions of the main model in different intervals. Thus, to avoid the effect of these changes on the results, the global criteria method is used as a normalization method. Consequently, using global criteria method, the final objective function is expressed as Eq. (36):

$$\begin{aligned} \text{Min } Z = w_1 \times & \frac{z_1^* - \left[\sum_{j=1}^J P_j(S_j - C_j) - \sum_{i=1}^I \sum_{k=1}^K \sum_{d=1}^{D_{ik}} r_{ikd} q_{ikd} - \sum_{i=1}^I f_i T_i - \sum_{i=1}^I \sum_{l=1}^L O_{il} X_{il} - \sum_{i=1}^I h_i V_i - \sum_{l=1}^L \sum_{i=1}^I P_{il} y_{il} - \sum_{j=1}^J d_j y_j \right]}{z_1^*} \\ & + w_2 \times \frac{\left[\sum_{j=1}^J \sum_{k=1}^K S_{jk} q_{jk} \right] - z_2^*}{z_2^*} + w_3 \times \frac{\left[\sum_{j=1}^J \sum_{k=1}^K H_{jk} q_{jk} \right] - z_3^*}{z_3^*} + w_4 \times \frac{z_4^* - \left[\sum_{i=1}^I \prod_{k=1}^K ((1 - e_{ik}) - E_i) \right]}{z_4^*} \end{aligned} \quad (36)$$

minimum efficiency required by that part. Equation (25) guarantees that the harmonized total input of each decision-making units (a combination of suppliers and parts) equals to variable zero and one. This equation should be considered in all decision-making units. Equation (26) implies the amount of inefficiency for harmonized total output of each decision-making unit, as well. This equation should be considered in all decision-making units. Equation (27) indicates that the harmonized total output should be less than its correspondent harmonized total input. Equations (28) and (29) indicate that input and output weights should be a non-negative value. Constraint (30) guarantees that the harmonized output for each decision making unit, as well as for each output type is less than and/or equal to 1. Equation (31) indicates the maximum number of selected suppliers per each part. Equations (32) and (33) show the quantity constraints for discount intervals; and Eqs. (34) and (35) indicate the sign limitation of decision-making variables.

As shown in Eq. (36), to consider decision maker's idea, different weights may be given to the objective functions; so that w_i is i th objective functions' weight according to decision maker's idea and equation $\sum_{i=1}^4 w_i = 1$ is established. Using this approach, if management gave the function a larger weight, in the state of simultaneous optimization, the result would be closer to the interested function's optimal solution. In Eq. (36), first, the optimal amount of each objective function (z_i^*) is calculated independently considering all constraints of problem, and a new function is created as expressed in the equation.

Analysis of the results

In this section, an illustrative example is considered to validate the proposed model. The followings are assumed: there are five candidate suppliers for five parts required by the manufacturer in a CLSC. The manufacturer is going to

select at the most three efficient suppliers according to managerial criteria; so that the maximum capacity of manufacturing factory and the available budget are, respectively, 200,000 and 750,000 monetary unit. Further, it is assumed that the maximum number of refurbishing sites is five sites; the maximum percentage of reusable parts and maximum percentage of returned products are equal to 0.5. Other data needed for CLSC optimization are presented in Tables 2, 3, 4, 5 and 6 according to Amin and Zhang (2012). Moreover, needed data on discount intervals and prices suggested by suppliers are simulated and shown in Table 7.

Moreover, for efficiency evaluation, an input and two outputs were assigned to each candidate supplier, as well as per each part. In the example, product transportation cost was defined as input I_{lki} (minimum of which is desirable) while product safety and green packaging was defined as

Table 2 Refurbishing sites' parameters

Parameter	i/l	1	2	3	4	5
O_{il}	1	3	2	3	3	4
	2	4	4	3	2	4
	3	4	3	4	3	4
	4	4	3	3	4	3
	5	3	3	4	4	4
P_{il}	1	4	5	4	4	4
	2	4	4	4	4	5
	3	5	5	4	5	5
	4	4	5	5	5	5
	5	4	4	4	5	4
g_{il}	1	1	1	1	1	1
	2	1	1	1	1	1
	3	1	1	1	1	1
	4	1	1	1	1	1
	5	1	1	1	1	1
G_{il}	1	9000	10,000	8500	10,000	9500
	2	10,000	9000	8500	10,000	9500
	3	9000	10,000	8000	9500	10,000
	4	8500	9000	10,000	9500	8500
	5	9000	9500	10,000	9000	8500

Table 3 Product's parameters

j	1	2	3	4	5
S_j	150	200	220	230	250
a_j	1	2	2	2	3
C_j	30	35	30	30	35
D_j	1400	1500	1400	1400	1500
d_j	5	5	4	5	4

Table 4 Amount of part i used in each j product unit (q_{ij})

i/j	1	2	3	4	5
1	2	1	3	1	3
2	1	3	2	1	2
3	3	2	1	4	1
4	2	1	2	3	4
5	1	3	2	2	3

Table 5 Part's parameters

i	1	2	3	4	5
P_i	9000	10,000	8500	10,000	9500
f_i	4	5.5	2.5	3.5	3.5
h_i	3	4	4	4	3
e_i	1	1	1	1	1
E_i	0.50	0.55	0.60	0.55	0.50

Table 6 Parameters of suppliers and manufactured parts

Parameter	i/k	1	2	3	4	5
S_{ik}	1	0.10	0.05	0.10	0.07	0.11
	2	0.05	0.05	0.10	0.10	0.05
	3	0.10	0.05	0.10	0.05	0.07
	4	0.05	0.10	0.07	0.10	0.60
	5	0.10	0.11	0.05	0.10	0.10
H_{ik}	1	0.10	0.08	0.06	0.10	0.11
	2	0.05	0.10	0.06	0.06	0.06
	3	0.09	0.07	0.10	0.10	0.10
	4	0.06	0.05	0.06	0.11	0.07
	5	0.09	0.09	0.08	0.07	0.09

outputs O_{1ki} and O_{2ki} (maximum of which is desirable). Values of these criteria are provided in Table 8.

In the first step, independent optimization of objective functions was performed using Lingo 14.0 software. Values for objective functions are highlighted in Table 9. These values were used as input for global criteria method so that all four functions were optimized simultaneously. Now, assuming that the decision maker has different ideas about weighting the four functions, global criteria method was performed. New values of the four functions in different weight status are presented in Table 9.

The last four columns of Table 9 show the objective functions' independent optimization. Considering objective functions' values during the simultaneous optimization for each weight set, it can be found that these values get away from their independent values, i.e., 368,102, 3114.58, 3758.375, and 0.09355841. The reason is in simultaneous optimization that indicates the effect of each objective function on CLSC optimization, supplier selection, and

Table 7 Quantity discount intervals

<i>i</i>	<i>k</i>	<i>d</i>	<i>r_{ikd}</i>	<i>i</i>	<i>k</i>	<i>d</i>	<i>r_{ikd}</i>
1	1	$0 < q < 2100$	14	3	4	$0 < q < 2500$	15
		$2100 \leq q < 4200$	13			$2500 \leq q < 5000$	14
		$4200 \leq q \leq 6500$	12			$5000 \leq q \leq 7500$	13
	2	$0 < q < 2300$	14	5	$0 < q < 2300$	14	
		$2300 \leq q < 4600$	13		$2300 \leq q < 4600$	13	
		$4600 \leq q \leq 7000$	12		$4600 \leq q \leq 7000$	12	
	3	$0 < q < 4500$	18	4	1	$0 < q < 3600$	15
		$4500 \leq q < 9000$	17			$3600 \leq q < 7200$	14
		$9000 \leq q \leq 13,500$	16			$7200 \leq q \leq 11,000$	13
	4	$0 < q < 1800$	12	2	$0 < q < 2000$	14	
		$1800 \leq q < 3600$	11		$2000 \leq q < 4000$	13	
		$3600 \leq q \leq 5500$	10		$4000 \leq q \leq 6000$	12	
	5	$0 < q < 2800$	19	3	$0 < q < 4600$	18	
		$2800 \leq q < 5600$	18		$4600 \leq q < 9200$	17	
		$5600 \leq q \leq 8500$	17		$9200 \leq q \leq 14,000$	16	
2	1	$0 < q < 2100$	16	4	$0 < q < 2600$	19	
		$2100 \leq q < 4200$	15		$2600 \leq q < 5200$	18	
		$4200 \leq q \leq 6500$	14		$5200 \leq q \leq 8000$	17	
	2	$0 < q < 4600$	21	5	$0 < q < 4500$	14	
		$4600 \leq q < 9200$	20		$4500 \leq q < 9000$	13	
		$9200 \leq q \leq 14,000$	19		$9000 \leq q \leq 13,500$	12	
	3	$0 < q < 1800$	14	5	1	$0 < q < 3600$	18
		$1800 \leq q < 3600$	13			$3600 \leq q < 7200$	17
		$3600 \leq q \leq 5500$	12			$7200 \leq q \leq 11,000$	16
	4	$0 < q < 2100$	16	2	$0 < q < 4500$	15	
		$2100 \leq q < 4200$	15		$4500 \leq q < 9000$	14	
		$4200 \leq q \leq 6500$	14		$9000 \leq q \leq 13,500$	13	
	5	$0 < q < 4300$	14	3	$0 < q < 3000$	14	
		$4300 \leq q < 8600$	13		$3000 \leq q < 6000$	13	
		$8600 \leq q \leq 13,000$	12		$6000 \leq q \leq 9000$	12	
3	1	$0 < q < 4800$	13	4	$0 < q < 4800$	13	
		$4800 \leq q < 9600$	12		$4800 \leq q < 9600$	12	
		$9600 \leq q \leq 14,500$	11		$9600 \leq q \leq 14,500$	11	
	2	$0 < q < 3300$	23	5	$0 < q < 3800$	15	
		$3300 \leq q < 6600$	22		$3800 \leq q < 7600$	14	
		$6600 \leq q \leq 10,000$	21		$7600 \leq q \leq 11,500$	13	
	3	$0 < q < 4600$	20				
		$4600 \leq q < 9200$	19				
		$9200 \leq q \leq 14,000$	18				

order allocation to suppliers in a competitive environment. Figures 2, 3 and 4 show efficiency function performance compared with other functions in a competitive environment. It should be noted that the horizontal graph of each three graphs indicates the efficiency function’s value for each different weight set in a competitive environment with ascending arrangement. According to Fig. 2, it can be found that the high efficiency function values mean lower

Table 8 Input and output values for each decision making unit

Evaluation criteria	<i>k</i>	1	2	3	4	5
Transportation cost (<i>I_{1ki}</i>)	<i>I_{1k1}</i>	90	98	84	84	89
	<i>I_{1k2}</i>	87	93	96	98	96
	<i>I_{1k3}</i>	157	181	193	186	177
	<i>I_{1k4}</i>	183	174	187	192	193
	<i>I_{1k5}</i>	238	219	232	234	243
Safety (<i>O_{1ki}</i>)	<i>O_{1k1}</i>	336	348	334	335	345
	<i>O_{1k2}</i>	326	327	324	342	348
	<i>O_{1k2}</i>	365	358	378	398	396
	<i>O_{1k2}</i>	399	352	393	372	353
	<i>O_{1k2}</i>	445	432	421	446	422
Green packaging (<i>O_{2ki}</i>)	<i>O_{2k1}</i>	43	49	47	46	48
	<i>O_{2k2}</i>	43	50	44	48	44
	<i>O_{2k2}</i>	75	64	75	65	71
	<i>O_{2k2}</i>	73	63	73	73	69
	<i>O_{2k2}</i>	99	100	93	98	100

organization profit. It is natural due this fact that, considering the criteria, highly efficient suppliers require more costs to be paid behalf of the organization leading to a lower profit. Figure 3 shows the efficiency objective function compared to defective rate. Considering the objective function of defective rate is minimization type, low values of defective rate lie in the beginning section of graph along with low efficiency values. That means the considered criteria are in conflict with defective rate and that indicate the importance of considering efficiency function. Moreover, in Fig. 4, except results S03, S11, and S13, other results lie in an identical interval. In this regard, it cannot be concluded that there is an especial relationship between efficiency function and delivery delay rate. Of course, these analyses are special to the example examined in this study while different analysis types are possible for different data. In the following, the amounts of allocated order to suppliers per each part in independent and simultaneous optimization are shown in Table 10.

Comparing the amount of allocated orders in objective function’s independent and simultaneous optimization, it can be concluded that all functions are effective in supplier selection and order allocation processes, and the manufacturer (buyer)-suppliers coordination is fulfilled efficiently according to manufacturer quantity discount policy. Considering the applied approach, it can be claimed that giving more importance and weight to a certain function moves the resulted answer toward that function’s optimal value. More analysis on the findings indicates that those suppliers with acceptable supply chain’s profit maximization, as well as acceptable efficiency, defective rate, and delivery delay are selected. Indeed, Table 10 shows that function’s simultaneous optimization causes an effect on

Table 9 Independent and simultaneous optimization of objective functions for different weight sets

No.	$Z_{(w1,w2,w3,w4)}$	Z_1	Z_2	Z_3	Z_4
S01	$Z_{(1,0,0,0)}$	368,102.0	4297.230	4371.480	0.04967278
S02	$Z_{(0,1,0,0)}$	249,105.0	3114.580	4304.020	0.03451588
S03	$Z_{(0,0,1,0)}$	257,755.0	4972.812	3758.375	0.05380110
S04	$Z_{(0,0,0,1)}$	257,355.0	4768.120	4560.873	0.09355841
S05	$Z_{(0.75,0.25,0,0)}$	336,326.0	3394.030	4579.220	0.03445624
S06	$Z_{(0.75,0,0.25,0)}$	368,102.0	4297.230	4371.480	0.04716222
S07	$Z_{(0.75,0,0,0.25)}$	357,104.0	4497.250	4385.500	0.06544845
S08	$Z_{(0.25,0.75,0,0)}$	315,804.0	3206.580	4435.270	0.03451588
S09	$Z_{(0,0.75,0.25,0)}$	256,706.0	3114.580	4304.020	0.03451588
S10	$Z_{(0,0.75,0,0.25)}$	257,678.0	3288.196	4456.389	0.06066799
S11	$Z_{(0.25,0,0.75,0)}$	294,254.0	5066.250	3795.750	0.05773662
S12	$Z_{(0,0.25,0.75,0)}$	253,430.0	3200.850	4254.993	0.01958798
S13	$Z_{(0,0,0.75,0.25)}$	261,056.0	4886.250	3793.010	0.06538074
S14	$Z_{(0.25,0,0,0.75)}$	282,972.0	4776.250	4506.050	0.09355766
S15	$Z_{(0,0.25,0,0.75)}$	250,155.0	4464.416	4495.820	0.09355756
S16	$Z_{(0,0,0.25,0.75)}$	246,421.0	4667.500	4455.830	0.09355755
S17	$Z_{(0.5,0.5,0,0)}$	330,755.0	3316.570	4545.260	0.02281606
S18	$Z_{(0.5,0,0.5,0)}$	360,902.0	4456.230	4183.980	0.04153408
S19	$Z_{(0.5,0,0,0.5)}$	325,904.0	4705.078	4409.531	0.08762127
S20	$Z_{(0,0.5,0.5,0)}$	257,030.0	3114.580	4304.020	0.02380733
S21	$Z_{(0,0.5,0,0.5)}$	257,823.0	3393.170	4443.520	0.06632999
S22	$Z_{(0,0,0.5,0.5)}$	261,295.0	4667.500	4455.830	0.09355745
S23	$Z_{(0.5,0.25,0.25,0)}$	330,755.0	3316.570	4545.260	0.03451588
S24	$Z_{(0.5,0.25,0,0.25)}$	336,101.0	3977.310	4495.510	0.06785256
S25	$Z_{(0.5,0,0.25,0.25)}$	349,904.0	4556.250	4158.000	0.07074653
S26	$Z_{(0.25,0.5,0.25,0)}$	315,804.0	3206.580	4435.270	0.03451365
S27	$Z_{(0.25,0.5,0,0.25)}$	291,372.0	3400.850	4455.530	0.06633212
S28	$Z_{(0,0.5,0.25,0.25)}$	257,353.0	3364.484	4410.701	0.06596480
S29	$Z_{(0.25,0.25,0.5,0)}$	317,780.0	3286.820	4395.510	0.02425277
S30	$Z_{(0.25,0,0.5,0.25)}$	349,904.0	4556.250	4158.000	0.07074652
S31	$Z_{(0,0.25,0.5,0.25)}$	259,917.0	3896.400	4130.730	0.06758118
S32	$Z_{(0.25,0.25,0,0.5)}$	277,197.0	4487.500	4503.800	0.09355754
S33	$Z_{(0.25,0,0.25,0.5)}$	279,697.0	4676.250	4466.050	0.09355753
S34	$Z_{(0,0.25,0.25,0.5)}$	249,430.0	4464.416	4495.820	0.09355745
S35	$Z_{(0.25,0.25,0.25,0.25)}$	314,123.0	3917.550	4345.760	0.07561865

each function’s independent results leading to changes in items such as number of selected suppliers per each part, list of suppliers per each part, amount of allocated orders to selected suppliers per each part, and order discount interval selection. Other results obtained from simultaneous function optimization in a CLSC are presented in Table 11.

Reviewing Tables 10 and 11, it can be claimed that amounts of parts ordered from suppliers, amount of waste and disassembly parts, as well as amounts of production and returned items during decision making period are determined in such a way that the current costs are minimized, while model limitations such as the number of maximum supplier selection per each part, maximum level of suppliers’ discount interval (supplier’s capacity),

buyer’s budget, and other constraints are not violated in a competitive environment. Furthermore, Table 11 states that considering the presence of returned items, disassembly sites are settled for all products to maximize chain’s profit. Also, refurbishing sites 1, 2, and 4 are settled for refurbishing products so that part troubleshooting is done with the minimum site number avoiding extra set-up costs.

Conclusion

During recent years, reverse logistic and CLSC have been taken more serious due to increased environmental concerns, stronger laws, as well as its excessive trading

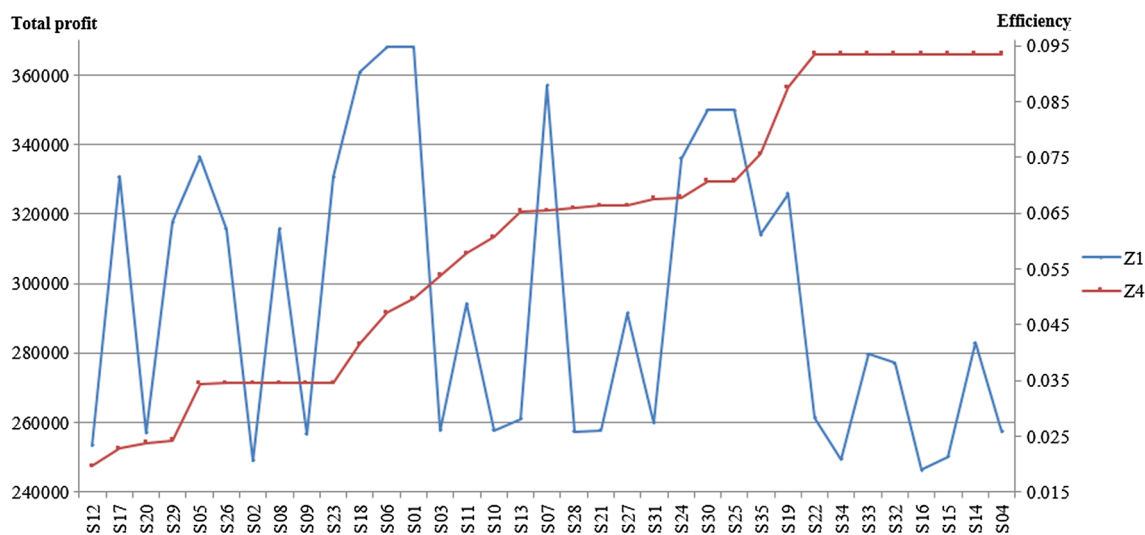


Fig. 2 Checking simultaneous performance of total profit and efficiency functions in different weight sets

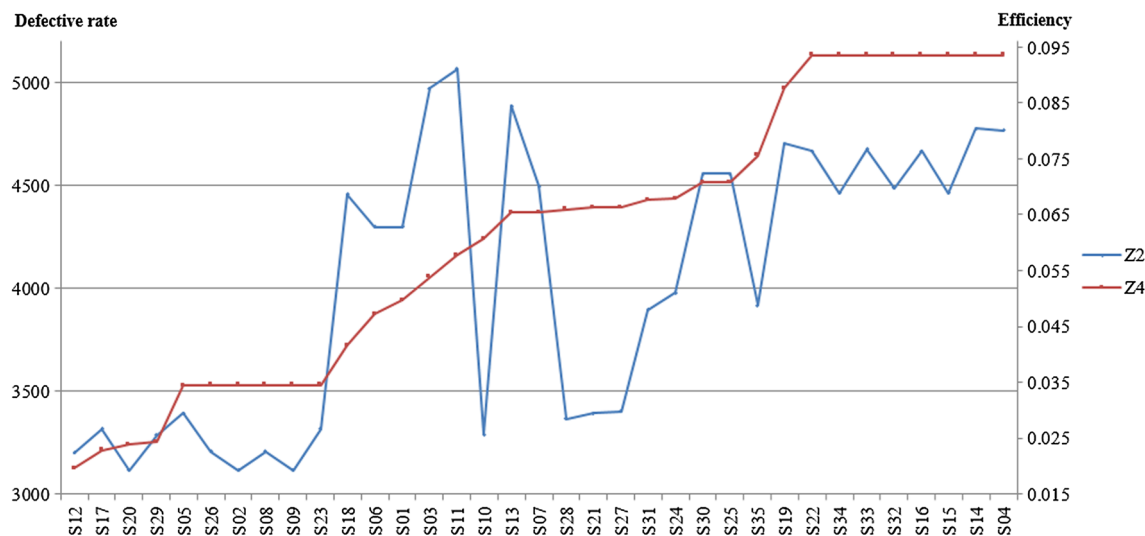


Fig. 3 Checking simultaneous performance of defective rate and efficiency functions in different weight sets

profit. In addition, supplier selection and optimal order allocation are the most important process in a close-looped supply chain. So that in the real world, in the competitive environment, suppliers provide incentives to the buyer such as discount and guarantee of production parts efficiency. The main objective of this study was to develop a model for designing a CLSC considering efficiency in competitive environments, as well as external suppliers' quantity discount policies. In other words, the aim of this study is adding both efficiency and competition concepts to dimensions of supplier selection problem in the CLSC. Therefore, an integrated model was proposed using multi-objective programming based on DEA–Nash bargaining game to cover the circumstances. This model was consisted four objectives including total profit, defective rate, delivery delay rate,

and efficiency that then were put together into one objective using global criteria method. In addition to supplier selection, the proposed model adopts decisions related to refurbishing and disassembly site set-up, as well as part and product amounts in existing in closed-loop network's ties including manufacturer and sites for disassembly, refurbishing, and disposal. So that, in a CLSC, to produce its productions, the manufacturer purchases its needed parts from external efficient suppliers and/or set-up refurbishing sites. The proposed model can be used in industries such as household electrical appliances, accessories and electronic components, automobile parts and similar cases. The results of simulated example show that increasing efficiency objective function is synonymous with decreasing organization (buyer) profit, because buyer pays more prices



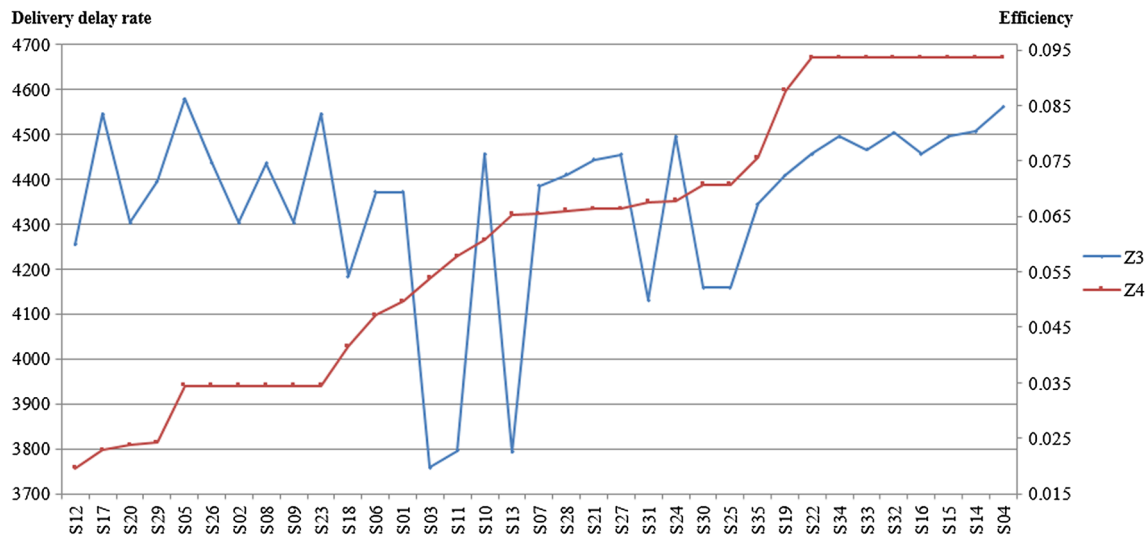


Fig. 4 Checking simultaneous performance of delivery delay rate and efficiency functions in different weight sets

Table 10 The amount of allocated order to suppliers in independent and simultaneous optimization of objective functions

First objective function				Second objective function				Third objective function				Fourth objective function				Multi objective function			
<i>i</i>	<i>k</i>	<i>d</i>	<i>q_{ikd}</i>	<i>i</i>	<i>k</i>	<i>d</i>	<i>q_{ikd}</i>	<i>i</i>	<i>k</i>	<i>d</i>	<i>q_{ikd}</i>	<i>i</i>	<i>k</i>	<i>d</i>	<i>q_{ikd}</i>	<i>i</i>	<i>k</i>	<i>d</i>	<i>q_{ikd}</i>
1	2	3	5301	1	2	3	6999	1	3	3	10,800	1	1	3	5850	1	1	3	4200
1	4	3	5499	1	4	3	3801	2	1	3	6225	1	2	3	4950	1	2	3	6600
2	5	3	9825	2	5	3	9825	2	3	3	3600	2	1	3	5225	2	5	3	9825
3	1	3	11,775	3	2	2	4375	3	1	3	9906	2	2	2	4600	3	1	3	11,775
4	5	3	12,975	3	4	3	7400	3	2	1	1869	3	1	3	11,775	4	1	3	10,975
5	4	3	12,000	4	1	3	10,999	4	1	3	7200	4	1	2	7012	4	2	2	2000
				4	5	1	1976	4	2	3	5775	4	2	3	5963	5	1	1	3001
				5	3	3	8999	5	4	3	12,000	5	2	3	12,000	5	3	3	8999
				5	4	1	3001												

Table 11 Other results from simultaneous optimization of objective functions

<i>j</i>	1	2	3	4	5	<i>ill</i>	1	2	3	4	5
Production amounts	1400	1500	1400	1400	1500	1	–	3600	–	–	–
Returned item amounts	700	750	700	700	750	2	–	–	–	3275	–
<i>i</i>	1	2	3	4	5	3	–	3925	–	–	–
Disassembly amounts	7200	6550	7850	8650	8000	4	–	4325	–	–	–
Waste amounts	3600	3275	3925	4325	4000	5	4000	–	–	–	–

for selling parts from efficient suppliers. The results demonstrated that the criteria considered in the evaluation of suppliers’ efficiency are in conflict with the defective rate. It is specified the importance of taking the efficiency objective function. This study is expandable considering uncertainty of other model’s certain parameters or fuzzy demand. More expandable issues resulted from this study including simultaneous competition between manufacturers and suppliers, as well as studying

the pricing process between them may be considered in future researches.

Open Access This article is distributed under the terms of the Creative Commons Attribution 4.0 International License (<http://creativecommons.org/licenses/by/4.0/>), which permits unrestricted use, distribution, and reproduction in any medium, provided you give appropriate credit to the original author(s) and the source, provide a link to the Creative Commons license, and indicate if changes were made.

References

- Amin SH, Zhang G (2012) An integrated model for closed-loop supply chain configuration and supplier selection: multi-objective approach. *Expert Syst Appl* 39(8):6782–6791
- Avrachenkov K, Elias J, Martignon F, Neglia G, Petrosyan L (2015) Cooperative network design: a Nash bargaining solution approach. *Comput Netw* 83:265–279
- Bagheri M, Yousefi S, Rezaee MJ (2016) Risk measurement and prioritization of auto parts manufacturing processes based on process failure analysis, interval data envelopment analysis and grey relational analysis. *J Intell Manuf*. doi:10.1007/s10845-016-1214-1
- Bottani E, Montanari R, Rinaldi M, Vignali G (2015) Modeling and multi-objective optimization of closed loop supply chains: a case study. *Comput Ind Eng* 87:328–342
- Chan CK, Kingsman BG (2007) Coordination in a single-vendor multi-buyer supply chain by synchronizing delivery and production cycles. *Transp Res Part E: Logist Transp Rev* 43(2):90–111
- Dahel NE (2003) Vendor selection and order quantity allocation in volume discount environments. *Supply Chain Manag Int J* 8(4):335–342
- Das K, Posinasetti NR (2015) Addressing environmental concerns in closed loop supply chain design and planning. *Int J Prod Econ* 163:34–47
- Duan Y, Luo J, Huo J (2010) Buyer–vendor inventory coordination with quantity discount incentive for fixed lifetime product. *Int J Prod Econ* 128(1):351–357
- Färe R, Grosskopf S, Lovell CK (1985) *The Measurement of Efficiency of Production*. Kluwer-Nijhoff Publishing, Boston
- Francas D, Minner S (2009) Manufacturing network configuration in supply chains with product recovery. *Omega* 37(4):757–769
- Govindan K, Rajendran S, Sarkis J, Murugesan P (2015) Multi criteria decision making approaches for green supplier evaluation and selection: a literature review. *J Clean Prod* 98:66–83
- Hammami R, Temponi C, Frein Y (2014) A scenario-based stochastic model for supplier selection in global context with multiple buyers, currency fluctuation uncertainties, and price discounts. *Eur J Oper Res* 233(1):159–170
- Ho W, Xu X, Dey PK (2010) Multi-criteria decision making approaches for supplier evaluation and selection: a literature review. *Eur J Oper Res* 202(1):16–24
- Hsueh CF (2011) An inventory control model with consideration of remanufacturing and product life cycle. *Int J Prod Econ* 133(2):645–652
- Huang Y, Huang GQ, Liu X (2012) Cooperative game-theoretic approach for supplier selection, pricing and inventory decisions in a multi-level supply chain. In: *International multi conference of engineers and computer scientists*, vol 7. pp 1042–1046
- Kamali A, Ghomi SF, Jolai F (2011) A multi-objective quantity discount and joint optimization model for coordination of a single-buyer multi-vendor supply chain. *Comput Math Appl* 62(8):3251–3269
- Kannan D, Khodaverdi R, Olfat L, Jafarian A, Diabat A (2013) Integrated fuzzy multi criteria decision making method and multi-objective programming approach for supplier selection and order allocation in a green supply chain. *J Clean Prod* 47:355–367
- Kaya O, Urek B (2016) A mixed integer nonlinear programming model and heuristic solutions for location, inventory and pricing decisions in a closed loop supply chain. *Comput Oper Res* 65:93–103
- Kim KH, Hwang H (1989) Simultaneous improvement of supplier's profit and buyer's cost by utilizing quantity discount. *J Oper Res Soc* 40(3):255–265
- Klimberg RK, Ratick SJ (2008) Modeling data envelopment analysis (DEA) efficient location/allocation decisions. *Comput Oper Res* 35(2):457–474
- Kokangul A, Susuz Z (2009) Integrated analytical hierarch process and mathematical programming to supplier selection problem with quantity discount. *Appl Math Model* 33(3):1417–1429
- Lee EK, Ha S, Kim SK (2001) Supplier selection and management system considering relationships in supply chain management. *IEEE Trans Eng Manag* 48(3):307–318
- Lee JE, Gen M, Rhee KG (2009) Network model and optimization of reverse logistics by hybrid genetic algorithm. *Comput Ind Eng* 56(3):951–964
- Leng M, Parlar M (2010) Game-theoretic analyses of decentralized assembly supply chains: non-cooperative equilibria vs. coordination with cost-sharing contracts. *Eur J Oper Res* 204(1):96–104
- Miettinen K (1999) *Nonlinear multi-objective optimization*. Kluwer Academic Publishers, Boston
- Monahan JP (1984) A quantity discount pricing model to increase vendor profits. *Manage Sci* 30(6):720–726
- Nash Jr JF (1950) The bargaining problem. *Econometrica* 18(2):155–162
- Ramezani M, Bashiri M, Tavakkoli-Moghaddam R (2013) A new multi-objective stochastic model for a forward/reverse logistic network design with responsiveness and quality level. *Appl Math Model* 37(1):328–344
- Rezaee MJ (2015) Using Shapley value in multi-objective data envelopment analysis: power plants evaluation with multiple frontiers. *Int J Electr Power Energy Syst* 69:141–149
- Rezaee MJ, Moini A, Makui A (2012a) Operational and non-operational performance evaluation of thermal power plants in Iran: a game theory approach. *Energy* 38(1):96–103
- Rezaee MJ, Moini A, Asgari FHA (2012b) Unified performance evaluation of health centers with integrated model of data envelopment analysis and bargaining game. *J Med Syst* 36(6):3805–3815
- Rezaee MJ, Salimi A, Yousefi S (2016a) Identifying and managing failures in stone processing industry using cost-based FMEA. *Int J Adv Manuf Technol*. doi:10.1007/s00170-016-9019-0
- Rezaee MJ, Yousefi S, Hayati J (2016b) A decision system using fuzzy cognitive map and multi-group data envelopment analysis to estimate hospitals' outputs level. *Neural Comput Appl*. doi:10.1007/s00521-016-2478-2
- Rezaee MJ, Izadbakhsh H, Yousefi S (2016c) An improvement approach based on DEA-game theory for comparison of operational and spatial efficiencies in urban transportation systems. *KSCE J Civil Eng* 20(4):1526–1531
- Roghanian E, Pazhoheshfar P (2014) An optimization model for reverse logistics network under stochastic environment by using genetic algorithm. *J Manuf Syst* 33(3):348–356
- Shafiee M, Lotfi FH, Saleh H, Ghaderi M (2016) A mixed integer bi-level DEA model for bank branch performance evaluation by Stackelberg approach. *J Ind Eng Int* 12(1):81–91
- Shi J, Zhang G, Sha J, Amin SH (2010) Coordinating production and recycling decisions with stochastic demand and return. *J Syst Sci Syst Eng* 19(4):385–407
- Shi J, Zhang G, Sha J (2011) Optimal production planning for a multi-product closed loop system with uncertain demand and return. *Comput Oper Res* 38(3):641–650
- Taleizadeh AA, Pentico DW (2014) An economic order quantity model with partial backordering and all-units discount. *Int J Prod Econ* 155:172–184
- Taleizadeh AA, Niaki STA, Aryanezhad MB (2009) A hybrid method of Pareto, TOPSIS and genetic algorithm to optimize multi-product multi-constraint inventory control systems with random fuzzy replenishments. *Math Comput Model* 49(5):1044–1057



- Taleizadeh AA, Niaki STA, Aryanezhad MB, Tafti AF (2010a) A genetic algorithm to optimize multiproduct multiconstraint inventory control systems with stochastic replenishment intervals and discount. *Int J Adv Manuf Technol* 51(1–4):311–323
- Taleizadeh A, Najafi AA, Akhavan Niaki ST (2010b) Economic production quantity model with scrapped items and limited production capacity. *Sci Iran Trans E: Ind Eng* 17(1):58–69
- Taleizadeh AA, Pentico DW, Aryanezhad M, Ghoreyshi SM (2012) An economic order quantity model with partial backordering and a special sale price. *Eur J Oper Res* 221(3):571–583
- Taleizadeh AA, Pentico DW, Jabalameli MS, Aryanezhad M (2013a) An economic order quantity model with multiple partial prepayments and partial backordering. *Math Comput Model* 57(3):311–323
- Taleizadeh AA, Wee HM, Jolai F (2013b) Revisiting a fuzzy rough economic order quantity model for deteriorating items considering quantity discount and prepayment. *Math Comput Model* 57(5):1466–1479
- Taleizadeh AA, Stojkovska I, Pentico DW (2015) An economic order quantity model with partial backordering and incremental discount. *Comput Ind Eng* 82:21–32
- Talluri S, Baker RC (2002) A multi-phase mathematical programming approach for effective supply chain design. *Eur J Oper Res* 141(3):544–558
- Wang M, Li Y (2014) Supplier evaluation based on Nash bargaining game model. *Expert Syst Appl* 41(9):4181–4185
- Farrell MJ (1957) The measurement of productive efficiency. *J R Stat Soc Ser A (Gen)* 120(3):253–290
- Yousefi S, Mahmoudzadeh H, Jahangoshai Rezaee M (2016) Using supply chain visibility and cost for supplier selection: a mathematical model. *Int J Manag Sci Eng Manag*. doi:[10.1080/17509653.2016.1218307](https://doi.org/10.1080/17509653.2016.1218307)
- Zhang ZZ, Wang ZJ, Liu LW (2015) Retail services and pricing decisions in a closed-loop supply chain with remanufacturing. *Sustainability* 7(3):2373–2396

