

Chernis, Tony; Sekkel, Rodrigo

Working Paper

A dynamic factor model for nowcasting Canadian GDP growth

Bank of Canada Staff Working Paper, No. 2017-2

Provided in Cooperation with:

Bank of Canada, Ottawa

Suggested Citation: Chernis, Tony; Sekkel, Rodrigo (2017) : A dynamic factor model for nowcasting Canadian GDP growth, Bank of Canada Staff Working Paper, No. 2017-2, Bank of Canada, Ottawa, <https://doi.org/10.34989/swp-2017-2>

This Version is available at:

<https://hdl.handle.net/10419/171956>

Standard-Nutzungsbedingungen:

Die Dokumente auf EconStor dürfen zu eigenen wissenschaftlichen Zwecken und zum Privatgebrauch gespeichert und kopiert werden.

Sie dürfen die Dokumente nicht für öffentliche oder kommerzielle Zwecke vervielfältigen, öffentlich ausstellen, öffentlich zugänglich machen, vertreiben oder anderweitig nutzen.

Sofern die Verfasser die Dokumente unter Open-Content-Lizenzen (insbesondere CC-Lizenzen) zur Verfügung gestellt haben sollten, gelten abweichend von diesen Nutzungsbedingungen die in der dort genannten Lizenz gewährten Nutzungsrechte.

Terms of use:

Documents in EconStor may be saved and copied for your personal and scholarly purposes.

You are not to copy documents for public or commercial purposes, to exhibit the documents publicly, to make them publicly available on the internet, or to distribute or otherwise use the documents in public.

If the documents have been made available under an Open Content Licence (especially Creative Commons Licences), you may exercise further usage rights as specified in the indicated licence.

Staff Working Paper/Document de travail du personnel 2017-2

A Dynamic Factor Model for Nowcasting Canadian GDP Growth



by Tony Chernis and Rodrigo Sekkel

Bank of Canada staff working papers provide a forum for staff to publish work-in-progress research independently from the Bank's Governing Council. This research may support or challenge prevailing policy orthodoxy. Therefore, the views expressed in this paper are solely those of the authors and may differ from official Bank of Canada views. No responsibility for them should be attributed to the Bank.

Bank of Canada Staff Working Paper 2017-2

February 2017

A Dynamic Factor Model for Nowcasting Canadian GDP Growth

by

Tony Chernis¹ and Rodrigo Sekkel²

¹Canadian Economic Analysis Department
Bank of Canada
Ottawa, Ontario, Canada K1A 0G9
cedw@bankofcanada.ca

²Financial Markets Department
Bank of Canada
Ottawa, Ontario, Canada K1A 0G9
rsekkel@bankofcanada.ca

Acknowledgements

We are extremely thankful to Haeyeon Lee for excellent research assistance. We would also like to thank seminar participants at the Bank of Canada, the 2016 Canadian Economic Association meeting, as well as comments from André Binette, Tatjana Dahlhaus, Daniel de Munnik, Domenico Giannone, and two anonymous referees. The views expressed in this paper are solely those of the authors.

Abstract

This paper estimates a dynamic factor model (DFM) for nowcasting Canadian gross domestic product. The model is estimated with a mix of soft and hard indicators, and it features a high share of international data. The model is then used to generate *nowcasts*, predictions of the recent past and current state of the economy. In a pseudo real-time setting, we show that the DFM outperforms univariate benchmarks as well as other commonly used nowcasting models, such as mixed-data sampling (MIDAS) and bridge regressions.

Bank topics: Econometric and statistical methods; Business fluctuations and cycles
JEL codes: C38, C32, C53, E37

Résumé

Nous estimons un modèle à facteurs dynamiques (MFD) applicable à la prévision du produit intérieur brut du Canada pour la période en cours. L'estimation du modèle combine des indicateurs qualitatifs et quantitatifs et s'appuie également sur un ensemble de statistiques contenant un grand nombre de données internationales. Le modèle sert ensuite à produire des prévisions pour la période en cours, à savoir pour une période qui englobe le passé récent et la conjoncture immédiate. Dans un environnement où les données sont disponibles en temps quasi réel, nous montrons que le MFD surclasse les modèles univariés de référence ainsi que d'autres modèles fréquemment utilisés pour les prévisions de la période en cours : par exemple, les régressions fondées sur un modèle d'échantillonnage de données de fréquence mixte (MIDAS) et les modèles d'étalonnage.

Sujets : Méthodes économétriques et statistiques; Cycles et fluctuations économiques
Codes JEL : C38, C32, C53, E37

Non-Technical Summary

The conduct of monetary policy, and economic policy in general, requires an assessment of the state of the economy in real time. Macroeconomic indicators tend to be released with substantial delays, and this is especially true for gross domestic product (GDP). To deal with this issue, policy institutions have traditionally used simple forecasting models and judgement to predict the current state of the economy, as well as that of the recent past. This process is now commonly referred to as *nowcasting*.

In this paper, we estimate an approximate dynamic factor model (DFM) for Canada and evaluate its nowcasting performance for Canadian GDP. DFMs are particularly appealing for addressing the characteristic problems of nowcasting. First, there is typically a large number of relevant variables available. Second, the release schedule can be different for each variable, which results in unbalanced data sets. Finally, most leading indicators are monthly, while most often the variable of interest is quarterly. Traditional models can struggle with these challenges, while a DFM handles them elegantly.

The model developed in this paper reflects many of the distinctive characteristics of the Canadian economy, and its data availability. For example, Canada releases a monthly GDP figure, and Canadian data are released with a slightly longer lag than US data. In a pseudo real-time exercise we show that the performance, measured by root-mean-squared forecast error, of the DFM improves steadily as more information is released. We also find that US variables, such as employment and Institute for Supply Management business surveys, are important predictors for nowcasting Canadian GDP growth. This is because of the timely release of US variables and the importance of the US economy for Canadian GDP growth. The model also outperforms simple benchmarks like autoregressive models, and is competitive with other nowcasting models, such as bridge equations and mixed-data sampling (MIDAS) regressions, especially at the nowcasting horizon.

1 Introduction

The conduct of monetary policy, and economic policy in general, requires an assessment of the state of the economy in real time. Macroeconomic indicators tend to be released with substantial delays, and this is especially true for gross domestic product (GDP). To deal with this issue, policy institutions have traditionally used simple forecasting models and judgement to predict the current state of the economy, as well as that of the recent past. This process is now commonly referred to as *nowcasting*.

In this paper, we estimate an approximate dynamic factor model (DFM) for Canada and evaluate its nowcasting performance for Canadian GDP. The model developed in this paper reflects many of the distinctive characteristics of the Canadian economy, and its data availability. Following [Giannone et al. \(2008\)](#), there is now a large literature on nowcasting with DFM. Recent contributions include: Brazil ([Bragoli et al. 2015](#)), BRIC countries and Mexico ([Dahlhaus et al. 2015](#)), China ([Giannone et al. 2013](#)), France ([Barhoumi et al. 2010](#)), Indonesia ([Luciani et al. 2015](#)), Ireland ([D’Agostino et al. 2013](#)), New Zealand ([Matheson 2010](#)), Norway ([Aastveit et al. 2011](#) and [Luciani and Ricci 2014](#)), and the United States ([Giannone et al. 2008](#)). A recent paper by [Bragoli and Modugno \(2016\)](#) constructs a DFM for Canada that bears many similarities with the model developed in this paper.¹ These papers have shown that DFM nowcasts not only outperform simple benchmarks and other competing nowcasting approaches, such as bridge models and mixed-data sampling (MIDAS) regressions, but also often produce nowcasts that are on par with those of professional forecasters.

Dynamic factor models have also been used to study the role of specific variables for nowcasting economic activity in a data-rich and real-time environment. [Lahiri et al. \(2015\)](#) study the role of ISM business surveys in nowcasting current quarter US GDP growth, and find evidence that these indices improve the nowcasts. Similarly, [Lahiri and Monokroussos \(2013\)](#) study the role of consumer confidence in nowcasting real personal consumption expenditure in a real-time and data-rich environment. They establish a robust link between consumer confidence and nowcast performance for consumption in real time that is especially strong for service consumption. We also find that the Institute for Supply Management (ISM) business survey for the United States

¹We discuss in more detail the differences and similarities between the present paper and [Bragoli and Modugno \(2016\)](#) when we detail the model in Section 3.

is an important predictor for nowcasting Canadian GDP growth, given its timely release and the importance of the US economy for Canadian GDP growth.

Through a pseudo real-time exercise using data from the first quarter of 1980 to the second quarter of 2016, we show that the root-mean-squared forecast error (RMSFE) of the DFM improves steadily as more information is released. The model also outperforms simple benchmarks like autoregressive (AR) models, and is competitive with other nowcasting models, such as bridge equations and MIDAS regressions, especially at the nowcasting horizon.

Apart from the aforementioned paper by [Bragoli and Modugno \(2016\)](#), there are very few papers on nowcasting Canadian macroeconomic variables. [Binette and Chang \(2013\)](#) propose a nowcasting model for Canadian GDP growth based on the Euro-STING of [Camacho and Perez-Quiros \(2010\)](#). [Galbraith and Tkacz \(2013\)](#) examine the usefulness of payments data to nowcast GDP growth. Relative to these papers, we contribute by proposing a different DFM, examining a larger set of monthly and quarterly predictors, and benchmarking the results against other nowcasting models commonly used in the literature.

The paper proceeds as follows: the next section describes our data set, followed by Section 3 that presents our dynamic factor model. Section 4 shows the performance of the DFM against various benchmarks and the contributions of each indicator. Finally, Section 5 concludes.

2 Data

When building a nowcasting model, it is important to find variables that are: *i*) helpful to predict GDP growth; *ii*) timely; and *iii*) updated frequently (e.g., monthly). To help us meet these criteria, we choose variables that are followed by the market and reported on Statistics Canada’s official release bulletin “*The Daily*.” This results in a mix of hard and soft indicators. We also include commodity prices and a set of US economic indicators because of the Canada’s close economic ties with the United States. Recent papers (e.g., [Alvarez and Perez-Quiros 2016](#)) that use a similar DFM show that medium-sized data sets (i.e., with 10-30 variables) perform equally as well as models with larger data sets with over 100 variables. With these considerations in mind, we select 23 predictors of the Canadian economy. There are two notable peculiarities in Canadian macroeconomic data: first, the data are released with a larger delay relative to other developed

economies, and second, Canada has a monthly GDP indicator. Below, we provide a more thorough description of the variables used in the model.

The Canadian National Accounts data are released two months after the end of the reference quarter. This means that GDP for the first quarter of the year is released at the end of May. The monthly GDP data, denoted GDP at basic prices, have a similar lag, such that January GDP would be released at the end of March. This is quite different from other developed countries such as the United States and the United Kingdom, for example, who release their first estimates of GDP four weeks after the reference period. Other European countries and Japan release their real GDP figures with a delay of only six weeks. Furthermore, many of the most commonly used and timely leading indicators, such as Industrial Production, are not available for Canada in a timely manner. In the United States, Industrial Production is available within two weeks of the reference period, while in Canada it is reported as a special aggregation of monthly real GDP data. As such, it is released 60 days after the reference period.²

The monthly GDP at basic prices series and the quarterly GDP at market prices are distinct measures that can have, at times, quite different growth rates. The difference lies in the treatment of taxes and subsidies on the products.³ While production at basic prices excludes taxes and subsidies, GDP at market prices includes them. This discrepancy can lead to significant differences in the annualized quarterly growth between the two series, sometimes greater than 1 percentage point in absolute value. Figure 1 illustrates that, while monthly GDP (aggregated to the quarterly frequency) tracks quarterly GDP at market prices closely, it can deviate significantly at times. Nonetheless, monthly GDP at basic prices is a very important predictor of quarterly GDP, and we construct our DFM to take that into account, as detailed in the next section.

Since Canada is a small open commodity exporting economy with important trade and financial links to the United States, our DFM includes some US indicators, as well as commodity prices and world economic activity indicators. Of the 23 variables that we include, 14 are domestic, 6 are US and the remaining 3 are the Bank of Canada non-energy commodity price index, WTI oil prices, and Global Purchasing Manager's Index (PMI).

²Canadian monthly real GDP is compiled on a by-industry basis and industrial production is an aggregation of mining, quarrying and oil and gas extraction, utilities, manufacturing, and waste management services.

³Taxes and subsidies such as sales taxes, fuel taxes, duties and taxes on imports, excise taxes on tobacco and alcohol products and subsidies paid on agricultural commodities, transportation services and energy.

The domestic variables cover most of the standard nowcasting variables: car sales, PMI, merchandise trade, housing variables, and various real activity measures. We also include an indicator from the Bank of Canada’s *Business Outlook Survey* (BOS). The BOS is a quarterly business survey of about 100 firms across Canada that reflects the diverse composition of the Canadian economy in terms of region, type of business activity and firm size.⁴ Specifically, we use the balance of opinion on the future sales question, which has been shown to be useful in forecasting GDP growth (Pichette and Rennison 2011).

Finally, we turn to the foreign variables. Since the United States is such an important trading partner for Canada, we include several indicators of US economic activity in our DFM, such as US PMI,⁵ and a set of standard real activity indicators, such as industrial production, retail sales and non-farm payroll.

We transform the series to ensure stationarity. Table 1 shows all the monthly and quarterly series, and their transformation. Furthermore, several series published by Statistics Canada have been re-based or undergone definitional changes, which makes finding series with a sufficiently long history difficult. To overcome this obstacle, series that suffer from this problem are simply spliced together with the corresponding older series.

3 Econometric Framework

We follow the approach proposed by Giannone et al. (2008), with the maximum likelihood estimation methodology of Bańbura and Modugno (2014), which allows for arbitrary patterns of missing data. Doz et al. (2012) study the asymptotic properties of quasi-maximum likelihood estimation for large approximate DFMs. The authors find that the maximum likelihood estimates of the factors are consistent, as the size of the cross-section and sample go to infinity along any path. Furthermore, the estimator is robust to a limited degree of cross-sectional and serial correlation of the error terms. This is particularly interesting because in large panels the assumption of no cross-correlation could be too restrictive. We use a block factor structure similar to what is developed in Bańbura et al. (2011).

⁴See Martin (2004) for a detailed exposition of the Bank of Canada *Business Outlook Survey*.

⁵Lahiri and Monokroussos (2013) show US PMI is a useful leading indicator for economic activity.

First, our model obeys the factor model representation:

$$y_t = \Lambda f_t + \epsilon_t, \quad (1)$$

where $y_t = (y_{1,t}, y_{2,t}, \dots, y_{n,t})$ is a set of standardized monthly stationary variables, f_t denotes a vector of r unobserved factors, and Λ is a vector of loadings.

$$f_t = A_1 f_{t-1} + \dots + A_p f_{t-p} + u_t, \quad u_t \sim i.i.d.N(0, Q), \quad (2)$$

and A_1, \dots, A_p are $r \times r$ matrix of autoregressive coefficients.

Finally, we assume that the i -th idiosyncratic component of the monthly variables follows an AR(1) process:

$$\epsilon_{i,t} = \alpha_i \epsilon_{i,t-1} + \varepsilon_{i,t}, \quad \epsilon_{i,t} \sim i.i.d.N(0, \sigma_i^2), \quad (3)$$

with $\mathbb{E}[\epsilon_{i,t} \epsilon_{j,s}] = 0$ for $i \neq j$.

3.1 Quarterly Series

Quarterly series are incorporated into the model by expressing them in terms of their partially observed monthly counterparts, as in [Mariano and Murasawa \(2003\)](#). Quarterly variables, like GDP (GDP_t^Q), are expressed as the sum of their unobserved monthly contributions (GDP_t^M):

$$GDP_t^Q = GDP_t^M + GDP_{t-1}^M + GDP_{t-2}^M, \quad (4)$$

for $t = 3, 6, 9, \dots$ define $Y_t^Q = 100 \times \log(GDP_t^Q)$ and $Y_t^M = 100 \times \log(GDP_t^M)$. The unobserved monthly rate of GDP growth, $y_t = \Delta Y_t^M$, is also assumed to follow the same factor model representation as the monthly variables:

$$y_t = \Lambda_Q f_t + \epsilon_t^Q \quad (5)$$

$$\epsilon_t^Q = \alpha_Q \epsilon_{t-1}^Q + \varepsilon_t^Q \quad (6)$$

where ε_t^Q is an $i.i.d.N(0, \sigma_Q^2)$ process.

To link y_t with the observed quarterly GDP series, we construct a partially observed monthly series:

$$y_t^Q = \begin{cases} Y_t^Q - Y_{t-3}, & t = 3, 6, 9 \\ \text{unobserved}, & \text{otherwise} \end{cases}$$

and use the approximation of [Mariano and Murasawa \(2003\)](#) to obtain:

$$\begin{aligned} y_t^Q &= Y_t^Q - Y_{t-3}^Q \approx (Y_t^M + Y_{t-1}^M + Y_{t-2}^M) - (Y_{t-3}^M + Y_{t-4}^M + Y_{t-5}^M) \\ &= y_t + 2y_{t-1} + 3y_{t-2} + 2y_{t-3} + y_{t-4}. \end{aligned} \tag{7}$$

3.2 Impact of New Data Releases

Nowcasters are frequently interested in the impact of each new data point. For example, it might be interesting to know what the impact of the latest industrial production figure is for the GDP forecast. Furthermore, the nowcasting environment is characterized by a large set of variables that can arrive at a high frequency. This results in the nowcaster studying a sequence of nowcasts that can be updated very frequently, reflecting the steady stream of new information arriving. The DFM framework used in this paper and developed by [Giannone et al. \(2008\)](#) allows us to study this so-called “news.” As discussed in [Bańbura et al. \(2011\)](#), by analyzing the forecast revision, we have a way of quantifying the change in information set and the average impact of each variable.

Let Ω_v denote a vintage of data available at time v , where v refers to the date of a particular data release. Since data are constantly arriving, Ω_v expands throughout the nowcast period. Furthermore, let us denote GDP growth at time t as y_t^Q .

In this context, we can decompose a new forecast into two components.

$$\underbrace{\mathbb{E} \left[y_t^Q | \Omega_{v+1} \right]}_{\text{new forecast}} = \underbrace{\mathbb{E} \left[y_t^Q | \Omega_v \right]}_{\text{old forecast}} + \underbrace{\mathbb{E} \left[y_t^Q | I_{v+1} \right]}_{\text{revision}}, \tag{8}$$

where I_{v+1} is the subset of the set Ω_{v+1} that is orthogonal to all the elements of Ω_v . As specified above, the change in nowcast is due to the unexpected part of the new data release, which is called the “news.” The news is useful because what matters in understanding the updating process of the nowcast is not the release itself but the difference between the release and the previous forecast.

Hence, the effect of the news is given by

$$\underbrace{\mathbb{E} \left[y_t^Q | \Omega_{v+1} \right] - \mathbb{E} \left[y_t^Q | \Omega_v \right]}_{\text{forecast revision}} = \sum_{j \in \mathbb{J}_{v+1}} b_{j,t,v+1} \underbrace{\left(x_{j,T_{j,v+1}} - \mathbb{E} \left[x_{j,T_{j,v+1}} | \Omega_v \right] \right)}_{\text{news}}, \quad (9)$$

where $b_{j,t,v+1}$ are weights obtained from the model estimation and \mathbb{J} is the set of new variables. The nowcast revision is a combination of the news associated with the data release for each variable and its relevancy for the target variable (quantified by its weight $b_{j,t,v+1}$). This decomposition allows the nowcaster to trace forecast revisions back to unexpected movements in individual predictors.

3.3 Estimation

We estimate the model parameters by maximum likelihood using the implementation of the Expectation Maximization (EM) algorithm proposed by [Bańbura and Modugno \(2014\)](#). This implementation can deal with arbitrary patterns of missing observations.

An additional advantage of the maximum likelihood approach is that it easily allows us to impose restrictions on the parameters. This feature is especially appealing in the case of Canada, as it makes possible the addition of a factor that solely loads on the monthly and quarterly GDP series. [Bork \(2009\)](#) and [Bork et al. \(2009\)](#) show how to impose restrictions in the model described above. We assume that there are two factors that relate to quarterly GDP, monthly GDP and the remaining macroeconomic and financial indicators, as follows:

1. $f_{1,t}$ is the factor that captures the co-movement among quarterly GDP, monthly GDP at basic prices and all other monthly series;
2. $f_{2,t}$ is the factor that solely loads on quarterly and monthly GDP at basic prices.

The block factor structure implies the following properties of the transition equation (2), where the subscript refers to the factors described above.

$$f_t = \begin{pmatrix} f_{1,t} \\ f_{2,t} \end{pmatrix}, \quad A = \begin{pmatrix} A_1 & 0 \\ 0 & A_2 \end{pmatrix}, \quad Q = \begin{pmatrix} Q_1 & 0 \\ 0 & Q_2 \end{pmatrix} \quad (10)$$

The modelling choice above differs from the [Bragoli and Modugno \(2016\)](#) nowcasting model of the Canadian economy. In their model, monthly GDP does not directly load on the factor; rather,

it follows a vector auto-regressive (VAR) process where it interacts with the factor in the state equation. The forecast for quarterly GDP is then the monthly GDP forecast aggregated within the model. Although the structure of their model is different, we share several key results, as the next section shows.⁶ Our papers also differ in that we examine the performance of a DFM relative to other nowcasting models and our benchmarks use final data, similar to the DFM.

4 Results

Since we do not have the real-time data vintages of every release, we perform a *pseudo* real-time out-of-sample evaluation of our model in which we simulate the flow of data availability. We replicate the data availability pattern by creating over 5,000 vintages of data, which simulates the forecasting environment for every new release. Using these vintages, we update our predictions with every new release of data. Table 1 shows the assumed order of data availability for our empirical exercise. The model is estimated recursively and the first out-of-sample forecast is for the first quarter of 2002. We start predicting quarter t GDP growth 30 days before the start of the quarter. The model is then updated with every variable release until the publication of the National Accounts for quarter t , about 60 days after the end of quarter t . Hence, we have 180 days over which the predictions for quarter t GDP growth rate are generated.

As discussed in Section 3.3, we estimate the model with two block factors and one lag ($p = 1$) in the VAR driving the dynamics of those factors. Finally, as specified in equation (3), we allow the idiosyncratic components to follow an AR(1) process.

As a first pass, we benchmark the DFM forecasts with two different versions of simple AR models. The first one, which we denote the quarterly AR, is simply an AR model with quarterly GDP data.

$$y_t^Q = \alpha + \sum_{i=1}^p \rho_i y_{t-i}^Q + \varepsilon_{t+h} \quad (11)$$

As discussed earlier, Canada releases data for a monthly GDP series. Thus, we also estimate a monthly AR model, whose monthly forecasts we then aggregate into a quarterly figure.

$$y_{t+h}^M = \alpha + \sum_{i=1}^p \rho_i y_{t-i}^M + \varepsilon_{t+h}, \quad (12)$$

⁶Specifically, the importance of US variables for forecasting and nowcasting.

where $h = 1, 2, \dots, 6$ months, depending on which month of the quarter the forecasts are being made.

Figure 2 shows the RMSFE of the model over the 180 days it generates predictions for quarter t GDP. The red line shows the RMSFE of the quarterly AR model, whereas the green lines show the RMSFE of the monthly AR model. Both models are estimated with one lag, $p = 1$. At the longest forecast horizon, 30 days before the start of the quarter, the DFM performs slightly better than the AR models, with an RMSFE about 9% lower than the monthly AR model. Nonetheless, as new data arrive, the performance of the DFM improves substantially. Over the three months of the nowcasting horizon, the DFM improves upon the benchmarks by a large margin. For example, at the end of the first month of quarter t , the DFM improves upon the monthly AR model by 32%, and at the end of the second month, by 32% as well. As we move into the backcasting horizon, three months after the beginning of quarter t , the DFM is still more accurate than the monthly AR model for the next 30 days. Finally, at the second month of backcasting, when two months of monthly GDP are already known, the DFM forecasts are slightly worse than the ones from the monthly AR.

Table 2 shows the average reduction in RMSFE due to each predictor in the model for each period that the model generates predictions. At the longest prediction horizon, before the start of the reference quarter t , US variables releases lead to the largest reductions in RMSFE.⁷ US and Global PMIs both lead to large decreases in RMSFE at 4 and 5 basis points (bps), respectively. Also, US Industrial Production, Retail Sales and Housing Starts make important contributions to enhancing the accuracy of the model. On the domestic variable front, the employment rate and the terms of trade are the two releases that reduce the RMSFE the most.

As we move into the nowcasting horizon, US variables continue to play an important role in reducing the model's RMSFE. US PMI is the most important release at the first nowcast horizon, and US Industrial Production is also an important release. Imports and Exports also lead to significant decreases in RMSFE, as do Wholesale Trade, Manufacturing Sales and the Bank of Canada Commodity Price Index. Finally, when we reach the backcasting horizon, the predictors other than monthly GDP have very little impact on reducing the RMSFE, especially at the second

⁷This result is shared with [Bragoli and Modugno \(2016\)](#), who also find that US variables lead to the highest improvements in accuracy earlier in the nowcasting quarter.

backcast, when two months of GDP at basic prices (monthly GDP) for quarter t are already known.

To better illustrate the importance of US variables, we estimate the DFM excluding the US variables. Figure 3 shows the RMSFE over the prediction horizon. As the analysis of Table 2 makes clear, the largest contribution of the US variables takes place during the forecasting horizon ($T-29$ to T) and the first two months of the nowcasting horizon (T to $T+60$). During these periods, the US variables play an important role in reducing the RMSFE of the DFM. In the third month of the nowcast, when the monthly GDP data for the first month of the quarter are released, the performance of the DFM with and without US data is roughly equal.

As shown in Section 3.2, the DFM model can be used to decompose the news component of every new economic release. Looking at the news provides a better understanding of the importance of the predictors for nowcasting Canadian GDP. Figure 5 shows the average absolute forecast revision of the models' forecast after the release of each predictor for each month of the prediction horizon. As the graphs clearly show, the importance of the predictors varies widely over the prediction horizon. At the forecasting horizon, before the start of quarter t , it is clear that US macro variables like PMI, Industrial Production and Employment affect the predictions significantly. To some degree, these results confirm the importance of US variables discussed in the previous section. The US variables are important because of the close economic ties between the United States and Canada and because of the timeliness of their release relative to Canadian data, a fact also highlighted by [Bragoli and Modugno \(2016\)](#). Monthly GDP, on the other hand, has an almost negligible impact on the prediction.

As we move into the nowcasting horizon, US variables still affect Canadian GDP predictions, as do the Canadian employment rate, terms of trade, exports and imports. Nonetheless, as we move further into nowcasting quarter t , the importance of monthly GDP increases, especially in the third month of the nowcasts, when monthly GDP for the first month of quarter t is released. Finally, as we reach the backcasting horizons, the importance of the additional predictors is much diminished. After two months of monthly GDP is known to the model, the additional predictors hardly move the final predictions.

Finally, to further demonstrate the fit of the DFM, Figure 4 shows the predictions for quarter-over-quarter (QoQ) GDP growth at annual rates for our out-of-sample period (first quarter of 2002

to second quarter of 2016) for three different horizons: at the end of the first nowcasting month, at the end of the last nowcasting month, and at the end of the last backcasting month, right before the release of the National Accounts. As one can easily see, the DFM gets increasingly better as we move along the prediction horizon. At the end of the first nowcasting month, though the model does a good job of capturing average GDP growth, it does not show the sharp fall in the fourth quarter of 2008 or the rebound in the second quarter of 2009. At the end of the last nowcasting month, the model does capture the sharp fall in GDP growth during that period, and even more so in the last backcasting period, when all model predictors are known to the model.

4.1 Comparison with Other Nowcasting Models

In this section, we compare the results of the proposed dynamic factor model with other commonly used models for nowcasting, namely bridge equations models and MIDAS regressions.

4.1.1 Bridge models

Bridge models have a long tradition in short-term forecasting, and are often used by central banks and policy-making institutions (see [Baffigi et al. 2004](#) and [Golinelli and Parigi 2007](#), among many others). This technique involves forecasting high-frequency indicators with auxiliary models, and using the results to forecast a low-frequency target variable. Since Canada has a monthly GDP series, we alter this procedure slightly. Instead of aggregating the high-frequency indicator to quarterly, we simply forecast monthly GDP using that indicator and an AR term. The nowcast is then aggregated to a quarterly frequency.

We estimate bridge models using the following specification:

$$y_{t_m+h} = \alpha + \sum_{i=1}^p \rho_i y_{t_m-i} + \beta_1 x_{i,t+h_m} + \varepsilon_{t_m}, \quad (13)$$

where $x_{i,t+h}$ are the remaining monthly indicators. We estimate bridge models featuring one indicator at a time, and then average all of the nowcasts for $y_{i,t+h}$ for a unique combined nowcast.

We use AR models to forecast the missing observations of the monthly series. We estimate a total of 20 bridge models, one for each of the monthly series in the data set. The models are re-estimated over the quarter as the monthly indicators are released. The forecasts are then averaged

with equal weights.⁸

4.1.2 MIDAS regressions

A more modern benchmark model is the MIDAS regression (Ghysels et al. (2006), Ghysels et al. (2007), and Clements and Galvão (2008)). The defining feature of MIDAS models is the way they deal with mixed frequencies. These models use a polynomial weighting function to link high-frequency regressors onto a low-frequency regressand. This makes the MIDAS regression a direct forecasting tool, which does not explicitly model the dynamics of the indicator. Instead, the MIDAS directly relates future quarterly GDP to present and lagged high-frequency indicators. This necessitates a model for each forecast horizon.

The basic model for forecasting h_q quarters ahead with $h_q = h_m/3$ is:

$$y_{t_q+h_q} = y_{t_m+h_m} = \beta_0 + \beta_1 b(L_m, \theta) x_{t_m+w}^{(3)} + \varepsilon_{t_m+h_m}, \quad (14)$$

where y_{t_m} is GDP growth and $x_{t_m}^{(3)}$ is the corresponding skip-sampled monthly indicator, L_m is the monthly lag operator and $w = T_x - T_y$. The lag polynomial $b(L_m, \theta)$ is defined as:

$$b(L_m, \theta) = \sum_{k=0}^K c(k; \theta) L_m^k. \quad (15)$$

The parsimonious parametrization of the lagged coefficients $c(k; \theta)$ is one of the key features of MIDAS models. While there are several common ways to parameterize the lagged coefficients, we choose the so-called ‘‘Beta Lag’’:

$$c(k, \theta_1, \theta_2) = \frac{f(\frac{k}{K}, \theta_1; \theta_2)}{\sum_{k=1}^K f(\frac{k}{K}, \theta_1; \theta_2)}, \quad (16)$$

where $f(k, \theta_1, \theta_2) = \frac{k^{\theta_1-1}(1-k)^{\theta_2-1}\Gamma(\theta_1+\theta_2)}{\Gamma(\theta_1)\Gamma(\theta_2)}$, $\Gamma(\theta) = \int_0^\infty e^{-x}x^{\theta-1}dx$, and parameters θ_1 and θ_2 govern the shape of the distribution. This parametrization is quite general and can take various shapes with only a few parameters. These include increasing, decreasing or hump-shaped patterns. Furthermore, we restrict the last lag to be equal to zero.

⁸We also combine the models with inverse MSE weights. These results are shown in an online appendix, and are very similar to the equal weights.

The MIDAS model is estimated using nonlinear least squares (NLS) in a regression of y_t onto $x_{t-h}^{(3)}$ for each forecast horizon $h = 1, \dots, H$. The direct forecast is given by the conditional expectation:

$$\hat{y}_{T_y+h|T_x} = y_{t_m+h_m} = \hat{\beta}_0 + \hat{\beta}_1 b(L_m, \theta) x_{t_m+w}^{(3)}, \quad (17)$$

where $T_x = T_y + w$ is such that the most recent observations of the indicator are included in the conditioning set of the projection. For example, if we were trying to forecast Q2 GDP and July PMI was available, the regression would include a lead of our indicator.

Since Canada has a monthly GDP measure, it is necessary to extend the basic MIDAS model to have multiple explanatory variables. Furthermore, we include a low-frequency AR term. The forecasting model then becomes:

$$y_{t_q+h_q} = y_{t_m+h_m} = \beta_0 + \beta_1 b(L_m, \theta_1) x_{1,t_m+w-h_m}^{(3)} + \beta_2 b(L_m, \theta_2) x_{2,t_m+w-h_m}^{(3)} + \lambda y_{t_m} + \varepsilon_{t_m+h_m} \quad (18)$$

with $x_1^{(3)}$ being monthly GDP measured at basic prices, and $x_2^{(3)}$ an additional leading indicator. As in the bridge models, we take the same set of leading indicators, create a model with each, and average the individual forecasts with equal weights to create the MIDAS class forecast.

4.1.3 Comparison results

Table 3 compares the RMSFE of our DFM with the two alternative models described above. We compare the models at the end of each month prior to the monthly GDP release, when all data except monthly GDP are known. Relative to both the bridge and MIDAS models, the DFM is more accurate before the first release of monthly GDP. The DFM improves over the MIDAS by close to 19% and the bridge equations by close to 28%. For the second month of the quarter the same trend emerges; the DFM outperforms the MIDAS and bridge models by approximately 13% and 14%, respectively. It is interesting to note how close the bridge and MIDAS models are in terms of RMSFE; it seems that in our context there are not many gains from the more complicated bridging polynomial. This is likely because we forecast monthly GDP and then aggregate to quarterly. In this sense, we know the proper weights and thus do not have to estimate them as in the MIDAS regressions. At the shortest horizon, the DFM accuracy is slightly worse than that of the bridge and MIDAS models.

To test for the statistical differences in the forecast performance, we apply [Diebold and Mariano \(1995\)](#) tests of forecast accuracy. We find that differences between the performance of the nowcasting models are not statistically significant. However, the difference in accuracy between the DFM and the quarterly AR model is significant at most forecast horizons, as shown in [Table 3](#).

5 Conclusion

This paper proposes a medium-sized DFM to nowcast quarterly GDP in Canada. We deviate from the traditional DFMs used in the nowcasting literature to accommodate specificities of the Canadian macroeconomic data availability. The model is estimated using a panel of 23 variables, and features an additional restricted factor to properly take into account the publication of a monthly GDP series in Canada.

In a pseudo real-time exercise, we show that the model performs well. Our proposed DFM is more accurate than traditional simple benchmarks such as univariate AR models. It also performs well against competing MIDAS and bridge models, which explicitly consider additional predictors, mixed frequencies, and ragged edges.

References

- AASTVEIT, K. A., K. R. GERDRUP, A. S. JORE, AND L. A. THORSRUD (2011): “Nowcasting GDP in real-time: A density combination approach,” Tech. rep., Norges Bank.
- ALVAREZ, R. M. C. AND G. PEREZ-QUIROS (2016): “Aggregate versus disaggregate information in dynamic factor models,” *International Journal of Forecasting*, 32, 680 – 694.
- BAFFIGI, A., R. GOLINELLI, AND G. PARIGI (2004): “Bridge models to forecast the euro area GDP,” *International Journal of forecasting*, 20, 447–460.
- BAÑBURA, M., D. GIANNONE, AND L. REICHLIN (2011): “Nowcasting,” in *The Oxford Handbook of Economic Forecasting*, ed. by M. P. Clements and D. F. Hendry, Oxford University Press, 63–90.
- BAÑBURA, M. AND M. MODUGNO (2014): “Maximum likelihood estimation of factor models on datasets with arbitrary pattern of missing data,” *Journal of Applied Econometrics*, 29, 133–160.
- BARHOUMI, K., O. DARNÉ, AND L. FERRARA (2010): “Are disaggregate data useful for factor analysis in forecasting French GDP?” *Journal of Forecasting*, 29, 132–144.
- BINETTE, A. AND J. CHANG (2013): “CSI: A Model for Tracking Short-Term Growth in Canadian Real GDP,” *Bank of Canada Review*, 2013, 3–12.
- BORK, L. (2009): “Estimating US monetary policy shocks using a factor-augmented vector autoregression: An EM algorithm approach,” *CREATES Research Paper*, 11.
- BORK, L., H. DEWACHTER, AND R. HOUSSA (2009): “Identification of Macroeconomic Factors in Large Panels,” *CREATES Research Paper*, 43.
- BRAGOLI, D., L. METELLI, AND M. MODUGNO (2015): “The importance of updating: Evidence from a Brazilian nowcasting model,” *OECD Journal: Journal of Business Cycle Measurement and Analysis*, 2015, 5–22.
- BRAGOLI, D. AND M. MODUGNO (2016): “A Nowcasting Model for Canada: Do U.S. Variables Matter?” *Finance and Economics Discussion Series*.

- CAMACHO, M. AND G. PEREZ-QUIROS (2010): “Introducing the euro-sting: Short-term indicator of euro area growth,” *Journal of Applied Econometrics*, 25, 663–694.
- CLEMENTS, M. P. AND A. B. GALVÃO (2008): “Macroeconomic forecasting with mixed-frequency data: Forecasting output growth in the United States,” *Journal of Business & Economic Statistics*, 26, 546–554.
- D’AGOSTINO, A., K. MCQUINN, AND D. OBRIEN (2013): “Nowcasting Irish GDP,” *OECD Journal: Journal of Business Cycle Measurement and Analysis*, 2012, 21–31.
- DAHLHAUS, T., J.-D. GUÉNETTE, AND G. VASISHTHA (2015): “Nowcasting BRIC+ M in Real Time,” Tech. rep., Bank of Canada Working Paper.
- DIEBOLD, F. X. AND R. S. MARIANO (1995): “Comparing Predictive Accuracy,” *Journal of Business & Economic Statistics*, 253–263.
- DOZ, C., D. GIANNONE, AND L. REICHLIN (2012): “A quasi–maximum likelihood approach for large, approximate dynamic factor models,” *Review of Economics and Statistics*, 94, 1014–1024.
- GALBRAITH, J. AND G. TKACZ (2013): “Nowcasting GDP: Electronic Payments, Data Vintages and the Timing of Data Releases,” *CIRANO Working Papers*.
- GHYSELS, E., P. SANTA-CLARA, AND R. VALKANOV (2006): “Predicting volatility: getting the most out of return data sampled at different frequencies,” *Journal of Econometrics*, 131, 59–95.
- GHYSELS, E., A. SINKO, AND R. VALKANOV (2007): “MIDAS regressions: Further results and new directions,” *Econometric Reviews*, 26, 53–90.
- GIANNONE, D., S. M. AGRIPPINO, AND M. MODUGNO (2013): “Nowcasting China Real GDP,” *Working Paper*.
- GIANNONE, D., L. REICHLIN, AND D. SMALL (2008): “Nowcasting: The real-time informational content of macroeconomic data,” *Journal of Monetary Economics*, 55, 665–676.
- GOLINELLI, R. AND G. PARIGI (2007): “The use of monthly indicators to forecast quarterly GDP in the short run: an application to the G7 countries,” *Journal of Forecasting*, 26, 77–94.

- LAHIRI, K. AND G. MONOKROUSSOS (2013): “Nowcasting US GDP: The role of ISM business surveys,” *International Journal of Forecasting*, 29, 644–658.
- LAHIRI, K., G. MONOKROUSSOS, AND Y. ZHAO (2015): “Forecasting Consumption: the Role of Consumer Confidence in Real Time with many Predictors,” *Journal of Applied Econometrics*.
- LUCIANI, M., M. PUNDIT, A. RAMAYANDI, G. VERONESE, ET AL. (2015): “Nowcasting Indonesia,” Tech. rep., Board of Governors of the Federal Reserve System (US).
- LUCIANI, M. AND L. RICCI (2014): “Nowcasting Norway,” *International Journal of Central Banking*, 215–248.
- MARIANO, R. S. AND Y. MURASAWA (2003): “A new coincident index of business cycles based on monthly and quarterly series,” *Journal of Applied Econometrics*, 18, 427–443.
- MARTIN, M. (2004): “The Bank of Canada’s Business Outlook Survey,” *Bank of Canada Review*, 2004, 3–18.
- MATHESON, T. D. (2010): “An analysis of the informational content of New Zealand data releases: the importance of business opinion surveys,” *Economic Modelling*, 27, 304–314.
- PICHETTE, L. AND L. RENNISON (2011): “Extracting Information from the Business Outlook Survey: A Principal-Component Approach,” *Bank of Canada Review*, 2011, 21–28.

Table 1: Domestic Macroeconomic Variables

Variable	Timing	Pub. Lag (Days)	Freq	Source	Avail From	Transf
WTI Oil Price	Week 1	1	M	F.O.B. Cushing, Okla- homa	Jan-72	2
US PMI	Week 1	1	M	Institute for Supply Management	Jan-48	1
Global PMI	Week 1	1	M	JP Morgan / Markit	Jan-98	1
BOS Future Sales	Week 1	1	Q	Bank of Canada	Q3-97	1
US MV Sales	Week 1	2	M	Bureau of Economic Analysis	Jan-67	2
Commodity Price Index	Week 1	3	M	Bank of Canada	Jan-72	2
US Employment	Week 1	3	M	Bureau of Labor Statistics	Jan-39	2
Employment Rate	Week 1	6	M	Statistics Canada	Jan-76	3
Total Hours Worked	Week 1	6	M	Statistics Canada	Jan-76	3
Housing Starts	Week 2	9	M	CMHC	Jan-56	2
MV Sales	Week 2	13	M	Statistics Canada	Jan-46	2
US Retail Sales	Week 2	13	M	Census Bureau	Jan-67	2
US Industrial Production	Week 3	17	M	Federal Reserve Board	Jan-21	2
US Housing Starts	Week 3	17	M	Census Bureau	Jan-59	2
MV Production	Week 3	17	M	Wards Auto	Jan-93	2
Goods Exports	Week 1	33	M	Statistics Canada	Jan-68	2
Goods Imports	Week 1	33	M	Statistics Canada	Jan-68	2
Terms of Trade	Week 1	33	M	Statistics Canada	Jan-71	2
Building Permits	Week 1	35	M	Statistics Canada	Jan-48	2
Manufacturing Sales	Week 3	47	M	Statistics Canada	Jan-97	2
Wholesale Trade	Week 3	49	M	Statistics Canada	Jan-81	2
GDP Basic Prices	Week 4	60	M	Statistics Canada	Jan-81	2
GDP Market Prices	Week 4	60	Q	Statistics Canada	Q1-61	2

Note: This table shows our data set on June 2016, as well as the transformation applied to each one of the series: 1-No change, 2-log difference, and 3-1st difference. Timing refers to which week of the month the series is usually released, and Publication lag refers the number of days for the variable announcement, after the reference month.

Table 2: Average Reduction in RMSFE by Variable

	First Forecast	First Nowcast	Second Nowcast	Third Nowcast	First Backcast	Second Backcast
WTI Oil Price	0	-2	-1	0	0	0
Commodity Price Index	0	-3	0	0	0	0
US PMI	-4	-8	-4	0	0	0
Global PMI	-5	0	1	0	0	0
US Employment	-1	1	4	0	-1	0
BOS Future Sales Growth	0	0	0	0	0	0
US MV Sales	0	0	1	0	0	0
Exports	2	-7	-3	-2	-2	-1
Imports	0	-6	-1	1	0	0
Terms of Trade	-4	-1	1	-1	0	0
Employment Rate	-5	4	-2	-2	0	0
Total Hours Worked	0	0	-3	-3	-2	-1
Building Permits	-1	1	0	0	0	0
Housing Starts	0	-1	-1	0	0	0
MV Sales	-1	0	-1	0	0	0
US Retail Sales	-4	0	-1	0	0	1
US Industrial Production	-4	-3	-2	1	2	-1
Manufacturing Sales	2	-1	1	1	-1	0
US Housing Starts	-3	0	1	-1	0	0
Wholesale Trade	1	-4	-2	-1	-2	0
MV Production	-1	-1	3	-1	0	0
GDPBP	0	-4	-4	-36	-23	-9
GDP	0	0	-3	0	0	0

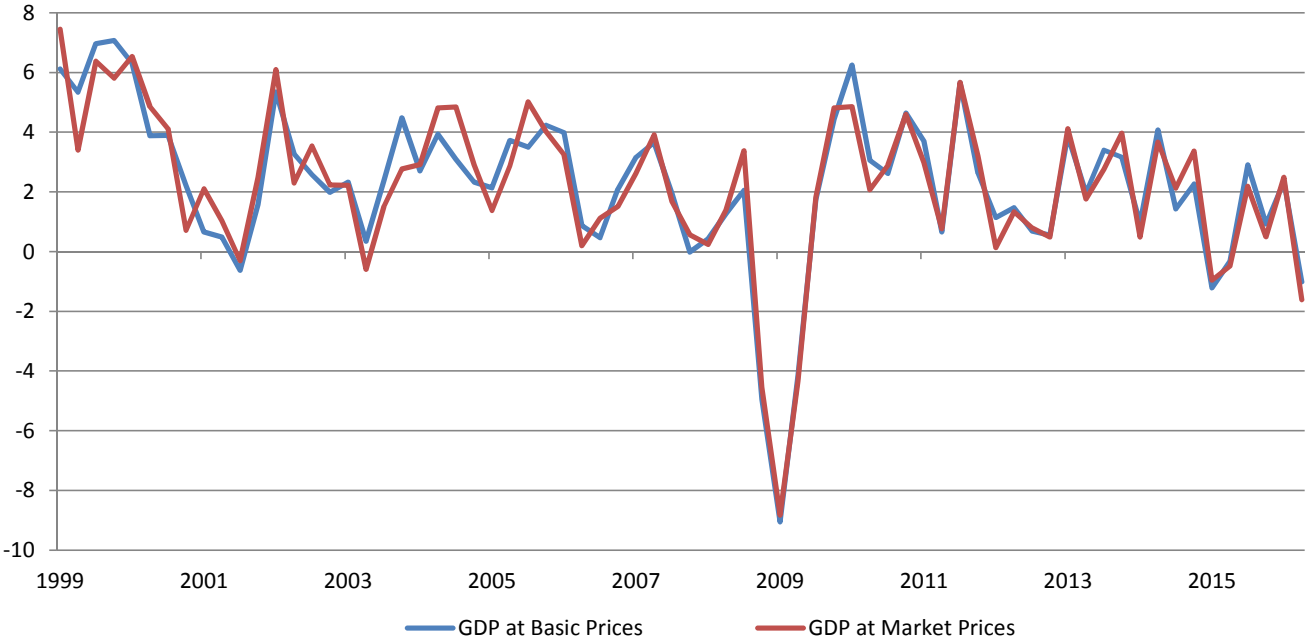
Note: This table shows the average reduction in RMSFE (in bps) from 2002Q1 to 2016Q2 due to each of the variables in the DFM, and for each of the six prediction horizons.

Table 3: RMSFE of the DFM and Benchmark Models

	First Fore- cast	First Now- cast	Second Nowcast	Third Nowcast	First Backcast	Second Backcast
Dynamic Factor Model	2.09	1.74	1.61	1.46*	1.05**	0.80***
MIDAS	2.44	2.30	1.99	1.69*	1.19**	0.74**
Bridge Equations	2.53*	2.48**	2.22*	1.67**	1.17**	0.72***
Quarterly AR	2.66	2.66	2.66	2.25	2.25	2.25

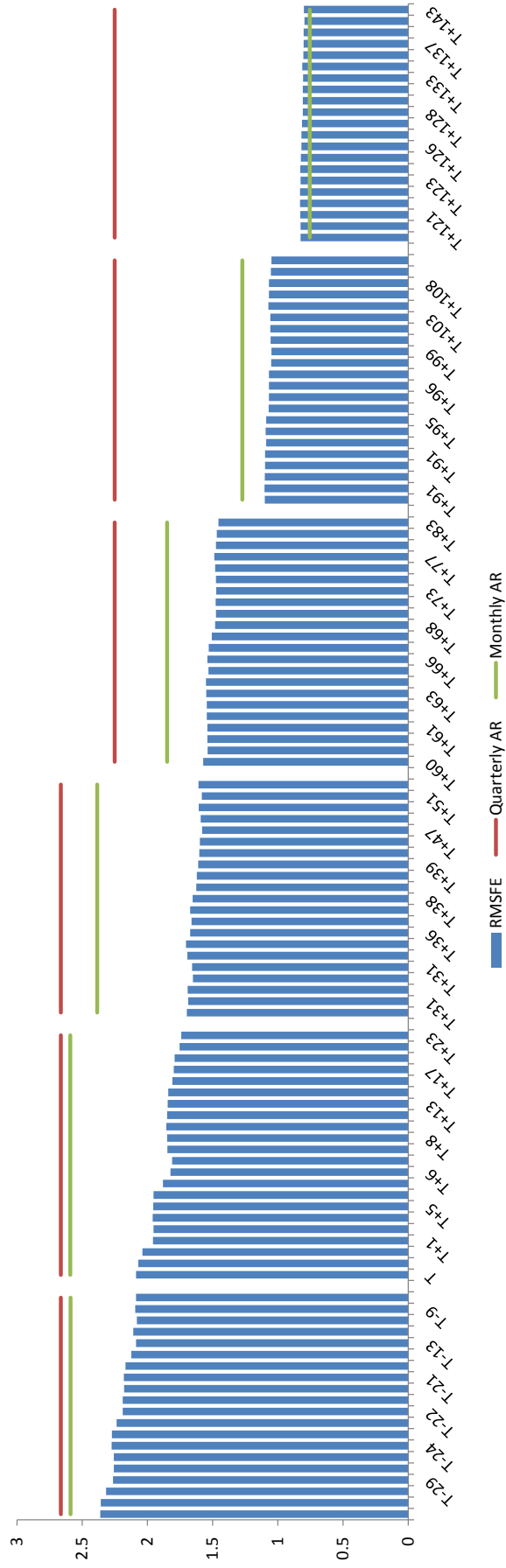
Note: This table shows the RMSFE of our DFM, as well as two other commonly used nowcasting models, MIDAS and bridge models. The predictions are evaluated at the end of each month prior to the monthly GDP release, when all data except monthly GDP are known. *, **, *** denote statistical significance at the 10, 5 and 1% level, respectively, for the Diebold-Marino test using the Quarterly AR model as the benchmark.

Figure 1: GDP at Market Prices (Quarterly) vs GDP at Basic Prices (Monthly)



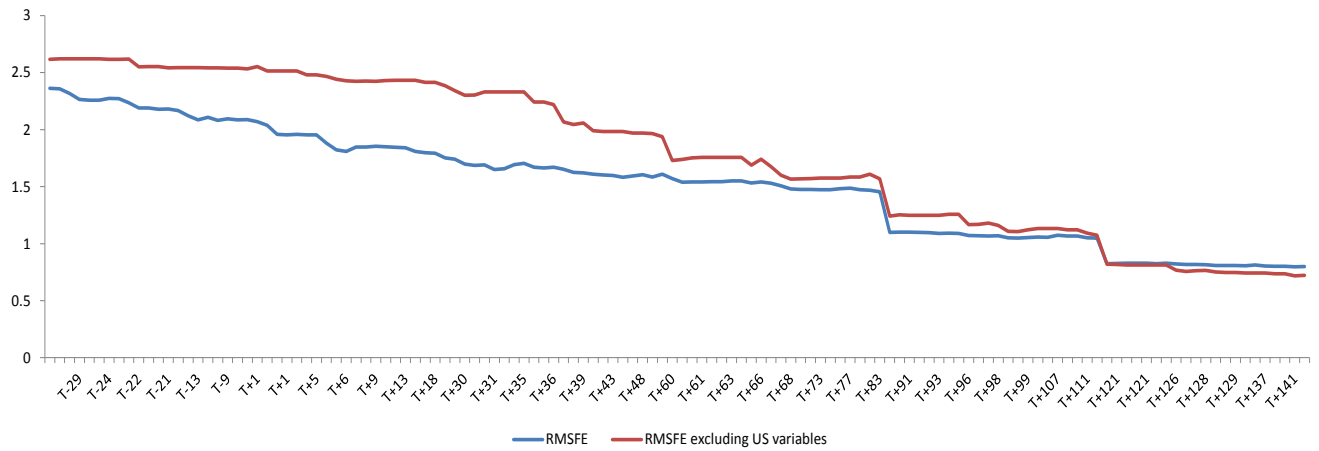
Notes: This figure shows Canadian GDP at market prices as published in the Quarterly National Accounts and monthly GDP at basic prices Q/Q growth rates at annualized rates.

Figure 2: RMSFE as New Data Are Released Throughout the Prediction Horizon



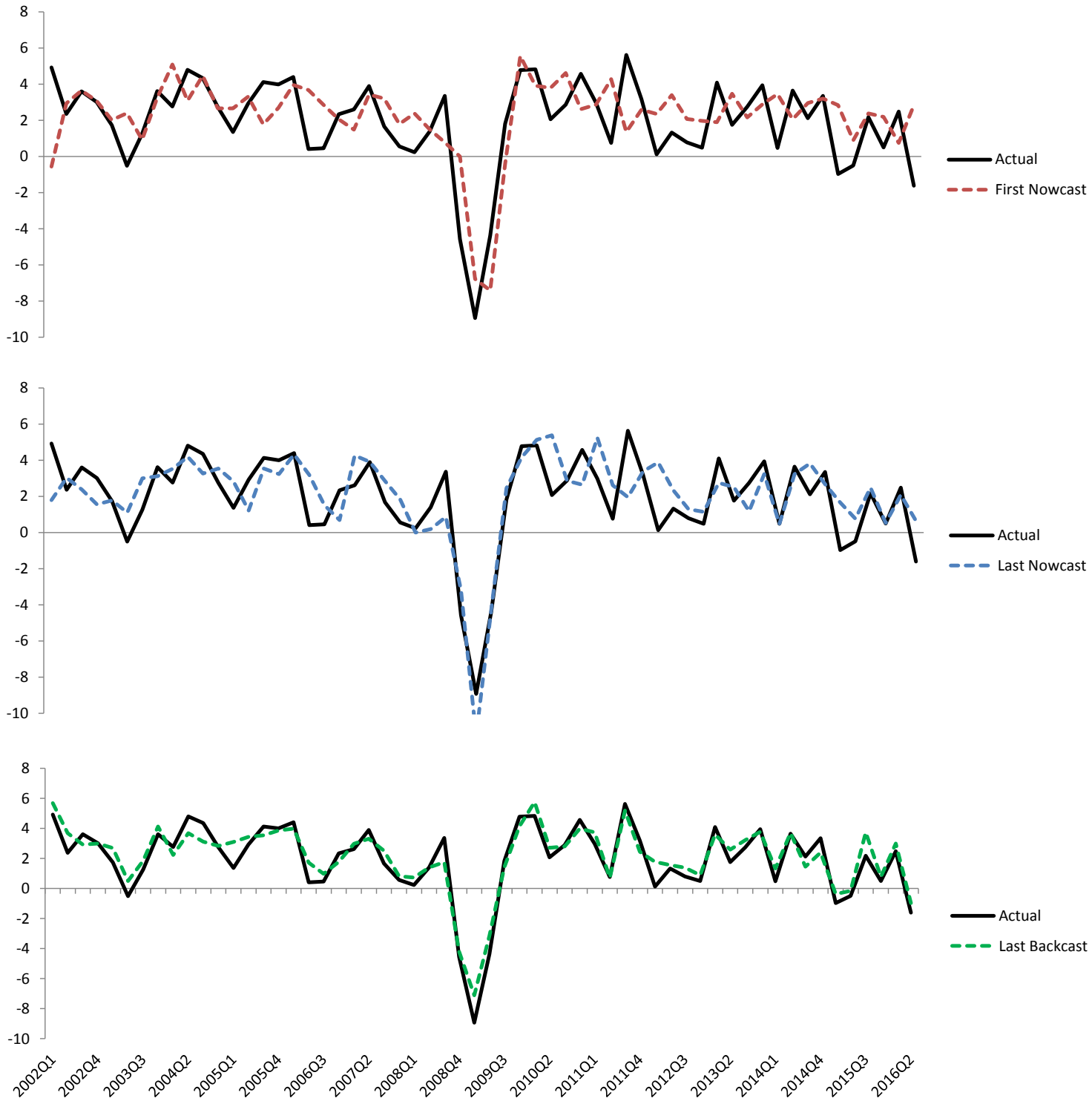
Notes: This figure shows the RMSFE of the DFM as new data are released throughout the prediction horizon. The red lines represent the RMSFE of the quarterly AR benchmark, whereas the green lines display the RMSFE of the monthly AR model. The out-of-sample forecasts period runs from 2002Q1 to 2016Q2.

Figure 3: RMSFE as New Data Are Released Throughout the Prediction Horizon with and without US Variables



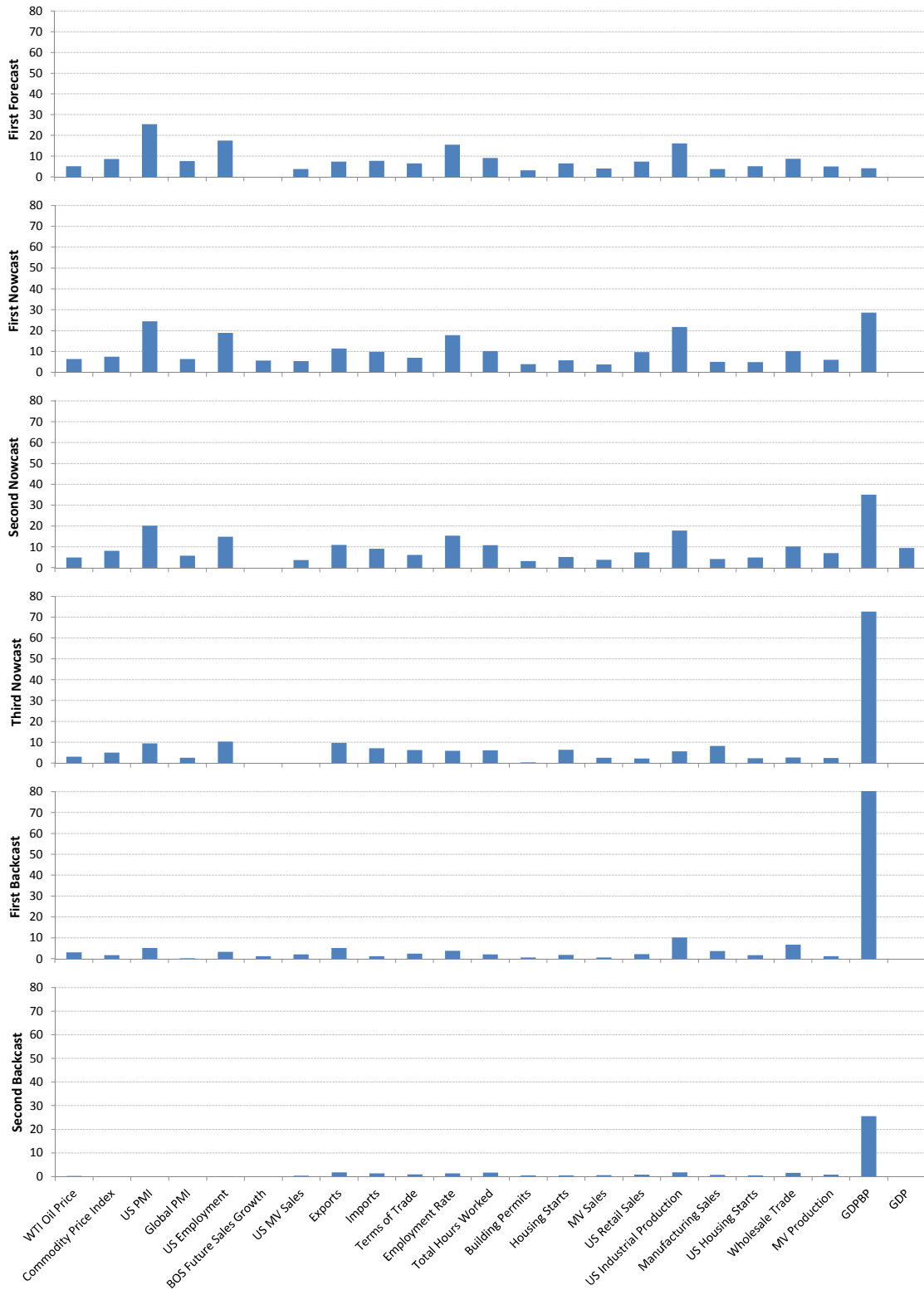
Notes: This figure shows the RMSFE of the DFM as new data are released throughout the prediction horizon with and without the US variables.

Figure 4: Quarterly GDP Growth Predictions



Notes: This figure shows the predictions of the DFM from 2002Q1 to 2016Q2 for three different horizons: the first nowcast, the last nowcast, and the last backcast. The solid black line displays actual GDP growth, while the dashed lines represent the DFM predictions.

Figure 5: Average Impact of News Releases



Notes: This figure shows the average absolute impact (basis points) on the forecast of every announcement in the forecast, first nowcast, second nowcast, third nowcast, as well as on the first and second backcasts.