

Miyamoto, Wataru; Nguyen, Thuy Lan

Working Paper

Business cycles in small, open economies: Evidence from panel data between 1900 and 2013

Bank of Canada Staff Working Paper, No. 2016-48

Provided in Cooperation with:

Bank of Canada, Ottawa

Suggested Citation: Miyamoto, Wataru; Nguyen, Thuy Lan (2016) : Business cycles in small, open economies: Evidence from panel data between 1900 and 2013, Bank of Canada Staff Working Paper, No. 2016-48, Bank of Canada, Ottawa,
<https://doi.org/10.34989/swp-2016-48>

This Version is available at:

<https://hdl.handle.net/10419/171939>

Standard-Nutzungsbedingungen:

Die Dokumente auf EconStor dürfen zu eigenen wissenschaftlichen Zwecken und zum Privatgebrauch gespeichert und kopiert werden.

Sie dürfen die Dokumente nicht für öffentliche oder kommerzielle Zwecke vervielfältigen, öffentlich ausstellen, öffentlich zugänglich machen, vertreiben oder anderweitig nutzen.

Sofern die Verfasser die Dokumente unter Open-Content-Lizenzen (insbesondere CC-Lizenzen) zur Verfügung gestellt haben sollten, gelten abweichend von diesen Nutzungsbedingungen die in der dort genannten Lizenz gewährten Nutzungsrechte.

Terms of use:

Documents in EconStor may be saved and copied for your personal and scholarly purposes.

You are not to copy documents for public or commercial purposes, to exhibit the documents publicly, to make them publicly available on the internet, or to distribute or otherwise use the documents in public.

If the documents have been made available under an Open Content Licence (especially Creative Commons Licences), you may exercise further usage rights as specified in the indicated licence.

Staff Working Paper/Document de travail du personnel 2016-48

Business Cycles in Small, Open Economies: Evidence from Panel Data Between 1900 and 2013



by Wataru Miyamoto and Thuy Lan Nguyen

Bank of Canada staff working papers provide a forum for staff to publish work-in-progress research independently from the Bank's Governing Council. This research may support or challenge prevailing policy orthodoxy. Therefore, the views expressed in this paper are solely those of the authors and may differ from official Bank of Canada views. No responsibility for them should be attributed to the Bank.

Bank of Canada Staff Working Paper 2016-48

November 2016

Business Cycles in Small, Open Economies: Evidence from Panel Data Between 1900 and 2013

by

Wataru Miyamoto¹ and Thuy Lan Nguyen²

¹Canadian Economic Analysis Department
Bank of Canada
Ottawa, Ontario, Canada K1A 0G9
wmiyamoto@bankofcanada.ca

²Santa Clara University
Santa Clara, California
tlnghuyen@scu.edu

Acknowledgements

We thank Emi Nakamura, Serena Ng, Stephanie Schmitt-Grohé, Jón Steinsson and Martín Uribe for their invaluable advice. We also thank two anonymous referees, Jonathan Dingel, Andres Fernandez, Alex Field, Pablo Guerron-Quintana, Chris Otrok and seminar participants at the 2012 Midwest Macroeconomic Meeting, Econometric Society European Meeting and Columbia Economic Fluctuation and Monetary Colloquia for their input. We also thank Chris Otrok for his help with the dynamic factor approach, and Leandro Prados de la Escosura, Alpay Filiztekin, Ola Gryten, Gudmundur Jonsson, Jari Kaupila, Pedro Lain, Eduardo Moron, Bruno Seminario and Jose Ursua for providing us with the data.

Abstract

Using a novel data set for 17 countries dating from 1900 to 2013, we characterize business cycles in both small developed and developing countries in a model with financial frictions and a common shock structure. We estimate the model jointly for these 17 countries using Bayesian methods. We find that financial frictions are an important feature for not only developing countries but also small developed countries. Furthermore, business cycles in both groups of countries are marked with trend productivity shocks. Common disturbances explain one-third of the fluctuations in small, open economies (both developed and developing), especially during important worldwide phenomena.

Bank topics: Business fluctuations and cycles; Economic models; International topics

JEL classification: F41; F44; E13; E32

Résumé

Grâce à un nouvel ensemble de données sur 17 pays couvrant la période de 1900 à 2013, nous caractérisons les cycles économiques de petits pays développés et de pays en développement dans un modèle doté de frictions financières et d'une structure de chocs commune. Nous estimons le modèle pour les 17 pays collectivement en recourant à des méthodes bayésiennes. Nous constatons que les frictions financières constituent une caractéristique importante non seulement des pays en développement, mais aussi des petits pays développés. Par ailleurs, les cycles économiques des deux groupes de pays sont marqués par des chocs de productivité tendancielle. Les perturbations communes expliquent le tiers des fluctuations dans les petites économies ouvertes (qu'il s'agisse de pays développés ou de pays en développement), en particulier durant des phénomènes mondiaux importants.

Sujets : Cycles et fluctuations économiques; Modèles économiques; Questions internationales

Codes JEL : F41; F44; E13; E32

Non-Technical Summary

Motivation and Question

Business cycles in emerging economies are marked with highly volatile consumption and countercyclical trade balance. There are two views in the literature to explain these features: Aguiar and Gopinath (2007) argue that business cycles in emerging economies can be well explained by a frictionless real business cycle model with shocks to trend productivity, reflecting frequent regime switches in economic policies and market failures in emerging economies. In contrast, Garcia-Cicco et al. (2010) argue that a model with financial frictions can better capture the dynamics of emerging economies and in that case trend shocks are not necessary. Given these contrasting views, we characterize the important features of business cycles in developing countries and compare with those in advanced countries using long historical data for 17 small open economies.

Methodology

We build a small open economy real business cycle model with reduced-form financial frictions and trend productivity shocks augmented with common shocks. We estimate the model using Bayesian methods jointly for 17 countries between 1900 and 2013.

Key Contributions

We make three contributions to the literature. First, we collect a new data set of macroeconomic variables covering 17 small open economies, for both advanced and developing countries between 1900 and 2013. This is motivated by the fact that most of the previous studies rely on only a few countries' data. Furthermore, while it is important to use long data to identify trend shocks, except for Garcia-Cicco et al. (2010), previous papers use relatively short data due to the limitation of public data, especially for emerging economies. Second, we estimate a model that nests two important features in the literature—trend productivity shocks and financial frictions—to quantify the importance of these two features. Third, we augment the model with common shocks, which affect all countries at the same time, to characterize the nature of country-specific versus common outside shocks in these economies.

Findings

Our main findings are as follows. First, financial friction is an important feature in both advanced and developing countries. In other words, a frictionless real business cycle model is not adequate to describe small open economies. Second, trend shocks play a sizable role in driving business cycles for both developing and advanced countries, contrary to previous literature. However, the nature of trend shock is different. While common trend shocks are more important than country-specific shocks in advanced economies, country-specific trend shocks are more important in developing countries. Third, common shocks explain about 30% of the variation in output in small open economies, on average. This result suggests the importance of external policies for business cycles in these economies.

Future Research

Our results suggest the importance of modeling in future studies financial frictions in small open economy models and how shocks transmit to these small open economies through international trades.

1 Introduction

Recent studies have examined whether economic fluctuations in developing countries are described well by a frictionless real business cycle (RBC) model with shocks to trend productivity. Using data for Mexico, [Aguilar and Gopinath \(2007\)](#) argue that a frictionless RBC model with trend productivity shocks goes a long way in explaining business cycles in developing countries, as trend productivity shocks can capture frequent regime switches in economic policies and market failures, which are important for these countries. At the same time, [Garcia-Cicco et al. \(2010\)](#) show that an RBC model with a reduced-form financial friction describes the data for Argentina better than a frictionless model, and that it predicts the negligible role of trend productivity shocks in aggregate fluctuations. Given these contrasting conclusions coming from studies with relatively few countries, several questions on the nature of the business cycle in small open economies remain. First, what are the important features of economic fluctuations in developing countries in general? Do trend productivity shocks have a negligible role, while financial frictions are at the front and center? Second, are business cycles in small developed countries any different from those in developing countries over the long horizon?

This paper answers these questions in a unified framework of a structural model for small open economies and provides new evidence on the characteristics of business cycles using a novel panel data set covering over 100 years of data for 17 small developed and developing countries. Our structural model is a small open economy RBC model with financial frictions and common shocks. The financial friction feature of the model provides us with a framework to analyze whether a frictionless RBC model with trend productivity shocks or a model with financial frictions can better describe key features of business cycles in small open economies over the long horizon. Importantly, unlike previous papers in the literature, we introduce a common shock structure into the model to capture the possibility that these countries are subject to some common outside shocks and to better utilize the information from the panel data of many countries. More specifically, our model includes 17 small open economies, each of which faces a reduced-form financial friction modeled as an endogenous interest rate premium that responds to both the level of debt-to-output ratio and expected future productivity. The model economy is buffeted by five types of shocks including trend and stationary productivity shocks and country premium shocks, each of which has two components: a world common shock that affects all countries at the same time, and a country-specific shock. These common shocks are what connect these small open economies and can be

interpreted as outside shocks.

To facilitate our analysis, we estimate the model using a new data set covering 17 developing and developed small open economies between 1900 and 2013. Compared with previous studies, our data set includes many more countries over a much longer horizon, providing us with new evidence on the important features of business cycles in both small developed and developing economies, which has been limited in both sample countries and sample periods. Furthermore, given the panel structure of the data set, we pool all available information and estimate the model jointly for these countries. Therefore, we obtain efficiency gain in estimating key parameters and can identify structural shocks more accurately. Even though long data series may contain measurement errors, the fact that these series contain several business cycles makes them suitable for our purpose, to characterize observed business cycles and identify structural parameters in the model, especially those related to the trend productivity shock process. Furthermore, as we pool data in our estimation, the problem with measurement errors is less pronounced, to the extent that these measurement errors are independent across countries.

Our joint estimation for all 17 countries using Bayesian methods indicates that financial frictions are an important feature of business cycles in both small developed and developing countries. In other words, a frictionless RBC model is not supported by the data. In fact, all 17 small open economies in our sample face non-zero financial frictions, although the estimated degree of financial frictions varies across countries. Our estimation results suggest that while it is difficult for households to smooth their consumption by borrowing internationally, their borrowing constraint is also relaxed when their expected future productivity is high.

An important finding of our analysis is that trend productivity shocks play a sizable role in both small developed and developing countries. In particular, trend productivity shocks explain about one-third of output fluctuations in both small developed and developing countries, on average. This result is substantially different from previous studies on the importance of trend productivity shocks in emerging economies, such as [Garcia-Cicco et al. \(2010\)](#), who find that in an estimated model with financial frictions for Argentina, trend shocks are a negligible source of business cycles. Our estimation suggests that Argentina is a particular case, since in other countries such as Taiwan and Portugal, trend productivity shocks are large and significant even though these countries face substantial financial frictions. The contribution of trend productivity shocks is, on average, much larger than that in Argentina. Nevertheless, on average, trend plays a less significant role than stressed in [Aguiar and Gopinath \(2007\)](#), who examine Mexico after 1980. This result highlights

the importance of using information from many countries over the long horizon to understand the nature of business cycles in small open economies.

Although trend productivity shocks explain a significant fraction of business cycle fluctuations in both developed and developing countries, the natures of trend productivity shocks differ between these two groups of countries. When we decompose the importance of trend and stationary shocks into common and country-specific components, our estimation finds that while important trend shocks in small developed countries are common, country-specific trend shocks are much more dominant in developing countries. We interpret this result as follows: Developed countries are generally closer to the world productivity frontier, so they are more prone to common trend productivity shocks. However, developing countries are subject to various domestic policy and structural reforms, so the trend productivity shocks that are important for them are not common but country-specific.

Another finding in our paper is that common disturbances across countries are an important driving force of business cycle fluctuations in small open economies. These common shocks capture worldwide phenomena in the last 100 years such as the Great Depression, the two World Wars, the two oil price shocks and the Great Recession. During these episodes, output in all these countries dropped at the same time. Therefore, the estimation attributes a substantial fraction of business cycle fluctuations in both developed and developing countries to these common disturbances. In particular, all types of common shocks account for roughly 28% of output fluctuations at an annual frequency over the last 100 years. Furthermore, the extracted world common shocks are highly correlated with U.S. output over time. For example, in the 2008–09 recession, output in Canada and Mexico, which have strong ties with the U.S., declined significantly due to common shocks. These results suggest that the identified common shocks include the general equilibrium effects of shocks from large countries, such as the U.S., to 17 small open economies through financial and trade linkages.¹ Finally, we document that several sources of common shocks contribute to the fluctuations of macroeconomic variables, including common trend and stationary productivity shocks, as well as common premium shocks.

To examine whether business cycles have changed substantially over the last 100 years, we estimate the model for the two subsample periods before and after 1950. We find that the esti-

¹It is possible that our common shocks include the shocks originating from one of the 17 countries transmitting to the rest of the countries in the sample, which can overstate the importance of common shocks. However, this bias may be small. The reason is that since our sample includes 17 small open economies, shocks originating from Argentina or Canada are unlikely to affect other countries such as Taiwan or India. In other words, data from small open economies can help to avoid some of the internal propagation among countries in the group.

mated parameters of the model, including those related to the financial friction, change over time, consistent with the fact that some of the second moments, such as volatilities in the data, are different across the two subsample periods. However, the main findings of our paper are robust: trend productivity shocks as well as common shocks play a sizable role in business cycles in these countries, and financial frictions are still an important feature for small open economies.

Although the identification in Bayesian estimation relies on all the information and moments in the data, our analysis suggests that the behaviors of trade balance, as well as output and consumption growth rates, help to pin down the importance of trend and productivity shocks. In particular, in a frictionless RBC model, although trend productivity shocks can lead to countercyclical trade balance and the excess volatility of consumption, trend productivity shocks lead to a near random-walk trade balance, as discussed in [Garcia-Cicco et al. \(2010\)](#). Therefore, observing trade balance is important in identifying whether a frictionless RBC model is adequate in explaining business cycles in small open economies or whether financial frictions are an important feature for these economies. Furthermore, observing output and consumption growth rates over the long horizon also helps to identify the persistence of productivity shocks, and the estimation to distinguish trend and stationary productivity shocks. We identify the common components of these shocks through both contemporaneous and dynamic correlations across all country pairs. In the model, since each country is a small open economy, there is no correlation across countries without common shocks. Therefore, the estimation attributes the comovements across all countries to world common shocks, and the fluctuations independent of other countries to country-specific shocks. This identification implies that common shocks tend to be more important for countries that are more correlated with the rest of the countries in the sample, which is consistent with our findings.

Related Literature Our paper is related to several strands of the macroeconomics literature. First, we contribute to a large literature in the small open economy business cycle studies, starting with [Mendoza \(1991\)](#), by providing new evidence on the role of trend shocks and financial frictions in a large number of countries.² These papers often focus on only a few countries, such as Argentina and Mexico, and use short time series. Although [Garcia-Cicco et al. \(2010\)](#) use 100 years of data, their sample countries are also limited to Argentina and Mexico.³ We complement these papers

²A number of papers including [Neumeyer and Perri \(2005\)](#), [Uribe and Yue \(2006\)](#), [Aguiar and Gopinath \(2007\)](#), [Chang and Fernandez \(2013\)](#), [Álvarez-Parra et al. \(2013\)](#), [Fernández-Villaverde et al. \(2011\)](#), and [Fernandez and Gulan \(2015\)](#) have highlighted the role of interest rate, the changes in interest rate volatility, trend shocks and financial frictions in business cycles in emerging economies.

³[Nakamura et al. \(2014\)](#) estimate a trend component using consumption data for 16 developed countries spanning 100 years in a long run risk model.

along several dimensions. We estimate trend shocks using a new data set that covers many more countries, spanning over a century. Our finding about the importance of trend shocks in these countries suggests that trend shocks are neither dominant nor negligible as earlier works with only a few countries have found. Furthermore, we also highlight the role of financial frictions in developing countries, unlike [Naoussi and Tripier \(2013\)](#), who use shorter data for 82 countries but restrict their attention to a frictionless model with trend shocks. This finding resonates with recent work by [Akinici \(2014\)](#) and [Fernandez and Gulan \(2015\)](#), who quantify the role of financial frictions in a micro-founded financial friction model using recent data. Finally, an important difference between our papers and earlier work in this literature is that we exploit the information from the long panel data to examine the common components of trend shocks and how financial frictions have changed over time for these small open economies.⁴

Our paper also provides new evidence of the role of common shocks to the existing literature on world business cycles. Structural studies such as [Glick and Rogoff \(1995\)](#) and [Gregory and Head \(1999\)](#) distinguish the effects of common and country-specific shocks, but do not estimate the model. Therefore, they do not address our questions on business cycles in small open economies. A recent work by [Guerron-Quintana \(2013\)](#) estimates the role of common shocks in small developed countries using quarterly data from 1980. Our paper, instead, focuses on business cycle characteristics for not only small developed countries but also emerging countries over 100 years. Besides, our model features an endogenous interest rate premium to proxy for the reduced-form financial friction in these countries, as well as a flexible common shock structure to capture the observed comovements in the data. Both differences matter for the results, as they affect identification and fitness of the model.

We also speak to a large literature on understanding world business cycles using reduced-form dynamic factor models (DFM) such as [Kose et al. \(2003, 2012\)](#). An important contribution of our paper is that we identify several types of structural common shocks and their propagation mechanism, which is difficult in a standard DFM approach. If we used standard DFM estimation in the international business cycle literature, which typically assumes one type of common factor, we would estimate a much more modest role of common shocks—about half of the result in the structural estimation. We demonstrate this difference between structural and DFM methods by showing that DFM estimates a much lower importance of common shocks when the data-generating

⁴A few other papers such as [Kose \(2002\)](#) and recently [Fernandez et al. \(2015\)](#) explore the role of commodity prices in driving business cycles in small open economies. We do not specify the commodity prices in our model, but we can interpret that some of the shocks we identify come from the fluctuations in commodity prices.

process has more than one type of common shock.⁵

The rest of the paper is organized as follows: Section 2 documents the main business cycle statistics of small developed and developing countries between 1900 and 2013. Section 3 describes the baseline model. We explain the estimation method and the identification issues in Section 4. We discuss the role of financial frictions in Section 5. We present our main findings on the relative role of trend and stationary shocks and the nature of these shocks in Section 6 and 7. Section 8 analyzes the role of common shocks in small open economies. Section 9 discusses the robustness of our findings when we look at two subsample periods in our data. Section 10 concludes.

2 Business Cycles in Small Open Economies: 1900–2013

This section documents the main business cycle statistics for small open economies using a novel data set covering 17 countries in the last 100 years.

Our new data set includes annual growth rates of output, consumption, investment and the trade balance-to-output ratio for 17 small developed and developing countries between 1900 and 2013. Output, consumption and investment are deflated by the GDP deflator and in per capita terms. We start our data set with countries that have output and consumption data in [Barro and Ursua \(2010\)](#). We exclude large countries such as the United States, Japan, Germany, France and the United Kingdom, which represented more than 2% of the world’s GDP in the year 2000. We then collect data on investment and trade balance for the remaining countries from various sources, such as national statistics offices and economic history publications.⁶ Since the data for many countries start after World War II and the motivation of the paper is to use long data series to identify trend shocks, we choose only countries with at least 89 years of data, leaving these 17 countries.⁷

We categorize the countries into two groups based on their present development level, similar to [Kose et al. \(2012\)](#). Our classification is also consistent with that of Morgan Stanley Capital International (MSCI), which is used in [Álvarez-Parra et al. \(2013\)](#).⁸ There are 10 developing countries (Argentina, Brazil, Chile, Colombia, India, Mexico, Peru, Taiwan, Turkey and Venezuela)

⁵ Our results may be consistent with the DFM approach that identifies several common factors. However, a standard DFM estimation is not adequate to address our research questions; i.e., to understand the role of financial frictions as well as the nature of driving forces in business cycles and the propagation mechanisms.

⁶Detailed data sources are listed in Appendix C.

⁷Data availability for the countries in our data set is detailed in Appendix Table A1.

⁸We classify a country as developed if the country was in the MSCI Developed Markets index in their classification and as having an emerging market otherwise.

and seven small developed countries (Australia, Canada, Finland, Norway, Portugal, Spain, and Sweden). This grouping helps us characterize the differences between small developed countries and developing countries.⁹

2.1 Within-Country Statistics

[Insert Table 1 around here]

Whole sample: 1900–2013. Some features of our long time-span data set are similar to the facts previously documented in shorter data series. First, business cycles in many developing countries are characterized by a more volatile consumption growth rate than output growth rate, as shown in column (1) and column (2) of the “Developing” panel in Table 1. This feature also holds, on average, across small developed countries. Second, investment is the most volatile variable in every country in the sample, as displayed in column (3) of Table 1. Third, consistent with standard business cycle facts, consumption and investment are positively correlated with output. Lastly, the autocorrelation of trade balance is high, as reported in column (13) of Table 1. We also find that the trade balance autocorrelation function tapers off quickly for all countries, similar to that reported in [Garcia-Cicco et al. \(2010\)](#) using shorter data.¹⁰

Our data set also exhibits several features that are different from the previously documented facts. First, consumption volatility is higher than output volatility in small developed countries, on average. As reported in the first two columns of Table 1, this is true for five out of seven small developed economies. The excess volatility of consumption is in contrast with previous studies such as [Aguilar and Gopinath \(2007\)](#), who find this feature prominent only for developing countries using quarterly data after 1980, but consistent with other studies that use annual data from 1960, such as [Crucini and Chen \(2011\)](#) and [Rondeau \(2012\)](#). Second, there is no strong pattern for trade balance in small developed countries. Three out of seven small developed countries have a countercyclical trade balance, as shown in column (7) of Table 1, while the other four countries have a mildly procyclical trade balance. Thus, the average correlation of output and trade balance across countries is only slightly positive.

⁹Previous literature estimates global business cycles by grouping countries based on geographical locations. We do not estimate such group components, because there are only one or two countries in some regions, which can be a problem when we want to identify the regional shocks. We can identify the group components if we divide the group based on the levels of development in the estimation. However, some countries such as Argentina may have switched between developed and developing groups over the entire 100 years, so we do not estimate the group components in the baseline.

¹⁰We plot the autocorrelation function for all countries in Figure [A2](#).

Since many small open economies have gone through substantial changes in the last 100 years, we report the business cycle statistics in small open economies in two subperiods: between 1901 and 1950, and between 1951 and 2013. We choose the break point at 1950 to avoid some of the lasting effects of World War II.¹¹ Table 2a reports the second moments averaged across all countries, all developed and developing countries in these two periods.

[Insert Table 2a Table 2b around here]

Subperiod: 1901–1950. During the first half of the 20th century, output, consumption and investment growth rates are much more volatile in both small developed and developing countries than in the whole sample. However, we still find that consumption is 50% more volatile than output in all countries, and investment is three to four times more volatile than output. The correlation between output and trade balance and the autocorrelation of all four variables are consistent with the statistics for the whole period. For example, output comoves positively with consumption and investment in all countries. Trade balance is countercyclical in developing countries, but acyclical in small developed countries. Overall, the main difference between this subperiod and the whole sample is that output, consumption and investment are substantially more volatile in this subperiod.

Subperiod: 1951–2013. One important difference between this subsample and the whole sample is that the volatilities of output, consumption and investment are much smaller in the period between 1951 and 2013. This pattern is true for not only small developed countries, but also developing countries. Trade balance, on the other hand, remains as volatile as the whole sample and the 1901–1950 period.¹² Other characteristics we document in the whole sample remain the same. For example, consumption is still, on average, more volatile than output in both developed and developing countries. Investment is still the most volatile component. Finally, the countercyclicality of trade balance remains similar to that of the whole sample.¹³

¹¹Garcia-Cicco et al. (2010) compares output volatilities before and after 1945. Romer (1999) divides the sample for the United States into: Pre World War I (1886–1916), Inter War (1920–40), Post World War II (1948–97).

¹²We formally test the differences in the standard deviation of output, consumption, investment and trade balance between two subperiods for each country. We find that for output, we can reject the hypothesis that the standard deviations are equal between the two subperiods for all countries, except for Argentina, Brazil, Peru and India, at the 5% significance level. We can reject the same hypothesis for consumption and investment of all countries except three. Trade balance results are mixed: we can reject the hypothesis for only nine out of 17 countries.

¹³In the recent period between 1980 and 2013, most of the second moments for these countries remain similar to those of the 1950–2013 period. The main difference is that the volatilities of output and consumption in developed countries decrease further compared with the whole period and the 1950–2013 period. Since there have been only a few business cycles since 1980 for most of these countries, which makes it difficult to reliably identify trend shocks, our robustness check does not estimate the model using this subsample, but only the 1950–2013 period data.

2.2 Cross-Country Statistics

[Insert Figure 1 around here]

Business cycles are correlated across these small open economies for the last 100 years. As shown in Figure 1, which plots the output growth rates for all countries in our sample excluding Taiwan, output growth rates move in tandem in many periods between 1900 and 2013, such as in the Great Depression and the two World Wars.¹⁴ Besides output, consumption, investment and trade balance are also positively correlated across countries, as reported in Table 2b, where we take an average of the cross-country correlation across all pairs of countries.

Consistent with the international business cycle features, cross-country correlations of output are higher than that of consumption in all pairs of countries. The average correlations of output and consumption across developing countries are lower than those across developed countries. For example, the correlation of output is 0.22 on average among developed countries, while it is 0.15 among developing countries. One reason for lower average cross-country correlations across developing countries is that the strength of comovement varies across pairs of countries. For example, Venezuela and India are negatively correlated or barely correlated with other countries in the sample, while Argentina is significantly positively correlated with other countries (0.19 on average). In fact, many developing economies in South America are substantially correlated with each other.¹⁵ The same is true for the cross-country correlations of consumption growth rates. However, the cross country correlations of investment and trade balance are higher in developing countries than in small developed countries.

Finally, we calculate the cross-country correlations across countries for two subperiods: 1901–1950 and 1951–2013 as reported in Table 2b. The average correlations across countries in both subsamples are similar to those of the whole sample. For example, output is still more correlated across countries than consumption, and the comovement is stronger among developed countries than developing countries, on average. One noticeable difference is that output comoves more strongly in the 1951–2013 period among developed economies (0.34 on average) than in the first 50 years of the sample (0.19). However, the reverse is true for developing countries: their output is slightly more correlated in the first 50 years than in the 1951–2013 period. These strong comovements across countries motivate our focus on the common component driving the business cycles of both small developed and developing countries.

¹⁴Taiwan has a large drop of output growth rate in 1945. The plot for all countries is in Appendix Figure A3.

¹⁵We report in Appendix Table A2 the cross-country correlation of output growth rates for each pair of countries.

3 The Baseline Model

This section presents the baseline model to understand the importance of financial frictions and quantify the sources of business cycles, including trend and stationary productivity shocks and the role of common shocks in small open economies. Our model is a small open RBC model with two features that encompass the influential papers in the literature: [Aguiar and Gopinath \(2007\)](#) (AG), [Garcia-Cicco et al. \(2010\)](#) (GPU) and [Chang and Fernandez \(2013\)](#) (CF). First, our model includes an interest rate that responds to both the level of debt and expected productivity in each country. The responsiveness of the interest rate to these two components is the reduced-form financial frictions.¹⁶

Second, to exploit the information from pooling the data of 17 small open economies, we augment the shock structure to include common world shocks in addition to country-specific shocks in all of the five structural shocks: trend and stationary productivity, preference, interest rate premium and government spending shocks. Common shocks are the only source of comovements across countries; i.e., there is no endogenous propagation of country-specific shocks. This assumption may bias the contribution of common shocks. However, since the size of each country is small, and unless one country is a major trading partner with many countries in the sample, it is unlikely that a shock from one country such as Argentina can spill over to other countries in the sample. Therefore, the bias caused by shocks propagated from larger countries within our sample may not be substantial. Additionally, we assume that common shocks can have different effects, including different signs on different countries, similar to [Gregory and Head \(1999\)](#). This assumption is to capture the heterogeneous responses of each country to common shocks.¹⁷

We describe below the detailed model for an individual economy, $j \in [1, N]$.

A representative household maximizes the following utility function:

$$U = E_0 \sum_{t=0}^{\infty} \beta^t b_{jt} u(C_{jt}, h_{jt}) \quad (1)$$

where b_{jt} is the preference shock of country j at time t , β is the subjective discount factor, C_{jt}

¹⁶In AG, there are no financial frictions. In GPU, financial frictions take the form of an estimated debt elastic interest rate, while it is an estimated elasticity of the real interest rate to expected productivity in CF. We note that CF also include working capital in their model, although the role of working capital friction turns out to be negligible, which is consistent with our results for our model with working capital.

¹⁷We keep our model as close to previous literature as possible so as to better compare the results. The model in a previous version of our paper includes variable capital utilization. The estimation results of that model are similar to the results in this paper.

is consumption of country j at time t , and h_{jt} is hours worked. In the model, the period utility function $u(C_{jt}, h_{jt})$ is assumed to be given by:

$$u(C_{jt}, h_{jt}) = \frac{\left[C_{jt} - \psi \frac{1}{\theta} X_{jt-1} (h_{jt})^\theta \right]^{1-\sigma} - 1}{1-\sigma}, \quad (2)$$

where $\theta > 0$ determines the Frisch elasticity of labor supply, which is $\frac{1}{\theta-1}$, $\psi > 0$ is a scale parameter, and X_{jt} is the trend component in the production function to induce stationarity. This GHH preference has been used widely in the small open economy literature ([Mendoza \(1991\)](#), GPU, among others) since it can generate the countercyclical behavior of the trade balance-to-output and avoid the case where hours fall in response to a rise in trend productivity due to wealth effect.

The representative household faces the following period-by-period budget constraint:

$$\frac{D_{jt+1}}{R_{jt}} \geq D_{jt} - Y_{jt} + C_{jt} + G_{jt} + I_{jt} + \frac{s^j}{2} \left(\frac{K_{jt+1}}{K_{jt}} - \mu_{ss}^j \right)^2 K_{jt}, \quad (3)$$

where D_{jt+1} is the stock of debts chosen at time t , and R_{jt} denotes the interest rate on bonds held between period t and $t+1$, Y_{jt} is the total output, G_{jt} is the government spending, which is exogenously determined, I_{jt} is the total investment, $s^j \geq 0$ is a parameter for the capital adjustment cost, and μ_{ss}^j is the steady state growth rate. Capital stock evolves according to the following law of motion:

$$K_{jt+1} = (1 - \delta) K_{jt} + I_{jt} \quad (4)$$

where $\delta > 0$ is the depreciation rate of capital.

Each economy is also subject to country premium interest rate shocks. The interest rate, R_{jt} , that country j faces is then given by:

$$R_{j,t} = R_{j,ss} \exp \left[\phi_D^j \left(\frac{D_{j,t+1}/X_{j,t}}{y_{j,ss}} - \frac{d_{j,ss}}{y_{j,ss}} \right) - \phi_{SR}^j \left(E_t \frac{SR_{j,t+1}}{SR_{j,ss}} - 1 \right) \right] pm_{j,t},$$

where $R_{j,ss}$ is the steady state interest rate of country j , $y_{j,ss}$, $SR_{j,ss}$ and $d_{j,ss}$ are the steady state stationary detrended output, the normalized Solow residuals and bond holding level of country j , respectively, and $pm_{j,t}$ is the interest rate premium shock. The parameters $\phi_D^j > 0$ and $\phi_{SR}^j \geq 0$ govern the sensitivity of interest rate to debt and Solow residuals.

Following CF, the normalized Solow residuals $SR_{j,t}$ is defined as follows:

$$SR_{j,t+1} = a_{j,t+1} \left(\frac{X_{j,t+1}}{X_{j,t}} \right)^{1-\alpha},$$

where a_{jt} and X_{jt} are the transitory and trend productivity shocks, respectively. In this specification, the real interest rate is sensitive to both the debt-to-output level relative to its steady state through ϕ_D^j , and the productivity (Solow residuals) through ϕ_{SR}^j . This formulation is motivated by the sovereign default literature and small open economy business cycles literature. For example, in [Arellano \(2008\)](#), the probability of default depends on both bond holdings and output; [Uribe and Yue \(2006\)](#) find evidence in their vector autoregression (VAR) that the real interest rate depends on both the level of output and trade balance-to-output ratio.¹⁸ While [Neumeyer and Perri \(2005\)](#) and CF model the country interest rate to inversely depend on expected productivity as future productivity can reduce the risk of default, GPU formulate their financial frictions as a debt-elastic interest rate, as a higher level of debt to output leads to a higher risk of default. Since both debt holding and productivity can, in principle, affect the real interest rate a country faces, we let the data determine the strength of each component in affecting the interest rate by estimating both ϕ_D^j and ϕ_{SR}^j . The higher ϕ_D^j is, the more the interest rate adjusts with respect to the amount of debt that country j holds, i.e., when debt over steady state output ratio changes by 1%, interest rate changes by $\phi_D^j\%$.¹⁹ Similarly, the lower ϕ_{SR}^j is, the less the interest rate adjusts with the level of productivity in the economy. Estimating these two parameters allows us to test whether the frictionless RBC model (when both ϕ s are near zero) is supported by the data, and to compare the relative lending and borrowing costs that these countries are facing.

The representative household maximizes the expected lifetime utility, subject to the budget constraint above and a no-Ponzi condition:

$$\lim_{h \rightarrow \infty} E_t \frac{D_{jt+h}}{\prod_{s=0}^h R_{js}} \leq 0. \quad (5)$$

The production function takes a standard Cobb–Douglas form:

$$Y_{jt} = a_{jt} (K_{jt})^\alpha (X_{jt} h_{jt})^{1-\alpha}. \quad (6)$$

¹⁸In our model, the movement of trade balance-to-output ratio is closely related to that of $D_{j,t}$.

¹⁹Except for GPU, most papers in the literature, such as AG, CF and [Guerron-Quintana \(2013\)](#), assign ϕ^j to be small only to induce stationarity for the model.

Similar to [Gregory and Head \(1999\)](#), we assume that each type of structural shock consists of world common and country-specific shocks. More specifically, the stationary productivity shock process in country j has two components: a world common shock that affects all countries, a_t^c , and a country-specific shock, a_t^j . The law of motion for stationary productivity shocks is then described by:

$$a_{jt} = (a_t^c)^{v^{acj}} a_t^j. \quad (7)$$

The world common shocks can have heterogeneous effects on each country, which is captured by the parameters v^{acj} . In our model, we restrict the sign of v to be positive for one country to facilitate identification. We can interpret vs as the responsiveness of the fundamentals in each country to common shocks. There are several reasons for why vs are left unrestricted. First, it is possible that a good shock for one country can be a bad shock for another country. An example of such shock is the oil price shock, which can have opposite impacts on oil-importing and -exporting countries. Besides, in the data, some countries such as India are negatively correlated with other countries. Second, this factor structure of the shocks is close to the DFM approach, facilitating our comparison with the reduced-form literature.

All common and country-specific shocks follow autoregressive AR(1) processes, given by:

$$\log a_t^c = \rho_{ac} \log a_{t-1}^c + \varepsilon_{ac,t}, \quad \varepsilon_{ac,t} \sim N(0, 1) \quad (8)$$

$$\log a_t^j = \rho_{aj} \log a_{t-1}^j + \varepsilon_{aj,t}, \quad \varepsilon_{aj,t} \sim N(0, \sigma_{aj}^2). \quad (9)$$

The natural logarithm of the trend productivity shocks X_{jt} is assumed to follow:

$$\log X_{jt} = \log X_{jt-1} + \log \mu_{jt}. \quad (10)$$

Similar to the stationary productivity shock process, the natural logarithm of the gross growth rate of X_{jt} , denoted by μ_{jt} , is a stationary AR process with two components: world common shocks μ_t^c and country-specific shocks μ_t^j . The world common trend shocks can have differential effects on each of the economies through $v^{\mu cj}$. Therefore, the stochastic trend productivity shock process can

be described by the following equations:

$$\mu_{jt} = (\mu_t^c)^{v^{\mu c j}} \mu_t^j \quad (11)$$

$$\log \mu_t^c = \rho_{\mu^c} \log \mu_{t-1}^c + \varepsilon_{\mu^c, t}, \quad \varepsilon_{\mu^c, t} \sim N(0, 1) \quad (12)$$

$$\log (\mu_t^j / \mu_{ss}^j) = \rho_{\mu^j} \log (\mu_{t-1}^j / \mu_{ss}^j) + \varepsilon_{\mu^j, t}, \quad \varepsilon_{\mu^j, t} \sim N(0, \sigma_{\mu^j}^2). \quad (13)$$

The economy also faces a country premium interest rate shock, which is a combination of a world common shock, pm_t^c , and a country-specific shock, pm_t^j . The stochastic process for a country interest rate is described by:

$$pm_{jt} = (pm_t^c)^{v^{pm c j}} pm_t^j \quad (14)$$

$$\log pm_t^c = \rho_{pm^c} \log pm_{t-1}^c + \varepsilon_{pm^c, t}, \quad \varepsilon_{pm^c, t} \sim N(0, 1) \quad (15)$$

$$\log pm_t^j = \rho_{pm^j} \log pm_{t-1}^j + \varepsilon_{pm^j, t}, \quad \varepsilon_{pm^j, t} \sim N(0, \sigma_{pm^j}^2). \quad (16)$$

We can interpret the world common interest rate premium shock as world or U.S. interest rate shocks that follow an AR(1) process.

Government spending, G_{jt} , is assumed to have the same stochastic trend as output. The log deviation of spending from trend $g_{jt} = \frac{G_{jt}}{X_{jt}}$ is assumed to have two components: world common and country-specific, each of which follows an AR(1) process:

$$g_{jt} = (g_t^c)^{v^{g c j}} g_t^j \quad (17)$$

$$\log g_t^c = \rho_{g^c} \log g_{t-1}^c + \varepsilon_{g^c, t}, \quad \varepsilon_{g^c, t} \sim N(0, 1) \quad (18)$$

$$\log (g_{jt} / g_{ss}^j) = \rho_{g^j} \log (g_{jt-1} / g_{ss}^j) + \varepsilon_{g^j, t}, \quad \varepsilon_{g^j, t} \sim N(0, \sigma_{g^j}^2). \quad (19)$$

Lastly, the stochastic processes of preference shocks are given by the following equations:

$$b_{jt} = (b_t^c)^{v^{b c j}} b_t^j \quad (20)$$

$$\log b_t^c = \rho_{b^c} \log b_{t-1}^c + \varepsilon_{b^c, t}, \quad \varepsilon_{b^c, t} \sim N(0, 1) \quad (21)$$

$$\log b_{jt} = \rho_b^j \log b_{jt-1} + \varepsilon_{b^j, t}, \quad \varepsilon_{b^j, t} \sim N(0, \sigma_{b^j}^2). \quad (22)$$

where we can interpret common preference shocks as common demand shocks.

4 Estimation and Identification

In this section, we discuss our estimation including calibrated parameters and Bayesian methods. We focus on understanding how we identify different shocks and common components by exploiting the correlation structure in the panel data.

4.1 Calibrated Parameters

[Insert Table 3 here]

Table 3 reports the values of calibrated parameters common for all countries, following the calibration strategy in GPU. We set the risk aversion parameter σ to be 2 and capital share α to be 0.32. The labor elasticity parameter θ is set to be 1.6 as frequently used in the literature such as [Mendoza \(1991\)](#), [Neumeyer and Perri \(2005\)](#), and GPU. The discount rate β is set to be 0.9224. Since we do not have government spending series going back to 1900, government spending share in output, G/Y , is set to match the average government spending share for each country available between 1960 and 2013. We set the steady state level of debt d_{ss} to match the average trade balance-to-output ratio, and the depreciation rate δ to match the average investment-output ratio in the data for each country. The parameter related to labor supply, ψ , is set so that the steady state level of hours h is equal to one-third. We also set the steady state growth rate, μ , equal to the average output growth rate for each country in the data. Since vs and the standard deviations of the shocks are not identified separately, we normalize the standard deviations of all common shocks to be 1 and estimate the effects of common shocks in each country through vs .²⁰ The rest of the parameters are estimated.

4.2 Bayesian Estimation

We estimate the model using the Adaptive Random Walk Metropolis–Hasting procedure, accommodating for missing data following [Haario et al. \(2001\)](#). We draw from the posterior distribution of estimated parameters, denoted as Θ , given the sample data matrix Y . This requires the evaluation of the product of the likelihood function and the prior distribution, which is denoted as $L(Y|\Theta)P(\Theta)$. To evaluate the likelihood function $L(Y|\Theta)$ numerically, we first solve the model using the first order approximation method in [Schmitt-Grohé and Uribe \(2004\)](#) and obtain the

²⁰We restrict v to be positive for one country so that positive world shocks increase the fundamentals for country 1, which is Argentina in the sample.

following state space form:

$$\begin{aligned} X_{t+1} &= h_x(\Theta) X_t + \eta(\Theta) \varepsilon_t \\ obs_t &= g_x(\Theta) X_t + me_{obs,t}, \end{aligned}$$

where X_t is a vector of state variables and ε_t is a vector of structural shocks following $N(0, I)$, where I is the identity matrix, and obs_t are the observables. We have four variables for each country: $[\Delta \ln GDP_t, \Delta \ln C_t, \Delta \ln I_t, \Delta TBY_t]$, where Δ denotes first difference, resulting in 68 observables in total.²¹ The baseline estimation uses our whole sample, from 1900 to 2013. Each observable has a measurement error $me_{obs,t}$, which follows $N(0, \sigma_{me}^{obs})$. Our baseline estimation includes measurement errors to address the concern that historical data are subject to measurement error problems, especially for developing countries. The measurement errors are restricted to be no larger than 5% of the variance of the observables. We numerically evaluate the likelihood function $L(Y|\Theta)$ by applying the Kalman filter to this state space form. Evaluating the prior distribution $P(\Theta)$ is straightforward since we use known distributions, as described below.

[Insert Table 4a Table 4b Table 4c around here]

The first columns of Table 4b and Table 4c report our prior distributions for the estimated parameters. We take a conservative stance and impose flat priors, following the previous literature such as GPU. We set priors for the parameters governing the capital adjustment cost, s_j , to have a Gamma distribution $G(5, 3)$. Since there is not much evidence on either the debt elastic parameters, ϕ_j^D , or the elasticity of the interest rate to productivity, ϕ_{SR}^j , we choose the prior for these two parameters to be a Gamma distribution with a fairly large standard deviation $G(1, 0.75)$. The priors of all the autocorrelation coefficients of shocks have a Beta prior $B(0.5, 0.2)$, which is standard in the literature. Lastly, we assume a uniform distribution for standard deviations of all shocks and the common shocks' effect on individual countries, *vs.* Overall, we have 379 estimated parameters.

²¹We do not include interest rate in our estimation to compare with previous literature such as AG, GPU and CF, who do not observe interest rate in their estimation of Argentina or Mexico. The interest rate data are also not available for the entire period for all countries. We compare the movements of the interest rate in Mexico implied by the model with the spread data available in Uribe and Yue (2006) and find that our model can be consistent with the interest rate movements in the data.

4.3 Identification

First, our full information estimation uses all moments of the long data series, such as the persistence of output and consumption growth rates, to separate trend from stationary productivity shock. This identification scheme is different from the identification strategy of the limited information approach used in AG, which primarily relies on the households' consumption smoothing behavior in absence of financial frictions. In their identification, households can borrow and lend in international markets to smooth consumption. Therefore, a positive persistent trend shock leads to a large immediate increase in consumption, driven by a deterioration of the trade balance, generating volatile consumption and countercyclical trade balance. On the other hand, in our model, AG's identification may not hold because of the endogenous response of the interest rate to expected productivity and the level of debt through ϕ_{SR}^j and ϕ_D^j . A non-zero ϕ_{SR}^j implies that *both* trend and stationary productivity shocks can lower the real interest rate, stimulating the consumption and borrowing. In other words, both trend and stationary productivity shocks can potentially generate the excess volatility of consumption and countercyclical trade balance. However, if ϕ_D^j is also sufficiently large, a higher level of borrowing and consumption drives up the real interest rate, limiting the ability of households to borrow and lend in international markets.

More specifically, in our model, ϕ_D^j is closely related to the mean reversion behavior of the trade balance, while ϕ_{SR}^j is related to the magnitude of the trade balance response to both productivity shocks. As pointed out by GPU, a robust prediction of an RBC model is that given the values of all other structural parameters, ϕ_D^j has to be large enough to ensure both stationarity of the equilibrium dynamics and mean-reversion trade balance-to-output ratio, which implies a downward-sloping autocorrelation function.²² In other words, the autocorrelation function of the trade balance has a strong implication for ϕ_D^j . At the same time, ϕ_{SR}^j amplifies the effects of both trend and stationary productivity shocks to the real interest rate, so this parameter is related to the volatilities of the trade balance and the cyclicity of trade balance for given values of other structural parameters. Given these two financial friction parameters, the identification of trend and stationary productivity shocks in our model does not come only from the consumption volatility and the trade balance cyclicity. The behaviors of consumption and output over the long horizon can also help to identify trend and stationary productivity shocks. This is why long run data series are useful for estimation.

²²Similar to CF, who set $\phi_D^j = 0.001$ and estimate ϕ_{SR}^j for Mexico, if we set $\phi_D^j = 0.001$ and estimate ϕ_{SR}^j , we find that the trade balance-to-output ratio is near Random Walk in all countries.

The remaining shocks are identified as follows. Preference shocks, which represent demand shocks, can help to explain highly volatile consumption in these countries. If households cannot borrow or lend abroad easily due to a large value of ϕ_D^j , and the trade balance does not respond much to either trend or stationary productivity shocks because of a low value of ϕ_{SR}^j , country premium shocks help to generate trade balance movement. In other words, preference and interest rate premium shocks help to explain the excess volatility of consumption and the movements of trade balance. Government spending and preference shocks can be separately identified, since government spending is the residual from the resource constraint and we observe all other four components. Moreover, preference shocks increase consumption while government spending shocks do not, which help us to distinguish between these two shocks.²³

Finally, common shocks are identified through both contemporaneous and dynamic correlations across all country pairs in the panel data. Theoretically, since these countries are modeled as small open economies, there is no correlation across countries if there are no common shocks. Thus, our structural model forces the comovements in aggregate variables across all countries to be explained by world common shocks. On the contrary, the country-specific shocks are to explain the movements in aggregate variables in each country that are independent of comparable movements in other countries. This identification scheme suggests that countries more correlated with the rest of the countries on average tend to have a higher contribution of common shocks, which is true in our results below. Additionally, since we estimate the model by pooling the data for all 17 countries, we have more information to better identify parameters in the model, especially those related to the common components, and identify a new source of business cycles compared with individual country estimation in the existing literature.

5 Financial Frictions in Small Open Economies

In this section, we discuss the role of financial frictions in small open economies between 1900 and 2013. Our estimates provide strong support for a model with financial frictions.

In the model, both ϕ_D^j and ϕ_{SR}^j govern the degree of financial frictions as they affect the sensitivity of the real interest rate in each country with respect to fundamentals. The posterior estimates of these two parameters are reported in Table 4b and Table 4c. All of the results are

²³One approach, as in CF, is to exclude preference and spending shocks. In our estimation of that specification, the estimated measurement errors are large, which is consistent with CF's finding using Mexican data. Therefore, instead of having large measurement errors, we identify additional structural shocks, as in GPU.

calculated from eight chains of one million draws each, out of which we take one in every 10 draws. The debt elastic interest rate parameter, ϕ_D^j , is significantly larger than 0 for all countries. In other words, there is a non-trivial borrowing cost that both developing and small developed countries face. Previous literature, including AG and [Guerron-Quintana \(2013\)](#), often assumes ϕ_D^j to be negligible (0.001). However, our estimates, consistent with the finding in GPU for Argentina, show that this parameter is not negligible for many countries, which is important for the inference about trend and stationary productivity shocks, as discussed in Section 4.3. The real interest rates are also sensitive to expected productivity, as ϕ_{SR}^j for both developing and small developed countries are different from zero. This result suggests that financial frictions are an important feature of business cycles in small open economies.²⁴

Furthermore, the degree of financial frictions varies across countries. For example, Venezuela and Peru have a relatively low debt elastic parameter among developing countries as ϕ_D^j is smaller than 0.4, which is similar to Canada, Sweden, Portugal and Norway in the group of developed countries. In contrast, Argentina, Colombia, India and Spain face a much larger debt adjustment cost. On average, ϕ_D^j is smaller in small developed countries (0.75) than in developing countries (1.04). Similarly, the sensitivity of the real interest rate to expected productive, ϕ_{SR}^j , also varies across countries. There is not much difference in ϕ_{SR}^j between developed and developing countries: 0.46 in developing countries, compared with 0.51 in developed countries, on average.

[Insert Table 5 here]

Additionally, our estimated model can match the data well, which lends strong support to the hypothesis that a real business cycle model with financial frictions provides a good description of business cycles for both small developed and developing countries. Table 5 reports the theoretical second moments and their empirical counterparts. On average, the model predicts slightly more volatility in output than was observed in the data. Nevertheless, it can generate a higher volatility of consumption relative to that of output in both small developed and developing countries. The model also predicts a countercyclical trade balance and matches the autocorrelation of the trade balance of developing countries well. Trade balance in small developed countries is slightly more countercyclical in the model than in the data. Similar to GPU, the autocorrelation of investment

²⁴Including both ϕ_D^j and ϕ_{SR}^j in our estimation makes our model comparable with the previous literature. Since the credible sets for both parameters do not include zero, both financial friction parameters matter. We note that without ϕ_D^j , the model cannot match the autocorrelation function for the trade balance in many countries, and without ϕ_{SR}^j , the conclusions that ϕ_D^j is significantly larger than zero and the results that followed remain the same.

is low compared with the data.²⁵

6 Trend and Stationary Productivity Shocks: Developed vs. Developing Countries

[Insert Table 6 here]

We decompose the sources of business cycles in 17 countries between 1900 and 2013 and focus on the relative importance of trend and stationary productivity shocks. We find that trend productivity shocks play a sizable role in driving economic fluctuations in both developed and developing countries, although these countries face substantial financial frictions. We plot in Figure 2 the posterior distributions of the average fraction of output growth rates in both developed and developing countries explained by trend and stationary productivity shocks. On average, trend productivity shocks explain a sizable fraction of output volatilities, explaining about 31% of output variations in developing countries and 38% of those in small developed countries. At the same time, the importance of trend productivity shocks varies widely across countries, as reported in Table 6, which shows the contribution of trend and stationary productivity shocks to each country in our sample. While trend shocks are negligible for Argentina, Mexico, Colombia and Spain, trend shocks explain a large fraction of the variation in output for other countries such as Venezuela, India, Peru, Turkey, Australia, Portugal and Sweden, explaining over one-fourth of the volatilities of output in these countries.²⁶

[Insert Figure 2 here]

Stationary productivity shocks are also an important source of fluctuations in both small developed and developing countries. On average, stationary shocks explain roughly half of the output fluctuations in all countries. The role of stationary productivity shocks is also heterogeneous across countries, ranging from 13% in Portugal to 56% in Peru to 85% in Argentina. Our results for Argentina and Mexico are consistent with GPU and CF, in that financial frictions are important

²⁵We also estimate a version of the model with investment adjustment cost, as in [Christiano et al. \(2005\)](#). The investment adjustment cost helps to match the autocorrelation function of investment better. The rest of the results in this paper are, nevertheless, robust to the investment adjustment cost feature. We keep the capital adjustment cost as the baseline to easily compare our results with the previous literature.

²⁶We also calculate the Random Walk component in the Solow residuals, as in AG, and find the same results: the Random Walk component explains 37% and 46% of Solow residuals in developing and small developed countries, respectively.

and that trend productivity shocks explain a negligible fraction of output fluctuations for these two countries. However, unlike in GPU and CF, in our work, the fact that countries face financial frictions does not preclude trend productivity shocks from having substantial effects on both developed and developing countries. Additionally, there is no evidence that the cycle is the trend for emerging economies, and that stationary productivity shocks, which are temporary changes in productivity, have a limited role in driving business cycles, either. Overall, our estimation paints a rather different picture about business cycles in small open economies compared with the previous studies, suggesting that it is important to study several countries.

The reason for the difference between our paper and previous papers is that our estimate utilizes a much larger data set spanning from 1900 to 2013. AG use a plain-vanilla RBC model and find that trend productivity shocks are dominant in explaining output fluctuations of Mexico compared with a much smaller role of trend shocks in Canada. In GPU, the authors argue that long time series are essential for identifying trend productivity shocks. These authors then point out with their Argentine data that an RBC model with a dominant trend productivity shock like in AG cannot satisfy the trade balance behavior of small open economies. Similar to GPU, we use long time series as they are better suited for identifying trend productivity shocks. Furthermore, as information from a large set of countries is beneficial for efficiency gain, we collect a rich data set in order to provide much richer evidence on the sources of business cycles compared with both studies. In fact, in our data set, consistent with GPU, we find that trend productivity shocks are not large in Argentina, explaining less than 10% of output fluctuations. However, Argentina turns out to be a special case. Trend shocks explain over 13% and up to 78% in 12 out of 17 countries in our sample. Furthermore, the estimated model with financial frictions with a significant role of trend productivity shocks can match trade balance autocorrelations well, as discussed in Section 5. Compared with AG, we find that in both Mexico and Canada, financial frictions are significantly larger than zero, and while trend productivity shocks explain less than 10% of output fluctuations in Mexico, trend productivity shocks explain around 56% of output fluctuations in Canada. In other words, AG’s hypothesis that the role of trend shocks distinguishes developing from developed countries is not supported by richer information from our data set.²⁷

To illustrate the efficiency gain from estimating the model jointly for 17 countries with common shocks, in Figure 2, we also plot the posterior distributions of the contribution of trend and

²⁷Our result for Mexico is consistent with CF’s result although they use quarterly data after 1980. However, this result does not dismiss the use of long-term historical data for many countries in the estimation as we discussed earlier.

stationary productivity shocks if we estimate each country individually without common shocks. When we estimate the model without common shocks, which is the same as estimating each country individually, we obtain a result similar to our baseline. However, notice that the precision of the estimates improves in our baseline compared with the individual estimates. In other words, pooling information from several countries is helpful in more precisely estimating the role of trend productivity shocks. Furthermore, as discussed later in Section 8, joint estimation for 17 countries helps us identify an important source of fluctuations in these small open economies: common shocks, which explain the substantial business cycle comovements across countries.

7 What are Trend and Stationary Productivity Shocks? Developed vs. Developing Countries

[Insert Figure 3 here]

An important contribution of our paper is that by pooling the data, we can also decompose the importance of trend shocks into the common and country-specific components. Figure 3, which plots the extracted historical states of world common trend and stationary productivity using the Kalman smoother at the posterior mean, shows that the estimated common shocks contain actual world shocks. The common states capture important historical worldwide events, such as the Great Depression, the two World Wars, the two oil price shocks and the recent Great Recession. These events appear as large, persistent common productivity shocks to all economies, causing output to fall in tandem. World War II is associated with a large negative drop in world trend productivity and a modest drop in world stationary productivity, which recovers quickly at the end of the war. Another component in the estimated common shocks is the innovation common to all countries coming from large countries such as the United States. As plotted in Figure 3, the extracted states move in a direction similar to U.S. output growth rate, which reflects shocks to the U.S. economy over time. The 2008-2009 Great Recession, starting from the U.S., is captured as a temporary but sharp drop in productivity.

[Insert Figure 4 around here]

Our analysis of the components of trend productivity shocks finds that although trend productivity shocks are about as important in small developed countries as they are in developing countries, a large component of trend productivity shocks in developed countries is common, while

it is country-specific for developing countries. Table 6 shows the fraction of output fluctuations explained by common trend in each of the 17 countries. On average, the importance of common trend is about one-third of the total contribution of trend productivity shocks in small developed countries. In contrast, common trend contributes only 5% of output fluctuations in developing countries, which is about one-sixth of the fraction of output explained by all trend productivity shocks. We use the Kalman smoother to calculate the historical output growth rates in each country, at the posterior mean of the parameters, conditional on common trend and stationary shocks. We then construct the historical decomposition of output growth rates for developed and developing countries on average, then plot in Figure 4 a 10-year centered moving average of this historical decomposition. Over the entire 100 years, common trend productivity shocks play a smaller role in developing countries than in developed countries. In large events such as the Great Depression and World War II, which are interpreted as both common trend and stationary productivity shocks given the persistent movements of macroeconomic variables, developing countries are more affected by common stationary productivity shocks, while for developed countries, it is a common trend. For example, between 1940 and 1949, about 25% of output fluctuations in small developed countries is explained by common trend shocks, while it is only 15% in developing countries.

We interpret these results as follows. Small developed countries are, in general, closer to the frontier of world technology, so they are more affected by common trend. On the other hand, developing countries are marked by frequent regime switches and policy changes domestically, so the trend that is important for them is country-specific. These results suggest that while trend productivity shocks are an important source of business cycles in both developed and developing countries, these trend shocks capture different phenomena in these two groups of countries.

8 Common Shocks

This section addresses the question regarding the extent to which business cycles in small open economies are driven by outside shocks. We aggregate all types of common shocks and show that they play an important role in both groups of small open economies in the last 100 years. We also briefly discuss our results compared with the results obtained by the reduced-form estimation approach frequently used in the previous literature on common shocks.

[Insert Figure 5 here]

First, the model with common shocks matches the cross-country correlation in our data relatively well, as reported in the last row of Table 5, which shows the average cross-country output and consumption correlations implied by the model.²⁸ Without common shocks, the model would imply no correlation in output and other aggregate variables.

[Insert Table 7 around here]

Second, while the effects of common shocks are heterogeneous across countries, world common shocks contribute to a substantially large fraction of fluctuations in these countries. On average, 28% of the fluctuations in output, 22% in consumption, 22% in investment, and 22% in trade balance between 1900 and 2013 can be attributed to all types of common shocks, as reported in the last row of Table 7. Common shocks are of similar importance for both small developed and developing countries. This result reflects the substantial comovements of these countries in history, especially during major historical episodes, such as the Great Depression, which are captured in the extracted world common shocks. Figure 5 plots the output growth rates of Argentina and Canada along with the output growth rates conditional on common shocks only and on country-specific shocks only. The estimated common shocks explain a large fraction of the output fluctuations in both countries, especially during worldwide events such as the Great Depression, World War I and II, the two oil price shocks and the recent Great Recession. We note that the estimated country-specific shocks are reasonable, which is demonstrated by the 2001 crisis in Argentina: during this period, Argentina’s decline in output is mostly explained by country-specific shocks, as expected.

A historical decomposition exercise shows that the role of common shocks varies over time for both developed and developing countries. In particular, common shocks explain a large fraction of output variations in all countries in the first half of the 20th century during historical episodes as in Figure 4, which plots a 10-year centered moving average of the historical decomposition of output fluctuations for small developed and developing countries, using the Kalman smoother. During the Great Depression and World War II, common shocks play a similar role for both groups of countries, explaining up to 50% of output fluctuations. This result reflects the worldwide impact of these disasters on all countries. In the later periods of the 20th century, these small open economies went through fewer large turbulences caused by common shocks, limiting the role of these common shocks, especially in developing countries. For example, during the 1950–70 period, common shocks explain around 20% of output fluctuations. Starting in the early 1970s, there were two oil price

²⁸We also show that there is a positive relationship between correlations and contribution of common shocks in Appendix Figure A4, as common shocks have to explain both static and dynamic correlations across countries.

shocks, and small developed countries were severely hit by these common shocks, so a larger fraction of output volatility (up to 40% in small developed countries) is explained by common shocks. At the same time, these shocks have smaller impacts on developing countries—about 30%. Recently, the importance of common shocks increases, but declines again after the 2008-2009 recession. Our result of recent periods is consistent with the report in the October 2013 World Economic Outlook, which documents that output synchronized more in the Great Recession but that synchronization has declined again recently.

Third, a structural analysis allows us to identify several types of common shocks important for business cycles in small open economies. In particular, we find that not only trend and stationary productivity common shocks, but also country premium and preference common shocks play a non-negligible role in business cycle fluctuations in small open economies. Among all common shocks, productivity shocks are the most important for output, as displayed in Table 7. On average, common stationary productivity shocks explain 18% of output fluctuations and common trend productivity shocks contribute another 8%. Consumption volatilities are explained by both common productivity shocks and common preference shocks, accounting for about 17% and 3% of consumption volatility, respectively. The reason for this result is as follows. When debt adjustment cost ϕ_D^j is high, preference shocks help to generate the excess volatility of consumption relative to output. As consumption is correlated across countries, the estimation assigns a non-negligible role to common preference shocks.

Common interest rate premium and spending shocks do not explain much of the movements in output and consumption, but account for a sizable fraction of the fluctuations in investment and the trade balance. For example, common interest rate premium shocks account for over 14% of the trade balance variations and 8% of investment. The reason for this result is that when households are not able to lend and borrow internationally easily, interest rate premium shocks help to explain more of the behavior of the trade balance. Since the trade balance is correlated across countries, the role of common interest rate premium shocks is non-negligible. Additionally, the fact that different types of shocks explain the comovements of different aggregate variables is consistent with other papers in the small open economy literature, such as [Adolfson et al. \(2007\)](#) and others.

In one of the extensions, we estimate the baseline model in which each shock has not only world common but also group-specific shocks in addition to their country-specific shocks. For example,

the stationary productivity shock process is given by:

$$a_{jt} = (a_t^c)^{v^{acj}} (a_t^g)^{v^{agj}} a_t^j, \quad (23)$$

where v^{agj} governs the effect of the group-specific shock on each country, and a_t^g follows an AR(1) process, i.e., $\log a_t^g = \rho_{ag} \log a_{t-1}^g + \varepsilon_{ag,t}$, $\varepsilon_{ag,t} \sim N(0, 1)$. The small developed and developing group-specific shocks capture the common shocks specific to these two groups of countries. We find that both world common and group-specific shocks explain roughly 48% of the output fluctuations, 40% of consumption fluctuations and 30% of trade balance in small open economies. In addition, our baseline results, such as the roles of financial frictions and trend productivity shocks in small open economies, are robust.

[Insert Table 8 around here]

Finally, we compare the importance of common shocks in our DSGE estimation with that in the reduced-form DFM. We first note that although a reduced-form DFM approach can also estimate the importance of common shocks, our structural approach is much more suitable for the focus of our analysis. In particular, using the DSGE estimation allows us to characterize the important features of business cycles in small open economies, such as financial frictions and the nature of trend productivity shocks, while the DFM approach does not provide either transmission mechanisms or structural interpretation of the estimates. Another difference between our approach and the DFM is that while our model can identify several types of common shocks, the typical DFM approach in [Kose et al. \(2003\)](#) and [Kose et al. \(2012\)](#) has one type of common shock, which matters for the total contribution of common shocks.²⁹ To illustrate the difference, we estimate the role of common shocks using the DFM approach. As reported in Table 8, the mean contribution of world common shocks is roughly 11% of output fluctuation—less than half of the structural estimation. The discrepancies are also large for other variables. The difference between the DSGE estimation and the DFM estimation may come from the assumption of one common factor in the DFM approach. To check this explanation, we run the same exercise for the data generated from our baseline model evaluated at the posterior mean of the parameters. Again, we find that the DFM

²⁹The standard model is

$$y_{it} = a_i + b_i^{world} f_t^{world} + b_i^{country} f_t^{country} + \varepsilon_{it}, \quad (24)$$

where y_{it} is a vector of aggregate variables for country i at time t , f_t^{world} is the world common factor with a loading b_i^{world} that varies across countries, $f_t^{country}$ is the country factor with a corresponding loading $b_i^{country}$. The common factor, f_t^{world} , country factor $f_t^{country}$ and the idiosyncratic component ε_{it} , are assumed to follow AR(p) processes.

estimation does not fully capture the extent of common shocks in the data-generating process. In particular, the DFM estimation attributes less than 12% of output fluctuations to common shocks in all of the generated data, while in the data-generating process, common shocks explain nearly 30% of output fluctuations.³⁰ It is possible that a DFM estimation with multiple common shocks may be able to reconcile with our results.³¹ However, as discussed earlier, the DFM approach is not suitable for our focus.

9 Subsample Stability

This section characterizes business cycles in small open economies, focusing on the difference between the first and the second half of the sample.

[Insert Table 9 here]

Throughout the paper, we motivate the use of historical data by the fact that long data series contain several business cycles, which helps to better identify trend shocks. Nevertheless, a valid concern is that business cycles in many small open economies may have changed over time. For example, aggregate volatilities have decreased after World War II, as shown for small developed countries in Table 2a. To address this concern, we estimate the baseline model with two subsamples: 1901–1950 and 1951–2013. The basis for dividing the data in 1950 is that second moment statistics suggest that the volatility in business cycles have decreased after 1950, especially in small developed countries. We do not estimate the 1980–2013 period because the short span data have limited number of observations, and the second moment statistics for this period are not substantially different from those in the 1951–2013 period. In the interest of space, we summarize the results in Table 9.

First, we find that financial frictions are an important feature in business cycles for both small developed and developing countries over both subsamples. In both periods, the two parameters governing the elasticity of the real interest rate to the debt-to-output level and expected productivity are substantially different from zero and vary strongly across countries. As plotted in Figure 6, the

³⁰We simulate the baseline model using the posterior means of the parameters and generate 240 samples of the same length and dimension as the actual data. The median of the share of variances of output explained by common shocks is 10.5% with a 5-95% confidence interval of (1.43%, 22.6%). The medians for consumption, investment and the trade balance are 5.59%, 4.18% and 10.1%, respectively. Detailed results are available upon request.

³¹One support for the existence of multiple factors in our data is that the principle component analysis shows that the first component explains about 15% of the variances, while each of the next four components explain between 5% and 9% of the data.

debt-elastic parameter ϕ_D^j for many developing economies, as well as Spain, is higher in the first half of the 20th century than in the second half of the sample. The elasticity of the real interest rate to expected productivity ϕ_{SR}^j is slightly larger in the second half of the sample in most of the countries in our sample. In other words, the extent to which countries face financial frictions has changed over time.

[Insert Figure 6 here]

Second, trend shocks on average explain about one-third of output fluctuations, and stationary productivity shocks contribute to about one-half of output fluctuations in both sample periods for both groups of countries, as reported in Table 9. In both subsamples, the third and fourth panels of Figure 6 show that the volatilities in both Argentina and Mexico are attributed mostly to the stationary productivity shocks, consistent with CF results for Mexican data between 1980Q1 and 2003Q2. However, the role of trend shocks is substantial for other small open economies. For example, trend shocks explain around 40% of the variations in output in the 1951–2013 period for Brazil, Chile, India, Taiwan, and Norway.

Lastly, common shocks are more important in the 1901–1950 period than in the 1951–2013 period in developing countries, while the difference in the contribution of common shocks to output between two subperiods for developed countries is less pronounced. This result is consistent with the historical variance decomposition exercise in our baseline estimation.

Overall, the results obtained in the subsample analysis suggest that although the volatilities of business cycles in small open economies have become smaller over time, and although we also find changes in the estimated parameters in the model, the main messages of our paper are robust. In particular, we find that trend productivity shocks and common shocks play a sizable role in business cycles in these countries. Additionally, financial frictions are still an important feature for small open economies, although the degree of financial frictions changes over time.³²

³²We also estimate a few variations of the baseline model. For example, since productivity shocks in the United States can also affect the world interest rate, we assume that there is a correlation between the two common productivity shocks and common premium shocks. Another variation of the baseline model is the country interest rate shock specification that separates the effects of expected trend productivity shocks and expected stationary productivity shocks. We consider a case where the normalized Solow residuals are normalized by X_{t-1} instead of X_t as in the baseline. The estimation results are all similar to the baseline results.

10 Conclusion

In this paper, we characterize business cycles in small open economies over the long horizon. We find strong evidence that an RBC model with reduced-form financial frictions and common shocks provides a good description of business cycles in both developing and developed small open economies. Estimating the model with a new data set covering 17 countries, we find that the reduced-form financial frictions in our model are substantial in many countries. This finding resonates with recent work by [Akinci \(2014\)](#) and [Fernandez and Gulan \(2015\)](#) who quantify the role of financial frictions in a micro-founded financial friction model and match moments calculated using data for emerging economies. Furthermore, unlike the two extreme findings in AG and GPU, we document a sizable but not dominant role for trend productivity shocks. Our estimates also find that common trend productivity shocks are much more important than country-specific trend shocks in small developed countries while the reverse is true in developing countries. We interpret this as reflecting the fact that developing countries face frequent changes in domestic policies and regimes, making country-specific trend shocks more important than common trend shocks.

Our analysis points out the large role of common shocks in small open economies. In particular, common trend and stationary productivity shocks explain the bulk of output fluctuations in both developing and developed small open economies. These common productivity shocks may capture not only true technology shocks, but also permanent and transitory changes in the terms of trade in these small open economies. These results suggest that future research should investigate the transmission mechanism of shocks and the general equilibrium effects from large countries to small open countries through international trade of both goods and financial assets. Furthermore, since this paper assumes that all common shocks are exogenous and outside of these 17 countries, future research can explicitly model the trade and financial linkages between these countries to take into account the effects of idiosyncratic shocks from the estimated common shocks. Further analysis in those models with endogenous transmission of shocks across countries may be able to shed more light on the role of external policies in mitigating the effects of outside shocks on small open economies.

References

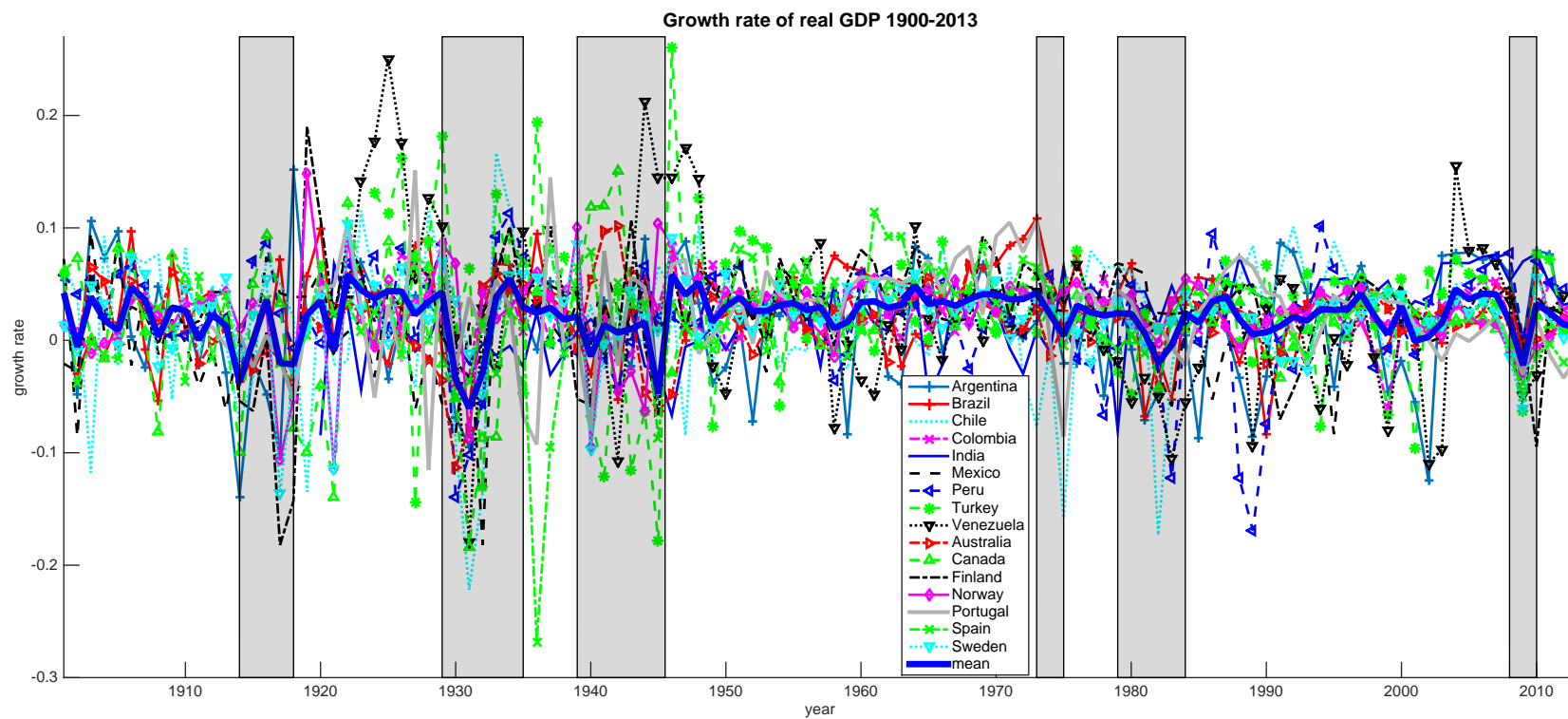
- ADOLFSON, M., S. LASÉEN, J. LINDÉ AND M. VILLANI, “Bayesian estimation of an open economy DSGE model with incomplete pass-through,” *Journal of International Economics* 72 (July 2007), 481–511.
- AGUIAR, M. AND G. GOPINATH, “Emerging Market Business Cycles: The cycle is the trend,” *Journal of Political Economy* 115 (2007), 69–102.
- AKINCI, O., “Financial Frictions and Macroeconomic Fluctuations in Emerging Economies,” International Finance Discussion Papers 1120, 2014.
- ÁLVAREZ-PARRA, F., L. BRANDAO-MARQUES AND M. TOLEDO, “Durable goods, financial frictions, and business cycles in emerging economies,” *Journal of Monetary Economics* 60 (2013), 720–736.
- ARELLANO, C., “Default Risk and Income Fluctuations in Emerging Economies,” *American Economic Review* 98 (2008), 690–712.
- BARRO, R. AND J. URSUA, “Macroeconomic Data,” Technical Report, 2010, data set.
- CHANG, R. AND A. FERNANDEZ, “On the Sources of Aggregate Fluctuations in Emerging Economies,” *International Economic Review* 54 (Nov 2013), 1267–1295.
- CHRISTIANO, L. J., M. EICHENBAUM AND C. L. EVANS, “Nominal Rigidities and the dynamic effects of a shock to Monetary Policy,” *Journal of Political Economy* 113 (February 2005), 1–45.
- CRUCINI, M. AND K. CHEN, “General and Partial Equilibrium Approaches to the Study of Real Business Cycles,” Working Paper, November 2011.
- FERNANDEZ, A., A. GONZALEZ AND D. RODRIGUEZ, “Sharing a Ride in the Commodities Roller Coaster: Common Factors in Business Cycles of Emerging Economies,” Working Paper, 2015.
- FERNANDEZ, A. AND A. GULAN, “Interest rates, Leverage and Business Cycles in Emerging Economies: The role of financial frictions,” *American Economic Journal: Macroeconomics* 7 (2015), 153–188.
- FERNÁNDEZ-VILLAYERDE, J., P. GUERRÓN-QUINTANA, J. F. RUBIO-RAMÍREZ AND M. URIBE, “Risk Matters: The real effects of volatility shocks,” *American Economic Review* 101 (2011), 2530–2561.

- GARCIA-CICCO, J., R. PANCRAZI AND M. URIBE, “Real Business Cycles in Emerging Countries?,” *American Economic Review* 100 (Dec 2010), 2510–2531.
- GLICK, R. AND K. ROGOFF, “Global versus country-specific productivity shocks and the current account,” *Journal of Monetary Economics* 35 (1995), 159–192.
- GREGORY, A. AND A. HEAD, “Common and country-specific fluctuations in productivity, investment, and the current account,” *Journal of Monetary Economics* 44 (1999), 423–451.
- GUERRON-QUINTANA, P., “Common and idiosyncratic disturbances in developed small open economies,” *Journal of International Economics* 90 (2013), 33–49.
- HAARIO, H., E. SAKSMAN AND J. TAMMINEN, “An adaptive Metropolis algorithm,” *Bernoulli* 7 (2001), 223–242.
- KOSE, M., “Explaining business cycles in small open economies: How much do world prices matter?,” *Journal of International Economics* 56 (2002), 299–327.
- KOSE, M., C. OTROK AND E. PRASAD, “Global business cycles: convergence or decoupling?,” *International Economic Review* (2012).
- KOSE, M., C. OTROK AND C. WHITEMAN, “International business cycles: World, region, and country-specific factors,” *American Economic Review* 93 (2003), 1216–1239.
- MENDOZA, E. G., “Real business cycles in a small open economy,” *American Economic Review* 81 (September 1991), 797–818.
- NAKAMURA, E., D. SERGEYEV AND J. STEINSSON, “Growth-Rate and Uncertainty Shocks in Consumption: Cross-Country Evidence,” Working paper, 2014.
- NAOUSSI, C. F. AND F. TRIPIER, “Trend shocks and economic development,” *Journal of Development Economics* 103 (2013), 29–42.
- NEUMEYER, P. AND F. PERRI, “Business cycles in emerging economies: the role of interest rates,” *Journal of Monetary Economics* 52 (March 2005), 345–380.
- ROMER, C., “Changes in Business Cycles: Evidence and Explanations,” *Journal of Economic Perspectives* 13 (1999), 23–44.

- RONDEAU, S., “Sources of Fluctuations in Emerging Markets : DSGE Estimation with Mixed Frequency Data,” (2012), 1–31.
- SCHMITT-GROHÉ, S. AND M. URIBE, “Solving Dynamic General Equilibrium Models Using a Second-Order Approximation to the Policy Function,” *Journal of Economic Dynamics and Control* 28 (2004), 755–775.
- URIBE, M. AND V. Z. YUE, “Country spreads and emerging countries: Who drives whom?,” *Journal of International Economics* 69 (2006), 6–36.

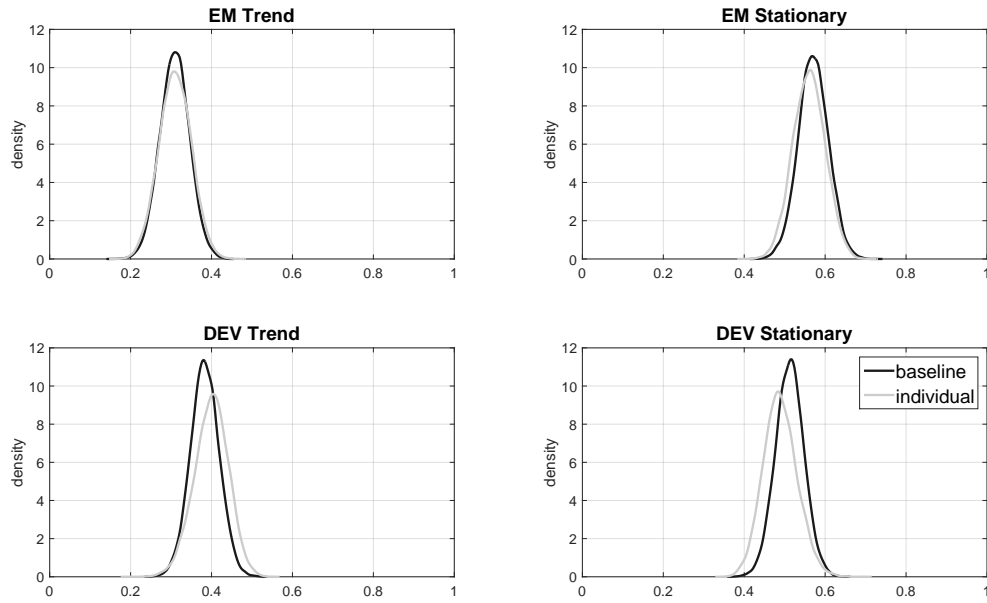
Appendix A Figures and Tables

Figure 1: Output growth rates for 16 small open economies excluding Taiwan between 1900 and 2013



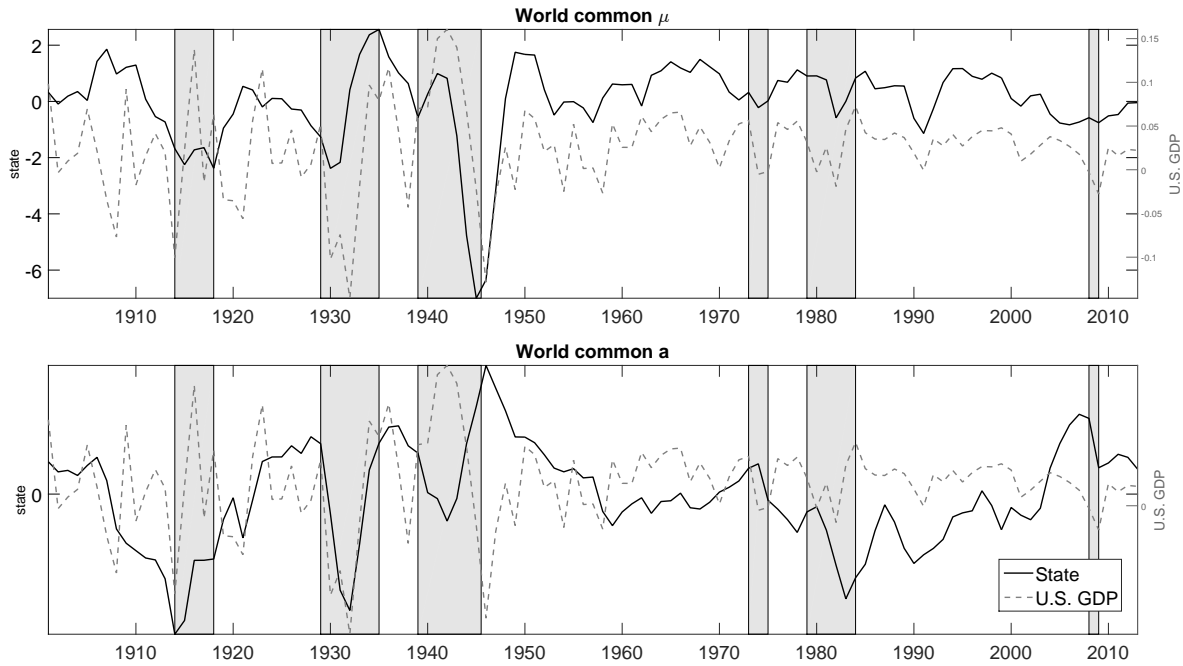
Notes: Shaded regions are major historical events.

Figure 2: Trend vs stationary productivity shocks



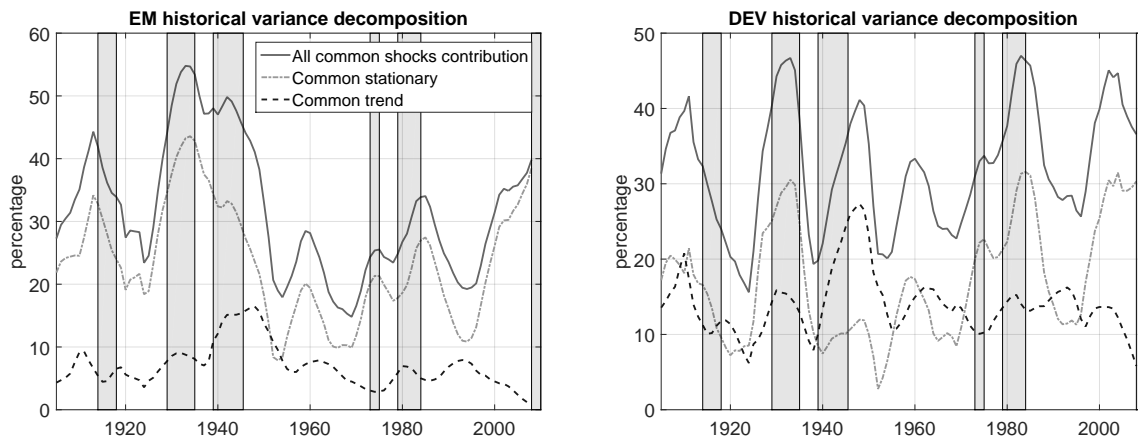
Note: “EM trend”, “EM stationary” are the posterior distributions of the fraction of output in developing countries, on average, explained by trend and stationary productivity shocks, respectively. “DEV trend”, “DEV stationary” are the posterior distributions of the fraction of output in small developed countries, on average, explained by trend and stationary productivity shocks, respectively. In each graph, we compare the posterior distribution estimated in our baseline model (baseline) with that estimated in the model without common shocks (individual).

Figure 3: Recovered world common states (solid line) against U.S. annual output growth rate (dashed line) between 1900 and 2013.



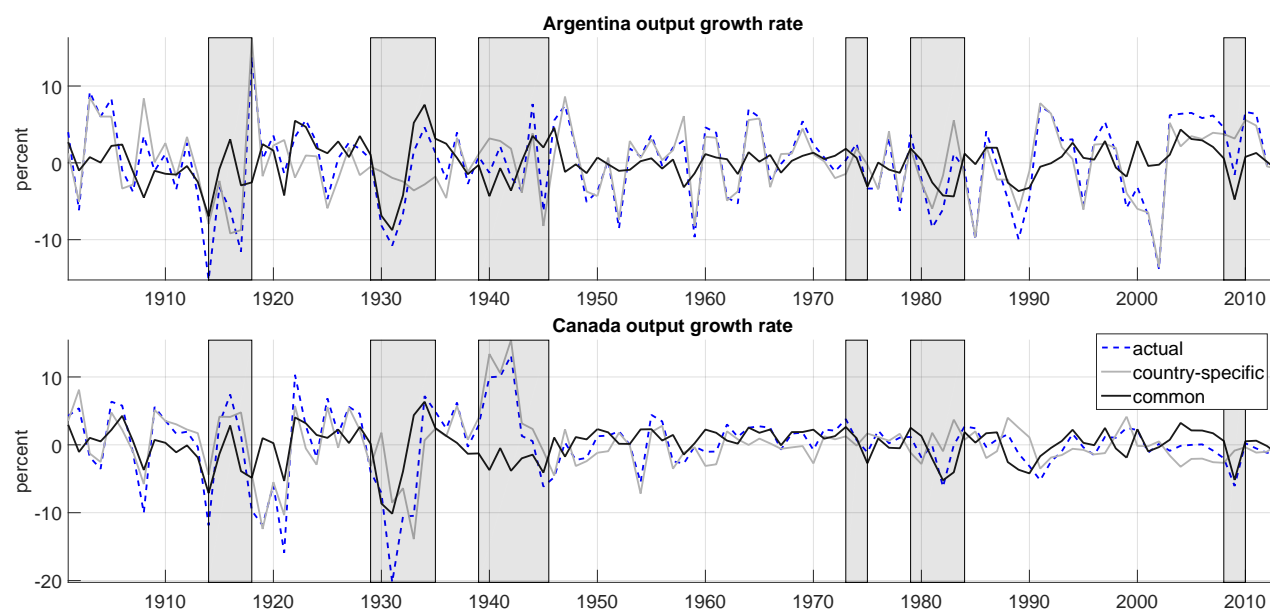
Notes: μ is the trend productivity shocks and a is the stationary productivity shocks. The recovered states were calculated using Kalman smoother at the posterior mean of the estimated parameters. Shaded regions are major historical events.

Figure 4: The contribution of common shocks to output on average in developing and small developed countries weighted over 10-year centered moving average window between 1905 and 2008.



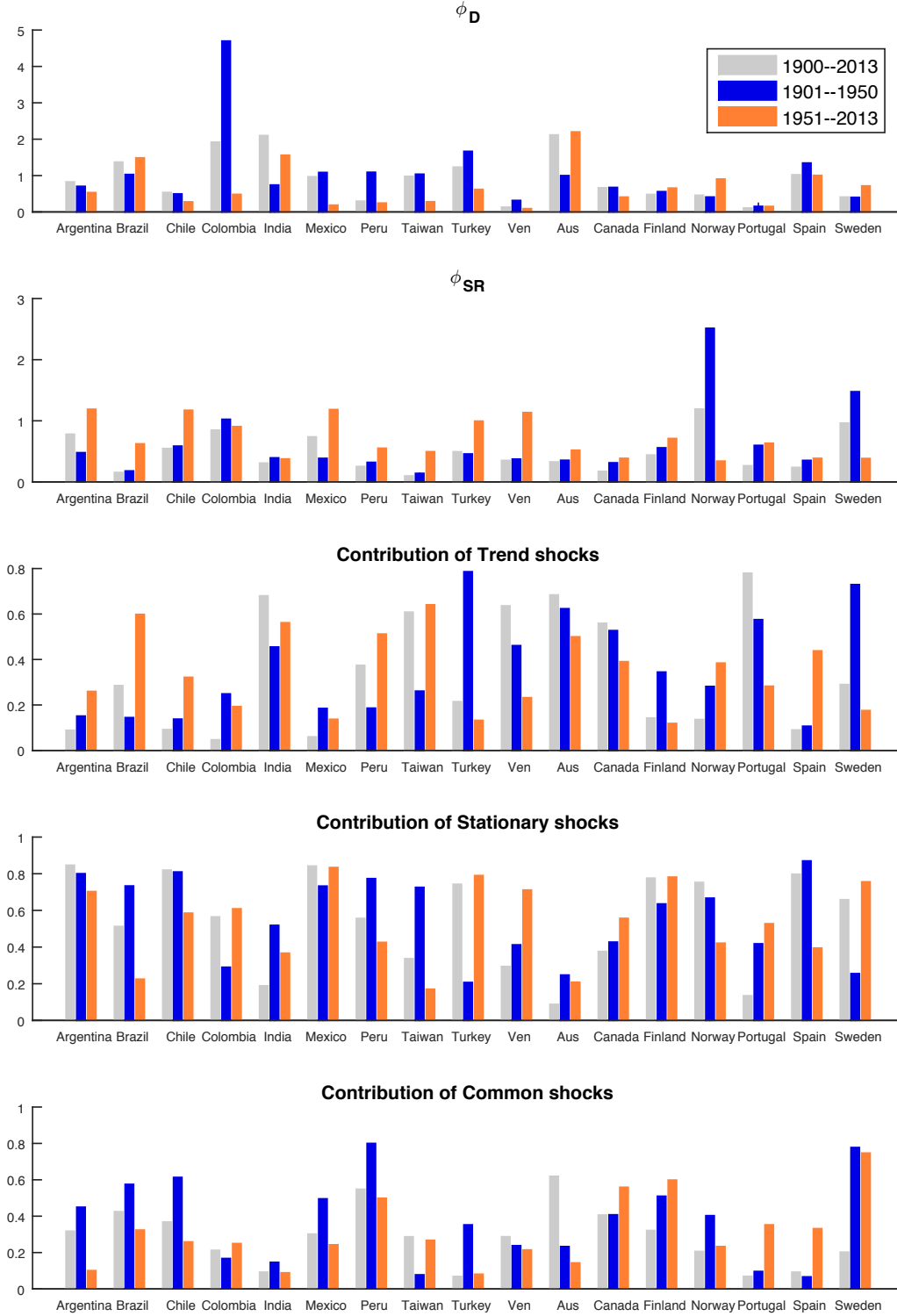
Note: This figure is constructed from the historical decomposition of output: the fraction of output in each point in time explained by common shocks. EM denotes average for emerging economies while DEV denotes average for small developed countries.

Figure 5: Historical decomposition of annual output growth rates between 1901 and 2013 for Argentina (top panel) and Canada (bottom panel)



Note: The historical decomposition is obtained by using the Kalman smoother: actual output growth rates are the blue dotted lines, output growth rates conditional on common shocks are the black lines), and conditional on country-specific shocks are the gray lines.

Figure 6: Subsample stability



Notes: The numbers are calculated at the mean of the posterior distributions for each country in three periods: 1900-2013, 1901-1950 and 1951-2013. The contribution of trend, stationary productivity shocks and common shocks are calculated as the fraction of output fluctuations in each country explained by these shocks.

Table 1: Second moments: 1900–2013

	Standard deviations				Correlation with output			Correlation with TBY		Autocorrelation			
	Y	C	I	TBY	C	I	TBY	C	I	Y	C	I	TBY
	(1)	(2)	(3)	(4)	(5)	(6)	(7)	(8)	(9)	(10)	(11)	(12)	(13)
Developing													
Argentina	5.36	7.41	19.84	5.06	0.74	0.66	-0.02	-0.25	-0.19	0.13	0.01	0.31	0.59
Brazil	4.04	7.30	20.98	3.47	0.49	0.41	-0.17	-0.15	0.02	0.19	-0.26	0.17	0.71
Chile	6.12	9.13	23.51	7.79	0.64	0.55	0.18	-0.02	-0.07	0.10	0.08	0.05	0.79
Colombia	2.36	5.92	17.31	3.57	0.55	0.27	-0.13	-0.08	-0.22	0.30	-0.23	-0.21	0.75
India	3.45	4.28	11.74	1.95	0.59	0.23	-0.39	-0.31	-0.12	0.23	-0.07	0.09	0.87
Mexico	4.19	6.01	19.28	4.14	0.67	0.56	-0.17	-0.28	-0.06	0.00	-0.09	0.22	0.73
Peru	4.86	4.83	17.38	4.51	0.83	0.74	0.04	-0.02	-0.01	0.43	0.29	0.30	0.71
Taiwan	8.89	8.90	21.53	5.62	0.84	0.23	0.03	-0.06	-0.07	0.34	0.28	-0.04	0.78
Turkey	7.15	6.24	14.19	3.53	0.66	0.46	-0.12	-0.19	-0.16	-0.17	0.09	0.17	0.82
Venezuela	7.49	10.11	20.06	7.14	0.65	0.83	-0.06	-0.11	-0.21	0.49	-0.05	0.37	0.60
Mean	5.39	7.01	18.58	4.68	0.67	0.49	-0.08	-0.15	-0.11	0.20	0.00	0.14	0.73
Small Developed													
Australia	3.16	4.97	13.12	3.71	0.28	0.42	0.04	-0.09	-0.16	0.50	0.15	0.34	0.45
Canada	5.03	4.49	12.74	3.86	0.70	0.50	0.13	0.16	-0.01	0.36	0.03	0.45	0.81
Finland	4.73	5.97	14.12	5.75	0.79	0.51	0.20	0.13	0.14	0.26	0.14	0.18	0.79
Norway	3.79	4.72	14.72	8.67	0.82	0.68	-0.08	-0.05	-0.14	0.00	-0.06	-0.15	0.94
Portugal	4.61	4.44	13.37	5.04	0.83	0.35	0.02	-0.12	-0.18	-0.02	0.20	0.17	0.79
Spain	4.50	8.08	11.98	2.42	0.85	0.49	-0.15	-0.19	-0.07	0.30	-0.05	0.39	0.74
Sweden	3.51	4.30	10.32	3.34	0.67	0.69	-0.09	-0.21	-0.05	-0.02	-0.09	0.17	0.80
Mean	4.19	5.28	12.91	4.68	0.71	0.52	0.01	-0.05	-0.07	0.20	0.05	0.22	0.76

Table 2: Average second moments in developed and developing countries
(a) Second moments across countries: Different periods

	Standard deviations				Correlation with output			Correlation with TBY		Autocorrelation			
	Y	C	I	TBY	C	I	TBY	C	I	Y	C	I	TBY
All													
1900–2013	4.90	6.30	16.25	4.68	0.68	0.50	-0.04	-0.11	-0.09	0.20	0.02	0.18	0.75
1900–1950	6.24	8.43	21.42	4.43	0.65	0.43	-0.04	-0.15	-0.13	0.10	-0.06	0.18	0.63
1951–2013	3.44	4.06	10.90	3.87	0.73	0.65	-0.08	-0.13	-0.12	0.30	0.21	0.19	0.69
EM													
1900–2013	5.39	7.01	18.58	4.68	0.67	0.49	-0.08	-0.15	-0.11	0.20	0.00	0.14	0.73
1900–1950	6.73	9.27	24.58	4.35	0.60	0.40	-0.10	-0.20	-0.16	0.09	-0.10	0.17	0.60
1951–2013	4.03	4.93	12.56	4.06	0.75	0.69	-0.10	-0.16	-0.15	0.25	0.18	0.13	0.72
DEV													
1900–2013	4.19	5.28	12.91	4.68	0.71	0.52	0.01	-0.05	-0.07	0.20	0.05	0.22	0.76
1900–1950	5.56	7.24	16.91	4.55	0.71	0.48	0.04	-0.07	-0.09	0.10	-0.01	0.19	0.68
1951–2013	2.60	2.82	8.52	3.60	0.71	0.60	-0.04	-0.09	-0.08	0.37	0.25	0.28	0.65

(b) Average cross-country correlations: Different periods

	Y			C			I			TBY		
	ALL	EM	DEV	ALL	EM	DEV	ALL	EM	DEV	ALL	EM	DEV
1900–2013	0.14	0.15	0.23	0.07	0.06	0.15	0.18	0.20	0.19	0.09	0.21	0.04
1900–1950	0.15	0.19	0.19	0.09	0.09	0.15	0.22	0.26	0.18	0.17	0.28	0.01
1951–2013	0.14	0.13	0.34	0.03	0.02	0.17	0.12	0.12	0.23	0.07	0.09	0.16

Notes: The numbers are calculated as averages across all 17 countries (All), 10 developing countries (Developing) and seven small developed countries (Developed) in three periods: 1900–2013, 1950–2013 and 1980–2013. Y denotes the growth rate of output, C denotes the growth rate of consumption, I denotes the growth rate of investment, and TBY denotes trade balance-to-output ratio.

Table 3: Calibrated parameters

Parameter	Description	Value
σ	Risk aversion	2
α	Capital share	0.32
θ	Labor elasticity	1.6
β	Discount rate	0.9224

Table 4: Baseline posterior estimates

(a) Common shocks parameters

$\rho_{\mu c}$	B	0.62
	(0.5, 0.2)	(0.52, 0.72)
ρ_{ac}	B	0.73
	(0.5, 0.2)	(0.67, 0.79)
ρ_{pmc}	B	0.88
	(0.5, 0.2)	(0.81, 0.95)
ρ_{bc}	B	0.91
	(0.5, 0.2)	(0.88, 0.94)
ρ_{gc}	B	0.76
	(0.5, 0.2)	(0.68, 0.83)

Notes: All results in Tables 4a, 4b, and 4c are reported using eight chains of 1 million draws each with half burn-in from the posterior distribution. The numbers in parentheses for the posterior are the 5% and 95% confidence interval of the posterior distribution. B denotes Beta distribution, G denotes Gamma distribution and U denotes Uniform distribution.

(b) Parameters for developing countries

Par	Prior	Arg	Brazil	Chile	Col	India	Mexico	Peru	Taiwan	Turkey	Ven
s	G	5.96	2.39	3.72	1.68	5.14	3.75	1.98	5.52	2.38	1.93
	(5, 3)	(4.31, 7.75)	(1.67, 3.22)	(2.62, 4.93)	(0.98, 2.52)	(3.37, 7.14)	(2.49, 5.23)	(1.44, 2.63)	(3.95, 7.27)	(1.47, 3.39)	(1.34, 2.60)
ϕ_D	G	0.83	1.37	0.54	1.92	2.10	0.97	0.30	0.98	1.23	0.13
	(1, 0.75)	(0.40, 1.41)	(0.90, 1.95)	(0.22, 0.99)	(1.02, 3.09)	(1.19, 3.27)	(0.54, 1.53)	(0.17, 0.46)	(0.54, 1.54)	(0.63, 2.06)	(0.06, 0.23)
ϕ_{SR}	G	0.78	0.16	0.55	0.85	0.31	0.74	0.25	0.10	0.49	0.35
	(1, 0.75)	(0.28, 1.35)	(0.03, 0.35)	(0.13, 1.09)	(0.20, 1.70)	(0.06, 0.70)	(0.28, 1.30)	(0.06, 0.53)	(0.02, 0.22)	(0.12, 1.01)	(0.08, 0.73)
$\rho_{\mu j}$	B	0.52	0.66	0.40	0.50	0.71	0.50	0.54	0.60	0.38	0.46
	(0.5, 0.2)	(0.24, 0.77)	(0.48, 0.82)	(0.15, 0.69)	(0.22, 0.77)	(0.56, 0.89)	(0.20, 0.79)	(0.42, 0.66)	(0.32, 0.86)	(0.17, 0.64)	(0.35, 0.57)
ρ_{aj}	B	0.75	0.58	0.65	0.76	0.51	0.84	0.64	0.50	0.82	0.58
	(0.5, 0.2)	(0.63, 0.85)	(0.26, 0.84)	(0.53, 0.77)	(0.63, 0.88)	(0.24, 0.79)	(0.76, 0.91)	(0.32, 0.87)	(0.29, 0.72)	(0.71, 0.92)	(0.28, 0.83)
ρ_{pmj}	B	0.76	0.64	0.78	0.86	0.93	0.89	0.88	0.84	0.82	0.76
	(0.5, 0.2)	(0.59, 0.90)	(0.35, 0.88)	(0.58, 0.94)	(0.76, 0.95)	(0.87, 0.97)	(0.77, 0.97)	(0.79, 0.96)	(0.72, 0.94)	(0.65, 0.95)	(0.59, 0.91)
ρ_{bj}	B	0.82	0.76	0.77	0.66	0.90	0.61	0.87	0.84	0.69	0.73
	(0.5, 0.2)	(0.74, 0.89)	(0.66, 0.86)	(0.67, 0.86)	(0.51, 0.81)	(0.84, 0.95)	(0.45, 0.76)	(0.78, 0.94)	(0.75, 0.90)	(0.47, 0.85)	(0.61, 0.82)
ρ_{gj}	B	0.57	0.76	0.80	0.81	0.81	0.66	0.51	0.64	0.81	0.48
	(0.5, 0.2)	(0.30, 0.80)	(0.65, 0.86)	(0.70, 0.88)	(0.60, 0.94)	(0.71, 0.90)	(0.54, 0.78)	(0.35, 0.65)	(0.47, 0.78)	(0.73, 0.87)	(0.24, 0.74)
$\sigma_{\mu j}$	U	1.38	2.17	1.14	0.49	2.09	0.70	2.82	4.25	2.41	5.23
	(10, 5.7)	(0.19, 2.77)	(1.47, 2.83)	(0.12, 2.66)	(0.05, 1.13)	(1.20, 2.66)	(0.08, 1.64)	(1.56, 3.60)	(2.27, 6.47)	(0.43, 4.25)	(4.26, 6.13)
σ_{aj}	U	2.75	1.26	3.03	1.38	0.57	2.40	0.82	2.62	3.30	0.91
	(10, 5.7)	(2.24, 3.22)	(0.72, 1.75)	(2.54, 3.49)	(1.15, 1.60)	(0.07, 1.17)	(2.08, 2.73)	(0.08, 1.87)	(0.93, 3.74)	(2.58, 3.97)	(0.10, 2.12)
σ_{pmj}	U	6.67	2.81	8.84	7.32	3.48	4.47	2.00	6.23	4.59	2.85
	(10, 5.7)	(4.36, 9.43)	(1.98, 3.76)	(5.52, 12.85)	(4.50, 10.68)	(2.15, 5.15)	(2.89, 6.38)	(1.39, 2.76)	(4.57, 8.16)	(2.36, 7.33)	(2.02, 3.80)
σ_{bj}	U	48.57	59.17	43.37	45.11	35.65	33.53	28.15	72.96	20.82	78.55
	(50, 28.9)	(38.34, 62.12)	(45.62, 76.35)	(35.02, 54.02)	(34.83, 59.18)	(23.40, 53.61)	(26.35, 42.36)	(18.54, 42.10)	(54.94, 93.59)	(14.96, 27.94)	(63.20, 95.02)
σ_{gj}	U	7.56	22.36	33.72	17.51	25.22	26.76	22.44	17.30	38.05	36.99
	(20, 11.5)	(2.80, 11.42)	(19.78, 25.09)	(29.93, 37.61)	(14.43, 20.87)	(21.84, 28.67)	(23.10, 30.60)	(19.23, 25.85)	(14.29, 20.55)	(35.26, 39.80)	(33.20, 39.66)
$v_{\mu c}$	U	0.33	0.84	1.25	0.19	0.44	0.58	1.01	3.93	-0.14	-1.18
	(0, 28.9)	(0.03, 0.81)	(0.22, 1.47)	(0.32, 2.16)	(-0.27, 0.65)	(-0.07, 0.92)	(-0.10, 1.26)	(0.23, 1.78)	(2.62, 5.34)	(-1.05, 0.76)	(-2.28, -0.17)
v_{ac}	U	2.04	1.85	2.41	0.86	-0.33	1.51	2.34	-0.43	0.81	2.24
	(0, 28.9)	(1.41, 2.68)	(1.43, 2.27)	(1.76, 3.09)	(0.53, 1.20)	(-0.65, -0.01)	(1.02, 2.01)	(1.86, 2.85)	(-1.27, 0.41)	(-0.03, 1.65)	(1.48, 3.01)
v_{pmc}	U	5.77	2.59	4.44	4.06	1.55	2.45	1.77	2.35	1.95	0.65
	(0, 28.9)	(3.49, 8.64)	(1.89, 3.40)	(2.28, 7.26)	(1.81, 6.87)	(0.61, 2.72)	(1.44, 3.61)	(1.21, 2.48)	(1.02, 3.85)	(0.57, 3.71)	(-0.09, 1.38)
v_{bc}	U	2.78	43.42	5.89	-1.71	12.21	31.24	28.31	-2.26	-2.17	23.54
	(0, 28.9)	(0.33, 6.06)	(33.59, 49.39)	(-7.43, 19.63)	(-21.36, 18.19)	(4.09, 20.92)	(17.49, 45.00)	(19.17, 38.63)	(-20.49, 15.80)	(-11.77, 7.58)	(-3.63, 46.13)
v_{gc}	U	5.05	-0.71	0.82	4.04	5.09	4.11	1.26	3.35	10.03	-8.71
	(0, 28.9)	(2.72, 7.41)	(-5.41, 3.96)	(-6.25, 7.85)	(-0.36, 8.49)	(-0.55, 10.82)	(-1.88, 10.35)	(-3.62, 6.17)	(-1.36, 8.11)	(0.81, 19.34)	(-17.27, -0.26)
me_{gy}	U	0.37	0.55	0.77	0.21	0.59	0.55	0.92	1.86	1.46	1.00
		(0.05, 0.79)	(0.12, 0.87)	(0.15, 1.29)	(0.02, 0.46)	(0.28, 0.76)	(0.10, 0.89)	(0.66, 1.07)	(1.64, 1.98)	(1.23, 1.59)	(0.18, 1.60)
me_{gc}	U	0.64	0.58	0.74	1.07	0.59	0.90	0.79	0.70	0.71	2.07
		(0.10, 1.24)	(0.07, 1.31)	(0.09, 1.62)	(0.59, 1.31)	(0.14, 0.92)	(0.36, 1.29)	(0.34, 1.05)	(0.08, 1.54)	(0.10, 1.31)	(1.77, 2.24)
me_{gI}	U	2.41	4.30	2.26	3.58	1.35	4.03	3.51	4.29	2.74	3.84
		(0.65, 3.98)	(3.69, 4.66)	(0.37, 4.51)	(3.06, 3.85)	(0.22, 2.44)	(3.55, 4.29)	(2.91, 3.85)	(3.40, 4.77)	(2.07, 3.14)	(2.90, 4.42)
me_{tby}	U	0.56	0.42	0.85	0.41	0.18	0.45	0.50	0.72	0.39	1.15
		(0.10, 0.95)	(0.27, 0.51)	(0.48, 1.11)	(0.22, 0.54)	(0.12, 0.21)	(0.16, 0.65)	(0.18, 0.73)	(0.61, 0.78)	(0.27, 0.46)	(0.72, 1.40)

(c) Parameters for developed countries

Par	Prior	Australia	Canada	Finland	Norway	Portugal	Spain	Sweden
s	G	4.37	4.57	3.92	1.43	2.71	6.96	5.96
	(5, 3)	(2.96, 5.98)	(3.48, 5.84)	(2.73, 5.28)	(0.96, 1.96)	(1.83, 3.70)	(4.94, 9.29)	(3.84, 8.36)
ϕ_D	G	2.12	0.67	0.48	0.46	0.11	1.02	0.41
	(1, 0.75)	(1.22, 3.23)	(0.42, 0.97)	(0.26, 0.78)	(0.20, 0.81)	(0.07, 0.17)	(0.63, 1.52)	(0.20, 0.70)
ϕ_{SR}	G	0.33	0.17	0.44	1.19	0.27	0.24	0.96
	(1, 0.75)	(0.06, 0.73)	(0.03, 0.38)	(0.11, 0.88)	(0.56, 1.95)	(0.05, 0.61)	(0.05, 0.50)	(0.41, 1.61)
$\rho_{\mu j}$	B	0.62	0.62	0.51	0.55	0.41	0.55	0.48
	(0.5, 0.2)	(0.33, 0.82)	(0.52, 0.72)	(0.24, 0.77)	(0.24, 0.85)	(0.27, 0.54)	(0.23, 0.82)	(0.25, 0.68)
ρ_{aj}	B	0.65	0.58	0.71	0.66	0.60	0.93	0.77
	(0.5, 0.2)	(0.34, 0.88)	(0.29, 0.81)	(0.63, 0.79)	(0.57, 0.75)	(0.26, 0.88)	(0.88, 0.97)	(0.67, 0.87)
ρ_{pmj}	B	0.81	0.91	0.88	0.94	0.84	0.88	0.89
	(0.5, 0.2)	(0.66, 0.93)	(0.85, 0.97)	(0.78, 0.96)	(0.89, 0.98)	(0.72, 0.94)	(0.79, 0.96)	(0.79, 0.96)
ρ_{bj}	B	0.87	0.84	0.89	0.67	0.97	0.91	0.72
	(0.5, 0.2)	(0.83, 0.90)	(0.73, 0.92)	(0.80, 0.95)	(0.49, 0.82)	(0.96, 0.98)	(0.85, 0.95)	(0.60, 0.82)
ρ_{gj}	B	0.23	0.59	0.27	0.51	0.71	0.84	0.73
	(0.5, 0.2)	(0.10, 0.38)	(0.46, 0.70)	(0.09, 0.48)	(0.26, 0.74)	(0.59, 0.81)	(0.70, 0.95)	(0.52, 0.90)
$\sigma_{\mu j}$	U	1.22	3.71	0.72	1.01	3.46	0.54	1.54
	(10, 5.7)	(0.14, 2.48)	(3.03, 4.32)	(0.07, 1.81)	(0.24, 1.87)	(2.85, 4.02)	(0.06, 1.28)	(0.61, 2.28)
σ_{aj}	U	0.60	0.71	2.38	2.10	0.67	2.44	1.46
	(10, 5.7)	(0.06, 1.35)	(0.08, 1.57)	(2.02, 2.72)	(1.79, 2.41)	(0.08, 1.44)	(2.16, 2.73)	(1.11, 1.79)
σ_{pmj}	U	10.22	3.96	4.58	3.14	2.12	4.26	2.36
	(10, 5.7)	(7.19, 13.63)	(2.91, 5.21)	(3.00, 6.55)	(2.07, 4.49)	(1.41, 3.01)	(2.95, 5.88)	(1.50, 3.42)
σ_{bj}	U	85.72	32.40	44.37	23.68	66.26	61.33	36.07
	(50, 28.9)	(70.89, 98.04)	(20.79, 47.30)	(28.89, 64.69)	(18.06, 30.85)	(43.29, 92.85)	(42.25, 85.16)	(29.43, 44.26)
σ_{gj}	U	18.58	12.23	13.62	4.77	18.58	14.68	3.84
	(20, 11.5)	(16.27, 21.04)	(10.35, 14.14)	(10.60, 16.79)	(3.20, 6.35)	(16.00, 21.31)	(12.21, 17.11)	(2.89, 4.81)
$v_{\mu c}$	U	3.46	1.17	1.45	0.73	0.30	0.92	0.29
	(0, 28.9)	(2.49, 4.26)	(0.25, 2.06)	(0.75, 2.21)	(0.19, 1.31)	(-0.35, 0.98)	(0.27, 1.58)	(-0.22, 0.82)
v_{ac}	U	0.54	2.03	1.39	1.00	0.48	0.25	0.85
	(0, 28.9)	(0.08, 1.00)	(1.53, 2.56)	(0.88, 1.91)	(0.54, 1.48)	(0.06, 0.89)	(-0.19, 0.68)	(0.49, 1.21)
v_{pmc}	U	1.63	2.70	0.65	0.49	1.27	2.07	0.61
	(0, 28.9)	(-0.32, 3.76)	(1.77, 3.77)	(-0.24, 1.58)	(-0.11, 1.12)	(0.74, 1.91)	(1.06, 3.28)	(0.15, 1.15)
v_{bc}	U	2.10	44.00	-6.06	22.09	3.03	21.46	22.04
	(0, 28.9)	(-18.30, 23.27)	(35.50, 49.41)	(-16.05, 4.24)	(11.58, 33.43)	(-1.84, 7.93)	(9.01, 35.39)	(9.59, 35.63)
v_{gc}	U	6.31	7.98	15.96	3.40	1.41	-3.68	0.73
	(0, 28.9)	(2.97, 9.70)	(5.18, 10.78)	(12.26, 19.59)	(1.74, 5.03)	(-2.53, 5.35)	(-6.98, -0.33)	(-0.44, 1.88)
me_{gy}	U	0.53	0.92	0.74	0.69	0.86	0.26	0.69
		(0.25, 0.69)	(0.59, 1.11)	(0.24, 1.03)	(0.43, 0.83)	(0.56, 1.02)	(0.03, 0.60)	(0.53, 0.78)
me_{gc}	U	0.94	0.57	0.84	0.67	0.61	1.19	0.79
		(0.69, 1.10)	(0.13, 0.95)	(0.24, 1.27)	(0.23, 1.00)	(0.14, 0.95)	(0.28, 1.75)	(0.51, 0.95)
me_{gI}	U	2.54	2.49	2.47	3.07	2.54	1.86	2.19
		(1.82, 2.90)	(1.89, 2.82)	(1.46, 3.09)	(2.73, 3.27)	(1.81, 2.95)	(0.70, 2.60)	(1.99, 2.30)
me_{tby}	U	0.58	0.25	0.59	0.54	0.61	0.27	0.20
		(0.25, 0.82)	(0.04, 0.48)	(0.23, 0.81)	(0.43, 0.60)	(0.47, 0.69)	(0.12, 0.37)	(0.03, 0.40)

Table 5: Average second moments: Data and model: 1900–2013

	gy			gc			gi			tby		
	ALL	EM	DEV	ALL	EM	DEV	ALL	EM	DEV	ALL	EM	DEV
Average Standard deviation												
Data	4.90	5.39	4.19	6.30	7.01	5.28	16.25	18.58	12.91	4.68	4.68	4.68
Model	5.88	6.39	5.15	7.81	8.65	6.62	15.75	18.05	12.46	4.43	4.93	3.71
	(5.67, 6.11)	(6.13, 6.68)	(4.91, 5.40)	(7.60, 8.04)	(8.37, 8.95)	(6.36, 6.88)	(15.30, 16.22)	(17.41, 18.71)	(11.96, 12.99)	(4.20, 4.69)	(4.61, 5.30)	(3.45, 4.01)
Average correlation with output												
Data	1.00	1.00	1.00	0.68	0.67	0.71	0.50	0.49	0.52	-0.04	-0.08	0.01
Model	1.00	1.00	1.00	0.80	0.78	0.83	0.48	0.46	0.50	-0.11	-0.12	-0.09
	(1.00, 1.00)	(1.00, 1.00)	(1.00, 1.00)	(0.79, 0.81)	(0.76, 0.79)	(0.81, 0.84)	(0.45, 0.50)	(0.43, 0.49)	(0.47, 0.54)	(-0.13, -0.09)	(-0.15, -0.09)	(-0.12, -0.07)
Average correlation with trade balance												
Data	-0.04	-0.08	0.01	-0.11	-0.15	-0.05	-0.09	-0.11	-0.07	1.00	1.00	1.00
Model	-0.12	-0.09	-0.19	-0.22	-0.15	-0.14	-0.14	-0.14	-0.14	1.00	1.00	1.00
	(-0.15, -0.09)	(-0.12, -0.07)	(-0.21, -0.17)	(-0.24, -0.19)	(-0.18, -0.12)	(-0.16, -0.11)	(-0.17, -0.10)	(-0.17, -0.10)	(-0.17, -0.11)	(1.00, 1.00)	(1.00, 1.00)	(1.00, 1.00)
Average autocorrelation												
Data	0.20	0.20	0.20	0.02	0.00	0.05	0.18	0.14	0.22	0.75	0.73	0.76
Model	0.09	0.09	0.10	0.01	-0.01	0.03	-0.07	-0.09	-0.06	0.61	0.60	0.63
	(0.07, 0.12)	(0.06, 0.12)	(0.07, 0.13)	(-0.01, 0.02)	(-0.03, 0.01)	(0.01, 0.05)	(-0.08, -0.06)	(-0.10, -0.07)	(-0.07, -0.04)	(0.58, 0.64)	(0.56, 0.63)	(0.59, 0.67)
Average cross country cross correlation												
Data	0.14	0.15	0.23	0.07	0.06	0.15	0.18	0.20	0.19	0.09	0.21	0.04
Model	0.16	0.15	0.17	0.11	0.10	0.14	0.13	0.13	0.12	0.12	0.14	0.08
	(0.12, 0.19)	(0.11, 0.19)	(0.11, 0.23)	(0.09, 0.14)	(0.07, 0.12)	(0.10, 0.18)	(0.10, 0.15)	(0.10, 0.16)	(0.09, 0.15)	(0.09, 0.15)	(0.11, 0.19)	(0.05, 0.11)

Notes: The numbers in parentheses are the 5-95% confidence interval obtained from the posterior distributions.

Table 6: Trend vs. stationary productivity shocks: 1900–2013

Country	All trend	All stationary	Common trend	Common stationary
Argentina	8.91	84.68	0.55	30.13
Brazil	28.55	51.30	3.97	33.66
Chile	9.22	82.02	4.54	30.94
Colombia	4.71	56.51	1.16	16.11
India	68.04	18.90	3.68	4.15
Mexico	6.02	84.23	2.44	24.42
Peru	37.47	55.68	5.05	46.86
Taiwan	60.86	33.71	26.85	1.62
Turkey	21.48	74.31	0.93	5.58
Venezuela	63.62	29.47	4.52	23.51
Australia	68.42	8.81	57.58	3.50
Canada	55.95	37.65	5.87	31.85
Finland	14.31	77.64	10.52	19.89
Norway	13.61	75.31	4.67	14.57
Portugal	78.00	13.50	1.60	4.06
Spain	9.05	79.78	6.15	1.75
Sweden	29.02	65.87	2.09	17.17
Average	33.96	54.67	8.36	18.22
EM	30.89	57.08	5.37	21.70
DEV	38.34	51.22	12.64	13.26

Notes: The table reports the means of the posterior distributions of the contribution of trend, stationary productivity shocks, and common trend and common stationary productivity shocks to output growth rates in each country.

Table 7: Contribution of common shocks to each country between 1900 and 2013: Average across countries

	gy			gc			gi			tby		
	All	EM	DEV	All	EM	DEV	All	EM	DEV	All	EM	DEV
μ	8.36	5.37	12.64	5.17	3.66	7.32	3.07	2.50	3.89	0.97	1.14	0.74
a	18.22	21.70	13.25	11.96	12.72	10.87	6.86	7.58	5.83	1.14	1.22	1.02
pm	0.65	0.83	0.39	0.54	0.72	0.29	8.03	9.29	6.23	14.00	17.10	9.57
b	0.97	1.13	0.75	3.36	3.39	3.31	2.77	2.93	2.55	4.77	5.40	3.88
g	0.21	0.08	0.39	1.23	0.41	2.41	1.10	0.47	1.99	1.08	0.43	2.00
Total	28.42	29.11	27.43	22.26	20.90	24.19	21.82	22.76	20.49	21.96	25.28	17.22

Notes: All results are reported using the mean of variance decomposition computed from eight chains of 1 million draws each with half burn-in from the posterior distribution. We take averages of the mean variance decomposition across all countries (ALL), developed countries (DEV) and developing countries (EM).

Table 8: Dynamic factor estimation

	Output	Consumption	Investment	TBY
Median	11.33	7.62	10.56	7.77
	(8.19, 14.0)	(5.36, 9.76)	(5.99, 14.8)	(3.13, 13.58)

Notes: Total contribution of common shocks to output, consumption, investment, and the trade-balance-to-output ratio using actual data estimated by the DFM approach. The results are reported at the mean from the posterior distribution with 20,000 draws and the parentheses are the 5% and 95% confidence interval.

Table 9: Subsample stability

	Baseline		1901–1950		1951–2013	
	EM	DEV	EM	DEV	EM	DEV
ϕ_D^j	1.04	0.75	1.29	0.65	0.57	0.86
ϕ_{SR}^j	0.46	0.51	0.47	0.88	0.85	0.48
Trend	30.39	38.34	30.20	45.58	35.90	32.74
Stationary	57.08	51.22	60.01	50.30	54.24	52.13
Common shocks	29.11	27.43	39.19	35.66	23.29	42.39

Notes: All results are reported using the mean of variance decomposition computed from eight chains of 1 million draws each with half burn-in from the posterior distribution. We take averages of the mean across all countries (ALL), developed countries (DEV) and developing countries (EM). ϕ_D^j and ϕ_{SR}^j are the mean of the estimated parameters across countries. Trend, Stationary and Common shocks are the contribution of all trend shocks, all stationary shocks, and all common shocks to output fluctuations in these countries, respectively.

Appendix B Additional Tables and Figures: Not for publication

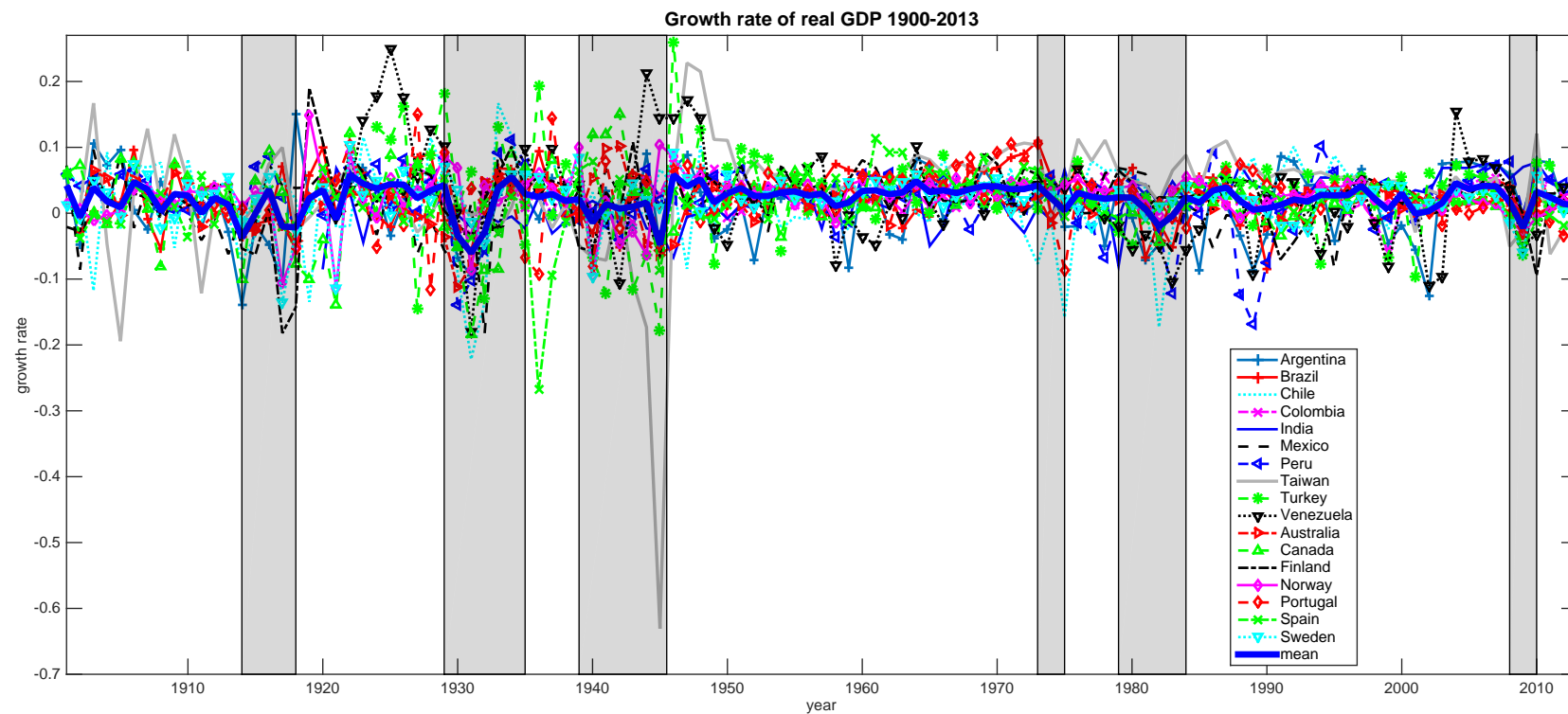
Table A1: Data availability

Country	Output	Consumption	Investment	Trade balance
Argentina	1900–2012	1900–2012	1900–2012	1900–2012
Brazil	1901–2013	1901–2013	1901–2013	1901–2013
Chile	1900–2013	1900–2013	1900–2013	1900–2013
Colombia	1925–2013	1925–2013	1925–2013	1925–2013
India	1919–2013	1919–2013	1919–2013	1919–2013
Mexico	1900–2013	1900–2013	1900–2013	1900–2013
Peru	1900–2013	1900–2013	1900–2013	1900–2013
Taiwan	1901–2013	1901–2013	1901–2013	1901–2013
Turkey	1923–2013	1923–2013	1923–2013	1923–2013
Venezuela	1920–2012	1920–2012	1920–2012	1920–2012
Australia	1901–2013	1901–2013	1901–2013	1901–2013
Canada	1900–2013	1900–2013	1900–2013	1900–2013
Finland	1900–2013	1900–2013	1900–2013	1900–2013
Norway	1900–2013	1900–2013	1900–2013	1900–2013
Portugal	1910–2013	1910–2013	1910–2013	1910–2013
Spain	1900–2013	1900–2013	1900–2013	1900–2013
Sweden	1900–2013	1900–2013	1900–2013	1900–2013

Table A2: Cross-country correlations of output: 1900–2013

	Arg	Aus	Bra	Can	Chile	Col	Fin	Ind	Mex	Nor	Peru	Port	Spain	Swe	Taiw	Turk	Vene
Arg	1.00	0.19	0.22	0.30	-0.01	0.27	0.36	0.05	0.13	0.38	0.17	0.10	0.14	0.06	0.12	0.08	0.19
Aus	0.19	1.00	0.16	0.50	-0.25	0.19	0.36	0.10	0.07	0.20	0.16	0.21	0.42	0.25	0.21	0.03	0.25
Bra	0.22	0.16	1.00	0.25	-0.03	0.17	0.29	0.00	0.26	0.20	0.22	0.28	0.01	0.07	0.00	0.00	0.07
Can	0.30	0.50	0.25	1.00	-0.09	0.02	0.38	-0.01	0.17	0.48	-0.01	0.06	0.19	0.23	0.03	0.01	0.22
Chile	-0.01	-0.25	-0.03	-0.09	1.00	-0.15	0.02	0.14	-0.02	-0.21	0.13	-0.05	-0.15	-0.22	-0.17	0.00	-0.14
Col	0.27	0.19	0.17	0.02	-0.15	1.00	0.24	0.09	0.18	0.06	0.22	0.18	0.18	-0.01	0.09	0.04	0.19
Fin	0.36	0.36	0.29	0.38	0.02	0.24	1.00	0.00	0.22	0.32	0.13	0.23	0.14	0.10	-0.07	0.04	0.24
Ind	0.05	0.10	0.00	-0.01	0.14	0.09	0.00	1.00	0.41	-0.12	0.32	0.10	0.16	0.03	0.23	0.23	0.13
Mex	0.13	0.07	0.26	0.17	-0.02	0.18	0.22	0.41	1.00	0.20	-0.09	-0.05	0.08	0.17	-0.10	-0.10	0.35
Nor	0.38	0.20	0.20	0.48	-0.21	0.06	0.32	-0.12	0.20	1.00	-0.15	0.16	0.12	0.29	0.02	-0.03	0.23
Peru	0.17	0.16	0.22	-0.01	0.13	0.22	0.13	0.32	-0.09	-0.15	1.00	0.40	0.37	-0.01	0.11	0.12	0.06
Port	0.10	0.21	0.28	0.06	-0.05	0.18	0.23	0.10	-0.05	0.16	0.40	1.00	0.11	0.11	0.07	0.19	0.27
Spain	0.14	0.42	0.01	0.19	-0.15	0.18	0.14	0.16	0.08	0.12	0.37	0.11	1.00	0.44	0.34	0.19	0.48
Swe	0.06	0.25	0.07	0.23	-0.22	-0.01	0.10	0.03	0.17	0.29	-0.01	0.11	0.44	1.00	0.17	0.02	0.60
Taiw	0.12	0.21	0.00	0.03	-0.17	0.09	-0.07	0.23	-0.10	0.02	0.11	0.07	0.34	0.17	1.00	0.39	0.23
Turk	0.08	0.03	0.00	0.01	0.00	0.04	0.04	0.23	-0.10	-0.03	0.12	0.19	0.19	0.02	0.39	1.00	0.12
Vene	0.19	0.25	0.07	0.22	-0.14	0.19	0.24	0.13	0.35	0.23	0.06	0.27	0.48	0.60	0.23	0.12	1.00

Table A3: Output growth rates for 17 small open economies 1900 and 2013



Note: Shaded regions are major historical events.

Figure A1: Autocorrelation functions of the trade balance-to-output ratio for developing and small developed countries: 1900–2013

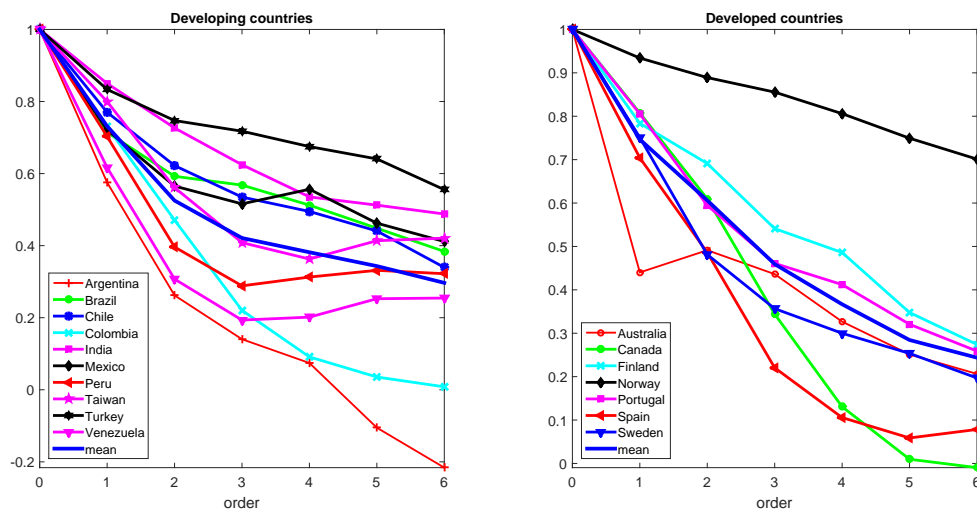


Figure A2: Autocorrelation functions of the trade balance-to-output ratio: Data vs. model. The predicted moment in the model is calculated using the parameters at the mean of the posterior distribution.

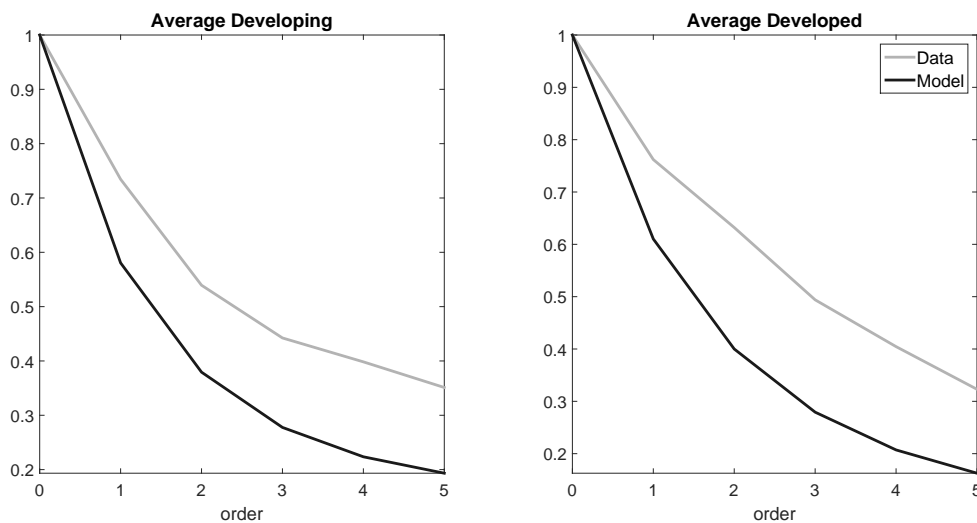
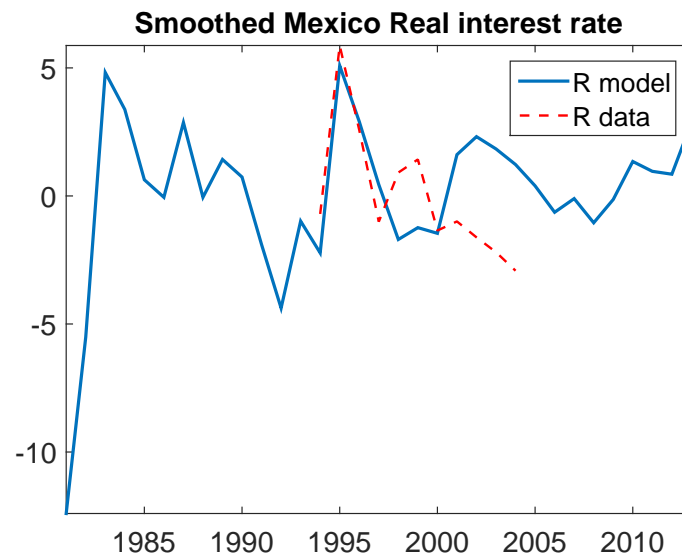


Figure A3: Mexico: Real interest rate in the model vs in the data (in annual frequency)



Notes: The real interest rate data for Mexico are taken from Uribe and Yue (2006) and average to an annual frequency.

Figure A4: Scatter plot of the contribution of common shocks against the average correlation of each country with others in the data

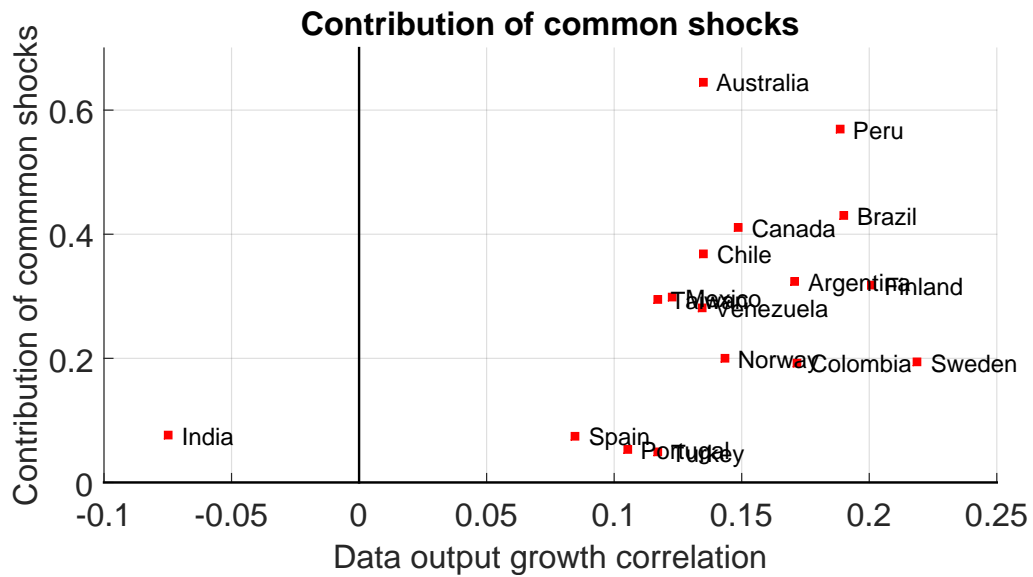
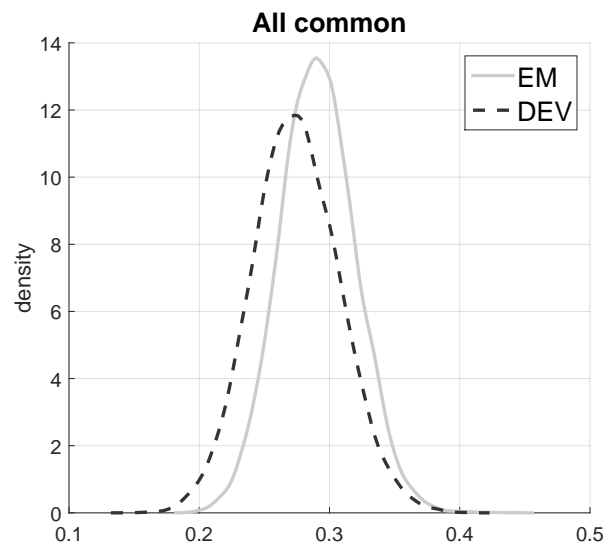


Figure A5: All common shocks contribution: posterior distributions for developing countries (EM) and developed countries (DEV).



Appendix C Data Source

The data are compiled from many sources but primarily, as stated in the paper, from Barro and Ursúa (2009) data set for GDP per capita and consumption per capita. All population data are taken from Maddison (2009). All updated data between 2007 and 2013 are from the International Financial Statistics unless otherwise stated.

1. **Argentina:** Updated the data set given by Garcia-Cicco, Pancrazi and Uribe (2010) available at http://www.columbia.edu/~mu2166/rbc_emerging/rbc_emerging.html

2006 data are from Secreteraria de Politica Economica (2006). Available at <http://www.mecon.gov.ar/peconomica/informe/indice.htm> and http://www.indec.gov.ar/principal.asp?id_tema=165
2. **Australia:** GDP and Consumption per capita are taken from Barro and Ursúa (2009) available at http://www.economics.harvard.edu/faculty/barro/data_sets_barro

Investment and Trade balance:

1901-1959: Vamplew, Wray (ed.), Australians, historical statistics, Fairfax, Syme & Weldon, Australia, 1987.

1960-2006: Central bank Statistics available at <http://abs.gov.au/AUSSTATS/abs@.nsf/DetailsPage/5206.0Dec%202009?OpenDocument>
3. **Brazil:** GDP and Consumption per capita are taken from Barro and Ursua (2009) as above

Investment and Trade balance:

1900-2000: OxLad available at <http://oxlad.qeh.ox.ac.uk/search.php>

2001-2007: IFS available at <http://www.imfstatistics.org/IMF/imfbrowser.aspx?branch=ROOT>

IPPEA available at <http://www.ipeadata.gov.br/ipeaweb.dll/ipeadata?Tick=1356034625> and Estatísticas Econômicas available at http://www.ibge.gov.br/seculoxx/economia/contas_nacionais/contas_nacionais.shtm
4. **Canada:** GDP and Consumption per capita are taken from Barro and Ursúa (2009) as above

Investment and Trade balance:

- 1900-1925: Urquhart, M.C., Gross National Product, Canada, 1870-1926: The Derivation of the Estimates, McGill-Queen's University Press, Canada, 1993
- 1926-1960: Historical Statistics of Canada, 2nd edition. 1983, available at <http://www.statcan.gc.ca/pub/11-516-x/11-516-x1983001-eng.htm>
- 1961-2006: Statistics Canada, National Income and Expenditure Accounts [Table 380-0017: Gross Domestic Product (GDP), expenditure-based]. Available at: <http://cansim2.statcan.ca/>
5. **Chile:** GDP and Consumption per capita are taken from Barro and Ursúa (2009) as above
Investment and Trade balance:
1900-1980: OxLad as above
1981-2006: IFS as above
Braun, Juan, Matías Braun, Ignacio Briones, and José Díaz, “Economía Chilena 1810-1995: Estadísticas Históricas”, Instituto de Economía - Pontificia Universidad Católica de Chile, Documento de Trabajo No. 187, January, 2000.
6. **Colombia:** All data are taken from Fernández, Andrés. “Tropical” Real Business Cycles? A Bayesian Exploration (2009). Mimeo, Rutgers University, and Banco de la República Colombia, at http://www.banrep.gov.co/series-estadisticas/see_prod_salar.htm
7. **Finland:** GDP and Consumption per capita are taken from Barro and Ursúa (2009) as above
Investment and Trade balance:
1900-1975: Hjerpe, Riitta, The Finnish Economy 1860-1985: Growth and Structural Change, Bank of Finland Publications, Studies on Finland's Economic Growth XIII, Helsinki, 1989.
1975-2006: Statistics Finland, available at http://pxweb2.stat.fi/database/StatFin/kan/pka/pka_en.asp
8. **India:** GDP and Consumption per capita are taken from Barro and Ursúa (2009) as above
Investment and Trade balance:
1919-1950: Narasimham, N. V. A., A Short Term Planning Model for India, North Holland Publishing Company, Amsterdam, 1956.

- 1951-2006: Central Statistical Office, Government of India, “National Accounts tables”, available at http://mospi.nic.in/mospi_nad_main.htm
9. **Mexico:** I updated the data set given by Garcia-Cicco, Pancrazi and Uribe (2010). 2006 data are from Instituto Nacional de Estadística, Geografía e Informática (INEGI), available at <http://dgcnesyp.inegi.org.mx/bdiesi/bdie.html>
 10. **Norway:** All data are taken from:

1830-1969: Grytten, Ola, “The gross domestic product for Norway 1830–2003”, in: Øyvind Eitrheim, Jan T. Klovland and Jan F. Qvigstad (eds.), Historical monetary statistics for Norway, 2005. Available at the Nordic Historical National Accounts Database, (courtesy of Guomundur Jonsson), available at <http://old.nhh.no/forskning/nnb/>

1941-1945: Ola Grytten kindly provided me with his estimates

1970-2006: Central Bank of Norway, “National accounts”, available at http://www.ssb.no/english/subjects/09/01/nr_en/
 11. **Peru:** GDP and Consumption per capita are taken from Barro and Ursúa (2009) as above. All other data are from courtesy of Bruno Seminario, available at <http://sites.google.com/site/lbseminario/peru-2021>
 12. **Portugal:** GDP and Consumption per capita are taken from Barro and Ursúa (2009) as above. All other data are taken from:

Batista, Dina; Martins, Carlos; Pinheiro, Maximiano and Reis, Jaime, New Estimates for Portugal’s GDP (1910-1958), Lisboa, 1997. Available at Professor Pedro Lain’s personal website <http://pedrolains.typepad.com/pedrolains/estatsticas-data.html>
 13. **Spain:** GDP and Consumption per capita are taken from Barro and Ursúa (2009) as above. Additionally, data are taken from

1900-1994: Prados de la Escosura, Leandro, El progreso económico de España, 1850-2000, Fundacion BBVA, Madrid, 2003

1995-2006: Instituto Nacional de Estadística, Contabilidad Nacional de España, Producto interior bruto a precios de mercado y sus componentes <http://www.ine.es/jaxi/menu.do?L=1&type=pcaxis&path=%2Ft35%2Fp008&file=inebase&N=&L=>

14. **Sweden:** GDP and Consumption per capita are taken from Barro and Ursúa (2009) as above.
Investment and Trade balance:
Edvinsson, Rodney, Historical national accounts for Sweden 1800-2000 (Historisk nationalkränskap för Sverige 1800-2000). Based on: Edvinsson, R., 2005: Growth, Accumulation, Crisis: With New Macroeconomic Data for Sweden. Almqvist & Wiksell International; Stockholm.
1900-1992: the Nordic Historical National Accounts Database, available at <http://old.nhh.no/forskning/nnb/>
1993-2006: Statistics Sweden, Economic statistics available at http://www.scb.se/Pages/List____258713.aspx
15. **Taiwan:** GDP and Consumption per capita are taken from Barro and Ursúa (2009) as above.
Investment and Trade balance:
1901-1950: National Historical data
Mizoguchi, Toshiyuki, "Estimates of the Long-run Economic Growth of Taiwan Based on Revised SNA (1901-2000) Statistics", Institute for Economic Research - Hitotsubashi University, Discussion Paper Series, No. 123, October, 2005.
1951-2013: National statistics, available at <http://eng.stat.gov.tw/mp.asp?mp=5>
16. **Turkey:** GDP and Consumption per capita are taken from Barro and Ursúa (2009) as above.
Investment and Trade balance:
Altug, Sumru, Alpay Filiztekin and Sevkett Pamuk. "Sources of long-term economic growth for Turkey, 1880-2005". European Review of Economic History, 12(3) pp.393-430, December 2008. Available at <http://myweb.sabanciuniv.edu/alpayf/my-research/data/>
Turkish Statistical Institute. Foreign Trade table, available at http://www.turkstat.gov.tr/PreTablo.do?tb_id=12&ust_id=4
State Institute of Statistics (Devlet İstatistik Enstitüsü), Statistical indicators (İstatistik göstergeleri): 1923-2008, Ankara, Turkey, 2009, available at http://www.tuik.gov.tr/Kitap.do?metod=KitapDetay&KT_ID=0&KITAP_ID=158
17. **Venezuela:** Besides data taken from Barro and Ursúa (2009) as above, I also constructed GDP, Consumption per capita and the other series from:

1920-2002: Baptista, Asdrúbal, Bases Cuantitativas de la Economía Venezolana: 1830-2002, Fundación Polar, Caracas, Venezuela, 2006

1998-2006: Central bank of Venezuela: Banco Central De Venezuela, available at <http://www.bcv.org.ve/c2/indicadores.asp>