

Ziebarth, Nicolas R.

**Working Paper**

## Social Insurance and Health

IZA Discussion Papers, No. 10918

**Provided in Cooperation with:**

IZA – Institute of Labor Economics

*Suggested Citation:* Ziebarth, Nicolas R. (2017) : Social Insurance and Health, IZA Discussion Papers, No. 10918, Institute of Labor Economics (IZA), Bonn

This Version is available at:

<https://hdl.handle.net/10419/170902>

**Standard-Nutzungsbedingungen:**

Die Dokumente auf EconStor dürfen zu eigenen wissenschaftlichen Zwecken und zum Privatgebrauch gespeichert und kopiert werden.

Sie dürfen die Dokumente nicht für öffentliche oder kommerzielle Zwecke vervielfältigen, öffentlich ausstellen, öffentlich zugänglich machen, vertreiben oder anderweitig nutzen.

Sofern die Verfasser die Dokumente unter Open-Content-Lizenzen (insbesondere CC-Lizenzen) zur Verfügung gestellt haben sollten, gelten abweichend von diesen Nutzungsbedingungen die in der dort genannten Lizenz gewährten Nutzungsrechte.

**Terms of use:**

*Documents in EconStor may be saved and copied for your personal and scholarly purposes.*

*You are not to copy documents for public or commercial purposes, to exhibit the documents publicly, to make them publicly available on the internet, or to distribute or otherwise use the documents in public.*

*If the documents have been made available under an Open Content Licence (especially Creative Commons Licences), you may exercise further usage rights as specified in the indicated licence.*

DISCUSSION PAPER SERIES

IZA DP No. 10918

**Social Insurance and Health**

Nicolas R. Ziebarth

JULY 2017

## DISCUSSION PAPER SERIES

IZA DP No. 10918

# Social Insurance and Health

**Nicolas R. Ziebarth**

*Cornell University, DIW Berlin and IZA*

JULY 2017

Any opinions expressed in this paper are those of the author(s) and not those of IZA. Research published in this series may include views on policy, but IZA takes no institutional policy positions. The IZA research network is committed to the IZA Guiding Principles of Research Integrity.

The IZA Institute of Labor Economics is an independent economic research institute that conducts research in labor economics and offers evidence-based policy advice on labor market issues. Supported by the Deutsche Post Foundation, IZA runs the world's largest network of economists, whose research aims to provide answers to the global labor market challenges of our time. Our key objective is to build bridges between academic research, policymakers and society.

IZA Discussion Papers often represent preliminary work and are circulated to encourage discussion. Citation of such a paper should account for its provisional character. A revised version may be available directly from the author.

## ABSTRACT

---

### **Social Insurance and Health\***

This chapter reviews the existing empirical evidence on how social insurance affects health. Social insurance encompasses programs primarily designed to insure against health risks, such as health insurance, sick leave insurance, accident insurance, long-term care insurance and disability insurance; and programs that insure against other risks, such as unemployment insurance, pension insurance and country-specific social insurance. These insurance systems exist in almost all developed countries around the world. This chapter discusses the state-of-the-art evidence on each of these social insurance systems, briefly reviews the empirical methods for identifying causal effects, and examines possible limitations to these methods. The findings reveal robust and rich evidence on first-stage behavioral responses (“moral hazard”) to changes in insurance coverage. Surprisingly, evidence on how changes in coverage impact beneficiaries’ health is scant and inconclusive. This lack of identified causal health effects is directly related to limitations on how human health is typically measured, limitations on the empirical approaches and a paucity of administrative panel data spanning long-time horizons. Future research must be conducted to fill these gaps. Of particular importance is evidence on how these social insurance systems interact and affect human health over the lifecycle and in the long-run.

**JEL Classification:** H1, H5, I1, J2

**Keywords:** social insurance, health, causal effects, microeconometrics, reduced-form methods, structural methods

**Corresponding author:**

Nicolas R. Ziebarth  
Cornell University  
Department of Policy Analysis and Management (PAM)  
106 Martha Van Rensselaer Hall  
Ithaca, NY 14850  
USA  
E-mail: nrz2@cornell.edu

---

\* Short version forthcoming as a book chapter in: Baltagi, B. H. and Moscone, F. [Eds.] (2017): *Health Econometrics in Contributions to Economic Analysis*, Emerald Publishing, 1st Edition.

I thank Maria Fitzpatrick, Pauline Leung, Zhuan Pei, Stefan Pichler, Sarah Prenovitz, Julian Reif, Hendrik Schmitz and two anonymous referees for excellent comments on a previous draft of this chapter. I also thank Beining Niu for excellent research assistance. I take responsibility for all remaining errors in and shortcomings of the article. The research reported in this paper is not the result of a for-pay consulting relationship. Cornell does not have a financial interest in the topic of the paper which might constitute a conflict of interest.

## 1. Introduction

This chapter reviews the state-of-the-art empirical research in the field of “Social Insurance and Health.” The chapter will discuss a subset of (subjectively chosen) papers to summarize the empirical evidence. It will also comment on the methods used for identification and highlight unresolved research questions as well as gaps in the application of methods. The focus of the chapter will be on how social insurance systems—primarily those designed to insure health shocks—causally affect beneficiaries’ health.<sup>1</sup>

There is no sharp and unambiguous definition of “social insurance.” Loosely speaking, all insurance schemes that are not provided by the private market but “by the government” could be considered social insurance. Most economists would agree that social insurance is in place when the benefits are either directly provided by the government using tax revenues, or when beneficiaries receive tax-funded subsidies. Most economists would also agree that heavy state regulation of private insurers alone—for example, through an individual mandate, guaranteed issue or community-rated premiums—would *not* be sufficient to label the insurance scheme as social insurance (Baicker and Chandra 2008).

While tax funding can stem from rather regressive sales or value-added taxes, most European countries charge social contribution rates to fund their social insurance systems. Contribution rates are payroll taxes, charged in percentage points of an individual’s gross salary and paid by the employee, the employer, or both. For most OECD countries, the classic social

---

<sup>1</sup> Chetty and Finkelstein (2013) provide an excellent overview on the theoretical social insurance literature. They focus on adverse selection as the motivation for social insurance and optimal benefit design.

insurance schemes include (i) health insurance, (ii) short- and long-term sickness insurance, (iii) disability insurance, (iv) accident insurance, (v) long-term care insurance, (vi) unemployment insurance, (vii) pension insurance, and (viii) other social insurances such as means-tested welfare programs. The structure of this chapter follows this categorization. The institutional details and generosity of these social insurance programs naturally differ across countries, which is why all findings should be interpreted in the context of the time period, country, and social insurance studied.

When discussing the impact of specific social insurance programs on health, one research strand that is of relevance for all subchapters asks the question: “How does income affect health?” Many of the social insurance systems discussed below provide monetary insurance benefits (for example, paid sick leave and disability benefits or unemployment benefits). However, because social insurance often kicks in as a result of a person’s health shock and inability to work, in addition to receiving monetary benefits, individuals experience a change in health and labor supply status. This complicates the empirical identification of underlying channels and the separation of the various effects. Therefore, studies trying to estimate the direct effect of money on health are important complements to understanding the effect of insurance on health. These studies have been using lottery winnings, variation in the US Earned Income Credit, or the US Social Security Notch as exogenous identifying variation (Snyder and Evans 2006, Evans and Garthwaite 2014, Hoynes et al. 2015, Cesarini et al. 2016). However, the findings have been inconclusive, probably due to differences in how the Local Average Treatment Effect (LATE) is identified in each study.

After a brief review of empirical methods, the next section begins with a discussion on how to empirically measure human health. Then the evidence on specific social insurance systems is discussed.

## 2. Social Insurance and Health: The Health Econometric Evidence

### 2.1 A Brief Review of the Empirical Methods

Over the last two decades, research in economics has experienced remarkable advancements in the design and application of microeconomic methods. These advancements have spread to all microeconomic subfields, including health economics. Based on the framework of potential outcomes as formalized in Heckman et al. (1999), the “credibility revolution in empirical economics” (Angrist and Pischke, 2010) was triggered by researchers who identified “natural experiments” that allowed them to mimic the randomized-controlled lab experiments of natural science to draw causal inference from observed behaviors in natural environments.

Many of the early seminal natural experiment papers were based on simple difference-in-difference (DD) designs, where a quasi-experimental setting would naturally form quasi-random treatment and control groups whose outcomes could be observed over time (Card 1990; Meyer et al. 1995). Difference-in-Difference-in-Difference (“triple differences”) (DDD) (Gruber 1994), Regression Discontinuity (RD) (Hahn et al. 2001; Imbens and Lemieux 2008, Card et al. 2008), Regression Kink (RK) (Card et al. 2015) and the Synthetic Control Group Method (SCGM) (Abadie and Gardeazabal 2003; Abadie et al. 2010, Bauhoff 2014, Kreif et al. 2016) have been further additions to the toolkit of the applied reduced-form microeconomist. Combining these methods, for example matching<sup>2</sup> with DD (Imbens and Wooldridge 2009) or SCGM with DD

---

<sup>2</sup> While matching has been a popular empirical tool in the labor market evaluation literature (Heckman et al. 1997, Caliendo and Kopeinig, 2008, Lechner et al. 2011, Fitzenberger et al. 2013), it never became as popular as the reduced-form methods outlined above. In the field of health economics, Lechner (2009) provides evidence of positive well-being and labor market effects of exercising.

(Bassok et al. 2014), refines the basic methods to further increase the credibility of the research design.

The last decades have also witnessed an upswing in the theoretical and applied microeconomic discussion of Instrumental Variable (IV) methods (Imbens and Angrist 1994; Heckman and Vytlacil 1998). As the standards for publishing empirical reduced-form papers in top journals have risen substantially, the difficulty of graphically illustrating evidence on the validity of instruments, or applying clear-cut and broadly accepted testing procedures in IV has slowed its use. However, more and more researchers combine graphical evidence—for example on discontinuities in an exogenous running variable—with IV estimation. An alternative, extremely credible, application of IV methods is to instrument when clear random assignment is readily available, e.g., through lotteries, and when the researcher intends to scale up intent-to-treat estimates to full exposure estimates (Finkelstein et al., 2012 provide an excellent example for an application).

The last decade of economic empirical research has also seen an impressive upswing of randomized controlled field experiments (Banerjee and Duflo 2009; Björkman and Svensson 2010; Duflo et al. 2015). Field experiments allow the researcher to design and exert control over the randomization, yet study the diffusion of the treatment and changes in participants' behavior under “natural” real world conditions. Policymakers have begun to understand the value of such field experiments for designing public policies (Levitt and List 2009; List and Metcalfe 2014). Field experiments combine the advantages of natural experiments and lab experiments, but they require high up-front investments and the involvement of many stakeholders.



By contrast, a broad use of laboratory experiments has been an integral part of the empirical toolkit for much longer. While the first lab experiments were conducted in the early 1950s and had their origin in game theory (Smith 1992), only in the last couple of years have health economists begun to carry out lab experiments more systematically (Hennig-Schmidt et al. 2011, Altmann and Traxler, 2014, Brosig-Koch et al. 2016). Some of the most innovative papers at the forefront of empirical health economic research replicate and combine natural experiments with lab experiments (e.g., Bhargava et al. 2017).

Although substantial advancements have been made in structural estimation, policy evaluation is currently quantitatively dominated by reduced-form research—both within and outside of health economics. Advantages of structural estimation are the close connection between theory and empirics, the ability to explicitly model supply and demand sides of a market, the possibility of conducting ‘ex-ante’ policy evaluations, and the opportunity to simulate the effects of alternative policies and parameters other than the LATE, such as the Average Treatment Effect (ATE) (Keane 2010). For reduced-form traditionalists, disadvantages of actual applications include a lack of transparency and overly strong (hidden) identification assumptions. Structural papers also require more time for the reader to digest, and the computation can be burdensome. A lack of introductory textbooks—such as Angrist and Pischke (2009) for reduced-form research—additionally hinders the diffusion of structural models into mainstream applied health econometrics. However, several structural papers on the US health insurance market have been recently published by IO health economists in top journals (Handel and Kolstad, 2015, Ho and Lee, 2016). Some of the best and most innovative health economists also combine reduced-form and structural estimation in their work, exploiting the benefits of both approaches (Einav et al. 2013, Autor et al. 2017). While these can be interpreted as early signs of a backlash against the “atheoretical” empirical revolution

(Keane 2010), a re-integration of theory and empirical estimation will also depend on the ability of researchers to adapt such methods and educate their graduate students accordingly.

In addition to these basic empirical methods that researchers in other microeconomic fields routinely use, the subfield of “health econometrics” has also emerged. This subfield studies empirical issues that are specific to health economics research, such as how to model distributional properties of health care use and expenditures appropriately (Mullahy 1998, Deb and Trivedi 2002, Winkelmann 2012), how to test and correct for reporting biases in self-assessed health measures (Lindeboom and van Doorslaer 2004, Jones et al. 2013), how to model spatial dependencies in health spending and outcomes (Moscone et al. 2007, Eibich and Ziebarth 2014), how to elicit quality-related health or happiness measures correctly (Wisløff et al. 2014), how to assess the value of a statistical life (Doucouliagos et al. 2012) or how to estimate inequality in health (Jagger et al. 2009, Erreygers and Van Ourti 2011).

## **2.2. Measurement of Health**

It has been acknowledged that “health” constitutes a multi-dimensional concept and is not merely the absence of disease. The standard and widely accepted WHO (1948) definition reads. *“Health is a state of complete physical, mental and social well-being and not merely the absence of disease or infirmity.”* For the health econometrician, the crucial question is how to quantify the three dimensions of physical, mental and social well-being.

The most widely used health measures in empirical health economics can be divided into five categories: (a) subjective self-reported health measures, (b) “quasi-objective” quality-of-life-related (generic) health measures, (c) health vignettes, (d) non-invasive objective health measures, and (e) invasive objective health measures (Ziebarth 2010a). None of these measures are perfect,

and each has advantages and disadvantages. More research is needed to identify easy-to-collect, robust, and comprehensive measures of physical, mental and social health.

**Subjective self-reported health measures.** Subjective health measures are still the dominant form of health measures, especially the five-category self-assessed health (SAH) measure which asks survey respondents: “*In general, would you say that your health is excellent, very good, good, fair, or poor?*” Other self-reported health measures elicit worries about health, satisfaction with one’s health, and SAH scaled by continuous generic health measures (Frick and Ziebarth 2013, Jones et al. 2013). One main advantage of these subjective health measures is that they are cheap and easy to collect. Another advantage is the comprehensiveness of these indicators—they have been shown to be very good predictors of true health (McGee et al. 1999, Wu et al. 2013).<sup>3</sup>

Subjective health measures have drawbacks that directly impede empirical researchers’ ability to identify changes in health status based on subjective health measures. One drawback is that subjective health measures are coarse measures with an inherent amount of noise (Crossley and Kennedy 2002). This means that a significant population share has to experience a significant change in health before it will be mapped onto a higher or lower self-reported SAH category.

Another issue is non-classical measurement error, which is also called “state dependent reporting bias” or “scale of reference bias.” Semantic or cultural differences may lead to systematic differences in response behavior that are unrelated to true health differences (Jürges, 2007; Bago d’Uva et al. 2008). While these are challenges for cross-country comparisons, the phenomenon of

---

<sup>3</sup> Baker et al. (2004) compared self-reports of specific chronic conditions to medical records and found considerable reporting errors which were related to the labor market activity of the respondents. Other studies have found similar results (Johnston et al. 2009).

differential reporting also exists *within* countries when samples are stratified by education, age, gender, or income. For example, older people tend to judge their health more mildly (Jürges, 2008; Bago d’Uva et al., 2008). Lindeboom and van Doorslaer (2004) named the non-separability of true health differences from index shifts a fundamental identification problem. Index shifts occur when *all* SAH thresholds are shifted in parallel for certain subpopulations. Cut-point shifts, which shift specific SAH cut-off points, occur if certain subpopulations value a specific health state differently. The standard convention in the literature is to control for age, gender and education, but this only accounts for some forms of reporting heterogeneity, making it challenging to identify changes in population health.

**Objective Health Measures.** Examples of non-invasive objective health measures are blood pressure, height and weight, grip strength, mortality and specific diagnoses. Invasive health measures include mainly blood or saliva samples. Except for when these measures are already included in administrative data, the main drawback of collecting them in surveys is their expensiveness, which typically results in low sample sizes. Another problem is a high and selective rate of survey non-response, especially with invasive measures. Finally, the majority of these objective health indicators only measure very narrowly defined physical health aspects without considering quality-of-life aspects.

**Quality-Related Life Measures and Vignettes.** A very promising “third way” between cheap, easy-to-collect subjective health measures and expensive, narrowly defined objective measures are health vignettes and quality-of-life-related (or “generic”) health measures. Examples of these measures include the SF12, the EQ5 HUIII or the 15D. The basic idea behind these indicators is that responses to several health questions can be summarized into continuous quasi-objective

health measures via an algorithm. For example, the German Socio-Economic Panel Study (SOEP) elicits the SF12 every other year (Andersen et al. 2007).

Health vignettes also have the purpose of reducing reporting biases in self-reports and yet exploiting comprehensive measures of mental and physical health by relying on respondents' self-reports. The basic idea of vignettes is to ask respondents to rate the health of a fictitious person, whose described health is invariant over all respondents, and then to subtract respondents' subjective evaluation bias by benchmarking their own health assessment with that of the fictitious person (Salomon et al. 2004). One main barrier to including vignettes more systematically in surveys is their relatively high cost due to the need to include many questions. In addition, more research and refinements are needed given that "members of different sociocultural groups appear to interpret vignettes as depicting fundamentally different levels of health" (Grol-Prokopczyk et al. 2015).

**Summary.** There is exists a clear trade-off between broadly available and easy-to-collect subjective health measures and "objective" health measures which may suffer from low selective response rates. Subjective measures are noisy and contain measurement error, but can measure mental and social health. Objective measures narrowly define health as physical and may result in low and selective response rates. Generic health measures and vignettes are a promising but expensive third way.

### **2.3 Health Insurance and Health**

The best evidence on the relationship between health insurance coverage and health comes from the U.S. While the RAND Health Insurance Experiment was a designed and expensive field

experiment, the Oregon Health Insurance Experiment was a natural experiment, although the identifying variation was also true randomization via a lottery.

**RAND Health Insurance Experiment.** The RAND Health Insurance Experiment (RAND HIE) randomly assigned families at six different sites in the U.S. to 14 different health plans. The assignment happened between 1974 and 1976 and participants were observed for 3 to 5 years (Keeler and Rolph 1988; Manning et al., 1987). One main objective was to estimate the price elasticity of demand for health care. Although the non-linear budgets of private health plans require assumptions and extrapolation, the RAND HIE price elasticity findings were relatively clear: health care demand is downward sloping but inelastic, with an average elasticity of around -0.2 (Aaron-Dine et al. 2013). To date, these findings have been the gold standard when it comes to estimating the price elasticity of demand for medical care.

However, the findings for health were less clear. Although several objective and subjective health measures were elicited (blood pressure, cholesterol, a mental and a general health index), the statistical tests could not reject the null hypothesis that there are no differences in these health measures between the groups that were assigned to different health plans and consumed different amounts of health care. Does this mean there is no empirical evidence that health insurance improves health?

First, some positive health effects *were* found for specific subsamples. For example, the 20% with the highest blood pressure who were assigned to the free care plan without any cost-sharing experienced a significant reduction in their blood pressure (Keeler and Rolph 1988).

Second, there are several explanations for the absence of health effects. To begin with, the field experiment was underpowered and substantial improvements (or decreases) in health could not be

excluded with 90% statistical certainty. Also, the experiment had been criticized on methodological grounds due to lower refusal and attrition rates in the most comprehensive health plan (Aaron-Dine et al. 2013). Third, the time-horizon may have been too short to identify significant health improvements. This could be due to ineffective treatments or because the human body is able to compensate for a lack of treatment before health effects manifest—especially when enrollees had more generous coverage before or after the experiment. Fourth, as discussed above, the health measures that were taken may not have been powerful enough to map changes in health status into changes in these health measures.

**Oregon Health Insurance Experiment.** Due to a budgetary shortfall, the state of Oregon closed enrollment in its Medicaid (public insurance for the poor) program in 2004. At the beginning of 2008, Oregon announced that it had enough funding to cover another 10K people. Because the number of applicants exceeded the number of available spots in the program, the state decided to run a lottery. The roughly 35,000 lottery winners could then *apply* for the state Medicaid program. Although 40% of lottery winners did not submit the necessary paperwork and 30% were not eligible, the remaining 30% successfully enrolled. Finkelstein et al. (2012) probabilistically matched them via their full names, date of birth, and zip code to hospital admission data, mortality data, and data from a consumer credit database. In addition, the research team contacted all participants multiple times to carry out three different surveys that included several health and health care utilization measures.

The findings show that winning the lottery increased the likelihood of obtaining Medicaid coverage significantly. The probability of outpatient and inpatient visits increased by about 30% (by 25 percentage points). Finkelstein et al. (2012) then use the lottery as an instrument to scale up the Intent-to-Treat Effects (ITT) of winning the lottery in order to obtain the full exposure Local

Average Treatment Effect (LATE) of having insurance vs. being uninsured. In line with the findings from the RAND HIE, having health insurance increases the likelihood of an outpatient (and also an inpatient) visit by about 30%. At least in the short-run, the use of emergency rooms did not decrease, but rather increased by 40% when the uninsured gained coverage (Taubman et al. 2014). Drug spending increased about 15% and overall health care spending by 25%.

In terms of health effects, the findings are (again) ambiguous, although they are clearer than the evidence obtained from the RAND HIE. While there is no evidence of reductions in short-term mortality, the SAH measures suggest significant health improvements. In addition, fewer newly insured people screened positive for depression and the number of days in good mental health in the past 30 days increased by 2. However, even two years after Medicaid enrollment, no effects on hypertension or high cholesterol level were found (Baicker et al. 2013). Overall, the patterns suggest that the improvements in self-reported health kicked in rather quickly after coverage began, and that most of the effects are driven by improvements in mental health and happiness.

These findings represent some of the strongest evidence that health economics research has brought to light. But it is important to interpret them in the right context. As Finkelstein et al. (2012) stress in the discussion of the estimates, the study provides internally valid estimates for a group of very low-income (mean family income: \$13K) uninsured residents of Oregon who *express interest* in obtaining public coverage. The findings only represent short-term effects and one cannot exclude that they are, at least partly, driven by pent-up demand and also driven by the fear of losing coverage again.

Although balance tests suggest that the randomization was very successful, the lack of pre-treatment data makes the interpretation of the findings challenging. The setting only allows us to



compare outcomes for the treatment and control groups at several post-treatment points in time without being able to pinpoint the exact changes over time. In addition, the Great Recession that hit the US basically overnight in October 2008 may limit the interpretation of the findings to a time period where the unemployment rate in Oregon doubled from 5 to 10%. For example, it could be that the lottery losers, who remained uninsured during this time, saw substantial *decreases* in health care utilization and self-reported health. Notwithstanding, the Oregon HIE represents one of the finest and best pieces of empirical evidence of the impact of health insurance coverage on health care utilization and health. It provides an incredibly useful treasure that lets us understand how social insurance protects vulnerable citizens in times of great economic hardship.

**Other Evidence.** Card et al. (2009) exploit the automatic Medicare (US public health insurance for the elderly) enrollment rules at age 65 in a sharp RD design. They provide evidence that, conditional on being hospitalized, Medicare beneficiaries receive more services and have a lower 7-day mortality rate. Because the pre-Medicare insurance status is unobserved, an implication of the findings could be that moving from a mix of different insurance scheme to a federal single payer system may save lives. However, papers that estimate the mortality impact of the Medicare introduction in the 1960s remain inconclusive (Finkelstein and McKnight, 2008; Chay et al. 2012). Also using a sharp RD design, Shigeoka (2014) exploits cost-sharing decreases after age 70 in Japan. He finds increases in health care utilization but no evidence for significant mortality and self-reported health effects in the short-run. Chandra et al. (2010) find significant increases in hospital admissions after an increase in copayments for prescription drugs in the US and call these “offset effects” (which were absent in the RAND HIE). In contrast, Ziebarth (2010b) does not find any evidence that a decrease in rehabilitation treatments (triggered by increases in copayments) decreased SAH significantly in the short-run. Courtemanche and Zapata (2014) use

DD models and cross-sectional BRFSS data to elicit evidence for SAH improvements after Massachusetts covered more uninsured. Using the same data, but using DDD models and variation from several states that expanded Medicaid under the Affordable Care Act, Courtemanche et al. (2017) find no impact on risky behavior or SAH for the full sample. Huh and Reif (2017) investigate the health effects of implementing Medicare Part D by comparing changes in mortality between the young-elderly and the near-elderly. They estimate that this prescription drug benefit program reduced elderly mortality by 2.2 percent annually.

A key shortcoming of all studies just cited is the lack of evidence on *long-term* health effects of insurance coverage and health care use. The workhorse model of Grossmann (1972) clearly suggests a trade-off between health investments today and health outcomes in the future (Fang and Gavazza 2011). In one of the few existing papers about long-term health effects, Wherry et al. (2017) exploit Medicaid expansions and regress administrative hospital data on a fuzzy discontinuity. The authors find that having more years of Medicaid *eligibility* in childhood is associated with fewer hospitalizations and ER visits in adulthood for blacks.<sup>4</sup> Brown et al. (2017) also find that exposure to Medicaid expansions is linked to lower mortality in adulthood. While these studies investigate Medicaid expansions, primarily in the early 1980s, Goodman-Bacon (2016, 2017) exploit the introduction of Medicaid in the 1960s, state-level variation in generosity, a cohort-level measure of cumulative childhood Medicaid eligibility, and aggregated state-year level data, he finds significant reductions in nonwhite infant and child mortality by 20%, and in

---

<sup>4</sup> One of the seminal and very first papers that simulated changes in Medicaid eligibility as a result of the 1980s expansion was Gruber and Currie (1996): Using the “simulated fraction” as an instrument at the state-year level, they find that a 30ppt increase in eligibility among women of childbearing age decreased childhood mortality by 8.5%.

20-year white adult (non-AIDS) mortality by 20%. A comparable identification strategy is used by Boudreaux et al. (2016), who find that exposure to Medicaid access in early childhood is associated with better adult health and lower blood pressure.

The reasons for the lack of more empirical evidence on how health insurance affects health are plentiful. They range from the difficulty of collecting appropriate health measures, to data availability and security concerns when linking data at the individual level over long-time horizons, to ethical issues that prevent broader applications of field experiments. In addition, structural limitations do not allow researchers to study the health effects of insurance coverage in the lab.

**Summary.** Despite being a core research question, and despite the strong evidence for large first stage effects on utilization, surprisingly few studies find clean casual evidence that having health insurance significantly increases human health in the short-run. Naturally, causality is harder to establish in the long-run, but a few recent studies find suggestive evidence that health insurance improves the health of poor children from disadvantaged backgrounds in the long-run.

## **2.4 Short- and Long-Term Sickness Insurance and Rehabilitation**

Sickness insurance, “sick pay,” or “medical leave” is a workplace insurance against wage losses due to short- or medium-term job-unrelated sickness. This implies that (the overwhelming majority of) people on sick leave are actively employed and in the labor force. Every OECD country except the US, Canada, and Japan provides universal access to sick leave (Heymann et al. 2010).

Most evidence stems from the first stage relationship between variation in sick leave generosity and sick leave behavior. For example, from July to December 1998, a large-scale randomized experiment in Gothenburg relaxed the monitoring requirements for some employees, which increased sick leave episodes and triggered peer effects (Hesselius et al. 2013). Another experiment randomized the invitation to “information meetings” for employees on sick leave with their case workers. Johansson and Lindahl (2013) find significant short-term effects on exiting the sickness spell, but no long-term effects.

Despite rich evidence on first stage utilization effects,<sup>5</sup> there exists very little evidence on the impact of taking more sick leave on health. Two papers, which both use DD approaches to examine variation in the short-term sick leave replacement rate from 100 to 80% in Germany in the 1990s, find strong and significant first-stage effects but no evidence that self-reported health changed significantly (Puhani and Sonderhof 2010, Ziebarth and Karlsson 2014). In contrast, Halla et al. (2015) use Austrian administrative data and policy variation in replacement rates as an instrument to estimate that more sick leave would *reduce* health care expenditures of employees. This finding indirectly suggests that (too) many employees would go to work sick. Pichler and Ziebarth (2017) also study the phenomenon of presenteeism—going to work while being sick—and the trade-off between shirking and “contagious presenteeism” (presenteeism with a contagious disease). Using Google Flu data and conventional DD methods, they find that population-level influenza-like

---

<sup>5</sup> Studies have also investigated the impact of probation periods (Ichino and Riphahn 2005), culture (Ichino and Maggi 2000), gender (Ichino and Moretti 2009; Gilleskie 2010), spousal peer effects (Olsson and Skogman Thoursie 2015), income taxes (Dale-Olsen 2013), unemployment (Pichler 2015), and part-time sick leave (Andrén 2014).

illness rates decreased by about 5% within the two years following US cities' mandate for employers to provide sick pay.

[Insert Figure 1 about here]

As Figure 1 shows, the bridge between short-term sick leave and disability insurance is long-term sick leave, also called “Temporary Disability Insurance.” Long-term sick leave typically includes rehabilitation treatments and, while the exact definition varies by the institutional setting, in general it covers severe diseases or injuries that last longer than several weeks but may not result in permanent work disability (Andrén 2007, Ziebarth 2013, Fevang et al. 2017).

In one of the few empirical economic studies on rehabilitation programs<sup>6</sup>, Frölich et al. (2004) make use of Swedish register data and a nonparametric matching estimator but fail to find evidence that rehabilitation programs for the long-term sick are effective in improving their labor market outcomes. Using Swedish register data and propensity score matching, Hägglund et al. (2015) evaluate cognitive behavioral therapy (CBT) for individuals with mild or moderate mental illness and find evidence for positive health effects for some population subgroups. Using a standard parametric DD framework and survey panel data, Ziebarth (2014) exploits a doubling of copayments for rehabilitation treatments and the induced sharp decrease in demand, but does not find significant (short-term) adverse health effects using SAH measures. Laun and Skogman Thoursie (2014) evaluate a randomized field experiment by the Swedish government and do not

---

<sup>6</sup> Additional exceptions are Josephson et al. (2013) on the ‘intergenerational transmission’ of long-term sick leave behavior in Sweden, Schneider et al. (2016) on the impact of a graded return-to-work program for the long-term sick in Germany, Andrén (2007) on analyzing the different exit types after a long-term sick leave episode, and Markussen and Røed (2014) on the labor market effectiveness of vocational rehabilitation for employees on short- and long-term sick leave.

find evidence that private providers for vocational rehabilitation treatments outperform public providers in terms of costs and labor market outcomes.

There are unexplored research opportunities to better understand how providing long-term sick leave and rehabilitation—while keeping those sick employees employed—causally affects employees’ health, labor market outcomes, and likelihood to stay in the labor market, and the likelihood to not receive disability benefits in the long-run. In addition to structural research designs, field experiments are an important element for making significant progress in this research area, given that the few existing natural experiments do not provide sufficiently large first stage effects (c.f. Ziebarth 2013).

**Summary.** There exists a lack of studies measuring the short and long-term effects of sick leave and rehabilitation treatments and how they interact with other social insurances. The few existing studies that attempt to identify health effects do not find any.

## **2.5 Accident Insurance (‘Workers Compensation’)**

Statutory Accident Insurance, called “Workers’ Compensation” (WC) in the US, is a mix of health and sickness insurance for *work-related* sickness absence or medical costs (Figure 1). In the US, WC is a state-level social insurance program that replaces wage losses and covers medical bills due to work-related accidents or sickness (Butler and Gardner 2011). The first Statutory Accident Insurance Bill was implemented in Germany in 1884. However, the relevance of this social insurance program has sharply decreased in the last decades because of improvements in workplace safety, better worker training, and the dramatic shift in the industry structure of OECD countries from manufacturing to service sector jobs. Between the 1950s and 1980s the workplace fatality rate per 100,000 workers decreased from above 20 to below 10 in several OECD countries

(OECD 1989). In 2014, the Bureau of Labor Statistics (BLS, 2016) reported 4,821 fatal workplace injuries (per 140 million employees) in the US.

Probably due to its decreasing relevance, along with difficulties in accessing and harmonizing the various state-level datasets in the US, economic research on WC has not flourished in the past two decades. While it was a relatively popular field in the 1980s and early 1990s (Butler and Worrall 1985, Krueger and Burton 1990) few new empirical findings have been published since then. Fortin and Lanoie (2000) and Butler and Gardner (2011) provide excellent literature overviews and Kangas (2001) provides an institutional overview of statutory accident insurance schemes in 18 OECD countries.

Two recent studies with very credible research designs provide health estimates. Levine et al. (2012) use the natural experiment of workplace safety inspections by the U.S. Occupational Safety and Health Administration (OSHA), where the randomly selected establishments were matched to similar control establishments. They find that injury rates decreased by about 10% among 409 randomly inspected establishments in California. Interestingly, the effect did not dissipate but became even stronger over the entire four year post-inspection period.

Powell and Seabury (2014) also use a natural experiment in the Californian WC system that implemented utilization reviews and caps on chiropractic care, physical therapy, and occupational therapy. The policy changes disproportionately affected lower back injuries. Using a DD design, Powell and Seabury (2014) find reductions in usage of these therapies but also lower earnings. The decrease in earnings resulted from both an *increase* in injury duration and a lower work productivity due to less hours worked for those who returned to work. These findings are among

the very few that directly suggest deteriorated health as a result of less generous social insurance and medical care.

**Summary.** Economic research on Accident Insurance has underproportionally benefited from the boom in microeconomic evaluation studies. Structural changes in industrialized countries make classical work accidents less relevant, while incidence rates of mental diseases and back pain are increasing and offer new research fields. However, field experiments on workplace safety and treatments of accidents would offer valuable insights for developing countries.

## 2.6 Disability Insurance (DI)

Public Disability Insurance (DI) is an integral part of social insurance in OECD countries (OECD 2010). While institutional details vary over time and across countries, the main objective of DI is to provide a safety net in case of *permanent* work disability. Benefits typically replace a fraction of former gross wages. Figure 2 shows the development of the DI recipiency rate for five different countries. There are substantial time trends that are (at least partly) driven by DI policies. Relatively generous eligibility standards in the 1970s, 1980s and 1990s had been accompanied by substantial increases in recipiency rates. As a reaction to rising rates, more restrictive DI policies reduced inflows in four of the five countries in Figure 2 (Autor and Duggan 2003, Staubli 2011, McVicar et al. 2017). An open yet crucial research question is how health care, short- and long-term sick leave, and rehabilitation treatments are causally related to work disability over the lifecycle and in the long-run.

The empirical DI literature in economics is very rich, both in terms of empirical methods and published papers. It contains structural life-cycle models (Low and Pistaferri 2015) as well as standard reduced form evidence (Kostøl and Mogstad 2014). It includes studies on the US as well



on Australia and European countries, (e.g., Autor and Duggan 2003 for the US, Staubli 2011 for Austria, Oshio and Shimizutani 2011 for Japan, Jönsson et al. 2011 for Sweden, García-Gómez et al. 2011 for Spain, Börsch-Supan and Jürges 2012 and Burkhauser et al. 2017 for Germany, Banks et al. 2015 for the UK, McVicar and Wilkens 2013 for Australia, Koning, P. and Lindeboom 2015 for the Netherlands).

The most clean and causal reduced-form research surrounds the question: “How much higher would the employment rate be without the existence of a disability social insurance system?” Various researchers used quasi-random variation in assignment of cases to examiners and found that employment rates are 15 to 30 percentage points higher among marginally rejected relative to marginally accepted applicants (Bound 1989; Chen and van der Klaauw 2008; von Wachter et al. 2011, Maestas et al. 2013; French and Song 2014, Kostøl and Mogstad 2014). However, clear and clean direct causal evidence on the effects of DI enrollment on beneficiaries’ health is missing; identification is complicated by the intertwined impact of DI receipt on labor force participation, earnings, provision of DI services, and—in case of the US—possibly changes in health care access and insurance.

Although they do not primarily study health effects, three studies are worthwhile to discuss: Dahl et al. (2014) use the random assignment of judges to initially denied cases in Norway to provide evidence for family peer effects in DI claiming behavior: the likelihood of an adult child becoming a DI beneficiary within the next 10 years increases by 12 percentage points when their parent gets accepted on the DI system. Using the same source of variation and combining it with a structural welfare model, Autor et al. (2017) find that single and unmarried individuals value DI benefits more than married individuals. Interestingly, household consumption by married beneficiaries is not substantially lower for denied applicants due to benefit substitution from other

social insurance programs and spousal earnings. Finally, using a field experiments where 2 out of 26 Dutch regions were treated, de Jong et al. (2011) conclude that stricter application screening reduces the number of applications and improves targeting efficiency.

**Summary.** Despite the richness of the literature, there is a severe paucity of evidence on the short and long-term health effects of disability insurance.

## 2.7 Long-Term Care Insurance

Essentially all OECD countries provide long-term care as an explicit or implicit part of their social insurance system; see Karlsson et al (2007) and Colombo et al. (2011) for overviews. For example, although the U.S. provides no explicit tax-funded long-term care program, the means-tested state-level Medicaid program for the poor covers long-term care services.

In the future, public long-term care insurance will become a major policy talking point in OECD countries because the (a) demand for long-term care will increase due to increasing life expectancy, changing family structures, and labor supply (European Commission 2012), and (b) greater prevalence of a lack of financial means of those who need long-term care (Mayhew et al. 2010). Already today, 4% of the population above 65 in OECD countries receive long-term care in a nursing facility and 8% receive home health care (OECD/EU 2013).

Economic research on long-term care is relatively rich in the analysis of the market structure, but relatively limited when it comes to beneficiaries and their well-being. The empirical evidence on those who need long-term care is limited because they are less likely to participate in surveys. Administrative data on the long-term care population is also scarce.

What is well documented is that private markets for long-term care insurance seem to suffer from relatively strong adverse selection (Kessler 2008, Oster et al. 2010) as well as selective lapsing of “good risks,” i.e., healthier policyholders (Finkelstein et al. 2005). There is also evidence that the inclusion of long-term care in means-tested safety net programs may crowd out the demand for private policies (Sloan and Norton 1997, Brown and Finkelstein 2008). Economists have also investigated the impact on the labor supply of caregivers using structural models (Geyer and Korfhage 2015) and modeled the long-term care market from a theoretical perspective (Lakdawalla and Philipson 2002). For example, Kuhn and Nuscheler (2011) theoretically study the optimal provision of public nursing homes under information asymmetries and find that publicly funded nursing homes facilitate self-selection and mitigate distortions in caring levels and transfers.

The following studies specifically examine health effects on both caregivers and recipients. Using claims data from a German health insurer, Schmitz and Stroka (2013) find that working full time and providing informal care is associated with a higher consumption of antidepressants. Schmitz and Westphal (2015) use German SOEP household panel data and propensity score matching to show that female caregivers who provide informal care incur a short-term negative mental health effect. Using U.S. Medicare Current Beneficiary Survey data and DD methods, McKnight (2006) exploits variation in Medicare reimbursement caps for home health care. She finds significant decreases in home health care use for the least healthy beneficiaries. Kim and Lim (2015) use administrative data from South Korea and a sharp RD design (based on a needs assessment score) to show that subsidies increase formal long-term care use significantly. However, their estimated mortality effect is imprecise. Finally, Barnay and Juin (2016) use

characteristics of adult children as instruments and find evidence that informal care reduces the risk of depression for the dependent elderly.

**Summary.** A growing number of studies estimate health effects of the increasingly important long-term care insurance. There is early limited evidence that informal care benefits the mental health of the elderly but negatively affect caregivers' mental health.

## **2.8 Unemployment Insurance**

OECD countries provide Unemployment Insurance (UI) as part of their social insurance schemes (Esser et al. 2013, Ozkan 2014). Although specifics of how UI benefits are funded differ from country to country, most countries require employers (and sometimes also employees) to pay a payroll tax as a share of employees' gross earnings. Eligibility typically kicks in when employees lose their job through no fault of their own. Most schemes allow beneficiaries to receive unemployment benefits up to one year but require job seeking efforts. Benefits are typically tied to previous earnings but the level varies greatly between countries—according to Schindler and Aleksynska (2011), benefits vary from an average of 10 percent of previous income in Georgia up to 70 percent in the Netherlands.

There exists a very rich economic literature investigating the impact of UI benefits on benefit duration, job search, job finding rates and subsequent job quality; Tatsiramos and van Ours (2014) summarize the findings. Other papers study interaction effects of UI with pension, disability and public assistance programs in general (Bratsberg et al. 2013, Inderbitzin et al. 2016; Leung and O'Leary, 2015; Mueller et al. 2016, Burns and Dague 2017).

Despite the richness of the UI literature, health effects of UI benefit receipt are typically not directly studied. However, using mass lay-offs and plant closures as exogenous variation, the impact of *becoming unemployed* on well-being and health has received a lot of attention in the reduced-form literature. While some studies estimate imprecise coefficients on SAH, there is solid evidence that unemployment significantly increases mortality and decreases well-being, particularly mental health and particularly for those who were already in poor health (Sullivan and van Wachter 2009; Deb et al. 2011; Marcus 2013, Schiele and Schmitz 2016). Because the health effects of unemployment are assessed in the context of existing UI systems, it remains unclear to what degree UI helps mitigate negative health effects of job loss.<sup>7</sup>

Finally, the literature studying the (isolated) effects of higher income on health—see the Introduction for a discussion—is worth mentioning in this context. Although the findings of this literature are somewhat inconclusive, combining all empirical evidence on low-income populations and on the health effects of losing your job, one may speculate that UI is likely to have a protective health effect, or to prevent even more severe health deteriorations in case of unemployment. However, detailed empirical research on this question is warranted.

**Summary.** There is clear evidence that job loss causally affect human health in a significantly negative way. Although studies on the (isolated) health effects of higher income are somewhat

---

<sup>7</sup> A related literature strand empirically estimates the impact of recessions on population health, using reduced-form models but aggregated data (Ruhm 2000, 2015). The paradoxical finding is that recessions may *improve* population health, despite the micro-level evidence that job loss hurts individuals badly. Explanations refer to the elderly in nursing homes and countercyclical staffing (Stevens et al. 2015). There is also solid causal evidence that graduating in a recession has negative long-term effects on job finding rates, wages, and health insurance coverage (Oreopoulos et al. 2012, Maclean 2014). In addition, Dehejia and Lleras-Muney (2004) find that babies born during recessions are healthier. And Currie and Tekin (2015) investigate the link between foreclosure and health.

inconclusive, combining all empirical evidence, one may speculate that UI is likely to have a protective health effect and prevents even more severe health deteriorations. However, more detailed empirical research on this question is warranted.

## **2.9 Statutory Pension Insurance**

The main purpose of statutory pension insurance is to provide a permanent income flow—a pension—for people who have exceeded the “working age” after decades of work, traditionally 45 years. Again, the institutional details differ across countries. The traditional retirement age has been 65, but is steadily increasing due to increasing life expectancy. Economists have empirically studied many aspects of pension systems, from labor supply effects to interaction effects with other social insurance systems (cf. Staubli and Zweimüller 2013).

A rich stream of reduced-form papers have studied the impact of retirement on self-reported health, mortality, health behavior and subjective well-being (Charles 2004, Coe and Zamarro, 2011, Eibich 2015, Mazzonna and Peracchi 2017, Heller-Sahlgren, 2017). The majority of papers exploit the age thresholds of early or regular retirement possibilities in a sharp or fuzzy RD design, sometimes in combination with an IV strategy. Although the studies’ findings have been inconclusive, the majority of studies find improvements in subjective well-being and self-reported mental health following retirement. One of the underlying mechanisms seems to be a healthier lifestyle, through more sleep and exercise and less tobacco consumption (Insler 2014, Eibich 2015, Kämpfen and Maurer 2016). Studies that examine (early) retirement effects on mortality using administrative data find decreases in mortality (Hallberg et al. 2015 for Sweden and Bloemen et al. 2017 for the Netherlands) as well as no effects (Hernaes et al. 2013 for Norway) or even increases in mortality (Kuhn et al. 2010 for Austria and Fitzpatrick and Moore 2016 for the US).

Explanations for the inconclusive findings include differences in institutional details, culture, effect heterogeneity, interaction effects with other social insurances and LATE effects at different margins.

**Summary.** Whether retirement has a positive or negative (short- or long-term) effect on human health appears to depend on the institutional details and the specific pension margin studied.

## 2.9 Other Social Insurance Systems

In addition to the evidence cited above, several papers study the impact of specific social insurance programs on health outcomes. As an example, the US runs several public assistance programs such as the Supplemental Nutrition Assistance Program (SNAP), the Special Supplemental Nutrition Program for Women, Infants, and Children (WIC), or the Temporary Assistance for Needy Families (TANF) program.

Almond et al. (2011) use a combination of data sources, among them Vital Statistics Natality and Mortality Data, to employ variation in the SNAP roll-out across counties and over time in DD models. They find that SNAP increased birth weight and reduced neonatal mortality. Hoynes et al. (2016) use a similar identification strategy and DDD models to find a negative long-term effect of *in utero* SNAP exposure on metabolic syndromes in adulthood. Similarly, Hoynes et al. (2011) use variation in the rollout of WIC and likewise find positive effects on birth outcomes. Baltagi and Yen (2016) use 1994-2005 panel data of the Survey of Income and Program Participation (SIPP) and fixed effects models to document that TANF increases health care utilization for children.

Several papers use variation in public health care institutions to assess its impact on population health. Buchmueller et al. (2006) make use of administrative mortality data and DD models to show that hospital closures in Los Angeles County between 1997 and 2003 had a significant positive impact on the likelihood to die from a heart attack. A very similar finding is reported by Avdic (2016) for Sweden. Exploiting the opening of community health centers in the US from 1965 to 1974, Bailey and Goodman-Bacon (2015) estimate long-term effects using county-level mortality rates from 1959 to 1998. They find significant long-term decreases in mortality rates for those above 50 years of age.

Finally, *Moving to Opportunity for Fair Housing* randomized nearly 4,500 poor women with children living in high poverty areas of five big US cities between 1994 and 1998. Ludwig et al. (2011) report significantly lower extreme obesity and diabetes rates (in 2008 to 2010) among those who obtained vouchers that would allow them to move to low poverty areas.

**Summary.** The studies summarized here all find positive health effects of having access to health institutions, to food stamps, or to housing (in a less impoverished neighborhood) in the US.

### **3. Discussion and Conclusion**

This chapter reviewed the empirical evidence on how social insurance systems causally affect the health of beneficiaries. In addition to summarizing the main findings, the health econometric methods used in the different studies have been briefly outlined.

Although, or maybe precisely because, most social insurances protect against the risk of a health shock, studies that specifically aim at identifying the effectiveness of social insurance programs with respect to health are surprisingly sparse. One factor that complicates the empirical



identification is certainly that changes in health status are correlated with reductions in labor supply and income. Another challenge is the empirical measurement of the complex multidimensional concept of human health.

Most efforts to causally identify the effect of social insurance on health have been carried out in the context of health insurance. In this domain, it has been surprisingly difficult to identify (the intuitively plausible) positive health effects of having health insurance. The evidence primarily suggests short-term well-being effects when covering the uninsured, in addition to long-term mortality reductions. The scarcity of evidence may be due to how health is commonly measured. Many studies that rely on self-reported health data and short-term variation in the demand for health care, short-or medium-term sick leave, or work disability fail to identify significant health effects.

In addition, the popularity of standard reduced-form methods complicates the identification of health effects to the degree that these effects evolve slowly and cumulatively over time. Reduced-form methods are well-suited for the identification of sharp, abrupt, and sizable dose-response relationships, but require a lot of statistical power for the identification of very small cumulative effects. The combination of structural, theory-based methods with reduced-form approaches of high internal validity may be a promising pathway for the identification of medium- to longer-term cumulative health effects of social insurance. To date, credible, causally identified and clean evidence on how (the interaction of various) social insurance systems affect human health in the long-run, over decades and across the human lifecycle, is very sketchy.

In light of the econometric toolkit that has been substantially improved and extended in the last two decades, and the substantial increase in the quality and quantity of data available, the

future for health econometricians looks promising. Making groundbreaking progress will, however, depend on the ability of researchers to integrate different econometric approaches and to apply them thoroughly. Advances in survey methodology—particularly on how to measure health comprehensively and in a socially and ethically acceptable manner—will also be required.

## Literature

Abadie A., Diamond A., Hainmueller, J.: (2010) “Synthetic Control Methods for Comparative Case Studies: Estimating the Effect of California’s Tobacco Control Program,” *Journal of the American Statistical Association*, 105(490): 493-505.

Abadie A., Gardeazabal J.: (2003) “The Economic Costs of Conflict: A Case Study of the Basque Country,” *American Economic Review*, 93(1): 113-132.

Almond D., Hoynes H.W., Schanzenbach D.W.: (2011) “Inside the War on Poverty: The Impact of Food Stamps on Birth Outcomes,” *The Review of Economics and Statistics*, 93(2): 387-403.

Altmann S., Traxler C.: (2014) “Nudges at the Dentist,” *European Economic Review*, 72(C), 19-38.

Andersen H.H., Mühlbacher A., Nübling M., Schupp J., Wagner, G.G.: (2007) “Computation of Standard Values for Physical and Mental Health Scale Scores Using the SOEP Version of SF12v2,” *Journal of Applied Social Science Studies (Zeitschrift für Wirtschafts- und Sozialwissenschaften)*, 127, 171–182.

Andrén D.: (2014) “Does Part-Time Sick Leave Help Individuals with Mental Disorders Recover Lost Work Capacity?” *Journal of Occupational Rehabilitation*, 24(2): 344-360.

Angrist J.D., Pischke J.: (2009) *Mostly Harmless Econometrics: An Empiricist's Companion*, Princeton University Press, Edition 1.

Angrist J.D., Pischke J.: (2010) “The Credibility Revolution in Empirical Economics: How Better Research Design Is Taking the Con out of Econometrics,” *Journal of Economic Perspectives*, 24(2): 3-30.

Aron-Dine A., Einav L., Finkelstein A.: (2013) “The RAND Health Insurance Experiment, Three Decades Later,” *Journal of Economic Perspectives*, 27(1): 197-222.

Autor D.H., Duggan M.G.: (2003) “The Rise in the Disability Rolls and the Decline in Unemployment,” *The Quarterly Journal of Economics*, 118(1): 157-206.

- Autor D.H., Kostøl A.R., Mogstad M.: (2017) “Disability Benefits, Consumption Insurance, and Household Labor Supply,” mimeo, [https://sites.google.com/site/magnemogstad/AER-rev1-final\\_manuscript.pdf?attredirects=0&d=1](https://sites.google.com/site/magnemogstad/AER-rev1-final_manuscript.pdf?attredirects=0&d=1), retrieved June 13, 2017.
- Avdic D.: (2016) “Improving Efficiency or Impairing Access? Health Care Consolidation and Quality of Care: Evidence from Emergency Hospital Closures in Sweden” *Journal of Health Economics*, 48:44-60.
- Bago d’Uva T., O’Donnell O., van Doorslaer E.: (2008) “Differential Health Reporting by Education Level and its Impact on the Measurement of Health Inequalities among Older Europeans,” *International Journal of Epidemiology*, 37: 1375–1383.
- Baicker K., Taubman S. L., Allen H. L., Bernstein M., Gruber J. H., Newhouse J. P., Schneider E. C., Wright B. J., Zaslavsky A. M., Finkelstein A. N. (2013): “The Oregon Experiment—Effects of Medicaid on Clinical Outcomes,” *New England Journal of Medicine* 368(18): 1713-1722.
- Baicker K., Chandra A.: (2008) “Myths and Misconceptions about U.S. Health Insurance,” *Health Affairs*, 27(6): w533-w543.
- Bailey M.J., Goodman-Bacon, A.: (2015) “The War on Poverty’s Experiment in Public Medicine: Community Health Centers and the Mortality of Older Americans,” *American Economic Review*, 105(3): 1067-1104.
- Baker M., Stabile M., Deri C.: (2004) “What Do Self-Reported, Objective, Measures of Health Measure?” *Journal of Human Resources*, 39: 1067–1093.
- Baltagi B.H., Yen Y.: (2016) “Welfare Reform and Children’s Health,” *Health Economics*, 25(3): 277-291.
- Banerjee A.V., Duflo E.: (2009) “The Experimental Approach to Development Economics,” *Annual Review of Economics*, 1(1): 151-178.
- Banks J., Blundell R., Emmerson, C.: (2015) “Disability Benefit Receipt and Reform: Reconciling Trends in the United Kingdom,” *Journal of Economic Perspectives* 29(2): 173–190.
- Barnay T., Juin S.: (2016) “Does home care for dependent elderly people improve their mental health?” *Journal of Health Economics*, 45(C): 149-160.
- Bassok D., Fitzpatrick M., Loeb S.: (2014) “Does State Preschool Crowd-Out Private Provision? The Impact of Universal Preschool on the Childcare Sector in Oklahoma and Georgia,” *Journal of Urban Economics*, 83(C): 18-33.
- Bauhoff S.: (2014) “The Effect of School District Nutrition Policies on Dietary Intake and Overweight: A Synthetic Control Approach,” *Economics & Human Biology*, 12(C): 45-55.

- Bhargava S., Loewenstein G., Sydnor J.: (2017) “Do Individuals Make Sensible Health Insurance Decisions? Evidence from a Menu with Dominated Options,” *Quarterly Journal of Economics*, forthcoming.
- Björkman M., Svensson J.: (2010) “When Is Community-Based Monitoring Effective? Evidence from a Randomized Experiment in Primary Health in Uganda,” *Journal of the European Economic Association*, 8(2-3): 571-581.
- Bloemen H., Hochguertel S., Zweerink J.: (2017) “The Causal Effect of Retirement on Mortality: Evidence from Targeted Incentives to Retire Early,” *Health Economics*, forthcoming.
- Börsch-Supan A., Jürges H.: (2012) “Disability, Pension Reform, and Early Retirement in Germany,” NBER Chapters, in: Wise, D.A.: *Social Security Programs and Retirement around the World: Historical Trends in Mortality and Health, Employment, and Disability Insurance Participation*, pp. 277-300, National Bureau of Economic Research, Inc.
- Bound J.: (1989) “The Health and Earnings of Rejected Disability Insurance Applicants,” *American Economic Review*, 79(3): 482–503.
- Bratsberg B., Fevang E., Røed K.: (2013) “Job Loss and Disability Insurance,” *Labour Economics*, 24(C): 137-150.
- Brosig-Koch J., Hennig-Schmidt H., Kairies-Schwarz N., Wiesen D.: (2017) “The Effects of Introducing Mixed Payment Systems for Physicians: Experimental Evidence,” *Health Economics*, 26(2): 243–262.
- Brown J.R., Finkelstein A.: (2008) “The Interaction of Public and Private Insurance: Medicaid and the Long-Term Care Insurance Market,” *American Economic Review*, 98(3): 1083-1102.
- Brown, D. W., Kowalski, A. E., Ithai Z. L.: (2017) “The Long-Term Impact of Medicaid Expansions on Eligible Children,” mimeo, [www.econ.yale.edu/~ak669/medicaid.latest.draft.pdf](http://www.econ.yale.edu/~ak669/medicaid.latest.draft.pdf), retrieved April 14, 2017.
- Boudreaux, Michel H. & Golberstein, Ezra & McAlpine, Donna D.: (2016) “The Long-Term Impacts of Medicaid Exposure in Early Childhood: Evidence from the Program's Origin,” *Journal of Health Economics*, 45(C): 161-175.
- Buchmueller T.C., Jacobson M., Wold C.: (2006) “How Far to the Hospital? The Effect of Hospital Closures on Access to Care,” *Journal of Health Economics*, 25(4): 740-761.
- Bureau of Labor Statistics (BLS) (2016): *Injuries, Illnesses, Fatalities*, [www.bls.gov/iif/](http://www.bls.gov/iif/), retrieved August 10, 2016
- Burkhauser R.V., Daly M.C., Ziebarth N.R.: (2017) “Protecting Working-Age People with Disabilities: Experiences of Four Industrialized Nations,” *Journal of Labour Market Research/Zeitschrift für Arbeitsmarktforschung*,

Burns M., Dague L.: (2017) “The Effect of Expanding Medicaid Eligibility on Supplemental Security Income Program Participation,” *Journal of Public Economics*, 149: 20-34.

Butler R.J., Gardner H.H.: (2011) “Moral Hazard and Benefits Consumption Capital in Program Overlap: The Case of Workers' Compensation,” *Foundations and Trends(R) in Microeconomics*, 5(8): 477-528.

Butler R.J., Worrall J.D.: (1985) “Work Injury Compensation and the Duration of Nonwork Spells,” *The Economic Journal*, 95(379): 714-24.

Caliendo M., Kopeinig S.: (2008) “Some Practical Guidance for the Implementation of Propensity Score Matching,” *Journal of Economic Surveys*, 22(1): 31-72.

Card D.: (1990) “The Impact of the Mariel Boatlift on the Miami Labor Market,” *Industrial & Labor Relations Review*, 43(2): 245-257.

Card D., Dobkin C., Maestas N.: (2008) “The Impact of Nearly Universal Insurance Coverage on Health Care Utilization: Evidence from Medicare,” *American Economic Review*, 98(5): 2242-58.

Card D., Dobkin C., Maestas N.: (2009): “Does Medicare Save Lives?” *The Quarterly Journal of Economics*, 124(2): 597-636.

Card D., Lee D.S., Pei Z., Weber A.: (2015) “Inference on Causal Effects in a Generalized Regression Kink Design,” *Econometrica*, 83(6): 2453-2483.

Cesarini D., Lindqvist E., Östling R., Wallace B.: (2016) “Wealth, Health, and Child Development: Evidence from Administrative Data on Swedish Lottery Players,” *The Quarterly Journal of Economics*, 131(2): 687-738.

Charles, K. K.: (2004) “Is Retirement Depressing? Labor Force Inactivity and Psychological Well Being in Later Life,” *Research in Labor Economics* 23 (2004): 269-299.

Chay, K. Y., Kim, D., Swaminathan, S. (2012): “Health Insurance, Hospital Utilization and Mortality: Evidence from Medicare’s Origins,” mimeo, [http://www.hec.ca/iea/seminaires/120418\\_chay\\_kenneth.pdf](http://www.hec.ca/iea/seminaires/120418_chay_kenneth.pdf), retrieved April 14, 2017.

Chen S., van der Klaauw W.: (2008) “The Work Disincentive Effects of the Disability Insurance Program in the 1990s,” *Journal of Economics*, 142(2), 757–784.

Chetty R., Finkelstein A.: (2013) “Social Insurance: Connecting Theory to Data,” in *Handbook of Public Economics*, 5(3): 111–193.

Coe N. B., Zamarro, G.: (2011) “Retirement Effects on Health in Europe,” *Journal of Health Economics*, 30(1): 77-86

- Colombo, F., Llana-Nozal A., Mercier J., Tjadens, F.: (2011) "Help Wanted? Providing and Paying for Long-Term Care," OECD Health Policy Studies, OECD Publishing.
- Courtemanche C.J., Zapata D.: (2014) "Does Universal Coverage Improve Health? The Massachusetts Experience," *Journal of Policy Analysis and Management*, 33(1): 36-69.
- Courtemanche C.J., Marton J., Ukert B., Yelowitz A., Zapata D.: (2017) "Early Effects of the Affordable Care Act on Health Care Access, Risky Health Behaviors, and Self-Assessed Health," NBER Working Papers 23269.
- Crossley T.F., Kennedy S.: (2002) "The Reliability of Self-Assessed Health Status," *Journal of Health Economics*, 21(4): 643-658.
- Currie, J., Gruber, J. (1996): "Saving Babies: The Efficacy and Cost of Recent Changes in the Medicaid Eligibility of Pregnant Women," *Journal of Political Economy*, 104(6): 1263-1296
- Currie J., Tekin E. (2015): "Is There a Link between Foreclosure and Health?" *American Economic Journal: Economic Policy*, 7(1): 63-94.
- Dahl G.B., Kostøl A.R., Mogstad M.: (2014) "Family Welfare Cultures," *The Quarterly Journal of Economics*, 29(4): 1711-1752.
- Dale-Olsen H.: (2013). Absenteeism, Efficiency Wages, and Marginal Taxes, *Scandinavian Journal of Economics*, 115(4), 1158–1185.
- de Jong P., Lindeboom M., van der Klaauw B.: (2011) "Screening Disability Insurance Applications" *Journal of European Economic Association*, 9(1): 106–129.
- Deb P., Gallo W.T., Ayyagari P., Fletcher J.M., Sindelar J.L.: (2011) "The Effect of Job Loss on Overweight and Drinking," *Journal of Health Economics*, 30(2): 317-327.
- Deb P., Trivedi P.K.: (2002) "The Structure of Demand for Health Care: Latent Class versus Two-Part Models," *Journal of Health Economics*, 21(4): 601-625.
- Dehejia R., Lleras-Muney, A.: (2004) "Booms, Busts, and Babies' Health," *The Quarterly Journal of Economics* 119(3): 1091-1130.
- Doucouliafos C., Stanley T.D., Giles M.: (2012) "Are Estimates of the Value of a Statistical Life Exaggerated?" *Journal of Health Economics*, 31(1): 197-206.
- Duflo E., Dupas P., Kremer M.: (2015) "Education, HIV, and Early Fertility: Experimental Evidence from Kenya," *American Economic Review*, 105(9): 2757-97.
- Eibich P.: (2015) "Understanding the Effect of Retirement on Health: Mechanisms and Heterogeneity," *Journal of Health Economics*, 43(C): 1-12.

Eibich P., Ziebarth N.R.: (2014) "Examining the Structure of Spatial Health Effects in Germany Using Hierarchical Bayes Models," *Regional Science and Urban Economics*, 49(C): 305-320.

Einav L, Finkelstein A., Ryan, S. P., Schrimpf, P. and M. R. Cullen: (2013) "Selection on Moral Hazard in Health Insurance," *American Economic Review*, 103(1): 178-219.

Erreygers G., Van Ourti T.: (2011) "Measuring socioeconomic inequality in health, health care and health financing by means of rank-dependent indices: A recipe for good practice," *Journal of Health Economics*, 30(4): 685-694.

Esser I., Ferrarini T., Nelson K., Palme J., Sjöberg O.: (2013) "Unemployment Benefits in EU Member States," European Commission," <http://ec.europa.eu/social/BlobServlet?docId=10852&langId=en>, retrieved August 26, 2016.

Evans W.N., Garthwaite C.L.: (2014) "Giving Mom a Break: The Impact of Higher EITC Payments on Maternal Health," *American Economic Journal: Economic Policy*, 6(2): 258-90.

European Commission: (2012) "Assessing Needs of Care in European Nations (ANCIEN)," <http://www.ancien-longtermcare.eu/home>, retrieved August 16, 2016.

Fang, H., and A. Gavazza: (2011) "Dynamic Inefficiencies in an Employment-Based Health Insurance System: Theory and Evidence," *American Economic Review*, 101(7): 3047-3077.

Fevang E., Hardoy I., Røed K.: (2017) "Temporary Disability and Economic Incentives," *The Economic Journal*, forthcoming.

Finkelstein, A., McKnight, R. (2008): "What Did Medicare Do? The Initial Impact of Medicare on Mortality and Out of Pocket Medical Spending," *Journal of Public Economics* 92: 1644-1669..

Finkelstein A., Taubman S., Wright B., Bernstein M., Gruber J., Newhouse J.P., Allen H., Baicker K.: (2012) "The Oregon Health Insurance Experiment: Evidence from the First Year," *The Quarterly Journal of Economics*, 127(3): 1057-1106.

Finkelstein A., McGarry K., Sufi A.: (2005) "Dynamic Inefficiencies in Insurance Markets: Evidence from Long-Term Care Insurance," *American Economic Review*, 95(2): 224-228.

Fitzenberger B., Lechner M., Smith J.: (2013) "Estimation of Treatment Effects: Recent Developments and Applications," *Empirical Economics*, 44(1): 1-11.

Fitzpatrick M., Moore T.: (2016) "The Mortality Effects of Retirement: Evidence from Social Security Eligibility at Age 62," mimeo, <https://sites.google.com/site/timothyjmoore/>, retrieved August 27, 2016.

Fortin B., Lanoie P.: (2000) "Incentive Effects of Workers' Compensation: A Survey," in Dionne, Georges: *Handbook of Insurance*, Chapter 13: 421-458, Springer Netherlands.

- French E., Song J.: (2014) “The Effect of Disability Insurance Receipt on Labor Supply,” *American Economic Journal: Economic Policy*, 6(2): 291-337.
- Frick J.R., Ziebarth N.R. (2013): “Welfare-Related Health Inequality: Does the Choice of Measure Matter?” *The European Journal of Health Economics*, 14(3): 431-442.
- Frölich M., Heshmati A., Lechner M.: (2004) “A Microeconomic Evaluation of Rehabilitation of Long-Term Sickness in Sweden,” *Journal of Applied Econometrics*, 19(3): 375-396.
- García-Gómez P. Jiménez-Martín S., Castelló J.V.: (2011) “Health, Disability and Pathways to Retirement in Spain,” NBER Working Paper No. 17048.
- Geyer J., Korfhage T.: (2015) “Long-term Care Insurance and Carers' Labor Supply—A Structural Model,” *Health Economics*, 24(9): 1178-1191.
- Gilleskie D.: (2010) “Work Absences and Doctor Visits during an Illness Episode: The Differential Role of Preferences, Production, and Policies among Men and Women,” *Journal of Econometrics*, 156(1), 148–163.
- Goodman-Bacon, A.: (2016) The Long-Run Effects of Childhood Insurance Coverage: Medicaid Implementation, Adult Health, and Labor Market Outcomes, NBER Working Paper No 22899.
- Goodman-Bacon, A.: (2017) “Public Insurance and Mortality: Evidence from Medicaid Implementation,” *Journal of Political Economy*, forthcoming.
- Grol-Prokopczyk H., Verdes-Tennant E., McEniry M., Ispány M.: (2015) “Promises and Pitfalls of Anchoring Vignettes in Health Survey Research,” *Demography*, 52(5): 1703-1728.
- Grossman M.: (1972) “On the Concept of Health Capital and the Demand for Health,” *Journal of Political Economy*, 80(2): 223-55.
- Gruber J.: (1994) “The Incidence of Mandated Maternity Benefits,” *American Economic Review*, 84(3): 622-41.
- Häggglund P., Johansson P., Laun L.: (2015) “Rehabilitation of Mental Illness and Chronic Pain—the Impact on Sick Leave and Health,” Working Paper Series 2015:22, IFAU - Institute for Evaluation of Labour Market and Education Policy.
- Hahn J., Todd P., Van der Klaauw W.: (2001) “Identification and Estimation of Treatment Effects with a Regression-Discontinuity Design,” *Econometrica*, 69(1): 201-09.
- Halla M., Pech S., Zweimüller M.: (2015) “The Effect of Statutory Sick Pay Regulations on Workers' Health,” IZA Discussion Papers 9091.



- Hallberg D., Johansson P., Josephson M.: (2015) "Is an Early Retirement Offer Good for Your Health? Quasi-Experimental Evidence from the Army," *Journal of Health Economics*, 44: 274-285.
- Handel B.R., Kolstad J.T.: (2015) "Health Insurance for Humans: Information Frictions, Plan Choice, and Consumer Welfare," *American Economic Review*, 105(8): 2449-2500.
- Heckman J.J., Ichimura H., Todd P.E.: (1997) "Matching As An Econometric Evaluation Estimator: Evidence from Evaluating a Job Training Programme," *Review of Economic Studies*, 64(4), 605-654.
- Heckman J.J., Vytlacil E.: (1998) "Instrumental Variables Methods for the Correlated Random Coefficient Model: Estimating the Average Rate of Return to Schooling When the Return is Correlated with Schooling," *Journal of Human Resources*, 33(4): 974-987.
- Heckman J.J., Lalonde R.J., Smith J.A.: (1999) "The Economics and Econometrics of Active Labor Market Programs," in: Shenfelter O., Card D. (ed.), *Handbook of Labor Economics*, Edition 1, Volume 3, Chapter 31: 1865-2097.
- Heller-Sahlgren G.: (2017) "Retirement Blues," *Journal of Health Economics*, 54: 66-78.
- Hennig-Schmidt H., Selten R., Wiesen D.: (2011) "How Payment Systems Affect Physicians' Provision Behaviour—An Experimental Investigation," *Journal of Health Economics*, 30(4): 637-646.
- Hernaes E., Markussen S., Piggott J., Vestad O.L.: (2013) "Does Retirement Age Impact Mortality?" *Journal of Health Economics*, 32(3): 586-598.
- Hesselius P., Johansson P., Vikström J.: (2013) "Social Behaviour in Work Absence," *Scandinavian Journal of Economics*, 115(4): 995-1019.
- Heymann J., Rho H. J., Schmitt J., Earle A.: (2010) "Ensuring a Healthy and Productive Workforce: Comparing the Generosity of Paid Sick Day and Sick Leave Policies in 22 Countries," *International Journal of Health Services*, 40(1): 1-22.
- Ho K., Lee R.S.: (2016) "Insurer Competition in Health Care Markets," *Econometrica*, 85(2):379-417.
- Hoynes H., Page M., Stevens A.H.: (2011) "Can Targeted Transfers Improve Birth Outcomes? Evidence from the Introduction of the WIC Program," *Journal of Public Economics*, 95(7-8): 813-827.
- Hoynes H., Miller D., Simon D.: (2015) "Income, the Earned Income Tax Credit, and Infant Health." *American Economic Journal: Economic Policy*, 7(1): 172-211.

- Hoynes H., Schanzenbach D.W., Almond D.: (2016) “Long-Run Impacts of Childhood Access to the Safety Net.” *American Economic Review*, 106(4): 903-34.
- Huh, J., Reif, J. (2017): “Did Medicare Part D Reduce Mortality?” *Journal of Health Economics*, 53: 17-37.
- Ichino A., Maggi G.: (2000) “Work Environment and Individual Background: Explaining Regional Shirking Differentials in a Large Italian Firm,” *The Quarterly Journal of Economics*, 115(3), 1057–1090.
- Ichino A., Moretti E.: (2009) “Biological Gender Differences, Absenteeism, and the Earnings Gap,” *American Economic Journal: Applied Economics*, 1(1), 183–218.
- Ichino A., Riphahn R. T.: (2005) “The Effect of Employment Protection on Worker Effort. A Comparison of Absenteeism during and after Probation,” *Journal of the European Economic Association*, 3(1), 120–143.
- Imbens, G.W., Angrist J.D.: (1994) “Identification and Estimation of Local Average Treatment Effects,” *Econometrica*, 62(2): 467-475.
- Imbens G.W., Wooldridge J.M.: (2009) “Recent Developments in the Econometrics of Program Evaluation,” *Journal of Economic Literature*, 47(1): 5-86.
- Imbens G.W., Lemieux T.: (2008) “Regression Discontinuity Designs: A Guide to Practice,” *Journal of Econometrics*, 142(2): 615-635.
- Inderbitzin L., Staubli S., Zweimüller J.: (2016) “Extended Unemployment Benefits and Early Retirement: Program Complementarity and Program Substitution.” *American Economic Journal: Economic Policy*, 8(1): 253-88.
- Insler, M.: (2014) “The Health Consequences of Retirement,” *Journal of Human Resources*, 49(1): 195-233.
- Jagger C., Gillies C., Moscone F., Cambois E., Van Oyen H., Nusselder W., Robine J.: (2009) “Inequalities in Healthy Life Years in the 25 Countries of the European Union in 2005: A Cross-National Meta-Regression Analysis,” *The Lancet*, 372(9656): 2124-2131.
- Johansson P., Lindahl E.: (2013) “Can Sickness Absence Be Affected by Information Meetings? Evidence from a Social Experiment,” *Empirical Economics*, 44(3): 1673-1695.
- Johnston D.W., Propper C., Shields M.A.: (2009) “Comparing Subjective and Objective Measures of Health: Evidence from Hypertension for the Income/Health Gradient.” *Journal of Health Economics*, 28: 540–552.

Jones A.M., Rice N., d’Uva T. B., Balia S.: (2013) *Applied Health Economics*, Abington: Routledge, Second edition.

Jönsson L., Palme M., Svensson I.: (2011) “Disability Insurance, Population Health and Employment in Sweden,” NBER Working Paper No. 17054.

Jürges H.: (2008). “Self-Assessed Health, Reference Levels and Mortality.” *Applied Economics*, 40: 569–582.

Jürges H.: (2007) “True Health vs. Response Styles: Exploring Cross-Country Differences in Self-Reported Health.” *Health Economics*, 16: 163–178.

Kämpfen F., Maurer J.: (2016) “Time to Burn (Calories)? The Impact of Retirement on Physical Activity among Mature Americans,” *Journal of Health Economics*, 45(C): 91-102.

Kangas O.: (2001) “From Workmen's Compensation to Working Women's Insurance,” *Institutional Development of Work Accident Insurance in OECD Countries*, <https://books.google.com/books?id=W9iqHAAACAAJ>, Zentrum für Sozialpolitik

Karlsson M., Mayhew L., Rickayzen B.: (2007) “Long Term Care Financing in Four OECD Countries: Fiscal Burden and Distributive Effects,” *Health Policy*, 80(1): 107-134.

Keane M.P.: (2010) “Structural vs. Atheoretic Approaches to Econometrics,” *Journal of Econometrics*, 156(1): 3-20.

Keeler E. B., Rolph J. E.: (1988) “The Demand for Episodes of Treatment in the Health Insurance Experiment,” *Journal of Health Economics*, 7: 337–367.

Kessler D.: (2008) “The Long-Term Care Insurance Market,” *The Geneva Papers on Risk and Insurance - Issues and Practice*, 33(1): 33-40.

Kim H.B., Lim W.: (2015) “Long-Term Care Insurance, Informal Care, and Medical Expenditures,” *Journal of Public Economics*, 125(C): 128-142.

Koning P., Lindeboom M.: (2015) “The Rise and Fall of Disability Insurance Enrollment in the Netherlands.” *Journal of Economic Perspectives*, 29(2): 151-172.

Kostøl A.R., Mogstad M.: (2014) “How Financial Incentives Induce Disability Insurance Recipients to Return to Work,” *American Economic Review*, 104(2): 624-55.

Kreif N., Grieve R., Hangartner D., Turner A.J., Nikolova S., Sutton M.: (2016) “Examination of the Synthetic Control Method for Evaluating Health Policies with Multiple Treated Units,” *Health Economics*, 25(12):1514-1528.

- Krueger A.B., Burton J.F.: (1990) "The Employers' Costs of Workers' Compensation Insurance: Magnitudes, Determinants, and Public Policy." *The Review of Economics and Statistics*, 72(2): 228-40.
- Kuhn A., Wuellrich J., Zweimüller J.: (2010) "Fatal Attraction? Access to Early Retirement and Mortality," IZA Discussion Papers 5160.
- Kuhn M., Nuscheler R.: (2011) "Optimal Public Provision of Nursing Homes and the Role of Information," *Journal of Health Economics*, 30(4): 795-810.
- Lakdawalla D.N., Philipson T.: (2002) "The Rise in Old-Age Longevity and the Market for Long-Term Care," *American Economic Review*, 92(1): 295-306.
- Laun L., Skogman Thoursie P.: (2014) "Does Privatisation of Vocational Rehabilitation Improve Labour Market Opportunities? Evidence from a Field Experiment in Sweden," *Journal of Health Economics*, 34(C): 59-72.
- Lechner M.: (2009) "Long-run Labour Market and Health Effects of Individual Sports Activities," *Journal of Health Economics*, 28(4): 839-854.
- Lechner M., Miquel R., Wunsch C.: (2011) "Long-Run Effects of Public Sector Sponsored Training in West Germany," *Journal of the European Economic Association*, 9(4): 742-784.
- Leung, P., O'Leary, C." (2015) "Should UI Eligibility Be Expanded to Low-Earning Workers? Evidence on Employment, Transfer Receipt, and Income from Administrative Data," Upjohn Institute Working Paper 15-236.
- Levine D.I., Toffel M.W., Johnson M.S.: (2012) "Randomized Government Safety Inspections Reduce Worker Injuries with No Detectable Job Loss," *Science*, 336(6083): 907-911.
- Levitt S.D., List J.A.: (2009) "Field Experiments in Economics: The Past, the Present, and the Future," *European Economic Review*, 53(1): 1-18.
- Lindeboom M., van Doorslaer E.: (2004) "Cut-Point Shift and Index Shift in Self-Reported Health." *Journal of Health Economics*, 23, 1083–1099.
- List J.A., Metcalfe R.: (2014) "Field Experiments in the Developed World: an Introduction," *Oxford Review of Economic Policy*, 30(4): 585-596.
- Low H., Pistaferri L.: (2015) "Disability Insurance and the Dynamics of the Incentive Insurance Trade-Off," *American Economic Review*, 105(10): 2986-3029.
- Ludwig, Jens, Sanbonmatsu, Lisa, Gennetian, Lisa, Adam, Emma, Duncan, Greg J., Katz, Lawrence F., Kessler, Ronald C., Kling, Jeffrey R., Lindau, Stacy Tessler, Whitaker, Robert C. McDade, Thomas W. (2011): "Neighborhoods, Obesity, and Diabetes — A Randomized Social Experiment," *New England Journal of Medicine*, 365(16): 1509-1519.

- Maclean, J. C.: (2014) “Does Leaving School in an Economic Downturn Impact Access to Employer-Sponsored Health Insurance?” *IZA Journal of Labor Policy*, 3(1):1-27.
- Maestas N., Mullen K. J., Strand A.: (2013) Does Disability Insurance Receipt Discourage Work? Using Examiner Assignment to Estimate Causal Effects of SSDI Receipt, *American Economics Review* 103(5): 1797-1829.
- Manning W. G., Newhouse J. P., Duan N., Keeler E. B., Leibowitz A.: (1987) “Health Insurance and the Demand for Medical Care: Evidence from a Randomized Experiment,” *The American Economic Review*. 77(3): 251-277.
- Marcus J.: (2013) “The Effect of Unemployment on the Mental Health of Spouses – Evidence from Plant Closures in Germany,” *Journal of Health Economics*, 32(3): 546-558.
- Mayhew L., Karlsson M., Rickayzen B.: (2010) “The Role of Private Finance in Paying for Long Term Care,” *Economic Journal*, 120(548): F478-F504.
- Mazzonna F., Peracchi, F.: (2017) “Unhealthy Retirement?” *Journal of Human Resources*, 52(1): 128-151.
- McGee D.L., Liao Y., Cao G., Cooper R.S.: (1999) “Self-Reported Health Status and Mortality in a Multiethnic US Cohort.” *American Journal of Epidemiology*, 149: 41–46.
- McKnight R.: (2006) “Home Care Reimbursement, Long-Term Care Utilization, and Health Outcomes,” *Journal of Public Economics*, 90(1-2): 293-323.
- McVicar D., Wilkins R., Ziebarth N.R.: (2017) “Four Decades of Disability Insurance Policy Changes: The Rise and Fall of Disability Reciprocity Rates in Five OECD Countries,” In: Besharov, D. and D. Call (2017), *Labor Activation in a Time of High Unemployment: Encouraging Work while Preserving the Social Safety Net*, Edition 1, Chapter 7, Oxford University Press, forthcoming
- McVicar D., Wilkins R.: (2013) “Explaining the Growth in the Number of Recipients of the Disability Support Pension in Australia,” *Australian Economic Review*, 46(3), 345-356.
- Meyer B.D., Viscusi W.K., Durbin D.L.: (1995) “Workers' Compensation and Injury Duration: Evidence from a Natural Experiment,” *American Economic Review*, 85(3): 322-340.
- Moscone F., Knapp M., Tosetti E.: (2007) “Mental Health Expenditure in England: A Spatial Panel Approach,” *Journal of Health Economics*, 26(4): 842-864.
- Mueller, A. I. Rothstein, J.; von Wachter, T. M.: (2016) “Unemployment Insurance and Disability Insurance in the Great Recession,” *Journal of Labor Economics*, 34(S1): 445-475.

- Mullahy, J.: (1998) "Much Ado about Two: Reconsidering Retransformation and the Two-Part Model in Health Econometrics," *Journal of Health Economics*, 17(3): 247-281.
- OECD: (1989) "Occupational Accidents in OECD Countries," in: OECD Employment Outlook 1989, Chapter 4, OECD Publishing, Paris, <https://www.oecd.org/els/emp/3888265.pdf>, retrieved on August 10, 2016.
- OECD: (2010) "Sickness, Disability and Work: Breaking the Barriers: A Synthesis of Findings across OECD Countries," OECD Publishing, Paris.
- OECD/EU: (2013) "A Good Life in Old Age? Monitoring and Improving Quality in Long-term Care," OECD Publishing, Paris.
- Olsson M., Skogman Thoursie P.: (2015) "Sickness Insurance and Spousal Labour Supply," *Labour Economics*, 33(C): 41-54.
- Oreopoulos P., von Wachter T., Heisz A.: (2012) "The Short- and Long-Term Career Effects of Graduating in a Recession." *American Economic Journal: Applied Economics*, 4(1): 1-29.
- Oshio T., Shimizutani S.: (2011) "Disability Pension Program and Labor Force Participation in Japan: A Historical Perspective," in: Wise D.A. (ed.), *Social Security Programs and Retirement around the World: Historical Trends in Mortality and Health, Employment, and Disability Insurance Participation and Reforms*, pp. 391-417.
- Oster E., Shoulson I., Quaid K., Dorsey E. R.: (2010) "Genetic Adverse Selection: Evidence from Long-Term Care Insurance and Huntington Disease," *Journal of Public Economics*, 94(11-12): 1041-1050.
- Ozkan U.R.: (2014) "Comparing Formal Unemployment Compensation Systems in 15 OECD Countries," *Social Policy & Administration*, 48(1): 44-66.
- Pichler S.: (2015) "Sickness Absence, Moral Hazard, and the Business Cycle," *Health Economics*, 24(6), 692-710.
- Pichler S., Ziebarth N. R. (2017) "The Pros and Cons of Sick Pay Schemes: Testing for Contagious Presenteeism and Noncontagious Absenteeism Behavior," *Journal of Public Economics*, forthcoming.
- Powell D., Seabury S.A.: (2014) "Medical Care Spending and Labor Market Outcomes: Evidence from Workers' Compensation Reforms," Working Papers 1028-1, RAND Corporation.
- Puhani P. A., Sonderhof K.: (2010) "The Effects of a Sick Pay Reform on Absence and on Health-Related Outcomes," *Journal of Health Economics*, 29(2): 285-302.

- Ruhm C.J.: (2000) "Are Recessions Good for Your Health?" *The Quarterly Journal of Economics*, 115(2): 617-650.
- Ruhm C.J.: (2015) "Recessions, Healthy No More?" *Journal of Health Economics*, 42(C): 17-28.
- Salomon J.A., Tandon A., Murray C.J.L.: (2004) "Comparability of self-rated health: cross sectional multi-country survey using anchoring vignettes," *BMJ*, 258(7434): 328.
- Schiele V., Schmitz H.: (2016) "Quantile Treatment Effects of Job Loss on Health," *Journal of Health Economics*, 49:59-69.
- Schindler M., Aleksynska M. (2011) "Labor Market Regulations in Low-, Middle- and High-Income Countries; A New Panel Database," IMF Working Papers 11/154, International Monetary Fund and <http://euwelfarestates.blogspot.com/2012/04/world-ranking-in-unemployment-benefit.html>, retrieved September 1, 2016
- Schmitz H., Stroka M.A.: (2013) "Health and the Double Burden of Full-Time Work and Informal Care Provision—Evidence from administrative data," *Labour Economics*, 24(C): 305-322.
- Schmitz H., Westphal M.: (2015) "Short- and Medium-Term Effects of Informal Care Provision on Female Caregivers' Health," *Journal of Health Economics*, 42(C): 174-185.
- Shigeoka H.: (2014) "The Effect of Patient Cost Sharing on Utilization, Health, and Risk Protection," *American Economic Review*, 104(7): 2152-84.
- Sloan F.A., Norton E.C.: (1997) "Adverse Selection, Bequests, Crowding Out, and Private Demand for Insurance: Evidence from the Long-Term Care Insurance Market," *Journal of Risk and Uncertainty*, 15(3): 201-19.
- Smith V.L.: (1992) "Game Theory and Experimental Economics: Beginnings and Early Influences," in Weintraub E.R. (ed.), *Towards a History of Game Theory*, pp. 241-282, 1992 Annual Supplement to *History of Political Economy*, Duke University Press.
- Snyder S.E., Evans W.E.: (2006) "The Effect of Income on Mortality: Evidence from the Social Security Notch," *Review of Economics and Statistics*, 88(3): 482-495.
- Staubli S.: (2011) "The Impact of Stricter Criteria for Disability Insurance on Labor Force Participation," *Journal of Public Economics*, 95(9-10): 1223-1235.
- Staubli S., Zweimüller J.: (2013) "Does Raising the Early Retirement Age Increase Employment of Older Workers?" *Journal of Public Economics*, 108: 17-32.
- Stevens A.H., Miller D.L., Page M.E., Filipski M.: (2015) "The Best of Times, the Worst of Times: Understanding Pro-cyclical Mortality," *American Economic Journal: Economic Policy*, 7(4): 279-311.

- Sullivan D., von Wachter T.: (2009) “Job Displacement and Mortality: An Analysis Using Administrative Data,” *The Quarterly Journal of Economics*, 124(3):1265-1306.
- Tatsiramos K., van Ours J.C.: (2014) “Labor Market Effects of Unemployment Insurance Design,” *Journal of Economic Surveys*, 28(2): 284-311.
- Taubman S. L., Allen H. L., Wright B. J., Baicker K., Finkelstein, A. N.: (2014) “Medicaid Increases Emergency-Department Use: Evidence from Oregon’s Health Insurance Experiment,” *Science*, 343(6168): 263—268.
- von Wachter T., Song J., Manchester J.: (2011) “Trends in Employment and Earnings of Allowed and Rejected Applicants to the Social Security Disability Insurance Program.” *American Economic Review*, 101(7): 3308-29.
- Wherry L. R., Miller S., Kaestner R., Meyer B.D.: (2017) “Childhood Medicaid Coverage and Later Life Health Care Utilization,” *Review of Economics and Statistics*, forthcoming.
- Winkelmann R.: (2012) “Copula Bivariate Probit Models: With an Application to Medical Expenditures,” *Health Economics*, 21(12):1444-1455.
- Wisløff T., Hagen G., Hamidi V., Movik E., Klemp M., Olsen J.A.: (2014) “Estimating QALY Gains in Applied Studies: A Review of Cost-Utility Analyses Published in 2010,” *Pharmacoeconomics*, 32(4): 367-375.
- Wu S., Wang R., Zhao Y., Ma X., Wu M., Yan X., He J.: (2013) “The Relationship Between Self-Rated Health and Objective Health Status: a Population-Based Study,” *BMC Public Health*, 13(1): 1-9.
- Ziebarth N.R.: (2010a) “Measurement of Health, Health Inequality, and Reporting Heterogeneity,” *Social Science & Medicine*, 71(1): 116-124.
- Ziebarth N.R.: (2010b) “Estimating Price Elasticities of Convalescent Care Programmes,” *Economic Journal*, 120(545): 816-844.
- Ziebarth N. R.: (2013) “Long-Term Absenteeism and Moral Hazard—Evidence from a Natural Experiment,” *Labour Economics*, 24(C): 277-292.
- Ziebarth N.R., Karlsson M.: (2014) “The Effects Of Expanding The Generosity Of The Statutory Sickness Insurance System,” *Journal of Applied Econometrics*, 29(2): 208-230.

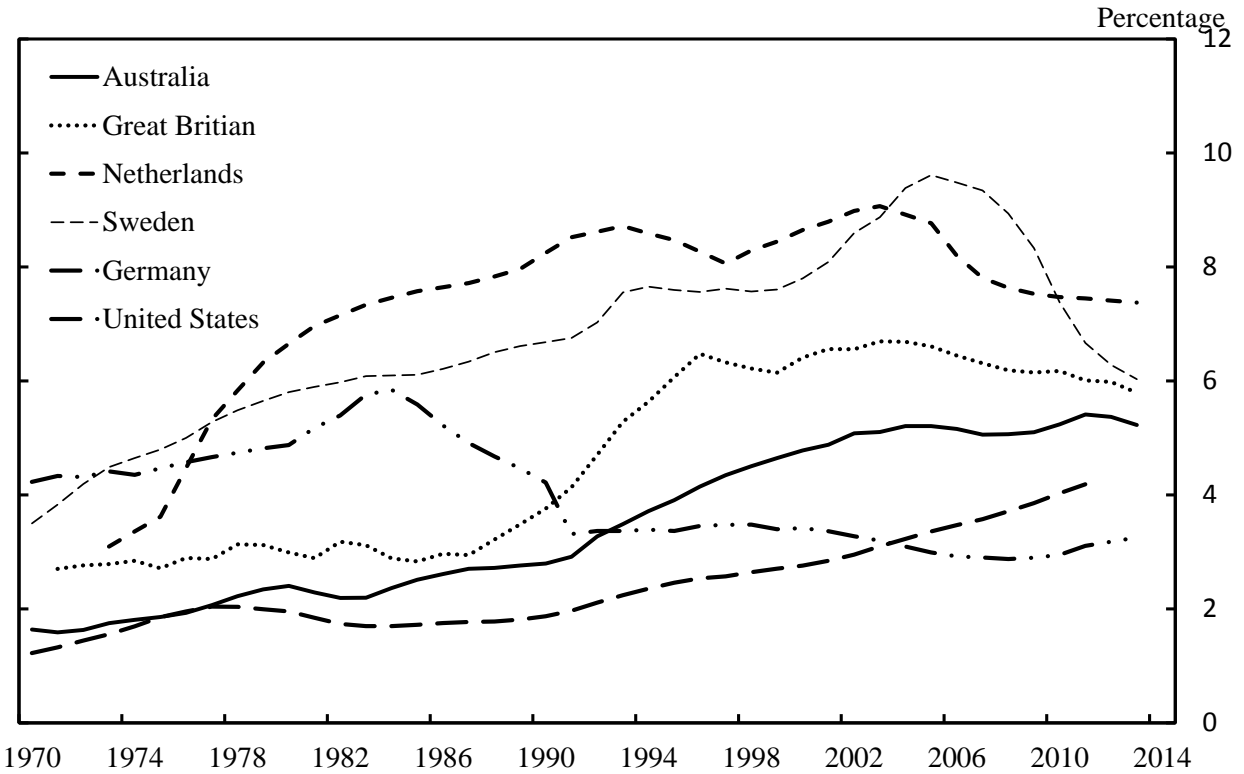


**Figure 1:** Health-Related Social Insurance and Labor Force Participation

	<i>in labor force</i>	<i>out of labor force</i>
<i>work-unrelated</i>	<p><b>Sickness Insurance (SI)</b></p> <p><i>short-term sick leave</i>    <i>long-term sick leave</i></p> <p>~ 50% of employees    ~5% of employees</p>	<p><b>Disability Insurance (DI)</b></p> <p>~5% of working-age population</p>
<i>work-related</i>	<p><b>Workers' Compensation (WC)</b></p> <p>~ 5% of employees</p>	

Source: Ziebarth (2013); the shares of employees refers to Germany but are roughly generalizable to other countries.

**Figure 2:** Development of Disability Receptiency Rates in Six OECD Countries



Source: Social Security Administration, US Census Bureau, Australian Government Department of Social Services, Australian Bureau of Statistics, Department of Work and Pensions, Office for National Statistics, Social Security Administration, US Census Bureau, Statistics Sweden and Swedish Social Insurance Agency yearbooks, Statistics Netherlands, and the Institute of Employee Benefit Schemes

Source: Adapted from Burkhauser et al. (2017) and McVicar et al. (2017).