

Discussion Paper

Deutsche Bundesbank
No 28/2017

Should unconventional monetary policies become conventional?

Dominic Quint

(Deutsche Bundesbank)

Pau Rabanal

(International Monetary Fund)

Editorial Board:

Daniel Foos
Thomas Kick
Malte Knüppel
Jochen Mankart
Christoph Memmel
Panagiota Tzamourani

Deutsche Bundesbank, Wilhelm-Epstein-Straße 14, 60431 Frankfurt am Main,
Postfach 10 06 02, 60006 Frankfurt am Main

Tel +49 69 9566-0

Please address all orders in writing to: Deutsche Bundesbank,
Press and Public Relations Division, at the above address or via fax +49 69 9566-3077

Internet <http://www.bundesbank.de>

Reproduction permitted only if source is stated.

ISBN 978-3-95729-394-7 (Printversion)

ISBN 978-3-95729-395-4 (Internetversion)

Non-technical summary

Research Question

The economic fallout from the Global Financial Crisis in 2008–09 triggered unprecedented monetary policy easing around the world. After short-term interest rates reached their effective lower bound, central banks deployed new instruments to affect credit conditions and to provide liquidity at a large scale. As both the economy and interest rates are recovering the question remains whether central banks should aim at phasing out their new measures or whether adding them to their standard policy toolkit could be beneficial. One advantage of making these unconventional measures conventional would be that central banks would be able to avoid the well-known “Greenspan conundrum”: conventional monetary policy affects the short-term interest rate, but might not be able to affect long-term rates with the same precision because of time-varying term and risk premia. However, in order to affect investment decisions, it is important to affect long-term interest rates.

Contribution

This paper studies if the unconventional tools deployed during the crisis in the form of asset purchase programs should become conventional and still be used when the zero lower bound on short-term interest rates is not binding. To answer this question, we rely on an estimated general equilibrium model in which banks explicitly facilitate maturity transformation. Banks raise short-term deposits but provide long-term financing to firms and purchase long-term government bonds. Long-term private loans result from the assumption that debtors engage in lumpy investment activities and cannot re-negotiate their debt each period.

Results

Focusing on the US, we find that the benefits of using such unconventional monetary policies in normal times are substantial, i.e. equivalent to 1.45 percent of life-time consumption. In particular, unconventional monetary policies are mostly useful in reacting to financial shocks, which generally affect bank capital, private sector spreads, investment and employment. However, they are not particularly useful when it comes to normal business cycle supply and demand shocks.

Nichttechnische Zusammenfassung

Fragestellung

Die wirtschaftlichen Auswirkungen der globalen Finanzkrise von 2008—09 waren Auslöser einer bislang beispiellosen weltweiten geldpolitischen Lockerung. Als die kurzfristigen Zinsen die Nullzins-Untergrenze erreichten, setzten die Zentralbanken neue Instrumente ein, um die Kreditkonditionen auch weiter zu beeinflussen und in großem Umfang Liquidität bereitzustellen. Da sich die wirtschaftliche Lage und das Zinsniveau wieder normalisieren, stellt sich aktuell die Frage, ob die Zentralbanken ein Ende dieser neu eingeführten geldpolitischen Geschäfte ansteuern sollten, oder ob es nicht gute Gründe gibt, sie in das konventionelle wirtschaftspolitische Instrumentarium mit aufzunehmen und auch künftig zu nutzen. Ein Vorteil der Weiternutzung der unkonventionellen Instrumente als konventionelle Maßnahmen läge in der Vermeidung des sog. „Greenspan Conundrums“: Konventionelle Geldpolitik beeinflusst zwar den kurzfristigen Zins, kann aufgrund zeitvariabler Laufzeit- und Risikoprämien die langfristigen Zinsen jedoch nicht mit derselben Genauigkeit steuern. Zur Beeinflussung von Investitionsentscheidungen ist allerdings gerade die Einflussnahme auf langfristige Zinsen entscheidend.

Beitrag

Im vorliegenden Forschungspapier wird untersucht, ob die während der Krise in Form von Ankaufprogrammen ergriffenen unkonventionellen Maßnahmen als Bestandteil des konventionellen Instrumentariums eingesetzt und auch in Zeiten genutzt werden sollten, in denen die Nullzins-Untergrenze keine bindende Restriktion darstellt. Beantwortet wird diese Frage im Rahmen eines allgemeinen Gleichgewichtsmodells, in welchem die Banken explizit Fristentransformation betreiben: Sie nehmen kurzfristige Finanzmittel auf, vergeben jedoch langfristige Kredite an die Unternehmen und kaufen langlaufende Staatsanleihen. Der Vergabe langfristiger Kredite an den privaten Sektor liegt die Annahme zugrunde, dass die Kreditnehmer Investitionsvorhaben und die dafür notwendige Kreditaufnahme nicht in jeder Periode anpassen können.

Ergebnisse

Die vorliegende, auf US-Daten basierende Analyse zeigt, dass es mit substantiellen Vorteilen verbunden ist, die unkonventionellen Maßnahmen auch in Zeiten normaler Konjunkturschwankungen zu nutzen. Gemessen an einem möglichen lebenslangen Konsumzuwachs entspräche der damit einhergehende Wohlfahrtsgewinn 1,45 Prozent. Als besonders nützlich erweisen sich unkonventionelle geldpolitische Politikmaßnahmen dabei vor allem in

der Reaktion auf Finanzmarktschocks, die gewöhnlich nicht ohne Auswirkungen auf das Eigenkapital der Banken sowie auf die Zinsaufschläge für die Privatwirtschaft oder die Investitionsentscheidung und Arbeitsnachfrage der Unternehmen bleiben. Weniger geeignet sind derartige Maßnahmen, wenn es darum geht, auf klassische Nachfrage- und Angebotschocks zu reagieren.

Should Unconventional Monetary Policies Become Conventional?*

Dominic Quint
Deutsche Bundesbank

Pau Rabanal
International Monetary Fund

Abstract

The large recession that followed the Global Financial Crisis of 2008–09 triggered unprecedented monetary policy easing around the world. Most central banks in advanced economies deployed new instruments to affect credit conditions and to provide liquidity on a large scale after short-term policy rates had reached their effective lower bound. In this paper, we study if this new set of tools, commonly labeled as unconventional monetary policies (UMP), should continue to be used once economic conditions and interest rates have normalized. In particular, we study the optimality of asset purchase programs by using an estimated non-linear DSGE model with a banking sector and long-term private and public debt for the United States. We find that the benefits of using such UMP in normal times are substantial, equivalent to 1.45 percent of consumption. However, the benefits of using UMP are shock-dependent and mostly arise when the economy is hit by financial shocks. By contrast, when more traditional business cycle shocks (such as supply and demand shocks) hit the economy, the benefits of using UMP are negligible or zero.

Keywords: Unconventional Monetary Policy, Banking, Optimal Rules

JEL classification: C32, E32, E52.

*Contact details: Dominic Quint, Deutsche Bundesbank, Wilhelm-Epstein-Strasse 14, 60431 Frankfurt am Main. Email: dominic.quint@bundesbank.de; Pau Rabanal, Research Department, International Monetary Fund, 700 19th St NW, Washington, DC 20431. Email: prabanal@imf.org. We thank Olivier Blanchard, Ulrich Grosch, Mike Kiley, Soledad Martinez Peria, Machiko Narita, Lars Svensson, and seminar participants at the Bundesbank and the IMF for useful comments. Discussion Papers represent the authors' personal opinions and do not necessarily reflect the views of the Deutsche Bundesbank or the IMF.

“In pre-crisis days, policymakers assumed that tweaking short-term interest rates was enough to influence all important financial decision-making. This was wishful thinking, based on a couple of decades of atypical US experience. Other economies still needed extra policy instruments, as has the US since the crisis.”

Adam Posen, Financial Times, August 23, 2016

“The long-term interest rate is a central variable in the macroeconomy. It matters to borrowers looking to start a business or purchase a home; to lenders weighing the risks and rewards of extending credit; to savers preparing for college or retirement; and to policymakers gauging the state of the economy and financing government expenditure.”

US Council of Economic Advisers, Report on “Long-Term Interest Rates: A Survey”, July 2015

1 Introduction

The economic fallout from the Global Financial Crisis in 2008–09 triggered unprecedented monetary policy easing around the world. Initially, central banks responded aggressively by decreasing interest rates until reaching their effective lower bound. Afterwards, central banks in most advanced economies started deploying a new set of instruments to provide liquidity and affect credit conditions on a large scale. These interventions, which became commonly known as *unconventional monetary policy*, were introduced via large scale asset purchase programs of domestic assets (including government bonds, mortgage backed securities, and private sector debt) as well as liquidity provision and refinancing operations with commercial banks.¹ As a result of such unconventional policies, central bank balance sheets expanded to unprecedented levels. For instance, the balance sheet of the Federal Reserve (Fed) fluctuated at about 5.5 percent of annual GDP on average between 1955–2007, but it more than quadrupled since then to 23.7 percent of GDP in 2016. For other major central banks, the same ratio evolved as follows: in the UK, the ratio went from 6.5 percent on average between 1955–2007 to 22.5 percent in 2015. In the euro area, the ratio went from 13 percent in 2006, to 34.1 percent in 2016. In Japan, this ratio went from 10 percent in 1994, to 21 percent right before the crisis in 2007, and to 88.7 percent in 2016.

During the crisis, and especially after the collapse of Lehman Brothers, corporate lending spreads increased to levels only comparable to the Great Depression, and borrowers saw their access to credit deteriorate (see e.g. [Ivashina and Scharfstein, 2010](#)). By adopting unconventional policy instruments, policymakers generally pursued two goals. First, as short-term interest rates quickly reached their lower bound, central banks needed to use other tools to provide further monetary policy accommodation to affect spreads between short-term and long-term rates directly. Second, with the provision of liquidity at a large scale, central banks aimed at restoring the functioning of credit and financial markets, and the transmission mechanism of monetary policy which had become impaired.

¹[Lenza, Pill, and Reichlin \(2010\)](#) provide an overview of the different actions taken by the Fed, the Bank of England and the ECB in response to the crisis. [Gagnon, Raskin, Remache, and Sack \(2011\)](#) compare the policy steps taken by the Fed with the ones taken by the Bank of Japan and the Bank of England. [Fratzcher, Duca, and Straub \(2016\)](#) study the international spillovers of the main actions taken by the ECB in responding to the crisis.

In this paper, we study if the unconventional tools deployed during the crisis in the form of asset purchase programs should become conventional and continue to be used once the economy and interest rates return to more normal conditions. We focus on whether monetary policy should target both the short-term rate and the spread between long- and short-term rates when the zero lower bound (ZLB) is not binding. In this sense, we will offer guidance on the question whether central banks should aim at phasing out their new measures introduced during the recent crisis or whether there are benefits in adding asset purchase programs to their standard policy toolkit.² Prior to the crisis, the prevailing consensus was that an expansion of the monetary base was regarded as having no effect on real variables (e.g. Wallace, 1981; Eggertsson and Woodford, 2003). Instead, the prevailing view was that central banks should focus on communicating the path of the short-term interest rate (e.g. via a transparent policy function) and allow monetary policy to be transmitted along the yield curve of government bonds as well as across private financial asset classes, including bank loans. This transmission mechanism crucially depends on the assumption of efficient financial markets (in the spirit of Fama, 1970). However, in the presence of market segmentation, the perfect substitutability between different financial assets breaks down, and policy makers can affect yields above and beyond targeting the short-term interest rate.

One advantage of making these unconventional measures conventional would be that central banks could avoid the well known “Greenspan conundrum” (Greenspan, 2005). Conventional monetary policy affects the short-term rate, but it might not be able to affect long-term rates with the same precision due to time-varying term and risk premia. Longer-term rates have stronger macroeconomic effects, as our quote from the US Council of Economic Advisers above suggests (see also Thornton, 2012). On the other hand, unconventional measures might be associated with welfare costs when affecting the slope of the yield curve away from its market-driven equilibrium value. In addition, there might be other costs such as smaller revenues by the fiscal authority if the central bank incurs losses (e.g. Hall and Reis (2015) and Del Negro and Sims (2015)). Unconventional monetary policies might also imply less efficient credit intermediation if the central bank either lends to the private sector directly or chooses which sectors should receive more credit. Furthermore, since the history of unconventional policy measures shows diminishing returns (e.g. Krishnamurthy and Vissing-Jorgensen, 2011), unconventional policy might only be effective when the economy is hit by large financial shocks or when conducted at a larger scale than is politically feasible.

To answer these questions, we rely on a general equilibrium model based on Justiniano, Primiceri, and Tambalotti (2013), which is augmented with a banking sector as in Gertler and Karadi (2013) and Andreasen, Ferman, and Zabczyk (2013). In the model, banks channel funds from households to non-financial firms and the government. Banks raise short-term deposits, provide long-term financing to firms and purchase long-term

²The Fed increased rates for the first time in almost a decade on December 16, 2015. The FOMC statement indicated that the Fed would keep the size of its balance sheet unchanged: “The Committee is maintaining its existing policy of reinvesting principal payments from its holdings of agency debt and agency mortgage-backed securities in agency mortgage-backed securities and of rolling over maturing Treasury securities at auction, and it anticipates doing so until normalization of the level of the federal funds rate is well under way. This policy, by keeping the Committee’s holdings of longer-term securities at sizable levels, should help maintain accommodative financial conditions.” This policy has been reiterated in all FOMC statements during 2016.

government bonds, thereby facilitating maturity transformation. Long-term private loans result from the assumption that debtors engage in lumpy investment activities and cannot re-negotiate their debt each period.³ Given this friction, the return on private assets as well as on government papers becomes sticky and agents are forward-looking when negotiating these contracts. Our assumptions relating to long-term debt reflect the fact that the majority of outstanding bonds in the US are fixed rate notes. Only around 2 percent of US Treasuries have a variable coupon and around 90 percent of US corporate bonds are issued as fixed rate bonds.

The model is estimated by taking a second-order approximation to the equilibrium conditions, and by using a Generalized Method of Moments (GMM) procedure to match sixty-three relevant first- and second-order moments from nine macroeconomic and financial time series. The estimated coefficients are obtained to match the data when the model is simulated up to second order. This is important because it allows accounting for precautionary savings motives, and also because we rely on the same second-order approximation to the equilibrium conditions for welfare evaluation purposes. In the model, conventional monetary policy affects the short-term deposit rate, while unconventional monetary policy encompasses measures targeting long-term corporate or government bond spreads over the short-term deposit rate. In our model, we only focus on asset purchase programs, and the central bank can conduct these by purchasing either private sector or government sector debt. When the central bank provides financing to the private sector, it basically crowds out intermediation by financial intermediaries. Since these banks are leverage constrained—in contrast to the central bank—such a policy is not neutral in affecting spreads and is especially effective when financial shocks, such as shocks to bank capital, hit the economy. By purchasing government bonds, policy makers can also affect total demand for private securities. These purchases increase banking sector liquidity and lower yields of government bonds. This leads financial intermediaries to rebalance their portfolio into private securities, thereby reducing corporate spreads and stimulating investment. This is the channel central banks have in mind when applying Quantitative Easing (QE) measures in the form of government bond purchases.

The main results are as follows. Under an estimated Taylor rule, welfare gains from using unconventional monetary policies (UMP) can be up to 1.45 percent of steady-state consumption. In particular, UMP is most useful when responding to financial shocks, which generally affect bank capital, private sector spreads, investment, and employment. UMP does not help much with normal “business cycle” supply and demand shocks. In this category, we include TFP and investment-specific technology shocks, mark-up shocks to price and wage setting, preference shocks to consumption and labor supply, and government spending shocks. In this paper, we do not attempt to model or quantify the costs of UMP, which might include interactions with the fiscal authority if the central bank incurs losses, and less efficient credit intermediation by the central bank. Given that the benefits of UMP are small under standard business cycle shocks, they are likely to be offset by these costs. In terms of the modality of UMP, we find that providing direct credit to firms or purchasing government bonds yields a very similar result. Similar welfare gains

³In the model, firms obtain financing in the form of bank loans, but the financial contract could also be thought of as a perpetual bond with an embedded option, which allows the firm to redeem the bond when it re-optimizes its capital level. For this reason, we use the terms private sector bonds and private sector loans interchangeably in the paper.

from UMP arise when the central bank runs a strict inflation targeting regime, but these benefits are much lower when the central bank follows an optimized Taylor rule which targets price and wage inflation.

Our paper complements the recent theoretical literature that evaluates the UMP measures implemented by central banks during the Global Financial Crisis. These studies differ mainly in the way the perfect substitutability between different financial assets at different maturities is broken down, and thus, how UMP is transmitted to the real economy. [Chen, Cúrdia, and Ferrero \(2012\)](#) assume that bonds with different maturities are imperfect substitutes and households are willing to pay a premium on bonds of their preferred maturities. In their model, the financial friction is at the household level, with some households having a preference for saving with long-term instruments. The transmission channel of UMP in such a framework is very similar to the one of conventional monetary policy. By purchasing assets with an appropriate maturity and altering the return that households earn on these assets, UMP is transmitted by also affecting the consumption-saving decision of households. [Chen et al. \(2012\)](#) find only weak evidence of this transmission channel and therefore negligible effects of UMP on the real economy of the US. [Del Negro, Eggertsson, Ferrero, and Kiyotaki \(2016\)](#) focus on the illiquidity of certain assets classes. They assume that, in a crisis, private assets become illiquid compared to government bonds, which gives rise to a premium between these two asset classes. By buying private assets in exchange for liquid assets, the central bank mitigates this effect and helps to counter the decline of investment funding. Calibrated to match liquidity premia during the crisis, [Del Negro et al. \(2016\)](#) show that shocks to the market liquidity of assets can explain a large share of the recession in the US and that the policy response by the Fed played an important role in attenuating the macroeconomic impact of these shocks.

Another stand of the literature focuses on the role of frictions in the intermediation between savers and borrowers ([Gertler and Kiyotaki, 2010](#), [Gertler and Karadi, 2011](#), and [Cúrdia and Woodford, 2011](#)). Direct lending by the central bank (or targeted asset purchases) can mitigate disruption in the intermediation of funds and therefore becomes desirable when these frictions are non-trivial. In such a framework, the transmission channels of conventional policy and UMP are very different. While the former targets the return earned by savers, the latter is able to directly target the credit costs of borrowers and therefore their investment decision. [Gertler and Karadi \(2013\)](#) extend the framework by incorporating government bonds as (imperfect) substitutes for private securities. In their model, purchases of government bonds will incentivize investors to rebalance their portfolio into private securities due to the arbitrage relation between the return on private assets and government papers. This is a feature we also incorporate in our model.

The papers listed above focus on the evaluation of the policies implemented during the Global Financial Crisis when the zero (or effective) lower bound became a binding constraint for monetary policy. Therefore, they offer little guidance on the question regarding whether these instruments should be added to the standard policy toolkit when conventional monetary policy is also available. Two exceptions are the works by [Ellison and Tischbirek \(2014\)](#) and [Carlstrom, Fuerst, and Paustian \(2016\)](#) which are the closest to our analysis. In particular, [Ellison and Tischbirek \(2014\)](#), who build on a similar framework as [Chen et al. \(2012\)](#), find that central banks should coordinate conventional policy and UMP as follows: the former should respond to inflation while the latter should

offset output gap fluctuations. Our paper contributes to this debate by using a micro-founded welfare criterion, in contrast to [Ellison and Tischbirek \(2014\)](#), who use a simple, non-microfounded, loss function. In addition, we focus on UMP rules that target credit spreads, which better reflects what central banks were focusing on during and after the crisis. [Carlstrom et al. \(2016\)](#) study the role of the banking sector in intermediating funds from households to non-financial firms and emphasize the usefulness of UMP measures to counteract shocks that are rooted in the financial sector, as we do in the present paper. However, unlike [Carlstrom et al. \(2016\)](#), we implement long-term credit contracts and a maturity-transformation motive for banks, and we estimate our model non-linearly, which allows us to fully account for precautionary motives effects.⁴

The rest of the paper is organized as follows. Section 2 describes the key features of our structural model. Section 3 and 4 presents the econometric methodology we use to estimate the parameters of the model and the model fit. We introduce unconventional monetary policy and explain its transmission into the real economy in section 5. Section 6 describes the welfare maximizing policy, while section 7 draws some concluding remarks.

2 The Model

Our framework is based on [Justiniano et al. \(2013\)](#), which is a standard New Keynesian model with nominal and real rigidities and several shocks.⁵ We modify their framework to include a banking sector as in [Gertler and Karadi \(2013\)](#) and a production sector with lumpy investment as in [Andreasen et al. \(2013\)](#). Banks channel funds from households to non-financial firms and the government. Due to an agency problem between bankers and depositors, banks cannot exclusively rely on external financing, which gives rise to a financial accelerator mechanism. In the production sector, we assume that firms can only infrequently adjust their capital stock and negotiate the refinancing of their investment, as in [Svein and Weinke \(2007\)](#). As a result, firms issue long-term debt, and the nominal lending rate is constant over the life of the loan. A similar structure applies to government bonds. Therefore, the main difference with respect to [Gertler and Karadi \(2013\)](#) is the presence of long-term debt: in our model, banks facilitate maturity transformation.⁶

The model includes households (consisting of workers and bankers), intermediate goods producers, retailers, final goods producers, capital goods producers, financial intermediaries, the central bank and the fiscal authority. Below, we present a summary of the model and only elaborate on the main differences between our model and the framework found in [Justiniano et al. \(2013\)](#). For this reason, we start by describing the problem of intermediate goods producers, capital goods producers and financial intermediaries. We then go on to briefly describe the remaining agents in the economy, which are standard in this literature. An online appendix includes all the details of the model and a derivation

⁴An early contribution by [McGough, Rudebusch, and Williams \(2005\)](#) examines if central banks should target long-term rates by using conventional monetary policy only.

⁵See also the contributions by [Smets and Wouters \(2003, 2007\)](#).

⁶[Gertler and Karadi \(2013\)](#) also introduce long-term bonds in their model but implement them as perpetuities using a short-cut proposed by [Woodford \(2001\)](#). However, the aggregate capital stock is refinanced each period. In our model, only a fraction of the capital stock is refinanced each period, which adds realism and also limits the extent to which unconventional monetary policies affect the real economy.

of all equilibrium conditions.⁷

2.1 Non-Financial Firms

There are four types of firms operating in the production sector. First, intermediate goods producers hire labor and purchase capital to produce a homogeneous good. These firms face a [Calvo \(1983\)](#)-type restriction when they upgrade their capital stock, which captures the idea that investment expenditures are lumpy (see [Reiter, Sveen, and Weinke, 2013](#)). Second, retailers purchase these homogeneous goods and turn them into differentiated goods. Retailers operate under monopolistic competition and charge a mark-up over their marginal costs, i.e. over the price of the intermediate good. The market power of retailers and the associated mark-up is time-varying. We deviate from [Justiniano et al. \(2013\)](#) and follow the [Rotemberg \(1982\)](#) quadratic cost model to implement sticky retail prices.⁸ We assume that retail prices are partially indexed to a combination of steady-state and lagged inflation. Third, final goods producers purchase differentiated goods and turn them into final goods that are used for consumption, investment and government spending. Finally, capital-producing firms purchase final goods to invest in capital goods that are sold to intermediate goods producers. Creating capital goods is subject to flow adjustment costs. In what follows, we present the optimization problem of intermediate goods producers and capital goods producers in greater detail. As the retail and the final goods sector are fairly standard, we refer the reader to the online appendix for further details.

2.1.1 Intermediate Goods Producers

Following [Andreasen et al. \(2013\)](#), only a fraction $(1 - \theta_k)$ of intermediate goods producers adjust their capital stock each period. We denote the capital stock adjusted in the current period with \bar{K}_t . When adjusting to the new capital stock, intermediate goods producers purchase capital from capital goods producers financed by a loan obtained from financial intermediaries. The loan contract has a fixed nominal interest rate \bar{r}_t^L , until intermediate goods producers receive the next Calvo signal, allowing them to adjust the capital stock, pay off the old loan and negotiate a new one. Another way to think about this financial contract is that firms issue a perpetual bond with an embedded option, which allows the firm to redeem the bond when it re-optimizes its capital level. The contract signed between intermediate goods producers and capital goods producers allows the former at the end of the contract period to sell the capital stock to the latter at the original price. In addition, intermediate goods producers need to pay a fee to capital goods producers that is a constant fraction of the value of the installed capital stock, $\omega P_t^K \bar{K}_t$, with P_t^K being the price of capital. As in [Andreasen et al. \(2013\)](#), one can think of these expenditures as compensation to capital producers for providing support and maintenance on installed capital. This setup implies that physical capital exchanged between intermediate goods producers and capital producing firms is valued based on the price of capital when a

⁷The appendix is available at www.paurabanal.net/research.html

⁸This is mostly for practical reasons, as we will solve our model using a second-order perturbation methods. Implementing price stickiness à la [Calvo \(1983\)](#) together with time-varying mark-ups does not allow the optimal price setting equations to be written recursively. This is not an issue when the model is log-linearized, as in [Justiniano et al. \(2013\)](#).

contract is signed. This way, good-producing firms do not face uncertainty about the price of capital, and the interaction between intermediate good- and capital-producing firms resembles a leasing relationship.

While capital cannot be adjusted each period, producers can change the labor input L_t^D each period. We denote the Cobb-Douglas production function for intermediate goods with $Y_t^M = A_t^{(1-\alpha)} Z_t (K_{t-1})^\alpha (L_t^D)^{(1-\alpha)}$, where production is affected by two productivity shocks: a stationary shock (Z_t) that follows an AR(1) process in logs, and a non-stationary shock (A_t) that follows an AR(1) process in logs and first differences. The price at which intermediate goods are sold to retailers is P_t^M . Intermediate goods producers solve the following maximization problem taking into account the infrequent adjustment of the capital stock:

$$\max_{\bar{K}_t, L_{t+j}^D} E_t \sum_{j=1}^{\infty} \left\{ (\theta_k)^{j-1} \beta^j \frac{\Xi_{t+j}}{\Xi_t} \left[\frac{P_{t+j}^M}{P_{t+j}} Y_{t+j|t}^M - \bar{r}_t^L \left(\prod_{i=1}^j \frac{P_{t+i}}{P_{t+i-1}} \right)^{-1} \frac{P_t^K}{P_t} \bar{K}_t - \omega \left(\prod_{i=1}^j \frac{P_{t+i}}{P_{t+i-1}} \right)^{-1} \frac{P_t^K}{P_t} \bar{K}_t - W_{t+j} L_{t+j}^D \right] \right\}$$

where the time notation $t+j | t$ indicates production and labor demand at time $t+j$ given that the capital stock was adjusted at time t . We denote the consumption goods price index with P_t and real wages with W_t . Since households own firms, the stochastic discount factor $\beta^j \Xi_{t+j} / \Xi_t$ is derived from the household Euler equation with Ξ_t being the marginal utility of consumption. The optimal investment decision is described by:

$$E_t \sum_{j=1}^{\infty} \left\{ (\theta_k)^{j-1} \beta^j \frac{\Xi_{t+j}}{\Xi_t} \left[\frac{P_{t+j}^M}{P_{t+j}} \alpha \frac{Y_{t+j|t}^M}{\bar{K}_t} - \left(\prod_{i=1}^j \pi_{t+i} \right)^{-1} (\bar{r}_t^L + \omega) \frac{P_t^K}{P_t} \right] \right\} = 0, \quad (1)$$

where $\pi_t \equiv P_t / P_{t-1}$ denotes the price inflation rate. Equation (1) links the expected marginal revenue product of capital with the expected marginal cost of maintaining and financing the capital stock. The loan and the service contract are specified in nominal terms, which implies that intermediate goods producers need to take into account expected cumulative inflation. All firms can adjust their labor demand each period and they take wages as given: firms equalize real wages with the marginal product of labor. As a result, firms' capital-labor ratios are the same, and the aggregate level of production and labor demand depends on the aggregate level of capital.

2.1.2 Capital Goods Producers

Capital goods producers sell capital to intermediate goods producers, with an agreement to repurchase it at the original price. In addition, they provide a service for the maintenance of the capital stock for which they charge a fee that is proportional to the price of capital (ωP_t^K). The duration of the contract is determined in the intermediate goods

sector. Capital goods producers solve the following maximization problem:

$$\max E_t \sum_{j=0}^{\infty} \beta^j \frac{\Xi_{t+j}}{\Xi_t} \left(\omega \frac{V_{t+j}}{P_{t+j}} - I_{t+j} \right), \quad (2)$$

with I_t being investment spending and where the value of outstanding contracts V_t depends on capital vintages sold in previous periods:

$$\frac{V_t}{P_t} = (1 - \theta_K) \sum_{j=0}^{\infty} (\theta_K)^j \frac{P_{t-j}^K}{P_t} \bar{K}_{t-j}. \quad (3)$$

The total demand for capital is given by the demand for new capital and the capital stock from the last period:

$$K_t = (1 - \theta_K) \bar{K}_t + \theta_K K_{t-1}, \quad (4)$$

while the law of motion for the aggregate capital stock takes into account adjustment costs $F(\cdot)$ for investment:

$$K_t = (1 - \delta) K_{t-1} + \xi_t^I \left[1 - F \left(\frac{I_t}{I_{t-1}} \right) \right] I_t, \quad (5)$$

where ξ_t^I is an investment shock which follows an AR(1) process in logs, and $F(\cdot)$ is an increasing, convex function. The equilibrium conditions are derived in the online appendix consisting of a Tobin's Q relation for net investment, together with the conditions linking the expected marginal revenues from the maintenance service and the expected marginal cost of providing the capital stock.

2.2 Financial Intermediaries

Banks use their net worth N_t and household deposits D_t to provide financing to intermediate good producers and to purchase government bonds. Deposit accounts are kept with financial intermediaries not owned by the depositing household so that financial intermediaries always manage other people's money. This assumption is needed to motivate the moral hazard problem that we describe below. Each period, a banker stays in office with probability θ_B . Thus, the expected professional life of a banker is $(1 - \theta_B)^{-1}$, and a certain mass of bankers become workers each period (a similar mass of workers become bankers so this keeps proportions stable).

We extend [Gertler and Karadi \(2013\)](#) by introducing long-term private and public debt. In their framework, bankers who exit the market transfer their final period assets to the household, which in turn transfers a fraction of that amount to new bankers as "startup funds". This simple mechanism can be implemented because [Gertler and Karadi \(2011, 2013\)](#) have one-period loans only. With long-term debt, banks hold a loan portfolio of different maturities and hence exiting bankers need to sell this portfolio when they retire. As in [Andreasen et al. \(2013\)](#), we introduce an insurance agency financed by a proportional tax τ_B on banks' profit. When a banker retires, the role of this agency is to create a new bank with an identical asset and liability structure and effectively guarantee the outstanding contracts of the old bank. This agency therefore ensures the existence of

a representative bank and that the wealth of this bank is bounded with an appropriately calibrated tax rate.

2.2.1 Corporate Long-Term Loans

The bank manages the portfolio of loans granted to the private sector, which includes all loans granted at a nominal amount $P_{t-j}^K \bar{K}_{t-j}$ and which pay a gross interest rate of \bar{R}_{t-j}^L for each period $j = 0, 1, \dots$. We will define the gross interest rate as $\bar{R}_t^L \equiv 1 + \bar{r}_t^L$. Aggregate real lending to the private sector len_t , which takes into account that loans mature with probability θ_k , can be recursively written as:

$$len_t = (1 - \theta_k) \sum_{j=0}^{\infty} (\theta_k)^j \frac{P_{t-j}^K}{P_t} \bar{K}_{t-j}, \quad (6)$$

and the total real revenues, rev_t , earned on the portfolio are given by:

$$rev_t = (1 - \theta_k) \sum_{j=0}^{\infty} (\theta_k)^j \bar{R}_{t-j}^L \frac{P_{t-j}^K}{P_t} \bar{K}_{t-j}. \quad (7)$$

We define the average return on the private sector loan portfolio by $R_t^L \equiv \frac{rev_t}{len_t}$, which is a weighted average of current and past long-term loan interest rates.

2.2.2 Long-Term Government Bonds

We introduce long-term government debt in a similar way to private sector debt. Each period, the government issues new debt B_t^N with a gross interest rate \bar{R}_t^G . Once the security is issued, it pays the net interest rate $\bar{r}_t^G = \bar{R}_t^G - 1$ each period. In addition, the principal is paid to the holder with probability $1 - \theta_g$. This implies that the average maturity of the government bond is $(1 - \theta_g)^{-1}$. The law of motion for government bonds is therefore:

$$B_t = \theta_g B_{t-1} + B_t^N. \quad (8)$$

Without loss of generality, and to keep the same notation as with private sector bonds, we denote $B_t^N = (1 - \theta_g) \bar{B}_t$. This will allow us to re-write the law of motion (8) in a similar way to equation (6). Finally, we can express total revenues rev_t^G earned on the portfolio of government bonds in a similar way to equation (7) and define the average return on the government bond portfolio by $R_t^G \equiv \frac{rev_t^G}{B_t}$, which is a weighted average of current and past long-term interest rates on government bonds.

2.2.3 Banking Sector

The balance sheet of the representative bank is defined by its real assets holdings ($len_t + b_t$), where $b_t = B_t/P_t$, which are financed through the real net worth of the bank, $n_t = N_t/P_t$, and real deposits, $d_t = D_t/P_t$, collected from households:

$$len_t + b_t = n_t + d_t.$$

Net worth (or bank capital) is accumulated over time as the difference between earnings on assets and interest payments to households:

$$n_t = (1 - \tau_B) \left[R_{t-1}^L \frac{P_{t-1}}{P_t} l e_{n_{t-1}} + R_{t-1}^G \frac{P_{t-1}}{P_t} b_{t-1} - R_{t-1} \frac{P_{t-1}}{P_t} d_{t-1} \right] \exp(\epsilon_t^{nw}), \quad (9)$$

where R_t is the short-term nominal deposit rate. As explained above, we interpret τ_B as an insurance premium, which helps to keep bank capital bounded. ϵ_t^{nw} is an iid shock to banks' net worth. Bankers maximize their expected terminal wealth, which is transferred to the households they belong to in the form of dividends after the bankers retire. Each period, bankers can divert a certain fraction of assets and also transfer them to the household they belong to. When bankers divert funds, the bank will be closed and the remaining assets serve as bankruptcy assets. Due to such an agency problem between banks and depositors, the latter demands that bankers have "skin in the game" requiring them to hold equity N_t . Thus, the following incentive constraint must be satisfied:

$$\mathcal{V}_t \geq \lambda_t (l e_{n_t} + \Delta_t b_t), \quad (10)$$

where \mathcal{V}_t is the expected terminal wealth of the bank (defined by the present value of the expected future net worth), λ_t is the time-varying fraction of loans that can be diverted, and $\lambda_t \Delta_t$ is the time-varying fraction of government bonds which bankers can embezzle. If $\Delta_t < 1$, banks will find it easier to divert corporate bonds than government bonds. As a result, the excess return on government bonds is only a fraction Δ_t of the excess return on private securities. The shares λ_t and Δ_t follow AR(1) processes in logs. Following [Gertler and Karadi \(2013\)](#), we describe the optimization in the online appendix. However, we want to highlight a few optimality conditions here. The optimal portfolio choice for bankers leads to:

$$(1 - \tau_B) E_t \beta \frac{\Xi_{t+1}}{\Xi_t} \Omega_{t+1} (R_t^L - R_t) \frac{P_t}{P_{t+1}} = \lambda_t \frac{\Theta_t}{1 + \Theta_t},$$

where Θ_t is the Lagrange multiplier associated with the participation constraint (10), and Ω_t is the shadow value of a unit of net worth to the banker. With a binding participation constraint, the Lagrange multiplier is positive and the participation constraint implies that $(R_t^L - R_t) > 0$. The size of the spread depends on the tightness of the constraint and the exogenous shock λ_t . Moreover, the optimizing conditions imply the following imperfect substitutability condition between corporate bonds and government bonds $(R_t^G - R_t) = \Delta_t (R_t^L - R_t)$. Investors demand return equalization up to a factor Δ_t , which in our model is a shock rather than a constant as in [Gertler and Karadi \(2013\)](#).

2.3 Households and Wage Setting

As in [Gertler and Karadi \(2011\)](#), we introduce a continuum of households in the economy and differentiate between two types of household members: workers and bankers. Workers supply labor L_t and bring wage income $W_t L_t$ to the household while bankers manage financial intermediaries and bring profits to the household. All household members perfectly pool their consumption risk, with C_t describing non-durable consumption spending. Households can only save in deposits D_t , which pay the nominal deposit rate R_t . We in-

roduce (internal) habit formation in consumption and assume a utility function, which is separable in consumption and hours worked, and which is hit by inter- and intratemporal disturbances. Consumption is determined via a standard Euler equation that depends on real interest rates and the intertemporal preference shock.

Following [Erceg, Henderson, and Levin \(2000\)](#), each household is a monopolistic supplier of specialized labor. When bargaining wages, this allows households to charge a mark-up over their marginal cost of supplying labor. The market power of households and the associated mark-up is assumed to be time-varying. For the reasons explained above, we deviate from [Justiniano et al. \(2013\)](#) and do not implement the wage rigidity in the spirit of [Calvo \(1983\)](#), but follow the [Rotemberg \(1982\)](#) quadratic adjustment cost instead. Wages are partially indexed to past inflation and TFP growth. Beyond this, households can further adjust wages but they have to pay quadratic adjustment costs to do so.

2.4 The Government

Conventional monetary policy is conducted by the central bank with an interest rate rule that targets CPI inflation, π_t , and real output growth, Y_t/Y_{t-1} . Let π be the inflation target of the central bank, R be the steady-state level of the nominal interest rate, $\exp(\Lambda)$ be the growth rate of GDP along the balanced growth path, and $\epsilon_{m,t}$ be an iid. monetary policy shock. The deposit rate is given by:

$$\frac{R_t}{R} = \left(\frac{R_{t-1}}{R} \right)^{\gamma_R} \left(\frac{\pi_t}{\pi} \right)^{\gamma_{\pi}(1-\gamma_R)} \left[\frac{Y_t/Y_{t-1}}{\exp(\Lambda)} \right]^{\gamma_y(1-\gamma_R)} \exp(\epsilon_{m,t}).$$

The ratio of government spending to GDP ($g_t = G_t/Y_t$) follows an AR(2) process:

$$\log(g_t) = (1 - \rho_{g1} - \rho_{g2}) \log(g) + \rho_{g1} \log(g_{t-1}) + \rho_{g2} \log(g_{t-2}) + \epsilon_{g,t}$$

where $\epsilon_{g,t} \sim \mathcal{N}(0, \sigma_g)$ is a shock to government spending. The choice of an AR(2) process is empirical, and we discuss the calibration in Section 3.1. We also assume that the supply of government bonds as percentage of GDP is exogenous with an AR(1) process:

$$\frac{b_t}{Y_t} = (1 - \rho_b) \frac{b}{Y} + \rho_b \frac{b_{t-1}}{Y_{t-1}} + \epsilon_{b,t}$$

where $\epsilon_{b,t} \sim \mathcal{N}(0, \sigma_b)$ is a shock to the supply of government bonds. Implicitly, we assume that, given a path for exogenous government spending and the debt/GDP ratio, the government will adjust lump-sum transfers so that its budget constraint holds.

3 Model Estimation

As is standard in the literature, we evaluate welfare by taking a second-order approximation of the model's equilibrium conditions and of the household's utility function. Therefore, we need to obtain parameter estimates that ensure that the second-order approximation of the model fits the data well. Due to the fact that we are departing from the assumption of linearization, the standard way of proceeding to estimate DSGE models

does not apply as it involves using the solution of the model in state-space form and the Kalman filter to evaluate the likelihood function of the linearized model, as explained in [An and Schorfheide \(2007\)](#).⁹ To ensure a good fit, we estimate the model using a Generalized Method of Moments (GMM) procedure as in [Christiano and Eichenbaum \(1992\)](#), [Ruge-Murcia \(2007\)](#), and [Andreasen, Fernández-Villaverde, and Rubio-Ramírez \(2016\)](#). We use seven macroeconomic series that were used by [Justiniano et al. \(2013\)](#) on US data: real GDP, real consumption, real investment, hours worked, nominal wage growth, GDP deflator inflation, and the Federal Funds target between 1964:2 and 2009:4. In addition, we include two spreads: the spread between BAA corporate yields and the Federal Funds rate as well as the spread between 10 year Treasury and the Federal Funds rate.

3.1 Parameter Estimates

We estimate the model by taking a second-order approximation to the equilibrium conditions and applying a GMM methodology. Let $data_t$ denote the nine macroeconomic and financial time series we described above. We estimate the model by matching the first moments, the contemporaneous second moments, and the persistence in the data. Hence, denote

$$M_t \equiv \begin{bmatrix} data_t \\ vech(data_t data_t') \\ diag(data_t data_{t-1}') \end{bmatrix}$$

where the $vech()$ operator selects the lower triangular elements of a matrix and orders them in a vector, and the $diag()$ operator selects the diagonal elements of a matrix. The size of the M_t vector is 63×1 . Letting Θ denote the vector of structural parameters that we wish to estimate, the GMM estimator is given by:

$$\hat{\Theta}_{GMM} = \arg \min \left(\frac{1}{T} \sum_{t=1}^T M_t - \mathbb{E}[\mathbf{M}(\Theta)] \right)' \mathbf{W} \left(\frac{1}{T} \sum_{t=1}^T M_t - \mathbb{E}[\mathbf{M}(\Theta)] \right)$$

where $\mathbb{E}[\mathbf{M}(\Theta)]$ denotes the model-implied moments that are counterparts to M_t when taking a second-order approximation to the model conditions. \mathbf{W} is a weighting matrix, which is positive definite. We use a conventional two-step approach. First, we use an identity matrix for \mathbf{W} to obtain an initial estimate of the parameters denoted by Θ_0 . Then, we use the inverse of the variance-covariance matrix of $\left(\frac{1}{T} \sum_{t=1}^T M_t - \mathbb{E}[\mathbf{M}(\Theta_0)] \right)$ as the weighting matrix, which is obtained with a Newey-West estimator with 10 lags.

Some parameters are calibrated before estimation (see Table 1) and are excluded from Θ . We do this because they have either been poorly identified from the data, or because we use other external sources to calibrate them. The elasticities of substitution are calibrated such that steady-state mark-ups are 10% in the product and 25% in the labor market. The capital share of output and the depreciation rate are calibrated according to standard values in the literature. We calibrate the average duration of capital stock upgrades to 12 quarters, in line with the calibration of [Sveen and Weinke \(2007\)](#). We calibrate the average

⁹Likelihood-based methods for higher-order approximations to the equilibrium conditions include the use of non-linear filters such as the particle filter, but they are computationally intensive (see, for instance, [Fernández-Villaverde and Rubio-Ramírez, 2007](#)).

Table 1: Calibrated Parameters

ε_L	Elasticity of Substitution between Labor	5
ε_Y	Elasticity of Substitution between Goods	10
α	Capital Share of Output	0.33
δ	Depreciation Rate	0.025
$1/(1 - \theta_k)$	Average Duration between Capital Stock Changes	12
$1/(1 - \theta_g)$	Average Duration of Government Debt	40
g	Government Spending/Output Ratio	0.2
ρ_{g_1}	AR(1) Coefficient for G_t/Y_t Ratio	1.288
ρ_{g_2}	AR(2) Coefficient for G_t/Y_t Ratio	-0.299
σ_g	Standard Deviation Innovation G_t/Y_t Ratio	1.07%
b/Y	Debt to GDP Ratio	0.45
L	Steady-State Hours	1

duration of government debt to 40 quarters (10 years) because this is our counterpart in the data (the 10 year bond). We obtain the parameters for the government spending shock by fitting an AR(2) process on the (log) government spending/GDP ratio in US data. The parameters g , ρ_{g_1} , ρ_{g_2} , and σ_g come from that regression. Finally, we calibrate the government debt/GDP ratio as in [Gertler and Karadi \(2013\)](#) and normalize steady-state hours to 1 (this is the same normalization as in [Justiniano et al., 2013](#)).

Table 2: Estimated Parameters

	Parameters	GMM	Standard Dev.
h	Habit Formation	0.742	0.026
φ	Inverse Frisch Elasticity	0.847	0.077
$1/\beta - 1$	Discount (in %)	0.241	0.025
$\log(R^L) - \log(R)$	Corporate Spread (in %, quarterly)	0.388	0.011
$\log(R^B) - \log(R)$	Government Spread (in %, quarterly)	0.144	0.006
Λ	TFP Growth (in %, quarterly)	0.425	0.015
η_i	Investment Adjustment Costs	8.43	0.85
θ_w	Wage Adjustment Cost	175.33	17.78
χ_w	Wage Indexation	0.707	0.041
θ_p	Price Adjustment Cost	62.76	4.61
χ_p	Price Indexation	0.421	0.044
ω	Capital Goods Producer Fees	0.0248	0.0009
θ_b	Probability of Banker Survival	0.919	0.044
ϕ	Steady-state Leverage Ratio	15.96	1.35
γ_Π	Taylor Rule Coefficient: Inflation	1.255	0.071
γ_R	Interest Rate Smoothing	0.606	0.036
γ_y	Taylor Rule Coefficient: Output Growth	0.12	0.007
π	Inflation Target	0.972	0.097

Table 2 presents the estimated parameters using GMM. We present the asymptotic standard errors which are computed using the asymptotic expression for the variance-

covariance matrix of the parameters under GMM estimation and an optimal weighting matrix:

$$\sqrt{T}(\hat{\Theta} - \Theta_0) \xrightarrow{d} N\left(0, \left(\mathbf{D}'_{\mathbf{o}}(\mathbf{S}_{\mathbf{o}})^{-1} \mathbf{D}_{\mathbf{o}}\right)^{-1}\right)$$

where we evaluate these matrices at the estimated parameter values:

$$\mathbf{D}_{\mathbf{o}} = \frac{\partial h(M_t, \Theta)}{\partial \Theta'} \Big|_{\Theta = \hat{\Theta}_{GMM}},$$

$$h(M_t, \Theta) = \frac{1}{T} \sum_{t=1}^T M_t - \mathbb{E}[\mathbf{M}(\Theta)],$$

and $\mathbf{W} = (\mathbf{S}_{\mathbf{o}})^{-1}$ is the optimal weighting matrix.

Most parameter estimates are in line with previous papers and contributions. We do not impose any type of prior information on the estimation, but we impose non-negativity constraints for most parameters, and we also impose an upper bound for some parameters (for instance, fractions such as indexation coefficients, and AR(1) coefficients have to be between $[0,1]$). These restrictions do not appear to be binding, since in all cases except the estimated AR(1) coefficient for the financial shock that affects the tightness of the participation constraint, the estimation procedure finds an interior solution.

Table 3: Estimated Parameters

	Parameters	GMM	Standard Dev
ρ_b	AR(1) Government Debt	0.833	0.098
ρ_u	AR(1) Preference	0.967	0.015
ρ_I	AR(1) Investment	0.558	0.067
ρ_λ	AR(1) Lambda	0.999	0.0003
ρ_ψ	AR(1) Labor supply	0.623	0.053
ρ_Z	AR(1) Transitory TFP	0.947	0.033
ρ_A	AR(1) Permanent TFP	0.289	0.029
ρ_{ε_Y}	AR(1) Goods Elasticity	0.871	0.186
ρ_Δ	AR(1) Delta	0.124	0.019
σ_b	SD Government Debt	0.673	0.088
σ_u	SD Preference	0.019	0.005
σ_I	SD Investment	0.075	0.016
σ_λ	SD Lambda	0.046	0.009
σ_ψ	SD Labor Supply	0.144	0.023
σ_Z	SD Transitory TFP	0.007	0.0005
σ_A	SD Permanent TFP	0.005	0.0007
σ_{ε_Y}	SD Price Markup	0.034	0.009
σ_Δ	SD Delta	0.138	0.039
σ_{ε_L}	SD Wage Markup	0.244	0.046
σ_m	SD Monetary	0.0033	0.0003
σ_{nw}	SD Net Worth	0.184	0.021

Despite the differences in the estimation procedure, the parameter estimates are similar

to other papers in the literature that use Bayesian methods and a linearized version of the model. The habit formation parameter is estimated at 0.74, while in the inverse Frisch elasticity of labor supply is 0.84. The implied estimated β is 0.9975. The estimated steady-state values for the corporate and government sector spreads imply that the mean of the financial shock that affects the tightness of the participation constraint for government bonds (Δ_t) is 0.78. The growth rate of TFP has a percentage annual rate of around 1.6, as in [Christiano, Motto, and Rostagno \(2014\)](#). The parameters related to the behavior of investment adjustment costs, price and wage rigidities, and behavior of the banking sector are also within the range of other model-based evidence or empirical studies. Interestingly, we find that the steady-state leverage ratio is close to 16, which is much higher than the calibrated value in [Gertler and Karadi \(2011\)](#), but is also closer to the data for financial institutions before the crisis. The estimates for the Taylor rule are on the lower side, with smaller reactions to inflation deviations (1.25), output growth deviations (0.12) and interest rate smoothing coefficients (0.6) than other studies such as [Justiniano et al. \(2013\)](#) and [Smets and Wouters \(2007\)](#).

Table 3 presents the estimated parameters for all the shock processes. It is difficult to compare these estimates with other papers, because changes in modeling assumptions lead to changes in the parameter estimates of the shocks. It is worth noting that only one shock is extremely persistent, the λ_t shock included in the participation constraint (10). Also, as in [Justiniano et al. \(2013\)](#), the growth rate of the permanent TFP shock displays low persistence.

4 Model Fit

Since the number of moment conditions is greater than the number of estimated parameters, the model is overidentified. In this case, a model specification J-test is given by:

$$J = Th(M_t, \Theta)'(S_o)^{-1}h(M_t, \Theta) \xrightarrow{d} \chi_{n_m - n_\Theta}^2.$$

where n_m is the number of moments and n_Θ is the number of parameters. The idea is to check whether $h(M_t, \hat{\Theta}_{GMM})$ is sufficiently close to zero to suggest that the model fits the data well. We find that the null hypothesis that the model is valid cannot be rejected with a p-value of 0.71.¹⁰

In order to better understand how well the model fits the data, we present the means and standard deviations of each variable, all contemporaneous correlations, and the first autocorrelation of each variable in the data and in the model (Tables 4 and 5).¹¹ The fit to the mean of the variables is very good. The only exception is the growth rate of investment, which is higher in the model than in the data. At this point, it is worth emphasizing that there are important risk corrections in the model once second-order effects are taken into account. For instance, in the non-stochastic steady state, the spreads over the Federal Funds rate were estimated to be 0.38 percent (on a quarterly basis) for the corporate

¹⁰More specifically, the values for the *J-test* are as follows: T=183, the value of the objective function at the optimum is 0.108, $n_m = 63$, and $n_\Theta = 39$.

¹¹Recall that the estimation procedure matches $E(M_t)$, $E(M_t M_t')$ and $diag[E(M_t M_{t-1}')$. We present means, standard deviations and correlations as it is typically done in assessing the goodness of fit of a model.

sector and 0.14 percent for the government sector. However, when second-order effects are taken into account, the spreads become 0.61 and 0.23 respectively, and closer to the data (0.71 and 0.22). The level of the spread affects the level of investment and the capital stock in the model, as well as consumption. Therefore, if we had estimated the model up to first order and then performed welfare analysis up to second order, our baseline welfare evaluation would not be aligned with the data. There are also risk corrections for the mean of inflation (0.97 in the non-stochastic steady state and 0.91 up to second order) and hours (0 in the steady state, 0.16 percent in the second-order approximation), but these are minor.

Table 4: Model Fit

Variable	Data			Model		
	Mean	Std. Dev.	Autocorr	Mean	Std. Dev.	Autocorr
GDP Growth	0.40	0.86	0.32	0.42	0.85	0.38
Consumption Growth	0.50	0.52	0.47	0.42	0.50	0.70
Investment Growth	0.26	3.32	0.30	0.42	3.33	0.26
Wage Growth	1.35	0.73	0.46	1.33	0.71	0.68
Inflation	0.95	0.60	0.87	0.91	0.62	0.89
Federal Funds Rate	1.54	0.84	0.95	1.56	0.76	0.87
Hours	0.00	3.74	0.98	0.16	3.75	0.95
Spread BAA-FFR	0.71	0.53	0.90	0.61	0.69	0.85
Spread 10Y Bond-FFR	0.22	0.43	0.88	0.23	0.26	0.84

Table 5: Model Fit

Correlation	Data	Model	Correlation	Data	Model
(GDP,C)	0.57	0.62	(INV,H)	0.03	0.02
(GDP, INV)	0.88	0.85	(INV,BAA-FFR)	0.05	0.01
(GDP, W)	-0.13	-0.13	(INV,10Y-FFR)	0.21	0.01
(GDP, INFL)	-0.24	-0.38	(W, INFL)	0.66	0.65
(GDP, FFR)	-0.14	-0.23	(W,FFR)	0.46	0.52
(GDP, H)	0.12	0.10	(W,H)	-0.18	-0.24
(GDP, BAA-FFR)	0.05	0.06	(W, BAA-FFR)	-0.42	-0.03
(GDP, 10Y-FFR)	0.22	0.06	(W,10Y-FFR)	-0.43	-0.03
(C,INV)	0.34	0.28	(INFL,FFR)	0.65	0.76
(C,W)	-0.11	-0.06	(INFL, H)	-0.38	-0.31
(C,INFL)	-0.33	-0.45	(INFL,BAA-FFR)	-0.49	-0.07
(C,FFR)	-0.10	-0.33	(INFL,10YFFR)	-0.52	-0.07
(C,H)	0.20	0.13	(FFR, H)	-0.38	-0.42
(C, BAA-FFR)	0.00	0.11	(FFR,BAA-FFR)	-0.49	-0.24
(C, 10Y-FFR)	0.17	0.11	(FFR,10YFFR)	-0.52	-0.24
(INV,W)	-0.05	-0.13	(H,BAA-FFR)	-0.33	-0.26
(INV, INFL)	-0.11	-0.24	(H,10Y-FFR)	-0.24	-0.26
(INV, FFR)	-0.10	-0.11	(BAA-FFR, 10Y-FFR)	0.94	0.997

When it comes to matching second moments, the estimated model explains the standard deviations and autocorrelations fairly well. The model has trouble matching the volatility of the spreads, because both the mean and the standard deviation of the government sector spreads are a fraction Δ_t of the mean and standard deviation of the corporate spreads. The estimated model is not able to overcome this tight relationship between the two variables, even though Δ_t is stochastic, because it is not volatile enough. The model fit to contemporaneous correlations is also very good. In fact, in all thirty-six cases, the estimation procedure gets the bilateral contemporaneous correlation sign right. The model also explains the persistence of variables well. It only fails in overpredicting the persistence of real consumption and nominal wage growth.

Table 6: Shock Decomposition

Variable	TFP	Inv	Pref	Fin	Mark-ups	Govt	Mon
GDP Growth	40.7	9.7	19.0	15.8	2.6	3.8	8.6
Consumption Growth	47.9	1.6	39.4	0.9	1.6	4.5	4.1
Investment Growth	21.2	14.5	25.2	28.4	2.0	0.6	8.0
Wage Growth	28.7	6.8	56.9	3.2	2.2	1.1	1.2
Inflation	39.3	3.9	46.1	3.3	4.2	1.9	1.3
Federal Funds Rate	24.1	4.1	41.4	3.5	2.5	1.9	22.6
Hours	9.1	8.3	50.3	18.2	2.9	9.3	2.0
Spread BAA-FFR	2.5	0.2	1.5	85.5	0.4	0.1	9.9
Spread 10Y Bond-FFR	2.5	0.2	1.4	85.6	0.4	0.1	9.8

Next, we report the variance decomposition through the lens of the model. In order to facilitate the reading of Table 6 we aggregate the shocks into preference (inter- and intratemporal), TFP (temporary and permanent), investment-specific, financial (λ_t , Δ_t , net worth, and debt supply), market power (prices and wages), government spending and monetary shocks. Both TFP shocks explain around 40 percent of the fluctuations in output growth, consumption growth, and inflation. Financial shocks are also important, because they explain around 15 percent of GDP fluctuations. Their effect is particularly strong in investment, where they explain around 28 percent of fluctuations, and also in hours, explaining around 18 percent. Furthermore, financial shocks explain more than 80 percent of the fluctuations in both spreads (government bonds and corporate bonds). Preference shocks also explain an important share (between one-third and one-half of fluctuations) of most macroeconomic variables, and up to 50 percent of the volatility of hours. Mark-up, monetary policy and government spending shocks explain small fractions of economic fluctuations. Up to this section, we have estimated the model with financial frictions but with monetary policy being conducted with a Taylor-type rule. In the following section, we examine the benefits of using UMP in normal times, under the estimated Taylor rule and under other conventional monetary policy rules.

5 Implementing UMP in the Model

UMP in our model is implemented via asset purchase programs and the central bank purchases either private or government sector debt.

5.1 Direct Lending to Firms

Similar to [Gertler and Karadi \(2011\)](#) the central bank provides financing to firms by extending credit directly (or, what is equivalent in the context of this model, by purchasing corporate debt). [Gertler and Karadi \(2011\)](#) assume that the public credit policy is to provide a fraction Ψ_t of the stock of credit for firms to borrow. Here, we assume that the central bank UMP rule is in terms of the level of credit (which is more consistent with central banks statements which describe actual amounts rather than fractions). Aggregate lending is given by:

$$len_t = (1 - \theta_k) \frac{P_t^K}{P_t} \bar{K}_t + \theta_k \frac{P_{t-1}}{P_t} len_{t-1}$$

where $len_t = len_t^p + len_t^{cb}$, and where len_t^p stands for commercial bank credit to the private sector and len_t^{cb} is central bank credit to the private sector. As we discuss in the appendix, when the central bank lends to the private sector, it reduces the banking sector leverage, thus putting downward pressure on corporate sector spreads.

5.2 Purchases of Government Bonds

In this case the central bank buys government bonds and tries to affect the corporate spread by inducing a portfolio reallocation away from government bonds by banks. The law of motion of government bonds is given by:

$$B_t = (1 - \theta_g) \bar{B}_t + \theta_g \frac{P_{t-1}}{P_t} B_{t-1}$$

where $B_t = B_t^p + B_t^{cb}$, and where B_t^p stands for commercial bank credit to the government, and B_t^{cb} is central bank purchases of government bonds. When the central bank purchases government bonds, it reduces the amount of government debt that is being financed by the private financial sector. This lower bond supply leads to higher bond prices, lower yields and spreads of government bonds, which, in turn, will also reduce corporate spreads, through the imperfect asset substitutability condition, and increase investment, employment and GDP.

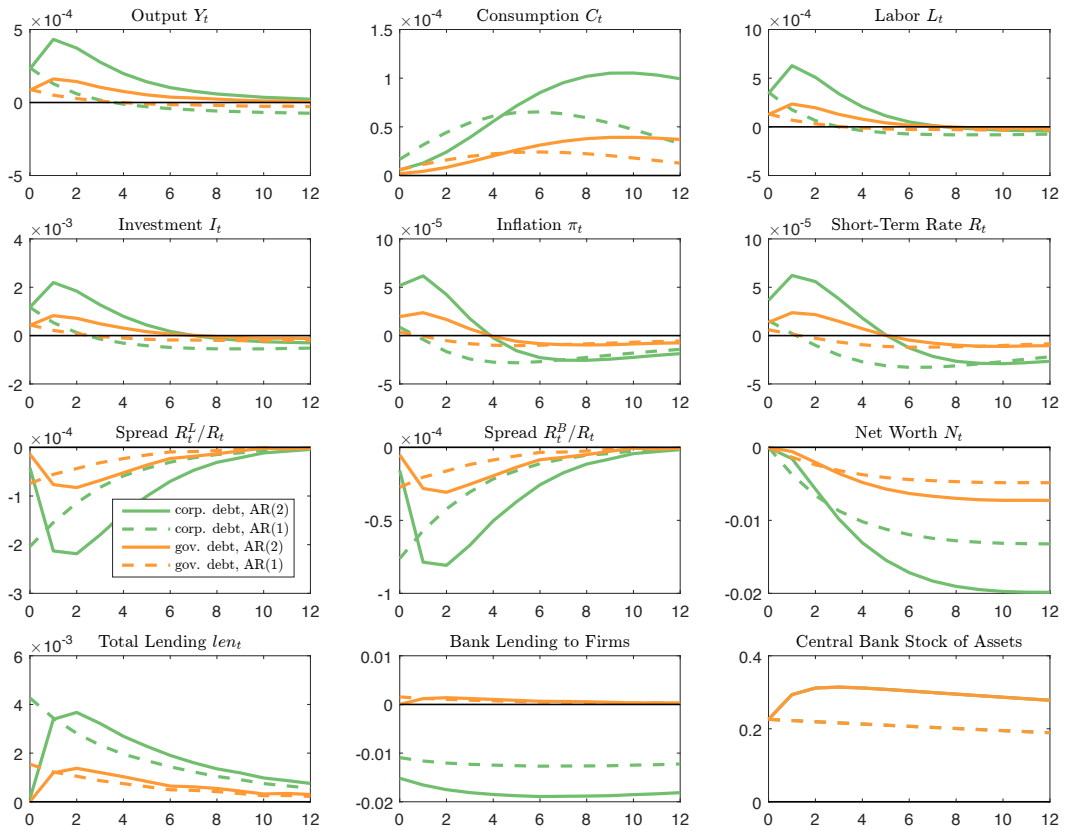
5.3 The Effects of UMP

To get a sense of what UMP does in the model, in [Figure 1](#) we plot the impulse responses to a UMP shock, when we take central bank purchases as an exogenous process. [Figure 1](#) shows the case when the stock of assets held by the central bank follows an AR(1) or AR(2) process and UMP is conducted by either lending directly to firms or purchasing government bonds. Two results stand out. First, the impact of UMP policies is stronger when the central bank lends directly to firms compared with when it purchases government bonds because it directly affects the private sector spreads, which have a stronger macroeconomic impact. This result echoes the findings of [Gertler and Karadi \(2013\)](#), and means that if UMP is to be implemented via government bond purchases, it needs to be deployed at a larger scale. Second, comparing the AR(1) with the AR(2) process shows that the latter has strong expansionary effects in our model, demonstrating that

announcement effects and a commitment not to unwind UMP policies in the near future are key to a successful implementation.

Under a persistent AR(1) shock, the stock of assets increases on impact and the central bank starts unwinding UMP already in $t = 1$. The effect of these policies is expansionary on impact because of reduced spreads and increased investment, labor demand and GDP. However, this effect is short-lived, and turns negative three quarters after the initial shock. The key to understanding this result is that by engaging in UMP policies, the central bank worsens the balance sheet position of financial intermediaries. Hence, when the initial UMP impulse is scaled down, banks' reduced net worth does not allow the provision of the necessary credit to sustain a higher level of activity and an investment contraction follows. Because of the reduction in spreads, and the fact that wages are sticky, inflation barely increases on impact and starts declining thereafter. However, this quantitative effect is minor.

Figure 1: Impulse Response to an Exogenous AR(1) or AR(2) UMP Shock



NOTE: The stock of assets held by the central bank follows either an AR(1) or AR(2) process. For the AR(1) process we set the coefficient of the first lag equal to 0.985 while for the AR(2) process we set the coefficients of the first lag equal to 1.3 and of the second lag equal to -0.31. Thus, the largest root of both processes is 0.985. The impulse responses are computed after taking a second-order approximation to the equilibrium conditions of the model.

Using an AR(2) process fits the implementation of UMP policies by major central banks better, when an announcement of future purchases of securities was generally made, and implemented over the following quarters (see [Chen et al., 2012](#) and [Gertler and Karadi, 2013](#)). In this case, the expansionary effects of UMP are long-lasting leading also to an increase in inflation. On the one hand, the decline in net worth is stronger due to the pronounced fall in spreads so that the incentive constraint (10) tightens more compared with the AR(1) process. On the other hand, the persistence of the UMP shock lowers spreads for a longer period of time, thereby improving refinancing conditions. Given the forward looking behavior of intermediate goods producers, the increase in investment spending is higher, which leads to a persistent, hump-shaped increase in output and employment. This section has shown the effects of UMP policies when they are considered to be exogenous. From a welfare point of view, simply including additional exogenous shocks to the model would reduce welfare. In practice, during the crisis, UMP was deployed to respond to adverse financial conditions. In the following section, we study the optimality of UMP rules that explicitly react to credit spreads.

6 Welfare Analysis

In this section, we quantify the benefits of deploying UMP as a standard monetary policy measure with a rule. The main benefit of including an additional policy instrument is to provide an additional tool for macroeconomic stabilization. [Gertler and Karadi \(2011\)](#) discuss the main cost of implementing UMP via lending to the private sector, which is that the central bank is less efficient in terms of intermediating credit than the private financial sector. Otherwise, given the structure of the model, it would be optimal for the central bank to replace commercial banks because it is not subject to an agency problem and is not leverage constrained. Since it is difficult to measure in the data how inefficient the central bank is compared to the private sector with regard to intermediating credit, our results provide an estimate of how great those costs would have to be for UMP policies not to be pursued. In addition, when UMP policies are implemented through purchases of government bonds, it is not clear that the central bank incurs any additional inefficiency cost of purchasing these bonds compared with the banking sector buying them. Therefore, our estimates also provide an upper bound of how great the costs of intermediating credit should be for UMP policies which are implemented via purchases of government bonds to be chosen over direct lending to firms. Also, as emphasized by [Del Negro and Sims \(2015\)](#) and [Hall and Reis \(2015\)](#), there may be fiscal implications if the central bank incurs losses as a consequence of large-scale asset purchases. In this section, we compare the effects of UMP under the estimated Taylor rule, and under more optimal conventional monetary policy rules.

6.1 Using the Estimated Taylor Rule

First, we assess the optimality of UMP in the estimated model, with the estimated policy rule. As a welfare criterion, we use the utility function of the representative household:

$$\mathbb{W}_t = \xi_t^u \left[\log(C_t - hC_{t-1}) - \psi_t \frac{L_t^{1+\varphi}}{1+\varphi} \right] + \beta E_t \mathbb{W}_{t+1}$$

We take a second-order approximation to the equilibrium conditions and to the welfare function. All the parameters of the model are set at their calibrated or estimated values (as in Tables 1 to 3). Lending intermediated by the central bank is given by the following rule:

$$len_t^{cb} = \rho_\Psi len_{t-1}^{cb} + \gamma_\Psi (R_t^L/R_t - R^L/R),$$

with R^L/R being the non-stochastic steady state spread. We also experiment with a rule that reacts to the spread on *new* lending rates (i.e. to $\bar{R}_t^L/R_t - R^L/R$) rather than *average* rates. Central bank government bond purchases are given by the following rule:

$$B_t^{cb} = \rho_\Psi B_{t-1}^{cb} + \gamma_\Psi (R_t^L/R_t - R^L/R)$$

We also experiment with a rule that reacts to the spread on *new* lending rates rather than *average* rates, as well as rules that react to the spread between government bond rates and short-term rates (both average and new). For each UMP rule, we optimize welfare over the coefficients ρ_Ψ and γ_Ψ taking as given the equilibrium conditions of the model. In the following section, we discuss why we do not include a second lag in the policy reaction function.

6.1.1 Optimal Coefficients

In Table 7, we report the optimal coefficients, the value of the welfare function up to second order, and the difference (in steady-state consumption equivalence terms) from the estimated model (with an estimated Taylor rule and no UMP in place). In quantitative terms, all policies deliver very similar results regarding welfare. The highest welfare is achieved when the central bank buys either corporate or government bonds to target the average spread on private sector securities. While the coefficient on the responses varies, all these policies entail very large responses to spreads, which in practice implies that spreads are flattened out.¹² In addition, we can see that using corporate or government bonds to achieve the results does not make a difference. The choice of implementing UMP with corporate or government bonds would make a difference if the Δ_t shock was very volatile. But in our estimation, which reflects the behavior of spreads in normal times, it is not. The only case where UMP policies are not desirable is when the central bank buys government bonds to affect the spread on new government debt. It is worth emphasizing again that if providing credit to the private sector entails some inefficiency cost, then a policy that implements purchases of government debt targeting the average lending spread would be the preferred policy. It is interesting to note that when UMP is endogenous, the degree of optimal persistence is high, but never close to a unit root behavior. Hence, we do not study the role of further lags in the UMP reaction function.

¹²In the deterministic steady-state, the value of len_t^{cb} or B_t^{cb} is always zero. However, the mean of the second-order approximation does not have to be zero, as it may include risk-correction effects. The optimization procedure includes a large penalty if the mean of the variables len_t^{cb} or B_t^{cb} (as a percentage of GDP) falls outside the range [0,50]. We think that this restriction makes sense to avoid the fact that the central bank short-sells securities or accumulates a very large stock of securities. This is why a policy of “strict spread targeting” is not optimal in Table 7.

Table 7: Optimal UMP Policy

Policy	ρ_Ψ	γ_Ψ	W_t	C.E. (in %)
Corp., $\bar{R}_t^L - R_t$	0.972	3142.9	-577.72	1.41
Corp., $R_t^L - R_t$	0.636	37992.7	-577.56	1.45
Gov., $\bar{R}_t^L - R_t$	0.786	56688.6	-577.8	1.4
Gov., $R_t^L - R_t$	0.767	65934.6	-577.56	1.45
Gov., $\bar{R}_t^B - R_t$	0	0	-583.6	0
Gov., $R_t^B - R_t$	0.953	37985.4	-577.66	1.43

Next, we zoom in and examine whether UMP policies are desirable when only a subset of shocks is included. For the purpose of this exercise, we group shocks as follows:

- **Supply shocks.** This group includes: (i) permanent TFP shocks, (ii) transitory TFP shocks, (iii) investment-specific technology shocks, (iv) labor supply shocks, and (v) price and (vi) wage mark-up shocks.
- **Demand shocks.** This group includes: (i) the intertemporal preference consumption shock, (ii) the government spending shock, and (iii) the monetary shock.
- **Financial shocks.** This group includes: (i) the bank capital (net worth) shock, (ii) the fraction of corporate securities that can be diverted by the banker, (iii) the fraction of government securities that can be diverted by the banker, and (iv) the government debt supply shock.

We could compute the optimal response to each particular shock but we find that this grouping makes sense because it separates “conventional business cycle” supply and demand shocks, from financial shocks. Using this grouping, UMP policies are most relevant when financial shocks hit the economy (Table 8). In fact, most of the welfare gains come from responding optimally to this group of shocks, with a gain of 1.34 percent in steady-state consumption. When only financial shocks are present, the optimal UMP policy is conducted by government bonds affecting the average spread on corporate loans, and interestingly, it is a highly inertial policy, with a value of 0.971 for the inertia coefficient ρ_Ψ . Under demand or supply shocks, UMP creates only minor welfare gains (0.35 and 0.07 of lifetime consumption). Interestingly, under these conventional business cycle shocks, the best policy is to use government bonds to target the spread on new government rates (a policy that is not deployed at all when we consider all shocks).

Hence, UMP is mostly useful when the economy is hit by financial shocks; but this does not apply when standard business cycle shocks drive fluctuations. This result echoes the finding of the literature on the usefulness of asset purchase programs in a financial crisis and when the economy hits the ZLB. Here, we have shown that the same applies away from the ZLB and smaller shocks. We have shown that there is less need for making UMP part of the toolkit when the sources of business cycles are not financial. In particular, it is worth emphasizing again that we have not quantified the possible costs of asset purchases. [Gertler and Karadi \(2011\)](#) assume that the central bank is less efficient than commercial banks when it comes to intermediating credit, and thus there is an efficiency cost when the

Table 8: Optimal UMP Policy, Conditional

Demand shocks				
Policy	ρ_Ψ	γ_Ψ	\mathbb{W}_t	C.E. (in %)
Corp., $\bar{R}_t^L - R_t$	0.99	26352.9	-575.96	.13
Corp., $R_t^L - R_t$	0.58	1000000	-576.16	0.07
Gov., $\bar{R}_t^L - R_t$	0.99	7174.87	-575.96	.13
Gov., $R_t^L - R_t$	0.58	1000000	-576.16	0.07
Gov., $\bar{R}_t^B - R_t$	0.05	14067.2	-575.05	0.35
Gov., $R_t^B - R_t$	0.84	1000000	-576.16	0.07
Supply Shocks				
Policy	ρ_Ψ	γ_Ψ	\mathbb{W}_t	C.E. (in %)
Corp., $\bar{R}_t^L - R_t$	0.05	0	-577.41	0
Corp., $R_t^L - R_t$	0.87	1000000	-577.21	0.05
Gov., $\bar{R}_t^L - R_t$	0	0	-577.41	0
Gov., $R_t^L - R_t$	0.87	1000000	-577.21	0.05
Gov., $\bar{R}_t^B - R_t$	0.11	1136.9	-577.12	0.07
Gov., $R_t^B - R_t$	0.99	1000000	-577.21	0.05
Financial Shocks				
Policy	ρ_Ψ	γ_Ψ	\mathbb{W}_t	C.E.
Corp., $\bar{R}_t^L - R_t$	0.911	9236.6	-575.76	1.33
Corp., $R_t^L - R_t$	0.806	20417.1	-575.76	1.33
Gov., $\bar{R}_t^L - R_t$	0.801	54346.5	-575.76	1.33
Gov., $R_t^L - R_t$	0.971	9292.1	-575.74	1.34
Gov., $\bar{R}_t^B - R_t$	0	64317.3	-576.23	1.22
Gov., $R_t^B - R_t$	0.955	36800.4	-575.81	1.32

central bank directly lends to the private sector. The benefits of UMP should be weighted against these costs. We have not included these costs in the model because there is no evidence of how large they might be. And, in the case of QE policies, it is not clear that purchases of government bonds by the central bank are performed less efficiently compared with private banks. Perhaps, the benefits of UMP should be compared to the fiscal or political economy costs that they entail, but again, it is difficult to quantify these costs.

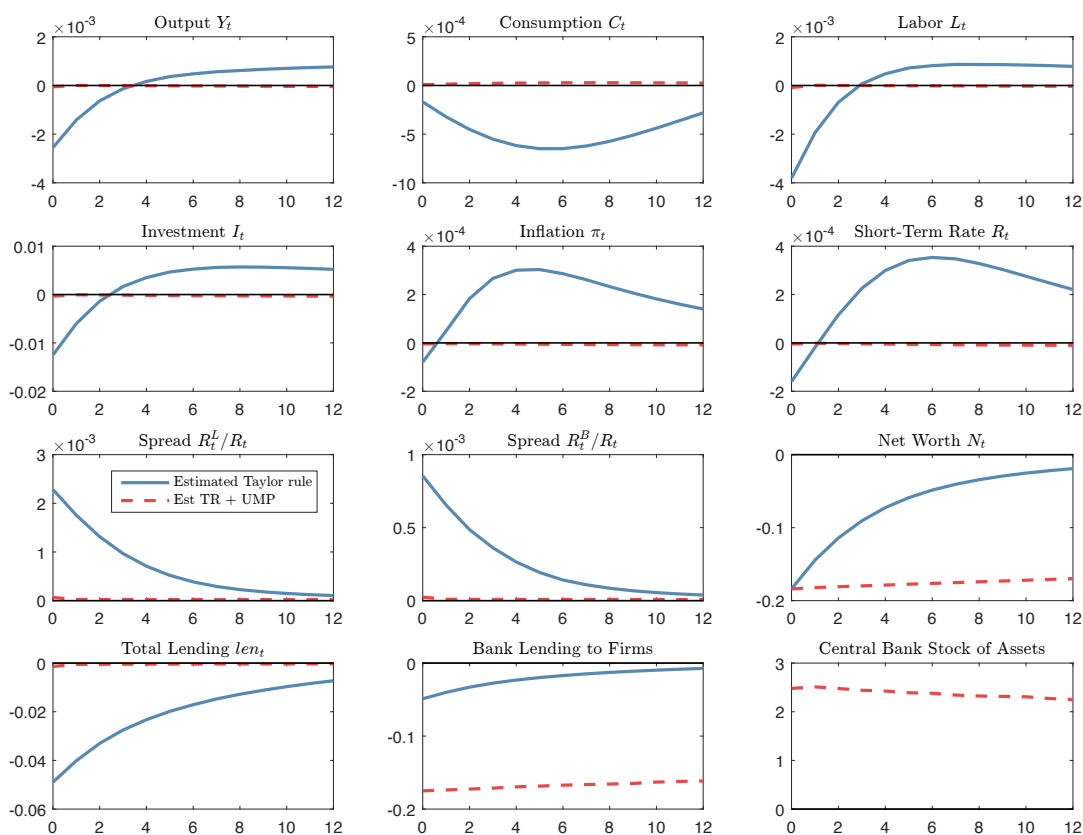
6.1.2 Impulse Response Analysis

Here we discuss impulse responses to financial shocks as well as the effects of more standard supply and demand shocks. We examine the response under the estimated model, and under the model where UMP is conducted by purchasing corporate bonds, and reacting to the average lending-deposit spread (the optimal UMP in Table 7).

Figure 2 presents the impulse response to an adverse bank capital or net worth shock. In the estimated model, the shock reduces banks' net worth, and thus leads to a decline in lending to the private sector as well as an increase of spreads for both the corporate and the government sector. As a result, investment and employment decrease, as does private consumption and real GDP. The response of inflation is muted because its two

main components move in different directions: lending rates increase, but real wages (not shown) fall. After falling on impact, inflation therefore increases only by a small amount. Monetary policy basically follows the behavior of inflation through the Taylor rule. The use of UMP completely offsets this shock. In this case, because the shock is contractionary, the central bank lends to firms directly. As a result, aggregate lending does not fall and the spreads do not move. A similar result is obtained by [Carlstrom et al. \(2016\)](#) in a model with financial frictions and real and financial shocks like the one we presented here.

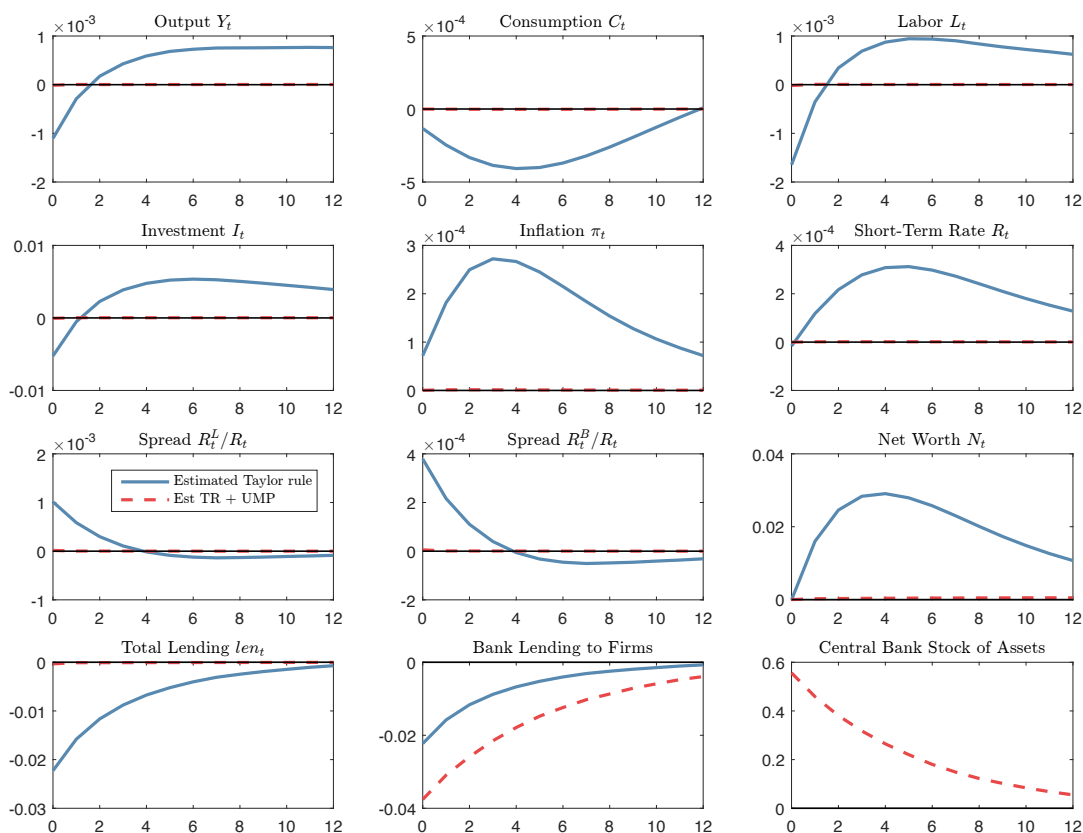
Figure 2: Impulse Response to a Net Worth Shock



NOTE: The impulse responses are computed after taking a second-order approximation to the equilibrium conditions of the model.

Figure 3 presents the impulse response to an increase in government debt. This increase could be motivated by a reduction in tax revenue while keeping government spending constant. An increase in government debt that needs to be financed by the banking sector leads to an initial crowding out: spreads on both government and corporate debt increase, reducing lending, investment, labor demand and therefore also GDP and consumption. Interestingly, the balance sheet position of banks improves because of the increased lending markings. However, the negative effects of this shock are short-lived, as

Figure 3: Impulse Response to a Government Debt Supply Shock



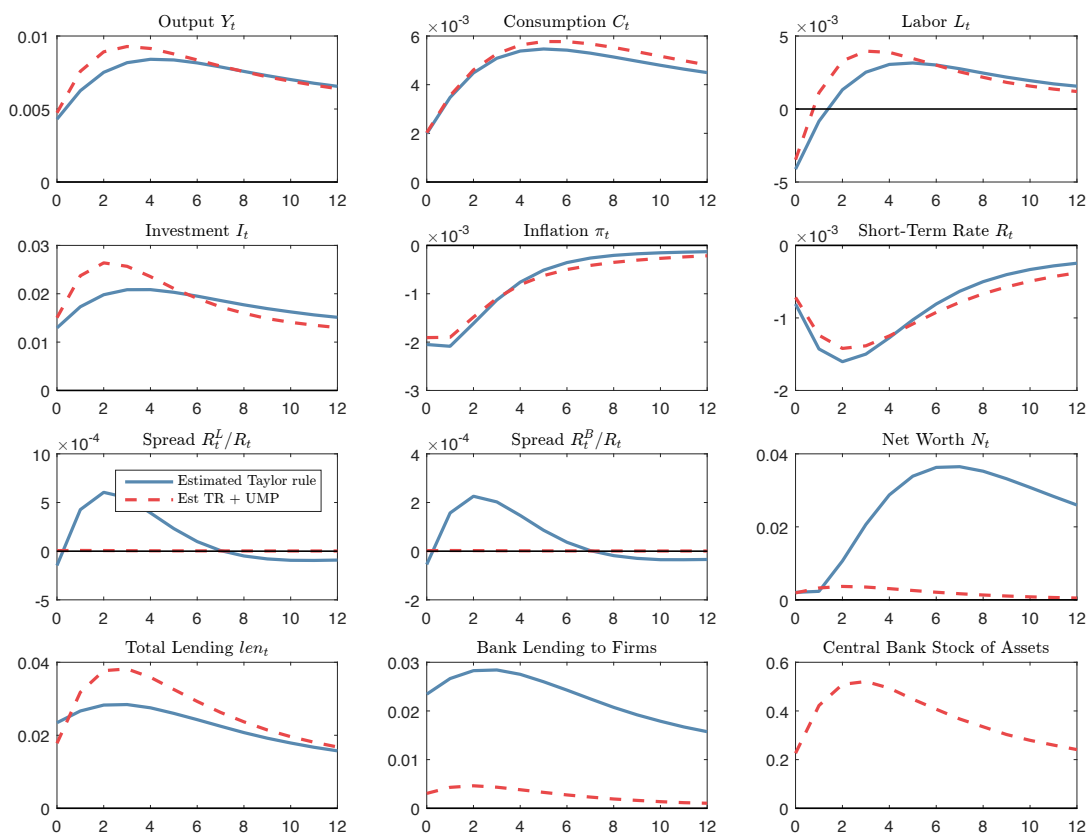
NOTE: The impulse responses are computed after taking a second-order approximation to the equilibrium conditions of the model.

it is not very persistent (the AR(1) coefficient is estimated to be 0.833). This means that spreads return quite rapidly to their steady-state values, and investment, labor demand and output rebound. UMP policies are extremely effective at insulating the real economy from this shock.

Having established that UMP is useful when the economy is hit by financial shocks, we now study what happens when the economy is hit by more standard supply and demand shocks. For this purpose, we present the impulse responses to a temporary TFP shock, an investment-specific technology shock, a consumption preference shock, and a government spending shock.¹³ The effects of a temporary TFP shock are fairly standard and similar to a model without financial frictions (see, for instance, [Smets and Wouters, 2007](#)). GDP, consumption and investment increase, while hours worked and inflation decline (Figure 4). In response, the central bank cuts interest rates. In the financial sector, lending

¹³The results are representative of what happens under any other supply or demand shock. To save space, we omit the analysis for all other supply and demand shocks in the model, but they are available upon request.

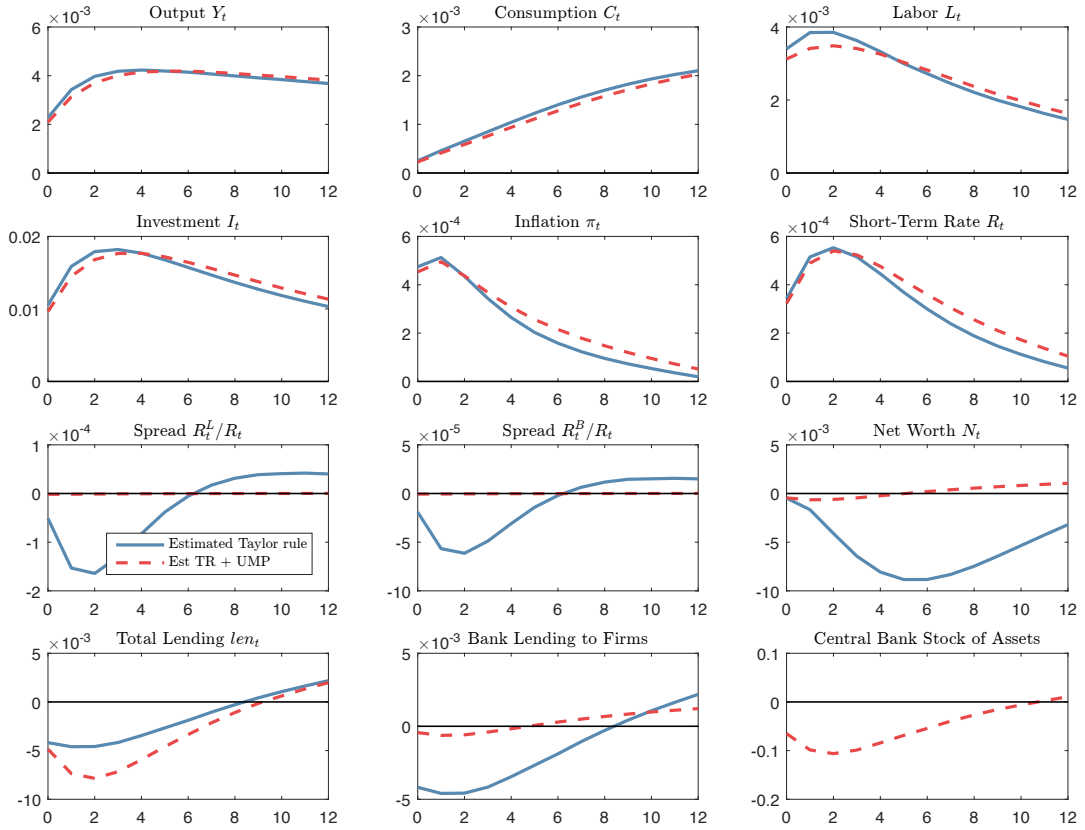
Figure 4: Impulse Response to a Temporary TFP Shock



NOTE: The impulse responses are computed after taking a second-order approximation to the equilibrium conditions of the model.

increases immediately because of increased credit demand, but it takes a while for banks to accumulate more net worth: the leverage ratio (not shown) increases and so does the lending-deposit spread. In this sense, the financial friction dampens the initial effect of the shock because of the lack of resources to invest. Deploying UMP removes the financial friction and allows the economy to reap the benefits of higher productivity. In this case, the central bank is able to stabilize the spread completely, generating an even larger effect on investment and GDP. The effect on consumption and labor is much smaller, which explains why, in terms of welfare, the effect of UMP under supply shocks is small.

Figure 5: Impulse Response to an Investment-Specific Technology Shock

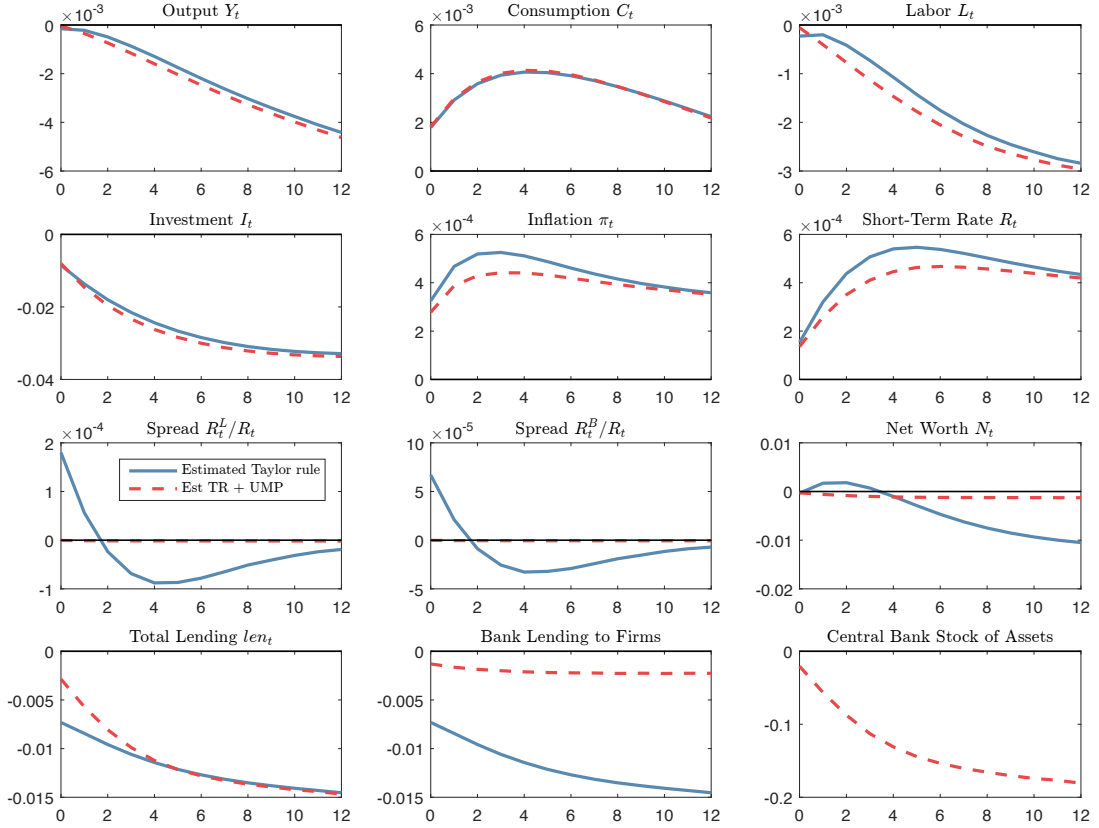


NOTE: The impulse responses are computed after taking a second-order approximation to the equilibrium conditions of the model.

The effects of an investment-specific technology shock are also fairly standard, as in [Justiniano, Primiceri, and Tambalotti \(2011\)](#) (Figure 5). Investment, GDP, consumption and labor increase. Unlike the case of the TFP shock, inflation also increases because the technology improvement is in the capital goods sector rather than the consumption goods sector, so the marginal cost of production in the latter actually increases. The inclusion of the financial sector and financial frictions has the following effect: in this case, total lending declines because the price of capital goods is cheaper: the amount that firms need to borrow, when expressed in nominal terms or in consumption goods, actually declines. This smaller demand for credit translates into lower spreads. Note, however, that the effect on spreads is minor in quantitative terms. As a result, when UMP policies aim at stabilizing spreads, the impulse responses with respect to the main macro variables do not really change.

The effects of a consumption preference shock are also fairly standard (Figure 6). They lead to a consumption boom and higher inflation, but lower investment and GDP. Financial accelerator effects are very small, and hence there is not much that the central bank can do by using UMP. When UMP is deployed, it does not really affect the behavior

Figure 6: Impulse Response to a Consumption Preference Shock

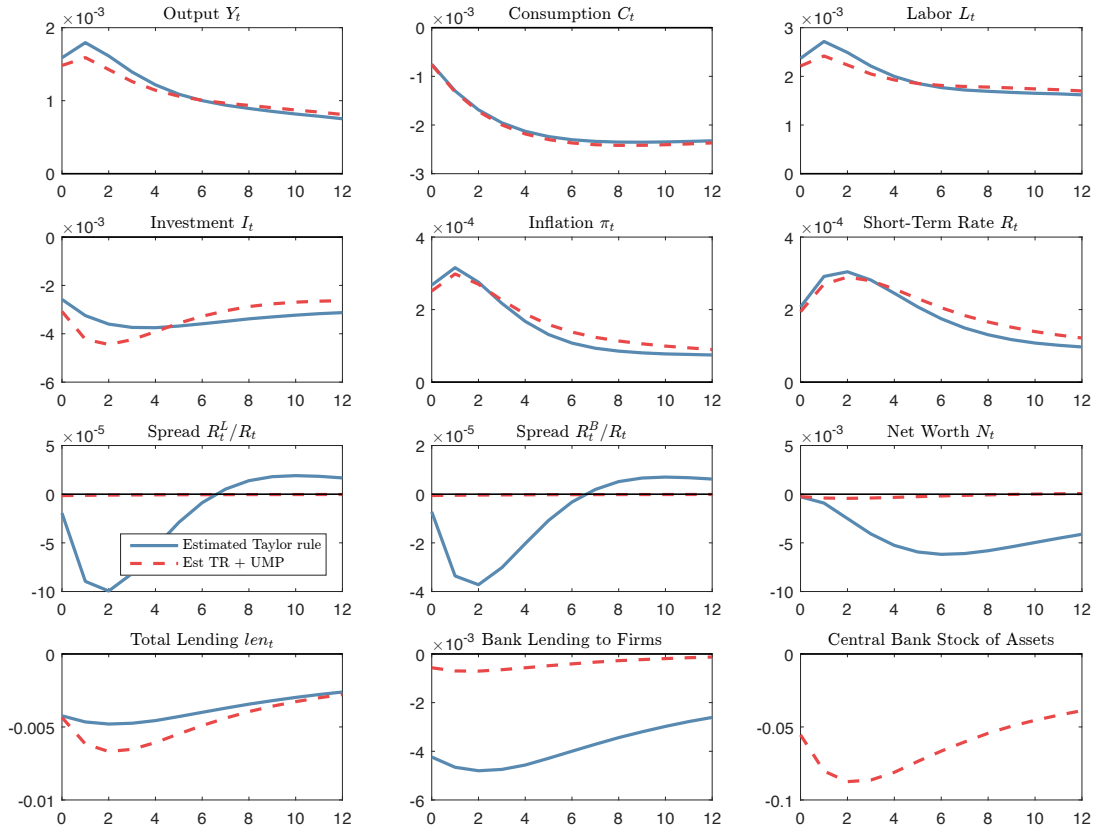


NOTE: The impulse responses are computed after taking a second-order approximation to the equilibrium conditions of the model.

of key variables, including consumption and hours, in a significant way.

Finally, we present the effects of a government spending shock (Figure 7). This shock does not increase government debt because lump-sum taxes adjust to keep debt constant. The effects of this shock are quite standard, and the introduction of financial frictions does not alter its effects. Specifically, the increase in government spending increases GDP and labor demand, but it crowds out consumption and investment. Inflation and short-term interest rates increase. The decline in investment leads to a reduction in lending, which, in turn, translates into lower spreads and reduces banks' net worth. When UMP is deployed, the effect is mostly felt on financial variables: spreads and bank capital are almost fully stabilized. However, the reaction of macroeconomic variables, and, in particular, the reaction of consumption and labor are extremely similar, which explains the small effect of UMP on welfare under demand shocks.

Figure 7: Impulse Response to a Government Consumption Shock



NOTE: The impulse responses are computed after taking a second-order approximation to the equilibrium conditions of the model.

6.2 Using Alternative Monetary Policy Rules

We have analyzed the role of UMP when monetary policy is conducted according to the estimated Taylor rule. Next, as a robustness exercise, we look at what happens when monetary policy follows two types of more optimal rules: (i) a strict inflation targeting rule and (ii) a policy aiming at targeting price and wage inflation. In this way, we can evaluate if there is a role for UMP when conventional monetary policy is conducted in a more optimal way. The results are presented in Tables 9 and 10.

Table 9: Optimal UMP Policy, Strict Inflation Targeting

Shocks	Policy	ρ_Ψ	γ_Ψ	\mathbb{W}_t	C.E. (in %)
All	Corp., $\bar{R}_t^L - R_t$	0.14	9.62	-553.83	1.45
Demand	Gov., $R_t^B - R_t$	0.84	1000000	-576.16	0.31
Supply	All	0	0	-553.67	0
Financial	Gov., $\bar{R}_t^L - R_t$	0.97	9163.7	-575.74	1.18

Under strict inflation targeting, the results are virtually unchanged: UMP matters and the welfare gains are exactly the same as under the estimated rule: 1.45 percent of lifetime consumption. These gains are still most important under financial shocks. However, two new results appear under a strict inflation targeting regime. First, the optimal UMP under supply shocks is to refrain from using it. Under the six possible alternatives, the coefficients are always zero. Second, with demand shocks, the welfare gains are slightly higher than under the estimated rule.

As a final robustness check, we study what happens under an optimized Taylor rule that targets both price and wage inflation. Since the model has price and wage stickiness, a Taylor rule that targets both price and wage inflation is optimal (see Erceg, Henderson and Levin, 2000).¹⁴ We find that in the estimated model, the optimized Taylor rule takes the form of:

$$\frac{R_t}{R} = \left(\frac{R_{t-1}}{R}\right)^{\gamma_R} \left(\frac{\pi_t}{\pi}\right)^{\gamma_\Pi(1-\gamma_R)} \left[\frac{\left(\frac{\tilde{W}_t}{\tilde{W}_{t-1}}\right) \exp(\Lambda_t)}{\exp(\Lambda)}\right]^{\gamma_W(1-\gamma_R)} \exp(\epsilon_{m,t})$$

where $\gamma_R = 0.00$, $\gamma_\Pi = 23403.33$, and $\gamma_W = 7784.26$.

In this case, the welfare improvements from using unconventional monetary policies become even more marginal. In fact, when all shocks are taken into account, the optimal unconventional policy is not to intervene. However, when the optimality of UMP is studied under a subset of shocks, it is still optimal to deploy it under demand or financial shocks, yet the effects are substantially lower than under the estimated Taylor rule or the strict inflation targeting rule.

¹⁴We also studied optimized Taylor rules that include output growth, but found that the optimal response to that variable is 0.

Table 10: Optimal UMP Policy, Price and Wage Inflation Targeting

Shocks	Policy	ρ_ψ	γ_ψ	W_t	C.E. (in %)
All	All	0	0	-554.49	0
Demand	Corp., $\bar{R}_t^L - R_t$	0.03	19128.8	-577.02	0.09
Supply	All	0	0	-553.67	0
Financial	Gov., $\bar{R}_t^B - R_t$	0	1.39	-580.25	0.17

To conclude, in this section we have shown that if monetary policy is conducted under a standard, estimated Taylor rule, then including a second policy instrument in the form of unconventional monetary policy can have sizable welfare effects, especially when the economy is hit by financial shocks. This result still holds when the central bank follows a strict inflation targeting rule with conventional monetary policy. Under a rule that targets price and wage inflation, the welfare effects are much smaller.

7 Conclusions

In this paper, we have examined whether the Fed should keep UMP in place once interest rates normalize, in a model with a banking sector that engages in maturity transformation and which is estimated using nonlinear techniques. We have studied one particular aspect of UMP, namely asset purchases of government and corporate bonds. We have found that the answer is affirmative: there are, indeed, welfare benefits from using these policies to address the effects of financial shocks to the economy. However, this main result comes with a few caveats. We have also found that under more traditional supply and demand shocks, the benefits of using UMP are much smaller. In this paper, we have made no attempt to quantify the possible costs of introducing UMP, such as less efficient intermediation by the central bank and interactions with fiscal policy stemming from central bank losses. It is quite likely that UMP should not be used under supply shocks, given its small benefits in this case. We have also found that providing credit to the private sector or purchasing government bonds has very similar effects on the economy. But, if purchases of government bonds entail lower (or no) costs compared with a policy of direct lending to the private sector, the former policy would be preferable to the latter.

Furthermore, it should be noted that our results do not necessarily apply to the euro area. Given the heterogeneity of the currency union and the fact that monetary policy is conducted by the Eurosystem, comprising all national central banks and the European Central Bank, costs and benefits of UMP might differ among its member states and UMP might have further undesirable side effects such as pronounced adverse effects on fiscal policy. We leave this question on the welfare effects of UMP conducted by national central banks in a currency union open for further research.

References

- An, S. and F. Schorfheide (2007). Bayesian Analysis of DSGE Models. *Econometric Reviews* 26(2-4), 113–172.
- Andreasen, M. M., M. Ferman, and P. Zabczyk (2013). The Business Cycle Implications of Banks Maturity Transformation. *Review of Economic Dynamics* 16(4), 581–600.
- Andreasen, M. M., J. Fernández-Villaverde, and J. F. Rubio-Ramírez (2016). The Pruned State-Space System for Non-Linear DSGE Models: Theory and Empirical Applications. *Mimeo, University of Pennsylvania*.
- Calvo, G. (1983). Staggered Prices in a Utility-Maximizing Framework. *Journal of Monetary Economics* 12(3), 383–398.
- Carlstrom, C. T., T. S. Fuerst, and M. Paustian (2016). Targeting Long Rates in a Model with Segmented Markets. *American Economic Journal: Macroeconomics*. forthcoming.
- Chen, H., V. Cúrdia, and A. Ferrero (2012). The Macroeconomic Effects of Large-scale Asset Purchase Programmes. *The Economic Journal* 122(564), F289–F315.
- Christiano, L. J. and M. Eichenbaum (1992, June). Current Real-Business-Cycle Theories and Aggregate Labor-Market Fluctuations. *American Economic Review* 82(3), 430–50.
- Christiano, L. J., R. Motto, and M. Rostagno (2014, January). Risk Shocks. *American Economic Review* 104(1), 27–65.
- Cúrdia, V. and M. Woodford (2011). The Central-Bank Balance Sheet as an Instrument of Monetary Policy. *Journal of Monetary Economics* 58(1), 54–79.
- Del Negro, M., G. Eggertsson, A. Ferrero, and N. Kiyotaki (2016, May). The Great Escape? A Quantitative Evaluation of the Fed’s Liquidity Facilities. NBER Working Papers 22259, National Bureau of Economic Research, Inc.
- Del Negro, M. and C. A. Sims (2015). When does a central bank’s balance sheet require fiscal support? *Journal of Monetary Economics* 73(C), 1–19.
- Eggertsson, G. B. and M. Woodford (2003). The Zero Bound on Interest Rates and Optimal Monetary Policy. *Brookings Papers on Economic Activity* 34(1), 139–235.
- Ellison, M. and A. Tischbirek (2014). Unconventional Government Debt Purchases as a Supplement to Conventional Monetary Policy. *Journal of Economic Dynamics and Control* 43, 199–217.
- Erceg, C. J., D. W. Henderson, and A. T. Levin (2000). Optimal Monetary Policy with Staggered Wage and Price Contracts. *Journal of Monetary Economics* 46(2), 281–313.
- Fama, E. F. (1970). Efficient Capital Markets: A Review of Theory and Empirical Work. *The Journal of Finance* 25(2), 383–417.

- Fernández-Villaverde, J. and J. F. Rubio-Ramírez (2007). Estimating Macroeconomic Models: A Likelihood Approach. *Review of Economic Studies* 74(4), 1059–1087.
- Fratzscher, M., M. L. Duca, and R. Straub (2016, May). ECB Unconventional Monetary Policy: Market Impact and International Spillovers. *IMF Economic Review* 64(1), 36–74.
- Gagnon, J., M. Raskin, J. Remache, and B. Sack (2011). The Financial Market Effects of the Federal Reserve’s Large-Scale Asset Purchases. *International Journal of Central Banking* 7(1), 3–43.
- Gertler, M. and P. Karadi (2011). A Model of Unconventional Monetary Policy. *Journal of Monetary Economics* 58(1), 17 – 34.
- Gertler, M. and P. Karadi (2013, January). QE 1 vs. 2 vs. 3. . . : A Framework for Analyzing Large-Scale Asset Purchases as a Monetary Policy Tool. *International Journal of Central Banking* 9(1), 5–53.
- Gertler, M. and N. Kiyotaki (2010). Financial Intermediation and Credit Policy in Business Cycle Analysis. In B. M. Friedman and M. Woodford (Eds.), *Handbook of Monetary Economics*, Volume 3, pp. 547–599. Elsevier.
- Greenspan, A. (2005). Federal Reserve Board’s semiannual Monetary Policy Report to the Congress. *Before the Committee on Banking, Housing, and Urban Affairs, U.S. Senate February 16, 2005*.
- Hall, R. E. and R. Reis (2015, May). Maintaining Central-Bank Financial Stability under New-Style Central Banking. NBER Working Papers 21173, National Bureau of Economic Research, Inc.
- Ivashina, V. and D. Scharfstein (2010). Bank lending during the financial crisis of 2008. *Journal of Financial Economics* 97(3), 319–338.
- Justiniano, A., G. Primiceri, and A. Tambalotti (2011, January). Investment Shocks and the Relative Price of Investment. *Review of Economic Dynamics* 14(1), 101–121.
- Justiniano, A., G. E. Primiceri, and A. Tambalotti (2013, April). Is There a Trade-Off between Inflation and Output Stabilization? *American Economic Journal: Macroeconomics* 5(2), 1–31.
- Krishnamurthy, A. and A. Vissing-Jorgensen (2011). The Effects of Quantitative Easing on Interest Rates: Channels and Implications for Policy. *Brookings Papers on Economic Activity* 43(2), 215–287.
- Lenza, M., H. Pill, and L. Reichlin (2010). Monetary Policy in Exceptional Times. *The Economic Policy* 25(4), 295–339.
- McGough, B., G. D. Rudebusch, and J. C. Williams (2005, July). Using a long-term interest rate as the monetary policy instrument. *Journal of Monetary Economics* 52(5), 855–879.

- Reiter, M., T. Sveen, and L. Weinke (2013). Lumpy Investment and the Monetary Transmission Mechanism. *Journal of Monetary Economics* 60(7), 821–834.
- Rotemberg, J. J. (1982). Monopolistic Price Adjustment and Aggregate Output. *The Review of Economic Studies* 49(4), 517–531.
- Ruge-Murcia, F. J. (2007, August). Methods to estimate dynamic stochastic general equilibrium models. *Journal of Economic Dynamics and Control* 31(8), 2599–2636.
- Smets, F. and R. Wouters (2003, 09). An Estimated Dynamic Stochastic General Equilibrium Model of the Euro Area. *Journal of the European Economic Association* 1(5), 1123–1175.
- Smets, F. and R. Wouters (2007, June). Shocks and Frictions in US Business Cycles: A Bayesian DSGE Approach. *American Economic Review* 97(3), 586–606.
- Sveen, T. and L. Weinke (2007, September). Lumpy investment, sticky prices, and the monetary transmission mechanism. *Journal of Monetary Economics* 54(Supplement), 23–36.
- Thornton, D. L. (2012). Greenspan’s Conundrum and the Fed’s Ability to Affect Long-Term Yields. Federal Reserve Bank of St. Louis Working Paper Series 2012-036.
- Wallace, N. (1981). A Modigliani-Miller Theorem for Open-Market Operations. *American Economic Review* 71(3), 267–274.
- Woodford, M. (2001, August). Fiscal Requirements for Price Stability. *Journal of Money, Credit and Banking* 33(3), 669–728.