

Irlacher, Michael; Baumgarten, Daniel; Koch, Michael

**Conference Paper**

## Short- versus long-run effects of offshoring when sectors are heterogeneous

Beiträge zur Jahrestagung des Vereins für Socialpolitik 2017: Alternative Geld- und Finanzarchitekturen - Session: Postersession, No. P00-V11

**Provided in Cooperation with:**

Verein für Socialpolitik / German Economic Association

*Suggested Citation:* Irlacher, Michael; Baumgarten, Daniel; Koch, Michael (2017) : Short- versus long-run effects of offshoring when sectors are heterogeneous, Beiträge zur Jahrestagung des Vereins für Socialpolitik 2017: Alternative Geld- und Finanzarchitekturen - Session: Postersession, No. P00-V11, ZBW - Deutsche Zentralbibliothek für Wirtschaftswissenschaften, Leibniz-Informationszentrum Wirtschaft, Kiel, Hamburg

This Version is available at:

<https://hdl.handle.net/10419/168272>

**Standard-Nutzungsbedingungen:**

Die Dokumente auf EconStor dürfen zu eigenen wissenschaftlichen Zwecken und zum Privatgebrauch gespeichert und kopiert werden.

Sie dürfen die Dokumente nicht für öffentliche oder kommerzielle Zwecke vervielfältigen, öffentlich ausstellen, öffentlich zugänglich machen, vertreiben oder anderweitig nutzen.

Sofern die Verfasser die Dokumente unter Open-Content-Lizenzen (insbesondere CC-Lizenzen) zur Verfügung gestellt haben sollten, gelten abweichend von diesen Nutzungsbedingungen die in der dort genannten Lizenz gewährten Nutzungsrechte.

**Terms of use:**

*Documents in EconStor may be saved and copied for your personal and scholarly purposes.*

*You are not to copy documents for public or commercial purposes, to exhibit the documents publicly, to make them publicly available on the internet, or to distribute or otherwise use the documents in public.*

*If the documents have been made available under an Open Content Licence (especially Creative Commons Licences), you may exercise further usage rights as specified in the indicated licence.*

# Short- versus long-run effects of offshoring when sectors are heterogeneous\*

Daniel Baumgarten                      Michael Irlacher                      Michael Koch  
University of Munich<sup>†</sup>                      University of Munich<sup>‡</sup>                      University of Bayreuth<sup>§</sup>

March 1, 2017

## Abstract

We analyze the effects of offshoring across sectors with different shares of offshorable tasks. Our main result suggests that, when sectors are linked in general equilibrium, a reduction in labor demand will not only occur in offshoring-intensive sectors but also in sectors with a low share of offshorable tasks. To derive this result, we set up a GOLE model with a continuum of sectors that differ in their intensity of offshorable tasks. In this framework, offshoring leads to heterogeneous profits across sectors with firms in offshoring-intensive industries gaining relative to their counterparts in non-offshoring sectors. In the long-run, capital is mobile and will be re-invested towards high profitable industries. This leads to firm entry (exit) in sectors with a high (low) share of offshorable tasks and generates a hump-shape pattern of employment across sectors. While offshoring-intensive industries face a reduction in employment because of the relocation effect, labor demand in sectors with a high prevalence of domestic production falls because of rising domestic wages in general equilibrium and firm exits. Hence, our model predicts positive employment effects only for industries with a medium share of offshorable tasks. To take this prediction to the data, we focus on Germany and use the fall of the Iron Curtain as a natural experiment, which greatly increased the opportunities of German firms to engage in offshoring. Using high-quality administrative data, we find strong empirical support for the hump-shape in the change of employment across industries with different scopes for offshoring.

*Keywords:* General oligopolistic equilibrium; Task offshoring; Offshoring and employment

*JEL Classification:* F12, F16, F23, J23, L13

---

\*We thank Hartmut Egger, Ingo Geishecker, Udo Kreickemeier, Jens Wrona and participants at European Trade Study Group in Helsinki, IO-Trade Seminar in Munich, Workshop International Economics in Goettingen and the Junior Faculty Retreat in Munich for their helpful comments. Michael Irlacher thanks the German Science Foundation (DFG grant number EC 216/7-1) for financial support.

<sup>†</sup>Department of Economics, University of Munich; e-mail: daniel.baumgarten@econ.lmu.de

<sup>‡</sup>Department of Economics, University of Munich; e-mail: michael.irlacher@econ.lmu.de

<sup>§</sup>Department of Law and Economics, University of Bayreuth; e-mail: michael.koch@uni-bayreuth.de

# 1 Introduction

The allocation of resources across firms and industries is essential for countries to absorb shocks and sustain economic growth. One of the main challenges during the past decades was offshoring, i.e. the fragmentation of the production process across borders to source intermediate inputs from many different countries (Yi, 2003). From the perspective of workers, offshoring generates substantial endogenous mobility (“push effects”) out of the exposed sectors in the short-run and leads to differences in employment and wages across industries.<sup>1</sup> From the perspective of firm owners, offshoring induces inter-sectoral reallocation of capital in the long-run, triggered by a business stealing effect towards industries which benefit above average from offshoring (“push effects”).<sup>2</sup> While net changes in factor demand across industries following trade liberalization is the core of traditional trade models, less attention is drawn on the sectoral heterogeneity in the possibilities to offshore and its implications in a general equilibrium framework.<sup>3</sup> Investigating how offshoring leads to inter- and intra-industry reallocation of workers and capital in the short and long-run and the consequences for sector specific employment and competition and overall welfare is the aim of this paper.

We document a substantial heterogeneity in the potential prospects for offshoring across industries within an economy.<sup>4</sup> We employ German social security data from the Institute for Employment Research (IAB) for the period 1975-2014. At the individual level our sample contains a 2% sample of workers covered by social security including occupation (4-digit level) and industry (5-digit level) information. At the plant level, we use the Establishment History Panel covering 50% of establishments including industry and entry and exit information. This information can be merged with occupation specific indicators of task contents (“offshorability”) and industry specific trade flow data (e.g. intermediate goods imports). We follow the definition of Blinder and Krueger (2013), to quantify the offshorability at the occupation level, which is finally used to generate a measure of offshorability at the industry level.

We build on the general oligopolistic equilibrium model (GOLE) introduced by Neary

---

<sup>1</sup>For instance, Dauth et al. (2016) document substantial reallocation of workers across industries for Germany after the fall of the Iron Curtain and after China entering the WTO. Artuç and McLaren (2015) point to the importance of a worker’s industry and occupation when determining who is affected from shocks relying on US Data. Furthermore, recent empirical work on job switching provides quite substantial movements of workers among industries. For instance, workers in the United States change 1-digit industries at rates of between 13% (Kambourov and Manovskii, 2008) and 20% (Parrado et al., 2007) a year.

<sup>2</sup>Looking at the hard disk drive industry, Igami (2017) documents that due to a competitive pressure “the incentives to offshore increase as more rivals offshore: offshoring breeds offshoring” (p. 5) thereby reducing prices and market shares of competing firms.

<sup>3</sup>See the discussion to the related literature below.

<sup>4</sup>Becker and Muendler (2015) and Hummels et al. (2016) also find significant variation across industries in the level and growth of intermediate imports.

(2016), to investigate offshoring effects in a multi-sector model. In our setting the home country consists of a continuum of sectors, where each sector produces a homogenous final good under Cournot competition. Labor is the only variable factor of production and can freely move among industries. As documented in the first step, sectors differ in the intensity of routine and non-routine tasks and thus in the opportunities to offshore parts of the production process to a low wage country. To keep the analysis tractable, we assume that the foreign economy just serves as a big labor reservoir for routine task production and foreign labor income is solely spend on freely tradable final goods, while final goods are exclusive assembled at home.<sup>5</sup> In contrast to Neary (2016), firm entry is endogenous in our setting. Thereby, we follow Egger and Etzel (2014) and assume that setting up a firm requires one fixed unit of capital and capital owners receive profits made by the firm.

In the closed economy all sectors are fully symmetric with respect to their unit production costs, as all routine and non-routine tasks must be performed domestically. Since profits decline in the number of competitors within an industry, firm number is the same in all sectors to make capital owners indifferent in their investment decision and we end up in a “featureless economy” (cf. Neary 2003). When allowing for offshoring routine tasks to a low-wage country, production costs vary among industries. The magnitude in cost-differences depend beside trade costs to ship tasks among countries on the size of the foreign labor force, which affects offshore production costs in a general equilibrium setting. The impact of offshoring can be decomposed into three different channels: (i) a reallocation effect, which captures the substitution of domestic routine task employment by foreign workers, (ii) a productivity effect, as offshoring firms produce at lower marginal costs and (iii) a market size effect, arising from additional demand for domestic produced freely tradable final goods by foreign workers.

In the short-run, i.e. for given allocation of capital and thus symmetric firm number in all sectors, opening the economy leads to changes in profits among industries.<sup>6</sup> While profits unambiguously increase in high offshoring intensive industries, sectors with a small share of routine task production may see their profits declining in a general equilibrium framework, when the productivity effect is stronger than the reallocation effect. In the long-run, we allow capital owners to de- and reinvest which results in a reallocation of capital towards high offshoring intensive, i.e. high profit industries. As profits negatively depend on the number of competitors within an industry, the business stealing effect leads to a

---

<sup>5</sup>A similar parsimonious modeling of the foreign economy can be found in Egger et al. (2015) in the context of offshoring.

<sup>6</sup>The endogeneity of capital investment as a criterion to distinguish the long-run from the short-run is common in the literature (see, for instance, Blanchard and Giavazzi, 2003) and is also used by Egger and Etzel (2014) to introduce firm entry and exit in the long run in the GOLE framework.

decline (increase) in profits in high (low) offshoring intensive industries and, in equilibrium, to symmetric profits over all sectors.

After fully characterizing the general equilibrium in the short and long-run, we investigate the labor market effects of offshoring. Sector specific employment depends on a complex interplay among the three different offshoring channels. In high offshoring intensive industries, the reallocation effect dominates the productivity and market size effect and leads to job losses. Similar affects arise in low-offshoring intensive industries, where the reallocation effect is not present by construction but are a result of falling outputs and profits due to higher domestic production cost. Contrary, in medium offshoring intensive industries, labor demand increases as the market size and productivity effect outweigh the reallocation effect. To put it differently, our model predicts a hump-shape in employment growth depending on the routine task production of industries.

By introducing endogenous firm entry and exit we can also disentangle the short and long-run effects from offshoring. Thereby offshoring leads to substantial reallocation of workers from high- and low-offshoring intensive industries, towards industries with a medium share of routine tasks in the short-run. In the long-run, aggregate labor demand within an industry is unaffected by the reallocation of capital. However, the exit and entry of firms leads to intra-industry reallocation of workers. Hence, our model predicts strong push and pull effects of workers across industries in the short-run and within industry worker movements in the long-run. Furthermore, the inter-sectoral reallocation of capital towards offshoring intensive industries mitigates the (positive) productivity effect on wages and welfare in the long-run.

Finally, we take the key predictions of our stylized two-country model of offshoring to the data and use the fall of the Iron Curtain as a natural experiment for Germany. Thereby, Germany is well suited to study the labor market effects of offshoring as the reallocation of production of Germany to Central and Eastern Europe increased rapidly in the aftermath of the fall of the Iron Curtain (e.g. Geishecker, 2006; Marin 2006; Dustmann et al., 2014). We use the pre-fall distribution of occupations across (West) German industries as a proxy for the sector-specific offshorability and investigate how differences in offshorability affect changes in total employment, worker reallocation and establishment entry and exit. Looking at employment growth, we find a statistically significant hump-shape as predicted by our theory. Thereby the differential impact of offshorability on the change in sector employment is even more pronounced when expanding the period of time before and after the fall of the Iron Curtain.

By investigating the labor market effects of offshoring our paper contributes to a large literature on offshoring in general equilibrium models. Thereby, the discussion has mostly focused on labor-market outcomes (e.g. skill premium, job destruction) by modification of

traditional trade models (Feenstra and Hanson 1997, Grossman and Rossi-Hansberg 2008, Burstein and Vogel 2010) or more recently, trade models with firm heterogeneity (e.g. Antras and Helpman 2004, Antras et al. 2006, Egger et al. 2015). Thereby, positive labor and welfare effects are more likely, if the productivity effect dominates the reallocation effect, the two major effects of offshoring that have been identified in the literature. However, in spite of nearly two decades of research on offshoring, less attention is drawn on sectoral heterogeneity in the possibilities to offshore. This paper aims to fill this gap by investigating how labor and welfare effects arising from offshoring vary if one takes sectoral differences in offshoring into account. To be more specific, as capital owners shift the resources towards sectors which benefit above average from offshoring, we show that existing models exaggerate the productivity effect by ignoring inter-sectoral reallocation in the long-run. Furthermore, due to the exit of firms in non-offshoring sectors, labor markets effects arise even in sectors, where one would not expect any.

Building on the general oligopolistic equilibrium model introduced by Neary (2016), our model contributes to a growing literature, that investigates labor market effects in a GOLE setting (see, for instance, Bastos and Kreickemeier 2009, Egger and Etzel 2012, Egger and Koch 2012). However, in all of these papers globalization is captured by trade in final goods and less attention is drawn on trade in intermediates (or tasks).<sup>7</sup> Thereby, the model is especially well equipped to study the implications of offshoring. First, it provides a general equilibrium setting to study labor market and welfare effects of offshoring. Second, it allows us to incorporate sectoral heterogeneity arising from differences in non-routine and routine task requirements among industries in a tractable way. And, thirdly, it allows for strategic interaction among firms within an industry. A prerequisite to endogenize firm entry and exit to study the implications of offshoring on the competitive environment (e.g. market shares, mark-ups ) within industries.<sup>8</sup>

## 2 Model setup

In this section, we introduce a simple model of offshoring and embed it into a general oligopolistic equilibrium (GOLE) framework. There are two countries Home ( $H$ ) and Foreign ( $F$ ), whereas  $H$  is the source and  $F$  is the host country of offshoring. Running a firm requires capital which we assume is available only in  $H$ . This implies that all firm headquarters are

---

<sup>7</sup>One exception here is Eckel and Irlacher (2017). However, there focus is on product line relocations within multi-product firms and emphasize substantial differences among multi- and single-product firms.

<sup>8</sup>Finally, by taking the key predictions to the data our paper contributes to a large empirical literature that investigates the labor market effects of offshoring. see Hummels et al. (2016) for an excellent survey of the literature.

located in  $H$ . Foreign workers can only be employed by  $H$  firms to produce offshored tasks. They receive labor income which in turn is spent on final products of country  $H$ .

Our economy consists of a continuum of sectors, whereas each sector consists of a finite number of competing firms. To produce one unit of output, firms combine non-routine and routine tasks, whereas only the latter is offshorable. Since we are interested in sector heterogeneity with respect to the prospects for offshoring, the share of routine and non-routine tasks, respectively, varies across sectors. Within a sector, firms are identical and make use of the same technology. Further, we assume that workers are homogeneous and mobile across sectors. Finally, wages are determined at the economy-level such that firms take factor prices both in  $H$  and  $F$  as given.

In the following steps, we describe consumer preferences as well as firm technology and characterize an autarky equilibrium without offshoring. Then  $F$  enters the economy and offshoring opportunities arise. In our analysis of opening the economy, we distinguish between short-run and long-run adjustments. While the allocation of firms across sectors is fixed in the short-run, capital and, hence, firms are mobile in the long-run. Therefore, capital is reallocated in the long-run and flows towards high profitable sectors.

## 2.1 Preferences

We assume an additively separable utility function defined over a continuum of sectors on the unit interval. Each sector  $z$  produces a different variety. Consumer  $c$  maximizes utility

$$U[x_c(z)] = \int_0^1 \left[ ax_c(z) - \frac{1}{2}b(x_c(z))^2 \right] dz \quad (1)$$

subject to a budget constraint  $\int_0^1 p(z)x_c(z) dz \leq I_c$  where  $p(z)$  denote price of variety  $z$  and  $I_c$  is consumer  $c$ 's income. Solving the utility maximization problem yields the following individual inverse demand function

$$p(z) = \frac{1}{\lambda_c} (a - bx_c(z)) \quad (2)$$

where  $\lambda_c = \frac{a\sigma_1 - bI_c}{\sigma_2}$  denotes the marginal utility of income of consumer  $c$ . The latter depends on the first and second moments of prices:  $\sigma_1 = \int_0^1 p(z) dz$  and  $\sigma_2 = \int_0^1 p(z)^2 dz$ .

We derive total demand  $x(z)$  by aggregating over  $L$  workers and  $K$  capital owners. The inverse demand is equal to

$$p(z) = \frac{1}{\lambda} (a'_{aut} - bx(z)), \quad (3)$$

where  $a'_{aut} = (K + L) a$ ,  $\lambda = \sum_c \lambda_c = (a' \sigma_1 - bI) / \sigma_2$  and  $I = \sum_c I_c = wL + \int_0^1 n(z) \pi(z) dz = \sum_c \int_0^1 p(z) x_c(z) dz = (L + K) \int_0^1 p(z) x_c(z) dz$ . Throughout our analysis we assume participation and non-satiation.<sup>9</sup> In the following we choose  $\lambda = 1$  as the numéraire.

## 2.2 Firms and technology

Each industry is characterized by an endogenous number of firms  $n(z)$  producing a homogeneous product. In each sector, firms use an identical technology, however technologies vary across sectors. Firms use labor to produce output and invest one unit of capital to start production. While producers take into account their impact on price  $p(z)$ , they ignore their impact on economy-wide variables. The profit of firm  $i$  in sector  $z$  is equal to:

$$\pi_i(z) = (p(z) - c(z)) y_i(z). \quad (4)$$

Firms maximize profits with respect to output under Cournot competition. The first order condition for scale is given by  $\frac{\partial \pi_i(z)}{\partial y_i(z)} = p(z) - c(z) + \frac{\partial p(z)}{\partial y_i(z)} y_i(z) = 0$ . By symmetry  $y_i(z) = y_j(z) = y(z)$  and per firm output is given by

$$y(z) = \frac{a'_{aut} - c(z)}{b(n(z) + 1)}. \quad (5)$$

Substituting into inverse demand in equation (3) gives optimal prizes in sector  $z$

$$p(z) = \frac{a'_{aut} + n(z) c(z)}{n(z) + 1}. \quad (6)$$

Finally, we derive markups and profits as

$$\mu = \frac{a'_{aut} - c(z)}{n(z) + 1} \quad (7)$$

$$\pi(z) = by(z)^2 \quad (8)$$

## 2.3 Equilibrium in autarky

Starting a firm, requires one unit of capital whereas  $K$  capital owners receive firm profits in return to their investment. Since capital owners maximize returns to investment, capital is allocated to sectors where profits are the largest. This implies that profits are equalized

---

<sup>9</sup>In the Appendix we specify a parameter constraint that guarantees participation and non-satiation of all consumers.



across sectors, i.e.  $\pi(z) = \pi$ . Capital market clearing requires

$$K = \int_0^1 n(z) dz = N. \quad (9)$$

Without opportunities for offshoring and cost symmetries across firms and sectors, we drop sector indices for the autarky equilibrium, i.e.  $n(z) = n$  and  $y(z) = y$ . Given the unit mass of industries, we get  $n = K$ . In autarky, there is only domestic production whereas costs to produce one unit of output are simply given by  $c(z) = c = w_{aut}$ . To compute domestic wages in autarky  $w_{aut}$ , we substitute (5) into the labor market clearing condition  $L = ny$  and derive

$$w_{aut} = a'_{aut} - \frac{b(n+1)L}{n} \quad (10)$$

Having computed the equilibrium wages, it is straightforward to compute the autarky equilibria for equations (5) - (8). We present results in table 1.

Table 1: Equilibrium outputs, prices, markups, and profits in autarky

Equilibrium values	Autarky
Outputs	$y_{aut} = \frac{L}{n}$
Price	$p_{aut} = a'_{aut} - bL$
Markup	$\mu_{aut} = \frac{bL}{n}$
Profits	$\pi_{aut} = b \left(\frac{L}{n}\right)^2$

## 2.4 Open economy

In the open economy, there is a potential offshoring destination  $F$  with  $L^*$  workers. Since there is no foreign capital, and capital can not cross borders, there are no foreign located firms. Therefore, workers in  $F$  can only be employed in offshored task activities of domestic firms. In the absence of offshoring, there is no employment in the foreign country and foreign wage income falls to zero. In the open economy final goods are consumed by domestic ( $K+L$ ) and foreign ( $L^*$ ) consumers. We abstract from any international shipment costs. Inverse demand is similar to equation (3) in the closed economy, however now  $a' = (K + L + L^*) a$ ,  $\lambda = \sum_c \lambda_c = (a'\mu - bI) / \sigma$  and  $I = \sum_c I_c = wL + \int_0^1 n(z) \pi(z) dz + w^* L^*$ .

To derive our results we proceed as follows. In a first step, we compare the extreme cases of autarky with the open economy. In a second step, we analyze a gradual decrease in offshoring costs. Within both cases, we distinguish between the short and long-run. In the short-run, we assume that capital is not mobile, i.e. there is no exit and entry of firms and the number of firms per sector is given by the allocation in the autarky scenario. In

the long-run, we allow for an endogenous entry and exit decision of firms such that capital moves into sectors where profits are the highest.

Domestic firms in sector  $z$  can relocate  $z$  percent of tasks to the low wage destination. Therefore, marginal production costs in sector  $z$  can be written as follows:

$$c(z) = z(w^*\tau) + (1 - z)w, \quad (11)$$

where  $\tau$  denotes iceberg-type transport costs to ship foreign produced tasks to the domestic country. The cost structure in equation (11) captures the idea, that sectors differ in the share of routine tasks and thus in the prospective cost savings from offshoring. In contrast to the closed economy, outputs, prices, markups and profits are now sector specific.

Since foreign workers earn a labor income that is spent on domestic products, opening the economy leads to a positive demand effect (larger  $a' > a'_{aut}$ ). This effect is the same across all sectors. However cost saving effects are sector-specific and depend on share of offshorable tasks  $z$ . In the following, we derive the short and long-run equilibrium of our framework, whereas the subscripts  $s$  and  $l$  indicate equilibrium expression in the short and long-run respectively.

### 2.4.1 Short-run equilibrium

In the short-run, firm number  $n$  is given by the autarky allocation. To derive the short-run equilibrium, we determine domestic and foreign wages by making use of the domestic- and foreign labor market clearing conditions:

$$L = \int_0^1 L(z) dz = \int_0^1 (1 - z)ny_s(z) dz, \quad (12)$$

$$L^* = \tau \int_0^1 L^*(z) dz = \tau \int_0^1 zny_s(z) dz. \quad (13)$$

By substituting optimal output (5) into the labor market clearing conditions, we compute equilibrium wages in the short-run as follows:<sup>10</sup>

$$w_s = a' + 2\frac{b(n+1)}{n} \left( \frac{L^*}{\tau} - 2L \right) \quad (14)$$

$$w_s^* = \frac{a' + 2\frac{b(n+1)}{n} \left( L - 2\frac{L^*}{\tau} \right)}{\tau} \quad (15)$$

---

<sup>10</sup>The proof of the existence of a unique equilibrium is provided in the Appendix.

Inspecting equation (14) shows that the domestic wage  $w_s$  rate decreases in domestic labor supply and increases in the size of effective foreign labor  $\frac{L^*}{\tau}$ . A larger pool of foreign labor implies lower foreign factor prices and higher cost savings from offshoring. Obviously, the latter increases the productivity effect of offshoring and thus increases domestic wages.

Now we are able to determine the equilibrium outcomes of equation (5) - (8) in the short-run. Since offshoring opportunities differ across sectors, outputs, prices, markups, and profits are now sector-specific. We present results in Table 2.

Table 2: Equilibrium outputs, prices, markups, and profits in the short run

Equilibrium values	Open economy in the short-run
Outputs	$y_s(z) = \frac{2((2-3z)L - (1-3z)\frac{L^*}{\tau})}{n}$
Prices	$p_s(z) = a' + 2b(1-3z)\frac{L^*}{\tau} + 2b(3z-2)L$
Markups	$\mu_s(z) = \frac{2b((2-3z)L - (1-3z)\frac{L^*}{\tau})}{n}$
Profits	$\pi_s(z) = b\frac{4((2-3z)L - (1-3z)\frac{L^*}{\tau})^2}{n^2}$

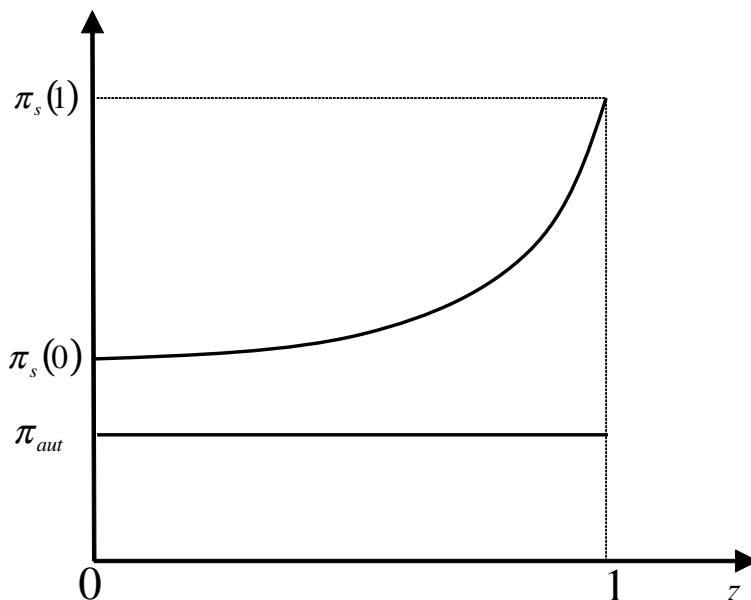
**Condition 1** *To ensure positive outputs in all sectors (i.e.  $y_s(0) > 0$ ) and incentives for efficiency seeking offshoring (i.e.  $w > w^*\tau$ ), we assume the following parameter restriction throughout our analysis:  $2L \geq \frac{L^*}{\tau} \geq L$ .*

Throughout our analysis, we will vary the size of foreign effective labor  $\frac{L^*}{\tau}$  within the upper and lower bound. This corresponds to changes in the potential cost savings from offshoring. With  $\frac{L^*}{\tau} = L$ , savings from offshoring vanish since  $w = w^*\tau$  which implies that firms in all sectors generate identical profits. However, as we will show, increasing  $\frac{L^*}{\tau}$  leads to sector-specific cost savings effects whereas offshoring-intensive sectors will benefit most.

**Proposition 1** *Since cost saving effects from offshoring increase in  $z$ , firms in offshoring-intensive sectors (higher  $z$ ) face lower production costs. This implies that firms in sectors with a higher share of offshorable tasks set lower prices, sell at a larger scale and earn higher markups, i.e.*

$$\frac{\partial p_s(z)}{\partial z} = -6b \left( \frac{L^*}{\tau} - L \right) < 0, \quad \frac{\partial y_s(z)}{\partial z} = \frac{6 \left( \frac{L^*}{\tau} - L \right)}{n} > 0, \quad \text{and} \quad \frac{\partial \mu_s(z)}{\partial z} = \frac{6b \left( \frac{L^*}{\tau} - L \right)}{n} > 0. \quad (16)$$

Figure 1: Profits across sectors



In the following, we investigate firm profits at the sector-level and compare the results to autarky. While profits are identical across sector in autarky, Figure 1 shows that firm profits are increasing in the offshoring intensity of a sector.<sup>11</sup>

Figure 1 depicts a case where all sectors gain from opening to offshoring because of the cost savings and the market size effect. However, our framework also captures cases in which some sectors may lose from opening despite the new opportunities from offshoring production. To gain intuition for this result, we compare profits in sector 0 with profits in autarky. Furthermore, we compute the difference in profits between sector 1 and sector 0.

$$\pi_s(0) - \pi_{aut} = \frac{b \left( 4 \left( 2L - \frac{L^*}{\tau} \right)^2 - L^2 \right)}{n^2} \quad (17)$$

$$\pi_s(1) - \pi_s(0) = 3 \left( \left( \frac{L^*}{\tau} \right)^2 - L^2 \right) \quad (18)$$

Evaluating (17) at the upper bound for the size of the foreign labor market  $\frac{L^*}{\tau} = 2L$ , we derive a result where sectors with low offshoring potentials lose from opening the economy:  $\pi_s(0) - \pi_{aut} = -\frac{bL^2}{n^2} < 0$ . In this example, sectors  $z \in [0; \frac{1}{6}]$  face lower profits whereas all other sectors gain. More generally, we are able to show that the difference in profits decreases

---

<sup>11</sup>To derive this figure, we compute the first and second derivative of  $\pi_s(z)$  with respect to  $z$ :  $\frac{\partial \pi_s(z)}{\partial z} = \frac{b}{n^2} \left[ 24 \left( (2-3z)L - (1-3z)\frac{L^*}{\tau} \right) \left( \frac{L^*}{\tau} - L \right) \right] > 0$  and  $\frac{\partial^2 \pi_s(z)}{\partial z^2} = \frac{72b}{n^2} \left( \frac{L^*}{\tau} - L \right)^2 > 0$ .

with falling offshoring costs  $\tau$ :

$$\frac{\partial (\pi_s(0) - \pi_{aut})}{\partial \tau} = \frac{8b \left(2L - \frac{L^*}{\tau}\right) \frac{L^*}{\tau^2}}{n^2} > 0. \quad (19)$$

The intuition behind these results is as follows: In sectors close to 0, only few tasks are offshorable and thus benefits from falling offshoring costs are moderate. However, those sectors are hurt by general equilibrium effects on the domestic labor market. Inspecting equation (14) shows that due to the productivity effect of offshoring, domestic wages increase when offshoring costs fall. This increase in domestic factor prices especially hits sectors where the share of domestic production is relatively high. The intuition that sectors are affected differently from opening the economy to offshoring, as well as from falling offshoring costs, is important for the understanding of capital movements in the long-run equilibrium. Since firm profits are not any longer equalized across all sectors, there are incentives for capital reallocations across industries.

Finally, we analyze the event of a gradual liberalization of offshoring costs  $\tau$ . Differentiating profits  $\pi_s$  with respect to  $\tau$  yields

$$\frac{\partial \pi_s(z)}{\partial \tau} = \frac{8b \left( (2-3z)L - (1-3z)\frac{L^*}{\tau} \right) (1-3z)L^*}{n^2 \tau^2} \gtrless 0. \quad (20)$$

Inspecting equation (20) shows that profits in sectors  $z \in [0; \frac{1}{3}[$  are reduced following a liberalization process, i.e.  $\frac{\partial \pi(z)}{\partial \tau} > 0$ , whereas firms in sectors  $z \in ]\frac{1}{3}; 1]$  expand profits. It is easily verified, that the same result holds true when differentiating markups  $\mu_s(z)$  with respect to  $\tau$ . Since we are interested in capital reallocations and thus firm movements across sectors, the latter result is of importance for our long-run analysis in the subsequent section.

**Proposition 2** *Falling offshoring costs lead to lower profits (mark-ups) in low offshoring-intensive sectors and higher profits (mark-ups) in high-offshoring intensive sectors.*

### 2.4.2 Long-run equilibrium

In the long-run, capital is mobile across sectors within the economy and will migrate towards sectors with higher profits. In equilibrium, capital moves until owners are indifferent, i.e. profits are equalized across all sectors. Since markups and profits are largest in offshoring-intensive sectors (see proposition 1), firms will enter these sectors and will exit low offshoring-intensive sectors.

To solve the equilibrium, we consider again the domestic and foreign labor market clearing conditions in equations (12) and (13) with the difference being that now firm number  $n(z)$

is sector-specific. Additionally, since we allow the firm allocation to differ from the autarky result, we make use of the capital market clearing condition (9) as well as the no arbitrage condition

$$\pi(z) = \pi = \pi(0). \quad (21)$$

Substituting profits into the latter condition, we determine the equilibrium number of firms in each sector  $z$

$$n(z) = \frac{(a' - w)n(0) + z(n(0) + 1)(w - w^*\tau)}{(a' - w)}, \quad (22)$$

whereas  $n(0)$  is the equilibrium number of firms in sector 0. In a next step, we substitute (22) into the capital market clearing condition (9) to derive the equilibrium number of firm in the purely domestic producing sector 0:

$$n(0) = \frac{2(a' - w)K - (w - w^*\tau)}{(2a' - w - w^*\tau)}. \quad (23)$$

From the discussion of Figure 1, we know that the firm number in sector 0 will be the lowest since profits are increasing in a sector's opportunity for offshoring  $z$ . Therefore, since short-run profits are the highest in offshoring intensive industries,  $n(z)$  is increasing in  $z$ .

To derive equilibrium wages in the long-run, we substitute equations (22) and (23) into the domestic- and foreign labor market clearing conditions in equations (12) and (13).

$$w_l = \frac{a'K - (4K + 1)bL + \frac{(2K-1)bL^*}{\tau}}{K} \quad (24)$$

$$w_l^* = \frac{a'K + (2K - 1)bL - \frac{(4K+1)bL^*}{\tau}}{\tau K} \quad (25)$$

Finally, we substitute equilibrium wages (24) and (25) back into equations (23) and (22), to derive the sector-specific equilibrium number of firms in terms of exogenous variables:

$$n(0) = \frac{2K(2L - \frac{L^*}{\tau})}{(L + \frac{L^*}{\tau})}, \quad (26)$$

$$n(z) = \frac{2K((2 - 3z)L - (1 - 3z)\frac{L^*}{\tau})}{(L + \frac{L^*}{\tau})}. \quad (27)$$

**Lemma 1** *In the long-run, the equilibrium number of firms per sector is an increasing function of  $z$  i.e.*

$$\frac{\partial n(z)}{\partial z} = \frac{6K(\frac{L^*}{\tau} - L)}{(L + \frac{L^*}{\tau})} > 0. \quad (28)$$

Since capital is mobile in the long-run, new firms are founded in the most expanding sectors while less expanding (or shrinking) sectors face firm exit. Considering the thought experiment of opening the economy from autarky to the long-run trade equilibrium, it is easily shown that the firm number in sector  $z = \frac{1}{2}$  is unchanged. Sectors with  $z < \frac{1}{2}$  lose firms, while sectors with  $z > \frac{1}{2}$  gain firms. This movement of firms ensures that the no arbitrage condition is fulfilled in the long-run equilibrium, leading to identical firm profits across all sectors:

$$\pi_l = \frac{b \left( L + \frac{L^*}{\tau} \right)^2}{K^2}. \quad (29)$$

In a next step, we analyze the effect of a gradual trade liberalization on the long-run equilibrium number of firms per sector. From the discussion of proposition 2 we know that falling offshoring cost increase profits in offshoring intensive sectors and decrease profits in sectors with predominantly domestic production. Hence, we can show that in sectors  $z > \frac{1}{2}$  the firm number increases whereas in sectors  $z < \frac{1}{2}$  the equilibrium number of firms falls.

**Proposition 3** *Falling offshoring costs increase profits in offshoring-intensive industries which attracts capital (firms) from sectors that produce predominantly with domestic labor, i.e.*

$$\frac{\partial n(z)}{\partial \tau} = 6K \frac{L^* L (1 - 2z)}{\tau^2 \left( L + \frac{L^*}{\tau} \right)^2} \leq 0. \quad (30)$$

So far, our analysis has shown that - in the short-run - offshoring leads to higher markups and profits in offshoring-intensive sectors. However, since capital is mobile in the long-run, new entrants increase competition in these sectors and compete away profits from incumbent firms. To shed more light on the effects of competition, we compute the average profits in the short-run

$$\tilde{\pi}_s = \frac{4b \left( L^2 + \left( \frac{L^*}{\tau} \right)^2 - L \frac{L^*}{\tau} \right)}{n^2} \quad (31)$$

and compare them to the average profits in the long-run (29):<sup>12</sup>

$$\tilde{\pi}_s - \pi_l = \frac{3b}{K^2} \left( \frac{L^*}{\tau} - L \right)^2 > 0. \quad (32)$$

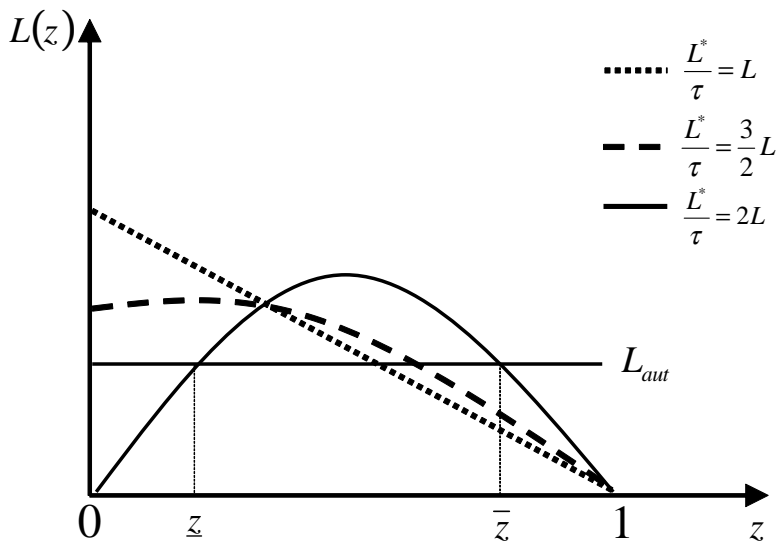
Equation (32) shows that average firm profits decrease in the long-run. The latter can be explained by competition that is intensified especially in formerly high profitable sectors.

**Lemma 2** *Average profits decrease in a comparison between the short- and long-run since competition between firms is intensified in sectors that are highly profitable in the short-run.*

---

<sup>12</sup>To compute the average profits in equation (31), we simply integrate the short run profits from Table 2 over the unit interval.

Figure 2: Labor demand across sectors



## 2.5 Labor market effects of offshoring

In this section, we focus on labor market effects in the presence of sector-specific opportunities for offshoring. In the short-run, opening the economy impacts domestic labor demand through three different channels: i) a relocation effect, ii) a productivity effect, and iii) a market size effect from additional foreign consumers. In the first part of this section, we start by comparing labor demand per sector in autarky versus the open economy. In the second part, we distinguish between the outcomes in the short and long-run equilibrium whereas we especially focus on the equilibrium wages in the two scenarios.

### 2.5.1 Labor demand in autarky versus the open economy

To investigate the impacts of offshoring in more detail, we compute the sector-specific labor demand

$$L(z) = 2(1-z) \left( (2-3z)L - (1-3z) \frac{L^*}{\tau} \right). \quad (33)$$

In Figure 2, we plot labor demand per sector in autarky  $L_{aut}$  as well as in the open economy  $L(z)$ . The latter is drawn for three different effective sizes of the foreign labor market  $\frac{L^*}{\tau}$  within the range of possible values that is predefined by Condition 1.

The dotted line represents a scenario without any cost saving effects of offshoring, since  $\frac{L^*}{\tau} = L$  implies  $w = w^*\tau$  such that production costs are identical in all sectors. In this case, per sector output is identical across all sectors and domestic labor demand decreases monotonically in  $z$ , whereas foreign labor demand is simply the mirror image of the domestic



one. In comparison to autarky,  $L(z)$  increases (decreases) in sectors  $z < \frac{1}{2}$  ( $z > \frac{1}{2}$ ). Starting from this edge case, where firms would be just indifferent whether to offshore production or not, we now increase step by step the effective supply of foreign labor (increase  $L^*$  or decrease  $\tau$ ). By doing so, we widen the gap between domestic and foreign wages which generates differential effects across sectors. The dashed line is drawn for intermediate cost savings from offshoring whereas the solid line represents a scenario where possible cost savings from offshoring are largest.

Given differences in factor prices and sector-specific cost savings, industries with enough routine tasks expand production whereas sectors which produce predominantly in the home country shrink compared to the case where  $\frac{L^*}{\tau} = L$ . The shrinkage of sectors which produce overwhelmingly with domestic labor is driven by general equilibrium effects on the domestic factor market. Since production becomes more efficient when foreign factor prices decrease, economy wide demand for labor increases because of the productivity effect. To ensure labor market equilibrium in  $H$ , domestic factor prices increase thereby hitting especially those sectors with a large share of domestic production. In the case of intermediate cost savings and thus intermediate factor price differences between  $H$  and  $F$  (dashed line), sector specific labor demand in mostly domestic sectors is still higher compared to autarky. The reason behind this result is the additional demand from foreign workers which outweighs the general equilibrium effects. However, if factor price differences are large between the two countries (solid line), the model predicts a hump-shaped pattern for the labor demand across sectors. In comparison to autarky, in sectors  $z \in [\underline{z}; \bar{z}]$  labor demand increases whereas sectors  $z \in [0; \underline{z}[$  and  $z \in ]\bar{z}; 1]$  decrease domestic labor. In industries with a high share of offshorable tasks, the reason for the reduced demand for domestic labor is straightforward: the relocation effect of offshoring. Predominantly domestic sectors i.e.  $z \in [0; \underline{z}[$  shrink since they are hit most by increasing domestic wages. The increase in the latter is especially large since the productivity effect of offshoring becomes stronger the larger is the foreign pool of labor. We summarize our findings in the following proposition.

**Proposition 4** *In a model with sector-specific offshoring costs, offshoring leads to a reallocation of workers across sectors. If cost saving effects of offshoring are high, the model predicts worker flows from the low and high offshoring-industries towards industries with an intermediate share of offshorable tasks. Given a larger pool of foreign workers, the productivity effect of offshoring effect becomes strong such that labor demand in predominantly domestic sectors is reduced due to rising domestic wages in general equilibrium. Sectors with a high share of offshorable tasks expand in outputs when cost saving effects are large, however due to the relocation effect, labor demand decreases compared to autarky.*

So far, we have analyzed the transition from autarky to the open economy, without elaborating differences between the short and long-run equilibrium. Equation (33) represent total employment in sector  $z$  and holds true for the short and long-run equilibrium. The difference between the two equilibria appears when we compute the labor demand per firm in the short and long-run:

$$l(z)_s = (1 - z) \frac{2 \left( 2L + 3z \frac{L^*}{\tau} - 3Lz - \frac{L^*}{\tau} \right)}{K}, \quad (34)$$

$$l(z)_l = (1 - z) \frac{\left( L + \frac{L^*}{\tau} \right)}{K}. \quad (35)$$

It is easily verified, that the labor demand per firm between the short and long-run equilibrium is unchanged in sector  $z = \frac{1}{2}$ . Reconsidering the discussion following Lemma 1, we already know that sectors  $z < \frac{1}{2}$  face firm exit since capital is moving towards sectors with  $z > \frac{1}{2}$ . The latter implies that competition is dampened in sectors  $z < \frac{1}{2}$  whereas it is intensified in sectors with  $z > \frac{1}{2}$ . Therefore, labor demand per firm is reduced in offshoring intensive sectors because of the business stealing effect and increased in predominantly domestic sectors because of a less competitive environment. These insights allow us to draw additional conclusions about the worker flows in the short and long-run equilibrium which we summarize in the following Lemma.

**Lemma 3** *Opening the economy for offshoring leads to reallocations of workers between sectors in the short-run. In the long-run, workers move between firms within sectors.*

### 2.5.2 Wages in the short and long-run analysis

In this section, we analyze the development of domestic wages in the short and long-run equilibrium. It is important to note, that wages should be interpreted as "real at the margin" (cf. Neary, 2002, 2016) and therefore, we cannot derive any welfare implications by simply interpreting changes in wages in the short and long-run separately. However, we can compare changes in wages between the short and long-run equilibrium. Comparing wages in equations (14) and (24), we observe higher wages in the short-run

$$w_s - w_l = \frac{3b \left( \frac{L^*}{\tau} - L \right)}{K} > 0, \quad (36)$$

whereas the gap widens, the larger are the cost savings from offshoring:

$$\frac{\partial (w_s - w_l)}{\partial \tau} = -\frac{3bL^*}{K\tau^2} < 0. \quad (37)$$

The intuition behind this result is as follows: The driving force behind rising wages in the short-run equilibrium is the productivity effect of offshoring. When offshoring opportunities improve, production becomes more efficient and demand for domestic labor increases because of rising sales. In the long-run, there is an opposing force since capital moves from predominantly domestic sectors towards offshoring-intensive industries. The latter reduces domestic labor demand since firms leave sectors with a large share of domestic production and enter industries with many offshore activities. To ensure a labor market equilibrium, domestic wages are reduced compared to the short-run scenario.

**Proposition 5** *In the long-run, domestic wages are reduced because of capital movements towards offshoring-intensive industries.*

## 3 Empirical analysis

### 3.1 Empirical Setting

To take some of the key predictions of the theoretical model to the data, we consider the (West) German experience in the wake of the fall of the Iron Curtain. This setting seems to be particularly fitting and empirically attractive for a number of reasons. First, the opening-up and economic transformation of these formerly socialist countries into market economies, most of which are just at Germany’s doorstep, greatly increased the opportunities of German firms to engage in cross-border production sharing. In the context of the theoretical model, this process can be interpreted as having led to a significant increase in the size of the foreign (low-wage) labor pool,  $L^*$ . Moreover, since these countries are close by, trade costs with them are considerably lower than trade costs with countries that can offer a similarly skilled and yet comparatively low-paid workforce such as, say, in “Factory Asia”. Also, trade costs further declined over time. Trade integration with the Central and Eastern European countries started with the Europe Agreements in the early and mid 1990s and culminated in the EU accession of several of these countries in the years 2004, 2007, and 2013.<sup>13</sup> Thus in the context of the model, this shock led to a decline in offshoring costs,  $\tau$ . Note that, from the perspective of the West German economy, German reunification had a very similar effect.

Previous research has indeed shown that offshoring of Germany to Central and Eastern Europe increased rapidly in the aftermath of the fall of the Iron Curtain and analysed some of its (labor market) consequences (e.g. Geishecker 2006; Marin 2006; Dustmann et al.,

---

<sup>13</sup>Estonia, Latvia, Lithuania, Poland, the Czech Republic, Slovakia, Slovenia, and Hungary joined in 2004; Bulgaria and Romania joined in 2007; and Croatia joined in 2013.

Figure 3: The development of offshoring over time

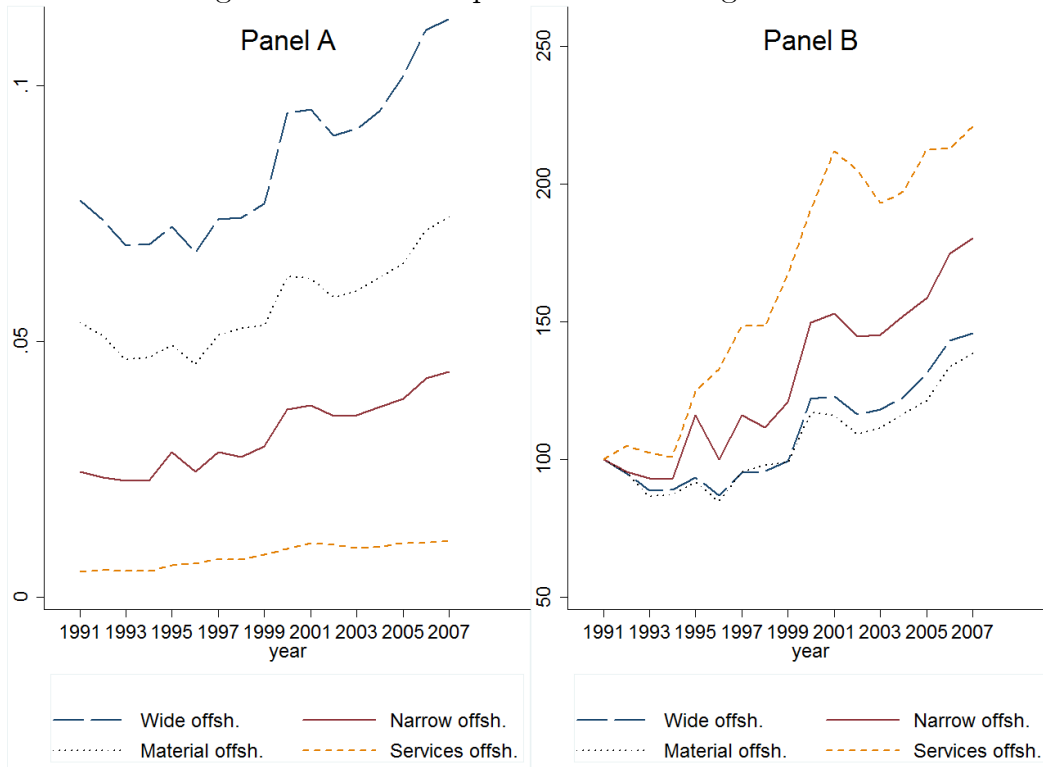


Figure 4:

2014). Also in an international comparison, Johnson and Noguera (forthcoming) highlight Germany as one example of an advanced economy with a particular large decrease in the value added to export (VAX) ratio, a measure of international production fragmentation, over the period 1970 to 2009 (without breaking this up by destination region, however). This decline was considerably larger than the ones experienced by, say, the US, Japan, the UK, or France over the same period of analysis.

Figure 4 further illustrates the increase in Germany's offshoring intensity over time, where the offshoring indicators are constructed from German input-output tables as the share of imported intermediates in (2-digit) industry total output.<sup>14</sup> Four different measures are constructed: Wide offshoring includes all imported intermediates from abroad; narrow offshoring restricts attention to imported intermediates from the same 2-digit industry; material offshoring only includes imported intermediates from manufacturing industries (NACE Rev. 1 codes 15–37) and services offshoring only imported intermediates from commercial service industries (NACE Rev. 1 codes 64–67 and 71–74) abroad. Panel A displays the development

<sup>14</sup>The figures display the output-weighted average over all 2-digit industries.

of the nominal values of these indices, while Panel B shows the growth of index values, where all measures have been normalized to 100 for the year 1991.<sup>15</sup> Offshoring stayed fairly flat or even slightly decreased up to the mid 90s, but increased substantially thereafter. There was another dip in the wake of the burst of the dotcom bubble in 2001, but the rise of offshoring continued from 2003 onwards. Overall, wide offshoring increased from 7.8% to 11.3% (by 46%) and narrow offshoring from 2.4% to 4.4% (by 80%). One can also see that services offshoring, while still of limited quantitative importance compared to material offshoring in level terms, had the largest growth rates between 1991 and 2007.

### 3.2 Empirical approach and specification

While the fall of the Iron Curtain constitutes an unforeseen shock to the West German economy as a whole, we exploit the fact that different industries were prepared to varying degrees to take advantage of the new offshoring opportunities due to their differences in the share of offshorable tasks.

Specifically, we relate industry-level labor market outcomes (several years) after the fall of the Iron Curtain to the pre-fall share of offshorable tasks. In line with the model’s prediction, we allow this effect to be non-linear. We estimate different versions of the following regression model

$$\Delta Y_{jh} = \alpha + \beta_1 \text{Offshorability}_{j,1988} + \beta_2 \text{Offshorability}_{j,1988}^2 + X'_{j,1988} \gamma + u_{jh} \quad (38)$$

where  $j$  denotes the 3-digit industry and  $h$  the time horizon. As our main outcome variable,  $\Delta Y_{jh}$ , we consider the change in log employment between 1988 and year  $1988 + h$ , where we let  $h$  vary up to a maximum of 26 (given that the final year of our sample is 2014). In addition to the quadratic term of *Offshorability*, whose exact construction we explain in the data section below, we include a rich set of start-of-period control variables,  $X_{j,1988}$ : a dummy that equals one if the industry is part of the manufacturing sector (such that we only exploit variation within the manufacturing and the non-manufacturing sectors, respectively); employment shares by age;<sup>16</sup> employment shares by education<sup>17</sup>; female employment share; foreign employment share; and a quadratic term of log total employment. To allow for a potential serial correlation of the error term within broader industry groups, we cluster

---

<sup>15</sup>Due to the limited availability of comparable input-output tables, these indices can only be constructed for the years 1991 to 2007. Moreover, they refer to the whole of (unified) Germany, while the subsequent empirical analysis will restrict attention to West Germany only.

<sup>16</sup>We distinguish 5 age groups: 18–25; 26–35; 36–45; 46–55; and 56–65.

<sup>17</sup>We distinguish 5 education groups: Missing; Lower secondary school or less without vocational training; Lower secondary school or less with vocational training; Abitur (with or without vocational training); University or more.

standard errors at the 2-digit industry level.

### 3.3 Data and measurement

#### 3.3.1 German social security data

The main data set used in the empirical analysis is the Sample of Integrated Employment Biographies (SIAB).<sup>18</sup> It is a 2-percent random sample of administrative social security records, which is assembled from different sources and provided by the Institute for Employment Research (IAB) at the German Federal Employment Agency.<sup>19</sup> The population is the universe of individuals who had one of the following statuses at least once during the observation period: employed in a job covered by social security; marginally employed (recorded from 1999 onwards); participation in an employment or training measure (recorded from 2000 onwards); receipt of benefits; registered as job seeker with the Federal Employment Agency (recorded from 2000 onwards). This includes roughly 80 percent of all German employees. Notable exceptions are the self-employed and civil servants. For the sampled individuals, the data set covers the entire employment biography with respect to the covered statuses and is exact to the day.

The information provided for the employment spells includes - apart from other characteristics - the occupation of the individual following the KldB1988 classification of the German Federal Employment Agency (Bundesanstalt für Arbeit, 1988). Furthermore, although the original industry classification changes a few times during the period of observation, the Research Data Centre of the German Federal Employment Agency provides a consistent series of (imputed) three-digit NACE Rev. 1 codes, which is used in the present analysis (cf. Eberle et al., 2011).

We restrict attention to regular workers between 18 and 65 years of age. That is, we discard apprentices, trainees, marginal employed in so-called “mini jobs”, home workers, individuals in partial retirement, as well as individuals who are currently on leave. The data set does not contain information on the hours of work, but only whether the job is part-time or full-time. We generate a measure of full-time equivalent workers by weighting observations in part-time jobs by 18/39 (and observations in full-time jobs by 1).

For our empirical analysis, we keep observations for the 30th of June of every year and aggregate the individual-level data at the 3-digit industry level.

---

<sup>18</sup>See Antoni, Ganzer and vom Berge (2016) for a detailed description of the data.

<sup>19</sup>The data set was first accessed during a stay at the Research Data Centre (FDZ) of the German Federal Employment Agency at the IAB and subsequently via controlled remote data processing.

### 3.3.2 Measuring offshorability

The literature pioneered by authors such as Levy and Murnane (2004), Leamer and Storper (2001), and Blinder (2006) has converged towards the notion that a job’s offshorability, i.e. its susceptibility to being relocated to a foreign country, does not primarily depend on the worker’s skill level, but rather on the type of tasks performed on the job. Since tasks are most closely related to the occupation of a worker, offshorability is typically treated as an occupation-level characteristic. Conforming to this literature, we approximate industry-level offshorability in a two-step procedure. First, we assign offshorability indicators to individual workers based on their disaggregate occupations. Second, we aggregate the individual-level data to the 3-digit industry level, thereby essentially exploiting the unequal distribution of occupations across industries. For our most parsimonious and preferred occupation-level offshorability measure, which is a 0/1 dummy distinguishing non-offshorable and offshorable occupations (as we explain below), the industry-level offshorability measure boils down to the share of offshorable jobs in an industry, measured prior to the fall of the Iron Curtain in 1988.

There are various different operationalizations of occupation-level offshorability indicators. Firpo, Fortin and Lemieux (2013) and Acemoglu and Autor (2011), among others, make use of the O\*NET database, which contains job content descriptions for detailed US SOC occupations. In the German setting, Spitz-Oener (2006) was the first to use the IAB/BIBB survey data to construct the five task content measures proposed by Autor, Levy and Murnane (2003), using information about the respondents’ job activities. These, however, were not directly designed to capture offshorability. Relying on the same data set, but using detailed information about the respondents’ workplace tools, Becker, Ekholm and Muendler (2013) have constructed measures of non-routine and personally interactive task content, respectively, and they have shown that offshoring activities of German multinationals are indeed associated with wage-bill shifts towards more non-routine and personally interactive tasks. Baumgarten, Geishecker and Görg (2013) have used the same measures to analyse heterogeneous wage effects of offshoring in the German manufacturing sector.

Finally, Blinder and Krueger (2013) develop various measures of offshorability for US occupations, making use of survey data and relying both on self-reporting and professional coders’ assessment.

We use Blinder and Krueger’s (2013) indicator based on professional coders’ assessment as our preferred measure of offshorability because it offers a number of advantages. First, it was specifically designed to capture whether the nature of the job “allows the work to be moved overseas *in principle*”. Thereby, secondly, this measure avoids a potentially too large overlap with other task indicators (such as routineness), which might also capture

Table 3: Pre-fall offshorability and changes in offshoring as well as displacement of offshorable jobs in 2-digit industries

	$\Delta$ Off. wide 1991-2007	$\Delta$ Off. narrow 1991-2007	$\Delta$ Off. material 1991-2007	$\Delta$ Off. services 1991-2007	$\Delta$ Share off. jobs 1988-2014
Offshorability	0.100*** (0.030)	0.062*** (0.023)	0.071*** (0.030)	0.020 (0.012)	-0.243*** (0.066)
Observations	57	57	57	57	59
R squared	0.17	0.12	0.09	0.04	0.19

Notes: \*  $p < 0.10$ , \*\*  $p < 0.05$ , \*\*\*  $p < 0.01$ .

Standard errors given in parentheses. Offshorability is measured by the share of offshorable occupations in the industry, where offshorable occupations are defined as being in the (employment-weighted) top 25% of the Blinder-Krueger offshorability score in 1988.

susceptibility to automation (cf. Autor, 2013). Third, Goos, Mannings and Salomons (2014) have used this measure before in a European context and have found that it correlates well (and better than alternative measures) with actual offshoring activities.

In practical terms, we have mapped the US SOC based indicator into the German 3-digit KldB1988 classification applying a series of cross-walks (similar to Goos et al., 2014). Originally, the variable is measured on a 5-point scale, where 1 denotes occupations that are “not offshorable” and 5 denotes occupations that are “easily offshorable”. After applying the various cross-walks which sometimes involve a many-to-many mapping and therefore give rise to a weighted average, this clean 5-point scale is slightly blurred in the German occupational data. We therefore use two operationalizations of this measure. As a first alternative, we standardize the measure such that it has a zero mean and a unit standard deviation in our individual-level data. As a second alternative, we convert the offshorability measure in a 0/1 dummy variable such that the top 25% (1988 employment-weighted) of occupations are coded as offshorable. While arguably arbitrary, this way of coding is both convenient and closely related to the existing literature. It is consistent with Blinder and Krueger (2013) who find that their various offshorability measures all lead to the conclusion that roughly 25% of US jobs are offshorable. Firpo et al. (2013), using their O\*NET based offshorability measures, also use a top quartile binary indicator in their empirical analysis.<sup>20</sup>

As stated above, the advantage of this approach in terms of interpretation is that at the aggregate industry level the offshorability corresponds to the share of offshorable occupations. We therefore use this measure as our preferred one.

We also performed a few plausibility checks to make sure that this measure indeed cap-

<sup>20</sup>In a similar way, Autor and Dorn (2013) classify those occupations as routine-intensive that are in the top employment-weighted third of their continuous routine task-intensity measure in the start-of-sample period.



tures what we aim to measure: the offshoring potential of different industries prior to the fall of the Iron Curtain. Results are presented in Table 3. Indeed, we find that it is positively and highly significantly related to the growth in actual offshoring intensity, as measured based on the input-output indicators described above, in the aftermath of the fall of the Iron Curtain.<sup>21</sup> The correlation is weaker and not significant for the change in service offshoring, but as seen above, service offshoring only accounts for a small share in total offshoring activities. For the most comprehensive offshoring indicator, wide offshoring, variation in the offshorability measure explains reasonably high 17% of the variation in posterior offshoring growth. We also find that a larger share of offshorable jobs in 1988 is strongly negatively related to the change in the share of offshorable jobs between 1988 and 2014, providing suggestive evidence that these types of occupations have increasingly been displaced after the fall of the Iron Curtain.

### 3.4 Results

Table 4 displays the estimation results pertaining to various variants of Equation 38. In these regressions, we consider the longest possible horizon and focus on long-run changes in log total employment between 1988 and 2014. The first column contains the quadratic offshorability term as only regressors, the second adds a manufacturing dummy, and the third adds the full set of control variables. While all these regressions make use of the entire set of 3-digit industries in the West German economy, the last column restricts attention to industries in the manufacturing sector.

Consistent with the predictions of the theoretical model, we find, throughout these specifications, clear evidence for a hump-shaped relationship between the initial share of offshorable occupations in an industry and subsequent (long-run) employment growth, as the negative coefficient of the squared offshorability term reveals. The significance of this relationship rises as we add control variables, and it also holds if we restrict attention to the manufacturing sector.

To aid the (quantitative) interpretation, we also graphically illustrate the quadratic relationship by plotting the predicted values resulting from the offshorability-related coefficients in specification (3) against the offshorability values in the sample (cf. Figure 5). The maximum employment growth is reached at an offshorability value of 0.38 and amounts to 61 log percentage points. It turns negative at an offshorability value of 0.77, which is still within the range of observable values in the sample. Thus, there are indeed sizable differences in

---

<sup>21</sup>As these input-output based offshoring indicators can only be constructed at the 2-digit industry level, these correlations are also at the 2-digit industry level, while the subsequent empirical analysis is done at the 3-digit level.

Table 4: Offshorability and long-run employment growth at the 3-digit industry level

	(1)	(2)	(3)	(4)
	All	All	All	Manufacturing
Dependent variable: $\Delta \ln$ total employment 1988-2014				
Offshorability	1.171 (1.359)	3.993** (1.737)	3.210*** (1.132)	2.588** (1.075)
Offshorability squared	-2.854* (1.607)	-4.961*** (1.711)	-4.255*** (1.292)	-2.972** (1.264)
Manufacturing (0/1)		-0.920*** (0.300)	-0.435** (0.215)	
Controls	No	No	Yes	Yes
Observations	219	219	219	103
R squared	0.05	0.20	0.50	0.52

Notes: \*  $p < 0.10$ , \*\*  $p < 0.05$ , \*\*\*  $p < 0.01$ .

Standard errors (given in parentheses) are clustered at the 2-digit industry level. Offshorability is measured by the share of offshorable occupations in the industry, where offshorable occupations are defined as being in the (employment-weighted) top 25% of the Blinder-Krueger offshorability score in 1988. Further controls (all measured in 1988): employment shares by age (5 groups); employment shares by education (5 groups); female employment share; foreign employment share; quadratic term of log total employment.

terms of long-run employment growth after the fall of the Iron Curtain across industries depending on their initial share of offshorable occupations.

How does the relationship between ex-ante offshorability and posterior employment growth look like for different horizons? Instead of presenting the detailed regression tables, we directly jump to the graphical illustration, again making use of the regression results of the richest specification with all control variables (cf. Figure 6). In addition to the already shown results for  $h = 26$  (i.e 1988–2014), we show results for  $h = 5$  (1988–1993) and  $h = 15$  (1988–2003). It can be seen that the hump shape becomes more pronounced over longer horizons, consistent with the model’s predictions. In the short run, the hump shape is even hardly visible, reflecting the small and insignificant coefficients on both the linear and the squared offshorability term (not shown here).

In sum, these initial empirical results provide strong support for the theoretical prediction that the relationship between the prospects for offshoring and employment growth at the industry level is not linear. Industries in the medium range of offshorable tasks gain employment relative to industries both at the top and the bottom of offshorability. At higher values of offshorability the relocation effect dominates while industries in the lower part of the offshorability spectrum are hurt by higher wages in general equilibrium and increased

Figure 5: Offshorability and long-run employment growth at the 3-digit industry level

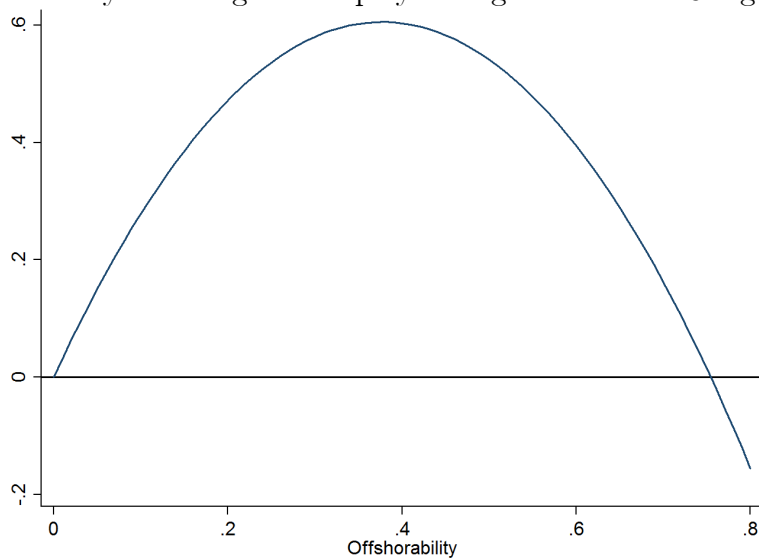
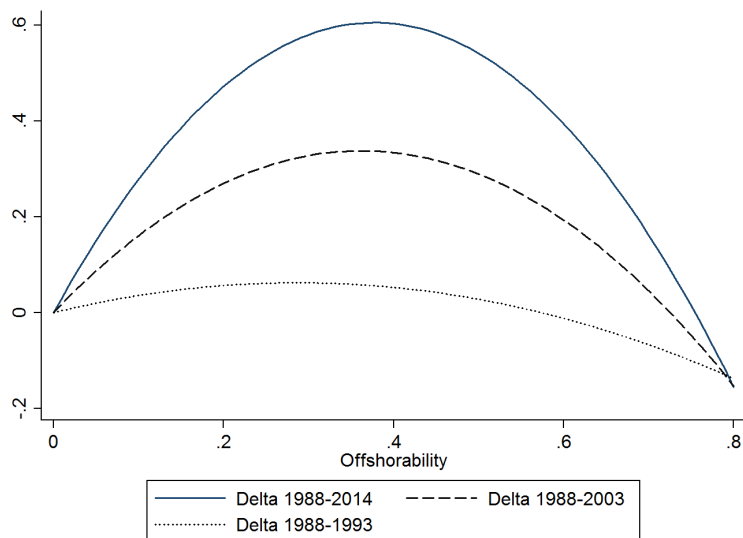


Figure 6: Offshorability and employment growth at the 3-digit industry level: different horizons



firm exit due to inferior profit opportunities relative to industries with a larger share of offshorable tasks.

## 4 Conclusion

This paper sets up a general oligopolistic equilibrium model where sectors differ in the intensity of routine and non-routine task production and thus in the opportunities to offshore parts of the production process to a low wage country. We use the model to shed light on how offshoring affects labor markets and welfare and how these effects differ in the short and long-run. In line with existing work, domestic wages increase if the productivity effect of offshoring dominates the reallocation effect. However, we show that additional results can be obtained by introducing sectoral heterogeneity in offshoring. First, labor market effects arise even in sectors where no tasks can be produced offshore. In the short-run this arises from higher domestic production costs, while in the long-run, this arises from exit of firms and the movement of capital towards sectors which benefit above average from offshoring. This so far unexplored inter-sector reallocation furthermore mitigates the productivity effect, as sectors with a high share of foreign task production expand in the long-run. Hence, by ignoring inter-sectoral reallocations, existing models exaggerate the productivity effect. In the empirical section, we test and quantify the predictions of our theory and emphasize the importance of inter-sectoral reallocations when quantifying the labor market and welfare effects of offshoring.

Whereas we think that this paper provides a useful tool to study the effects of offshoring when sectors differ in their ability to shift tasks to a foreign low wage country, it is clear that the parsimonious structure lowers the ability of our model to capture other important features of the data. For instance, in our setting we exclude intra-sectoral heterogeneity among firms or frictions in the ability of factors to migrate between sectors. Going in this direction would therefore be a worthwhile task for future research.

## References

- [1] Antras, P., Garicano, L., and Rossi-Hansberg, E. (2006), "Offshoring in a Knowledge Economy", *The Quarterly Journal of Economics*, 121(1), 31–77.
- [2] Antras, P. and Helpman, E. (2004), "Global Sourcing", *Journal of Political Economy*, 112(3), 552-580.

- [3] Artuç, E., and McLaren, J. (2015). "Trade policy and wage inequality: A structural analysis with occupational and sectoral mobility", *Journal of International Economics*, 97(2), 278-294.
- [4] Bastos, P. and Kreickemeier, U. (2009), "Unions, competition and international trade in general equilibrium", *Journal of International Economics*, 79(2), 238-247.
- [5] Baumgarten, D., I., Geishecker, and Görg, H. (2013), "Offshoring, tasks, and the skill-wage pattern". *European Economic Review* ,61, 132-152.
- [6] Becker, S., Ekholm, K. and Muendler, M-A. (2013) "Offshoring and the onshore composition of tasks and skills", *Journal of International Economics* 90(1), 91-106. (2015)
- [7] Becker, S., and Muendler, M-A. (2015), "Trade and Tasks: An Exploration over three Decades in Germany", *Economic Policy*, 30(84), 589-641.
- [8] Blanchard, O. and F. Giavazzi (2003), "Macroeconomic Effects of Regulation and Deregulation in Goods and Labor Markets", *Quarterly Journal of Economics*, 118, 879-907.
- [9] Blinder, A. S. (2006), "Offshoring: The Next Industrial Revolution?", *Foreign Affairs*, 85, 113-128.
- [10] Blinder, A. S. and Krueger, A. B. (2013), "Alternative measures of offshorability: a survey approach", *Journal of Labor Economics*, 31(S1), S97-S128.
- [11] Burstein, A. and Vogel J. (2010), "Factor Prices and International Trade: A Unifying Perspective", *Journal of Political Economy*, 112, 552-580.
- [12] Dauth, W., Findeisen, S., and Suedekum, J. (2016), "Adjusting to Globalization - Evidence from Worker-Establishment Matches in Germany", *CEPR Discussion Paper* 205.
- [13] Dustmann, C., Fitzenberger, B., Schönberg, U. and Spitz-Oener, A. (2014), "From sick man of Europe to economic superstar: Germany's resurgent economy", *The Journal of Economic Perspectives*, 28(1), 167-188.
- [14] Eckel, C. and Irlacher, M. (2017), "Multi-Product Offshoring", *European Economic Review*, forthcoming.
- [15] Egger, H. and Etzel, D. (2012) "The impact of trade on employment, welfare, and income distribution in unionized general oligopolistic equilibrium", *European Economic Review*, 56(6), 1119-1135.

- [16] Egger, H. and Etzel D. (2014), "Union wage-setting an International Trade with Foot-loose Capital", *Regional Science and Urban Economics*, 48, 56-67.
- [17] Egger, H. and Koch, M. (2012), "Labour unions and multi-product firms in closed and open economies", *Canadian Journal of Economics/Revue canadienne d'economique*, 45(4), 1456-1479.
- [18] Egger, H., Kreickemeier U., and Wrona, J. (2015), "Offshoring Domestic Jobs", *Journal of International Economics*, 97(1), 112-125.
- [19] Feenstra, R. C. and Hanson, G. H. (1997), "Foreign Direct Investment and Relative Wages: Evidence from Mexico's Maquiladoras", *Journal of International Economics*, 42, 371-393.
- [20] Geishecker, I. (2006), "Does Outsourcing to Central and Eastern Europe really threaten manual workers jobs in Germany?", *The World Economy*, 29(5), 559-583.
- [21] Görg, H. and Görlich, D. (2011), "Trade and labour market outcomes in Germany", *OECD Publishing*, (No. 125).
- [22] Grossman, G.M. and Rossi-Hansberg, E. (2008), "A Simple Theory of Offshoring" *American Economic Review*, 98(5), 1978-1997.
- [23] Hummels, D., Munch, J. R., and Xiang, C. (2016), "Offshoring and labor markets", *National Bureau of Economic Research*, No. 22041.
- [24] Igami, M. (2017), "Industry Dynamics of Offshoring: The Case of Hard Disk Drives", *American Economic Journal: Microeconomics*, forthcoming.
- [25] Kambourov, G. and Manovskii, I. (2008), "Rising occupational and industry mobility in the United States: 1968-1997", *International Economic Review*, 49(1), 41-79.
- [26] Levy, F. and Murnane, R. J. (2004), "The New Division of Labor", *Princeton/NJ.: Princeton University Press*.
- [27] Marin, D. (2006), "A new international division of labor in Europe: Outsourcing and offshoring to Eastern Europe", *Journal of the European Economic Association*, 612-622.
- [28] Neary, J. P. (2003), "The Road Less Travelled: Oligopoly and Competition Policy in General Equilibrium", in R. Arnott et al. (eds.): *Economics for an Imperfect World: Essays in Honor of Joseph E. Stiglitz*, Cambridge, Mass.: MIT Press, 485-500.

- [29] Neary, J. P. (2016), "International Trade in General Oligopolistic Equilibrium", *Review of International Economics*, forthcoming.
- [30] Parrado, E., Caner, A., and Wolff, E. N. (2007), "Occupational and industrial mobility in the United States", *Labour Economics*, 14(3), 435-455.
- [31] Spitz-Oener, A. (2006), "Technical Change, Job Tasks, and Rising Educational Demands: Looking Outside the Wage Structure", *Journal of Labor Economics*, 24 (2), 235-270.
- [32] Yi, Kei-Mu (2003), "Can vertical specialization explain the growth of world trade?", *Journal of Political Economy*, 111(1), 52-102.