

Poppitz, Philipp

Conference Paper

Can subjective data improve inequality measurement? A multidimensional index of economic inequality

Beiträge zur Jahrestagung des Vereins für Socialpolitik 2017: Alternative Geld- und Finanzarchitekturen - Session: Income Distribution, Inequality and Poverty, No. F19-V3

Provided in Cooperation with:

Verein für Socialpolitik / German Economic Association

Suggested Citation: Poppitz, Philipp (2017) : Can subjective data improve inequality measurement? A multidimensional index of economic inequality, Beiträge zur Jahrestagung des Vereins für Socialpolitik 2017: Alternative Geld- und Finanzarchitekturen - Session: Income Distribution, Inequality and Poverty, No. F19-V3, ZBW - Deutsche Zentralbibliothek für Wirtschaftswissenschaften, Leibniz-Informationszentrum Wirtschaft, Kiel, Hamburg

This Version is available at:

<https://hdl.handle.net/10419/168252>

Standard-Nutzungsbedingungen:

Die Dokumente auf EconStor dürfen zu eigenen wissenschaftlichen Zwecken und zum Privatgebrauch gespeichert und kopiert werden.

Sie dürfen die Dokumente nicht für öffentliche oder kommerzielle Zwecke vervielfältigen, öffentlich ausstellen, öffentlich zugänglich machen, vertreiben oder anderweitig nutzen.

Sofern die Verfasser die Dokumente unter Open-Content-Lizenzen (insbesondere CC-Lizenzen) zur Verfügung gestellt haben sollten, gelten abweichend von diesen Nutzungsbedingungen die in der dort genannten Lizenz gewährten Nutzungsrechte.

Terms of use:

Documents in EconStor may be saved and copied for your personal and scholarly purposes.

You are not to copy documents for public or commercial purposes, to exhibit the documents publicly, to make them publicly available on the internet, or to distribute or otherwise use the documents in public.

If the documents have been made available under an Open Content Licence (especially Creative Commons Licences), you may exercise further usage rights as specified in the indicated licence.

Can subjective data improve inequality measurement?

A multidimensional index of economic inequality

preliminary draft

Philipp Poppitz*

09/08/2017

Abstract

To measure multidimensional inequality by a univariate index, dimensions of inequality need to be weighted. This work addresses the normative and empirical problems by estimating hedonic weights based on German microdata. In contrast to previous works that relied on life satisfaction, individuals' perception of inequality is used to estimate a weighting scheme including five dimensions. The hedonic weights estimations reveal that income is the most important dimension, while education, occupational prestige, working status, and parents' socio-economic status are respectively less important. Based on a multidimensional generalized Gini and the estimated weights, annual multidimensional economic inequality (MDEI) is calculated on an annual frequency from 2000 to 2016. On average, the MDEI is significantly higher in the analyzed period compared to the case of equal weights, but lower than income inequality. Until 2006 multidimensional inequality in Germany increased at the same pace as income inequality. Since then, the decreasing trend of MDEI is amplified when assuming greater complementarity between dimensions. The decomposition analysis reveals that income contributes more than any other dimension to inequality, but the exceptional reduction in unemployment is the major cause for the decline of the MDEI from 2008 onwards.

Keywords: inequality, multidimensional index, perception, hedonic weights

JEL classification: D31, C43, I30

*University of Hamburg, E-mail: philipp.poppitz@wiso.uni-hamburg.de

1 Introduction

Parallel to the recent attention on income inequality, numerous works have concluded that income alone is an insufficient indicator to describe human well-being and the distribution thereof (Sen, 1985; Stiglitz *et al.*, 2009). Despite the growing theoretical development and increasing data availability over the last 20 years, the task of selecting and weighting dimension of inequality is still a major issue of debate (Brandolini, 2009; Decancq and Lugo, 2013; OECD, 2011). This work uses subjective social status to select and weight dimensions of inequality by a hedonic regression (Schokkaert, 2007; Decancq and Neumann, 2014). The result is a composite index of multidimensional economic inequality (MDEI).

To evaluate multidimensional inequality and the impact of the weighting scheme, this work draws on a standard functional form that makes the normative decisions incorporated in the aggregation process explicit.¹ To account for correlation among dimensions, individuals' achievements are first aggregated across individuals by a weighted CES-like function and then across individuals by the Gini index, which can be rewritten as a single step procedure (Decancq and Lugo, 2012). A reverse aggregation would relax the need for micro-data at the individual level, but at the expense of ignoring individual preferences and correlation among dimensions (Aaberge and Brandolini, 2015, 195; Decancq *et al.*, 2015b, 107).

Several methods have been proposed to weight dimensions of inequality. Equal weights, just like any other arbitrary weighting scheme, rest solely on the considerations of a 'social evaluator' and makes any inequality assessment dependent from his perspective on inequality. Statistical weights on the contrary, define the relative importance by the correlation among of dimensions of inequality. Data driven weights have been criticized for carrying out a deliberately normative task by ignoring any normative considerations at all (Brandolini, 2009, 13), because a higher correlation does not imply less relevance per se since a lower correlation could also be interpreted as a sign of higher relevance. Hedonic weights combine the normative selection process of dimensions with a weighting scheme driven by individuals stated preferences. This process is not immune to problems, but has some clear advantages over the other two approaches (Decancq and Lugo, 2013).

This work contributes to the existing literature on hedonic weights in several ways. First, instead of using life satisfaction as the dependent variable of the hedonic regression, subjective social status is used. It is shown that subjective social status points towards the relational aspect of inequality, an aspect missing from applications focusing on well-being and life satisfaction. Second, by pooling individuals at the national level, a consensual weighting scheme is elaborated which yields comparable welfare and inequality measures. Third, the work allows to decompose the overall trend of inequality into changes within dimensions and changes by the weights. This allows a reasonable comparison of the MDEI with income

¹For recent survey of multidimensional inequality measures see Aaberge and Brandolini (2015) and Chakravarty and Lugo (2016).

inequality. Fourth, by drawing on the ALLBUS dataset the development of multidimensional inequality from 2000 to 2016 in Germany can be investigated.

The results of this work show the annual changes of multidimensional inequality over the last 16 years. According to the MDEI, inequality increased until the peak in 2006 and declined during the following recession. Since 2008, multidimensional inequality has been gradually decreasing, although the trend of the MDEI in recent years is ambiguous and depends on the substitution elasticity between dimensions. Overall, the MDEI increases with the degree of substitution. Among the five dimensions income is by far the most important dimension of the MDEI as the hedonic regressions reveal. Education, occupational prestige, and employment status are less relevant while the socioeconomic status of the parental household is barely relevant. Moreover, the decomposition into factor shares shows that the variation of hedonic weights over time translates only into marginal changes of multidimensional inequality.

This paper is organized as follows: section 2 explains the methodology of hedonic weights and motivates the choice of subjective social status and the selection of dimensions. Section 3 describes the estimation model, followed by the presentation of the data source and descriptive statistics (section 4). The results are presented and discussed in section 5, before concluding in section 6.

2 Subjective social status and individual preferences

Determining the relative importance of dimension of inequality by individual preferences aims to circumvent the specific problems that come with normative and statistical weights, but individual preferences cannot be elicited directly. Therefore, the collection of preferences and the transformation into weights must rely on statistical and methods. Because of this combination, this method has also been named hybrid weights (Decancq and Lugo, 2013).

One solution to elicit individual preferences is to exploit stated preferences of individuals directly. However, stated preferences on different dimensions are rarely available and suffer from two conceptual problems.² The first problem is the ‘physical-condition neglect’. Individuals might disregard the real influence of physical conditions, for example when they are ill or unsheltered and adopt their desires “to take pleasure from small mercies” (Sen, 1985, 21). Second, any subjective assessment is a reflective activity. If personal valuations are not considered, the ‘valuation neglect’ problem occurs (Sen, 1985, 29).

Hedonic weights

The alternative solution followed in this work, is to use experienced instead of stated preferences by assuming that a subjective well-being measure exists, which represents individuals’

²Empirical application include the OECD *Better Life Index* (BLI) where individuals are asked to weight eleven preselected dimensions (OECD, 2011) and Decancq *et al.* (2013), where different weighting approaches are evaluated against stated preferences.

preferences consistently. If individual preferences are complete and consistent, they can be elicited by a representative subjective wellbeing (SWB) measure and allow consistent interpretations between different dimensions or outcomes for one person. However, an ordinal SWB measure is not an adequate source for interpersonal comparisons because they depend critically on adaptation and aspirations, framed by reference groups (Decancq *et al.*, 2015a). Only when controlling for such scale effects, SWB measures can be a consistent representation of individual preferences.

Theoretically, an SWB measure should represent all dimensions of life that matter consistently, but the empirical evaluation of this consistency depends critically on the actual selection of dimensions. One could also state vice versa, that all relevant dimensions should be consistently represented by an SWB measure. This acknowledges that the selection the relevant dimensions and an adequate SWB measure are both inherently normative decisions. The consistency criterion only requires that dimensions and the SWB measure complement each other, but does not relieve the 'social evaluator' to define the relevant dimensions.

Starting with (Schokkaert, 2007), various works have used life satisfaction as a variable for SWB assuming either implicitly or explicitly that this measure adequately reflects individual preferences over various dimensions of well-being. Life sanctification aims to captures an evaluative concept of SWB that is relatively persistent over time because it rests on cognitive evaluations and not emotions (Schokkaert, 2007). Feelings, emotions and other affects as such are only accounted for if individual preferences include them. In empirical applications, life satisfactions has been used to evaluate individual preferences in multidimensional settings to measure job quality (Schokkaert *et al.*, 2009, 2011), well-being (Decancq *et al.*, 2009; Fleurbaey *et al.*, 2009; Decancq *et al.*, 2015a), inequality (Justino, 2012; Maasoumi and Xu, 2015; Decancq, 2015) and deprivation (Haisken-DeNew and Sinning, 2010; Bellani, 2013; Dat *et al.*, 2015).³ The great variation of topics including different dimensions all weighted by the same SWB measure restates the arbitrary nature of eliciting individual preferences over various dimensions and the need to justify on what grounds consistency between any subjective measure and the selected dimensions is ensured.

Nevertheless, some works using hedonic weights have selected relevant dimensions by regressing them on life satisfaction and judging their relevance by the size of the respective standard errors (Decancq *et al.*, 2013; Haisken-DeNew and Sinning, 2010). These estimations however, rely on the distinction between variables of interest and control variables, which is a normative decision indeed. Education, which has been considered as dimension (Justino, 2012; Maasoumi and Xu, 2015) as well as a control variable (Decancq and Neumann, 2016), shows that such a decision is not trivial. In addition, many of these estimations might suffer from empirical problems such as multicollinearity, which can lead to biased standard errors. Therefore, the only plausible method is to motivate the selection of dimensions and the subjective measure by theoretical means based on the assumed nature of wellbeing or

³See table A.2 in the appendix for an overview of works using hedonic weights.

inequality (Aaberge and Brandolini, 2015, 149) and the consistency argument (Decancq *et al.*, 2015a, 1084).

Dimension selection

This work uses Bourdieu's capital theory to select relevant dimensions of multidimensional inequality. In his seminal article, Bourdieu (1983) describes economic, cultural, and social capital as the main determinants of the stratification in society. Although cultural and social capital are based on economic capital, their effect on social status is heterogeneous and the possibilities to accumulate and transmit each type of capital is different. Economic capital can always be expressed in monetary values and is usually approximated by income and wealth, but it can also include property rights, that can easily be converted into money. In addition, economic capital can be transmitted at low costs between persons, since it is not incorporated.

Cultural capital is more diverse as it includes institutionalized forms such as educational titles, objects such as art and internalized dispositions including behavioral manners. Cultural capital presupposes not only economic capital to acquire such forms, but also the means to consume such forms. Therefore, it is usually embodied and cannot be transformed easily between individuals. To approximate cultural capital this work uses education (in years), the occupational prestige, and the family background. Decancq *et al.* (2015a) for example, refrain from using occupational prestige and the family background as a dimension of inequality, because they assume that both variables only drive aspirations and consequently use them as control variables. In the light of Bourdieu's theory however, it is reasonable to think of aspirations as an elementary dimension of inequality because they define the habitus and thereby individuals' actions.

The form of social capital is more intangible than the other forms of capital, because it is usually defined as the access to and the recognition within social networks. Continuous efforts are needed to obtain and to preserve social capital because money and time alone are not sufficient to accumulate it. Due to the lack of information on networks connections of respondents, the employment status will be used as a proxy for social status. The underlying assumption is that when controlling for income effects, the additional effect of being unemployed relates to a loss of social networks, skills, and motivation (Sen, 1997).

In accordance with this theoretical foundation, subjective social status is used as the subjective measure to elicit the individual preferences over all three types of capital. From a theoretical perspective, social status describes an individuals' position within society by relative characteristics. Because many individuals agree on the relative position of a given individual, social status manifests in friendships, marriage, and economic decisions (Weiss and Fershtman, 1998). As such, social status can be described as a shared standard of social stratification (Ridgeway and Walker, 1995). Since the 1980s various household surveys gathered social status as perceived by individuals themselves (Evans *et al.*, 1992; Kelley

and Evans, 1995). Subjective social status is usually surveyed by asking the respondent to evaluate his/her position within society on an ordinal ten-point scale from top to bottom. This subjective perspective is especially valuable, because individuals must form an opinion about the overall stratification of society, before they can locate their position within this distribution. Subjective social status thereby links objective criteria with relative evaluations.

Empirically, various works have shown that material factors including income and wealth as well as non-material factors such as education and occupational status have been proven to be highly relevant for subjective social status in the European context (Evans and Kelley, 2004; Lindemann and Saar, 2014; Poppitz, 2016). Therefore, I assume subjective social status to be consistent representation of individual preferences over the three capital types. However, subjective social status lacks the explicit relation to well-being, which makes hedonic weights based on subjective social status more suitable for the case of distributional analyses while works aimed at measuring well-being might prefer a classical SWB variable such as life satisfaction.

Substitution between dimensions

As noted before, the multidimensional economic inequality index (MDEI) is calculated using the functional form proposed by Decancq and Lugo (2012), which is based on the generalized Gini index:

$$MDEI = 1 - \frac{\sum_{i=1}^n \left[\left(\frac{r^i}{n} \right)^\delta - \left(\frac{r^{i-1}}{n} \right)^\delta \right] \left(\sum_{j=1}^m w_j (x_j^i)^{1-\beta} \right)^{\frac{1}{1-\beta}}}{\left(\sum_{j=1}^m w_j \mu(x_j)^{1-\beta} \right)^{\frac{1}{1-\beta}}} \quad (1)$$

Before aggregating individual outcomes, two additional normative parameters remain undetermined, namely the degree of complementary between dimensions (β) and inequality aversion (ϵ). The first parameter defines whether dimensions of inequality are perfect substitutes ($\beta = 0$) and aggregate additively or if they are perfect complements ($\beta \rightarrow \infty$) and only the lowest achievement in any dimension determines the overall outcome. The degree of substitution is closely related to the weights because they jointly determine the marginal rate of substitution (MRS) for any pair of dimensions j_1, j_2 :

$$MRS_{j_1, j_2} = \frac{w_{j_1}}{w_{j_2}} \times \left[\frac{x_i^{j_1}}{x_i^{j_2}} \right]^\beta \quad (2)$$

The first component of equation 2 shows that with an increasing weight of dimension one, individual i is willing to give more of dimension two for an additional unit of dimension one. If $\beta = 0$, the MRS depends only on the weights, but as β increases the ratio between the achievements in both dimensions becomes more influential.

The Human Development Index (HDI) for example, has previously assumed perfect substitutability ($\beta = 0$) but changed to partial complementarity ($\beta = 1$) in 2010 to recognize the essential differences between dimensions, which are lost when using an arithmetic average (Kovacevic, 2010, 39). In most empirical papers, the degree of substitution has been set arbitrarily while some works include a sensitivity analysis using different β 's, usually within the range between 0 and 1. Justino (2012) compares multidimensional inequality of expenditures, education and health between 1992 and 1998. Overall inequality decreased over time, irrespective of β . When the degree of substitution is adjusted from .3 to 1, the magnitude of the inequality change lowers, but not the direction of the trend. Maasoumi and Xu (2015) use an entropy maximization framework to obtain substitutions elasticities for income, housing, wealth, and education. They find a degree of substitution between .5 and .98, with the biggest differences between urban and rural Chinese households. Both examples show that like weights, normative and statistical approaches can be used to determine the degree of substitution. Compared to weights however, there seems to be less research interest towards this direction.

Another concern is the assumption of equal substitutability between all dimensions. For Bourdieu, one major reason to distinguish between economic, cultural, and social is the fact that “the different types of capital can be distinguished according to their reproducibility or, more precisely, according to how easily they are transmitted” (Bourdieu, 1984, 197). In the economic sense, this implicates different marginal rates of substitution, although Bourdieu discusses inter- as well as intra-personal transmission. However, the marginal rate of substitution can vary even if β is hold constant, because of the weights (see equation 2). Since weights are estimated for each dimension, the degree of substitution between the types of capital is assumed to be equal for the sake of simplicity.

3 Estimation of hedonic weights

The hedonic weights are estimated by an OLS model with subjective social status being the depended variable. Using micro-data from individuals, the obtained estimates for the independent variables are interpreted as mutual or unilateral preferences for the respective dimensions.⁴ To account for possible nonlinear relationships with subjective social status, a Box-Cox transformation in applied to the continuous independent variables (Fleurbaey *et al.*, 2009). If SSS_i is the subjective social status of individual i , the hedonic weights can be obtained from the regression coefficients ($\beta_{1,\dots,m}$), normalized by the sum of coefficients.⁵ This lead to the following estimation model including the dimension specific box-cox transformation (Γ_j)

⁴An ordered probit estimation model was discarded in favor of the more efficient OLS model because the dependent variable includes 10 items and is almost normally distributed. A robustness check confirms virtually similar results.

⁵Which can be described formaly by $w_j = \frac{\hat{\beta}^j}{\sum_{j=1}^m \hat{\beta}^j}$.

for the continuous variables and the control variables (Z_i):

$$SSS_{it} = \alpha + \sum_{j=1}^m (\beta^j (\Gamma^j x_{it}^j)) + \gamma' Z_{it} + v_t + \epsilon_{it} \quad (3)$$

The issue with hedonic weights is, that they potentially suffer from typical estimation problems resulting in biased estimators and standard errors. Since neither the selection nor the weighting of dimensions relies on the standard errors, multicollinearity does not affect the weights. However, the estimators might be biased due to omitted variables or endogeneity. In addition, the bounded scale requires respondents to rescale their preferences to answer the question, which could lead to measurement errors and add a certain noise to the question (Decancq and Neumann, 2016, 586). If these problems lead to response patterns that are correlated with individuals' characteristics and personal traits, they also lead to biased estimates.

The most common approach to both problems is to control for individual time constant factors by a time fixed effects model. Lacking panel data, one can only control for age, gender, and personality traits.⁶ However, if those individual factors are considered as illegitimate sources of inequality, they would enter the model (3) as dimensions of inequality (X_i) rather than controls (Z_i). To circumvent this problem, Cavapozzi *et al.* (2015) use vignette questions which ask respondents to judge the life satisfaction of two hypothetical households. These vignette questions are then used to control for individual response patterns. They find however, that these additional controls barely change the life satisfaction estimation results. The same problems apply to subjective social status because of a similar answering scheme and the subjective nature of the question. Due to the lack of panel data and information on personal traits the estimation model relies on the control variables age, gender, the structure of the household and political interest. Since estimated coefficients are supposed to yield the importance relative to other covariates, all independent variables are z-standardized to eliminate scaling effects.

4 Data source and proxy selection

The empirical analysis rests on the cumulation of cross-sectional waves of the German General Social Survey (ALLBUS/GGSS) from 2000 to 2016. The ALLBUS is a bi-annual representative household survey including between 2,800 and 3,900 observations per wave (Wasmer *et al.*, 2014). Because the total German population is the objective of the study, sampling weights are used to account for the over-sampling of East Germany. Individuals younger than 18, older than 65 and persons in education are excluded from the sample. After deleting missing

⁶Decancq and Neumann (2016) for example include responses about the control over their life, achieved what they deserve and positive attitude toward themselves.

values list wise 646 to 1990 annual observations remain.⁷ Despite the relatively small number of observations compared to the German socio-economic panel (GSOEP), the Gini coefficients based on both datasets yields no significant differences except for the first two waves (see Figure A.2).

Table 1: Descriptive statistics for subjective social status

	mean	variance	sd	count
2000	5.297	2.26	1.50	733
2002	6.240	2.10	1.45	655
2004	5.458	2.44	1.56	1405
2006	5.313	2.79	1.67	1606
2008	5.664	2.82	1.68	1613
2010	5.783	2.59	1.61	1483
2012	6.359	2.27	1.51	1925
2014	6.362	2.25	1.50	1982
2016	6.436	2.55	1.60	2001
Total	5.940	2.68	1.64	13403

Source: Author’s calculation based on ALLBUS (2016).

Subjective social status, the depended variable of the hedonic weights estimation is surveyed by the question: “In our society there are groups which tend to be towards the top and groups which tend to be towards the bottom. Below is a scale that runs from top to bottom. Where would you put yourself now on this scale?”. Table 1 shows that individuals tend to rank themselves in the middle of the distribution or slightly above ($mean = 5.9$). The distribution of responses is relatively stable over time, despite a minor decrease of average subjective social status during the recession and an increase in variance.

The independent variables include five proxy variables for the three capital types and several control variables. Income is the only proxy for economic capital since wealth data is only available for the year 2010. The monthly disposable income is surveyed by an open question, equalized by the household structure, deflated by the harmonized consumer price index (European Commission, 2014) and the top 1% incomes are winsorized. Years of schooling and the occupational status serve as proxies for cultural capital. Because years of schooling are not included in the survey, the number is imputed based on the typical length for the highest educational and occupational degree obtained.⁸ This method cannot account for repeated classes and other irregularities. However, differences usually have a minor impact (Pischke and von Wachter, 2008). Occupational prestige is measured by the Standard International Socioeconomic Occupational Status (SIOPS), which transforms ISCO88 occupational codes into an index ranging from 6 (low prestige) to 78 (high prestige).⁹

The dummy for being employed covers all individuals that are not unemployed including part-time workers and students. Finally, the socioeconomic status of the parents is approximated based on parents’ occupation, which are transformed into the International

⁷In 2000 and 2002 only half of the sample in 2000 and 2002 were asked about their subjective social status. Therefore, the effective number of observations is reduced by half in the first two waves.

⁸For the exact imputation methodology see the German country codebook of ISSP (2016).

⁹Based on (Treiman, 1977) and transformed using the conversion tables of Ganzeboom and Treiman (1996).

Socio-Economic Index (ISEI). In contrast to SIOPS, ISEI provides a measure of socioeconomic status that considers not only prestige, but also average income and education levels of occupations (Ganzeboom *et al.*, 1992).

To verify that the selected proxies adequately represent the three types of capital, a principal component analysis (PCA) has been conducted. Three additional proxies cover the highest educational degree instead of years of schooling and the status of the family background measured either by socioeconomic prestige¹⁰ or the highest educational degree of the parents. The PCA confirms that each of the three extracted components represent one of the three capital types (see Appendix A.1).

Before aggregating individual achievements, dimensions are rescaled by a linear transformation to prevent of scale effects. Instead of the common min-max normalization, all variables are divided by their maximum value.¹¹ The advantage of the latter over the min-max method is that attributes at the bottom of the distribution also get positive values (Decancq, 2015, 45).

5 Results

Weighting dimensions of multidimensional inequality

Based on model 3, I estimate hedonic weights using the pooled sample and for each year separately. Before the estimation, box-cox parameters have been determined by a maximum likelihood estimation for the continuous independent variables: income (.217), education in years (.968), occupational prestige (1.11) and parent socio-economic status (.489). This means highest decreasing returns for income and smaller, but still significant decreasing returns for parents' socio-economic status while the returns on occupational status and education are linear. Figure 1 shows the estimated coefficients for each wave and the five dimensions, normalized to one. Detailed estimation results as well as the pooled sample results can be found in the Appendix (table A.3).

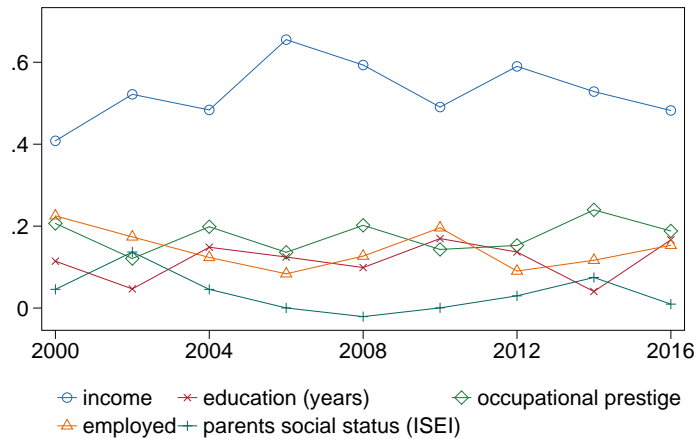
Income is the most important dimensions with an average weight of .53, that varies greatly over time from .40 in 2000 to .65 in 2006. After the peak in 2006, the weight for income declined from 2006 to 2010 and increased again up to .58 in 2012. Education, occupational prestige and being employed are relatively less important as their weights range between 0.11 and .17 on average while the socioeconomic status of the parents is hardly relevant. The relevance of being employed is of similar magnitude (.14) but compared to income the trend is reversed with the lowest weight in 2006. While the variation over time is notable for income, the year to year changes of other dimensions are not significant in most of the years. Overall, the trend of weights during the recession year indicate a shift of individual's focus from income and

¹⁰Socio-economic prestige is measured by the Standard International Socioeconomic Occupational Status (SIOPS), a recode of occupations according to their prestige on a scale from 6 to 78 (Treiman, 1977; Ganzeboom and Treiman, 1996).

¹¹The normalization for each outcome x of dimension j can therefore be written as: $x_j^n = \frac{x_j}{\max x_j}$.

status to the mere fact of being employed while the relevance of education remained constant. However, to avoid a bias due to spurious volatility between different waves, the following weighting scheme relies on pooled weights including year fixed effects as specified in model 3.

Figure 1: Normalized weights



Source: Author's calculation based on ALLBUS (2016).

The great relevance of income stands in contrast to works which have relied on life satisfaction instead of subjective social status. Especially unemployment seems to affect life satisfaction more than subjective social status while income is more relevant for the latter (Decancq and Neumann, 2016). These differences highlight the small but potentially influential differences between subjective measures of well-being and social status (Clark and D'Ambrosio, 2015).

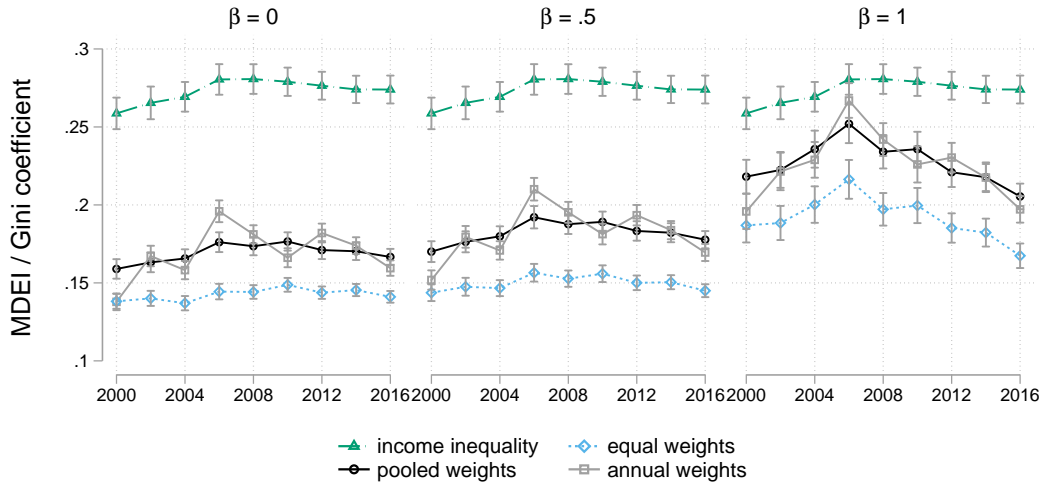
Multidimensional Inequality in Germany

Using either pooled, annual or equal weights I calculate three series of composite inequality measures. Figure 2 compares these series with income inequality. To account for different degrees of substitution, results are shown for perfect substitution ($\beta = 0$), a high degree of complementarity ($\beta = 1$), which is the standard choice for the IHDI, and an intermediate+ value ($\beta = .5$).¹²

Figure 2 shows that income inequality provides an upper bound of inequality with an average Gini coefficient of .273. The MDEI based annual hedonic weights is significantly lower with an average of .226 ($\beta = 1$). The equal weights index provides a lower bound of inequality estimates with .191 ($\beta = 1$). This result is not surprising since the hedonic weights reduce the MRS between dimensions (see equation 2) leading to an overall increase in inequality compared to equal weights. Using annual weights, the variation of the MDEI increases, but

¹²The theoretically feasible minimum of substitution is $\beta = 2$, limited by the functional form. However, the interpretation of results for $\beta > 1$ do not change significantly and have therefore been omitted.

Figure 2: Absolute development of the MDEI



Note: Development of the MDEI with annual and pooled hedonic weights, equal weights, and the Gini coefficient for disposable income. Gray bars show 95% confidence intervals, based on bootstrapped standard errors. Source: Author's calculation based on ALLBUS (2016).

remains within the confidence intervals of the MDEI based on constant weights over time in all years except 2006. This suggests that distributional changes within dimensions are more important to inequality changes over time than weights.

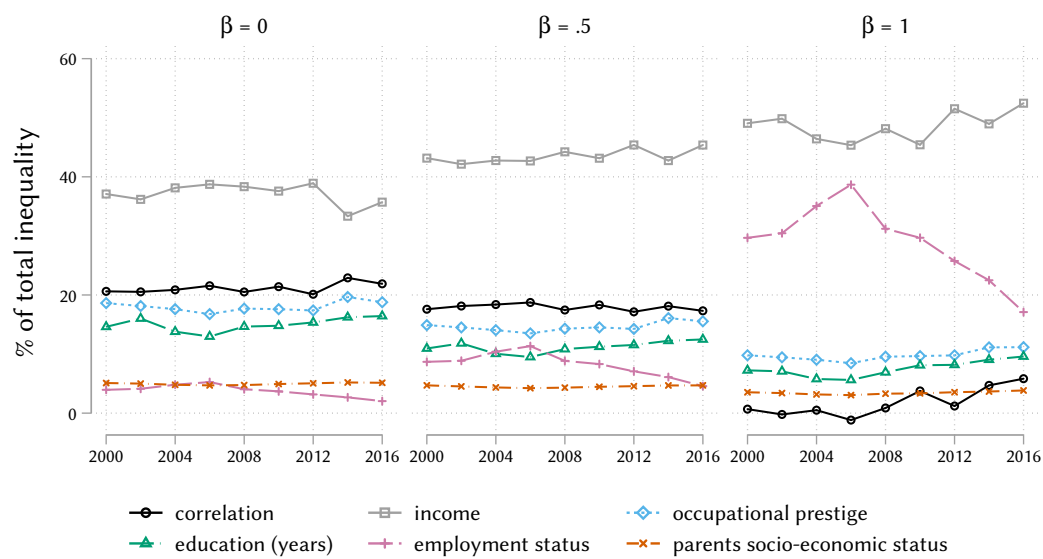
Of similar importance for the development over time is the degree of substitution and therefore the correlation between dimension of the MDEI. The MRS exemplifies the relationship between correlation and weights (see equation 2). As β increases, the ratio between outcomes at the individual level dominates the effect of the ratio between weights. Assuming perfect substitution ($\beta = 0$), income inequality and the composite indexes follow a similar trend over time. Whether uni- or multidimensional, inequality has increased until 2006. Since then income inequality decreased slightly if $\beta \leq .5$, but in relation to the 95% confidence intervals, it is rather a stagnation of inequality. Assuming imperfect substitution however, the strong increase was followed by an even greater surge in multidimensional inequality. If $\beta \geq 1$ the decrease of the MDEI since 2008 is severe, regardless of the weights used. Comparing the different time trends depending on the degree of substitution, the question is whether a changing correlation between dimensions or lower inequality within dimensions cause the downward trend.

Decomposition by correlation and dimension

To answer this question, the MDEI is decomposed by constructing counter-factual distributions to distinguish the effects of distributional changes within each dimension from the effect of a changing correlation between dimensions. Decancq (2017) decomposes total multidimensional inequality into four components: correlation between individual preferences, variation in individual preferences, correlation among outcomes and variation in outcomes. Since this work relies on unilateral preferences, the decomposition boils down to the latter

two components. Therefore, the decomposition first reshuffles individual outcomes among individuals repeatedly. Mean and standard deviation over all inequality estimates then provide total inequality minus the effect of correlation among achievements. Second, outcomes in each dimension are replaced by their respective mean, starting with the highest weighted dimension. Compared to [Shorrocks \(1982\)](#) factor decomposition method, this method allows decomposing factors which are aggregated non-additively, at the expense making the decomposition path dependent. However, a robustness check using the reverse decomposition path shows fairly similar results.¹³

Figure 3: MDEI decomposition by correlation and outcomes



Note: Relative contribution to total MDEI by eliminating stepwise the influence of one component. *Source:* Author's calculation based on ALLBUS (2016).

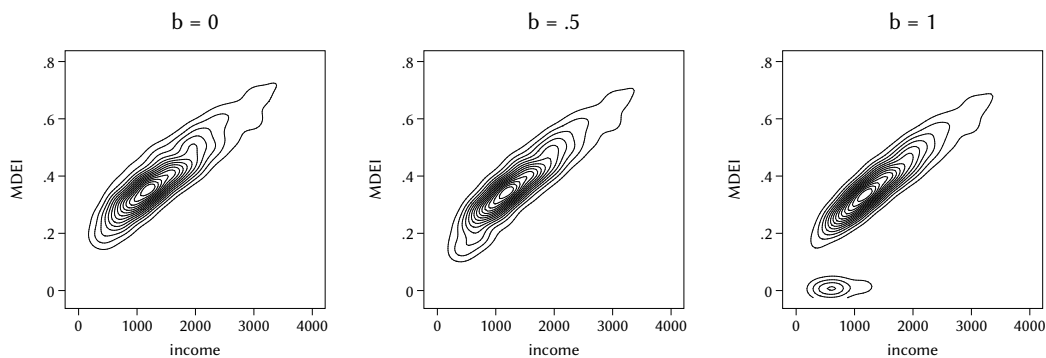
Figure 3 shows the decomposition results for different degrees of substitution in percentages.¹⁴ The contribution of the correlation between dimensions to total inequality is moderate and steady at 20%. If $\beta \geq 1$, however, the contribution is significantly smaller and increasing over time meaning that the downward trend of the MDEI cushioned by a decreasing correlation between dimensions. Of all dimensions, the highest absolute contribution comes from the income dimension with 36% on average ($\beta = 0$). Occupational prestige and education also contribute with a stable share of 16% to overall inequality. As complementarity increases however, the relative contributions of all dimensions decrease at the expense of income (47%) and the employment status (28%). If complementarity is high ($\beta = 1$), the employment status becomes not only the second most important dimension but also the major factor behind the trend with a contribution decreasing from 38% in 2006 to 17% in 2016.

¹³Results available upon request.

¹⁴Absolute contributions to total inequality can be found in appendix A.3.

Comparing the rank changes between income and MDEI also highlights the relevance of the employment dimension. Instead of using a transition matrix, which tabulates rank affiliation across percentiles, I analyze rank changes by a stochastic kernel (Quah, 1997). This non-parametric method avoids the otherwise necessary assumption of a normal distribution within each percentile and therefore allows to describe the distribution more accurately. Figure 4 shows contour plots of the bivariate density distributions over the income and MDEI distribution in 2010. The great concentration along an imaginary 45°line shows that for most of the individuals the rank in the income distribution translates into a similar rank within the multidimensional distribution. However, as complementarity increases, several low-income individuals at the bottom of the MDEI distribution are separated. These individuals are unemployed and cannot substitute the lack of employment by outcomes in other dimensions. Only if $\beta > .5$ the segregation between employed and unemployed individuals manifests in the MDEI distribution, but also at lower degrees of complementarity, the segregation is already visible.

Figure 4: Stochastic kernel plot for the year 2010



Note: Kernel-smoothed bivariate density distribution of income and MDEI in 2010 using a Gaussian kernel and pooled weights. *Source:* Author's calculation based on ALLBUS (2016)

6 Conclusion

Prior works have used life satisfaction as a benchmark variable to estimate weights for multidimensional inequality indexes by a hedonic regression. Life satisfaction is an established subjective well-being measure, but an arbitrary choice whose efficacy depends on the dimensions of inequality which have been deemed relevant. This work used subjective social status to estimate hedonic weights, which is more closely related to the topic of inequality and consistently represents the dimensions selected in this work. Compared to income inequality, the results show significantly different levels and trends of multidimensional inequality in Germany.

The selection of dimensions was motivated by Bourdieu's distinction between economic, cultural and social capital. Based on his theory this work identified five relevant proxies for the three dimensions of inequality: income, education, occupational prestige, employment status and parents' socio-economic status. Using the German household survey ALLBUS, estimations indicate that income is the single most important dimension with an average weight of .52. Education, occupational prestige and the employment status together are equally important while parents' status is irrelevant.

Subsequently, the composite index of multidimensional economic inequality (MDEI) is constructed using the estimated weights and individual achievements. According to the MDEI, inequality continuously increased until 2006 and declined afterwards. In the 2000 - 2016 period average MDEI was .225 while the Gini index of disposable income was .273. Until 2006 the development of the MDEI is relatively similar for different degrees of substitution, but since 2008 substitution is a critical factor for evaluating the trend of the MDEI. When assuming high substitution between dimensions, multidimensional inequality has stagnated or slightly declined, similar to the trend of income inequality. Assuming greater complementary however, the MDEI shows a continuous and significant reduction of inequality since 2006. This result indicates that the disparity between dimensions, especially because of the employment dimension, has decreased in recent years. The margin between income inequality and the MDEI is, among other things, related to the use of unilateral preferences since heterogeneous individual preferences would contribute to higher multidimensional inequality [Decancq et al. \(2017\)](#).

The contribution of individual dimensions is further investigated by a decomposition based on counterfactual distributions. Because the MDEI aggregates first across achievements and then over individuals, the decomposition also accounts for the correlation among dimensions at the individual level. The decomposition reveals, that the correlation among dimension contributes steadily to overall inequality and brings up the question which dimension caused the exceptional decrease of the MDEI. The contribution of the employment dimension remains stable at < 10% under perfect substitution, but under complementarity it becomes obvious that the steady reduction of unemployment caused the MDEI to decline since 2006. These empirical findings prove the decisive role of the degree of substitution and suggest that a composite index is needed to understand the contradicting developments within and between dimensions.

However, two reasons limit the empirical results of this work. First, the ALLBUS data set does not allow controlling for the effect of personal traits on subjective social status sufficiently, because it lacks the panel structure to control for individual fixed effects and the choice of proxies for personal traits is limited. In addition, the estimated weights could be biased due to omitted variables, but previous studies aimed to explore the determinants of subjective social status indicate that the predictive power of the proxies, selected in this work is robust ([Evans and Kelley, 2004](#); [Lindemann and Saar, 2014](#); [Poppitz, 2016](#)). Finally,

the ALLBUS survey lacks data for one frequently included dimension: health. While the relevance of health for life satisfaction is undoubted, this can be disputed for subjective social status. At least in Bourdieu's discussion of different types of capital health does not play a role. Therefore, I assume that the lack of health as one dimension of inequality is negligible.

By combining the subjective perspective on inequality with the factual distribution of relevant dimensions, this work provides an empirical solution to unify both aspects of inequality in a single univariate measure. This is especially relevant since numerous works in recent years have found that perceptions of inequality might be better suited to explain attitudes towards redistribution (Cruces *et al.*, 2013; Clark and D'Ambrosio, 2015) and political mobilization (Justino and Martorano, 2016). However, a strong focus on individual perceptions ignoring the distribution of other domains faces the dilemma of a "physical condition neglect". By combining the subjective viewpoint with factual distributions, the MDEI provides a fair middle ground to analyze in future works how changes in the perception of inequality and the actual distribution in different domains might affect economic and political developments. Future works using subjective social status could also review the impact of heterogeneous preferences compared to unilateral preferences empirically and investigate how the MDEI developed in other European countries that experienced a different evolution of labor markets during the financial and European crisis.

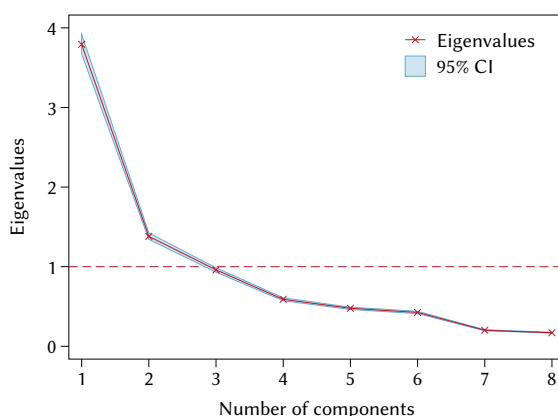
A Appendix

A.1 Principal components analysis

The principal components analysis aims to verify, if the available proxy variables share similar features, equivalent to the theoretically defined dimensions. The similarity between proxies for the same dimension should verify their quality while the dissimilarity between proxies of different dimensions should rule out multicollinearity problems in the hedonic regression. The PCA uses the total sample of non-missing observations over all waves.

With an average $KMO > .7$, all variables are sufficiently correlated to qualify for an PCA analysis (Dziuban and Shirkey, 1974). According to the scree plot two to three components should be extracted (figure A.1). The unrotated PCA results of the first component show that all variables except working status (unemployment) point towards the same direction thereby reproducing the regression results (table A.1a). After rotating the factor loadings, the "Einfachstruktur" is evident and confirms that the selected proxies adequately represent economic cultural and social capital (table A.1b).

Figure A.1: Scree plot of eigenvalues after PCA



Note: Author's calculation based on ALLBUS (2016).

Table A.1: Factor loadings of PCA

	(a) Unrotated loadings			(b) Rotated loadings			
	Comp1	Comp2	Comp3	Comp1	Comp2	Comp3	Unexplained
winc	0.288	-0.413	-0.299			-0.537	0.365
educyrs	0.422	-0.158	0.306	0.537			0.201
iscd97	0.408	-0.250	0.321	0.576			0.183
siops	0.353	-0.271	0.348	0.560			0.309
rwrkst	-0.176	0.403	0.721			0.841	0.158
pisei	0.386	0.442	-0.173		0.611		0.136
psiops	0.370	0.460	-0.180		0.616		0.158
pedu	0.362	0.314	-0.102		0.485		0.355

Source: Factor loadings after extracting three components out of eight variables by principal components analysis. Source: Author's calculation based on ALLBUS (2016).

Note: Based on an oblimin rotation with $\delta = 0$. For better readability, lower factor loadings ($< \pm .3$) have been omitted. Source: Author's calculation based on ALLBUS (2016).

Table A.2: Survey of empirical applications of hedonic weights

authors	topic (Inequality measure)	weights	estimation model	data (Region)	dimensions	ord./ bin.	normalization	β	controls
Schokkaert <i>et al.</i> (2011)	job inequality (equivalent incomes) deprivation	hedonic (life sat.) stated preferences	ordered logit ols fixed effects	SONAR (Flanders) GSOEP (Germany)	8 job characteristics incl. log(wage) finance, house, consumption, health, social	+ / - - / +	$\frac{x-min}{max-min}$ by p-values	1 -	age, children
Justino (2012)	inequality (Theil) deprivation	arbitrary variation stated preferences	-	VLSS (Vietnam) SILC (Europe)	consumption, education, health 19 (finance, basics, housing, durables)	+ / - - / +	$\frac{x-min}{max-min}$, z-sd. + 10	.3 - 1 -	
Bellani (2013)	deprivation	stated preferences		SILC (Europe)	housing, durables	- / +	-	-	
Decancq <i>et al.</i> (2013)	preferred weights	voting		LEVO (Flanders)	8 subjective indicators	+ / -	-	1	age, sex, nationality, personality
Decancq and Neumann (2014, 2016)	well-being (equivalent incomes)	hedonic (life sat.)	box-cox, interactions	GSOEP (Germany)	income, health, (un)employment	+ / +	$\frac{x-min}{max-min}$	-	age, sex, edu, married, personality
Decancq <i>et al.</i> (2015a); Fleurbaey <i>et al.</i> (2009)	well-being (equivalent incomes)	hedonic (life sat.)	ordered logit, interactions	RLMS-HSE (Russia)	log(consumption), house, health, unemployment	+ / -	$\frac{x-min}{max-min}$	-	
Decancq <i>et al.</i> (2015c)	poverty	hedonic (life sat.)	box-cox, interactions	RLMS-HSE (Russia)	consumption, health, housing, unemployment	+ / +	-	< 1	age, sex, edu, minority
Maasoumi and Xu (2015)	inequality (entropy measure)	hedonic (happiness)	entropy minimization	CHIOPS (China)	income, wealth, housing, health, education	+ / -	$\frac{x-min}{max-min}$.4 - .9 (est.)	marital status
Cavapozzi <i>et al.</i> (2015)	poverty	hedonic (life sat.)	ordinal probit, hobit	SHARE (Europe)	6 (income, housing, health)	- / +	-	-	vignette question
Dat <i>et al.</i> (2015)	child deprivation	hedonic (life sat.)	ordered logit, f.e.	YL (Vietnam)	education, health, shelter, water, work, inclusion	-	-	-	sex, rural, ethnicity, religion

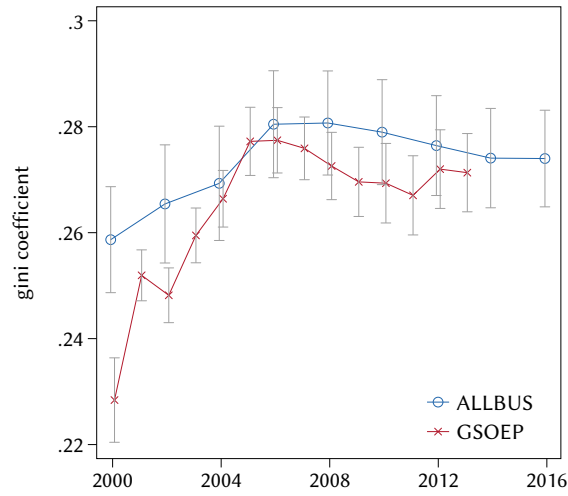
Note: Survey of empirical works which use hedonic weights to obtain a multidimensional measure of inequality or deprivation. Abbreviations: life sat: life satisfaction, ord: ordinal scaled variables, bin: binary variables, β : degree of substitution as in CES function, defined in Decancq and Lugo (2012).

Table A.3: Annual regressions for hedonic weights

dependent variable	subjective social status									
	2000	2002	2004	2006	2008	2010	2012	2014	2016	total
income	0.403 (0.065)***	0.479 (0.063)***	0.519 (0.050)***	0.729 (0.044)***	0.631 (0.049)***	0.536 (0.051)***	0.518 (0.040)***	0.475 (0.041)***	0.482 (0.045)***	0.537 (0.017)***
education (years)	0.113 (0.065)*	0.043 (0.068)	0.159 (0.048)***	0.139 (0.049)***	0.105 (0.049)**	0.185 (0.055)***	0.120 (0.042)***	0.036 (0.042)	0.167 (0.045)***	0.118 (0.017)***
occupational prestige	0.204 (0.066)***	0.111 (0.074)	0.213 (0.048)***	0.151 (0.049)***	0.215 (0.049)***	0.156 (0.054)***	0.134 (0.044)***	0.215 (0.046)***	0.188 (0.044)***	0.178 (0.017)***
parents social status (ISEI)	0.045 (0.058)	0.126 (0.055)**	0.049 (0.043)	0.000 (0.041)	-0.022 (0.043)	0.001 (0.046)	0.026 (0.036)	0.067 (0.036)*	0.010 (0.037)	0.028 (0.014)*
employed (dummy)	0.222 (0.056)***	0.160 (0.073)**	0.133 (0.044)***	0.093 (0.043)**	0.135 (0.047)***	0.214 (0.051)***	0.079 (0.038)**	0.105 (0.040)***	0.153 (0.048)***	0.144 (0.016)***
age	-0.009 (0.059)	-0.059 (0.062)	0.061 (0.045)	0.016 (0.041)	-0.110 (0.045)**	-0.037 (0.044)	-0.022 (0.037)	0.004 (0.037)	-0.069 (0.038)*	-0.029 (0.015)*
age ²	0.072 (0.058)	0.017 (0.064)	0.109 (0.047)**	0.080 (0.043)*	0.098 (0.045)**	0.010 (0.048)	0.086 (0.040)**	0.093 (0.041)**	0.055 (0.045)	0.073 (0.015)***
female	0.033 (0.050)	0.039 (0.050)	0.087 (0.038)**	0.068 (0.036)*	0.107 (0.037)***	-0.018 (0.038)	-0.014 (0.032)	0.057 (0.031)*	0.021 (0.032)	0.043 (0.013)***
no political interest	-0.158 (0.054)***	-0.022 (0.062)	-0.082 (0.041)**	-0.138 (0.039)***	-0.108 (0.040)***	-0.030 (0.043)	-0.022 (0.036)	-0.121 (0.035)***	-0.120 (0.037)***	-0.092 (0.014)***
hh composition	Yes	Yes	Yes	Yes	Yes	Yes	Yes	Yes	Yes	Yes
r^2	0.244	0.272	0.261	0.334	0.277	0.259	0.218	0.232	0.248	0.301
N	730	646	1394	1595	1606	1462	1906	1964	1990	13293

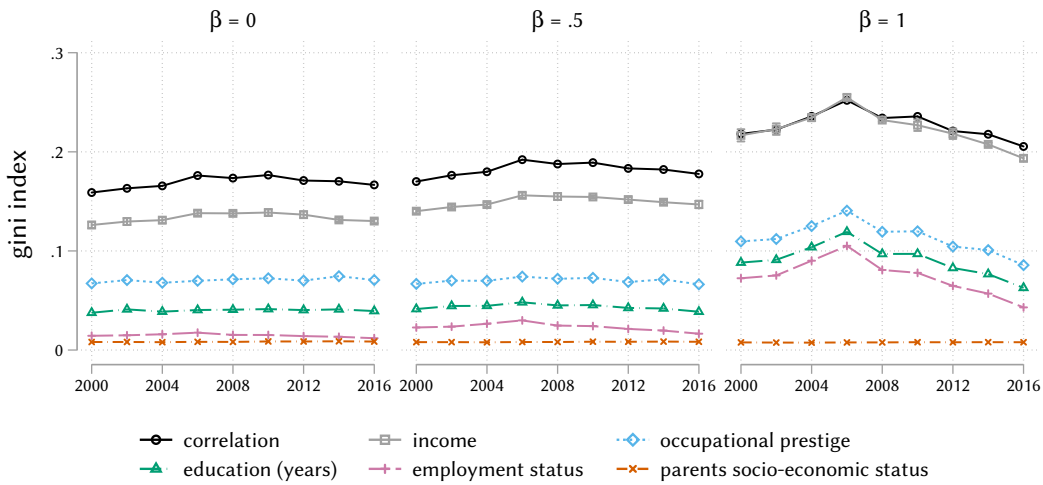
Note: * p<0.1, ** p<0.05, *** p<0.01. S.E.'s in parentheses. All regressors are z-standardized. Source: Author's calculations based on ALLBUS (2016).

Figure A.2: Income inequality compared



Note: Gini coefficient with 95% confidence intervals based on jackknife estimates. Sample: 18 - 65 year old individuals not in education.
 Source: Author's calculation based on ALLBUS (2016) and SOEP (2016).

Figure A.3: Absolute MDEI decomposition by correlation and outcomes



Note: Absolute contribution to total MDEI by eliminating stepwise the influence of one component. Grey bars show 95% confidence intervals after reshuffling outcomes 2000 times. Source: Author's calculation based on ALLBUS (2016).

References

- Aaberge, R. and Brandolini, A., 2015. Multidimensional Poverty and Inequality, in: *Handbook of Income Distribution*, Elsevier, vol. 2, 141--216.
- ALLBUS, 2016. German General Social Survey - Cumulation 1980-2014, Datenfile Version 1.0.0 ZA4584, GESIS Data Archive, Cologne.
- Bellani, L., 2013. Multidimensional indices of deprivation: The introduction of reference groups weights, *The Journal of Economic Inequality*, 11 (4), 495--515.
- Bourdieu, P., 1983. Ökonomisches Kapital, kulturelles Kapital, soziales Kapital, in: R. Kreckel, ed., *Soziale Ungleichheiten*, Göttingen: Schwartz, 183--198.
- Bourdieu, P., 1984. *Distinction: A Social Critique of the Judgement of Taste*, Harvard Univ. Press.
- Brandolini, A., 2009. On applying synthetic indices of multidimensional well-being: Health and income inequalities in France, Germany, Italy, and the United Kingdom, in: *Against Injustice*, Cambridge University Press.
- Cavapozzi, D., Han, W., and Miniaci, R., 2015. Alternative weighting structures for multidimensional poverty assessment, *The Journal of Economic Inequality*, 13 (3), 425--447.
- Chakravarty, S.R. and Lugo, M.A., 2016. Multidimensional indicators of inequality and poverty, in: *Oxford Handbook of Well-Being and Public Policy*, New York: Oxford University Press, 246--285.
- Clark, A.E. and D'Ambrosio, C., 2015. Attitudes to income inequality: Experimental and survey evidence, in: A.B. Atkinson, ed., *Handbook of Income Distribution*, vol. 2A, 1147--1208.
- Cruces, G., Perez-Truglia, R., and Tetaz, M., 2013. Biased perceptions of income distribution and preferences for redistribution: Evidence from a survey experiment, *Journal of Public Economics*, 98, 100--112.
- Dat, V.H., Thai, P.M., Pasquier-Doumer, L., and Thang, N., 2015. Weighting Deprivations using Subjective Well-being, Working Paper 142, Young Lives, Oxford Department of International Development, Oxford.
- Decancq, K., 2015. Towards a Distribution-Sensitive Better Life Index, OECD Statistics Working Papers 2015/07.
- Decancq, K., 2017. Measuring Multidimensional Inequality in the OECD Member Countries with a Distribution-Sensitive Better Life Index, *Social Indicators Research*, 131 (3), 1057--1086.
- Decancq, K., Decoster, A., and Schokkaert, E., 2009. The Evolution of World Inequality in Well-being, *World Development*, 37 (1), 11--25.
- Decancq, K., Fleurbaey, M., and Schokkaert, E., 2015a. Happiness, Equivalent Incomes and Respect for Individual Preferences, *Economica*, 82 (1), 1082--1106.
- Decancq, K., Fleurbaey, M., and Schokkaert, E., 2015b. Inequality, Income, and Well-Being, in: A.B. Atkinson and F. Bourguignon, eds., *Handbook of Income Distribution*, Elsevier, vol. 2, 67--140.
- Decancq, K., Fleurbaey, M., and Schokkaert, E., 2017. Wellbeing Inequality and Preference Heterogeneity, *Economica*, 84 (334), 210--238.
- Decancq, K., Fleurbaey, M., and Maniquet, F., 2015c. Multidimensional Poverty Measurement with Individual Preferences, CORE Discussion Paper 8, Université catholique de Louvain, Center for Operations Research and Econometrics.
- Decancq, K. and Lugo, M.A., 2012. Inequality of Wellbeing: A Multidimensional Approach, *Economica*, 79 (316), 721--746.
- Decancq, K. and Lugo, M.A., 2013. Weights in Multidimensional Indices of Wellbeing: An Overview, *Econometric Reviews*, 32 (1), 7--34.
- Decancq, K. and Neumann, D., 2014. Does the choice of well-being measure matter empirically? An illustration with German data, CORE Discussion Paper 50, Université catholique de Louvain, Center for Operations Research and Econometrics.
- Decancq, K. and Neumann, D., 2016. Does the choice of well-being measure matter empirically?, in: M.D. Adler and M. Fleurbaey, eds., *Oxford Handbook of Well-Being and Public Policy*, New York: Oxford University Press, 553--587.
- Decancq, K., Van Ootegem, L., and Verhofstadt, E., 2013. What If We Voted on the Weights of a Multidimensional Well-Being Index? An Illustration with Flemish Data, *Fiscal Studies*, 34 (3), 315--332.
- Dziuban, C.D. and Shirkey, E.C., 1974. When is a correlation matrix appropriate for factor analysis? Some decision rules, *Psychological Bulletin*, 81 (6), 358--361.
- European Commission, 2014. EUROSTAT, <http://epp.eurostat.ec.europa.eu/portal/page/portal/eurostat/home/>.
- Evans, M.D.R. and Kelley, J., 2004. Subjective Social Location: Data From 21 Nations, *International Journal of Public Opinion Research*, 16 (1), 3--38.
- Evans, M.D.R., Kelley, J., and Kolosi, T., 1992. Images of Class: Public Perceptions in Hungary and Australia, *American Sociological Review*, 57 (4), 461--482.
- Fleurbaey, M., Schokkaert, E., and Decancq, K., 2009. What good is happiness?, CORE Discussion Paper 17, Université catholique de Louvain, Center for Operations Research and Econometrics.
- Ganzeboom, H.B., De Graaf, P.M., and Treiman, D.J., 1992. A standard international socio-economic index of occupational status, *Social Science Research*, 21 (1), 1--56.
- Ganzeboom, H.B.G. and Treiman, D.J., 1996. Internationally Comparable Measures of Occupational Status for the 1988 International Standard Classification of Occupations, *Social Science Research*, 25 (3), 201--239.
- Haisken-DeNew, J. and Sinning, M., 2010. Social deprivation of immigrants in Germany, *Review of Income and Wealth*, 56 (4), 715--733.
- ISSP, 2016. International Social Survey Programm 2000-2014, merge of annual waves, GESIS Data Archive, Cologne.
- Justino, P., 2012. Multidimensional welfare distributions: Empirical application to household panel data from Vietnam, *Applied Economics*, 44 (26), 3391--3405.
- Justino, P. and Martorano, B., 2016. Inequality, Distributive Beliefs and Protests: A Recent Story from Latin America.
- Kelley, J. and Evans, M.D.R., 1995. Class and Class Conflict in Six Western Nations, *American Sociological Review*, 60 (2), 157--178.
- Kovacevic, M., 2010. Review of HDI Critiques and Potential Improvements, Human Development Research Papers HDRP-2010-33, United Nations Development Programme (UNDP), Geneva.
- Lindemann, K. and Saar, E., 2014. Contextual effects on subjective social position: Evidence from European countries, *International Journal of Comparative Sociology*, 55 (1), 3--23.
- Maasoumi, E. and Xu, T., 2015. Weights and substitution degree in multidimensional well-being in China, *Journal of Economic Studies*, 42 (1), 4--19.
- OECD, 2011. *How's Life? How's Life?*, Paris: OECD Publishing.
- Pischke, J.S. and von Wachter, T., 2008. Zero Returns to Compulsory Schooling in Germany: Evidence and Interpretation, *The Review of Economics and Statistics*, 90 (3), 592--598.
- Poppitz, P., 2016. Does self-perceptions and income inequality match? The case of subjective social status, IMK Working Paper 173, IMK, Düsseldorf.
- Quah, D.T., 1997. Empirics for Growth and Distribution: Stratification, Polarization, and Convergence Clubs, *Journal of Economic Growth*, 2 (1), 27--59.
- Ridgeway, C.L. and Walker, H.A., 1995. Status structures, in: K. Cook, G.A. Fine, and J. House, eds., *Sociological Perspectives on Social Psychology*, Upper Saddle River: Pearson Education, 281--310.
- Schokkaert, E., 2007. Capabilities and Satisfaction with Life, *Journal of Human Development*, 8 (3), 415--430.
- Schokkaert, E., van Ootegem, L., and Verhofstadt, E., 2011. Preferences and Subjective Satisfaction: Measuring Well-being on the Job for Policy Evaluation, *CESifo Economic Studies*, 57 (4), 683--714.
- Schokkaert, E.A., van Ootegem, L., and Verhofstadt, E., 2009. Measuring job quality and job satisfaction, Working Paper 09/620, Ghent University, Faculty of Economics and Business Administration, Gent.

- Sen, A., 1985. *Commodities and Capabilities*, 7, Amsterdam: North-Holland.
- Sen, A.K., 1997. Inequality, unemployment and contemporary Europe, *International Labor Review*, 136 (2), 155.
- Shorrocks, A.F., 1982. Inequality Decomposition by Factor Components, *Econometrica*, 50 (1), 193--211.
- SOEP, 2016. Socio-Economic Panel (SOEP), SOEPlong, version 31, 1984-2014.
- Stiglitz, J.E., Sen, A.K., and Fitoussi, J.P., 2009. Report by the Commission on the Measurement of Economic Performance and Social Progress, Tech. rep., Commission on the Measurement of Economic Performance and Social Progress, Paris.
- Treiman, D.J., 1977. *Occupational Prestige in Comparative Perspective*, Academic Press.
- Wasmer, M., Blohm, M., Walter, J., Scholz, E., and Jutz, R., 2014. Konzeption und Durchführung der "Allgemeinen Bevölkerungsumfrage der Sozialwissenschaften"(ALLBUS) 2012.
- Weiss, Y. and Fershtman, C., 1998. Social status and economic performance: A survey, *European Economic Review*, 42 (3), 801--820.