

Schwab, Thomas; Todtenhaupt, Maximilian

Conference Paper

Spillover from the Haven: Cross-border Externalities of Patent Box Regimes within Multinational Firms

Beiträge zur Jahrestagung des Vereins für Socialpolitik 2017: Alternative Geld- und Finanzarchitekturen - Session: Foreign Direct Investment II, No. D14-V2

Provided in Cooperation with:

Verein für Socialpolitik / German Economic Association

Suggested Citation: Schwab, Thomas; Todtenhaupt, Maximilian (2017) : Spillover from the Haven: Cross-border Externalities of Patent Box Regimes within Multinational Firms, Beiträge zur Jahrestagung des Vereins für Socialpolitik 2017: Alternative Geld- und Finanzarchitekturen - Session: Foreign Direct Investment II, No. D14-V2, ZBW - Deutsche Zentralbibliothek für Wirtschaftswissenschaften, Leibniz-Informationszentrum Wirtschaft, Kiel, Hamburg

This Version is available at:

<https://hdl.handle.net/10419/168148>

Standard-Nutzungsbedingungen:

Die Dokumente auf EconStor dürfen zu eigenen wissenschaftlichen Zwecken und zum Privatgebrauch gespeichert und kopiert werden.

Sie dürfen die Dokumente nicht für öffentliche oder kommerzielle Zwecke vervielfältigen, öffentlich ausstellen, öffentlich zugänglich machen, vertreiben oder anderweitig nutzen.

Sofern die Verfasser die Dokumente unter Open-Content-Lizenzen (insbesondere CC-Lizenzen) zur Verfügung gestellt haben sollten, gelten abweichend von diesen Nutzungsbedingungen die in der dort genannten Lizenz gewährten Nutzungsrechte.

Terms of use:

Documents in EconStor may be saved and copied for your personal and scholarly purposes.

You are not to copy documents for public or commercial purposes, to exhibit the documents publicly, to make them publicly available on the internet, or to distribute or otherwise use the documents in public.

If the documents have been made available under an Open Content Licence (especially Creative Commons Licences), you may exercise further usage rights as specified in the indicated licence.

Spillover from the Haven: Cross-border Externalities of Patent Box Regimes within Multinational Firms*

Thomas Schwab¹ and Maximilian Todtenhaupt²

¹*University of Mannheim, WU Vienna and ZEW*

²*University of Mannheim and ZEW*

February 14, 2017

Abstract

This paper analyzes cross-border externalities of patent box regimes. Tax cuts in one location of a multinational enterprise reduce the user cost of capital for the whole group if they do not require nexus to benefit from these reductions. This spillover effect of foreign tax cuts raises domestic investment. We test this mechanism for the case of research activity. By combining information on patents, firm ownership and specific characteristics of patent box regimes, we show that regimes without nexus requirement for tax-efficient reallocation of patent profits induce positive cross-border externalities within multinational groups. The implementation of a patent box in a country where one of the foreign affiliates of a firm resides, increases domestic research activity by about 1% per implied tax rate differential. Evaluated at the sample average, this result implies that the implementation of a foreign patent box increases domestic R&D activity from about one patent every three years to about one patent every one and a half years. Furthermore, our findings suggest that patent boxes generate negative spillovers on average patent quality. This has important implications for international tax policy and the evaluation of patent box regimes.

JEL Classification: F23, H25, O31

Keywords: patent box, spillover, corporate taxation, innovation

*Contact: T. Schwab, thomas.schwab@gess.uni-mannheim.de, M. Todtenhaupt: todtenhaupt@zew.de. The authors are grateful to Niels Johannesen, Nadine Riedel and Johannes Voget as well as participants of the MaTax Annual Conference for valuable comments and suggestions.

1 Introduction

Many governments have recognized the importance of technological progress and corporate innovation for domestic productivity growth. Fostering research and development (R&D) activity of firms is therefore one of the key objectives when designing tax systems. In recent years, patent box regimes have become a very relevant instrument in this policy field. Patent boxes allow firms to exempt a large share of profits related to intangible assets (mainly patents)¹ from taxation and thus reduce the effective tax rate for these profits. They differ substantially in their design, in particular with regard to the type of patents that are taxed at the low patent box rates. In a global economy with strong international links, such policies may generate substantial cross-border externalities. The goal of this paper is to identify these spillovers of patent boxes with respect to corporate R&D activity.

Even though most governments claim to implement patent boxes mainly to facilitate *domestic* R&D activity, the emergence of these regimes has raised several concerns. Not surprisingly, the cross-border externalities that we investigate in this paper are at the heart of many of these issues. First, it is not certain that patent boxes actually boost new R&D projects and thus increase the overall level of corporate innovation. In response to the implementation of a more favorable tax regime in one location, firms may merely relocate existing research activity. Such a beggar-thy-neighbor effect is well-known for input-related R&D tax incentives (Wilson, 2009). Second, the economic role of patent boxes is strongly debated. In the best case, these regimes eliminate a market failure by increasing the net return of R&D to a level that better reflects the positive externalities that arise due to knowledge spillovers. In the worst case, patent boxes distort the efficient allocation of R&D investment. Finally, patent box regimes decrease or increase tax revenue. If a patent transfer is used as a cross-border profit shifting vehicle, patent boxes reduce tax revenues in countries with higher effective tax burdens and potentially also in patent box countries because of the lower rate. However, if they spur innovation that raises future profits, tax revenue may actually increase in the long-run.

Determining the sign and size of cross-border externalities of patent boxes is

¹Some patent boxes also allow for the inclusion of trade marks or other intellectual property.

thus important to characterize the role of such regimes in an international context. In our paper, we analyze these externalities using micro-level data for European firms. We link ownership information for a large number of firms to R&D activity. The latter is measured as the number of granted patent applications per firm and year.² As we are interested in cross-border effects of patent boxes, we focus on the research activity of firms that are located in countries without a patent box regime. Cross-border links are established via multinational companies with affiliates both in patent box countries and in countries without a patent box regime implemented. We then estimate the effect of a patent box implementation on the R&D activity of a firm that is located in a non-patent-box country but has an affiliate in the implementing country.

In our analysis, we differentiate between patent box regimes with and without nexus requirement. The former usually requires at least part of the research activity to be carried out in the respective country for the resulting patents to be taxed at the lower patent box rate. In contrast, the latter also taxes patents at the favorable rate that have been generated elsewhere. This is usually done by including acquired patents in the patent box which provides firms with a simple profit shifting opportunity. Corporations can conduct R&D at the location of their choice and then transfer the resulting patent to a patent box country without nexus requirement and benefit from the lower tax rates there. These regimes thus lower the user cost of capital for R&D activity of firms in other countries that have an inter-corporate link to it through a mechanism that is very similar to the role of tax havens in Hong & Smart (2010). In fact, this similarity is not surprising as countries that implement patent boxes without nexus requirement effectively become tax havens for a particular asset. We thus expect these regimes to generate positive cross-border externalities on R&D activity. For patent boxes *with* nexus requirement, such an effect should not be observed since the profit shifting opportunity is limited.

We test these hypotheses with a Poisson fixed effects count model which relates the implementation of a patent box in a foreign affiliate to the number of domestically developed patents of a firm while controlling for various location-

²Focusing on granted applications allows to better capture actual research activity rather than strategic patent filing and is thus commonly used in the literature (e.g. Aghion *et al.*, 2013; Bena & Li, 2014; Seru, 2014; Stiebale, 2016).

firm- and group-specific variables that might drive innovation activity. Our estimation results suggest that the implementation of a patent box *without* nexus requirement raises R&D activity from about one patent every three years to about one patent every one and a half years. When relating the effect to the implied tax difference between firm and affiliate location, we find that a one percentage point difference in the tax rate resulting from a patent box introduction leads to an increase of R&D activity by 1.11%.

These positive externalities are robust to controlling for domestic tax-related input incentives such as super-deductions and credits. They also pertain when we adjust the patent count for heterogeneity in the patent quality. For patent boxes with nexus requirement, we find negative, and much smaller cross-border externalities. However, the estimated coefficients are only significant when accounting for patent quality. This points to a decrease in average patent quality rather than a decline in R&D output in non-patent box countries. In fact, we find that both types of patent box regimes reduce the average patent quality in related firms abroad. This result can be explained by the spatial sorting of patents according to their profitability which is similar to the sorting mechanism of firms with different levels of productivity in Melitz *et al.* (2004) and related findings for tax competition by Becker *et al.* (2012) and Haufler & Stähler (2013). Patent boxes with nexus requirement probably lead to the reallocation of the most profitable patents while those without nexus requirement allow the firm to realize more but also less profitable R&D projects.

Our analysis contributes to the large literature that relates tax policy to R&D activity. In particular, researchers have established a link between corporate taxation and investment in R&D (Mamuneas & Nadiri, 1996; Bloom *et al.*, 2002; Wilson, 2009), the location choice of intangible assets within multinational firms (Dischinger & Riedel, 2011; Karkinsky & Riedel, 2012; Griffith *et al.*, 2014) and the quality of patents (Ernst *et al.*, 2014). Only few papers analyze international spillovers of tax policy, but all of them rely on macro-level data of R&D activity. For example, Wilson (2009) focuses on input-related incentives and uses aggregate R&D data from US states to show that a large part of the R&D increasing effect of tax credits is due to a reallocation of research activity between states. In contrast, our paper uses micro-level data to establish positive cross-border externalities of output-related tax incentives as a novel effect of tax policy on R&D.

In addition, we also contribute to the growing literature on patent box regimes. In this field, more normative analyses (e.g. Evers *et al.*, 2015) have recently been complemented by empirical studies (e.g. Bradley *et al.*, 2015). To the best of our knowledge, our paper is the first to empirically analyze cross-border externalities of patent boxes on real R&D activity.

Finally, our analysis is related to the literature on tax havens. As noted above, by implementing patent boxes, the respective countries effectively become low-tax locations for intangible assets. Thus, the criticism that is put forward against tax havens (e.g. Dharmapala, 2008; Slemrod & Wilson, 2009) may also apply to patent box countries. Depending on their design, they may divert firm profits away from the location of real activity and thus erode the tax base of high-tax locations. Alternatively one could apply the more positive view of Hong & Smart (2010) and Desai *et al.* (2006). They argue that low-tax jurisdictions may be beneficial because they enable governments to implicitly differentiate between mobile and immobile firms, even if they cannot distinguish between the two types or are not willing to do so because of political reasons. As a first-order effect, allowing mobile firms to shift profits to low-tax locations lowers the user cost of capital in high-tax locations and increases investment there. The assumption underlying these arguments is that there are real responses of domestic firms to tax incentives abroad. Our empirical results suggest that such a mechanism exists with regard to R&D investments.

The remainder of this paper is structured as follows. Section 2 develops a stylized theoretical framework for our analysis and characterizes existing patent boxes. We explain the empirical strategy in Section 3 and describe the data collection in Section 4. Results are presented in Section 5 while Section 6 concludes.

2 Externalities from Patent Boxes

2.1 Theoretical Framework

In this section, we set up a simple theoretical model to analyze the reaction of the R&D investment of a particular firm i to the introduction of a patent box in a country where one of its foreign affiliates resides. Throughout the analysis, our focus will thus be on the number of successfully realized research projects,

measured as granted patent applications, at the location of i rather than the overall research activity in all affiliates of the multinational company.

Each firm i can choose to realize projects from a given set of potential research undertakings indicated by $s = 1, \dots, n_i$. The return to each project is given by $r_s = (1 - t) \pi_s - c$ and is defined as the difference between the net profit, defined as revenue less deductible cost after taxes, $(1 - t) \pi_s$, and some non-deductible fixed costs c . The latter may comprise costs that are hard to price and usually not considered as deductible expenses such as the cost of risk-taking, the cost of becoming acquainted with local patenting institutions or the cost to find and hire suitable researchers.

The firm realizes any project that yields a positive return $r_s > 0$. We define the net profit of the cut-off project as $\tilde{\pi} = \frac{c}{1-t}$ such that the firm realizes all projects with a net profit of $\pi_s > \tilde{\pi}$ and disregards projects with $\pi_s \leq \tilde{\pi}$. We can sort the net profits of all available projects along the interval $(\underline{\pi}_i, \bar{\pi}_i)$ and define the corresponding cumulative distribution function F . We assume that each realized research project generates one patent and denote the overall patent count for firm i by P_i which is given by

$$P_i = n_i (1 - F(\tilde{\pi})). \quad (1)$$

Equation (1) defines the number of patents as a decreasing function of the fixed cost c and the applicable profit tax rate t .³

So far, the setting applies to a domestic company with no international links. We now turn to a multinational company. More precisely, we assume that firm i is located in country h and has an affiliate in country p . The two locations differ in the fixed cost and may apply different tax rates. We thus denote the return for a research project s in location l by

$$r_{s,l} = (1 - t_l) \pi_s - c_l, \quad l \in \{h, p\}. \quad (2)$$

To simplify the derivation, we assume that firm i incurs a higher fixed cost if it re-

³This can be easily verified by taking the first derivative of P_j with respect to t and c : $\frac{\partial P_j}{\partial c} = -n_j f(\tilde{\pi}) \frac{1}{1-t} < 0$, $\frac{\partial P_j}{\partial t} = -n_j f(\tilde{\pi}) \frac{c}{(1-t)^2} < 0$

locates its research activity to country p (i.e. $c_p > c_h$). Besides the specific characteristics of the fixed costs described above, this reflects potential reallocation cost that the firm would have to bear. Reallocation cost include the reestablishment of new organizational R&D structures in p and effort for convincing researchers to move.

There are two decisions to be made by the firm. First, it must decide *whether or not* to realize a research project. This is done along the rationale described above by evaluating whether it generates a positive return, $r_{s,l} > 0$. Second, the firm must decide *where* to realize the research project (i.e. in h or p). This is done by comparing the location-specific returns and choosing $l \in \{h, p\}$ such that $r_{s,l} = \max(r_{s,h}, r_{s,p})$.

Note that in our analysis, we focus on the number of patents generated by the firm in its original location h . We begin with the hypothetical situation where there are no tax differences between the two locations such that $t_h = t_p$. In this scenario, the firm locates research in h since $c_p > c_h$ implies that $r_{s,h} > r_{s,p}$. All projects with net profit $\pi_s > \tilde{\pi} = \frac{c_h}{1-t_h}$ are realized and the number of generated patents is given by equation (1).

Now, assume that a patent box is implemented in location p . This reduces the effective tax rate there such that $t_h > t_p$. The impact of the patent box in location h on the number of research projects realized in h depends on its nexus requirement. For illustrative purposes, we demonstrate the effects of two extreme options: *full nexus* and *no nexus requirement* at all. In the first case, the firm must carry out all the research in p to be able to opt for the favorable tax regime. Under the second option, the firm can locate research activity in h but still benefit from the low tax rate in p . A typical example for this would be the case where a patent box also allows for the inclusion of acquired patents. The firm can then generate the patent in h and subsequently transfer it to its affiliate in p where patent profit is generated via license fees obtained from the affiliate in h .

Consider first a patent box in p *without nexus requirement*. In such a scenario, the firm always allocates the patent rights to the low-tax affiliate in p so that its profits are taxed there, resulting in $t_l = t_p$. However, it keeps research activity in h because of the fix cost advantage. The return of conducting research in h is given by $r_{s,h} = (1 - t_p) \pi_s - c_h$ and we can define the profit of the cut-off project as $\tilde{\pi}' = \frac{c_h}{1-t_p}$ such that all projects with $\pi_s > \tilde{\pi}'$ are realized in h . Note that in

this extreme case, no research is carried out in p because of the higher fixed cost there.⁴ The number of patents in h is then given by

$$P'_i = n_i (1 - F(\tilde{\pi}')). \quad (3)$$

Because of $\tilde{\pi}' < \tilde{\pi}$ we have $P'_i > P_i$. A patent box without nexus requirement in p increases research activity in h . The underlying mechanism is very similar to the concept of the user cost of capital applied in investment theory. If the patent box requires no change of location of the actual research process, the lower profit tax effectively increases the return from the patent which decreases the user cost of capital and makes R&D investment more attractive.

Consider now the situation where p introduces a patent box with *full nexus requirement*. The firm will only realize projects in h with a net profit of $\pi_s > \tilde{\pi} = \frac{c_h}{1-t_h}$. However, not all of these projects are necessarily realized in h but the research activity may also be carried out in p . In particular, the firm will locate the most profitable research projects to p because for these projects the tax savings from relocation are the largest. Formally, we define the cut-off profit for relocating profits by $\tilde{\pi}'' = \frac{c_p - c_h}{t_h - t_p}$ such that all projects with $\pi_s < \tilde{\pi}''$ are located in h whereas all other realized projects are located in p . The number of research projects realized in h is then given by

$$P''_i = \max(n_i (F(\tilde{\pi}'') - F(\tilde{\pi})), 0) \quad (4)$$

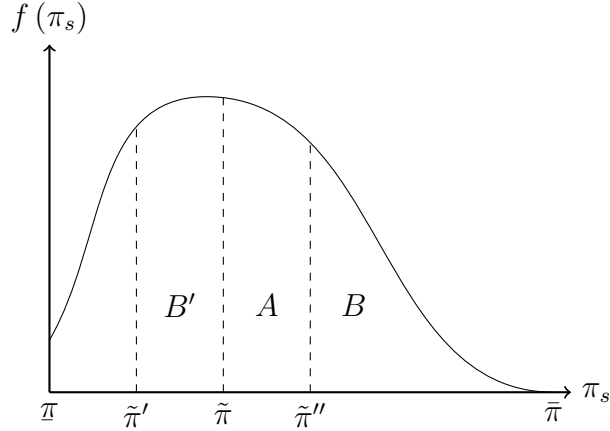
Since $F(\tilde{\pi}'') \leq 1$, we must have $P''_i \leq P_i$. If the patent box in p requires full nexus, it provides an incentive for the firm to relocate those projects from h to p whose profits are sufficiently large such that the resulting tax savings fully compensate the increase in the fixed cost. Consequently, the number of patents in h decreases with the introduction of such a patent box.⁵

Let us assume for illustrative purposes that $\tilde{\pi}' < \tilde{\pi} < \tilde{\pi}''$. This allows us to

⁴This is also a result of our focus on R&D activity in h . To make the model more realistic, one would have to assume that the affiliate in p also faces a set of potential R&D projects. Such a set up, however, would complicate our model while not adding any new insights with regard to the cross-border externalities of tax policy in p on R&D activity of firm j in h .

⁵Note that this does not necessarily imply that overall research activity of the multinational company decreases. If the tax benefits in p are large enough, the total number of patents may even increase. This occurs, however, only because the increase in research activity in p more than compensates for the decrease in h . Research activity in h always decreases.

Figure 1: Profit distribution and realized R&D projects



graphically display the effect of a patent box introduction. Figure 1 plots the density function of the profits of available research projects. Without a patent box in location p , the firm realizes all projects with profit above the threshold $\tilde{\pi}$ and the share of realized projects is given by area $A + B$. Introducing a patent box without nexus makes research more profitable also in h and the firm now realizes all projects with profit greater than $\tilde{\pi}' < \tilde{\pi}$. The share of realized projects increases by the area B' such that the overall share of projects is given by the area $A + B + B'$. In contrast, a patent box with full nexus requirement induces the firm to realize those projects with profits above $\tilde{\pi}''$ in p . This corresponds to a share B of available projects. The share of projects realized in h is thus reduced to area A .

Finally, we observe that the average profit of realized patents in h decreases with the implementation of a patent box. This can be easily seen when comparing the average profits of the different fractions of research projects in Figure 1. A formal analysis of this result is presented in Appendix A.1. The sign of the effect is independent of the nexus requirement of the patent box, but it follows different intuitions in each case. A patent box *without nexus requirement* lowers average patent profits because it allows R&D projects with lower profitability to be realized. Patent boxes *with nexus* requirement reduce the average profit in h

because R&D activity for the most profitable projects is relocated to p . The latter mechanism is related to the one described for international trade by Melitz *et al.* (2004) who show that only the most productive firms relocate internationally. Furthermore, Haufler & Stähler (2013) show in a tax competition model, that more profitable projects sort into low-tax jurisdictions. Empirical evidence by Becker *et al.* (2012) suggests that this effect contributes significantly to the overall tax base location effect of corporate taxes. In our firm-level analysis below, we show that a similar mechanism is particularly relevant for corporate R&D activity.

Deviating from the two polar cases of *full* and *no nexus requirement* leads to intermediate cases that offer less clear-cut predictions. In particular, when the patent box in a country requires some but not all of the R&D activity to be generated in this country to be able to opt for the lower tax rate, both the increasing and decreasing effect on R&D activity in h are present. The overall impact depends then on which of these effects dominates. The negative effect on the average profitability of R&D realized in h should, however, prevail.

2.2 Patent Boxes in Practice

Before testing our hypotheses developed above, it is useful to relate our theoretical model to the patent boxes that exist in practice. Evers *et al.* (2015) provide a comprehensive overview of the various regimes that have been established since 2000, which has recently been updated by Alstadsæter *et al.* (2015). In Table 1 we summarize key elements of existing patent box regimes in Europe. In general, firms enjoy substantial reductions in effective tax payments when opting for these regimes but significant differences between individual regimes remain. Patent boxes differ in the treatment of expenses as well as in the types of intangible assets they may be applied to beyond patents (e.g. trademarks, brands). The extent of the tax exemption varies significantly across locations. While the tax rate on profits from patents is reduced by 35 percentage points in Cyprus, firms only enjoy a 50% exemption in Portugal which implies a decrease in the statutory tax rate of 11.25 percentage points.

Table 1: Patent box regimes in European countries

Country	Year of implementation	Corporate income tax rate (2015)	Patent box tax rate (2015)	Nexus Requirement
France	2000	34.0	16.8	No
Hungary	2003	19.0	9.5	No
Netherlands	2007	25.0	5.0	Yes
Spain	2008	30.0	12.0	Yes
Belgium	2008	34.0	6.8	Yes
Luxembourg	2008	29.2	5.8	Yes
Malta	2010	35.0	0.0	No
Cyprus	2012	10.0	2.5	No
United Kingdom	2013	20.0	12.0	Yes
Portugal	2014	22.5	11.3	Yes
Italy	2015	31.4	22.0	Yes
Turkey	2015	20.0	10.0	Yes
Ireland	2016	12.5	6.3	Yes

Note: Ireland initially introduced a patent box regime in 1973 but abolished it in 2010. It was reintroduced in 2016.

As pointed out above, the extent of the nexus requirement of patent boxes is relevant for the sign of their cross-border externalities. In this regard, existing regimes also differ substantially. In the sense of our analytical framework a nexus requirement is a regulation that effectively prevents the cross-border transfer of patent rights within multinational groups. In this regard, it is crucial how acquired patents are treated in the patent box. Some countries directly prohibit the inclusion of acquired patents into the patent box (Spain, Portugal). Other regimes include acquired patents but require that these have been further developed to a substantial degree at the location where the resulting profits are taxed (Belgium, Ireland⁶, Netherlands, United Kingdom). In Luxembourg, only patents acquired from an unrelated party outside the corporate group are included in the patent

⁶In 2008, Ireland extended the scope of its patent box to patent income resulting from

box. Patent boxes that have been implemented more recently (Italy, Ireland) comply with the Modified Nexus Approach adopted by the EU and the OECD. This approach allows only for a certain share of intellectual property income to be included in the patent box which must correspond to the share of research conducted by the firm itself.⁷ Effectively, all of these patent boxes require that a substantial part of the research activity must be conducted in the respective country for the lower patent box rate to take effect. Even though they do not impose the full nexus requirement as supposed in our theoretical model, the remaining profit shifting opportunities are limited and are thus unlikely to generate positive cross-border spillovers on R&D activity.

In contrast, several patent box regimes include acquired patents (France, Hungary, Malta, Cyprus) without effective restrictions.⁸ As this allows firms to conduct the actual development of the patent elsewhere and then transfer the resulting patent right to the patent box location, these regimes correspond to the patent boxes without nexus requirement described above.

3 Empirical Strategy

The goal of this paper is to assess the impact of foreign tax reductions for patent profits on domestic R&D activity. This is achieved by estimating the effect of the introduction of a patent box regime in countries where firms have foreign affiliates. Following Blundell *et al.* (1995) and Stiebale (2016), R&D activity of a firm is measured by its newly registered annual patent output. More formally, we model the number of newly granted patent applications P_{ijct} of firm i which is member of multinational group j and is located in country c in period t as a function of the availability of international patent boxes to a foreign affiliate and several control variables and estimate a Poisson fixed effects model (see Hausman *et al.*, 1984;

R&D conducted in any EEA member state. However, the reform also imposed an upper limit of 5 mio EUR for the income to which the exemption is applied. Furthermore, income from within-company licensing was only included in the patent box if the royalties were paid by a manufacturing firm. This prohibits the setup of effective profit shifting structures through holding entities.

⁷It is also expected that from 2016 onward the other regimes will adopt this approach and change their patent box legislation accordingly.

⁸In France, the only limitation is that acquired patents must be held for at least 2 years by the acquiring company for the resulting profits to be taxed under the patent box regime.

Wooldridge, 1999; Cameron & Trivedi, 2015) of the following form:

$$E(P_{ijct}) = \exp(\mathbf{x}'_{ijct}\beta)$$

$$\text{with } \mathbf{x}'_{ijct}\beta = \alpha \cdot BOX_{jt} + \beta \mathbf{X}_{it} + \gamma \mathbf{Z}_{jt} + \delta \mathbf{C}_{ct} + \phi_t + \phi_i + u_{it}. \quad (5)$$

BOX_{jt} is a binary variable that is equal to 1 if a patent box without nexus requirement is implemented in the country of residence of at least one of the foreign affiliates of firm i and zero otherwise. \mathbf{X}_{it} , \mathbf{Z}_{jt} and \mathbf{C}_{ct} are firm-, group- and location-specific characteristics. ϕ_t and ϕ_i capture time- and firm-specific effects.

A crucial identification assumption for our model is that firms with affiliates in countries that implement a patent box without nexus requirement are not systematically different with respect to the evolution of their R&D activity from those that do not have affiliates in these locations. We check this when describing the data below. Most importantly, we show that even though treated and non-treated firms in our sample differ in the level of their R&D activity, the time trends for the two groups are very similar until the occurrence of the first patent box without nexus requirement.

A further potential source of endogeneity is the structure of the multinational group. In principal, the multinational group that comprises firms with a high level of research activity has an incentive to set up a new affiliate in a country as soon as a new patent box regime is introduced there. To overcome this potential issue of reverse causality, only multinational groups without changes in their structure with respect to patent box locations are considered. As a consequence, BOX_{jt} is an exogenous shock to the firm's tax incentives insofar as it is purely driven by exogenous policy changes in the residence countries of its affiliates. Identification thus hinges on the variation in the timing of the introduction of national patent box regimes.

The macroeconomic and institutional control variables include productivity measured as the log of GDP per capita, GDP growth, general research activity measured by R&D expenditure as a percentage of GDP, the corporate income tax rate and the user cost of capital for R&D. The latter is a composite measure that includes input-related tax incentives such as tax credits and super-deductions for

R&D activity. We control for several items that have been suggested to affect R&D activity on the firm level (see Stiebale, 2016), such as the number of affiliates, the age of a firm as well as the firm size measured in total assets, the working capital and the capital intensity of a firm. Finally, we include firm- and time-fixed effects to capture cross-sectional differences in the level of R&D output, as well as general time trends.

The number of patents is primarily measured as the simple count of annual granted patents per firm. To capture the intensity of domestic R&D activity, we also conduct our analysis using the quality-weighted number of new patents. Frequently cited patents registered at multiple patent offices and classified to contribute to many patenting classes are not only potentially more valuable (see Harhoff *et al.*, 1999), but also point to a higher R&D input (Hagedoorn & Cloudt, 2003). We construct patent quality using the composite quality indicator proposed by Lanjouw & Schankerman (2004) which is commonly used in this strand of literature (see, e.g., Hall *et al.*, 2007 and Ernst *et al.*, 2014). The composite quality indicator is derived by employing a multiple-indicator model relying on the number of forward citations, the patent family size and the number of patent classifications resulting in a relative measure for patent quality. The procedure to derive the composite quality indicator is described in detail in Appendix A.2. For the quality-weighted number of new patents, we weight each patent by its relative quality and aggregate it on an annual basis.

Having analyzed the cross-border effect of patent boxes without nexus requirement, we turn to patent boxes that apply the favorable rate only to profits from R&D activity that has taken place in the respective location. Requiring nexus, these patent boxes are not suitable for profit shifting via patent transfers. This means that they do not lower R&D cost of capital in other locations. Therefore, we do not expect that these regimes generate positive spillovers on R&D activity in other countries.

An important issue raised by the literature on tax havens and investment of multinational enterprises (e.g. Hong & Smart, 2010) is that the domestic tax rate of a jurisdiction may not be very informative with respect to the tax environment faced by such firms for investing in this jurisdiction. Since internationally operating firms are able to shift part of their profit from one location to another, the effective tax burden they face in one location is likely to depend on the applicable

tax rates in the whole group. With sufficiently low costs of profit shifting, it may be the location with the lowest tax rate in the group that determines the effective tax burden of its members. We test this notion by replacing the main variable of interest BOX in equation (5) by several measures for the effective tax rate for profits faced by a firm. These include the statutory corporate income tax rate and the minimum tax rate on patent profits within the group. For the latter, we again distinguish between patent boxes with and without nexus requirement. We are interested in how R&D activity reacts to each of these measures. Following Hong & Smart (2010) and Slemrod & Wilson (2009), the statutory tax rate should be relevant only for firms without foreign affiliates. The minimum tax rate within a group should be more informative for the whole sample but only if we take into account tax rate reductions of patent boxes without nexus requirement.

We also estimate the effect of a foreign patent box implementation on the average quality of new patents of a firm. The latter is computed by dividing the quality-weighted patent count by the number of patents, $q_{ijct} = \frac{P_{ijct}^{qual.}}{P_{ijct}}$. To account for general quality shifts within the same industry as well as level differences across industries and countries, we then scale this measure by its 2-digit SIC industry, country- and year-specific mean \bar{q}_{sct} and obtain $\tilde{q}_{ijct} = \frac{q_{ijct}}{\bar{q}_{sct}}$. We relate the logarithm of this relative measure to foreign patent box implementations in the this simple fixed effects regression:

$$\log(\tilde{q}_{ijct}) = \iota + \alpha \cdot BOX_{jt} + \beta \mathbf{X}_{it} + \gamma \mathbf{Z}_{jt} + \delta \mathbf{C}_{ct} + \phi_t + \phi_i + u_{it} \quad (6)$$

The specification of variables is the same as for equation (5).

Note that we are only able to compute the average quality of patents for firm-year observations where the firm successfully applied for a patent. In order to not distort our estimation by potentially confounding effects of the patenting decision of a firm, we restrict this regression to firms that generate patents before and after a patent box was implemented in a country where one of their foreign affiliates resides.⁹

We restrict our analysis to firms located in non-patent box countries. This is done for two reasons. First, external effects of patent boxes should generally not be observed at locations where a patent box is already implemented since in this case,

⁹We also estimated equation 6 on the full sample and obtain virtually the same result.

the foreign tax regime does not provide an additional incentive. Second, as the focus of this study are spillover effects of patent boxes, patent box locations must be excluded to avoid any distorting effects of the implementation of domestic patent boxes that may or may not coincide with the implementation of patent boxes abroad.

4 Data

Table 2: New Patents, 2000-2012

	Number of firms in sample	Share of firms with affiliate in patent box location		Avg. new dom. patents per year	Avg. new dom. patents per year (qual. wt.)
		w nexus requirement	w/o nexus requirement		
AT	900	0.14	0.15	0.40	0.21
BG	66	0.03	0.00	0.21	0.08
CH	1,018	0.27	0.25	0.43	0.26
CZ	727	0.04	0.04	0.25	0.09
DE	10,207	0.11	0.12	0.38	0.20
DK	452	0.14	0.17	0.31	0.19
EE	43	0.00	0.00	0.23	0.10
FI	435	0.13	0.15	0.37	0.21
GB	3,256	0.16	0.19	0.30	0.19
GR	13	0.23	0.07	0.33	0.21
HR	18	0.11	0.05	0.13	0.07
IS	8	0.00	0.13	0.15	0.11
IT	3,056	0.06	0.06	0.30	0.16
LT	19	0.05	0.11	0.14	0.06
LV	42	0.00	0.00	0.21	0.06
NO	461	0.07	0.10	0.26	0.16
PL	422	0.06	0.07	0.29	0.14
RO	145	0.01	0.01	0.22	0.08
SE	737	0.20	0.21	0.33	0.21
SI	142	0.03	0.03	0.27	0.11
TR	392	0.02	0.03	0.23	0.07
Total	22,559	0.11	0.12	0.34	0.19

The analysis is based on a rich panel dataset built by combining multiple data sources on patent data, firm information and patent box characteristics. Patent data is taken from the PATSTAT database operated by the European Patent Office (EPO). PATSTAT is a comprehensive data source covering patent data for over 80 countries in a harmonized way (Jacob, 2013). For the econometric analysis we count the number of granted patents per firm for each year.¹⁰

In our analysis we focus on domestically developed patents. In principal, the country of residence of the firm applying for a patent does not necessarily constitute the place of development of the patent. As is common in the literature, we identify whether or not a patent was developed at the location of the firm by using address information of the inventors (Guellec & de la Potterie, 2001). A patent is classified as domestic if the majority of its inventors reside in the same country as the firm which filed the application.¹¹ We remove outliers by trimming the sample at the 99 percentile of annual domestic patent output.

Table 2 displays descriptive statistics of the firm locations we include in our sample.¹² Research activity is particularly strong in Switzerland, Austria and Germany with average annual domestically developed patents per firm of 0.43, 0.40 and 0.38 respectively.

We obtain PATSTAT patent data through Orbis which is a Bureau van Dijk database. This allows us to link patents of the applying firms to the comprehensive ownership information contained in the Bureau van Dijk's Amadeus database via unique identifiers. By exploiting the ownership structure, we are able to identify the ultimate owner for each firm in the sample. We construct multinational groups by assigning firms with a common ultimate owner to the same group. This approach is complemented by checking whether the firm existed throughout the whole observation period to exclude tax-driven affiliate establishment in patent box countries. Finally, we combine the ownership information with data on mergers and acquisitions (M&A) from Bureau van Dijk's Zephyr database to capture

¹⁰Since it can take multiple years between application and approval of a patent, we account for this time lag between generating an innovation and acceptance of the patent application by using the date of first patenting application instead of the patent publication date.

¹¹For those patents with no inventor information provided by PATSTAT, it is assumed that the patent was developed domestically. As a robustness check, it is also assumed that all patents without inventor information provided are non-domestic ones. The results still hold true implying that these patents are not systematically different from those with inventor information.

¹²An overview of the sample selection process is displayed in Table A.2 in the Appendix.

ownership changes within the observation period. We exclude all groups where the firm structure changed with respect to the patent box locations displayed in Table 1. That is, all groups are excluded where one of the affiliates in a patent box location has been established, acquired or sold during our sample period. In line with Stiebale (2016), we further restrict our sample to industries where patenting is actually relevant. We include firms active in the manufacturing sector, as well as, several knowledge-intensive service sectors such as information technology, telecommunications, transport, R&D, or business-related services.¹³ Table 2 provides information on the geographical distribution of firm observations over the 22 locations that remain after excluding patent box locations.

Table 3: Summary Statistics

	Number of Observations	Mean	Standard Deviation	Min	Max
New patent appl.	260,103	0.342	0.867	0	7
New patent appl. (qual. adj.)	260,103	0.188	0.526	0	6.582
<i>BOX</i>	260,103	0.113	0.317	0	1
<i>BOX_{Nexus}</i>	260,103	0.080	0.270	0	1
Δt	250,551	1.782	6.376	0	31.4
Number of affiliates	260,103	11.655	43.357	1	1,094
Log Age	253,123	2.672	1.041	0	6.592
Log Total Assets	260,069	9.154	2.473	-8.151	17.342
Working Capital	260,069	-7.154	2,084.461	-769,074	344,886
Log Capital Intensity	251,390	-2.774	2.262	-24.089	10.901
Corporate income tax rate	260,103	32.003	6.964	10	52
User cost of R&D capital	260,103	0.345	0.023	0.115	0.364
Real interest rate	251,321	0.056	0.020	-0.014	0.265
R&D expenditure (% of GDP)	258,481	2.121	0.723	0.323	3.914
GDP p.c.	260,103	35,697.180	10,280.320	2,750.587	69,094.750
GDP Growth	260,103	1.443	2.682	-14.814	11.902

We also obtain balance sheet items as well as firm age from Amadeus. Working capital is computed by scaling the difference between current assets and current

¹³This excludes financial services. We identify relevant sectors via 2-digit NACE Rev. 2 codes and include firms with codes NACE 2 codes 10-32, 51-53, 58-63, 69-74 and 77-82.

liabilities with total assets, while capital intensity is defined as the ratio of tangible fixed assets and sales.¹⁴

Macroeconomic control variables are obtained from the World Bank’s World Development Indicators (WDI) and the OECD. Tax policy indicators are collected from the IBFD tax database. When computing the user cost of capital, we follow Bloom *et al.* (2002) and incorporate the input incentives, the applicable tax rate and the fixed depreciation rate into a measure for the user cost of a domestic R&D investment. In order to isolate the effect of tax policy on R&D activity, we calculate the user cost using a fixed interest rate of 5%.¹⁵

Table 4: Treated vs. Non-treated Firms

Panel A: Distribution Across Industries (Share of firms in industry)						
	Agriculture	Mining	Manu- facturing	Transport & Commu- nication	Finance & Insurance	Services
Treated	0.0000	0.0011	0.8105	0.0071	0.0554	0.1259
Non-treated	0.0008	0.0007	0.7418	0.0095	0.0263	0.2209

Panel B: Means of Key Variables						
	User cost of R&D Capital	CIT	Log GDP per capita	Total Assets (th. USD)	Age	No. of affiliates
Treated	0.35	32.23	10.43	173,582.76	27.46	66.39
Non-treated	0.340	30.49	10.32	122,265.82	22.13	3.28

We restrict our sample to the period 2000-2012. Before 2000, information on balance sheets and shareholders in the Bureau van Dijk database is sparse and the Zephyr database is fragmentary¹⁶ so there is no reliable information on M&A that would also identify the vendor in such deals.¹⁷ We stop our sample period in 2012

¹⁴Missing entries for the necessary variables are replaced by annual industry (2-digit US SIC code) means.

¹⁵See Appendix A.3 for a detailed description of the calculation of user cost of capital.

¹⁶See Table 1 in Bollaert & Delanghe (2015).

¹⁷The SDC Thomson Reuters database, which would be an alternative to Zephyr, contains the variable “seller”, however, entries are missing in the vast majority of cases.

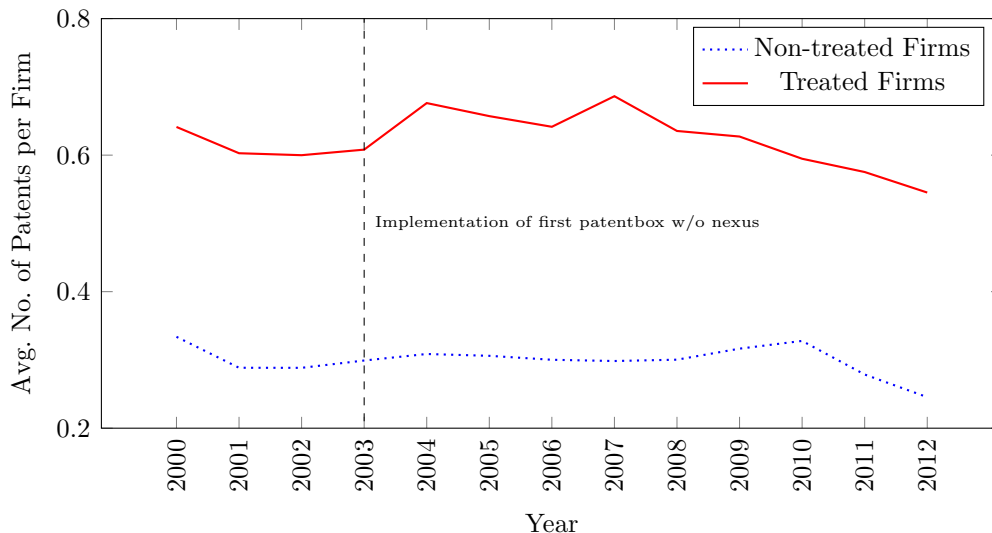
because from 2013 onward, several large European economies (including United Kingdom, Italy, Portugal) implemented domestic patent box regimes. This means that we cannot include these locations in our analysis of cross-border spillovers of patent boxes.¹⁸ Furthermore, the process of granting patents often takes several years, such that for more recent periods we do not yet observe the full amount of R&D output. Table 3 provides summary statistics for all variables used in the empirical analysis.

As discussed above, for the cross-border effect of patent boxes to be identified, we require firms with affiliates in patent box locations without nexus requirement (treated) and those that do not have affiliates in these countries (non-treated) to be comparable. In Table 4 we display the distribution across industries of the two groups in Panel A and state the within-group averages for key variables in Panel B. Treated and non-treated firms have a similar distribution across industries, with the majority of patenting firms in the manufacturing and services sectors. They are also similar with respect to location-specific variables such as the user cost of R&D capital, the statutory corporate income tax rate and GDP per capita. This implies that firms with affiliates in patent box countries are not clustered in certain locations and, therefore, our results are not driven by such a clustering. The two groups differ, however, with respect to size (measured in total assets), age and the number of affiliates within their corporate group. Firms with foreign affiliates in patent box locations without nexus requirement are larger, older and more often part of large multinational groups. This difference in levels is, however, not surprising as a large part of the non-treated firms operates domestically. We control for them by including the respective variables in our regression model.

R&D activity in treated and non-treated firms may still be subject to different time trends which are driven by unobservable factors. In Figure 2 we plot the evolution of the average number of patents per firm for treated and non-treated firms in our sample over time to verify whether such factors are behind our result. We observe that for the years before the implementation of the first patent box without nexus requirement (2003, Hungary), the trends of the two groups are very similar. After 2003, R&D activity slightly increases in firms with affiliates in no-

¹⁸In a robustness check, we extended the sample to 2014 but excluded firms located in countries with patent boxes after their implementation. The results remain highly significant with coefficients of similar size.

Figure 2: R&D Activity Over Time



nexus patent box locations relative to those without. We attribute this increase to the decrease in the user cost of capital for R&D investment induced by the profit shifting opportunities arising from the patent box implementation. More generally, there appears to be no substantial difference in the time trends of the two groups which allows us to base our subsequent analysis on a comparison between them.

5 Results

5.1 R&D Quantity

Table 5 contains our estimation results. The parsimonious specification in column (1) relies solely on the *BOX* dummy that indicates the implementation of a patent box without nexus requirement in the residence country of a foreign affiliate of a firm, and year-fixed as well as firm-fixed effects. Having an affiliate in a patent box country leads to a significant increase of domestic patenting activity of 60.6 log points. This translates into an increase of annual research activity by 83.31% and points to a strong external effect of foreign tax incentives on domestic research activity. Our results suggest that a decline in the user cost of capital within a multinational group spills over to group members with no relevant tax policy

Table 5: Benchmark

	No. of new Patents					
	(1)	(2)	(3)	(4)	(5)	(6)
<i>BOX</i>	0.606*** (0.192)	0.668*** (0.194)	0.670*** (0.202)			
<i>BOX</i> \times Δt				0.013*** (0.004)	0.013*** (0.005)	0.011** (0.005)
R&D Exp.		0.254*** (0.061)	0.333*** (0.065)		0.289*** (0.064)	0.343*** (0.066)
Log GDP p.c.		-0.177 (0.211)	-0.380* (0.223)		-0.182 (0.218)	-0.406* (0.226)
CIT		-0.001 (0.002)	-0.004* (0.002)		-0.001 (0.002)	-0.004 (0.002)
GDP Growth		-0.007 (0.005)	-0.000 (0.005)		-0.005 (0.005)	0.000 (0.006)
User Cost of R&D		-5.337*** (0.539)	-5.573*** (0.555)		-5.342*** (0.547)	-5.476*** (0.557)
Real interest rate		-1.118** (0.501)	-1.395** (0.545)		-1.086** (0.521)	-1.448*** (0.554)
No. of affiliates			0.119*** (0.039)			0.104*** (0.040)
Log Age			0.089*** (0.021)			0.092*** (0.022)
Log Total Assets			0.035*** (0.005)			0.035*** (0.005)
Working Capital			0.000 (0.000)			0.000 (0.000)
Log Capital Intensity			0.017*** (0.005)			0.016*** (0.005)
N	260,103	248,383	229,723	246,039	234,679	224,795
No. of firms	22,559	21,778	20,414	21,159	20,401	19,725
Pseudo LL	-128,250	-123,309	-115,432	-120,920	-116,116	-112,020

Estimation of a Poisson fixed effects model. The dependent variable is the number of new patents per year and firm for which the majority of inventors does not reside outside the country of residence of the firm. Cluster robust standard errors (clustered at the firm level) are provided in parentheses. All regressions include firm- and year-fixed effects. Stars behind coefficients indicate the significance level, * 10%, ** 5%, *** 1%.

change.¹⁹

In column (2) of Table 5, we include various characteristics of the firm-location that could affect R&D activity. R&D expenditure as a share of GDP increases patent output of firms. On the contrary, an increase in the financing cost measured by the real interest rate is expected to induce a decline in innovative activity. The coefficient for the patent box implementation dummy remains significantly positive, albeit smaller than in the specification without controls. Hence, our estimated effect is not driven by coinciding tax policy changes or macroeconomic fluctuations.

We have noted above that patent boxes constitute an effective policy to attract foreign R&D investments and are thus a relevant instrument for international tax competition. One concern with regard to our analysis may be that those countries without a patent box have instead turned to input-related tax incentives in order to remain competitive R&D locations. If these alternative incentives are the main drivers of the observed increased domestic patenting activity, this would still hint to international spillover effects of patent boxes. Instead of a direct impact on the user cost of capital, the spillover would then be observable via policy interactions in a fiscal competition game.

To account for this, column (2) also includes the user cost of capital as a control. Consistent with previous findings (e.g. Bloom *et al.*, 2002; Wilson, 2009), our estimates suggest that an increase in the user cost of R&D capital leads to a decline in corporate R&D investment. It is also apparent that the evolution of domestic R&D input incentives does not drive our results regarding the implementation of patent box regimes in affiliate countries. The respective coefficient remains significantly positive and similar in magnitude throughout all specifications.

In column (3) we add firm- and group-level controls. The significantly positive coefficients of total assets and the firm age indicate that, consistent with previous findings, larger and also older firms conduct more R&D. The coefficient of *BOX* increases relatively to the previous specifications and remains significantly positive. It suggests that the patent output of a firm increases by about 95.42% when a patent box without nexus requirement is implemented in one of the locations

¹⁹If there are multiple affiliates of the multinational group in a country with no relevant tax policy change, all of them are affected similarly (see Table A.3 in the Appendix).

of its affiliates. Evaluated at the sample average, this result implies that the implementation of a patent box in a foreign affiliate location increases R&D activity from about one patent every three years to about one patent every one and a half years.

In columns (4) to (6) of Table 5 we also account for the heterogeneity in the tax rate changes induced by different patent boxes. Instead of a simple implementation dummy, we use the tax rate divergence between the location of the firm and the patent box country that results from the patent box regime. More specifically, we take the difference between the corporate income tax rate in the residence country of the firm and the applicable tax rate for patent profits in the relevant affiliate country after the introduction of the patent box and interact it with our implementation dummy *BOX*. We then repeat regressions (1) to (3) using our more sophisticated measure for the patent box implementation. Again, the coefficient of interest is significantly positive. Focusing on conservative specification of column (6) that also includes the full set of controls, our results suggest that a patent box that induces a tax difference of 1 percentage point between the residence country of the firm and the relevant affiliate country raises the number of patent output by 1.11%. For instance, take the example of a firm residing in Germany that has an affiliate in Hungary. The patent box implementation in the affiliate location in 2003 implied a tax differential of 31.2%. Our estimates suggest that this increased research activity in the German firm by 34.51%.

Our results in Table 5 show strong and positive cross-border externalities of patent boxes without nexus requirement. This suggests that these patent boxes reduce not only the user cost of capital for R&D investment of domestic firms but also of their foreign affiliates by providing them with an effective profit shifting opportunity that reduces their prospective tax burden.

In a second step, we use the quality-weighted patent count as a dependent variable to control for the fact that patents may vary strongly with regard to their quality, usefulness and applicability (see Hall *et al.*, 2010). Table 6 presents the results from repeating the regressions of Table 5 with this new dependent variable.

Throughout the specifications, the coefficients of the patent box implementation dummy as well as the one for the more sophisticated measure of the patent box induced tax difference remain significantly positive. Again, including location-

Table 6: Accounting for Quality Differences

	No. of new Patent (quality-weighted)					
	(1)	(2)	(3)	(4)	(5)	(6)
<i>BOX</i>	0.584*** (0.203)	0.598*** (0.212)	0.611*** (0.221)			
<i>BOX</i> × Δt				0.011** (0.005)	0.012** (0.005)	0.010** (0.005)
R&D exp.		0.379*** (0.068)	0.444*** (0.072)		0.408*** (0.071)	0.451*** (0.074)
Log GDP p.c.		1.007*** (0.222)	0.890*** (0.234)		1.064*** (0.228)	0.893*** (0.237)
CIT		-0.004 (0.002)	-0.007*** (0.003)		-0.004* (0.003)	-0.006** (0.003)
GDP Growth		-0.019*** (0.006)	-0.015** (0.006)		-0.017*** (0.006)	-0.014** (0.006)
User Cost of R&D		-4.123*** (0.565)	-4.368*** (0.588)		-4.167*** (0.576)	-4.237*** (0.589)
Real interest rate		-1.411*** (0.520)	-1.730*** (0.563)		-1.403*** (0.542)	-1.794*** (0.574)
Log no. of affiliates			0.112*** (0.041)			0.097** (0.042)
Log Age			0.088*** (0.023)			0.094*** (0.025)
Log Total Assets			0.023*** (0.006)			0.022*** (0.006)
Working Capital			0.000 (0.000)			0.000 (0.000)
Log Capital Intensity			0.016*** (0.005)			0.015*** (0.005)
N	252,281	240,738	222,701	238,682	227,491	217,880
No. of firms	21,847	21,078	19,761	20,490	19,743	19,087
Pseudo LL	-74,490	-72,445	-67,720	-69,928	-67,938	-65,431

Estimation of a Poisson fixed effects model. The dependent variable is the number of new patents measured weighted by their relative quality per year and firm for which the majority of inventors does not reside outside the country of residence of the firm. Cluster robust standard errors (clustered at the firm level) are provided in parentheses. All regressions include firm- and year-fixed effects. Stars behind coefficients indicate the significance level, * 10%, ** 5%, *** 1%.

, firm-, and group-specific controls suggests that our results are not driven by macroeconomic factors or endogenous firm selection. We note that the coefficients for the variables of interest are slightly smaller than in the regression with a simple patent count. This may reflect that there exist cross-border externalities of patent boxes not only with respect to the quantity of patent output but also with respect to their quality. Our theoretical analysis suggests that external effects on quality are negative and thus potentially mitigate the positive quantity effect if this is measured with quality weights. We turn to this additional effect in more detail below.

We are also interested in the cross-border effect of patent boxes with some nexus requirement on R&D activity. In Table 7 we thus present results of a Poisson fixed effects estimation that relates the simple and quality-weighted patent count to a dummy BOX_{Nexus} that switches to one when the residence country of one of the foreign affiliates of the firm implements a patent box with nexus requirement.

Column (1) reports the results of the parsimonious fixed-effects regression containing only the implementation dummy which is augmented by the full set of controls in column (2). In the latter estimation, the coefficient of interest turns out positive, which potentially hints to some remaining profit shifting opportunities even in patent boxes with some nexus requirement. When accounting for patent quality in columns (3) and (4), the estimated coefficient for the BOX_{Nexus} is negative but again insignificant when including controls. We note that the observed effect for the quality-weighted patent count may also be driven by the negative impact of foreign patent boxes on domestic patent quality that is suggested by our theoretical framework. We investigate this effect in more detail below. In general, we cannot identify positive spillovers for patent boxes with nexus requirement which is consistent with the notion that patent boxes only reduce the user cost of R&D capital and thus raise R&D activity in other countries if they do not inhibit profit shifting via the relocation of intangibles.

Given that our results highlight the importance of foreign patent box regimes for domestic R&D activity, which tax rate determines the tax environment of a firm? To answer this question, we regress the number of new patents of a firm on several tax rate measures. Table 8, displays the results. In column (1), the variable of interest is the statutory corporate income tax rate. The respective coefficient is negative with a tax cut by one percentage point causing an increase in R&D

Table 7: Patent Boxes With Nexus Requirement

	No. of new Patents		No. of new Patents (quality-weighted)	
	(1)	(2)	(3)	(4)
<i>BOX_{Nexus}</i>	-0.024 (0.032)	0.002 (0.032)	-0.065* (0.033)	-0.042 (0.034)
R&D exp.		0.340*** (0.065)		0.452*** (0.072)
Log GDP p.c.		-0.387* (0.224)		0.885*** (0.235)
CIT		-0.004* (0.002)		-0.006** (0.003)
GDP Growth		-0.000 (0.005)		-0.014** (0.006)
User Cost of R&D		-5.563*** (0.557)		-4.284*** (0.589)
Real interest rate		-1.383** (0.545)		-1.704*** (0.562)
Log no. of affiliates		0.120*** (0.039)		0.112*** (0.041)
Log Age		0.088*** (0.021)		0.086*** (0.023)
Log Total Assets		0.035*** (0.005)		0.024*** (0.006)
Working Capital		0.000 (0.000)		0.000 (0.000)
Log Capital Intensity		0.017*** (0.005)		0.016*** (0.005)
N	260,103	229,723	252,281	222,701
No. of firms	22,559	20,414	21,847	19,761
Pseudo LL	-128,258	-115,442	-74,491	-67,722

Estimation of a Poisson fixed effects model. The dependent variable is the number of new (quality-weighted) patents per year and firm for which the majority of inventors does not reside outside the country of residence of the firm. Cluster robust standard errors (clustered at the firm level) are provided in parentheses. All regressions include firm- and year-fixed effects. Stars behind coefficients indicate the significance level, * 10%, ** 5%, *** 1%.

Table 8: R&D Activity and Corporate Taxation

	No. of new Patents			
	(1)	(2)	(3)	(4)
	Full Sample	Domestic Firms	Full Sample	Full Sample
CIT	-0.004 (0.002)	-0.007** (0.003)		
Minimum Tax Rate (No Nexus)			-0.004** (0.002)	
Minimum Tax Rate (Nexus)				-0.003 (0.002)
R&D exp.	0.340*** (0.065)	0.319*** (0.086)	0.347*** (0.063)	0.352*** (0.063)
Log GDP p.c.	-0.387* (0.224)	-0.237 (0.254)	-0.390* (0.223)	-0.391* (0.223)
GDP Growth	-0.000 (0.005)	-0.002 (0.007)	0.000 (0.005)	0.001 (0.005)
User Cost of R&D	-5.560*** (0.555)	-6.814*** (0.627)	-5.492*** (0.553)	-5.563*** (0.554)
Real interest rate	-1.382** (0.545)	-1.882*** (0.690)	-1.338** (0.531)	-1.276** (0.530)
Log no. of affiliates	0.120*** (0.039)	0.110** (0.046)	0.115*** (0.039)	0.117*** (0.039)
Log Age	0.088*** (0.021)	0.077*** (0.025)	0.087*** (0.021)	0.088*** (0.021)
Log Total Assets	0.035*** (0.005)	0.032*** (0.006)	0.036*** (0.005)	0.035*** (0.005)
Working Capital	0.000 (0.000)	0.000* (0.000)	0.000 (0.000)	0.000 (0.000)
Log Capital Intensity	0.017*** (0.005)	0.013** (0.005)	0.017*** (0.005)	0.017*** (0.005)
N	229,723	175,163	229,723	229,723
No. of firms	20,414	15,701	20,414	20,414
Pseudo LL	-115,442	-77,860	-115,439	-115,442

Estimation of a Poisson fixed effects model. The dependent variable is the number of new patents per year and firm for which the majority of inventors does not reside outside the country of residence of the firm. Cluster robust standard errors (clustered at the firm level) are provided in parentheses. All regressions include firm- and year-fixed effects. Stars behind coefficients indicate the significance level, * 10%, ** 5%, *** 1%.

activity by about 0.4%. This result is, however, insignificant, implying that the statutory tax rate is not very informative with respect to the tax environment of a firm in our sample. In column (2), we restrict the sample to firms without foreign affiliates. The coefficient for the statutory corporate income tax rate is now more than twice as large and significantly negative. Our results suggest that for domestically operating firms a decrease in the corporate income tax rate would raise R&D activity by about 0.7%. Next, we use the minimum tax rate on patent profits within the group of affiliates of a firm as a measure of the tax burden in column (3). In doing so, we take into account tax reductions resulting from the implementation of patent boxes without nexus requirement. In contrast to the regression in column (1), the coefficient for this adjusted tax rate measure is significantly negative and implies that an effective tax rate decrease by one percentage point leads to an increase of patent output by 0.4%.

Thus, our results indicate that the effective tax burden of a firm with respect to R&D investment is better described by also taking into account tax rate changes in foreign affiliates to which patent profits may be shifted. The statutory corporate income tax rate remains, however, informative for firms that operate in one country only.

Consistent with our expectation, that we do not find a significant effect of the minimum group tax rate when we account for tax cuts induced by foreign patent boxes with nexus requirement. The corresponding coefficient in column (4) is negative but insignificant.

5.2 R&D Quality

In Table 6, we present the result for estimating the cross-border spillover of a patent box implementation on the average quality of patents. Column (1) contains the parsimonious regression result relying on a single dummy indicating whether the firm runs an affiliate in a country with a patent box without nexus requirement implemented. The negative coefficient suggests that the patent box implementation leads to a reduction in relative patent quality. This result is robust when including the full set of control variables. In columns (3) and (4), the regressions are repeated but with a dummy that takes value one if firms have an affiliate residing in a country with a patent box *with* nexus requirement im-

Table 9: Patent Quality

	Patent Quality			
	(1)	(2)	(3)	(4)
<i>BOX</i>	-0.250**	-0.269**		
	(0.101)	(0.108)		
<i>BOX_{Nexus}</i>			-0.062***	-0.048***
			(0.015)	(0.015)
R&D exp.		0.111***		0.129***
		(0.034)		(0.037)
Log GDP p.c.		-0.205**		-0.190*
		(0.101)		(0.114)
CIT		0.001		0.001
		(0.002)		(0.002)
GDP Growth		0.001		-0.000
		(0.003)		(0.003)
User Cost of R&D		-0.913***		0.480
		(0.316)		(0.401)
Real interest rate		-0.621*		-0.464
		(0.320)		(0.352)
Log no. of affiliates		-0.034		-0.041
		(0.022)		(0.025)
Log Age		-0.006		-0.011
		(0.013)		(0.015)
Log Total Assets		-0.022***		-0.023***
		(0.004)		(0.004)
Working Capital		0.000***		0.000***
		(0.000)		(0.000)
Log Capital Intensity		0.001		0.001
		(0.003)		(0.004)
N	50,766	47,225	39,613	36,136
No. of firms	21,513	19,857	15,772	14,117
R^2	0.014	0.017	0.014	0.018

Estimation of an OLS fixed effects model. The dependent variable is the logarithm of average patent quality per year and firm for patents for which the majority of inventors does not reside outside the country of residence of the firm. Cluster robust standard errors (clustered at the firm level) are provided in parentheses. All regressions include firm- and year-fixed effects. Stars behind coefficients indicate the significance level, * 10%, ** 5%, *** 1%.

plemented. Having an affiliate in such a country reduces the average quality of domestic patents, albeit to a lesser extent.

The negative cross-border effect of patent boxes with and without nexus requirement possibly reflects a decrease in the average profitability of granted patents, which is consistent with our theoretical findings above. Note that even though the direction of the effect does not depend on the nexus requirement of the patent box, our model suggests that the underlying mechanism differs between the two types of patent boxes. This may also explain the difference in the magnitude of the coefficients. The estimated effect on average patent quality is about three and a half times larger for a patent box without nexus requirement than for a patent box with nexus requirement. We therefore conclude that the effect on the intensive margin driven by foreign patent boxes without nexus requirement that allow firms to conduct more but also less profitable R&D is more pronounced in practice. In comparison to this, the effect on the extensive margin, which results from patent boxes with nexus requirement that lure away R&D projects with high profitability, is much smaller.

6 Conclusion

In this paper, we combine information on firm ownership, research activity and output-related R&D tax incentives to identify cross-border spillover effects of tax policy within multinational groups. In particular, we analyze the impact of the introduction of a patent box without nexus requirement in a foreign affiliate location that allows domestic firms to reduce the user cost of capital by shifting patent profits abroad. Our results indicate that within multinational companies this foreign tax incentive transmits to the domestic firm. It increases its research activity by 1.11% per percentage point of the induced tax rate differential. On average, this raises the patent output from about one patent every three years to about one patent every one and a half years. Consistent with our theoretical analysis, we do not find a similar effect for patent boxes with nexus requirement. The latter effectively inhibit international profit-shifting via the transfer of intangibles and thus do not lower the effective tax burden on R&D investment across borders. Furthermore, we show that, in line with the predictions of our theoretical model, cross-border spillovers of patent boxes on average patent quality are negative.

These results have several important implications. First, they support theoretical analyses by Desai *et al.* (2006) and Hong & Smart (2010), who argue that the presence of low-tax countries reduces the user cost of capital for investment in high-tax countries. Although it remains questionable if tax havens are beneficial from an overall welfare perspective, it is interesting to observe that one relevant channel through which they might cause positive externalities can actually be observed in the data. Our results are of course limited to investment in intangible assets which are particularly mobile with regard to the allocation of related profits. The effect may be weaker for investments whose profits cannot be shifted as easily.

Second, these findings inform the ongoing debate on patent boxes. Some countries have argued that patent boxes are not effective in fostering research activity but merely constitute an instrument for harmful tax competition. Our results indicate that if patent box regimes include non-domestically developed patents, other countries without patent box regimes may indirectly benefit because the implicit tax reduction for multinational companies increases corporate R&D activity there. An assessment of the overall welfare impact is precluded by the fact that we do not observe foregone revenue in the location of the domestic firm. Nevertheless, the results presented above suggest that the expected increase in domestic tax revenue resulting from restricting profit shifting opportunities to foreign patent box countries must be weighed against the negative impact on domestic research activity. Somewhat surprisingly, those patent boxes that provide the best opportunity for profit shifting are actually the regimes that have the strongest positive effect on research activity in non-patent box countries.

Results from our theoretical analysis suggest that there are two consecutive firm responses to the introduction of foreign patent boxes without nexus requirement. Companies first raise R&D output and then locate the resulting patent rights to the patent box location. In our empirical analysis we have verified the first step which is relevant for the cross-border implications of patent boxes on real R&D activity. Since we lack data on the post-application relocation of patents, we cannot identify the second step. We note, however, that empirical findings of previous studies suggest that profit shifting via the transfer of patent rights is a very relevant phenomenon (see Dischinger & Riedel, 2011; Karkinsky & Riedel, 2012). In fact, recent findings by Koethenbueger *et al.* (2016) on the effect of

patent boxes on cross-border profit shifting suggest that the introduction of these regimes leads to substantial cross-border profit-shifting to the affiliates that are located in the implementing countries. Consistent with our analysis, this effect is confined to patent boxes without sufficient nexus requirements. Furthermore, we are interested in the impact of patent boxes on corporate R&D investment rather than on the resulting profit allocation. As is generally the case for corporate investment decisions, the former effect depends on the expected tax rate on future profits. Thus, the change of prospective taxation induced by the patent box, which we capture in our empirical specification, is decisive.

Nevertheless, future research may aim at measuring the impact on the subsequent allocation of patent profits. This would provide a more comprehensive picture of the underlying economic mechanism and would enable us to determine whether it is the change in prospective or the actually realized tax burden of R&D investment that drives the positive cross-border spillovers of patent boxes.

Appendix

A.1 Patent Boxes and Average Patent Quality

Let us denote by Π , Π' and Π'' the average profits of realized projects of firm i in h without a patent box in p , with a patent box in p that has no nexus requirement and with a patent box in p that requires full nexus, respectively. The average profits are given by

$$\Pi = \int_{\tilde{\pi}}^{\bar{\pi}} \pi_s f(\pi_s) d\pi_s, \quad \Pi' = \int_{\tilde{\pi}'}^{\bar{\pi}} \pi_s f(\pi_s) d\pi_s, \quad \Pi'' = \int_{\tilde{\pi}}^{\tilde{\pi}''} \pi_s f(\pi_s) d\pi_s. \quad (\text{A.1})$$

Note that

$$\begin{aligned} \Pi > \Pi' &\iff \int_{\tilde{\pi}'}^{\bar{\pi}} \pi_s f(\pi_s) d\pi_s - \int_{\tilde{\pi}}^{\bar{\pi}} \pi_s f(\pi_s) d\pi_s > 0 \\ &\iff \int_{\tilde{\pi}'}^{\bar{\pi}} \pi_s f(\pi_s) d\pi_s > 0 \end{aligned}$$

where the last inequality follows from $\tilde{\pi} > \tilde{\pi}'$. Furthermore

$$\begin{aligned} \Pi > \Pi'' &\iff \int_{\tilde{\pi}}^{\bar{\pi}} \pi_s f(\pi_s) d\pi_s - \int_{\tilde{\pi}}^{\tilde{\pi}''} \pi_s f(\pi_s) d\pi_s > 0 \\ &\iff \int_{\tilde{\pi}''}^{\bar{\pi}} \pi_s f(\pi_s) d\pi_s > 0 \end{aligned}$$

where the last inequality holds whenever $\tilde{\pi}''$ is interior (i.e. $\tilde{\pi}'' < \bar{\pi}$).

A.2 Composite Patent Quality Indicator

Patent quality is a latent variable which is not directly observable in the data. To approximate it, we follow the approach proposed by Lanjouw & Schankerman (2004) and employ a multiple-indicator model with one unobserved common factor. We use three different indicators, namely forward citations, patent family size and number of patent classifications codes (IPC classes). Therefore, the underlying equations for the multiple-indicator model are

$$y_{k,s} = \lambda_k v_s + \beta \mathbf{X} + e_{k,s}, \quad k \in \{1, 2, 3\}$$

where $y_{k,s}$ is the value of quality indicator k for patent s , v_s indicates the common factor, λ_k represents the factor loading, \mathbf{X} contains common controls and $e_{k,s} \sim N(0, \sigma^2)$ is the idiosyncratic component with $Cov(e_{k,s}, e_{k,r}) = 0$, $s \neq r$. Since the term $\lambda_k v_s$ is latent, we estimate the reduced form of the equations:

$$y_{k,s} = \beta \mathbf{X} + u_{k,s}, \quad k \in \{1, 2, 3\}$$

where $u_{k,s} = \lambda_k v_s + e_{k,s}$ combines a common component $\lambda_k v_s$ and a idiosyncratic component $e_{k,s}$. We estimate these equations using three stage least squares employing for \mathbf{X} controls for the year of application and main technology class of the patent. To gather λ_k and v_s , we conduct in a further step a factor analysis using maximum likelihood to decompose $u_{k,s}$. The estimated factor loadings are presented in Table A.1.

We use the estimated factor loadings to calculate the composite quality indicator for each patent. The composite quality indicator is a relative measure to determine the quality of patents and is normally distributed with mean zero. To

Table A.1: Factor loadings

Indicator	Factor loading
Forward citations	0.6201
Patent family size	0.3593
Patent classification codes	0.1229

Results from factor analysis of the residuals from regressing each indicator on year and industry class dummies. Factor loadings represent both weighting of the indicator and correlation between indicator and patent quality.

construct the quality-weighted annual patent count, we transform the distribution by adding the value of the patent with lowest patent quality so that all composite quality indicators turn positive. After this transformation the composite quality indicator for each patent has a positive value and can be used as weight for summing up patent output. The implied relative ordering of the quality of patents is unaffected by this transformation.

A.3 User Cost of R&D Investment

The computation of the user cost strongly follows the derivation of Bloom *et al.* (2002) who extend its standard expression as presented by Hall & Jorgenson (1967) to R&D investment. The user cost is defined as the pre-tax financial return ρ for a marginal R&D investment project (i.e. a project with zero economic rent). The economic rent of an R&D project is given by

$$\begin{aligned}
 R &= (1 + i) dV_t = dD_t + dV_{t+1} \\
 &= \frac{(\rho + \delta) (1 - \tau^{CIT}) + (1 - \delta) A}{1 + r} - (1 - A)
 \end{aligned}$$

where dV_t is the change in the market value of the firm and dD_t is the change in dividends paid out by the firm that results from the investment. i denotes the nominal and r the real market interest rate and δ is the economic rate of depreciation. A is the net present value of allowances. Following Thomson (2013) and Warda (2002), we assume the R&D investment to consist of an investment in labor (60%), machinery and equipment (5%), buildings (5%) and other current

expenditure (30%). A accounts for additional deductions, tax credits and accelerated depreciation. To obtain the user cost, we set $R = 0$ and solve for ρ . This yields

$$\rho = \frac{1 - (A^D + A^C)}{1 - \tau^{CIT}} (r + \delta) \quad (\text{A.2})$$

We compute ρ_{ct} for every country and year and follow Bloom *et al.* (2002) in setting $\delta = 0.3$ and $r = 0.05$. Tax policy variables are obtained from the IBFD database.

A.4 Additional Tables

Table A.2: Sample Selection

	Number of Firms in the Sample
Firms in patenting sectors that conduct R&D with data for 2000-2012	38,906
Excluding firms located in patent box countries	30,923
Excluding firms with a change in the firm structure with respect to patent box locations	26,393
Trimming at the 99% quantile of the patent count	26,314
Excluding firms with no patent application in the observation period	22,559

This table displays the sample selection. Patenting sectors are defined by 2-digit NACE Rev. 2 codes 10-32, 51-53, 58-63, 69-74 and 77-82. Firms that conduct R&D are defined as firms included in the PATSTAT database that have successfully filed a patent application at any point in time.

For the results in Table A.3, we consolidated firm data of affiliates located in the same country which are member of the same group. The point estimates for the *BOX* dummy are very similar to the results in Table 5 and 6.

Table A.3: Consolidated group affiliates

	No. of new Patents		No. of new Patents (quality-weighted)	
	(1)	(2)	(3)	(4)
<i>BOX</i>	0.611*** (0.192)	0.681*** (0.192)	0.615*** (0.208)	0.634*** (0.212)
R&D Exp.		0.340*** (0.065)		0.457*** (0.074)
Log GDP p.c.		-0.488* (0.254)		0.732*** (0.260)
CIT		-0.004 (0.002)		-0.007** (0.003)
GDP Growth		0.002 (0.006)		-0.011* (0.006)
User Cost of R&D		-5.639*** (0.566)		-4.591*** (0.601)
Real interest rate		-1.189** (0.535)		-1.556*** (0.555)
Log no. of affiliates		0.168*** (0.040)		0.158*** (0.043)
Log Age		0.115*** (0.022)		0.130*** (0.024)
Log Total Assets		0.028*** (0.003)		0.025*** (0.003)
Working Capital		0.000 (0.000)		0.000 (0.000)
Log Capital Intensity		0.020*** (0.005)		0.017*** (0.005)
N	235,286	208,348	228,229	202,001
No. of firms	20,432	18,509	19,784	17,914
Pseudo LL	-119,384	-107,916	-69,361	-63,495

Estimation of a Poisson fixed effects model. The dependent variable is the number of (quality-weighted) patents per year and firm for which the majority of inventors does not reside outside the country of residence of the firm. All firm data of firms belonging to the same multinational group is consolidated at the country level. Cluster robust standard errors (clustered at the firm level) are provided in parentheses. All regressions include firm- and year-fixed effects. Stars behind coefficients indicate the significance level, * 10%, ** 5%, *** 1%.

References

- Aghion, Philippe, Reenen, John Van, & Zingales, Luigi. 2013. Innovation and Institutional Ownership. *American Economic Review*, **103**(1), 277–304.
- Alstadsæter, Annette, Barrios, Salvador, Nicodème, Gaëtan, Skonieczna, Agnieszka, & Vezzani, Antonio. 2015. *Patent boxes design, patents, location and local R&D*. Oxford University Centre for Business Taxation Working Paper 15/18. Oxford University Centre for Business Taxation.
- Becker, Johannes, Fuest, Clemens, & Riedel, Nadine. 2012. Corporate tax effects on the quality and quantity of FDI. *European Economic Review*, **56**(8), 1495–1511.
- Bena, Jan, & Li, Kai. 2014. Corporate Innovations and Mergers and Acquisitions. *Journal of Finance*, **69**(5), 1923–1960.
- Bloom, Nick, Griffith, Rachel, & Van Reenen, John. 2002. Do R&D tax credits work? Evidence from a panel of countries 1979–1997. *Journal of Public Economics*, **85**(1), 1–31.
- Blundell, Richard, Griffith, Rachel, & Van Reenen, John. 1995. Dynamic count data models of technological innovation. *The Economic Journal*, **105**(429), 333–344.
- Bollaert, Helen, & Delanghe, Marieke. 2015. Securities Data Company and Zephyr, data sources for M&A research. *Journal of Corporate Finance*, **33**, 85–100.
- Bradley, Sebastien J, Dauchy, Estelle, & Robinson, Leslie. 2015. Cross-Country Evidence on the Preliminary Effects of Patent Box Regimes on Patent Activity and Ownership. *National Tax Journal*, **68**(4).
- Cameron, A Colin, & Trivedi, Parvin K. 2015. Count Panel Data. *In*: Baltagi, Badi H. (ed), *The Oxford Handbook of Panel Data*. Oxford University Press.
- Desai, Mihir A, Foley, C Fritz, & Hines, James R. 2006. Do tax havens divert economic activity? *Economics Letters*, **90**(2), 219–224.

- Dharmapala, Dhammika. 2008. What problems and opportunities are created by tax havens? *Oxford Review of Economic Policy*, **24**(4), 661–679.
- Dischinger, Matthias, & Riedel, Nadine. 2011. Corporate taxes and the location of intangible assets within multinational firms. *Journal of Public Economics*, **95**(7), 691–707.
- Ernst, Christof, Richter, Katharina, & Riedel, Nadine. 2014. Corporate taxation and the quality of research and development. *International Tax and Public Finance*, **21**(4), 694–719.
- Evers, Lisa, Miller, Helen, & Spengel, Christoph. 2015. Intellectual property box regimes: effective tax rates and tax policy considerations. *International Tax and Public Finance*, **22**(3), 502–530.
- Griffith, Rachel, Miller, Helen, & O’Connell, Martin. 2014. Ownership of intellectual property and corporate taxation. *Journal of Public Economics*, **112**, 12–23.
- Guellec, Dominique, & de la Potterie, Bruno van Pottelsberghe. 2001. The internationalisation of technology analysed with patent data. *Research Policy*, **30**(8), 1253–1266.
- Hagedoorn, John, & Cloudt, Myriam. 2003. Measuring innovative performance: is there an advantage in using multiple indicators? *Research Policy*, **32**(8), 1365–1379.
- Hall, Bronwyn H, Thoma, Grid, & Torrisi, Salvatore. 2007. *The market value of patents and R&D: evidence from European firms*. NBER Working Paper No. 13426.
- Hall, Bronwyn H, Mairesse, Jacques, & Mohnen, Pierre. 2010. Measuring the Returns to R&D. *Chap. 24, pages 1033–1082 of: Hall, Bronwyn H., & Rosenberg, Nathan (eds), Handbook of the Economics of Innovation*, vol. 2. Elsevier.
- Hall, Robert E, & Jorgenson, Dale W. 1967. Tax policy and investment behavior. *The American Economic Review*, **57**(3), 391–414.

- Harhoff, Dietmar, Narin, Francis, Scherer, Frederic M, & Vopel, Katrin. 1999. Citation frequency and the value of patented inventions. *Review of Economics and Statistics*, **81**(3), 511–515.
- Haufler, Andreas, & Stähler, Frank. 2013. Tax Competition In A Simple Model With Heterogeneous Firms: How Larger Markets Reduce Profit Taxes. *International Economic Review*, **54**(2), 665–692.
- Hausman, Jerry, Hall, Bronwyn H., & Griliches, Zvi. 1984. Econometric Models for Count Data with an Application to the Patents-R & D Relationship. *Econometrica*, **52**(4), 909–938.
- Hong, Qing, & Smart, Michael. 2010. In praise of tax havens: International tax planning and foreign direct investment. *European Economic Review*, **54**(1), 82–95.
- Jacob, Jojo. 2013. PATSTAT database for patent-based research. *Innovation and Development*, **Volume 3**.
- Karkinsky, Tom, & Riedel, Nadine. 2012. Corporate taxation and the choice of patent location within multinational firms. *Journal of International Economics*, **88**(1), 176–185.
- Koethenbueger, Marko, Liberini, Federica, & Stimmelmayer, Michael. 2016. *Is it Luring Innovations or just Profit? The Case of European Patent Boxes*. mimeo.
- Lanjouw, Jean O, & Schankerman, Mark. 2004. Patent quality and research productivity: Measuring innovation with multiple indicators. *The Economic Journal*, **114**(495), 441–465.
- Mamuneas, Theofanis P, & Nadiri, M Ishaq. 1996. Public R&D policies and cost behavior of the US manufacturing industries. *Journal of Public Economics*, **63**(1), 57–81.
- Melitz, Marc, Helpman, Elhanan, & Yeaple, Stephen. 2004. Export versus FDI with heterogeneous firms. *American Economic Review*, **94**(1), 300–316.
- Seru, Amit. 2014. Firm boundaries matter: Evidence from conglomerates and R&D activity. *Journal of Financial Economics*, **111**(2), 381–405.

- Slemrod, Joel, & Wilson, John D. 2009. Tax competition with parasitic tax havens. *Journal of Public Economics*, **93**(11), 1261–1270.
- Stiebale, Joel. 2016. Cross-border M&As and innovative activity of acquiring and target firms. *Journal of International Economics*, **99**, 1–15.
- Thomson, Russell. 2013. Measures of R&D Tax Incentives for OECD Countries. *Review of Economics and Institutions*, **4**(3).
- Warda, Jacek. 2002. *Measuring the Value of R&D Tax Treatments in OECD Countries*. STI Review No. 27. OECD.
- Wilson, Daniel J. 2009. Beggar thy neighbor? The in-state, out-of-state, and aggregate effects of R&D tax credits. *The Review of Economics and Statistics*, **91**(2), 431–436.
- Wooldridge, Jeffrey M. 1999. Distribution-free estimation of some nonlinear panel data models. *Journal of Econometrics*, **90**(1), 77–97.