

Luciano, Elisa; Spreeuw, Jaap; Vigna, Elena

Article

Spouses' dependence across generations and pricing impact on reversionary annuities

Risks

Provided in Cooperation with:

MDPI – Multidisciplinary Digital Publishing Institute, Basel

Suggested Citation: Luciano, Elisa; Spreeuw, Jaap; Vigna, Elena (2016) : Spouses' dependence across generations and pricing impact on reversionary annuities, *Risks*, ISSN 2227-9091, MDPI, Basel, Vol. 4, Iss. 2, pp. 1-18,
<https://doi.org/10.3390/risks4020016>

This Version is available at:

<https://hdl.handle.net/10419/167886>

Standard-Nutzungsbedingungen:

Die Dokumente auf EconStor dürfen zu eigenen wissenschaftlichen Zwecken und zum Privatgebrauch gespeichert und kopiert werden.

Sie dürfen die Dokumente nicht für öffentliche oder kommerzielle Zwecke vervielfältigen, öffentlich ausstellen, öffentlich zugänglich machen, vertreiben oder anderweitig nutzen.

Sofern die Verfasser die Dokumente unter Open-Content-Lizenzen (insbesondere CC-Lizenzen) zur Verfügung gestellt haben sollten, gelten abweichend von diesen Nutzungsbedingungen die in der dort genannten Lizenz gewährten Nutzungsrechte.

Terms of use:

Documents in EconStor may be saved and copied for your personal and scholarly purposes.

You are not to copy documents for public or commercial purposes, to exhibit the documents publicly, to make them publicly available on the internet, or to distribute or otherwise use the documents in public.

If the documents have been made available under an Open Content Licence (especially Creative Commons Licences), you may exercise further usage rights as specified in the indicated licence.



<http://creativecommons.org/licenses/by/4.0/>

Article

Spouses' Dependence across Generations and Pricing Impact on Reversionary Annuities [†]

Elisa Luciano ¹, Jaap Spreeuw ² and Elena Vigna ^{3,*}

¹ Collegio Carlo Alberto and NETSPAR, Università di Torino, Torino 10134, Italy; elisa.luciano@unito.it

² Faculty of Actuarial Science and Insurance, Cass Business School, City University London, London EC1V 0HB, UK; j.spreeuw@city.ac.uk

³ Collegio Carlo Alberto and CeRP, Università di Torino, Torino 10134, Italy

* Correspondence: elena.vigna@unito.it; Tel.: +39-011-670-5754; Fax: +39-011-670-5783

[†] A previous version of this paper was circulated under the title "Evolution of coupled lives' dependency across generations and pricing impact".

Academic Editor: Nadine Gatzert

Received: 21 October 2015; Accepted: 04 May 2016; Published: 25 May 2016

Abstract: This paper studies the dependence between coupled lives, *i.e.*, the spouses' dependence, across different generations, and its effects on prices of reversionary annuities in the presence of longevity risk. Longevity risk is represented via a stochastic mortality intensity. We find that a generation-based model is important, since spouses' dependence decreases when passing from older generations to younger generations. The independence assumption produces quantifiable mispricing of reversionary annuities, with different effects on different generations. The research is conducted using a well-known dataset of double life contracts.

Keywords: stochastic mortality; generation effect; reversionary annuity; copula; goodness-of-fit

JEL: C12, C18, G22, J12

1. Introduction

Longevity risk, *i.e.*, the risk that individuals live longer than expected, has become a relevant issue for the sustainability of public and private pension systems. It is likely to become even more important, at least in industrialized countries, thanks to the improvement in health care. Already in the past century, populations of industrialized countries, such as the U.K., have been living longer than expected. The difference between actual and forecasted lifetime has been on average close to three years. The consequence of greater survivorship on public pension systems is likely to count for several points of GDP, as a recent study of the IMF shows ([1]). While the reaction of public systems to increased outflows due to longevity is mainly a policy issue, the reaction of private pension systems and funds is likely to be more technical. Private funds can transfer longevity risk to reinsurers or to the market, through customized derivative contracts, such as *s*-forwards. The recent surge in these contracts, together or as a substitute of reinsurance treaties, proves that the burden of longevity is important, and its quantification is key (see [2]). Within these arrangements and the assessments they require, attention should be paid to annuities or pensions payable to couples. Indeed, both in the first and in the second pillar of pension provision, the offer of insurance products includes last survivor and reversionary annuities. These are paid either to the survivor in a couple or to the original beneficiary and its survivor. Quite clearly, the problem of longevity is doubled for reversionary or last survivor contracts. It seems to us that a missing piece of research is longevity assessment when two individuals are involved. An accurate pricing scheme of joint survivorship, which goes beyond the elementary assumption of independence between the lifetimes of members of a couple,

is needed, even before addressing reinsurance or marketability. First, one needs to determine the correct dependence between two members of a couple, *i.e.*, spouses' dependence. Second, one needs to investigate whether and how this dependence evolves over time, *i.e.*, over different generations. The first issue has been addressed in the literature, at least to a certain extent. To the best of our knowledge, the second has not been tackled, since it requires a treatment of longevity risk, as well. To model longevity risk, the researcher has to adopt so-called stochastic mortality, or stochastic intensity, models, in which the actual mortality rate can be different from the forecasted one.

The existing actuarial literature rejects the spouses' independence and measures both the level of dependence and the extent of mispricing through the comparison between premia of insurance products on two lives with and without independence. In this field, the seminal paper is [3], which introduces a dataset of couples provided by a large Canadian insurer, the largest publicly available. Their paper has been followed by a few others, including [4–8]. Some of these papers include stochastic mortality. When couples are considered, one has to model both marginal stochastic mortality, taking the due age and generation effects into account, and spouses' dependence. The latter aim is achieved by coupling marginal survival functions with a copula function. The work in [7,8] addresses the existence of spouses' dependence, without performing a best-fit copula analysis. The work in [4–6] investigates which copula better encapsulates spouses' dependence.

The present paper deepens the study of spouses' dependence in two directions: firstly, by addressing its evolution over time, *i.e.*, across generations; secondly, by extending the features of spouses' dependence with multi-parameter copulas. It then applies the enhanced spouses' dependence model to pricing contracts on two lives. Since pricing is a pre-requisite for hedging, we understand our contribution as a necessary step towards the marketability of products on two lives, as well.

By analyzing the evolution of dependence across different generations, we are also considering how dependence evolves across different ages. This seems novel in the actuarial literature. Moreover, the analysis of the mortality of married individuals across cohorts or ages (not considered in the actuarial literature) has been addressed by a limited number of papers also in the demographic and sociological literature. While a huge number of papers concentrates on the relationship between marital status and mortality (see for instance the survey by [9]), a reduced number of papers investigate the effect of age on the mortality risk experienced by survivors after the spouse's death. Among them, [10] study how the mode of death (whether the spouse's death occurred suddenly or after a long illness) affects the relative risk of mortality of the survivor by gender and age, and [11] find that the adverse effects of widowhood on mortality (that are significantly higher for men than for women) are more pronounced at younger ages and less pronounced at older ages.

A preview of our results, obtained using the dataset on couples introduced by [3], is that spouses' dependence decreases when passing from older to younger generations, as intuition would suggest. Not only the level of spouses' dependence, but also its features, as measured by the copula, change across generations. For all of the generations considered, goodness-of-fit and significance tests indicate that two-parameter copulas are significantly more suitable to describe spouses' dependence than one-parameter copulas. The analysis of prices of reversionary annuities confirms that spouses' dependence matters on pricing, for the independence assumption produces a quantifiable mispricing. Mispricing is heavier for older generations than for younger ones. Even when the copula approach is adopted, the misspecification of the copula has different and opposite effects on the mispricing for different generations.

The paper is organized as follows. In Section 2, we present the methodology. In Sections 3 and 4, we present respectively the calibration method, as required by the specific dataset, and its results. In Section 5, we discuss the effect of different models on premia of reversionary annuities, comparing them with those obtained under the independence assumption. Section 6 concludes.

2. Methodology

This paper models the mortality of couples using a copula approach: the joint survival probability is written in terms of the marginal survival probabilities and a function—the survival copula—which represents spouses’ dependence. The calibration procedure has two steps, as usual in the copula field. The best-fit parameters of the marginal distributions are chosen separately from the best-fit parameters of the copula. This section briefly describes the modeling and calibration choices in the two steps.

Since one of the aims of this research is to compare the spouses’ dependence across different generations, throughout the paper, we will assume that the two members of a given couple belong to the same generation. Male and female have remaining lifetimes T_x^m and T_y^f (x and y being the initial ages of male and female, respectively), which are assumed to have continuous distributions. Denote by S_x^m and S_y^f the corresponding marginal survival functions:

$$S_x^m(t) = \Pr [T_x^m > t], \quad \forall t \geq 0$$

$$S_y^f(t) = \Pr [T_y^f > t], \quad \forall t \geq 0$$

Denote as $S_{xy}(s, t)$ the joint survival function of the couple (x, y) , *i.e.*,

$$S_{xy}(s, t) = \Pr [T_x^m > s, T_y^f > t] \quad \forall s, t \geq 0$$

As is known, Sklar’s theorem states the existence (and uniqueness over the range of the marginal distributions) of a survival copula $C : [0, 1] \times [0, 1] \rightarrow [0, 1]$, such that, for all $(s, t) \in [0, \infty] \times [0, \infty]$, S can be represented in terms of S_x^m, S_y^f :

$$S_{xy}(s, t) = C(S_x^m(s), S_y^f(t))$$

2.1. Marginal Survival Functions

For a given generation, we model the marginal survival functions of males and females with the stochastic-intensity or doubly-stochastic approach. This approach is well established in the actuarial literature; see [12–14]. Within this approach, the random time of death T of the individual is modeled as the first jump time of a doubly-stochastic process, *i.e.*, a counting process, the intensity of which is itself a nonnegative, measurable stochastic process $\Lambda(s)$. Under some technical properties, this construction permits one to write the marginal survival probabilities as:

$$S_i^j(t) = \Pr(T_i^j > t) = \mathbf{E} \left[\exp \left(- \int_0^t \Lambda_i^j(s) ds \right) \right] \tag{1}$$

where $i = x, y, j = m, f$.

As usual, we focus on the case in which the intensity is an affine diffusion. This permits one to write the marginal survival probability in Equation (1) in terms of the intensity evaluated at time 0 and two functions of time, denoted as $\alpha(\cdot)$ and $\beta(\cdot)$. One can indeed show that:

$$S_i^j(t) = \exp \left[\alpha_i^j(t) + \beta_i^j(t) \Lambda_i^j(0) \right] \tag{2}$$

where the functions $\alpha_i^j(\cdot)$ and $\beta_i^j(\cdot)$ satisfy appropriate Riccati ODEs.

Previous papers motivate the appropriateness, among generation-based affine intensities, of processes without mean reversion. Luciano and Vigna ([15,16]), using the evidence

provided by a comparison of competing models over the U.K. population, focused on the Cox–Ingersoll–Ross process:

$$d\Lambda_i^j(s) = a_i^j \Lambda_i^j(s) ds + \sigma_i^j \sqrt{\Lambda_i^j(s)} dW_i^j(s) \tag{3}$$

where W_i^j is a one-dimensional Wiener process, with $a_i^j > 0$ and $\sigma_i^j \geq 0$. Notice that the process Equation (3), that belongs to the Feller family, is a natural stochastic extension of the Gompertz model (indeed, it is an exponential force of mortality if $\sigma_i^j = 0$). This is a desirable property, given that in general, the Gompertz model is appropriate for ages greater than 35. In addition, [4] finds that the Gompertz model outperforms competing mortality models on the same dataset used in this paper.

The Cox–Ingersoll–Ross process is a parsimonious choice that, for each generation under scrutiny, involves only two parameters (a_i^j, σ_i^j) for each gender j . From the empirical point of view, it proved to fit a number of different datasets quite accurately. These are the reasons that motivate its adoption in [17] and in this paper. For such a process, we have:

$$\begin{cases} \alpha_i^j(t) = 0 \\ \beta_i^j(t) = \frac{1 - \exp(b_i^j t)}{c_i^j + d_i^j \exp(b_i^j t)} \end{cases} \tag{4}$$

where:

$$\begin{cases} b_i^j = -\sqrt{(a_i^j)^2 + 2(\sigma_i^j)^2} \\ c_i^j = \frac{b_i^j + a_i^j}{2} \\ d_i^j = c_i^j - a_i^j \end{cases}$$

and therefore¹:

$$S_i^j(t) = \exp \left[\frac{1 - \exp(b_i^j t)}{c_i^j + d_i^j \exp(b_i^j t)} \Lambda_i^j(0) \right] \tag{5}$$

2.2. Copulas

In line with the related literature, we start from single-parameter (1P) Archimedean copulas. Archimedean copulas indeed permit one to compare our results with the survival studies conducted on the same or similar datasets. In a second step, in an attempt to get a better fit, we introduce two-parameter (2P) copulas.

2.2.1. One-Parameter Copulas

Each one-parameter Archimedean copula is obtained from a continuous, decreasing, convex function $\phi : [0, 1] \rightarrow [0, +\infty]$, the generator, such that $\phi(1) = 0$. Using ϕ and its generalized inverse ϕ^{-1} , the copula is defined as follows:

$$C(v, z) = \phi^{-1} (\phi(v) + \phi(z)) \tag{6}$$

Usually the generator, and consequently the copula, contains one parameter, which we denote as θ . Archimedean copulas are symmetric and associative and have convex level curves. They are easily amenable to calibration, thanks to the link between the generator and popular measures of

¹ The survival function given by Equation (5) is biologically reasonable (*i.e.*, it is decreasing over time) if and only if the following condition holds: $e^{b_i^j t} \left[(\sigma_i^j)^2 + 2(d_i^j)^2 \right] > (\sigma_i^j)^2 - 2d_i^j c_i^j$. In our calibrations, this is always true.

association, mainly Kendall’s tau. They have clear relationships not only with association measures, but also with measures, such as Oakes’ cross-ratio function, tail and positive quadrant dependence.

The link between an Archimedean copula and its Kendall’s τ is as follows:

$$\tau = 4 \int_0^1 \frac{\phi(v)}{\phi'(v)} dv + 1 \tag{7}$$

For all of these reasons, Archimedean copulas provide a flexible, comprehensive family widely used in the literature. Thanks to the fit exploration provided in [6] on the same dataset, we consider the Archimedean copulas, listed in Table 1.

Table 1. Archimedean single-parameter copulas considered.

Name	$C(u, v)$
Clayton	$(u^{-\theta} + v^{-\theta} - 1)^{-\frac{1}{\theta}}$
Gumbel-Hougaard	$\exp \left[- \left((-\ln u)^\theta + (-\ln v)^\theta \right)^{\frac{1}{\theta}} \right]$
Frank	$-\frac{1}{\theta} \ln \left[1 + \frac{(e^{-\theta u} - 1)(e^{-\theta v} - 1)}{e^{-\theta} - 1} \right]$
Nelsen 4.2.20	$\left[\ln \left(\exp(u^{-\theta}) + \exp(v^{-\theta}) - e \right) \right]^{-\frac{1}{\theta}}$
Special	$\left(\frac{-W + \sqrt{4 + W^2}}{2} \right)^{\frac{1}{\theta}}$; with $W = \frac{1}{u^\theta} - u^\theta + \frac{1}{v^\theta} - v^\theta$

While the first three copulae are common in the literature, the last two are not. They have been included because, differently from the first three copulae, their association, as measured by the cross-ratio function, is increasing over time, which is what one would expect from couples, as time from marriage or coupling increases (see [18]).

The joint survival function is:

$$S(x, y) = \Pr(X > x, Y > y) \tag{8}$$

Thanks to Sklar’s theorem for survival functions, the joint survival probability may be written using the marginal survival functions, as:

$$S(x, y) = C(1 - F_1(x), 1 - F_2(y))$$

2.2.2. Two-Parameter Copulas

The goodness-of-fit may be improved significantly by copulas with enhanced flexibility through an additional parameter. There are numerous two-parameter copula families available in the literature, many of them being a result of generalizing one parameter families. In this paper, we will adopt one such generalization by mixing the one-parameter Archimedean copulas with the independence copula. A justification of this is partly based on previous work in this area (see further in this section) and partly on the data at hand, as will be argued in Section 4.3.

Two-parameter copulas may be obtained by combining the Archimedean copulas with the independence copula in three distinct ways. We obtain three types, through:

1. a product:

$$C_{\alpha, \theta}(u, v) = u^{1-\alpha} v^{1-\alpha} C_\theta(u^\alpha, v^\alpha) \tag{9}$$

where C_θ is any Archimedean copula and $\alpha \in [0, 1]$. It is a subcase of [19];

2. a linear mix:

$$C_{\alpha, \theta}(u, v) = (1 - \alpha)uv + \alpha C_\theta(u, v) \tag{10}$$

where C_θ is any Archimedean copula and $\alpha \in [0, 1]$. It is the method proposed by [4] for the special case in which C_θ is Clayton. Both the limiting cases of C_θ being Fréchet upper bound or Fréchet lower bound lead to subclasses of the Fréchet copula family;

3. a geometrically-weighted average:

$$C_{\alpha,\theta}(u, v) = (uv)^{1-\alpha} (C_\theta(u, v))^\alpha$$

with $\alpha \in [0, 1]$. This mix, envisaged in [20], generates a valid copula if C_θ is absolutely continuous. The work in [4] considered also this type of mixing for the special case of C_θ being Clayton, leading to a copula called “correlated frailty”, originally stemming from [21].

In all cases, the two-parameter model nests the one-parameter one, when $\alpha = 1$, as well as the product copula, when $\alpha = 0$. Note that Types 1 and 3 coincide in the special case of C_θ being an extreme value copula. In this paper, only Gumbel–Hougaard belongs to this class. The limiting case of C_θ being the Fréchet upper bound leads to the Cuadras–Augé copula family.

The selection of these three types of mixing is also motivated by the fact that [4] obtained a very good fit, both with his “linear mix” and with the “correlated frailty”. To the best of our knowledge, so far, only Carriere has adopted the “mix with independence” approach in fitting a copula to joint survival data. In this respect, this paper can be considered as an extension of Carriere’s work.²

3. Calibration Methods

3.1. Marginal Survival Functions

We consider the large Canadian dataset introduced by [3]. In this dataset, thousands of couples of individuals are observed in a time frame of five years, from 29 December 1988–31 December 1993. In order to provide an estimate of the marginal parameters for each generation, $(\hat{\alpha}_i^j, \hat{\sigma}_i^j)$, we first identify the generations. It is reasonable to assume that persons with ages of birth close to each other belong to the same generation. As in [6], we define a generation as the set of all individuals born in a fourteen-year time interval. We set the age difference between male and female of the same couple equal to three years, as this is the average age difference between spouses in the whole dataset. We select two generations: 1900–1913, 1914–1927 for males, 1903–1916, 1917–1930 for females.³ From now on, we refer to these generations as “old” and “young”. Notice that the members of each generation may enter the observation period at nineteen different years of age. For instance, the male members of the old generation may start to be observed at every age between 75 and 94. For notational convenience and according to [6], we will consider as the initial age of each generation the smallest possible entry age, namely, $x = 75$ for the old male, $x = 61$ for the young male, $y = 72$ for the old female, $y = 58$ for the young female.

² We did fit more common 2P families, such as Student’s copula and several families in [22], to the data, as well, but the fits obtained were not as good as the ones resulting from the three types specified above. In preliminary work, we investigated also the general three-parameter families as proposed in [23,24], built as follows:

$$C_{\alpha,\beta,\theta}(u, v) = u^{1-\alpha} v^{1-\beta} C_\theta(u^\alpha, v^\beta) \quad (11)$$

where $(\alpha, \beta) \in [0, 1] \times [0, 1]$. However, the empirical tests do not give clear answers regarding the dominance of any three versus the corresponding two-parameter model. We omit the discussion here.

³ To be more precise, the males of the older generation were born between 1.1.1900 and 31.12.1913, while the corresponding females between 1 January 1903 and 31 December 1916, and so on.

Then, we extract from the raw data the Kaplan–Meier (KM) empirical distribution for each generation and each gender.

The last step consists of using the KM data to calibrate the parameters of the intensity of each gender and generation, $(\hat{\alpha}_i^j, \hat{\sigma}_i^j)$. This is done by minimizing the squared error between empirical and theoretical probabilities; the former being the KMs; the latter being obtained by replacing the appropriate function in the survival function Equation (5).

3.2. Copulas

The calibration of the copulas belonging to classes 1P and 2P proceeds through the pseudo-maximum likelihood (PML) approach as in [25]. In order to use the methodology, we need complete data. This is a relevant restriction for the dataset available. In fact, the five-year observation window of the dataset implies that the majority of couples under observation are censored data. Restricting our attention only to complete data makes the number of couples suitable for the investigation drop remarkably. The restriction to complete data is unavoidable even in the absence of multi-parameter copulas, whenever the accent is on the evolution of spouses' dependence across generations. Indeed, suppose that the focus of the investigation is only on the comparison of spouses' dependence of different generations, and the copulas considered are only one parameter. Ideally, it is possible to keep the vast number of censored data and to perform the best-fit copula test within each generation with the [26] procedure, which is suitable for censored data.⁴ The Wang and Wells procedure involves selecting a starting point $\zeta \in [0, 1]$ in the calculation of the empirical Kendall's tau $\hat{\tau}$. In turn, the selection of ζ induces an overestimation of $\hat{\tau}$, on which the whole procedure is based, and the higher ζ , the higher the overestimation of $\hat{\tau}$. It can be shown that the value of ζ strongly depends on the generation considered: the older the generation, the lower the cutting point ζ and *vice versa*. Therefore, the overestimation of $\hat{\tau}$ strongly depends on the generation chosen and is bigger with younger generations. This phenomenon is not acceptable if the focus of the investigation is on the comparison of spouses' dependence among different generations. If the investigator wants to compare in a consistent way the association within a couple across different generations, she is bound to select smaller subsets of complete data.

This has disadvantages and advantages. On the first side, the price to pay in order to be able to make consistent comparisons across generations is a remarkable reduction of the size of the sample, which in our case becomes $n = 66$ for each generation. In spite of this, as [4] notices, this approach is still informative, even though inefficient due to the scarcity of couples. Indeed Carriere, when testing the null hypothesis of the independence of the data, considered only the complete observations of the same data. As in [3], he pooled all of the generations together, rather than considering different generations. Also, in his case, the number of couples drops to a surprisingly low 229. On the second side, the advantage of working with complete data only is that this allows one to employ relatively straightforward goodness-of-fit tests that appeared in the literature in recent years. We greatly benefit from this possibility in performing significance tests of the goodness-of-fit of copulas with different numbers of parameters.

We now illustrate the PML approach. For survival copulas, the rank-based log likelihood to be maximized with respect to the parameters has the form:

$$\ell(\theta^*) = \sum_{i=1}^n \log \left\{ c_{\theta^*} \left(1 - \frac{R_i^{(1)}}{n+1}, 1 - \frac{R_i^{(2)}}{n+1} \right) \right\} \quad (12)$$

⁴ This was indeed the method used in [6], where the authors used censored data on the same dataset.

where $\ell(\theta^*)$ is the resulting log-likelihood with parameter θ (which can be real or vector valued), n is the number of data, $c_{\theta^*}(u, v) = \frac{\partial^2 C_{\theta^*}(u, v)}{\partial u \partial v}$ is the density of the copula C_{θ^*} and $R_i^{(j)}$ is the rank of part j of observation i , with $j \in \{1, 2\}$ and $i \in \{1, \dots, n\}$. In this context, the rank is in terms of the waiting time, *i.e.*, the time between entry and exit (death). The motivation for using this pseudolikelihood and its intuitive meaning are illustrated, for instance, in [27]. Since the focus of our investigation is to compare the spouses' dependence among different generations, we use complete data to implement the estimation strategy. Due to the five-year observation window of the dataset, the majority of couples under observation are censored data, and considering only complete data means that the number of observations drops to $n = 66$.

We start by calibrating the parameters for each copula in each class, using Equation (12). Once this is done, we first perform a best-fit copula test among all copulas with the same number of parameters. Then, we compare the best-fit one-parameter copula with the best-fit two-parameter copula.

Since, in the absence of adjustments, the higher the number of parameters, the better the fit, below, we adjust the likelihood by penalizing for the number of parameters. Below, we are going to use the Akaike Information Criterion (AIC) and the Bayesian Information Criterion (BIC) for each model.⁵

4. Calibration Results

4.1. Marginal Survival Functions

The parameters of the marginal survival functions, for both the old generation (OG) and the young generation (YG), are presented (in basis points) in Table 2.

Table 2. Parameters of the marginal survival functions.

	OG Male	OG Female	YG Male	YG Female
a	961.045	790.232	528.581	619.733
σ	0.007	0.057	0.019	0.5

Their initial values for the two generations are $\lambda_x(0)^{OG} = 0.0361$, $\lambda_y(0)^{OG} = 0.01645$, $\lambda_x(0)^{YG} = 0.01314$ and $\lambda_y(0)^{YG} = 0.00354$.

The following figures report the plot of the survival probabilities, grouped by generation and gender. Each figure reports the analytical survival function $S_z(t)$ for initial age z and the empirical survival function obtained with the Kaplan–Meier methodology. Figures 1 and 2 report the old generation, female and male, respectively; Figures 3 and 4 report the young generation, female and male, respectively.

⁵ Let $\ell(\theta^*)$ be defined as in Equation (12). Then, the Akaike Information Criterion (AIC) and the Bayesian Information Criterion (BIC) are defined as:

$$\text{AIC} = -\frac{2}{n} (\ell(\theta^*) - p), \quad \text{BIC} = -\frac{2}{n} \left(\ell(\theta^*) - \frac{\log n}{2} p \right)$$

where p is defined as the number of parameters of c_{θ^*} . According to these methods, the lower the AIC or BIC value, the more suitable the model.

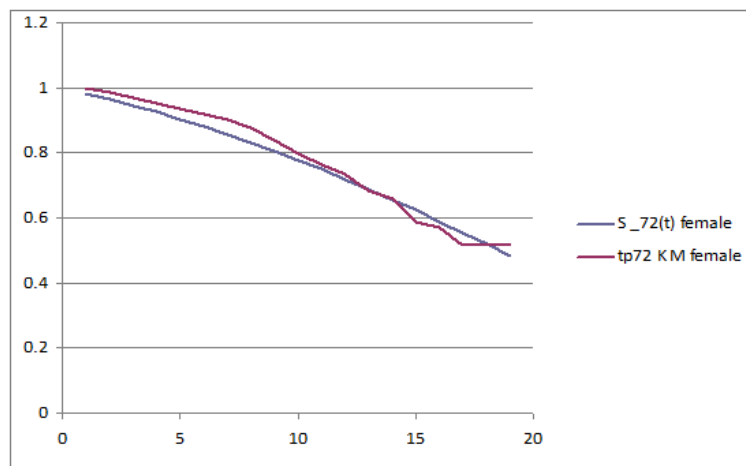


Figure 1. Females, old generation.

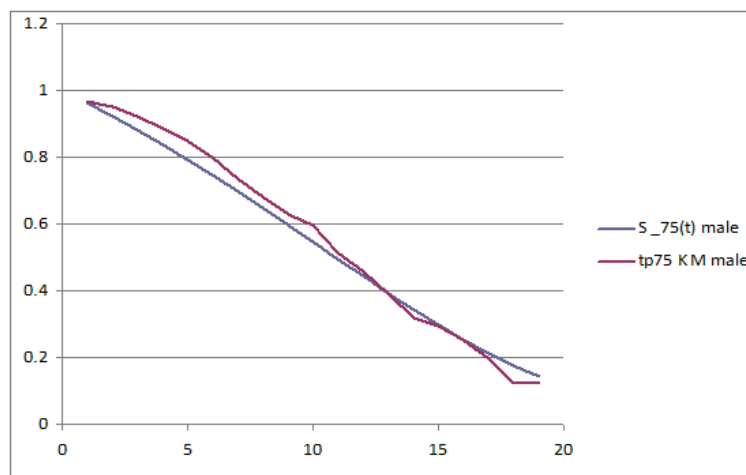


Figure 2. Males, old generation.

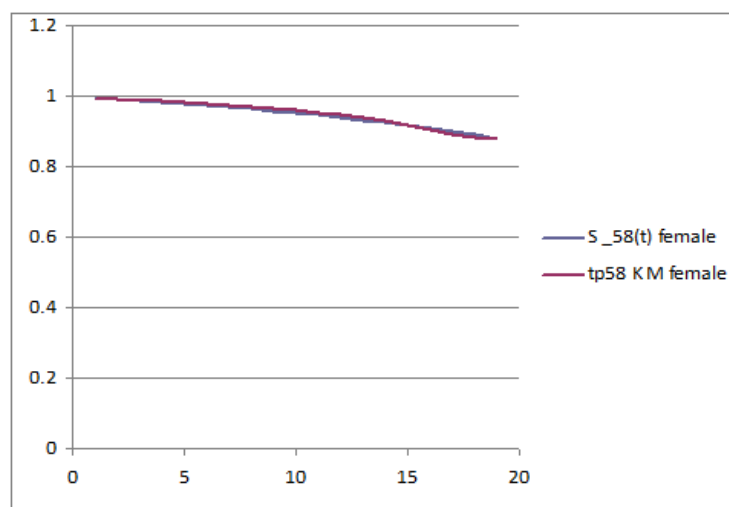


Figure 3. Females, young generation.

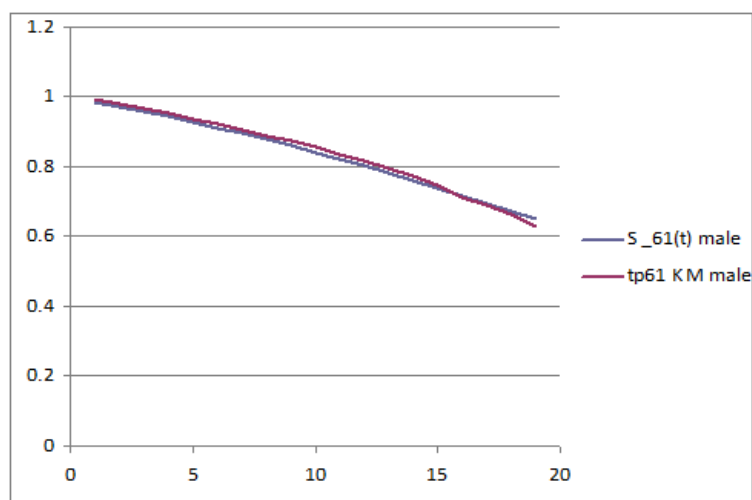


Figure 4. Males, young generation.

4.2. Decreasing Spouses' Dependence over Generations

Before calibrating any specific copula, we first compute an empirical estimate $\hat{\tau}$ of Kendall's tau coefficient for each generation. The results are given in Table 3.

Table 3. Kendall's τ across generations.

	OG	YG
Kendall's τ	0.440	0.279

Spouses' dependence decreases as we consider younger generations. This interesting result is not surprising and is in accordance with the observed increase in the rate of divorces, the creation of extended families, the increased independence of women in the family, and so on. We call this effect the "cohort effect".

We acknowledge that this result can be subject to skepticism. One might wonder whether the decrease in dependence from older to younger generations is really due to the cohort effect or rather to the age effect, which works as follows. The two generations enter the observation window (from December 1988–December 1993) at different ages. In particular, the old generation enters at ages 75–72 (male-female), while the young generation enters at ages 61–58 (male-female). Thus, the higher spouses' dependence of the old generation could be partially explained by higher spouses' dependence of a couple at older ages: one could argue that also for the same generation, spouses' dependence increases with age or with the duration of marriage or coupling. Because of the age effect, one would expect a higher spouses' dependence coefficient for the older generation, even without a cohort effect.

Therefore, it seems crucial to disentangle age and cohort effect and to investigate which one is the main explanation of Table 3. In order to do so, one would need either to observe the same cohort over two different time windows, *i.e.*, at different ages, or different generations over different windows, but when they have the same initial age. The latter is not feasible with this dataset, because it would require two observation windows distant by 14 years (at least). However, we can observe the same cohort at different ages, as follows:

- We create artificially two observation windows out of the unique one, by distinguishing the period 29 December 1988–30 June 1991 from the period 1 July 1991–31 December 1993.
- For each cohort, we compute Kendall's tau in the two sub-windows, in which the same individuals have different initial ages.

Implementing this procedure, we are observing the same generation with different initial ages. The results are reported in Table 4.

Table 4 shows the unexpected result that for each generation, τ decreases when time passes, meaning that the spouses' dependence seems to decrease when the two members of the same cohort become older. This may be due to the small number of couples at disposal in the dataset and to the fact that in order to implement the procedure, we had to further reduce the number of couples in each sub-window. However, had we found the opposite results (*i.e.*, an increasing τ), we would have been puzzled by the issue of whether the decreasing Kendall's tau of Table 3 was due to cohort effects or to age effects. The likely answer would have been "by both", and it would have been impossible (with this dataset) to measure the extent of age effect and cohort effect. This would have remained an open issue.

Table 4. Kendall's τ across two close observations windows.

τ	December 1988–June 1991	July 1991–December 1993
OG	0.636	0.502
YG	0.543	0.411

However, the evidence produced by Table 4 indicates that, for the two generations under scrutiny, increasing age does not imply higher spouses' dependence. Transferring this conclusion to Table 3, there seems to be no age effect on the decreasing Kendall's tau from old generation to young generation. In this dataset, spouses' dependence decreases when passing from older to younger generations, and this seems to be due only to cohort effects.

We do not intend to claim that, in general, dependence decreases when considering younger generations. This would require extensive investigations that we cannot perform. However, an insurance company endowed with a complete series of data on coupled lives would be able to perform a deeper investigation and separate the age from the generation effect on Kendall's tau. This would permit one to further support our results that spouses' dependence is affected by the generations' effect and decreases when considering younger cohorts.

4.3. Joint Calibration: Archimedean Copulas

Following the method illustrated in Section 3, for each copula of Table 1, we calibrate the single-parameter and the two-parameter versions. Given the parameters, we perform a best-fit test among all copulas with the same number of parameters first, among the best-fit copulas with a different number of parameters then.

The results on the log likelihood, AIC and BIC are provided by Tables 5–8 (Tables 5 and 6 report data for the old generation; Tables 7 and 8 those for the young generation). In the tables, LH stands for "log likelihood"; 2Ppr stands for "2P product"; 2Pl stands for "2P linear mix"; 2Pg stands for "2P geometrically weighted average"; Fr stands for "Frank copula"; Cl stands for "Clayton copula"; GH stands for "Gumbel–Hougaard copula"; Ne stands for "Nelsen 4.2.20 copula"; and Sp stands for "special copula". The highest LH, the lowest AIC and the lowest BIC are reported in bold.

Table 5. Loglikelihood, AIC and BIC values for the old generation, one-parameter (1P)-copulas.

OG	LH-1P	AIC-1P	BIC-1P
Fr	11.806	−0.327	−0.294
Cl	6.04	−0.153	−0.120
GH	14.396	−0.406	−0.373
Ne	4.950	−0.12	−0.086
Sp	2.216	−0.037	−0.004

Table 6. Loglikelihood, AIC and BIC values for the old generation, 2P-copulas.

OG	LH-2Ppr	AIC-2Ppr	BIC-2Pr	LH-2PI	AIC-2PI	BIC-2PL	LH-2Pg	AIC-2Pg	BIC-2Pg
Fr	32.627	−0.928	−0.862	32.625	−0.928	−0.862	33.731	−0.961	−0.895
Cl	31.583	−0.896	−0.830	26.607	−0.745	−0.679	31.583	−0.896	−0.830
GH	41.015	−1.182	−1.116	41.714	−1.203	−1.137	41.015	−1.182	−1.116
Ne	18.754	−0.508	−0.441	12.887	−0.329	−0.263	18.754	−0.507	−0.441
Sp	12.619	−0.321	−0.255	10.722	−0.264	−0.198	13.258	−0.341	−0.275

Table 7. Loglikelihood, AIC and BIC values for the young generation, 1P-copulas.

YG	LH-1P	AIC-1P	BIC-1P
Fr	4.736	−0.113	−0.080
Cl	6.696	−0.173	−0.139
GH	2.39	−0.042	−0.009
Ne	6.444	−0.165	−0.132
Sp	6.832	−0.177	−0.144

Table 8. Loglikelihood, AIC and BIC values for the young generation, 2P-copulas.

YG	LH-2Ppr	AIC-2Ppr	BIC-2Ppr	LH-2PI	AIC-2PI	BIC-2Ppl	LH-2Pg	AIC-2Pg	BIC-2Ppg
Fr	9.31	−0.221	−0.155	11.055	−0.274	−0.208	8.762	−0.204	−0.139
Cl	9.555	−0.229	−0.163	11.048	−0.274	−0.208	9.555	−0.229	−0.163
GH	9.057	−0.214	−0.148	11.516	−0.288	−0.222	9.057	−0.214	−0.147
Ne	8.915	−0.209	−0.143	9.835	−0.237	−0.171	8.915	−0.209	−0.143
Sp	10.049	−0.244	−0.178	11.250	−0.280	−0.214	10.049	−0.243	−0.178

The results of the comparison within each class (1P, 2P) can be summarized as follows.

1. Class 1P: The one-parameter Archimedean family that performs best according to Tables 5 and 7, is the Gumbel–Hougaard for the old generation and the special one for the young generation.
2. Class 2P: For both generations, Tables 6 and 8 show that the two-parameter family that performs best is the Gumbel–Hougaard linear mix. We observe that the LH of the 2P-product is very similar (and in many cases, identical) to those of the 2P-geometric. For the old generation, the linear-mixing copula is closely followed by the product and geometric Gumbel–Hougaard mixes (as pointed out before, the latter two entail identical copulas): the 2P mixes with the GH copula have a LH much higher than all of the other copulas. This is not the case for the young generation, where the LH are of similar order of magnitude for all copulas and way of mixing.

We see that for the old generation, the best-fit copulas are nested, *i.e.*, the 2P copula is an extension of the 1P, but they are not for the young generation.

The parameters of the best-fit copulas are reported in Tables 9 and 10.

Table 9. Best-fit copulas parameters for the old generation.

OG	Gumb-Houg-1P	Gumb-Houg-Linear-Mix-2P
θ	1.758	12.134
α	−	0.550

Table 10. Best-fit copulas parameters for the young generation.

YG	Special-1P	Gumb-Houg-Linear-Mix-2P
θ	1.116	6.100
α	−	0.373

Consistently with the decrease of Kendall’s tau across generations, when the best-fit copula remains the same across generations, the spouses’ dependence parameter is decreasing when passing from the older to the younger generation. Indeed, θ goes from 12.134 to 6.1 for the 2P case.

After having established, for a given number of parameters, which copula fits best for each generation, we compare the 1P and 2P versions of each copula in order to assess the correct trade-off between fit and parsimony. We observe that in all cases, the AIC and the BIC values of the 2P copulas are lower than the AIC and BIC values of the corresponding 1P copulas. This indicates that the 2P copulas are more suitable to describe the dependence of this dataset than the 1P copulas. We also note that for the old generation, the passage from 1P to 2P is characterized by a huge gap in the LH. A possible way to explain the superiority of 2P *versus* 1P copulas is by observing the scatterplots of the ranked observations for both generations. These are displayed in Figures 5 (old generation) and 6 (young generation).

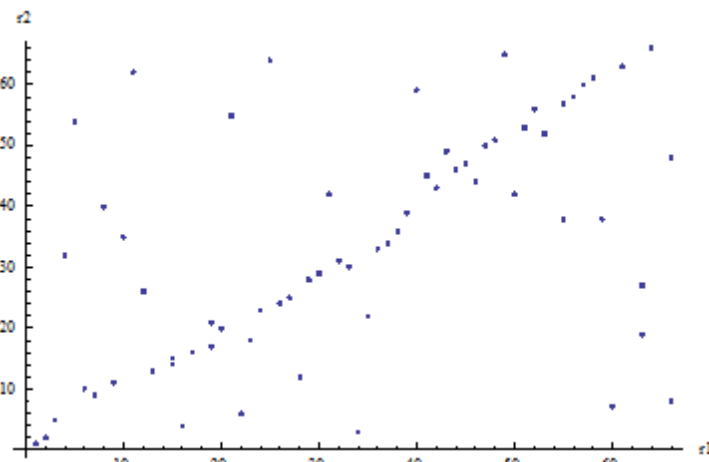


Figure 5. Ranks of the observations, old generation.

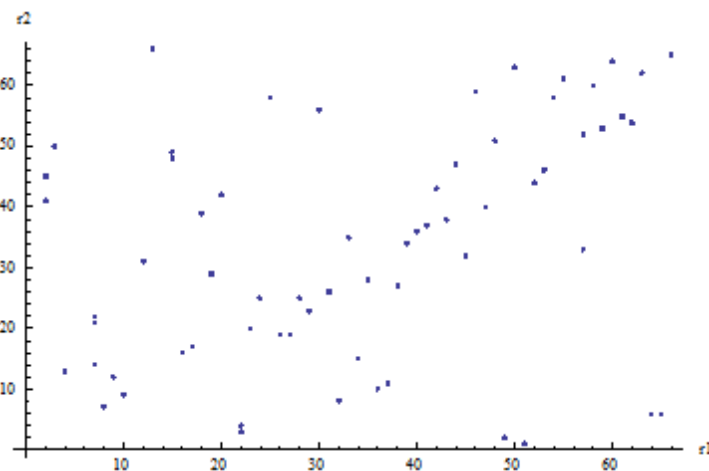


Figure 6. Ranks of the observations, young generation.

We observe that for both generations, we can distinguish between two subgroups of ranked observations:

1. points on or close to the main diagonal; considering these points only gives an impression of very strong spouses' dependence (evidently stronger for the old generation than for the young generation);
2. the remaining points; considering these points only gives an impression of weak or no spouses' dependence.

The presence of many observations that display strong spouses' dependence and others that show no spouses' dependence can be intuitively captured by mixing a 1P copula with strong spouses' dependence with the independence copula. Therefore, we are not surprised that the best copula for both generations is the linear-mixing between Gumbel–Hougaard and independence. An intuitive interpretation of the linear mix copula is that a couple has a $100\alpha\%$ (55% for the old generation, 37.3% for the young generation) chance of strong dependence, reflected by the points on or near the main diagonal, and a $100(1 - \alpha)\%$ (45% for the old generation, 62.7% for the young generation) chance of no dependence at all. A similar interpretation applies to the geometrically-weighted average (Type 3) after a log transform of the copula, and presumably, although less intuitive, also to the product (Type 1) given that overall, the results in terms of LH and AIC are very similar.

5. Effects of Spouses' Dependence on Pricing

In this section, we investigate the effect of the spouses' dependence to the pricing of policies on two lives. We consider a *combined joint life and reversionary annuity*, which pays 1 as long as both members are alive and a fraction R of it (R stands for "reduction factor") when only one member of the couple is alive. In this scheme, the last survivor product corresponds to $R = 1$ (the benefit paid remains constant also after the first death), and the joint life annuity corresponds to $R = 0$ (nothing is paid to the last survivor). In practice, such contracts are quite common (see [3]) for $R = 1/2, 2/3$.

If the interest rate used in the actuarial evaluation is constant at the level i over the maturity of the contract, the fair price of the reversionary annuity with reduction factor $R \in [0, 1]$ is:

$$\sum_{t=1}^{+\infty} v^t \left[R({}_t p_x^m - {}_t p_{xy}) + R({}_t p_y^f - {}_t p_{xy}) + {}_t p_{xy} \right] \tag{13}$$

where $v = (1 + i)^{-1}$ is the discount factor, $({}_t p_x^m - {}_t p_{xy})$ is the probability that the benefit R is paid only to the male, $({}_t p_y^f - {}_t p_{xy})$ is the probability that the benefit R is paid only to the female and ${}_t p_{xy}$ is the probability that the benefit 1 is paid when both are alive. Connecting the survival probabilities needed to the marginal and the joint survival functions, we have:

$${}_t p_x^m - {}_t p_{xy} = S_x^m(t) - S_{xy}(t, t), \quad \text{and} \quad {}_t p_y^f - {}_t p_{xy} = S_y^f(t) - S_{xy}(t, t)$$

and also:

$${}_t p_{xy} = S_{xy}(t, t) = C(S_x^m(t), S_y^f(t))$$

Therefore, the price of the combined joint life and reversionary annuity is equal to:

$$\sum_{t=1}^{+\infty} v^t R \left(S_x^m(t) + S_y^f(t) - 2C(S_x^m(t), S_y^f(t)) \right) + \sum_{t=1}^{+\infty} v^t C(S_x^m(t), S_y^f(t))$$

We have implemented the pricing formulas when R takes the values 0, 1/4, 1/3, 1/2, 2/3, 3/4, 1. Results are in the next section.

5.1. Prices of Combined Joint Life and Reversionary Annuities

Tables 11 and 12 report the single premia of R -reversionary annuities for the old generation and the young generation, respectively. The interest rate used is $i = 2\%$. While the first column reports the value of R , the second reports the price of the annuity under the independence assumption. For each model specification (1P, 2P), there is a column reporting the best-fit copula price (cum-dependence price) and a column with the ratio between the cum-dependence price and the independence price. In Table 11 and 12, "GH" stands for "Gumbel-Hougaard", while in Table 12 "Spec." stands for "special".

Table 11. Reversionary annuity price for the old generation under independence and using best-fit 1P, 2P copulas.

R	Indep.	GH-1P	Ratio	GH-2PI	Ratio
0	7.72	8.786	1.138	8.755	1.110
1/4	9.772	10.305	1.054	10.199	1.044
1/3	10.456	10.811	1.032	10.740	1.027
1/2	11.823	11.823	1	11.823	1
2/3	13.191	12.835	0.975	12.906	0.978
3/4	13.875	13.342	0.964	13.448	0.969
1	15.926	14.860	0.937	15.072	0.946

Table 12. Reversionary annuity price for the young generation under independence and using best-fit 1P, 2P copulas.

R	Indep.	Spec.-1P	Ratio	GH-2PI	Ratio
0	16.421	17.056	1.039	17.137	1.044
1/4	19.271	19.589	1.016	19.580	1.019
1/3	20.221	20.433	1.010	20.394	1.012
1/2	22.121	22.121	1	22.121	1
2/3	24.021	23.810	0.991	23.650	0.990
3/4	24.971	24.654	0.987	24.464	0.986
1	27.822	27.187	0.977	26.907	0.974

Before commenting on dependence effects, notice that for each R and each model specification (1P, 2P), the annuity prices of the young generation are higher than those of the old generation. This is expected, because all survival probabilities are higher for younger insureds. Furthermore, in both tables and for each model specification (1P, 2P), each annuity has a value increasing in R , both under dependence and independency. This is also expected: a higher benefit for the bereaved life implies a higher actuarial value of the benefits to be paid.

Regarding dependence, the reader can notice the following.

1. For each R and each model specification (1P, 2P), the young generation shows ratios of cum-spouses' dependence to independence price that are closer to one than those of the old generation. This is a clear consequence of the decreasing τ from old generation to young generation: the milder spouses' dependence of the young generation generates prices that deviate less from the independence prices than the old generation prices.
2. In both tables and for each model specification (1P, 2P), the ratio cum-spouses' dependence/independence is decreasing when R increases. This can be explained, as well. Let us recall that for $R = 0$, we have the joint life annuity, and for $R = 1$, we have the last survivor policy. Then, R measures the weight given to the last-survivor part of the reversionary annuity, with respect to the joint-life part. When $R = 0$, positive spouses' dependence implies that the joint survival probability is higher than in the independence case, leading to a ratio greater than one. At the opposite, when $R = 1$, we have the last survivor, for which positive

spouses' dependence implies lower survivorship after the spouse's death, implying ratios lower than one. The values $0 < R < 1$ give all of the intermediate situations between these two extremes. In particular, for $R \in (0, 1/2)$, we still have ratios greater than one; for $R \in (1/2, 1)$, we have ratios lower than one. For $R = 1/2$, the ratio is exactly one: the annuity price is unaffected by the level of spouses' dependence. In fact, due to Equation (13), the joint survival probability does not enter the premium that reduces to:

$$\sum_{t=1}^{+\infty} v^t \left(\frac{{}_t p_x^m + {}_t p_y^f}{2} \right)$$

The weight given to the last survivor benefit is equal to that given to the joint life annuity, and the two opposite effects of the overestimation and underestimation of the premium perfectly offset each other.

3. The practical consequence of having ratios greater than one as long as $R < 1/2$ and ratios smaller than one when $R > 1/2$ is that insurance companies, by assuming independence when pricing the former, are under-pricing contracts, while they are over-pricing, or prudentially pricing, the latter. Consider the joint life case. Insurance companies that assume independence are not "on the safe side". The previous tables give a measure of the lack of safety so obtained. Consistently with Item 1 above, the lack of safety is greater for the older generation. Consider now the last survivor policy, for which insurance companies that assume independence are overpricing the contract. This can be interpreted as a prudential maneuver from the point of view of insurers, and the previous tables give a measure of the extent of prudence so obtained. Consistently with Item 1 above, prudence decreases when the younger generation is selected.
4. For the old generation, the impact on prices and on the ratio cum-spouses' dependence/independence is smaller for the 2P copulas than for the 1P copula; the opposite happens for the young generation. As a consequence, for the old generation, the width of the range of prices and ratios when R changes is smaller for the 2P copulas than for the 1P copula; the opposite happens for the young generation. The next item illustrates the mispricing implications of this asymmetry.
5. Misspecification of the copula produces opposite mispricing effects on the two generations. Indeed, given the assessed superiority of the 2P model with respect to the 1P one, annuity prices show that when the spouses' dependence is described with a 1P copula rather than with a 2P one, for the old generation, the insurer over-prices annuities with $R < 1/2$ and under-prices annuities with $R > 1/2$. Opposite results apply to the young generation: when the spouses' dependence is described with a 1P copula rather than with a 2P one, the insurer under-prices annuities with $R < 1/2$, and over-prices annuities with $R > 1/2$. The occurrence of opposite mispricing effects for the two generations could represent a potential for the insurer who wants to natural-hedge reversionary annuities written on one cohort with products on a different cohort.

6. Conclusions

This paper analyzes, first from a statistical, then from a pricing point of view, spouses' dependence between coupled lives of insureds. We model the marginal distributions of the two spouses with the doubly-stochastic setup and the dependence of the spouses' lifetimes with the copula approach. We develop the statistical analysis in two directions. We first study the evolution of dependence across generations. We find that on our data, spouses' dependence decreases when passing from older to younger generations. This decrease in spouses' dependence is due to the cohort and not to the age effect. We provide a methodology that, if sufficiently rich datasets are available, allows one to separate further age and cohort effects on the evolution of spouses'

dependence. Second, we consider not only a class of single-parameter Archimedean copulas, but also their two-parameter extensions, obtained by mixing with the independence copula. We find that the two-parameter copulas are significantly more suitable to describe spouses' dependence than single-parameter ones, especially if the extension is the linear-mixing with independence. In this way, our findings echo the results in [4], even though the datasets are not the same.

When we study the effect of spouses' dependence on pricing insurance products, we find that dependence matters in pricing annuities on two lives, including joint-life and last-survivor ones. Indeed, when assuming independence, the insurer under-/over-prices such annuities when the benefit payable to the bereaved life is lower/greater than half of the initial benefits payable while both spouses are alive. The misspecification of spouses' dependence affects in a different way each cohort. Indeed, when the insurer misspecifies the copula (taking one parameter rather than two parameters), the sign in the over- and under-estimation is reversed in the two generations. Since mispricing caused by inaccurate modeling of spouses' dependence is not uniform across cohorts, the longevity of couples can be hedged away using reinsurance and longevity derivatives on single generations, but also using natural hedging across generations. This is the agenda for future research.

An alternative approach to the study of couples' dependence could be the multiple state approach. We did not pursue it here because the benchmark literature is copula-based and due to the relative paucity of data, which would make multiple state modeling quite hard. However, we certainly consider it as an alternative worth investigation in the future.

Author Contributions: The three authors contributed in equal shares to the paper. Luciano and Vigna focused more on modelling and calibrating the marginal survival functions, Spreeuw focused more on fitting the several copula families.

Conflicts of Interest: The authors declare no conflict of interest.

References

1. International Monetary Fund (IMF). *Global Financial Stability Report*; World Economic and Financial Surveys. Available online: <http://www.imf.org/external/pubs/ft/gfsr/2012/01/> (accessed on 20 May 2016).
2. Tan, K.S.; Blake, D.; MacMinn, R. Longevity Risk and Capital Markets: The 2013-14 Update. *Insur. Math. Econ.* **2008**, *63*, 1–11.
3. Frees, E.W.; Carriere, J.F.; Valdez, E.A. Annuity valuation with dependent mortality. *J. Risk Insur.* **1996**, *63*, 229–261.
4. Carriere, J.F. Bivariate survival models for coupled lives. *Scand. Actuar. J.* **2000**, *1*, 17–31.
5. Denuit, M.; Dhaene, J.; Le Bailly de Tilleghem, C.; Teghem, S. Measuring the impact of dependence among insured lifelengths. *Belg. Actuar. Bull.* **2001**, *1*, 18–39.
6. Luciano, E.; Spreeuw, J.; Vigna, E. Modelling stochastic mortality for dependent lives. *Insur. Math. Econ.* **2008**, *43*, 234–244.
7. Shemyakin, A.; Youn, H. Copula models of joint last survivor analysis. *Appl. Stoch. Models Bus. Ind.* **2006**, *22*, 211–224.
8. Youn, H.; Shemyakin, A. Pricing Practices For Joint Last Survivor Insurance. *Actuar. Res. Clear. House* **2001**, *1*, 3.
9. Manzoli, L.; Villari, P.; Pirone, G.M.; Boccia, A. Marital status and mortality in the elderly: A systematic review and meta-analysis. *Soc. Sci. Med.* **2007**, *64*, 77–94.
10. Smith, K.R.; Zick, C.D. Risk of mortality following widowhood: Age and sex differences by mode of death. *Soc. Biol.* **1996**, *43*, 59–71.
11. Shor, E.; Roelfs, D.J.; Curreli, M.; Clemow, L.; Burg, M.M.; Schwartz, J.E. Widowhood and mortality: A meta-analysis and meta-regression. *Demography* **2012**, *49*, 575–606.
12. Biffis, E. Affine processes for dynamic mortality and actuarial valuations. *Insur. Math. Econ.* **2005**, *37*, 443–468.
13. Dahl, M. Stochastic mortality in life insurance: Market reserves and mortality-linked insurance contracts. *Insur. Math. Econ.* **2004**, *35*, 113–136.

14. Schrage, D. F. Affine stochastic mortality. *Insur. Math. Econ.* **2006**, *40*, 81–97.
15. Luciano, E.; Vigna, E. Non Mean Reverting Affine Processes for Stochastic Mortality, Carlo Alberto Notebook 30/2006. Available online: <http://papers.ssrn.com/sol3/papers.cfm?abstract-id=724706> (accessed on 20 May 2016).
16. Luciano, E.; Vigna, E. Mortality risk via affine stochastic intensities: Calibration and empirical relevance. *Belg. Actuar. Bull.* **2008**, *8*, 5–16.
17. Biagini, F.; Rheinländer, T.; Widenmann, J. Hedging mortality claims with longevity bonds. *ASTIN Bull.* **2013**, *43*, 123–157.
18. Spreeuw, J. Types of dependence and time-dependent association between two lifetimes in single parameter copula models. *Scand. Actuar. J.* **2006**, *5*, 286–309.
19. Khoudraji, A. Contributions à l'Étude Des Copules Et à La Modélisation Des Valeurs Extrêmes Bivariées. Ph.D. Thesis, Université Laval, Quebec, QC, Canada, 1995.
20. Nelsen, R.B. *An Introduction to Copulas*, 2nd ed.; Springer Series; Springer-Verlag: New York, NY, USA, 2006.
21. Yashin, A.I.; Iachine, I. How long can humans live? Lower bound for biological limit of human longevity calculated from Danish twin data using correlated frailty model. *Mech. Aging Dev.* **1995**, *80*, 147–169.
22. Joe, H. *Multivariate Models and Dependence Concepts*; Chapman & Hall CRC: Boca Raton, FL, USA, 1997.
23. Genest, C.; Ghoudi, K.; Rivest, L. Discussion on “Understanding relationships using copulas”, by Frez, E.W. and Valdez, E.A. *N. Am. Actuar. J.* **1998**, *2*, 143–149.
24. McNeil, A.; Frey, R.; Embrechts, P. *Quantitative Risk Management*; Princeton University Press: Princeton, NJ, USA, 2005.
25. Genest, C.; Ghoudi, K.; Rivest, L. A semiparametric estimation procedure of dependence parameters in multivariate families of distributions. *Biometrika* **1995**, *82*, 543–552.
26. Wang, W.; Wells, M.T. Model selection and semiparametric inference for bivariate failure-time data. *J. Am. Stat. Assoc.* **2000**, *95*, 62–72.
27. Cherubini, U.; Luciano, E.; Vecchiato, W. *Copula Methods for Finance*; John Wiley and Sons: Hoboken, NJ, USA, 2004.



© 2016 by the authors; licensee MDPI, Basel, Switzerland. This article is an open access article distributed under the terms and conditions of the Creative Commons Attribution (CC-BY) license (<http://creativecommons.org/licenses/by/4.0/>).