

Bock, Alona; Korn, Ralf

Article

Improving convergence of binomial schemes and the Edgeworth expansion

Risks

Provided in Cooperation with:

MDPI – Multidisciplinary Digital Publishing Institute, Basel

Suggested Citation: Bock, Alona; Korn, Ralf (2016) : Improving convergence of binomial schemes and the Edgeworth expansion, *Risks*, ISSN 2227-9091, MDPI, Basel, Vol. 4, Iss. 2, pp. 1-22,
<https://doi.org/10.3390/risks4020015>

This Version is available at:

<https://hdl.handle.net/10419/167885>

Standard-Nutzungsbedingungen:

Die Dokumente auf EconStor dürfen zu eigenen wissenschaftlichen Zwecken und zum Privatgebrauch gespeichert und kopiert werden.

Sie dürfen die Dokumente nicht für öffentliche oder kommerzielle Zwecke vervielfältigen, öffentlich ausstellen, öffentlich zugänglich machen, vertreiben oder anderweitig nutzen.

Sofern die Verfasser die Dokumente unter Open-Content-Lizenzen (insbesondere CC-Lizenzen) zur Verfügung gestellt haben sollten, gelten abweichend von diesen Nutzungsbedingungen die in der dort genannten Lizenz gewährten Nutzungsrechte.

Terms of use:

Documents in EconStor may be saved and copied for your personal and scholarly purposes.

You are not to copy documents for public or commercial purposes, to exhibit the documents publicly, to make them publicly available on the internet, or to distribute or otherwise use the documents in public.

If the documents have been made available under an Open Content Licence (especially Creative Commons Licences), you may exercise further usage rights as specified in the indicated licence.



<http://creativecommons.org/licenses/by/4.0/>

Article

Improving Convergence of Binomial Schemes and the Edgeworth Expansion

Alona Bock¹ and Ralf Korn^{1,2,*}

¹ Department of Mathematics, University of Kaiserslautern, 67663 Kaiserslautern, Germany; afutorna@gmail.com

² Financial Mathematics, Fraunhofer ITWM, Fraunhofer Platz 1, 67663 Kaiserslautern, Germany

* Correspondence: korn@mathematik.uni-kl.de; Tel.: +49-631-205-2747

Academic Editor: Alexander Szimayer

Received: 12 April 2016; Accepted: 13 May 2016; Published: 23 May 2016

Abstract: Binomial trees are very popular in both theory and applications of option pricing. As they often suffer from an irregular convergence behavior, improving this is an important task. We build upon a new version of the Edgeworth expansion for lattice models to construct new and quickly converging binomial schemes with a particular application to barrier options.

Keywords: binomial model; Black–Scholes model; option pricing; accelerated convergence; weak convergence

1. Introduction: Convergence of Binomial Trees

Since the appearance of the pioneering work by Cox *et al.* (see [1]) and by Rendleman and Bartter (see [2]), the use of binomial trees in option pricing has been very popular in both application and theory. Their main advantages are that they inherit the important theoretical concepts of completeness and risk-neutral pricing while keeping the technical framework on a very low level. In particular, they can be applied without the necessity to introduce stochastic calculus.

Further, approximating option prices in the Black–Scholes model (BS model) or more advanced models with the help of a sequence of suitable binomial trees is a popular numerical method when it comes to exotic options, in particular those with American or Bermudan features.

Convergence of such a sequence of approximations to the desired option price in the BS model is ensured by constructing the corresponding binomial trees in a way such that they satisfy the (approximate) moment matching conditions of Donsker’s theorem (see, e.g., [3,4]). However, conventional sequences of binomial trees (such as the Cox–Ross–Rubinstein tree (CRR tree) or the Rendleman–Bartter tree (RB tree)) show a quite erratic convergence behavior, which is typically not monotonic in the number of periods n (*i.e.*, the fineness of the trees) and is often referred to as the sawtooth effect.

This issue has been addressed by numerous authors, and different solutions have been offered (see, e.g., [5–8]). In order to better understand the source of the problem, as well as to be able to compare existing methods theoretically, one has to consider the asymptotics of the discrete models ([9,10]). Moreover, this information can then be used to construct advanced tree models with faster or smoother convergence (see [11–13]).

We will focus on the BS model in the one-dimensional setting. There, we offer a general method of constructing asymptotic expansions for lattices based on an appropriate Edgeworth expansion and discuss ways of further improving the convergence behavior for different types of options.

Edgeworth expansions have various applications in the literature, e.g., in statistics. In the context of binomial trees, the Edgeworth expansion has been applied, e.g., by Rubinstein (see [14]) to

construct risk-neutral approximations for various types of distributions, however, without providing the exact convergence behavior.

In this article, we propose a new approach to analyze the asymptotic behavior of binomial trees via the introduction of the Edgeworth expansion for lattice triangular schemes. This method provides a general framework for improving the convergence of binomial trees that is not restricted to risk-neutral transition probabilities and can be easily applied to multinomial and multidimensional trees. As an application we provide an asymptotic expansion for the performance of binomial trees for barrier options and construct an extended CRR tree with an improved convergence behavior.

2. Asymptotic Analysis of Binomial Trees: Distributional Fit

Consider the one-dimensional BS model in the risk-neutral setting given by:

$$dS(t) = S(t)(r dt + \sigma dW(t)), \quad S(0) = s_0 \quad (1)$$

where $W(t)$ is a Brownian motion under the risk-neutral measure Q . We then construct approximating binomial trees $\{S_k^{(n)}\}$, $k = 1, \dots, n$ via:

$$S_k^{(n)} = S_{k-1}^{(n)} e^{\alpha_n \Delta t + \sigma \sqrt{\Delta t} \zeta_k^{(n)}}, \quad S_0^{(n)} = s_0 \quad (2)$$

where $\{\alpha_n\}_n$ is a bounded sequence and for each $n \in \mathbb{N}$, $\zeta_k^{(n)}$, $k = 1, \dots, n$ are i.i.d random variables taking on values of one and -1 with probabilities p_n and $1 - p_n$, respectively.

The convergence behavior of the binomial trees above can be controlled with an appropriate selection of values α_n and p_n . However, in order to ensure weak convergence, the mean and variance of the one-period log returns of the discrete- and continuous-time models should match at least asymptotically (see, e.g., [15]). Therefore, α_n and p_n should satisfy:

$$\begin{aligned} \mu(n) &:= \alpha_n + \frac{1}{\sqrt{\Delta t}} \sigma E_n(\zeta_1^{(n)}) = r - \frac{1}{2} \sigma^2 + o(1) \\ \sigma^2(n) &:= \sigma^2 \text{Var}(\zeta_1^{(n)}) = \sigma^2 + o(1) \end{aligned} \quad (3)$$

Note first that a simple consequence of the requirement Equation (3) is:

$$p_n = \frac{1}{2} + O\left(\frac{1}{\sqrt{n}}\right), \quad n \rightarrow \infty \quad (4)$$

A natural aim is to optimize the choices for α_n and p_n for all types of options and, thus, construct a uniformly superior tree. Unfortunately, we will see later that the exact forms of the optimal α_n and p_n strongly depend on the type of option considered, although they are derived using the same idea.

We now consider the convergence behavior of $S^{(n)}$ to S in distribution and look at the discretization error:

$$P(S_n^{(n)} \leq x) - Q(S(T) \leq x) = P(S_n^{(n)} \leq x) - \Phi(d_2) \quad (5)$$

with $d_2 := d_2(x)$ given by:

$$d_2(x) := \frac{\ln\left(\frac{x}{s_0}\right) - \left(r - \frac{1}{2}\sigma^2\right)T}{\sigma\sqrt{T}} \quad (6)$$

The asymptotics for Equation (5) has already been provided in [9] and later in [11] based on an integral representation of binomial sums (see e.g. [16]). This approach was also used in [10] to obtain an asymptotic expansion for barrier options. Note, however, that this methodology has only been applied to one-dimensional binomial trees. In this section, we present an alternative approach that

makes use of an Edgeworth expansion for lattice triangular arrays. The advantage of this approach is that it can be easily generalized to both multinomial and multidimensional trees and can be extended to provide any required order of convergence (see, e.g., [17]).

Consider the discrete-time stock price at maturity:

$$S_n^{(n)} = s_0 e^{\alpha_n T + \sigma \sqrt{T} \frac{1}{\sqrt{n}} \sum_{k=1}^n \xi_k^{(n)}}$$

To be able to make use of the Edgeworth expansion for lattice triangular schemes as introduced in [17] and in particular Theorem A1 in Appendix A, we consider:

$$\eta_k^{(n)} = \frac{\xi_k^{(n)} + 1}{2}, \quad k = 1, \dots, n \tag{7}$$

Note that this yields:

$$\begin{aligned} P\left(S_n^{(n)} \leq x\right) &= P\left(\frac{1}{\sqrt{n}} \sum_{k=1}^n \left(\xi_k^{(n)} - E\xi_k^{(n)}\right) \leq \frac{\ln\left(\frac{x}{s_0}\right) - \mu(n)T}{\sigma\sqrt{T}}\right) \\ &= P\left(\frac{1}{\sqrt{n}} \sum_{k=1}^n \left(\eta_k^{(n)} - E\eta_k^{(n)}\right) \leq \frac{\ln\left(\frac{x}{s_0}\right) - \mu(n)T}{2\sigma\sqrt{T}}\right) \end{aligned}$$

Remark 1. The change of variables from $\xi_k^{(n)}$ to $\eta_k^{(n)}$ is necessary as the variables $\xi_k^{(n)}$ take values ± 1 ; therefore, their minimal lattice is $2\mathbb{Z}$. However, $\eta_k^{(n)}$ has a minimal lattice \mathbb{Z} and $P\left(\eta_k^{(n)} \in \mathbb{Z}\right) = 1$. Therefore, Theorem A1 can be applied to $\eta_k^{(n)}$, but not directly to $\xi_k^{(n)}$. This transformation is not the only possibility, the resulting expansion, however, will remain the same.

By Theorem A1, the following asymptotic expansion holds (see Appendix A for the definition of the cumulants and for the Lemmas used in the proof).

Corollary 1. Let $\mu_n = E\eta_1^{(n)}$, $\sigma_n^2 = \text{Var} \eta_1^{(n)}$ and $\kappa_{n,\nu}$ be the ν -th cumulant of $\eta_1^{(n)}$. The process $S^{(n)}$ defined in Equation (2) satisfies:

$$\begin{aligned} P\left(S_n^{(n)} \leq x\right) &= \Phi_{0,\sigma_n^2}(y_n) - \frac{1}{\sqrt{n}} \phi_{0,\sigma_n^2}(y_n) \left(S_1(a_n) + \frac{\kappa_{n,3}}{6\sigma_n^2} \left(\frac{y_n^2}{\sigma_n^2} - 1\right)\right) \\ &+ \frac{1}{n} \phi_{0,\sigma_n^2}(y_n) \frac{1}{\sigma_n} \left(-\frac{y_n}{\sigma_n} S_2(a_n) + \left(S_1(a_n) \frac{\kappa_{n,3}}{3!} + \frac{\kappa_{n,4}}{4!}\right) \frac{1}{\sigma_n^2} \left(\frac{3y_n}{\sigma_n} - \frac{y_n^3}{\sigma_n^3}\right)\right) \\ &- \frac{1}{n^{3/2}} \phi_{0,\sigma_n^2}(y_n) \frac{1}{\sigma_n^2} \left(S_3(a_n) \left(\frac{y_n^2}{\sigma_n^2} - 1\right) + \right. \\ &\left. + \left(S_2(a_n) \frac{\kappa_{n,3}}{3!} + S_1(a_n) \frac{\kappa_{n,4}}{4!}\right) \frac{1}{\sigma_n^2} \left(\frac{y_n^4}{\sigma_n^4} - \frac{6y_n^2}{\sigma_n^2} + 3\right)\right) + O\left(\frac{1}{n^2}\right) \end{aligned} \tag{8}$$

where for $\mu(n)$ defined as in Equation (3) and with $\{z\}$ denoting the fractional part of z :

$$y_n = \frac{\ln\left(\frac{x}{s_0}\right) - \mu(n)T}{2\sigma\sqrt{T}}, \quad a_n = n\mu_n + y_n\sqrt{n} \tag{9}$$

$$\begin{aligned} S_1(z) &= \{z\} - \frac{1}{2}, \quad S_2(z) = \frac{1}{2} \left(\{z\}^2 - \{z\} + \frac{1}{6}\right) \\ S_3(z) &= \frac{1}{6} \left(\{z\}^3 - \frac{3}{2}\{z\}^2 + \frac{1}{2}\{z\}\right) \end{aligned} \tag{10}$$

Proof. By relation Equation (4), the assumption Equation (A1) is satisfied for any s and starting from some $n \in \mathbb{N}$; Lemma A2 is applicable, so the uniform condition Equation (A2) also holds. Furthermore, by Lemma A1, in the one-dimensional case, we obtain:

$$\begin{aligned}
 P_1 \left(-\Phi_{0,\sigma_n^2, \kappa_{n,\nu}} \right) (y_n) &= -\frac{\kappa_{n,3}}{3!} D^3 \Phi_{0,\sigma_n^2} (y_n) = \frac{\kappa_{n,3}}{6\sigma_n^2} \left(1 - \frac{y_n^2}{\sigma_n^2} \right) \phi_{0,\sigma_n^2} (y_n) \\
 P_2 \left(-\Phi_{0,\sigma_n^2, \kappa_{n,\nu}} \right) (y_n) &= \frac{\kappa_{n,4}}{4!} D^4 \Phi_{0,\sigma_n^2} (y_n) + \frac{\kappa_{n,3}^2}{2!(3!)^2} D^6 \Phi_{0,\sigma_n^2} (y_n) \\
 &= \left(\frac{\kappa_{n,4}}{4! \sigma_n^3} \left(\frac{3y_n}{\sigma_n} - \frac{y_n^3}{\sigma_n^3} \right) - \frac{\kappa_{n,3}^2}{2!(3!)^2 \sigma_n^5} \left(\frac{y_n^5}{\sigma_n^5} - \frac{10y_n^3}{\sigma_n^3} + \frac{15y_n}{\sigma_n} \right) \right) \phi_{0,\sigma_n^2} (y_n) \\
 P_3 \left(-\Phi_{0,\sigma_n^2, \kappa_{n,\nu}} \right) (y_n) &= \\
 \frac{\kappa_{n,5}}{5!} D^5 \Phi_{0,\sigma_n^2} (y_n) + \frac{\kappa_{n,4} \kappa_{n,3}}{3!4!} D^7 \Phi_{0,\sigma_n^2} (y_n) + \frac{\kappa_{n,3}^3}{(3!)^4} D^9 \Phi_{0,\sigma_n^2} (y_n) &= O \left(\frac{1}{\sqrt{n}} \right)
 \end{aligned}$$

since, due to Equation (4), $\kappa_{n,3}, \kappa_{n,5} = O \left(\frac{1}{\sqrt{n}} \right)$, $n \rightarrow \infty$. Therefore, by applying Theorem A1 with $s = 5$, we get the statement of the corollary. \square

3. Improving the Convergence Behavior

We will now apply the Edgeworth expansion (Corollary 1) to improve the convergence pattern of one-dimensional binomial trees.

3.1. Existing Methods in the Literature

As mentioned in [9], the irregularities in the convergence behavior of tree methods can be explained by the periodic, n -dependent term $S_1(a_n)$ in Equation (8). Since $S_1(a_n) = \{a_n\} - \frac{1}{2}$ does not have a limit as n goes to infinity and oscillates between $-\frac{1}{2}$ and $\frac{1}{2}$, even large values of n do not guarantee accurate results. As a solution, various methods have been offered to improve convergence by controlling the S_1 function and with that the leading error term. However, basically, they pursue one of the following goals.

The first one (see, e.g., [8]) is to achieve smooth convergence behavior, so that extrapolation methods can be applied to increase the order of convergence. The second one (see, e.g., [11]) is to construct the tree such that the leading error term becomes zero, thus increasing the order of convergence directly. These methods concentrate only on the leading error term allowing one to increase the order of convergence up to $O \left(\frac{1}{n} \right)$. However, if we also incorporate the subsequent terms in expansion Equation (8), it is possible to further improve the convergence behavior. The optimal drift model (OD model) in [13,15] has an improved rate $O \left(\frac{1}{n^{3/2}} \right)$ for most parameter settings of interest (the order of convergence depends on solving quadratic equations).

3.2. The 3/2-Optimal Model

We now consider a general setting that includes both the RB and CRR tree and show how convergence can be improved in this wider class of models.

Note that the problem of optimizing the convergence of the CRR tree to a certain order has already been addressed by different authors. The aforementioned OD model of Korn and Müller in [13] allows one to improve convergence up to order $O \left(\frac{1}{n^{3/2}} \right)$, and the method introduced by Leduc in [18] for vanilla options can also be adjusted to further improve the distributional fit, as well. However, these approaches are restricted to risk-neutral probabilities and involve solving quadratic equations, which rules out certain model parameters. We now present a slightly different approach that involves only linear equations and is, therefore, applicable to any parameter setting.

Consider the following model given by:

$$S_k^{(n)} = S_{k-1}^{(n)} e^{\alpha_n \Delta t + \sigma \sqrt{\Delta t} \xi_k^{(n)}}, k = 1, \dots, n \tag{11}$$

$$\xi_k^{(n)} = \begin{cases} 1, & \text{with probability } p_n \\ -1, & \text{with probability } 1 - p_n \end{cases}$$

$$p_n = \frac{1}{2} + c_{1,n} \frac{1}{\sqrt{n}} + c_{2,n} \frac{1}{n} + c_{3,n} \frac{1}{\sqrt{n}^3} + c_{4,n} \frac{1}{n^2} + O\left(\frac{1}{n^{5/2}}\right) \tag{12}$$

$$\alpha_n = k_{0,n} + k_{1,n} \frac{1}{\sqrt{n}} + k_{2,n} \frac{1}{n} + k_{3,n} \frac{1}{\sqrt{n}^3} + O\left(\frac{1}{n^2}\right)$$

with bounded $c_{i,n}, k_{i,n}$ and:

$$k_{0,n} + \frac{2\sigma c_{1,n}}{\sqrt{T}} = r - \frac{1}{2}\sigma^2 \tag{13}$$

Proposition 1. *With an appropriate choice of parameters $c_{i,n}, i = 0, \dots, 4$ and $k_{j,n} j = 0, \dots, 3$, the binomial process $S^{(n)}$ in Equation (11) satisfies:*

$$P\left(S_n^{(n)} \leq x\right) = \Phi(d_2) + O\left(\frac{1}{n^2}\right)$$

The proof of the proposition and the possible choice of the parameters $c_{i,n}, i = 0, \dots, 4$ and $k_{j,n} j = 0, \dots, 3$ is provided in Appendix B.

Remark 2. *The name 3/2-optimal model refers to the optimized convergence up to and including order 3/2, in the sense that the corresponding coefficients are set to zero.*

Remark 3. *Other than Equation (13), there are no restrictions on $k_{0,n}$ and $c_{1,n}$. With $k_{0,n} = 0$, we are in the CRR case; for $c_{1,n} = 0$, we have the RB tree extension. Either way, the order of convergence is $O\left(\frac{1}{n^2}\right)$; however, $k_{0,n}$ influences the exact convergence pattern. The optimal choice of $k_{0,n}$ is still an open question.*

Remark 4. *In case risk-neutral probabilities are considered (see, e.g., [15,18]), the coefficients $c_{i,n}$ above are completely determined by the drift. We have proposed a different approach, where the coefficients of the probabilities are chosen instead of the drift. This way, we are able to avoid quadratic equations, and hence, we are able to increase the order of convergence for any parameter setting (see also [12] for an alternative approach).*

Remark 5. *Since all absolute moments of $\eta_k^{(n)}$ are bounded, we can apply Theorem A1 to retrieve subsequent terms in the asymptotic expansion Equation (8). We are then able to further increase the order of convergence, by adding more terms to the probability. With the approach described above, all equations will be linear, and unlike the method in [18], the previous coefficients will remain unaltered.*

CRR vs. RB

Consider the following log-log plots with the convergence behavior of the 3/2-optimal RB-based and CRR-based trees. By Proposition 1, we should see the slope of -2 in the graph. The convergence is not smooth, and the graph is not a straight line; however, the general trend is present.

Figure 1 suggests that the RB-based model gives a slightly better distributional fit. However, to compare the performance of the RB-based and the CRR-based variants for different choices of the coefficient $k_{0,n}$, we consider a whole set of approximation tasks. The performance will be measured in term of both the root mean squared (RMS) error and the root mean squared relative (RMSR) error.

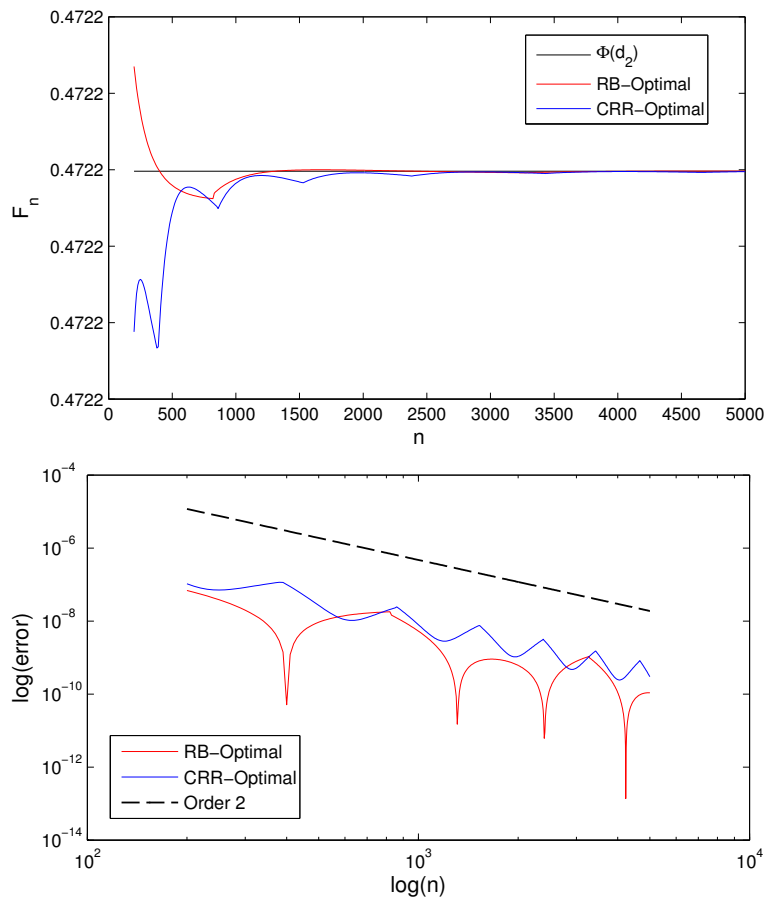


Figure 1. Distributional fit with $s_0 = 95, x = 100, r = 0.1, \sigma = 0.25, T = 1$.

First, we randomly generate a sample of m parameter vectors $\pi = (s_0, x, r, \sigma, T)$, following the procedure described in [19], but allowing a slightly wider range for the parameters.

- The initial asset price s_0 is fixed to 100,
- the value x is uniformly distributed between 50 and 150,
- the riskless interest rate r is uniformly distributed between zero and 0.2,
- the volatility σ is uniformly distributed between 0.1 and 0.8,
- the maturity T is chosen uniformly between zero and one years with probability 0.75 and between one and five years with probability 0.25.

Note that s_0 remains fixed, and we only vary x as we are only interested in the ratio $\frac{x}{s_0}$. Parameter vectors, for which $\Phi^\pi(d_2(x)) \leq 10^{-6}$, are excluded from the sample to ensure a reliable relative error estimate. For each $n \in \mathbb{N}$ and every parameter vector π , let $\varepsilon_{abs}^\pi(n)$ and $\varepsilon_{rel}^\pi(n)$ denote the absolute and relative error, respectively, *i.e.*,

$$\varepsilon_{abs}^\pi(n) = |F_n^\pi(x) - \Phi^\pi(d_2(x))|, \quad \varepsilon_{rel}^\pi(n) = \frac{\varepsilon_{abs}^\pi(n)}{\Phi^\pi(d_2(x))}$$

where F_n^π and Φ^π refer to the distribution functions of the discrete- and continuous-time models, corresponding to the parameters π . Then, we look at:

$$RMS(n) = \sqrt{\frac{1}{m} \sum_{i=1}^m (\varepsilon_{abs}^{\pi_i}(n))^2}, \quad RMSR(n) = \sqrt{\frac{1}{m} \sum_{i=1}^m (\varepsilon_{rel}^{\pi_i}(n))^2}$$

Due to Proposition 1, both errors are of order $O\left(\frac{1}{n^2}\right)$. Consider the following convergence behavior of the errors, taken over a sample of $m = 1000$ parameter vectors, 995 of which are included. For both errors, a maximum of $n = 1000$ time steps is considered.

Note that the absolute error has a very similar convergence pattern for both models (see Figure 2). However, Figure 3 suggests that the CRR-optimal tree delivers better results for the relative error.

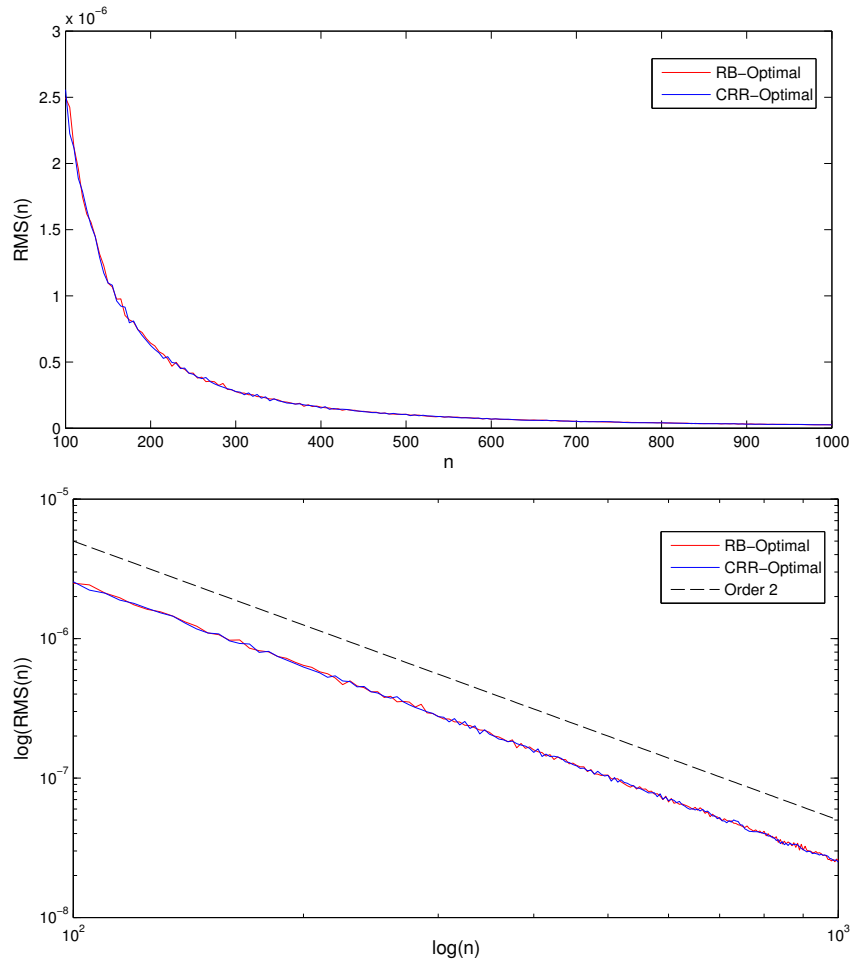


Figure 2. $RMS(n)$ and $\log(RMS(n))$ error.

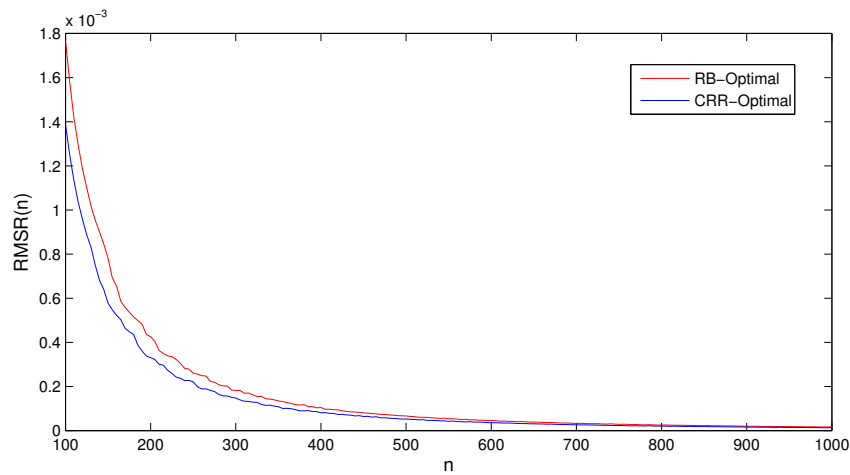


Figure 3. Cont.

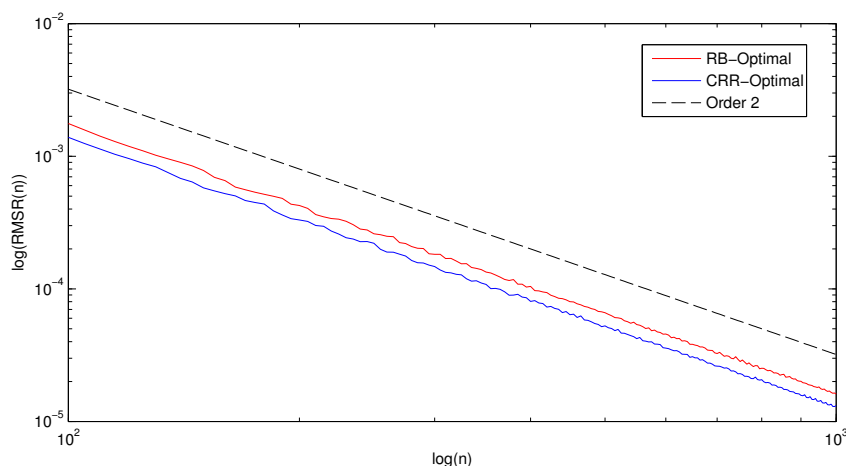


Figure 3. $RMSR(n)$ and $\log(RMSR(n))$ error.

4. Expansions for Barrier Option Prices

We now apply the above results to improve the convergence behavior for barrier options.

To examine the performance of our new approach, we will focus on the price of an up-and-in put option with payoff:

$$(K - S(T))^+ 1_{\{S(t) \geq B, \text{ for some } t \in [0, T]\}}$$

Prices of other barrier options can be obtained in a similar manner or using the in-out parities for single barrier options. We assume $s_0 < B$, as otherwise, the barrier option becomes a plain vanilla option. Let $K < B$; then, the price of an up-and-in put is given by (see, e.g., [20]):

$$V_p^{ui} = Ke^{-rT} \left(\frac{B}{s_0}\right)^\mu \Phi(d_3) - s_0 \left(\frac{B}{s_0}\right)^{\mu+2} \Phi(d_4)$$

where $\mu = \frac{2r}{\sigma^2} - 1$ and:

$$d_3 = \frac{\log\left(\frac{Ks_0}{B^2}\right) - \left(r - \frac{1}{2}\sigma^2\right)T}{\sigma\sqrt{T}}, \quad d_4 = d_3 - \sigma\sqrt{T}$$

Lattice methods for barrier options have a very irregular convergence behavior due to the position of the barrier. This phenomenon, as well as possible solutions have been studied by various authors; see, for example, [5,6,21], etc. A first order asymptotic expansion for binomial trees has been obtained in [22]. An expansion for barrier options with coefficients up to order $O\left(\frac{1}{n^{3/2}}\right)$ has already been provided in [10]. Here, we show how the Edgeworth expansion (Corollary 1) can be used to increase the order of convergence to $O\left(\frac{1}{n^{3/2}}\right)$.

4.1. Binomial Trees for Barrier Options

Consider the model:

$$S_k^{(n)} = S_{k-1}^{(n)} e^{\sigma\sqrt{\Delta t} \epsilon_k^{(n)}}, \quad k = 1 \dots, n \tag{14}$$

with the probability of an up-jump given by:

$$p_n = \frac{1}{2} + c_{1,n} \frac{1}{\sqrt{n}} + c_{2,n} \frac{1}{n} + c_{3,n} \frac{1}{\sqrt{n^3}} \tag{15}$$

where:

$$c_{1,n} = \frac{r - \frac{1}{2}\sigma^2}{2\sigma} \sqrt{T}$$

and $c_{2,n}, c_{3,n}$ are bounded. We set:

$$V_n^{ui} = E_n \left(e^{-rT} \left(K - S_n^{(n)} \right) 1_{\left\{ \max_{1 \leq k \leq n} S_k^{(n)} \geq B, S_n^{(n)} \leq K \right\}} \right)$$

Let:

$$a_n^K = \frac{\log\left(\frac{K}{s_0}\right)}{\sigma\sqrt{\Delta t}}, \quad a_n^B = \frac{\log\left(\frac{B}{s_0}\right)}{\sigma\sqrt{\Delta t}}, \quad l_n^B = \lceil a_n^B \rceil$$

Then, $\{-a_n^B\}$ is the overshoot of the barrier in the discrete model (Figure 4).

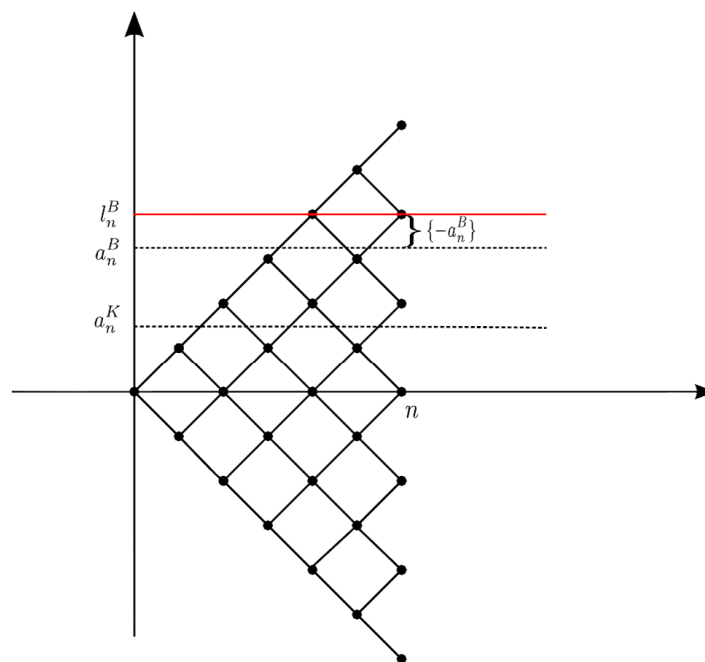


Figure 4. Dynamics of $\sum_{i=1}^n \zeta_i^{(n)}$.

Therefore, we get:

$$\begin{aligned} V_n^{ui} &= \sum_{x \leq a_n^K} E_n \left(e^{-rT} \left(K - s_0 e^{\sigma\sqrt{\Delta t} \sum_{i=1}^n \zeta_i^{(n)}} \right) 1_{\left\{ \max_{1 \leq k \leq n} \sum_{i=1}^k \zeta_i^{(n)} \geq a_n^B, \sum_{i=1}^n \zeta_i^{(n)} = x \right\}} \right) \\ &= e^{-rT} K \sum_{x \leq a_n^K} P \left(\max_{1 \leq k \leq n} \sum_{i=1}^k \zeta_i^{(n)} \geq l_n^B, \sum_{i=1}^n \zeta_i^{(n)} = x \right) \\ &\quad - s_0 \sum_{x \leq a_n^K} e^{-rT + \sigma\sqrt{\Delta t} \cdot x} P \left(\max_{1 \leq k \leq n} \sum_{i=1}^k \zeta_i^{(n)} \geq l_n^B, \sum_{i=1}^n \zeta_i^{(n)} = x \right) \end{aligned} \tag{16}$$

To calculate the probabilities in Equation (16), we need the following lemma that makes use of the reflection principle for a simple random walk. Its proof is similar to that of the continuous-time analogue and can be found in [17].

Lemma 1. Let $S_n := X_1 + \dots + X_n$, where X_i are i.i.d, $X_i = \pm 1$ with probabilities p and q . Then:

$$P\left(\max_{1 \leq k \leq n} S_k \geq b, S_n = x\right) = \begin{cases} \left(\frac{p}{q}\right)^b P(S_n = x - 2b), & \text{if } x < b \\ P(S_n = x), & \text{if } x \geq b \end{cases} \tag{17}$$

Substituting Lemma 1 into Equation (16), we get:

$$\begin{aligned} & e^{-rT} K \sum_{x \leq a_n^K} P\left(\max_{1 \leq k \leq n} \sum_{i=1}^k \zeta_i^{(n)} \geq l_n^B, \sum_{i=1}^n \zeta_i^{(n)} = x\right) \\ &= e^{-rT} K \left(\frac{p}{q}\right)^{l_n^B} \sum_{x \leq a_n^K} P\left(\sum_{i=1}^n \zeta_i^{(n)} = x - 2l_n^B\right) = e^{-rT} K \left(\frac{p}{q}\right)^{l_n^B} P\left(\sum_{i=1}^n \zeta_i^{(n)} \leq a_n^K - 2l_n^B\right) \end{aligned}$$

To get the dynamics of the second term in Equation (16), we need to perform a suitable change of measure. Let:

$$\lambda_{n,k} = e^{(-r)\Delta t + \sigma\sqrt{\Delta t}\zeta_k^{(n)}}, \quad k = 1, \dots, n$$

and:

$$M_n = E(\lambda_{n,1}) \tag{18}$$

We can now define new transition probabilities for $\zeta_k^{(n)}, k = 1, \dots, n$. Let the new probabilities of an up-jump \tilde{p}_n and a down-jump \tilde{q}_n be:

$$\tilde{p}_n = \frac{e^{(-r)\Delta t + \sigma\sqrt{\Delta t}p_n}}{M_n} \tag{19}$$

$$\tilde{q}_n = \frac{e^{(-r)\Delta t - \sigma\sqrt{\Delta t}(1-p_n)}}{M_n} \tag{20}$$

Note that \tilde{p}_n, \tilde{q}_n are well defined, starting from some $n \in \mathbb{N}$, and $\tilde{p}_n + \tilde{q}_n = 1$. The new probability measure \tilde{P}_n is now defined as:

$$\begin{aligned} \tilde{P}_n(\omega_1, \dots, \omega_n) &= \tilde{p}_n^{n_u(\omega_1, \dots, \omega_n)} \cdot \tilde{q}_n^{n_d(\omega_1, \dots, \omega_n)} \\ &= \left(\frac{e^{(-r)\Delta t + \sigma\sqrt{\Delta t}p_n}}{M_n}\right)^{n_u(\omega_1, \dots, \omega_n)} \left(\frac{e^{(-r)\Delta t - \sigma\sqrt{\Delta t}(1-p_n)}}{M_n}\right)^{n_d(\omega_1, \dots, \omega_n)} \\ &= \prod_{k=1}^n \frac{\lambda_{n,k}(\omega_k)}{M_n} P_n(\omega_1, \dots, \omega_n) \end{aligned} \tag{21}$$

where $\omega_k \in \{-1, 1\}, k = 1, \dots, n$ and $n_u(\omega_1, \dots, \omega_n)$ and $n_d(\omega_1, \dots, \omega_n)$ are the numbers of ones and -1 's in the sequence $(\omega_1, \dots, \omega_n)$. Therefore, the Radon–Nikodým derivative of \tilde{P}_n with respect to P_n is given by:

$$\Lambda_n = \prod_{k=1}^n \frac{\lambda_{n,k}}{M_n}$$

All conditions for a change of measure are now satisfied, and we arrive at:

$$\begin{aligned} & s_0 \sum_{x \leq a_n^K} e^{-rT + \sigma \sqrt{\Delta t} \cdot x} P \left(\max_{1 \leq k \leq n} \sum_{i=1}^k \xi_i^{(n)} \geq l_n^B, \sum_{i=1}^n \xi_i^{(n)} = x \right) \\ &= s_0 \left(\frac{p}{q} \right)^{l_n^B} \sum_{x \leq a_n^K} e^{-rT + \sigma \sqrt{\Delta t} \cdot x} P \left(\sum_{i=1}^n \xi_i^{(n)} = x - 2l_n^B \right) \\ &= s_0 \left(\frac{p}{q} \right)^{l_n^B} e^{2l_n^B \sigma \sqrt{\Delta t}} M_n^n \tilde{P} \left(\sum_{i=1}^n \xi_i^{(n)} \leq a_n^K - 2l_n^B \right) \end{aligned}$$

As a result, we obtain:

$$\begin{aligned} V_n^{ui} &= e^{-rT} K \left(\frac{p}{q} \right)^{l_n^B} P \left(\sum_{i=1}^n \xi_i^{(n)} \leq a_n^K - 2l_n^B \right) \\ &\quad - s_0 \left(\frac{p}{q} \right)^{l_n^B} e^{2l_n^B \sigma \sqrt{\Delta t}} M_n^n \tilde{P} \left(\sum_{i=1}^n \xi_i^{(n)} \leq a_n^K - 2l_n^B \right) \end{aligned} \tag{22}$$

Proposition 2. *With an appropriate choice of coefficients $c_{2,n}$ and $c_{3,n}$, the binomial model in Equation (14) satisfies:*

$$V_n^{ui} = V^{ui} + O \left(\frac{1}{\sqrt{n^3}} \right)$$

The proof of the proposition and the possible choice of the coefficients $c_{2,n}$ and $c_{3,n}$ are provided in Appendix C. We call the resulting modified binomial tree the *1-optimal tree*.

Remark 6. *Consider the leading error coefficient in Equation (C9). Note that $g_{1,n}, g_{2,n}$ are constant; therefore, the oscillatory convergence behavior is due to the overshoot of the barrier $\{-a_n^B\}$. The relative position of the strike with respect to the two neighboring nodes at maturity does not enter into the expression. The strike is only present starting from the $O\left(\frac{1}{n}\right)$ coefficient in the term $S_1(a_n)$ together with the barrier in quadratic form. Therefore, the position of the barrier will have a much stronger effect on the convergence pattern than the position of the strike (see also [10]).*

4.2. Numerical Results

We now consider the convergence pattern of a specific barrier option.

Remark 7. *Note that as in the CRR tree, we have $c_{2,n} = 0$; the leading error coefficient in Equation (C9) becomes $\{-a_n^B\} g_{2,n}$, where $0 < \{-a_n^B\} \leq 1$. Therefore, the binomial tree will either overestimate or underestimate the BS price for all n , depending on the sign of $g_{2,n}$, as can be seen in Figures 5 and 6.*

CRR vs. RB

For barrier options, we have a different behavior for the RB and the CRR trees. Expansions for the RB tree cannot be obtained with the method described above, since the reflection principle is directly applicable only to the CRR tree; however, numerical results show that the RB tree has a much smoother convergence compared to the CRR tree. This can be explained by the fact that, as the CRR tree is symmetric around zero in the log-scale, the overshoot of the barrier $\{-a_n^B\}$ is the same for each time step. Therefore, with an increase of n , a whole row of nodes becomes out-of-the-money. The RB tree, on the other hand, is tilted; therefore, this effect is not that pronounced.

See Figure 5 for the numerical illustration of this behaviour.

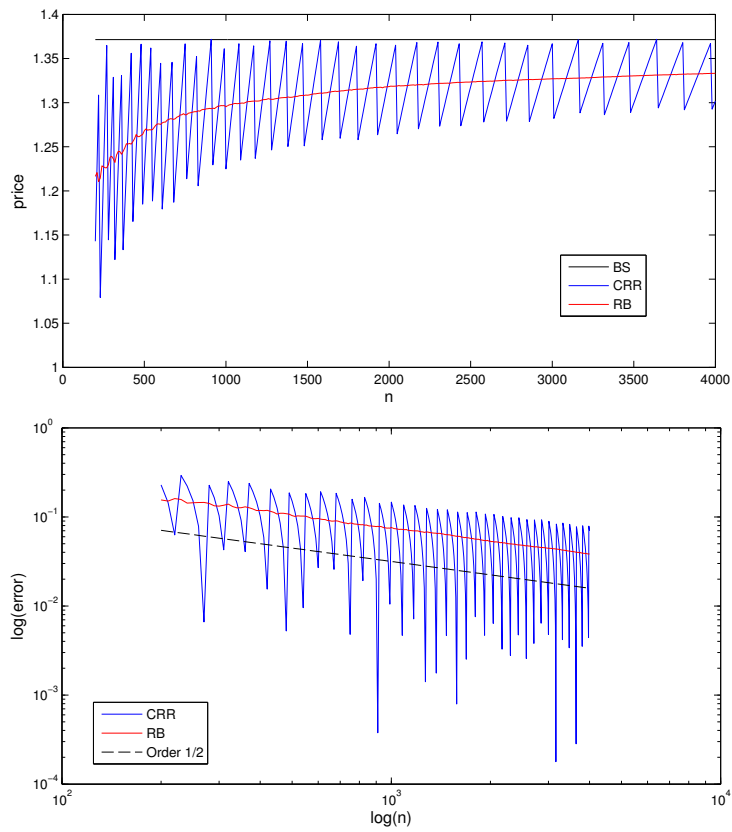


Figure 5. CRR vs. RB: up-and-in barrier put, $T = 1, r = 0.1, \sigma = 0.25, s_0 = 100, K = 110, B = 120$.

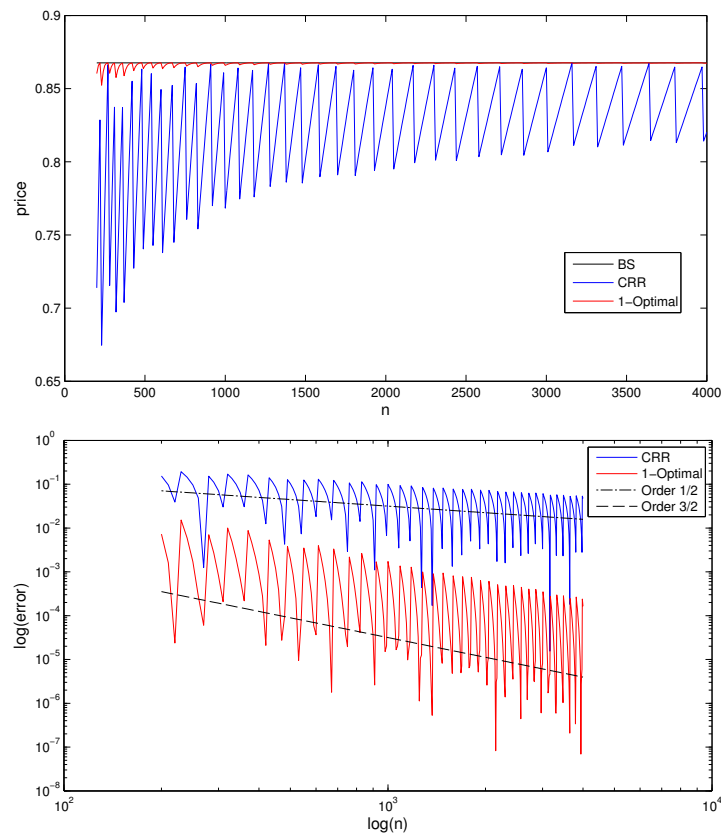


Figure 6. CRR vs. 1-opt.: Up-and-in barrier put, $T = 1, r = 0.1, \sigma = 0.25, s_0 = 100, K = 105, B = 120$.

Figure 6 illustrates the superior behaviour of the 1-optimal tree compared to the CRR-tree.

Due to the smooth convergence pattern, we can apply extrapolation to the RB tree to increase the order of convergence(see Figure 7).

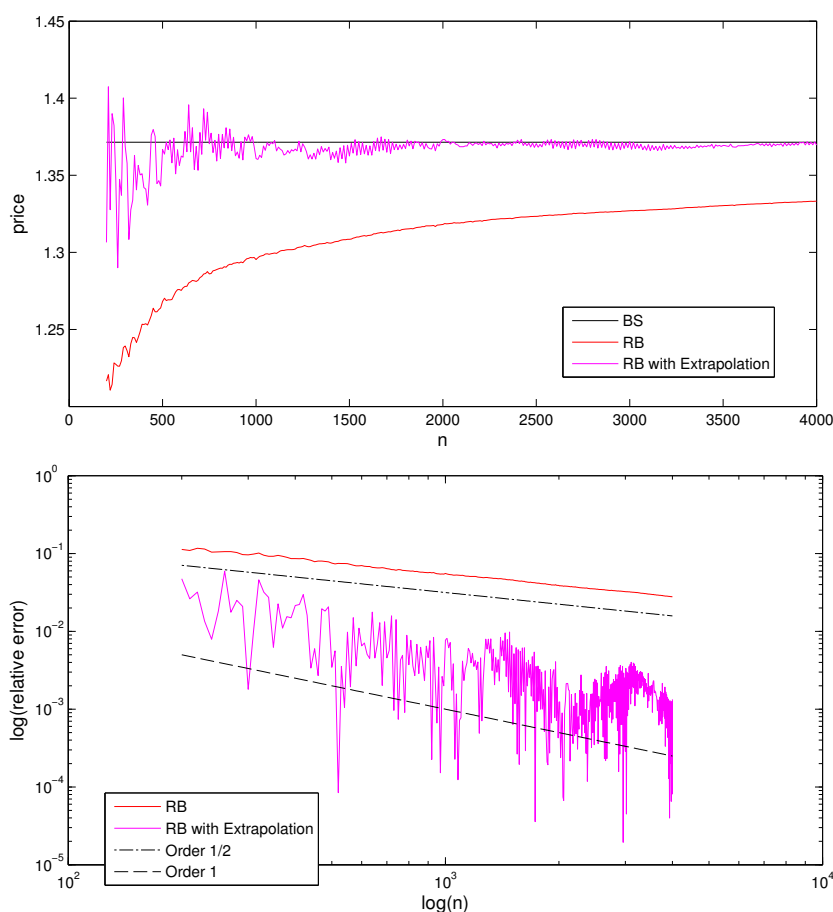


Figure 7. RB with extrapolation: up-and-in barrier put with $T = 1, r = 0.1, \sigma = 0.25, s_0 = 100, K = 110, B = 120$.

Although the RB tree with extrapolation outperforms the CRR tree, the 1-optimal tree outperforms the two others by far. This observation is summarized in Table 1 below.

Table 1. Convergence behaviour of CRR, RB with extrapolation and the 1-optimal tree.

| Parameters | n | CRR Tree | RB Extrapolation | 1-Optimal | BS Value |
|--------------------|------|-----------|------------------|-----------|-----------|
| $T = 1$ | 100 | 1.0370950 | 1.2728844 | 1.3071811 | 1.3714613 |
| $s_0 = 100$ | 200 | 1.1428755 | 1.3064705 | 1.3528020 | |
| $K = 110, B = 120$ | 500 | 1.2210427 | 1.3667218 | 1.3668495 | |
| $\sigma = 0.25$ | 1000 | 1.2248525 | 1.3608690 | 1.3671287 | |
| $r = 0.1$ | 2000 | 1.3285299 | 1.3731534 | 1.3713814 | |
| | 4000 | 1.3018025 | 1.3696310 | 1.3710375 | |

5. Conclusions

We have considered applications of the Edgeworth expansions to one-dimensional tree models in the Black–Scholes setting. We have seen how expansions can be obtained for barrier options and how these results can be used to improve convergence behavior. For applications to digital and European options, as well as multidimensional trees, see [17].

Once again, we consider the binomial method as a purely numerical approach and do not restrict ourselves to the equivalent martingale measure in the binomial setting. This gives us more freedom in the construction of the advanced trees, as it allows one to choose the probabilities, as well as the drift of the tree. Nevertheless, the expansions obtained in the proofs of the propositions above hold for a very general setting and can also be applied to trees under the risk-neutral measure.

Author Contributions: Both authors contributed to all aspects of this work.

Conflicts of Interest: The authors declare no conflict of interest.

Appendix A. The Edgeworth Expansion

We consider a triangular array of lattice random vectors $X_{n,1}, X_{n,2}, \dots, X_{n,n}$ defined on the probability spaces $(\Omega_n, \mathcal{F}_n, P_n)$, with common minimal lattice \mathbb{Z}^d s.t.:

$$E(X_{n,1}) = \mu_n, \quad Cov(X_{n,1}) = V_n, \quad P(X_{n,1} \in \mathbb{Z}^d) = 1 \quad \text{and} \quad (A1)$$

$$\rho_{n,s+1} = E \|X_{n,1} - \mu_n\|^{s+1} = O(1), \quad \text{for some integer } s \geq 2$$

where the sequence of positive-definite covariance matrices $\{V_n\}$ converges to a positive-definite limit matrix V .

For each $n \in \mathbb{N}$, let S_n be the normalized sum

$$S_n = \frac{X_{n,1} + \dots + X_{n,n} - n\mu_n}{\sqrt{n}}$$

Since $\rho_{n,s+1} < \infty$, starting from some $n \in \mathbb{N}$, then the cumulants of P_n , $\kappa_{n,\nu}$, of order ν , $|\nu| \leq s + 1$, exist and can be obtained from the Taylor expansion of the logarithm of the characteristic function ψ_{P_n} as:

$$i^{|\nu|} \kappa_{n,\nu} = (D^\nu \log \psi_{P_n})(0)$$

There exists a one-to-one correspondence between the cumulants and the moments of a distribution. In the theory of Fourier transforms, cumulants are the preferred choice due to their additivity. For a further discussion, please refer to [17,23].

A detailed description of Edgeworth expansions for various types of distributions, including lattice distributions, is provided in [23]. The following theorem is an extension for lattice triangular arrays, applicable to binomial trees with n-dependent transition probabilities.

Theorem A1. Let $E(C) = \{t \in \mathbb{R}^d : \|t\| \leq C\}$ and \mathcal{F}^* be a fundamental domain of $(\mathbb{Z}^d)^*$. Under condition Equation (A1), if for all constants $C > 0$, s.t. $\mathcal{F}^* \setminus E(C)$ is non-empty, the characteristic functions of $X_{n,1}$, $\psi_{X_{n,1}}$, satisfy the condition:

$$N_C := \sup \left\{ \left| \psi_{X_{n,1}}(t) \right| : t \in \mathcal{F}^* \setminus E(C), n \in \mathbb{N} \right\} < 1 \quad (A2)$$

then the distribution function of S_n satisfies:

$$\begin{aligned} \sup_{x \in \mathbb{R}^d} & \left| P(S_n \leq x) - \sum_{|\alpha| \leq s-2} n^{-|\alpha|/2} (-1)^{|\alpha|} S_\alpha(n\mu_n + \sqrt{n}x) (D^\alpha \Phi_{0,V_n})(x) \right. \\ & - n^{-1/2} \sum_{|\alpha| \leq s-3} n^{-|\alpha|/2} (-1)^{|\alpha|} S_\alpha(n\mu_n + \sqrt{n}x) (D^\alpha P_1(-\Phi_{0,V_n}, \{\kappa_{n,\nu}\}))(x) \\ & \left. - \dots - n^{-(s-2)/2} P_{s-2}(-\Phi_{0,V_n}, \{\kappa_{n,\nu}\}) \right| = O\left(n^{-(s-1)/2}\right) \end{aligned} \quad (A3)$$

where $P_j(-\Phi_{0,V_n}, \{\kappa_{n,\nu}\})$ is the finite signed measure on \mathbb{R}^d whose density is $P_j(-\phi_{0,V_n}, \{\kappa_{n,\nu}\})$ defined in Lemma A1 and $S_\alpha(x) = S_{\alpha_1}(x_1) \cdots S_{\alpha_k}(x_d)$, with the periodic functions S_j obtained from the Fourier series:

$$S_j(x) = \begin{cases} (-1)^{j/2-1} \sum_{n=1}^{\infty} \frac{2\cos(2n\pi x)}{(2n\pi)^j}, & j \text{ even}, j > 0 \\ (-1)^{(j-1)/2} \sum_{n=1}^{\infty} \frac{2\sin(2n\pi x)}{(2n\pi)^j}, & j \text{ odd} \end{cases}$$

for $x \in \mathbb{R} \setminus \mathbb{Z}$.

For details, please refer to [23,24]:

Lemma A1. $P_r(-\phi_{0,V}, \{\kappa_\nu\})$ is a polynomial multiple of $\phi_{0,V}$ and can be written as:

$$P_r(-\phi_{0,V}, \{\kappa_\nu\}) = \sum_{m=1}^r \frac{1}{m!} \sum_{j_1, \dots, j_m} \left(\sum_{v_1, \dots, v_m} \frac{\kappa_{v_1} \cdots \kappa_{v_m}}{v_1! \cdots v_m!} (-1)^{r+2m} D^{v_1 + \dots + v_m} \phi_{0,V} \right)$$

where \sum_{j_1, \dots, j_m} is the summation over all m -tuples of positive integers (j_1, \dots, j_m) satisfying $\sum_{i=1}^m j_i = r$ and \sum_{v_1, \dots, v_m} is the summation over all m -tuples of nonnegative integral vectors (v_1, \dots, v_m) s.t. $|v_i| = j_i + 2, i = 1, \dots, m$.

For details, see [23]. The following lemma gives a sufficient condition for Equation (A2), which holds for multidimensional and multinomial trees. Compare also [25].

Lemma A2. Let $\xi_{n,1}, \dots, \xi_{n,n} \in \mathbb{R}^d, n \in \mathbb{N}$ be a triangular array of lattice random vectors with a common minimal lattice L and support $S = \{x \in \mathbb{R}^d \mid p_{x,n} := P(\xi_{n,1} = x) > 0\}, |S| = m$. If for each $x \in S$, there exists a constant $K_x > 0$, such that:

$$p_{x,n} \geq K_x, \quad n \in \mathbb{N}$$

then for all constants $C > 0$, s.t. $\mathcal{F}^* \setminus E(C)$ is non-empty:

$$N_C := \sup \left\{ \left| \psi_{\xi_{n,1}}(t) \right| : t \in \mathcal{F}^* \setminus E(C), n \in \mathbb{N} \right\} < 1 \tag{A4}$$

Here, \mathcal{F}^* is the fundamental domain of L^* , and $E(C)$ is defined as in Theorem A1.

Proof. Since S has a finite number of elements, define $K := \min \{K_x, x \in S\}$. Then:

$$\begin{aligned} \psi_{\xi_{n,1}}(t) &= \sum_{x \in S} e^{i\langle t,x \rangle} p_{x,n} = \sum_{x \in S} e^{i\langle t,x \rangle} (p_{x,n} - K) + \sum_{x \in S} e^{i\langle t,x \rangle} K \\ &= \sum_{x \in S} e^{i\langle t,x \rangle} (p_{x,n} - K) + Km \sum_{x \in S} e^{i\langle t,x \rangle} \frac{1}{m} \end{aligned}$$

Set:

$$\psi(t) := \sum_{x \in S} e^{i\langle t,x \rangle} \frac{1}{m}$$

which is the characteristic function of an m -nomial random vector that has the same support S , but assigns an equal probability $\frac{1}{m}$ to each attainable value. Note that $\psi(t)$ is independent of n ,

and for any constant $C > 0$, $\delta(C) := |\psi(t)| < 1$, for $t \in \mathcal{F}^* \setminus E(C)$. Then, since $p_{x,n} \geq K_x \geq K$, for all $x \in S$,

$$\begin{aligned} \left| \psi_{\xi_{n,1}}(t) \right| &\leq \sum_{x \in S} (p_{x,n} - K) + Km |\psi(t)| \\ &= \sum_{x \in S} p_{x,n} + Km (\delta(C) - 1) = 1 - Km (1 - \delta(C)) := \varepsilon(C) \end{aligned}$$

Since $\delta(C) < 1$, we have $\left| \psi_{\xi_{n,1}}(t) \right| \leq \varepsilon(C) < 1$ for all $n \in \mathbb{N}$ and $t \in \mathcal{F}^* \setminus E(C)$. Therefore, we have shown Equation (A4). \square

Appendix B. Proof of Proposition 1

In order to get an expansion of all of the required terms in Corollary 1, we need to consider the asymptotics of the standard normal distribution and density functions. For a fixed $z \in \mathbb{R}$ and sequences ε_n :

$$\varepsilon_n = e_{1,n} \frac{1}{\sqrt{n}} + e_{2,n} \frac{1}{n} + e_{3,n} \frac{1}{n^{3/2}} + O\left(\frac{1}{n^2}\right)$$

with bounded $e_{i,n}$, by applying Taylor’s theorem, we get the following expansions up to order 3/2:

$$\begin{aligned} \Phi(z + \varepsilon_n) &= \Phi(z) + \frac{1}{\sqrt{n}} \phi(z) e_{1,n} + \frac{1}{n} \phi(z) \left(e_{2,n} - \frac{1}{2} z e_{1,n}^2 \right) \\ &\quad + \frac{1}{n^{3/2}} \phi(z) \left(e_{3,n} - z e_{1,n} e_{2,n} + \frac{1}{6} (z^2 - 1) e_{1,n}^3 \right) + O\left(\frac{1}{n^2}\right) \end{aligned} \tag{B1}$$

$$\begin{aligned} \phi(z + \varepsilon_n) &= \phi(z) - \frac{1}{\sqrt{n}} \phi(z) z e_{1,n} + \frac{1}{n} \phi(z) \left(-z e_{2,n} + \frac{1}{2} (z^2 - 1) e_{1,n}^2 \right) \\ &\quad + \frac{1}{n^{3/2}} \phi(z) \left(-z e_{3,n} + (z^2 - 1) e_{1,n} e_{2,n} + \frac{1}{6} (3z - z^3) e_{1,n}^3 \right) + O\left(\frac{1}{n^2}\right) \end{aligned} \tag{B2}$$

Proposition B1. We use the notation of Corollary 1. Given Equation (12), we get the following dynamics:

$$\mu(n) = r - \frac{1}{2} \sigma^2 + m_1 \frac{\sigma}{\sqrt{T}} \frac{1}{\sqrt{n}} + m_2 \frac{\sigma}{\sqrt{T}} \frac{1}{n} + m_3 \frac{\sigma}{\sqrt{T}} \frac{1}{\sqrt{n^3}} + O\left(\frac{1}{n^2}\right)$$

with:

$$m_i = \left(k_{i,n} + \frac{2\sigma c_{i+1,n}}{\sqrt{T}} \right) \frac{\sqrt{T}}{\sigma}, \quad i = 1, 2, 3 \tag{B3}$$

and:

$$\sigma_n^2 = p_n - (p_n)^2 = \frac{1}{4} - c_{1,n}^2 \frac{1}{n} - 2c_{1,n} c_{2,n} \frac{1}{\sqrt{n^3}} + O\left(\frac{1}{n^2}\right)$$

Therefore, by the binomial series theorem (Taylor series at zero for $(1 + x)^\alpha$, $\alpha \in \mathbb{R}$):

$$\frac{1}{2\sigma_n} = 1 + 2c_{1,n}^2 \frac{1}{n} + 4c_{1,n} c_{2,n} \frac{1}{\sqrt{n^3}} + O\left(\frac{1}{n^2}\right)$$

and as a result, for y_n as in Equation (9), we get:

$$\begin{aligned} \frac{y_n}{\sigma_n} &= d_2 - m_1 \frac{1}{\sqrt{n}} \\ &\quad + \left(2d_2 c_{1,n}^2 - m_2 \right) \frac{1}{n} + \left(4d_2 c_{1,n} c_{2,n} - m_3 - 2c_{1,n}^2 m_1 \right) \frac{1}{\sqrt{n^3}} + O\left(\frac{1}{n^2}\right) \end{aligned} \tag{B4}$$

Then, by Equations (B1) and (B2), we obtain:

$$\begin{aligned} \Phi_{0,\sigma_n^2}(y_n) &= \Phi(d_2) - \frac{1}{\sqrt{n}}\phi(d_2)m_1 + \frac{1}{n}\phi(d_2)\left(2d_2c_{1,n}^2 - m_2 - \frac{1}{2}d_2m_1^2\right) \\ &+ \frac{1}{\sqrt{n}^3}\phi(d_2)\left(4d_2c_{1,n}c_{2,n} - m_3 - d_2m_1m_2 + (d_2^2 - 1)m_1\left(2c_1^2 - \frac{1}{6}m_1^2\right)\right) + O\left(\frac{1}{n^2}\right) \\ \phi_{0,\sigma_n^2}(y_n) &= \phi(d_2) + \frac{1}{\sqrt{n}}\phi(d_2)d_2m_1 \\ &+ \frac{1}{n}\phi(d_2)\left(m_2d_2 - 2d_2^2c_{1,n}^2 + \frac{1}{2}(d_2^2 - 1)m_1^2\right) + O\left(\frac{1}{\sqrt{n}^3}\right) \end{aligned}$$

Let $\mu_{n,\nu}, \nu \in \mathbb{Z}$ denote the ν -th moment of $\eta_1^{(n)}$. Then, the cumulants can be represented in terms of moments (see, e.g., [17], Section 3.2) as:

$$\begin{aligned} \kappa_{n,3} &= \mu_{n,3} - 3\mu_{n,1}\mu_{n,2} + 2\mu_{n,1}^3 = -\frac{1}{2}c_{1,n}\frac{1}{\sqrt{n}} - \frac{1}{2}c_{2,n}\frac{1}{n} + O\left(\frac{1}{\sqrt{n}^3}\right) \\ \kappa_{n,4} &= \mu_{n,4} - 4\mu_{n,3}\mu_{n,1} - 3\mu_{n,2}^2 + 12\mu_{n,2}\mu_{n,1}^2 - 6\mu_{n,1}^4 = -\frac{1}{8} + O\left(\frac{1}{n}\right) \end{aligned}$$

Substituting the above expansions into Equation (8), we get:

$$\begin{aligned} P\left(S_n^{(n)} \leq x\right) &= \Phi(d_2) - \frac{1}{\sqrt{n}}\phi(d_2)f_1(\alpha_n, p_n) + \frac{1}{n}\phi(d_2)f_2(\alpha_n, p_n) \\ &+ \frac{1}{\sqrt{n}^3}\phi(d_2)f_3(\alpha_n, p_n) + O\left(\frac{1}{n^2}\right) \end{aligned} \tag{B5}$$

where:

$$\begin{aligned} f_1(\alpha_n, p_n) &:= m_1 + 2S_1(a_n) \\ f_2(\alpha_n, p_n) &:= -m_2 + 2d_2c_{1,n}^2 + \frac{2}{3}c_{1,n}(d_2^2 - 1) + \frac{d_2^3 - d_2}{12} - \frac{d_2}{2}(m_1 + 2S_1(a_n))^2 \\ f_3(\alpha_n, p_n) &:= -m_3 + 4d_2c_{1,n}c_{2,n} + \frac{2}{3}c_{2,n}(d_2^2 - 1) - 8S_3(a_n)(d_2^2 - 1) \\ &- \frac{1}{6}m_1\left(\left(d_2^2 - 1\right)m_1^2 + \left(d_2^2 - 1\right)m_1S_1(a_n) + 4S_2(a_n)\left(d_2^2 - 1\right)\right) \\ &- (m_1 + 2S_1(a_n))\left(2c_{1,n}^2(1 - d_2^2) + d_2m_2 + 2c_{1,n}d_2 - \frac{2}{3}c_{1,n}d_2^3\right) \\ &- \frac{1}{12}\left(d_2^4 - 6d_2^2 + 3\right) \end{aligned} \tag{B6}$$

The goal now is to choose the coefficients $c_{i,n}, k_{i,n}$, so that $f_i = 0, i = 1, 2, 3$. As there are more variables than equations, there are various ways of doing that. Set $k_{2,n} = k_{3,n} = 0$, and choose $c_{2,n}$ such that $f_1(\alpha_n, p_n) = 0$ is satisfied, i.e.,

$$\begin{aligned} 2S_1(a_n) + \left(k_{1,n} + \frac{2\sigma c_{2,n}}{\sqrt{T}}\right)\frac{\sqrt{T}}{\sigma} &= 0 \\ \Leftrightarrow \frac{\ln\left(\frac{x}{s_0}\right) - k_{0,n}T}{2\sigma\sqrt{\Delta t}} + \frac{n}{2} - \frac{1}{2} + c_{2,n} &= \left[\frac{\ln\left(\frac{x}{s_0}\right) - k_{0,n}T - k_{1,n}\frac{T}{\sqrt{n}}}{2\sigma\sqrt{\Delta t}} + \frac{n}{2}\right] \end{aligned}$$

The above equation is solved by:

$$c_{2,n} = \frac{1}{2} - \left\{ \frac{\ln\left(\frac{x}{s_0}\right) - k_{0,n}T}{2\sigma\sqrt{\Delta t}} + \frac{n}{2} \right\} \tag{B7}$$

and $k_{1,n}$ taking any of the following values:

$$-\frac{2\sigma c_{2,n}}{\sqrt{T}} - \frac{\sigma}{\sqrt{T}} < k_{1,n} \leq -\frac{2\sigma c_{2,n}}{\sqrt{T}} + \frac{\sigma}{\sqrt{T}} \tag{B8}$$

The other terms in Equation (B5) become:

$$\begin{aligned} f_2(\alpha_n, p_n) &= -2c_{3,n} + 2d_2c_{1,n}^2 + \frac{2}{3}c_{1,n}(d_2^2 - 1) + \frac{d_2^3 - d_2}{12} \\ f_3(\alpha_n, p_n) &= -2c_{4,n} + 4d_2c_{1,n}c_{2,n} + \frac{2}{3}c_{2,n}(d_2^2 - 1) \\ &\quad - 8S_3(a_n)(d_2^2 - 1) - \frac{1}{6}(d_2^2 - 1)(m_1^3 - m_1) \end{aligned}$$

where we have used $S_2(a_n) = \frac{1}{2}(S_1^2(a_n) - \frac{1}{12})$ (see Equation (10)). Therefore, if we set:

$$c_{3,n} = d_2c_{1,n}^2 + \frac{1}{3}c_{1,n}(d_2^2 - 1) + \frac{d_2^3 - d_2}{24} \tag{B9}$$

and:

$$\begin{aligned} c_{4,n} &= 2d_2c_{1,n}c_{2,n} + \frac{1}{3}c_{2,n}(d_2^2 - 1) - 4S_3(a_n)(d_2^2 - 1) \\ &\quad - \frac{1}{12}(d_2^2 - 1)(m_1^3 - m_1) \end{aligned} \tag{B10}$$

all chosen coefficients are bounded, f_2 and f_3 vanish and we get the statement of the proposition. \square

Remark B1. $k_{1,n}$ can be chosen freely, as long as Equation (B8) is satisfied. We will usually choose $k_{1,n} = -\frac{2\sigma c_{2,n}}{\sqrt{T}}$, since in this case, $m_1 = 0$, $S_3(a_n) = 0$, and therefore, the values assigned to $c_{3,n}$ and $c_{4,n}$ have a simpler form and require less computations.

Appendix C. Proof of Proposition 2

Proposition C1. Note:

$$P\left(\sum_{i=1}^n \xi_i^{(n)} \leq a_n^K - 2l_n^B\right) = P\left(\frac{1}{\sqrt{n}} \sum_{i=1}^n (\eta_i^{(n)} - \mu_n) \leq y_n\right)$$

where $\eta_i^{(n)}$ is defined as in Equation (7), $\mu_n = E_n(\eta_i^{(n)})$ and:

$$y_n = \frac{\log\left(\frac{Ks_0}{B^2}\right) - \mu(n)T}{2\sigma\sqrt{T}} - \frac{\{-a_n^B\}}{\sqrt{n}}$$

From Equation (15), we get:

$$\mu(n) = r - \frac{1}{2}\sigma^2 + \frac{2c_{2,n}\sigma}{\sqrt{T}} \frac{1}{\sqrt{n}} + \frac{2c_{3,n}\sigma}{\sqrt{T}} \frac{1}{n}$$

and following the proof of Proposition 1, we get:

$$\frac{y_n}{\sigma_n} = d_3 - \frac{2}{\sqrt{n}} \left(\{-a_n^B\} + c_{2,n} \right) + \frac{2}{n} \left(2d_3c_{1,n}^2 - 2c_{3,n} \right) + O\left(\frac{1}{\sqrt{n^3}}\right)$$

and:

$$\begin{aligned} P\left(\sum_{i=1}^n \xi_i^{(n)} \leq a_n^K - 2l_n^B\right) &= \Phi(d_3) - \frac{2}{\sqrt{n}}\phi(d_3) \left(\{-a_n^B\} + c_{2,n} + S_1(a_n) \right) \\ &+ \frac{2}{n}\phi(d_3) \left(-c_{3,n} + d_3c_{1,n}^2 + \frac{1}{3}c_{1,n}(d_3^2 - 1) + \frac{d_3^3 - d_3}{24} \right. \\ &\left. - d_3 \left(\{-a_n^B\} + c_{2,n} + S_1(a_n) \right)^2 \right) + O\left(\frac{1}{\sqrt{n^3}}\right) \end{aligned} \tag{C1}$$

where $a_n = \frac{\log\left(\frac{Ks_0}{B^2}\right)}{2\sigma\sqrt{\Delta t}} + \frac{n}{2} - \{-a_n^B\}$. Similarly, we deduce:

$$\tilde{\mu}(n) = r + \frac{1}{2}\sigma^2 + \frac{2\tilde{c}_{2,n}\sigma}{\sqrt{T}} \frac{1}{\sqrt{n}} + \frac{2\tilde{c}_{3,n}\sigma}{\sqrt{T}} \frac{1}{n}$$

and:

$$\begin{aligned} \tilde{P}\left(\sum_{i=1}^n \tilde{\xi}_i^{(n)} \leq a_n^K - 2l_n^B\right) &= \Phi(d_4) - \frac{2}{\sqrt{n}}\phi(d_4) \left(\{-a_n^B\} + c_{2,n} + S_1(a_n) \right) \\ &+ \frac{2}{n}\phi(d_4) \left(-\tilde{c}_{3,n} + d_4\tilde{c}_{1,n}^2 + \frac{1}{3}\tilde{c}_{1,n}(d_4^2 - 1) + \frac{d_4^3 - d_4}{24} \right. \\ &\left. - d_4 \left(\{-a_n^B\} + c_{2,n} + S_1(a_n) \right)^2 \right) + O\left(\frac{1}{\sqrt{n^3}}\right) \end{aligned} \tag{C2}$$

$$\begin{aligned} e^{2l_n^B\sigma\sqrt{\Delta t}} &= \left(\frac{B}{s_0}\right)^2 e^{2\{-a_n^B\}\sigma\sqrt{\Delta t}} \\ &= \left(\frac{B}{s_0}\right)^2 \left(1 + \frac{1}{\sqrt{n}}2\sigma\sqrt{T} \{-a_n^B\} + \frac{1}{n}2\sigma^2T \{-a_n^B\}^2 \right) + O\left(\frac{1}{\sqrt{n^3}}\right) \end{aligned} \tag{C3}$$

Further, a Taylor expansion yields:

$$\begin{aligned} \left(\frac{p}{q}\right)^{l_n^B} &= \left(\frac{B}{s_0}\right)^\mu \left(1 + \frac{4}{\sqrt{n}} \left(c_{1,n} \{-a_n^B\} + c_{2,n} \frac{\log\frac{B}{s_0}}{\sigma\sqrt{T}} \right) \right) \\ &+ \frac{4}{n} \left(c_{2,n} \{-a_n^B\} - \frac{\log\frac{B}{s_0}}{\sigma\sqrt{T}} \left(\frac{2}{3}c_{1,n}^3 - c_{3,n} \right) + 2 \left(c_{1,n} \{-a_n^B\} + c_{2,n} \frac{\log\frac{B}{s_0}}{\sigma\sqrt{T}} \right)^2 \right) \\ &+ O\left(\frac{1}{\sqrt{n^3}}\right) \end{aligned} \tag{C4}$$

M_n in Equation (18) satisfies:

$$\begin{aligned} M_n &= 1 + \frac{1}{\sqrt{n^3}}\sigma\sqrt{T}m_1 + \frac{1}{n^2} \left(\sigma\sqrt{T}m_2 - 2\sigma^2T \left(c_{1,n} + \frac{1}{6}\sigma\sqrt{T} \right)^2 - \frac{1}{36}\sigma^4T^2 \right) \\ &+ \frac{1}{\sqrt{n^5}} \left(\sigma\sqrt{T}m_3 - 4\sigma^2c_{1,n}c_{2,n}T - \frac{2}{3}c_{2,n}\sigma^3\sqrt{T^3} \right) + O\left(\frac{1}{n^3}\right) \end{aligned} \tag{C5}$$

with $m_i, i = 1, \dots, 3$ as in Equation (B3). To get the asymptotics of M_n^n , consider the binomial formula:

$$\begin{aligned} (1+x)^n &= \sum_k^n x^k \binom{n}{k} \\ &= 1 + nx + \frac{n(n-1)}{2}x^2 + \frac{n(n-1)(n-2)}{6}x^3 + \sum_{k=4}^n x^k \binom{n}{k} \end{aligned} \tag{C6}$$

If $x = O(n^{-\frac{3}{2}})$, then $\sum_{k=4}^n x^k \binom{n}{k} = O(\frac{1}{n^2})$. Indeed,

$$\begin{aligned} n^2 \cdot \sum_{k=4}^n (O(n^{-\frac{3}{2}}))^k \binom{n}{k} &= n^2 \cdot \sum_{k=0}^{n-4} (O(n^{-\frac{3}{2}}))^{k+4} \binom{n}{k+4} \\ &\leq n^2 \cdot \frac{n^4}{4!} (O(n^{-\frac{3}{2}}))^4 \sum_{k=0}^{n-4} (O(n^{-\frac{3}{2}}))^k \binom{n-4}{k} \\ &\leq C (1 + O(n^{-\frac{3}{2}}))^{n-4} \end{aligned}$$

The last expression is convergent and, therefore, bounded, and we have the necessary result. If we now substitute Equation (C5) into Equation (C6), we get:

$$M_n^n = 1 + a_{1,n} \frac{1}{\sqrt{n}} + a_{2,n} \frac{1}{n} + a_{3,n} \frac{1}{\sqrt{n^3}} + O\left(\frac{1}{n^2}\right) \tag{C7}$$

where:

$$\begin{aligned} a_{1,n} &= \sigma\sqrt{T}m_1 \\ a_{2,n} &= \sigma\sqrt{T}m_2 - 2\sigma^2T \left(c_{1,n} + \frac{1}{6}\sigma\sqrt{T}\right)^2 - \frac{1}{36}\sigma^4T^2 + \frac{1}{2}\sigma^2Tm_1^2 \\ a_{3,n} &= \sigma\sqrt{T}m_3 - 4\sigma^2c_{1,n}c_{2,n}T - \frac{2}{3}c_{2,n}\sigma^3\sqrt{T^3} \\ &\quad + \sigma\sqrt{T}m_1 \left(\sigma\sqrt{T}m_2 - 2\sigma^2T \left(c_{1,n} + \frac{1}{6}\sigma\sqrt{T}\right)^2 - \frac{1}{36}\sigma^4T^2\right) + \frac{1}{6}m_1^3\sigma^3\sqrt{T^3} \end{aligned} \tag{C8}$$

Substituting Equations (C1)–(C4) and (C7) into Equation (22) and using $s_0\phi(d_4) = Ke^{-rT}\phi(d_3)$, we get:

$$V_n^{ui} = V^{ui} - \frac{1}{\sqrt{n}} (c_{2,n}g_{1,n} + \{-a_n^B\}g_{2,n}) + \frac{1}{n} (g_{3,n} - c_{3,n}g_{1,n}) + O\left(\frac{1}{\sqrt{n^3}}\right) \tag{C9}$$

where:

$$\begin{aligned} g_{1,n} &= 2\sigma\sqrt{T}s_0 \left(\frac{B}{s_0}\right)^{\mu+2} \Phi(d_4) - 4V^{ui} \log\left(\frac{B}{s_0}\right) / (\sigma\sqrt{T}) \\ g_{2,n} &= 2\sigma\sqrt{T}s_0 \left(\frac{B}{s_0}\right)^{\mu+2} \Phi(d_4) - 4V^{ui}c_{1,n} \\ g_{3,n} &= \sigma\sqrt{T}s_0 \left(\frac{B}{s_0}\right)^{\mu+2} (\phi(d_4)h_{1,n} - \Phi(d_4)h_{2,n}) + 4V^{ui}h_{3,n} \end{aligned}$$

and:

$$\begin{aligned}
 h_{1,n} &= -2c_{1,n}^2 - c_{1,n} \left(\sigma\sqrt{T} + \frac{d_3 + d_4}{3} \right) - \frac{1}{8}\sigma^2 T + \frac{1}{4} - \frac{d_3^2}{8} + \frac{d_4^2}{24} - 2 \left(\{-a_n^B\} + c_{2,n} + S_1(a_n) \right)^2 \\
 &\quad + 4 \left(\{-a_n^B\} + c_{2,n} \right) \left(\{-a_n^B\} + c_{2,n} + S_1(a_n) \right) \\
 h_{2,n} &= 2\sigma\sqrt{T} \left(\{-a_n^B\} + c_{2,n} \right)^2 - 2\sigma\sqrt{T} \left(c_{1,n} + \frac{1}{6}\sigma\sqrt{T} \right)^2 - \frac{1}{36}\sigma^3\sqrt{T}^3 \\
 &\quad + 8 \left(\{-a_n^B\} + c_{2,n} \right) \left(c_{1,n} \{-a_n^B\} + c_{2,n} \frac{\log \frac{B}{s_0}}{\sigma\sqrt{T}} \right) \\
 h_{3,n} &= c_{2,n} \{-a_n^B\} - \frac{2 \log \left(\frac{B}{s_0} \right)}{3\sigma\sqrt{T}} c_{1,n}^3 + 2 \left(c_{1,n} \{-a_n^B\} + c_{2,n} \frac{\log \frac{B}{s_0}}{\sigma\sqrt{T}} \right)^2
 \end{aligned}$$

Therefore, if $g_{1,n} \neq 0$, then by setting:

$$c_{2,n} = -\frac{\{-a_n^B\} g_{2,n}}{g_{1,n}}, \quad c_{3,n} = \frac{g_{3,n}}{g_{1,n}}$$

we get the assertion of the proposition. \square

References

1. Cox, J.C.; Ross, S.A.; Rubinstein, M. Option Pricing: A Simplified Approach. *J. Financ. Econ.* **1979**, *7*, 229–263.
2. Rendleman, R.J.; Bartter, B.J. Two-State Option Pricing. *J. Financ.* **1979**, *34*, 1093–1110.
3. Billingsley, P. *Convergence of Probability Measures*; J. Wiley & Sons: New York, NY, USA, 1968.
4. Korn, R.; Korn, E. *Option Pricing and Portfolio Optimization*; AMS: Providence, RI, USA, 2001.
5. Boyle, P.P.; Lau, S.H. Bumping up against the Barrier with the Binomial Method. *J. Deriv.* **1994**, *1*, 6–14.
6. Ritchken, P. On pricing barrier options. *J. Deriv.* **1995**, *3*, 19–28.
7. Leisen, D.P.J.; Reimer, M. Binomial Models for Option Valuation—Examining and Improving Convergence. *Appl. Math. Financ.* **1996**, *3*, 319–346.
8. Tian, Y.S. A Flexible Binomial Option Pricing Model. *J. Future Mark.* **1999**, *19*, 817–843.
9. Diener, F.; Diener, M. Asymptotics of the price oscillations of the European call option in a tree model. *Math. Financ.* **2004**, *14*, 271–293.
10. Lin, J.; Palmer, K. Convergence of barrier option prices in the binomial model. *Math. Financ.* **2013**, *23*, 2318–2338.
11. Chang, L.-B.; Palmer, K. Smooth Convergence in the Binomial Model. *Financ. Stoch.* **2007**, *11*, 91–105.
12. Joshi, M. Achieving higher order convergence for the prices of European options in binomial trees. *Math. Financ.* **2010**, *20*, 89–103.
13. Korn, R.; Müller, S. The optimal-drift model: An accelerated binomial scheme. *Financ. Stoch.* **2013**, *17*, 135–160.
14. Rubinstein, M. Edgeworth binomial trees. *J. Deriv.* **1998**, *5*, 20–27.
15. Müller, S. The Binomial Approach to Option Valuation. Ph.D. Thesis, University of Kaiserslautern, Kaiserslautern, Germany, 2009.
16. Uspensky, J.V. *Introduction to Mathematical Probability*; McGraw-Hill: New York, NY, USA, 1937.
17. Bock, A. Edgeworth Expansions for Binomial Trees. Ph.D. Thesis, University of Kaiserslautern, Kaiserslautern, Germany, 2014.
18. Leduc, G. Arbitrarily Fast CRR Schemes; Working Paper. Available online: <https://mpira.uni-muenchen.de/42094/> (accessed on 21 October 2012).
19. Broadie, M.; Detemple, J. American option valuation: New bounds, approximations and a comparison for existing methods. *Rev. Financ. Stud.* **1996**, *9*, 1221–1250.
20. Haug, E.G. *The Complete Guide to Option Pricing Formulas*; McGraw-Hill: New York, NY, USA, 2006.

21. Derman, E.; Kani, I.; Ergener, D.; Bardhan, I. Enhanced numerical methods for options with barriers. *Financ. Anal. J.* **1995**, *51*, 8–17.
22. Gobet, E. *Analysis of the Zigzag Convergence for Barrier Options With Binomial Trees*; Working paper 536; Université Paris 6 et Paris7: Paris, France, 1999.
23. Bhattacharya, R.N.; Rao, R.R. *Normal Approximation and Asymptotic Expansions*; de Gruyter: Berlin, Germany; New York, NY, USA, 1976.
24. Bock, A. Edgeworth Expansions for lattice triangular arrays. In *Report in Wirtschaftsmathematik (WIMA Report)*; University of Kaiserslautern: Kaiserslautern, Germany, 2014; Volume 149.
25. Korchinsky, I.A.; Kulik, A.M. Local limit theorems for triangular array of random variables. *Theory Stoch. Process.* **2007**, *13*, 48–54.



© 2016 by the authors; licensee MDPI, Basel, Switzerland. This article is an open access article distributed under the terms and conditions of the Creative Commons Attribution (CC-BY) license (<http://creativecommons.org/licenses/by/4.0/>).