

Alm, Jonas; Lindskog, Filip

Article

Valuation of index-linked cash flows in a Heath-Jarrow-Morton framework

Risks

Provided in Cooperation with:

MDPI – Multidisciplinary Digital Publishing Institute, Basel

Suggested Citation: Alm, Jonas; Lindskog, Filip (2015) : Valuation of index-linked cash flows in a Heath-Jarrow-Morton framework, Risks, ISSN 2227-9091, MDPI, Basel, Vol. 3, Iss. 3, pp. 338-364, <https://doi.org/10.3390/risks3030338>

This Version is available at:

<https://hdl.handle.net/10419/167860>

Standard-Nutzungsbedingungen:

Die Dokumente auf EconStor dürfen zu eigenen wissenschaftlichen Zwecken und zum Privatgebrauch gespeichert und kopiert werden.

Sie dürfen die Dokumente nicht für öffentliche oder kommerzielle Zwecke vervielfältigen, öffentlich ausstellen, öffentlich zugänglich machen, vertreiben oder anderweitig nutzen.

Sofern die Verfasser die Dokumente unter Open-Content-Lizenzen (insbesondere CC-Lizenzen) zur Verfügung gestellt haben sollten, gelten abweichend von diesen Nutzungsbedingungen die in der dort genannten Lizenz gewährten Nutzungsrechte.

Terms of use:

Documents in EconStor may be saved and copied for your personal and scholarly purposes.

You are not to copy documents for public or commercial purposes, to exhibit the documents publicly, to make them publicly available on the internet, or to distribute or otherwise use the documents in public.

If the documents have been made available under an Open Content Licence (especially Creative Commons Licences), you may exercise further usage rights as specified in the indicated licence.



<http://creativecommons.org/licenses/by/4.0/>

Article

Valuation of Index-Linked Cash Flows in a Heath–Jarrow–Morton Framework

Jonas Alm ¹ and Filip Lindskog ^{2,*}

¹ Department of Mathematical Sciences, Chalmers University of Technology, Gothenburg 412 96, Sweden; E-Mail: jonas.c.alm@gmail.com

² Department of Mathematics, Stockholm University, Stockholm 106 91, Sweden

* Author to whom correspondence should be addressed; E-Mail: lindskog@math.su.se; Tel.: +46-8-164564.

Academic Editor: Montserrat Guillén

Received: 1 June 2015 / Accepted: 1 September 2015 / Published: 10 September 2015

Abstract: In this paper, we study the valuation of stochastic cash flows that exhibit dependence on interest rates. We focus on insurance liability cash flows linked to an index, such as a consumer price index or wage index, where changes in the index value can be partially understood in terms of changes in the term structure of interest rates. Insurance liability cash flows that are not explicitly linked to an index may still be valued in our framework by interpreting index returns as so-called claims inflation, *i.e.*, an increase in claims cost per sold insurance contract. We focus primarily on the case when a deep and liquid market for index-linked contracts is absent or when the market price data are unreliable. Firstly, we present an approach for assigning a monetary value to a stochastic cash flow that does not require full knowledge of the joint dynamics of the cash flow and the term structure of interest rates. Secondly, we investigate in detail model selection, estimation and validation in a Heath–Jarrow–Morton framework. Finally, we analyze the effects of model uncertainty on the valuation of the cash flows and how forecasts of cash flows and interest rates translate into model parameters and affect the valuation.

Keywords: state price deflators; insurance pricing; Heath–Jarrow–Morton

1. Introduction

In this paper, we study the valuation of index-linked cash flows under the assumption that index returns and the changes in nominal interest rates have significant dependence. The cash flows we consider are such that each payment is a product of two independent random variables: one is the index value, and the other may represent pure insurance risk or simply a constant. Typically, the index is a consumer price index or a wage index, but the index returns could also be interpreted as claims inflation, *i.e.*, an increase in claims cost per sold insurance contract. Given a deep and liquid market of bonds linked to the same index as the cash flow, the natural market-consistent value of the cash flow is a best estimate of the non-index factor times the market-implied price of an index-linked zero-coupon bond. Here, we focus mainly on market-consistent valuation of index-linked cash flows when market-implied prices of index zero-coupon bonds are absent or unreliable.

A traditional approach to valuation of insurance cash flows is to assign a value corresponding to the discounted expected cash flow, where the discount factors match a yield curve bootstrapped from, *e.g.*, current data on government bonds or interest rate swaps. However, if the cash flows depend on the development over time of an index that shows clear signs of dependence on changes in the yield curve, then the traditional valuation approach is inappropriate and possibly even a source of arbitrage opportunities. The importance of market-consistent valuation in life and pension insurance is well understood by insurance companies and regulators, and the theoretical foundation is well established and accessible in textbooks; see, *e.g.*, [1–3]. Moreover, the ideas of integrating traditional insurance valuation with financial no-arbitrage valuation can be found in the literature from the 1970s; see, *e.g.*, [4]. Many articles found in actuarial journals are based on the idea that it is possible to construct a portfolio of financial assets that replicates the unit in which a life insurance contract is expressed; see, *e.g.*, [5–7]. Valuation of unit-linked life insurance products with embedded options and guarantees is treated in, *e.g.*, [8,9], and participating policies are analyzed in, *e.g.*, [10–12]. Valuation frameworks for pension liabilities and long-term health insurance are developed in [13,14], respectively. Market-consistent valuation in non-life insurance is a rather new subject treated in, *e.g.*, [15,16].

The approach we promote for the valuation of index-linked cash flows requires accurate modeling of the dynamics of the yield curve of nominal interest rates. For this purpose, we choose a Heath–Jarrow–Morton (HJM) model in a discrete-time setting. HJM models, introduced in [17], are flexible enough to realistically model the evolution of the forward-rate curve over time and are more appealing than short-rate models, since they directly model the evolution of the entire forward-rate curve. Key features of simultaneous changes in forward rates are easily investigated using, *e.g.*, principal component analysis on historical yield-curve data. From a theoretical perspective, HJM models in continuous time are complicated models whose properties have posed challenges to probabilists. However, by now, they are among the standard interest-rate models (see, *e.g.*, [3,18]), and generalizations of the models that allow for non-Gaussian driving noise processes are well understood; see [19,20].

We apply the valuation principles in [3], in an HJM framework and based on historical yield-curve and index data, with the aim of setting up a credible valuation machinery for index-linked cash flows. The valuation formulas we derive allow us to understand how the volatility structure of the calibrated HJM model, the market-price-of-risk vector, the forecasts of trends in index values and interest rates

and the necessary modeling assumptions affect the value of an index-linked cash flow. The index we consider in the empirical analysis is the Swedish Consumer Price Index (CPI), to which, for example, illness and accident insurance contracts often are linked. Market prices of CPI-linked bonds offer possibilities to investigate how the market's anticipation of future price inflation can be understood in terms of our valuation machinery.

The suitable time grid (weekly, monthly or quarterly, say) for the HJM modeling of the dynamics of the yield curve might be finer than the time grid for the updates of index values. Even if frequently-updated index values are available, seasonal effects and problems with data quality might suggest that a coarser time grid for the index values is preferable. Moreover, many insurance liability cash flows depend on yearly updated values of a consumer price index, whereas historical data of yearly yield curve changes are not sufficient for efficiently parameterizing an HJM model. We investigate the effects of different time scales on the valuation of the index-linked cash flows.

In [21], a three-factor HJM model is used to model the joint dynamics of a U.S. consumer price index and the real and nominal U.S. Treasury yield curves, with the aim of pricing and hedging both inflation bonds and conventional nominal bonds. The basic idea is to exploit the analogy between nominal and real interest rates and a consumer price index, on the one hand, and two currencies and an exchange rate, on the other hand. The foreign-exchange analogy has appeared earlier also in [22]. The paper [21] discusses both model selection and validation issues and uses the model to price options written on the consumer price index. In [23], the question of how and under what conditions an inflation-index bond can be replicated by dynamically trading in nominal bonds is investigated.

Our main contributions in this paper can be summarized as follows. Firstly, we present an approach for transparently assigning a monetary value to a stochastic cash flow that does not require full knowledge of the joint dynamics of the cash flow and the term structure of interest rates. Secondly, we investigate in detail model selection, estimation and validation in a Heath–Jarrow–Morton framework. Finally, we analyze the effects of model uncertainty on the valuation of the cash flows and how forecasts of cash flows and interest rates translate into model parameters and affect the valuation.

The outline for the paper is as follows. In Section 2, we introduce principles for market-consistent valuation of cash flow that will form the basis for our valuation machinery and give a summary of the discrete-time HJM framework. Section 3 derives valuation formulas for index-linked cash flows taking the modeling at different time scales into account. The proofs containing rather lengthy computations are placed at the end of the paper in Appendix. Section 4 presents model selection and model validation issues, describes the data and presents the empirical findings and statistical analysis. Section 5 applies the valuation machinery and presents and interprets the numerical results. Finally, the discussion in Section 6 concludes the paper.

2. Preliminaries

We work in a discrete-time setting with time points $t = 0, 1, \dots, t_{\max}$, where $t = 0$ denotes the current time. We consider a filtered probability space $(\Omega, \mathcal{F}, \mathbb{P}, \mathbb{F})$, where $\mathbb{F} = (\mathcal{F}_t)_{t=0, \dots, t_{\max}}$ with \mathcal{F}_t denoting the information available at time t . The probability measure \mathbb{P} , called the real-world probability measure, is assumed to describe future observations of cash flows and price processes. Typically, it is

chosen so that relevant features of historical data are plausible for future values of cash flows and price processes. The expectation operator with respect to \mathbb{P} is denoted by \mathbb{E} . In expressions involving matrix multiplications, vectors are taken to be column vectors. We use the notation $\mathbf{a} \cdot \mathbf{b}$ for the scalar product $\mathbf{a}^T \mathbf{b}$ and $\|\cdot\|$ for the Euclidean norm.

We consider a given currency that applies to all price processes and cash flows. A cash flow here is a random vector $\mathbf{X} = (X_0, \dots, X_{t_{\max}})$, where X_t is the amount due at time t . The price at time t of the cash flow \mathbf{X} is denoted by $Q_t[\mathbf{X}]$.

For market-consistent valuation of insurance cash flows, a useful approach is presented in [3]. Here, we give a brief outline of the approach. We set up models and validation procedures in subsequent sections.

We assume that all cash flows $\mathbf{X} = (X_0, \dots, X_{t_{\max}})$ are \mathbb{F} -adapted with integrable components and write $\mathbf{X} \in L^1(\Omega, \mathcal{F}, \mathbb{P}, \mathbb{F})$. A state price deflator $\boldsymbol{\phi} = (\phi_0, \dots, \phi_{t_{\max}}) \in L^1(\Omega, \mathcal{F}, \mathbb{P}, \mathbb{F})$ is a strictly positive random vector with normalization $\phi_0 \equiv 1$. We interpret ϕ_t as a stochastic discount factor transporting cash amounts X_t at time t to values at time 0. The set of cash flows that can be valued relative a given state price deflator $\boldsymbol{\phi}$ is given by:

$$\mathcal{L}_\phi = \left\{ \mathbf{X} \in L^1(\Omega, \mathcal{F}, \mathbb{P}, \mathbb{F}) : \mathbb{E} \left[\sum_{s=0}^{t_{\max}} \phi_s |X_s| \middle| \mathcal{F}_0 \right] < \infty \right\}$$

and the price process $(Q_t[\mathbf{X}])_{t=0, \dots, t_{\max}}$ for a cash flow $\mathbf{X} \in \mathcal{L}_\phi$ is defined by:

$$Q_t[\mathbf{X}] := \frac{1}{\phi_t} \mathbb{E} \left[\sum_{s=0}^{t_{\max}} \phi_s X_s \middle| \mathcal{F}_t \right], \quad t = 0, \dots, t_{\max} \tag{1}$$

A price process $(Q_t[\mathbf{X}])_{t=0, \dots, t_{\max}}$ is called consistent with respect to a state price deflator $\boldsymbol{\phi}$ if the deflated price process $(\phi_t Q_t[\mathbf{X}])_{t=0, \dots, t_{\max}}$ is a (\mathbb{P}, \mathbb{F}) -martingale. Using the tower property of conditional expectation, we see that the definition in Equation (1) implies that deflated price processes are (\mathbb{P}, \mathbb{F}) -martingales,

$$\begin{aligned} \mathbb{E} [\phi_t Q_t[\mathbf{X}] | \mathcal{F}_{t-1}] &= \mathbb{E} \left[\mathbb{E} \left[\sum_{s=0}^{t_{\max}} \phi_s X_s \middle| \mathcal{F}_t \right] \middle| \mathcal{F}_{t-1} \right] = \mathbb{E} \left[\sum_{s=0}^{t_{\max}} \phi_s X_s \middle| \mathcal{F}_{t-1} \right] \\ &= \phi_{t-1} Q_{t-1}[\mathbf{X}] \end{aligned}$$

Let $P(t, u)$ denote the price at time t of a non-defaultable zero-coupon bond (ZCB) with maturity $u \geq t$. By convention, $P(u, u) = 1$. The one-period risk-free rollover r_t and the value of one unit of the corresponding bank account at time t are defined by $r_t := -\log P(t, t + 1)$ for $t \geq 0$, $B_t := B_{t-1} \exp \{r_{t-1}\}$ for $t \geq 1$, and $B_0 := 1$. From the definition Equation (1) and the fact that B_{t+1} is \mathcal{F}_t -measurable, it follows that the process $(\phi_t B_t)_{t=0, \dots, t_{\max}}$ is a strictly positive (\mathbb{P}, \mathbb{F}) -martingale with an expected value of one (Lemma 2.17 in [3]). Therefore, we may define the probability measure \mathbb{P}^* , equivalent to \mathbb{P} , by $\mathbb{P}^*(A) := \mathbb{E} [I_A \phi_{t_{\max}} B_{t_{\max}}]$ for any \mathcal{F}_t -measurable event A for $t \leq t_{\max}$. In particular, $\phi_t B_t$ is the Radon–Nikodym derivative for \mathbb{P}^* with respect to \mathbb{P} on \mathcal{F}_t . The probability measure \mathbb{P}^* , called the risk-neutral probability measure, is the equivalent martingale measure for the bank account numeraire (B_t) : $(B_t^{-1} Q_t[\mathbf{X}])$ is a $(\mathbb{P}^*, \mathbb{F})$ -martingale (Lemma 11.5 in [3]). We write \mathbb{E}^* for the expectation operator with respect to \mathbb{P}^* .

By a standard change of the numeraire argument (Lemma 11.4 in [3]),

$$\phi_t^{-1} \mathbb{E} [\phi_T X_T | \mathcal{F}_t] = B_t \mathbb{E}^* [B_T^{-1} X_T | \mathcal{F}_t] \quad \text{for } t \leq T$$

Therefore, using the linearity of conditional expectations, the price at time t of the cash flow $\mathbf{X}_{\geq t} := (0, \dots, 0, X_t, \dots, X_{t_{\max}})$ can be expressed as:

$$Q_t[\mathbf{X}_{\geq t}] = \frac{1}{\phi_t} \mathbb{E} \left[\sum_{s=t}^{t_{\max}} \phi_s X_s \middle| \mathcal{F}_t \right] = B_t \mathbb{E}^* \left[\sum_{s=t}^{t_{\max}} B_s^{-1} X_s \middle| \mathcal{F}_t \right]$$

i.e., the risk-neutral value at time t of the cash flow $\mathbf{X}_{\geq t}$. Unless we are considering a very simple cash flow, the joint distribution under \mathbb{P}^* of the r_s and X_u is hard to determine, and the effect on the valuation of dependencies between interest rates and cash flows is hard to assess. Therefore, although valuation using state price deflators is equivalent to risk-neutral valuation, the former is more natural for cash flows with distributions that cannot be easily assessed from market prices of financial contracts.

From a modeling perspective, we may first decide on a model for the (forward) interest-rate dynamics under \mathbb{P}^* , such that the model may, given a convenient change of measure from \mathbb{P}^* to \mathbb{P} , yield dynamics under \mathbb{P} that are in line with historical observations of interest rates. The measure transformation is typically determined by the market-price-of-risk function, which should be chosen so that the model parameters under \mathbb{P} can be estimated and the model validated on historical data. The interest-rate model under \mathbb{P}^* and the market-price-of-risk function determines the model for the state price deflators under \mathbb{P} , which can be extended into a joint model under \mathbb{P} of both cash flows and state price deflators. This approach to setting up the valuation framework and validating the models of historical data is presented below.

The Heath–Jarrow–Morton Framework

The forward rate at time t for maturity u is defined by:

$$F(t, u) := -\log P(t, u) + \log P(t, u - 1), \quad u > t$$

and the price of a ZCB can be expressed in terms of forward rates as:

$$P(t, u) = \exp \left\{ - \sum_{s=t+1}^u F(t, s) \right\}, \quad u > t$$

We assume an HJM framework with the forward rate dynamics:

$$F(t, u) = F(t - 1, u) + \alpha(t, u) + \sigma(t, u) \cdot \epsilon_t^*, \quad 0 < t < u \tag{2}$$

where the innovation vector ϵ_t^* is \mathcal{F}_t -measurable. The risk-neutral measure \mathbb{P}^* is chosen so that ϵ_t^* is independent of \mathcal{F}_{t-1} under \mathbb{P}^* . The consistency condition for an arbitrage-free pricing system is:

$$\mathbb{E}^* [B_t^{-1} P(t, u) | \mathcal{F}_{t-1}] = B_{t-1}^{-1} P(t - 1, u), \quad 0 < t < u$$

where B_t is the value of the bank account at time t . The consistency condition can be written (see ([3], pp. 98–99) for details):

$$h(t, u) = \sum_{s=t+1}^u \alpha(t, s), \quad 0 < t < u$$

where the function h is defined by:

$$h(t, u) := \log \mathbb{E}^* [e^{-v(t,u) \cdot \epsilon_t^*} | \mathcal{F}_{t-1}], \quad u > t \tag{3}$$

with $v(t, u) := \sum_{s=t+1}^u \sigma(t, s)$. If the expectation in Equation (3) is finite, we get $\alpha(t, u) = h(t, u) - h(t, u - 1)$ for $0 < t < u$, and $h(u - 1, u - 1) = 0$. We choose \mathbb{P}^* , so that the components of ϵ_t^* are independent standard normal random variables under \mathbb{P}^* . Then, $h(t, u) = \frac{1}{2} \|v(t, u)\|^2$ and:

$$\alpha(t, u) = \sigma(t, u) \cdot v(t, u) - \frac{1}{2} \|\sigma(t, u)\|^2 \tag{4}$$

Now, let $\epsilon_t = \epsilon_t^* + \lambda_t$, where λ_t is called the market price of risk at time t . We require that λ_t is \mathcal{F}_{t-1} -measurable. The forward rate dynamics can be expressed as:

$$F(t, u) = F(t - 1, u) + \mu(t, u) + \sigma(t, u) \cdot \epsilon_t, \quad 0 < t < u \tag{5}$$

where:

$$\mu(t, u) := \alpha(t, u) - \sigma(t, u) \cdot \lambda_t = \sigma(t, u) \cdot (v(t, u) - \lambda_t) - \frac{1}{2} \|\sigma(t, u)\|^2$$

The density process $(\phi_t B_t)_{t=0, \dots, t_{\max}}$ is chosen as:

$$\phi_t B_t := \exp \left\{ - \sum_{s=1}^t \left(\frac{1}{2} \|\lambda_s\|^2 - \lambda_s \cdot \epsilon_s \right) \right\}$$

Notice that, given sufficient integrability (Novikov’s condition), $(\phi_t B_t)_{t=0, \dots, t_{\max}}$ is a (\mathbb{P}, \mathbb{F}) -martingale and $(\phi_t^{-1} B_t^{-1})_{t=0, \dots, t_{\max}}$ is a $(\mathbb{P}^*, \mathbb{F})$ -martingale. This choice of density process implies that the ϵ_t are independent and standard normally-distributed under \mathbb{P} . Indeed, the fact that for an \mathcal{F}_{t+1} -measurable X it holds that:

$$\begin{aligned} \mathbb{E} [X | \mathcal{F}_t] &= \phi_t B_t \mathbb{E}^* [\phi_{t+1}^{-1} B_{t+1}^{-1} X | \mathcal{F}_t] \\ &= \mathbb{E}^* \left[\exp \left\{ -\frac{1}{2} \|\lambda_{t+1}\|^2 - \lambda_{t+1} \cdot \epsilon_{t+1}^* \right\} X \middle| \mathcal{F}_t \right] \end{aligned}$$

implies that:

$$\begin{aligned} &\mathbb{E} [\exp \{ \mathbf{u} \cdot \epsilon_{t+1} \} | \mathcal{F}_t] \\ &= \mathbb{E} [\exp \{ \mathbf{u} \cdot \lambda_{t+1} + \mathbf{u} \cdot \epsilon_{t+1}^* \} | \mathcal{F}_t] \\ &= \mathbb{E}^* \left[\exp \left\{ -\frac{1}{2} \|\lambda_{t+1}\|^2 - \lambda_{t+1} \cdot \epsilon_{t+1}^* + \mathbf{u} \cdot \lambda_{t+1} + \mathbf{u} \cdot \epsilon_{t+1}^* \right\} \middle| \mathcal{F}_t \right] \\ &= \exp \left\{ \mathbf{u} \cdot \lambda_{t+1} - \frac{1}{2} \|\lambda_{t+1}\|^2 \right\} \mathbb{E}^* [\exp \{ (\mathbf{u} - \lambda_{t+1}) \cdot \epsilon_{t+1}^* \} | \mathcal{F}_t] \\ &= \exp \left\{ \frac{\|\mathbf{u}\|^2}{2} \right\} \end{aligned}$$

which further implies that:

$$\begin{aligned}\mathbb{E}[\exp\{\mathbf{u}_1 \cdot \boldsymbol{\epsilon}_t\} \exp\{\mathbf{u}_2 \cdot \boldsymbol{\epsilon}_{t+1}\}] &= \mathbb{E}[\mathbb{E}[\exp\{\mathbf{u}_1 \cdot \boldsymbol{\epsilon}_t\} \exp\{\mathbf{u}_2 \cdot \boldsymbol{\epsilon}_{t+1}\} | \mathcal{F}_t]] \\ &= \mathbb{E}[\exp\{\mathbf{u}_1 \cdot \boldsymbol{\epsilon}_t\} \mathbb{E}[\exp\{\mathbf{u}_2 \cdot \boldsymbol{\epsilon}_{t+1}\} | \mathcal{F}_t]] \\ &= \exp\left\{\frac{\|\mathbf{u}_1\|^2}{2}\right\} \exp\left\{\frac{\|\mathbf{u}_2\|^2}{2}\right\}\end{aligned}$$

We observe that the moment generating function of the random vector $(\boldsymbol{\epsilon}_t, \boldsymbol{\epsilon}_{t+1})$ of length $2d$ is the moment generating function of the $2d$ -dimensional standard normal distribution. The claim follows.

3. Valuation of an Index-Linked Cash Flow

We consider the valuation of a cash flow formed by two independent components: a pure insurance risk component and an index component. More specifically, we consider the value of the cash flow $Y_{kT}I_{kT}$ at time kT , where Y_{kT} and I_{kT} are \mathcal{F}_{kT} -measurable and independent under \mathbb{P} . The meaning of k and T will be made clear below. According to Equation (1), the value today of the cash flow $\mathbf{X} = (0, \dots, 0, Y_{kT}I_{kT}, 0, \dots, 0)$ is $Q_0[\mathbf{X}] = \mathbb{E}[\phi_{kT}Y_{kT}I_{kT}] = \mathbb{E}[Y_{kT}]Q_0[\mathbf{I}]$, where $\mathbf{I} = (0, \dots, 0, I_{kT}, 0, \dots, 0)$. If I_{kT} denotes the value at time kT of an inflation index and if there is a deep and liquid market of (coupon-bearing) inflation-linked bonds, then the market prices determine the market price $Q_0[\mathbf{I}] = I_0P_r(0, kT)$ of the cash flow \mathbf{I} , which is the cash flow of a real zero-coupon bond maturing at time kT .

We focus on the case when index values and nominal interest rates are dependent and when $Q_0[\mathbf{I}]$ is not trivially determined by the market prices of index-linked bonds. In this case, modeling of the joint dynamics of the index and nominal interest rates is required. Whereas data are available that enable the selection of a plausible model for the dynamics of interest rates, the index value data may be limited in size and quality. Therefore, we want a transparent approach to cash-flow valuation where the value $Q_0[\mathbf{I}] = \mathbb{E}[\phi_{kT}I_{kT}]$ factors into a product, where one factor is the expected value of the part of the index value that cannot be explained by interest rates, and the other factor, completely specifying a generally accepted HJM forward-rate model, is the monetary value of the part of the index value that is explained by the interest rates. We want the first factor to allow for subjective input, such as an assumption of a particular long-term trend in the index value. Subjective views may be attractive for stress testing, or internal valuation purposes, or imposed exogenously by a supervisory authority.

For the discrete-time forward-rate dynamics, the time unit is commonly chosen large enough to avoid unnecessary noisy forward rate data, but small enough for the model to capture relevant time series features. However, for valuation purposes, it may be of interest to consider the forward-rate dynamics on a coarser time grid, e.g., with yearly observations instead of quarterly observations. Let $k \geq 1$ be an integer and consider a new time unit corresponding to k original time units. We use the superscript k to denote that time is measured in units of k original time units. Let q_t^k be the log return of some index between time kt and time $k(t+1)$: $I_{k(t+1)} = I_{kt} \exp\{q_t^k\}$. Without loss of generality, we set $I_0 = 1$. If the original time unit is a fraction of a year, then the series $\{q_t^k\}$ may not be available or can be hard to model accurately due to seasonal effects and, in the case of a price index, so-called price stickiness; prices are not rapidly updated as costs and demands change in the economy. Therefore, it may be more attractive to consider changes in the index over longer time periods (one year, say).

Given the independence between the pure insurance risk variable Y_{kT} and I_{kT} , $Q_0[\mathbf{X}] = \mathbb{E}[Y_{kT}] \mathbb{E}[I_{kT} \phi_{kT}] = \mathbb{E}[Y_{kT}] Q_0[\mathbf{I}]$. Hence, if we determine a random variable Z , such that $\log I_{kT} - Z$ and $Z + \log \phi_{kT}$ are independent, then $Q_0[\mathbf{I}] = \mathbb{E}[I_{kT} \exp\{-Z\}] \mathbb{E}[\exp\{Z\} \phi_{kT}]$, where:

$$\mathbb{E}[I_{kT} \exp\{-Z\}] = \mathbb{E}\left[\exp\left\{\sum_{t=1}^T q_{t-1}^k - Z\right\}\right] \tag{6}$$

$$\mathbb{E}[\exp\{Z\} \phi_{kT}] = \mathbb{E}^*\left[\exp\left\{Z - \sum_{t=1}^{kT} r_{t-1}\right\}\right] \tag{7}$$

Notice that the market price of risk does not affect the value $Q_0[\mathbf{I}]$. In order for this approach to computing $Q_0[\mathbf{I}]$ to have practical utility, we want Z to be an affine function of forward rates $F(t, u)$ for $t \leq kT$, so that Equation (7) is easily computed using the HJM dynamics under \mathbb{P}^* . Moreover, we want Z to be a rather simple expression in terms of some forward rates, so that the distribution of $\sum_{t=1}^T q_{t-1}^k - Z$ is easily assessed from historical data or economic arguments. If the market price of risk is an affine function of forward rates and if the q_{t-1}^k and the ϵ_s are jointly normally-distributed, then the independence of $\log I_{kT} - Z$ and $Z + \log \phi_{kT}$ is equivalent to $\text{Cor}[\log I_{kT} - Z, Z + \log \phi_{kT}] = 0$, which is more easily testable. Notice that Z could be taken as the orthogonal projection of $\log I_{kT}$ onto the linear space spanned by $\epsilon_1, \dots, \epsilon_{kT}$. However, the restriction of Z to an affine function of forward rates appears more useful.

Based on empirical investigations presented in Section 4, in the case when the index is chosen as a consumer price index, here, we choose Z so that the right-hand side of Equation (6) is expressed as:

$$\mathbb{E}\left[\exp\left\{\sum_{t=1}^T d_t^k\right\}\right], \quad d_t^k := q_{t-1}^k - r_t^k$$

Recall that q_{t-1}^k is the index log return from time $k(t - 1)$ to time kt and that r_t^k is the continuously-compounded spot rate at time kt of a ZCB maturing at time $k(t + 1)$. Both q_{t-1}^k and r_t^k are observable at time kt .

The traditional value at time 0 assigned to an insurance cash flow X_{kT} at time kT is $P(0, kT)\mathbb{E}[X_{kT}] = \mathbb{E}[\phi_{kT}] \mathbb{E}[X_{kT}]$, *i.e.*, the discounted best estimate. In Proposition 1 below, we compute the market-consistent value $Q_0[\mathbf{X}]$ and compare it to the traditional value of the cash flow. The proof of the proposition is found in Appendix.

Proposition 1. *Suppose that:*

$$Y_{kT}, \quad \exp\left\{\sum_{t=1}^T d_t^k\right\}, \quad \exp\left\{\sum_{t=1}^T r_t^k - \sum_{t=1}^{kT} \left(r_{t-1} + \frac{1}{2} \|\lambda_t\|^2 - \lambda_t \cdot \epsilon_t\right)\right\} \tag{8}$$

are uncorrelated under \mathbb{P} . Then:

$$Q_0[\mathbf{X}] = \mathbb{E}[Y_{kT}] \mathbb{E}\left[\exp\left\{\sum_{t=1}^T d_t^k\right\}\right] A(k, T)$$

If, further, the market price of risk λ is a constant vector, then:

$$P(0, kT)\mathbb{E}[X_{kT}] = \mathbb{E}[Y_{kT}] \mathbb{E}\left[\exp\left\{\sum_{t=1}^T d_t^k\right\}\right] B(k, T, \lambda)$$

so that:

$$\frac{Q_0[\mathbf{X}]}{P(0, kT)\mathbb{E}[X_{kT}]} = \frac{A(k, T)}{B(k, T, \boldsymbol{\lambda})}$$

The quantities $A(k, T)$ and $B(k, T, \boldsymbol{\lambda})$ are given by:

$$A(1, T) = \exp \left\{ F(0, T + 1) - F(0, 1) + \sum_{t=1}^T \boldsymbol{\sigma}(t, T + 1) \cdot \mathbf{v}(t, T + 1) \right\}$$

and, for $k \geq 2$,

$$\begin{aligned} A(k, T) = & \exp \left\{ \sum_{t=kT+1}^{k(T+1)} F(0, t) - \sum_{t=1}^k F(0, t) \right\} \\ & \times \exp \left\{ \sum_{s=1}^{k-1} \left(\sum_{t=kT+1}^{k(T+1)} - \sum_{t=s+1}^k \right) \left[\boldsymbol{\sigma}(s, t) \cdot \mathbf{v}(s, t) - \frac{1}{2} \|\boldsymbol{\sigma}(s, t)\|^2 \right] \right\} \\ & \times \exp \left\{ \sum_{u=1}^T \sum_{t=kT+1}^{k(T+1)} \left[\boldsymbol{\sigma}(ku, t) \cdot \mathbf{v}(ku, t) - \frac{1}{2} \|\boldsymbol{\sigma}(ku, t)\|^2 \right] \right\} \\ & \times \exp \left\{ \sum_{u=1}^{T-1} \sum_{s=ku+1}^{k(u+1)-1} \left(\sum_{t=kT+1}^{k(T+1)} - \sum_{t=s+1}^{k(u+1)} \right) \left[\boldsymbol{\sigma}(s, t) \cdot \mathbf{v}(s, t) - \frac{1}{2} \|\boldsymbol{\sigma}(s, t)\|^2 \right] \right\} \\ & \times \exp \left\{ \frac{1}{2} \sum_{s=1}^{k-1} \left\| \sum_{t=kT+1}^{k(T+1)} \boldsymbol{\sigma}(s, t) - \mathbf{v}(s, k) \right\|^2 \right\} \\ & \times \exp \left\{ \frac{1}{2} \sum_{u=1}^T \left\| \sum_{t=kT+1}^{k(T+1)} \boldsymbol{\sigma}(ku, t) \right\|^2 \right\} \\ & \times \exp \left\{ \frac{1}{2} \sum_{u=1}^{T-1} \sum_{s=ku+1}^{k(u+1)-1} \left\| \sum_{t=kT+1}^{k(T+1)} \boldsymbol{\sigma}(s, t) - \mathbf{v}(s, k(u+1)) \right\|^2 \right\} \end{aligned}$$

$$\begin{aligned} B(1, T, \boldsymbol{\lambda}) = & \exp \{ F(0, T + 1) - F(0, 1) \} \\ & \times \exp \left\{ \sum_{s=1}^T \sum_{t=s+1}^{T+1} \left(\boldsymbol{\sigma}(s, t) \cdot \mathbf{v}(s, t) - \frac{1}{2} \|\boldsymbol{\sigma}(s, t)\|^2 \right) \right\} \\ & \times \exp \left\{ \sum_{s=1}^T \left(\frac{1}{2} \|\mathbf{v}(s, T + 1)\|^2 - \boldsymbol{\lambda} \cdot \mathbf{v}(s, T + 1) \right) \right\} \end{aligned}$$

and, for $k \geq 2$,

$$\begin{aligned}
 B(k, T, \lambda) = & \exp \left\{ \sum_{t=kT+1}^{k(T+1)} F(0, t) - \sum_{t=1}^k F(0, t) \right\} \\
 & \times \exp \left\{ \sum_{s=1}^{kT} \sum_{t=\lceil s/k \rceil k+1}^{k(T+1)} \left(\sigma(s, t) \cdot (\mathbf{v}(s, t) - \lambda) - \frac{1}{2} \|\sigma(s, t)\|^2 \right) \right\} \\
 & \times \exp \left\{ \frac{1}{2} \sum_{s=1}^{kT} \left\| \sum_{t=\lceil s/k \rceil k+1}^{k(T+1)} \sigma(s, t) \right\|^2 \right\}
 \end{aligned}$$

where $\lceil x \rceil$ is the smallest integer larger or equal to the nonnegative number x .

Notice that under the assumption of Proposition 1 and a constant market-price-of-risk vector λ , the valuation ratio:

$$\eta_{kT}(\lambda) := \frac{Q_0[\mathbf{X}]}{P(0, kT)\mathbb{E}[X_{kT}]} = \frac{\mathbb{E}[\phi_{kT}X_{kT}]}{\mathbb{E}[\phi_{kT}]\mathbb{E}[X_{kT}]}$$

is an expression in terms of σ , λ , k and T . In particular, it does not depend on the current term structure of forward rates. Moreover the dependence on the market price of risk λ is rather easily analyzed by writing:

$$\eta_{kT}(\lambda) = \exp \{ \lambda \cdot \mathbf{s}(k, T) \} \eta_{kT}(\mathbf{0}), \quad \mathbf{s}(k, T) = \sum_{s=1}^{kT} \sum_{t=\lceil s/k \rceil k+1}^{k(T+1)} \sigma(s, t)$$

In Section 4, we present an approach to estimating the function σ from historical forward-rate data. We also consider the modeling of the market price of risk vector λ_t as an affine function of past forward rates and present a testing procedure for determining whether λ_t may be taken as a constant vector λ . Finally, in Section 5, we investigate numerically, based on historical data, the market-consistent valuation of an inflation-linked insurance cash flow and analyze how the market-consistent value differs from the value based on traditional valuation.

4. Model Selection and Validation

The Swedish Riksbank provides market prices of Swedish government bills with maturities of 1, 3, 6 and 12 months and government bonds with maturities of 2, 5, 7 and 10 years from 1992 to 2014. We choose the time unit as a quarter of a year, and here, we let $t = 0$ denote the time of the oldest market prices of the historical sample. Historical zero-coupon yield curves:

$$u \mapsto R(t, u), \quad u > t, \quad t = 0, \dots, N, \quad (N = 90)$$

where $R(t, u) := -\frac{1}{u-t} \log P(t, u)$ is the continuously-compounded spot rate at time t for maturity u , are obtained by a standard bootstrap procedure assuming linearity in R between observed market rates. Moreover, we assume that $R(t, u) = R(t, t + 40)$ for $u > t + 40$, i.e., the rate for a maturity further away than 10 years is set equal to the 10-year rate.

Notice that $r_t = R(t, t + 1)$ and that the forward rates at time t are given by $F(t, t + 1) = R(t, t + 1)$ and:

$$F(t, u) = (u - t)R(t, u) - (u - t - 1)R(t, u - 1), \quad u > t + 1$$

We assume an HJM framework with a volatility function satisfying $\sigma(t, u) = \sigma(u - t)$. This simplifying parametrization is rather common; see, e.g., Example 6.6 in [18,21,24], and Section 5.4 in [25]. Discussions of possible shortcomings and remedies of such a parametrization for HJM models designed for interest-rate derivative pricing can be found in, e.g., [26,27]. We assume that the market price of risk is a function of the previous forward rates and get the forward rate dynamics:

$$F(t, u) = F(t - 1, u) + \mu(u - t, \mathbf{F}_{t-1}) + \sigma(u - t) \cdot \epsilon_t, \quad 0 < t < u$$

where $\mu(m, \mathbf{z}) = \alpha(m) - \sigma(m) \cdot \lambda(\mathbf{z})$ and $\mathbf{F}_{t-1} = (F(t - 1, t), \dots, F(t - 1, t_{\max}))$. Recall that the conditional distribution of ϵ_t given \mathcal{F}_{t-1} is a multivariate standard normal distribution under the real-world measure \mathbb{P} . We define forward rate changes by:

$$\Delta F(t, u) = F(t, u) - F(t - 1, u), \quad 0 < t < u$$

We would like to estimate the functions λ and σ simultaneously on historical data for sufficiently flexible parameterizations of the two functions, for instance by maximum likelihood estimation. Unfortunately, this approach will not work well. Instead, we perform a two-stage estimation by, in the first stage, considering λ to be a constant vector and estimating σ , and, then, in the second stage, considering the estimate of σ to be the true, but unknown volatility function and estimating a parametric model for λ by maximum likelihood estimation. Finally, we validate our selected parametric model.

4.1. The Volatility Structure of Changes in the Forward Rates

As the basis for a statistical analysis of historical forward rate dynamics, we choose the vectors:

$$\Delta_t := \begin{pmatrix} \Delta F(t, t + m_1) \\ \vdots \\ \Delta F(t, t + m_n) \end{pmatrix}, \quad t = 1, \dots, N$$

where $n = 5$ and $\{m_1, m_2, m_3, m_4, m_5\} = \{4, 8, 20, 28, 40\}$, since the elements in these vectors roughly correspond to the changes in spot rates observable in the market data. According to our modeling assumption, $\Delta_t = \mu(\mathbf{F}_{t-1}) + \Sigma \epsilon_t$, where:

$$\mu(\mathbf{F}_{t-1}) = \begin{pmatrix} \alpha(m_1) - \sigma(m_1) \cdot \lambda(\mathbf{F}_{t-1}) \\ \vdots \\ \alpha(m_n) - \sigma(m_n) \cdot \lambda(\mathbf{F}_{t-1}) \end{pmatrix}$$

and Σ is an $(n \times d)$ -matrix with $\sigma(m_j)$ as the j -th row. If the covariance matrix of $\mu(\mathbf{F}_{t-1})$ is small and does not vary much over time, then the covariance matrix of Δ_t is approximately $\Sigma \Sigma^T$. In particular, then, the function σ , the volatility structure, can be estimated from the sample covariance matrix of

historical forward rate changes. To this end, we conduct a principal component analysis of the sample covariance matrix of vectors of forward-rate changes for the chosen set of maturities.

We denote eigenvalue i by w_i and eigenvector i by $e_i, i = 1, \dots, n$. From the eigenvalues shown in Table 1, we get that $(w_1 + w_2) / \sum_{i=1}^n w_i = 0.89$, which means that 89% of the variance is explained by the first two components.

Table 1. Eigenvalues (w_i) of the sample covariance matrix of forward rate changes (Δ_t).

w_1	$13.6 \cdot 10^{-6}$
w_2	$3.9 \cdot 10^{-6}$
w_3	$1.1 \cdot 10^{-6}$
w_4	$0.8 \cdot 10^{-6}$
w_5	$0.4 \cdot 10^{-6}$

In order to have a smooth dependence on maturity, we fit functions ξ_1 and ξ_2 to the eigenvectors e_1 and e_2 , respectively. Plots of the eigenvectors suggest functions of the following form: $\xi_1(m) = \xi_1$ and $\xi_2(m) = \alpha - \beta e^{-\gamma m}$. Other parameterizations are possible; see, e.g., Example 6.6. in [18].

The vectors:

$$\xi_1 := \begin{pmatrix} \xi_1(m_1) \\ \vdots \\ \xi_1(m_n) \end{pmatrix} \quad \text{and} \quad \xi_2 := \begin{pmatrix} \xi_2(m_1) \\ \vdots \\ \xi_2(m_n) \end{pmatrix}$$

should satisfy $\|\xi_1\| = 1, \|\xi_2\| = 1$ and $\xi_1 \cdot \xi_2 = 0$. To satisfy the first condition, we set $\xi_1 = -1/\sqrt{n}$. Since ξ_1 is independent of m , the third condition can be written $\mathbf{1} \cdot \xi_2 = 0$, which implies that $\alpha = \frac{\beta}{n} \sum_{i=1}^n e^{-\gamma m_i}$, and we get:

$$\xi_2(m; \beta, \gamma) = \beta \left(\frac{1}{n} \sum_{i=1}^n e^{-\gamma m_i} - e^{-\gamma m} \right)$$

We let $e_{2,i}$ denote the i -th component of the second eigenvector e_2 and find the pair of arguments $(\tilde{\beta}, \tilde{\gamma})$ that minimizes:

$$\sum_{i=1}^n (e_{2,i} - \xi(m_i; \beta, \gamma))^2$$

We are almost done, but $\|\xi_2(\tilde{\beta}, \tilde{\gamma})\| = 0.988$, so a slight modification is needed to get ξ_1 and ξ_2 orthonormal. Setting:

$$\begin{aligned} \beta &= \tilde{\beta} / \|\xi_2(\tilde{\beta}, \tilde{\gamma})\| \approx 1.716 \\ \gamma &= \tilde{\gamma} \approx 0.0536 \\ \alpha &= \frac{\beta}{5} \sum_{i=1}^5 e^{-\gamma m_i} \approx 0.735 \end{aligned}$$

yields the desired result. To summarize, $\xi_1(m) = -1/\sqrt{n}$, $\xi_2(m) = \alpha - \beta e^{-\gamma m}$, and:

$$\xi_1 = \begin{pmatrix} -1/\sqrt{5} \\ -1/\sqrt{5} \\ -1/\sqrt{5} \\ -1/\sqrt{5} \\ -1/\sqrt{5} \end{pmatrix} \approx \begin{pmatrix} -0.447 \\ -0.447 \\ -0.447 \\ -0.447 \\ -0.447 \end{pmatrix}, \quad \xi_2 = \begin{pmatrix} \alpha - \beta e^{-4\gamma} \\ \alpha - \beta e^{-8\gamma} \\ \alpha - \beta e^{-20\gamma} \\ \alpha - \beta e^{-28\gamma} \\ \alpha - \beta e^{-40\gamma} \end{pmatrix} \approx \begin{pmatrix} -0.650 \\ -0.383 \\ 0.147 \\ 0.352 \\ 0.534 \end{pmatrix}$$

The eigenvectors e_1 and e_2 are plotted together with the functions ξ_1 and ξ_2 in Figure 1.

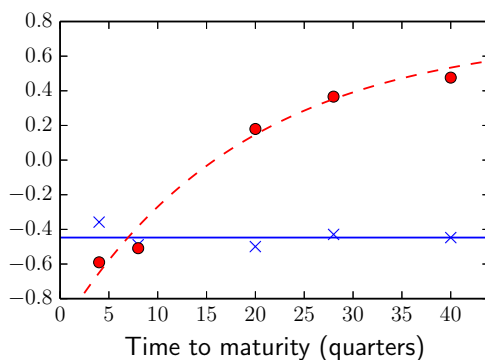


Figure 1. Eigenvectors e_1 (blue crosses) and e_2 (red circles) together with the functions ξ_1 (blue solid line) and ξ_2 (red dashed line).

To compensate for only considering variance in the plane spanned by ξ_1 and ξ_2 , due to the reduction in the dimension of the driving input noise from five to two, we must have higher variances along these vectors in our model than what we see in the data. To this end, we find the κ that minimizes:

$$\sum_{i=1}^n (\text{Var} [\Delta F(t, t + m_i)] - \kappa w_1 \xi_1(m_i)^2 - \kappa w_2 \xi_2(m_i)^2)^2$$

We get $\kappa = 1.084$ and set $\sigma(m) = (\sigma_1(m), \sigma_2(m))$, with $\sigma_i(m) = \nu_i \xi_i(m)$ for $i = 1, 2$, where $\nu_i = \sqrt{\kappa w_i}$.

4.2. The Market Price of Risk and Model Validation

We now assume the forward rate dynamics given by $\Delta_t = \mu(F_{t-1}) + \Sigma \epsilon_t$, where Σ is known, set to the estimate above, and $(\epsilon_t)_{t=1, \dots, N}$ is an i.i.d. sequence of standard normal bivariate vectors under \mathbb{P} . Since:

$$\Sigma := \begin{pmatrix} \sigma(m_1)^T \\ \vdots \\ \sigma(m_n)^T \end{pmatrix} = \begin{pmatrix} \nu_1 \xi_1 & \nu_2 \xi_2 \end{pmatrix}$$

and ξ_1 and ξ_2 are orthonormal,

$$\Sigma^T \Sigma = \begin{pmatrix} \nu_1^2 \xi_1 \cdot \xi_1 & \nu_1 \nu_2 \xi_1 \cdot \xi_2 \\ \nu_1 \nu_2 \xi_1 \cdot \xi_2 & \nu_2^2 \xi_2 \cdot \xi_2 \end{pmatrix} = \begin{pmatrix} \nu_1^2 & 0 \\ 0 & \nu_2^2 \end{pmatrix}$$

Hence, the forward-rate dynamics $\Delta_t = \mu(F_{t-1}) + \Sigma\epsilon_t$ can be rewritten as:

$$(\Sigma^T \Sigma)^{-1} \Sigma^T \Delta_t = (\Sigma^T \Sigma)^{-1} \Sigma^T \mu(F_{t-1}) + \epsilon_t \tag{9}$$

The left-hand side in Equation (9) corresponds to a known affine transformation of observed changes in forward rates for the chosen maturities. We assume that the market price of risk is an affine transformation of previous forward rates and, therefore, express Equation (9) as:

$$\tilde{\Delta}_t = \tilde{\alpha} + \sum_{i=0}^n \tilde{b}_i F(t-1, t-1+m_i) + \epsilon_t$$

where $n = 5$, $\{m_0, m_1, m_2, m_3, m_4, m_5\} = \{1, 4, 8, 20, 28, 40\}$ and $\tilde{\alpha}$ and the \tilde{b}_i are unknown vectors. Notice that the conditional distribution of $\tilde{\Delta}_t$ given \mathcal{F}_{t-1} is a bivariate normal distribution with uncorrelated components with unit variances and mean vector $\tilde{\alpha} + \sum_{i=0}^n \tilde{b}_i F(t-1, t-1+m_i)$. Therefore, maximum likelihood estimation of $\tilde{\alpha}$ and the \tilde{b}_i coincides with ordinary least squares estimation:

$$\hat{\beta}^j = (M^T M)^{-1} M^T \tilde{\Delta}^j, \quad j = 1, 2$$

with:

$$\tilde{\beta}^j = \begin{pmatrix} \tilde{\alpha}^j \\ \tilde{b}_0^j \\ \vdots \\ \tilde{b}_n^j \end{pmatrix}, \quad \tilde{\Delta}^j = \begin{pmatrix} \tilde{\Delta}_1^j \\ \vdots \\ \tilde{\Delta}_N^j \end{pmatrix}$$

and:

$$M = \begin{pmatrix} 1 & F(0, m_0) & \cdots & F(0, m_n) \\ 1 & F(1, 1+m_0) & \cdots & F(1, 1+m_n) \\ \vdots & \vdots & \ddots & \vdots \\ 1 & F(N-1, N-1+m_0) & \cdots & F(N-1, N-1+m_n) \end{pmatrix}$$

Maximum likelihood values for different numbers of non-zero \tilde{b}_i are shown in Table 2. Likelihood-ratio tests based on these values suggest that we should not use more than three non-zero \tilde{b}_i .

Table 2. Maximum log-likelihood values.

Number of Non-Zero \tilde{b}_i	Non-Zero \tilde{b}_i	Maximum Log-Likelihood
6	$\tilde{b}_0, \tilde{b}_1, \tilde{b}_2, \tilde{b}_3, \tilde{b}_4, \tilde{b}_5$	-226.21
5	$\tilde{b}_0, \tilde{b}_1, \tilde{b}_2, \tilde{b}_3, \tilde{b}_5$	-226.29
4	$\tilde{b}_0, \tilde{b}_1, \tilde{b}_2, \tilde{b}_3$	-228.28
3	$\tilde{b}_0, \tilde{b}_1, \tilde{b}_3$	-230.92
2	\tilde{b}_0, \tilde{b}_1	-234.69
1	\tilde{b}_0	-243.09
0	-	-246.55

Scatter and QQ plots of the innovations for the cases with 0, 1, 2 and 3 non-zero \tilde{b}_i , respectively, are shown in Figure 2, and auto- and cross-correlations are shown in Figure 3. Since the innovations

look very similar in all four cases, we select the simplest model, *i.e.*, the model with a constant market price of risk.

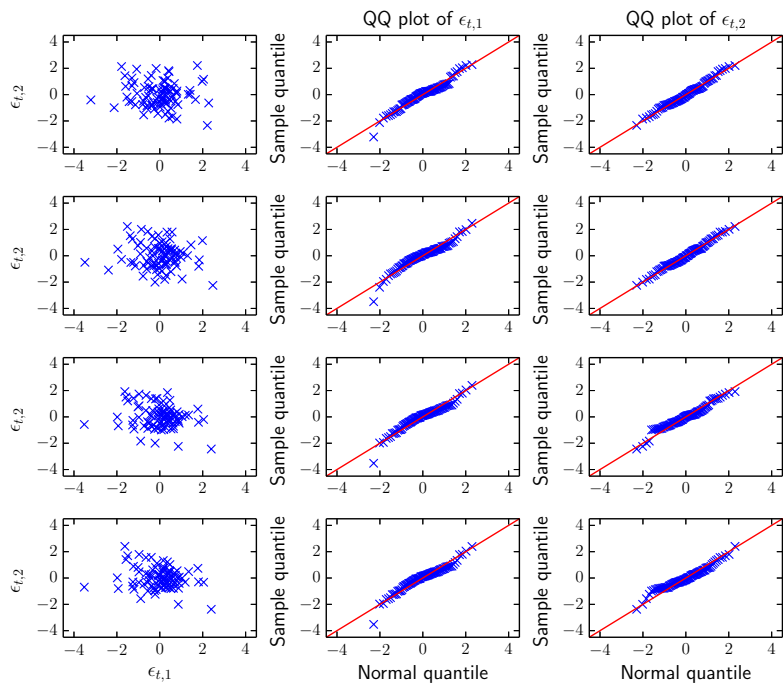


Figure 2. Scatter and QQ plots of the innovations for the cases with 0, 1, 2 and 3 non-zero \tilde{b}_i , respectively.

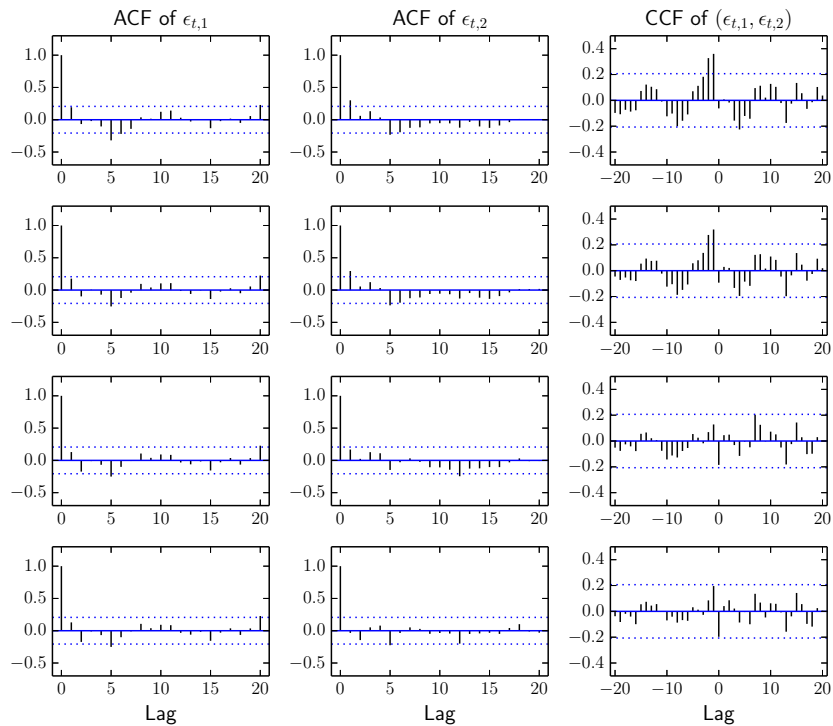


Figure 3. Auto- and cross-correlations of the innovations for the cases with 0, 1, 2 and 3 non-zero \tilde{b}_i , respectively.

Writing $\lambda(\mathbf{F}_{t-1}) = \lambda$ and using the invariance property of the maximum likelihood estimator, the maximum likelihood estimator of λ is given by:

$$\hat{\lambda} = (\Sigma^T \Sigma)^{-1} \Sigma^T \alpha - \hat{a}$$

We get $\hat{\lambda} = (0.12, -0.68)$. Notice that $\lambda - \hat{\lambda} = \hat{a} - \tilde{a} = \frac{1}{N} \sum_{t=1}^N \epsilon_t$, so we may calculate confidence regions for λ using:

$$\hat{\lambda} = \lambda + \frac{1}{\sqrt{N}} \mathbf{g} \tag{10}$$

where \mathbf{g} is a bivariate standard normal random variable. We have:

$$\mathbb{P} \left(\|\lambda - \hat{\lambda}\| > r \right) = \mathbb{P} \left(\frac{1}{N} \|\mathbf{g}\|^2 > r^2 \right) = \mathbb{P} \left(\chi_2^2 > Nr^2 \right)$$

where χ_2^2 is chi-square distributed with two degrees of freedom. We get $r = 0.258$ by solving $\mathbb{P} \left(\|\lambda - \hat{\lambda}\| > r \right) = 0.05$.

4.3. The Relation between the Consumer Price Index and the Short Rate

Statistics Sweden (*Statistiska centralbyrån* in Swedish) provides monthly values of the Swedish Consumer Price Index (CPI). However, we prefer to study changes over a one-year horizon to get rid of seasonal effects and to get less sensitivity to price-stickiness. We denote the change in the consumer price index for year t by q_t^4 , i.e., $q_t^4 = \log\{\text{CPI}_{4(t+1)}/\text{CPI}_{4t}\}$, and the risk-free rollover for the same year by r_t^4 . Notice that r_t^4 is known already at time $4t$, while q_t^4 is not known until time $4(t + 1)$. Moreover, if we remove linear trends from q and r and denote the detrended values by \tilde{q} and \tilde{r} , respectively, we get the strongest cross-correlation when \tilde{q} lags \tilde{r} by one year (see Figure 4). Thus, it is natural to study the differences $d_t^4 := q_{t-1}^4 - r_t^4$.

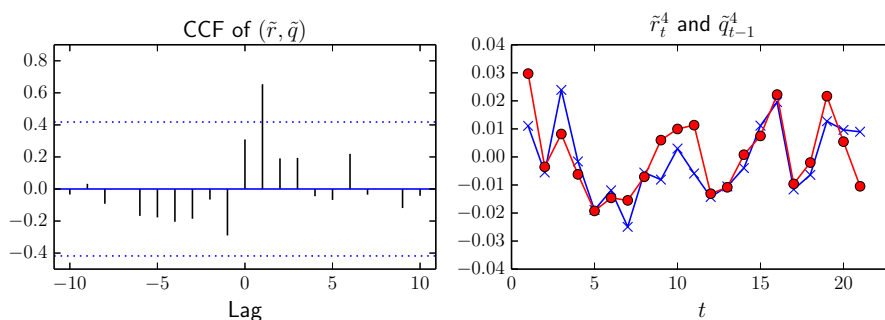


Figure 4. Cross-correlations between \tilde{r} and \tilde{q} and time series plots of \tilde{r}_t^4 (blue crosses) and \tilde{q}_{t-1}^4 (red circles).

We define:

$$\rho_t^k := r_t^k - \sum_{u=k(t-1)+1}^{kt} \left(r_{u-1} + \frac{1}{2} \|\lambda_u\|^2 - \lambda_u \cdot \epsilon_u \right)$$

and notice that the factorization condition in Proposition 1 is satisfied if the ρ_t^k and d_t^k are jointly normally distributed and $\text{Cor} [\sum_t \rho_t^k, \sum_t d_t^k] = 0$.

The ρ_t^4 are calculated using the estimated constant market price of risk and the observed innovations. We remove linear trends from d and ρ and denote the detrended values by \tilde{d} and $\tilde{\rho}$, respectively. The sample standard deviation of \tilde{d}_t^4 is $\hat{\sigma}_{\tilde{d}_t^4} = 0.0089$. Scatter and QQ plots of $\tilde{\rho}$ and \tilde{d} are shown in Figure 5, and auto- and cross-correlations are shown in Figure 6. These plots suggest that $\sum_t \rho_t^4$ and $\sum_t d_t^4$ are uncorrelated and jointly normally distributed, hence independent.

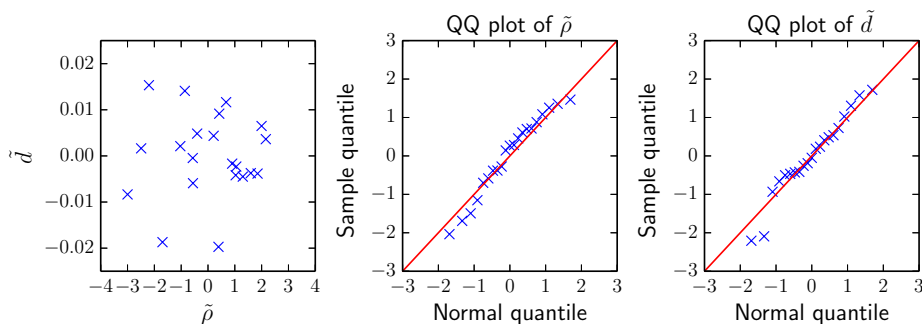


Figure 5. Scatter and QQ plots of $\tilde{\rho}$ and \tilde{d} .

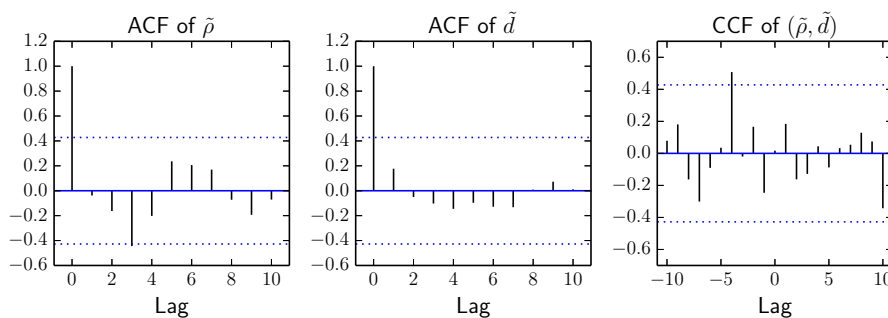


Figure 6. Auto- and cross-correlations of $\tilde{\rho}$ and \tilde{d} .

5. Model-Based Valuation

In this section, we value a cash flow linked to the Swedish CPI using our model. We consider the cash flow $\mathbf{X} = (0, \dots, 0, X_{kT}, 0, \dots, 0)$, where:

$$X_{kT} = Y_{kT} \exp \left\{ \sum_{t=1}^T q_{t-1}^k \right\} = Y_{kT} \exp \left\{ \sum_{t=1}^T d_t^k \right\} \exp \left\{ \sum_{t=1}^T r_t^k \right\}$$

with $d_t^k := q_{t-1}^k - r_t^k$.

According to Equation (1), the value of \mathbf{X} today is $\mathbb{E}[\phi_{kT} X_{kT}]$. However, in practice, one often assumes independence between the interest rates used for discounting and the claims payments, and under this assumption, today’s value is $\mathbb{E}[\phi_{kT}] \mathbb{E}[X_{kT}]$.

We set $k = 4$ and let q_t^4 be the change in CPI for year t . The analysis in Section 4 suggests that the d_t^4 are normally distributed and that the factorization condition in Proposition 1 is satisfied. It also

suggests that a constant market price of risk is a reasonable assumption. Assuming that Y_{4T} represents some actuarial risk independent of price inflation and interest rates, we get:

$$\mathbb{E} [\phi_{4T} X_{4T}] = \mathbb{E} [Y_{4T}] \mathbb{E} [\exp \{D_T\}] A(4, T)$$

and:

$$\mathbb{E} [\phi_{4T}] \mathbb{E} [X_{4T}] = \mathbb{E} [Y_{4T}] \mathbb{E} [\exp \{D_T\}] B(4, T, \lambda)$$

where $D_T := \sum_{t=1}^T d_t^A$, from Proposition 1. We assume that:

$$\sigma(s, t) = \sigma(t - s) = \begin{pmatrix} -\nu_1/\sqrt{n} \\ \nu_2(\alpha - \beta e^{-\gamma(t-s)}) \end{pmatrix}$$

where the parameters are set to the estimates from Section 4.

The value $\mathbb{E} [\phi_{4T} X_{4T}]$ is independent of the market price of risk λ , but depends on the trend in future price inflation (relative interest rates). We assume that D_T is normally distributed with mean $\mu_{D_T} = cT$ for some constant trend c and standard deviation $\sigma_{D_T} = \hat{\sigma}_{\tilde{d}_t^A} \sqrt{T} = 0.0089\sqrt{T}$, and we get:

$$\mathbb{E} [\exp \{D_T\}] = \exp \left\{ \mu_{D_T} + \frac{\sigma_{D_T}^2}{2} \right\} \approx \exp \{(c + 0.000040)T\}$$

Values of $\mathbb{E} [\exp \{D_T\}]$ for different trends are shown in Table 3.

Table 3. Values of $\mathbb{E} [\exp \{D_T\}]$ with $\mu_{D_T} = cT$.

T	$c = -0.04$	$c = -0.02$	$c = 0.0$	$c = 0.02$	$c = 0.04$
1	0.961	0.980	1.000	1.020	1.041
2	0.923	0.961	1.000	1.041	1.083
5	0.819	0.905	1.000	1.105	1.221
10	0.670	0.819	1.000	1.221	1.492

At this point, it should be mentioned that if there exists a deep and liquid market of bonds linked to the same index as the insurance liability cash flow, then a market-consistent value of the cash flow is given by $P_r(0, 4T)\mathbb{E} [Y_{4T}]$, where $P_r(0, t)$ denotes the price of an index-linked zero-coupon bond maturing at time t . In our case, $P_r(0, t)$ is the price paid today for receiving the amount CPI_t/CPI_0 at time t .

Swedish CPI-linked bonds (often called real bonds) are either bought at auctions held by the Swedish National Debt Office (*Riksgälden* in Swedish) or over-the-counter (OTC) in the secondary market. All OTC trades are reported to Nasdaq OMX, so there is some market data available. Market rates on 28 November 2014 (the last day of our observation period) are shown in Table 4. These rates should be interpreted as the yields to maturity given that the CPI remains at today’s level until the maturity date.

Table 4. Market rates (in percent) of Swedish Consumer Price Index (CPI)-linked government bonds on 28 November 2014.

Name	Years to Maturity	Average Rate
RGKB 3105	1.0	−0.168
RGKB 3107	2.5	−0.569
RGKB 3102	6.0	−0.505
RGKB 3108	7.5	−0.329
RGKB 3109	10.5	−0.048
RGKB 3104	14.0	−0.220

Now, say that we are interested in the price of a real ZCB maturing in 10 years. The average rate of the bond maturing in 10.5 years (RGKB 3109) suggests a rather different 10-year rate than what a linear interpolation of the average rates of the bonds maturing in 7.5 and 14.0 years (RGKB 3108 and RGKB 3104), respectively, do. However, it seems reasonable to conclude that the 10-year real zero rate lies somewhere between −0.3% and 0.0%, which implies that $P_r(0, 40) \in (1.00, 1.03)$. Using the nominal forward rates bootstrapped in November 2014, we get $A(4, 10) = 1.039$. Thus,

$$\mathbb{E}[\exp\{D_{10}\}] = \frac{P_r(0, 40)}{A(4, 10)} \in (0.963, 0.992)$$

which corresponds to $c \in (-0.0038, -0.0008)$.

From Section 3, we get the valuation ratio:

$$\eta_{4T}(\lambda) = \frac{A(4, T)}{B(4, T, \lambda)} = \exp\{\lambda \cdot s(4, T)\} \eta_{4T}(0)$$

where:

$$s(k, T) = (s_1(k, T), s_2(k, T)) = \sum_{s=1}^{kT} \sum_{t=\lceil s/k \rceil}^{k(T+1)} \sigma(t - s)$$

The valuation ratio depends on the market price of risk λ , but is independent of the trend in future inflation. Plots of $s_1(4, T)$ and $s_2(4, T)$ are shown in Figure 7.

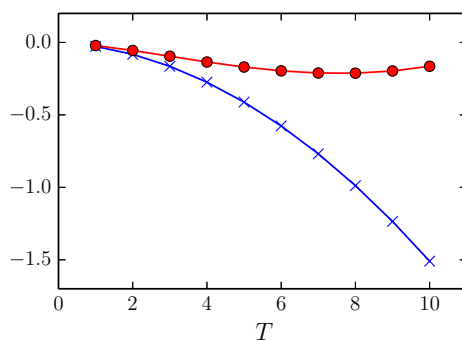


Figure 7. Plots of $s_1(4, T)$ (blue crosses) and $s_2(4, T)$ (red circles), respectively.

From Equation (10), we get that $\hat{\lambda} \cdot s(k, T)$ is normally distributed with mean $\lambda \cdot s(k, T)$ and variance $s(k, T) \cdot s(k, T)/N$. Thus, $\widehat{\eta_{kT}(\lambda)}$ is log-normally distributed with mean:

$$\eta_{kT}(0) \exp \left\{ \lambda \cdot s(k, T) + \frac{1}{2N} s(k, T) \cdot s(k, T) \right\}$$

Point estimates and confidence intervals of $\eta_{4T}(\lambda)$ for different values of T are shown in Table 5.

Table 5. Mean and confidence interval of $\eta_{4T}(\lambda)$ and valuation ratios for the market prices of risks $\mathbf{0}$ and λ_{belief} .

T	$\eta_{4T}(\mathbf{0})$	$\widehat{\eta_{4T}(\lambda)}$	95% CI of $\eta_{4T}(\lambda)$	$\eta_{4T}(\lambda_{\text{belief}})$
1	1.000	1.011	(1.004, 1.019)	0.994
2	0.999	1.028	(1.007, 1.049)	0.983
5	0.991	1.059	(0.965, 1.160)	0.925
10	0.935	0.884	(0.638, 1.194)	0.780

A market price of a risk vector defines expected future forward rate curves via the expression:

$$\mathbb{E} [F(t, u)] = F(0, u) + \sum_{s=1}^t \alpha(u - s) - \lambda \cdot \sum_{s=1}^t \sigma(u - s) \tag{11}$$

The expected forward rate curve in five years ($t = 20$) given the market price of risk $\hat{\lambda}$ is plotted as a black thick solid line in Figure 8.

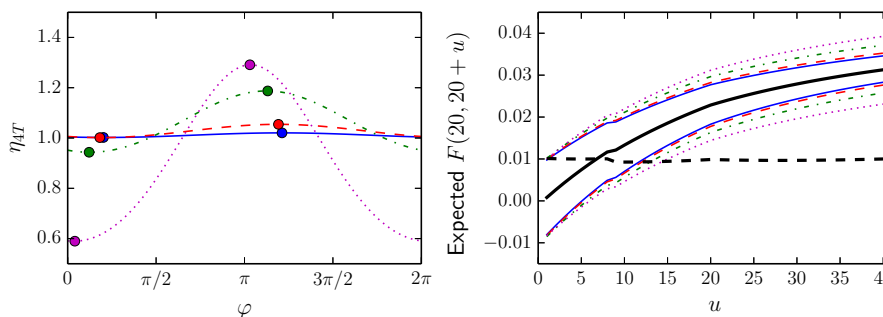


Figure 8. Valuation ratios $\eta_{4T}(\lambda(\phi))$ (left) and forward rate curves in five years for the minimum and maximum valuation ratios (right). The blue solid line, the red dashed line, the green dot-dashed line and the magenta dotted line correspond to $T = 1, 2, 5, 10$, respectively. The black thick solid and dashed lines represent the market prices of risk $\hat{\lambda}$ and λ_{belief} , respectively.

Now, consider market prices of risk of the type:

$$\lambda(\phi) = \hat{\lambda} + r (\cos \phi, \sin \phi), \quad \phi \in [0, 2\pi)$$

where $\hat{\lambda} = (0.12, -0.68)$ here denotes the estimate and $r = 0.258$. Given T and under the assumption that historical observations are representative for future conditions, these market prices of risk correspond

to equal-probability valuation ratios and expected forward-rate curves. The valuation ratios and expected forward-rate curves in five years corresponding to the maximum and minimum valuation ratio, respectively, are plotted in Figure 8.

Any belief in a future yield curve, not just those suggested by historical observations, can be translated to a market price of risk via Equation (11). If we believe that in five years, the one-year and 10-year rates both will be 1%, we get the market price of risk $\lambda_{\text{belief}} = (0.10, 0.15)$ by solving the linear system:

$$\mathbb{E}[F(20, 24)] = 0.01$$

$$\mathbb{E}[F(20, 60)] = 0.01$$

Values of $\eta_{4T}(\lambda_{\text{belief}})$ are shown in Table 5, and the expected forward-rate curve in five years is plotted as a black thick dashed line in Figure 8.

6. Conclusions and Discussion

In this paper, we present an approach, for assigning a monetary value to an index-linked cash flow, that does not require full knowledge of the joint dynamics of the cash flow and the term structure of interest rates. In the case when the amount and quality of index data do not match that of the interest rate data, setting up a credible model for the dynamics of the term structure of interest rates may be relatively straightforward, whereas a joint model for both the cash flow and the interest rates poses significant challenges.

Our approach essentially relies on that we can identify a simple proxy for the orthogonal projection of the log index value onto the linear space spanned by the forward rates, such that the expected value representing the monetary value of the cash flow factorizes into a product. One factor of the product represents the expected value of the part of the index value that cannot be explained by interest rates, and the other factor is the monetary value of the part of the index value that is explained by the interest rates.

The main difficulty for getting a realistic cash-flow value is to forecast the trend component of the part of the index value that cannot be explained by interest rates. As seen in Table 3, this trend may affect the value of the cash flow substantially. If there exist reliable market prices of bonds linked to the same index as the insurance cash flow, then a market-consistent value of the cash flow can be derived. If not, then the insurance regulator must decide on a reasonable value of the trend in order to get a fair valuation principle for insurers to apply.

Due to the factorization, it is possible for a risk manager interested in dependence between losses for different lines of business to analyze and model dependence due to insurance events, dependence due to claims inflation and dependence due to exposure to interest rate changes independently. In this context, a loss is a change in cash-flow valuation between two time points. The dependence between losses for different lines of business affects the insurer's aggregate loss, and the distribution of the aggregate loss determines the solvency capital requirement in new regulatory frameworks (e.g., Solvency 2).

The transition from a yield-curve forecast to a market-price-of-risk vector via Equation (11) is interesting in itself and useful for the valuation of cash flows that are not necessarily index-linked. More research is needed on how to transform forecasts into consistent valuation principles for insurers.

The valuation machinery relies on that we set up an accurate model for the dynamics of the term structure of nominal interest rates. Based on interest rate data, we investigate in detail model selection,

estimation and validation in a Heath–Jarrow–Morton framework. Finally, we analyze the effects of model uncertainty on the valuation of the cash flows and also how forecasts of cash flows and interest rates translate into model parameters and affect the valuation. Even in the presence of a deep and liquid market for index-linked bonds, the valuation machinery may prove useful as a basis for risk management and investment purposes.

Acknowledgments

The authors thank Andreas Lagerås for insightful comments and suggestions and two anonymous referees for comments and suggestions that improved the paper.

Author Contributions

J.A. collected and analyzed the data. The two authors made equal contributions to the mathematical analysis and writing of the paper.

Conflicts of Interest

The authors declare no conflict of interest.

Appendix

Proof. Proof of Proposition 1

$$\begin{aligned} \mathbb{E} \left[\Phi_{kT} \exp \left\{ \sum_{t=1}^T r_t^k \right\} \right] &= \mathbb{E}^* \left[(\Phi_{kT} B_{kT})^{-1} \Phi_{kT} \exp \left\{ \sum_{t=1}^T r_t^k \right\} \right] \\ &= \mathbb{E}^* \left[\exp \left\{ - \sum_{t=0}^{kT-1} r_t \right\} \exp \left\{ \sum_{t=1}^T r_t^k \right\} \right] \end{aligned}$$

Notice that:

$$\begin{aligned} \sum_{t=0}^{kT-1} r_t &= \sum_{t=0}^{kT-1} \left(F(0, t+1) + \sum_{s=1}^t \alpha(s, t+1) + \sum_{s=1}^t \sigma(s, t+1) \cdot \epsilon_s^* \right) \\ &= \sum_{t=1}^{kT} F(0, t) + \sum_{u=1}^T \sum_{t=k(u-1)+1}^{ku} \sum_{s=1}^{t-1} \left(\alpha(s, t) + \sigma(s, t) \cdot \epsilon_s^* \right) \end{aligned}$$

where $\alpha(s, t) = 0$ and $\sigma(s, t) = \mathbf{0}$ if $s \geq t$. Since $r_t^k = \sum_{s=kt+1}^{k(t+1)} F(kt, s)$, we get:

$$\sum_{t=1}^T r_t^k = \sum_{u=1}^T \sum_{t=ku+1}^{k(u+1)} \left(F(0, t) + \sum_{s=1}^{ku} \left(\alpha(s, t) + \sigma(s, t) \cdot \epsilon_s^* \right) \right)$$

Hence,

$$\begin{aligned}
 & \sum_{t=1}^T r_t^k - \sum_{t=0}^{kT-1} r_t \\
 &= \sum_{t=kT+1}^{k(T+1)} F(0, t) - \sum_{t=1}^k F(0, t) + \sum_{s=1}^{kT} \sum_{t=kT+1}^{k(T+1)} \left(\alpha(s, t) + \sigma(s, t) \cdot \epsilon_s^* \right) \\
 & \quad - \sum_{s=1}^{k-1} \sum_{t=s+1}^k \left(\alpha(s, t) + \sigma(s, t) \cdot \epsilon_s^* \right) \\
 & \quad - \sum_{u=1}^{T-1} \sum_{t=ku+2}^{k(u+1)} \sum_{s=ku+1}^{t-1} \left(\alpha(s, t) + \sigma(s, t) \cdot \epsilon_s^* \right) \\
 &= \sum_{t=kT+1}^{k(T+1)} F(0, t) - \sum_{t=1}^k F(0, t) \\
 & \quad + \sum_{s=1}^{k-1} \left(\sum_{t=kT+1}^{k(T+1)} - \sum_{t=s+1}^k \right) \left[\alpha(s, t) + \sigma(s, t) \cdot \epsilon_s^* \right] \\
 & \quad + \sum_{u=1}^T \sum_{t=kT+1}^{k(T+1)} \left[\alpha(ku, t) + \sigma(ku, t) \cdot \epsilon_{ku}^* \right] \\
 & \quad + \sum_{u=1}^{T-1} \sum_{s=ku+1}^{k(u+1)-1} \left(\sum_{t=kT+1}^{k(T+1)} - \sum_{t=s+1}^{k(u+1)} \right) \left[\alpha(s, t) + \sigma(s, t) \cdot \epsilon_s^* \right]
 \end{aligned}$$

Using the definition of α in Equation (4), we get:

$$\begin{aligned}
 & \mathbb{E}^* \left[\sum_{t=1}^T r_t^k - \sum_{t=0}^{kT-1} r_t \right] \\
 &= \sum_{t=kT+1}^{k(T+1)} F(0, t) - \sum_{t=1}^k F(0, t) \\
 & \quad + \sum_{s=1}^{k-1} \left(\sum_{t=kT+1}^{k(T+1)} - \sum_{t=s+1}^k \right) \left[\sigma(s, t) \cdot \mathbf{v}(s, t) - \frac{1}{2} \|\sigma(s, t)\|^2 \right] \\
 & \quad + \sum_{u=1}^T \sum_{t=kT+1}^{k(T+1)} \left[\sigma(ku, t) \cdot \mathbf{v}(ku, t) - \frac{1}{2} \|\sigma(ku, t)\|^2 \right] \\
 & \quad + \sum_{u=1}^{T-1} \sum_{s=ku+1}^{k(u+1)-1} \left(\sum_{t=kT+1}^{k(T+1)} - \sum_{t=s+1}^{k(u+1)} \right) \left[\sigma(s, t) \cdot \mathbf{v}(s, t) - \frac{1}{2} \|\sigma(s, t)\|^2 \right]
 \end{aligned}$$

Using the independence of the ϵ_s^* , we get:

$$\begin{aligned} & \text{Var}^* \left[\sum_{t=1}^T r_t^k - \sum_{t=0}^{kT-1} r_t \right] \\ &= \sum_{s=1}^{k-1} \left\| \sum_{t=kT+1}^{k(T+1)} \boldsymbol{\sigma}(s, t) - \mathbf{v}(s, k) \right\|^2 \\ &+ \sum_{u=1}^T \left\| \sum_{t=kT+1}^{k(T+1)} \boldsymbol{\sigma}(ku, t) \right\|^2 \\ &+ \sum_{u=1}^{T-1} \sum_{s=ku+1}^{k(u+1)-1} \left\| \sum_{t=kT+1}^{k(T+1)} \boldsymbol{\sigma}(s, t) - \mathbf{v}(s, k(u+1)) \right\|^2 \end{aligned}$$

The result follows from:

$$\begin{aligned} & \mathbb{E}^* \left[\exp \left\{ \sum_{t=1}^T r_t^k - \sum_{t=0}^{kT-1} r_t \right\} \right] \\ &= \exp \left\{ \mathbb{E}^* \left[\sum_{t=1}^T r_t^k - \sum_{t=0}^{kT-1} r_t \right] + \frac{1}{2} \text{Var}^* \left[\sum_{t=1}^T r_t^k - \sum_{t=0}^{kT-1} r_t \right] \right\} \end{aligned}$$

Next, we compute the traditional value of the cash flow.

$$\mathbb{E} [\Phi_{kT}] = P(0, kT) = \exp \left\{ - \sum_{t=1}^{kT} F(0, t) \right\}$$

$$\mathbb{E} [X_{kT}] = \mathbb{E} [Y_{kT}] \mathbb{E} \left[\exp \left\{ \sum_{t=1}^T d_t^k \right\} \right] \mathbb{E} \left[\exp \left\{ \sum_{t=1}^T r_t^k \right\} \right]$$

We focus on the expectation:

$$\begin{aligned} \mathbb{E} \left[\exp \left\{ \sum_{t=1}^T r_t^k \right\} \right] &= \mathbb{E}^* \left[(\Phi_{kT} B_{kT})^{-1} \exp \left\{ \sum_{t=1}^T r_t^k \right\} \right] \\ &= \mathbb{E}^* \left[\exp \left\{ - \sum_{s=1}^{kT} \left(\frac{1}{2} \|\boldsymbol{\lambda}_s\|^2 + \boldsymbol{\lambda}_s \cdot \boldsymbol{\epsilon}_s^* \right) \right\} \exp \left\{ \sum_{t=1}^T r_t^k \right\} \right] \end{aligned}$$

Notice that:

$$\begin{aligned} \sum_{t=1}^T r_t^k &= \sum_{t=k+1}^{k(T+1)} F(0, t) + \sum_{u=1}^T \sum_{s=1}^{ku} \sum_{t=ku+1}^{k(u+1)} (\alpha(s, t) + \boldsymbol{\sigma}(s, t) \cdot \boldsymbol{\epsilon}_s^*) \\ &= \sum_{t=k+1}^{k(T+1)} F(0, t) + \sum_{s=1}^{kT} \sum_{t=\lceil s/k \rceil k+1}^{k(T+1)} (\alpha(s, t) + \boldsymbol{\sigma}(s, t) \cdot \boldsymbol{\epsilon}_s^*) \end{aligned}$$

where $\lceil x \rceil$ is the smallest integer larger or equal to the nonnegative number x . Hence,

$$\begin{aligned} & \sum_{t=1}^T r_t^k - \sum_{s=1}^{kT} \left(\frac{1}{2} \|\lambda_s\|^2 + \lambda_s \cdot \epsilon_s^* \right) \\ &= \sum_{t=k+1}^{k(T+1)} F(0, t) + \sum_{s=1}^{kT} \left(\sum_{t=\lceil s/k \rceil k+1}^{k(T+1)} \alpha(s, t) - \frac{1}{2} \|\lambda_s\|^2 \right) \\ & \quad + \sum_{s=1}^{kT} \left(\sum_{t=\lceil s/k \rceil k+1}^{k(T+1)} \sigma(s, t) - \lambda_s \right) \cdot \epsilon_s^* \end{aligned}$$

If $\lambda_s = \lambda$ is constant, then:

$$\begin{aligned} & \mathbb{E}^* \left[\sum_{t=1}^T r_t^k - \sum_{s=1}^{kT} \left(\frac{1}{2} \|\lambda_s\|^2 + \lambda_s \cdot \epsilon_s^* \right) \right] \\ &= \sum_{t=k+1}^{k(T+1)} F(0, t) - \frac{kT}{2} \|\lambda\|^2 + \sum_{s=1}^{kT} \sum_{t=\lceil s/k \rceil k+1}^{k(T+1)} \left(\sigma(s, t) \cdot \mathbf{v}(s, t) - \frac{1}{2} \|\sigma(s, t)\|^2 \right) \end{aligned}$$

and:

$$\begin{aligned} & \text{Var}^* \left[\sum_{t=1}^T r_t^k - \sum_{s=1}^{kT} \left(\frac{1}{2} \|\lambda_s\|^2 + \lambda_s \cdot \epsilon_s^* \right) \right] \\ &= \sum_{s=1}^{kT} \left\| -\lambda + \sum_{t=\lceil s/k \rceil k+1}^{k(T+1)} \sigma(s, t) \right\|^2 \\ &= kT \|\lambda\|^2 - 2\lambda \cdot \sum_{s=1}^{kT} \sum_{t=\lceil s/k \rceil k+1}^{k(T+1)} \sigma(s, t) + \sum_{s=1}^{kT} \left\| \sum_{t=\lceil s/k \rceil k+1}^{k(T+1)} \sigma(s, t) \right\|^2 \end{aligned}$$

The result follows from:

$$\begin{aligned} & \mathbb{E}^* \left[\exp \left\{ \sum_{t=1}^T r_t^k - \sum_{s=1}^{kT} \left(\frac{1}{2} \|\lambda_s\|^2 + \lambda_s \cdot \epsilon_s^* \right) \right\} \right] \\ &= \exp \left\{ \mathbb{E}^* \left[\sum_{t=1}^T r_t^k - \sum_{s=1}^{kT} \left(\frac{1}{2} \|\lambda_s\|^2 + \lambda_s \cdot \epsilon_s^* \right) \right] \right\} \\ & \quad \times \exp \left\{ \frac{1}{2} \text{Var}^* \left[\sum_{t=1}^T r_t^k - \sum_{s=1}^{kT} \left(\frac{1}{2} \|\lambda_s\|^2 + \lambda_s \cdot \epsilon_s^* \right) \right] \right\} \end{aligned}$$

and:

$$B(k, T) = \mathbb{E}[\phi_{kT}] \mathbb{E}^* \left[\exp \left\{ \sum_{t=1}^T r_t^k - \sum_{s=1}^{kT} \left(\frac{1}{2} \|\lambda_s\|^2 + \lambda_s \cdot \epsilon_s^* \right) \right\} \right]$$

□

References

1. Møller, T.; Steffensen, M. *Market-Valuation Methods in Life and Pension Insurance*; Cambridge University Press: Cambridge, UK, 2007.
2. Wüthrich, M.V.; Bühlmann, H.; Furrer, H. *Market-Consistent Actuarial Valuation*, 2nd ed.; Springer-Verlag Berlin Heidelberg: Heidelberg, Germany, 2010.
3. Wüthrich, M.V.; Merz, M. *Financial Modeling, Actuarial Valuation and Solvency in Insurance*; Springer-Verlag Berlin Heidelberg: Heidelberg, Germany, 2013.
4. Brennan, M.J.; Schwartz, E.S. The pricing of equity-linked life insurance policies with an asset value guarantee. *J. Financ. Econ.* **1976**, *3*, 195–213.
5. Bühlmann, H. New Math for Life Actuaries. *ASTIN Bull.* **2002**, *32*, 209–211.
6. De Felice, M.; Moriconi, F. Market based tools for managing the life insurance company. *ASTIN Bull.* **2005**, *35*, 79–111.
7. Løchte Jørgensen, P. On accounting standards and fair valuation of life insurance and pension liabilities. *Scand. Actuar. J.* **2004**, *5*, 372–394.
8. Møller, T. Hedging equity-linked life insurance contracts. *N. Am. Actuar. J.* **2001**, *5*, 79–95.
9. Persson, S.-A.; Aase, K.K. Valuation of the minimum guaranteed return embedded in life insurance products. *J. Risk Insur.* **1997**, *64*, 599–617.
10. Grosen, A.; Løchte Jørgensen, P. Fair valuation of life insurance liabilities: The impact of interest rate guarantees, surrender options, and bonus policies. *Insur. Mathe. Econ.* **2000**, *26*, 37–57.
11. Steffensen, M. Surplus-linked life insurance. *Scand. Actuar. J.* **2006**, *1*, 1–22.
12. Tanskanen, A.J.; Lukkarinen, J. Fair valuation of path-dependent participating life insurance contracts. *Insur. Mathe. Econ.* **2003**, *33*, 595–609.
13. Hilli, P.; Koivu, M.; Pennanen, T. Cash-flow based valuation of pension liabilities. *Eur. Actuar. J.* **2011**, *1*, 329–343.
14. Schmidt, J.-P. Market-consistent valuation of long-term insurance contracts: Valuation framework and application to German private health insurance. *Eur. Actuar. J.* **2014**, *4*, 125–153.
15. Buchwalder, M.; Bühlmann, H.; Merz, M.; Wüthrich, M.V. Valuation portfolio in non-life insurance. *Scand. Actuar. J.* **2007**, *2*, 108–125.
16. Diers, D.; Eling, M.; Kraus, C.; Reuß, A. Market-consistent embedded value in non-life insurance: How to measure it and why. *J. Risk Financ.* **2012**, *13*, 320–346.
17. Heath, D.; Jarrow, R.; Morton, A. Bond pricing and the term structure of interest rates: A new methodology for contingent claims valuation. *Econometrica* **1992**, *60*, 77–105.
18. Cairns, A.J.G. *Interest Rate Models: An Introduction*; Princeton University Press: Princeton, NJ, USA, 2004.
19. Filipović, D.; Tappe, S. Existence of Lévy term structure models. *Financ. Stoch.* **2008**, *12*, 83–115.
20. Filipović, D.; Tappe, S.; Teichmann, J. Term structure models driven by Wiener processes and Poisson measures: Existence and positivity. *SIAM J. Financ. Math.* **2010**, *1*, 523–554.
21. Jarrow, R.; Yildirim, Y. Pricing Treasury Inflation Protected Securities and Related Derivatives using an HJM Model. *J. Financ. Quant. Anal.* **2003**, *38*, 337–358.

22. Hughston, L. *Inflation Derivatives*; Working Paper; Merrill Lynch and King's College: London, UK, 2007.
23. Eksi-Altay, Z.; Filipović, D. Pricing and hedging of inflation-indexed bonds in an affine framework. *J. Comput. Appl. Math.* **2014**, *259*, 452–463.
24. Aïd, R.; Féron, O.; Touzi, N.; Vialas, C. An arbitrage-free interest rate model consistent with economic constraints for long-term asset liability management. *Bank. Mark. Invest.* **2012**, *116*, 4–19.
25. Brigo, D.; Mercurio, F. *Interest Rate Models—Theory and Practice*, 2nd ed.; Springer-Verlag Berlin Heidelberg: Heidelberg, Germany, 2007.
26. Rebonato, R. *Modern Pricing of Interest-Rate Derivatives: The LIBOR Market Model and Beyond*; Princeton University Press: Princeton, NJ, USA, 2002.
27. Rebonato, R. *Term-Structure Models: A Review*; Technical Report; QUARC—Royal Bank of Scotland: Edinburgh, UK, 2003.

© 2015 by the authors; licensee MDPI, Basel, Switzerland. This article is an open access article distributed under the terms and conditions of the Creative Commons Attribution license (<http://creativecommons.org/licenses/by/4.0/>).