

Ilie, Elena Mihaela; Țincu, Carmen

Conference Paper

The social inclusion favoring development: Feature and also concept of the development strategies. Romania case

Provided in Cooperation with:

The Research Institute for Agriculture Economy and Rural Development (ICEADR), Bucharest

Suggested Citation: Ilie, Elena Mihaela; Țincu, Carmen (2015) : The social inclusion favoring development: Feature and also concept of the development strategies. Romania case, In: Agrarian Economy and Rural Development - Realities and Perspectives for Romania. 6th Edition of the International Symposium, November 2015, Bucharest, The Research Institute for Agricultural Economy and Rural Development (ICEADR), Bucharest, pp. 382-389

This Version is available at:

<https://hdl.handle.net/10419/163330>

Standard-Nutzungsbedingungen:

Die Dokumente auf EconStor dürfen zu eigenen wissenschaftlichen Zwecken und zum Privatgebrauch gespeichert und kopiert werden.

Sie dürfen die Dokumente nicht für öffentliche oder kommerzielle Zwecke vervielfältigen, öffentlich ausstellen, öffentlich zugänglich machen, vertreiben oder anderweitig nutzen.

Sofern die Verfasser die Dokumente unter Open-Content-Lizenzen (insbesondere CC-Lizenzen) zur Verfügung gestellt haben sollten, gelten abweichend von diesen Nutzungsbedingungen die in der dort genannten Lizenz gewährten Nutzungsrechte.

Terms of use:

Documents in EconStor may be saved and copied for your personal and scholarly purposes.

You are not to copy documents for public or commercial purposes, to exhibit the documents publicly, to make them publicly available on the internet, or to distribute or otherwise use the documents in public.

If the documents have been made available under an Open Content Licence (especially Creative Commons Licences), you may exercise further usage rights as specified in the indicated licence.

THE SOCIAL INCLUSION FAVORING DEVELOPMENT – FEATURE AND ALSO CONCEPT OF THE DEVELOPMENT STRATEGIES – ROMANIA CASE

ILIE (ȘERB) ELENA MIHAELA¹
ȚÎNCU (BENA) CARMEN²

Abstract: *There are three features as well as concepts of the development reforms which can be identified in the European Strategy 2020, namely: the intelligent development, the sustainable development and the inclusion aiding development. The hypothesis which supports the new development policy of the EU is based on the idea that a lasting and favourable for inclusion growth is crucial in order to diminish the long term poverty. This is why the development policies aim to stimulate the human capacity so that this could head to prosperity, wealth and the creation of new work places. Romania, once considered as the most important wheat producer in Europe, has the obligation and the opportunity to apply there principals, mainly in this field, agriculture. Starting from this aspect obviously some questions can arise: "To what extent has Romania put into practice this objective of the European Union?" or "which is the satisfaction level of the population working in the agricultural field?" As a result of our inquiry we have reached a purely statistical conclusion that will be further debated and discussed. Therefore, this is the theme of our research and this idea has led us to a complex area one with a complicated historical evolution and a troubled social-economic reality.*

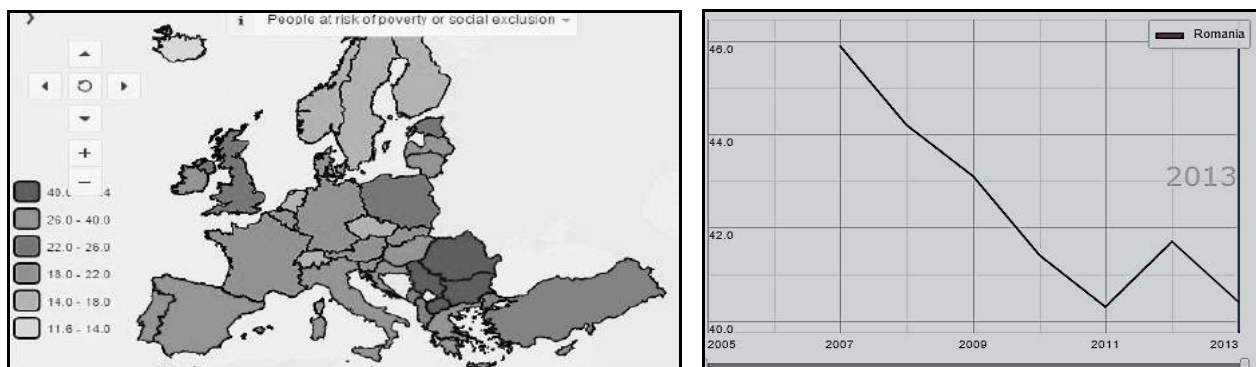
Key words: *agriculture, the sustainable development, the inclusion aiding development, the population employed in agriculture, average duration and quality of life.*

INTRODUCTION

To discuss about the politics of development of our country we have to bring into discussion the European Strategy 2020³, which is focused on three main objectives that are mutually reinforcing, namely: *intelligent development* in terms of economy based on knowledge and innovation; *sustainable development*, by promoting a competitive economy with low carbon emissions and an efficient use of resources, *the development favourable to population inclusion* on the labor field and the fight against poverty and social exclusion.

The process of social inclusion represents the assembly of measurements and multidimensional actions from the fields of social protection, employment, housing, education, health informing-communication, mobility, security, justice and culture, to combat social exclusion and ensuring participation of people in all economic, cultural and political aspects of society.⁴

According to the chart below about the *Situation of inclusion of European population*⁵ we can say that Romania falls into a high risk (40, 4%) of poverty and social exclusion.



¹ Ph. D Student, "Valahia" University of Targoviste; E-mail address: elenamihela_serb@yahoo.ro

² Ph. D Student, "Valahia" University of Targoviste; E-mail address: carmen_bena@yahoo.com

³ Strategia Europeană 2020 disponibilă online la adresa: http://ec.europa.eu/europe2020/index_ro.htm

⁴ According to Art. 6 lit. c) of the Law on Social Assistance nr. 292/2011

⁵ <http://ec.europa.eu/eurostat/web/europe-2020-indicators>

In this article we intend to answer the following questions: „*To what extent has Romania applied this objective of the European Union?*” and „*What is the degree of satisfaction of the population employed in agriculture?*”

The hypothesis we start from are the following:

- Romania has started the politic of social inclusion to fulfil the objective of social nature of the European Union 2020.
- Young people (potential farmers) are not convinced of our country's policy regarding inclusion in agriculture.

Through the applied research methods we will demonstrate the perception which people have about the policy of inclusion in employment.

MATERIAL AND METHODS

The development favourable to inclusion of population in agriculture

Agriculture in Romania, plays an important role in the rural economy, especially through the employment in villages. Although it is the most vulnerable sector of the Romanian economy, 30% of the country's population still works in agriculture using the old technology.

To highlight all the problems our country is facing in the agricultural sector we have processed some statistics⁶ relating to the politics of inclusion of agricultural population.

Thus, we have analysed the evolution of some indicators such as: the total employed population of Romania on the fields of activity, the average life expectancy, the unemployed and the unemployment rate, and we caught the following aspects:

1. Romania's population, compared to Moldova during 1990-2013, from July 1

Country	1990	2000	2005	2010	2012	2013
The Republic Of Moldova	4,4	3,6	4,2	4,1	4,1	4,1
Romania	23,2	22,4	21,3	20,2	20,1	20,0

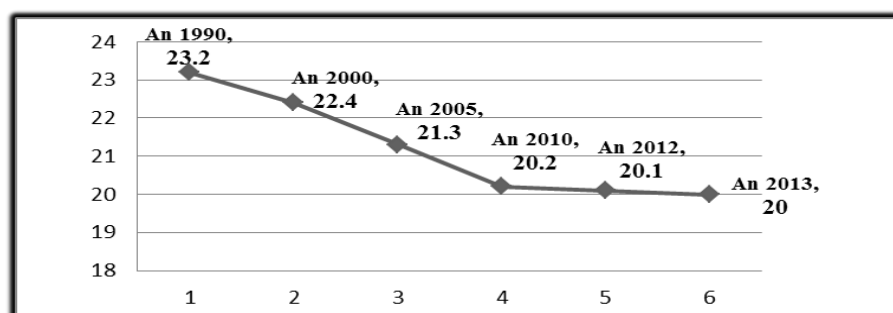


Fig.1 – The population of Romania (1990-2013)

2. The total employed population of Romania on the fields of activity, between 2010-2013

Country	The employed population SUM	Structure as a percentage of total employed population, the main activities			
		Agriculture, forestry and fishing	Industry	Construction	Trade
		1	2	3	4
Romania	8605,1	29,7	20,8	7,4	14,7

⁶ Processing statistical data from the statistic Annuary of Romania, edition 2014

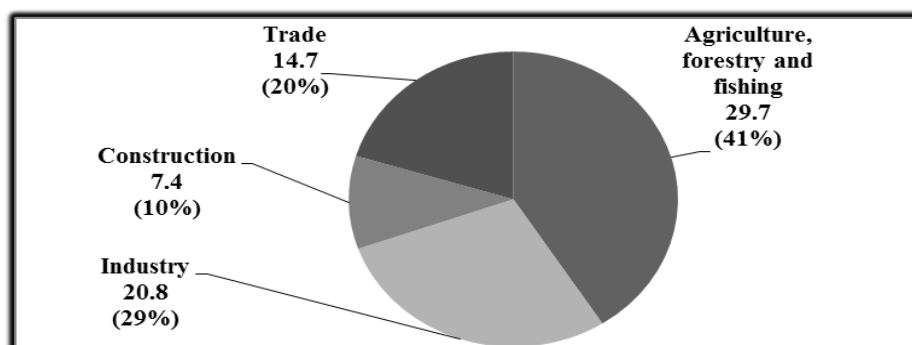


Fig.2 – The employed population at the end of 2012

3. The average life expectancy

Country	years	
	Men	Ladies
Romania	71	78

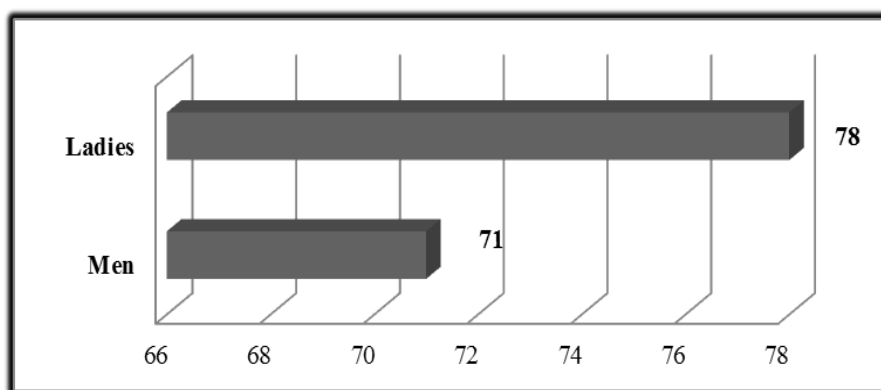


Fig.3 – Average life according to sex

4. The unemployed and the unemployment rate

Indicators	Romania				
	2008	2009	2010	2011	2012
	1	2	3	4	5
Unemployed - thousand persons	549	624	652	660	627
Unemployment rate - %	5,6	6,5	7,0	7,2	6,8

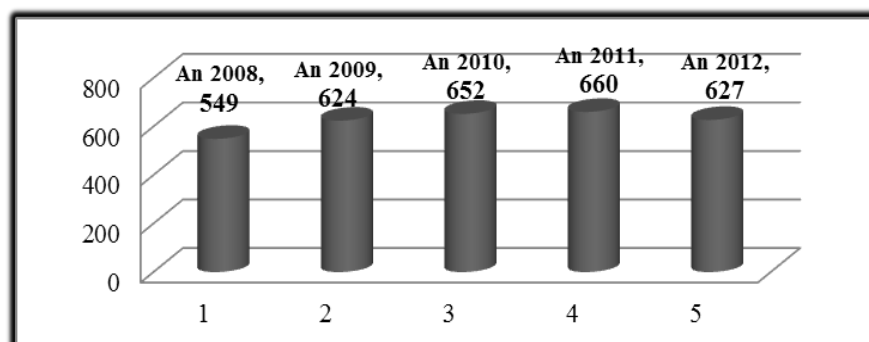


Fig. 4 – The unemployment

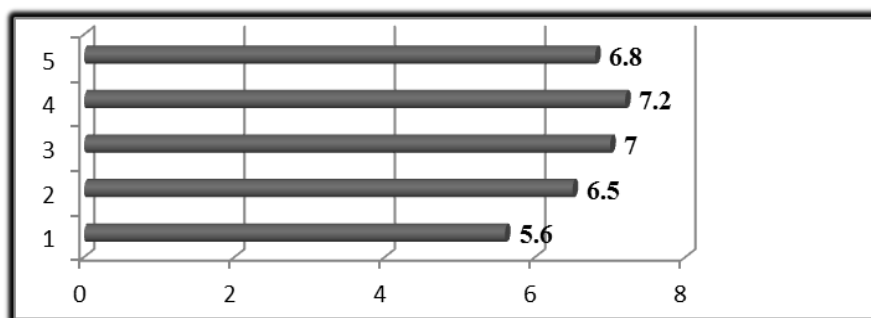


Fig.5 – The unemployment rate

Analysing all the indicators above, both under the form of a table and graphics, we notice that:

- the population of Romania is decreasing from year to year, from 23,2% in 1990 to 20,0% in 2013;
- the share of employed population in agriculture in 2010-2013 is higher (29,7%) than the population employed in industry (20,8%), commerce (14,7%) and construction (7,4%);
- referring to the number of unemployed, it has registered a fluctuating evolution from 549 thousand people in 2008 to 627 thousand people in 2012;
- also, the rate of unemployment is part of the same trend, increasing from 5,6% in 2008 to 6,8 % in 2012.

A number of factors have influenced the evolution of these indicators after 1990, among which we name: the poor living standards, perpetuating the system of employment in the fields of activity with no future, dismantling the large state companies, excessive taxation, the lack of interest towards foreign investments, the lack of correlation of the curricula with fields of activity where young people could work etc.

In this context, the European Union analysing the situation of the 28 EU state members provided them a package of financing from the European Agricultural Fund for Rural Development (FEADR) in order to modernize the agricultural exploitations, the support given to young farmers, sustainable management of land and improving infrastructure broadband.

Through the Program of Rural Development of Romania (PDR), adopted on 26 May 2015 by the European Commission were outlined the main priorities of our country for the period 2014-2020 with a total financing from European Union of 8,128 billion euros, representing a percentage of 8,18% of the total FEADR. Also, Romania will benefit of the amount of over 10, 6 billion euros for direct payments from the European Fund for Guarantee in Agriculture.⁷

The areas that this Program (PDR) will especially focus are: promoting competitiveness and restructuring the agricultural sector in Romania; environment protection and climatic changes; stimulating economic development; creating new jobs and a better quality of life in the villages in Romania.

Within the program of rural development young farmers will further benefit of financial aid grant up to 70.000 euros for the installation in the farm/opening a business in agriculture, professional training and consulting services⁸.

Regarding the County of Dâmbovița, the **agricultural production** is represented in a balanced way on the two components: growing vegetables and livestock. The production of vegetables is oriented towards grain cereals culture, potatoes, vegetables and fruit. Thus, in Dâmbovița's County, the productions of fruit, vegetables and potatoes place the region in the category of major producers of the country. In 2011 Dâmbovița's county gave 7, 3% from the production of fruit (107, 6 thousand tons, No. 2 in the country); 7, 3% from the production of vegetables (305, 0 thousand tons, no 2 in the country); 4, 8% of potato production (194, 3 thousand tons, no 5 in the country). In

⁷http://www.economica.net/romania-va-primi-10-6-miliarde-de-euro-subventii-directe-pe-suprafata-pana-in-2020-cat-ajunge-subventia_70328.html

⁸Idem ⁶

livestock production, Dâmbovița occupies the 3rd place in the hierarchy of Counties, in the production of eggs (256 million pieces with 4, 0%), the 7th place in total production of meat (48412 tons of weight in live with 3, 6%) and 20th place in the production of cow and buffalo milk (985 thousand with 2, 2 %).

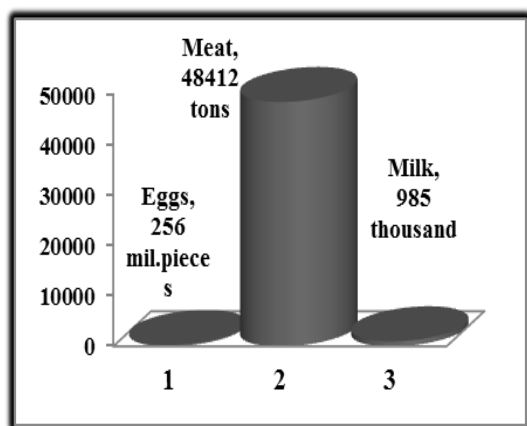


Fig.6 – The production of meat, eggs and milk

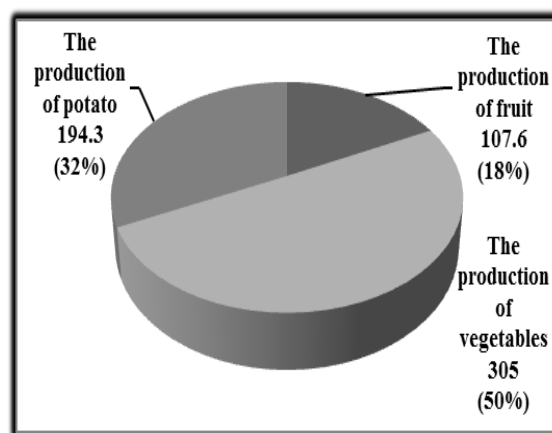


Fig. 7 – The production of fruit, vegetables and potato

RESULTS AND DISCUSSIONS

To achieve the second objective of our research we interviewed a few people with agricultural areas in very low households (having the possibility to cultivate at least one hectare) and graduates of high school who in the future can occupy a job in agriculture.

The sample included a total of 50 people in two areas of the country: one country's border and the capital area.

Thus, in Bucharest were interviewed 20 people of which: 10 were highly educated people and 10 were with secondary education, 10 of them having the status of unemployed.

In Dâmbovița's county were interviewed 30 people, 15 with higher education and 15 with secondary education, of which 28 people were unemployed (13 with higher education and 15 with secondary education).

The answers of those interviewed were represented both graphically and in a table.

The question	Answer	
	RURAL	URBAN
Living in rural or urban?	10	40

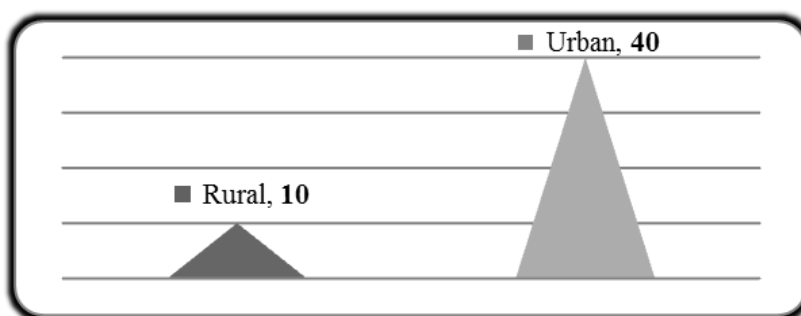


Fig. 8 – People living in urban and rural

The question	Answer			
	SUM	YES	NO	
Are you familiar with the policy of state support for young farmers Romanian?	50	11	22%	39 78%

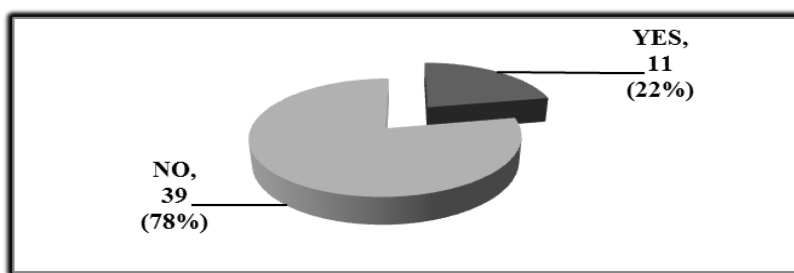


Fig.9 – People familiar with the agrarian policy

The question	Answer				
	SUM	YES		NO	
You have a steady job?	50	12	24%	38	76%

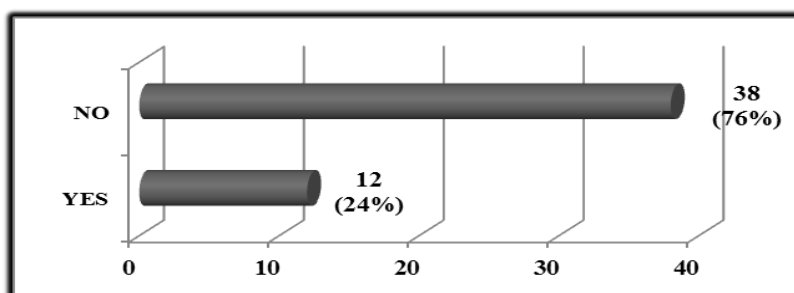


Fig.10 – Number of persons engaged

The question	Answer				
	SUM	YES		NO	
You agree to receive a support grant of 75,000 euros from the Romanian state to open a farm?	50	18	36%	32	64%

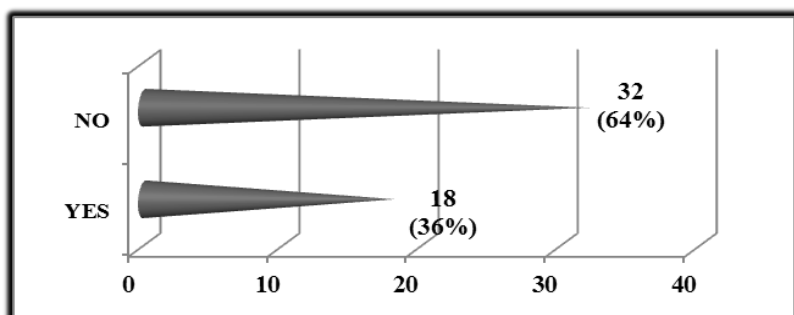


Fig.11 – Agreement for grant support from the state

The question	Answer						
	SUM	a)	b)	c)	d)	e)	f)
If your answer is negative, choose the reasons behind this choice:	50	10	20	10	5	3	2
a) low wages in agriculture;	(100%)	(20%)	(40%)	(20%)	(10%)	(6%)	(4%)
b) lack of stable employment;							
c) the fierce competition of large farms;							
d) climate change and the environment;							
e) bureaucracy;							
f) other.							

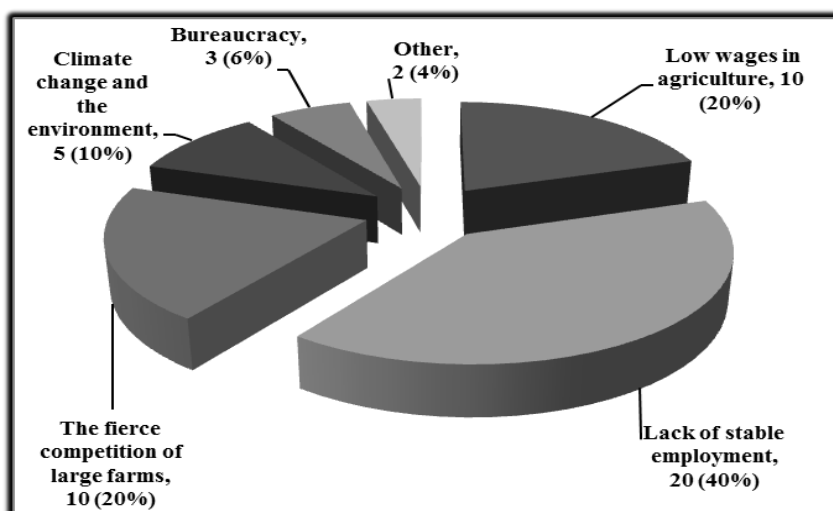


Fig.12 – Reasons for not leaving your current job

Our research based on the method of questionnaire highlighted the following aspects:

- the majority of the interviewed people live in urban areas;
- 78% are familiarized with the policy of support given by the Romanian state to young farmers;
- 24% have a job;
- 64% do not wish to benefit by the grant of 75.000 euros to open a farm;
- the reasons why these persons would not leave their current job are: instability of the job, (40%), low salary in agricultural area (20%), low wages in agriculture (20%), fierce competition of large farms (20%), climatic changes and environment (10%), bureaucracy (6%), another (4%).

CONCLUSIONS

Due to the changes in the economic-social sphere registered over the years in the Romanian society, the countryside has come to a difficult road to find their identity.

The moment of land restitution represented for small farmers a hope in increasing the quality of life in the villages. But without financial support and having outdated technology, the activity in agriculture remained, largely, not professionalized. However, the lure of urban areas, easier work and safe monthly income determined young people from villages to migrate to cities.

In this context, the rural population knows a demographic decline, being in a continuous declining and ageing.

However, almost 30 % of the population of Romania still conducts its activity in the agricultural sector.

After the research made we noticed that the majority of the interviewed people do not want to benefit from the policy of inclusion in the agricultural area proposed by the Program of Rural development of Romania, as they perceive a high risk.

Low attractiveness of the agricultural sector, as well as the decrease of the number of graduates of the schools with an agricultural profile are factors that contributed to the decrease of the level of preparation of managers of agricultural exploitations and to the removal of young farmers from the agricultural sector.

We believe that, for the development and modernization of the rural area we have to adopt the economic, social and environmental aspects of the sustainable development. Thus, among the awareness of rural population and the investments in the agricultural sector it is needed the investment in human capital through proper education, improvement of activity and the diversification of activities in the rural area.

BIBLIOGRAPHY

1. Dona, I., (2000), *Economie rurală*, Editura Economică, București
2. Ghețău, V., (2004), *Declinul demografic al României: ce perspective?*, Sociologie Românească, nr. 2/ 2004, 5-42
3. Istudor, N. (2006), *Dezvoltarea rurală și regională a României în perspectiva integrării în Uniunea Europeană*, Editura ASE
4. Voicu, M., Voicu, B., (2006), *Satul românesc pe drumul către Europa*, Editura Polirom, Iași
5. http://www.economica.net/romania-va-primi-10-6-miliarde-de-euro-subventii-directe-pe-suprafata-pana-in-2020-cat-ajunge-subventia_70328.html#ixzz3prhYr11Y
6. http://ec.europa.eu/agriculture/cap-for-our-roots/cap-reform/index_ro.htm
7. <http://www.pndr.ro/>
8. http://ec.europa.eu/europe2020/index_ro.htm
9. <http://www.madr.ro/docs/dezvoltare-rurala/programare-2014-2020/programe/Programul-National-de-Dezvoltare-Rurala-2014-2020-proiect.pdf>
10. <http://ec.europa.eu/eurostat/web/europe-2020-indicators>
11. Anuarul statistic al României, ediția 2014, p.361