

Fossen, Frank M.; Rees, Ray; Rostam-Afschar, Davud; Steiner, Viktor

Working Paper

How do entrepreneurial portfolios respond to income taxation?

Hohenheim Discussion Papers in Business, Economics and Social Sciences, No. 12-2017

Provided in Cooperation with:

Faculty of Business, Economics and Social Sciences, University of Hohenheim

Suggested Citation: Fossen, Frank M.; Rees, Ray; Rostam-Afschar, Davud; Steiner, Viktor (2017) : How do entrepreneurial portfolios respond to income taxation?, Hohenheim Discussion Papers in Business, Economics and Social Sciences, No. 12-2017, Universität Hohenheim, Fakultät Wirtschafts- und Sozialwissenschaften, Stuttgart, <https://nbn-resolving.de/urn:nbn:de:bsz:100-opus-13815>

This Version is available at:

<https://hdl.handle.net/10419/162796>

Standard-Nutzungsbedingungen:

Die Dokumente auf EconStor dürfen zu eigenen wissenschaftlichen Zwecken und zum Privatgebrauch gespeichert und kopiert werden.

Sie dürfen die Dokumente nicht für öffentliche oder kommerzielle Zwecke vervielfältigen, öffentlich ausstellen, öffentlich zugänglich machen, vertreiben oder anderweitig nutzen.

Sofern die Verfasser die Dokumente unter Open-Content-Lizenzen (insbesondere CC-Lizenzen) zur Verfügung gestellt haben sollten, gelten abweichend von diesen Nutzungsbedingungen die in der dort genannten Lizenz gewährten Nutzungsrechte.

Terms of use:

Documents in EconStor may be saved and copied for your personal and scholarly purposes.

You are not to copy documents for public or commercial purposes, to exhibit the documents publicly, to make them publicly available on the internet, or to distribute or otherwise use the documents in public.

If the documents have been made available under an Open Content Licence (especially Creative Commons Licences), you may exercise further usage rights as specified in the indicated licence.

UNIVERSITY OF HOHENHEIM

FACULTY OF BUSINESS, ECONOMICS AND SOCIAL SCIENCES



HOHENHEIM DISCUSSION PAPERS
IN BUSINESS, ECONOMICS AND SOCIAL SCIENCES

Institute of Economics

DISCUSSION PAPER **12**-2017

**HOW DO ENTREPRENEURIAL
PORTFOLIOS RESPOND TO INCOME TAXATION?**

Frank M. Fossen

University of Nevada

Ray Rees

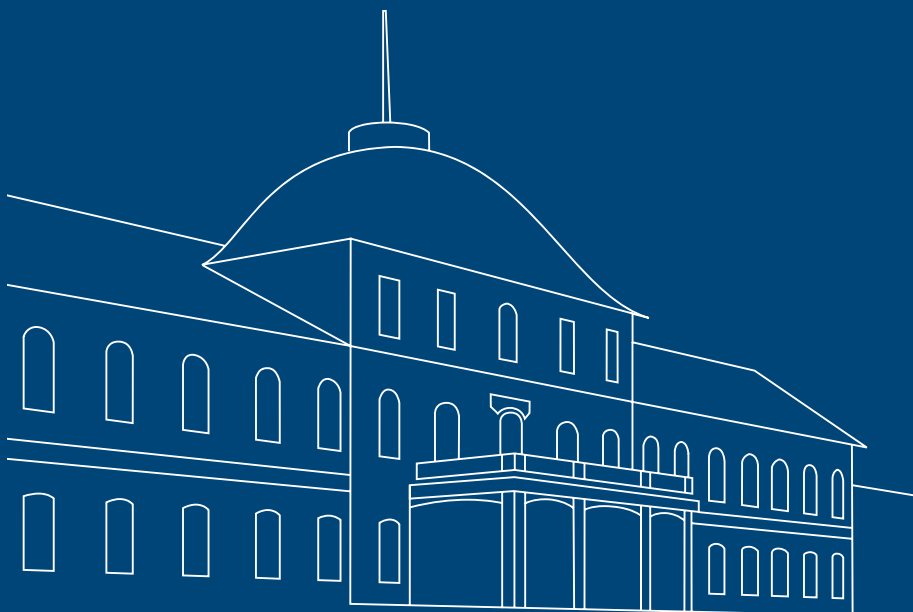
Ludwig-Maximilians-Universität München

Davud Rostam-Afschar

University of Hohenheim

Viktor Steiner

Freie Universität Berlin



www.wiso.uni-hohenheim.de

Discussion Paper 12-2017

How Do Entrepreneurial Portfolios Respond to Income Taxation?

Frank M. Fossen, Ray Rees, Davud Rostam-Afschar, Viktor Steiner

Download this Discussion Paper from our homepage:

<https://wiso.uni-hohenheim.de/papers>

ISSN 2364-2076 (Printausgabe)
ISSN 2364-2084 (Internetausgabe)

Die Hohenheim Discussion Papers in Business, Economics and Social Sciences dienen der schnellen Verbreitung von Forschungsarbeiten der Fakultät Wirtschafts- und Sozialwissenschaften. Die Beiträge liegen in alleiniger Verantwortung der Autoren und stellen nicht notwendigerweise die Meinung der Fakultät Wirtschafts- und Sozialwissenschaften dar.

Hohenheim Discussion Papers in Business, Economics and Social Sciences are intended to make results of the Faculty of Business, Economics and Social Sciences research available to the public in order to encourage scientific discussion and suggestions for revisions. The authors are solely responsible for the contents which do not necessarily represent the opinion of the Faculty of Business, Economics and Social Sciences.

How Do Entrepreneurial Portfolios Respond to Income Taxation?[☆]

July 4, 2017

Frank M. Fossen^a, Ray Rees^b, Davud Rostam-Afschar^c, Viktor Steiner^d

^a*Department of Economics, University of Nevada, Reno, NV 89557-0030, USA; DIW Berlin; IZA Bonn*

^b*CES, Faculty of Economics, Ludwig-Maximilians-Universität München, Schackstr. 4, 80539 München, Germany*

^c*Department of Economics, Universität Hohenheim, 70593 Stuttgart, Germany*

^d*Department of Economics, Freie Universität Berlin, Boltzmannstr. 20, 14195 Berlin, Germany*

Abstract

We investigate how personal income taxes affect the portfolio share of personal wealth that entrepreneurs invest in their own business. In a reformulation of the standard portfolio choice model that allows for underreporting of private business income to tax authorities, we show that a fall in the tax rate may increase investment in risky entrepreneurial business equity at the intensive margin, but decrease entrepreneurial investment at the extensive margin. To test these hypotheses, we use household survey panel data for Germany eliciting the personal wealth composition in detail in 2002, 2007, and 2012. We analyze the effects of personal income taxes on the portfolio shares of six asset classes of private households, including private business equity. In a system of simultaneous demand equations in first differences, we identify the tax effects by an instrumental variables approach exploiting tax reforms during our observation period. To account for selection into entrepreneurship, we use changes in entry regulation into skilled trades. Estimation results are consistent with the predictions of our theoretical model. An important policy insight is that lower taxes drive out businesses that are viable only due to tax avoidance or evasion, but increase investment in private businesses that are also worthwhile in the absence of taxes.

Keywords Taxation · entrepreneurship · portfolio choice · investment

JEL Classification H24 · H25 · H26 · L26 · G11

[☆]We thank participants at the Workshop on Self-Employment/Entrepreneurship and Public Policy at Oslo Fiscal Studies in 2016 and seminar participants at Freie Universität Berlin, University of Bath, University of Canterbury, University of Nevada, Reno, and Universität Hohenheim, for valuable comments. The usual disclaimer applies.

Email addresses: ffossen@unr.edu (Frank M. Fossen), ray.rees@lrz.uni-muenchen.de (Ray Rees), davud.rostam-afschar@uni-hohenheim.de (Davud Rostam-Afschar), viktor.steiner@fu-berlin.de (Viktor Steiner)

1. Introduction

Taxes influence the decisions of households on which assets to hold and how much to invest in each asset type. A growing empirical literature has analysed the effects of personal income taxes on household portfolio allocation (Feldstein 1976; Hubbard 1985; King and Leape 1998; Poterba 2002a,b; Poterba and Samwick 2002; Alan et al. 2010; Ochmann 2014). The literature considers tax effects on investment in assets such as owner-occupied housing, rental property, and various forms of financial assets. However, the literature is mostly silent about the impact of taxes on private business equity, i.e., the share of wealth that entrepreneurial households invest in their own businesses. Closing this knowledge gap is an important task from the perspectives of academics and policymakers. In Germany (the United States), 8% (9%) of the population own private business equity, and these entrepreneurs on average allocate as much as 40% (42%) of their wealth to their own businesses. Although entrepreneurial households form a minority among households, they hold a large share of aggregate wealth because they are much wealthier on average than other households: The average net worth of entrepreneurs is more than five times as much as that of non-entrepreneurs in Germany and even seven times as much in the United States.¹ Thus, tax effects on entrepreneurial portfolio allocation may dominate tax effects on aggregate capital allocation in the economy. In modern knowledge-based economies, innovation, economic growth and job creation depend on the willingness of entrepreneurs to take risky investments (Carree and Thurik 2003; Acs and Audretsch 2005; van Praag and Versloot 2007). This underscores the importance of understanding the effects of tax policy on entrepreneurial choice and investment.

Although the empirical results from the existing literature on household portfolio allocation are far from conclusive, they can generally be rationalized by the standard portfolio choice model. However, when we add entrepreneurial equity to the empirical analysis, the standard theory fails to explain the data. We therefore extend the model by allowing for tax sheltering of private business income. Our extended model, which nests the standard model in case of no sheltering, leads to predictions that are consistent with our empirical findings.

More specifically, we model an entrepreneur's choice of the asset composition of her portfolio. We first present a simple model in which a portfolio consists of a risky and a riskless asset, the returns from which are subject to the same tax rate. We distinguish between the decisions on whether to hold anything of an asset or not—the extensive margin—and, conditional on that, how much of the asset to hold—the intensive margin. We show that in the standard model, a change in the income tax rate, while it induces a change at the intensive margin, does not change the decision at the extensive margin, as long as the tax rate remains below 100%. Thus empirical evidence showing that when there is a fall in the tax rate, there is a reduction in the probability of holding the risky asset *together with* an increase in investment conditional on holding the asset cannot be rationalised in this model. At best it represents a puzzle, at worst a rejection of the model.

However, assuming that tax avoidance or evasion in the form of shifting, concealing or underreporting business income—what we refer to as “sheltering” income from taxation—is relatively less costly than for most other forms of asset, we extend the model to show that a fall in the tax rate reduces the attractiveness of investments that are only profitable when part of their return is sheltered. The reason is that lower taxes reduce the net return to sheltering

¹The U.S. figures are from Gentry and Hubbard (2004).

relative to its cost. This can account for the reduction in investment at the extensive margin. In contrast, investments that are profitable in the absence of taxation become more profitable when the tax rate falls and, to the extent that tax sheltering also takes place for these investments, this would also tend to increase reported income and investment. Therefore, we hypothesize that the effect of a fall in the tax rate on the portfolio share of private business equity is negative at the extensive margin, but positive at the intensive margin.

In our empirical model there are six classes of assets, including own business equity. We provide empirical evidence on how marginal tax rates affect the shares of personal wealth held in business equity as well as the other asset forms. We find that lower marginal personal income tax rates significantly decrease the probability of holding private business equity, but increase the conditional wealth share that entrepreneurs invest in their own business. This is contrary to the standard portfolio model but in line with the tax sheltering model just discussed.

For our estimations, we use the German Socio-economic Panel (SOEP), an annual household survey that collected detailed data on the personal wealth composition in 2002, 2007, and 2012, and a comprehensive tax-benefit microsimulation model for Germany to calculate marginal personal income tax rates. We estimate a system of simultaneous demand equations in first differences eliminating unobserved individual fixed effects. The effects of the endogenous individual tax rate are identified by an instrumental variables approach of [Gruber and Saez \(2002\)](#) exploiting tax reforms and bracket creeping during our observation period. We also use legislation changes on entry regulation into skilled trades in 2004 (see [Rostam-Afschar 2014](#)) to account for selection into entrepreneurship. Our results indicate that a decrease in the marginal tax rate by 10 percentage points increases the portfolio share of private business equity conditional on owning a private business by 2.3% of the average conditional portfolio share (39%), but decreases the unconditional portfolio share by 2.9% of the unconditional average (3%). An important policy insight is that lower taxes drive out businesses that are viable only due to tax sheltering, but increase investment in private businesses that are also worthwhile in the absence of taxes.

One reason why the existing empirical literature analysing tax effects on household portfolio choice listed above has mostly excluded own business equity is that most data bases do not provide this information. An exception is [Samwick \(2000\)](#), who includes private business equity in his empirical portfolio choice analysis using the 1998 wave of the U.S. Survey of Consumer Finances, but he does not focus on this asset type. Another reason why most of the literature has not included private business equity may be that entrepreneurial business assets do not fit into the standard portfolio choice model and require specific considerations not only because of their risky nature, but also because of the potentially important role played by tax sheltering opportunities.

A second related stream of empirical literature investigates effects of income taxes on entrepreneurship as an occupational choice ([Bruce 2000](#); [Gentry and Hubbard 2000](#); [Bruce and Mohsin 2006](#); [Cullen and Gordon 2007](#); [Fossen 2009](#); [Fossen and Steiner 2009](#); [Hansson 2012](#); [Wen and Gordon 2014](#)). The literature is far from conclusive, with papers reporting both positive effects of personal income tax rates on entrepreneurial choice ([Cullen and Gordon 2007](#)) and negative effects ([Hansson 2012](#)). One of the reasons for the inconclusiveness of this literature may be its limitation to the binary occupational choice. The operationalisation of entrepreneurship as an occupational choice is closely related to the extensive margin of entrepreneurial investment that we are explicitly considering in this paper. In our data, more than three quarters of business owners (who report positive private business equity) also indicate that self-employment is their main occupation. However, we go beyond the binary choice model by extending the analysis

to the intensive margin of entrepreneurial portfolio investment. Our finding of opposite tax effects at the extensive and intensive margins, which we can explain with our extended theoretical model, contributes to reconciling the results from the binary choice literature. Even if we assume that entrepreneurs have a strong preference for self-employment because of the independence and autonomy it brings, our sheltering model still predicts a negative effect of a tax cut at the extensive margin. The cost of that independence and autonomy increases for business investment that is unprofitable in the absence of sheltering, when the return to sheltering, the tax rate, falls.

The paper proceeds as follows. Section 2 presents our theoretical model explaining how tax changes may affect holdings of a risky asset, with different signs at the extensive and intensive margins, and Section 3 goes on to set out our econometric strategy. In Section 4, we provide relevant information on the personal income tax reforms and the reform of entry regulation in Germany that we exploit to identify tax and selection effects. Section 5 describes the panel data we use, and Section 6 presents our empirical results. Section 7 concludes the analysis.

2. Theoretical Model of Entrepreneurial Portfolio Choice

Portfolio choice under taxation in the presence of a risky asset such as own business equity has long been discussed in the theoretical literature (Domar and Musgrave 1944; Sandmo 1977; Feldstein and Slemrod 1980; Auerbach and King 1983; Konrad 1991). While this literature has focused on the intensive margin of portfolio investment, another literature stream has evolved that more specifically discusses tax effects on entrepreneurial choice as a decision at the extensive margin (Kanbur 1981; Gentry and Hubbard 2000; Cullen and Gordon 2007). In the following, we develop a portfolio choice model that allows for tax sheltering of private business income and that consistently generates predictions for both the extensive and intensive margins of portfolio choice.

In the standard portfolio choice model, a risk averse investor with given initial wealth maximizes end of period utility by choosing a portfolio consisting of a safe and a risky asset, and will hold a positive amount of the latter if and only if its expected return net of the safe rate of return is positive. Imposing the same proportional rate of income tax on the returns to both assets cannot change this sign, and, *a fortiori*, reducing this tax rate cannot induce the investor to move to a corner solution in which she would hold none of the risky asset—the net return must vary inversely with the tax rate. Therefore, an empirical observation that shows a fall in the tax rate having this effect cannot be rationalized in this model and so presents a “puzzle”, or, more accurately, a rejection of the model.

When the model is applied to a class of decisions for which the risky asset is the business income of an individual entrepreneur however, a straightforward rationalisation of the observation that the tax rate has opposite effects at the extensive and intensive margins suggests itself. If part of the business income can be sheltered in such a way that its net of tax return increases relative to that of the safe asset, the return to which cannot be sheltered, it can happen that a business investment that would not be undertaken in the absence of taxation because its net return is negative could actually become profitable in the presence of a suitably high tax rate, since this is the rate of return to sheltering.² In

²We are not specifying whether sheltering of business income is due to legal tax avoidance activities such as profit shifting or illegal tax evasion. In practice, it is likely that a mixture of both occurs, although it is of course very hard to find direct evidence due to the very nature of income concealment. However, it is very plausible that income from private businesses, which must be declared by the entrepreneur, can be sheltered more easily than other income types such as wage and salary income or income from interest or dividends, all of which are subject to withholding taxes.

a population of such investments with a given distribution, a reduction in the tax rate could then eliminate the least profitable of them. At the same time, investment in projects whose net expected return in the absence of taxation is positive could be increased,³ so that the signs of the effects of the tax reduction at the extensive and intensive margins are the opposite of each other. The following model explores this intuition more rigorously.

We take a single entrepreneur who supplies capital $k \geq 0$ to her own business, and this has a risky return of \tilde{e} . In each given state of the world she shelters $\tilde{c} \in [0, k\tilde{e}]$ of this, and b is the holding of the safe asset, with a riskless rate of return of r . Note that we are assuming that she never shelters more than actual earnings, but allowing this possibility would simply strengthen the argument. It is also reasonable to assume that she never conceals negative returns.

The income tax rate is t and initial wealth is W_0 . The amount of income sheltered is chosen after the return is realised, and depends on how much is invested and the realised rate of return, as given by the continuously differentiable function $\tilde{c} = \gamma(k, \tilde{e})$, $\gamma_k, \gamma_{\tilde{e}} > 0$ and $\gamma(0, \tilde{e}) = 0$.

It is possible to set up more sophisticated tax sheltering models along the lines of [Allingham and Sandmo \(1972\)](#), [Yitzhaki \(1974\)](#) or [Lin and Yang \(2001\)](#) but this very simple one is sufficient for our results. The idea is that sheltered income can increase with the amount of investment in own business, but also depends on the return in each state, and is bounded above by $k\tilde{e}$ in *every* state. Underlying this function is a trade-off between the return to sheltering, the tax rate t , and costs of tax avoidance (tax planning and advising costs) or tax evasion (including costs associated with detection and punishment).

Ignoring taxation and sheltering for the moment, end of period wealth is

$$\tilde{W} = (1 + \tilde{e})k + (1 + r)(W_0 - k) \quad (1)$$

$$= (1 + r)W_0 + (\tilde{e} - r)k \quad (2)$$

and so *true* taxable (Haig/Simons) income is

$$\tilde{y} = \tilde{W} - W_0 = rW_0 + (\tilde{e} - r)k. \quad (3)$$

However, *reported* taxable income is

$$\tilde{y}_R = \tilde{y} - \tilde{c} \quad (4)$$

and so tax paid is

$$T = t[rW_0 + (\tilde{e} - r)k] - t\tilde{c}. \quad (5)$$

Thus the entrepreneur's true after tax income is

$$\tilde{y}_T = (1 - t)\tilde{y} + t\tilde{c} = (1 - t)[rW_0 + (\tilde{e} - r)k] + t\gamma(k, \tilde{e}) \quad (6)$$

and true after tax end of period wealth is $\tilde{W}_T = W_0 + \tilde{y}_T$.

Notice that this is implicitly assuming that negative business income can be set against positive income from the safe asset, and that there is full loss offset if total income is negative. We discuss this assumption below and show

³In general, as is well-known, the effect of a tax reduction on investment in a risky asset with expected return greater than the riskless rate is ambiguous, as it depends on how the risk aversion of the entrepreneur varies with income or wealth. But an increase in that investment is certainly very plausible.

that the main conclusions of the model are not affected by restrictions on the nature of tax offsets such as are usually found, for example in the German economy.⁴

Given a cdf $F(\tilde{\epsilon})$ the entrepreneur solves:

$$\max_k \bar{U} = E[u(\tilde{W}_T)] \quad (7)$$

subject to $k \geq 0$.

The FOC is⁵:

$$\frac{\partial \bar{U}}{\partial k} = E\{u'(\tilde{W}_T)[(1-t)(\tilde{\epsilon}-r) + t\gamma_k(k^*, \tilde{\epsilon})]\} \leq 0; \quad k^* \geq 0; \quad k^* \frac{\partial \bar{U}}{\partial k} = 0. \quad (8)$$

There are two equilibria of interest.⁶

1. Suppose first $k^* = 0$, implying also no sheltering. Since $k^* = 0 \Rightarrow \tilde{W}_T = [1 + (1-t)r]W_0$, the condition becomes

$$(1-t)E(\tilde{\epsilon}-r) \leq 0. \quad (9)$$

This is a necessary condition for no investment in the business, and is unaffected by the tax rate. If this condition is not satisfied, a positive k will be optimal even without sheltering, as in the standard model.

In the standard portfolio model without the possibility of income sheltering, if this is a local maximum it is also global since at all values of k , risk aversion implies

$$\frac{\partial^2 \bar{U}}{\partial k^2} = Eu''(\tilde{W}_T)\{[(1-t)(\tilde{\epsilon}-r)]^2\} < 0. \quad (10)$$

Thus the marginal expected utility lies below zero over the entire domain of k .

However, as we now show, in the presence of the possibility of sheltering it need not be the only local maximum, and so is no longer necessarily a global maximum.

2. If $0 < k^* < W_0$ we must have

$$\left. \frac{\partial \bar{U}}{\partial k} \right|_{k^* > 0} = Eu'(\tilde{W}_T)[(1-t)(\tilde{\epsilon}-r) + t\gamma_k(k^*, \tilde{\epsilon})] = 0 \quad (11)$$

with the second order condition, now evaluated at $k^* > 0$, given by

$$\frac{\partial^2 \bar{U}}{\partial k^2} = Eu''(\tilde{W}_T)\{[(1-t)(\tilde{\epsilon}-r) + t\gamma_k]^2 + Eu'(\tilde{W}_T)t\gamma_{kk}\} < 0. \quad (12)$$

The reason this maximum is now possible is that \bar{U} may no longer fall monotonically with k because of the possibility of sheltering part of the return $k\tilde{\epsilon}$, with the amount sheltered increasing with k .

For this interior solution to be strictly preferred to the corner solution we must have

$$E[u(W_0 + (1-t)(rW_0 + (\tilde{\epsilon}-r)k^*) + t\gamma(k^*, \tilde{\epsilon}))] > u([1 + (1-t)r]W_0). \quad (13)$$

The existence of such an interior maximum for any arbitrary tax rate t is of course not guaranteed. Necessary conditions for an interior local maximum to exist and be superior to $k^* = 0$ are⁷:

⁴It is possible to formulate a more complicated model without tax offsets for negative values of portfolio income, but our main conclusion, that tax changes can have opposite effects at the extensive and intensive margins, continues to hold.

⁵Asterisks denote optimal values.

⁶An equilibrium is also possible at a corner solution with $k = W_0$, but we need not consider this explicitly.

⁷Proof of this is a straightforward application of the Intermediate Value Theorem and is available from the authors on request.

There exists a critical value $k_C > 0$ such that, at the given tax rate:

$$E[u(W_0 + (1-t)(rW_0 + (\tilde{e} - r)k_C) + t\gamma(k_C, \tilde{e}))] = u([1 + (1-t)r]W_0) \quad (14)$$

$$\left. \frac{\partial \bar{U}}{\partial k} \right|_{k=k_C} > 0. \quad (15)$$

In words, there exists a positive k -value at which expected utility is equal to that at $k = 0$ and is strictly increasing at that point. Intuitively, the gain from sheltering in states of the world where $\tilde{e} > 0$ must be sufficient to compensate for negative net returns.

Figure 1 illustrates this. Curve AA corresponds to a level of the tax rate t_A such that $k^* > 0$ is a global maximum, while curve BB corresponds to a tax rate t_B at which the entrepreneur is just indifferent between the interior and corner solutions. We assume that $t_A > t_B$ and argue below that a further tax reduction (to t_C) would cause the corner solution to be strictly preferred, thus having a negative effect at the extensive margin.

If condition (14) is satisfied, the entrepreneur will have a risk premium $\rho_C > 0$ such that

$$E[(1-t)(rW_0 + (\tilde{e} - r)k_C) + t\gamma(k_C, \tilde{e})] = (1-t)rW_0 + \rho_C \quad (16)$$

implying

$$(1-t)E(\tilde{e} - r) + \frac{tE\tilde{c}}{k_C} = \frac{\rho_C}{k_C}. \quad (17)$$

This tells us that this case is more likely to arise the higher the tax rate, the greater the expected value of sheltered income, the less risk averse the entrepreneur and the smaller the absolute value of the (negative) expected net return. It is easy to construct examples in which this condition is satisfied.

Note that if $t = 1$, as long as *any* income can be sheltered a $k > 0$ must exist such that

$$E[u((1-t)(rW_0 + (\tilde{e} - r)k) + t\gamma(k, \tilde{e}))] = E[u(\gamma(k, \tilde{e}))] > u((1-t)rW_0) = 0. \quad (18)$$

Therefore, by continuity of \tilde{y}_T in t , there must exist an interval of t -values sufficiently close to 1 for which condition (14) is satisfied. On the other hand, at $t = 0$ these conditions cannot be satisfied, and again by continuity there will be an interval of t -values at which the corner solution is optimal. How large these respective intervals are will be determined by the parameters of the model.

We can then conclude that the population of entrepreneurs could be distributed such that at any tax rate a marginal reduction in the rate will cause some to switch from the interior to the corner solution. These can however only be entrepreneurs for whom $E(\tilde{e} - r) \leq 0$, since those for whom $E(\tilde{e} - r) > 0$ will never choose the corner solution regardless of the tax rate. Thus the reduction in tax rate drives out at least some of the entrepreneurs who only invest because of the possibilities of tax sheltering.⁸ The effects on k of tax changes for those entrepreneurs who would be in business in the absence of taxation, with $E(\tilde{e} - r) > 0$, are ambiguous, depending as they do on the interplay of income and substitution effects, but it is certainly not a puzzle if these are found to expand their investment when the tax rate falls.

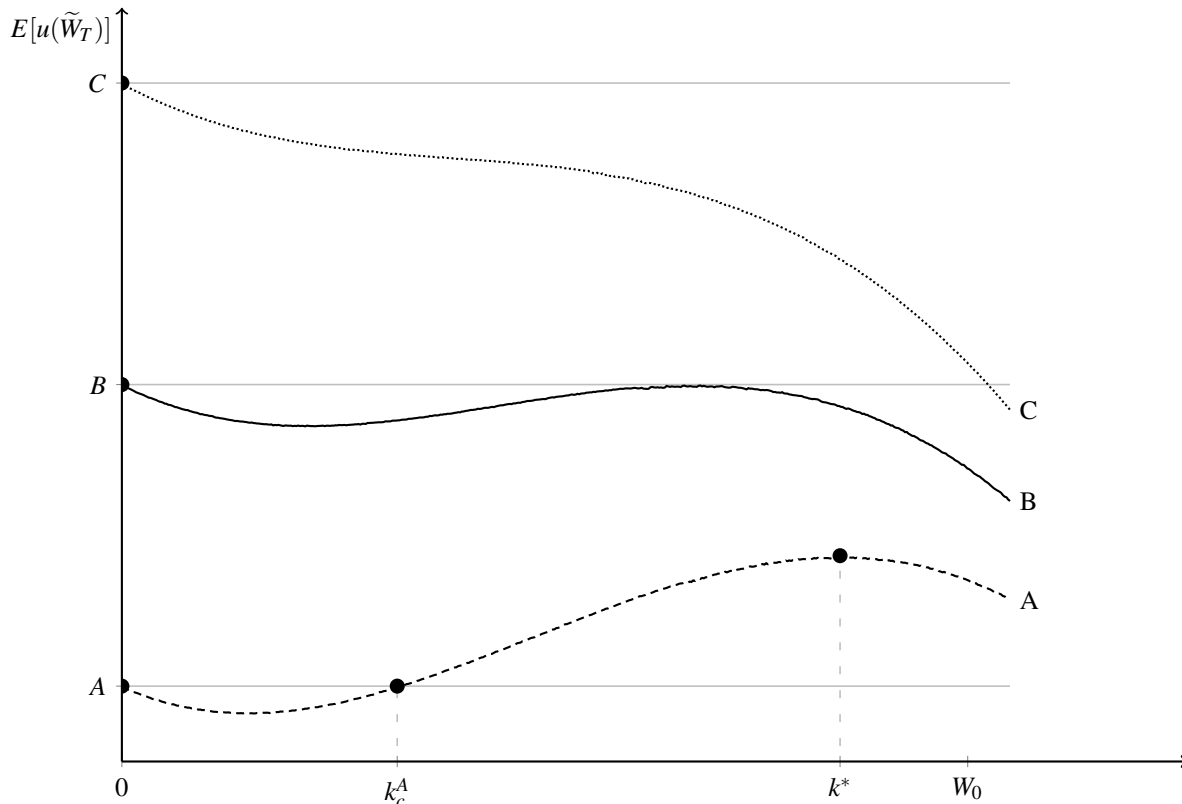


Figure 1: Optimal Investment in Entrepreneurship with Tax Sheltering.

Note: The figure shows an individual's optimal investment in entrepreneurship for a high tax rate (line AA), a medium tax rate (line BB), and a low tax rate (line CC), illustrating an example of an individual for whom entrepreneurship is only worthwhile due to taxation. With the high tax rate, this individual's optimal investment in entrepreneurship is positive ($k^* > 0$). When the tax rate is decreased, the individual reaches a situation where she is just indifferent between no investment or a positive investment in entrepreneurship. A further decrease in the tax rate makes the individual strictly better off when choosing not to be an entrepreneur (line CC). This example was generated using equally probable good and bad states of the world with returns to the risky asset of $\tilde{e}_{\text{Good State}} = 0.5$ and $\tilde{e}_{\text{Bad State}} = -0.6$, $r = 0$, tax rates $t_A = 0.50$, $t_B = 0.45$, and $t_C = 0.40$, $W_0 = 100$, preferences implying constant relative risk aversion $u(\tilde{W}_T) = \tilde{W}_T^{(1-\vartheta)}/(1-\vartheta) - 4 \times t$ with $\vartheta = 0.5$, and the sheltering function $\gamma(k, \tilde{e}) = \max[0, (k^2 - 0.005k^3) \times 0.0096 \times \tilde{e}]$.

In this simple model we have assumed full loss offset and a simple proportional income tax. On the other hand in the German tax system tax offset possibilities are restricted and the tax system is piecewise linear. Nevertheless we argue that this simple model is sufficient to resolve the puzzle of why the effects of tax changes can have opposite effects at the extensive and intensive margins. What matters is the possibility of income sheltering over the subset of states of the world in which $\tilde{e} > 0$. However, it is also true that the greater the generosity of tax offsets, the more likely it is that an optimum with $k^* > 0$ will exist.

At the same time, given that the marginal tax rate is determined by total income from all sources, effectively the full loss on one form of income is set against positive income from the other sources. Our sample does not contain

⁸This is not to imply that reducing the tax rate is the best way of dealing with tax evasion or avoidance.

individuals with zero or negative income in the aggregate. Moreover, in a piecewise linear tax system, any individual can be modelled as being faced by a linear tax with a virtual lump sum and a constant marginal tax rate. Decisions about allocations of capital and time between different income-earning activities are taken in the light of the net income each yields at the margin, and so the corner solution with the amount of income from a particular source set at zero represents the correct extensive margin for income from that source. This is in contrast to the case of, say, a multinational company deciding on the location of a new factory, or a second earner in a household deciding on whether to go out to work or not, where the average tax rate may be the more relevant one.

We now go on to test the implications of the theoretical model of entrepreneurial portfolio choice by explicitly modeling the extensive and intensive margins in a system of estimated asset demand equations using panel data covering the period 2002 to 2012. Tax rate effects are identified by exogenous changes in the income tax code that took place during the period under analysis.

3. Empirical Asset Demand Model with Endogenous Tax Rate

We formulate a system of equations to model demand of individual i in year t for asset class m . We distinguish between six asset types: Private business equity, owner-occupied housing, rental property, financial assets (stocks and bonds), life and private pension insurance, and tangible assets. The 6 linear equations

$$y_{mit} = X_{it}\beta_m + \mu_{mi} + u_{mit} \quad (19)$$

relate the share y_{mit} of asset class m in the private gross wealth portfolio of individual i to a set of explanatory variables X_{it} including the marginal tax rate, an unobserved individual specific effect μ_{mi} capturing individual tastes for certain assets, and a mean-zero error term u_{mit} .

Using panel data on private wealth portfolios, we can eliminate the unobserved fixed effect, in contrast to most of the literature on household portfolio choice, which does not use panel data methods. This is potentially important because unobserved preferences for certain asset classes could well be correlated with tax rates and bias results in cross-sectional estimations. In particular, our approach accounts for unobserved preferences for entrepreneurship such as desire for autonomy included in the fixed effect.

To identify tax effects on the extensive and intensive margins of asset demands, we estimate both the probability that an individual invests in a specific asset class at all and the demand for that asset, conditional on investing in this asset. From an econometric perspective, since most individuals hold incomplete portfolios (King and Leape 1998), for consistent estimation of the coefficient vector β_m in equation (19) we need to account for the choice of investing in a specific asset class in the first place. This is particularly important in our setup because we extend the set of asset classes considered in King and Leape (1998) by including business equity, which most households do not hold.

To predict selection into ownership we assume that

$$y_{mit} > 0 \text{ iff } v_{mit} < Z_{it}\gamma_m + \alpha_{mi}, \quad (20)$$

$$y_{mit} = 0 \text{ iff } v_{mit} \geq Z_{it}\gamma_m + \alpha_{mi}, \quad (21)$$

where v_{mit} is an error term and α_{mi} is an individual specific fixed effect that again contains unobserved tastes for certain assets. Z_{it} is a vector of selection variables that includes X_{it} and additional variables we discuss further below.

Assume that $E(u_{mit}u_{mjt}) = \sigma_{mu}$ and $E(v_{mit}u_{mjt}) = \rho\sigma_v\sigma_{mu}$ if $i = j$, and that these moments are zero otherwise. To account for the individual fixed effects we extend the selection correction method in [Olsen \(1980\)](#) assuming that v_{mit} is uniformly distributed over $[0, 1]$. Then the predicted probability of selection is

$$Pr(v_{mit} < Z_{it}\gamma_m + \alpha_{mi}) = Z_{it}\gamma_m + \alpha_{mi}, \quad (22)$$

so that the vector γ_m can be consistently estimated using the linear probability model in first differences (see [Appendix A.1](#)). Note that the standard probit model is not suitable for estimation in first differences. Thus, in a first step, we estimate the selection equation (22) into asset holding using a linear probability model for each asset class and estimate these equations in first differences to allow for individual and asset-class specific effects. This provides estimates of the coefficient vectors $\hat{\gamma}_m$.

In a second step, we estimate the conditional expectation of the asset demand system ([Shonkwiler and Yen 1999](#)). In our setting the estimation equation, derived in [Appendix A.2](#), is

$$E(y_{mit}|X_{it}) = (Z_{it}\gamma_m)X_{it}\beta_m + \delta_m[(Z_{it}\gamma_m)^2 - Z_{it}\hat{\gamma}_m], \quad (23)$$

where $\delta_m = \rho_m\sigma_{mu}\sqrt{3}$ is the coefficient for the selection term, and ρ_m measures the correlation of v_{mit} and u_{mit} . In order to estimate this equation, we transform the vector of variables X_{it} to $(Z_{it}\hat{\gamma}_m)X_{it}$ and include the predicted selection terms $(Z_{it}\hat{\gamma}_m)^2 - Z_{it}\hat{\gamma}_m$ as additional regressors. We jointly estimate six asset demand equations using 3SLS in first differences to eliminate the unobserved fixed effect.

The marginal tax rate is endogenous to both the choice to hold a specific asset class and the share of the overall portfolio invested in a given class. The reason is that certain investments may change income, which may influence the marginal tax rate due to the progressivity of the tax schedule. To deal with this endogeneity, we estimate the selection equation (22) and the wealth share equation (23) based on the instrumental variable method. We use the tax-benefit microsimulation model STSM ([Steiner et al. 2012](#)) to simulate individual marginal personal income tax rates.⁹ To construct an exogenous instrument for the marginal tax rate, we follow the approach of [Gruber and Saez \(2002\)](#). We first update individual incomes from 2002, the first year in our data, to forecast hypothetical incomes in 2007 and 2012, using the consumer price index. These are the incomes that taxpayers would have received had incomes changed solely due to inflation without any behavioral adjustments. Then we calculate predicted marginal tax rates based on the forecasted incomes using the tax codes of the respective years. We use these predicted marginal tax rates as instrument for the endogenous actual marginal tax rates that are calculated based on observed incomes. Variation in the changes of the predicted marginal tax rates over time exclusively stem from changes in tax laws and bracket creep during our observation period that affect different taxpayers to different degrees due to the nonlinearities and discontinuities of the tax schedule. These effects of tax reforms and inflation are exogenous to the individual.

⁹This tax calculator takes into account the details of the German tax and benefit system and its changes over time, including, for example, the rules for income splitting by married couples and child allowances.

Section 4 describes the relevant tax reforms during our period of analysis that provide exogenous variation for the identification of tax effects.

In the portfolio share equation (23), besides the marginal tax rate, the transformed variables $(Z_{it} \hat{\gamma}_m)X_{it}$ are also endogenous because Z_{it} includes the marginal tax rate. As instruments for $(Z_{it} \hat{\gamma}_m)X_{it}$ we therefore use modified versions of the transformed variables $(Z_{it}^{IV} \hat{\gamma}_m)X_{it}$ where we replace the marginal tax rate with the simulated marginal tax rate. Analogously, we treat the selection term as endogenous as well and use $(Z_{it}^{IV} \hat{\gamma}_m)^2 - Z_{it}^{IV} \hat{\gamma}_m$ based on the simulated marginal tax rate as its instrument.

The vector of variables X_{it} includes controls for time-varying heterogeneity both in the ownership and the portfolio share equations. It is important to control for possibly nonlinear effects of income because income is correlated with the marginal tax rate and is likely to influence portfolio choice. We use monthly gross income, i.e. before tax, because taxes paid are potentially endogenous. Further control variables include net worth and its square,¹⁰ age and its square, the number of children in the household, marital status, the willingness to take risks measured on an 11-point Likert scale, and local GDP per capita (at the level of Germany's 96 Spatial Planning Regions). By eliminating individual fixed effects, we also control any time-invariant characteristics such as gender and ethnicity.

Including the selection term $(Z_{it} \gamma_m)^2 - Z_{it} \gamma_m$ in equation (23) controls for selection into holding a particular asset class (most importantly, business ownership) based on unobservables, similar to the inverse Mill's ratio in a standard Heckman selection model. In principle, the selection terms' coefficients δ_m are identified by the nonlinear functional form of the selection term, but identification is stronger when exclusion restrictions exist. Reforms in entry regulation into entrepreneurship in 2004 (see Section 4) are likely to have an effect on the probability of being an entrepreneur, but not on the portfolio share invested in one's own business conditional on being an entrepreneur. Similarly, changes in the local unemployment rate over time affect individual entrepreneurial choice because individuals are pushed into self-employment when it is difficult to find paid employment (Evans and Leighton 1989), but we do not expect an effect on the conditional portfolio share after controlling for changes in regional GDP. Therefore, we include the local unemployment rate (at the Spatial Planning Region level) and interaction terms that capture the effect of the 2004 reform of entry regulation in Z_{it} but exclude these variables from X_{it} .

Our approach of estimating portfolio choice in two steps is flexible and does not restrict the signs of tax effects to be the same at the extensive margin (asset ownership) and the intensive margin (conditional portfolio share of the same asset). In this respect, our empirical model is similar to that used in King and Leape (1998), although these authors have access to cross-sectional data only and cannot eliminate unobserved individual fixed effects. In contrast, the Tobit model frequently used in the literature (Poterba and Samwick 2002; Alan et al. 2010; Fossen and Rostam-Afschar 2013) implicitly imposes the restriction that the sign be the same at both margins. Since our theoretical model allows for opposing signs of tax effects at the extensive and intensive margins, it is important to use a general empirical specification that does not impose such a restriction.

¹⁰Net worth is gross wealth, i.e. the sum of all assets, minus liabilities. We do not include gross wealth as a control variable because the leverage decision is presumably endogenous.

4. Identification of Tax and Selection Effects Through Legislation Changes

4.1. Personal Income Tax Reforms

To identify the effects of marginal personal income tax (PIT) rates on portfolio choice, we rely on changes in the tax code over time. The changes in marginal tax rates are of different magnitudes for different persons at different points in time and can be considered exogenous for the individual. In this section, we briefly describe the relevant German tax reforms that provide quasi-experimental variation in our time period of analysis (2002-2012). We simulate all the details in the German tax laws and their changes over time to calculate individual marginal tax rates.

Germany follows the principle of comprehensive income taxation to a large extent. The same PIT schedule is applied for most income sources such as wage and salary income or profits from self-employment and unincorporated businesses. Profits of unincorporated businesses are passed through to their owners and are subject to the owners' PIT (transparent taxation). In contrast, corporations are legal entities and subject to a flat corporate income tax. Unincorporated businesses are much more important in Germany than in other countries. In 2012, only 13% of the enterprises in Germany that were large enough to pay turnover tax (generally when the turnover exceeds 17,500 Euro per year) were incorporated ([German Federal Statistical Office 2016](#)). Including entrepreneurs with lower turnover, who are almost exclusively unincorporated, would shrink the share of incorporated firms even more, although no exact statistics are available. Therefore, in our analysis, we focus on unincorporated businesses.

The PIT schedule is directly progressive. After a basic allowance, there are two progressive zones with continuously increasing marginal tax rates, followed by a tax bracket with a constant marginal tax rate. In 2007, an additional bracket was introduced ("rich tax", see below). On top of income tax, the so-called "solidarity surcharge" is levied at a rate of 5.5% of the PIT liability for higher incomes, initially introduced to finance the reunification of Germany.

The personal income tax underwent several reforms between 2002 and 2012. Figure 2 displays the statutory marginal PIT rates for unmarried persons in 2002, 2007 and 2012, the three years we use in our empirical analysis. The top marginal income tax rate was reduced from 48.5% in 2003 to 42% in 2005. The "rich tax" reform in 2007 introduced an additional tax bracket with a new top marginal income tax rate of 45% for incomes in excess of 250,000 Euro (not visible in the figure). The lowest marginal tax rate was decreased from 19.9% in 2003 to 15% in 2005 and further to 14% in 2009. The basic allowance was raised several times and amounted to 7235 Euro in 2002, 7664 Euro in 2007 and 8004 Euro in 2012 for a single taxpayer and double these amounts for a married couple filing jointly.

Another tax reform was implemented in 2009. Before this date, interest and dividend income were taxed jointly with income from other sources using the PIT schedule. For dividend income, a shareholder tax relief of 50% was applied to account for taxes already paid by the corporation (corporate income tax plus solidarity surcharge and local business tax). From 2009 on, a separate final withholding tax for interest and dividend income was introduced instead at a flat rate of 25% plus solidarity surcharge. In turn, the shareholder relief for dividends was abolished, so dividends were effectively taxed at a similar rate as before, taking into account taxes paid at the corporation level.

Since 2008, unincorporated partnerships have the option to tax retained earnings at a rate of 28.25% instead of the personal tax rate of the PIT schedule. Once the profit is withdrawn, a follow-up tax of 25% is due. This option is

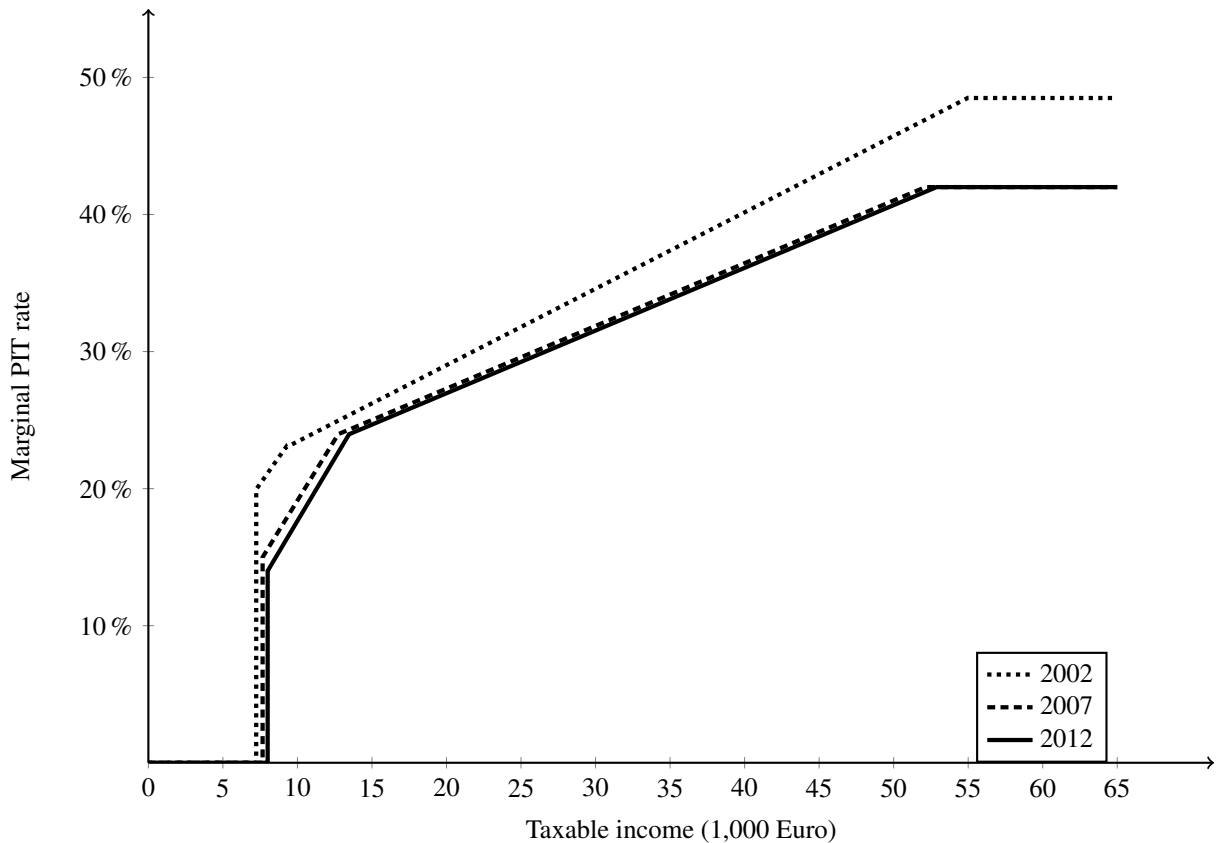


Figure 2: Personal Income Tax Reforms in Germany.

Note: Statutory marginal PIT rates for unmarried persons in 2002, 2007 and 2012.

therefore only attractive for a small number of entrepreneurs who face high marginal tax rates and who intend to retain their profits for a long time.¹¹

In the German PIT, apart from setting losses against positive income from other sources, losses can also be carried back to the previous year or carried forward for an unlimited number of years. While losses below 1 million Euro (2 million in case of married couples) can be carried forward in full, since 2004 only 60% of the part of a loss that exceeds these thresholds can be carried forward. Since the thresholds are fairly large, these loss offset restrictions are hardly relevant for the entrepreneurs in our sample, who have a mean monthly income of 4,527 Euro (see Table 3).

The changes in the PIT schedule generated quite substantial variation in the shifts of marginal PIT rates for different taxpayers over time. For instance, because for married couples joint filing is the rule, the tax bracket applicable for a person depends on the earnings of the spouse. [Jessen et al. \(2017\)](#) show marginal tax rates and budget constraints for singles and married couples and provide a comprehensive overview of the German tax and transfer system. Since the PIT schedule is not adjusted for inflation in Germany, bracket creep generates additional cross-sectional variation in changes of marginal PIT rates over time, because the effects of bracket creep are largest in the progressive zones of the tax schedule.

¹¹ See [Fossen and Simmler \(2016\)](#) for details on the final withholding tax and the tax option for retained earnings.

4.2. Reform of Entry Regulation Into Entrepreneurship

To control for selection into entrepreneurship (extensive margin), we exploit exogenous variation in entry regulation for certain occupations in crafts and trades.¹² This group of entrepreneurs amounts to about 19% of all entrepreneurs in our sample.¹³

Table 1: Reform of Entrepreneurial Entry Regulation For Craft and Trade Occupations

Group	Change in Entry Regulation in 2004	% of all Entrep.	Example Occupations
AC	Craft and trade occupation with no change	0.3	Chimney sweeps, optometrists, hearing aid audiologists, orthopedic technicians, dental technicians
A1	Relaxation through “senior journeyman rule”	10.1	Roofers, surgical instrument makers, gunsmiths, plumbers, gas and water fitters, joiners, pastry cooks
A2	In addition, frequent exemptions for “easy jobs”	3.8	Masons and concreters, painters and varnishers, metalworkers, motor vehicle body and vehicle construction mechanics, bike mechanics, information electronics technicians, vehicle technicians, butchers
B1	Abolishment of entry requirement	4.9	Tile and mosaic layers, coppersmiths, turners, tailors, millers, photographers

Note: Some occupations that are legally not classified as crafts occupations may be included in the same occupational classification code in our data.

Market entry for prospective entrepreneurs in craft trades has been strictly regulated in Germany. Before 2004, and dating back to 1935, setting up an own crafts business was conditional on having obtained an educational qualification called “Meister” (master craftsman) in 94 occupations listed as A-occupations in the German Trades and Crafts Code. Obtaining this qualification is associated with significant costs. Full-time courses to prepare for the Meister exam take 1-3 years, and the overall costs range from 4000 to 10,000 Euro depending on the occupation. In January 2004, this entry regulation underwent a dramatic change. In many occupations that had required a Meister qualification for market entry, the educational requirement was completely abolished (B1 occupations) or relaxed by allowing “senior journeymen” with six years of relevant work experience to start up without a Meister degree (A1 and A2 occupations). Furthermore, a new rule allowed the exemption of “easy jobs” from the entry requirement. A2 occupations are defined as a group that we conjecture to often make use of this rule, so the entry requirement could be further loosened for this group in practice. Table 1 summarizes the changes in the entry regulation for the occupation groups and lists examples of occupations. [Rostam-Afschar \(2014\)](#) analyses the effects of this reform on entry rates into entrepreneurship and estimates significant effects for B1 and A1 occupations. We account for this reform by including interaction terms of the four occupation group dummies (AC, A1, A2, B1; omitted base category: no craft or trade occupation) with a post reform dummy (years 2004 and later) in the selection equations.

5. Panel Data with Private Business Equity

For our analysis of portfolio choice we require individual panel data reporting private asset holdings including private business equity. The data must provide sufficient information on various income sources and the household

¹²In addition, we use changes in regional unemployment rates over time for identification of selection effects, as discussed in Section 3.

¹³Due to some classification ambiguity, this might include some occupations that are legally not defined as crafts occupations.

situation for detailed tax-benefit simulation. It must also report occupations at a detailed level and include control variables important for entrepreneurship such as risk attitudes (Caliendo et al. 2009).

Table 2: Entrepreneurial and Non-entrepreneurial Balance Sheets

<i>Personal Assets and Liabilities</i>		<i>Entrepreneurs</i>			<i>Non-Entrepreneurs</i>		
		Mean assets (Euro)	Percentage of gross wealth	Percentage of owners	Mean assets (Euro)	Percentage of gross wealth	Percentage of owners
I	Financial assets	51,061	10.5	59.2	16,291	23.0	57.9
II	Ownership equity	206,263	40.0	100.0	0	0.0	0.0
III	Contractual savings	35,943	13.4	74.7	12,637	30.8	70.3
IV	Tangible assets	3,588	0.8	13.4	815	1.7	7.4
V	Real estate						
	Primary house or apartment	155,648	26.0	52.6	101,886	38.6	47.9
	Other (rental) property	152,835	9.2	29.3	25,031	6.0	12.8
	Gross wealth	519,565	100.0	100.0	109,726	100.0	100.0
VI	Mortgages						
	On primary house or apart.	38,125	8.9	33.3	29,506	13.0	32.6
	On other (rental) property	47,479	3.9	15.9	8,509	3.7	7.1
VII	Other liabilities	13,904	20.8	30.4	3,158	69.4	23.1
	Total Liabilities	99,507	33.6	62.7	41,173	86.1	50.9
	Net worth	441,494	67.1	95.3	82,229	15.4	91.4

Note: Pooled averages of 1,135 entrepreneur-years and 13,409 non-entrepreneur-years based on the SOEP waves 2002, 2007, and 2012, using population weights provided by the SOEP. The percentages of total gross wealth are means over individual percentage shares in gross wealth portfolios. The large average share of other liabilities in gross wealth for non-entrepreneurs is driven by individuals who have very small gross wealth, but large liabilities. *Financial assets* include savings balance, savings bonds, bonds, shares or investments, *ownership equity* commercial enterprise, i.e. a company, a shop, an office, a practice or an agricultural enterprise, *contractual savings* life insurance or private retirement insurance policies, *tangible assets* gold, jewelry, coins or valuable collections, *other liabilities* do not include mortgages or building loans.

These requirements are fulfilled by the SOEP, a representative annual panel survey covering more than 20,000 individuals living in more than 10,000 households in Germany. Wagner et al. (2007) provide a detailed description of the data. The waves of 2002, 2007 and 2012 included a special module collecting detailed information on private wealth. The interviewers asked for the current market values of the most important asset and liability types of private households. The items include personally owned real estate (owner-occupied housing, property rented out, mortgage debt), financial assets, private life and pension insurance, tangible assets, consumer credits, and, most importantly for this analysis, private business equity (net market value, own share in case of a business partnership). All information is elicited at the level of the individual respondent. When an asset is owned by more than one person, e.g., a house owned by a couple, the respondents are asked to indicate which share they own. Therefore, our analysis is on the individual, not the household level.¹⁴

We define an entrepreneur as a person with strictly positive holdings of own business equity. We restrict our sample to persons between 25 and 65 years of age and exclude those not in the labour force, the unemployed, students, and pensioners. By excluding the unemployed, we focus on persons who have the choice between work in wage and salary employment or entrepreneurship, thus those who become entrepreneurs are likely to do so because they perceive a market opportunity (Fairlie and Fossen 2017). This relates our concept of entrepreneurship more closely to innovation and growth.

¹⁴We use directly observed information on asset holdings only. Using imputations provided by the SOEP increases the size of our final estimation sample only slightly and our estimation results do not change much.

Table 3: Descriptive Statistics

Variable	Unit	Entrepreneurs		Non-Entrepreneurs	
		Mean	Std. dev.	Mean	Std. dev.
Marginal tax rate	%	38.2	12.9	38.1	22.5
Marginal tax rate using updated income (IV)	%	37.8	19.8	36.8	23.0
Real gross income per month	Euro (2005 prices)	4,527	5,121	2,618	1,989
Real net worth	Euro (2005 prices)	418,980	1,471,572	78,033	172,801
Age	Years	45.2	9.3	43.1	10.0
Married	%	66.7		65.0	
Number of children in household	Integer	0.64	0.92	0.55	0.86
Willingness to take risks	Scale 0-10	5.90	2.12	4.86	2.11
Higher technical college or similar	%	28.7		26.2	
University degree	%	39.6		23.4	
GDP per capita	1,000 Euro	30.3	9.0	29.9	8.5
Regional unemployment rate	%	8.5	3.9	8.5	4.0

Note: Pooled averages of 1,135 entrepreneur-years and 13,409 non-entrepreneur-years based on the SOEP waves 2002, 2007, and 2012, using population weights provided by the SOEP. Standard deviations are not shown for binary variables.

Table 2 shows private wealth balance sheets of entrepreneurs and non-entrepreneurs, respectively. On average, entrepreneurs' net worth is more than five times as large as that of non-entrepreneurs. Entrepreneurs hold very undiversified portfolios: On average, they invest 40% of their gross wealth in their own business. This is very similar to observations made for the United States (Gentry and Hubbard 2004).¹⁵ By definition, non-entrepreneurs do not own any private business equity. They invest the largest share of their gross wealth in owner-occupied housing.

Table 3 summarizes means of other individual characteristics used in our analysis by entrepreneurial status. Entrepreneurs have higher monthly income on average than non-entrepreneurs, which is in line with their larger net worth. However, their marginal PIT rate is only slightly larger, which may partly be due to the fact that they are more likely to be married and have a larger number of children on average. The large standard deviations show the substantial cross-sectional variation in marginal tax rates. Entrepreneurs also self-report a higher willingness to take risks on an 11-point scale from 0 (completely unwilling) to 10 (fully willing).

6. Empirical Portfolio Choice Results

6.1. Extensive Margin

We begin the discussion of the results by presenting the first estimation step, the regressions of selection into ownership of the six different asset classes. Table 4 shows the estimation results (with standard errors robust to clustering at the individual level). Each column represents a separately estimated linear probability model, where the dependent variable is a dummy that is one if a person has strictly positive holdings of the asset class indicated at the column head and zero otherwise. The equations are estimated using the IV method in first differences. The marginal tax rate is treated as endogenous. The instrument is the simulated marginal tax rate based on each year's tax code, but

¹⁵Fossen (2011, 2012) and Fossen and Rostam-Afschar (2013) discuss possible reasons why entrepreneurs hold these undiversified portfolios. In particular, Fossen (2011) finds that lower average risk aversion of entrepreneurs may explain their risky portfolio choices.

exogenously updated individual income from 2002 (see Section 3). The instrument is relevant, as indicated by the first stage F -statistic of 25.9.¹⁶

Table 4: Ownership Probabilities of Asset Classes

	Business equity	Owner Housing	Rental Property	Financials	Life Insurance	Tangible Assets
Marginal tax rate	0.1189* (0.0617)	-0.0576 (0.0769)	-0.2069** (0.0868)	-0.0312 (0.1442)	-0.0786 (0.1254)	0.0650 (0.0921)
Local unempl. rate	-0.0027 (0.0021)	0.0042 (0.0035)	-0.0038 (0.0032)	0.0078 (0.0048)	0.0028 (0.0045)	-0.0018 (0.0030)
Occupations A1 $\times \geq 2004$	0.0351* (0.0213)	0.0340 (0.0278)	-0.0413 (0.0301)	-0.0266 (0.0418)	-0.0032 (0.0345)	0.0068 (0.0183)
Occupations A2 $\times \geq 2004$	0.0450 (0.0308)	0.0806* (0.0417)	-0.0365 (0.0328)	0.0934 (0.0603)	0.0129 (0.0651)	0.0427* (0.0248)
Occupations AC $\times \geq 2004$	-0.0815 (0.0607)	-0.1074* (0.0644)	0.0741 (0.1140)	-0.0143 (0.0940)	0.0234 (0.1140)	0.0011 (0.1356)
Occupations B1 $\times \geq 2004$	-0.0151 (0.0176)	0.0104 (0.0272)	-0.0418 (0.0309)	0.0033 (0.0497)	-0.0013 (0.0449)	-0.0058 (0.0321)
Gross income	0.1586** (0.0646)	-0.0266 (0.0501)	0.1245** (0.0606)	0.2345*** (0.0851)	0.1857*** (0.0686)	0.0326 (0.0577)
Gross inc. sq.	-0.0136 (0.0096)	0.0072 (0.0060)	-0.0107* (0.0055)	-0.0163* (0.0088)	-0.0216*** (0.0070)	-0.0027 (0.0052)
Net worth	0.6152*** (0.2296)	1.3759*** (0.3053)	1.1622*** (0.3036)	0.2274 (0.2303)	0.5284** (0.2279)	0.1018 (0.1701)
Net worth sq.	-0.0686* (0.0379)	-0.1700*** (0.0370)	-0.1285*** (0.0347)	-0.0374 (0.0300)	-0.0432 (0.0267)	0.0194 (0.0192)
Further controls	✓	✓	✓	✓	✓	✓
First-differenced observations	3,979	3,979	3,979	3,979	3,979	3,979
F -test income terms (p -val.)	0.0446	0.3295	0.0972	0.0085	0.0078	0.6814
F -test wealth terms (p -val.)	0.0256	0.0000	0.0005	0.4469	0.0261	0.0000
F -test selection var.: (p -val.)	0.0519	0.1772	0.4887	0.2326	0.9635	0.5710
First stage F statistic	25.8651	25.8651	25.8651	25.8651	25.8651	25.8651
Mean ownership prob.	0.0840	0.5412	0.1646	0.5933	0.7081	0.0854

Note: Linear probability models of ownership of asset classes (separate IV regressions in first differences). The dependent variable is one if a person owns a strictly positive amount of the asset class indicated at the column head and zero otherwise. The marginal tax rate is treated as endogenous. Instrumental variable: the simulated marginal tax rate using exogenously updated individual income from 2002 and the contemporaneous tax code. Estimated in first differences to eliminate individual fixed effects. The occupation groups are defined in Table 1. Gross income is in 10,000 Euro and net worth in 10 mill. Euro, both in prices of 2005. Further control variables included: Age squared, number of children, married, willingness to take risks, local GDP per capita, educational degree dummies, time dummy for 2012. The F -tests are for joint significance of the variables indicated; the selection variables are the local unemployment rate and the interaction terms involving the trade occupation dummies. Standard errors clustered at the person level in parentheses. */**/***: Significance at the 10%/5%/1% levels. *Source:* Own estimations based on the German Socio-economic Panel 2002, 2007, and 2012.

The marginal personal income tax rate has significant effects on the probabilities of holding two asset classes, business equity and rental property. Increasing the marginal tax rate by 10 percentage points *increases* the probability of holding assets in a private business by 1.2 percentage points. This corresponds to 14% of the average ownership probability of 8.4% indicated at the bottom of the table, so the effect is economically very significant. The positive effect of the marginal tax rate on business ownership is consistent with a tax avoidance or evasion motivation. Higher tax rates raise incentives to create a private business as a vehicle to shelter income. This finding is in line with the findings of Cullen and Gordon (2007) using U.S. tax return data.¹⁷

The second significant effect of the marginal tax rate is on property rented out, with the opposite sign. A hike in the marginal tax rate by 10 percentage points decreases the probability of holding rental property by 2.1 percentage

¹⁶The first stage of the IV regressions has the marginal tax rate as the dependent variable and is identical for all asset classes.

¹⁷These authors emphasize a particular tax avoidance mechanism available in the United States, i.e. the possibility to shift income between the tax bases for the personal and corporate income taxes.

points, i.e. 12.6% of the average ownership probability of 16.5%. The effects on the ownership probabilities of the other asset classes are small and insignificant. Together, the results indicate that tax-induced investment in an own business and in rental property are substitutes at the extensive margin.

Next, we consider the variables testing the effects of the change in the regulation of entry into entrepreneurship for trade and craft occupations in 2004. The interaction term of the dummy variable indicating A1 occupations with the post-reform time period dummy is positive and significant in the ownership equation of private business equity. This indicates that the probability of owning a business increased after the entry regulation reform for workers in A1 occupations. This is very plausible because the reform lowered the educational entry requirements for these occupations (see Section 4.2). This result confirms the finding of [Rostam-Afschar \(2014\)](#), though the interaction on B1 is not significantly positive as expected. The variables included in these first step selection equations, but excluded from the second step estimations of portfolio shares (i.e., the entry regulation reform dummies and the local unemployment rate) are jointly significant in the business equity ownership equation (p -value: 0.0519). This facilitates identification of the equation of the conditional portfolio share of business equity, which is of primary interest in this analysis.¹⁸

Income and wealth have significant effects on the probability of owning most asset classes (see the p -values of the F-tests of joint significance of the linear and square terms at the bottom of the table). The probability of owning private business equity increases with gross (before-tax) income and personal net worth at decreasing marginal rates. (The turning points are beyond the ranges relevant in our data.) Similar income and wealth effects can be observed for rental property and life and private pension insurance. For owner occupied housing, only the wealth effect is significant, whereas for financial assets, only the income effect is significant. The finding that the wealth and income effects are initially positive or insignificant for all asset classes at the extensive margin is plausible. When individuals have higher income and larger amounts of wealth, they hold more diversified portfolios with a larger number of different asset classes (e.g., [Carroll 2002](#)).

6.2. Intensive Margin

Table 5 presents the results of the second step estimations of the portfolio shares of the six asset classes in the private wealth portfolio. The system of demand equations is estimated jointly using 3SLS in first differences, with an endogenous marginal tax rate and with selection correction. As outlined in Section 3, all transformed explanatory variables are treated as endogenous and appropriately instrumented.¹⁹

The strength of the instruments in the system of demand equations is tested using Shea's Partial R^2 . The instruments are particularly strong in the equation of the portfolio share of private business equity (in the first column), which is of primary interest, with Shea's Partial $R^2 = 23.9\%$. The statistic is smaller, but still satisfactory in the other

¹⁸The exclusion restrictions are jointly insignificant in the ownership equations of the other assets, although some of these variables are individually significant. It is plausible that regulation of entry into entrepreneurship and the local unemployment rate affect the probability of owning a business, but not necessarily ownership of other assets.

¹⁹In Table B.1 in Appendix B, we report standard errors robust to clustering at the person level. The clustered standard errors turn out to be mostly smaller than the regular standard errors in our 3SLS estimations. Therefore, to be conservative, we report regular standard errors in the other tables providing 3SLS results.

equations, although quite small for tangible assets.²⁰ The estimated coefficient of the selection term is significant in four out of the six equations including the equation of the portfolio share of private business equity. This indicates that it is important to account for selection into ownership of these assets.²¹

Table 5: Portfolio Shares of Asset Classes

	Business equity	Owner Housing	Rental Prop.	Financials	Life Insurance	Tangible Assets
Marginal tax rate	-0.0708** (0.0296)	0.0348*** (0.0130)	-0.0753** (0.0313)	0.0084 (0.0750)	-0.0896** (0.0350)	-0.0533 (0.0449)
Gross income	0.1838*** (0.0459)	0.0151 (0.0160)	0.0081 (0.0666)	-0.1314*** (0.0455)	0.0214 (0.0473)	0.0586 (0.0645)
Gross income sq.	-0.0111** (0.0055)	-0.0017 (0.0031)	-0.0025 (0.0095)	0.0128*** (0.0047)	0.0008 (0.0054)	0.0003 (0.0185)
Net worth	0.0790 (0.0857)	0.0428 (0.0805)	0.1067 (0.1108)	-0.6237*** (0.1784)	0.1251 (0.1578)	0.3120 (0.2250)
Net worth sq.	-0.0294* (0.0165)	0.0041 (0.0212)	-0.0018 (0.0291)	0.0585** (0.0243)	-0.0302 (0.0242)	-0.0663 (0.0689)
Selection term $(Z\hat{\gamma})^2 - Z\hat{\gamma}$	-0.1540* (0.0793)	0.0076 (0.0208)	-0.1107* (0.0583)	-0.0358 (0.0773)	-0.1554** (0.0651)	0.1494* (0.0846)
Further controls	✓	✓	✓	✓	✓	✓
First-differenced observations	3,979	3,979	3,979	3,979	3,979	3,979
<i>F</i> -test income terms (<i>p</i> -val.)	0.0000	0.6183	0.9510	0.0145	0.2900	0.5194
<i>F</i> -test wealth terms (<i>p</i> -val.)	0.1427	0.6233	0.2611	0.0017	0.4445	0.3681
Angrist/Pischke Partial R^2	0.1924	0.0576	0.0327	0.0516	0.0727	0.0233
Shea's Partial R^2	0.2387	0.0572	0.0401	0.0522	0.0703	0.0250
Uncond. mean portfolio share	0.0325	0.4132	0.0697	0.2039	0.2673	0.0135
Conditional mean portf. share	0.3865	0.7636	0.4231	0.3437	0.3775	0.1577

Note: System 3SLS estimation of asset class shares in first differences with endogenous tax rate and selection correction. The dependent variable is the share of the asset class indicated at the column head in the private wealth portfolio. The instrument for the actual marginal tax rate is the simulated marginal tax rate using exogenously updated individual income from 2002 and the contemporaneous tax code. Estimated in first differences to eliminate individual fixed effects. Gross income is in 10,000 Euro and net worth in 10 mill. Euro, both in prices of 2005. Further control variables included: Age squared, number of children, married, willingness to take risks, local GDP per capita, time dummy for 2012. All variables are transformed and instrumented as described in Section 3. Standard errors in parentheses. */**/***: Significance at the 10%/5%/1% levels. *Source:* Own estimations based on the German Socio-economic Panel 2002, 2007, and 2012.

The estimated coefficient of the marginal personal income tax rate is significant for the portfolio share of private business equity, as in the ownership probability equation, but has the opposite sign. An increase in the marginal tax rate *decreases* the share of own business equity in the private wealth portfolio conditional on being a business owner.²² This is consistent with a disincentive effect of taxation on marginal investment in productive businesses. The negative effect of taxes on entrepreneurial activity is in line with [Hansson \(2012\)](#).

Our finding of opposite signs of tax effects at the extensive and intensive margins are inconsistent with the standard model of portfolio choice, but can be rationalised using our extended model that allows for tax sheltering. The

²⁰A limitation of Shea's Partial R^2 is that it does not allow to formally test for weak instruments. Therefore, for each endogenous regressor, we also conduct Sanderson-Windmeijer's χ^2 and *F*-test for underidentification and for weak identification. In both versions of the test as well as in a joint *F*-test (not reported in the table), no *p*-value exceeds the 5% significance level, and we can infer that the hypotheses that the endogenous regressors are underidentified or weakly identified are rejected. The method by [Sanderson and Windmeijer \(2016\)](#) is a modification of the tests described by [Angrist and Pischke \(2009\)](#), which we report in the table.

²¹Note that our linear selection correction model allows interpreting the effect of an increase in the probability of being an entrepreneur ($Z_i \gamma_m$) more directly than other selection correction models (see equation A.1 in [Appendix A.2](#)). If a 10 percentage points larger share of the population engaged in entrepreneurship, the share invested in own business equity conditional on business ownership would be 1.5 percentage points lower.

²²We discuss the effect size in [Section 6.3](#).

opposing effect of taxes on the probability of ownership and on the conditional portfolio share of the same asset type also indicates that a Tobit model is inappropriate for estimation of tax effects on household portfolio choice when business equity is included, because the Tobit model restricts the signs of the effects to be the same. As mentioned before, the Tobit model has frequently been used in the literature not considering business equity (Poterba and Samwick 2002; Alan et al. 2010).

Significant tax effects are also detected for owner-occupied housing, rental property, and life and private pension insurance policies. For owner-occupied housing, the coefficient of the marginal tax rate is positive and significant, which may indicate that business equity and owner-occupied housing are used as substitutes when tax rates change. The estimated tax effect on business equity is the most robust among the six asset classes. When instead of 3SLS we estimate inefficient 2SLS models equation by equation without taking into account correlation of the error terms across equations (Table B.2 in Appendix B), the coefficient of the marginal tax rate in the business equity equation becomes even more negative and remains statistically significant, but the coefficients of the marginal tax rate become statistically insignificant for the other asset classes. Therefore, our conclusions focus on the robustly estimated tax effects on private business equity.

Income effects are significant for the portfolio shares of business equity and financial assets (joint significance of the linear and square terms as indicated at the bottom of Table 5). When their income grows (starting from zero), private persons invest a larger share of their wealth in their own business, but a lower share in financial assets at the intensive margins. These effects attenuate when income increases further. The income effects occur holding net worth constant. Wealth effects are significant (joint tests of the linear and square terms) for financial assets, with an initially negative effect on the portfolio share of financial assets.

6.3. Unconditional and Conditional Marginal Effects

The average unconditional portfolio shares as well as the portfolio shares conditional on owning a positive amount of an asset class appear at the bottom of Table 5 (unweighted). Based on the estimated coefficients of the selection and portfolio share equations, we calculate the average unconditional and conditional marginal effects of the marginal personal income tax rate using the formulas derived in Appendix A.3. When the government increases the marginal tax rate by 10 percentage points, the portfolio share of private business equity conditional on owning a private business *decreases* by 0.891 percentage points. This is 2.3% of the unweighted average conditional portfolio share of private business equity in the sample of 38.7%. The finding is consistent with a disincentive effect of the marginal tax rate on marginal investment conditional on being a business owner.

The signs of the unconditional effects depend on both the estimated selection and the portfolio share equations. Increasing the marginal tax rate by 10 percentage points *increases* the unconditional portfolio share of private business equity by 0.093 percentage points. This is 2.9% of the average unconditional portfolio share of private business equity in the sample of 3.25%. Thus, the sign of the unconditional tax effect is the same as in the ownership selection equation, but opposite to the effect on the conditional portfolio share. This indicates that the tax effect at the extensive margin overcompensates the effect at the intensive margin.

7. Conclusion

We have investigated the effects of the marginal personal income tax rate on household portfolios focusing on entrepreneurial business equity, which has been almost completely neglected in the extant empirical literature on tax effects on household portfolio choice. We extend the standard theoretical portfolio choice model by allowing for partial sheltering of income from an own business. This could be legal tax avoidance and/or illegal tax evasion. In contrast to the standard model, our model implies that tax effects could have different signs at the extensive margin (probability of being an entrepreneur, i.e., of holding own business equity) and intensive margin (portfolio share of private business equity conditional on being a business owner).

For our empirical analysis, we use representative panel data including private business equity and the other most important asset types of private persons in Germany. We estimate simultaneous demand equations for six asset classes, including private business equity, eliminate unobserved individual fixed effects, and identify tax effects through changes in the tax code over time. We also control for selection into entrepreneurship by exploiting a reform in entry regulation during our observation period.

Our empirical results indicate that lower marginal personal income tax rates decrease the probability of owning a business, but increase the conditional portfolio share that entrepreneurs invest in their own business. This is consistent with a tax avoidance or evasion motive for owning a marginal business, but a disincentive effect of higher marginal tax rates on marginal investment in productive businesses. Quantitatively, a decrease in the marginal tax rate by 10 percentage points increases the conditional portfolio share of private business equity by 2.3% of the average conditional portfolio share of 39%, but decreases the unconditional portfolio share by 2.9% of the unconditional average of 3%. The latter occurs due to a negative effect of a tax cut on the probability of being an entrepreneur. The opposing signs of the tax effects at the intensive and extensive margins are inconsistent with the standard portfolio choice model, but can be rationalized using our reformulated model allowing for tax sheltering of business income.

Our results contribute to reconciling the inconclusive results from the literature of tax effects on entrepreneurship. Our finding that lower marginal tax rates have a negative effect on the probability of being an entrepreneur is consistent with [Cullen and Gordon \(2007\)](#), who find that a uniform cut in personal tax rates would lead to a fall in the entrepreneurship rate in the United States. However, our finding that the conditional amount of own wealth that entrepreneurs put at risk in their business increases when tax rates are lower may explain why other studies find positive effects of tax cuts on entrepreneurship in other countries and situations, such as that by [Hansson \(2012\)](#) for Sweden.

In light of the mixed empirical results from the literature, our theoretical model, which receives support from our empirical results, offers some guidance for policymakers. By highlighting that lower taxes may drive out businesses that are viable only due to tax sheltering, but increase equity investment in private businesses that are also worthwhile in the absence of taxes, our analysis strengthens the case for lower tax rates to stimulate productive entrepreneurial risk taking. Future research should more specifically investigate the mechanisms to scrutinize this point. An important challenge for the future is to collect and analyse data on tax avoidance and evasion, which is of course notoriously difficult due to the very nature of income concealment.

References

- ACS, Z., AND D. AUDRETSCH (2005): "Entrepreneurship, Innovation and Technological Change," *Foundations and Trends in Entrepreneurship*, 1(4), 149–195.
- ALAN, S., K. ATALAY, T. F. CROSSLEY, AND S.-H. JEON (2010): "New Evidence on Taxes and Portfolio Choice," *Journal of Public Economics*, 94(11–12), 813–823.
- ALLINGHAM, M. G., AND A. SANDMO (1972): "Income Tax Evasion: A Theoretical Analysis," *Journal of Public Economics*, 1(3), 323–338.
- ANGRIST, J. D., AND J.-S. PISCHKE (2009): *Mostly Harmless Econometrics: An Empiricist's Companion*. Princeton University Press.
- AUERBACH, A. J., AND M. A. KING (1983): "Taxation, Portfolio Choice, and Debt-Equity Ratios: A General Equilibrium Model," *Quarterly Journal of Economics*, 98(4), 587–609.
- BRUCE, D. (2000): "Effects of the United States Tax System on Transitions Into Self-Employment," *Labour Economics*, 7(5), 545–574.
- BRUCE, D., AND M. MOHSIN (2006): "Tax Policy and Entrepreneurship: New Time Series Evidence," *Small Business Economics*, 26(5), 409–425.
- CALIENDO, M., F. M. FOSSEN, AND A. S. KRITIKOS (2009): "Risk Attitudes of Nascent Entrepreneurs—New Evidence from an Experimentally Validated Survey," *Small Business Economics*, 32(2), 153–167.
- CARREE, M. A., AND A. R. THURIK (2003): *The Impact of Entrepreneurship on Economic Growth* 437–471. Springer US, Boston, MA.
- CARROLL, C. D. (2002): "Portfolios of the Rich," in *Household Portfolios*, ed. by L. Guiso, M. Haliassos, and T. Japelli, 389–430. MIT Press.
- CULLEN, J. B., AND R. H. GORDON (2007): "Taxes and Entrepreneurial Risk-Taking: Theory and Evidence for the U.S.," *Journal of Public Economics*, 91(7–8), 1479–1505.
- DOMAR, E. D., AND R. A. MUSGRAVE (1944): "Proportional Income Taxation and Risk-Taking," *Quarterly Journal of Economics*, 58(3), 388–422.
- EVANS, D. S., AND L. S. LEIGHTON (1989): "Some Empirical Aspects of Entrepreneurship," *American Economic Review*, 79(3), 519–535.
- FAIRLIE, R. W., AND F. M. FOSSEN (2017): "Opportunity versus Necessity Entrepreneurship: Two Components of Business Creation," Discussion Paper 17-014, Stanford Institute for Economic Policy Research.
- FELDSTEIN, M. (1976): "Personal Taxation and Portfolio Composition: An Econometric Analysis," *Econometrica*, 44(4), 631–650.

- FELDSTEIN, M. S., AND J. SLEMROD (1980): "Personal Taxation, Portfolio Choice, and the Effect of the Corporation Income Tax," *Journal of Political Economy*, 88(5), 854–866.
- FOSSEN, F. M. (2009): "Would a Flat-Rate Tax Stimulate Entrepreneurship in Germany? A Behavioural Microsimulation Analysis Allowing for Risk," *Fiscal Studies*, 30(2), 179–218.
- (2011): "The Private Equity Premium Puzzle Revisited—New Evidence on the Role of Heterogeneous Risk Attitudes," *Economica*, 78(312), 656–675.
- (2012): "Risk Attitudes and Private Business Equity," in *The Oxford Handbook of Entrepreneurial Finance*, ed. by D. Cumming, 109–132. Oxford University Press.
- FOSSEN, F. M., AND D. ROSTAM-AFSCHAR (2013): "Precautionary and Entrepreneurial Savings: New Evidence from German Households," *Oxford Bulletin of Economics and Statistics*, 75(4), 528–555.
- FOSSEN, F. M., AND M. SIMMLER (2016): "Personal Taxation of Capital Income and the Financial Leverage of Firms," *International Tax and Public Finance*, 23(1), 48–81.
- FOSSEN, F. M., AND V. STEINER (2009): "Income Taxes and Entrepreneurial Choice: Empirical Evidence from Two German Natural Experiments," *Empirical Economics*, 36(3), 487–513.
- GENTRY, W. M., AND R. G. HUBBARD (2000): "Tax Policy and Entrepreneurial Entry," *American Economic Review*, 90(2), 283–287.
- (2004): "Entrepreneurship and Household Saving," *Advances in Economic Analysis & Policy*, 4(1), 283–287.
- GERMAN FEDERAL STATISTICAL OFFICE (2016): "Umsatzsteuerstatistik (Veranlagungen) 2012," Fachserie 14, Reihe 8.2.
- GRUBER, J., AND E. SAEZ (2002): "The Elasticity of Taxable Income: Evidence and Implications," *Journal of Public Economics*, 84(1), 1–32.
- HANSSON, Å. (2012): "Tax Policy and Entrepreneurship: Empirical Evidence from Sweden," *Small Business Economics*, 38(4), 495–513.
- HECKMAN, J. J. (1979): "Sample Selection Bias as a Specification Error," *Econometrica*, 47(1), 153–161.
- HUBBARD, R. G. (1985): "Personal Taxation, Pension Wealth, and Portfolio Composition," *Review of Economics and Statistics*, 67(1), 53–60.
- JESSEN, R., D. ROSTAM-AFSCHAR, AND V. STEINER (2017): "Getting the Poor to Work: Three Welfare Increasing Reforms for a Busy Germany," *Public Finance Analysis*, 73(1), 1–41.
- KANBUR, S. (1981): "Risk Taking and Taxation," *Journal of Public Economics*, 15(2), 163–184.
- KING, M. A., AND J. I. LEAPE (1998): "Wealth and Portfolio Composition: Theory and Evidence," *Journal of Public Economics*, 69(2), 155–193.

- KONRAD, K. A. (1991): “The Domar-Musgrave Phenomenon and Adverse Selection,” *European Journal of Political Economy*, 7(1), 41–53.
- LIN, W.-Z., AND C. YANG (2001): “A Dynamic Portfolio Choice Model of Tax Evasion: Comparative Statics of Tax Rates and its Implication for Economic Growth,” *Journal of Economic Dynamics and Control*, 25(11), 1827–1840.
- OCHMANN, R. (2014): “Differential Income Taxation and Household Asset Allocation,” *Applied Economics*, 46(8), 880–894.
- OLSEN, R. J. (1980): “A Least Squares Correction for Selectivity Bias,” *Econometrica*, 48(7), 1815–1820.
- POTERBA, J. (2002a): “Taxation and Portfolio Structure: Issues and Implications,” in *Household Portfolios*, ed. by L. Guiso, M. Haliassos, and T. Japelli. MIT Press.
- POTERBA, J. M. (2002b): “Taxation, Risk-Taking, and Household Portfolio Behavior,” vol. 3 of *Handbook of Public Economics*, 1109–1171. Elsevier.
- POTERBA, J. M., AND A. A. SAMWICK (2002): “Taxation and Household Portfolio Composition: US Evidence from the 1980s and 1990s,” *Journal of Public Economics*, 87(1), 5–38.
- ROSTAM-AFSCHAR, D. (2014): “Entry Regulation and Entrepreneurship: A Natural Experiment in German Craftsmanship,” *Empirical Economics*, 47(3), 1067–1101.
- SAMWICK, A. A. (2000): “Portfolio Responses to Taxation: Evidence from the End of the Rainbow,” in *Does Atlas Shrug? The Economic Consequences of Taxing the Rich*, ed. by J. Slemrod. Harvard University Press.
- SANDERSON, E., AND F. WINDMEIJER (2016): “A Weak Instrument-Test in Linear IV Models with Multiple Endogenous Variables,” *Journal of Econometrics*, 190(2), 212–221.
- SANDMO, A. (1977): “Portfolio Theory, Asset Demand and Taxation: Comparative Statics with Many Assets,” *Review of Economic Studies*, 44(2), 369–379.
- SHONKWILER, J. S., AND S. T. YEN (1999): “Two-Step Estimation of a Censored System of Equations,” *American Journal of Agricultural Economics*, 81(4), 972–982.
- STEINER, V., K. WROHLICH, P. HAAN, AND J. GEYER (2012): “Documentation of the Tax-Benefit Microsimulation Model STSM: Version 2012,” Data Documentation 63, DIW Berlin, German Institute for Economic Research.
- VAN PRAAG, C. M., AND P. H. VERSLOOT (2007): “What is the Value of Entrepreneurship? A Review of Recent Research,” *Small Business Economics*, 29(4), 351–382.
- WAGNER, G. G., J. R. FRICK, AND J. SCHUPP (2007): “The German Socio-Economic Panel Study (SOEP): Scope, Evolution and Enhancements,” *Journal of Applied Social Science Studies*, 127(1), 139–169.
- WEN, J.-F., AND D. V. GORDON (2014): “An Empirical Model of Tax Convexity and Self-Employment,” *The Review of Economics and Statistics*, 96(3), 471–482.
- YITZHAKI, S. (1974): “Income Tax Evasion: A Theoretical Analysis,” *Journal of Public Economics*, 3(2), 201–202.

Appendix A. Derivation of the Estimation Equations

Appendix A.1. Selection Correction

Following [Olsen \(1980\)](#), equation (19) describes portfolio shares at the intensive margin, where equations (20) and (21) are the equations of selection into ownership of a particular asset. To avoid clutter, we suppress the time and asset class indices in this subsection. Assume X_i and Z_i are row vectors which conform to the column vectors of unknown coefficients β and γ , respectively. The X 's and Z 's are exogenous.

Assume that the expected value of the error of the intensive regression is zero, $E(u_i) = 0$, its variance is $E(u_i u_j) = \sigma_u^2$ for $i = j$, and it is homoskedastic ($E(u_i u_j) = 0$ for $i \neq j$). The expected value of the selection threshold is equal to $E(v_i) = \mu_v$, its variance is $E[(v_i - \mu_v)(v_i - \mu_v)] = \sigma_v^2$ for $i = j$, and it is homoskedastic ($E[(v_i - \mu_v)(v_i - \mu_v)] = 0$ for $i \neq j$). The covariance between the error of the intensive regression and the selection threshold is $Cov(u_i, v_i) = E(u_i v_i) - E(u_i)E(v_i) = \rho \sigma_v \sigma_u$ for $i = j$, and the error does not vary with the selection threshold of other individuals, i.e. $Cov(u_i, v_i) = 0$ for $i \neq j$.

Then the expected value of the error of the intensive regression conditional on the value of the selection threshold is

$$E(u_i | v_i) = \rho(v_i - \mu_v)\sigma_u / \sigma_v.$$

By assuming the conditional expectation of u_i given v_i is linear in v_i we can use the decomposition

$$u_i = \rho(v_i - \mu_v)\sigma_u / \sigma_v + \varepsilon_i,$$

where ε_i and v_i are uncorrelated. Substituting this into $y_i = X_i \beta + u_i$ gives

$$y_i = X_i \beta + \rho(v_i - \mu_v)\sigma_u / \sigma_v + \varepsilon_i.$$

Then the conditional mean is

$$E(y_i | X_i, v_i < Z_i \gamma) = X_i \beta + \rho \sigma_u E(v_i | v_i < Z_i \gamma) / \sigma_v - \rho \sigma_u \mu_v / \sigma_v.$$

If v_i is a standard normally distributed random variable with mean $\mu_v = 0$ and variance $\sigma_v^2 = 1$, then it follows that

$$E(v_i | v_i < Z_i \gamma) = -\frac{\phi(Z_i \gamma)}{\Phi(Z_i \gamma)} \text{ (Inverse Mills Ratio)}$$

and the estimation equation is:

$$E(y_i | X_i, v_i < Z_i \gamma) = X_i \beta - \underbrace{\rho \sigma_u}_{\delta} \frac{\phi(Z_i \gamma)}{\Phi(Z_i \gamma)},$$

where δ and β are the parameters to be estimated.

If v_i is instead uniformly distributed over the interval $[0, 1]$, it follows that $E(v_i) = \mu_v = 1/2$, and $V(v_i) = 1/12$, so $\sigma_v = \frac{1}{2\sqrt{3}}$. Using the equation for the conditional mean as above with these values gives

$$\begin{aligned} E(y_i | X_i, v_i < Z_i \gamma) &= X_i \beta + \rho \sigma_u E(v_i | v_i < Z_i \gamma) / \sigma_v - \rho \sigma_u \mu_v / \sigma_v \\ &= X_i \beta + \frac{\rho \sigma_u E(v_i | v_i < Z_i \gamma)}{\frac{1}{2\sqrt{3}}} - \frac{\rho \sigma_u 1/2}{\frac{1}{2\sqrt{3}}}. \end{aligned}$$

Recognizing that $E(v_i | v_i < Z_i\gamma) = Z_i\gamma E(v_i) = Z_i\gamma 1/2$ gives

$$\begin{aligned} E(y_i | X_i, v_i < Z_i\gamma) &= X_i\beta + \frac{\rho\sigma_u Z_i\gamma 1/2}{\frac{1}{2\sqrt{3}}} - \frac{\rho\sigma_u}{\frac{1}{\sqrt{3}}} \\ &= X_i\beta + \rho\sigma_u\sqrt{3}(Z_i\gamma - 1). \end{aligned}$$

From this follows

$$E(y_i | X_i, v_i < Z_i\gamma) = X_i\beta + \underbrace{\rho\sigma_u\sqrt{3}}_{\delta}(Z_i\gamma - 1).$$

Appendix A.2. System Estimation

Based on the assumption of a normally distributed error term in the selection equation, [Shonkwiler and Yen \(1999\)](#) show that the conditional mean of y_{mi} for individual i in equation $m = 1, \dots, M$ is

$$E(y_{mi} | X_{mi}, v_m < Z_{mi}\gamma_m) = f(X_{mi}, \beta_m) + \delta_m \frac{\phi(Z_{mi}\gamma_m)}{\Phi(Z_{mi}\gamma_m)}.$$

Because $E(y_{mi} | X_{mi}, v_m \geq Z_{mi}\gamma_m) = 0$, the unconditional mean of y_{mi} for the m th equation is

$$E(y_{mi} | X_{mi}) = \Phi(Z_{mi}\gamma_m) f(X_{mi}, \beta_m) + \delta_m \phi(Z_{mi}\gamma_m).$$

In our case, we have analogously for the uniform distribution

$$E(y_{mi} | X_{mi}, v_m < Z_{mi}\gamma_m) = f(X_{mi}, \beta_m) + \delta_m (Z_{mi}\gamma_m - 1) \tag{A.1}$$

and

$$E(y_{mi} | X_{mi}) = Z_{mi}\gamma_m f(X_{mi}, \beta_m) + \delta_m ((Z_{mi}\gamma_m)^2 - Z_{mi}\gamma_m). \tag{A.2}$$

Appendix A.3. Marginal Effects

Under assumption of uniformly distributed v_i over $[0, 1]$, the marginal effects for a variable x_{mi} if $x_{mi} \in Z_{mi}$ and $x_{mi} \in X_{mi}$ conditional on selection are

$$\frac{\partial E(y_{mi} | X_{mi}, v_m < Z_{mi}\gamma_m)}{\partial x_{mik}} = \beta_{mk} f'(X_{mi}, \beta_m) + \delta_m \gamma_{mk},$$

and the unconditional marginal effects are

$$\frac{\partial E(y_{mi} | X_{mi})}{\partial x_{mik}} = \gamma_{mk} f(X_{mi}, \beta_m) + Z_{mi}\gamma_m \beta_{mk} f'(X_{mi}, \beta_m) + \delta_m \gamma_{mk} 2Z_{mi}\gamma_m - \delta_m \gamma_{mk}.$$

Appendix B. Supplementary Tables

Table B.1: Portfolio Shares of Asset Classes (with Cluster Robust Standard Errors)

	Business equity	Owner Housing	Rental Prop.	Financials	Life Insurance	Tangible Assets
Marginal tax rate	-0.0708** (0.0288)	0.0348*** (0.0126)	-0.0753*** (0.0257)	0.0084 (0.0667)	-0.0896*** (0.0320)	-0.0533* (0.0316)
Gross income	0.1838*** (0.0625)	0.0151 (0.0130)	0.0081 (0.0659)	-0.1314*** (0.0383)	0.0214 (0.0297)	0.0586 (0.0423)
Gross income sq.	-0.0111 (0.0069)	-0.0017 (0.0024)	-0.0025 (0.0111)	0.0128*** (0.0036)	0.0008 (0.0031)	0.0003 (0.0086)
Net worth	0.0790 (0.2122)	0.0428 (0.0586)	0.1067 (0.1310)	-0.6237** (0.2465)	0.1251* (0.0721)	0.3120* (0.1759)
Net worth sq.	-0.0294 (0.0281)	0.0041 (0.0126)	-0.0018 (0.0351)	0.0585** (0.0247)	-0.0302*** (0.0090)	-0.0663* (0.0352)
Selection term	-0.1540* (0.0809)	0.0076 (0.0185)	-0.1107*** (0.0374)	-0.0358 (0.0555)	-0.1554*** (0.0488)	0.1494** (0.0719)
Further controls	✓	✓	✓	✓	✓	✓
First-differenced observations	3,979	3,979	3,979	3,979	3,979	3,979
F-test income terms (p -val.)	0.0012	0.4508	0.9686	0.0017	0.0002	0.2194
F-test wealth terms (p -val.)	0.2097	0.3723	0.431	0.0353	0.0001	0.156
Angrist/Pischke Partial R^2	0.1924	0.0576	0.0327	0.0516	0.0727	0.0233
Shea's Partial R^2	0.2387	0.0572	0.0401	0.0522	0.0703	0.0250
Uncond. mean portfolio share	0.0325	0.4132	0.0697	0.2039	0.2673	0.0135
Conditional mean portf. share	0.3865	0.7636	0.4231	0.3437	0.3775	0.1577

Note: System 3SLS estimation of asset class shares in first differences with endogenous tax rate and selection correction. The dependent variable is the share of the asset class indicated at the column head in the private wealth portfolio. The instrument for the actual marginal tax rate is the simulated marginal tax rate using exogenously updated individual income from 2002 and the contemporaneous tax code. Estimated in first differences to eliminate individual fixed effects. Gross income is in 10,000 Euro and net worth in 10 mill. Euro, both in prices of 2005. Further control variables included: Age squared, number of children, married, willingness to take risks, local GDP per capita, time dummy for 2012. All variables are transformed and instrumented as described in Section 3. Standard errors clustered at the person level in parentheses. */**/**: Significance at the 10%/5%/1% levels. *Source:* Own estimations based on the German Socio-economic Panel 2002, 2007, and 2012.

Table B.2: Portfolio Shares of Asset Classes (Equation-by-Equation 2SLS Estimation)

	Business equity	Owner Housing	Rental Prop.	Financials	Life Insurance	Tangible Assets
Marginal tax rate	-0.1840** (0.0787)	-0.0406 (0.0760)	0.3542 (0.2537)	0.3499 (0.6948)	0.1390 (0.2031)	0.0152 (0.3043)
Gross income	0.2163*** (0.0634)	0.0260 (0.0327)	0.0717 (0.1069)	-0.1281 (0.1917)	-0.3646* (0.2204)	-0.0292 (0.2523)
Gross income sq.	-0.0132* (0.0070)	-0.0001 (0.0048)	-0.0025 (0.0132)	0.0138 (0.0156)	0.0395 (0.0241)	0.1032 (0.1592)
Net worth	0.3402*** (0.1179)	0.1226 (0.2280)	-0.4594 (0.4882)	-0.2701 (0.3185)	0.0608 (0.3679)	0.9556 (1.1630)
Net worth sq.	-0.0624*** (0.0203)	-0.0183 (0.0410)	0.0468 (0.0697)	0.0181 (0.0406)	-0.0412 (0.0380)	-0.4357 (0.5709)
Selection term	-0.7080*** (0.1574)	-0.1244 (0.1213)	0.6366 (0.4976)	-0.0653 (0.4266)	0.3119 (0.5991)	-0.0661 (0.3023)
Further controls	✓	✓	✓	✓	✓	✓
First-differenced observations	3,979	3,979	3,979	3,979	3,979	3,979
<i>F</i> -test income terms (<i>p</i> -val.)	0.0004	0.8624	0.2400	0.8460	0.3629	0.6429
<i>F</i> -test net worth terms (<i>p</i> -val.)	0.0001	0.4544	0.6142	0.3470	0.2546	0.3012
Angrist/Pischke Partial R^2	0.1924	0.0576	0.0327	0.0516	0.0727	0.0233
Shea's Partial R^2	0.2387	0.0572	0.0401	0.0522	0.0703	0.0250
Uncond. mean portfolio share	0.0325	0.4132	0.0697	0.2039	0.2673	0.0135
Conditional mean portf. share	0.3865	0.7636	0.4231	0.3437	0.3775	0.1577

Note: Equation-by-equation 2SLS estimation of asset class shares in first differences with endogenous tax rate and selection correction. The dependent variable is the share of the asset class indicated at the column head in the private wealth portfolio. The instrument for the actual marginal tax rate is the simulated marginal tax rate using exogenously updated individual income from 2002 and the contemporaneous tax code. Estimated in first differences to eliminate individual fixed effects. Gross income is in 10,000 Euro and net worth in 10 mill. Euro, both in prices of 2005. Further control variables included: Age squared, number of children, married, willingness to take risks, local GDP per capita, time dummy for 2012. All variables are transformed and instrumented as described in Section 3. Standard errors in parentheses. */**/***: Significance at the 10%/5%/1% levels. *Source:* Own estimations based on the German Socio-economic Panel 2002, 2007, and 2012.

Hohenheim Discussion Papers in Business, Economics and Social Sciences

The Faculty of Business, Economics and Social Sciences continues since 2015 the established “FZID Discussion Paper Series” of the “Centre for Research on Innovation and Services (FZID)” under the name “Hohenheim Discussion Papers in Business, Economics and Social Sciences”.

Institutes

510	Institute of Financial Management
520	Institute of Economics
530	Institute of Health Care & Public Management
540	Institute of Communication Science
550	Institute of Law and Social Sciences
560	Institute of Economic and Business Education
570	Institute of Marketing & Management
580	Institute of Interorganisational Management & Performance

Research Areas (since 2017)

INEPA	“Inequality and Economic Policy Analysis”
TKID	“Transformation der Kommunikation – Integration und Desintegration”
NegoTrans	“Negotiation Research – Transformation, Technology, Media and Costs”
INEF	“Innovation, Entrepreneurship and Finance”

Download Hohenheim Discussion Papers in Business, Economics and Social Sciences from our homepage: <https://wiso.uni-hohenheim.de/papers>

No.	Author	Title	Inst
01-2015	Thomas Beissinger, Philipp Baudy	THE IMPACT OF TEMPORARY AGENCY WORK ON TRADE UNION WAGE SETTING: A Theoretical Analysis	520
02-2015	Fabian Wahl	PARTICIPATIVE POLITICAL INSTITUTIONS AND CITY DEVELOPMENT 800-1800	520
03-2015	Tommaso Proietti, Martyna Marczak, Gianluigi Mazzi	EUROMIND-D: A DENSITY ESTIMATE OF MONTHLY GROSS DOMESTIC PRODUCT FOR THE EURO AREA	520
04-2015	Thomas Beissinger, Nathalie Chusseau, Joël Hellier	OFFSHORING AND LABOUR MARKET REFORMS: MODELLING THE GERMAN EXPERIENCE	520
05-2015	Matthias Mueller, Kristina Bogner, Tobias Buchmann, Muhamed Kudic	SIMULATING KNOWLEDGE DIFFUSION IN FOUR STRUCTURALLY DISTINCT NETWORKS – AN AGENT-BASED SIMULATION MODEL	520
06-2015	Martyna Marczak, Thomas Beissinger	BIDIRECTIONAL RELATIONSHIP BETWEEN INVESTOR SENTIMENT AND EXCESS RETURNS: NEW EVIDENCE FROM THE WAVELET PERSPECTIVE	520
07-2015	Peng Nie, Galit Nimrod, Alfonso Sousa-Poza	INTERNET USE AND SUBJECTIVE WELL-BEING IN CHINA	530

No.	Author	Title	Inst
08-2015	Fabian Wahl	THE LONG SHADOW OF HISTORY ROMAN LEGACY AND ECONOMIC DEVELOPMENT – EVIDENCE FROM THE GERMAN LIMES	520
09-2015	Peng Nie, Alfonso Sousa-Poza	COMMUTE TIME AND SUBJECTIVE WELL-BEING IN URBAN CHINA	530
10-2015	Kristina Bogner	THE EFFECT OF PROJECT FUNDING ON INNOVATIVE PERFORMANCE AN AGENT-BASED SIMULATION MODEL	520
11-2015	Bogang Jun, Tai-Yoo Kim	A NEO-SCHUMPETERIAN PERSPECTIVE ON THE ANALYTICAL MACROECONOMIC FRAMEWORK: THE EXPANDED REPRODUCTION SYSTEM	520
12-2015	Volker Grossmann Aderonke Osikominu Marius Osterfeld	ARE SOCIOCULTURAL FACTORS IMPORTANT FOR STUDYING A SCIENCE UNIVERSITY MAJOR?	520
13-2015	Martyna Marczak Tommaso Proietti Stefano Grassi	A DATA–CLEANING AUGMENTED KALMAN FILTER FOR ROBUST ESTIMATION OF STATE SPACE MODELS	520
14-2015	Carolina Castagnetti Luisa Rosti Marina Töpfer	THE REVERSAL OF THE GENDER PAY GAP AMONG PUBLIC-CONTEST SELECTED YOUNG EMPLOYEES	520
15-2015	Alexander Opitz	DEMOCRATIC PROSPECTS IN IMPERIAL RUSSIA: THE REVOLUTION OF 1905 AND THE POLITICAL STOCK MARKET	520
01-2016	Michael Ahlheim, Jan Neidhardt	NON-TRADING BEHAVIOUR IN CHOICE EXPERIMENTS	520
02-2016	Bogang Jun, Alexander Gerybadze, Tai-Yoo Kim	THE LEGACY OF FRIEDRICH LIST: THE EXPANSIVE REPRODUCTION SYSTEM AND THE KOREAN HISTORY OF INDUSTRIALIZATION	520
03-2016	Peng Nie, Alfonso Sousa-Poza	FOOD INSECURITY AMONG OLDER EUROPEANS: EVIDENCE FROM THE SURVEY OF HEALTH, AGEING, AND RETIREMENT IN EUROPE	530
04-2016	Peter Spahn	POPULATION GROWTH, SAVING, INTEREST RATES AND STAGNATION. DISCUSSING THE EGGERTSSON- MEHROTRA-MODEL	520
05-2016	Vincent Dekker, Kristina Strohmaier, Nicole Bosch	A DATA-DRIVEN PROCEDURE TO DETERMINE THE BUNCHING WINDOW – AN APPLICATION TO THE NETHERLANDS	520
06-2016	Philipp Baudy, Dario Cords	DEREGULATION OF TEMPORARY AGENCY EMPLOYMENT IN A UNIONIZED ECONOMY: DOES THIS REALLY LEAD TO A SUBSTITUTION OF REGULAR EMPLOYMENT?	520

No.	Author	Title	Inst
07-2016	Robin Jessen, Davud Rostam-Afschar, Sebastian Schmitz	HOW IMPORTANT IS PRECAUTIONARY LABOR SUPPLY?	520
08-2016	Peng Nie, Alfonso Sousa-Poza, Jianhong Xue	FUEL FOR LIFE: DOMESTIC COOKING FUELS AND WOMEN'S HEALTH IN RURAL CHINA	530
09-2016	Bogang Jun, Seung Kyu-Yi, Tobias Buchmann, Matthias Müller	THE CO-EVOLUTION OF INNOVATION NETWORKS: COLLABORATION BETWEEN WEST AND EAST GERMANY FROM 1972 TO 2014	520
10-2016	Vladan Ivanovic, Vadim Kufenko, Boris Begovic Nenad Stanistic, Vincent Geloso	CONTINUITY UNDER A DIFFERENT NAME. THE OUTCOME OF PRIVATISATION IN SERBIA	520
11-2016	David E. Bloom Michael Kuhn Klaus Prettnner	THE CONTRIBUTION OF FEMALE HEALTH TO ECONOMIC DEVELOPMENT	520
12-2016	Franz X. Hof Klaus Prettnner	THE QUEST FOR STATUS AND R&D-BASED GROWTH	520
13-2016	Jung-In Yeon Andreas Pyka Tai-Yoo Kim	STRUCTURAL SHIFT AND INCREASING VARIETY IN KOREA, 1960–2010: EMPIRICAL EVIDENCE OF THE ECONOMIC DEVELOPMENT MODEL BY THE CREATION OF NEW SECTORS	520
14-2016	Benjamin Fuchs	THE EFFECT OF TEENAGE EMPLOYMENT ON CHARACTER SKILLS, EXPECTATIONS AND OCCUPATIONAL CHOICE STRATEGIES	520
15-2016	Seung-Kyu Yi Bogang Jun	HAS THE GERMAN REUNIFICATION STRENGTHENED GERMANY'S NATIONAL INNOVATION SYSTEM? TRIPLE HELIX DYNAMICS OF GERMANY'S INNOVATION SYSTEM	520
16-2016	Gregor Pfeifer Fabian Wahl Martyrna Marczyk	ILLUMINATING THE WORLD CUP EFFECT: NIGHT LIGHTS EVIDENCE FROM SOUTH AFRICA	520
17-2016	Malte Klein Andreas Sauer	CELEBRATING 30 YEARS OF INNOVATION SYSTEM RESEARCH: WHAT YOU NEED TO KNOW ABOUT INNOVATION SYSTEMS	570
18-2016	Klaus Prettnner	THE IMPLICATIONS OF AUTOMATION FOR ECONOMIC GROWTH AND THE LABOR SHARE	520
19-2016	Klaus Prettnner Andreas Schaefer	HIGHER EDUCATION AND THE FALL AND RISE OF INEQUALITY	520
20-2016	Vadim Kufenko Klaus Prettnner	YOU CAN'T ALWAYS GET WHAT YOU WANT? ESTIMATOR CHOICE AND THE SPEED OF CONVERGENCE	520

No.	Author	Title	Inst
01-2017	Annarita Baldanzi Alberto Bucci Klaus Prettner	CHILDRENS HEALTH, HUMAN CAPITAL ACCUMULATION, AND R&D-BASED ECONOMIC GROWTH	INEPA
02-2017	Julius Tennert Marie Lambert Hans-Peter Burghof	MORAL HAZARD IN VC-FINANCE: MORE EXPENSIVE THAN YOU THOUGHT	INEF
03-2017	Michael Ahlheim Oliver Frör Nguyen Minh Duc Antonia Rehl Ute Siepmann Pham Van Dinh	LABOUR AS A UTILITY MEASURE RECONSIDERED	520
04-2017	Bohdan Kukharsky Sebastian Seiffert	GUN VIOLENCE IN THE U.S.: CORRELATES AND CAUSES	520
05-2017	Ana Abeliansky Klaus Prettner	AUTOMATION AND DEMOGRAPHIC CHANGE	520
06-2017	Vincent Geloso Vadim Kufenko	INEQUALITY AND GUARD LABOR, OR PROHIBITION AND GUARD LABOR?	INEPA
07-2017	Emanuel Gasteiger Klaus Prettner	ON THE POSSIBILITY OF AUTOMATION-INDUCED STAGNATION	520
08-2017	Klaus Prettner Holger Strulik	THE LOST RACE AGAINST THE MACHINE: AUTOMATION, EDUCATION, AND INEQUALITY IN AN R&D-BASED GROWTH MODEL	INEPA
09-2017	David E. Bloom Simiao Chen Michael Kuhn Mark E. McGovern Les Oxley Klaus Prettner	THE ECONOMIC BURDEN OF CHRONIC DISEASES: ESTIMATES AND PROJECTIONS FOR CHINA, JAPAN, AND SOUTH KOREA	520
10-2017	Sebastian Till Braun Nadja Dwenger	THE LOCAL ENVIRONMENT SHAPES REFUGEE INTEGRATION: EVIDENCE FROM POST-WAR GERMANY	INEPA
11-2017	Vadim Kufenko Klaus Prettner Vincent Geloso	DIVERGENCE, CONVERGENCE, AND THE HISTORY-AUGMENTED SOLOW MODEL	INEPA
12-2017	Frank M. Fossen Ray Rees Davud Rostam-Afschar Viktor Steiner	HOW DO ENTREPRENEURIAL PORTFOLIOS RESPOND TO INCOME TAXATION?	520

FZID Discussion Papers

(published 2009-2014)

Competence Centers

IK	Innovation and Knowledge
ICT	Information Systems and Communication Systems
CRFM	Corporate Finance and Risk Management
HCM	Health Care Management
CM	Communication Management
MM	Marketing Management
ECO	Economics

Download FZID Discussion Papers from our homepage: https://wiso.uni-hohenheim.de/archiv_fzid_papers

Nr.	Autor	Titel	CC
01-2009	Julian P. Christ	NEW ECONOMIC GEOGRAPHY RELOADED: Localized Knowledge Spillovers and the Geography of Innovation	IK
02-2009	André P. Slowak	MARKET FIELD STRUCTURE & DYNAMICS IN INDUSTRIAL AUTOMATION	IK
03-2009	Pier Paolo Saviotti, Andreas Pyka	GENERALIZED BARRIERS TO ENTRY AND ECONOMIC DEVELOPMENT	IK
04-2009	Uwe Focht, Andreas Richter and Jörg Schiller	INTERMEDIATION AND MATCHING IN INSURANCE MARKETS	HCM
05-2009	Julian P. Christ, André P. Slowak	WHY BLU-RAY VS. HD-DVD IS NOT VHS VS. BETAMAX: THE CO-EVOLUTION OF STANDARD-SETTING CONSORTIA	IK
06-2009	Gabriel Felbermayr, Mario Larch and Wolfgang Lechthaler	UNEMPLOYMENT IN AN INTERDEPENDENT WORLD	ECO
07-2009	Steffen Otterbach	MISMATCHES BETWEEN ACTUAL AND PREFERRED WORK TIME: Empirical Evidence of Hours Constraints in 21 Countries	HCM
08-2009	Sven Wydra	PRODUCTION AND EMPLOYMENT IMPACTS OF NEW TECHNOLOGIES – ANALYSIS FOR BIOTECHNOLOGY	IK
09-2009	Ralf Richter, Jochen Streb	CATCHING-UP AND FALLING BEHIND KNOWLEDGE SPILLOVER FROM AMERICAN TO GERMAN MACHINE TOOL MAKERS	IK

Nr.	Autor	Titel	CC
10-2010	Rahel Aichele, Gabriel Felbermayr	KYOTO AND THE CARBON CONTENT OF TRADE	ECO
11-2010	David E. Bloom, Alfonso Sousa-Poza	ECONOMIC CONSEQUENCES OF LOW FERTILITY IN EUROPE	HCM
12-2010	Michael Ahlheim, Oliver Frör	DRINKING AND PROTECTING – A MARKET APPROACH TO THE PRESERVATION OF CORK OAK LANDSCAPES	ECO
13-2010	Michael Ahlheim, Oliver Frör, Antonia Heinke, Nguyen Minh Duc, and Pham Van Dinh	LABOUR AS A UTILITY MEASURE IN CONTINGENT VALUATION STUDIES – HOW GOOD IS IT REALLY?	ECO
14-2010	Julian P. Christ	THE GEOGRAPHY AND CO-LOCATION OF EUROPEAN TECHNOLOGY-SPECIFIC CO-INVENTORSHIP NETWORKS	IK
15-2010	Harald Degner	WINDOWS OF TECHNOLOGICAL OPPORTUNITY DO TECHNOLOGICAL BOOMS INFLUENCE THE RELATIONSHIP BETWEEN FIRM SIZE AND INNOVATIVENESS?	IK
16-2010	Tobias A. Jopp	THE WELFARE STATE EVOLVES: GERMAN KNAPPSCHAFTEN, 1854-1923	HCM
17-2010	Stefan Kirn (Ed.)	PROCESS OF CHANGE IN ORGANISATIONS THROUGH eHEALTH	ICT
18-2010	Jörg Schiller	ÖKONOMISCHE ASPEKTE DER ENTLOHNUNG UND REGULIERUNG UNABHÄNGIGER VERSICHERUNGSVERMITTLER	HCM
19-2010	Frauke Lammers, Jörg Schiller	CONTRACT DESIGN AND INSURANCE FRAUD: AN EXPERIMENTAL INVESTIGATION	HCM
20-2010	Martyna Marczak, Thomas Beissinger	REAL WAGES AND THE BUSINESS CYCLE IN GERMANY	ECO
21-2010	Harald Degner, Jochen Streb	FOREIGN PATENTING IN GERMANY, 1877-1932	IK
22-2010	Heiko Stüber, Thomas Beissinger	DOES DOWNWARD NOMINAL WAGE RIGIDITY DAMPEN WAGE INCREASES?	ECO
23-2010	Mark Spoerer, Jochen Streb	GUNS AND BUTTER – BUT NO MARGARINE: THE IMPACT OF NAZI ECONOMIC POLICIES ON GERMAN FOOD CONSUMPTION, 1933-38	ECO

Nr.	Autor	Titel	CC
24-2011	Dhammika Dharmapala, Nadine Riedel	EARNINGS SHOCKS AND TAX-MOTIVATED INCOME-SHIFTING: EVIDENCE FROM EUROPEAN MULTINATIONALS	ECO
25-2011	Michael Schuele, Stefan Kirn	QUALITATIVES, RÄUMLICHES SCHLIEßEN ZUR KOLLISIONSERKENNUNG UND KOLLISIONSVERMEIDUNG AUTONOMER BDI-AGENTEN	ICT
26-2011	Marcus Müller, Guillaume Stern, Ansgar Jacob and Stefan Kirn	VERHALTENSMODELLE FÜR SOFTWAREAGENTEN IM PUBLIC GOODS GAME	ICT
27-2011	Monnet Benoit, Patrick Gbakoua and Alfonso Sousa-Poza	ENGEL CURVES, SPATIAL VARIATION IN PRICES AND DEMAND FOR COMMODITIES IN CÔTE D'IVOIRE	ECO
28-2011	Nadine Riedel, Hannah Schildberg-Hörisch	ASYMMETRIC OBLIGATIONS	ECO
29-2011	Nicole Waidlein	CAUSES OF PERSISTENT PRODUCTIVITY DIFFERENCES IN THE WEST GERMAN STATES IN THE PERIOD FROM 1950 TO 1990	IK
30-2011	Dominik Hartmann, Atilio Arata	MEASURING SOCIAL CAPITAL AND INNOVATION IN POOR AGRICULTURAL COMMUNITIES. THE CASE OF CHÁPARRA - PERU	IK
31-2011	Peter Spahn	DIE WÄHRUNGSKRISEUNION DIE EURO-VERSCHULDUNG DER NATIONALSTAATEN ALS SCHWACHSTELLE DER EWU	ECO
32-2011	Fabian Wahl	DIE ENTWICKLUNG DES LEBENSSTANDARDS IM DRITTEN REICH – EINE GLÜCKSÖKONOMISCHE PERSPEKTIVE	ECO
33-2011	Giorgio Triulzi, Ramon Scholz and Andreas Pyka	R&D AND KNOWLEDGE DYNAMICS IN UNIVERSITY-INDUSTRY RELATIONSHIPS IN BIOTECH AND PHARMACEUTICALS: AN AGENT-BASED MODEL	IK
34-2011	Claus D. Müller-Hengstenberg, Stefan Kirn	ANWENDUNG DES ÖFFENTLICHEN VERGABERECHTS AUF MODERNE IT SOFTWAREENTWICKLUNGSVERFAHREN	ICT
35-2011	Andreas Pyka	AVOIDING EVOLUTIONARY INEFFICIENCIES IN INNOVATION NETWORKS	IK
36-2011	David Bell, Steffen Otterbach and Alfonso Sousa-Poza	WORK HOURS CONSTRAINTS AND HEALTH	HCM
37-2011	Lukas Scheffknecht, Felix Geiger	A BEHAVIORAL MACROECONOMIC MODEL WITH ENDOGENOUS BOOM-BUST CYCLES AND LEVERAGE DYNAMICS	ECO
38-2011	Yin Krogmann, Ulrich Schwalbe	INTER-FIRM R&D NETWORKS IN THE GLOBAL PHARMACEUTICAL BIOTECHNOLOGY INDUSTRY DURING 1985–1998: A CONCEPTUAL AND EMPIRICAL ANALYSIS	IK

Nr.	Autor	Titel	CC
39-2011	Michael Ahlheim, Tobias Börger and Oliver Frör	RESPONDENT INCENTIVES IN CONTINGENT VALUATION: THE ROLE OF RECIPROCITY	ECO
40-2011	Tobias Börger	A DIRECT TEST OF SOCIALLY DESIRABLE RESPONDING IN CONTINGENT VALUATION INTERVIEWS	ECO
41-2011	Ralf Rukwid, Julian P. Christ	QUANTITATIVE CLUSTERIDENTIFIKATION AUF EBENE DER DEUTSCHEN STADT- UND LANDKREISE (1999-2008)	IK

Nr.	Autor	Titel	CC
42-2012	Benjamin Schön, Andreas Pyka	A TAXONOMY OF INNOVATION NETWORKS	IK
43-2012	Dirk Foremny, Nadine Riedel	BUSINESS TAXES AND THE ELECTORAL CYCLE	ECO
44-2012	Gisela Di Meglio, Andreas Pyka and Luis Rubalcaba	VARIETIES OF SERVICE ECONOMIES IN EUROPE	IK
45-2012	Ralf Rukwid, Julian P. Christ	INNOVATIONSPOTENTIALE IN BADEN-WÜRTTEMBERG: PRODUKTIONSCLUSTER IM BEREICH „METALL, ELEKTRO, IKT“ UND REGIONALE VERFÜGBARKEIT AKADEMISCHER FACHKRÄFTE IN DEN MINT-FÄCHERN	IK
46-2012	Julian P. Christ, Ralf Rukwid	INNOVATIONSPOTENTIALE IN BADEN-WÜRTTEMBERG: BRANCHENSPEZIFISCHE FORSCHUNGS- UND ENTWICKLUNGSAKTIVITÄT, REGIONALES PATENTAUFKOMMEN UND BESCHÄFTIGUNGSSTRUKTUR	IK
47-2012	Oliver Sauter	ASSESSING UNCERTAINTY IN EUROPE AND THE US - IS THERE A COMMON FACTOR?	ECO
48-2012	Dominik Hartmann	SEN MEETS SCHUMPETER. INTRODUCING STRUCTURAL AND DYNAMIC ELEMENTS INTO THE HUMAN CAPABILITY APPROACH	IK
49-2012	Harold Paredes- Frigolett, Andreas Pyka	DISTAL EMBEDDING AS A TECHNOLOGY INNOVATION NETWORK FORMATION STRATEGY	IK
50-2012	Martyna Marczyk, Víctor Gómez	CYCLICALITY OF REAL WAGES IN THE USA AND GERMANY: NEW INSIGHTS FROM WAVELET ANALYSIS	ECO
51-2012	André P. Slowak	DIE DURCHSETZUNG VON SCHNITTSTELLEN IN DER STANDARDSETZUNG: FALLBEISPIEL LADESYSTEM ELEKTROMOBILITÄT	IK
52-2012	Fabian Wahl	WHY IT MATTERS WHAT PEOPLE THINK - BELIEFS, LEGAL ORIGINS AND THE DEEP ROOTS OF TRUST	ECO
53-2012	Dominik Hartmann, Micha Kaiser	STATISTISCHER ÜBERBLICK DER TÜRKISCHEN MIGRATION IN BADEN-WÜRTTEMBERG UND DEUTSCHLAND	IK
54-2012	Dominik Hartmann, Andreas Pyka, Seda Aydin, Lena Klauß, Fabian Stahl, Ali Santircioglu, Silvia Oberegelsbacher, Sheida Rashidi, Gaye Onan and Suna Erginkoç	IDENTIFIZIERUNG UND ANALYSE DEUTSCH-TÜRKISCHER INNOVATIONSNETZWERKE. ERSTE ERGEBNISSE DES TGIN- PROJEKTES	IK
55-2012	Michael Ahlheim, Tobias Börger and Oliver Frör	THE ECOLOGICAL PRICE OF GETTING RICH IN A GREEN DESERT: A CONTINGENT VALUATION STUDY IN RURAL SOUTHWEST CHINA	ECO

Nr.	Autor	Titel	CC
56-2012	Matthias Strifler Thomas Beissinger	FAIRNESS CONSIDERATIONS IN LABOR UNION WAGE SETTING – A THEORETICAL ANALYSIS	ECO
57-2012	Peter Spahn	INTEGRATION DURCH WÄHRUNGSUNION? DER FALL DER EURO-ZONE	ECO
58-2012	Sibylle H. Lehmann	TAKING FIRMS TO THE STOCK MARKET: IPOS AND THE IMPORTANCE OF LARGE BANKS IN IMPERIAL GERMANY 1896-1913	ECO
59-2012	Sibylle H. Lehmann, Philipp Hauber and Alexander Opitz	POLITICAL RIGHTS, TAXATION, AND FIRM VALUATION – EVIDENCE FROM SAXONY AROUND 1900	ECO
60-2012	Martyna Marczak, Víctor Gómez	SPECTRAN, A SET OF MATLAB PROGRAMS FOR SPECTRAL ANALYSIS	ECO
61-2012	Theresa Lohse, Nadine Riedel	THE IMPACT OF TRANSFER PRICING REGULATIONS ON PROFIT SHIFTING WITHIN EUROPEAN MULTINATIONALS	ECO

Nr.	Autor	Titel	CC
62-2013	Heiko Stüber	REAL WAGE CYCLICALITY OF NEWLY HIRED WORKERS	ECO
63-2013	David E. Bloom, Alfonso Sousa-Poza	AGEING AND PRODUCTIVITY	HCM
64-2013	Martyna Marczak, V́ctor G3mez	MONTHLY US BUSINESS CYCLE INDICATORS: A NEW MULTIVARIATE APPROACH BASED ON A BAND-PASS FILTER	ECO
65-2013	Dominik Hartmann, Andreas Pyka	INNOVATION, ECONOMIC DIVERSIFICATION AND HUMAN DEVELOPMENT	IK
66-2013	Christof Ernst, Katharina Richter and Nadine Riedel	CORPORATE TAXATION AND THE QUALITY OF RESEARCH AND DEVELOPMENT	ECO
67-2013	Michael Ahlheim, Oliver Fr3r, Jiang Tong, Luo Jing and Sonna Pelz	NONUSE VALUES OF CLIMATE POLICY - AN EMPIRICAL STUDY IN XINJIANG AND BEIJING	ECO
68-2013	Michael Ahlheim, Friedrich Schneider	CONSIDERING HOUSEHOLD SIZE IN CONTINGENT VALUATION STUDIES	ECO
69-2013	Fabio Bertoni, Tereza Tykvov3	WHICH FORM OF VENTURE CAPITAL IS MOST SUPPORTIVE OF INNOVATION? EVIDENCE FROM EUROPEAN BIOTECHNOLOGY COMPANIES	CFRM
70-2013	Tobias Buchmann, Andreas Pyka	THE EVOLUTION OF INNOVATION NETWORKS: THE CASE OF A GERMAN AUTOMOTIVE NETWORK	IK
71-2013	B. Vermeulen, A. Pyka, J. A. La Poutr3 and A. G. de Kok	CAPABILITY-BASED GOVERNANCE PATTERNS OVER THE PRODUCT LIFE-CYCLE	IK
72-2013	Beatriz Fabiola L3pez Ulloa, Valerie M3ller and Alfonso Sousa- Poza	HOW DOES SUBJECTIVE WELL-BEING EVOLVE WITH AGE? A LITERATURE REVIEW	HCM
73-2013	Wencke Gwozdz, Alfonso Sousa-Poza, Lucia A. Reisch, Wolfgang Ahrens, Stefaan De Henauw, Gabriele Eiben, Juan M. Fern3ndez-Alvira, Charalampos Hadjigeorgiou, Eva Kov3cs, Fabio Lauria, Toomas Veidebaum, Garrath Williams, Karin Bammann	MATERNAL EMPLOYMENT AND CHILDHOOD OBESITY – A EUROPEAN PERSPECTIVE	HCM

Nr.	Autor	Titel	CC
74-2013	Andreas Haas, Annette Hofmann	RISIKEN AUS CLOUD-COMPUTING-SERVICES: FRAGEN DES RISIKOMANAGEMENTS UND ASPEKTE DER VERSICHERBARKEIT	HCM
75-2013	Yin Krogmann, Nadine Riedel and Ulrich Schwalbe	INTER-FIRM R&D NETWORKS IN PHARMACEUTICAL BIOTECHNOLOGY: WHAT DETERMINES FIRM'S CENTRALITY-BASED PARTNERING CAPABILITY?	ECO, IK
76-2013	Peter Spahn	MACROECONOMIC STABILISATION AND BANK LENDING: A SIMPLE WORKHORSE MODEL	ECO
77-2013	Sheida Rashidi, Andreas Pyka	MIGRATION AND INNOVATION – A SURVEY	IK
78-2013	Benjamin Schön, Andreas Pyka	THE SUCCESS FACTORS OF TECHNOLOGY-SOURCING THROUGH MERGERS & ACQUISITIONS – AN INTUITIVE META- ANALYSIS	IK
79-2013	Irene Prostoplow, Andreas Pyka and Barbara Heller-Schuh	TURKISH-GERMAN INNOVATION NETWORKS IN THE EUROPEAN RESEARCH LANDSCAPE	IK
80-2013	Eva Schlenker, Kai D. Schmid	CAPITAL INCOME SHARES AND INCOME INEQUALITY IN THE EUROPEAN UNION	ECO
81-2013	Michael Ahlheim, Tobias Börger and Oliver Frör	THE INFLUENCE OF ETHNICITY AND CULTURE ON THE VALUATION OF ENVIRONMENTAL IMPROVEMENTS – RESULTS FROM A CVM STUDY IN SOUTHWEST CHINA –	ECO
82-2013	Fabian Wahl	DOES MEDIEVAL TRADE STILL MATTER? HISTORICAL TRADE CENTERS, AGGLOMERATION AND CONTEMPORARY ECONOMIC DEVELOPMENT	ECO
83-2013	Peter Spahn	SUBPRIME AND EURO CRISIS: SHOULD WE BLAME THE ECONOMISTS?	ECO
84-2013	Daniel Guffarth, Michael J. Barber	THE EUROPEAN AEROSPACE R&D COLLABORATION NETWORK	IK
85-2013	Athanasios Saitis	KARTELLBEKÄMPFUNG UND INTERNE KARTELLSTRUKTUREN: EIN NETZWERKTHEORETISCHER ANSATZ	IK

Nr.	Autor	Titel	CC
86-2014	Stefan Kirn, Claus D. Müller-Hengstenberg	INTELLIGENTE (SOFTWARE-)AGENTEN: EINE NEUE HERAUSFORDERUNG FÜR DIE GESELLSCHAFT UND UNSER RECHTSSYSTEM?	ICT
87-2014	Peng Nie, Alfonso Sousa-Poza	MATERNAL EMPLOYMENT AND CHILDHOOD OBESITY IN CHINA: EVIDENCE FROM THE CHINA HEALTH AND NUTRITION SURVEY	HCM
88-2014	Steffen Otterbach, Alfonso Sousa-Poza	JOB INSECURITY, EMPLOYABILITY, AND HEALTH: AN ANALYSIS FOR GERMANY ACROSS GENERATIONS	HCM
89-2014	Carsten Burhop, Sibylle H. Lehmann-Hasemeyer	THE GEOGRAPHY OF STOCK EXCHANGES IN IMPERIAL GERMANY	ECO
90-2014	Martyna Marczak, Tommaso Proietti	OUTLIER DETECTION IN STRUCTURAL TIME SERIES MODELS: THE INDICATOR SATURATION APPROACH	ECO
91-2014	Sophie Urmetzer, Andreas Pyka	VARIETIES OF KNOWLEDGE-BASED BIOECONOMIES	IK
92-2014	Bogang Jun, Joongho Lee	THE TRADEOFF BETWEEN FERTILITY AND EDUCATION: EVIDENCE FROM THE KOREAN DEVELOPMENT PATH	IK
93-2014	Bogang Jun, Tai-Yoo Kim	NON-FINANCIAL HURDLES FOR HUMAN CAPITAL ACCUMULATION: LANDOWNERSHIP IN KOREA UNDER JAPANESE RULE	IK
94-2014	Michael Ahlheim, Oliver Frör, Gerhard Langenberger and Sonna Pelz	CHINESE URBANITES AND THE PRESERVATION OF RARE SPECIES IN REMOTE PARTS OF THE COUNTRY – THE EXAMPLE OF EAGLEWOOD	ECO
95-2014	Harold Paredes-Frigolett, Andreas Pyka, Javier Pereira and Luiz Flávio Autran Monteiro Gomes	RANKING THE PERFORMANCE OF NATIONAL INNOVATION SYSTEMS IN THE IBERIAN PENINSULA AND LATIN AMERICA FROM A NEO-SCHUMPETERIAN ECONOMICS PERSPECTIVE	IK
96-2014	Daniel Guffarth, Michael J. Barber	NETWORK EVOLUTION, SUCCESS, AND REGIONAL DEVELOPMENT IN THE EUROPEAN AEROSPACE INDUSTRY	IK

IMPRINT

University of Hohenheim

Dean's Office of the Faculty of Business, Economics and Social Sciences

Palace Hohenheim 1 B

70593 Stuttgart | Germany

Fon +49 (0)711 459 22488

Fax +49 (0)711 459 22785

E-mail wiso@uni-hohenheim.de

Web www.wiso.uni-hohenheim.de