

Schnabl, Gunther

**Working Paper**

## Monetary policy and wandering overinvestment cycles in East Asia and Europe

Working Paper, No. 148

**Provided in Cooperation with:**

University of Leipzig, Faculty of Economics and Management Science

*Suggested Citation:* Schnabl, Gunther (2017) : Monetary policy and wandering overinvestment cycles in East Asia and Europe, Working Paper, No. 148, Universität Leipzig, Wirtschaftswissenschaftliche Fakultät, Leipzig

This Version is available at:

<https://hdl.handle.net/10419/162136>

**Standard-Nutzungsbedingungen:**

Die Dokumente auf EconStor dürfen zu eigenen wissenschaftlichen Zwecken und zum Privatgebrauch gespeichert und kopiert werden.

Sie dürfen die Dokumente nicht für öffentliche oder kommerzielle Zwecke vervielfältigen, öffentlich ausstellen, öffentlich zugänglich machen, vertreiben oder anderweitig nutzen.

Sofern die Verfasser die Dokumente unter Open-Content-Lizenzen (insbesondere CC-Lizenzen) zur Verfügung gestellt haben sollten, gelten abweichend von diesen Nutzungsbedingungen die in der dort genannten Lizenz gewährten Nutzungsrechte.

**Terms of use:**

*Documents in EconStor may be saved and copied for your personal and scholarly purposes.*

*You are not to copy documents for public or commercial purposes, to exhibit the documents publicly, to make them publicly available on the internet, or to distribute or otherwise use the documents in public.*

*If the documents have been made available under an Open Content Licence (especially Creative Commons Licences), you may exercise further usage rights as specified in the indicated licence.*

UNIVERSITÄT LEIPZIG

**Wirtschaftswissenschaftliche Fakultät**  
**Faculty of Economics and Management Science**

Working Paper, No. 148

Gunther Schnabl

**Monetary Policy and Wandering  
Overinvestment Cycles in East Asia  
and Europe**

Mai 2017

ISSN 1437-9384

## *Monetary Policy and Wandering Overinvestment Cycles in East Asia and Europe*

Gunther Schnabl  
Universität Leipzig  
Grimmaische Straße 12  
D-04109 Leipzig

### **Abstract**

The paper analyses the role of monetary policy for cyclical movements of investment and asset markets in East Asia and Europe based on a Mises-Hayek overinvestment framework. It is shown how the gradual global decline of interest rates has triggered wandering overinvestment cycles in Japan, Southeast Asia and China. Similarly, it is shown how a one-size monetary policy within the European Monetary Union has not preserved the European Monetary Union from idiosyncratic economic development and crisis because of uncoordinated fiscal policies. With monetary policy crisis management being argued to impede financial and economic restructuring, a timely exit from ultra-expansionary monetary policies is recommended for both East Asia and Europe to reconstitute economic stability and growth.

Keywords: Hayek, Mises, East Asia, European Monetary Union, monetary overinvestment theory, fiscal policy, asymmetric shocks, secular stagnation.

JEL-Codes: E52, E58, F42, E63.

## 1. Introduction

Europe and East Asia are at the cross-roads. In East Asia, Japan remains stuck in a lasting stagnation, with the Abenomics having failed to kick-start the Japanese economy. Growth in China and a set of smaller East Asian countries is still high, but continues to slow down. China's fading economic dynamics put into question the future path of the giant economy. In Europe, different parts of the economically highly integrated region have followed different cycles. Whereas the southern member states of the European Monetary Union (EMU) remain stuck in crisis, Germany exhibits buoyant economic activity, with unemployment continuing to decline.

Despite a still positive growth performance in some parts of East Asia and Europe, the growth trends point downwards since the bursting of financial market bubbles (see Figure 1). Whereas the bubble economy in Japan had reached its peak already in the early 1990s, in Southeast Asia the crisis occurred in 1997/98. The European financial and debt crisis broke out in 2007/08, bringing Greece, Ireland, Italy, Portugal and Spain into a lasting slump. Even China's impressive economic performance is staggering since the year 2014. Capital flight and depreciation pressure on the Chinese yuan indicate upcoming economic turmoil.

Up to the present, structurally low productivity gains and growth have been explained by ageing societies (Summers 2014) and a pre-determined declining marginal efficiency of investment (Gordon 2012). The assumed decline of the natural rate of interest originating in growing savings and declining investment is taken as a justification for increasingly expansionary monetary policies of central banks. As an alternative approach, here the monetary overinvestment theory of Mises (1912) and Hayek (1929) is used as a theoretical framework because it allows to understand the prominent role of monetary policy for cyclical fluctuations in the economic activity.

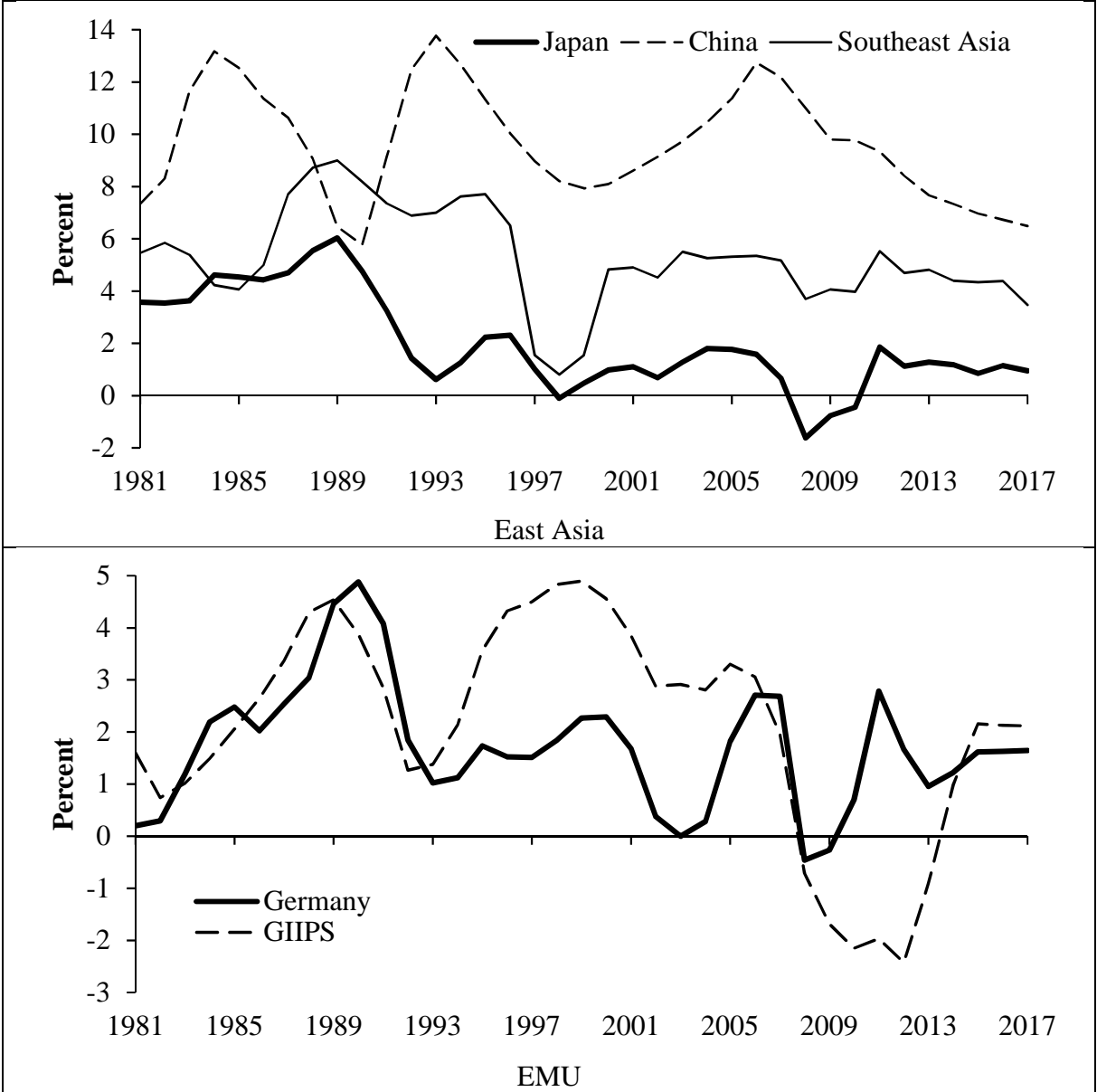
Thus, the innovation of the paper is to provide an alternative theoretical approach to the standard dynamic stochastic equilibrium frameworks (Galí 2008, Woodford 2003) to understand cyclical fluctuations on financial markets, which are accompanied by cyclical fluctuations in investment activity (rather than determining an optimal level of investment).<sup>1</sup> The motivation is that the dynamic stochastic equilibrium frameworks have been widely criticized to have failed to understand the reasons and to project financial market crisis (Mankiw 2006), as "*models*

---

<sup>1</sup> This would be regarded by Hayek (1974) as "pretence of knowledge".

attribute fluctuations in aggregate variables to imaginary causal forces that are not influenced by the action that any person takes (Romer 2016: 1).

**Figure 1: Real Growth in East Asia and the EMU**



Source: IMF, corrected for outliers. Three-year-moving averages. Southeast Asia and GIIPS calculated as arithmetic averages.

**2. The Role of Monetary Policy for Overinvestment from a Mises-Hayek Perspective**

In contrast to the dynamic stochastic general equilibrium models (Woodford 2003) the policy framework provided by Mises (1912) and Hayek (1929) does not presuppose a long-term general equilibrium. Instead the business cycle is assumed to be the outcome of dynamic

interaction of private economic agents and policy makers. The divergence of the central bank and capital market interest rate from the natural interest rate allows to understand boom and bust cycles as they occurred in East Asia and Europe since the mid 1980s starting in Japan and most recently evolving in Germany.

Based on the overinvestment theories of Mises (1912) and Hayek (1929) four types of interest rates can be distinguished (see Hoffmann and Schnabl 2011): The internal interest rate  $i_i$  reflects the (expected) returns of (planned) investment projects. The natural interest rate  $i_n$  is the interest rate that balances supply of (saving) and demand for capital (investment).<sup>2</sup> The central bank sets the central bank interest rate  $i_{cb}$ . The capital market rate  $i_c$  is defined as the interest rate set by the private banking (financial) sector for credit provided to private enterprises. The model simplifies from the fact that in reality, there are different interest rates with different maturities.

## 2.1. Boom and Bust in the Overinvestment Framework

In the monetary overinvestment theory, an economy is in equilibrium when the central bank rate and therefore the capital market interest rate are set equal to the natural interest rate. Then, planned savings are equal to investment. An economic upswing starts, when – for instance – an important innovation raises the internal interest rate of investment from  $i_{i_1}$  to  $i_{i_2}$ . In the left panel of Figure 2 the investment curve shifts from  $I_{i_1}$  to  $I_{i_2}$ , with the natural rate of interest rising from  $i_{n_1}$  to  $i_{n_2}$ .

If the central bank would lift the policy rate from  $i_{cb_1}$  to  $i_{cb_2}$ , assuming a perfect interest rate transmission to credit markets, planned savings and investment in the economy would stay in

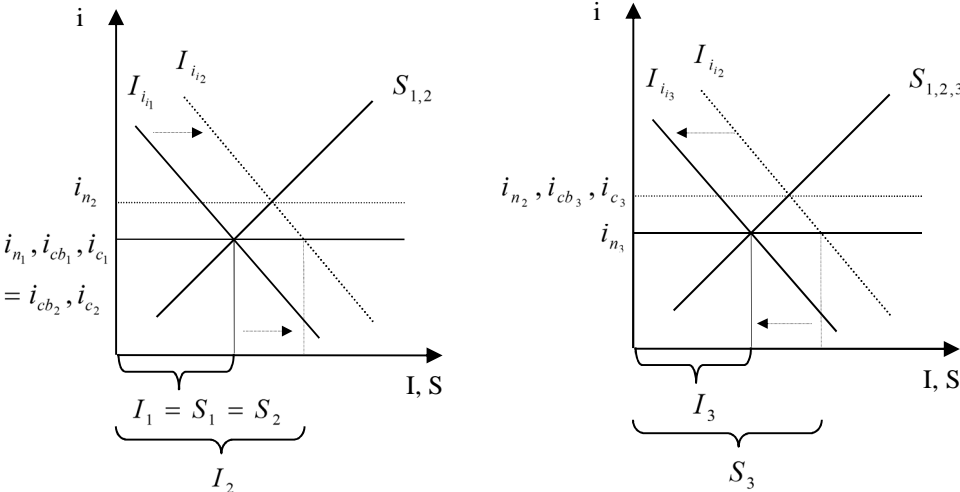
---

<sup>2</sup> Hayek (1929) and Wicksell (1898) had different concepts of the natural interest rate. According to Wicksell (1898), the deviation of the central bank and capital market interest rates from the natural rate of interest disturbs the equilibrium between ex-ante savings (S) and investment (I) plans. This leads to inflation (I>S) or deflation (S>I). Hayek (1929) explained the natural interest rate as the interest rate which aligns saving and consumption preferences with the production structure over time. In contrast, Woodford (2003) defines the natural rate of interest as the real interest rate that prevails if output is equal to its steady state value given fully flexible prices. This implies that in the Woodford setting the natural interest rate can be negative, for instance if saving structurally increases, while investment structurally declines. In the view of Mises (1912) and Hayek (1929) the natural rate (albeit empirically unknown) has to be positive, because it reflects time preferences in consumption, which is assumed to be positive for human beings.

equilibrium ( $S_2 = I_2$ ). If, in contrast, as in the left panel of Figure 2 the central bank does not raise the central bank rate ( $i_{n_1} = i_{cb_1} = i_{cb_2} < i_{n_2}$ ), an unsustainable overinvestment boom will evolve. Holding policy rates too low (for too long) is defined as type 1 monetary policy mistake.

To market participants a rise in credit to the private sector at constant interest rates signals that saving activity of households has increased. Additional credit-financed investment projects aim to satisfy the expected rise in future consumption. As planned household savings did not increase, an unsustainable disequilibrium between ex-ante saving and investment  $S_2 < I_2$  at  $i_{c_2} < i_{n_2}$  is constituted. Additional investments of some enterprises lead to further investments of other enterprises, which accelerates the cumulative upward process. As soon as capacity limits are reached and free capacities in labor markets are fully used, wages and prices rise.

**Figure 2: Overinvestment Boom and Crisis**



Price increases signal to enterprises additional profits and therefore trigger further investments. There are spill-over effects to financial markets. Stocks are attractive because of low interest rates on bank deposits. Stock prices increase, also encouraged by higher (expected) profits of enterprises. When stock prices move upward, speculation may set in, providing extra momentum such that “the symptoms of prosperity themselves finally become [...] a factor of prosperity” (Schumpeter 1912: 226). As the owners of stock and real estate feel richer, consumption is stimulated via the wealth channel, thereby adding to inflationary pressure.

The boom turns into bust, when the central bank increases the central bank rate to contain inflationary pressure (Mises, 1912; Hayek, 1929). The benchmark for the profitability of past and future investment projects is lifted. Investment projects with an internal interest rate below

the risen central bank and capital market interest rates turn out to be unprofitable. As first enterprises are forced to dismantle investment projects, the investment activity of other enterprises will stagger. This shifts the investment curve back from  $I_{i_2}$  to  $I_{i_3}$  (see right panel of Figure 2). As stock (and other asset prices) fall, the equity of banks and enterprises shrinks as well. A cumulative downward process sets in, as a credit crunch evolves and more investment projects are dismantled. Wages fall and unemployment grows.

The monetary overinvestment theories assumed that during the downturn the central bank holds the interest rates above the natural interest rate. This is labelled type 2 monetary policy mistake. The high central bank interest rate comes along with a high capital market interest rate and thus a tightening of credit during the crisis. The right panel of Figure 2 shows that when the policy interest rate is held above the natural interest rate ( $i_{cb_3} = i_{c_3} > i_{n_3}$ ), ex-ante saving is higher than investment ( $S_3 > I_3$ ). The recession is aggravated.

## 2.2. Asymmetric Central Bank Crisis Management

Since the mid 1980s the central bank monetary policy mistakes were not made in a symmetric way as assumed by Mises (1912) and Hayek (1929). Instead, since the mid 1980s the large central banks tended to set policy interest rates low for long during upswings and thereby nurtured overinvestment as well as financial market booms (type 1 monetary policy mistakes).<sup>3</sup> In contrast, in the face of (financial) crises interest rates were cut decisively to prevent type 2 monetary policy mistakes.

As economic upswings were increasingly led by boom phases in financial markets, central banks developed an asymmetric response pattern to financial market cycles. In the so-called ‘Jackson Hole consensus’ (Blinder and Reis 2005), central bankers claimed that central banks do not have sufficient information to recognize bubbles and therefore should refrain from “leaning against the wind” in phases of financial market exuberance. However, central banks should react decisively to sharply declining asset prices during crisis. The outcome of this asymmetric monetary policy crisis management pattern has been a cyclical downward-trend in nominal and real interest rates in the large economies as shown in Figure 3. Despite the gradual

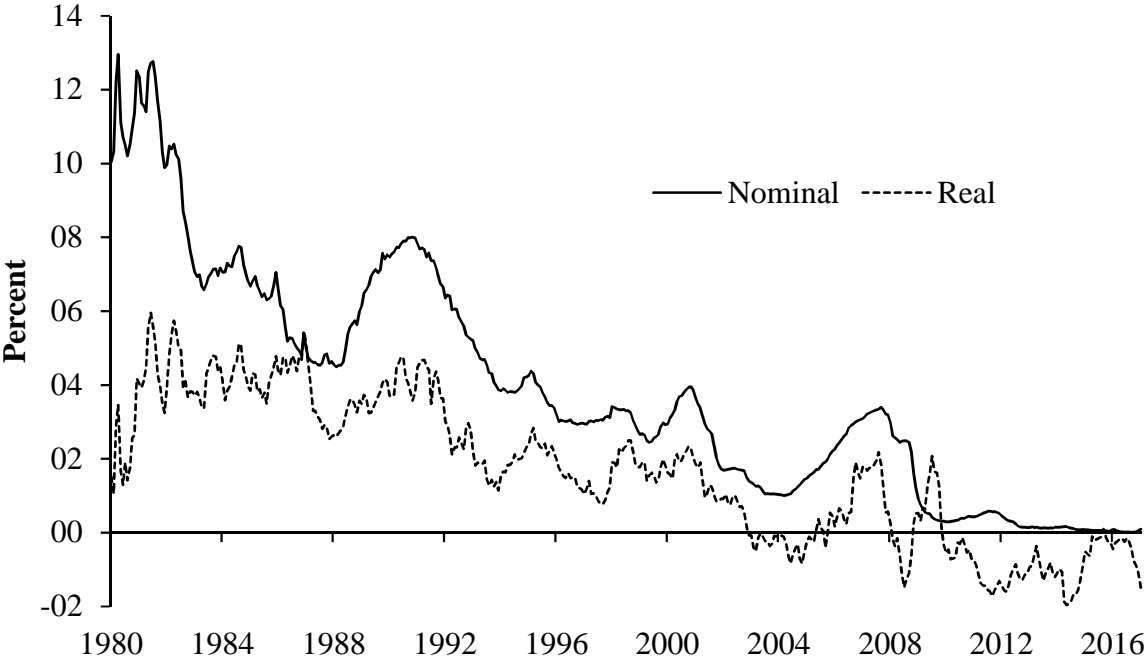
---

<sup>3</sup> In the dynamic stochastic general equilibrium models (Woodford 2003, Galí 2008) time-dependent asymmetric policy action is excluded by assumption.



monetary expansion consumer price inflation remained low, as the effects of monetary expansion increasingly became visible in financial instead of goods markets (see Gertler and Hoffmann 2016).

**Figure 3: Short-Term Interest Rates: US, Japan and Germany/Euro Area**

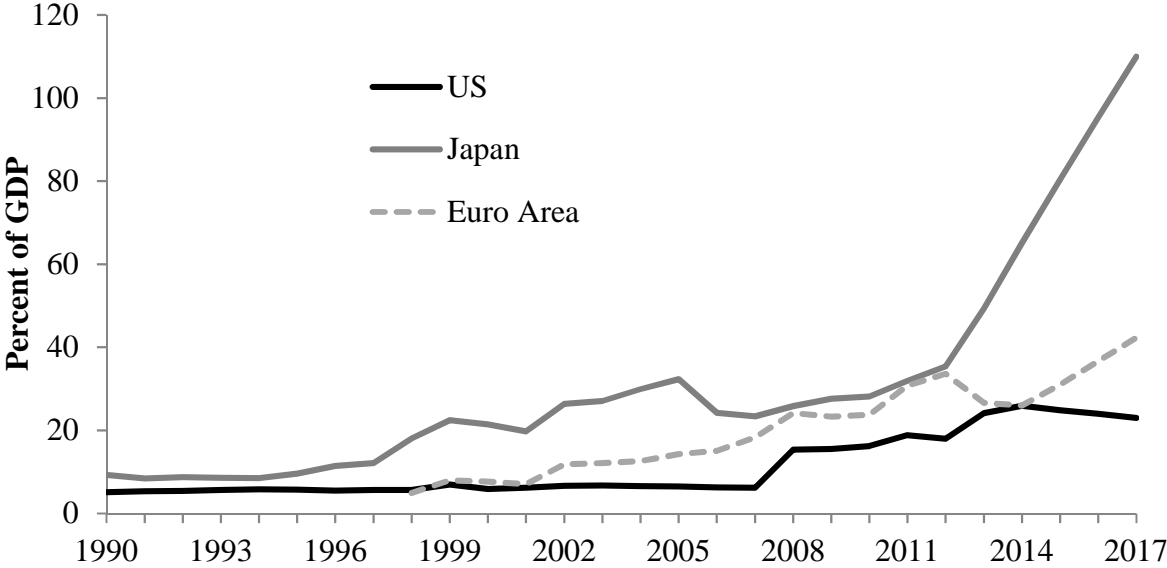


Source: International Monetary Fund (IMF). Arithmetic averages. Money market rates: Germany up to 1998, euro area since then.

When short-term interest rates approached the zero-bound (in Japan since 1999 and the US and euro area since 2008), large-scale asset purchases gradually inflated the central bank balance sheets (Figure 4). The purchases of mostly government bonds by central banks in the course of unconventional monetary policies further depressed the interest rates at the long end of the yield curves.

Up to the present only the Federal Reserve has started to (very carefully) exit from ultra-expansive monetary policies by reducing asset purchases to zero (the so-called tapering) and slowly lifting short-term interest rates. In contrast, in the euro area and Japan ultra-expansive monetary policies continue in form of extensive government bond purchases. The unprecedented gradual monetary expansion of the large central banks (Federal Reserve, European Central Bank, Bank of Japan) had an unprecedented impact on investment activity and financial markets in both Europe and East Asia.

**Figure 4: Central Bank Assets as Percent of GDP: Japan, US, Euro Area**



Sources: World Economic Outlook (WEO), European Central Bank and Eurostat. 2016 and 2017 are projections.

**3. Wandering Overinvestment Cycles in East Asia**

East Asia is part of the world dollar standard (McKinnon 2013). Because both trade with the US as the most important trading partner and flourishing intra-regional trade are invoiced in dollars, for all countries the exchange rate against the dollar remain crucial determinants of growth. With international liabilities and assets being denominated overwhelmingly in dollars, exchange rate stabilization against the dollar is an important tool of financial stabilization. Within this dollar standard, gradually declining interest rates in the United States have become the breeding ground for overinvestment as well as for boom and bust cycles in financial markets. Three main waves of boom and bust can be identified in East Asia since the mid 1980s.

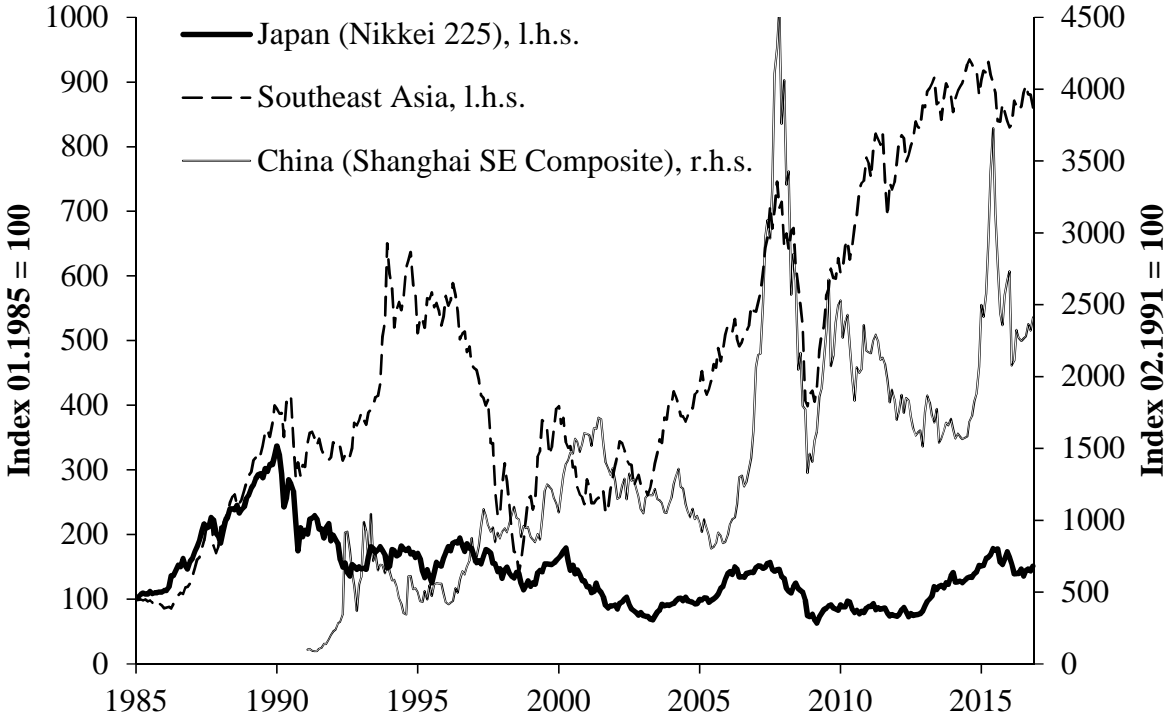
**3.1. The Japanese Bubble Economy**

The exuberance in the Japanese stock and real estate markets originated in the second half of the 1980s as expansionary monetary policy was paired with fiscal expansion (Schnabl and Hoffmann 2008).<sup>4</sup> The starting point of the Japanese bubble was a conflict about the trade imbalance between US and Japan, which had emerged after the liberalization of Japanese international capital flows during the first half of the 1980s. The United States put pressure on

<sup>4</sup> In addition, the liberalization of capital markets and the resulting erosion of bank-based lending are identified as important reasons for the bubble economy.

Japan to cure the trade imbalance by a strong revaluation of the yen against the dollar (McKinnon and Ohno 1997).

**Figure 5: Stock Prices in Japan, Southeast Asia and China**



Source: IMF. Southeast Asia is defined as the arithmetic average of the Set Index for Thailand, the Bursa Malaysia KLCI for Malaysia and the Korea Composite Stock Price Index for South Korea.

With the Plaza-Agreement of September 1985 a substantial appreciation of the Japanese yen against the US dollar was announced and underpinned by a monetary tightening in Japan (Funabashi 1989). This opened the door for one-way bets on yen appreciation (McKinnon and Ohno 1997), which led to a yen appreciation far beyond the targeted range. The resulting sharp decline of Japanese exports and a high-yen induced recession prompted the Bank of Japan to soften the appreciation pressure by cutting the short-term interest rate from roughly 8% in Sept. 1985 to 3.5% in Sept. 1987.

The resulting easing of credit conditions facilitated investment in the Japanese industry to regain international competitiveness. Investment as a share of GDP substantially increased (Figure 6). As in the monetary overinvestment theories, the investment-driven upswing was accompanied by a real estate and stock market boom (Figure 5). Real estate prices, in particular in the metropolitan areas, increased fast. In densely populated Japan real estate became a widely-used collateral for speculative stock purchases, which drove up stock prices. From

February 1987, following the Louvre-Accord (February 1987) additional government spending added further momentum.<sup>5</sup> The Nikkei 225 was boosted from about 15.000 points in January 1985 to closely below 40.000 points in December 1989.

### **3.2. Southeast Asian Economic Miracle and Asian Crisis**

The Japanese bubble burst in the stock market in December 1989 and in the real estate market in 1991. To stabilize the Japanese economy after the bursting of the bubble economy, the Bank of Japan gradually cut interest rates to prevent asset prices from further falling. This stabilized the ailing Japanese banking sector via two channels. First, the amount of non-performing loans, which strongly depended on real estate prices, was contained.

Second Japanese banks could realize new profits by funnelling low-cost liquidity to the fast-growing Southeast Asian countries (Indonesia, Malaysia, Philippines, South Korea, Thailand).<sup>6</sup> Japanese banks financed in particular Foreign Direct Investment (FDI) of the Japanese enterprises in the region. The FDI helped Japanese enterprises to reduce production costs, as in the first half of the 1990s the Japanese yen continued to strongly appreciate against the dollar. The capital inflows into Southeast Asia were further encouraged by exchange rate pegs to the dollar, which subdued foreign exchange risk.

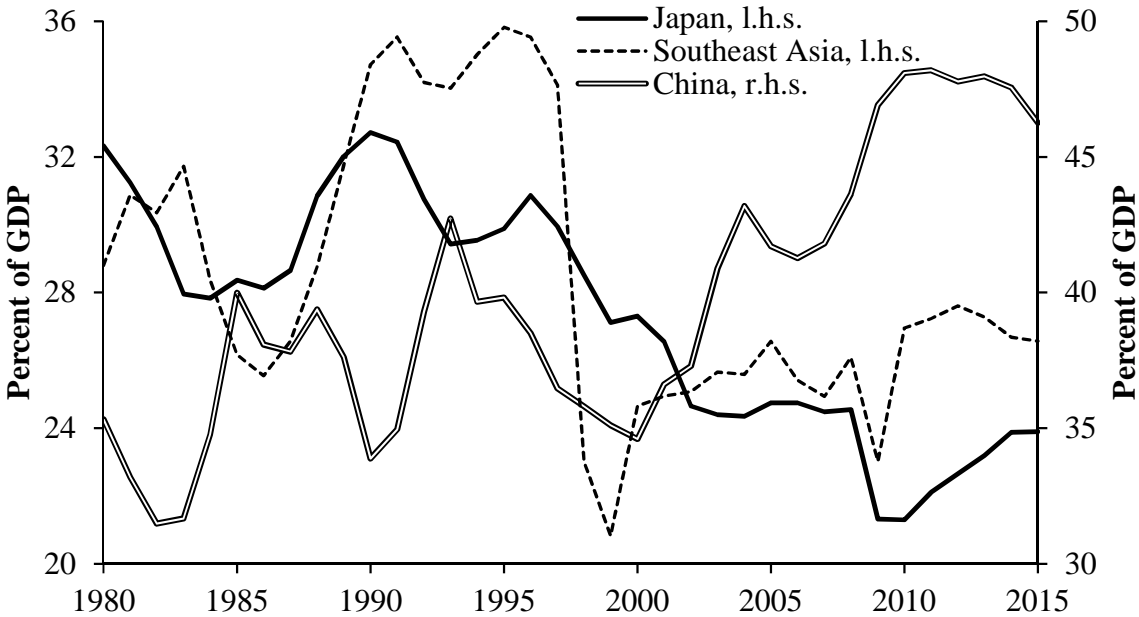
The accelerating capital inflows to the Southeast Asian countries constituted a Mises-Hayek-type overinvestment boom, which was accompanied by a hike in stock and real estate prices. As capital inflows made interest rates decline, an increasing number of investment projects looked profitable. Figure 6 shows that investment as share of GDP in the Southeast Asian countries further increased from a high level and peaked at 36% by 1997. As in Japan, the Mises-Hayek overinvestment boom was accompanied by fast rising stock and real estate prices. Figure 5 shows the respective rise of stock prices as an arithmetic average of the five Southeast Asian tiger economies (Indonesia, Malaysia, Philippines, South Korea, Thailand).

---

<sup>5</sup> The Japanese current account balance as the target of the yen appreciation remained more or less unchanged, because not only exports but also imports declined (McKinnon and Ohno 1997). Therefore, Japan was urged to stimulate the domestic economy via fiscal expansion to reduce the current account surplus via the import channel (Funabashi 1989).

<sup>6</sup> The five Southeast Asian countries have all individual country-specific characteristics. Nevertheless, they have similar structural similarities with respect to the pre-crisis build-up of vulnerabilities and the course of the crisis. This is also acknowledged by the literature (see e.g. Corsetti, Pesenti and Roubini 1999).

**Figure 6: Investment as a Share of GDP in Japan, Southeast Asia and China**



Source: IMF, IFS.

Like in Japan and in the Hayek-Mises overinvestment theories during the course of the boom the average marginal efficiency of investment in the tiger economies declined as represented by growing current account deficits. As the investment and speculation in asset markets was financed by foreign-currency denominated debt growing foreign exchange risk<sup>7</sup> finally eroded the trust in the Southeast Asian boom and capital flows reversed. In June 1997, the crisis started in Thailand with the collapse of the dollar peg and was transmitted to the other Southeast Asian tiger countries. With the benefit of hindsight Corsetti, Pesenti and Roubini (1999) and Krugman (1998) modelled the Asian crisis as an overinvestment crisis. As shown in Figures 4 and 5 both investment (as share of GDP) and asset prices slumped.

**2.3. The Chinese Overinvestment Boom**

With the Asian crisis, international capital returned to the safe havens of the international monetary system (in particular US, Japan, euro area), where central banks cut interest rates to absorb the financial shocks originating in the emerging market economies and the resulting capital inflows. The interest rate cuts became the breeding ground for bubbles in the new economy segments of the stock markets (dotcom bubbles). After these bubbles had burst in the year 2000, the large central banks cut interest rates again. From then onwards capital inflows into high-growth China accelerated.

<sup>7</sup> From the mid 1990s the depreciation of the Japanese yen had started to undermine the competitiveness of the exports of the Southeast Asian countries to Japan and in third markets such as the US and Europe.

Given inward-bound capital controls, the interest rate level in China had remained substantially higher than in the industrialized countries, which constituted per se an incentive for capital inflows. Furthermore, the decision to allow for a gradual appreciation of the Chinese yuan starting from the year 2005<sup>8</sup> created an incentive to bet for yuan appreciation (McKinnon and Schnabl 2012). The acceleration of capital inflows is represented by the rapid increase of foreign reserve holdings by the People's Bank of China, which reached their peak in July 2014 at around four trillion dollars.

Given capital controls, the hot money flows took the form of Foreign Direct Investment, which contributed to the build-up of overcapacities in the Chinese industry. Alternatively, hot money inflows were disguised as repatriated receipts from exports, which explains the dramatic increase of the Chinese current account surplus between 2005 and 2008. The hot money inflows became the source for the build-up of large overcapacities.

To prevent an overheating as observed during the Southeast Asian boom, starting from 2005 the People's Bank of China sterilized the monetary effects of foreign reserve accumulation by selling central bank bonds and by extending reserve requirements. To minimize the costs of sterilization the People's Bank of China kept the remuneration rate for required reserves substantially below the prevailing lending rate and the inflation rate.

This non-market-based liquidity absorption became the basis for the build-up of large overcapacities in the Chinese industrial sector (i.e. overinvestment) via so-called *window guidance*.<sup>9</sup> Because the interest rate on credit was kept low by a ceiling below the market clearing level, a surplus demand in the capital market emerged. This allowed the Chinese government to allocate credit to specific enterprises via the state-controlled banking sector. A preferential treatment seems to have been given to investment of the state-owned and export-oriented enterprises rather than to the households and small and medium enterprises. As shown

---

<sup>8</sup> Therefore, China's move towards a gradual appreciation path after July 2005 up to the year 2014, with a major interruption between July 2010 and July 2012, is an important determinant of this overinvestment boom.

<sup>9</sup> The window guidance (*madoguchi shidô*) was a way of allocating credit during the catch-up process of Japan. It allowed a preferential treatment of specific sectors and enterprises such as the automobile industry (Hamada and Horiuchi 1987: 244-246).

in Figure 6 investment as a share of GDP grew rapidly from 33% in the year 2000 to 44% in 2014 at the cost of household consumption.<sup>10</sup>

Furthermore, the preferential capital allocation fostered a sharp increase in real estate prices. Because low-remunerated reserve requirements created opportunity costs for banks in form of the difference between the lending rate and the remuneration rate for the required reserves, the Chinese banks sought for ways to cope with this burden. As a ceiling was put on lending rates, deposit rates were lowered. This created an incentive for households to transfer deposits from state-owned banks to the shadow banking sector. The shadow banks tended to use these funds to finance small and medium enterprises and in particular real estate projects, as real estate prices were/are expected to further rise (McKinnon and Schnabl 2012). The boom in the real estate market was accompanied by erratic increases of prices in the comparatively underdeveloped Chinese stock market (Figure 5).

Since the year 2014 the Chinese overinvestment, real estate and stock market booms are staggering. Capital flows are reserved and depreciation pressure on the Chinese yuan gives indication that the overinvestment boom has ended. The Chinese government aims to absorb overcapacities in the industry by creating additional domestic consumption. News about overcapacities in the Chinese real estate sector get denser. In 2015, sharply declining stock prices prompted the Chinese authorities to heavily intervene in stock markets via interest rate cuts and outright purchases of stocks. Like the Bank of Japan and European Central Bank the People's Bank of China aims to forestall a crisis by interest rate cuts, de-sterilization and low-cost credit provision to keep potentially unprofitable enterprises alive (He 2016). This has helped to prevent a harsh crisis in the short term as credit to the private sector continues to grow.

Nevertheless, real growth continues to trend downwards (upper panel of Figure 1), which can be seen as evidence that the overinvestment boom in China has ended. The Abenomics in Japan, which have taken the form of tremendous government bonds purchases by the central bank have not only slightly reanimated investment activity as well as stock and real estate prices (see Figure 5 and Figure 6).<sup>11</sup> The resulting depreciation of the yen against the yuan has put a further

---

<sup>10</sup> The resulting increase in capacities could *ceteris paribus* not be fully absorbed by domestic demand. By keeping the price level of Chinese manufacturing products low via sterilization policies cum low cost-credit provision, the real exchange rate of the Chinese yuan was kept undervalued. This helped to clear the overcapacities in the international markets (McKinnon and Schnabl 2012).

<sup>11</sup> The scale of the new Japanese overinvestment and speculation boom is, however, substantially smaller than

drag on Chinese growth.

#### **4. Overinvestment Cycles within the Monetary Union**

While the interest rate cuts in Japan and the United States after the bursting of the dotcom bubble contributed to wandering overinvestment and financial market cycles in the East Asian periphery of the world dollar standard, the interest rate cuts of the European Central Bank in response to the bursting European dotcom bubble triggered imbalances at the inner and outer periphery of the euro area. The fact that the monetary expansion has caused wandering overinvestment and speculation booms within the monetary union in different periods of time is due to the constructional flaw of the euro area as a monetary union with widely independent national fiscal policies.

##### **4.1. The Southern European Speculation and Overconsumption Boom**

To explain different inflation rates and growth rates in different parts of the European Monetary Union (and beyond) since the turn of the millennium, the role of fiscal policies in encouraging Mises-Hayek-type overinvestment booms has to be considered (Schnabl and Wollmershäuser 2013). From the very beginning, the European Monetary Union was a heterogeneous monetary union with different economic structures and therefore a high likelihood of asymmetric shocks, i.e. idiosyncratic business cycles (see Blanchard and Quah 1989). According to Mundell's (1961) theory of optimum currency areas an heterogeneous monetary union necessitates a high degree of labor market flexibility, which is not the case for the highly-rigid labor markets in most EMU member states. Alternatively, asymmetric shocks have to be counterbalanced by fiscal policies, as monetary policy and exchange rate adjustment cannot address country-specific economic developments (De Grauwe 2016).

From the turn of the millennium, a low interest rate policy combined with region-specific fiscal policy stances amplified idiosyncratic business cycles instead of balancing them out. After the turn of the millennium, the ECB interest rate cuts in response to the bursting dotcom bubble was combined with a tight fiscal policy stance in Germany, whereas spending substantially increased in Greece, Ireland Italy, Portugal and Spain. This increased the probability of region-

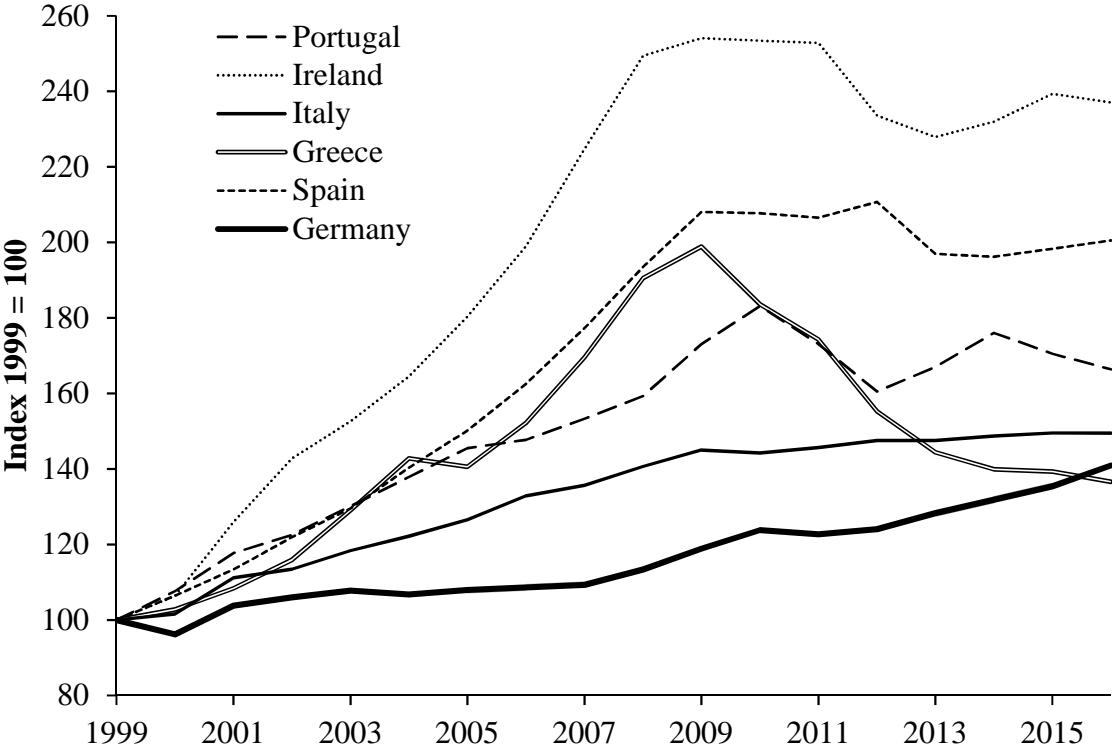
---

in the second half of the 1980s despite the much larger scale of monetary expansion (see Figure 3).



specific Mises-Hayek-type overinvestment booms in the parts of the monetary union, where expansionary monetary policy was paired with expansionary fiscal policy in form of increasing spending.<sup>12</sup>

**Figure 7: Diverging Spending Paths of Germany and EMU-Crisis Countries**



Source: IMF: WEO. General government expenditure in euros indexed to 100 in 1999.

In the late 1990s the high costs of the German unification had brought the generous German welfare state to its limits. Unemployment had grown from 6.2% in 1990 to 9.4% by 1998. In 1999, general government debt reached 60% of GDP, which brought Germany in conflict with the Maastricht criteria for general government debt.<sup>13</sup> The government felt forced to implement comprehensive reforms to curtail government expenditure. Wage increases in the public sector were restrained and social security benefits were streamlined. As shown in Figure 7 general government spending in Germany hardly increased between 1999 and 2007.

<sup>12</sup> In some countries such as Ireland and Spain fast growing tax revenues generated government surpluses despite fast growing expenditures. This implies that the Maastricht deficit criterion did not fulfil its information function concerning unsustainable government expenditure.

<sup>13</sup> After the introduction of the euro also the general government budget deficit increased beyond the -3% of GDP Maastricht limit, as the reforms slowed down growth and thereby reduced tax revenues.

As labor markets were deregulated, the wage austerity in the public sector was followed by wage austerity in the private sector. Investment declined as the domestic business outlook deteriorated because of sluggish domestic public and private demand. By keeping domestic inflation low, the tight fiscal policy stance kept the real interest rate in Germany high compared to other EMU member states. This prevented an overinvestment and speculation boom from emerging despite the ECB's strong interest rate cuts in response to the bursting dotcom bubble.<sup>14</sup>

The combination of a loose monetary policy with a tight fiscal policy boosted capital outflows from Germany as domestic economic activity remained sluggish.<sup>15</sup> Capital outflows to other member states of the euro area and beyond accelerated from the year 2001. In many countries, inside **and** outside the euro area<sup>16</sup> the capital inflows boosted investment, public spending, consumption and growth (Sinn and Wollmershäuser 2012). As inflation increased, declining real interest rates triggered an investment boom as shown in Figure 8. As in the Mises-Hayek overinvestment theory, the boom came along with speculation in real estate and stock markets. The resulting hike of tax revenues induced a dramatic increase in government expenditures, which added further momentum to the exuberance in Greece, Ireland, Portugal and Spain. Figure 7 shows how general government expenditure of the later euro area crisis countries diverged significantly relative to Germany.

The impact of diverging fiscal policy stances in the euro area on diverging overinvestment and speculation cycles in the face of a too loose one-size monetary policy can be characterized as a “waterbed effect”:<sup>17</sup> the liquidity issued by the European Central Bank as a crisis therapy for the whole euro area was one-sidedly pushed to the periphery. There, the generous credit provision pushed the real capital market interest rate below the natural interest rate, triggering unsustainable overinvestment booms as modeled in the left panel of Figure 2. The growing

---

<sup>14</sup> The main financing rate was set below the Taylor rate for the whole euro area, whereas for Germany the main refinancing rate remained above the Taylor rate (see Schnabl 2017).

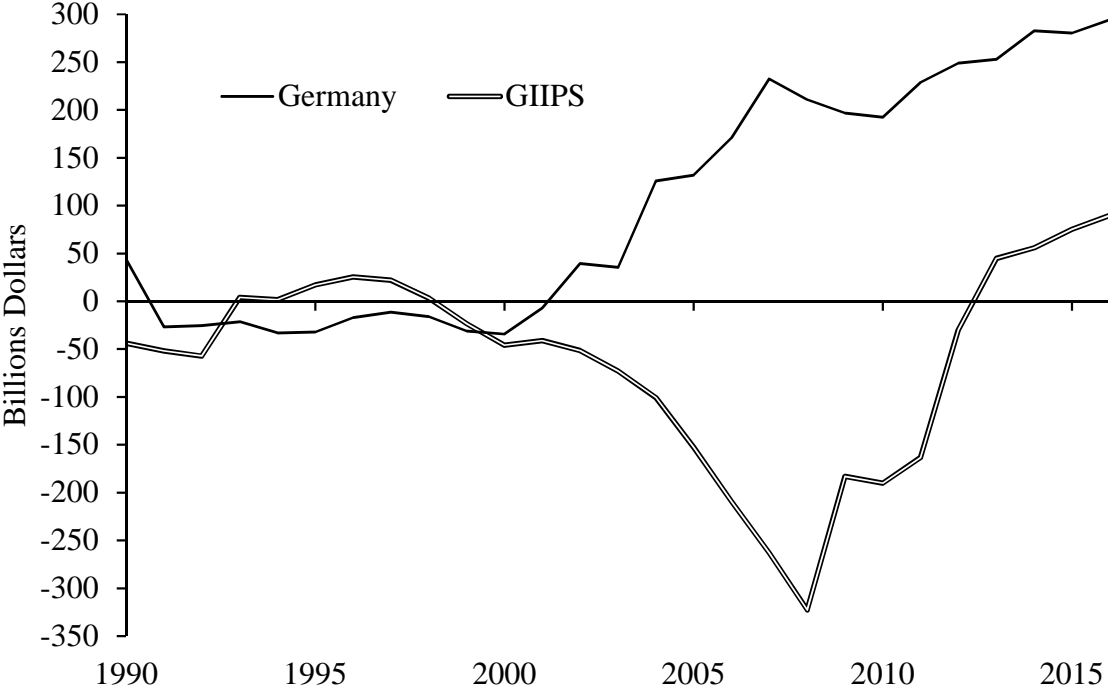
<sup>15</sup> As the reduction of future pensions was paired with incentives for private provisions for retirement, savings of households increased. In addition, growing demand for German export products contributed to higher profits of enterprises and thereby enterprise savings. The resulting dramatic rise of aggregate savings over investment contributed to the significant rise in capital outflows, which finance purchased of German products.

<sup>16</sup> Also, many central and eastern European countries, Iceland, the UK and the United States became target destinations of large capital inflows originating in Germany.

<sup>17</sup> The Mises-Hayek-based interpretation of the boom in the southern and western European later crisis countries is opposed (or complementary) to the widely-accepted convergence scenario which attributes the declining interest rates in the later crisis countries to their entry to the European Monetary Union (which made interest rates converge) (see Sinn and Wollmershäuser 2013). The convergence hypothesis neglects, however, the fact that similar booms took place in non-euro area countries such as the Baltic countries, Iceland and the United States.

imbalances within the European Monetary Union were mirrored in fast growing current account imbalances within the European Monetary Union (Figure 8), as real wage increases far beyond (below) productivity gains led to real appreciations (depreciation) of the euros of the later crisis countries (of Germany).

**Figure 8: Intra-EMU Current Account Imbalances**



Source: IMF: WEO. GIIPS = Greece, Ireland, Italy, Portugal and Spain.

With the break-out of the US subprime crisis in the year 2007 the boom in the euro area periphery countries and beyond ended. As in the overinvestment theory the turn-around of capital flows was initiated by a gradual increase of the central bank interest rate (main refinancing rate) by the European Central Bank from 2005 onwards. The subprime crisis added to the monetary tightening, as it led to a curtailing of international credit provision by the private banking sector. As German banks realized painful losses in the subprime market, they had to reduce risk exposure in the southern and western euro area countries, where German savings had financed low-return investment, speculation in the real estate markets and proliferate government and private consumption.

## 4.2 The German Overinvestment and Speculation Boom

With the crisis in the southern euro area private capital flows were redirected toward Germany, where therefore growth perspectives improved. This is particularly the case, as the reform process after the turn of the millennium has strengthened the international competitiveness of the German industry. With the ECB's monetary policy rescue measures becoming increasingly focused on the southern European crisis countries, the main refinancing rate was cut to zero and the balance sheet was further expanded by large-scale (mostly) government bond purchases. As the robust economic performance of Germany does not necessitate such an extraordinary monetary expansion, this suggests that now for Germany the central bank interest rate has fallen below the natural interest rate. This would imply from the point of view of the overinvestment theory that an overinvestment boom is currently evolving in Germany.

However, in contrast to the monetary overinvestment theory, investment activity in Germany has remained sluggish (Figure 9). Nevertheless, asset markets show characteristics of a Mises-Hayek-type speculation boom as German real estate and stock markets flourish. Whereas during the pre-crisis boom stock and real estate prices have strongly increased in the southern euro area countries (and stagnated in Germany), now German stock and real estate prices (the latter ones in particular in the economic centers) are steeply pointing upwards.

The monetary policy crisis management of the European Central Bank has boosted German real estate prices (lower panel of Figure 10), because financing conditions for real estate projects are generous, keeping real estate still affordable despite rising prices. Furthermore, whereas bank deposits have been historically the preferred form of saving in Germany because of low inflation<sup>18</sup>, the trust in the stability of the common European currency is fading. This has triggered a shift from nominal to real assets. In addition, capital flight from the southern European crisis countries has induced additional demand on the German real estate market, where prices compared to most other European countries are perceived as comparatively low.

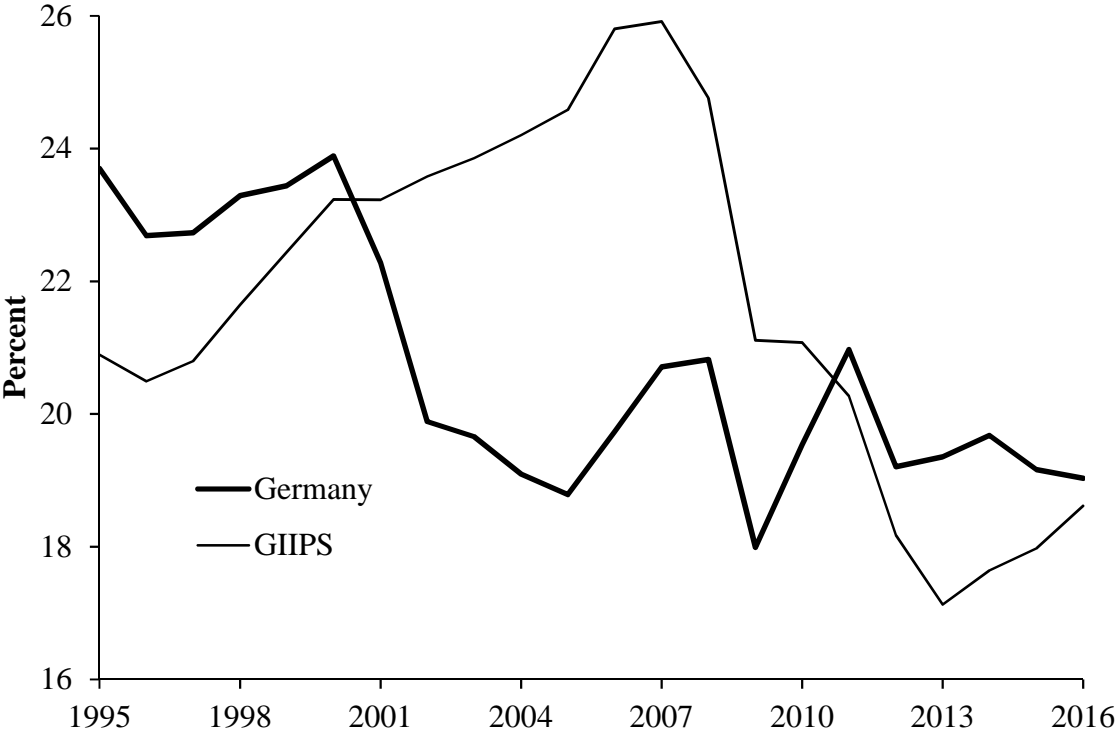
The German stock prices as shown in the upper panel of Figure 10 are boosted via the export channel. While German industrial enterprises still profit from the past reforms, the ECB's monetary policy rescue measures have created windfall profits by depreciating the euro. The

---

<sup>18</sup> Therefore, the share of Germans living in their own flat or house is small compared to southern European countries, where inflation has been traditionally high.

current account surplus of Germany continues to be high although the European current account deficits of the European crisis countries are consolidated because of tighter fiscal controls of the European authorities (Figure 7).

**Figure 9: Investment as Percent of GDP in Europe**



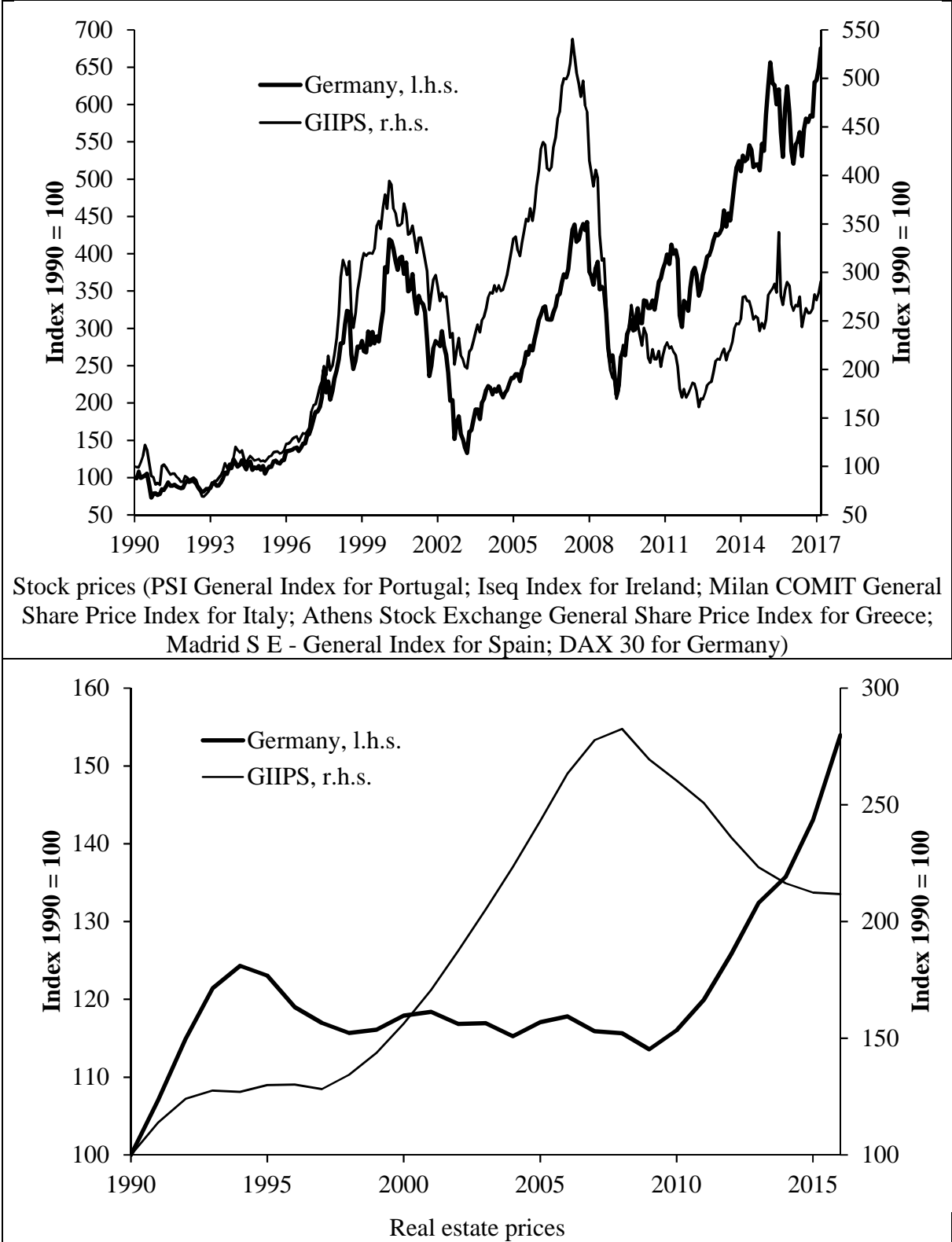
Source: IMF: WEO. GIIPS is the arithmetic average of Greece, Ireland, Italy, Portugal and Spain.

The recent acceleration of public spending of Germany, which is triggered by growing tax revenues,<sup>19</sup> as well as growing real wages not sufficiently large to substantially reduce the German current account surplus. As a result, Germany’s net capital outflows – and thereby the German current account surplus – are redirected towards third countries. The new target destinations are in particular the United States and United Kingdom, where fiscal spending continues to grow from already high levels. It has to be seen, if the current German net capital exports will turn out as over- or malinvestment in the future. The monetary overinvestment theories suggest, however, that the likelihood of overinvestment and speculative bubbles has dramatically increased, as on a global level central banks have depressed interest rates below the natural interest rate level. This has disturbed the allocation function of interest rates, which separates investment with high expected returns from investment with low expected returns.

<sup>19</sup> Like in the current crisis countries prior to the crisis, now in Germany tax revenues are inflated.

Also, the signaling function of interest rates (which indicates the risk of default, for instance of over-indebted countries is undermined.

**Figure 10: Stock and Real Estate Markets Compared in Spain and Germany**



Source: Thompson Reuters Datastream (stock prices), Oxford Economics (real estate prices).

In the past, major devaluations of the German foreign assets occurred during the subprime crisis as well as during the European financial and debt crisis. For the current net capital outflows the likelihood of default is even higher, as globally central bank interest rates are very likely to have fallen far below the natural interest rate during the pre-crisis period.

## **5. Outlook**

The gradual decline of interest rates in the large industrialized countries has been accompanied by wandering overinvestment and speculation cycles in different parts of East Asia and Europe in different time periods. This cyclicity of investment and financial markets in East Asia and Europe can be well explained with the monetary overinvestment theories of Mises (1912) and Hayek (1929). As every crisis following the end of an overinvestment boom has triggered a further monetary expansion a recursive process of monetary expansion and overinvestment-induced crises can be identified in different parts of East Asia and Europe.

This poses the question about the long-term consequences, which can be best observed in Japan, where the bubble has burst first and therefore the monetary policy based crisis management has been lasting longest. In Japan, the unprecedented degree of monetary expansion could not reanimate growth and has led Japan into an era of low-productivity growth, declining real wages and growing income inequality (for details see Caballero, Hoshi and Kashyab 2008, Peek and Rosengreen 2005). In Europe, the southern European crisis countries have embarked on similar paths of stagnation in the course of the ECB's monetary policy crisis management, albeit Spain has shown a more robust growth performance recently.

The negative growth effects of cheap liquidity provision as a crisis therapy can also be explained by the monetary overinvestment theories of Mises (1912) and Hayek (1929): During the upswing, the average marginal efficiency of investment declines, as investment projects with low marginal efficiency are realized. During the down-turn the low return-investment projects are conserved with even more low-cost liquidity provision. As distorted economic structures are kept alive and financial restructuring is prevented, the creative destruction of Schumpeter (1912) is impeded. In the long-term, growth inevitably declines as it is shown in Figure 1 for both East Asia and the EMU.

Whereas in East Asia, China remains – despite slowing growth dynamics – an engine of growth and prosperity, in Europe Germany continues – thanks to past reforms – to provide growth momentum. However, as the overinvestment boom seems to have already ended in China, the positive spill-over effects originating in the middle kingdom can be expected to gradually slow down. In Germany, economic activity will remain buoyant as long as the real estate and export bubbles last. Once the bubbles burst, European growth perspectives can be expected to further deteriorate, if ultra-loose monetary policy crisis therapies last.

## References

- Blanchard, Oliver / Quah, Danny (1989): The Dynamic Effects of Aggregate Demand and Supply Disturbances. *American Economic Review* 79, 4, 655-673.
- Blinder, Alan / Reis, Ricardo (2005): Understanding the Greenspan Standard. *Princeton University Department of Economics Working Papers* 88.
- Caballero, Ricardo / Hoshi, Takeo, / Kashyap, Anil (2008): Zombie Lending and Depressed Restructuring in Japan. *American Economic Review* 98, 5, 1943–1977.
- Corsetti, Giancarlo, Paolo Pesenti, and Nouriel Roubini (1999): Paper Tigers? A Model of the Asian Crisis. *European Economic Review* 43: 1211–1236.
- De Grauwe, Paul (2016): *The Economic of Monetary Union*. Oxford: Oxford University Press.
- Funabashi, Yoichi (1989): *Managing the Dollar: From the Plaza to the Louvre*, Institute of International Economics, Washington D.C.
- Galí, Jordi (2008): *Monetary Policy, Inflation, and the Business Cycle*. Princeton: Princeton University Press.
- Gertler, Pavel, and Boris Hofmann (2016): Monetary Facts Revisited. *BIS Working Papers* 566.
- Gordon, Robert (2012): Is U.S. Economic Growth Over? Faltering Innovation Confronts the Six Headwinds. *NBER Working Paper* 18315.
- Hamada, Koichi, and Akiyoshi Horiuchi. 1987. The Political Economy of the Financial Market. In *The Political Economy of Japan, Vol. 1 The Transformation*, edited by Kozo Yamamura and Yasukichi Yasuba. Stanford: Stanford University Press, 223–260.



- Hayek, Friedrich August von (1929): *Geldtheorie und Konjunkturtheorie*, Salzburg, Philosophia Verlag, Reprint 1976.
- Hayek, Friedrich August von (1974): *The Pretence of Knowledge*, Nobel Prize in Economics Documents from Nobel Prize Committee.
- He, Fan. 2016. Dealing with Zombie Enterprises in China. *East Asia Forum*, 20 November 2016.
- Hoffmann, Andreas / Schnabl, Gunther (2011): A Vicious Cycle of Manias, Crises and Asymmetric Policy Responses – An Overinvestment View. *The World Economy* 34, 382–403.
- Krugman, Paul. 1998. What Happened to Asia? <http://web.mit.edu/krugman/www/DISINTER.html>.
- Maniw, Gregory (2006): The Macroeconomist as Scientist and Engineer. *Journal of Economic Perspectives* 20, 4, 29-46.
- McKinnon, Ronald / Ohno, Kenichi (1997): *Dollar and Yen: Resolving Economic Conflict between the United States and Japan*, MIT Press, Cambridge, Massachusetts.
- McKinnon, Ronald. 2013. *Exchange Rates under the East Asian Dollar Standard*. Cambridge, Massachusetts: MIT Press.
- McKinnon, Ronald, and Gunther Schnabl. 2012. China and its Dollar Exchange Rate. A Worldwide Stabilizing Influence? *The World Economy* 35, 6, 667–693.
- Mundell, Robert (1961): A Theory of Optimum Currency Areas. *American Economic Review* 51, 4, 657-665.
- Peek, Joe / Rosengren, Eric (2005): Unnatural Selection: Perverse Incentives and the Misallocation of Credit in Japan. *American Economic Review* 95, 4, 1144–1166.
- Romer, Paul (2016): The Trouble with Macroeconomics. *Mimeo*.
- Schnabl, Gunther / Wollmershäuser, Timo (2013): Fiscal Divergence and Current Account Imbalances in Europe. *CESifo Working Paper* 4108.
- Schnabl, Gunther (2017): The Failure of ECB Monetary Policy from a Mises-Hayek Perspective. *CESifo Working Paper* 6388.
- Schumpeter, Joseph (1912): *The Theory of Economic Development*, Cambridge, Massachusetts.
- Sinn, Hans-Werner / Wollmershäuser, Timo (2012): Target Loans, Current Account Balances and Capital Flows: the ECB's Rescue Facility. *International Tax and Public Finance* 19, 4, 468-508.
- Summers, Larry (2014): U.S. Economic Prospects: Secular Stagnation, Hysteresis, and the Zero Lower Bound. *Business Economics* 49, 2, 65–73.

Wicksell, Knut. 1898 [2005]. "Geldzins und Güterpreise." Munich: FinanzBuch Verlag.

Woodford, Micheal (2003): Interest and Prices: Foundation of a Theory of Monetary Policy.  
Princeton, Princeton University Press.

# Universität Leipzig

## Wirtschaftswissenschaftliche Fakultät

Nr. 1	Wolfgang Bernhardt	Stock Options wegen oder gegen Shareholder Value? Vergütungsmodelle für Vorstände und Führungskräfte 04/1998
Nr. 2	Thomas Lenk / Volkmar Teichmann	Bei der Reform der Finanzverfassung die neuen Bundesländer nicht vergessen! 10/1998
Nr. 3	Wolfgang Bernhardt	Gedanken über Führen – Dienen – Verantworten 11/1998
Nr. 4	Kristin Wellner	Möglichkeiten und Grenzen kooperativer Standortgestaltung zur Revitalisierung von Innenstädten 12/1998
Nr. 5	Gerhardt Wolff	Brauchen wir eine weitere Internationalisierung der Betriebswirtschaftslehre? 01/1999
Nr. 6	Thomas Lenk / Friedrich Schneider	Zurück zu mehr Föderalismus: Ein Vorschlag zur Neugestaltung des Finanzausgleichs in der Bundesrepublik Deutschland unter besonderer Berücksichtigung der neuen Bundesländer 12/1998
Nr. 7	Thomas Lenk	Kooperativer Föderalismus – Wettbewerbsorientierter Föderalismus 03/1999
Nr. 8	Thomas Lenk / Andreas Mathes	EU – Osterweiterung – Finanzierbar? 03/1999
Nr. 9	Thomas Lenk / Volkmar Teichmann	Die fiskalischen Wirkungen verschiedener Forderungen zur Neugestaltung des Länderfinanzausgleichs in der Bundesrepublik Deutschland: Eine empirische Analyse unter Einbeziehung der Normenkontrollanträge der Länder Baden-Württemberg, Bayern und Hessen sowie der Stellungnahmen verschiedener Bundesländer 09/1999
Nr. 10	Kai-Uwe Graw	Gedanken zur Entwicklung der Strukturen im Bereich der Wasserversorgung unter besonderer Berücksichtigung kleiner und mittlerer Unternehmen 10/1999
Nr. 11	Adolf Wagner	Materialien zur Konjunkturforschung 12/1999
Nr. 12	Anja Birke	Die Übertragung westdeutscher Institutionen auf die ostdeutsche Wirklichkeit – ein erfolg-versprechendes Zusammenspiel oder Aufdeckung systematischer Mängel? Ein empirischer Bericht für den kommunalen Finanzausgleich am Beispiel Sachsen 02/2000
Nr. 13	Rolf H. Hasse	Internationaler Kapitalverkehr in den letzten 40 Jahren – Wohlstandsmotor oder Krisenursache? 03/2000
Nr. 14	Wolfgang Bernhardt	Unternehmensführung (Corporate Governance) und Hauptversammlung 04/2000
Nr. 15	Adolf Wagner	Materialien zur Wachstumsforschung 03/2000
Nr. 16	Thomas Lenk / Anja Birke	Determinanten des kommunalen Gebührenaufkommens unter besonderer Berücksichtigung der neuen Bundesländer 04/2000
Nr. 17	Thomas Lenk	Finanzwirtschaftliche Auswirkungen des Bundesverfassungsgerichtsurteils zum Länderfinanzausgleich vom 11.11.1999 04/2000
Nr. 18	Dirk Büttel	Continuous linear utility for preferences on convex sets in normal real vector spaces 05/2000
Nr. 19	Stefan Dierkes / Stephanie Hanrath	Steuerung dezentraler Investitionsentscheidungen bei nutzungsabhängigem und nutzungsunabhängigem Verschleiß des Anlagenvermögens 06/2000
Nr. 20	Thomas Lenk / Andreas Mathes / Olaf Hirschfeld	Zur Trennung von Bundes- und Landeskompetenzen in der Finanzverfassung Deutschlands 07/2000
Nr. 21	Stefan Dierkes	Marktwerte, Kapitalkosten und Betafaktoren bei wertabhängiger Finanzierung 10/2000
Nr. 22	Thomas Lenk	Intergovernmental Fiscal Relationships in Germany: Requirement for New Regulations? 03/2001
Nr. 23	Wolfgang Bernhardt	Stock Options – Aktuelle Fragen Besteuerung, Bewertung, Offenlegung 03/2001

Nr. 24	Thomas Lenk	Die „kleine Reform“ des Länderfinanzausgleichs als Nukleus für die „große Finanzverfassungs-reform“? 10/2001
Nr. 25	Wolfgang Bernhardt	Biotechnologie im Spannungsfeld von Menschenwürde, Forschung, Markt und Moral Wirtschaftsethik zwischen Beredsamkeit und Schweigen 11/2001
Nr. 26	Thomas Lenk	Finanzwirtschaftliche Bedeutung der Neuregelung des bundestaatlichen Finanzausgleichs – Eine allkoative und distributive Wirkungsanalyse für das Jahr 2005 11/2001
Nr. 27	Sören Bär	Grundzüge eines Tourismusmarketing, untersucht für den Südraum Leipzig 05/2002
Nr. 28	Wolfgang Bernhardt	Der Deutsche Corporate Governance Kodex: Zuwahl (comply) oder Abwahl (explain)? 06/2002
Nr. 29	Adolf Wagner	Konjunkturtheorie, Globalisierung und Evolutionsökonomik 08/2002
Nr. 30	Adolf Wagner	Zur Profilbildung der Universitäten 08/2002
Nr. 31	Sabine Klinger / Jens Ulrich / Hans-Joachim Rudolph	Konjunktur als Determinante des Erdgasverbrauchs in der ostdeutschen Industrie? 10/2002
Nr. 32	Thomas Lenk / Anja Birke	The Measurement of Expenditure Needs in the Fiscal Equalization at the Local Level Empirical Evidence from German Municipalities 10/2002
Nr. 33	Wolfgang Bernhardt	Die Lust am Fliegen Eine Parabel auf viel Corporate Governance und wenig Unternehmensführung 11/2002
Nr. 34	Udo Hielscher	Wie reich waren die reichsten Amerikaner wirklich? (US-Vermögensbewertungsindex 1800 – 2000) 12/2002
Nr. 35	Uwe Haubold / Michael Nowak	Risikoanalyse für Langfrist-Investments Eine simulationsbasierte Studie 12/2002
Nr. 36	Thomas Lenk	Die Neuregelung des bundesstaatlichen Finanzausgleichs auf Basis der Steuerschätzung Mai 2002 und einer aktualisierten Bevölkerungsstatistik 12/2002
Nr. 37	Uwe Haubold / Michael Nowak	Auswirkungen der Renditeverteilungsannahme auf Anlageentscheidungen Eine simulationsbasierte Studie 02/2003
Nr. 38	Wolfgang Bernhard	Corporate Governance Kodex für den Mittel-Stand? 06/2003
Nr. 39	Hermut Kormann	Familienunternehmen: Grundfragen mit finanzwirtschaftlichen Bezug 10/2003
Nr. 40	Matthias Folk	Launhardtsche Trichter 11/2003
Nr. 41	Wolfgang Bernhardt	Corporate Governance statt Unternehmensführung 11/2003
Nr. 42	Thomas Lenk / Karolina Kaiser	Das Prämienmodell im Länderfinanzausgleich – Anreiz- und Verteilungsmittwirkungen 11/2003
Nr. 43	Sabine Klinger	Die Volkswirtschaftliche Gesamtrechnung des Haushaltsektors in einer Matrix 03/2004
Nr. 44	Thomas Lenk / Heide Köpping	Strategien zur Armutsbekämpfung und –vermeidung in Ostdeutschland: 05/2004
Nr. 45	Wolfgang Bernhardt	Sommernachtsfantasien Corporate Governance im Land der Träume. 07/2004
Nr. 46	Thomas Lenk / Karolina Kaiser	The Premium Model in the German Fiscal Equalization System 12/2004
Nr. 47	Thomas Lenk / Christine Falken	Komparative Analyse ausgewählter Indikatoren des Kommunalwirtschaftlichen Gesamt-ergebnisses 05/2005
Nr. 48	Michael Nowak / Stephan Barth	Immobilienanlagen im Portfolio institutioneller Investoren am Beispiel von Versicherungsunternehmen Auswirkungen auf die Risikosituation 08/2005

Nr. 49	Wolfgang Bernhardt	Familiengesellschaften – Quo Vadis? Vorsicht vor zu viel „Professionalisierung“ und Ver-Fremdung 11/2005
Nr. 50	Christian Milow	Der Griff des Staates nach dem Währungsgold 12/2005
Nr. 51	Anja Eichhorst / Karolina Kaiser	The Institutional Design of Bailouts and Its Role in Hardening Budget Constraints in Federations 03/2006
Nr. 52	Ullrich Heilemann / Nancy Beck	Die Mühen der Ebene – Regionale Wirtschaftsförderung in Leipzig 1991 bis 2004 08/2006
Nr. 53	Gunther Schnabl	Die Grenzen der monetären Integration in Europa 08/2006
Nr. 54	Hermut Kormann	Gibt es so etwas wie typisch mittelständige Strategien? 11/2006
Nr. 55	Wolfgang Bernhardt	(Miss-)Stimmung, Bestimmung und Mitbestimmung Zwischen Juristentag und Biedenkopf-Kommission 11/2006
Nr. 56	Ullrich Heilemann / Annika Blaschzik	Indicators and the German Business Cycle A Multivariate Perspective on Indicators of Ifo, OECD, and ZEW 01/2007
Nr. 57	Ullrich Heilemann	“The Suol of a new Machine” zu den Anfängen des RWI-Konjunkturmodells 12/2006
Nr. 58	Ullrich Heilemann / Roland Schuhr / Annika Blaschzik	Zur Evolution des deutschen Konjunkturzyklus 1958 bis 2004 Ergebnisse einer dynamischen Diskriminanzanalyse 01/2007
Nr. 59	Christine Falken / Mario Schmidt	Kameralistik versus Doppik Zur Informationsfunktion des alten und neuen Rechnungswesens der Kommunen Teil I: Einführende und Erläuternde Betrachtungen zum Systemwechsel im kommunalen Rechnungswesen 01/2007
Nr. 60	Christine Falken / Mario Schmidt	Kameralistik versus Doppik Zur Informationsfunktion des alten und neuen Rechnungswesens der Kommunen Teil II Bewertung der Informationsfunktion im Vergleich 01/2007
Nr. 61	Udo Hielscher	Monti della citta di firenze Innovative Finanzierungen im Zeitalter Der Medici. Wurzeln der modernen Finanzmärkte 03/2007
Nr. 62	Ullrich Heilemann / Stefan Wappler	Sachsen wächst anders Konjunkturelle, sektorale und regionale Bestimmungsgründe der Entwicklung der Bruttowertschöpfung 1992 bis 2006 07/2007
Nr. 63	Adolf Wagner	Regionalökonomik: Konvergierende oder divergierende Regionalentwicklungen 08/2007
Nr. 64	Ullrich Heilemann / Jens Ulrich	Good bye, Professir Phillips? Zum Wandel der Tariflohndeterminanten in der Bundesrepublik 1952 – 2004 08/2007
Nr. 65	Gunther Schnabl / Franziska Schobert	Monetary Policy Operations of Debtor Central Banks in MENA Countries 10/2007
Nr. 66	Andreas Schäfer / Simone Valente	Habit Formation, Dynastic Altruism, and Population Dynamics 11/2007
Nr. 67	Wolfgang Bernhardt	5 Jahre Deutscher Corporate Governance Kodex Eine Erfolgsgeschichte? 01/2008
Nr. 68	Ullrich Heilemann / Jens Ulrich	Viel Lärm um wenig? Zur Empirie von Lohnformeln in der Bundesrepublik 01/2008
Nr. 69	Christian Groth / Karl-Josef Koch / Thomas M. Steger	When economic growth is less than exponential 02/2008
Nr. 70	Andreas Bohne / Linda Kochmann	Ökonomische Umweltbewertung und endogene Entwicklung peripherer Regionen Synthese einer Methodik und einer Theorie 02/2008
Nr. 71	Andreas Bohne / Linda Kochmann / Jan Slavik / Lenka Slaviková	Deutsch-tschechische Bibliographie Studien der kontingenten Bewertung in Mittel- und Osteuropa 06/2008

Nr. 72	Paul Lehmann / Christoph Schröter-Schlaack	Regulating Land Development with Tradable Permits: What Can We Learn from Air Pollution Control? 08/2008
Nr. 73	Ronald McKinnon / Gunther Schnabl	China's Exchange Rate Impasse and the Weak U.S. Dollar 10/2008
Nr. 74	Wolfgang Bernhardt	Managervergütungen in der Finanz- und Wirtschaftskrise Rückkehr zu (guter) Ordnung, (klugem) Maß und (vernünftigem) Ziel? 12/2008
Nr. 75	Moritz Schularick / Thomas M. Steger	Financial Integration, Investment, and Economic Growth: Evidence From Two Eras of Financial Globalization 12/2008
Nr. 76	Gunther Schnabl / Stephan Freitag	An Asymmetry Matrix in Global Current Accounts 01/2009
Nr. 77	Christina Ziegler	Testing Predictive Ability of Business Cycle Indicators for the Euro Area 01/2009
Nr. 78	Thomas Lenk / Oliver Rottmann / Florian F. Woitek	Public Corporate Governance in Public Enterprises Transparency in the Face of Divergent Positions of Interest 02/2009
Nr. 79	Thomas Steger / Lucas Bretschger	Globalization, the Volatility of Intermediate Goods Prices, and Economic Growth 02/2009
Nr. 80	Marcela Munoz Escobar / Robert Holländer	Institutional Sustainability of Payment for Watershed Ecosystem Services. Enabling conditions of institutional arrangement in watersheds 04/2009
Nr. 81	Robert Holländer / WU Chunyou / DUAN Ning	Sustainable Development of Industrial Parks 07/2009
Nr. 82	Georg Quaas	Realgrößen und Preisindizes im alten und im neuen VGR-System 10/2009
Nr. 83	Ullrich Heilemann / Hagen Findeis	Empirical Determination of Aggregate Demand and Supply Curves: The Example of the RWI Business Cycle Model 12/2009
Nr. 84	Gunther Schnabl / Andreas Hoffmann	The Theory of Optimum Currency Areas and Growth in Emerging Markets 03/2010
Nr. 85	Georg Quaas	Does the macroeconomic policy of the global economy's leader cause the worldwide asymmetry in current accounts? 03/2010
Nr. 86	Volker Grossmann / Thomas M. Steger / Timo Trimborn	Quantifying Optimal Growth Policy 06/2010
Nr. 87	Wolfgang Bernhardt	Corporate Governance Kodex für Familienunternehmen? Eine Widerrede 06/2010
Nr. 88	Philipp Mandel / Bernd Süsmuth	A Re-Examination of the Role of Gender in Determining Digital Piracy Behavior 07/2010
Nr. 89	Philipp Mandel / Bernd Süsmuth	Size Matters. The Relevance and Hicksian Surplus of Agreeable College Class Size 07/2010
Nr. 90	Thomas Kohstall / Bernd Süsmuth	Cyclic Dynamics of Prevention Spending and Occupational Injuries in Germany: 1886-2009 07/2010
Nr. 91	Martina Padmanabhan	Gender and Institutional Analysis. A Feminist Approach to Economic and Social Norms 08/2010
Nr. 92	Gunther Schnabl / Ansgar Belke	Finanzkrise, globale Liquidität und makroökonomischer Exit 09/2010
Nr. 93	Ullrich Heilemann / Roland Schuhr / Heinz Josef Münch	A "perfect storm"? The present crisis and German crisis patterns 12/2010
Nr. 94	Gunther Schnabl / Holger Zemanek	Die Deutsche Wiedervereinigung und die europäische Schuldenkrise im Lichte der Theorie optimaler Währungsräume 06/2011
Nr. 95	Andreas Hoffmann / Gunther Schnabl	Symmetrische Regeln und asymmetrisches Handeln in der Geld- und Finanzpolitik 07/2011
Nr. 96	Andreas Schäfer / Maik T. Schneider	Endogenous Enforcement of Intellectual Property, North-South Trade, and Growth 08/2011
Nr. 97	Volker Grossmann / Thomas M. Steger / Timo Trimborn	Dynamically Optimal R&D Subsidization 08/2011

Nr. 98	Erik Gawel	Political drivers of and barriers to Public-Private Partnerships: The role of political involvement 09/2011
Nr. 99	André Casajus	Collusion, symmetry, and the Banzhaf value 09/2011
Nr. 100	Frank Hüttner / Marco Sunder	Decomposing $R^2$ with the Owen value 10/2011
Nr. 101	Volker Grossmann / Thomas M. Steger / Timo Trimborn	The Macroeconomics of TANSTAAFL 11/2011
Nr. 102	Andreas Hoffmann	Determinants of Carry Trades in Central and Eastern Europe 11/2011
Nr. 103	Andreas Hoffmann	Did the Fed and ECB react asymmetrically with respect to asset market developments? 01/2012
Nr. 104	Christina Ziegler	Monetary Policy under Alternative Exchange Rate Regimes in Central and Eastern Europe 02/2012
Nr. 105	José Abad / Axel Löffler / Gunther Schnabl / Holger Zemanek	Fiscal Divergence, Current Account and TARGET2 Imbalances in the EMU 03/2012
Nr. 106	Georg Quaas / Robert Köster	Ein Modell für die Wirtschaftszweige der deutschen Volkswirtschaft: Das "MOGBOT" (Model of Germany's Branches of Trade)
Nr. 107	Andreas Schäfer / Thomas Steger	Journey into the Unknown? Economic Consequences of Factor Market Integration under Increasing Returns to Scale 04/2012
Nr. 108	Andreas Hoffmann / Björn Urbansky	Order, Displacements and Recurring Financial Crises 06/2012
Nr. 109	Finn Marten Körner / Holger Zemanek	On the Brink? Intra-euro area imbalances and the sustainability of foreign debt 07/2012
Nr. 110	André Casajus / Frank Hüttner	Nullifying vs. dummifying players or nullified vs. dummified players: The difference between the equal division value and the equal surplus division value 07/2012
Nr. 111	André Casajus	Solidarity and fair taxation in TU games 07/2012
Nr. 112	Georg Quaas	Ein Nelson-Winter-Modell der deutschen Volkswirtschaft 08/2012
Nr. 113	André Casajus / Frank Hüttner	Null players, solidarity, and the egalitarian Shapley values 08/2012
Nr. 114	André Casajus	The Shapley value without efficiency and additivity 11/2012
Nr. 115	Erik Gawel	Neuordnung der W-Besoldung: Ausgestaltung und verfassungsrechtliche Probleme der Konsumtionsregeln zur Anrechnung von Leistungsbezügen 02/2013
Nr. 116	Volker Grossmann / Andreas Schäfer / Thomas M. Steger	Migration, Capital Formation, and House Prices 02/2013
Nr. 117	Volker Grossmann / Thomas M. Steger	Optimal Growth Policy: the Role of Skill Heterogeneity 03/2013
Nr. 118	Guido Heineck / Bernd Süßmuth	A Different Look at Lenin's Legacy: Social Capital and Risk Taking in the Two Germanies 03/2013
Nr. 119	Andreas Hoffmann	The Euro as a Proxy for the Classical Gold Standard? Government Debt Financing and Political Commitment in Historical Perspective 05/2013
Nr. 120	Andreas Hoffmann / Axel Loeffler	Low Interest Rate Policy and the Use of Reserve Requirements in Emerging Markets 05/2013
Nr. 121	Gunther Schnabl	The Global Move into the Zero Interest Rate and High Debt Trap 07/2013
Nr. 122	Axel Loeffler / Gunther Schnabl / Franziska Schobert	Limits of Monetary Policy Autonomy and Exchange Rate Flexibility by East Asian Central Banks 08/2013
Nr. 123	Burkhard Heer / Bernd Süßmuth	Tax Bracket Creep and its Effects on Income Distribution 08/2013
Nr. 124	Hans Fricke / Bernd Süßmuth	Growth and Volatility of Tax Revenues in Latin America 08/2013
Nr. 125	Ulrich Volz	RMB Internationalisation and Currency Co-operation in East Asia 09/2013

Nr. 126	André Casajus / Helfried Labrenz	A property rights based consolidation approach 02/2014
Nr. 127	Pablo Duarte	The Relationship between GDP and the Size of the Informal Economy: Empirical Evidence for Spain 02/2014
Nr. 128	Erik Gawel	Neuordnung der Professorenbesoldung in Sachsen 03/2014
Nr. 129	Friedrun Quaas	Orthodoxer Mainstream und Heterodoxe Alternativen Eine Analyse der ökonomischen Wissenschaftslandschaft 04/2014
Nr. 130	Gene Callahan / Andreas Hoffmann	The Idea of a Social Cycle 05/2014
Nr. 131	Karl Trela	Klimaanpassung als wirtschaftspolitisches Handlungsfeld 06/2014
Nr. 132	Erik Gawel / Miquel Aguado	Neuregelungen der W-Besoldung auf dem verfassungsrechtlichen Prüfstand 08/2014
Nr. 133	Ulf Papenfuß / Matthias Redlich / Lars Steinhauer	Forschend und engagiert lernen im Public Management: Befunde und Gestaltungsanregungen eines Service Learning Lehrforschungsprojektes 10/2014
Nr. 134	Karl Trela	Political climate adaptation decisions in Germany - shortcomings and applications for decision support systems 11/2014
Nr. 135	Ulf Papenfuß / Lars Steinhauer / Benjamin Friedländer	Beteiligungsberichterstattung der öffentlichen Hand im 13-Länder-Vergleich: Erfordernisse für mehr Transparenz über die Governance und Performance öffentlicher Unternehmen 02/2015
Nr. 136	Gunther Schnabl	Japans Lehren für das Schweizer Wechselkursdilemma 02/2015
Nr. 137	Ulf Papenfuß / Christian Schmidt	Determinants of Manager Pay in German State-Owned Enterprises and International Public Policy Implications: 3-Year Study for Sectors, Performance and Gender 02/2015
Nr. 138	Philipp Mandel / Bernd Süßmuth	Public education, accountability, and yardstick competition in a federal system 05/2015
Nr. 139	Gunther Schnabl	Wege zu einer stabilitäts- und wachstumsorientierten Geldpolitik aus österreichischer Perspektive 06/2015
Nr. 140	Ulf Papenfuß / Matthias Redlich / Lars Steinhauer / Benjamin Friedländer	Forschend und engagiert lernen im Public Management: Befunde und Gestaltungsanregungen eines Service Learning Lehrforschungsprojektes – 2. aktualisierte Auflage 08/2015
Nr. 141	Friedrun Quaas / Georg Quaas	Hayeks Überinvestitionstheorie 10/2015
Nr. 142	Bastian Gawellek / Marco Sunder	The German Excellence Initiative and Efficiency Change among Universities, 2001-2011 01/2016
Nr. 143	Benjamin Larin	Bubble-Driven Business Cycles 02/2016
Nr. 144	Friedrun Quaas / Georg Quaas	Effekte des Kapitalmarktzins auf die Preis- und Produktivitätsentwicklung Eine Analyse der deutschen Volkswirtschaft 1970-2014 02/2016
Nr. 145	Thomas Lenk / Matthias Redlich / Philipp Glinka	Nachhaltige Stadtfinanzen - Akzeptanzsteigerung der bürgerschaftlichen Beteiligung an der Haushaltsplanung 02/2016
Nr. 146	Michael von Prollius / Gunther Schnabl	Geldpolitik, Arabellion, Flüchtlingskrise 10/2016
Nr. 147	David Leuwer / Bernd Süßmuth	The Exchange Rate Susceptibility of European Core Industries, 1995-2010 05/2017
Nr. 148	Gunther Schnabl	Monetary Policy and Wandering Overinvestment Cycles in East Asia and Europe 05/2017