

Pourshahid, Alireza; Johari, Iman; Richards, Gregory; Amyot, Daniel; Akhigbe, Okhaide S.

Article

A goal-oriented, business intelligence-supported decision-making methodology

Decision Analytics

Provided in Cooperation with:

Springer Nature

Suggested Citation: Pourshahid, Alireza; Johari, Iman; Richards, Gregory; Amyot, Daniel; Akhigbe, Okhaide S. (2014) : A goal-oriented, business intelligence-supported decision-making methodology, Decision Analytics, ISSN 2193-8636, Springer, Heidelberg, Vol. 1, Iss. 1, pp. 1-36, <https://doi.org/10.1186/s40165-014-0009-8>

This Version is available at:

<https://hdl.handle.net/10419/161796>

Standard-Nutzungsbedingungen:

Die Dokumente auf EconStor dürfen zu eigenen wissenschaftlichen Zwecken und zum Privatgebrauch gespeichert und kopiert werden.

Sie dürfen die Dokumente nicht für öffentliche oder kommerzielle Zwecke vervielfältigen, öffentlich ausstellen, öffentlich zugänglich machen, vertreiben oder anderweitig nutzen.

Sofern die Verfasser die Dokumente unter Open-Content-Lizenzen (insbesondere CC-Lizenzen) zur Verfügung gestellt haben sollten, gelten abweichend von diesen Nutzungsbedingungen die in der dort genannten Lizenz gewährten Nutzungsrechte.

Terms of use:

Documents in EconStor may be saved and copied for your personal and scholarly purposes.

You are not to copy documents for public or commercial purposes, to exhibit the documents publicly, to make them publicly available on the internet, or to distribute or otherwise use the documents in public.

If the documents have been made available under an Open Content Licence (especially Creative Commons Licences), you may exercise further usage rights as specified in the indicated licence.



<http://creativecommons.org/licenses/by/4.0/>

RESEARCH

Open Access

A goal-oriented, business intelligence-supported decision-making methodology

Alireza Pourshahid^{1*}, Iman Johari², Gregory Richards³, Daniel Amyot^{4*} and Okhaide S Akhigbe⁴

* Correspondence:

alireza.pourshahid@gmail.com;

damyot@eecs.uottawa.ca

¹IBM Canada, Ottawa, Canada

⁴School of Computer Science and Electrical Engineering, University of Ottawa, 800 King Edward Avenue, Ottawa, ON K1N 6N5, Canada

Full list of author information is available at the end of the article

Abstract

In many enterprises and other types of organizations, decision making is both a crucial and a challenging task. Despite their importance, many decisions are still made based on experience and intuition rather than on evidence supported by rigorous approaches. Decisions are often made this way because of lack of data, unknown relationships between data and goals, conflicting goals, and poorly understood risks. This research presents a goal-oriented, business intelligence-supported methodology for decision making. The methodology, which is iterative, allows enterprises to begin with limited data, discover required data to build their models, capture stakeholders goals, and model threats, opportunities, and their impact. It also enables the aggregation of Key Performance Indicators and their integration into goal models. The tool-supported methodology and its models aim to enhance the user's experience with common business intelligence applications. Managers can monitor the impact of decisions on the organization's goals and improve both decision models and business processes. The approach is illustrated and evaluated through a retail business scenario, from which several lessons were learned. One key lesson is that once an organization has a goal model, data can be added iteratively. The example, tool support, and lessons suggest the feasibility of the methodology.

Keywords: Business Process Management; Business intelligence; Decision support systems; Goal-oriented modelling; Performance indicators; Tools; User requirements notation

Background

The motivation for this research stems from the observation that, despite the vast amount of time and effort spent on Business Intelligence (BI) technologies in organizations, these systems often fail to influence managerial decision making (Ko and Abdullaev 2007; Korhonen et al. 2008). One of the issues is that BI can be viewed primarily as tool for data consolidation, not necessarily one that represents the managerial decision making environment. As a result, the decision making environment, which includes for example, organizational goals, key performance indicators related to these goals and linkages to the business processes involved, is not represented within the BI system.

Yet, a stream of literature, beginning in the 1960s, has addressed the notion of decision-centric information delivery (Ackoff 1967; King and Cleland 1975). The recent development of goal modelling languages provides an opportunity to explore this notion in more detail. More specifically, we believe that the use of such

languages can enable integration of organizational goals, managerial decision models, Key Performance Indicators (KPIs), and the relationship between KPIs and business processes into a single methodology with proper tool support to better deliver information to managers within a decision-centric context.

The main research question therefore, is whether the integration of goal, KPI, and business process models together with BI systems is feasible and potentially beneficial for decision making, especially for middle-level managers and in the presence of sparse data. Accordingly, the main objectives of the research were:

- To develop a framework to model goals, key performance indicators and processes, using one modelling notation, in an iterative and incremental manner;
- To define a method for modelling and analysis of cause-effect relationships between indicators used to measure goal satisfaction; and
- To specify a technical architecture for integration of an existing open source modelling tool with the BI system as a means of implementing the aforementioned framework.

Method

We use a research method inspired from *design science* (Hevner et al. 2004; Hevner and Chatterjee 2010), where we construct and evaluate relevant artefacts to enable managerial decision making. This method relies on iterative improvements to the research based on three cycles: relevance, rigor, and design.

- *Relevance cycle*: The research was conducted through collaboration with a medium-sized organization in the retail sector. Through interviews with managers and observations of their data management and decision making processes, we developed familiarity with the current processes and methods allowing us to better define and scope the problem areas.
- *Rigor cycle*: Literature was reviewed to find existing research results on decision making with an emphasis on approaches based on BI and goal and process modelling. This step helped us to better understand the state of the art and related research and to validate our research topic.
- *Design cycle*: We built model artefacts of a real-life example to motivate, illustrate and evaluate the main aspects of our decision-making methodology. Feedback from real users was incorporated in our methodology during its refinement. Tool support was developed to demonstrate the feasibility of the methodology. Lessons learned from the design cycle were also documented to augment the knowledge base related to goal-oriented and BI-driven decision making.

The main contributions of this paper include:

- A novel goal-oriented decision methodology that integrates goal models, decision models, threats and opportunities (collectively called *situations* in this paper), and processes together with analytic capabilities in order to improve decision-making capabilities within BI systems.

- Extensions of a standard goal-oriented language (from the User Requirements Notation) to better model and analyze relationships between KPIs, goals, and situations. In particular, these extensions enhance *what-if* strategy analysis in support of decision making.
- Tool support for the above extensions and for integration of goal/decision models with BI systems (particularly with a commercially available system, namely IBM Cognos BI).

The rest of the paper presents our literature review (resulting from the relevance and rigor cycles), the methodology that exploits goal and process modelling together with BI for decision making (from the design cycle), and the application of the methodology to a real-life example from the retail organization (also from the design cycle).

Literature review

This section reviews important concepts and relevant research in the areas of decision making based on BI, goal and process modelling with the User Requirements Notation (URN), and the use of the Goal-oriented Requirement Language (GRL) combined with Key Performance Indicators for business modelling.

Current challenges related to BI-based decision making

BI is typically thought of as a category of applications specifically related to the provision of information for management decision-making (Negash 2004; Shariat and Hightower 2007). In some cases, Data Warehouses (DW) are seen as components of BI (Negash 2004; Wixom et al. 2008), but many standalone BI tools exist for the delivery of on-line analytic processing, dashboards, and reporting. These tools capture data from a variety of different sources including the DW.

Currently, BI information is consumed in a variety of ways. Managers either interact directly with the system viewing data presented in graphical or tabular reports, or they rely on analysts to prepare such reports (Negash 2004). In some cases, dashboards are used to provide a quick review of performance against targets. Alternatively or in conjunction, on-line analytic processing (OLAP) might be employed to explore performance across a range of different dimensions within the data set such as customer, location, or product.

The use of BI to actually make a decision, however, still requires a fair bit of data manipulation even after the data has been delivered in the formats mentioned above because another series of steps are needed to arrive at a decision after the data has been viewed (Cooper et al. 2000; Vinekar et al. 2009). Although the fundamental goal of BI is to enable informed decision-making that results in improved organizational performance (Vinekar et al. 2009), it has been argued that, perhaps due to the lack of integration of BI into the decision making process, more than 50% of BI implementations fail to influence the decision-making process in any meaningful way (Ko and Abdullaev 2007).

The dichotomy between data delivery and the use of data in decision making is evidenced by the categorization of BI tools into *data-driven support* and *decision support* (Isik et al. 2011). Data support is related to the delivery of accurate, up-to-date data while decision support refers to the assistance provided to the user in actually

making decisions based on the available data (Power and Sharda 2007). As March and Hevner (2007) point out, simply loading transactional data into a Data Warehouse is not necessarily the answer if the objective is to enable managerial decision-making.

Korhonen et al. (2008) argue that one of the key challenges faced in institutionalizing decision aids is validating decision models used by the *decision maker*. The implication is that such a model would help to provide information more closely linked to the decision to be made. One problem associated with the integration of data in this way is the fact that the need for analytic information differs from the need for transactional information, and Information System professionals lack adequate models to clearly define analytic information needs (March and Hevner 2007; Stroh et al. 2011).

This notion of delivering information based on “decision analysis”, however, has a long history in management information systems (MIS). For example, over 30 years ago, Ackoff (1967) called for the use of decision analysis as the key to designing a useful MIS. King and Cleland (1975), as well as Henderson and West (1979), explored the use of “decision inventories”, and King and Cleland (1975) proposed the concept of “decision models” as a means of specifying the decision environment in more detail.

More recent decision-centric approaches to information delivery include Watson and Frolick’s (1993) “strategic business objective” technique. In this approach, the strategic business objectives and the processes that influence their accomplishment are defined and serve as the basis for information delivery. Similarly, goal-oriented techniques are based on mapping organizational goals and attendant sub-goals as a means of defining information needs of managers (Siena et al. 2008). In addition, Prakash and Gosain (2008) describe the goal-decision-information (GDI) approach for DW development, which defines goals and associated decisions leading to a better understanding of the data required in a DW. Finally, Liew and Sundaram (2009) define a complex “flexible object-oriented decision system” that leverages information about organizational objectives as a starting point for defining information requirements.

Although decision or goal analysis is the foundation for many of the above approaches, most are applied at the enterprise level and thus are not necessarily in line with current BI technologies. Furthermore, while they do focus on delivery of information linked to goals and outcomes, many are static in that they seek to design the goal system as a “business architecture” that informs the information architecture.

In addition, while many of these models do explore linkages between goals and information required for the decisions, the actual KPIs and the interrelationships between KPIs and goals are not defined. According to Popova and Sharpanskykh (2010), even when relationships can be defined, such as in the ARIS model (Davis and Brabänder 2007) where users articulate cause-effect relationships using Balanced Scorecards and connect KPIs to strategic goals, the analysis options are inadequate due to a lack of formal modelling foundations and proper representations.

In order to shorten the gap between the delivery of information and decision making, we propose an approach that borrows from the decision analysis tradition. Specifically, we seek to create a BI-supported decision methodology by providing a means of defining *decision models* that illustrate cause-effect relationships among variables relevant to the decision for specific roles in the organization. As in the GDI and strategic business objective approaches, the model includes definition of goals and the presumed drivers of these goals. To this approach we add Key Performance Indicators, which are organized according to the

decision model and are “dimensionally aware”, allowing users to compare KPIs from different store locations for example. Finally, to allow for adaptability in the process, we take a prototyping, iterative approach to model development, which allows for adaptation as business needs change or as managers become clearer on what types of information they need for various decisions.

It is conceivable that not all types of decisions in an organization would be enabled by such an approach. The taxonomy of management decisions from Koutsoukis and Mitra (2003) is depicted in Table 1. Executive decisions are thought to be longer term and relatively unstructured. Operational decisions are structured but are amenable to automation. Mid-level decisions by contrast, are semi-structured in that they relate to management control: ensuring that certain objectives meet their targets by managing the drivers of these objectives. Accordingly, our proposed methodology is expected to be particularly suited to mid-level management decision making.

User requirements notation

Goals are high-level objectives of an enterprise, organization, or system. The requirements engineering community has acknowledged the importance of goal-oriented approaches to system development many years ago. Yu and Mylopoulos (1998) observe that goals are important not just for requirements elicitation, but also for relating requirements, processes and solutions to organizational and business contexts, and for enabling trade-off analysis and conflict resolution. Complete goal-driven development approaches now exist to support software development (van Lamsweerde 2009).

The Goal-oriented Requirement Language (GRL) is a graphical notation used to model and analyze goals. Although many goal-oriented languages exist, GRL is the first and currently only *standardized* one. GRL is part of the User Requirements Notation (URN), a standard of the International Telecommunication Union (ITU-T) intended for the elicitation, analysis, specification, and validation of requirements using a combination of goal-oriented and scenario-based modelling (ITU-T 2012; Amyot and Mussbacher 2011). In URN, GRL is complemented by a scenario notation called Use Case Map (UCM), which offers an operational or process-oriented view of a system in terms of causal scenarios composed of responsibilities optionally allocated to a structure of components and actors.

GRL enables the modelling of stakeholders, business goals, qualities, alternatives, and rationales. Modelling goals of stakeholders with GRL makes it possible to understand stakeholder intentions as well as problems that ought to be solved. GRL enables business analysts to model strategic goals and concerns using various types of *intentional* elements and relationships, as well as their stakeholders called *actors* (⊙). Core intentional elements include *goals* (□), *softgoals* (◻) for qualities, and *tasks* (◁) for decisions; activities and alternative solutions. Intentional elements can also be linked by AND/OR *decompositions* (+—). Elements of a goal model can

Table 1 A taxonomy of management decision-making

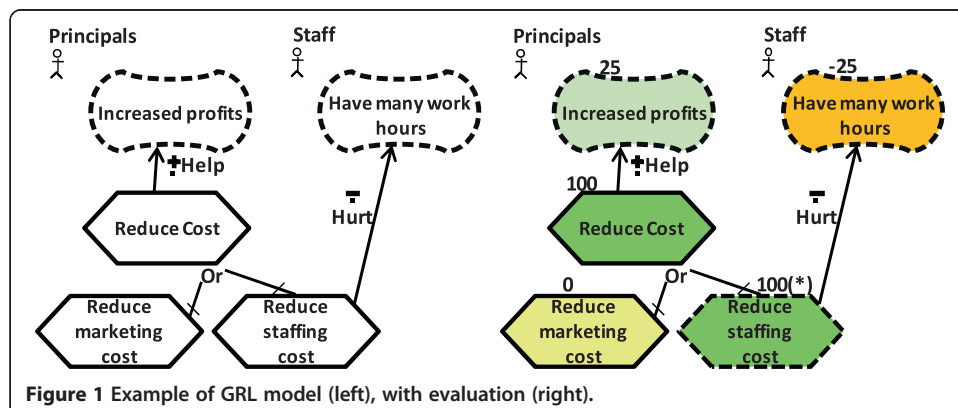
Level of management	Core requirement	Nature of the decision
Executive	Strategic planning	Long term, unstructured
Mid-level	Management control	Shorter term, semi-structured
Operational	Operational control	Short term, structured

influence each other through *contributions*, displayed as arrows (\rightarrow). Qualitative positive (make, help, some positive) and negative (break, hurt, some negative) contribution levels exist, as well as quantitative contribution levels on a scale from -100 (break) to $+100$ (make).

Figure 1 (left) illustrates in GRL some of the above concepts with a toy retail store example, where principals (captured as an actor) want increased profits (captured as a softgoal) while the staff (another actor) wants to have many work hours (another softgoal). Reducing costs (captured as a task), which can help satisfy the principals' objective, can be decomposed into two non-mutually exclusive options: reducing the marketing cost or reducing the staffing budget. The latter option however can hurt the staff's objective. As modellers develop deeper knowledge of these relationships, they can move from a qualitative scale (e.g., *Help*) to a quantitative one (e.g., 35) for contributions and for satisfaction values. Such models can help capture stakeholder's objectives as well as their relationships in an explicit way in terms understandable by managers.

GRL *evaluation strategies* enable modellers to assign initial satisfaction values to some of the intentional elements (usually alternatives at the bottom of a goal graph) and propagate this information to the other elements through the decomposition and contribution links. Strategies act as *what-if* scenarios that can help assess the impact of alternative solutions on high-level goals of the involved stakeholders, evaluate trade-offs during conflicts, and document decision rationales. Different goal evaluation algorithms (using qualitative values, quantitative satisfaction values between -100 and $+100$, or a mix of both types) for GRL are discussed by Amyot et al. (2010).

Figure 1 (right) illustrates the result of a strategy for our example where the reduction of the staffing budget is selected, i.e., the satisfaction value of this task is initialized to 100. In the Eclipse-based modelling tool we use, called *jUCMNav* (Mussbacher et al. 2009), initialized elements are displayed with dashed contours. This strategy eventually leads to a weakly satisfied ($+25$) "Increased profits" softgoal and to a weakly denied (-25) satisfaction level for "Have many work hours". The resulting satisfaction values in top-level goals and actors should be used to compare different strategies and find suitable trade-offs rather than be interpreted as some sort of satisfaction percentage. *jUCMNav* also uses a color-coding scheme to highlight satisfaction levels —red for denied, yellow for neutral, and green for satisfied (with various shades for values in between)— which again improves the intuitive understanding through dual coding.



The Use Case Map notation is a visual process modelling language for specifying causal scenarios and optionally allocating their activities to an underlying structure of components and actors. UCMs model scenarios and processes with causal relationships, where *responsibilities* (✕) are sequenced and may be assigned to *components* (□). Responsibilities represent activities performed in a process whereas components represent actors, systems, and system parts. UCMs support most of the concepts used in common workflow modelling notations including *start points* (●), *end points* (|) as well as guarded *alternatives* and *concurrent* flows. *Stubs* (◇) are containers for sub-maps and can be used to organize a complex model in a hierarchical structure. Furthermore, URN allows typed links to be established between modelling elements (e.g., between a GRL goal and a UCM responsibility). UCMs can be used to model as-is and to-be business processes, as will be seen in our illustrative case study.

GRL and KPIs for business modelling

Although the primary application domains for URN target reactive systems and telecommunications systems, this language has also been applied successfully to the modelling and analysis of business goals and processes (Weiss and Amyot 2005). Goal models combined with process models have been used elsewhere to assess the risk and viability of business solutions (Ansar et al. 2008) and model different concerns of interest to different stakeholders (Colombo and Mylopoulos 2006). However, in order to better support business process monitoring and performance management, Pourshahid et al. (2007, 2009) have extended GRL with the concept of *Key Performance Indicators* (◁▷), which was added to the URN standard in 2012. KPIs can also be analyzed from various perspectives called *dimensions* (□□), in a way similar to what is found in common BI systems. Dimensional data allows one to look at the data from different points of view and filter or aggregate the data based on the defined dimensions. For instance, in Figure 2, staffing cost can be aggregated in all locations in all years of store operations or can be analyzed for Store1, 2, 3 and the online store individually and in a specific month or year.

From a static semantics perspective, KPIs are defined as a sub-class of intentional elements in the URN metamodel, and hence they can be associated to other GRL intentional elements (such as goals, tasks, and even other indicators) through decomposition and contributions links. However, KPIs additionally include specifications of *worst*, *threshold*, and *target* values in a particular *unit*. For example, a Staffing cost KPI

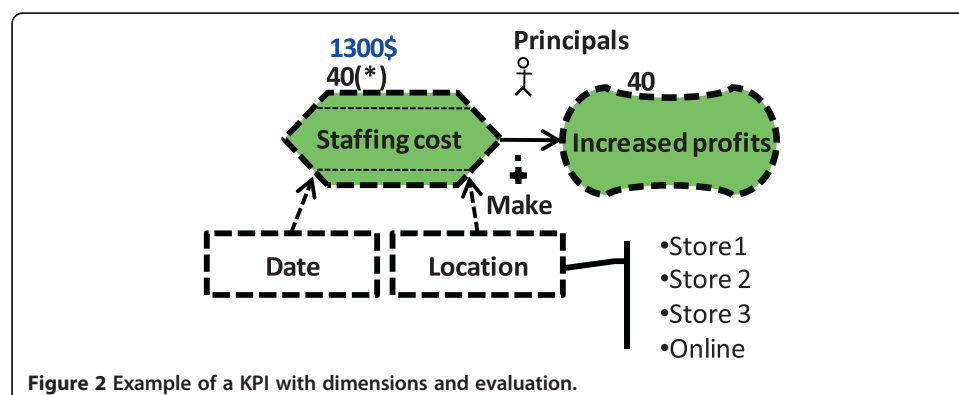


Figure 2 Example of a KPI with dimensions and evaluation.

(see Figure 2) could have a target value of \$1000, a threshold value of \$1,500, and a worst value of \$2,500. KPIs also contain a *current* value, which is either defined in a GRL evaluation strategy or provided by an external source of information such as a database, an Excel sheet, a BI tool, external sensors, or web services. The KPI is a metric of the system that normalizes the current value to a scale of -100 to 100, which enables it to be used like any other intentional element in a GRL model. For instance, if the current Staffing Cost is \$1,300, then the normalization function, which takes here $|\text{threshold-current}|/|\text{threshold-target}|*100$, will result in a satisfaction level of 40. Furthermore, when the current value is between the threshold value and the worst value (e.g., \$2,500), then the normalization function becomes $|\text{threshold-current}|/|\text{worst-threshold}| * (-100)$, which results in a negative value (e.g., -100 here). If the result is higher than 100, then it becomes 100 (symmetrically, if it is lower than -100, then it becomes -100). Such an evaluation strategy was used in Figure 2. After the satisfaction level (i.e., 40) is calculated, the usual GRL quantitative algorithm is used to evaluate the satisfaction level of the goals connected to the KPI (i.e., Increase profits). Note also in this model that Staffing cost could be drilled down (e.g., explored) according to the Date and Location dimensions.

Although goal modelling and scorecards have been used in combination in the past (Babar et al. 2010; Siena et al. 2008), we believe KPIs are also necessary because they act as an interface between conventional goal models and quantitative, external sources of information. Our work, together with the work on qualitative indicators of Tawhid et al. (2012), has actually led to the standardization of KPIs by ITU-T as part of URN (ITU-T 2012). This standard goes beyond other goal-indicator approaches, such the one proposed by Popova and Sharpanskykh (2011), in that quantitative and qualitative indicators are both supported and are compatible with strategy-based propagation algorithms.

Furthermore, Chen (2007) and Pourshahid et al. (2009) have introduced and implemented a service-oriented architecture enabling the use of underlying data and BI reports by the jUCMNav tool. jUCMNav is connected to BI systems via a web service. All the information generated by the BI system, from raw data to very complex data warehouses, can hence be used as qualitative data to initialize the KPIs used in the GRL model, and against which goal satisfaction is evaluated.

Although several other goal modelling languages exist (e.g., *i**, Tropos, KAOS, and the Extended Enterprise Modeling Language), the combination of support for KPIs and performance modelling, the ability to combine process and goal models and perform analysis on both, the possibility of defining strategies, existing tool support for using BI systems as sources of data, and the fact that URN is a standard modelling language, all together have convinced us that URN is the best language to be used in the context of our research. A more formal and detailed evaluation of 14 popular goal and process modelling languages is provided in Pourshahid (2014), with a similar conclusion.

Decision-making methodology

The methodology we have developed defines the organizational goals and links these explicitly to a decision model and relevant Key Performance Indicators. The methodology can be used by organizations at any level of maturity and readiness in terms of gathering and monitoring data for BI-based decision making. In particular, unlike many simulation

approaches, it does not necessitate up front large quantities of data to be useful. We believe different organizations however have different needs and may be in different states when they decide to incorporate such a methodology. Consequently, we are suggesting an iterative approach for this section.

Furthermore, we extend the existing modelling notation (URN) and its associated evaluation algorithms to allow organizations to better define the relationship between the KPIs and also to aggregate the KPI values using custom formulas.

Finally, we propose an enhancement to the supporting tool (jUCMNav) to enable better integration with Business Intelligence tools. This helps organizations to use their existing BI systems to initialize the KPI values of the defined models. Although this additional tool support can be helpful for organizations that would like to automate this part of the process, it is not a required component of the methodology and a small organization without a sophisticated Business Intelligence infrastructure can still benefit from the approach.

In the next three subsections, we elaborate on the three main contributions of this paper in more detail.

Methodology lifecycle

The methodology lifecycle consists of three main steps involving iterations that build upon each other (Figure 3, with details in Table 2). The intention at a high-level is to allow organizations to model the current state, monitor their business, make decisions and finally monitor and refine the results. A first version of this lifecycle was introduced by Pourshahid et al. (2011). The one in this paper is more mature, more precise (in terms of steps and roles), and better supported by tools (on the URN and BI integration sides).

Three types of roles are involved in the implementation and usage of the methodology: *analysts*, *BI experts*, and *consumers* of the artefacts (i.e., those who monitor reports and make decisions). These roles, to be further discussed later, interact with the system at different levels. In a nutshell, analysts interact the most with the system, its artefacts, and the other roles. They implement the methodology and make it available to other roles. BI experts help the analysts by providing the underlying data sources and BI systems to feed the required values to the models automatically. Finally, consumers mainly use the models for decision-making and monitor the satisfaction level of business goals and

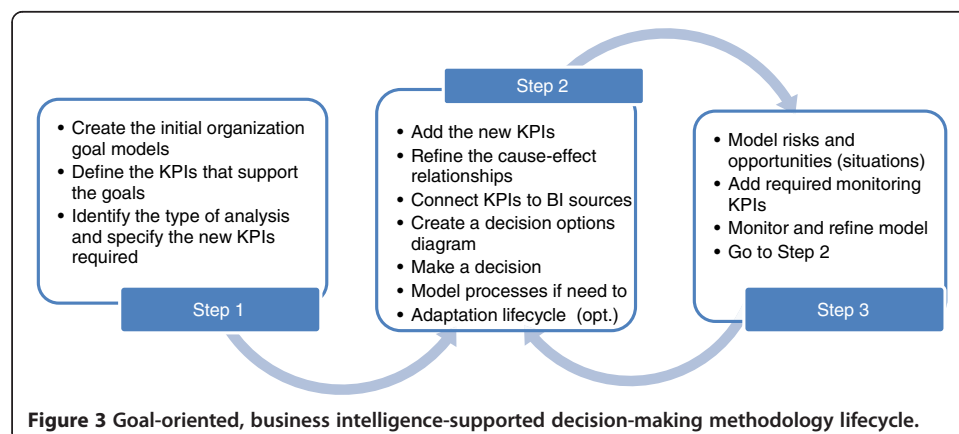


Table 2 Detailed methodology steps, with roles

Steps	Activity	Input	Output	Involved roles
Step 1	Create goal models	Interview data	Goal models	Analysts: interviewers & modellers Consumers: interviewees
	Define the KPIs	Interview data & existing KPI monitoring systems	Performance model	Analysts: interviewers & modellers Consumers: interviewees
	Identify analysis types & specify new KPIs	Goal and performance models	Analysis types	Consumers: identify the required analysis
Step 2	Add new KPIs	Performance model	Refined performance model	Analysts
	Refine cause-effect relationships	Performance model	Refined performance model	Analysts
	Connect KPIs to BI data sources	Performance model	Performance model connected to BI data sources	BI Experts: BI related activities Analysts: Provide the required information for BI experts
	Create decision options diagrams	Interview data, business plans and other related documents	Decision model	Analysts: interviewers & modellers Consumer: interviewees
	Make a decision	Decision model, goal model and performance model	Changes in the business	Consumers: Make decisions Analysts: Provide input to consumers as required
	Model required processes	Interview data & current process models	Process model	Analysts: Interviewers & Modellers Consumers: Interviewees
	Adaptation lifecycle (Optional)	Models (Goals, Performance, Processes)	Adapted models	Analysts
Step 3	Model threats and opportunities (situations)	Performance model	Performance & Goal models + Situations	Analysts
	Add required monitoring KPIs	Performance model	Performance model + New KPIs	Analysts
	Monitor and refine the model	Goal and performance model	Refined models and a new iteration	Analysts: Monitor and refine Consumers: Monitor

KPIs. Consumers are usually either tactical managers who monitor the performance models or strategy managers who monitor the high-level business goals.

In the **first step**, an initial model of the organization's goals is created (e.g., using the approach of Feng et al. 2009). This model can be built by analysts based on interviews with executives and operational managers (i.e., consumers), as we experimented with in our examples. This goal model can consist of long-term, short-term, strategic and operational goals of the organization as well as contribution and decomposition relationships between them. Furthermore, in this step, analysts define *the KPIs that support the goals* (e.g., financial KPIs) and add them to the model. This can be a challenging task and is dependent on the level of maturity of the organization. For instance, in the organizations we have studied as part of this research, one small organization (retail store) had a very limited set of data

and was using a spreadsheet to monitor the business while the other (a large teaching hospital) had many indicators available and was using a sophisticated Business Intelligence system. Our discussions with both organizations however demonstrate that organizations at any point within this wide range of information management capabilities can benefit from applying such a goal-based model. After defining the *performance and goal models*, consumers will have a better picture of their business, will *identify the type of analysis* they want to perform on the model and *specify the new KPIs required* to do so if any are missing.

In the **second step**, analysts explore the existing models, discover and *add the new KPIs* and the new dimensions to the model required to perform a better job in monitoring various aspects of the business. Note that not all the KPIs need to be dimensional and if the available data is not as granular as is required for a dimensional model, or if all the data is not available, a step-by-step approach can be used leading to a number of model iterations as additional data becomes available.

In addition, during this process analysts *refine the relationships* between KPIs in the goal model. These relationships create a graphical model, which can be used to analyze what-if scenarios. The relationships are defined using mathematical formulas that are discussed comprehensively in the next sub-section. For example, a relationship between the “New customer count” KPI and the “Online marketing campaign budget” and “Flyer budget” KPIs could look like the following:

$$\begin{aligned} \text{New customer count} = & \text{Online marketing campaign budget in } \$ / (0.5 \text{ } \$ / \text{customer}) \\ & + \text{Flyer budget in } \$ / (0.8 \text{ } \$ / \text{customer}) \end{aligned}$$

Such formulae capturing relationships between KPIs can be refined based on historical data, for example through data mining. In cases where organizations do not have historical data and are in early stages of creating their performance model, the initial formula used to define the KPI relationships can be based on industry standards (e.g., Gartner 2014; World Intellectual Capital 2014); analysts have to start somewhere, even if the relationships are not right the first time. As the organization gathers more information, this historical data can be integrated into the model. As will be seen later in the retail example, the models can be used to illustrate the expected impact of actions taken by involved consumers and analysts.

Once a performance model is ready, as an optional step, BI experts can get involved and use that model as a reference to understand the monitoring needs of the organization and create (or reuse) the underlying BI infrastructure, including data warehouses and BI reports, to feed the performance model. This is a collaborative effort between analysts and BI experts and may result in refining the performance model by adding raw data elements to read the data directly from BI systems.

Analysts can also add a *decision model* and connect the model’s options to the goals and KPIs of the organization. A decision model outlines the different options available to organizations to achieve their goals. This diagram helps managers to visualize the options and define GRL strategies that reflect the result of selecting one of the options. Note that this is not a new type of graphical diagram and it is only a terminology choice in our methodology to isolate the decision options from goal and performance models.

Moreover, organizations can continually adapt the models by saving the initial iteration as a “snapshot” and comparing it to actual results achieved by decisions. Gathering these snapshots will eventually create a “decision trail” that displays decisions taken and results thus allowing managers to continually improve their decisions. In addition, decision trails allow organizations to refer back to the rationale they used for making successful or unsuccessful decisions. At this time, the snapshots are not currently supported by tools at the model level, and analysts have to save various model versions and rely on BI tools and databases for snapshot capabilities. This functionality needs to be further developed in the supporting tool in the future but is out of the scope of this paper.

Furthermore, the notation used for the methodology and the modelling tool allow the organization to model *business processes* (with UCM) in an integrated environment with the KPI models. This often can be used when the analysts believe some of the processes in the organization need closer attention to enhance the KPIs of interest. Analysts can model the as-is and proposed to-be processes and use the KPI model to monitor the expected results. When process adaptation is considered to be an option for improving certain aspect of a business, analysts can use the process *adaptation lifecycle*. The latter exploits redesign patterns and aspect-oriented extensions to URN (Pourshahid et al. 2012, 2013) to detect improvement opportunities and dynamically adapt business processes in consequence. This lifecycle, detailed by Pourshahid (2014), is outside the scope of this paper.

In the **third step**, analysts add the expected impact, if any, of the decision made in the second step to the model that illustrates either *threats* or *opportunities* involved. Such expected impact is modelled with *situations*, a new concept in our methodology, which is akin to situations in the Business Intelligence Model (BIM), which is focused on SWOT (Strengths, Weaknesses, Opportunities, and Threats) analysis (Jiang et al. 2011; Horkoff et al. 2014; Yu et al. 2013). Situations, in this paper, capture the opportunities or threats that affect the way a business operates. For instance, investment in an online store brings the risk of reducing the profits of the business for a period of time. Using *stereotyped GRL softgoals* to capture situations, we are able to show the qualitative impact of situations on the rest of the model. The most challenging aspect of this step is modelling a qualitative situation factor that influences a quantitative KPI. In this case, we model the impact by increasing the range of acceptable values for a KPI. In other words, once we have estimated the impact of the situation, we allow the acceptable range of the measured KPI to deviate accordingly from its target value.

In this third step, analysts also add the *required KPIs* and dimensions to the model that allows analysts and consumers to better observe the impact of decisions. If analysts expect a decision to change anything in the organization, they will examine that hypothesis using the appropriate KPIs and GRL strategies.

Finally, analysts *monitor* the impact of the changes made to the business or processes and compare expected results against actual results. Based on this comparison, analysts *refine* the models as required and record the data. Monitoring of the business could be done in several ways. Analysts and consumers can observe the results of business goals and KPIs one by one and look for signs of unsatisfied business goals and performance indicators in the models. They can also take advantage of more sophisticated reports based on BI tools, or of detection mechanisms from the adaptation lifecycle (Pourshahid 2014).

In summary, the methodology is based on creating an initial model, which is then refined by expanding data sources, capturing decisions made and the results of those decisions, and building historical decision trails that inform future models.

New goal evaluation with KPI aggregation and situation analysis

Although several “standard” GRL evaluation algorithms (qualitative, quantitative and hybrid) already exist, as described by Amyot et al. (2010), none of them provides the formula-based KPI aggregation required for the type of cause-effect analysis performed in our decision making context. The current algorithms allow modellers to specify the contribution level of a KPI on another GRL intentional element and to calculate the satisfaction level of that target element (Pourshahid et al. 2009). However, these algorithms prevent one KPI from driving the computation of the *current value* of another KPI. Although the current evaluation methods allow computing the impact of one KPI on another KPI in terms of *satisfaction levels*, when it comes to showing the impact of several KPIs on one KPI (e.g., their *aggregate effect*), the current evaluation methods quickly become a bottleneck and thus obstruct the cause-effect analysis. Furthermore the current algorithms have no means to consider the impact of situations (threats and opportunities) in the calculation of the evaluation values. There is also a need to connect KPIs to raw data values in goal models. These three features (KPI aggregation, KPI calculation using raw data values, and situation impact) are essential as they allow modellers and managers to explore and modify the way KPIs impact each other inside the goal model. This may happen frequently, especially when little data or knowledge about the enterprise is available or when the organization is small and does not want to have a large infrastructure in place. The alternative is to rely on heavy computing at the BI tool level and hence involves complex modifications outside the modelling environment that often require implementation by IT staff.

Other modelling languages and enterprise modelling methodologies exist that can be used to model KPIs, however many have a limited computational power and do not allow one to define proper relationships between KPIs for advanced analysis (Popova and Sharpanskykh 2010). In addition, there have been recent efforts in industry to use strategy maps and measurable objectives to help with decision making and process improvement (Silver 2010). However, the mutual influence of KPIs on each other has not been discussed. More recently, and inspired by work on GRL and KPIs, the Business Intelligence Model (BIM) proposed by Jiang et al. (2011) also suggests KPI aggregation in goal models. However, BIM’s formal semantics is mainly based on Description Logic (Horkoff et al. 2014), and hence semantics and tools are currently unable to consider the impact of situations in models in a *quantitative way*.

In order to address these issues, we introduce further extensions to GRL and a novel evaluation algorithm that allow analysts and decision makers to define precise mathematical formulae describing relationships between the model elements. This method extends the bottom-up propagation algorithm defined in (Amyot et al. 2010). Modellers and analysts gain full control of the model and can change the impact of one element on another as desired.

The algorithm uses current/evaluation values of the source KPIs as inputs for the formula (described as metadata, see Figure 4) and calculates the target KPI evaluation value using these inputs. Then, the satisfaction level of the KPI is calculated using the KPI's target/threshold/worst values as discussed previously. The impact of KPIs on other types of intentional elements (e.g., goals, softgoals and tasks) is computed using conventional GRL quantitative and qualitative algorithms. This unique combination allows one to have both quantifiable KPIs and strategic-level softgoals that are hard to quantify together in the same model and to show and monitor the impact of KPIs on the goals of the organization.

Figure 4 shows a simple example where the current KPI values are displayed, with their units, above the usual satisfaction values. Note that the inputs can be of different units; the formula in the target KPI must take this into consideration. In this example, the current value of *Profit* is computed as $Revenue - Costs - Stolen * 50$ (the first two are in dollars and the third is a number of items). Note also that the contributions have no weight; the satisfaction of the *Profit* KPI is based on the normalization of its computed current value (\$39,000) against its specified target, threshold and worse values. We have implemented this new formula-based algorithm in the jUCMNav tool.

Another benefit of this formula-based approach is the ability to account for *situations*. In organizations, cause-effect analysis and decision making usually involve an element of threat or opportunity that we capture as situations influencing the business. Even though we can easily show situations as model elements in GRL diagrams (e.g., using softgoals stereotyped with «Situation»), it is rather hard to quantify the impact of situations on the value of a KPI and consider it in evaluation algorithms.

It has been argued that integrating risks, threats, and opportunities into KPI frameworks can contribute to effective management (Beasley et al. 2006; McWhorter et al. 2006; Wu and Olson 2009). We therefore propose such integration in GRL with a new model element called *situation* (a stereotyped softgoal) with an evaluation value between 0 and 100. This element allows us to easily model and evaluate threats and opportunities in the models. The situation element can be connected to KPI nodes using either positive or negative contributions. Table 3 discusses one potential example of the expected impact on a target KPI. The method is not limited to this example (where linear interpolation is used) and one can define any formula that is suitable for their situation.

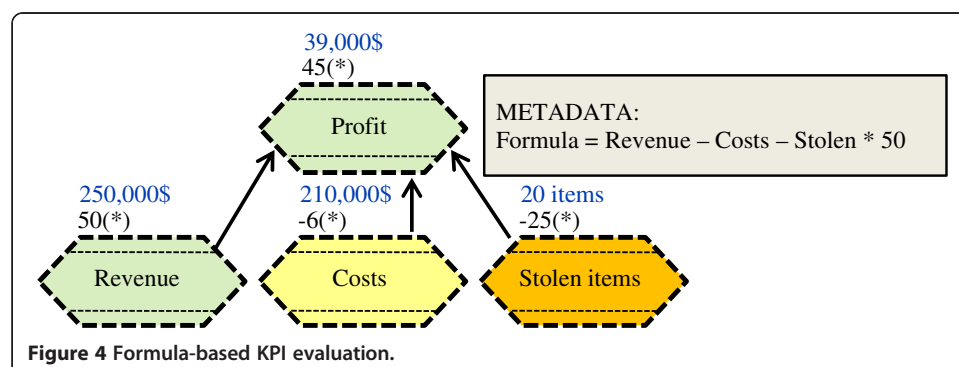


Table 3 An example heuristic for situation impact on a target KPI

Contribution level	Description
Positive	A situation with a positive contribution (i.e., an <i>opportunity</i>) positively impacts the expected result from the target KPI. Therefore it will move the impacted <i>threshold</i> closer to the <i>target</i> value. In other words, such opportunity reduces the range of acceptable values or increases the expectation about the outcome for a KPI towards the target. Hence, the KPI's current value in this new context will lead to a lower satisfaction value if it is not improved.
Negative	A situation with a negative contribution (i.e., a <i>threat</i>) negatively impacts the expected result from the target KPI. Therefore it will move the impacted <i>threshold</i> closer to the <i>worst</i> value. In other words, such situation increases the range of acceptable values for a KPI towards the worst value (i.e., it reduces the expectation about the outcome of the KPI). Hence, the KPI's current value in this new context will lead to a higher satisfaction value.

The target KPI *threshold value* changes based on the evaluation level and level of contribution of the situation factor on the target element as indicated in Table 4. This enables the modeller to vary the acceptable range of values for a KPI when there is an expected situation involved.

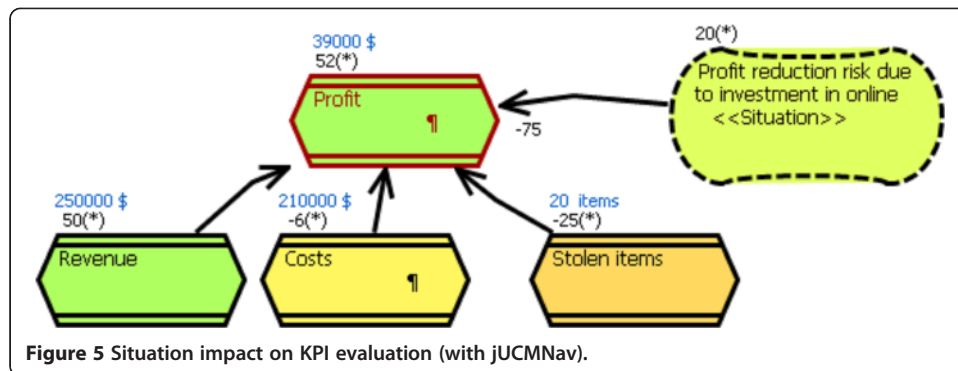
The formalization of this algorithm and its implementation are further detailed by Pourshahid (2014).

Although we believe situations give more power to the analyst to set expectations and define the expected outcome of a decision made on the business goals, the usage of situations is optional in our methodology. More organizations are, however, seeking to integrate risk and performance management methods (Rogers et al. 2008), therefore, this capability is provided for those that have risk information available and find it useful to integrate this information into their decision making approaches.

As an example of application, Figure 5 uses the same formula-based algorithm described in Figure 4, only this time the model also contains a new situation element, namely a risk with a negative contribution (-75). Therefore, the threshold value of the profit KPI has changed and increased the acceptable range for the evaluation value of the KPI. In this example, the threat has somehow been mitigated (satisfaction level of 20, which means weakly denied). Therefore, even though the evaluation value of the KPI (i.e., 39,000\$) has not changed from Figure 4, the evaluation level of the KPI has slightly improved and went up from 45 to 52.

Table 4 Situation formula based on the example situation heuristic

Conditions	Target KPI's new threshold value
• Contribution positive	$= \text{Current threshold value}$
• Target KPI values	$+ \frac{ \llcorner\text{Situation}\gg\text{Evaluation value} \times \llcorner\text{Situation}\gg\text{Contribution value}}{10000}$
◦ Target > Threshold	$\times (\text{KPI Target value} - \text{KPI current threshold value})$
• Contribution negative	$= \text{Current threshold value}$
• Target KPI values	$+ \frac{ \llcorner\text{Situation}\gg\text{Evaluation value} \times \llcorner\text{Situation}\gg\text{Contribution value}}{10000}$
◦ Target > Threshold	$\times (\text{KPI Worst value} - \text{KPI current threshold value})$
• Contribution positive	$= \text{Current threshold value}$
• Target KPI values	$- \frac{ \llcorner\text{Situation}\gg\text{Evaluation value} \times \llcorner\text{Situation}\gg\text{Contribution value}}{10000}$
◦ Target < Threshold	$\times (\text{KPI Target value} - \text{KPI current threshold value})$
• Contribution negative	$= \text{Current threshold value}$
• Target KPI values	$- \frac{ \llcorner\text{Situation}\gg\text{Evaluation value} \times \llcorner\text{Situation}\gg\text{Contribution value}}{10000}$
◦ Target < Threshold	$\times (\text{KPI Worst value} - \text{KPI current threshold value})$



Formalized algorithm

In this section, we discuss the formal definition of the formula-base algorithm. This algorithm is based on the evaluation algorithm described in Appendix II of the URN standard (ITU-T 2012). To set the context, the core part of the standard algorithm is repeated here (Figures 6 and 7) before the extension points and modifications are illustrated in later figures. The data types used correspond to elements of URN’s metamodel.

The algorithm is a bottom-up forward propagation algorithm that uses the initial values set in a GRL strategy to calculate the satisfaction level of the rest of the GRL elements in the graph shows the forward propagation algorithm from the standard. In this algorithm, totalSourceLink is total number of incoming source links to a node and linkReady is used to track the number of links that have been used in the propagation so far.

```

Algorithm ForwardPropagation
Inputs GRLmodel:GRLspec, currentStrategy:EvaluationStrategy
Output newEvaluations:HashMap

elementsReady:List = Ø // containable elements that can be evaluated
elementsWaiting:List = Ø // containable elements that cannot yet be evaluated
newEvaluations = Ø
for each element:GRLContainableElement in GRLmodel.intElements
{
    element.linkReady = 0
    if (element in currentStrategy.evaluations.intElement) // is the element initialized?
        elementsReady.add(element)
    else
        elementsWaiting.add(element)
}
while (elementsReady.size() > 0)
{
    element = elementsReady.get()
    elementsReady.remove(element)
    newEvaluations.add(element, CalculateEvaluation(element, currentStrategy))
    for each link:ElementLink in element.linksSrc
    {
        destination = link.dest
        destination.linkReady = destination.linkReady + 1
        if (destination.linkReady == destination.totalSourceLink)
        {
            // all source elements have known evaluation values
            elementsWaiting.remove(destination)
            elementsReady.add(destination)
        }
    }
}
return newEvaluations
    
```

Figure 6 Forward propagation algorithm, standard version (ITU-T 2012).

Algorithm CalculateEvaluation
Inputs element:GRLContainableElement, currentStrategy:EvaluationStrategy
Output result: Integer

```

decompValue:EvaluationValue // intermediate result
contribValue:EvaluationValue // intermediate result
result: Integer
eval: Evaluation = evaluations.get(element)
evalMathEvaluator:MathEvaluator // new, for KPI aggregation
situationMathEvaluator:MathEvaluator // new, for situation computation

quickReturn: Integer = PreGetEvaluation(element, eval, evalMathEvaluator,
                                         situationMathEvaluator)

if (quickReturn != null)
    return quickReturn.intValue();
if not(element in currentStrategy.evaluations.intElement) // is the element not initialized?
{
    // calculate based on decompositions, contributions, and dependencies
    decompValue = CalculateDecompositions(element)
    contribValue = CalculateContributions(element, decompValue)
    result = CalculateDependencies(element, contribValue)
}
result = PostGetEvaluation(element, eval, result, evalMathEvaluator,
                             situationMathEvaluator)
return result
    
```

Figure 7 Calculate evaluation algorithm – Formula-based algorithm.

The forward propagation algorithm calls the CalculateEvaluation algorithm (found in Figure 7) to calculate the evaluation value of each model element. The calculation method varies depending on the type of the link that is connected to the model elements and for each type of link, a different algorithm is invoked. Prior to looking at the links, the standard algorithm calls PreGetEvaluation to use the initialized values in the GRL strategies if any. If the node is already initialized by the strategy that value is used and the evaluation result is returned immediately.

In the formula-based algorithm, *PreGetEvaluation* is extended (see Figure 8) to get the formulas definition from the element metadata and to define the math evaluators.

Algorithm PreGetEvaluation
Inputs element:ItentionalElement, eval:Evaluation
Modified: evalMathEvaluator:MathEvaluator, situationMathEvaluator:MathEvaluator
Outputs result:Integer

```

// get the evaluation formula from the metadata defined on the GRL intentional element
evalFormula:String = MetadaHelper.getMetaData(element, Messages.getString
                                             ("FormulaBasedGRLStrategyAlgorithm_evalFormula"))
// get the situation formula from the metadata defined on the GRL intentional element
situationFormula:String = MetadaHelper.getMetaData(element, Messages.getString
                                                    ("FormulaBasedGRLStrategyAlgorithm_situationFormula"))
if (evalFormula == null)
    evalFormula = "" // no evaluation formula defined
else
    evalMathEvaluator = new MathEvaluator(evalFormula)
if (situationFormula == null)
    situationFormula = "" // no situation formula defined
else
    situationMathEvaluator = new MathEvaluator(situationFormula)
// from the standard algorithm
result = QuantitativeGRLStrategyAlgorithm.preGetEvaluation (element, eval)
return result
    
```

Figure 8 PreGetEvaluation – formula-based algorithm.

Each element can have both evaluation formula and situation formula defined as metadata, i.e., *FormulaBasedGRLStrategyAlgorithm_evalFormula* and *FormulaBasedGRLStrategyAlgorithm_situationFormula* respectively. The math evaluator for each formula is implemented using a math library that gets a string math formula as well as name-value pairs as variables used in the formula as input, and returns the result of the formula as output. The implementation in jUCMNav that was done as part of this research uses the math library that was developed by Lai (2013).

After the formula is defined, in the CalculateContributions algorithm (not shown here), *ComputeContributionResult* (Figure 9) is called, which is overridden in the formula-based algorithm to set the name-value pair variables of the formula using the KPI value sets of the source nodes. Therefore, KPI value sets (i.e., evaluation, target, threshold, and worst values) of each source node connected to the KPI that is being evaluated can be used in the formula.

Furthermore, *ComputeSituationResult*, Figure 10, is called and initializes the situation-MathEvaluator using the elements that are marked with the Situation stereotype as input. This approach also allows using any formula, including the default ones discussed in Table 4, to define a situation that impacts a KPI (Figures 11 and 12).

The other extension point that is provided by the standard algorithm is *PostGetEvaluation*. The standard algorithm calls this method after the evaluation is performed but does not implement anything and just returns the values. This is the extension point (Figure 13) that is used to calculate the result of the formula and finally the satisfaction level of the KPI by calling *CalculateIndicatorEvalLevel*. *CalculateIndicatorEvalLevel* maps the KPI value sets to the GRL standard (-100 to 100) satisfaction level. Prior to calling *CalculateIndicatorEvalLevel*, the *evalMathEvaluator* and *situationMathEvaluator*, if defined, are used to calculate the evaluation value and threshold value of the KPI, respectively.

Comparison with current algorithms

Table 5 compares the existing GRL evaluation algorithms with the new algorithm proposed in this paper (last column).

Although this new algorithm addresses issues related to KPI aggregation and situation consideration, there is room for improvement and future work. The main disadvantage of the algorithm is that the formula is part of the model for all strategies. This could make

```
Algorithm ComputeContributionResult
Input link:ElementLink, contrib:Contribution,
Modified evalMathEvaluator:MathEvaluator
Output result: Integer
if (evalMathEvaluator == null)
    result = QuantitativeGRLStrategyAlgorithm.ComputeContributionResult (link, contrib)
else
{
    set: KPISet = strategyManager.getActiveKPISet (link.getSrc())
    evalMathEvaluator = InitFormula (set, evalMathEvaluator)
    result = 0
}
return result
```

Figure 9 ComputeContributionResult – formula-based algorithm extension.

```
Algorithm ComputeSituationResult  
Inputs link:ElementLink  
Modified situationMathEvaluator: MathEvaluator  


---

if (situationMathEvaluator != null)  
{  
  if ( IsSituation(link.getSrc()) )  
  {  
    set: KPIEvalValueSet = strategyManager.getActiveKPIEvalValueSet (link.getSrc())  
    InitFormula (set, situationMathEvaluator)  
  }  
}  
return
```

Figure 10 ComputeSituation – formula-based algorithm extension.

model maintenance difficult when different versions of a model with different formulas are required for what-if scenario analysis. This mechanism could be improved if the formulas were defined as part of or in combination with the GRL strategies themselves.

Tool support

The modelling tool we use is jUCMNav, an open source URN tool for the creation, analysis, transformation, and management of URN models (Mussbacher et al. 2009). jUCMNav allows for the qualitative, quantitative, or hybrid evaluation of GRL models based on strategies. We have successfully implemented and validated the new formula-based propagation algorithm presented in the previous sub-section, with support for raw data access, KPI aggregation and situation impact.

In addition, jUCMNav integrates with third party BI servers using a service-oriented architecture that allows one to setup the KPI models to load the evaluation values from a BI provider (Chen 2007). Although the current architecture provides a great deal of flexibility, it has some drawbacks that prevent its application in real-life scenarios to be practical. For instance, a required web service must be installed on an application server. In addition, for each GRL strategy, a separate BI report must be created manually. This quickly becomes a tedious task in the presence of many strategies. For example, if the

```
Algorithm InitFormula  
Inputs set:KPIEvalValueSet  
Modified mathEvaluator: MathEvaluator  


---

if (set != null)  
{  
  mathEvaluator.addVariable(contrib.getName() + "_evaluation",  
                           set.getEvaluationValue())  
  mathEvaluator.addVariable(contrib.getName() + "_target", set.getTargetValue())  
  mathEvaluator.addVariable(contrib.getName() + "_threshold",  
                           set.getThresholdValue())  
  mathEvaluator.addVariable(contrib.getName() + "_worst", set.getWorstValue())  
}  
return
```

Figure 11 InitFormula – formula-based algorithm extension.

```
Algorithm IsSituation
Inputs element:IntentionalElement
Output srcIsSituation:Boolean
```

```
srcIsSituation = false
for each elementMetadata:Metadata in element.metadata
{
  if (elementMetadata.name == "ST_SITUATION")
  {
    srcIsSituation = true
    break
  }
}
return (srcIsSituation)
```

Figure 12 IsSituation – formula-based algorithm extension.

```
Algorithm PostGetEvaluation
Inputs element:IntentionalElement, eval:Evaluation, result:Integer,
        evalMathEvaluator:MathEvaluator, situationMathEvaluator:MathEvaluator
Output result:Integer
```

```
EvaluationStrategyManager strategyManager =
                                EvaluationStrategymanager.getInstance()
set:KPIEvalValueSet = strategyManager.getActiveKPIEvalValueSet (link.getSrc())
if (situationMathEvaluator !=null)
{
  // change the Threshold Value if there is a situation formula
  calculatedThresholdValue: double = situationMathEvaluator.getValue()
  if (thresholdCalculatedValue != 0)
  {
    // set the calculated threshold value
    set.setThresholdValue(thresholdCalculatedValue)
  } else {
    set.setThresholdValue(0.0)
  }
}
if (evalMathEvaluator != null)
{
  // change the Evaluation Value if there is a situation formula
  calculatedEvalValue: double = evalMathEvaluator.getValue()
  if (calculatedEvalValue != 0) {
    // set the evaluation value
    set.setEvaluationValue(calculatedEvalValue)
  } else {
    set.setEvaluationValue(0.0)
  }
  // after the value sets are set, calculate the KPI satisfaction level by mapping it
  // to a -100 to 100 scale.
  strategyManager.calculateIndicatorEvalLevel(eval)
  result = eval.getEvaluation()
}
return result
```

Figure 13 PostGetEvaluation – formula-based algorithm extension.

Table 5 Comparison between GRL evaluation algorithms

Criteria	Qualitative	Quantitative	Hybrid	Old formula-based	New formula-based
Evaluation type	Qualitative	Quantitative	Hybrid	Quantitative	Quantitative
KPI evaluation	No	Yes	Yes	Yes	Yes
KPI aggregation	No	No	No	No	Yes
Situation impact analysis	No	No	No	No	Yes

reports are moved within the BI server, then the monitoring process will fail and extra work is needed to manually detect the problem and manage the dependency.

We developed a new architecture (Figure 14) that eliminates the dependencies to an additional application server as well as the creation and maintenance of the reports on the BI server. In this architecture, the part of the code responsible for communicating with the BI server is moved *inside* the Eclipse application as a new plug-in. Therefore, the solution is self-contained and easier to deploy compared to the architecture proposed by Chen (2007). This plug-in sends and receives the required data to the modelling plug-in. It also communicates with two main modules of the BI server to create the required reports on the fly and run them. Consequently, no pre-authored reports are required in this solution, which makes it even more compelling.

The downside of the new architecture is a tighter coupling with the BI server interfaces compared to the previous solution, which abstracted out the BI server interfaces behind more generic application server interfaces. The previous solution had a BI server agnostic interface in the application server that would allow jUCMNav to connect to any BI server. However, we believe that, with the plug-in based architecture of the new solution, one can write a plug-in adapter for each different BI server. So far, we have developed only one BI connection plug-in for IBM Cognos BI (IBM 2012), which is the BI server we are using for our experiments.

In our current prototype (Johari 2012), we use the approach illustrated in Figure 15 to create and run the reports on the server. In this approach we generate a report specification on the fly that returns the value of the KPI we are interested in. The report specification is stored on the server and is run using the IBM Cognos *Mashup*

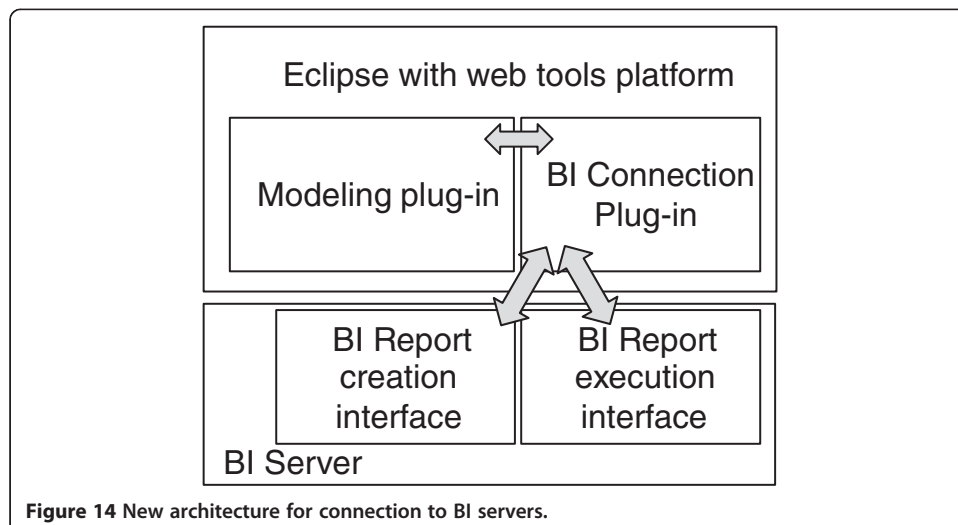
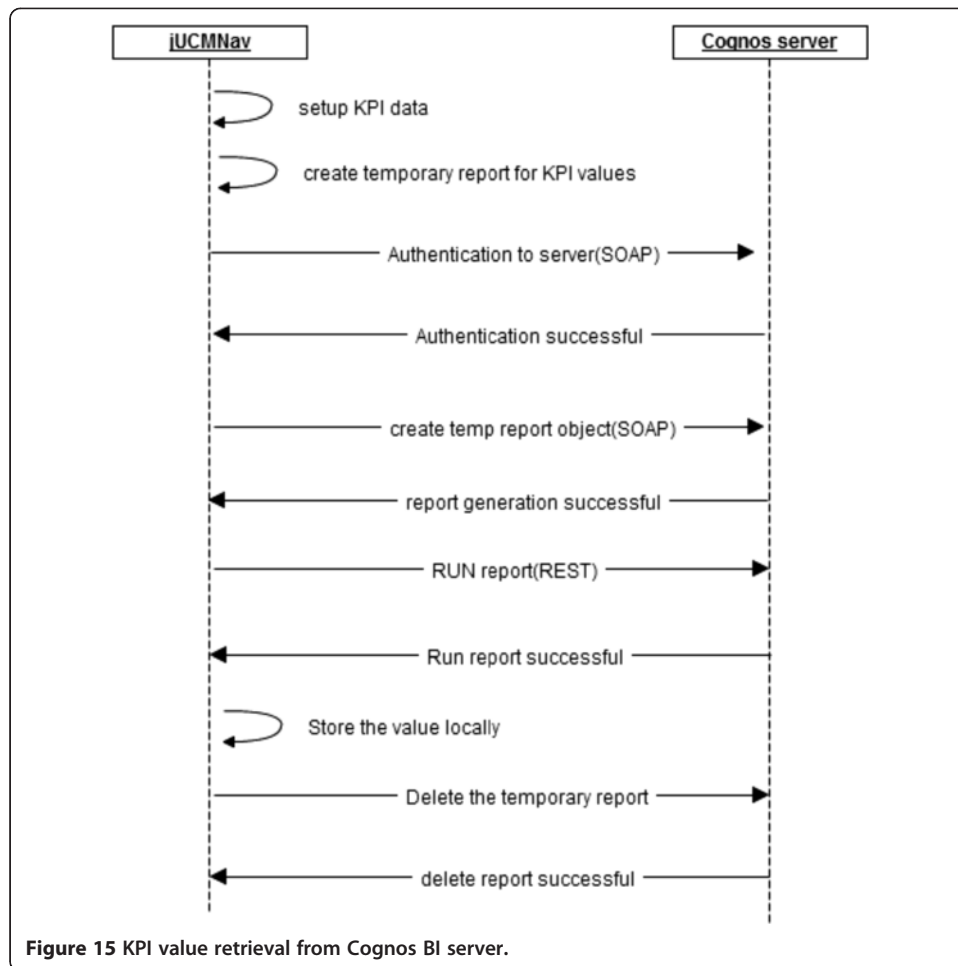


Figure 14 New architecture for connection to BI servers.



Service (IBM 2012). This approach allows us to get the value of the KPI and initialize the jUCMNav KPI values accordingly.

Although this approach allows a simple integration with the BI server, there are concerns around performance that needs to be addressed. The main problem is the fact that, for each KPI, a report needs to be created and run. Depending on the size of the data source and traffic on the server, this could potentially become a performance-intensive activity. Our solution for now is to schedule this activity and run the reports and retrieve all the required values by the defined GRL strategies overnight. The values of the KPIs are then stored locally and become available for the users to use by running the model's GRL strategies.

Although this approach addresses the performance problem for already-defined strategies, it does not address the problem of creating new what-if scenarios and ad-hoc analyses that allow users to change the KPI dimensions at runtime. Even though what-if analysis can still be done using jUCMNav in standalone mode (without connecting to the BI server), if the real values coming from BI server are required, users will be bound to the available values on the server in the analysis time.

As part of our future work, we are looking at an integration with IBM Cognos Insight (IBM 2014). This product is a client-side BI tool targeted for end users to perform performance analysis on their desktops. Integration with this tool will eliminate the step of going to the BI server for retrieving KPI values and address the performance-related

issues. Furthermore, since IBM Cognos Insight has write-back capabilities and allows end users to enter their own data to perform what-if analysis by creating a local data source, it represents a good match for our methodology and integration with our KPI and goal models. This will enable users to change the values of the KPIs at runtime efficiently and see the results in the goal models without being dependent on a database administrator to update the data sources.

Roles and responsibilities in an organization

Although the iterative and incremental nature of the framework allows organizations at any size/maturity to start using it, depending on the size of the organization and level of investment, not all aspects of the framework may be readily achievable. The complexity of some aspects of the framework requires specialized skills that not all users in an organization have, and the intention of the framework is also not to expose everyone to the same level of detail and complexity.

Figure 16 illustrates the required roles and responsibilities in an organization to use the framework. In a large organization, most of the users, primarily managers and business users, will only deal with the least complex aspects of the methodology (for consumers) and mainly use a subset of goals and KPIs to monitor their targets. A smaller number of analysts and BI experts will be involved in the more complicated aspects of the methodology. Initially, large organizations with access to such expertise will likely be the key adopters. In larger organizations, people with different functional roles in the organization may take one of these defined roles in the framework. For instance, both executives and line-of-business users can take the consumer role in the framework. In smaller organizations, one may take more than one of defined roles in the framework. For instance, the owner of a small retail store may become both the consumer and the analyst. Wixom and Watson (2010) have shown that many large and mature organizations can already benefit from sophisticated BI technologies, so incorporating our methodology in such context should not represent a major challenge. We believe, however, that our plan for using more consumer-oriented BI tools will help us to reduce the skill and cost barriers thus enabling

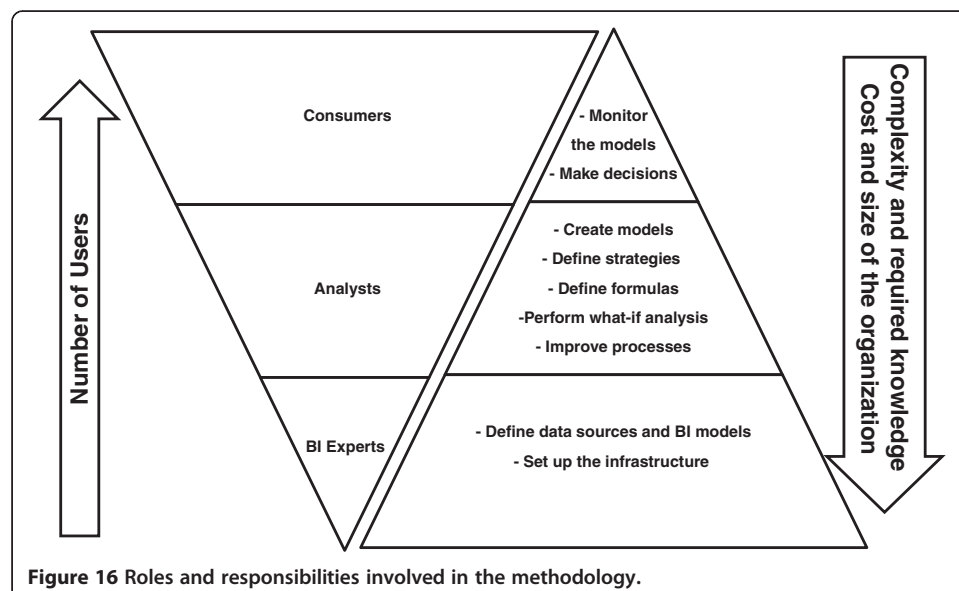


Figure 16 Roles and responsibilities involved in the methodology.

smaller organizations, and especially middle-level managers, to fully utilize all aspects of the methodology.

Results and discussion

Example of methodology application

In this example, we describe an application of the methodology in a Canada-based retail business. The particular retail business studied here is a small enterprise (with revenues less than \$50 million) with four local stores. The business has existed for over 15 years, establishing a strong foothold in one neighborhood, and is now planning to expand nationally. Three years prior to the study, the business was purchased by new owners who set national growth as a key strategic objective. As part of the expansion plans, market and competitive studies were conducted. In addition, the owners had created a scorecard that tracked key operational indicators and provided the ability to conduct an assessment of business results. Some data however, for example, the flow of customers through each of the locations, was not yet available in the scorecard.

At the time of the study, most revenues were earned through consignment sales. The business had started selling new items as well and was planning to invest in an *online* business. Revenue was driven by ensuring that stock was properly displayed, which in turn depended on assuring that enough staff were available to sort, tag, and lay out the products. The supply side of the business depended on the number of consigners available, the amount of product they brought to each store, and the speed at which these products could be displayed. The demand side depended on local advertising and word of mouth that stimulated traffic flow. All stores were situated in prominent locations with good visibility that stimulated walk-in traffic.

To begin our investigation, playing the analyst role in **Step 1**, we interviewed the CEO in order to identify the high-level goals as well as KPIs and drivers of organizational success. As depicted in Figure 17, the goals of the principals i.e., business owners, were

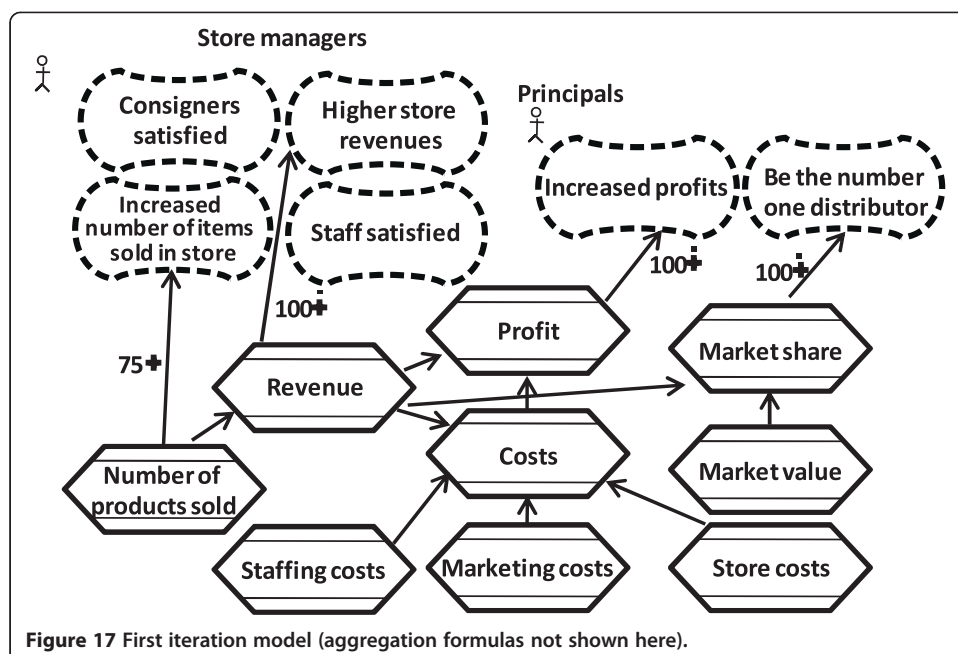
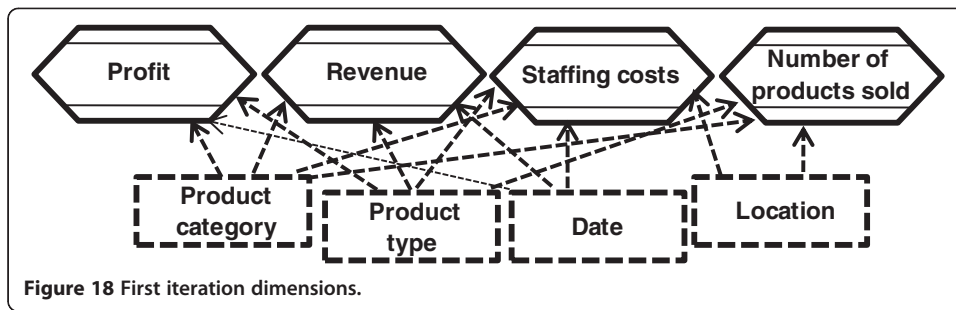


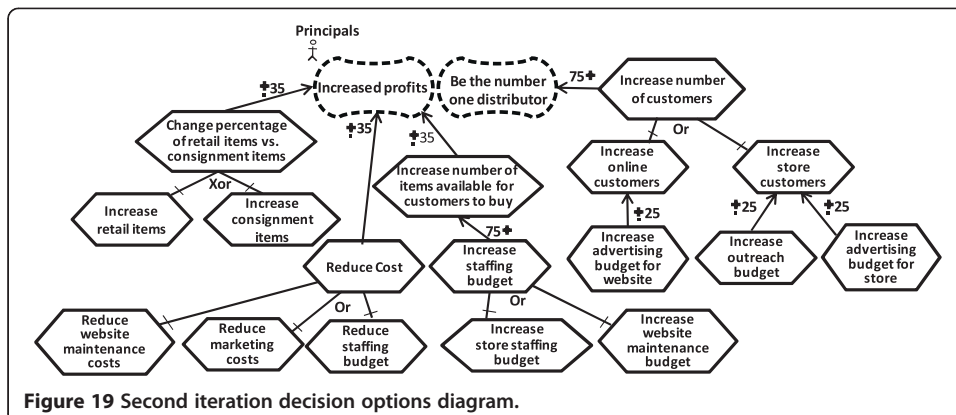
Figure 17 First iteration model (aggregation formulas not shown here).



related to market growth: they wanted to be the number one distributor within their geographical market. Store managers were aware of the growth objective, but on the short term, they focused on increasing revenues and the number of items sold in their stores.

As discussed above, the first iteration of the model provides an initial alignment of higher-level goals and KPIs. We started with a minimal decision model and limited set of data just to illustrate the business goals and financial targets and to identify the indicators and driver KPIs required to monitor the business and to make informed business decisions. Figure 17 illustrates the first iteration of the model. At this stage, we also developed a rough dimensional model (Figure 18) in order to ensure that the data needed for the decision model would be available. The dimensional model helps the store to analyze the impact of the KPIs on goals based on their different store locations, in each period of time, by product type (e.g., clothing, electronics, etc.), and by product category (i.e., retail and consignment).

In **Step 2** of the methodology (Table 2), more KPIs were added to the model as drivers and then linked to the high-level financial KPIs and organizational goals. In addition, we added the new KPIs as well as a new dimension called “marketing type” (e.g., outreach, online advertising, etc.) to the dimensional model. This new dimension allows decision makers to analyze which marketing initiative has a more significant impact on the goals. In this step we also created a decision options diagram (Figure 19) illustrating the specific actions managers can take to improve goal accomplishment. One of the decision options available to managers in this case, is to invest in an online business by increasing the



advertising budget for the website and increasing the website maintenance budget. We consider this option as the decision made by managers and update the models while transitioning to Step 3.

In **Step 3** of the methodology (Table 2), we added situations, new KPIs and started the monitoring effort. Figure 20 depicts the third iteration model, which defines the expected impact of the actions identified in Figure 19 along with the KPIs and acceptable ranges for each of the relevant goals based on the situations associated with each goal. Table 6 shows the formulas defined between the KPIs in this model. There is one new situation element in the model reflecting the initial cost of *investment in the online business*. This situation is a threat at this point in time. Therefore, the situation increases the acceptable range of the profit values by moving the threshold value closer to the worst value, as explained in Table 4. Furthermore, there is also a *new KPI* used to monitor the investment made in the online business and its impact on the costs. The GRL strategy used for the evaluation here focuses on the use of the online business investment (other GRL strategies were defined to evaluate different sets of options and find the most suitable trade-off).

Figure 21 depicts the third iteration dimensional model (including its new “Sales method” dimension) used to ensure that decision makers can compare and analyze the numbers for the online part of the business separately. In addition, this model now also supports the location dimension on more KPIs, allowing business owners to compare

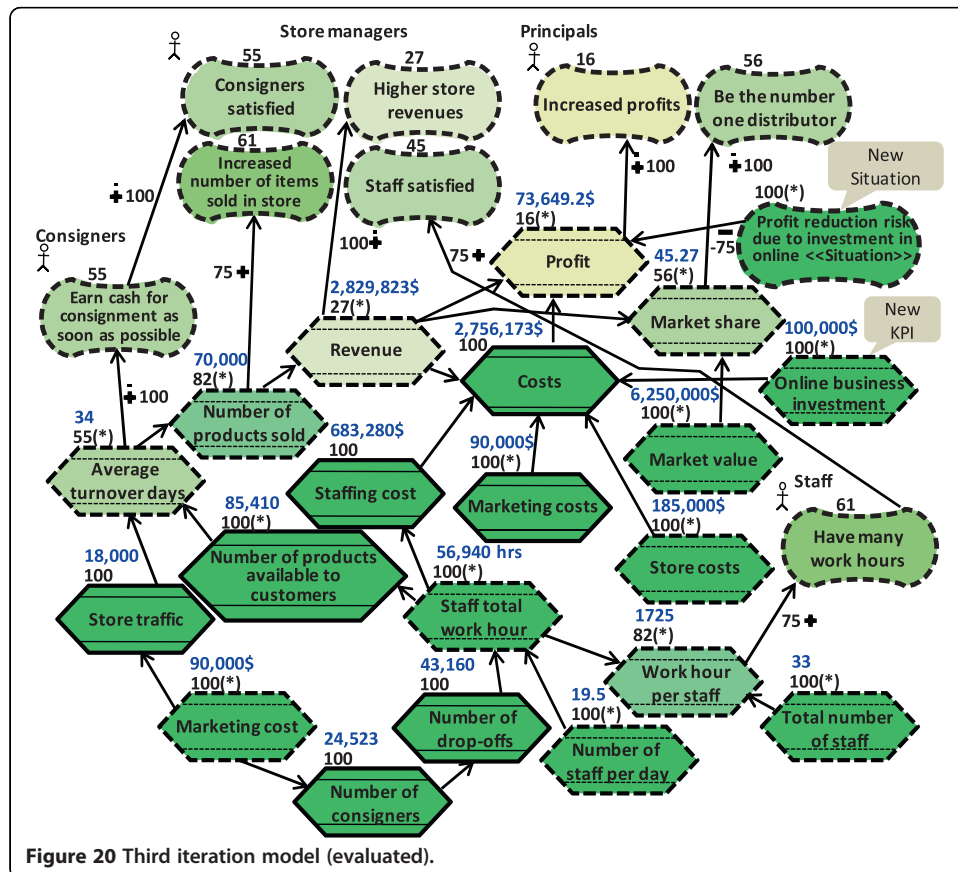
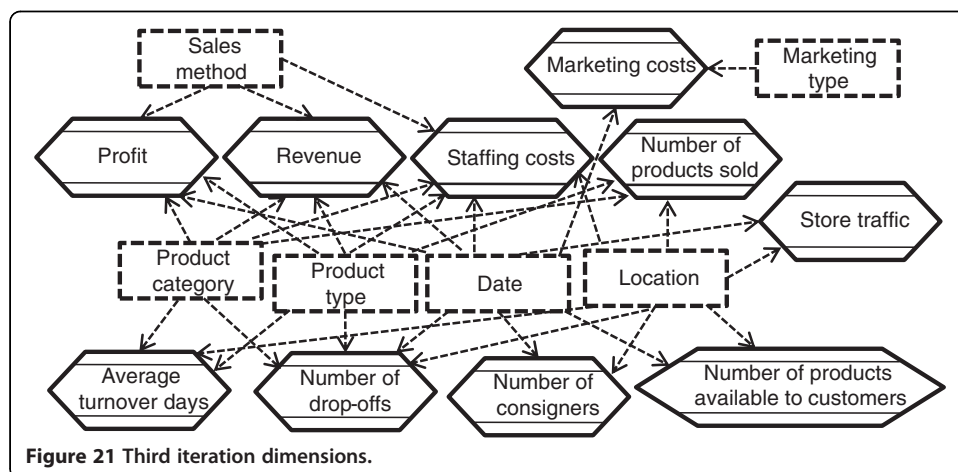


Table 6 Third iteration model formulas

Formula	Target KPI	Source KPIs
$2 \times MC/10$	Store traffic	MC: Marketing cost
$\text{floor}(MC/3.67)$	Number of consigners	MC: Marketing cost
$\text{floor}(1.76 \times NC)$	Number of drop-offs	NC: Number of consigners
$365 \times 8 \times NSPD$	Staff total work hours	NSPD: Number of staff per day
$STWH/TNS$	Work hour per staff	STWH: Staff total work hour TNS: Total number of staff
$STWH \times 8 + STWH \times 4$	Staffing cost	STWH: Staff total work hour \$8 per hour + \$4 overhead
$STWH \times 1.5$	Number of products available for customers	STWH: Staff total work hour
$\text{StaffC} + \text{MarketingC} + \text{StoreC} + R \times 0.6 + \text{OBI}$	Costs	StaffC: Staffing cost MarketingC: Marketing cost StoreC: Store cost OBI: Online business investment R: Revenue
$R - C$	Profit	R: Revenue C: Cost
$(R \times 100)/MV$	Market share	MV: Market value

the stores. Note that, in jUCMNav, such figures can be split over many diagrams when they become too large or complex.

Another enlightening aspect of the third iteration model, Figure 20, is the evaluation value of the defined KPIs as well as the relationship of the KPIs with various stakeholder goals. Note also in this figure that this performance monitoring view in jUCMNav was enhanced to show the KPI values themselves (in blue), with their units. As shown, the evaluation value of “Average turnover days”, which has significant impact on the satisfaction of both Revenue and Consigners, is 55. In this case, the lower the number of turnover days, the better the outcome. Therefore, according to the model, business owners have to reduce average turnover time to increase both customer satisfaction and store revenues. According to Figure 19, the latest version of the decision



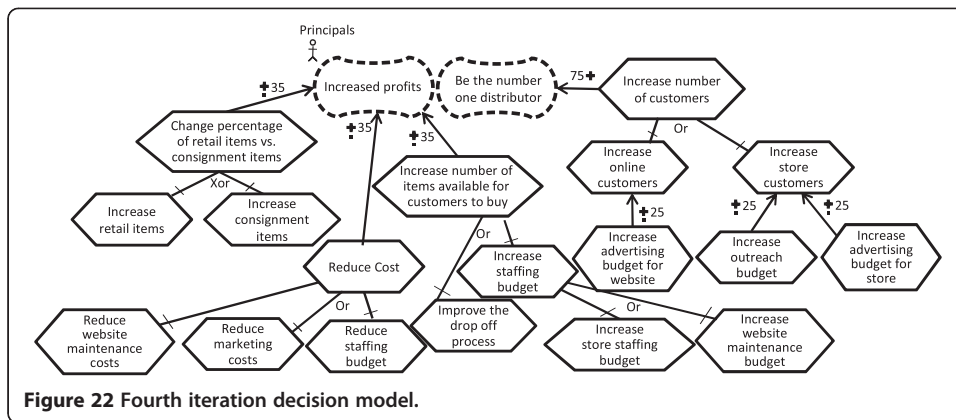


Figure 22 Fourth iteration decision model.

model, the only option was to increase the number of staff. However, when the new location dimension added to Figure 21 is used, one could easily point out that the average turnover days were significantly worse in one of the stores even though the number of staff in all stores were the same. After some brainstorming, owners realized that the design of that specific store as well as how the drop-off is handled in that store is contributing to the higher number of turnover days. Therefore, their decision model was updated (Figure 22) to show process improvement as an alternative to increasing the number products available to customers, which according to the model directly

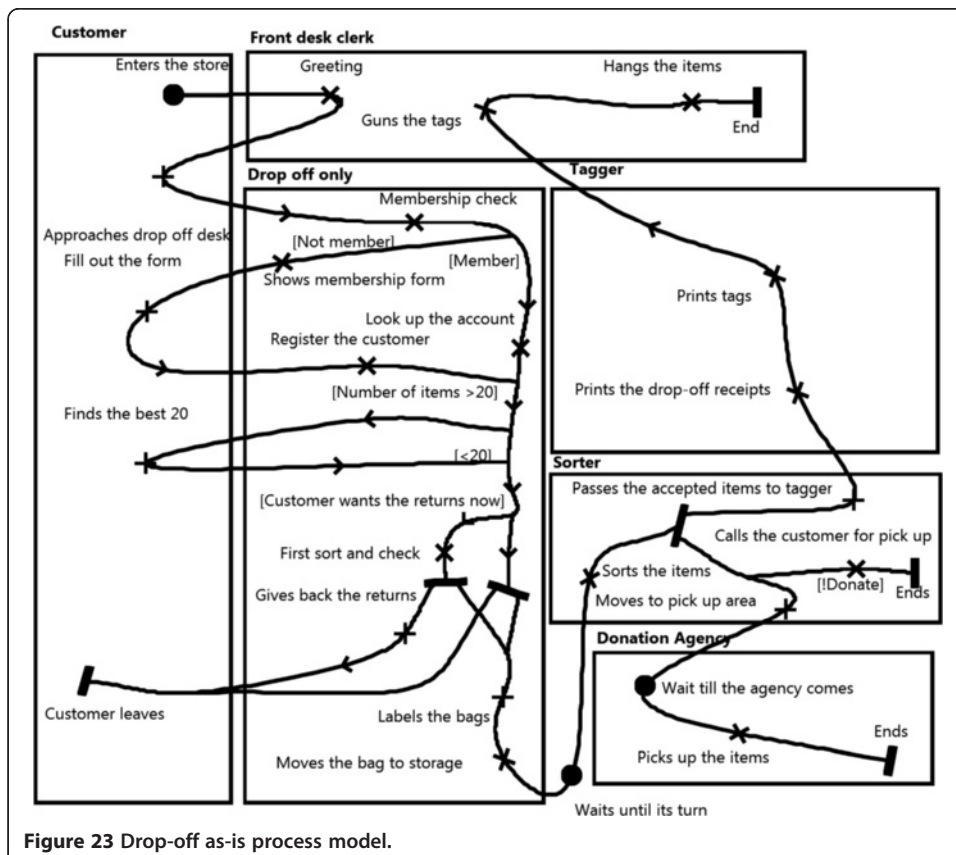


Figure 23 Drop-off as-is process model.

impacts the average turnover days. This process improvement will be specified with Use Case Maps.

The change in the decision model also highlighted a potential enhancement in the third iteration monitoring model (Figure 20). Although the impact of “Number of products available to customers” on “Average turnover days” is illustrated in the model, the target value for the former is not accurate. To elaborate, the discussed KPI evaluation value is 100, which means it fully satisfies the expected value, whereas we know we have to improve this number to improve the average turnover days. This is another example that shows how not having enough information about the context and relationships at the beginning is not a showstopper for using this methodology. Analyzing the model at each iteration can help us both to understand the business

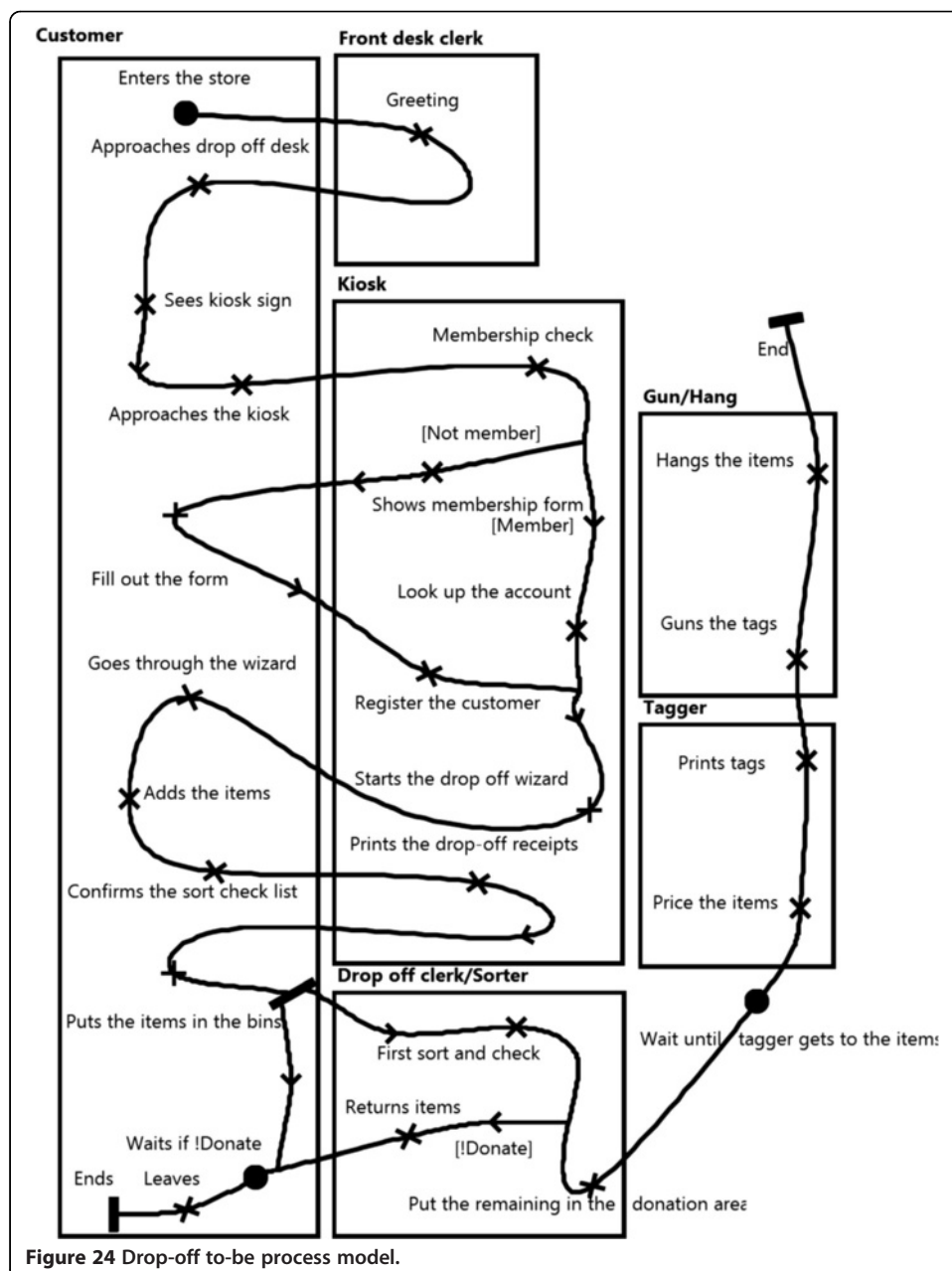


Figure 24 Drop-off to-be process model.

more accurately and to improve the model itself and change the business targets accordingly.

In terms of adaptation, the owners decided to improve the drop-off process model. The as-is drop-off process was modelled using UCM, as shown in Figure 23. After some brainstorming, a to-be process was proposed as well (Figure 24). This to-be process was designed to minimize the time that staff spend on the drop-off process as well as reducing the wait time between item drop-off and item display.

As illustrated in Figure 23, in the as-is process, all the interactions with customers are done manually, including the registration of new customers and the entire process for dropping off items to be sold. This problem was addressed in the to-be process, Figure 24, by adding kiosks to the process to automate part of this work and reduce the staff workload.

In addition, in the as-is process, there are two sorting activities in the process, one in the presence of the customer and another one later on. If a customer does not want to donate the items deemed “unacceptable”, then there is a follow-up activity to call the customer to pick up these rejected items. This sequence was streamlined in the to-be process by sorting all the items in the presence of the customer or mandatory donation as the two possible options for the customer. This change not only reduces the staff workload but also removes a backlog of items to be sorted from the entire process and significantly reduces the time lag between drop-off and display.

After the suggested changes to the process model are implemented, the methodology allows the owners to monitor the results and see the impact on the KPIs that were assumed to be improved using the new process model (i.e., average turnover days in this example).

Although the complete model in the third iteration, Figure 20, seems complex, this is not the view that everyone in the organization has to deal with. The tool allows organization to create the custom diagrams from the same model to adjust the complexity of the method for different level of users and only expose the users to the subset of the model and method that helps them to perform their job. For instance, Figure 25 illustrates a subset of the model that is customized to

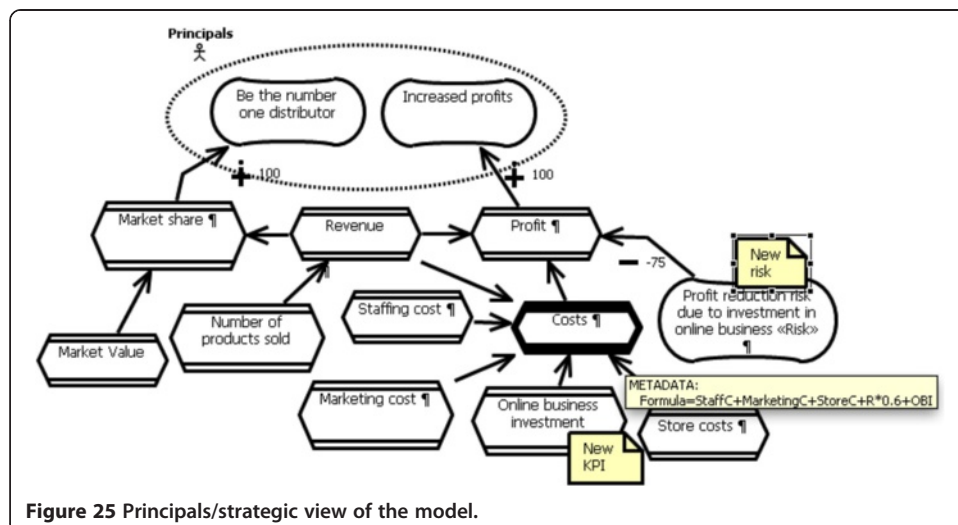


Figure 25 Principals/strategic view of the model.

show only the elements that business principals would be interested in. This strategic view only has the very high level goals of the organization and the related high-level KPIs and does not include any operational goals that normally store managers would be interested in.

Lessons learned

The development of our methodology and its application to the real world retail business led to several lessons learned. From a business management perspective, we observe the following:

- Modelling goals and defining drivers and KPIs (i.e., creating the cause-effect decision model) not only helps to document the known aspects of the business but also helps to clarify unknown factors that might be driving goal accomplishment. Validation of the model through interviews with decision makers ensures that data and KPIs included are indeed relevant to the business. This can have a great impact especially for small businesses where initial goals might not have been clear.
- Even though modelling the indicators helps define the required information and the relationships between variables, we are still unsure about where to draw the line regarding the data we need to show in the model versus the data maintained in source systems (e.g., databases or BI reports). We still need to explore how to find the appropriate balance so we do not omit important information in the model for decision making while preventing the inclusion of too much data which can complicate the decision-making environment.

We believe however that getting feedback on the right balance is facilitated by the use of graphical goal models with rapid evaluation feedback as provided by GRL strategies, which provide more insight into cause-effect relationships than do conventional BI reports. Note however that the goal-oriented view introduced here is complementary to what is currently found in BI tools, not a substitute.

- Defining relationships between the model elements without historical data is difficult. In some cases, managers themselves are not aware of the linkages because they have not had the historical data available to create cause-effect models. In this case, we first create the models using industry standards or “educated guesses” and then use the different iterations of the methodology steps to improve the cause-effect decision model.
- The ability to adjust the range of acceptable values for a KPI is useful for registering risk. For example, one might establish a wide range of acceptable values for an objective that carries a high level of risk, such as expected sales for a new product. On the other hand, objectives with lower profiles, such as sales of well-established products, might have a narrower range of acceptable values.
- The ability to have a cohesive notation and modelling environment that allow one to model the organization goals, KPIs, decision, situations, and processes, together with simple integration of the models with BI tools, can help with the introduction and adaptation of the suggested approach.

From a technical point of view, we have learned that:

- Our new extensions to GRL and the new formula-based algorithm provide a great deal of flexibility for model evaluation, especially as they are combined with standard goal satisfaction evaluation, hence offering the best of both worlds. However our new algorithm still has room for improvement, especially when it comes to using other intentional elements (e.g., goals) as contributors to KPIs. We have had limited experience with this idea by considering situations as an input to KPIs, but this type of modelling may be useful in other circumstances that require further investigation. In addition, recent results on the use of constraint-based programming for solving the satisfaction problem in GRL models (Luo and Amyot 2011) has the potential to allow optimizations to be computer and answers to be provided to questions such as “if I want to reach this KPI satisfaction level or current value, tell me what should be done in sub-KPIs given all the constraints present in the goal model”.
- Creating different versions of a model in different iterations and keeping them consistent for comparison purposes can be painful with current tool support. Saving separate files for each version of the model quickly becomes a maintenance issue that requires a better technical solution. Very recent additions to jUCMNav (Amyot et al. 2013) however provide potentially useful features in this context, including: URN model comparisons, strategy evaluation differences, contribution overrides, as well as export of strategy results (e.g., for historical data) and import of strategy definitions as Comma-Separated Value (CSV) files.

Conclusions

There are critical issues related to the use of conventional Business Intelligence technology for decision making. Data support is an important contribution of BI, but data presented without a proper context can require more effort from decision makers and does not necessarily enable decision support. This represents a challenge that will become even more important in the future given that organizations are nowadays gathering terabytes of information.

In this research, we have provided several contributions toward a goal-oriented business intelligence-supported decision methodology, where we integrate in a novel way goal models, decision models, situations, and processes together with analytic capabilities. By integrating the decision model into the BI system, we attempt to integrate model-based decision support into a BI system thus improving the decision-making process. To do so, we extended a standard goal-oriented language, GRL, to better display relationships between Key Performance Indicators and objectives and processes, to enable formula-based evaluations of goal models involving KPI aggregation, and to integrate situations through the notion of acceptable ranges for KPIs. These extensions enable the combination of quantifiable KPIs with strategic-level softgoals in the same model, which in turn allows analysts to assess and monitor the impact of KPIs based on existing values and to explore what-if scenarios through GRL strategies.

We also proposed an enhancement to the integration architecture of the existing open source URN tool, jUCMNav. This new architecture addresses two major issues of the

existing integration approach, which were considered main impediments for adaptation of the integration between jUCMNav and BI tools: dependency on an external web service and application server, as well as BI reports created, hosted, and manually maintained on the BI server.

From an implementation perspective, we also introduced a methodology lifecycle with iterative steps that support the construction of goal models (including KPIs and dimensions) even in situations where little information is available. Such models can be refined as more knowledge is gained about the organization and its context. Models can also be compared (as historical data) to validate newer models. This feature allows for assessment of the impact of past business decisions creating an ongoing system of record that permits continual adaptation. Our retail business example helped illustrate the methodology in a real context, and the results of our study suggest the feasibility of the approach, especially for middle-level managers. Other applications of parts of the methodology to information access in a large hospital (Pourshahid 2014) and to adaptive enterprise architectures in a government's department (Akhigbe 2014; Akhigbe et al. 2014) also support this conclusion. We also believe that such a graphical, goal-oriented approach, which delivers data values used to make decisions in context, supports the comprehension of important cause-effect relationships in a way that could complement existing current BI technologies, which often lack an appropriate goal view.

The methodology is still evolving, and limitations and potential work items have been identified in our lessons learned. In particular, major future work items include:

- Study of the usability of the methodology from several viewpoints, including the effort required by the iterative modelling before analysis can be done, the continuous evolution of the models, what to put in the URN model and what to leave in conventional BI systems, the usefulness of the analysis results in helping decision making, and appropriate tool support (including integration with BI systems other than IBM Cognos).
- Further validation of the methodology by applying it to other real organizations and measuring its usefulness in organizations of different domains, sizes, and levels of maturity.
- Improvements to the maintainability of models with formulas, and of evolving models.
- Improvements to the performance of the current integration with IBM Cognos BI by exploiting the facilities provided by IBM Cognos Insight.

Still, as it stands today, this methodology brings new contributions and good value to the BI table, and we believe it has a promising future.

Abbreviations

BI: Business intelligence; BIM: Business intelligence model; DW: Data warehouse; GDI: Goal-decision-information; GRL: Goal-oriented requirement language; ITU-T: International Telecommunication Union - Telecommunication standardization sector; KPI: Key performance indicator; MIS: Management information systems; SWOT: Strengths, weaknesses, opportunities, and threats; UCM: Use case map; URN: User requirements notation.

Competing interests

Okhaide Akhigbe was funded by the Business Intelligence Network (BIN), a strategic network of the National Science and Engineering Research Council of Canada. Greg Richards and Daniel Amyot were co-investigators in this project. BIN received funding from several companies, including IBM Canada. Greg Richards is the director of the IBM Center for Business Analytics and Performance at the University of Ottawa, also funded by IBM Canada. Alireza Pourshahid

and Iman Johari are both employees of the Business Analytics division of IBM Canada. As the IBM Cognos BI tool (provided to the researchers by IBM Canada through its educational program) was used in our methodology, it could be perceived that IBM Canada may benefit from the publication of this manuscript. However, the research results are independent from specific BI tools.

Other than the above, the authors declare that they have no competing interests.

Authors' contributions

AP defined the overall methodology and the algorithms supporting indicator relationships, with assistance from DA and GR. AP led development and modeling of the illustrative case study, with assistance from GR and DA. IJ provided the integration with IBM Cognos BI, with the assistance of GR and DA. All authors contributed to the literature review, helped to draft the manuscript, and approved the final version. OA led its finalization.

Authors' information

Alireza Pourshahid received his M.Sc. degree in E-Business Technologies and his Ph.D. in Computer Science from the University of Ottawa in 2008 and 2014 respectively. He is Software Development Manager and Product Owner at IBM. His main research interests are business process and performance management, business analytics, data visualization, process modeling, trust modeling, and software development methodologies. During his masters, Alireza developed the foundation of a Process Monitoring Framework and Methodology based on the User Requirement Notation (URN) and business intelligence. He extended this framework during his Ph.D. studies to support business process improvement, through the use of aspect-oriented modeling and redesign patterns.

Gregory Richards is Professor of Performance Management at the Telfer School of Management and Director of the IBM Centre for Business Analytics and Performance. He is also the Director of the MBA program at the same school. He has a Ph.D. from Carleton University and an MBA and a MA from the University of Ottawa. Prior to his academic appointment, Gregory worked at Transport Canada and at Consulting and Audit Canada as well as with Cognos Incorporated. He also has over 20 years of consulting experience and is a Certified Management Consultant. His research interests include the use of analytics in decision making, business intelligence, organizational learning, and management process innovation.

Daniel Amyot is Professor at the University of Ottawa, which he joined in 2002 after working for Mitel Networks as a senior researcher. His research interests include scenario-based software engineering, requirements engineering, business process modeling, aspect-oriented modeling, and healthcare informatics. Daniel led the standardization of the User Requirements Notation at the International Telecommunication Union between 2002 and 2013, and still leads the development of the jUCMNav modeling environment. He has published over 130 journal and conference publications. He has a Ph.D. and an M.Sc. from the University of Ottawa (2001 and 1994), as well as a B.Sc. from Laval University (1992). Daniel is also a Professional Engineer in the province of Québec, Canada.

Iman Johari holds a Master's degree in Systems Science (2012) and a Bachelor's degree in Software Engineering (2009) from the University of Ottawa. His research area relates to goals in business intelligence and performance management. Iman is also a software developer at IBM for the Business Analytics segment, where he contributed to the development of the IBM Cognos SDK and Cognos Mashup Service.

Okhaide Akhigbe holds a Master's degree in Systems Science from the University of Ottawa (2014) and a Bachelor of Engineering degree from Ambrose Alli University (2003). His research area relates to adaptive enterprise architectures, goal modeling, and performance management. Okhaide is now a Ph.D. student in E-Business at the University of Ottawa.

Acknowledgements

This research was supported by the Business Intelligence Network of the National Science and Engineering Research Council of Canada and by the IBM Centre for Business Analytics and Performance of the University of Ottawa.

Author details

¹IBM Canada, Ottawa, Canada. ²IBM Canada, Vancouver, Canada. ³Telfer School of Management, University of Ottawa, 55 Laurier Avenue East, Ottawa ON K1N 6N5, Canada. ⁴School of Computer Science and Electrical Engineering, University of Ottawa, 800 King Edward Avenue, Ottawa, ON K1N 6N5, Canada.

Received: 5 May 2014 Accepted: 20 October 2014

Published online: 13 December 2014

References

- Ackoff, RL. (1967). Management Misinformation Systems. *Management Science*, 14(4), B147–B156.
- Akhigbe, OS. (2014). *Business Intelligence - Enabled Adaptive Enterprise Architecture*. M.Sc. thesis, Systems Science, University of Ottawa, April. <http://hdl.handle.net/10393/31012>.
- Akhigbe, OS, Amyot, D, & Richards, G. (2014). A Framework for a Business Intelligence-Enabled Adaptive Enterprise Architecture. In *33rd Int. Conf. on Conceptual Modeling (ER 2014)* (LNCS 8824, pp. 393–406). Switzerland: Springer International Publishing.
- Amyot, D, Ghanavati, S, Horkoff, J, Mussbacher, G, Peyton, L, & Yu, E. (2010). Evaluating Goal Models within the Goal-oriented Requirement Language. *International Journal of Intelligent Systems*, 25(8), 841–877.
- Amyot, D, & Mussbacher, G. (2011). *User Requirements Notation: The First Ten Years, The Next Ten Years, Invited paper* (Journal of Software (JSW), Vol. 6, No. 5, pp. 747–768). Academy Publisher. doi:10.4304/jsw.6.5.747-768.
- Amyot, D, Rashidi-Tabrizi, R, Mussbacher, G, Kealey, J, Tremblay, E, & Horkoff, J. (2013). Improved GRL Modeling and Analysis with jUCMNav 5. In *6th International i* Workshop (iStar 2013)* (CEUR-WS, Vol. 978, pp. 137–139).
- Ansar, Y, Giorgini, P, Ciancarini, P, Moretti, R, Sebastianis, M, & Zannone, N. (2008). Evaluation of Business Solutions in Manufacturing Enterprises. *International Journal of Business Intelligence and Data Mining*, 3(3), 305–329.
- Babar, A, Zowghi, D, & Chew, E. (2010). *Using Goals to Model Strategy Map for Business IT Alignment* (Workshop on BUSITAL10, in conjunction with CAISE'10, June. CEUR-WS, Vol-599, pp. 16–30).

- Beasley, M, Chen, A, Nunez, K, & Wright, L. (2006). Balanced Scorecards and Enterprise Risk Management. *Strategic Finance*, 87(9), 49–55.
- Chen, P. (2007). *Goal-oriented business process monitoring: An approach based on user requirement notation combined with business intelligence and web services*. Master's thesis, Computer Science, Carleton University, Canada, December.
- Colombo, E, & Mylopoulos, J. (2006). *A Multi-perspective Framework for Organizational Patterns* (Conceptual Modeling, LNCS, Vol. 4215, pp. 451–467). Berlin Heidelberg: Springer.
- Cooper, BL, Watson, HJ, Wixom, BH, & Goodhue, DL. (2000). Data Warehousing supports Corporate Strategy at First American Corporation. *MIS Quarterly*, 24(4), 547–567.
- Davis, R, & Brabänder, E. (2007). *ARIS Design Platform: Getting Started with BPM*. London: Springer.
- Feng, X, Richards, G, & Raheemi, B. (2009). The Road to Decision-Centric Business Intelligence. In *2nd Int. Conf. on Business Intelligence and Financial Engineering* (pp. 514–518). Beijing, China: IEEE CS.
- Gartner (2014). *Gartner/EBRC KPI Initiative*, <http://www.aicpa.org/InterestAreas/FRC/AccountingFinancialReporting/EnhancedBusinessReporting/Pages/GartnerEBRCkpiInitiative.aspx>, accessed May 2014.
- Henderson, JC, & West, JM, Jr. (1979). Planning for MIS: A Decision-Oriented Approach. *MIS Quarterly*, 3(2), 45–58.
- Hevner, A, & Chatterjee, S. (2010). *Design Research in Information Systems - Theory and Practice* (Integrated Series in Information Systems, Vol. 22). USA: Springer.
- Hevner, AR, March, ST, Park, J, & Ram, S. (2004). Design science in information systems research. *MIS Quarterly*, 28, 75–105.
- Horkoff, J, Barone, D, Jiang, L, Yu, E, Amyot, D, Borgida, A, & Mylopoulos, J. (2014). Strategic Business Modeling - Representation and Reasoning. *Software and Systems Modeling*, 13(3), 1015–1041.
- IBM (2012). *Cognos Mashup Service*. <http://www-03.ibm.com/software/products/en/cognos-mashup-service>, accessed November 2014.
- IBM (2014). *Cognos Insight*. <http://www-03.ibm.com/software/products/en/cogninsi>, accessed May 2014.
- Isik, O, Jones, MC, & Sidorova, A. (2011). Business Intelligence (BI) and the Role of BI Capabilities. *Intelligent Systems in Accounting, Finance and Management*, 18(4), 161–176.
- International Telecommunication Union – ITU-T (2012). *Recommendation Z.151 (10/12), User Requirements Notation (URN) – Language definition*. Geneva, Switzerland. <http://www.itu.int/rec/T-REC-Z.151/en>.
- Jiang, L, Barone, D, Amyot, D, & Mylopoulos, J. (2011). Composite Indicators for Business Intelligence. In *30th Int. Conf. on Conceptual Modeling (ER 2011)* (LNCS 6998, pp. 448–458). Brussels, Belgium: Springer.
- Johari, I (2012). *Combining Business Intelligence, Indicators, and the User Requirements Notation for Performance Monitoring*. Master's thesis, Systems Science, University of Ottawa, Canada, November. <http://hdl.handle.net/10393/23540>
- King, WR, & Cleland, DI. (1975). The Design of Management Information Systems: An Information Analysis Approach. *Management Science*, 22(3), 286–297.
- Ko, IS, & Abdullaev, SR. (2007). *A Study on the Aspects of Successful Business Intelligence System Development* (Int. Conf. on Computational Science (ICCS 2007). LNCS, Vol. 4490, pp. 729–732). Berlin Heidelberg: Springer.
- Korhonen, P, Mano, H, Stenfors, S, & Wallenius, J. (2008). Inherent Biases in Decision Support Systems: The Influence of Optimistic and Pessimistic DSS on Choice, Affect, and Attitudes. *Journal of Behavioral Decision Making*, 21, 45–58.
- Koutsoukis, N, & Mitra, G. (2003). *Decision Modelling and Information Systems: The information Value Chain*. Boston: Kluwer Academic Publishers.
- Lai, T. (2013). *com.primalworld.math.MathEvaluator* (Math Evaluator), <http://goo.gl/z3KIEA>, accessed September 2014.
- Liew, A, & Sundaram, D. (2009). Flexible Modelling and Support of Interrelated Decisions. *Decision Support Systems*, 46, 786–802.
- Luo, H, & Amyot, D. (2011). Towards a Declarative, Constraint-Oriented Semantics with a Generic Evaluation Algorithm for GRL. In *5th International i* Workshop* (CEUR-WS, Vol. 766, pp. 26–31).
- March, ST, & Hevner, AR. (2007). Integrated Decision Support Systems: A data warehousing perspective. *Decision Support Systems*, 43, 1031–1043.
- McWhorter, LB, Matherly, M, & Frizzel, DM. (2006). The Connection between Performance Measurement and Risk Management. *Strategic Finance*, 87(8), 50–55.
- Mussbacher, G, Ghanavati, S, & Amyot, D. (2009). *Modeling and Analysis of URN Goals and Scenarios with jUCMNav* (17th IEEE Int. Requirements Engineering Conf, pp. 383–384). USA: IEEE CS. <http://softwareengineering.ca/jucmnav/>.
- Negash, S. (2004). Business Intelligence. *Communications of the Association for Information Systems*, 13, 177–195.
- Popova, V, & Sharpanskykh, A. (2010). Modeling organizational performance indicators. *Information Systems*, 35(4), 505–527. Special issue on Vocabularies, Ontologies and Rules for Enterprise and Business Process Modeling and Management, June.
- Popova, V, & Sharpanskykh, A. (2011). Formal modelling of organisational goals based on performance indicators. *Data & Knowledge Engineering*, 70(4), 335–364.
- Pourshahid, A. (2014). *A Framework for Monitoring and Adapting Business Processes Using Aspect-Oriented URN*. Ph.D. thesis, Computer Science, University of Ottawa, Canada, April. <http://hdl.handle.net/10393/30958>.
- Pourshahid, A, Amyot, D, Shamsaei, A, Mussbacher, G, & Weiss, M. (2012). *A Systematic Review and Assessment of Aspect-oriented Methods Applied to Business Process Adaptation* (Journal of Software (JSW), Vol. 7, No. 8, pp. 1816–1826). Academy Publisher. <http://ojs.academypublisher.com/index.php/js/article/viewFile/js070818161826/5368>.
- Pourshahid, A, Chen, P, Amyot, D, Forster, AJ, Ghanavati, S, Peyton, L, & Weiss, M. (2009). *Business Process Management with the User Requirements Notation* (Electronic Commerce Research, Vol. 9, No. 4, pp. 269–316). USA: Springer.
- Pourshahid, A, Chen, P, Amyot, D, Forster, AJ, & Weiss, M. (2007). Business Process Monitoring and Alignment: An Approach Based on the User Requirements Notation and Business Intelligence Tool. In *Proc. of the 10th Workshop on Requirements Engineering (WER07)* (pp. 80–91). Canada: York University Printing Services. ISBN 978-1-55014-483-3.
- Pourshahid, A, Mussbacher, G, Amyot, D, & Weiss, M. (2013). Requirements for a Modeling Language to Specify and Match Business Process Improvement Patterns. In *3rd Workshop on Model-Driven Requirements Engineering (MoDRE 2012)* (pp. 10–19). USA: IEEE CS.
- Pourshahid, A, Richards, G, & Amyot, D. (2011). Toward a Goal-Oriented, Business Intelligence Decision-Making Framework. In *5th International MCETECH Conference on eTechnologies* (LNBIP 78, pp. 100–115). Berlin Heidelberg: Springer.
- Power, DJ, & Sharda, R. (2007). Model-driven Decision Support Systems: Concepts and Research Directions. *Decision Support Systems*, 43, 1044–1061.
- Prakash, N, & Gossain, A. (2008). An Approach to Engineering the Requirements of Data Warehouses. *Requirements Engineering*, 13, 49–72.

- Rogers, S, Lin, S, & Torok, R. (2008). *Orchestrating Risk-Adjusted Performance Management* (IBM Institute for Business Value). <https://www-935.ibm.com/services/no/cfo/pdf/gbe03048usen.pdf>. accessed May 2014.
- Shariat, M, & Hightower, R, Jr. (2007). Conceptualizing Business Intelligence Architecture. *Marketing Management Journal*, 17(2), 40–46.
- Siena, A, Bonetti, A, & Giorgini, P. (2008). Balanced Goalcards: Combining Balanced Scorecards and Goal Analysis. In *Third Int. Conf. on Evaluation of Novel Approaches to Software Engineering (ENASE 2008)* (pp. 107–114). Funchal, Portugal: INSTICC Press.
- Silver, B. (2010). *Collaborative Business Process Discovery and Improvement* (Industry Trend Reports). USA: Bruce Silver Associates.
- Stroh, F, Winter, R, & Wortmann, F. (2011). Method Support of Information Requirements Analysis for Analytical Information Systems. *Business & Information Systems Engineering*, 3(1), 33–43.
- Tawhid, R, Alhaj, M, Mussbacher, G, Braun, E, Cartwright, N, Shamsaei, A, Amyot, D, Behnam, SA, & Richards, G. (2012). Towards Outcome-Based Regulatory Compliance in Aviation Security. In *20th IEEE Int. Requirements Engineering Conf. (RE'12)* (pp. 267–272). USA: IEEE CS.
- van Lamsweerde, A. (2009). *Requirements Engineering: From System Goals to UML Models to Software Specifications*. England: John Wiley & Sons.
- Vinekar, V, Teng, JTC, & Chennamaneni, A. (2009). The Interaction of Business Intelligence and Knowledge Management in Organizational Decision-Making. *Journal of International Technology and Information Management*, 18(2), 143–159.
- Watson, HJ, & Frolick, MN. (1993). Determining Information Requirements for an EIS. *MIS Quarterly*, 17(3), 255–269.
- Weiss, M, & Amyot, D. (2005). Business Process Modeling with URN. *International Journal of E-Business Research*, 1(3), 63–90.
- Wixom, BH, & Watson, HJ. (2010). The BI-Based Organization. *International Journal of Business Intelligence Research*, 1, 13–28.
- Wixom, BH, Watson, HJ, Reynolds, AM, & Hoffer, JA. (2008). Continental Airlines Continues to Soar with Business Intelligence. *Information Systems Management*, 25, 102–112.
- World Intellectual Capital Initiative (2014). *WICI KPI*, <http://www.wici-global.com/kpis>, accessed May 2014.
- Wu, DD, & Olson, DL. (2009). Enterprise Risk Management: Small Business Scorecard Analysis. *Production Planning and Control*, 20(4), 362–369.
- Yu, E, Horkoff, J, Mylopoulos, J, Richards, G, & Amyot, D. (2013). Business Modeling for Business Intelligence. In RT Ng et al. (Eds.), *Perspectives on Business Intelligence* (Synthesis Lectures on Data Management, Vol. 5(1), pp. 19–33). USA: Morgan & Claypool Publishers.
- Yu, E, & Mylopoulos, J. (1998). Why Goal-Oriented Requirements Engineering. In *Fourth Intl. Workshop on Req. Eng.: Foundation for Software Quality (REFSQ'98)*, Pisa, Italy.

doi:10.1186/s40165-014-0009-8

Cite this article as: Pourshahid et al.: A goal-oriented, business intelligence-supported decision-making methodology. *Decision Analytics* 2014 1:9.

Submit your manuscript to a SpringerOpen[®] journal and benefit from:

- ▶ Convenient online submission
- ▶ Rigorous peer review
- ▶ Immediate publication on acceptance
- ▶ Open access: articles freely available online
- ▶ High visibility within the field
- ▶ Retaining the copyright to your article

Submit your next manuscript at ▶ springeropen.com
