

Azam, Qazi T.; Bloom, Erik A.; Evenson, Robert E.

Working Paper

Agricultural Research Productivity in Pakistan

Center Discussion Paper, No. 644

Provided in Cooperation with:

Yale University, Economic Growth Center (EGC)

Suggested Citation: Azam, Qazi T.; Bloom, Erik A.; Evenson, Robert E. (1991) : Agricultural Research Productivity in Pakistan, Center Discussion Paper, No. 644, Yale University, Economic Growth Center, New Haven, CT

This Version is available at:

<https://hdl.handle.net/10419/160566>

Standard-Nutzungsbedingungen:

Die Dokumente auf EconStor dürfen zu eigenen wissenschaftlichen Zwecken und zum Privatgebrauch gespeichert und kopiert werden.

Sie dürfen die Dokumente nicht für öffentliche oder kommerzielle Zwecke vervielfältigen, öffentlich ausstellen, öffentlich zugänglich machen, vertreiben oder anderweitig nutzen.

Sofern die Verfasser die Dokumente unter Open-Content-Lizenzen (insbesondere CC-Lizenzen) zur Verfügung gestellt haben sollten, gelten abweichend von diesen Nutzungsbedingungen die in der dort genannten Lizenz gewährten Nutzungsrechte.

Terms of use:

Documents in EconStor may be saved and copied for your personal and scholarly purposes.

You are not to copy documents for public or commercial purposes, to exhibit the documents publicly, to make them publicly available on the internet, or to distribute or otherwise use the documents in public.

If the documents have been made available under an Open Content Licence (especially Creative Commons Licences), you may exercise further usage rights as specified in the indicated licence.

2.2 PFP Indexes for Pakistani Agriculture

It is useful to begin the reporting of productivity measures with the more familiar PFP or yield measures. These have been calculated for wheat, rice, maize, bajra, jowar, cotton, barley, gram, mung, and sugarcane. Table 2.1 reports yield levels for two periods, 1956-66 and 1971-85, for each of three Pakistani states. The first period is the pre-green revolution period. The second is the post-green revolution period. In general, yields were higher for all crops in the 1972-85 period than in the 1956-66 period. Rice yields increased most in percentage terms followed by cotton yields. Wheat and maize yields increased at a modest rate. Yields of gram, barley, sugarcane, bajra, and jowar increased at a slow rate.

Table 2.1: Average Crop Yields: 1956-66 and 1972-85 (Tons per Hectare)

CROPS	PUNJAB		SIND		NWFP		PAKISTAN	
	1956-66	1972-85	1956-66	1972-85	1956-66	1972-85	1956-66	1972-85
Sugar-cane	2.79	3.30	3.43	3.37	2.82	3.25	2.99	3.31
Maize	0.96	1.23	0.52	0.54	1.03	1.33	0.88	1.09
Bajra	0.52	0.58	0.46	0.51	0.38	0.44	0.48	0.55
Jowar	0.49	0.61	0.56	0.62	0.54	0.50	0.52	0.59
Wheat	1.62	1.62	0.70	1.61	0.59	1.03	1.18	1.52
Rice	0.82	1.36	0.83	1.74	0.72	1.42	0.81	1.49
Cotton	0.18	0.23	0.21	0.33	0.72	1.14	0.24	0.38
Barley	0.64	0.72	0.55	0.58	0.62	0.76	0.62	0.69
Gram	0.57	0.59	0.65	0.73	0.43	0.36	0.57	0.59
Mung	0.44	0.59	0.00	0.00	0.32	0.52	0.44	0.58

Table 2.2 reports estimated time trends in yields (PFP) for the eight commodities during the pre-green revolution period, the green revolution period, and the post-green revolution period,

(1972-86). For comparison purposes, Table 2.2 also reports trends in the TFP measure.¹⁹ All trends are estimated by a regression of the form:

$$\ln(X_t) = a + bYear + \sum_i c_i D_{it} \quad (2.11)$$

where the D_{it} are district dummy variables. In this specification, b is an estimate of the geometric or percentage rate of change per year within the districts in the state. These estimates show that yields generally did increase most rapidly in the green revolution period and that rates of change were highest for rice and wheat. Rates of yield change in the post-green revolution period have generally been low, although most have been positive.

2.3 TFP Indexes for Pakistani Agriculture

Equations (2.9) and (2.10) define the quantity aggregates for the Tornqvist-Theil TFP index. An alternative index number that is also a flexible and superlative index number is the Fisher-Chained index. The Fisher index is the square root of the product of the Laspeyres and the Paasche indexes. Chain-linking it refers to the practice of shifting price weights each period to the previous period and then *linking* changes to produce a cumulated index.²⁰

Table 2.3 shows output and variable factor shares for the pre- and post-green revolution periods by province. It is noteworthy that the shares of wheat, sugarcane, and cotton rose during the given time span. On the other hand, the share of rice declined in spite of improved varieties.

¹⁹ This is discussed in greater detail in section 2.3.

²⁰ In contrast, equations (2.9) and (2.10) use an average of the previous period and the current period.

Table 2.2: Estimated Time Trend in Yield by Crop (% Change by Year)

CROPS	PUNJAB			SIND			NWFP			PAKISTAN		
	1956-66	1966-72	1972-85	1956-66	1966-72	1972-85	1956-66	1966-72	1972-85	1956-66	1966-72	1972-85
Sugarcane	0.0154	0.0082	0.0012*	0.0158	-0.0052*	0.0185	0.0277	0.0088	-0.0050*	0.0172	0.0043*	0.0049
Maize	0.0140	0.0144	0.0015	0.0297	-0.0371*	-0.0092*	0.0024*	-0.0110*	0.0160	0.0147	0.0027*	0.0017
Bajra	0.0178	0.0072	0.0076	0.0350	-0.0026*	0.0001*	0.0375	-0.0161*	0.0329	0.0248	0.0016*	0.0090
Jowar	0.0170	0.0210	0.0040	0.0158	0.0199	-0.0074*	0.0433	-0.0029*	0.0015*	0.0211	0.0172	0.0003
Wheat	0.0130	0.0390	0.0198	0.0123	0.0906	0.0259*	0.0022*	0.0319	0.0310	0.0109	0.0524	0.0235
Rice	0.0394	0.0646	-0.0119*	0.0068	0.1227	-0.0042*	0.0302	0.0963	0.0198	0.0275	0.0886	-0.0035
Cotton	0.0185	0.0323	0.0108	0.0385	0.0334	-0.0038*	0.0753	0.0127*	-0.0092*	0.0305	0.0304	0.0042
Barley	-0.0067*	0.0228	0.0057	0.0164	0.0044*	-0.0117*	-0.0137*	0.0356	0.0220	-0.0034*	0.0201	0.0048
Gram	0.0047	0.0175	-0.0122*	0.0046*	0.0216	0.0119	0.0668	-0.0263*	0.0094*	0.0155	0.0116	-0.0021*
Mung	0.0317	0.0117	-0.0000*	-	-	-	-	0.0731	0.0249	0.0317	0.0171	0.0033
TFP(FC)	0.0172	0.0253	0.0025	0.0233	0.0725	0.0097	0.0272	-0.0125*	-0.0128*	0.0206	0.0231	0.0019
TFP(TQ)	0.0074	0.0170	-0.0043*	0.0129	0.0628	0.0008*	0.0193	-0.0235*	-0.0184	0.0110	0.0231	0.0086

Note: * means that $1.7 < t < 2.0$, while ** means $2.0 < t$

Table 2.3: Output and Variable Factor Shares

CROPS	PUNJAB		SIND		NWFP		PAKISTAN	
	1956-66	1972-85	1956-66	1972-85	1956-66	1972-85	1956-66	1972-85
OUTPUT SHARES								
Sugar-cane	0.149	0.189	0.080	0.125	0.179	0.196	0.135	0.169
Maize	0.030	0.029	0.001	0.002	0.184	0.154	0.048	0.043
Bajra	0.041	0.027	0.033	0.014	0.031	0.152	0.037	0.021
Jowar	0.020	0.017	0.042	0.015	0.014	0.128	0.025	0.016
Wheat	0.393	0.413	0.165	0.254	0.356	0.355	0.321	0.358
Rice	0.125	0.106	0.403	0.325	0.024	0.034	0.187	0.157
Cotton	0.110	0.132	0.169	0.208	0.009	0.014	0.108	0.134
Barley	0.006	0.004	0.03	0.003	0.020	0.011	0.007	0.005
Gram	0.064	0.043	0.038	0.031	0.067	0.054	0.057	0.042
Mung	0.009	0.009	-	-	-	0.008	0.005	0.006
Tobacco	0.025	0.009	-	-	0.084	0.116	0.028	0.025
Rape & Must'd	0.028	0.022	0.065	0.020	0.028	0.027	0.039	0.022
VARIABLE FACTOR SHARES								
Labor	0.561	0.519	0.526	0.621	0.559	0.626	0.551	0.567
Animal Labor	0.419	0.268	0.463	0.262	0.429	0.267	0.433	0.266
Tractors	0.018	0.150	0.009	0.049	0.010	0.070	0.015	0.108
Fertilizer	0.002	0.062	0.001	0.067	0.001	0.035	0.001	0.059

Variable factor shares show that fertilizer use increased rapidly and that tractor power was rapidly replacing animal power in Pakistani agriculture.²¹ Figures 2.1, 2.2, and 2.3 depict the Tornqvist-Theil index for the average district in the Punjab, Sind, and NWFP respectively. The base period for each district is the 1956-60 average. This procedure eliminates much of the early period

²¹ Appendix B, Table B.1 gives the annual quantity indexes for each output and variable input.

weather variation and affords a better basis for comparison among states. The same figures also depict Fisher-Chained TFP indexes on the same basis.²²

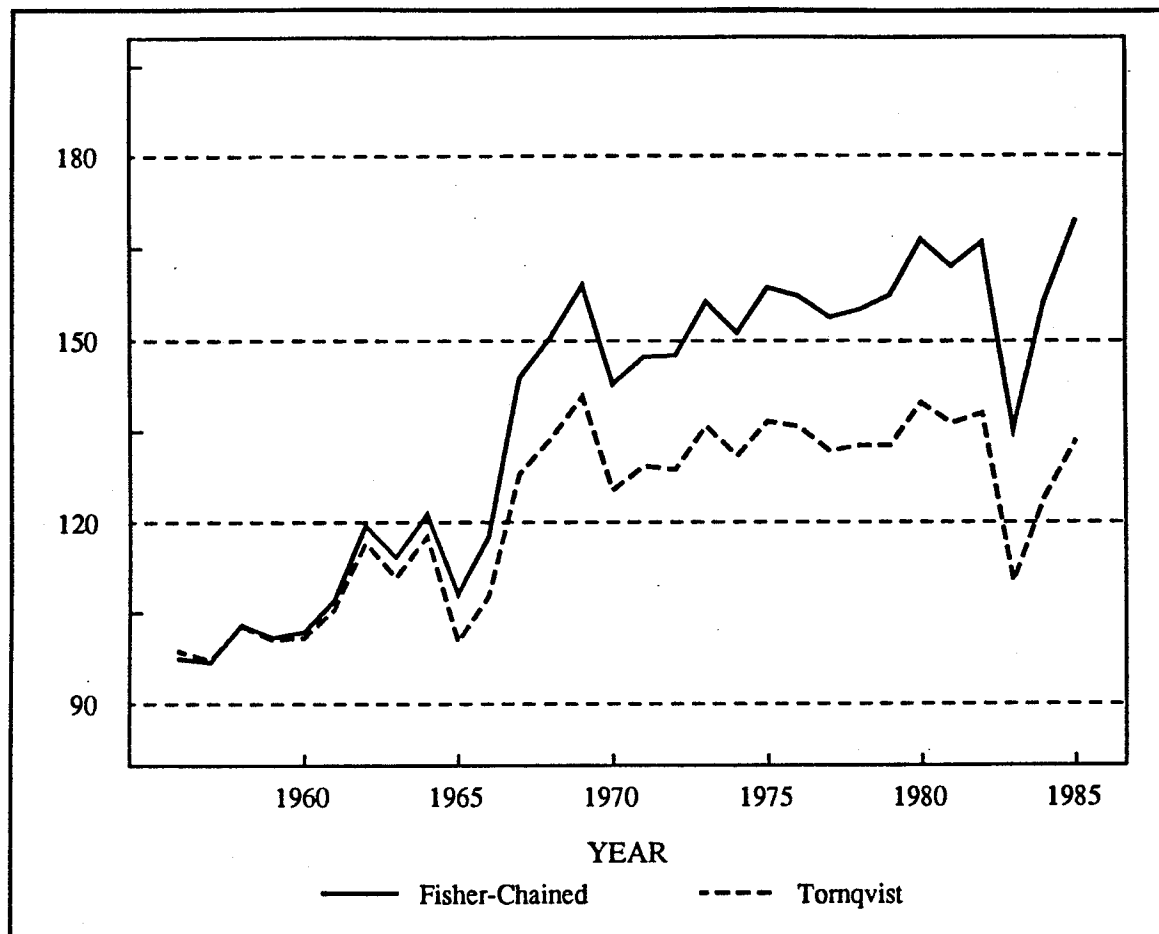


Figure 2.1: TFP Indexes for Punjab Province (Pakistan)

It is readily obvious from these figures that marked differences in TFP growth by region have characterized Pakistan's agricultural sector. In the pre-green revolution period, 1956-66, TFP growth was most rapid in the province of Punjab. The TFP index had risen to 120 by 1962 and remained at that level until 1966. In the province of Sind, the TFP index had risen to only 117 or so by 1966. Interestingly, the NWFP index had also risen to 120 by 1966.

²² In Appendix B, Table B.2 reports a comparison of Laspeyres, Fisher-Chained, and Tornqvist indexes for Pakistan. Table B.3 reports Fisher-Chained and Tornqvist TFP indexes by province.

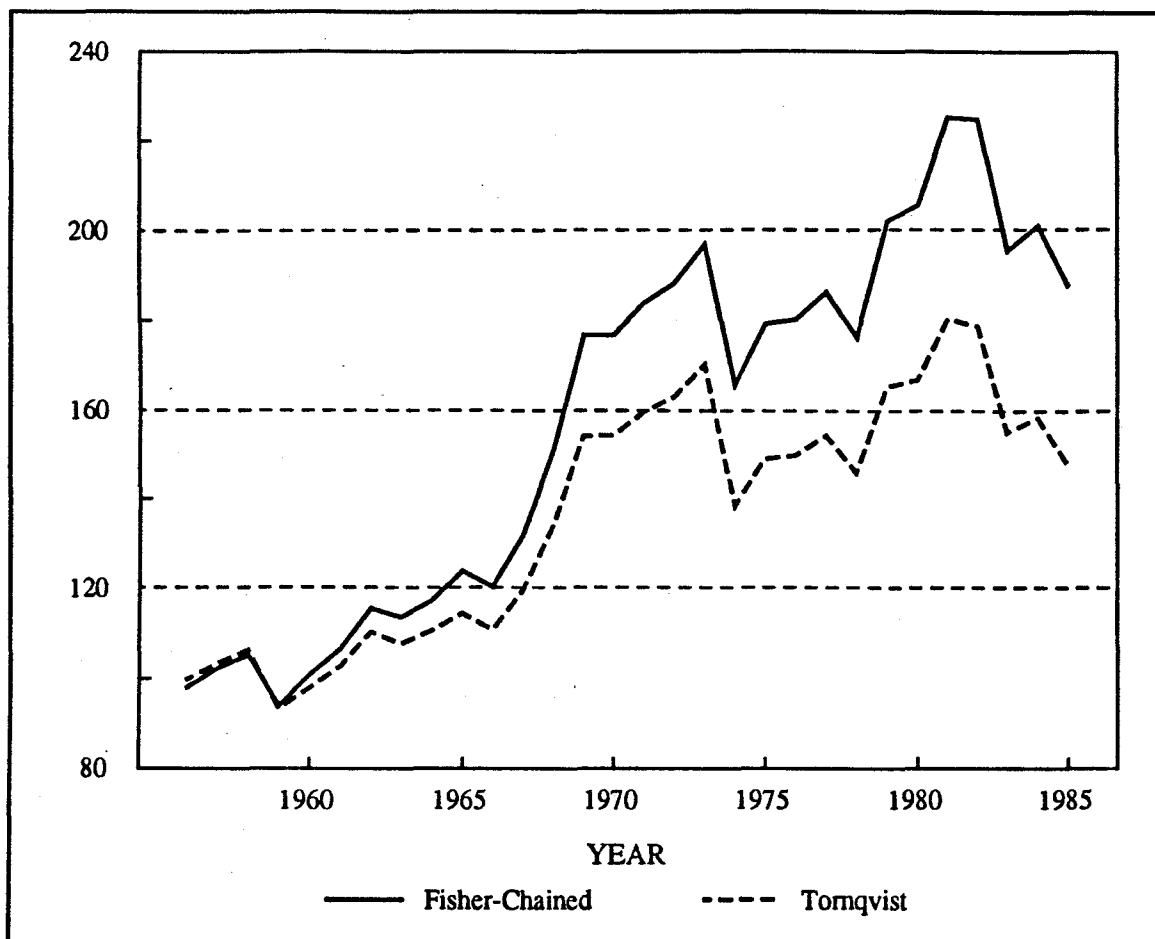


Figure 2.2: TFP Indexes for Sind Province (Pakistan)

During the green revolution period, 1966-1971, TFP rose rapidly in the Punjab, from 115 to almost 150. TFP increased even more rapidly in Sind, from 115 to almost 180. TFP declined in the NWFP. In the post-green revolution years, 1972-85, there was little further TFP growth in the Punjab. The Sind, however, continued to realize relatively rapid TFP growth over this period. TFP growth in the NWFP continued to decline and was well below the 1956-60 level by the early 1980s. The Fisher-Chained indexes follow essentially the same patterns as are apparent in the Tornqvist indexes.²³

²³ These patterns are not the result of poor weather shocks, since the return of normal weather restores the indexes back to their original path.

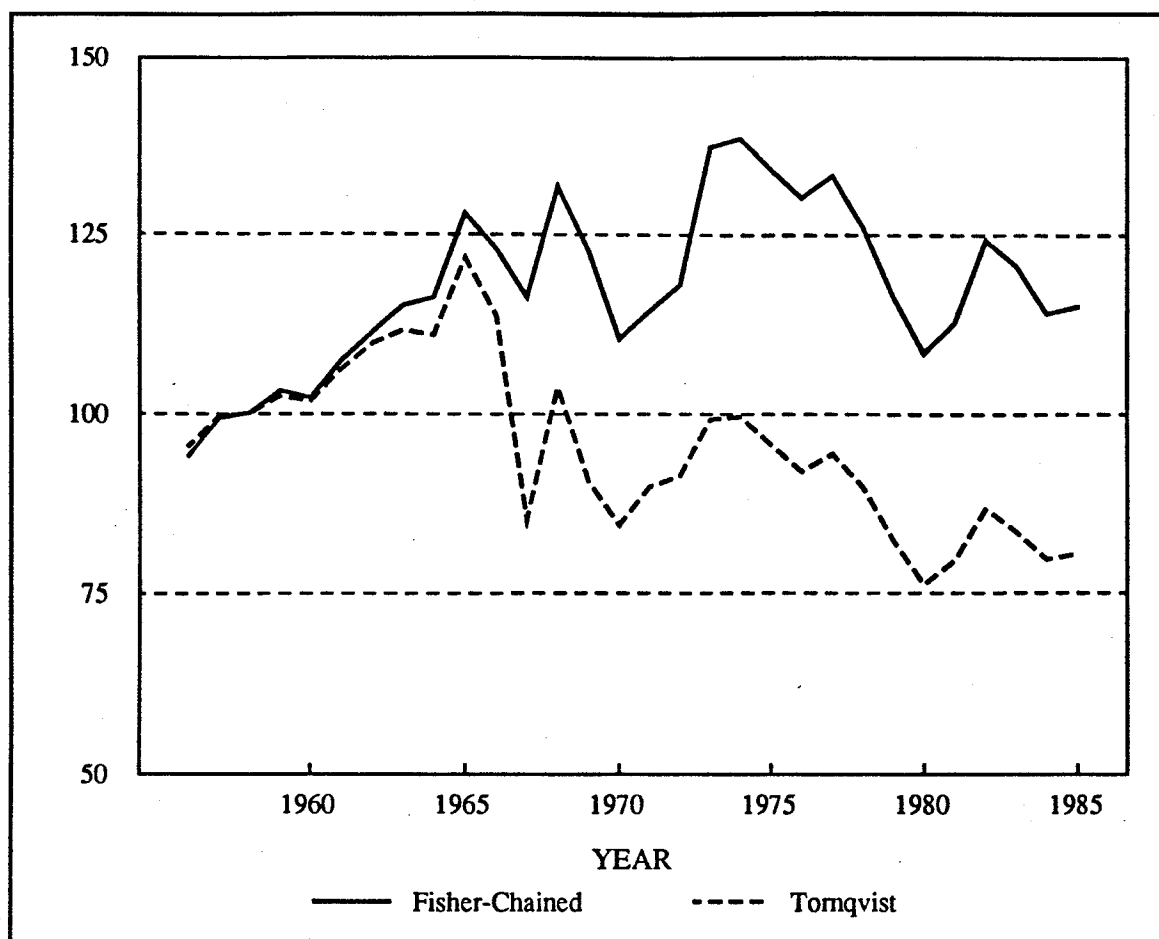


Figure 2.3: TFP Indexes for NWFP (Pakistan)

These results may appear somewhat puzzling to many observers. The Punjab is widely regarded to have the richest resource base of any Pakistani province. The Sind is more dependent on irrigation, while the NWFP is a region of relatively poor and fragile soil resources. However, soil salinity problems have been more severe in the Punjab than in other provinces. It is also felt that the impact of high-yield wheat varieties (HYV) was confined to the early years of the green revolution. Chapter III is dedicated to a more formal analysis of the factors underlying these TFP changes.

2.4 A Comparison of TFP Growth in Pakistan and the Indian Punjab State

Since we have comparable data for districts in the Indian state of Punjab, it is instructive to compare TFP growth under the Indian system with TFP growth in Pakistan. The Indian Punjab is generally

regarded to be advantaged relative to the Pakistani Punjab in terms of water quality. Salinity problems have been more severe in Pakistan. Research institutions in the Indian Punjab are also felt to be stronger since, for example, more wheat and rice varieties were developed in India during the post-green revolution period.

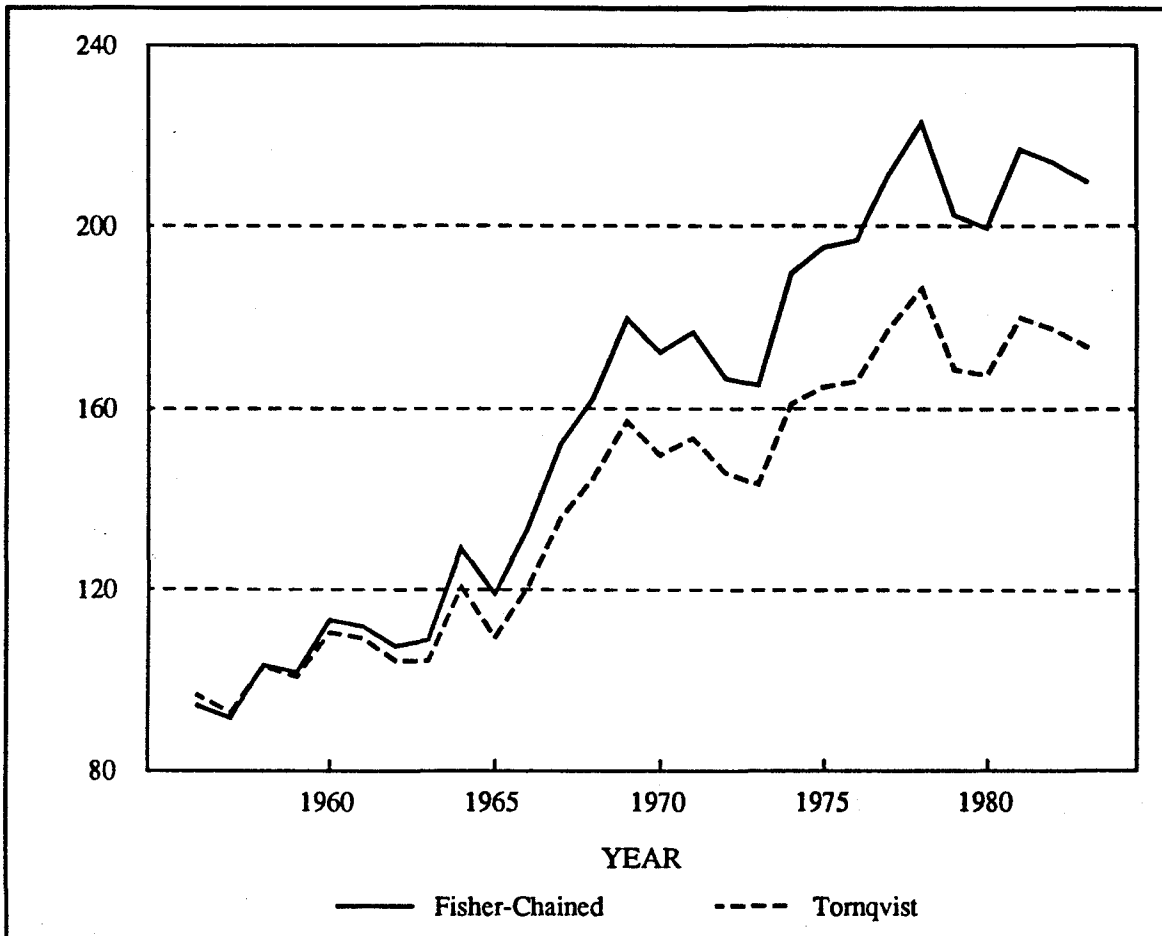


Figure 2.4: TFP Indexes for Punjab State (India)

Figure 2.4 depicts the comparable Tornqvist and Fisher-Chained TFP indexes for the average district in the Indian Punjab.²⁴ This figure shows that the Pakistani Punjab outperformed the Indian Punjab in the pre-green revolution period (1956-66).

²⁴ The districts later to be incorporated into the state of Haryana were not included in the indexes.

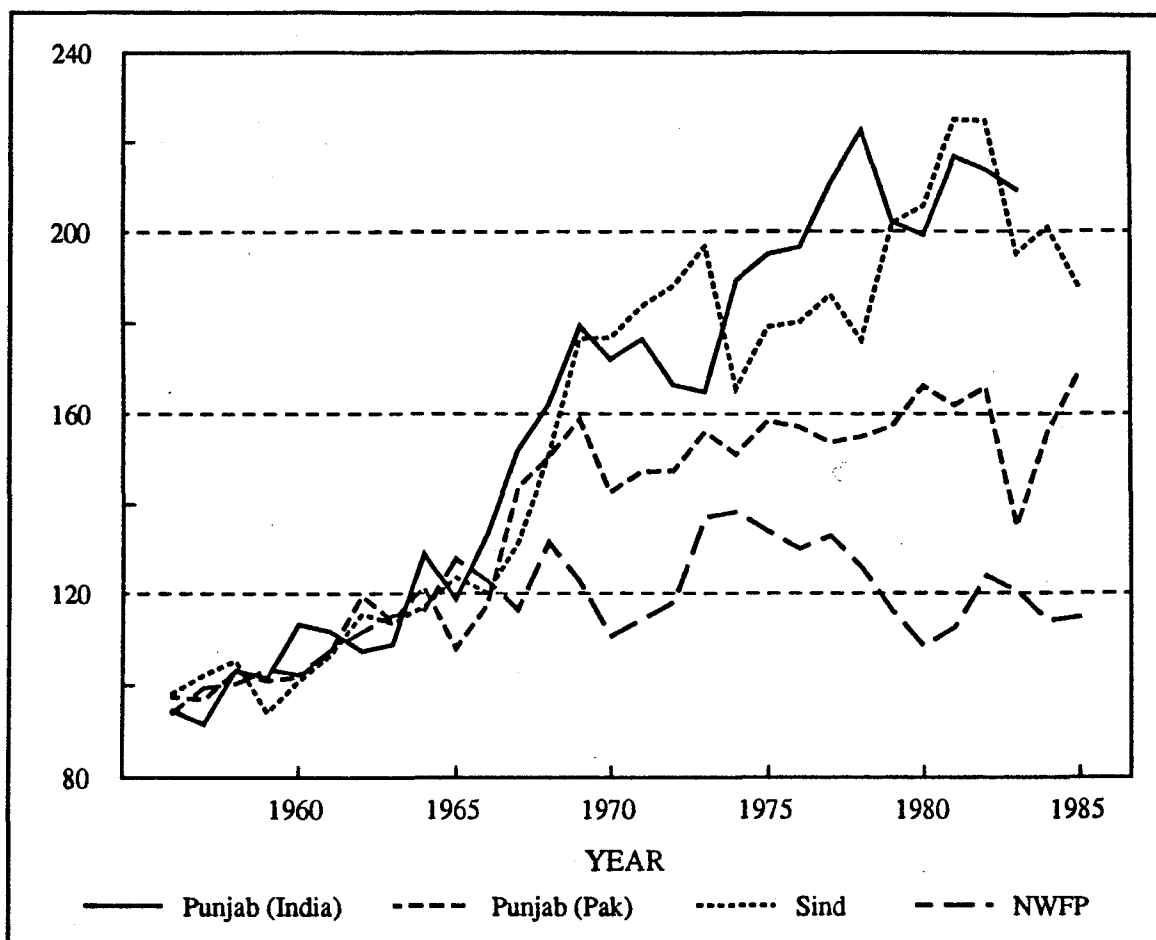


Figure 2.5: Fisher-Chained TFP Indexes (1950-60 = 100)

Both Punjabs performed well during the green-revolution period, but the Indian Punjab clearly outperformed the Pakistani Punjab in the post-green revolution period. In fact, the TFP performance of the Indian Punjab more closely resembles that of the Sind than of the Pakistani Punjab. This is seen most clearly in Figures 2.5 and 2.6, where all four indexes are plotted on a common scale. The NWFP series departed sharply from the other series after 1966. The Pakistani Punjab series departed from the Sind and Indian Punjab series after the early 1970s.

2.5 Conclusion

These TFP calculations are of interest because they raise questions as to the factors underlying their movements. The indicators presented in this chapter were constructed using the most appropriate

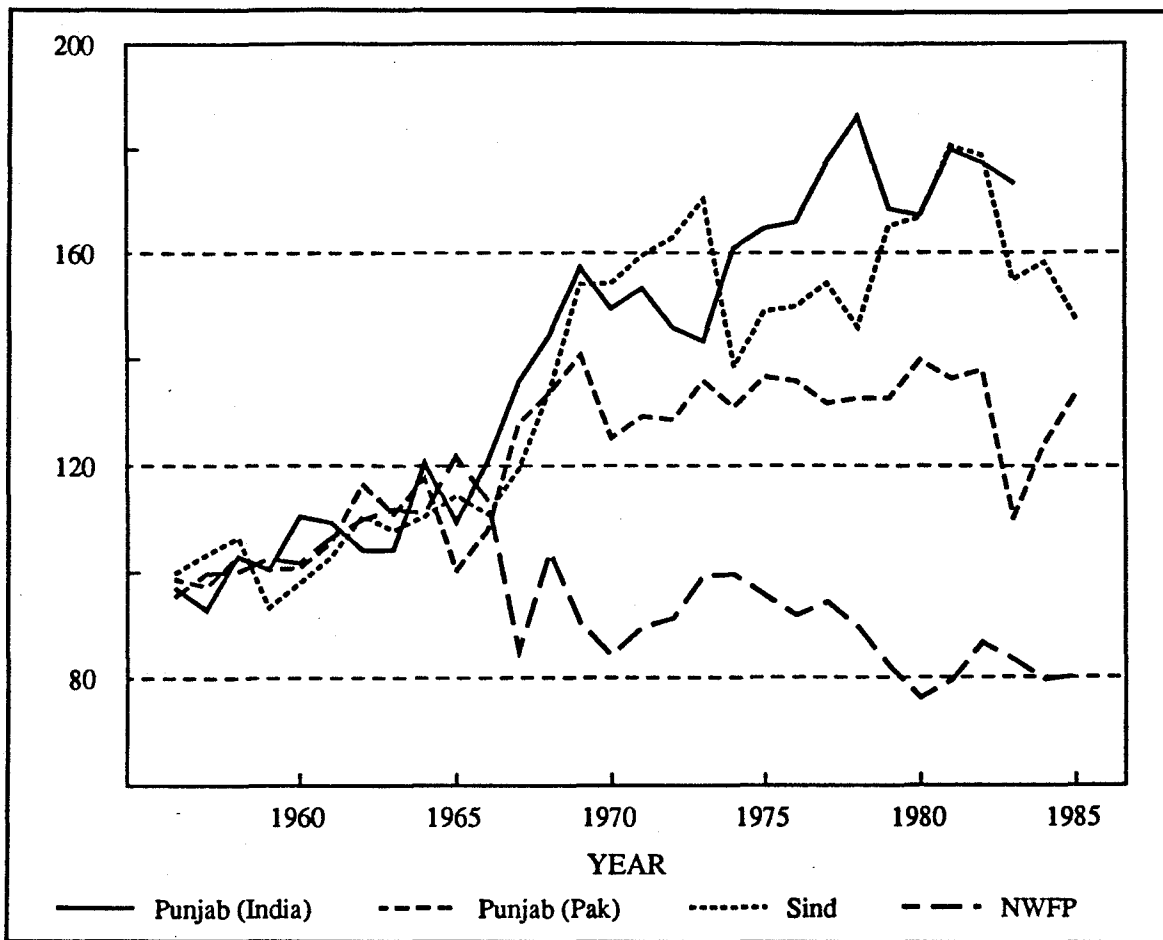


Figure 2.6: Tornqvist TFP Indexes (1950-60 = 100)

methods available, and comparable methods were utilized for each district. This does not rule out the existence of measurement problems in the basic data series, of course, but the resultant series provides food for thought. The following chapters provide a more systematic analysis of factors contributing to these series.

Chapter III

RESEARCH AND TOTAL FACTOR PRODUCTIVITY IN PAKISTANI AGRICULTURE

In this chapter, the question of the determining the factors behind TFP growth in Pakistani agriculture is addressed. The methodology for analyzing TFP growth is quite simple. It entails defining appropriate independent variables for research and infrastructure in a regression, where the dependent variable is the cumulated TFP index for the district. In addition, since there is some possibility of simultaneity bias, the estimating procedure must take this into account.

Section 3.1 discusses the methodological issues in developing TFP decomposition variables. Section 3.2 reports the results of the TFP decomposition analysis. The concluding section summarizes the estimates.

3.1 Methods and Variable Definitions

Recall from Chapter II that TFP measurement procedures attempt to separate output fluctuations into the changes due to variations in input use, and those due to changes in the technology infrastructure and skill levels. TFP decomposition specifications essentially relate TFP growth to changes in technology, infrastructure, and skills by developing variables that measure the *flows* of new technology, infrastructure services, and skill changes. For technology, this requires that variables based on past research and extension programs be developed. For infrastructure, measures of road and communication infrastructure must be developed. In general, there are no strong functional form implications to be derived from optimization theory that can be imposed on this specification unless there is reason to believe that governments actually choose TFP growth-producing projects in an

optimizing fashion. It is highly unlikely that the public agencies providing technological and infrastructural services in Pakistan are doing so in a truly optimizing fashion.

In a regression set-up where cumulated TFP indexes are the dependent variable, *appropriate* independent variables should meet two conditions. First they should be exogenous in the context of the system under analysis. If not strictly exogenous, they should at least be predetermined. Techniques exist for correcting for endogeneity bias, and these should be used where required. Second, the form of the variable should be such that there is consistency with the dependent variable over time and across cross-sections.

Consider first the consistency problem. The dependent variable in this case is defined as a cumulated index number with a base of one in the period 1956-60 in each district. This means that it does not depend on the size of the district and that it measures TFP change after the base period. The level of the index at time t is the cumulated change since the base period. The appropriate research variable should, therefore, reflect this cumulation in its timing weights. In addition, it should reflect technological spill-in from outside the district.

The general form for the research variable is:

$$R_{it}^* = \sum_j G_{ij} \sum_k W_{ik} r_{ijt-k}, \quad (3.1)$$

where r_{ijt-k} is research investment in commodity i , region j , in period $t-k$. The research stock is thus based on cumulated past investments and weighted by two sets of weights. The first set, G_{ij} , are spill-in weights measuring the degree to which research conducted in location j is productive in location i relative to the productivity of research conducted in location i . For Pakistan these weights are based on geo-climate regions. The second set of weights are the time-shape weights, W_{ik} . These weights reflect the lag between research expenditure and the ultimate productivity impact. They can also reflect real depreciation of research impacts. These weights are estimated using an iterative procedure described below.

There is also a deflation issue that must be dealt with in cases where research variables must be aggregated across commodities (i.e. over i). For cases where the dependent variable is cumulated TFP, each commodity research variable could be included as a regressor. However, this often results in a high degree of multicollinearity and aggregation is desirable. The aggregation

$$R_i^* = \sum_i S_i R_i^* \quad (3.2)$$

is reasonable if one presumes no spill-over between research programs, that is to say, research on commodity j does not enhance productivity for commodity i .

In the analysis undertaken in this chapter, three variables are designed to characterize the cumulated flow of new technology to a district:

- APPRES:** This is an aggregate cumulated commodity research stock. The time weights estimated are: 0.0 for $k = 0, \dots, 4$; 0.2 for $k = 5$; 0.4 for $k = 6$; 0.6 for $k = 7$; 0.8 for $k = 8$; and 1.0 for $k > 8$.²⁵ Research expenditures are associated with geo-climate regions and presumed to spill freely within the region. Commodity shares are used to form the aggregate variable, as given in equation (3.2).
- GENRES:** This is a cumulated research stock based on expenditures that are not commodity specific. It is constructed in the same manner as APPRES.
- SHHYV:** The proportion of wheat, rice, and cotton area planted to high-yielding varieties.

The variables are not directly deflated by the number of farms, but the commodity weights are implicitly deflated by the number of commodities. The time weighting is consistent with the cumulated form of the TFP index, as opposed to an annual change form.

The specification also includes several infrastructure or skill level variables:

- MKTDISTANCE:** This is a measure of investment in markets. It is the average distance for farms in a district from major market centers.
- FARMSIZE:** This is the average farm size in the district, defined as: Crop Area/Number of Farms.
- IRRIGSH:** This is the proportion of the cropped area under irrigation.

²⁵ See also Table 3.2.

CANALSH:	This is the proportion of the cropped area irrigated by canal.
TUBEWSH:	This is the proportion of the cropped area irrigated by tubewells.
RAIN:	This is the level of rainfall in the cropping month.
ROADS:	This is the ratio of Paved Roads:Cropped Area (km/ha).
POPENSITY:	This is the ratio of Rural Population in 1960:Cropped Area in 1985.

The simultaneity problem is likely to affect the variables **FARMSIZE**, **IRRIGSH**, and **TUBEWSH** most severely. They are likely to respond to TFP growth, although usually with a lag. In the estimation they are treated using simultaneous equation methods.

Table 3.1 summarizes the variables utilized in this analysis. Means for the variables are also reported. All variables are measured at the district level for the years 1956 to 1988.²⁶ There are two alternative measures of TFP to be analyzed, the Tornqvist-Theil approximation to the Divisia index (TFP-TQ) and the Fisher-Chainned index (TFP-FC). The indexes are based on the 1956-60 period in each district and are cumulated over time.

To explore the question of simultaneity, it is possible to test whether markets, farm size, and tubewell irrigation investment may be simultaneously determined with TFP growth.²⁷ Several of these variables are transformed into natural logarithms as indicated.

3.2 TFP Decomposition Estimates

3.2.1 Estimation of the Timing Weights

The first step in the TFP decomposition is to estimate the timing weights for the research variable. This was done by an appropriate non-linear least squares procedure, which entailed constructing alternate time weights for the variables measuring research; **APPRES**, **GENRES**, and the interaction

²⁶ Appendix C provides further details regarding data collection and measurement.

²⁷ See Table 3.2 for the full specification.

Table 3.1: Variable Definitions and their Means: TFP Decomposition

VARIABLE	DEFINITION	MEAN
Endogenous		
TFP-TQ*	District cumulated Tornqvist TFP index (1956-60 = 100)	4.757
TFP-FC*	District cumulated Fisher-Chained TFP index (1956-60 = 100)	4.895
MKTDISTANCE	Average distance from a major market center (km)	18.203
FARMSIZE	Cropped area/Number of farms	3.070
TUBEWSH	Proportion of irrigated area under tubewells	0.114
Exogenous		
I. Technology		
SHHYV	Proportion of cropped area planted with high-yield varieties (IRRI wheat, Moxipak wheat, Pakcotton)	0.302
APPRES*	Cumulated stock of applied research investment weighted by commodity shares (see text)	3.805
GENRES	Cumulated stock of general research investment, unweighted (see text)	1430
SHGRAD	Proportion of research personnel holding graduate degrees	0.390
II. Skills		
LITERACY	Percentage of literate rural adult males	20.660
III. Infrastructure		
IRRIGSH	Proportion of cropped area under irrigation	0.686
CANALSH	Proportion of irrigated area irrigated by canals	0.728
TUBEWSH	See above	0.114
ROADS	Km of paved roads/1985 cropped area	1.846
MKTDISTANCE	See above	18.203
FARMSIZE	See above	3.070
POPENSITY	Rural population in 1960/1985 cropped area	3.305
RAIN	Rainfall in growing season (mm)	394.0
Note: * - variables are transformed to natural logarithms		

APPRES*GENRES.²⁸ The non-system TFP-TQ specification in Table 3.3, excluding the HYV

²⁸ See Table 3.3.

variables, was utilized for estimation of the weights. Since the research system itself produces some of the HYVs, it was concluded that the best time weight would be obtained using a specification excluding the HYV variable. This allows the research variables to pick up the combined effect of varietal and non-varietal research contributions.

Table 3.2 reports the mean square errors (MSE) for alternate weighting schemes. As the table shows, the MSE is lowest for weight set 3 for APPRES and weight set 4 for GENRES. These time weights were utilized in the further estimates reported in Table 3.3.

3.2.2 TFP Decomposition Estimates

Table 3.3 reports Two-Stage Least Squares coefficient estimates for a four-equation system and its reduced form TFP-TQ equation. In addition, non-system OLS estimates for both the TFP-TQ and TFP-FC indexes are reported. These TFP measures are calibrated such that the 1956-60 average equals 100. Thus there are no beginning period differences in these indexes. However, to control for fixed effect environmental factors, district dummy variables are included in all TFP equations. This means that any systematic district level factors are taken out of the estimates. In addition, all equations reported include time and time-squared variables to control for any systematic trend factors. Thus the resultant estimates are based on within-district TFP changes and TFP changes that are not correlated with time.

Consider first the system estimates. In this system, MKTDIST, FARMSIZE, and TUBEWSH are treated as endogenous and simultaneously determined with TFP changes. Population density is the key identifying variable. The estimates indicate that there is some simultaneity between TFP, FARMSIZE, and TUBEWSH. TFP growth does appear to have stimulated larger farm sizes and more investment in tubewells. Farm size, in turn, appears to have stimulated TFP growth. Investment in tubewells has not.

Table 3.2: Time Weight Estimates

ALTERNATIVE	t-1	t-2	t-3	t-4	t-5	t
0	0.0	0.2	0.4	0.6	0.8	1.0
1	0.0	0.0	0.2	0.4	0.6	0.8
2	0.0	0.0	0.0	0.2	0.4	0.6
3	0.0	0.0	0.0	0.0	0.2	0.4
4	0.0	0.0	0.0	0.0	0.0	0.2
5	0.0	0.0	0.0	0.0	0.0	0.0
6	0.0	0.0	0.0	0.0	0.0	0.0
7	0.0	0.0	0.0	0.0	0.0	0.0
8	0.0	0.0	0.0	0.0	0.0	0.0
ALTERNATIVE	t-8	t-9	t-10	t-11	t-12	t-13
0	1.0	1.0	1.0	1.0	1.0	1.0
1	1.0	1.0	1.0	1.0	1.0	1.0
2	1.0	1.0	1.0	1.0	1.0	1.0
3	0.8	1.0	1.0	1.0	1.0	1.0
4	0.6	0.8	1.0	1.0	1.0	1.0
5	0.4	0.6	0.8	1.0	1.0	1.0
6	0.2	0.4	0.6	0.8	1.0	1.0
7	0.0	0.2	0.4	0.6	0.8	1.0
8	0.0	0.0	0.2	0.4	0.6	0.8
		ALTERNATIVE				
		APPRES	GENRES	MSE		
		0	1	0.033291		
		1	1	0.032779		
		1	2	0.032824		
		2	2	0.032319		
		2	3	0.032229		
		3	3	0.032021		
		3	4	0.031951		
		4	4	0.031960		
		5	5	0.032405		
		6	6	0.032724		
		7	7	0.032866		
		8	8	0.032731		

Table 3.3: TFP Decomposition Estimates

Independent Variable	System				Reduced Form	Non-System	
	MKTDISTANCE	FARMSIZE	TUBEWSH	TFP-TQ	TFP-TQ	TFP-TQ	TFP-FC
TFP-TQ	-0.6260	1.5784**	0.0712**	-	-	-	-
MKTDISTANCE	-	-0.0846**	-	0.0079**	-	0.0111*	2.6E-4
FARMSIZE	-	-	-	0.0130**	-	0.0056*	3.4E-4
TUBEWSH	-	-	-	-0.0777	-	-0.1077	0.0587
SHHYV	-	-2.8372**	0.0627	-0.0468	-0.0678	0.0678	-0.0991
APPRES	-	-	-	-0.0222	-0.0211	-0.0139	0.0930**
GENRES	-	-	-	0.0240	0.0292	0.0283	0.1151**
SHHYV*APPRES	-	-	-	0.1633**	0.1758**	0.1455**	0.1269**
SHHYV*IRRIGSH	-	-	-	-0.5725**	-0.6038**	-0.6525**	-0.3984**
SHHYVSQ	-	1.6924*	-0.0279	1.6788**	1.7185**	1.7217**	1.5834**
SHHYVSQ*APPRES	-	-	-	-0.3378**	-0.3433**	-0.3335**	-0.2973**
APPRES*GENRES	-	-	-	-1.8E-6	-3.5E-6	-3.1E-6	8.6E-6*
APPRES*SHGRAD	-	-	-	-0.0193	-0.0213	0.0002	-0.1071
APPRES*SHGRADSH	-	-	-	0.1233	0.1225	0.1089	0.2514**
APPRES*SHIRR	-	-	-	0.1515**	0.1498**	0.1570**	0.0581**
APPRES*LITERACY	-	-	-	-0.0015*	-8.6E-4	-0.0019**	-0.0027**
IRRIGSH	-	-	-	0.0545	0.0410	0.0641	0.2870**
CANALSH	-	-	-	-0.0107	0.0208	-0.0058	0.0587
LITERACY	-	-0.0396**	0.0076**	0.0183**	0.0102*	0.0202**	0.0223**
ROADS	0.8672**	-	-	-0.0658**	-0.0312*	-0.0244	0.0233
POPDENSITY	0.8271**	-	-0.0067*	-	-0.0489**	-0.0574**	-0.1086**
RAIN	-	-	-	-3.2E-5	-1.7E-5	-2.0E-5	-3.6E-5

Note: * = 1.7 < t < 2.0 and ** = t > 2.0

Roads and population density appear to be associated with greater distances to grain markets. The distance to grain markets, however, is not negatively related to TFP growth as expected, which may be due to the fixed effects procedure since results without the fixed effects do share negative impacts. Farm size is positively associated with TFP growth and is higher in the regions with high HYV adoption. The effect of literacy on farm size is negative. Tubewell shares are higher in high literacy districts.

A comparison of the system TFP-TQ coefficients with the non-system estimates shows that there are few large differences. Farm size has a larger input in TFP in the system estimates, but most other estimates are similar, particularly the coefficients on technology inputs.

A comparison of the results for TFP-TQ, the Tornqvist-Divisia indexes, and TFP-FC, the Fisher-Chained indexes, also show little difference due to the specific form of the index measuring TFP. The variables of most interest are the research and HYV variables. Because of interactions, it is difficult to interpret these effects directly. Marginal product calculations show these effects more clearly. The interactions themselves are of some interest.

It first merits noting that applied research does not generally interact positively with more general research. It does interact positively with the level of HYV use when HYV use is low, but not when HYV use is high.²⁹ Applied research does interact positively with the share of irrigation, showing that it is more valuable in districts with more irrigation. There are weak indications that the higher the proportion of researchers holding graduate degrees, the more productive is applied research. Applied research appears to have a much stronger impact on TFP than does general research.

High yielding varieties are partly imported and partly the product of domestic research. The negative SHHYVSQ*APPRES interaction may be reflecting imported varieties that tend to substitute for domestic research. This variable is probably picking up the early dominance of imported HYVs, especially for wheat. The positive SHHYVSQ term is probably also a reflection of this. Interestingly,

²⁹ The SHHYVSQ*APPRES coefficients have negative signs while those on SHHYV*APPRES have positive signs.

the interaction of HYVs with the share of land irrigated is negative, indicating that irrigation has tended to favor domestically produced over imported technology.³⁰

3.3 Marginal Products and Marginal Internal Rates of Return

The estimated TFP decomposition equation can be used to compute marginal products for the independent variables. The research variables are of special interest in this context. This requires attention to three problems: the timing and spill-in weights must be used to relate units of product to the research variable; HYV and research variables must be interpreted in a general and consistent manner because research programs themselves produce HYV technology; and general and applied research contributions must be consistently computed.

The methodology for calculating marginal products is based on an evaluation of the partial derivatives of the estimated functions. Since these derivatives are themselves functions of other variables, a particular level of these interaction variables must be chosen to evaluate the effects. The level used in most studies is the mean of the interaction variable, a practice that will be followed here.

The basic concept behind the partial derivative is that this derivative is the calculated change in the dependent variable, in this case the TFP index, due to a one unit change of some independent variable, holding constant the level of all other variables in the expression. Thus for the analysis of research impacts, two further calculations are required to actually compute a rate of return to the investment in research. First, the relationship between investment in some period t and the subsequent change in the research stock variable must be determined. Secondly, the change in TFP must be given an economic value.

Consider the first calculation. An investment, of say 1000 rupees, in a particular region on a particular commodity will ultimately affect the research variable in one or more districts. The timing is governed by the time weights. There is no impact in the first four years after the expenditure is

³⁰ I.e., APPRES*IRRIGSH is positive.

made, but the impact is 200 rupees (0.2×1000) in the fifth year, 400 rupees by the sixth year, 600 by the seventh year, 800 by the eighth year, and 1000 for the ninth and later years. These weights thus define a future time profile of benefits associated with the investment at time t .

The number of districts affected will depend on the spill-in specification. In the case of Pakistan, this is governed by the size of the geo-climate regions. Applied research conducted in a region is specified to spill throughout the region, but not outside the region. Applied research is also specified to produce productivity impacts only on the commodity towards which it is directed. This implicitly deflates the research. This deflator must be used to calculate marginal products. For general research, spill-over occurs across all commodities in all regions. This research is not deflated.

The second calculation requires placing a value on the TFP change. Since the TFP index measures output per unit of input, a change in TFP is equivalent to an increase in output holding inputs constant. This output increase is approximately the increase in consumer plus producer surplus in a market setting. This is illustrated in Figure 3.1.

Suppose that we are at the initial equilibrium point where production is Q_0 and the market clearing price is P_0 . A productivity shock that increases per unit output by k percent will shift the supply curve to S_1 . The change in total surplus is the area A , which is $k \cdot Q_0$, plus area B , the size of which depends on the elasticity of demand. However, since B is small relative to A , we can approximate total surplus by k (the marginal product) times Q_0 (the original output level) times P_0 (the initial price level).

It is actually easier and more straightforward to compute marginal products in two stages. In the first, the marginal product elasticity is found by evaluating $\ln(TFP)/\ln(APPRES)$, etc., from the estimated equation. Then in the second step, the marginal product can be evaluated by multiplying the elasticity by the ratio of the value of output to the value of the investment in the research program involved.

Table 3.4 reports estimates of both marginal production elasticities (MPEs) and marginal products (MPs). The marginal products may be interpreted as the added value (i.e., total surplus) of

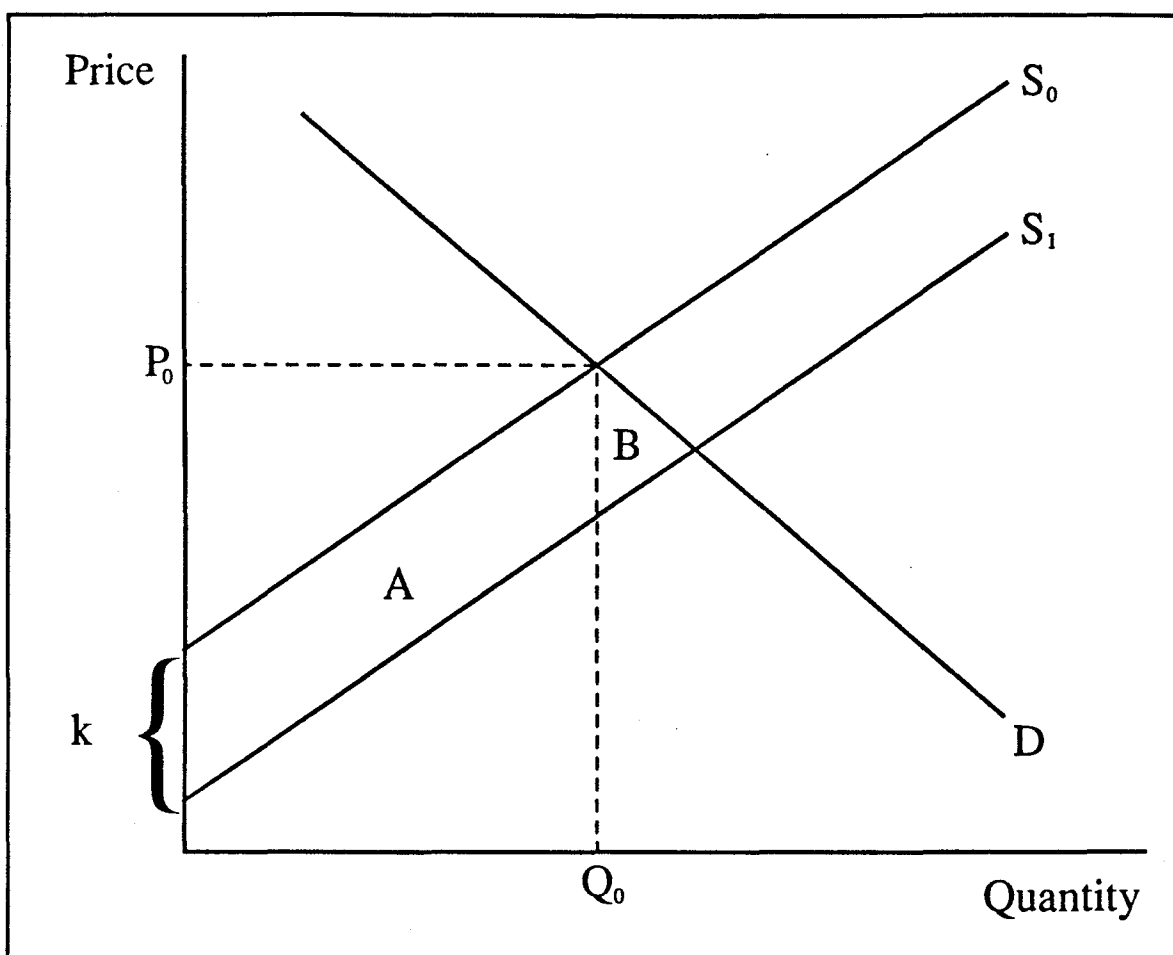


Figure 3.1: Consumer and Producer Surplus

agricultural production or farm output associated with a one rupee investment, after its full impact is realized. The table also reports Marginal Internal Rates of Return (MIRRs) to these investments.

Table 3.4 reports calculations for four specifications for the TFP-TQ index and one for the TFP-FC index. The four TFP-TQ specifications include both the structural and reduced form equations for the system and OLS single equation estimates. The reader can quickly verify that these three specifications yield almost identical results for the MPEs and MPs.³¹ Thus it is reasonable to conclude that little simultaneity bias is affecting the results. The fourth equation is the OLS equation used to estimate the timing weights. It excludes HYV variables and is intended to provide an indirect

³¹ See Chapter V for MIRR estimates.

Table 3.4: Estimated Research and HYV Marginal Production Elasticities and Marginal Products

Details	Dependent Variable TFP-TQ				TFP-FC
	System Structure	System Reduced Form	OLS Including HYV	OLS Excluding HYV	OLS Including HYV
I. Marginal Production Elasticities					
APPRES	0.05669	0.07313	0.05457	0.16330	0.07663
SHHYV - 0	0.04964	0.06849	0.04272	n/r	0.06535
GENRES	0.01842	0.01876	0.01846	0.05320	0.14157
SHHYV	0.13580	0.14264	0.13214		0.11697
LITERACY	0.18863	0.27740	0.27478	-0.02880	0.27398
IRRGSH	0.26746	0.26486	0.24013	0.19509	0.24688
II. Marginal Products					
APPRES (128)	7.25	9.36	6.99	20.90	9.81
GENRES (192)	3.53	3.60	3.54	10.21	27.18
SHHYV (38)	5.21	5.48	5.07		4.49
All Research	10.96	12.53	10.68	16.61	21.25
III. Marginal Internal Rates of Return					
APPRES	58	64	58	82	65
GENRES	39	40	39	56	75
SHHYV	52	52	51	-	49
All Research	57	60	57	65	70
Notes: Numbers in parentheses are the ratios of agricultural product to investment. n/r = Not relevant					

way of attributing varietal improvements to applied research, APPRES.

The fifth equation is for the TFP-FC index and is intended to show whether the index number construction affects the results. The reader can verify that this specification attributes a larger contribution to general research than other specifications. In Chapter II we argued that the most natural index number specification is the TFP-TQ index, and we prefer to base our interpretation on these specifications. The elasticity estimates are intended to show the percentage change in product or output, holding conventional inputs constant. This is the basis for interpreting them as measures of economic surplus.

There is a strong suggestion that irrigation makes a contribution over and above its normal production contribution. Each elasticity also holds other variables constant. Thus the elasticity for APPRES shows its impact holding constant HYV use, even though most HYV usage is itself the product of applied research. One could consider combining these two contributions.

The marginal product (MP) calculations entail multiplication of the elasticities (MPEs) by the ratio of agricultural product to investment. These ratios, which are reported in parentheses, are calculated as follows:

1. The 1987 ratio of research spending to agricultural product (0.0052, see Chapter I) was the starting point.
2. Eighty percent of total product was assumed to be affected by research and extension.
3. In the absence of an extension variable it was assumed that a one rupee investment in research required a one rupee investment in extension.
4. The total spending on applied research was estimated to be 60% of the total. The remaining 40% went to general research.
5. The equivalent expenditure to achieve a change in HYVs was assumed to be the mean HYV level (0.303). Thus a 10% increase in APPRES leads to a 3% expansion of HYV acreage.

Under these rules, marginal products, (i.e., rupees product per rupee investment after full realization), were computed separately for APPRES, GENRES, and HYV associated research. These estimated marginal products imply high marginal internal rates of return to all forms of investment.³²

It was also possible to calculate the marginal product for a combined investment in applied and general research by using the 0.6 and 0.4 weights and adding the associated HYV contribution.³³ The estimated MP from the equation excluding HYVs was higher (16.61) than the calculated MP (10.68), suggesting that we may have understated the HYV contribution. However, since some of the HYV contribution is imported, the calculation is probably the more reasonable estimate.

³² See Chapter V.

³³ The expression is: $MP = 0.6*APPRES + 0.4*GENRES + HYVMPs$.

The MIRRs are computed from the marginal product estimates. An investment in period t will generate a stream of economic surplus in the future as indicated by the time weights. The discount rate that makes the present value at time t of the future flow of benefits equal to one rupee is known as the internal rate of return to an investment. It is the interest rate that would allow a bank to pay a depositor the stream of marginal products as the payoff from a one rupee investment at time t . In our case, the payoffs would be zero in the first few years, rising to the full marginal product by year 9 as indicated in Table 3.2. These realized returns to investment are extraordinarily high. They indicate that research investment has been productive. They also indicate a high degree of under-investment in research.

In concluding this chapter, we note that we have found an explanation for a considerable part of the TFP change in Pakistani agriculture. We note that the research system, including varietal, non-varietal, and more general research, contributed to TFP growth. The estimated marginal products of investment in research are high. The estimated returns to investment are high. We will undertake further discussion of these estimates in Chapter V after examining the question further through PFP decomposition analysis in the next chapter.

Chapter IV

Research and Partial Factor Productivity in Pakistani Agriculture

Although Partial Factor Productivity (PFP) indexes are easier to measure and calculate than TFP indexes, their decomposition analysis is more complex. This is because PFP indexes contain the contributions not only of technology, skills, and infrastructure, but of other input changes as well. Accordingly, decomposition specification requires that we deal with this problem of *other inputs*. In addition, since PFP indexes are typically measured for specific crops, there is an additional land quality problem that must also be dealt with.³⁴ These two problems require a two-stage procedure for PFP or yield decomposition. In the first stage we must predict or estimate land use decisions. In the second stage we take these land use decisions as given and include predicted area variables in the yield decomposition equation. Both stages require that we introduce prices into the analysis, in addition to the technology, skills, and infrastructure variables. Furthermore, we are constrained somewhat in the way we define and use these variables.

Section 4.1 discusses the methodological issues involved. Section 4.2 reports decomposition results. Section 4.3 reports estimated marginal elasticities and marginal products of research variables.

4.1 Methods and Variable Definitions

As noted above, we have two problems in PFP decomposition that we did not have to address in the TFP decomposition analysis. One is the *other inputs* problem, which requires that we develop variables controlling for, or correcting for, the unobservable inputs other than land. The second is that since

³⁴ This crop specificity is the primary reason PFP indexes are used.

land is not homogenous across districts or farms, there is a *land quality* problem. We may observe, for example, that when the acreage planted in soybeans increases in a district, the land may be of higher or lower quality than land planted with soybeans in the past.

Were it not for this second problem, the most natural way to handle the other inputs problem would be to utilize the duality between transformation and profits functions and use both output and input prices to correct for missing inputs. However, this limits the interpretation of estimated commodity research program impacts. In this chapter, we develop an approach that is intermediate in some sense between the TFP decomposition approach of Chapter III and the duality approach of Chapter V. We utilize prices, but also attempt to take advantage of the fact that farmers do make sequential decisions regarding acreage and other inputs.

4.2 Modelling Acreage Decisions

Consider the farmer's decision regarding the allocation of land to alternative crops. The farmer takes the expected relative prices of other crops, (P_i, P_0) , as well as the expected technology available for the crop in question and for other crops, (T_i, T_0) , into account. He considers factor prices (P_f) as well. He also takes total farm size as fixed in the short-run.

$$A_i = F(P_i, P_0, T_i, T_0, P_f, S) \quad (4.1)$$

This decision is implicitly a decision to commit other inputs to the process even though there may be a change of plans later. A large literature dealing with supply response models has emerged over the years. Early specifications of (4.1) usually included A_{it-1} as an independent variable to reflect adaptive price expectations and/or cost of adjustment concerns. This older literature has been criticized for failing to consider technology choice (Mundlak 1988) and for imposing expectations that may be unrealistic or even irrational (Eckstein, 1984). The duality literature, on the other hand, does not generally recognize the acreage decision as an independent decision. It focuses instead on the supply decision. Mundlak and McQuirk (1990) have recently argued that the acreage decision is

independent because it is made before planting starts and cannot respond to unexpected price changes that may affect yields. They have also argued that technology should be incorporated into the farmers' plans, which can then be looked upon as a two-stage process. First, acreage decisions are made. Then, given the available land, full production decisions determining yield are made. They further note that, for econometric purposes, acreage decisions are not subject to unanticipated weather effects, whereas yield decisions are.

Given acreage decisions, yields are determined by the weather and by factor prices, which also influence the acreage decision. Ideally, we would like to have good product price variables and a reliable weather index for the analysis of yields. Prices, at least prices as measured in Pakistan, tend to vary primarily from year to year, as does weather. There are some differences by region but these differentials tend to be constant over time. We are thus faced with the choice of whether to utilize prices in the yield equation, or to use year and region dummy variables to dummy-out price effects. This decision is also governed by the fact that output-input price ratios themselves reflect productivity changes.³⁵ After consideration of these factors, we decided to utilize output price ratios and input price ratios (but not output-input price ratios) in the acreage response functions. In the specification, district dummy variables were also used. We then decided to use year and region dummies to dummy-out price effects in the yield equations. This effectively means that we do not estimate full supply elasticities in this analysis.

4.3 Variables and Their Means

Table 4.1 reports variables, variable definitions, and mean values for the PFP analysis. In the first stage, AREA is regressed on the input price ratios, PRFERT, PRLABOR, PRANLAB; the output price ratio, PRICER; the research stocks, APPRES and OTHRES; total cropped area; FARMSIZE; district dummy variables; and year and year squared terms. This is then a fixed effects specification.

³⁵ This was discussed in Chapter II.

Table 4.1: PFP Analysis: Variables and their Means

Variable	Definition	Mean		
AREA	Area planted to crop (000 hectares)	By crop		
PRFERT	Price index for fertilizer/Price index for tractors	0.607		
PRLABOR	Price index for labor/Price index for tractors	1.184		
PRANLAB	Price index for animal labor/Price index for tractors	0.961		
CROPAREA	Total cropped area (000 hectares)	376		
APPRES	Research stock for the crop	By crop		
SHHYV	Proportion of AREA planted to HYVs	By crop		
OTHRES	Research stock for competing crop	By crop		
PRICER	Price index for crop/Price index of competing crops	By crop		
MKTDISTANCE	See Table 3.1			
FARMSIZE	See Table 3.1			
LITERACY	See Table 3.1			
ROADS	See Table 3.1			
POPDENSITY	See Table 3.1			
MEANS BY CROP				
CROP	AREA	APPRES	OTHRES	PRICER
Bajra	20.96	65.8	144.6	0.656
Jowar	12.37	65.8	143.7	0.574
Maize	14.07	65.8	143.9	0.597
Rice	44.84	21.8	163.0	1.119
Wheat	160.89	183.0	109.0	0.475
Cotton	53.89	285.0	121.0	4.858
Sugarcane	18.28	71.0	159.6	1.094

In the second stage, the logarithm of the yield index, which takes the 1956-60 average in each district to equal 100, is regressed on: crop research variables, $\ln(\text{APPRES})$ and SHHYV ; MKTDISTANCE ; FARMSIZE ; LITERACY ; ROADS ; POPDENSITY ; and the predicted acreage index

for the crop.³⁶ The specification also included year dummy variables and geo-climate regional dummy variables. These variables are expected to control for price effects on yields. They also reflect weather effects and some trends in productivity. We do not attempt to interpret them, however, as our interest is in the research variables.

4.4 Stage I: Acreage Decision Estimates

Table 4.2 summarizes the acreage response estimates. We expect acreage for each crop to respond positively to its related output price (PRICER) and to its own research flow (APPRES). We expect a negative response to the research attention directed to substitute crops.

Table 4.2: PFP Analysis: Area Coefficient Estimates

CROPS	R ²	PRICER	APPRES	OTHRES	PRFERT
Bajra	0.88	1.904	0.034*	-0.058**	-0.966
Jowar	0.88	-0.170	0.055**	-0.011**	-0.121
Maize	0.96	-1.143**	-0.014**	-0.003	1.762**
Rice	0.95	4.095**	-0.654**	-0.075**	-2.634
Wheat	0.95	13.757**	-0.019	-0.016	0.859
Cotton	0.94	-0.920	-0.048**	0.100**	7.620**
Sugarcane	0.90	-1.906**	-0.037**	0.020**	-0.080
CROPS	PRLABOR	PRANLAB	CROPAREA	FARMSIZE	
Bajra	7.231**	-0.350	0.079**	-0.001	
Jowar	0.801	1.144	0.002	0.001	
Maize	0.913	-1.475	0.019**	0.002	
Rice	-5.382**	10.828**	0.057**	-1.611	
Wheat	-0.857	-11.658**	0.647**	-0.011	
Cotton	0.596	-7.881*	0.136**	0.045*	
Sugarcane	1.029	2.318	0.026**	0.001	

Note: * = 1.7 < t < 2.0 and ** = t > 2.0

We find positive price effects only for wheat and rice. Other cereals show little response to prices. We find the expected responses to research flows in all the cereals except wheat. We find

³⁶ The predicted acreage index is calculated as: $\ln(\text{Predicted Acreage}) - \ln(\text{Predicted Acreage in 1970 in the district})$.

effects on cotton and sugarcane acreage that are contrary to expectations. We do not wish to conclude that we have identified the full effects of the price on the acreage decision for these two crops.

The input price ratios are not expected to have particular effects. High prices of fertilizer, for example, will have negative effects on fertilizer intensive crops and positive effects on crops using little fertilizer. Similarly, higher wages will stimulate production of crops that use little labor and reduce production of labor intensive crops such as rice. It is difficult to claim many obviously reasonable impacts for these price effects. However, we have probably identified reasonable research effects on decisions.

4.5 Stage II: Yield Effect Estimates

Table 4.3 reports the yield index estimates. Predicted areas are included in these regressions. It is of interest to note that predicted area changes contribute to yield changes as expected in the cereal grains and cotton, but not for sugarcane.

Of most interest are the research impacts on yields. Here we observe positive impacts for all cereal grains and cotton, but not for sugarcane. The cotton impacts appear to be closely related to varietal usage. For wheat and rice, the negative interaction between the HYV and the research variable indicates some substitutability between varieties and research. This is consistent with the fact that a considerable amount of HYV importation occurred in both rice and wheat. Thus we have strong evidence of research and HYV impacts for the three major cereals, maize, wheat, and rice. For bajra and jowar there is positive support for a research impact. For cotton there is also support, but it is mixed. There is no evidence for a research impact on sugarcane.

The effects of other variables in the specification are generally mixed, although statistically significant effects are generally of the expected sign. Market distance has a negative impact on yields. Literacy generally has a positive impact. The POPDENSITY coefficient appears to be picking up a positive impact because it is measuring labor impacts. Since we do not wish to develop a strong interpretation for variables other than the research variables, we simply note that there may be several

Table 4.3: PFP Yield Index Decomposition Estimates

Independent Variables	Commodity Regressions						
	Bajra	Jowar	Maize	Rice	Wheat	Cotton	Sugar-cane
Predicted Area	0.0490**	0.0672**	0.0594**	0.0327**	0.0240	0.0241	0.0004
APPRES	0.0161	0.0113	0.0622**	0.0243*	0.0837**	-0.5247**	-0.0364**
SHHYV				0.4735**	1.4860**	0.0609	
APPRES* SHHYV				-0.3182*	-0.2094**	0.1280**	
MKT-DISTANCE	-0.0019	-0.0049**	-0.0053**	0.0010	0.0042	-0.0033	-0.0052**
FARMSIZE	0.0002	-0.0010**	-0.0001	-0.0001	-0.0003	0.0001	-0.0000
LITERACY	0.0029	0.0049**	0.0004	-0.0002	-0.0018	-0.0075**	0.0059**
ROADS	-0.0216	-0.0491**	-0.0137	-0.0051	-0.0515**	0.0352**	-0.0209**
POP-DENSITY	0.0794**	0.0579**	0.0178*	0.0078	0.1489**	0.0550**	0.0177**
R ²	0.384	0.489	0.734	0.754	0.695	0.628	0.444
F	10.84	18.73	46.04	45.47	43.69	24.59	13.51
Note: * = 1.7 < t < 2.0 and ** = t > 2.0							

ways by which population density has a positive impact on crop yields. We believe that this variable is contributing to improved estimates of the research impacts.

4.6 Marginal Products and Marginal Internal Rates of Return

We have two options regarding marginal product calculations. We could consider the yield index marginal products to be the primary impacts of the research variables. However, there is also reason to evaluate the impacts of research programs on acreage decision and then treat the predicted area impacts on yields as being research induced. Both calculations are reported in Table 4.4.

The procedure utilized to compute marginal products is to first compute marginal product elasticities from the estimated yield and acreage equations and then to convert these to marginal

products using product-investment ratios.³⁷ Marginal products are thus the value of annual increased product per rupee invested after the full impact of the investment is realized.

Table 4.4: PFP Analysis: Marginal Production Elasticities and Marginal Product Estimates

CROPS	Estimated Elasticities				Estimated Marginal Products		MIRR	
	APPRES	HYVs	ALL	ALL (A)	ALL	ALL (A)	ALL	ALL (A)
Bajra	0.0494		0.0494	0.0547	3.06	3.39	0.42	0.44
Jowar	0.0672		0.0672	0.0864	4.17	5.36	0.48	0.52
Maize	0.0594		0.0594	0.0627	3.68	3.88	0.45	0.46
Coarse Cereals	0.0571		0.0571	0.0663 (0.0541)	3.54	4.11 (3.35)	0.45	0.47
Rice	0.0159	0.1090	0.0448	0.0546	22.40	27.30	0.84	0.89
Wheat	-0.0050	0.2446	0.1088	0.1087	16.53	16.52	0.76	0.76
All Cereals			0.0851	0.0910 (0.0831)	21.17	22.64 (20.87)	0.83	0.84
Sugar	-0.0364		-0.0364	-0.0365	< 0	< 0	-	-
Cotton	-0.0555	0.5328	0.3483	0.3428	43.53	43.52	1.02	1.02
All Crops			0.1585	0.1605 (0.1580)	26.31	26.64 (26.62)	0.88	0.88

Note: The ALL (A) estimates include the acreage effects. Numbers in parentheses include the indirect effects of other research.

Table 4.4 reports elasticities separately for applied research and HYV impacts. It is probably most reasonable to consider the combined elasticities and marginal products as the full contributions of applied research. We have not considered general research estimates in this analysis, and it is probably reasonable to attribute some of these gains to general research. As noted earlier, sugarcane research appears not to have had a PFP impact. For wheat and cotton, the impact is entirely through the HYV variable. For rice, most of it is through the HYV variable. The HYV elasticities are converted to expenditure elasticities by assuming that all expenditures were required to produce the HYVs.

³⁷ Estimated yield and acreage equations are given in Tables 4.2 and 4.3. See Table 1.5 for product-investment ratios by commodity.

Marginal products were computed using the product-investment ratios reported in Chapter I, assuming that a one rupee investment in extension and related activities is required per rupee invested in research. The actual calculations turn out to be generally consistent at the aggregate level with those reported in Chapter III. The marginal products for all commodity applied research is higher (26 versus 16), but if the applied research impacts actually include a substantial part of the returns to general research, the estimates reported in Table 4.4 are consistent with those reported in Table 3.4. Marginal internal rates of return are computed from the marginal products using the estimated weight schemes reported in Table 3.2. These rates of return are the rates realized from an investment in period t that produces the marginal product indicated over the future time periods. These rates of return are all extraordinarily high except in case of cotton. They are discussed in the context of a general investment program and in the context of estimates reported in other studies in Chapter V.

Chapter V

Summing Up the Contribution of Agricultural Research

This study has documented the institutional development of the agricultural research system in Pakistan and has pursued several methods to evaluate the contribution of this system. In this final chapter, we summarize the conclusions and estimates of each chapter and compare them to conclusions and estimates obtained in other studies.

Chapter I documented the growth and development of the agricultural research system in Pakistan after independence. Pakistan did not inherit extensive research capacity from its colonial period. It thus faced a major institutional challenge in building research programs suited to its agricultural conditions. In Chapter I we provided a quantification of the ways in which Pakistan has addressed this challenge. We noted that, even though Pakistan was without extensive research capacity after independence, it did build a set of research centers and programs that is today roughly comparable to institutions in other countries in the region.

The standard quantitative indicators for research investment show that Pakistan has achieved approximately the same ratio of annual research investments to the value of agricultural product as in other South Asian and low-income developing countries. However, the allocation of research programs between regions and among commodities is probably somewhat more unequal or unbalanced, than in other developing economies. There are also indications that the system has been subject to budgetary stress in recent years, in the sense that operational support to scientists has been too low. In addition, the system has a low level of basic research backing up its applied research programs when compared with other countries.

The responsibility for agricultural programs and support in Pakistan resides heavily in the provinces. The strongest research institutions and the strongest agricultural universities are provincial. This situation creates potential problems of research duplication and coordination. The Pakistan Agricultural Research Council is responsible for addressing these concerns. The Council has been in place for a relatively short period, and it is still too early to determine its full effectiveness.

Chapter II initiated the process of evaluating the impact of the research program. The major contribution of research programs is to make improved technology available to farms through adaptive research and screening of technology produced abroad. If this technology is adopted by farmers and used effectively, it should lead to productivity gains. Did such gains actually occur in Pakistan?

Chapter II showed that Pakistan did achieve significant gains in Total Factor Productivity and in Partial Factor Productivity for most crops. Some part of these gains was obviously achieved as a result of the rapid adoption of improved *green revolution* high-yielding crop varieties, particularly of wheat, as the late 1960s showed the highest rates of TFP and PFP gains. There were, however, significant differences in the timing and rate of TFP and PFP growth in different districts.

Chapter III sought to identify the source of differences in TFP changes in Pakistan's districts. A TFP decomposition specification was developed and applied to district data for the 1956-85 period. In this specification, TFP growth is statistically related to variables designed to reflect the contribution of research programs and improved infrastructure. The timing pattern between research investment and the ultimate impact that research programs have on productivity growth was also estimated.

The TFP decomposition procedure reported in Chapter III did find significant contributions to TFP change from applied commodity-oriented research, from general non-commodity research, and from varietal improvements, part of which represented imported technology. The timing pattern estimates showed that applied research probably has little impact until four years after investment takes place and does not have its full impact on productivity until eight years after investment.

General non-commodity oriented research has a slightly longer time lag. First impacts are realized after five years, full impacts after nine years.

It is possible to evaluate the marginal product of research investment from the estimated decomposition relationship. This is expressed in rupees of surplus realized when the full impact is achieved per rupee invested.³⁸ By using the timing estimates it is thus possible to calculate the future value of the surplus as the stream of benefits from a one rupee investment at time t . The interest rate or discount rate at which this stream has a present value of one rupee at time t is the internal rate of return to the investment. Since it is calculated from a marginal product, it is appropriate to consider it a marginal internal rate of return (MIRR).

5.1 Comparable TFP Studies

Table 5.1 summarizes 45 MIRR estimates reported in 25 different studies where aggregate research programs were the object of study. The table includes seven estimates from Chapters III and IV. It also includes the earlier study of Pakistan by Nagy and the historical study of the British Indian Punjab by Pray. Most of these studies are of the type developed in Chapters II and III. Several of them, denoted with an M, were meta production studies. The Chapter III estimates are reported both for estimates holding HYV constant (i.e., not including HYV benefits in the conclusion) and for estimates which count the HYV benefits. The Chapter IV estimates are for the combined commodities analyzed below.

We first observe that all of the Chapter III and IV estimates are extraordinarily high when considered in an investment context. Rates of return above 20% are relatively rare in any economy unless it is growing rapidly. If an economy such as Pakistan could actually realize returns to all public and private investment in the 40-60% range, its overall rate of economic growth must have been extraordinarily high. Investment in agricultural research, even where the time lags are relatively long

³⁸ By surplus we mean the increased output attributable to the research program.

as they are in Pakistan, is yielding very high returns and thus is providing economic growth at low cost.

Table 5.1: Estimated Marginal Internal Rates of Return to Aggregate Research Investment in Pakistan and Other Countries

STUDY	COUNTRY	COVERAGE	TYPE	TIME PERIOD	MIRR ESTIMATE
Chapter III	Pakistan	AR - HYV constant	D	1956-85	0.57-0.63
		GR - HYV constant	D	1956-85	0.40
		AR - incl HYV	D	1956-85	0.82
		GR - incl HYV	D	1956-85	0.56
		All research	D	1956-85	0.57-0.65
Chapter IV	Pakistan	Commodity research	D	1956-85	0.88
Nagy (1991)	Pakistan	All research	D	1959-79	0.64
Pray (1978)	Punjab	Res & extension	M	1906-56	0.34-0.44
Evenson & McKinsey (1991)	India	All research	D	1958-83	0.65
Kahlon et al (1977)	India	All research	M	1960-71	0.63
Evenson & Jha (1973)	India	All research	D	1953-71	0.40
Evenson (1987)	India	All research	D	1959-71	1.00
Pray & Ahmed (1991)	Bangladesh	All research	M	1948-81	1.00
Ardito-Berletta (1970)	Mexico	Crop research	M	1943-63	0.45-0.93
Evenson (1982b)	Brazil	All research	D	1970-80	0.60
Silva (1984)	Brazil	All research	M	1955-83	0.23-0.53
Evenson (1986)	Brazil	Field crop research	D	1970/75/80	0.55
		Permanent crop res	D	1970/75/80	0.90
Tang (1963)	Japan	Res & schooling	M	1880-1938	0.35
Griliches (1964)	U.S.A.	Res & extension	M	1949-59	0.35-0.40
Latimer (1964)	U.S.A.	Res & extension	M	1949-59	NS
Evenson (1968)	U.S.A.	Res & extension	M	1949-59	0.47
Cline (1975)	U.S.A.	Res & extension	M	1949-58	0.39-0.47
			M	1959-68	0.32-0.39
			M	1964-72	0.28-0.35
Davis (1979)	U.S.A.	Research	M	1949-59	0.66-1.00
			M	1964-79	0.37
Evenson & Welch (1979)	U.S.A.	All research	M	1964	0.55

STUDY	COUNTRY	COVERAGE	TYPE	TIME PERIOD	MIRR ESTIMATE
Fox (1986)	U.S.A.	AR - Livestock	M	1944-83	1.50
		BR - Livestock	M	1944-83	1.16
		AR - Crops	M	1944-83	1.80
		BR - Crops	M	1943-77	0.36
Norton (1981)	U.S.A.	Cash grains	M	1974	0.85
		Livestock	M	1974	0.88
Evenson et al (1979)	U.S.A.	All research	D	1868-1926	0.65
		Appl Research	D	1927-50	0.95
		Basic Research	D	1927-50	1.10
		Appl Research	D	1948-71	0.93-1.30
		Basic Research	D	1948-71	0.45
Huffman & Evenson (1989)	U.S.A.	AR - Crops	D	1950-82	0.45
		AR - Livestock	D	1950-82	0.11
		BR - Crops	D	1950-82	0.57
		BR - Livestock	D	1950-82	0.83
		Private R&D	D	1950-82	0.83

Note: NS = Not significant; D = Decomposition study; M = Meta production study; AR = Applied research; BR = Basic research; GR = General research

It must be noted that these returns are so high that even if the MPs are substantially over-estimated, the MIRR's are still very high. For example, the MP for applied research, including HYVs, was 20.9, and this gave a MIRR of 82%. Suppose that the 20.9 was overestimated by a factor of five and was actually only 4. A marginal product of 4 still leads to a MIRR of 47%.

A quick glance at the other estimates in the table shows that the Pakistani results are not unusual. High rates of return have been observed in a broad range of countries at different times. There is a high degree of consistency underlying this evidence. Many studies have shown that agricultural research has a high payoff and produces low cost growth.

5.2 Comparable PFP Studies

Chapter IV developed a methodology to estimate the determinants of Partial Factor Productivity growth. Table 5.2 summarizes the Chapter IV estimates and compares them with other estimates on a commodity by commodity basis.

The wheat research productivity estimates indicate that wheat research has been productive in many countries and that it has been particularly productive in Pakistan. Many of the measured impacts were due to the varieties released in the mid 1960s, but national programs have contributed by *adding on* to the original HYV material. The same analysis applies to rice research. In general, returns to rice research are even higher than returns to wheat research. Pakistan's rice research program is highly productive, but is simply too small.³⁹

Table 5.2: Estimated Marginal Internal Rates of Return to Crop Specific Research Investments in Pakistan and Other Countries

STUDY	COUNTRY	COMMODITY	TYPE	TIME PERIOD	MIRR ESTIMATE
Chapter IV	Pakistan	Wheat	D	1956-85	0.76
Nagy (1991)	Pakistan	Wheat	M	1967-81	0.58
Evenson & McKinsey (1991)	India	Wheat	D	1959-83	0.50
Ardito-Berletta (1970)	Mexico	Wheat	M	1943-63	0.90
Hertford et al (1977)	Colombia	Wheat	M	1927-76	0.11-0.12
Wennergren & Whittaker (1977)	Bolivia	Wheat	M	1966-75	NS
Yrarrazaval et al (1982)	Chile	Wheat	M	1949-77	0.21-0.28
Ambrosi & Da Cruz (1984)	Brazil	Wheat	M	1974-82	0.59
Chapter IV	Pakistan	Rice	D	1956-85	0.84-0.89
Evenson & McKinsey (1991)	India	Rice	D	1959-83	1.55
Flores et al (1978)	Philippines	Rice	D	1966-75	0.75
	Asia	Rice	D	1966-75	0.46-0.71
Evenson & Flores (1978)	Asia	Rice	D	1950-65	0.32-0.39
	Asia	Rice	D	1966-75	0.73-0.78
	IRRI	Rice	D	1966-75	0.74-1.08
Echeverria et al (1988)	Uruguay	Rice	M	1965-85	0.52
Avila (1981)	Brazil	Rice	I	1959-78	0.87-1.19

³⁹ Note that we have not included the recent extraordinary gains in Basmati rice productivity in these calculations.

STUDY	COUNTRY	COMMODITY	TYPE	TIME PERIOD	MIRR ESTIMATE
Scobie & Posada (1978)	Colombia	Rice	I	1957-64	0.79-0.96
Hayami & Akino (1977)	Japan	Rice	M	1915-53	0.25-0.27
	Japan	Rice	I	1932-61	0.73-0.75
Hertford et al (1977)	Colombia	Rice	I	1951-72	0.60-0.82
Chapter IV	Pakistan	Maize	D	1956-85	0.46
Nagy (1990)	Pakistan	Maize	D	1967-81	0.19
Evenson & McKinsey (1991)	India	Maize	M	1959-83	0.94
Ardito-Berletta (1970)	Mexico	Maize	I	1943-63	0.35
Hines (1972)	Peru	Maize	I	1954-67	0.35-0.40
Yrarrazaval et al (1982)	Chile	Maize	I	1940-77	0.32-0.34
Martinez & Sain (1983)	Panama	Maize	I	1979-82	0.47
Evenson & Da Cruz (1989a)	Brazil	Maize	D	1966-88	0.30
Evenson & Da Cruz (1989b)	PROCISUR	Maize	D	1979-88	1.91
Griliches (1958)	U.S.A.	Maize	I	1940-55	0.35-0.40
Otto & Havlicek (1981)	U.S.A.	Maize	M	1967-79	1.52-2.10
Chapter IV	Pakistan	Bajra	D	1956-85	0.44
Evenson & McKinsey (1991)	India	Bajra	D	1959-83	1.07
Chapter IV	Pakistan	Jowar	D	1956-85	0.52
Evenson & McKinsey (1991)	India	Jowar	D	1959-83	1.07
Griliches (1958)	U.S.A.	Sorghum (Jowar)	I	1940-57	0.20
Chapter IV	Pakistan	All cereals	D	1956-85	0.81-0.84
Evenson & McKinsey (1991)	India	All cereals	D	1959-83	2.18
Evenson (1987)	Latin America	All cereals	M	1960-82	0.44
	Africa	All cereals	M	1960-82	NS
	Asia	All cereals	M	1960-82	0.50
	IARC - Latin Am	All cereals	M	1960-82	> 0.80
	IARC - Africa	All cereals	M	1960-82	> 0.80
	IARC - Asia	All cereals	M	1960-82	> 0.80

STUDY	COUNTRY	COMMODITY	TYPE	TIME PERIOD	MIRR ESTIMATE
Pray (1979)	Bangladesh	Wheat & Rice	I	1961-77	0.30-0.35
Chapter IV	Pakistan	Cotton	D	1956-85	1.02
Ayer & Schuh (1972)	Brazil	Cotton	I	1924-67	0.77-1.10
Hertford et al (1977)	Colombia	Cotton	I	1953-72	NS
Chapter IV	Pakistan	Sugarcane	D	1956-85	NS
Pinazza et al (1984)	Brazil	Sugarcane	D	1972-82	0.35
Evenson (1969)	South Africa	Sugarcane	M	1945-62	0.40

Note: NS = Not significant; D = Decomposition study; M = Meta production study

For maize research, the MIRRs are a little lower than for rice, but again the evidence is clear. Maize research is highly productive in Pakistan and has been highly productive elsewhere. Griliches (1958) reported the first estimates of this type for hybrid corn, and showed that hybrid corn development in the U.S was an extraordinary success story. It is clear after numerous further studies that there are many success stories, covering virtually all commodities, but particularly in cereal grains.

Chapter IV reported estimates for bajra and jowar as well as for all cereals. As with wheat, rice, and maize, research on bajra in Pakistan has been highly productive, although not as productive as research in India. The results for combined cereals add further to the conclusion that national research programs for cereal grains improvement have been highly productive almost everywhere. The IARC programs for cereal research have been even more productive.

Chapter IV also reported results for cotton and sugarcane research. The high returns to cotton research in Pakistan have been replicated in Brazil. The absence of evidence of sugarcane research impacts in Pakistan stands in contrast to the results in Brazil and South Africa. By international standards Pakistan has preformed well in increasing its all its crop yields. However, there is still great potential for future yield increases.

5.3 A Final Summary

This study reports evidence that has strong statistical support to the effect that Pakistan's agricultural research system has been productive. It has produced high rates of return to investment. It has produced economic growth in agriculture at low cost and that growth has been vital to Pakistan with its rapidly growing population. There is little doubt that investment in agricultural research programs have been among the most productive investments in Pakistan over the past 40 years.

It does not follow, however, that the research system has been as productive as it could have been. This study has noted problems with congruence, especially serious in the case of rice. Currently there are serious problems with the level of research support which is insufficient to allow scientists to get their work done. The system appears to be weak in basic research support.

Nor does it follow that the system has solved all or even some of the major problems. Soil salinity has probably worsened. Our data show severe problems in NWFP and these will have to be addressed. However, it is important to note that agricultural research programs cannot solve all these problems. They are designed to develop technology which will enable farmers to increase their productivity and enable the economy to get more output from the resources at hand.

This they have accomplished. It is clear that even given the flaws in the system, and these are probably not too serious, Pakistan has underinvested in agricultural research. It should have invested more. Among the alternative routes by which an economy can increase output, such as expanding the cropped area, increased irrigation, or increased fertilizer use, research has been a bargain. Indeed, for an economy like Pakistan's, the biggest bargains in the business of providing economic growth are probably the agricultural scientists. Not only are they productive, but they are a low cost input. This study has documented the fact that the real cost of supporting a scientist relative to the costs of irrigation equipment, fertilizer, and other infrastructure, is probably one tenth of their level in developed countries.

Pakistan faces challenges in the future. Its population will double in the next few years. It must double food production merely to maintain per capita food consumption. It has already brought

most cultivable land under cultivation. If Pakistan is to meet this challenge, it must realize gains in productivity. To do this it must expand and strengthen its agricultural research system as well as its extension and farm education program. The evidence showing that agricultural research contributes to productivity is abundant. Numerous studies reveal the same conclusion. Agricultural research programs will have to play a larger role in the future. Countries such as Pakistan cannot afford to continue to underinvest in their research system and provide inadequate support to its agricultural scientists.

The overall evidence is clear, indeed overwhelming. Research has an exceptionally high pay-off as reflected in the rates of return estimates. The average return to investment in public and private capital and infrastructure in Pakistan cannot possibly have yielded the returns reported here. Indeed, the aggregate growth of the Pakistani economy would indicate that average rates of return to investment in Pakistan are probably less than ten percent in real terms.

Research can also be seen as a means to purchase economic growth in agriculture. The cost of obtaining a unit of growth via research can be compared with the costs of obtaining a unit of growth via irrigation, land clearing, and through input use. No other growth producing activities have demonstrated that they can achieve lower costs per unit of growth than agricultural research, as demonstrated in this study and reinforced by international comparisons.

This study has shown that research is a bargain in Pakistan. It is a bargain, even though the research system is presently severely stressed by support and skill constraints. These constraints should be relaxed which would make research even more of a bargain. Fundamentally, research is a bargain because the real costs of scientific effort in Pakistan are low relative to the costs of irrigation equipment and capital goods.

Pakistan is underinvesting in research. It is not taking advantage of the growth bargain offered by research. It is underinvesting in both qualitative and quantitative terms. If Pakistan is to meet the massive challenge that it faces regarding agricultural production in the future, it will have to invest more in its agricultural research system. It will have to provide better support to its scientists. It will

have to upgrade the skill level of its scientists. It will have to expand its research system as well and develop extension and related systems to further support its research program. Only then will it be able to expand agricultural production at a rate sufficient to meet the development challenge that lies ahead.

APPENDIX A

Table A.1: Research Expenditures per Scientist in Selected Asian Countries (1980)

COUNTRY	\$US 000's
Malaysia	56.4
Papua New Guinea	45.9
Indonesia	30.2
India	21.8
Bangladesh	16.2
Philippines	15.5
Thailand	15.3
Nepal	12.4
Sri Lanka	10.9
Pakistan	8.9

SOURCE: World Bank Report, 1988

Table A.2: Budgets of Selected Agricultural Research Establishments (Millions of Rupees)

NO.	INSTITUTE	1977-78	1988-89	% CHANGE
1	A.R.I., Sariab, Quetta, Baluchistan	3.61	10.40	188.1
2	A.R.I., Tandojam, Sind	5.60	14.09	151.6
3	A.R.I., Tarnab, Peshawar, NWFP	11.67	21.63	187.4
4	Animal Husbandry Laboratory, Karachi, Sind	0.04	0.10	150.0
5	A.Z.R.I., Quetta, Baluchistan	1.75	6.08	247.4
6	Atomic Energy Agricultural Research Center, Tandojam, Sind	4.29	17.00	296.3
7	Cereal Diseases Research Institute, Islamabad	1.39	2.01	44.6
8	College of Veterinary Sciences, Lahore, Punjab	4.07	1.11	-72.7
9	Commonwealth Institute of Biological Control, Rawalpindi, Punjab	2.24	2.17	-3.1
10	Cotton Research Institute, Multan, Punjab	1.75	6.83	290.3
11	Cotton Research Institute, Sakrand, Sind	6.09	6.09	-
12	Directorate of Land Reclamation, Lahore, Punjab	4.85	22.67	367.4
13	Directorate of Marine Fisheries, Karachi, Sind	3.04	3.04	-
14	Directorate of Soil Conservation, Rawalpindi, Punjab	16.47	16.49	0.1
15	Directorate of Wool/Hair and Mutton Production, Multan, Punjab	1.29	6.92	436.4
16	Drainage and Reclamation Institute of Pakistan, Hyderabad, Sind	6.50	4.94	-24.0
17	NWFP Agriculture University, Peshawar, NWFP	3.32	108.59	3170.8
18	Fine Wool Sheep Farm, Sarai Krishna, Mianwali, Punjab	0.42	1.80	328.6
19	Fisheries Research Institute, Qadirabad, Gujranwala, Punjab	0.42	1.23	192.8
20	Institute of Cotton Research and Technology, Karachi, Sind	1.90	4.30	126.3
21	Kamori Goat Farm, Khudabad Dadu, Sind	0.23	0.39	69.5

NO.	INSTITUTE	1977-78	1988-89	% CHANGE
22	Livestock Development Research Farm for Kundi Buffaloes, Rohri, Sind	0.35	1.29	268.6
23	Livestock Experiment Station, Jaba, Mansehra, NWFP	0.08	1.21	1412.5
24	Livestock Experiment Station, Karachi, Sind	0.34	1.34	294.1
25	Livestock Experiment Station, Khushab, Punjab	1.38	2.18	57.9
26	Livestock Experiment Station, Nabisar Road, Tharparkar, Sind	0.43	2.06	379.1
27	Livestock Experiment Station Qadirabad, Sahiwal, Punjab	0.86	2.79	224.4
28	Livestock Production Research Institute, Bahadurnagar, Okara, Punjab	7.03	8.69	23.6
29	Cereal Crops Research Institute, Pirsabak Nowshera, NWFP	2.34	6.78	189.7
30	Maize and Millet Research Institute, Yousufwala, Punjab	1.94	6.51	235.5
31	National Agriculture Research Center, Islamabad	1.45	48.28	3229.6
32	Nuclear Institute of Agriculture and Biology, Faisalabad, Punjab	4.99	21.00	320.8
33	Nuclear Institute of Food and Agriculture, Tarnab, Peshawar, NWFP	2.20	7.50	240.9
39	Oilseed Research Institute, Faisalabad, Punjab	1.41	4.67	231.2
35	Pakistan Agricultural Research Council, Islamabad	62.46	464.46	643.6
36	Pakistan Forest Institute, Peshawar, NWFP	4.90	28.20	475.5
37	Plant Protection Institute, Faisalabad, Punjab	1.60	4.10	156.2
38	Ayub Agricultural Research Institute, Faisalabad, Punjab	29.35	122.09	315.9
39	Rapid Soil Fertility Survey and Soil Testing Institute, Lahore, Punjab	4.80	7.93	65.2
40	Rice Research Institute, Kala Shah Kaku, Punjab	1.75	3.74	113.7

NO.	INSTITUTE	1977-78	1988-89	% CHANGE
41	Sericulture Research Laboratory, Lahore, Punjab	0.50	0.56	112.0
42	Silvicultural Research Division, Hyderabad, Sind	0.18	1.00	455.5
43	Sind Agriculture University, Tandojam, Sind	11.50	109.54	852.5
44	Soil Survey of Pakistan, Lahore, Punjab	4.88	9.83	101.4
45	University of Agriculture, Faisalabad, Punjab	28.20	119.53	322.5
46	Vegetable Research Institute, Faisalabad, Punjab	3.75	1.59	-57.6
47	Veterinary Research Institute, Lahore, Punjab	5.22	17.18	229.1
48	Veterinary Research Institute, Peshawar, NWFP	1.85	8.42	355.1
49	Wheat Research Institute, Faisalabad, Punjab	1.20	3.15	162.5
Total		267.88	1273.13	375.3
Source: PARC Survey, 1988				

Table A.3: Staff Qualifications at Selected Agricultural Research Establishments

NO.	1977-78				1988-89			
	B.Sc.	M.Sc.	Ph.D.	Total	B.Sc.	M.Sc.	Ph.D.	Total
1	34	29	3	66	18	25	1	44
2	44	86	1	131	15	88	1	104
3	178	75	5	258	99	104	4	207
4	2	-	-	2	-	2	-	2
5	3	8	-	11	5	35	1	41
6	3	25	15	43	17	40	13	70
7	6	13	3	22	1	16	3	20
8	11	30	2	43	6	46	8	60
9	2	19	4	25	1	7	1	9
10	15	19	4	38	5	33	2	40
11	6	17	1	24	3	28	3	34
12	82	15	-	97	57	20	-	77
13	11	9	-	20	20	15	-	35
14	32	9	-	41	34	23	-	57
15	22	1	-	23	13	1	-	14
16	5	8	-	13	20	11	1	32
17	46	13	-	66	-	111	14	125
18	2	1	-	3	2	1	-	3
19	9	4	1	14	10	14	1	25
20	24	10	1	35	17	11	-	28
21	2	-	-	2	1	-	-	1
22	1	-	-	1	1	1	-	2
23	2	-	-	2	2	-	-	2
24	3	-	-	3	2	-	-	2
25	2	-	-	2	2	1	-	3
26	5	-	-	5	5	-	-	5
27	5	-	-	5	6	-	-	6
28	26	12	3	41	24	21	-	45
29	19	7	2	28	21	25	2	48
30	12	11	2	25	2	32	1	35
31	1	2	1	4	90	207	46	343
32	17	55	20	92	26	53	21	100
33	8	14	3	25	10	30	5	45
39	6	23	2	31	2	37	2	41
35	52	75	17	144	103	471	82	656

NO.	1977-78				1988-89			
	B.Sc.	M.Sc.	Ph.D.	Total	B.Sc.	M.Sc.	Ph.D.	Total
36	25	34	5	64	11	48	10	69
37	1	42	1	44	2	25	1	28
38	187	299	18	504	294	501	25	820
39	19	30	1	50	16	66	1	83
40	11	21	4	36	3	20	2	25
41	3	2	-	5	1	2	-	3
42	4	1	-	5	1	2	-	3
43	23	123	16	162	-	121	46	167
44	26	42	3	71	17	42	-	59
45	47	219	95	361	-	267	120	387
46	1	33	-	34	2	32	1	35
47	45	16	1	62	59	32	-	91
48	16	7	1	24	24	14	1	39
49	3	31	2	36	1	34	3	38
Total	1109	1490	237	2836	1071	2715	422	4208
% Change					-3.4	82.2	78.0	48.4

Source: PARC Survey, 1988

Table A.4: Development and Non-Development Budgets of 50 Agricultural Research and Education Establishments (Millions of Rupees)

YEAR	DEV BUDGET	NON-DEV BUDGET	TOTAL
1978-79	46.0	104.2	150.2
1979-80	48.5	109.1	157.6
1980-81	60.5	124.5	185.0
1981-82	57.8	150.6	208.4
1982-83	69.6	172.8	242.4
1983-84	302.9	243.2	546.1
1984-85	396.4	277.6	674.0
1985-86	331.0	351.8	682.8
1986-87	379.2	404.1	783.3
1987-88	424.1	418.0	842.1

Source: PARC Survey 1988

Table A.5: Non-Development Budgets of 50 Agricultural Research and Education Establishments (Millions of Rupees)

YEARS	SALARIES			OPERATIONAL EXPENSES			TOTAL
	BASIC SALARIES	ALLOW/ MISC EXP	TOTAL	EQUIP- MENT	BUILD- INGS	TOTAL	
1978-79	61.2	16.5	77.7	25.3	1.10	26.4	104.1
1979-80	65.8	16.1	82.4	26.2	0.95	27.1	109.5
1980-81	74.8	17.9	92.7	31.1	0.65	31.8	124.5
1981-82	88.1	27.8	115.9	34.2	0.53	34.7	150.6
1982-83	100.9	29.8	130.7	40.2	1.86	42.1	172.8
1983-84	129.2	67.5	196.7	43.1	3.79	46.9	243.6
1984-85	149.3	78.2	227.5	47.6	2.44	50.0	277.5
1985-86	166.8	112.9	279.7	67.9	4.17	72.1	351.8
1986-87	196.8	115.9	312.7	88.5	2.74	91.2	404.9
1987-88	229.7	120.1	349.8	65.5	2.67	68.2	418.0

Table A.6: Sanctioned and Actual Staff Positions of 50 Agricultural Research and Education Establishments (Number)

YEARS	SANCTIONED STAFF			STAFF IN POSITION		
	TECHNIC AL STAFF	SUPPORT STAFF	TOTAL	TECHNIC AL STAFF	SUPPOR T STAFF	TOTAL
1978-79	3396	5461	8857	2718	5010	7728
1979-80	3504	5687	9191	2707	5058	7765
1980-81	3502	5862	9364	2964	5217	8181
1981-82	3600	5932	9532	3101	5347	8448
1982-83	3713	6024	9737	3462	5448	8910
1983-84	3753	6182	9935	3554	5677	9231
1984-85	3957	6117	10074	3716	5844	9560
1985-86	4046	6131	10177	3929	5916	9845
1986-87	4877	6321	11198	4023	6188	10211
1987-88	5155	6513	11668	4162	6436	10598

Table A.7: Technical Manpower at 50 Agricultural Research and Education Establishments by Degree Earned (Number)

YEAR	Ph.D.	M. Phil.	M.Sc.	H. B.Sc.	B.Sc.	DV M	BV M	OTHE R	TOTA L
1978-79	99	11	952	494	246	199	118	678	2718
1979-80	93	10	1090	406	231	126	116	797	2707
1980-81	89	12	1058	578	234	241	107	538	2964
1981-82	111	21	1181	503	235	293	115	499	3101
1982-83	115	15	1325	719	234	274	150	251	3462
1983-84	127	14	1303	785	247	282	153	199	3554
1984-85	137	15	1352	916	256	297	199	241	3716
1985-86	156	17	1471	987	268	269	208	117	3929
1986-87	148	26	1666	907	272	240	198	54	4023
1987-88	199	28	2014	1144	299	217	194	67	4162

Source: PARC Survey, 1988

Table A.8: Analysis of the Current Expenditures of NARC (1985-86 to 1988-89, Millions of Rupees)

CATEGORY	ACTUAL 1985-86		ACTUAL 1986-87		REVISED 1987-88		BUDGETED 1988-89	
	Amount	%	Amount	%	Amount	%	Amount	%
Staff Costs % of 1985-86 Level	13.633 (100.0)	48.7	16.525 (121.2)	53.0	21.580 (158.3)	60.8	26.789 (196.5)	70.6
Operational Expenses % of 1985-86 Level	10.803 (100.0)	38.6	12.149 (112.5)	38.9	11.426 (105.7)	32.2	9.491 (87.8)	25.0
Capital Expenditures % of 1985-86 Level	3.535 (100.0)	12.7	2.520 (71.3)	8.1	2.465 (69.7)	7.0	1.656 (46.8)	4.4
TOTAL % of 1985-86 Level	27.971 (100.0)	100.0	31.194 (111.5)	100.0	35.472 (126.8)	100.0	37.936 (135.6)	100.0
Total # of Staff	629		801		787		857	
Total # of Scientists	129		203		200		224	
Operational Exp. per Scientist % of 1985-86 Level	0.084 (100.0)		0.060 (70.9)		0.057 (68.0)		0.042 (50.2)	

Table A.9: Analysis of the Current Expenditures of the NARC Wheat Research Program (1985-86 to 1988-89, Millions of Rupees)

CATEGORY	ACTUAL 1985-86		ACTUAL 1986-87		REVISED 1987-88		BUDGETED 1988-89	
	Amount	%	Amount	%	Amount	%	Amount	%
Staff Costs % of 1985-86 Level	0.603 (100.0)	55.6	0.556 (92.2)	59.9	0.743 (123.2)	72.5	1.192 (197.7)	82.8
Operational Expenses % of 1985-86 Level	0.420 (100.0)	38.8	0.369 (87.8)	39.7	0.277 (65.9)	27.0	0.239 (56.9)	16.6
Capital Expenditures % of 1985-86 Level	0.062 (100.0)	5.7	0.003 (4.8)	0.3	0.005 (8.1)	0.5	0.008 (12.9)	0.6
TOTAL % of 1985-86 Level	1.085 (100.0)	100.0	0.928 (85.5)	100.0	1.025 (94.5)	100.0	1.439 (132.6)	100.0
Total # of Staff	60		80		70		70	
Total # of Scientists	22		31		25		32	
Operational Exp. per Scientist % of 1985-86 Level	0.019 (100.0)		0.012 (63.2)		0.011 (57.9)		0.007 (36.8)	

Table A.10: Analysis of the Current Expenditures of the NARC Rice Research Program (1985-86 to 1988-89, Millions of Rupees)

CATEGORY	ACTUAL 1985-86		ACTUAL 1986-87		REVISED 1987-88		BUDGETED 1988-89	
	Amount	%	Amount	%	Amount	%	Amount	%
Staff Costs % of 1985-86 Level	0.671 (100.0)	49.7	0.744 (110.9)	55.6	1.098 (163.6)	73.9	1.166 (173.8)	80.1
Operational Expenses % of 1985-86 Level	0.642 (100.0)	47.6	0.572 (89.1)	42.8	0.381 (59.3)	25.6	0.277 (43.2)	19.0
Capital Expenditures % of 1985-86 Level	0.037 (100.0)	2.7	0.021 (56.7)	1.6	0.006 (16.2)	0.4	0.013 (35.1)	0.9
TOTAL % of 1985-86 Level	1.350 (100.0)	100.0	1.337 (99.0)	100.0	1.485 (110.0)	100.0	1.456 (107.8)	100.0
Total # of Staff	55		58		59		58	
Total # of Scientists	17		19		21		23	
Operational Exp. per Scientist % of 1985-86 Level	0.038 (100.0)		0.030 (78.9)		0.018 (47.4)		0.012 (31.6)	

Table A.11: Analysis of the Current Expenditures of the NARC Maize Research Program (1985-86 to 1988-89, Millions of Rupees)

CATEGORY	ACTUAL 1985-86		ACTUAL 1986-87		REVISED 1987-88		BUDGETED 1988-89	
	Amount	%	Amount	%	Amount	%	Amount	%
Staff Costs % of 1985-86 Level	0.584 (100.0)	68.1	0.567 (97.1)	71.0	0.497 (85.1)	66.8	0.757 (129.6)	79.2
Operational Expenses % of 1985-86 Level	0.251 (100.0)	29.3	0.232 (92.4)	29.0	0.236 (94.0)	31.7	0.194 (77.3)	20.3
Capital Expenditures % of 1985-86 Level	0.022 (100.0)	2.6	0.000 (0.0)	0.0	0.011 (50.0)	1.5	0.005 (22.7)	0.5
TOTAL % of 1985-86 Level	0.857 (100.0)	100.0	0.799 (93.2)	100.0	0.744 (86.8)	100.0	0.956 (111.5)	100.0
Total # of Staff	54		52		51		59	
Total # of Scientists	15		18		17		21	
Operational Exp. per Scientist % of 1985-86 Level	0.017 (100.0)		0.013 (76.5)		0.014 (82.4)		0.009 (52.9)	

Table A.12: Analysis of the Current Expenditures of the NARC Pulses Research Program (1985-86 to 1988-89, Millions of Rupees)

CATEGORY	ACTUAL 1985-86		ACTUAL 1986-87		REVISED 1987-88		BUDGETED 1988-89	
	Amount	%	Amount	%	Amount	%	Amount	%
Staff Costs % of 1985-86 Level	0.613 (100.0)	61.3	0.677 (110.4)	71.3	0.854 (139.3)	80.5	0.971 (158.4)	87.9
Operational Expenses % of 1985-86 Level	0.349 (100.0)	34.9	0.258 (73.9)	27.2	0.206 (59.0)	19.4	0.129 (36.9)	11.7
Capital Expenditures % of 1985-86 Level	0.038 (100.0)	3.8	0.014 (36.8)	1.5	0.001 (2.6)	0.1	0.005 (13.1)	0.4
TOTAL % of 1985-86 Level	1.000 (100.0)	100.0	0.949 (94.9)	100.0	1.061 (106.1)	100.0	1.105 (110.5)	100.0
Total # of Staff	38		40		40		41	
Total # of Scientists	18		21		21		21	
Operational Exp. per Scientist % of 1985-86 Level	0.019 (100.0)		0.012 (63.2)		0.010 (52.6)		0.006 (31.6)	

APPENDIX B

Table B.1: Output and Input Quantities by Year

YEAR	OUTPUT (Thousand of Tons)					
	WHEAT	RICE	COTTON	SUGAR	BAJRA	MAIZE
1955	94.08	23.76	8.23	23.61	9.72	12.01
1956	100.73	23.90	8.37	24.76	10.52	12.80
1957	100.94	24.58	8.36	31.28	8.45	12.85
1958	111.31	28.25	8.09	33.59	9.96	13.41
1959	105.24	25.74	7.81	32.64	9.57	13.16
1960	107.52	29.16	8.26	34.04	8.39	12.51
1961	111.40	32.02	8.88	40.69	10.22	13.14
1962	118.12	33.80	9.99	49.80	11.78	14.28
1963	117.22	35.16	11.35	47.52	10.31	14.03
1964	128.71	39.16	10.37	49.90	13.49	14.84
1965	109.18	36.26	11.35	62.66	10.90	14.55
1966	121.32	37.36	12.75	61.95	10.61	15.64
1967	176.18	41.87	14.13	53.08	11.89	18.96
1968	185.95	56.98	14.47	62.43	10.36	19.77
1969	203.76	66.45	14.70	74.45	8.96	18.87
1970	182.58	60.65	14.88	66.39	10.11	17.88
1971	189.68	62.13	19.39	55.76	10.18	17.99
1972	205.01	64.01	19.22	56.88	8.70	17.23
1973	211.50	67.70	18.06	67.26	9.89	18.44
1974	212.20	63.47	17.40	59.68	7.39	18.91
1975	237.51	71.86	14.13	72.23	8.97	20.28
1976	251.94	75.65	11.95	83.58	8.88	19.88
1977	231.07	81.35	15.79	85.16	9.07	19.39
1978	272.07	89.40	13.00	77.58	9.10	19.84
1979	295.01	86.94	19.96	78.34	8.01	20.31
1980	311.58	83.81	20.45	91.18	6.24	21.89
1981	324.02	87.34	21.43	102.16	7.70	21.36
1982	335.01	85.54	23.61	91.90	6.32	22.64
1983	294.54	83.31	14.20	96.83	7.31	22.99
1984	314.61	83.10	28.88	91.74	8.08	23.46
1985	377.82	73.66	34.83	79.03	7.39	22.05

Table B.1: Output and Input Quantities by Year (continued)

YEAR	OUTPUT (Thousand of Tons)					
	JOWAR	GRAM	RAPESEE D & MUSTAR D	TOBACCO	BARLEY	MUNG
1955	6.61	19.54	6.16	1.87	3.11	0.71
1956	7.38	20.09	6.32	1.20	3.76	0.62
1957	5.54	18.41	6.53	1.32	3.18	0.54
1958	6.11	16.22	6.18	1.32	3.65	0.56
1959	6.57	17.27	7.41	1.50	4.66	0.66
1960	6.11	16.88	6.23	1.56	4.22	0.59
1961	6.95	16.67	6.10	1.73	3.16	0.60
1962	7.24	19.54	9.17	1.95	3.16	0.52
1963	6.76	17.47	6.03	1.81	2.92	0.44
1964	7.68	19.40	5.11	2.16	3.07	0.62
1965	6.51	16.15	4.83	2.18	2.36	0.52
1966	7.19	18.62	6.68	3.11	2.27	0.62
1967	7.93	15.26	8.15	3.42	2.51	0.56
1968	7.68	14.73	6.45	3.45	2.63	0.63
1969	6.89	14.72	6.42	3.17	1.96	0.50
1970	8.19	13.79	6.77	2.95	2.75	0.61
1971	7.25	14.52	8.08	2.87	2.75	0.71
1972	7.10	15.37	7.51	2.35	2.56	0.67
1973	7.53	17.43	7.80	1.51	3.05	0.61
1974	6.54	15.47	6.82	1.80	2.96	0.66
1975	7.02	17.13	7.28	1.78	2.94	0.67
1976	6.58	18.36	7.75	1.59	2.72	0.57
1977	6.17	16.78	6.46	2.03	2.56	0.64
1978	5.95	15.81	6.50	2.07	2.86	0.53
1979	6.15	9.78	6.75	1.74	2.63	0.68
1980	5.69	9.88	6.78	2.03	3.89	0.64
1981	5.50	7.87	6.33	1.91	3.53	0.59
1982	5.47	13.50	6.59	1.74	3.60	0.75
1983	5.28	14.08	5.68	1.78	2.78	0.78
1984	5.65	14.22	6.06	2.16	2.29	0.88
1985	5.40	15.88	6.76	2.94	2.38	0.99

Table B.1: Output and Input Quantities by Year (concluded)

YEAR	INPUTS					
	FERTILIZER (Thousand Tons)			LABOR (000 Units)	ANIMAL LABOR (000's)	TRACTORS (Units)
	NITROGEN	P ₂ O ₅	K ₂ O			
1955	-	-	-	44,601.8	135.7	80
1956	-	-	-	45,614.0	136.9	84
1957	-	-	-	46,626.3	138.1	88
1958	-	-	-	47,638.5	139.2	92
1959	-	-	-	48,650.8	140.4	97
1960	-	-	-	49,663.1	141.5	103
1961	-	-	-	50,675.3	144.2	126
1962	-	-	-	50,887.5	146.9	148
1963	-	-	-	51,099.8	149.5	172
1964	-	-	-	51,312.1	152.2	199
1965	2.09	0.04	-	51,524.3	154.8	225
1966	3.13	0.12	0.003	51,736.5	157.5	309
1967	4.95	0.36	0.006	51,948.8	160.1	393
1968	5.70	1.09	0.062	52,161.1	162.8	477
1969	7.90	0.96	0.030	52,373.3	165.4	557
1970	7.58	0.92	0.030	52,585.6	168.1	637
1971	9.77	1.06	0.019	52,797.8	170.7	717
1972	10.92	1.39	0.037	53,010.0	173.4	786
1973	9.78	1.67	0.072	53,222.3	170.8	850
1974	10.29	1.73	0.058	55,345.7	168.2	924
1975	12.55	2.95	0.083	57,469.1	165.7	994
1976	14.47	3.33	0.071	59,592.4	163.1	1293
1977	15.53	4.46	0.165	61,715.8	161.0	1578
1978	19.22	5.29	0.130	63,839.1	158.8	1870
1979	22.91	6.45	0.262	65,962.5	156.7	2170
1980	22.85	6.39	0.275	68,085.9	154.5	2470
1981	23.42	6.36	0.590	70,209.2	152.3	2740
1982	26.59	7.46	0.700	72,332.6	150.2	3100
1983	25.62	7.30	0.820	74,456.0	148.1	3750
1984	26.19	8.83	0.710	76,579.3	145.9	4300
1985	32.99	9.82	0.930	78,702.7	143.8	4750

Table B.2: Output, Input, and TFP Indexes for Pakistan

YEAR	OUTPUT INDEXES			INPUT INDEXES			TFP INDEXES		
	LASP	F-C	TQ	LASP	F-C	TQ	LASP	F-C	TQ
1956	94.15	97.04	95.57	96.87	97.05	97.16	97.30	97.04	98.44
1957	97.39	97.13	97.75	98.35	98.32	98.36	99.02	98.76	99.37
1958	104.02	103.83	104.00	100.69	100.67	100.65	103.31	103.14	103.32
1959	100.78	100.93	100.28	101.61	101.57	101.52	99.18	99.35	98.76
1960	103.64	104.00	102.39	102.47	102.38	102.30	101.16	101.60	100.13
1961	111.50	112.07	109.58	104.88	104.78	104.64	106.39	107.04	104.85
1962	123.54	124.12	120.36	106.29	106.12	106.33	116.43	116.90	113.65
1963	121.45	122.16	117.49	107.20	107.12	106.79	113.30	114.09	110.07
1964	128.87	129.97	124.24	109.03	109.01	108.69	118.24	119.22	114.46
1965	127.06	127.54	120.07	110.19	109.59	110.79	114.93	115.93	107.90
1966	132.64	134.29	132.64	113.13	112.28	113.47	116.85	119.16	109.59
1967	152.80	157.44	139.18	116.97	115.94	117.15	130.44	135.52	118.08
1968	169.99	175.09	155.02	142.12	147.39	128.69	119.12	118.08	119.33
1969	185.82	190.77	166.74	121.20	119.74	120.99	152.26	157.81	135.93
1970	173.86	179.04	156.67	122.23	120.76	122.01	141.34	146.94	126.51
1971	181.41	188.69	165.03	124.59	122.72	123.97	144.45	152.11	131.06
1972	188.21	194.01	168.77	147.77	154.12	132.03	126.61	124.73	125.97
1973	200.81	208.20	179.10	127.22	125.84	127.02	157.69	164.62	139.37
1974	190.83	195.86	166.10	128.42	127.29	128.46	148.62	153.18	127.69
1975	206.05	211.96	178.91	132.89	131.89	133.01	155.24	160.25	133.12
1976	215.82	222.05	186.84	139.42	138.47	139.43	154.57	159.48	132.27
1977	222.07	230.19	192.51	144.39	143.20	144.07	153.29	159.55	131.72
1978	228.06	233.57	195.34	150.65	148.87	149.60	151.43	156.12	128.79
1979	246.62	253.82	210.06	157.46	154.51	155.14	156.86	163.16	133.29
1980	256.13	267.07	220.21	161.06	157.92	158.52	159.21	167.77	136.52

YEAR	OUTPUT INDEXES			INPUT INDEXES			TFP INDEXES		
	LASP	F-C	TQ	LASP	F-C	TQ	LASP	F-C	TQ
1981	272.03	281.94	231.42	165.90	162.73	163.91	164.11	171.64	139.23
1982	282.35	297.33	240.91	172.23	167.81	168.23	164.51	175.68	140.80
1983	249.54	258.55	205.68	178.79	173.12	173.37	141.96	149.93	118.31
1984	271.44	292.33	229.24	184.66	177.96	178.12	147.19	161.88	126.21
1985	284.27	308.74	240.97	193.50	183.59	183.62	147.17	165.39	128.27

Note: LASP = Laspeyres; F-C = Fisher-Chained; TQ = Tornqvist

Table B.3: TFP Indexes for Selected Provinces of Pakistan

YEAR	PUNJAB		SIND		NWFP	
	F-C	TQ	F-C	TQ	F-C	TQ
1956	97.41	98.64	98.12	99.86	94.07	95.47
1957	96.77	97.21	102.18	103.27	99.39	99.72
1958	103.02	102.79	105.15	106.27	100.16	100.09
1959	100.91	100.46	94.02	93.30	103.29	102.45
1960	101.76	100.80	100.79	97.86	102.44	101.76
1961	107.14	105.45	106.52	102.75	107.58	106.41
1962	119.38	116.53	115.40	110.42	111.53	109.90
1963	114.07	110.81	113.52	107.68	115.08	111.69
1964	121.37	117.62	116.99	110.53	116.18	111.01
1965	108.04	100.21	123.71	114.27	127.89	121.65
1966	117.46	107.67	120.32	110.82	122.89	113.63
1967	143.77	127.85	131.36	119.32	116.31	85.11
1968	150.54	133.74	150.91	134.09	131.58	103.69
1969	158.91	140.68	176.82	154.13	122.66	90.53
1970	142.83	125.20	176.85	154.24	110.49	84.41
1971	147.32	129.15	183.89	159.50	114.31	89.68
1972	147.54	128.55	188.32	163.03	117.97	91.34
1973	156.19	135.81	197.09	170.27	137.21	99.17
1974	151.22	130.90	165.79	138.45	138.38	99.59
1975	158.47	136.56	179.33	149.02	134.07	95.69
1976	157.22	135.81	180.25	149.76	130.09	91.94
1977	153.75	131.67	186.44	154.22	133.07	94.36
1978	154.96	132.62	176.40	145.92	125.99	89.73
1979	157.44	132.62	202.21	165.18	116.18	82.28
1980	166.43	139.68	205.91	166.67	108.45	76.27
1981	162.09	136.32	225.15	180.52	112.68	79.60
1982	166.04	137.90	224.92	178.77	124.12	86.70
1983	135.15	110.07	195.60	154.87	120.62	83.50
1984	156.23	124.01	201.31	158.21	114.03	79.83
1985	169.39	133.15	188.03	147.65	115.00	80.49

Note: F-C = Fisher-Chained Index; TQ = Tornqvist Index

APPENDIX C

Statistical Sources and Variable Descriptions

This appendix describes the variables used in the data set for this study. It describes their sources, units of measurement, and any necessary transformations.

C.1 Coverage

We covered all of the districts in Sind, Punjab, and the NWFP. These three provinces constitute the bulk of agricultural production in Pakistan. As far as possible, we used the original districts as they existed within their boundaries in 1955. Any new district created since was included in the parent district. This was done in order to maintain consistency among the observations and to allow meaningful comparisons through time. The districts that existed in 1955 are our observational units.

Each district was assigned a unique identification code in the data set. The code consists of a one-digit province identification number, which is the variable STATE, and a two-digit district number called DISTRICT. This classification system is summarized in Table C.1. It can easily be determined that the code 1 01 represents Attock, while 2 01 represents Khairpur. Combining these two variables, we create STDIST, which is a three-digit identification code, where Attock is represented by 101. The district of Karachi has been excluded from consideration due to its lack of agricultural production. Rawalpindi includes the present Islamabad district.

The data set covers agricultural production from the year 1955-56 to 1985-86, which is the last year for which we were able to obtain data. The variable YEAR stores a two-digit code indicating the calendar year of the observations.

Table C.1: State and District Identification Codes

PUNJAB (1)			
Attock (01)	Jhang (11)	Sahiwal (19)	Rawalpindi (02)
Mianwali (12)	Multan (20)	Jhelum (04)	Sialkot (14)
Muaffargarh (22)	Gujrat (06)	Gujanwala (15)	D.G. Khan (24)
Sargodha (07)	Sheikhupura (16)	Bahawalapur (28)	Faisalabad (09)
Bahawalnagar (29)	Lahore (17)	R.Y. Khan (30)	
SIND (2)			
Khairpur (01)	Nawabshah (05)	Tharpakkar (08)	Thatta (12)
Jacobabad (02)	Larkana (06)	Dadu (09)	Sukkur (03)
Sanghar (07)	Hyderabad (10)		
NWFP (3)			
Peshawar (01)	Abbottabad (05)	D.I. Khan (10)	Mardan (02)
Hazara (08)	Kohat (03)	Bannu (09)	

Table C.2: Crop Variables

Variable	Coverage
WHEAT	Total wheat
RICE	All rice, regardless of type
COTTON	All cotton, regardless of type
SUGAR	Refined sugar
BAJRA	
MAIZE	
JOWAR	
GRAM	
RAPEMUS	Rapeseed and mustard
TOBAC	Tobacco
BARLEY	
MUNG	
MAXWHT	High-yield varieties of wheat
BASRCE	Basmati rice
IRRIRCE	IRRI improved varieties of rice
PAKCTTN	Pak Upland cotton
DESCCTN	Desi or local cotton

C.2 Outputs

The data set contains data on the prices and quantities harvested of 12 major Pakistani crops. These crops are listed in the following table. The variables listed in the second panel of Table C.2 represent sub-varieties and improved varieties of the basic crops listed in the first panel.

As it is also necessary to distinguish between prices, quantities, and yields, the following notational conventions have been used. To represent a quantity, the prefix Q is attached to the variable name. Thus QGRAM represents the quantity of gram produced, measured in thousands of metric tons. The source of these data is the Agricultural Statistics of Pakistan, except for the year 1968. For that year, quantities were estimated for about half of the crops since the data was not available.

To represent output prices, the prefix P is attached to the variable name. Because of inconsistencies, wholesale prices from the Statistical Yearbooks are used rather than farm-gate prices. Wholesale prices are only available for certain key markets over the time period under investigation.

These key markets are:

SIND		
Sukkur (203)	Hyderabad (210)	Karachi (213)
PUNJAB		
Sargodha (107)	Lahore (117)	Multan (120)
Faisalabad (109)	Rawalpindi (102)	

Each district was assigned to a market on the basis of distance. This market provided the output prices. The code for the market is the same as the state-district identification code (STDIST). The variable is called MARKET and its possible values are given above with the market names.

The prefix Y indicates the yield of a given crop, calculated as quantity divided by area planted. Thus, for example, YDESCCTN indicates the yield of Desi cotton. The prefix YI before a crop name indicates the yield index. For example, YIGRAM is the yield index for gram. The yield index is normalized by the average for the first three years of the series, which in this case means

1955, 1956, and 1957. This average is the base of the index and is set equal to 1.0. Thus an index number of 2.0 indicates that the crop's yield in that particular year was twice the average of the first three years.

Finally, an aggregate output variable was constructed, using prices as the weights. The variable QCROPS is a weighted index of output quantities. PCROPS is an aggregate index of output prices, normalized to unity in the first year.

C.3 Inputs

Five factors of production have been considered; land, labour, tractors (mechanization), animal power, and fertilizer. For each variable, the data set includes observations on prices and quantities, by year and district.

The land data comes from various editions of the Agricultural Statistics of Pakistan, measured in thousands of hectares. The variable is denoted by the prefix A attached to the crop name. Thus ARICE is the area under rice cultivation. As there are virtually no data on the value of land, the price of land was set equal to 30% of the total input costs. While this is not the true value, based on our evidence we believe this to be a good approximation.

There is no single annual source reporting the number of farm laborers at the district level. It was therefore necessary to estimate this figure from two sources. The variable QLABOR represents the number of agricultural workers reported in the 1951, 1961, and 1981 Population Censuses. Since the 1972 Population Census data were not available, the Agricultural Censuses were used for comparison. The agricultural labor force from these 1972 and 1980 censuses, measured in thousands, is given by the variable AGLABOR. Interpolation is used to fill in the missing years. For each district, the ratio of the Agricultural Census workforce to the Population Census workforce was determined for the year 1980. This ratio was then imposed on the 1972 Agricultural Census to create a hypothetical 1973 Population Census. The missing observations of QLABOR were then found by interpolation.

There is also little direct data on agricultural wages. We do have the following estimates of daily wages in 1983-84 for selected districts, from a cost of production study.

Sargodha	20.5	Sahiwal	16.8	Sheikhupura	20.0
R.Y. Khan	22.5	Hyderabad	23.3	Sukkur	23.0

These wages were imposed throughout each of the districts' divisions, using the boundaries in effect in 1955. An index based on ILO data and industrial wages was used to adjust the wages over time. We assumed that laborers worked 188 days per year.

Our data on the tractor stock came from a variety of sources. When district level data was available, it was used directly. When only provincial data existed, we estimated the share of each district from different years. When no data was available, interpolation was used to fill in the missing values of QTRACTOR.

1955	8	1962	8	1969	10	1976	30	1983	100
1956	8	1963	10	1970	12	1977	36	1984	170
1957	8	1964	12	1971	13	1978	40	1985	170
1958	8	1965	11	1972	13	1979	45		
1959	8	1966	11	1973	23	1980	53		
1960	9	1967	9	1974	32	1981	78		
1961	9	1968	10	1975	30	1982	80		

The wholesale price of a 47hp tractor from the Statistical Yearbooks was used when available. This is a typical tractor in Pakistan. An index using FAO data was constructed to project the price into the past. These prices are reported in PTRACTOR. After we had determined the value of the tractor stock for each year, these values were scaled by the factor 0.25 to approximate annual expenditures on tractors.

Concise data on animal labor is only available for the few years in which an Agricultural Census or a Livestock Census was carried out. Straight interpolation was used to fill in the values of QANLAB for the intervening years.

An estimate of bullock prices was made for 1981. Using this and the price of maize, an index was computed for the estimated price of animal labour, called PANLAB. As with tractors, the value of the animal workforce was determined and scaled by a factor of 0.50 to estimate annual expenditures on animal labor.

District level data on fertilizer dates back to 1978. From 1965 to 1977, numbers are only available at the provincial level, so the average district shares were imposed on these provincial totals. The fertilizer types included in the study are NITRO, P2O5, and K2O. The Q prefix indicates metric tons of each nutrient. Fertilizer prices are set by the government and were obtained from official sources. The prefix P indicates the price per nutrient metric ton, measured in rupees.

Once the input prices and quantities had been estimated, aggregate input quantity and price indexes were constructed. QINPUT is the input index, where input prices are used as share weights. PINPUT is the aggregate input price index. Both indexes are normalized to unity in the year 1955. The variables SHFERT, SHLABOR, SHTRAC, SHANLAB, and SHLAND are the estimated cost shares for fertilizer, labor, tractors, animal labor, and land, respectively.

C.4 Infrastructure

A variety of sources reported irrigation by district in the Punjab, but there were fewer sources for Sind and NWFP. Linear interpolation was used to fill in the missing data. Road length data were reported in the Statistical Yearbooks of Pakistan and in the Road Transport Statistics. Data on the average distance to market were obtained from Village and Mauza Statistics.

REFERENCES

- Addison, L.E.; J.W. Litchfield; and J.V. Hansen (1976): "Managing Growth and Change in an R&D Organization: The Role of Dynamic Modelling." R & D Management, 6.
- Allen, D.H., and T.F.N. Johnson (1970): "Optimal Selection of a Research Portfolio Under Uncertainty." The Chemical Engineer, 241.
- Anderson, J.R. (1972): "Allocation of Resources in Agricultural Research." Journal of the Australian Institute of Agricultural Science, 36.
- Araji, A.A.; R.J. Sim; and R.L. Gardner (1978): "Return to Agricultural Research and Extension Programs: An Ex Ante Approach." American Journal of Agricultural Economics, 60.
- Ardito-Barletta, N. (1970): "Costs and Social Benefits of Agricultural Research in Mexico." Unpublished Ph.D. dissertation, University of Chicago.
- Arndt, T.; D. Dalrymple; and V.W. Ruttan, eds. (1977): Resource Allocation and Productivity in National and International Agricultural Research. Minneapolis: University of Minnesota Press.
- Avila, A.F.D. (1981): "Evaluation de la Recherche Agronomique au Bresil: Le Cas de la Recherche Rizicole de l'IRGA ou Rio Grande do Sul." Unpublished Ph.D. dissertation, Fac. de Droit et Sci. Econ., Montpellier.
- Ayer, H.W.; and G.E. Schuh (1972): "Social Rates of Return and Other Aspects of Agricultural Research: The Case of Cotton Research in Sao Paulo, Brazil." American Journal of Agricultural Economics, 54:557-569.
- Ayers, C.H.S. (1985): "The Contribution of Agricultural Research to Soybean Productivity in Brazil." Unpublished Ph.D. dissertation, University of Minnesota.
- Binswanger, H.P. (1975): "The Use of Duality Between Production, Profit, and Cost Functions in Applied Econometric Research." Occasional Paper No. 10, Economics Department, International Crops Research Institute for the Semi-Arid Tropics.
- Birkhaeuser, D.; R.E. Evenson; and G. Feder (1989): "The Economic Impact of Agricultural Extension: A Review." Discussion Paper No. 567, Economic Growth Center, Yale University.
- Boserup, E. (1965): The Conditions of Agricultural Growth. Allen & Unwin.
- Boserup, E. (1981): Population and Technical Change. Chicago: University of Chicago Press.
- Bredahl, M.; and W.L. Peterson (1976): "The Productivity and Allocation of Research: U.S. Agricultural Experiment Stations." American Journal of Agricultural Economics, 58:684-692.

Cline, P.L. (1975): "Sources of Productivity Change in United States Agriculture." Unpublished Ph.D. dissertation, Oklahoma State University.

Da Cruz, E.R.; and R.E. Evenson (1989): "Research, Extension, Output Supply, and Factor Demand in Brazilian Agriculture." Discussion Paper No. , Economic Growth Center, Yale University.

Diewert, W.E. (1973): "Functional Forms for Profit and Transformation Functions." Journal of Economic Theory, 6:284-316.

Davis, J.S. (1979): "Stability of the Research Production Coefficient for U.S. Agriculture." Unpublished Ph.D. dissertation, University of Minnesota.

Duncan, R.C. (1972): "Evaluating Returns to Research in Pasture Improvement." Australian Journal of Agricultural Economics, 16:153-168.

Echeverria, R.G.; G. Ferreira; and M. Debezies (1988): Retornos a la Inversion en Generacion y Transferencia de Tecnologia Agropecuaria en Uruguay: el Caso del Arroz, Montevideo: CIAAB.

Evenson, R.E. (1968): "The Contribution of Agricultural Research and Extension to Agricultural Production." Unpublished Ph.D. dissertation, University of Chicago.

Evenson, R.E. (1982a): "The Green Revolution in North Indian Agriculture: Ex Post Assessment." Mimeo, Economic Growth Center, Yale University.

Evenson, R.E. (1982b): "Observations on Brazilian Agricultural Research and Productivity." Revista de Economia Rural, 20:367-401.

Evenson, R.E. (1983): "Productivity Decomposition: A Method for the Evaluation of Agricultural Systems Impacts." In R.E. Evenson, E.R. Da Cruz, A.F. Diaz Avila, and V. Palma, eds.: Evaluation of Agricultural Research: Methodologies and Brazilian Applications. Joint Publication of A Empresa Brasileira de Pesquisa Agropecuaria and the Economic Growth Center, Yale University.

Evenson, R.E. (1987): "The International Agricultural Research Centers: Their Impact on Spending for National Agricultural Research Extension." Study Paper No. 22, Consultative Group on International Agricultural Research. Washington, D.C.: The World Bank.

Evenson, R.E. (1988): "Human Capital and Agricultural Productivity Change." Discussion Paper No. 566, Economic Growth Center, Yale University.

Evenson, R.E. (1989): "Productivity Decomposition in Brazilian Agriculture." Unpublished manuscript, Economic Growth Center, Yale University.

Evenson, R.E. (1991): "Technology, Infrastructure, Output Supply, and Factor Demand in North Indian Agriculture." In R.E. Evenson and C.E. Pray, eds.: Research, Productivity and Incomes in Asian Agriculture. Ithaca, N.Y.: Cornell University Press.

Evenson, R.E.; and E. Da Cruz (1989a): "Technology Transfer (Spillover) Methods of Analysis with Examples From Brazil." Discussion Paper No. , Economic Growth Center, Yale University.

Evenson, R.E.; and E. Da Cruz (1989b): "The Economic Impacts of the PROCISUR Program: An International Study." Discussion Paper No. , Economic Growth Center, Yale University.

- Evenson, R.E.; and P. Flores (1978): Economic Consequences of New Rice Technology in Asia. Los Banos, Philippines: International Rice Research Institute.
- Evenson, R.E.; and D. Jha (1973): "The Contribution of Agricultural Research Systems to Agricultural Production in India." Indian Journal of Agricultural Economics, 28:212-230.
- Evenson, R.E.; M.A. Judd; and J.K. Boyce (1983): "Investing in Agricultural Supply." Discussion Paper No. 442, Economic Growth Center, Yale University.
- Evenson, R.E.; and Y. Kislev (1973): "Research and Productivity in Wheat and Maize." Journal of Political Economy, 81:1309-1329.
- Evenson, R.E.; and J. McKinsey (1991): "Research, Extension, Infrastructure, and Productivity Change in Indian Agriculture." In R.E. Evenson and C.E. Pray, eds.: Research, Productivity and Incomes in Asian Agriculture. Ithaca, N.Y.: Cornell University Press.
- Evenson, R.E.; and J. Quezon (1991): "Technology, Infrastructure, Output Supply, and Factor Demand in Philippine Agriculture." In R.E. Evenson and C.E. Pray, eds.: Research, Productivity and Incomes in Asian Agriculture, Ithaca, N.Y.: Cornell University Press.
- Feder, G.; L. Lau; and R. Slade (1987): "Does Agricultural Extension Pay? The T & V System In North West India." American Journal of Agricultural Economics, 69:678-686.
- Feder, G.; and R. Slade (1986a): "The Acquisition of Information and the Adoption of New Technology." American Journal of Agricultural Economics, 66:312-320.
- Feder, G.; and R. Slade (1986b): "Methodological Issues in the Evaluation of Extension Impacts." In G. Jones, ed.: Investing in Rural Extension: Strategies and Goals, Elsevier Applied Sciences Publishers.
- Flores, P.; R.E. Evenson; and Y. Hayami (1978): "Social Returns to Rice Research in the Philippines: Domestic Benefits and Foreign Spillover." Economic Development and Cultural Change, 26:591-607.
- Griliches, Z. (1958): "Research Costs and Social Returns: Hybrid Corn and Related Innovations." Journal of Political Economy, 66:419-431.
- Griliches, Z. (1960a): "Measuring Input in Agriculture: A Critical Survey." Journal of Farm Economics, 42:1411-1429.
- Griliches, Z. (1960b): Technology, Education and Productivity. New York: Basil Blackwell.
- Griliches, Z. (1964): "Research Expenditures, Education, and Aggregate Agricultural Production Functions." American Economic Review, 54:961-974.
- Hayami, Y.; and V. Ruttan (1971): Agricultural Development: An International Perspective. Baltimore: John Hopkins University Press.
- Hayami, Y.; J. Ardila; A. Rocha; and G. Trujillo (1977): "Productivity of Agricultural Research Systems in Japan." In T.M. Arndt, D.G. Dalrymple, and V.W. Ruttan, eds.: Resource Allocation and Productivity in National and International Agricultural Research. Minneapolis: University of Minnesota Press.

Herd, R.; J. O'Toole; W.R. Coffman; H. Kauffman; and R.E. Evenson (1979): "Risk and Uncertainty as Factors in Crop Improvement Research." In J. Roumasset, ed.: Risk Uncertainty and Agricultural Development. Los Banos, Philippines: SEARCA.

Hertford, R.; J. Ardila; A. Rocha; and G. Trujillo (1977): "Productivity of Agricultural Research Systems in Colombia." In T.M. Arndt, D.G. Dalrymple, and V.W. Ruttan, eds.: Resource Allocation and Productivity in National and International Agricultural Research. Minneapolis: University of Minnesota Press.

Hines, J. (1972): "The Utilization of Research for Development: Two Case Studies in Rural Modernization and Agriculture in Peru." Unpublished Ph.D. dissertation, Princeton University.

Jamison, D.T.; and L.J. Lau (1982): Farmer Education and Farm Efficiency. Baltimore: Johns Hopkins University Press.

Jorgenson, D.W.; and Z. Griliches (1967): "The Explanation of Productivity Change." Review of Economic Studies, 34:249-283.

Judd, M.A.; J.K. Boyce; and R.E. Evenson (1986): "Investing in Agricultural Supply: The Determinants of Agricultural Research and Extension Investment." Economic Development and Cultural Change, 35:77-113.

Kahlon, A.S.; H.K. Bal; P.N. Saxena; and D. Jha (1977): "Returns to Research in India." In T.M. Arndt, D.G. Dalrymple, and V.W. Ruttan, eds.: Resource Allocation and Productivity in National and International Agricultural Research. Minnesota: University of Minnesota Press.

Knutson, M.; and L.G. Tweeten (1979): "Toward an Optimal Rate of Growth in Agricultural Production Research and Extension." American Journal of Agricultural Economics, 61:70-76.

Latimer, R. (1964): "Some Economic Aspects of Agricultural Research and Extension in the U.S." Unpublished Ph.D. dissertation, Purdue University.

Martinez, J.C.; and G. Sain (1983): "The Economic Return to Institutional Innovations in National Agricultural Research: On-Farm Research in IDIAP Panama." CIMMYT Economics Program Working Paper 04/83, CIMMYT, Mexico City.

Nagy, J.G.; and W.H. Furtan (1978): "Economic Costs and Returns for Crop Development Research: The Case of Rapeseed Breeding in Canada." Canadian Journal of Agricultural Economics, 26:1-14.

Nagy, J.G. (1990): "Returns from Agricultural Research and Extension in Wheat and Maize: The Use of Pakistani On-Farm Yield Constraints Data." The Pakistan Development Review, 23.

Nagy, J.G. (1991): "Returns From Agricultural Research and Extension in Wheat and Maize in Pakistan." In R.E. Evenson and C.E. Pray, eds.: Research, Productivity and Incomes in Asian Agriculture. Ithaca, N.Y.: Cornell University Press.

Norton, G.W.; and J.S. Davis (1981): "Evaluating Returns to Agricultural Research: A Review." American Journal of Agricultural Economics, 63:685-699.

Peterson, W.L. (1967): "Returns to Poultry Research in the United States." Journal of Farm Economics, 49:656-669.

Peterson, W.L.; and J.C. Fitzharris (1977): "The Organization and Productivity of the Federal State Research System in the United States." In T.M. Arndt, D.G. Dalrymple, and V.W. Ruttan, eds.: Resource Allocation and Productivity in National and International Agricultural Research, Minneapolis: University of Minnesota Press.

Pray, C.E. (1978): "The Economics of Agricultural Research in British Punjab and Pakistan Punjab, 1905-1975." Unpublished Ph.D. dissertation, University of Pennsylvania.

Pray, C.E. (1979): "The Economics of Agricultural Research in Bangladesh." Bangladesh Journal of Agricultural Economics, 2:1-36.

Pray, C.E.; and Z. Ahmed (1991): "Research and Agricultural Productivity Growth in Bangladesh." In R.E. Evenson and C.E. Pray, eds.: Research, Productivity and Incomes in Asian Agriculture, Ithaca, N.Y.: Cornell University Press.

Salmon, D.C. (1991): "Rice Productivity and Returns to Rice Research in Indonesia." In R.E. Evenson and C.E. Pray, eds.: Research Productivity and Incomes in Asian Agriculture, Ithaca, N.Y.: Cornell University Press.

Schmitz, A.; and D. Seckler: "Mechanized Agriculture and Social Welfare: The Case of the Tomato Harvester." American Journal of Agricultural Economics, 52:569-577.

Scobie, G.M.; and R.T. Posada (1978): "The Impact of Technological Change on Income Distribution: The Case of Rice in Colombia." American Journal of Agricultural Economics, 60:85-92.

Tang, A. (1963): "Research and Education in Japanese Agricultural Development." Economic Studies Quarterly, 13:27-41.

Shultz, T. W. (1954): The Economic Organization of Agriculture. New York: McGraw-Hill.

Welch, F. (1970): "Education in Production." Journal of Political Economy, 78:32-59.

Wennergren, E.B.; and M.D. Whittaker (1977): "Social Returns to U.S. Technical Assistance in Bolivian Agriculture: The Case of Sheep and Wheat." American Journal of Agricultural Economics, 59:565-569.

Yrarrazaval, R.; R. Navarrete; and V. Valdivivia (1982): "Costos y Beneficios Sociales de los Programas de Mejoramiento Varietal de Trigo y Maiz en Chile." In M. Elgueta and E. Venezian, eds.: Economica y Organizacion de la Investigacion Agropecuaria. Santiago, Chile: INIA.