

Bacchini, Fabio; Bontempi, Maria Elena; Golinelli, Roberto; Jona Lasinio, Cecilia

Working Paper

ICT and Non-ICT investments: short and long run macro dynamics

Quaderni - Working Paper DSE, No. 956

Provided in Cooperation with:

University of Bologna, Department of Economics

Suggested Citation: Bacchini, Fabio; Bontempi, Maria Elena; Golinelli, Roberto; Jona Lasinio, Cecilia (2014) : ICT and Non-ICT investments: short and long run macro dynamics, Quaderni - Working Paper DSE, No. 956, Alma Mater Studiorum - Università di Bologna, Dipartimento di Scienze Economiche (DSE), Bologna, <https://doi.org/10.6092/unibo/amsacta/4050>

This Version is available at:

<https://hdl.handle.net/10419/159795>

Standard-Nutzungsbedingungen:

Die Dokumente auf EconStor dürfen zu eigenen wissenschaftlichen Zwecken und zum Privatgebrauch gespeichert und kopiert werden.

Sie dürfen die Dokumente nicht für öffentliche oder kommerzielle Zwecke vervielfältigen, öffentlich ausstellen, öffentlich zugänglich machen, vertreiben oder anderweitig nutzen.

Sofern die Verfasser die Dokumente unter Open-Content-Lizenzen (insbesondere CC-Lizenzen) zur Verfügung gestellt haben sollten, gelten abweichend von diesen Nutzungsbedingungen die in der dort genannten Lizenz gewährten Nutzungsrechte.

Terms of use:

Documents in EconStor may be saved and copied for your personal and scholarly purposes.

You are not to copy documents for public or commercial purposes, to exhibit the documents publicly, to make them publicly available on the internet, or to distribute or otherwise use the documents in public.

If the documents have been made available under an Open Content Licence (especially Creative Commons Licences), you may exercise further usage rights as specified in the indicated licence.



<https://creativecommons.org/licenses/by-nc/3.0/>



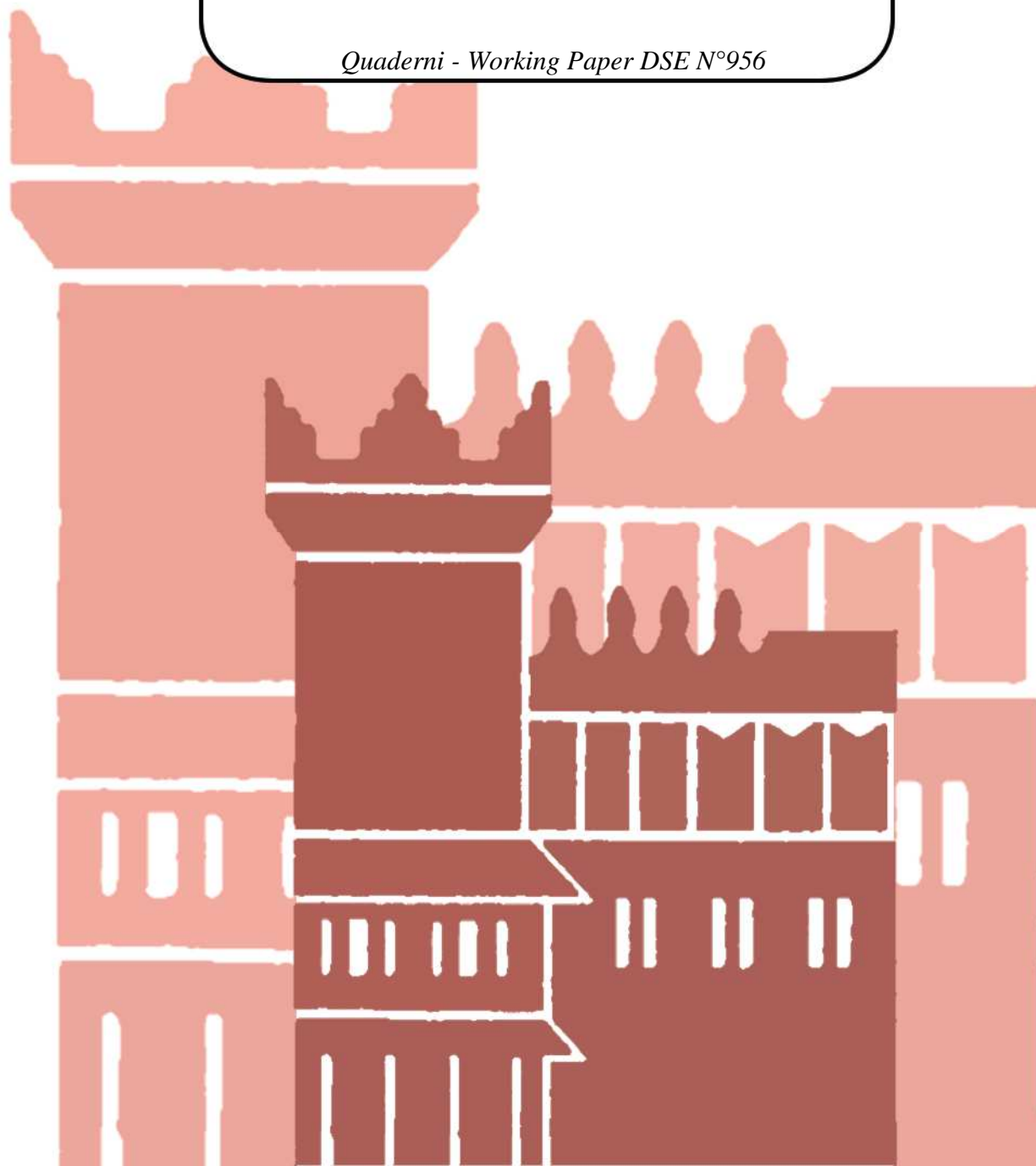
ISSN 2282-6483

Alma Mater Studiorum - Università di Bologna
DEPARTMENT OF ECONOMICS

**ICT and Non-ICT investments:
short and long run macro dynamics**

Fabio Bacchini
Maria Elena Bontempi
Roberto Golinelli
Cecilia Jona Lasinio

Quaderni - Working Paper DSE N°956



ICT and Non-ICT investments: short and long run macro dynamics

Fabio Bacchini^{*}, Maria Elena Bontempi^{**}, Roberto Golinelli^{**}, Cecilia Jona Lasinio^{*}

16 July 2014

Abstract

In this paper, we model business investment distinguishing between ICT (communication equipment, hardware and software) and Non-ICT (machinery and equipment, and non-residential buildings) components and taking into account asset specific characteristics potentially affecting the reactivity of capital accumulation over the business cycle.

Business investment and ICT and Non-ICT assets are estimated within a VECM model to test, in a unique framework, the assumptions of the flexible accelerator model (Clark, 1944, and Koyck, 1954) and of the neoclassical model of Hall and Jorgenson (1967), as well as how financial constraints and uncertainty influence investment behaviour (Hall and Lerner, 2010, and Bloom, 2007).

Our findings suggest that the long-run relationship with standard macro determinants (output and user cost) is verified for aggregate business capital stock as well as for individual Non-ICT assets but not for ICT. In the short run, liquidity is a key determinant of investment behaviour independently of the asset type. In the long-run, uncertainty significantly affects ICT. Finally, the results of the counterfactual exercises over the latest Italian recession support the idea that ICT is a key policy variable to foster the economic recovery.

JEL Classification: C52, C53, E22, E50

Keywords: Evaluation of Macro models, ICT Investments, Uncertainty, Liquidity constraints.

(^{*}) Division of Economic Studies and Econometric Forecasts, Italian Institute of Statistics, ISTAT, Rome.

(^{**}) Department of Economics, University of Bologna, Italy.

Corresponding author: mariaelena.bontempi@unibo.it

1. Introduction¹

Since the seminal work of Clark (1917) up to the most recent contributions of Gaiotti (2013) and Bachmann et al. (2013), the macro and micro economic literature have tried to identify the main factors influencing capital accumulation given its prominent role in boosting economic growth.

Aggregate demand and consequently short term growth are reduced by low investment that in turn negatively affects medium term growth via its impact on capital stock. In a recent analysis by Buti and Mohl (2014) it is shown that investment is definitely the main driver of the growth differential between the Eurozone and the US accounting for 20% and 21% of real GDP respectively. They estimate that a 5 percentage point reduction in the investment rate leads to a reduction of potential growth of around 0.5%. As a consequence, the design of policy measures to foster the most reactive components of aggregate investment turns out to be especially important in times of economic crisis.

Nevertheless, today there is still a weak empirical support for an inclusive macro or micro theoretical model able to provide effective policy suggestions to stimulate heterogeneous investment expenditures. At the macro level, especially, little is known about the determinants of asset specific business investment such as Information and Communication Technologies (ICT) as compared to other non-technological assets (machinery and equipment and non-residential buildings). Particularly, there is relatively limited work on modelling ICT investment (De Arcangelis et al., 2004; and Guerrieri et al, 2011). But the increased economic relevance of innovation and digitalization as major drivers of sustainable economic growth makes the understanding of short and long run determinants of ICT investment a strategic policy issue. Moreover modelling asset specific investment dynamics is even more relevant for policy purposes since ICT and physical capital are driven by different forces. Firm level empirical analysis reveals that both ICT and physical capital investment are strongly demand-driven, but ICT investment adjusts more rapidly to a given demand shock. Further, ICT capital is characterized by above normal returns: evidence for European countries shows that a 10% increase in ICT capital is related with a 0.23% increase in firm's productivity (Van Reenen et al, 2010). This suggests that programmes stimulating ICT investment may be beneficial for counter-cyclical policies.

In this paper, we model aggregate level as well as ICT and Non-ICT investments adopting a macro perspective. We test the empirical performance of structural investment models in a Vector Error Correction Model (VECM)² where we jointly evaluate the assumptions of the flexible accelerator model (Clark, 1944, and Koyck, 1954), and of the neoclassical model of Hall and Jorgenson (1967), as well as the role of financial constraints and uncertainty (Hall and Lerner, 2010, and Bloom, 2007) in determining investment

¹ Paper presented at the DIW Macroeconometric Workshop 2013, Berlin, November 29-30. We are grateful to Giuseppe De Arcangelis, Adrian Pagan, Carmine Pappalardo, Francesco Zollino, and to participants of the workshop and of seminars in ISTAT for suggestions; the usual disclaimers apply.

² The VECM approach is a strategy to develop VAR-based structural models for policy purposes on the basis of their ability of accounting for the features and regularities of time series data (Qin, 2011).

behaviour. We also check for the existence of complementary effects between different types of investments. To our knowledge, this paper offers an original contribution to the macroeconomic modelling of investment as well as to the ICT literature adopting a novel approach to model ICT and Non-ICT investment behaviour.

In the analysis, we make two core assumptions: the actual capital stock is dynamically related with the determinants of the desired stock (Caballero, 1999); and ICT and non-ICT capital may incur in different adjustment costs thus responding differently to macroeconomic shocks. The second hypothesis is based on the findings by Bloom (2007) suggesting that investment in knowledge capital (R&D) typically incurs flow adjustment costs, while investment in physical capital usually deserves stock adjustment costs, thus implying a different dynamics under uncertainty.

We test our approach on Italian business investment and capital stock by asset over the period 1980-2012. Our empirical results support the assumption that ICT and Non-ICT respond differently to macroeconomic fluctuations and that both aggregate business capital stock and its Non-ICT components (machinery and equipment, and non-residential) are cointegrated. But, we do not find any evidence of a long run relationship for ICT capital *stock* nor for any of its main components (communication equipment, hardware and software). This finding, coupled with the evidence of the existence of a cointegration relationship for ICT *investment* and its components, reinforces the hypothesis that ICT, as other knowledge based assets (R&D), incurs in flow adjustment costs consistently with the evidence in Bloom(2007).³

Particularly, we find that the flexible neoclassical model can explain the long-run dynamics of Non-ICT capital, while ICT investment flows are driven by liquidity constraints, uncertainty and R&D. Interestingly, financial constraints are a key determinant for short run investment decisions independently of the asset characteristics. The same holds for output in the long run.

Finally, we perform a counterfactual exercise in the framework of the Macroeconometric model of the Italian statistical institute (MeMo-It) to test our approach on the Italian data in 2008-2013. The analysis suggests the following: a lower level of uncertainty and better financial conditions could have accounted for a cumulate increase of nearly 5% in total business investment with respect to its level in 2013, and 1.2% in capital stock, thus increasing the GDP by 0.4%. ICT investment is the main driver of this result.

The paper is structured as follows. Section 2 surveys the basics of the macro and micro theoretical and empirical literature on investment models. Section 3 illustrates our model and empirical strategy, and section 4 shows our empirical results. Section 5 is focused on policy implications while section 6 concludes.

2. Modelling investment expenditure: macro and micro findings

Very few studies have analysed ICT investment determinants and most of them focused on factors influencing ICT adoption in small and medium enterprises (Consoli, 2012). Traditionally, ICT capital accumulation has been widely investigated in the economic growth literature to clarify its impact on

³ Few papers have tried to assess the complementarity between ICT and R&D with opposite results (Van Leeuwen et al. 2009, Cerquera and Klein, 2008).

productivity growth (Jorgenson and Stiroh, 1999; Jorgenson, 2001). More recently, O'Mahony and Vecchi (2005) and Venturini (2009) look at the long-run relationship between ICT capital and output growth, using panel cointegration techniques but with the goal of quantifying the impact of ICT capital accumulation on productivity growth.

The accelerator model of Clark (1917) and the neoclassical intertemporal optimisation model of Jorgenson (1963) have been the benchmark models to explain aggregate investment behaviour.

Investment decisions have short- and long-run characteristics that have to be taken into account when modelling investment behaviour (Bernanke, 1983). Generally, macro theoretical models assume a long run perspective focusing on the idea that an investment occurs when expected returns over the life of the project exceed its costs (Hall and Jorgenson, 1967; Eisner, 1967; Tobin and Brainard, 1977).

The macro structural models were empirically tested since the beginning of the 1970s. Clark (1979) provided an extensive analysis of the output-based and security-value models using U.S. macro data. He found that a good explanation of factors influencing investment in machinery and equipment can be obtained adopting the accelerator model. Few years later Gordon and Veitch (1986) went back to the standard approach to estimate structural investment equations demonstrating that since economic aggregates play multiple roles in explaining investment behaviour it is possible only to estimate reduced form equations (Chirinko, 1983).

The modest empirical performance of macroeconomic models and the need to analyze investment properties at higher frequencies determined a shift from macro to micro data analysis (Caballero, 1999). However, as largely demonstrated, the most popular empirical implementation, the q -model of Brainard and Tobin (1968), and Tobin (1969), has a low performance since it produces estimated coefficients for the Q variable (the measured shadow value of capital) which imply unrealistically high marginal adjustment costs and therefore implausibly slow adjustment speeds (Whited, 1994). The q -model is seriously misspecified because it does not allow for market imperfections (Hubbard, 1998), non-convex adjustment costs (Caballero, 1999), and fixed adjustment costs and irreversibility (Bertola and Caballero, 1994, Caballero et al., 1995, and Cooper and Haltiwanger, 2006) which may differently affect individual capital inputs and be more relevant for intangibles than for tangibles, or for buildings than for equipment.⁴ So, aggregation of capital inputs fails to consider that capital is heterogeneous and that firms use many types of capital assets in the production process. The assumption of capital homogeneity might be responsible also for the poor empirical performance of the neoclassical inter-temporal optimization investment model (Chirinko, 1993).

⁴ A further problem derives from difficulties in measuring average Q as the ratio of the stock market value of the firm to the replacement cost of its assets. The book value of a company usually does not capture intangibles: the expenditures for R&D, advertising, and the like are expensed rather than treated as assets, even though they are expected to yield future profits. And if stock market is not strongly efficient a firm's market value can differ from its fundamental value because the stock market fails to properly value tangibles and, to a higher extent, intangibles (Bond and Cummins, 2000).

A possible solution to deal with capital heterogeneity is that of relying on the structural model based on the Euler equation which can be extended more straightforwardly than the q -model to the case of more than one quasi-fixed factor (Bontempi et al., 2004). This approach shows that together with dynamics, output and the user cost of capital, other determinants are important for investments.

As noted by Pindyck (1991), irreversible investment is especially sensitive to uncertainty about future cash flows, interest rates, or the ultimate cost of the investment. The theoretical relationship between uncertainty and investment is ambiguous: predictions are different according to the assumptions on adjustment costs, firms' profit function and managers' or investors' utility functions. As we move away from perfect competition and constant returns to scale towards a concave marginal revenue product of capital and asymmetric adjustment costs (irreversibility), the relationship is supposed to be negative (Bernanke, 1983, McDonald and Siegel, 1986, Pindyck, 1988, Bertola, 1988, Dixit and Pindyck, 1994). The empirical evidence based on micro-level data is however prevalently focused on tangible investments (Leahy and Whited, 1996, Guiso and Parigi, 1999, Bloom et al., 2007, Bontempi et al., 2010, Bianco et al., 2013, Kang et al., 2014; for a survey Carruth et al., 2000, and Greasley and Madsen, 2006) but there are few exceptions looking at R&D and uncertainty: Goel and Ram (2001) on a panel of OECD countries, Czarnitzki and Toole (2007, 2011, 2013) on German firms, Stein and Stone (2012) on US firms, and Bontempi (2014) on Italian firms. Since the effect of uncertainty is usually negative, if a policy goal is to stimulate investment, a stable environment and policy credibility may be more important than tax incentives or interest rates.

The negative effect of uncertainty on investment might proxy for credit constraints and/or agency costs: inherently riskier firms may find it more difficult to finance their spending and hence they may plan a lower amount of investments. Therefore, capital market imperfections and the role of internal funds are shown to be relevant in the literature on physical capital, since Fazzari et al. (1988) to Bond and Meghir (1994). Investment in R&D is usually considered even more affected than tangibles by financial constraints (e.g. Himmelberg and Petersen, 1994, Czarnitzki and Hottenrott, 2009). Hall and Lerner (2010) describe some of the unique characteristics of R&D investment that could explain why external finance for R&D might be more expensive than internal finance. In the empirical analysis we implicitly assume that the same might be true for ICT.

3. The empirical approach

Our empirical strategy hinges from different macro and micro theoretical models to identify short and long run determinants of technological and physical investment expenditure. We examine the characteristics of investment decisions distinguishing between aggregate (total business expenditure, *agg*) Non-ICT (machinery and equipment, *me* and non-residential, *nres*), and ICT assets (*ict*)⁵.

⁵ Several empirical studies have been focused on traditional assets, such as machinery and equipment, to observe their relation with the business cycle (see e.g. Lee and Rabanal, 2010). However to our knowledge, the empirical evidence about asset specific investment determinants at macro level is scant.

According to the flexible accelerator model (Clark, 1944, and Koyck, 1954) investments can be represented as :

$$I_t^j = \sum_{k^j=1}^{n^j} \beta_k^j \Delta K_{t-k}^{*j} \quad (1)$$

where I^j is the investment, K^{*j} is the desired stock of capital, and β^j are parameters while superscripts $j = agg, me, nres,$ and ict denote different asset types.

Given that K^{*j} is unobservable, we can define it (Eisner, 1969) as a function of income and substitution effects, and the latter are measured by the neoclassical cost of capital:

$$K_t^{*j} = \alpha_0^j Y_t^{\phi_1^j} UC_t^{\phi_2^j} \quad \text{or, in logs} \quad k_t^{*j} = a_0^j + \phi_1^j y_t + \phi_2^j uc_t^j \quad (2)$$

where Y is the output, ϕ^j are parameters, and UC^j is the cost of capital, which can be defined on the basis of the classical Hall and Jorgenson (1967) formula as (see e.g. Caballero, 1994):

$$UC_t^j = \left(R_t^j + \delta_t^j - \pi_t^j + \psi^j \right) \left(\frac{1 - c_t}{1 - \tau_t} \right) \frac{P_t^j}{P_t} \quad (3)$$

where R_t^j is the cost of the borrowing; δ_t^j is the depreciation rate, π_t^j is the rate of change of investment prices; ψ^j is an arbitrary risk premium; c_t is the rate of investments' subsidies; τ_t is the corporate tax rate; P_t^j is the price of investment in good j , and P_t is the product price.

The accelerator and the neoclassical models are nested in the general model obtained by substituting equation (2) in (1), according to alternative restrictions on the ϕ parameters. If $\phi_1^j = 1$ and $\phi_2^j = 0$ we have the accelerator model; if $\phi_1^j = 1$ and $\phi_2^j = -1$ we have the flexible neoclassical model of Hall and Jorgenson (1967).

Even though k_t^{*j} is not observable, we can model k_t^j as trying to keep pace with it. Thus, the differences between these two variables should only be transitory (see for example Caballero, 1999). Let

$$k_t^j = k_t^{*j} + u_t^j \quad (4)$$

where u_t^j is the residual measuring transitory discrepancies due to adjustment costs. Substituting (2) in (4) we obtain the traditional static relationship where the determinants of the desired capital stock explain directly its actual realizations

$$k_t^j = a_0^j + \phi_1^j y_t + \phi_2^j uc_t^j + u_t^j \quad (5)$$

The empirical literature suggests that uncertainty and financial constraints might be relevant to explain especially short-run capital fluctuations (Hubbard, 1998, Bloom et al. 2007, Gaiotti, 2013).⁶ Therefore transitory discrepancies between desired and actual capital stock can be modelled as a function of

⁶ Among macro papers, de Bondt and Diron (2008) find that financing constraints are relevant for aggregate investment. The findings in Parigi and Siviero (2001) reveal the importance of business confidence (interpreted as a measure of expectations on accumulation and of uncertainty) to determine investment decisions.

liquidity constraints (*liq*), uncertainty (*unc*) and a miscellanea of other effects, v_t^j , which are possibly autocorrelated because of the omitted dynamics generated by the adjustment costs:

$$u_t^j = f^j(liq_t, unc_t) + v_t^j \quad (6)$$

However, both equations (5) and (6) are unavoidably mixed in the data generation process. Thus to explore long- and short-run fluctuations in a comprehensive framework, we adopt the Vector Error Correction Model (VECM) approach of Johansen (1995). In this context, we can cope with the issues of estimating the number of long-run relationships (i.e. the cointegration rank), and of testing for the weak exogeneity of a subset of variables in a multivariate framework, where all the variables of interest are *a priori* endogenous.

The Johansen approach is sketched by the following general VECM representation (for simplicity we omit the superscript j):

$$\Delta Z_t = \Gamma_0 C_t + \sum_{k=1}^{p-1} \Gamma_k \Delta Z_{t-k} + \pi(\phi' Z_{t-1}) + \varepsilon_t \quad (7)$$

where: Z is the $(n \times 1)$ vector of n I(1) or I(0) variables explained by the system, and Δ is the first-difference operator, C is the $(d \times 1)$ vector of d deterministic terms (such as intercept and linear trend), Γ_0 is the corresponding $(n \times d)$ matrix of parameters, and p is the lag-order of the underlying unrestricted VAR, Γ_k are the p $(n \times n)$ matrixes of parameters measuring the short-run fluctuations on the basis of lagged changes of the variables, $\phi' Z_{t-1}$ is the $(r \times 1)$ vector of stationary (i.e. cointegrated of rank r) long-run level-relationships among the variables of interest, and ϕ is the $(n \times r)$ matrix of cointegration parameters, π is the $(n \times r)$ matrix of loading factors (measuring the speed of adjustment towards the long-run/target relationships among the variables in levels) and ε is the $(n \times 1)$ vector of normal white noise stochastic errors.

To model aggregate capital stock we define the vector of the dependent variables as $Z^{agg} = (k^{agg}, y, uc^{agg}, liq, unc)'$. This model representation is appropriate to test the exclusion of liquidity and uncertainty from capital stock's long run relationship and the weak exogeneity of all the other variables imposing appropriate parameter restrictions, see also Hausman (1978) and Urbain (1992). If the restrictions are not rejected, then the VECM (7) can be reduced into the single-equation (8), where aggregate capital stock is explained by an EqCM model conditional on the simultaneous changes in all the other variables of the system:

$$\begin{aligned} \Delta k_t^{agg} &= \gamma_1 + \gamma_2 \Delta y_t + \gamma_3 \Delta uc_t^{agg} + \gamma_4 \Delta liq_t + \gamma_5 \Delta unc_t + \\ &\gamma_{11} \Delta k_{t-1}^{agg} + \gamma_{21} \Delta y_{t-1} + \gamma_{31} \Delta uc_{t-1}^{agg} + \gamma_{41} \Delta liq_{t-1} + \gamma_{51} \Delta unc_{t-1} + \\ &\pi_1 (k_{t-1}^{agg} - \phi_1 y_{t-1} - \phi_2 uc_{t-1}^{agg}) + \varepsilon_t \end{aligned} \quad (8)$$

The first row of equation (8) shows the conditioning explanatory variables ($p = 2$), while the second row reports the corresponding lags. In the last row, the equilibrium correction term is reported in brackets, where the long run parameters contribute to the definition of the target level of capital:

$$k_t^{agg*} = \phi_1 y_t + \phi_2 uc_t^{agg} \quad (9)$$

Once equation (8) is solved, we can obtain the corresponding level of business investments adopting the perpetual inventory accounting identity:

$$I_t^{agg} \equiv \Delta K_t^{agg} + \delta K_{t-1}^{agg} \quad (10)$$

in which investments are defined as the difference between the changes of the levels of capital stock and the amount of past capital depreciation (δ is the depreciation rate).

To model ICT and Non-ICT capital accumulation in the framework of equation (7) it is necessary to estimate a vector of nine variables (i.e. six asset-specific variables - stocks and user costs - plus output, liquidity and uncertainty). Under the assumption of separate cointegration (Granger and Haldrup, 1997), the estimation by asset is addressed by $Z^j = (k^j, y, uc^j, liq, unc)'$, for $j = me, nres$ and ict . In other words, under the assumption of separate cointegration, the estimation can be performed by three parsimonious sub systems, which in analogy with the aggregate case are modelled by asset.

4. The empirical results

In this section we statistically describe the main characteristics of ICT and Non-ICT dynamics in Italy over the period 1980-2012. Descriptive statistics are relevant to depict a complete picture of the driving factors of ICT and Non-ICT investments dynamics over the business cycle (for the USA, Lee and Rabanal, 2010). Then we present the results of the cointegration analysis and test the sensitivity of aggregate and disaggregate capital accumulation determinants in our newly defined investment capital stock system of equations.

4.1. Stylised facts over the cycle

Table 1 reports a number of classical business-cycle time-series indicators (Schlitzer, 1995) to measure volatility, persistence, and co-movement of each variable of interest (in general, X_t) with respect to the output gap (i.e. the reference variable).

Table 1 here

The growth rate of GDP and investment in machinery have approximately the same volatility of the output gap (the reference series) over the cycle, while non-residential investment are significantly less volatile. ICT investments and its main components, as well as R&D, are twice more volatile than physical assets. According to the persistence indicators all the variables in Table 1 are broadly stationary, albeit at different degrees.⁷ Investment ratios are more persistent than the rate of growth of GDP and employment,

⁷ The permanent inventory method relating investment and capital stock, $I_t^j / K_{t-1}^j = \Delta K_t^j / K_{t-1}^j + \delta_t^j$, implies that the investment ratios in Table 1 are linked to the growth of the capital stocks. Unreported unit root tests show that log-levels of capital stocks are I(1), as their first differences always reject the null of unit roots.

with first order autocorrelations equal to 0.7 or above. Non-residential buildings, software (*sw*) and R&D expenditure (*berd*) show the highest degree of persistency. Finally, GDP growth and investment ratios in machinery and buildings are pro-cyclical and coincident (or slightly leading), while *ICT* and R&D expenditure are a-cyclical (hardware resembles machinery and equipment).

The descriptive analysis supports the idea that Non-ICT physical assets and ICT (but also R&D) evolve and react differently over the business cycle and that the dynamics of aggregate business investment is substantially similar to Non-ICT capital.

4.2. The cointegration analysis

The cointegration analysis has been performed using the Johansen's rank-test based on VECM (7) at the aggregate level and by asset. The 5 vector variables includes the three components of the classical capital stock model together with a measure of uncertainty and a measure of liquidity constraints $Z^j = (k^j, y, uc^j, liq, unc)'$. The estimation results are reported in Table 2.

Table 2 here

A significant cointegration relationship is identified for aggregate stock as well as for Non-ICT assets while we do not find any cointegration relationship for ICT⁸ stock. The identified cointegrated vectors support the relationship between desired capital stock and its classical determinants (output and user costs). In the long run, aggregate stock and Non-ICT assets adjust to desired stocks whose determinants are weakly exogenous⁹.

The long run desired capital stock elasticity to output (restricted VAR3, Table 2) is very close to one in the aggregate specification, and significantly higher than (lower than) one for machinery and equipment (for non-residential buildings). The significant negative value (below -1) of the capital stock elasticity to the user cost rejects the accelerator model but supports the prediction of the flexible neoclassical model.

The speed of adjustment of actual to desired capital stocks is rather slow, suggesting the presence of dynamics with relevant adjustment costs, especially for non-residential buildings. The long run estimates above reinforce the prediction of Caballero (1994) that – when there are relevant adjustment costs - the standard deviations of the desired stocks is larger than the actual stocks¹⁰.

⁸ The data congruence of VAR models has been assessed through a number of residuals' mis-specification tests, which hardly ever reject the null of vector white noise errors. In the few cases of failure of the heteroschedasticity and/or the normality tests, the inclusion of one/two dummies in the deterministic components prevents such rejections without qualitative changes in the results reported here without such dummies.

⁹ Columns 1 to 5, show the remarkable similarity of test results and parameter estimates in VAR5 and VAR3 models. In the trace tests, the cointegration rank is always one at least at 5%, and the weak exogeneity is never 1% significant.

¹⁰ The last two rows of Table 2 show that the variability of the business target stock is about three times that of the actual stock; for machinery and equipment this ratio is slightly lower (suggesting lower adjustment costs than the

ICT capital stock behaves rather differently. The cointegration rank tests deliver the following results: the rank is larger than one in VAR5 and zero (no cointegration) in VAR3. As far as VAR5 results are concerned, the cointegration finding that $r > 1$, together with the strong rejection of the weak exogeneity restrictions, support the assumption that the underlying long run relationships in reduced form are a combination of target capital stock determinants and liquidity and uncertainty rather than the classical capital stock equations.¹¹

This hypothesis has been tested looking both at the individual ICT components, namely communication equipment (*ct*), hardware (*hw*) and software (*sw*) and at R&D. The analysis is reported in Table 3, in which the first two columns for aggregate ICT replicate the last two columns of Table 2 to ease presentation. Results can be summarized in three main findings.

Table 3 here

First, ICT components and R&D behave as aggregate ICT, hence they react to different determinants compared to Non-ICT physical capital. Second, the user cost of capital does not play any relevant role in the long run, as it is never significant and has opposite sign in eight cases out of ten. Third, the weak exogeneity of uncertainty and liquidity constraints is always strongly rejected.

The ICT analysis supports the hypothesis that technological capital responds differently than Non-technological capital to macroeconomic shocks; one reason could be that ICT, as other knowledge based capital like R&D, experiences flow adjustment costs rather than stock adjustment costs (Bloom, 2007). To further improve our understanding of ICT driving factors we test a VECM specification on ICT investment rather than capital stock. To test for the existence of possible complementarity between ICT and R&D we also extend equation (7) including the log GDP share of R&D (Table 4).

Table 4 here

All variables (including uncertainty) are weakly exogenous: the disequilibria only feed short run changes in actual investments. The joint restrictions that the elasticity of investment to output is equal to one and that the elasticity to the user cost is equal to zero (i.e. the user cost plays a transitory role) are not rejected. Under these restrictions, in the long run, the ICT output ratio (in logs) is positively correlated with financial liquidity constraints and R&D, and negatively related with uncertainty. In particular, the long run ICT elasticity to uncertainty is not significantly different from minus one, while the long run effects of liquidity and R&D are smaller in absolute values. The speed of adjustment of actual to target ICT investments is estimated around 0.27 (i.e. about one-quarter of the discrepancy between desired and actual investment is closed after one year), denoting flow adjustment costs which are considerably lower than the

aggregate), and for non residential buildings this ratio is clearly higher (about five-six times, denoting the highest adjustment costs).

¹¹ This interpretation is also supported by opposite-signed and/or quite imprecise long run ϕ_1 and ϕ_2 estimates in the VAR5 where probably wrong restrictions to identify the long-run capital stock equation are imposed.

stock adjustment costs experienced by business, machinery-equipment and non-residential buildings.¹² Overall our findings for ICT corroborate the hypothesis of Bloom (2007) for R&D.

In table 4 the analysis of ICT investment has been extended to its components: communication equipment (*ct*), software (*sw*) and hardware (*hw*). The results suggest that each component performs as aggregate ICT. However, there are some interesting differences in the long run parameters: liquidity does not exert a long run effect on software, and R&D does not affect hardware. Software reacts strongly to uncertainty (almost double compare to the other ICT components) while hardware reveals the highest speed of adjustment. Finally, it is worth noting that the standard error of the aggregate ICT equation is markedly lower than those of the three disaggregate equations: due to the statistical averaging of the individual shocks, the aggregate ICT picture is clearer.

4.3. The elasticities of the investment-capital stock system

To characterize the different sensitivity of aggregate and disaggregate investment and capital stock, we first define an investment-capital stock system of stochastic and deterministic equations where liquidity constraints and uncertainty interact with the traditional determinants of investment expenditure, output and user cost (A1-A8 equations in appendix A.2). In the investment-capital stock system we evaluate short and long run composition effects comparing the sensitivity of total (*agg*) capital stock and investment (equations A9-A10) with that of capital stock and investment obtained summing across the assets (*sum*, in equations A11-A13).

Second, we derive the steady state solution of the system through its simulation 90 periods ahead where all the un-modelled variables are assumed to remain constant at the level of the last end-of-sample observation.

Finally, we calculate the short and long run elasticities of *agg* and *sum* variables perturbing our selected determinants. Table 5 reports the main results.

Table 5 here

The estimated output elasticities tend to significantly differ in the short-run, while the user cost (i.e. the interest rates) elasticities do not diverge. In the long run, the output elasticity of investment and capital stock are obviously similar to those estimated by the cointegrated relationships in Table 2 and Table 4. The zeros corresponding to the *agg* columns reveal that the aggregate modelling of capital stock admits the exclusion of uncertainty and liquidity effects, that instead play a significant role in the individual asset specifications.

The *sum* outcomes show that an improvement in the liquidity conditions has an impact about five times larger than the effect of a reduction of uncertainty. Then the identified long run cointegration between *ict* investment and uncertainty suggests that uncertainty permanently affects ICT expenditure (a 10%

¹² As for capital stock targets, also ICT investment targets show standard deviations which are larger than the actual ones (results not reported in Table 4, but available upon request).

increase in uncertainty reduces the long run business investment level by about 1%), while the liquidity impact vanishes in the long-run.

5. Policy implications

Our analysis shows that the dynamics of Non-ICT and ICT capital is subject to a different set of drivers, both in the short- and in the long-run since they respond differently to macroeconomic shocks. From a policy perspective this is a relevant result suggesting that the identification of asset specific policy design can be very important to stimulate single and aggregate investment expenditure.

Further, the relatively higher reactivity of ICT supports the idea that in a period of economic downturn when the opportunity cost of a company's resources is reduced, so that it has a greater opportunity to reorganise production and other business processes, there is increasing scope for innovation without sacrificing growth (Bhaumik, 2011). Therefore during a recession policymakers should definitely stimulate productivity enhancing investments, such as those in knowledge based assets, to encourage economic recovery.

In periods of recession high level of uncertainty and low level of liquidity could negatively influence behavioural responses of firms and consumers as shown in e.g. Romer (1990) and Bloom (2009). The economic rationale of this effect lies in a number of theoretical underpinnings, based on the channel of real- and growth-options, of the risk premia and of the precautionary savings (for an updated survey, see Bloom, 2014). We check the sensitivity of technological and non-technological assets to the business cycle evaluating the effect of uncertainty and firm's liquidity constraints on the dynamics of Italian Non-ICT and ICT capital accumulation. The analysis of the channels through which financial constraints and uncertainty affected Italian investment dynamics over the recent years is potentially helpful to address the growth differential between the Italian economy and the average of the other euro area countries.

Since the financial turmoil in 2008, Italy experienced a deep recession. Subsequently, the risk of a sovereign debt defaults (in the middle of the Greek crisis) and endemic domestic political instability in the Italian economy fuelled uncertainty. In 2009, as in most of the other developed countries, the Italian GDP growth slowed down substantially (-5.5%), recovering in 2010 and 2011 (1.8% and 0.7% respectively). In 2012, instead, even though in the euro area the recovery was moderately in progress (German GDP rose by 0.7 while French GDP remained at 0.0), Italy experienced another slowdown (GDP growth decreased by -2.6%)¹³.

The risk of sovereign debt defaults is clearly represented by the Italian index of economic policy uncertainty showing the markedly higher level of uncertainty experienced since 2008, as compared to the other European countries (summarised by the average of Germany, France and Spain). The shaded area in

¹³ The projection for 2013 are still negative (-1.9%), however in Q4 2013, for the first time since Q2 2011 the growth rate has not been negative.

Figure 1 provides a broad idea of the degree of economic and political uncertainty that characterized the Italian economy over the period.

Figure 1 here

Further, the evolution of the financial conditions, measured by the ISTAT monthly business survey, reinforces our assumption. In 2012, as reported in Figure 2, in Italy, the level of liquidity was very close to the low level recorded in 2009.

Figure 2 here

Now our aim is to assess the macroeconomic effects of a change in the level of uncertainty and liquidity conditions on economic performance, taking into account the intrinsic characteristics of the Italian economy over the period. To this goal we include the system of equations listed in appendix A2 in the framework of the Italian Statistical Institute Macroeconometric Model (MeMo-It)¹⁴ to build a counterfactual exercise - over the period 2008-2013 – to compare the current Italian economic performance with a simulated scenario where the level of uncertainty is equal to the average of France, Germany and Spain (the improvement is the shaded area in Figure 1), and the liquidity conditions are constantly improved in 2012-2013 (the measure of the improvement is the shaded area in Figure 2).¹⁵

Table 6 shows that over the years 2008-2013, a lower level of uncertainty and better financial conditions could account for a cumulate increase of almost 5% in business investments with respect to their level in 2013, and 1.2% in capital stock. GDP would have been raised by 0.4%, and employment by a slightly smaller amount (0.2%, corresponding to an increase in the number of full time employees by about 50 thousands).

Table 6 here

Remarkably, Non-ICT and ICT investments react differently to uncertainty and liquidity changes. Although ICT investment is more sensitive to uncertainty, financial conditions play a relevant role: smaller uncertainty coupled with higher level of liquidity would make them increase by a cumulate 25% in six years. Both investments in machinery and equipment and in non-residential buildings react to both shocks, with a higher sensitivity to the financial conditions (improving by 2.3% and 1.7% respectively).

¹⁴ MeMo-It is an annual model composed by 53 stochastic equations and 78 identities, and represents a New Keynesian economic system including households, firms, public administration, and a foreign sector. MeMo-It is structured into five main blocks supply side, labor market, demand side, prices, and Government. For more details see Bacchini et al. (2013). Of course, the three disaggregate investment equations replace the pre-existing (aggregated) one.

¹⁵ In particular, in the counterfactual the liquidity indicator is assumed to ignore the deep financing trough of 2012, by shifting back the observations for 2013 and 2014, as if the hole of 2012 never happened. Further, we recognize that our results are surrounded by the usual caveats emerging from any macro-econometric counterfactual.

6. Concluding remarks

In this paper, we modelled the dynamics of business investment taking into account asset specific characteristics potentially affecting the reactivity of capital accumulation at the aggregate and disaggregate level over the business cycle. Our analysis corroborates the assumption that ICT and Non-ICT investment decisions are driven by a different set of determinants, both in the long- and in the short-run. Additionally, our findings support the idea that tangible and intangible assets have different speed of adjustments to macroeconomic shocks because they incur in different adjustment costs. ICT as other knowledge based assets typically incur in flow adjustment costs thus being more reactive to fluctuations over the business cycle (Bloom, 2007).

We found that individual investment characteristics matter since we observed highly heterogeneous behaviour of each asset over the business cycle. In the short run, liquidity constraints and uncertainty are key determinants of Non-ICT capital accumulation, while ICT investment is driven by the interest rate and financial constraints. In the long run instead, uncertainty and output have permanent effects on ICT, while Non-ICT tangible capital is affected by output and the user cost as suggested by the flexible neoclassical model.

Our simulation results support the idea that ICT is a key variable to assess sound policy measures to stimulate economic growth. This finding is consistent with the empirical literature that widely demonstrated that ICT investment generates higher returns to growth than the other capital assets thus producing higher level of GDP (Jorgenson and Stiroh, 2000, Jorgenson and Vu, 2007).

We tested our model on the Italian data over the period 2008-2013. Simulation results show that better financial conditions and lower uncertainty could have helped the recovery of the Italian economy after the Great Recession, mainly through their impact on ICT.

Our findings provide a contribution to the European policy agenda emphasising the central role of investment specific policy measures necessary to reduce economic growth differentials both inside the union and with respect to the US. The issue is particularly relevant in the peripheral countries where the increasing investment gap would probably be substantially reduced stimulating the expenditure in investment components with higher output elasticities, such as ICT. Future research developments will be devoted to test our investment capital stock system of equations on the Eurozone countries with the aim of building a new framework for investment policy programmes.

References

- Bacchini, F., C. Brandimarte, P. Crivelli, R. De Santis, M. Fioramanti, A. Girardi, R. Golinelli, C. Jonas-Lasinio, M. Mancini, C. Pappalardo, D. Rossi, M. Ventura and C. Vicarelli (2013), "Building the core of the Istat system of models for forecasting the Italian economy: MeMo-It", *Rivista di statistica ufficiale*, No. 1, pp. 17-45.
- Bachmann, R., R.J. Caballero and E.M.R.A. Engel (2013), "Aggregate implications of lumpy investment: new evidence and DSGE model", *American Economic Journal: Macroeconomics*, Vol. 5, No. 4, pp. 29-67.
- Baker, S. R., N. Bloom and S. J. Davis (2013), "Measuring Economic Policy Uncertainty", *mimeo*.
- Bhaumik, S. (2011), "Productivity and the economic cycle", *BIS Economics Paper*, No. 12.
- Bernanke B. S. (1983) "Irreversibility, Uncertainty, and Cyclical Investment", *Quarterly Journal of Economics*, Vol. 97, No. 1, pp. 85-106.
- Bertola, G. (1988), *Adjustment Costs and Dynamic Factor Demands: Investment and Employment Under Uncertainty*, PhD Dissertation, Ch. 2, Massachusetts Institute of Technology.
- Bertola G. and R. J. Caballero (1994), "Irreversibility and aggregate investment", *Review of Economic Studies*, Vol. 61, pp. 223-246.
- Bianco, M., M. E. Bontempi, R. Golinelli and G. Parigi (2013), "Family firms' investments, uncertainty and opacity", *Small Business Economics*, Vol. 40, No. 4, pp. 1035-1058.
- Bloom, N. (2007) "Uncertainty and the Dynamics of R&D," *American Economic Review*, 97, 2, 250-255.
- Bloom, N. (2009), "The impact of uncertainty shocks", *Econometrica*, Vol. 77, No. 3, pp. 623-685.
- Bloom, N. (2014), "Fluctuations in uncertainty", *Journal of Economic Perspectives*, Vol. 28, No. 2, pp 153-176.
- Bloom, N., S. Bond and J. Van Reenen (2007), "Uncertainty and investment dynamics", *Review of Economic Studies*, Vol. 74, No. 2, pp. 391-415.
- Bond, S.R. and J.G. Cummins (2000), "The stock market and investment in the new economy: some tangible facts and intangible fictions", *Brookings Papers on Economic Activity*, No. 1, pp. 61-124.
- Bond, S.R. and C. Meghir (1994), "Dynamic investment models and the firm's financial policy", *Review of Economic Studies*, Vol. 61, No. 2, pp. 197-222.
- Bontempi, M. E. (2014), "Investment-uncertainty relationship: differences between intangible and physical capital", paper invited for presentation at the 4th European Conference on Corporate R&D and Innovation: *Financing R&D and Innovation for Corporate Growth in the EU: Strategies, drivers and barriers*, CONCORDi-2013, European Commission, Seville, 26-27 September 2013.
- Bontempi, M. E., A. Del Boca, A. Franzosi, M. Galeotti, and P. Rota (2004), "Capital heterogeneity: does it matter? Fundamental q and investment on a panel of Italian firms", *RAND Journal of Economics*, Vol. 35, No. 4, pp. 674-690.
- Bontempi, M. E., R. Golinelli and G. Parigi (2010), "Why demand uncertainty curbs investments: evidence from a panel of Italian firms", *Journal of Macroeconomics*, Vol. 32, pp. 218-238.
- Bontempi, M. E. and J. Mairesse (2014), "Intangible Capital and Productivity at the Firm Level: a Panel Data Assessment", *Economics of Innovation and New Technology*, forthcoming.
- Brainard, W. C. and J. Tobin (1968), "Pitfalls in financial model buildings", *American Economic Review*, Vol. 58, No. 2, pp. 99-122.
- Buti, M. and P. Mohl (2014), "Raising investment in the Eurozone", <http://www.voxeu.org/article/raising-investment-eurozone>
- Caballero, R. J. (1994), "Small sample bias and adjustment costs", *Review of Economics and Statistics*, Vol. 76, No. 1, pp. 52-58.

- Caballero, R. J. (1999), "Aggregate investment", in J. Taylor and M. Woodford (eds.) *Handbook of Macroeconomics*, Vol. 1, Elsevier.
- Caballero, R.J., E.M.R.A. Engel and J. C. Haltiwanger (1995), "Plant-Level Adjustment and Aggregate Investment Dynamics", *Brookings Papers on Economic Activity*, No. 2, pp. 1-54.
- Carruth, A., A. Dickerson and A. Henley (2000), What Do We Know About Investment Under Uncertainty, *Journal of Economic Surveys*, Vol. 14, No. 2, pp. 119-153.
- Cequera, D. and G. J. Klein, "Endogenous firm heterogeneity, ICT and R&D incentives", *ZEW Discussion Papers*, No. 08-126.
- Chirinko, R. (1983), "Investment and Tax policy: a survey of existing models and empirical results with applications to the high technology sector", *A Report for the National Science Foundation, Division of Policy Research and Analysis*.
- Chirinko R. S. (1993), "Business Fixed Investment Spending: A critical Survey of modeling Strategies, Empirical Results, and Policy Implications", *Journal of Economic Literature*, Vol. 31, 4, 1875-1911.
- Clark, J. M. (1917), "Business acceleration and the law of demand: a technical factor in economic cycles", *Journal of Political Economy*, Vol. 25, pp. 217-235.
- Clark, J. M. (1944), "Additional notes on business acceleration and the law of demand", in American Economic Association, *Readings in Business Cycle Theory*, Philadelphia, pp. 254-260.
- Clark, P. K. (1979), "Investment in the 1970s: Theory, performance, and prediction", *Brookings Papers on Economic Activity*, No. 1, pp. 73-113.
- Consoli, D. (2012), "Literature analysis on determinant factors and the impact of ICT in SMEs", *Procedia - Social and Behavioral Sciences*, Vol. 62, pp. 93-97.
- Cooper, R. W., and J. C. Haltiwanger (2006), "On the Nature of Capital Adjustment Costs", *Review of Economic Studies*, Vol. 73, pp. 611-33.
- Czarnitzki, D. and H. Hottenrott (2011), "R&D Investment and Financing Constraints of small and medium-sized firms", *Small Business Economics*, Vol. 36, pp. 65-83.
- Czarnitzki, D. and A. A. Toole (2007), "Business R&D and the Interplay of R&D Subsidies and Product Market Uncertainty", *Review of Industrial Organization*, Vol. 31, pp. 169-181.
- Czarnitzki, D. and A.A. Toole (2011), "Patent Protection, Market Uncertainty, and R&D Investment", *The Review of Economics and Statistics*, Vol. 93, No. 1, pp. 147-159.
- Czarnitzki, D. and A.A. Toole (2013), "The R&D Investment-Uncertainty Relationship: Do Strategic Rivalry and Firm Size Matter?", *Managerial and Decision Economics*, Vol. 34, pp. 15-28.
- De Arcangelis, G., C. Jona-Lasinio and S. Manzocchi (2004), "Sectoral determinants and dynamics of ICT investment in Italy", *Rivista di Politica Economica*, Vol. 94, No. 3, pp. 119-162.
- de Bondt, G., & Diron, M. (2008) "Investment, financing constraints and profit expectations: new macro evidence", *Applied Economics Letters*, Vol. 15, No. 8, pp. 577-581.
- Dixit, A.K. and R. S. Pindyck (1994), *Investment under Uncertainty*, Princeton University Press.
- Eisner, R. (1967), "The Permanent Income Theory for Investment: Some empirical explorations", *American Economic Review*, Vol. 62, No. 3, pp. 363-390.
- Eisner, R. (1969), "Tax policy and investment behavior: a comment", *American Economic Review*, Vol. 59, No. 2, pp. 379-388.
- Fazzari S.M., R. G. Hubbard, and B. C. Petersen (1988), "Financing constraints and corporate investment", *Brookings Papers on Economic Activity*, No. 1, pp. 141-95.
- Gaiotti, E. (2013), "Credit availability and investment: Lessons from the *Great Recession*", *European Economic Review*, Vol. 59, pp. 212-227.

- Goel R. K. and R. Ram (2001), "Irreversibility of R&D investment and the adverse effect of uncertainty: Evidence from the OECD countries", *Economics Letters*, Vol. 71, pp. 287–291.
- Gordon, R. J. and J. Veitch (1986), "Fixed Investment in the American Business Cycle, 1919-83" in R. J. Gordon (ed.), *The American Business Cycle: Continuity and Change*, NBER, pp. 267-358.
- Granger, C. W. J. and N. Haldrup (1997), "Separation in cointegrated systems and persistent-transitory decompositions", *Oxford Bulletin of Economics and Statistics*, Vol. 59, No. 4, pp 449-462.
- Greasley, D. and J. B. Madsen (2006), "Investment and Uncertainty: Precipitating the Great Depression in the United States", *Economica*, Vol. 73, No. 291, pp. 393–412.
- Guerrieri, P, M. Luciani and V. Meliciani (2011), "The determinants of investment in information and communication technologies", *Economics of Innovation and New Technology*, Vol. 20, No. 4, pp. 387-403.
- Guiso, L. and G. Parigi (1999), "Investment and demand uncertainty", *Quarterly Journal of Economics*, Vol. 114, No. 1, pp. 185-227.
- Hall, B. H. (2007), "Measuring the returns to R&D: the depreciation problem", *NBER Working Paper*, No. 13473.
- Hall, B. H. and J. Lerner (2010), "The Financing R&D and Innovation", in B. H. Hall and N. Rosenberg (eds.) *Handbook of the Economics of innovation*, Elsevier-North Holland.
- Hall, R. E. and D. W. Jorgenson (1967), "Tax policy and investment behavior", *American Economic Review*, Vol. 57, No. 3, pp. 391-414.
- Hausman, J. A. (1978), "Specification Tests in Econometrics", *Econometrica*, No. 46, Vol. 6, pp. 1251–1271.
- Himmelberg, C. P. and B. C. Petersen (1994), "R&D and Internal Finance: A panel Study of Small Firms in High-Tech Industries", *Review of Economics and Statistics*, Vol. 76, pp. 38-51.
- Hubbard, R.G. (1998), "Capital-market imperfections and investment", *Journal of Economic Literature*, Vol. 36, pp. 193-225.
- Johansen, S. (1995), *Likelihood-based Inference in Cointegrated Vector Autoregressive Models*, Oxford University Press.
- Jorgenson, D. W. (1963), "Capital theory and investment behavior", *American Economic Review*, Vol. 53, No. 2, pp. 247-259.
- Jorgenson, D. W. (2001), "Information Technology and the U.S. Economy", *American Economic Review*, Vol. 91, No. 1, pp. 1–32.
- Jorgenson, D. W. and K. J. Stiroh (1999), "Information Technology and Growth", *American Economic Review*, Vol. 89, No. 2, pp. 109–115.
- Jorgenson, D. W. and K. Vu (2007), "Information technology and the world growth resurgence", *German Economic Review*, Vol. 8, No. 2, pp. 125–145.
- Kang, W., K. Lee and R. A. Ratti (2014), "Economic Policy uncertainty and firm-level investment", *Journal of Macroeconomics*, Vol. 39, pp. 42-53.
- Koyck, L. M. (1954), *Distributed Lags and Investment Analysis*, North Holland, Amsterdam.
- Leahy, J. V. and T. M. Whited (1996), "The Effect of Uncertainty on Investment: Some Stylized Facts", *Journal of Money Credit and Banking*, Vol. 28, pp. 64-83.
- Lee, J. and P. Rabanal (2010), "Forecasting US investment", *IMF Working Paper*, No. 246.
- McDonald, R. and D. Siegel (1986), "The Value of Waiting to Invest", *Quarterly Journal of Economics*, Vol. 101, No. 4, 707-728.
- O'Mahony, M. and M. Vecchi (2005), "Quantifying the impact of ICT capital on output growth: a heterogeneous dynamic panel approach", *Economica*, Vol. 72, No. 288, pp. 615-633.

- Parigi, G. and S. Siviero (2001), "An investment-function-based measure of capacity utilisation. Potential output and utilised capacity in the Bank of Italy's quarterly model", *Economic Modelling*, Vol. 18, pp. 525-550.
- Pesaran, M.H., Y. Shin and R. J. Smith (2001), "Bounds approaches to the analysis of level relationships", *Journal of Applied Econometrics*, Vol. 16, pp. 289–326.
- Pindyck, R. S (1988), "Irreversible Investment, Capacity Choice, and the Value of the Firm", *American Economic Review*, Vol. 78, No. 5, pp. 969-985.
- Pindyck, R. S (1991), "Irreversibility, Uncertainty, and Investment", *Journal of Economic Literature*, Vol. 29, n. 3, pp. 1110-48.
- Qin, D. (2011), "Rise of VAR modelling approach", *Journal of Economic Surveys*, Vol. 25, pp. 156-174.
- Romer, C. (1990), "The Great Crash and the Onset of the Great Depression", *Quarterly Journal of Economics*, Vol. 105, No. 3, pp. 597– 624.
- Schlitzler, G. (1995), "Business cycles in Italy: A statistical investigation", *European Journal of Political Economy*, Vol. 11, pp. 683-698.
- Stein, L. C. and E. C. Stone (2012), "The effect of uncertainty on investment, hiring, and R&D: Causal evidence from equity options, *mimeo*.
- Stock, J. H. and M. W. Watson (1993), "A simple MLE of cointegrating vectors in higher order integrated systems", *Econometrica*, Vol. 61, No. 4, pp. 783-820.
- Tobin, J. (1969), "A general equilibrium approach to monetary theory", *Journal of Money, Credit and Banking*, Vol. 1, pp. 15-29.
- Tobin, J. and W. C. Brainard (1977), "Asset markets and the cost of capital", in R. Nelson and B. Balassa (eds.), *Economic Progress: Private Values and Public Policy. Essays in Honor of W. Fellner*, North Holland, pp. 235–62.
- Urbain, J.-P. (1992), "On weak exogeneity in error correction models", *Oxford Bulletin of Economics and Statistics*, Vol. 54, No. 2, pp. 187-207.
- Van Leeuwen, G., P. Mohnen, M. Polder and W. Raymond (2009), "Productivity effects of innovation modes", *Statistics Netherlands*, paper for ASIGO conference, Nurnberg, May.
- Van Reenen, J., N. Bloom, M. Draca, T. Kretschmer, R. Sadun, H. Overman and M. Schankerman (2010). "The economic impact of ICT", Final Report, Centre for Economic Performance, SMART No. 2007/0020.
- Venturini, F. (2009), "The long-run impact of ICT", *Empirical Economics*, Vol. 37, No. 3, pp. 497-515.
- Whited T.M. (1994), "Problems with Identifying Adjustment Costs from Regressions of Investment on q", *Economics Letters*, Vol. 46, 339-344.

Appendix A1 - Data sources

Aggregate ($j = agg$) and disaggregate ($j = me, nres, ict$) capital stock and investments data are drawn from the ISTAT National Accounts (NA) and they refer to the Italian business over the period 1980-2012.

Series are available at both current prices and in volumes (chained index). Non-residential capital stock ($nres$) is the difference between business capital stock (agg), machinery and equipment (me) and ICT (ict).

From the NA source, we can compute the series of capital stock and investments in volume, respectively K_t^j and I_t^j , and the corresponding series of investment deflators P_t^j , obtained as ratios between investments at current prices and those in volumes.

Output series is measured by GDP in volumes. In the user cost's formula (3): P_t is the GDP deflator; π_t^j is the rate of change of investment prices (measured by $\Delta \log P_t^j$); the rate of investments' subsidies (c_t) is the ratio between Government subsidies to investments and the value of business investments in the previous year. The cost of borrowing R_t^j is given by the average of the rate of interest of long terms Government bonds (BTP) and ISTAT estimates of the rate of interest implicitly used in collecting information to compute capital stocks; the arbitrary risk premium (ψ^j) is set to zero. Finally, depreciation rates are obtained by reversing the formula of the perpetual inventory method, as $\delta_t^j = \frac{I_t^j - \Delta K_t^j}{K_{t-1}^j}$; the corporate tax rate (τ_t) is

obtained by the series of effective tax rates from the NA source.

The degree of financial constraints (liq) is from the ISTAT monthly business survey where it is asked to the firms: "how do you judge the current level of liquidity (quite good, normal, bad)?" The index of economic policy uncertainty (unc) is from Backer et al. (2013) and is downloadable from <http://www.policyuncertainty.com>.

Nominal R&D is measured by the total intramural R&D expenditure of the Italian business enterprise sector (source: Eurostat's Statistics on Research and Development). R&D in real terms (I_t^{berd}) is obtained by deflating its values with the GDP deflator. In order to compute the R&D stock, we used the perpetual inventory method with constant depreciation rate (assumed, as customary, equal to about 0.4 - see e.g. Hall, 2007, and Bontempi and Mairesse, 2014). In steady state, the initial value of the capital stock is proxied by $K_o^{berd} = I_o^{berd} / 0.4$. Although we acknowledge that this is a very crude method, it is just an early estimate subject to possible improvements.

The *output gap* series is from the Ameco database of the European Commission.

Appendix A2 - The investment capital stock system

The specification of the complete system for investments and capital stock is listed below. In the OLS estimates equations, the standard errors are reported in curly braces below each estimate. The use of OLS estimator is allowed by the weak exogeneity property emerged from the results in Section 4.2. Labels in capital letters denote variables in levels, while their logs are in small letters. Variables' definitions and data sources are reported in the appendix A.1.

Non-residential buildings (*nres*)

$$UC_t^{nres} \equiv (R_t^{nres} + \delta_t^{nres} - \Delta p^{nres}) \left(\frac{1 - c_t}{1 - \tau_t} \right) \frac{P_t^{nres}}{P_t} \quad (A1)$$

$$\begin{aligned} \Delta k_t^{nres} = & \underbrace{0.068}_{0.031} + \underbrace{0.003}_{0.001} \times \Delta liq_t + \underbrace{0.107}_{0.029} \times \Delta y_{t-1} + \underbrace{1.045}_{0.136} \times \Delta k_{t-1}^{nres} - \underbrace{0.347}_{0.121} \times \Delta k_{t-2}^{nres} \\ & - \underbrace{0.002}_{0.001} \times \Delta uc_{t-2}^{nres} - \underbrace{0.023}_{0.010} \times \left[k_{t-1}^{nres} - \left(\underbrace{0.750}_{0.088} \times y_{t-1} - \underbrace{0.100}_{0.031} \times uc_{t-1}^{nres} \right) \right] + \hat{\varepsilon}_t^{nres} \end{aligned} \quad (A2)$$

$$I_t^{nres} \equiv \Delta K_t^{nres} + \delta K_{t-1}^{nres} \quad (A3)$$

Machinery, plants and equipments (*me*)

$$UC_t^{me} \equiv (R_t^{me} + \delta_t^{me} - \Delta p^{me}) \left(\frac{1 - c_t}{1 - \tau_t} \right) \frac{P_t^{me}}{P_t} \quad (A4)$$

$$\begin{aligned} \Delta k_t^{me} = & \underbrace{-0.597}_{0.160} + \underbrace{0.015}_{0.002} \times \Delta liq_t - \underbrace{0.013}_{0.006} \times \Delta unc_t + \underbrace{0.482}_{0.060} \times \Delta y_{t-1} + \underbrace{0.518}_{0.061} \times \Delta k_{t-2}^{me} \\ & - \underbrace{0.006}_{0.002} \times \Delta uc_{t-1}^{me} - \underbrace{0.087}_{0.023} \times \left[k_{t-1}^{me} - \left(\underbrace{1.402}_{0.055} \times y_{t-1} - \underbrace{0.266}_{0.022} \times uc_{t-1}^{me} \right) \right] + \hat{\varepsilon}_t^{me} \end{aligned} \quad (A5)$$

$$I_t^{me} \equiv \Delta K_t^{me} + \delta K_{t-1}^{me} \quad (A6)$$

Information and communication technology goods (*ict*)

$$\begin{aligned} \Delta i_t^{ict} = & \underbrace{0.098}_{0.014} + \underbrace{0.113}_{0.026} \times \Delta liq_t + \underbrace{0.055}_{0.026} \times \Delta liq_{t-1} + \underbrace{0.044}_{0.026} \times \Delta liq_{t-2} - \underbrace{0.931}_{0.489} \times \Delta R_{t-1} + \\ & - \underbrace{0.115}_{0.032} \times \left[i_{t-1}^{ict} - \left(y_{t-1} - \underbrace{1.127}_{0.166} \times unc_{t-1} + \underbrace{0.632}_{0.297} \times \log \left(\frac{I_{t-1}^{berd}}{Y_{t-1}} \right) + \underbrace{0.305}_{0.145} \times liq_{t-1} \right) \right] + \hat{\varepsilon}_t^{ict} \end{aligned} \quad (A7)$$

$$K_t^{ict} \equiv I_t^{ict} + (1 - \delta_t^{ict}) K_{t-1}^{ict} \quad (A8)$$

Aggregation through summation of the three business components (sum)

$$K_t^{sum} \equiv K_t^{nres} + K_t^{me} + K_t^{ict} \quad (A9)$$

$$I_t^{sum} \equiv \frac{I_t^{nres} \times P_{t-1}^{nres} + I_t^{me} \times P_{t-1}^{me} + I_t^{ict} \times P_{t-1}^{ict}}{P_{t-1}^{sum}} \quad (A10)$$

Aggregate modelling of business investments (agg)

$$UC_t^{agg} \equiv (R_t^{agg} + \delta_t^{agg} - \Delta p^{agg}) \left(\frac{1 - c_t}{1 - \tau_t} \right) \frac{P_t^{agg}}{P_t} \quad (A11)$$

$$\Delta k_t^{agg} = \underbrace{-0.081}_{0.021} + \underbrace{0.248}_{0.017} \times \Delta y_t + \underbrace{0.712}_{0.037} \times \Delta k_{t-1}^{agg} - \underbrace{0.009}_{0.002} \times \Delta uc_t^{agg} \\ - \underbrace{0.038}_{0.010} \times \left[k_{t-1}^{agg} - \left(\underbrace{1.141}_{0.058} \times y_{t-1} - \underbrace{0.170}_{0.044} \times uc_{t-1}^{agg} \right) \right] + \hat{\varepsilon}_t \quad (A12)$$

$$I_t^{agg} \equiv \Delta K_t^{agg} + \delta K_{t-1}^{agg} \quad (A13)$$

Tab. 1 – Time series analysis of GDP, employment, and investments (1980-2012) ^(a)

	Volatility ^(b)	Persistence ^(c)		Comovement ^(d)				
	σ_X / σ_Y	ρ_1	ρ_2	$\rho_{XY}^{(k)}$ with k equal to:				
				-2	-1	0	1	2
				Lagging		Coincident		Leading
<i>Reference: output gap</i>	1.00	0.63 *	0.18			1.00		
$\Delta Y_t / \Delta Y_{t-1}$	1.12	0.40 *	0.05	-0.33	-0.12	0.62 *	0.60 *	0.38 *
$I_t^{agg} / K_{t-1}^{agg}$	0.57 *	0.75 *	0.37 *	0.25	0.64 *	0.93 *	0.63 *	0.26
I_t^{me} / K_{t-1}^{me}	0.99	0.72 *	0.34	0.12	0.58 *	0.88 *	0.61 *	0.24
$I_t^{nres} / K_{t-1}^{nres}$	0.40 *	0.89 *	0.67 *	0.36	0.64 *	0.67 *	0.40 *	0.15
$I_t^{ict} / K_{t-1}^{ict}$	2.89 *	0.82 *	0.67 *	-0.30	0.00	0.31	0.28	0.22
I_t^{ct} / K_{t-1}^{ct}	2.72 *	0.68 *	0.4 *	-0.30	-0.14	0.25	0.27	0.22
I_t^{hw} / K_{t-1}^{hw}	3.66 *	0.66 *	0.41 *	-0.23	0.07	0.38 *	0.20	0.04
I_t^{sw} / K_{t-1}^{sw}	7.31 *	0.92 *	0.85 *	-0.19	-0.02	0.06	0.04	0.08
$I_t^{berd} / K_{t-1}^{berd}$	2.34 *	0.84 *	0.57 *	-0.07	0.10	0.26	0.21	0.13

The volatility of each variable of interest, X_t , is measured in the first column by its standard deviation in terms of that of Y_t (i.e. σ_X / σ_Y) where Y_t is the output gap, while the persistence of both X_t and Y_t is measured by the autocorrelation coefficients of the first and second order (ρ_1 and ρ_2). The comovements of X_t with the reference Y_t are reported in the last five columns, and they are measured by the correlation coefficients of X_t with up to the second lag/lead of Y_{t-k} ($\rho_{XY}^{(k)}$, where $k = -2, -1, 0, 1, 2$). With annual data, we assume that two lags are enough to account for all the relevant dynamics. ^(a) * denotes 5% significance from one of the variance ratios in the volatility columns, while it denotes 5% significance from zero of the correlations in the persistence and comovement columns. ^(b) Standard deviations of each variable relative to that of the output gap. ^(c) Autocorrelations of the first- and the second-order. ^(d) Correlations between each variable in t and the output gap in $t+k$, with $k = -2, -1, 0, +1, +2$.

We focus on growth rates for GDP ($\Delta Y_t / Y_{t-1}$) and on investment ratios by asset (I_t^j / K_{t-1}^j , with $j = agg$ for aggregate, me for machinery-equipment, $nres$ for non-residential buildings, ict for information and communication technology). We also exploit the disaggregation in three components of ICT investments, namely ct (communication equipment), hw (hardware) and sw (software). Finally, we computed the same indicators for the ratio of R&D expenditure on its stock ($j = berd$). Details about data sources are in Appendix A1.

Tab. 2 – VECM modelling of capital stock: cointegration and weak exogeneity (1980-2012) ^(a)

	Business (<i>agg</i>)		Machinery & equip. (<i>me</i>)		Non resid. (<i>nres</i>)		ICT (<i>ict</i>)	
	VAR5	VAR3	VAR5	VAR3	VAR5	VAR3	VAR5	VAR3
<i>VAR(p) settings:</i>								
- <i>p</i> (number of lags)=	2	2	2	2	2	3	2	3
<i>Residuals' tests, p-values:</i>								
- autocorrelation 3 rd order	0.6953	0.2080	0.3641	0.2335	0.1904	0.0530	0.2984	0.8008
- heteroscedasticity	0.1422	0.0005	0.3008	0.0019	0.0040	0.0877	0.2235	0.0013
- normality	0.2068	0.0128	0.5647	0.0042	0.0181	0.3390	0.0070	0.1120
<i>Trace rank <i>r</i> test, p-values:</i>								
<i>r</i> = 0	0.0211	0.0105	0.0461	0.0111	0.0225	0.0393	0.0000	0.1457
<i>r</i> ≤ 1	>0.1417	>0.0600	>0.1020	>0.0788	>0.0624	>0.0634	>0.0070	>0.1120
<i>Long run parameter estimates:</i>								
$\hat{\phi}_1$ (output)	1.156	1.141	1.427	1.402	0.946	0.750	3.337	2.080
	(0.050)	(0.058)	(0.061)	(0.055)	(0.070)	(0.088)	(0.472)	(1.074)
$\hat{\phi}_2$ (user cost)	-0.164	-0.170	-0.295	-0.266	-0.067	-0.100	1.043	0.053
	(0.050)	(0.044)	(0.070)	(0.022)	(0.027)	(0.031)	(0.531)	(1.272)
<i>Loading parameter estimates:</i>								
$\hat{\pi}_1$ (stock's loading parameter)	-0.068	-0.068	-0.097	-0.106	-0.038	-0.033	-0.100	-0.061
	(0.014)	(0.020)	-20	(0.022)	(0.010)	(0.011)	(0.019)	(0.019)
- other loadings (restricted to zero)	0	0	0	0	0	0	0	0
- weak exogeneity, p-values ^(b)	0.0264	0.2145	0.2772	0.1804	0.0189	0.0891	0.0001	0.6790
<i>Stock's equation:</i>								
-R ²	0.831	0.803	0.763	0.718	0.914	0.913	0.817	0.840
- standard error of the regression	0.0056	0.0062	0.0099	0.0104	0.0025	0.0026	0.0233	0.0222
<i>Standard deviation of log-changes in:</i>								
- desired (target) capital stock ^(c)	0.0348	0.0354	0.0549	0.0411	0.0502	0.0390	--	--
- actual capital stock	0.0114	0.0114	0.0170	0.0170	0.0072	0.0072	0.0478	0.0478

Given the aforementioned problems in inferences because of over-parameterization, we cross-validate results by assessing their consistency in the context of both VAR5 and VAR3. Hence, for each asset, results from two different VAR specifications are reported: the 5 variables specification (VAR5) and the restrict one (VAR3) that does not include information on uncertainty and financial constraints.

^(a)Dependent variables' vectors of VECM (7): $Z^j = (k^j, y, uc^j, liq, unc)'$ for enlarged VAR5, $Z^j = (k^j, y, uc^j)'$ for core VAR3. ^(b) In VAR5, tests for weak exogeneity also include restrictions to zero of liquidity and uncertainty long run parameters. ^(c) "--" not available (i.e. no valid long run relationship).

Tab. 3 – VECM modelling of ICT capital stock, its components and R&D: cointegration and weak exogeneity (1980-2012) ^(a)

	ICT aggregate (ict)		Communication equip. (ct)		Hardware (hw)		Software (sw)		R&D (berd)	
	VAR5	VAR3	VAR5	VAR3	VAR5	VAR3	VAR5	VAR3	VAR5	VAR3
<i>VAR(p) settings:</i>										
- <i>p</i> (number of lags)=	2	3	2	2	2	3	2	2	2	3
<i>Residuals' tests, p-values:</i>										
- autocorrelation 3 rd order	0.2984	0.8008	0.7558	0.9423	0.5382	0.4015	0.8736	0.7407	0.663	0.1316
- heteroscedasticity	0.2235	0.0013	0.1780	0.2692	0.6673	0.3327	0.7280	0.2294	0.6626	0.2914
- normality	0.0070	0.1120	0.0004	0.0000	0.6031	0.0736	0.0001	0.0000	0.2900	0.0199
<i>Trace rank <i>r</i> test, p-values:</i>										
<i>r</i> = 0	0.0000	0.1457	0.0202	0.1554	0.0000	0.1439	0.0015	0.0929	0.0036	0.0108
<i>r</i> ≤ 1	>0.0070	>0.1120	>0.1094	>0.1055	>0.021	>0.3338	>0.0111	>0.1723	>0.0559	>0.0846
<i>Long run parameter estimates:</i>										
$\hat{\phi}_1$ (output)	3.337 (0.472)	2.080 (1.074)	2.923 (0.515)	2.351 (0.559)	2.375 (0.396)	1.710 (0.498)	2.122 (0.0919)	2.283 (0.809)	0.728 (0.200)	0.641 (0.206)
$\hat{\phi}_2$ (user cost)	1.043 (0.531)	0.053 (1.272)	0.333 (0.401)	-0.152 (0.404)	0.037 (0.252)	-0.408 (0.310)	2.722 (0.798)	2.433 (0.711)	0.674 (0.469)	0.670 (0.507)
<i>Loading parameter estimates:</i>										
$\hat{\pi}_1$ (stock's loading parameter)	-0.100 (0.019)	-0.061 (0.019)	-0.099 (0.031)	-0.096 (0.036)	-0.207 (0.040)	-0.202 (0.046)	-0.076 (0.021)	-0.085 (0.020)	-0.134 (0.028)	-0.145 (0.040)
- other loadings (restricted to zero)	0	0	0	0	0	0	0	0	0	0
- weak exogeneity, p-values ^(b)	0.0001	0.679	0.0023	0.0945	0.0016	0.1664	0.0027	0.2106	0.0006	0.0093
<i>Stock's equation:</i>										
-R ²	0.817	0.840	0.625	0.601	0.655	0.678	0.937	0.935	0.840	0.851
- standard error of the regression	0.0233	0.0222	0.0218	0.0232	0.0373	0.0368	0.0229	0.0235	0.0173	0.017

^(a)Dependent variables' vectors of VECM (7): $Z^j = (k^j, y, uc^j, liq, unc)'$ for enlarged VAR5, $Z^j = (k^j, y, uc^j)'$ for core VAR3. ^(b) In VAR5, tests for weak exogeneity also include restrictions to zero of liquidity and uncertainty long run parameters.

Tab. 4 – VECM modelling ICT investment and its components: cointegration and weak exogeneity (1980-2012) ^(a)

	ICT aggregate (<i>ict</i>)		ICT components		
	<i>Model (1)</i>	<i>Model (2)</i>	<i>Model (2)</i>		
			<i>ct</i>	<i>sw</i>	<i>hw</i>
VAR ($p=3$)					
Residuals' tests, (p-values)					
- autocorrelation, 3 rd order	0.5374	0.2318	0.0749	0.6326	0.2678
- heteroscedasticity	0.5998	0.6065	0.2051	0.3054	0.4923
- normality	0.8539	0.0010	0.0333	0.5415	0.0059
Trace rank r tests, p-values					
$r = 0$	0.0124	0.0296	0.0010	0.0073	0.0130
$r \leq 1$	>0.1164	>0.0778	>0.0775	>0.0618	>0.0700
Long run parameter estimates:					
$\hat{\phi}_1$ (output)	1.3273	1.000	1.000	1.000	1.000
	(0.984)	(--)	(--)	(--)	(--)
$\hat{\phi}_2$ (user cost)	0.279	--	--	--	--
	(0.890)	(--)	(--)	(--)	(--)
$\hat{\phi}_3$ (liquidity)	0.326	0.305	0.327	0.000	0.322
	(0.153)	(0.145)	(0.243)	(--)	(0.174)
$\hat{\phi}_4$ (uncertainty)	-1.061	-1.127	-0.898	-1.510	-0.667
	(0.373)	(0.166)	(0.253)	(0.808)	(0.167)
$\hat{\phi}_5$ (R&D)	0.576	0.632	0.429	0.476	0.000
	(0.258)	(0.297)	(0.254)	(0.562)	(--)
Loading parameter estimates:					
$\hat{\pi}_1$ (investment loading parameter)	-0.272	-0.271	-0.215	-0.133	-0.477
	(0.043)	(0.046)	(0.086)	(0.047)	(0.120)
- other loadings (restricted to zero)	0	0	0	0	0
- weak exogeneity, p-values ^(b)	0.0713	0.7971	0.0224	0.0875	0.0731
Investment's equation:					
-R ²	0.364	0.668	0.727	0.715	0.758
- standard error of the regression	0.0830	0.0599	0.0744	0.0860	0.0938
- conditioning cost of capital ^(c)	No	Yes **	Yes ***	Yes **	Yes ***

^(a) "--" means not estimated (excluded variables from VAR and/or standard errors of restricted parameters), $p=3$. ^(b) Tests for weak exogeneity also include restrictions on the long run parameters, when imposed. ^(c) Changes of user cost in t and $t-1$; ** and *** respectively denote 5% and 1% significance on the basis of F tests.

Tab. 5 – Short- and long-run elasticities corresponding to the system steady state solution ^(a)

	Investment					Capital stock				
	<i>agg</i>	<i>sum</i> (<i>nres+me+ict</i>)	<i>nres</i>	<i>me</i>	<i>ict</i>	<i>agg</i>	<i>sum</i> (<i>nres+me+ict</i>)	<i>nres</i>	<i>me</i>	<i>ict</i>
<i>Output</i>										
- short-run	2.560 (0.028)	3.495 (0.045)	3.249 (0.038)	4.056 (0.064)	0.110 (0.011)	0.447 (0.004)	0.301 (0.004)	0.119 (0.001)	0.593 (0.009)	0.035 (0.003)
- long-run	1.149 (0.029)	1.214 (0.043)	0.740 (0.054)	1.432 (0.058)	1.000 (0.102)	1.149 (0.012)	1.021 (0.011)	0.740 (0.010)	1.431 (0.024)	1.002 (0.090)
<i>Uncertainty</i>										
- short-run	0 (0)	-0.014 (0.001)	0 (0)	-0.005 (0.000)	-0.122 (0.012)	0 (0)	-0.006 (0.000)	0 (0)	-0.012 (0.000)	-0.039 (0.004)
- long-run	0 (0)	-0.078 (0.008)	0 (0)	0.000 (0.000)	-1.019 (0.107)	0 (0)	-0.025 (0.002)	0 (0)	0.000 (0.000)	-1.018 (0.096)
<i>Liquidity</i>										
- short-run	0 (0)	0.091 (0.001)	0.068 (0.001)	0.097 (0.002)	0.108 (0.011)	0 (0)	0.008 (0.000)	0.002 (0.000)	0.014 (0.000)	0.034 (0.003)
- long-run	0 (0)	0.023 (0.002)	0.000 (0.000)	0.000 (0.000)	0.294 (0.031)	0 (0)	0.007 (0.001)	0.000 (0.000)	0.000 (0.000)	0.295 (0.027)
<i>Interest rates</i> ^b										
- short-run	-1.130 (0.011)	-1.027 (0.014)	-1.416 (0.017)	-0.883 (0.015)	-0.916 (0.094)	-0.163 (0.002)	-0.126 (0.002)	-0.072 (0.001)	-0.194 (0.003)	-0.289 (0.030)
- long-run	-1.307 (0.035)	-1.280 (0.046)	-1.306 (0.097)	-1.419 (0.055)	0.000 (0.000)	-1.304 (0.015)	-1.320 (0.015)	-1.309 (0.018)	-1.419 (0.023)	0.000 (0.000)

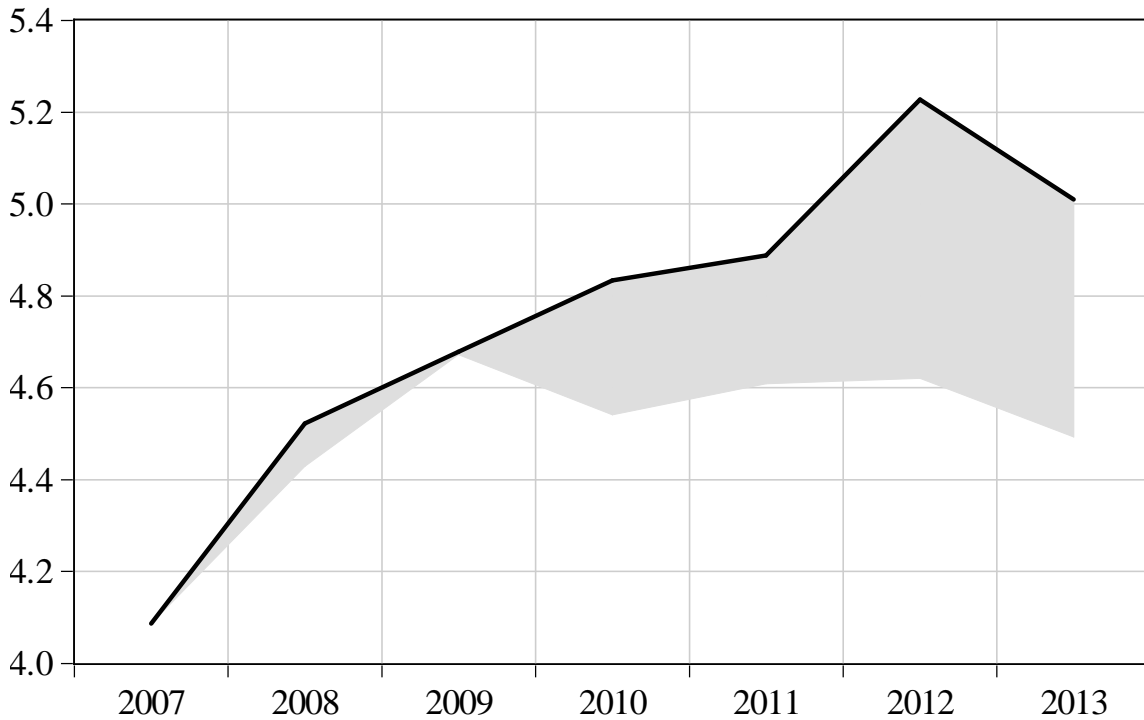
^(a) Obtained by perturbing the steady state solution of the four explanatory variables listed along the rows. The short-run elasticity is computed one period (year) after the shock, the long run corresponds to the last simulation year (i.e. about 90 periods after the shock). Standard errors (in parentheses) are bootstrapped in stochastic simulations of the system (1,000 replications). Simple zeros denote that the corresponding parameters in the system are restricted to zero, while "decimal zeros" suggest the numerical irrelevance of the elasticity.

Tab. 6 - The price of the political uncertainty and financial conditions ^(a)

	<i>uncertainty</i>	<i>liquidity</i>	<i>total</i>
<i>GDP</i>	0.2	0.2	0.4
<i>Business investments</i>	2.1	2.5	4.8
- ICT	15.0	9.3	25.7
- Machinery & equipments	0.5	1.8	2.3
- Non-residential buildings	0.5	1.2	1.7
<i>Capital stock</i>	0.6	0.6	1.2
<i>Full time equivalent employees</i>	0.1	0.1	0.2

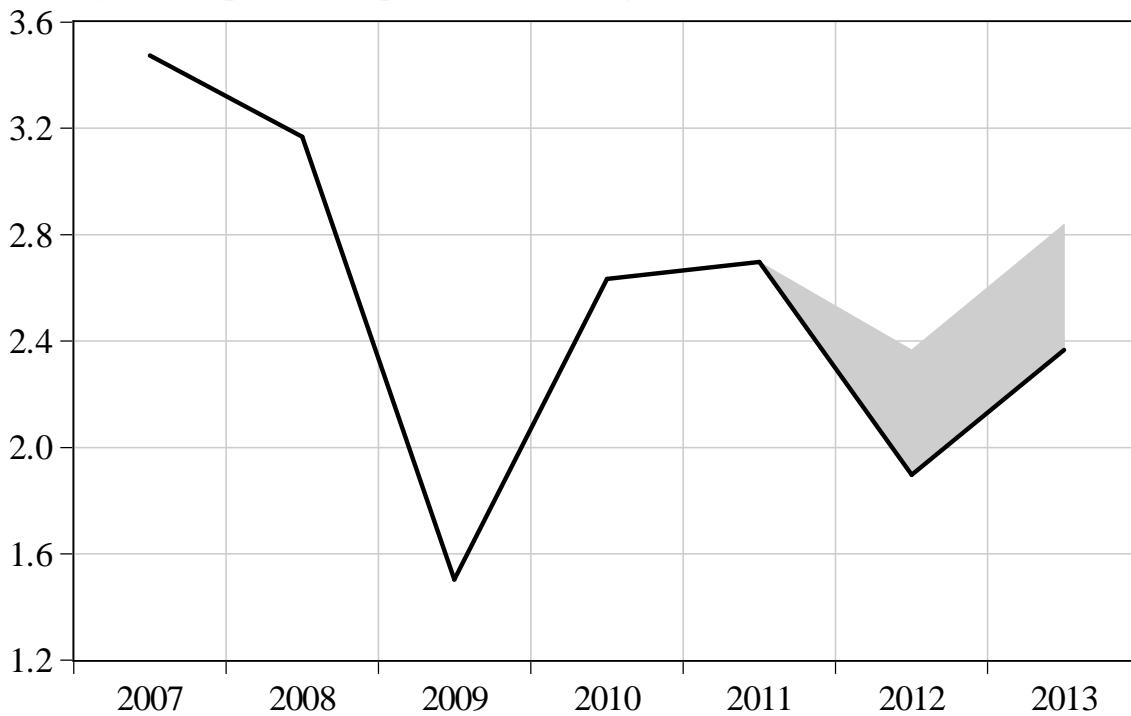
^(a) % changes in 2013 with respect to the actual levels.

Fig. 1 – The economic policy uncertainty index, log-levels ^(a)



^(a) Bold line: the Italian index; grey shaded area: distance between the Italian index and the average of Germany, France and Spain indexes.

Fig. 2 – The pattern of liquidity indicator, log-levels ^(a)



^(a) Bold line: the historical pattern; grey shaded area: distance between the historical pattern and an alternative of less credit crunch in 2012-2013, whose liquidity levels are those of the historical figures one-year later.



Alma Mater Studiorum - Università di Bologna
DEPARTMENT OF ECONOMICS

Strada Maggiore 45
40125 Bologna - Italy
Tel. +39 051 2092604
Fax +39 051 2092664
<http://www.dse.unibo.it>