

Gregori, Wildmer Daniel

Working Paper

Fiscal Rules and Public Spending: Evidence from Italian Municipalities

Quaderni - Working Paper DSE, No. 923

Provided in Cooperation with:

University of Bologna, Department of Economics

Suggested Citation: Gregori, Wildmer Daniel (2014) : Fiscal Rules and Public Spending: Evidence from Italian Municipalities, Quaderni - Working Paper DSE, No. 923, Alma Mater Studiorum - Università di Bologna, Dipartimento di Scienze Economiche (DSE), Bologna, <https://doi.org/10.6092/unibo/amsacta/3948>

This Version is available at:

<https://hdl.handle.net/10419/159762>

Standard-Nutzungsbedingungen:

Die Dokumente auf EconStor dürfen zu eigenen wissenschaftlichen Zwecken und zum Privatgebrauch gespeichert und kopiert werden.

Sie dürfen die Dokumente nicht für öffentliche oder kommerzielle Zwecke vervielfältigen, öffentlich ausstellen, öffentlich zugänglich machen, vertreiben oder anderweitig nutzen.

Sofern die Verfasser die Dokumente unter Open-Content-Lizenzen (insbesondere CC-Lizenzen) zur Verfügung gestellt haben sollten, gelten abweichend von diesen Nutzungsbedingungen die in der dort genannten Lizenz gewährten Nutzungsrechte.

Terms of use:

Documents in EconStor may be saved and copied for your personal and scholarly purposes.

You are not to copy documents for public or commercial purposes, to exhibit the documents publicly, to make them publicly available on the internet, or to distribute or otherwise use the documents in public.

If the documents have been made available under an Open Content Licence (especially Creative Commons Licences), you may exercise further usage rights as specified in the indicated licence.



<https://creativecommons.org/licenses/by-nc/3.0/>



ISSN 2282-6483

Alma Mater Studiorum - Università di Bologna
DEPARTMENT OF ECONOMICS

**Fiscal Rules and Public Spending:
Evidence from Italian Municipalities**

Wildmer Daniel Gregori

Quaderni - Working Paper DSE N°923



Fiscal Rules and Public Spending: Evidence from Italian Municipalities

Wildmer Daniel Gregori*

February 3, 2014

Abstract

The aim of this paper is to investigate the extent to which local budget spending composition reacts to fiscal rules variations. I consider the budget of Italian municipalities and exploit specific changes in the Domestic Stability Pact's rules, to perform a difference-in-discontinuities analysis. The results show that not all rules are equally effective: imposing a cap on the total amount of consumption and investment is not as binding as two caps, one specific for consumption and a different one for investment spending. More specifically, the consumption variation is triggered by changes in the level of wages and services spending, while investment relies on infrastructure movements. In addition, there is evidence that when an increase in investment is achieved, there is also a higher budget deficit level.

JEL codes: C21, C23, H72, H74, H77.

Key words: Fiscal rules, Difference-in-discontinuities, Public spending, Consumption, Investment, Deficit, Italian Municipalities.

*Department of Economics, University of Bologna. wildmer.gregori@unibo.it. I would like to thank Paolo Manasse, Alberto Zanardi, Massimiliano Marzo, James Rauch, Julie Cullen, Giovanni Prarolo, Valerie Ramey, Fabian Kruger, Nelio Rosa, Matteo Falagiarda and Giorgio Gulino for their useful comments. I also thank participants of the seminar at the University of Bologna, University of California San Diego, Europaeum Workshop in Prague, and the OECD-University Joint conference on "Economics for a Better World".

1 Introduction

Rules for coordinating the financial relationship among different levels of government have the purpose of guaranteeing both macroeconomic stability and financial sustainability. The rationale of fiscal rules stems from two main concepts. The first one is the common pool problem, whereby the presence of imbalances financed by the common pool of national taxes through central transfers generates an incentive for local governments to excessively increase local expenditure (Rodden, 2002). The second concept is related to the fact that whenever a local administration defaults, the national level generally intervenes with transfers of more resources to the local level. This creates an insurance effect and a problem of moral hazard.

In case of Italy, local governments are subject to financial distress. As shown in Figure 1, in the period between 1989 and 2012 there are 460 municipalities where a default occurred¹. This situation creates social and financial instability at the local level and might also affect the national level if the central government needs to reallocate resources. Indeed, a recent judgment of the European Court of Human Rights point in this direction². In fact, the Court states that when a m suffers financial distress, the Central level has to guarantee for its debt refund. Consequently, fiscal rules play a central role and their ability to affect budget decisions is crucial.

[Figure 1 about here]

Beyond this, subnational rules could also be implemented with the aim of fostering virtuous behaviors. Public spending can focus on consumption or investment. Ganelli and Tervala (2010) affirm that the reallocation of consumption in favor of capital spending might generate welfare gains. In the case of Italian municipalities, the amount of consumption compared to investment spending has changed over time. As shown in Figure 1, the overall consumption of municipalities was 3.96% of GDP in 1990, while

¹In addition, from the mid-1990s onwards, decentralized governments have made significant recourse to financial tools such as derivatives, mainly Interest Rate Swaps. The number of municipalities that had derivative transaction in 2007 was above 600 (as shown in the “Financial Stability Report” of Banca d’Italia in 2013). They have been exposed to market volatility, which has generated potential liability and, sometimes, financial distress. For instance, Milan signed a contract of derivatives for a total amount of 1.5 billion Euro in 2005 and after a few years had to face a potential loss of 200 million Euro. For this reason, the city of Milan called banks who proposed the transaction to court, arguing that the city had been duped. Moreover, smaller Municipalities have come up against this issue, such as Alessandria and Acqui Terme, who decided to stop paying their derivatives’ liabilities to banks.

²See the European Court of Human Rights “Case of De Luca vs Italy”, n. 43870/04 and the Il Sole 24 Ore’s article of the article of September 24th, 2013 entitled “La Corte Ue condanna l’Italia: i debiti dei Comuni falliti vanno pagati”.

investment was 2.47%. The distance between these two types of spending subsequently decreased in the following years: in 2005 consumption and investment reached 3.32% and 3.01% of GDP, respectively. However, starting from 2006 onwards, this trend has reverted.

[Figure 2 about here]

The aim of this paper is to empirically assess the extent to which public spending of Italian municipalities is affected by fiscal rules. For this purpose, I exploit specific aspects of the Institutional framework. Since 1999 the Italian Government has implemented fiscal rules under the so-called Domestic Stability Pact (hereafter DSP), in order to coordinate and control subnational budget balances. Peculiar features of the DSP give the opportunity to study a natural experiment implementing a difference-in-discontinuity technique.

This paper provides evidence that fiscal rules are not equally effective, but rather they crucially depend on how they are designed. In particular, differences arise concerning whether it is imposed a cap on the overall amount of public spending or if there are two limits, differentiating between consumption and investment. In addition, this paper also highlights the extent to which the budget composition reacts to fiscal rules. When a reduction in consumption is imposed, there is a significant effect of the same sign on the quantity of services offered, whereas while when an increase in investment is allowed, there is a positive variation on the amount of infrastructure spending. Interestingly, there is also a significant increase in the deficit level in the latter case.

This evidence shows the existence of a trade-off, whereby rules that favor investment also cause deficit. The policy maker should take into account these design issues: on one hand only certain rules are actually binding while, on the other hand, rules might have effects that go beyond the initial normative goal.

The remainder of this paper is organized as follows. Section 2 details the related literature, while section 3 analyses the normative framework. Section 4 provides the preliminary analysis and section 5 shows the identification strategy. Sections 6 illustrates the empirical findings, before section 7 concludes.

2 Literature review

Fiscal rules are generally justified because they substitute reputation when government policy is discretionary and time-inconsistent.

In the case of subnational fiscal rules, the debate is controversial, with the theoretical literature suggesting advantages and disadvantages. Authors such as Eichengreen and von Hagen (2004) and Rodden (2004) are in favor of these rules, believing that the scope for subnational fiscal rules is higher when there are severe fiscal imbalances, possibly increased by the decentralization process. In fact, when more functions are delegated to local governments, their spending power rises and imbalances might worsen. In addition, local governments have incentives to free ride on fiscal discipline for different reasons: they can rely on a common pool of national resources (Weingast, 2006); sometimes they are “too big to fail” (Wildasin, 1997), and private creditors on the capital market expect that central government will guarantee for local debts (Dafflon, 2002). Milesi-Ferretti (2004) argues against subnational fiscal rules, suggesting that local rules might lead to “ugly outcomes” for local governments, such as creative accounting and window dressing. Ter-Minassian (Ter-Minassian) affirms that fiscal rules should only be implemented if financial markets or cooperative arrangements across government levels cannot enforce or reach financial discipline.

From an empirical perspective, the DSP has captured the attention of different authors. Patrizii et al. (2006) have addressed the ability of regions and local governments to meet the DSP requirements, whereas Brugnano and Rapallini (2010) evaluate the effects of the DSP on local public borrowing requirements from 1999 to 2005. Bartolini and Santolini (2009) conduct a panel data analysis on the current expenditures of 246 Italian municipalities to capture the impact of the DSP on both the opportunistic behavior of incumbent politicians and the yardstick competition. They show that the introduction of the DSP significantly reduces the level of public spending but strengthens the opportunistic behavior of incumbent politicians in pre-electoral years. Other authors focus on the “effectiveness” approach, in dealing with the impact of fiscal rules on local administrations’s ability to achieve fiscal discipline and sustainability. In particular, Balduzzi and Grembi (2010) implement a difference-in-difference methodology on Italian municipalities considering the period 1999-2004 and show that the DSP has a positive and significant impact on current expenditures and taxes’ revenues. Galli and Grembi (2010) focus the attention on “special” municipalities³ between 1999 and 2000 using a difference-in-difference approach. Their results show that the revenue side is affected when the DSP is imposed, while there are not significant variations in relation to expenditures’ decisions. Grembi et al. (2012) analyze Italian Municipalities between 1999 and 2004, implementing a

³Which are part of the so-called “special status” regions and provinces.

difference-in-discontinuities approach. They highlight that relaxing fiscal rules provokes a deficit bias, shifting from zero to 2% of total budget, with this variation mainly driven by adjustment on the revenue side.

With respect to the previous literature, this paper contributes to the effectiveness branch of research. The novelty of this work stems from the analysis of specific fiscal rules designed to influence local public spending (i.e. caps on the expenditure side of the budget). It is shown that there are both effective and ineffective fiscal rules. Furthermore, when investment spending increases, there is also a positive reaction in terms of the deficit level.

3 Normative framework

Italian municipalities are subject to the Law for Local Authorities⁴, which states goals and duties that have to pursue. Moreover, starting from 1999, the central government has set the DSP in order to honor commitment taken with the European Institutions. Since its introduction, the DSP has implemented different types of rules, particularly: a) a balanced budget, whereby the total amount of revenues has to equal the total amount of expenditures; b) expenditure caps, through which there might be ceilings on total current expenditure or specific expenditure items; c) ceilings on local level revenues, which allow the central government to limit local authorities' ability to increase revenue; d) limits on the stock of debt or the issuance of new debt; e) restrictions on the type of expenditure that can be financed by debt, which usually state that only investment expenditure may be financed through debt (known as "Golden Rule"), requiring a clear definition of investment expenditure to avoid current expenditure being transferred to investments; f) indicators of the ability to service the debt.

Considering that this paper aims to study the extent to which fiscal rules affect local public spending, I am particularly interested in rules designed to have an impact on it. The DSP has implemented this kind of rule twice. In particular, a cap on the total expenditures was set in 2005, which could not be higher than the average spending of the previous three years, augmented by 11.5%⁵. In the following year, the limit on the overall spending was removed, while different ceilings on current and capital expenditures were

⁴Law n. 367/2000. In particular, the actual functions are presented by the DPR 167/1996 and cover a wide range of subjects, such as general administration, justice, local police, public education (up to primary school and part of secondary school), culture, sport, tourism, local public transportation, urban development, social sector, economic development, productive local services.

⁵Further details are shown in the Finance law n. 311, December 30, 2004 and Document of Ministry of Economy and Finance ("*Circolare della Ragioneria Generale dello Stato*") n. 4 of February 8, 2005.

added. Consumption was the most penalized, with the rule imposing a cut of 6.5%. On the other hand, investment was allowed to increase by 8.1%⁶. For the purpose of this analysis, I should also highlight DSP rules in the year prior to the introduction of the caps, because I am analyzing the variation of public spending from one year to the next. Thus, in 2004 the DSP imposed the budget balance as target rule.

There is also another crucial element to consider, namely that the number of municipalities subject to the DSP has changed over time. The Pact only constrained municipalities with more than 5,000 inhabitants in 2004 and 2006, while in 2005 the threshold decreased to 3,000, as summarized in Table 1.

[Table 1 about here]

This normative framework provides an opportunity to study the extent to which fiscal rules can affect budget spending decisions at the local level through a natural experiment, as described in the following sections.

4 Preliminary analysis

The normative framework shows that the analysis should focus on the period between 2004 and 2006. Data concerning local budgets is derived from the Italian Ministry of the Interior's website⁷ and covers all Italian municipalities. The outcome of interest refers to budget values, and particularly consumption and investment spending⁸. Values are expressed in Euro per-capita and deflated using 2006 as the reference year.

The DSP is set at the national level, although the so-called "special autonomy" provinces and regions are treated differently and therefore had to be excluded from the

⁶For both consumption and investment the benchmark level is the one of two years previously. Further details are shown in the Finance law n. 266, December 23, 2005 and Document of Ministry of Economy and Finance ("*Circolare della Ragioneria Generale dello Stato*") n. 8 of February 17, 2006.

⁷See <http://finanzalocale.interno.it/>.

⁸Consumption spending is divided into the following categories: Employees, Raw Material, Services and Interests paid on Debt. Investment are detailed in Infrastructures, Goods for internal production, Durable goods, Consulting services, Transfers and Credits. Expenditures are composed by a further category which considers the amount of principal repaid on debt. Current budget revenues are divided in the following categories: Taxes, Fees & Tariffs, Current Central Transfers, Current Regional Transfers, Extra-tributary revenues. Capital revenues are split into Alienations, Capital Central Transfers, Capital Regional Transfers, Real estate transfers, Deficit (defined as new loans stipulated by the municipality as shown in the balance sheet in "Titolo V - Entrate derivanti da accensioni di prestiti"). All the budget values represent the accrual basis of accounting.

sample⁹. The dataset also includes information from the National Institute of Statistics about the geographical characteristics of municipalities¹⁰ which is useful when robustness checks are implemented.

According to the institutional framework, municipalities are grouped in relation to their number of inhabitants: Group A includes those with up to 3,000 people; Group B between 3,000 and 5,000, and Group C above 5,000. Arguably, small and large municipalities might have different behaviors in terms of budget policies and thus it seems reasonable to limit the sample to municipalities with between 1,000 and 7,000 inhabitants¹¹.

This preliminary analysis intends to explore consumption and investment spending to provide an intuition of possible DSP effects, with the aim of highlighting different behavior between the three groups during the examined period (2004, 2005 and 2006 are named t_1 , t_2 and t_3 , respectively). Subsequently, these findings will be further investigated through the empirical analysis (see section 6).

In t_2 , the DSP imposed a cap on total spending to municipalities with more than 3,000 inhabitants. The sum of consumption and investment increased for the non-constrained group (Group A) by 2.8% from t_1 to t_2 , while for Groups B and C it decreased by 2.3% and 3.1%, respectively. Table 2 shows the budget values.

[Table 2 about here]

In t_3 , municipalities with more than 5,000 inhabitants had to face a different rule. Instead of having just one cap on budget spending, there were two different caps: one on consumption and another on investment. Interestingly, from t_2 to t_3 , the constrained group (Group C) reported a different trend in terms of budget composition compared to the other groups, as shown in Figure 3. In particular, Group B reached a consumption level that was 1.76 times the investment in 2006. By contrast, Group C did not increase this relationship from t_2 to t_3 . Such budget spending variation might be due to either a consumption or investment change. Table 2 shows the mean budget values for each group, highlighting that consumption changed between t_1 and t_3 by 1.5%, 0% and -4.5%

⁹They have the power to bargain fiscal rules directly with the Central Government. Consequently, municipalities of the autonomous provinces of Trento and Bolzano and the autonomous regions of Sicilia, Sardegna, Valle D'Aosta, Trentino-Alto-Adige and Friuli-Venezia-Giulia have not been considered.

¹⁰In particular: i) total surface of each Municipality in square kilometers; ii) altitude of the Town hall in meters; iii) altitude zone: Inland mountain, Coastal mountain, Inland Hill, Coastal Hill, Plain; iv) macro-area: Northwest (Piemonte, Lombardia, Liguria), Northeast (Veneto, Emilia-Romagna), Centre (Toscana, Umbria, Marche, Lazio), South (Abruzzo, Molise, Campania, Puglia, Basilicata, Calabria).

¹¹The number of municipalities analyzed is 42% of the total.

respectively for Group A, B and C, mainly due to variation in services. On the other hand, investment changed by -6.3%, -20.4% and -15% for Group A, B and C, respectively, mostly due to infrastructure spending¹².

[Figure 3 about here]

As a preliminary comment, there is evidence of a variation in the budget composition during the analyzed period, with the three groups demonstrating different behaviors. This can be due to fiscal rules imposed by the DSP, with the next section focusing on the identification strategy to exploit this possibility accordingly.

5 Identification Strategy

The institutional framework analyzed in section 3 explained that decisions related to the DSP rules are made by the central government, and are therefore exogenous with respect to local dynamics. Specifically, I would like to assess rules designed to influence budget spending, namely: (i) a total expenditure cap and (ii) consumption and investment caps. For this purpose, I need to identify a treated and control group, and a treatment. Considering Groups A, B, C and t_1, t_2, t_3 as defined in the previous section, the analysis involves two steps, each comprising two cases.

As shown in Figure 4, the first step focuses on Groups A and B, which are the control and treated group, respectively, and the threshold is set at 3,000 inhabitants. There are two cases in relation to the period analyzed. Case IA studies t_1 and t_2 , where the treatment is the imposition of the total expenditure cap to Group B, while Case IB analyzes t_2 and t_3 , whereby the treatment is the exemption from the total expenditure cap for Group B.

[Figure 4 about here]

The second step relies on results from the first step (as shown in the next section) and considers Group B and C, the control and treated group, respectively, with the threshold set at 5,000 (see Figure 5). As before, there are two cases in relation to the period analyzed. Case IB studies t_1 and t_2 , where the treatment is the variation of the fiscal rule from “Budget balance” to “Total expenditure cap” for Group C, while Case IIB analyzes t_2 and t_3 , whereby the treatment is the variation of the fiscal rules from “total expenditure cap” to “consumption and investment caps” for Group C.

¹²Mean values have been tested using the t-test and groups have statistically different means at the 95% confidence interval.

[Figure 5 about here]

The remainder of the section focuses on the formal approach used for the aforementioned cases.

5.1 General setting

To assess the causal effect of each fiscal rule (the treatment) on the treated group, it is necessary to consider a minimum set of assumptions to perform the analysis (Angrist et al., 1996). Potential budget outcomes Y are the variables of interest and the actual treatment D ¹³ depends on the variable Z , which is equal to 1 when a municipality is assigned to the treatment, while $Z = 0$ when it is assigned to the control group. The potential budget outcome of municipality m at time t depends on Z and D , which can more formally be noted as $Y_{mt} = Y_m(Z_t, D_t)$. Therefore, the outcome is $Y_{mt}(1)$ when the municipality is treated and $Y_{mt}(0)$ when it is not. The following assumptions should be considered:

(i) Stable unit treatment value assumption: the potential outcomes and treatments of unit m are independent from the potential assignment, treatments and outcomes of $n \neq m$. Consequently, when a municipality is subject to the treatment, it should not influence the other one (no general equilibrium effects);

(ii) non-zero average causal effect of Z on D : the probability of treatment must be different between the two groups. Therefore, it is required that whoever is assigned to the treatment actually gets the treatment, or at least part of the component of the treated group. In other words, some level of compliance is necessary¹⁴;

(iii) the exclusion restriction should hold. Consequently, the assignment only affects the outcome through the treatment;

(iv) monotonicity. No one does the opposite of its assignment, regardless what the assignment is. Thus, the absence of defiers is required. Specifically, a defier would be a municipality that follows the DSP rules without any formal obligation;

(v) random assignment: all municipalities have the same probability of getting the treatment.

It should be noted that assumption (v) cannot hold due to the fact that the assignment is not random, but rather conditioned to the population level. In this case, a Sharp

¹³The actual treatment is assumed to be beyond the researcher control (Angrist et al., 1996).

¹⁴In order to have a high compliance level, the DSP also introduces incentives. Patrizii et al. (2006) show that municipalities are compliant to the DSP.

Regression Discontinuity Design (SRDD) could be implemented, imposing the following assumptions:

(vi) assignment to treatment must only depend on observable pre-intervention variables (i.e. the population level);

(vii) identification of the mean treatment effect is only possible at the threshold;

(viii) the continuity of potential outcome: limits of the expected values have to be identical at the cutoff. In other words, the budget outcomes of municipalities just before and after the cutoff level should be equal.

Under these assumptions, the SRDD can be written as (Angrist and Pischke, 2008):

$$\lim_{\delta \rightarrow c} E[Y_m | P_c < P_m < P_c + \delta] - E[Y_m | P_c - \delta < P_m < P_c] = E[Y_m(1) - Y_m(0) | P_m = P_c]$$

where P_c is the population at the cutoff level, δ represents a small number, Y_m and P_m are the potential budget outcome and population of Municipality m . The estimand of this nonparametric estimation strategy is the average causal effect, $E[Y_m(1) - Y_m(0) | P_m = P_c]$.

However, assumption (viii) raises some issues. In order to identify the causal effect at the cut-off point, any discontinuity in the relationship between the outcome of interest and the variable determining the treatment status must be fully attributable to the treatment itself. However, there is a confounding discontinuity policy at the cut-offs, due to a change in the wage level of local politicians. In fact, the three groups of municipalities guarantee different wages in relation to the population level, with a jump at 3,000 and 5,000 inhabitants (exactly at the cutoffs). As shown by Gagliarducci and Nannicini (2013), better-paid politicians are able to improve internal efficiency, sizing down the government machine. Consequently, there is a confounding policy that might alter the identification strategy. To overcome this issue, the approach described in the following subsection can be implemented.

5.2 Difference-in-Discontinuities

The confounding policy that inhibits the effectiveness of the SRDD strategy is constant over the analyzed period, and thus a Difference-in-Discontinuities (DiDisc) framework can be implemented, as shown in Grembi et al. (2012)¹⁵. This allows studying the sharp discontinuity at the threshold and, thanks to the Difference-in-Difference (DiD) design,

¹⁵This methodology combines the Difference-in-Difference strategy and a Regression Discontinuity Design.

remove the constant confounding discontinuity policies (i.e. different wage policies among municipalities). The assumptions that should hold are as follows:

(ix) the confounding discontinuity needs to be time invariant. This assumption requires that the effect of wage variations on budget outcome among groups not to vary with time;

(x) the interaction between the treatment and the confounding discontinuity has to be irrelevant. Therefore, different wage policies should not generate a different reaction compared to fiscal rules introduced by the DSP.

Under these assumptions, there is an estimator $\hat{\phi}$ that identifies the local treatment effect ϕ :

$$\hat{\phi} \equiv \left(\lim_{P_m \uparrow P_c} E[Y_{mt}|P_m, t = t_1] - \lim_{P_m \downarrow P_c} E[Y_{mt}|P_m, t = t_1] \right) + \left(\lim_{P_m \uparrow P_c} E[Y_{mt}|P_m, t = t_0] - \lim_{P_m \downarrow P_c} E[Y_{mt}|P_m, t = t_0] \right) \quad (1)$$

where Y_{mt} is the potential budget outcome for municipality m at time t , P_m is the population level, t_1 is the year of the treatment and t_0 is the previous one.

For each case, the assignment to the treatment is given by the dummy D_{mt} which takes the value:

$$D_{mt} = \begin{cases} 0 & \text{if } t = t_0 \\ 0 & \text{if } P_m \leq P_c, t = t_1 \\ 1 & \text{if } P_m > P_c, t = t_1 \end{cases} \quad (2)$$

where P_c is the cutoff level. Having described the DiDisc strategy, we can now proceed to the empirical model.

5.3 Empirical models

To estimate the DiDisc estimator I use two different methods¹⁶.

The first one is the ‘‘Local Linear Regression’’ (LLR) method, which fits the data with linear regression functions in a specific sample range. The interval is limited considering a certain distance ‘‘ d ’’, thus $P_m \in [P_c - d, P_c + d]$. The estimated model is:

¹⁶See Imbens and Lemieux (2008) and Grembi et al. (2012).

$$\begin{aligned}
Y_{mt} = & \alpha_0 + \alpha_1 \tilde{P}_m + G_m(\beta_0 + \beta_1 \tilde{P}_m) + \\
& + t_1(\gamma_0 + \gamma_1 \tilde{P}_m + G_m(\delta_0 + \delta_1 \tilde{P}_m)) + \epsilon_{mt}
\end{aligned} \tag{3}$$

where Y_{mt} is the budget outcome for municipality m at time t , \tilde{P}_m is the normalized population size ($\tilde{P}_m = P_m - P_c$), G_m is a dummy equal to 1 when a city is part of the treated group and 0 otherwise, t_1 is the treatment year, α_0 is the intercept and ϵ_{mt} is the error term. Considering that the treatment is $D_{mt} = G_m t_1$, the coefficient δ_0 is the DiDisc estimator¹⁷

The second method is the ‘‘Spline Polynomial Approximation’’ (SPA), which relaxes the linearity assumption of the previous method and uses polynomial functions of order η to fit the relationship between the outcome of interest Y_{mt} and the population level P_c ¹⁸. The estimated model is:

$$\begin{aligned}
Y_{mt} = & \sum_{n=0}^{\eta} (\alpha_k \tilde{P}_m^n) + G_m \sum_{n=0}^{\eta} (\beta_k \tilde{P}_m^n) + \\
& + t_1 \left[\sum_{n=0}^{\eta} (\gamma_k \tilde{P}_m^n) + G_m \sum_{n=0}^{\eta} (\delta_k \tilde{P}_m^n) \right] + \epsilon_{mt}
\end{aligned} \tag{4}$$

where the variables and the DiDisc estimator are defined as in the LLR method.

6 Results

Empirical results are divided between the first (Case IA and IB) and second (Case IIA and IIB) step and focus on consumption and investment spending budget outcomes, showing the DiDisc estimator. The empirical models are represented by equations (3) and (4): the LLR is performed at two different bandwidths, $b=1,500$ (LLR_1) and $b=1,300$ (LLR_2), while the SPA is implemented at the second order of the polynomial.

The first step of the analysis is shown in Table 3. The effect of introducing a cap on total spending for municipalities with a population between 3,000 and 5,000 inhabitants

¹⁷Standard errors are clustered at the municipal level and results are controlled considering different bandwidths.

¹⁸This is true on the right and left hand side of the cutoff level P_c and in the treatment year and previous one, for each case analyzed. Standard errors are clustered at the municipal level and robustness checks are performed considering different functional orders.

during the period t_1 and t_2 (Case IA) does not produce a significant effect on either consumption or investment for any model specification. Moreover, moving forward of one period (Case IB), and thus studying the effects when the cap is removed, also does not provide any significant effects on both types of spending¹⁹.

[Table 3 about here]

It can be affirmed that the cap on the overall level of public spending is not capable of significantly influencing the composition of the budget spending. Intuitively, the cap was not sufficiently binding (as shown in section 3, the fiscal rule allowed for a maximum increase of total spending of 11.5%, compared to the average of the previous three years) and both groups reported a behavior that was not significantly different between each other. Therefore, in this framework, the cap on overall spending is not effective and thus it can be seen as a placebo treatment with no effect on budget outcome decisions. These findings are confirmed by the graphical representation of the difference-in-discontinuity approach. In fact, Figure 6 shows the difference between budget outcomes, generated by the difference between t_0 and t_{-1} , between Group A and Group B. At the cutoff level, there is a vertical line to highlight a possible discontinuity. Consumption does not show any discontinuity at the thresholds, while the jump shown by investment is not significant.

[Figure 6 about here]

Before showing the results, it should be noted that there are potentially two contemporaneous treatment. In particular, in the period considered by Case IIA, Group B is exempted from the DSP in t_1 and subject to it in t_2 , while there is a variation of the fiscal rule for Group C from “budget balance” to “total expenditure cap”. Moving forward one period (Case IIB), Group B is no longer subject to the DSP in t_3 and there is a further variation from the “budget balance” to “consumption and investment caps” for Group C. In order to disentangle these two treatments, we need to rely on the evidence provided in the first step. The treatment assigned to Group B is claimed not to be effective in both t_2 and t_3 and therefore in Case II the treatment is the fiscal rule variation for Group C. Consequently, Group B and C are the control and treated group, respectively.

We can now focus on the results. Case IIA shows the effect of a variation of the fiscal rule for Group C from the “budget balance” to the “total expenditure cap”. As shown in

¹⁹The effects are not significant, further deepening the analysis at subcategories of consumption and investment (consumption: wages, raw material, services and interests paid on debt; investment: infrastructures, goods for internal production, durable goods, consulting services, transfers and credits).

the top part of table 4, there is no evidence for a significant effect of this variation. This result provides evidence in the direction of the first step, with Case IA, Case IB and Case IIA highlighting that the “total expenditure cap” does not have an impact in terms of affecting budget spending composition.

The last analysis (Case IIB) shows the effect of introducing two different caps: one for consumption and another for investment. As further explained in section 3, the fiscal rule imposed a decrease in consumption and allowed for an increase in investment spending. The bottom part of table 4 highlights that the outcome is consistent with the fiscal rule aim: from t_2 to t_3 consumption diminished by 28 Euro per-capita, while investment increased by 180 Euro per-capita. Considering subcategories of budget spending, there is evidence that consumption variations are mainly due to movements in wages (+11 Euro per-capita) and services (-35 Euro per-capita) spending. In terms of investment, the main subcategory to vary is infrastructure, which accounts for 83.5% of the overall variation.

Considering that municipalities are only allowed to generate new debt²⁰ to finance investment spending, it seems reasonable to verify what happened to this specific category. For this reason, Table 4 includes a row related to the deficit level for Case IIB. In line with the Golden Rule, the variation of investment and deficit have the same sign and a comparable magnitude, thus providing evidence that an increase in investment fosters a higher deficit level.

[Table 4 about here]

The empirical findings are supported by Figure 7. In Case IIA the behavior of Group 2 and Group 3 is substantially the same, while in Case IIB there is evidence of a discontinuity due to a variation in services and infrastructure spending. In addition, this is also confirmed by the jump in deficit spending.

[Figure 7 about here]

6.1 Robustness checks

Smaller municipalities have, on average, a higher level of consumption and investment, which might be due to geographical factors²¹.

²⁰Which is named deficit, as explained in section 4.

²¹Municipalities situated on the mountains have different issues compared to those located in a plain area, such as higher spending for street maintenance and costs related to the snow. In the empirical analysis there are dummies to control for it.

In order to assess the results' robustness, specific aspects of the municipalities are taken into account, including further peculiarities, as follows: (i) Surface (in Km^2): different territory extensions would likely require a dissimilar budget structure spending. For instance, a wider area would probably include more paved roads and therefore involve higher maintenance costs; (ii) Altitude level (in meters); (iii) Macro-areas dummies: Italy is characterized by economical and cultural differences between the north, center and south, therefore I control for North West, North East, Centre and South areas; (iv) Geographical dummies: factors such as mountains, hills, plains and coasts might affect spending choices; thus, the following dummies are also included: inland mountain, coastal mountain, inland hill, coastal hill, plain.

The LLR model (3) becomes:

$$Y_{mt} = \alpha_0 + \alpha_1 \tilde{P}_m + G_m(\beta_0 + \beta_1 \tilde{P}_m) + t_0(\gamma_0 + \gamma_1 \tilde{P}_m + G_m(\delta_0 + \delta_1 \tilde{P}_m)) + \phi \mathbf{X} + \epsilon_{mt} \quad (5)$$

where \mathbf{X} is a vector of the covariates and ϕ is a vector of the related coefficients. The SPA model (4) becomes:

$$Y_{mt} = \sum_{n=0}^{\eta} (\alpha_k \tilde{P}_m^n) + G_m \sum_{n=0}^{\eta} (\beta_k \tilde{P}_m^n) + t_0 \left[\sum_{n=0}^{\eta} (\gamma_k \tilde{P}_m^n) + G_m \sum_{n=0}^{\eta} (\delta_k \tilde{P}_m^n) \right] + \phi \mathbf{X} + \epsilon_{mt} \quad (6)$$

where \mathbf{X} and ϕ are defined as in model (5).

Tables 5 and 6 confirm the main findings for the four Cases examined. The only result that it is not robust is the wage variation: there are no significant effects of an impact of the DSP on it.

[Table 5 and Table 6 about here]

6.2 Comments

Through the empirical analysis, it has been possible to show that the Domestic Stability Pact is a vehicle for the central government to implement different kinds of local fiscal rules. Specifically, the cap on total spending did not have a significant effect on the budget

composition either for municipalities that were not subject to the DSP the year before its implementation (as shown in Case IA and Case IB) or those already constrained (Case IIA). It is possible that the policy maker wanted to implement a more binding rule and for this reason changed it in the following year (t_3), imposing different caps on consumption and investment spending. This new fiscal rule was able to significantly influence budget composition, generating a negative variation in the amount of services provided by more than 3% of the total budget, as well an increase in infrastructure spending by about 15% (compared to the unconstrained municipalities).

7 Final remarks

Coordination rules between state and local government levels are fundamental to guarantee overall sound public finance. Unsurprisingly, the European integration process considers fiscal rules as a central subject for stability and growth purposes. This paper studies the effects of the Domestic Stability Pact on Italian municipalities budget composition and thanks to the peculiar framework that characterizes the Pact, has been able to perform a natural experiment implementing a Difference-in-Discontinuity design. The analysis provides two main contributions.

Firstly, there is a discrimination between effective and ineffective fiscal rules. What emerges from the analysis is that the DSP is not effective per se, but rather the kind of fiscal rule implemented is crucial. In fact, it has been shown that imposing a cap on the overall level of current and capital expenditure does not affect budget decisions. Interestingly, imposing separate caps on consumption and investment spending creates an effective boundary, capable of affecting budget composition.

Secondly, effective fiscal rules do not equally affect all the types of spending. In particular, imposing a cut on consumption generates a decrease in the amount of services provided. Allowing for an increase in investment creates an increase in both infrastructure spending and the deficit level.

Therefore, fiscal rules set at the national level are able to significantly affect spending choices at the local level, both in statistical and economic terms. This evidence shows the existence of a trade-off, whereby rules that favor investment also cause a deficit. The policy maker should take into account these design issues: on one hand, only certain rules are actually binding and, on the other hand, rules might have effects that go beyond the initial normative goal.

References

- Acconcia, A., G. Corsetti, and S. Simonelli (2011). Mafia and public spending: Evidence on the fiscal multiplier from a quasi-experiment. CEPR, Discussion Paper 8305.
- Alesina, A., F. R. Campante, and G. Tabellini (2008). Why is fiscal policy often procyclical? *Journal of the European Economic Association* 6(5), 1006–1036.
- Alesina, A. and A. Drazen (1991). Why are stabilizations delayed? *The American Economic Review*, 1170–1188.
- Alesina, A. and R. Perotti (1994). The political economy of budget deficits. National Bureau of Economic Research, Working Paper 4637.
- Ambrosanio, M. F. and M. Bordignon (2007). Internal stability pacts: The european experience. *European Economic Governance Monitor, Papers*.
- Angrist, J. D. and J.-S. Pischke (2008). *Mostly harmless econometrics: An empiricist's companion*. Princeton University Press.
- Balassone, F. and D. Franco (2000). Public investment, the stability pact and the "golden rule". *Fiscal studies* 21(2), 207–229.
- Balduzzi, P. and V. Grembi (2010). Compliance vs. effectiveness: Assessing the role of fiscal rules.
- Barro, R. J. (1989). The ricardian approach to budget deficits. *The Journal of Economic Perspectives* 3(2), 37–54.
- Bartolini, D. and R. Santolini (2009). Fiscal rules and the opportunistic behaviour of the incumbent politician: Evidence from italian municipalities. CESifo Group Munich.
- Bastos, P., L. Castro, J. Cristia, and C. Scartascini (2011). Does energy consumption respond to price shocks? evidence from a regression-discontinuity design. *Inter-American Development Bank Working Paper Series No. IDB-WP-234*.
- Brugnano, C. and C. Rapallini (2010). Il patto di stabilità interno per i comuni: una valutazione con i certificati dei conti consuntivi. *Economia pubblica*.
- Dafflon, B. (2002). Local public finance in europe: Balancing the budget and controlling debt. Edward Elgar Publishing.

- Eichengreen, B. and J. von Hagen (2004). Fiscal policy and monetary union: Is there a tradeoff between federalism and budgetary restrictions? *Journal of Economic Theory* 114(2), 198–230.
- Gagliarducci, S. and T. Nannicini (2013). Do better paid politicians perform better? disentangling incentives from selection. *Journal of the European Economic Association* 11(2), 369–398.
- Galli, E. and V. Grembi (2010). Assessing degrees of fiscal rules. mimeo presented at The 7th Public Economics At the Regional and Local level (PEARL) Conference, Turin, April, 2010.
- Ganelli, G. and J. Tervala (2010). Public infrastructures, public consumption, and welfare in a new-open-economy-macro model. *Journal of Macroeconomics* 32(3), 827–837.
- Giuriato, L. and F. Gastaldi (2009). The domestic stability pact in italy: a rule for discipline? University Library of Munich, Germany.
- Grembi, V., T. Nannicini, and U. Troiano (2012). Policy responses to fiscal restraints: A difference-in-discontinuities design. IZA Discussion Paper.
- Imbens, G. W. and T. Lemieux (2008). Regression discontinuity designs: A guide to practice. *Journal of Econometrics* 142(2), 615–635.
- Krueger, A. (2002). Crisis prevention and resolution: lessons from argentina. speech at the National Bureau of Economic Research conference on The Argentina Crisis, NBER, Cambridge MA, July.
- Lucas, R. E. and N. L. Stokey (1983). Optimal fiscal and monetary policy in an economy without capital. *Journal of monetary Economics* 12(1), 55–93.
- Manasse, P. (2007). Deficit limits and fiscal rules for dummies. *IMF Staff Papers* 54(3), 455–473.
- Milesi-Ferretti, G. M. (2004). Good, bad or ugly? on the effects of fiscal rules with creative accounting. *Journal of Public Economics* 88(1), 377–394.
- Patrizii, V., C. Rapallini, and G. Zito (2006). I patti di stabilita interni. *Rivista di diritto finanziario e scienza delle finanze* 65, 156–189.

- Persson, T. and L. E. Svensson (1989). Why a stubborn conservative would run a deficit: Policy with time-inconsistent preferences. *The Quarterly Journal of Economics* 104 (2), 325–345.
- Rodden, J. (2002). The dilemma of fiscal federalism: grants and fiscal performance around the world. *American Journal of Political Science*, 670–687.
- Rodden, J. (2004). Comparative federalism and decentralization: On meaning and measurement. *Comparative Politics*, 481–500.
- Romer, C. D. and D. H. Romer (2010). The macroeconomic effects of tax changes: Estimates based on a new measure of fiscal shocks. *American Economic Review* 100, 763–801.
- Serrato, J. C. and P. Wingender (2010). Estimating local fiscal multipliers. University of California at Berkeley, mimeo.
- Sutherland, D., R. Price, and I. Joumard (2005). Fiscal rules for sub-central governments: Design and impact. OECD Publishing.
- Ter-Minassian, T. Fiscal rules for subnational governments: can they promote fiscal discipline? *OECD Journal on Budgeting* 6(3), 111.
- Weingast, B. (2006). Second generation fiscal federalism: implications for decentralized democratic governance and economic development. SSRN 1153440.
- Wildasin, D. E. (1997). Externalities and bailouts: hard and soft budget constraints in intergovernmental fiscal relations. World Bank Publications 1843.
- Zanardi, A. (1997). Federalismo fiscale: si riparte? *La finanza pubblica italiana*, 127–155.

A Tables

Table 1: Fiscal rules imposed by the Domestic Stability Pact to Italian Municipalities.

Year	Group A	Group B	Group C
t_1	None	None	Budget balance
t_2	None	Total expenditure cap	Total expenditure cap
t_3	None	None	Consumption and Investment caps

Notes. t_1 , t_2 and t_3 are respectively years 2004, 2005 and 2006. Group A, Group B and Group C represent, respectively, municipalities with a population below 3,000, between 3,000 and 5,000, above 5,000 inhabitants.

Table 2: Budget values.

	Group A			Group B			Group C		
	t_1	t_2	t_3	t_1	t_2	t_3	t_1	t_2	t_3
Consumption	717.91	723.04	729.04	664.28	666.52	664.49	616.51	627.09	588.51
Wages	239.39	236.46	236.94	207.51	206.16	204.39	196.34	196.08	192.21
Services	235.85	242.39	254.22	248.78	254.37	259.76	239.03	247.58	224.00
Investment	618.11	651.68	579.35	474.99	445.70	377.86	400.33	358.18	339.67
Infrastructure	514.84	530.46	463.08	364.64	353.64	300.07	318.22	280.83	266.11
Obs.	2041	2041	2041	894	894	894	470	470	470

Notes. t_1 , t_2 and t_3 are respectively years 2004, 2005 and 2006. Group A, Group B and Group C represent, respectively, municipalities with a population below 3,000, between 3,000 and 5,000, above 5,000 inhabitants. Values are in Euro per-capita and deflated using as reference year t_3 .

Table 3: Domestic Stability Pact effects in Case I.

	LLR_1	LLR_2	SPA
Case IA			
Consumption	6.78 (9.32)	7.54 (10.58)	7.70 (11.54)
Investment	90.74 (68.40)	111.72 (74.20)	74.46 (93.21)
Case IB			
Consumption	2.07 (8.06)	2.81 (9.31)	-5.59 (12.50)
Investment	4.62 (63.52)	-22.04 (65.61)	-85.55 (87.76)
Obs.	4,078	3,446	5,870

Notes. Case I refers to Municipalities between 1,000 and 5,000 inhabitants. Case IA considers t_1 and t_2 while Case IB analyzes t_2 and t_3 . LLR_1 and LLR_2 are Local Linear Regressor methods as in equation (3), with a bandwidth of respectively 1,500 and 1,300. SPA is the Spline Polynomial Approximation method of order 2, as in equation (4), and considers all the Municipalities. Values are in Euro per-capita and deflated using t_3 as reference year. Robust standard errors are in parenthesis and are clustered at the Municipality level. Significance at the 10% level is represented by *, at the 5% level by **, at the 1% level by ***.

Table 4: Domestic Stability Pact effects in Case II.

	LLR_1	LLR_2	SPA
Case IIA			
Consumption	9.60 (9.49)	-2.05 (12.62)	4.69 (15.77)
Investment	4.44 (80.13)	6.70 (90.19)	-44.68 (119.15)
Case IIB			
Consumption	-27.97*** (10.20)	-23.03* (11.84)	-28.54* (14.61)
<i>Wages</i>	11.03*** (3.00)	12.93*** (3.53)	10.73** (4.40)
<i>Services</i>	-35.40*** (6.72)	-34.05*** (7.67)	-37.22*** (9.49)
Investment	179.58*** (69.04)	188.45** (76.66)	193.83** (93.59)
<i>Infrastructure</i>	149.97*** (54.03)	164.44*** (60.12)	171.69** (73.21)
Deficit	103.22** (41.28)	110.40** (46.17)	141.07** (56.96)
Obs.	1,880	1,618	2,728

Notes. Case II refers to Municipalities between 3,000 and 7,000 inhabitants. Case IIA considers t_1 and t_2 while Case IIB analyzes t_2 and t_3 . LLR_1 and LLR_2 are Local Linear Regressor methods as in equation (3), with a bandwidth of respectively 1,500 and 1,300. SPA is the Spline Polynomial Approximation method of order 2, as in equation (4), and considers all the Municipalities. Values are in Euro per-capita and deflated using t_3 as reference year. Robust standard errors are in parenthesis and are clustered at the Municipality level. Significance at the 10% level is represented by *, at the 5% level by **, at the 1% level by ***.

Table 5: Robustness checks in Case I.

	LLR (b=1,500)	LLR (b=1,300)	Spline (order 2)
Case IA			
Consumption	3.21 (9.87)	4.78 (11.09)	2.28 (11.48)
Investment	56.86 (68.01)	74.74 (73.31)	37.72 (93.26)
Case IB			
Consumption	-2.09 (7.95)	-1.19 (9.22)	-8.66 (12.28)
Investment	-35.89 (63.58)	-56.85 (66.02)	-115.28 (88.55)
Obs.	4,078	3,446	5,870

Notes. Case I refers to Municipalities between 1,000 and 5,000 inhabitants. Case IA considers t_1 and t_2 while Case IB analyzes t_2 and t_3 . LLR_1 and LLR_2 are Local Linear Regressor methods as in equation (5), with a bandwidth of respectively 1,500 and 1,300. SPA is the Spline Polynomial Approximation method of order 2, as in equation (6), and considers all the Municipalities. Values are in Euro per-capita and deflated using t_3 as reference year. Robust standard errors are in parenthesis and are clustered at the Municipality level. Significance at the 10% level is represented by *, at the 5% level by **, at the 1% level by ***.

Table 6: Robustness checks in Case II.

	LLR (b=1,500)	LLR (b=1,300)	Spline (order 2)
Case IIA			
Consumption	6.84 (9.59)	-4.86 (12.74)	4.42 (16.13)
Investment	-26.75 (79.36)	-29.78 (89.42)	-77.15 (119.29)
Case IIB			
Consumption	-32.32*** (10.44)	-27.57** (12.18)	-29.68** (15.03)
<i>Wages</i>	4.57 (2.90)	5.22 (3.35)	4.65 (4.21)
<i>Services</i>	-30.57*** (6.76)	-28.19*** (7.72)	-30.33*** (9.61)
Investment	142.38** (68.75)	144.22* (76.37)	156.04* (93.41)
<i>Infrastructure</i>	119.25** (53.43)	127.30** (59.36)	141.68* (72.91)
Deficit	97.15** (41.58)	102.67** (46.48)	134.51** (57.23)
Obs.	1,880	1,618	2,728

Notes. Case II refers to Municipalities between 3,000 and 7,000 inhabitants. Case IIA considers t_1 and t_2 while Case IIB analyzes t_2 and t_3 . LLR_1 and LLR_2 are Local Linear Regressor methods as in equation (5), with a bandwidth of respectively 1,500 and 1,300. SPA is the Spline Polynomial Approximation method of order 2, as in equation (6), and considers all the Municipalities. Values are in Euro per-capita and deflated using t_3 as reference year. Robust standard errors are in parenthesis and are clustered at the Municipality level. Significance at the 10% level is represented by *, at the 5% level by **, at the 1% level by ***.

B Figures

Figure 1: Number of default of Italian Municipalities between 1989 and 2012 by Regions. Source: Corte dei Conti.

	1989	1990	1991	1992	1993	1994	1995	1996	1997	1998	1999	2000	2001	2002	2003	2004	2005	2006	2007	2008	2009	2010	2011	2012		
Piemonte		1	2	1	1																				5	
Lombardia		3	3	5	1	1					1													1	15	
Liguria	1			2																				1	4	
Veneto	1			1				1																	3	
Emilia Romagna	1		4	1		1			1																8	
Toscana	3	1																						1	5	
Umbria	2	1				1																			4	
Marche	2	1	1			1									1										6	
Lazio	7	2	5	2	7	3	3	2		1		2		1			1	1		1	2	2	1		43	
Abruzzo	6	1	1	4	1	1	3														1	2			18	
Molise	4	4		1	2	1															1	2			15	
Campania	18	18	10	12	22	14	2	1	5		2	1		1	1	1		2		1		3	4	3	121	
Puglia	21	4	2	4	2		1												1						35	
Basilicata	4	3	3	1	3	2	2	1																	19	
Calabria	51	22	13	10	11	7	2	3	1		1		1	1	1					3		1	1	2	131	
Sicilia	2	3	1	2	2	6	3	1			1						2	1						1	25	
Sardegna	2													1												3
	125	64	45	46	52	38	16	9	7	1	5	3	1	4	2	2	3	4	1	5	4	8	10	5	460	

Figure 2: Italian Municipalities spending as a percentage of GDP (period between 1990 and 2010). Source: Istat, author's calculations.

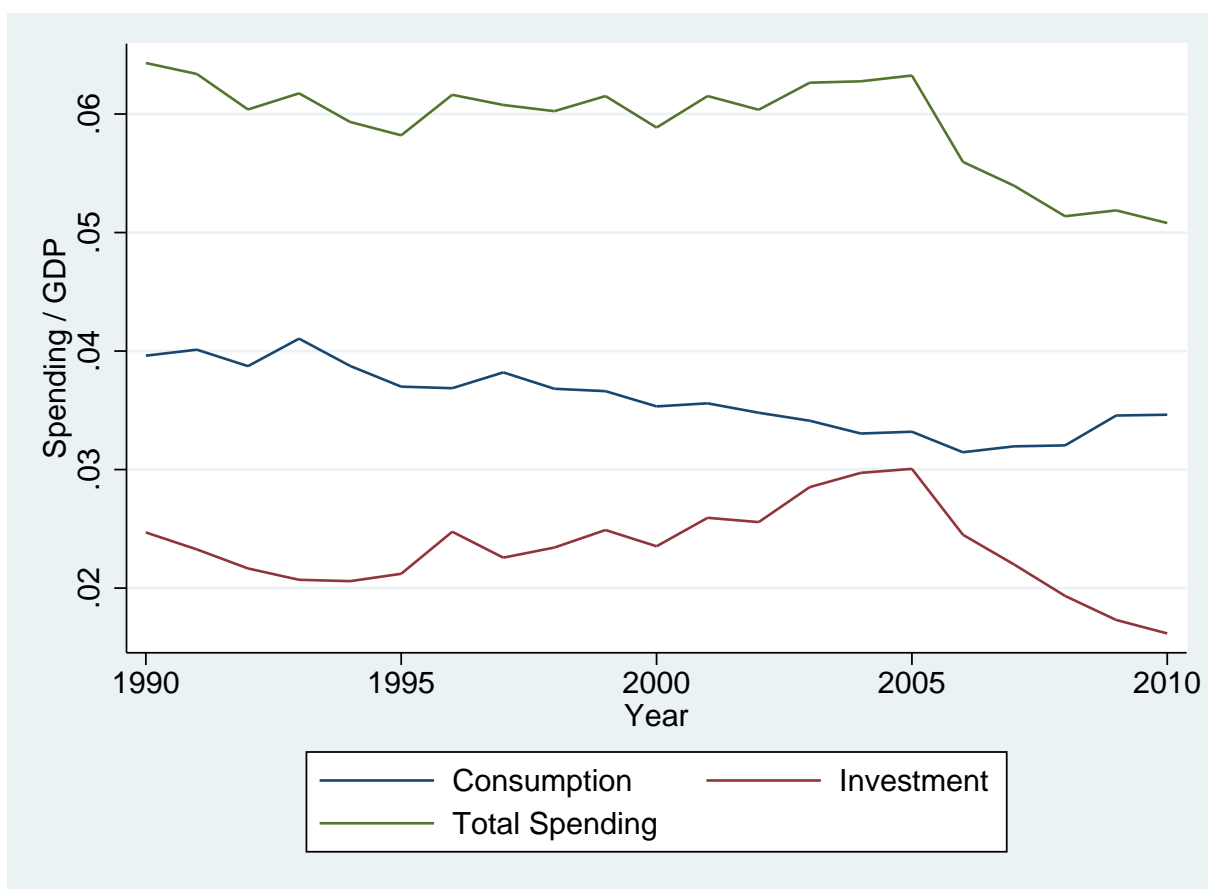


Figure 3: Level of Consumption over Investment for the three groups of Municipalities in the period between 2004 and 2006. Source: Ministry of the Interior, author's calculations.

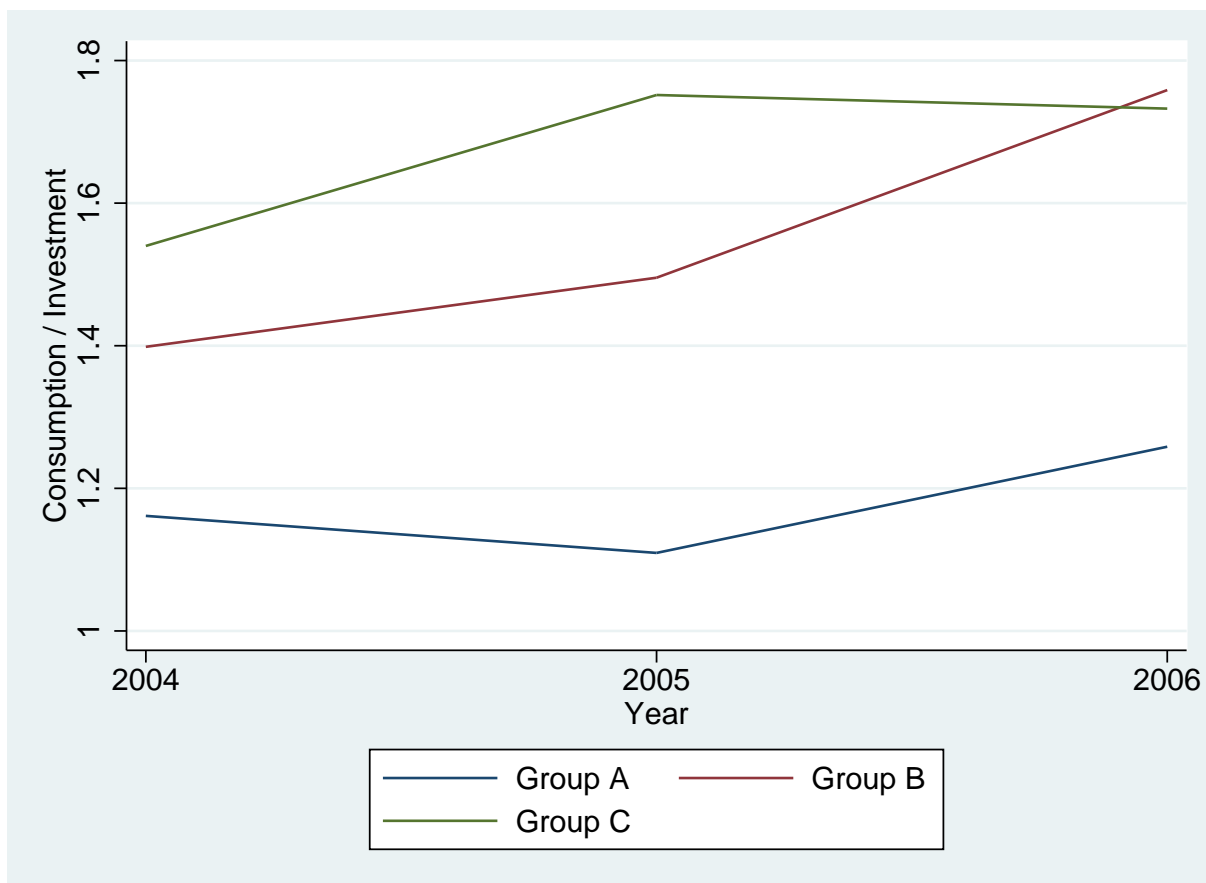


Figure 4: Identification strategy, Case IA and Case IB

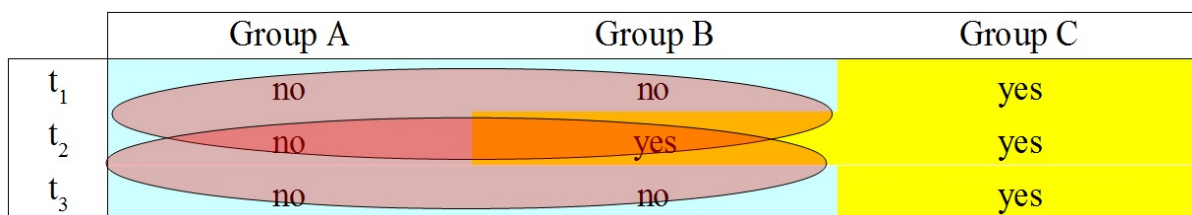


Figure 5: Identification strategy, Case IIA and Case IIB

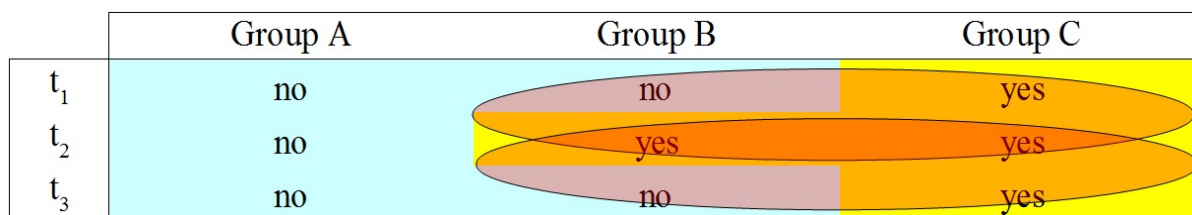
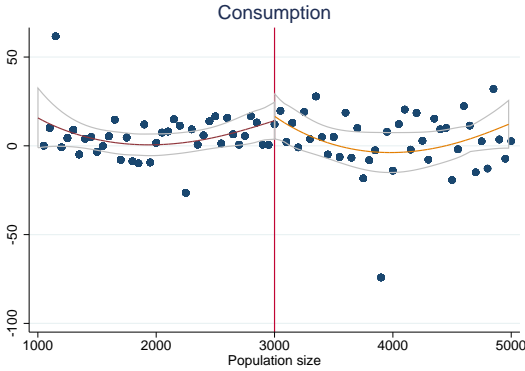
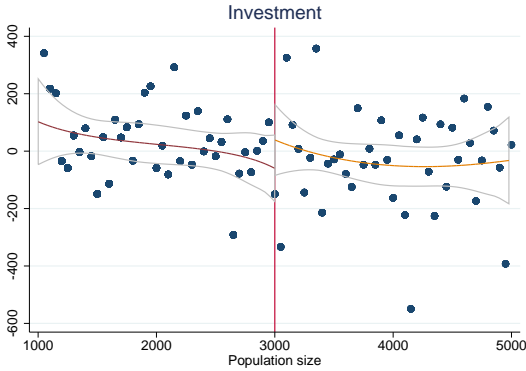


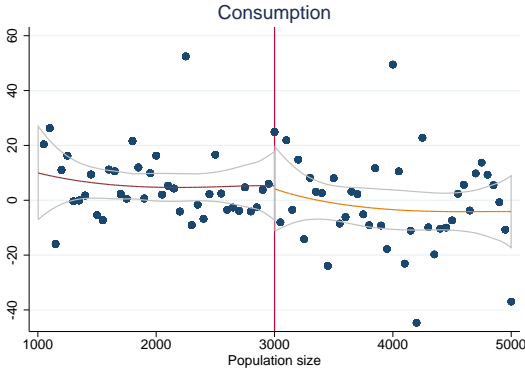
Figure 6: Difference-in-discontinuities in Case I. Threshold at 3,000 inhabitants. The central line is a SPA of order 2 and the later lines represent the 95% confidence interval. Scatter points are averaged over intervals of 50 inhabitants. On the vertical axis there are the t_0-t_{-1} budget values. On the horizontal axis there is the actual population size.



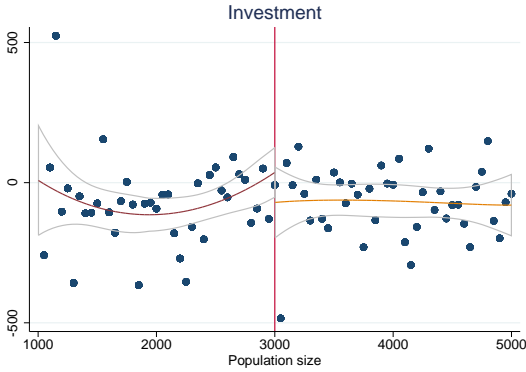
(a) Case IA



(b) Case IA

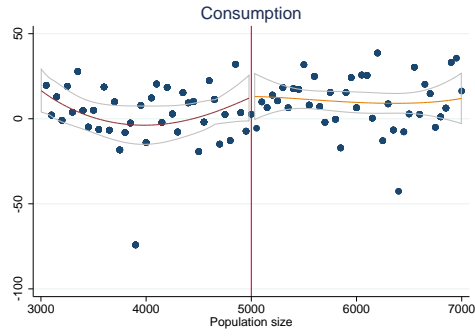


(c) Case IB

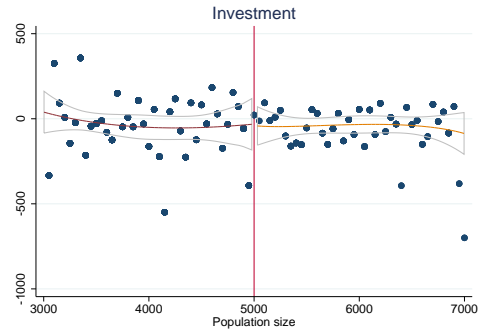


(d) Case IB

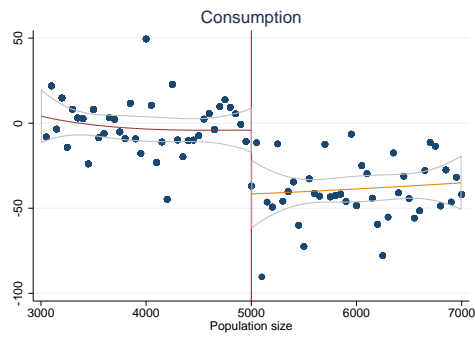
Figure 7: Difference-in-discontinuities in Case II. Threshold at 5,000 inhabitants. The central line is a SPA of order 2 and the later lines represent the 95% confidence interval. Scatter points are averaged over intervals of 50 inhabitants. On the vertical axis there are the t_0-t_{-1} budget values. On the horizontal axis there is the actual population size.



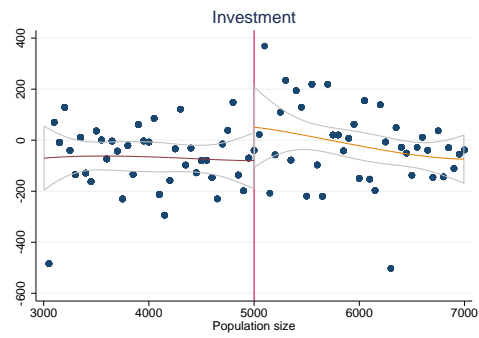
(a) Case IIA



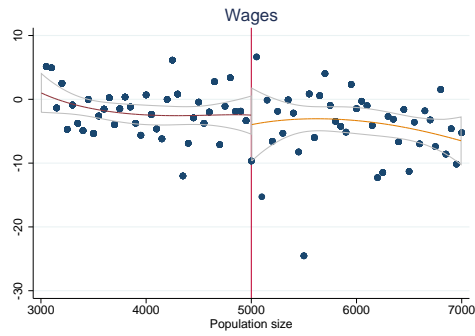
(b) Case IIA



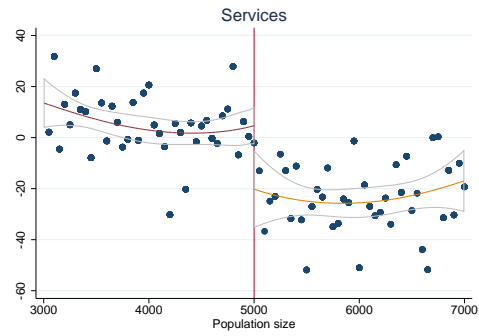
(c) Case IIB



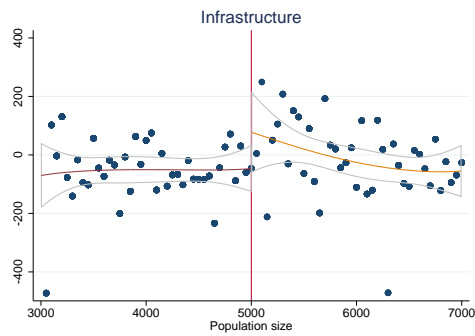
(d) Case IIB



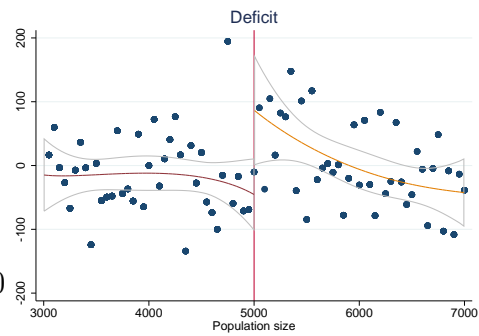
(e) Case IIB



(f) Case IIB



(g) Case IIB



(h) Case IIB



Alma Mater Studiorum - Università di Bologna
DEPARTMENT OF ECONOMICS

Strada Maggiore 45
40125 Bologna - Italy
Tel. +39 051 2092604
Fax +39 051 2092664
<http://www.dse.unibo.it>